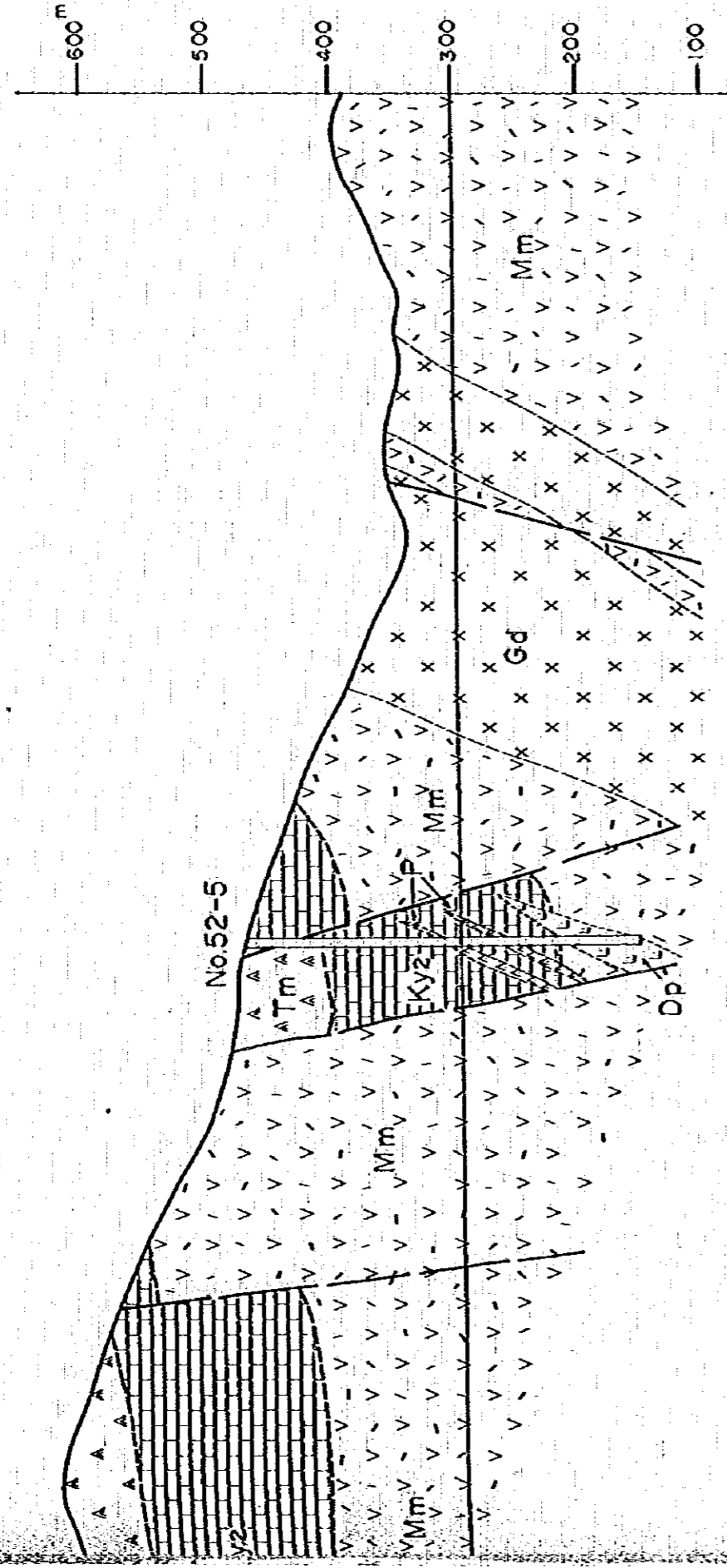
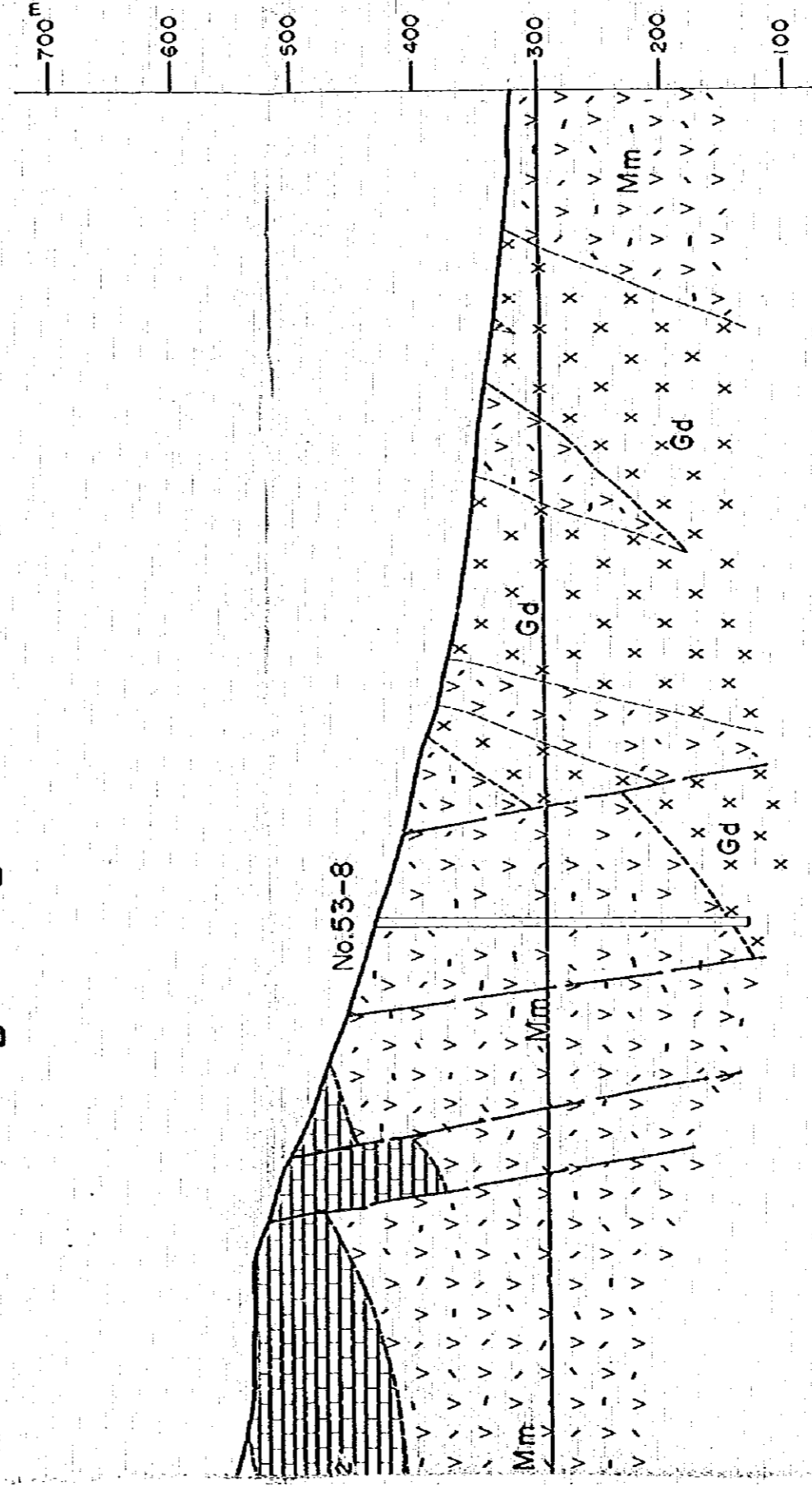


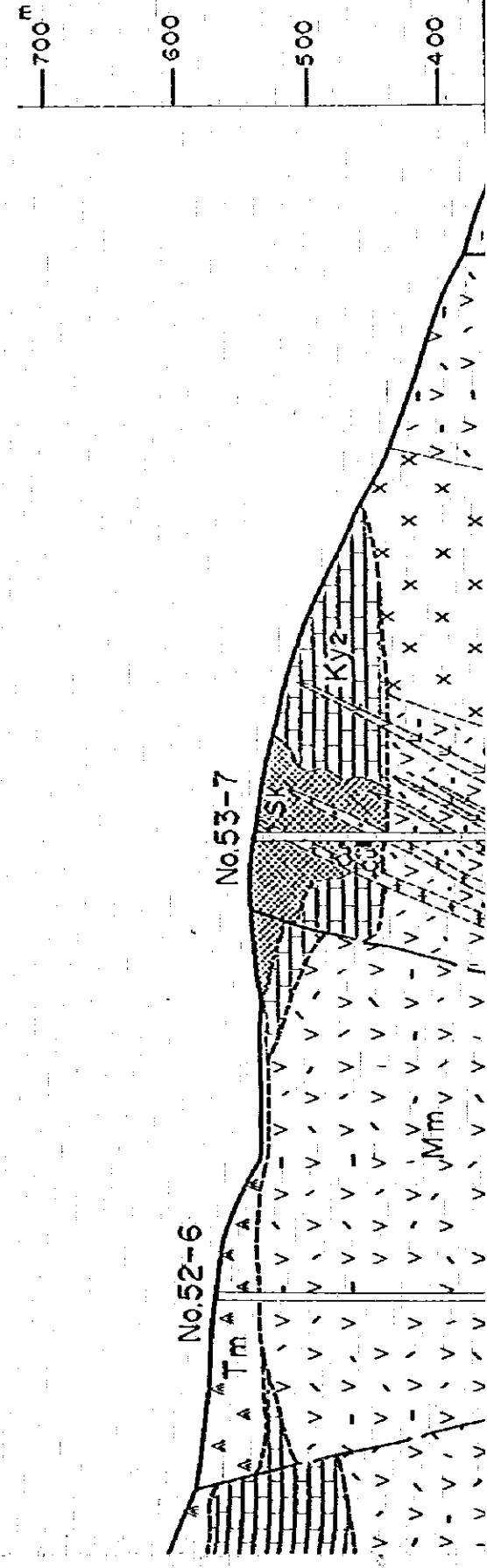
A — A'



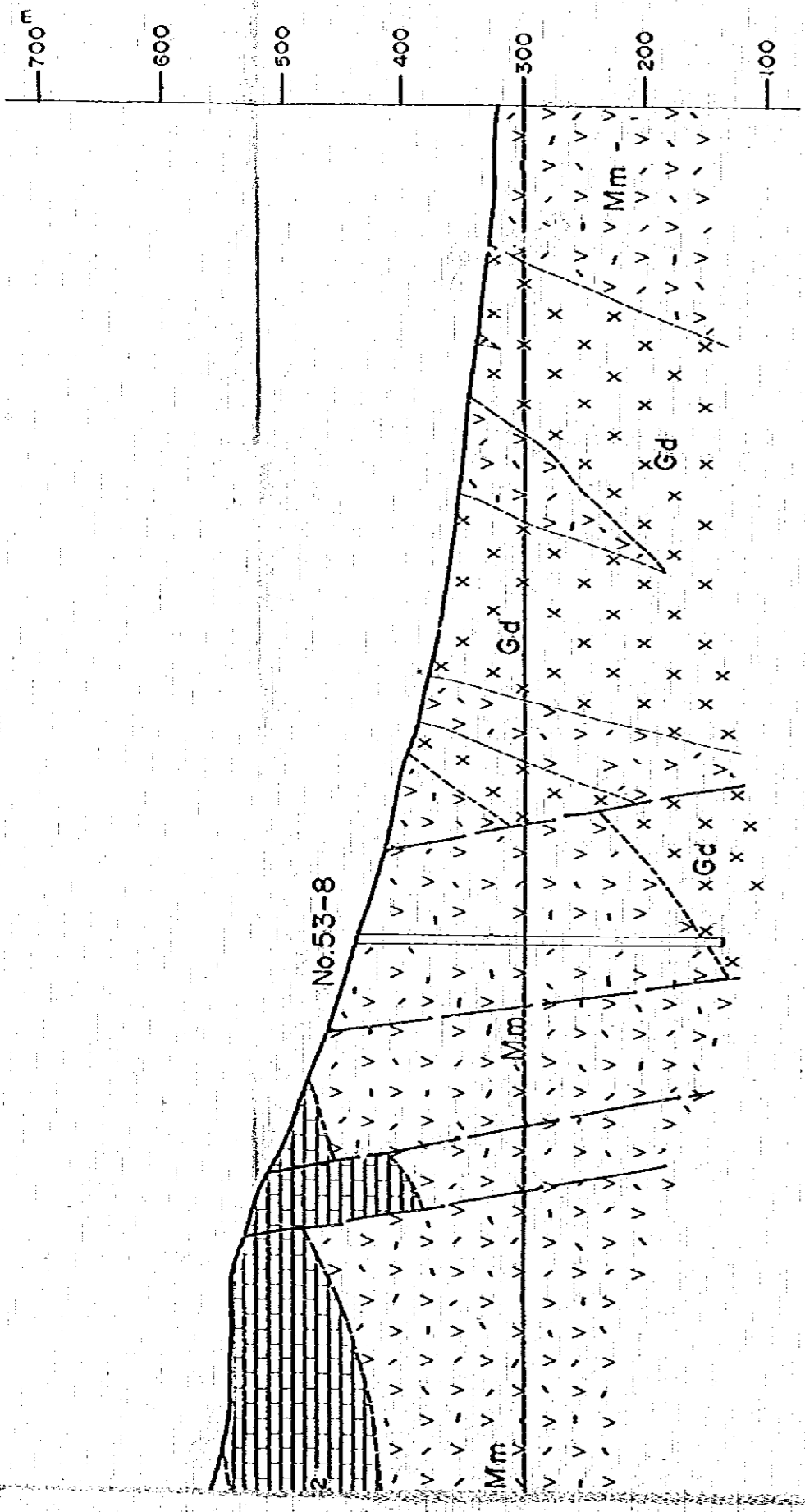
B — B'



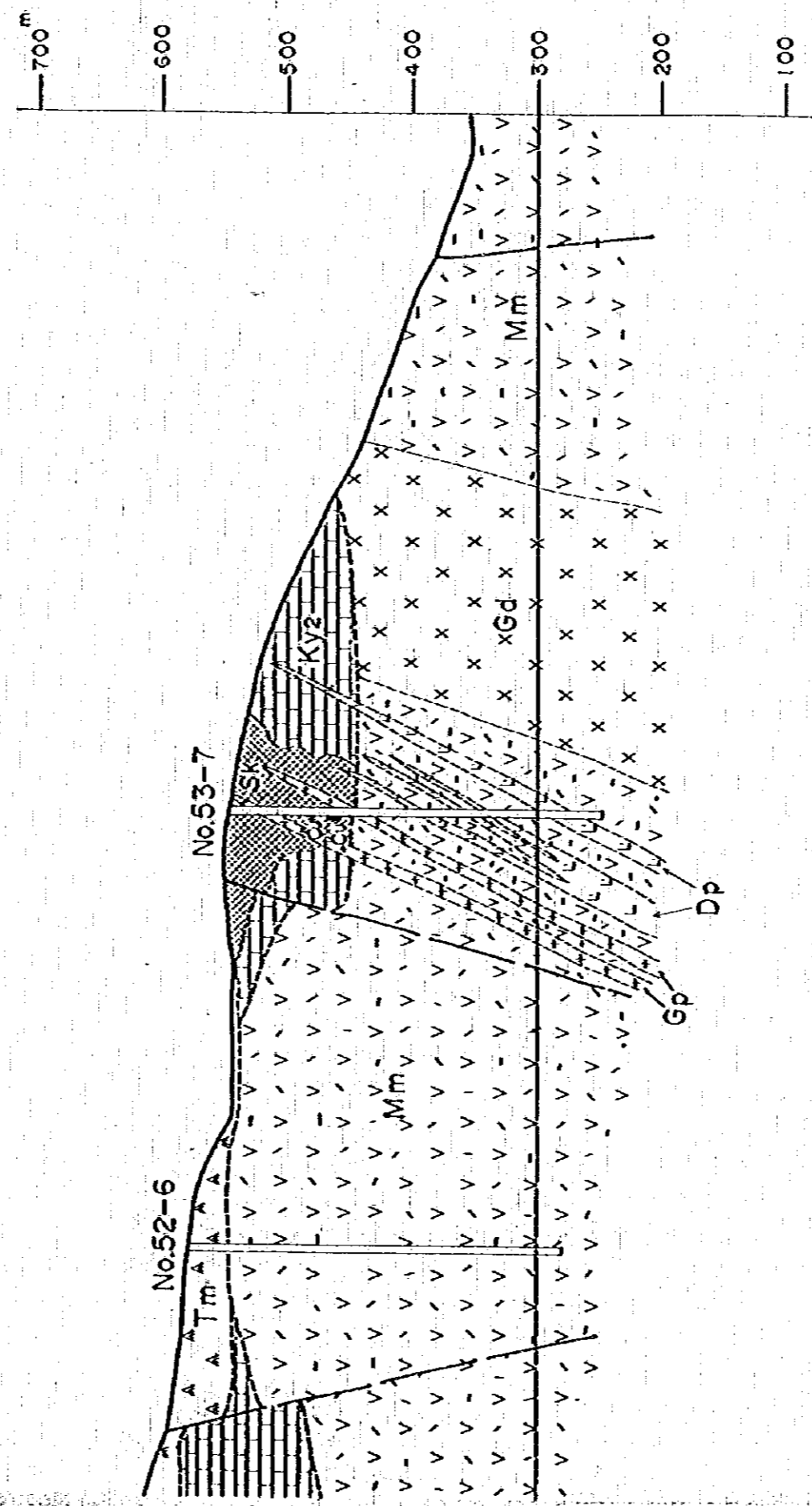
C — C'



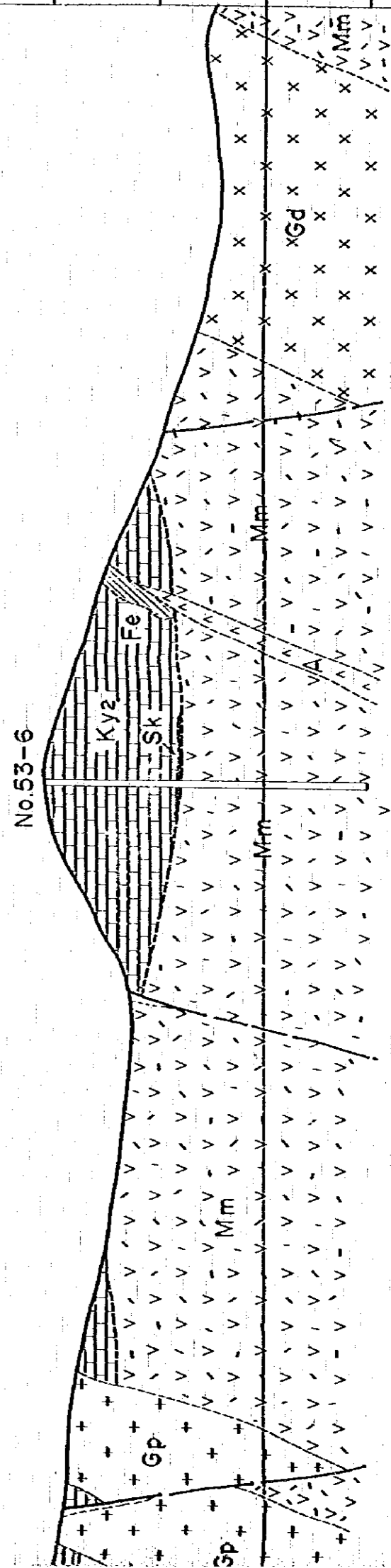
B — B'

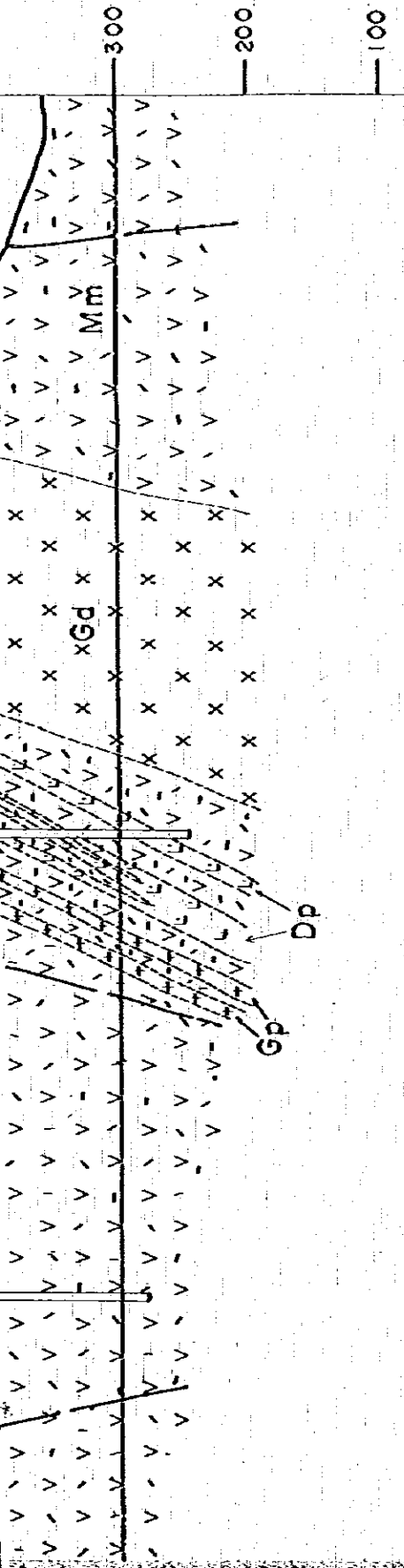


C — C'

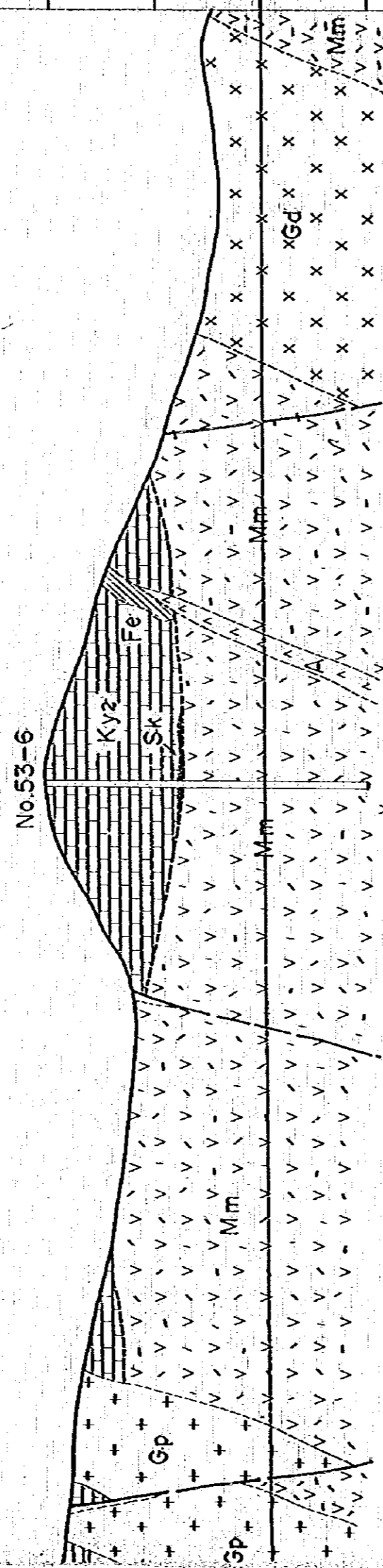


D — D'

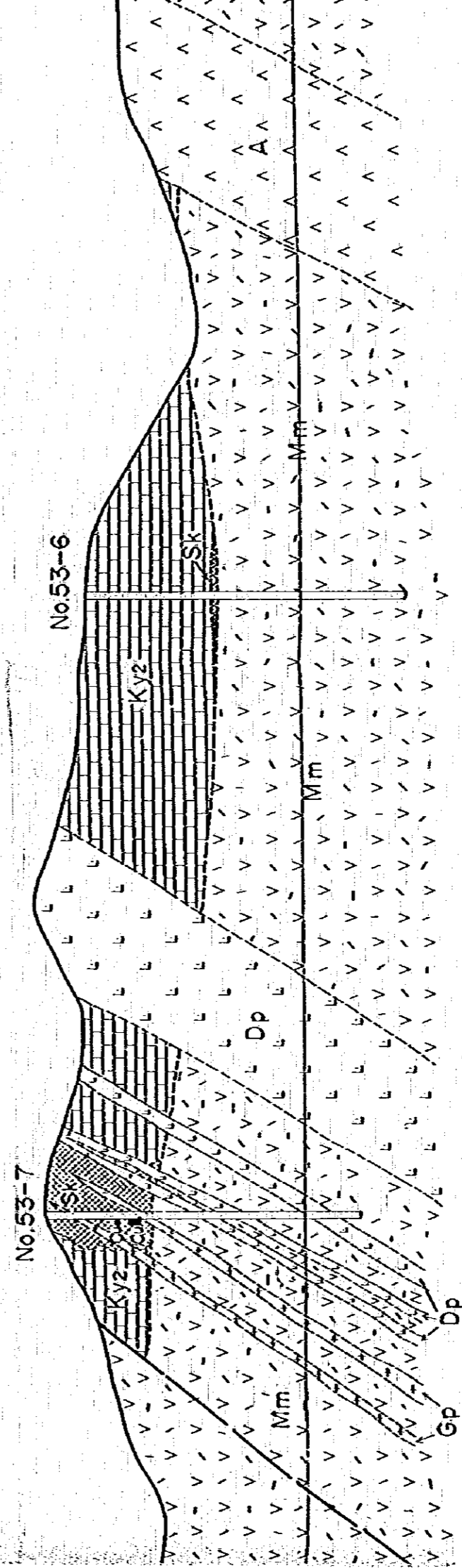




D — D'

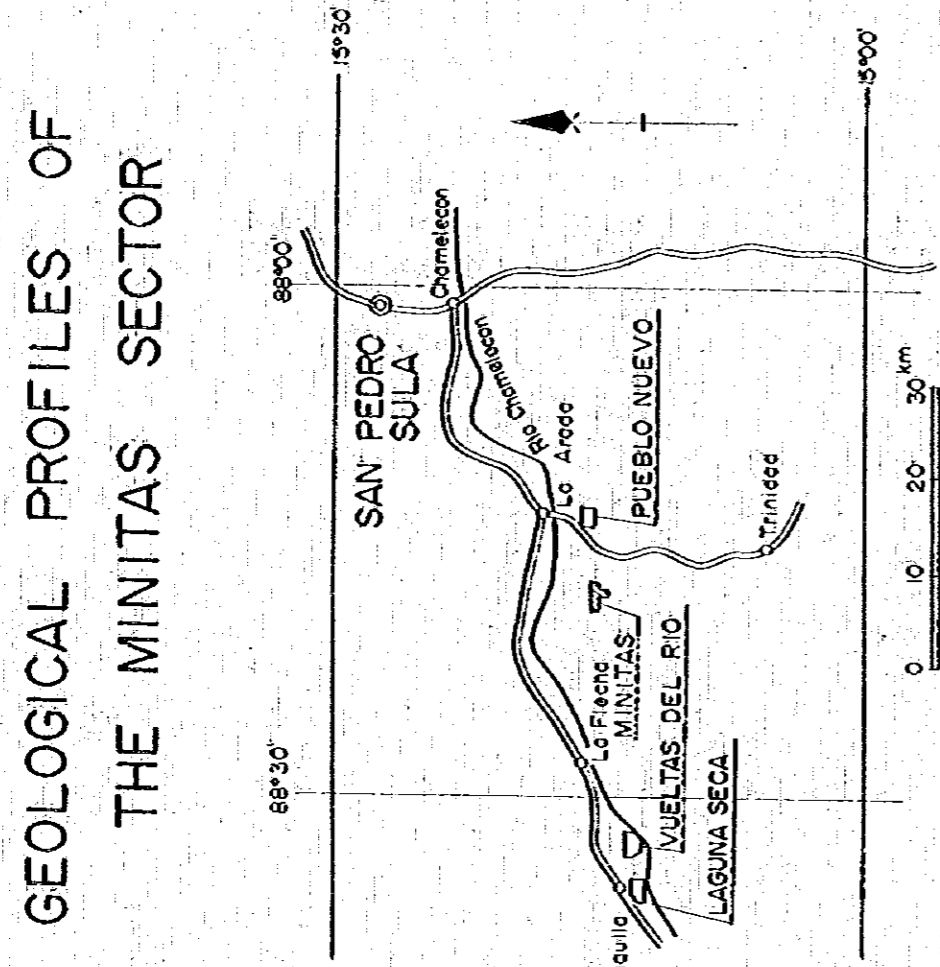


E — E'



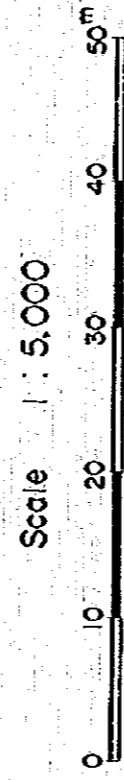
GEOLOGICAL SURVEY
OF
THE WESTERN AREA, REPUBLIC OF HONDURAS
VOL. 3

GEOLOGICAL PROFILES OF
THE MINITAS SECTOR



METAL MINING AGENCY OF JAPAN
JAPAN INTERNATIONAL COOPERATION AGENCY
GOVERNMENT OF JAPAN

FEBRUARY 1979
prepared by MESCO, Inc.



LEGEND

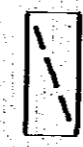
Formation	Stratigraphical Mark	Symbol	Lithology
Alluvium		Q	gravel, sand & mud
Matagalpa F.	A A A A	Tm	basalt, andesite & pyroclastics
Atima F.	V V V V	Kyz	massive limestone
Minitas F.	V V V V	Mm	metaandesite, metaporphyrite & pyroclastics
	X X X X	Ge	granodiorite
	L L L L	Mr	liparite
Intrusive rock	A A A A	A	andesite dyke
	A A A A	P	porphyrite dyke
	L L L L	Dp	diorite porphyry
	+ + + +	Gp	granite porphyry & granodiorite porphyry

- fault
- UN 3
- sk mineralized zone (skarn)
- Fe mineralized zone (Fe gossan)

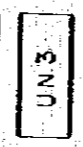


LEGEND

Formation	Stratigraphical Mark	Symbol	Lithology
Alluvium		Q	gravel, sand & mud.
Matagalpa F.	A A A A	Tm	basalt, andesite & pyroclastics
Arima F.		Kyz	massive limestone
Minitas F.	V V V V	Mm	metaandesite, metaporphyrity & pyroclastics
	X X X X	Gd	granodiorite
	L L L L	Mr	liparite
Intrusive rock	^ ^ ^ ^	A	andesite dyke
	^ ^ ^ ^	P	porphyrite dyke
	L L L L	Dp	diorite porphyry
	+ + + +	Gp	granite porphyry & granodiorite porphyry



fault



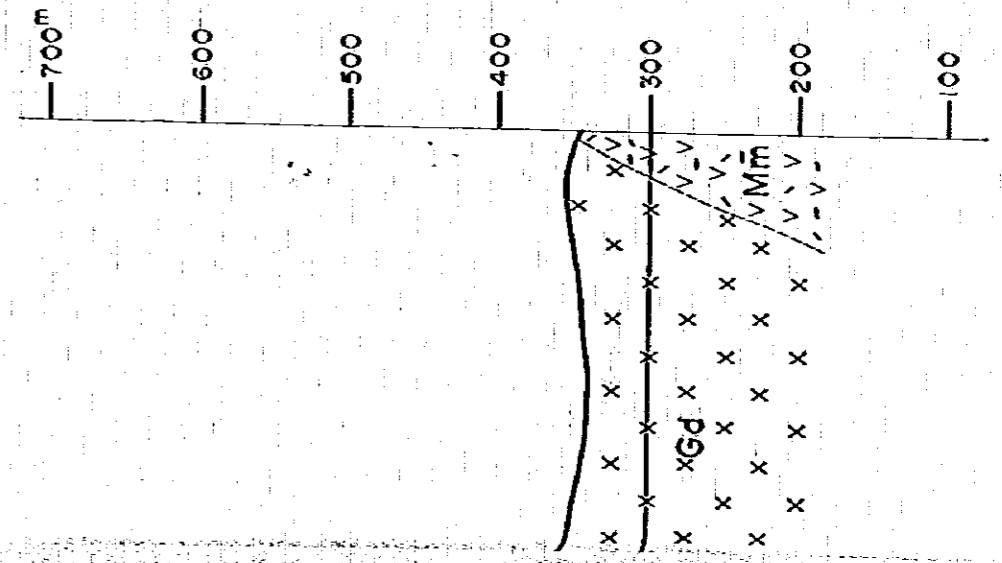
UN3
DDH by UNDP
(1969-1972)

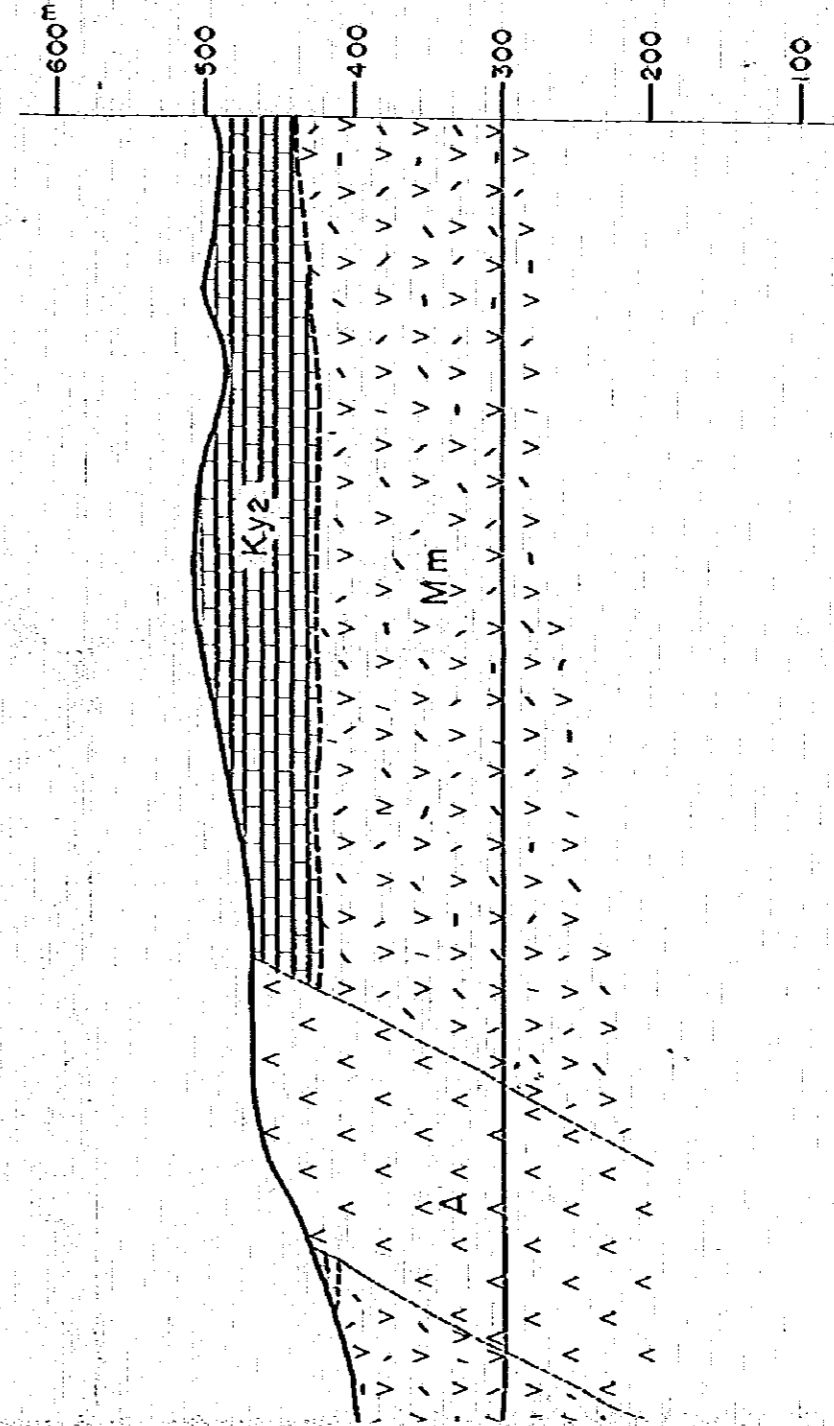
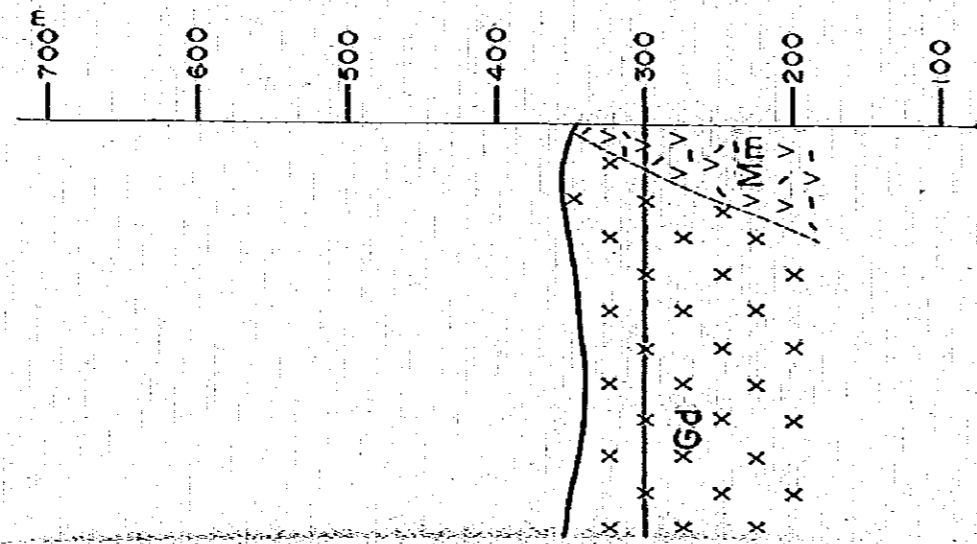


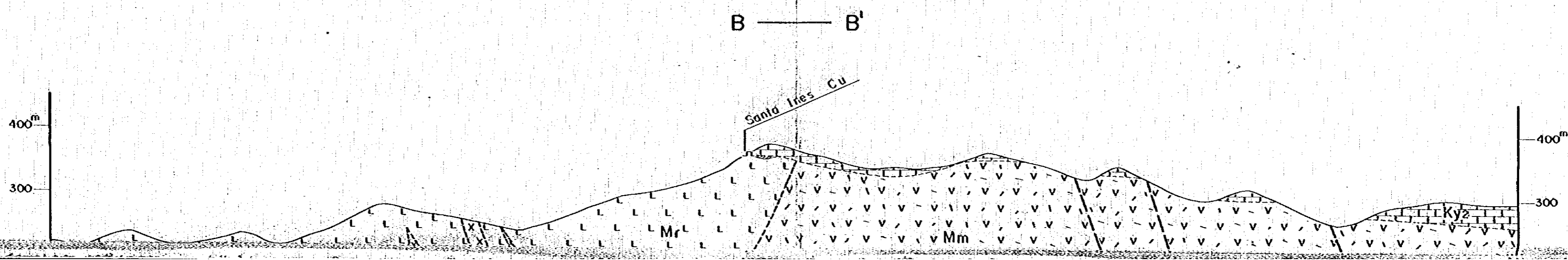
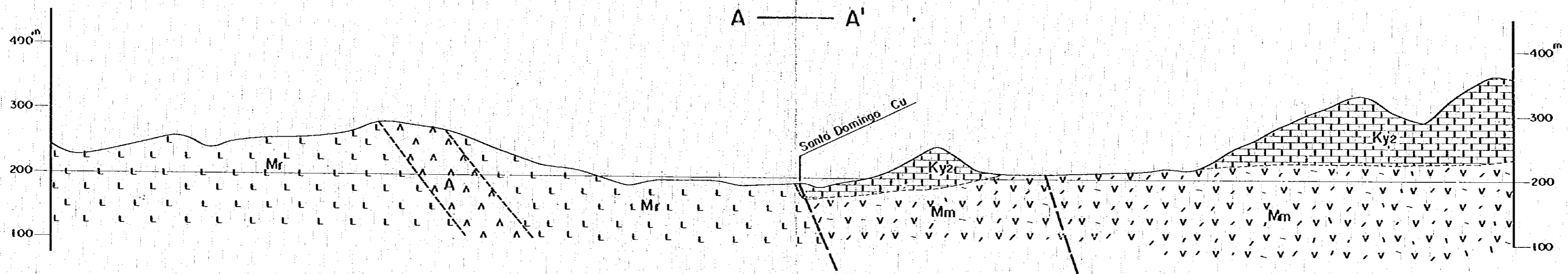
mineralized zone (skarn)



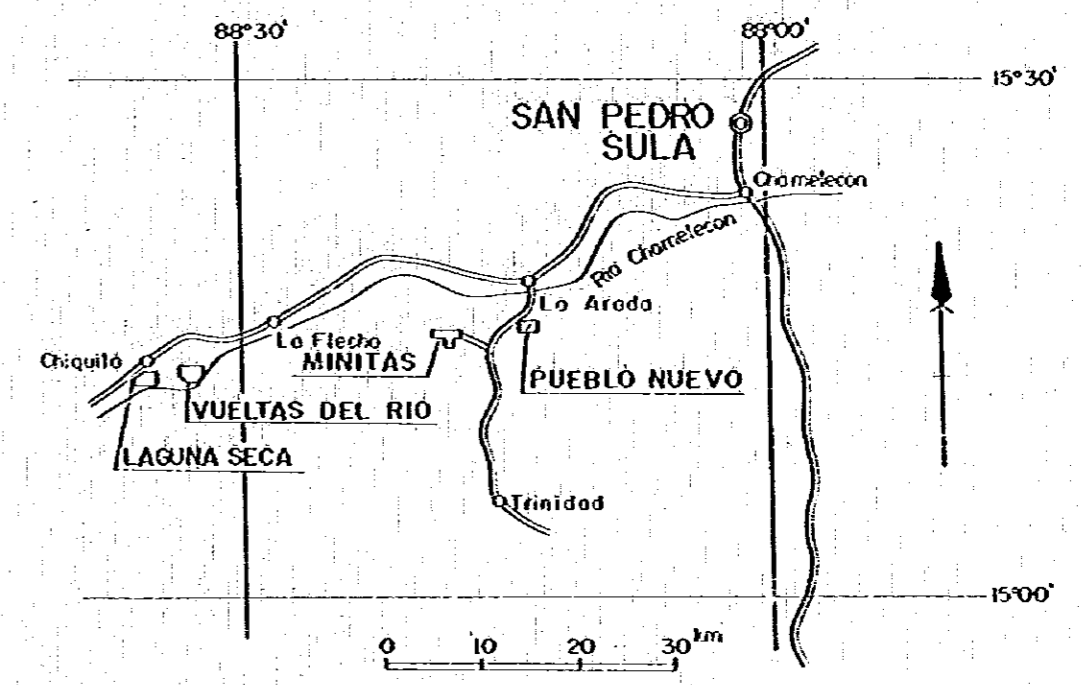
mineralized zone (Fe gossan)



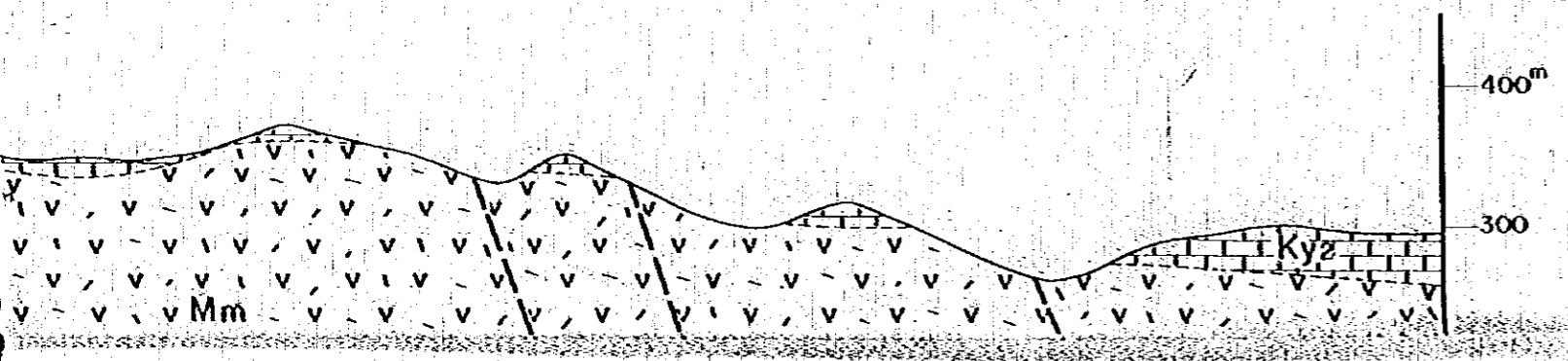
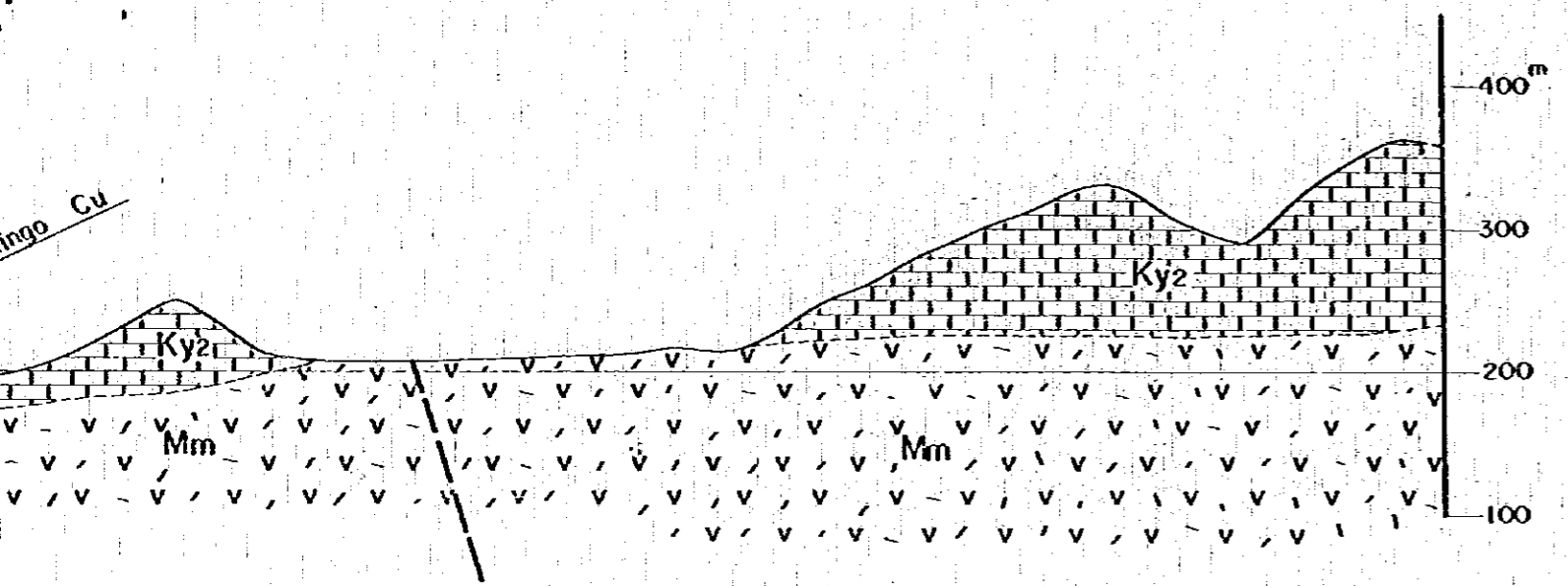
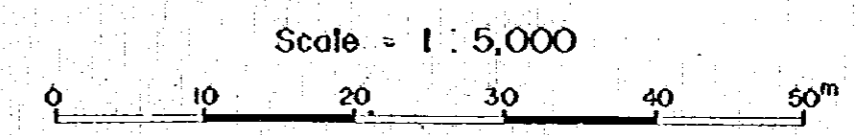


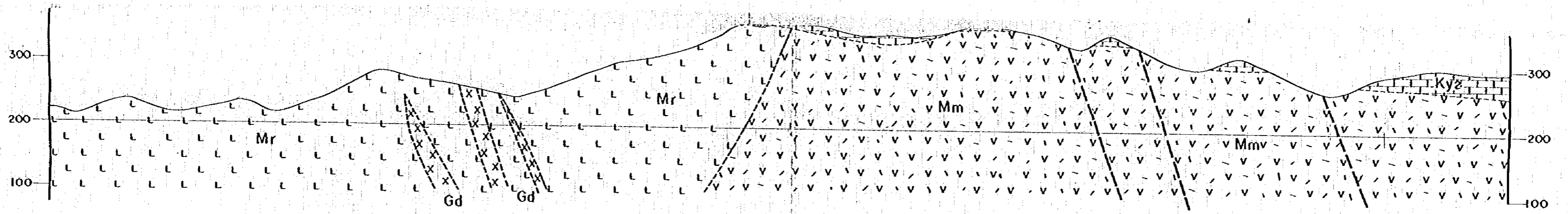


GEOLOGICAL SURVEY
OF
THE WESTERN AREA, REPUBLIC OF HONDURAS
VOL. 3
GEOLOGICAL PROFILES OF
THE PUEBLO NUEVO SECTOR

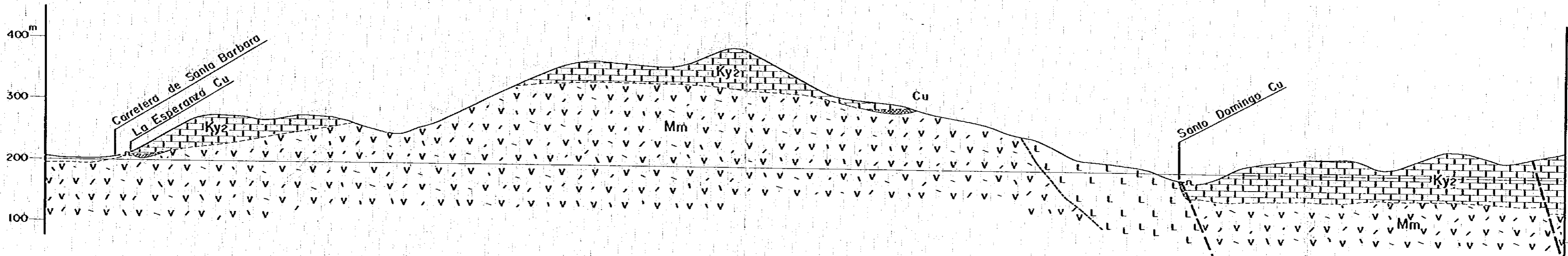


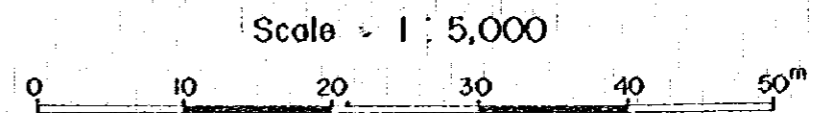
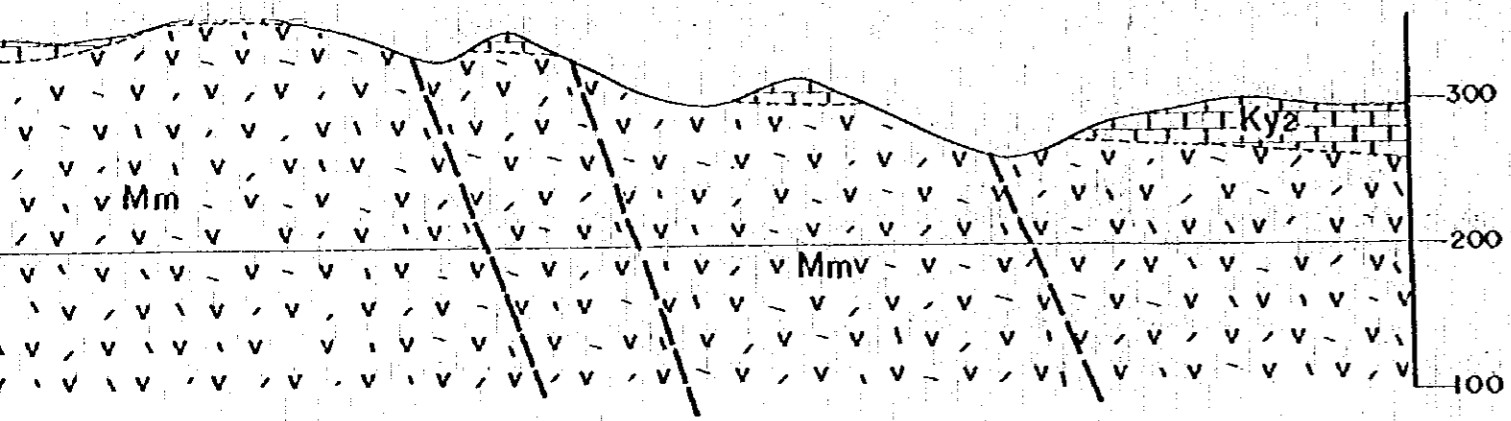
METAL MINING AGENCY OF JAPAN
JAPAN INTERNATIONAL COOPERATION AGENCY
GOVERNMENT OF JAPAN
FEBRUARY 1979
prepared by MESCO, Inc.





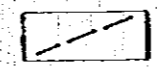
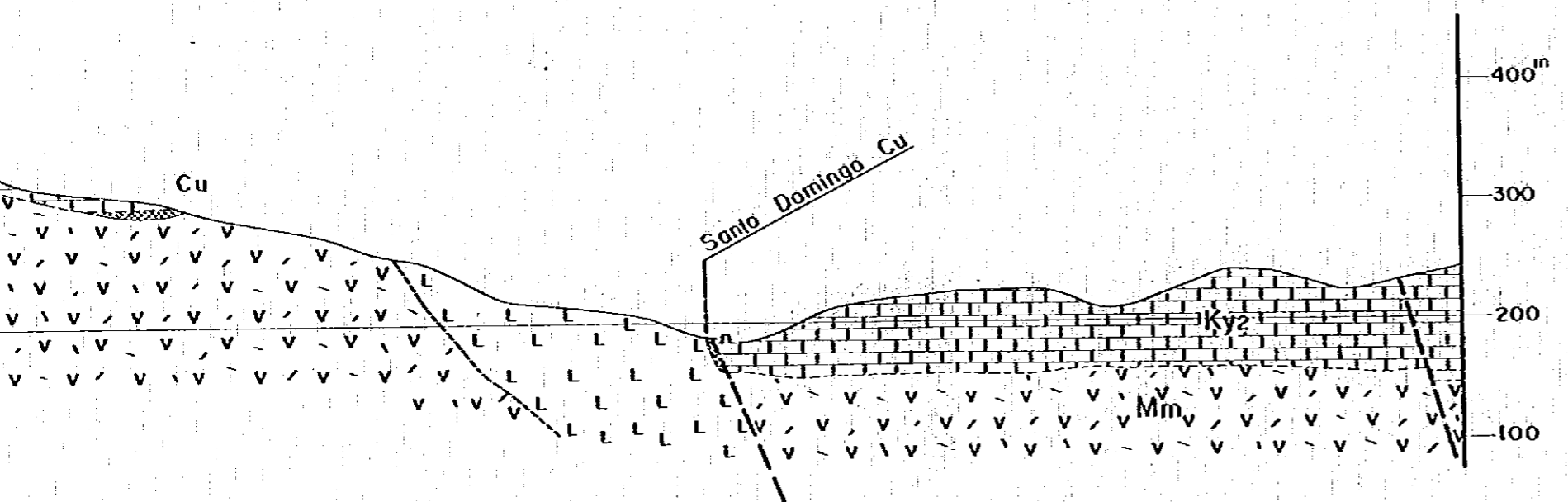
C — C'





LEGEND

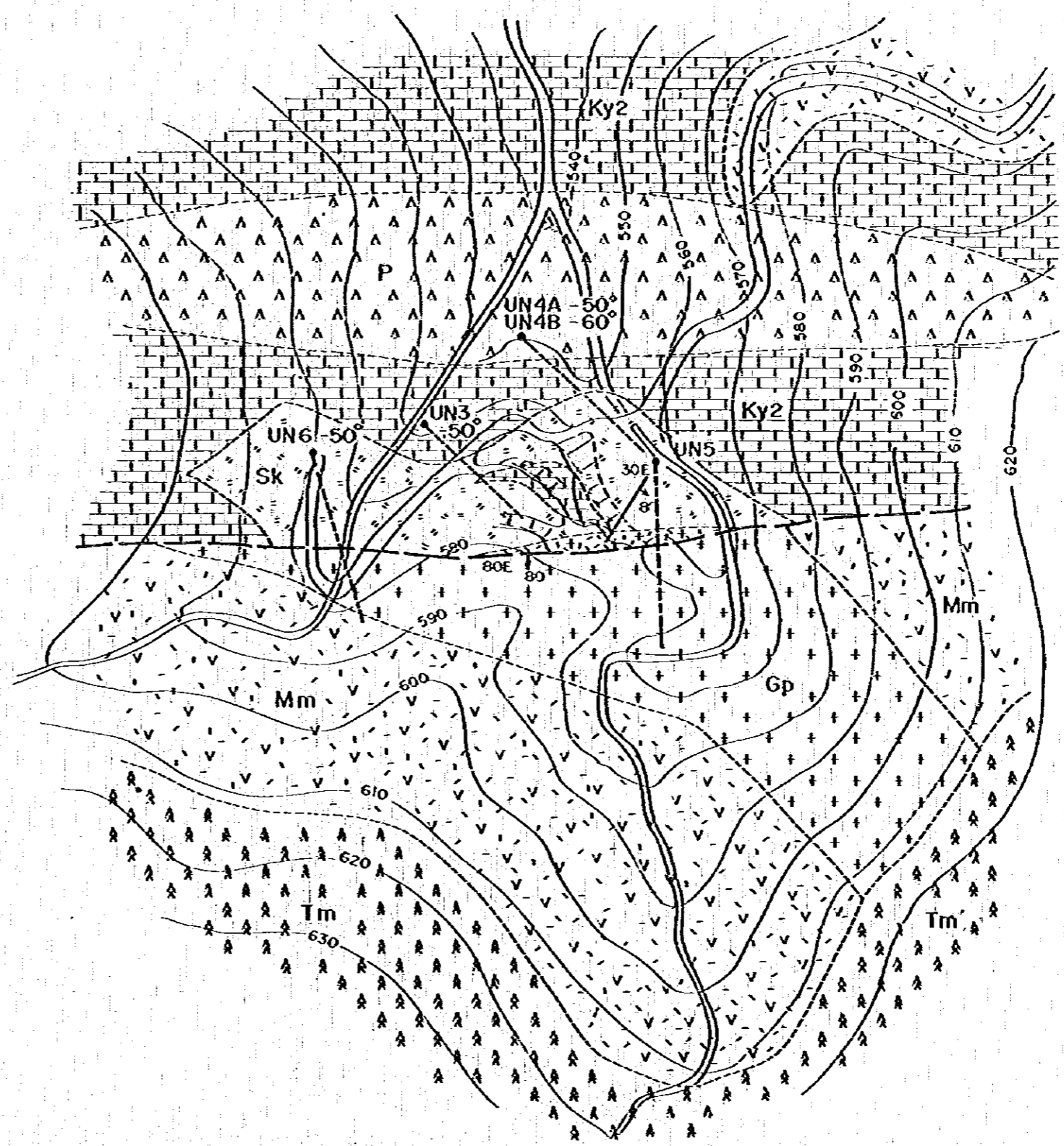
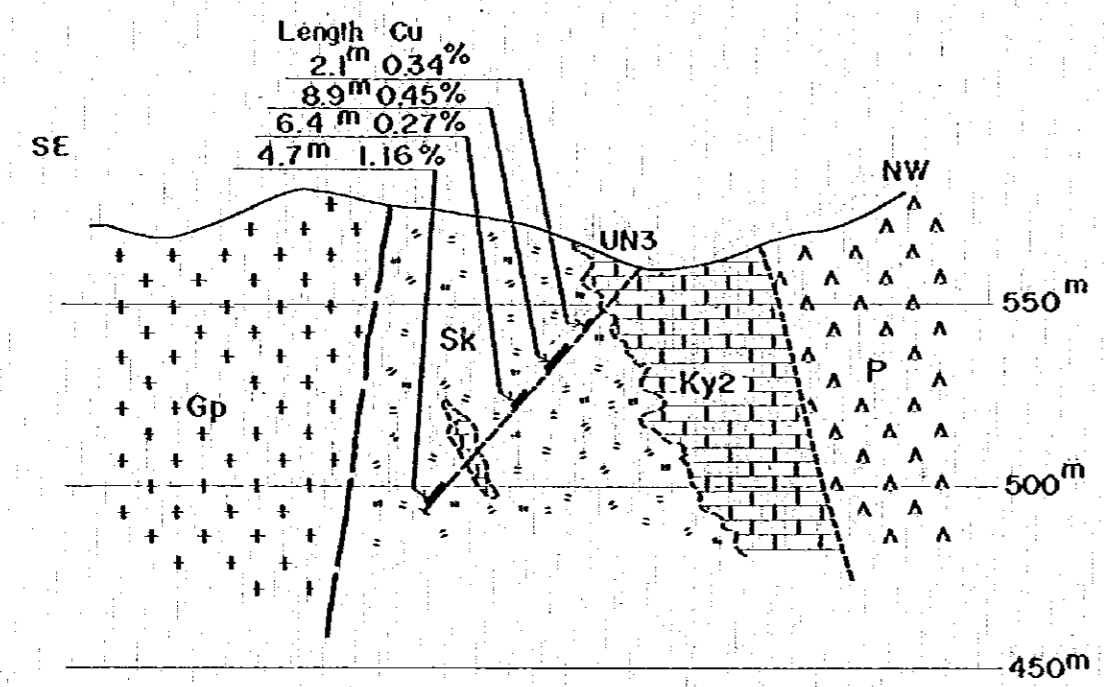
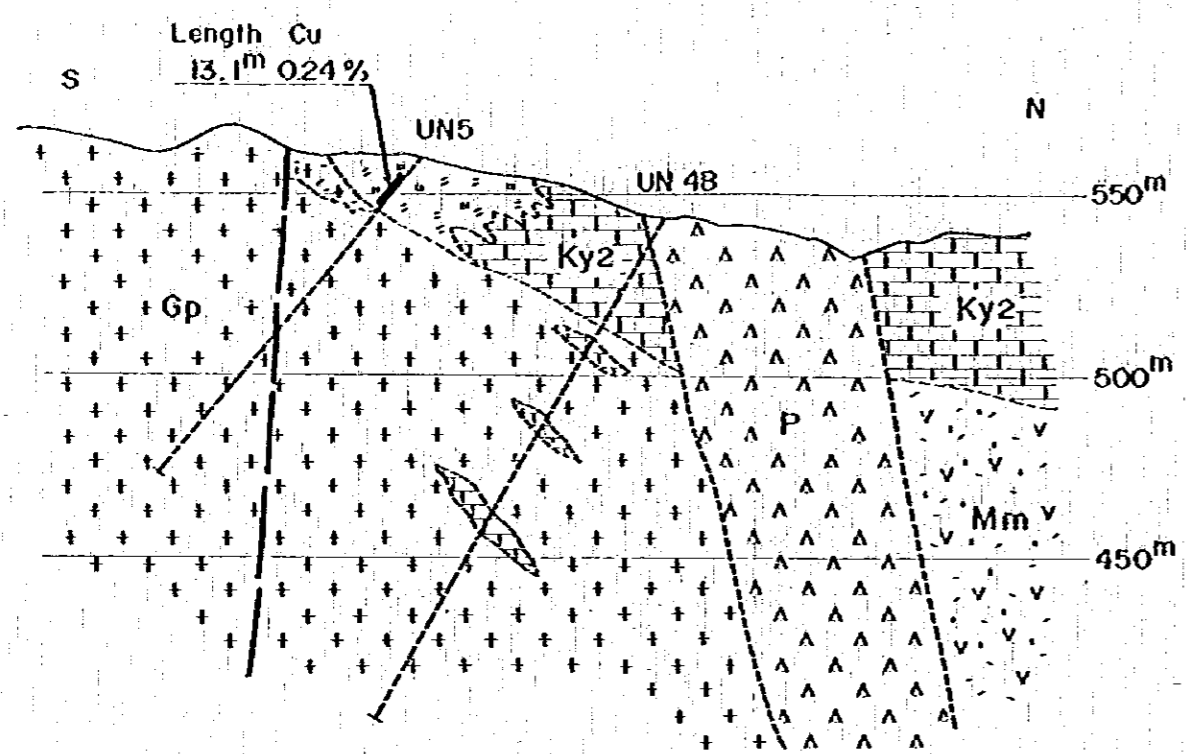
Formation	Stratigraphical		Lithology
	Mark	Symbol	
Alluvium		Q	gravel, sand & mud
Matagalpa F.		Tm	basalt, andesite & pyroclastics
Atimo F.		Ky2	massive limestone
Minitos F.		Mm	meteoandesite, metaporphyrite & pyroclastics
		Gd	granodiorite
		Mr	liporite
Intrusive rock		A	andesite dyke
		P	porphyrite dyke
		Dp	diorite porphyry
		Gp	granite porphyry & granodiorite porphyry



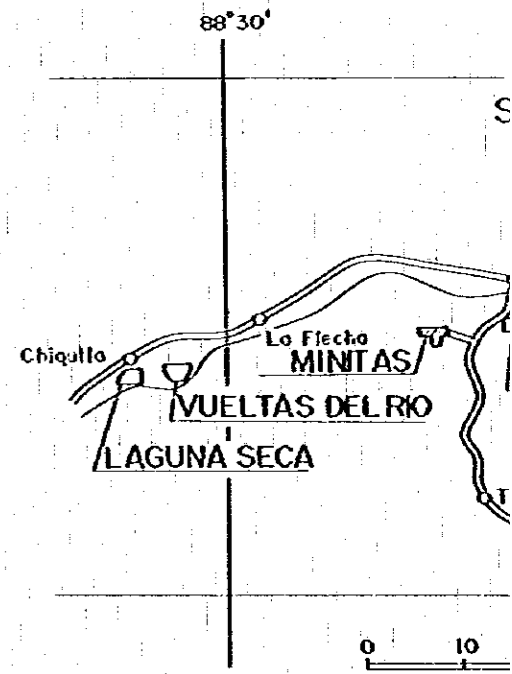
fault



mineral indication

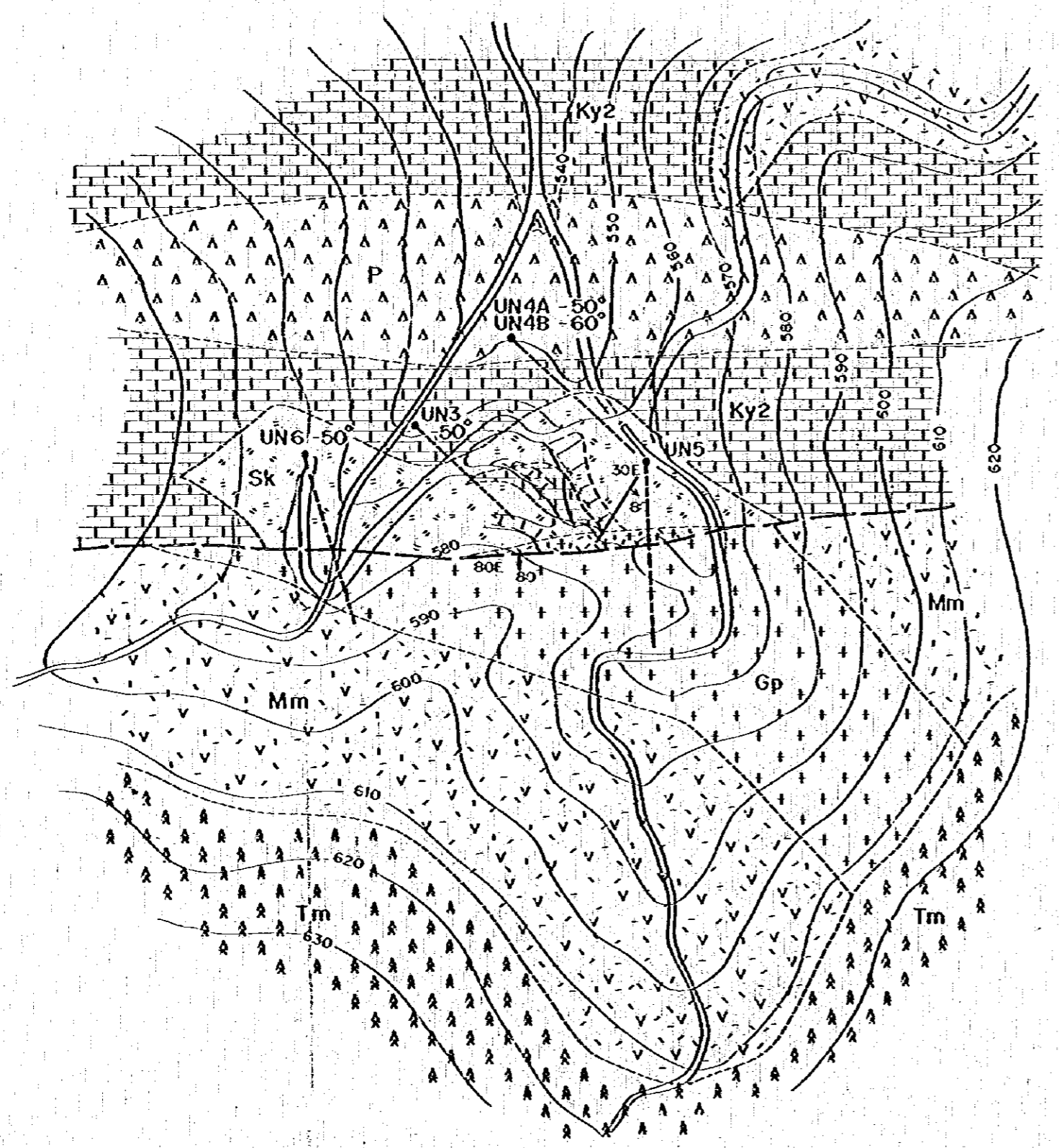
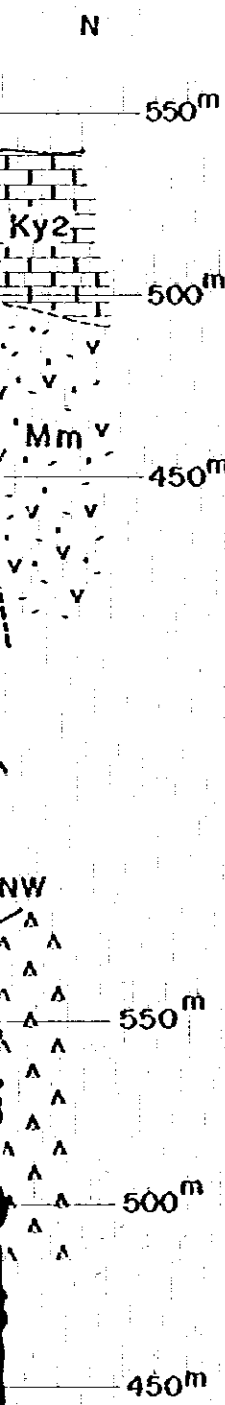


GEOLOGICAL
THE WESTERN AREA, REF
VO
GEOLOGICAL
O
THE MACUTALO OUTCROP



METAL MINING AC
JAPAN INTERNATIONAL
GOVERNMENT
FEBRUARY
prepared by

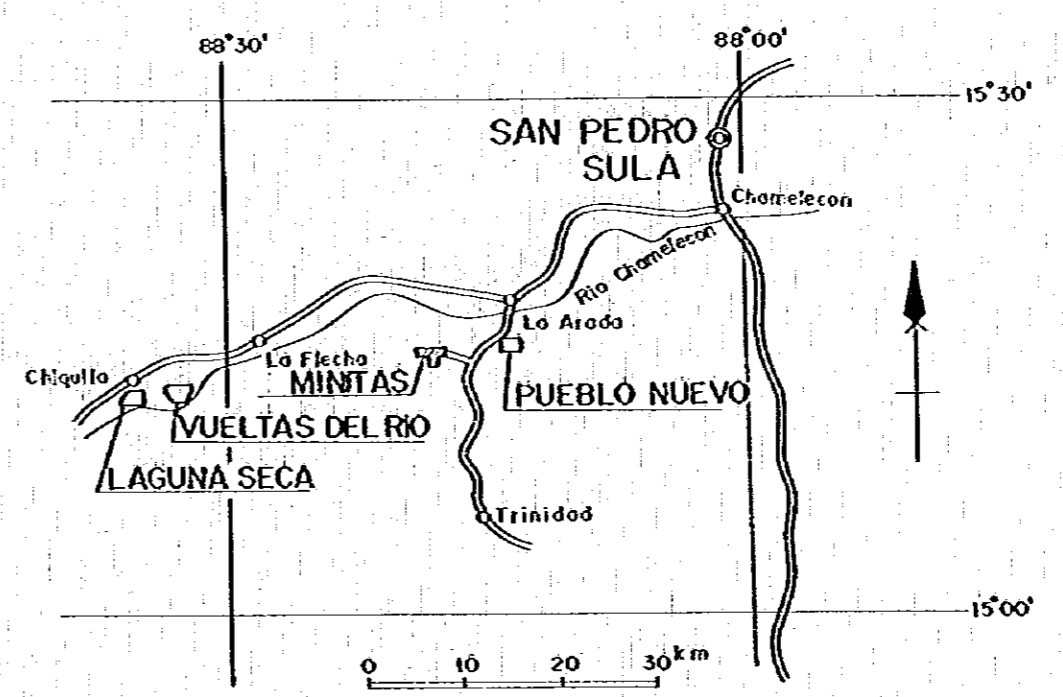




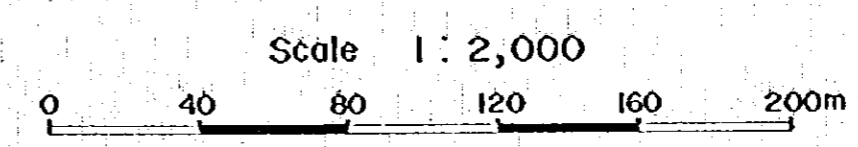
PL. III - I - 13

GEOLOGICAL SURVEY
OF
THE WESTERN AREA, REPUBLIC OF HONDURAS
VOL. 3

GEOLOGICAL SKETCH
OF
THE MACUTALO OUTCROP IN THE MINITAS SECTOR


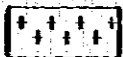
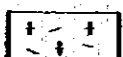
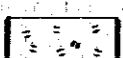
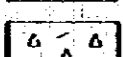
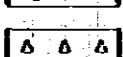


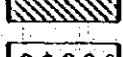
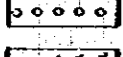


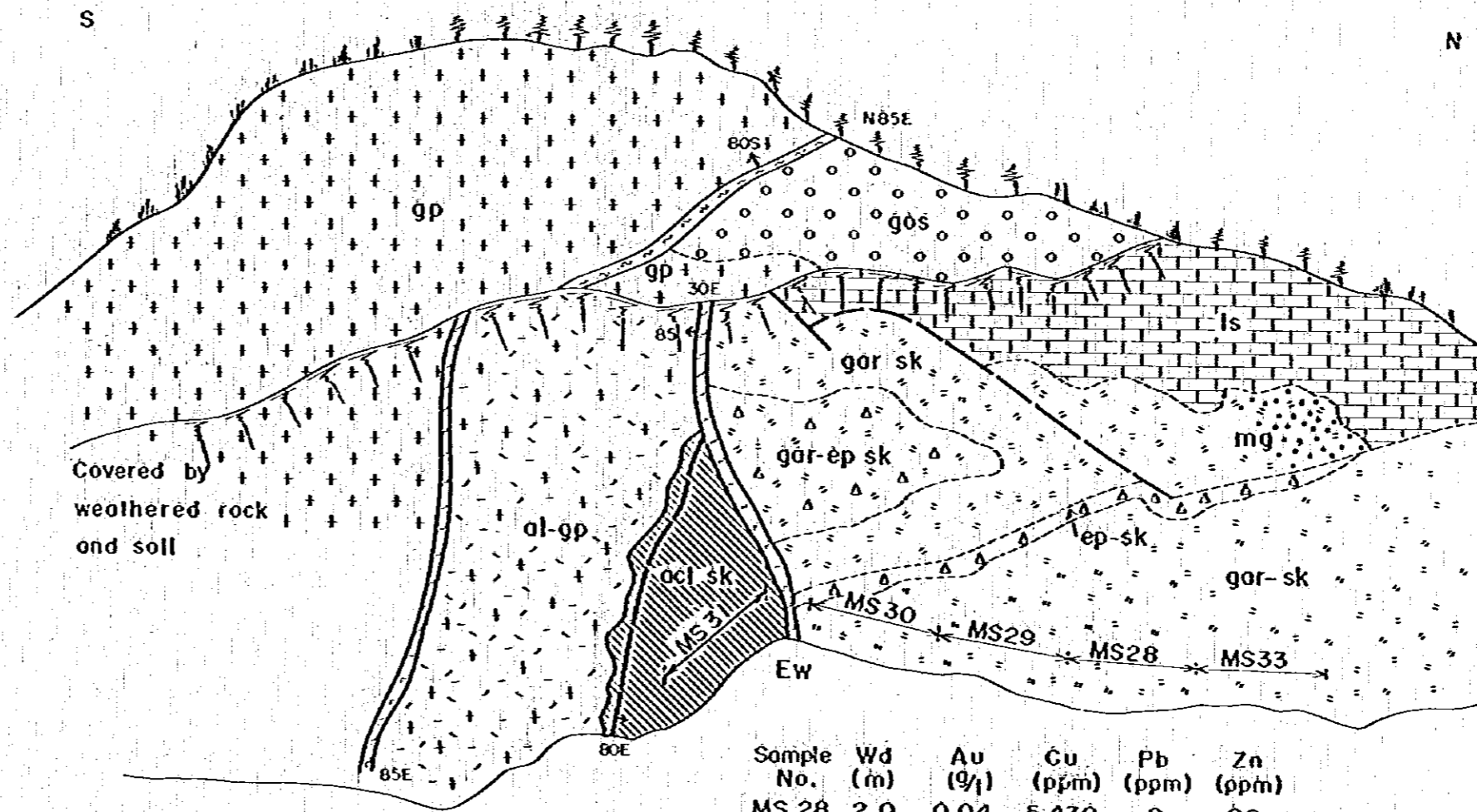
METAL MINING AGENCY OF JAPAN
JAPAN INTERNATIONAL COOPERATION AGENCY
GOVERNMENT OF JAPAN
FEBRUARY 1979
prepared by MESCO, Inc.



Sketch of Macutalo Outcrop

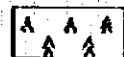
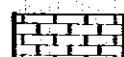
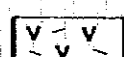
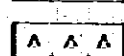
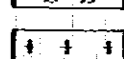
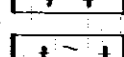

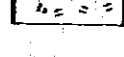
LEGEND

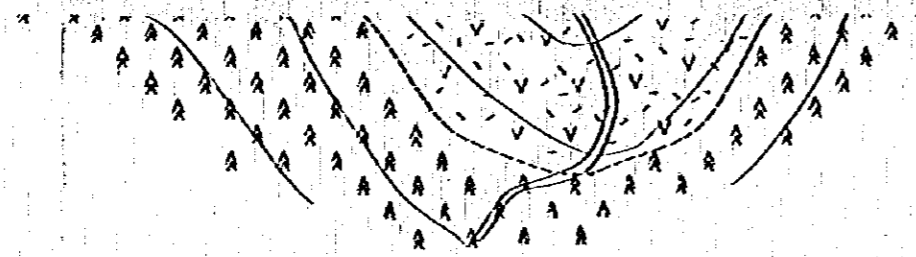
-  ls limestone
-  gp granodiorite porphyry
-  ol-gp altered granodiorite porphyry brittle epidole-chlorite bearing part
-  gar garnet skarn with magnetite
-  gar-ep garnet-epidote skarn with quartz, magnetite
-  ep epidote skarn
-  mg magnetite
-  act actinolite skarn, magnetite-chalcopyrite-bornite-pyrite
-  gos gossan
-  sheared zone



Sample No.	Wd (m)	Au (g/t)	Cu (ppm)	Pb (ppm)	Zn (ppm)
MS 28	2.0	0.04	5,430	9	98
MS 29	3.0	<0.01	13,380	11	147
MS 30	3.0	0.10	260	15	420
MS 31	3.0	0.10	26,200	32	290
MS 33	3.0	0.10	5,620	12	117

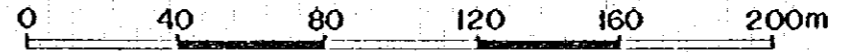
0 40

-  Tm
-  Ky
-  Mm
-  P
-  Gp
-  ol-gp
-  Sk
-  UN3

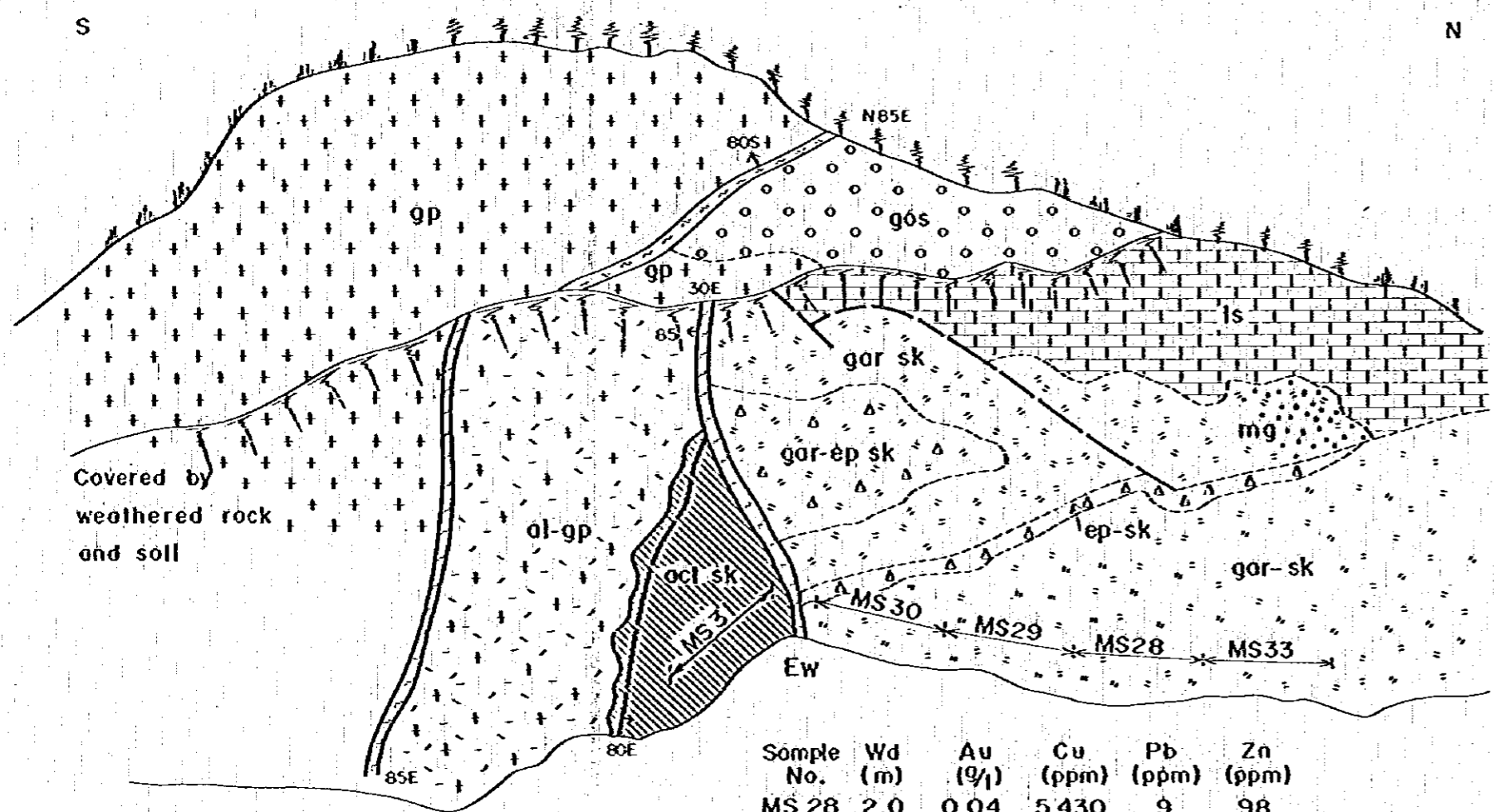


prepared by MACCO, INC.

Scale 1 : 2,000

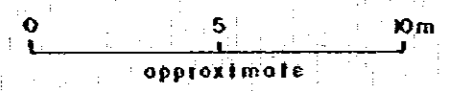


Sketch of Macutalo Outcrop



LEGEND

- Tm basalt, andesite
- Ky limestone
- Mm metaandesite, metaporphyrite & pyroclastics
- P porphyrite
- Gp granodiorite porphyry
- al-gp altered granodiorite porphyry
- Sk skarn
- fault
- UN3 DDH by UNDP

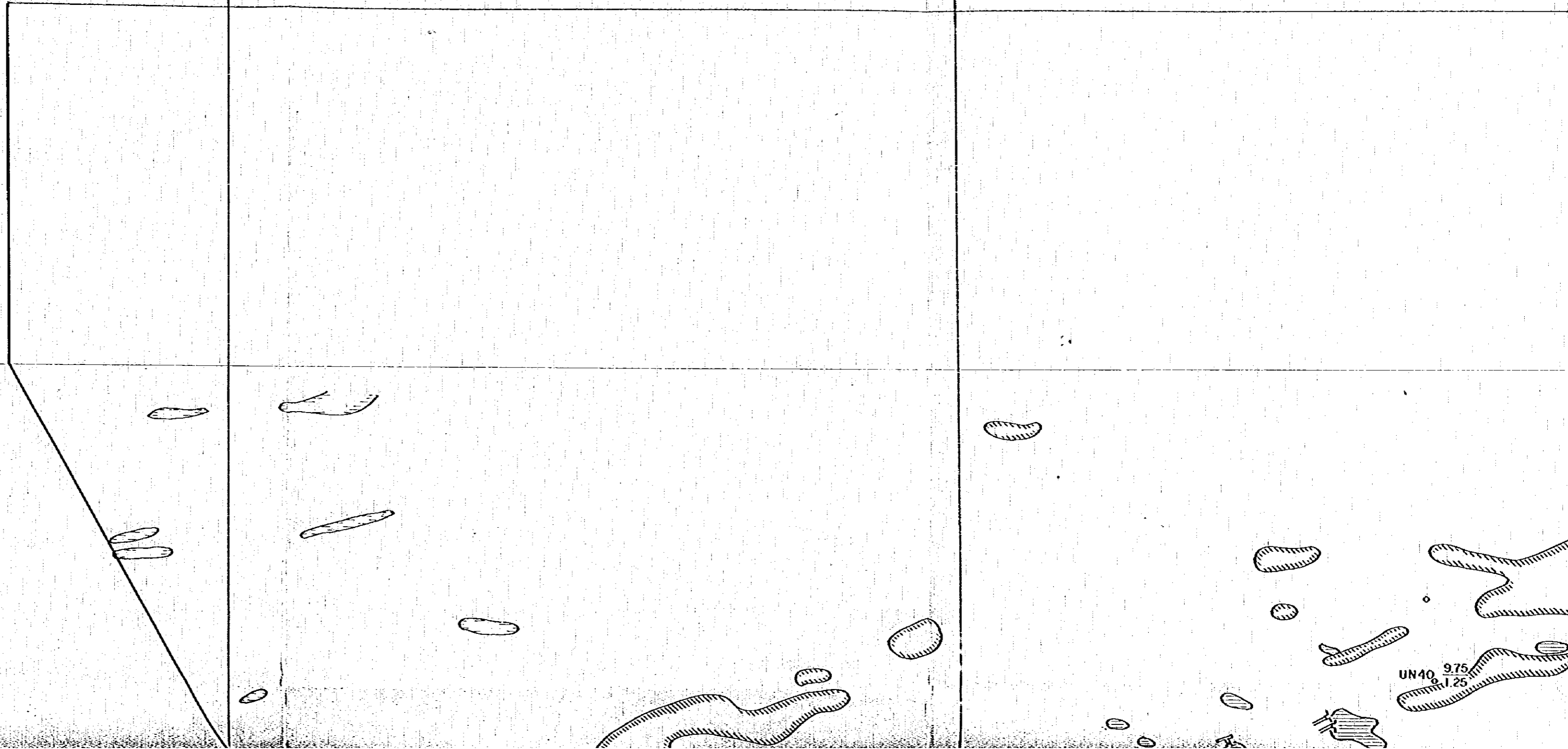


Sample No.	Wd (m)	Au (g/t)	Cu (ppm)	Pb (ppm)	Zn (ppm)
MS 28	2.0	0.04	5,430	9	98
MS 29	3.0	<0.01	13,380	11	147
MS 30	3.0	0.10	260	15	420
MS 31	3.0	0.10	26,200	32	290
MS 33	3.0	0.10	5,620	12	117

1683N

332E

333E



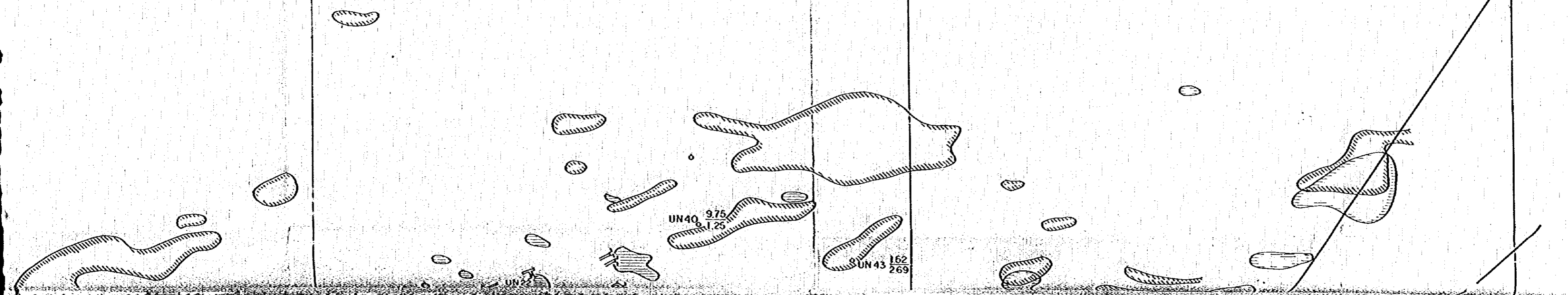
UN40 9.75
UN40 1.25

333E

334E

335E

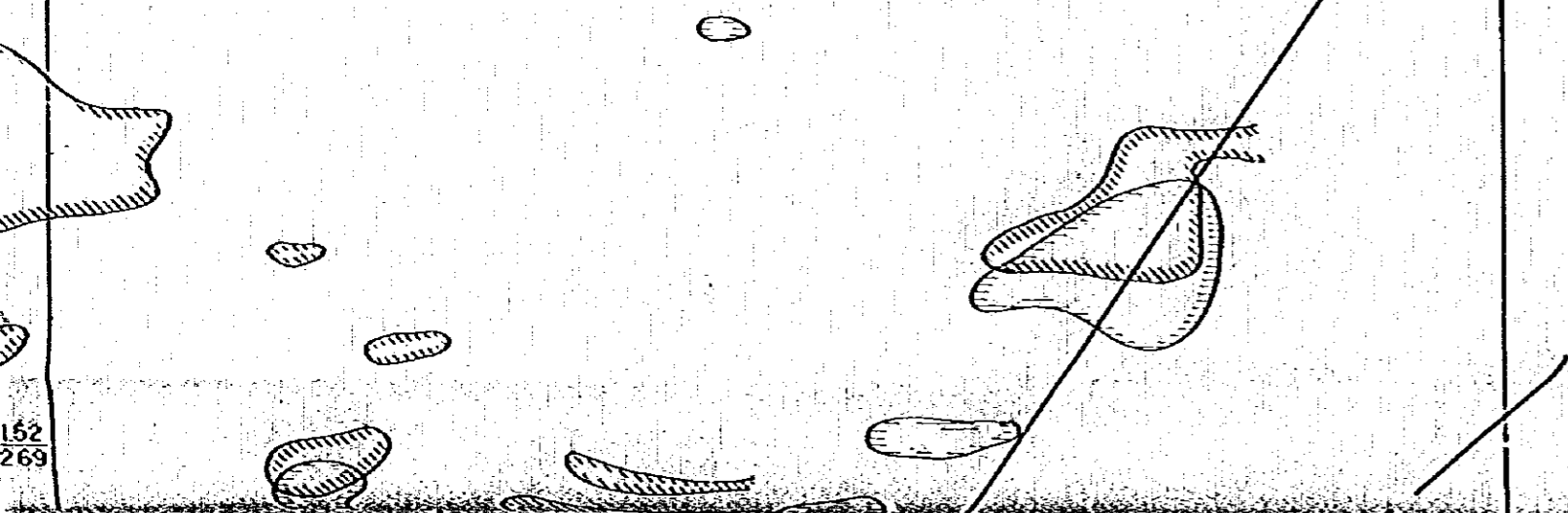
1683N



334E

335E

1683N

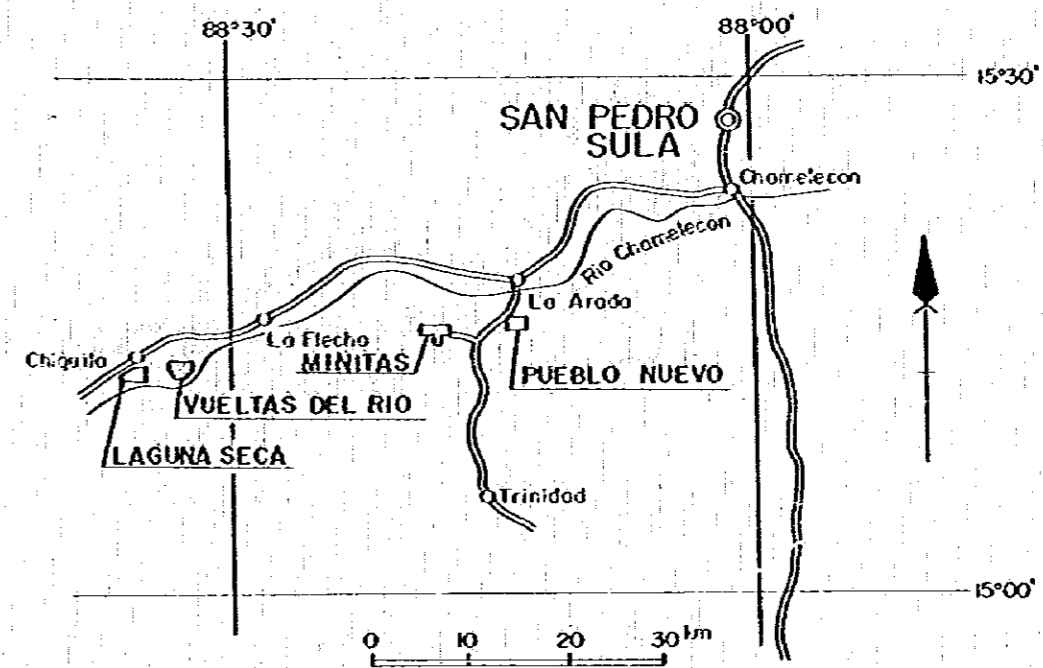


PL. III - I - 18

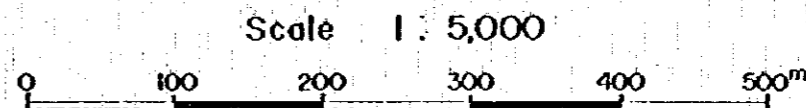
GEOLOGICAL SURVEY
OF
THE WESTERN AREA, REPUBLIC OF HONDURAS

VOL. 3

GEOCHEMICAL MAP BY UNDP
IN THE VUELTAS DEL RIO SECTOR



METAL MINING AGENCY OF JAPAN
JAPAN INTERNATIONAL COOPERATION AGENCY
GOVERNMENT OF JAPAN
FEBRUARY 1979
prepared by MESCO, Inc.

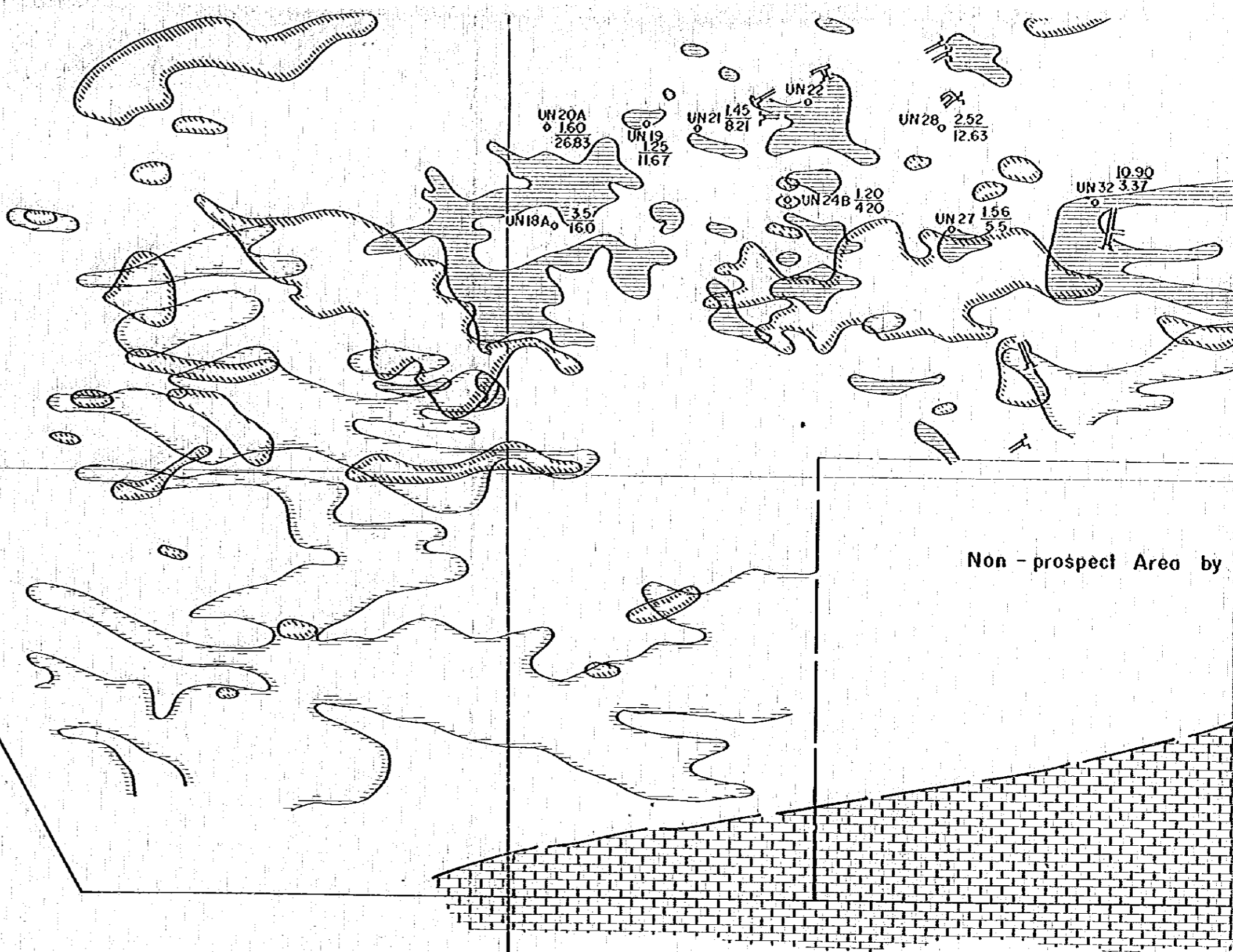


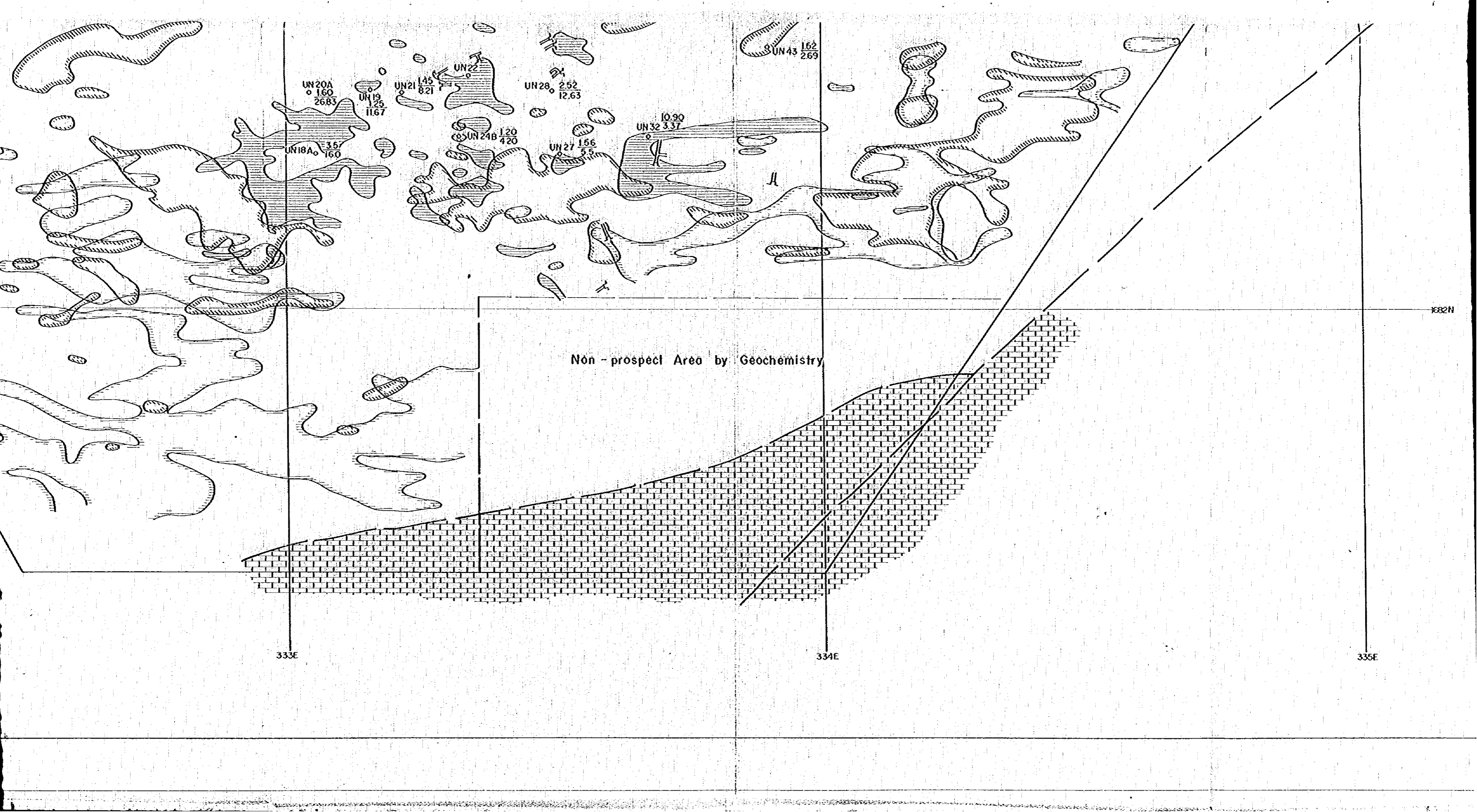
1682N

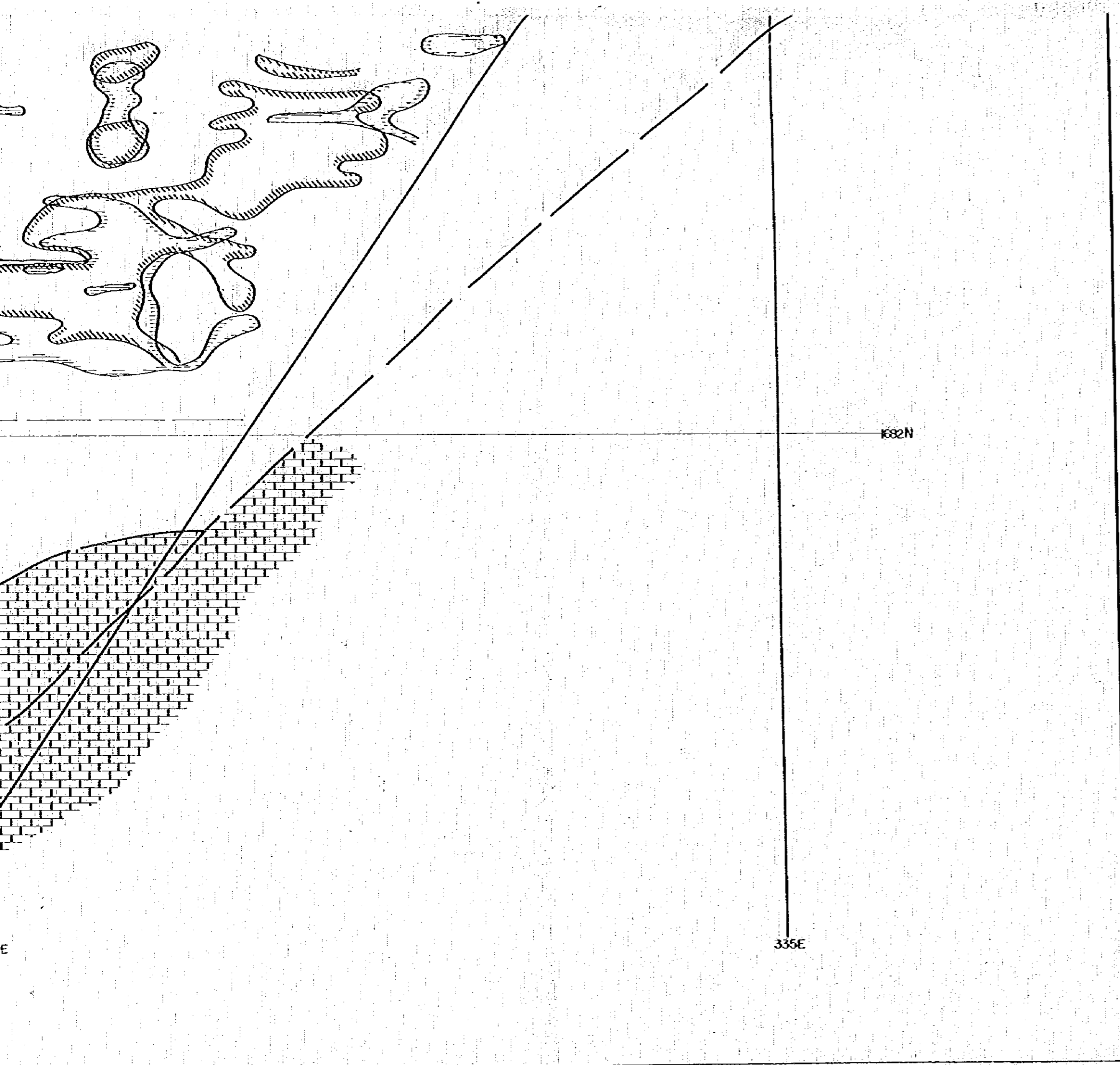
332E

333E


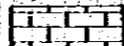


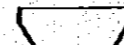



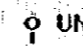
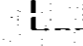
Non - prospect Area by







LEGEND

-  Vuelto del Rio Formation
 -  Atimo Formation
 -  Fault
 -  Adit
 -  Surveyed sector
 -  Au > 1.01 ppm
 -  Cu > 251 ppm
 -  Zn > 501 ppm
-  UN21 2.45 Au (g/t)
1.85 Width (m)
 DDH by UNDP