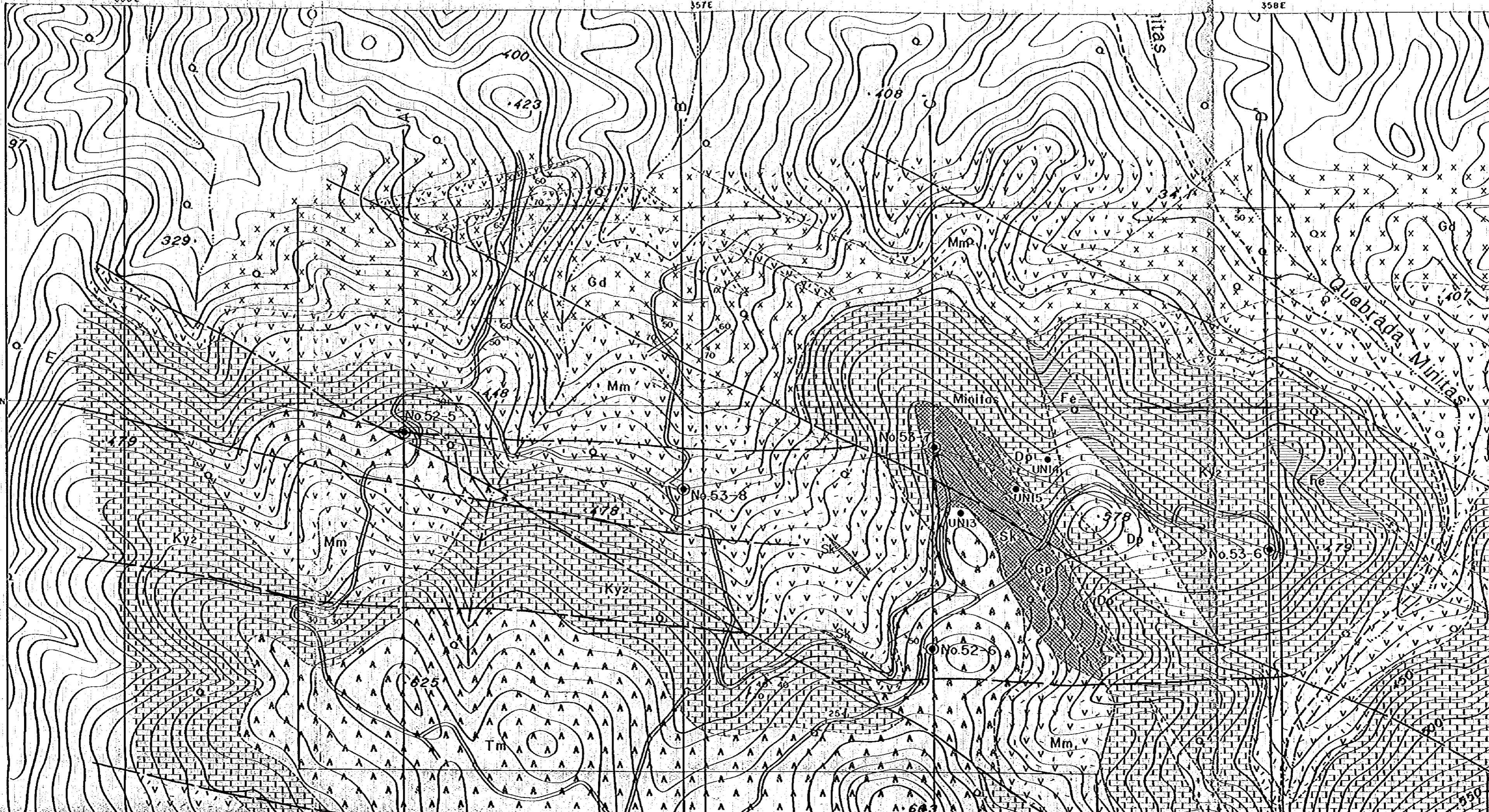


356E

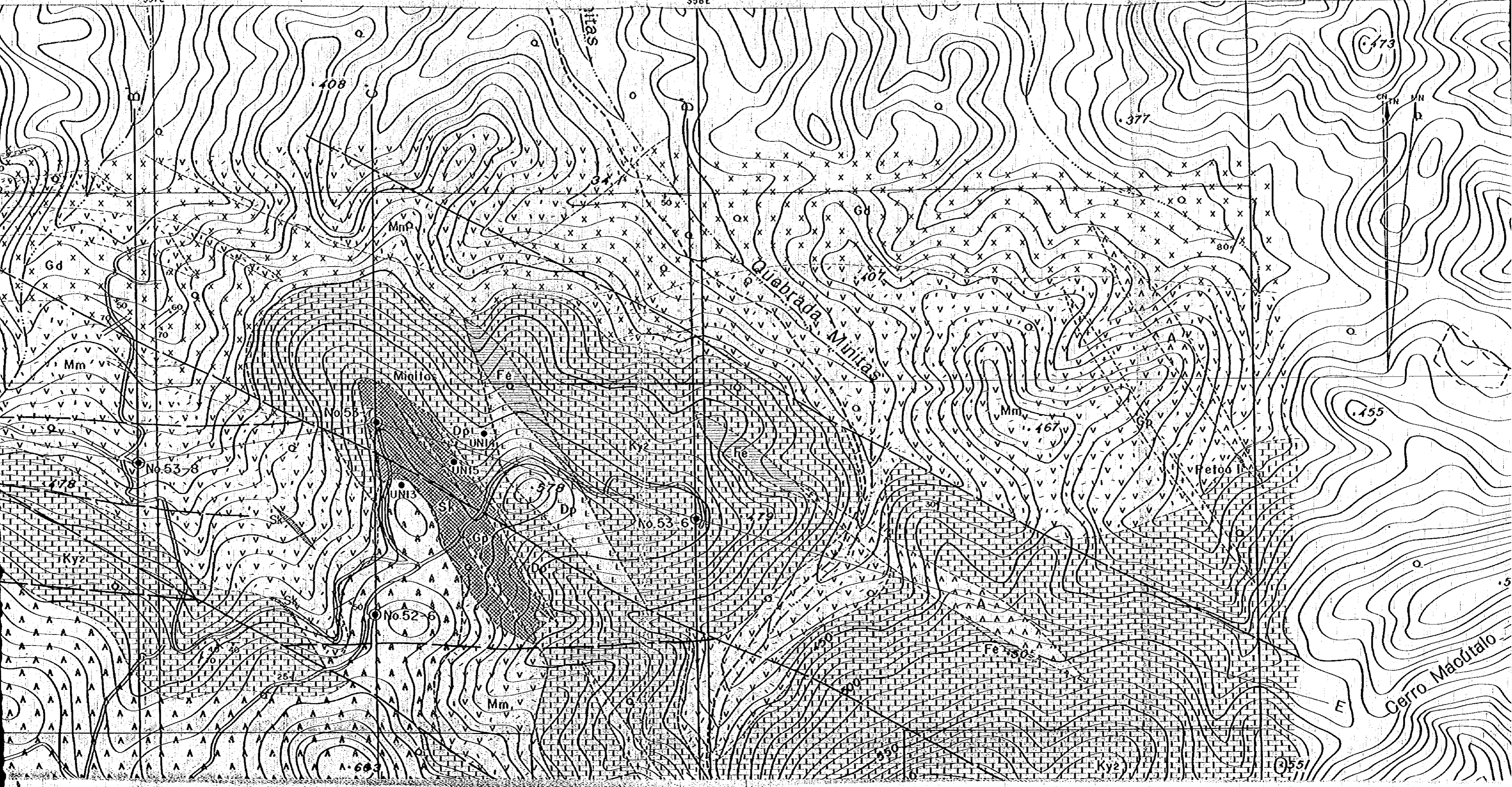
357E

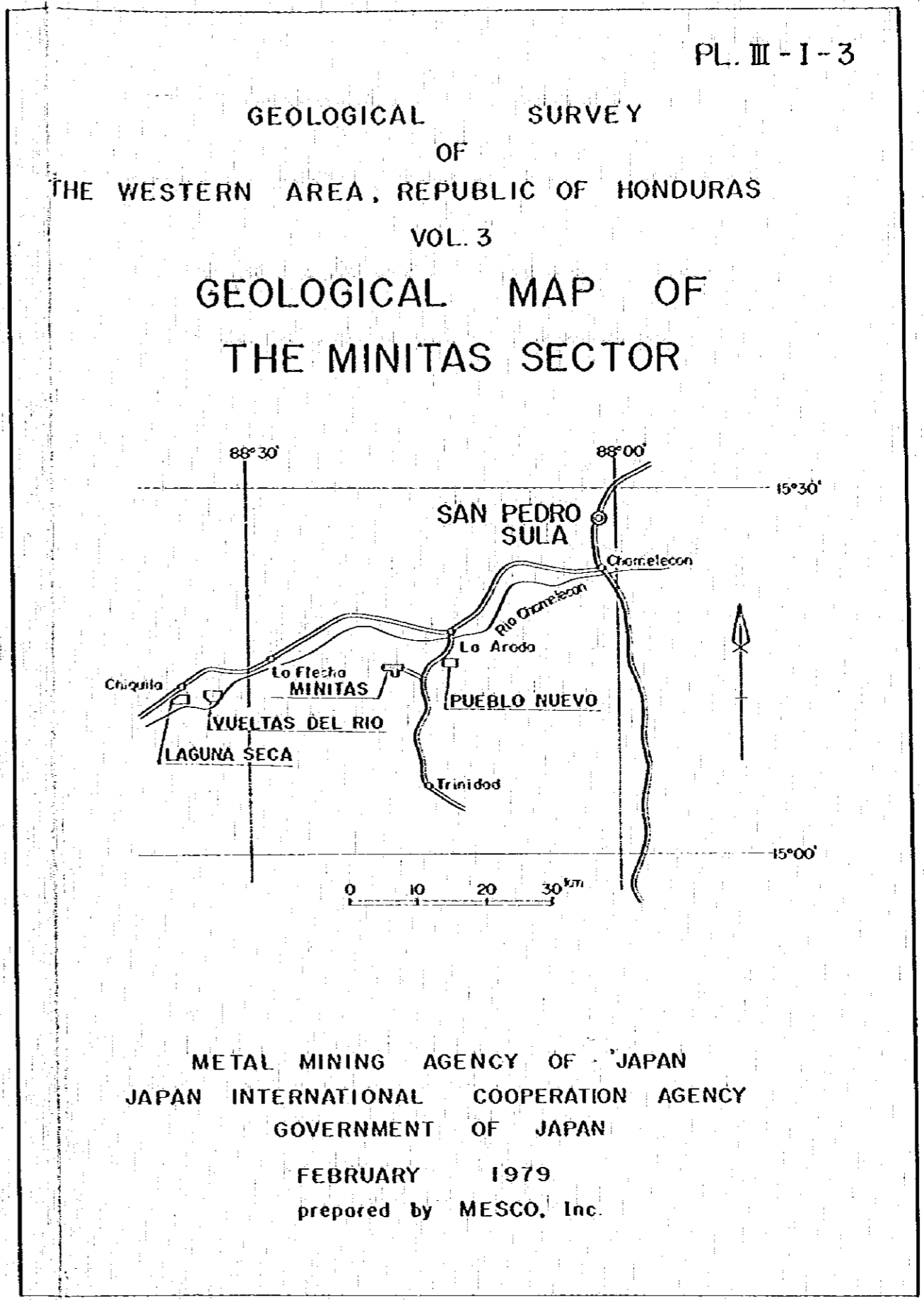
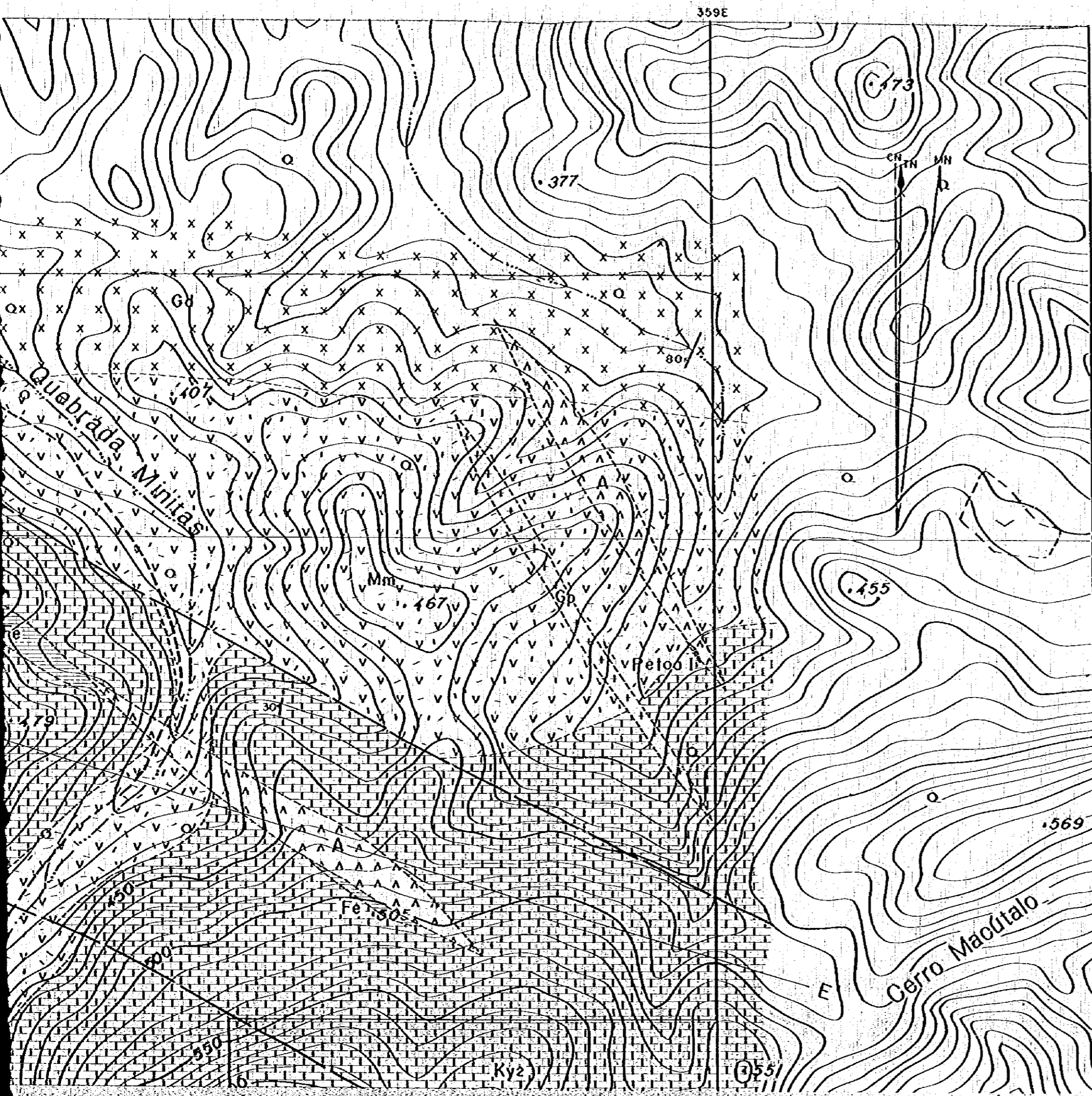
358E

1688N

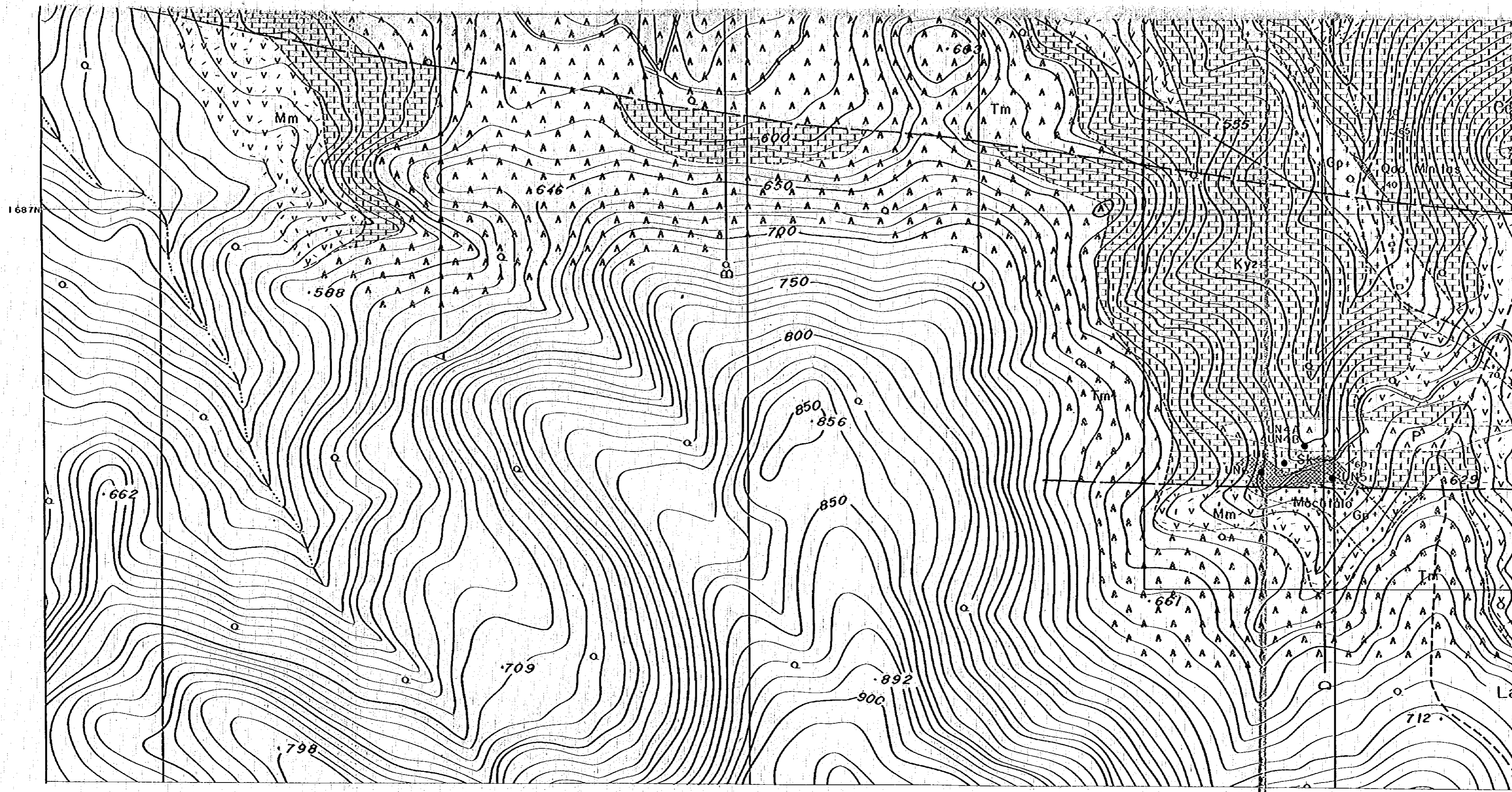


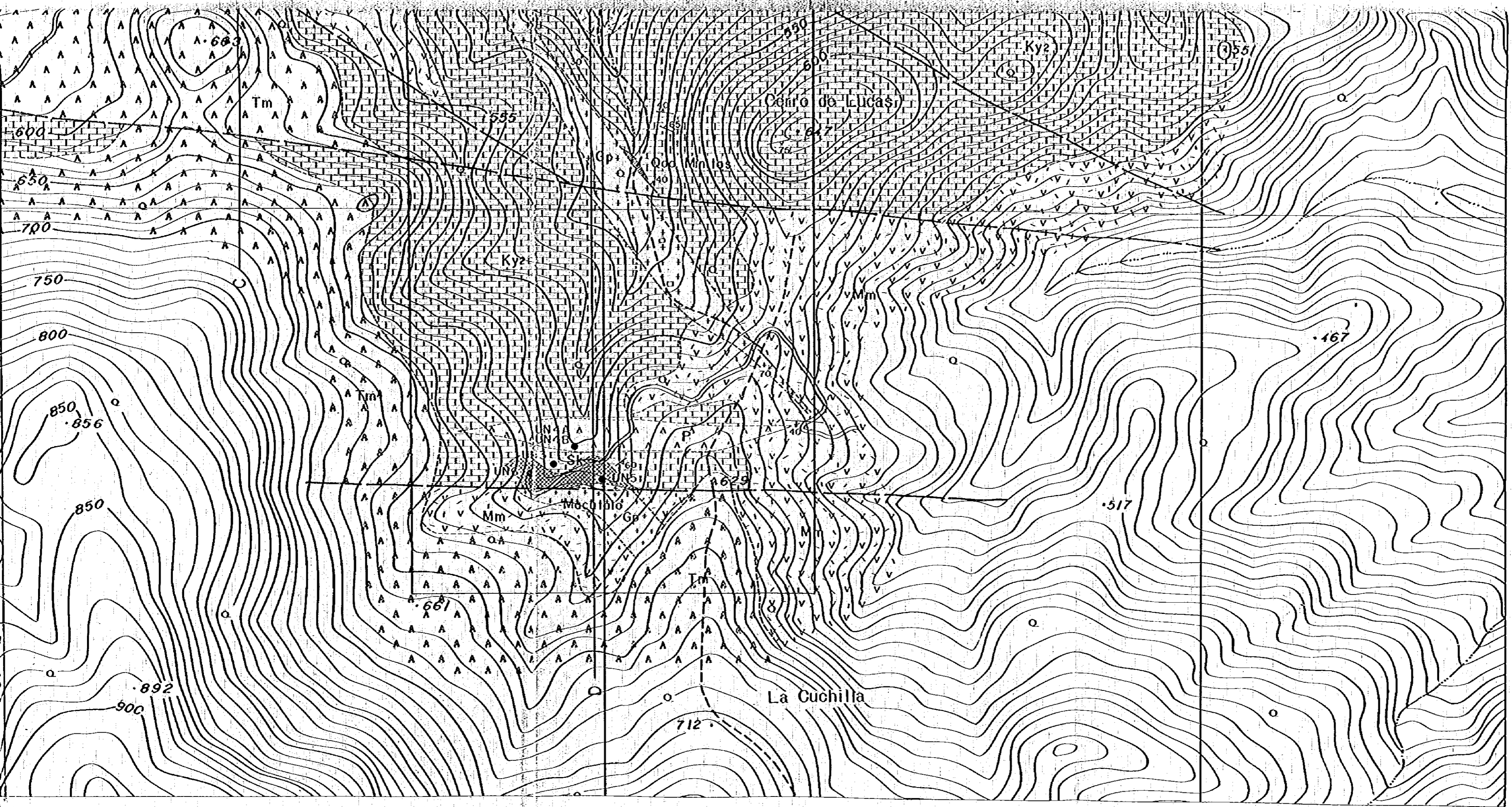








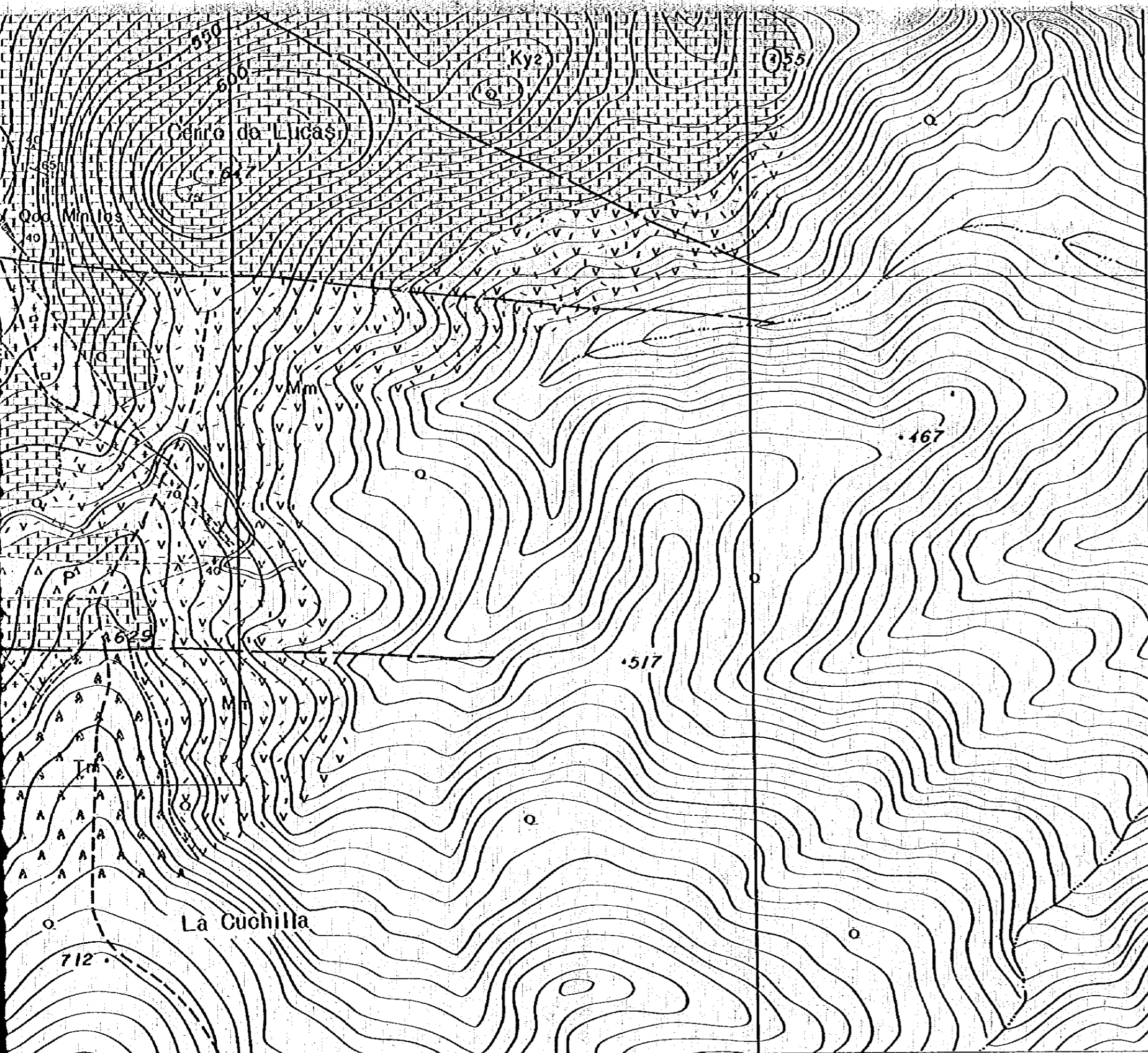




Form
Alluv
Notog
Atimo
Ninit
Irtrusi







### LEGEND

Formación	Stratigraphical Mark	Symbol	Lithology
Alluvium		Q	gravel, sand & mud
Matagalpa F.		Tm	basalt, andesite & pyroclastics
Atimo F.		Ky2	massive limestone
Minillas F.		Mm	metaandesite, metaporphyrite & pyroclastics
		Gd	granodiorite
		Mr	liparite
Intrusive rock		A	andesite dyke
		P	porphyrite dyke
		Dp	diorite porphyry
		Gp	granite porphyry & granodiorite porphyry

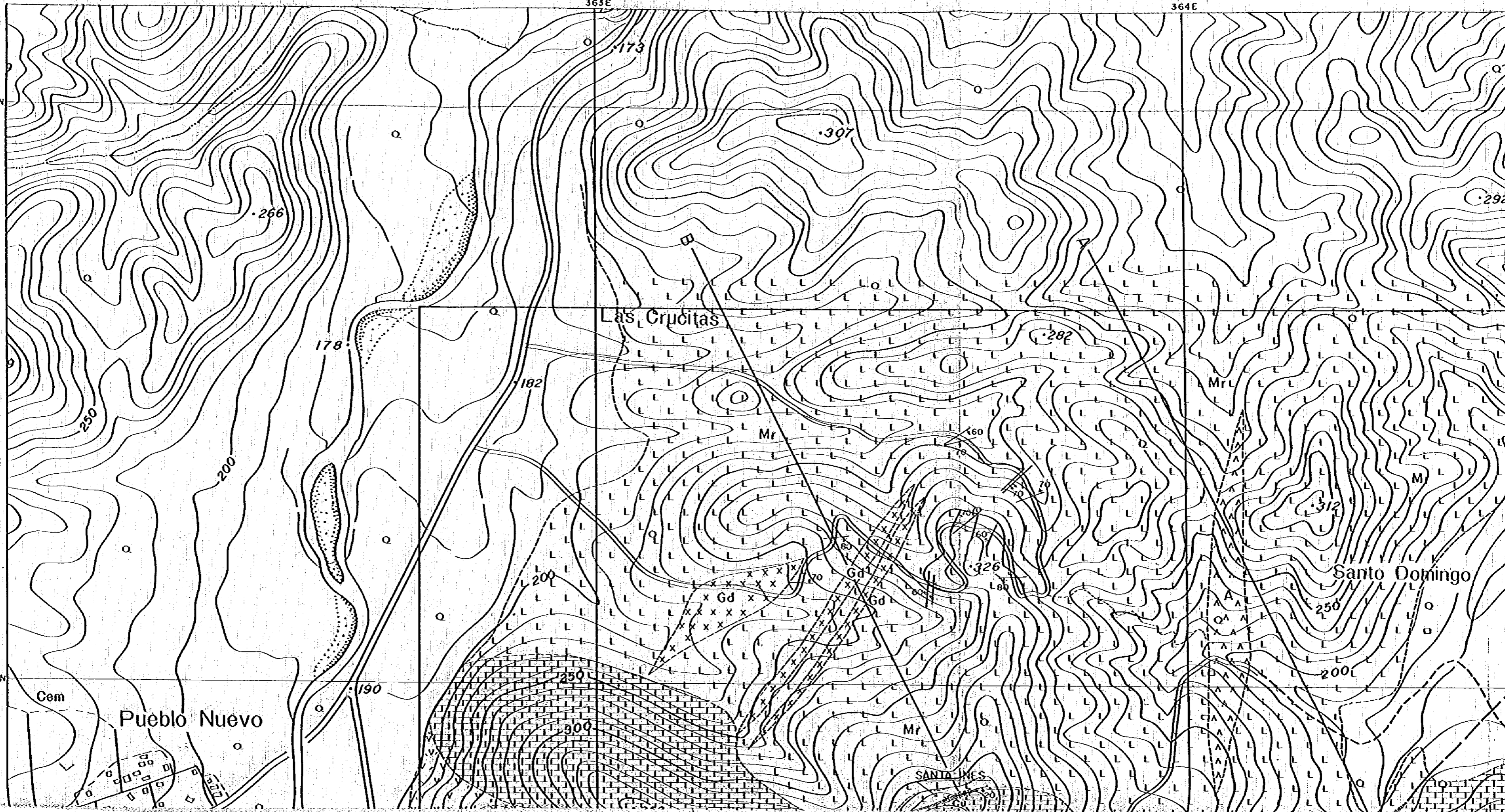
- bedding plane
- adit
- fissure
- mineralized zone (skarn)
- fault
- mineralized zone (Fe gossan)
- DDH by UNDP (1969 ~ 1972)
- surveyed area

363E

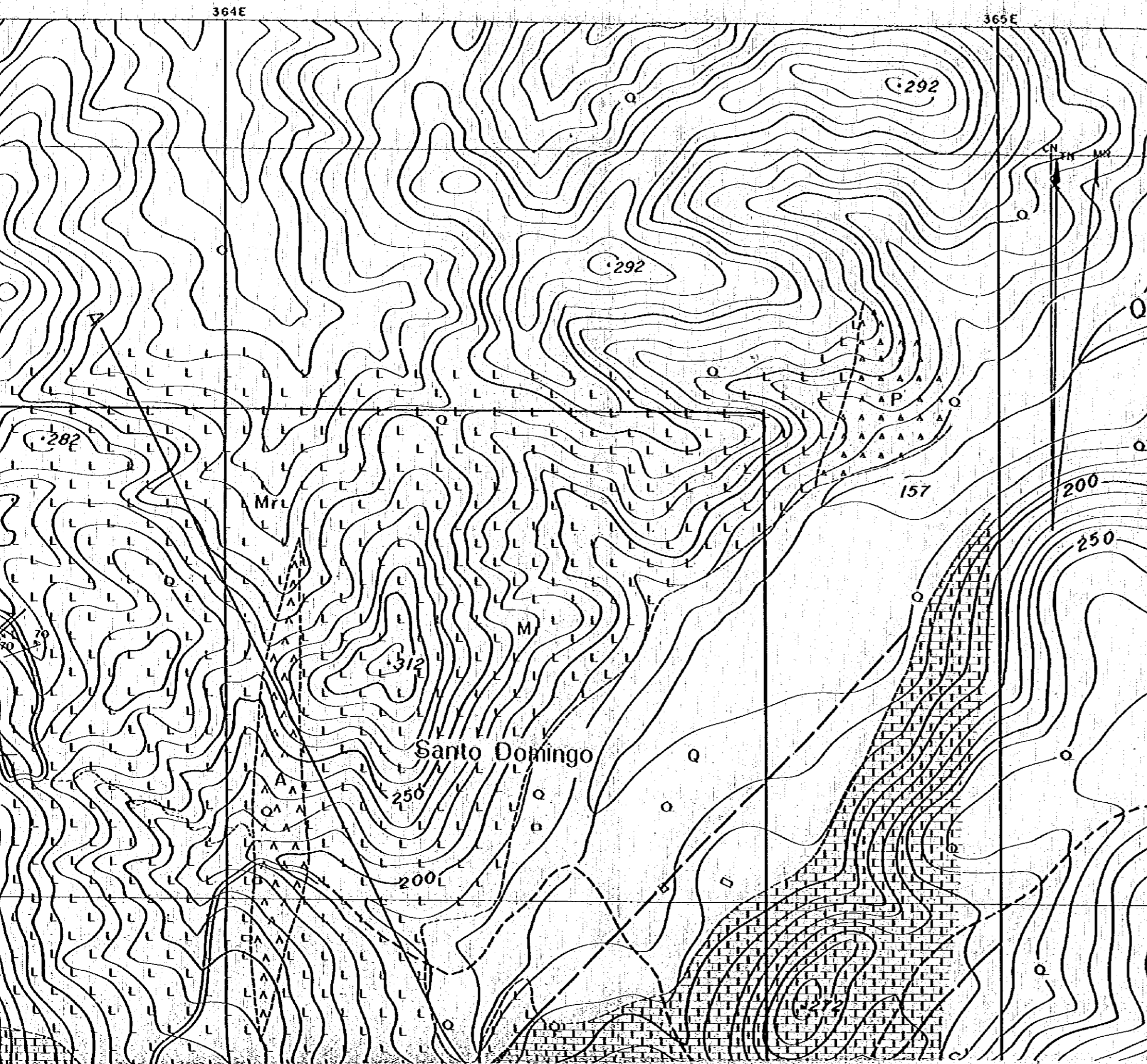
364E

1690N

1689N



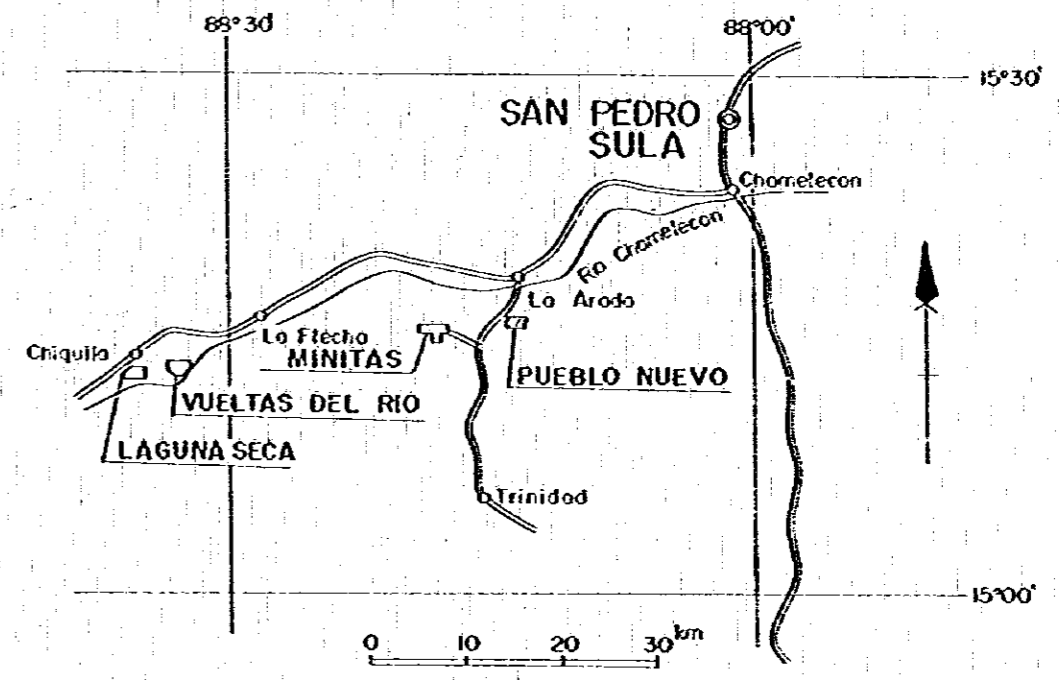




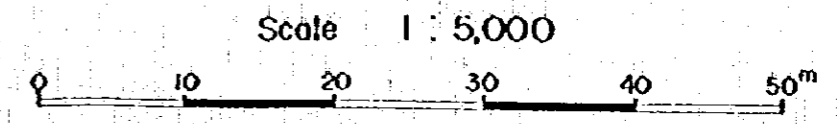
PL. III - I - 4

GEOLOGICAL SURVEY  
OF  
THE WESTERN AREA, REPUBLIC OF HONDURAS  
VOL. 3

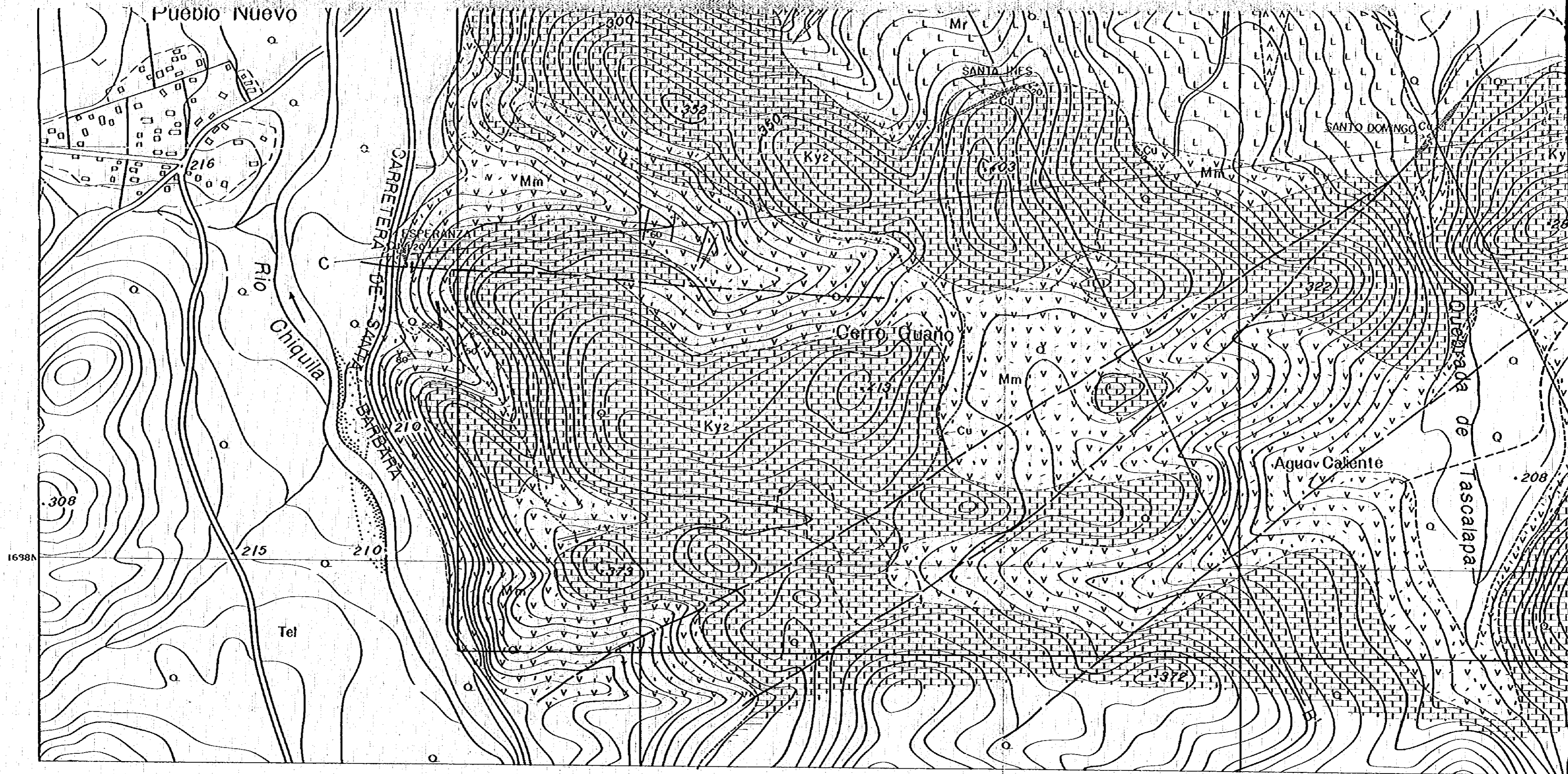
GEOLOGICAL MAP OF  
THE PUEBLO NUEVO SECTOR

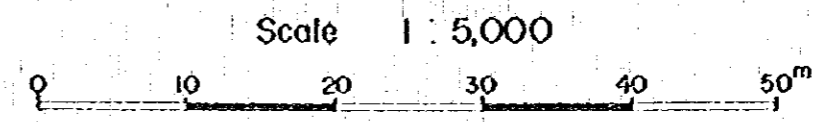
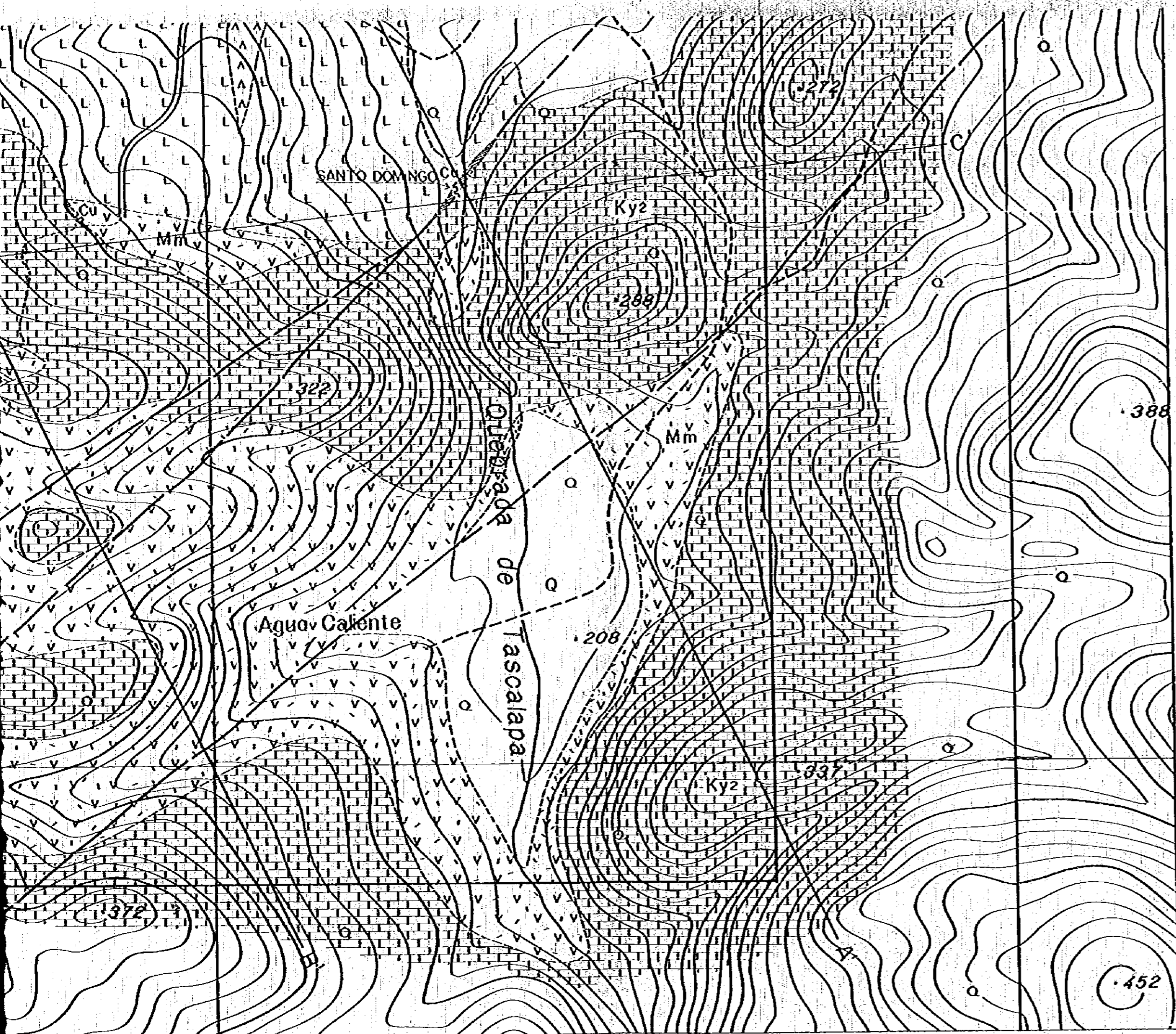


METAL MINING AGENCY OF JAPAN  
JAPAN INTERNATIONAL COOPERATION AGENCY  
GOVERNMENT OF JAPAN  
FEBRUARY 1979  
prepared by MESCO, Inc.







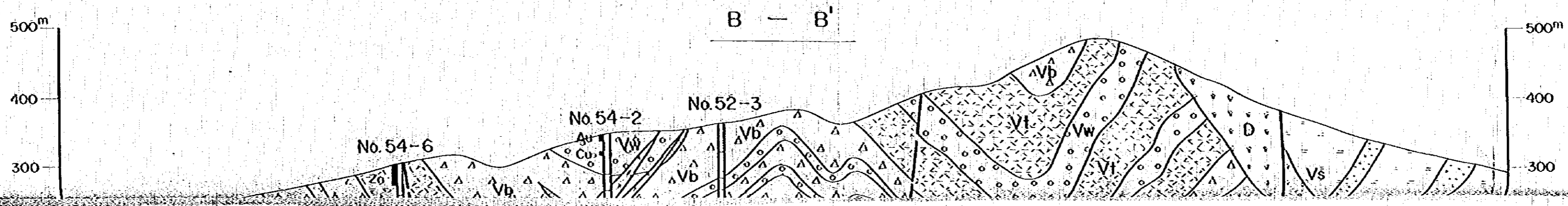
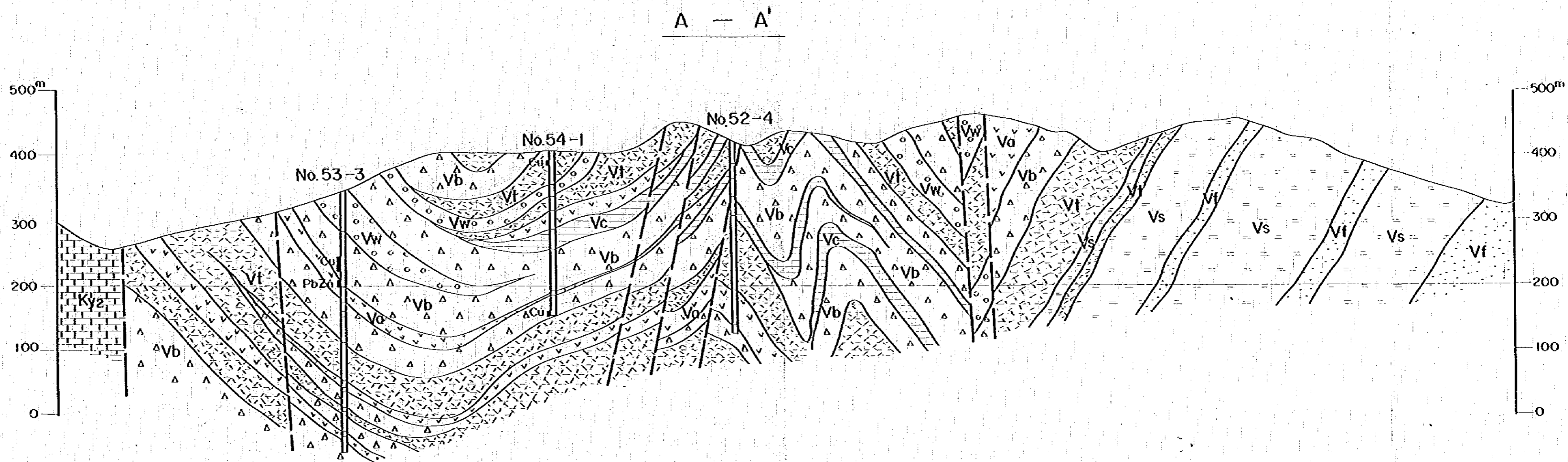


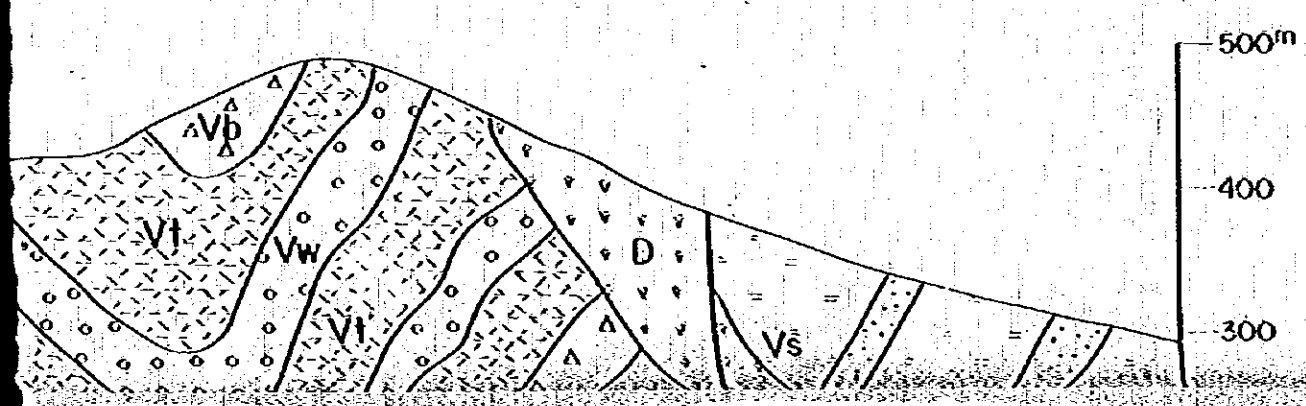
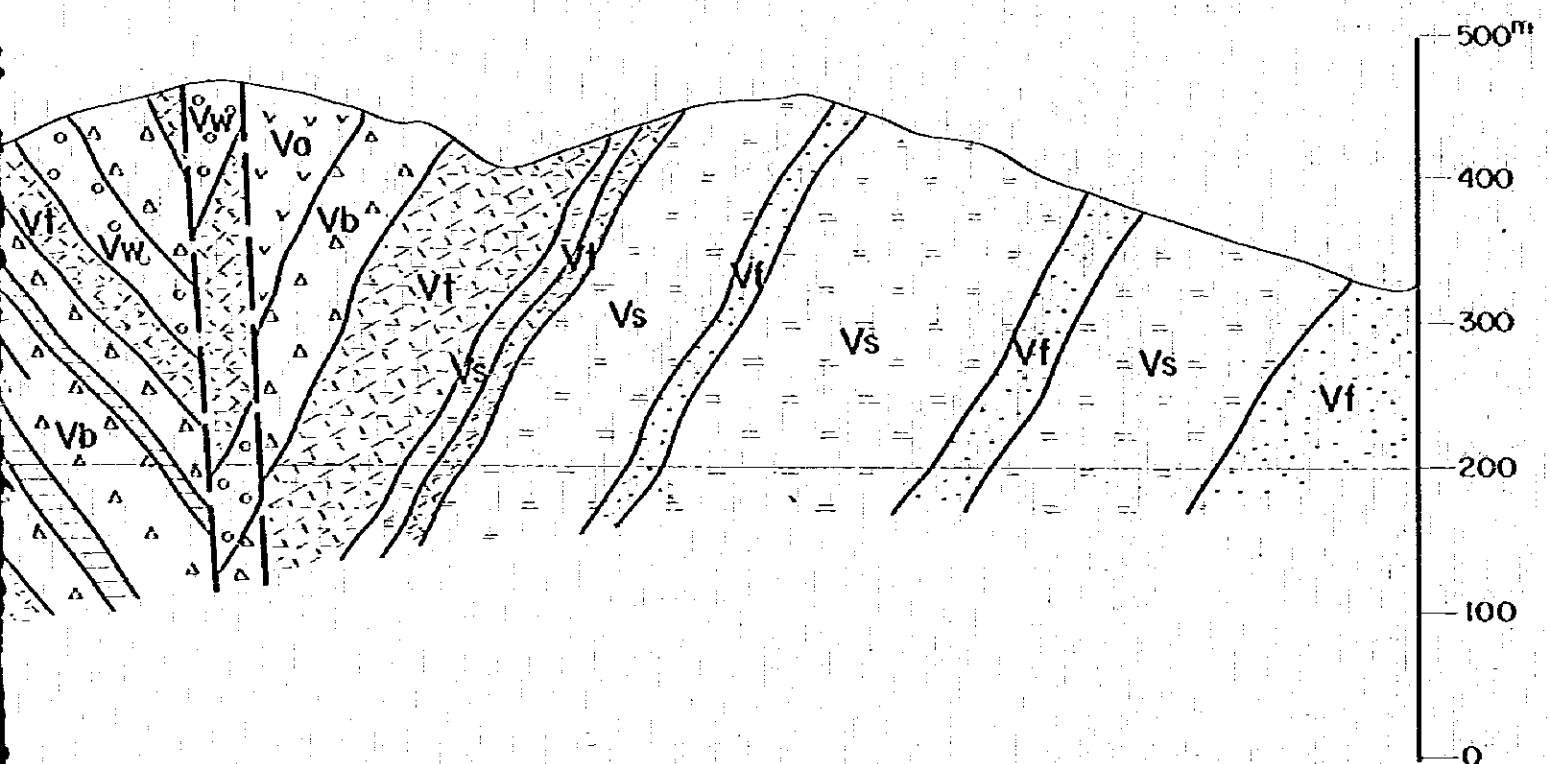
LEGEND

Formation	Stratigraphical Mark	Symbol	Lithology
Alluvium		Q	gravel, sand & mud
Matagalpa F.		Tm	basalt, andesite & pyroclastics
Atimo F.		Ky2	massive limestone
Minitos F.		Mm	metoandesite, metoporphyrite & pyroclastics
		Gd	granodiorite
		Mr	liparite
Intrusive rock		A	andesite dyke
		P	porphyrite dyke
		Dp	diorite porphyry
		Gp	granite porphyry & granodiorite porphyry

- bedding plane
- adit
- fissure
- mineral indication
- fault
- surveyed area
- UN30
- DDH by UNDP  
(1969 ~ 1972)



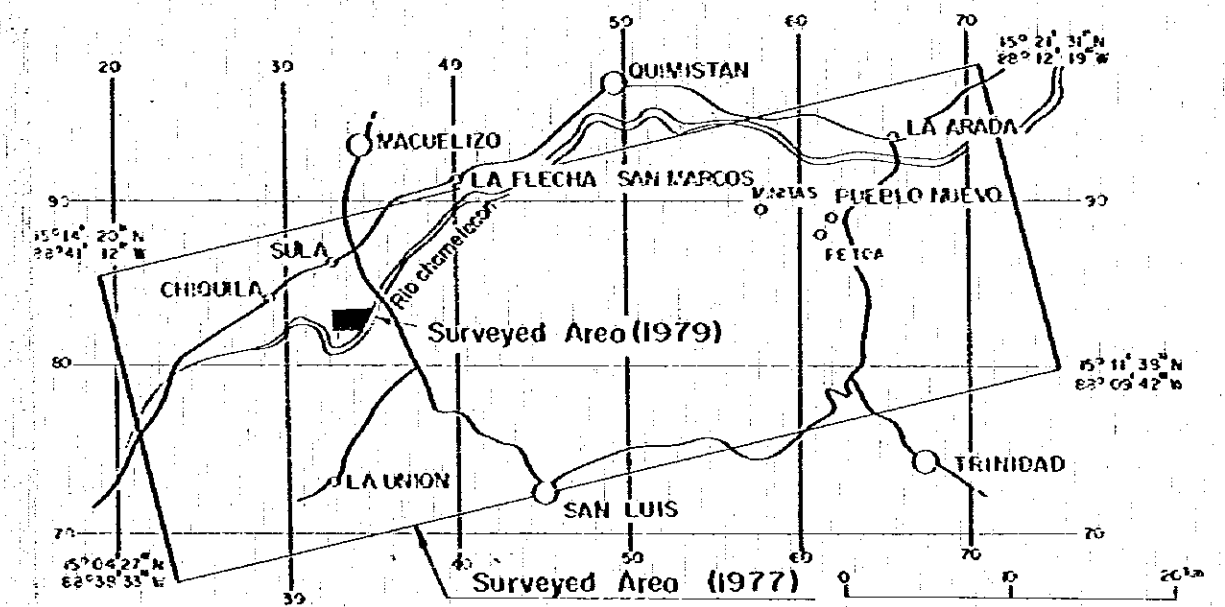




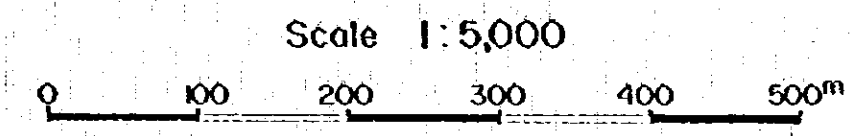
PL. III - I - 5

GEOLOGICAL SURVEY  
OF  
THE WESTERN AREA REPUBLIC OF HONDURAS  
VOL. 4

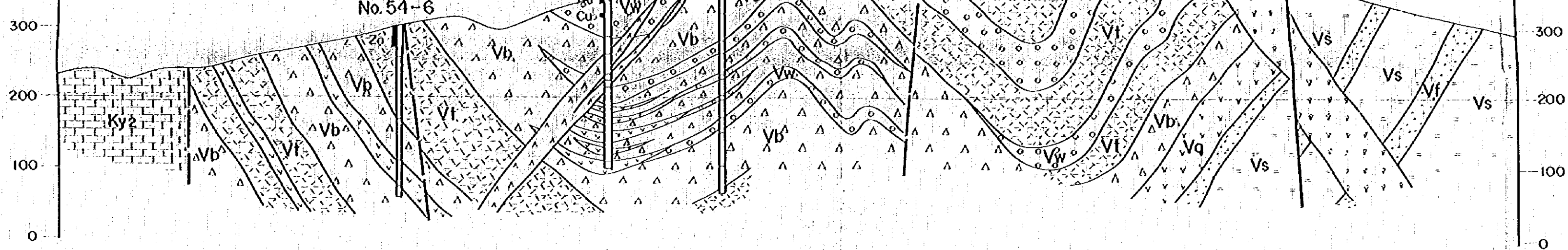
GEOLOGICAL PROFILES OF  
THE VUELTAS DEL RIO SECTOR



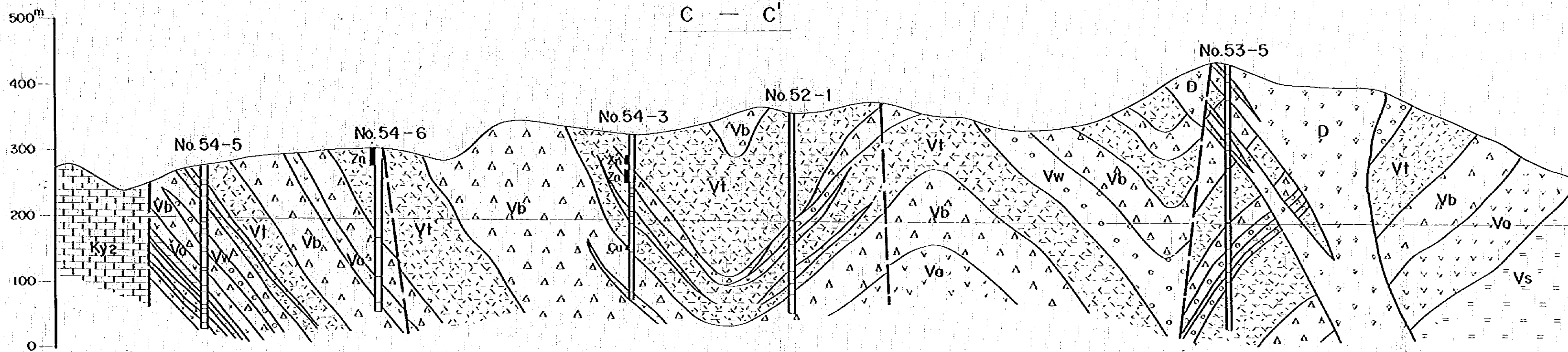
METAL MINING AGENCY OF JAPAN  
JAPAN INTERNATIONAL COOPERATION AGENCY  
GOVERNMENT OF JAPAN  
FEBRUARY 1980  
Prepared by MESCO, Inc.



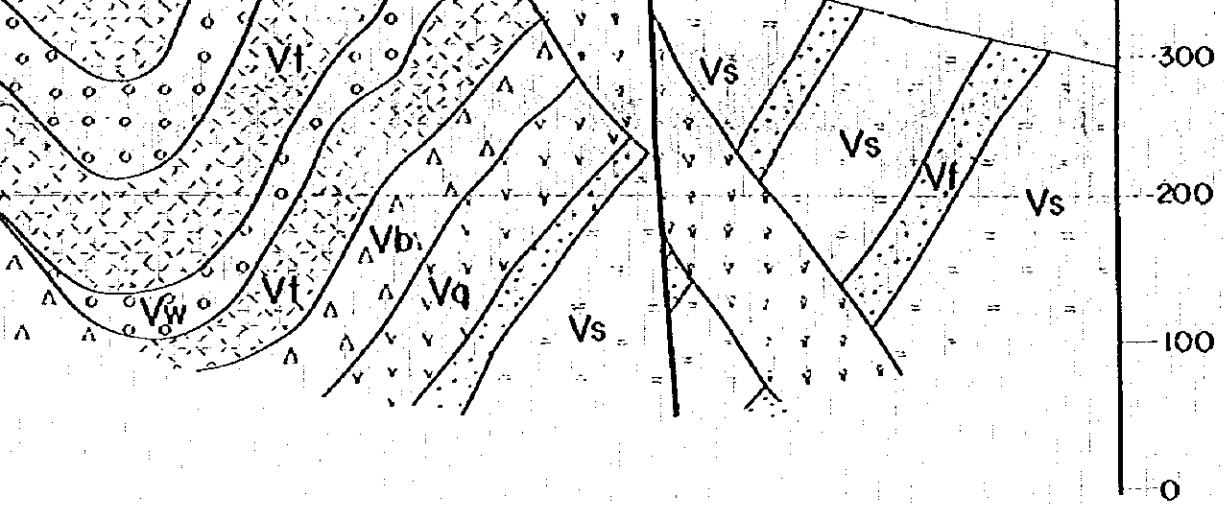




C — C'



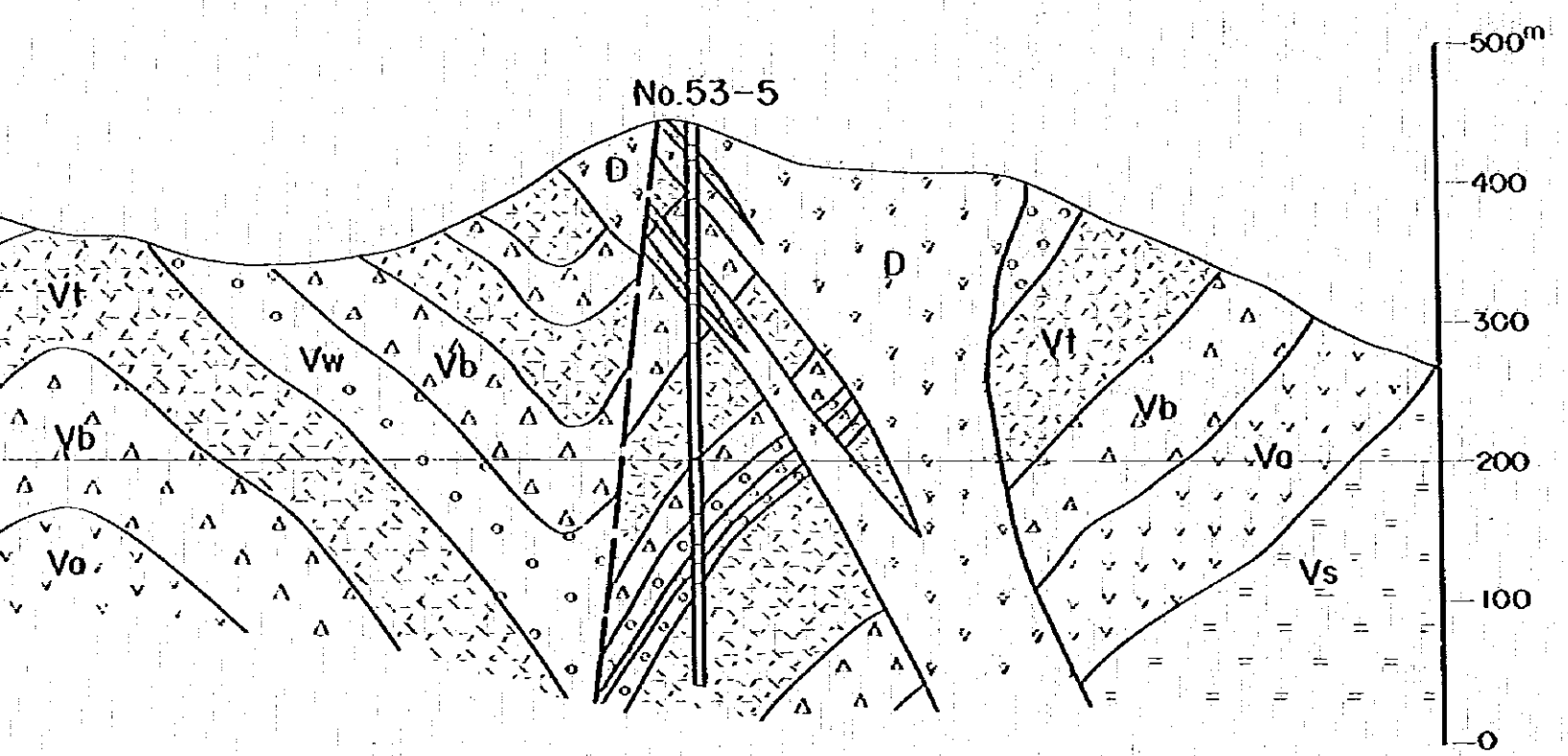
D — D'



Scale 1:5,000  
 0 100 200 300 400 500m

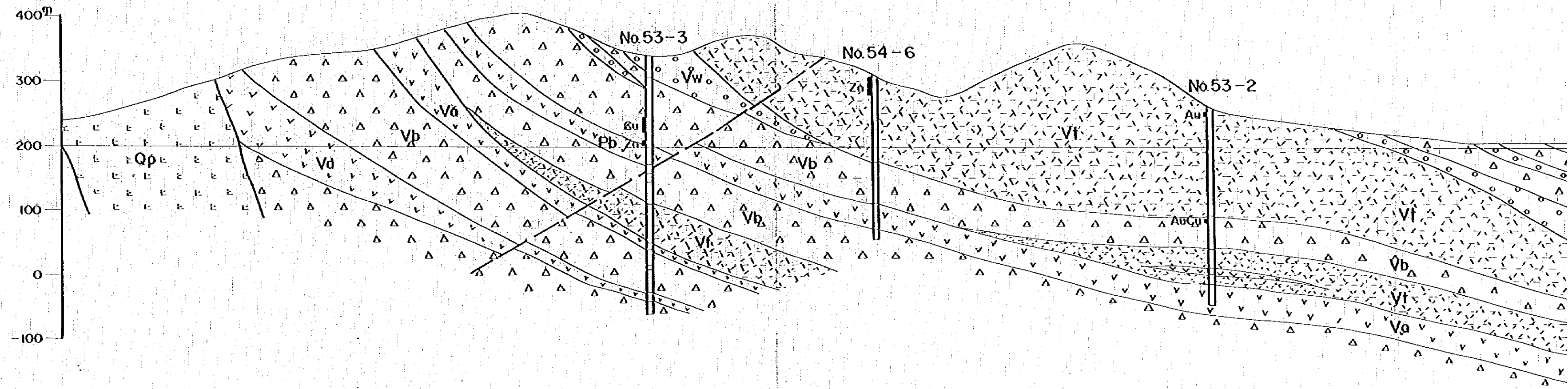
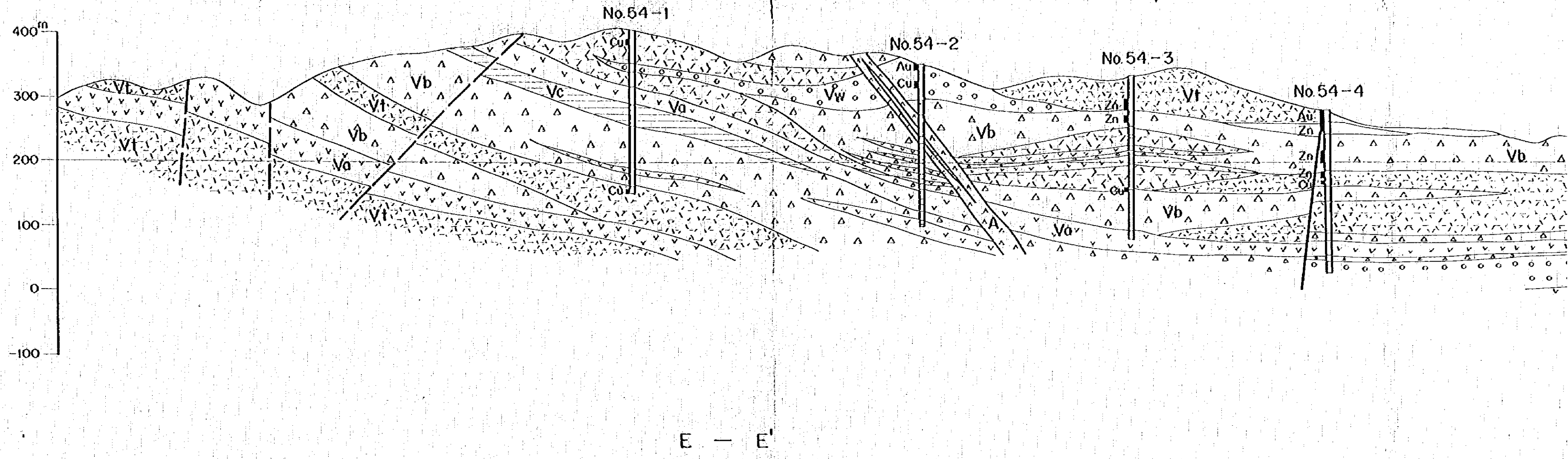
LEGEND

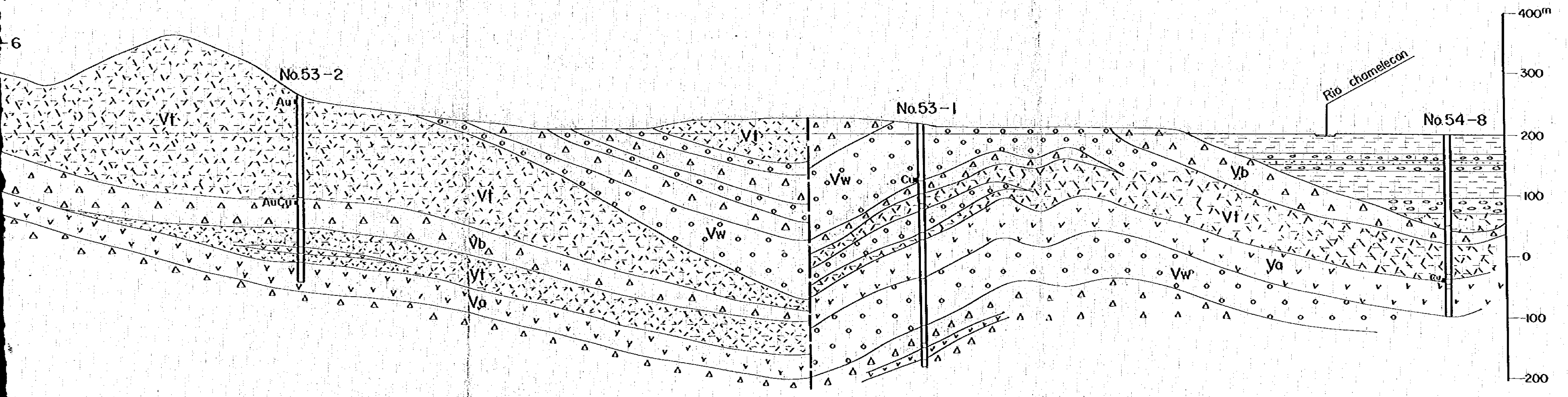
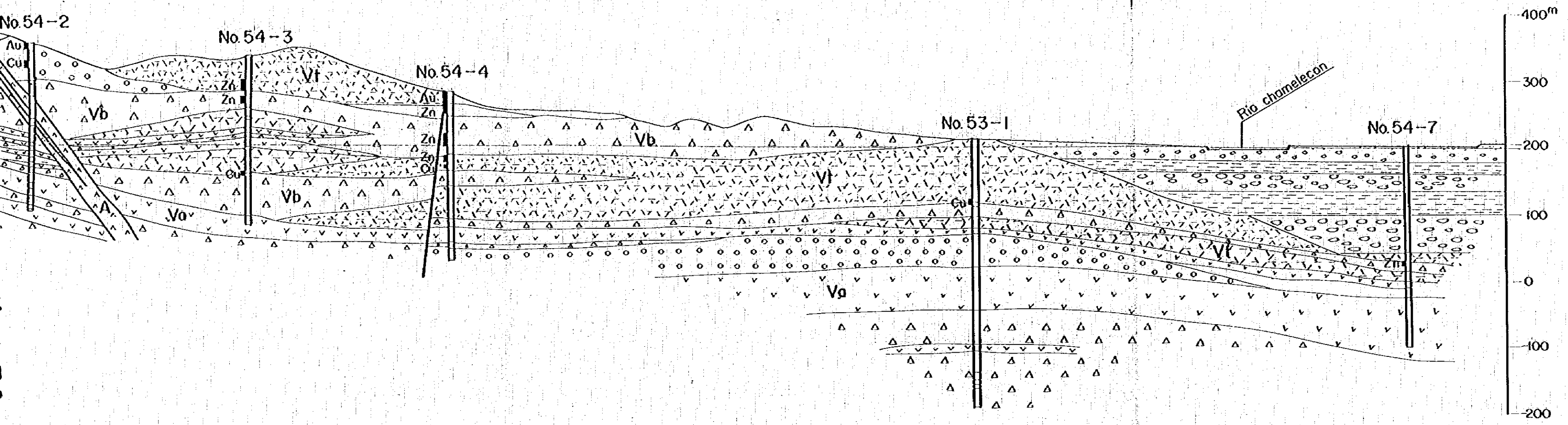
Formation	Stratigraphical		Lithology
	Mark	Symbol	
Alluvium		O	gravel, sand & clay
Atima F.		Ky2	massive limestone
Vueltas del Rio F.		Vt	meta tuff
		Vb	meta tuff breccia
		Vw	meta welded tuff & meta tuff
		Vc	shale
		Vg	conglomerate
		Va	meta andesite & meta welded tuff
		Vs	schalstein, diabase, meta andesite & meta diabase
		Vf	meta fine tuff
Intrusive rock		A	andesite & porphyrite dyke
		Qp	quartz porphyry
		D	dacite porphyry



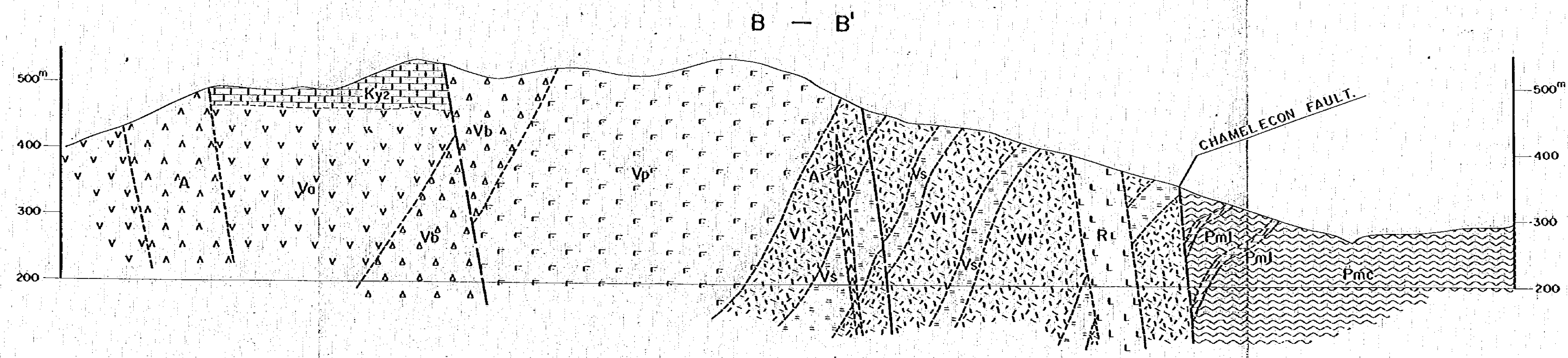
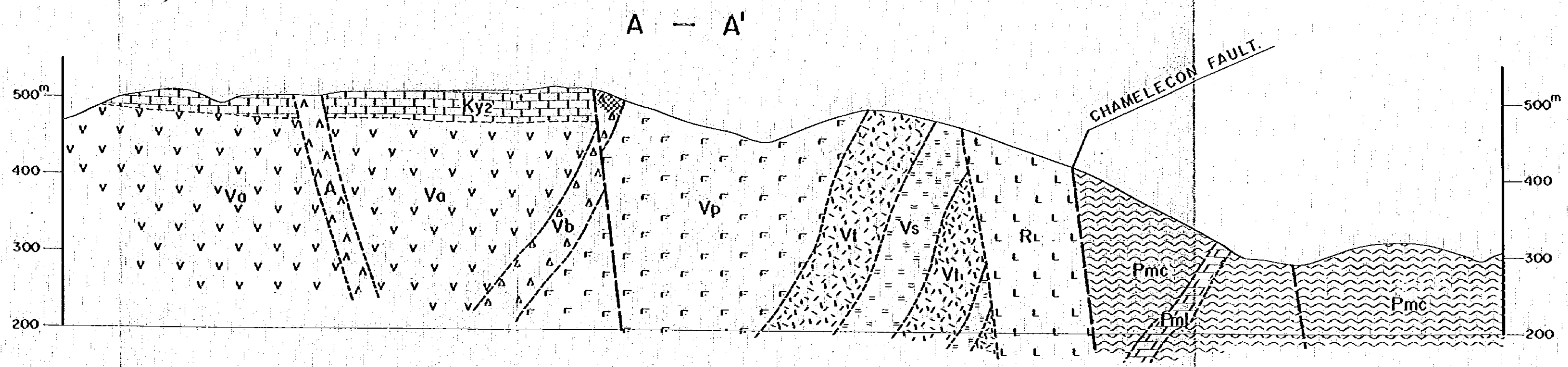
fault  
 Cu, Pb, Zn mineral indication  
 NO54-1  
 DDH by Japanese Team (1977~1979)



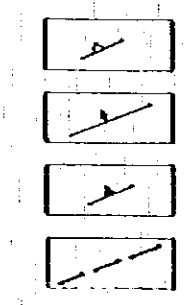






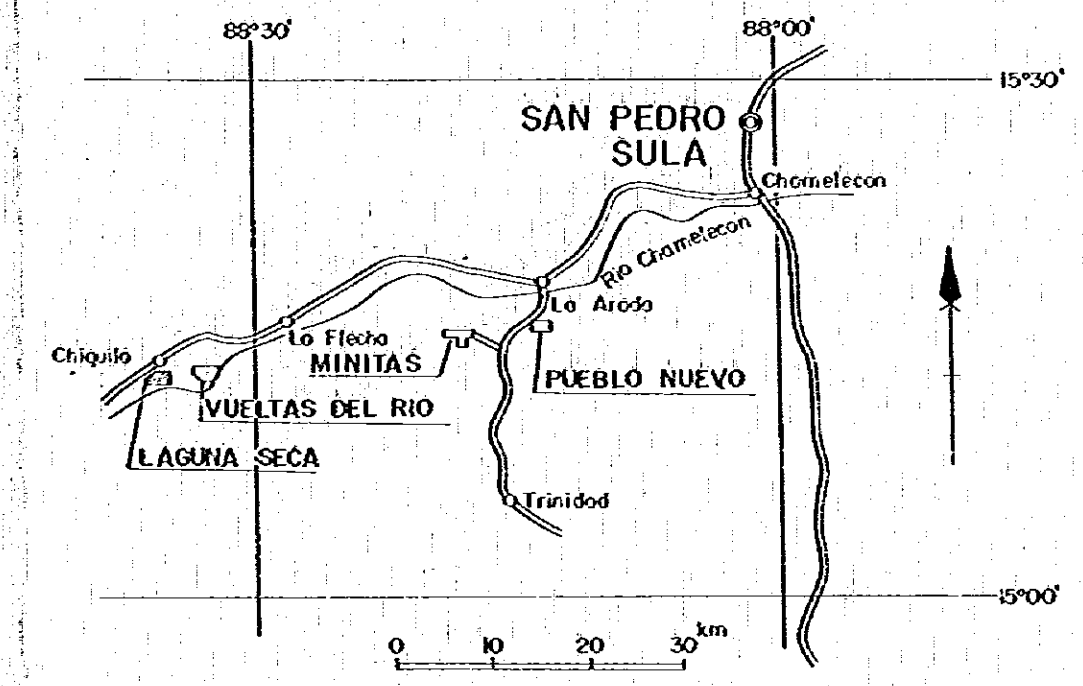


Formación
Alluvium
Alimó F.
Vueltas del Río F.
Chiquila- Arado Group
Intrusive rock

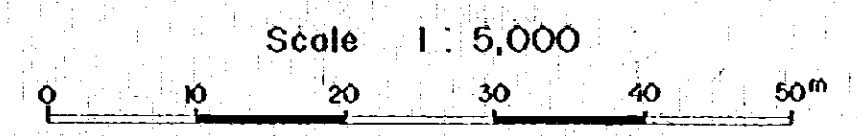


GEOLOGICAL SURVEY  
OF  
THE WESTERN AREA, REPUBLIC OF HONDURAS  
VOL. 3

GEOLOGICAL PROFILES OF  
THE LAGUNA SECA SECTOR



METAL MINING AGENCY OF JAPAN  
JAPAN INTERNATIONAL COOPERATION AGENCY  
GOVERNMENT OF JAPAN  
FEBRUARY 1979  
prepared by MESCO, Inc.



LEGEND

Formallon	Stratigraphical		Lithology
	Mark	Symbol	
Alluvium		Q	gravel, sand & mud
Atimo F.		Ky2	massive limestone
Vueltas del Rio F.		Vt	tuff
		Vb	tuff breccia
		Vw	welded tuff & tuff
		Vc	shale
		Vg	conglomerate
		Vo	metaandesite & welded tuff
		Vp	dioritic porphyry
		Vs	schalstein, diabase, metaandesite & meladiabase
		Vf	fine tuff
	Chiquila Arada Group		Pmc
		Pml	crystalline limestone
Intrusive rock		A	andesite & porphyrite dyke
		Qp	quartz porphyry
		R	liparite
		D	dacite porphyry

- bedding plane
- anticlinal axis/synclinal axis
- fissure
- adit
- schistosity
- silicified zone
- fault

