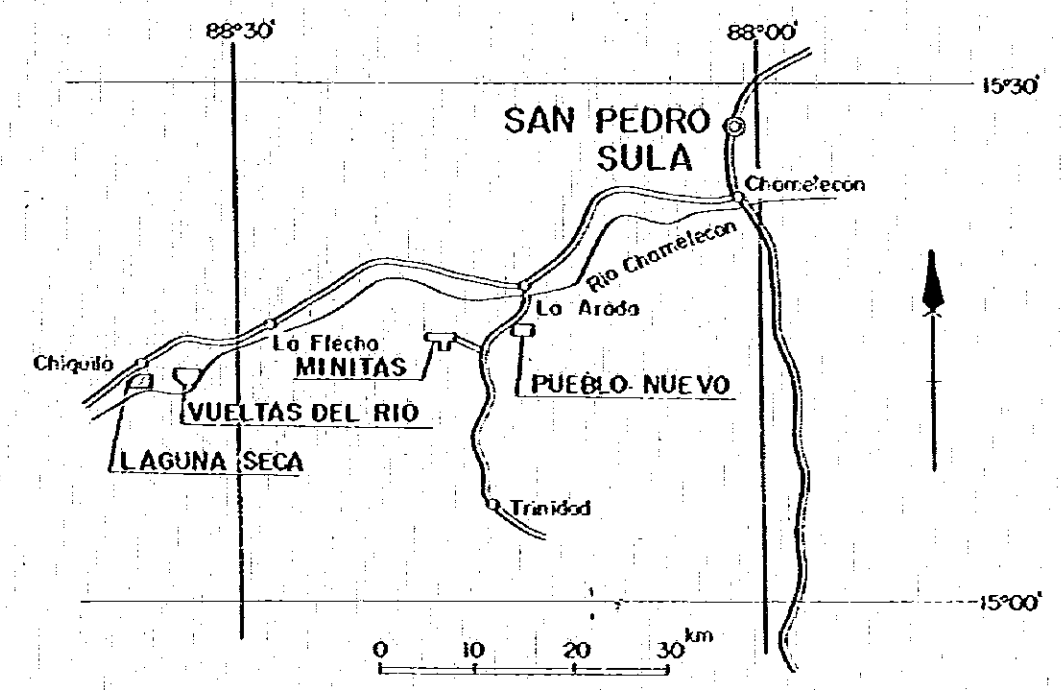
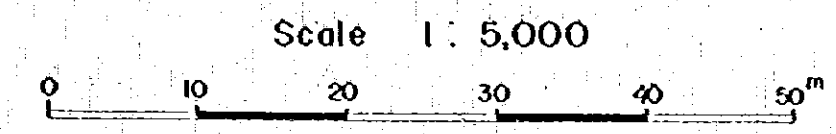


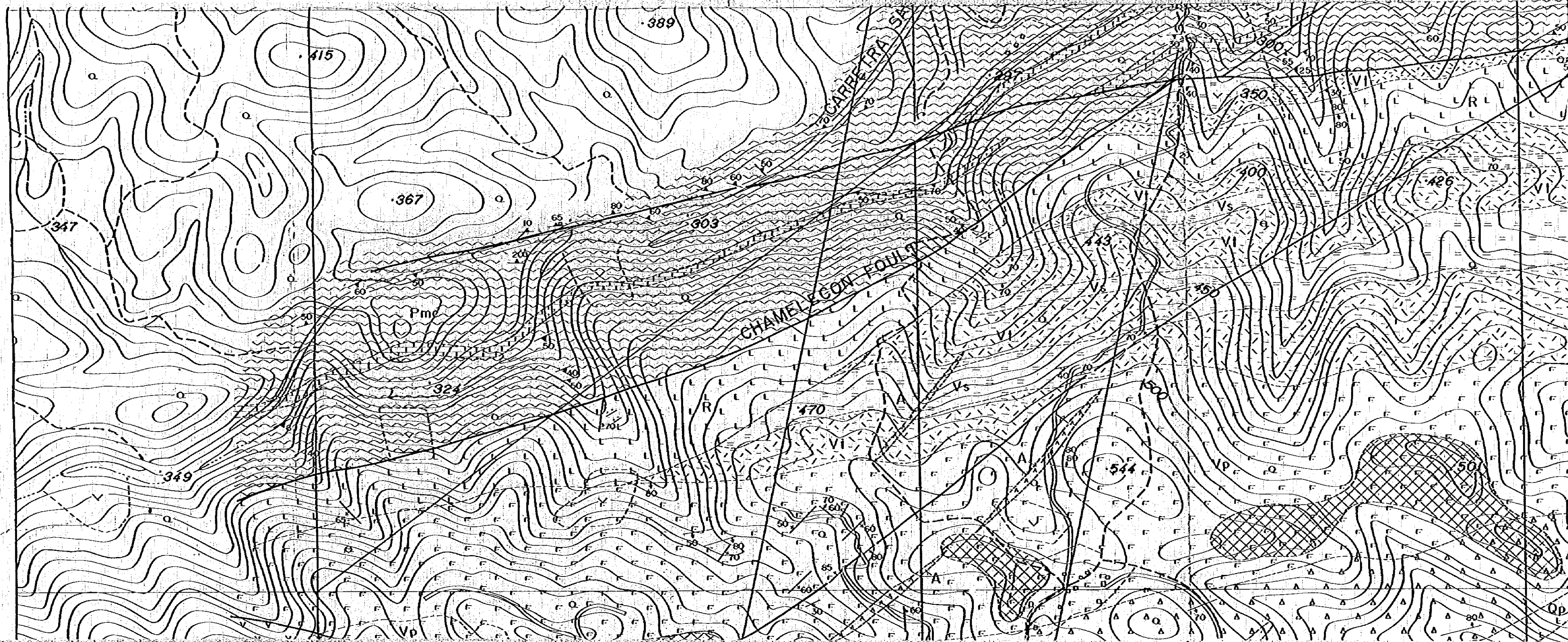
GEOLOGICAL SURVEY
OF
THE WESTERN AREA, REPUBLIC OF HONDURAS
VOL. 3

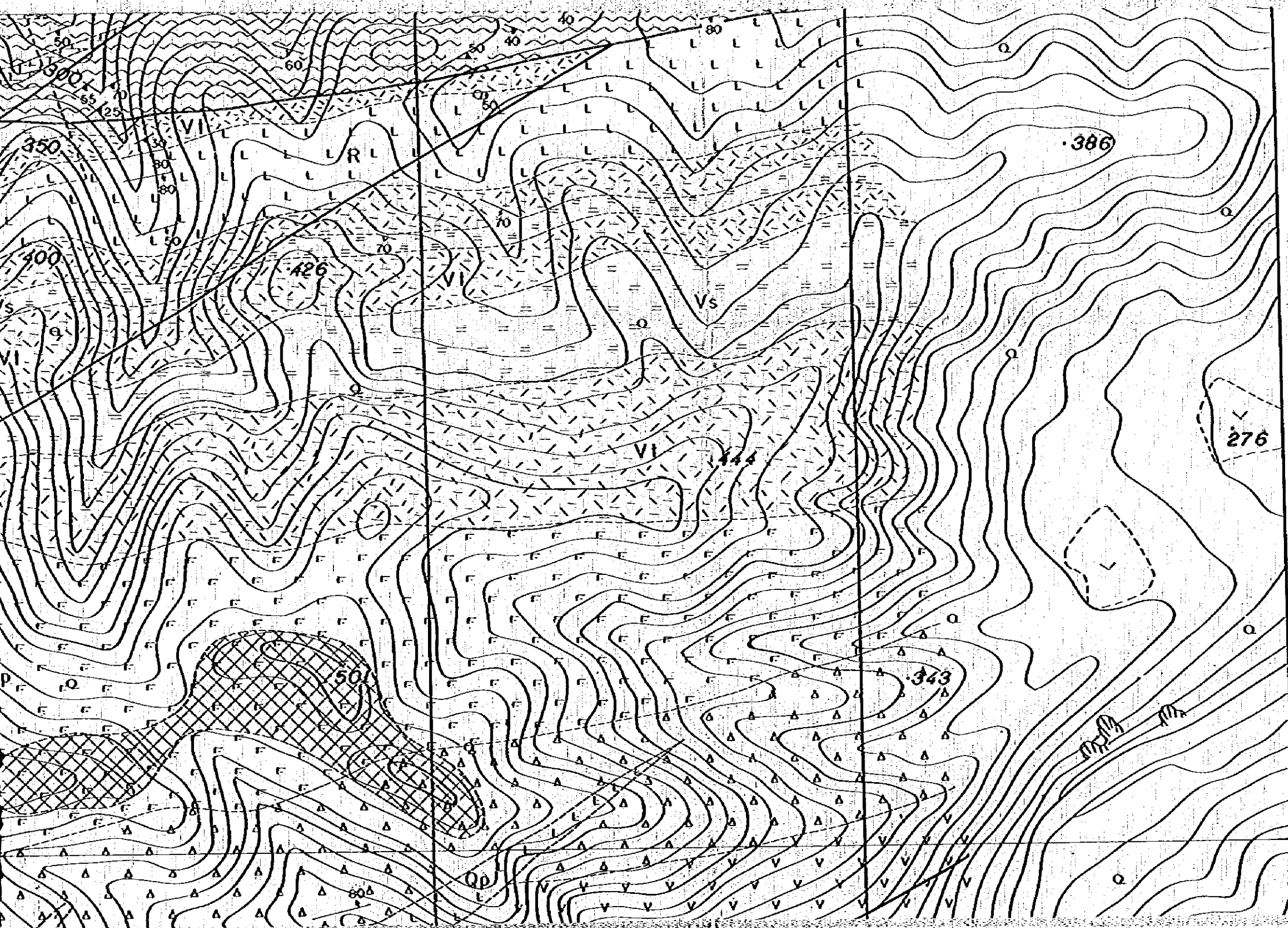
GEOLOGICAL MAP OF
THE LAGUNA SECA SECTOR



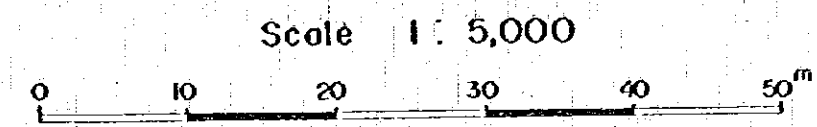
METAL MINING AGENCY OF JAPAN
JAPAN INTERNATIONAL COOPERATION AGENCY
GOVERNMENT OF JAPAN
FEBRUARY 1979
prepared by MESCO, Inc.







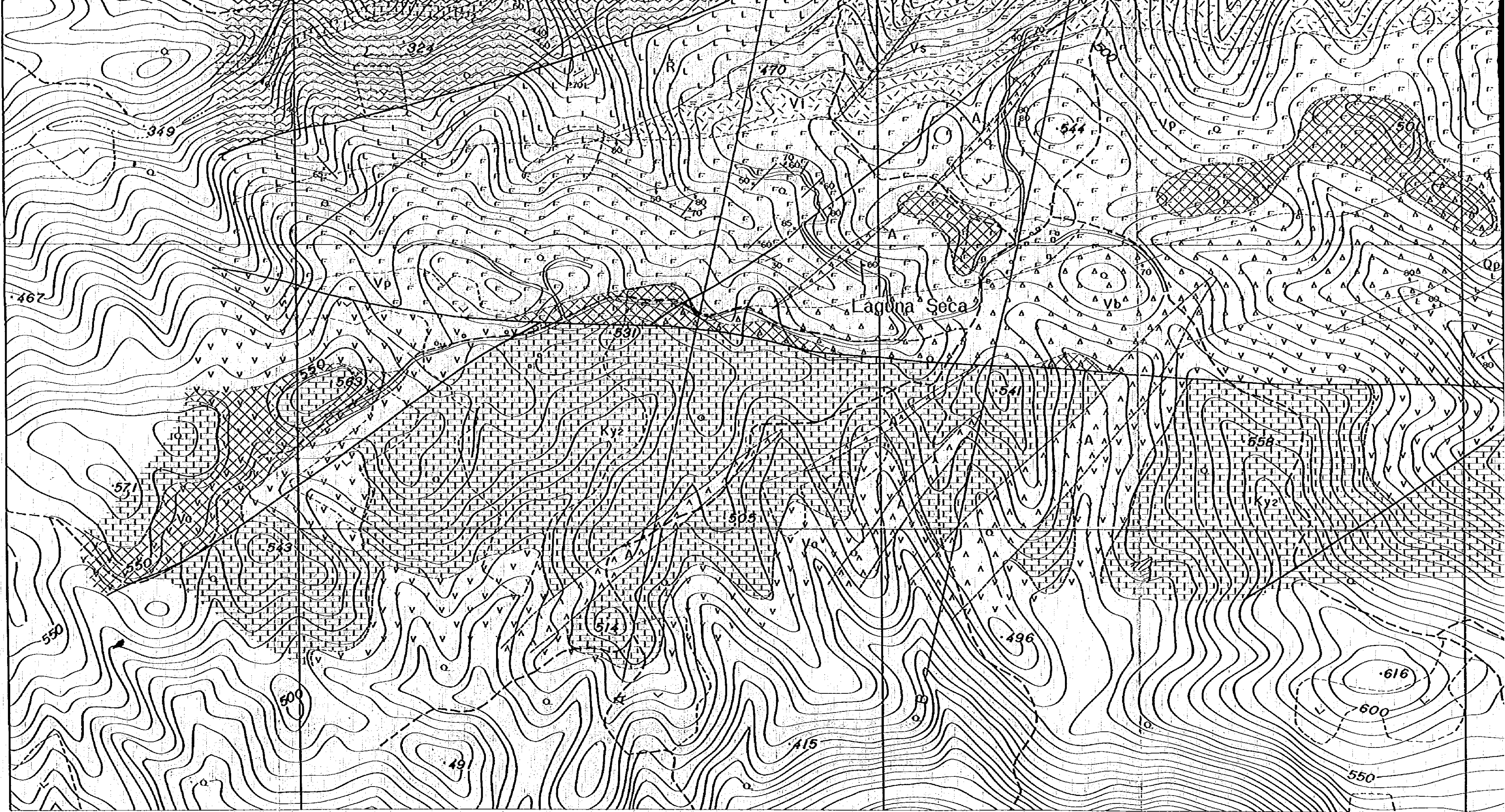
METAL MINING AGENCY OF JAPAN
 JAPAN INTERNATIONAL COOPERATION AGENCY
 GOVERNMENT OF JAPAN
 FEBRUARY 1979
 prepared by MESCO, Inc.

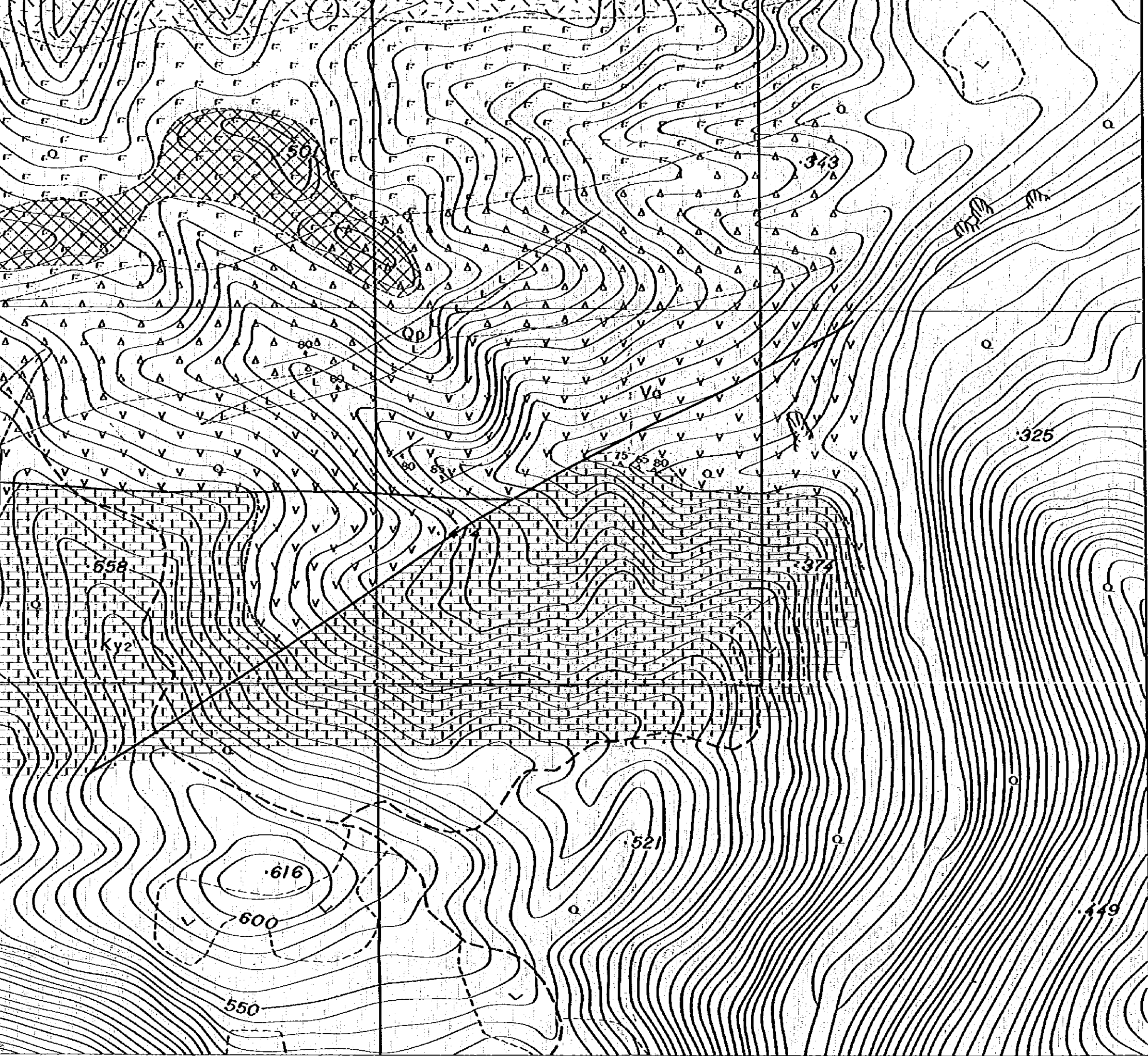


LEGEND

Formation	Stratigraphical Mark	Symbol	Lithology
Alluvium	[Blank box]	Q	gravel, sand & mud
Atimo F.	[Brick pattern]	Ky2	massive limestone
Vuellos del Rio F.	[Dashed pattern]	VI	tuff
	[Triangle pattern]	Vb	tuff breccia
	[Circle pattern]	Vw	welded-tuff & tuff
	[Horizontal line pattern]	Vc	shale
	[Circle-in-circle pattern]	Vg	conglomerate

1682N

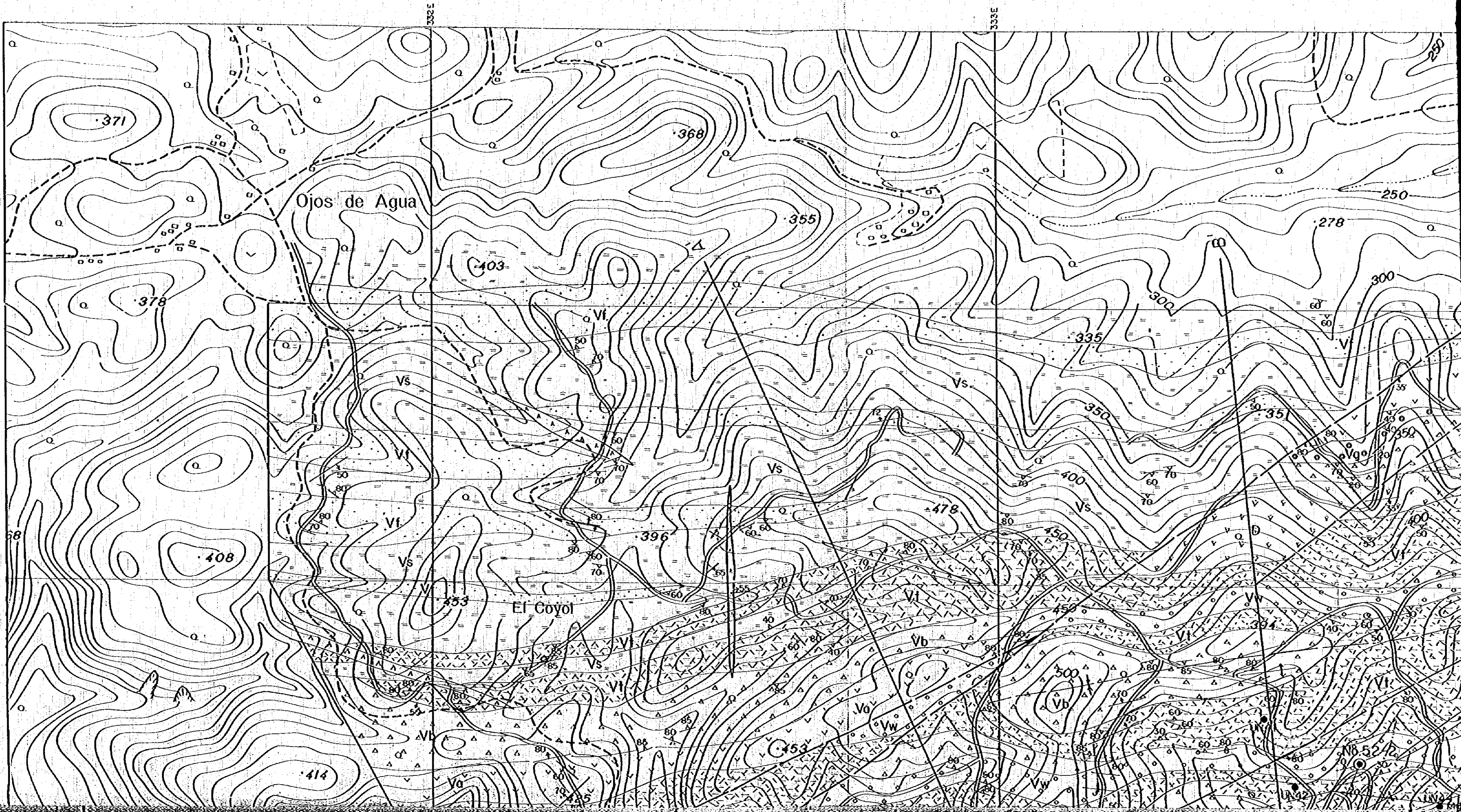


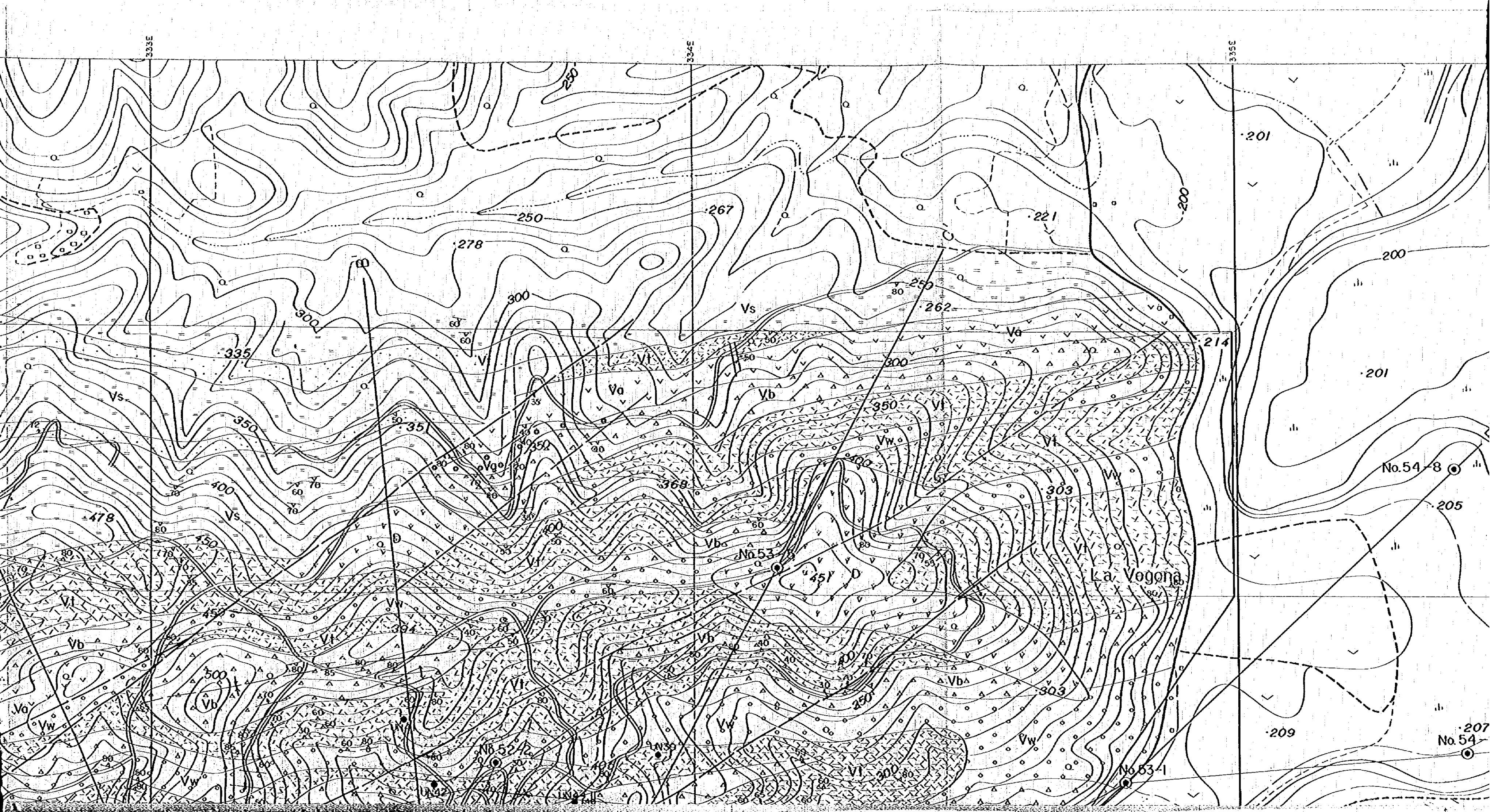


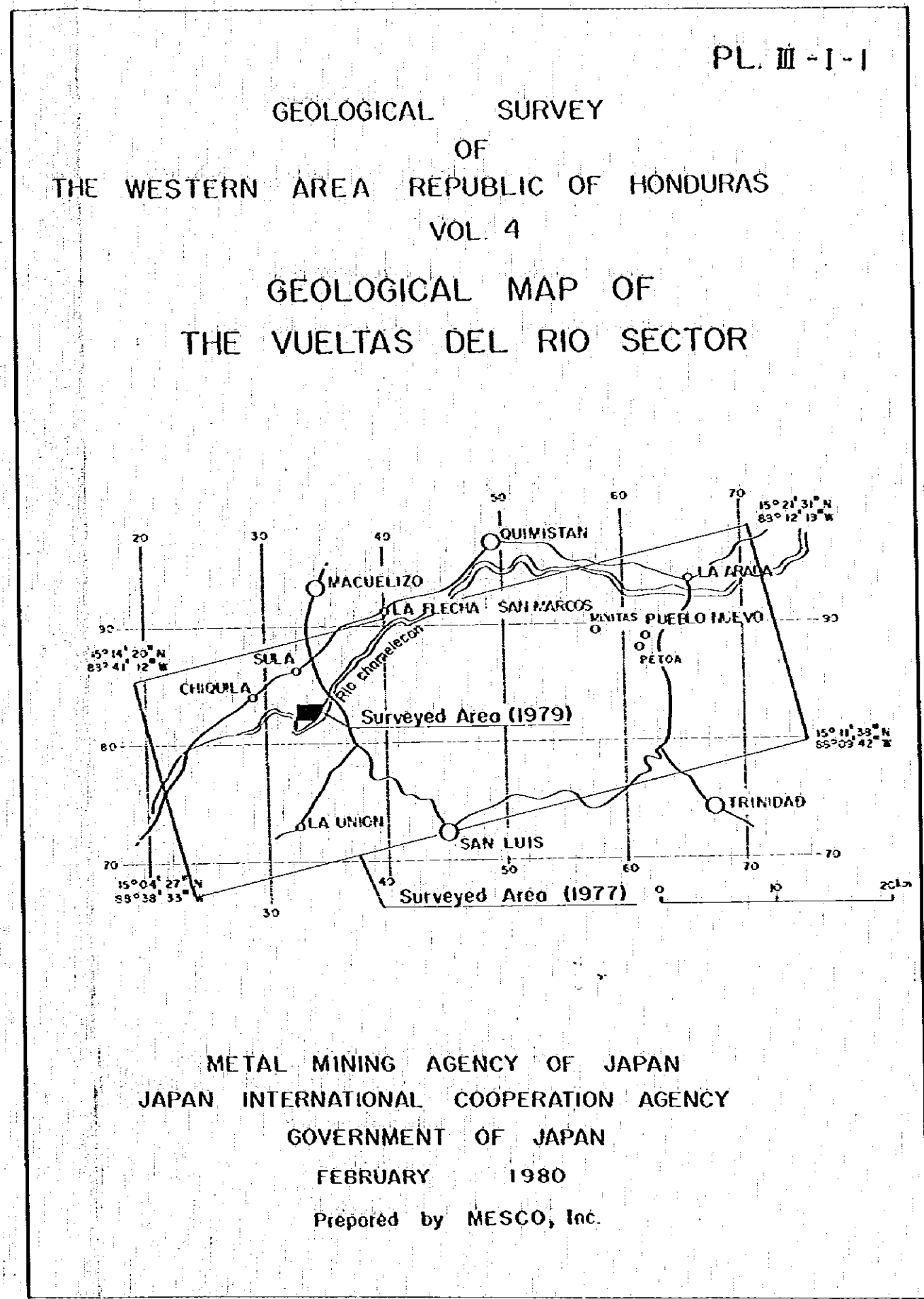
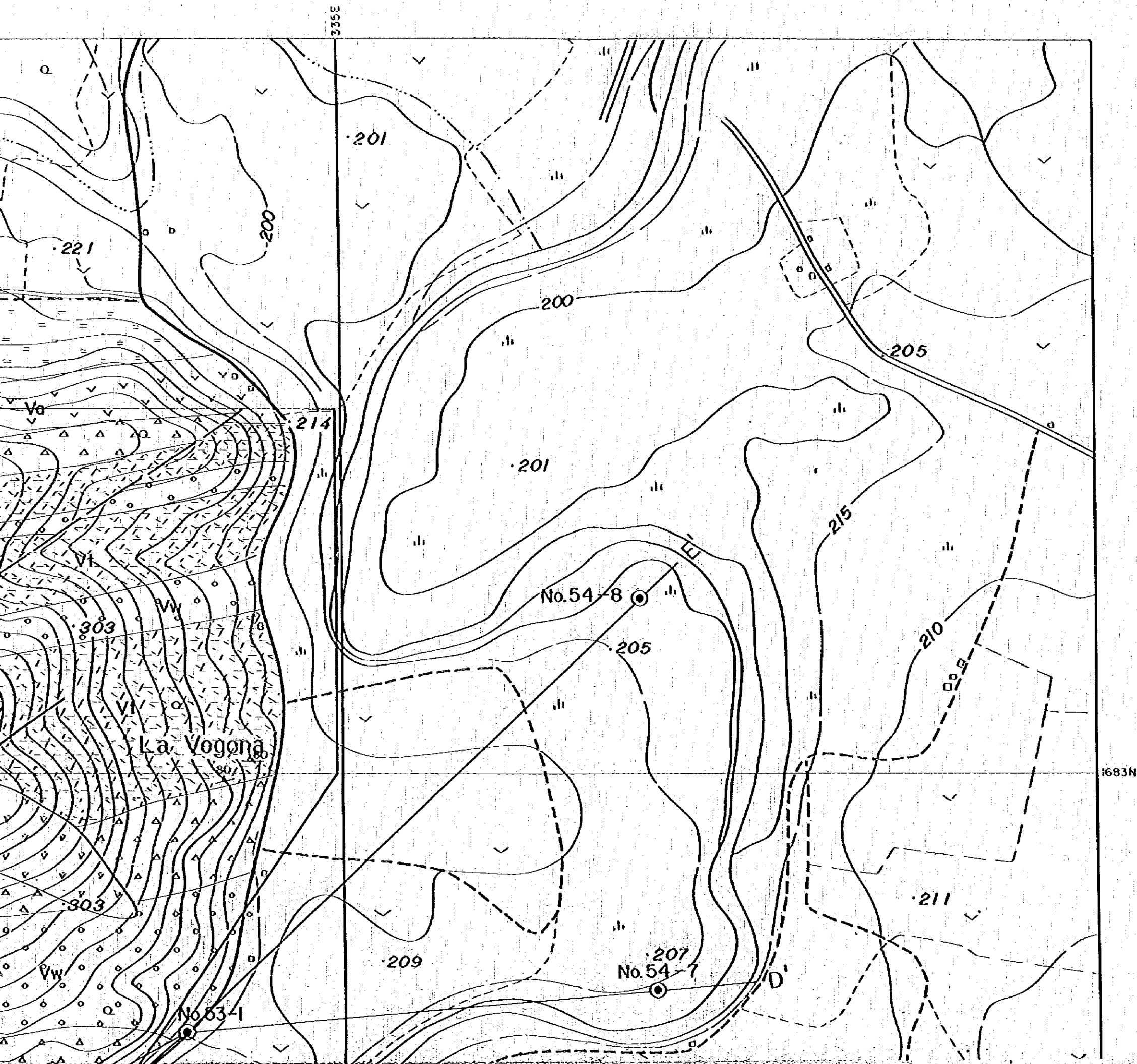
LEGEND

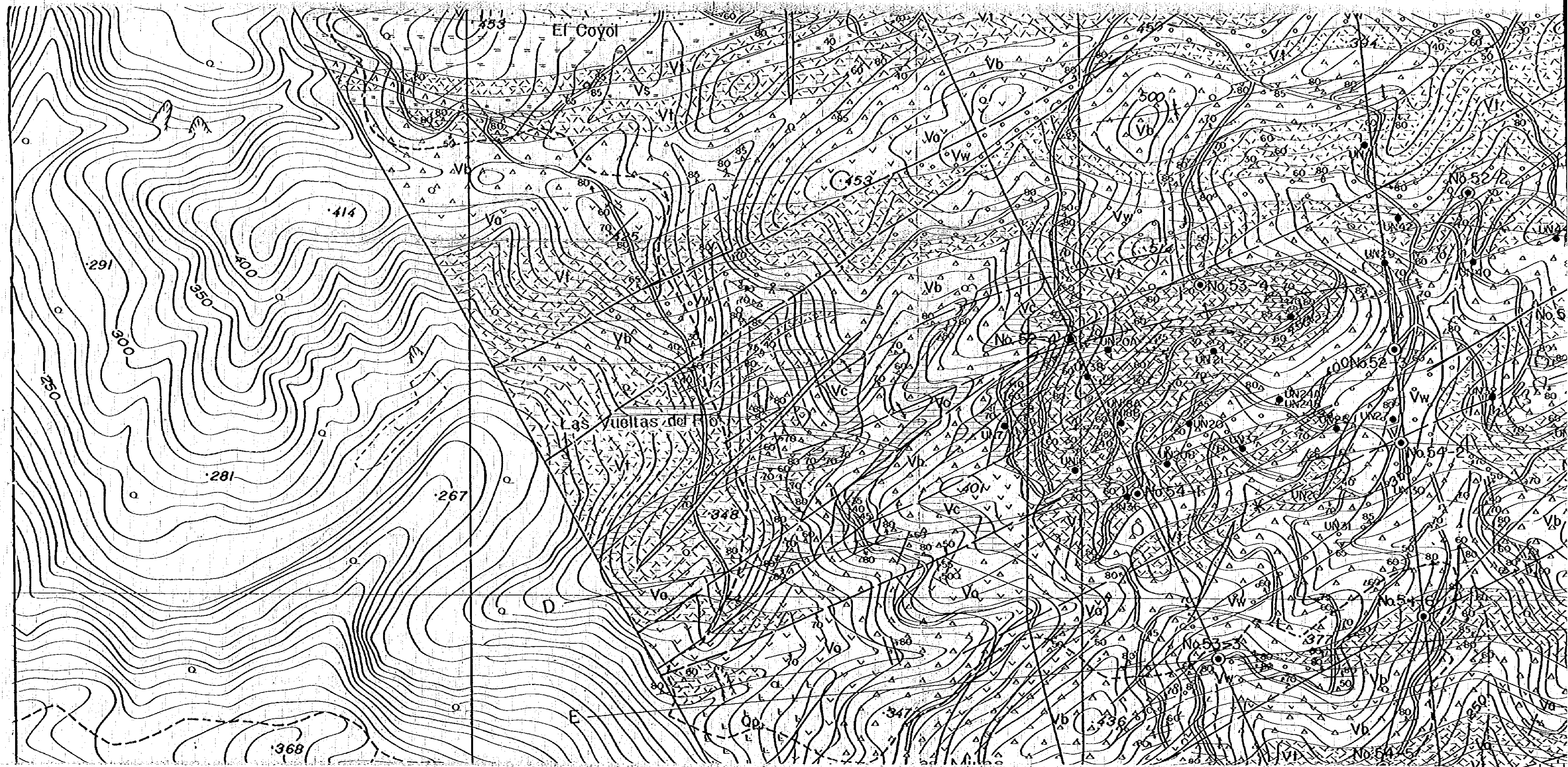
Formation	Stratigraphical Mark	Symbol	Lithology
Alluvium		Q	gravel, sand & mud
Alima F.		Ky2	massive limestone
Vuellos del Rio F.		Vt	tuff
		Vb	tuff breccio
		Vw	welded-tuff & tuff
		Vc	shale
		Vg	conglomerate
		Va	metaandesite & welded tuff
		Vp	dioritic porphyry
		Vs	scholstein, diabase, metaandesite & metadiabase
		Vf	fine tuff
	Chiquilo - Arada Group		Pmc
		Pml	crystalline limestone
Intrusive rock		A	andesite & porphyrite dyke
		Qp	quartz porphyry
		R	liporite
		D	dacite porphyry

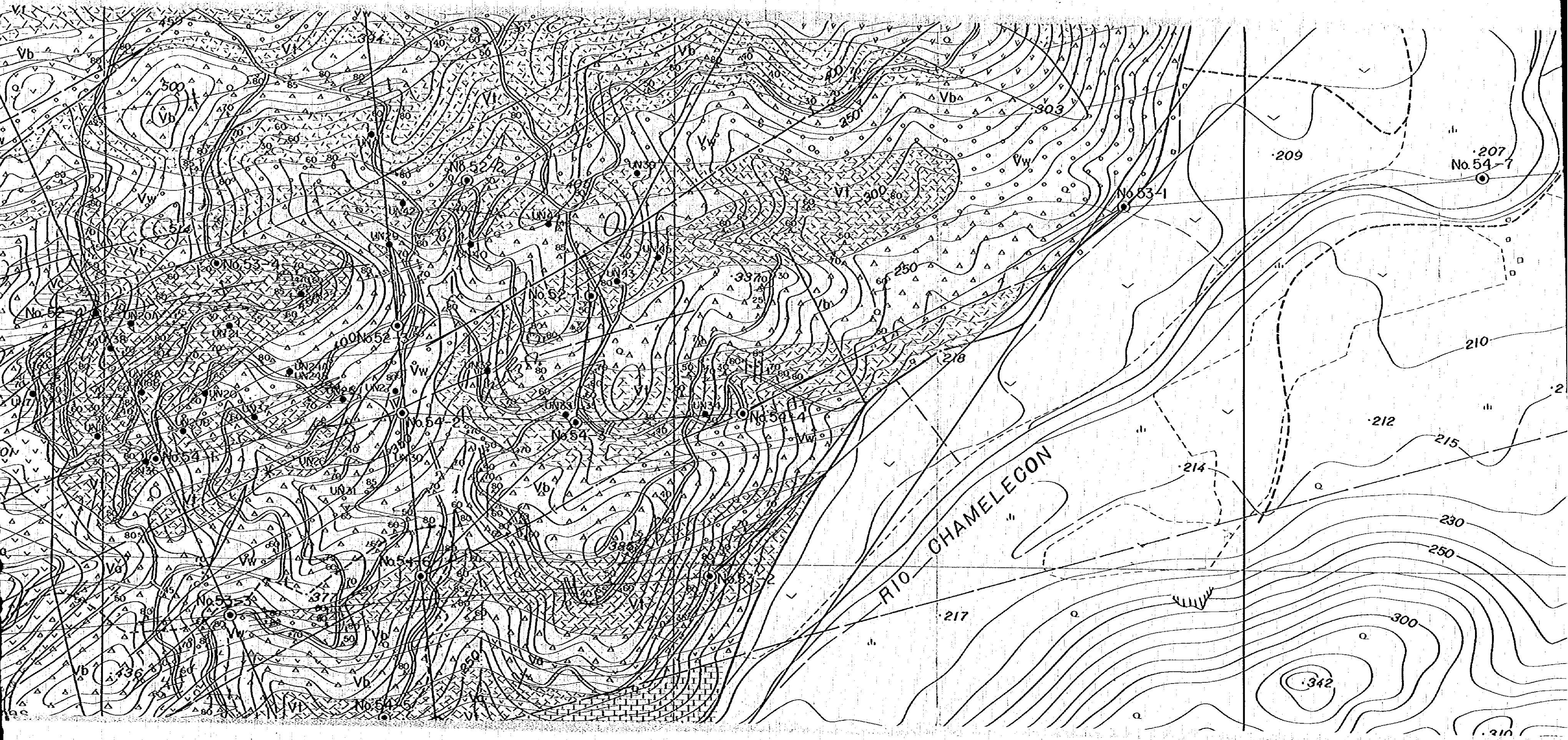
- bedding plane
- anticlinal axis/synclinal axis
- fissure
- adit
- schistosity
- silicified zone
- fault
- mineral indication
- DDH by UNDP (1969-1972)
- surveyed area

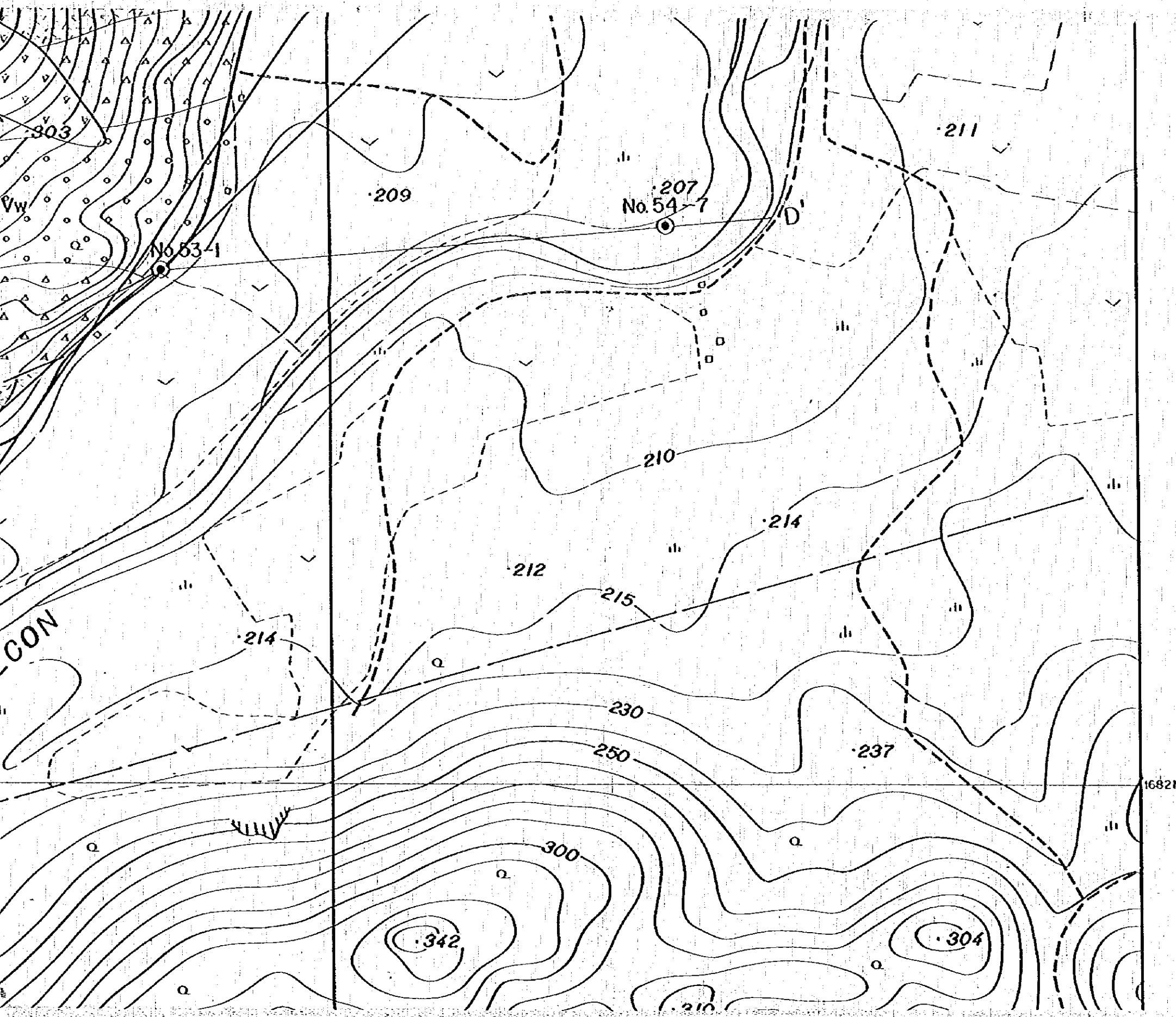




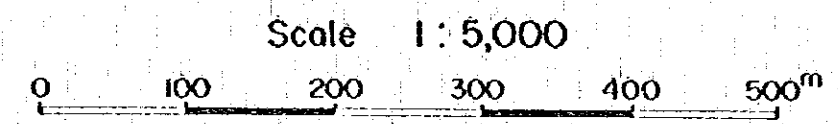






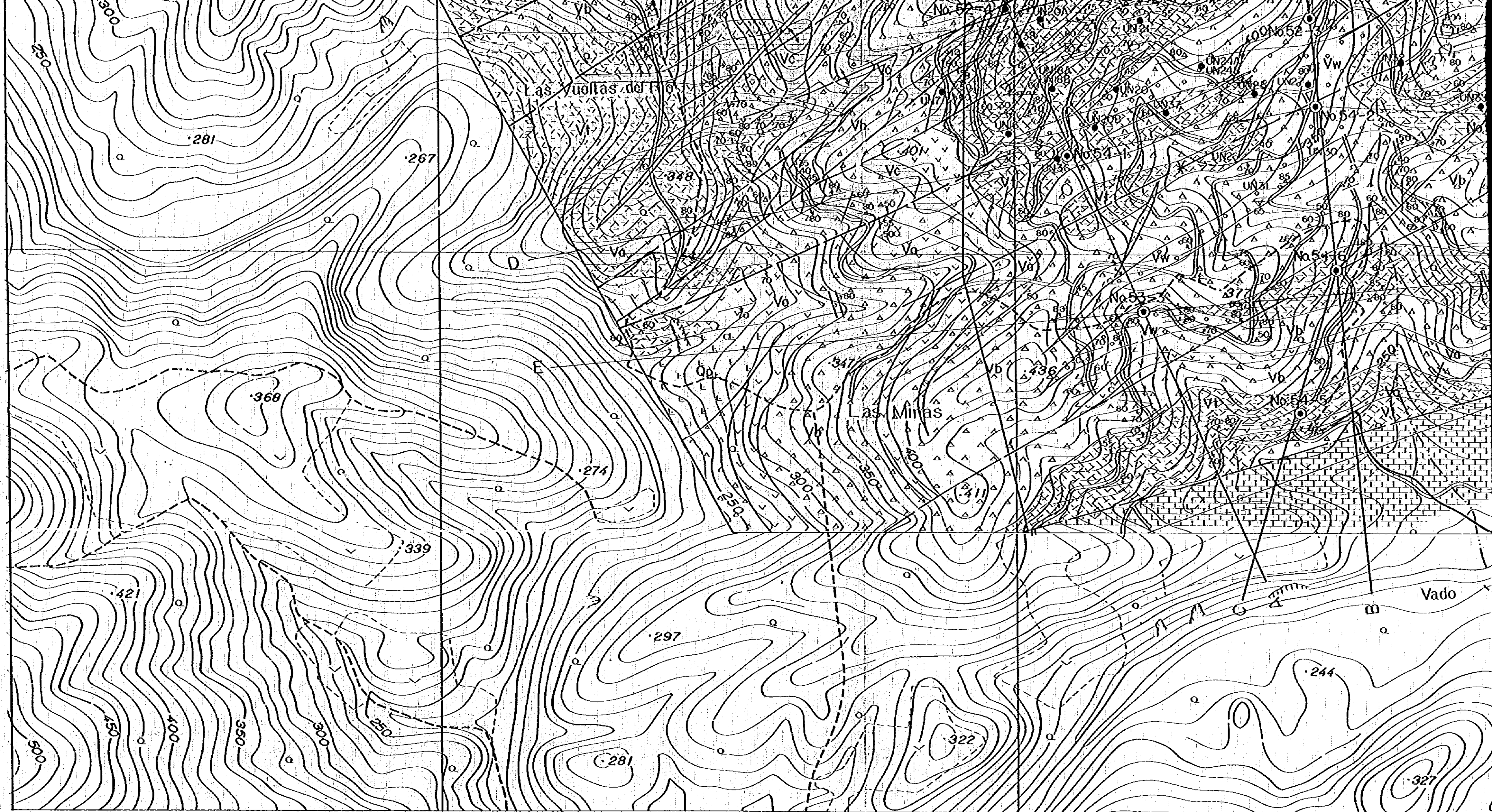


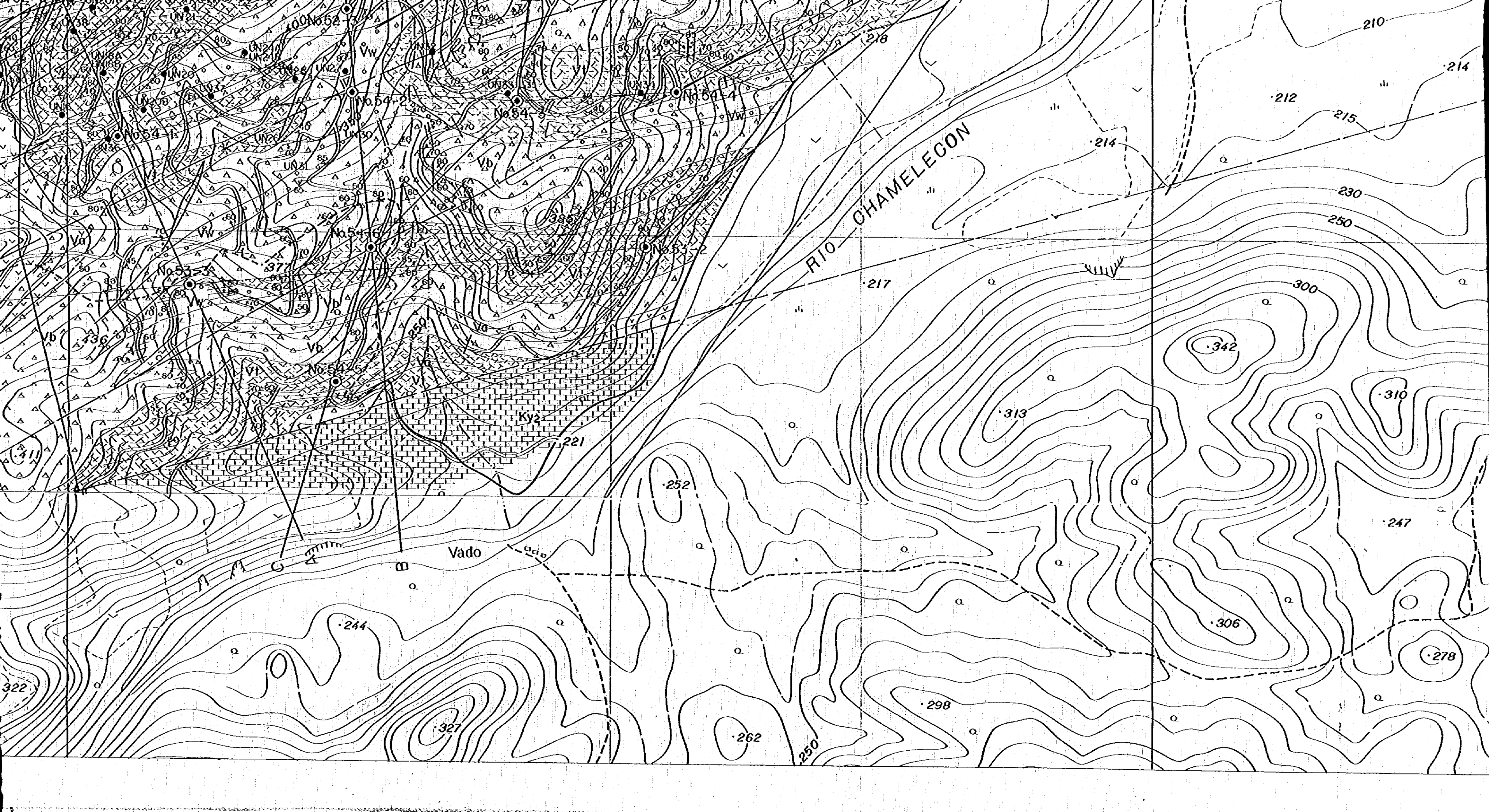
JAPAN INTERNATIONAL COOPERATION AGENCY
 GOVERNMENT OF JAPAN
 FEBRUARY 1980
 Prepared by MESCO, Inc.

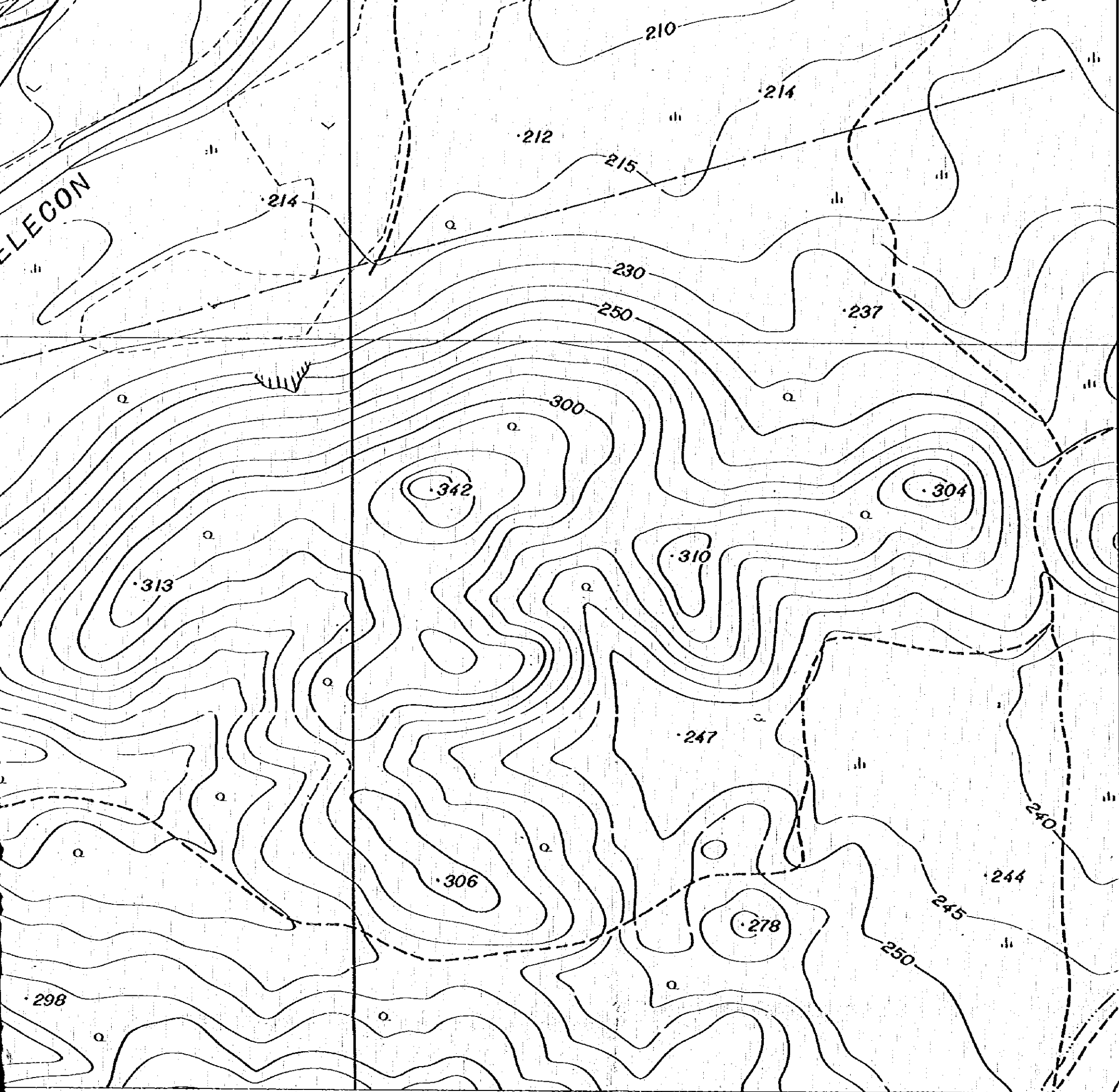


LEGEND

Formación	Stratigraphical		Lithology
	Mark	Symbol	
Alluvium		Q	gravel, sand & mud
Alima F.		Ky2	massive limestone
Vuellos del Rio F.		Vt	meta tuff
		Vb	meta tuff breccio
		Vw	meta welded tuff & meta tuff
		Vc	shale
		Vg	conglomerate
		Vo	meta andesite & meta welded tuff
		Vs	schalstein, diabase, meta andesite & meta diabase
		Vf	meta fine tuff
		A	andesite & porphyrite dyke

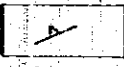
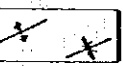
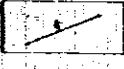

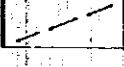
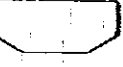

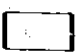







LEGEND

Formation	Stratigraphical Mark	Symbol	Lithology
Alluvium		Q	gravel, sand & mud
Alimo F.		Ky2	massive limestone
Vueltos del Rio F.		Vt	meta tuff
		Vb	meta tuff breccia
		Vw	meta welded tuff & meta tuff
		Vc	shale
		Vg	conglomerate
		Vo	meta andesite & meta welded tuff
		Vs	schalstein, diabase, meta andesite & meta diabase
Intrusive rock		Vf	meta fine tuff
		A	andesite & porphyrite dyke
		Qp	quartz porphyry
		D	dacite porphyry

-  bedding plane
-  anticlinal axis/synclinal axis
-  fissure
-  adit
-  fault
-  surveyed area (1978)
-  UN30
-  surveyed area (1979)
-  DDH by Japanese team (1977~1979)