

A. I-6 Chemical Analysis of Ore Samples

TH-1 Samples of Quartz vein with Limonite

T-1 Samples of Soil

Vueltas del Rio Sector

Sample No.	Elements analysed (ppm)					Sample No.	Elements analysed (ppm)				
	width m	Au	Cu	Pb	Zn		width m	Au	Cu	Pb	Zn
TM-1	0.10	0.30	71	19	340	TM-46	0.50	0.50	261	162	840
2	0.20	0.24	21	5	29	47	0.40	0.20	61	110	190
3	0.40	<0.01	37	4	27	48	1.00	0.02	57	39	385
4	0.50	0.44	13	6	69	49	2.00	0.34	72	625	240
5	0.50	1.18	32	6	24	50	2.00	0.16	18	207	32
6	0.30	6.80	11	2	38	51	0.10	0.86	69	1013	290
7	0.60	11.60	39	1	33	52	1.50	0.14	485	144	990
8	0.60	0.96	28	14	41	53	0.10	0.36	249	21	250
9	1.50	0.48	85	19	79	54	1.00	0.08	5870	30	430
10	3.00	0.34	22	5	20	55	1.50	2.78	378	15	74
11	3.00	0.26	27	9	61	56	0.02	0.10	208	22	310
12	0.50	9.20	31	6	34	57	2.00	0.08	367	67	84
13	1.20	10.40	71	9	18	58	0.50	0.88	89	14	48
14	0.30	4.00	29	12	180	59	1.00	2.00	72	10	220
15	3.00	1.60	30	5	28						
16	3.00	0.56	34	4	16						
17	3.00	0.78	71	6	19						
18	3.00	1.62	36	4	63						
19	0.30	0.06	17	4	34						
20	0.50	0.22	85	7	190						
21	0.10	0.70	33	6	220						
22	1.50	0.18	48	5	31						
23	0.80	0.08	50	4	63						
24	0.40	1.24	178	82	81						
25	0.40	0.14	14	11	45						
26	1.00	0.14	40	11	55						
27	0.10	0.04	36	7	290						
28	2.00	0.30	35	13	19						
29	1.60	0.24	36	12	42						
30	1.00	0.42	50	13	15						
31	0.20	0.02	34	8	73						
32	0.30	0.48	23	10	210						
33	0.30	14.00	55	20	80						
34	3.00	0.24	51	10	61						
35	3.00	0.38	57	24	22						
36	3.00	0.14	86	15	36						
37	3.00	0.10	162	7	48						
38	0.30	0.06	519	12	760						
39	0.30	1.74	47	56	48						
40	0.30	0.06	45	27	71						
41	0.05	<0.01	65	50	230						
42	0.20	<0.01	62	42	150						
43	3.00	0.24	19	120	1030						
44	3.00	0.06	251	39	360						
45	0.10	0.88	27	938	87						

Vueltas del Río Sector

Sample No.	Elements analysed (ppm)					Sample No.	Elements analysed (ppm)				
	width _m	Au	Cu	Pb	Zn		width _m	Au	Cu	Pb	Zn
T- 01	0.70	0.36	54	9	100	T- 46	0.70	0.94	174	10	52
02	0.20	2.02	243	30	37	47	1.00	0.22	73	8	59
03	1.00	0.18	355	10	37	48	0.40	1.16	154	7	25
04	0.60	0.12	4340	12	37	49	0.20	0.16	91	6	19
05	0.30	0.28	34	9	41	50	0.20	0.20	161	8	240
06	0.3	0.54	87	10	31	51	0.30	0.44	50	7	21
07	0.40	3.80	71	12	34	52	0.30	0.06	52	4	20
08	0.50	0.14	31	10	21	53	1.20	0.10	146	6	42
09	0.40	0.20	25	10	27	54	0.40	0.10	326	26	26
10	0.80	0.38	16	12	190	55	0.40	0.18	173	12	48
11	0.30	0.12	35	24	7600	56	0.30	0.04	171	3	43
12	0.80	1.92	36	32	49	57	0.40	0.36	52	7	18
13	0.4	0.06	20	7	55	58	0.50	0.24	176	18	29
14	0.50	1.72	15	22	15	59	0.10	0.38	212	11	41
15	0.80	0.04	8	7	53	60	0.60	0.04	190	10	35
16	0.30	0.06	30	14	300	61	0.50	0.04	143	11	45
17	0.20	0.04	22	6	230	62	0.30	0.56	39	16	33
18	0.40	<0.01	12	6	36	63	0.50	0.40	39	18	54
19	0.60	0.12	364	24	36	64	0.40	0.56	49	18	26
20	0.10	0.32	441	28	38	65	0.50	0.06	222	18	31
21	0.30	0.14	389	11	31	66	0.10	0.08	183	16	34
22	0.50	0.06	459	16	49	67	0.55	0.18	337	17	57
23	1.00	0.08	257	6	39	68	0.30	0.56	230	11	35
24	1.10	0.06	81	13	73	69	0.30	0.50	45	11	30
25	0.85	0.04	33	17	56	70	0.45	0.10	48	9	21
26	0.40	0.04	54	26	41	71	0.50	0.44	62	11	23
27	0.40	0.04	184	32	610	72	0.50	0.12	79	16	25
28	0.40	0.08	27	710	23	73	0.50	0.24	163	79	170
29	0.40	0.02	65	7	42	74	0.40	0.10	13	59	79
30	0.20	0.04	19	10	64	75	0.10	0.04	307	10	640
31	0.10	0.02	40	11	66	76	0.50	<0.01	183	33	2100
32	0.50	0.01	220	64	100	77	0.70	<0.01	89	14	6500
33	0.95	<0.01	120	18	54	78	0.40	<0.01	56	31	410
34	0.10	0.02	24	28	47	79	0.10	<0.01	187	567	1600
35	0.40	0.04	56	21	31	80	0.40	<0.01	51	66	370
36	0.30	0.06	34	108	28	81	0.50	<0.01	41	34	340
37	0.50	0.04	358	640	530	82	0.50	<0.01	34	34	210
38	0.90	0.04	48	5	23	83	0.30	0.68	20	733	240
39	0.40	0.16	96	7	50	84	0.30	<0.01	31	53	540
40	0.60	0.30	26	10	28	85	0.35	0.70	273	174	660
41	0.30	0.78	272	11	19	86	0.20	0.04	64	44	530
42	0.50	0.30	142	7	270	87	0.30	0.08	84	29	230
43	2.20	2.18	233	10	35	88	0.60	0.04	56	40	350
44	0.25	1.30	940	12	65	89	0.90	<0.01	229	14	68
45	0.30	1.36	56	6	37	90	0.70	0.04	45	10	46

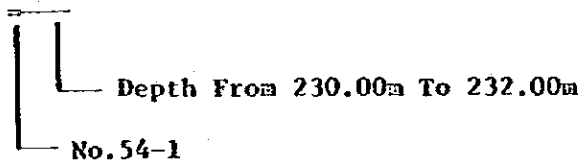
Vueltas del Río Sector

Sample No.	Elements analysed (ppm)					Sample No.	Elements analysed (ppm)				
	width _m	Au	Cu	Pb	Zn		width _m	Au	Cu	Pb	Zn
T - 91	0.80	0.90	162	7	56	T -136	0.40	<0.01	75	39	840
92	0.50	0.56	407	7	35	137	0.70	<0.01	79	86	2900
93	0.60	0.08	173	11	150	138	0.40	<0.01	155	66	3300
94	0.60	0.04	347	37	350	139	0.70	<0.01	60	30	220
95	0.70	0.08	87	63	600	140	0.80	<0.01	27	14	620
96	0.80	0.06	46	28	99	141	1.20	0.16	60	76	720
97	0.30	0.12	304	103	1500	142	0.30	0.01	66	500	340
98	0.40	0.58	84	53	650	143	0.20	0.04	288	82	1800
99	0.35	0.04	200	344	1900	144	0.80	<0.01	66	38	640
100	0.15	0.06	129	29	370	145	0.70	<0.01	188	356	1950
101	0.15	0.08	176	86	360	146	0.30	<0.01	10	9	360
102	0.70	0.08	62	29	190	147	0.30	<0.01	12	7	180
103	0.40	0.04	169	24	320	148	0.35	<0.01	33	9	340
104	0.65	0.28	353	3440	2000	149	0.15	<0.01	71	11	290
105	0.30	0.14	65	267	460	150	0.40	<0.01	186	139	560
106	0.50	0.02	15	14	500	151	0.25	0.14	53	17	710
107	0.30	0.16	34	16	290	152	0.50	0.10	231	60	680
108	0.80	0.12	70	80	460	153	0.90	0.04	19	9	19
109	1.50	0.10	380	81	410	154	0.30	<0.01	17	5	45
110	0.50	0.16	452	113	3300	155	0.40	0.06	27	7	27
111	0.60	0.20	589	422	970	156	0.50	0.30	58	13	22
112	0.10	0.10	384	28	4200	157	0.50	0.38	152	11	26
113	0.15	0.12	139	48	4100	158	0.50	3	379	14	58
114	0.30	<0.01	47	54	180	159	0.40	0.14	181	31	870
115	0.60	0.08	80	169	840	160	0.40	0.70	279	19	300
116	0.25	0.08	79	119	460	161	0.60	0.08	138	22	220
117	0.70	0.04	73	20	500	162	0.80	0.12	53	17	59
118	0.80	0.10	58	24	320	163	0.60	0.12	80	17	64
119	0.45	0.12	258	20	300	164	0.80	0.02	46	39	500
120	0.80	0.10	142	16	39	165	0.70	<0.01	173	31	63
121	0.50	0.02	25	24	51	166	0.80	<0.01	253	41	230
122	0.80	0.20	45	9	20	167	0.80	0.08	325	12	74
123	0.45	0.04	39	7	30	168	0.50	0.06	143	29	100
124	0.60	0.06	17	9	43	169	0.50	0.04	555	32	85
125	0.45	0.08	39	7	30						
126	0.50	0.08	55	24	91						
127	0.60	0.08	156	19	69						
128	0.30	0.06	79	11	560						
129	0.80	0.06	405	28	81						
130	0.30	0.04	77	28	750						
131	0.80	<0.01	25	36	2300						
132	1.00	<0.01	37	11	2000						
133	0.60	<0.01	81	58	580						
134	1.00	<0.01	74	27	600						
135	1.00	0.02	86	53	1750						

A. I-7 Chemical Analysis of Drilled Core Samples

Example

Sample No. 1230



Δ checked samples

Vueltas del Rio Sector

No. 54 - 1

Sample No.	Elements analysed (ppm)					Sample No.	Elements analysed (ppm)				
	Au	Ag	Cu	Pb	Zn		Au	Ag	Cu	Pb	Zn
1000	0.92	3	281	12	69	1082	0.04	1	76	16	410
1002	0.18	1	140	7	42	Δ1082	0.04	1	76	18	410
Δ1002	0.18	1	146	7	42	1084	0.02	1	27	14	480
1004	0.06	1	183	8	310	1086	0.04	1	37	15	350
1006	0.16	1	131	7	47	1088	0.04	1	87	16	410
1008	1	2	242	6	190	1090	0.04	1	52	13	520
1010	0.06	1	183	20	1700	1092	0.04	1	177	13	480
1012	0.10	1	415	6	54	1094	0.04	1	37	19	330
1014	0.06	1	12300	9	740	1096	0.04	1	49	12	350
1016	0.04	1	9350	15	300	1098	<0.01	1	84	15	430
1018	<0.01	1	3140	7	490	1100	0.02	1	25	18	520
1020	<0.01	0.3	20	6	460	1120	0.04	2	51	54	260
1022	<0.01	1	29	6	340	Δ1120	0.04	2	49	54	260
Δ1022	<0.01	1	31	8	340	1140	0.06	2	67	1240	4800
1024	0.01	1	35	10	230	1160	0.04	1	48	16	160
1026	0.02	1	219	15	440	1180	0.02	1	156	19	330
1028	<0.01	1	29	13	270	1200	0.02	1	51	14	96
1030	0.01	1	44	12	190	1220	<0.01	1	38	8	96
1032	<0.01	1	193	18	290	1240	<0.01	1	56	11	100
1034	0.14	2	200	17	170	1248	0.06	1	2500	9	76
1036	0.04	1	120	17	280						
1038	0.06	1	47	11	89						
1040	0.06	1	36	11	140						
1042	0.04	0.4	31	9	67						
Δ1042	0.04	0.4	28	9	67						
1044	0.04	1	26	17	230						
1046	0.04	1	44	67	280						
1048	0.04	1	176	12	2400						
1050	0.06	1	424	12	370						
1052	0.04	0.4	30	12	160						
1054	0.04	1	209	12	310						
1056	0.02	1	225	11	220						
1058	<0.01	1	64	11	340						
1060	<0.01	1	52	15	330						
1062	0.02	1	27	17	450						
Δ1062	0.02	1	28	18	450						
1064	0.02	1	282	24	660						
1066	0.04	1	40	12	480						
1068	0.02	1	195	16	960						
1070	<0.01	1	22	11	600						
1072	0.04	1	195	11	7600						
1074	0.02	1	32	12	550						
1076	0.04	1	30	14	390						
1078	<0.01	1	49	18	430						
1080	0.02	1	66	20	870						

Vueltas del Río Sector

No. 54 - 2

Sample No.	Elements analysed (ppm)					Sample No.	Elements analysed (ppm)				
	Au	Ag	Cu	Pb	Zn		Au	Ag	Cu	Pb	Zn
2000	0.04	1	244	24	52	Δ2080	0.02	1	33	10	280
Δ2000	0.04	1	238	27	53	2082	0.02	1	69	11	440
2002	2.54	1	293	12	64	2084	<0.01	1	34	11	56
2004	0.58	0.5	413	8	25	2086	0.02	1	47	17	84
2006	1.52	0.5	413	14	25	2088	0.02	1	57	17	93
2008	0.20	0.4	716	10	20	2090	0.02	1	75	16	72
2010	0.02	0.3	262	9	22	2092	0.04	1	41	14	77
2012	0.04	0.3	239	7	18	2094	0.04	1	45	13	79
2014	0.14	0.4	136	9	31	2096	<0.01	1	41	15	97
2016	0.06	0.1	227	4	19	2098	<0.01	1	184	11	88
2018	0.06	0.05	46	11	25	2100	0.04	1	73	11	200
2020	0.04	0.4	150	10	16	2120	<0.01	1	72	26	81
Δ2020	0.04	0.4	155	8	16	2140	<0.01	1	89	11	75
2022	0.04	0.4	57	12	12	Δ2140	<0.01	1	87	11	70
2024	<0.01	0.4	52	8	25	2160	0.08	1	79	10	74
2026	0.04	0.4	570	7	45	2180	<0.01	1	207	13	61
2028	0.04	0.3	3570	9	440	2200	0.08	1	167	10	60
2030	0.02	0.4	2910	7	550	2220	0.06	1	59	21	99
2032	0.04	1	66	18	520	2240	0.08	1	223	11	230
2034	0.04	1	152	10	610						
2036	0.04	1	1320	13	750						
2038	0.04	0.5	680	10	610						
2040	0.04	1	56	10	380						
Δ2040	0.04	1	56	10	380						
2042	0.02	1	44	10	380						
2044	<0.01	1	52	9	250						
2046	0.01	0.5	1180	11	660						
2048	0.02	1	52	13	330						
2050	<0.01	1	56	8	220						
2052	0.02	1	53	11	90						
2054	0.06	0.4	54	9	16						
2056	0.04	1	57	12	300						
2058	<0.01	0.06	79	13	350						
2060	<0.01	1	44	13	520						
Δ2060	<0.01	1	40	13	520						
2062	<0.01	1	34	11	250						
2064	<0.01	2	33	10	450						
2066	<0.01	1	42	10	270						
2068	<0.01	1	85	9	250						
2070	<0.01	1	31	10	360						
2072	0.01	1	32	14	330						
2074	<0.01	1	35	12	580						
2076	<0.01	1	32	16	260						
2078	0.04	1	29	14	410						
2080	0.02	1	34	11	280						

Vueltas del Rio Sector

No. 54 - 3

Sample No.	Elements analysed (ppm)					Sample No.	Elements analysed (ppm)				
	Au	Ag	Cu	Pb	Zn		Au	Ag	Cu	Pb	Zn
3000	0.04	1	54	13	88	3082	<0.01	2	147	18	89
3002	<0.01	0.4	87	10	310	3084	<0.01	1	49	11	240
3004	<0.01	<0.01	27	9	18	3086	<0.01	2	46	16	370
3006	0.04	0.5	41	5	42	3088	0.02	1	70	13	59
3008	<0.01	0.4	44	5	13	Δ3088	0.02	1	67	13	63
Δ3008	<0.01	0.4	44	5	13	3090	<0.01	1	41	14	96
3010	<0.01	0.4	61	4	23	3092	<0.01	2	214	16	320
3012	<0.01	0.4	87	7	70	3094	<0.01	2	54	16	370
3014	<0.01	0.4	859	3	17	3096	<0.01	2	44	14	290
3016	<0.01	1	652	7	48	3098	<0.01	2	44	13	310
3018	<0.01	1	464	7	51	3100	<0.01	1	38	11	260
3020	0.04	1	1220	18	98	3120	<0.01	1	79	13	250
3022	0.02	1	357	12	200	3140	<0.01	1	43	13	95
3024	0.04	0.4	433	13	49	3160	1.70	1	52	18	81
3026	<0.01	1	198	12	72	3176	<0.01	1	2230	12	75
3028	<0.01	1	191	14	590	Δ3176	<0.01	1	2230	12	75
Δ3028	<0.01	1	191	13	590	3200	0.04	1	60	14	58
3030	0.06	1	295	10	800	3220	<0.01	1	74	13	370
3032	<0.01	1	68	10	510	3240	<0.01	1	69	13	230
3034	<0.01	1	72	14	650						
3036	0.66	1	163	14	6500						
3038	0.24	1	130	14	4800						
3040	0.06	2	129	14	2500						
3042	0.10	1	198	11	9100						
3044	<0.01	1	213	15	8400						
3046	0.10	1	383	15	3800						
3048	<0.01	9	2160	4100	23000						
Δ3048	<0.01	9	2160	4100	23000						
3050	0.01	1	48	23	270						
3052	0.10	1	50	12	340						
3054	<0.01	1	37	19	520						
3056	<0.01	1	32	18	620						
3058	<0.01	1	198	18	2200						
3060	<0.01	1	454	15	3000						
3062	<0.01	1	450	16	9400						
3064	0.04	1	280	20	8700						
3066	0.04	1	144	16	2000						
3068	0.02	1	58	16	2350						
Δ3068	0.02	1	59	16	2350						
3070	0.06	1	62	15	760						
3072	0.04	2	234	15	3700						
3074	0.04	2	152	18	5000						
3076	0.02	1	114	12	3000						
3078	<0.01	1	53	25	720						
3080	<0.01	1	170	15	500						

Vueltas del Rio Sector

No. 54 - 4

Sample No.	Elements analysed (ppm)					Sample No.	Elements analysed (ppm)				
	Au	Ag	Cu	Pb	Zn		Au	Ag	Cu	Pb	Zn
4000	0.76	1	590	6	1100	4082	<0.01	1	41	13	470
4002	0.24	1	460	25	710	4084	0.04	1	31	14	400
4004	0.08	0.5	305	4	3000	4086	<0.01	1	43	17	420
4006	0.06	0.5	274	4	3800	Δ4086	<0.01	1	42	17	390
Δ4006	0.06	0.5	274	4	3800	4088	<0.01	1	41	17	500
4008	0.10	1	219	13	3100	4090	<0.01	1	40	16	550
4010	3.24	1	76	14	960	4092	<0.01	1	33	14	530
4012	0.30	1	160	9	780	4094	0.02	1	179	11	4300
4014	0.12	1	160	11	2800	4096	0.04	1	281	10	6900
4016	0.04	1	143	14	980	4098	<0.01	1	51	11	3200
4018	0.04	1	336	19	1600	4100	<0.01	1	186	10	5400
4020	0.06	2	200	21	3100	4109	0.42	1	6280	9	520
4022	0.04	1	276	15	980	4120	0.04	1	63	10	540
4024	<0.01	2	233	31	3500	4140	<0.01	1	45	11	310
4026	<0.01	1	310	21	550	Δ4140	<0.01	1	45	10	320
Δ4026	<0.01	1	319	21	550	4160	<0.01	1	437	7	320
4028	0.08	4	355	83	3400	4180	0.01	0.5	37	4	270
4030	0.08	1	412	14	580	4188	<0.01	1	751	10	330
4032	0.04	2	890	149	24000	4200	<0.01	1	212	7	400
4034	2	1	143	19	2400	4220	<0.01	1	76	26	810
4036	<0.01	1	35	16	260	4240	0.04	1	53	10	2900
4038	<0.01	1	37	9	220						
4040	<0.01	1	52	9	180						
4042	<0.01	1	63	10	260						
4044	0.10	1	94	9	170						
4046	0.20	1	43	10	170						
Δ4046	0.20	1	42	10	170						
4048	<0.01	1	30	9	170						
4050	0.12	1	44	15	240						
4052	0.06	1	94	9	200						
4054	0.26	1	91	19	180						
4056	0.04	1	73	9	220						
4058	0.06	1	188	9	240						
4060	<0.01	2	74	14	630						
4062	0.08	6	805	19	2300						
4064	<0.01	1	374	12	760						
4066	<0.01	1	479	11	4500						
Δ4066	<0.01	1	479	11	4500						
4068	<0.01	2	728	10	570						
4070	0.04	1	191	11	5000						
4072	<0.01	1	326	10	7200						
4074	0.04	1	77	11	4500						
4076	<0.01	1	80	10	380						
4078	<0.01	1	179	10	3700						
4080	<0.01	1	54	16	720						

Vueltas del Rio Sector

No. 54 - 5

Sample No.	Elements analysed (ppm)					Sample No.	Elements analysed (ppm)				
	Au	Ag	Cu	Pb	Zn		Au	Ag	Cu	Pb	Zn
5000	<0.01	2	175	19	420	5082	<0.01	1	41	15	180
5002	<0.01	3	143	11	410	5084	<0.01	2	38	15	240
5004	<0.01	2	280	11	290	5086	<0.01	2	30	14	190
5006	<0.01	2	19	94	270	Δ5086	<0.01	2	28	14	190
5008	<0.01	2	17	27	520	5088	<0.01	3	18	11	260
5010	<0.01	2	22	39	290	5090	<0.01	3	25	10	230
5012	<0.01	2	45	34	310	5092	<0.01	2	83	10	77
5014	<0.01	3	160	65	335	5094	<0.01	2	146	9	79
Δ5014	<0.01	3	160	65	335	5096	<0.01	1	34	9	75
5016	<0.01	2	39	62	300	5098	<0.01	1	53	10	78
5018	0.06	2	52	31	84	5100	<0.01	2	85	12	210
5020	<0.01	3	70	25	80	5120	<0.01	3	42	12	230
5022	<0.01	2	48	21	84	5140	<0.01	3	60	10	82
5024	<0.01	2	34	16	95	5160	<0.01	3	55	11	62
5026	<0.01	2	15	9	250	Δ5160	<0.01	3	59	11	61
5028	<0.01	2	17	12	200	5180	<0.01	2	72	16	71
5030	<0.01	2	124	10	270	5200	<0.01	1	76	16	99
5032	<0.01	2	35	12	270	5220	<0.01	1	72	15	58
5034	<0.01	2	53	9	240	5240	<0.01	1	28	11	65
Δ5034	<0.01	2	53	8	240						
5036	<0.01	2	61	12	94						
5038	<0.01	2	20	13	220						
5040	<0.01	2	16	12	300						
5042	<0.01	2	15	14	290						
5044	<0.01	2	21	13	100						
5046	<0.01	2	24	13	340						
5048	<0.01	2	54	12	76						
5050	<0.01	2	68	26	250						
5052	<0.01	2	140	16	290						
5054	<0.01	2	58	12	89						
Δ5054	<0.01	2	56	12	88						
5056	<0.01	2	35	13	61						
5058	<0.01	2	28	26	66						
5060	<0.01	2	24	16	51						
5062	<0.01	2	31	36	92						
5064	<0.01	2	32	14	65						
5066	<0.01	16	66	12	63						
5068	<0.01	3	154	15	65						
5070	0.02	2	28	17	270						
5072	0.02	2	41	20	71						
5074	<0.01	2	26	16	84						
Δ5074	<0.01	2	24	16	84						
5076	0.02	2	244	17	280						
5078	0.01	2	244	24	200						
5080	<0.01	2	383	14	79						

Vueltas del Rio Sector

No. 54 - 6

Sample No.	Elements analysed (ppm)					Sample No.	Elements analysed (ppm)				
	Au	Ag	Cu	Pb	Zn		Au	Ag	Cu	Pb	Zn
6000	0.04	2	368	67	2000	6082	<0.01	1	35	10	210
6002	0.04	1	384	79	2600	6084	0.01	1	180	9	260
6004	0.04	1	414	132	2400	Δ6084	0.01	1	190	10	260
Δ6004	0.04	1	414	130	2400	6086	0.04	1	84	8	420
6006	0.50	1	334	131	3500	6088	<0.01	0.5	49	8	280
6008	0.04	1	307	113	1800	6090	0.08	1	93	14	270
6010	0.04	1	173	17	3100	6092	<0.01	0.5	51	9	81
6012	0.06	1	168	26	2700	6094	<0.01	0.5	61	9	83
6014	0.02	0.4	145	45	850	6096	<0.01	1	46	21	1050
6016	<0.01	1	276	71	1900	6098	<0.01	1	37	8	160
6018	0.01	0.5	164	28	1700	6100	<0.01	0.5	40	7	180
6020	0.02	0.5	224	28	2100	6120	<0.01	1	68	14	380
6022	0.04	3	149	71	3000	6140	0.10	4	179	23	850
6024	0.02	1	28	19	4600	Δ6140	0.10	4	179	23	850
Δ6024	0.02	1	26	19	4600	6160	0.02	0.5	357	10	290
6026	0.04	1	42	20	3400	6180	<0.01	1	36	11	200
6028	<0.01	0.3	18	3	2700	6200	<0.01	0.5	25	5	140
6030	<0.01	0.2	25	6	580	6220	<0.01	0.3	29	14	70
6032	<0.01	1	52	18	490	6240	<0.01	1	57	11	180
6034	<0.01	0.5	52	20	210						
6036	<0.01	1	75	20	780						
6038	0.02	1	92	22	540						
6040	<0.01	0.5	60	11	270						
6042	<0.01	0.5	92	8	190						
6044	<0.01	0.5	62	8	150						
Δ6044	<0.01	0.5	62	8	150						
6046	<0.01	1	170	10	180						
6048	<0.01	0.5	69	8	170						
6050	<0.01	0.5	22	12	160						
6052	<0.01	0.5	69	8	630						
6054	<0.01	0.3	29	9	300						
6056	<0.01	1	25	11	86						
6058	<0.01	1	46	12	77						
6060	<0.01	1	69	11	88						
6062	0.01	0.4	31	11	89						
6064	<0.01	1	41	13	94						
Δ6064	<0.01	1	41	12	100						
6066	<0.01	1	35	10	79						
6068	<0.01	1	42	12	79						
6070	<0.01	1	47	11	86						
6072	<0.01	1	43	14	100						
6074	<0.01	1	39	15	88						
6076	<0.01	1	52	11	260						
6078	<0.01	1	41	8	93						
6080	0.01	1	37	11	270						

Vueltas del Rio Sector

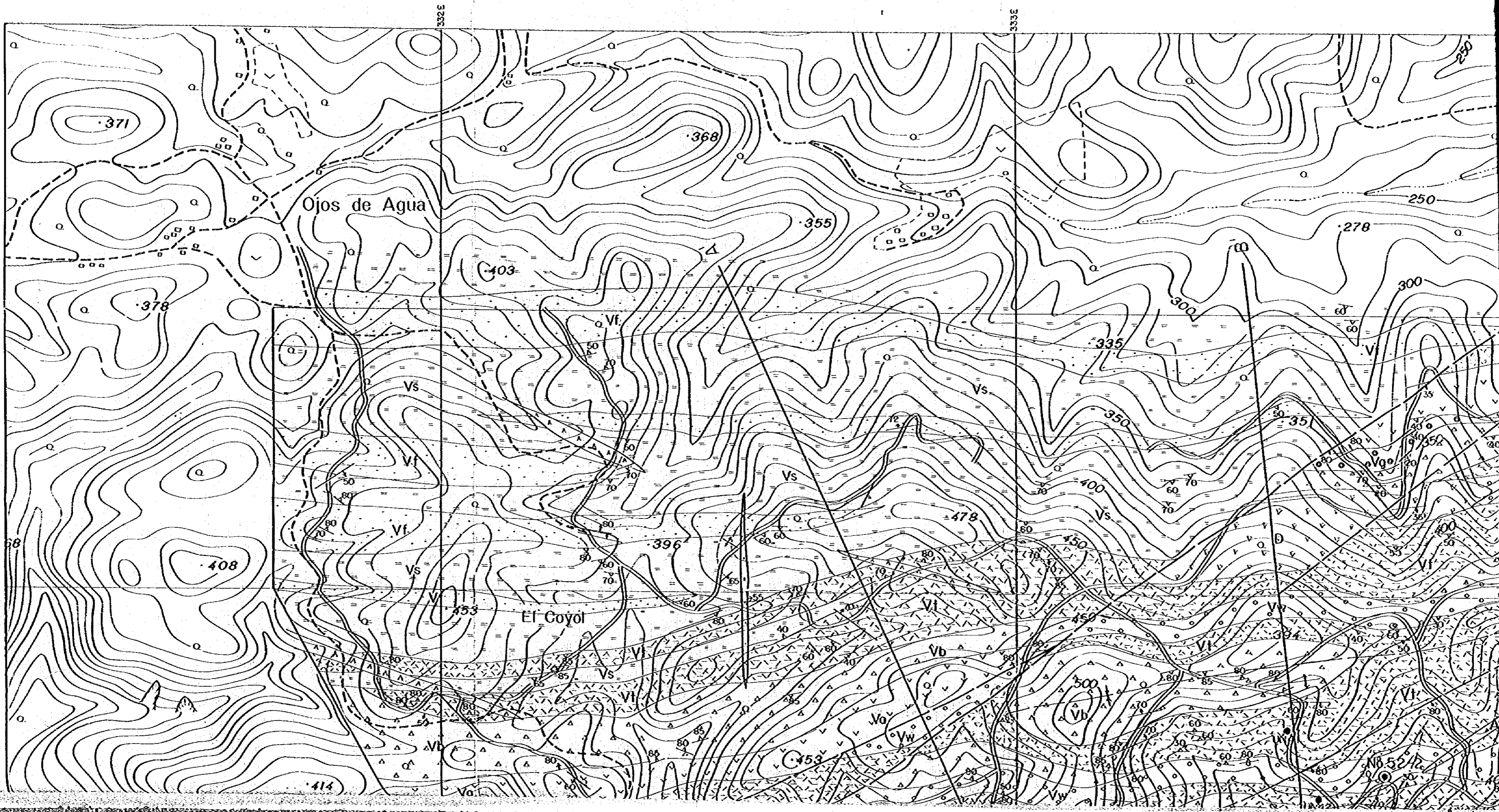
No. 54 - 7

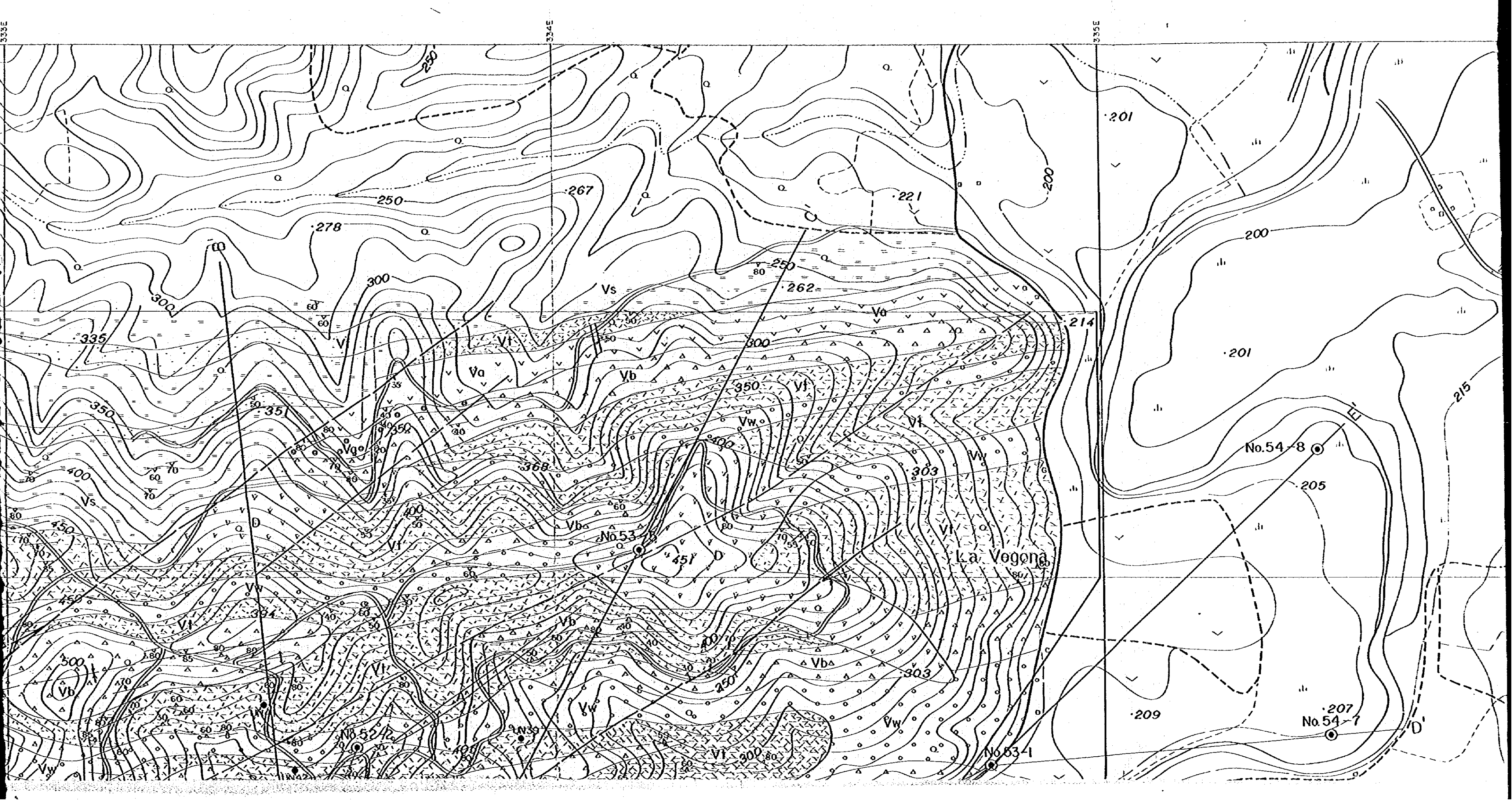
Sample No.	Elements analysed (ppm)					Sample No.	Elements analysed (ppm)				
	Au	Ag	Cu	Pb	Zn		Au	Ag	Cu	Pb	Zn
7000	0.08	4	24	29	87	7208	<0.01	1	28	16	78
7002	<0.01	6	26	31	150	Δ7208	<0.01	1	29	15	78
7008	<0.01	1	47	36	310	7210	<0.01	1	133	12	170
7010	<0.01	1	55	29	200	7212	<0.01	1	32	17	82
7012	<0.01	1	44	36	200	7214	0.02	2	42	125	101
7014	0.10	1	49	67	230	7216	<0.01	1	41	22	34
7016	0.02	1	41	36	200	7218	0.02	1	38	19	94
7018	<0.01	1	52	37	230	7220	0.02	1	44	21	74
Δ7018	<0.01	1	50	37	230	7222	0.02	1	33	50	3200
7022	<0.01	1	55	36	300	7224	<0.01	1	46	27	97
7024	<0.01	1	48	31	360	7226	<0.01	1	36	20	85
7026	0.06	0.5	47	44	290	7228	<0.01	1	30	21	250
7031	0.06	1	49	34	220	Δ7228	<0.01	1	30	20	250
7042	<0.01	0.5	52	36	240	7230	<0.01	2	40	20	78
7154	<0.01	1	208	44	680	7232	<0.01	1	78	21	98
7155	<0.01	1	67	37	1400	7234	<0.01	1	52	21	320
7157	<0.01	1	71	104	2000	7240	<0.01	1	59	56	570
7158	0.20	1	200	196	4900	7260	<0.01	1	39	23	350
7159	0.02	4	51	413	2300	7280	<0.01	1	43	21	42
7160	<0.01	1	127	60	730						
7162	<0.01	2	46	69	440						
7164	<0.01	1	29	69	280						
7166	0.06	1	19	67	81						
7168	<0.01	2	21	325	260						
Δ7168	<0.01	2	21	325	260						
7170	<0.01	1	25	165	5500						
7172	<0.01	2	39	570	1900						
7174	<0.01	1	116	538	1020						
7176	0.01	2	41	413	520						
7178	<0.01	2	22	313	420						
7180	0.04	1	28	54	90						
7182	0.02	1	26	82	140						
7184	0.08	2	77	450	520						
7186	0.02	1	363	56	130						
7188	<0.01	1	47	25	180						
Δ7188	<0.01	1	43	25	180						
7190	<0.01	1	47	26	55						
7192	<0.01	1	50	25	58						
7194	<0.01	1	42	35	170						
7196	<0.01	1	37	27	85						
7198	<0.01	2	28	26	84						
7200	<0.01	2	34	19	97						
7202	<0.01	1	56	14	67						
7204	<0.01	1	34	16	63						
7206	<0.01	1	78	25	190						

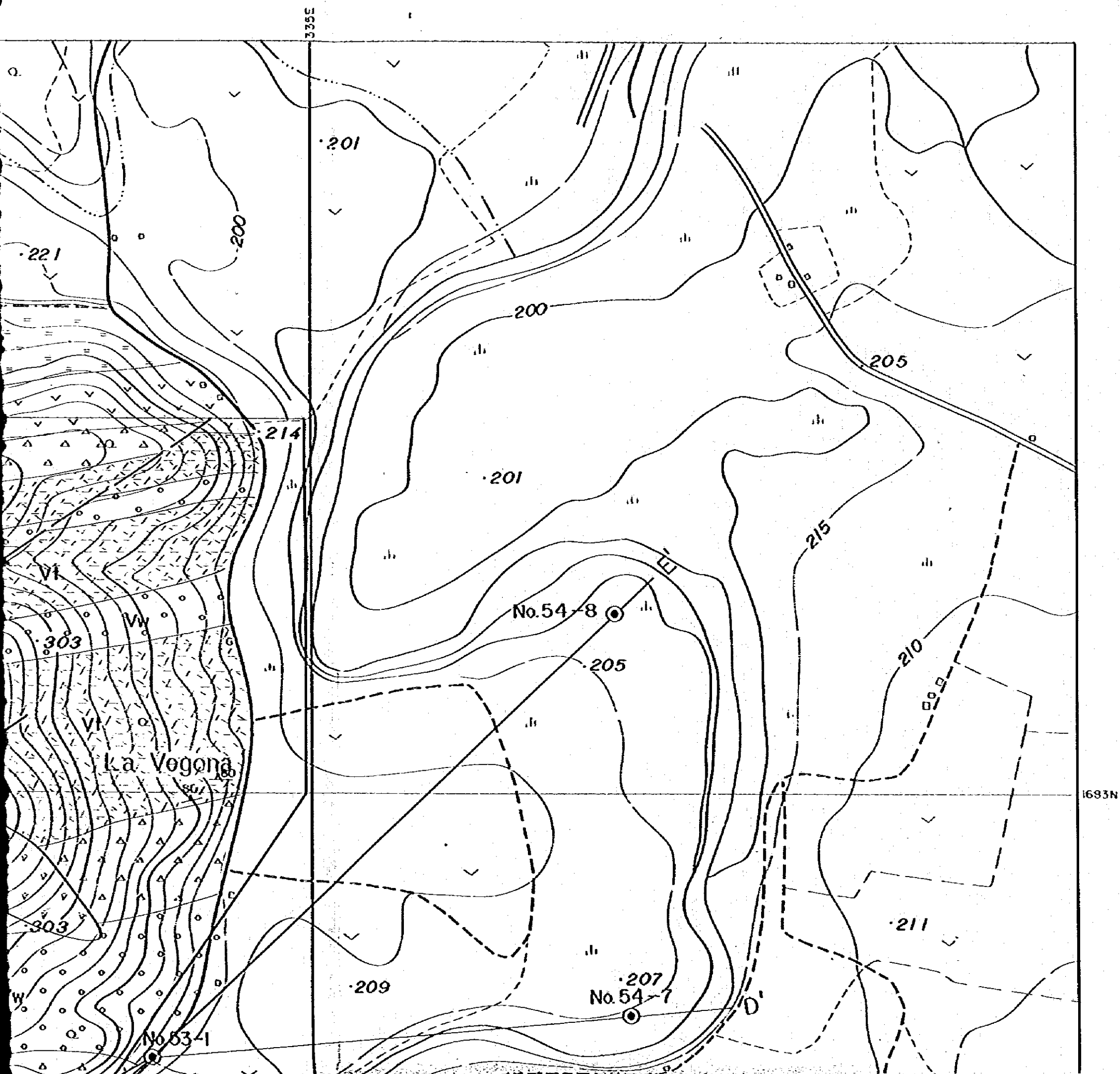
Vueltas del Rio Sector

No. 54 - 8

Sample No.	Elements analysed (ppm)					Sample No.	Elements analysed (ppm)				
	Au	Ag	Cu	Pb	Zn		Au	Ag	Cu	Pb	Zn
8000	0.04	4	16	22	345	8198	0.02	1	210	385	715
Δ8000	0.04	4	16	22	345	Δ8198	0.02	1	205	400	715
8004	<0.01	1	39	17	54	8200	0.02	1	198	166	430
8008	<0.01	1	42	34	180	8202	0.02	1	77	149	170
8010	<0.01	1	41	30	250	8204	<0.01	1	280	29	87
8018	<0.01	1	40	19	180	8206	<0.01	1	228	19	200
8118	0.01	1	83	19	490	8208	<0.01	1	52	12	64
8128	0.06	0.3	24	12	58	8210	<0.01	1	276	51	170
8130	0.06	0.3	26	14	73	8212	<0.01	2	215	216	510
8132	<0.01	0.5	28	21	46	8214	0.06	1	79	49	170
8134	<0.01	0.3	44	13	280	8216	0.08	1	68	63	180
8136	<0.01	0.3	44	16	210	8218	0.06	1	205	44	350
8138	<0.01	0.3	51	9	230	Δ8218	0.06	1	200	43	350
Δ8138	<0.01	0.3	51	10	230	8220	0.02	1	63	34	86
8140	0.02	0.3	71	7	60	8222	0.06	1	273	66	270
8142	0.08	0.3	43	7	85	8224	<0.01	1	180	49	180
8144	0.01	0.5	59	21	260	8226	<0.01	1	207	79	550
8146	<0.01	0.5	224	47	270	8228	<0.01	1	67	43	57
8148	0.08	1	563	89	320	8230	<0.01	1	52	36	86
8150	<0.01	1	40	101	550	8232	<0.01	1	83	56	86
8152	<0.01	0.3	15	29	93	8240	0.08	4	5100	16	260
8154	<0.01	1	15	52	83	8260	0.04	1	82	17	240
8156	<0.01	0.5	15	35	260	8280	0.04	1	52	20	245
8158	<0.01	0.5	19	27	230	Δ8280	0.04	1	65	17	245
Δ8158	<0.01	0.5	20	27	230						
8160	<0.01	0.5	28	31	310						
8162	<0.01	1	39	57	200						
8164	<0.01	0.5	27	54	80						
8166	<0.01	0.5	19	56	62						
8168	0.08	2	144	99	220						
8170	0.06	1	71	225	310						
8172	0.02	1	56	209	700						
8174	<0.01	1	90	100	89						
8176	<0.01	1	250	150	240						
8178	0.04	1	140	51	67						
Δ8178	<0.01	1	153	44	67						
8180	<0.01	1	32	21	35						
8182	<0.01	0.5	29	14	41						
8184	<0.01	1	24	20	40						
8186	<0.01	1	34	56	40						
8188	<0.01	1	27	20	45						
8190	<0.01	1	39	15	35						
8192	<0.01	1	87	24	27						
8194	<0.01	4	2880	64	210						
8196	0.04	1	240	117	210						



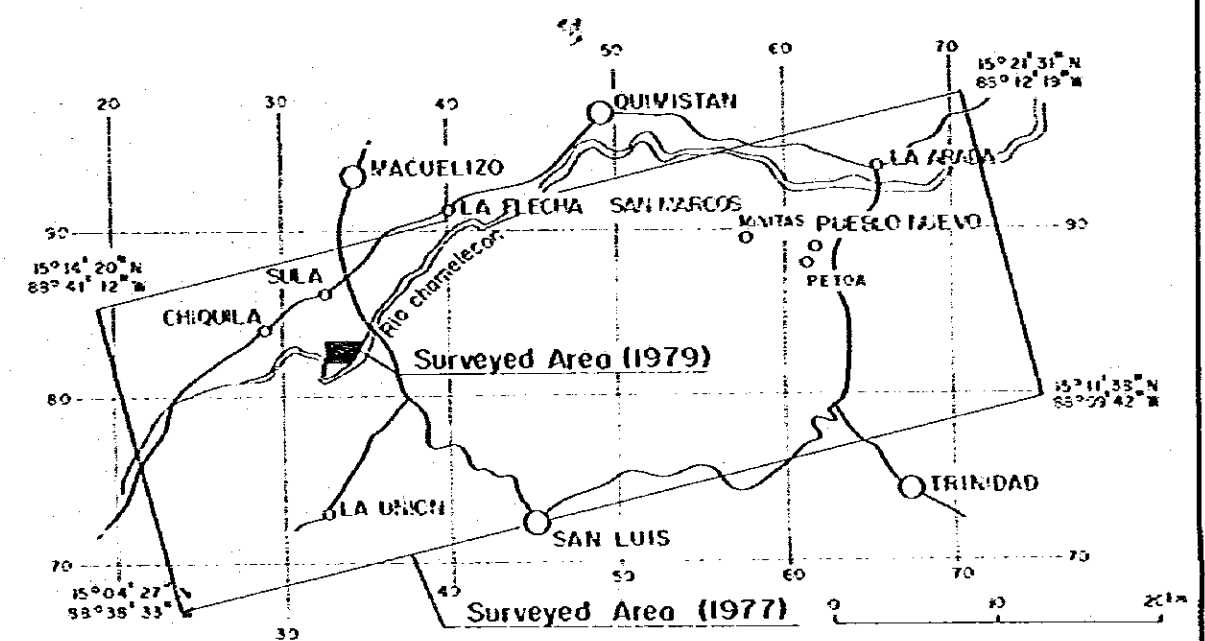




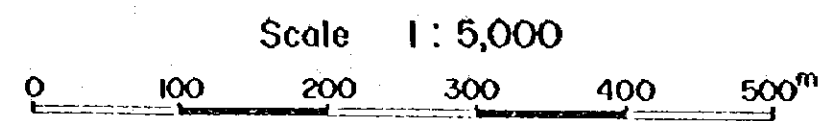
PL. I-1

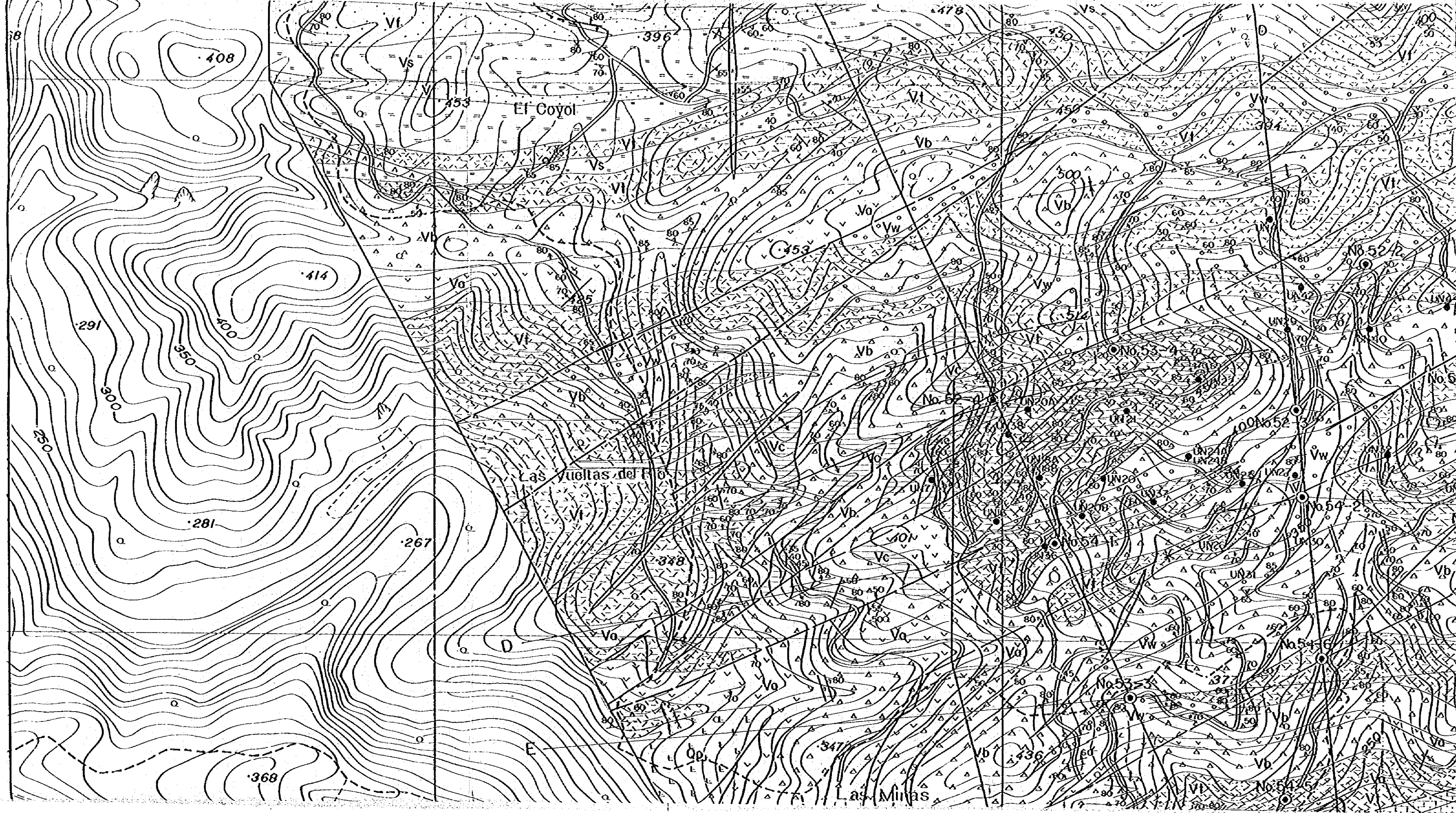
GEOLOGICAL SURVEY
OF
THE WESTERN AREA REPUBLIC OF HONDURAS
VOL. 4
GEOLOGICAL MAP OF
THE VUELTAS DEL RIO SECTOR

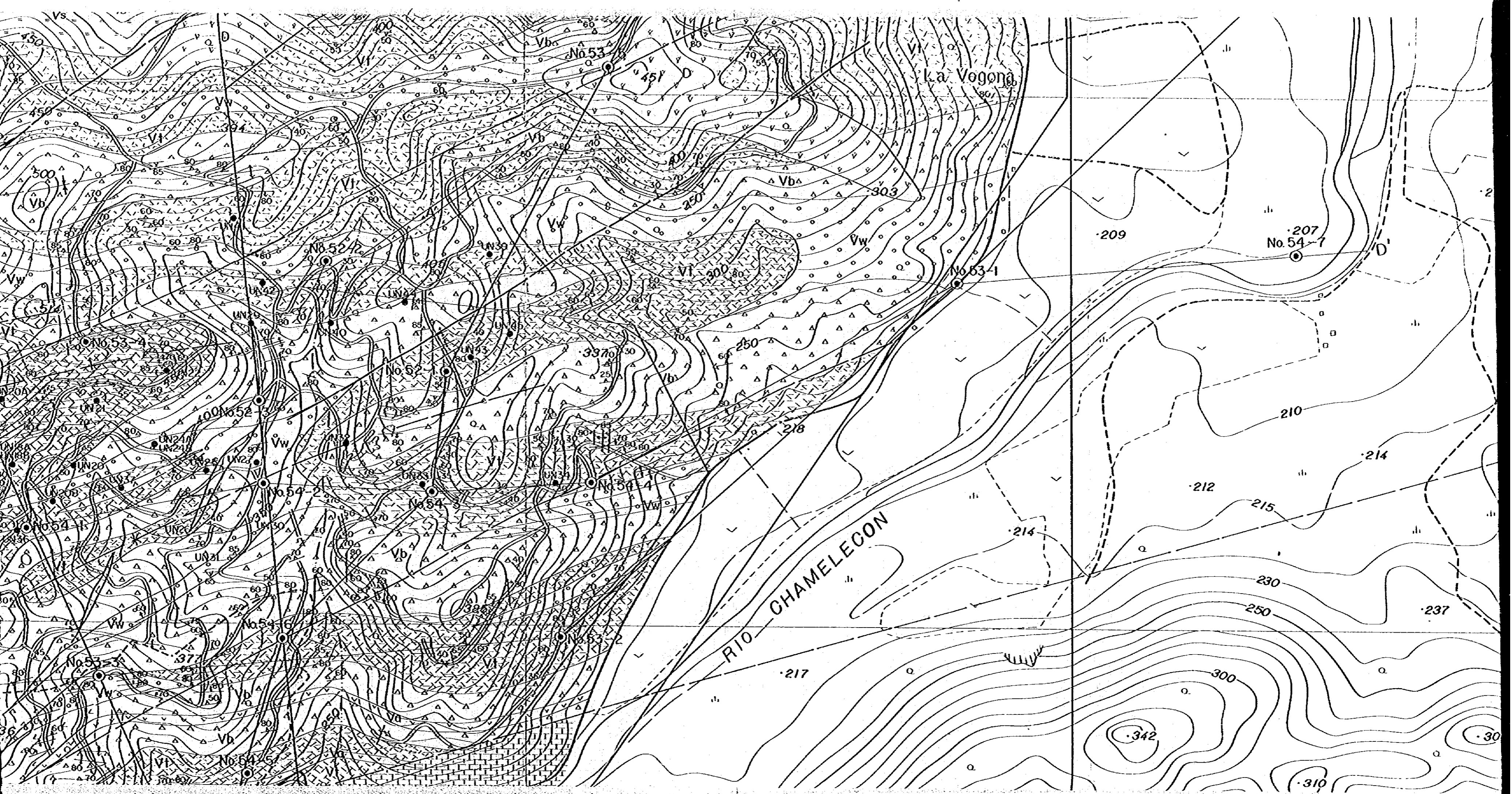
国際協力機構
09300
図書資料室蔵書

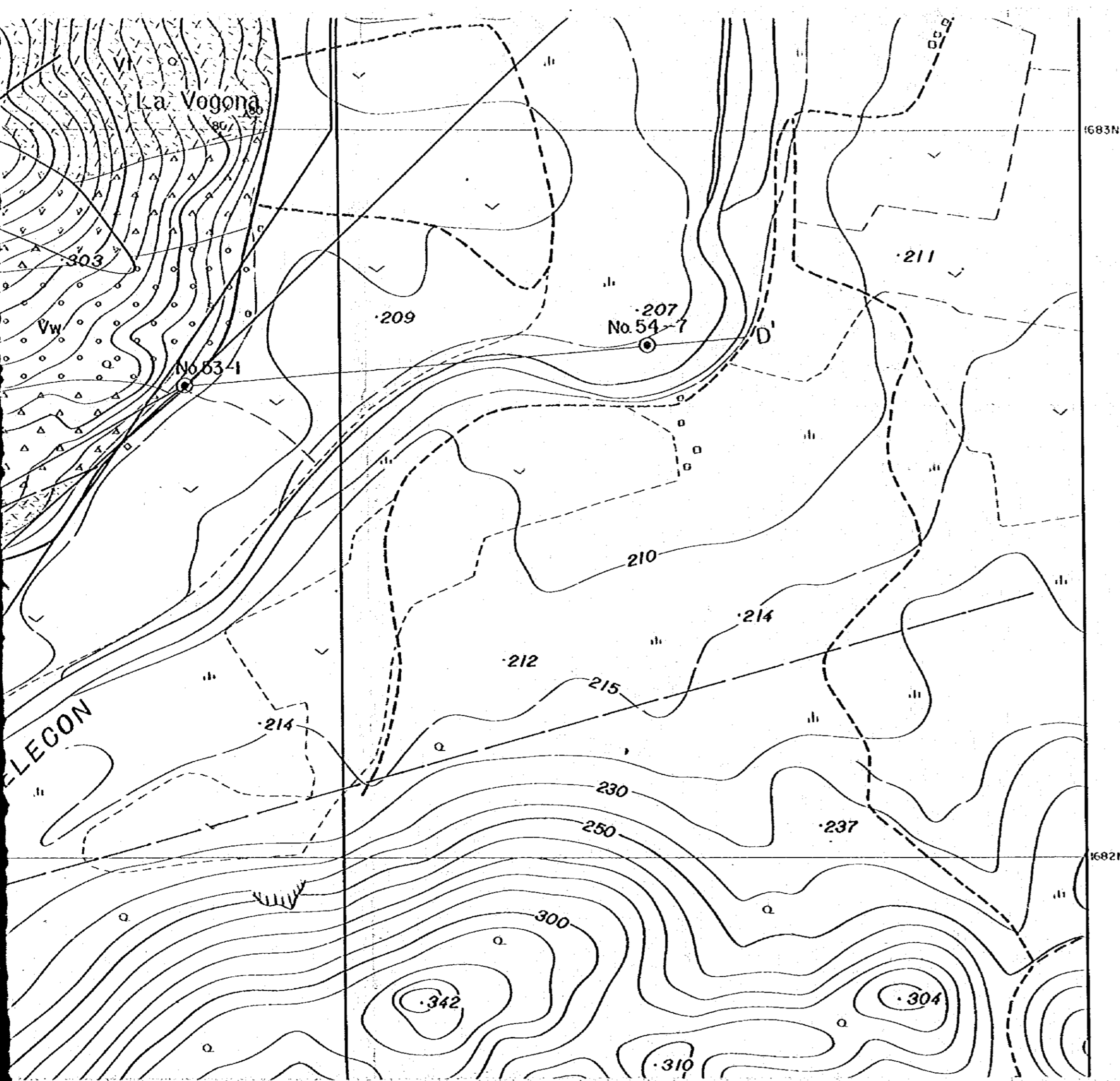


METAL MINING AGENCY OF JAPAN
JAPAN INTERNATIONAL COOPERATION AGENCY
GOVERNMENT OF JAPAN
FEBRUARY 1980
Prepared by MESCO, Inc.







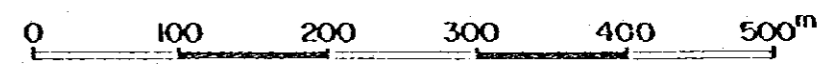


15°04' 27" N
98°39' 33" W

Surveyed Area (1977) 20m

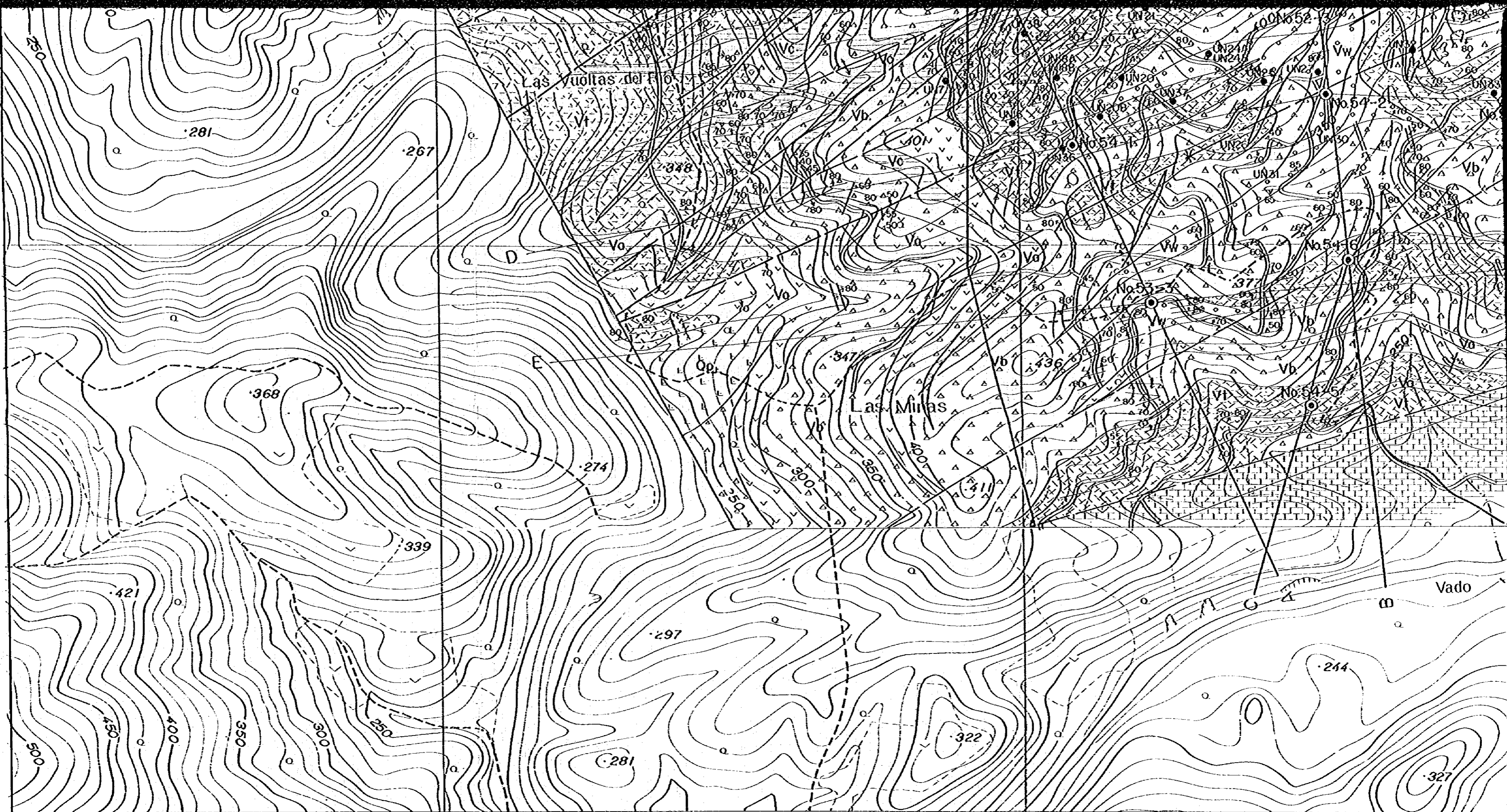
METAL MINING AGENCY OF JAPAN
 JAPAN INTERNATIONAL COOPERATION AGENCY
 GOVERNMENT OF JAPAN
 FEBRUARY 1980
 Prepared by MESCO, Inc.

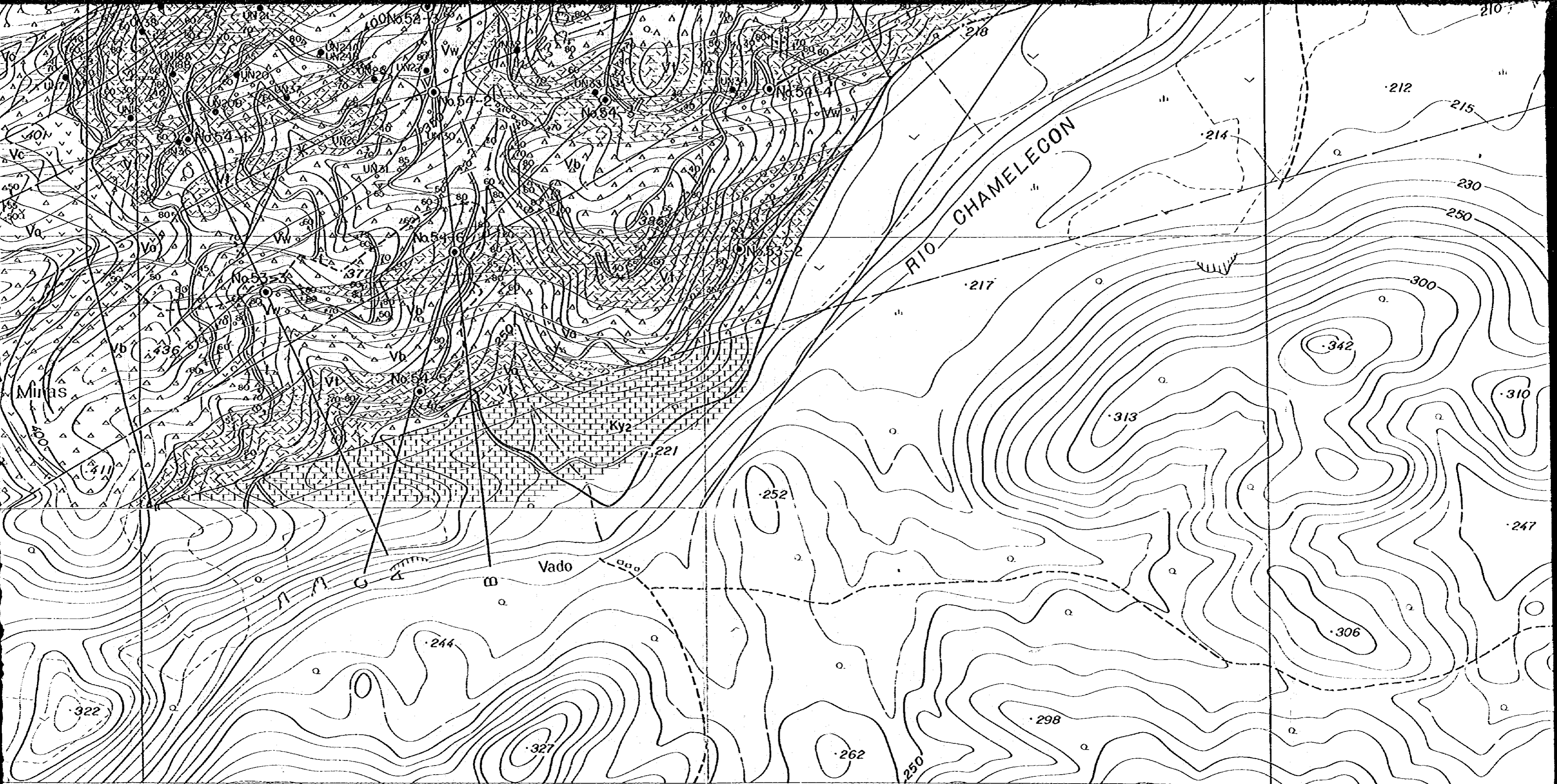
Scale 1:5,000

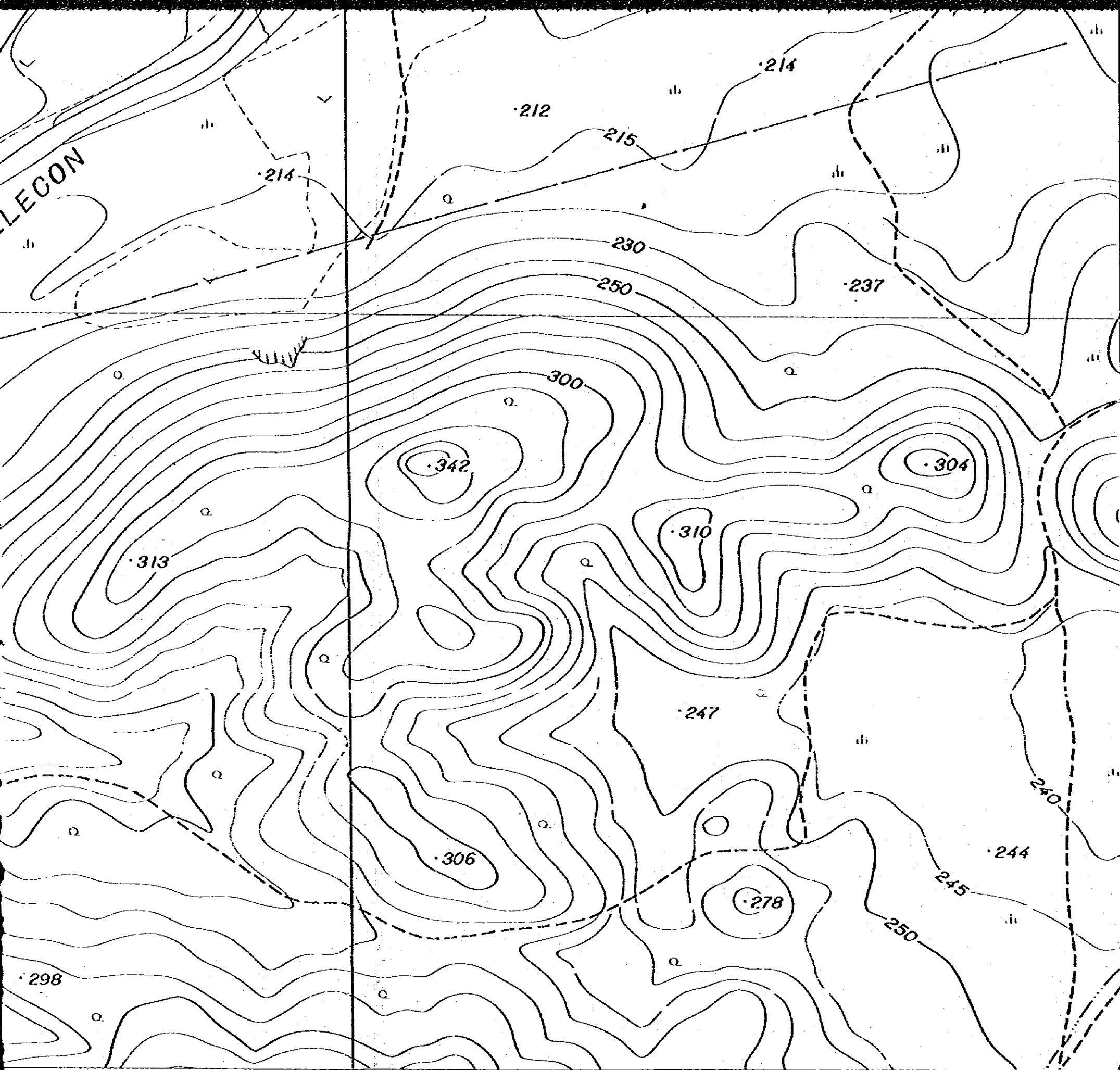


LEGEND

Formation	Stratigraphical Mark	Symbol	Lithology
Alluvium		Q	gravel, sand & mud
Atimo F.		Ky2	massive limestone
Vuelto del Rio F.		Vt	meta tuff
		Vb	meta tuff breccia
		Vw	meta welded tuff & meta tuff
		Vc	shale
		Vg	conglomerate
		Vo	meta andesite & meta welded tuff
		Vs	schist, diabase, meta andesite & meta diabase
		Vf	meta fine tuff
		A	andesite & porphyrite dyke

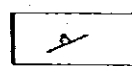
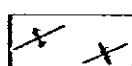
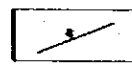

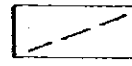


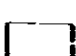





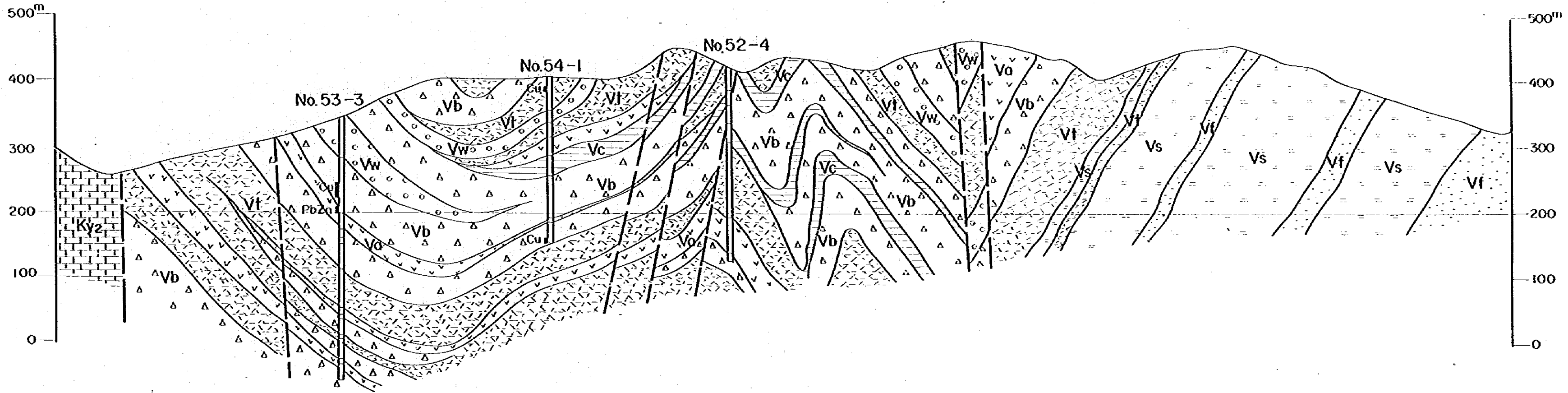


LEGEND

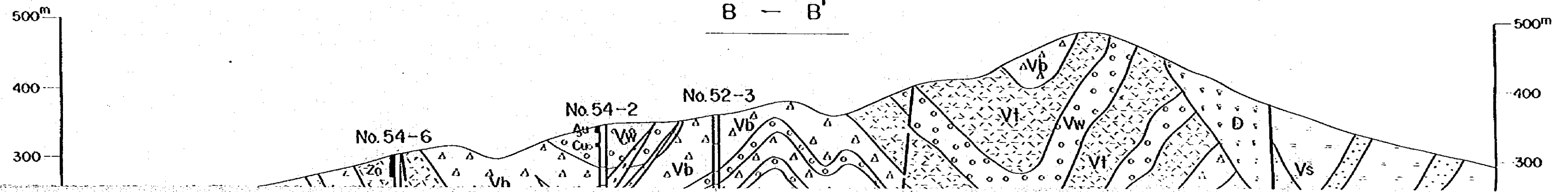
Formation	Stratigraphical Mark	Symbol	Lithology
Alluvium		Q	gravel, sand & mud
Atimo F.		Ky2	massive limestone
Vueltas del Rio F.		Vl	meta tuff
		Vb	meta tuff breccia
		Vw	meta welded tuff & meta tuff
		Vc	shale
		Vg	conglomerate
		Vo	meta andesite & meta welded tuff
		Vs	scholstein, diabase, meta andesite & meta diabase
Intrusive rock		Vf	meta fine tuff
		A	andesite & porphyrite dyke
		Qp	quartz porphyry
		D	dacite porphyry

-  bedding plane
-  anticlinal axis/synclinal axis
-  fissure
-  adit
-  fault
-  surveyed area (1978)
-  UN30 DDH by UNDP (1969~1972)
-  surveyed area (1979)
-  No 54-1 DDH by Japanese team (1977~1979)

A — A'



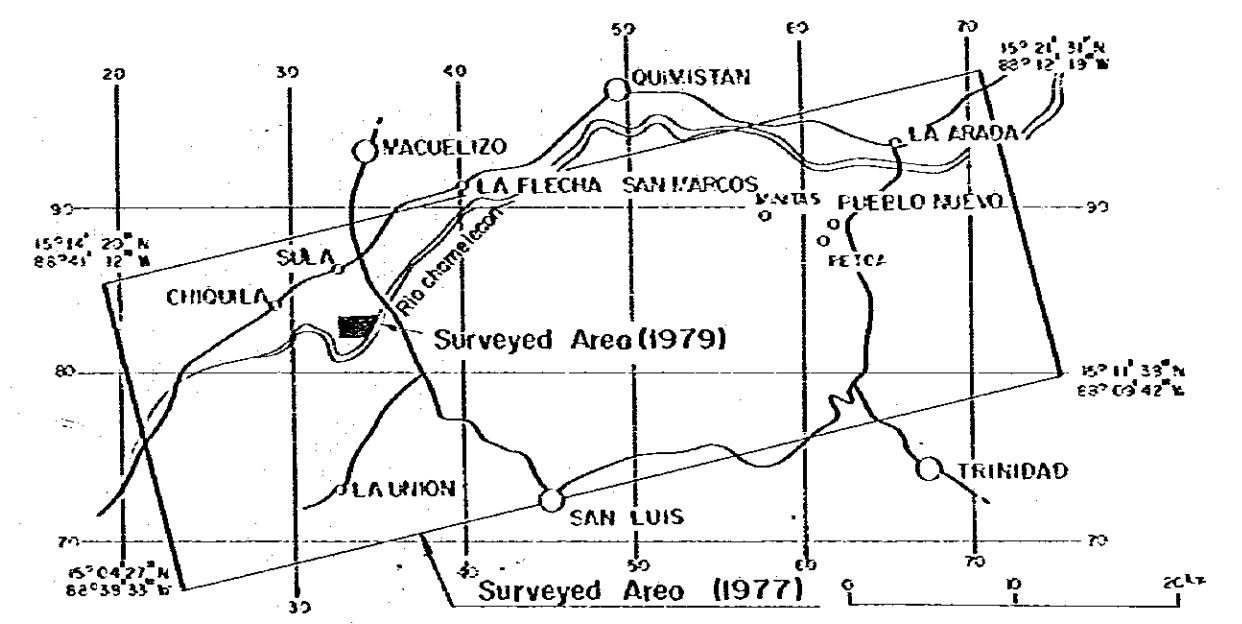
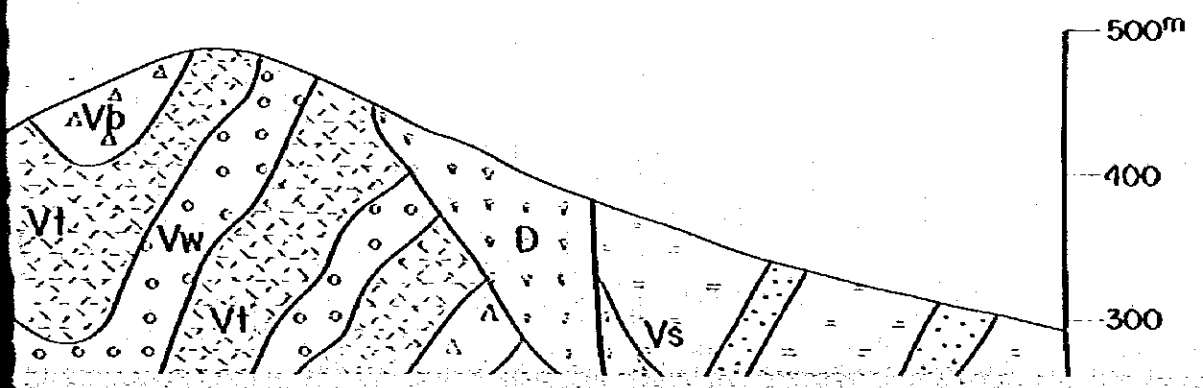
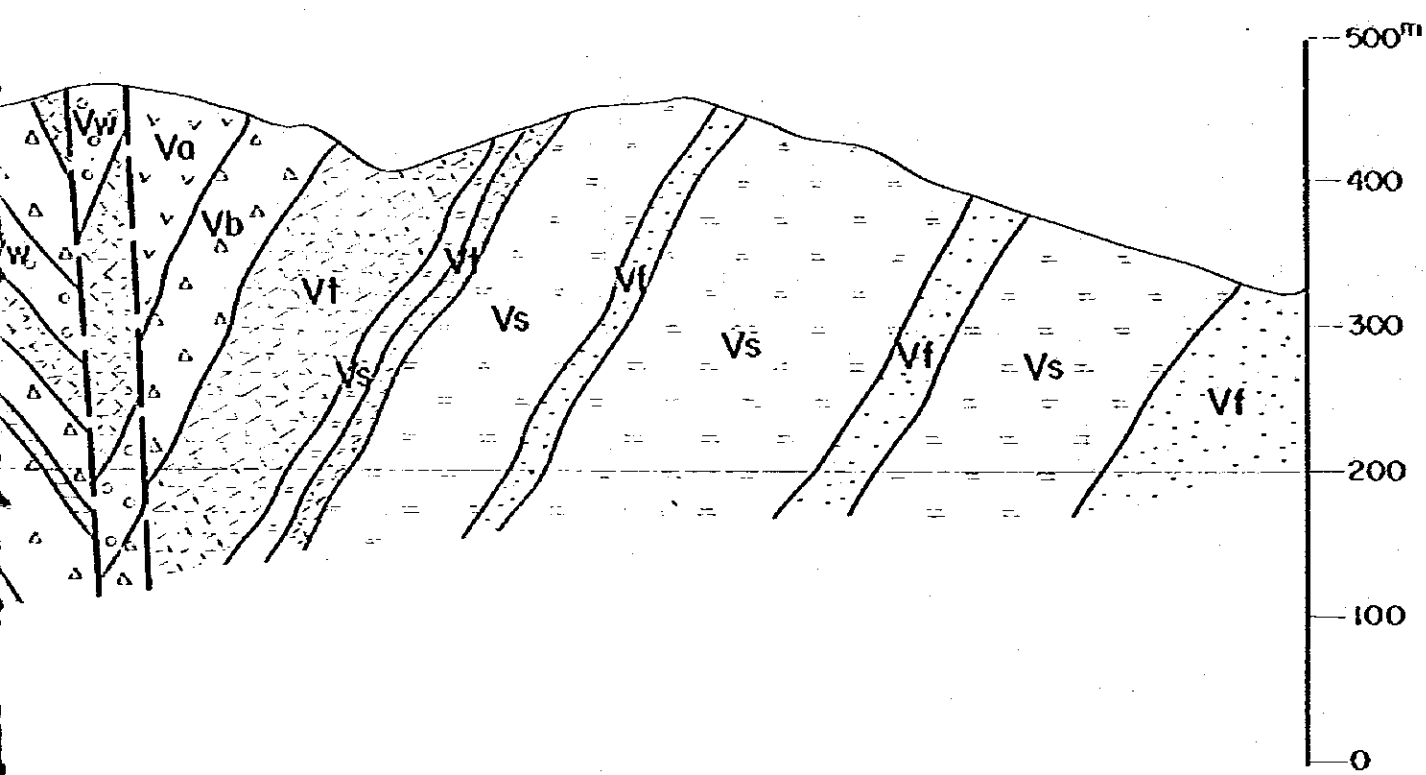
B — B'



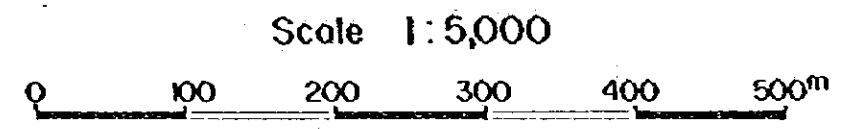
国際協力事業団
09300
図書資料室蔵書

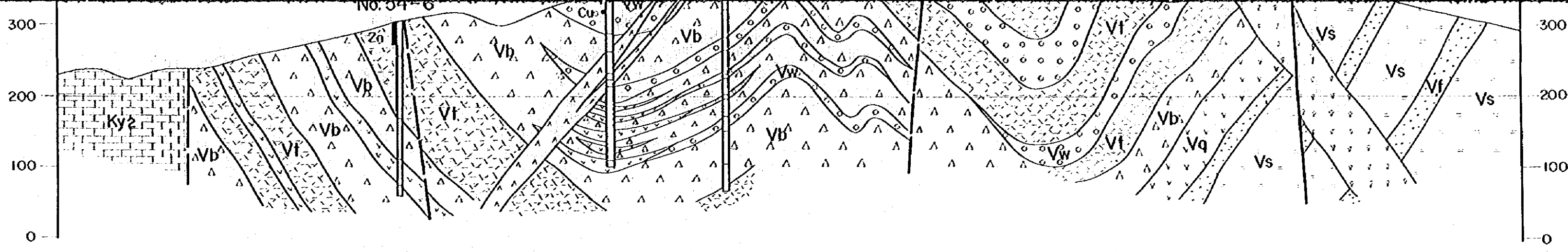
GEOLOGICAL SURVEY
OF
THE WESTERN AREA REPUBLIC OF HONDURAS
VOL. 4

GEOLOGICAL PROFILES OF
THE VUELTAS DEL RIO SECTOR

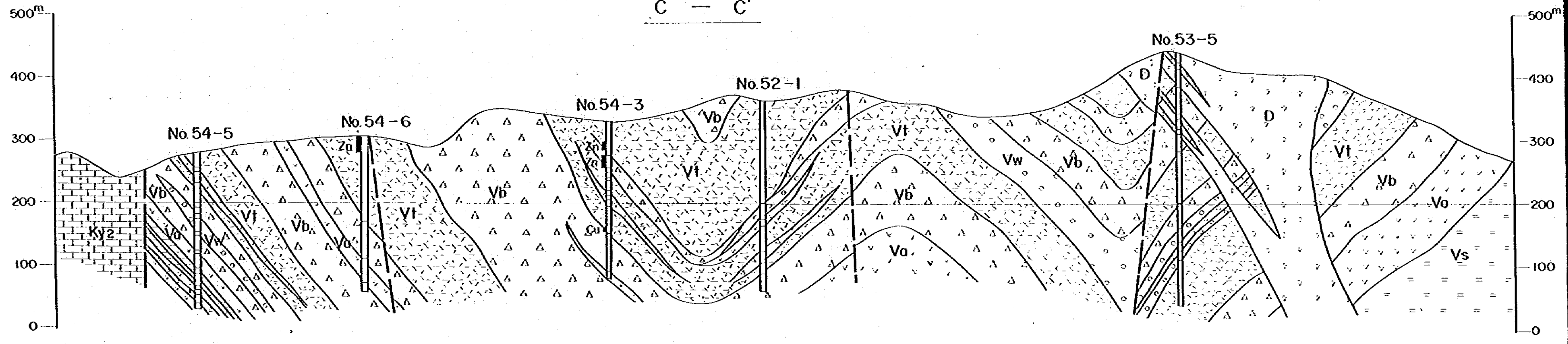


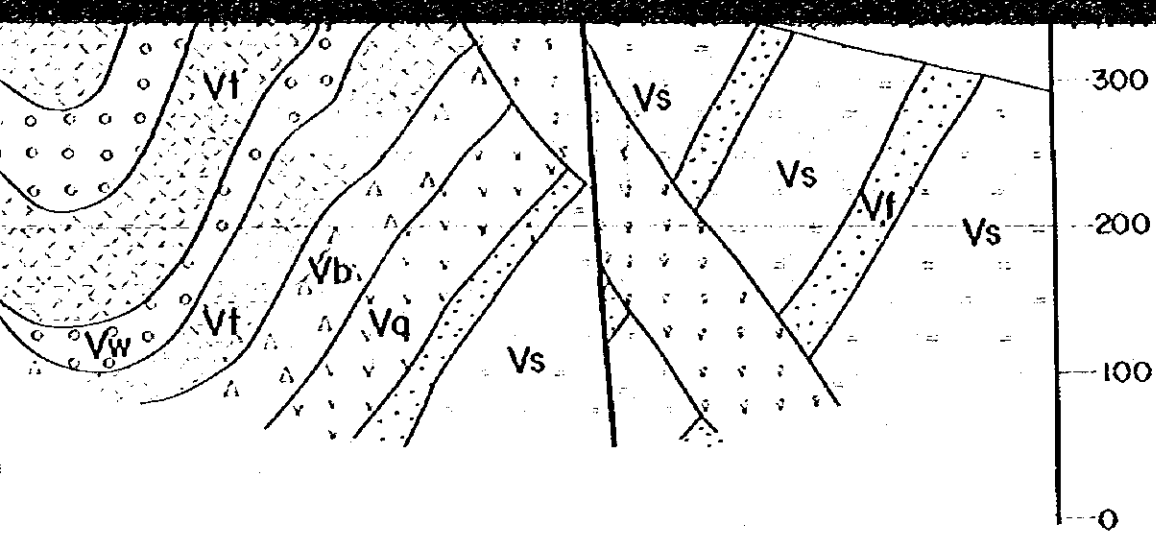
METAL MINING AGENCY OF JAPAN
JAPAN INTERNATIONAL COOPERATION AGENCY
GOVERNMENT OF JAPAN
FEBRUARY 1980
Prepared by MESCO, Inc.





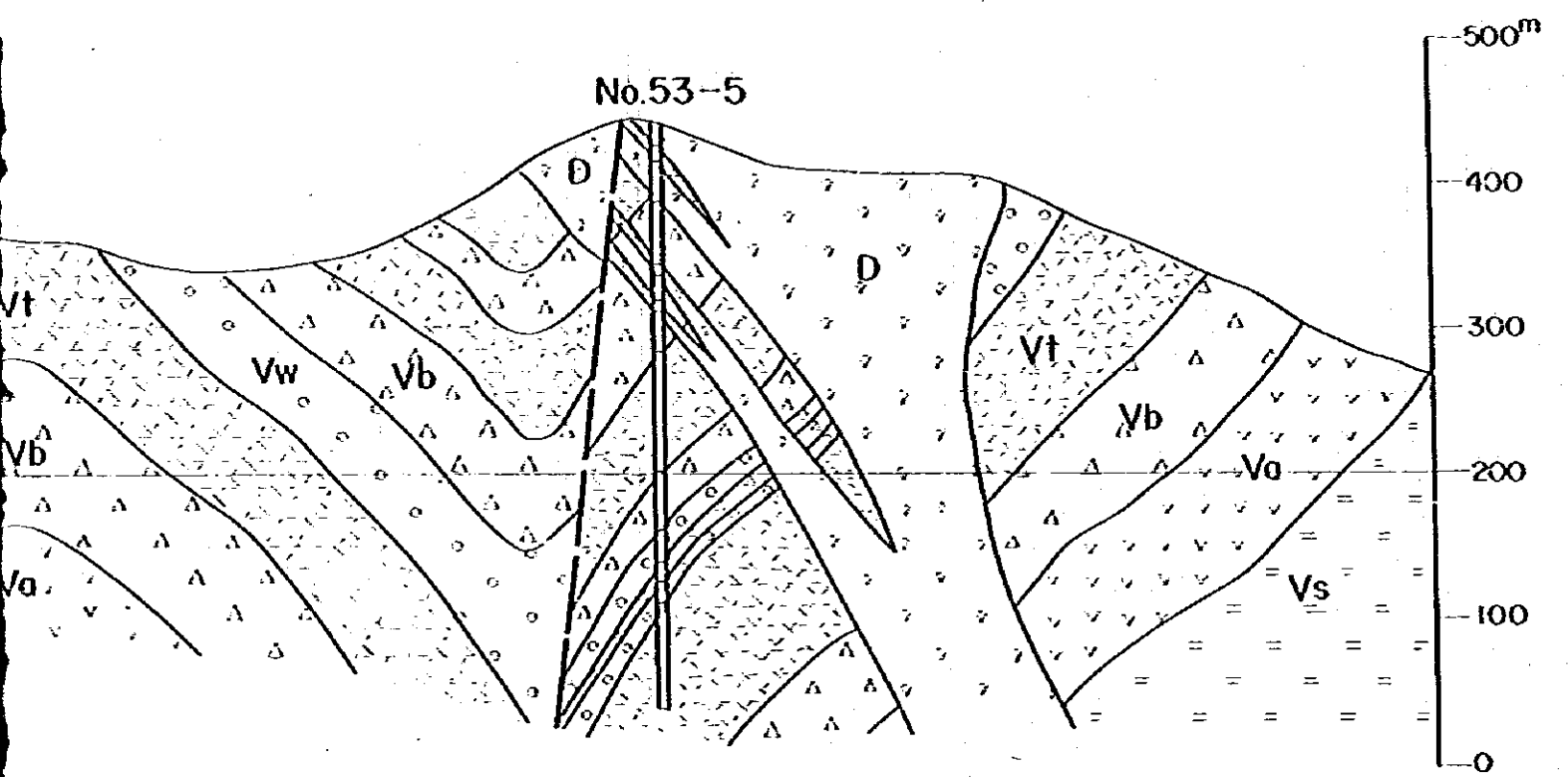
C — C'





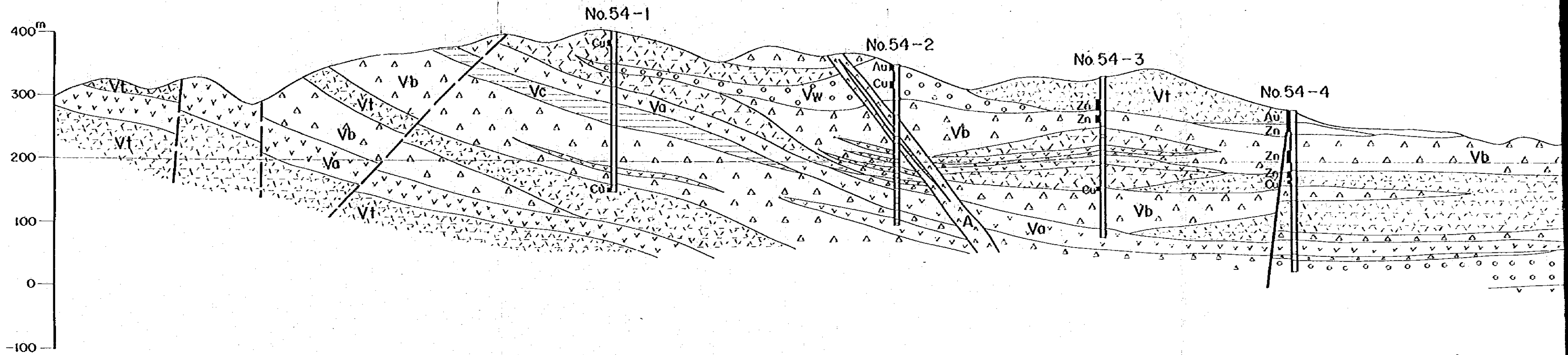
LEGEND

Formation	Stratigraphical		Lithology
	Mark	Symbol	
Alluvium		Q	gravel, sand & clay
Atimo F.		Ky2	massive limestone
Vueltos del Rio F.		Vt	meta tuff
		Vb	meta tuff breccia
		Vw	meta welded tuff & meta tuff
		Vc	shale
		Vg	conglomerate
		Va	meta andesite & meta welded tuff
		Vs	scholstein, diobase, meta andesite & meta diobase
Intrusive rock		A	andesite & porphyrite dyke
		Qp	quartz porphyry
		D	dacite porphyry



- fault
- mineral indication
- DDH by Japanese Team (1977~1979)

D — D'



E — E'

