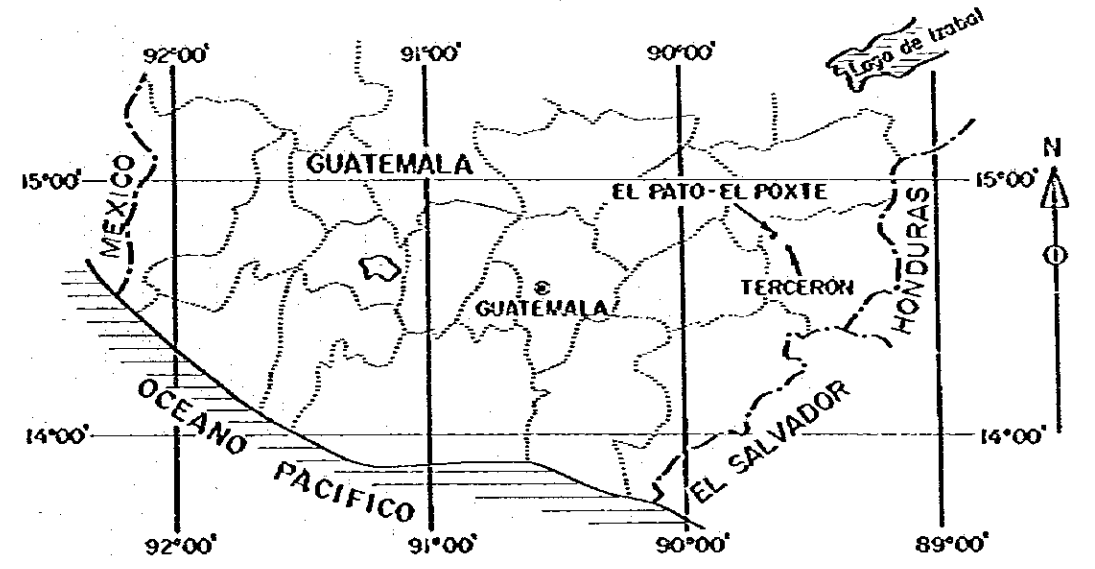
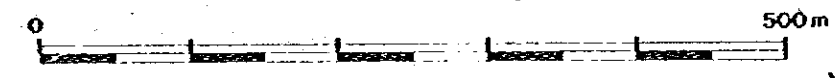


PL II-5
 山陰地方
 13717
 国書資料室蔵書

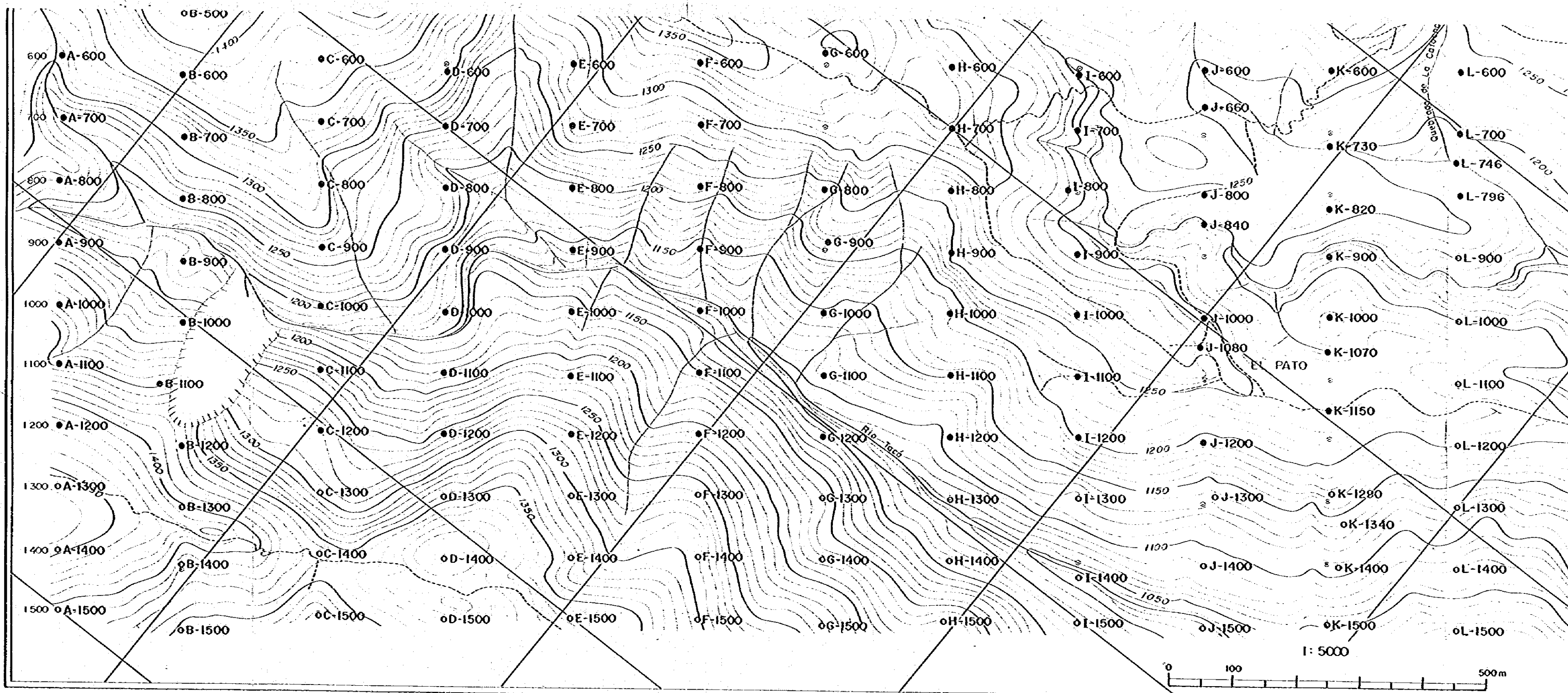
ESTUDIO SOBRE LA EXPLORACION MINERA
 EN LAS AREAS DE CHIQUIMULA, MATAQUESCUINTLA
 Y LLANO DEL COYOTE
 DE LA REPUBLICA DE GUATEMALA
 TERCERA FASE

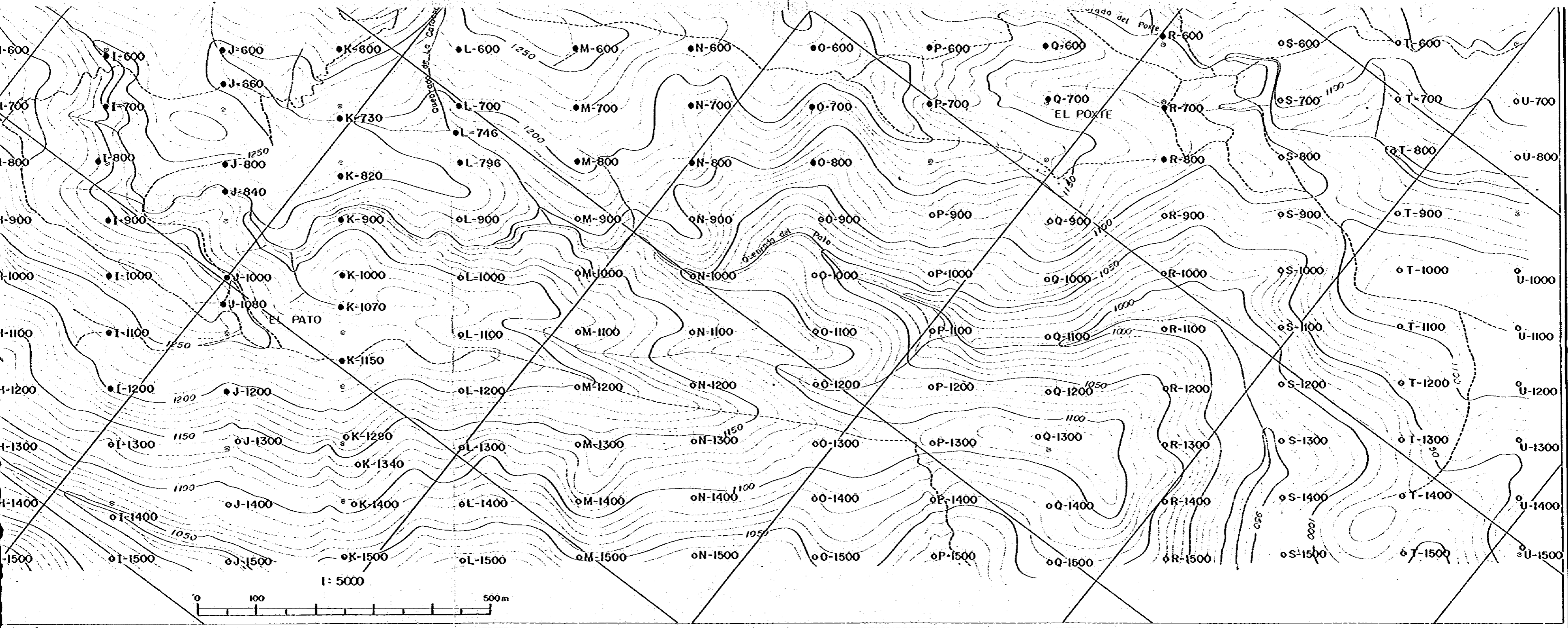
LOCALIZACION DE LAS MUESTRAS
 GEOQUIMICAS DE ROCAS,
 AREA DE EL PATO-EL POJTE

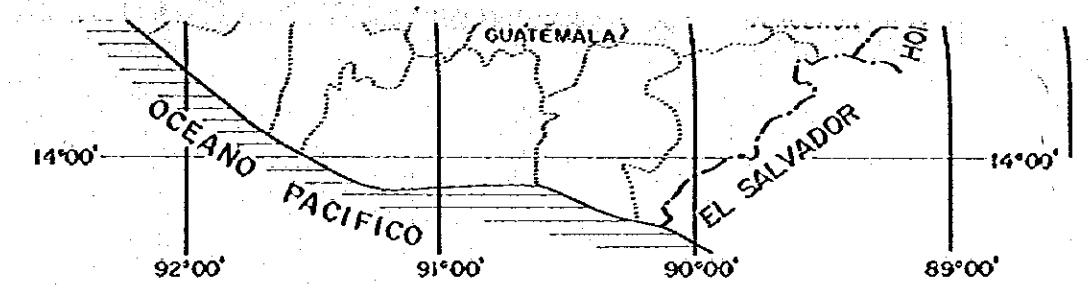
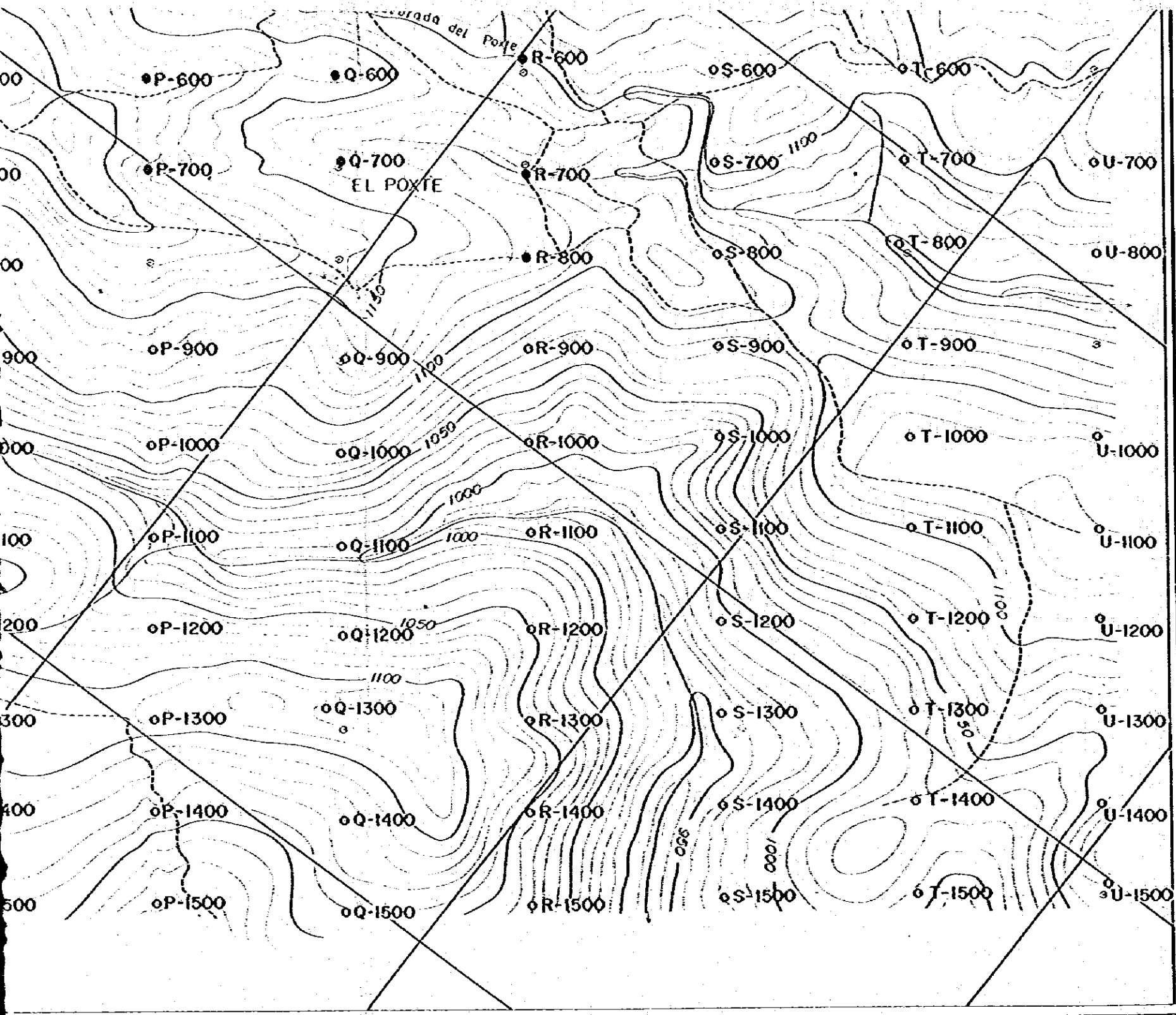
ESCALA 1 : 5,000



METAL MINING AGENCY OF JAPAN
 JAPAN INTERNATIONAL COOPERATION AGENCY
 EN COLABORACION CON
 DIRECCION GENERAL DE MINERIA
 E HIDROCARBUROS DE GUATEMALA
 FEBRERO 1982

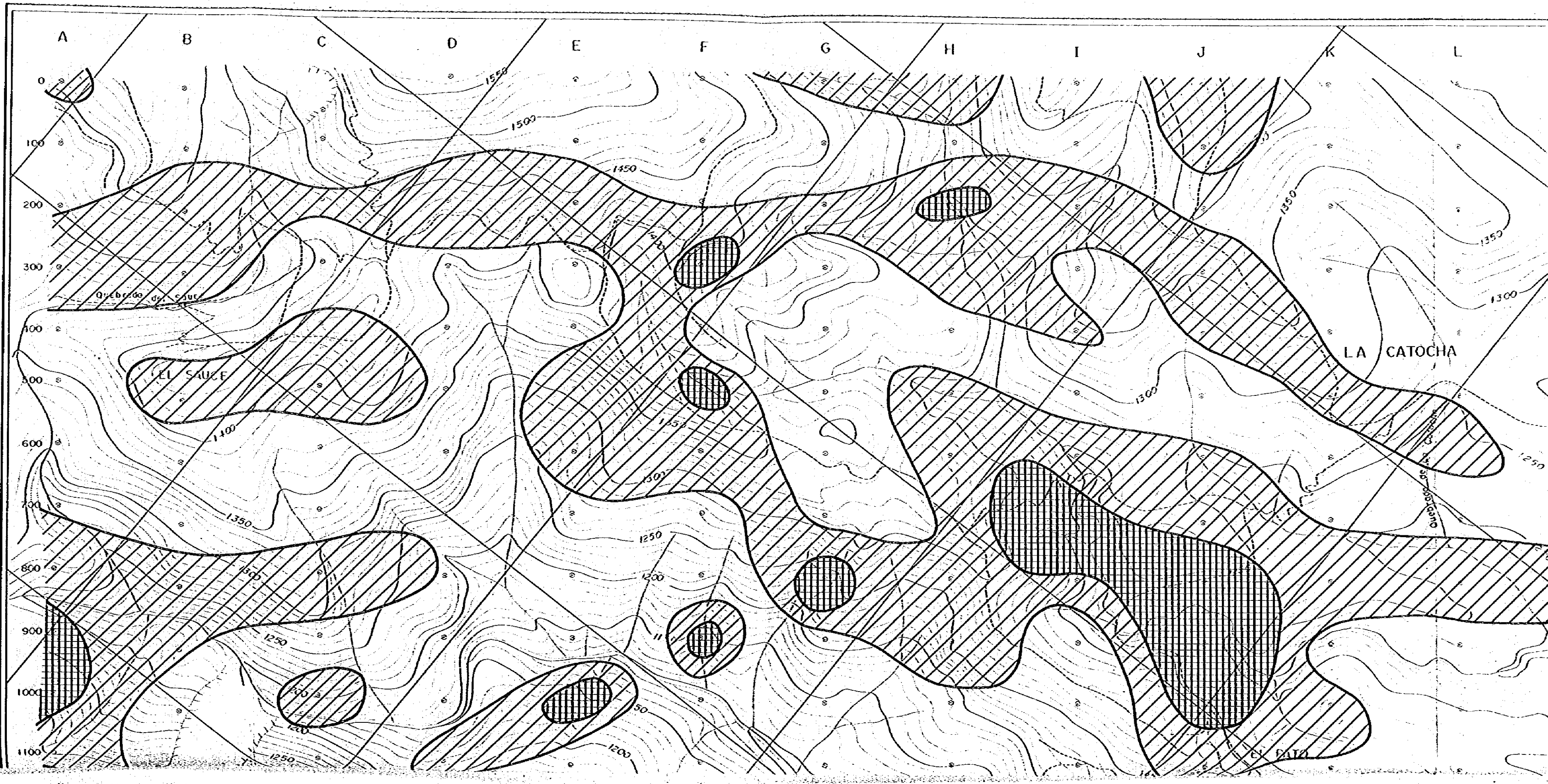


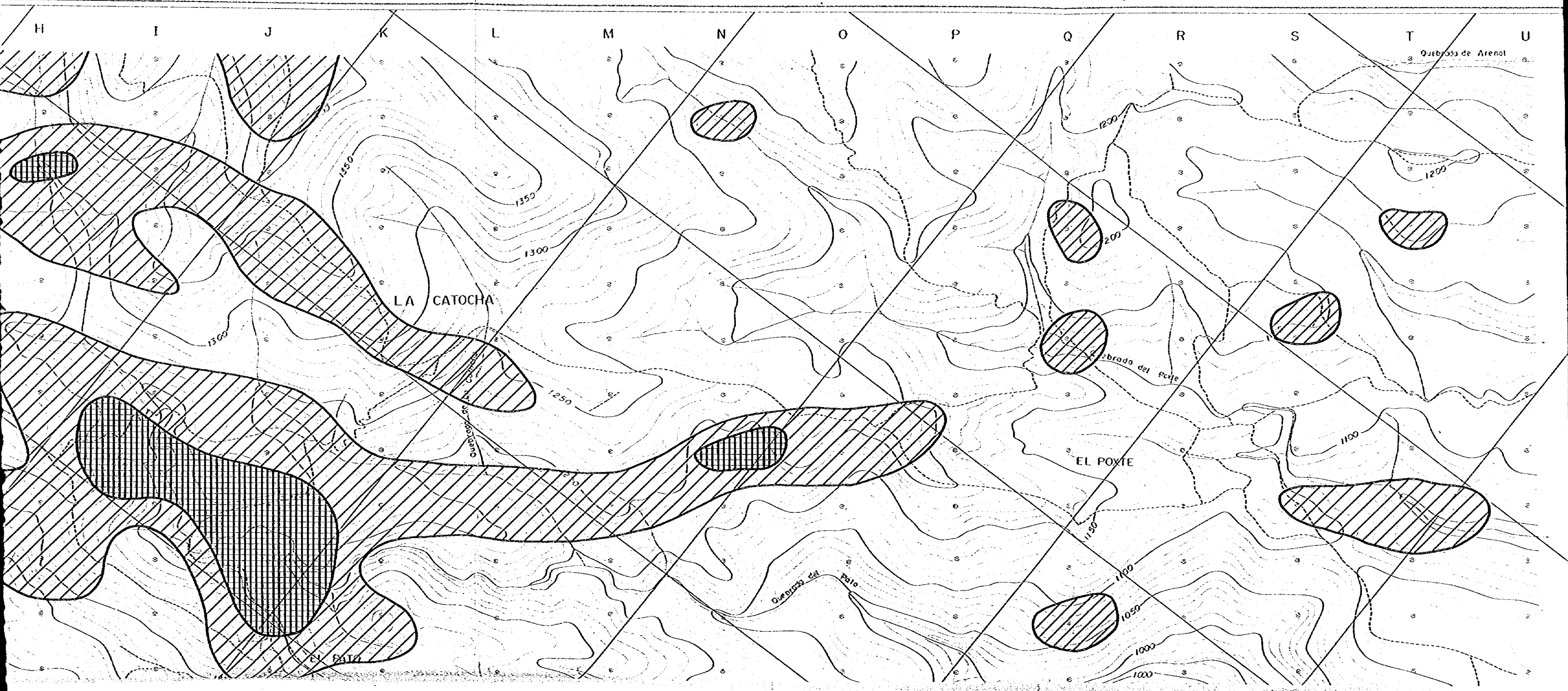
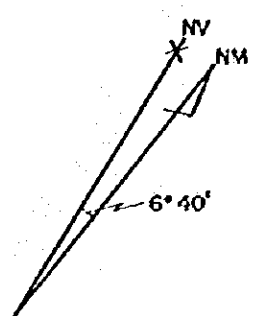


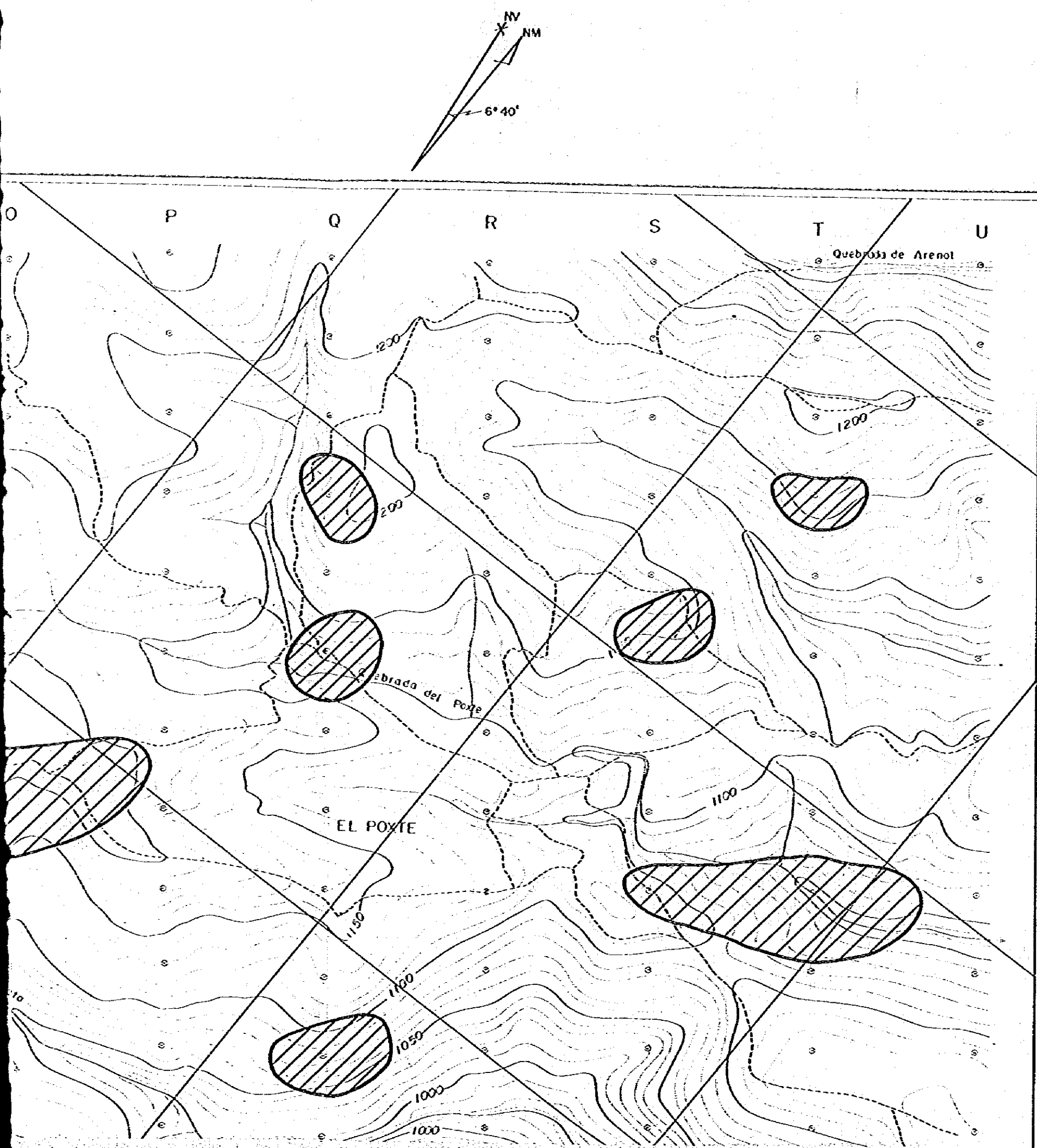


METAL MINING AGENCY OF JAPAN
 JAPAN INTERNATIONAL COOPERATION AGENCY
 EN COLABORACION CON
 DIRECCION GENERAL DE MINERIA
 E HIDROCARBUROS DE GUATEMALA
 FEBRERO 1982

- Muestras geoquímicas de rocas analizadas
- Muestras geoquímicas de rocas no analizadas



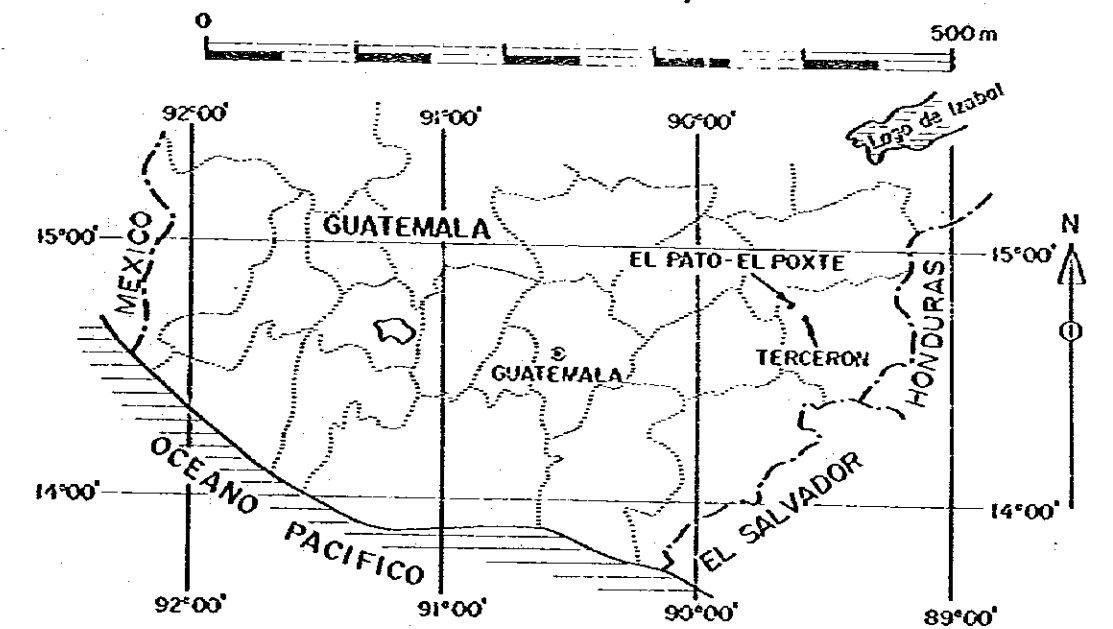




ESTUDIO SOBRE LA EXPLORACION MINERA
 EN LAS AREAS DE CHIQUIMULA, MATAQUESCUINTLA
 Y LLANO DEL COYOTE
 DE LA REPUBLICA DE GUATEMALA
 TERCERA FASE

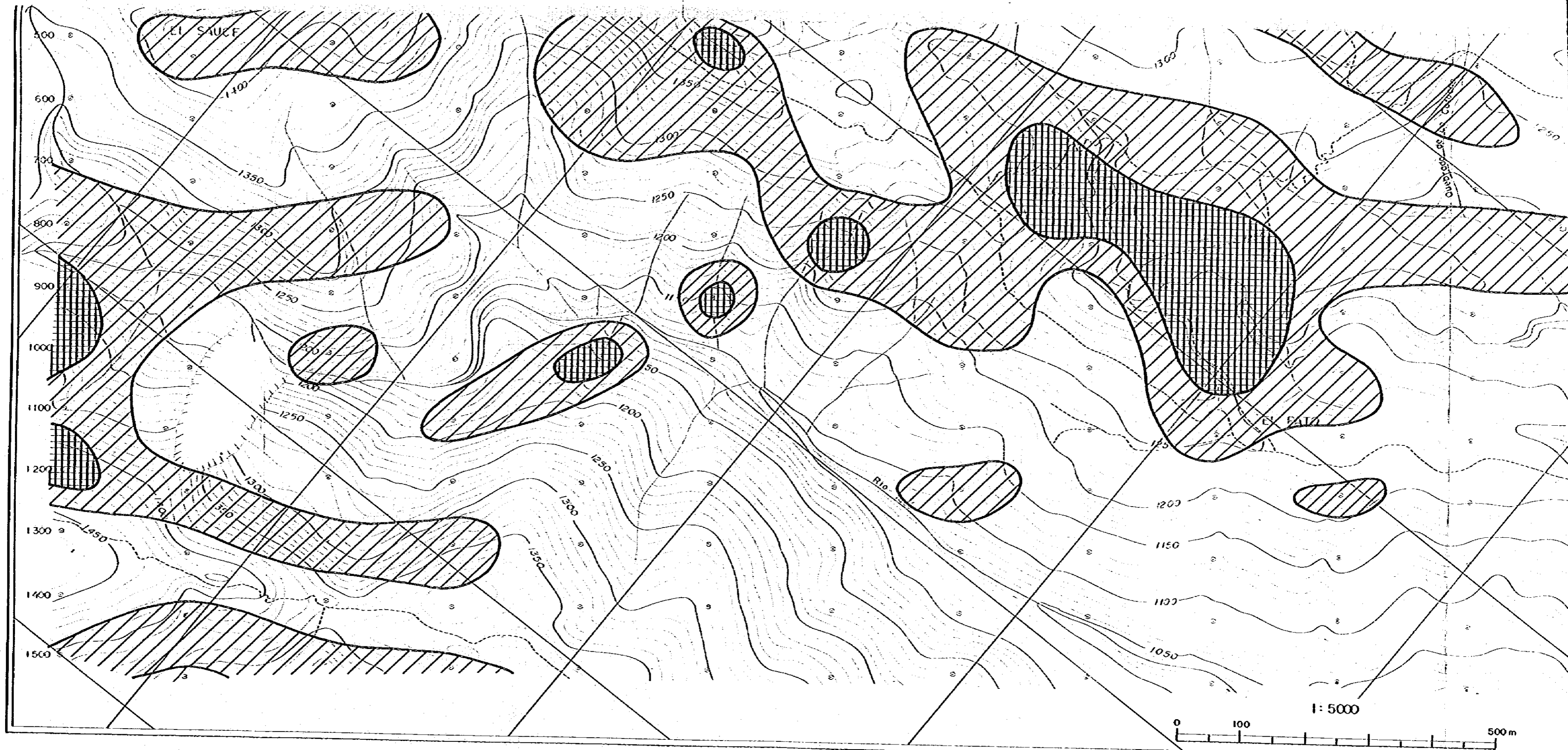
MAPA GEOQUIMICO DE Au EN SUELOS,
 AREA DE EL PATO-EL POJTE

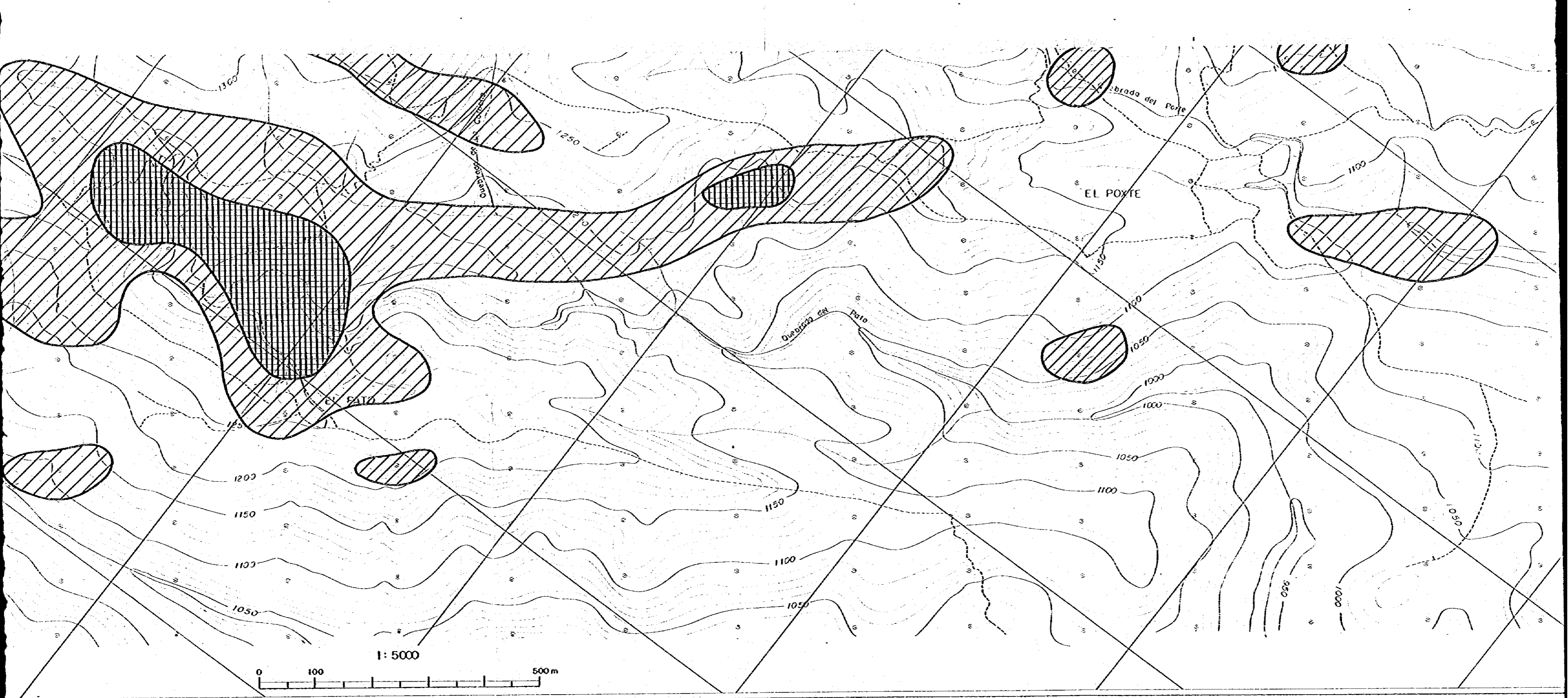
ESCALA 1 : 5,000



METAL MINING AGENCY OF JAPAN
 JAPAN INTERNATIONAL COOPERATION AGENCY
 EN COLABORACION CON
 DIRECCION GENERAL DE MINERIA
 E HIDROCARBUROS DE GUATEMALA
 FEBRERO 1982

PL. II-6
 13717





1300

1250

EL POYTE

Quebrada del Pato

Quebrada del Poite

PATO

1200

1150

1100

1050

1150

1100

1050

1050

1000

1000

1100

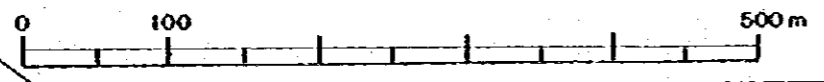
1150

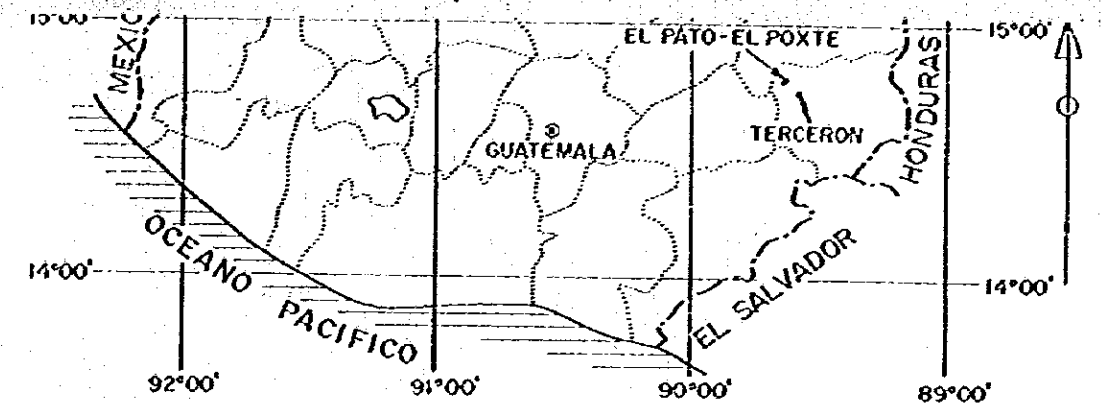
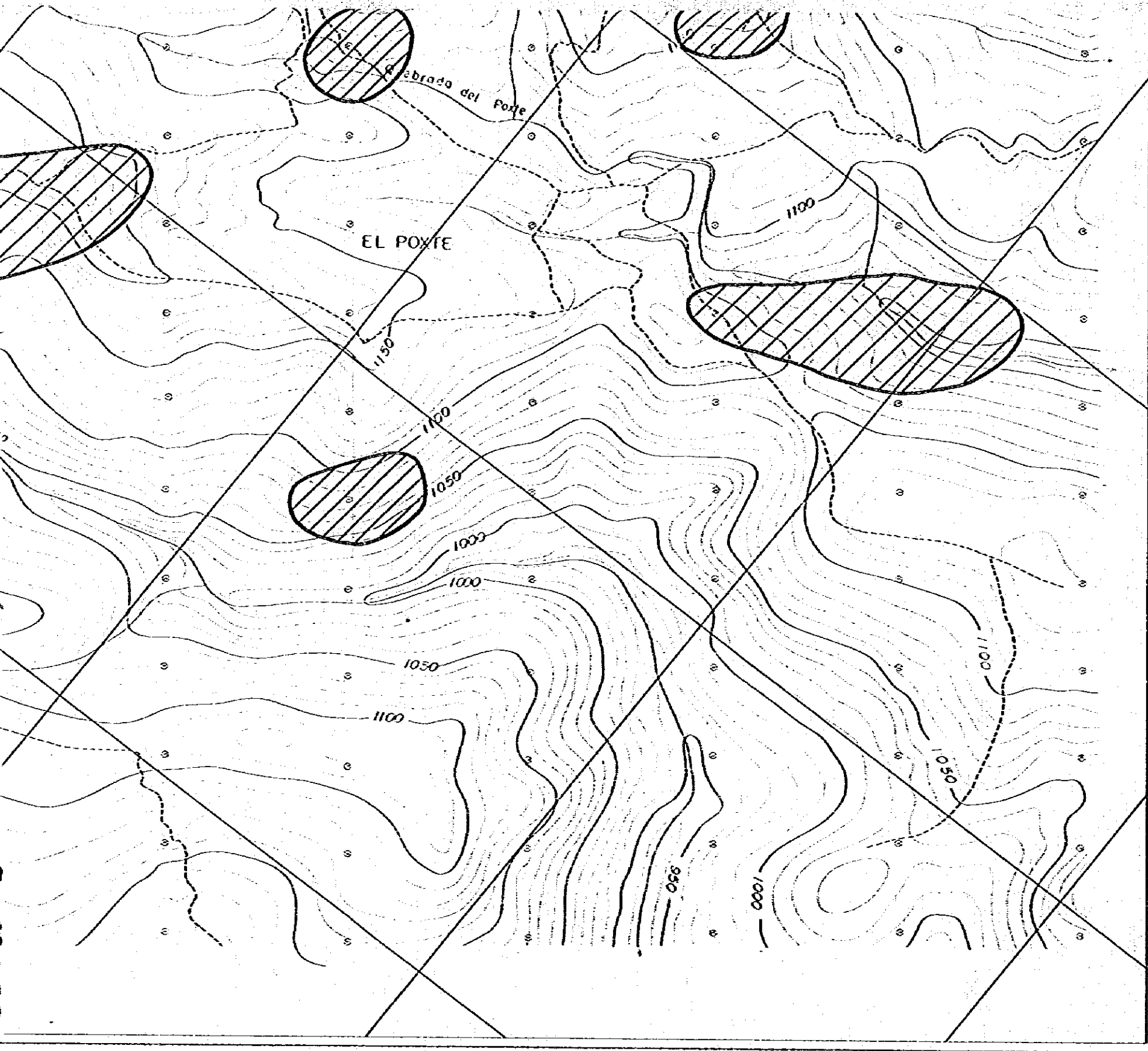
950

1000

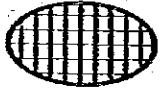

1050

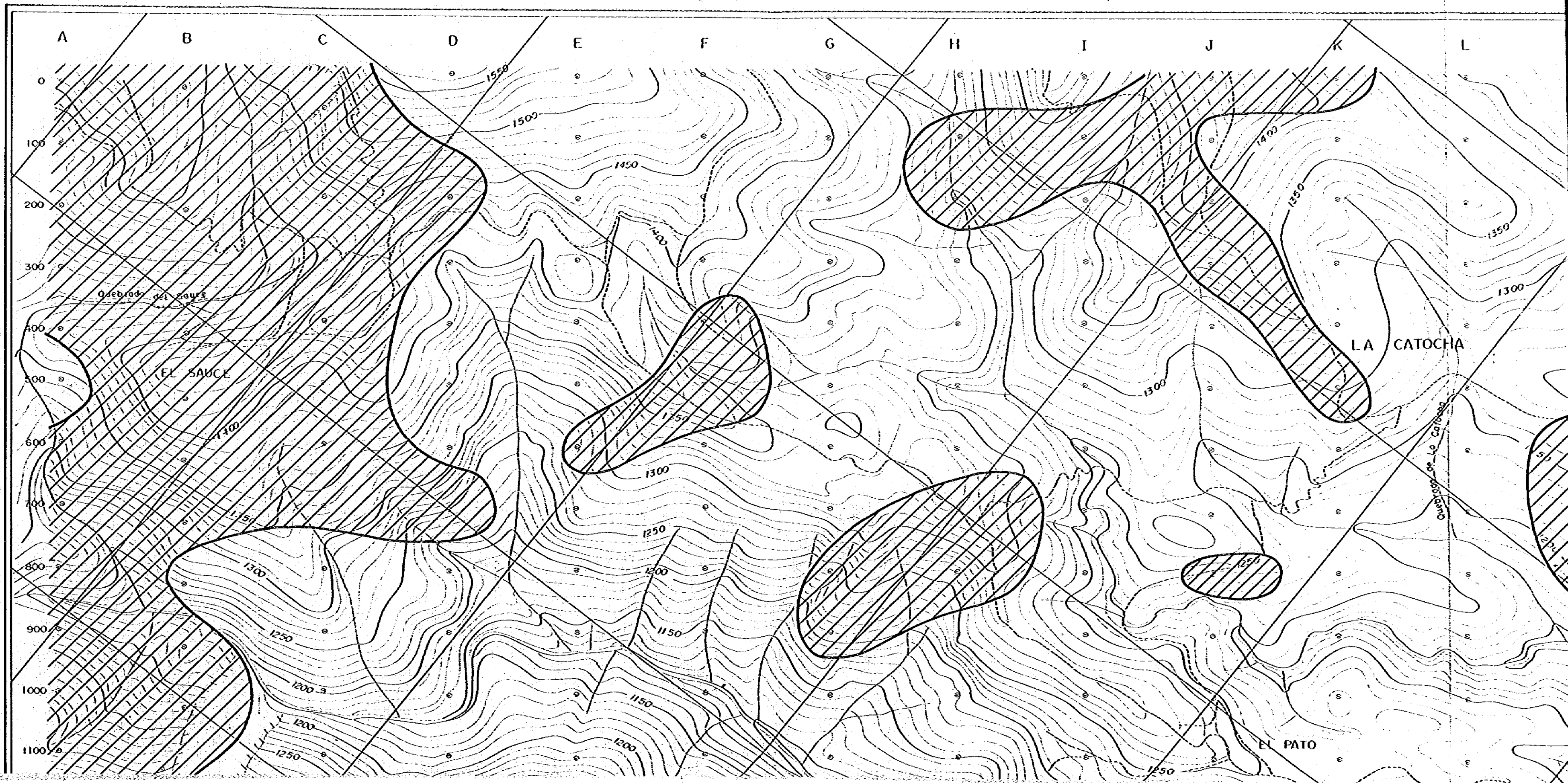
1: 5000

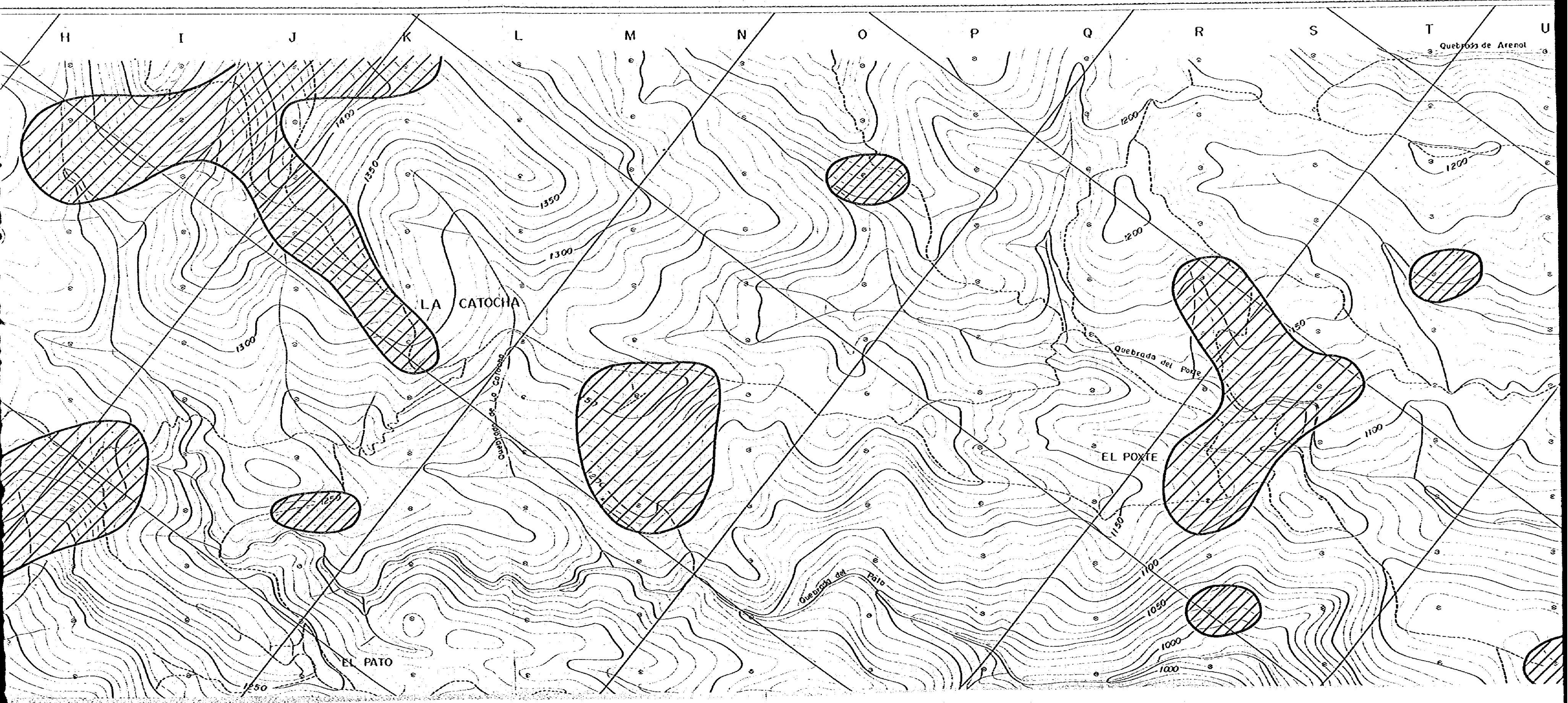
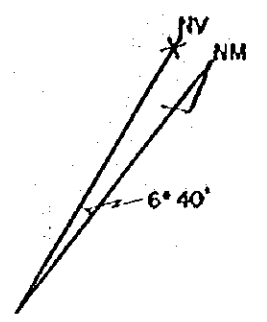


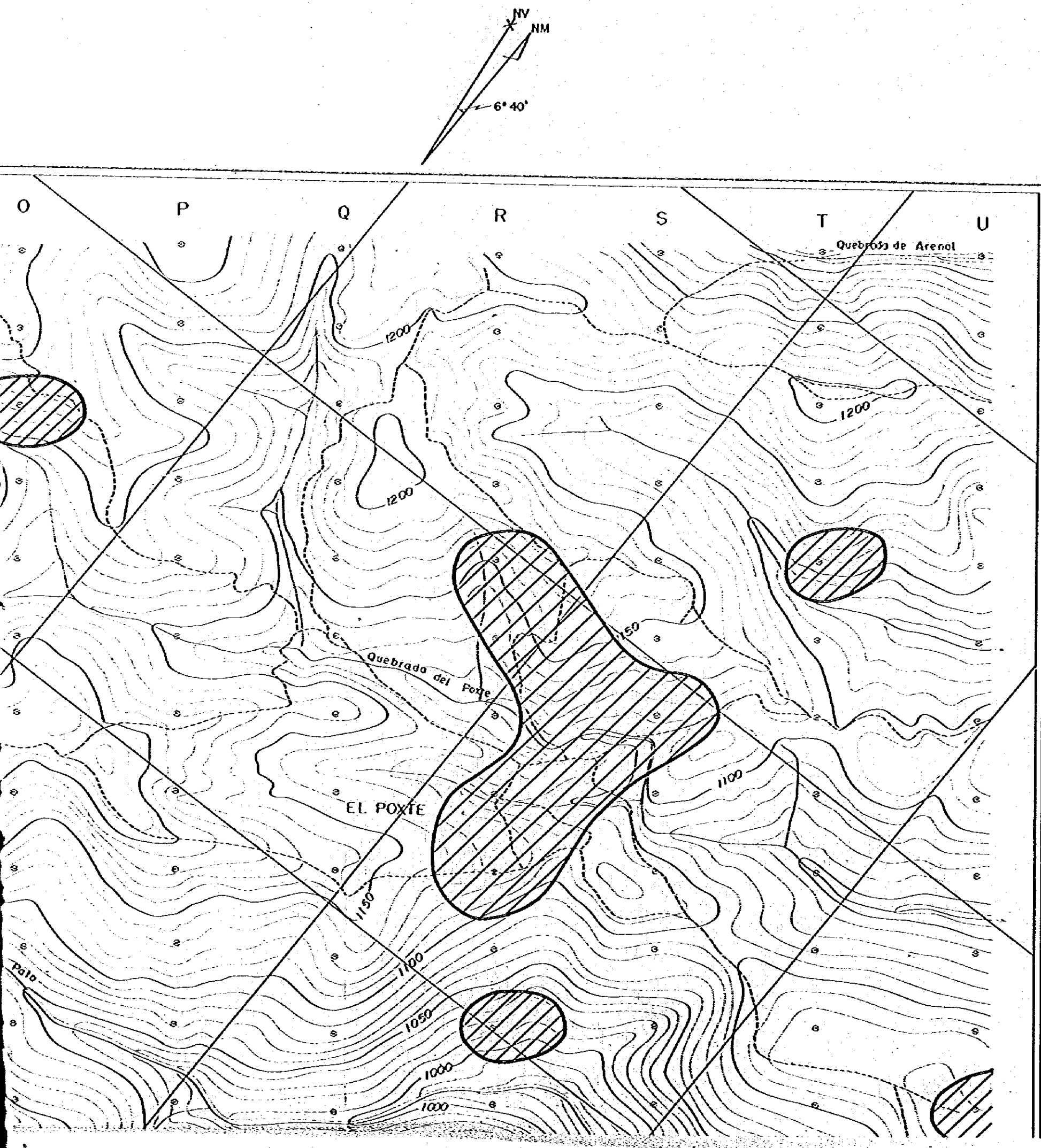


METAL MINING AGENCY OF JAPAN
 JAPAN INTERNATIONAL COOPERATION AGENCY
 EN COLABORACION CON
 DIRECCION GENERAL DE MINERIA
 E HIDROCARBUROS DE GUATEMALA
 FEBRERO 1982

-  Zona de anomalía clase-A
-  Zona de anomalía clase-B







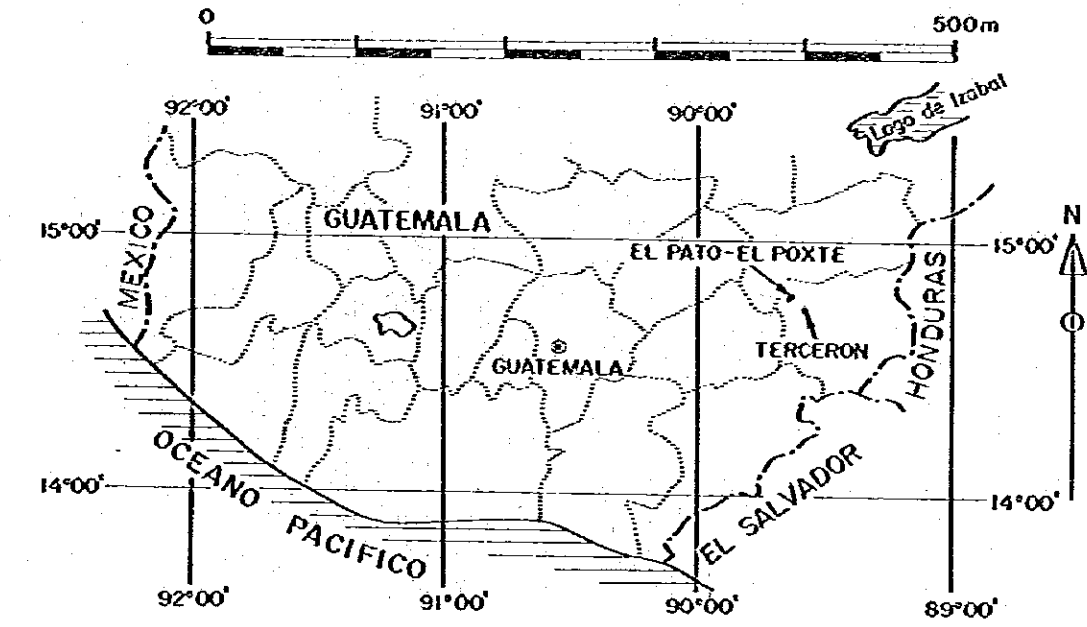
PL. II-7

国際協力事業団
13717
資料室蔵書

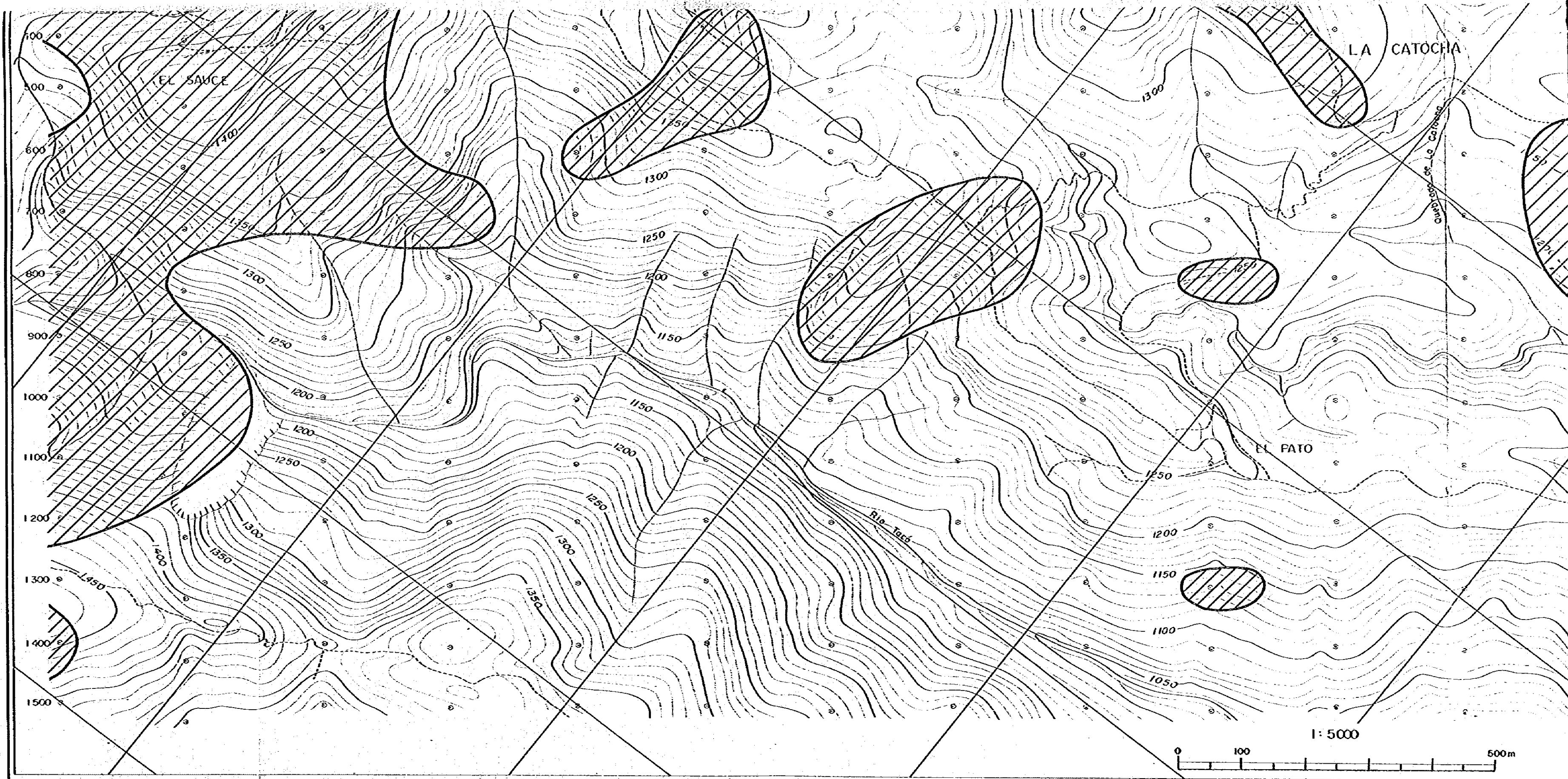
ESTUDIO SOBRE LA EXPLORACION MINERA
EN LAS AREAS DE CHIQUIMULA, MATAQUESCUNTIA
Y LLANO DEL COYOTE
DE LA REPUBLICA DE GUATEMALA
TERCERA FASE

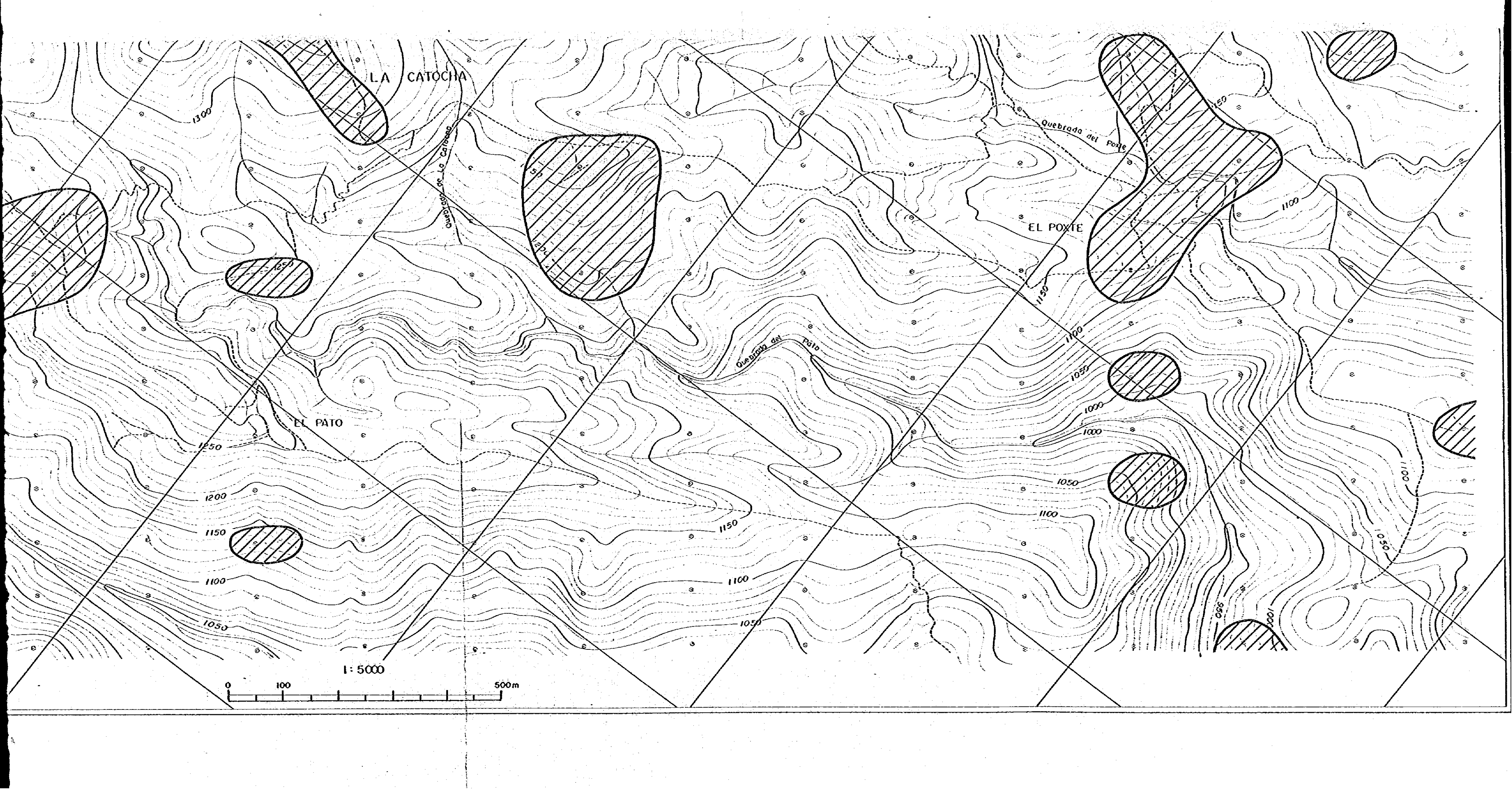
MAPA GEOQUIMICO DE Ag EN SUELOS,
AREA DE EL PATO-EL POJTE

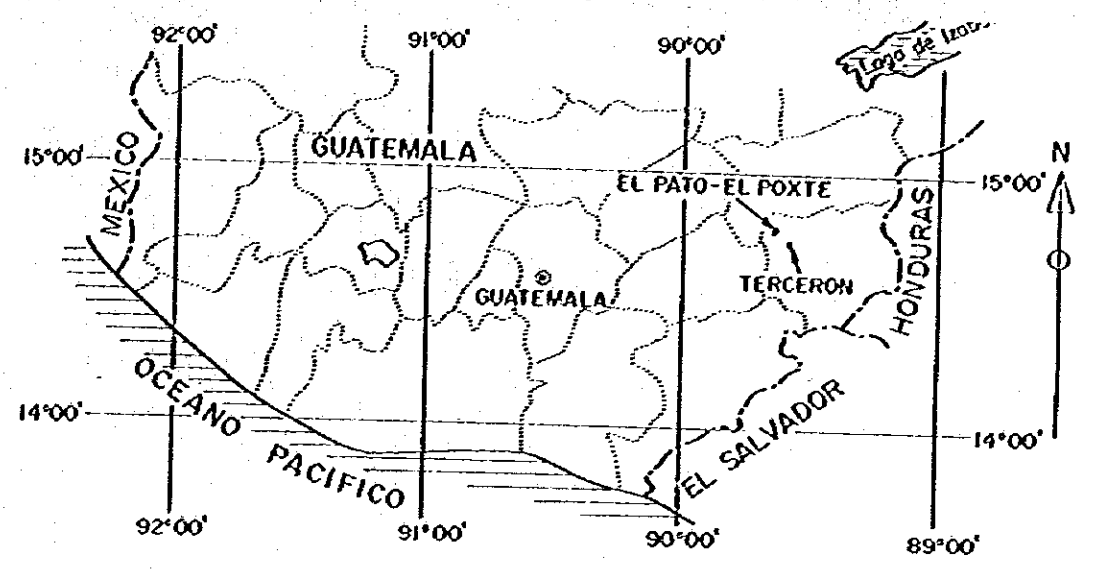
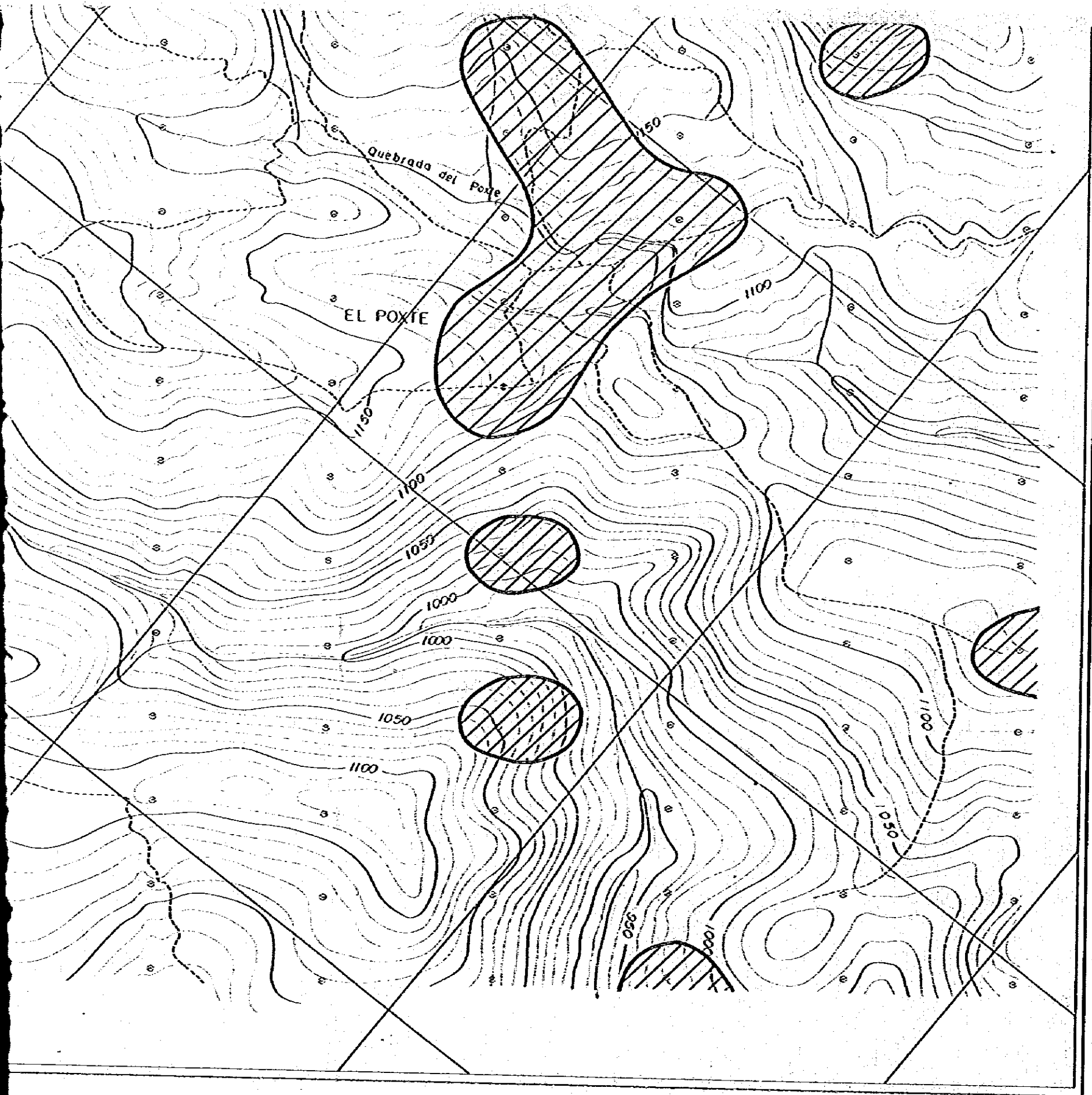
ESCALA 1 : 5,000




METAL MINING AGENCY OF JAPAN
JAPAN INTERNATIONAL COOPERATION AGENCY
EN COLABORACION CON
DIRECCION GENERAL DE MINERIA
E HIDROCARBUROS DE GUATEMALA
FEBRERO 1982

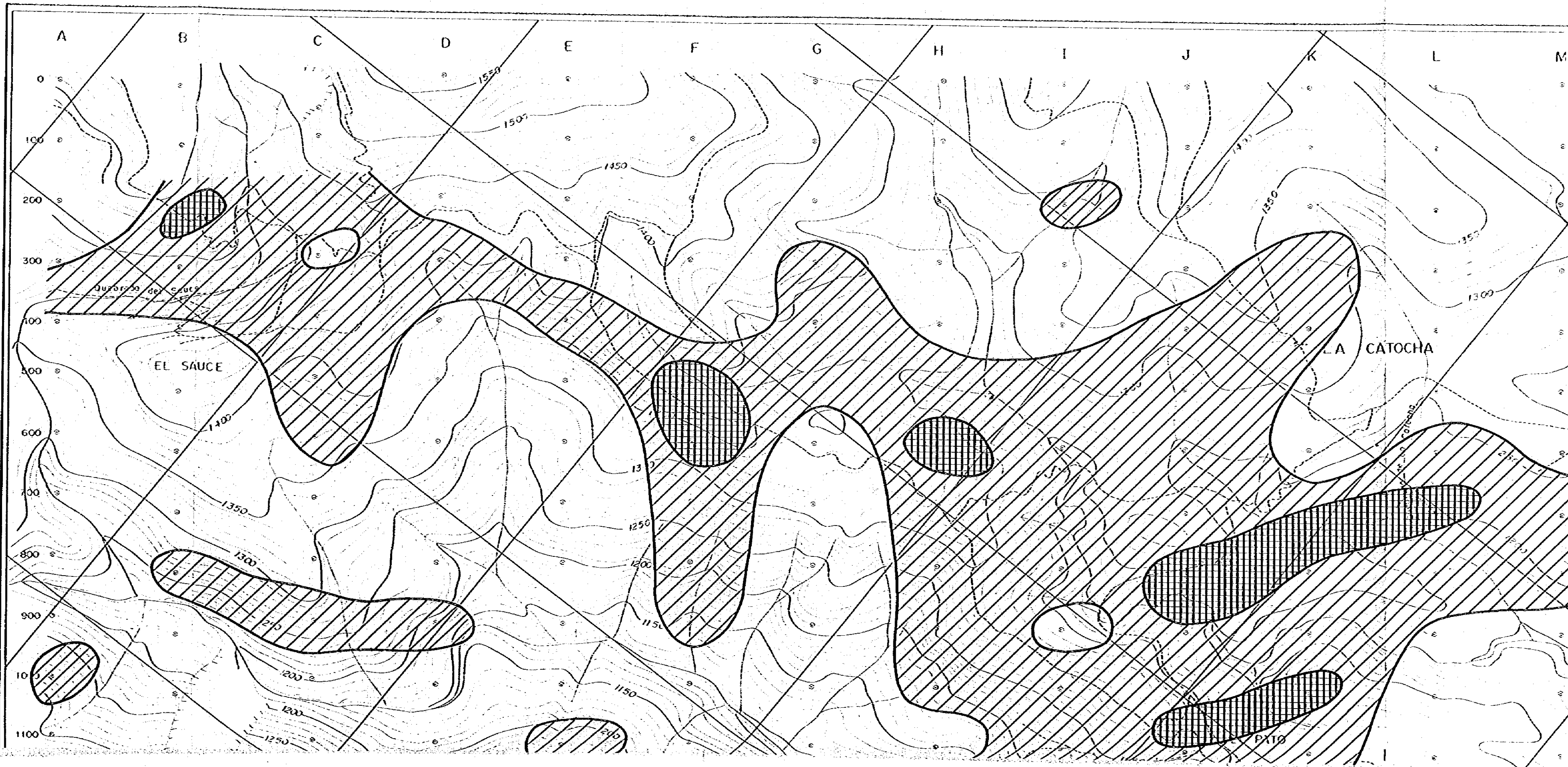


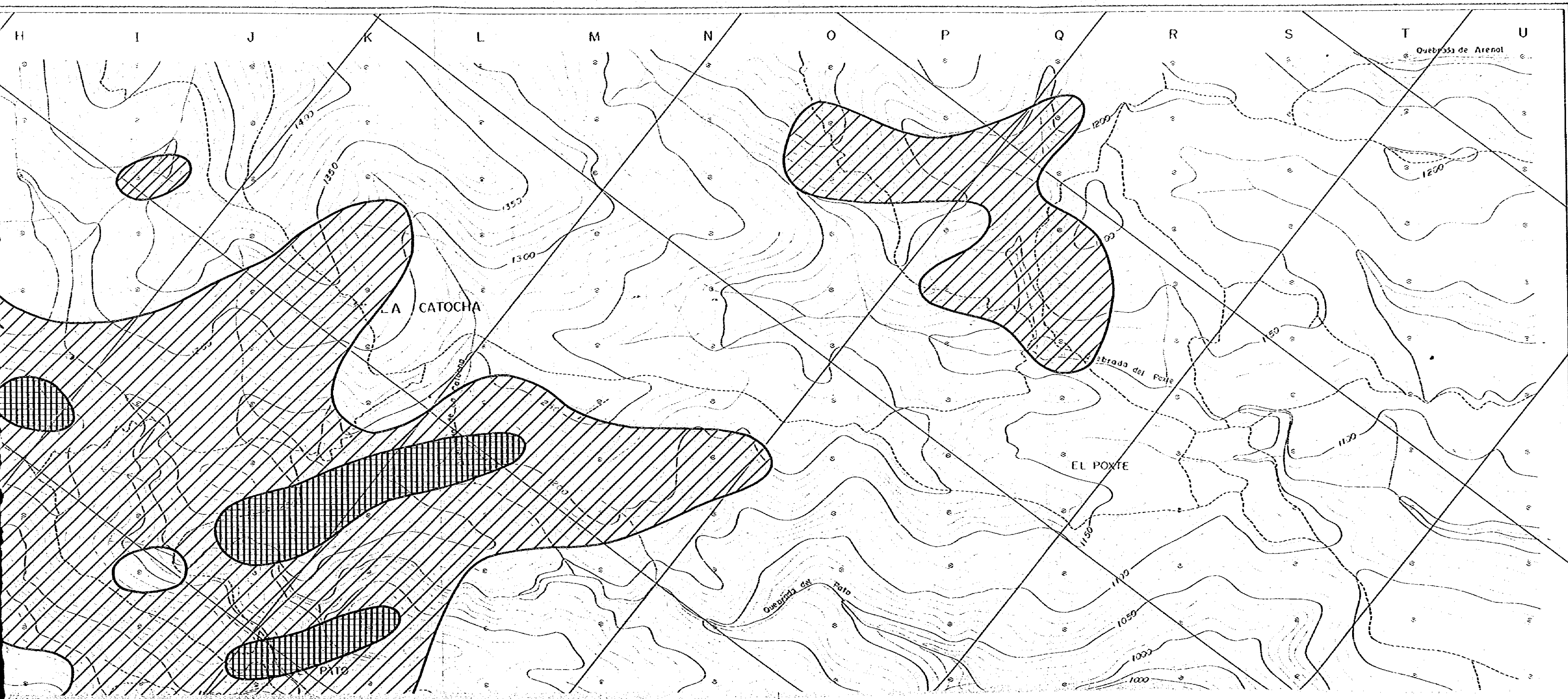
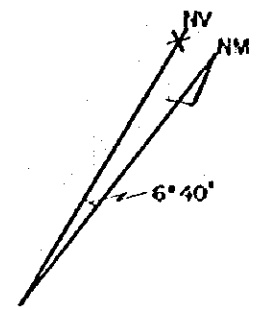




METAL MINING AGENCY OF JAPAN
 JAPAN INTERNATIONAL COOPERATION AGENCY
 EN COLABORACION CON
 DIRECCION GENERAL DE MINERIA
 E HIDROCARBUROS DE GUATEMALA
 FEBRERO 1982

 Zona de anomalía clase-B

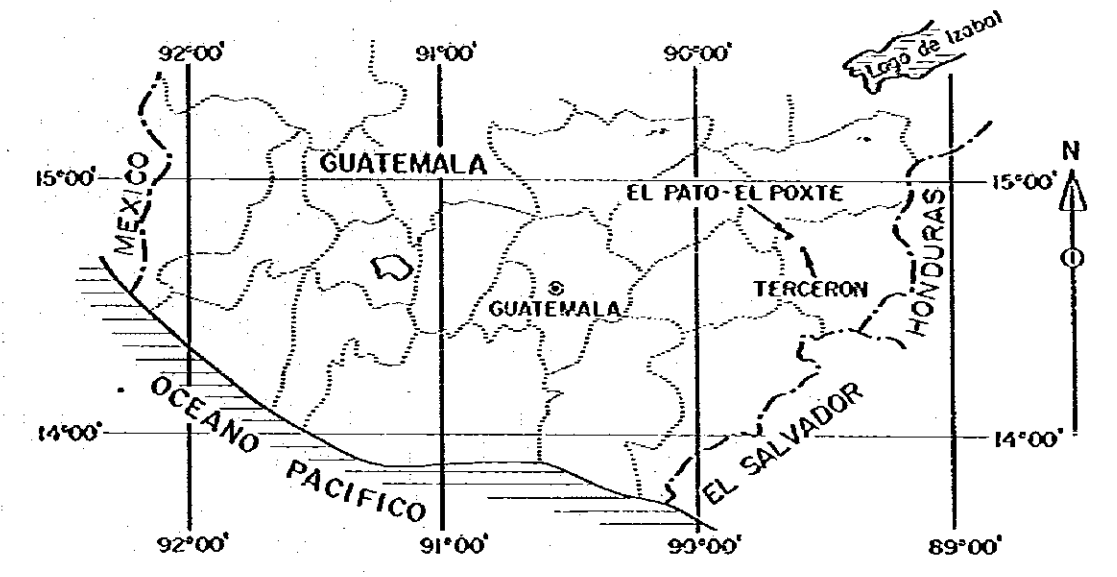
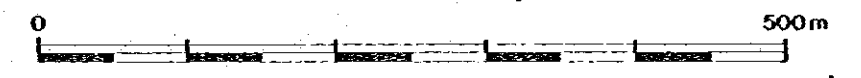




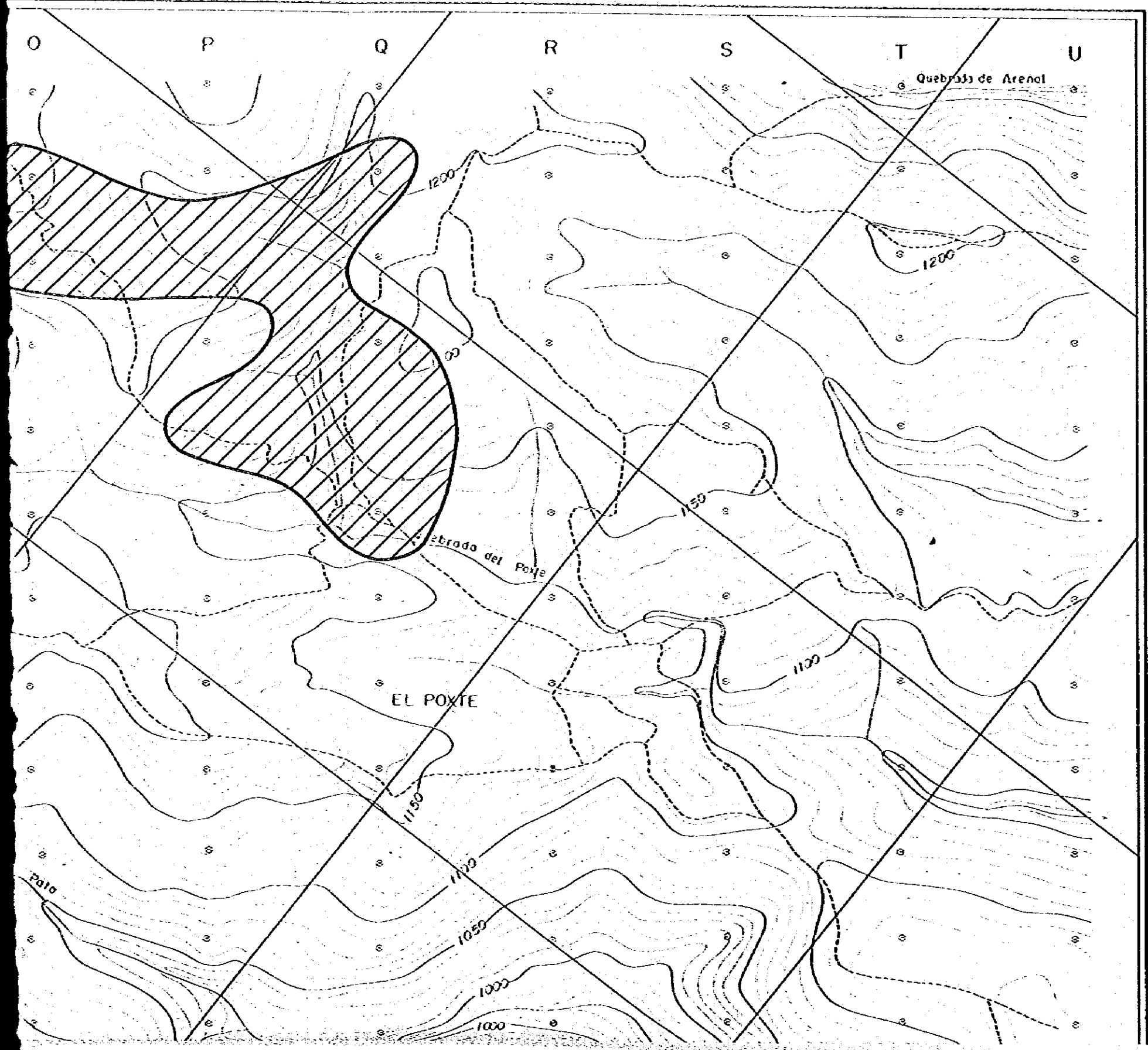
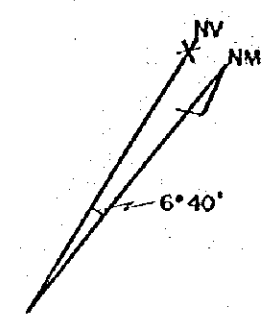
ESTUDIO SOBRE LA EXPLORACION MINERA
EN LAS AREAS DE CHIQUIMULA, MATAQUESCUINTLA
Y LLANO DEL COYOTE
DE LA REPUBLICA DE GUATEMALA
TERCERA FASE

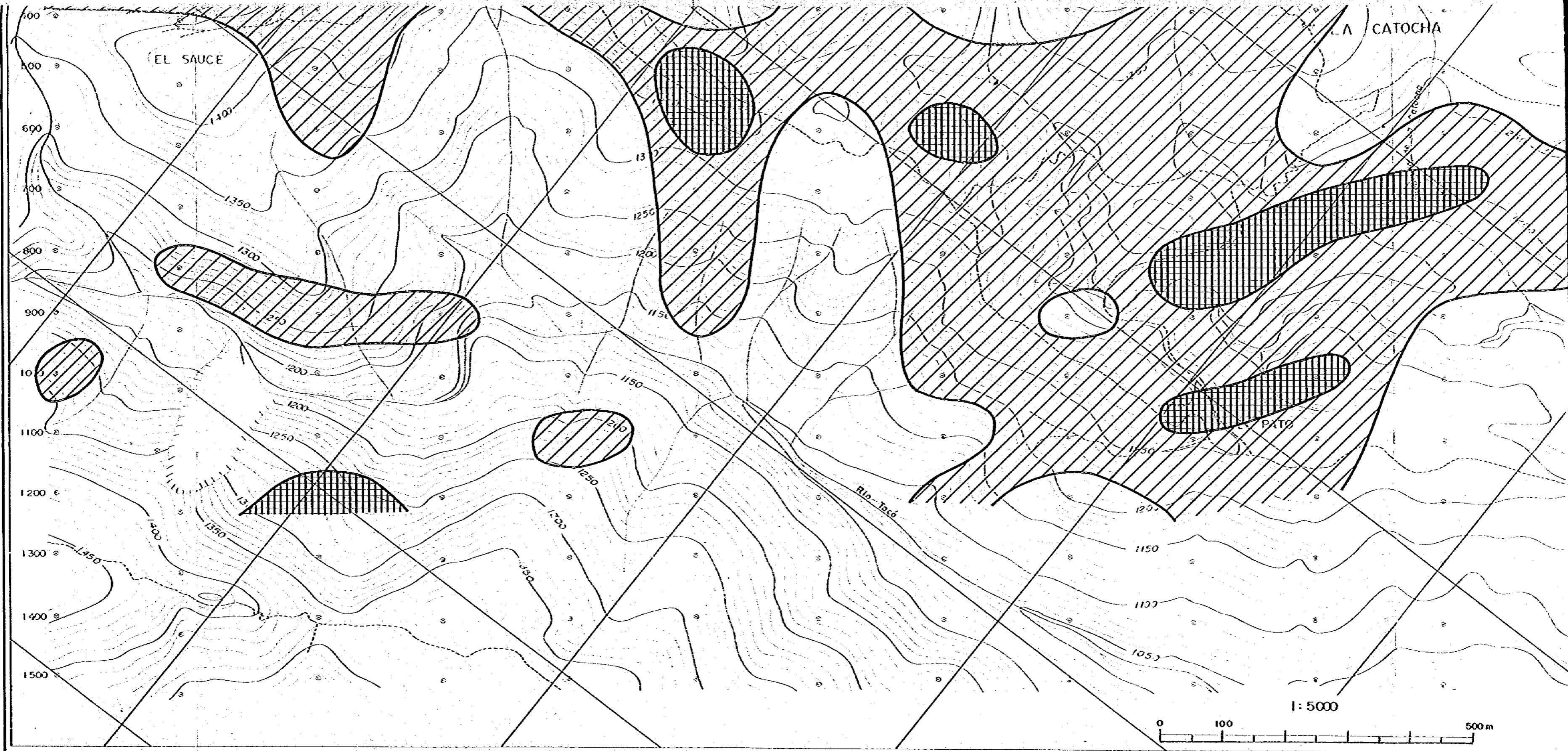
MAPA GEOQUIMICO DE Au EN ROCAS,
AREA DE EL PATO-EL POXTE

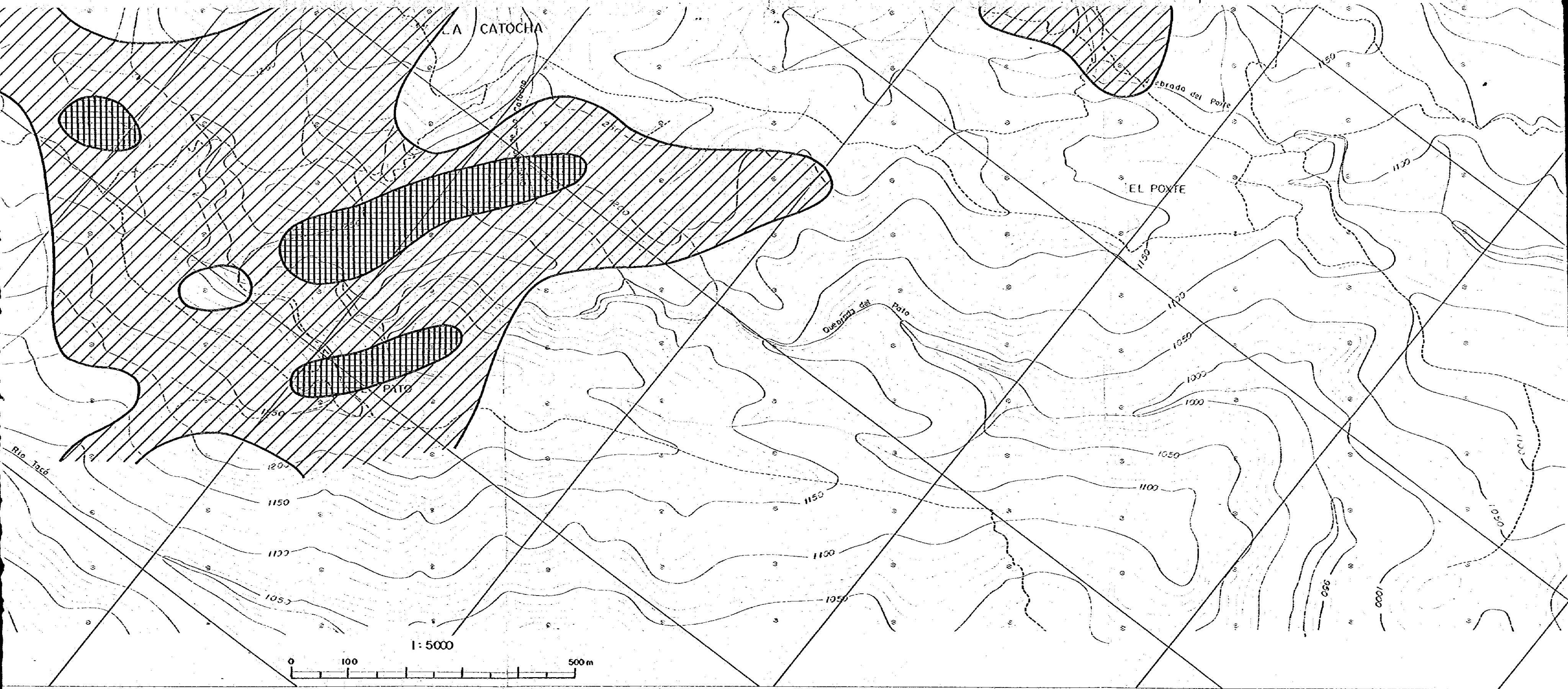
ESCALA 1 : 5,000



METAL MINING AGENCY OF JAPAN
JAPAN INTERNATIONAL COOPERATION AGENCY
EN COLABORACION CON
DIRECCION GENERAL DE MINERIA
E HIDROCARBUROS DE GUATEMALA
FEBRERO 1982







LA CATOCHA

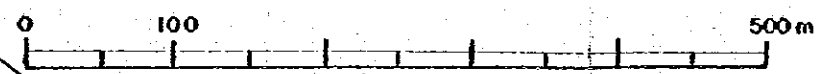
EL POSTE

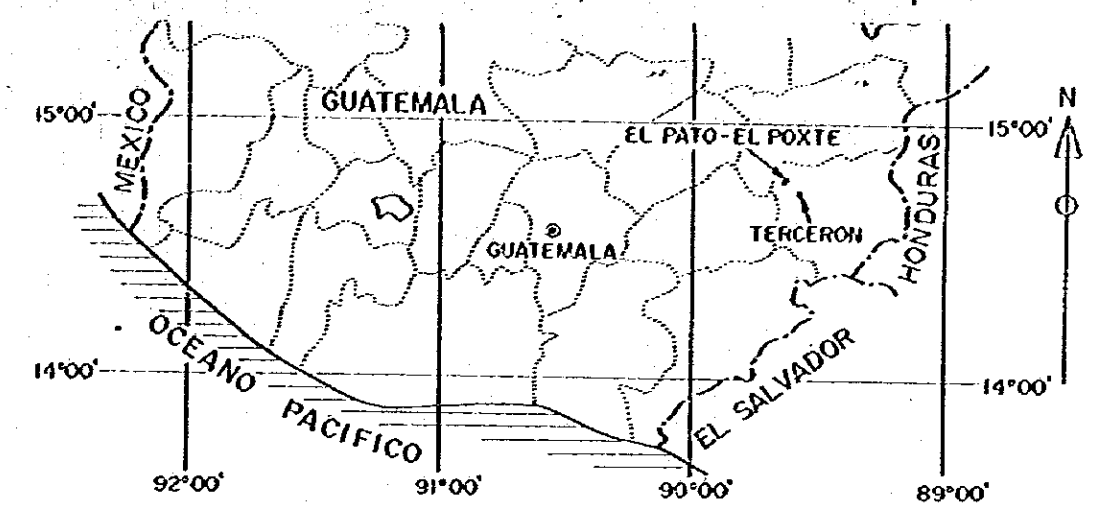
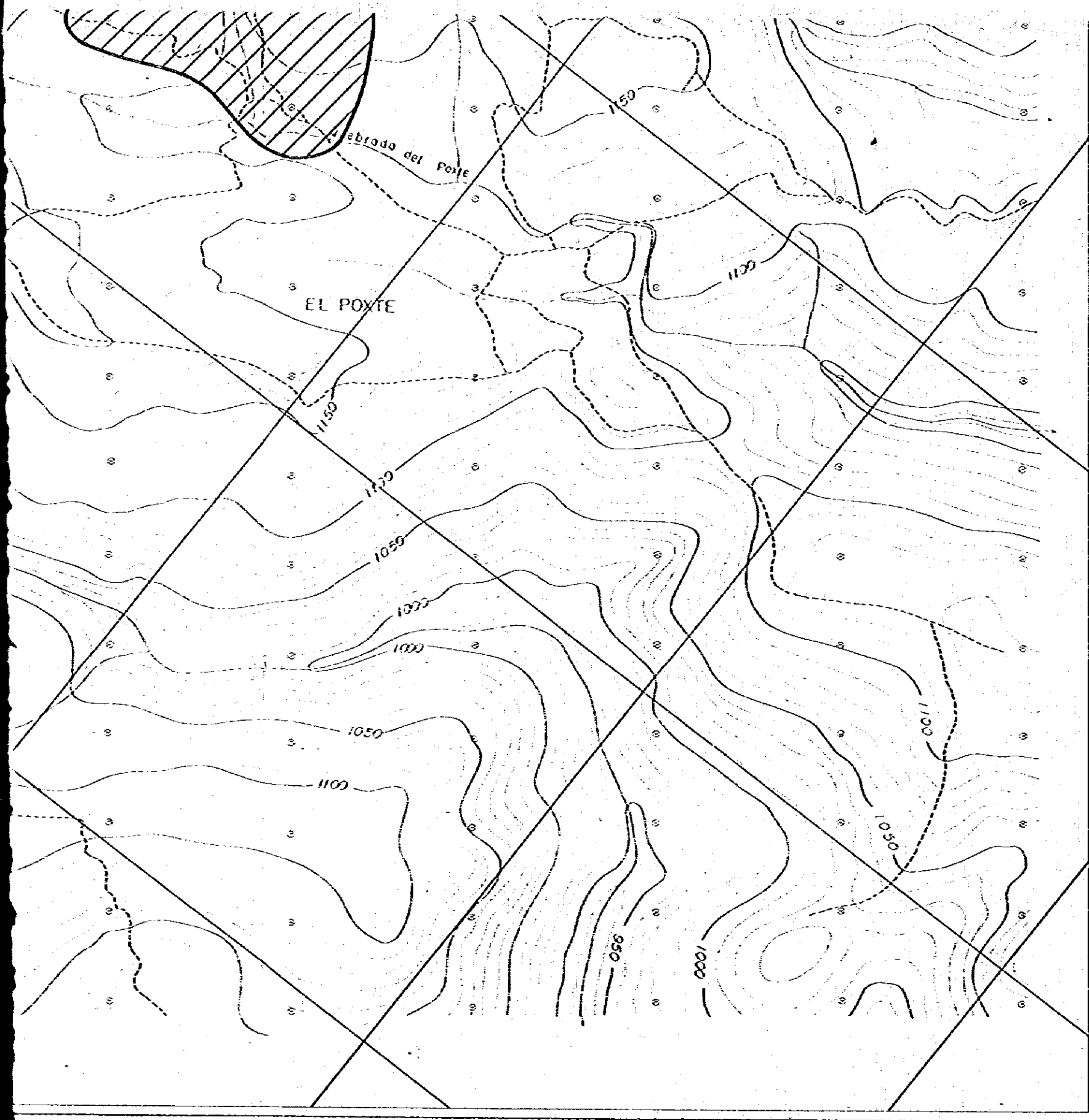
PATO

Quebrada del Pato



Rio Tacó

1:5000





METAL MINING AGENCY OF JAPAN
 JAPAN INTERNATIONAL COOPERATION AGENCY
 EN COLABORACION CON
 DIRECCION GENERAL DE MINERIA
 E HIDROCARBUROS DE GUATEMALA
 FEBRERO 1982

-  Zona de anomalía clase-A
-  Zona de anomalía clase-B