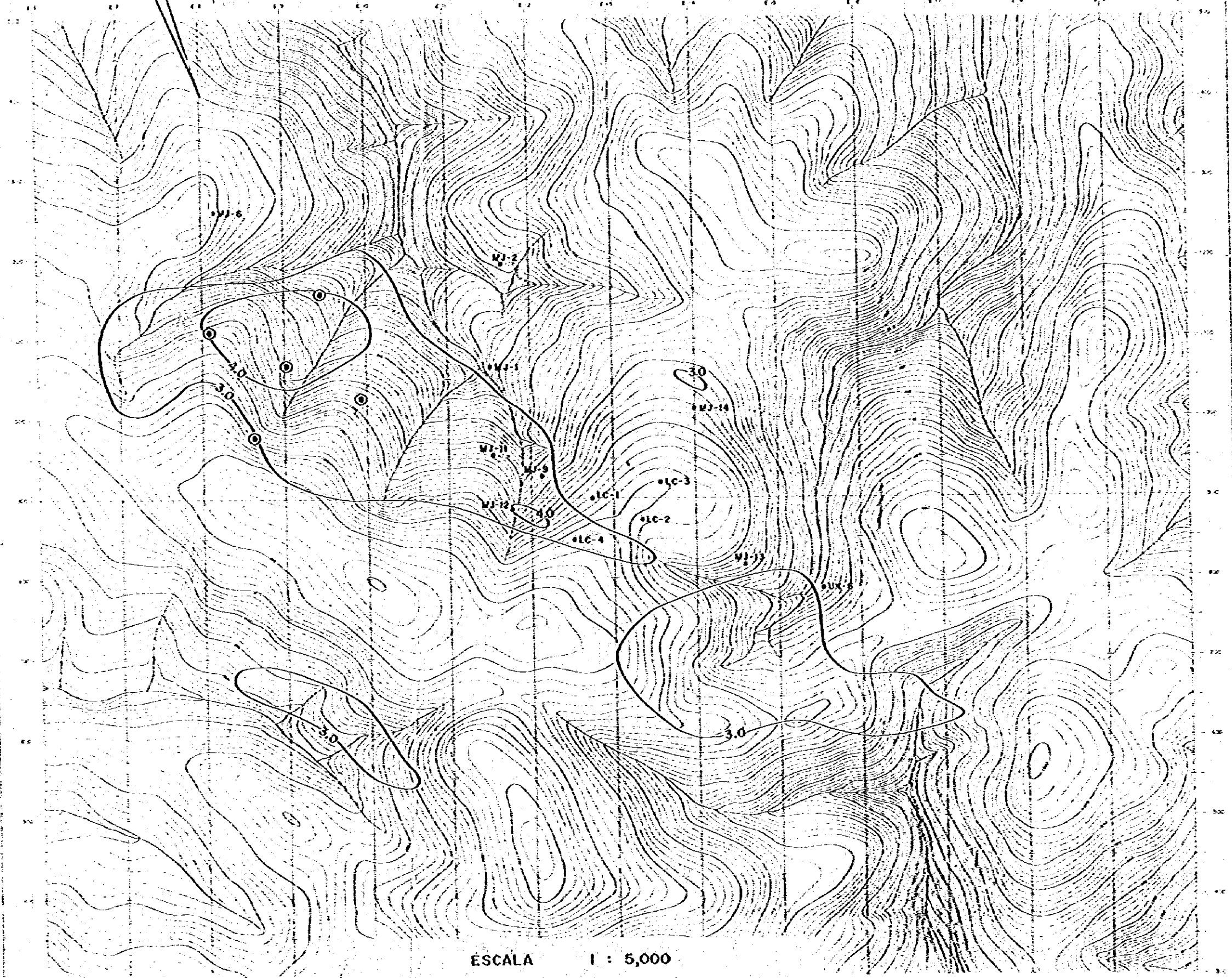
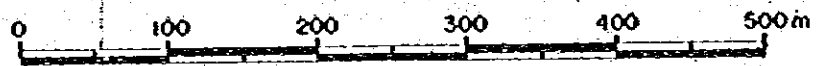


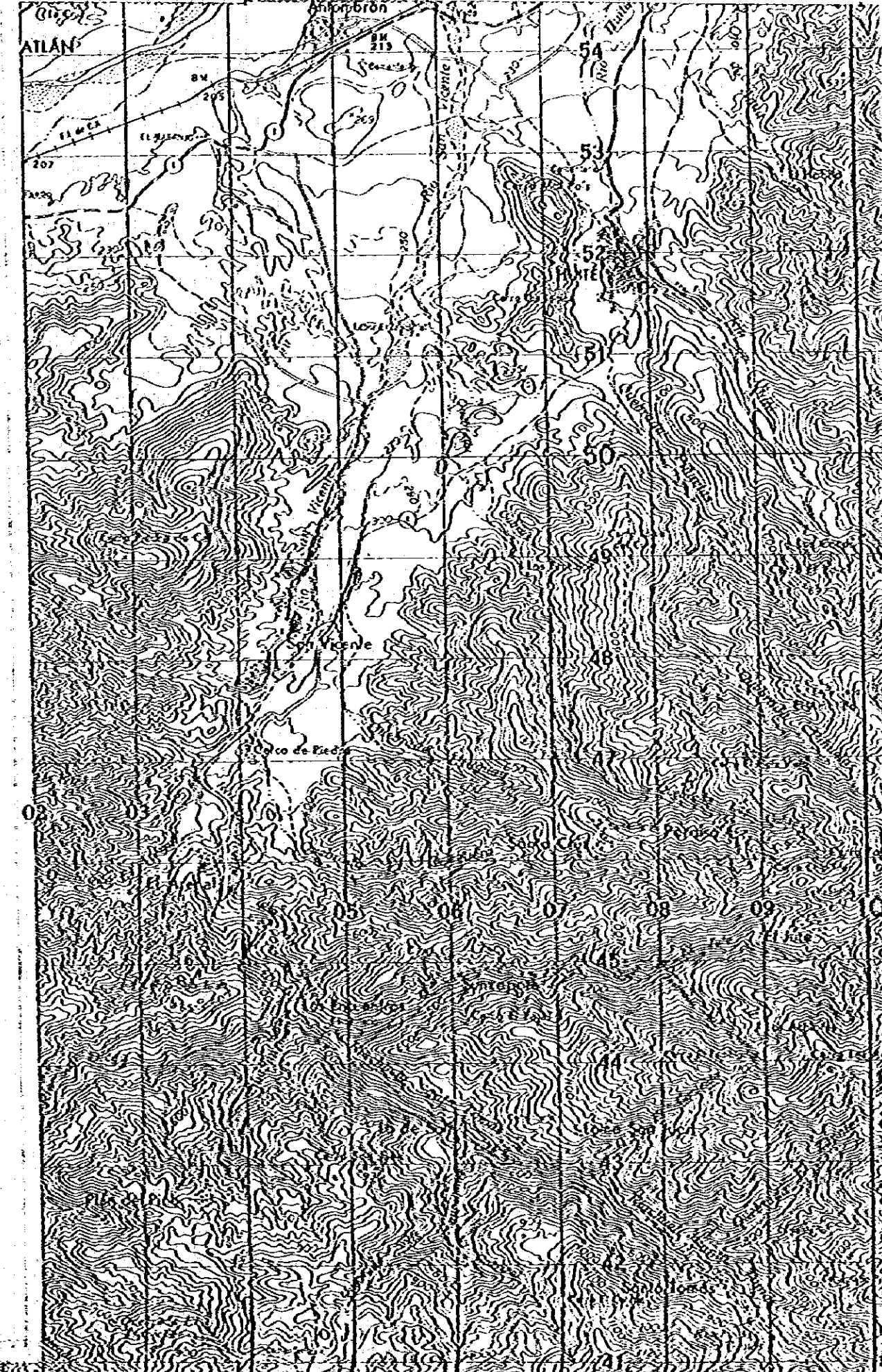
AREA DE LLANO DEL COYOTE

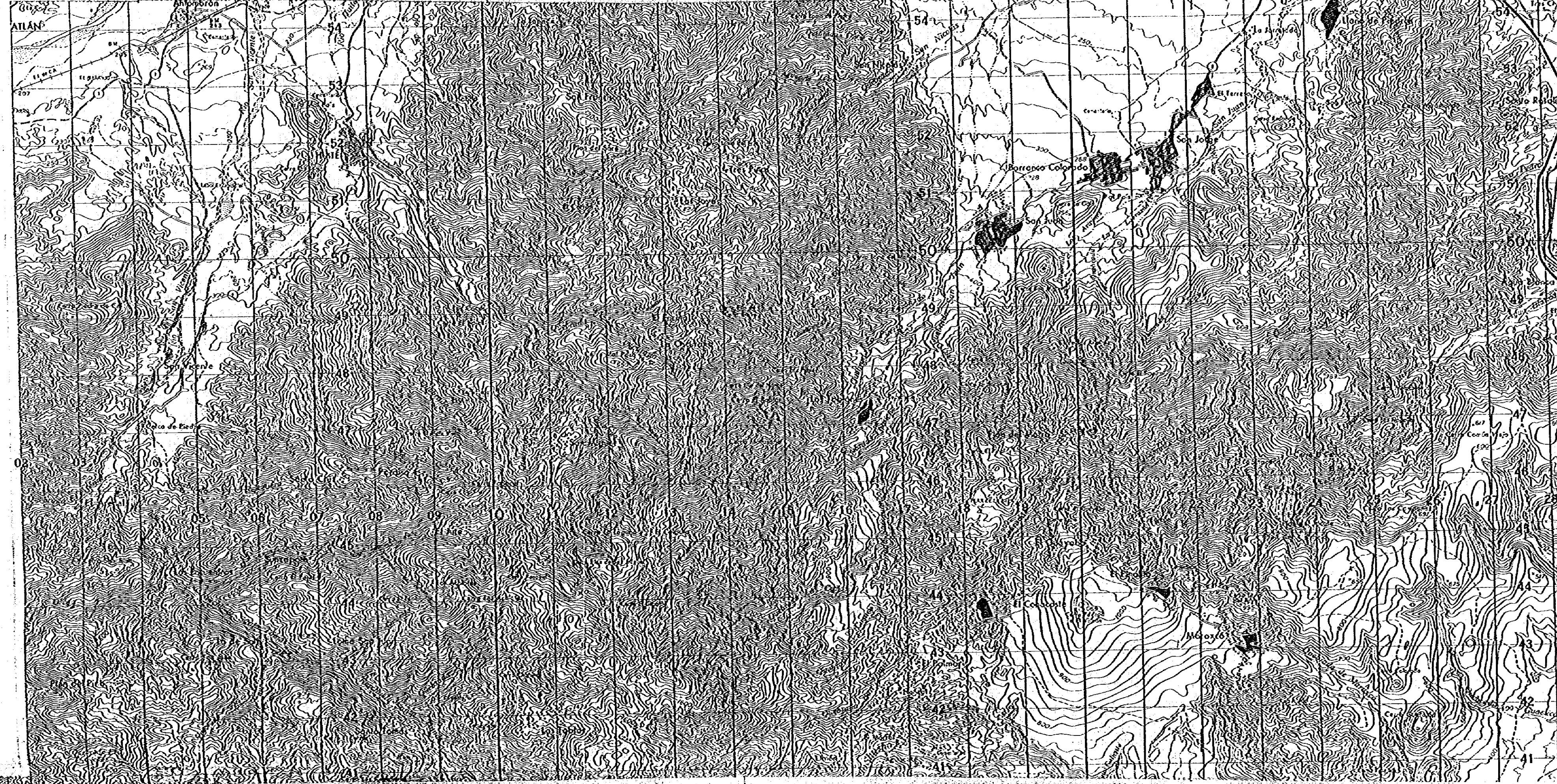


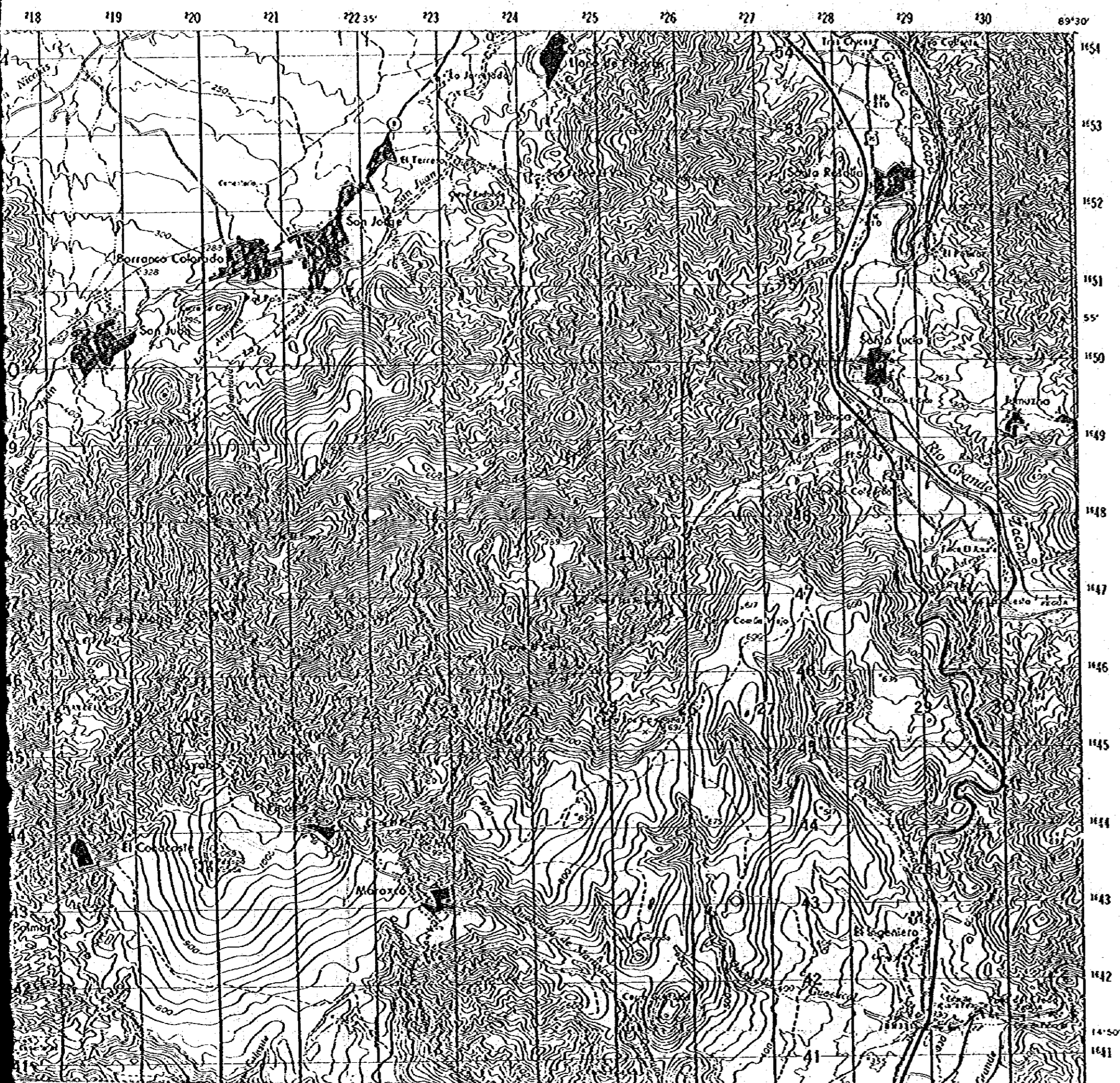
ESCALA 1 : 5,000



202 203 65°45' 205 206 207 208 209 210







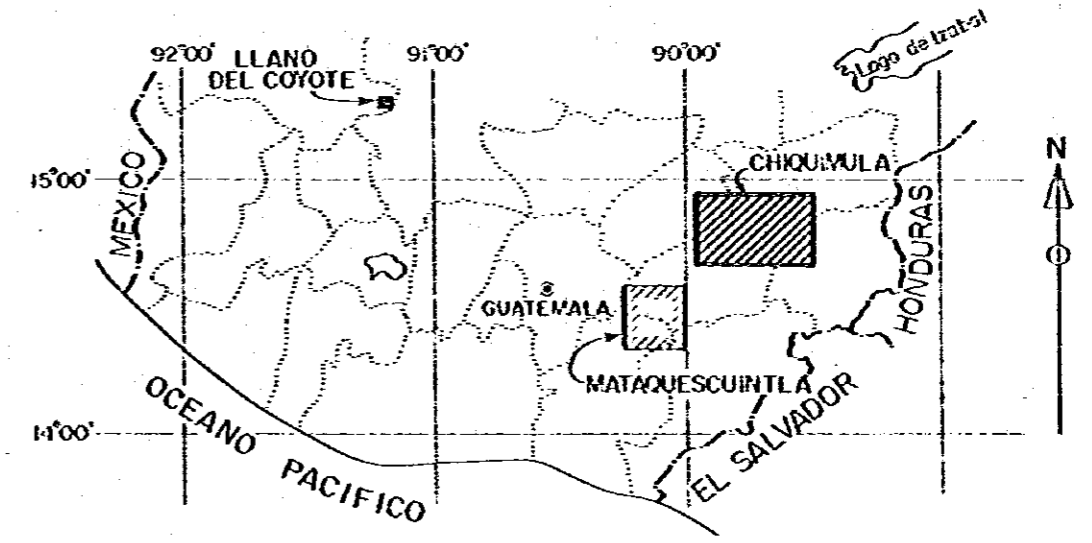
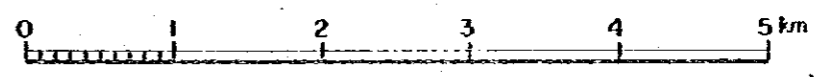
国際協力事業団
09904
図書資料室蔵書

PL. V - 4

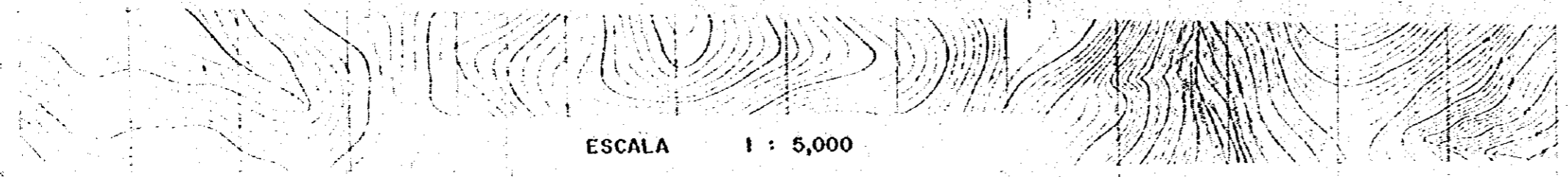
INVESTIGACION GEOLOGICA
EN LAS AREAS DE
A-2 (JALAPA), A-3 (CHIQUMULA), B-1 (MATAQUESCINTLA),
LLANO DEL COYOTE Y TERCERON
DE LA REPUBLICA DE GUATEMALA
FASE II

MAPA INDICE DE
LAS AREAS PROMETEDORAS

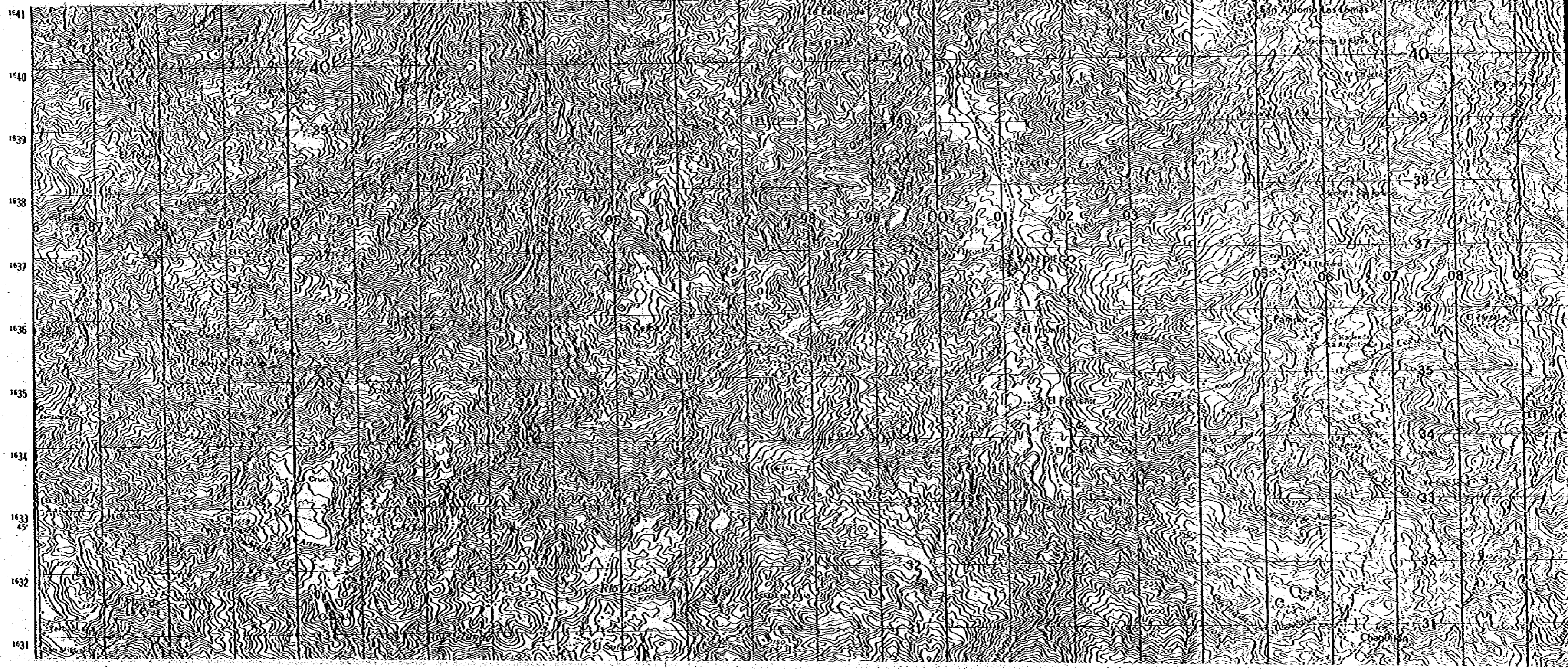
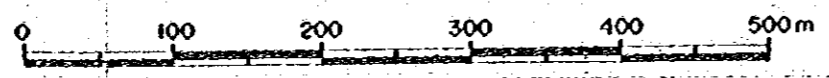
ESCALA 1 : 50,000

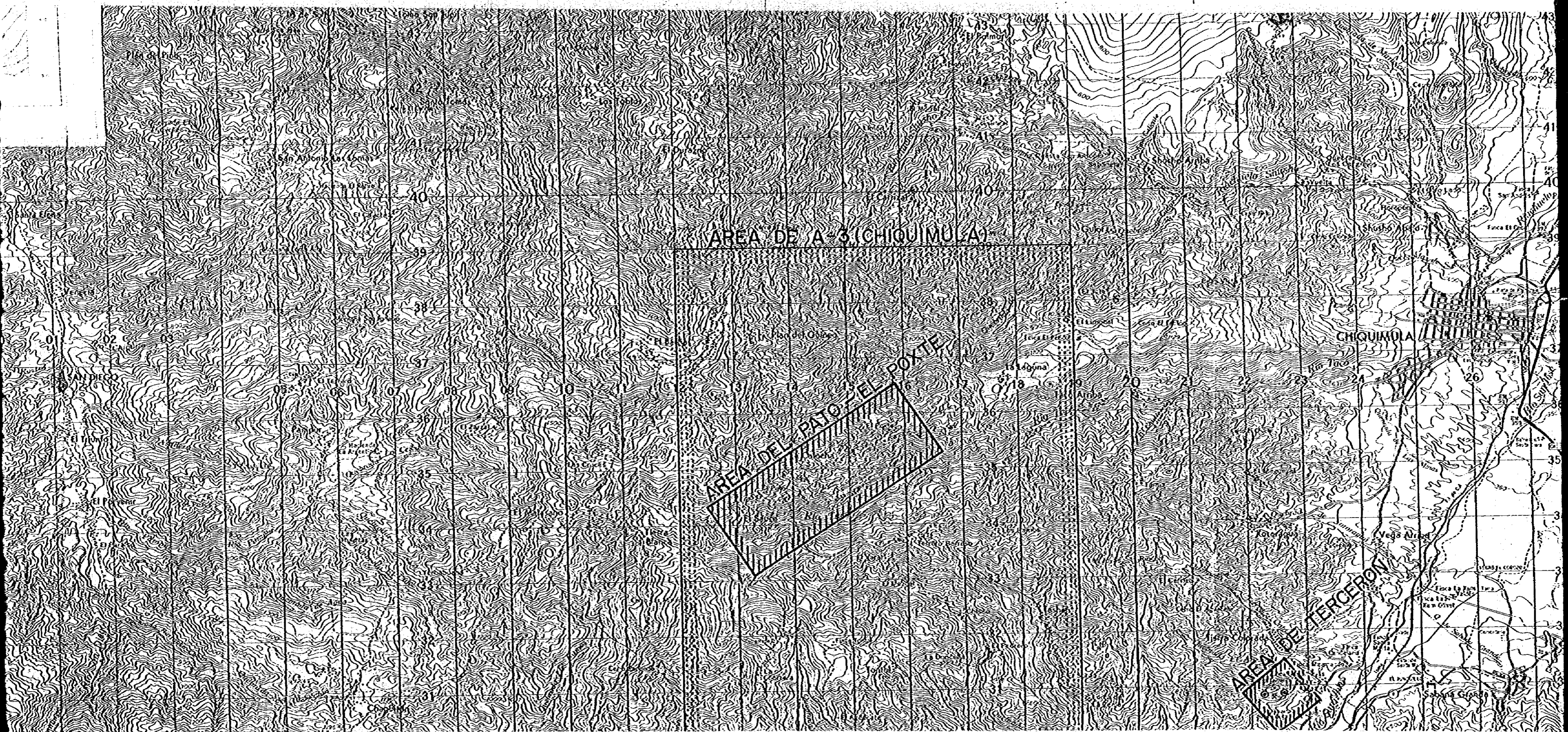


METAL MINING AGENCY OF JAPAN
JAPAN INTERNATIONAL COOPERATION AGENCY
EN COLABORACION CON
DIRECCION GENERAL DE MINERIA
E HIDROCARBUROS DE GUATEMALA
FEBRERO 1981



ESCALA 1 : 5,000





AREA DE A-3 (CHIQUIMULA)

AREA DEL PISO DEL POXTE

AREA DE TERCERON

CHIQUIMULA

Vega Alta

LEYENDA



Las áreas prometedoras



Los sitios recomendables



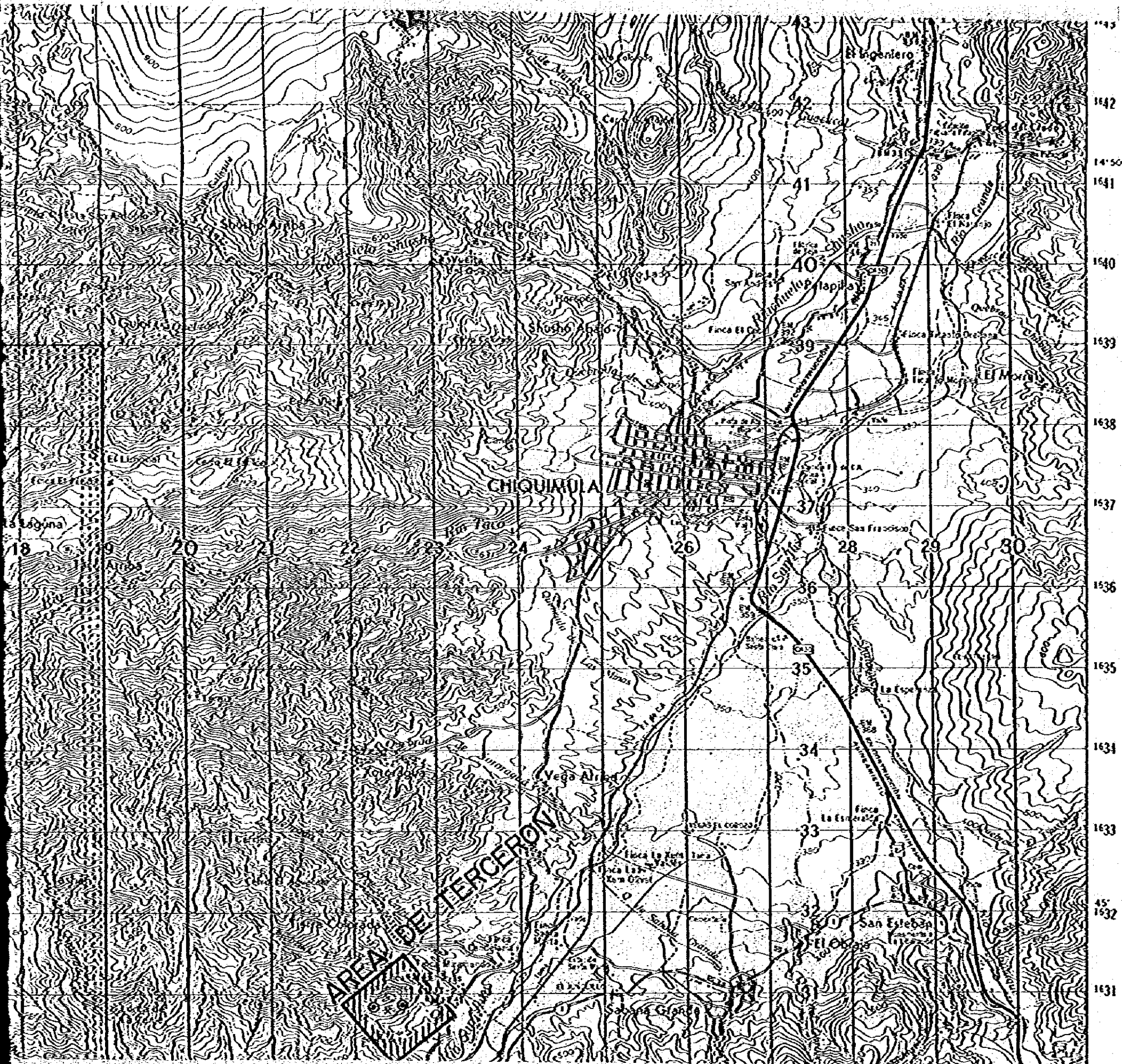
Las áreas estudiadas en la segunda fase

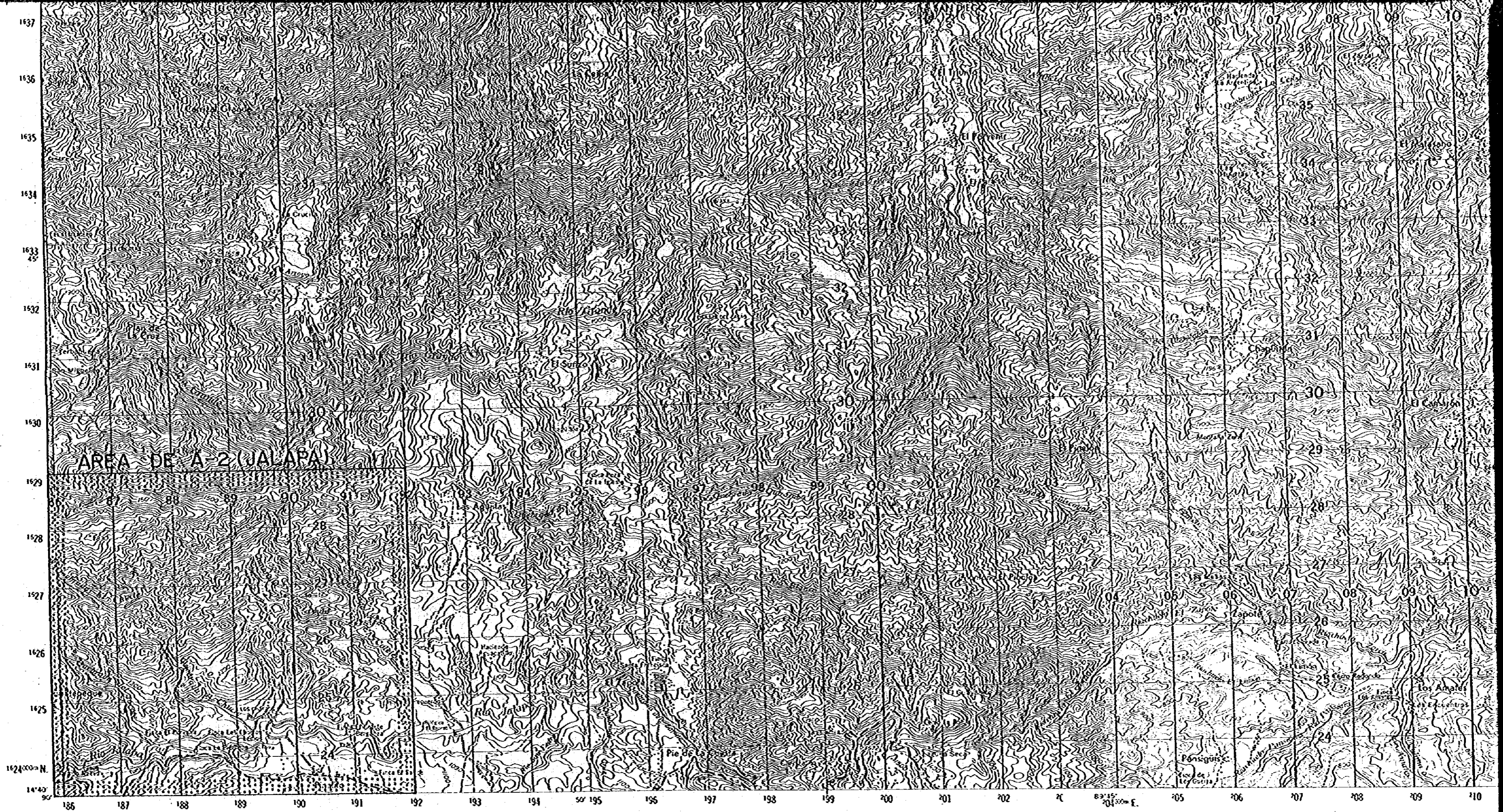


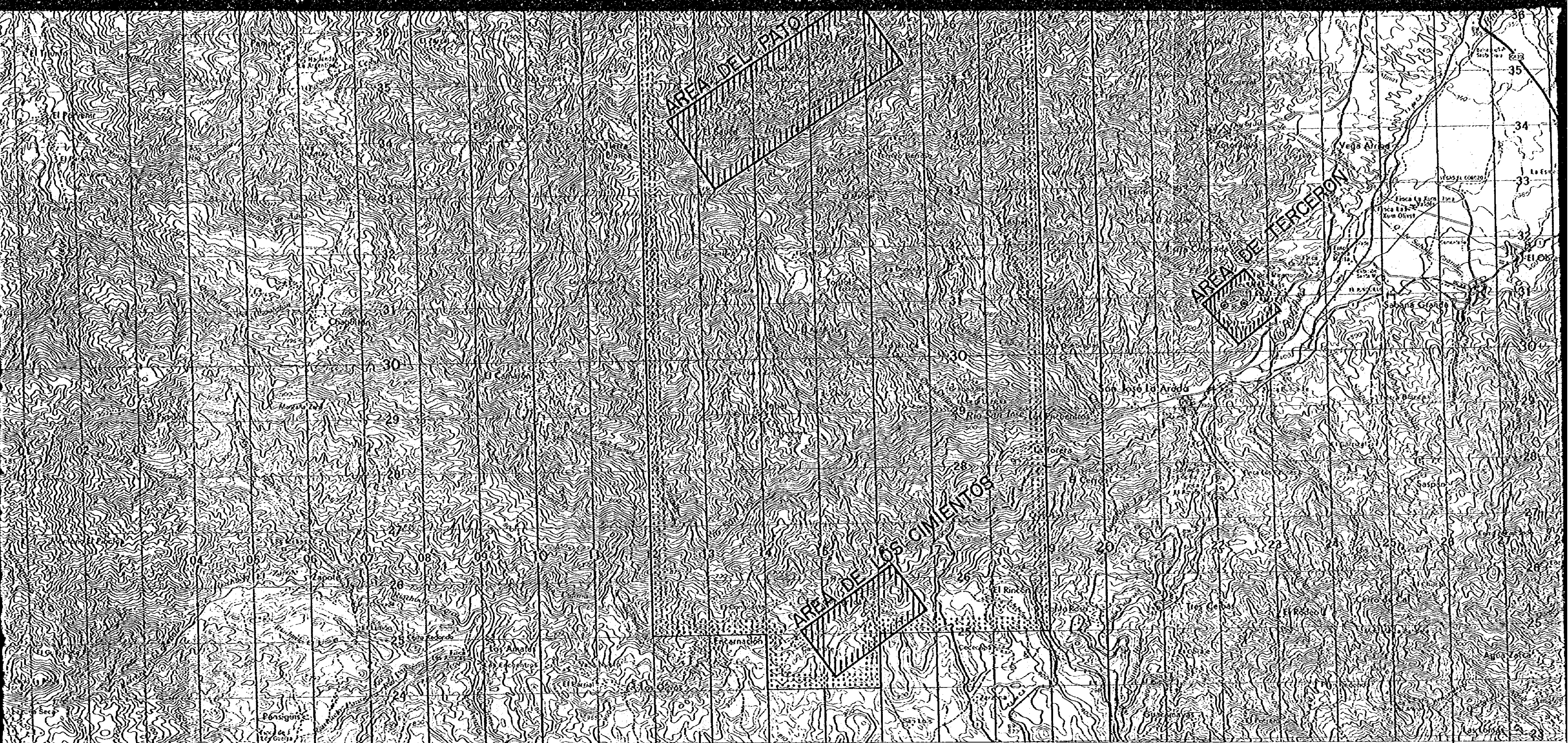
Los sitios perforados



Anomalia geofísica de FE-aparente (n=4)

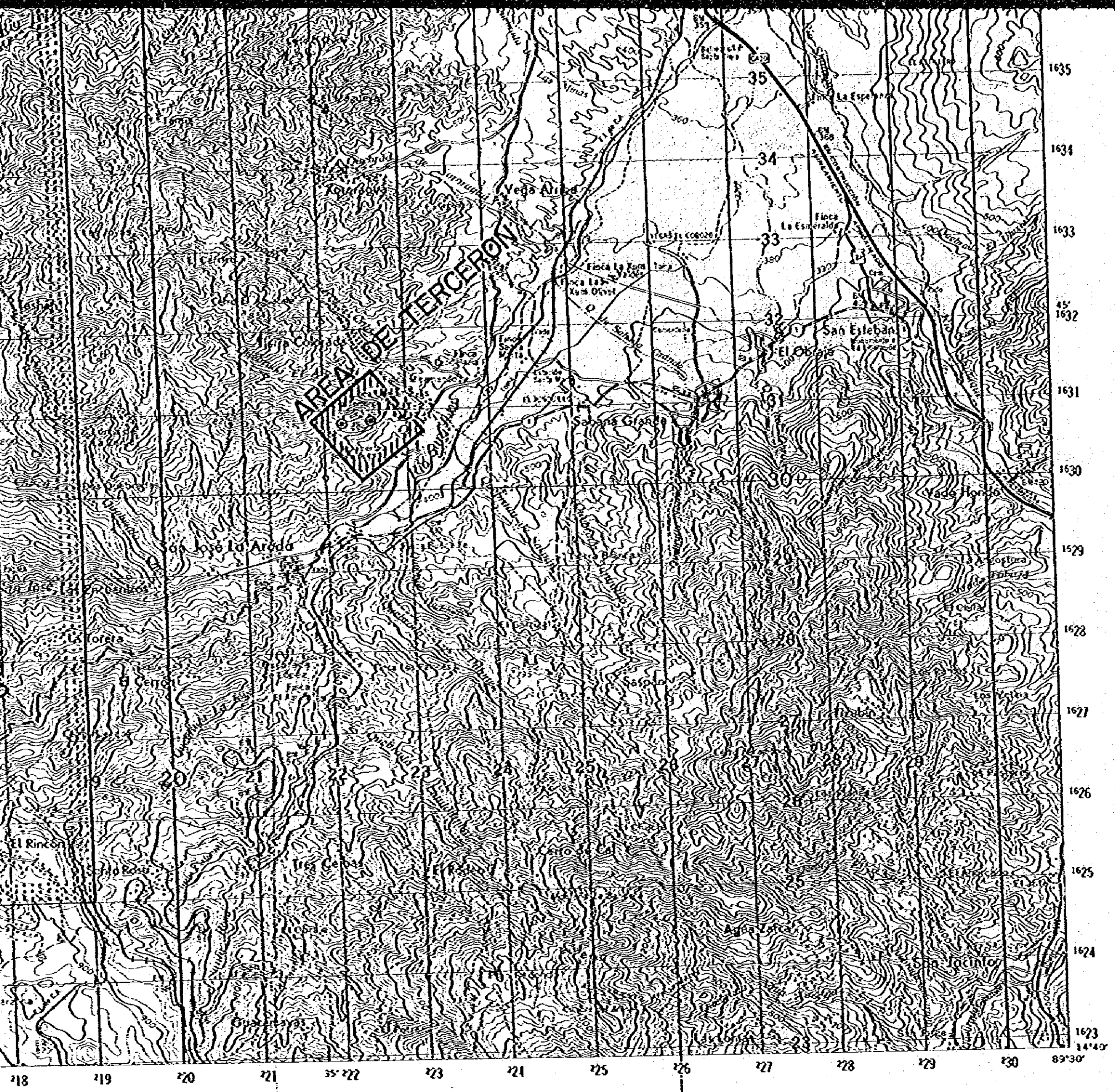






201 202 203 204 205 206 207 208 209 210 211 212 213 214 215 216 217 218 219 220 221 222 223 224 225 226 227

89° 35' 30" W
104° 00' 00" E



- Los sitios perforados
- Anomalia geofisica de FE-aparente (n=4)

118 119 120 121 122 123 124 125 126 127 128 129 130 89°30'

1623 1624 1625 1626 1627 1628 1629 1630 1631 1632 1633 1634 1635

