

PL. III-5-Pb

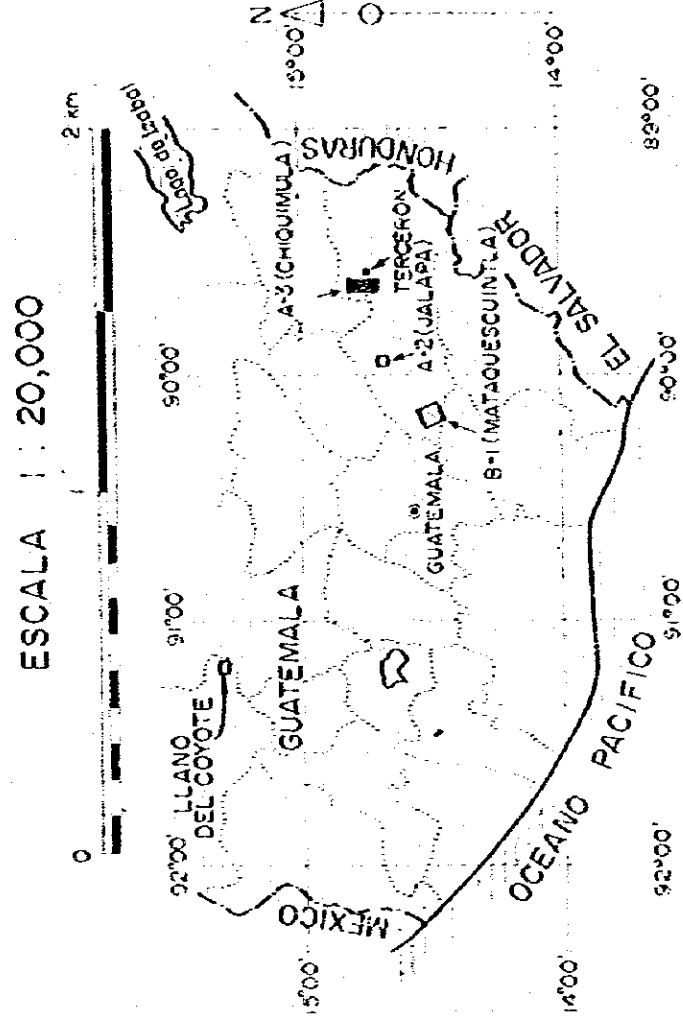
09904

圖書英神靈藏書

INVESTIGACION GEOLOGICA

EN LAS AREAS DE  
A-2 (JALAPA), A-3 (CHIQUMULA), B-1 (MATAQUESCUINTLA),  
LLANO DEL COYOTE Y TERCERON  
DE LA REPUBLICA DE GUATEMALA  
FASE II

MAPA GEOQUIMICO DE Pb,  
AREA DE A-3 (CHIQUMULA)



METAL MINING AGENCY OF JAPAN  
JAPAN INTERNATIONAL COOPERATION AGENCY  
EN COLABORACION CON  
DIRECCION GENERAL DE MINERIA  
E HIDROCARBUROS DE GUATEMALA  
FEBRERO 1981

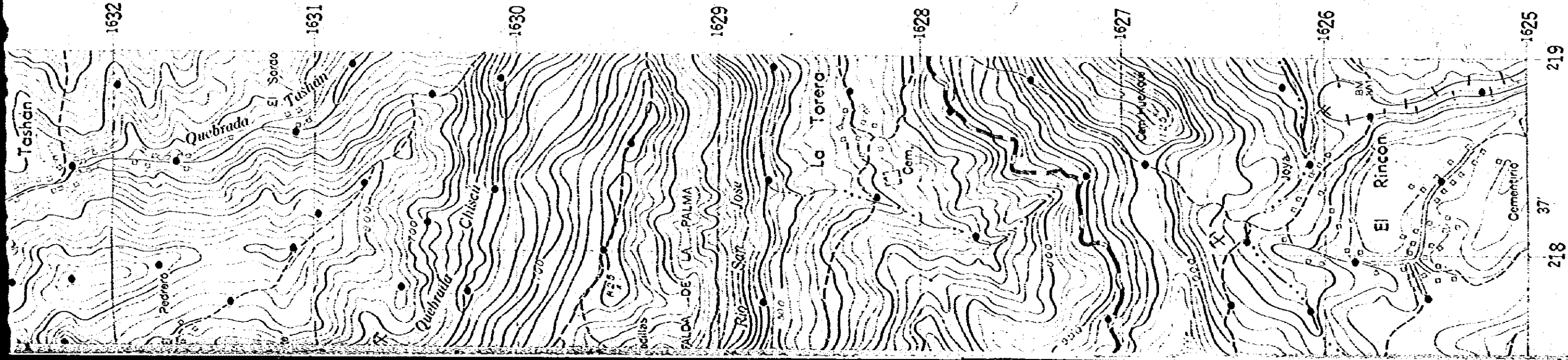
LEYENDA

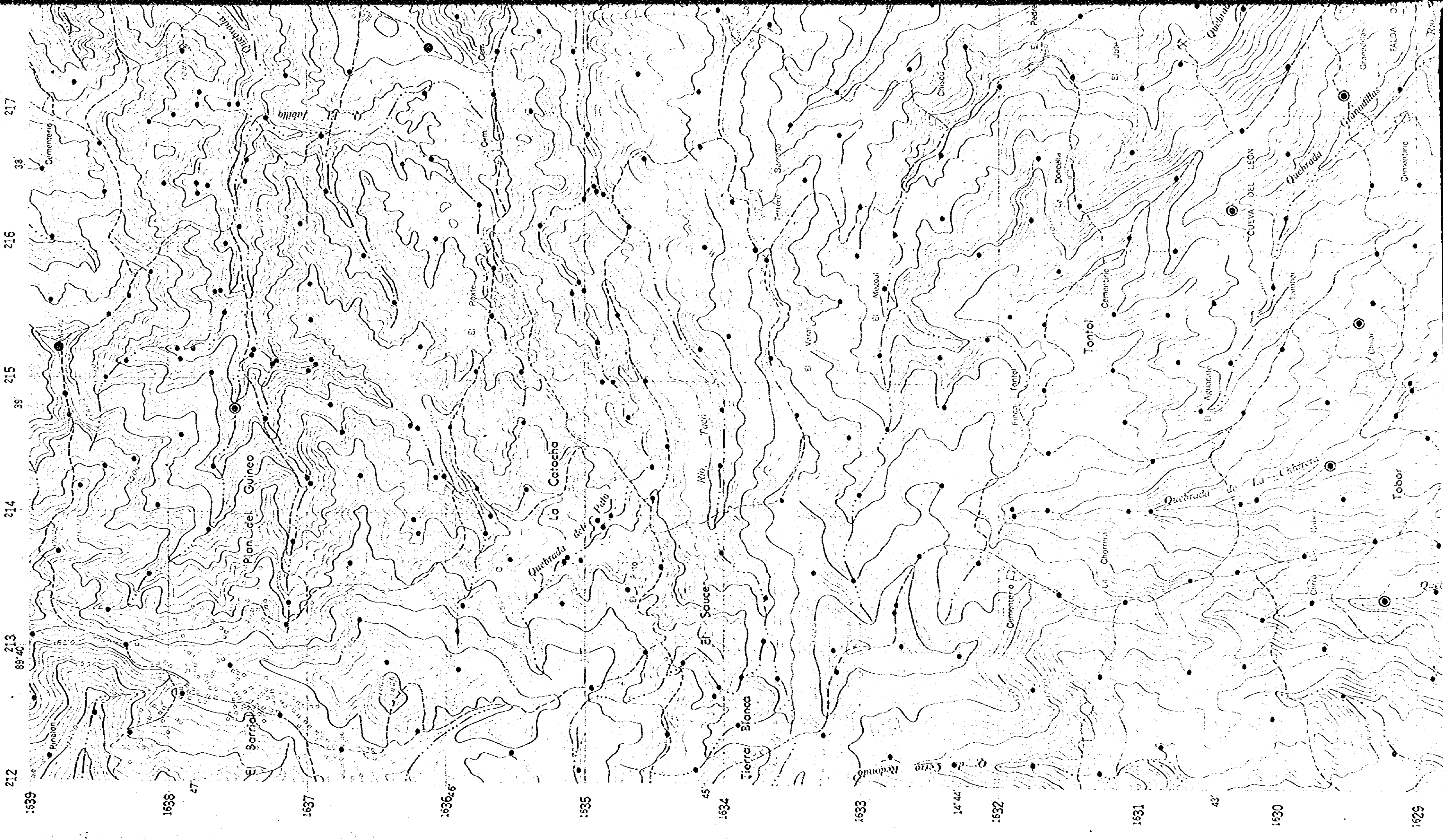
Pb (ppm)

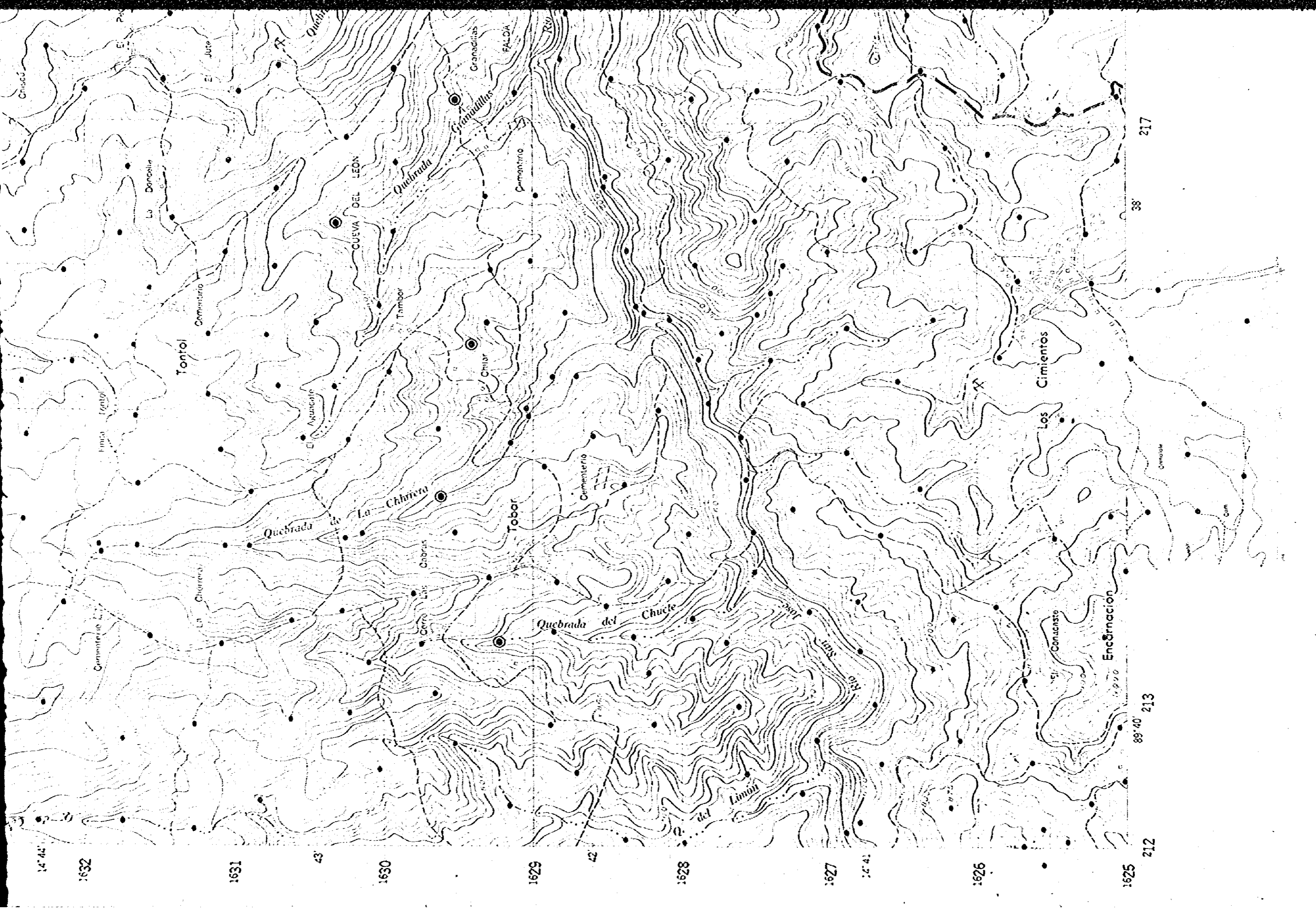
- $\geq 260$  : Anomalia geoquimica de clase A.
- $260 >$  : Anomalia geoquimica de clase B.
- $130 >$  : "Background".

Pb (ppm)

- ⊙  $\geq 260$  : Anomalia geoquímica de clase A.
- $260 >$   $\geq 130$  : Anomalia geoquímica de clase B.
- $130 >$  : " Background " .







1632

1631

1630

1629

1628

1627

1626

1625

1624

98

97

217

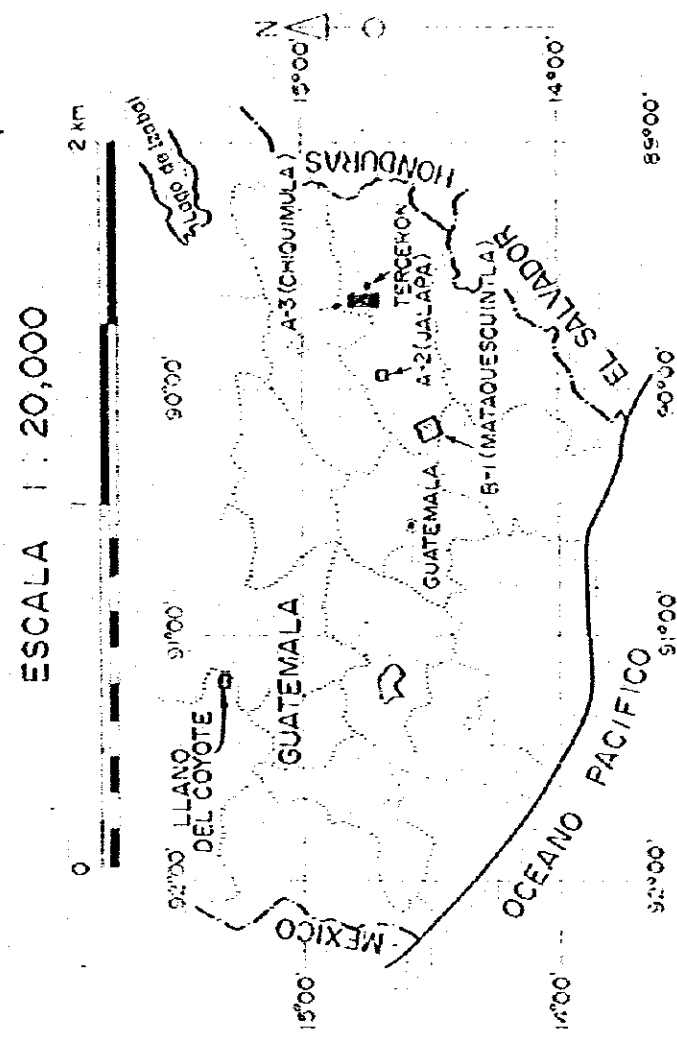
212

國際協力事業團  
09904  
國産資源部

PL. III-5-Zn

INVESTIGACION GEOLOGICA  
EN LAS AREAS DE  
A-2 (JALAPA), A-3 (CHIQUMULA), B-1 (MATAQUESQUINTLA),  
LLANO DEL COYOTE Y TERCERON  
DE LA REPUBLICA DE GUATEMALA  
FASE II

MAPA GEOQUIMICO DE Zn,  
AREA DE A-3 (CHIQUMULA)

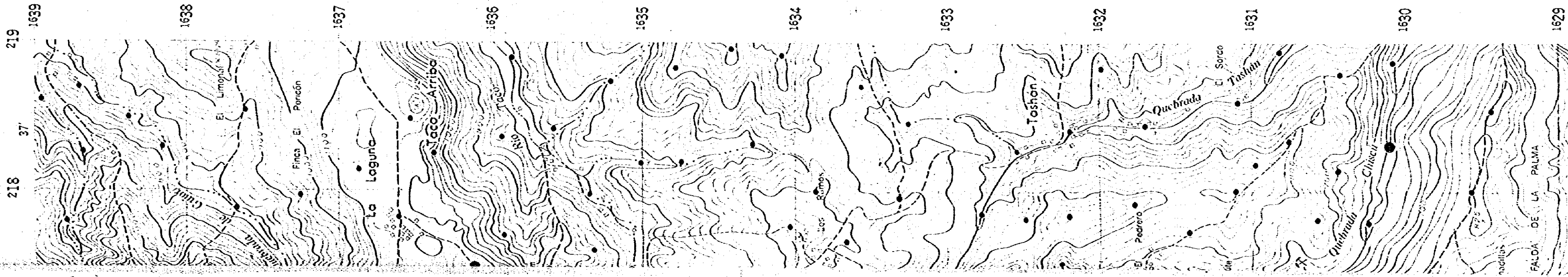


METAL MINING AGENCY OF JAPAN  
JAPAN INTERNATIONAL COOPERATION AGENCY  
EN COLABORACION CON  
DIRECCION GENERAL DE MINERIA  
E HIDROCARBUROS DE GUATEMALA  
FEBRERO 1981

LEYENDA

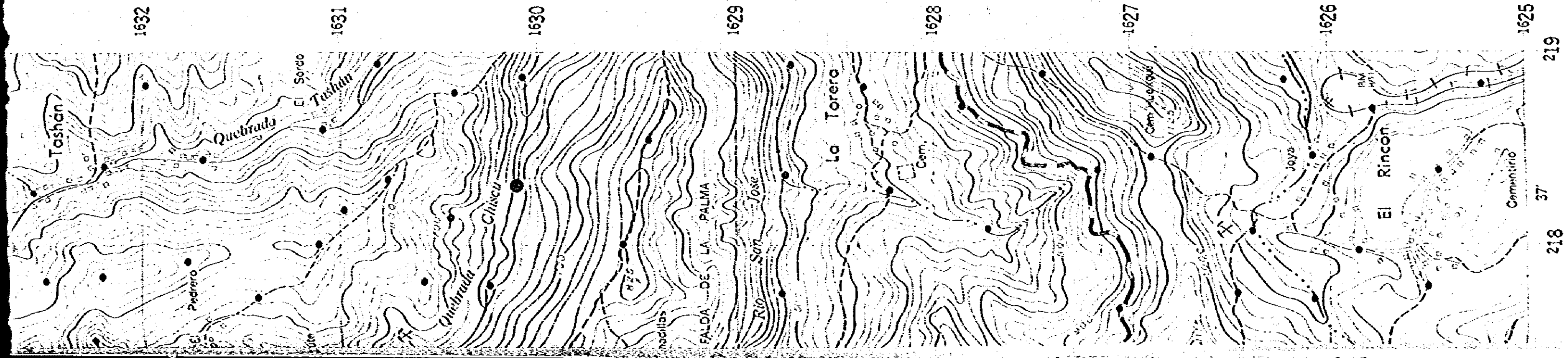
Zn (ppm)

- ≥ 470 : Anomalia geoquímica de clase A.
- 470 > ● ≥ 250 : Anomalia geoquímica de clase B.
- 250 > ● : " Background ".



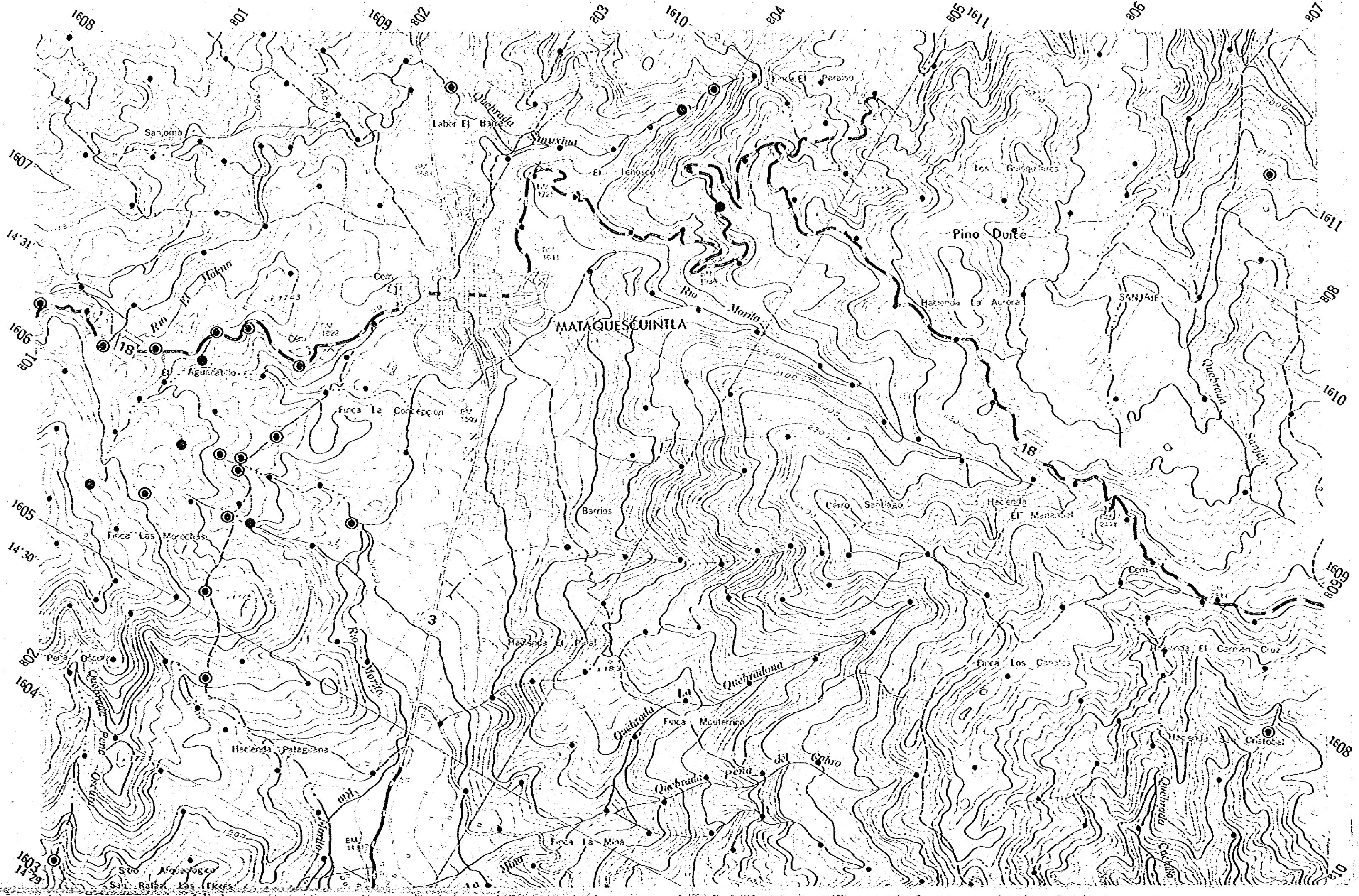
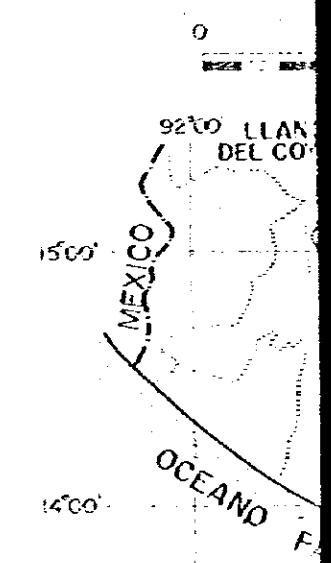
Zn (ppm)

- ⊙  $\geq 470$  : Anomalia geoquímica de clase A.
- $470 >$   $\geq 250$  : Anomalia geoquímica de clase B.
- $250 >$  : " Background ".

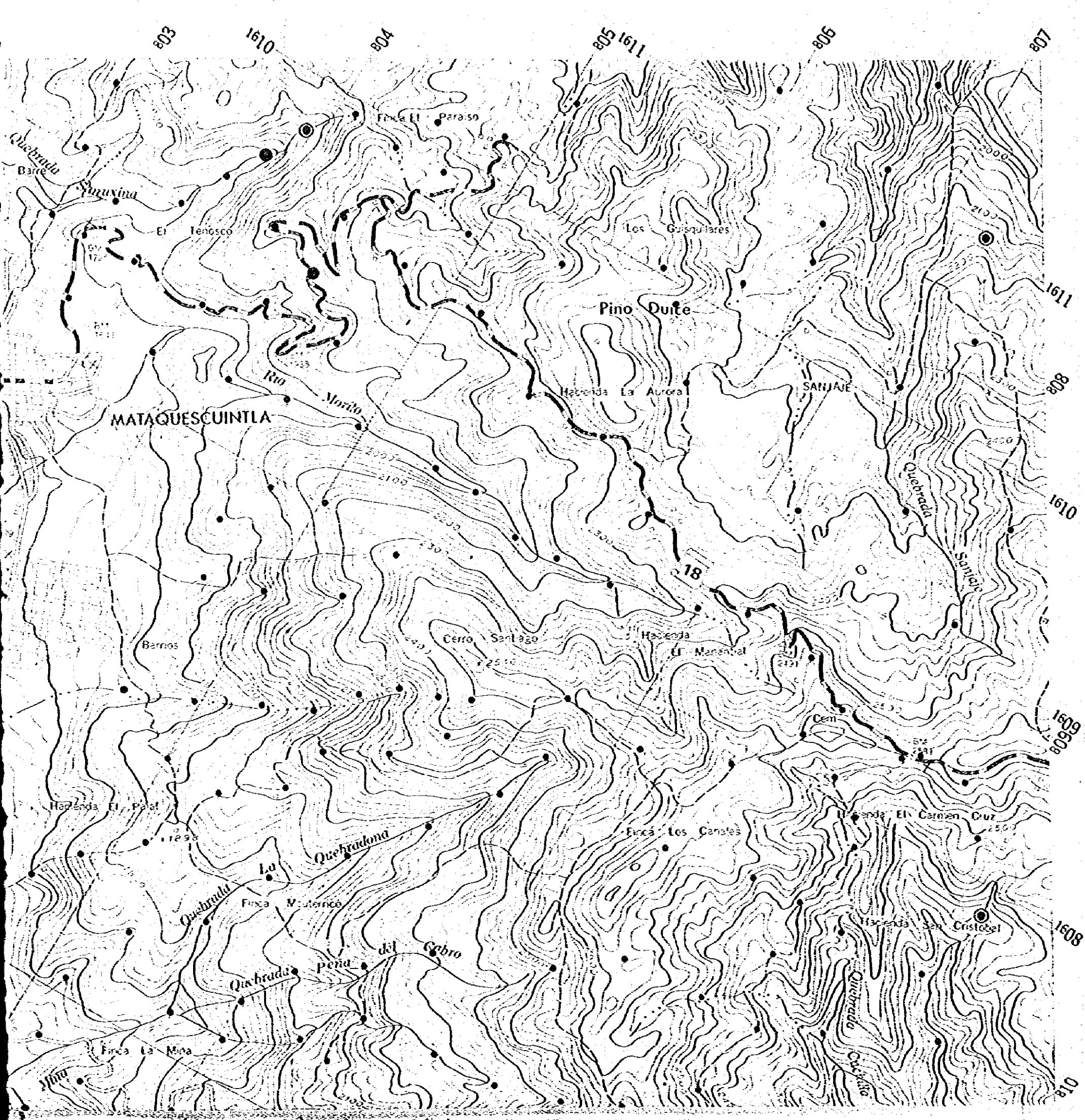


国際協力事業団  
09904  
図書資料室蔵書

A-2 (JALAPA),  
LLAN  
DE  
MA  
AREA D



MEXICO  
OCEANO P  
92°00'  
15°00'  
MET  
JAPAN I  
DIR  
E H



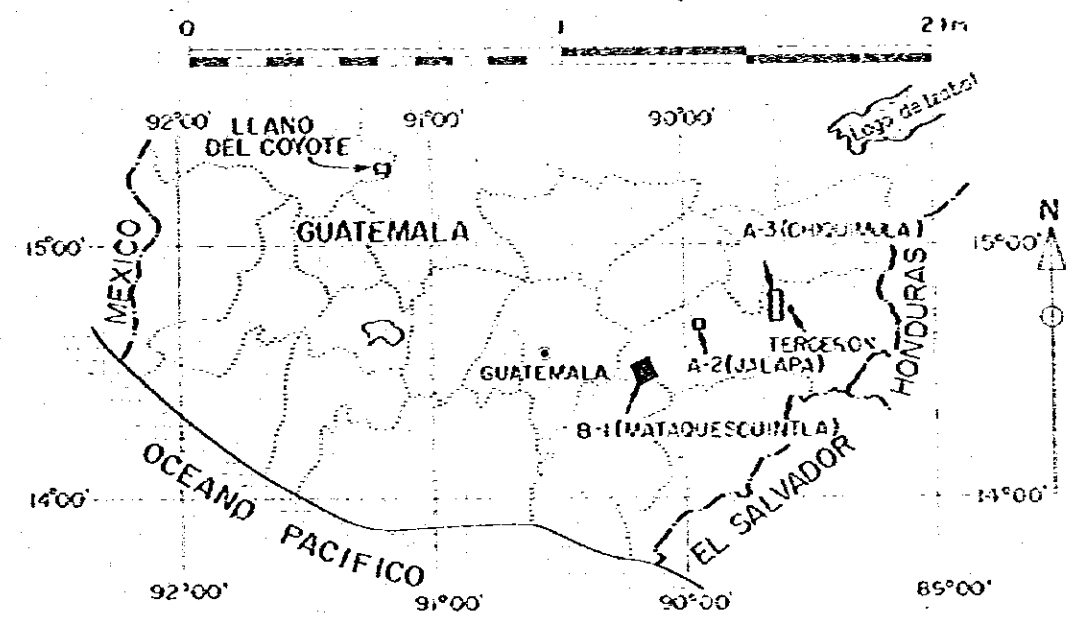
国際協力事業団  
09904  
図書資料室蔵書

PL. III-6-Ag

INVESTIGACION GEOLOGICA  
EN LAS AREAS DE  
A-2 (JALAPA), A-3 (CHIQUIMULA), B-1 (MATAQUESCUINTLA),  
LLANO DEL COYOTE Y TERCERON  
DE LA REPUBLICA DE GUATEMALA  
FASE II

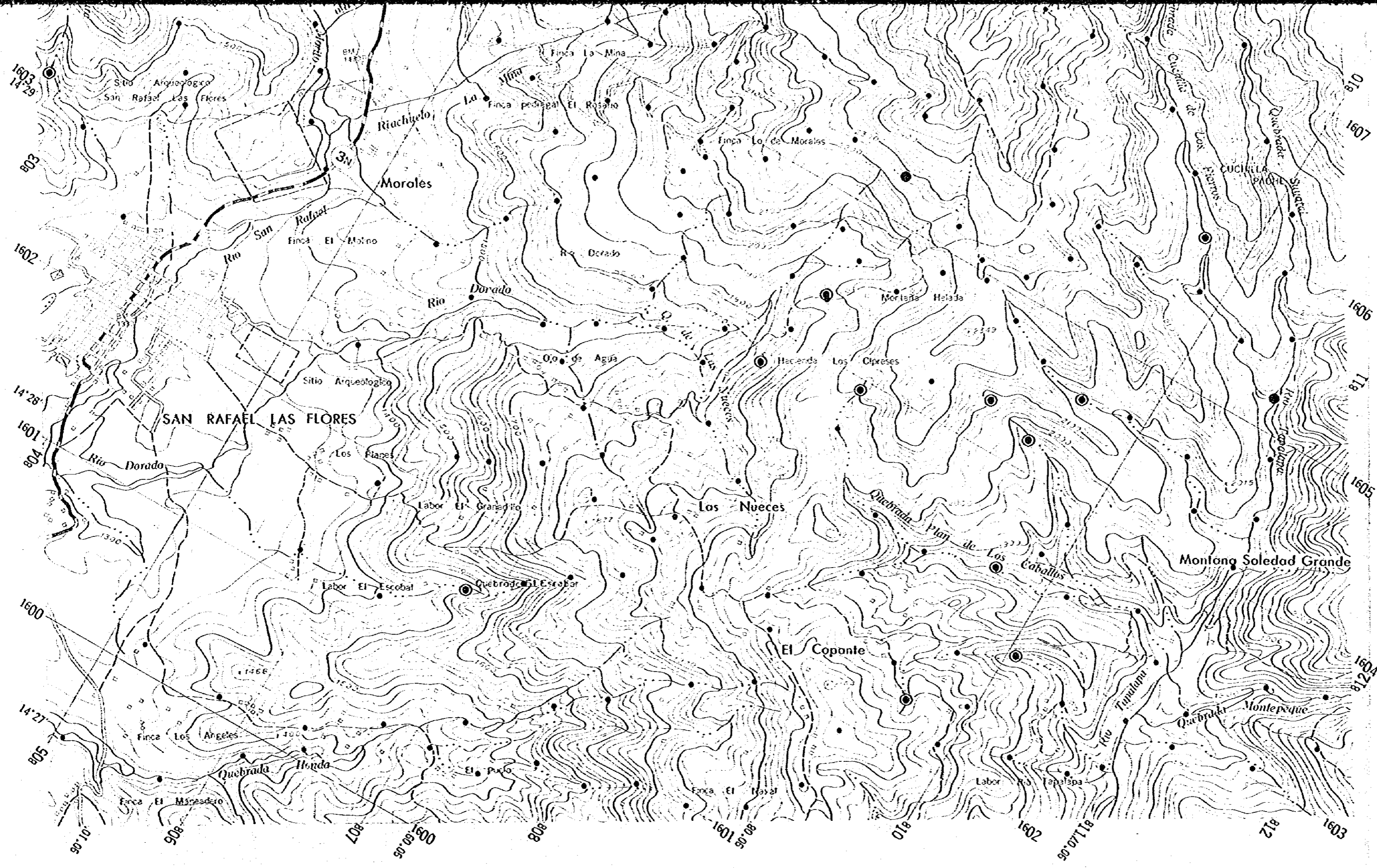
MAPA GEOQUIMICO DE Ag,  
AREA DE B-1 (MATAQUESCUINTLA)

ESCALA 1:20,000



METAL MINING AGENCY OF JAPAN  
JAPAN INTERNATIONAL COOPERATION AGENCY  
EN COLABORACION CON  
DIRECCION GENERAL DE MINERIA  
E HIDROCARBUROS DE GUATEMALA  
FEBRERO 1981



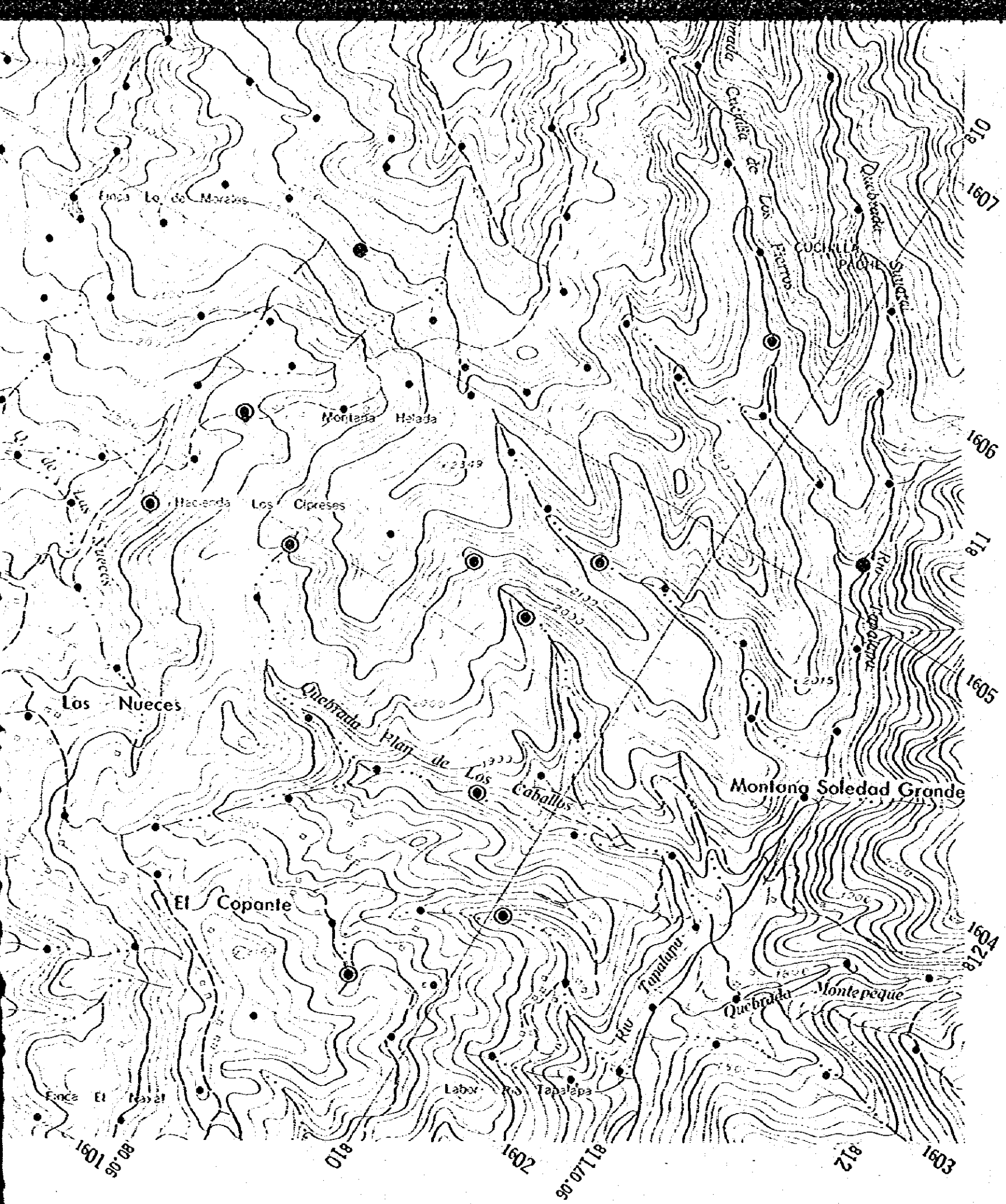


Ag (ppm)

●  $\geq 0.5$

●  $0.5 > \bullet \geq 0.4$

●  $0.4 > \bullet$

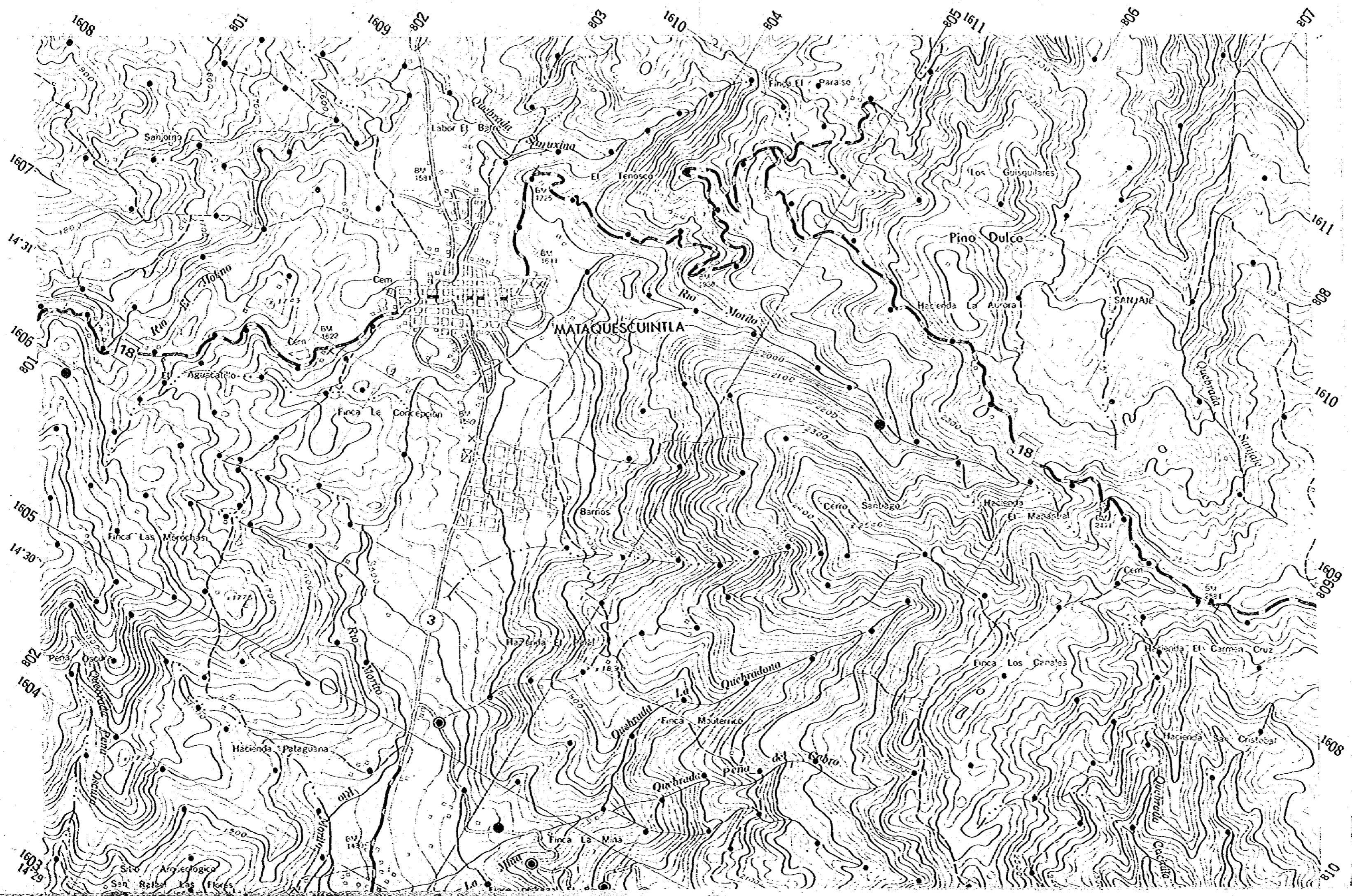


# LEYENDA

Ag (ppm)

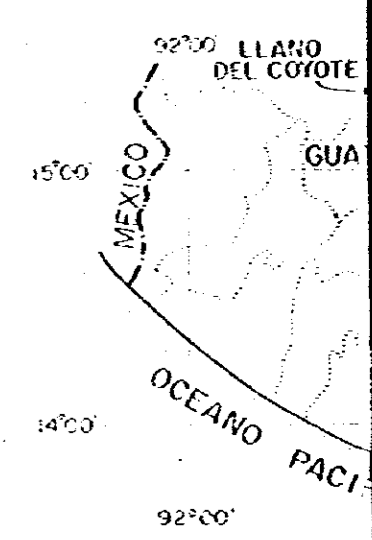
- ⊙ ≥ 0.5 : Anomalia geoquímica de clase A.
- 0.5 > ● ≥ 0.4 : Anomalia geoquímica de clase B.
- 0.4 > ● : " Background ".

國際協力事業團  
09904  
圖書資料室蔵書



INVI  
A-2 (JALAPA), A-  
LLANO  
DE LA

MAPA  
AREA DE



METAL  
JAPAN INTI  
DIRECC  
E HID

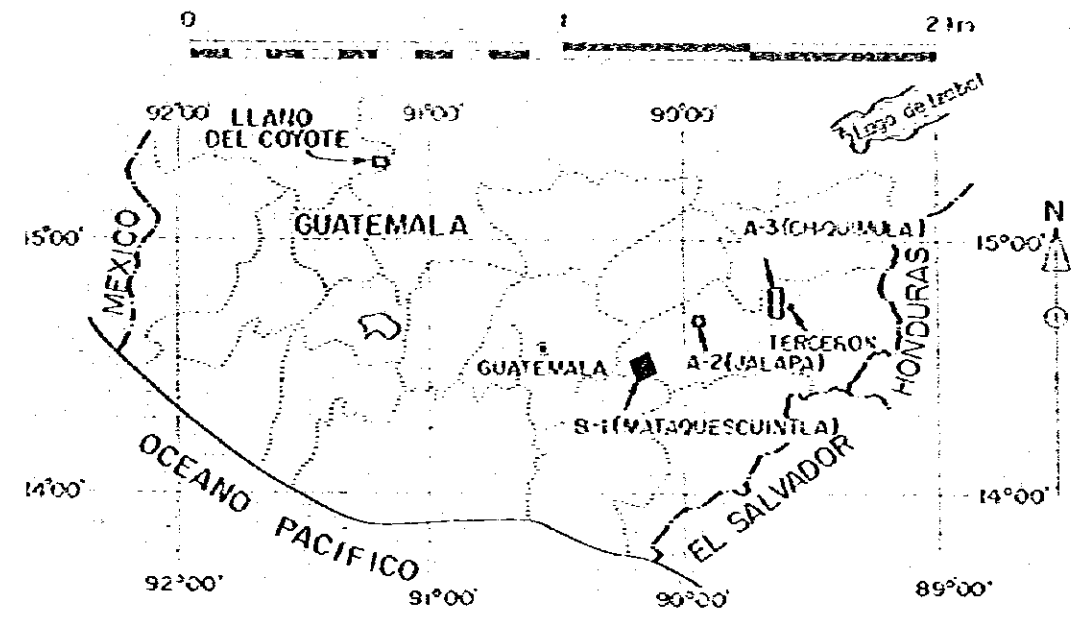
国際協力事業団  
09904  
図書資料室蔵書

PL. III-6-Cu

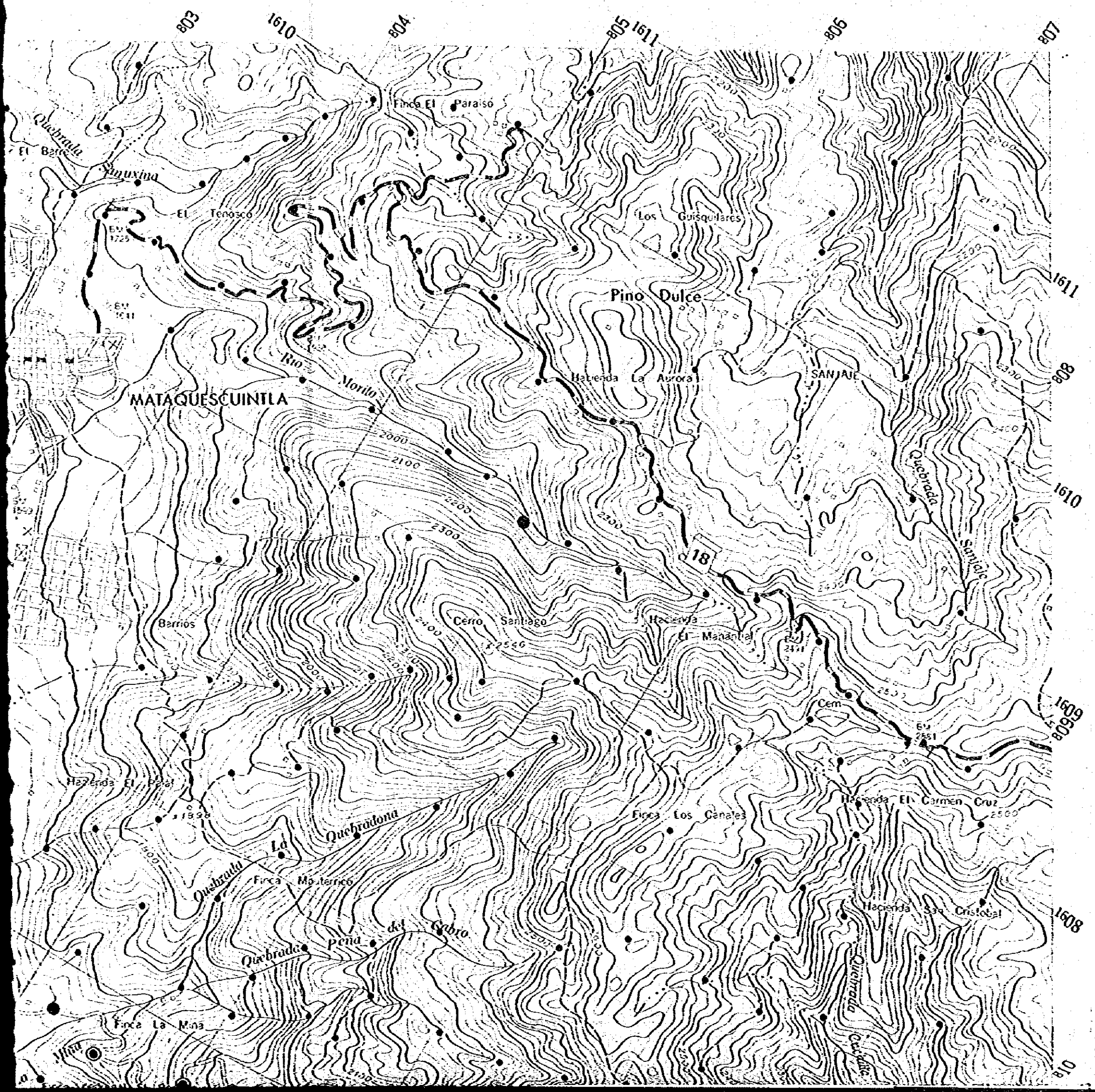
INVESTIGACION GEOLOGICA  
EN LAS AREAS DE  
A-2 (JALAPA), A-3 (CHIQUIMULA), B-1 (MATAQUESCUINTLA),  
LLANO DEL COYOTE Y TERCERON  
DE LA REPUBLICA DE GUATEMALA  
FASE II

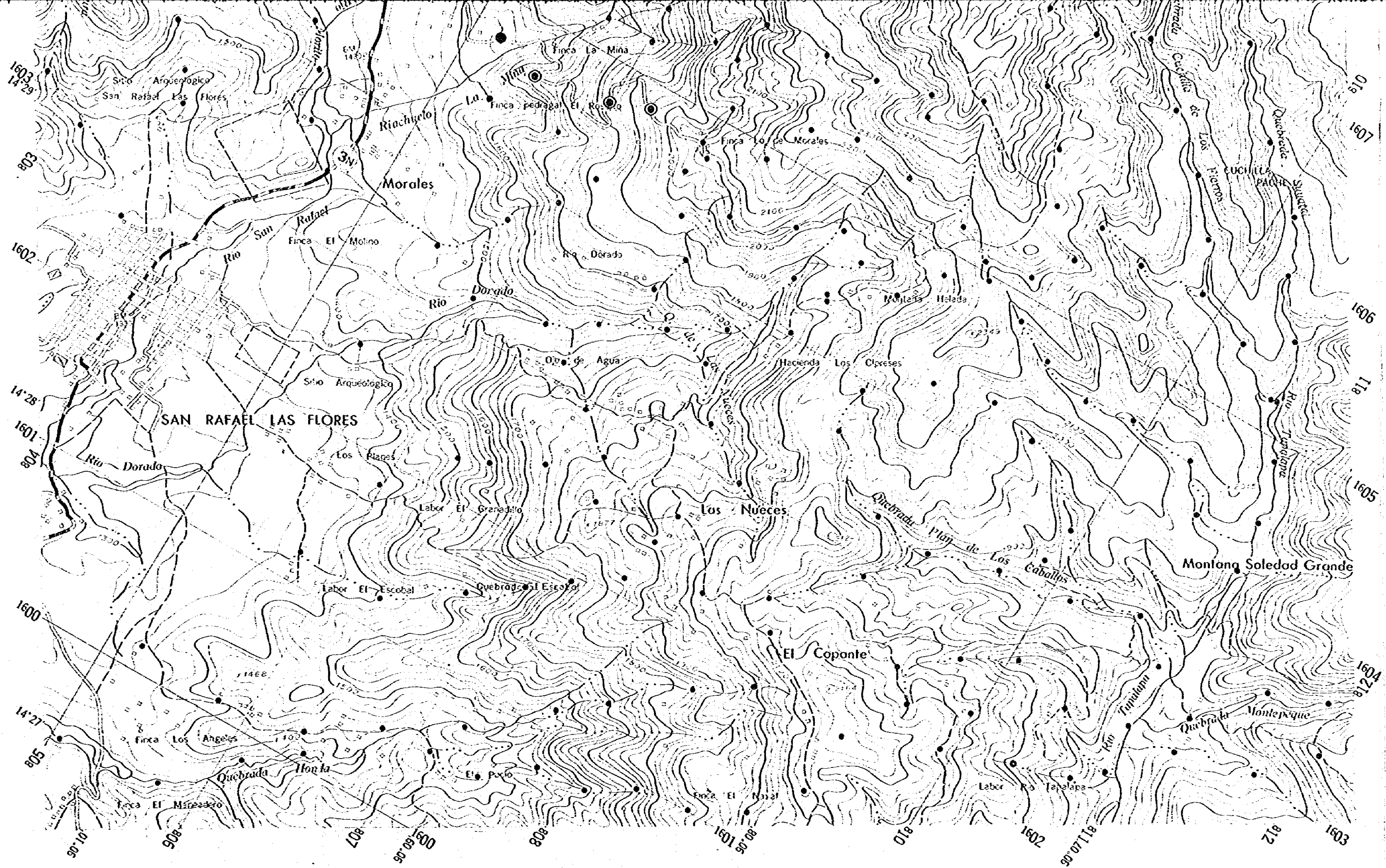
MAPA GEOQUIMICO DE Cu,  
AREA DE B-1 (MATAQUESCUINTLA)

ESCALA 1 : 20,000



METAL MINING AGENCY OF JAPAN  
JAPAN INTERNATIONAL COOPERATION AGENCY  
EN COLABORACION CON  
DIRECCION GENERAL DE MINERIA  
E HIDROCARBUROS DE GUATEMALA  
FEBRERO 1981



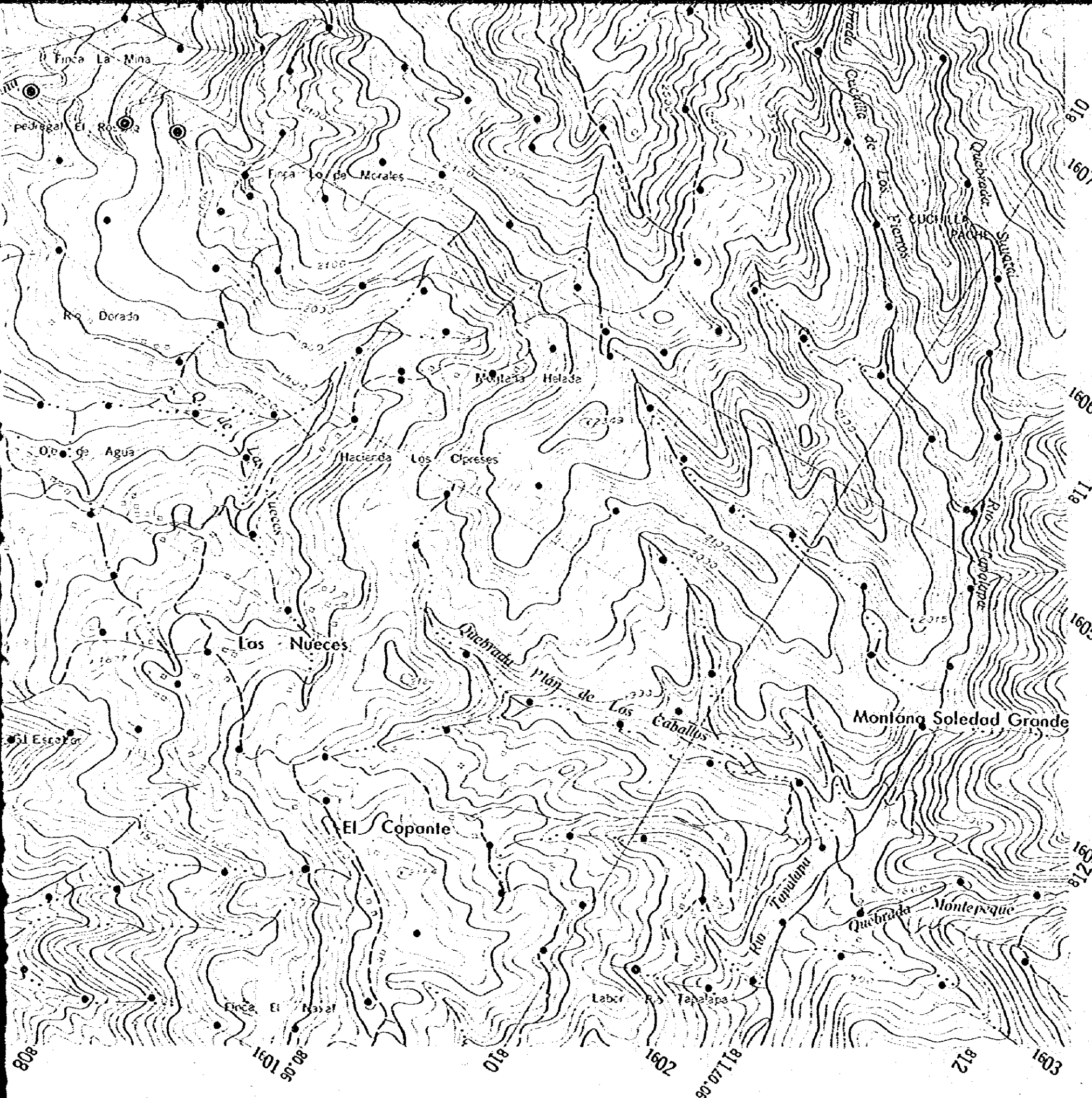


Cu (ppm)

●  $\geq 190$

●  $190 > \bullet \geq 80$

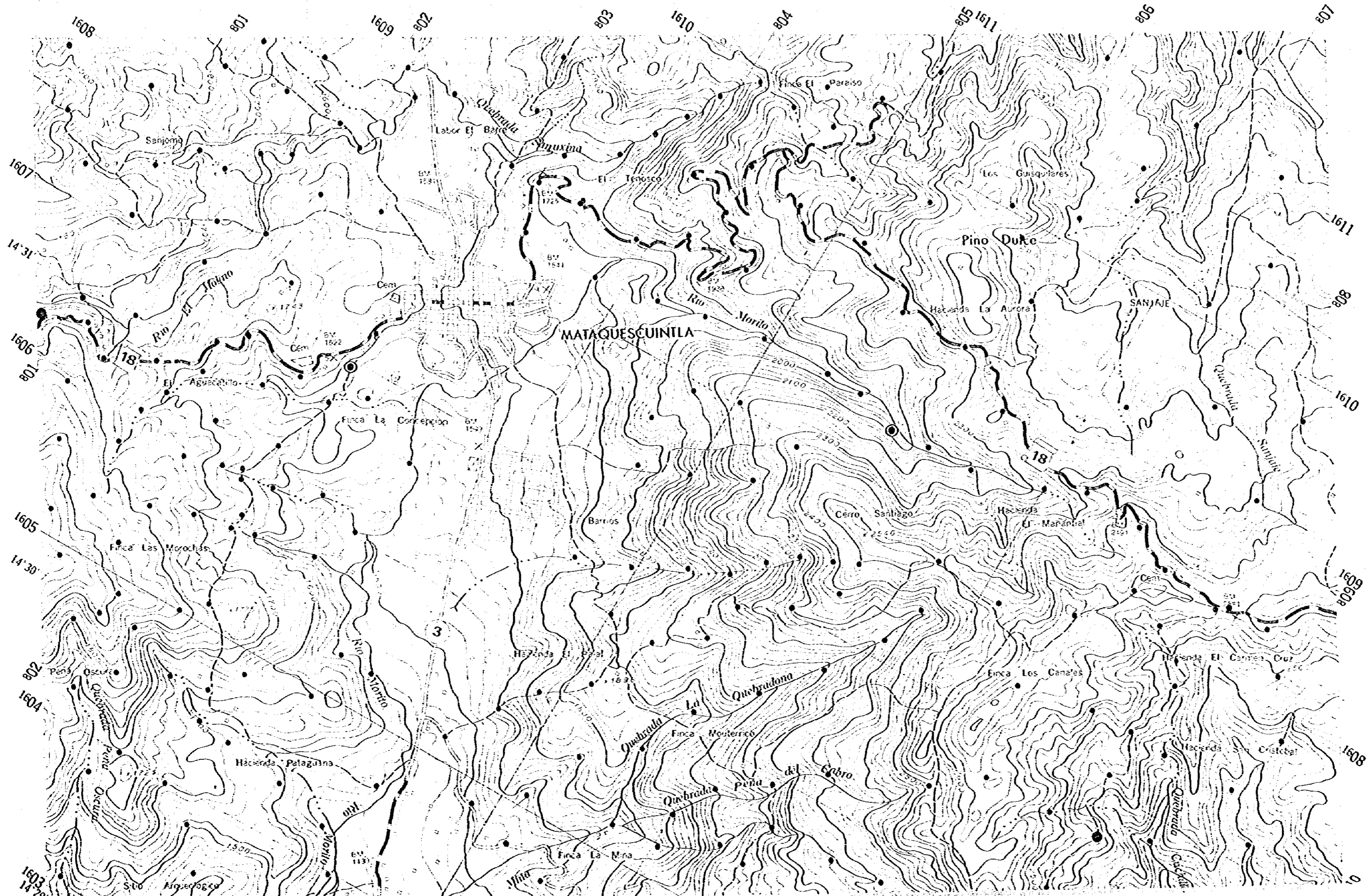
●  $80 >$



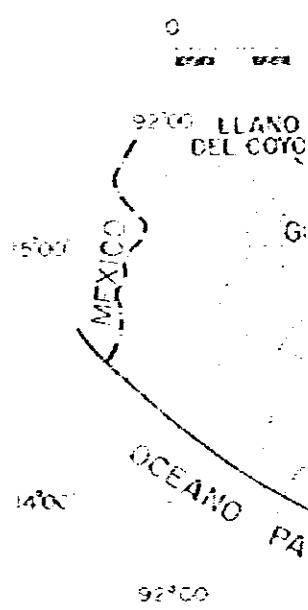
### LEYENDA

- Cu (ppm)**
- $\geq 190$  : Anomalia geoquímica de clase A.
  - $190 > \bullet \geq 80$  : Anomalia geoquímica de clase B.
  - $80 > \bullet$  : "Background".

國際協力事業團  
09904  
圖書資料室蔵書



IN  
A-2 (JALAPA), A  
LLAN  
DE L  
MAP  
AREA DE



META  
JAPAN IN  
DIRE  
E H

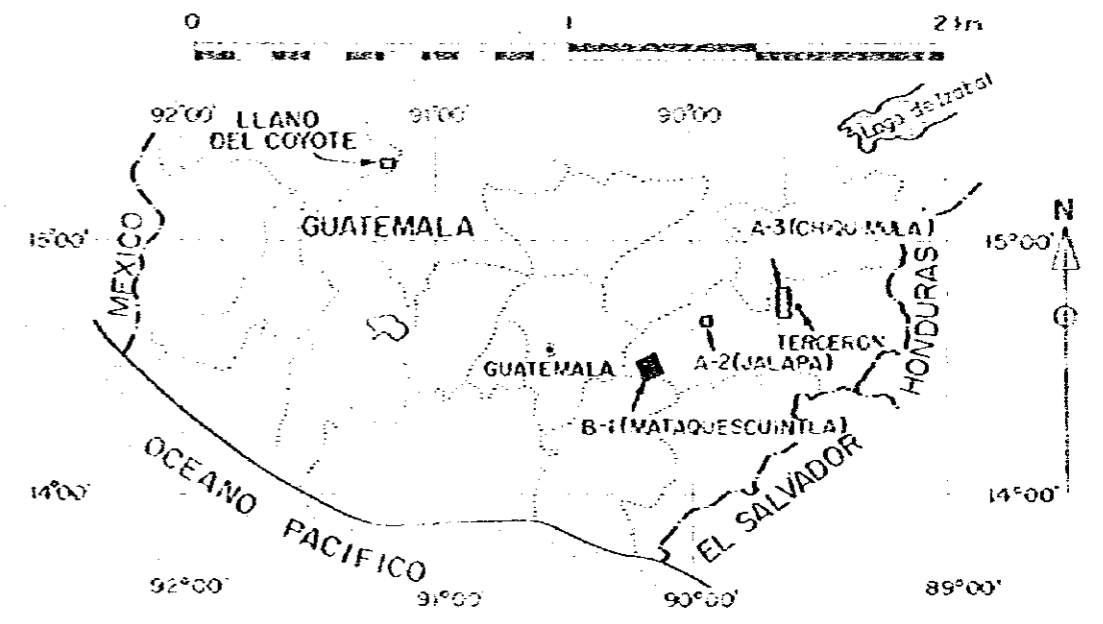
国際協力事業団  
09904  
図書資料室蔵書

PL. III - 6 - Pb

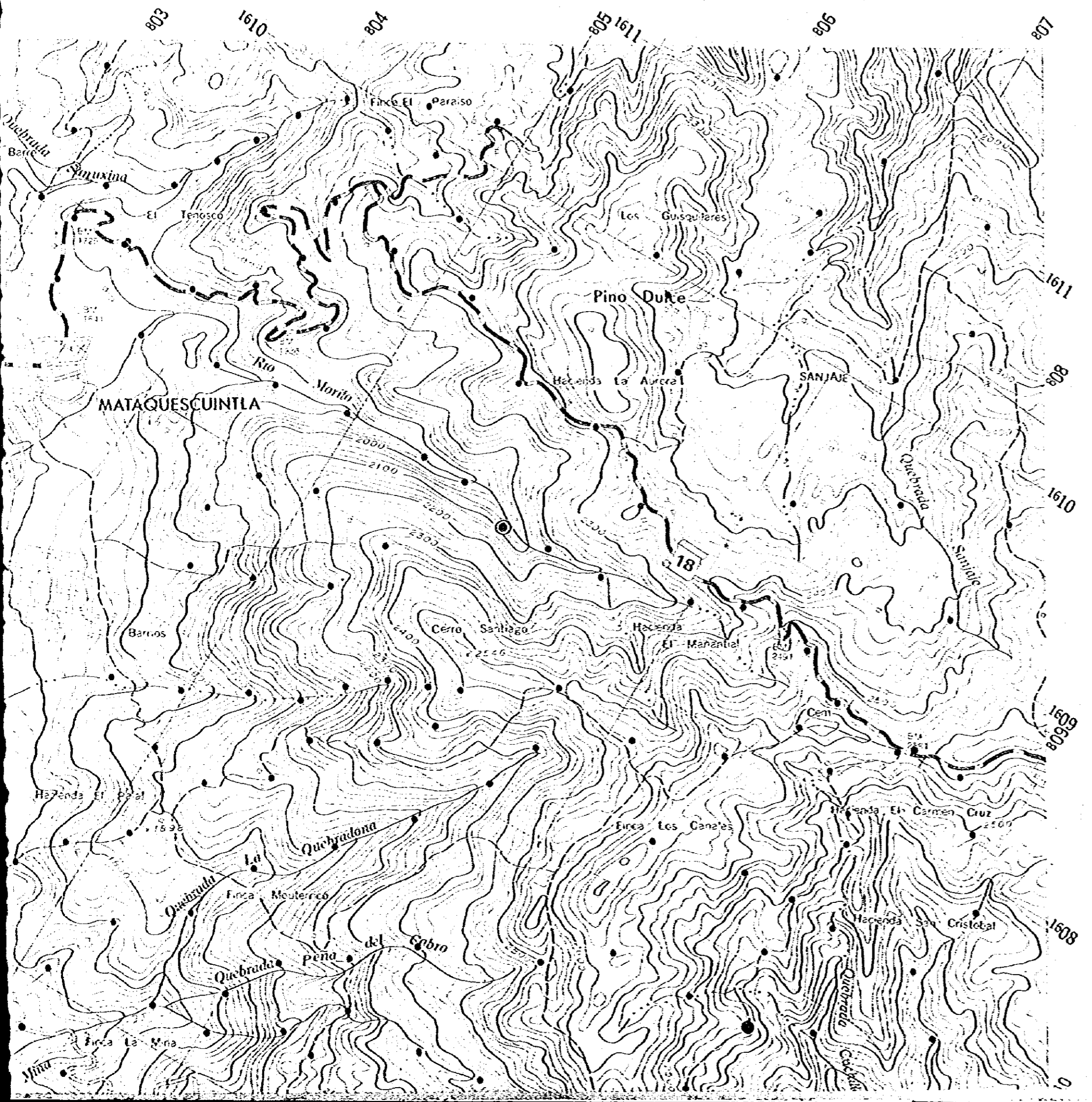
INVESTIGACION GEOLOGICA  
EN LAS AREAS DE  
A-2 (JALAPA), A-3 (CHIQUMULA), B-1 (MATAQUESCUINTLA),  
LLANO DEL COYOTE Y TERCERON  
DE LA REPUBLICA DE GUATEMALA  
FASE II

MAPA GEOQUIMICO DE Pb,  
AREA DE B-1 (MATAQUESCUINTLA)

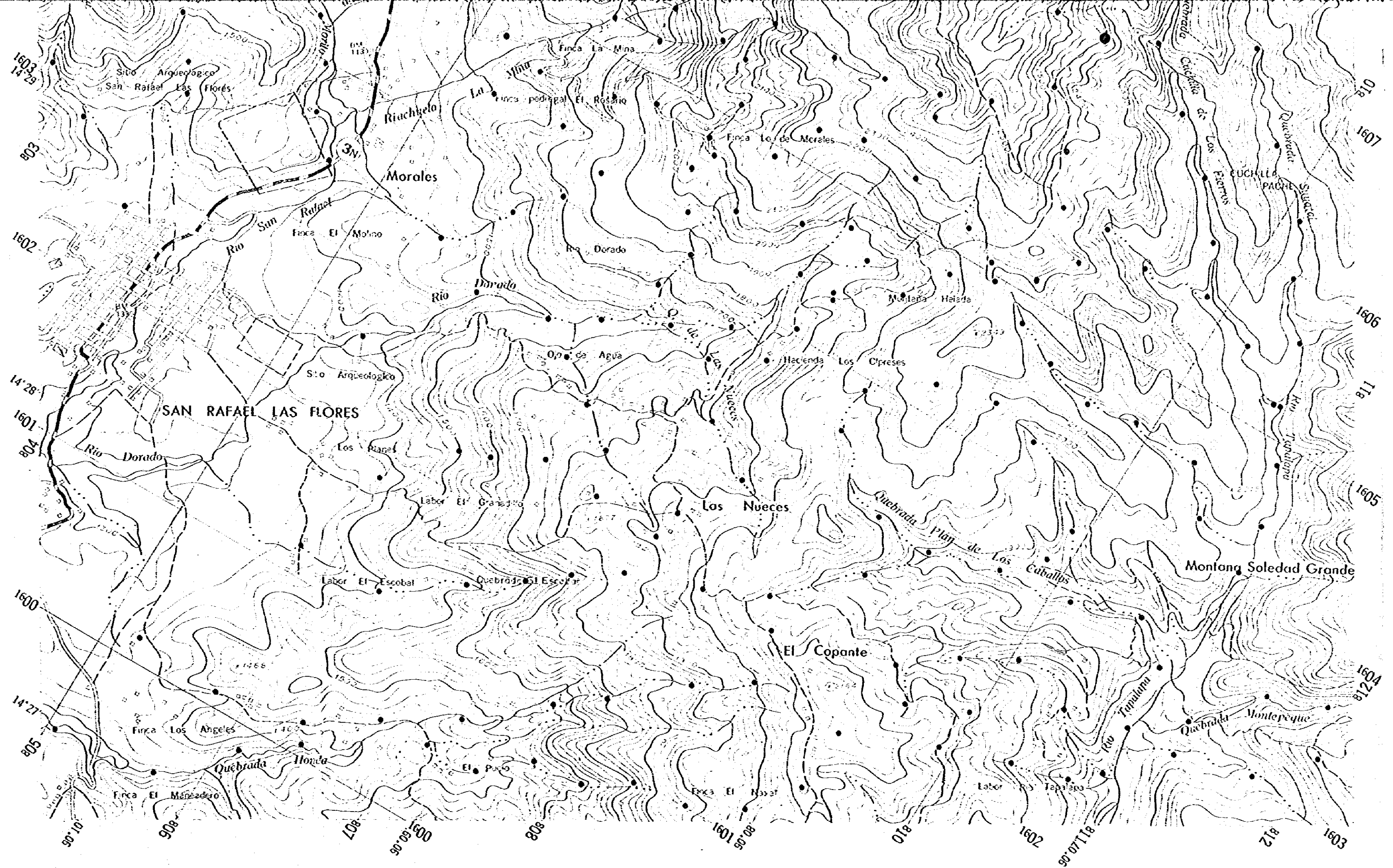
ESCALA 1 : 20,000



METAL MINING AGENCY OF JAPAN  
JAPAN INTERNATIONAL COOPERATION AGENCY  
EN COLABORACION CON  
DIRECCION GENERAL DE MINERIA  
E HIDROCARBUROS DE GUATEMALA  
FEBRERO 1981





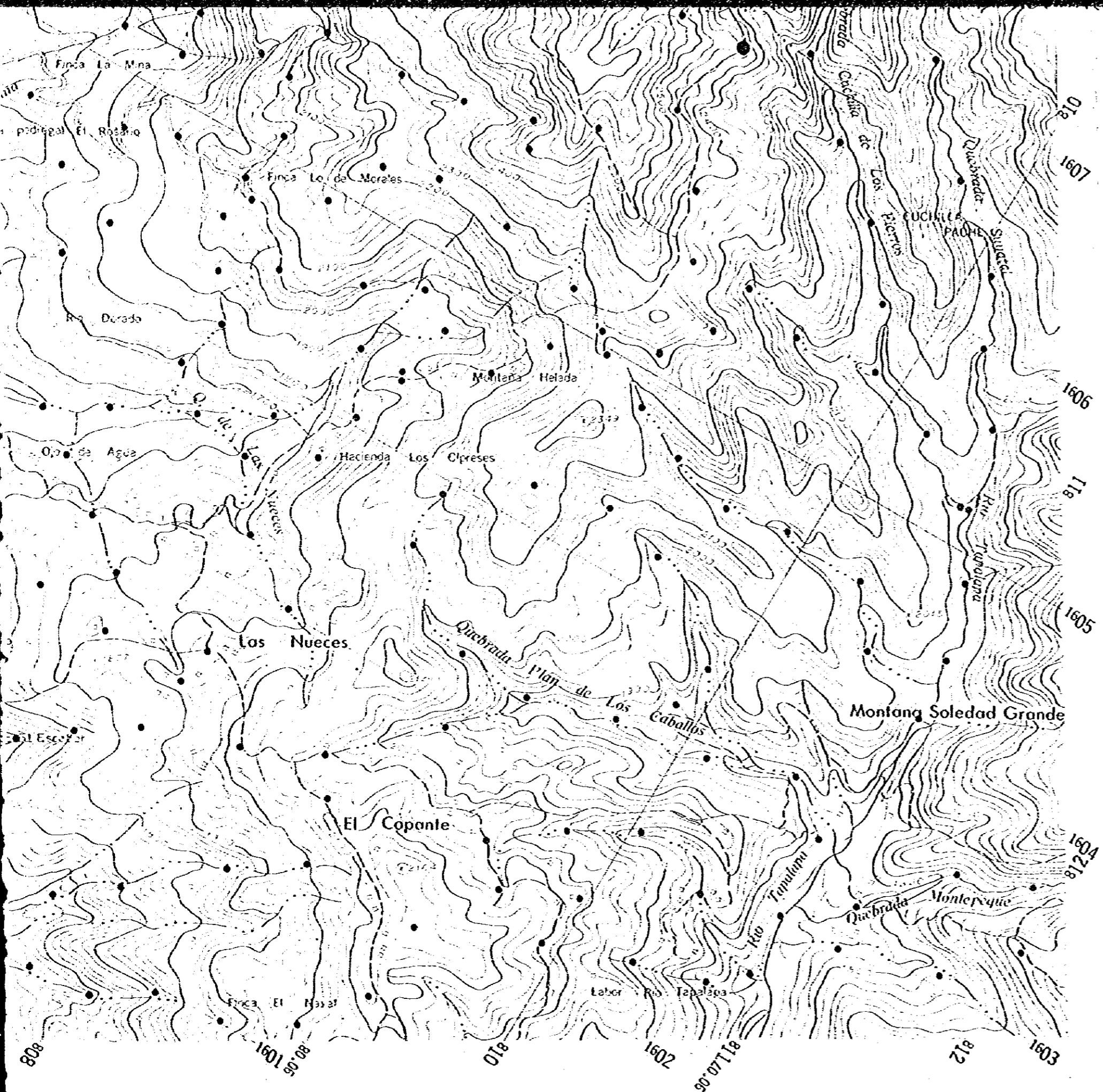


Pb (ppm)

● ≥ 360

360 > ● ≥ 160

160 > ●



### LEYENDA

- Pb (ppm)
- ⊙  $\geq 360$  : Anomalia geoquímica de clase A.
  - $360 > \bullet \geq 160$  : Anomalia geoquímica de clase B.
  - $160 > \bullet$  : " Background ".