

CDP NO.	SP	TIME	AMPLITUDE
1	549	0.0	0.0
2	549	0.1	0.0
3	549	0.2	0.0
4	549	0.3	0.0
5	549	0.4	0.0
6	549	0.5	0.0
7	549	0.6	0.0
8	549	0.7	0.0
9	549	0.8	0.0
10	549	0.9	0.0
11	549	1.0	0.0
12	549	1.1	0.0
13	549	1.2	0.0
14	549	1.3	0.0
15	549	1.4	0.0
16	549	1.5	0.0
17	549	1.6	0.0
18	549	1.7	0.0
19	549	1.8	0.0
20	549	1.9	0.0
21	549	2.0	0.0
22	549	2.1	0.0
23	549	2.2	0.0
24	549	2.3	0.0
25	549	2.4	0.0
26	549	2.5	0.0
27	549	2.6	0.0
28	549	2.7	0.0
29	549	2.8	0.0
30	549	2.9	0.0
31	549	3.0	0.0
32	549	3.1	0.0
33	549	3.2	0.0
34	549	3.3	0.0
35	549	3.4	0.0
36	549	3.5	0.0
37	549	3.6	0.0
38	549	3.7	0.0
39	549	3.8	0.0
40	549	3.9	0.0
41	549	4.0	0.0
42	549	4.1	0.0
43	549	4.2	0.0
44	549	4.3	0.0
45	549	4.4	0.0
46	549	4.5	0.0
47	549	4.6	0.0
48	549	4.7	0.0
49	549	4.8	0.0
50	549	4.9	0.0
51	549	5.0	0.0
52	549	5.1	0.0
53	549	5.2	0.0
54	549	5.3	0.0
55	549	5.4	0.0
56	549	5.5	0.0
57	549	5.6	0.0
58	549	5.7	0.0
59	549	5.8	0.0
60	549	5.9	0.0
61	549	6.0	0.0
62	549	6.1	0.0
63	549	6.2	0.0
64	549	6.3	0.0
65	549	6.4	0.0
66	549	6.5	0.0
67	549	6.6	0.0
68	549	6.7	0.0
69	549	6.8	0.0
70	549	6.9	0.0
71	549	7.0	0.0
72	549	7.1	0.0
73	549	7.2	0.0
74	549	7.3	0.0
75	549	7.4	0.0
76	549	7.5	0.0
77	549	7.6	0.0
78	549	7.7	0.0
79	549	7.8	0.0
80	549	7.9	0.0
81	549	8.0	0.0
82	549	8.1	0.0
83	549	8.2	0.0
84	549	8.3	0.0
85	549	8.4	0.0
86	549	8.5	0.0
87	549	8.6	0.0
88	549	8.7	0.0
89	549	8.8	0.0
90	549	8.9	0.0
91	549	9.0	0.0
92	549	9.1	0.0
93	549	9.2	0.0
94	549	9.3	0.0
95	549	9.4	0.0
96	549	9.5	0.0
97	549	9.6	0.0
98	549	9.7	0.0
99	549	9.8	0.0
100	549	9.9	0.0
101	549	10.0	0.0

VEL. ANALYSIS

JAPAN INTERNATIONAL COOPERATION AGENCY

NE

SEISMIC SURVEY
DEPTH MIGRATED SECTION

OFFSHORE AREA OF
ZONGULDAK COAL
FIELD IN TURKEY
LINE T3AB12.5
S.P. 1 - 549

ENCL. 14

FIELD RECORDING DATA

RECORDED BY	RIS
INSTRUMENT	OPS 14
RECORD LENGTH	3.0 SEC.
SAMPLE RATE	1.0 SEC.
FILTER	LOW 0/36 HZ/OB/OCT
GAIN CONTROL	PI: 248 (HZ)
ENERGY SOURCE	1.4 P
	3 AIR GUNS (70 CU. IN. (40, 20, 10))
	(1750 PSI.)
SHOT INTERVAL	12.5 M.
CDP MULTIPLICITY	24-FOLD
DETECTOR CABLE	SEC-STREAMER
SURVEY DATE	JULY 1978
SURVEY VESSEL	SISIMIN I

PROCESSING SEQUENCE

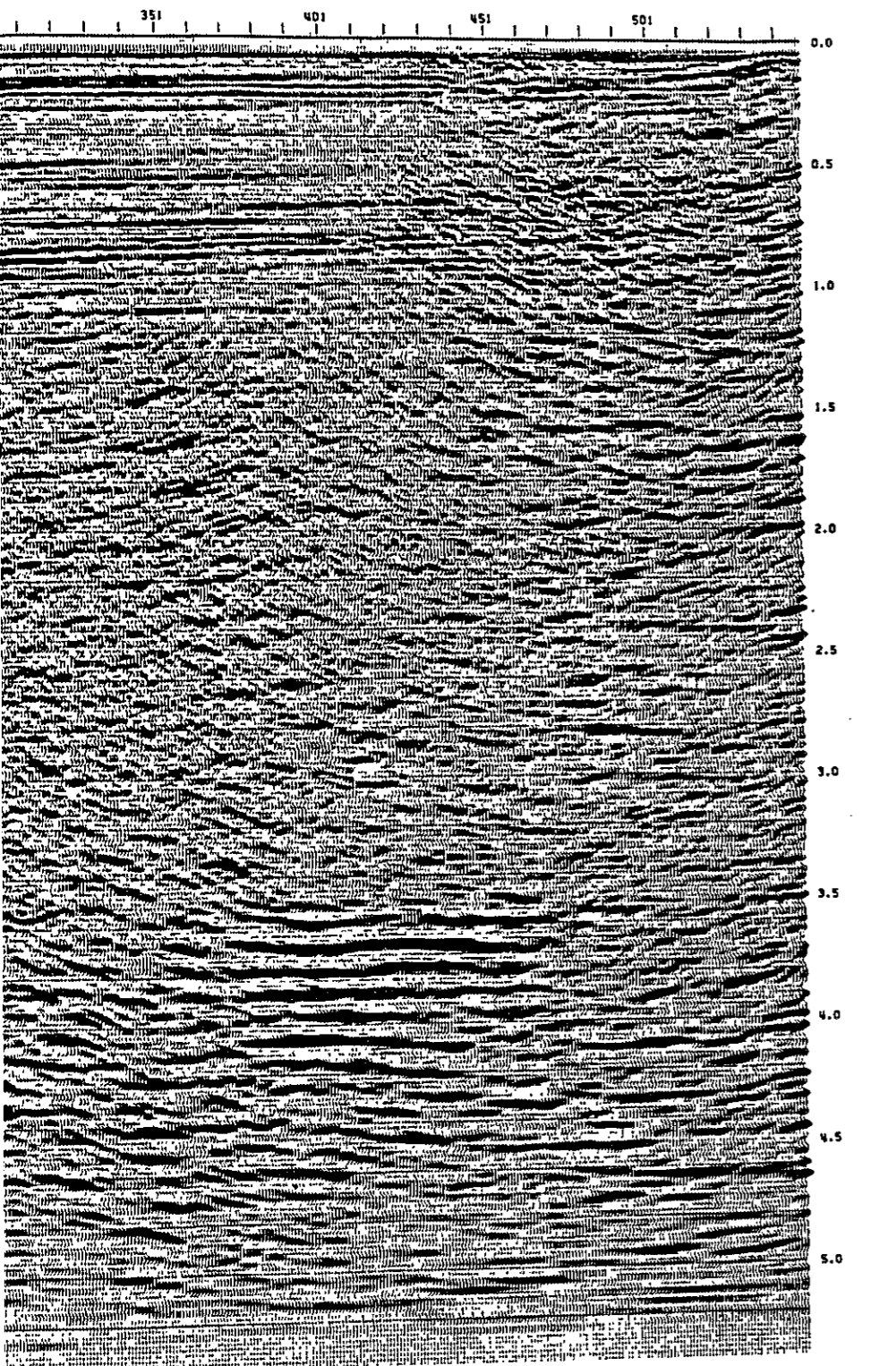
PROCESS LENGTH	3.0 SEC.
SAMPLE RATE	1.0 MSEC.

1) RECORD EDIT	1) MUTE
2) CDP SORT	2) STRETCH 24-FOLD
3) GAIN RECOVERY	3) DECONVOLUTION
4) DECONVOLUTION	4) T.V. FILTER
5) RESAMPLE 1 TO 2 INSEC.	5) DATUM CORRECTION
6) VELOCITY ANALYSIS	6) SCALING
7) NMO CORRECTION	7) F-K DEPTH MIGRATION

DISPLAY

POLARITY	NORMAL
HORIZONTAL SCALE	30 IN./CH. (1:12500)
VERTICAL SCALE	7.5 CM./CH. (1:13333)
DISPLAY GAIN	5 DECIBEL

JAPAN PETROLEUM
EXPLORATION CO., LTD.
GEOPHYSICAL HEADQUARTERS



CROSS LINE

SHOT NUMBER

5.5 (M)

CDP#	SP	TIME	AMPL
170	275	2.75	1.00
171	276	2.76	1.00
172	277	2.77	1.00
173	278	2.78	1.00
174	279	2.79	1.00
175	280	2.80	1.00
176	281	2.81	1.00
177	282	2.82	1.00
178	283	2.83	1.00
179	284	2.84	1.00
180	285	2.85	1.00
181	286	2.86	1.00
182	287	2.87	1.00
183	288	2.88	1.00
184	289	2.89	1.00
185	290	2.90	1.00
186	291	2.91	1.00
187	292	2.92	1.00
188	293	2.93	1.00
189	294	2.94	1.00
190	295	2.95	1.00
191	296	2.96	1.00
192	297	2.97	1.00
193	298	2.98	1.00
194	299	2.99	1.00
195	300	3.00	1.00

CDP#	SP	TIME	AMPL
196	301	3.01	1.00
197	302	3.02	1.00
198	303	3.03	1.00
199	304	3.04	1.00
200	305	3.05	1.00
201	306	3.06	1.00
202	307	3.07	1.00
203	308	3.08	1.00
204	309	3.09	1.00
205	310	3.10	1.00
206	311	3.11	1.00
207	312	3.12	1.00
208	313	3.13	1.00
209	314	3.14	1.00
210	315	3.15	1.00
211	316	3.16	1.00
212	317	3.17	1.00
213	318	3.18	1.00
214	319	3.19	1.00
215	320	3.20	1.00
216	321	3.21	1.00
217	322	3.22	1.00
218	323	3.23	1.00
219	324	3.24	1.00
220	325	3.25	1.00

CDP#	SP	TIME	AMPL
221	326	3.26	1.00
222	327	3.27	1.00
223	328	3.28	1.00
224	329	3.29	1.00
225	330	3.30	1.00
226	331	3.31	1.00
227	332	3.32	1.00
228	333	3.33	1.00
229	334	3.34	1.00
230	335	3.35	1.00
231	336	3.36	1.00
232	337	3.37	1.00
233	338	3.38	1.00
234	339	3.39	1.00
235	340	3.40	1.00
236	341	3.41	1.00
237	342	3.42	1.00
238	343	3.43	1.00
239	344	3.44	1.00
240	345	3.45	1.00

CDP#	SP	TIME	AMPL
241	346	3.46	1.00
242	347	3.47	1.00
243	348	3.48	1.00
244	349	3.49	1.00
245	350	3.50	1.00
246	351	3.51	1.00
247	352	3.52	1.00
248	353	3.53	1.00
249	354	3.54	1.00
250	355	3.55	1.00
251	356	3.56	1.00
252	357	3.57	1.00
253	358	3.58	1.00
254	359	3.59	1.00
255	360	3.60	1.00
256	361	3.61	1.00
257	362	3.62	1.00
258	363	3.63	1.00
259	364	3.64	1.00
260	365	3.65	1.00

VEL. ANALYSIS

JAPAN INTER
COOPERATION

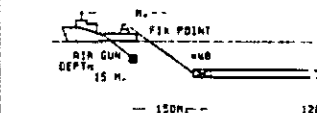
NE

SEISMIC S
24 FOLD RECORD

OFFSHORE
ZONGULDAK
FIELD IN
LINE TIA
S.P.291 -
ENCL. 15

FIELD RECORDING

RECORDED BY	RTG
INSTRUMENT	DFP 11
RECORD LENGTH	3.0 SEC
SAMPLE RATE	2 HSEC
FILTER	LOW P
GAIN CONTROL	1.0
ENERGY SOURCE	1.0
SHOT INTERVAL	1.0 SEC
CDP MULTIPLICITY	24-FOLD
DEFLECTION CABLE	SEC-5
WAVE DATE	06-78
SURVEY VESSEL	STIMP



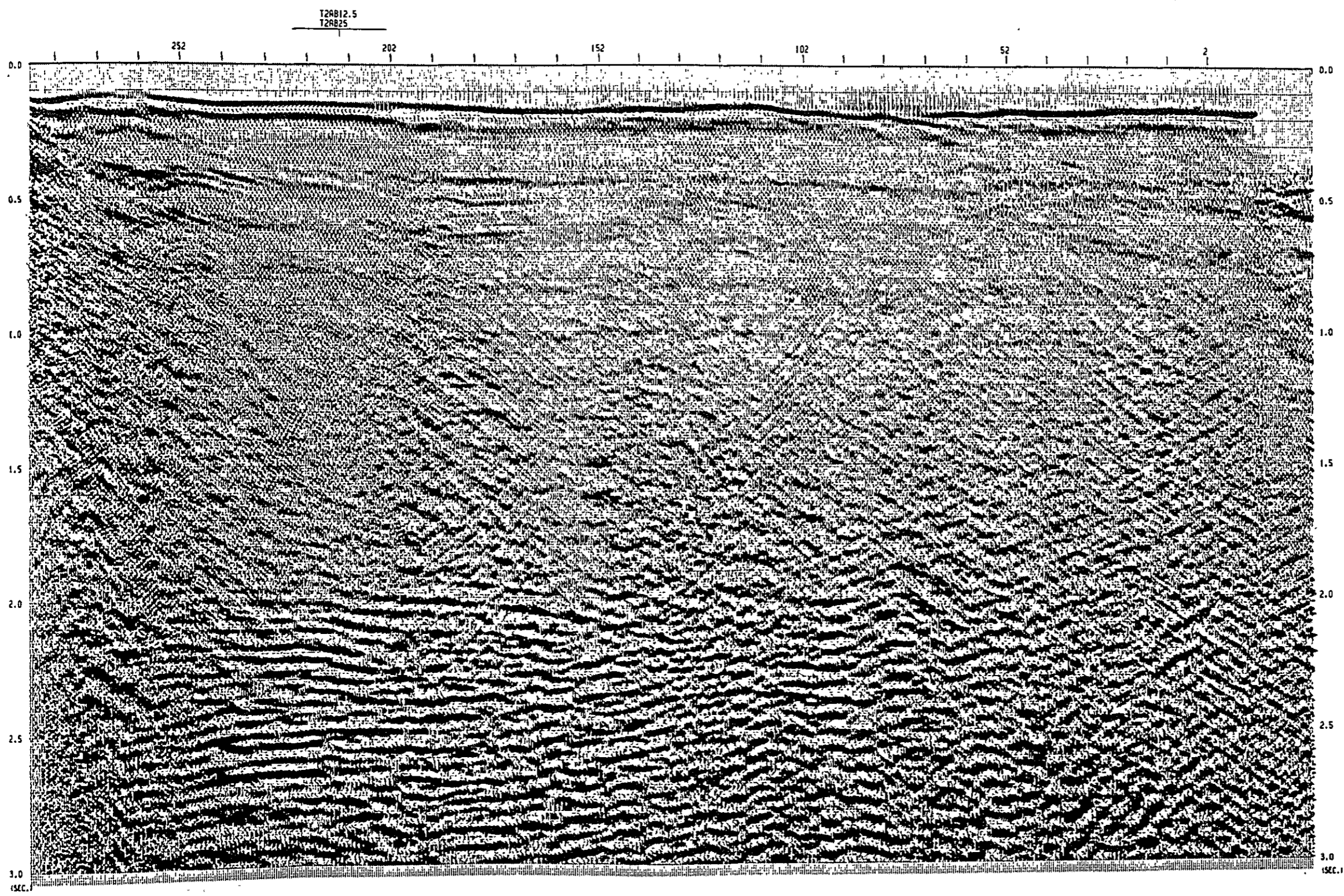
PROCESSING S

PROCESS LENGTH	3.0
SAMPLE RATE	2.0
1) RECORD EDIT	1.0
2) EDP SORT	1.0
EDP INTERVAL	12.5 M.
3) GAIN RECOVERY	1.0
ARC	
DATE LENGTH	150 MSEC.
4) DECONVOLUTION	
OP. LENGTH	300 MSEC.
PA. DISTANCE	2 MSEC.
DESIGN GATE LENGTH	2000 MSEC.
5) BANDPASS FILTER	0-75 HZ
OP. LENGTH	300 MSEC.
6) VELOCITY ANALYSIS	
BY E.T. SCHWARTZ	
7) NMO CORRECTION	

DISPLA

POLARITY	NOR
HORIZONTAL SCALE	10
VERTICAL SCALE	5
DISPLAY GAIN	3.0

JAPAN PET
EXPLORATI
GEOPHYSIC



CDP#			
SP -1			
TRC	CDP#	TIME	TIME
0	214	0352	0352
0	317	0352	0352
0	419	0661	0661
0	522	0743	0743
0	624	0815	0815
0	726	0887	0887
0	829	0959	0959
1	931	0980	0980
2	1033	1052	1052

TURKEY T1-AB25 2 2

VEL. ANALYSIS

CROSS LINE

SHOT NUMBER

JAPAN INTERNATIONAL
COOPERATION AGENCY

NE

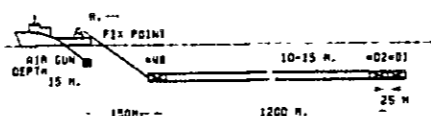
SEISMIC SURVEY
24 FOLD RECORD SECTION

OFFSHORE AREA OF
ZONGULDAK COAL
FIELD IN TURKEY
LINE T1AB25
S.P.291 - 2

ENCL. 15

FIELD RECORDING DATA

RECORDED BY	MR
INSTRUMENT	OPC 15
RECORD LENGTH	2.0 SEC.
SAMPLE RATE	2 HSEC.
FILTER	LOW 8.25 HZ, 0.0CT
	HIGH 124 HZ
CRN CONTROL	1.0 P
ENERGY SOURCE	1 AIR GUNS 11005 CU. IN. 1
	(1750 PSI.)
SHOT INTERVAL	25 M
CDP MULTIPLICITY	24-FOLD
DETECTION CABLE	SEC-5 FIBER
START DATE	JUN 1 1979
START VESSEL	STB-11



PROCESSING SEQUENCE

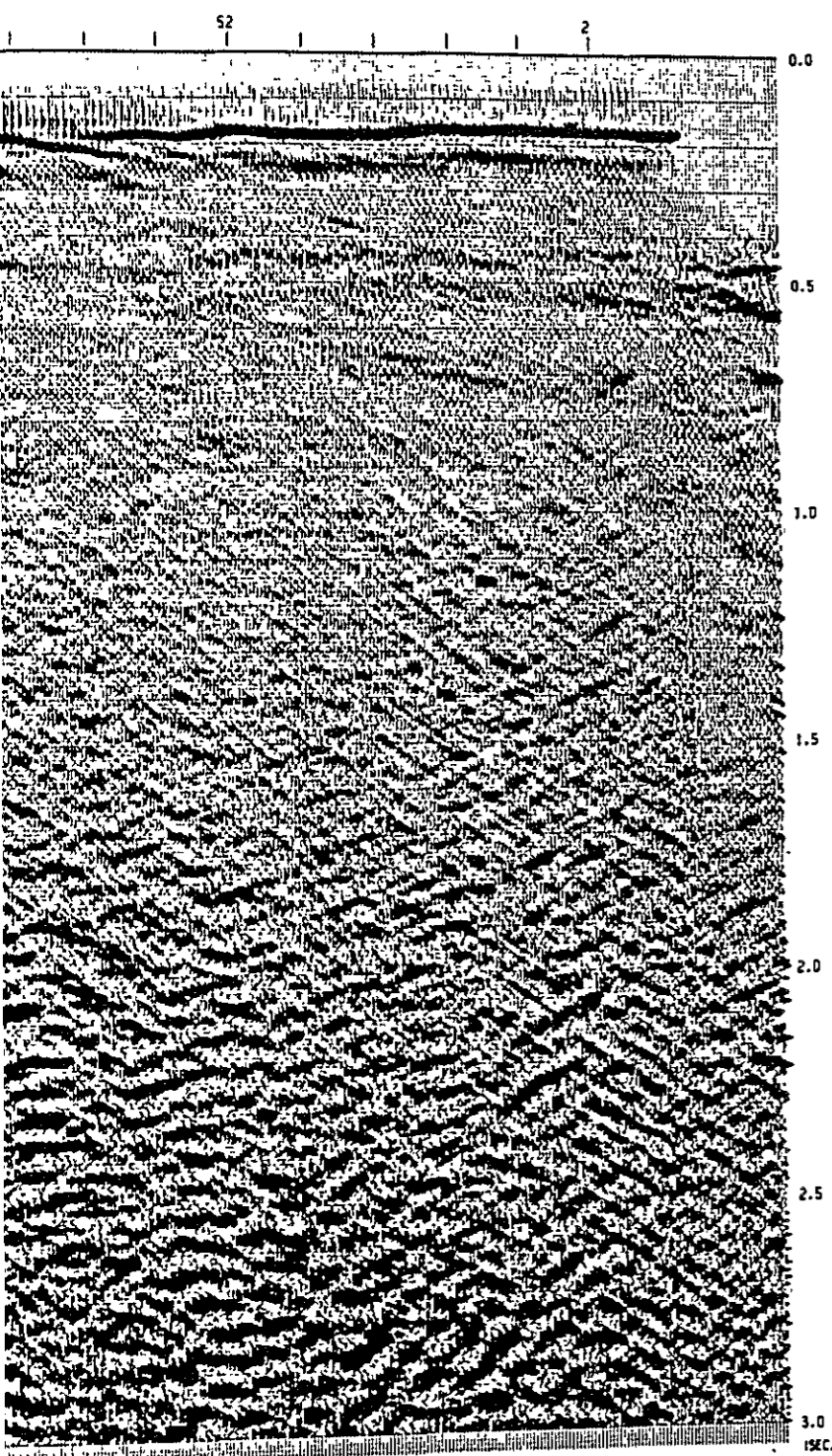
PROCESS LENGTH	2.0 SEC.
SAMPLE RATE	2.0 HSEC.
1) RECORD EDIT	10) STACK 24-FOLD
2) CDP SORT	11) DATUM CORRECTION +18 HSEC.
CDP INTERVAL 12.5 M.	12) SEG. INC.
3) CRN RECOVERY	TRACE SIGMA SCALE
4) DECONVOLUTION	
DP LENGTH 300 HSEC.	
PA. DISTANCE 2 HSEC.	
DESIGN GATE LENGTH 2000 HSEC.	
5) BANDPASS FILTER 0-70 HZ	
DP LENGTH 300 HSEC.	
6) VELOCITY ANALYSIS	
BY C.V. SCAN/GATHER	
7) NMO CORRECTION	

DISPLAY

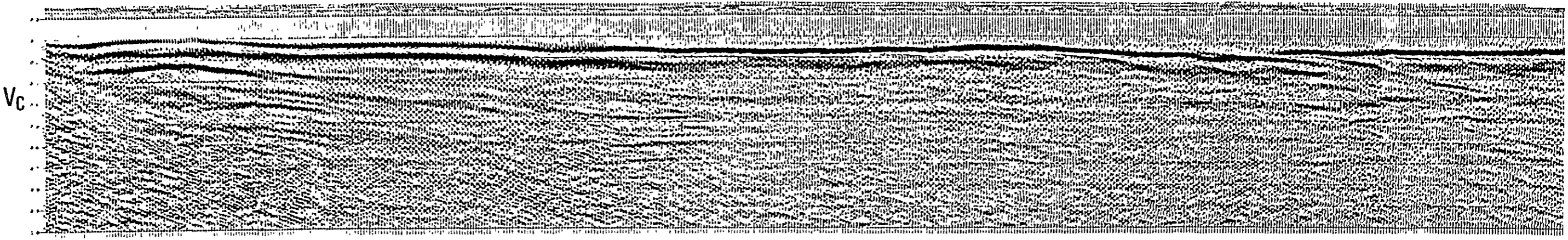
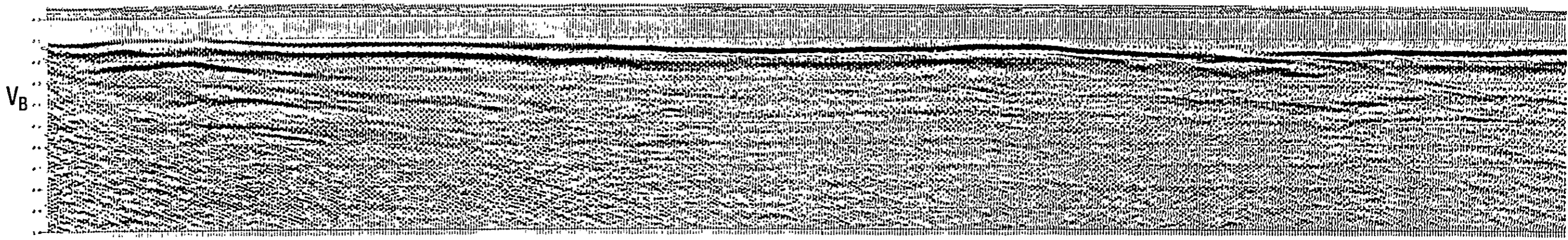
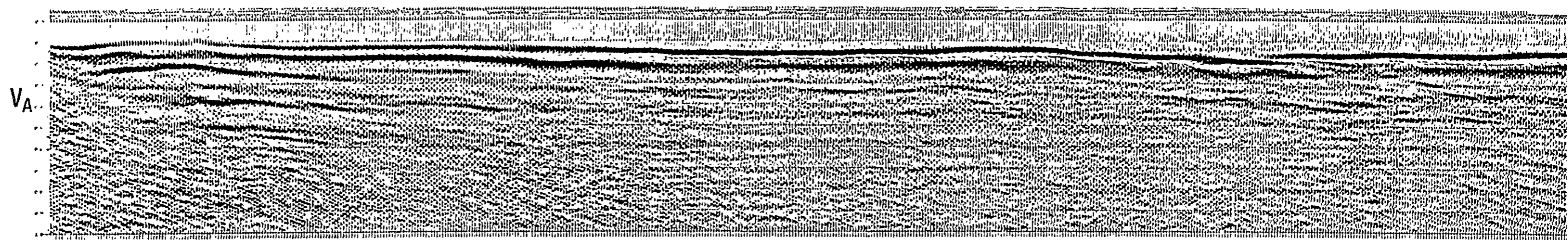
POLARITY	NORMAL
HORIZONTAL SCALE	10 M./CM. (1:12500)
VERTICAL SCALE	5 INCH/SEC. (12.7 CM./SEC.)
DISPLAY GAIN	3 DECIBEL

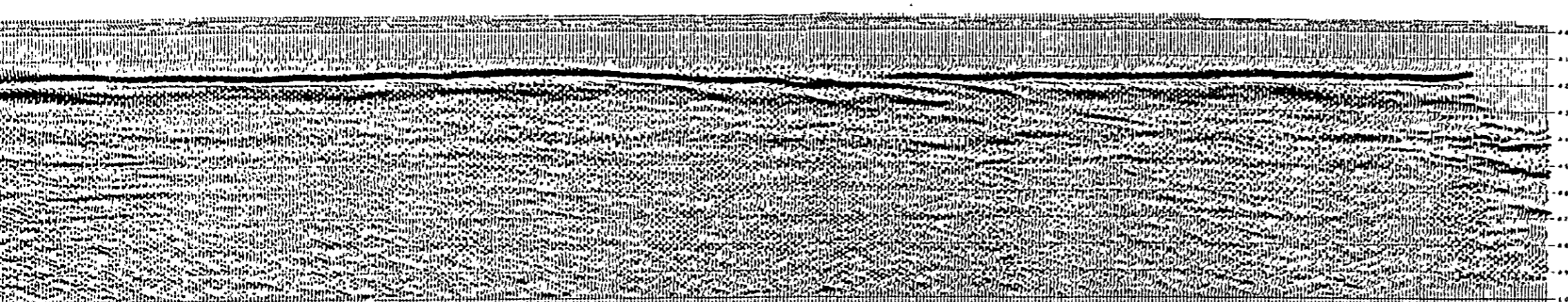
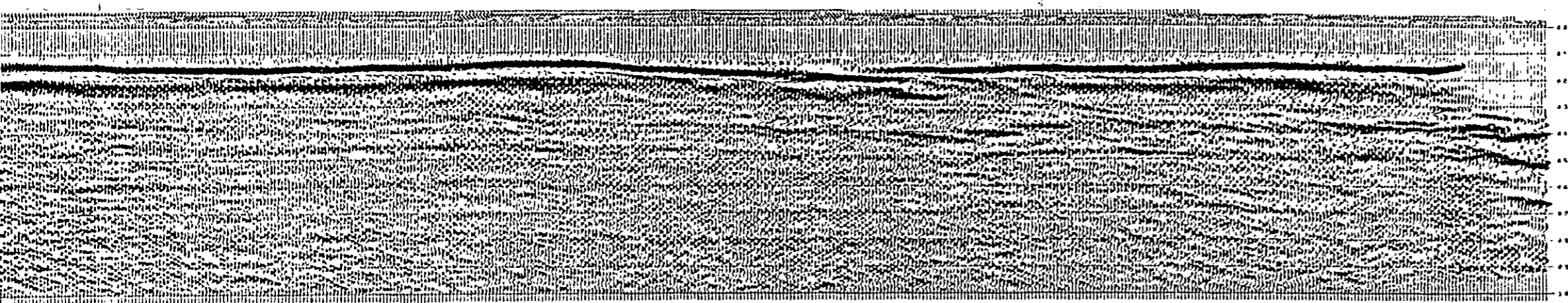
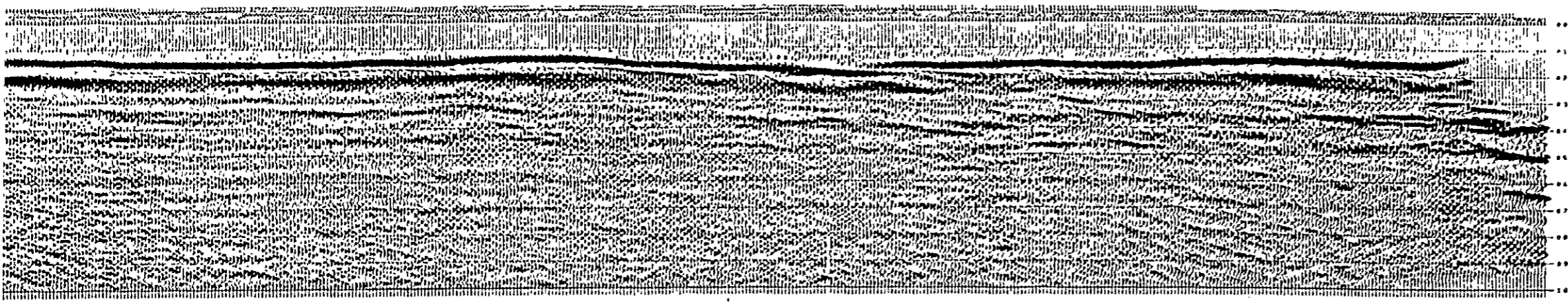


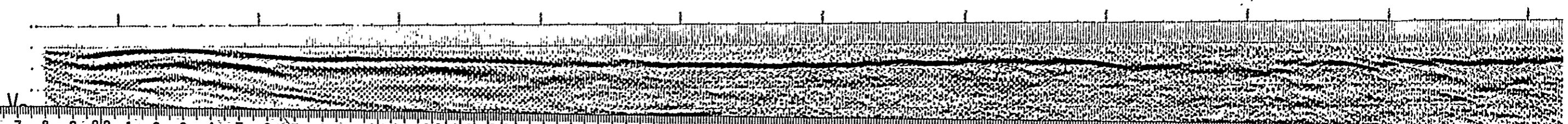
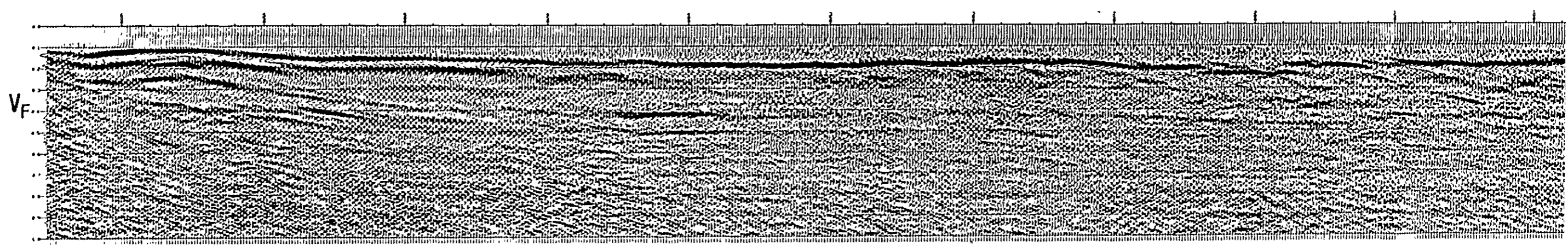
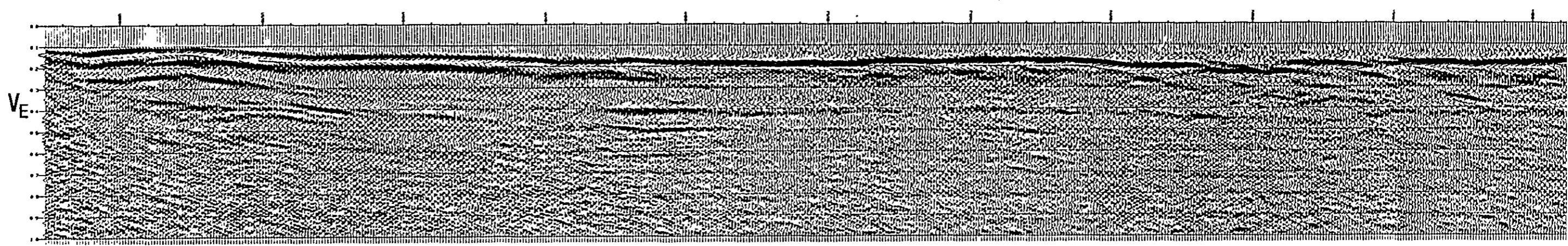
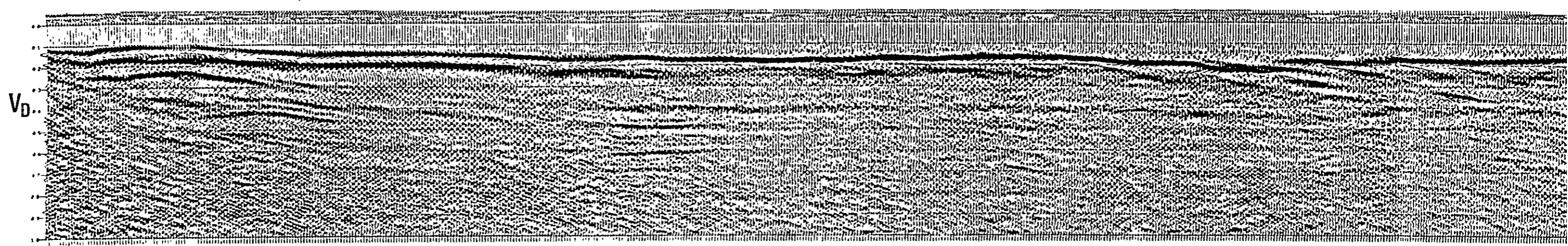
JAPAN PETROLEUM
EXPLORATION CO., LTD.
GEOPHYSICAL HEADQUARTERS

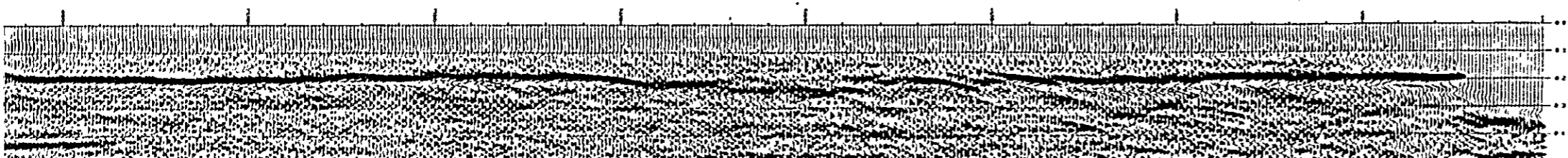
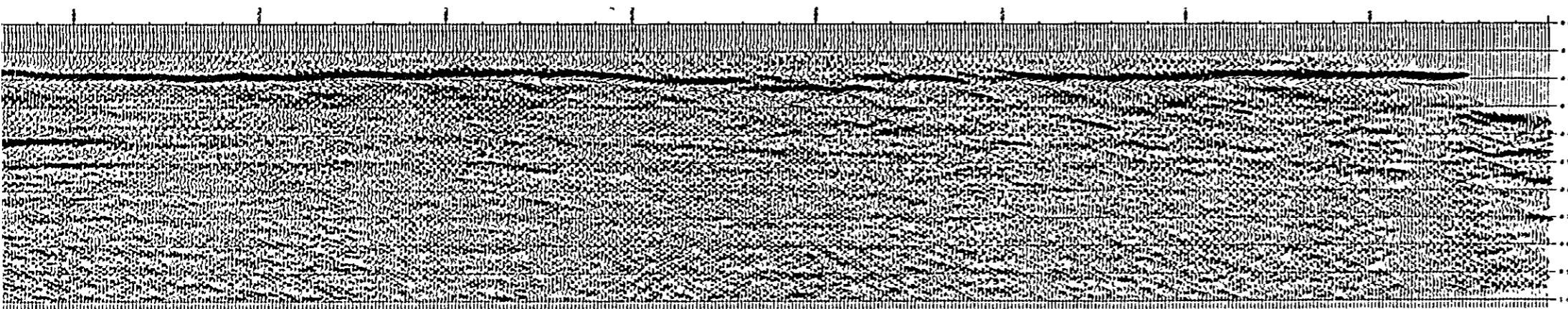
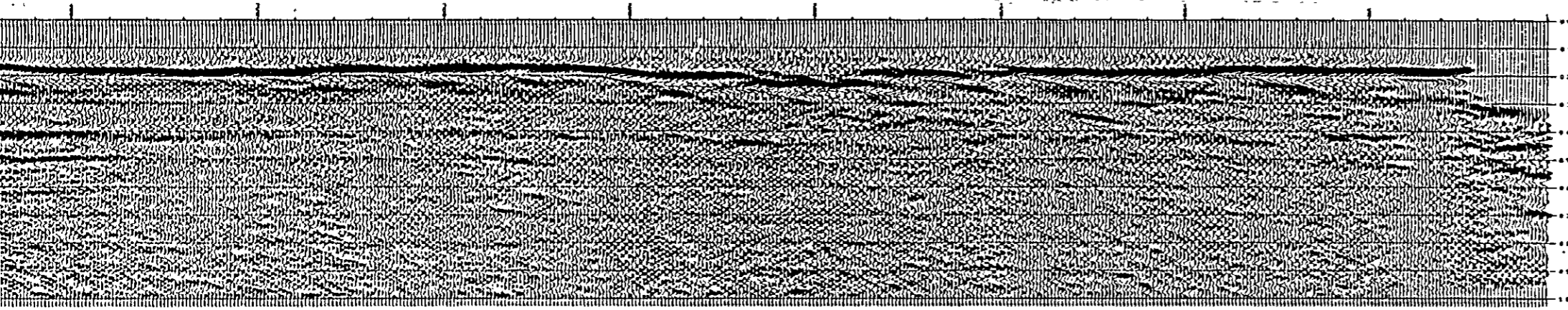
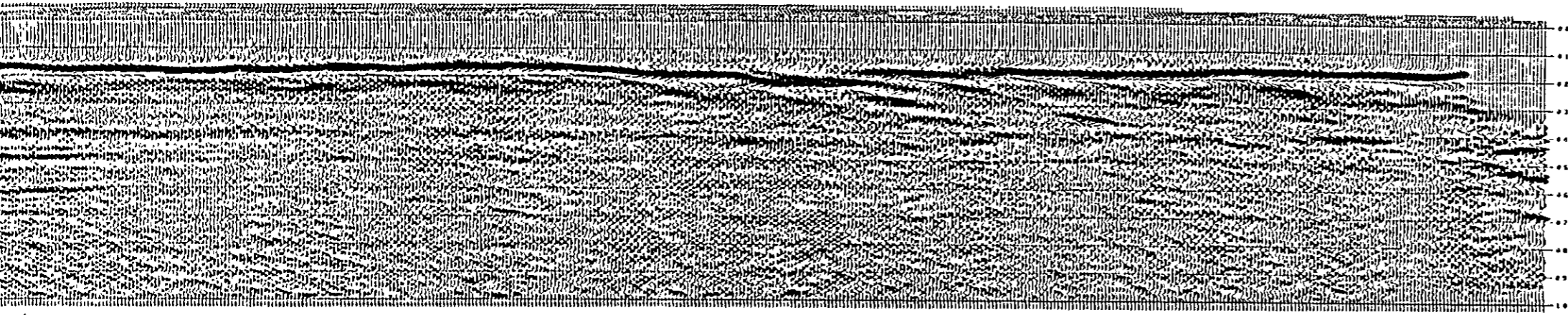


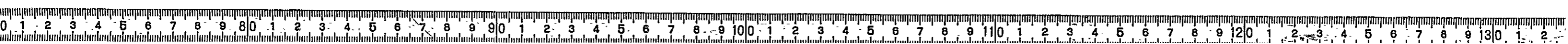
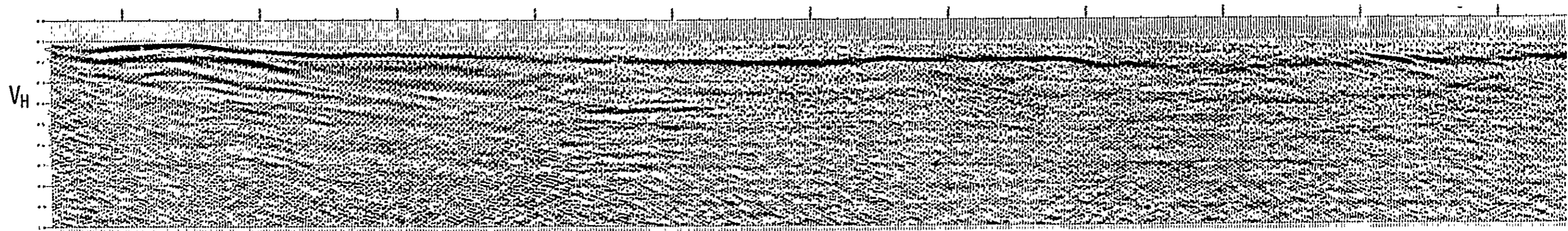
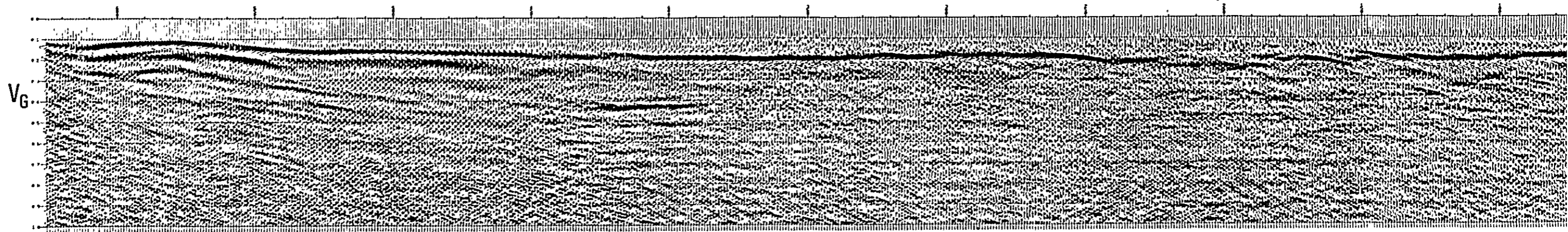
VELOCITY FUNCTION STACK
LINE T1-AB 25

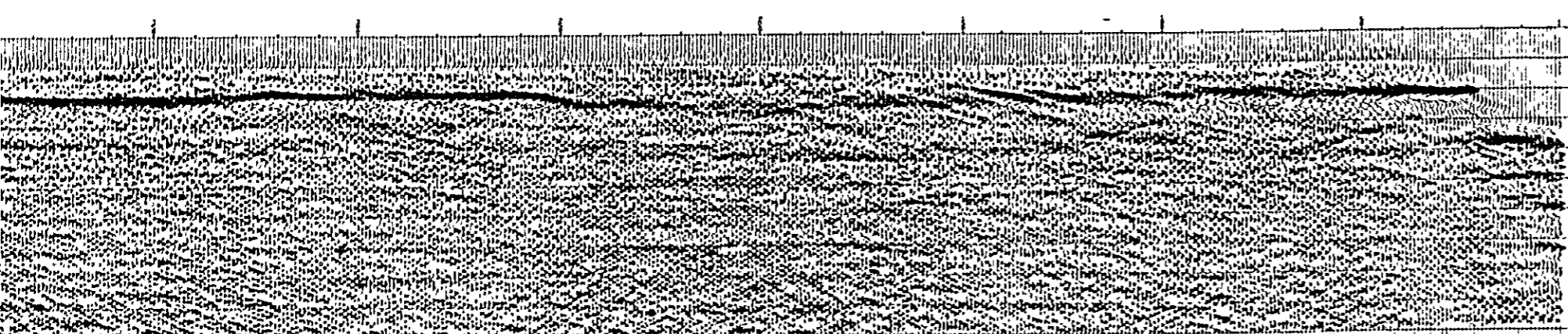
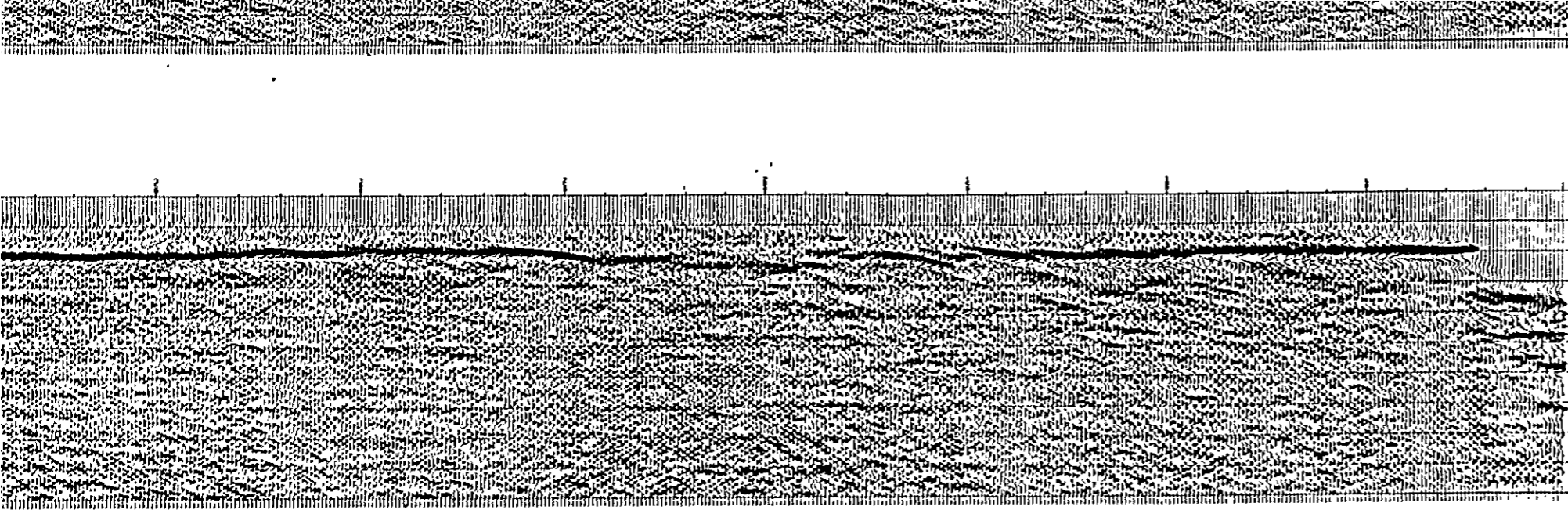












Encl. 16



CDP#46 SP 133			
TIME	CDP	TIME	CDP
1.00	133	1.00	133
1.01	133	1.01	133
1.02	133	1.02	133
1.03	133	1.03	133
1.04	133	1.04	133
1.05	133	1.05	133
1.06	133	1.06	133
1.07	133	1.07	133
1.08	133	1.08	133
1.09	133	1.09	133
1.10	133	1.10	133
1.11	133	1.11	133
1.12	133	1.12	133
1.13	133	1.13	133
1.14	133	1.14	133
1.15	133	1.15	133
1.16	133	1.16	133
1.17	133	1.17	133
1.18	133	1.18	133
1.19	133	1.19	133
1.20	133	1.20	133

CDP#46 SP 83			
TIME	CDP	TIME	CDP
1.00	83	1.00	83
1.01	83	1.01	83
1.02	83	1.02	83
1.03	83	1.03	83
1.04	83	1.04	83
1.05	83	1.05	83
1.06	83	1.06	83
1.07	83	1.07	83
1.08	83	1.08	83
1.09	83	1.09	83
1.10	83	1.10	83
1.11	83	1.11	83
1.12	83	1.12	83
1.13	83	1.13	83
1.14	83	1.14	83
1.15	83	1.15	83
1.16	83	1.16	83
1.17	83	1.17	83
1.18	83	1.18	83
1.19	83	1.19	83
1.20	83	1.20	83

CDP#46 SP 33			
TIME	CDP	TIME	CDP
1.00	33	1.00	33
1.01	33	1.01	33
1.02	33	1.02	33
1.03	33	1.03	33
1.04	33	1.04	33
1.05	33	1.05	33
1.06	33	1.06	33
1.07	33	1.07	33
1.08	33	1.08	33
1.09	33	1.09	33
1.10	33	1.10	33
1.11	33	1.11	33
1.12	33	1.12	33
1.13	33	1.13	33
1.14	33	1.14	33
1.15	33	1.15	33
1.16	33	1.16	33
1.17	33	1.17	33
1.18	33	1.18	33
1.19	33	1.19	33
1.20	33	1.20	33

CDP#46 SP -16			
TIME	CDP	TIME	CDP
1.00	-16	1.00	-16
1.01	-16	1.01	-16
1.02	-16	1.02	-16
1.03	-16	1.03	-16
1.04	-16	1.04	-16
1.05	-16	1.05	-16
1.06	-16	1.06	-16
1.07	-16	1.07	-16
1.08	-16	1.08	-16
1.09	-16	1.09	-16
1.10	-16	1.10	-16
1.11	-16	1.11	-16
1.12	-16	1.12	-16
1.13	-16	1.13	-16
1.14	-16	1.14	-16
1.15	-16	1.15	-16
1.16	-16	1.16	-16
1.17	-16	1.17	-16
1.18	-16	1.18	-16
1.19	-16	1.19	-16
1.20	-16	1.20	-16

VEL. ANALYSIS

CROSS LINE

SHOT NUMBER

JAPAN INTERNATIONAL COOPERATION AGENCY

E

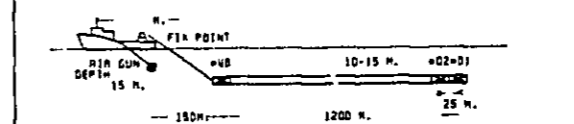
SEISMIC SURVEY
24 FOLD RECORD SECTION

OFFSHORE AREA OF
ZONGULDAK COAL
FIELD IN TURKEY
LINE T2AB25
S.P.-13 - 319

ENCL. 17

FIELD RECORDING DATA

RECORDED BY	MEG
INSTRUMENT	DPS 11
RECORD LENGTH	4.0 SEC.
SAMPLE RATE	2 MSEC.
FILTER	CON. 8/36 INZ/DB/OCT1
GRAIN CONTROL	WL 124 INZ1
ENERGY SOURCE	1.5 G.
	7 AIR GUNS 11685 CU. IN. 1
	11750 PSI. 1
SHOT INTERVAL	25 H.
CDP MULTIPLICITY	24-FOLD
DETECTION CABLE	SEC-5160A
SURVEY DATE	JULY 1970
SURVEY VESSEL	SISHMA 1



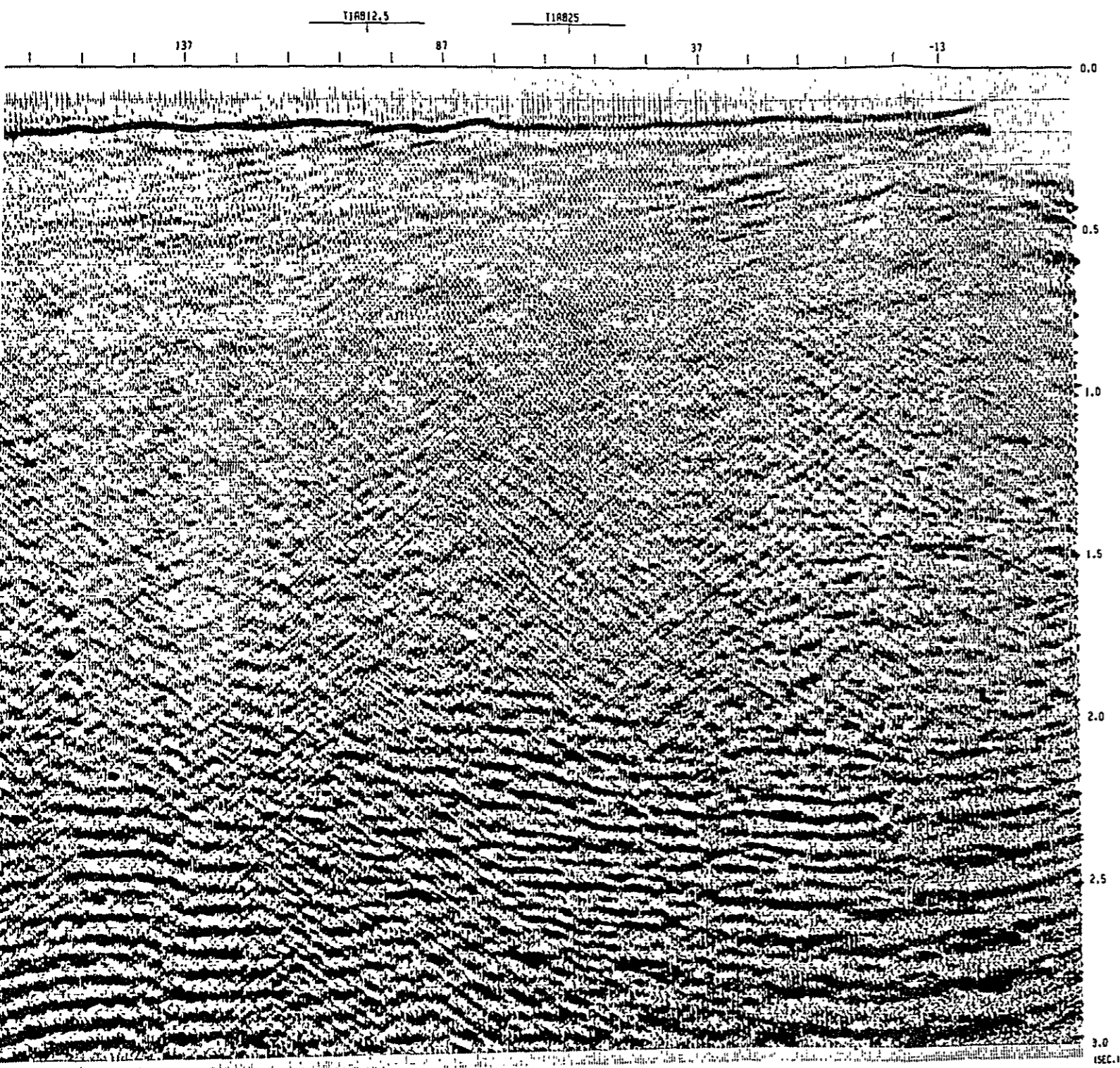
PROCESSING SEQUENCE

PROCESS LENGTH	3.0 SEC.
SAMPLE RATE	2.0 MSEC.
1 1) RECORD EDIT	1 0) STACK 24-FOLD
1 2) CDP SORT	1 0) GATE CORRECTION -10 MSEC.
CDP INTERVAL 12.5 M.	
1 3) GAIN RECOVERY	110. SEC. 1/2
RAC	TRACE SIGMA SCALE
GATE LENGTH 150 MSEC.	
1 4) DECONVOLUTION	
SP. LENGTH 300 MSEC.	
PA. DISTANCE 2 MSEC.	
DESIGN GATE LENGTH 2000 MSEC.	
1 5) BANDPASS FILTER 0-70 HZ	
OP. LENGTH 300 MSEC.	
1 6) VELOCITY ANALYSIS	
BY L.V. SCHNEIDER	
1 7) NMO CORRECTION	

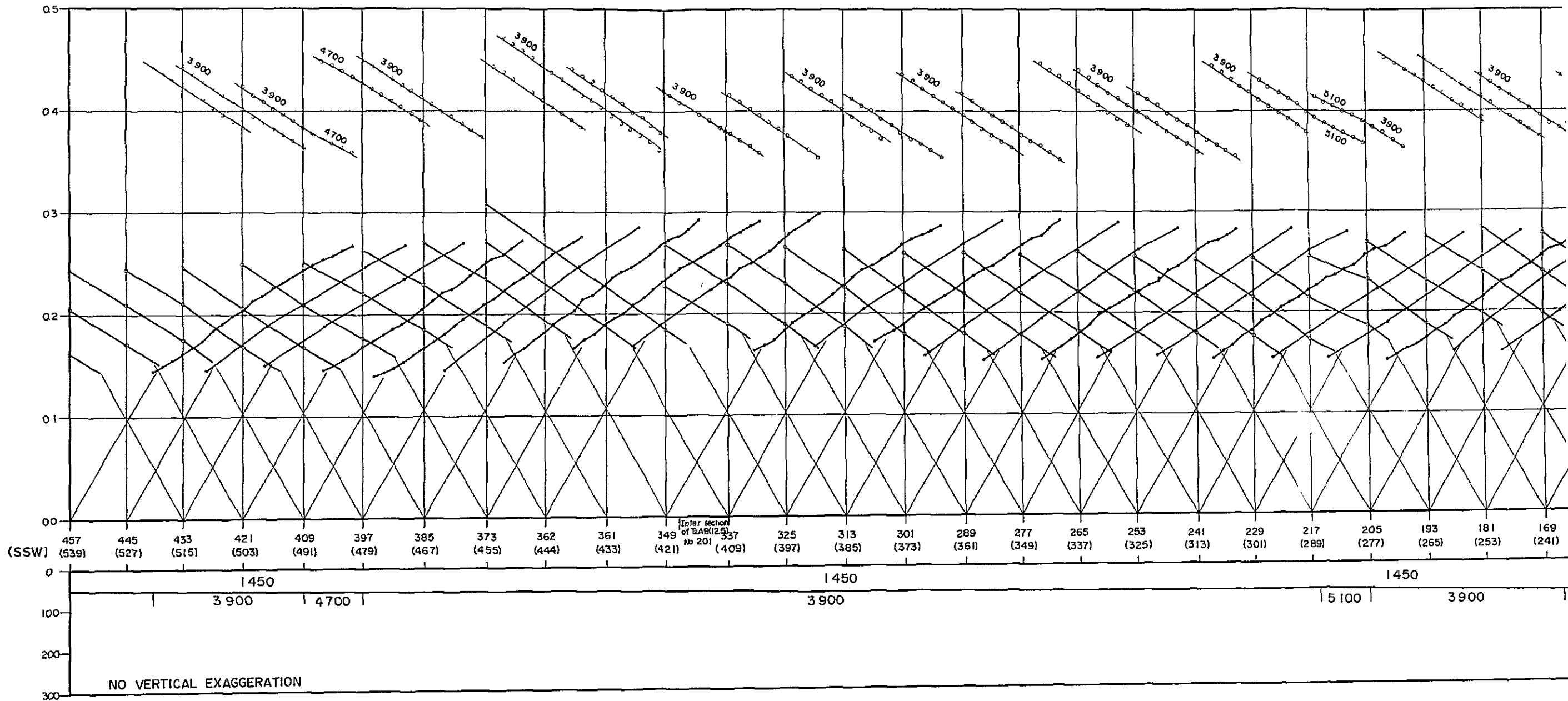
DISPLAY

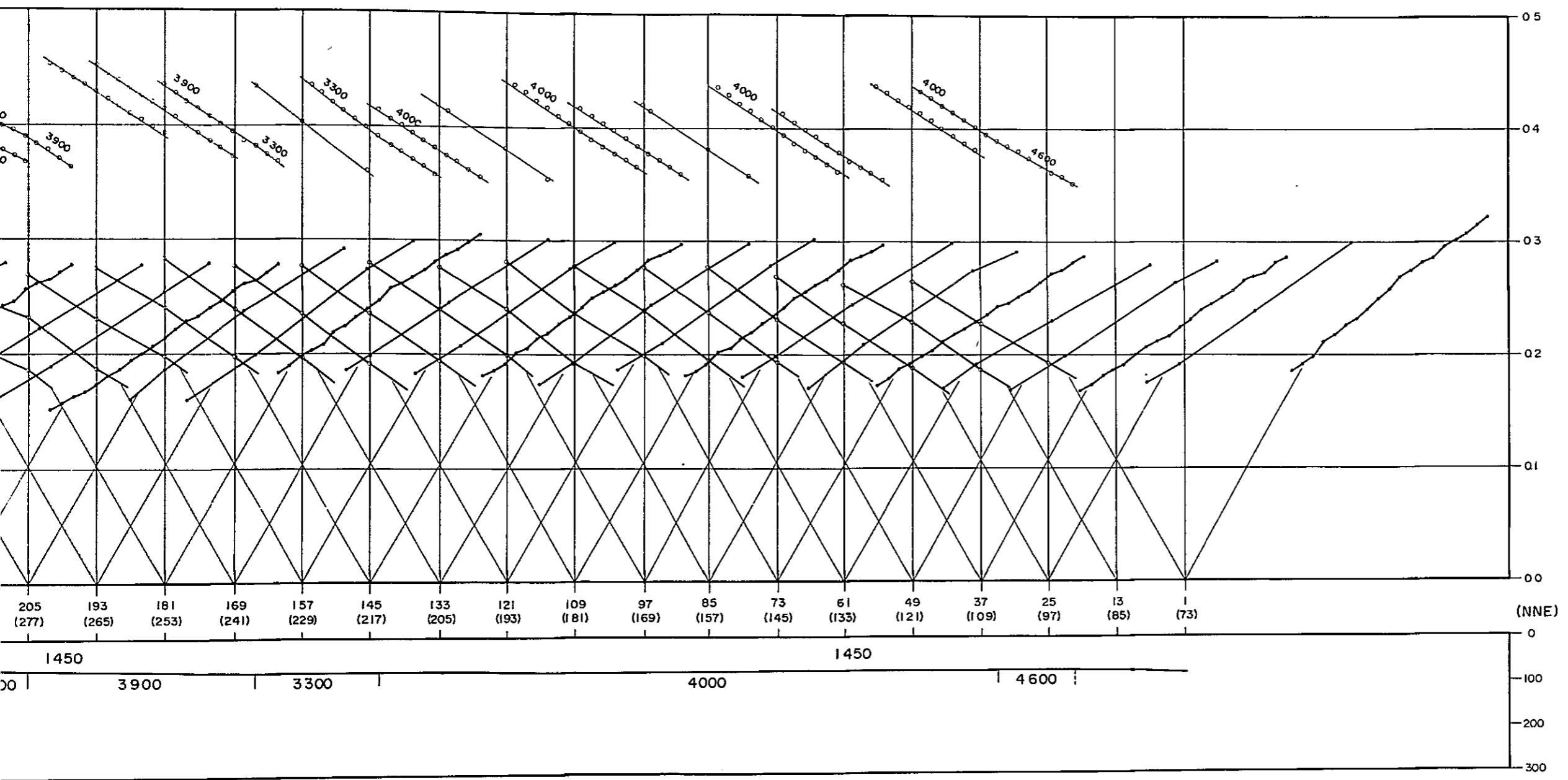
POLARITY	NORMAL
HORIZONTAL SCALE	20 TR./CM. 111325001
VERTICAL SCALE	5 INCH/SEC. 112.7 CM./SEC. 1
DISPLAY GAIN	9 DECIBEL

JAPAN PETROLEUM EXPLORATION CO., LTD. GEOPHYSICAL HEADQUARTERS

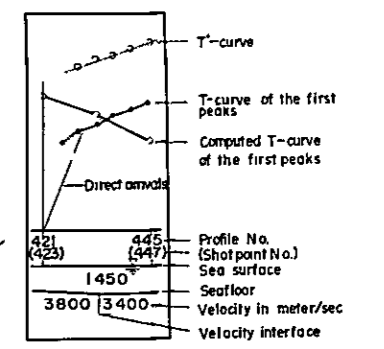


TRAVEL TIME IN SECOND
DEPTH IN METER





LEGEND



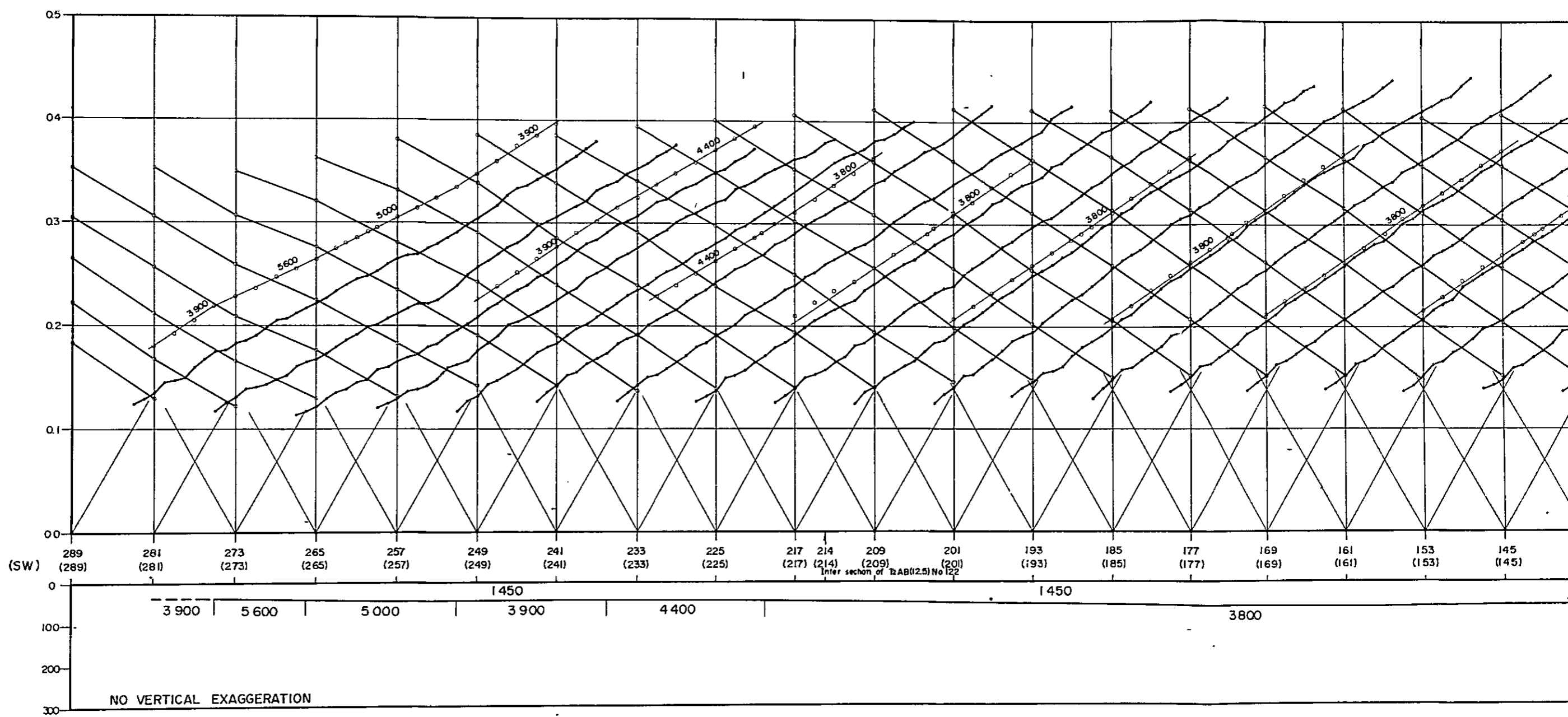
Geophysical Study
 on the offshore Zonguldak Coal Field
 in the Republic of Turkey

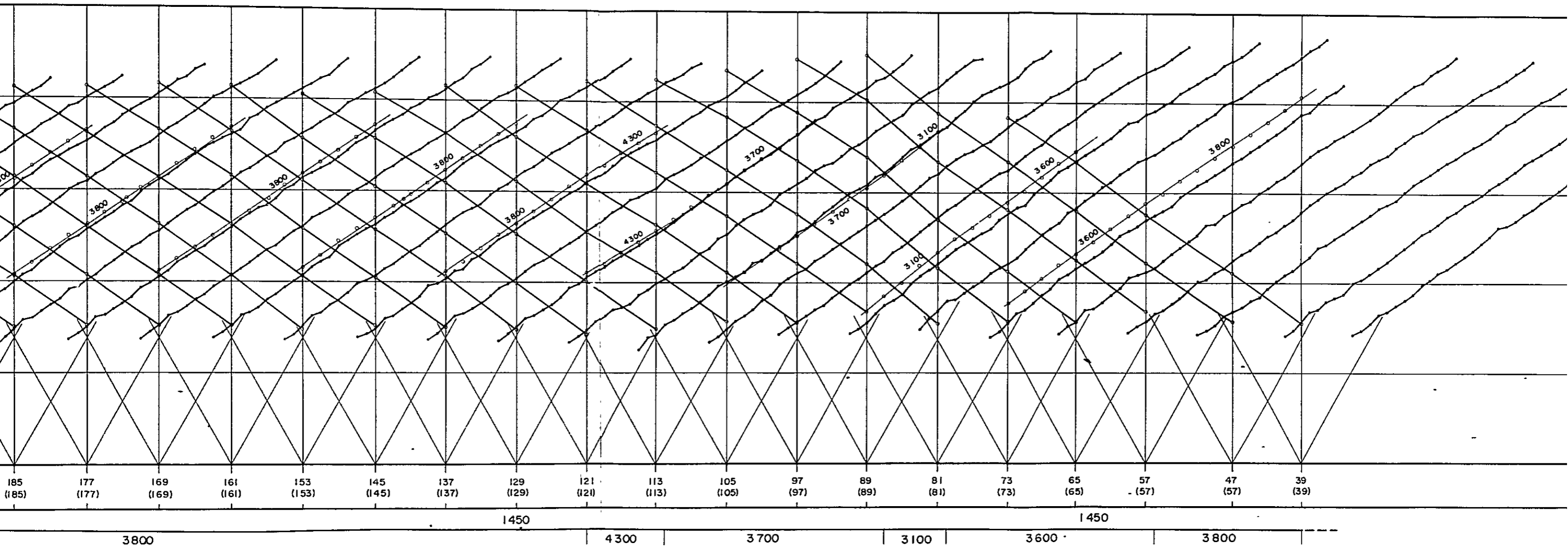
Time - Distance curve
 and
 Velocity section

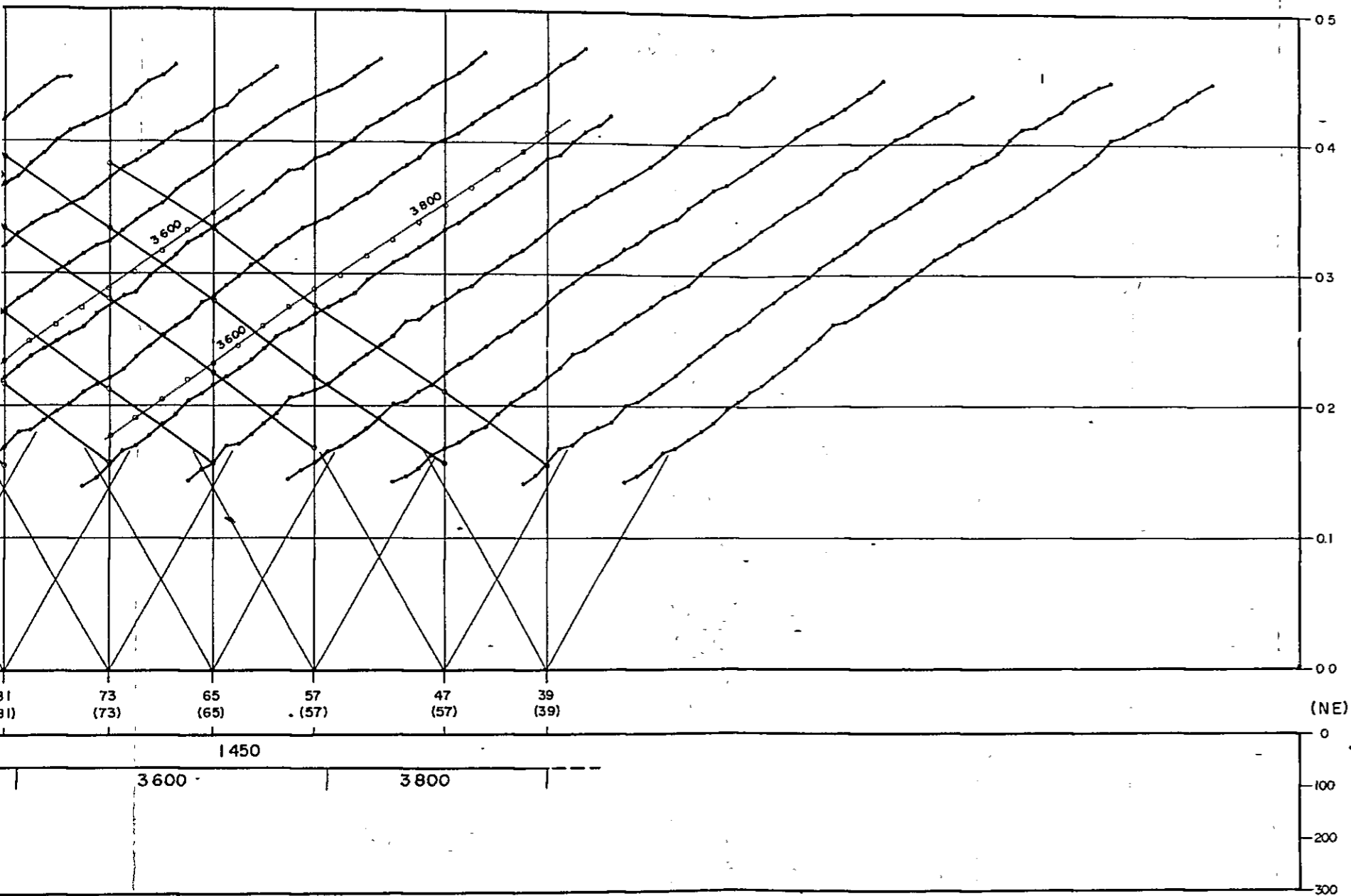
Line - T1AB (12.5)

Japan International Cooperation Agency (JICA)
 Date. Mar 1981 | Encl. 18

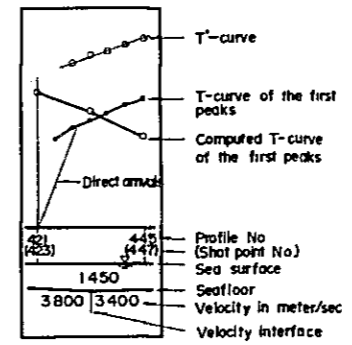
DEPTH IN METER
TRAVEL TIME IN SECOND







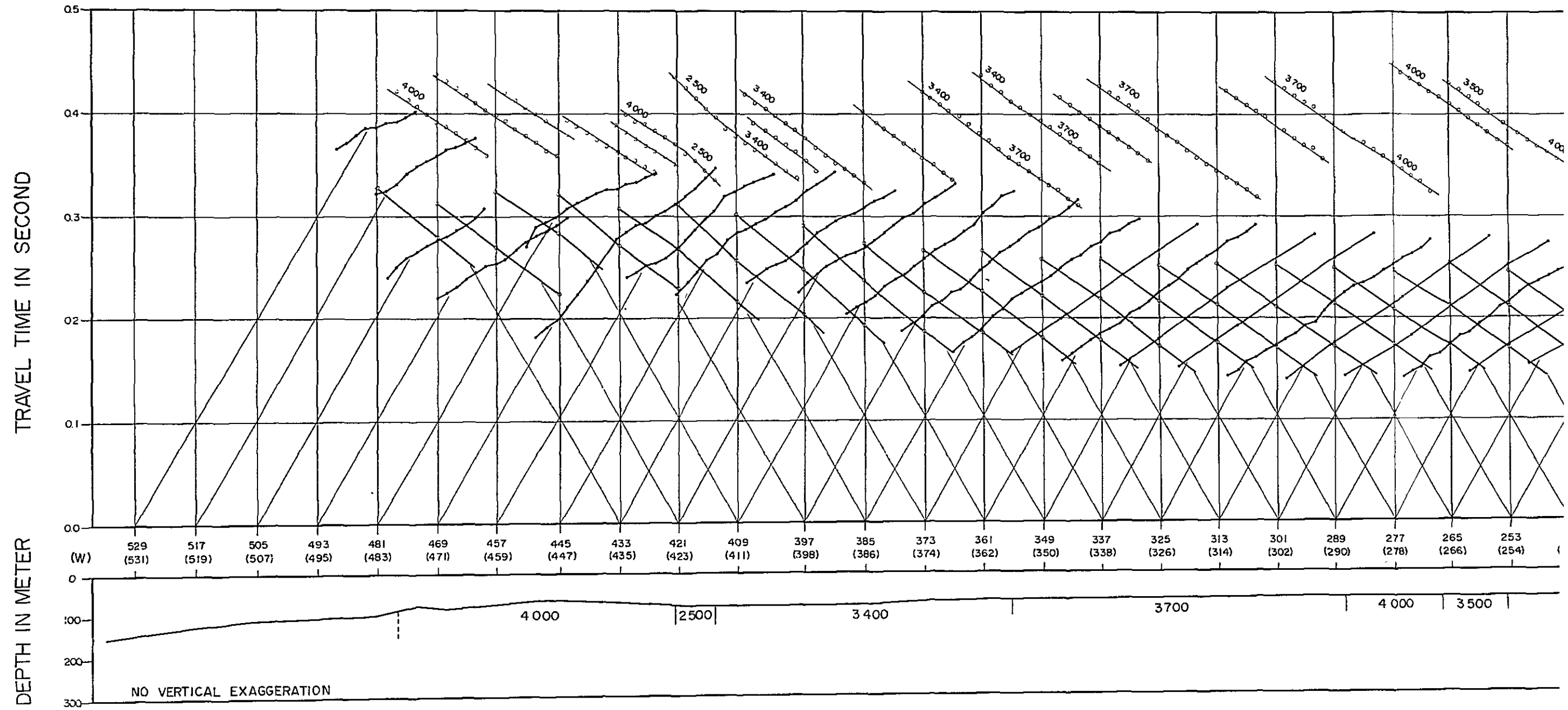
LEGEND

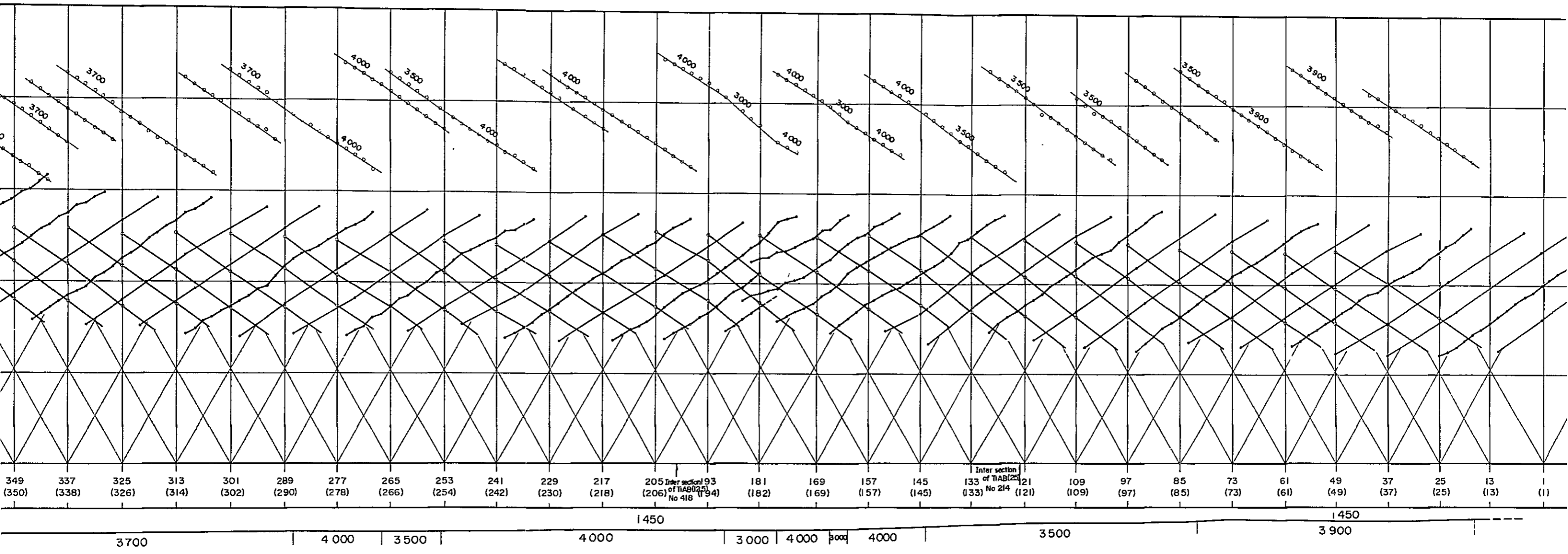


Geophysical Study
 on the offshore Zonguldak Coal Field
 in the Republic of Turkey

Time - Distance curve
 and
 Velocity section
 Line - T1AB(25)

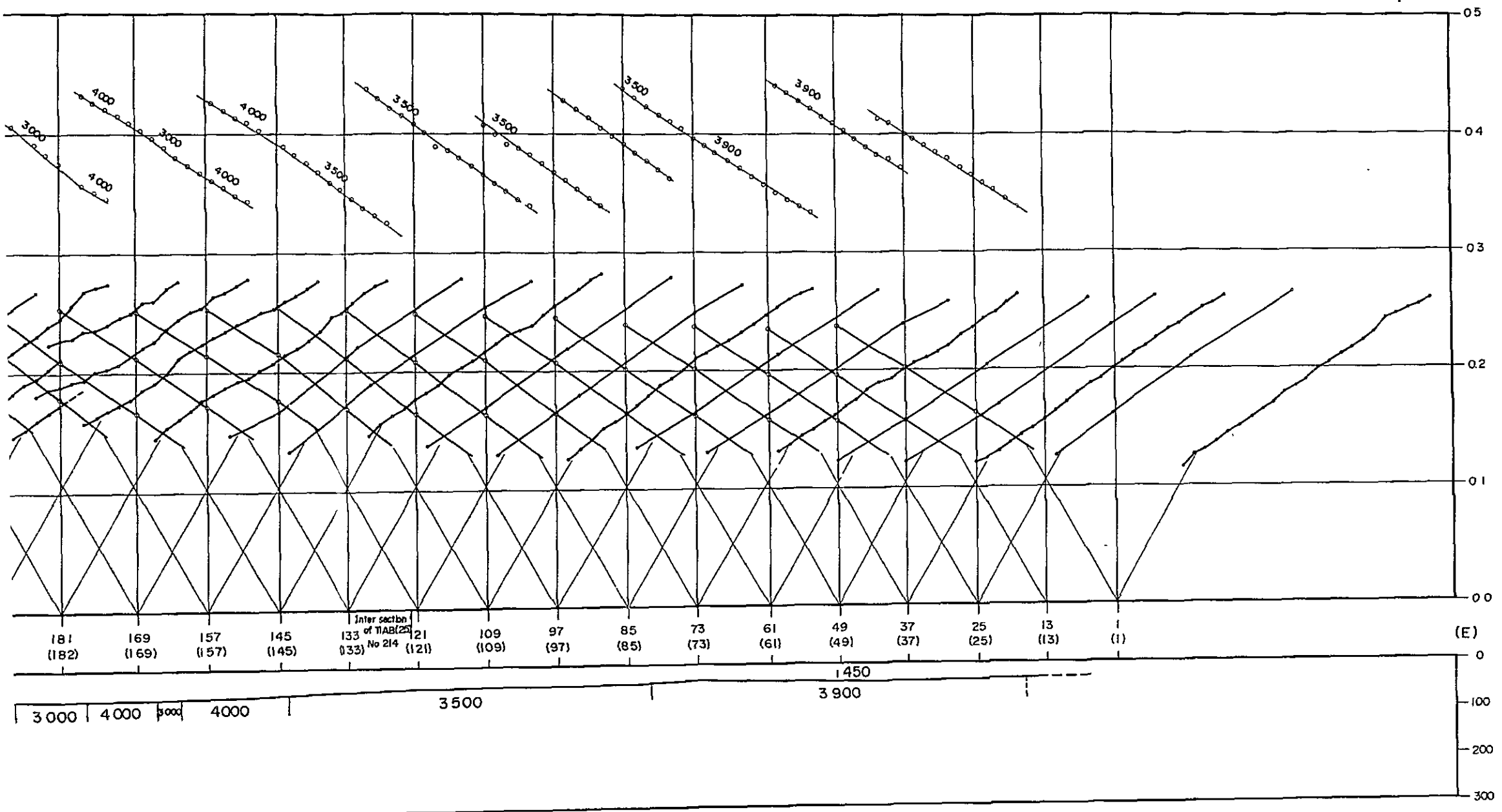
Japan International Cooperation Agency (JICA)
 Date: Mar. 1981 | Encl. 19



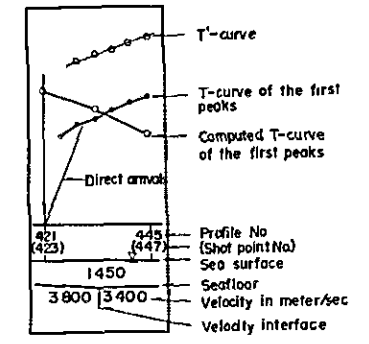


349 (350) 337 (338) 325 (326) 313 (314) 301 (302) 289 (290) 277 (278) 265 (266) 253 (254) 241 (242) 229 (230) 217 (218) 205 (206) **Inter section of TAB No 418** 193 (194) 181 (182) 169 (169) 157 (157) 145 (145) **Inter section of TAB No 214** 133 (133) 121 (121) 109 (109) 97 (97) 85 (85) 73 (73) 61 (61) 49 (49) 37 (37) 25 (25) 13 (13) 1 (1)

1450 1450 3700 4000 3500 4000 3000 4000 3500 3900



LEGEND



Geophysical Study
 on the offshore Zonguldak Coal Field
 in the Republic of Turkey

Time - Distance curve
 and
 Velocity section

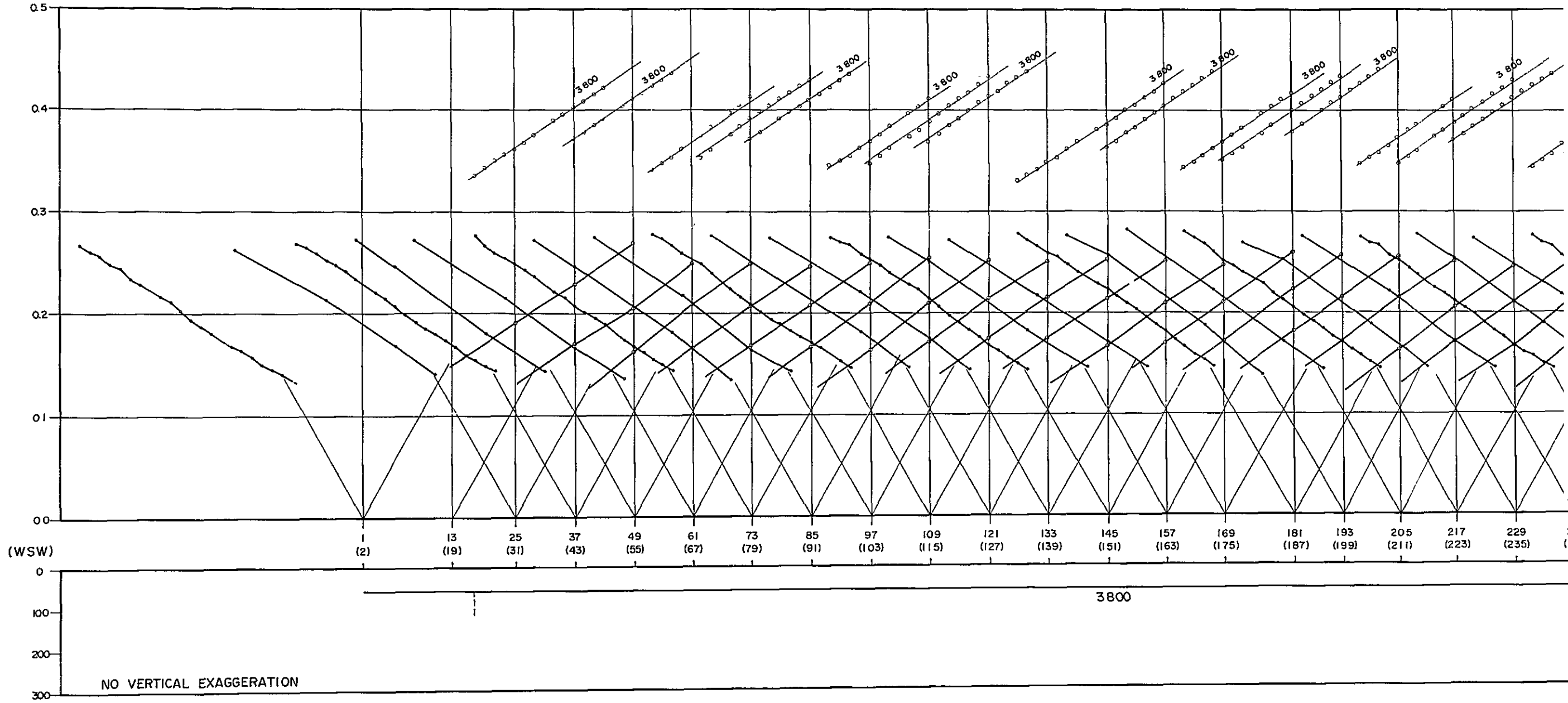
Line - T₂ AB (125)

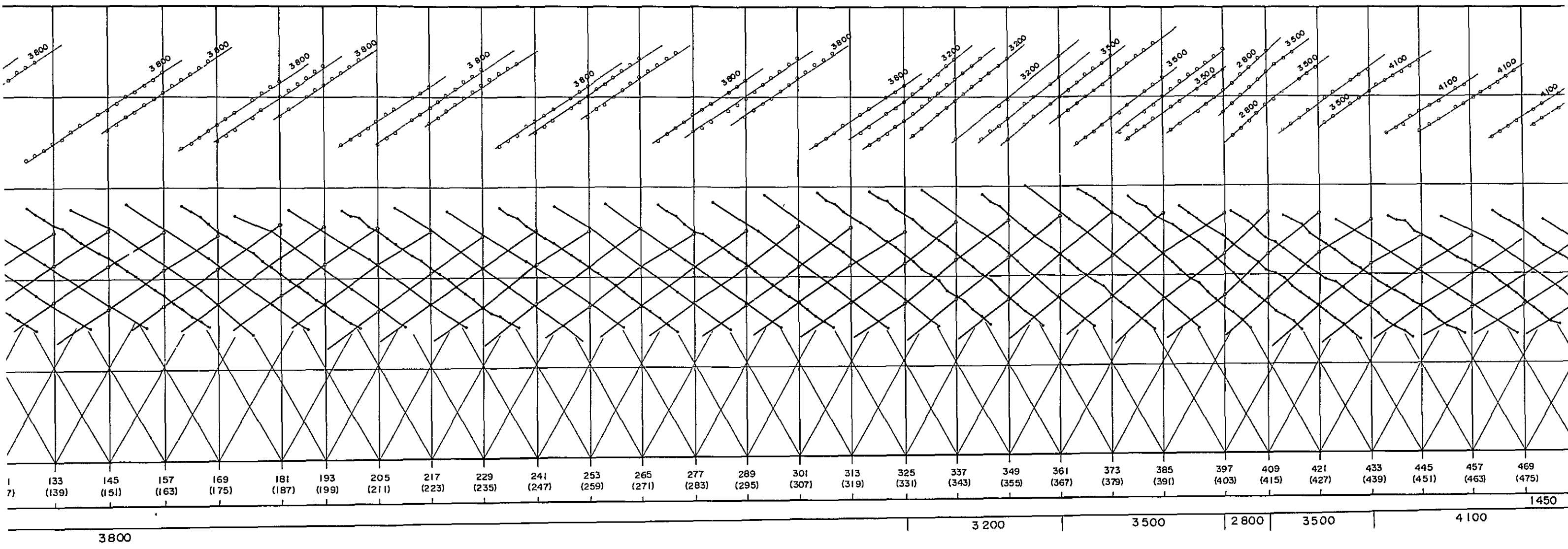
Japan International Cooperation Agency (JICA)

Date. Mar 1981 | Encl. 20

TRAVEL TIME IN SECOND

DEPTH IN METER





1	133	145	157	169	181	193	205	217	229	241	253	265	277	289	301	313	325	337	349	361	373	385	397	409	421	433	445	457	469
7)	(139)	(151)	(163)	(175)	(187)	(199)	(211)	(223)	(235)	(247)	(259)	(271)	(283)	(295)	(307)	(319)	(331)	(343)	(355)	(367)	(379)	(391)	(403)	(415)	(427)	(439)	(451)	(463)	(475)

3800

3200

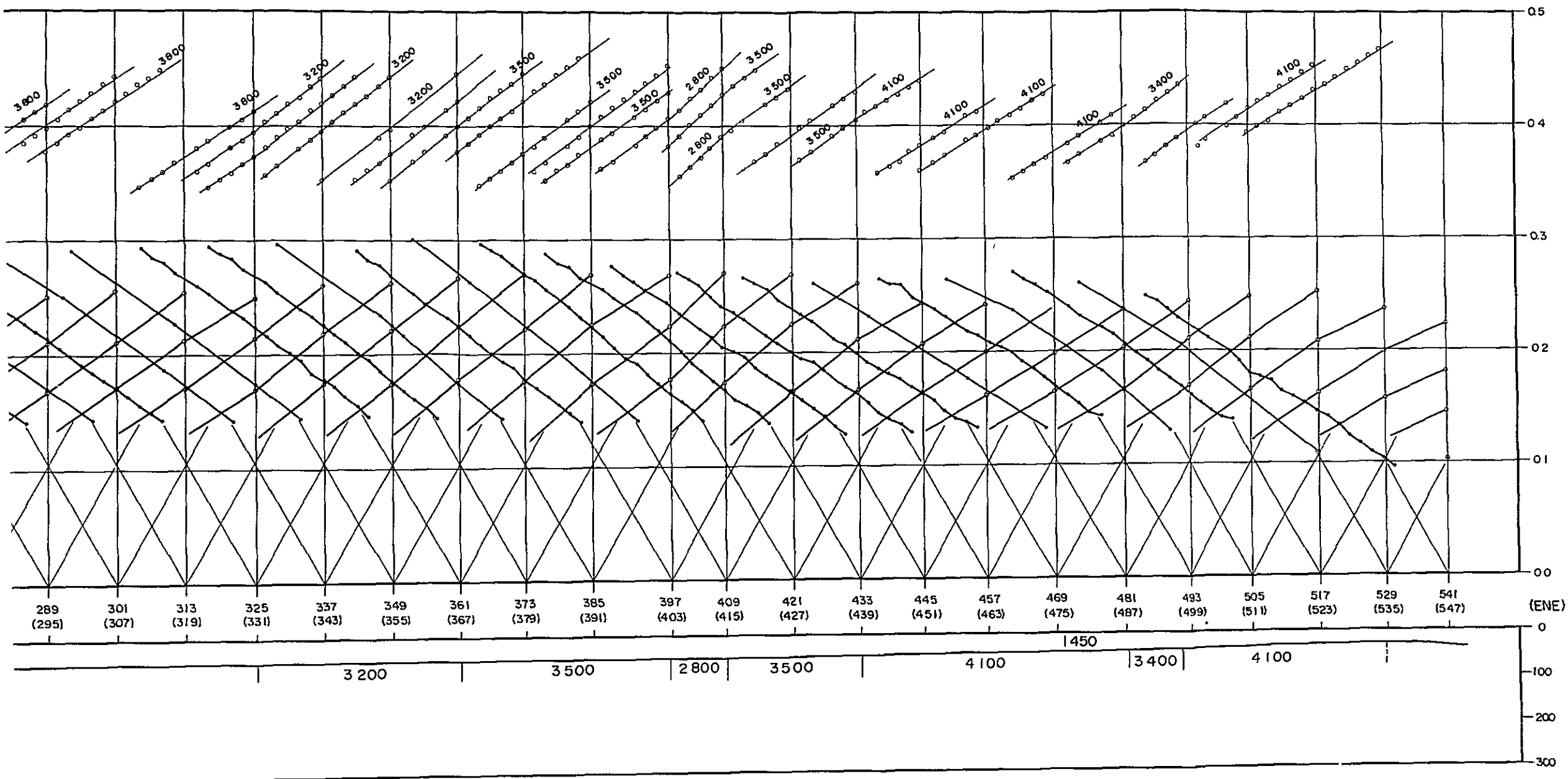
3500

2800

3500

4100

1450



LEGEND

- T-curve
- T-curve of the first peaks
- Computed T-curve of the first peaks
- Direct arrival

421 (423)	445 (447)	Profile No.
		(Shot point No.)
1450		Sea surface
3800	3400	Seafloor
		Velocity in meter/sec
		Velocity Interface

Geophysical Study
 on the offshore Zonguldak Coal Field
 in the Republic of Turkey

Time - Distance curve
 and
 Velocity section

Line - T3AB(2.5)

Japan International Cooperation Agency(JICA)

Date. Mar 1981 Encl. 21

JICA