

CDP 409			
TR	SP	TIME	DEPTH
0.100	1492	1492	175
0.200	1300	1300	275
0.300	1110	1110	375
0.400	920	920	475
0.500	730	730	575
0.600	540	540	675
0.700	350	350	775
0.800	160	160	875
0.900	0	0	975
1.000	0	0	1075
1.100	0	0	1175
1.200	0	0	1275
1.300	0	0	1375
1.400	0	0	1475
1.500	0	0	1575
1.600	0	0	1675
1.700	0	0	1775
1.800	0	0	1875
1.900	0	0	1975
2.000	0	0	2075

CDP 100			
TR	SP	TIME	DEPTH
0.100	1492	1492	175
0.200	1300	1300	275
0.300	1110	1110	375
0.400	920	920	475
0.500	730	730	575
0.600	540	540	675
0.700	350	350	775
0.800	160	160	875
0.900	0	0	975
1.000	0	0	1075
1.100	0	0	1175
1.200	0	0	1275
1.300	0	0	1375
1.400	0	0	1475
1.500	0	0	1575
1.600	0	0	1675
1.700	0	0	1775
1.800	0	0	1875
1.900	0	0	1975
2.000	0	0	2075

VEL. ANALYSIS

JAPAN INTERNATIONAL COOPERATION AGENCY

NE

CROSS LINE

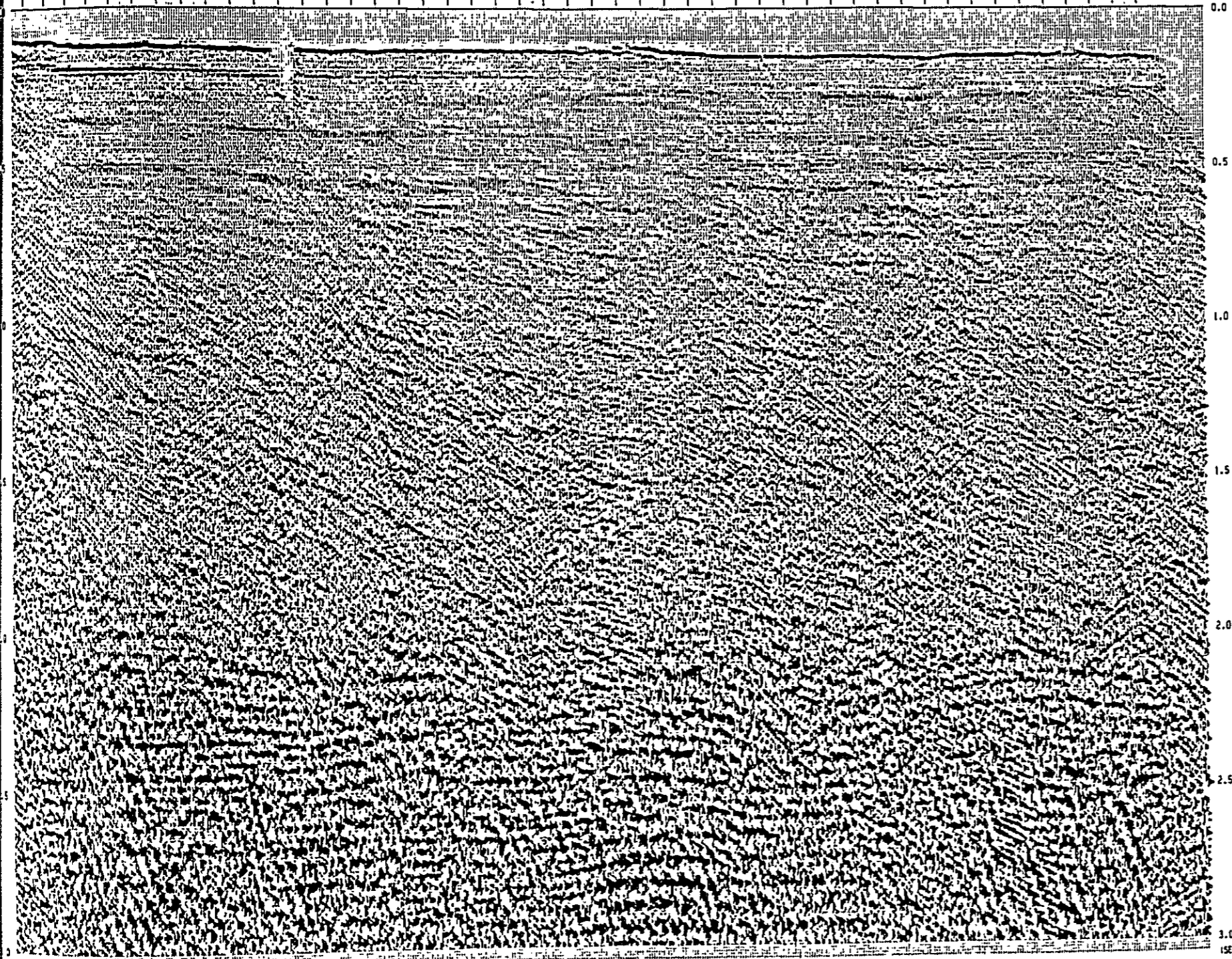
SEISMIC SURVEY
24 FOLD RECORD SECTION

SHOT NUMBER

OFFSHORE AREA OF ZONGULDAK COAL FIELD IN TURKEY
LINE T1AB12.5
S.P. 73 - 554

T2 AB 25 T2AB12.5

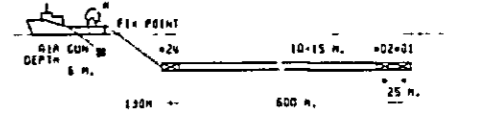
523 473 423 373 323 273 223 173 123 73



ENCL. 6

FIELD RECORDING DATA

RECORDED BY: MFR
INSTRUMENT: DFG 14
RECORD LENGTH: 3.0 SEC.
SAMPLE RATE: 1 MSEC.
FILTER: LOW 8/36 HZ/OB/OCTI
GAIN CONTROL: 1.5 P.
ENERGY SOURCE: 3 AIR GUNS 170 CU IN. 140, 20, 1011
SHOT INTERVAL: 12.5 M.
CDP MULTIPLICITY: 24-FOLD
DETECTION CABLE: SEC-TREASER
SURVEY DATE: JUL 1 1979
SURVEY VESSEL: SISHIN 1



PROCESSING SEQUENCE

PROCESS LENGTH: 3.0 SEC.
SAMPLE RATE: 1-2 MSEC.

1 1) RECORD EDIT	1 0) MUTE
2 2) CDP SORT	1 9) STACK 24-FOLD
CDP INTERVAL 12.5 M.	110) DECONVOLUTION
3 3) GAIN RECOVERY	PA. DISTANCE 2 MSEC.
RAC	OP. LENGTH 200 MSEC.
GATE LENGTH 150 MSEC.	DESIGN GATE LENGTH 2000 MSEC.
4 4) DECONVOLUTION	111) T.V. FILTER
OP. LENGTH 300 MSEC.	OP. LENGTH 300 MSEC.
PA. DISTANCE 1 MSEC.	S = 10 MZ
DESIGN GATE LENGTH 2000 MSEC.	S = 30 MZ
5 5) RESAMPLE 1 TO 2 MSEC.	112) DAFM CORRECTION +12 MSEC.
6 6) VELOCITY ANALYSIS	113) SCALING
BY C.V. STACK	TRACE SIGNA SCALE
7 7) NMO CORRECTION	

DISPLAY

POLARITY: NORMAL
HORIZONTAL SCALE: 10 IN./CM. 11-125001
VERTICAL SCALE: 5 INCH/SEC. 112-7 CM./SEC.
DISPLAY GAIN: 3 DECIBEL

JAPAN PETROLEUM EXPLORATION CO., LTD.
GEOPHYSICAL HEADQUARTERS

CDP#27			
SP	TIME	TIME	TIME
100	1130	1130	1130
101	1131	1131	1131
102	1132	1132	1132
103	1133	1133	1133
104	1134	1134	1134
105	1135	1135	1135
106	1136	1136	1136
107	1137	1137	1137
108	1138	1138	1138
109	1139	1139	1139
110	1140	1140	1140
111	1141	1141	1141
112	1142	1142	1142
113	1143	1143	1143
114	1144	1144	1144
115	1145	1145	1145
116	1146	1146	1146
117	1147	1147	1147
118	1148	1148	1148
119	1149	1149	1149
120	1150	1150	1150

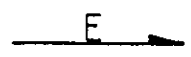
CDP#48			
SP	TIME	TIME	TIME
100	1151	1151	1151
101	1152	1152	1152
102	1153	1153	1153
103	1154	1154	1154
104	1155	1155	1155
105	1156	1156	1156
106	1157	1157	1157
107	1158	1158	1158
108	1159	1159	1159
109	1160	1160	1160
110	1161	1161	1161
111	1162	1162	1162
112	1163	1163	1163
113	1164	1164	1164
114	1165	1165	1165
115	1166	1166	1166
116	1167	1167	1167
117	1168	1168	1168
118	1169	1169	1169
119	1170	1170	1170
120	1171	1171	1171

CDP#59			
SP	TIME	TIME	TIME
100	1172	1172	1172
101	1173	1173	1173
102	1174	1174	1174
103	1175	1175	1175
104	1176	1176	1176
105	1177	1177	1177
106	1178	1178	1178
107	1179	1179	1179
108	1180	1180	1180
109	1181	1181	1181
110	1182	1182	1182
111	1183	1183	1183
112	1184	1184	1184
113	1185	1185	1185
114	1186	1186	1186
115	1187	1187	1187
116	1188	1188	1188
117	1189	1189	1189
118	1190	1190	1190
119	1191	1191	1191
120	1192	1192	1192

CDP#8			
SP	TIME	TIME	TIME
100	1193	1193	1193
101	1194	1194	1194
102	1195	1195	1195
103	1196	1196	1196
104	1197	1197	1197
105	1198	1198	1198
106	1199	1199	1199
107	1200	1200	1200
108	1201	1201	1201
109	1202	1202	1202
110	1203	1203	1203
111	1204	1204	1204
112	1205	1205	1205
113	1206	1206	1206
114	1207	1207	1207
115	1208	1208	1208
116	1209	1209	1209
117	1210	1210	1210
118	1211	1211	1211
119	1212	1212	1212
120	1213	1213	1213

VEL. ANALYSIS

JAPAN INTERNATIONAL COOPERATION AGENCY



CROSS LINE

SHOT NUMBER

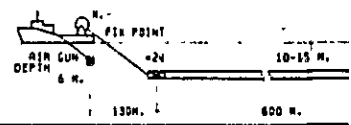
SEISMIC SURVEY
24 FOLD RECORD SECTION

OFFSHORE AREA
ZONGULDAK COASTAL
FIELD IN TURKEY
LINE T2AB12.
S.P. 0 - 602

ENCL. 7

FIELD RECORDING DATA

RECORDED BY	NTA
INSTRUMENT	DPS 11
RECORD LENGTH	3.0 SEC.
SAMPLE RATE	1 MSEC.
FILTER	LOW PASS 100/200/300/400/500/600/700/800/900/1000
CHAIN CONTROL	1. P. P.
ENERGY SOURCE	3.5 MEG. CHARGE 170 CU. IN. 1750 PSI.
SHOT INTERVAL	12.5 M.
CDP MULTIPLICITY	24-FOLD
DETECTOR CABLE	SEC. STRENGTH
SURVEY DATE	JULY 1979
SURVEY VESSEL	SISHIN 1



PROCESSING SEQUENCE

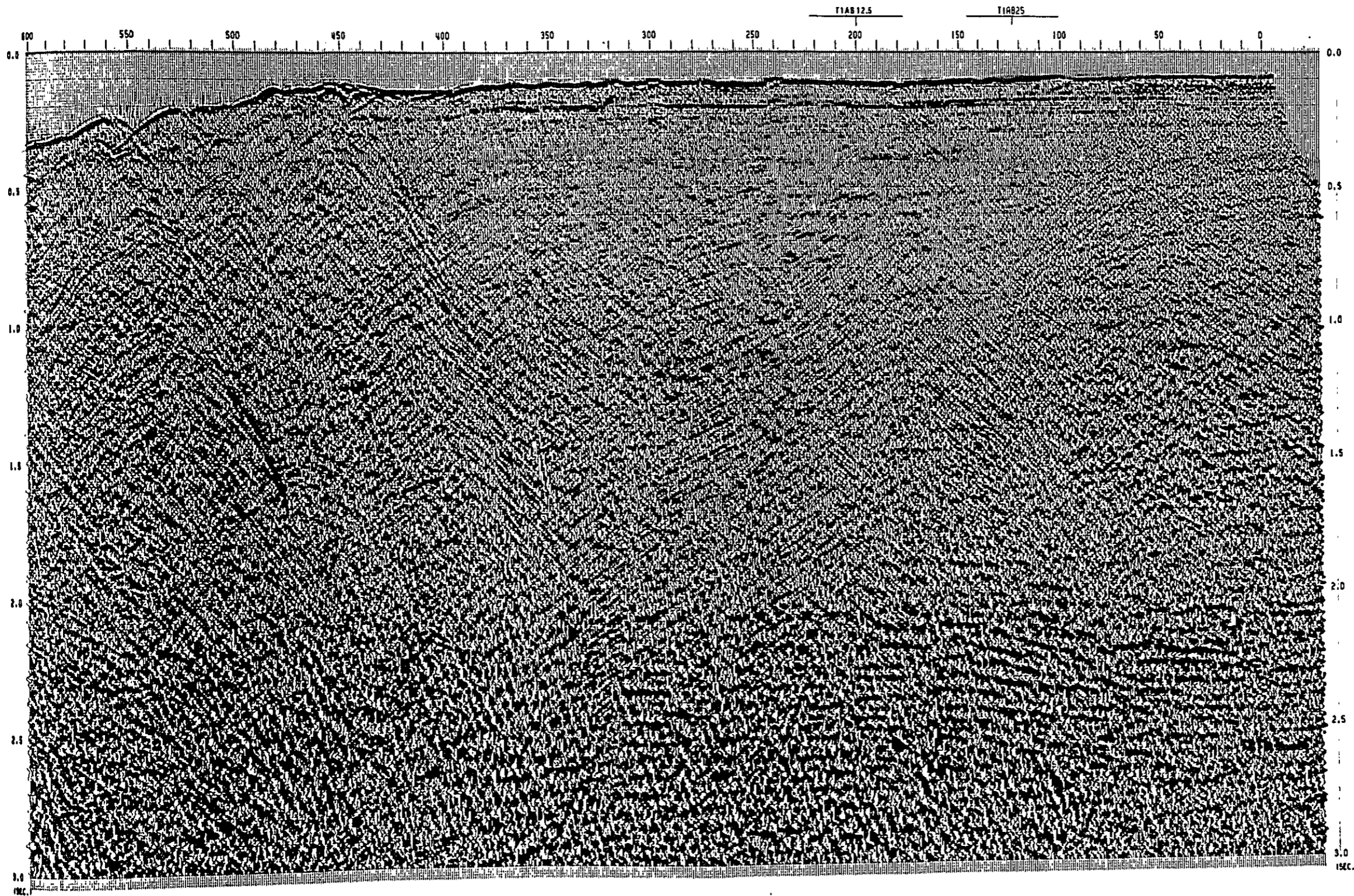
PROCESS LENGTH	3.0 SEC.
SAMPLE RATE	1-2 MSEC.
1) RECORD EDIT	1) BY MUTE
2) CDP SORT	2) BY STACK 20-F
CDP INTERVAL 12.5 M.	3) DECONVOLUTION
3) GAIN RECOVERY	PA. DISTANCE
4) DECONVOLUTION	DP. LENGTH
5) RESAMPLE 1 TO 2 INSEC.	DESIGN GATE
6) VELOCITY ANALYSIS	1) 1. V. FILTER
7) NOD CORRECTION	2) DATUM CORRECTION
	3) SCALING TRACE STRENGTH

DISPLAY

POLARITY	NORMAL
HORIZONTAL SCALE	10 TR./CM. (1:1)
VERTICAL SCALE	5 INCH/SEC. (1:1)
DISPLAY GAIN	3 DECIBEL



JAPAN PETROLEUM EXPLORATION CO. GEOPHYSICAL HEADQUARTERS



CDP NO	SP	120
0.100	3377	1187
0.200	3370	1180
0.300	3370	1180
0.400	3364	1174
0.500	3360	1170
0.600	3360	1170
0.700	3366	1176
0.800	3366	1176
0.900	3362	1172
1.000	3362	1172
1.100	3362	1172
1.200	3362	1172
1.300	3362	1172
1.400	3362	1172
1.500	3362	1172
1.600	3362	1172
1.700	3362	1172
1.800	3362	1172
1.900	3362	1172
2.000	3362	1172
2.100	3362	1172
2.200	3362	1172
2.300	3362	1172
2.400	3362	1172
2.500	3362	1172
2.600	3362	1172
2.700	3362	1172
2.800	3362	1172
2.900	3362	1172
3.000	3362	1172

VEL. ANALYSIS

JAPAN INTERNATIONAL COOPERATION AGENCY

E

CROSS LINE

SEISMIC SURVEY
24 FOLD RECORD SECTION

SHOT NUMBER

OFFSHORE AREA OF ZONGULDAK COAL FIELD IN TURKEY
LINE T2AB12.5
S.P. 0 - 602

ENCL. 7

FIELD RECORDING DATA

RECORDED BY	NJA
INSTRUMENT	OPS IV
RECORD LENGTH	3.0 SEC.
SAMPLE RATE	1 MSEC.
FILTER	LOW 8736 HZ/OB/OC1
	HT 200 INCH
	1.2 FT
GAIN CONTROL	3 MIN GUNS (70 CH. TR. 100.00.100)
ENERGY SOURCE	1750 PSI.1
	12.5 M.
SHOT INTERVAL	30-FOLD
COP MULTIPLICITY	SEC-STRECHER
DETECTION CABLE	JULY 1979
SURVEY DATE	813111 J
SURVEY VESSEL	

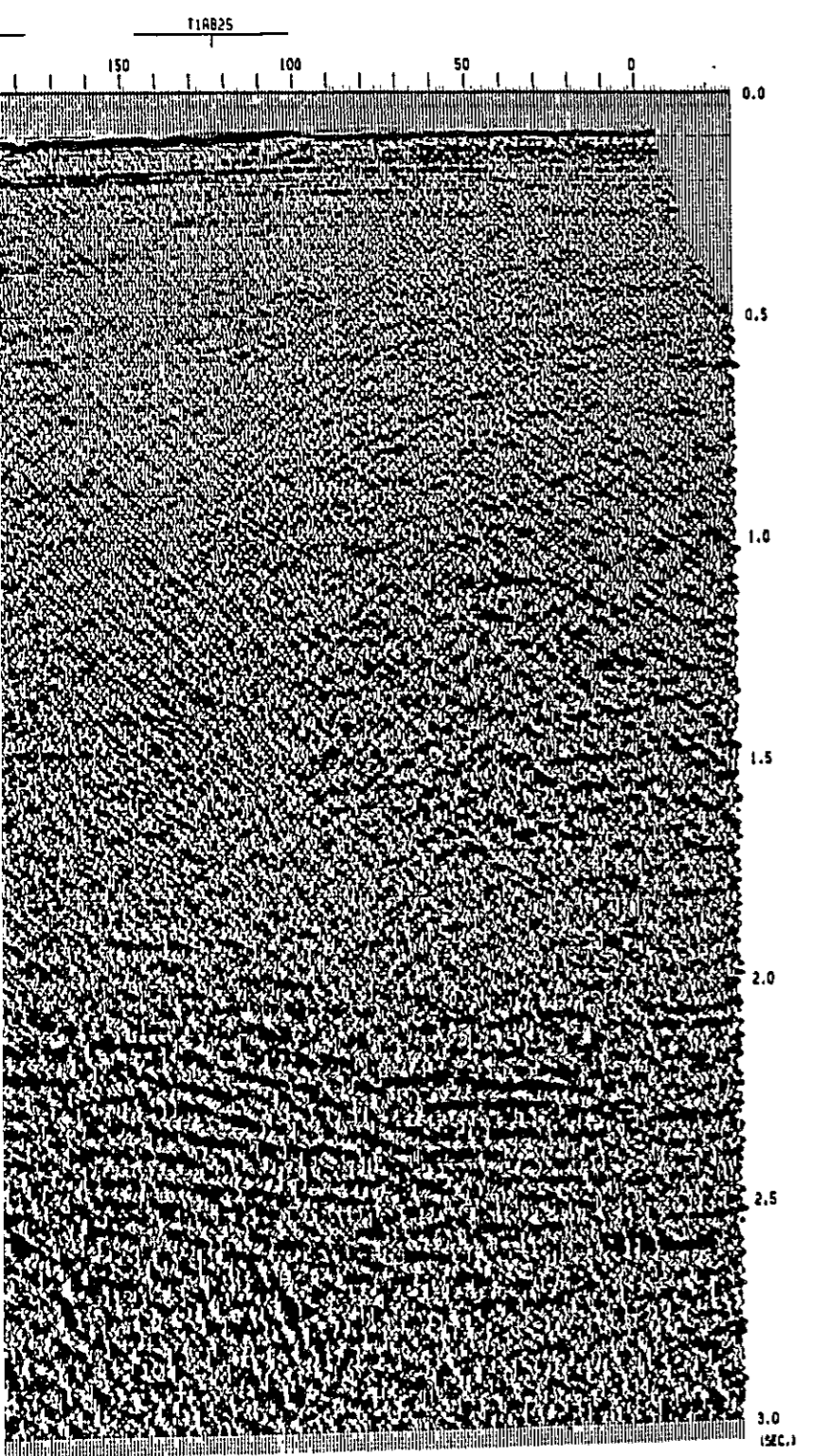
PROCESSING SEQUENCE

PROCESS LENGTH	3.0 SEC.
SAMPLE RATE	1-2 MSEC.
1) RECORD EDIT	1) MUTE
2) COP SORT	2) STACK 24-FOLD
3) GAIN RECOVERY	3) DECONVOLUTION
OP. INTERVAL 12.5 M.	PR. DISTANCE 200 MSEC.
OP. LENGTH 300 MSEC.	OP. LENGTH 200 MSEC.
OP. DISTANCE 1 MSEC.	DESIGN GATE LENGTH 3000 MSEC.
DESIGN GATE LENGTH 3000 MSEC.	
4) DECONVOLUTION	4) T.V. FILTER
OP. LENGTH 300 MSEC.	OP. LENGTH 300 MSEC.
OP. DISTANCE 1 MSEC.	S = 10 M
DESIGN GATE LENGTH 3000 MSEC.	S = 50 M
5) RESAMPLE 1 TO 2 (MSEC.)	6) ORIGIN CORRECTION +12 MSEC.
7) VELOCITY ANALYSIS BY C.V. STAGA	8) SCALING TRACE SIGMA SCALE
9) NMO CORRECTION	

DISPLAY

POLARITY	NORMAL
HORIZONTAL SCALE	10 TR./CH. (1:12500)
VERTICAL SCALE	5 INCH/SEC. (12.7 CM./SEC.)
DISPLAY GRIN	3 DECIBEL

JAPAN PETROLEUM EXPLORATION CO., LTD.
GEOPHYSICAL HEADQUARTERS



CDP100			
TR	SP	TR	SP
1.000	1874	1001	1875
1.000	1875	1002	1876
1.000	1876	1003	1877
1.000	1877	1004	1878
1.000	1878	1005	1879
1.000	1879	1006	1880
1.000	1880	1007	1881
1.000	1881	1008	1882
1.000	1882	1009	1883
1.000	1883	1010	1884
1.000	1884	1011	1885
1.000	1885	1012	1886
1.000	1886	1013	1887
1.000	1887	1014	1888
1.000	1888	1015	1889
1.000	1889	1016	1890
1.000	1890	1017	1891
1.000	1891	1018	1892
1.000	1892	1019	1893
1.000	1893	1020	1894

CDP117			
TR	SP	TR	SP
1.000	1897	1101	1898
1.000	1898	1102	1899
1.000	1899	1103	1900
1.000	1900	1104	1901
1.000	1901	1105	1902
1.000	1902	1106	1903
1.000	1903	1107	1904
1.000	1904	1108	1905
1.000	1905	1109	1906
1.000	1906	1110	1907
1.000	1907	1111	1908
1.000	1908	1112	1909
1.000	1909	1113	1910
1.000	1910	1114	1911
1.000	1911	1115	1912
1.000	1912	1116	1913
1.000	1913	1117	1914
1.000	1914	1118	1915
1.000	1915	1119	1916
1.000	1916	1120	1917

VEL. ANALYSIS

JAPAN INTERNATIONAL COOPERATION AGENCY

NE

CROSS LINE

SEISMIC SURVEY
24 FOLD RECORD SECTION

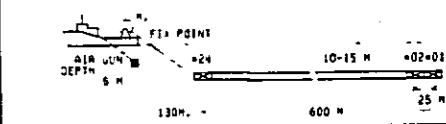
SHOT NUMBER

OFFSHORE AREA
ZONGULDAK COAL
FIELD IN TURKEY
LINE T3AB12.5
S.P. 1 - 549

ENCL. 8

FIELD RECORDING DATA

RECORDED BY	NR
INSTRUMENT	SP 14
RECORD LENGTH	3.0 SEC
SAMPLE RATE	1 MSEC
FILTER	LOW 9736 HZ/DB/OCT
CRIN CONTACT	WT 248 #M1
ENERGY SOURCE	3 AIR GUNS 70 CU. IN. 140.20
	11750 PSI/IN
SHOT INTERVAL	12.5 M
CDP MULTIPLICITY	24
SECTION CABLE	CCP STREAMER
SURVEY DATE	JUL 1 1978
SURVEY VESSEL	SIRIN 1



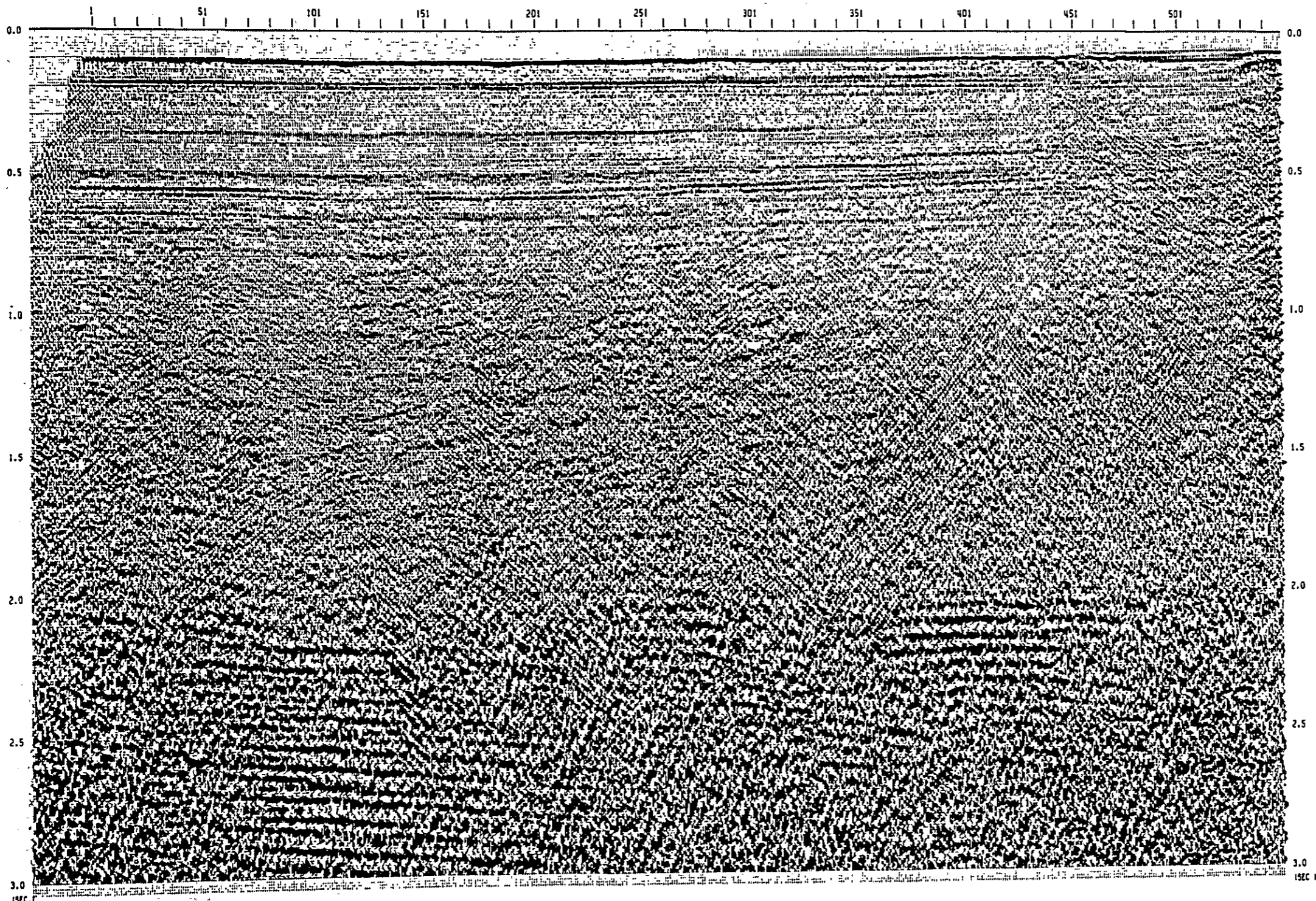
PROCESSING SEQUENCE

PROCESS LENGTH	3.0 SEC.
SAMPLE RATE	1/2 MSEC.
1 01 RECORD EDIT	1 01 MUTE
1 21 CDP SORT	1 01 STACK 24-FOLD
CDP INTERVAL 12.5 M	
1 31 CRIN RECOVER	1 01 DECONVOLUTION
CRIN LENGTH 150 MSEC	PA DISTANCE 2 M
	SP LENGTH 200 M
	DESIGN GATE LENGTH
1 41 DECONVOLUTION	1 11 1 M FILTER
SP LENGTH 300 MSEC.	SP LENGTH 300 M
PA DISTANCE 1 MSEC.	PA DISTANCE 2 M
DESIGN GATE LENGTH 2000 MSEC	DESIGN GATE LENGTH 2 M
	DESIGN GATE LENGTH 2 M
1 51 RESAMPLE 1 TO 2 INSEC	1 121 ORIGIN CORRECTION
1 61 VELOCITY ANALYSIS	1 131 SCALING
BY C.P. STACK	TRACE SIGMA SCALE
1 71 WVD CORRECTION	

DISPLAY

POLARITY	NORMAL
HORIZONTAL SCALE	30 CM / CH 11125000
VERTICAL SCALE	5 INCH/SEC. 112.7 CM / S
DISPLAY GAIN	3 DECIBEL

JAPAN PETROLEUM EXPLORATION CO., LTD
GEOPHYSICAL HEADQUARTERS



1 SEC

CDP #	SP	NO
0.100	143	1897
0.200	172	1820
0.300	177	1889
0.400	354	1821
0.500	384	1821
0.700	174	1889
1.000	1824	1800
1.500	1894	1821
2.000	1813	1895
3.000	1842	1895

VEL. ANALYSIS

JAPAN INTERNATIONAL
COOPERATION AGENCY

NE

CROSS LINE

SHOT NUMBER

SEISMIC SURVEY
24 FOLD RECORD SECTION

OFFSHORE AREA OF
ZONGULDAK COAL
FIELD IN TURKEY
LINE T3AB12.5
S.P. 1 - 549

ENCL. 8

FIELD RECORDING DATA

RECORDED BY	NR
INSTRUMENT	OPS 14
RECORD LENGTH	3.0 SEC.
SAMPLE RATE	1 MSEC.
FILTER	LUM 0736 (HZ/OBT)
	W1 240 (HZ)
	W2 240 (HZ)
	W3 240 (HZ)
	W4 240 (HZ)
	W5 240 (HZ)
	W6 240 (HZ)
	W7 240 (HZ)
	W8 240 (HZ)
	W9 240 (HZ)
	W10 240 (HZ)
	W11 240 (HZ)
	W12 240 (HZ)
	W13 240 (HZ)
	W14 240 (HZ)
	W15 240 (HZ)
	W16 240 (HZ)
	W17 240 (HZ)
	W18 240 (HZ)
	W19 240 (HZ)
	W20 240 (HZ)
	W21 240 (HZ)
	W22 240 (HZ)
	W23 240 (HZ)
	W24 240 (HZ)
	W25 240 (HZ)
	W26 240 (HZ)
	W27 240 (HZ)
	W28 240 (HZ)
	W29 240 (HZ)
	W30 240 (HZ)
	W31 240 (HZ)
	W32 240 (HZ)
	W33 240 (HZ)
	W34 240 (HZ)
	W35 240 (HZ)
	W36 240 (HZ)
	W37 240 (HZ)
	W38 240 (HZ)
	W39 240 (HZ)
	W40 240 (HZ)
	W41 240 (HZ)
	W42 240 (HZ)
	W43 240 (HZ)
	W44 240 (HZ)
	W45 240 (HZ)
	W46 240 (HZ)
	W47 240 (HZ)
	W48 240 (HZ)
	W49 240 (HZ)
	W50 240 (HZ)
	W51 240 (HZ)
	W52 240 (HZ)
	W53 240 (HZ)
	W54 240 (HZ)
	W55 240 (HZ)
	W56 240 (HZ)
	W57 240 (HZ)
	W58 240 (HZ)
	W59 240 (HZ)
	W60 240 (HZ)
	W61 240 (HZ)
	W62 240 (HZ)
	W63 240 (HZ)
	W64 240 (HZ)
	W65 240 (HZ)
	W66 240 (HZ)
	W67 240 (HZ)
	W68 240 (HZ)
	W69 240 (HZ)
	W70 240 (HZ)
	W71 240 (HZ)
	W72 240 (HZ)
	W73 240 (HZ)
	W74 240 (HZ)
	W75 240 (HZ)
	W76 240 (HZ)
	W77 240 (HZ)
	W78 240 (HZ)
	W79 240 (HZ)
	W80 240 (HZ)
	W81 240 (HZ)
	W82 240 (HZ)
	W83 240 (HZ)
	W84 240 (HZ)
	W85 240 (HZ)
	W86 240 (HZ)
	W87 240 (HZ)
	W88 240 (HZ)
	W89 240 (HZ)
	W90 240 (HZ)
	W91 240 (HZ)
	W92 240 (HZ)
	W93 240 (HZ)
	W94 240 (HZ)
	W95 240 (HZ)
	W96 240 (HZ)
	W97 240 (HZ)
	W98 240 (HZ)
	W99 240 (HZ)
	W100 240 (HZ)


DATA CONTROL: 3 AIR CUN 470 CU. IN 140.20.1011
ENERGY SOURCE: 11700 PSI. 14
SHOT INTERVAL: 12.5 M.
CDP MULTIPLICITY: 24-FOLD
DETECTION CABLE: SEC-STERMER
SURVEY DATE: JULY 1979
SURVEY VESSEL: SISHIN I

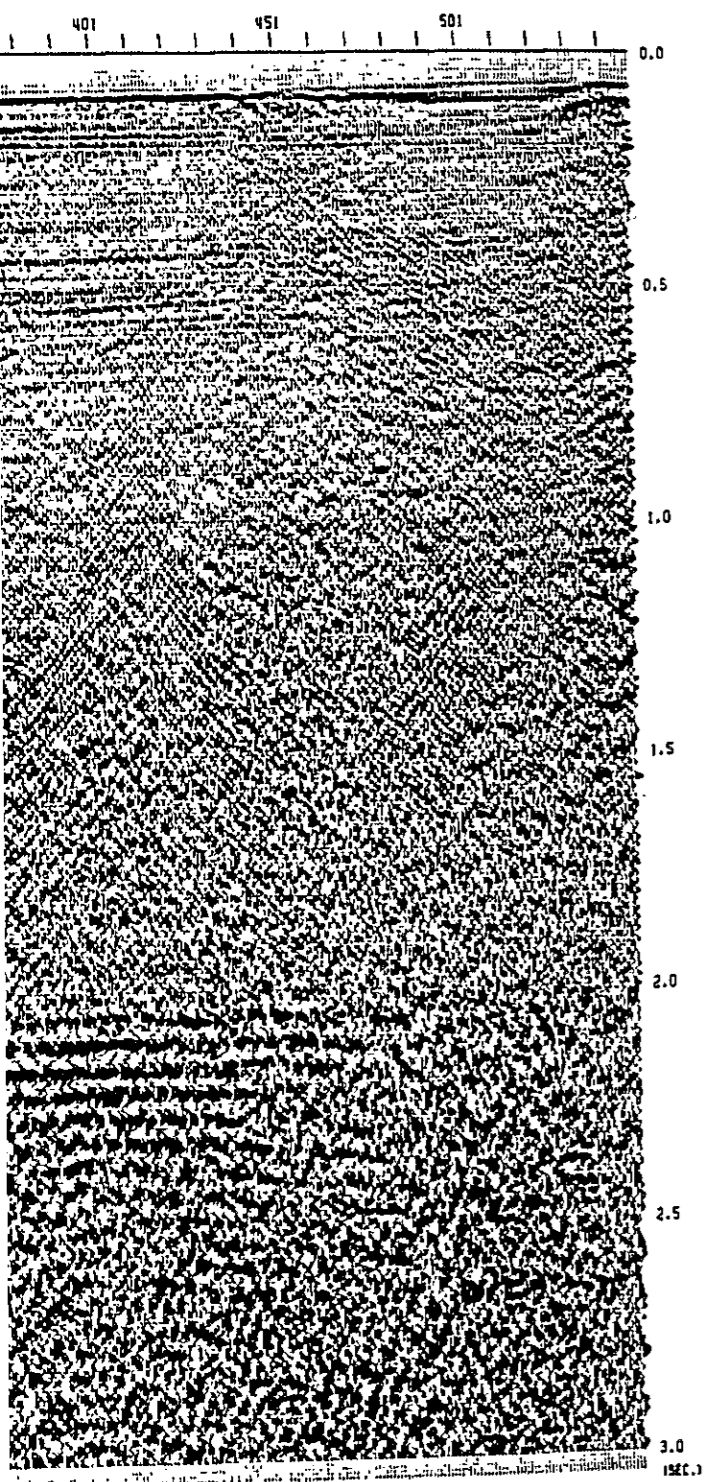
PROCESSING SEQUENCE

PROCESS LENGTH	3.0 SEC.
SAMPLE RATE	1-2 MSEC.
1 01 RECORD EDIT	1 01 MUTE
1 21 CDP SORT	1 01 STAC 24-FOLD
1 31 GAIN RECOVERY	1101 DECONVOLUTION
ASC	PA DISTANCE 2 MSEC.
GATE LENGTH 150 MSEC.	OP LENGTH 200 MSEC.
	DESIGN GATE LENGTH 2000 MSEC.
1 41 DECONVOLUTION	1111 I.V. FILTER
OP LENGTH 300 MSEC.	OP LENGTH 300 MSEC.
PA DISTANCE 1 MSEC.	5 - 70 HZ
DESIGN GATE LENGTH 2000 MSEC.	5 - 80 HZ
	5 - 50 HZ
1 51 RESAMPLE 1 TO 2 INSEC.	1121 DATUM CORRECTION -12 MSEC.
1 61 VELOCITY ANALYSIS	1131 SCALING
BY C.V. STACK	TRACE SIGNA SCALE
1 71 NMO CORRECTION	

DISPLAY

POLARITY	NORMAL
HORIZONTAL SCALE	10 CM / CH 1:12500
VERTICAL SCALE	5 CM / SEC. 1:12.5 CA./SEC.
DISPLAY GAIN	3 DECIBEL

 JAPAN PETROLEUM
EXPLORATION CO., LTD.
GEOPHYSICAL HEADQUARTERS



1 SEC. 1

TIME	SP	CP	NO
0.100	1437	1437	75
0.200	1437	1437	75
0.300	1437	1437	75
0.400	1437	1437	75
0.500	1437	1437	75
0.600	1437	1437	75
0.700	1437	1437	75
0.800	1437	1437	75
0.900	1437	1437	75
1.000	1437	1437	75
1.100	1437	1437	75
1.200	1437	1437	75
1.300	1437	1437	75
1.400	1437	1437	75
1.500	1437	1437	75
1.600	1437	1437	75
1.700	1437	1437	75
1.800	1437	1437	75
1.900	1437	1437	75
2.000	1437	1437	75

TIME	SP	CP	NO
0.100	1437	1437	75
0.200	1437	1437	75
0.300	1437	1437	75
0.400	1437	1437	75
0.500	1437	1437	75
0.600	1437	1437	75
0.700	1437	1437	75
0.800	1437	1437	75
0.900	1437	1437	75
1.000	1437	1437	75
1.100	1437	1437	75
1.200	1437	1437	75
1.300	1437	1437	75
1.400	1437	1437	75
1.500	1437	1437	75
1.600	1437	1437	75
1.700	1437	1437	75
1.800	1437	1437	75
1.900	1437	1437	75
2.000	1437	1437	75

VEL. ANALYSIS

JAPAN INTERNATIONAL COOPERATION AGENCY

NE

CROSS LINE

SHOT NUMBER

SEISMIC SURVEY
TIME MIGRATED SECTION
OFFSHORE AREA OF ZONGULDAK COAL FIELD IN TURKEY
LINE T1AB12.5
S.P. 73 - 554
ENCL. 9

FIELD RECORDING DATA

RECORDED BY	HTA
INSTRUMENT	DFS IV
RECORD LENGTH	3.0 SEC.
SAMPLE RATE	1 MSEC.
FILTER	LOW 0/36 HZ/OB/OCT
DATA CONTROL	1/2 248 HZ
ENERGY SOURCE	3 018 CUMS 170 CU. IN. 140 20.101
SHOT INTERVAL	12.5 M
CDP MULTIPLICITY	24-FOLD
DETECTION COIL	SEC-STIFFENER
SURVEY DATE	JULY 1979
SURVEY VESSEL	SISMAK I

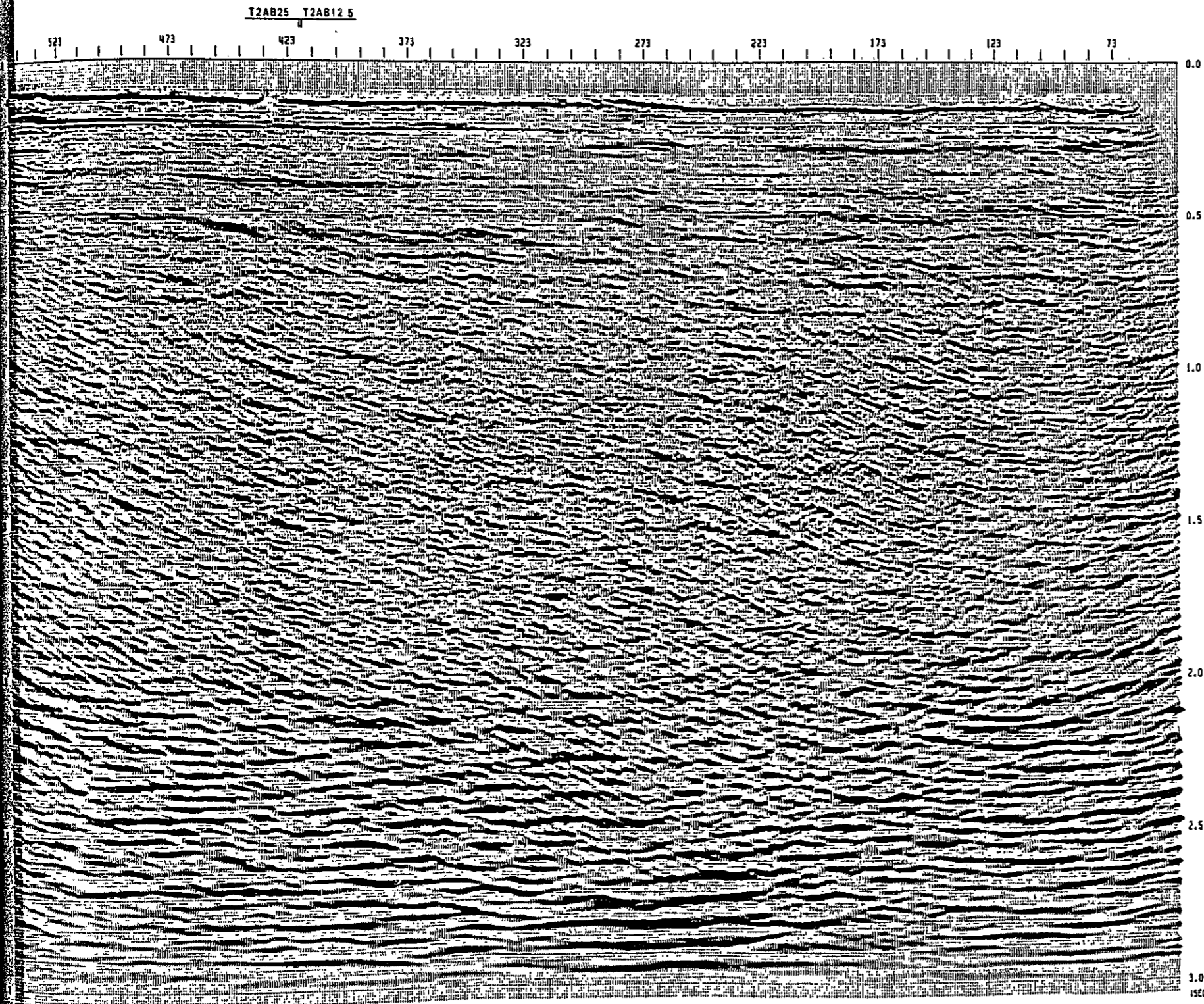
PROCESSING SEQUENCE

PROCESS LENGTH	3.0 SEC.
SAMPLE RATE	1-2 MSEC.
1) RECORD EDIT	1) MUTE
2) CDP SORT	2) STACK 24-FOLD
CDP INTERVAL 12.5 M.	10) DECONVOLUTION
3) CRIN RECOVER	PA. DISTANCE 3 MSEC.
ARC	OP. LENGTH 200 MSEC.
GATE LENGTH 150 MSEC.	DESIGN GATE LENGTH 2000 MSEC.
4) DECONVOLUTION	11) T. V. FILTER
OP. LENGTH 300 MSEC.	OP. LENGTH 300 MSEC.
PA. DISTANCE 3 MSEC.	S - 30 MZ
DESIGN GATE LENGTH 2000 MSEC.	S - 50 MZ
5) RESAMPLE 1 TO 2 (MSEC.)	12) DATUM CORRECTION +12 MSEC.
6) VELOCITY ANALYSIS BY C.V. STACK	13) SCALING TRACE SIGMA SCALE
7) NMO CORRECTION	14) F-A MIGRATION

DISPLAY

POLARITY	NORMAL
HORIZONTAL SCALE	10 CM./CM. 11:125001
VERTICAL SCALE	7.5 CM./M. 11:133331
DESPICAY GAIN	3 DECIBEL

JAPAN PETROLEUM EXPLORATION CO., LTD. GEOPHYSICAL HEADQUARTERS



CDP#26 SP 59'		CDP#27 SP 53'		CDP#28 SP 40'	
0	1450	1450	1450	1450	1450
1	1450	1450	1450	1450	1450
2	1450	1450	1450	1450	1450
3	1450	1450	1450	1450	1450
4	1450	1450	1450	1450	1450
5	1450	1450	1450	1450	1450
6	1450	1450	1450	1450	1450
7	1450	1450	1450	1450	1450
8	1450	1450	1450	1450	1450
9	1450	1450	1450	1450	1450
10	1450	1450	1450	1450	1450
11	1450	1450	1450	1450	1450
12	1450	1450	1450	1450	1450
13	1450	1450	1450	1450	1450
14	1450	1450	1450	1450	1450
15	1450	1450	1450	1450	1450
16	1450	1450	1450	1450	1450
17	1450	1450	1450	1450	1450
18	1450	1450	1450	1450	1450
19	1450	1450	1450	1450	1450
20	1450	1450	1450	1450	1450
21	1450	1450	1450	1450	1450
22	1450	1450	1450	1450	1450
23	1450	1450	1450	1450	1450
24	1450	1450	1450	1450	1450
25	1450	1450	1450	1450	1450
26	1450	1450	1450	1450	1450
27	1450	1450	1450	1450	1450
28	1450	1450	1450	1450	1450
29	1450	1450	1450	1450	1450
30	1450	1450	1450	1450	1450
31	1450	1450	1450	1450	1450
32	1450	1450	1450	1450	1450
33	1450	1450	1450	1450	1450
34	1450	1450	1450	1450	1450
35	1450	1450	1450	1450	1450
36	1450	1450	1450	1450	1450
37	1450	1450	1450	1450	1450
38	1450	1450	1450	1450	1450
39	1450	1450	1450	1450	1450
40	1450	1450	1450	1450	1450
41	1450	1450	1450	1450	1450
42	1450	1450	1450	1450	1450
43	1450	1450	1450	1450	1450
44	1450	1450	1450	1450	1450
45	1450	1450	1450	1450	1450
46	1450	1450	1450	1450	1450
47	1450	1450	1450	1450	1450
48	1450	1450	1450	1450	1450
49	1450	1450	1450	1450	1450
50	1450	1450	1450	1450	1450
51	1450	1450	1450	1450	1450
52	1450	1450	1450	1450	1450
53	1450	1450	1450	1450	1450
54	1450	1450	1450	1450	1450
55	1450	1450	1450	1450	1450
56	1450	1450	1450	1450	1450
57	1450	1450	1450	1450	1450
58	1450	1450	1450	1450	1450
59	1450	1450	1450	1450	1450
60	1450	1450	1450	1450	1450

CDP#29 SP 40'	
0	1450
1	1450
2	1450
3	1450
4	1450
5	1450
6	1450
7	1450
8	1450
9	1450
10	1450
11	1450
12	1450
13	1450
14	1450
15	1450
16	1450
17	1450
18	1450
19	1450
20	1450
21	1450
22	1450
23	1450
24	1450
25	1450
26	1450
27	1450
28	1450
29	1450
30	1450
31	1450
32	1450
33	1450
34	1450
35	1450
36	1450
37	1450
38	1450
39	1450
40	1450
41	1450
42	1450
43	1450
44	1450
45	1450
46	1450
47	1450
48	1450
49	1450
50	1450
51	1450
52	1450
53	1450
54	1450
55	1450
56	1450
57	1450
58	1450
59	1450
60	1450

VEL. ANALYSIS

JAPAN INTERNATIONAL
COOPERATION AC

E

SEISMIC SURV
TIME MIGRATED SI

OFFSHORE AR
ZONGULDAK C
FIELD IN TU
LINE T2AB12
S.P. 0 - 60

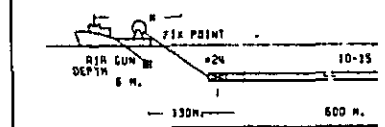
CROSS LINE

SHOT NUMBER

ENCL. 10

FIELD RECORDING

RECORDED BY	MTA
INSTRUMENT	DP3 1P
RECORD LENGTH	3.0 SEC.
SAMPLE RATE	1 INSEC.
FILTER	LOW 0.75 INZ
	HI 240 INZ
GAIN CONTROL	1-2
ENERGY SOURCE	3 AIR GUNS 17
	(1750 PSI.)
SHOT INTERVAL	12.5 M
CDP MULTIPLICITY	24-FOLD
DETECTOR CABLE	SEC-STRENGTH
SURVEY DATE	JUN 1978
SURVEY VESSEL	SIRINIK I



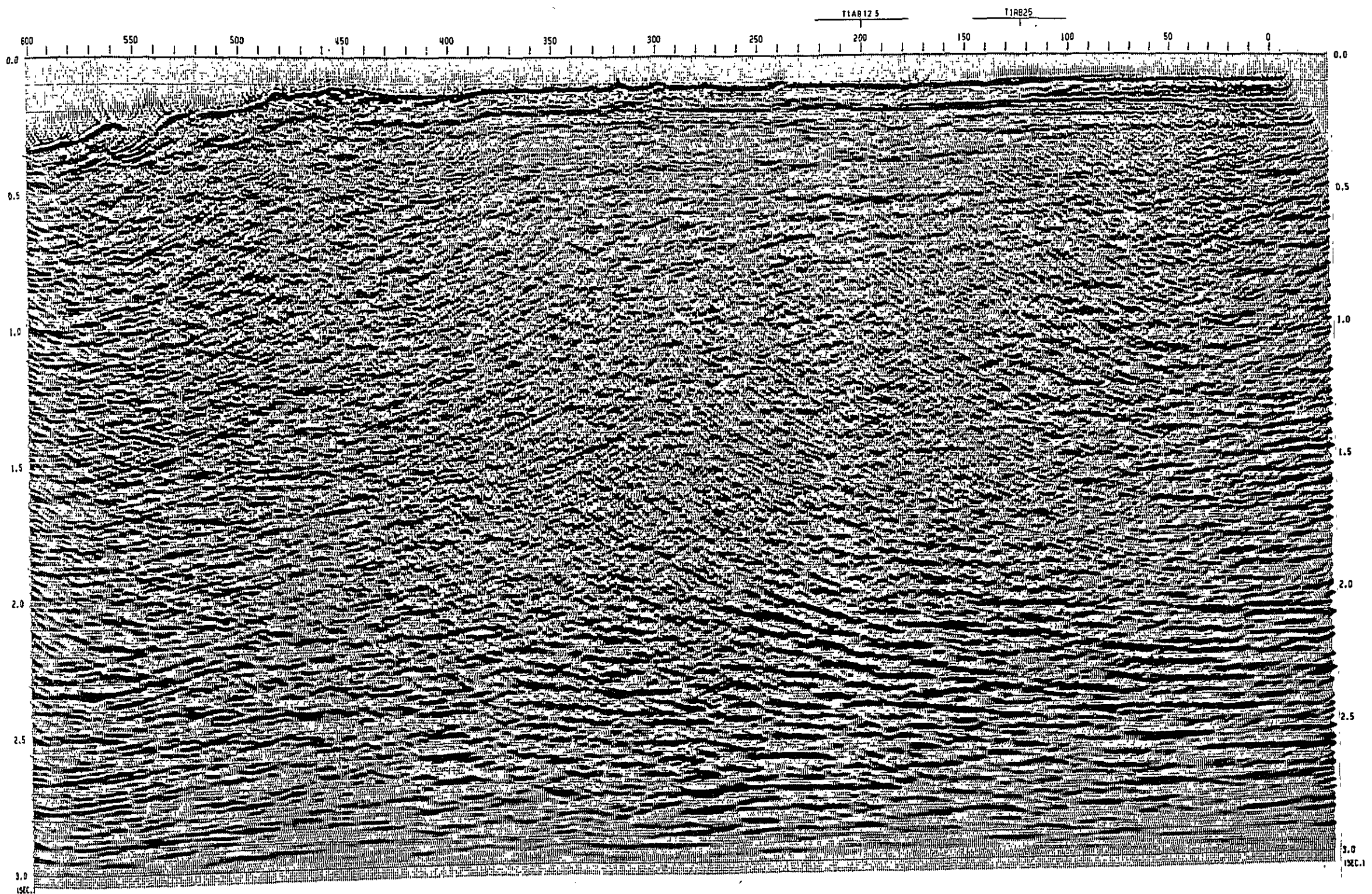
PROCESSING SEQU

PROCESS LENGTH	3.0 SEC.
SAMPLE RATE	1.2 INSEC.
1) RECORD EDIT	1) MUTE
2) CDP SORT	2) STACK
CDP INTERVAL 12.5 M.	110) DECONVOL
3) GAIN RECOVERY	PA. DIST
ARC	OP. LEN
SCALE LENGTH 350 MSEC.	DESIGN
4) DECONVOLUTION	111) 1. V. FIL
OP. LENGTH 300 MSEC.	OP. LEN
PA. DISTANCE 1 MSEC.	5 - 10
DESIGN RATE LENGTH	5 - 60
2000 MSEC.	5 - 50
5) RESAMPLE 1 TO 2 INSEC.	112) DATUM
6) VELOCITY ANALYSIS	113) SCALING
BY C.V. STACK	TRACE 1
7) NMO CORRECTION	114) F-R NIG

DISPLAY

POLARITY	NORMAL
HORIZONTAL SCALE	10 CM./CM.
VERTICAL SCALE	2.5 CM./SEC.
DISPLAY GAIN	3 DECIBEL

JAPAN PETROLE
EXPLORATION C
GEOPHYSICAL

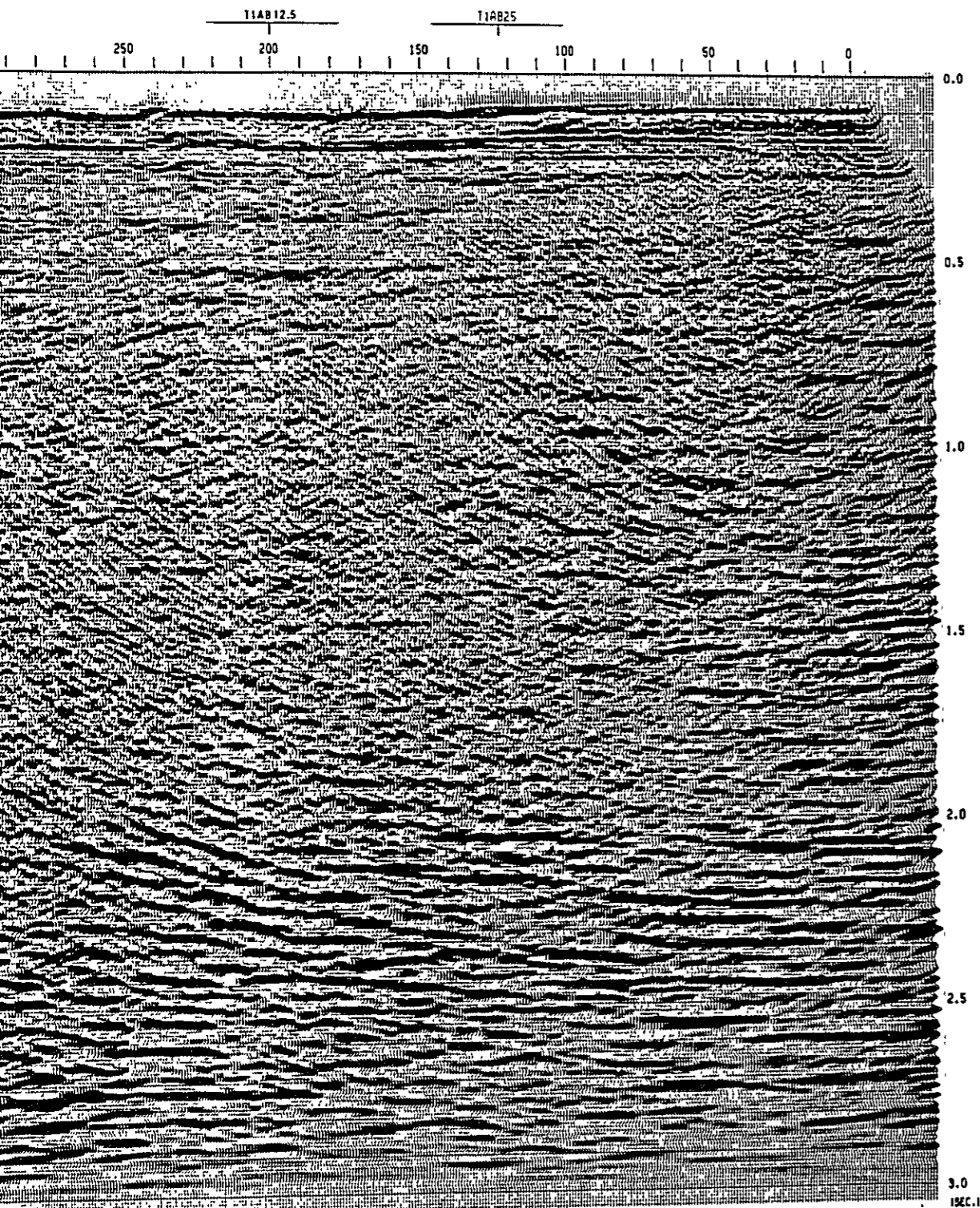


NO.	TIME	DEPTH	VELOCITY
1	11.81	11.81	11.81
2	11.82	11.82	11.82
3	11.83	11.83	11.83
4	11.84	11.84	11.84
5	11.85	11.85	11.85
6	11.86	11.86	11.86
7	11.87	11.87	11.87
8	11.88	11.88	11.88
9	11.89	11.89	11.89
10	11.90	11.90	11.90
11	11.91	11.91	11.91
12	11.92	11.92	11.92
13	11.93	11.93	11.93
14	11.94	11.94	11.94
15	11.95	11.95	11.95
16	11.96	11.96	11.96
17	11.97	11.97	11.97
18	11.98	11.98	11.98
19	11.99	11.99	11.99
20	12.00	12.00	12.00

VEL. ANALYSIS

CROSS LINE

SHOT NUMBER



JAPAN INTERNATIONAL
COOPERATION AGENCY

E

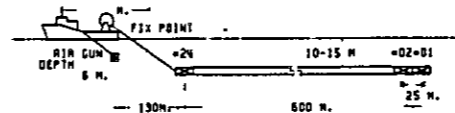
SEISMIC SURVEY
TIME MIGRATED SECTION

OFFSHORE AREA OF
ZONGULDAK COAL
FIELD IN TURKEY
LINE T2AB12.5
S.P. 0 - 602

ENCL. 10

FIELD RECORDING DATA

RECORDED BY	NSA
INSTRUMENT	DP3 IV
RECORD LENGTH	3.0 SEC.
SAMPLE RATE	1 MSEC.
FILTER	LOW 8/36 HZ/OB/OCT
GAIN CONTROL	M1 2ND THZ
ENERGY SOURCE	3 MIA GUNS 170 CU. IN. (NO. 20.101)
SHOT INTERVAL	12.5 M.
CDP MULTIPLICITY	24-FOLD
DETECTION CABLE	SEC-STRENGTH
SURVEY DATE	JUL 1 1978
SURVEY VESSEL	SISMA I



PROCESSING SEQUENCE

PROCESS LENGTH	3.0 SEC.
SAMPLE RATE	1-2 MSEC.
1 1) RECORD EDIT	1 8) MUTE
1 2) CDP SORT	1 9) STACK 24-FOLD
CDP INTERVAL 12.5 M.	110) DECONVOLUTION
1 3) GAIN RECOVERY	PA. DISTANCE 2 MSEC.
REC. GATE LENGTH 150 MSEC.	OP. LENGTH 200 MSEC.
1 4) DECONVOLUTION	DESIGN GATE LENGTH 2000 MSEC.
OP. LENGTH 300 MSEC.	111) T.V. FILTER
PA. DISTANCE 1 MSEC.	OP. LENGTH 300 MSEC.
DESIGN GATE LENGTH 2000 MSEC.	S = 70 MZ
1 5) RESAMPLE 1 TO 2 (MSEC.)	S = 60 MZ
1 6) VELOCITY ANALYSIS	S = 50 MZ
BY C.T. STACK	112) DATUM CORRECTION -12 MSEC.
1 7) NMO CORRECTION	113) SCALING TRACE SIGN SCALE
	114) F-N MIGRATION

DISPLAY

POLARITY	NORMAL
HORIZONTAL SCALE	10 IN./CM. 1:12500
VERTICAL SCALE	7.5 CM./M. 1:19333
DISPLAY GAIN	3 DECIBEL



JAPAN PETROLEUM
EXPLORATION CO., LTD.
GEOPHYSICAL HEADQUARTERS

CDP NO	SP	TIME	AMPL
1	100	1.000	1.000
2	100	1.000	1.000
3	100	1.000	1.000
4	100	1.000	1.000
5	100	1.000	1.000
6	100	1.000	1.000
7	100	1.000	1.000
8	100	1.000	1.000
9	100	1.000	1.000
10	100	1.000	1.000
11	100	1.000	1.000
12	100	1.000	1.000
13	100	1.000	1.000
14	100	1.000	1.000
15	100	1.000	1.000
16	100	1.000	1.000
17	100	1.000	1.000
18	100	1.000	1.000
19	100	1.000	1.000
20	100	1.000	1.000
21	100	1.000	1.000
22	100	1.000	1.000
23	100	1.000	1.000
24	100	1.000	1.000
25	100	1.000	1.000
26	100	1.000	1.000
27	100	1.000	1.000
28	100	1.000	1.000
29	100	1.000	1.000
30	100	1.000	1.000
31	100	1.000	1.000
32	100	1.000	1.000
33	100	1.000	1.000
34	100	1.000	1.000
35	100	1.000	1.000
36	100	1.000	1.000
37	100	1.000	1.000
38	100	1.000	1.000
39	100	1.000	1.000
40	100	1.000	1.000
41	100	1.000	1.000
42	100	1.000	1.000
43	100	1.000	1.000
44	100	1.000	1.000
45	100	1.000	1.000
46	100	1.000	1.000
47	100	1.000	1.000
48	100	1.000	1.000
49	100	1.000	1.000
50	100	1.000	1.000
51	100	1.000	1.000
52	100	1.000	1.000
53	100	1.000	1.000
54	100	1.000	1.000
55	100	1.000	1.000
56	100	1.000	1.000
57	100	1.000	1.000
58	100	1.000	1.000
59	100	1.000	1.000
60	100	1.000	1.000
61	100	1.000	1.000
62	100	1.000	1.000
63	100	1.000	1.000
64	100	1.000	1.000
65	100	1.000	1.000
66	100	1.000	1.000
67	100	1.000	1.000
68	100	1.000	1.000
69	100	1.000	1.000
70	100	1.000	1.000
71	100	1.000	1.000
72	100	1.000	1.000

CDP NO	SP	TIME	AMPL
1	100	1.000	1.000
2	100	1.000	1.000
3	100	1.000	1.000
4	100	1.000	1.000
5	100	1.000	1.000
6	100	1.000	1.000
7	100	1.000	1.000
8	100	1.000	1.000
9	100	1.000	1.000
10	100	1.000	1.000
11	100	1.000	1.000
12	100	1.000	1.000
13	100	1.000	1.000
14	100	1.000	1.000
15	100	1.000	1.000
16	100	1.000	1.000
17	100	1.000	1.000
18	100	1.000	1.000
19	100	1.000	1.000
20	100	1.000	1.000
21	100	1.000	1.000
22	100	1.000	1.000
23	100	1.000	1.000
24	100	1.000	1.000
25	100	1.000	1.000
26	100	1.000	1.000
27	100	1.000	1.000
28	100	1.000	1.000
29	100	1.000	1.000
30	100	1.000	1.000
31	100	1.000	1.000
32	100	1.000	1.000
33	100	1.000	1.000
34	100	1.000	1.000
35	100	1.000	1.000
36	100	1.000	1.000
37	100	1.000	1.000
38	100	1.000	1.000
39	100	1.000	1.000
40	100	1.000	1.000
41	100	1.000	1.000
42	100	1.000	1.000
43	100	1.000	1.000
44	100	1.000	1.000
45	100	1.000	1.000
46	100	1.000	1.000
47	100	1.000	1.000
48	100	1.000	1.000
49	100	1.000	1.000
50	100	1.000	1.000
51	100	1.000	1.000
52	100	1.000	1.000
53	100	1.000	1.000
54	100	1.000	1.000
55	100	1.000	1.000
56	100	1.000	1.000
57	100	1.000	1.000
58	100	1.000	1.000
59	100	1.000	1.000
60	100	1.000	1.000
61	100	1.000	1.000
62	100	1.000	1.000
63	100	1.000	1.000
64	100	1.000	1.000
65	100	1.000	1.000
66	100	1.000	1.000
67	100	1.000	1.000
68	100	1.000	1.000
69	100	1.000	1.000
70	100	1.000	1.000
71	100	1.000	1.000
72	100	1.000	1.000

VEL. ANALYSIS

JAPAN INTERNATIONAL COOPERATION AGENCY

NE

CROSS LINE

SHOT NUMBER

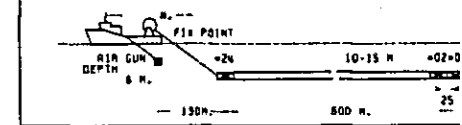
SEISMIC SURVEY
TIME MIGRATED SECTION

OFFSHORE AREA
ZONGULDAK COAL
FIELD IN TURKEY
LINE T3AB12.5
S.P. 1 - 549

ENCL. 11

FIELD RECORDING DATA

RECORDED BY	WIA
INSTRUMENT	OPS IV
RECORD LENGTH	3.0 SEC.
SAMPLE RATE	1 MSEC.
FILTER	LOW 875 HZ/OB/OCT
CRIM CONTROL	HI. 200 HZ
ENERGY SOURCE	3 AIR GUNS 170 CU. IN. IN.
SHOT INTERVAL	1.750 PSI.
CDP MULTIPLICITY	24 FOLD
DETECTOR CABLE	SEC-STRENGTH
SURVEY DATE	JULY 1978
SURVEY VESSEL	SISMIN I



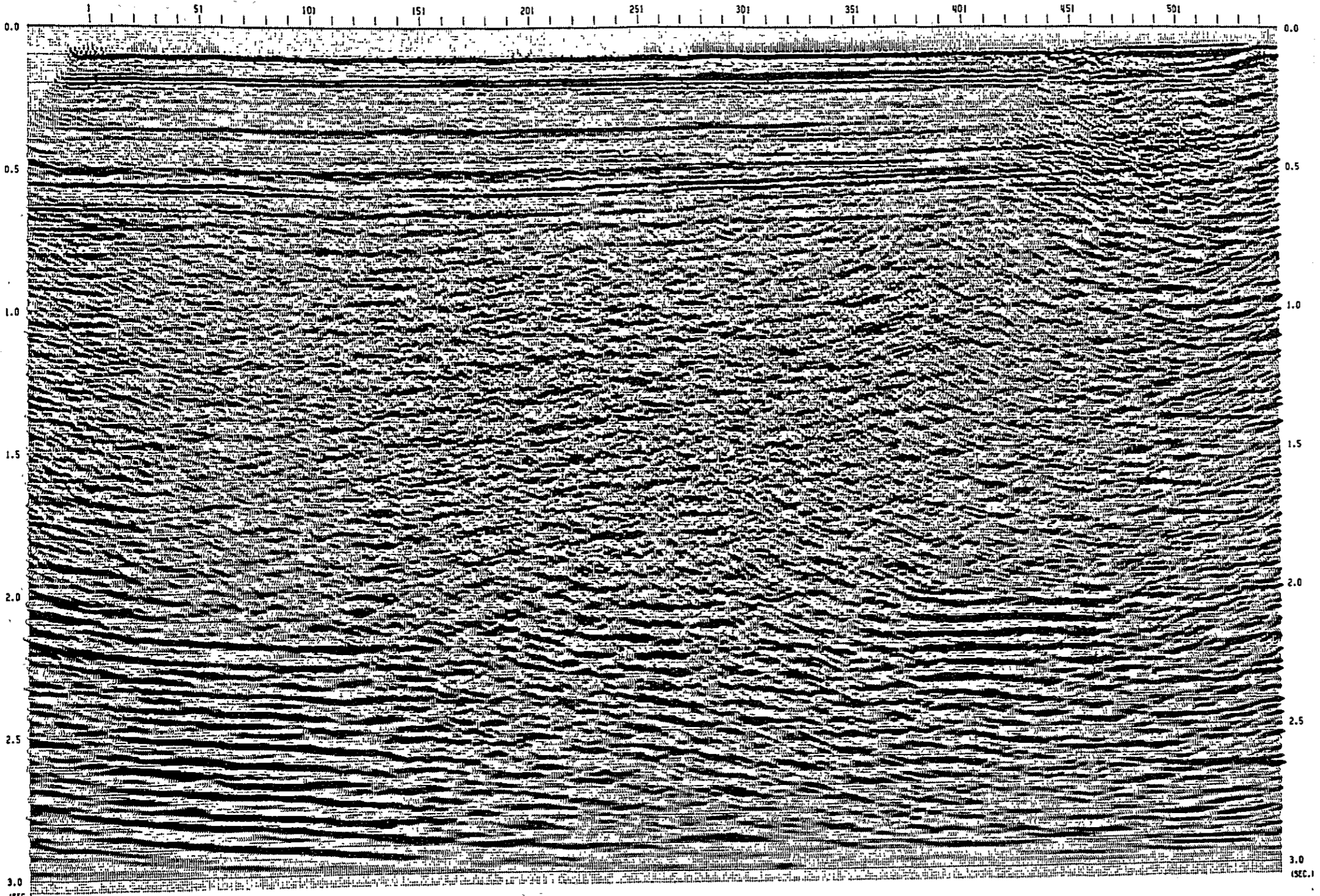
PROCESSING SEQUENCE

PROCESS LENGTH	3.0 SEC.
SAMPLE RATE	1-2 MSEC.
1 11 RECORD EDIT	1 01 MUTE
1 21 CDP SORT	1 01 STRETCH 24-FOLD
CDP INTERVAL 12.5 M.	1 01 DECONVOLUTION
1 31 GAIN RECOVERY	PR DISTANCE 200
ARC	DP LENGTH 200
GATE LENGTH 150 MSEC.	DESIGN GATE LENGTH
1 41 DECONVOLUTION	1 11 L.V. FILTER
DP LENGTH 300 MSEC.	DP LENGTH 300
PR DISTANCE 1 MSEC.	S - 70 HZ
DESIGN GATE LENGTH 2000 MSEC.	S - 80 HZ
1 51 RESAMPLE 1 TO 2 INSEC.	1 12 DATUM CORRECTION
1 61 VELOCITY ANALYSIS	1 31 SCALING
BY C.V. STREEL	TRACE SIGN SCALING
1 71 NMO CORRECTION	1 11 F-X MIGRATION

DISPLAY

POLARITY	NORMAL
HORIZONTAL SCALE	10 IN./CM. 11:125000
VERTICAL SCALE	2.5 IN./SEC. 11:133333
DISPLAY GAIN	3 DECIBEL

JAPAN PETROLEUM EXPLORATION CO., LTD.
GEOPHYSICAL HEADQUARTERS



CDP#	S.P.	TIME	DEPTH
100	100	1.000	100
200	200	2.000	200
300	300	3.000	300
400	400	4.000	400
500	500	5.000	500
600	600	6.000	600
700	700	7.000	700
800	800	8.000	800
900	900	9.000	900
1000	1000	10.000	1000

VEL. ANALYSIS

JAPAN INTERNATIONAL COOPERATION AGENCY

NE

CROSS LINE

SEISMIC SURVEY
TIME MIGRATED SECTION

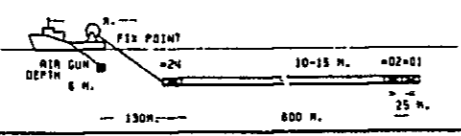
SHOT NUMBER

OFFSHORE AREA OF ZONGULDAK COAL FIELD IN TURKEY
LINE T3AB12.5
S.P. 1 - 549

ENCL. 11

FIELD RECORDING DATA

RECORDED BY	NTA
INSTRUMENT	DPS 11
RECORD LENGTH	3.0 SEC.
SAMPLE RATE	1 MSP
FILTER	LOW 8/36 HZ/OB/DCT
CRIN CONTRL	HI 248 HZ
ENERGY SOURCE	1. P. P.
	3 AIR GUNS 170 CU. IN. NO. 20.1011
	1750 PSI, 1
SHOT INTERVAL	12.5 M.
CDP MULTIPLICITY	24-FOLD
DETECTOR CABLE	SEC-375HWA
SURVEY DATE	JULY 1979
SURVEY VESSEL	SISHIK 1



PROCESSING SEQUENCE

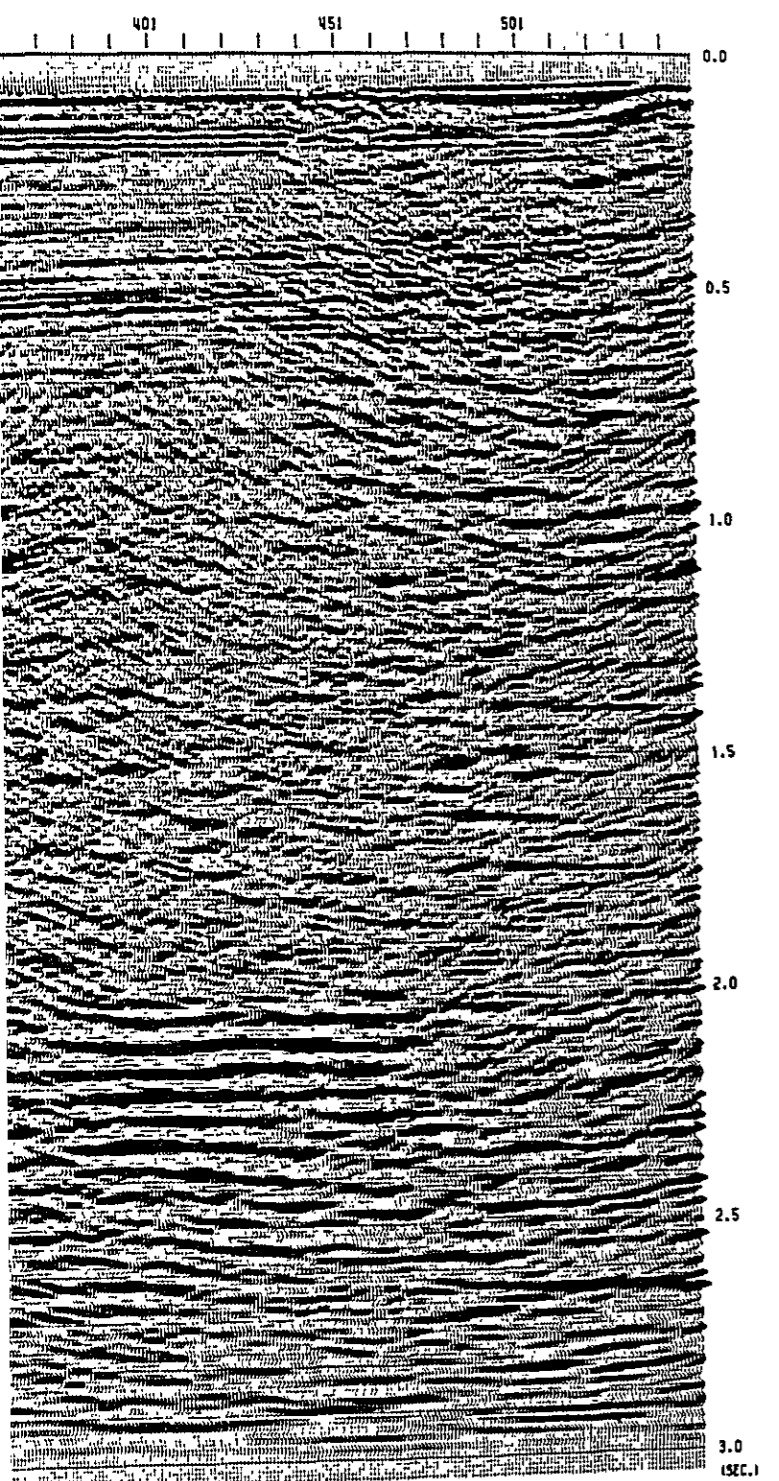
- | | |
|--------------------------------------|---------------------------------|
| PROCESS LENGTH | 3.0 SEC. |
| SAMPLE RATE | 1-2 MSEC. |
| 1) RECORD EDIT | 1) MUTE |
| 2) CDP SORT | 1) STRETCH 24-FOLD |
| CDP INTERVAL 12.5 M. | 110) DECONVOLUTION |
| 3) CRIN RECOVERY | PA. DISTANCE 200 MSEC. |
| RAC | OP. LENGTH 200 MSEC. |
| GATE LENGTH 350 MSEC. | DESIGN GATE LENGTH 2000 MSEC. |
| 4) DECONVOLUTION | 111) 1-V. FILTER |
| OP. LENGTH 300 MSEC. | OP. LENGTH 300 MSEC. |
| PA. DISTANCE 1 MSEC. | 5 - 70 HZ |
| DESIGN GATE LENGTH 2000 MSEC. | 5 - 80 HZ |
| | 5 - 90 HZ |
| 5) RESAMPLE 1 TO 2 (MSEC.) | 112) DATUM CORRECTION +12 MSEC. |
| 6) VELOCITY ANALYSIS BY C.V. STRETCH | 113) SCALING TRACE SIGNA SCALE |
| 7) NMO CORRECTION | 114) F-K MIGRATION |

DISPLAY

POLARITY	NORMAL
HORIZONTAL SCALE	10 IN./CM. (1:12500)
VERTICAL SCALE	7.5 CM./SEC. (1:15555)
DISPLAY GAIN	5 DECIBEL



JAPAN PETROLEUM EXPLORATION CO., LTD.
GEOPHYSICAL HEADQUARTERS



3.0 (SEC.)

CDP NO	TIME	DEPTH	AMPLITUDE
1	1.00	1.00	1.00
2	1.00	1.00	1.00
3	1.00	1.00	1.00
4	1.00	1.00	1.00
5	1.00	1.00	1.00
6	1.00	1.00	1.00
7	1.00	1.00	1.00
8	1.00	1.00	1.00
9	1.00	1.00	1.00
10	1.00	1.00	1.00

CDP NO	TIME	DEPTH	AMPLITUDE
1	1.00	1.00	1.00
2	1.00	1.00	1.00
3	1.00	1.00	1.00
4	1.00	1.00	1.00
5	1.00	1.00	1.00
6	1.00	1.00	1.00
7	1.00	1.00	1.00
8	1.00	1.00	1.00
9	1.00	1.00	1.00
10	1.00	1.00	1.00

VEL. ANALYSIS

JAPAN INTERNATIONAL COOPERATION AGENCY

NE

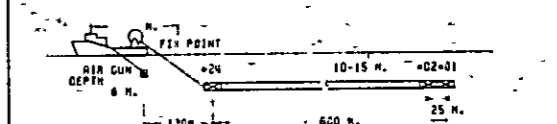
SEISMIC SURVEY
DEPTH MIGRATED SECTION

OFFSHORE AREA OF ZONGULDAK COAL FIELD IN TURKEY
LINE T1A812.5
S.P. 73 - 554

ENCL. 12

FIELD RECORDING DATA

RECORDED BY	INSURUMENT	RECORD LENGTH	SAMPLE RATE	FILTER	GAIN CONTROL	ENERGY SOURCE	SHOT INTERVAL	CDP MULTIPLICITY	DETECTOR CABLE	SURVEY DATE	SURVEY VESSEL
MTR	OP'S IV	3.0 SEC.	1 MSEC.	LOW 8/36 INZ/DB/DCFI	NI, 240 INZ	1.5 P.	12.5 M	24-FOLD	SEC-STRECHER	JULY 1978	SISIM 1
					AIR GUNS 170 CU. IN. 40, 20, 1011						



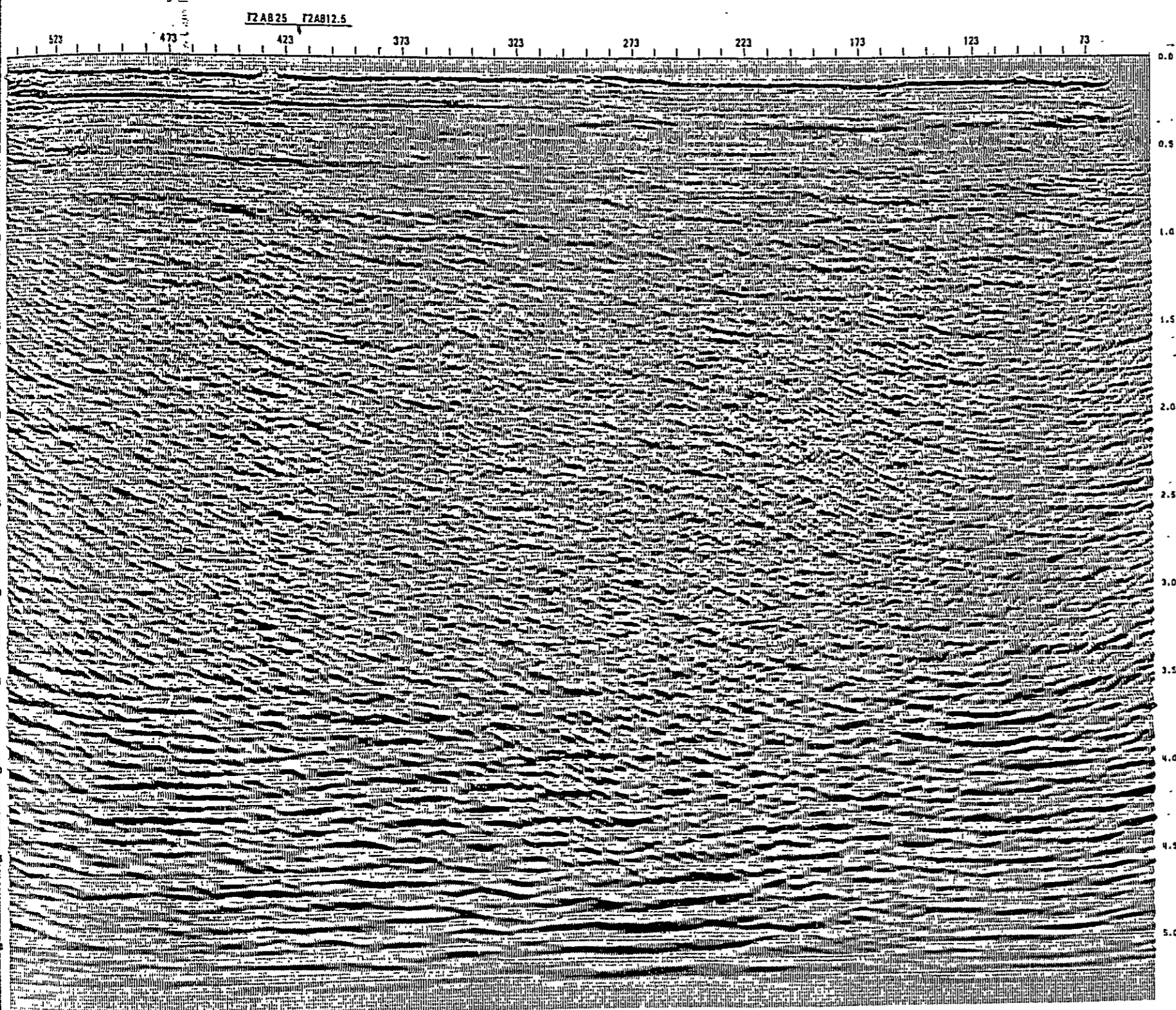
PROCESSING SEQUENCE

1 01 RECORD EDIT	1 02 MUTE
1 21 CDP SORT	1 03 STACK 24-FOLD
1 31 GAIN RECOVERY	1 04 DECONVOLUTION
1 41 DECONVOLUTION	1 05 T.V. FILTER
1 51 RESAMPLE 1 TO 2 (MSEC.)	1 06 DATUM CORRECTION +12 MSEC.
1 61 VELOCITY ANALYSIS BY C.N. STACK	1 07 SCALING TRACE SIGMA SCALE
1 71 NMO CORRECTION	1 08 F-A DEPTH MIGRATION

DISPLAY

POLARITY	NORMAL
HORIZONTAL SCALE	10 CM./CM. 11:105001
VERTICAL SCALE	7.5 CM./CM. 11:133311
DISPLAY GAIN	3 DECIBEL

JAPAN PETROLEUM EXPLORATION CO., LTD.
GEOPHYSICAL HEADQUARTERS



CROSS LINE

SHOT NUMBER

ECP408				ECP409				ECP410			
TIME	SP	SP	SP	TIME	SP	SP	SP	TIME	SP	SP	SP
1.000	1150	1150	1150	1.000	1150	1150	1150	1.000	1150	1150	1150
1.001	1150	1150	1150	1.001	1150	1150	1150	1.001	1150	1150	1150
1.002	1150	1150	1150	1.002	1150	1150	1150	1.002	1150	1150	1150
1.003	1150	1150	1150	1.003	1150	1150	1150	1.003	1150	1150	1150
1.004	1150	1150	1150	1.004	1150	1150	1150	1.004	1150	1150	1150
1.005	1150	1150	1150	1.005	1150	1150	1150	1.005	1150	1150	1150
1.006	1150	1150	1150	1.006	1150	1150	1150	1.006	1150	1150	1150
1.007	1150	1150	1150	1.007	1150	1150	1150	1.007	1150	1150	1150
1.008	1150	1150	1150	1.008	1150	1150	1150	1.008	1150	1150	1150
1.009	1150	1150	1150	1.009	1150	1150	1150	1.009	1150	1150	1150
1.010	1150	1150	1150	1.010	1150	1150	1150	1.010	1150	1150	1150

ECP 148			
TIME	SP	SP	SP
1.000	1150	1150	1150
1.001	1150	1150	1150
1.002	1150	1150	1150
1.003	1150	1150	1150
1.004	1150	1150	1150
1.005	1150	1150	1150
1.006	1150	1150	1150
1.007	1150	1150	1150
1.008	1150	1150	1150
1.009	1150	1150	1150
1.010	1150	1150	1150

JAPAN INTERNATIONAL COOPERATION AC

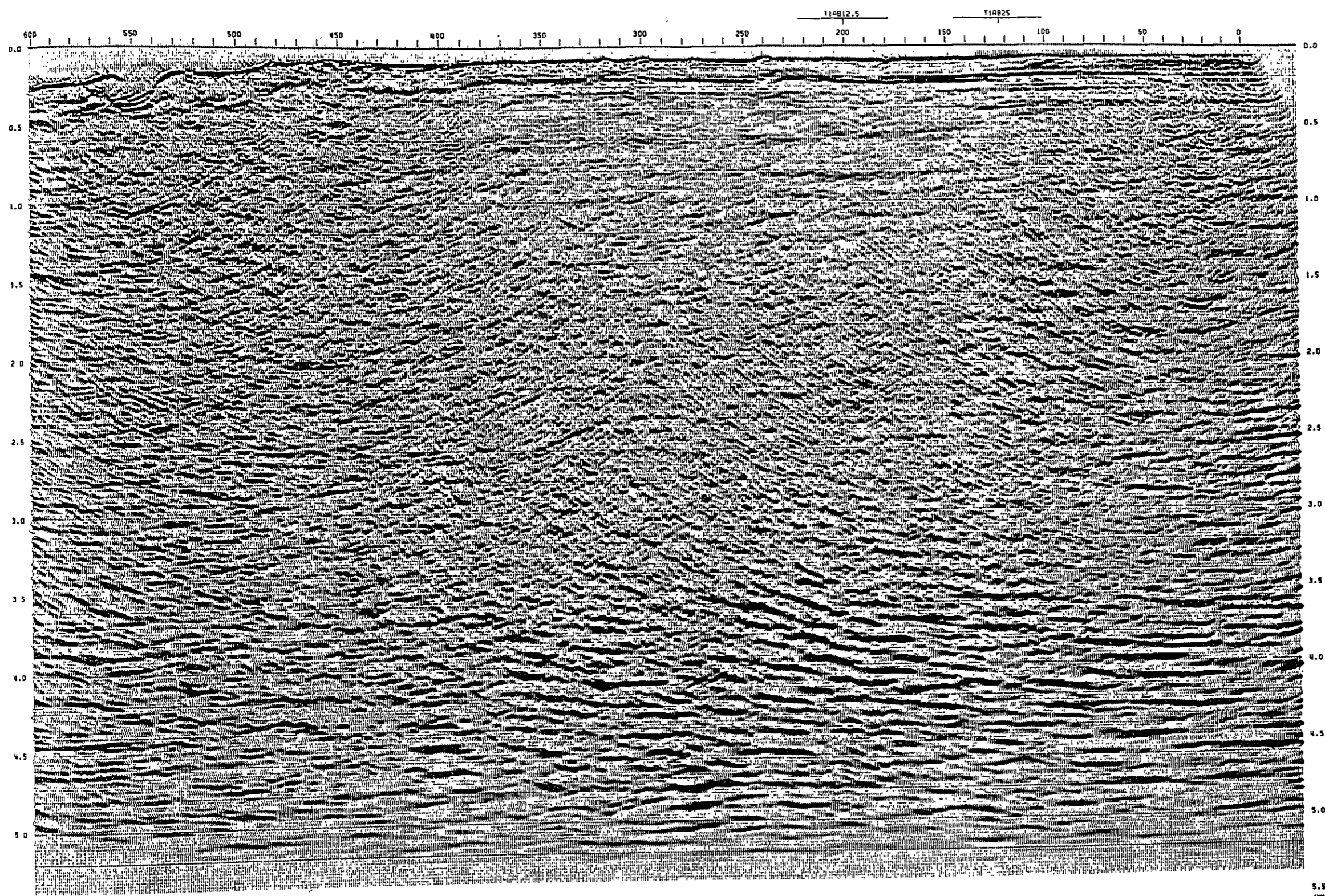
E

SEISMIC SUR
DEPTH MIGRATED S

OFFSHORE AI
ZONGULDAK (I
FIELD IN TI
LINE T2AB1
S.P. 0 - 60

CROSS LINE

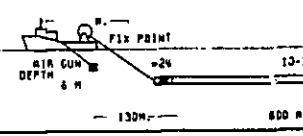
SHOT NUMBER



ENCL. 13

FIELD RECORDING

RECORDED BY	WJA
INSTRUMENT	SPS 11
RECORD LENGTH	2.0 SEC.
SAMPLE RATE	1 MSEC.
FILTER	LOW 478 HZ
	HI 248 HZ
CABLE CONTACT	1 MFT CUMS 1'
ENERGY SOURCE	12750 PSI.1
	12.5 H
SHOT INTERVAL	24-FLD
COP MULTIPLICITY	SEC-STRAKER
DETECTOR CABLE	JULY 1978
SURVEY UNIT	SISMA 1
SURVEY VESSEL	



PROCESSING SEQ

PROCESS LENGTH	2.0 SEC
SAMPLE RATE	1-2 MSEC
1 14 RECORD EDIT	1 01 MIXE
1 24 EDP SORT	1 01 STACK
1 31 GAIN RECOVERY	1 101 DECONV
	OP. D
	DESIG
1 41 DECONVOLUTION	1 111 F-V-F
OP. LENGTH	OP. L
PR. DISTANCE	5 - 1
DESIGN GATE LENGTH	5 - 1
	5 - 1
1 51 RESAMPLE 1 TO 2	1 121 DATUM
	1 131 SCALE
	1 141 F-R DE
1 61 VELOCITY ANALYSIS	
BY C.V. STACK	
1 71 NMO CORRECTION	

DISPLAY

POLARITY	NORMAL
HORIZONTAL SCALE	10 FT./IN
VERTICAL SCALE	1.5 CM./IN
DISPLAY GAIN	3 DECIBEL

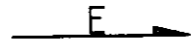


JAPAN PETROL EXPLORATION GEOPHYSICAL

CDP NO	12	13	14	15	16	17	18	19	20
1	1	1	1	1	1	1	1	1	1
2	1	1	1	1	1	1	1	1	1
3	1	1	1	1	1	1	1	1	1
4	1	1	1	1	1	1	1	1	1
5	1	1	1	1	1	1	1	1	1
6	1	1	1	1	1	1	1	1	1
7	1	1	1	1	1	1	1	1	1
8	1	1	1	1	1	1	1	1	1
9	1	1	1	1	1	1	1	1	1
10	1	1	1	1	1	1	1	1	1
11	1	1	1	1	1	1	1	1	1
12	1	1	1	1	1	1	1	1	1
13	1	1	1	1	1	1	1	1	1
14	1	1	1	1	1	1	1	1	1
15	1	1	1	1	1	1	1	1	1
16	1	1	1	1	1	1	1	1	1
17	1	1	1	1	1	1	1	1	1
18	1	1	1	1	1	1	1	1	1
19	1	1	1	1	1	1	1	1	1
20	1	1	1	1	1	1	1	1	1

VEL. ANALYSIS

JAPAN INTERNATIONAL COOPERATION AGENCY



SEISMIC SURVEY
DEPTH MIGRATED SECTION

OFFSHORE AREA OF
ZONGULDAK COAL
FIELD IN TURKEY
LINE T2AB12.5
S.P. 0 - 602

ENCL. 13

FIELD RECORDING DATA

RECORDED BY	WTA
INSTRUMENT	OPR 10
RECORD LENGTH	3.0 SEC.
SAMPLE RATE	1 MSEC.
FILTER	LOW 8/30 HZ/OB/OCT
GAIN CONTROL	H1 200 MZ
ENERGY SOURCE	1.7.0
	3 81A GUNS 170 CU. IN. (40.20.10)
	(1750 PSI.)
SHOT INTERVAL	12.5 M
CDP MULTIPLIER	24-FOLD
DETECTOR CABLE	SEC-STREAMEA
SURVEY DATE	JULY 1979
SURVEY VESSEL	SISWIN I

PROCESSING SEQUENCE

PROCESS LENGTH	3.0 SEC.
SAMPLE RATE	1-2 MSEC.

1 1) RECORD EDIT	1 8) MUTE
1 2) CDP SORT	1 9) STACK 24-FOLD
CDP INTERVAL 12.5 M.	110) DECONVOLUTION
1 3) GAIN RECOVERY	PR. DISTANCE 2 MSEC.
OP. LENGTH 150 MSEC.	OP. LENGTH 200 MSEC.
DESIGN GATE LENGTH 2000 MSEC.	DESIGN GATE LENGTH 2000 MSEC.
1 4) DECONVOLUTION	111) T.V. FILTER
OP. LENGTH 300 MSEC.	OP. LENGTH 300 MSEC.
PR. DISTANCE 1 MSEC.	S - 10 MZ
DESIGN GATE LENGTH 2000 MSEC.	S - 50 MZ
1 5) RESAMPLE 1 TO 2 (MSEC.)	112) DATUM CORRECTION +12 MSEC.
1 6) VELOCITY ANALYSIS	113) SCALING
BY C.V. STACK	TRACE STACK SCALE
1 7) NMO CORRECTION	114) F-K DEPTH MIGRATION

DISPLAY

POLARITY	NORMAL
HORIZONTAL SCALE	10 M./CM. (1:12500)
VERTICAL SCALE	7.5 CM./M. (1:13333)
DISPLAY GAIN	5 DECIBEL

JAPAN PETROLEUM EXPLORATION CO., LTD.
GEOPHYSICAL HEADQUARTERS

