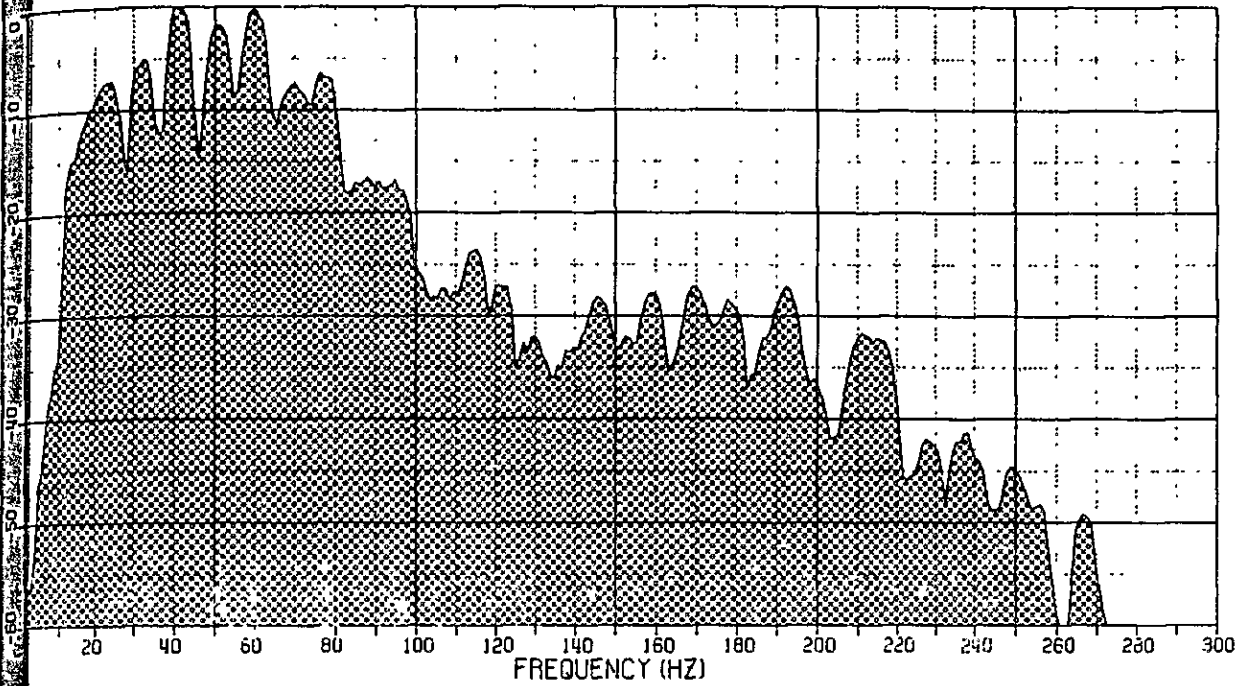


POWER SPECTRUM OF NEAR TRACE

SHOT=73
TURKEY T1-AB 12.5 TIME=0-1 SEC



SHOT=554
TURKEY T1-AB 12.5 TIME=0-1 SEC

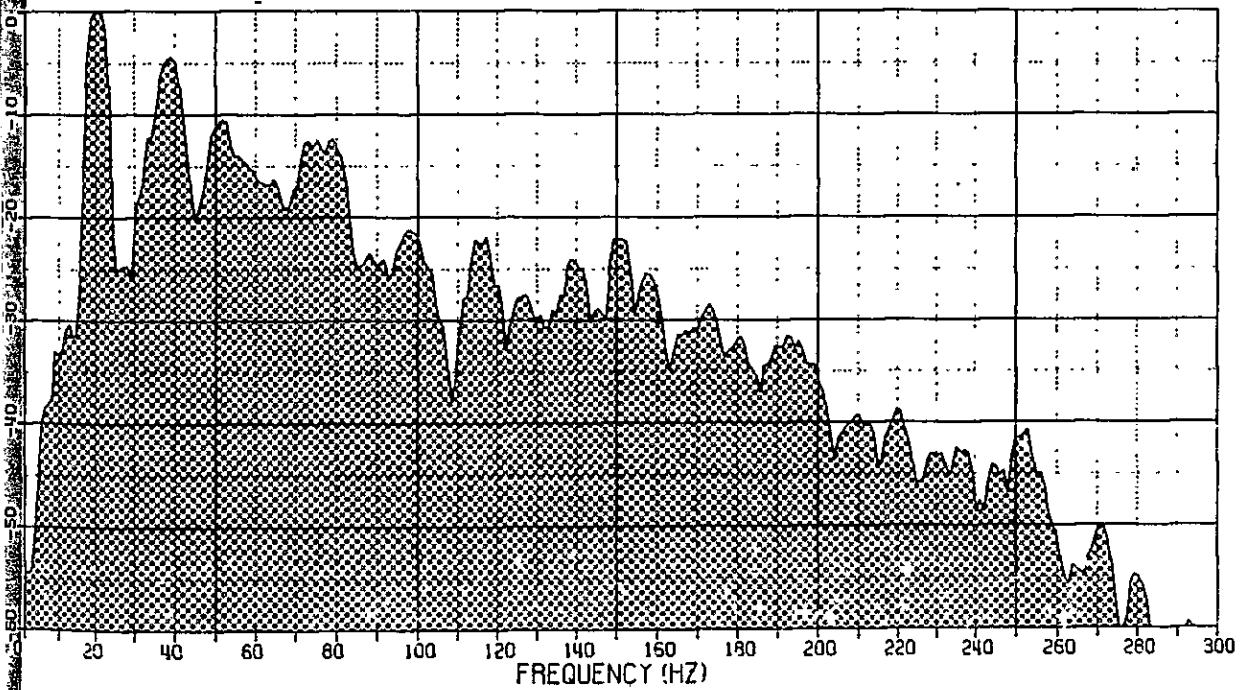
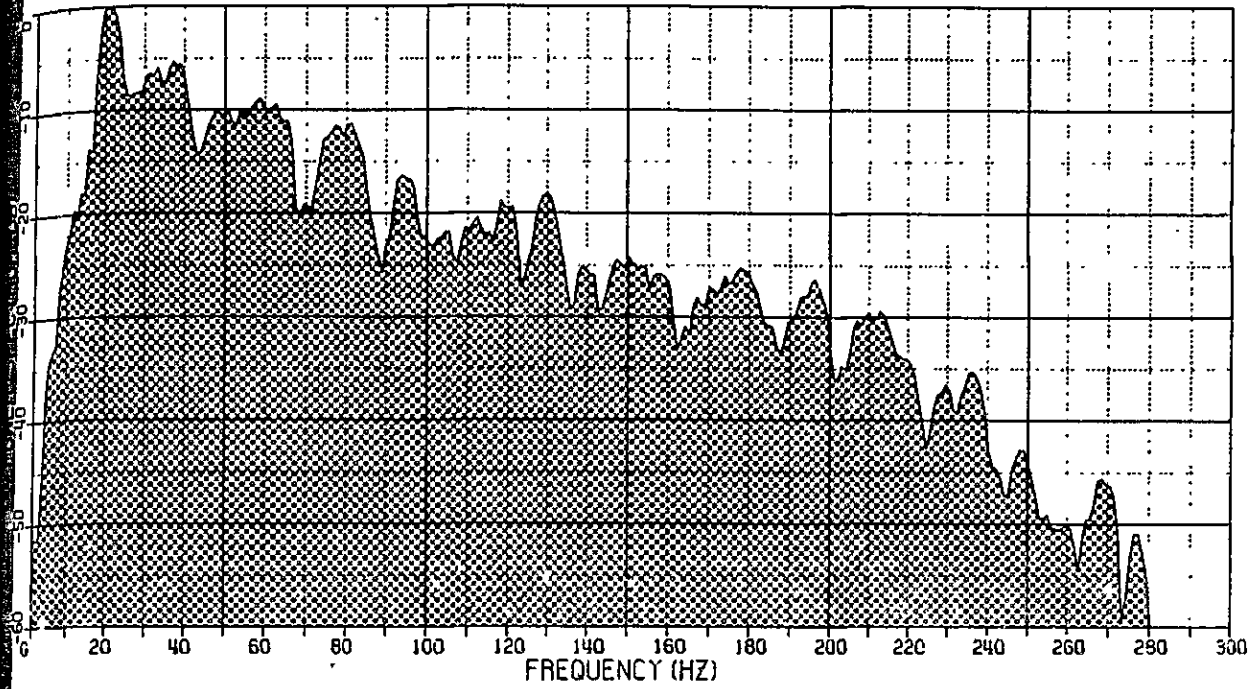


Fig. III-2-17a

POWER SPECTRUM OF NEAR TRACE

SHOT=0
TURKEY T2-AB 12.5 TIME=0-1 SEC



SHOT=606
TURKEY T2-AB 12.5 TIME=0-1 SEC

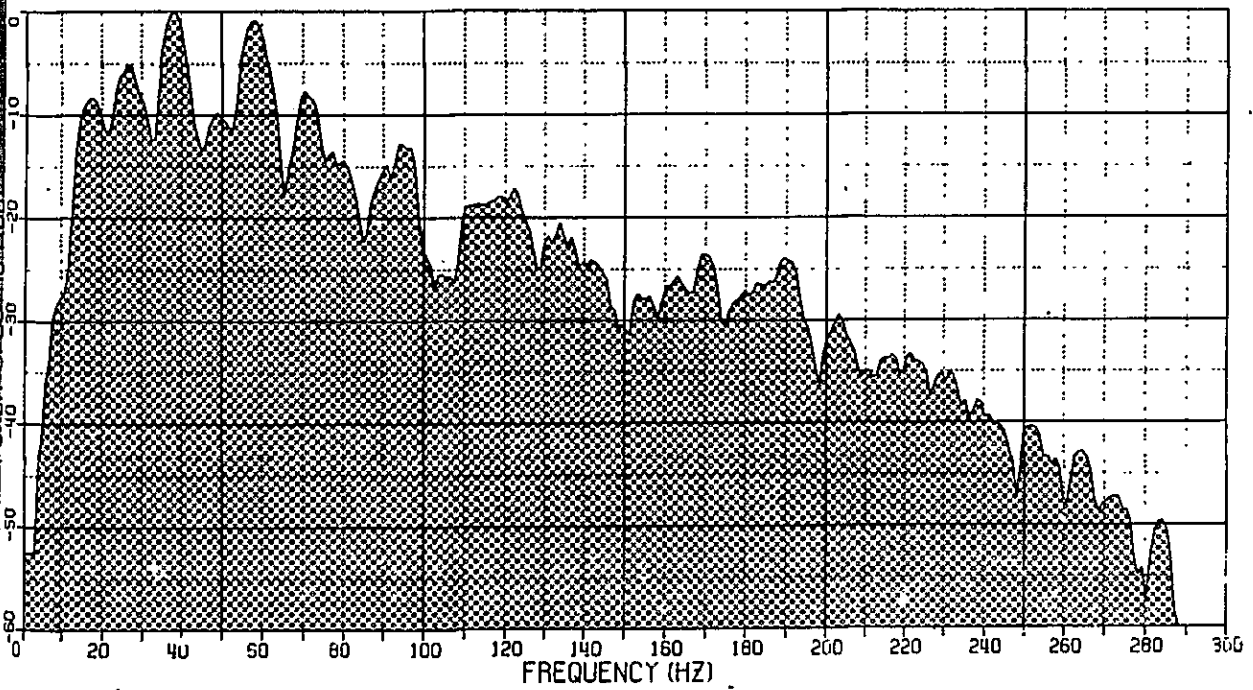


Fig. III-2-17b

Know all men that I, the undersigned, do hereby certify that the following is a true and correct copy of the original as the same appears in the records of the County of Dallas, State of Texas, to-wit:

...

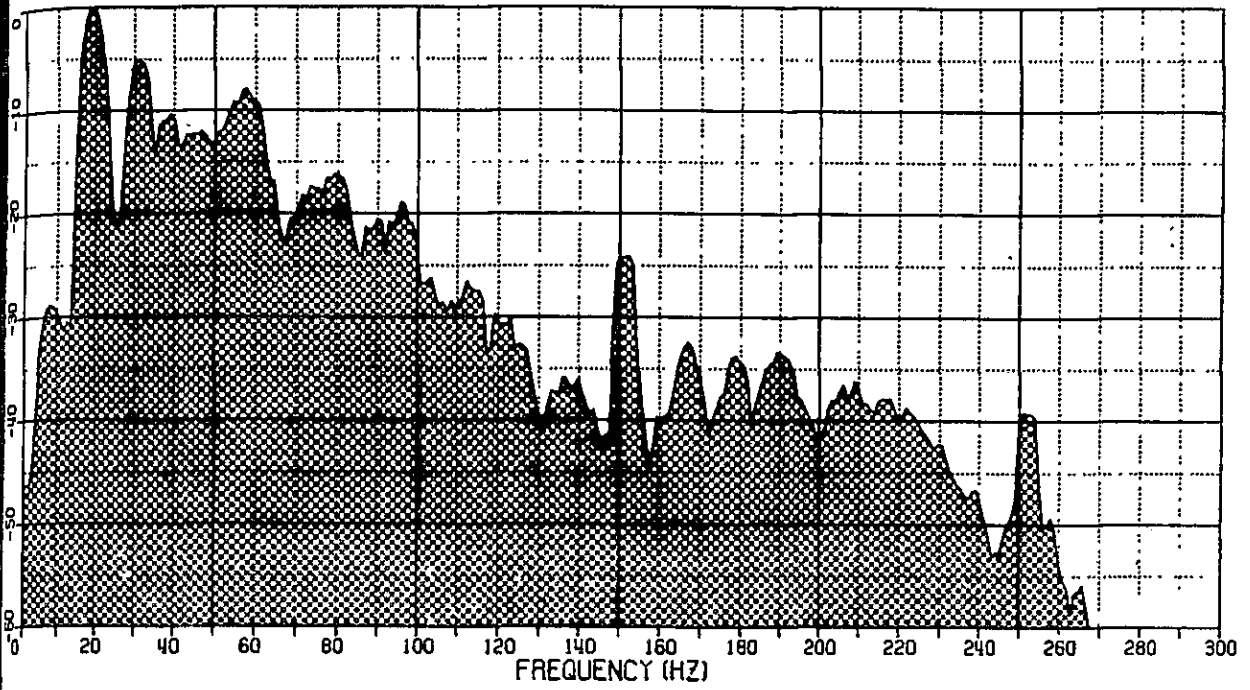
...

...

...

POWER SPECTRUM OF NEAR TRACE

SHOT-1
TURKEY T3-AB 12.5 TIME=0-1 SEC



SHOT-566
TURKEY T3-AB 12.5 TIME=0-1 SEC

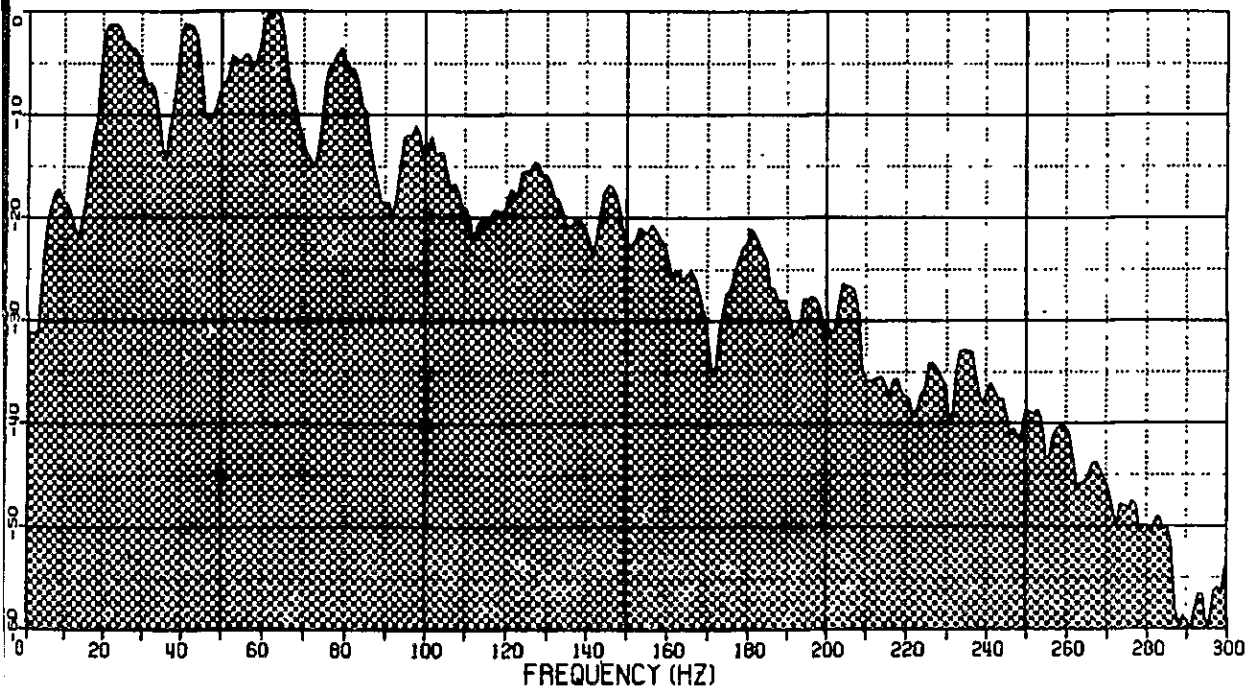
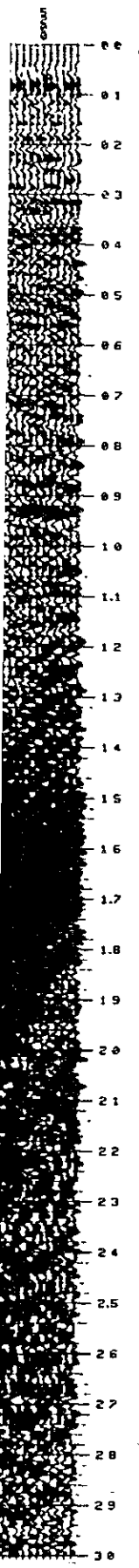


Fig. II-2-17c

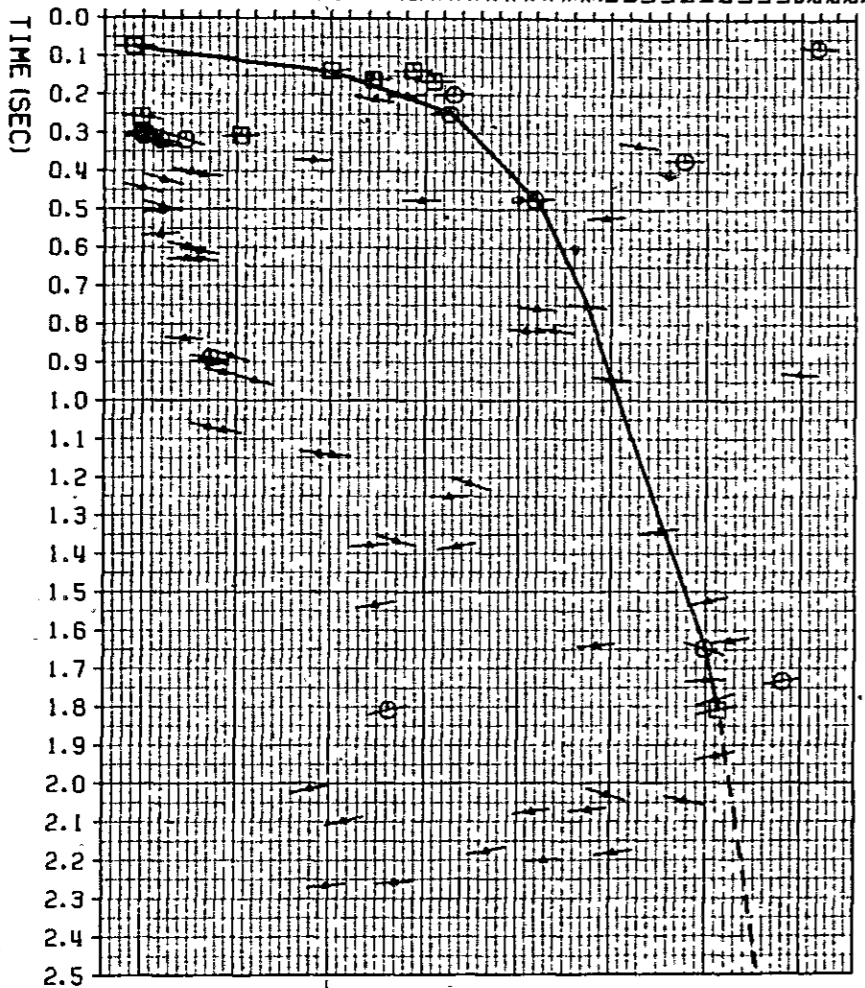


CVSK
 LINE T3-AB12.5
 CDP 504-515

***** VELOCITY PICKING *****
 LINE=T3-AB SP= , CDP NO.=510

VELOCITY (METER/SEC)

TIME (SEC)



AMPLITUDE GRADE

E04
 1-0-0-0

DIP (CORRESPONDING TO CVSK SECTION)

----- EVENTS LIST

GRADE	TIME	VELOCITY	DIP (M. SEC/100M)
75	1450	0.00	
75	5090	-6.00	
137	2500	6.00	
137	2500	6.00	
164	3040	0.00	
161	2720	12.00	
199	3150	6.00	
202	2900	12.00	
213	2730	-24.00	
259	1490	-12.00	
251	3130	-6.00	
298	1500	12.00	
308	2020	6.00	
308	1500	6.00	
318	1590	-30.00	
318	1720	-48.00	
331	1610	-24.00	
333	4140	-18.00	
371	4380	0.00	
371	2410	0.00	
410	1820	-12.00	
403	1750	-30.00	
423	1610	-42.00	
445	1500	-36.00	
475	3590	6.00	
476	2980	0.00	
492	1600	-42.00	
504	1600	18.00	
522	3970	6.00	
566	1590	12.00	
597	1730	-30.00	
610	1800	-24.00	
629	1730	6.00	
632	1790	-12.00	
753	3870	-18.00	
760	3600	-12.00	
816	3690	-18.00	
817	3540	-12.00	
838	1720	-6.00	
889	1860	-24.00	
884	1970	-42.00	
902	1860	-18.00	
932	4990	-6.00	
927	1930	-30.00	
944	4000	-18.00	
947	2100	-42.00	
1077	1930	-24.00	
1070	1860	-36.00	
1141	2510	-12.00	
1138	2440	-18.00	
1217	3240	-48.00	
1251	3130	0.00	
1342	4260	18.00	
1367	2650	-42.00	
1379	2710	12.00	
1382	3170	24.00	
1526	4510	36.00	
1535	2740	24.00	
1628	4620	24.00	
1640	3920	12.00	
1649	4490	-48.00	
1734	4900	24.00	
1732	4500	12.00	
1782	4550	48.00	
1809	4560	36.00	
1809	2810	36.00	
1929	4550	36.00	
2015	2400	36.00	
2030	4380	-48.00	
2045	4390	-36.00	
2069	3880	12.00	
2074	3580	18.00	
2098	2580	36.00	
2177	3340	30.00	
2182	4020	18.00	
2201	3650	6.00	
2258	2850	12.00	
2266	2490	18.00	

Fig. III-2-18

CVSCAN
LINE T2-AB25
CDP 665+668

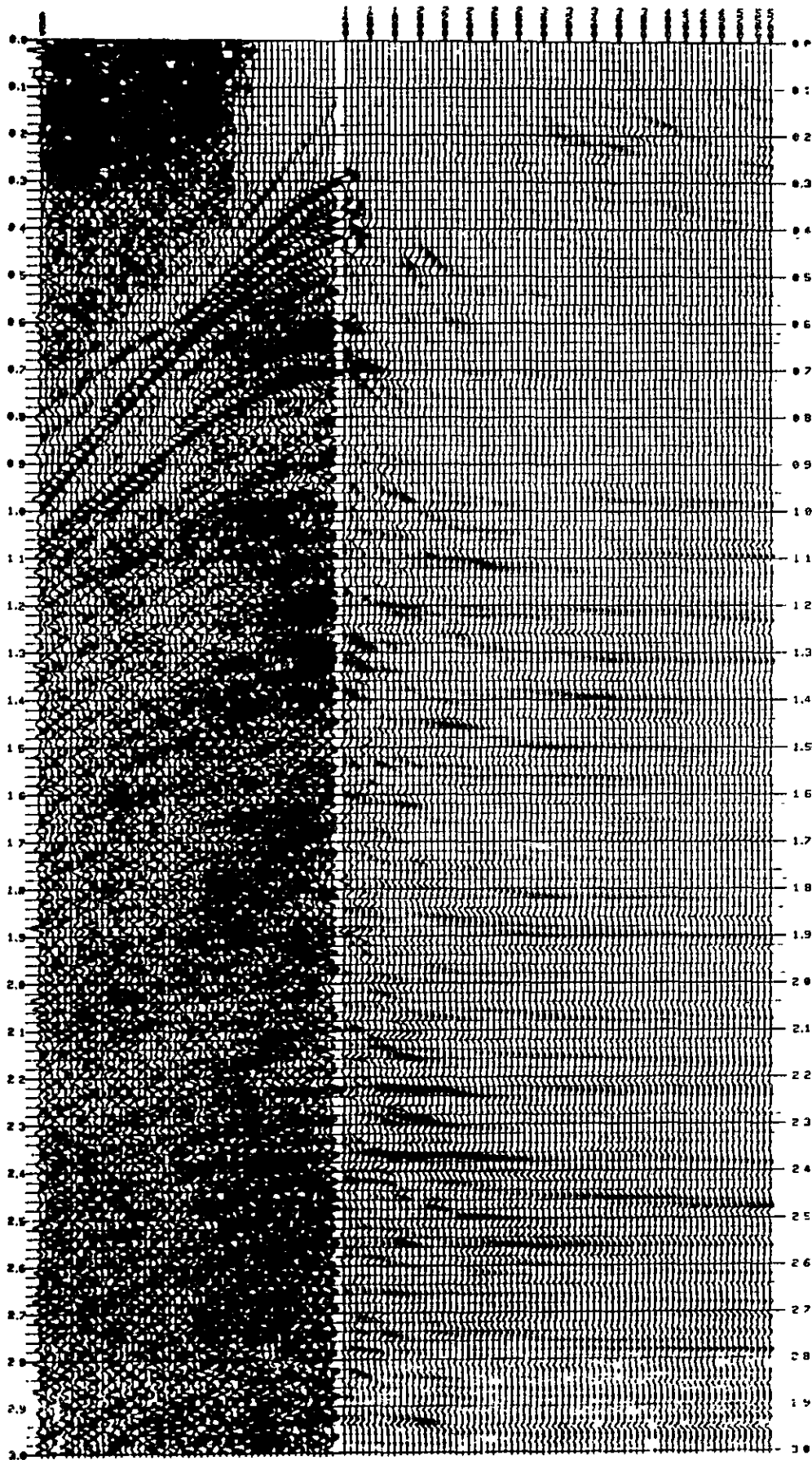
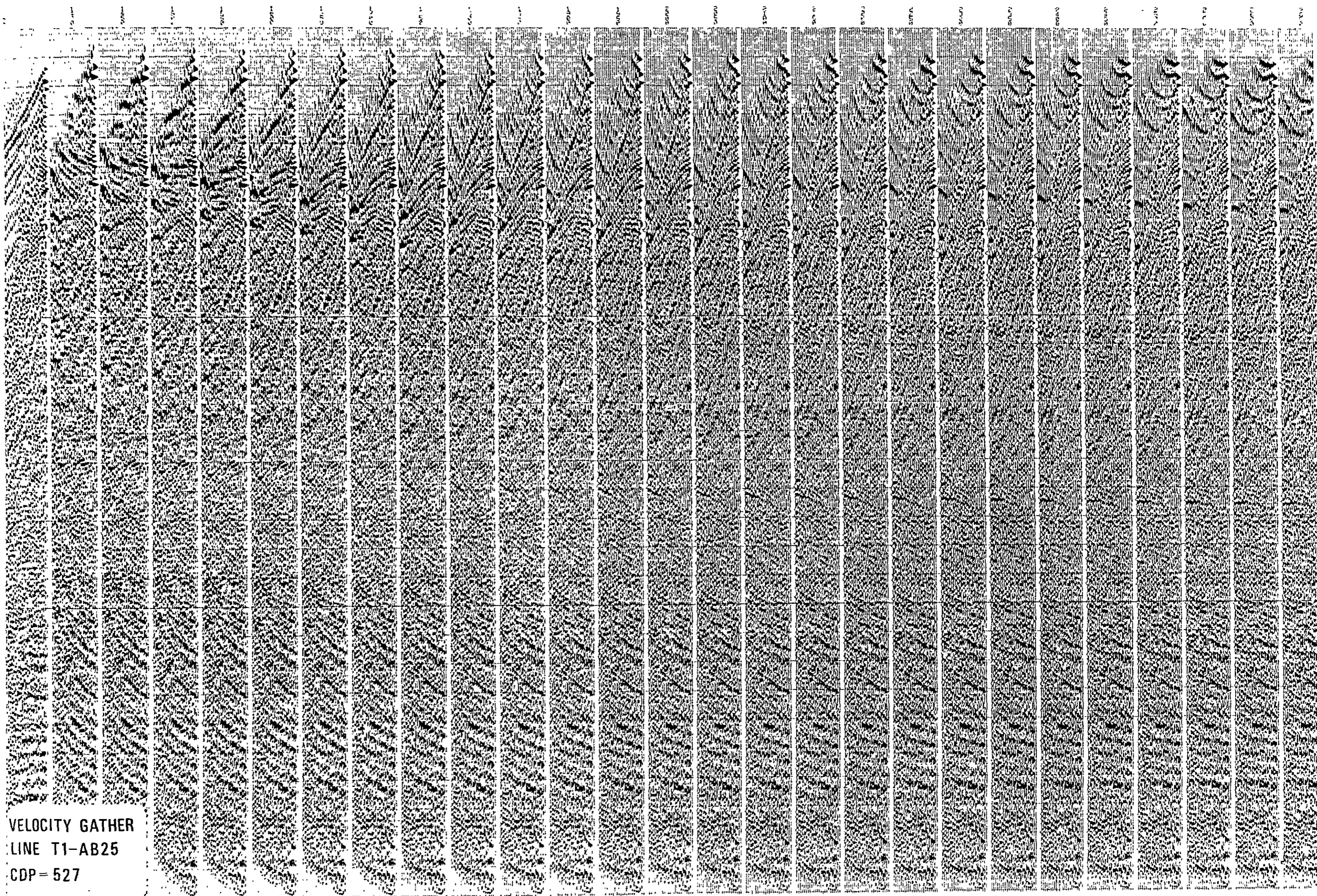
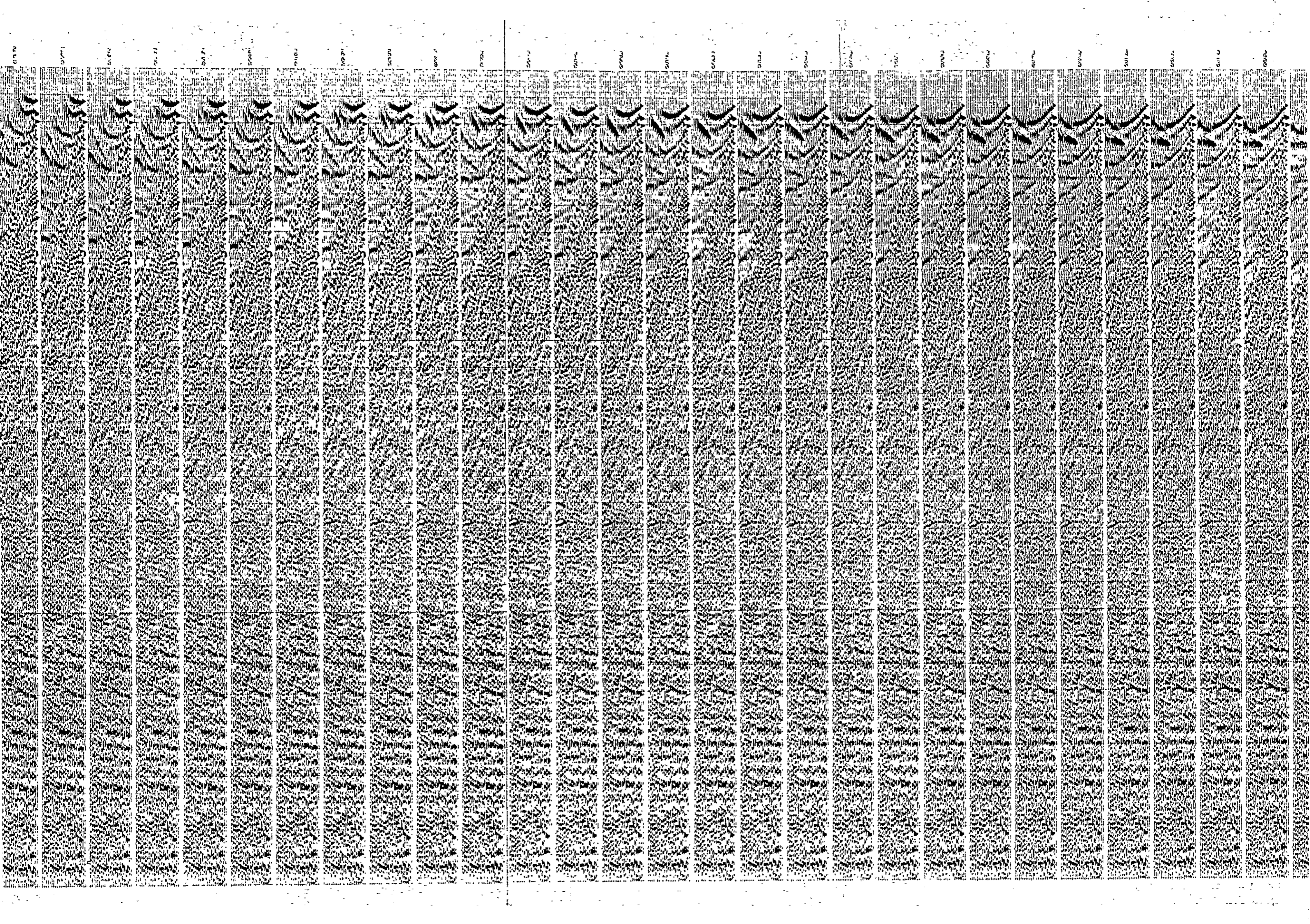


Fig. III-2-19



VELOCITY GATHER
LINE T1-AB25
CDP= 527



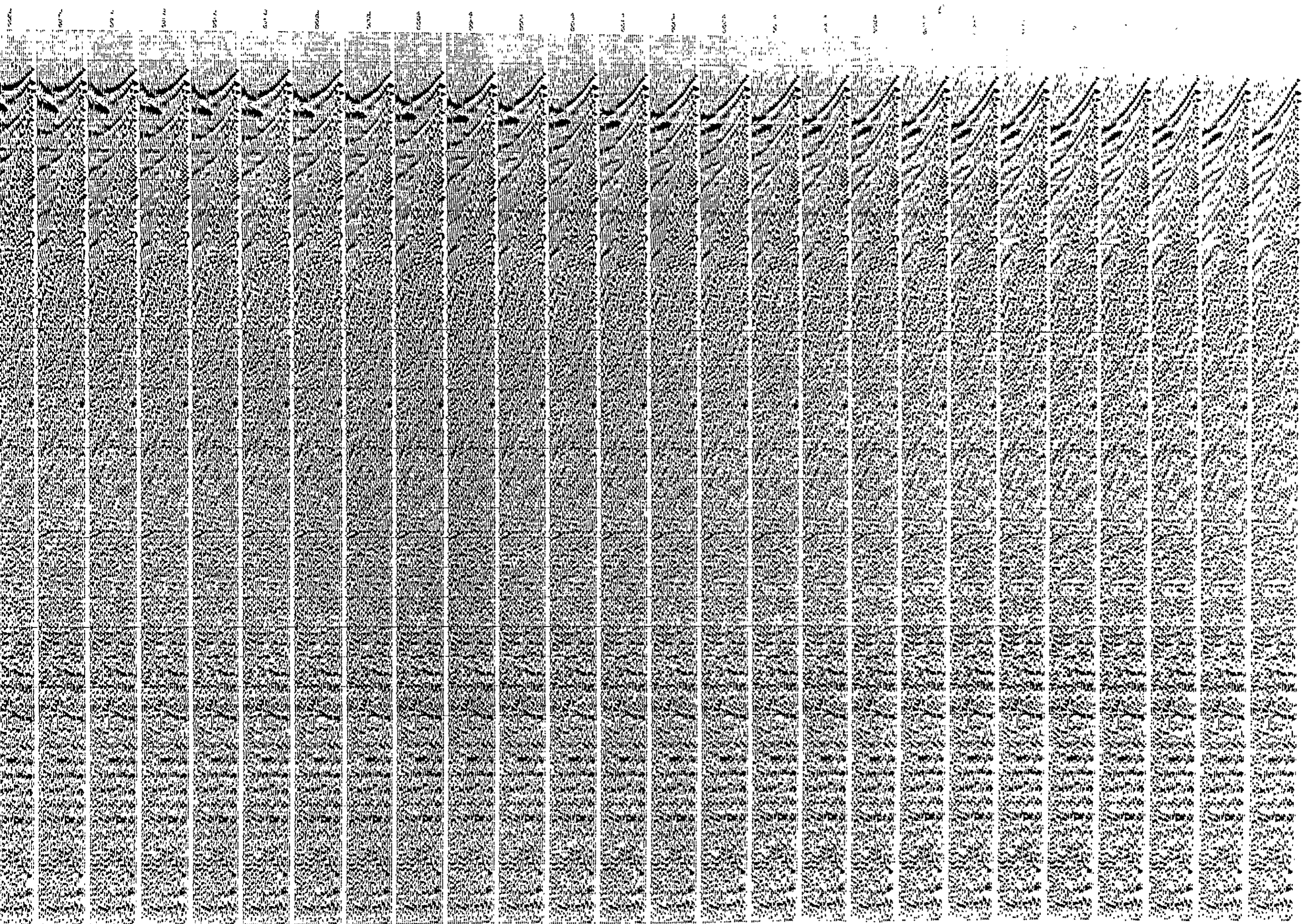


Fig. III -2-20

LINE T1 - AB 25
CDP TRACES

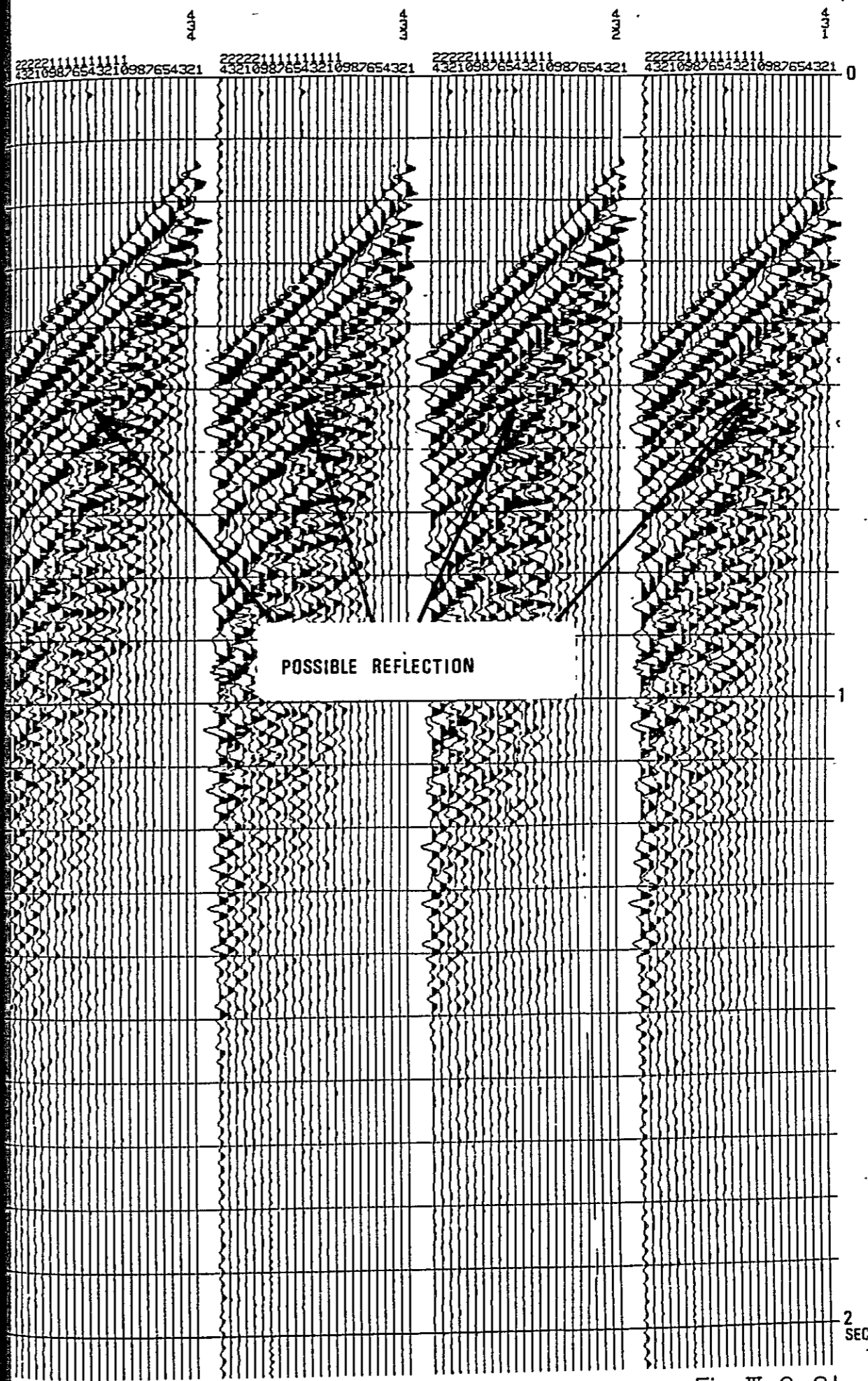
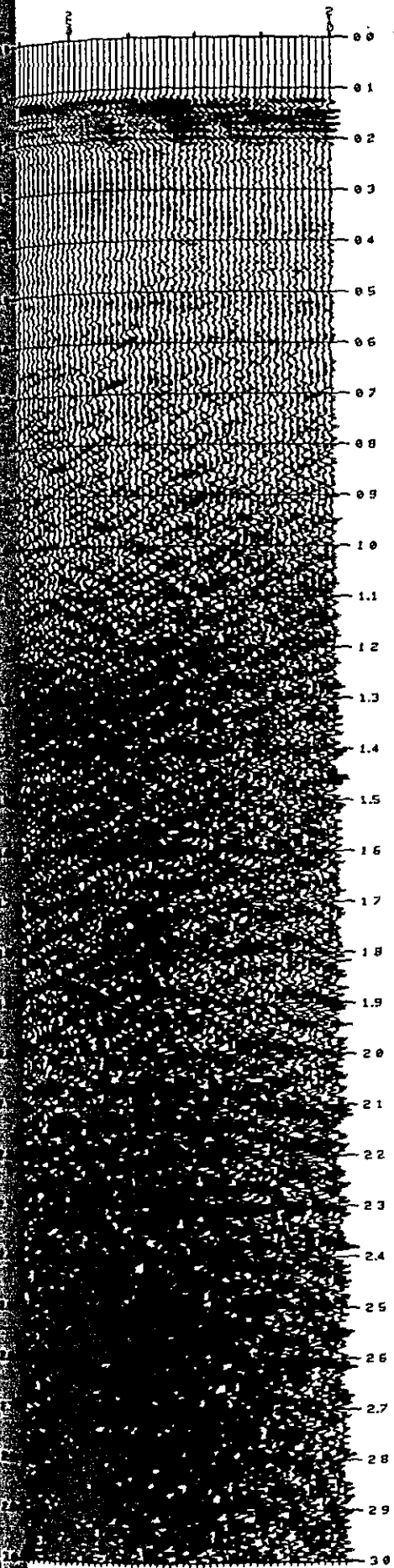


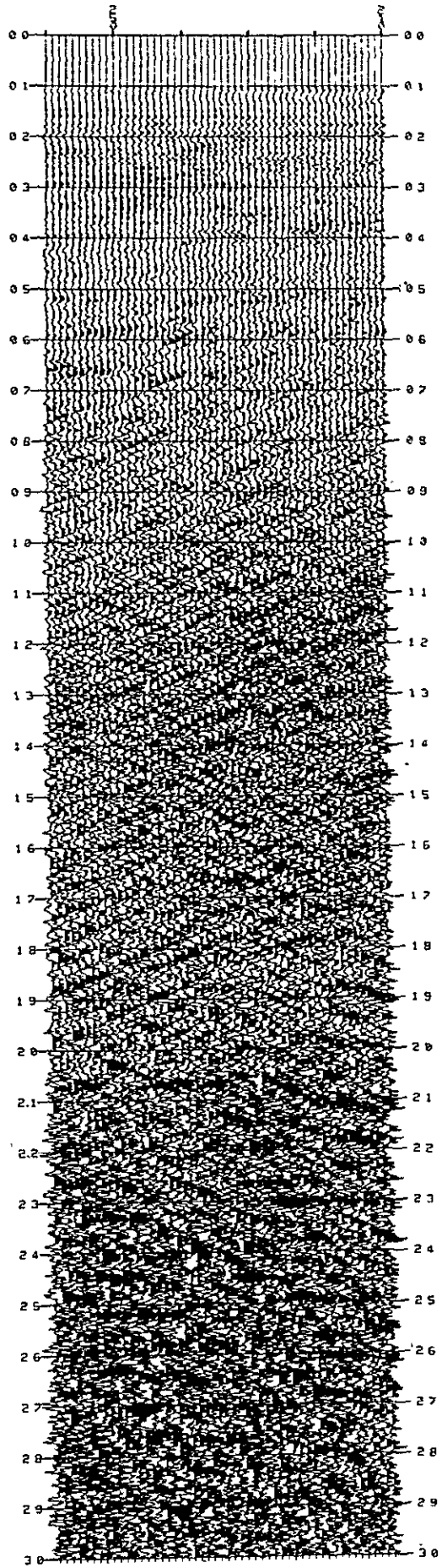
Fig. III-2-21

STACKING TEST
LINE T2-AB125

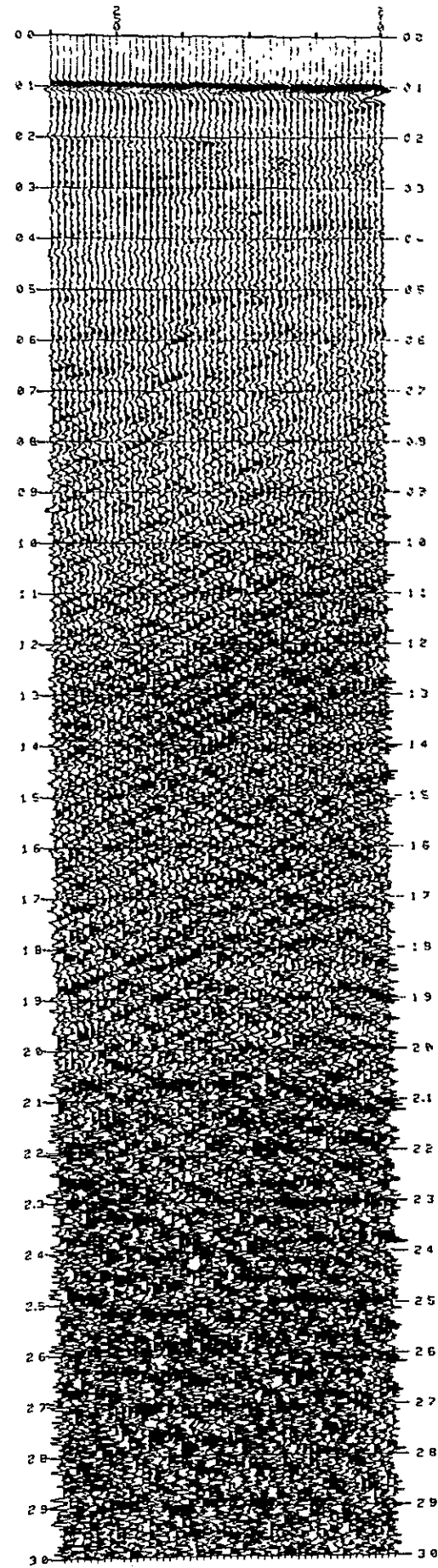
H-VELOCITY STACK



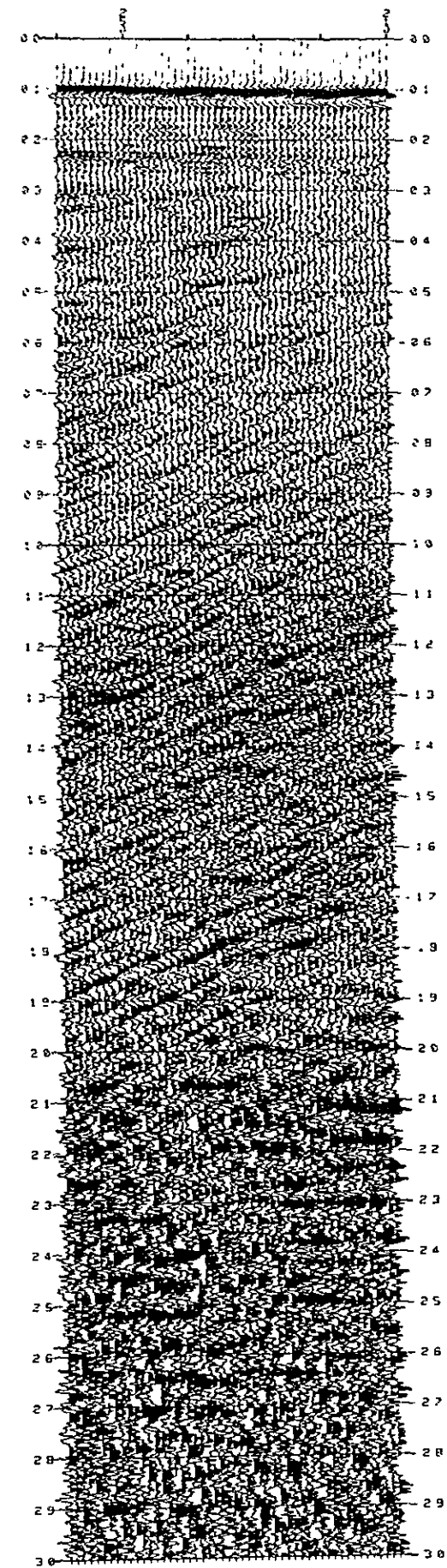
HO-VELOCITY STACK



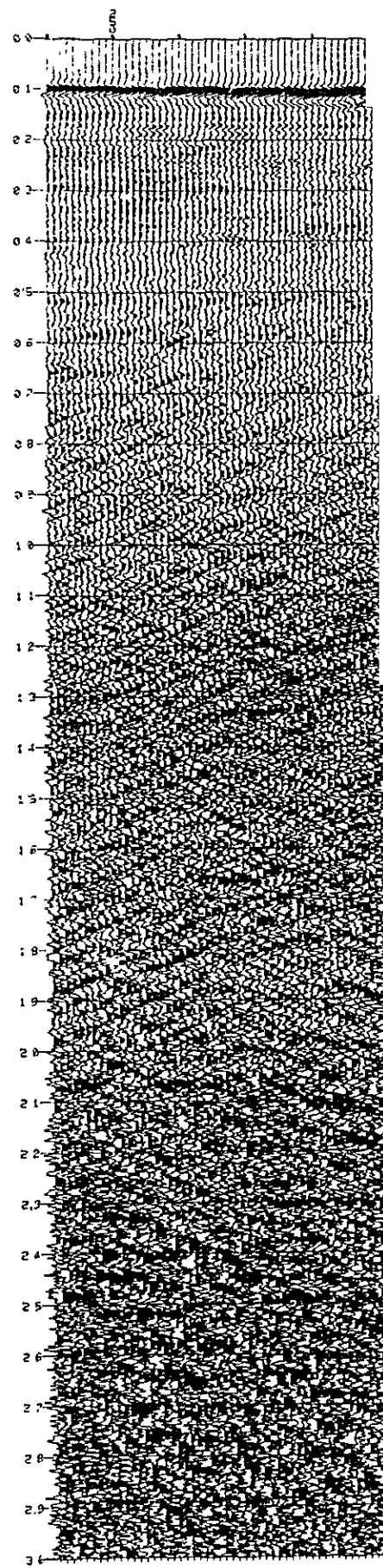
K-VELOCITY STACK



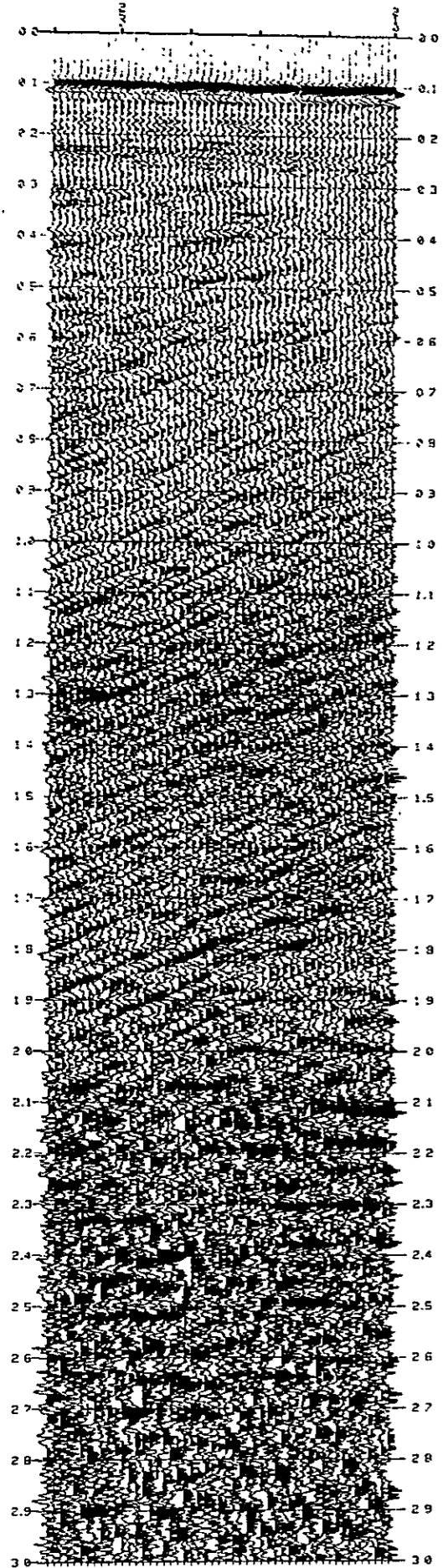
VELFIL+T-VELOCITY STACK



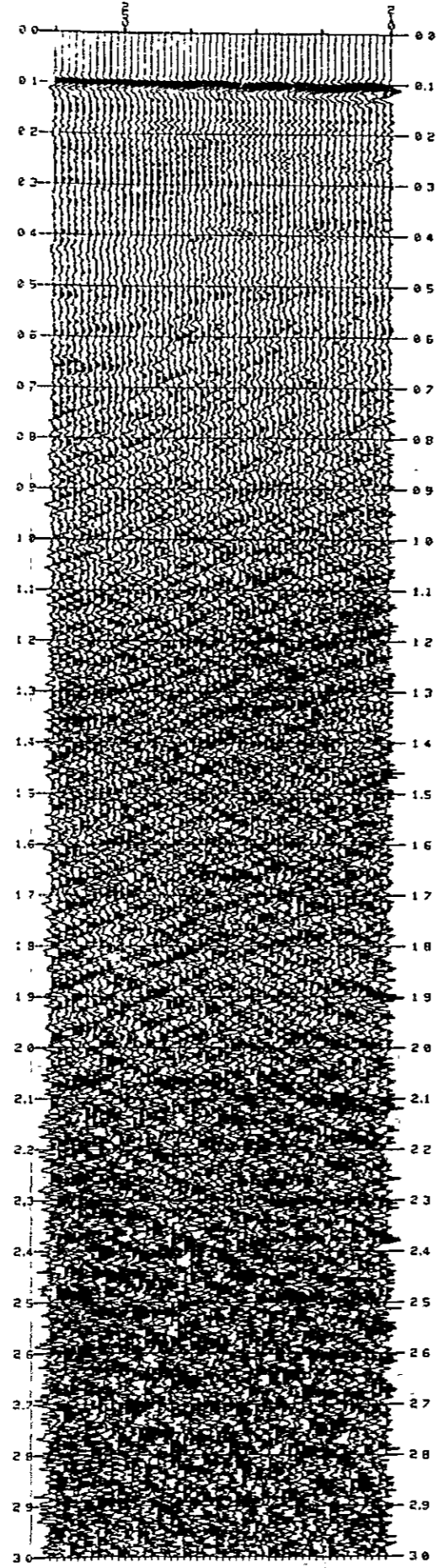
T-VELOCITY STACK



VELFIL+T-VELOCITY STACK



T-VELOCITY STACK



L-VELOCITY STACK

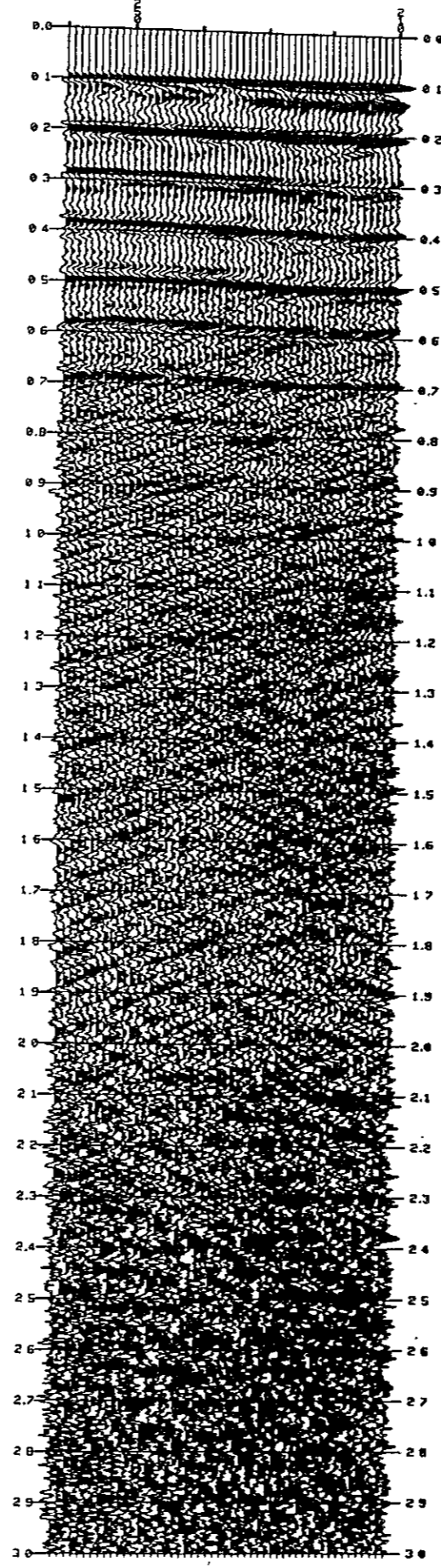


Fig. III - 2 - 22

1631 3417
75107 74

RECORDED 711221

1911 111 2

111 111

111

1

111

111

111

111

111

111

111

111

111

111

111

111

111

111

111

111

111

111

111

111

111

111

111

111

111

111

111

111

111

111

111

111

111

111

111

111

111

111

111

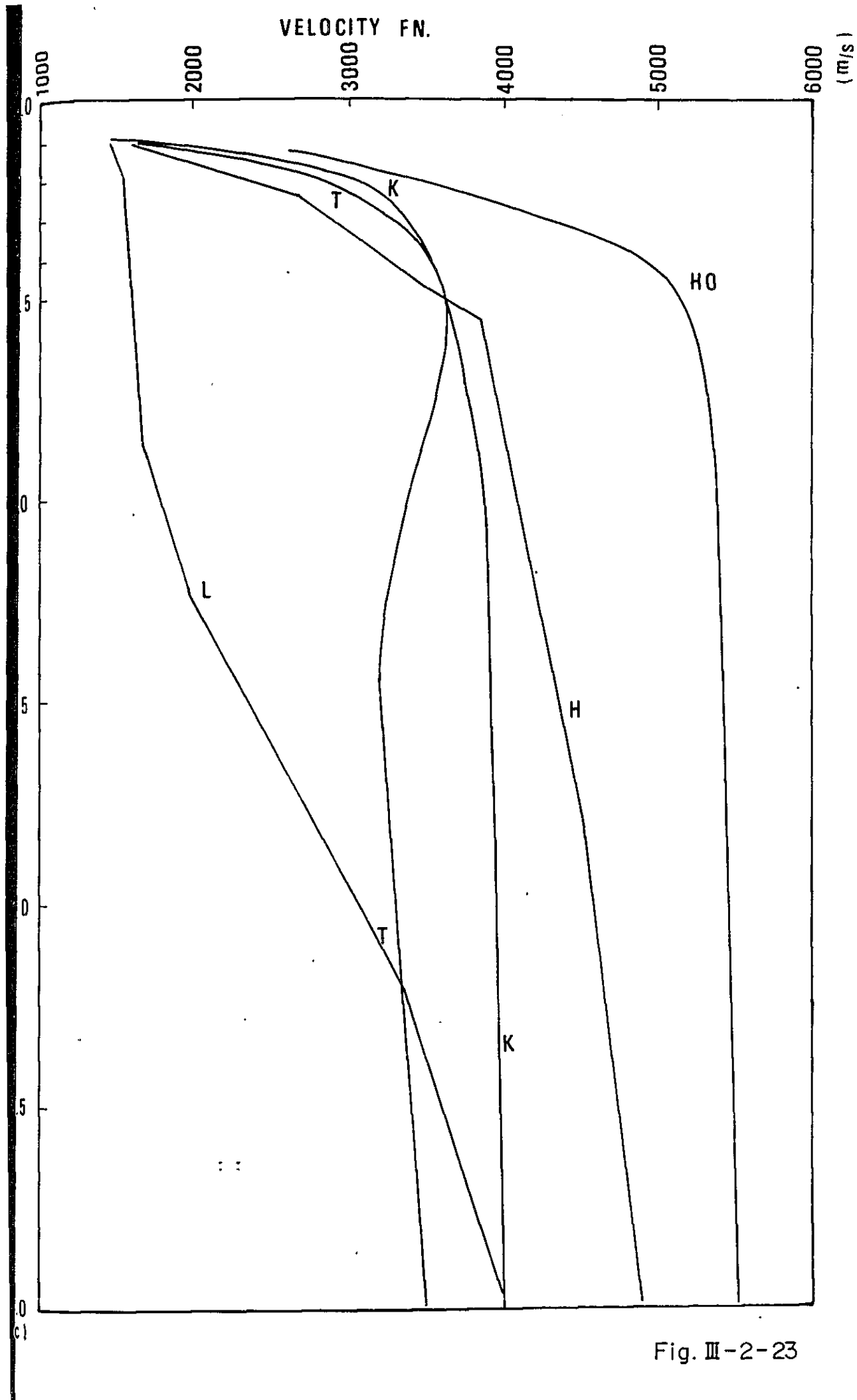


Fig. III-2-23

MUTE TEST, LINE T2-AB, 12.5 TAPER = 50 MS

STEP DISTANCE (m)
DT (ms)
SLIDING VELOCITY (m/s)
FILTER (Hz)

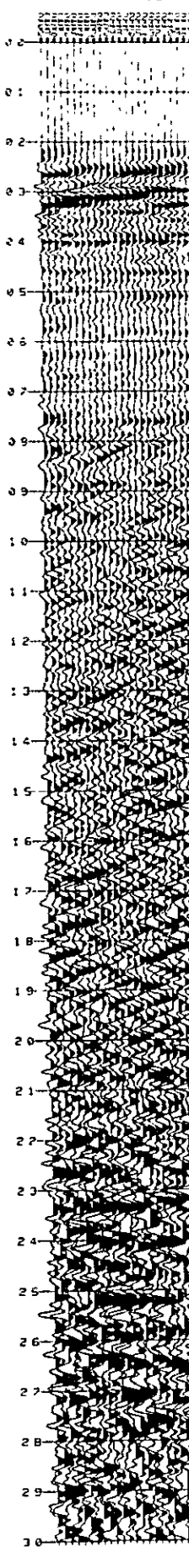
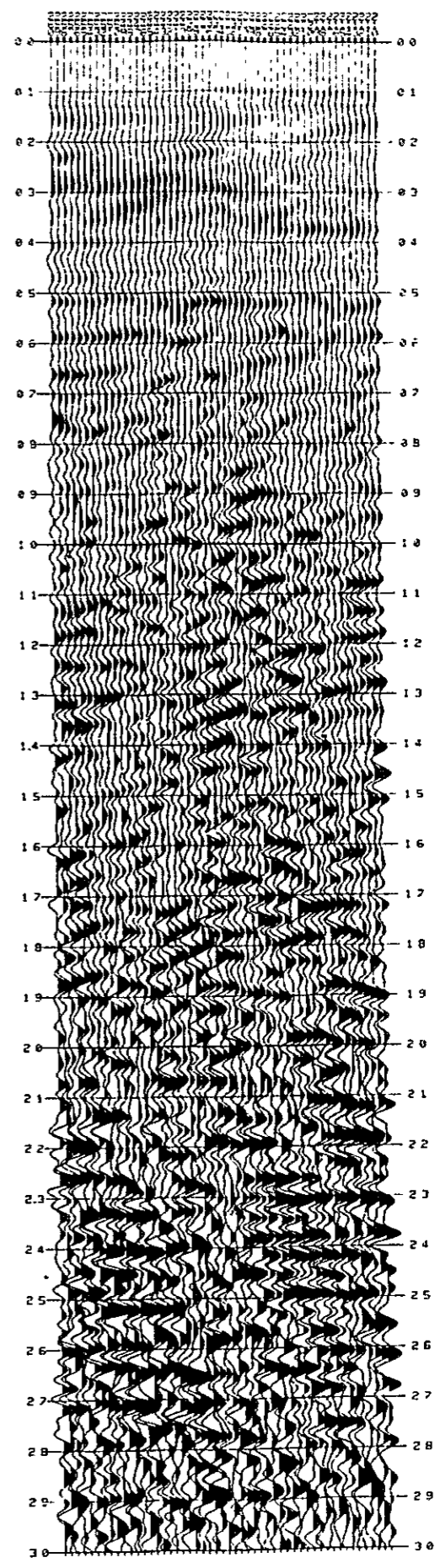
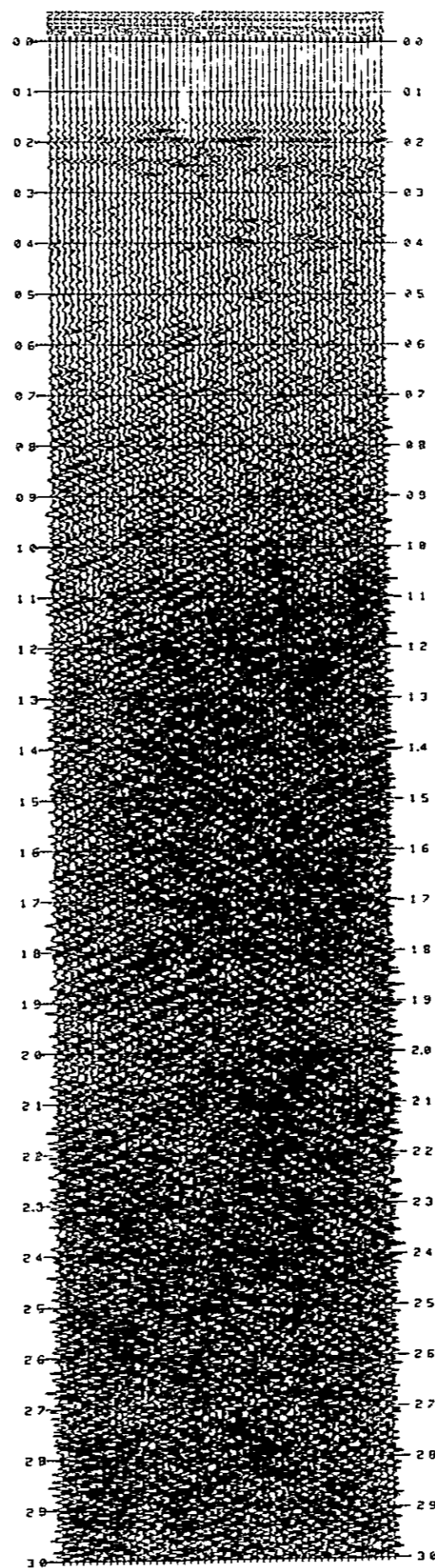
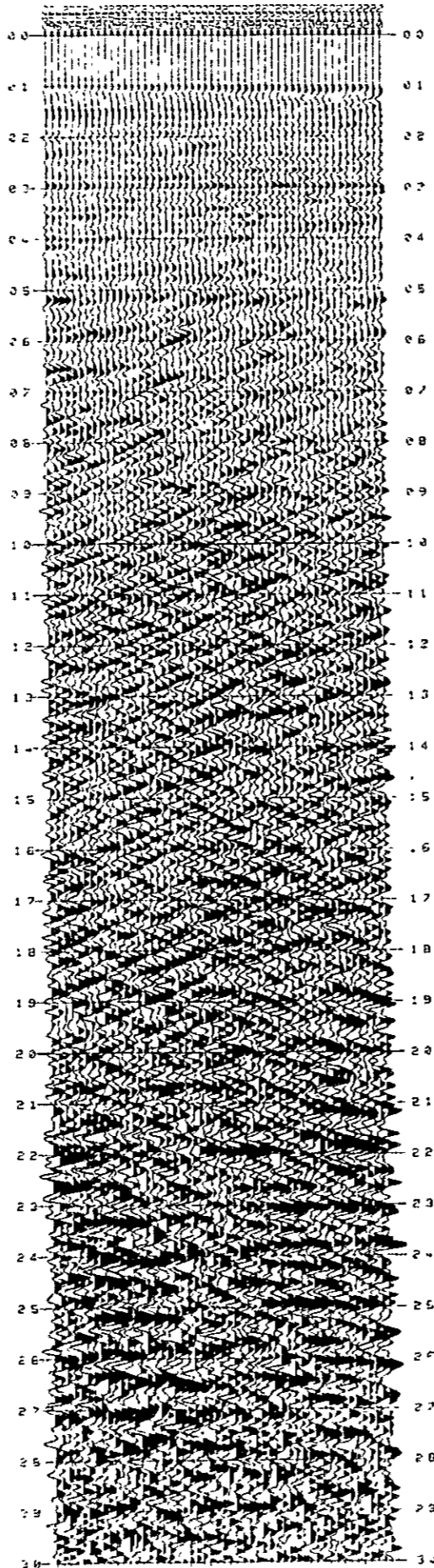
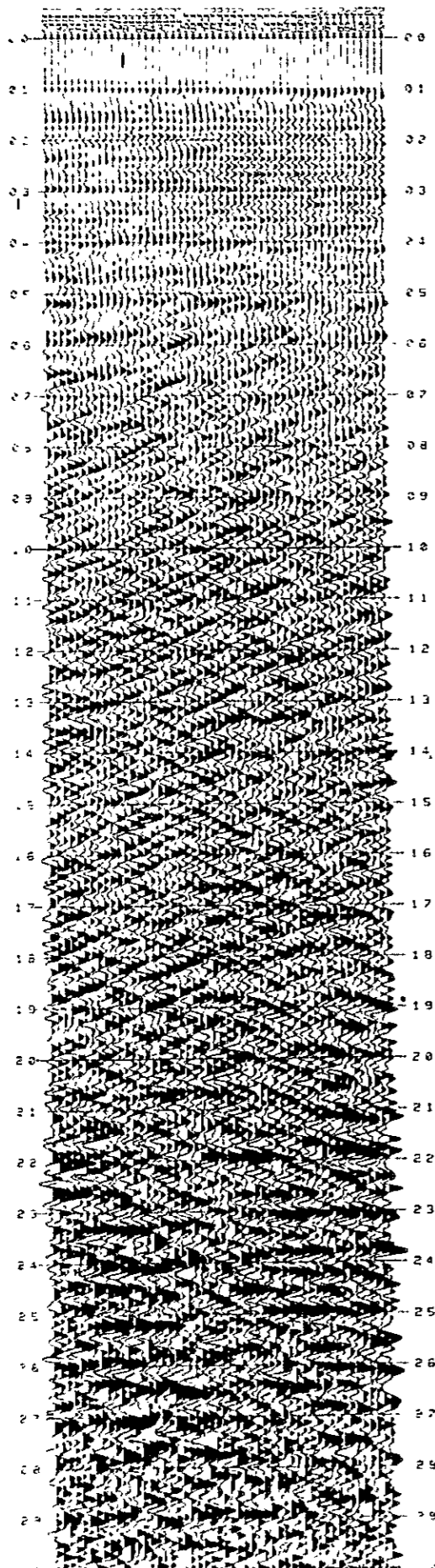
420
240
3190
8-70

130 -
60
1670
8-70

300
200
1340
30-200

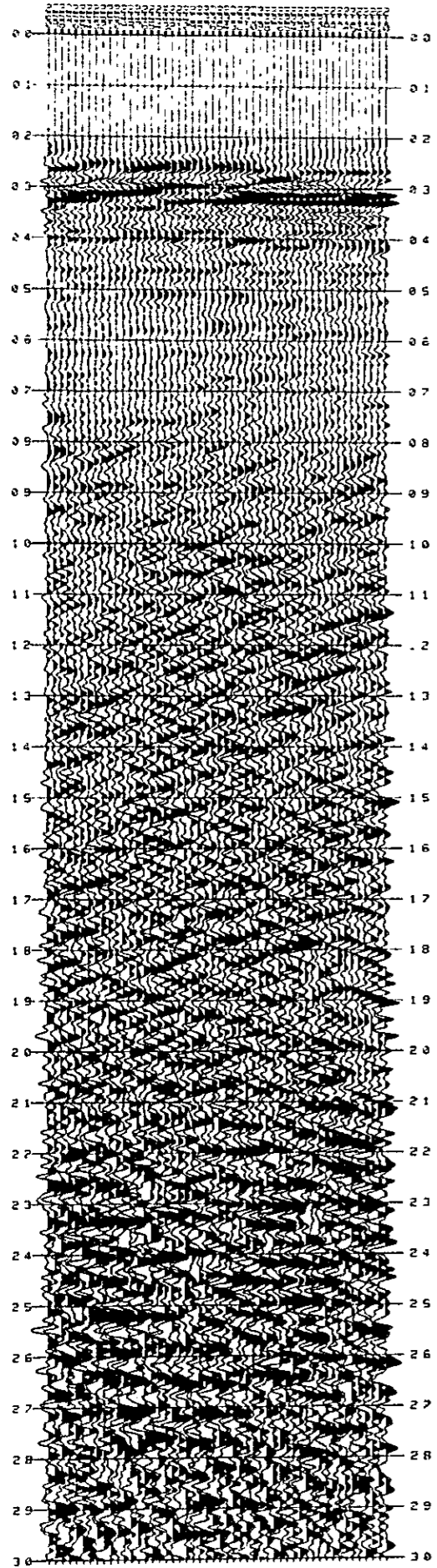
300
200
1340
0-30

NO MUTE
FAR TRA
8-70



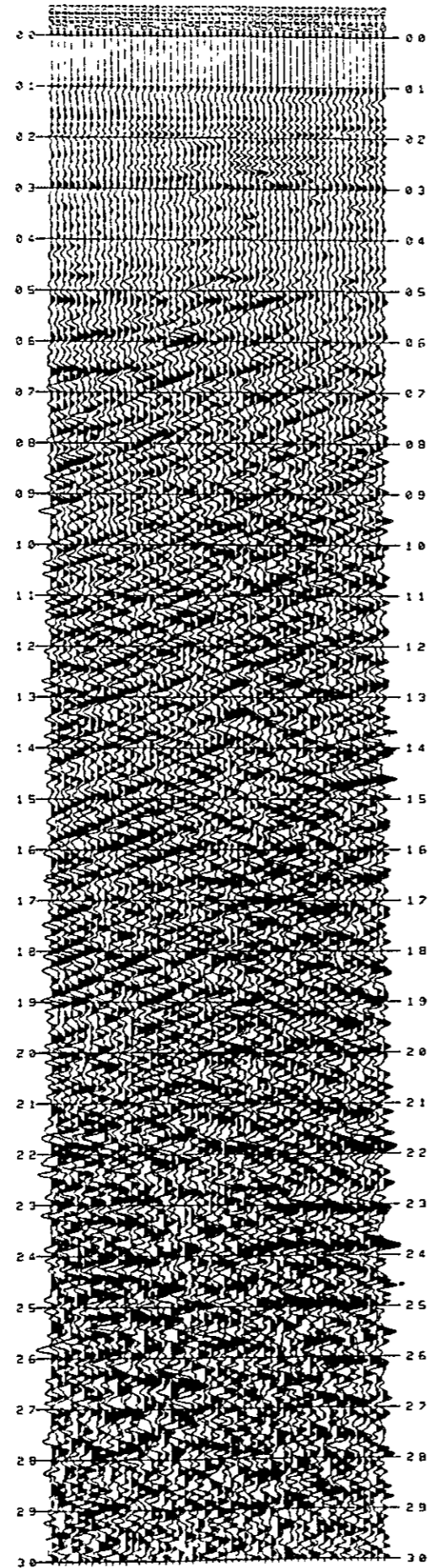
NO MUTE

FAR TRACE STACK
8-70

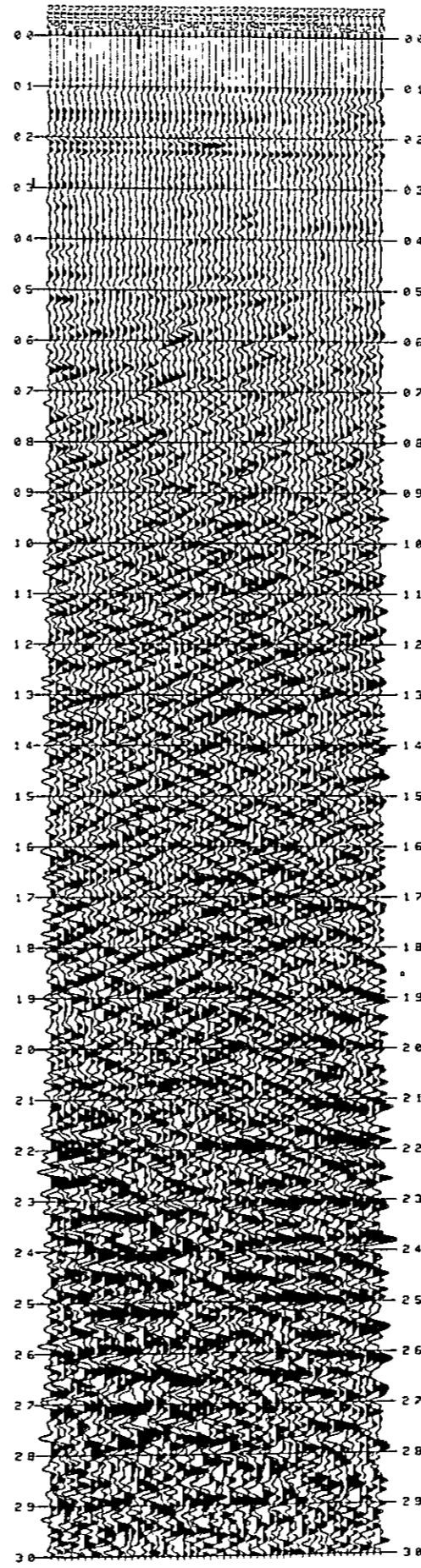


NO MUTE

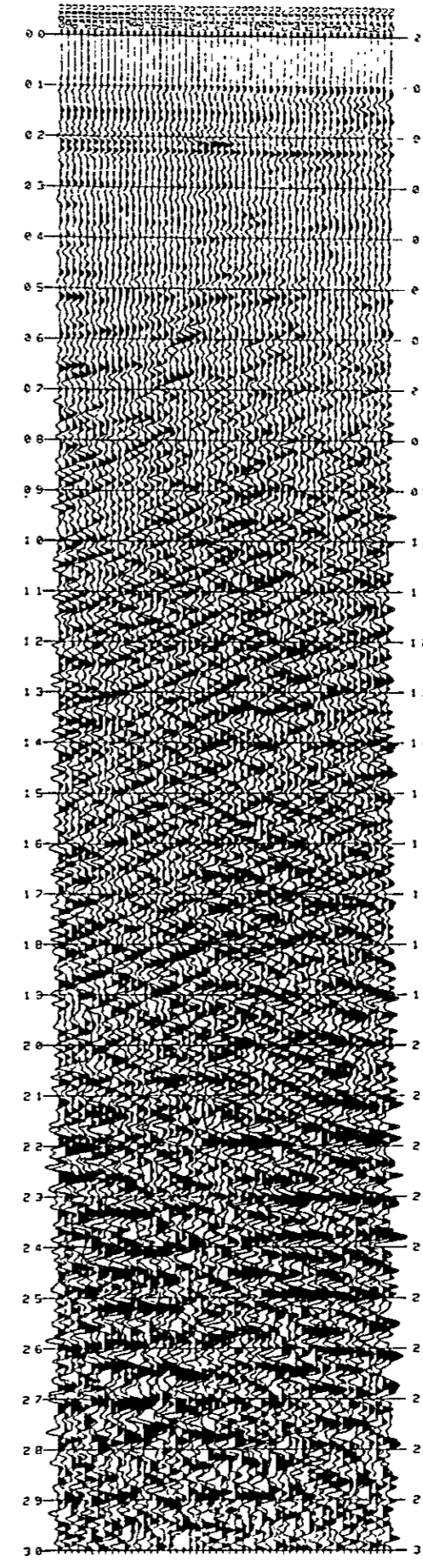
NEAR TRACE STACK
8-70



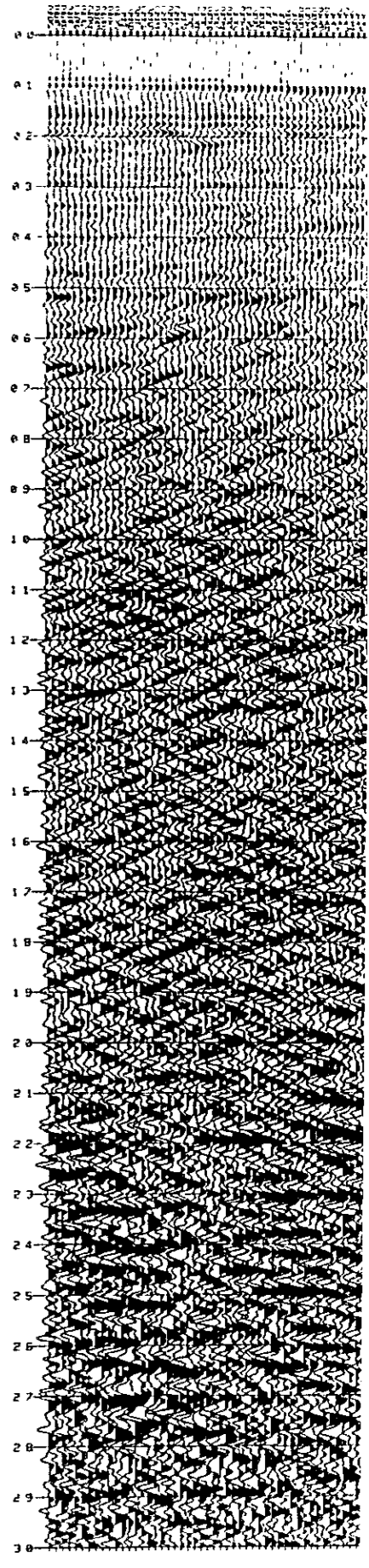
180
200
1670
8-70



180
200
1340
8-70



300
200
1670
8-70



180
200
1340
8-70

300
200
1670
8-70

300
200
1340
8-70

NO MUTE

8-70

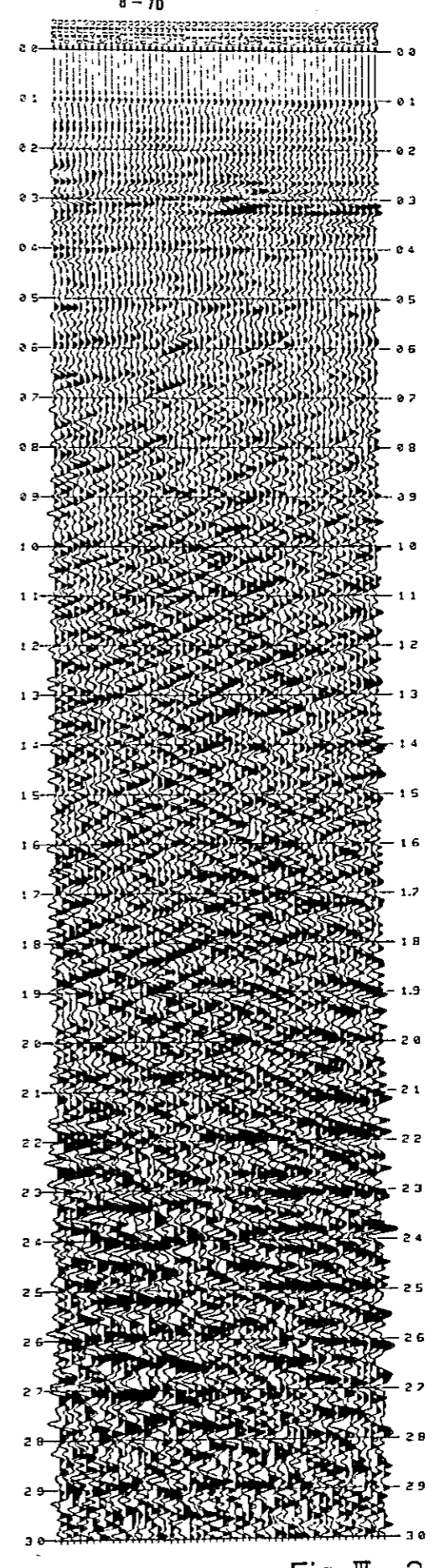
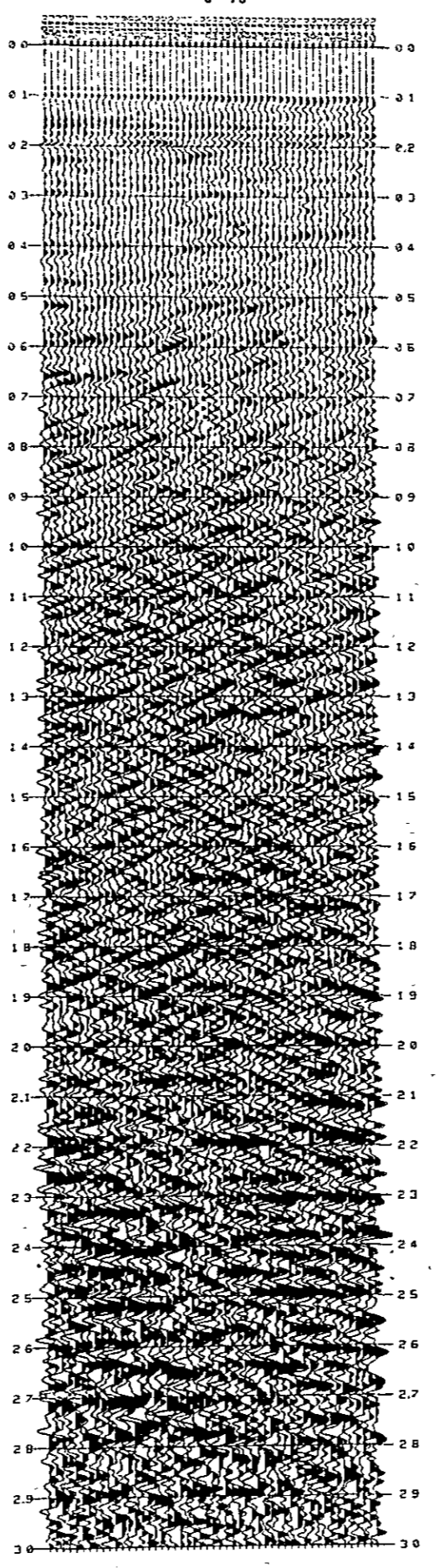
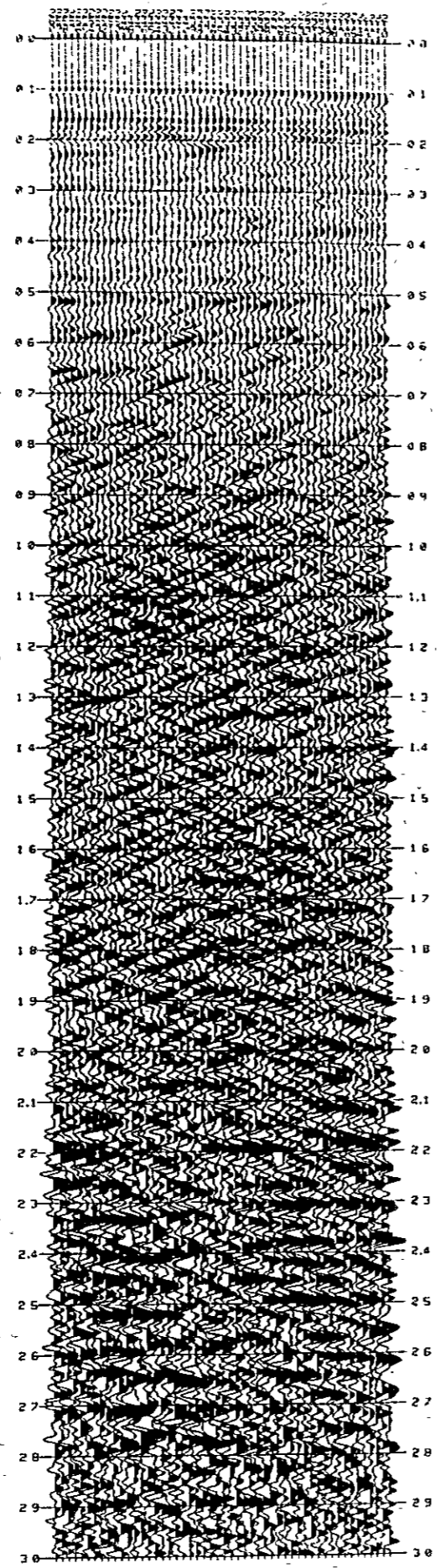
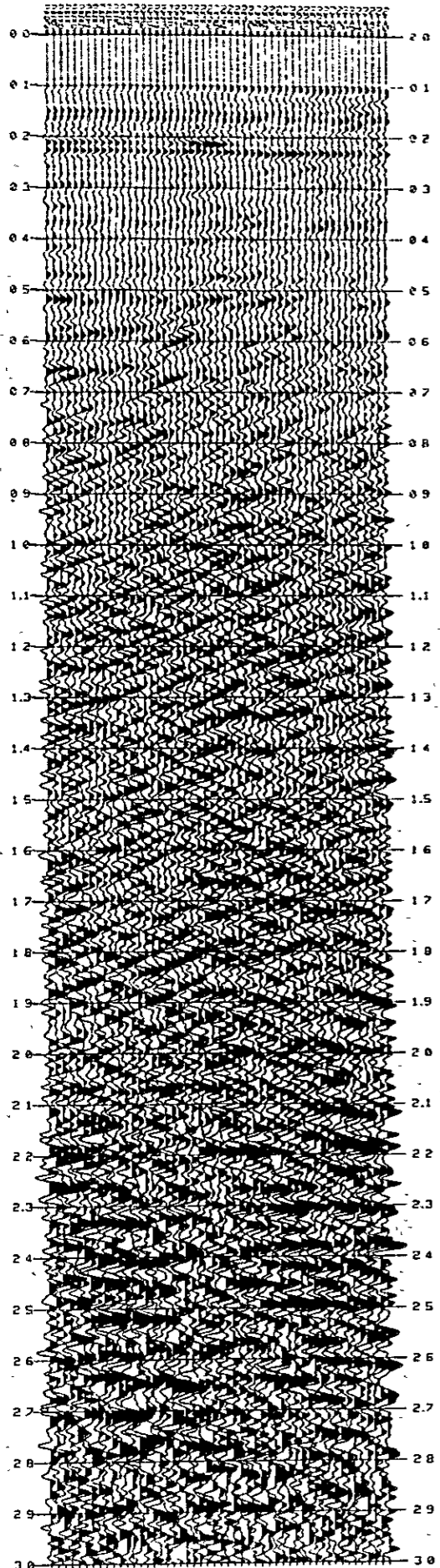


Fig. III - 2 - 24