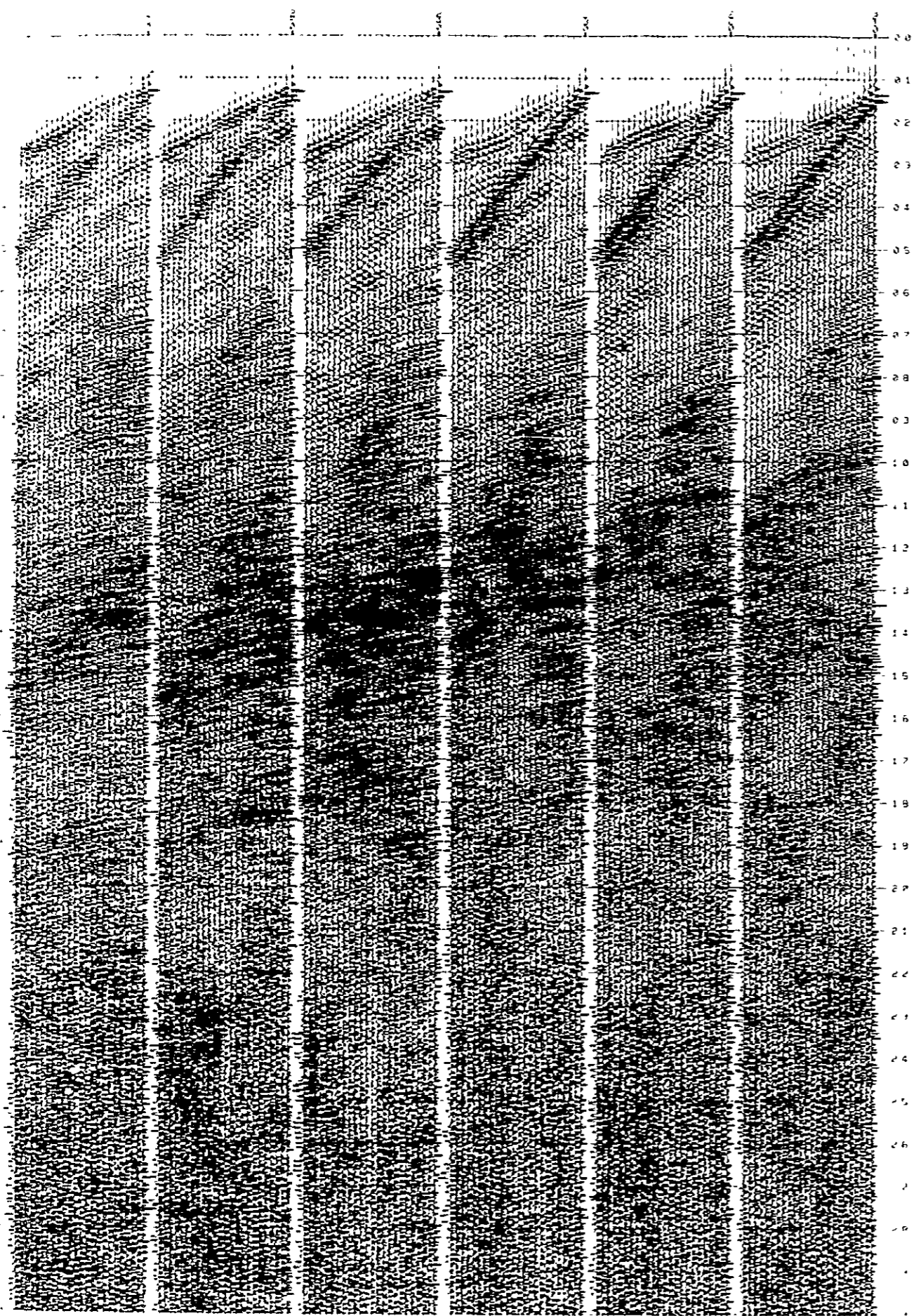
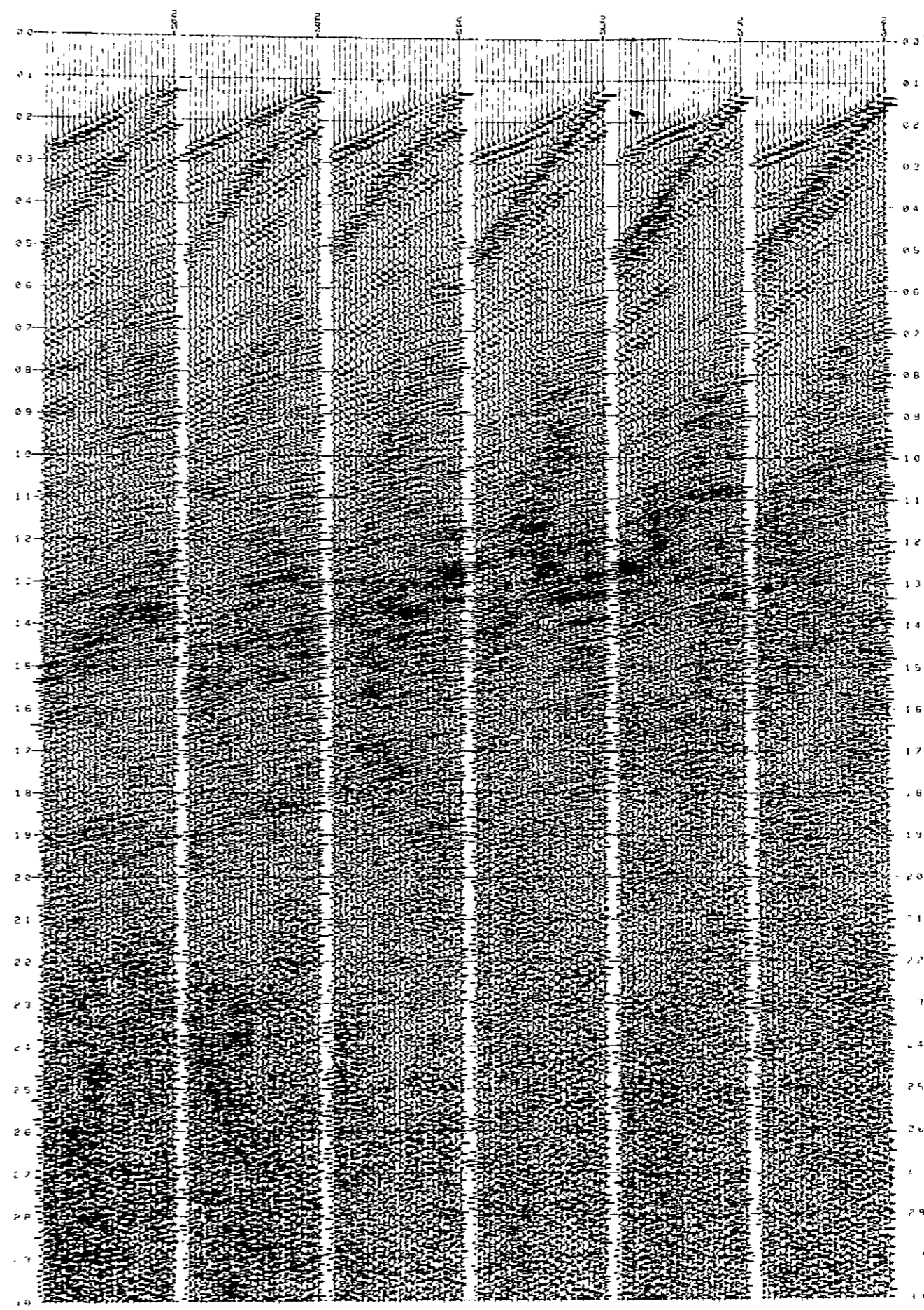


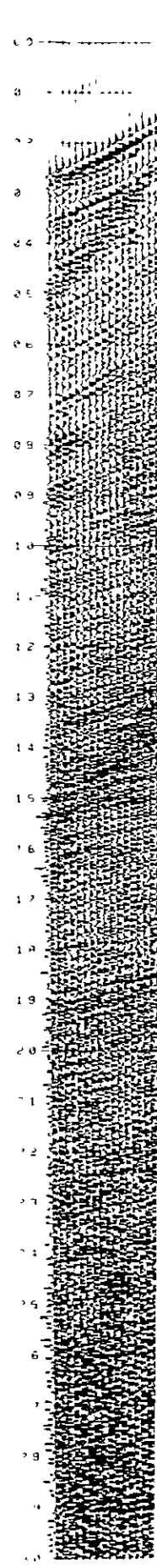
(10) (3)+FILTER (50-200 HZ)



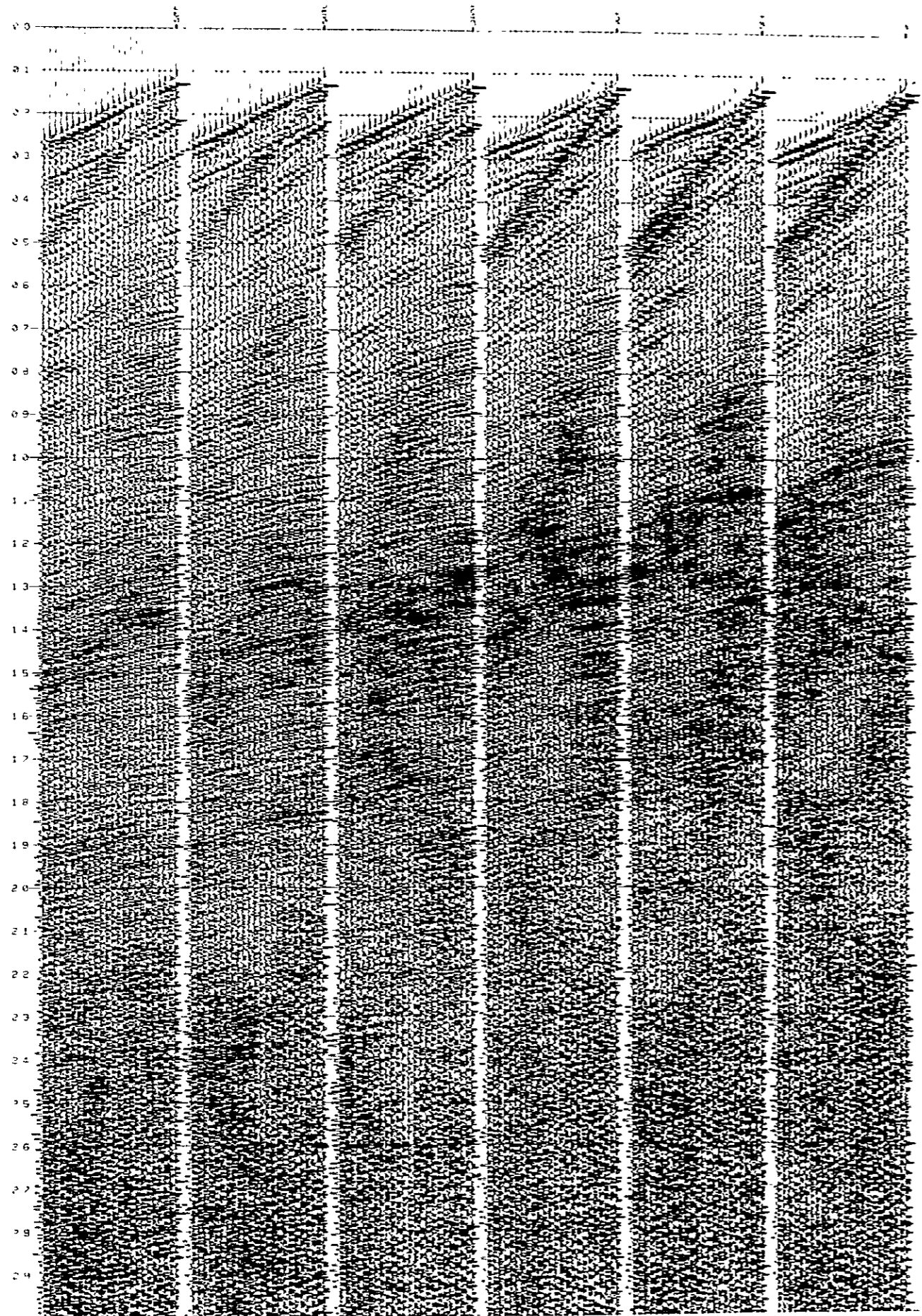
(9) (3)+FILTER (40-200 HZ)



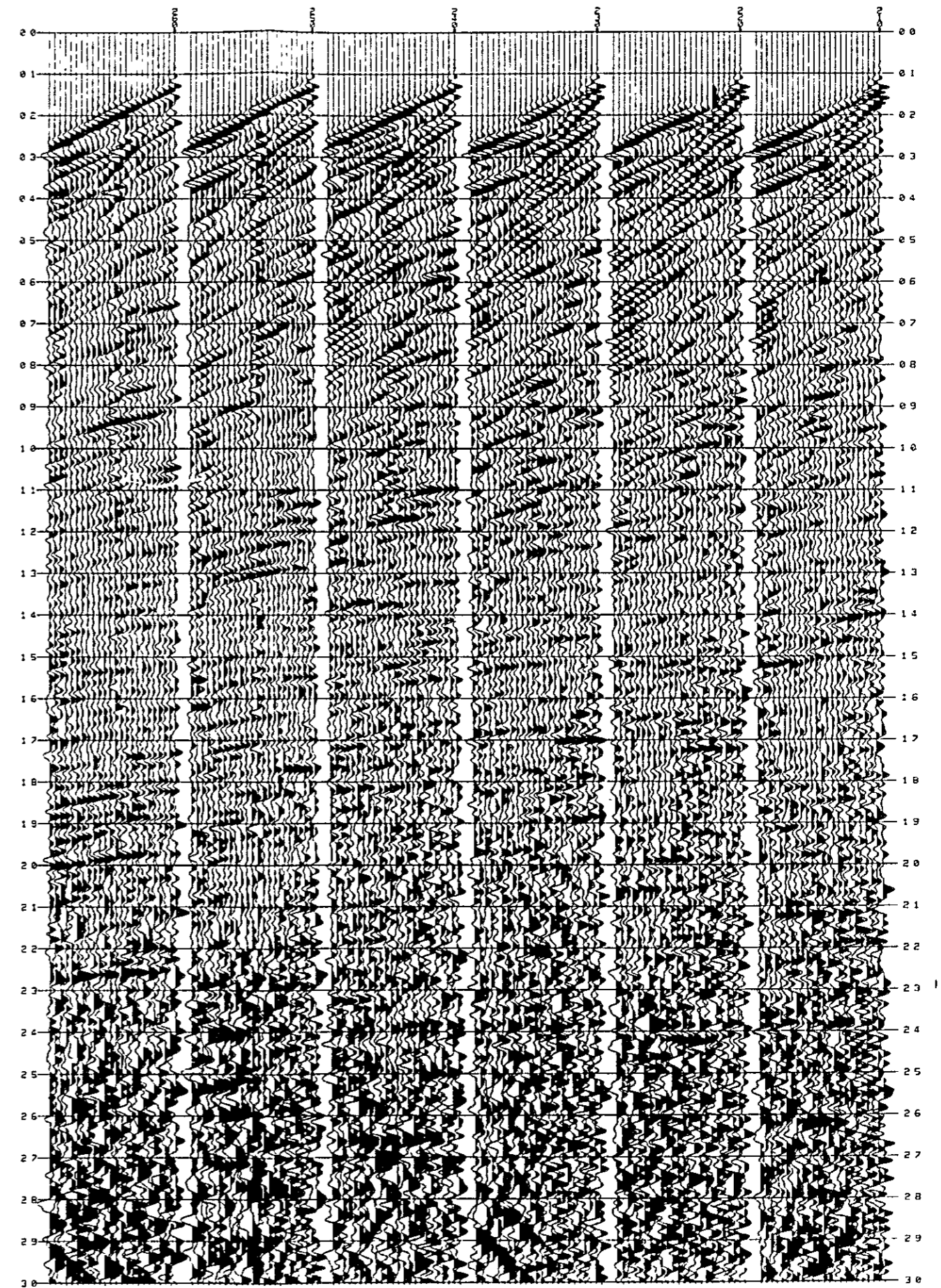
(8) (3)



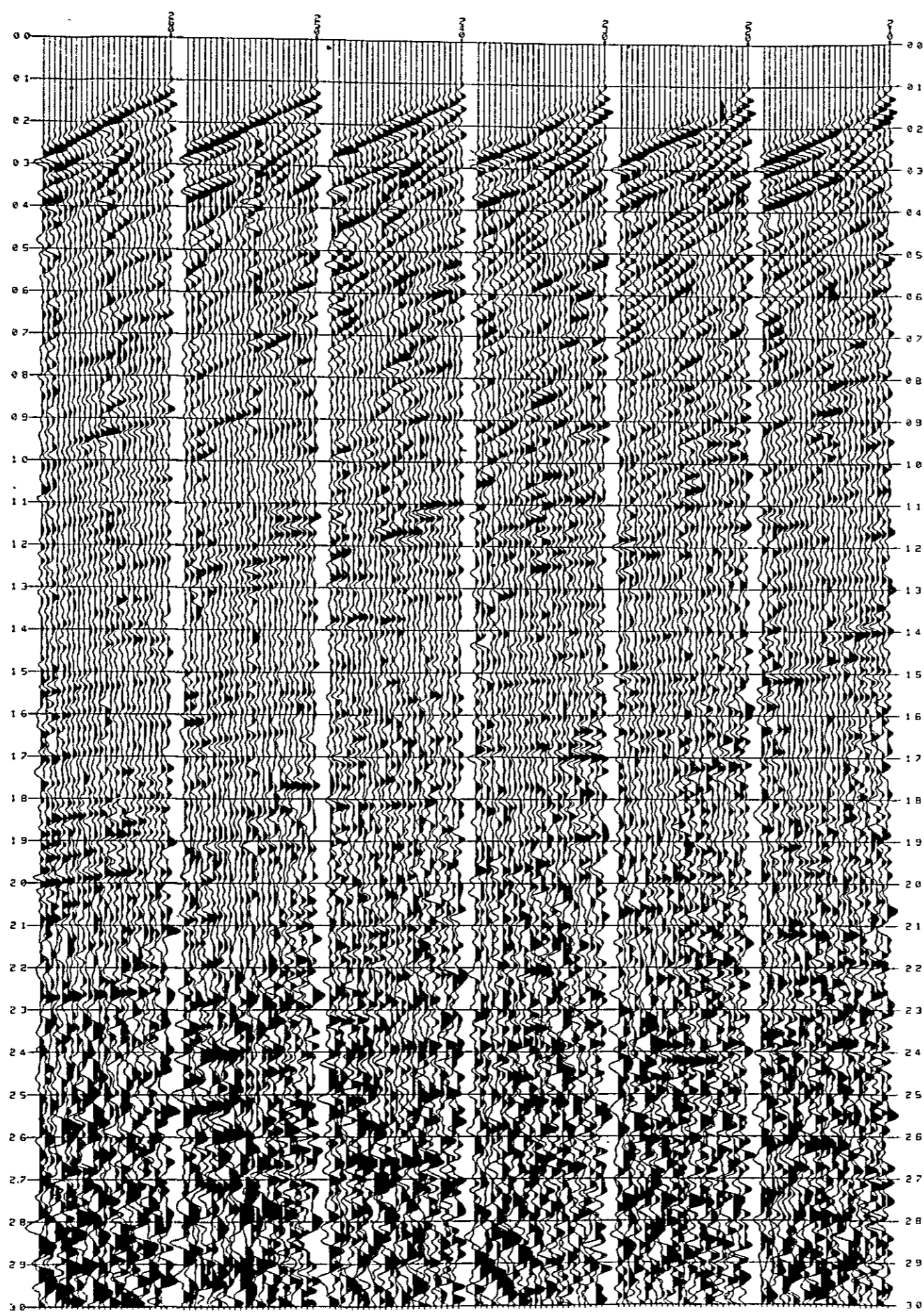
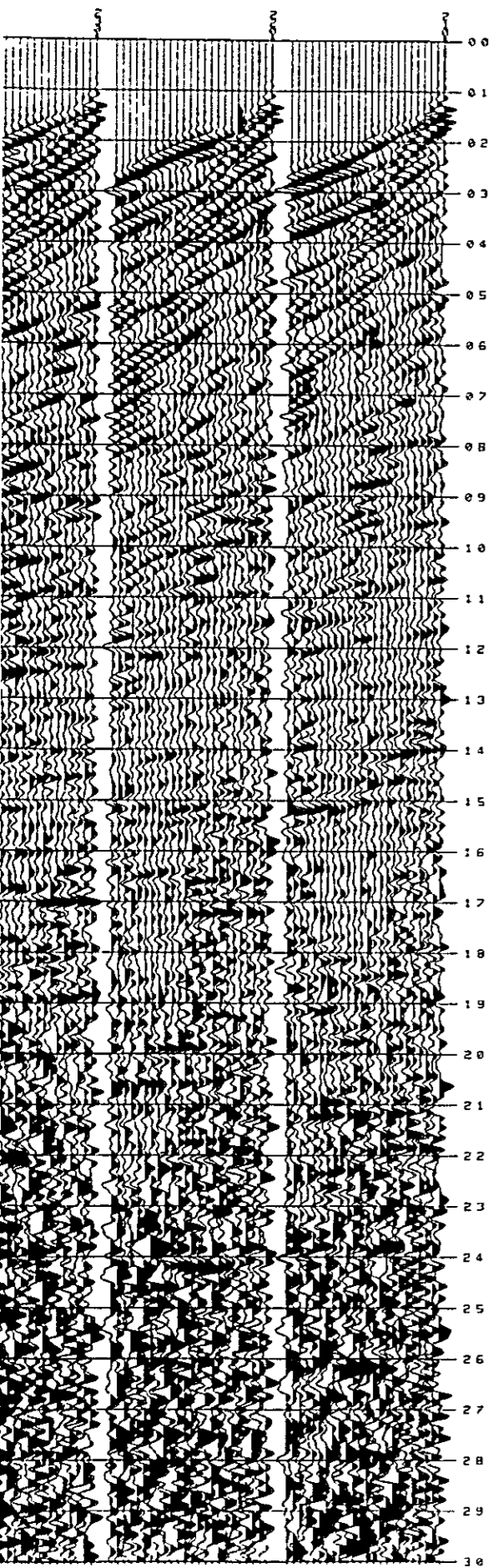
(8) (3)+FILTER (30-200 HZ)



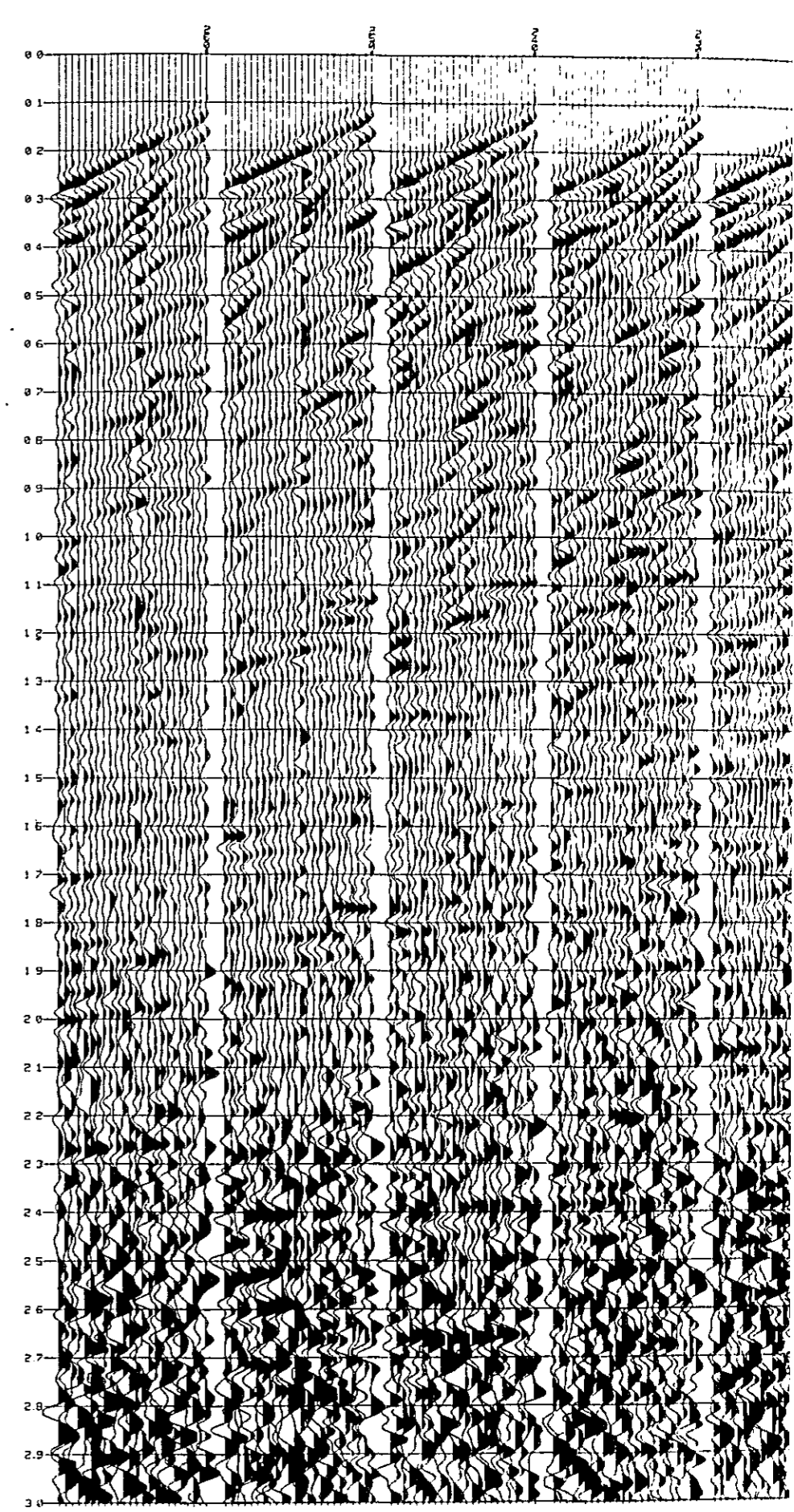
(7) (3)+FILTER (0-50 HZ)



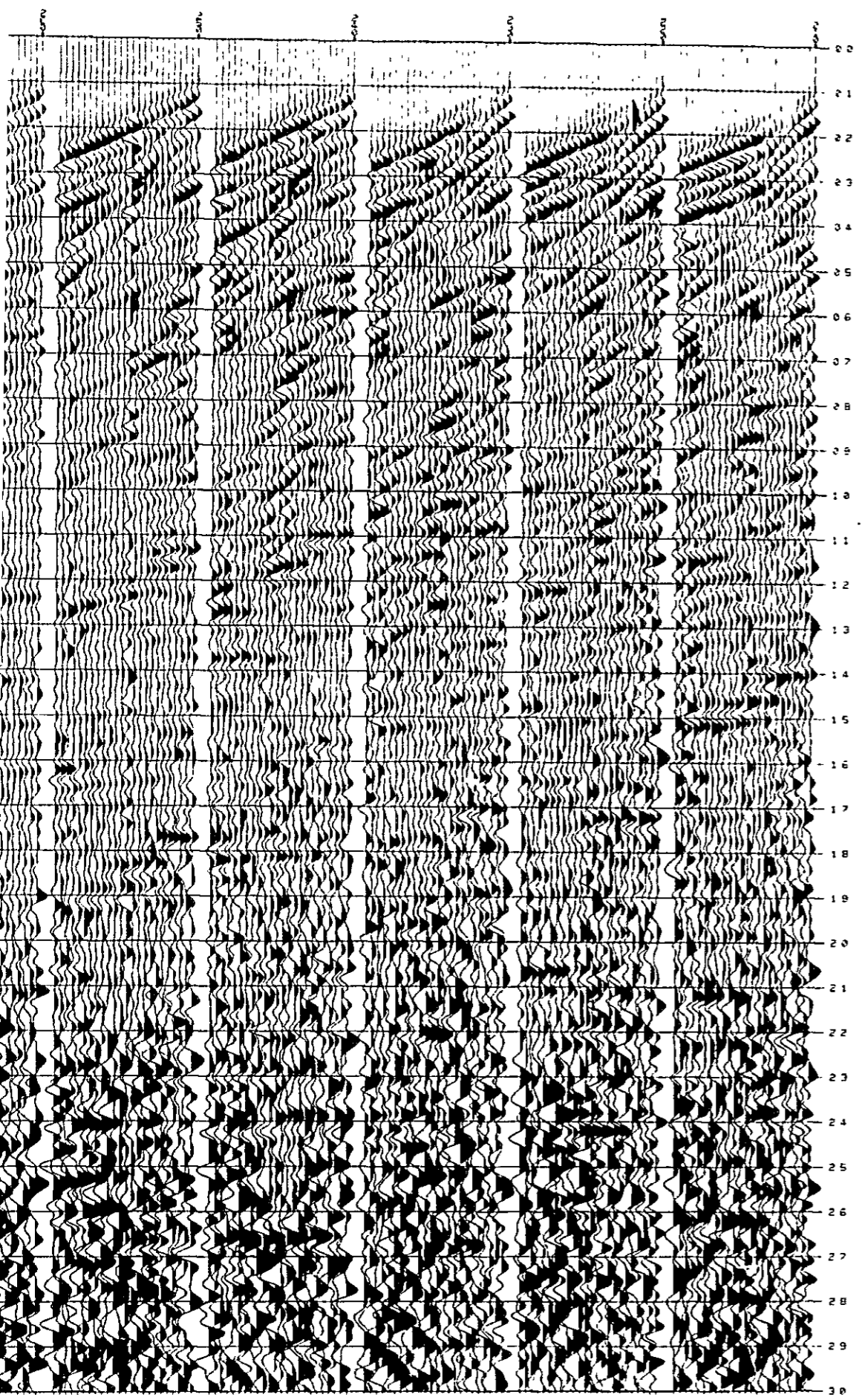
(6) (3)+FILTER (0-40 HZ)



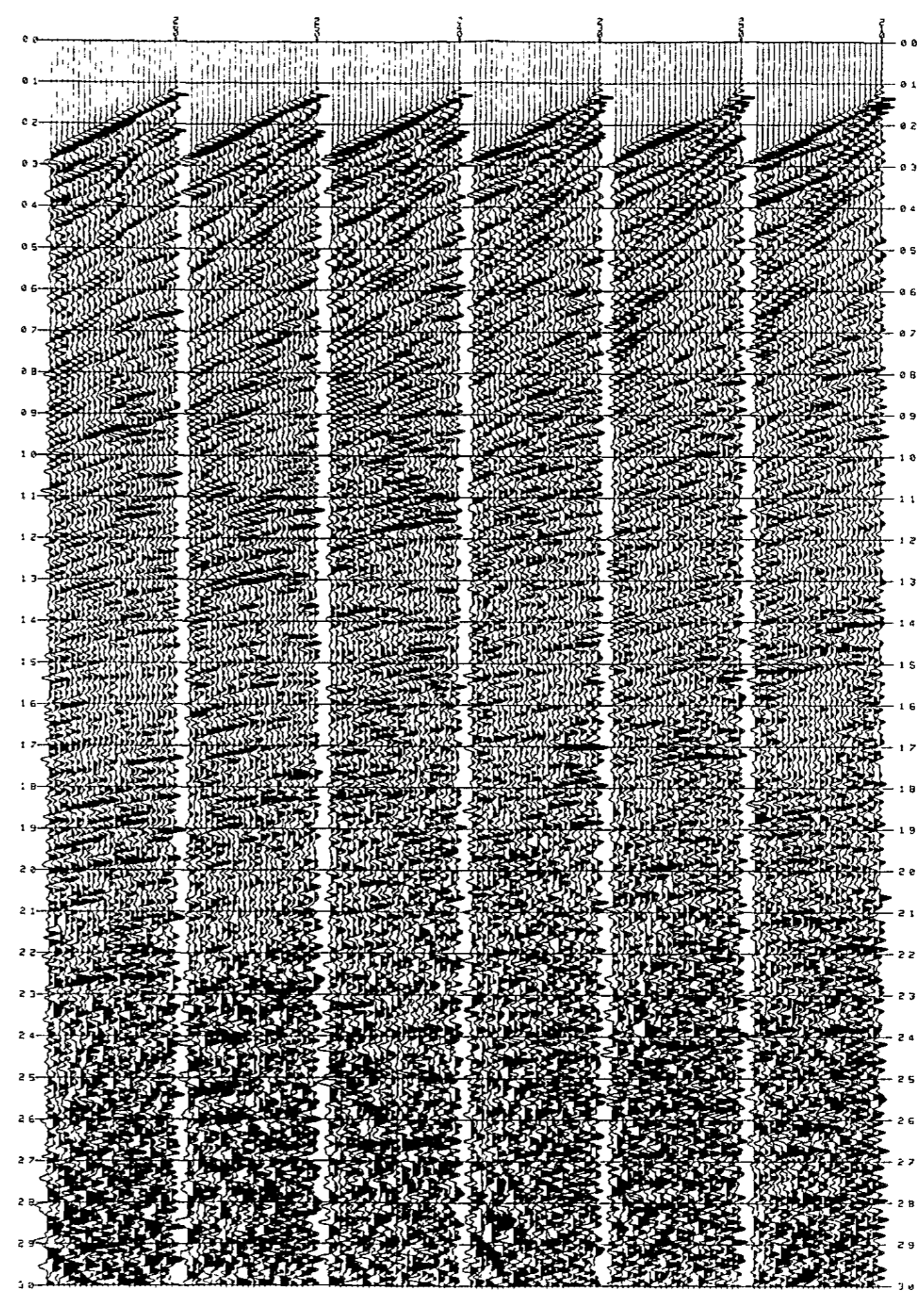
(5) (3)+FILTER (0-30 HZ)



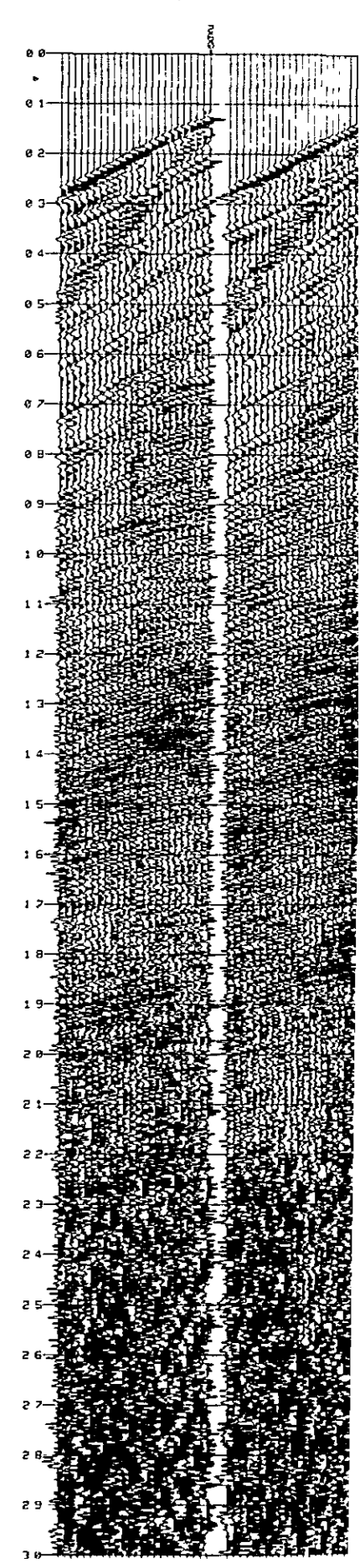
+ FILTER (0-30 HZ)



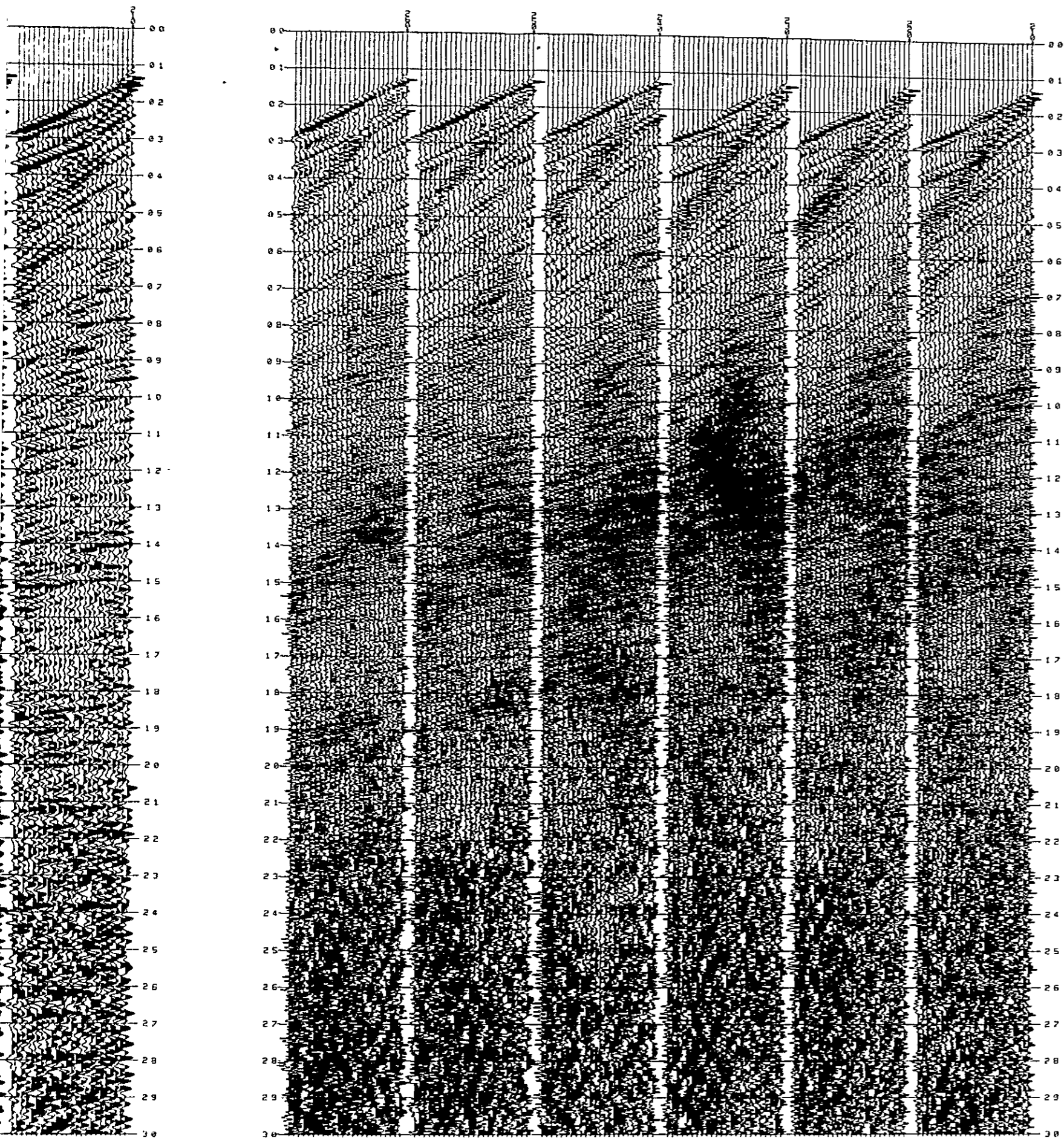
(4) (3)+FILTER (8-70 HZ)



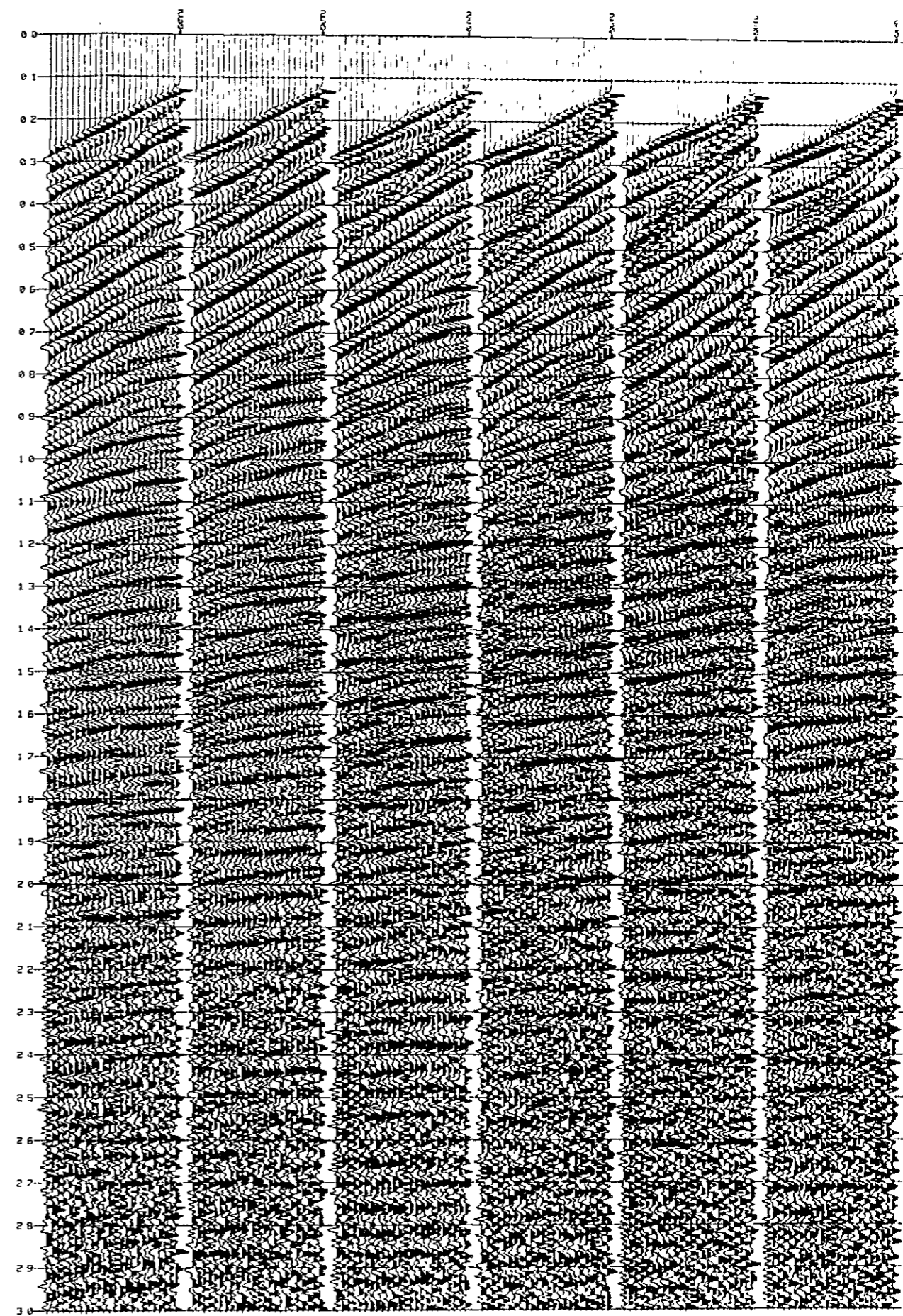
(3) (2)+ DECONVOLUTION



(3) (2) + DECONVOLUTION



(2) (1) + AAC (150 ms)



(1) CDP DATA (ORIGINAL)

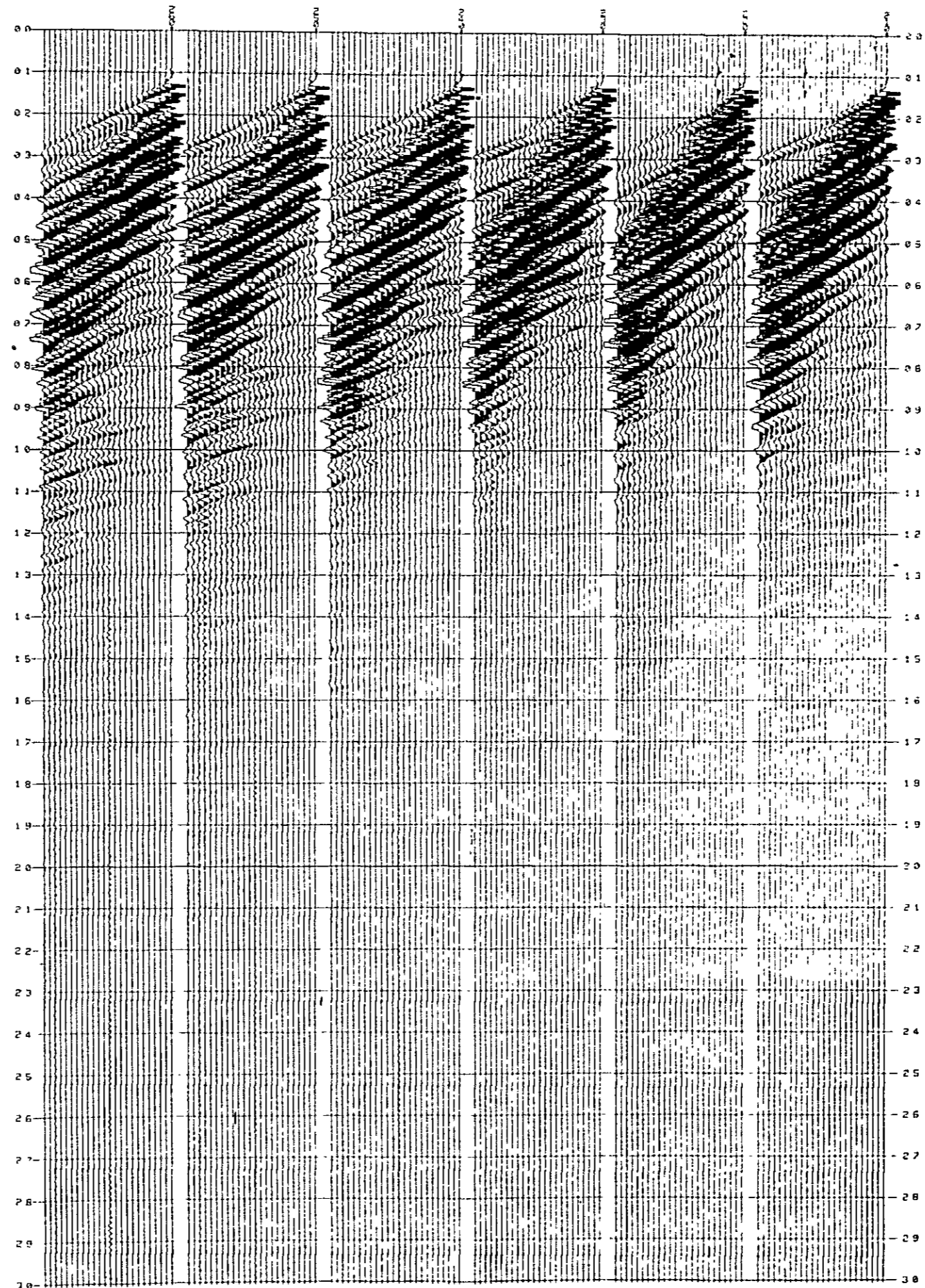
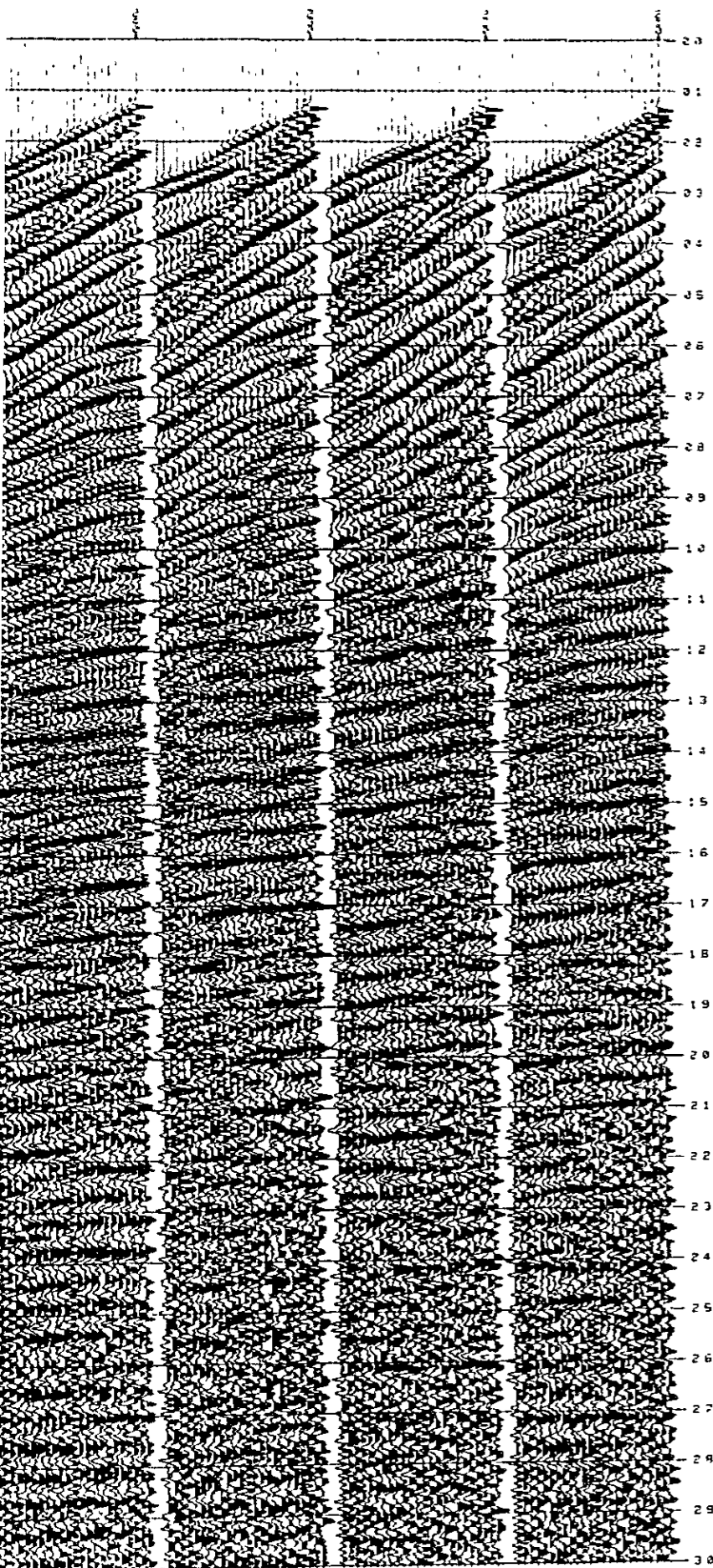
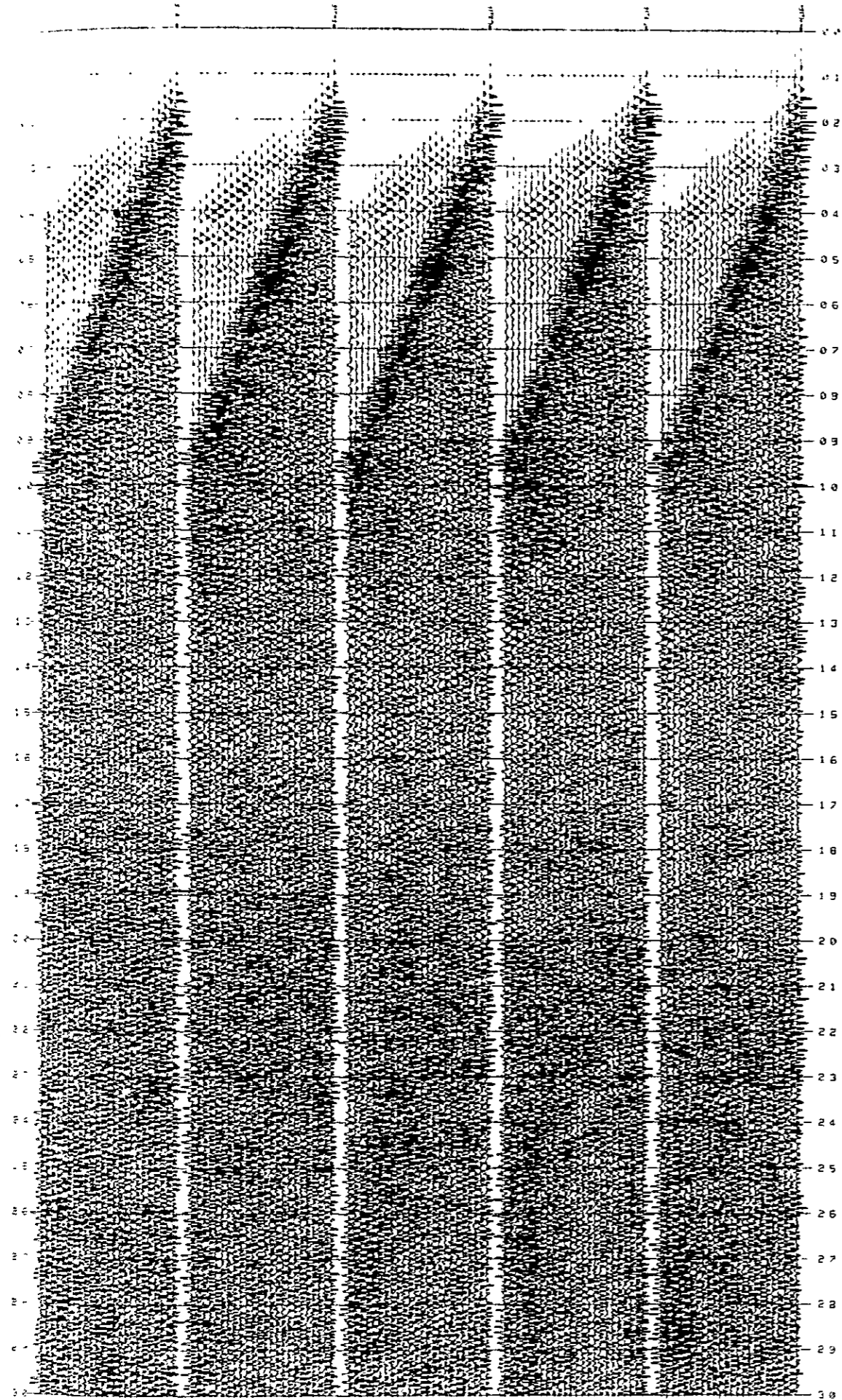


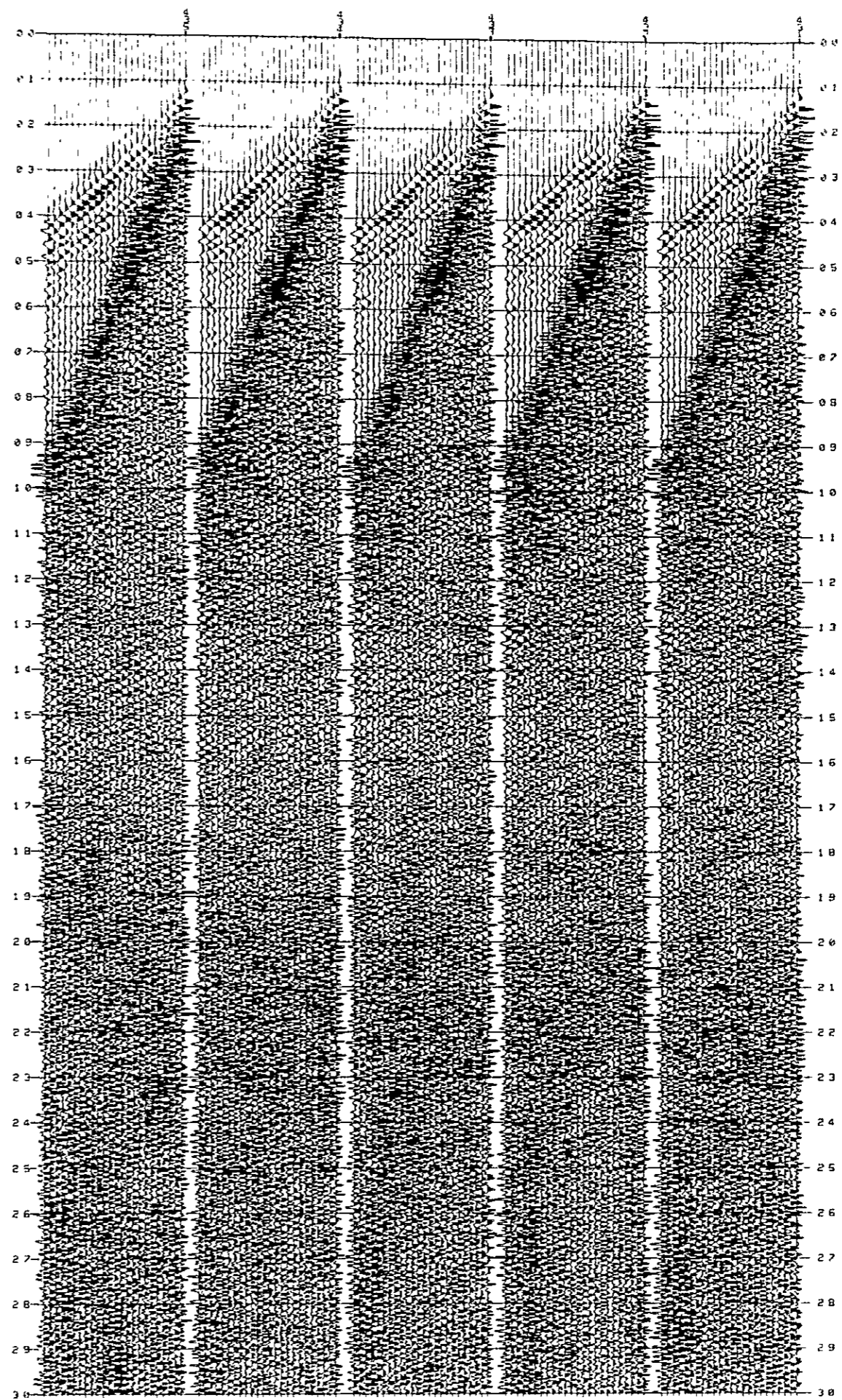
Fig. III - 2-14

DECONVOLUTION AND FREQUENCY ANALYSIS, LINE T1-AB25

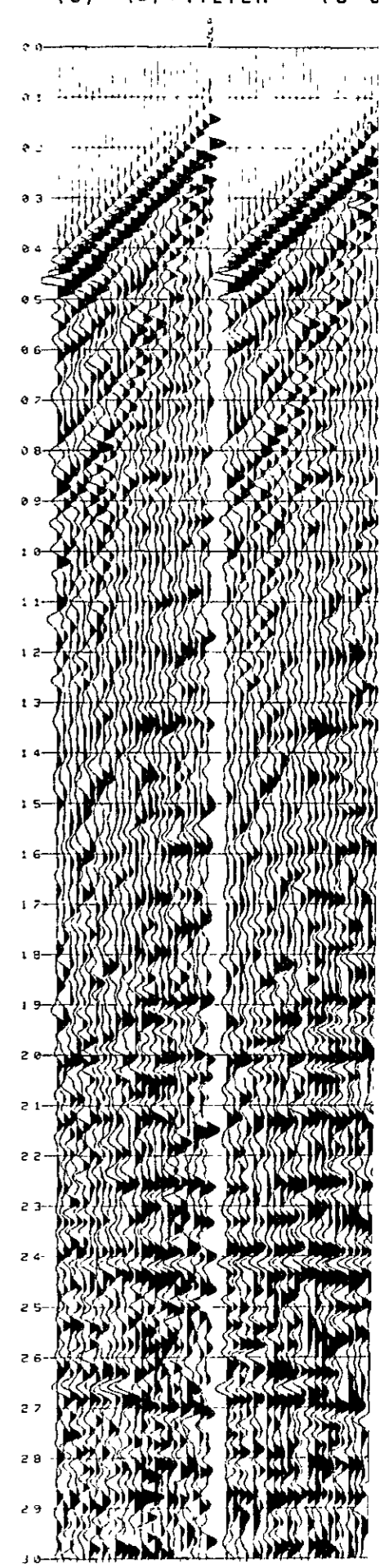
(7) (3)+FILTER (40-200 HZ)



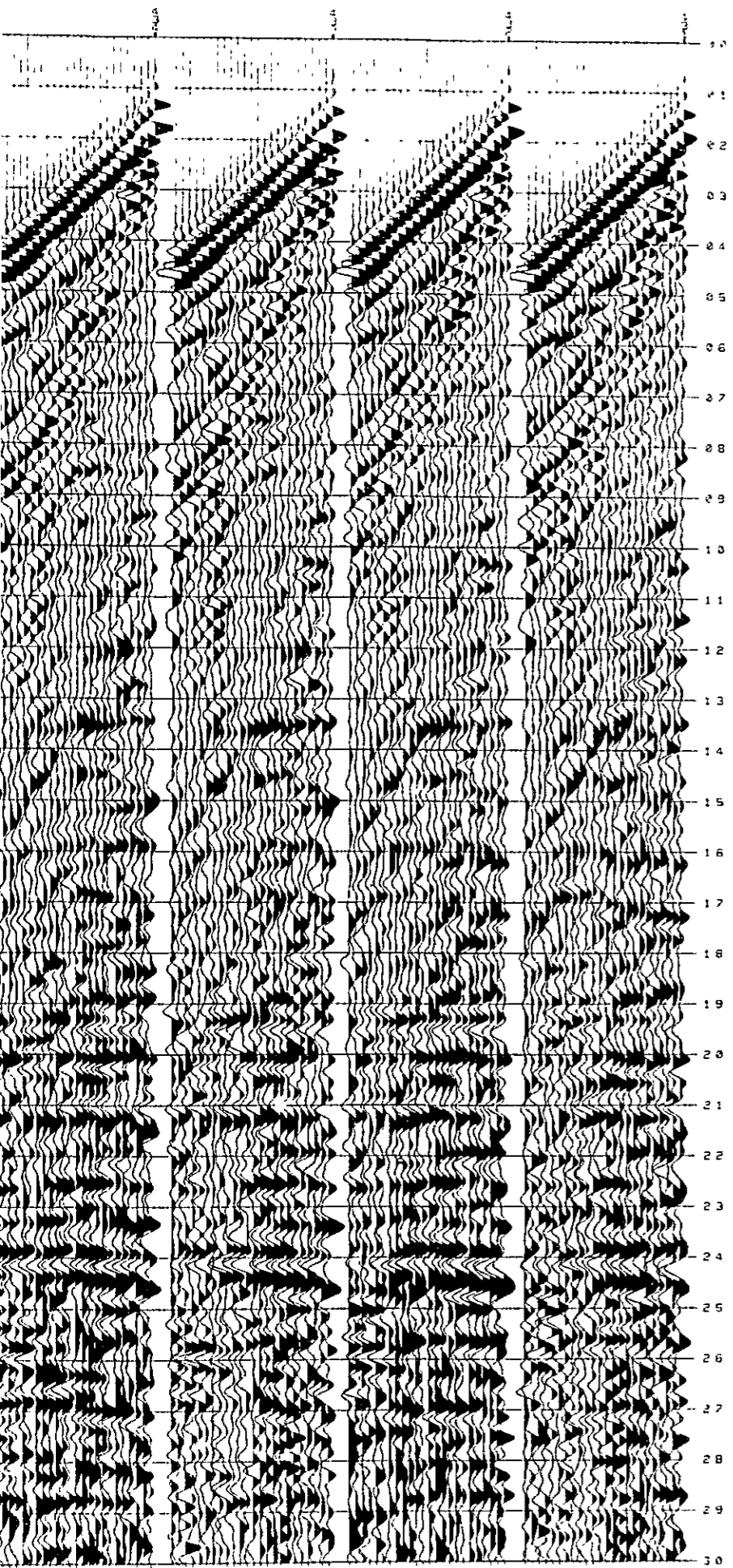
(6) (3)+FILTER (30-200 HZ)



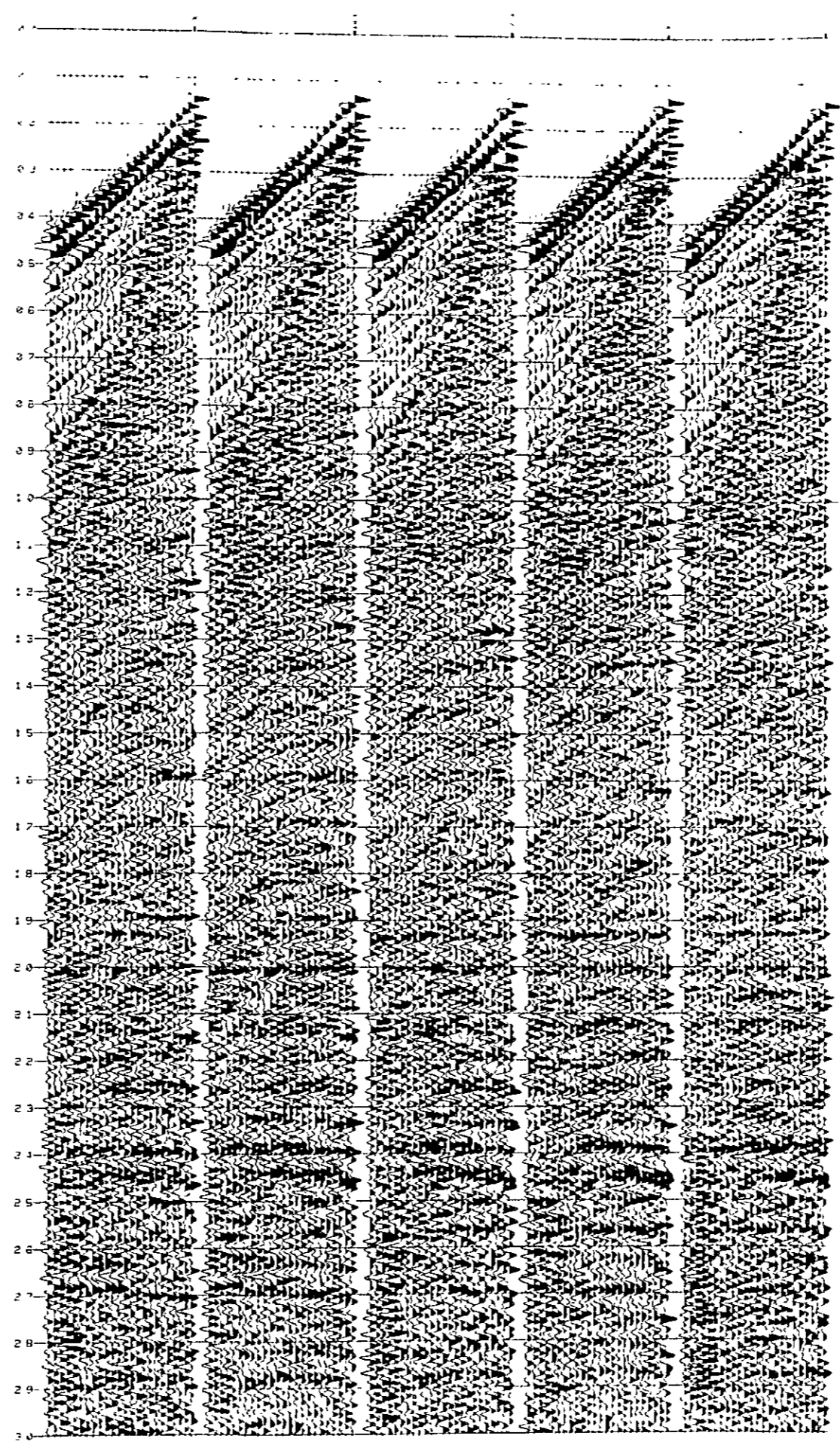
(5) (3)+FILTER (0-30 HZ)



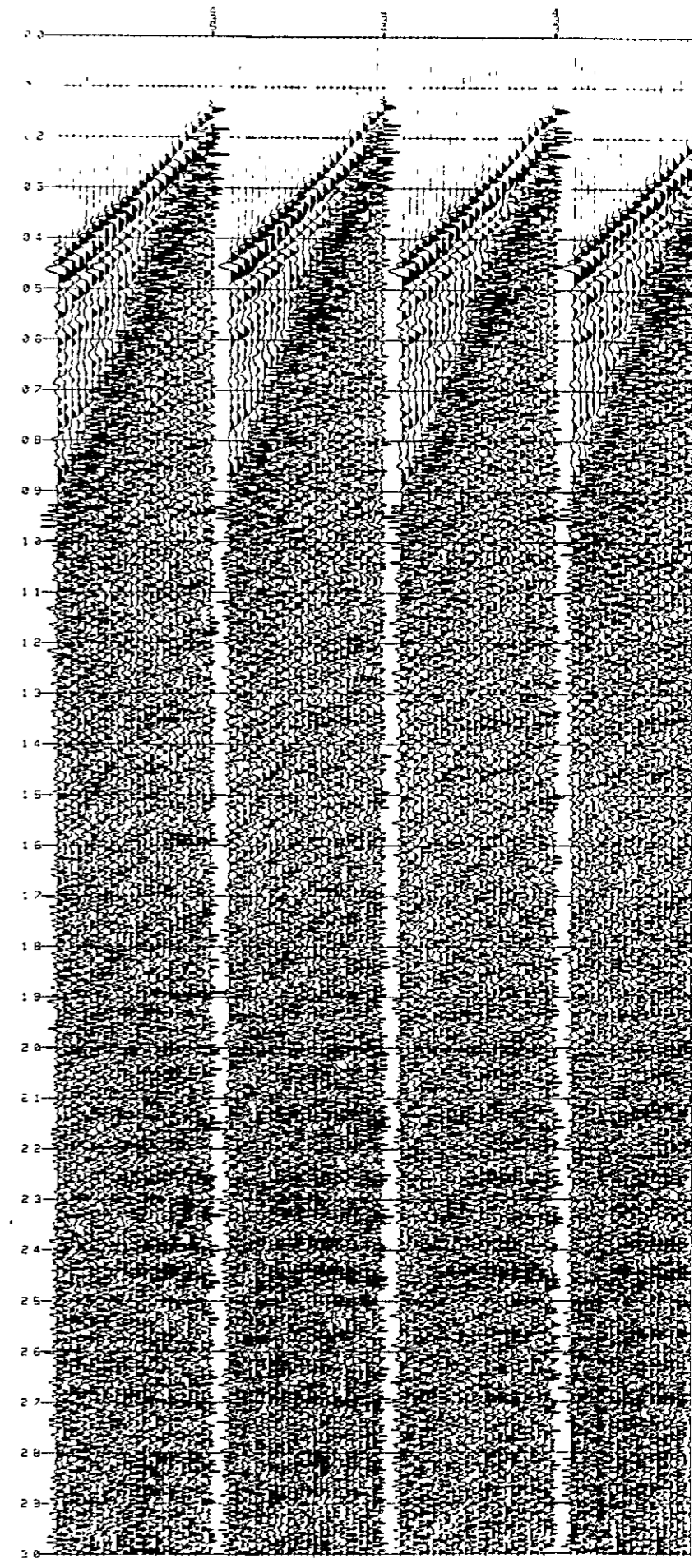
TER (0-30 HZ)



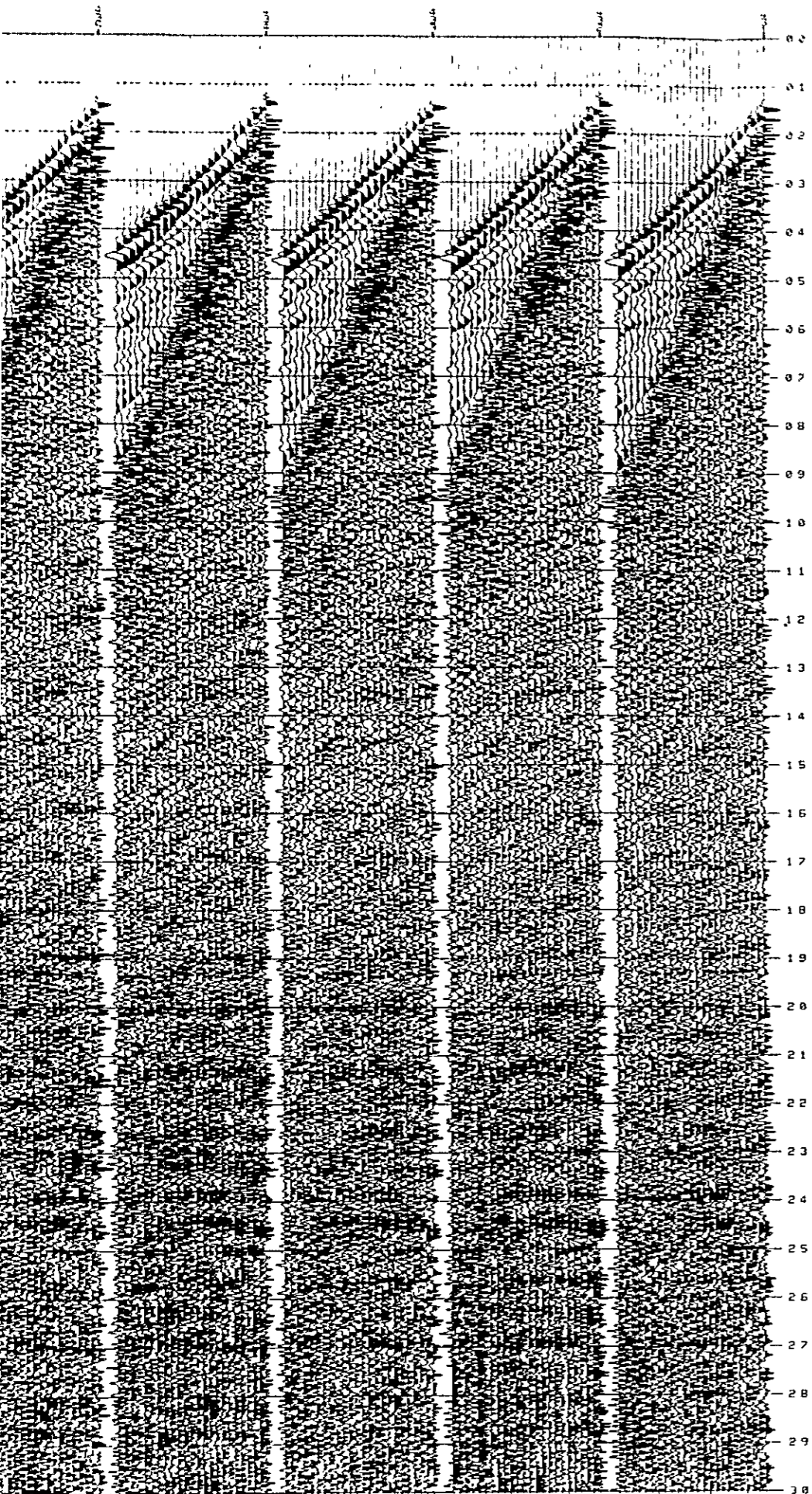
(4) (3)+FILTER (8-70 HZ)



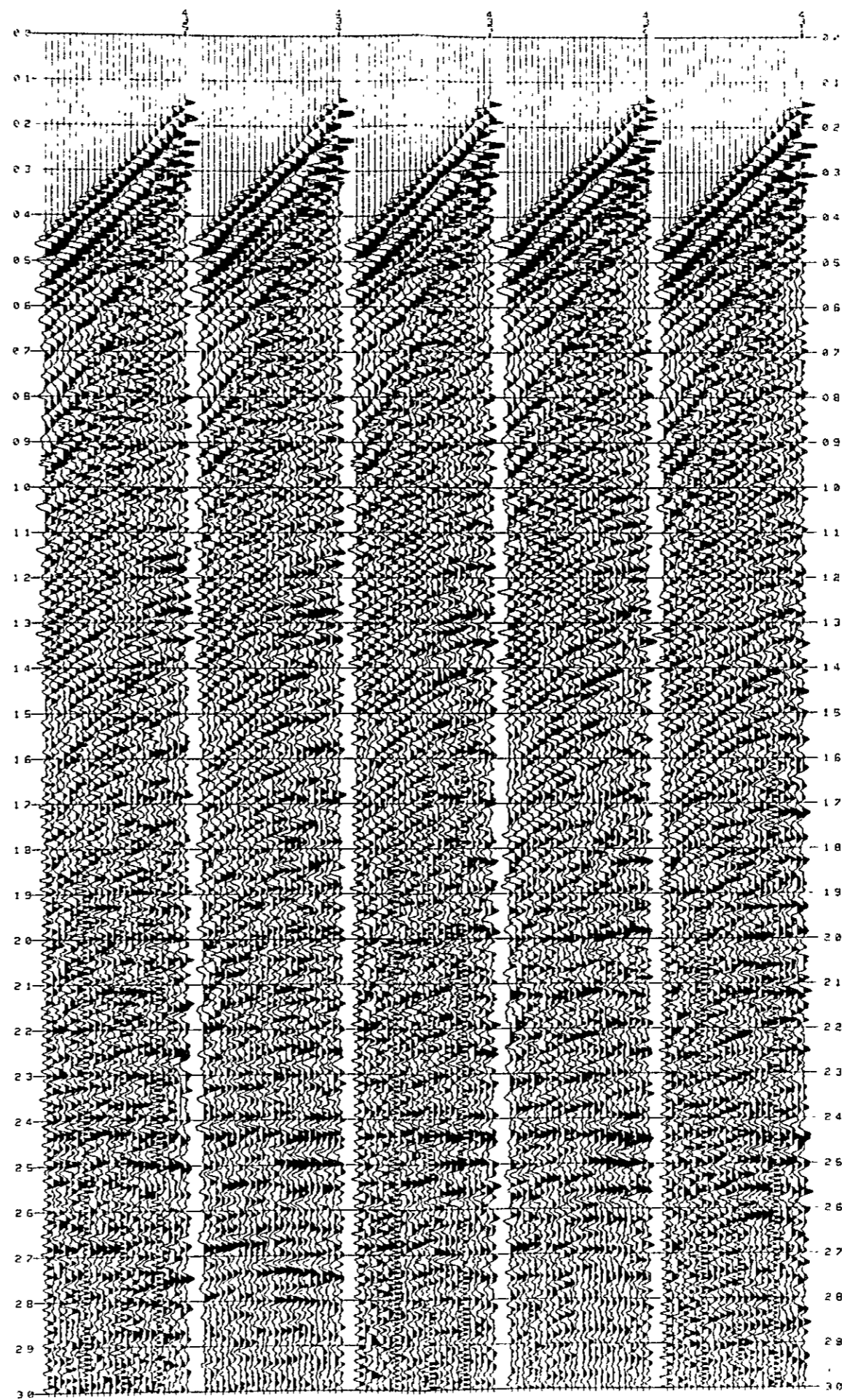
(3) (2)+DECONVOLUTION



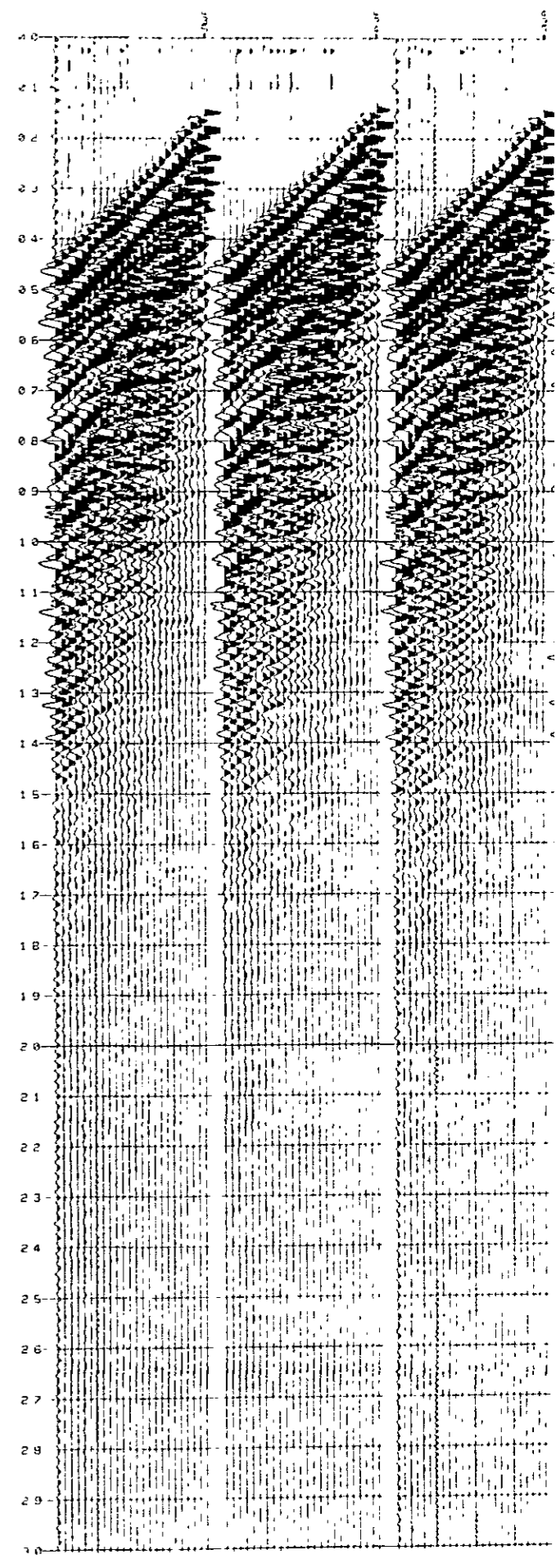
(2) + DECONVOLUTION



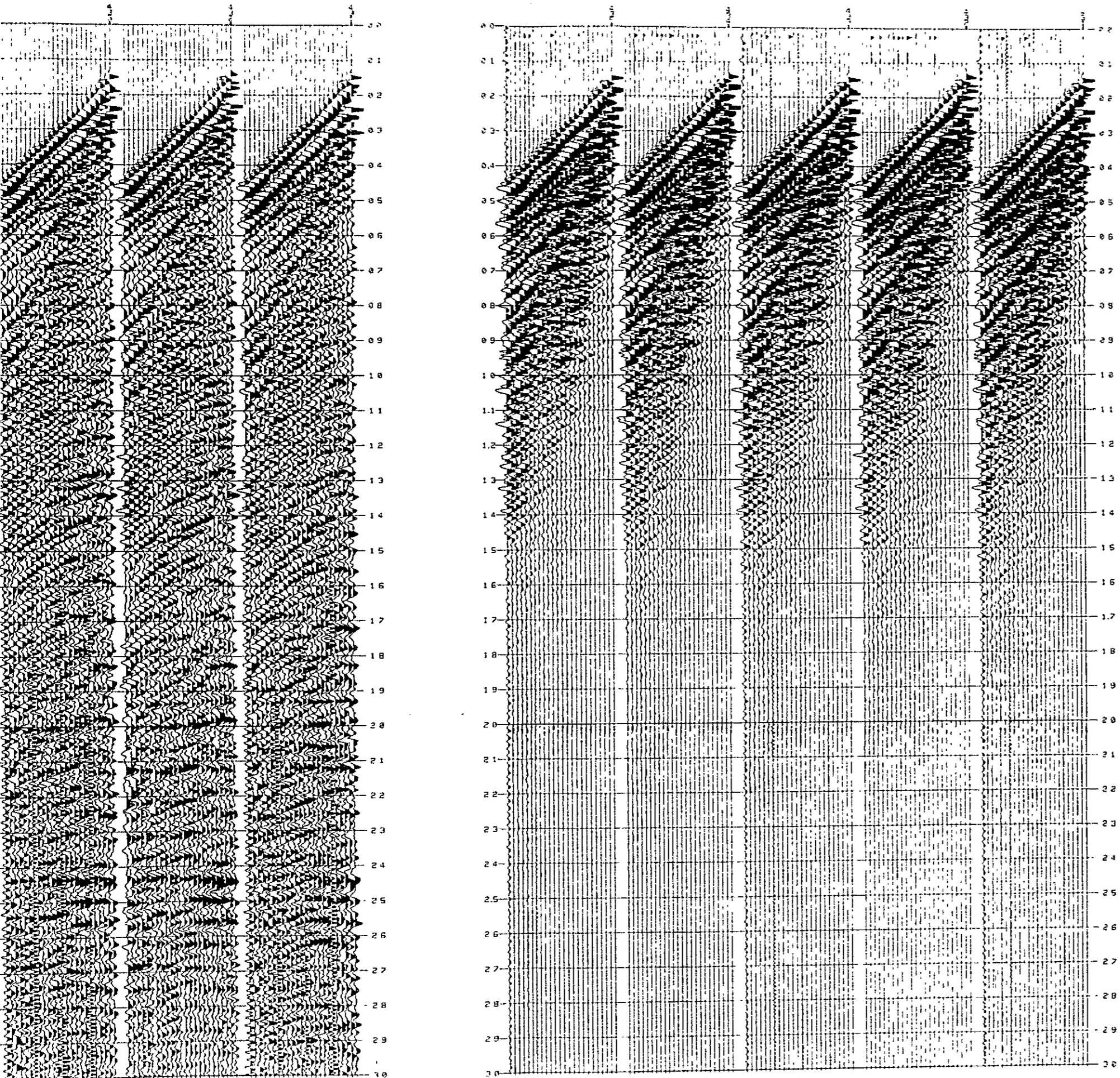
(2) (1) + AAC (150 ms)



(1) CDP DATA (ORIGINAL)



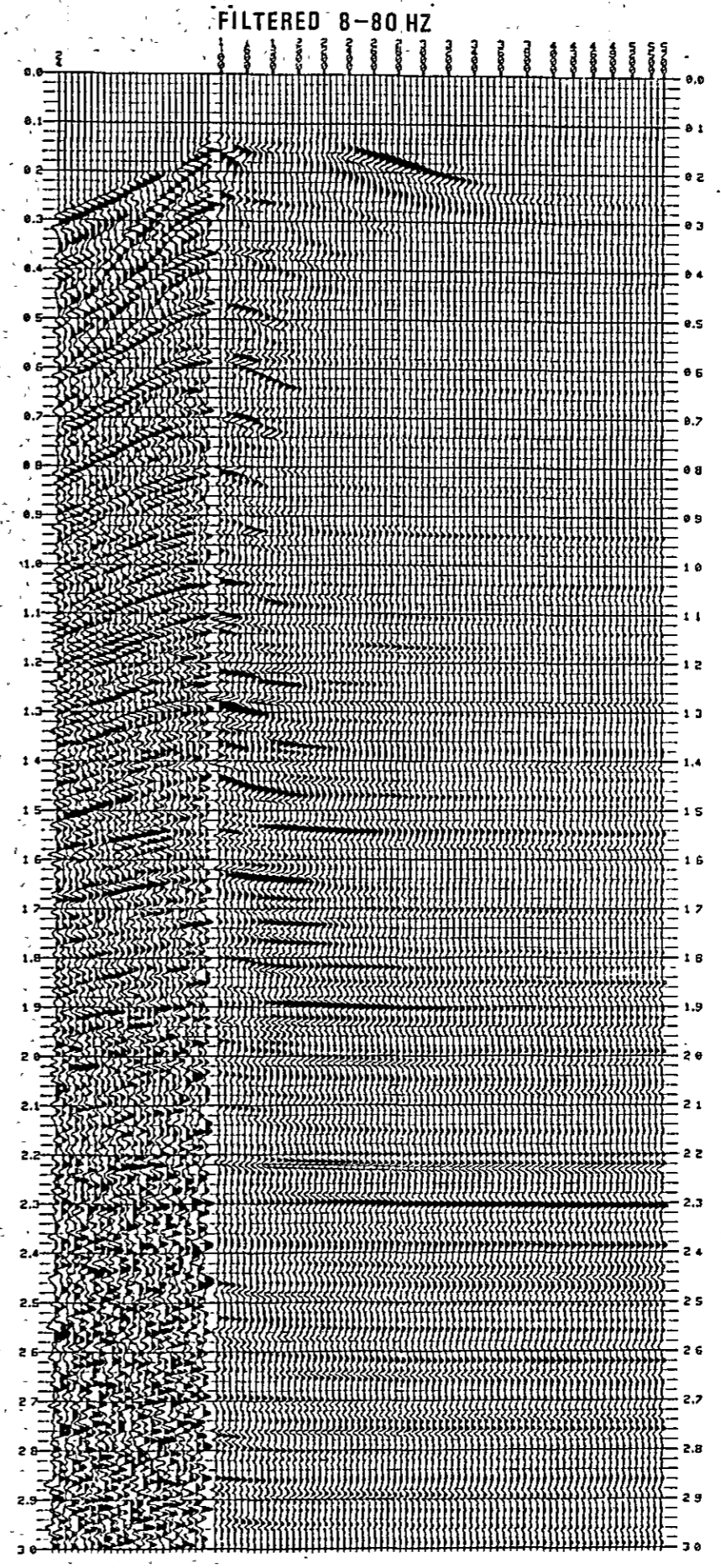
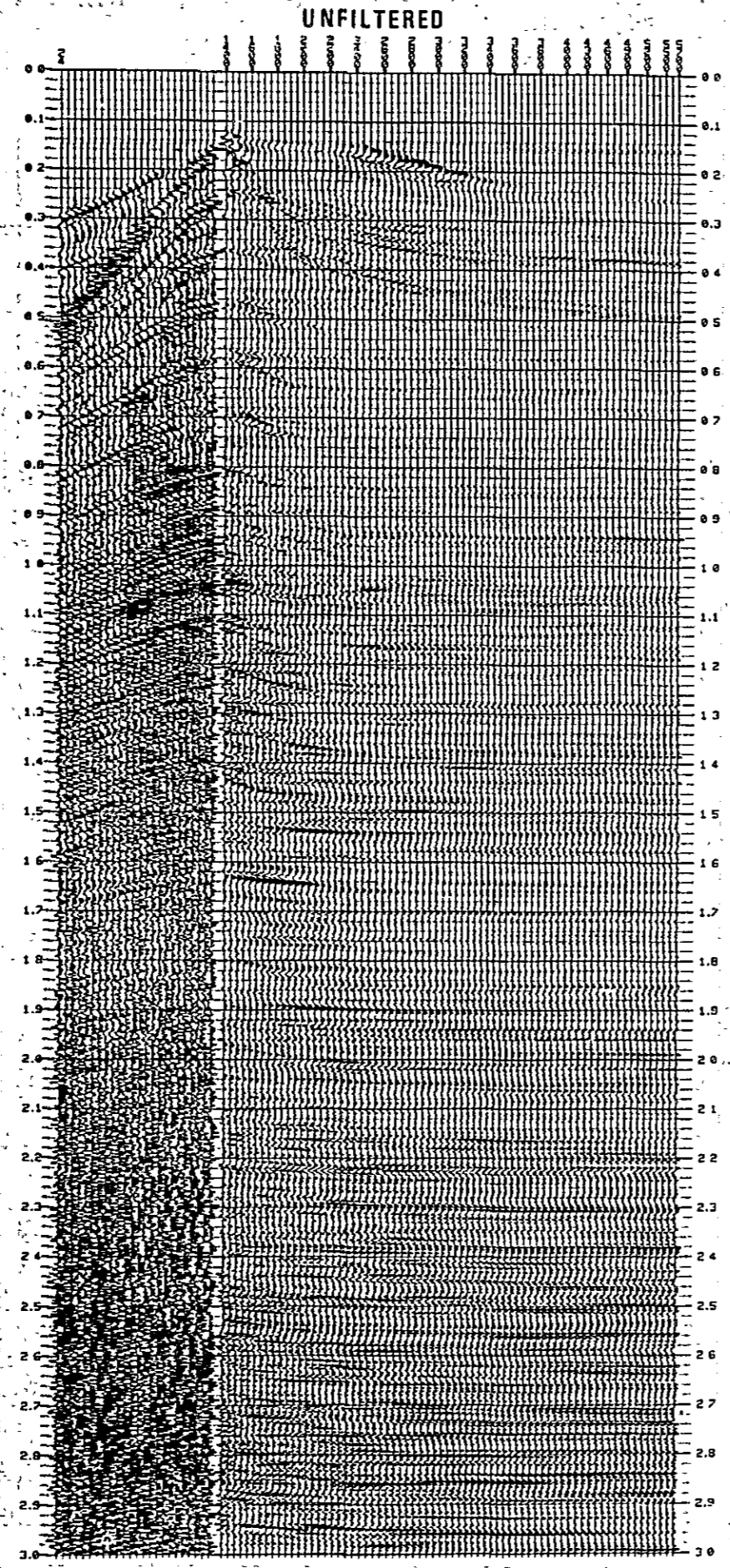
(1) CDP DATA (ORIGINAL)



.....
..... J0715
..... F001Y 10P
..... T1-A02
.....

Fig. III-2-15

CONSTANT VELOCITY SCAN T1-AB 12.5



 * T1-AB *
 * LINE VSCANTES CDP= 24 SP= 1 *
 * VELOCITY ANALYSIS (24 FOLD) *

 * T1-AB *
 * LINE VSCANTES CDP= 24 SP= 1 *
 * VELOCITY ANALYSIS (24 FOLD) *

Fig. III-2-16

