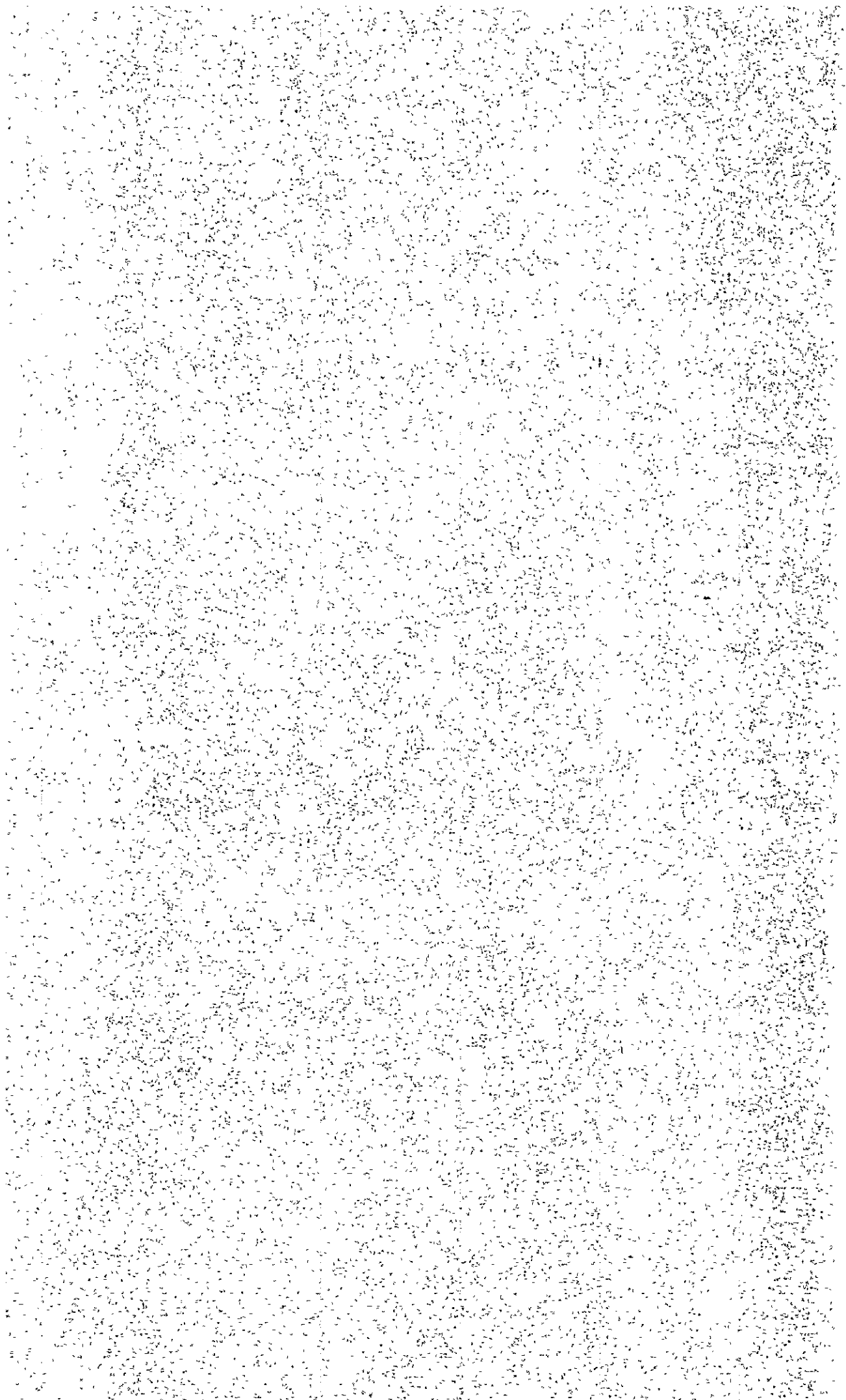


## V. 参考資料・文献



## V. REFERENCES AND LITERATURES

### for General

- (1) Bojo, T. et al. (1979) : Technical Cooperation Report on Exploration of Offshore Area of Zonguldak Coal Field, Turkey.
- (2) Bojo, T. et al. (1980) : Preliminary Investigation Report for offshore Development Plan of Zonguldak Coal Field, Turkey.
- (3) Hosono, M. et al. (1970) : Report on Geophysical prospecting of Offshore Area of Kozlu Coal Mine, Zonguldak Coal Field, Nittetsu Mining Consultants Co., Ltd.
- (4) Sinan Kavukçu (1979) : Offshore seismic investigation of Northwest Anatolian hard coal basin (Preliminary Report, M.T.A. (Original Turkish))
- (5) M.T.A. ENSTITÜSÜ : OFFSHORE GEOPHYSICS (brochure)

### for Seismics

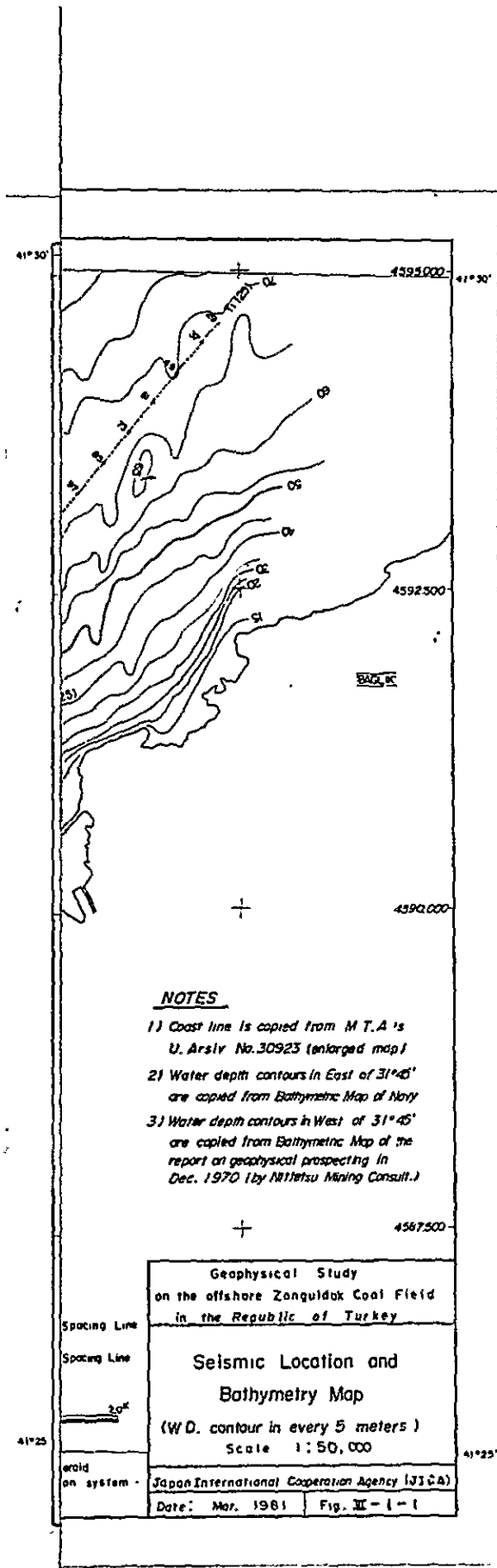
- (6) Robinson, E. A. (1967) : Predictive deconvolution of time series with application to seismic exploration, Geophysics, 32, p. 418 – 484.
- (7) Taner, M. T., and F. Koehler (1969) : Velocity spectra-digital computer derivation and application of velocity functions, Geophysics, 34, p. 859 – 881.
- (8) Claerbout, F. F. (1976) : Fundamentals of geophysical data processing, New York, McGraw-Hill.
- (9) Stolt, R. (1978) : Migration by Fourier Transform, Geophysics, 43, p. 23 – 48.

### for Gravity and Magnetics

- (10) Seya, K. (1959) : A New Method of Analysis in Gravity Prospecting (Running Average Method), Geophysical Exploration (Butsuritanko) Vol. 12.
- (11) Kato, M. (1975) : Analysis of the Gravity Field and the Total Magnetic Field and the Subterranean Structure Corresponding to them, Geophysical Exploration Vol. 30.
- (12) Katsuro Ogawa and Hiroji Tsu (1976) : Magnetic Interpretation Using Interactive Computer Graphics, Report of Technology Research Center J.P.D.C. No. 3.

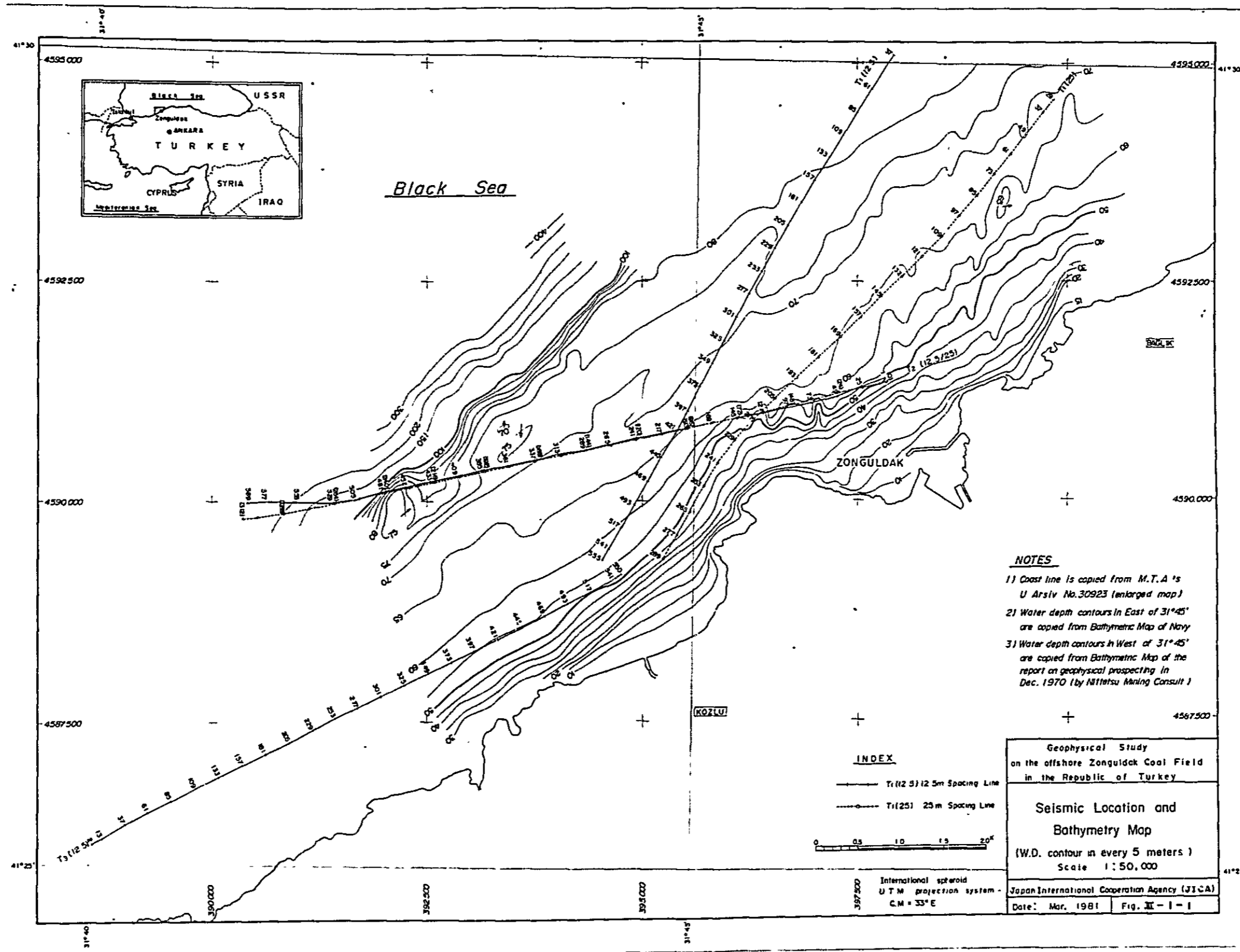
for Offshore Position Fixing

- (13) Sheriff, R.E. (1974) : Navigational Requirements for Geophysical Exploration, Geophysical Prospecting Vol. 22, p. 526 – 533.
- (14) Tsukada, K. (1978) : The Integrated Satellite Navigation System, Geophysical Exploration (Japanese) Vol 142.
- (15) Takemori, M. (1980) : Position Fixings in 1979 Seismic Survey, Technical Report of Shin Nishinihon Sekiyu Kaihatsu.



**NOTES**

- 1) Coast line is copied from M.T.A.'s U. Arsliv No.30923 (enlarged map)
- 2) Water depth contours in East of 31°45' are copied from Bathymetric Map of Navy
- 3) Water depth contours in West of 31°45' are copied from Bathymetric Map of the report on geophysical prospecting in Dec. 1970 (by Nihetsu Mining Consult.)

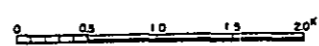


Black Sea

INDEX

Tr(12.5) 12.5m Spacing Line

Tr(25) 25m Spacing Line



International spheroid  
UTM projection system -  
GM = 33° E

NOTES

- 1) Coast line is copied from M.T.A.'s U Arsliv No.30923 (enlarged map)
- 2) Water depth contours in East of 31°45' are copied from Bathymetric Map of Navy
- 3) Water depth contours in West of 31°45' are copied from Bathymetric Map of the report on geophysical prospecting in Dec. 1970 (by Nittetsu Mining Consult.)



PRINCIPLE OF GDP

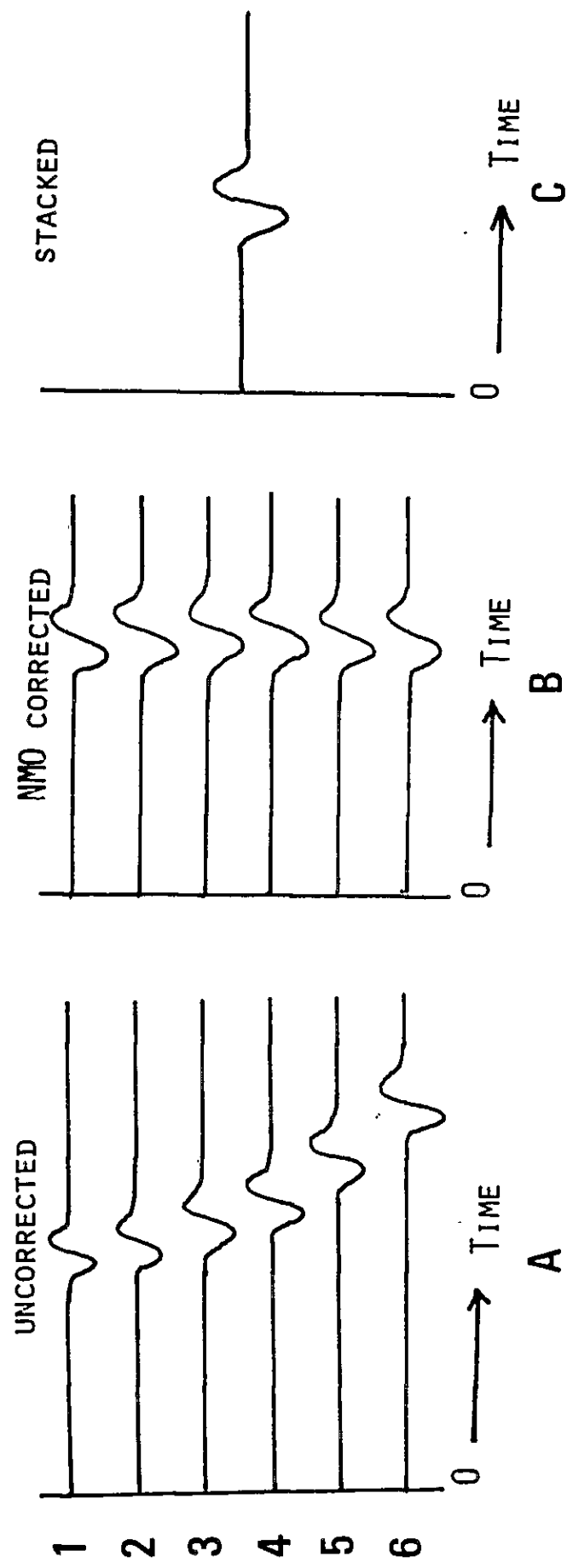
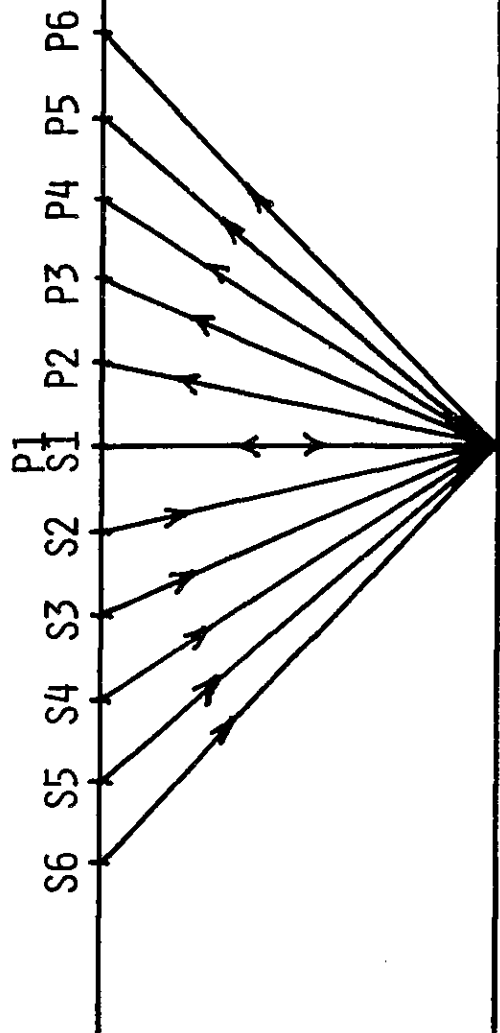


Fig. III-2-1





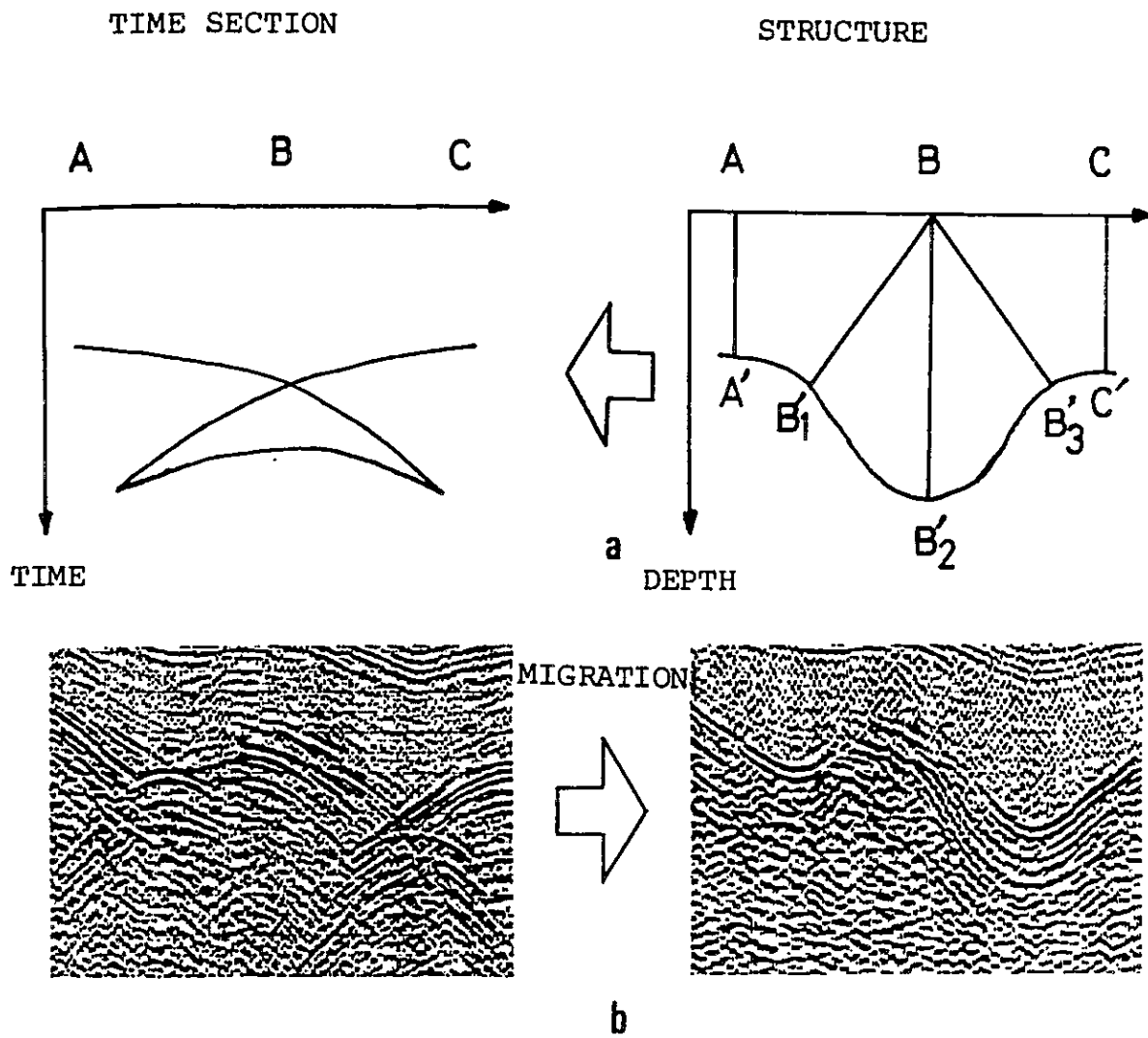


Fig. II-2-2



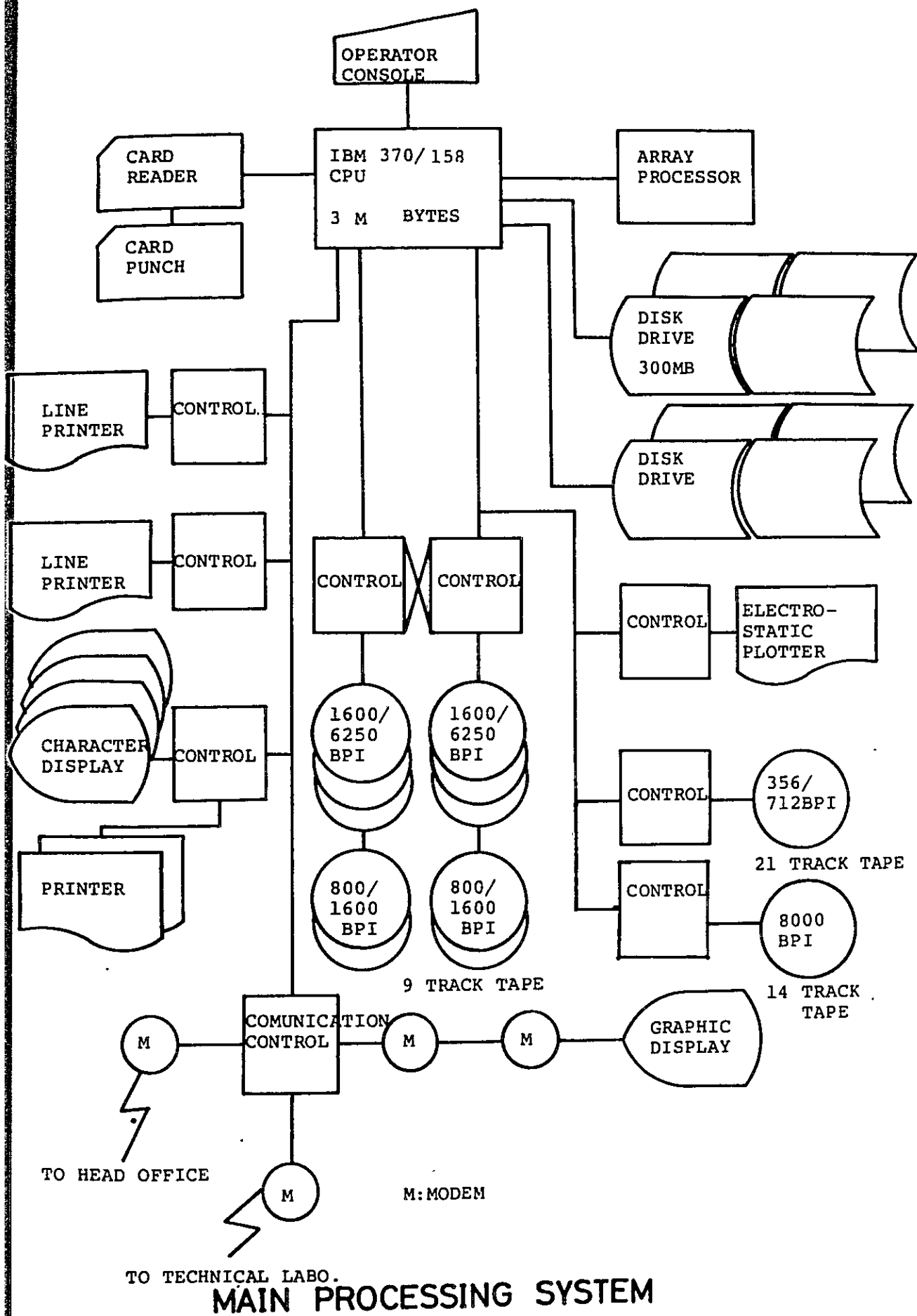
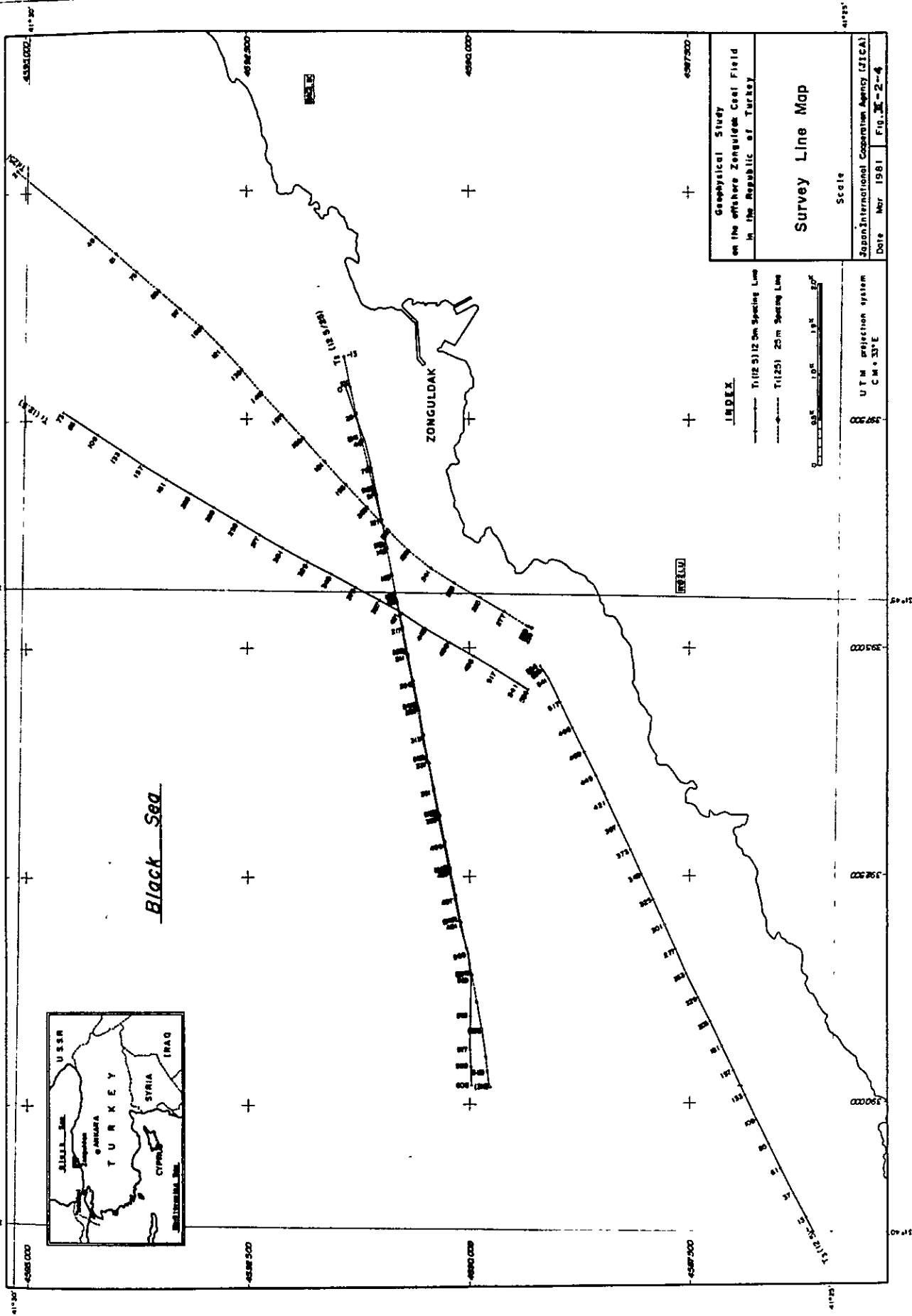


Fig. III-2-3





Geophysical Study  
 on the offshore Zonguldak Coal Field  
 in the Republic of Turkey

**Survey Line Map**

Scale

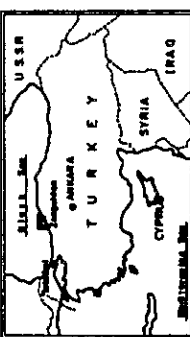
Japan International Cooperation Agency (JICA)  
 Date: Mar. 1981 Fig. 3E-2-4

**INDEX**

— T(12.5) 512.5m Spacing Line  
 - - - - - T(20) 20m Spacing Line

Scale: 0 0.5 1.0 1.5 2.0 km

UTM projection system  
 C.M. 33°E



*Black Sea*

ZONGULDAK



# AIR GUN & STREAMER CABLE TOWING ARRAY

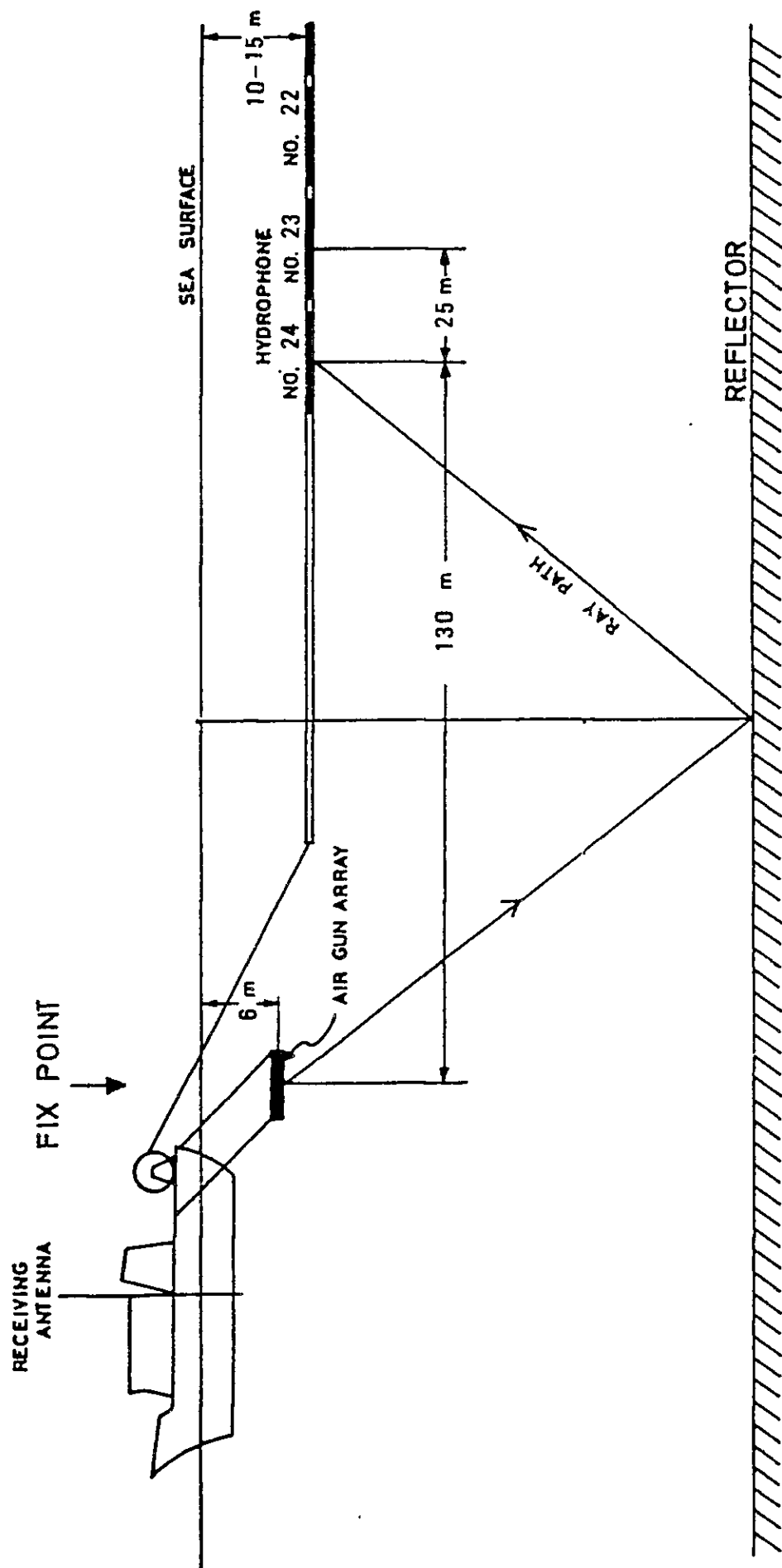
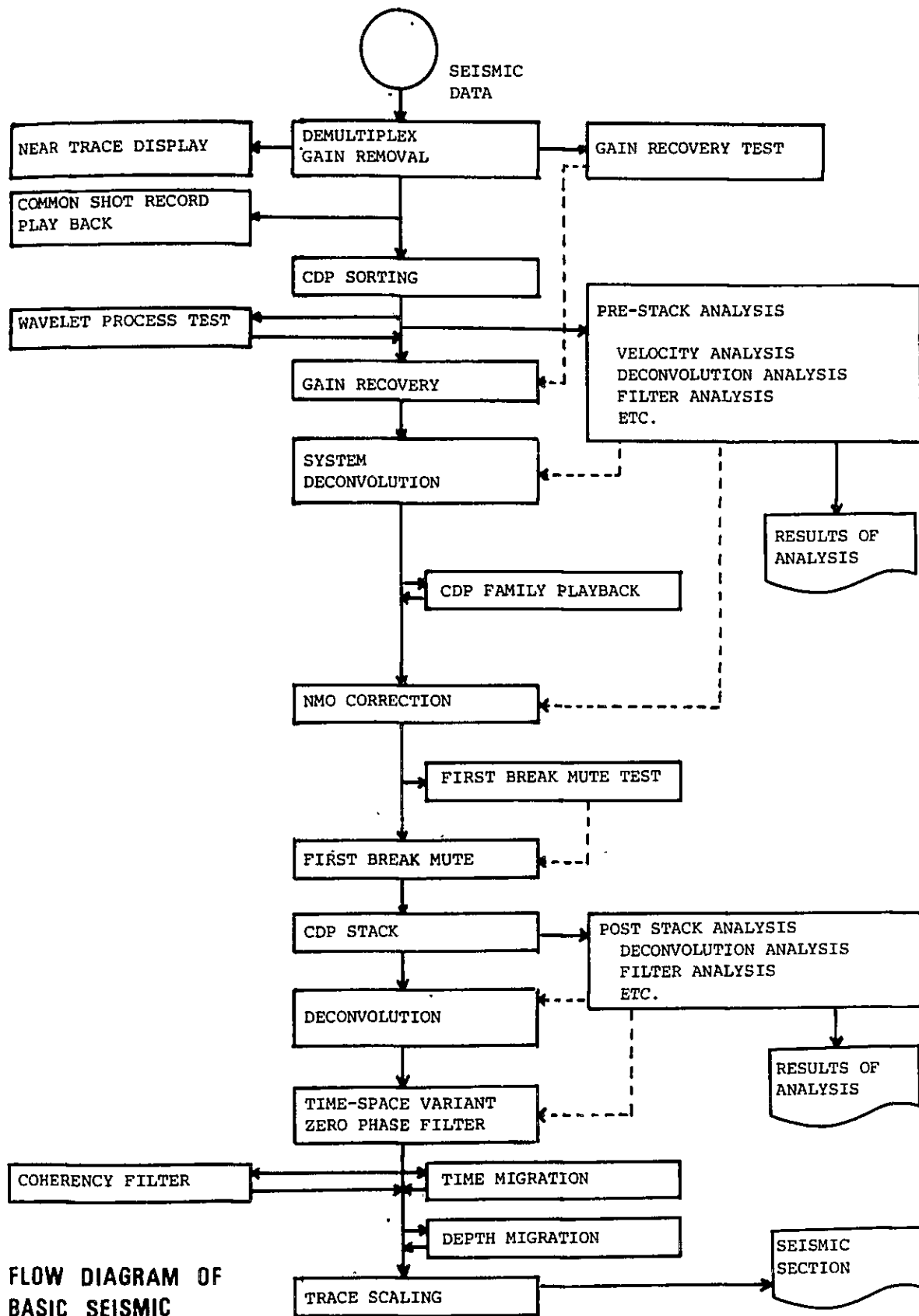


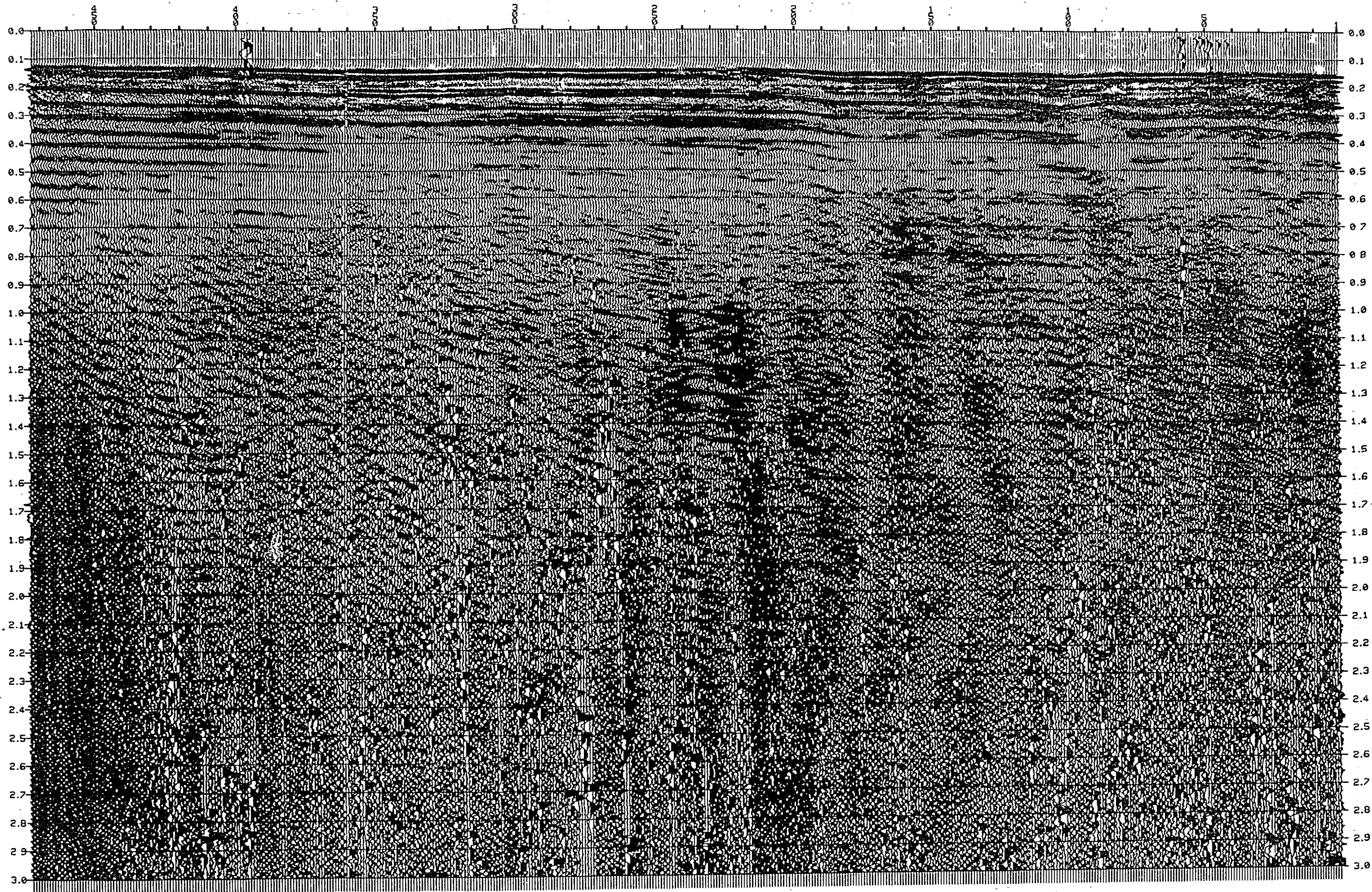
Fig. III-2-5



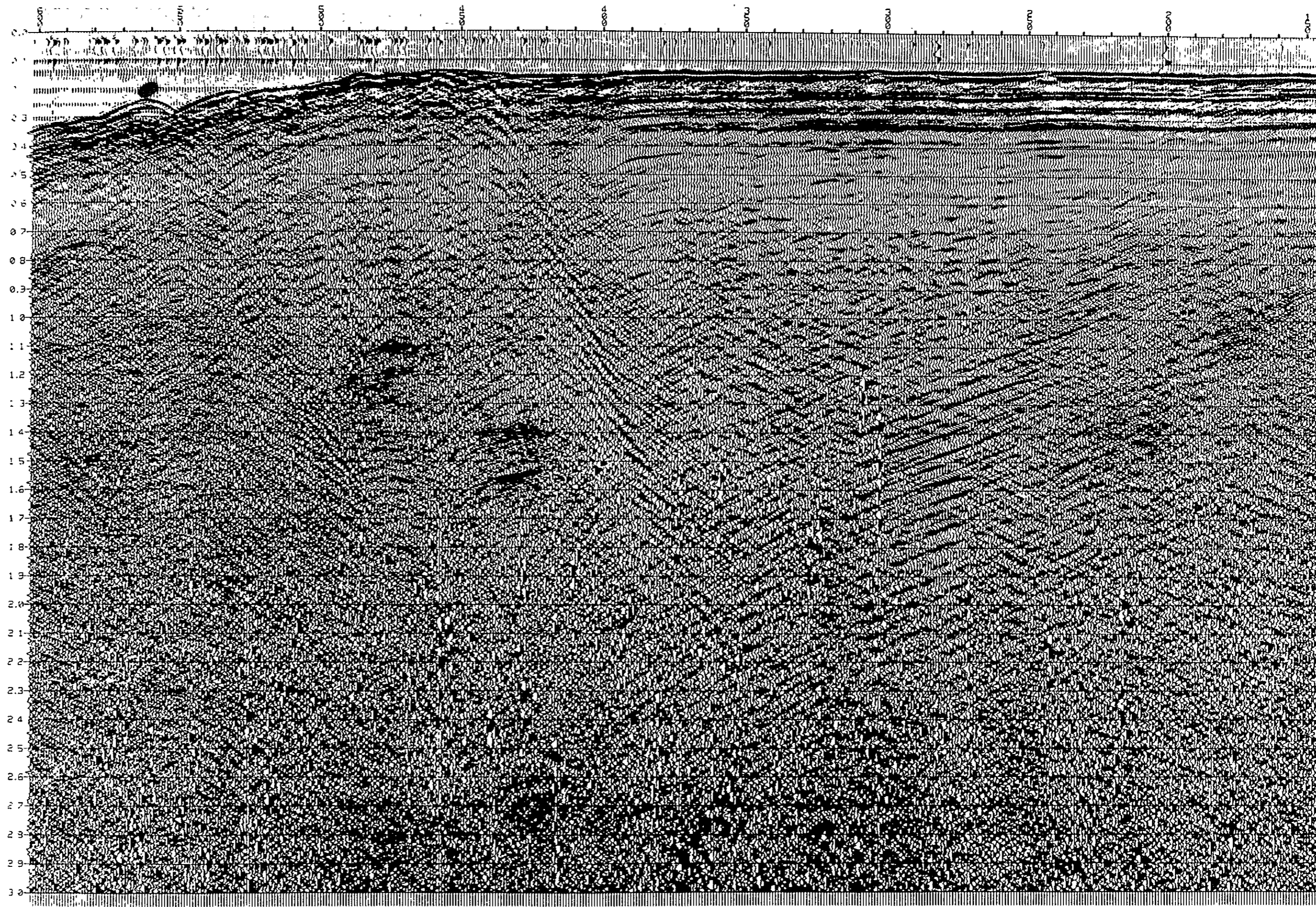
1  
2  
3  
4  
5  
6  
7  
8  
9  
10  
11  
12  
13  
14  
15  
16  
17  
18  
19  
20  
21  
22  
23  
24  
25  
26  
27  
28  
29  
30  
31  
32  
33  
34  
35  
36  
37  
38  
39  
40  
41  
42  
43  
44  
45  
46  
47  
48  
49  
50  
51  
52  
53  
54  
55  
56  
57  
58  
59  
60  
61  
62  
63  
64  
65  
66  
67  
68  
69  
70  
71  
72  
73  
74  
75  
76  
77  
78  
79  
80  
81  
82  
83  
84  
85  
86  
87  
88  
89  
90  
91  
92  
93  
94  
95  
96  
97  
98  
99  
100

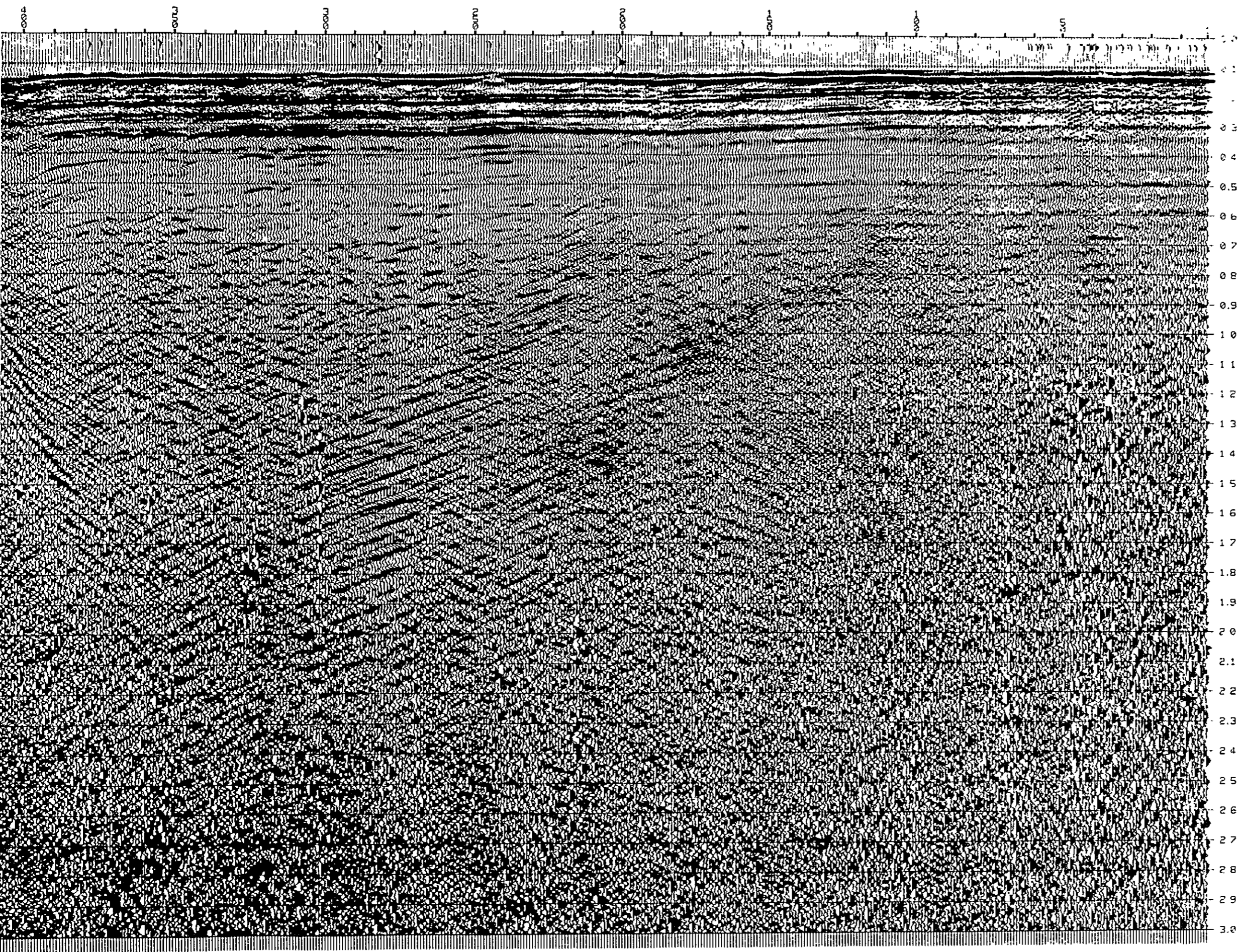


FLOW DIAGRAM OF  
BASIC SEISMIC  
PROCESSING

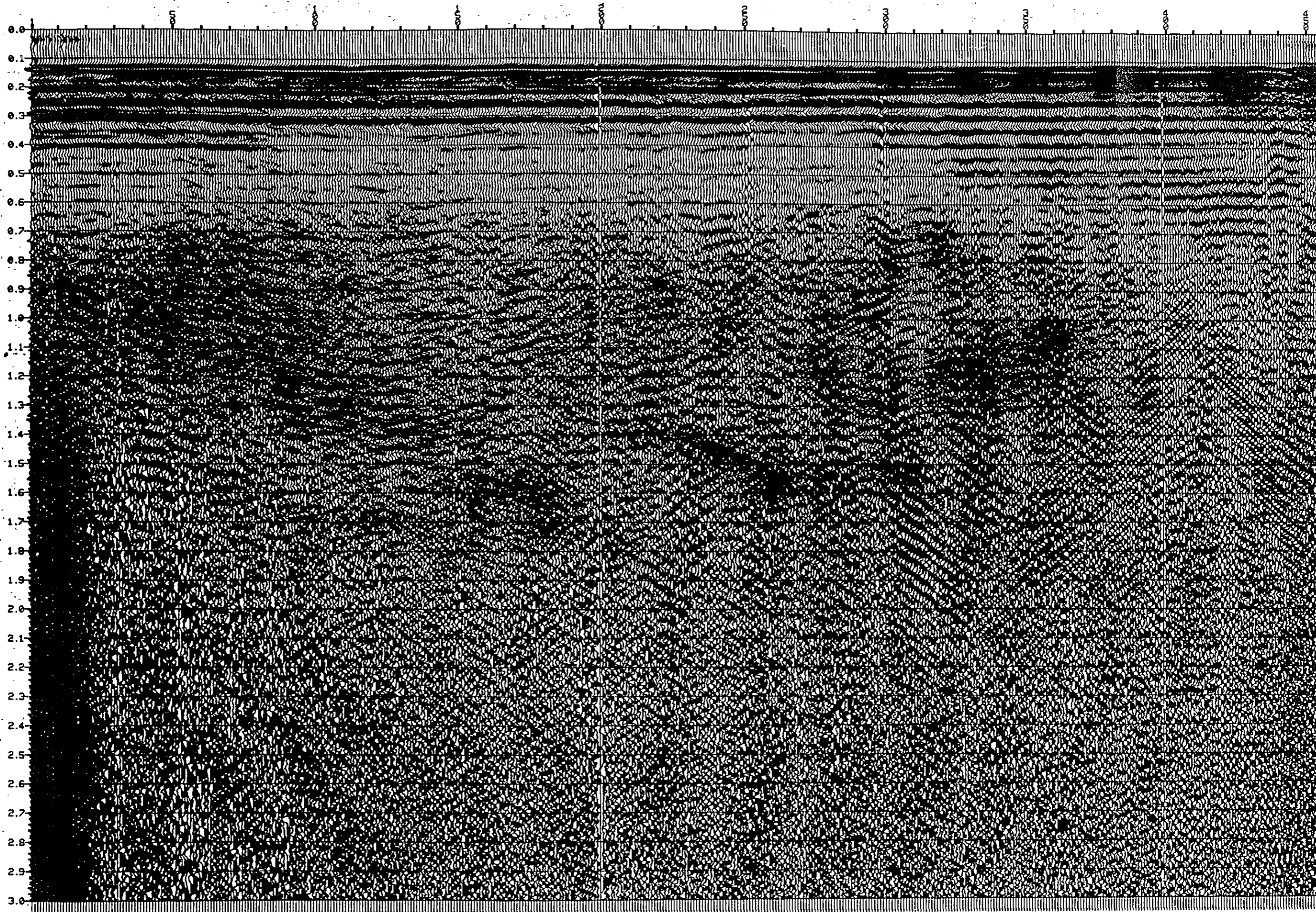


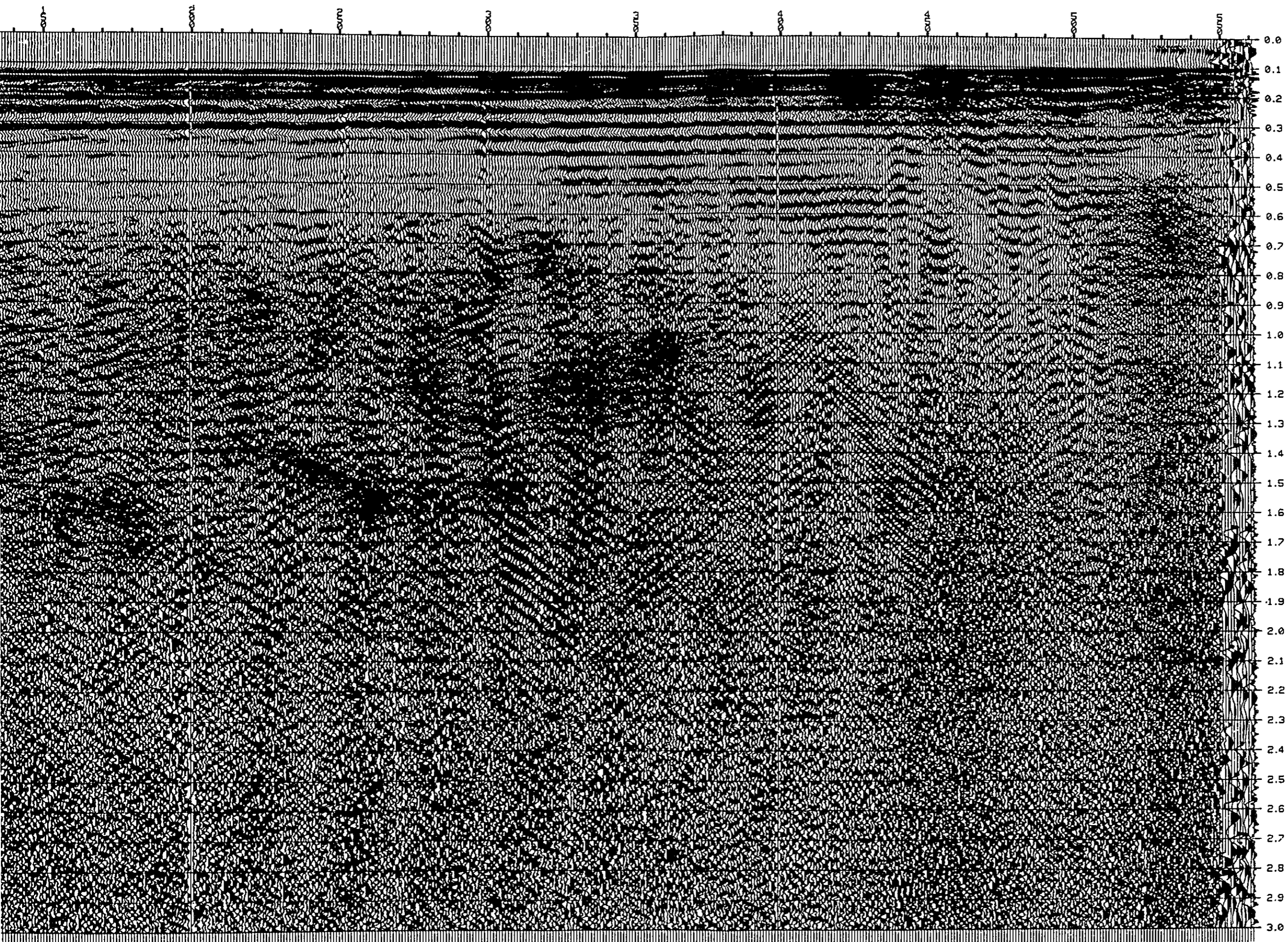
Line T1-AB12.5  
Near Trace section  
Demux+AAC600 Fig. II - 2 - 7





Line T2-AB 12.5  
Near Trace Section  
Demux+AAC600 Fig. III - 2-8





Line T3-AB12.5  
Near Trace section  
Demux+AAC600

AAC TEST LINE T1-AB 12.5

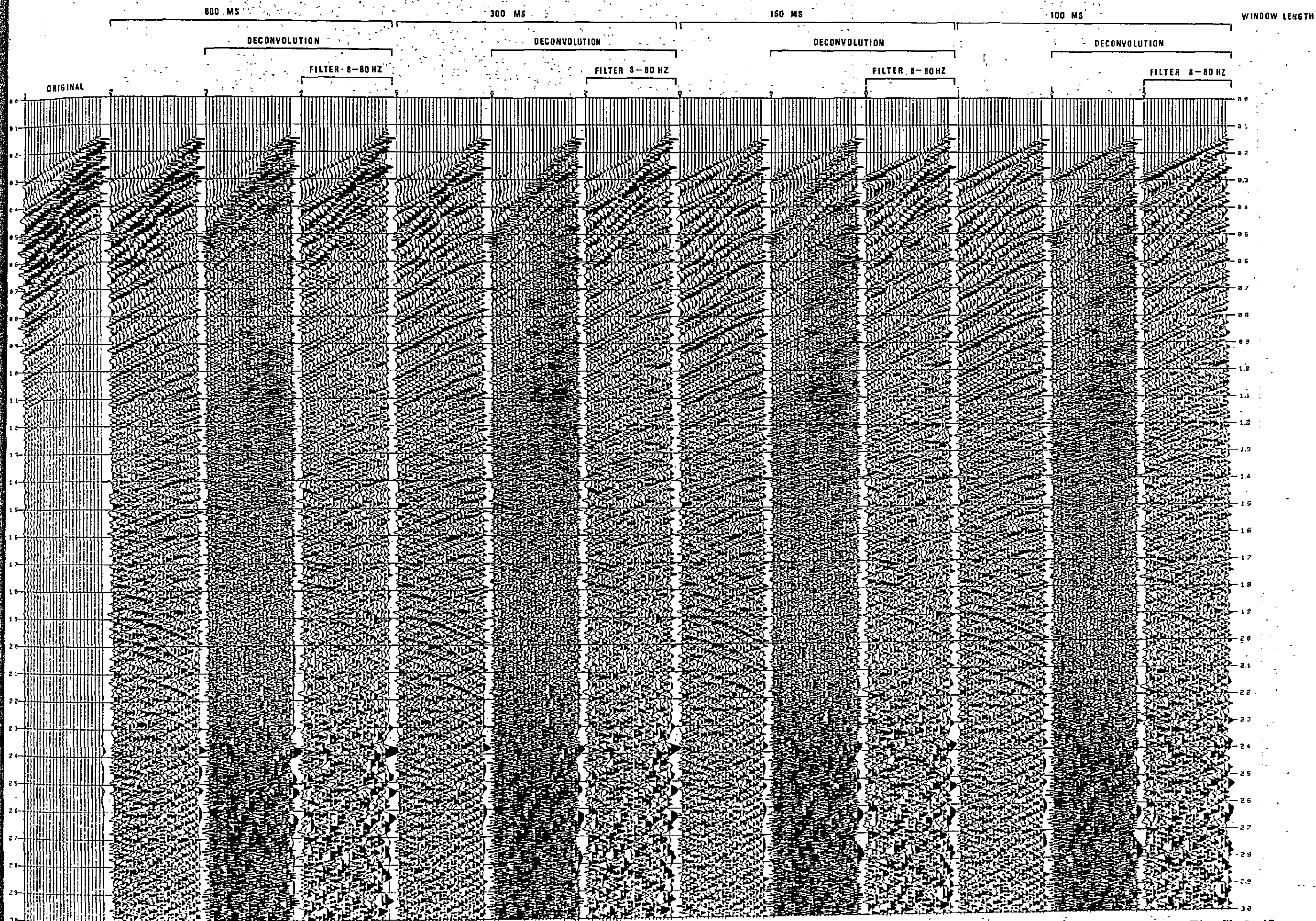


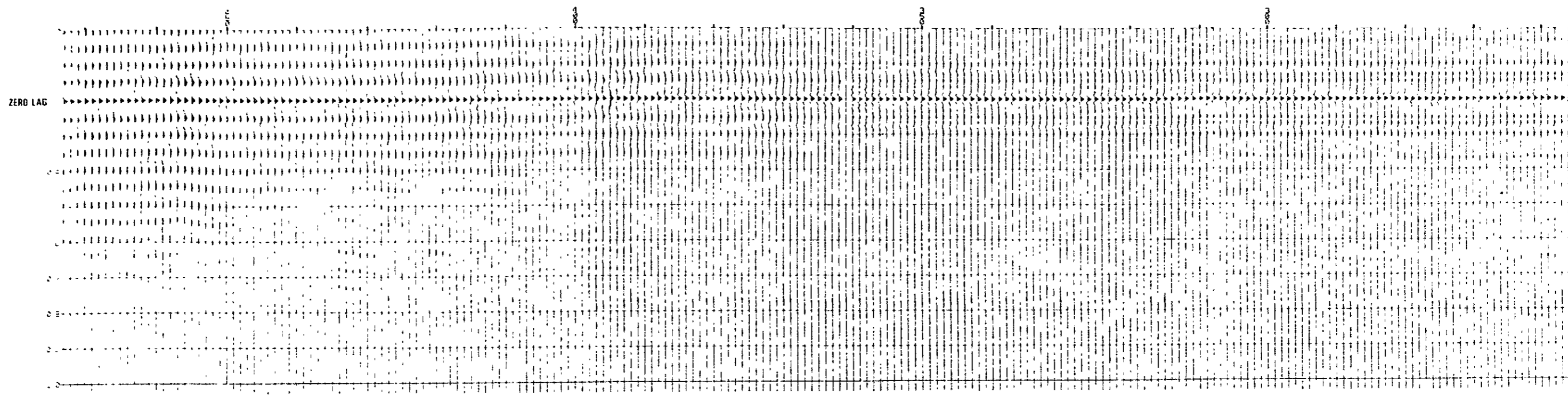
Fig. III-2-10



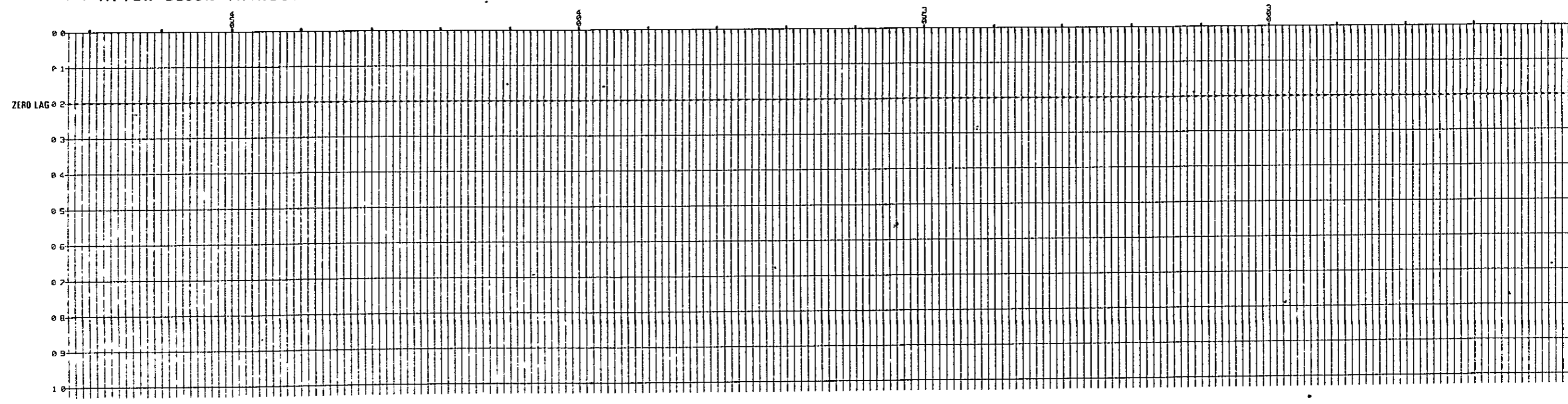
AUTOCORRELOGRAM

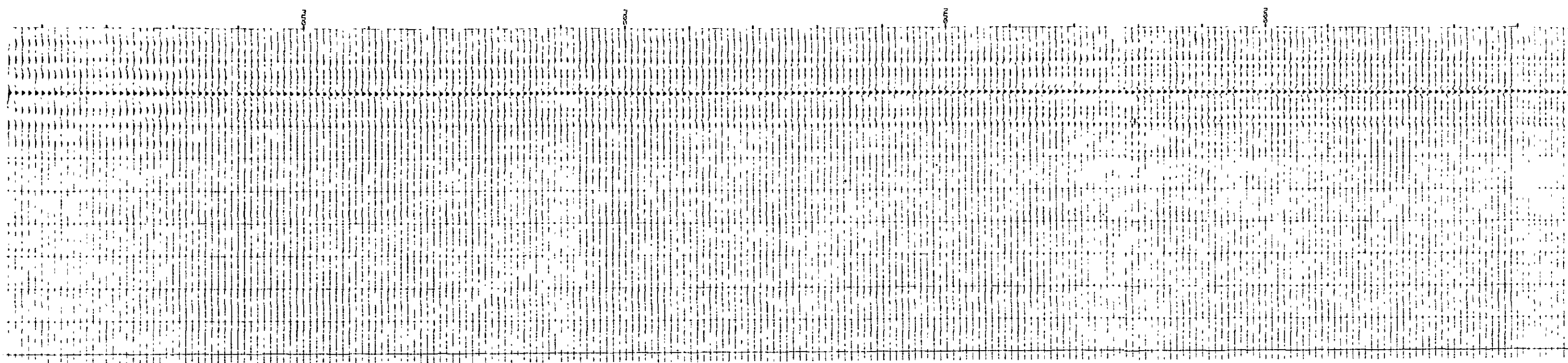
LINE T1 - AB12.5 NEAR TRACE, WINDOW = 1000 MSEC

(1) BEFORE DECON

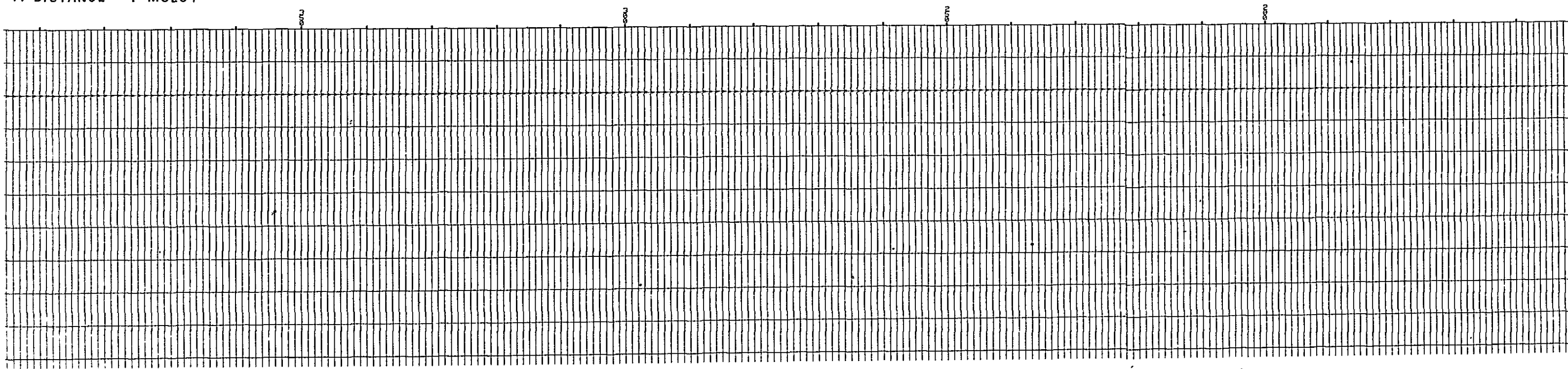


(2) AFTER DECON (WINDOW = 2000 MSEC, OPERATOR = 300 MSEC, P. DISTANCE = 1 MSEC)





P. DISTANCE = 1 MSEC )



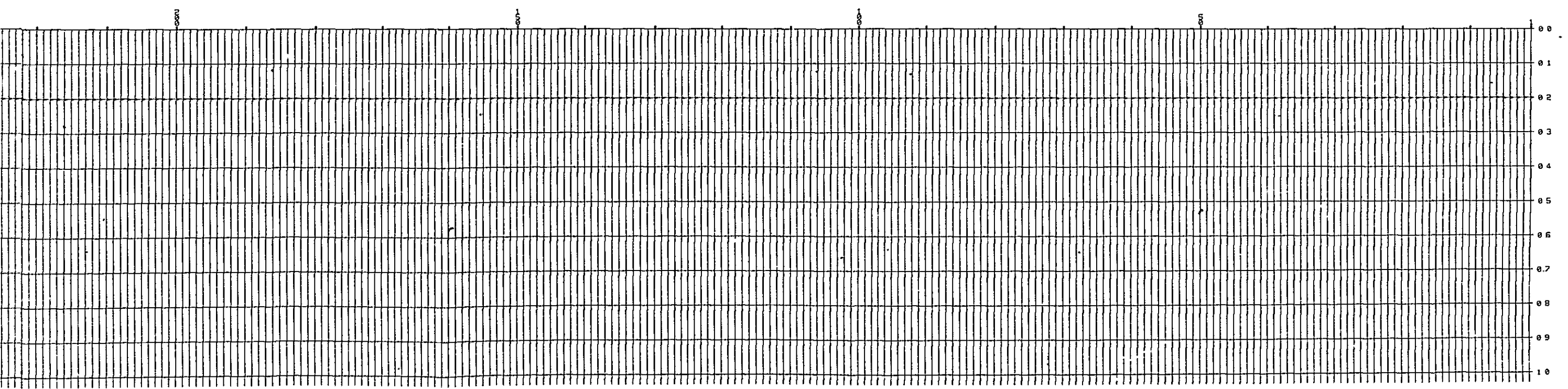
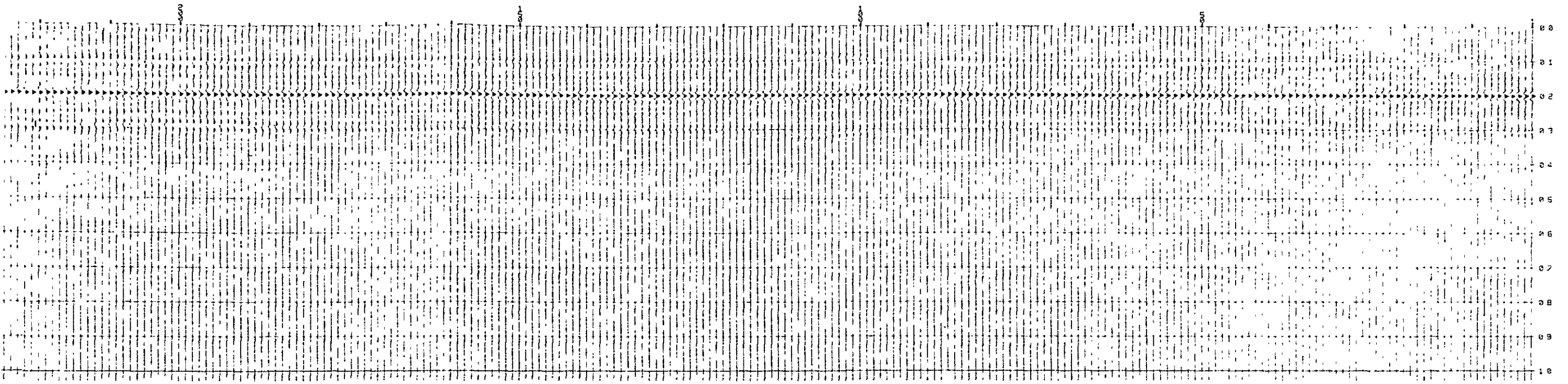
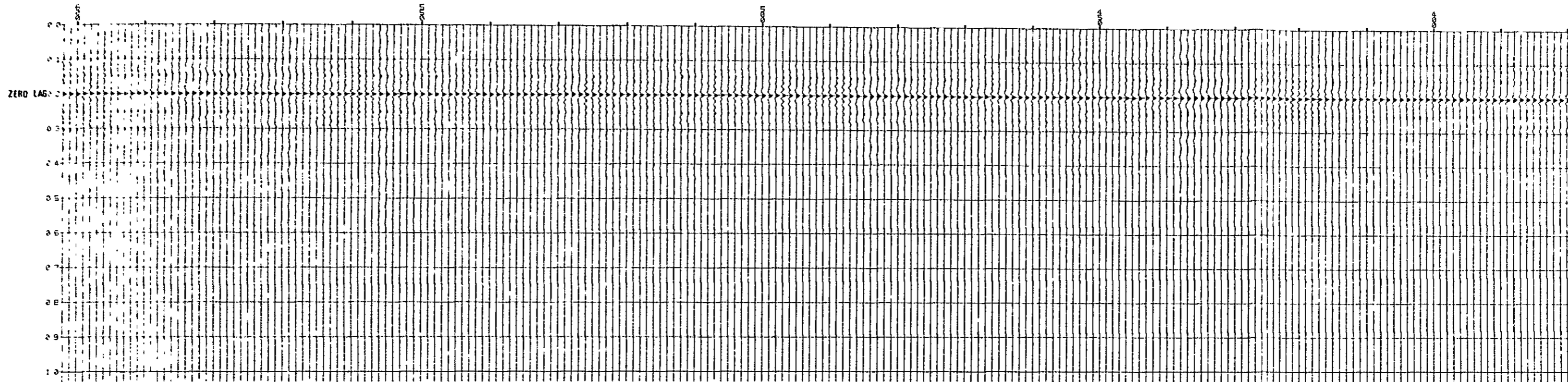


Fig. III - 2 - 11

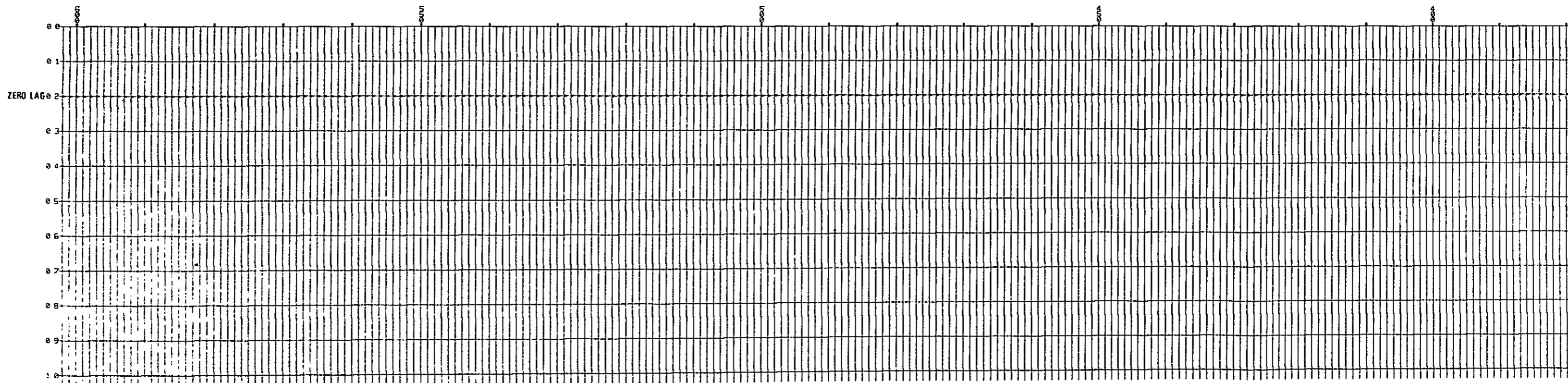
**AUTOCORRELOGRAM**

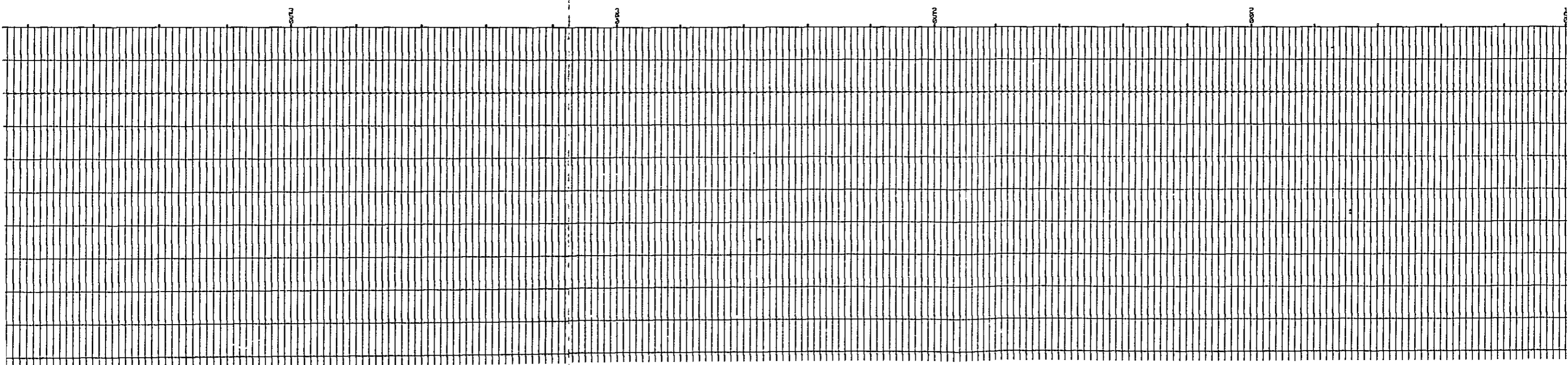
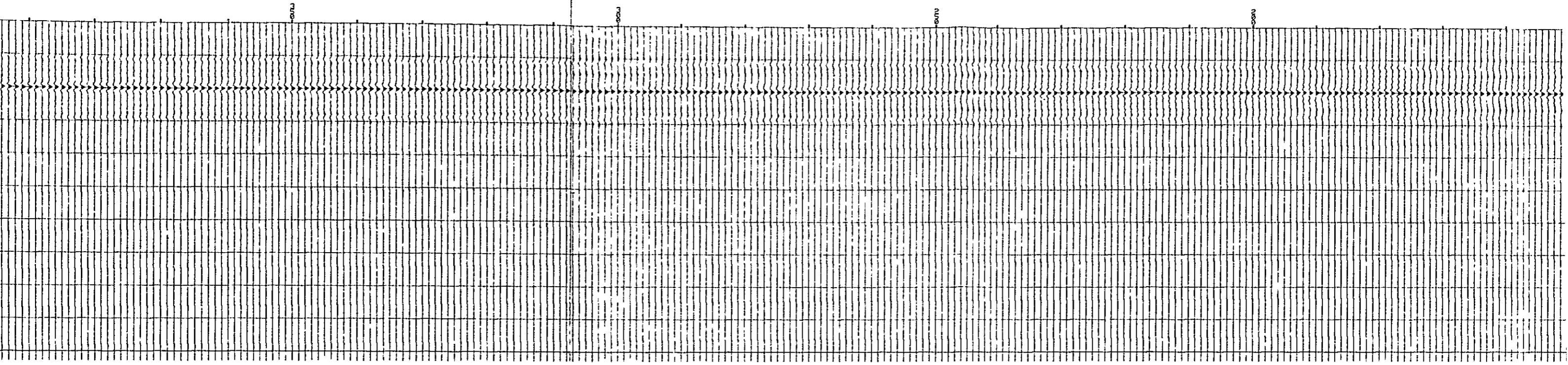
**LINE T2 - AB12.5 NEAR TRACE, WINDOW = 1000 MSEC**

**(1) BEFORE DECON**



**(2) AFTER DECON (WINDOW = 2000 MSEC, OPERATOR = 300 MSEC, P. DISTANCE = 1 MSEC)**





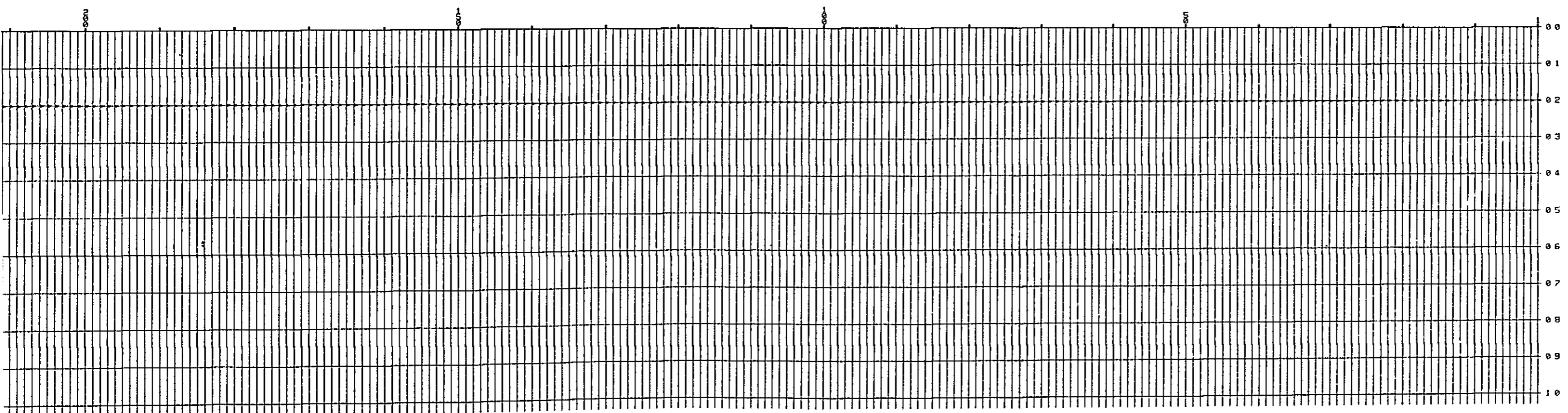
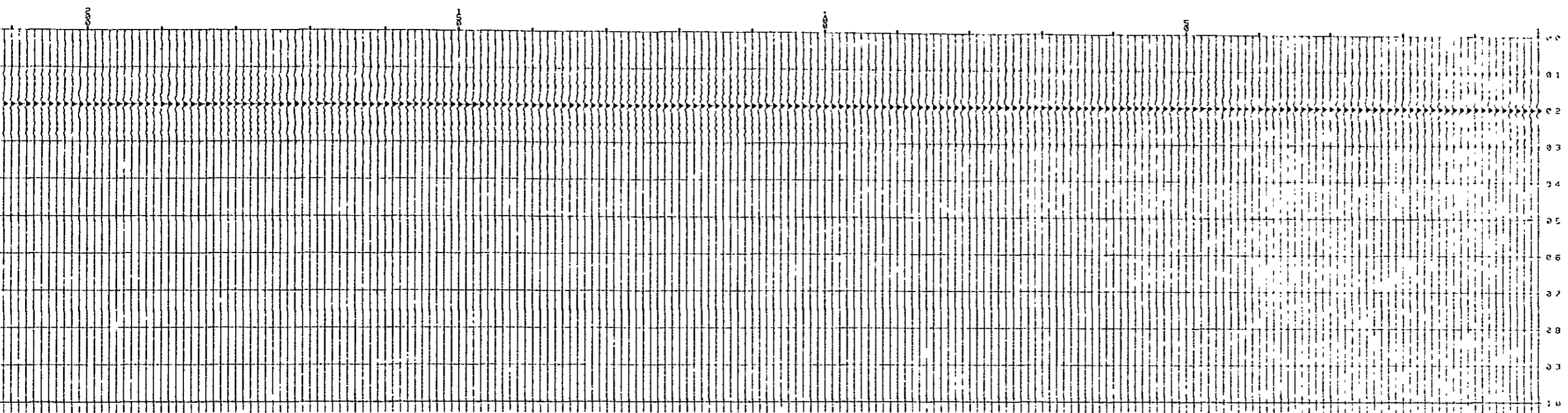
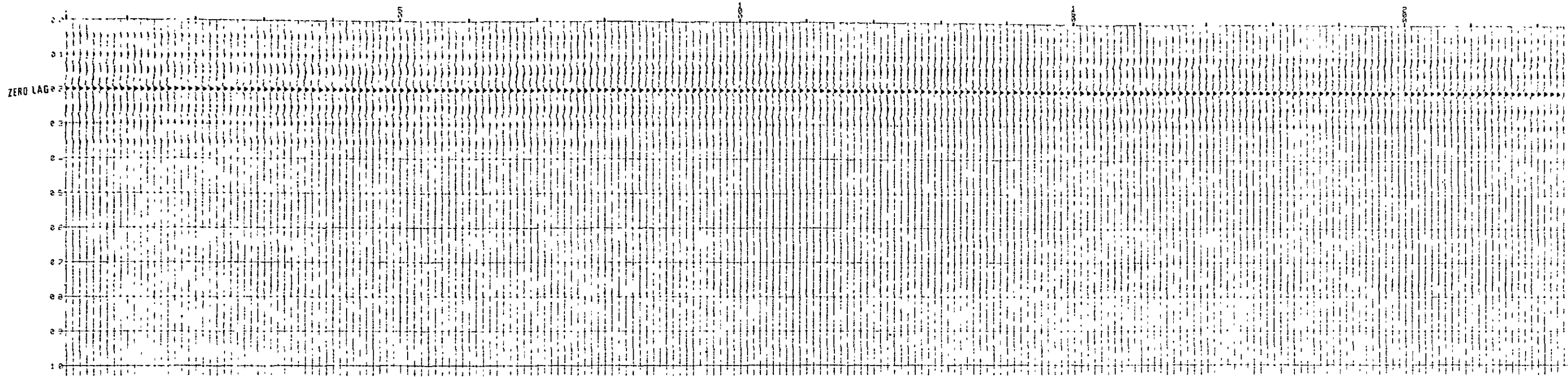


Fig. III - 2 - 12

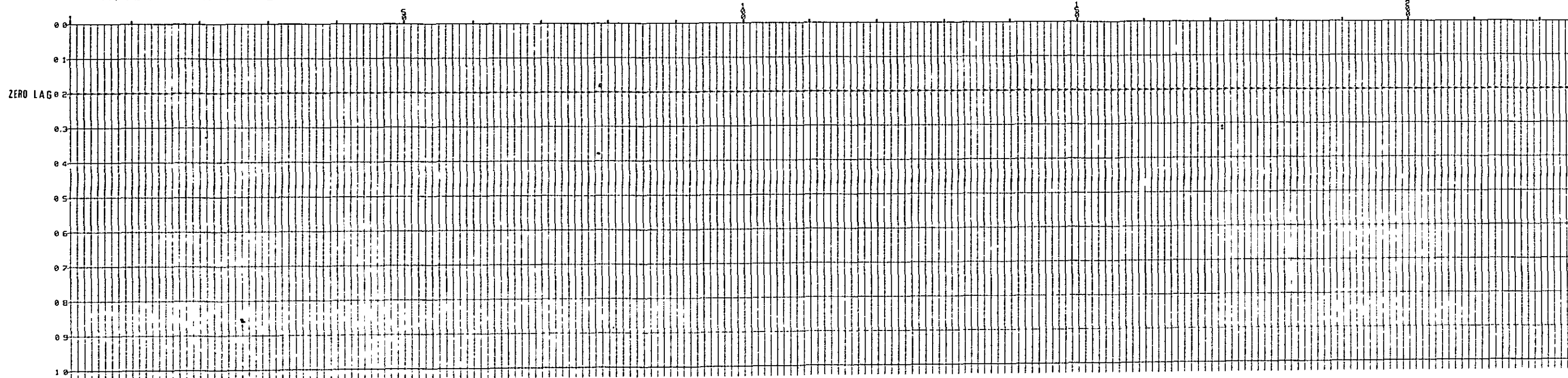
AUTOCORRELOGRAM

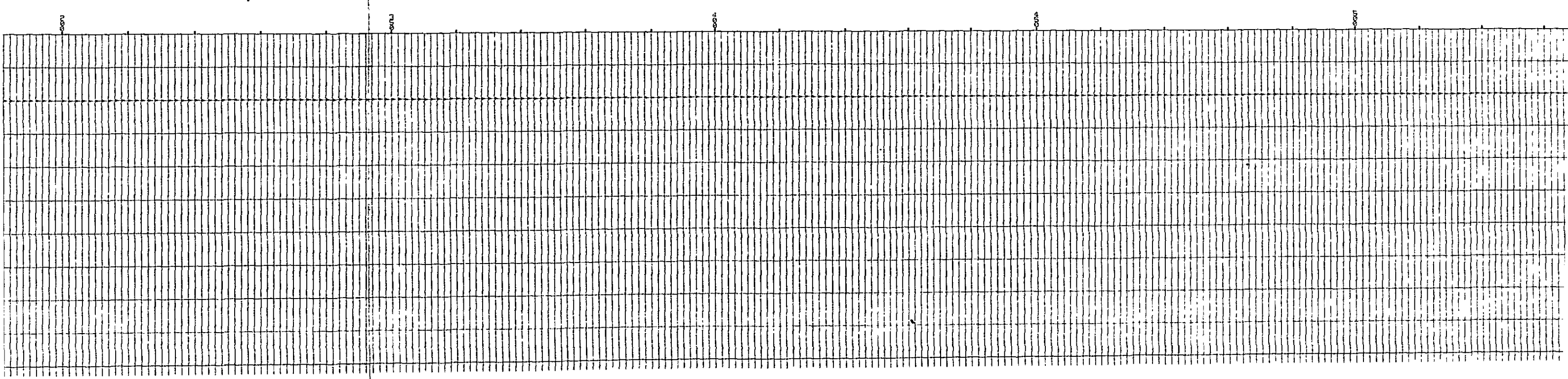
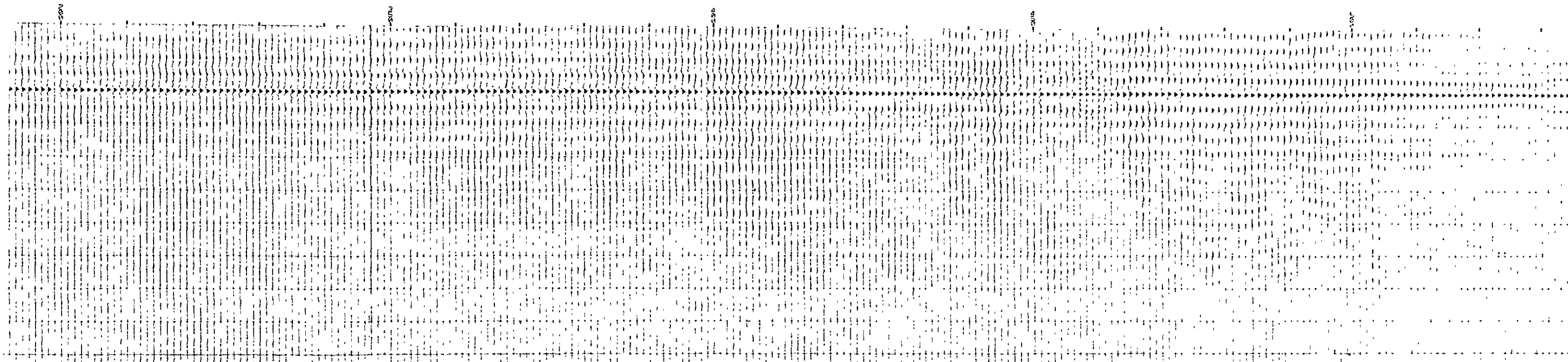
LINE T3 - AB12.5 NEAR TRACE, WINDOW = 1000 MSEC

(1) BEFORE DECON



(2) AFTER DECON (WINDOW = 2000 MSEC, OPERATOR = 300 MSEC, P. DISTANCE = 1 MSEC)







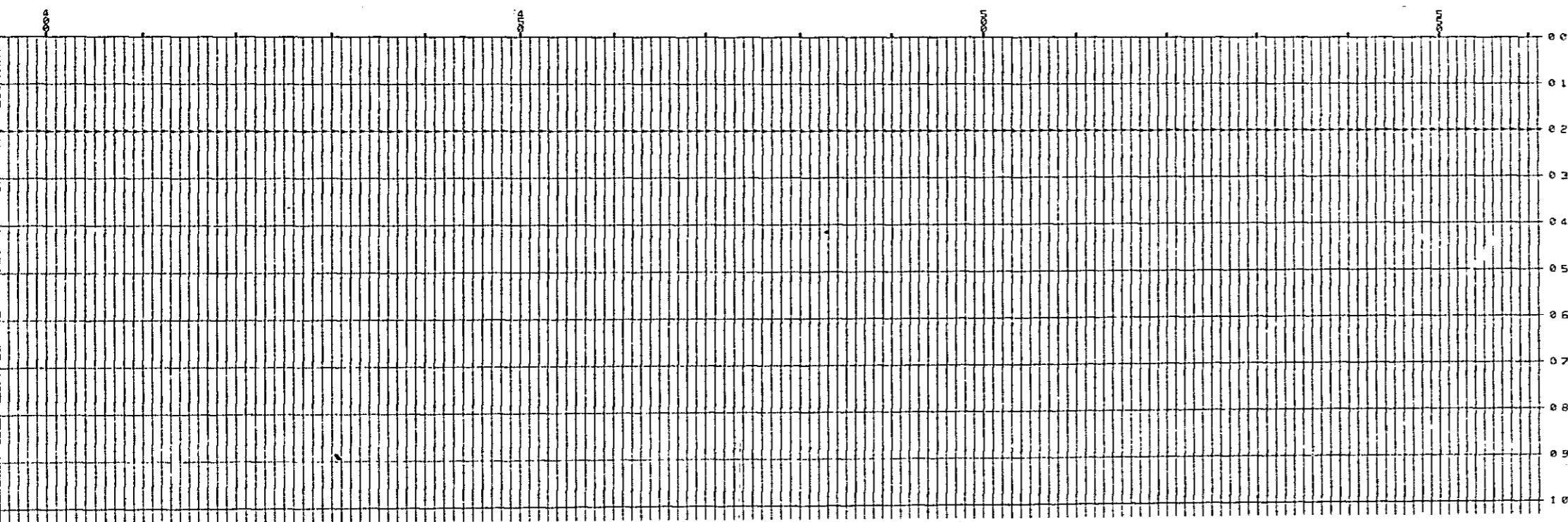
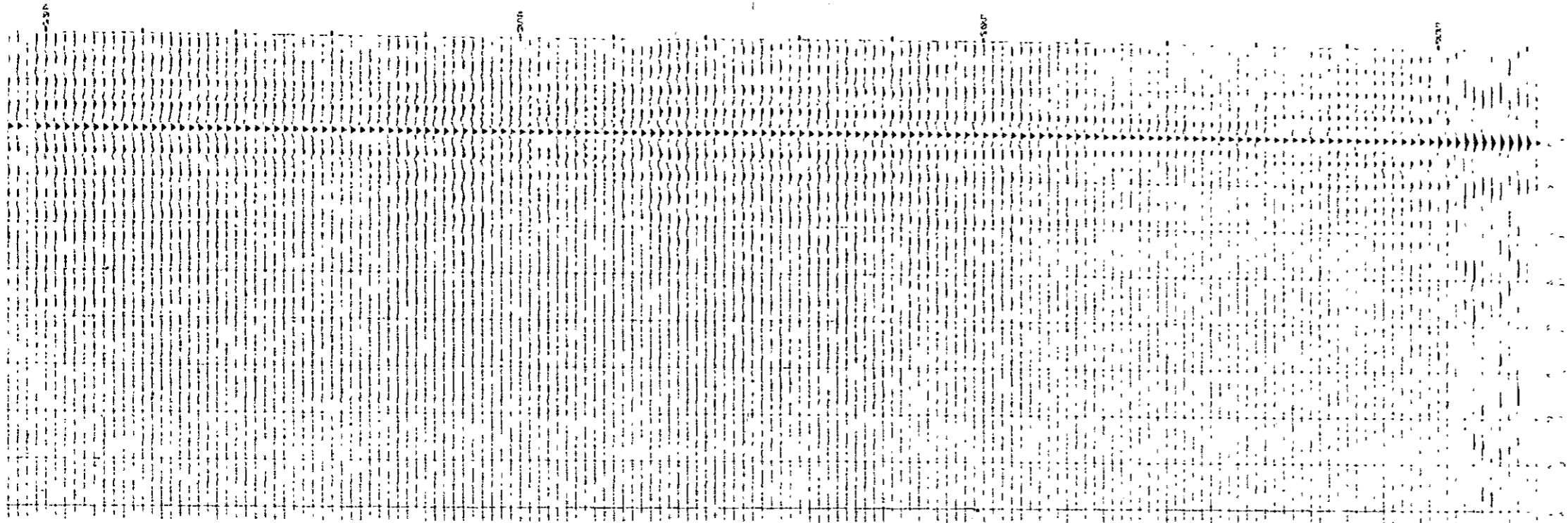


Fig. III - 2 - 13