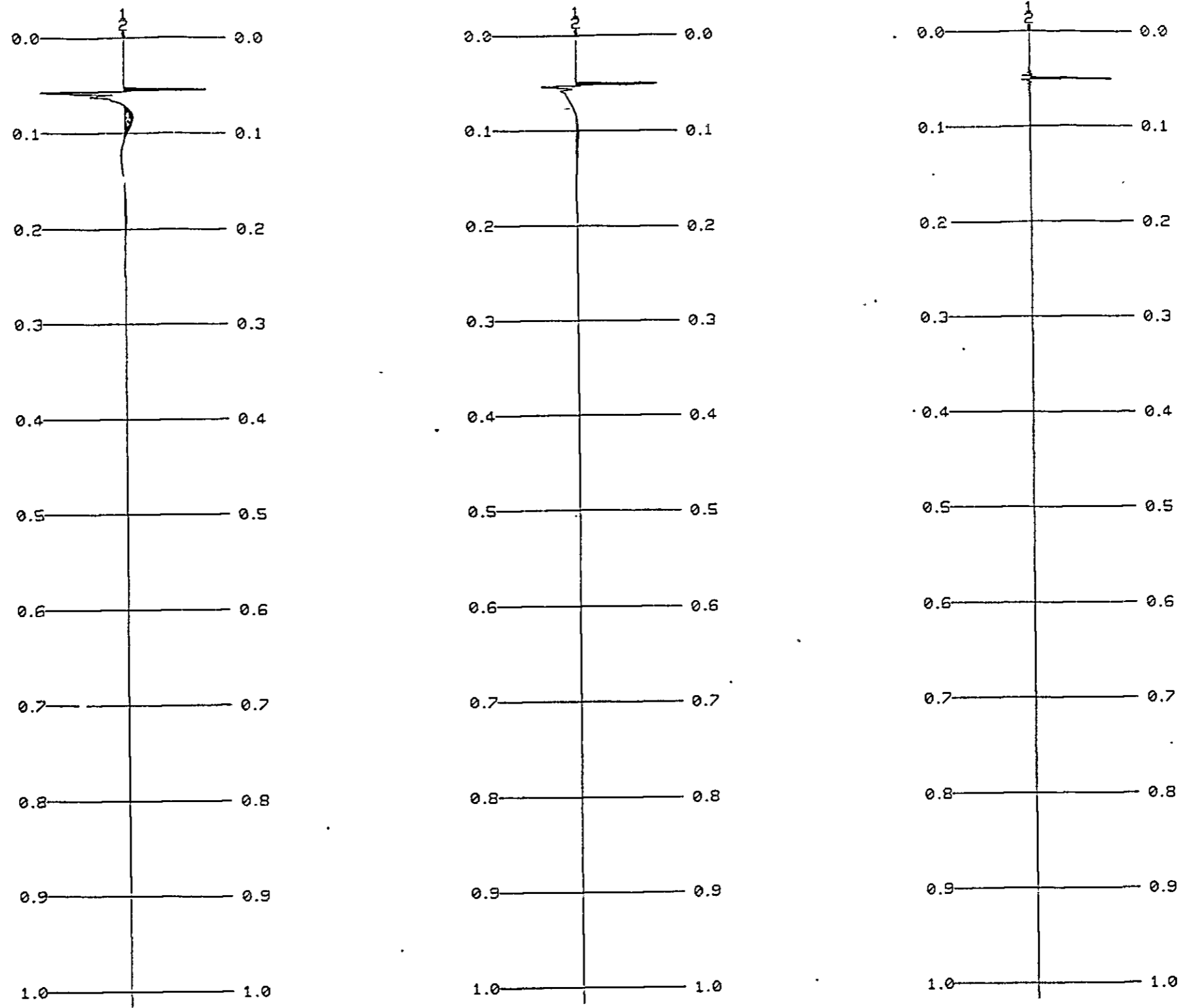


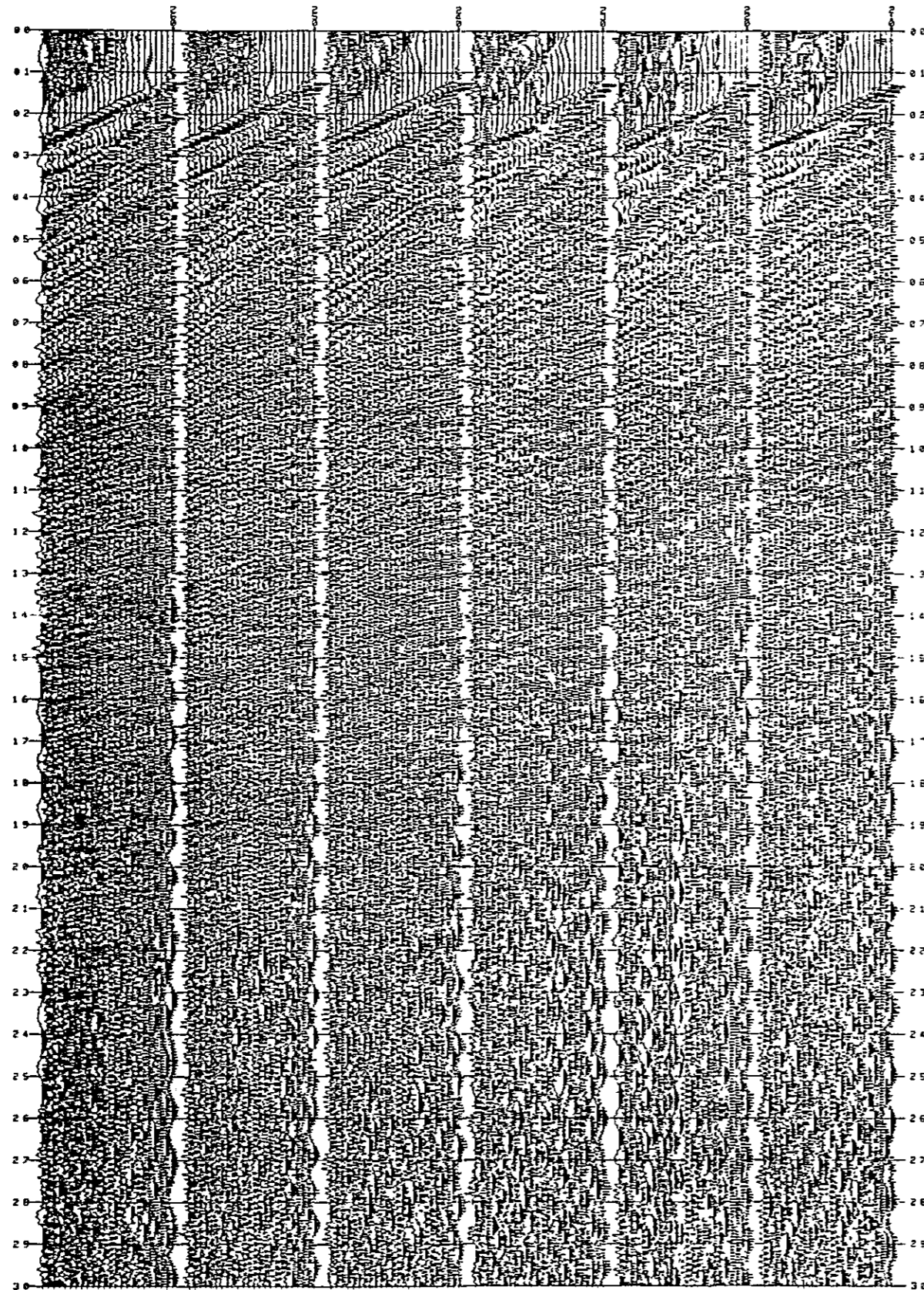
# WAVELET PROCESS TEST (1) DFS-4 IMPULSE RESPONSE



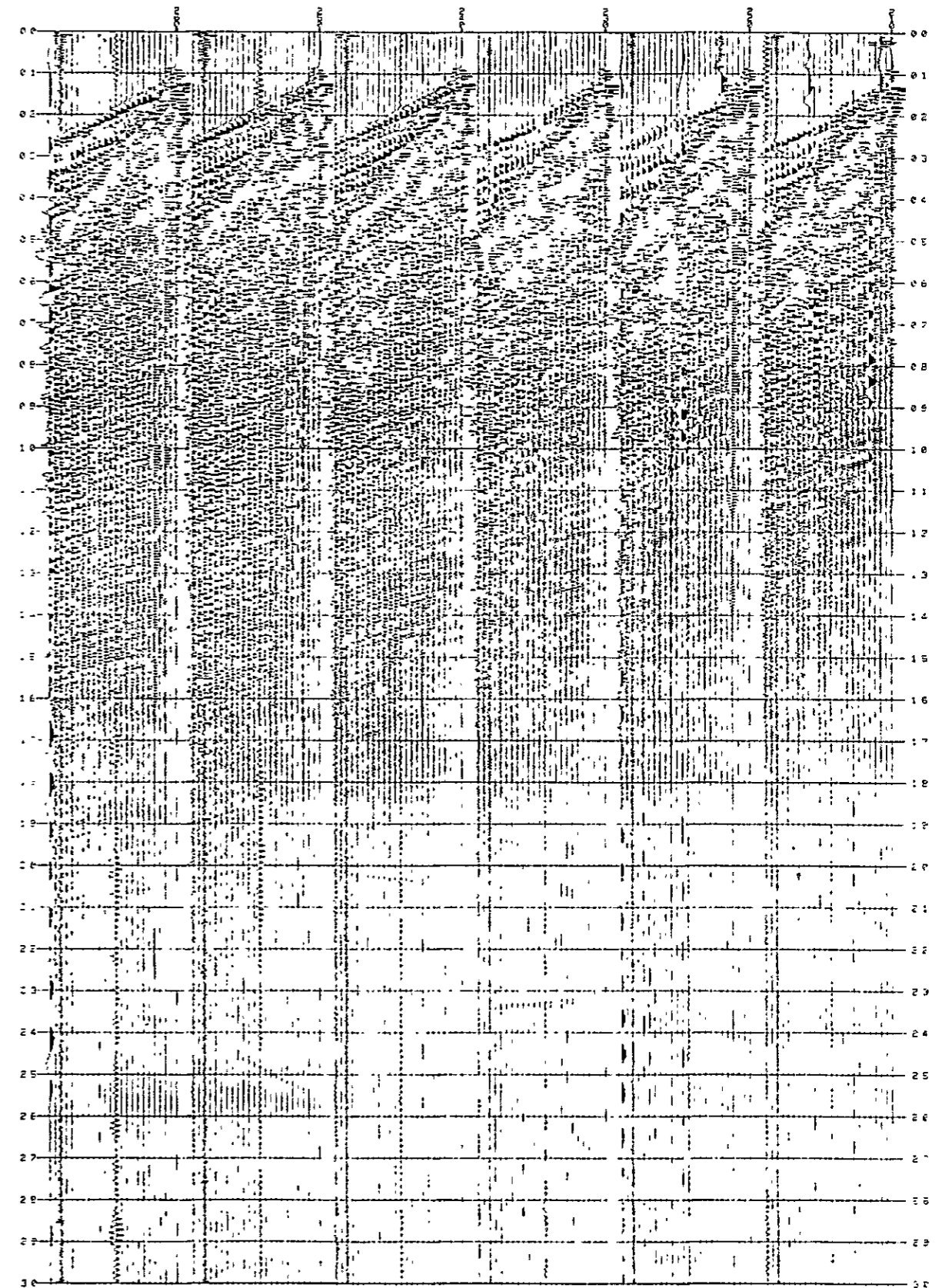
(1) IMPULSE RESPONSE (8/36 - 248 HZ) (2) (1) + MINIMUM PHASE CONVERSION (3) (2) + DECONVOLUTION

WAVELET TEST (2)  
LINE T2-AB 12.5

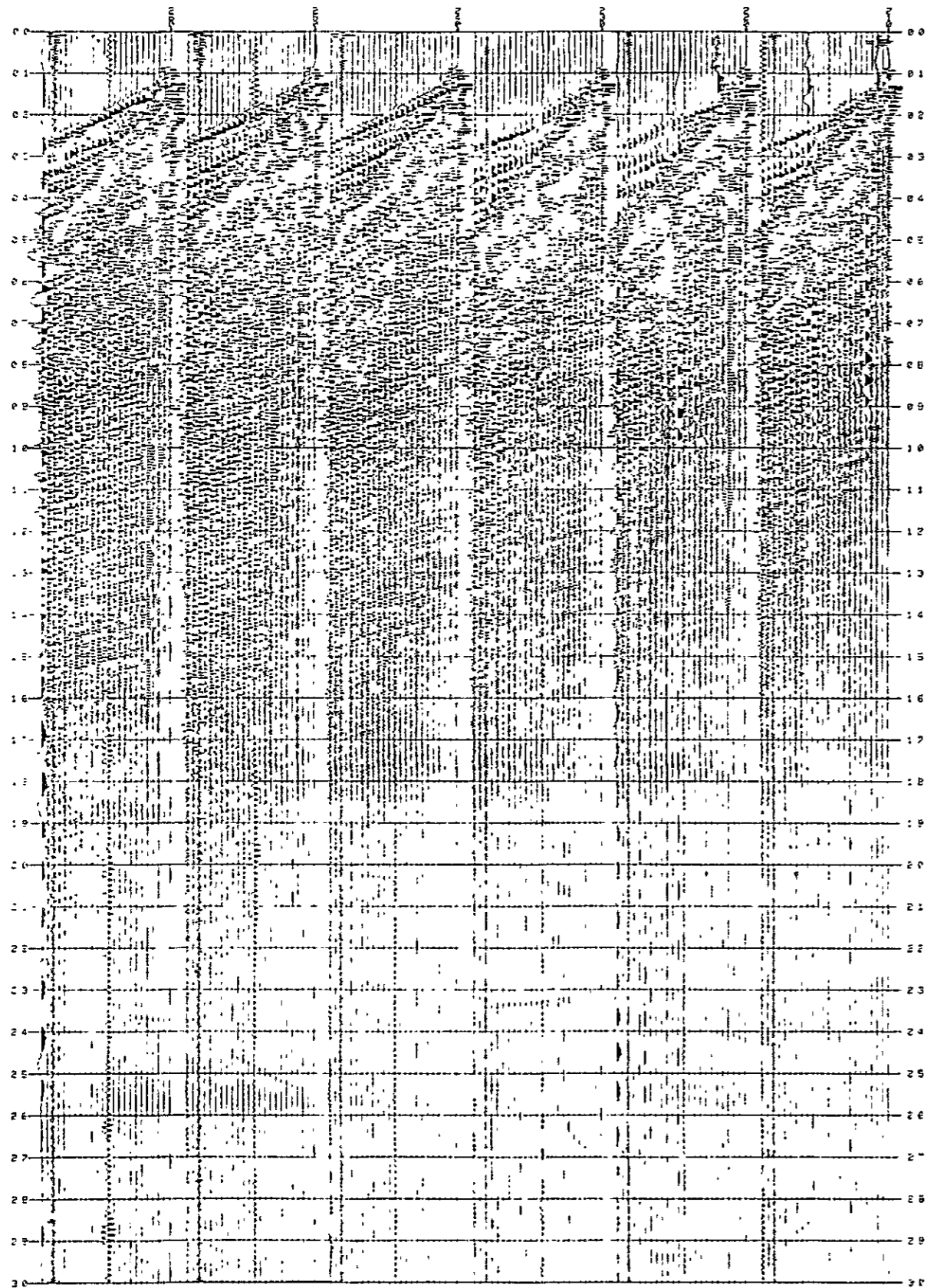
(13) (2)+GAIN RECOVERY (AAC 150 MS)



(12) WAVELET DECON



(2) WAVELET DECON



(1) CDP TRACES (GAIN REMOVED)

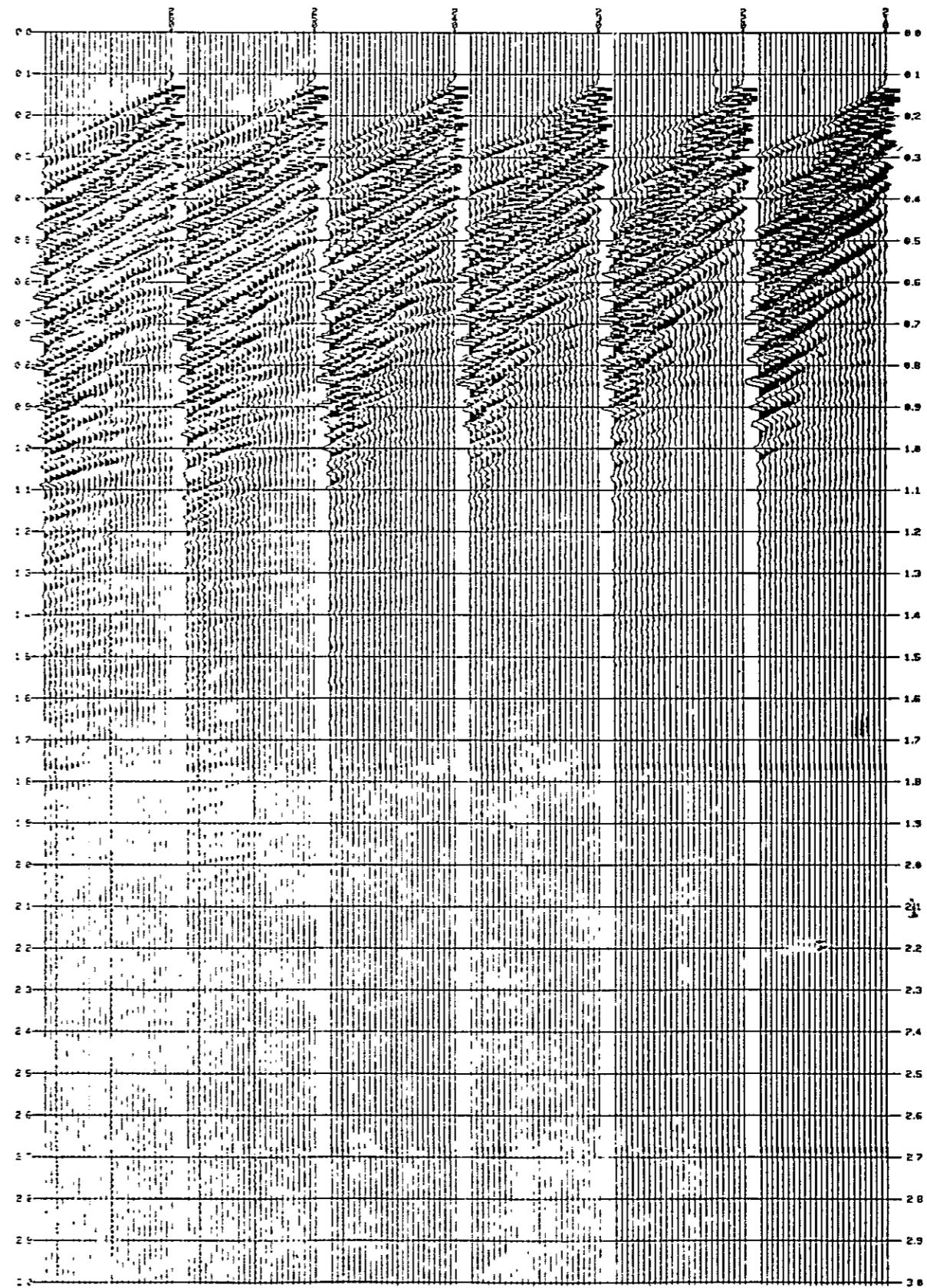
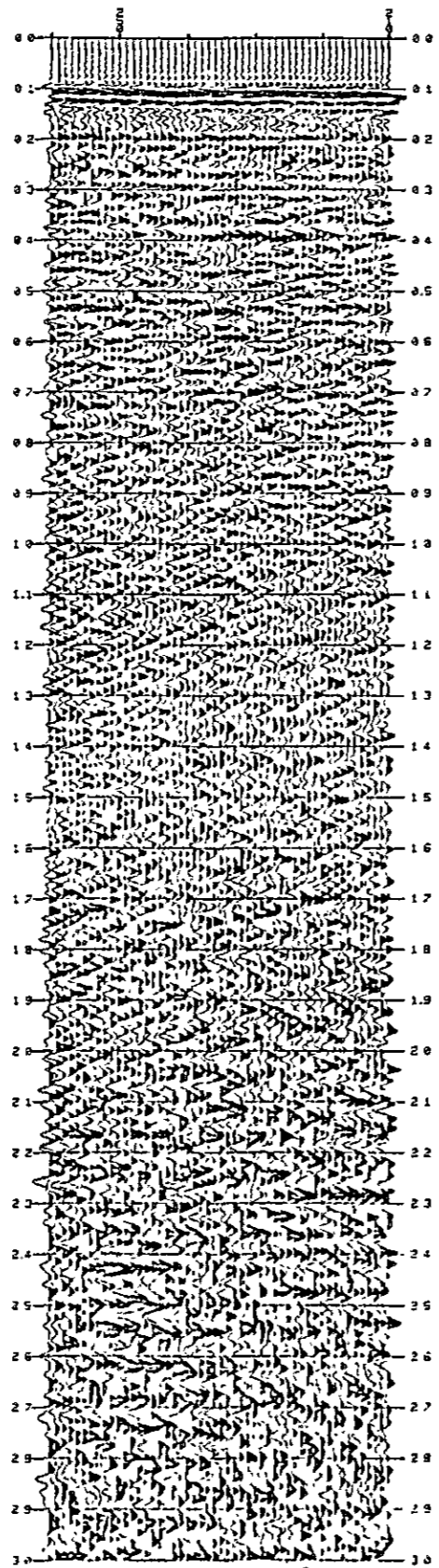


Fig. III - 2 - 29

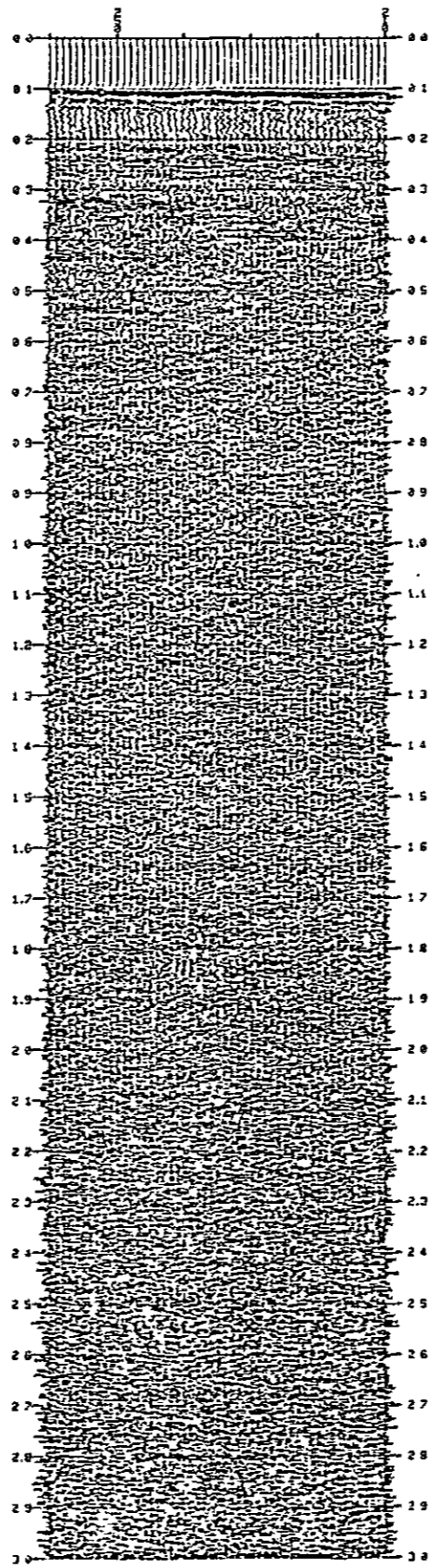


WAVELET TEST (3)  
LINE T2-AB 12.5

(3) (2)+ BAND PASS FILTER



(2) (1)+ DECONVOLUTION



(1) WAVELET PROCESS STACK

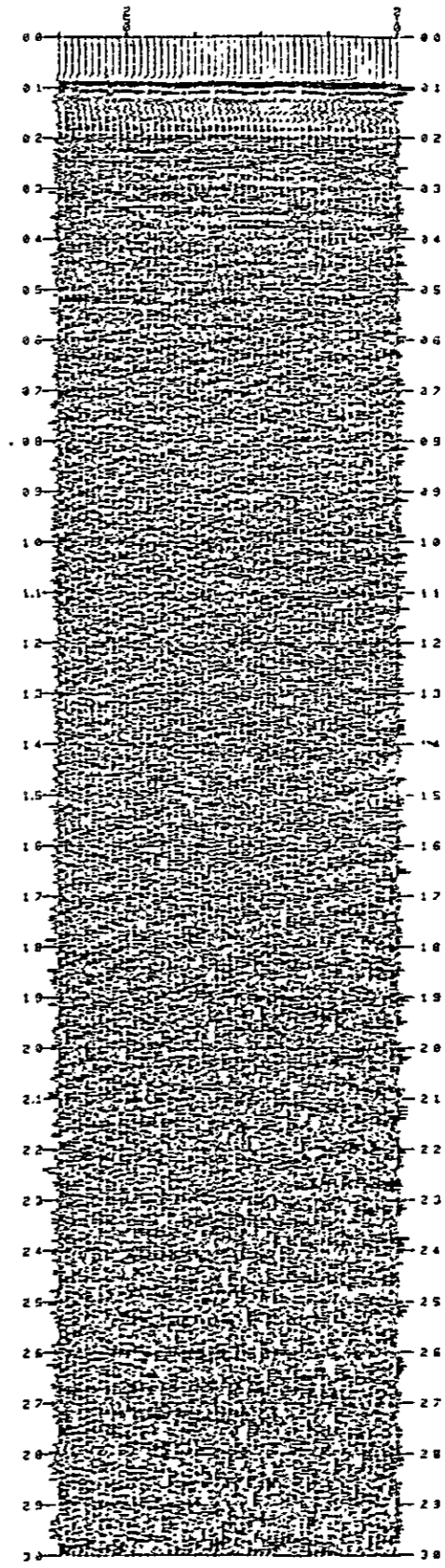
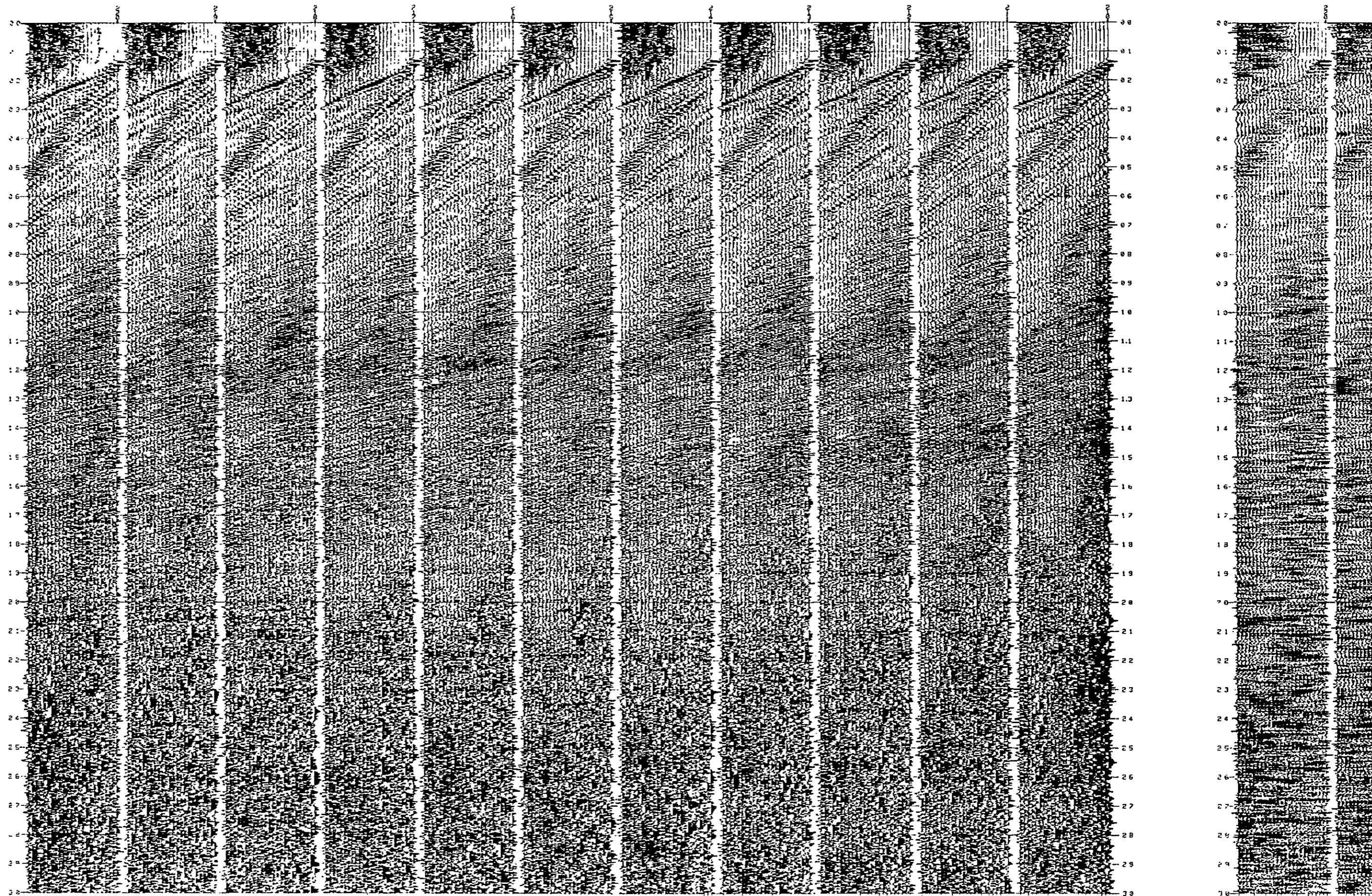


Fig. III-2-30

ORIGINAL ( After Gain Recovery and Deconvolution )





PLANE WAVE SIMULATION TEST (CDP 100 %)  
LINE T2-AB 12.5 (CDP 210 - 220)

PLANE WAVE SIMULATED RECORDS

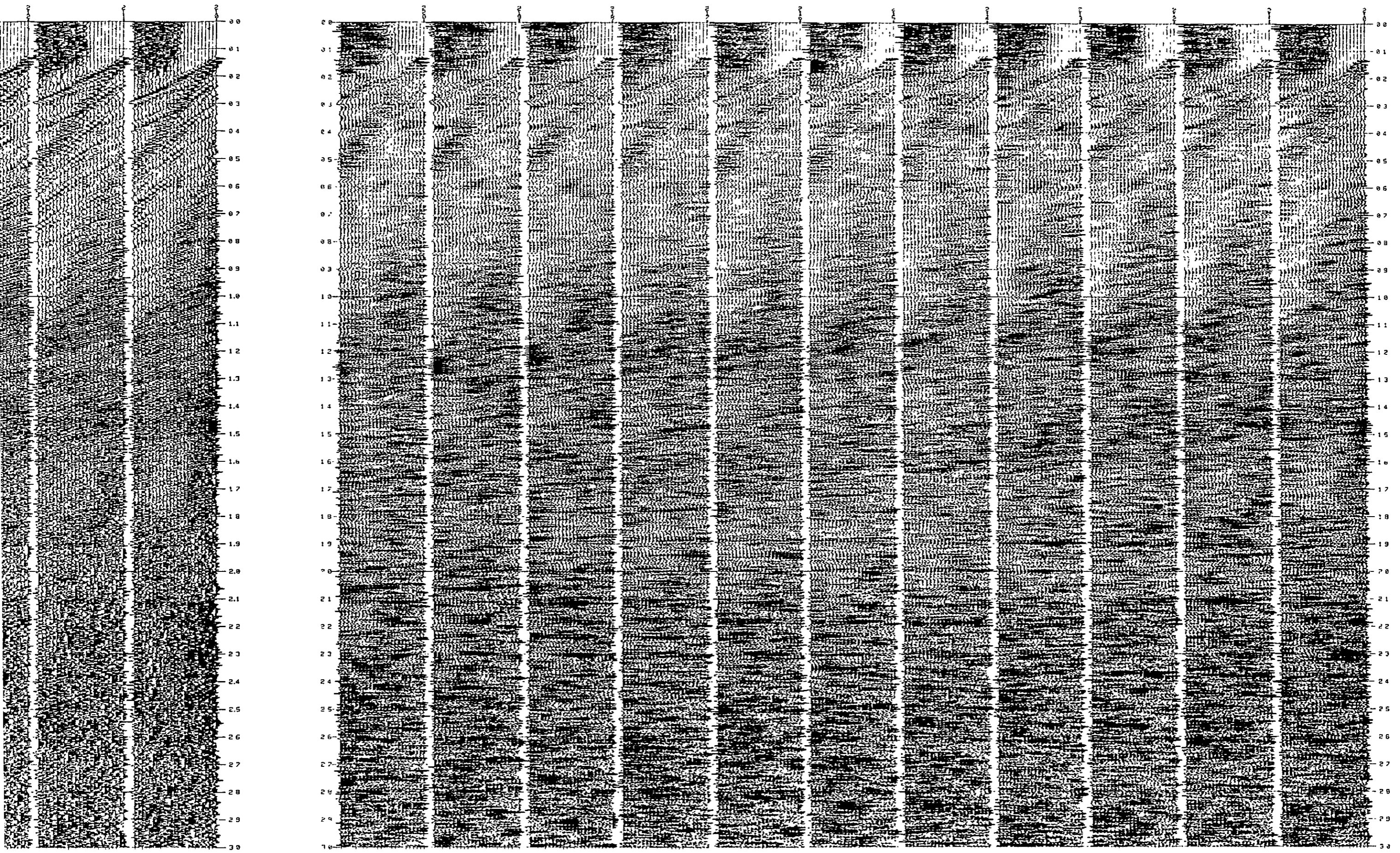


Fig. III - 2 - 31

PLANE WAVE SIMULATION TEST (STACK)  
LINE T2-AB 12.5 (CDP 210-220)

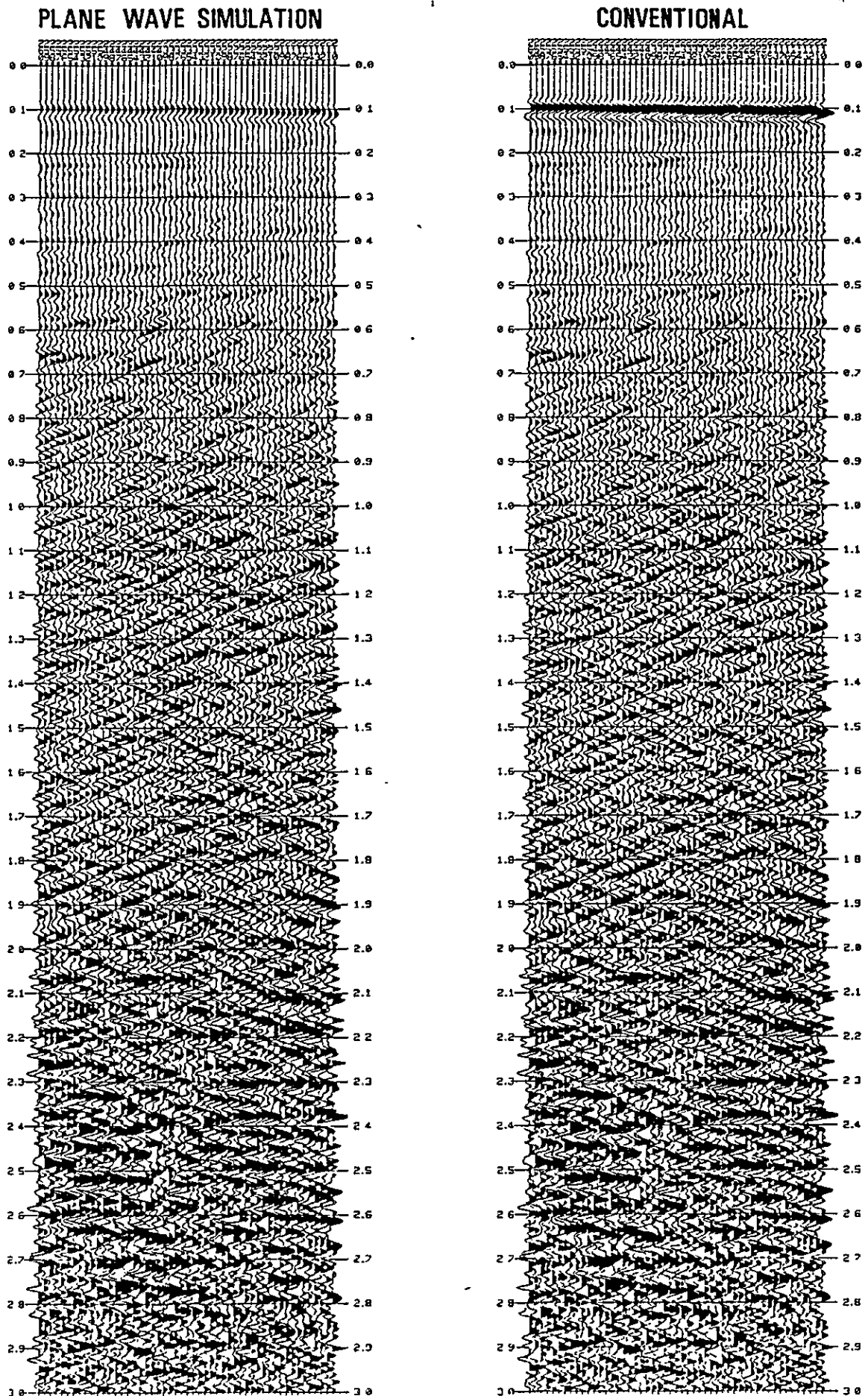


Fig. III-2-32

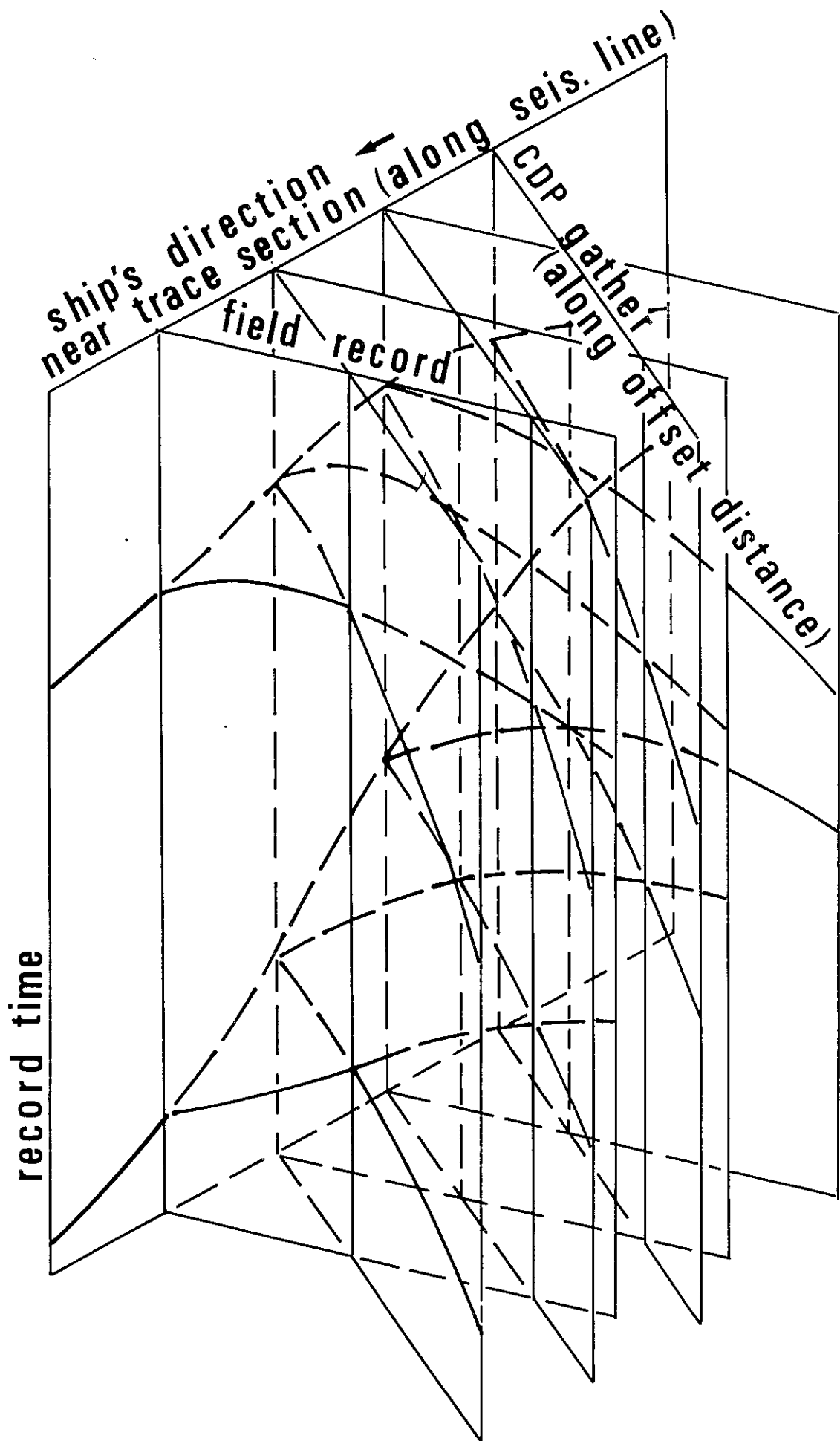


Fig. IV-1-1



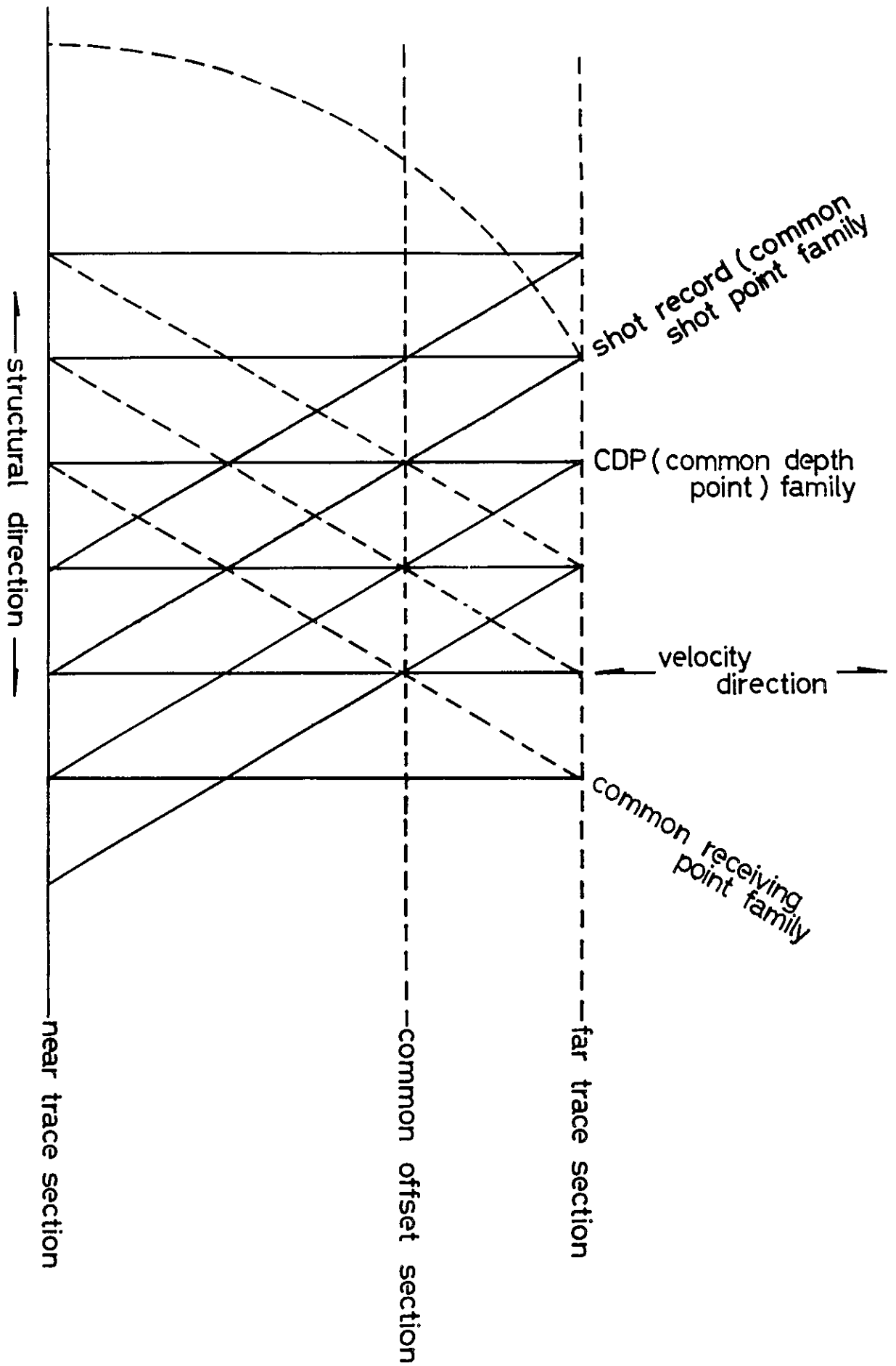
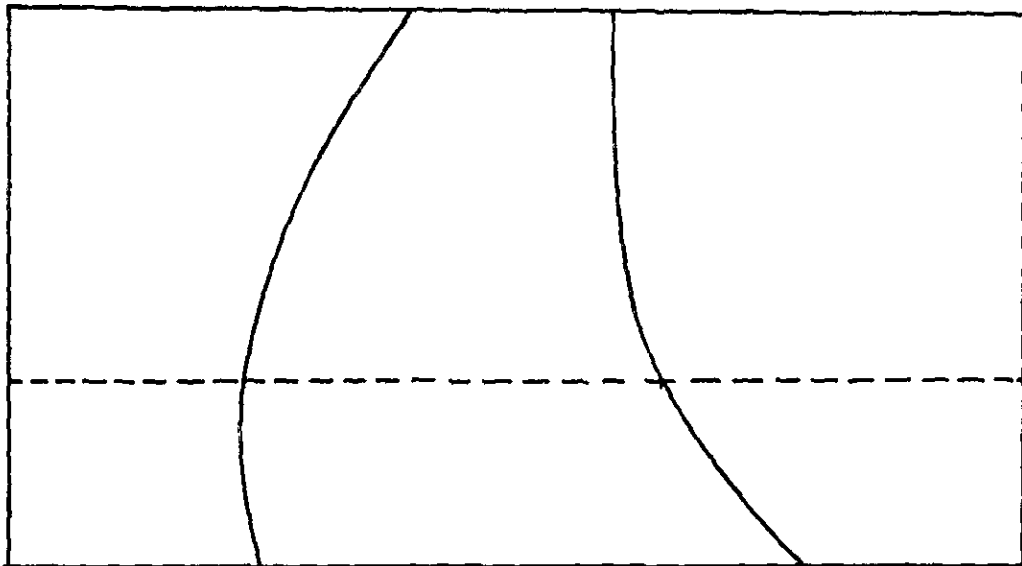
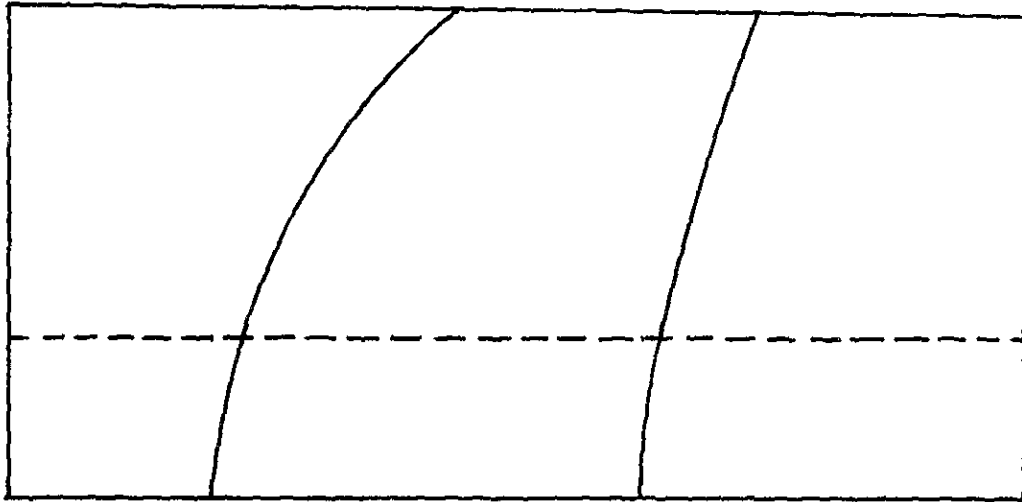


Fig. IV-1-2

str. + vel. direction  
( e.g. shot record )



velocity direction  
( CDP family )



structural direction  
( e.g. near trace section )

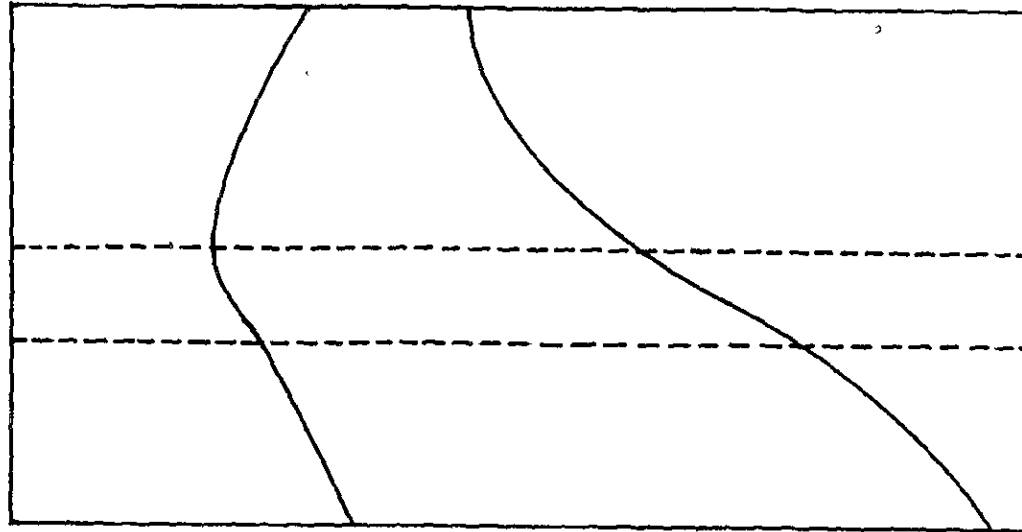


Fig. IV - 1 - 3

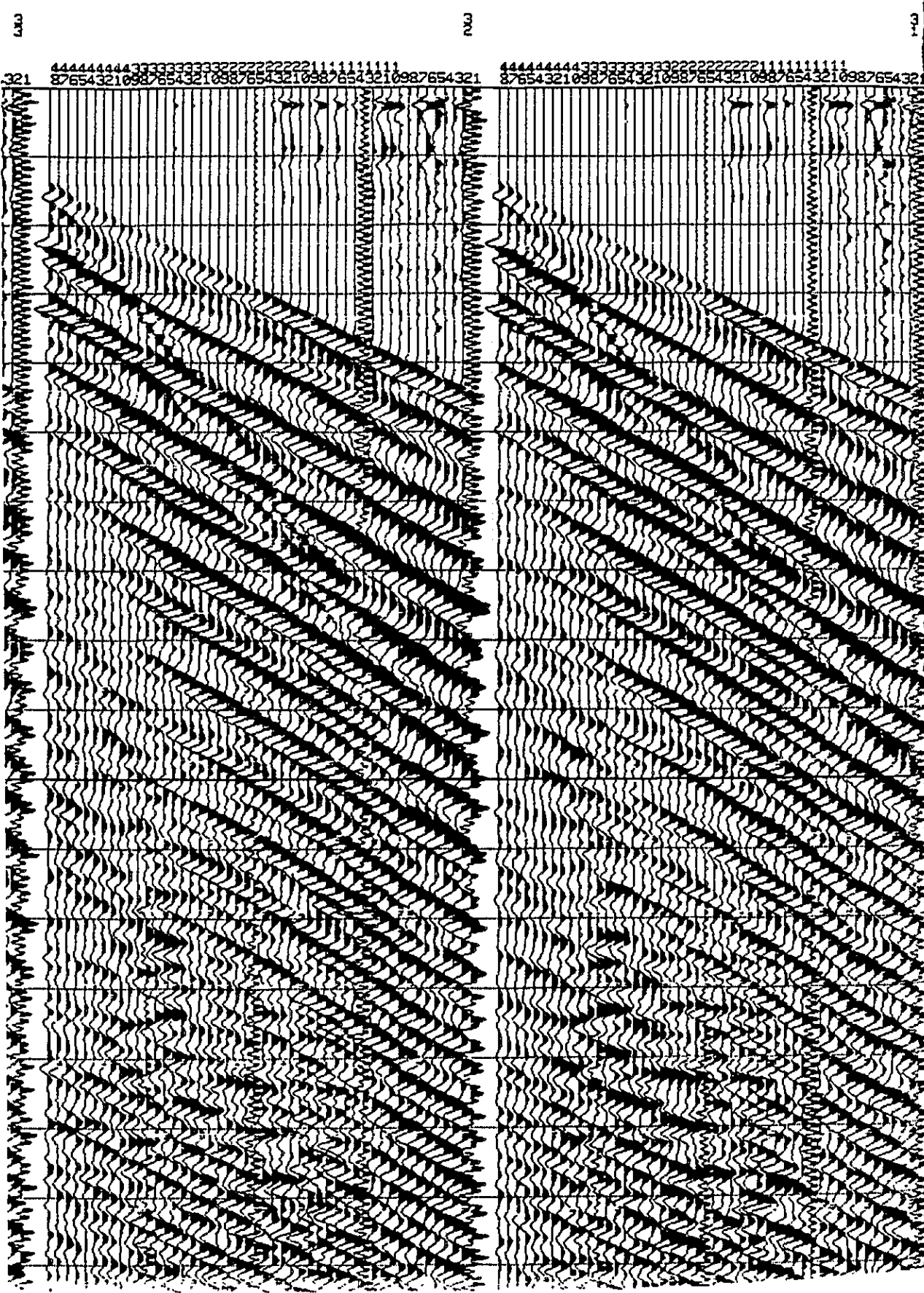
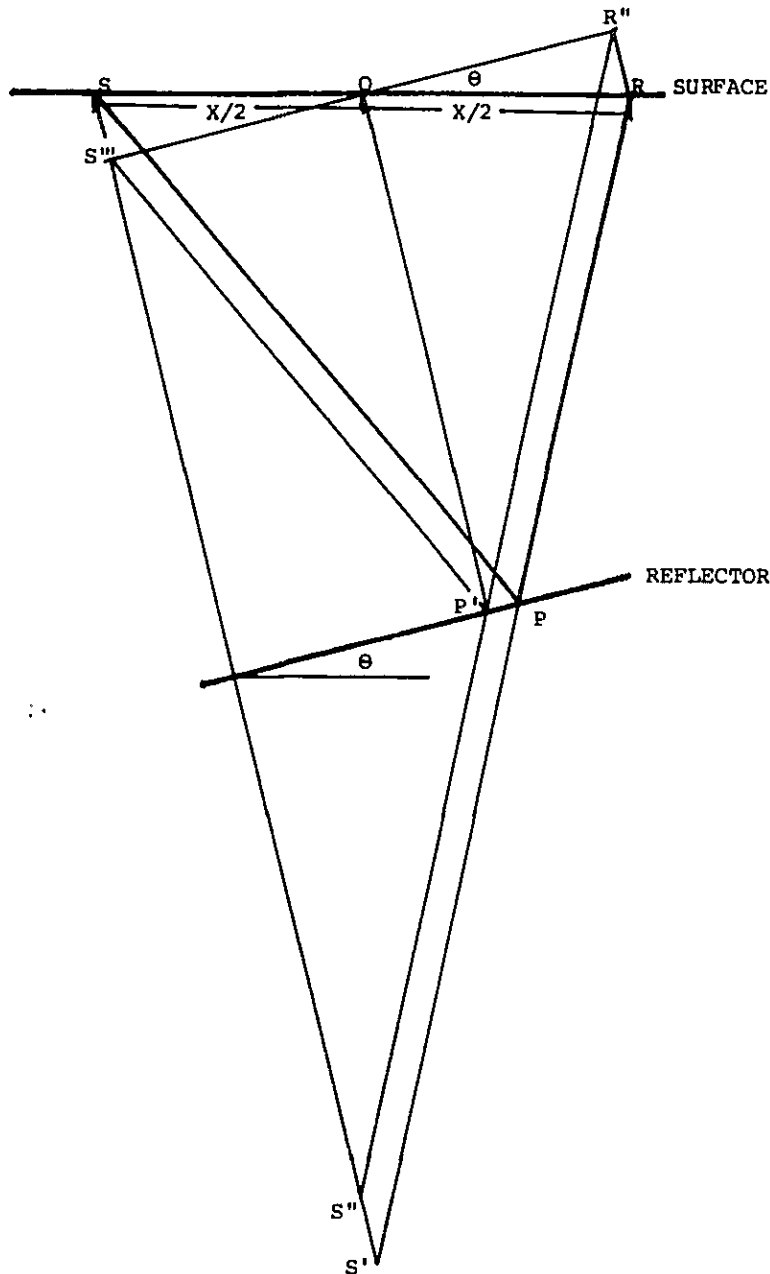


Fig. IV-1-4





$T_n + \Delta T$  : Reflection time on the farthest trace.

$$V(T_n + \Delta T) = SP + PR = S'PR = S''P'R''$$

$$VT_n = 2OP' = S'''S''$$

$$(S''P'R'')^2 = (S'''S'')^2 + (S'''R'')^2$$

$$V^2(T_n + \Delta T)^2 = (VT_n)^2 + (X \cos \theta)^2 \quad (1)$$

In the case of horizontal reflector,  $\theta = 0$

therefore

$$V^2(T_n + \Delta T)^2 = (VT_n)^2 + X^2 \quad (2)$$

CDP velocity calculation is actually based on (2),

$$V_{cdp} = X / ((T_n + \Delta T)^2 - T_n^2)^{1/2} \quad (3)$$

However, true velocity must be based on (1).

$$V = X \cos \theta / ((T_n + \Delta T)^2 - T_n^2)^{1/2} \quad (4)$$

Comparing (3) with (4)

$$V_{cdp} = V / \cos \theta \quad (5)$$

$1 / \cos \theta$  is the correction factor.

Fig. IV-1-5

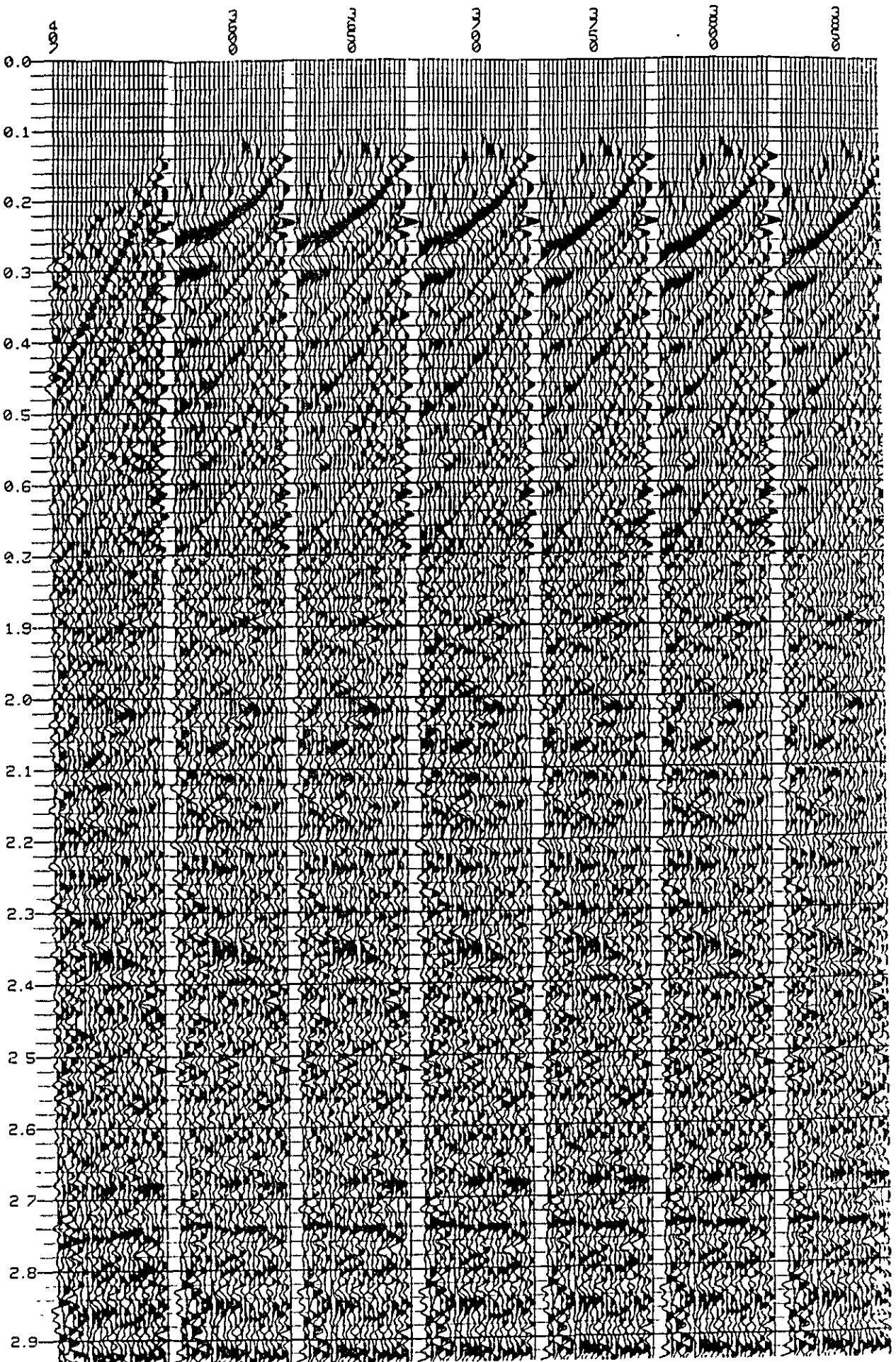


Fig. IV-1-6

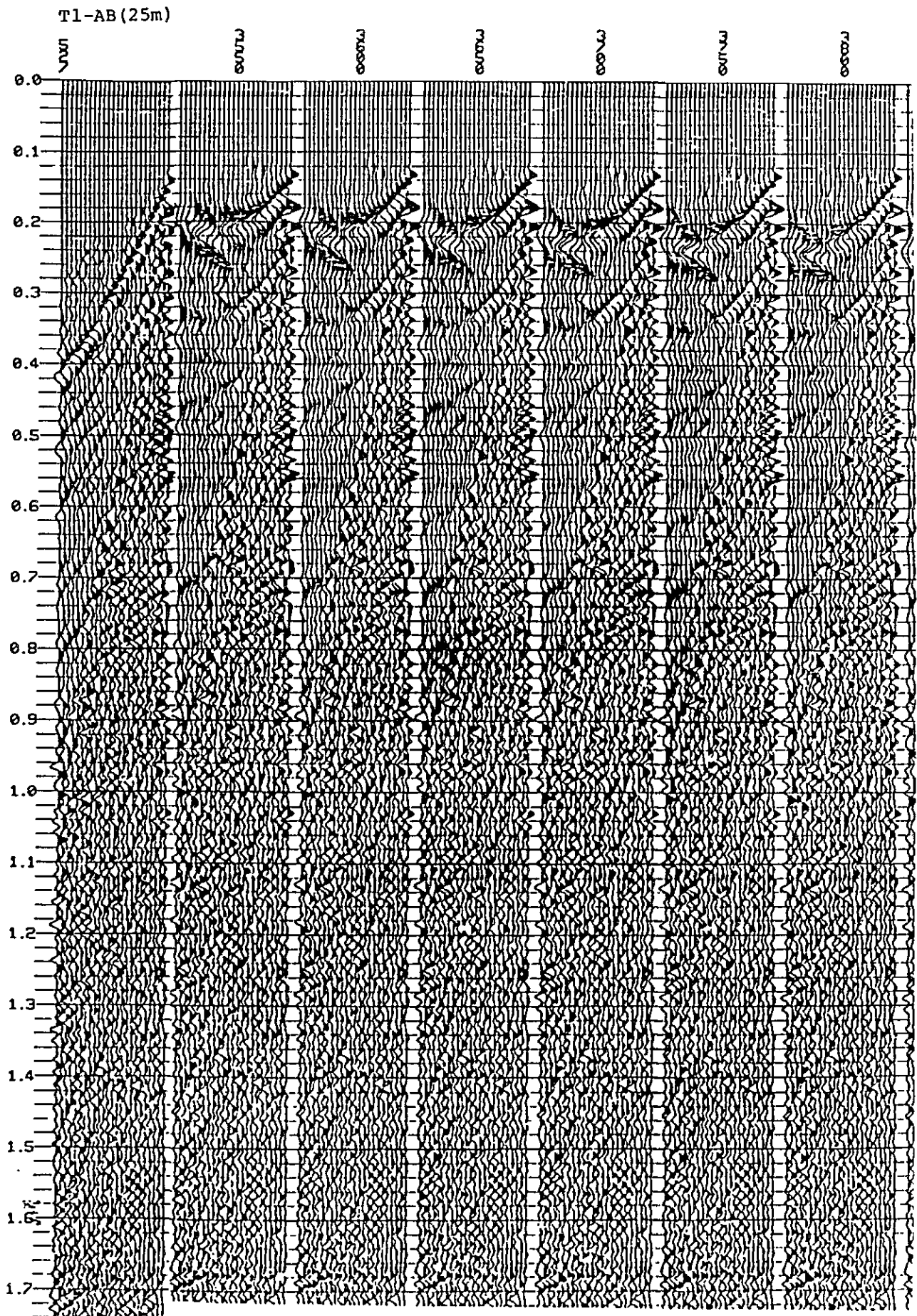


Fig. IV-1-7



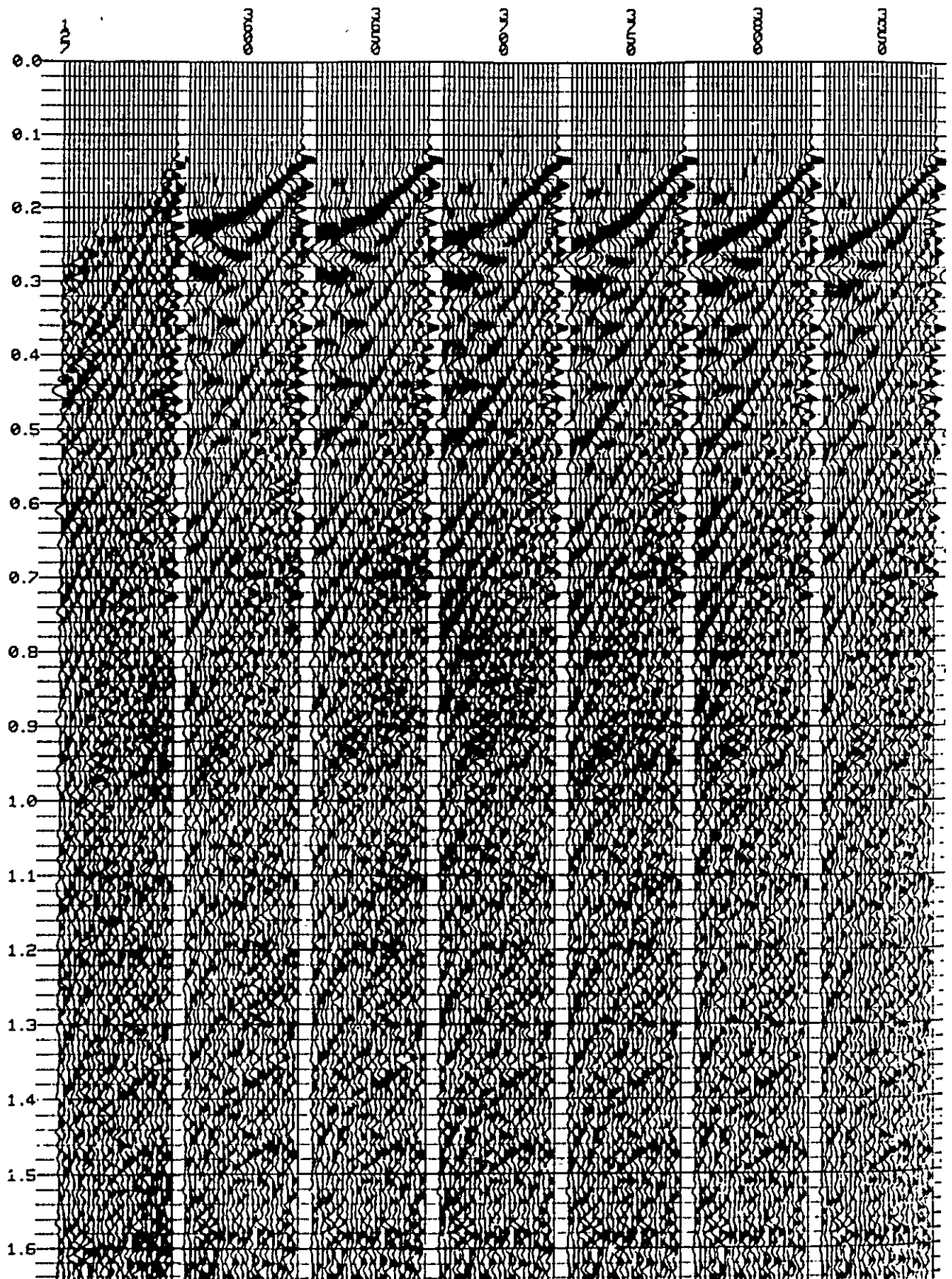


Fig. IV-1-8

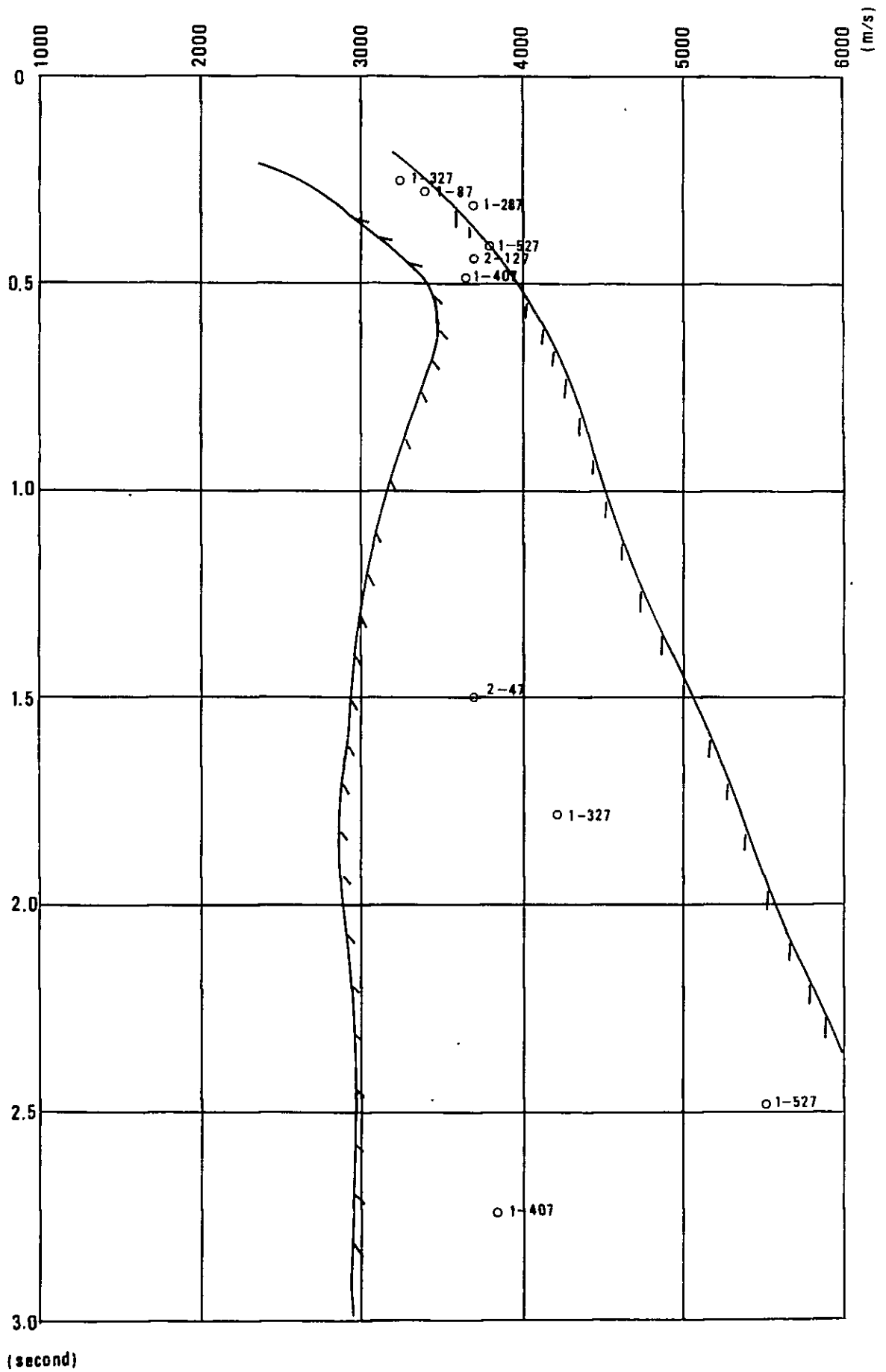


Fig. IV-1-9

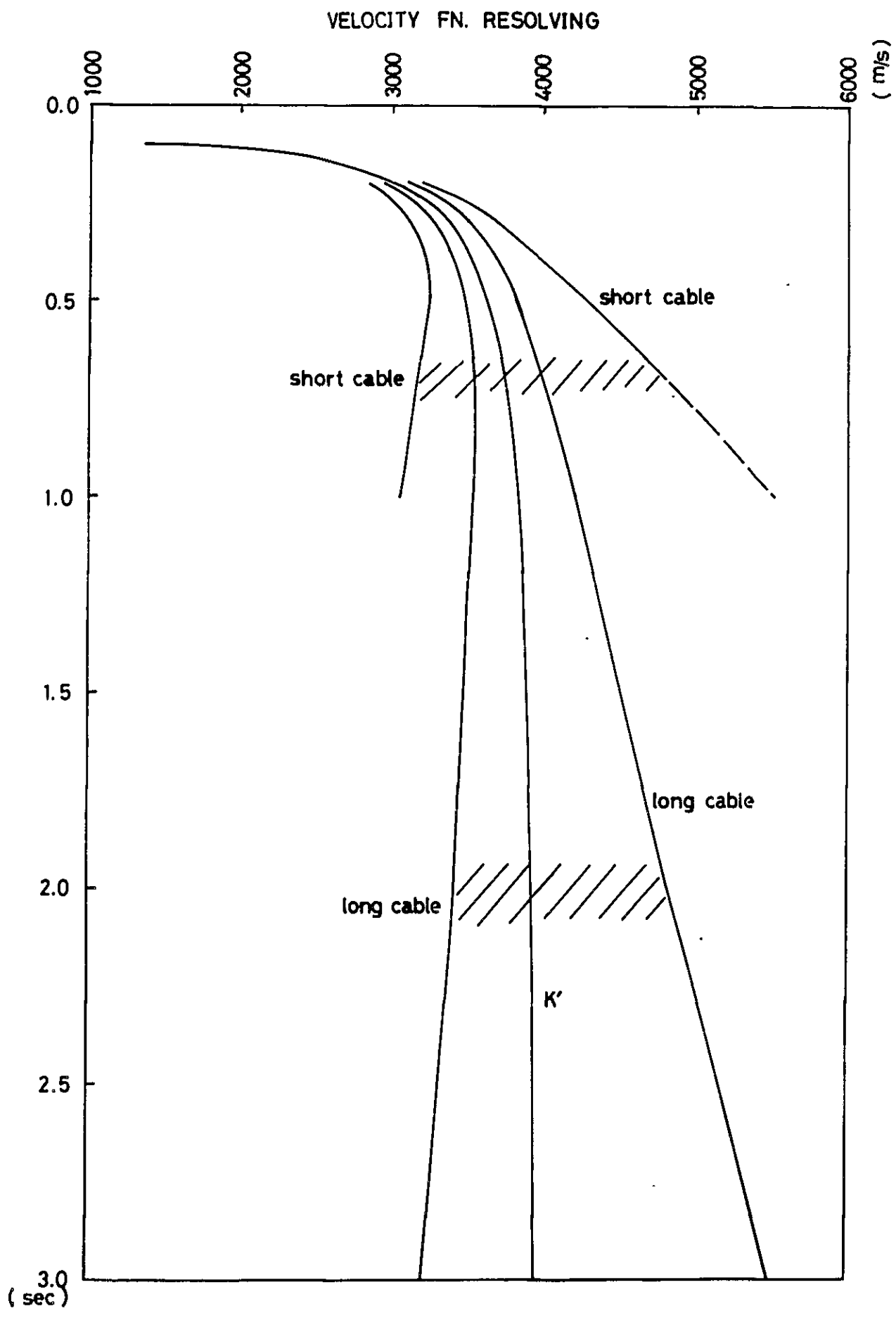


Fig. IV-1-10



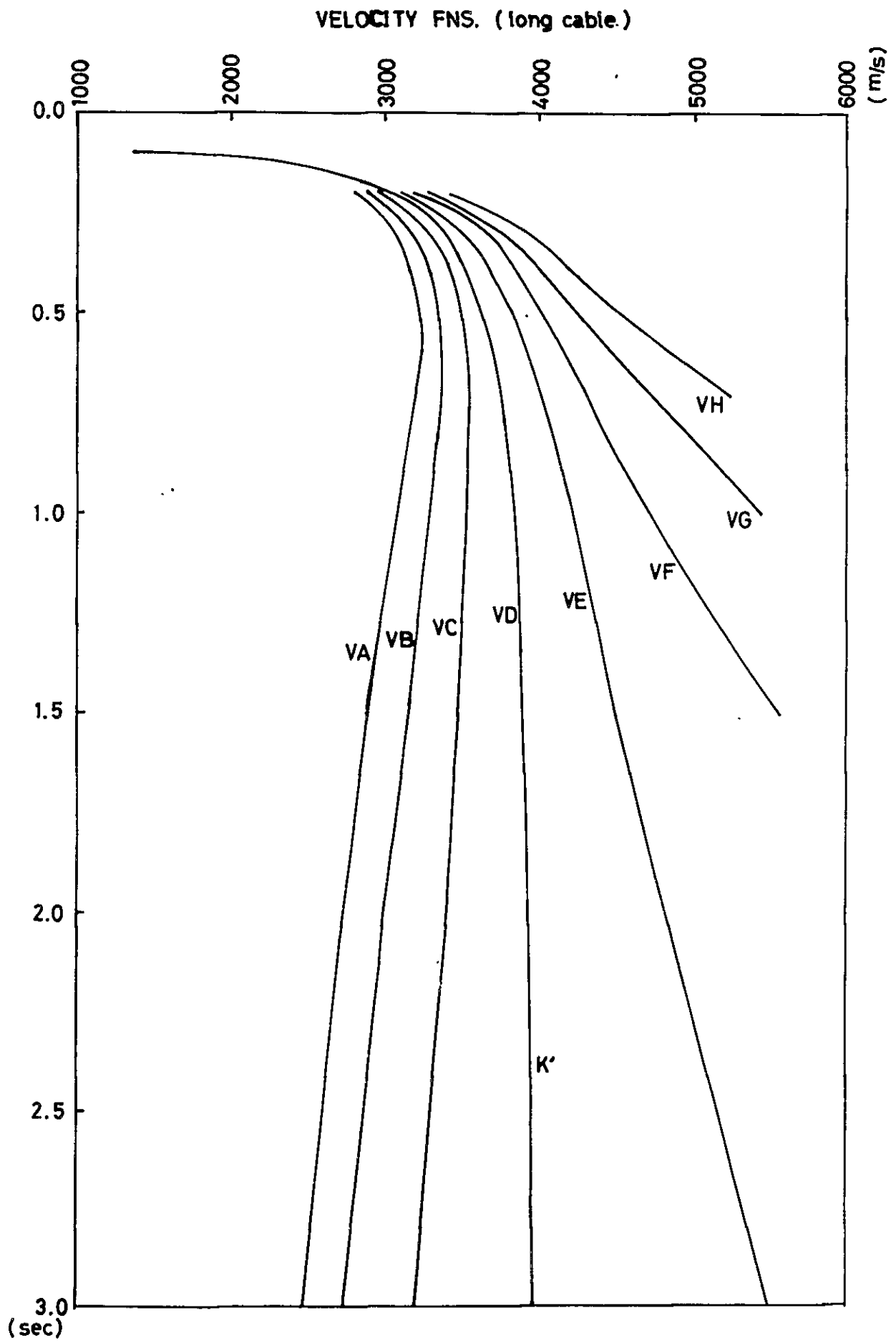


Fig. IV-1-11

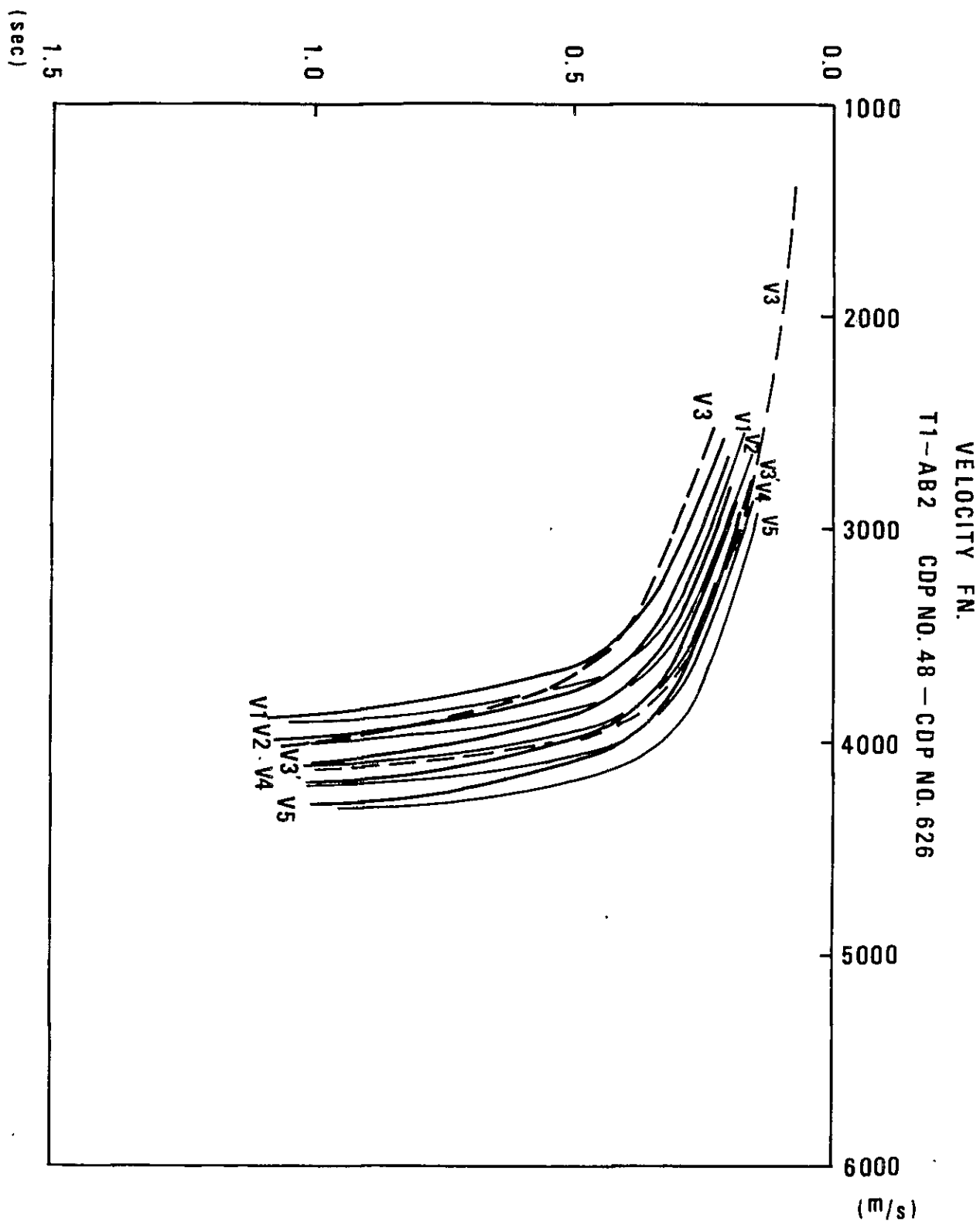


Fig. IV - I - 12

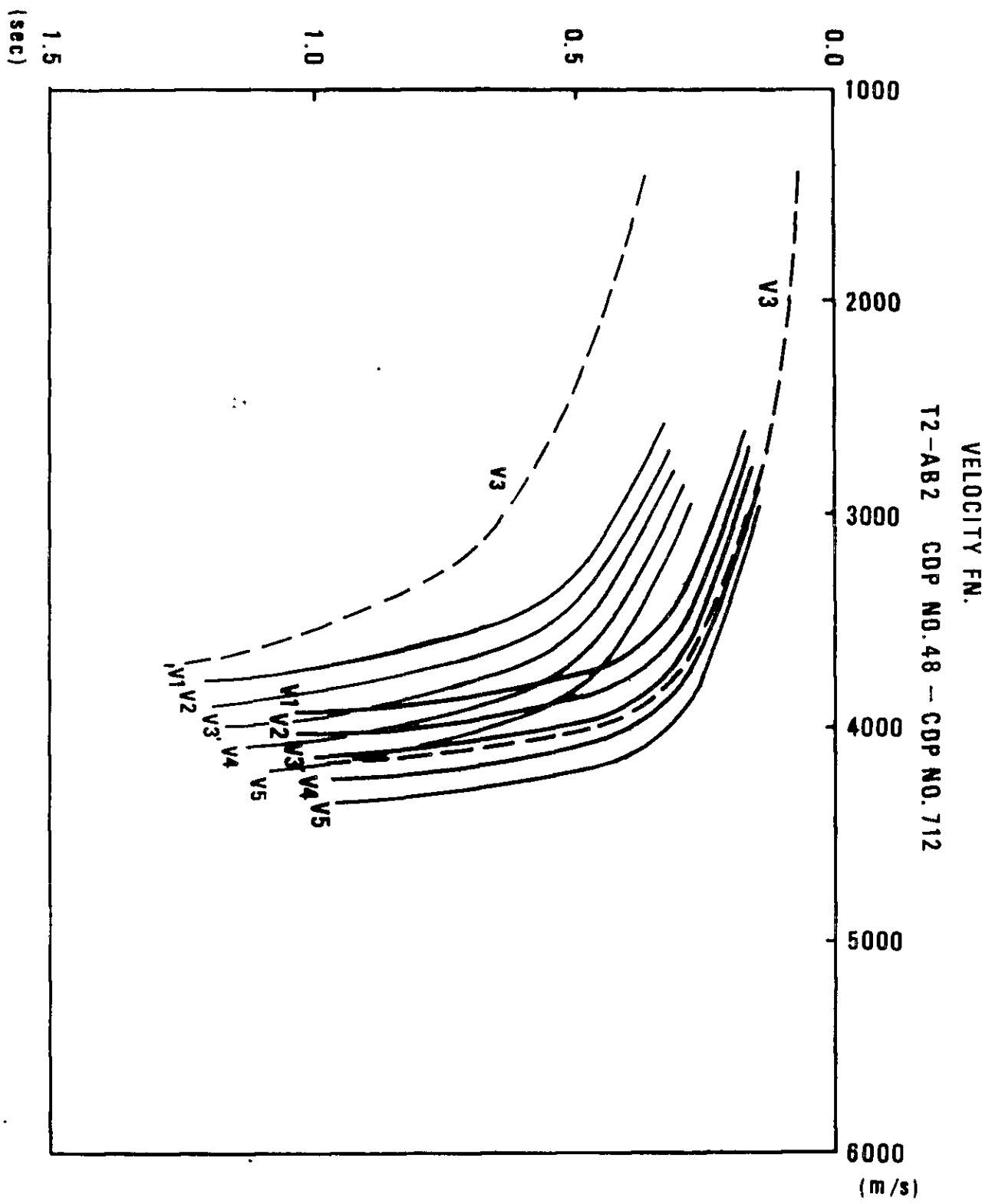


Fig. IV-1-13

**T3-AB CDP No.300**

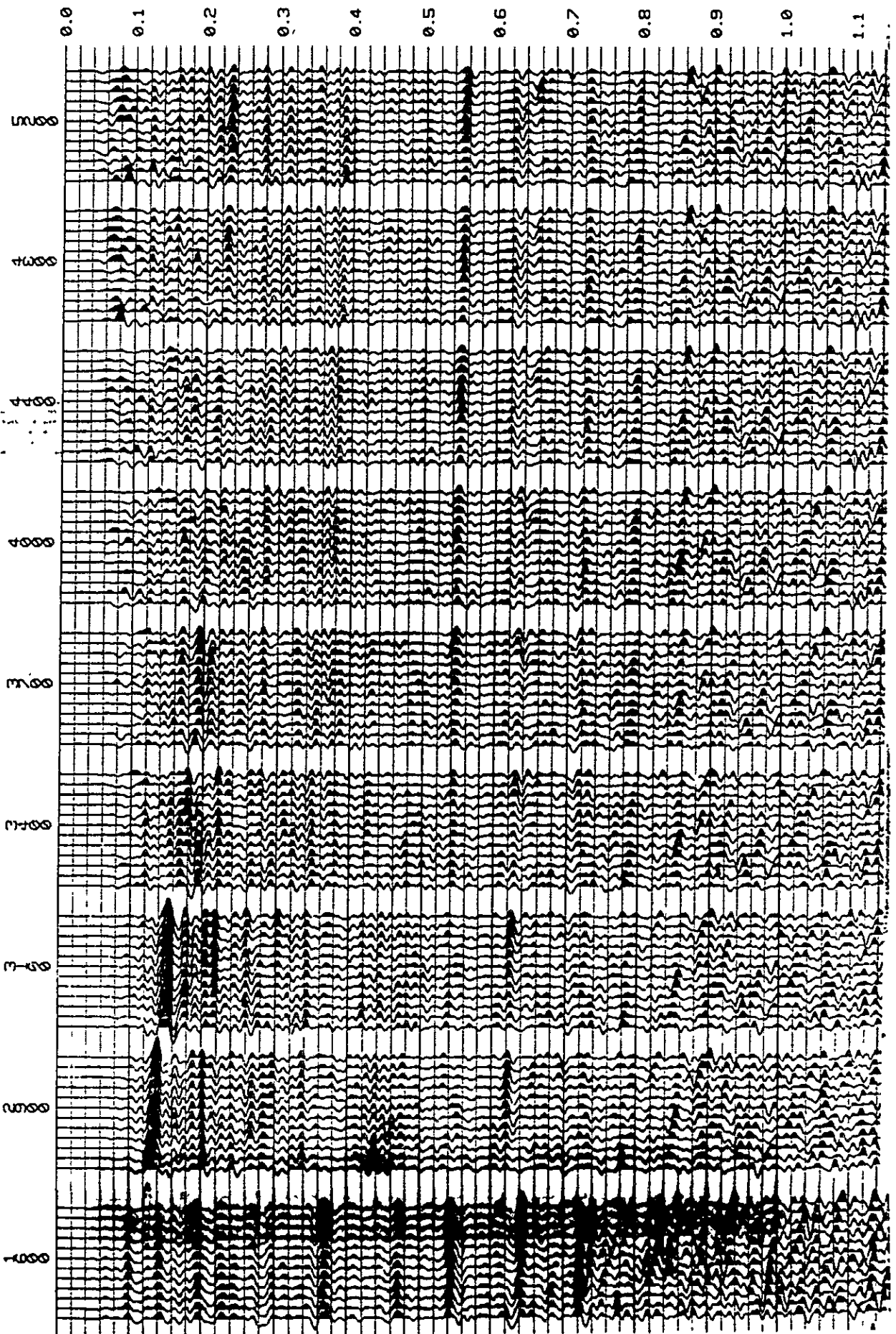


Fig. IV-1-14



1. 2. 3.