

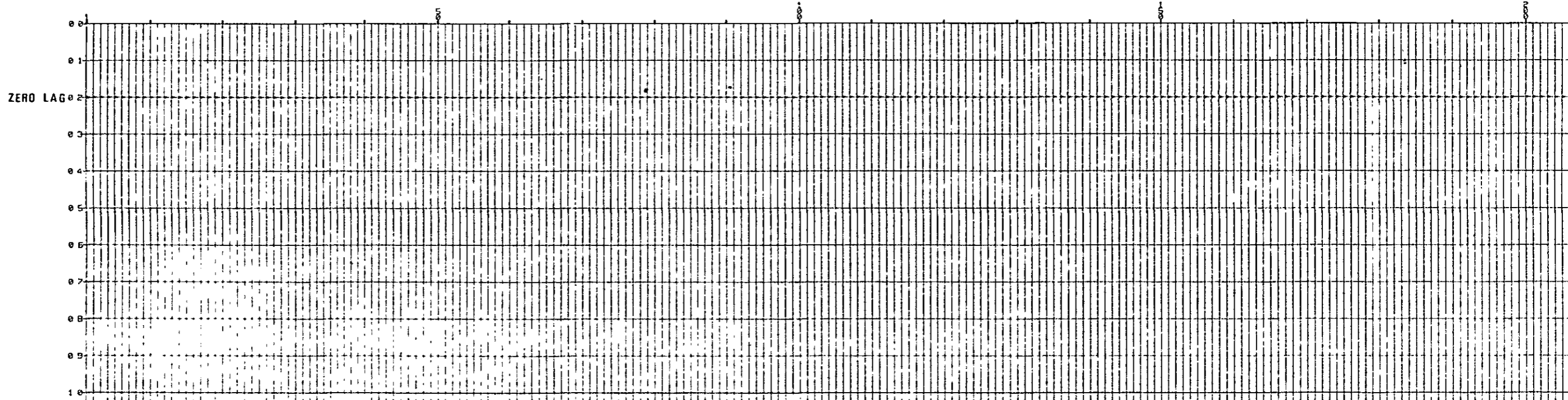
AUTOCORRELOGRAM

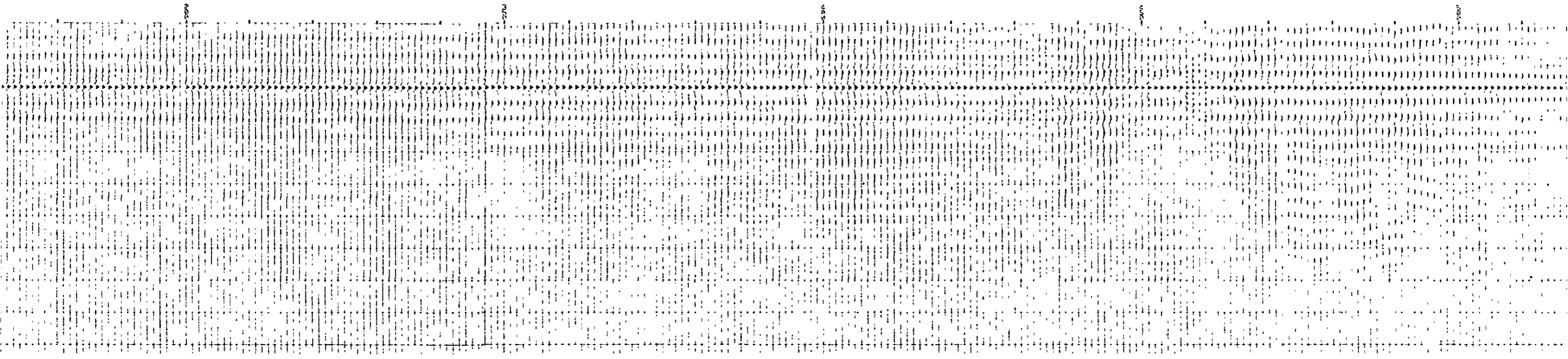
LINE T3 - AB12.5 NEAR TRACE, WINDOW = 1000 MSEC

(1) BEFORE DECON



(2) AFTER DECON (WINDOW = 2000 MSEC, OPERATOR = 300 MSEC, P. DISTANCE = 1 MSEC)





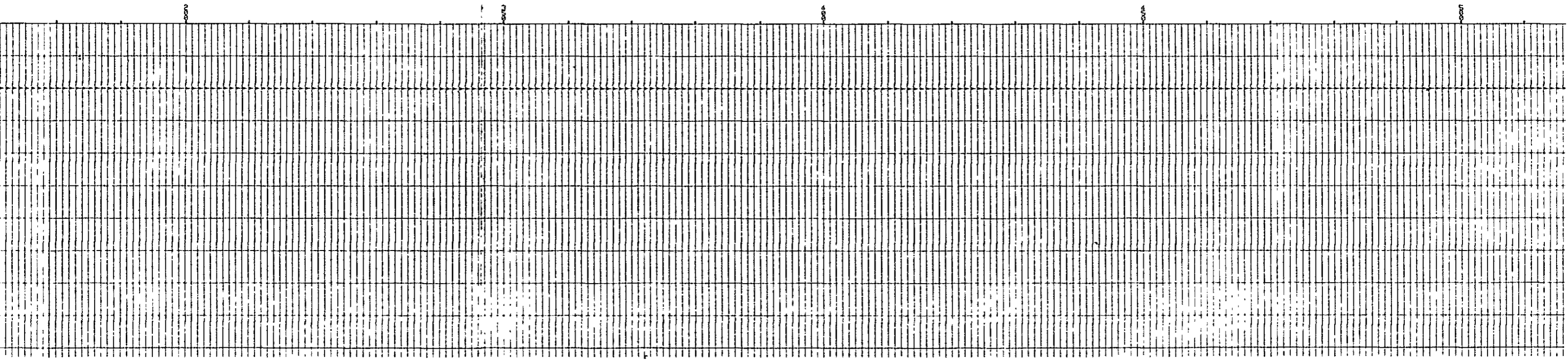
1000

2000

3000

4000

5000



1000

2000

3000

4000

5000

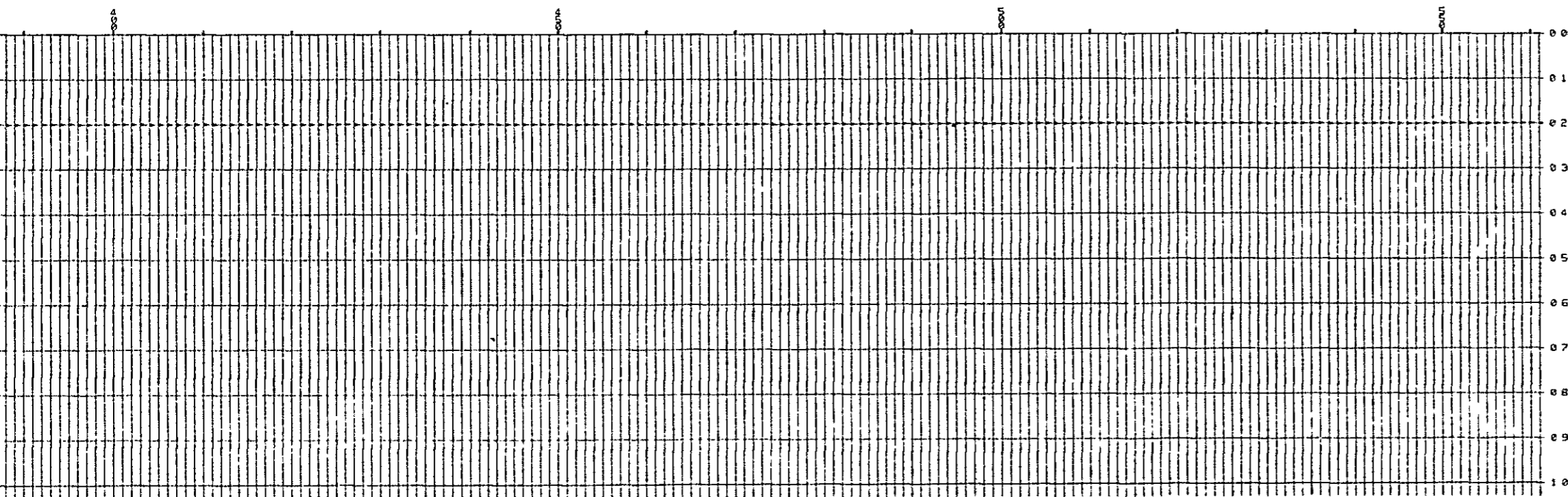
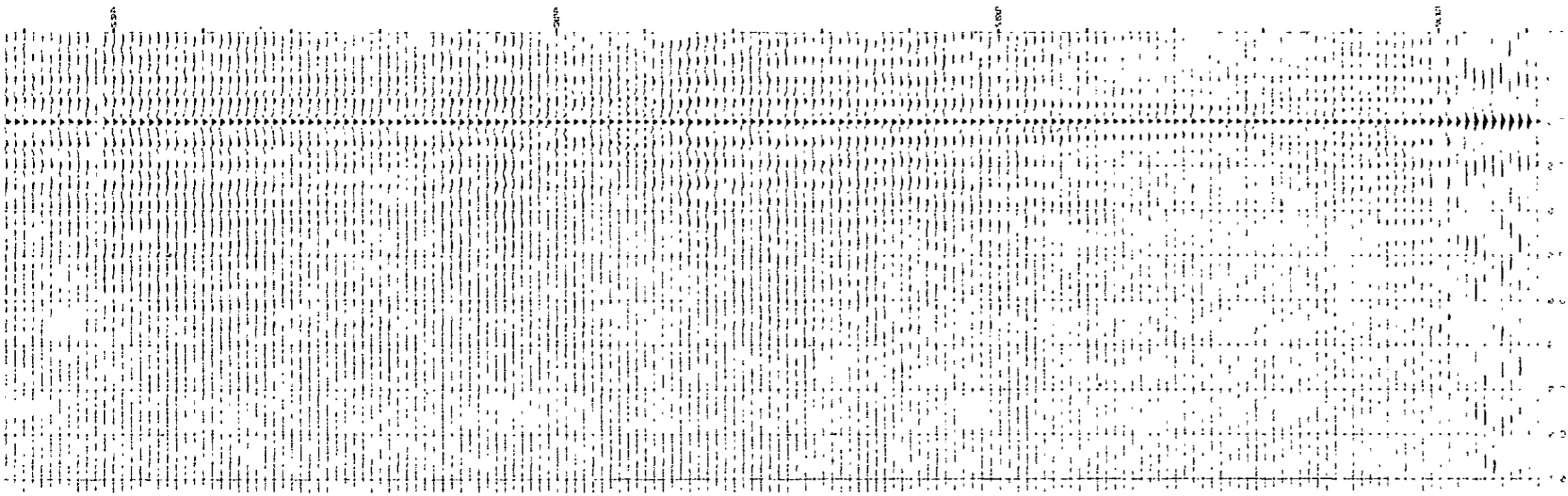
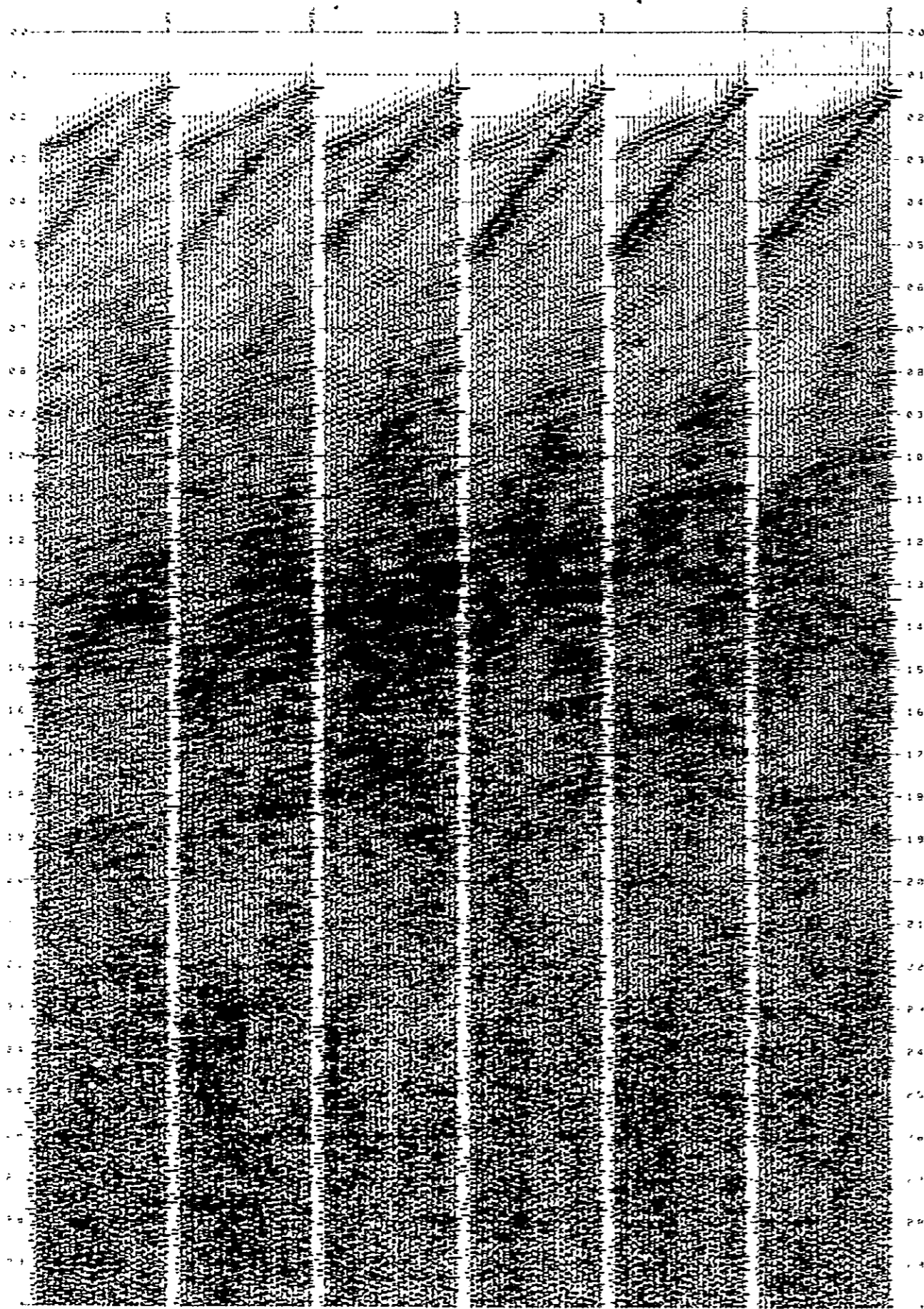
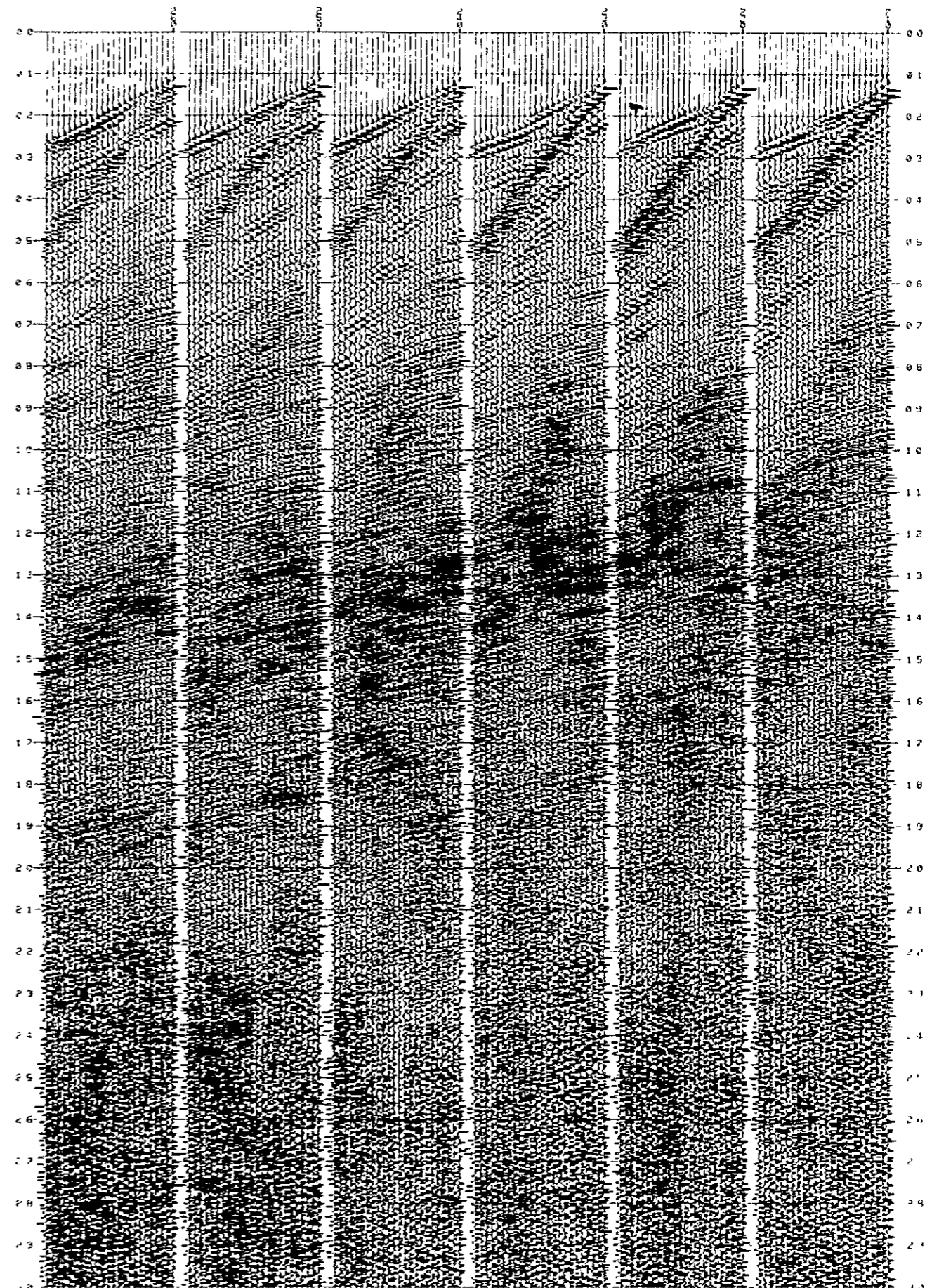


Fig. III - 2 - 13

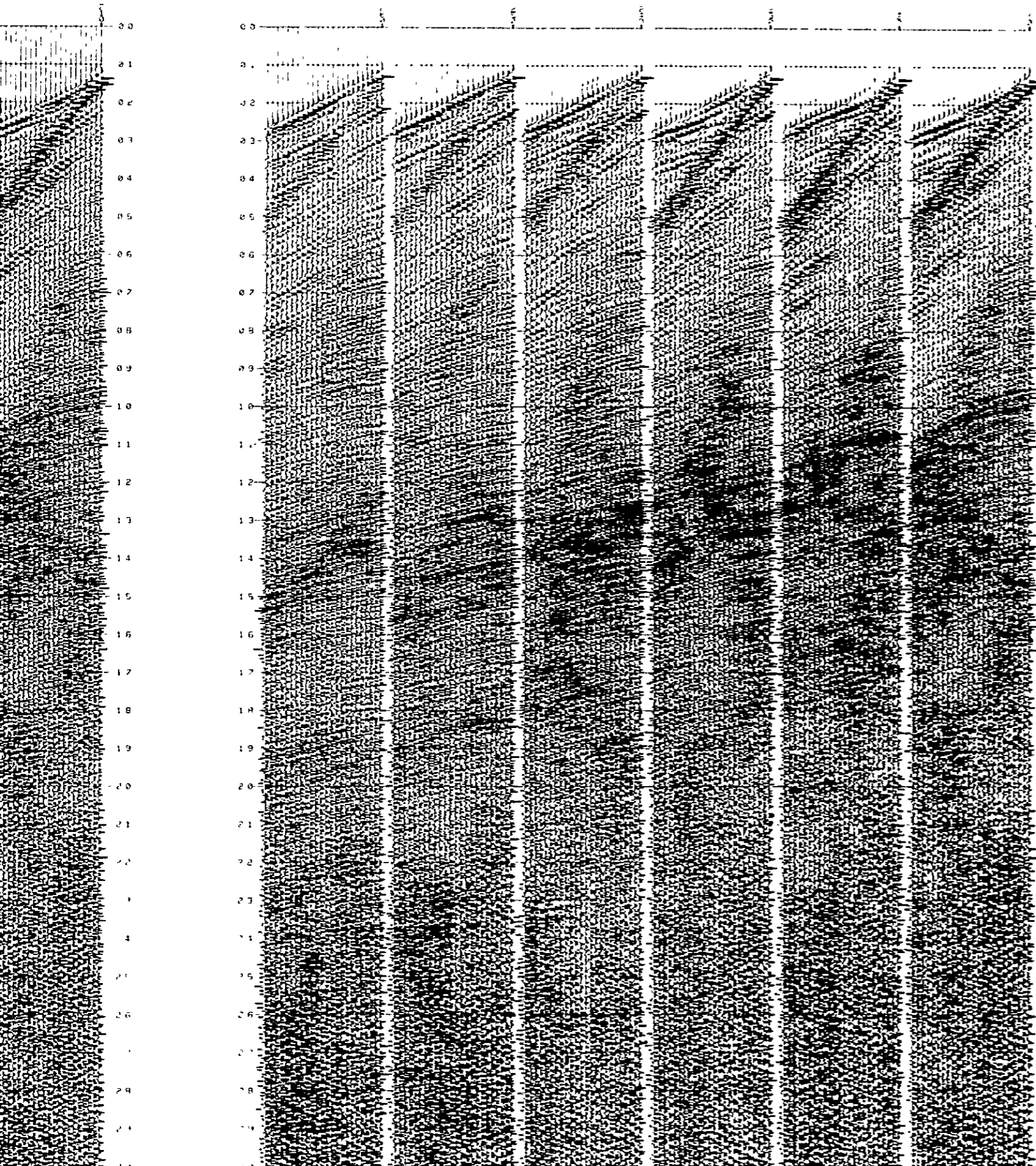
(10) (3)+FILTER (50-200 HZ)



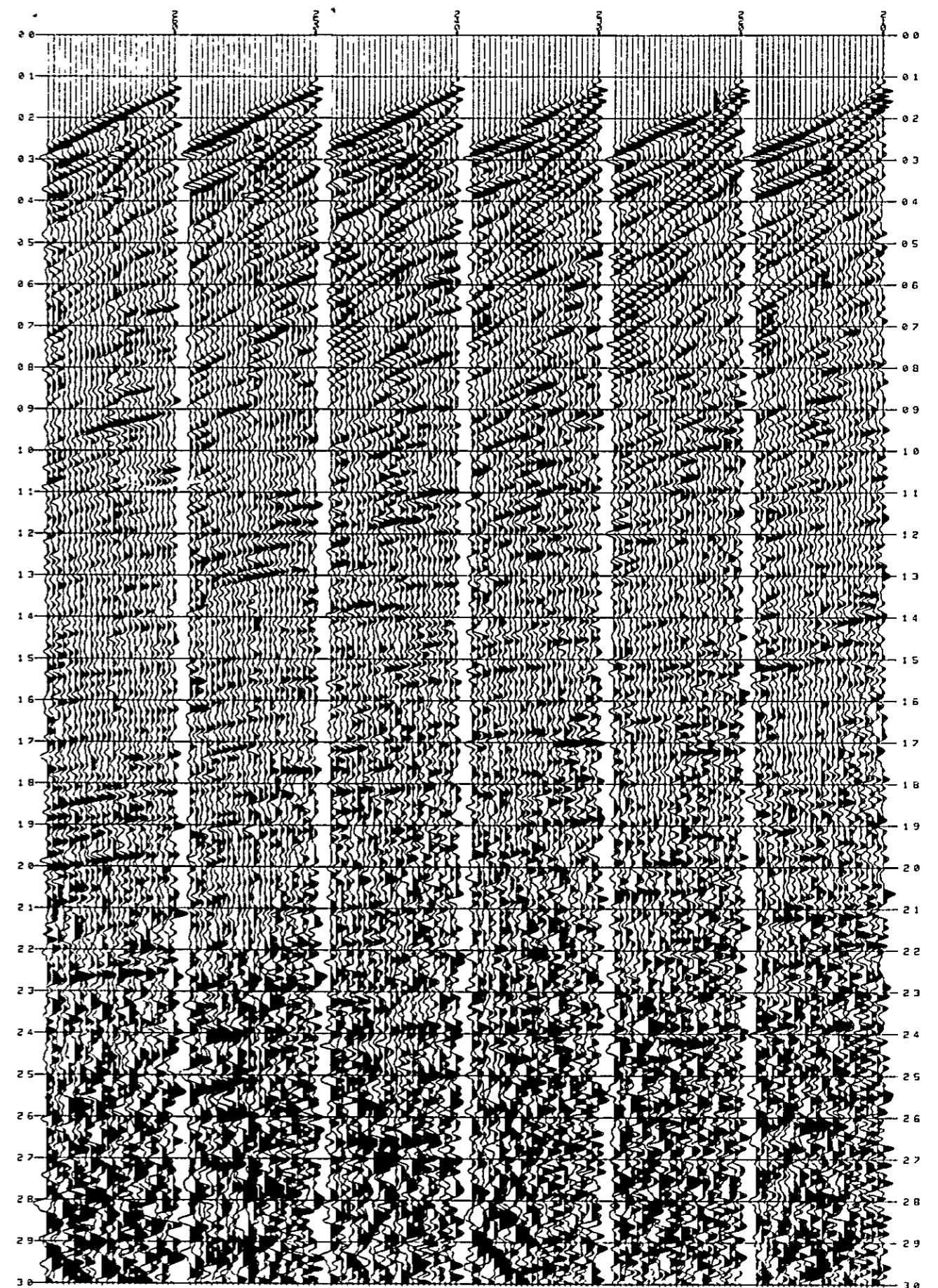
(9) (3)+FILTER (40-200 HZ)



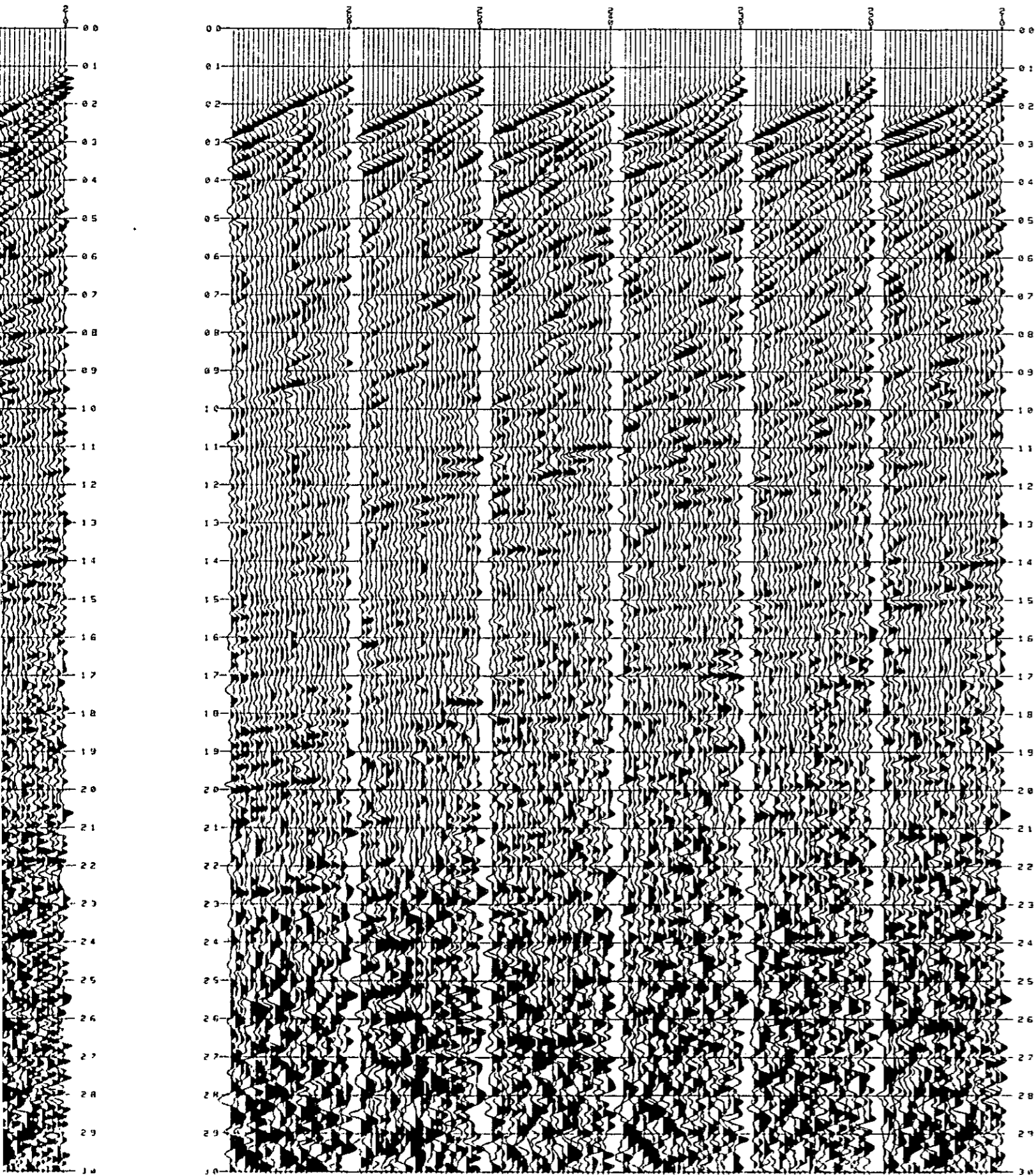
(8) (3)+FILTER (30-200 HZ)



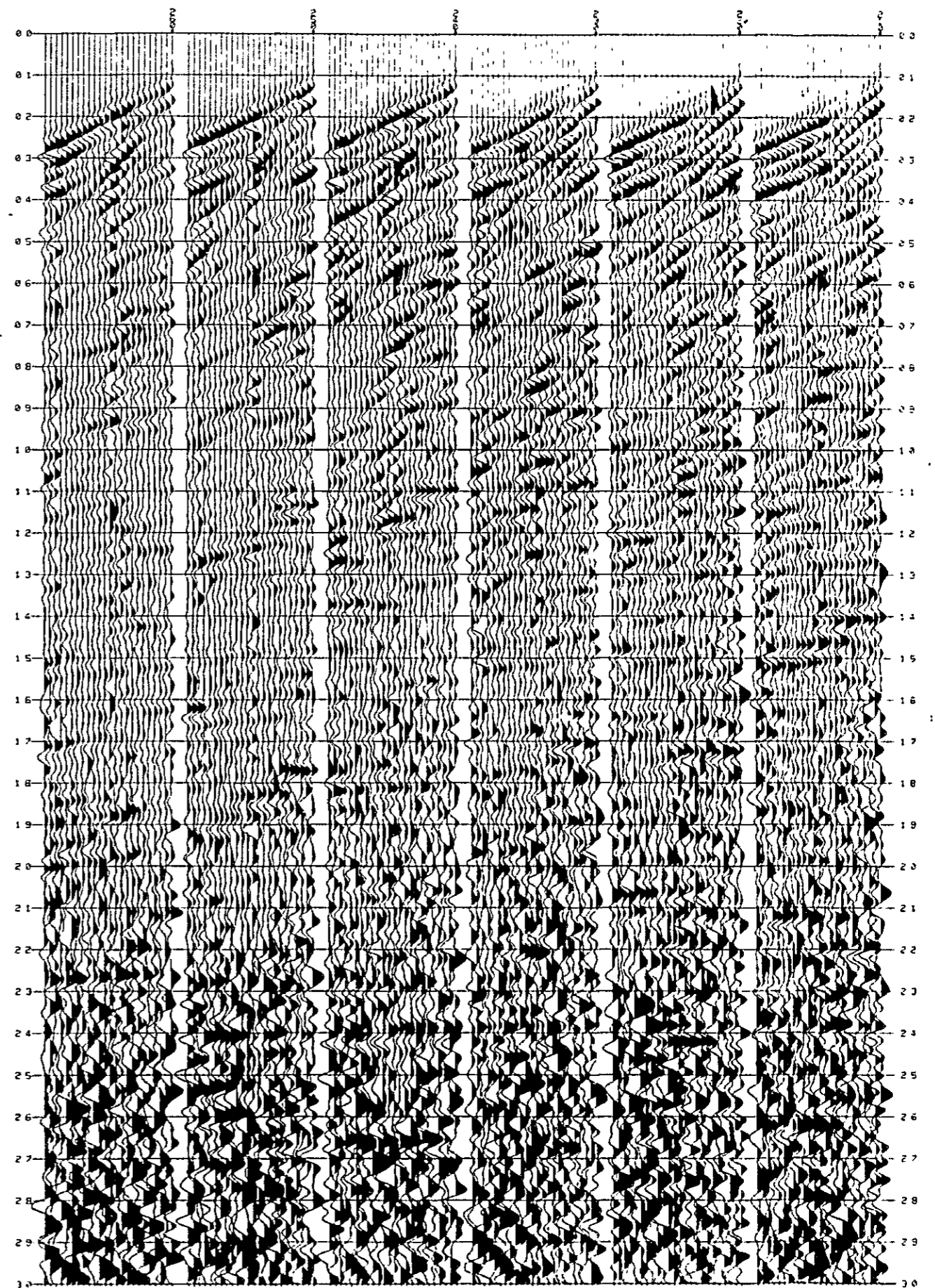
(7) (3)+FILTER (0-50 HZ)



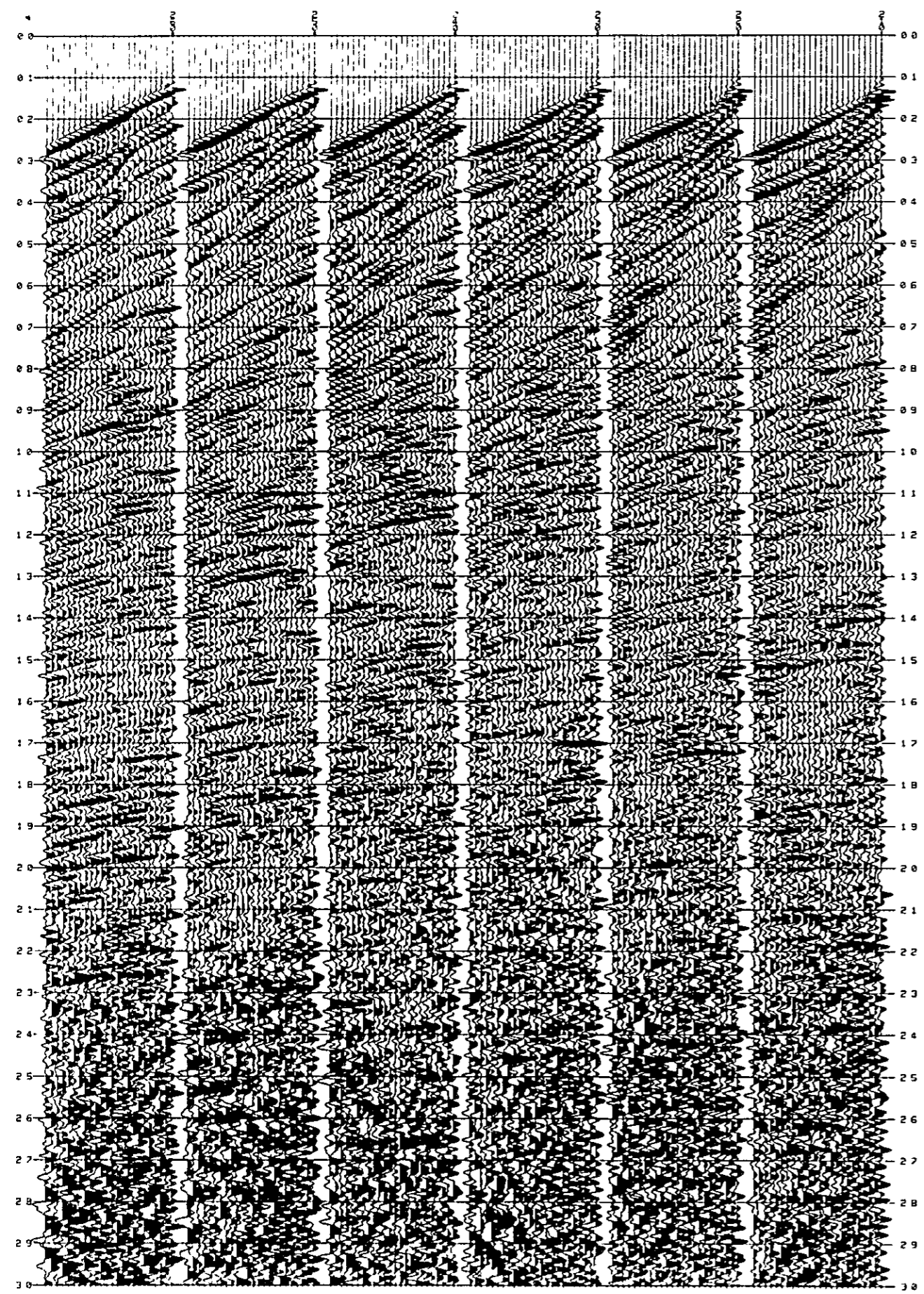
(6) (3)+FILTER (0-40 HZ)



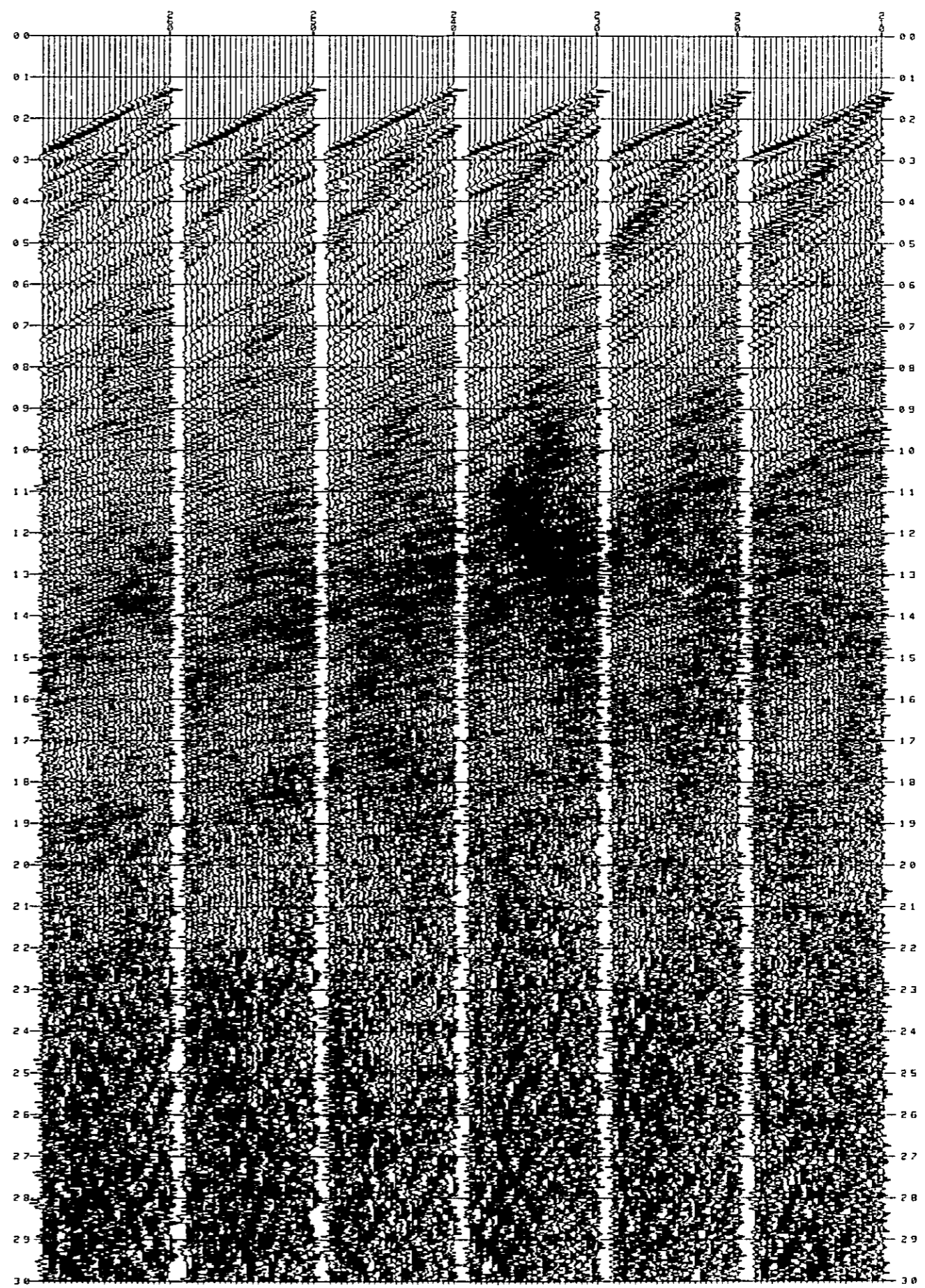
(5) (3)+FILTER (0-30 HZ)



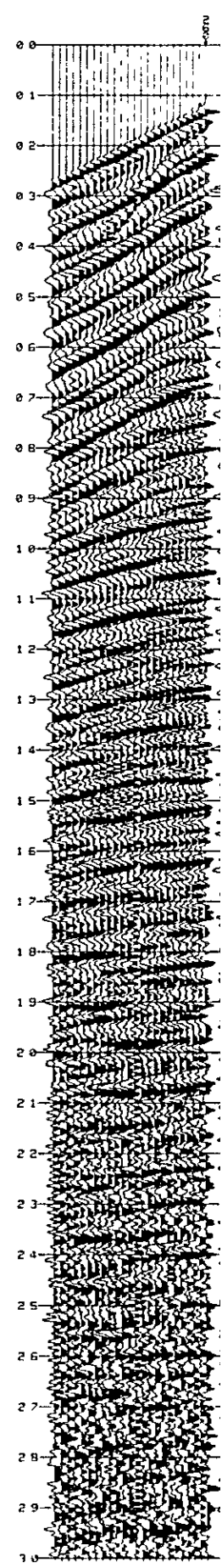
(4) (3) + FILTER (8-70 HZ)



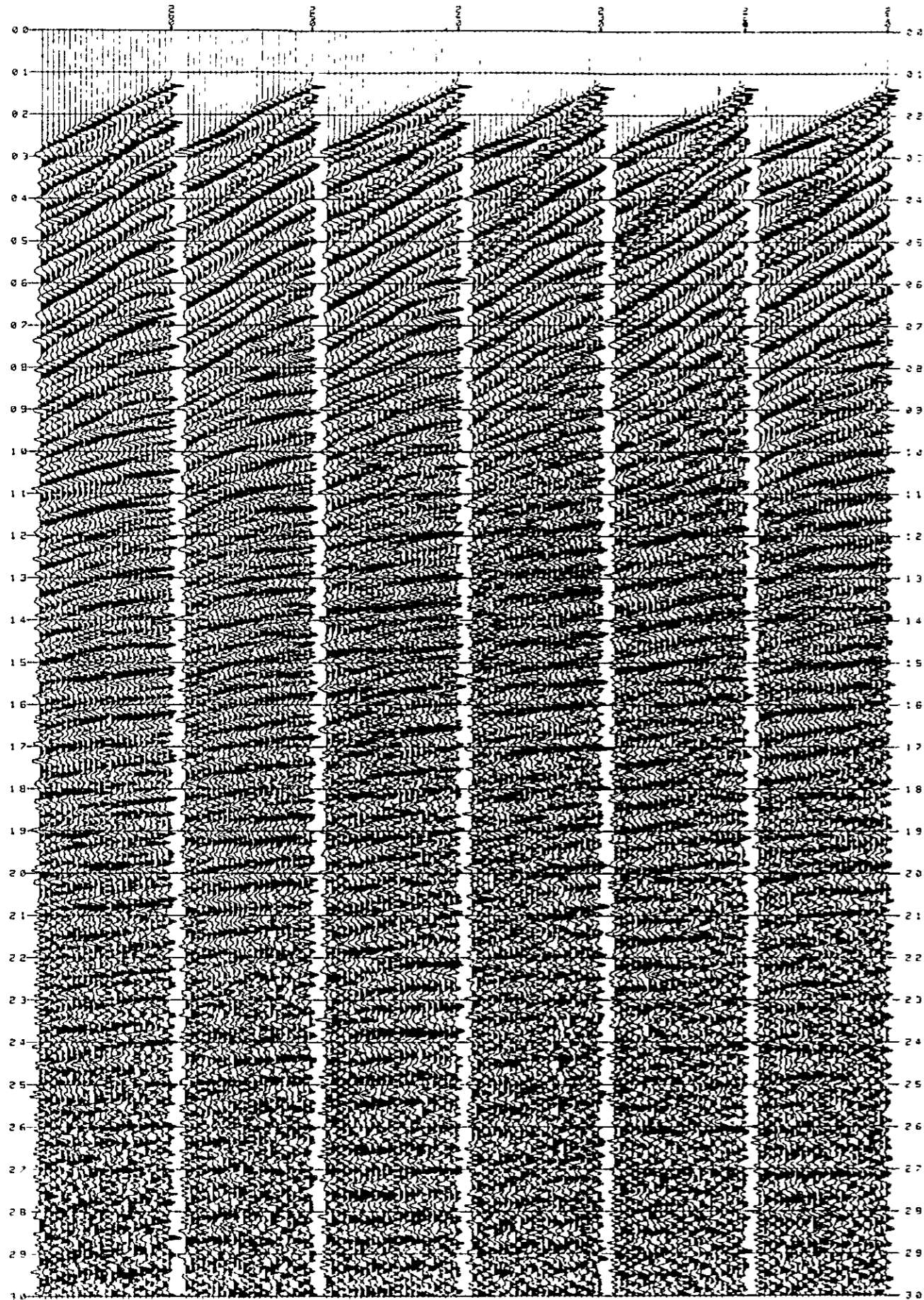
(3) (2) + DECONVOLUTION



(2) (1) + A/A



(2) (1) + AAC (150 ms)



(1) CDP DATA (ORIGINAL)

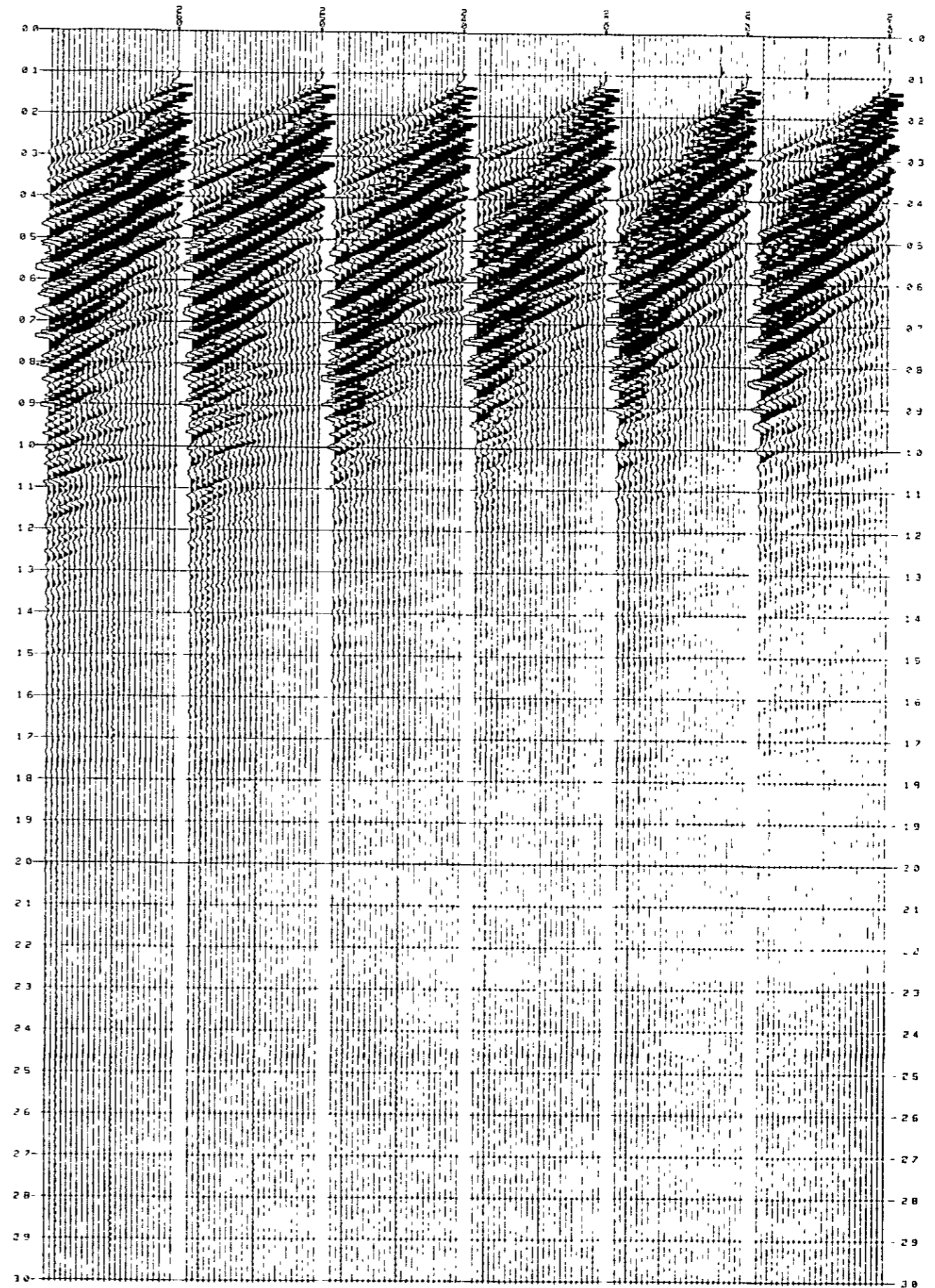
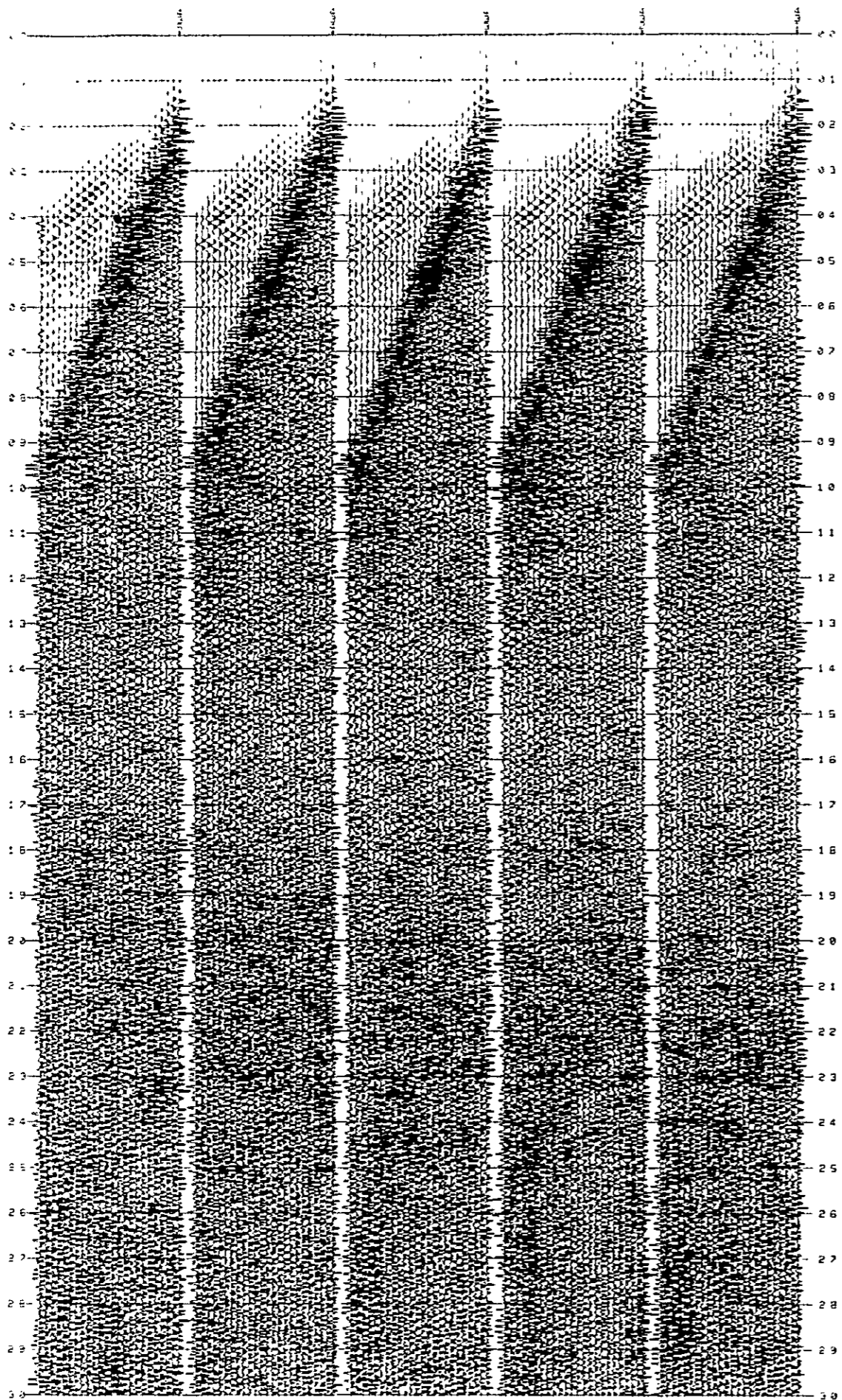


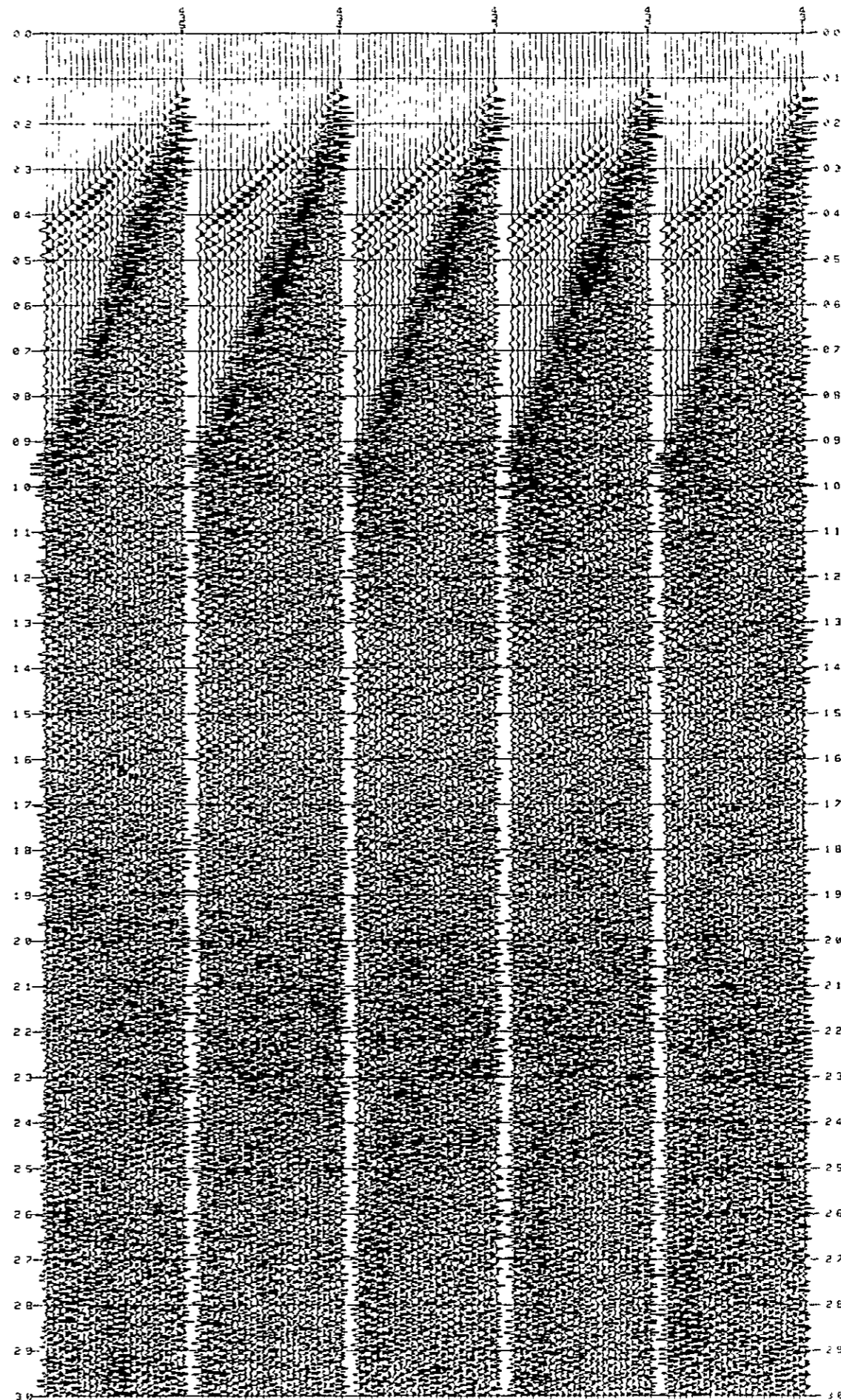
Fig. III - 2 - 14

DECONVOLUTION AND FREQUENCY ANALYSIS, LINE T1-AB25

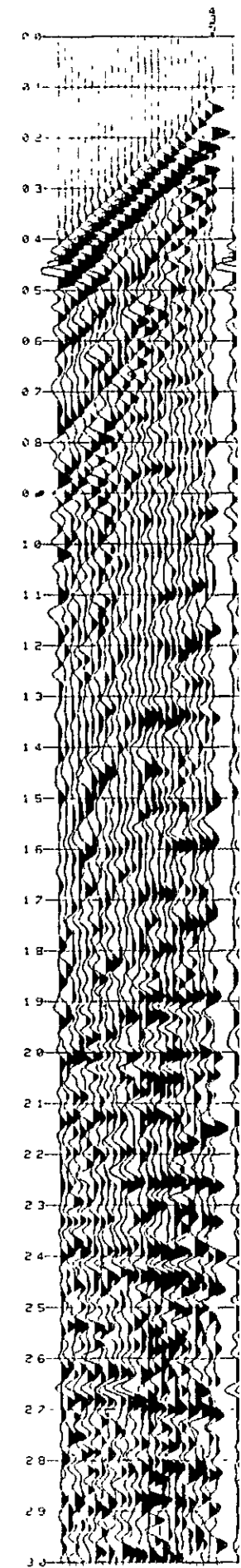
(7) (3)+FILTER (40-200 HZ)



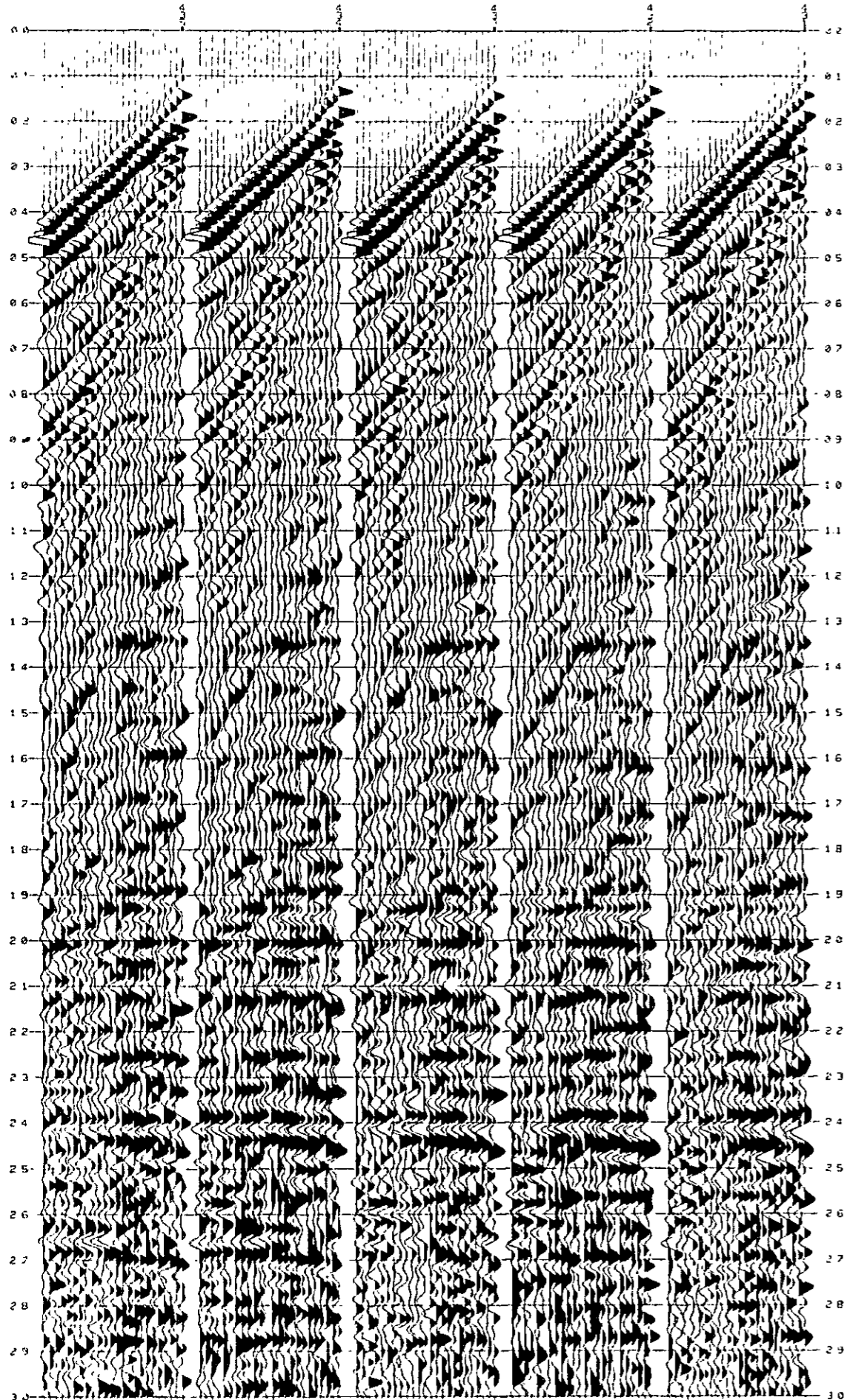
(6) (3)+FILTER (30-200 HZ)



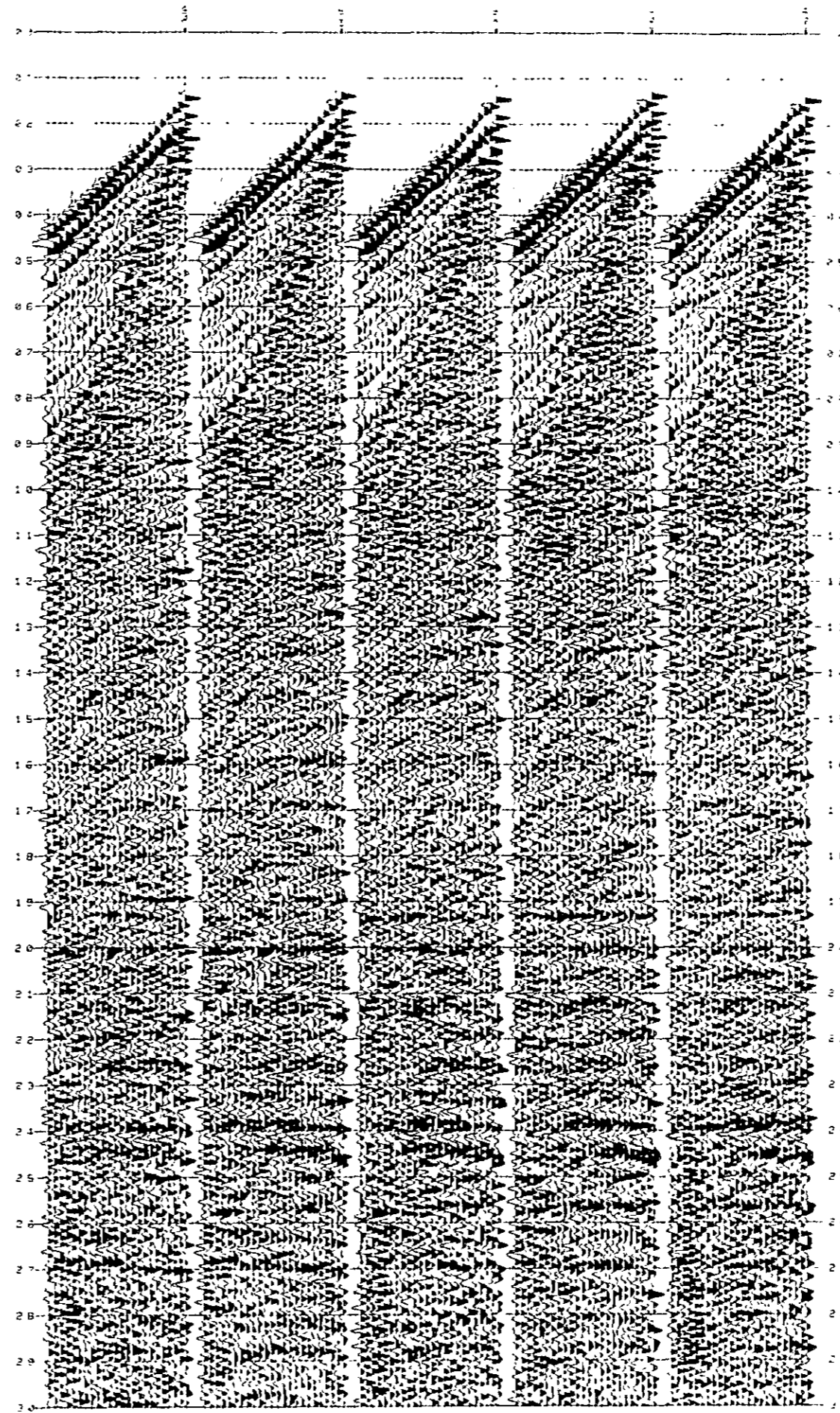
(5) (3)+FILTER



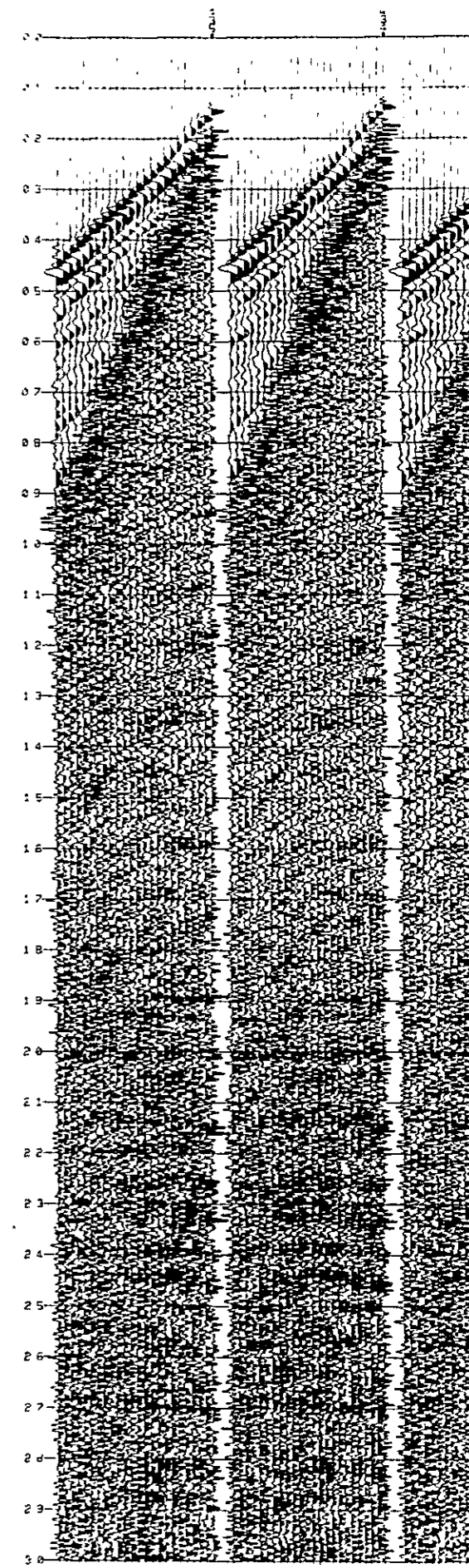
(5) (3)+FILTER (0-30 HZ)



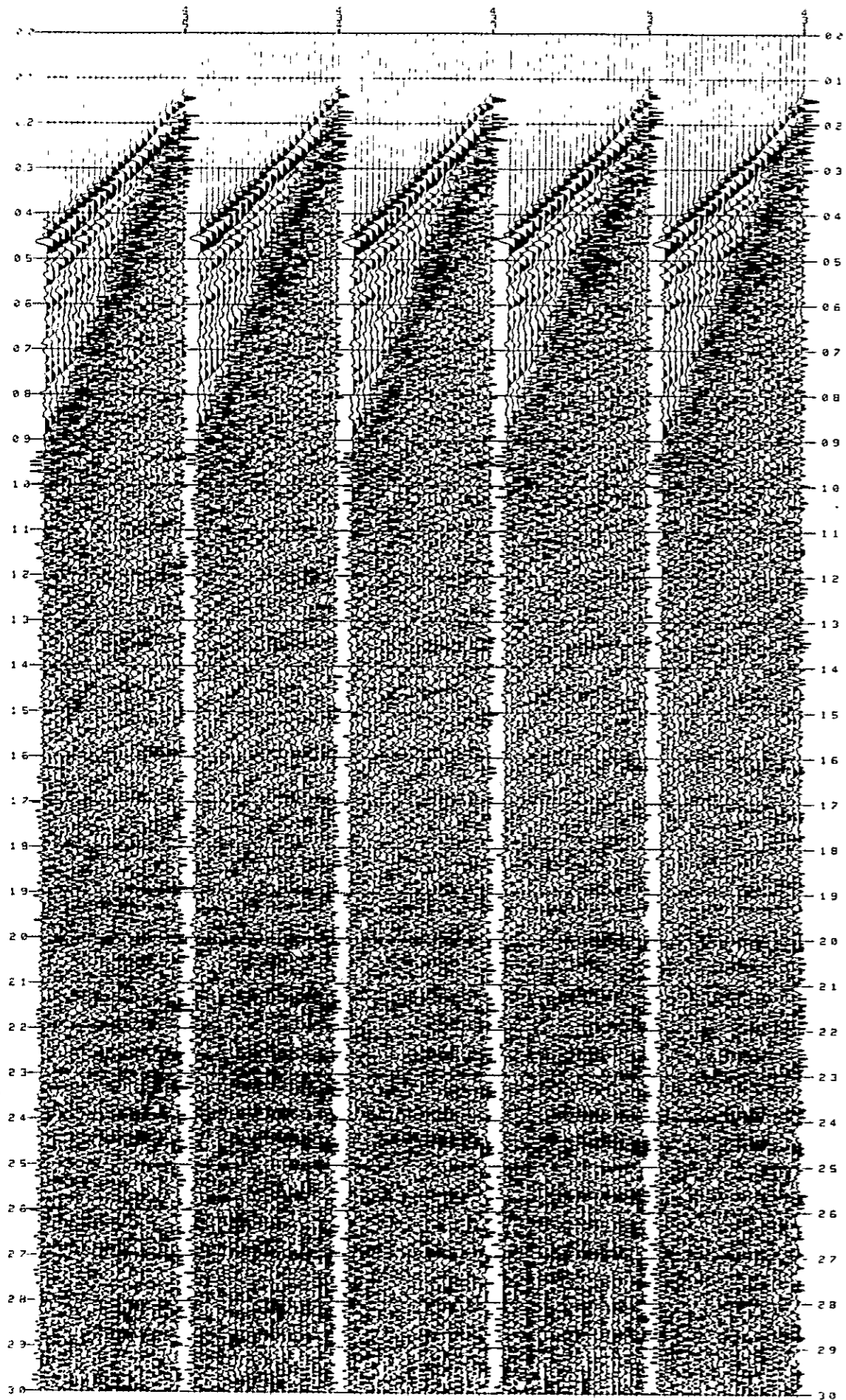
(4) (3)+FILTER (8-70 HZ)



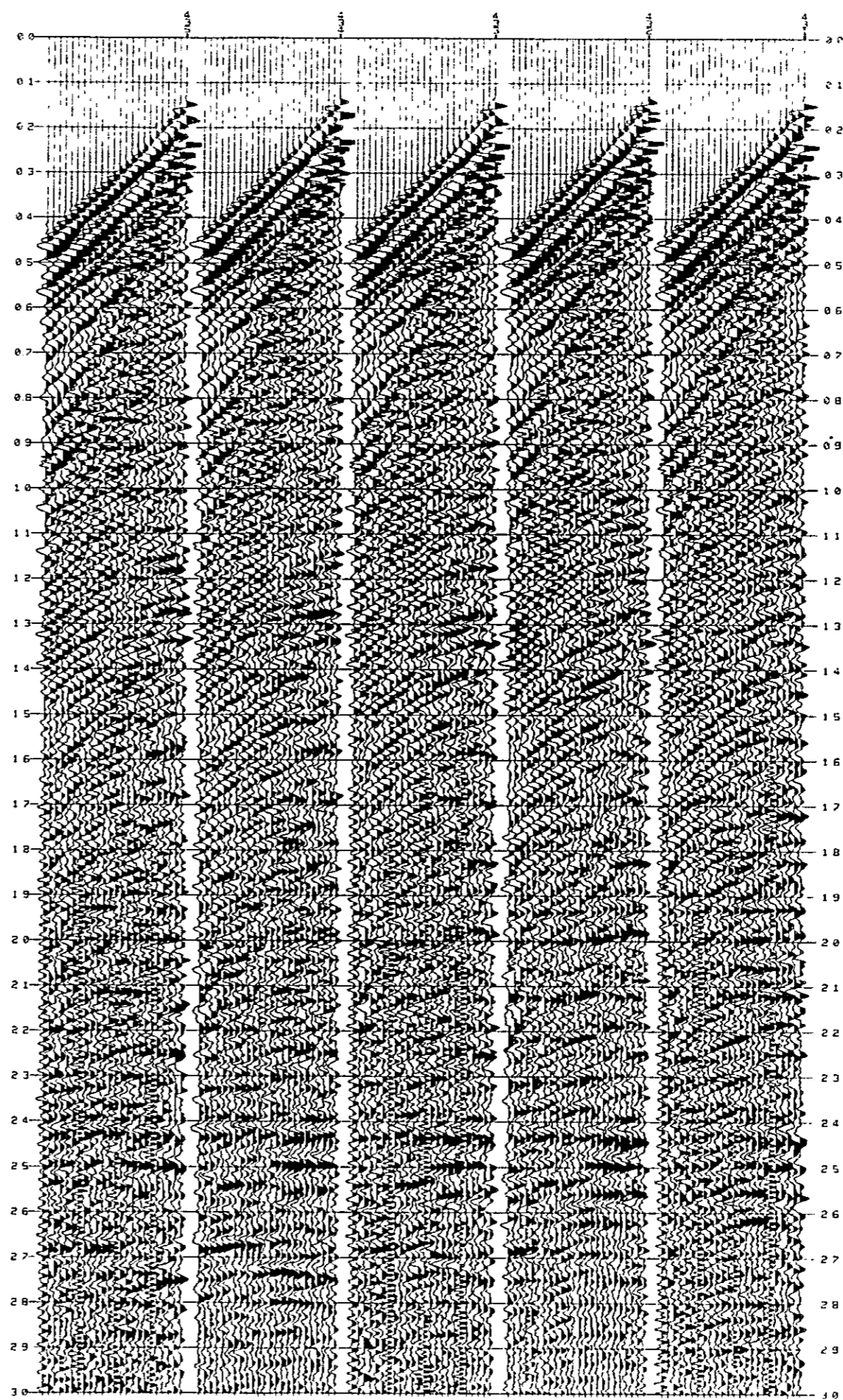
(3) (2)+DECONVOLUTION



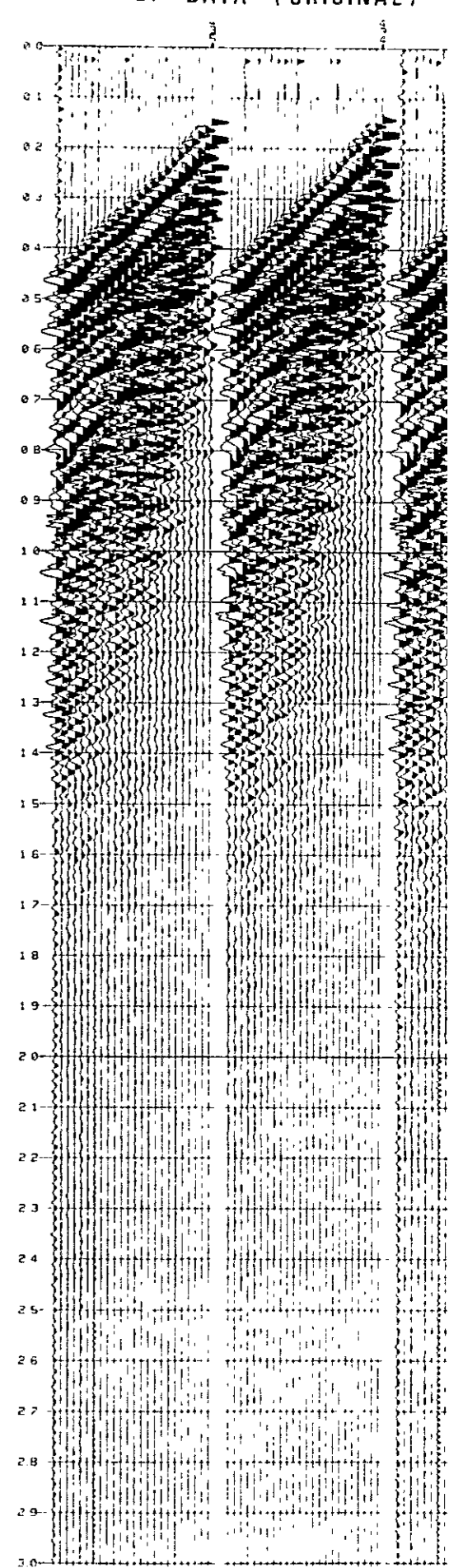
(3) (2) + DECONVOLUTION



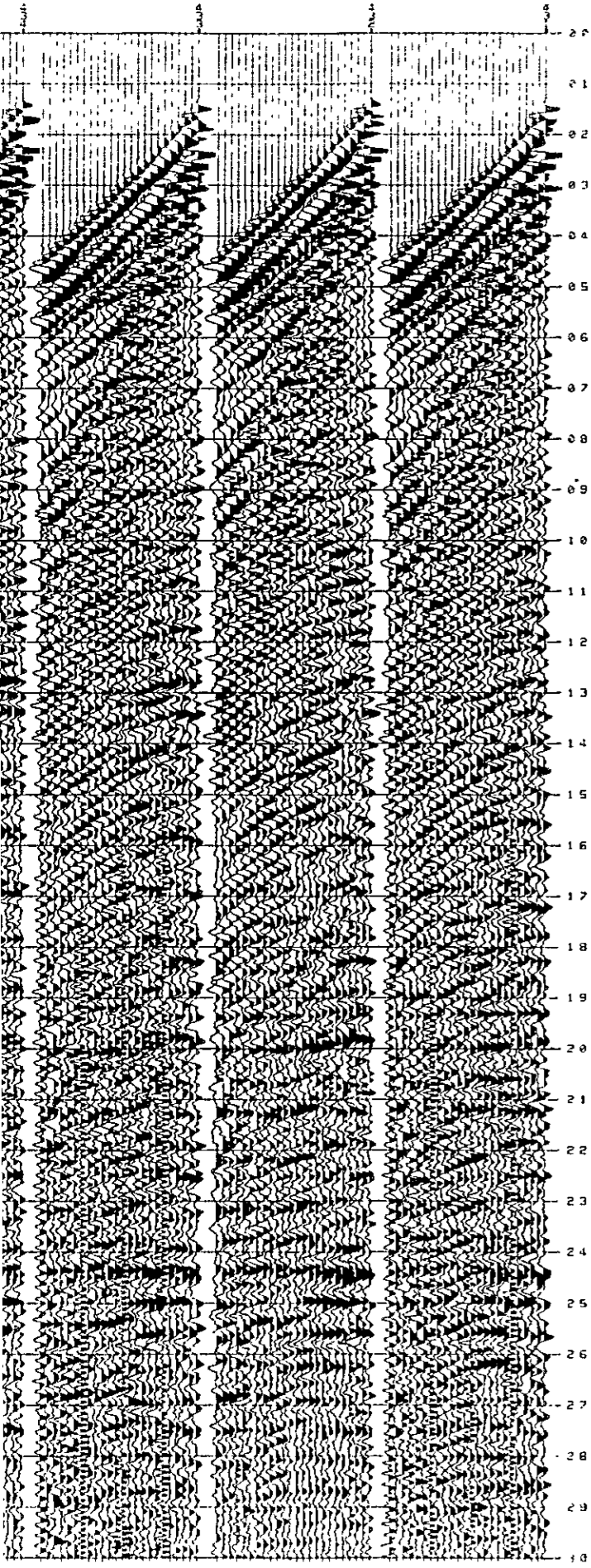
(2) (1) + AAC (150 ms)



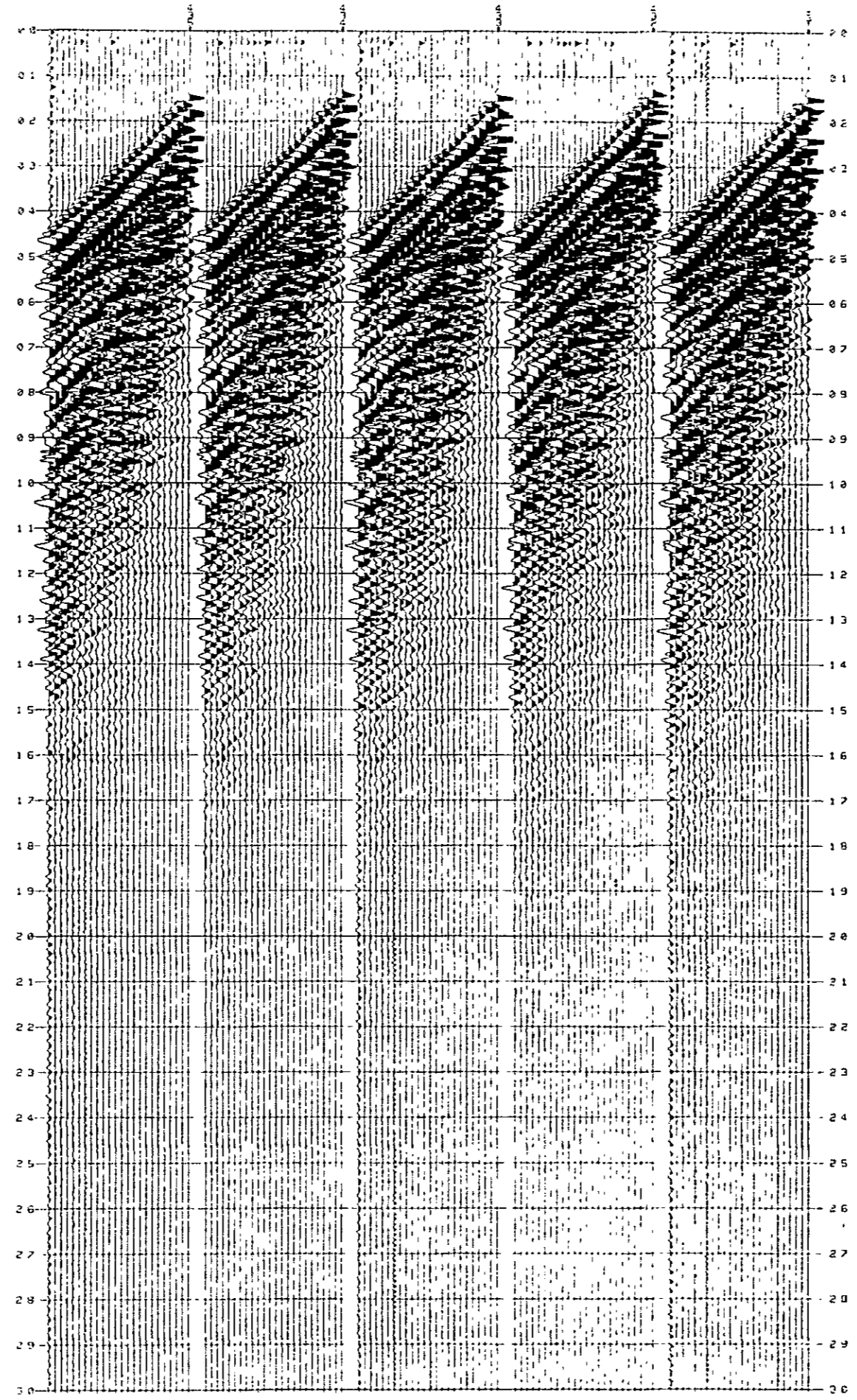
(1) CDP DATA (ORIGINAL)



as)



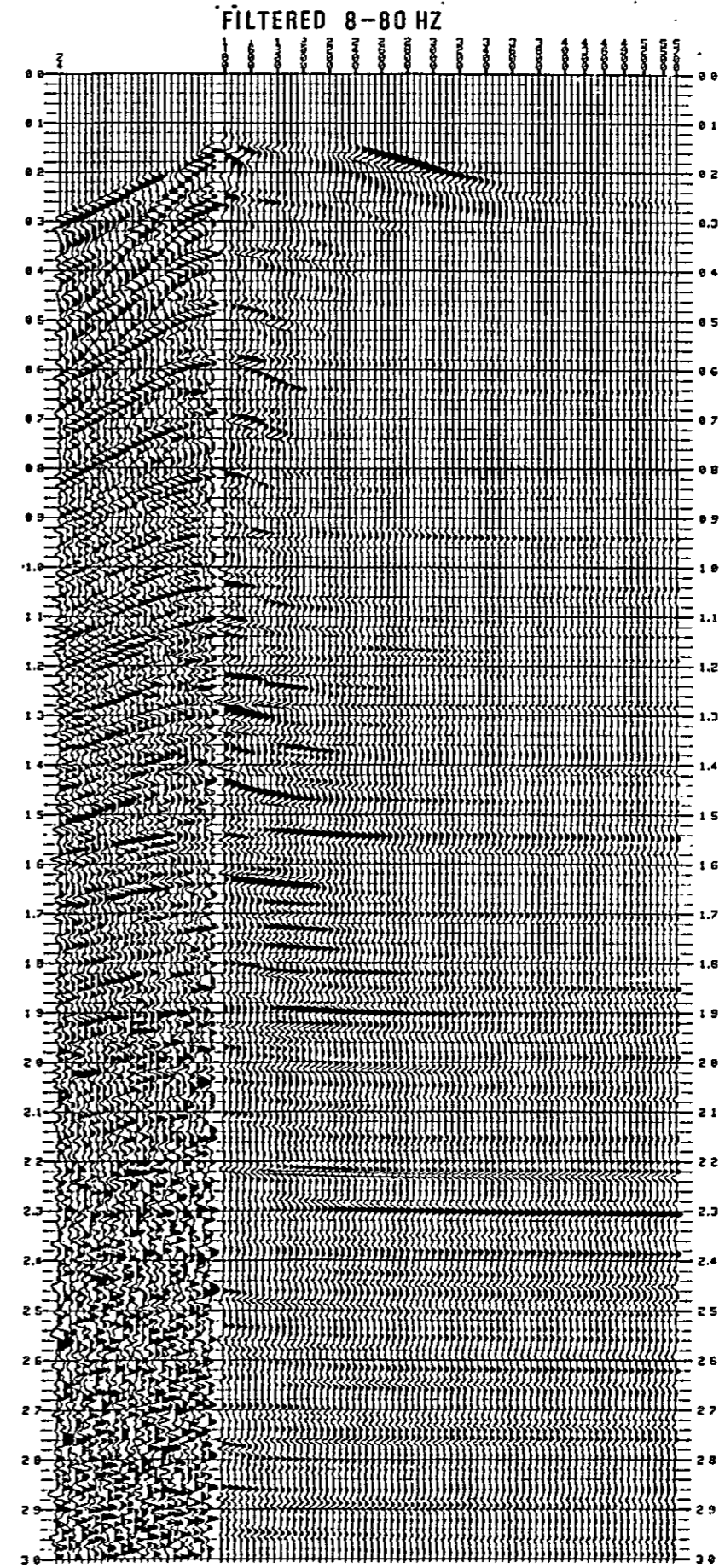
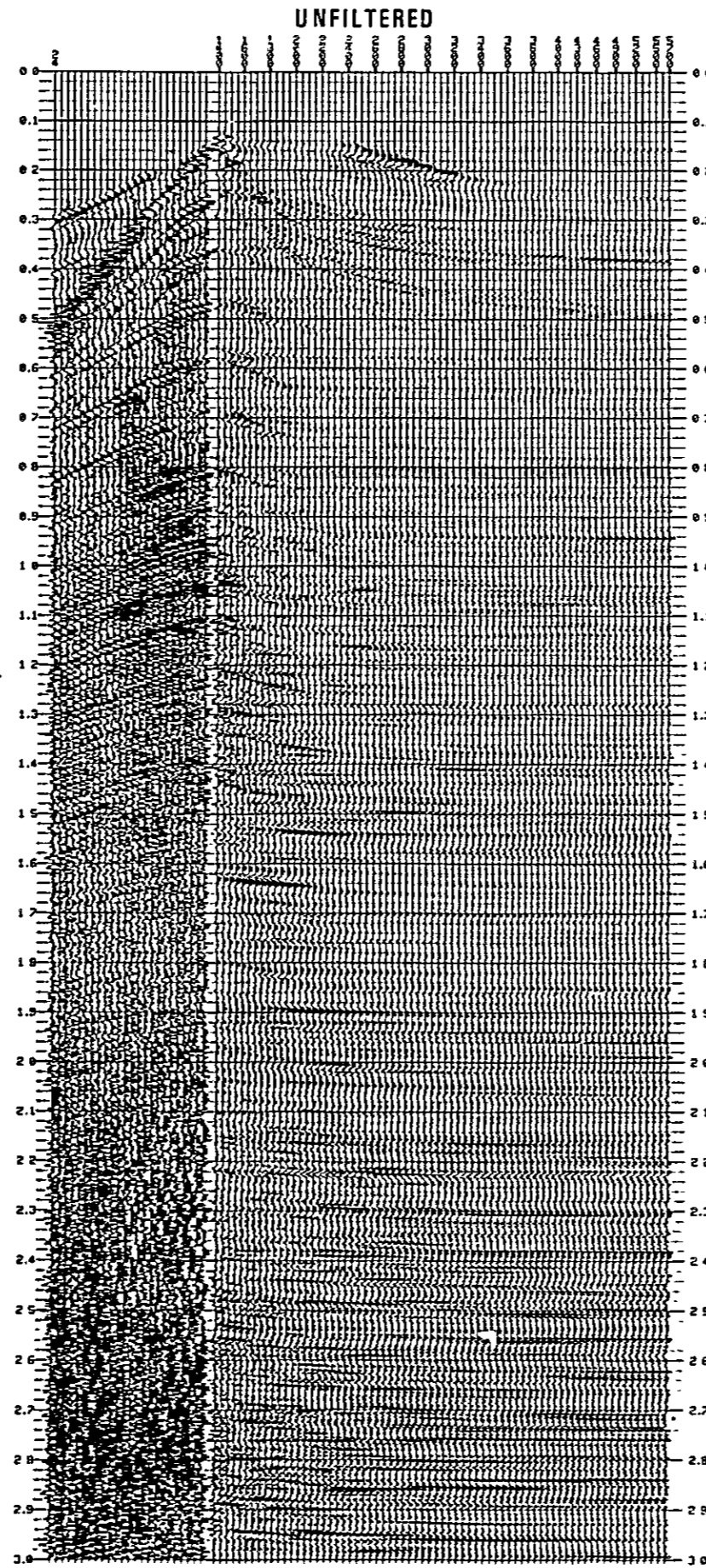
(1) CDP DATA (ORIGINAL)



..... 02215
..... 11011Y (10)
..... 11-402
.....

Fig. III-2-15

CONSTANT VELOCITY SCAN T1-AB 12.5



 * T1-AB *
 * LINE VSCANTES CDP= 24 SP= 1 *
 * VELOCITY ANALYSIS (24 FOLD) *

 * T1-AB *
 * LINE VSCANTES CDP= 24 SP= 1 *
 * VELOCITY ANALYSIS (24 FOLD) *

Fig. II-2-16

POWER SPECTRUM OF NEAR TRACE

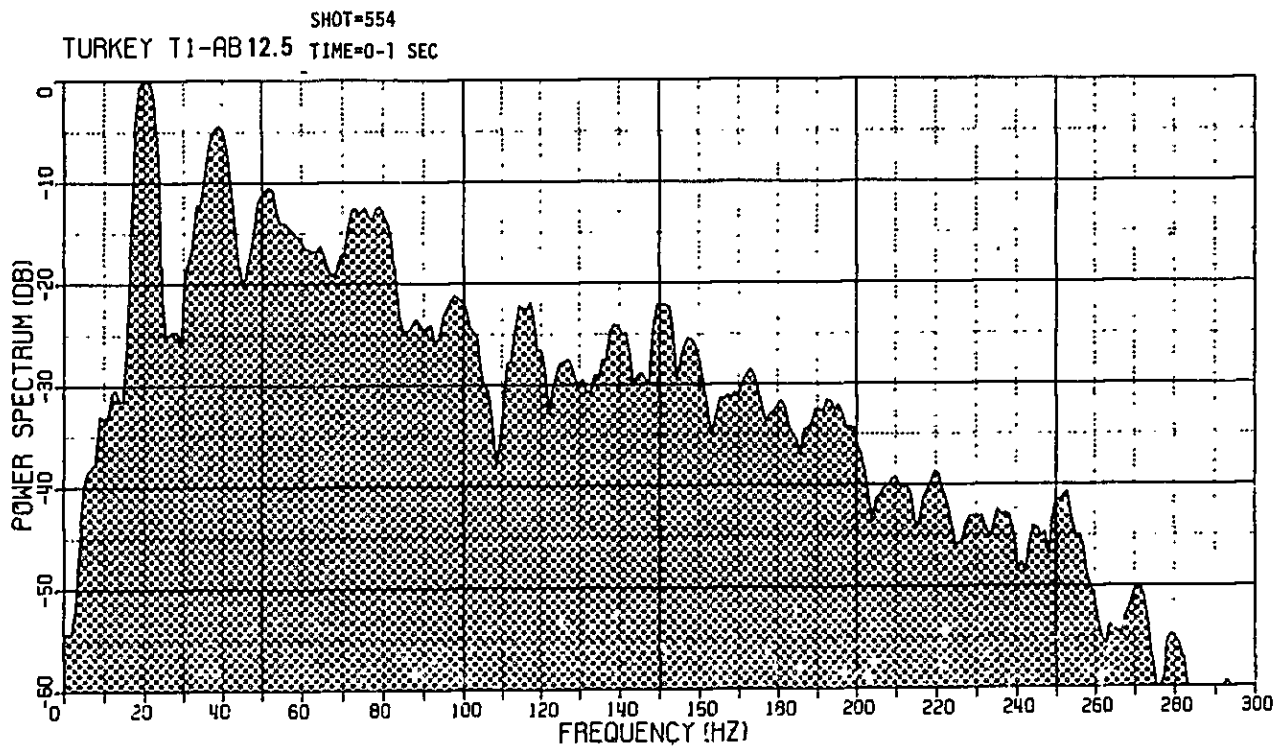
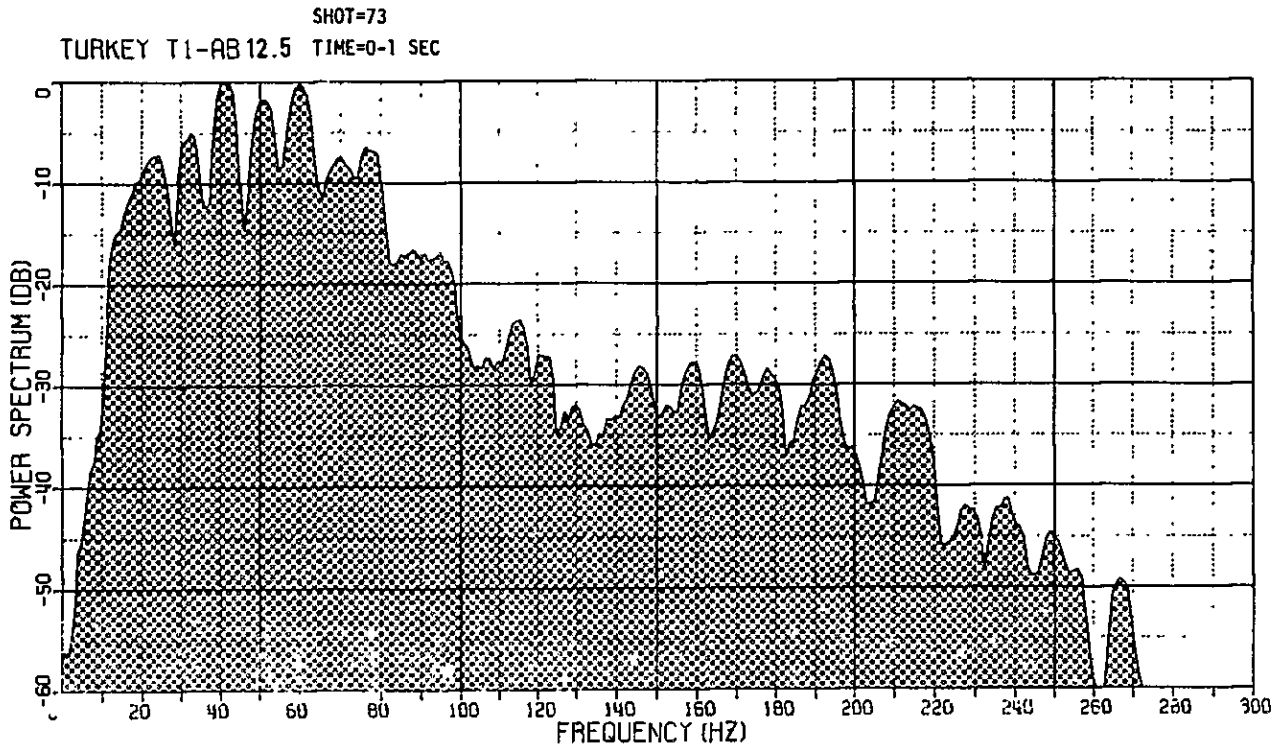


Fig. III-2-17a

POWER SPECTRUM OF NEAR TRACE

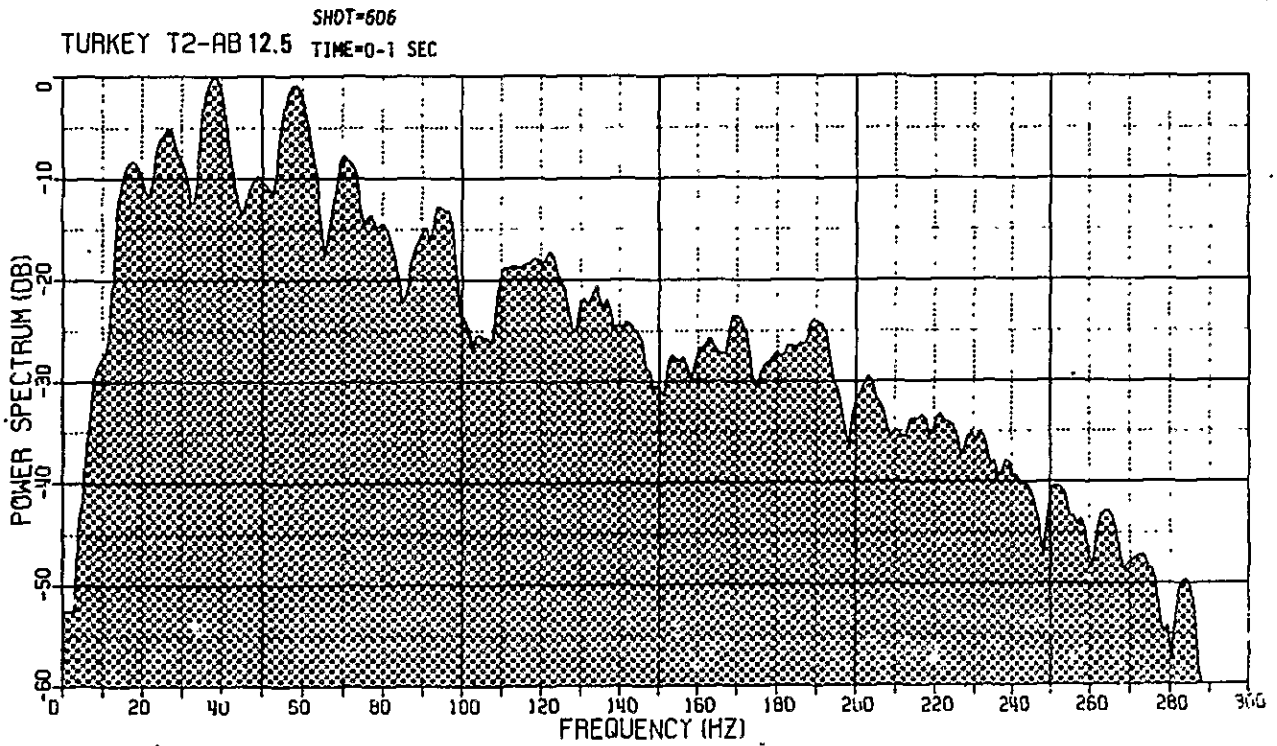
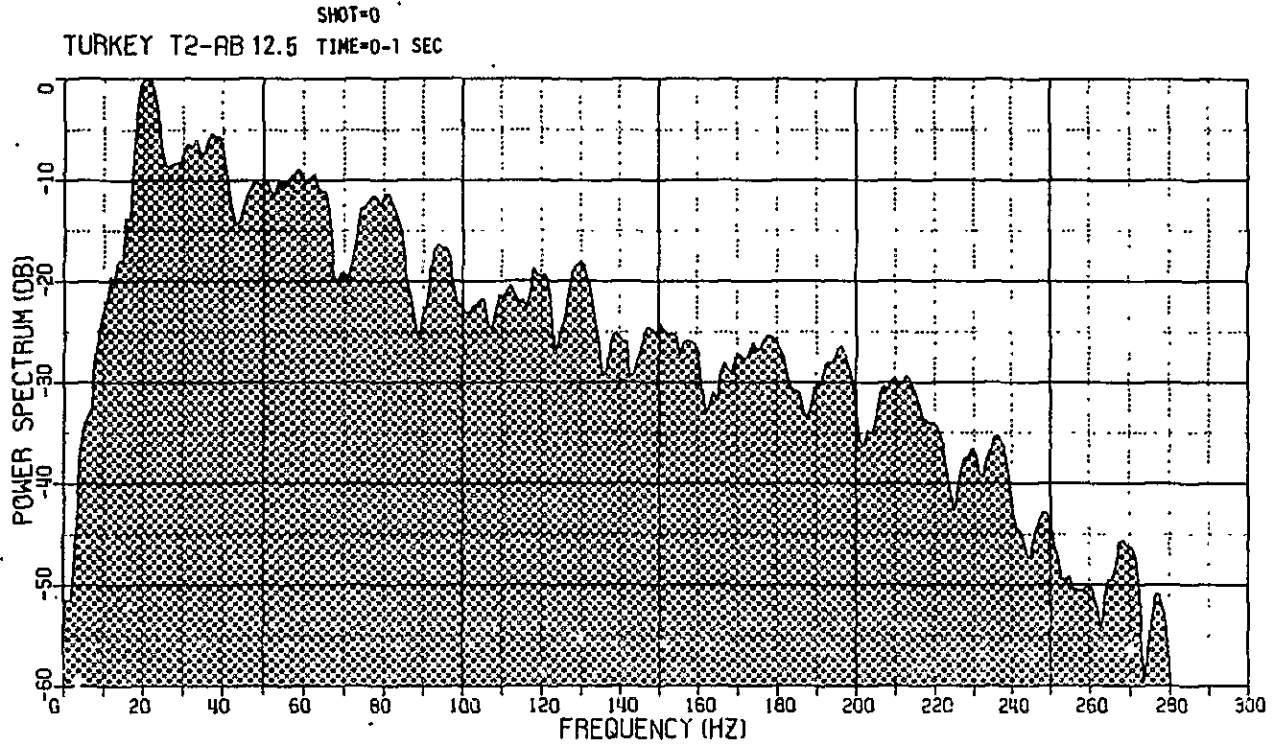


Fig. III-2-17b

POWER SPECTRUM OF NEAR TRACE

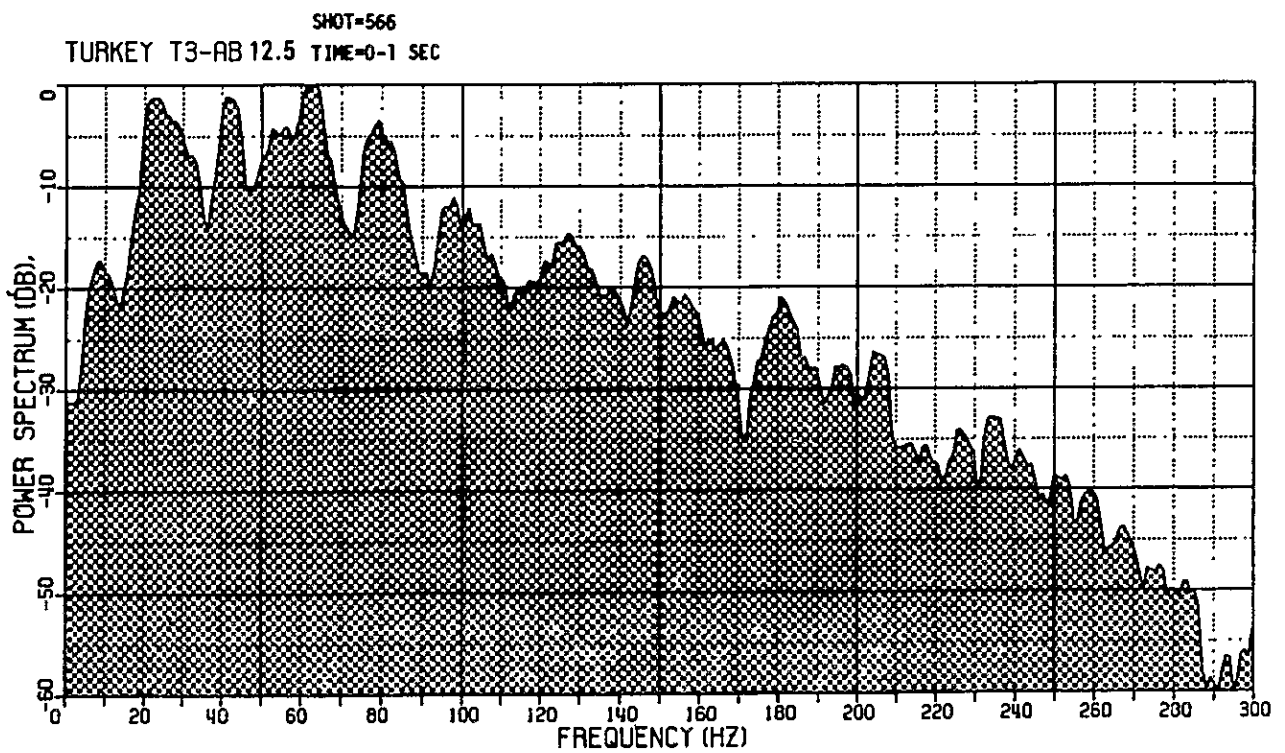
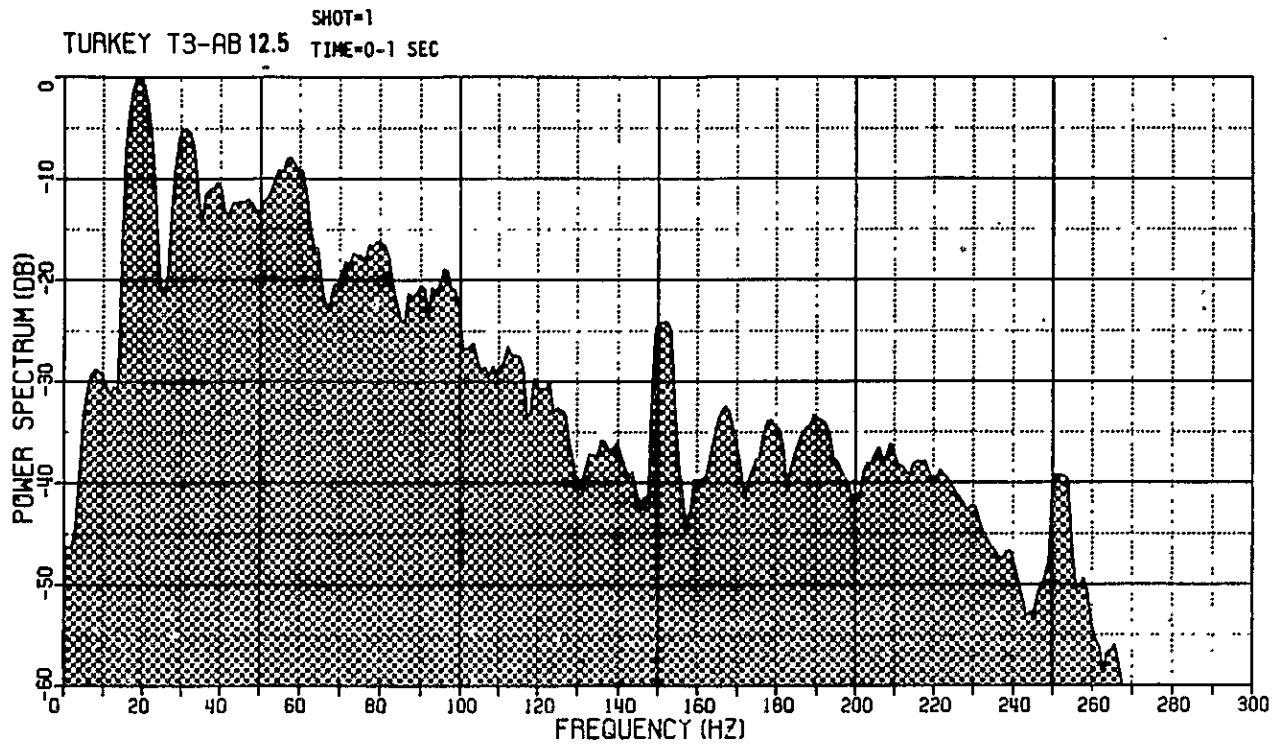


Fig. I-2-17c

100