

B: 640 km²

C: 220 km²

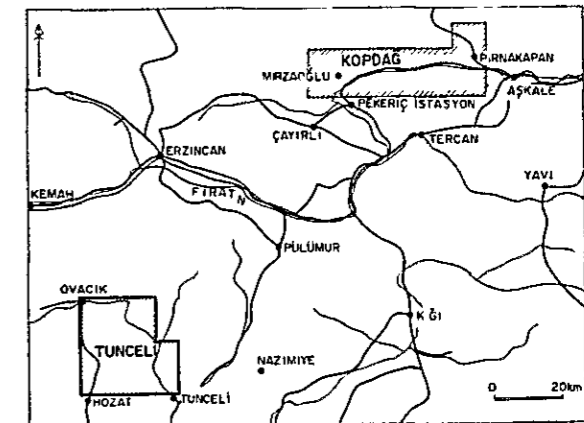
A: 115 km²



MINERAL RESEARCH AND EXPLORATION INSTITUTE
 GEOLOGICAL SURVEY
 OF
 TUNCELİ AND KOPDAĞ AREA, EASTERN TURKEY
 PHASE I

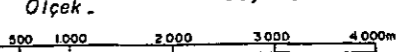
RECOMMENDATION MAP FOR TUNCELİ AREA IN 1978
 1978 YILINDA TUNCELİ ÖNERİLEN ÇALIŞMA ALANLARINI
 GÖSTEREN HARİTA

INDEX MAP



Preliminary photo-geological survey area

Scale 1 : 50,000



METAL MINING AGENCY OF JAPAN
 JAPAN INTERNATIONAL COOPERATION AGENCY
 JUNE 1978

LEGEND
 LEJAND

Recommended area
 Tavsiye edilen saha



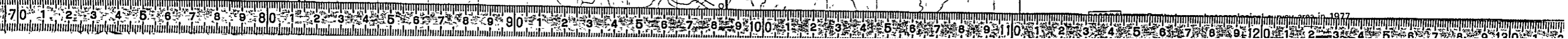
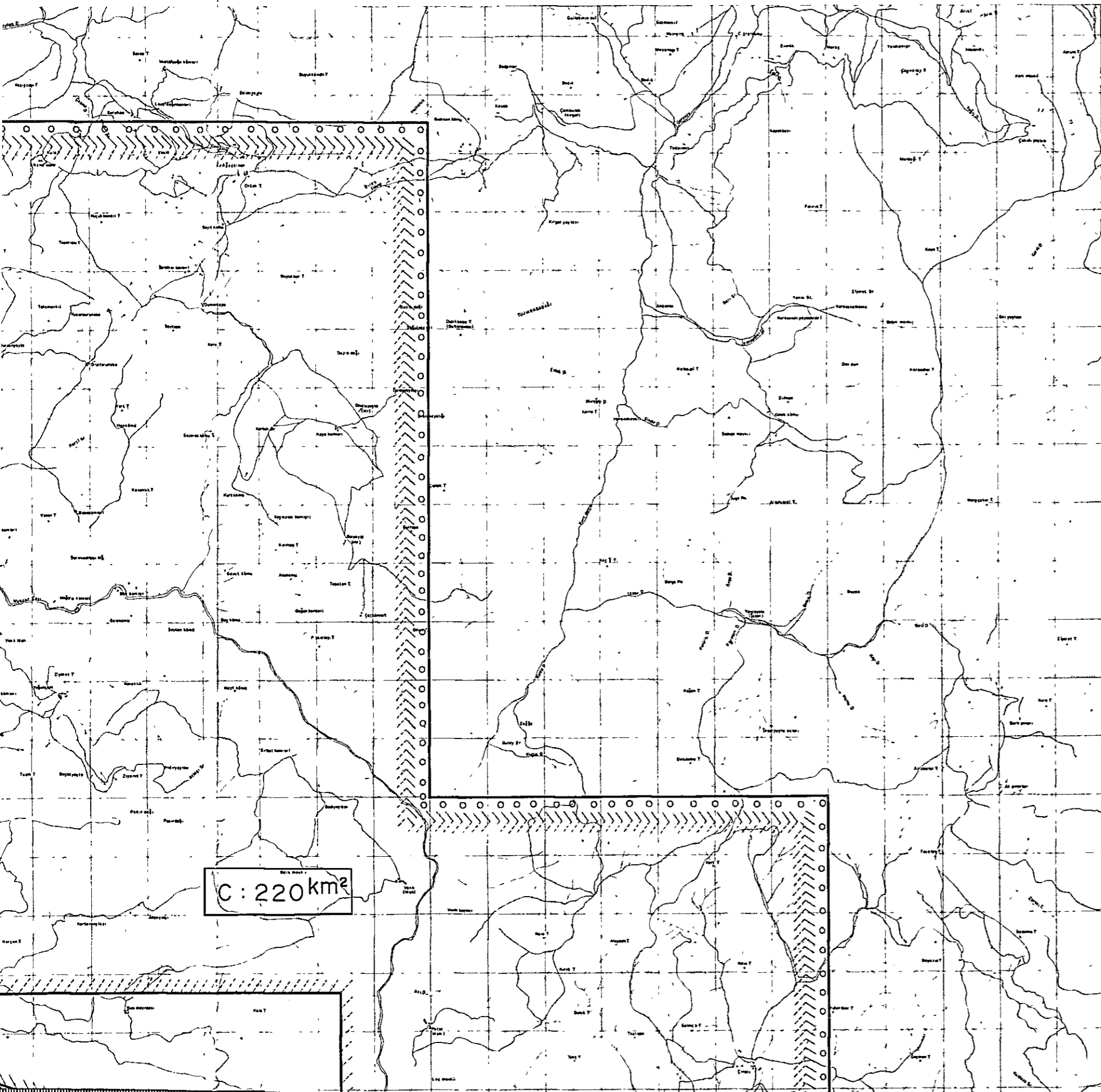
Detailed geological and geochemical survey area
 Detay jeoloji, mineraloji ve jeokimya çalışmalarından saha

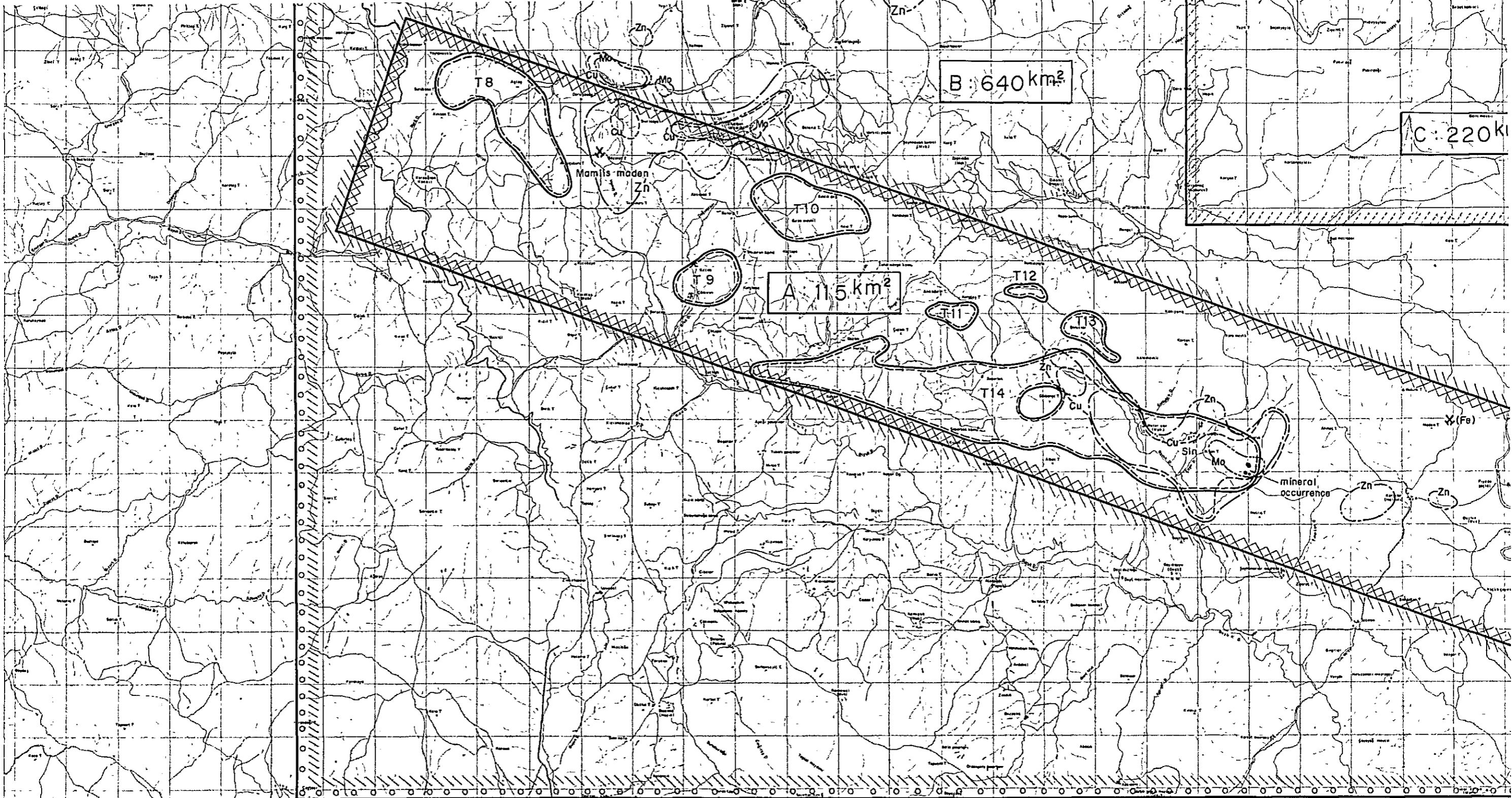


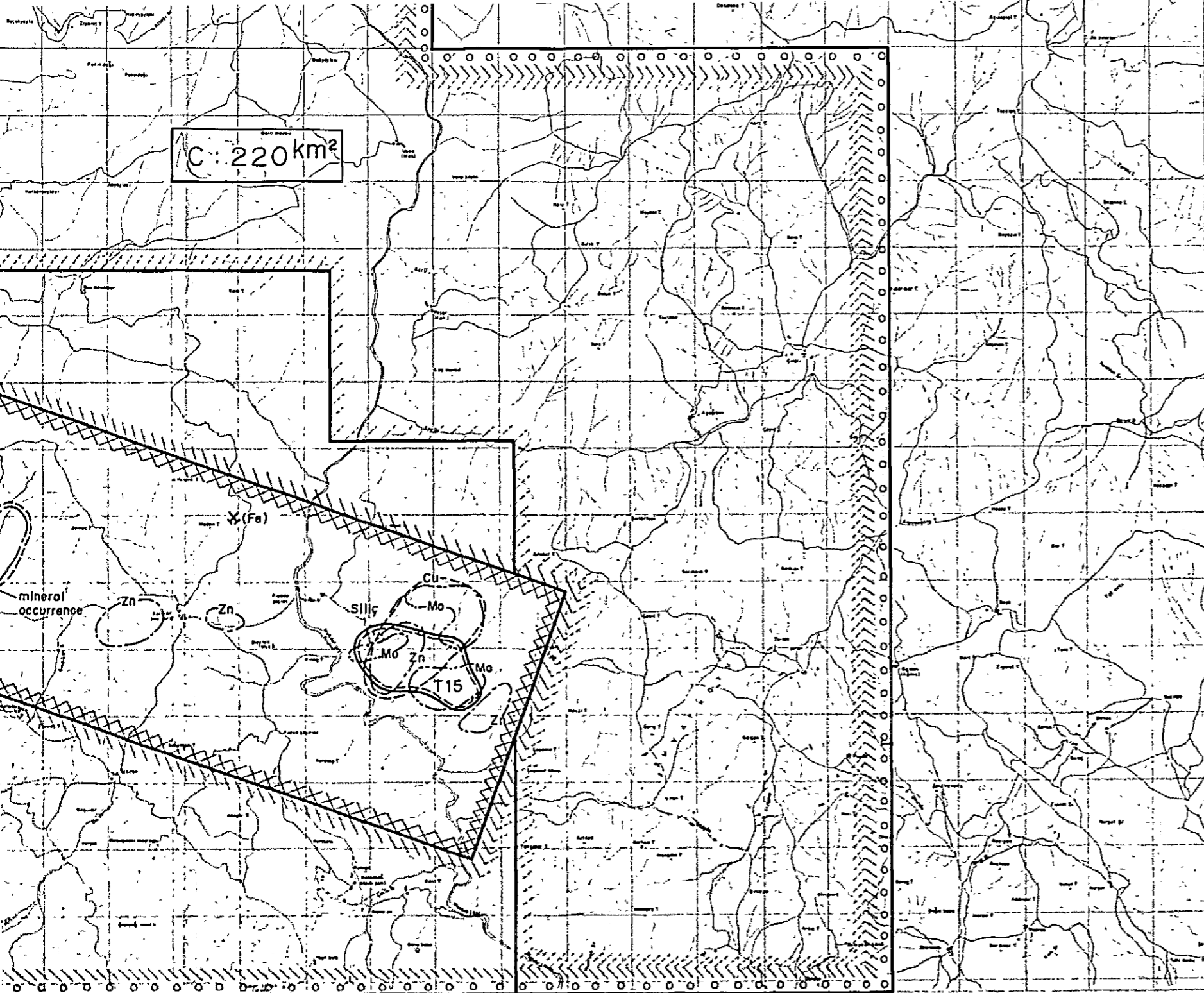
Reconnaissance geological survey area
 İstikşaf jeoloji, mineraloji çalışmalarından saha



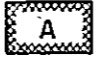

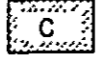
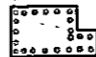




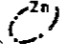

Reconnaissance geochemical survey area
 İstikşaf jeokimya çalışmalarından saha



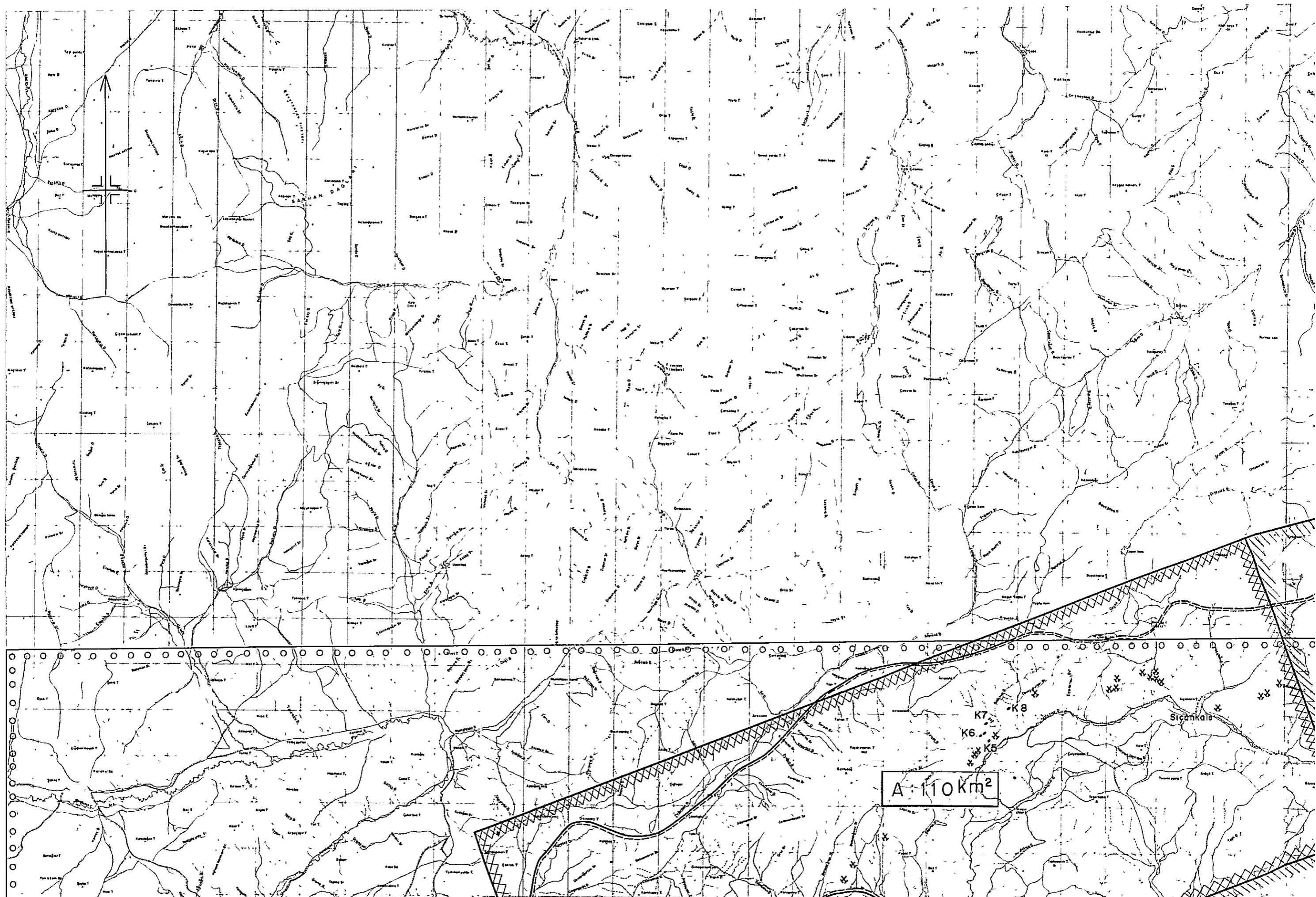




LEGEND
LEJAND

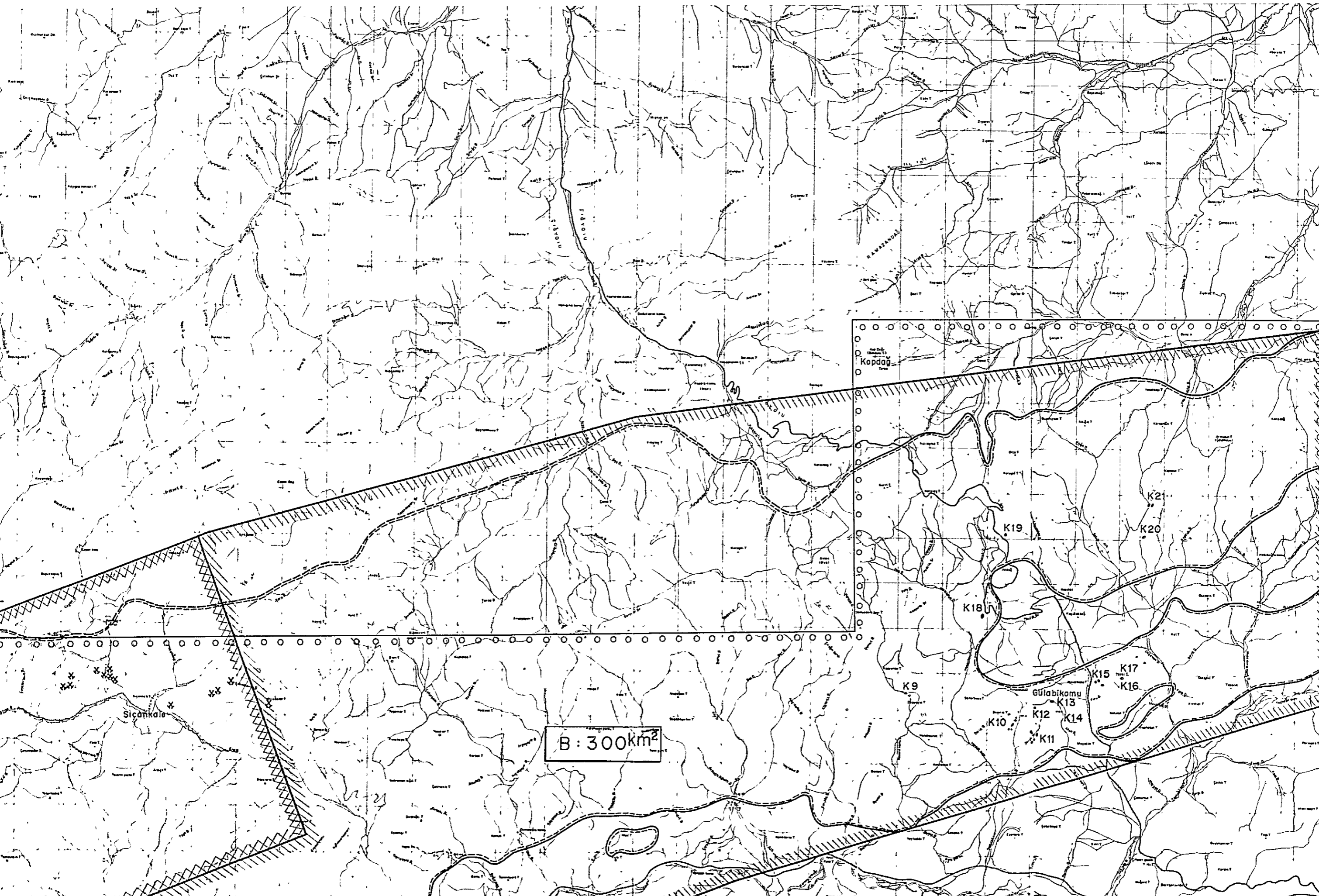
- Recommended area
Tavsiye edilen saha
-  Detailed geological and geochemical survey area
Detay jeoloji, mineraloji ve jeokimya çalışmaları istenen saha
 -  Reconnaissance geological survey area
İstikşaf jeoloji, mineraloji çalışmaları istenen saha
 -  Reconnaissance geochemical survey area
İstikşaf jeokimya çalışmaları istenen saha
 -  Preliminary photogeological survey area in 1977
1977 yılında fotojeolojik ön çalışmaları istenen saha
 -  Alteration area (T1 ~ 15)
Alterasyon saha
 -  Mineral occurrence
Maden zuhurları
 -  Mine
Maden
 -  Geochemical anomaly area (Cu > 150)
Jeokimyasal anomali saha
 -  Geochemical anomaly area (Zn > 400)
Jeokimyasal anomali saha
 -  Geochemical anomaly area (Mo > 10)
Jeokimyasal anomali saha





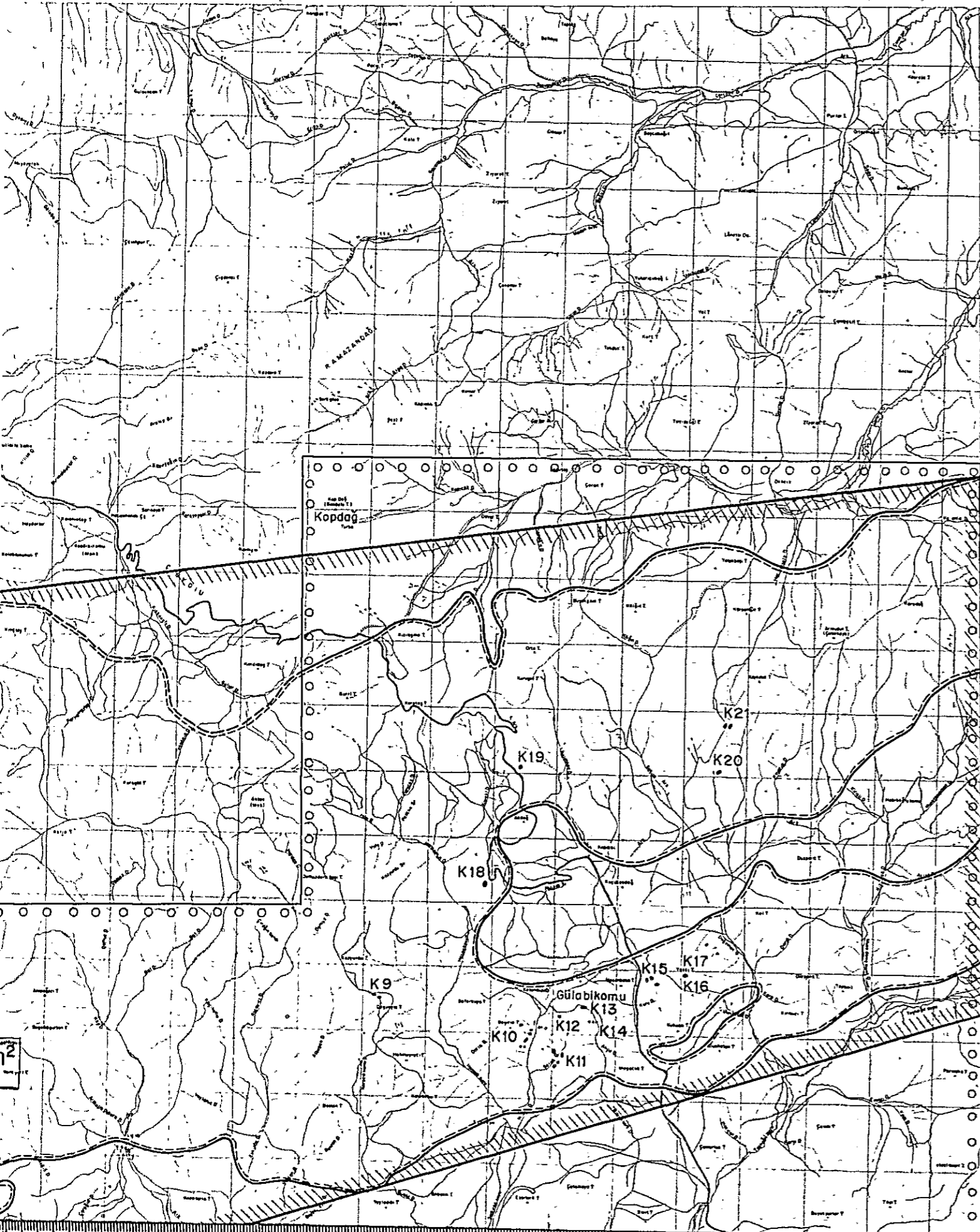
A: 110 km²





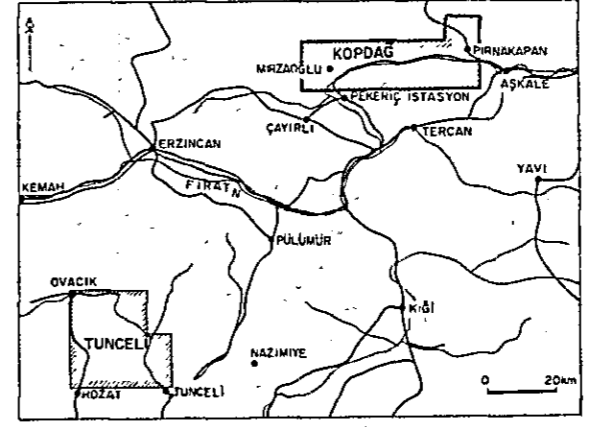
B: 300km²





MINERAL RESEARCH AND EXPLORATION INSTITUTE
 GEOLOGICAL SURVEY
 OF
 TUNCELİ AND KOPDAĞ AREA, EASTERN TURKEY
 PHASE I
 RECOMMENDATION MAP FOR KOPDAĞ AREA IN 1978
 1978 YILINDA KOPDAĞ ÖNERİLEN ÇALIŞMA ALANLARINI
 GÖSTEREN HARİTA


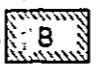


INDEX MAP



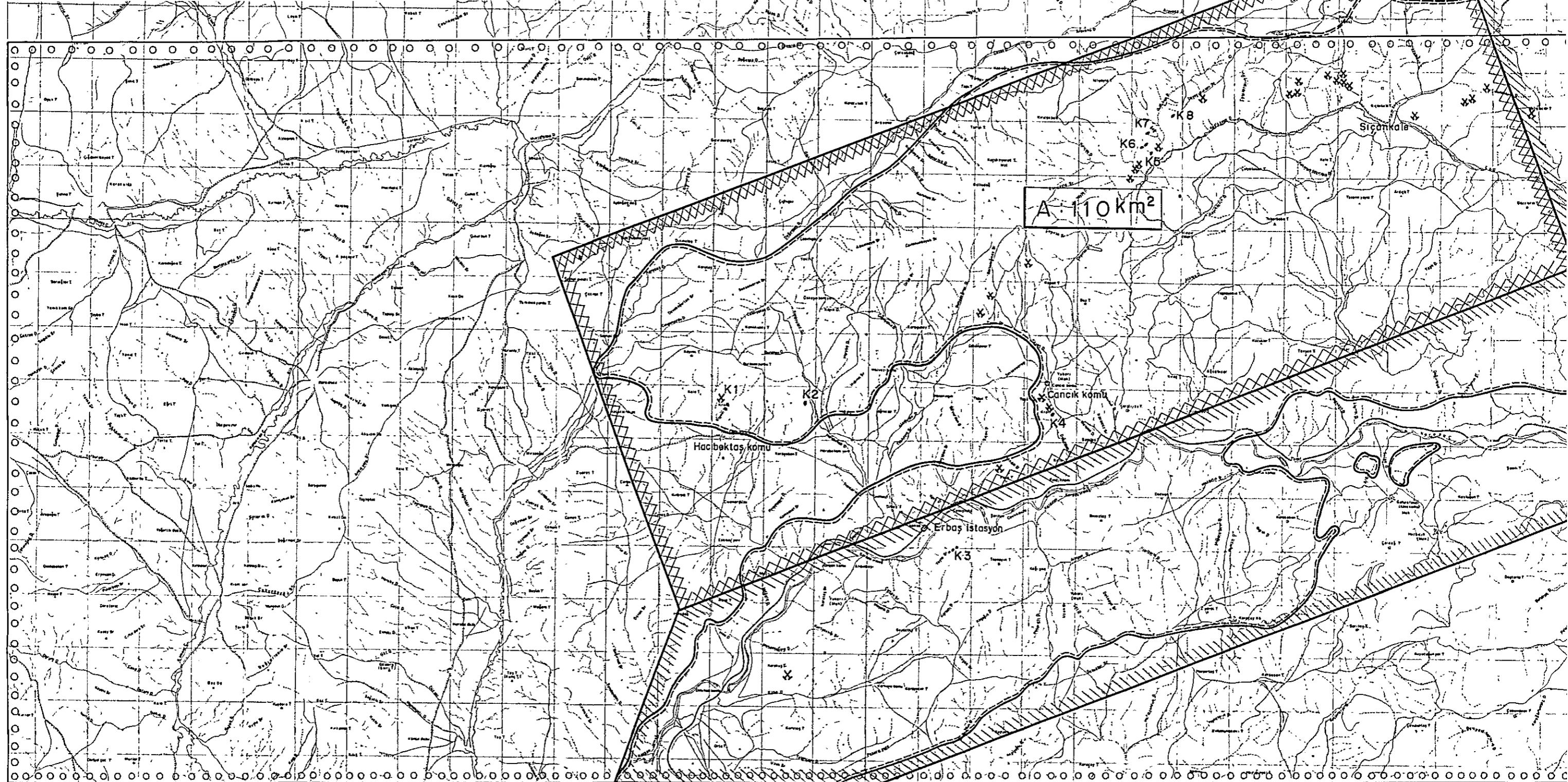
Scale
 Ölçek 1 : 50,000
 0 500 1000 2000 3000 4000m

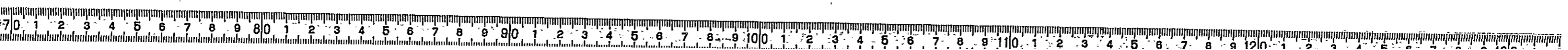
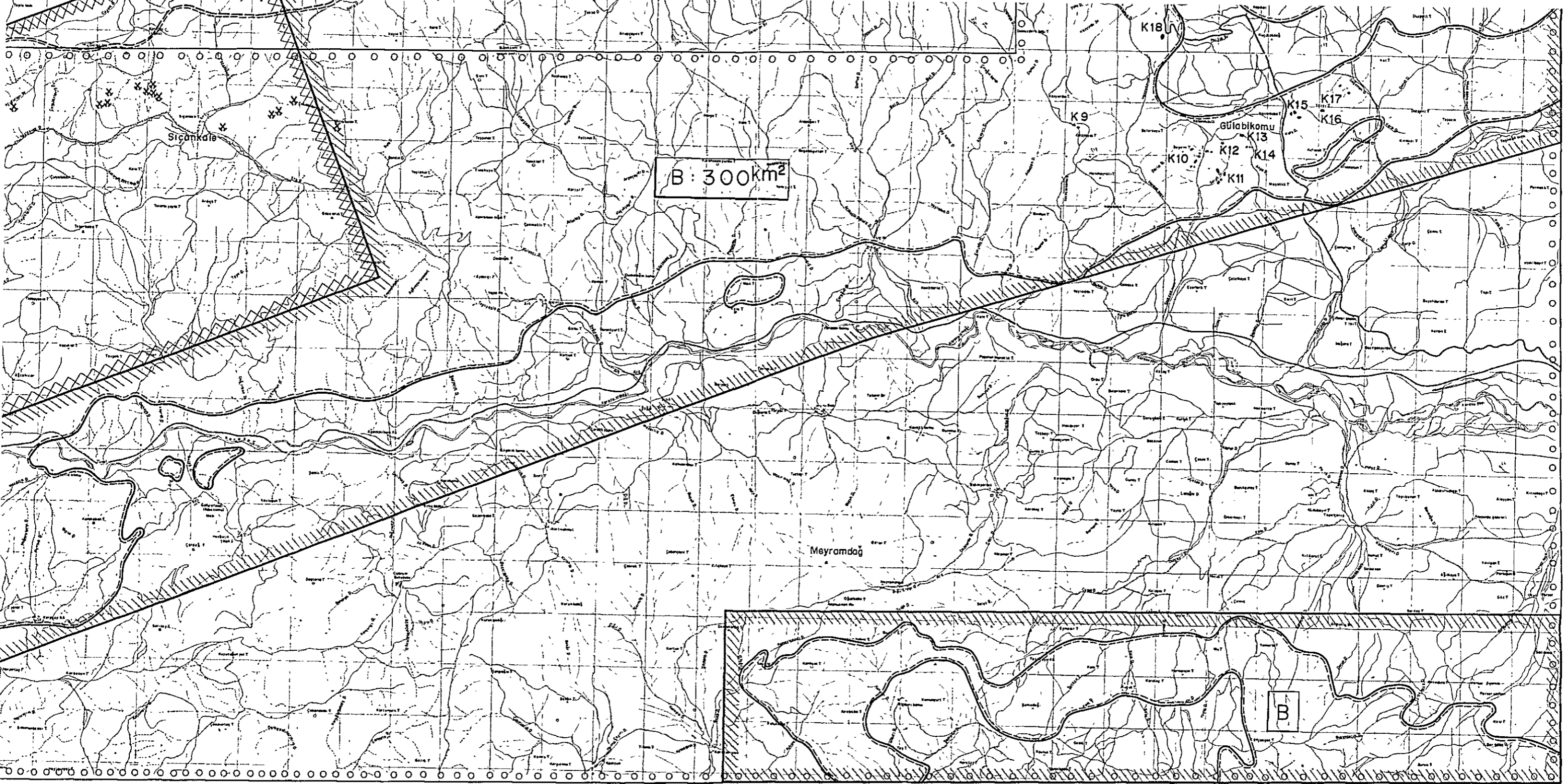
METAL MINING AGENCY OF JAPAN
 JAPAN INTERNATIONAL COOPERATION AGENCY
 JUNE 1978

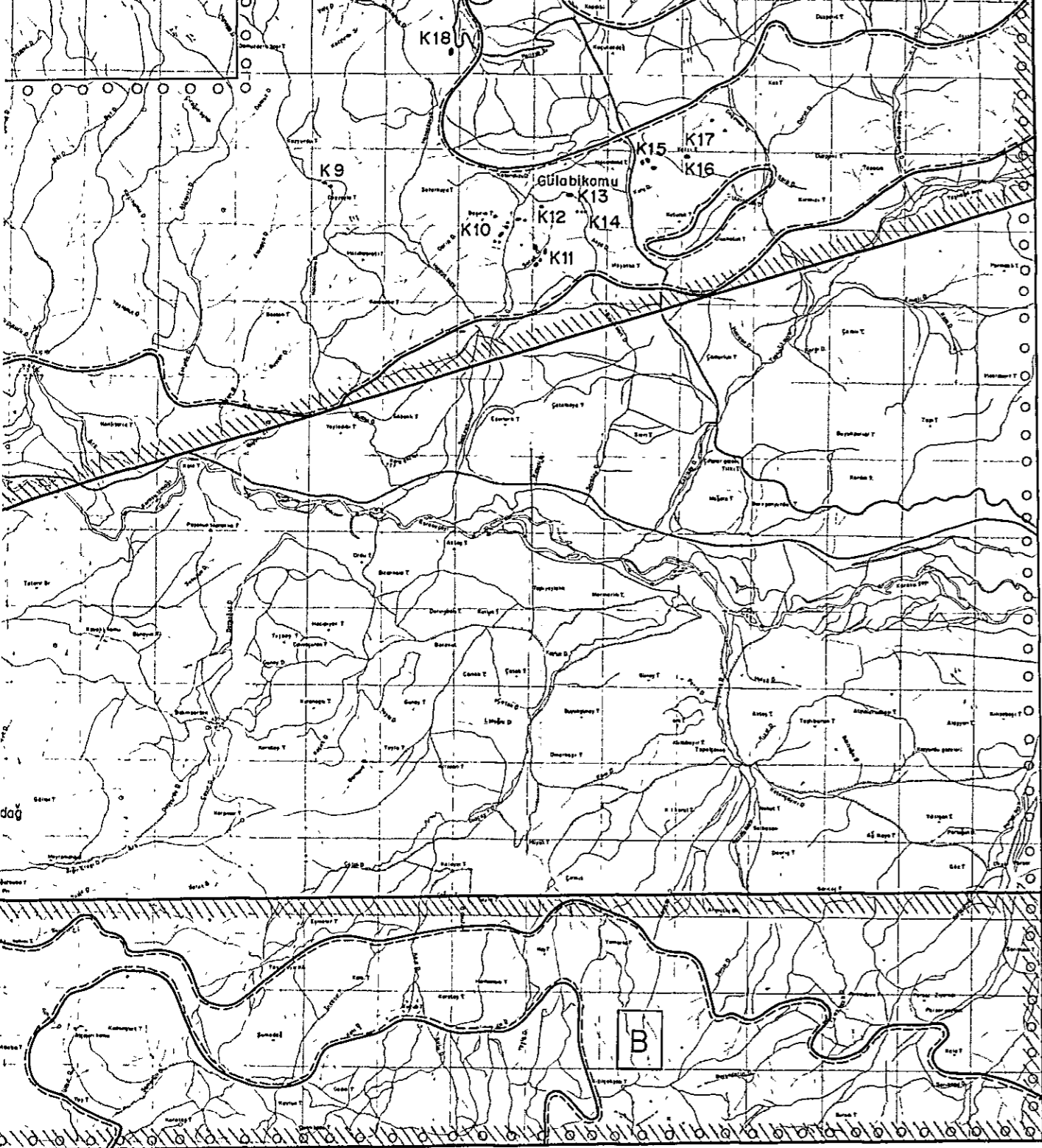
LEGEND
 LEJAND

- Recommended area
 Tavsiye edilen saha
-  Detailed geological survey area
 Detay jeoloji, mineralojî çalışmaları istenen saha
-  Reconnaissance geological survey area
 İstikşaf jeoloji, mineralojî çalışmaları istenen saha
-  Preliminary photogeological survey area in 1977
 1977 yılında fotojeolojik ön çalışmaları istenen saha
-  Boundary of ultrabasic rocks
 Ultrabazik kayalar had









LEGEND
LEJAND

Recommended area
Tavsiye edilen saha



Detailed geological survey area
Detay jeoloji, mineraloji çalışmalarına istenen saha



Reconnaissance geological survey area
İstikşaf jeoloji, mineraloji çalışmalarına istenen saha



Preliminary photogeological survey area in 1977
1977 yılında fotojeolojik ön çalışmalarına istenen saha



Boundary of ultrabasic rocks
Ultrabazik kayalar had



Mine
Maden



Trench (K1-21)
Çukur

