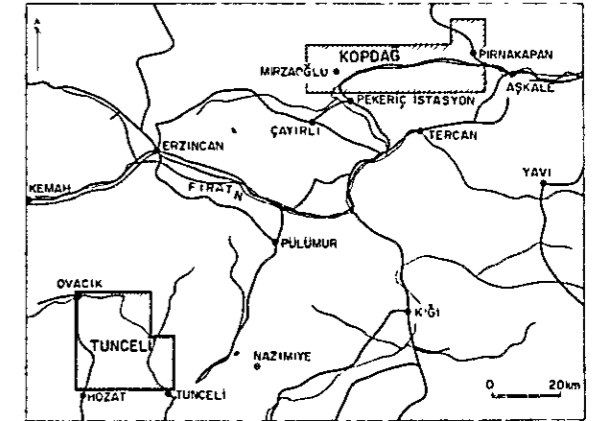


MINERAL RESEARCH AND EXPLORATION INSTITUTE
GEOLOGICAL SURVEY
OF
TUNCELİ AND KOPDAĞ AREA, EASTERN TURKEY
PHASE I

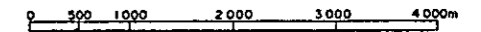
RECOMMENDATION MAP FOR TUNCELİ AREA IN 1978
1978 YILINDA TUNCELİ ÖNERİLEN ÇALIŞMA ALANLARINI
GÖSTEREN HARİTA

INDEX MAP



Preliminary photogeological survey area

Scale Ölçek 1 50,000



METAL MINING AGENCY OF JAPAN
JAPAN INTERNATIONAL COOPERATION AGENCY
JUNE 1978

LEGEND
LEJAND

Recommended area
Tavsiye edilen saha



Detailed geological and geochemical survey area
Detay jeoloji, mineraloji ve jeokimya çalışmalarından saha



Reconnaissance geological survey area
İstikşaf jeoloji, mineraloji çalışmalarından saha

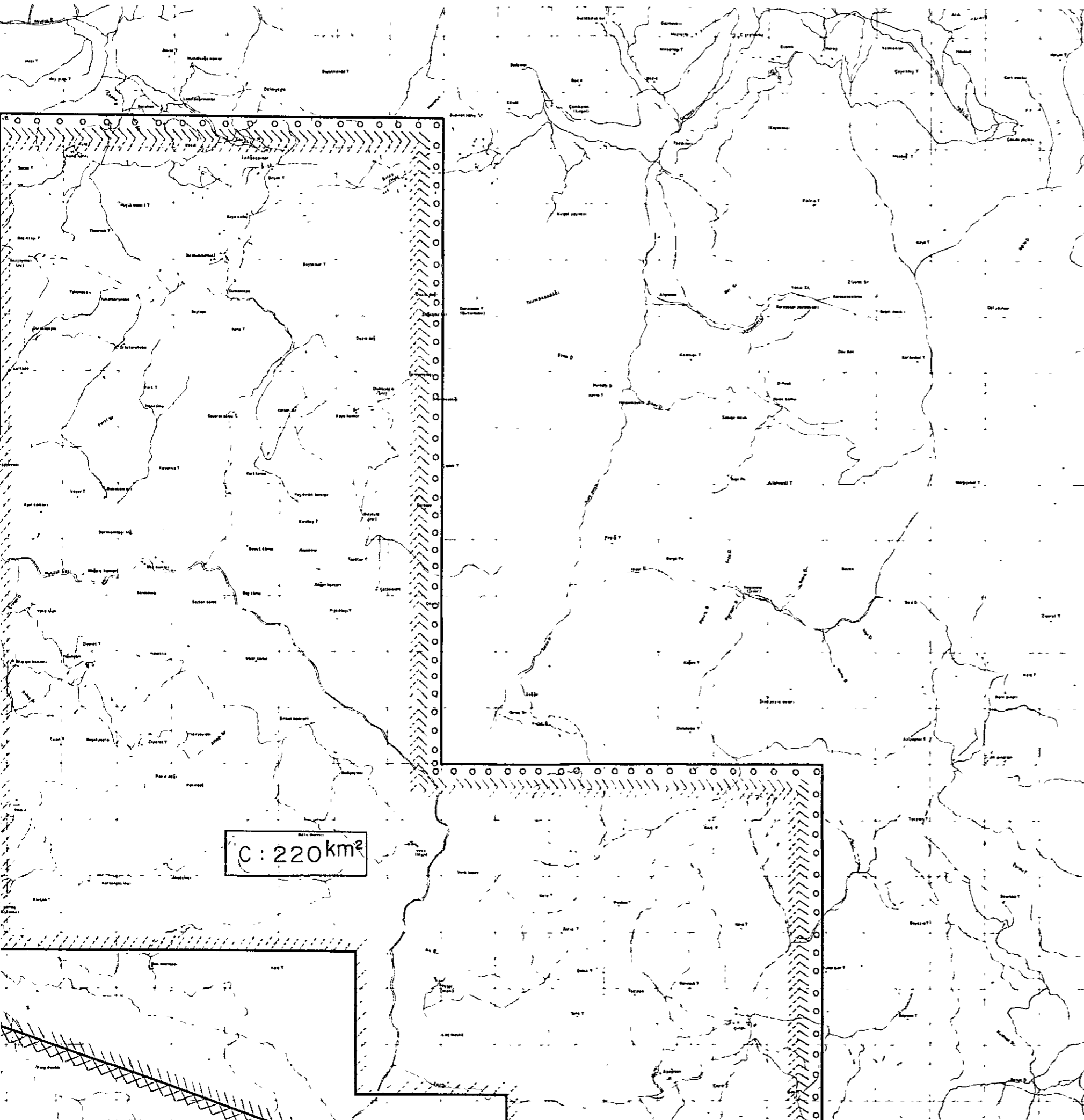


Reconnaissance geochemical survey area
İstikşaf jeokimya çalışmalarından saha



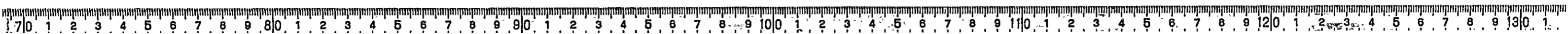
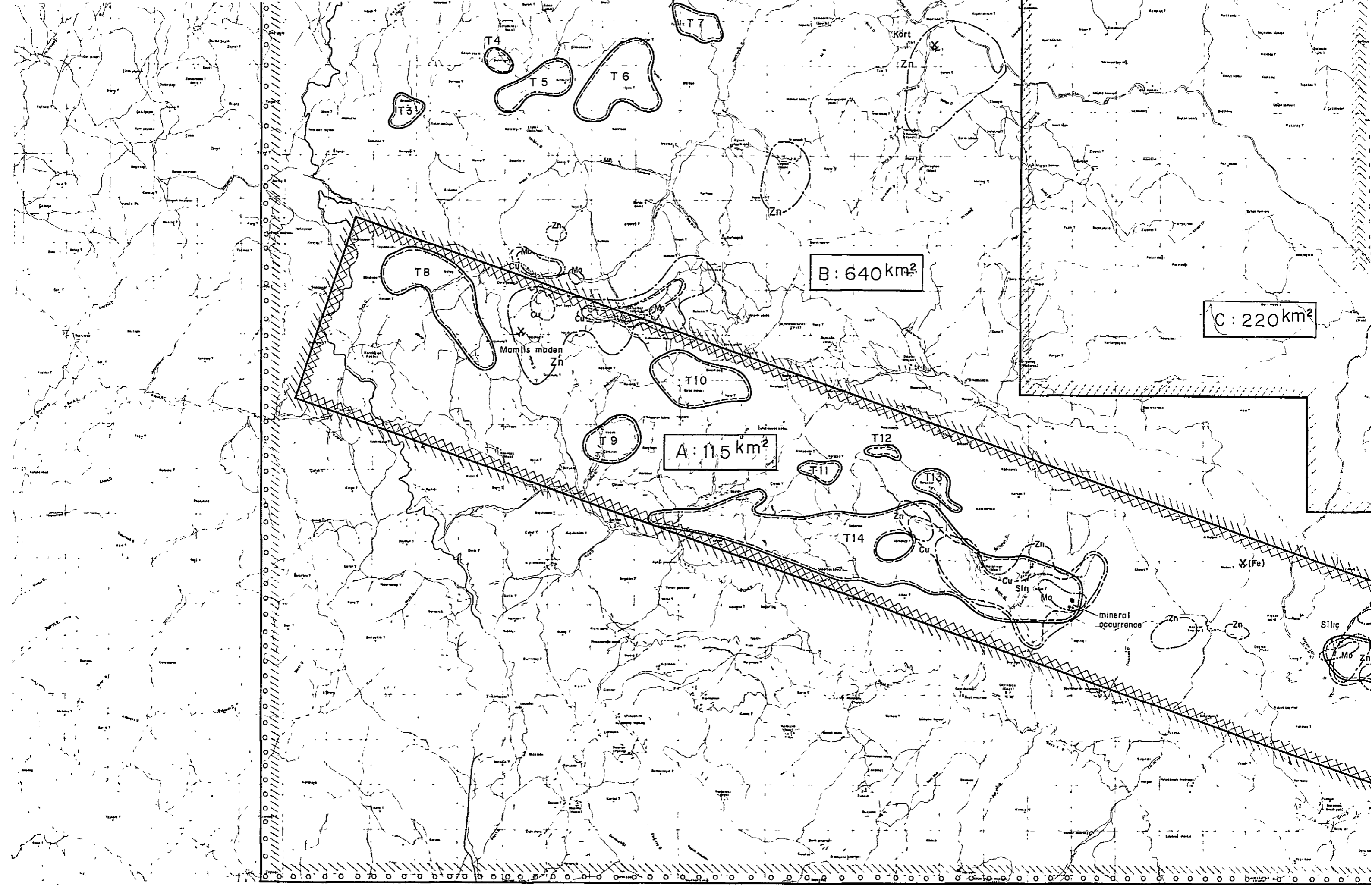
Preliminary photogeological survey area in 1977
1977 yılında fotojeolojik ön çalışmalarından saha

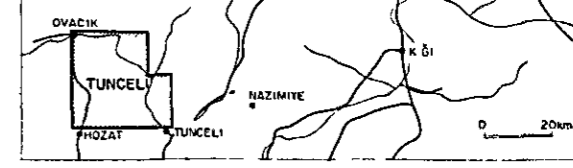
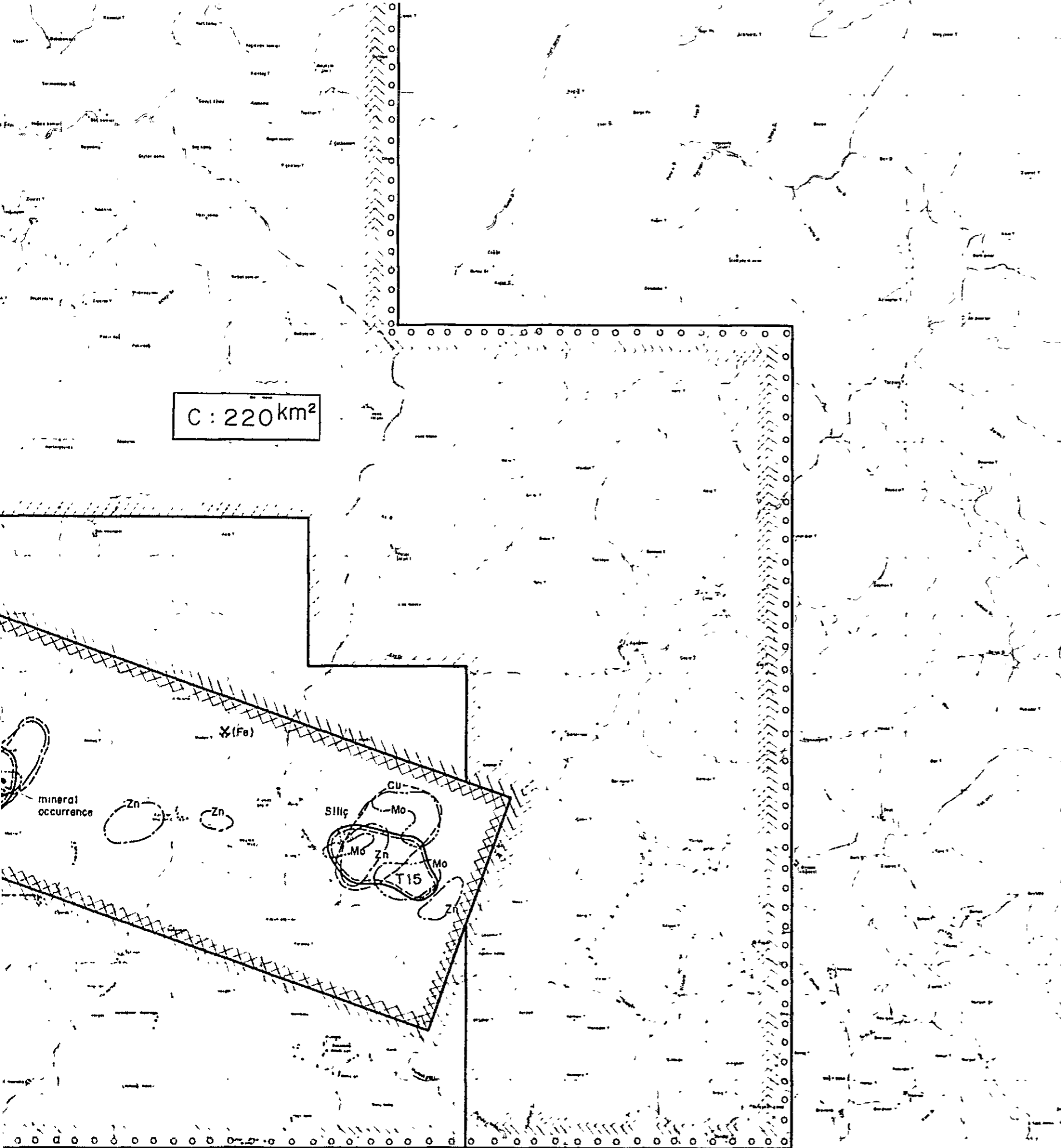
Alteration area (T1-15)



C : 220 km²







Preliminary photogeological survey area

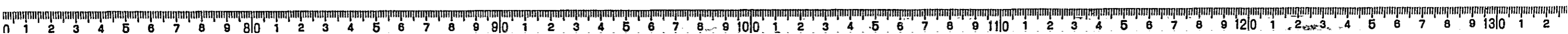
Scale
Ölçek 1 50,000

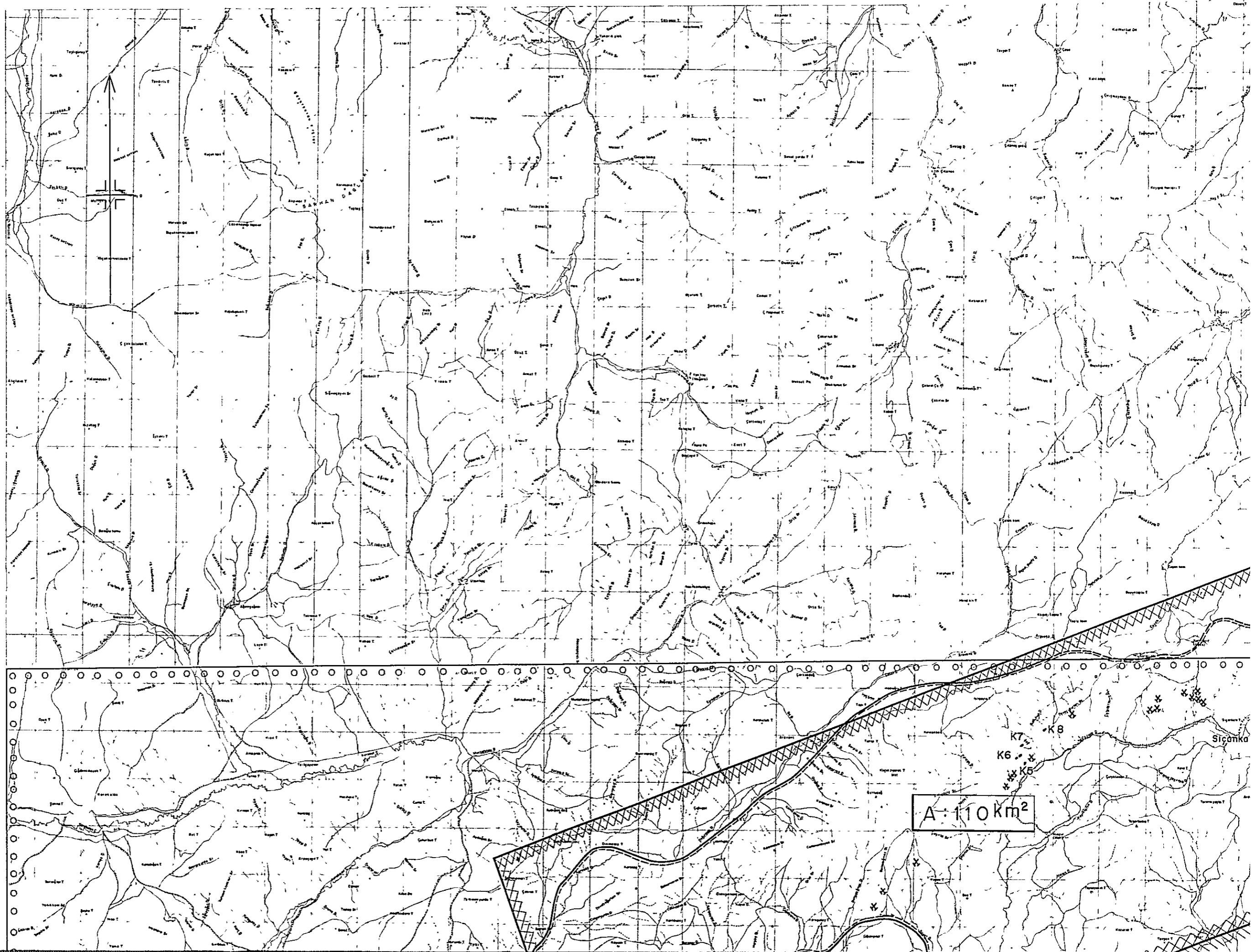
0 500 1000 2000 3000 4000m

METAL MINING AGENCY OF JAPAN
JAPAN INTERNATIONAL COOPERATION AGENCY
JUNE 1978

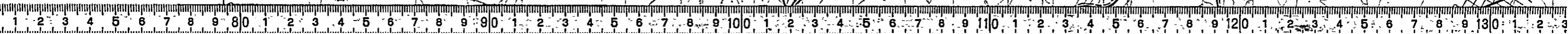
LEGEND
LEJAND

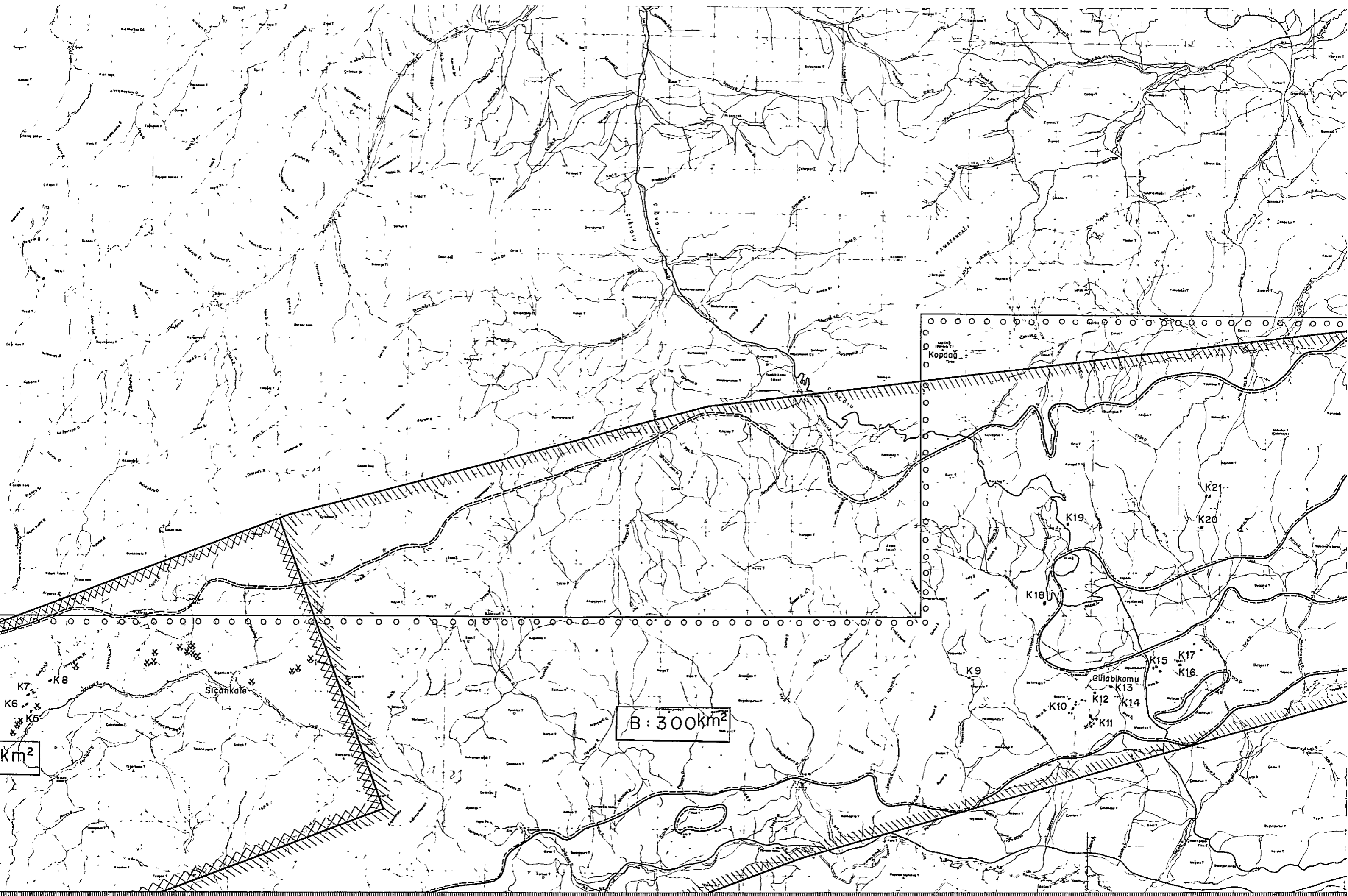
- Recommended area
Tarıstıe edilen saha
- Detailed geological and geochemical survey area
Detay jeoloji, mineraloji ve jeokimya çalışmalarından saha
 - Reconnaissance geological survey area
İstikşaf jeoloji, mineraloji çalışmalarından saha
 - Reconnaissance geochemical survey area
İstikşaf jeokimya çalışmalarından saha
 - Preliminary photogeological survey area in 1977
1977 yılında fotojeolojik ön çalışmalarından saha
 - Alteration area (T1 ~ 15)
Alterasyon saha
 - Mineral occurrence
Maden zuhurları
 - Mine
Maden
 - Geochemical anomaly area (Cu > 150)
Jeokimyasal anomali saha
 - Geochemical anomaly area (Zn > 400)
Jeokimyasal anomali saha
 - Geochemical anomaly area (Mo > 10)
Jeokimyasal anomali saha





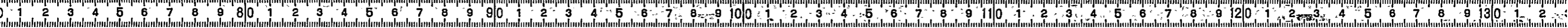
A: 110 km²





B: 300km²

km²

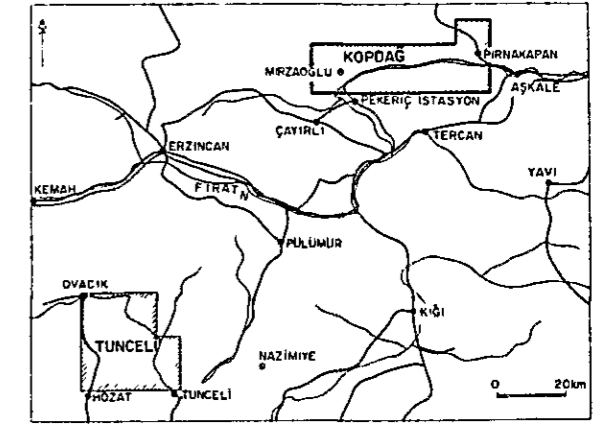


MINERAL RESEARCH AND EXPLORATION INSTITUTE
GEOLOGICAL SURVEY
OF
TUNCELİ AND KOPDAĞ AREA, EASTERN TURKEY
PHASE I

RECOMMENDATION MAP FOR KOPDAĞ AREA IN 1978

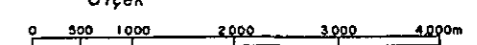
1978 YILINDA KOPDAĞ ÖNERİLEN ÇALIŞMA ALANLARINI
GÖSTEREN HARİTA

INDEX MAP

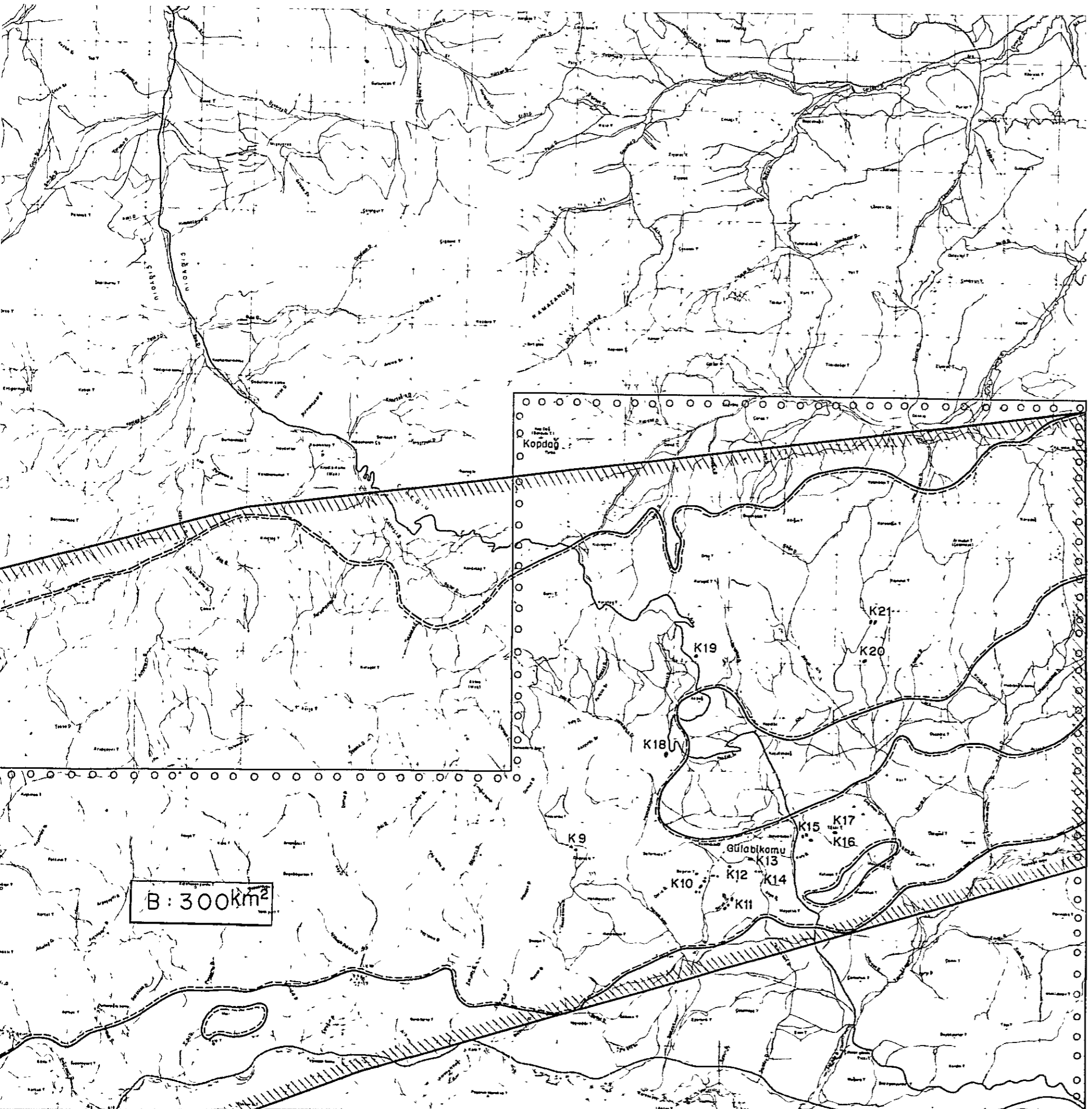


Preliminary photogeological survey area

Scale Ölçek 1 50,000



METAL MINING AGENCY OF JAPAN
JAPAN INTERNATIONAL COOPERATION AGENCY
JUNE 1978



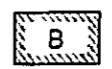
B: 300km²

LEGEND
LEJAND

Recommended area
Tarıstıe edtlen saha



Detailed geological survey area
Detay jeoloji, mineraloji çalışmaları istenen saha



Reconnaissance geological survey area
İstikşaf jeoloji, mineraloji çalışmaları istenen saha



Preliminary photogeological survey area in 1977
1977 yılında fotojeolojik ön çalışmaları istenen saha

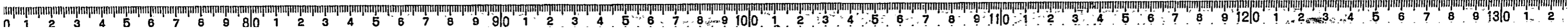
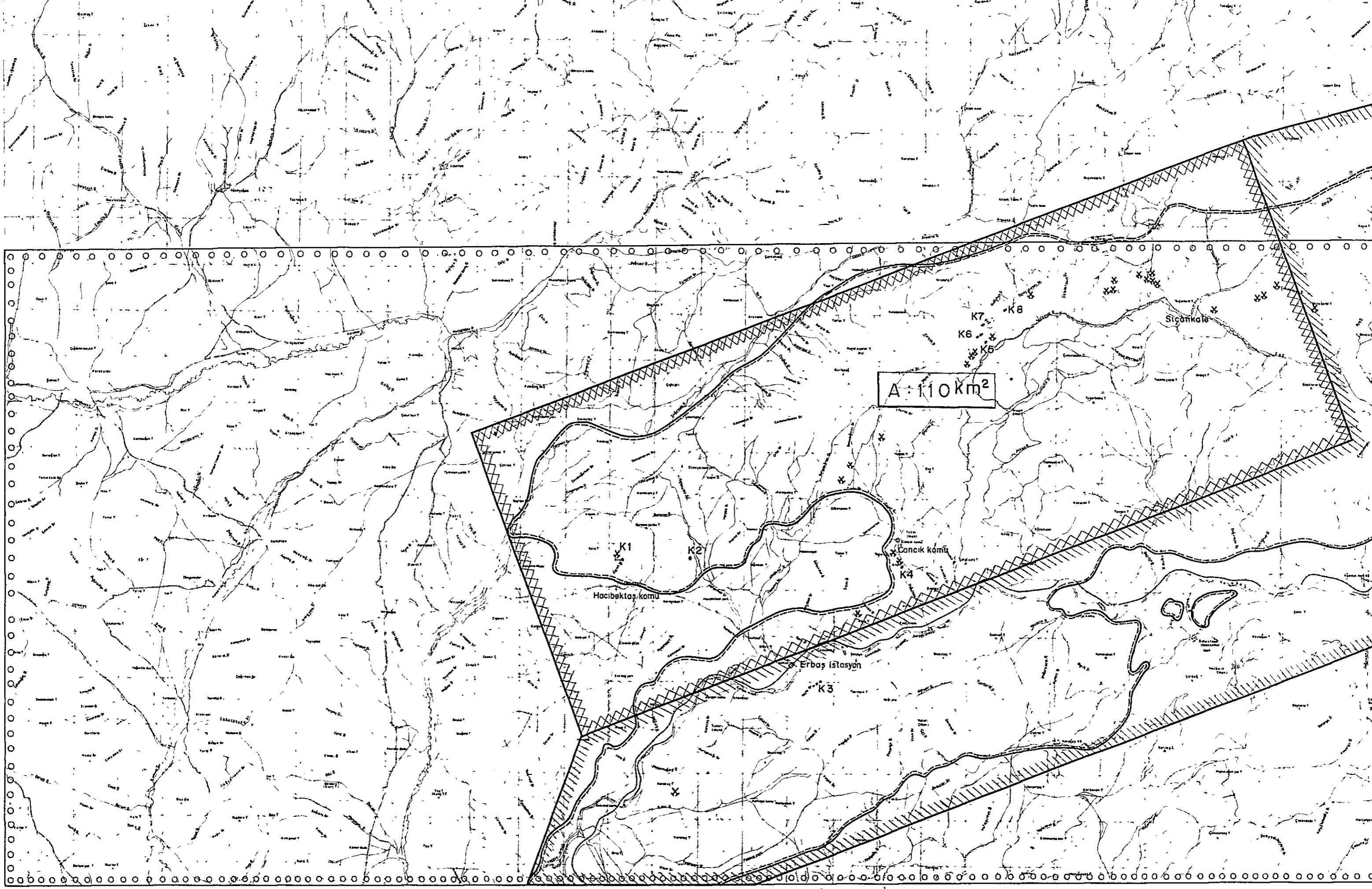


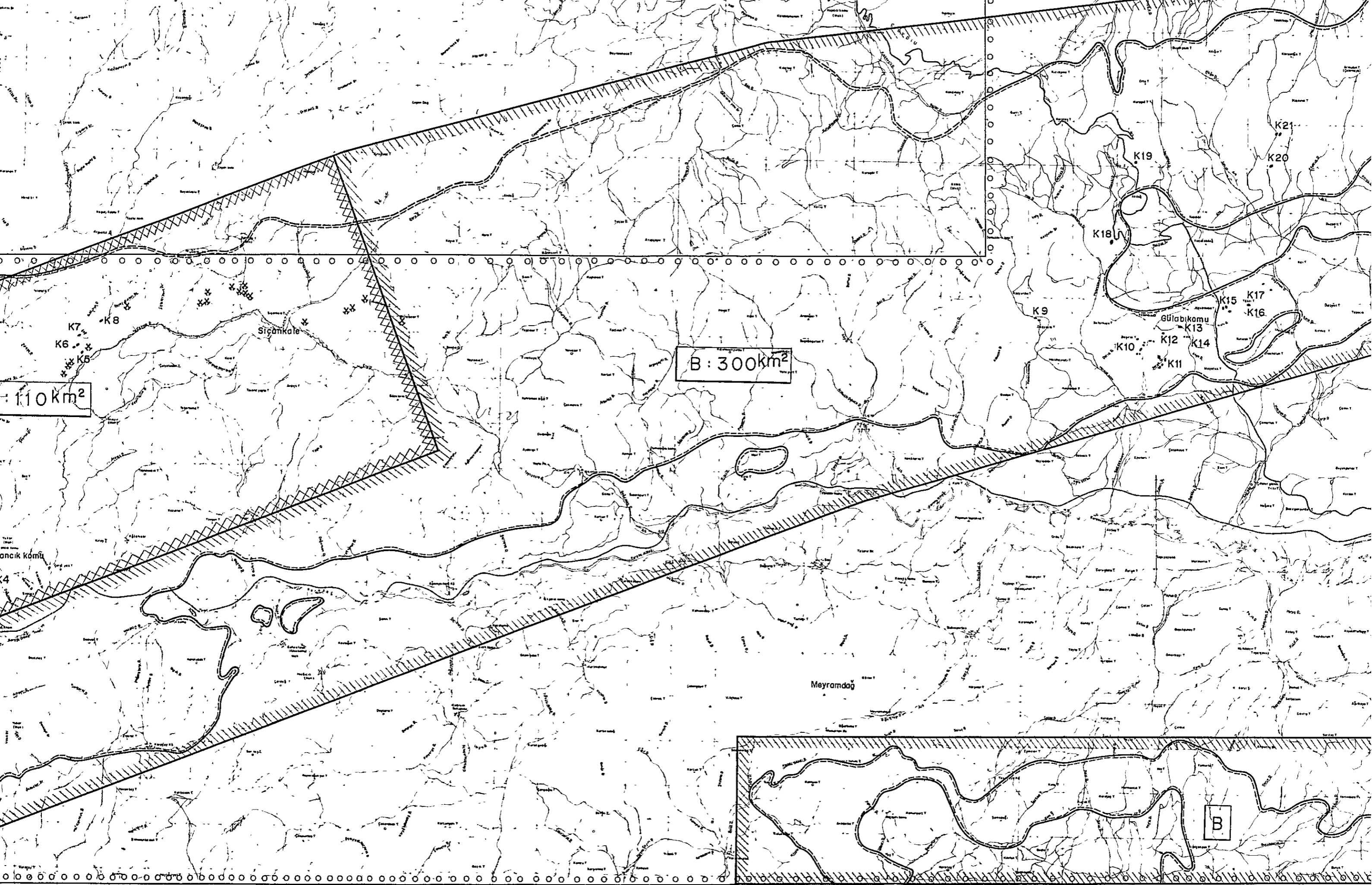
Boundary of ultrabasic rocks
Ultrabazik kayalar had



Mine
Maden



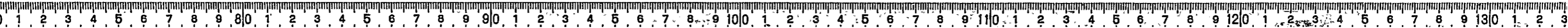


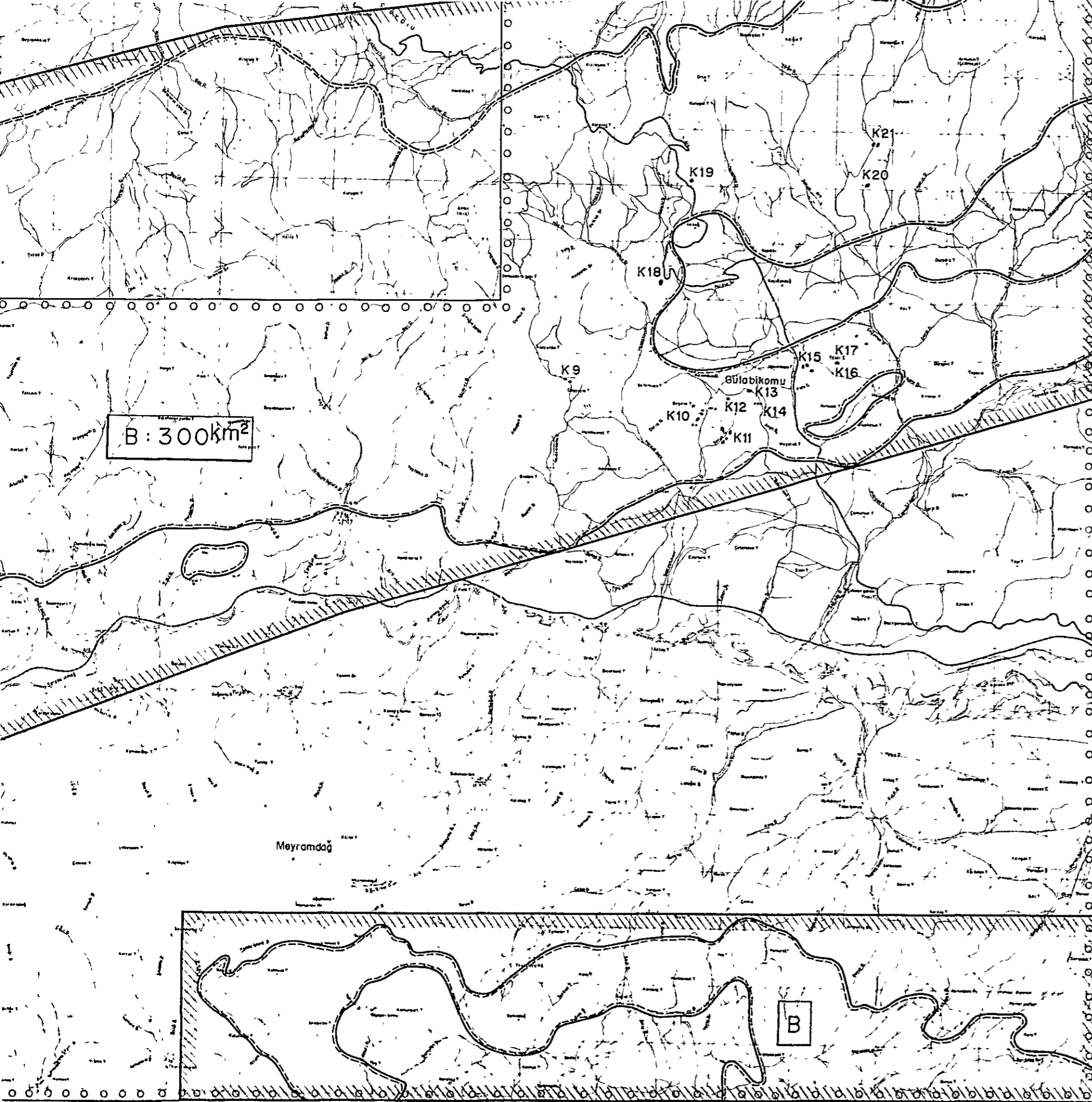


110km²

B : 300km²

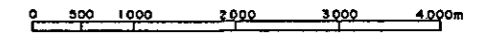
B





Preliminary photogeological survey area

Scale
Ölçek 1 50,000



METAL MINING AGENCY OF JAPAN
JAPAN INTERNATIONAL COOPERATION AGENCY
JUNE 1978

LEGEND
LEJAND

Recommended area
Tavsiye edilen saha

A Detailed geological survey area
Detay jeoloji, mineraloji çalışmaları istenen saha

B Reconnaissance geological survey area
İstikşaf jeoloji, mineraloji çalışmaları istenen saha

Preliminary photogeological survey area in 1977
1977 yılında fotojeolojik ön çalışmaları istenen saha

Boundary of ultrabasic rocks
Ultrabazik kayalar had

Mine
Maden

Trench (K1 ~ 21)
Çukur

