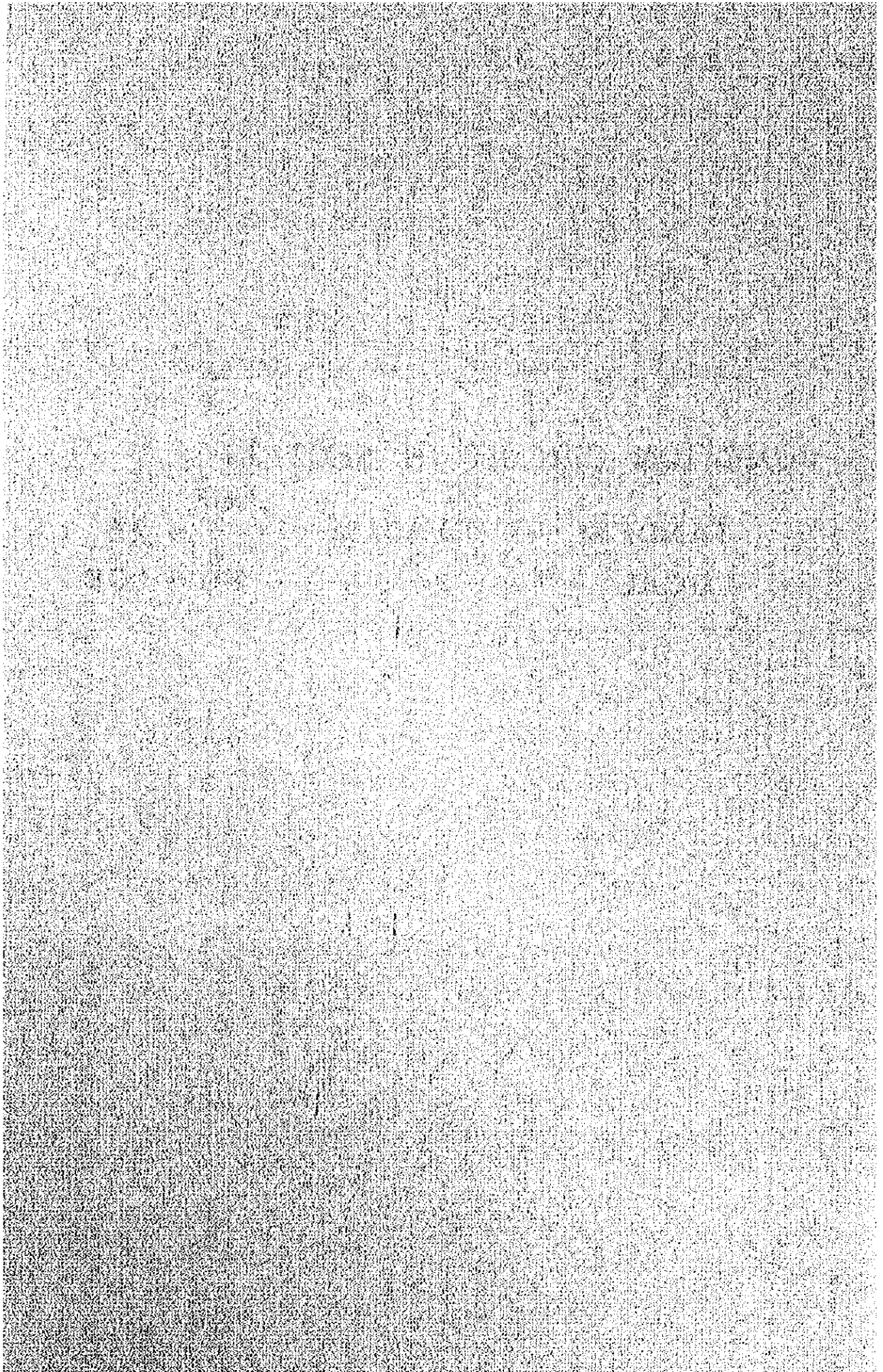


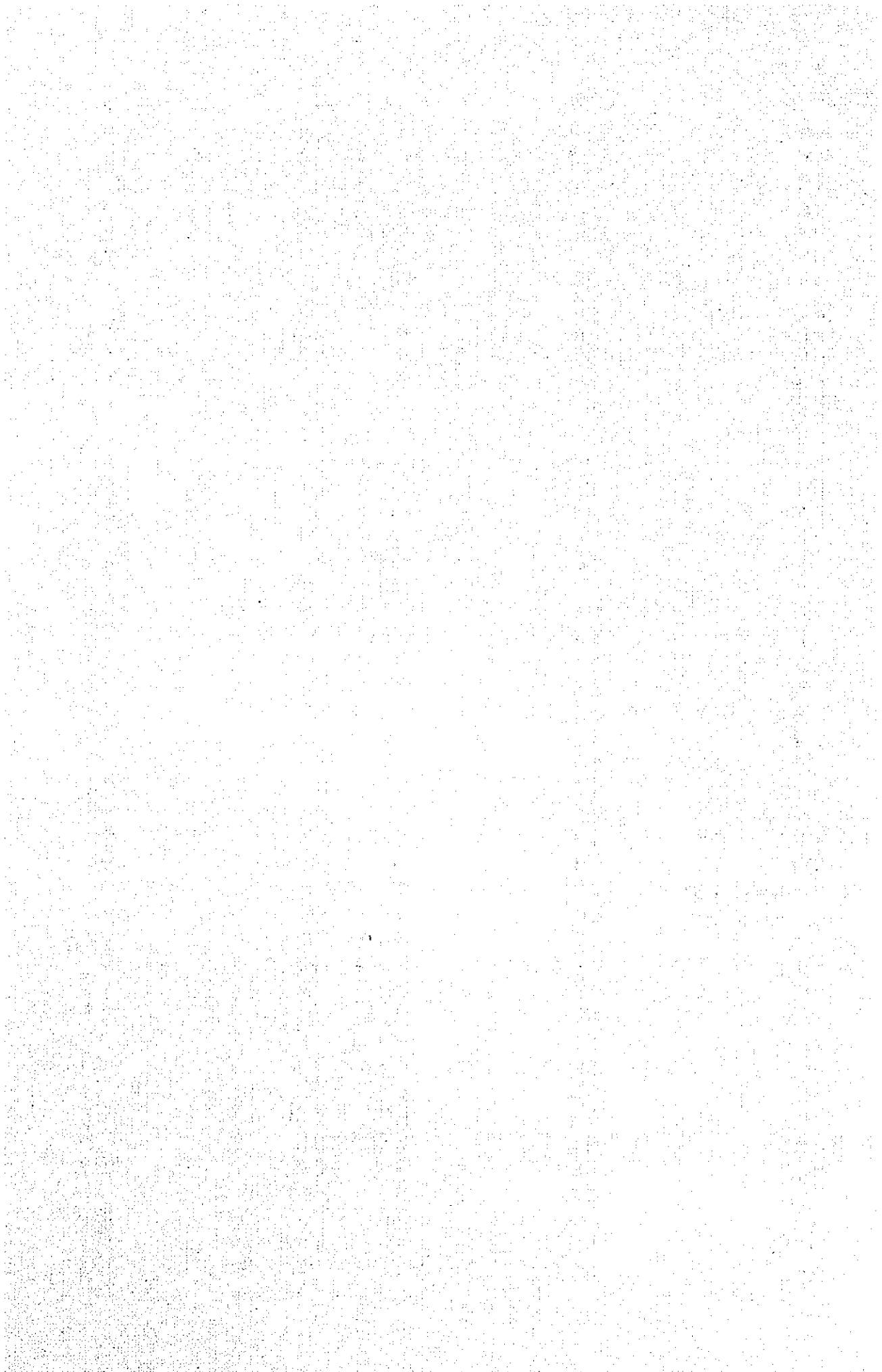
JUNCTION CIRCUIT IN SECTION

	PAGE
TANDEM — TANDEM	1 ~ 25
LOCAL	26 ~ 108



CONTENTS

SECTION	PAGE	SECTION	PAGE
PY -- KK	1. 2	TC -- SP.b -- MM	61
PL -- KK	3. 4	MM -- SP.b -- SP	62
SW -- KK	5	SV -- PL	63
TH -- KK	6	MM -- SW	64
SW -- PY	7~9	NW -- NW.b -- BK	65
PL -- PY	10.11	BK -- LS	66
PN -- PY	12	RID.b -- LS	67
LS -- PY	13~15	BSN -- RID.b	68
SW -- PL	16~18	RID -- RID.b	69
PN -- PL	19~21	NC -- BSN	70
TH -- SW	22~25	CW -- LS	71
PW -- KK	26	PK -- CW	72
SR -- KK	27	PT -- PK	73
SS -- KK	28	BT -- PK	74
SS -- BP	29	DM -- LS	75
PW -- PY	30	TY -- DM	76
SR -- TH	31	RS -- DM	77
SR -- SW	32	NWN -- RS	78
PW -- SW	33	KC -- BSN	79
PW -- PL	34	DK -- TH	80.81
SR -- PL	35	EC -- DK	82
SR -- PY	36	RB -- DK	83
BP -- CN	37	PD -- RB	84
SS -- SS.b -- PY	38	PP -- PD	85
SS.b -- PY	39	CN -- TH	86
BS -- SS.b -- SS	40	BC -- TH	87
BS -- SS.b	41	PC -- BC	88
BS -- NN	42	MK -- PC	89
LPI -- LP.b -- PY	43	MK -- NK	90
LPI -- PY	44	NK -- NEWNK	91
PY -- LP.b -- NW.b -- NW	45	CP -- PN	92
PY -- LP.b -- NW.b -- BK	46	HM -- PN	93
LPI -- BK	47	HM -- KC	94
LPI -- LP ₂	48	CP -- HM	95
IM -- PY	49	ON -- PN	96
NN -- NW	50	PV -- ON	97
KC -- LP ₂	51	LB -- PV	98
ASD -- PY	52	PS -- PN	99
ASD -- PL	53	BN -- PN	100, 101
CP -- PL	54	PS -- BN	102
MM -- PL	55	BPL -- BN	103
MM -- SV	56	SPK -- PS	104
MM -- KT	57	BPO -- SPK	105
SV -- CP	58	TK -- TK.b -- SW	106
CP -- ASD	59	TC -- TK.b -- SW	107
HM -- PL	60	TC -- SP.b -- SP	108



II

PL — KK

SECTION	PAIRS		0-9		0-65		0-5		PCM	REMARK
	L	NL	L	NL	L	NL	L	NL		
[PN] — KK					72					
PN — [KK]					19					
[PN] — [KK]									143	
PN — [KK TOLL]									172	
PN — [KK OTD]	6									
PN — KK							12			
PN — [KK] MC	15									
[PN] — BP									36	
[PN] — SS	36									
BN — [KK]									49	
BN — [KK OTD]									11	
BN — KK					26					
BN — SS	12									
PS — [KK]									27	
PS — [KK OTD]									5	
PS — KK	28									
PS — SS					6					
PS — BP	6									
SPK — [KK]									49	
SPK — [KK OTD]									5	
BPO — [KK]									8	
BPO — [KK OTD]									2	
ON — [KK]	39									
ON — [KK OTD]									5	
PV — [KK]									6	
PV — [KK OTD]									2	
BPV — [KK OTD]	2									
LB — [KK]					12					
LB — [KK OTD]	2									
CP — [KK]	36									
CP — KK							100			
CP — [KK OTD]	12									
CP — SS							24			
CP — BP					30					
SUB TOTAL	194				165		136		520	
TOTAL										

(V)

SW — PY

SECTION	PAIRS	0-9		0-65		0-5		PCM	REMARK
		L	NL	L	NL	L	NL		
[TH] --- LS								24	
TH --- [LS]								50	
[TH] --- [LS]								121	
[TH] --- OM								39	
[TH] --- RS								7	
[TH] --- NWN								10	
[TH] --- RID								38	
[TH] --- BSN		11							
[TH] --- CW								16	
[TH] --- PK								7	
[TH] --- PT								8	
[TH] --- [LS] MC								13	
TH --- DM								19	
DK --- [LS]								23	
EC --- [LS]								12	
RB --- [LS]								15	
PD --- [LS]								28	
PD --- DM								12	
BC --- [LS]								25	
PC --- [LS]								15	
MK --- [LS]								6	
NK --- [LS]								6	
CN --- [LS]								24	
TH --- LS		14							
[LS] --- [SW]								123	
LS --- [SW]								27	
[LS] --- SW								79	
[LS] --- TK								18	
[LS] --- TC								38	
[LS] --- SP								18	
[LS] --- [SW] "13"								40	
DM --- [SW]								28	
DM --- SW								57	
RS --- [SW]		8							
NWN --- [SW]		9							
RID --- [SW]								32	
RID --- SW								54	
RID --- TC								6	
BSN --- [SW]		12							
CW --- [SW]								19	
PK --- [SW]								8	
PT --- [SW]		8							
SUB TOTAL		62						1065	
TOTAL									

PAIRS		SW		PY		PCM	REMARK
		0.9		0.65			
SECTION	PAIRS	L	NL	L	NL	L	NL
[PY] --- SW				67			
PY --- [SW]				36			
[PY] --- [SW]							95
PY --- SW					150		
[PY TOLL] --- SW	232						
[PY] --- [SW] "13"				39			
[PY] --- SP				23			
[PY TOLL] --- SP	24						
[PY] --- TC				46			
PY --- TC				12			
[PY TOLL] --- TC	62						
[PY] --- TK				21			
[PY TOLL] --- TK	24						
IM --- [SW]	35						
IM --- SW				18			
LPI --- [SW]	27						
LPI --- SW				48			
LP2 --- [SW]	30						
LP2 --- SW				45			
LP2 --- TC							6
BS --- [SW]	27						
BS --- SW				60			
OS --- TC	12						
NN --- [SW]	21						
BK --- [SW]	33						
BK --- SW				74			
NW --- [SW]	58						
NW --- SW				64			
SUB TOTAL	585			553	150		101
TOTAL	1003			695	150		1981

VI

PL — PY

SECTION	0.9		0.65		0.5		PCM	REMARK
	L	NL	L	NL	L	NL		
[PL] — PY					28			
PL — [PY]					74			
[PL] — [PY]	72							
PL — PY						108		
PL — [PY TOLL]			172					
[PL] — IM			18					
PL — IM					28			
[PL] — BS			26					
PL — BS					30			
[PL] — NN	25							
[PL] — LP1	22							
PL — LP1					30			
[PL] — LP2	25							
[PL] — LP2			42					
SV — [PY]			14					
SV — PY					34			
SV — [PY TOLL]	41							
SV — IM			15					
SV — BS			14					
SV — LP1			13					
SV — LP2			16					
MM — [PY]			17					
MM — PY					26			
MM — [PY TOLL]	38							
MM — BS			6					
MM — LP1			12					
MM — LP2			15					
KT — [PY]	30							
KT — PY			14					
KT — [PY TOLL]	38							
KT — IM			6					
KT — BS			13					
KT — LP1	14							
KT — LP2	16							
HM — [PY]			16					
HM — PY				32				
HM — IM	16							
HM — BS	16							
BK — [PL]	26							
BK — PL			42					
BK — SV			12					
BK — MM			7					
BK — KT	12							
NW — [PL]	56							
NW — PL	38							
NW — MM	6							
NW — KT	6							
SUB TOTAL	497		490	32	250	108		
TOTAL								

VI

PL — PY

SECTION	PAIRS	0.9		0.65		0.5		PCM	REMARK
		L	NL	L	NL	L	NL		
[LS]	PL							56	
LS	[PL]							29	
[LS]	[PL]							113	
[LS]	MM							20	
[LS]	SV							22	
[LS]	KT							23	
DM	PL	20							
DM	[PL]	30							
RS	[PL]	8							
NWN	[PL]	13							
RID	PL							30	
RID	[PL]							31	
RID	MM							7	
RID	SV							6	
RID	KT							14	
BSN	[PL]	16							
CW	[PL]							19	
PK	[PL]							8	
PT	[PL]	9							
CP	[LS]							38	
CP	DM							28	
CP	RID							30	
HM	[LS]							28	
HM	BK	15							
HM	RID							19	
SUB TOTAL		119						521	
TOTAL		616		490	32	250	108	521	

VII		PN (ASD)				PY		PCM	REMARK
SECTION	PAIRS	0-9		0-65		0-5			
		L	NL	L	NL	L	NL		
[PN]	LS							34	
PN	[LS]							15	
[PN]	[LS]							139	
[PN]	[LS] MC							15	
[PN]	OM							36	
[PN]	RS							10	
[PN]	NWN							13	
[PN]	RID							41	
PN	RID							6	
[PN]	BSN							19	
[PN]	NC							5	
[PN]	CW							21	
[PN]	PK							9	
[PN]	PT							11	
[PN] MC	BSN							3	
[PN] MC	NC							2	
[PN TOLL]	BSN							26	
BN	[LS]							37	
BN	RID							7	
PS	[LS]							22	
PS	RID							6	
SPK	[LS]							18	
ON	[LS]							18	
LB	[LS]							6	
[PN]	PY	60							
PN	[PY]	24							
[PN]	[PY]							130	
[PN]	[PY TOLL]							204	
[PN]	BS							38	
[PN]	NN							25	
[PN]	IM							43	
[PN]	LP ₁							36	
[PN]	LP ₂							36	
PN	LP ₂	6							
BN	[PY]							48	
BN	PY	14							
BN	BS	13							
BN	LP ₂	6							
PS	[PY]							30	
PS	PY	12							
PS	BS							6	
PS	LP ₂							12	
SPK	[PY]							25	
ON	[PY]							22	
LB	[PY]							7	
[PN]	BK							37	
[PN]	NW							67	
BN	BK							6	
TOTAL		135						1 291	



LS — PY

SECTION	PAIRS	0-9		0-65		0-5		PCM	REMARK
		L	NL	L	NL	L	NL		
[LS] --- [KK]								117	
LS --- [KK]								42	
[LS] --- KK								46	
[LS] --- [KK TOLL]								193	
LS --- [KK OTD]								5	
[LS] --- SS								20	
[LS] --- BP								23	
[LS] --- SR								88	
[LS] --- PW								55	
LS --- PW		6							
LS --- [KK] MC								14	
DM --- [KK]								20	
DM --- KK								34	
DM --- [KK OTD]								5	
DM --- SS								23	
DM --- SR								56	
RS --- [KK]								12	
RS --- [KK OTD]								3	
NWN --- [KK]								18	
NWN --- [KK OTD]								3	
RID --- [KK]								25	
RID --- KK								30	
RID --- [KK OTD]								6	
RID --- SS								12	
RID --- BP								13	
RID --- SR								52	
NC --- [KK]								8	
NC --- [KK OTD]								2	
CW --- [KK]								28	
CW --- [KK OTD]								5	
PK --- [KK]								14	
PK --- [KK OTD]								3	
PT --- [KK]								16	
PT --- [KK OTD]								3	
BT --- [KK OTD]								2	
TY --- [KK]								7	
TY --- [KK OTD]								2	
[LS] --- [SW]								123	
LS --- [SW]								27	
[LS] --- SW								79	
[LS] --- TK								18	
[LS] --- TC								38	
[LS] --- SP								10	
[LS] --- [SW] 13"								40	
DM --- [SW]								28	
DM --- SW								57	
RS --- [SW]								8	
NWN --- [SW]								9	
RID --- [SW]								32	
RID --- SW								54	
RID --- TC								6	
CW --- [SW]								19	
PK --- [SW]								8	
PT --- [SW]								8	
SUB TOTAL		6						1585	
TOTAL									

SECTION PAIRS		LS				PY		PCM	REMARK
		0.9		0.65		0.5			
		L	NL	L	NL	L	NL		
[LS] -- [PY]								93	
LS -- [PY]								20	
[LS] -- PY								36	
[LS] -- [PY TOLL]								230	
[LS] MC -- PY								10	
[LS] -- IM		17							
[LS] MC -- IM		5							
[LS] -- BS		21							
LS -- BS		7							
[LS] MC -- BS		5							
DM -- [PY]								27	
DM -- PY								56	
DM -- BS								24	
DM -- LP2								6	
DM -- IM								6	
RS -- [PY]								8	
NWN -- [PY]								10	
RID -- [PY]								26	
RID -- PY								16	
RID -- BS								17	
RID -- LPI								17	
RID -- LP2								24	
RID -- IM								14	
CW -- [PY]								23	
PK -- [PY]								9	
PT -- [PY]								8	
[LS] -- PL								56	
LS -- [PL]								29	
[LS] -- [PL]								113	
[LS] -- MM								20	
[LS] -- ASD								40	
[LS] -- SV								22	
[LS] -- KT								23	
DM -- PL								28	
DM -- [PL]								30	
RS -- [PL]								8	
NWN -- [PL]								13	
RID -- PL								30	
RID -- [PL]								31	
RID -- MM								7	
RID -- SV								6	
RID -- KT								14	
CW -- [PL]								19	
PK -- [PL]								8	
PT -- [PL]								9	
KC -- [LS]		43							
KC -- DM		18							
HM -- [LS]								28	
HM -- RID								19	
SUB TOTAL		116						1233	
TOTAL									

VI

LS --- PY

SECTION	PAIRS	0-9		0-65		0-5		PCM	REMARK
		L	NL	L	NL	L	NL		
[YH] --- LS								24	
YH --- [LS]								50	
[YH] --- [LS]								121	
[YH] --- DM								39	
[YH] --- RS								7	
[YH] --- NWN								10	
[YH] --- RID								38	
YH --- DM								19	
[YH] --- CW								16	
[YH] --- PK								7	
[YH] --- PI								8	
[YH] MC --- LS								13	
YH --- RID								19	
DK --- [LS]								23	
EC --- [LS]								12	
RB --- [LS]								15	
PD --- [LS]								28	
PD --- DM								12	
BC --- [LS]								25	
PC --- [LS]								15	
MK --- [LS]		6							
NX --- [LS]		6							
CN --- [LS]								24	
YH --- LS		14							
[YH] --- BT								2	
[PN] --- LS								34	
PN --- [LS]								15	
[PN] --- [LS]								139	
[PN] --- [LS] MC								15	
[PN] --- DM								36	
[PN] --- RS								10	
[PN] --- NWN								13	
[PN] --- RID								41	
PN --- RID								6	
[PN] --- BSN								19	
[PN] --- NC								5	
[PN] --- CW								21	
[PN] --- PK								9	
[PN] --- PI								11	
[PN] MC --- BSN								3	
[PN] MC --- NC								2	
[PN] [OLI] --- BSN								26	
BN --- [LS]								37	
BN --- RID								7	
PS --- [LS]								22	
PS --- RID								6	
SPK --- [LS]								18	
ON --- [LS]								18	
LB --- [LS]		6							
[CP] --- [LS]								38	
CP --- DM								28	
CP --- RID								30	
SUB TOTAL		32						1136	
TOTAL		154						3954	

(IX)		SW — PL						PCM	REMARK
SECTION	PAIRS	0.9		0.65		0.5			
		L	NL	L	NL	L	NL		
[TH] --- PN								22	
TH --- [PN]								68	
[TH] --- [PN]								154	
[TH] --- BN								44	
[TH] --- PS								37	
TH --- PS								21	
[TH] --- SPK								28	
[TH] --- ON								21	
[TH] --- LB								7	
[TH] --- [PN] MC								14	
TH --- CP				40					
DK --- [PN]								45	
DK --- PN								6	
DK --- PS								6	
EC --- [PN]								23	
RB --- [PN]								24	
PD --- [PN]								50	
PD --- PN								6	
PD --- BN								6	
PD --- PS								18	
PD --- SPK								12	
PP --- [PN]								7	
BC --- [PN]								42	
PC --- [PN]								28	
MK --- [PN]								10	
NK --- [PN]								11	
CN --- [PN]								43	
TH --- BN				7					
TH --- SPK				15					
TH --- PN				17					

[PL] --- SW							64		
PL --- [SW]							68		
[PL] --- [SW]		67							
PL --- SW							464		
[PL] --- SP		21							
[PL] --- TC		33							
PL --- TC							82		
[PL] --- TK						21			
PL --- [SW] "13"							42		
ASD --- [SW]		37							
ASD --- SW							116		
SV --- [SW]				19					
SV --- SW							84		
HM --- [SW]				30					
HM --- SW							63		
HM --- TC				13					
KC --- [SW]		50							
KC --- SW				54					

SUB TOTAL		208		195		21	983	753	
TOTAL		783		590		225	1060	1425	

		T H — S W							
SECTION	PAIRS	0-9		0-65		0-5		PCM	REMARK
		L	NL	L	NL	L	NL		
[TH]	— PL			91					
TH	— [PL]			60					
TH	— PL					77			
[TH]	— [PL]							108	
[TH]	— MM			31					
TH	— MM					24			
[TH]	— KT			41					
TH	— KT					23			
[TH]	— ASD			53					
[TH]	— SV			37					
TH	— ASD			22					
DK	— [PL]							29	
DK	— PL					14			
DK	— MM			16					
DK	— KT	15							
DK	— SV			13					
EC	— [PL]							22	
Rθ	— [PL]							22	
PD	— [PL]							28	
PD	— PL							43	
PD	— MM	16							
PD	— KT							18	
PD	— ASD							6	
PD	— SV							15	
PP	— [PL]			6					
BC	— [PL]	32							
PC	— [PL]							26	
MK	— [PL]							10	
NK	— [PL]							10	
CN	— [PL]			22					
CN	— PL			28					
CN	— MM	7							
CN	— KT							8	
CN	— ASD							12	
[TH]	— CP			74					
[TH]	— HM							37	
TH	— HM			26					
[TH]	— KC	53							
TH	— KC			25					
DK	— HM							12	
PD	— CP							14	
PD	— HM							15	
PD	— KC	6							
TH	— SV					25			
SUB TOTAL		135		629		163		435	
TOTAL									

(XI)

TH — SW

SECTION	PAIRS	0-9		0-65		0-5		PCM	REMARK
		L	NL	L	NL	L	NL		
[TH]	PN							22	
TH	[PN]							68	
[TH]	[PN]							154	
[TH]	BN							44	
[TH]	PS							37	
TH	PS							21	
[TH]	SPK							28	
[TH]	ON							21	
[TH]	LB							7	
[TH]	[PN]MC							14	
TH	CP			40					
OK	[PN]							45	
DK	PN							6	
OK	PS							6	
EC	[PN]							23	
RB	[PN]							24	
PD	[PN]							50	
PD	PN							6	
PD	ON							6	
PD	PS							18	
PD	SPK							12	
PP	[PN]							7	
BC	[PN]							42	
PC	[PN]							28	
MK	[PN]							10	
NK	[PN]							11	
CN	[PN]							43	
TH	BN			7					
TH	SPK			15					
TH	PN					17			
SUB TOTAL				62		17		753	
TOTAL									

① SECTIONS		PW — KK						PCM	REMARK
		0.9		0.65		0.5			
SECTION	PAIRS	L	NL	L	NL	L	NL		
PW	KK							373	
"	KK IOLL							73	
"	KK OTD							14	
"	KK MC							10	
"	KK							296	
"	SR							484	
"	SS							76	
"	BP							64	
"	TH					72			
"	TH							112	
"	OK							46	
"	PD							40	
"	CN							34	
"	BC							35	
"	BS							42	
"	LS							55	
TOTAL						72		1754	

2

SR — KK

SECTION	PAIRS	0.9		0.65		0.5		PCM	REMARK
		L	NL	L	NL	L	NL		
SR	KK						776		
1	KK TOLL						220		
2	KK OTD						36		
3	KK MC						20		
4	KK						432		
5	SS						112		
6	BP						152		
7	PW						484		
8	BS						80		
9	LS						88		
10	RIO						52		
11	DM					56			
TOTAL						56	2452		

SECTION		0-9		0-65		0-5		PCM	REMARK
		L	NL	L	NL	L	NL		
NN	[KK]			44					
	[KK OTD]	5							
BS	[KK]					15			
	[KK OTD]			7					
	KK						52		
	SR						80		
	PW						12		
BP	[KK]			217					
	KK						82		
	[KK OTD]			7					
	SR				152				
	PW				64				
	[PL]			16					
	PL					72			
	MM			16					
	KT			18					
	SV			13					
	ASD			18					
	[PN]			36					
	CP	30							
	PS	6							
	HM			14					
	KC			12					
	[LS]			23					
	RID			13					
	[SW]			20					
	SW					83			
	TC	12							
SS	[KK]				215				
	[KK TOLL]				33				
	[KK OTD]				6				
	KK						66		
	SR						112		
	PW						76		
	[PL]			27					
	PL					59			
	ASD			17					
	SV					16			
	[PN]			36					
	BN	12							
	PS	6							
	CP	24							
	HM			16					
	KC			18					
	[TH]			27					
	TH				32				
	DK				12				
	PD				13				
	[LS]				20				
	DM			23					
	RID					12			
	[SW]			28					
	SW				63				
	TC				6				
	[KK] MC						5		
BP	PD	14							
TOTAL		109		666	616	257	515		

④

SS — BP

SECTION	PAIRS	0.9		0.65		0.5		PCM	REMARK
		L	NL	L	NL	L	NL		
BP	[KK]			217					
	KK						82		
	[KK OTD]			7					
	SR						152		
	PW				64				
	SS						56		
	[PL]			16					
	PL						72		
	MM				16				
	KT			18					
	SV				13				
	ASD			18					
	[PN]			36					
	CP			30					
	PS			6					
	HM				14				
	KC			12					
	[PY]				23				
	PY						48		
	GS						28		
	LPI				14				
	LP2				13				
	[LS]			23					
	NW				14				
	BK			15					
	RID			13					
	[SW]			20					
	SW						83		
	YC				12				
SS	CN						23		
BP	PD			14					
TOTAL				445	183		544		

7

SR — TH

SECTION	PAIRS (TH)	0.9		0.65		0.5		PCM	REMARK
		L	NL	L	NL	L	NL		
SR						140			
	TH						216		
	DK						104		
	PD						108		
	CN						108		
	BC						92		
TOTAL						140	628		

SECTION		SR		SW		PCM	REMARK
		PAIRS		0.65			
		0.9					
		L	NL	L	NL	L	NL
SR	[SW]					108	
✓	SW						720
✓	TC					112	
TOTAL						220	720

②

SR — PL

SECTION	PAIRS	0.9		0.65		0.5		PCM	REMARK
		L		L	N L	L	N L		
SR	[PL]					60			
✓	PL						396		
✓	MM					108			
✓	KT			92					
✓	SV					76			
✓	ASD			152					
✓	[PN]			164					
✓	PN			24					
✓	CP				208				
✓	HM			80					
✓	KC			56					
✓	BN			24					
✓	PS			52					
TOTAL				644	208	244	396		

(12)

SR — PY

SECTION	PAIRS		0-9		0-65		0-5		PCM	REMARK
	L	NL	L	NL	L	NL				
SR — [P.Y.]				84						
" — [P.Y. TOLL]				256						
" — PY							248			
" — LP1				60						
" — LP2				64						
" — BK						64				
" — NW				68						
TOTAL				532		64	248			

14

B P — C N

SECTION	PAIRS	0.9		0.65		0.5		PCM	REMARK
		L	NL	L	NL	L	NL		
BP	TH			24					
	TH				30				
	TH TOLL			63					
	TH MC			5					
	BC			16					
	OK			14					
	CN				26				
SS	CN				23				
TOTAL				122	87				

(17)

BS — SS.b

SECTION	PAIRS	0.9		0.65		0.5		PCM	REMARK
		L	NL	L	NL	L	NL		
BS	[LS]	21							
	LS	7							
	[LS]MC	5							
	RID	17							
	DM	24							
	[TH]	31							
	TH	24							
	PD	14							
	DK	13							
	BC	13							
	CN	13							
	[SW]	27							
	SW	60							
	TC	12							
	[PY]	214							
	PY	70							
	IM	19							
	LPI1	28							
	LP2	18							
	[PL]	26							
	PL	30							
	ASD	18							
	SV	14							
	KT	13							
	MM	6							
	[PN]	38							
	CP	12							
	BN	13							
	KC	28							
	PS	6							
	NM	16							
NN	[PY]	239							
	[PL]	25							
	[TH]	23							
	[PN]	25							
	[SW]	21							
	TH	6							
TOTAL		1189							

18

BS — NN

PAIRS		0-9		0-65		05		PCM	REMARK
		L	NL	L	NL	L	NL		
BS	NN		16						
	NW		69						
	BK	41							
	[LS TOLL]	72							
NN	[PY]	239							
	BS		16						
	[KK]	44							
	[KK OTD]	5							
	[PL]	25							
	[TH]	23							
	[PN]	25							
	[SW]	21							
BP	NW	14							
SS	NW	42							
NN	TH	6							
TOTAL		557	101						

19 20

LP1 — LP.b — PY

SECTION	PAIRS	0.9		0.65		0.5		PCM	REMARK
		L	NL	L	NL	L	NL		
LP1	[PY]			264					
	PY				50				
	IM			28					
	BS			28					
	[KK]			16					
	KK			30					
	[KK OTD]	6							
	SS			8					
	BP			14					
	[PN]			36					
	[SW]			27					
	SW			48					
	BK			27					
	NW				14				
	RID			17					
	SR			60					
	PW			38					
	[PL]			22					
	PL			30					
	MM			12					
	ASD			16					
	SV			13					
	KT			14					
	[TH]			39					
	CP			30					
LP2	[PY]	194							
	PY			34					
	IM			17					
	BS			18					
	[KK]	17							
	KK			32					
	[KK OTD]	6							
	SS			13					
	BP			13					
	SR			64					
	PW	36							
	[TH]	36							
	TH	21							
	PD	12							
	DK	6							
	[PL]	25							
	PL			42					
	ASD			15					
	MM	15							
	SV	16							
	KT	16							
	[PN]	36							
	PN	6							
	CP			36					
	BN	6							
	PS	12							
	[SW]	30							
	SW			45					
	TC	6							
	BK	23							
	NW			12					
	RID	24							
	OM	6							
LP1	TH			20					
SUB TOTAL		555		1178	64				
TOTAL									

(19) (20)

LPI — LP. b — PY

SECTION	PAIRS	0.9		0.66		0.5		PCM	REMARK
		L	NL	L	NL	L	NL		
KC	[PY]							41	
"	PY							46	
"	IM							18	
"	BS							28	
"	OK							38	
"	NW							17	
"	[TH]							53	
"	TH							25	
"	PD							6	
"	[LS]							43	
"	OM							18	
BSN	[KK]							22	
"	[KK QTD]							4	
"	[PY]							14	
"	[PL]							16	
"	[TH]							11	
"	[SW]							12	
SUB-TOTAL								412	
TOTAL		556		1178	64			412	

①9 ②3 ③9

PY - LP.b — NW.b - BK

SECTION	PAIRS	0.9		0.65		0.5		PCM	REMARK
		L	NL	L	NL	L	NL		
BK	[KK]	18							
"	[KK QTD]	6							
"	KK			46					
"	SR	64							
"	BP			15					
"	PW			34					
"	SS			25					
"	[PY]			16					
"	PY				82				
"	IM			20					
"	LPI			27					
"	LP ₂			23					
"	[PL]			26					
"	PL			42					
"	MM			7					
"	ASD			12					
"	SV			12					
"	KT			12					
"	[TH]	32							
"	PD	6							
"	BC	12							
"	DK	6							
"	[PN]	37							
"	CP	30							
"	BN			6					
"	KC			38					
"	HM	15							
"	[SW]	33							
"	SW			74					
"	TH	18							
NW	KK			40					
"	PL			38					
"	PY			56					
"	IM			23					
"	SR	68							
"	PW	28							
TOTAL		373		592	82				

SECTION		0.9		0.65		0.5		PCM	REMARK
		L	NL	L	NL	L	NL		
LP1	LP2		26						
	KC		17						
	HM		18						
LP2	[PY]	194							
	PY	34							
	IM	17							
	BS	18							
	[KK]	17							
	KK	32							
	[KK OTD]	6							
	SS	13							
	OP	13							
	SR	64							
	PW	36							
	[TH]	36							
	TH	21							
	PO	12							
	DK	6							
	[PL]	25							
	PL		42						
	ASD	15							
	MM	15							
	SV	16							
	KT	16							
	[PN]	36							
	PN	6							
	CP	36							
	BN	6							
	PS	12							
	[SW]	30							
	SW	45							
	TC	6							
	BK	23							
	NW	12							
	RID	24							
	DM	6							
	[LS]	26							
	LS		7						
	[LS MC]	5							
	[LS FOLL]	54							
KC	[PY]							41	
	PY							46	
	IM							18	
	BS							28	
	BK							38	
	NW							17	
	[TH]							53	
	TH							25	
	PD							6	
	[LS]							43	
	DM							18	
B SN	[KK]							22	
	[KK OTD]							4	
	[PY]							14	
	[PL]							16	
	[TH]							11	
	[SW]							12	
TOTAL		933	110					412	

22

I M — P Y

SECTION	PAIRS	0 9		0 65		0 5		PCM	REMARK
		L	NL	L	NL	L	NL		
IM	[PY]				277				
	PY						48		
	[PY TOLL]				38				
	LP1						28		
	LP2						17		
	[LS]			17					
	[LS]MC			5					
	BK						20		
	NW				23				
	DM				6				
	RID			14					
	BS						19		
	[KK]			39					
	KK				38				
	[KK TOLL]			33					
	[KK OTD]			6					
	SS						17		
	PW			36					
	[PL]			18					
	PL						20		
	SV						15		
	KT			6					
	ASD						37		
	[TH]			32					
	PD			6					
	[PN]				43				
	KC				18				
	HM				16				
	CP			12					
	[SW]			35					
	SW						18		
	TH			14					
TOTAL				273	459		247		

(24)

NN — NW

SECTION	PAIRS	0.9		0.65		0.5		PCM	REMARK
		L	NL	L	NL	L	NL		
NN	[LS]	21							
f	[LS]MC	4							
f	NW		16						
f	[LS TOLL]	35							
BS	NW		69						
f	BK	11							
f	[LS TOLL]	72							
BP	NW	14							
SS	NW		42						
TOTAL		187	127						

25

K C LP 2

SECTION	PAIRS	0.9		0.65		0.5		PCM	REMARK
		L	NL	L	NL	L	NL		
HM	LP1	18							
	LP2	29							
KC	[PY]							41	
	PY							46	
	LP1	17							
	LP2	44							
	IM							10	
	BS							20	
	BK							30	
	NW							17	
	[TH]							53	
	TH							25	
	PD							6	
	[LS]							43	
	OM							10	
BSN	[KK]							22	
	[KK OTD]							4	
	[PY]							14	
	[PL]							16	
	[TH]							11	
	[SW]							12	
TOTAL		108						412	

(27)

ASD — PL

SECTION	PAIRS	0.9		0.65		0.5		PCM	REMARK
		L	NL	L	NL	L	NL		
ASD	[PL]					487			
"	PL						156		
"	SV						22		
"	MM					18			
"	KT					16			
"	[KK]					20			
"	KK					62			
"	[KK TOID]					54			
"	[KK OYD]					11			
"	PW						99		
"	SR					152			
"	SS					17			
"	BP					18			
"	[IH]					63			
"	CN					12			
"	PD					6			
"	HM					40			
"	XC					13			
"	[SW]					37			
"	SW					116			
"	TH					22			
TOTAL						1124	277		

30

MM — KT

SECTION	PAIRS	0-9		0-65		0-5		PCM	REMARK
		L	NL	L	NL	L	NL		
KT	[KK]	21							
	[KK TOLL]	33							
	[KK OTB]	6							
	KK			34					
	BP	18							
	SR				92				
	PW			60					
	[PY]			30					
	[PY TOLL]	38							
	PY				14				
	BS				13				
	IM				6				
	LP ₁				14				
	LP ₂				16				
	[LS]			23					
	R10	14							
	BK		12						
	NW	6							
	[PL]			208					
	PL				75				
	ASD			16					
	SV				28				
	MM				59				
	[PN]			42					
	[PN] MC			5					
	PN		8						
	BN			16					
	PS			17					
	SPK	6							
	CP	58							
	HM		18						
	KC		13						
	[SW]			22					
	SW				131				
	TK			6					
	TC				49				
	SP				15				
	[TH]	41							
	TH	23							
	CN			8					
	DK			15					
	PD			18					
TOTAL		264	51	520	512				

(31)

SV — CP

SECTION	PAIRS	0.9		0.65		0.5		PCM	REMARK
		L	NL	L	NL	L	NL		
KY	[PN]	42							
"	[PN] MC	5							
"	PN			8					
"	BN	16							
"	PS	17							
"	SPK			6					
"	CP						58		
MM	[PN]			32					
"	[PN] MC			5					
"	PN					7			
"	CP						60		
"	BN			14					
"	PS			15					
"	SPK			6					
SV	[PN]					38			
"	PN						20		
"	[PN] MC					5			
"	CP						88		
"	BN					17			
"	PS					14			
CP	[PL]					48			
"	PL						180		
"	[SW]			50					
"	SW			186					
"	YC					30			
"	SP			12					
"	[LS]			38					
"	DM			28					
"	RID			30					
SP	[PN]	35							
"	[DN] MC	4							
IC	[PN]	65							
"	[PN] MC			9					
CP	[KK]			36					
"	KK			100					
"	PW					112			
"	SR			208					
"	SS			24					
"	BP			30					
"	TH			40					
TOTAL		184		877		271	406		

32

CP — ASD

SECTION	PAIRS	0.9		0.65		0.5		PCM	REMARK
		L	NL	L	NL	L	NL		
CP	ASD				54				
	[PY]	32							
	PY			56					
	IM			12					
	BS	12							
	LP1	30							
	LP2	36							
	BK			30					
	NW	12							
ASD	[PN]			55					
	[PN] MC			9					
	PS			6					
TOTAL		122		168	54				

34 83

TC — SP. b — MM

SECTION	PAIRS	0-9		0-65		0-5		PCM	REMARK
		L	NL	L	NL	L	NL		
TC	MM		53						
.	SV		13						
.	KT		49						
.	[PN]	65							
.	CP		30						
.	[PN] MC	9							
TOTAL		74	145						

		MM		SP.b		SP			
SECTION	PAIRS	0.9		0.65		0.5		PCM	REMARK
		L	NL	L	NL	L	NL		
SP	[SW]	236							
"	SW		36						
"	[KK]	39							
"	[KK TOLL]	21							
"	[KK OTD]	5							
"	[PY]	23							
"	[PY TOLL]	24							
"	[PL]	21							
"	MM		16						
"	KT		15						
"	[LS]	18							
"	[IH]	24							
"	[PN]	35							
"	CP		12						
"	[PN] MC	4							
TOTAL		450	79						

(35) (37)

SV — PL

SECTION	PAIRS	0.9		0.65		0.5		PCM	REMARK
		L	NL	L	NL	L	NL		
SV	[PL]					260			
	PL			97					
	ASD			22					
	[PY]					14			
	PY			34					
	[PY TOLL]			41					
	BS			14					
	IM			15					
	LPI			13					
	LP2			16					
	[LS]			22					
	BK			12					
	RID			6					
	[KK]					10			
	KK					46			
	[KK TOLL]			35					
	[KK OIQ]			7					
	PW						60		
	SR						76		
	SS			16					
	BP			13					
	[SW]			19					
	SW						84		
	[TH]			37					
	BK			13					
	PD					15			
	HM						29		
	KC			14					
CP	[PL]					48			
	PL						180		
	[SW]			50					
	SW					186			
	[LS]			38					
	DM			28					
	RID			30					
	[KK]			36					
	KK			100					
	PW					112			
	SR			208					
	SS			24					
	BP			30					
SV	TH			25					
CP	TH			40					
TOTAL				1055		691	429		

(38) (39)

NW — NW.b — BK

SECTION	PAIRS	0-9		0-65		0-5		PCM	REMARK
		L	NL	L	NL	L	NL		
NN	[L.S.]	21							
	[L.S.] MC	4							
	[L.S.] TOLL	35							
BS	BK	41							
	[L.S.] TOLL	72							
NW	[L.S.]	408							
	[L.S.] TOLL	94							
	[L.S.] MC	9							
	DM	19							
	RID	14							
	BK		55						
NW	KK	40							
	PL	38							
	PY	56							
	IM	23							
	SR	68							
	PW	28							
TOTAL		970	55						

40

BK — LS

SECTION	PAIRS	0-9		0-65		0-5		PCM	REMARK
		L	NL	L	NL	L	NL		
NN	LS	21							
	LS MC	4							
	LS TOLL	35							
BS	LS TOLL	72							
LP1	LS			22					
	LS				13				
	LS MC			5					
	LS TOLL	53							
LP2	LS	26							
	LS			7					
	LS MC	5							
	LS TOLL	54							
NW	LS	408							
	LS TOLL	94							
	LS MC			9					
	DM			19					
	RID			14					
BK	LS			232					
	LS MC				5				
	LS TOLL			59					
	LS				23				
	DM			30					
	RID			21					
TOTAL		772		418	41				

(41)

RID.b — LS

SECTION	PAIRS	0-9		0-65		0-5		PCM	REMARK
		L	NL	L	NL	L	NL		
NC	[KK]							8	
"	[KKOTD]							2	
"	[LS]							85	
"	[LS TOLL]							9	
"	[PN]							5	
"	[PN] MC							2	
BSN	[LS]							173	
RID	[KK]	25							
"	KK	30							
"	[KKOTD]	6							
"	SR	52							
"	BP	13							
"	SS	12							
"	[PY]	26							
"	PY	16							
"	BS	17							
"	IM	14							
"	LP1	17							
"	LP2	24							
"	[PL]	31							
"	PL	30							
"	MM	7							
"	SV	6							
"	KY	14							
"	[LS]	217							
"	LS			16					
"	[LS] MC			5					
"	NW	14							
"	BK			21					
"	DM			16					
"	[LS TOLL]	59							
"	[TH]	38							
"	[PN]	41							
"	PN	6							
"	CP	30							
"	BN	7							
"	TH	19							
"	PS	6							
"	HM	19							
"	[SW]	32							
"	SW	54							
"	TC	6							
BSN	[PN]							19	
"	[PN TOLL]							26	
"	[PN] MC							3	
TOTAL		888		58				332	

NO.67

(45)

CW — LS

SECTION	PAIRS	0-9		0-65		0-5		PCM	REMARK
		L	NL	L	NL	L	NL		
B T	[KK OTD]							2	
"	[LS]							68	
"	[LS TOLL]							9	
"	[TH] MC							2	
P T	[KK]							16	
"	[KK OTD]							3	
"	[PY]							8	
"	[PL]							9	
"	[LS]							124	
"	[LS] MC							3	
"	[TH]							8	
"	[PN]							11	
"	[SW]							8	
"	[LS TOLL]							19	
P K	[KK]	14							
"	[KK OTD]	3							
"	[PY]	9							
"	[PL]	8							
"	[LS]	118							
"	[LS] MC	3							
"	[TH]	7							
"	[PN]	9							
"	[SW]	8							
"	[LS TOLL]	19							
C W	[KK]						28		
"	[KK OTD]						5		
"	[PY]						23		
"	[PL]						19		
"	[LS]						230		
"	[LS] MC						4		
"	[TH]						16		
"	[PN]						21		
"	[SW]						19		
"	[LS TOLL]						35		
"	LS							12	
TOTAL		198				400	12	290	

NO. 71

46

PK — CW

SECTION	PAIRS	0.9		0.65		0.5		PCM	REMARK
		L	NL	L	NL	L	NL		
BT	KK OTD							2	
*	LS							68	
*	LS TOLL							9	
*	TH MC							2	
PT	KK							16	
*	KK OTD							3	
*	PY							8	
*	PL							9	
*	LS							124	
*	LS MC							3	
*	TH							8	
*	PN							11	
*	SW							8	
*	LS TOLL							19	
PK	KK	14							
*	KK OTD	3							
*	PY	9							
*	PL	8							
*	LS	118							
*	LS MC	3							
*	TH	7							
*	PN	9							
*	SW	8							
*	LS TOLL	19							
TOTAL		198						290	

50

DM — LS

SECTION	PAIRS	0.9		0.65		0.5		PCM	REMARK
		L	NL	L	NL	L	NL		
NWN	[KK]							18	
"	[KK OTO]							3	
"	[PY]							10	
"	[PL]							13	
"	[LS]							143	
"	[LS] MC							3	
"	[TH]							10	
"	[PN]							13	
"	[SW]							9	
"	[LS TOLL]							19	
RS	[KK]							12	
"	[KK OTO]							3	
"	[PY]							8	
"	[PL]							8	
"	[LS]							124	
"	[LS] MC							3	
"	[TH]							7	
"	[PN]							10	
"	[SW]							8	
"	[LS TOLL]							19	
TY	[KK]							7	
"	[KK OTO]							2	
"	[LS]							87	
"	[LS TOLL]							9	
"	[LS] MC							2	
DM	[KK]							28	
"	KK							34	
"	[KK OTO]							5	
"	SR							56	
"	SS							23	
"	[PY]							27	
"	PY							56	
"	BS							24	
"	IM							6	
"	LP ₂							6	
"	[PL]							30	
"	PL							28	
"	[LS]	277							
"	LS				14				
"	[LS] MC			4					
"	NW			19					
"	OK			30					
"	RID	16							
"	[TH]	39							
"	PD	12							
"	[PN]	36							
"	CP	28							
"	KC	18							
"	[LS]	45							
"	[SW]	28							
"	SW	57							
"	TH	19							
TOTAL		575		53	14			873	

NO. 75

TY — DM									
(51) PAIRS		0.9		0.65		0.5		PCM	REMARK
SECTION	PAIRS	L	NL	L	NL	L	NL		
TY	KK							7	
	KK OTD							2	
	LS							87	
	LS IOLL							9	
	LS MC							2	
TOTAL								107	

52

RS — D.M

SECTION	PAIRS	0-9		0-65		0-5		PCM	REMARK
		L	NL	L	NL	L	NL		
NWN	[KK]							18	
	[KK OTD]							3	
	[PY]							10	
	[PL]							13	
	[LS]							143	
	[LS MC]							3	
	[TH]							10	
	[PN]							13	
	[SW]							9	
	[LS TOLL]							19	
RS	[KK]							12	
	[KK OTD]							3	
	[PY]							8	
	[PL]							8	
	[LS]							124	
	[LS MC]							3	
	OM		6						
	[TH]							7	
	[PN]							10	
	[SW]							8	
	[LS TOLL]							19	
TOTAL			6					443	

(54)

KC — BSN

SECTION	PAIRS	0-9		0-65		05		PCM	REMARK
		L	NL	L	NL	L	NL		
KC	RID		40						
BSN	KK							22	
	KKOTD							4	
	PY							14	
	PL							16	
	TH							11	
	SW							12	
TOTAL			40					79	

NO. 79

(55)

DK — TH (1/2)

SECTION	PAIRS	0.9		0.65		0.5		PCM	REMARK
		L	NL	L	NL	L	NL		
PP	[TH]							78	
"	[TH] MC							2	
"	[TH TOLL]							9	
"	[KK]							8	
"	[KK OTD]							2	
"	PL							6	
"	PN							7	
PD	KK	38							
"	SR	108							
"	BP	14							
"	PW	40							
"	SS	13							
"	[KK]	17							
"	PY			16					
"	BS			14					
"	IM			6					
"	LP ₂	12							
"	[PY]	32							
"	PL			43					
"	MM			16					
"	ASD	6							
"	SV			15					
"	KT	18							
"	[PL]	28							
"	NW	7							
"	DM	12							
"	BK			6					
"	[LS]	28							
"	TH							32	
"	BC							17	
"	[TH]							232	
"	[TH] MC							5	
"	[TH TOLL]							59	
"	[KK OTD]							6	
"	PN			6					
"	CP			14					
"	BN			6					
"	KC							6	
"	PS			18					
"	SPK			12					
"	HM	15							
"	PN	50							
"	SW							60	
"	TC							17	
"	[SW]							33	
RB	TH				23				
"	[TH]			225					
"	[TH] MC			3					
"	[TH TOLL]			31					
"	[KK]	40							
"	[KK OTD]	4							
"	[PY]	17							
"	[PL]	22							
"	[LS]			15					
"	[PN]	24							
"	[SW]	25							
SUB TOTAL		570		446	23			577	
TOTAL									

NO. 60

(55)

DK — TH (2/2)

SECTION	PAIRS	0.9		0.65		0.5		PCM	REMARK
		L	NL	L	NL	L	NL		
EC	PC	21							
	[TH]	221							
	[TH] MC	3							
	[KK]			38					
	[PY]	16							
	[PL]	22							
	[LS]	12							
	[PN]	23							
	[SW]	22							
	[TH FOIL]	31							
	[KK OTD]	4							
DK	KK							32	
	SR					104			
	BP	14							
	PW			46					
	SS					12			
	[KK]			12					
	[KK OTD]	6							
	PY			12					
	BS	13							
	LP2	6							
	[PY]					28			
	PL			14					
	MM			16					
	SV	13							
	KT			15					
	[PL]			29					
	NW					7			
	BK					6			
	[LS]					23			
	TH							56	
	BC				27				
	CN							14	
	[TH]					266			
	[TH] MC					5			
	[TH FOIL]					59			
	PN							6	
	PS			6					
	HM							12	
	[PN]							45	
	SW							82	
	TC	20							
	[SW]			22					
EC	TH					12			
SUB TOTAL		447		210	32	656	108		
TOTAL		1017		656	55	656	108	577	

NO. 81

56

EC — DK

SECTION	PAIRS	0.9		0.65		0.5		PCM	REMARK
		L	NL	L	NL	L	NL		
EC	DK		12						
	PC	21							
	TH	221							
	TH MC	3							
	KK	38							
	PY	16							
	PL	22							
	LS	12							
	PN	23							
	SW	22							
	TH TOLL	31							
	KK OTD	4							
	TH	12							
TOTAL		425	12						

(58)

R B — D K

SECTION	PAIRS	0.9		0.65		0.5		PCM	REMARK
		L	NL	L	NL	L	NL		
PP	[TH]							76	
	[TH] MC							2	
	[TH TOLL]							9	
	[KK]							8	
	[KK OTD]							2	
	PL							6	
	PN							7	
PD	KK	38							
	SR	108							
	BP	14							
	PW	40							
	SS	13							
	[KK]	17							
	PY			16					
	DS			14					
	IM			6					
	LP ₂	12							
	[PY]	32							
	PL			43					
	MM	16							
	ASD	6							
	SV			15					
	KY	18							
	[PL]	28							
	NW	7							
	DM	12							
	BK			6					
	[LS]	28							
	TH							32	
	BC							17	
	DK				48				
	[TH]							232	
	[TH] MC							5	
	[TH TOLL]							59	
	[KK OTD]							6	
	PN			6					
	CP			14					
	BN			6					
	KC							6	
	PS			18					
	SPK			12					
	HM	15							
	[PN]	50							
	SW							60	
	TC							17	
	[SW]							33	
RB	TH				23				
	DK				38				
	[TH]	225							
	[TH] MC	3							
	[TH TOLL]	31							
	[KK]			40					
	[KK OTD]			4					
	[PY]			17					
	[PL]			22					
	[LS]	15							
	PN			24					
	SW	26							
TOTAL		763		263	109			577	

NO. 83

62

BC — TH

SECTION	PAIRS	0.9		0.65		0.5		PCM	REMARK
		L	NL	L	NL	L	NL		
NK	[TH]							122	
"	[TH] MC							3	
"	[TH TOLL]							19	
"	[KK]							17	
"	[KK OTD]							3	
"	[PY]							7	
"	[PL]							10	
"	[LS]							6	
"	[PN]							11	
"	[SW]							9	
MK	[TH]							124	
"	[TH] MC							3	
"	[TH TOLL]							19	
"	[KK]	17							
"	[PY]							9	
"	[PL]							10	
"	[LS]							6	
"	[PN]							10	
"	[SW]							9	
"	[KK OTD]	3							
PC	EC	21							
"	[TH]	267							
"	TH					18			
"	[KK]	47							
"	[PY]	20							
"	[PL]	26							
"	[LS]	15							
"	[PN]	28							
"	[SW]	27							
"	[TH TOLL]	35							
"	[TH] MC	4							
"	[KK OTD]	5							
BC	KK					30			
"	SR					92			
"	BP	16							
"	PW					35			
"	PY		12						
"	GS		13						
"	NW					7			
"	BK					12			
"	TH						56		
"	PO					17			
"	CN						20		
"	DK						27		
"	SW						54		
"	YC		6						
"	[KK]					14			
"	[PY]					29			
"	[PL]					32			
"	[LS]					25			
"	[TH]		302						
"	[PN]					42			
"	[SW]					23			
"	[KK OTD]	6							
"	[TH TOLL]		59						
"	[TH] MC						5		
TOTAL		537	392			376	162	397	

65

MK — NK

SECTION	PAIRS	0-9		0-65		0-5		PCM	REMARK
		L	NL	L	NL	L	NL		
NK	TH							122	
"	TH MC							3	
"	TH TOLL							19	
"	KK							17	
"	KK OTD							3	
"	PY							7	
"	PL							10	
"	LS							6	
"	PN							11	
"	SW							9	
TOTAL								207	

67

CP — P N

SECTION	PAIRS	0-9		0-65		0-5		PCM	REMARK
		L	NL	L	NL	L	NL		
K T	[P N]	42							
	[P N] MC	5							
	P N			8					
	B N	16							
	P S	17							
	S P K			6					
M M	[P N]	32							
	[P N] MC	5							
	P N					7			
	B N			14					
	P S	15							
	S P K	6							
S V	[P N]					38			
	P N						20		
	[P N] MC					5			
	B N					17			
	P S	14							
A S O	[P N]			55					
	[P N] MC			9					
	P S			6					
CP	[P N]						538		
	P N						62		
	[P N TOLL]						118		
	[P N] MC						10		
	B N						84		
	P S						34		
	O N						12		
SP	[P N]	35							
	[P N] MC	4							
T C	[P N]	65							
	[P N] MC	9							
TOTAL		265		98		67	678		

68

HM — PN

SECTION	PAIRS	0.9		0.65		0.5		PCM	REMARK
		L	NL	L	NL	L	NL		
HM	PN			241					
	PN				19				
	PN TOLL			68					
	PN MC			5					
	BN			16					
	PS			13					
KC	PN			452					
	PN TOLL			94					
	PN MC			9					
	BN			14					
	PS			6					
TOTAL				918	19				

75

BN — PN

SECTION	PAIRS	0-9		0-65		0-5		PCM'	REMARK
		L	NL	L	NL	L	NL		
SPK	PL			12					
8PL	[PN]							77	
"	[PN TOLL]							9	
"	[PN MC]							2	
"	[KK OTD]							2	
PS	[PN]			215					
"	PN				13				
"	[PN TOLL]			45					
"	[PN MC]			4					
"	CP			34					
"	HM			13					
"	KC			6					
"	[PL]	26							
"	PL			30					
"	SV			14					
"	ASD	6							
"	MM	15							
"	KT	17							
"	[KK]	27							
"	KK			28					
"	[KK OTD]	5							
"	PW			31					
"	SR	52							
"	SS	6							
"	BP	6							
"	[SW]	45							
"	SW	27							
"	TC	6							
"	[TH]	37							
"	TH	21							
"	DK	6							
"	PD	18							
"	[PY]	30							
"	PY			12					
"	BS	6							
"	LP2	12							
"	[LS]	22							
"	RID	6							
BN	[PN]			581					
"	PN						18		
"	[PN TOLL]			94					
"	[PN MC]					9			
"	CP						84		
"	HM						16		
"	KC			14					
"	[PL]			52					
"	PL					32			
"	SV					17			
"	MM	14							
"	KT			16					
"	[KK]			49					
"	KK	26							
"	[KK OTD]	11							
"	PW	31							
"	SR			24					
"	SS	12							
"	[SW]	54							
"	SW	51							
SUB TOTAL		595		1274	13	58	118	90	
TOTAL									

82

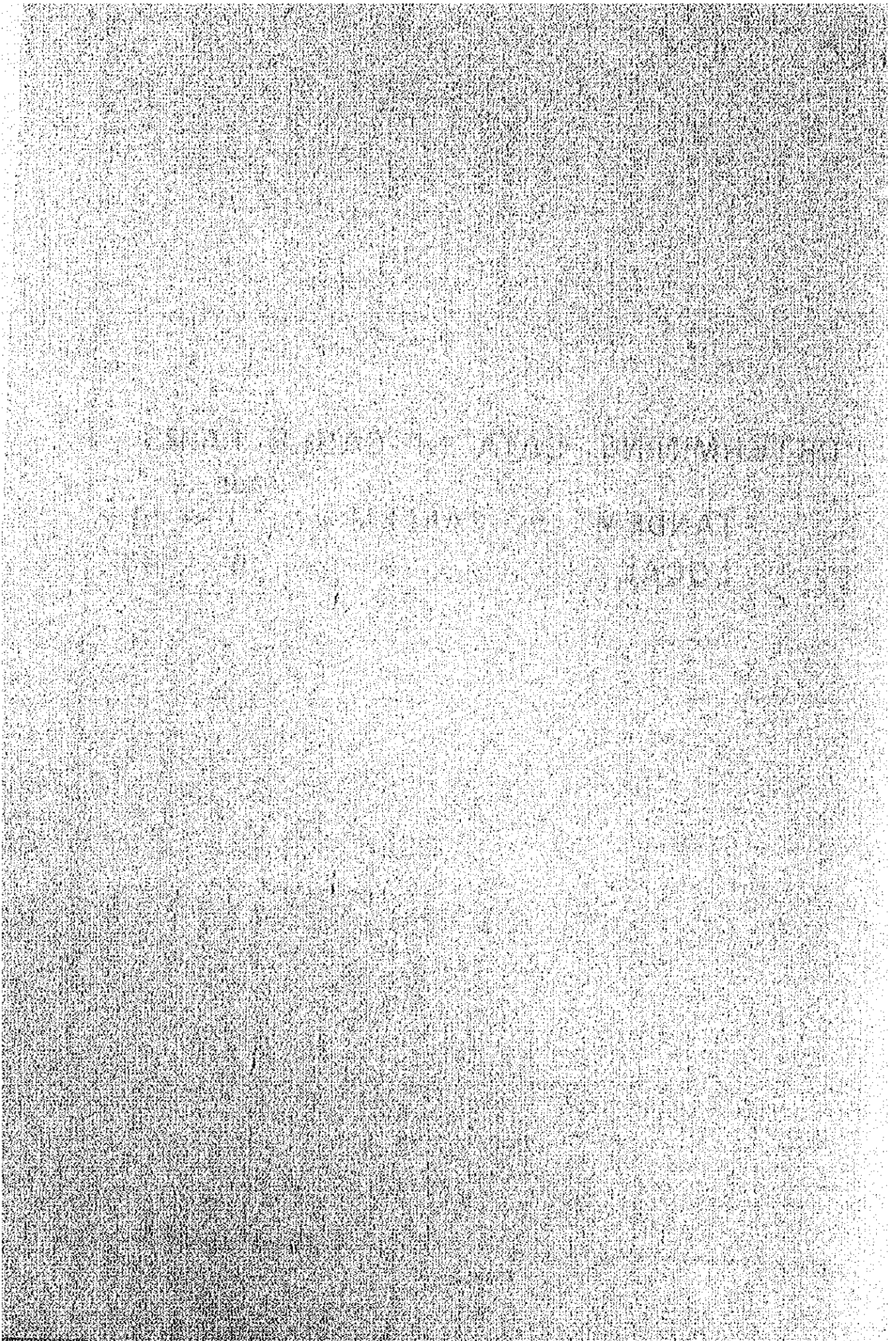
TC — SW

SECTION	PAIRS	0.9		0.65		0.5		PCM	REMARK
		L	NL	L	NL	L	NL		
TC	SW			(483)		483			
"	SW						176		
"	TK					18			
"	KK					24			
"	KK TOLL					54			
"	KK OTD					11			
"	KK					54			
"	SR					112			
"	BP					12			
"	PW					59			
"	SS					6			
"	PY					46			
"	PY TOLL			(62)		62			
"	PY					12			
"	BS					12			
"	LP ₂					6			
"	LS					38			
"	RID					6			
"	TH					63			
"	TH					54			
"	PD					17			
"	BC					6			
"	DK					20			
"	PL					33			
"	PL					82			
"	PS					6			
"	HM					13			
TOTAL				(545)		1307	176		

No. 107

DETERMINING DATA OF CABLE PAIRS

	PAGE
TANDEM - TANDEM	1 ~ 14
LOCAL	15 ~ 93



DETERMINING DATA OF CABLE PAIRS

SECTION P Y I KK

ITEM	0.9mm CABLE			0.65mm CABLE			0.5mm CABLE					
	NL (PCM)	L	PCM (CH)	TOTAL	NL	L	PCM (CH)	TOTAL	NL	L	TOTAL	
NO. OF PLANNING	(76)	498	814	(37+1)	1312	()	289	()	289	100	140	240
MAINTENANCE	65					14				12		
LEASED & SPARE	131					28				24		
TOTAL	272	498	1384	(60+1)	2230	42	289	331	491	136	140	276
GENERAL	(122)	846	1384	(60+1)	2230	()	491	()	491	170	238	408
MAINTENANCE	111					25				20		
LEASED & SPARE	223					49				40		
TOTAL	456	846	1302		1302	74	491	565	900	230	238	468
CABLES					400ASP 600SP			900	1100ASP			1800ASP (M/RY=900)
PAIRS	200	800	1000		1000	360	540	900	900	400	500	900
COILS					400P 400P			540P	540P			500P
CABLES												
PAIRS												
COILS												
CABLES					400ASP							
PAIRS	350	50	400		400							
COILS					50P							
ACCOMMODATION	AT '84				770 1000				331 900		276 900	30.7 %
RATIO	AT '94				1302 1400				565 900		468 900	52.0 %
REMARKS												

NO. 1

DETERMINING DATA OF CABLE PAIRS

SECTION PL I KK

ITEM	0.9mm CABLE			0.65mm CABLE			0.5mm CABLE							
	NL (PCM)	L	PCM (CH)	PCM (S+S)	TOTAL	NL	L	PCM (CH)	PCM (SYS)	TOTAL	NL	L	TOTAL	
NO. OF PLANNING MAINTENANCE LEASED & SPARE	(52)	554	520 (25+1)	1174	34 ()	297				331	377	602	979	
CIRCUIT IN '84	59				17						49			
TOTAL	228	654		892	84	297				381	524	602	1126	
NO. OF PLANNING MAINTENANCE LEASED & SPARE	(80)	1112	884 (39+1)	1996	58 ()	505				553	641	1023	1664	
CIRCUIT IN '94	100				28						83			
TOTAL	200	1112		1492	142	505				547	890	1023	1913	
EXISTING	58	542		600ASP						500ASP 900ASP	2000	1600	3600	
INCREASING UNTIL '84	450	150		600						1800	2000	1600	3600	
INCREASING UNTIL '94				300ASP						600P 300P			1600P	
ACCOMMODATION RATIO				882 1200	73.5 %					381 1800	21.2 %		1126 3600	31.3 %
REMARKS				1492 1500	99.5 %					547 1800	36.0 %		1913 3600	53.1 %

DETERMINING DATA OF CABLE PAIRS

SECTION SW III KK

ITEM	0.9mm CABLE				0.65mm CABLE				0.5mm CABLE				
	NL (PCM)	L	PCM (CH)	PCM (SYS)	TOTAL	NL	L	PCM (CH)	PCM (SYS)	TOTAL	NL	L	TOTAL
NO. OF PLANNING													
CIRCUIT IN '84													
GENERAL	()	250			250	35	649			1000	288	180	468
MAINTENANCE													
LEASED & SPARE	13					50				552			
TOTAL	25					27					23		
NO. OF PLANNING													
CIRCUIT IN '94													
GENERAL	()	250			288	50	649			1150	358	180	538
MAINTENANCE													
LEASED & SPARE	21					143	469			612			
TOTAL	42					597	1103			1700	490	306	796
NO. OF PLANNING													
CIRCUIT IN '94													
GENERAL	()	425				85	797			904			
MAINTENANCE													
LEASED & SPARE	21					35					40		
TOTAL	63	425			488	170	1103			1955	80		
EXISTING													
CABLES													
PAIRS	0	200(290)			300	1230	870			2100	610	306	916
COILS					300/400ASP					900ASP			
INCREASING													
UNTIL '84													
UNTIL '94													
CABLES													
PAIRS	150	150			300		250			500P			
COILS										500P			
ACCOMMODATION													
RATIO													
AT '84					288					1150			%
AT '94					290					2100			%
					488					1955			%
					590					2100			%
REMARKS	THESE CIRCUITS ARE ACCOMMODATED TO EXISTING 0.65 mm CABLE												

DETERMINING DATA OF CABLE PAIRS

SECTION T.H. IV KK

ITEM	0.9mm CABLE			0.65mm CABLE			0.5mm CABLE		
	NL (PCM)	L	PCM (CH)	NL	L	PCM (CH)	NL	L	PCM (CH)
NO. OF PLANNING	()	268	()	262 (26)	522	264 (12+1)			
MAINTENANCE	13			52					
LEASED & SPARE	27			105					
TOTAL	40	268		445	522				967
GENERAL	()	456	()	445 (40)	887	449 (19+1)			1781
MAINTENANCE	23			89					
LEASED & SPARE	46			178					
TOTAL	69	456		752	887				1639
CABLES									1100ASP
PAIRS		700		957	1143				2100
COILS									1200P
INCREASING UNTIL '84									
INCREASING UNTIL '94									
ACCOMMODATION AT '84									
RATIO AT '84									
REMARKS									

DETERMINING DATA OF CABLE PAIRS

SECTION PY (V) SW

ITEM	0.9mm CABLE				0.65mm CABLE				0.5mm CABLE				
	NL (PCM)	L	PCM (CH)	PCM (SYS)	TOTAL	NL	L	PCM (CH)	PCM (SYS)	TOTAL	NL	L	TOTAL
NO. OF PLANNING													
GENERAL	(178)	1003	1981	(87+2)	2984	150	695			845			
MAINTENANCE	149					42							
LEASED & SPARE	298					85							
TOTAL	625	1003			1628	277	695			972			
GENERAL	(295)	1705	3368	(146+2)	5073	255	1182			1437			
MAINTENANCE	254					72							
LEASED & SPARE	507					144							
TOTAL	1057	1705			2762	471	1182			1653			
CABLES					600ASP					1200ASP			
PAIRS	300	300			600	300	900			1200			
COILS					300P					900P			
CABLES					600ASP								
PAIRS	450	750			1200								
COILS					150P								
CABLES					600ASP								
PAIRS	300	700			1000	300	300			600ASP			
COILS					100P					300P			
ACCOMMODATION					1528					972			
RATIO					1800					1200			
					2762					1653			
					2800					1800			
					90.4%					81.0%			
					98.6%					91.8%			
REMARKS													

DETERMINING DATA OF CABLE PAIRS

SECTION PY VI PL

ITEM	0.9mm CABLE				0.65mm CABLE				0.5mm CABLE				
	NL (PCM)	L	PCM (CH)	PCM (SYS)	TOTAL	NL	L	PCM (CH)	PCM (SYS)	TOTAL	NL	L	TOTAL
NO. OF PLANNING CIRCUIT IN '84	GENERAL	(46)	616	521	(22+1)	1137	140	740	()	880	108	250	358
	MAINTENANCE LEASED & SPARE	57				44				522	18		
NO. OF PLANNING CIRCUIT IN '94	TOTAL	217	616			833	272	740		1012	35		
	GENERAL	(76)	1047	886	(37+1)	1933	238	490	()	600	162	250	412
NO. OF PLANNING CIRCUIT IN '94	MAINTENANCE LEASED & SPARE	97				75				1496	184	425	609
	TOTAL	366	1047			1413	463	1256		1721	30		
EXISTING	CABLES					600ASP				1200ASP			
	PAIRS	275	325			600	1100	1300		2400			
INCREASING UNTIL '84	COILS					200P				700P			
	TOTAL					600ASP				2400			
INCREASING UNTIL '94	CABLES					300P				600P			
	PAIRS	300	300			600							
ACCOMMODATION RATIO	COILS					300P							
	TOTAL					300ASP							
REMARKS	AT '84					833				1012			%
	AT '94					1413				1721			%
<p>THOSE CIRCUITS ARE ACCOMMODATED TO EXISTING CABLE.</p>													

DETERMINING DATA OF CABLE PAIRS

SECTION PY VI - I ASD

ITEM	0.9 mm CABLE				0.65mm CABLE				0.5mm CABLE				
	NL (PCM)	L	PCM (CH)	PCM (SYS)	TOTAL	NL	L	PCM (CH)	PCM (SYS)	TOTAL	NL	L	TOTAL
NO. OF PLANNING CIRCUIT IN '84	GENERAL (120) (120)	225 135	129 129	{ 59+1 } { 59+1 }	1516 1428	()	()	()	()				
	MAINTENANCE 76												
	LEASED & SPARE 152 143												
	TOTAL	348 334	225 135		573 469								
NO. OF PLANNING CIRCUIT IN '94	GENERAL (192) (192)	383 230	2195 2195	{ 95+1 } { 95+1 }	2578 2425	()	()	()	()				
	MAINTENANCE 129												
	LEASED & SPARE 258 243												
	TOTAL	579 556	383 230		962 786								
EXISTING	CABLES				600REF-P								
	PAIRS	400	200		600								
	COILS				200P								
INCREASING UNTIL '84	CABLES												
	PAIRS		100										
	COILS				100P								
INCREASING UNTIL '94	CABLES												
	PAIRS	300	100		400ASP								
	COILS				400								
ACCOMMODATION	AT '84				573 600					95.5 %			%
RATIO	AT '94				962 1000					96.2 %			%
REMARKS	UPPER FIGURE INCLUDES NUMBER OF CIRCUITS IN (29) SECTION												

DETERMINING DATA OF CABLE PAIRS

SECTION ASD (VI) - 2 CP

ITEM	0.9mm CABLE				0.65mm CABLE				0.5mm CABLE				
	NL (PCM)	L	PCM (CH)	PCM (SYS)	TOTAL	NL	L	PCM (CH)	PCM (SYS)	TOTAL	NL	L	TOTAL
NO. OF PLANNING CIRCUIT IN '84	GENERAL	(120)	257	(129)	(59+)		()		()				
	MAINTENANCE	(120)	135	(129)	(59+)								
	LEASED & SPARE	77											
TOTAL	352	257	334	135	609					469			
NO. OF PLANNING CIRCUIT IN '94	GENERAL	(192)	437	(192)	(93+)		()		()				
	MAINTENANCE	(192)	230	(192)	(93+)								
	LEASED & SPARE	121											
TOTAL	253	437	243	230	2632					2425			
EXISTING	CABLES	587	437	536	230	1024				786			
	PAIRS	400	200			600				600			
	COILS					200P							
INCREASING UNTIL '84	CABLES												
	PAIRS		100			100P							
	COILS												
INCREASING UNTIL '94	CABLES												
	PAIRS	450	150			600ASP				600			
	COILS					150P							
ACCOMMODATION	AT '84					509	101						%
RATIO	AT '94					1024	85.3						%
REMARKS	* USE OF ASD/PN 600 PEF * P CABLE WHICH IS CUT AND TERMINATED TO CP EX. * UPPER FIGURE INCLUDES NUMBER OF CIRCUITS IN (32) SECTION.												

DETERMINING DATA OF CABLE PAIRS

SECTION CP VI -3 PN

ITEM	0.9mm CABLE			0.65mm CABLE			0.5mm CABLE		
	NL (PCM)	L	PCM (CH)	NL	L	PCM (CH)	NL	L	PCM (CH)
NO. OF PLANNING MAINTENANCE LEASED & SPARE	(120)	135	1291	(59+1)	1426	()	()	()	()
TOTAL	334	135	469						
NO. OF PLANNING MAINTENANCE LEASED & SPARE	(192)	229	2195	(95+1)	2424	()	()	()	()
TOTAL	556	229	785						
CABLES PAIRS COILS	400	200	600EFP		600EFP				
CABLES PAIRS COILS					200P				
CABLES PAIRS COILS									
CABLES PAIRS COILS					300ASP				
CABLES PAIRS COILS	250	50	300		50P				
ACCOMMODATION AT '84			469		78.3 %				%
RATIO AT '94			792+102		99.3 %				%
REMARKS									

DETERMINING DATA OF CABLE PAIRS

SECTION PY LS

ITEM	0.9mm CABLE			0.65mm CABLE			0.5mm CABLE		
	NL (PCM)	L	PCM (CH)	NL	L	PCM (CH)	NL	L	PCM (SYS)
NO. OF PLANNING CIRCUIT IN '84	(358)	154	3954 (176+3)	()	()	()	()	()	()
GENERAL									
MAINTENANCE	205								
LEASED & SPARE	411								
TOTAL	974	154	1128						
NO. OF PLANNING CIRCUIT IN '94	(390)	262	6722 (192+3)	()	()	()	()	()	()
GENERAL									
MAINTENANCE	349								
LEASED & SPARE	698								
TOTAL	1437	262	1699						
CABLES			300 ASP			600x2 PEF			
PAIRS	711	789	1300						
COILS			300P			200P			
			300P			200P			
INCREASING UNTIL '84									
INCREASING UNTIL '94									
ACCOMMODATION			300 PEF P						
AT '84	300		300						
AT '94									
RATIO			1128			75.2 %			%
			1500						%
			1699			94.4 %			%
			1800						%
REMARKS									

DETERMINING DATA OF CABLE PAIRS

SECTION SW PL

ITEM	0.9mm CABLE			0.65mm CABLE			0.5mm CABLE		
	NL (PCM)	L	PCM (CH)	NL	L	PCM (CH)	NL	L	PCM (CH)
NO. OF PLANNING MAINTENANCE LEASED & SPARE CIRCUIT IN '84	(130)	783	1425 (64+1)	()	590	()	1060	225	590
	110		2208	30			64		
TOTAL	461	783	1244	89	590		1253	225	679
NO. OF PLANNING MAINTENANCE LEASED & SPARE CIRCUIT IN '94	(216)	1331	2423 (106+2)	()	1003	()	1802	383	1003
	188		3754	50			109		
TOTAL	779	1331	2110	150	1003		2130	383	1153
EXISTING	100	950	1050	1000	1400		2600	1000	2400
INCREASING UNTIL '84		-50							
INCREASING UNTIL '94	700	500	1200						
ACCOMMODATION RATIO			1244-213 1050				679+213 2400	1478 3600	37.2 % 41.1 %
			2110 2230				1153 2400	2513 3600	48.0 % 69.8 %
REMARKS	SPARE AND LEASED PAIRS FOR PCM CHANNEL REQUIREMENTS ARE ASSIGNED TO 0.65mm CABLE. THE MINUS SIGN SHOWS DELOADED CIRCUIT								

DETERMINING DATA OF CABLE PAIRS

SECTION PL - CP

ITEM	0.9mm CABLE				0.65mm CABLE				0.5mm CABLE				
	NL (PCM)	L	PCM (CH)	PCM (SYS)	TOTAL	NL	L	PCM (CH)	PCM (SYS)	TOTAL	NL	L	TOTAL
NO. OF PLANNING													
CIRCUIT IN '84													
GENERAL	159 138	138 938	640 640	(77+2) (77+2)	2678 2578	36	610			646			
MAINTENANCE	34					32							
LEASED & SPARE	268 258					65							
TOTAL	560 545	1038 938	1598 1483	1598 1483	1598 1483	133	610			743			
NO. OF PLANNING													
CIRCUIT IN '94													
GENERAL	250 250	1765 1595	2788 2788	(123+2) (123+2)	4533 4383	61	1037			1098			
MAINTENANCE	228					55							
LEASED & SPARE	455 438					110							
TOTAL	933 907	1765 1595	2698 2502	2698 2502	2698 2502	226	1037			1263			
EXISTING													
CABLES					600ASP 600ASP					1200ASP			
PAIRS	610	1190	1800	1800	1800	800	400			1200			
COILS			300P 300P	300P 300P	300P 300P					400			
INCREASING													
UNTIL '84													
CABLES													
PAIRS													
COILS													
INCREASING													
UNTIL '94													
CABLES					300ASP 600ASP								
PAIRS	300	600	900	900	900								
COILS													
ACCOMMODATION													
AT '84				1598 1800	88.8%					743 1200			61.9%
RATIO				2698 2700	99.9%					263 1200			105.2%
REMARKS	UPPER FIGURE INCLUDES NUMBER OF CIRCUITS IN (28) SECTION												

DETERMINING DATA OF CABLE PAIRS

SECTION CP X-2 PN

ITEM	0.9mm CABLE				0.65mm CABLE				0.5mm CABLE				
	NL (PCM)	L	PCM (CH)	PCM (SYS)	TOTAL	NL	L	PCM (CH)	PCM (SYS)	TOTAL	NL	L	TOTAL
NO. OF PLANNING CIRCUIT IN '84	GENERAL (158)	938	1640	(77+2)	2578	35	610			645			
	MAINTENANCE	129				32							
	LEASED & SPARE	258				65							
	TOTAL	545	938		1483	133	610			745			
NO. OF PLANNING CIRCUIT IN '94	GENERAL (250)	1595	2788	(123+2)	4383	61	1037			1098			
	MAINTENANCE	219				55							
	LEASED & SPARE	438				110							
	TOTAL	907	1595		2502	226	1037			1263			
EXISTING	CABLES				600EF 600DEF					1200ASP			
	PAIRS	510	690		1200	600	400			1200			
	COILS				500P 200P					400P			
INCREASING UNTIL '84	CABLES				600ASP								
	PAIRS	300	300		600		300						
	COILS				300P					300P			
INCREASING UNTIL '94	CABLES				600ASP								
	PAIRS		600		600		350						
	COILS				600P					350P			
ACCOMMODATION AT '84				1483	82.4%				743	61.9%			
				1800					1200				
RATIO AT '94				2502-102	100%				1263	105.2%			
				2400					1200				
REMARKS	102 PAIRS REQUIRED IN 1994 ARE ASSIGNED TO CABLE ON <u>VI</u> -3 ROUTE.												

NO. 15

DETERMINING DATA OF CABLE PAIRS

SECTION TH SW

ITEM	0.9 mm CABLE				0.65mm CABLE				0.5mm CABLE				
	NL (PCM)	L	PCM (CH)	PCM (SYS)	TOTAL	NL	L	PCM (CH)	PCM (SYS)	TOTAL	NL	L	TOTAL
NO. OF PLANNING MAINTENANCE LEASED & SPARE CIRCUIT IN '84	(228)	716	2,521	(112+2)	3,237		906			906	164	692	856
	162					43					43		
	324					91					86		
TOTAL	714	716			1,430	136	906			1,042	293	692	985
NO. OF PLANNING MAINTENANCE LEASED & SPARE CIRCUIT IN '94	(360)	1,217	4,286	(187+3)	5,503		1,540			1,540	279	1,176	1,455
	275					77					73		
	550					154					146		
TOTAL	1,205	1,217			2,422	231	1,540			1,771	498	1,176	1,674
CABLES					600PEF								1,800ASP
PAIRS	100	500			600	200	1,000			1,200	900	900	1,800
COILS					500P					1,000P			900P
INCREASING UNTIL '84					600PEF								
	350	250			600								
					250P								
CABLES					600PEF					600ASP			
PAIRS	700	500			1,200		600			600		300	
COILS					500P					600P			300P
ACCOMMODATION AT '84				1,430-230	100.0 %				1,042-150	99.3 %			985+90
				1,200					1,200				1,800
RATIO AT '94				2,422-22	100.0 %				1,771+22	99.6 %			1,674
				2,400					1,800				1,800
REMARKS	SPARE AND LEASED PAIRS FOR PCM CHANNEL REQUIREMENTS ARE ASSIGNED TO 0.65mm AND 0.5mm CABLES												

DETERMINING DATA OF CABLE PAIRS

SECTION PW (1) KK

ITEM	0.9mm CABLE			0.65mm CABLE			0.5mm CABLE						
	NL (PCM)	L	PCM (CH)	PCM (SYS)	TOTAL	NL	L	PCM (CH)	PCM (SYS)	TOTAL	NL	L	TOTAL
NO. OF PLANNING MAINTENANCE LEASED & SPARE	()			()		()			()		1754	72	1826
CIRCUIT IN '84											91		
TOTAL											2028	72	2100
NO. OF PLANNING MAINTENANCE LEASED & SPARE	()			()		()			()		2982	122	3104
CIRCUIT IN '94											155		
TOTAL											310		
EXISTING											3447	122	3569
INCREASING UNTIL '84													
INCREASING UNTIL '94													
ACCOMMODATION RATIO													
AT '84												2100	77.8%
AT '94												2700	
												3569	
												3600	99.1%
REMARKS													

DETERMINING DATA OF CABLE PAIRS

SECTION SR 2 KK

ITEM	0.9mm CABLE			0.65mm CABLE			0.5mm CABLE		
	NL (PCM)	L	PCM (CH)	NL	L	PCM (CH)	NL	L	PCM (CH)
NO. OF PLANNING MAINTENANCE LEASED & SPARE	()	()	()	()	()	()	2452	56	2508
CIRCUIT IN '84							125		
TOTAL							2828	56	2884
NO. OF PLANNING MAINTENANCE LEASED & SPARE	()	()	()	()	()	()	4168	95	4263
CIRCUIT IN '94							213		
TOTAL							426		
EXISTING							4807	95	4902
INCREASING UNTIL '84									1800ASP 900ASP
INCREASING UNTIL '94							2700	100	2700
ACCOMMODATION RATIO							100	100	1200ASP 1200
AT '84									2884 73.9 % 3900
AT '94									4902 96.1 % 5100
REMARKS									

DETERMINING DATA OF CABLE PAIRS

SECTION KK-3-SS

ITEM	0.9mm CABLE			0.65mm CABLE			0.5mm CABLE		
	NL (PCM)	L	PCM (CH)	NL	L	PCM (CH)	NL	L	PCM (CH)
NO. OF PLANNING MAINTENANCE LEASED & SPARE	() 109		() 109	616()	666	() 1282	515	257	772
TOTAL	5			64			39		
NO. OF PLANNING MAINTENANCE LEASED & SPARE	() 185		() 185	808	666	1474	631	257	888
TOTAL	9			1047()	1132	2179	876	437	1313
NO. OF PLANNING MAINTENANCE LEASED & SPARE	() 185		() 185	109			66		
TOTAL	19			218			131		
EXISTING	28	185	213	1374	1132	2506	1073	437	1510
INCREASING UNTIL '84			600ASP			600ASP			900ASP
INCREASING UNTIL '94		600	600	1400	400	1800	300	600	900
ACCOMMODATION AT '84			600P			400P			600P
RATIO									
			125+270 600			1474-270 1300			288 900
			213 600			2506 2700			1510 1500
			65.8%			66.9%			98.7%
			35.5%			92.8%			100.6%
REMARKS				270 PAIRS ARE ACCOMMODATED TO EXISTING 0.9mm CABLE.			340 NL PAIRS ARE ACCOMMODATED TO EXISTING LOADING PAIRS.		

DETERMINING DATA OF CABLE PAIRS

SECTION SS 4 BP

ITEM	0.9mm CABLE				0.65mm CABLE				0.5mm CABLE						
	NL (PCM)	L	PCM (CH)	PCM (SYS)	TOTAL	NL	L	PCM (CH)	PCM (SYS)	TOTAL	NL	L	PCM (CH)	PCM (SYS)	TOTAL
NO. OF PLANNING CIRCUIT IN '84	GENERAL	()		()		183	445	()	()	628	544				544
	MAINTENANCE LEASED & SPARE					31					27				
	TOTAL					214	445			628	571				544
NO. OF PLANNING CIRCUIT IN '94	GENERAL	()		()		277	445	()	()	722	625				625
	MAINTENANCE LEASED & SPARE					53					46				
	TOTAL					330	445			722	671				625
EXISTING	CABLES					471	757			1228	1064				1064
	PAIRS					350	750			1100	1500				1500
	COILS									750P					
INCREASING UNTIL '84	CABLES														
	PAIRS														
	COILS														
INCREASING UNTIL '94	CABLES									200ASP					
	PAIRS					150	50			200					
	COILS									50P					
ACCOMMODATION RATIO	AT '84									722 / 1100 = 65.6 %					625 / 1500 = 41.7 %
	AT '94									1228 / 1300 = 94.5 %					1064 / 1500 = 70.9 %
REMARKS															

DETERMINING DATA OF CABLE PAIRS

SECTION PY 6 PW

ITEM	0.9mm CABLE				0.65mm CABLE				0.5mm CABLE				
	NL (PCM)	L	PCM (CH)	PCM (SYS)	TOTAL	NL	L	PCM (CH)	PCM (SYS)	TOTAL	NL	L	TOTAL
NO. OF PLANNING CIRCUIT IN '84	GENERAL	()		()		()		()			156	271	427
	MAINTENANCE LEASED & SPARE										21		
	TOTAL										220	271	491
NO. OF PLANNING CIRCUIT IN '94	GENERAL	()		()		()		()			265	461	726
	MAINTENANCE LEASED & SPARE										36		
	TOTAL										73		
EXISTING	CABLES										374	461	835
	PAIRS										600	300	900ASP
	COILS												300P
INCREASING UNTIL '84	CABLES												
	PAIRS												
	COILS												
INCREASING UNTIL '94	CABLES												
	PAIRS											200	
	COILS												200P
ACCOMMODATION RATIO	AT '84				%							491	54.6%
	AT '94				%							835	92.0%
REMARKS													

DETERMINING DATA OF CABLE PAIRS

SECTION TH 7 SR

ITEM	0.9mm CABLE			0.65mm CABLE			0.5mm CABLE					
	NL (PCM) ()	L ()	PCM (CH) ()	TOTAL ()	NL ()	L ()	PCM (CH) ()	PCM (SYS) ()	TOTAL	NL	L	TOTAL
NO. OF PLANNING MAINTENANCE LEASED & SPARE	()	()	()	()	()	()	()	()	()	628	140	768
TOTAL										743	140	883
NO. OF PLANNING MAINTENANCE LEASED & SPARE	()	()	()	()	()	()	()	()	()	1068	238	1306
TOTAL										65		
										131		
EXISTING										1264	238	1502
INCREASING UNTIL '84										1500		1500ASP
INCREASING UNTIL '94											200	200P
ACCOMMODATION RATIO												
AT '84												883 / 1500 = 58.9 %
AT '94												1502 / 1500 = 100.1 %
REMARKS												

DETERMINING DATA OF CABLE PAIRS

SECTION SW 8 SR

ITEM	0.9mm CABLE				0.65mm CABLE				0.5mm CABLE				
	NL (PCM)	L	PCM (CH)	PCM (SYS)	TOTAL	NL	L	PCM (CH)	PCM (SYS)	TOTAL	NL	L	TOTAL
NO. OF PLANNING CIRCUIT IN '94	GENERAL	()	()	()	()	()	()	()	()	()	720	220	940
	MAINTENANCE LEASED & SPARE										47		
	TOTAL										861	220	1081
NO. OF PLANNING CIRCUIT IN '94	GENERAL	()	()	()	()	()	()	()	()	()	1224	374	1598
	MAINTENANCE LEASED & SPARE										80		
	TOTAL										1464	374	1838
EXISTING	CABLES												1500ASP
	PAIRS										1200	300	1500
	COILS												300P
INCREASING UNTIL '84	CABLES												
	PAIRS												
	COILS												
INCREASING UNTIL '94	CABLES												600ASP
	PAIRS										500	100	600
	COILS												100P
ACCOMMODATION	AT '84											1081	72.1 %
RATIO	AT '94											1838	87.5 %
REMARKS													

NO.21

DETERMINING DATA OF CABLE PAIRS

SECTION SW 9 PW

ITEM	0.9mm CABLE				0.65mm CABLE				0.5mm CABLE				
	NL (PCM)	L	PCM (CH)	PCM (SYS)	TOTAL	NL	L	PCM (CH)	PCM (SYS)	TOTAL	NL	L	TOTAL
NO. OF PLANNING CIRCUIT IN '84	GENERAL	()	()	()	()	()	()	()	()	()	499		499
	MAINTENANCE										25		
	LEASED & SPARE										50		
	TOTAL										574		574
NO. OF PLANNING CIRCUIT IN '94	GENERAL	()	()	()	()	()	()	()	()	()	848		848
	MAINTENANCE										42		
	LEASED & SPARE										85		
	TOTAL										975		975
EXISTING	CABLES												1200ASP
	PAIRS												1200
	COILS												
INCREASING UNTIL '84	CABLES												
	PAIRS												
	COILS												
INCREASING UNTIL '94	CABLES												
	PAIRS												
	COILS												
ACCOMMODATION RATIO	AT '84				%							574 1200	47.8%
	AT '94				%							975 1200	81.3%
REMARKS													

DETERMINING DATA OF CABLE PAIRS

SECTION PL-0-PW

ITEM	0.9mm CABLE			0.65mm CABLE			0.5mm CABLE						
	NL (PCM)	L	PCM (CH)	PCM (SYS)	TOTAL	NL	L	PCM (CH)	PCM (SYS)	TOTAL	NL	L	TOTAL
NO. OF PLANNING CIRCUIT IN '84	GENERAL	()	()	()	()	()	()	()	()	()	944	68	1012
	MAINTENANCE LEASED & SPARE										51		
	TOTAL										1096	68	1164
	GENERAL	()	()	()	()	()	()	()	()	()	1605	116	1721
NO. OF PLANNING CIRCUIT IN '94	GENERAL	()	()	()	()	()	()	()	()	()	86		
	MAINTENANCE LEASED & SPARE										172		
	TOTAL										1863	116	1979
	GENERAL	()	()	()	()	()	()	()	()	()	1000	200	1200ASP
EXISTING	CABLES												
	PAIRS												
	COILS												
	TOTAL												
INCREASING UNTIL '84	CABLES												
	PAIRS												
	COILS												
	TOTAL												
INCREASING UNTIL '94	CABLES												
	PAIRS												
	COILS												
	TOTAL												
ACCOMMODATION RATIO	AT '84				%							1164	97.0%
	AT '94				%							1200	94.2%
REMARKS													

NO.23

DETERMINING DATA OF CABLE PAIRS

SECTION PL II SR

ITEM	0.9mm CABLE			0.65mm CABLE			0.5mm CABLE						
	NL (PCM)	L	PCM (CH)	PCM (SYS)	TOTAL	NL	L	PCM (CH)	PCM (SYS)	TOTAL	NL	L	TOTAL
NO. OF PLANNING CIRCUIT IN '84	GENERAL	()		()		208	644	()	()	852	396	244	640
	MAINTENANCE LEASED & SPARE					43					32		
	TOTAL					85					64		
NO. OF PLANNING CIRCUIT IN '94	GENERAL	()		()		336	644	()	()	980	492	244	736
	MAINTENANCE LEASED & SPARE					72					54		
	TOTAL					145				1449	673	415	1088
EXISTING	CABLES					571	1095			1666	836	415	1251
	PAIRS									1200ASP			1200ASP
	COILS					400	800			1200	200	1000	1200
INCREASING UNTIL '84	CABLES									800P			1000P
	PAIRS												
	COILS												
INCREASING UNTIL '94	CABLES									600ASP			
	PAIRS					300	300			600			
	COILS									300P			
ACCOMMODATION RATIO	AT '84				%					980 1200	81.7 %	736 1200	61.3 %
	AT '94				%					1666+51 1800	95.4 %	1251+51 1200	100.0 %
REMARKS	300NL PAIRS ARE ACCOMMODATED TO EXISTING LOADING PAIRS. 51 PAIRS REQUIRED IN 1994 ARE ACCOMMODATED TO 065mm CABLE.												

DETERMINING DATA OF CABLE PAIRS

SECTION PY 12 SR

ITEM	0.9mm CABLE			0.65mm CABLE			0.5mm CABLE		
	NL (PCM)	L	PCM (CH)	NL	L	PCM (CH)	NL	L	PCM (CH)
NO. OF PLANNING MAINTENANCE LEASED & SPARE	()			()	532		()	64	312
				26			16		
				53			31		
TOTAL				79	532		295	64	359
GENERAL	()			()	904		422	109	531
NO. OF PLANNING MAINTENANCE LEASED & SPARE	()			45			27		
				90			53		
TOTAL				135	904		502	109	611
CABLES									800/600ASP
PAIRS							20	580	600
COILS									600P
CABLES									1200ASP
PAIRS				600	600				1200
COILS									600P
CABLES									
PAIRS					350				
COILS									350P
ACCOMMODATION AT '84									359
RATIO									59.8%
									600
									611-111
									100.0%
REMARKS	248 NL PAIRS ARE ACCOMMODATED TO EXISTING LOADING PAIRS. 11 PAIRS REQUIRED IN 1994 ARE ACCOMMODATED TO 065mm CABLE.								

DETERMINING DATA OF CABLE PAIRS

SECTION C N (14) BP

ITEM	0.9mm CABLE			0.65mm CABLE			0.5mm CABLE						
	NL (PCM)	L	PCM (CH)	PCM (SYS)	TOTAL	NL	L	PCM (CH)	PCM (SYS)	TOTAL	NL	L	TOTAL
NO. OF PLANNING MAINTENANCE LEASED & SPARE CIRCUIT IN '84	()			()		87 ()	122	()	()	209			
						10							
						21							
TOTAL						118	122			240			
NO. OF PLANNING MAINTENANCE LEASED & SPARE CIRCUIT IN '94	()			()		148 ()	207	()	()	355			
						18							
						36							
TOTAL						202	207			409			
EXISTING										300ASP			
						200	100			300			
										100P			
INCREASING UNTIL '84							50						
										50P			
INCREASING UNTIL '94						100	100			200ASP			
										200			
										100P			
ACCOMMODATION AT '84										240			80.0 %
										300			
RATIO AT '94										409			81.8 %
										500			
REMARKS													

DETERMINING DATA OF CABLE PAIRS

SECTION PY 1516 SS

ITEM	0.9mm CABLE				0.65mm CABLE				0.5mm CABLE				
	NL (PCM)	L	PCM (CH)	PCM (SYS)	TOTAL	NL	L	PCM (CH)	PCM (SYS)	TOTAL	NL	L	TOTAL
NO. OF PLANNING CIRCUIT IN '84	GENERAL	154	149	()	303	()	()	()	()				
	MAINTENANCE	15											
	LEASED & SPARE	30											
	TOTAL	199	149		348								
NO. OF PLANNING CIRCUIT IN '94	GENERAL	262	253	()	515	()	()	()	()				
	MAINTENANCE	25											
	LEASED & SPARE	51											
	TOTAL	338	253		591								
EXISTING	CABLES									\$50ASP (\$SP-\$S: \$00ASP)			
	PAIRS	250	300		550								
	COILS				300P								
INCREASING UNTIL '84	CABLES												
	PAIRS												
	COILS												
INCREASING UNTIL '94	CABLES												
	PAIRS												
	COILS												
ACCOMMODATION RATIO	AT '84				348 / 550 = 63.3 %								%
	AT '94				591 / 550 = 107.4 %								%
REMARKS													

DETERMINING DATA OF CABLE PAIRS

SECTION BS (15) (17) SS

ITEM	0.9mm CABLE			0.65mm CABLE			0.5mm CABLE						
	NL (PCM)	L	PCM (CH)	NL	L	PCM (CH)	NL	L	PCM (SYS)	TOTAL	NL	L	TOTAL
NO. OF PLANNING CIRCUIT IN '84	GENERAL	117	249							366			
	MAINTENANCE LEASED & SPARE	18											
	TOTAL	172	249							421			
NO. OF PLANNING CIRCUIT IN '94	GENERAL	199	423							622			
	MAINTENANCE LEASED & SPARE	31											
	TOTAL	292	423							715			
EXISTING	CABLES									600ASP			
	PAIRS	300	300							600			
	COILS									300P			
INCREASING UNTIL '84	CABLES												
	PAIRS												
	COILS												
INCREASING UNTIL '94	CABLES									200ASP			
	PAIRS	50	150							200			
	COILS									150P			
ACCOMMODATION	AT '84								421	70.0 %			
	AT '94								600				
RATIO									715	89.4 %			
									800				
REMARKS													

DETERMINING DATA OF CABLE PAIRS

SECTION PY 16 SS.D

ITEM	0.9mm CABLE				0.65mm CABLE				0.5mm CABLE				
	NL (PCM)	L	PCM (CH)	PCM (SYS)	TOTAL	NL	L	PCM (CH)	PCM (SYS)	TOTAL	NL	L	TOTAL
NO. OF PLANNING													
GENERAL	()	525	()	()	525	()	664	()	()	664			
MAINTENANCE	26					33							
LEASED & SPARE	53					66							
TOTAL	79	525			604	99	664			763			
NO. OF PLANNING													
GENERAL	()	893	()	()	893	()	1129	()	()	1129			
MAINTENANCE	45					56							
LEASED & SPARE	89					113							
TOTAL	134	893			1027	169	1129			1298			
EXISTING													
CABLES					600ASP					450ASP			
PAIRS	75	525			600		1000			1000			
COILS					525					1000P			
INCREASING UNTIL '84													
CABLES													
PAIRS													
COILS													
INCREASING UNTIL '94													
CABLES					300ASP								
PAIRS	400	500			900								
COILS					500P								
ACCOMMODATION													
AT '84					$\frac{604}{600} 100.6\%$					$\frac{763}{1000} 76.3\%$			
AT '94					$\frac{1027+298}{1200} 88.3\%$					$\frac{1298-298}{1000} 100.0\%$			
REMARKS	299 PAIRS REQUIRED IN 1994 ARE ACCOMMODATED TO 0.9mm CABLE												

DETERMINING DATA OF CABLE PAIRS

SECTION 55.0 (17) B.S.

ITEM	0.9mm CABLE			0.65mm CABLE			0.5mm CABLE		
	NL (PCM)	L	PCM (CH)	NL	L	PCM (CH)	NL	L	PCM (CH)
NO. OF PLANNING MAINTENANCE LEASED & SPARE	() 59			()			()		
CIRCUIT IN '84	119								
TOTAL	178	1189			1367				
NO. OF PLANNING MAINTENANCE LEASED & SPARE	() 101			()			()		
CIRCUIT IN '94	202								
TOTAL	303	2021			2324				
CABLES					2324				
PAIRS	75	1525			1600				
COILS					1000P				
					525P				
INCREASING UNTIL '84									
INCREASING UNTIL '94	400	500			900				
					500P				
ACCOMMODATION AT '84					1367				
RATIO					1600				
					2324				
					2500				
REMARKS									

NO. 30

DETERMINING DATA OF CABLE PAIRS

SECTION BS 16 NN

ITEM	0.9mm CABLE				0.65mm CABLE				0.5mm CABLE				
	NL (PCM)	L	PCM (CH)	PCM (SYS)	TOTAL	NL	L	PCM (CH)	PCM (SYS)	TOTAL	NL	L	TOTAL
NO. OF PLANNING CIRCUIT IN '84	GENERAL	101	557	()	658	()							
	MAINTENANCE	33											
	LEASED & SPARE	66											
	TOTAL	200	557		757								
NO. OF PLANNING CIRCUIT IN '94	GENERAL	172	947	()	1119	()							
	MAINTENANCE	56											
	LEASED & SPARE	112											
	TOTAL	340	947		1287								
EXISTING	CABLES				300ASP 600ASP								
	PAIRS	200	400		900								
	COILS	10	290		290 400P								
INCREASING UNTIL '84	CABLES												
	PAIRS												
	COILS												
INCREASING UNTIL '94	CABLES				400ASP								
	PAIRS	100	300		400								
	COILS				300P								
ACCOMMODATION	AT '84			757	84.1 %								
RATIO	AT '94			1287	99.0 %								
REMARKS													

DETERMINING DATA OF CABLE PAIRS

SECTION LP: 19 20 PY

ITEM	0.9 mm CABLE				0.65mm CABLE				0.5mm CABLE				
	NL (PCM)	L	PCM (CH)	PCM (SYS)	TOTAL	NL	L	PCM (CH)	PCM (SYS)	TOTAL	NL	L	TOTAL
NO. OF PLANNING CIRCUIT IN '84	GENERAL	(40)	555	412	(19+1)	967	64	()	1178	()	1242		
	MAINTENANCE LEASED & SPARE	48				62							
TOTAL	188	555			740	250			1178		1428		
NO. OF PLANNING CIRCUIT IN '94	GENERAL	(62)	944	700	(30+1)	1644	109	()	2003	()	2112		
	MAINTENANCE LEASED & SPARE	82				106							
TOTAL	154	944			1252	426			2003		2429		
EXISTING	CABLES				PY/9K/LPI 600/500 ASP						1200ASP 1200ASP		
	PAIRS	75	225		300	900			1500		2400		
COILS					300P						500P 1000P		
INCREASING UNTIL '84	CABLES				600ASP								
	PAIRS	250	350		600								
COILS					350P								
INCREASING UNTIL '94	CABLES				400ASP								
	PAIRS	400	400		400				500				
COILS					400P						500P		
ACCOMMODATION RATIO	AT '84			740 900	82.2%					1428 2400	59.5%		%
AT '94				1252+29 1300	96.5%					2429-29 2400	100.0%		%
REMARKS	29 PAIRS REQUIRED IN 1994 ARE ACCOMMODATED TO 0.9 mm CABLE												

DETERMINING DATA OF CABLE PAIRS

SECTION PY 19/23/36 NW

ITEM	0.9mm CABLE				0.65mm CABLE				0.5mm CABLE						
	NL (PCM)	L	PCM (CH)	PCM (SYS)	TOTAL	NL	L	PCM (CH)	PCM (SYS)	TOTAL	NL	L	PCM (CH)	PCM (SYS)	TOTAL
NO. OF PLANNING MAINTENANCE LEASED & SPARE CIRCUIT IN '84	26				528										
TOTAL	79	528			607										
NO. OF PLANNING MAINTENANCE LEASED & SPARE CIRCUIT IN '94	45				898					898					
TOTAL	135	898			1033										
EXISTING															
CABLES					1923					600ASP					
PAIRS	200	400			600										
COILS					400P										
INCREASING UNTIL '84															
CABLES					38					600ASP					
PAIRS	50	550			600										
COILS					550P										
INCREASING UNTIL '94															
CABLES					600ASP										
PAIRS	250	350			600										
COILS					350P										
ACCOMMODATION AT '84					607					100.0 %					
RATIO AT '94					1033					86.1 %					
REMARKS															

DETERMINING DATA OF CABLE PAIRS

SECTION PY 19(23)39 BK

ITEM	0.9mm CABLE			0.65mm CABLE			0.5mm CABLE		
	NL (PCM)	L	PCM (CH)	NL	L	PCM (CH)	NL	L	PCM (CH)
NO. OF PLANNING CIRCUIT IN '84	GENERAL MAINTENANCE	() 373	()	82 ()	592	()	()		674
	LEASED & SPARE	19		34					
	TOTAL	56	373	116	592				674
NO. OF PLANNING CIRCUIT IN '94	GENERAL MAINTENANCE	() 634	()	139 ()	1006	()	()		1145
	LEASED & SPARE	32		57					
	TOTAL	95	634	196	1006				1145
EXISTING	CABLES								
	PAIRS		600						
	COILS								
INCREASING UNTIL '84	CABLES								1200ASP
	PAIRS			500	700				1200
	COILS								700 P
INCREASING UNTIL '94	CABLES								
	PAIRS	200	100		300				
	COILS								300 P
ACCOMMODATION AT '84									
RATIO AT '84									
ACCOMMODATION AT '94									
RATIO AT '94									
REMARKS	117 PAIRS REQUIRED IN 1994 ARE ACCOMMODATED TO 0.9mm CABLE								

DETERMINING DATA OF CABLE PAIRS

SECTION LPI 20(23/39) BK

ITEM	0.9mm CABLE			0.65mm CABLE			0.5mm CABLE				
	NL (PCM)	L	PCM (CH)	TOTAL	NL	L	PCM (CH)	TOTAL	NL	L	TOTAL
NO. OF PLANNING CIRCUIT IN '84	GENERAL	()	185	()	185	()	()	()	()	()	()
	MAINTENANCE	9									
	LEASED & SPARE	19									
TOTAL	28	185		213							
NO. OF PLANNING CIRCUIT IN '94	GENERAL	()	315	()	315	()	()	()	()	()	()
	MAINTENANCE	16									
	LEASED & SPARE	32									
TOTAL	48	315		363							
EXISTING											
PAIRS											
COILS											
CABLES											
PAIRS	200	200		400ASP							
COILS				400							
CABLES				200P							
PAIRS		150									
COILS				150P							
ACCOMMODATION				213				53.3 %			
RATIO				400							
				363				90.8 %			
				400							
REMARKS											

DETERMINING DATA OF CABLE PAIRS

SECTION LP1 21 LP2

ITEM	0.9mm CABLE			0.65mm CABLE			0.5mm CABLE		
	NL (PCM)	L	PCM (SYS)	NL	L	PCM (CH)	NL	L	TOTAL
NO. OF PLANNING									
GENERAL	110 (40)	933	412 (19+1)	()	()	()	()	()	()
MAINTENANCE	73								
CIRCUIT IN '84	146								
TOTAL	369	933	1302						
NO. OF PLANNING									
GENERAL	187 (62)	1586	700 (30+1)	2473	()	()	()	()	()
MAINTENANCE	124								
LEASED & SPARE	247								
CIRCUIT IN '94	620	1586	2206						
TOTAL	620	1586	2206						
EXISTING									
CABLES			300ASP						
PAIRS	163	737	300P						
COILS			300P						
INCREASING									
UNTIL '84	400	200	600ASP						
UNTIL '94			200P						
TOTAL	400	200	600ASP						
PAIRS		600	600						
COILS			600P						
ACCOMMODATION									
AT '84			1302						86.8 %
AT '94			2206						105.0 %
RATIO			2100						
REMARKS									

DETERMINING DATA OF CABLE PAIRS

SECTION NW (24) NN

ITEM	0.9mm CABLE			0.65mm CABLE			0.5mm CABLE						
	NL (PCM)	L	PCM (CH)	PCM (SYS)	TOTAL	NL	L	PCM (CH)	PCM (SYS)	TOTAL	NL	L	TOTAL
NO. OF PLANNING CIRCUIT IN '84	GENERAL	127	()	187	()	314	()	()	()	()	()	()	()
	MAINTENANCE LEASED & SPARE	16											
	TOTAL	174		187		361							
NO. OF PLANNING CIRCUIT IN '94	GENERAL	216	()	318	()	534	()	()	()	()	()	()	()
	MAINTENANCE LEASED & SPARE	27											
	TOTAL	296		318		614							
EXISTING	CABLES					300 ASP							
	PAIRS	10		290		600 ASP							
	COILS	200		400		900							
INCREASING UNTIL '84	CABLES												
	PAIRS												
	COILS												
INCREASING UNTIL '94	CABLES												
	PAIRS												
	COILS												
ACCOMMODATION	AT '84				361				900	40.1 %			%
RATIO	AT '94				614				900	68.4 %			%
REMARKS													

DETERMINING DATA OF CABLE PAIRS

SECTION KC (25) LP2

ITEM	0.9mm CABLE			0.65mm CABLE			0.5mm CABLE		
	NL (PCM)	L	PCM (CH)	NL	L	PCM (CH)	NL	L	PCM (CH)
NO. OF PLANNING MAINTENANCE LEASED & SPARE CIRCUIT IN '84	(40)	108	412	()	()	()	()	()	()
TOTAL	118	108	226						
NO. OF PLANNING MAINTENANCE LEASED & SPARE CIRCUIT IN '94	(62)	184	700	()	()	()	()	()	()
TOTAL	194	184	378						
EXISTING									
INCREASING UNTIL '84									
INCREASING UNTIL '94									
ACCOMMODATION AT '84			226			75.3 %			
RATIO AT '94			378			94.5 %			
REMARKS									

DETERMINING DATA OF CABLE PAIRS

SECTION ASD (26) PY

ITEM	0.9mm CABLE				0.65mm CABLE				0.5mm CABLE				
	NL (PCM)	L	PCM (CH)	PCM (SYS)	TOTAL	NL	L	PCM (CH)	PCM (SYS)	TOTAL	NL	L	TOTAL
NO. OF PLANNING													
GENERAL	()	90	()	()	90	217	232	()	()	449			
MAINTENANCE	5					22							
LEASED & SPARE	9					45							
TOTAL	14	90			104	284	232			516			
GENERAL	()	153	()	()	153	359	394	()	()	763			
MAINTENANCE	8					38							
LEASED & SPARE	15					75							
TOTAL	23	153			176	463	394			877			
CABLES										1200 ASP			
PAIRS						900	300			1200			
COILS										300 P			
INCREASING UNTIL '84													
INCREASING UNTIL '94							100						
ACCOMMODATION AT '84										100 P			
RATIO AT '84					%					516 / 1200 = 43.0%			%
AT '94					%					877 / 1200 = 73.1%			%
REMARKS	PAIRS REQUIRED IN 1984 AND 1994 ARE ADDED UP IN CABLE ON (26) - I ROUTE												

DETERMINING DATA OF CABLE PAIRS

SECTION ASD 27 PL

ITEM	0.9mm CABLE			0.65mm CABLE			0.5mm CABLE		
	NL (PCM)	L	PCM (CH)	NL	L	PCM (CH)	NL	L	PCM (CH)
NO. OF PLANNING MAINTENANCE LEASED & SPARE CIRCUIT IN '84	()	()	()	()	()	()	277	1,124	1,401
TOTAL							487	1,124	1,611
NO. OF PLANNING MAINTENANCE LEASED & SPARE CIRCUIT IN '94	()	()	()	()	()	()	471	1,911	2,382
TOTAL							119		
							238		
							828	1,911	2,739
CABLES									1,800 ASP
PAIRS									1,800 ASP
COILS									1,800 P
									200 P
									600 P
INCREASING UNTIL '84									
INCREASING UNTIL '94									
ACCOMMODATION RATIO									
AT '84									1,611 / 3,600 = 44.8%
AT '94									2,739 / 3,600 = 76.1%
REMARKS									

NO. 41

DETERMINING DATA OF CABLE PAIRS

SECTION PL 29 (35) M.M.

ITEM	0.9mm CABLE				0.65mm CABLE				0.5mm CABLE				
	NL (PCM)	L	PCM (CH)	PCM (SYS)	TOTAL	NL	L	PCM (CH)	PCM (SYS)	TOTAL	NL	L	TOTAL
NO. OF PLANNING CIRCUIT IN '84	GENERAL	13	522		535	315	744			1,059			
	MAINTENANCE	27				53							
	LEASED & SPARE	54				106							
	TOTAL	94	522		616	474	744			1,218			
NO. OF PLANNING CIRCUIT IN '94	GENERAL	22	887		909	536	1,265			1,801			
	MAINTENANCE	45				90							
	LEASED & SPARE	91				180							
	TOTAL	158	887		1,045	806	1,265			2,071			
EXISTING	CABLES				35 600ASP					600 ASP 900 ASP			
	PAIRS				600	420	1,080			1,500 430 P 650 P			
	COILS												
INCREASING UNTIL '84	CABLES				29 600ASP								
	PAIRS	50	550		600								
	COILS				550 P								
INCREASING UNTIL '94	CABLES				600 ASP					600 ASP			
	PAIRS	250	350		600	400	200			600			
	COILS				350 P					200 P			
ACCOMMODATION AT '84				616 600					1,218 1,500				81.2 %
RATIO AT '94				1,045 1,200					2,071 2,100				98.6 %
REMARKS													

NO. 42

DETERMINING DATA OF CABLE PAIRS

SECTION MM 29 37 SV

ITEM	0.9mm CABLE			0.65mm CABLE			0.5mm CABLE		
	NL(PCM)	L	PCM (CH)	NL	L	PCM (CH)	NL	L	PCM (CH)
NO. OF PLANNING CIRCUIT IN '84.	GENERAL	()	199	41	275	()	()		316
	MAINTENANCE	10		16					
	LEASED & SPARE	20		32					
TOTAL	30	199	229	69	275				364
NO. OF PLANNING CIRCUIT IN '94	GENERAL	()	338	70	468	()	()		538
	MAINTENANCE	17		27					
	LEASED & SPARE	34		54					
TOTAL	51	338	389	151	468				619
EXISTING	CABLES								(37) 900ASP
	PAIRS		300		900				900
	COILS								900 P
INCREASING UNTIL '84	CABLES								(29) 600ASP
	PAIRS				600				600
	COILS								600 P
INCREASING UNTIL '94	CABLES								
	PAIRS	100	100						200 ASP
	COILS								200 P
ACCOMMODATION AT '84			229						364
RATIO AT '94			389+19						619-19
REMARKS	<p>41NL PAIRS ARE ACCOMMODATED TO LOADED PAIRS. 19 PAIRS REQUIRED IN 1994 ARE ACCOMMODATED TO 0.9mm CABLE.</p>								

DATA OF CABLE PAIRS

SECTION MM - 30 - KT

ITEM	0.9mm CABLE				0.65mm CABLE				0.5mm CABLE				
	NL (PCM)	L	PCM (CH)	PCM (SYS)	TOTAL	NL	L	PCM (CH)	PCM (SYS)	TOTAL	NL	L	TOTAL
NO. OF PLANNING MAINTENANCE LEASED & SPARE	51 ()	284			315	512 ()	520			1032			
	16					52							
CIRCUIT IN '84	32					103							
TOTAL	99	284			383	667	520			1187			
GENERAL	87 ()	449			536	870 ()	884			1754			
NO. OF PLANNING MAINTENANCE LEASED & SPARE	27					88							
CIRCUIT IN '94	54					175							
TOTAL	168	449			617	1133	884			2017			
CABLES													
PAIRS													
COILS													
CABLES													
PAIRS	300	300			600 ASP	650	550			1200 ASP			
COILS					300 P					550 P			
CABLES													
PAIRS		150				550	350			900 ASP			
COILS					150 P					350 P			
ACCOMMODATION AT '84				363 / 600	60.5 %				197 / 200	98.9 %			
RATIO AT '94				617 / 600	102.8 %				2017 / 2100	96.1 %			
REMARKS													

DETERMINING DATA OF CABLE PAIRS

SECTION SV 31 CP

ITEM	0.9mm CABLE			0.65mm CABLE			0.5mm CABLE		
	NL (PCM)	L	PCM (CH)	NL	L	PCM (CH)	NL	L	PCM (CH)
NO. OF PLANNING MAINTENANCE LEASED & SPARE IN '84	9	184	()	44	877	()	406	271	877
TOTAL	27	184	211	132	877	1009	508	271	779
NO. OF PLANNING MAINTENANCE LEASED & SPARE IN '94	16	313	()	75	1491	()	690	461	1151
TOTAL	31	313	313	150	1491	1716	115	461	1323
EXISTING	47	313	360	225	1491	1200 ASP 900 ASP	862	461	1323
INCREASING UNTIL '84	300	300	300 P	300	2100	2100 P	600	900	1500
INCREASING UNTIL '94	50	50	50 P	50	50 P	100 ASP	50	50	100
ACCOMMODATION RATIO	AT '84	211 / 300	70.7 %	211 / 300	70.7 %	1009 / 2100	48.0 %	779 / 1500	51.9 %
	AT '94	350 / 400	87.5 %	350 / 400	87.5 %	1716 / 2100	81.7 %	1323 / 1500	88.2 %
REMARKS									

NO. 45

DETERMINING DATA OF CABLE PAIRS

SECTION HM 33 PL

ITEM	0.9mm CABLE				0.65mm CABLE				0.5mm CABLE				
	NL (PCM)	L	PCM (CH)	PCM (SYS)	TOTAL	NL	L	PCM (CH)	PCM (SYS)	TOTAL	NL	L	TOTAL
NO. OF PLANNING													
CIRCUIT IN '84													
GENERAL	()	491	()	()	491	65()	646	()	()	711			
MAINTENANCE	25					36							
LEASED & SPARE	49					71							
TOTAL	74	491			565	172	646			818			
GENERAL	()	835	()	()	835	111()	1098	()	()	1209			
NO. OF PLANNING													
CIRCUIT IN '94													
MAINTENANCE	42					60							
LEASED & SPARE	84					121							
TOTAL	126	835			961	292	1098			1390			
CABLES					600 ASP					1200 ASP			
PAIRS		600			600	100	1100			1200			
COILS					600 P					1100 P			
INCREASING UNTIL '84													
CABLES													
PAIRS													
COILS													
INCREASING UNTIL '94													
CABLES					600 ASP								
PAIRS	300	300			600								
COILS					300 P								
ACCOMMODATION AT '84				565	94.2%				818	68.2%			
				600					1200				
RATIO AT '94				961+190	95.9%				1390+190	100.0%			
				1200					1200				
REMARKS	190 PAIRS REQUIRED IN 1994 ARE ACCOMMODATED TO 0.5mm CABLE.												

DETERMINING DATA OF CABLE PAIRS

SECTION MM 34 83 TC

ITEM	0.9mm CABLE				0.65mm CABLE				0.5mm CABLE				
	NL (PCM)	L	PCM (CH)	PCM (SYS)	TOTAL	NL	L	PCM (CH)	PCM (SYS)	TOTAL	NL	L	TOTAL
NO. OF PLANNING CIRCUIT IN '84	GENERAL	145	74	()	219	()	()	()	()				
	MAINTENANCE	11											
	LEASED & SPARE	22											
	TOTAL	178	74		252								
NO. OF PLANNING CIRCUIT IN '94	GENERAL	247	126	()	373	()	()	()	()				
	MAINTENANCE	19											
	LEASED & SPARE	37											
	TOTAL	303	126		429								
EXISTING	CABLES				34					300 ASP			
	PAIRS		250		250								
	COILS				300 P								
INCREASING UNTIL '84	CABLES				83					300 ASP			
	PAIRS												
	COILS												
INCREASING UNTIL '94	CABLES									200 ASP			
	PAIRS	200			200								
	COILS												
ACCOMMODATION RATIO	AT '84				232					100.0%			%
	AT '94				429					95.3%			%
REMARKS	300 NL PAIRS ARE ACCOMMODATED TO LOADED PAIRS.												

DETERMINING DATA OF CABLE PAIRS

SECTION MM 34 84 SP

ITEM	0.9mm CABLE				0.65mm CABLE				0.5mm CABLE				
	NL (PCM)	L	PCM (CH)	PCM (SYS)	TOTAL	NL	L	PCM (CH)	PCM (SYS)	TOTAL	NL	L	TOTAL
NO. OF PLANNING CIRCUIT IN '84	GENERAL	79	450	()	()	529	()	()	()				
	MAINTENANCE	26											
	LEASED & SPARE	53											
	TOTAL	158	450			608							
NO. OF PLANNING CIRCUIT IN '94	GENERAL	134	765	()	()	899	()	()	()				
	MAINTENANCE	45											
	LEASED & SPARE	90											
	TOTAL	269	765			1,034							
EXISTING	CABLES					300/750							
	PAIRS	300	350			650							
	COILS					50 P 300 P							
INCREASING UNTIL '84	CABLES												
	PAIRS		150			150 P							
	COILS												
INCREASING UNTIL '94	CABLES					600 ASP							
	PAIRS	250	350			600							
	COILS					350 P							
ACCOMMODATION RATIO	AT '84					608 650				93.5%			%
	AT '94					1,034 1,200				86.2%			%
REMARKS													

DETERMINING DATA OF CABLE PAIRS

SECTION PL 35 37 SV

ITEM	0.9mm CABLE				0.65mm CABLE				0.5mm CABLE				
	NL (PCM)	L	PCM (CH)	PCM (SYS)	TOTAL	NL	L	PCM (CH)	PCM (SYS)	TOTAL	NL	L	TOTAL
NO. OF PLANNING MAINTENANCE LEASED & SPARE CIRCUIT IN '84	()					()	1,055			1,055	429	691	1,120
						53					56		
						106					112		
TOTAL						159	1,055			1,214	597	691	1,288
NO. OF PLANNING MAINTENANCE LEASED & SPARE CIRCUIT IN '94	()					()	1,793			1,793	729	1,175	1,904
						90					95		
						179					190		
TOTAL						269	1,793			2,062	1,014	1,175	2,189
EXISTING										1,200 ASP			1,500 ASP
							1,500			1,500	600	900	1,500
										300 P			900 P
INCREASING UNTIL '84													
INCREASING UNTIL '94										600 ASP			900 ASP
						300	300			600	600	300	900
										300 P			300 P
ACCOMMODATION AT '84									1,214	80.9 %			1,288
									1,500				1,500
RATIO AT '94									2,062	98.2 %			2,189
									2,100				2,500
REMARKS													

NO. 50

DETERMINING DATA OF CABLE PAIRS

SECTION M M 36 SW

ITEM	0.9mm CABLE			0.55mm CABLE			0.5mm CABLE						
	NL (PCM) ()	L	PCM (CH)	PCM (SYS) ()	TOTAL	NL	L	PCM (CH)	PCM (SYS) ()	TOTAL	NL	L	TOTAL
NO. OF PLANNING MAINTENANCE LEASED & SPARE CIRCUIT IN '84	()			()		()			()		371	572	943
											47		
											94		
TOTAL											512	572	1084
NO. OF PLANNING MAINTENANCE LEASED & SPARE CIRCUIT IN '94	()			()		()			()		631	972	1603
											80		
											160		
TOTAL											871	972	1843
CABLES													1200 ASP
PAIRS											800	400	1200
COILS													400 P
CABLES												200	
PAIRS													
COILS													200 P
CABLES													900 ASP
PAIRS											500	400	900
COILS													400 P
ACCOMMODATION AT '84					%						1084	50.3 %	
											200		
RATIO AT '94					%						1843	87.6 %	
											2100		
REMARKS													

NO. 51

DETERMINING DATA OF CABLE PAIRS

SECTION BK (38) (39) NW

ITEM	0.9mm CABLE			0.65mm CABLE			0.5mm CABLE		
	NL (PCM)	L	PCM (CH)	NL	L	PCM (CH)	NL	L	PCM (SYS)
NO. OF PLANNING CIRCUIT IN '84	55	970	()	()	()	()	()	()	()
GENERAL									
MAINTENANCE	51								
LEASED & SPARE	103								
TOTAL	209	970	1025		1179				
NO. OF PLANNING CIRCUIT IN '94	93	1649	()	()	()	()	()	()	()
GENERAL									
MAINTENANCE	87								
LEASED & SPARE	174								
TOTAL	354	1649	2003		600ASP				
CABLES									
PAIRS	50	650/150	600		600				
COILS		+50/450	600 P		600 P				
INCREASING UNTIL '84			600ASP		600 P				
CABLES	200	400	500		400 P				
PAIRS			300ASP		600ASP				
COILS			900		700 P				
INCREASING UNTIL '94			700 P		98.3 %				
AT '84			1179		1200				
AT '94			2003		2100				
ACCOMMODATION RATIO			95.4 %		95.4 %				
REMARKS									

DETERMINING DATA OF CABLE PAIRS

SECTION BK 40 LS

ITEM	0.9mm CABLE				0.65mm CABLE				0.5mm CABLE				
	NL (PCM)	L	PCM (CH)	PCM (SYS)	TOTAL	NL	L	PCM (CH)	PCM (SYS)	TOTAL	NL	L	TOTAL
NO. OF PLANNING CIRCUIT IN '84	GENERAL	()	772	()	772	41	418	()	()	459			
	MAINTENANCE LEASED & SPARE	39				23							
	TOTAL	116	772		888	110	418			528			
NO. OF PLANNING CIRCUIT IN '94	GENERAL	()	1312	()	1312	70	711	()	()	781			
	MAINTENANCE LEASED & SPARE	66				39							
	TOTAL	197	1312		1509	187	711			996			
EXISTING	CABLES				300 PEFH								
	PAIRS	150	150		300								
	COILS		+50		150 P								
INCREASING UNTIL '84	CABLES				600 ASP					900 ASP			
	PAIRS		600		600	450	450			900			
	COILS				50 P 600 P					450 P			
INCREASING UNTIL '94	CABLES				600 ASP								
	PAIRS	50	550		600		250			250 P			
	COILS				550 P								
ACCOMMODATION RATIO	AT '84			888 900	98.7 %				528 900	58.6 %			%
AT '94				1509 1500	100.6 %				898 900	99.8 %			%
REMARKS													

DETERMINING DATA OF CABLE PAIRS

SECTION RID. B (4) LS

I.T.E.M.	0.9mm CABLE				0.65mm CABLE				0.5mm CABLE				
	NL (PCM)	L	PCM (CH)	PCM (SYS)	TOTAL	NL	L	PCM (CH)	PCM (SYS)	TOTAL	NL	L	TOTAL
NO. OF PLANNING MAINTENANCE LEASED & SPARE	(34)	946	332	(16+1)	278	()	58	()	()	59	()	()	()
TOTAL	217	888			1,105	9	58			67			
NO. OF PLANNING MAINTENANCE LEASED & SPARE	(54)	1,608	564	(26+1)	2,172	()	99	()	()	99	()	()	()
TOTAL	360	1,608			1,988	15	99			114			
EXISTING	150	150			300								
INCREASING UNTIL '84	300	900			1,200								
INCREASING UNTIL '94		600			600								
ACCOMMODATION RATIO				1105	73.7 %					%			%
				1500									
				1988	94.7 %					%			%
REMARKS	THESE PAIRS ARE INCLUDED IN 0.9mm CABLE PAIRS BECAUSE THE REQUIREMENT IS NOT SUFFICIENT FOR USING 0.65mm CABLE.												

NO. 54

DETERMINING DATA OF CABLE PAIRS

SECTION BSN 42 RID.b

ITEM	0.9mm CABLE				0.65mm CABLE				0.5mm CABLE				
	NL (PCM)	L	PCM (CH)	PCM (SYS)	TOTAL	NL	L	PCM (CH)	PCM (SYS)	TOTAL	NL	L	TOTAL
NO. OF PLANNING													
CIRCUIT IN '84	GENERAL (34)	40	332	(18+1)	372	()	()	()	()				
	MAINTENANCE	19											
	LEASED & SPARE	37											
	TOTAL	90	40		130								
NO. OF PLANNING	GENERAL (57)	68	564	(26+1)	632	()	()	()	()				
CIRCUIT IN '94	MAINTENANCE	32											
	LEASED & SPARE	63											
	TOTAL	152	68		220								
EXISTING	CABLES												
	PAIRS												
	COILS												
INCREASING	CABLES												
UNTIL '84	PAIRS	200	100		300								
	COILS				100P								
INCREASING	CABLES												
UNTIL '94	PAIRS												
	COILS												
ACCOMMODATION	AT '84				130					43.3 %			%
					300								
RATIO	AT '94				220					73.3 %			%
					300								
REMARKS	AS FOW NEWLY INSTALLED 300 PEF-P CABLE, 50 PAIRS ARE LOADED BETWEEN LS EX. AND BSN EX, AND RID EX. AND -BSN EX.												

DETERMINING DATA OF CABLE PAIRS

SECTION R I D 43 R I D B

ITEM	0.9 mm CABLE				0.65mm CABLE				0.5mm CABLE				
	NL (PCM)	L	PCM (CH)	PCM (SYS)	TOTAL	NL	L	PCM (CH)	PCM (SYS)	TOTAL	NL	L	TOTAL
NO. OF PLANNING CIRCUIT IN '84	GENERAL	()	986	()	986	()	58	()	()	58			
	MAINTENANCE	49	928		928	3							
	LEASED & SPARE	99				6							
	TOTAL	148	986		1134	9	58			67			
NO. OF PLANNING CIRCUIT IN '94	GENERAL	()	677	()	677	()	99	()	()	99			
	MAINTENANCE	84	578		578	5							
	LEASED & SPARE	79				10							
	TOTAL	252	677		1929	15	99			114			
EXISTING	CABLES				300PEP-P								
	PAIRS	150	150		300								
	COILS				150P								
INCREASING UNTIL '64	CABLES				600ASP								
	PAIRS	300	900		600ASP								
	COILS				1200								
INCREASING UNTIL '94	CABLES				400P								
	PAIRS		600		600ASP								
	COILS				600P								
ACCOMMODATION RATIO	AT '84			1134	75.6%					%			%
	AT '94			1929	91.9%					%			%
REMARKS	THESE PAIRS ARE INCLUDED IN 0.9mm CABLE PAIRS BECAUSE THE REQUIREMENT IS NOT SUFFICIENT FOR USING 0.65mm CABLE.												

DETERMINING DATA OF CABLE PAIRS

SECTION NC 44 BSN

ITEM	0.9mm CABLE			0.65mm CABLE			0.5mm CABLE						
	NL (PCM)	L	PCM (CH)	PCM (SYS)	TOTAL	NL	L	PCM (CH)	PCM (SYS)	TOTAL	NL	L	TOTAL
NO. OF PLANNING MAINTENANCE LEASED & SPARE	()			()		(14)		111	(6+1)	111			
CIRCUIT IN '84						6							
TOTAL						31				31			
NO. OF PLANNING MAINTENANCE LEASED & SPARE	()			()		(20)		188	(9+1)	188			
CIRCUIT IN '94						9							
TOTAL						19							
EXISTING						48				48			
INCREASING UNTIL '84							8			50			
INCREASING UNTIL '94										8P			
ACCOMMODATION RATIO										31/50			62.0%
										48/50			96.0%
REMARKS													

DETERMINING DATA OF CABLE PAIRS

SECTION CW 45 LS

ITEM	0.9mm CABLE				0.65mm CABLE				0.5mm CABLE				
	NL (PCM)	L	PCM (CH)	PCM (SYS)	TOTAL	NL	L	PCM (CH)	PCM (SYS)	TOTAL	NL	L	TOTAL
NO. OF PLANNING MAINTENANCE LEASED & SPARE	(34)	198	290	(16+1)	488	()		()			12	400	412
TOTAL	107	198			305						74	400	474
NO. OF PLANNING MAINTENANCE LEASED & SPARE	(50)	337	493	(24+1)	830	()		()			20	680	700
TOTAL	175	337			512						125	680	805
EXISTING					300EF-P								
INCREASING UNTIL '84	150	150			300						450	450	900
INCREASING UNTIL '94		50			50P								450P
ACCOMMODATION RATIO					300ASP								
AT '84	150	150			300							250	
AT '94					200P								
					305							474	52.7 %
					300							900	
					512							805	89.4 %
					600							900	
REMARKS													

DETERMINING DATA OF CABLE PAIRS

SECTION PK 46 CW

ITEM	0.9mm CABLE				0.65mm CABLE				0.5mm CABLE				
	NL (PCM)	L	PCM (CH)	PCM (SYS)	TOTAL	NL	L	PCM (CH)	PCM (SYS)	TOTAL	NL	L	TOTAL
NO. OF PLANNING CIRCUIT IN '94	GENERAL (34)	196	290	(16+1)	488	()	()	()	()	()	()	()	()
	MAINTENANCE	24	/	/	/	/	/	/	/	/	/	/	/
	LEASED & SPARE	49	/	/	/	/	/	/	/	/	/	/	/
	TOTAL	107	196		305								
NO. OF PLANNING CIRCUIT IN '94	GENERAL (50)	337	493	(24+1)	830	()	()	()	()	()	()	()	()
	MAINTENANCE	42	/	/	/	/	/	/	/	/	/	/	/
	LEASED & SPARE	83	/	/	/	/	/	/	/	/	/	/	/
	TOTAL	175	337		512								
EXISTING	CABLES				300PE-P								
	PAIRS	150	150		300								
	COILS				150P								
INCREASING UNTIL '84	CABLES												
	PAIRS	+50											
	COILS				50P								
INCREASING UNTIL '94	CABLES				300ASP								
	PAIRS	150	150		300								
	COILS				150P								
ACCOMMODATION AT '84					305					101.6 %			
					300								
RATIO AT '94					512					85.3 %			
					600								
REMARKS	LS/PT 300 PE-P CABLE IS CUT AND TERMINATED TO PK EX.												

DETERMINING DATA OF CABLE PAIRS

SECTION PT 47 PK

ITEM	0.9mm CABLE				0.65mm CABLE				0.5mm CABLE				
	NL (PCM)	L	PCM (CH)	PCM (SYS)	TOTAL	NL	L	PCM (CH)	PCM (SYS)	TOTAL	NL	L	TOTAL
NO. OF PLANNING CIRCUIT IN '84	GENERAL	(24)		209 (11+1)	209	()		()					
	MAINTENANCE	10											
	LEASED & SPARE	2											
	TOTAL	55			55								
NO. OF PLANNING CIRCUIT IN '94	GENERAL	(36)		355 (17+1)	355	()		()					
	MAINTENANCE	18											
	LEASED & SPARE	36											
	TOTAL	90			90								
EXISTING	CABLES				300PEF-P								
	PAIRS	150	150		150								
	COILS				150P								
INCREASING UNTIL '84	CABLES												
	PAIRS												
	COILS												
INCREASING UNTIL '94	CABLES												
	PAIRS												
	COILS												
ACCOMMODATION				55				55	18.3 %				
RATIO				500				90	30.0 %				
REMARKS													

NO.60

DETERMINING DATA OF CABLE PAIRS

SECTION BT 49 PK

ITEM	0.9mm CABLE				0.65mm CABLE				0.5mm CABLE				
	NL (PCM)	L	PCM (CH)	PCM (SYS)	TOTAL	NL	L	PCM (CH)	PCM (SYS)	TOTAL	NL	L	TOTAL
NO. OF PLANNING MAINTENANCE LEASED & SPARE	(12)		81	(5+1)	81	()		()					
TOTAL	24				24								
NO. OF PLANNING MAINTENANCE LEASED & SPARE	(16)		138	(7+1)	138	()		()					
TOTAL	37				37								
EXISTING													
INCREASING UNTIL '84					50 PER-P								
INCREASING UNTIL '94													
ACCOMMODATION RATIO					24 50					48.0 %			%
					37 50					74.0 %			%
REMARKS													

DETERMINING DATA OF CABLE PAIRS

SECTION DM-50 LS

ITEM	0.9mm CABLE				0.65mm CABLE				0.5mm CABLE				
	NL (PCM)	L	PCM (CH)	PCM (SYS)	TOTAL	NL	L	PCM (CH)	PCM (SYS)	TOTAL	NL	L	TOTAL
NO. OF PLANNING	14	(90)	578		518	14	()	53		67			
CIRCUIT IN '84													
GENERAL	76					3							
MAINTENANCE	72												
LEASED & SPARE	152					7							
TOTAL	307		628		960	24		53		77			
NO. OF PLANNING	24	(134)	1068		2576	24	()	90		114			
CIRCUIT IN '94													
GENERAL	129					5							
MAINTENANCE	123												
LEASED & SPARE	258					11							
TOTAL	503		1068		1613	41		90		131			
EXISTING													
CABLES					300ASP								
PAIRS	42		258		300								
COILS					300P								
INCREASING													
UNTIL '84					600ASP								
UNTIL '94					600ASP								
EXISTING													
CABLES					1200								
PAIRS	750		450		450P								
COILS													
INCREASING													
UNTIL '84					300ASP								
UNTIL '94					300								
EXISTING													
CABLES					300P								
PAIRS													
COILS													
ACCOMMODATION					960					%			%
RATIO					1500					%			%
					1613					%			%
					1800					%			%
REMARKS	THESE PAIRS ARE INCLUDED IN 0.9mm CABLE PAIRS BECAUSE THE REQUIREMENT IS NOT SUFFICIENT FOR USING 0.65mm CABLE												

DETERMINING DATA OF CABLE PAIRS

SECTION T Y 51 - DM

ITEM	0.9mm CABLE			0.65mm CABLE			0.5mm CABLE								
	NL (PCM)	L	TOTAL	PCM (CH)	PCM (SYS)	TOTAL	NL	L	TOTAL	PCM (CH)	PCM (SYS)	TOTAL	NL	L	TOTAL
NO. OF PLANNING CIRCUIT IN '84	GENERAL	(14)		107	(6+1)	107	()			()					
	MAINTENANCE LEASED & SPARE	5													
	TOTAL	30				30									
	GENERAL	(18)		182	(8+1)	182	()			()					
NO. OF PLANNING CIRCUIT IN '94	MAINTENANCE LEASED & SPARE	9													
	TOTAL	45				45									
	CABLES PAIRS COILS														
	CABLES PAIRS COILS														
INCREASING UNTIL '84	CABLES PAIRS COILS														
	CABLES PAIRS COILS														
	TOTAL														
	AT '84														
INCREASING UNTIL '94	CABLES PAIRS COILS														
	CABLES PAIRS COILS														
	TOTAL														
	AT '94														
ACCOMMODATION RATIO	AT '84														
	AT '94														
REMARKS															

DETERMINING DATA OF CABLE PAIRS

SECTION RS (52) DM

ITEM	0.9mm CABLE			0.65mm CABLE			0.5mm CABLE		
	NL (PCM)	L	PCM (CH)	NL	L	PCM (CH)	NL	L	PCM (CH)
NO. OF PLANNING									
GENERAL	6 (48)		443 (23+1)	()		()			
MAINTENANCE	22								
LEASED & SPARE	45								
TOTAL	121		121						
NO. OF PLANNING									
GENERAL	10 (72)		753 (34+2)	()		()			
MAINTENANCE	38								
LEASED & SPARE	76								
TOTAL	196		196						
EXISTING									
CABLES									
PAIRS	100		100PEF						
COILS									
INCREASING									
UNTIL '84		8							
COILS								8P	
INCREASING									
UNTIL '94									
CABLES									
PAIRS	100		100						
COILS									
ACCOMMODATION									
AT '84			121			121.0 %			%
RATIO			136			98.0 %			%
REMARKS									

DETERMINING DATA OF CABLE PAIRS

SECTION NWN 53 RS

ITEM	0.9mm CABLE				0.65mm CABLE				0.5mm CABLE				
	NL (PCM)	L	PCM (CH)	PCM (SYS)	TOTAL	NL	L	PCM (CH)	PCM (SYS)	TOTAL	NL	L	TOTAL
NO. OF PLANNING MAINTENANCE LEASED & SPARE	()			()		(26)		241 (12+1)		241			
CIRCUIT IN '84						12							
TOTAL						24				62			
NO. OF PLANNING MAINTENANCE LEASED & SPARE	()			()		(38)		410 (18+1)		410			
CIRCUIT IN '94						21							
TOTAL						41				100			
CABLES PAIRS COILS													
INCREASING UNTIL '84										100 PEF			
INCREASING UNTIL '94						92	8			100		8P	
ACCOMMODATION RATIO					%					62 / 100 = 62.0%			%
					%					100 / 100 = 100.0%			%
REMARKS													

NC. 65

DETERMINING DATA OF CABLE PAIRS

SECTION KC 54 BSN

ITEM	0.9mm CABLE				0.65mm CABLE				0.5mm CABLE				
	NL (PCM)	L	PCM (CH)	PCM (SYS)	TOTAL	NL	L	PCM (CH)	PCM (SYS)	TOTAL	NL	L	TOTAL
NO. OF PLANNING CIRCUIT IN '84	GENERAL	40 (10)		79 (4+1)	119	()		()					
	MAINTENANCE LEASED & SPARE	6											
	TOTAL	68			68								
	GENERAL	68 (14)		134 (6+1)	202	()		()					
NO. OF PLANNING CIRCUIT IN '94	MAINTENANCE LEASED & SPARE	10											
	TOTAL	20											
	TOTAL	112			112								
	CABLES PAIRS COILS	100			100PEF								
EXISTING	CABLES PAIRS COILS	100			100								
	CABLES PAIRS COILS												
	CABLES PAIRS COILS												
	CABLES PAIRS COILS												
INCREASING UNTIL '84	CABLES PAIRS COILS				50PEF-P								
	CABLES PAIRS COILS				50								
	CABLES PAIRS COILS												
	CABLES PAIRS COILS												
INCREASING UNTIL '94	CABLES PAIRS COILS												
	CABLES PAIRS COILS												
	CABLES PAIRS COILS												
	CABLES PAIRS COILS												
ACCOMMODATION RATIO	AT '84			68	68.0%								%
	AT '94			112	74.7%								%
REMARKS													

NO. 65

DETERMINING DATA OF CABLE PAIRS

SECTION DK 55 TH

ITEM	0.9mm CABLE				0.65mm CABLE				0.5mm CABLE				
	NL (PCM)	L	PCM (CH)	PCM (SYS)	TOTAL	NL	L	PCM (CH)	PCM (SYS)	TOTAL	NL	L	TOTAL
NO. OF PLANNING CIRCUIT IN '84	GENERAL	(56)	1017	577	(26+2)	1594	55	656	()	711	108	656	764
	MAINTENANCE LEASED & SPARE	80				36					38		
	TOTAL	296	1017			1313	162	656		818	222	656	878
NO. OF PLANNING CIRCUIT IN '94	GENERAL	(88)	1729	981	(42+2)	2710	94	1115	()	1209	184	1115	1299
	MAINTENANCE LEASED & SPARE	136				60					65		
	TOTAL	495	1729			2224	275	1115		1390	379	1115	1494
EXISTING	CABLES												
	PAIRS	740	660			1400							
	COILS					300P+100P 260P							
INCREASING UNTIL '84	CABLES												
	PAIRS		400			500	700			1200ASP	1100	700	1800
	COILS					200P 200P 600ASP 600ASP				700P			700P
INCREASING UNTIL '94	CABLES												
	PAIRS	500	700			1200	450					450	
	COILS					600P 100P				450P			450P
ACCOMMODATION RATIO	AT '84			1313 1400	93.8 %				818 1200	68.2 %		878 1800	48.8 %
AT '94			2224+190 2600	92.8 %					1390-190 1200	100.0 %		1494 1800	83.0 %
REMARKS	190 PAIRS REQUIRED IN 1994 ARE ACCOMMODATED TO 0.9mm CABLE.												

DETERMINING DATA OF CABLE PAIRS

SECTION EC 56 DK

ITEM	0.9mm CABLE			0.65mm CABLE			0.5mm CABLE		
	NL (PCM)	L	PCM (CH)	NL	L	PCM (CH)	NL	L	PCM (CH)
NO. OF PLANNING									
CIRCUIT IN '84	12 ()	425	()	()	()	()	()	()	()
MAINTENANCE	22								
LEASED & SPARE	44								
TOTAL	78	425							
NO. OF PLANNING									
CIRCUIT IN '94	20 ()	723	()	()	()	()	()	()	()
MAINTENANCE	37								
LEASED & SPARE	74								
TOTAL	131	723							
EXISTING									
CABLES									
PAIRS									
COILS									
INCREASING									
UNTIL '84	150	450					600ASP		
UNTIL '94							600		
TOTAL							450P		
INCREASING									
UNTIL '84		300					300ASP		
UNTIL '94							300		
TOTAL							300P		
ACCOMMODATION									
AT '84							503		
AT '94							600		
RATIO							83.8 %		
							854		
							900		
							94.9 %		
REMARKS									

DETERMINING DATA OF CABLE PAIRS

SECTION R B 58 DK

ITEM	0.9mm CABLE				0.65mm CABLE				0.5mm CABLE				
	NL (PCM)	L	PCM (CH)	PCM (SYS)	TOTAL	NL	L	PCM (CH)	PCM (SYS)	TOTAL	NL	L	TOTAL
NO. OF PLANNING													
CIRCUIT IN '84													
GENERAL	(56)	753	577	(26+2)	1330	109	263			372			
MAINTENANCE	67					19							
LEASED & SPARE	133					37							
TOTAL	256	753			1009	165	263			428			
NO. OF PLANNING													
CIRCUIT IN '94													
GENERAL	(88)	1280	981	(42+2)	2261	185	447			632			
MAINTENANCE	113					31							
LEASED & SPARE	226					63							
TOTAL	427	1280			1707	279	447			726			
EXISTING													
CABLES					200ASP								
PAIRS	200				200								
COILS													
INCREASING													
UNTIL '84													
CABLES					600ASP					900ASP			
PAIRS	400	800			1200	600	300			900			
COILS					600P					300P			
INCREASING													
UNTIL '94													
CABLES					400ASP								
PAIRS		400			400		150						
COILS					400P					150P			
ACCOMMODATION													
RATIO													
AT '84					1009	72.1 %				428	47.6 %		
					1400				900				
AT '94					1707	94.8 %				726	80.7 %		
					1800				900				
REMARKS													

NO. 59

DETERMINING DATA OF CABLE PAIRS

SECTION PD-59-RB

ITEM	0.9mm CABLE				0.65mm CABLE				0.5mm CABLE				
	NL (PCM)	L	PCM (CH)	PCM (SYS)	TOTAL	NL	L	PCM (CH)	PCM (SYS)	TOTAL	NL	L	TOTAL
NO. OF PLANNING CIRCUIT IN '84	GENERAL	38 (56)	416	577	(28+2) 1031	73 ()	156	()	()	229			
	MAINTENANCE LEASED & SPARE	52				11							
	TOTAL	249	416		665	107	156			263			
NO. OF PLANNING CIRCUIT IN '94	GENERAL	65 (88)	707	981	(42+2) 1753	124 ()	265	()	()	389			
	MAINTENANCE LEASED & SPARE	88				19							
	TOTAL	175	707		1123	182	265			447			
EXISTING													
INCREASING UNTIL '94	CABLES	200			200ASP								
	PAIRS	200			200								
	COILS												
INCREASING UNTIL '94	CABLES	122	478		600ASP					600ASP			
	PAIRS	122	478		600	400	200			600			
	COILS				500P					200P			
INCREASING UNTIL '94	CABLES	150	250		400ASP								
	PAIRS	150	250		400	100							
	COILS				250P					100P			
ACCOMMODATION RATIO				665 800	93.1 %				263 600	43.8 %			
				1123 1200	93.6 %				447 600	74.5 %			
REMARKS													

DETERMINING DATA OF CABLE PAIRS

SECTION PP - (60) PD

ITEM	0.9mm CABLE				0.65mm CABLE				0.5mm CABLE				
	NL (PCM)	L	PCM (CH)	PCM (SYS)	TOTAL	NL	L	PCM (CH)	PCM (SYS)	TOTAL	NL	L	TOTAL
NO. OF PLANNING CIRCUIT IN '84	GENERAL	(14)		110 (6+1)	110	()		()					
	MAINTENANCE	6											
	LEASED & SPARE	11											
	TOTAL	31			31								
NO. OF PLANNING CIRCUIT IN '94	GENERAL	(20)		187 (9+1)	187	()		()					
	MAINTENANCE	9											
	LEASED & SPARE	19											
	TOTAL	48			48								
EXISTING	CABLES												
	PAIRS												
	COILS												
INCREASING UNTIL '84	CABLES									50PEF			
	PAIRS	50			50					50			
	COILS												
INCREASING UNTIL '94	CABLES												
	PAIRS												
	COILS												
ACCOMMODATION	AT '84			31	62.0%								
RATIO				50									
	AT '94			48	96.0%								
REMARKS													

DETERMINING DATA OF CABLE PAIRS

SECTION CN 61 TH

ITEM	0.9mm CABLE				0.65mm CABLE				0.5mm CABLE				
	NL (PCM)	L	PCM (CH)	PCM (SYS)	TOTAL	NL	L	PCM (CH)	PCM (SYS)	TOTAL	NL	L	TOTAL
NO. OF PLANNING MAINTENANCE LEASED & SPARE CIRCUIT IN '84	GENERAL	()		()		()		()			42	1031	1073
	MAINTENANCE										54		
	LEASED & SPARE										107		
TOTAL											203	1031	1234
NO. OF PLANNING MAINTENANCE LEASED & SPARE CIRCUIT IN '94	GENERAL	()		()		()		()			71	1753	1824
	MAINTENANCE										91		
	LEASED & SPARE										182		
TOTAL											344	1753	2097
EXISTING	CABLES												1500ASP
	PAIRS												400
	COILS												1000
INCREASING UNTIL '84	CABLES												
	PAIRS												
	COILS												
INCREASING UNTIL '94	CABLES												600 ASP
	PAIRS												600
	COILS												600P
ACCOMMODATION RATIO	AT '84												1234 / 1500 = 82.3%
	AT '94												2097-597 / 1500 = 99.5%
REMARKS													

DETERMINING DATA OF CABLE PAIRS

SECTION BC 62 TH

ITEM	0.9mm CABLE			0.65mm CABLE			0.5mm CABLE		
	NL (PCM)	L	PCM (CH)	NL	L	PCM (CH)	NL	L	PCM (CH)
NO. OF PLANNING CIRCUIT IN '84	392 (40)	537	397 (19+1)	()	()	()	162	376	538
GENERAL MAINTENANCE LEASED & SPARE	66						27		
TOTAL	631	537	1168				243	376	619
NO. OF PLANNING CIRCUIT IN '94	666 (64)	913	624 (31+1)	()	()	()	275	639	914
GENERAL MAINTENANCE LEASED & SPARE	110						45		
TOTAL	220						91		
EXISTING	1060	913	1973				411	639	1050
CABLES			600ASP 200ASP						1800ASP
PAIRS	600	800	1400				1300	500	1800
COILS			400P 200P 200P						500P
INCREASING UNTIL '84									
INCREASING UNTIL '94	450	150	600ASP					150	
ACCOMMODATION AT '84			1168						619
PATIO			1400						1800
			1973						1050
			2000						1800
			83.4 %						34.4 %
			98.7 %						58.4 %
REMARKS									

DETERMINING DATA OF CABLE PAIRS

SECTION PC 63 BC

ITEM	0.9mm CABLE			0.65mm CABLE			0.5mm CABLE						
	NL (PCM)	L	PCM (CH)	PCM (SYS)	TOTAL	NL	L	PCM (CH)	PCM (SYS)	TOTAL	NL	L	TOTAL
NO. OF PLANNING CIRCUIT IN '84	GENERAL (40)	20	397	(19+1)	417	32	455	()	()	527			
	MAINTENANCE	21				26							
	LEASED & SPARE	42				53							
	TOTAL	103	20		123	111	495			606			
NO. OF PLANNING CIRCUIT IN '94	GENERAL (64)	34	624	(31+1)	658	54	842	()	()	896			
	MAINTENANCE	33				45							
	LEASED & SPARE	66				90							
	TOTAL	163	34		197	189	842			1031			
EXISTING	CABLES				200ASP					1200ASP			
	PAIRS		200		200	500	600			1200			
	COILS				200P					600P			
INCREASING UNTIL '84	CABLES												
	PAIRS		-66										
	COILS												
INCREASING UNTIL '94	CABLES												
	PAIRS						250						
	COILS									250P			
ACCOMMODATION RATIO	AT '84			123 200	61.5 %					606 1200			50.5 %
	AT '94			197 200	98.5 %					1031 1200			85.9 %
REMARKS	THE MINUS SIGN SHOWS DELOADED CIRCUIT.												

DETERMINING DATA OF CABLE PAIRS

SECTION MK 64 PC

ITEM	0.9mm CABLE			0.65mm CABLE			0.5mm CABLE		
	NL (PCM)	L	PCM (CH)	NL	L	PCM (CH)	NL	L	PCM (CH)
NO. OF PLANNING MAINTENANCE LEASED & SPARE CIRCUIT IN '84	(40)	20	397 (19+1)	()	()	()	()	()	()
TOTAL	103	20	123						
NO. OF PLANNING MAINTENANCE LEASED & SPARE CIRCUIT IN '94	(64)	34	624 (31+1)	()	()	()	()	()	()
TOTAL	163	34	197						
EXISTING									
CABLES									
PAIRS		200	200ASP						
COILS			200P						
INCREASING UNTIL '84									
CABLES									
PAIRS		-66							
COILS									
INCREASING UNTIL '94									
CABLES									
PAIRS									
COILS									
ACCOMMODATION AT '84			123						
RATIO			200						
			61.5 %						
AT '94			197						
			200						
			98.5 %						
REMARKS	THE MINUS SIGN SHOWS DELOADED CIRCUIT.								

DETERMINING DATA OF CABLE PAIRS

SECTION MK 65 NK

ITEM	0.9mm CABLE			0.65mm CABLE			0.5mm CABLE						
	NL (PCM)	L	PCM (CH)	PCM (SYS)	TOTAL	NL	L	PCM (CH)	PCM (SYS)	TOTAL	NL	L	TOTAL
NO. OF PLANNING													
GENERAL	(22)		207	(10+1)	207	()							
MAINTENANCE	10												
LEASED & SPARE	21												
TOTAL	53				53								
NO. OF PLANNING													
GENERAL	(34)		352	(16+1)	352	()							
MAINTENANCE	18												
LEASED & SPARE	35												
TOTAL	67				67								
EXISTING													
CABLES					200ASP								
PAIRS		200			200								
COILS					200P								
INCREASING													
UNTIL '84		-44											
UNTIL '94													
INCREASING													
UNTIL '84													
UNTIL '94													
ACCOMMODATION													
AT '84				53	26.5%								%
RATIO				87	43.5%								%
REMARKS	THE MINUS SIGN SHOWS DELOADED CIRCUIT.												

NO. 76

DETERMINING DATA OF CABLE PAIRS

SECTION NK 66 NK

ITEM	0.9mm CABLE			0.65mm CABLE			0.5mm CABLE				
	NL (PCM)	L	PCM (CH)	TOTAL	NL	L	PCM (CH)	TOTAL	NL	L	TOTAL
NO. OF PLANNING											
CIRCUIT IN '84	GENERAL (22)		207 (10+1)	207	()		()				
	MAINTENANCE	10									
	LEASED & SPARE	21									
	TOTAL	53		53							
NO. OF PLANNING	GENERAL (34)		352 (16+1)	352	()		()				
CIRCUIT IN '94	MAINTENANCE	18									
	LEASED & SPARE	35									
	TOTAL	87		87							
EXISTING	CABLES										
	PAIRS										
	COILS										
INCREASING	CABLES			100ASP							
UNTIL '84	PAIRS	100		100							
	COILS										
INCREASING	CABLES										
UNTIL '94	PAIRS										
	COILS										
ACCOMMODATION	AT '84		53/100	53.0%							%
RATIO	AT '94		87/100	87.0%							%
REMARKS											

DETERMINING DATA OF CABLE PAIRS

SECTION PN 67 CP

ITEM	0.9mm CABLE				0.65mm CABLE				0.5mm CABLE				
	NL (PCM)	L	PCM (CH)	PCM (SYS)	TOTAL	NL	L	PCM (CH)	PCM (SYS)	TOTAL	NL	L	TOTAL
NO. OF PLANNING MAINTENANCE LEASED & SPARE	13	265			265	5	98			98	878	67	945
CIRCUIT IN '84	27					10					47		
TOTAL	40	265			305	15	98			113	1020	67	1087
NO. OF PLANNING MAINTENANCE LEASED & SPARE	23	451			451	8	167			167	1493	114	1607
CIRCUIT IN '94	45					17					80		
TOTAL	68	451			519	25	167			192	1734	114	1848
CABLES					600ASP					1200ASP 600ASP			1800ASP
EXISTING PAIRS	100	500			600	100	1700			1800	1650	150	1800
EXISTING COILS					500P					1200P 500P			150P
INCREASING UNTIL '84													
INCREASING UNTIL '94													
ACCOMMODATION AT '84					305 600					113 1800			1087 1800
RATIO					50.8 %					6.3 %			60.4 %
					51.9 600					14.0 %			1848-98 1800 100.0 %
REMARKS	60 PAIRS REQUIRED IN 1994 ARE ACCOMMODATED TO 0.65mm CABLE.												

DETERMINING DATA OF CABLE PAIRS

SECTION HM 68 PN

ITEM	0.9mm CABLE			0.65mm CABLE			0.5mm CABLE				
	NL (PCM)	L	PCM (CH)	TOTAL	NL	L	PCM (CH)	TOTAL	NL	L	TOTAL
NO. OF PLANNING CIRCUIT IN '84	GENERAL	()	()	()	19	918	()	937			
	MAINTENANCE				47						
	LEASED & SPARE				94						
	TOTAL				160	918		1078			
NO. OF PLANNING CIRCUIT IN '94	GENERAL	()	()	()	32	1561	()	1593			
	MAINTENANCE				80						
	LEASED & SPARE				159						
	TOTAL				271	1561		1832			
EXISTING	CABLES							1200ASP			
	PAIRS				200	1000		1200			
	COILS							1000P			
INCREASING UNTIL '84	CABLES										
	PAIRS										
	COILS										
INCREASING UNTIL '94	CABLES							600ASP			
	PAIRS				100	500		600			
	COILS							500P			
ACCOMMODATION RATIO	AT '84			%				1078 1200			89.8 %
	AT '94			%				1832 1800			101.7 %
REMARKS											

DETERMINING DATA OF CABLE PAIRS

SECTION HM 69 KC

ITEM	0.9mm CABLE			0.65mm CABLE			0.5mm CABLE		
	NL (PCM)	L	PCM (CH)	NL	L	PCM (CH)	NL	L	PCM (CH)
NO. OF PLANNING MAINTENANCE LEASED & SPARE	()	996	()	44 ()	159	()	203		
TOTAL	50			10					
CIRCUIT IN '84	100			20					
TOTAL	150	996	1146	74	159	233			
NO. OF PLANNING MAINTENANCE LEASED & SPARE	()	1693	()	75 ()	270	()	345		
TOTAL	85			17					
CIRCUIT IN '94	169			35					
TOTAL	254	1693	1947	127	270	397			
CABLES			600ASP			1200ASP			
PAIRS		600	600	600	600	1200			
COILS			600P			600P			
INCREASING UNTIL '84	200	400	600ASP						
COILS			400P						
CABLES			300ASP						
PAIRS	200	700	900						
COILS			100P						
ACCOMMODATION AT '84			1146			233	19.4 %		
RATIO			1200			1200			
AT '94			1947			397	33.1 %		
REMARKS			2100			1200			

NO.80

DETERMINING DATA OF CABLE PAIRS

SECTION C.P. 70 HM

ITEM	0.9mm CABLE				0.65mm CABLE				0.5mm CABLE				
	NL (PCM)	L	PCM (CH)	PCM (SYS)	TOTAL	NL	L	PCM (CH)	PCM (SYS)	TOTAL	NL	L	TOTAL
NO. OF PLANNING CIRCUIT IN '84	GENERAL					144				144			
	MAINTENANCE LEASED & SPARE					7							
	TOTAL					151				144			
NO. OF PLANNING CIRCUIT IN '94	GENERAL					245				245			
	MAINTENANCE LEASED & SPARE					12							
	TOTAL					257				245			
EXISTING	CABLES												
	PAIRS						150			150 ASP			
	COILS									150 P			
INCREASING UNTIL '84	CABLES												
	PAIRS												
	COILS												
INCREASING UNTIL '94	CABLES												
	PAIRS					150				150 ASP			
	COILS									150 P			
ACCOMMODATION RATIO	AT '84									165 / 150 = 110.0%			
	AT '94									282 / 300 = 94.0%			
REMARKS	164 NL PAIRS ARE ACCOMMODATED TO LOADED PAIRS.												

NO. 81

DETERMINING DATA OF CABLE PAIRS

SECTION ON (7) PN

ITEM	0.9mm CABLE				0.65mm CABLE				0.5mm CABLE				
	NL (PCM)	L	PCM (CH)	PCM (SYS)	TOTAL	NL	L	PCM (CH)	PCM (SYS)	TOTAL	NL	L	TOTAL
NO. OF PLANNING CIRCUIT IN '84	GENERAL	12 (32)	495	272 (15+1)	779	()	()	()	()				
	MAINTENANCE LEASED & SPARE	39											
	TOTAL	161	495		656								
NO. OF PLANNING CIRCUIT IN '94	GENERAL	20 (46)	842	452 (22+1)	1324	()	()	()	()				
	MAINTENANCE LEASED & SPARE	66											
	TOTAL	264	842		1106								
EXISTING													
INCREASING UNTIL '84	CABLES												
	PAIRS	100	500		600ASP								
	COILS				500P								
INCREASING UNTIL '94	CABLES												
	PAIRS	250	350		600ASP								
	COILS				350P								
ACCOMMODATION													
RATIO													
REMARKS													

DETERMINING DATA OF CABLE PAIRS

SECTION PV 72 ON

ITEM	0.9mm CABLE				0.65mm CABLE				0.5mm CABLE				
	NL (PCM)	L	PCM (CH)	PCM (SYS)	TOTAL	NL	L	PCM (CH)	PCM (SYS)	TOTAL	NL	L	TOTAL
NO. OF PLANNING MAINTENANCE LEASED & SPARE CIRCUIT IN '94	(32)		272	(15+1)	272	()							
TOTAL	73				73								
NO. OF PLANNING MAINTENANCE LEASED & SPARE CIRCUIT IN '94	(46)		462	(22+1)	462	()							
TOTAL	115				115								
EXISTING													
INCREASING UNTIL '84					150PEF								
INCREASING UNTIL '94					150								
ACCOMMODATION RATIO AT '84				75	48.7 %								
AT '94				115	76.7 %								
REMARKS													

DETERMINING DATA OF CABLE PAIRS

SECTION LB 73 PV

ITEM	0.9mm CABLE			0.65mm CABLE			0.5mm CABLE		
	NL (PCM)	L	PCM (CH)	NL	L	PCM (CH)	NL	L	PCM (CH)
NO. OF PLANNING MAINTENANCE LEASED & SPARE	(22)		174 (10+1)	()		()			
TOTAL	48		48						
NO. OF PLANNING MAINTENANCE LEASED & SPARE	(30)		296 (14+1)	()		()			
TOTAL	75		75						
EXISTING									
INCREASING UNTIL '84	100		100			100			
INCREASING UNTIL '94									
ACCOMMODATION AT '84			48/100			48.0%			
RATIO AT '94			75/100			75.0%			
REMARKS									

DETERMINING DATA OF CABLE PAIRS

SECTION PS 74 PN

ITEM	0.9mm CABLE			0.65mm CABLE			0.5mm CABLE					
	NL (PCM)	L	PCM (CH)	TOTAL	NL	L	PCM (CH)	PCM (SYS)	TOTAL	NL	L	TOTAL
NO. OF PLANNING MAINTENANCE LEASED & SPARE CIRCUIT IN '84	(70)		695	695	()		()					
TOTAL	175			175								
NO. OF PLANNING MAINTENANCE LEASED & SPARE CIRCUIT IN '94	(110)		1182	1182	()		()					
TOTAL	287			287								
EXISTING				600/300ASP								
INCREASING UNTIL '84		176		300								
INCREASING UNTIL '94				300 P								
ACCOMMODATION AT '84				175 + 140					105.0 %			
RATIO AT '94				300								
REMARKS				287					95.7 %			
				300								

THE MINUS SIGN SHOWS DELOADED CIRCUIT.

DETERMINING DATA OF CABLE PAIRS

SECTION BN 75 PN

ITEM	0.9mm CABLE				0.65mm CABLE				0.5mm CABLE				
	NL (PCM)	L	PCM (CH)	PCM (SYS)	TOTAL	NL	L	PCM (CH)	PCM (SYS)	TOTAL	NL	L	TOTAL
NO. OF PLANNING MAINTENANCE LEASED & SPARE	(10)	608	90	(4+1)	698	13	1433	()	()	1446	118	79	197
CIRCUIT IN '84	35					72					10		
TOTAL	115	608			723	230	1433			1663	148	79	227
NO. OF PLANNING MAINTENANCE LEASED & SPARE	(14)	1034	153	(6+1)	1187	22	2436	()	()	2458	201	134	335
CIRCUIT IN '94	59					123					17		
TOTAL	119	1034			1227	246	2436			2827	252	134	386
EXISTING					300ASP					600ASP 1200ASP			1200ASP
INCREASING UNTIL '84		300			300	800	1000			1800	470	800	1200
INCREASING UNTIL '94					300P					500P 500P			900P
ACCOMMODATION RATIO					600ASP								
AT '84		350			600		500			500P			
AT '94		400			400ASP	200	1000			1200ASP			
REMARKS					400P					1000P			
					723 900	80.3 %				1663 1800	92.4 %	227 1200	18.9 %
					1227 1300	94.4 %				2827 3000	94.2 %	386 1200	32.2 %

NO. 86

DETERMINING DATA OF CABLE PAIRS

SECTION PS 76 BN

ITEM	0.9mm CABLE				0.65mm CABLE				0.5mm CABLE				
	NL (PCM)	L	PCM (CH)	PCM (SYS)	TOTAL	NL	L	PCM (CH)	PCM (SYS)	TOTAL	NL	L	TOTAL
NO. OF PLANNING CIRCUIT IN '84	30	637			667	72	177			249			
GENERAL													
MAINTENANCE	33					12							
LEASED & SPARE	67					25							
TOTAL	130	637			767	109	177			286			
NO. OF PLANNING CIRCUIT IN '94	51	1083			1134	122	301			423			
GENERAL													
MAINTENANCE	57					21							
LEASED & SPARE	113					42							
TOTAL	221	1083			1304	185	301			486			
EXISTING													
CABLES					600ASP					1200ASP			
PAIRS	100	500			600	700	500			1200			
COILS					500P					500P			
INCREASING UNTIL '94													
CABLES													
PAIRS													
COILS													
INCREASING UNTIL '94													
CABLES					200ASP								
PAIRS	200	600			800								
COILS					600P								
ACCOMMODATION RATIO													
AT '84					$\frac{767-140}{600}$					$\frac{286}{1200}$			23.8%
AT '94					$\frac{1304}{1400}$					$\frac{486}{1200}$			40.5%
REMARKS	140 PAIRS ARE ADDED UP IN CABLE ON <u>76</u> ROUTE.												

NO. 87

DETERMINING DATA OF CABLE PAIRS

SECTION BPL 77 BN

ITEM	0.9mm CABLE				0.65mm CABLE				0.5mm CABLE				
	NL (PCM)	L	PCM (CH)	PCM (SYS)	TOTAL	NL	L	PCM (CH)	PCM (SYS)	TOTAL	NL	L	TOTAL
NO. OF PLANNING MAINTENANCE LEASED & SPARE CIRCUIT IN '84	(10)		90	(4-1)	90	()		()					
TOTAL	24				24								
NO. OF PLANNING MAINTENANCE LEASED & SPARE CIRCUIT IN '94	(16)		153	(7-1)	153	()		()					
TOTAL	39				39								
EXISTING													
INCREASING UNTIL '84					50 DEF					50			
INCREASING UNTIL '94													
ACCOMMODATION AT '84			24		48.0%								%
RATIO AT '94			39		78.0%								%
REMARKS													

SECTION SPK 78 PS DETERMINING DATA OF CABLE PAIRS

ITEM	0.9mm CABLE				0.65mm CABLE				0.5mm CABLE				
	NL (PCM)	L	PCM (CH)	PCM (SYS)	TOTAL	NL	L	PCM (CH)	PCM (SYS)	TOTAL	NL	L	TOTAL
NO. OF PLANNING													
GENERAL	32 (72)	16	695	(34+2)	743	()							
MAINTENANCE	37												
LEASED & SPARE	74												
TOTAL	215	16			231								
NO. OF PLANNING													
GENERAL	110 (54)	27	1181	(53+2)	1262	()							
MAINTENANCE	63												
LEASED & SPARE	126												
TOTAL	353	27			380								
EXISTING													
CABLES					100 PEF								
PAIRS	500	200			700								
COILS					200 P								
INCREASING													
UNTIL '84													
CABLES													
PAIRS													
COILS													
UNTIL '94													
CABLES													
PAIRS													
COILS													
ACCOMMODATION													
AT '84				231	33.0 %								
RATIO				700									
AT '94				380	54.3 %								
RATIO				700									
REMARKS													

DETERMINING DATA OF CABLE PAIRS

SECTION BPO 79 SPK

ITEM	0.9mm CABLE				0.65mm CABLE				0.5mm CABLE				
	NL (PCM)	L	PCM (CH)	PCM (SYS)	TOTAL	NL	L	PCM (CH)	PCM (SYS)	TOTAL	NL	L	TOTAL
NO. OF PLANNING													
MAINTENANCE	(14)			(6+1)	117	()		()					
LEASED & SPARE	6												
CIRCUIT IN '84	12												
TOTAL	32				32								
NO. OF PLANNING													
MAINTENANCE	(20)			(9+1)	199	()		()					
LEASED & SPARE	10												
CIRCUIT IN '94	20												
TOTAL	50				50								
EXISTING													
CABLES													
PAIRS													
COILS													
INCREASING													
UNTIL '84										50PEF			
UNTIL '94										50			
TOTAL													
CABLES													
PAIRS													
COILS													
ACCOMMODATION													
AT '84					32					64.0 %			%
AT '94					50								%
RATIO													
AT '84					50					100.0 %			%
AT '94					50								%
REMARKS													

NO. 90

DETERMINING DATA OF CABLE PAIRS

SECTION T K (8) SW

ITEM	0.9mm CABLE				0.65mm CABLE				0.5mm CABLE				
	NL (PCM)	L	PCM (CH)	PCM (SYS)	TOTAL	NL	L	PCM (CH)	PCM (SYS)	TOTAL	NL	L	TOTAL
NO. OF PLANNING													
CIRCUIT IN '84	22 ()	449		()	471	()			()		69	41	110
GENERAL MAINTENANCE	24										6		
LEASED & SPARE	47										11		
TOTAL	93	449			542						86	41	127
NO. OF PLANNING													
CIRCUIT IN '94	37 ()	763		()	800	()			()		117	70	187
GENERAL MAINTENANCE	40										9		
LEASED & SPARE	80										18		
TOTAL	157	763			920						144	70	214
EXISTING													
CABLES					600 ASP								900ASP
PAIRS	100	500			600						700	200	900
COILS					500 P								200P
INCREASING													
UNTIL '94													
CABLES					400 ASP								
PAIRS	100	300			400								
COILS					300 P								
ACCOMMODATION					542								127
RATIO	AT '84				90.3 %								14.1 %
	AT '94				92.0 %								23.8 %
REMARKS													

NO. 91

DETERMINING DATA OF CABLE PAIRS

SECTION TC 82 SW

ITEM	0.9mm CABLE				0.65mm CABLE				0.5mm CABLE				
	NL (PCM)	L	PCM (CH)	PCM (SYS)	TOTAL	NL	L	PCM (CH)	PCM (SYS)	TOTAL	NL	L	TOTAL
NO. OF PLANNING MAINTENANCE LEASED & SPARE	()					()	545			545	176	762	938
TOTAL						27					47		
NO. OF PLANNING MAINTENANCE LEASED & SPARE	()					()	545			627	317	762	1079
TOTAL						82					299	1296	1594
NO. OF PLANNING MAINTENANCE LEASED & SPARE	()					()	927			927	130		
TOTAL						46					159		
EXISTING						139	927			1066	588	1295	1883
INCREASING UNTIL '84													1800 ASP
INCREASING UNTIL '94													1800
ACCOMMODATION AT '84													800 P
RATIO AT '94													550 P
REMARKS	THESE CIRCUITS ARE TEMPORARILY ACCOMMODATED TO EXISTING 0.5mm CABLE UNTIL 1984												

DETERMINING DATA OF CABLE PAIRS

SECTION TC 83 84 SP

ITEM	0.9mm CABLE				0.65mm CABLE				0.5mm CABLE				
	NL (PCM)	L	PCM (CH)	PCM (SYS)	TOTAL	NL	L	PCM (CH)	PCM (SYS)	TOTAL	NL	L	TOTAL
NO. OF PLANNING CIRCUIT IN '84	GENERAL	19 ()		()	19	()		()					
	MAINTENANCE	1											
	LEASED & SPARE	2											
	TOTAL	22			22								
NO. OF PLANNING CIRCUIT IN '94	GENERAL	32 ()		()	32	()		()					
	MAINTENANCE	2											
	LEASED & SPARE	3											
	TOTAL	37			37								
EXISTING	CABLES				300ASP								
	PAIRS	150			(50)								
	COILS												
INCREASING UNTIL '84	CABLES												
	PAIRS												
	COILS												
INCREASING UNTIL '94	CABLES												
	PAIRS												
	COILS												
ACCOMMODATION RATIO	AT '84				%					%			%
	AT '94				%					%			%
REMARKS													

NO.93

