

APPX. 9 PHOTOGRAPHS OF DRILL CORES

(a) RS. 2. 18 (Drilled depth: 242.00 m)

(b) RS. 2. 19 (Drilled depth: 246.40 m)

(c) RS. 2. 20 (Drilled depth: 218.35 m)

71.00 m



(a) RS.2.18
(71.00 m
- 109.71 m)

76.35 m

81.95 m

87.48 m

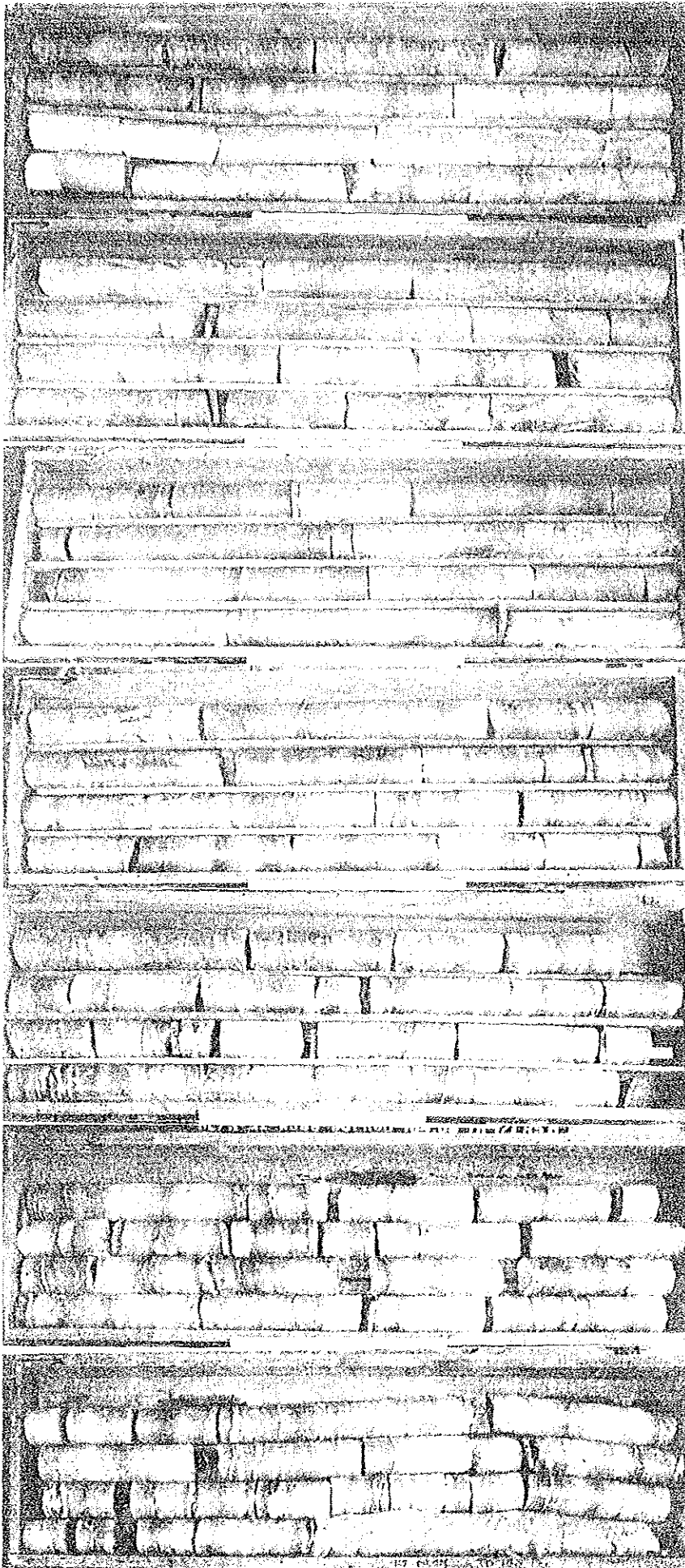
93.00 m

98.60 m

104.68 m

109.71 m

GD RS 2.48
(109.74)
- 1.18.00



115.16 m

121.00 m

126.88 m

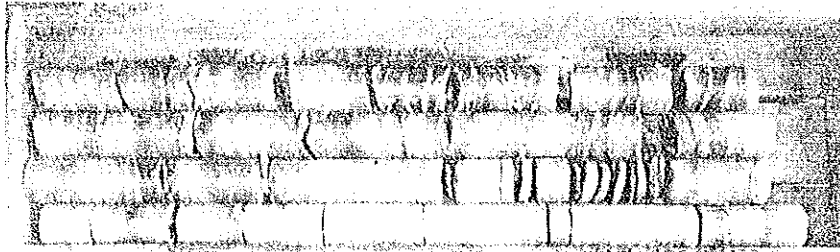
132.00 m

137.88 m

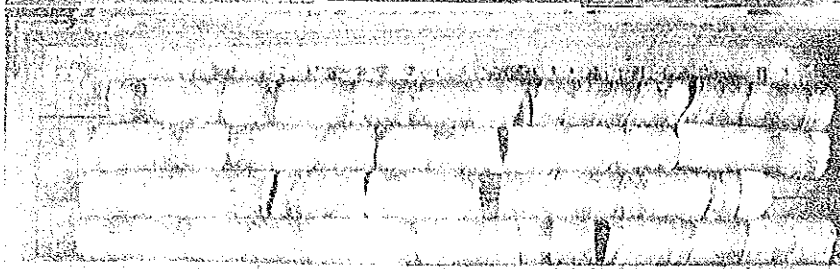
143.00 m

148.00 m

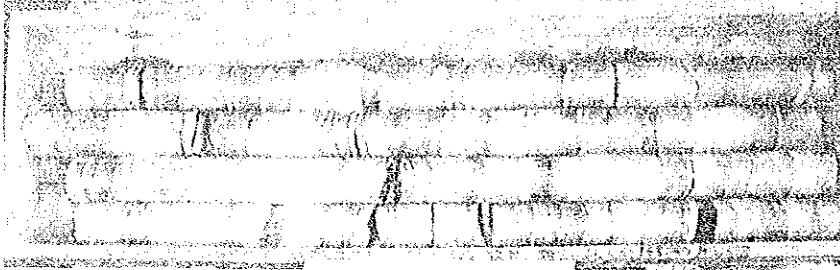
(a) RS.2.18
(148.00 m
- 184.00 m)



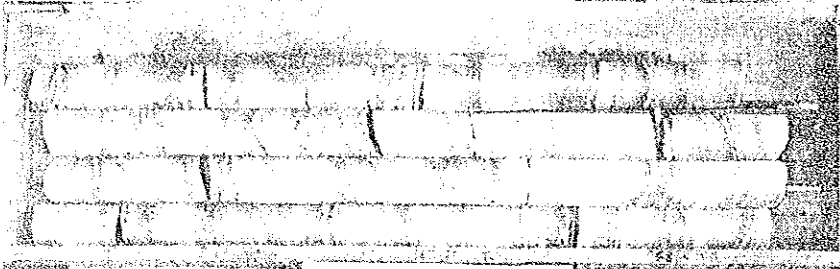
153.27 m



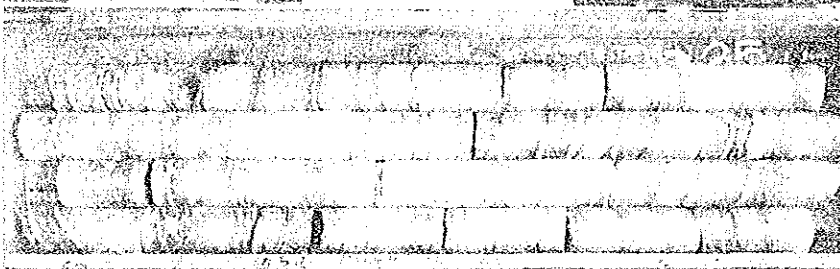
158.32 m



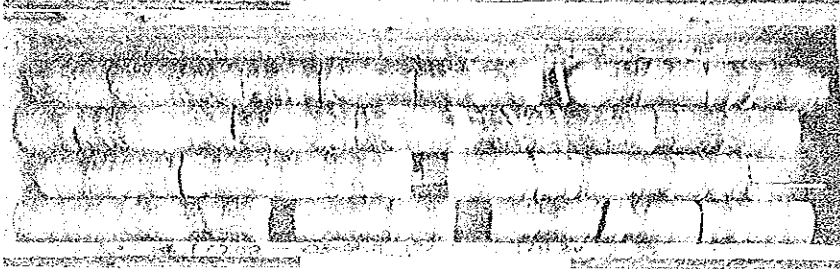
163.60 m



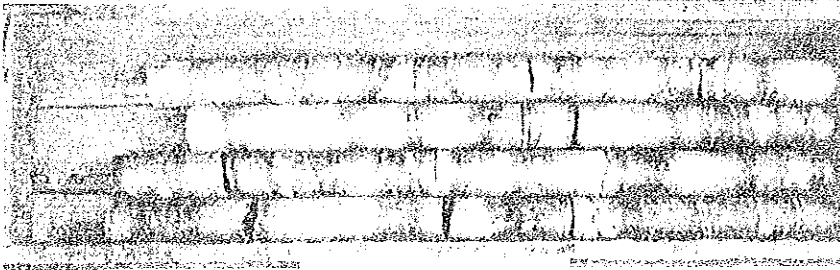
168.84 m



174.22 m

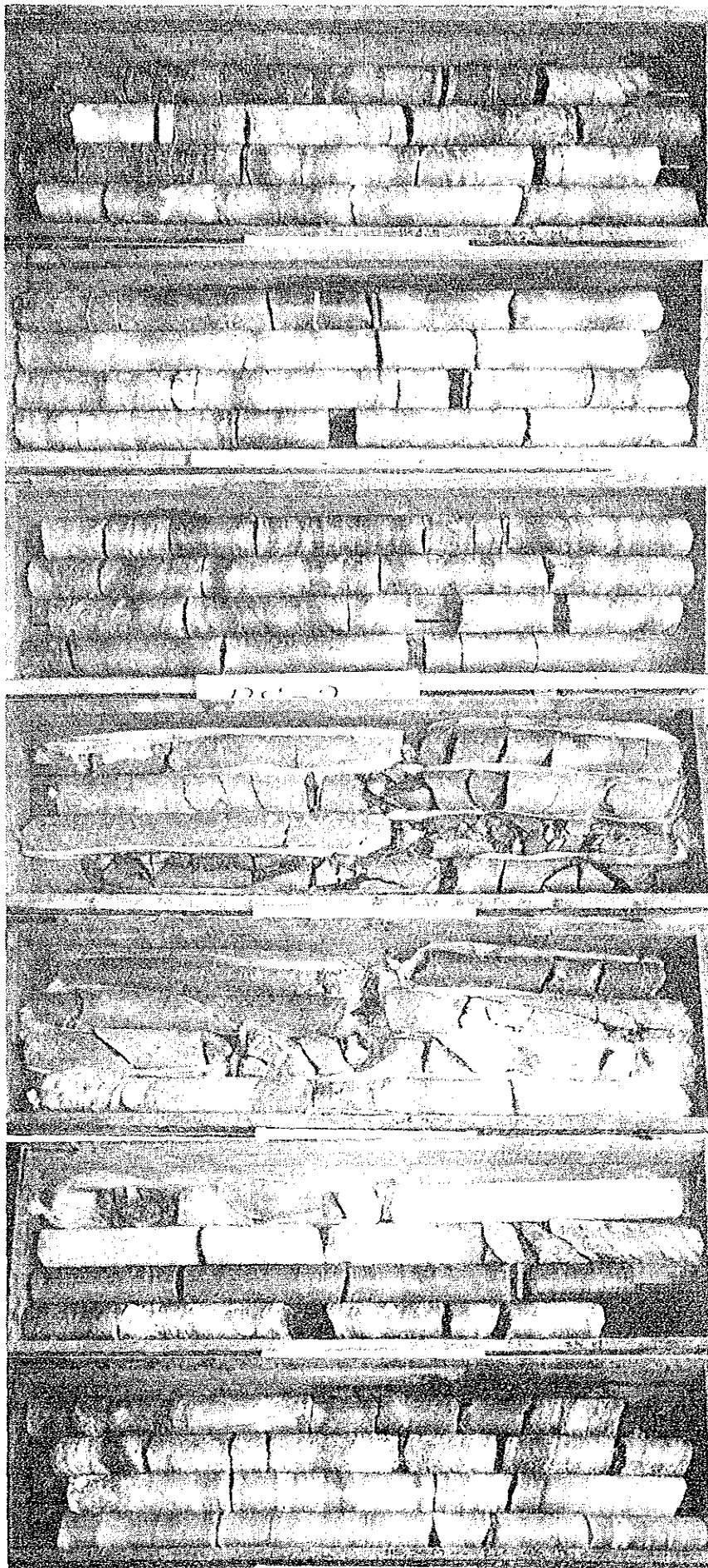


179.56 m



184.90 m

184.00 m



(a) RS.2.18
(184.00 m
- 220.43 m

189.25 m

194.83 m

200.28 m

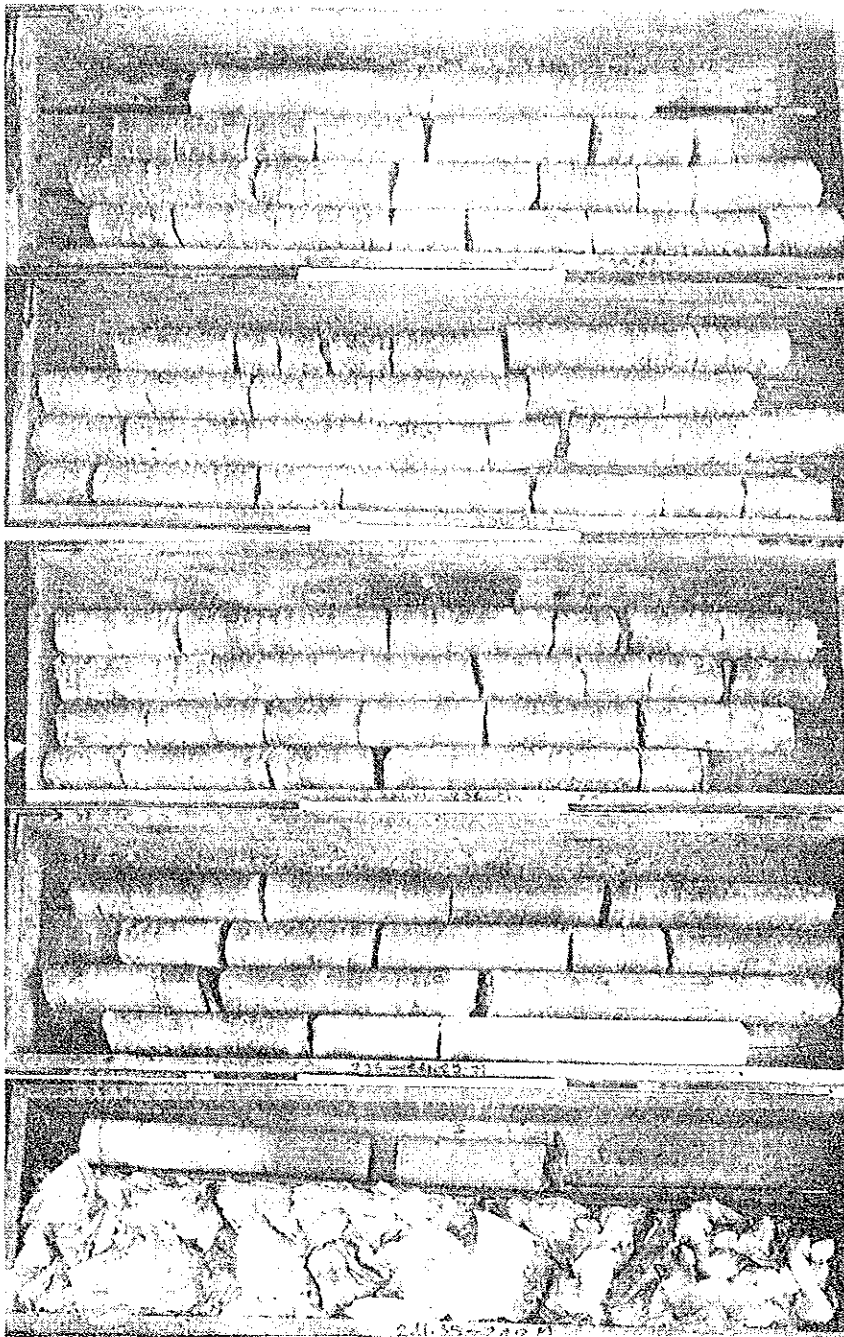
205.00 m

210.30 m

215.35 m

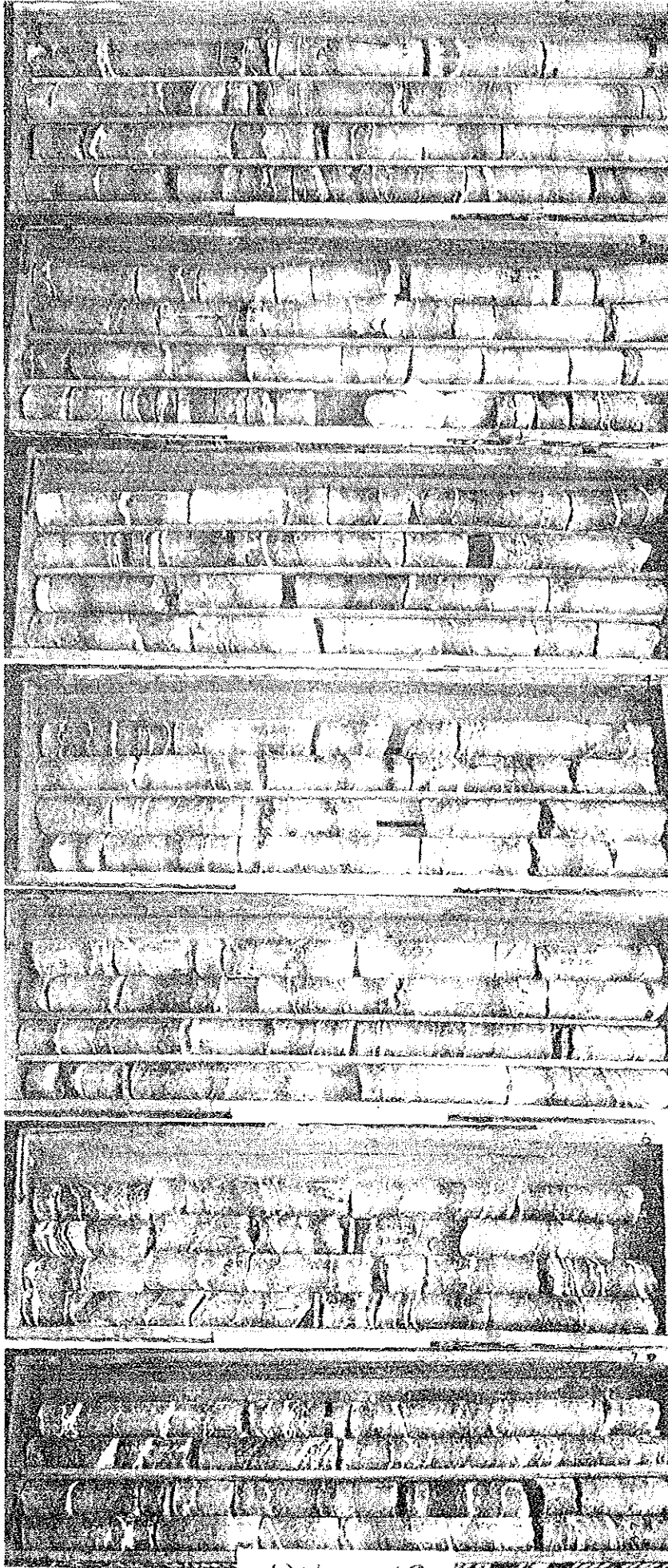
220.43 m

220.13 m



(a) RS.2.18
(220.43 m
- 242.00 m)

64.00 m



(b) RS.2.19
(64.00 m
- 101.80 m)

69.50 m

75.00 m

81.00 m

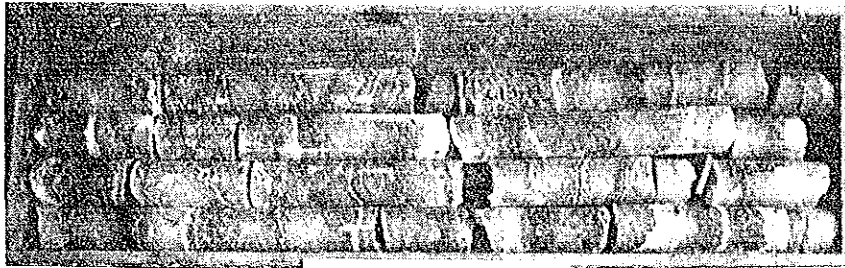
86.22 m

91.38 m

96.35 m

101.80 m

101.80 m

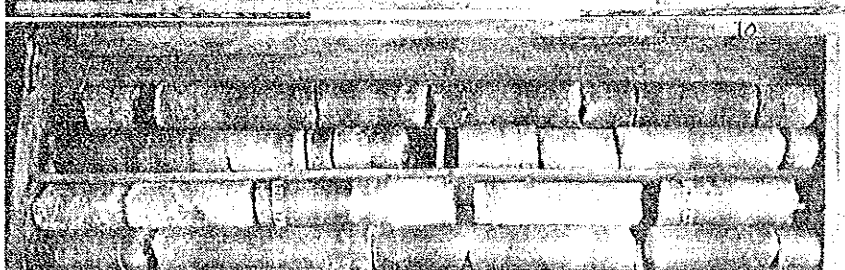


(b) RS.2.19
(101.80 m
- 139.40 m)

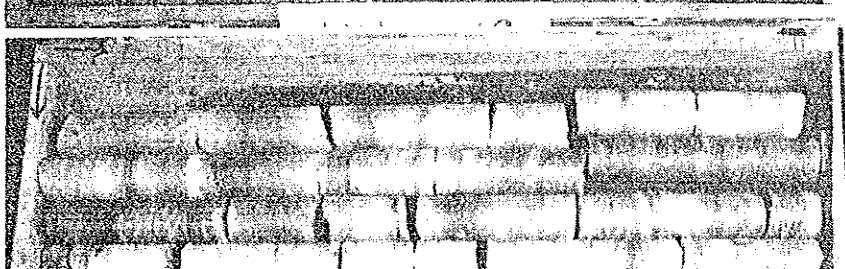
107.15 m



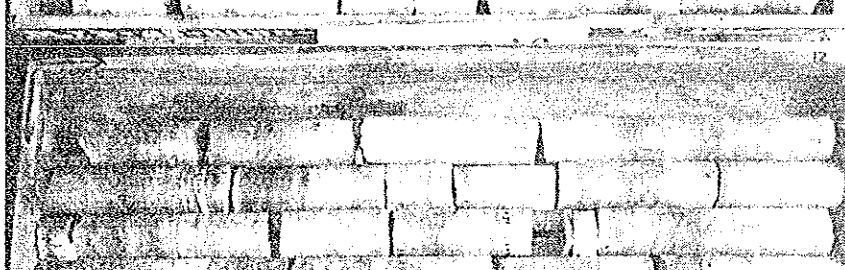
112.80 m



117.90 m



123.45 m



128.56 m



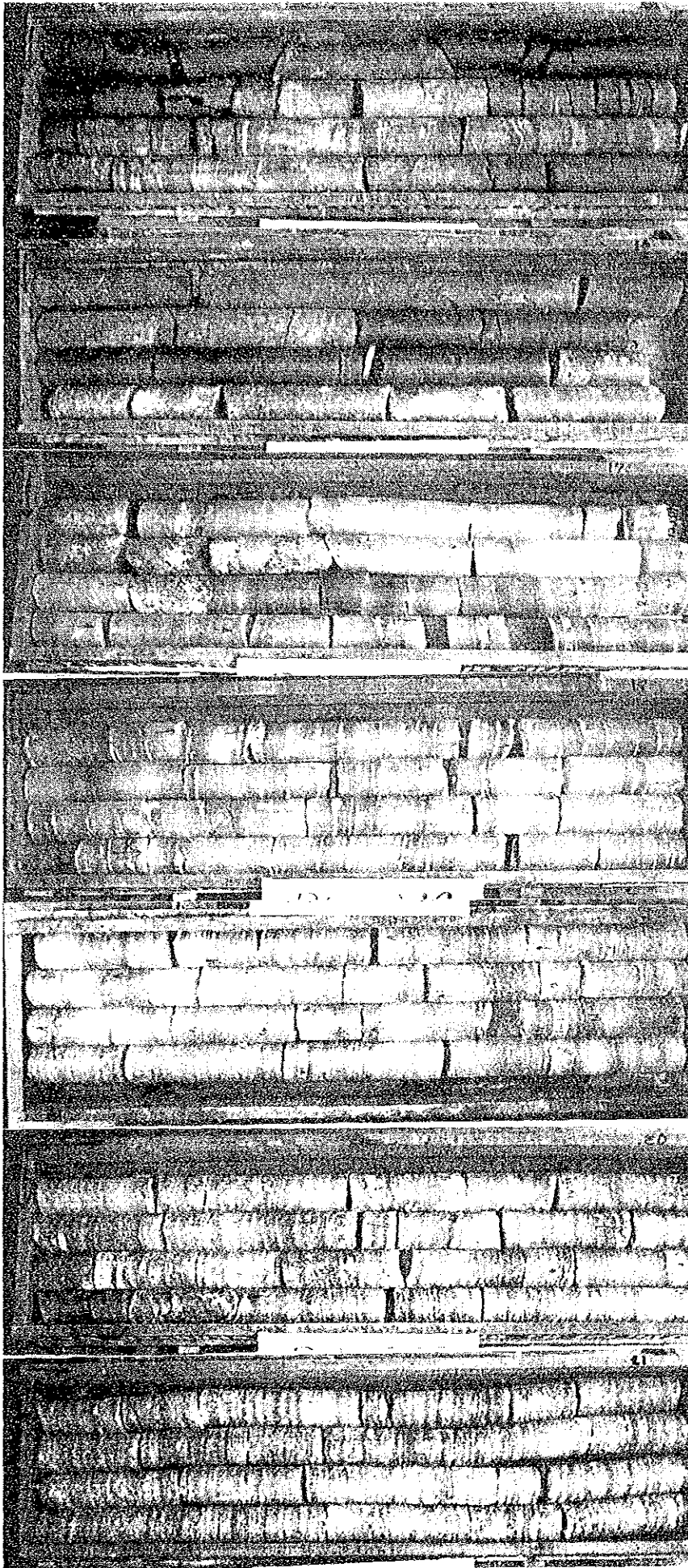
134.15 m



139.40 m

139.40 m

(b) RS.2.19
(139.40 m
- 177.30 m)



143.60 m

150.10 m

155.40 m

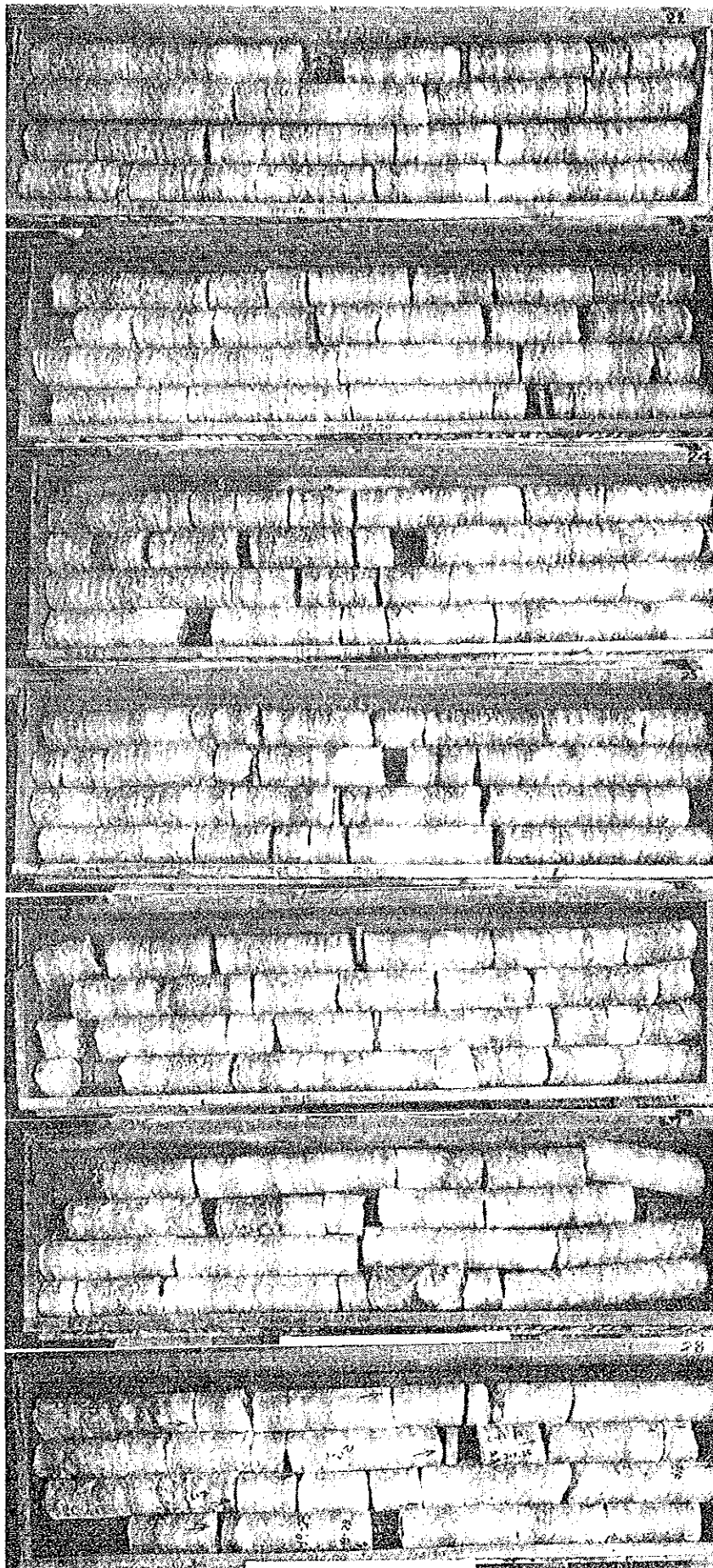
160.75 m

165.85 m

171.85 m

177.30 m

177.30 m



(b) RS.2.19
(177.30 m
- 215.20 m)

182.95 m

188.20 m

193.65 m

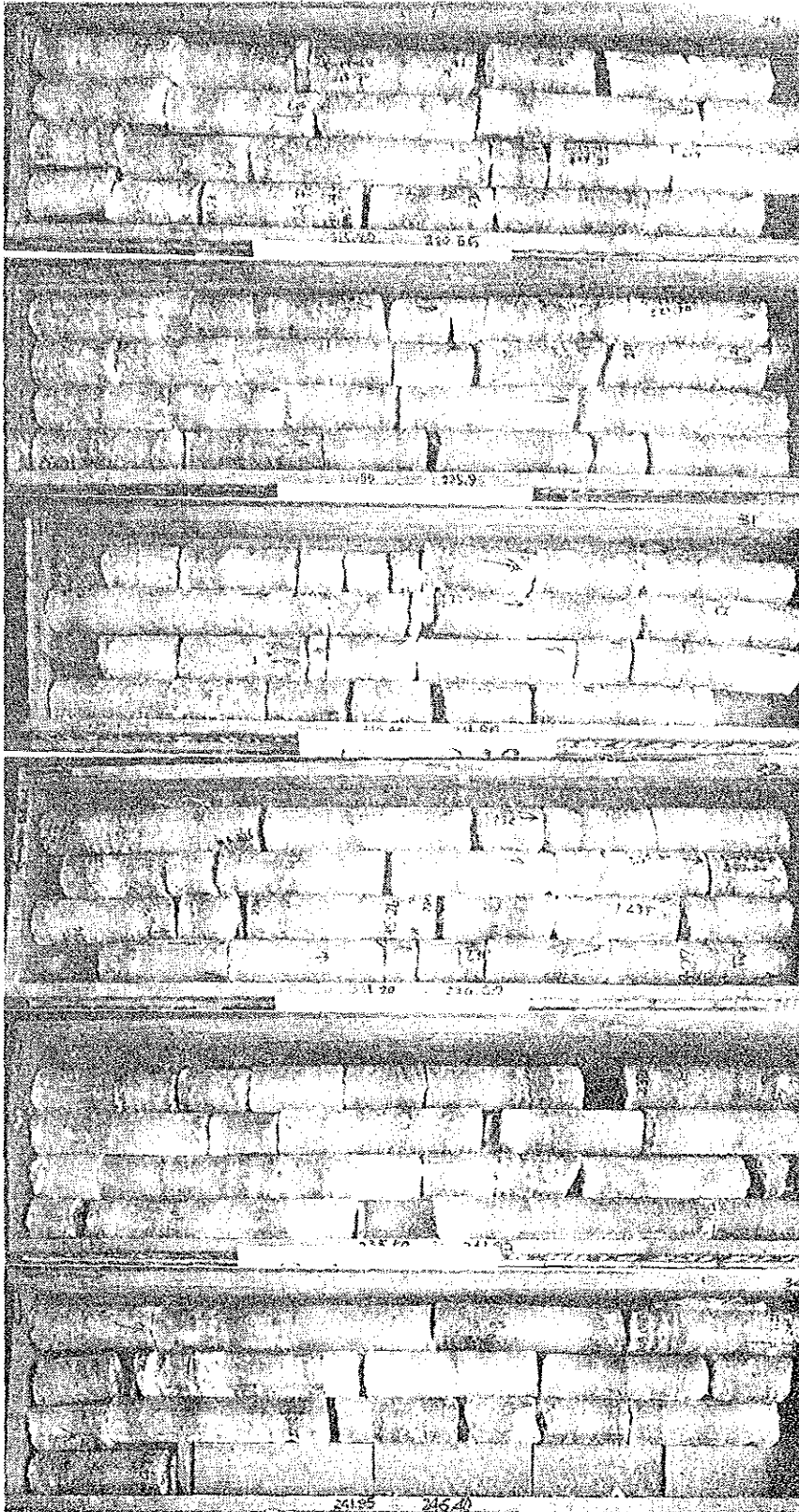
199.15 m

205.05 m

210.00 m

215.20 m

215.20 m



(b) RS.2.19
(215.20 m
- 246.40 m)

220.55 m

225.95 m

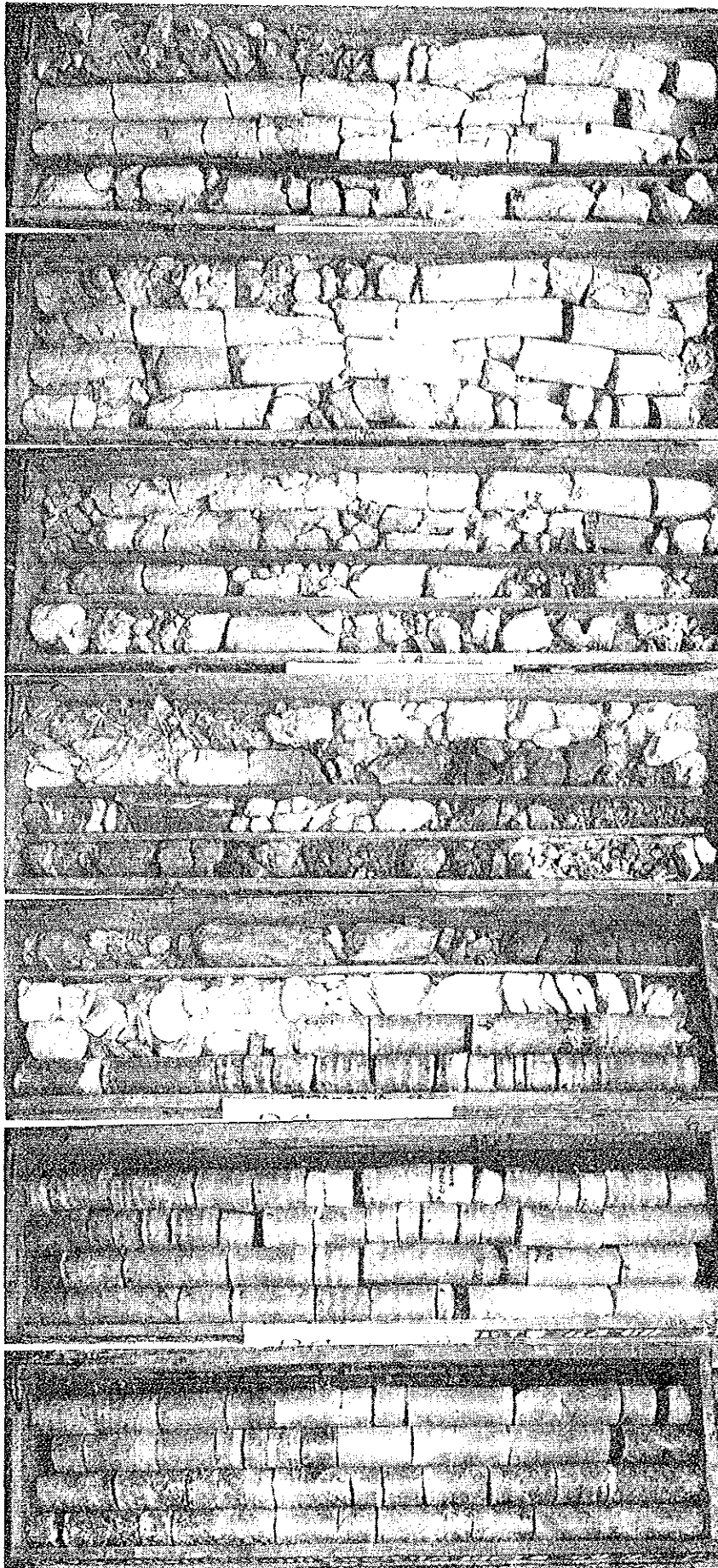
231.20 m

236.60 m

241.95 m

246.40 m

0 m



(c) RS.2.20
(0 m - 89.92 m)

21.70 m

41.40 m

58.00 m

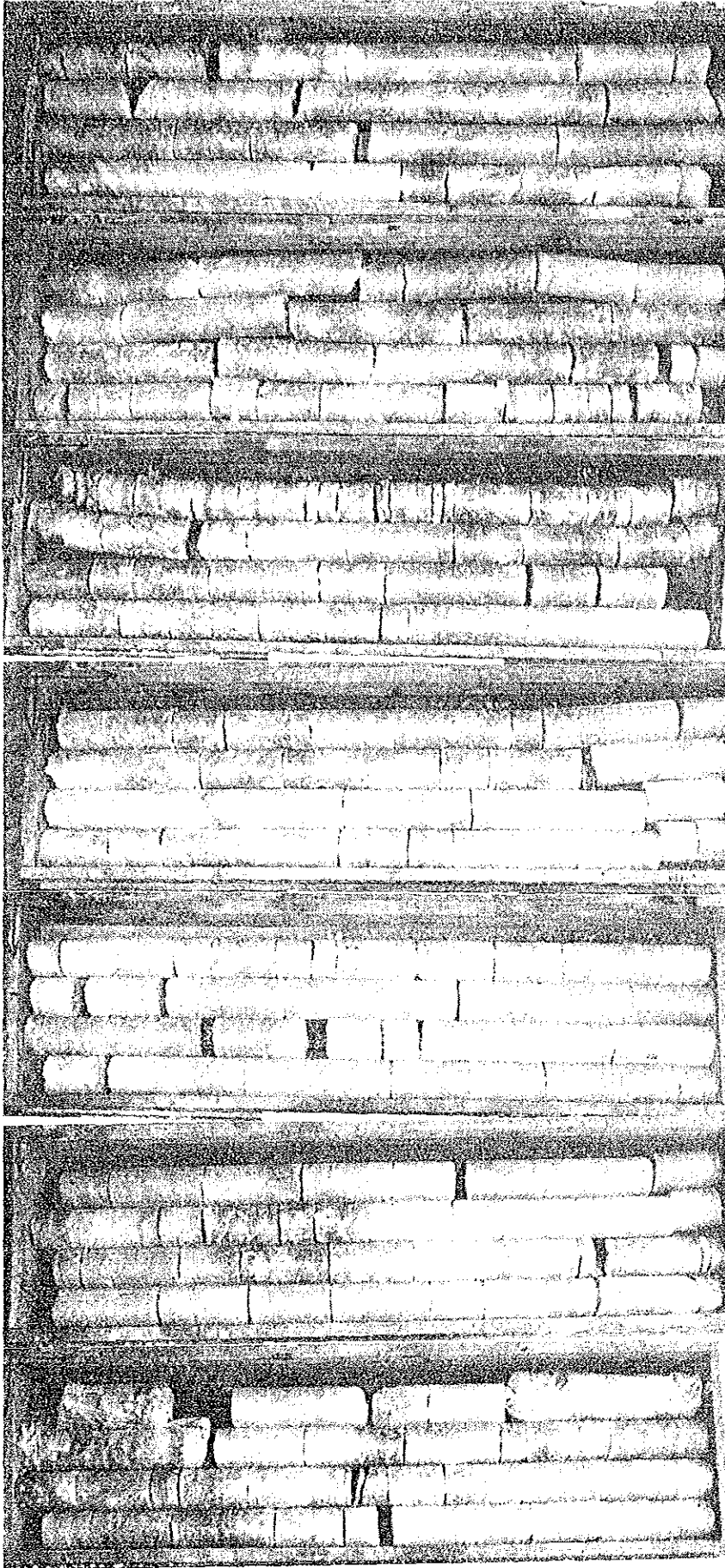
71.70 m

79.10 m

84.60 m

89.92 m

89.92 m



(c) RS.2.20
(89.92 m
- 127.45 m)

95.70 m

100.90 m

106.20 m

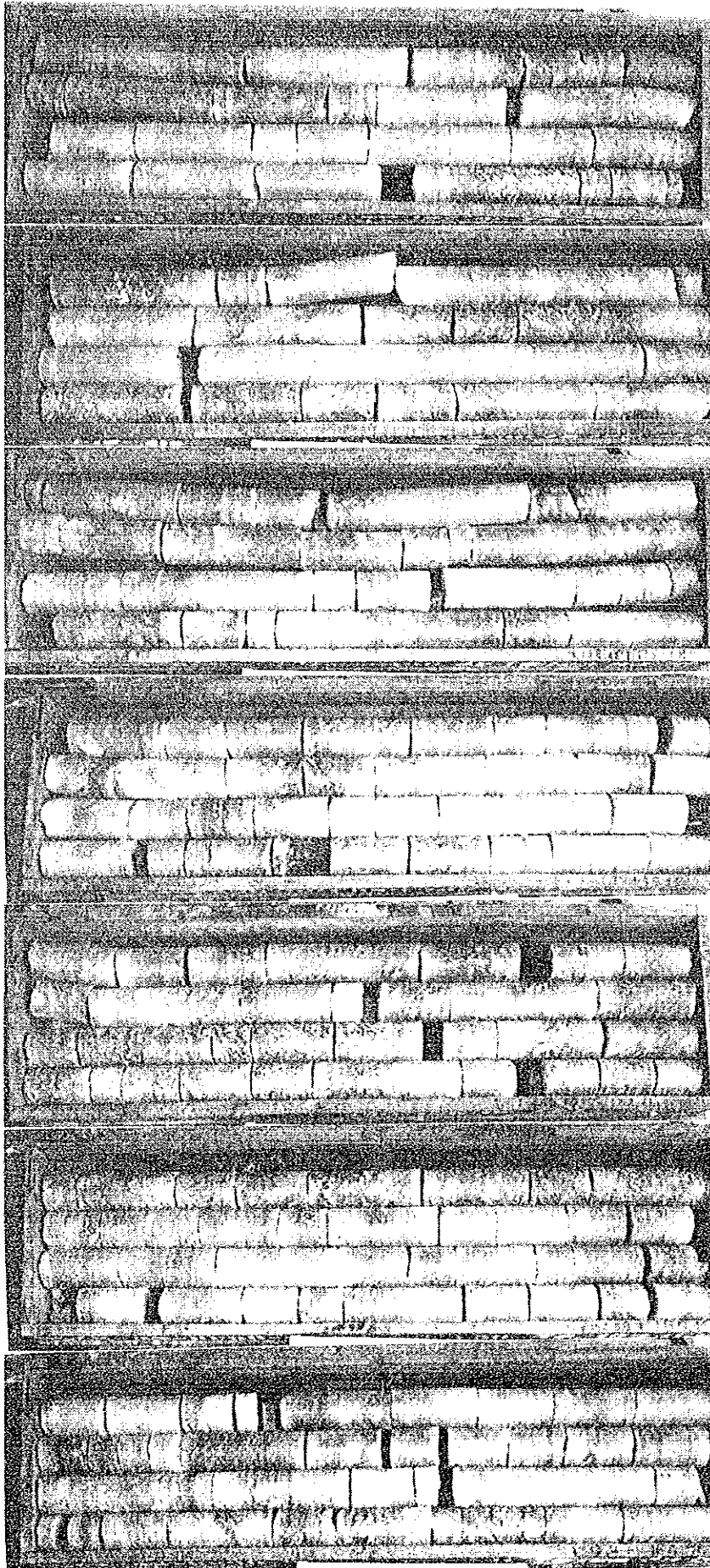
111.55 m

117.05 m

122.35 m

127.45 m

127.45 m



(c) RS.2.20
(127.45 m
~ 164.73 m)

132.90 m

138.42 m

143.94 m

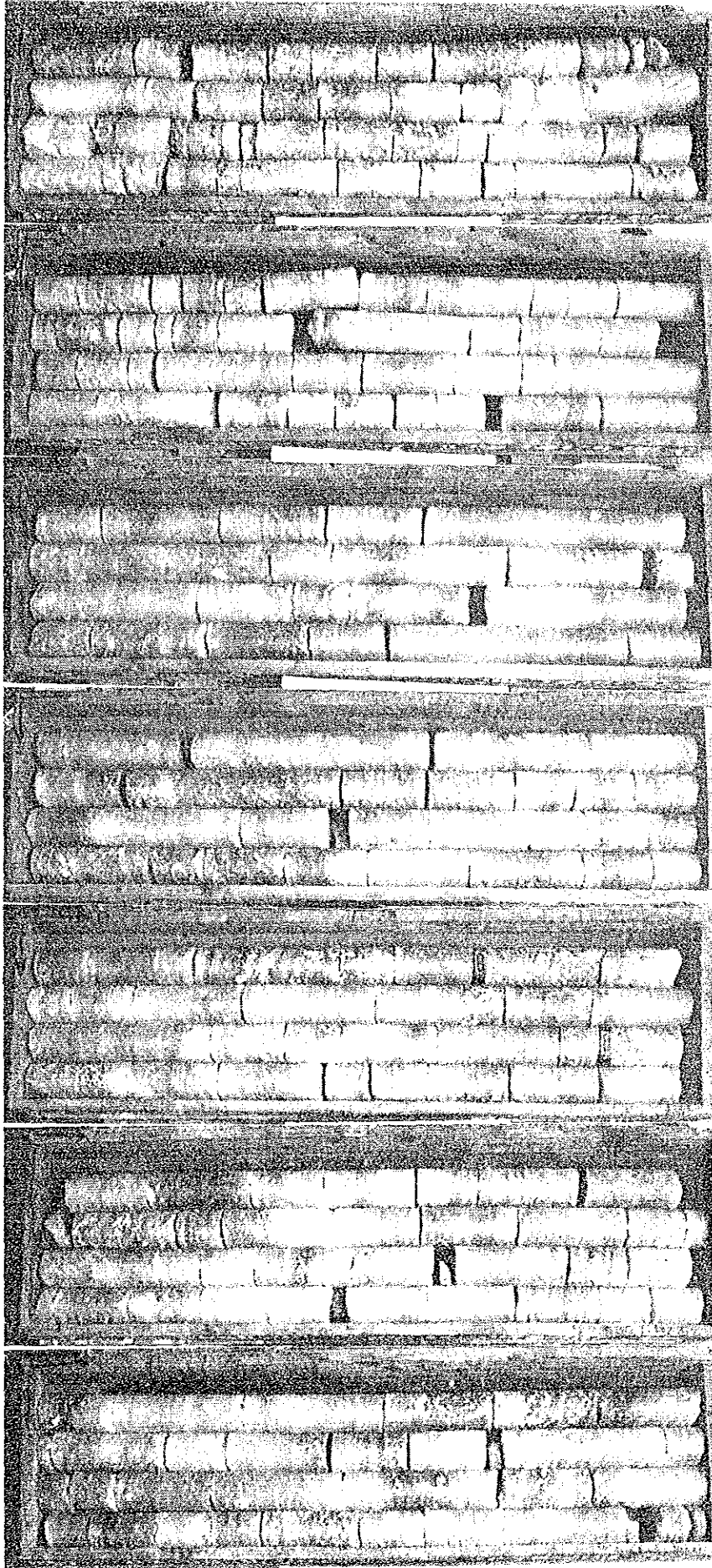
149.12 m

154.58 m

159.11 m

164.73 m

164.73 m



(c) RS.2.20
(164.73 m
- 203.20 m

170.62 m

176.00 m

181.41 m

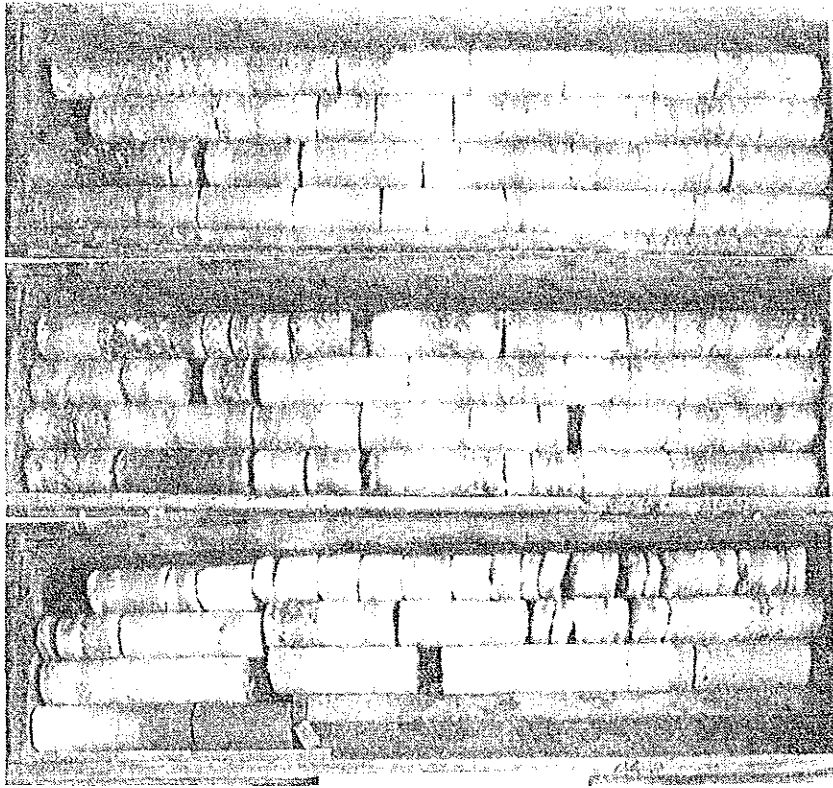
186.90 m

192.30 m

197.76 m

203.20 m

203.20 m



(c) RS.2.20
(203.20 m
~ 218.35 m)

208.65 m

214.10 m

218.35 m

JICA