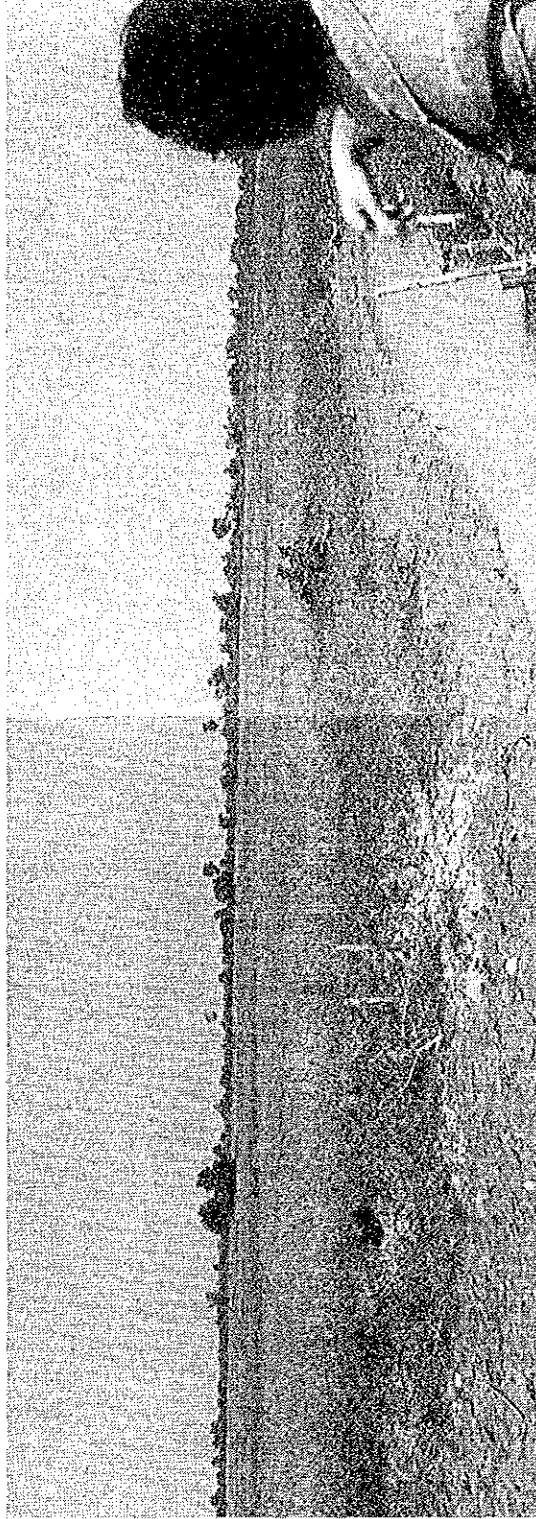


APPX. 8 PHOTOGRAPHS AT SITE



View of center area of Bannet-Narong rock salt district, Rice Paddies in foreground

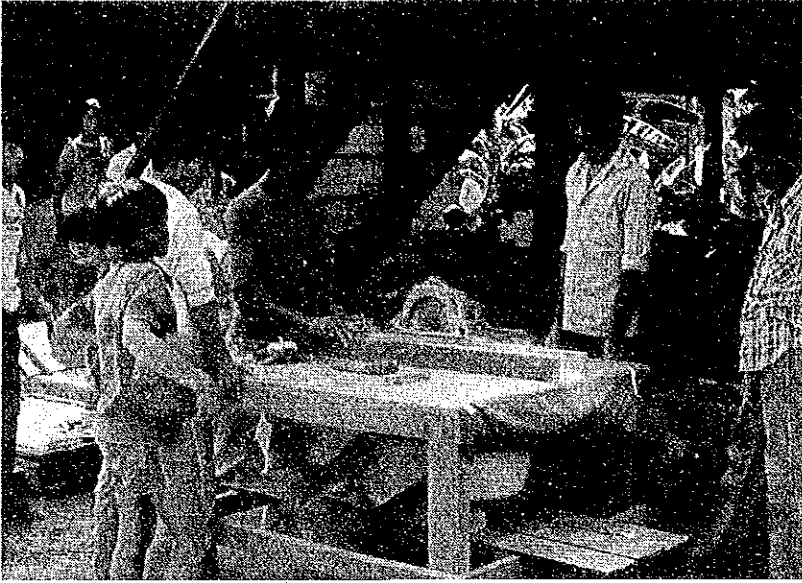


Investigation of drill core

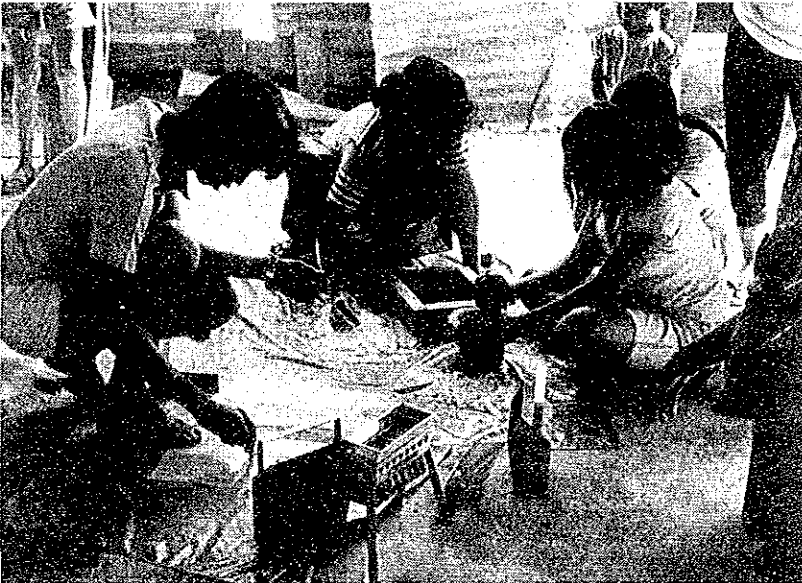


Taking sample for rock mechanics tests

Photographs showing part of the progress of the site works



Cutting rock salt core for chemical analysis with diamond cutter



Milling, dividing and sieving

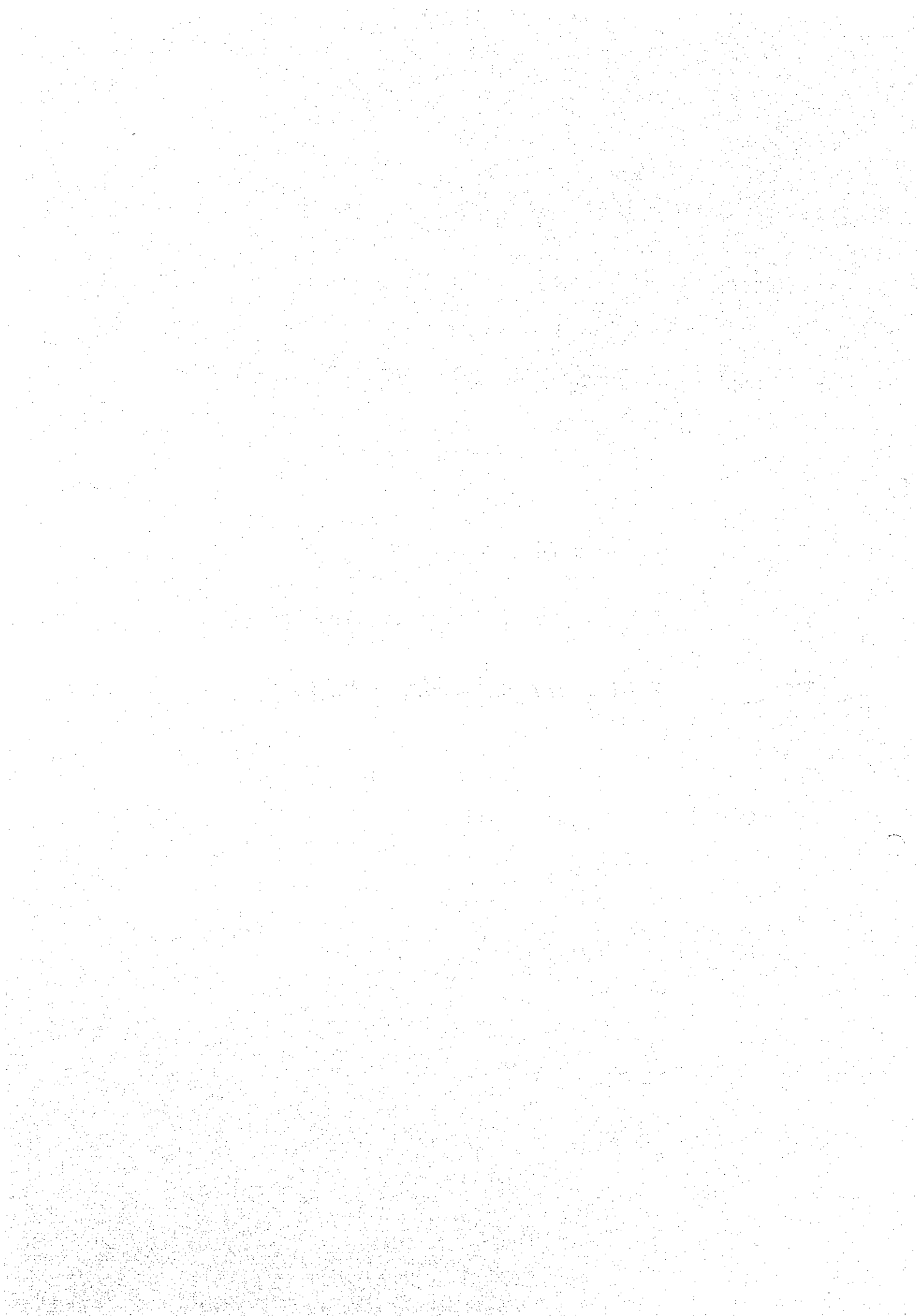
Photographs showing part of the progress of the site works

APPX. 9 PHOTOGRAPHS OF DRILL CORES

(a) RS. 2. 18 (Drilled depth: 242.00 m)

(b) RS. 2. 19 (Drilled depth: 246.40 m)

(c) RS. 2. 20 (Drilled depth: 218.35 m)



71.00 m



(a) RS.2.18
(71.00 m
- 109.71 m)

76.35 m

81.95 m

87.48 m

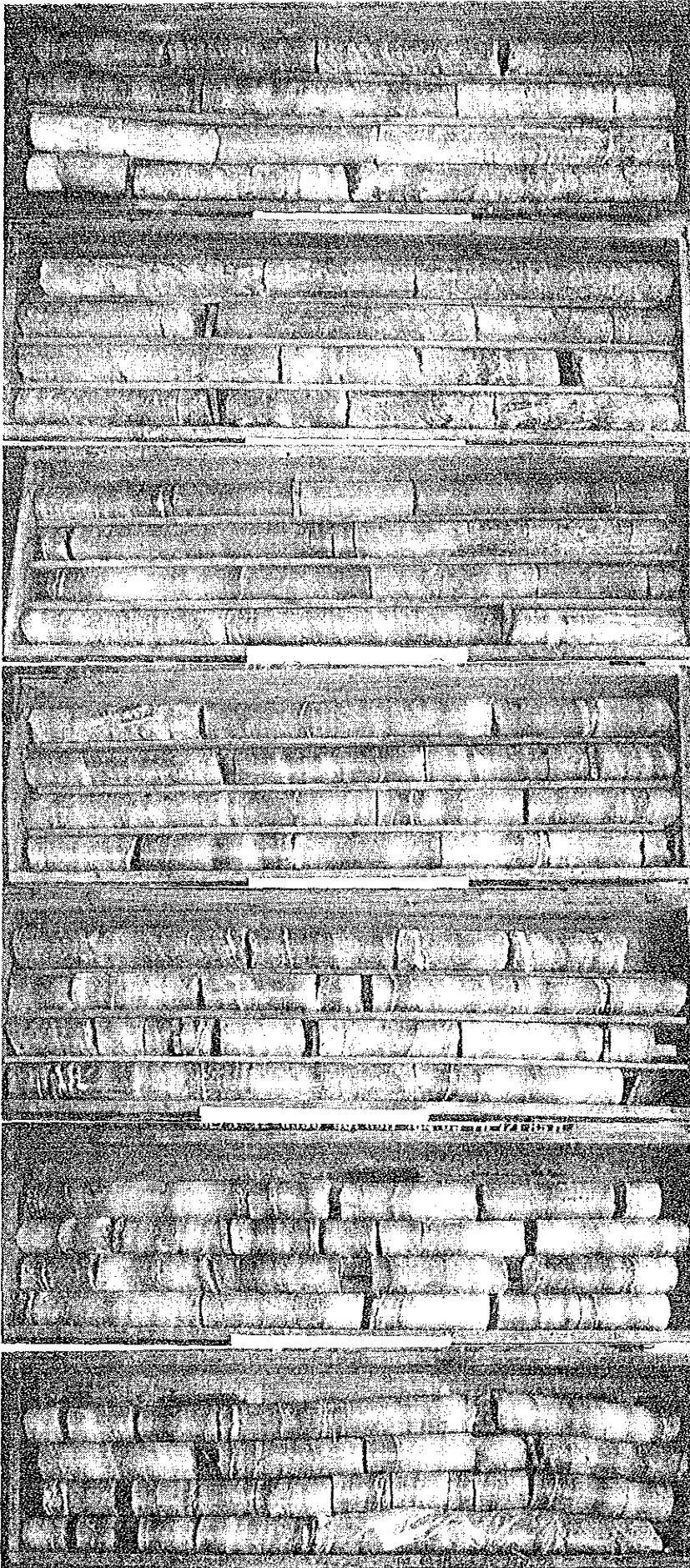
93.00 m

98.60 m

104.68 m

109.71 m

109.71 m



(a) RS.2.18
(109.71 m
- 148.00 m)

115.16 m

121.00 m

126.38 m

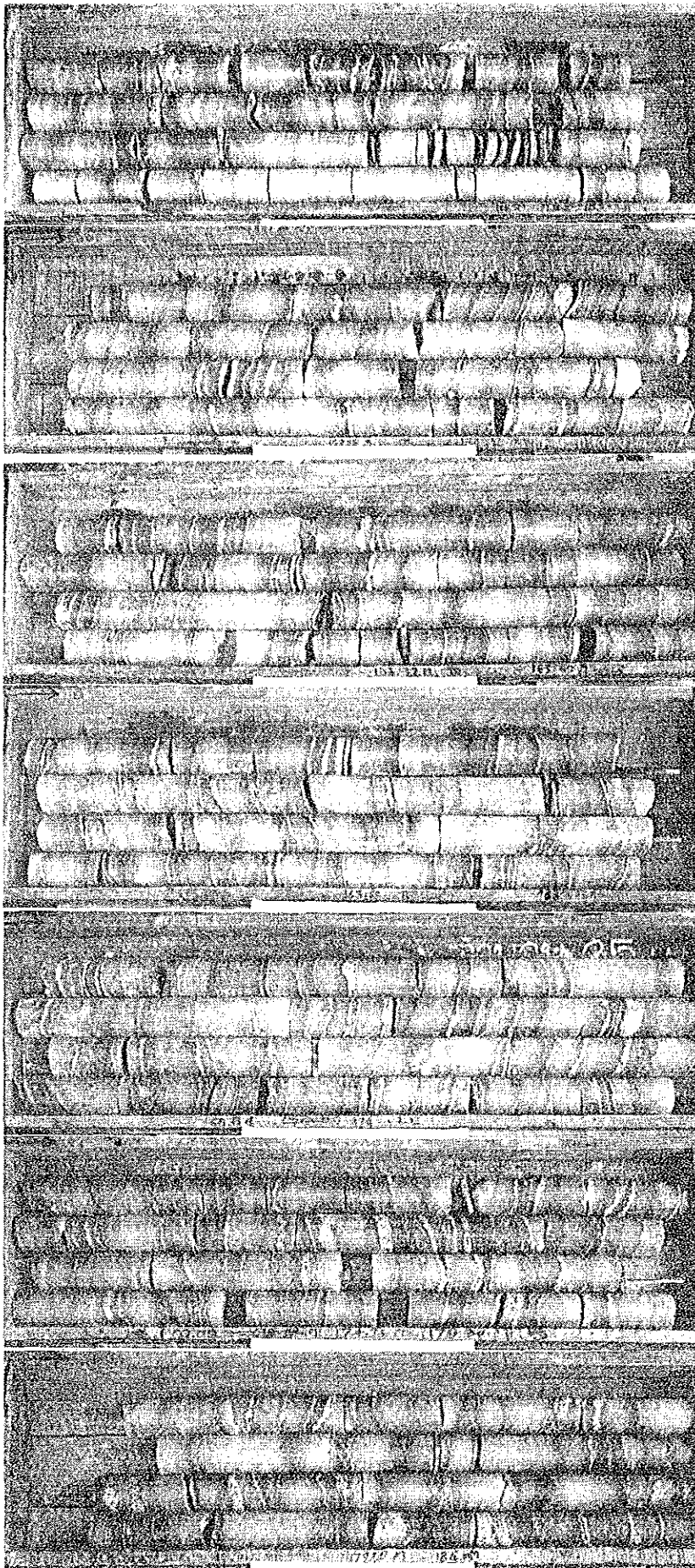
132.00 m

137.38 m

142.60 m

148.00 m

148.00 m



(a) RS.2.18
(148.00 m
- 184.00 m)

153.25 m

158.32 m

163.60 m

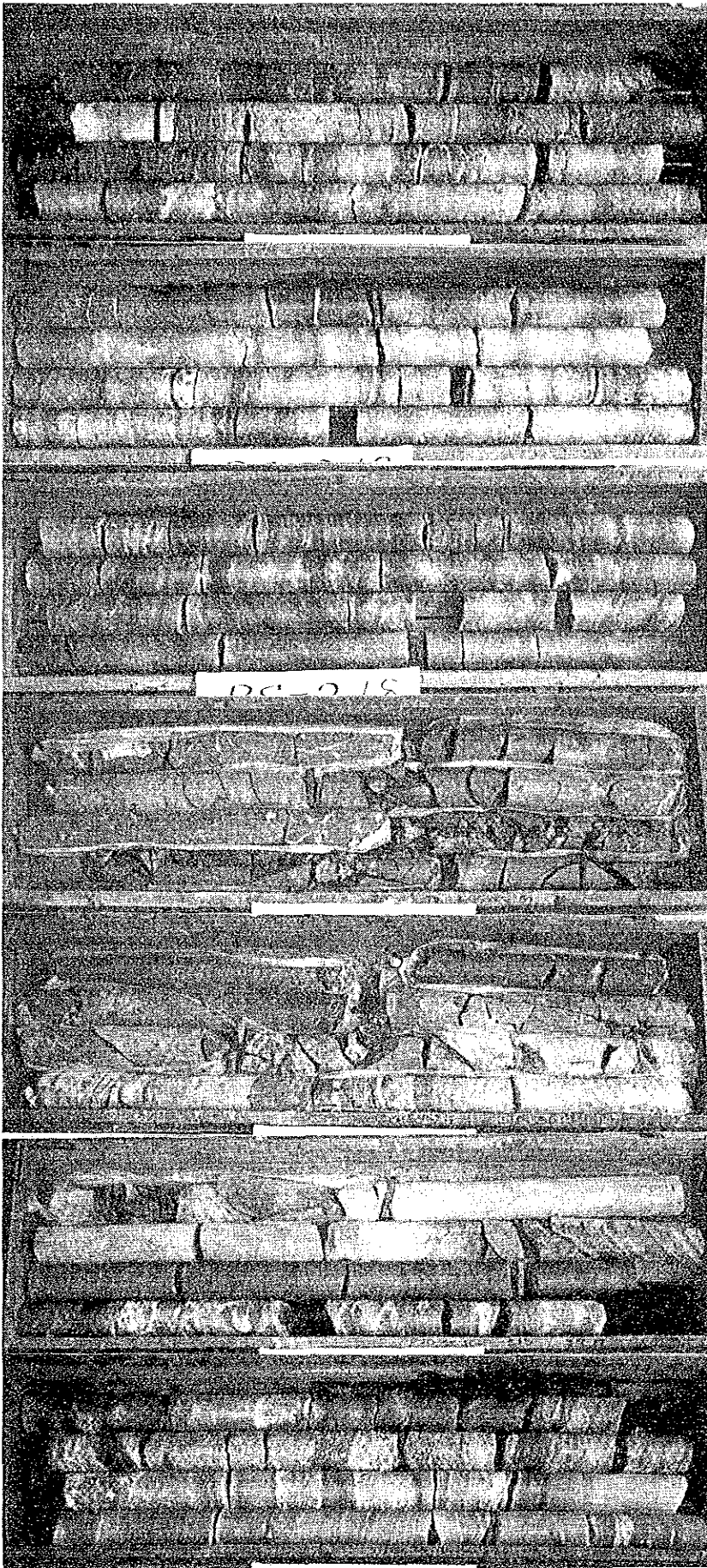
168.84 m

174.22 m

179.30 m

184.00 m

184.00 m



(a) RS.2.18
(184.00 m
- 220.43 m)

189.25 m

194.83 m

200.28 m

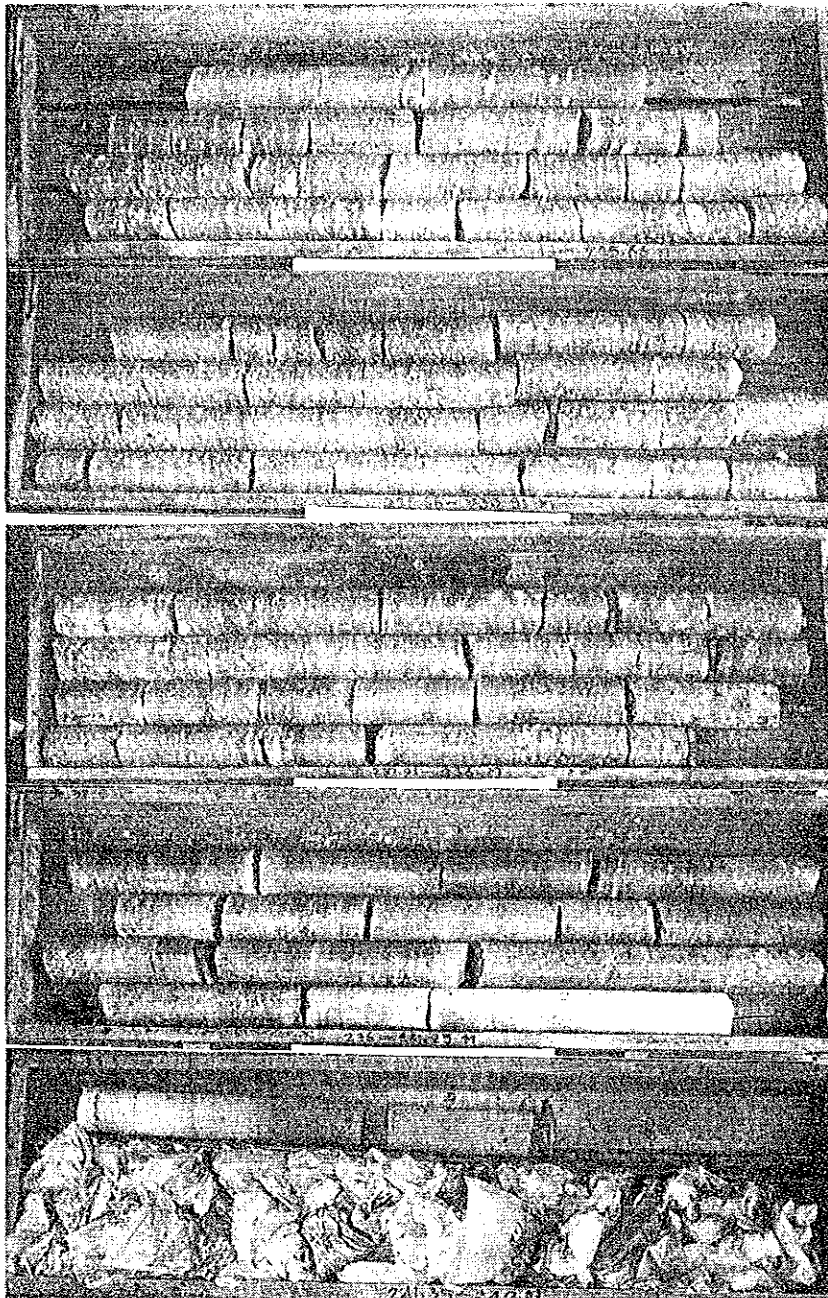
205.00 m

210.30 m

215.35 m

220.43 m

220.43 m



(a) RS.2.18
(220.43 m
- 242.00 m)

225.66 m

230.91 m

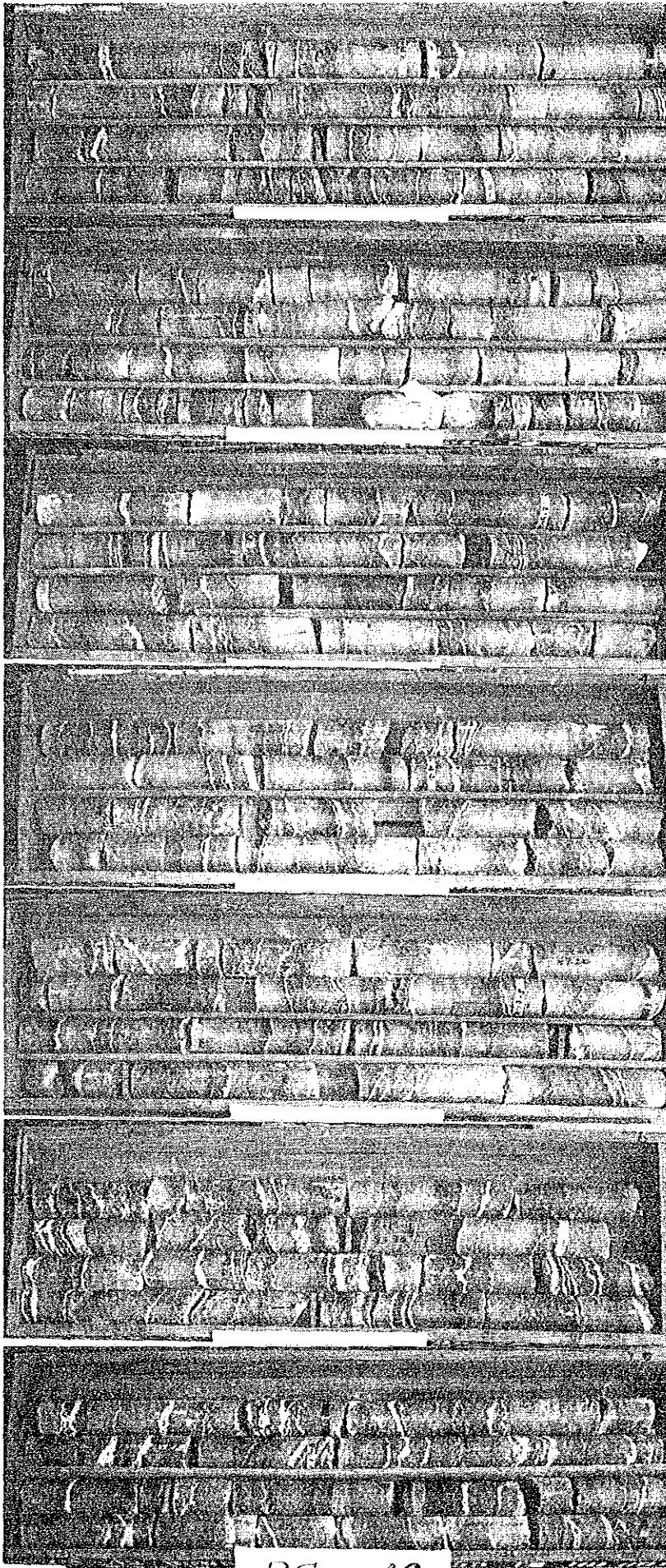
236.00 m

241.25 m

242.00 m

64.00 m

(b) RS.2.19
(64.00 m
- 101.80 m)



69.50 m

75.00 m

81.00 m

86.22 m

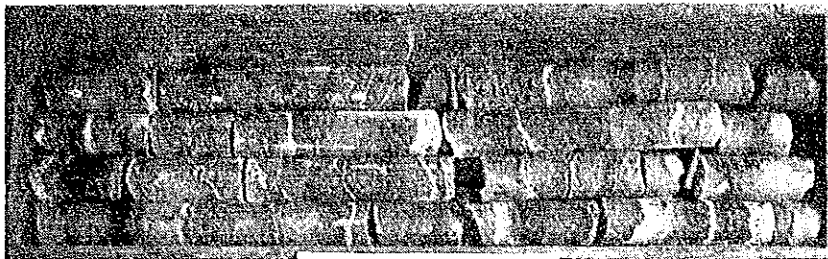
91.38 m

96.35 m

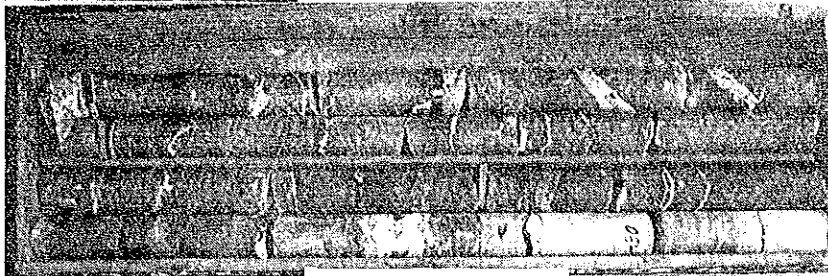
101.80 m

101.80 m

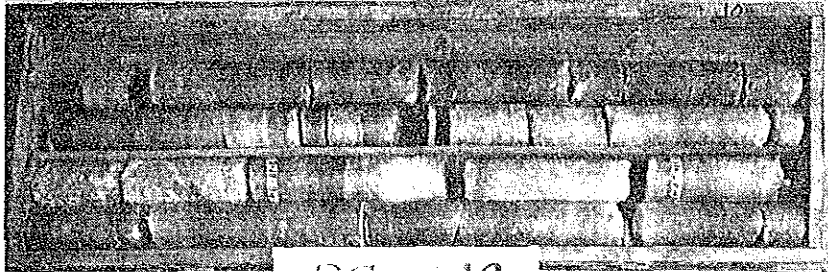
(b) RS.2.19
(101.80 m
- 139.40 m)



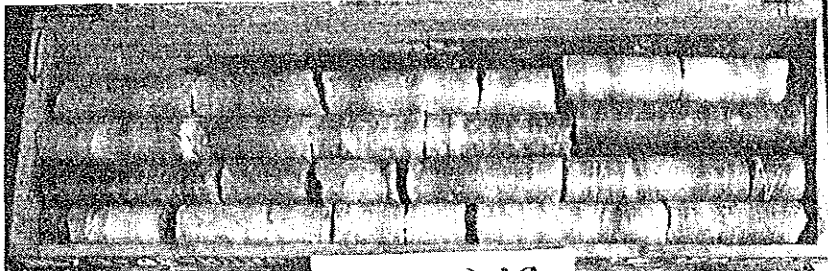
107.15 m



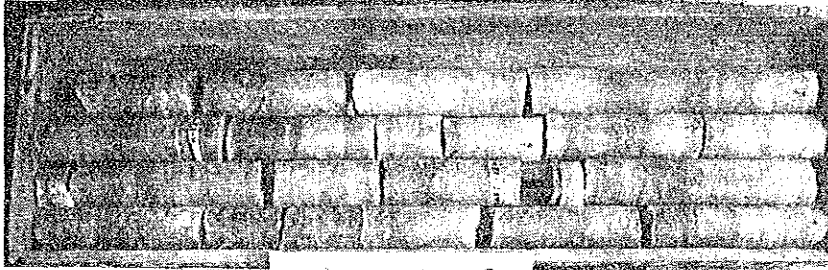
112.80 m



117.90 m



123.45 m



128.56 m



134.15 m



139.40 m