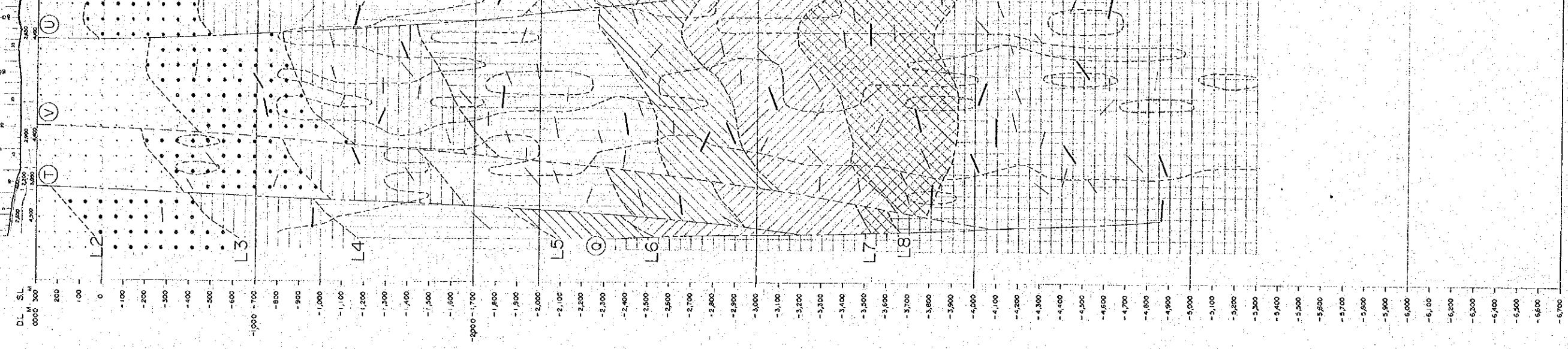
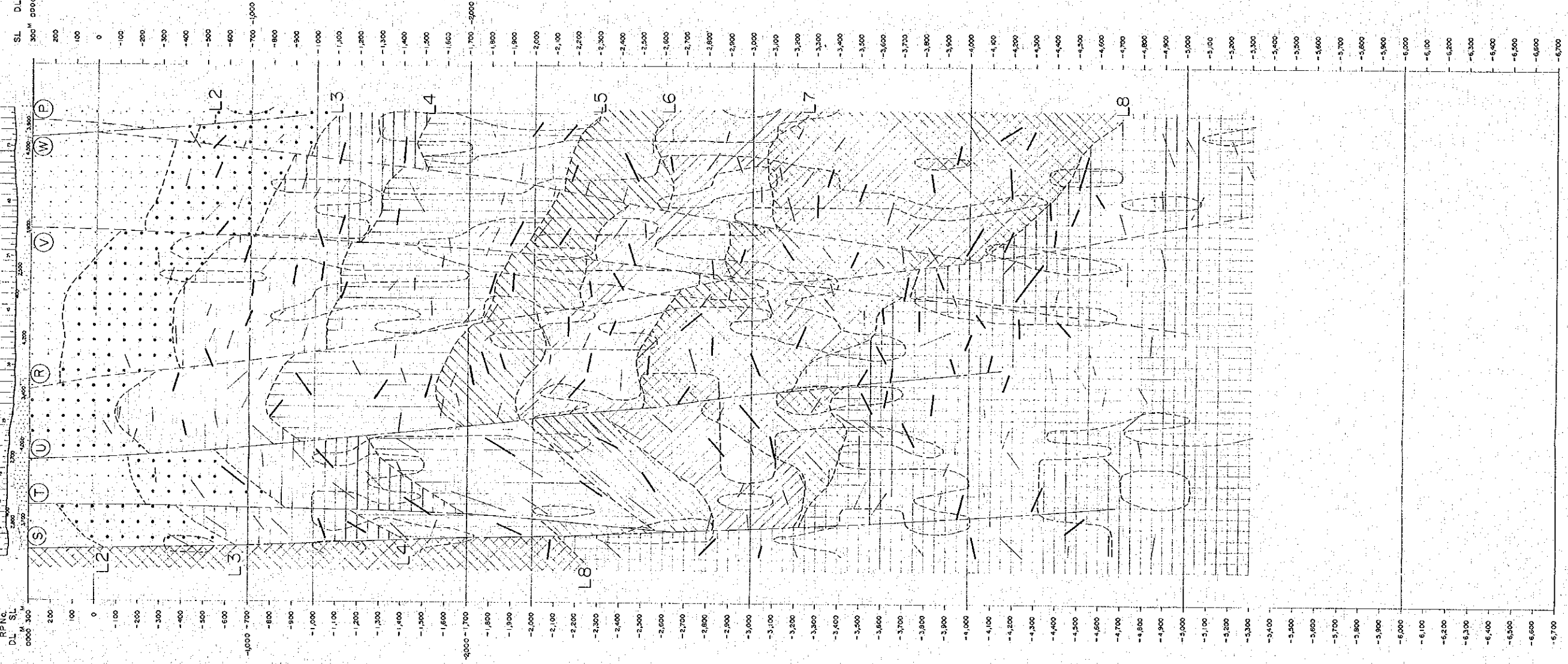


LINE-B

LINE-C

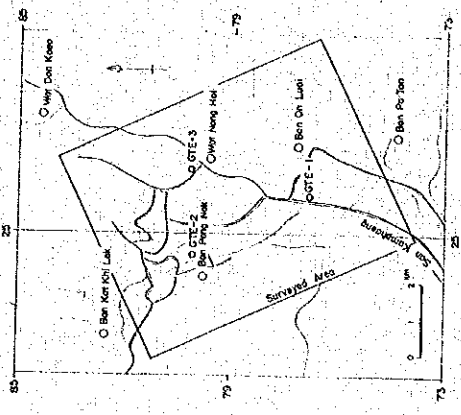
LINE-A

SPNG  
RPNc  
DL SL  
0000 300



DEPTH IN METERS

DEPTH SECTION MAP  
(LINE-B, LINE-C)



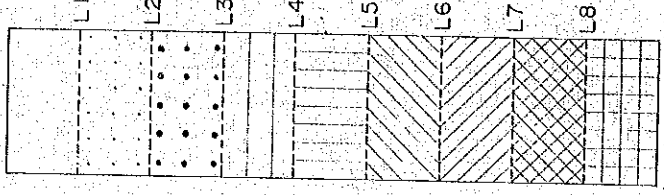
JAPAN INTERNATIONAL COOPERATION AGENCY  
ELECTRICITY GENERATING AUTHORITY OF THAILAND  
DEPARTMENT OF MINERAL RESOURCES  
CHIANG MAI UNIVERSITY

MARCH 1983



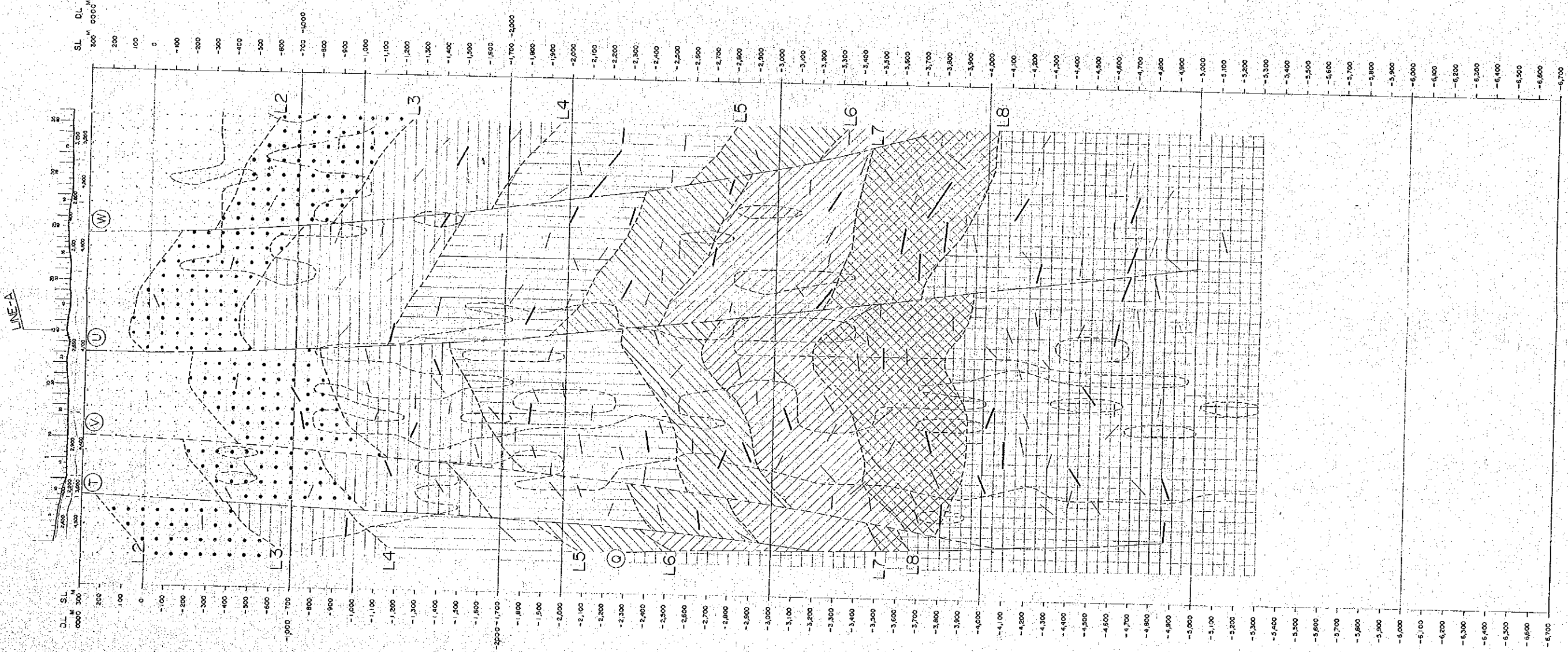
11019

LEGEND



- ⑤ Decided fault (ex. S fault)
- ② Presumptive fault (ex. P fault)
- Low frequency zone (<20HZ)
- Good reflector
- Poor reflector

LINE-C



LINE-D

LINE-E

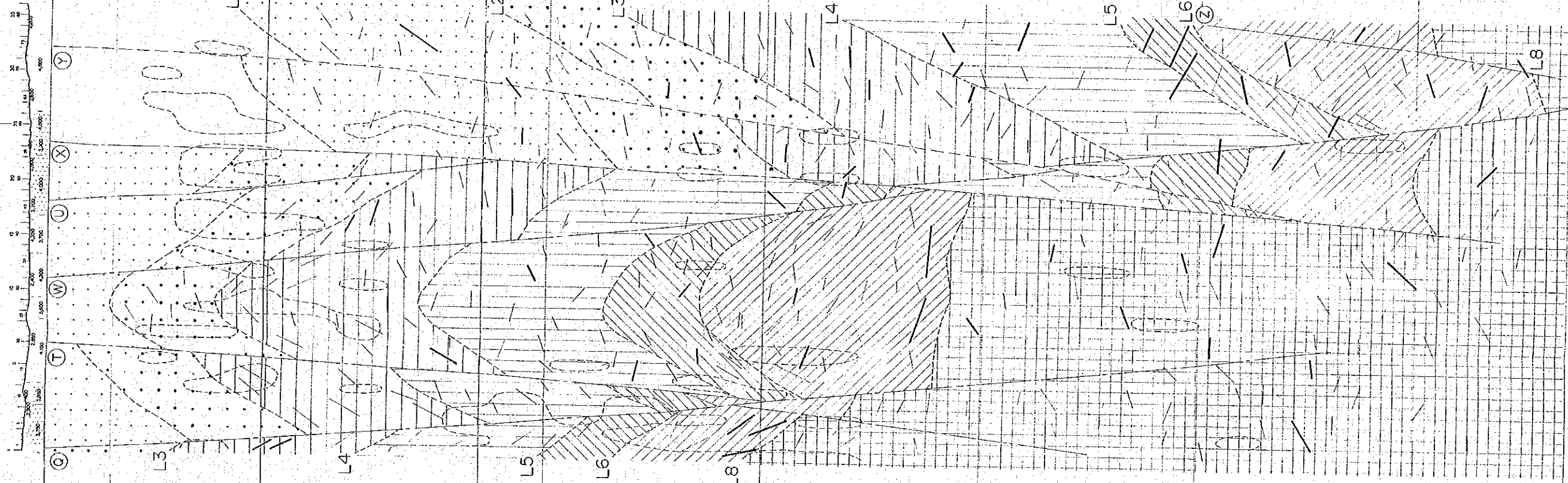
LINE-A

SPNG.  
RPNQ.  
DL SL

0.000 M 300

200  
100  
0  
-100  
-200  
-300  
-400  
-500  
-600  
-700  
-800  
-900  
-1000  
-1100  
-1200  
-1300  
-1400  
-1500  
-1600  
-1700  
-1800  
-1900  
-2000  
-2100  
-2200  
-2300  
-2400  
-2500  
-2600  
-2700  
-2800  
-2900  
-3000  
-3100  
-3200  
-3300  
-3400  
-3500  
-3600  
-3700  
-3800  
-3900  
-4000  
-4100  
-4200  
-4300  
-4400  
-4500  
-4600  
-4700  
-4800  
-4900  
-5000  
-5100  
-5200  
-5300  
-5400  
-5500  
-5600  
-5700  
-5800  
-5900  
-6000  
-6100  
-6200  
-6300  
-6400  
-6500  
-6600  
-6700

300 M  
200  
100  
0  
-100  
-200  
-300  
-400  
-500  
-600  
-700  
-800  
-900  
-1000  
-1100  
-1200  
-1300  
-1400  
-1500  
-1600  
-1700  
-1800  
-1900  
-2000  
-2100  
-2200  
-2300  
-2400  
-2500  
-2600  
-2700  
-2800  
-2900  
-3000  
-3100  
-3200  
-3300  
-3400  
-3500  
-3600  
-3700  
-3800  
-3900  
-4000  
-4100  
-4200  
-4300  
-4400  
-4500  
-4600  
-4700  
-4800  
-4900  
-5000  
-5100  
-5200  
-5300  
-5400  
-5500  
-5600  
-5700  
-5800  
-5900  
-6000  
-6100  
-6200  
-6300  
-6400  
-6500  
-6600  
-6700



SPNG.  
RPNQ.  
DL SL

0.000 M 300

200  
100  
0  
-100  
-200  
-300  
-400  
-500  
-600  
-700  
-800  
-900  
-1000  
-1100  
-1200  
-1300  
-1400  
-1500  
-1600  
-1700  
-1800  
-1900  
-2000  
-2100  
-2200  
-2300  
-2400  
-2500  
-2600  
-2700  
-2800  
-2900  
-3000  
-3100  
-3200  
-3300  
-3400  
-3500  
-3600  
-3700  
-3800  
-3900  
-4000  
-4100  
-4200  
-4300  
-4400  
-4500  
-4600  
-4700  
-4800  
-4900  
-5000  
-5100  
-5200  
-5300  
-5400  
-5500  
-5600  
-5700  
-5800  
-5900  
-6000  
-6100  
-6200  
-6300  
-6400  
-6500  
-6600  
-6700

300 M  
200  
100  
0  
-100  
-200  
-300  
-400  
-500  
-600  
-700  
-800  
-900  
-1000  
-1100  
-1200  
-1300  
-1400  
-1500  
-1600  
-1700  
-1800  
-1900  
-2000  
-2100  
-2200  
-2300  
-2400  
-2500  
-2600  
-2700  
-2800  
-2900  
-3000  
-3100  
-3200  
-3300  
-3400  
-3500  
-3600  
-3700  
-3800  
-3900  
-4000  
-4100  
-4200  
-4300  
-4400  
-4500  
-4600  
-4700  
-4800  
-4900  
-5000  
-5100  
-5200  
-5300  
-5400  
-5500  
-5600  
-5700  
-5800  
-5900  
-6000  
-6100  
-6200  
-6300  
-6400  
-6500  
-6600  
-6700

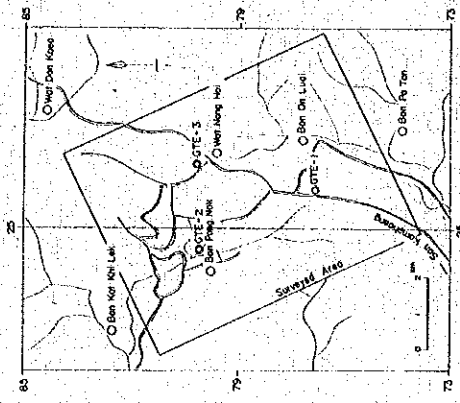
SPNG.  
RPNQ.  
DL SL

0.000 M 300

200  
100  
0  
-100  
-200  
-300  
-400  
-500  
-600  
-700  
-800  
-900  
-1000  
-1100  
-1200  
-1300  
-1400  
-1500  
-1600  
-1700  
-1800  
-1900  
-2000  
-2100  
-2200  
-2300  
-2400  
-2500  
-2600  
-2700  
-2800  
-2900  
-3000  
-3100  
-3200  
-3300  
-3400  
-3500  
-3600  
-3700  
-3800  
-3900  
-4000  
-4100  
-4200  
-4300  
-4400  
-4500  
-4600  
-4700  
-4800  
-4900  
-5000  
-5100  
-5200  
-5300  
-5400  
-5500  
-5600  
-5700  
-5800  
-5900  
-6000  
-6100  
-6200  
-6300  
-6400  
-6500  
-6600  
-6700

DEPTH IN METERS

DEPTH SECTION MAP  
(LINE-D, LINE-E)



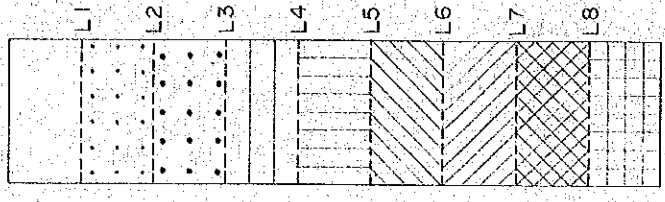
JAPAN INTERNATIONAL COOPERATION AGENCY  
ELECTRICITY GENERATING AUTHORITY OF THAILAND  
DEPARTMENT OF MINERAL RESOURCES  
CHIANG MAI UNIVERSITY

MARCH 1983



11019

LEGEND

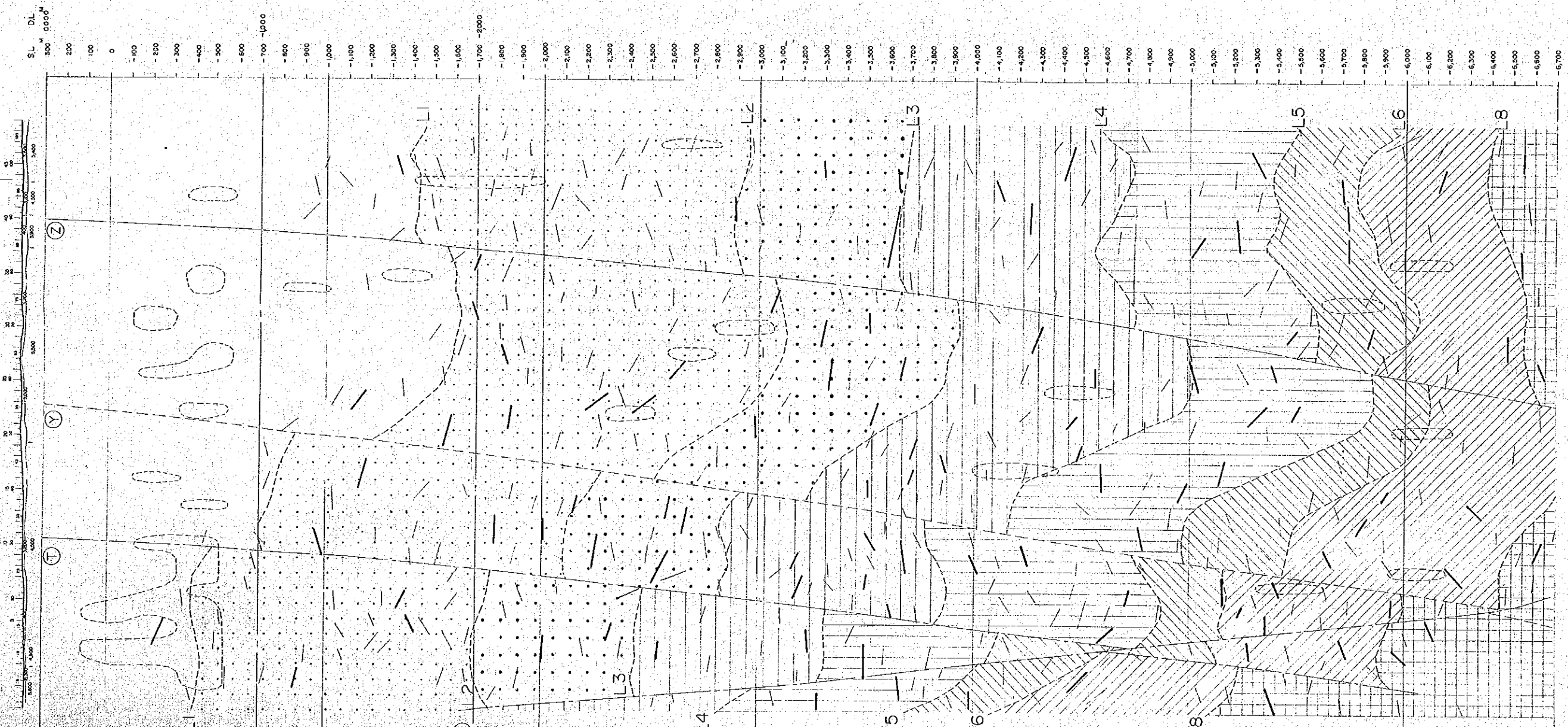


Reflective layer

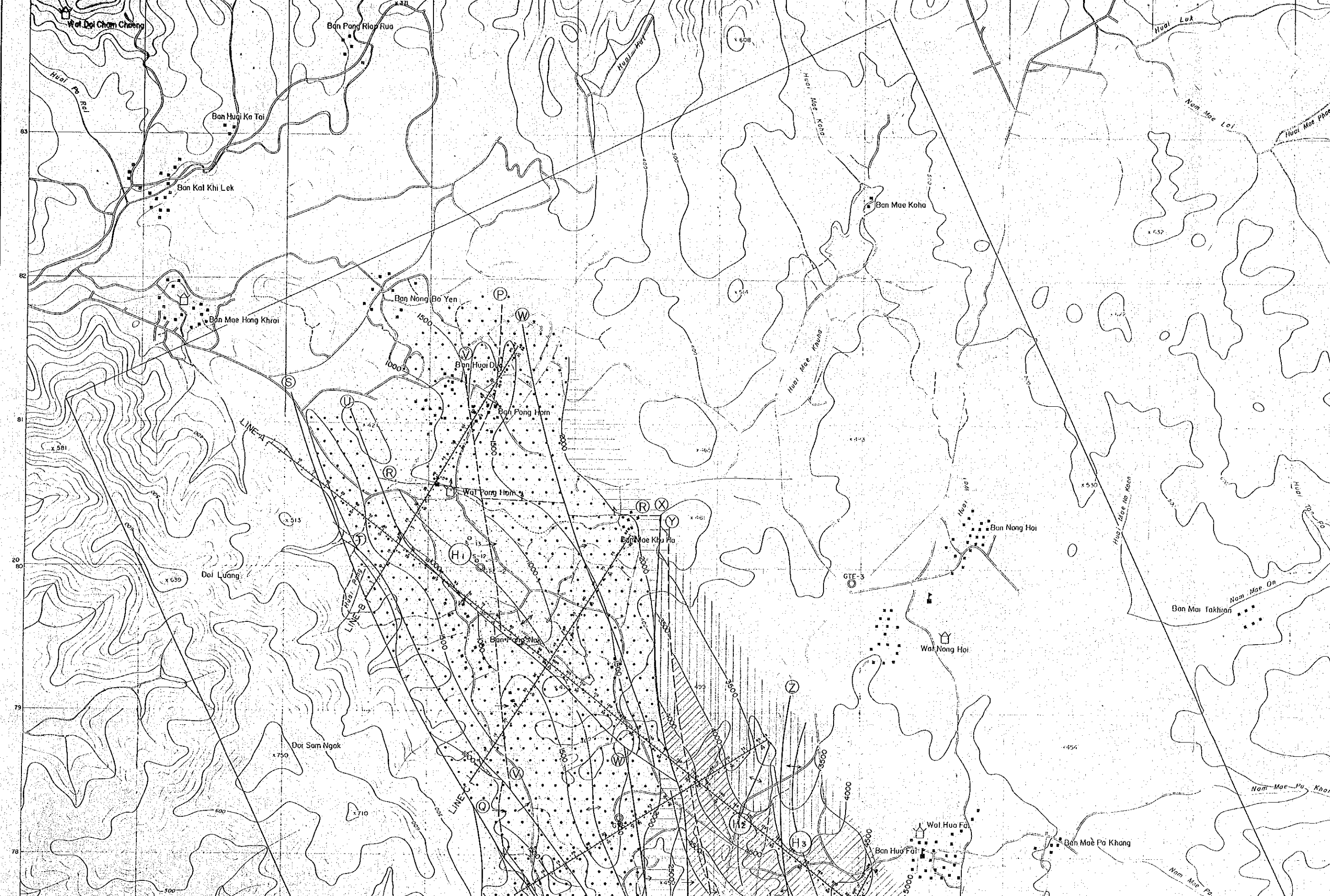
- ⑤ Decided fault (ex. S fault)
- ② Presumptive fault (ex. P fault)
- Low frequency zone (<20Hz)
- Good reflector
- Poor reflector

LINE-E

LINE-A



22 23 24 25 26 27 28 29 30  
52 7000mE



Wai Doi Cham Chong

Ban Pong Riao Rua

Ban Huoi Ke Tai

Ban Kal Khi Lek

Ban Mae Hong Khroi

Ban Nong Bo Yen

Ban Huoi Oa

Ban Pong Hom

Wai Pong Hom

Ban Mae Kha Pha

Ban Nong Hoi

Wai Nong Hoi

Ban Mai Takhian

Doi Luang

Doi Sam Ngok

Wai Hua Fai

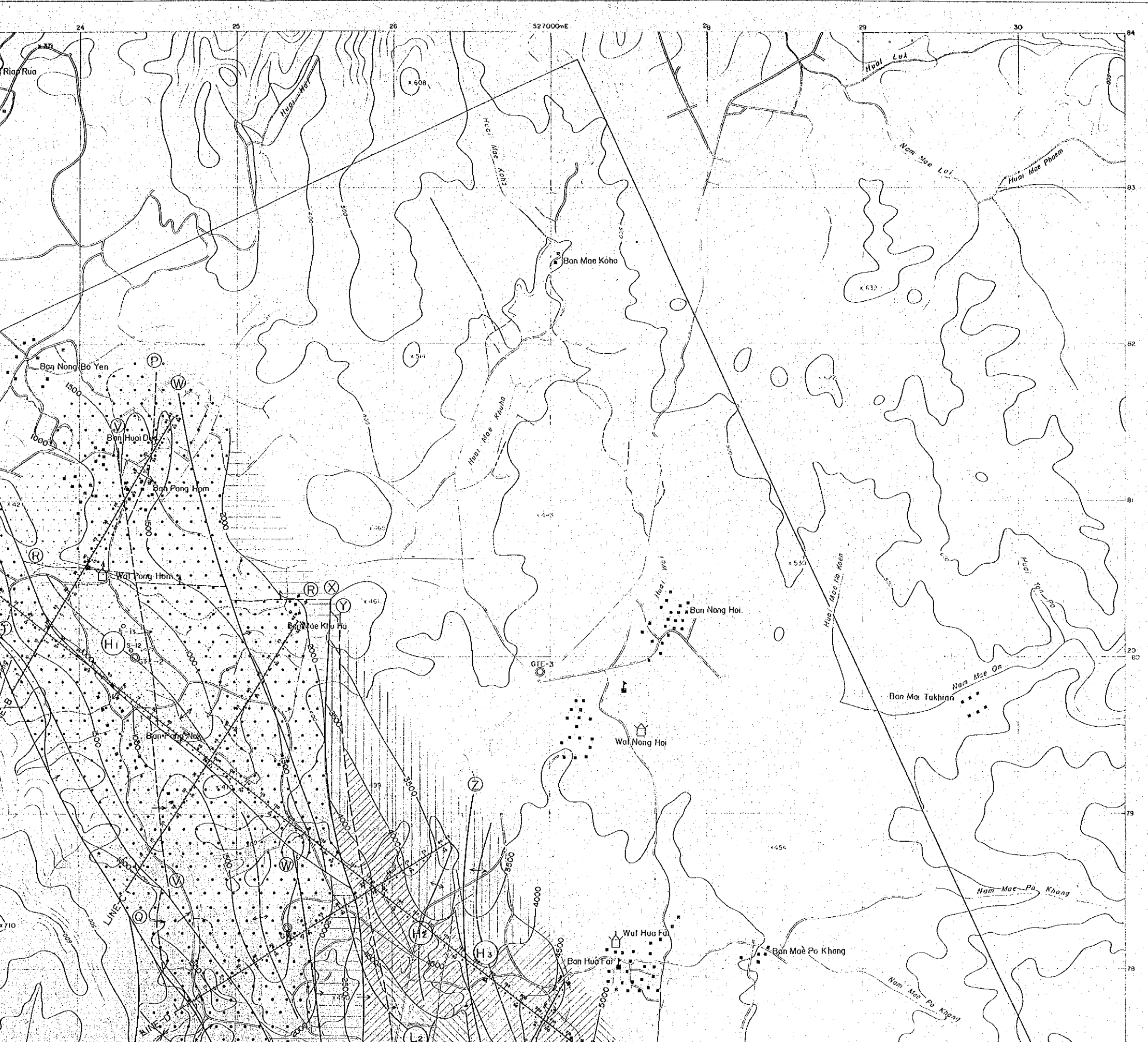
Ban Hua Fai

Ban Mae Pa Khang

84  
83  
82  
81  
80  
79  
78

22 23 24 25 26 27 28 29 30

500 1000 1500 2000 3000 4000 5000



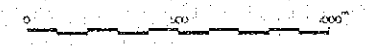
PL. II.2.2-44

THE PRE-FEASIBILITY STUDY  
ON  
THE SAN KAMPAENG GEOTHERMAL DEVELOPMENT PROJECT  
IN THE KINGDOM OF THAILAND

STRUCTURE ANALYSIS MAP  
(L-4)

JAPAN INTERNATIONAL COOPERATION AGENCY  
ELECTRICITY GENERATING AUTHORITY OF THAILAND  
DEPARTMENT OF MINERAL RESOURCES  
CHIANG MAI UNIVERSITY

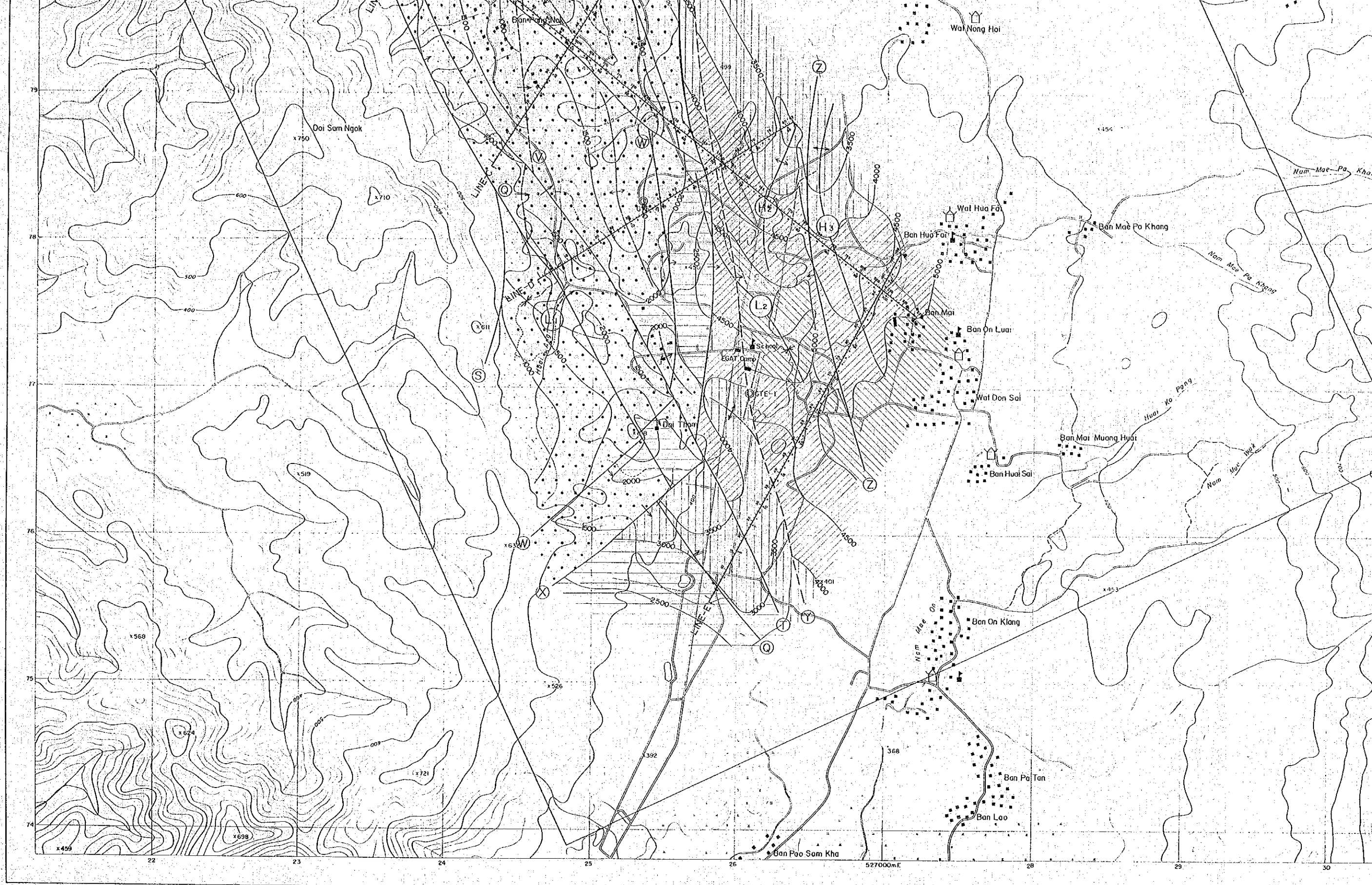
MARCH 1983

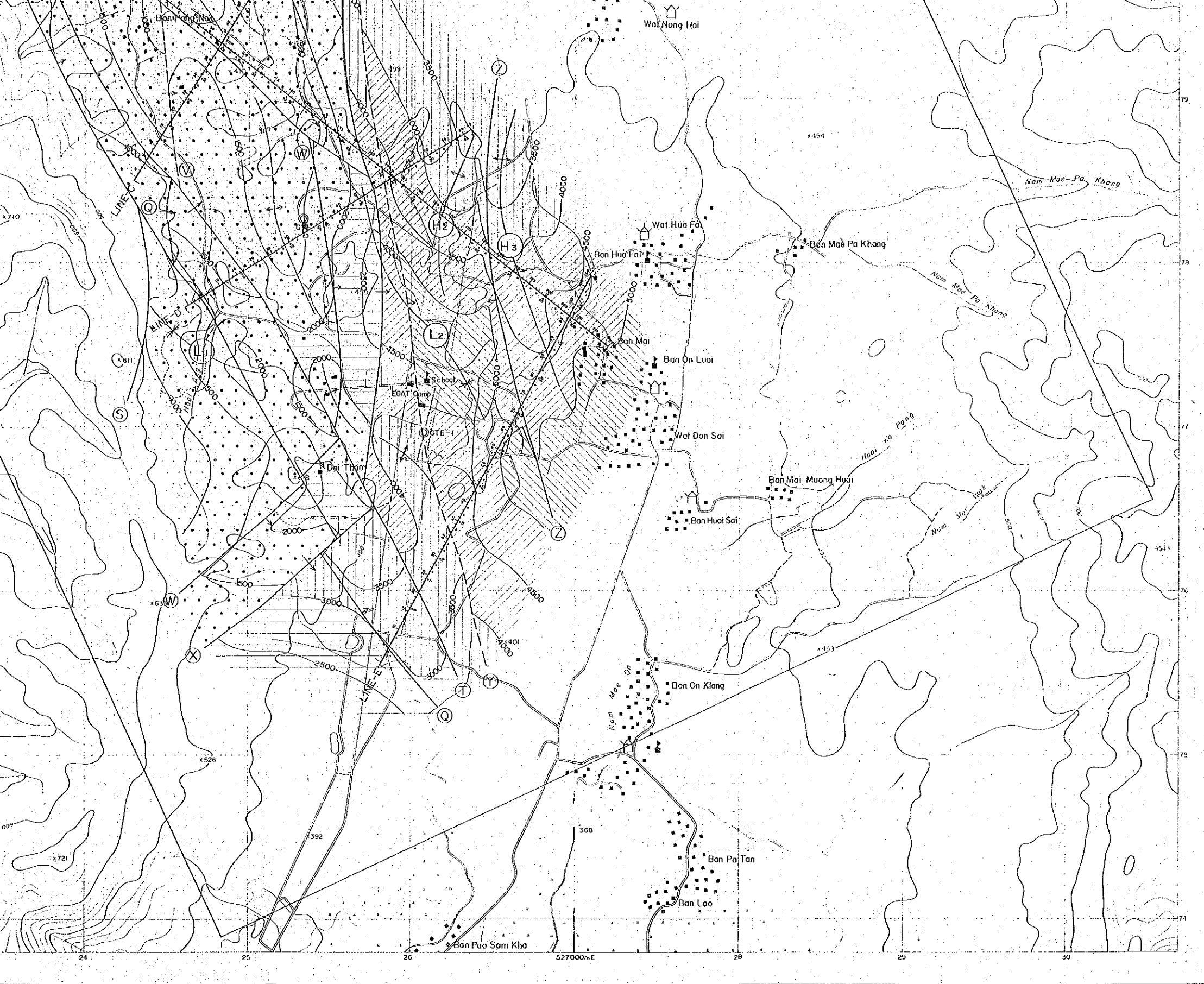


11019

LEGEND

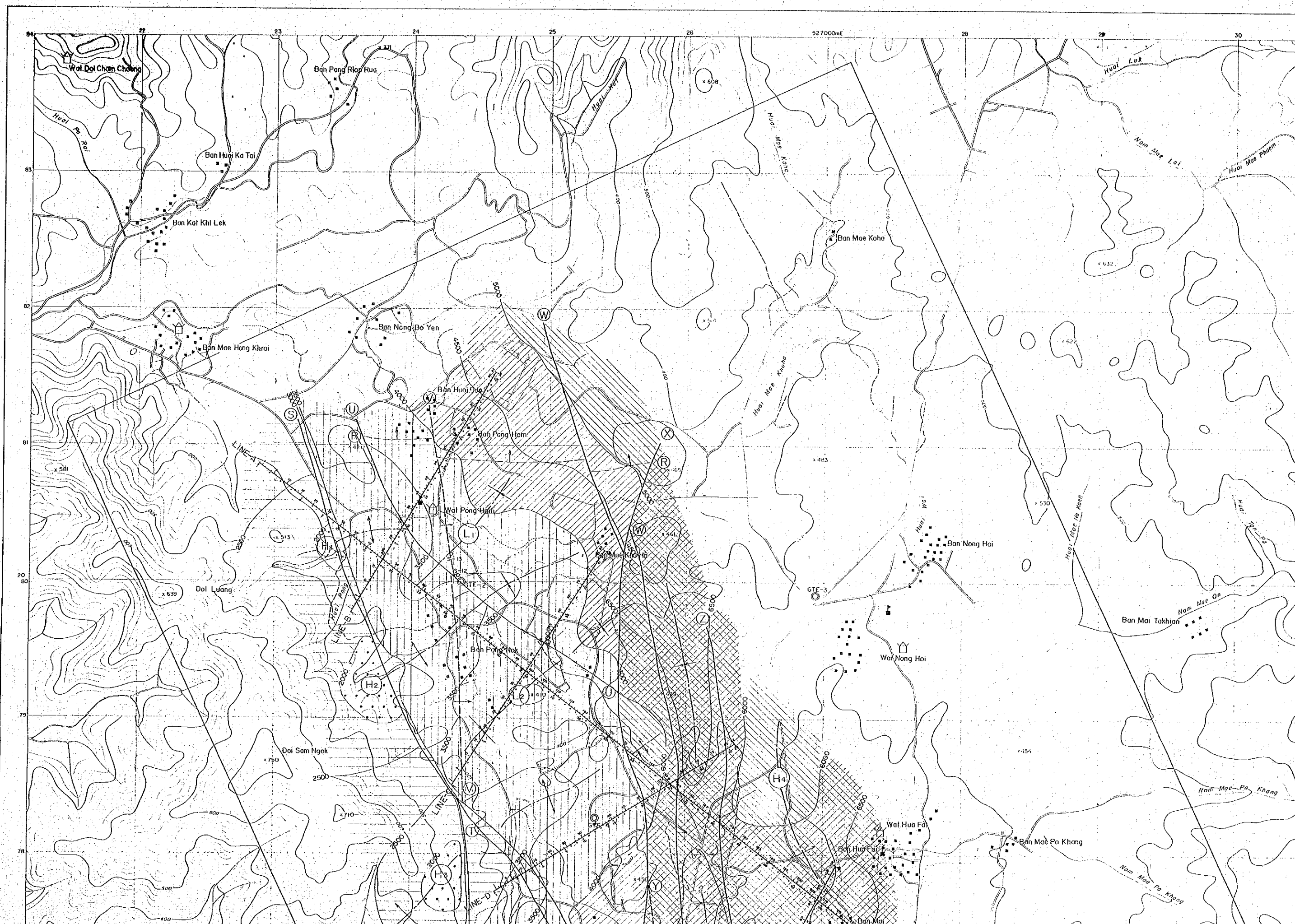
- Confirmed road
  - Unconfirmed road
  - Stream
  - Village
  - Wai
  - School
  - Rice field
  - Dam water reserve
  - DL 0m - 1000m
  - DL 1000m - 2000m
  - DL 2000m - 3000m
  - DL 3000m - 4000m
  - DL 4000m - 5000m
  - DL 5000m - 6000m
  - Contour line (D.L.M.)
  - Decided fault (ex. Z fault)
  - Presumptive fault (ex. Y fault)
  - Anticline axis (ex. H<sub>2</sub> anticline axis)
  - Syncline axis (ex. L<sub>2</sub> syncline axis)
- Depth of L-4 Retentive layer





- Z — Decided fault (ex. Z fault)
- - - Y - - - Presumptive fault (ex. Y fault)
- H<sub>2</sub> — Anticline axis (ex. H<sub>2</sub> Anticline axis)
- L<sub>2</sub> — Syncline axis (ex. L<sub>2</sub> Syncline axis)





22 23 24 25 26 27 28 29 30  
527000E

Wai Doi Chan Chang Ban Pong Riep Rua Ban Mae Koha

Huai Pa Rai Huai Mae Kua Huai Mae Khuha Huai Mae Phom

Ban Hui Ka Tai Ban Mae Koha

Ban Kal Khi Lek

Ban Mae Hong Khrai

Ban Nong Bo Yen

Ban Hui Oue Ban Pong Hom

Wai Pong Ham

Doi Luang

Ban Pong Nak

Wai Nong Hoi

Ban Nong Hoi

Ban Mai Takhan

Doi Sam Ngok

Wai Hua Fai

Ban Hui Fai

Ban Mae Pa Khang

LINE-A LINE-B LINE-C LINE-D

H2 H3 H4

Wai Nong Hoi

Wai Hua Fai

Ban Hui Fai

Ban Mae Pa Khang

Wai Hua Fai

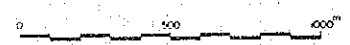
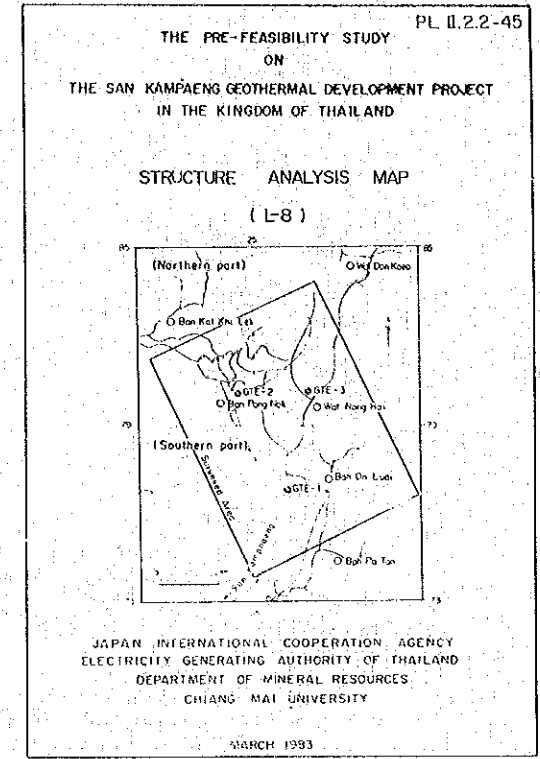
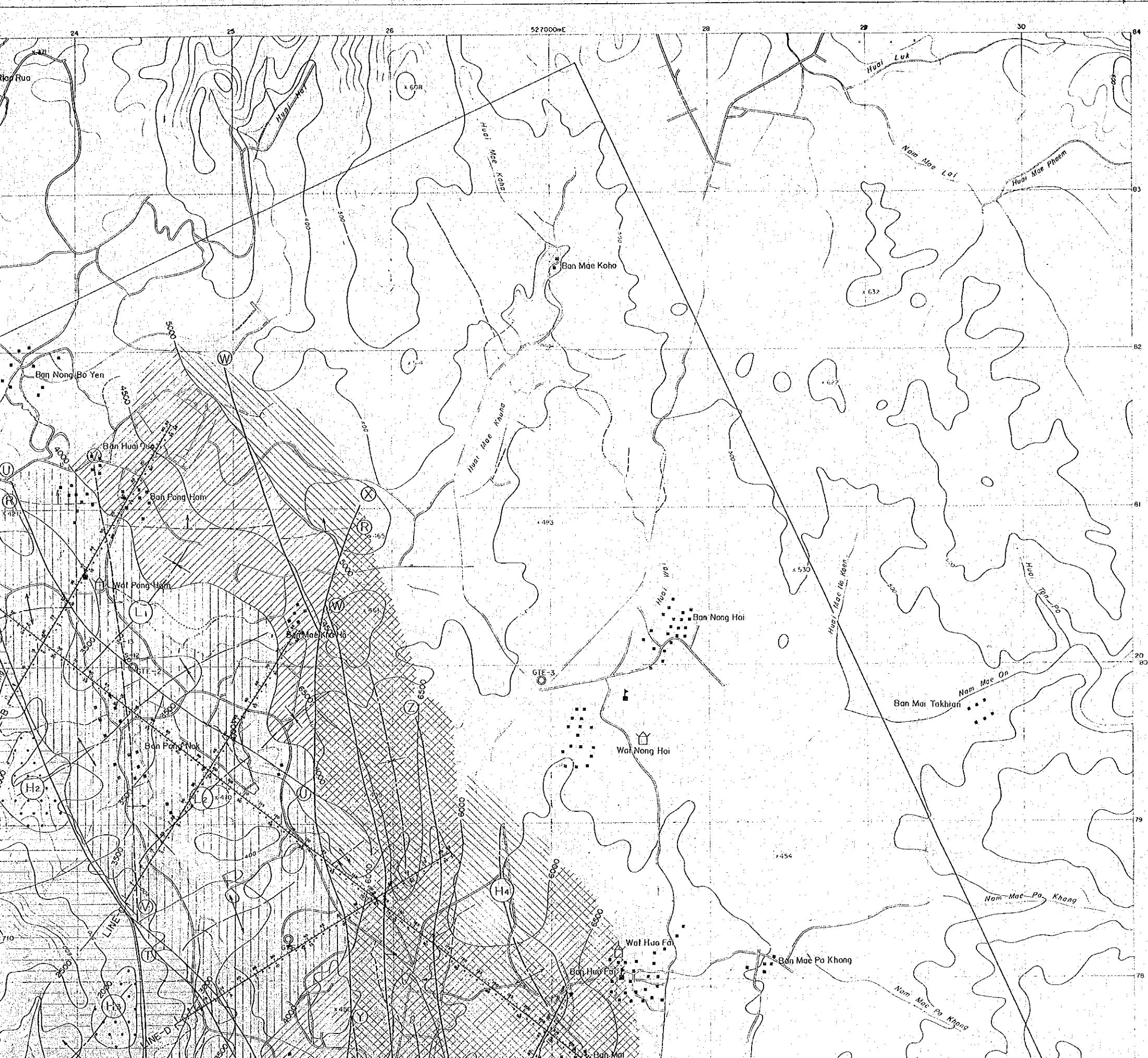
Ban Hui Fai

Ban Mae Pa Khang

Wai Hua Fai

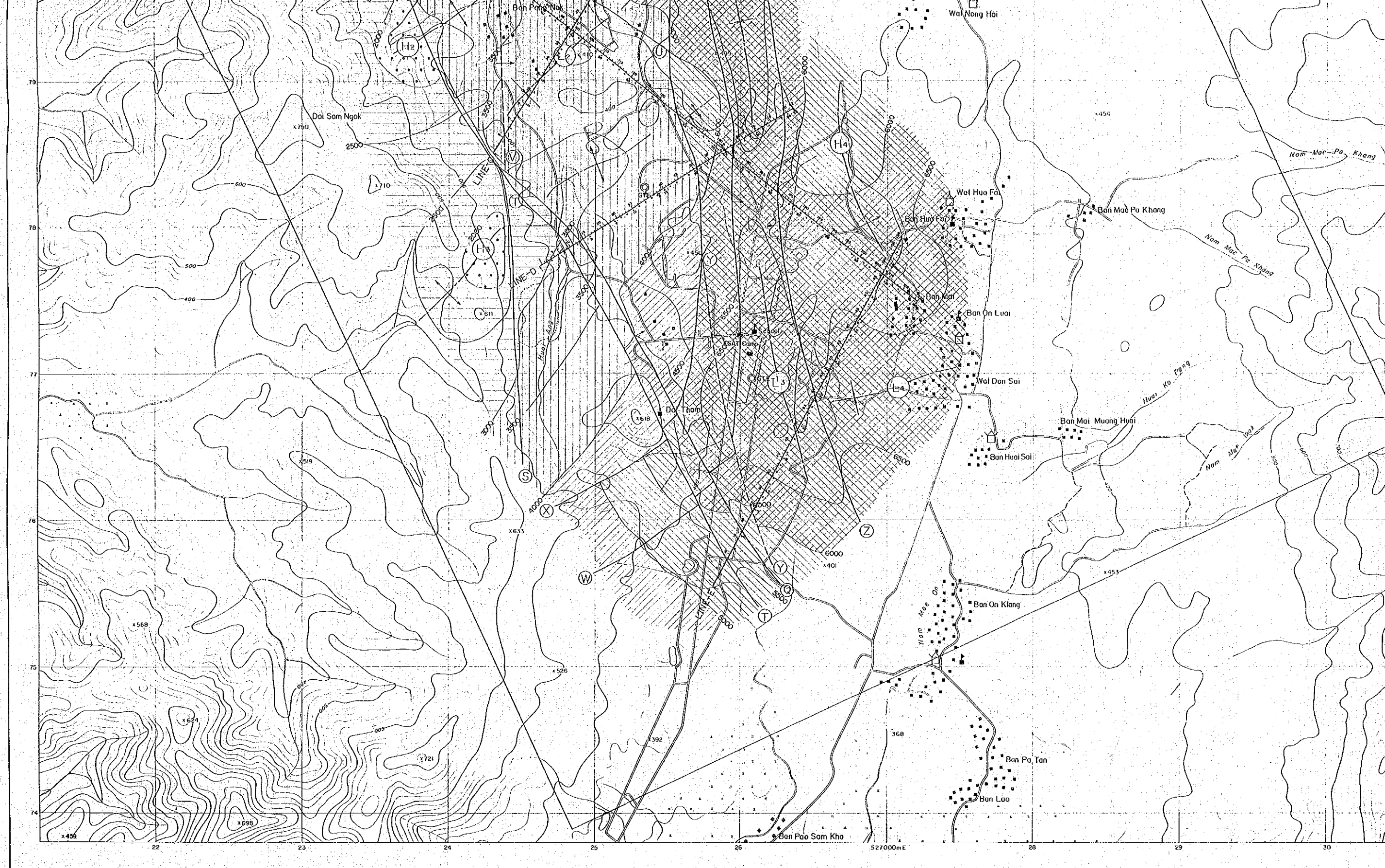
Ban Hui Fai

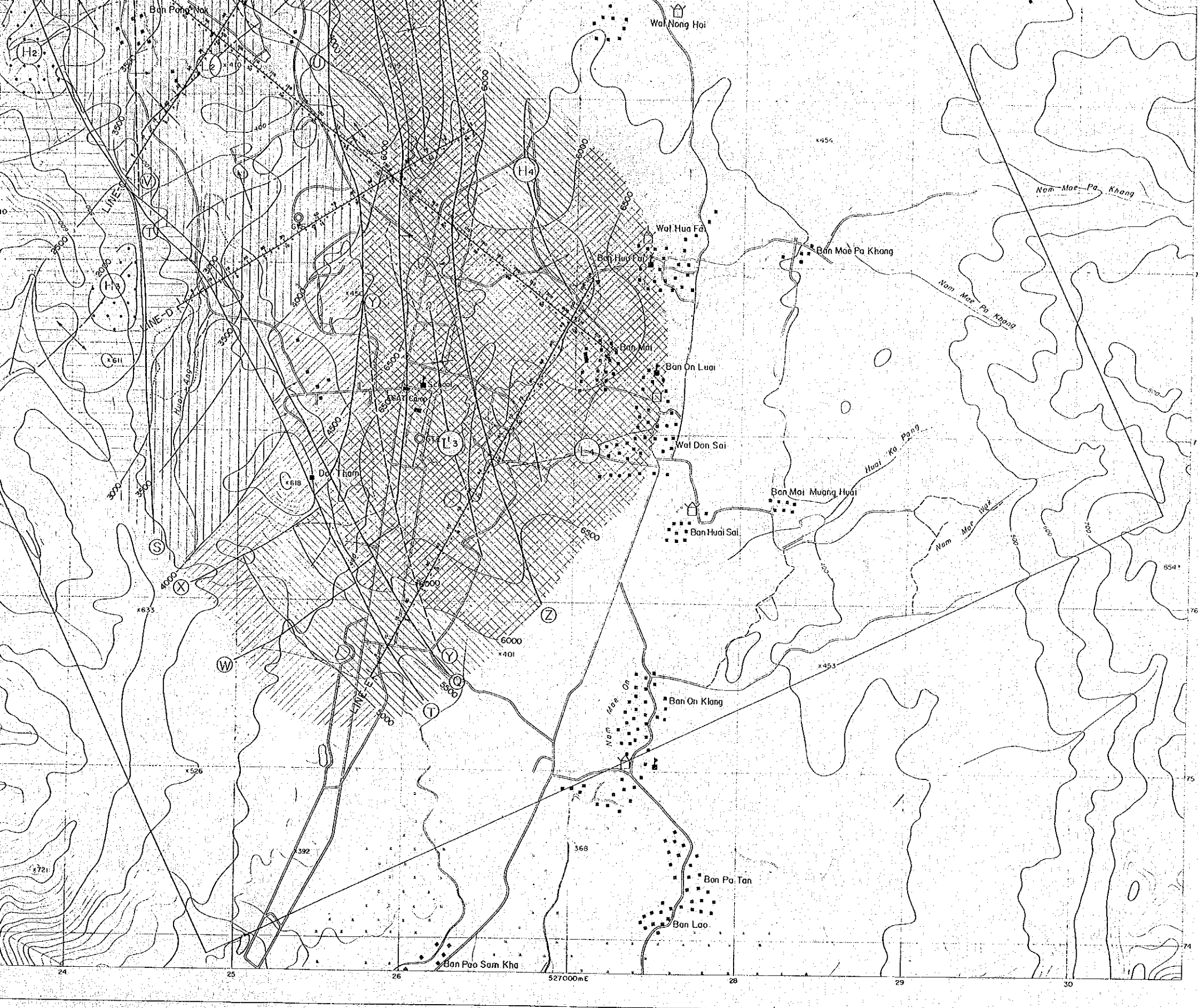
Ban Mae Pa Khang



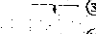

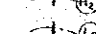



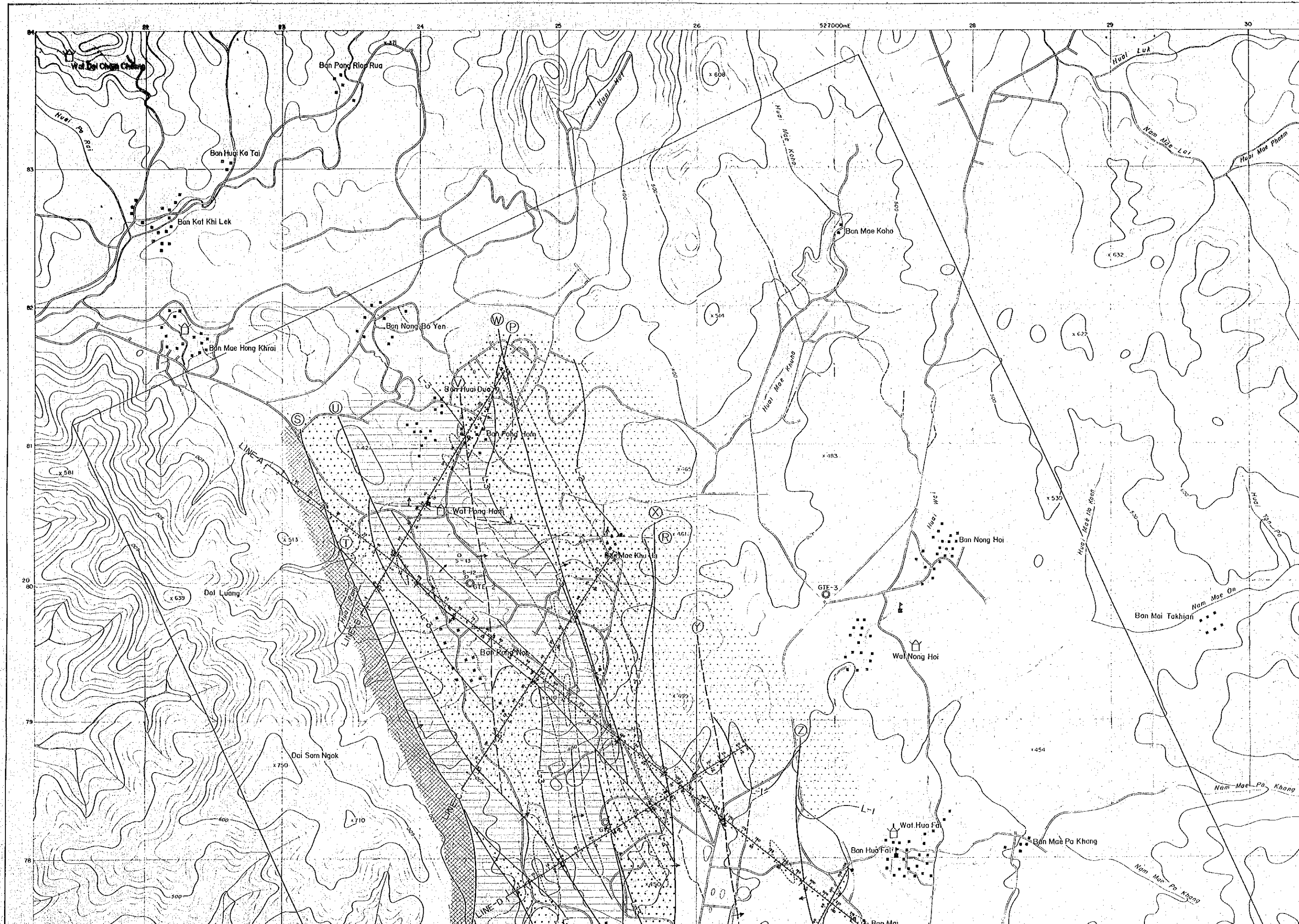
**LEGEND**

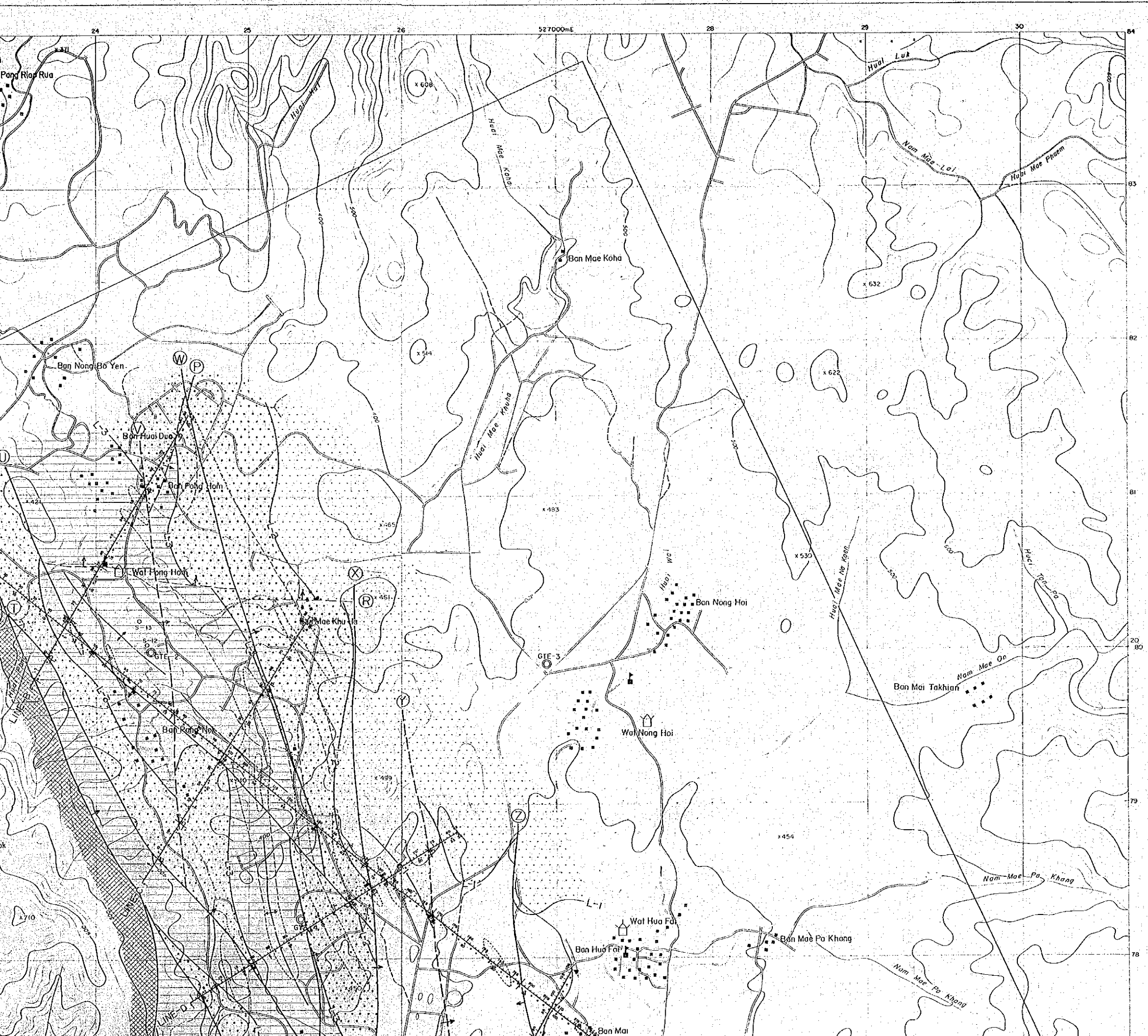
- Confirmed road
- Unconfirmed road
- Stream
- Village
- Wat
- School
- Rice field
- Dam (water reserve)
- DL
- 1000<sup>m</sup> ~ 2000<sup>m</sup>
- 2000<sup>m</sup> ~ 3000<sup>m</sup>
- 3000<sup>m</sup> ~ 4000<sup>m</sup>
- 4000<sup>m</sup> ~ 5000<sup>m</sup>
- 5000<sup>m</sup> ~ 6000<sup>m</sup>
- 6000<sup>m</sup> ~ 7000<sup>m</sup>
- Contour line (D.L.m)
- Decided fault (ex. Z fault)
- Presumptive fault (ex. Y fault)
- Anticline axis (ex. H<sub>2</sub> Anticline axis)
- Syncline axis (ex. L<sub>2</sub> Syncline axis)





-  -6000m ~ -7000m
-  Contour line (DL 10)
-  Decided fault (ex. Z fault)
-  Presumptive fault (ex. Y fault)
-  Anticline axis (ex. H2 Anticline axis)
-  Syncline axis (ex. L2 Syncline axis)

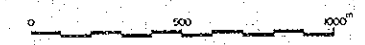




PL II.2.2-46

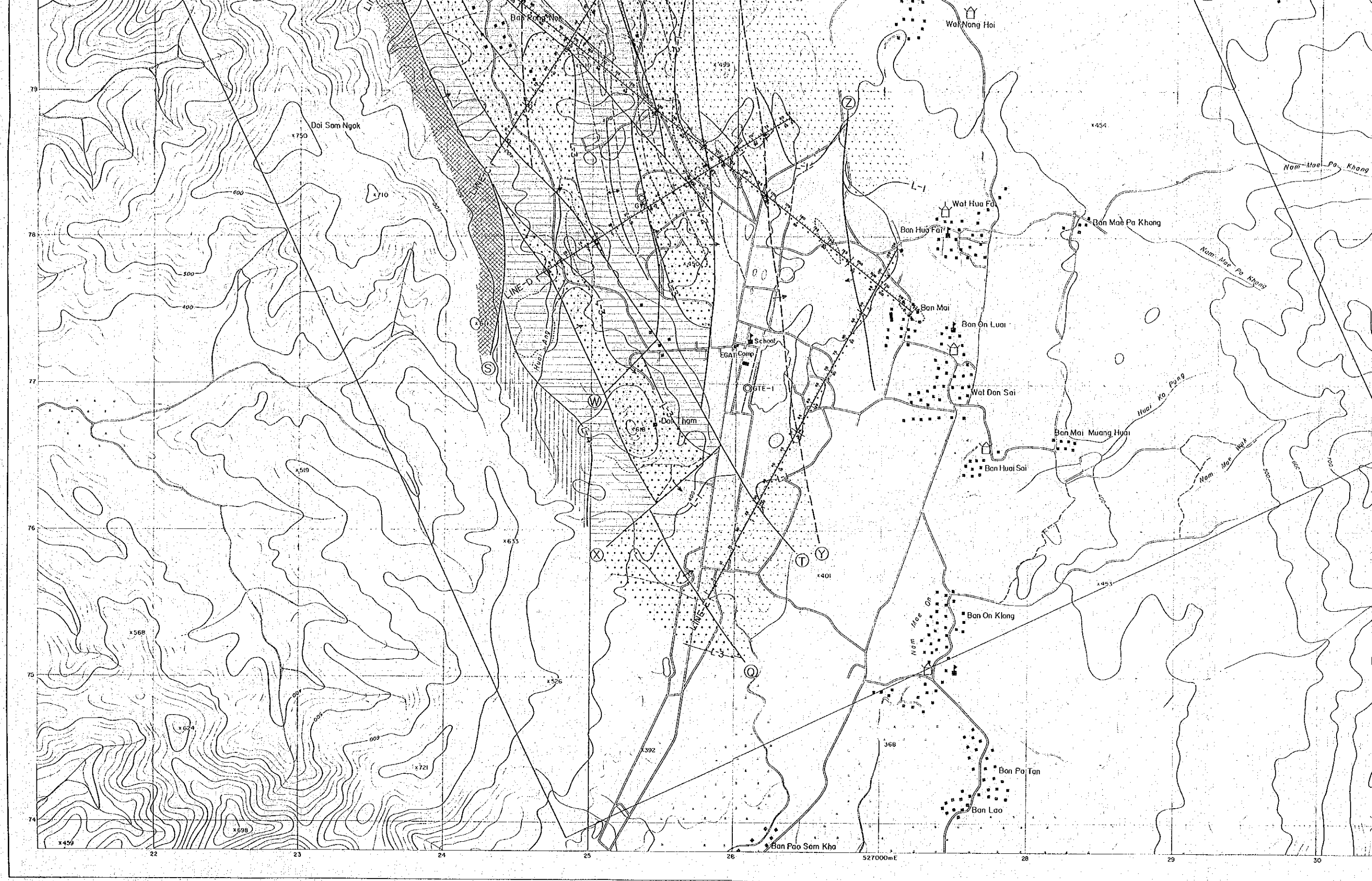
THE PRE-FEASIBILITY STUDY  
ON  
THE SAN KAMPAENG GEOTHERMAL DEVELOPMENT PROJECT  
IN THE KINGDOM OF THAILAND  
(DL - 1000)  
DEPTH STRUCTURE ANALYSIS MAP

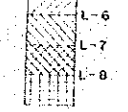
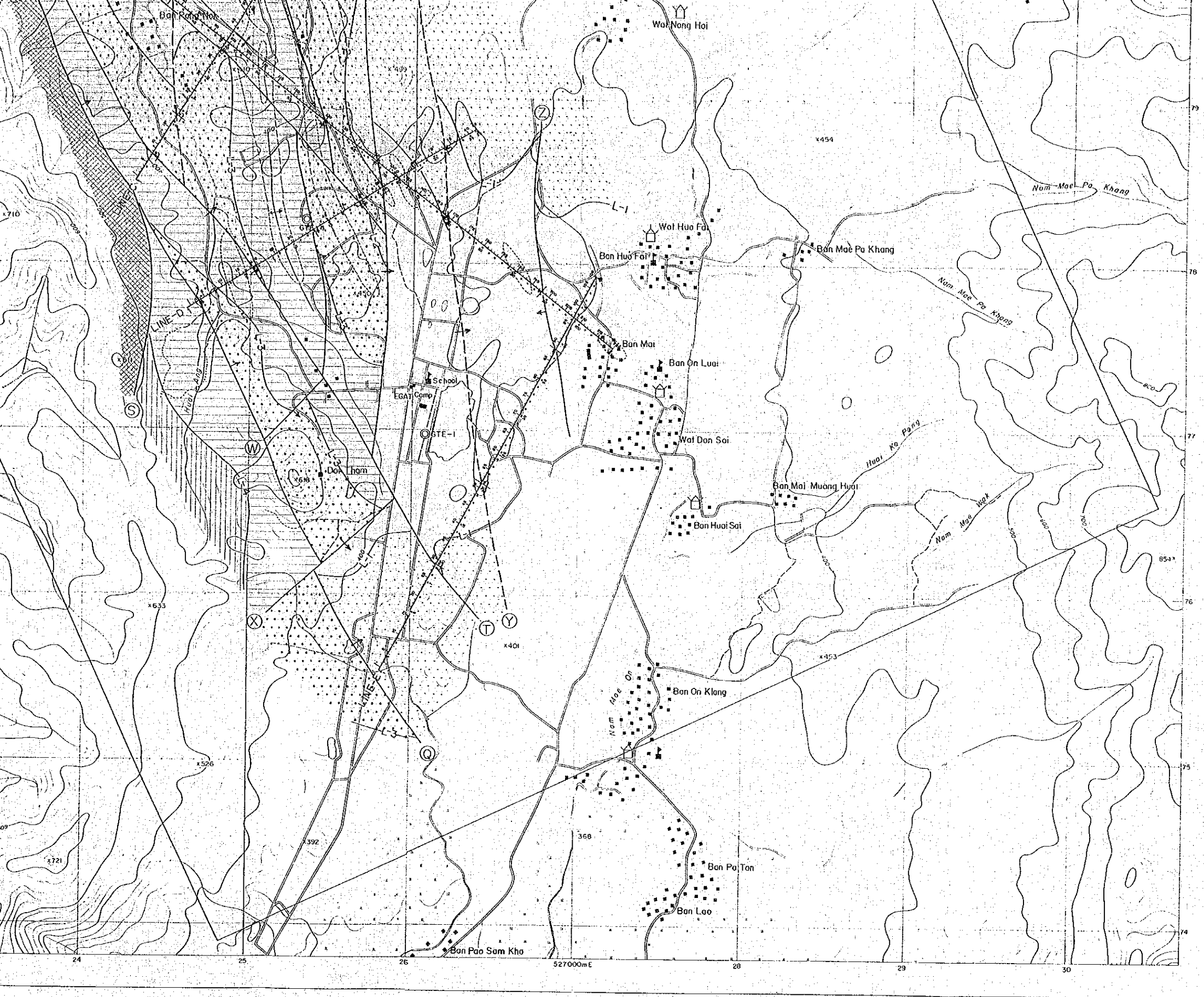
JAPAN INTERNATIONAL COOPERATION AGENCY  
ELECTRICITY GENERATING AUTHORITY OF THAILAND  
DEPARTMENT OF MINERAL RESOURCES  
CHIANG MAI UNIVERSITY  
MARCH 1983



LEGEND

- Confirmed road
- Unconfirmed road
- Stream
- Village
- Wat
- School
- Rice field
- Dam (water reserve)
- Reflective layer  
L-1  
L-2  
L-3  
L-4  
L-5  
L-6  
L-7  
L-8
- Decided fault (ex. S fault)
- Presumptive fault (ex. P fault)
- Anticline axis
- Syncline axis
- Low frequency zone (<20Hz)





- Decided fault (ex. S fault)
- Presumptive fault (ex. P fault)
- Anticline axis
- Syncline axis
- Low frequency zone (<20Hz)

527000mE