

Wat Doi Cham Chong

Ban Pong Riang Rua

Ban Hoi Ko Tai

Ban Kot Khi Lek

Ban Mae Hong Khrai

Ban Nong Bo Yen

Ban Hoi Bue

Ban Pong Hon

Wat Pong Hom

Ban Mae Phu Hoi

Ban Pong Mak

Wat Nong Hoi

Wat Hoi Fai

Ban Hoi Fai

Ban Mae Po Khang

Huai Luak

Nam Mae Loi

Huai Mae Phom

Huai Mae Nam An

Nam Mae On

Ban Mae Takhan

Nam Mae Po Khang

Nam Mae Po Khang

527000mE

83

82

81

80

79

78

22

23

24

25

26

28

29

30

x 608

x 632

x 622

x 530

x 581

x 639

x 513

x 421

x 410

x 490

x 456

x 750

x 710

LINE A

LINE C

LINE D

GIR

150

200

225

250

275

300

325

350

400

450

500

550

600

650

700

750

800

850

900

950

1000

1050

1100

1150

1200

1250

1300

1350

1400

1450

1500

1550

1600

1650

1700

1750

1800

1850

1900

1950

2000

2050

2100

2150

2200

2250

2300

2350

2400

2450

2500

2550

2600

2650

2700

2750

2800

2850

2900

2950

3000

3050

3100

3150

3200

3250

3300

3350

3400

3450

3500

3550

3600

3650

3700

3750

3800

3850

3900

3950

4000

4050

4100

4150

4200

4250

4300

4350

4400

4450

4500

4550

4600

4650

4700

4750

4800

4850

4900

4950

5000

5050

5100

5150

5200

5250

5300

5350

5400

5450

5500

5550

5600

5650

5700

5750

5800

5850

5900

5950

6000

6050

6100

6150

6200

6250

6300

6350

6400

6450

6500

6550

6600

6650

6700

6750

6800

6850

6900

6950

7000

7050

7100

7150

7200

7250

7300

7350

7400

7450

7500

7550

7600

7650

7700

7750

7800

7850

7900

7950

8000

8050

8100

8150

8200

8250

8300

8350

8400

8450

8500

8550

8600

8650

8700

8750

8800

8850

8900

8950

9000

9050

9100

9150

9200

9250

9300

9350

9400

9450

9500

9550

9600

9650

9700

9750

9800

9850

9900

9950

10000

10050

10100

10150

10200

10250

10300

10350

10400

10450

10500

10550

10600

10650

10700

10750

10800

10850

10900

10950

11000

11050

11100

11150

11200

11300

11400

11500

11600

11700

11800

11900

12000

12100

12200

12300

12400

12500

12600

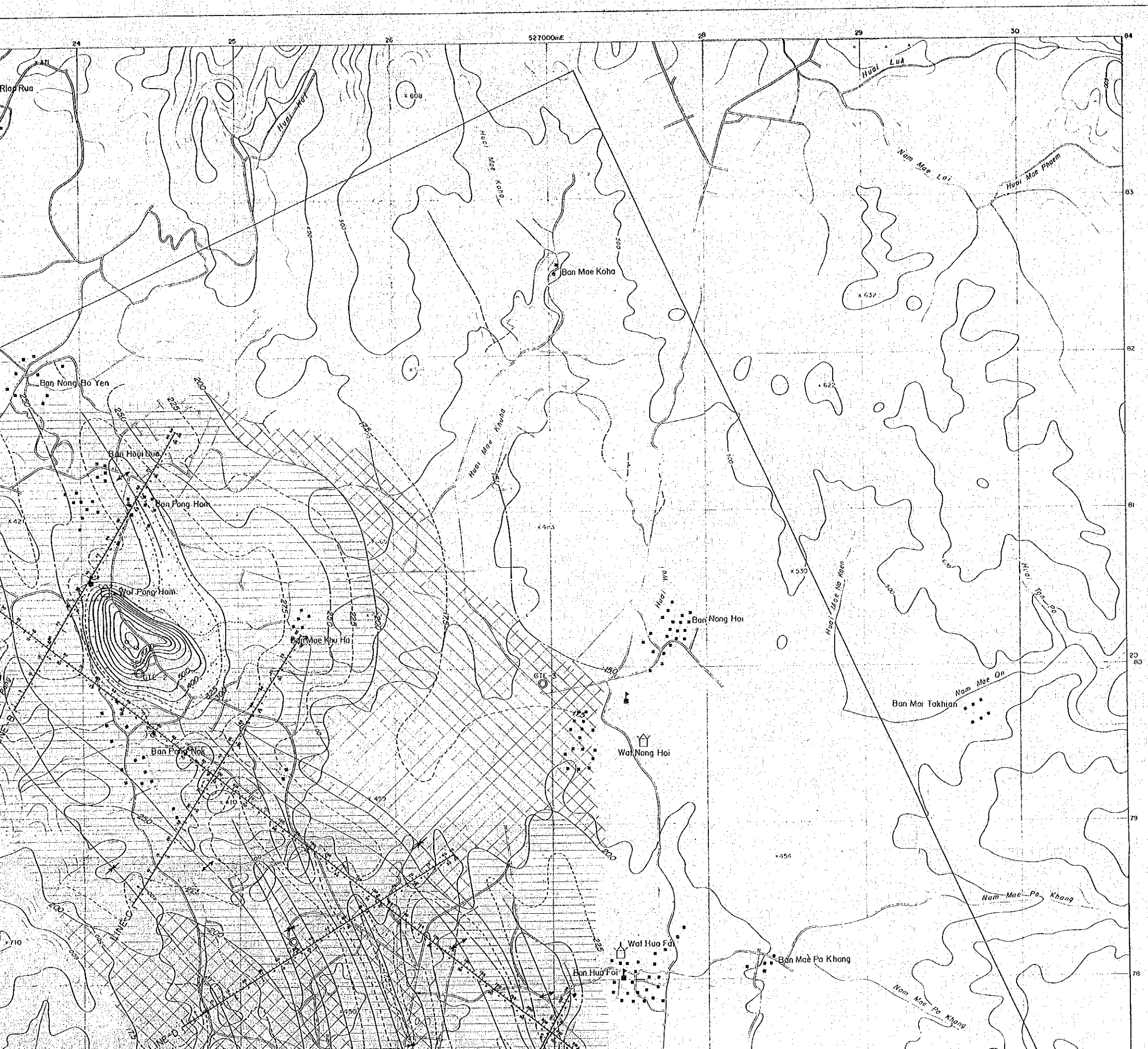
12700

12800

12900

13000

13100

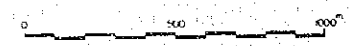


THE PRE-FEASIBILITY STUDY PL II.2.2-15  
ON  
THE SAN KAMPAENG GEOTHERMAL DEVELOPMENT PROJECT  
IN THE KINGDOM OF THAILAND

10m DEPTH  
TEMPERATURE DISTRIBUTION MAP

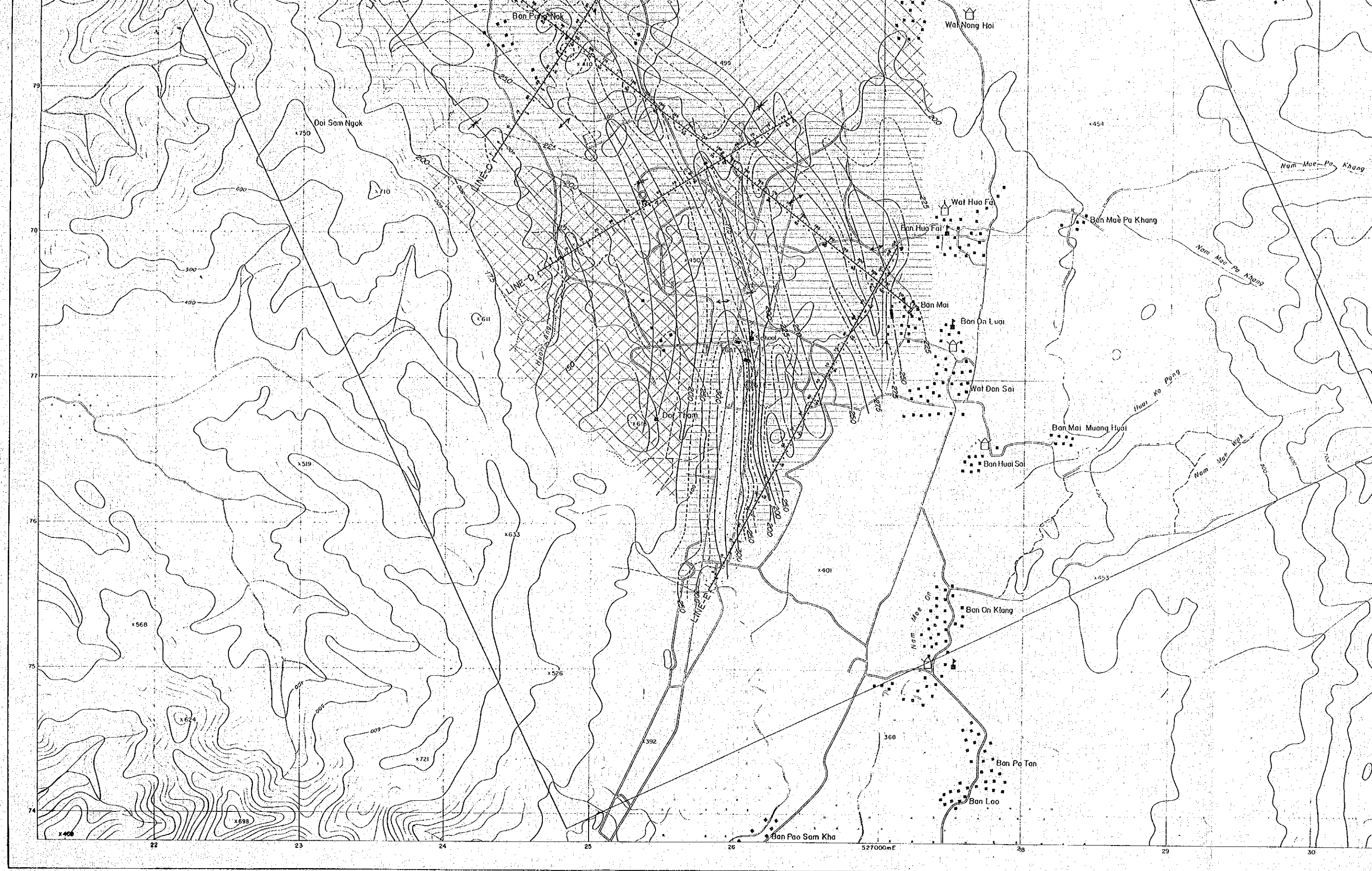
JAPAN INTERNATIONAL COOPERATION AGENCY  
ELECTRICITY GENERATING AUTHORITY OF THAILAND  
DEPARTMENT OF MINERAL RESOURCES  
CHIANG MAI UNIVERSITY

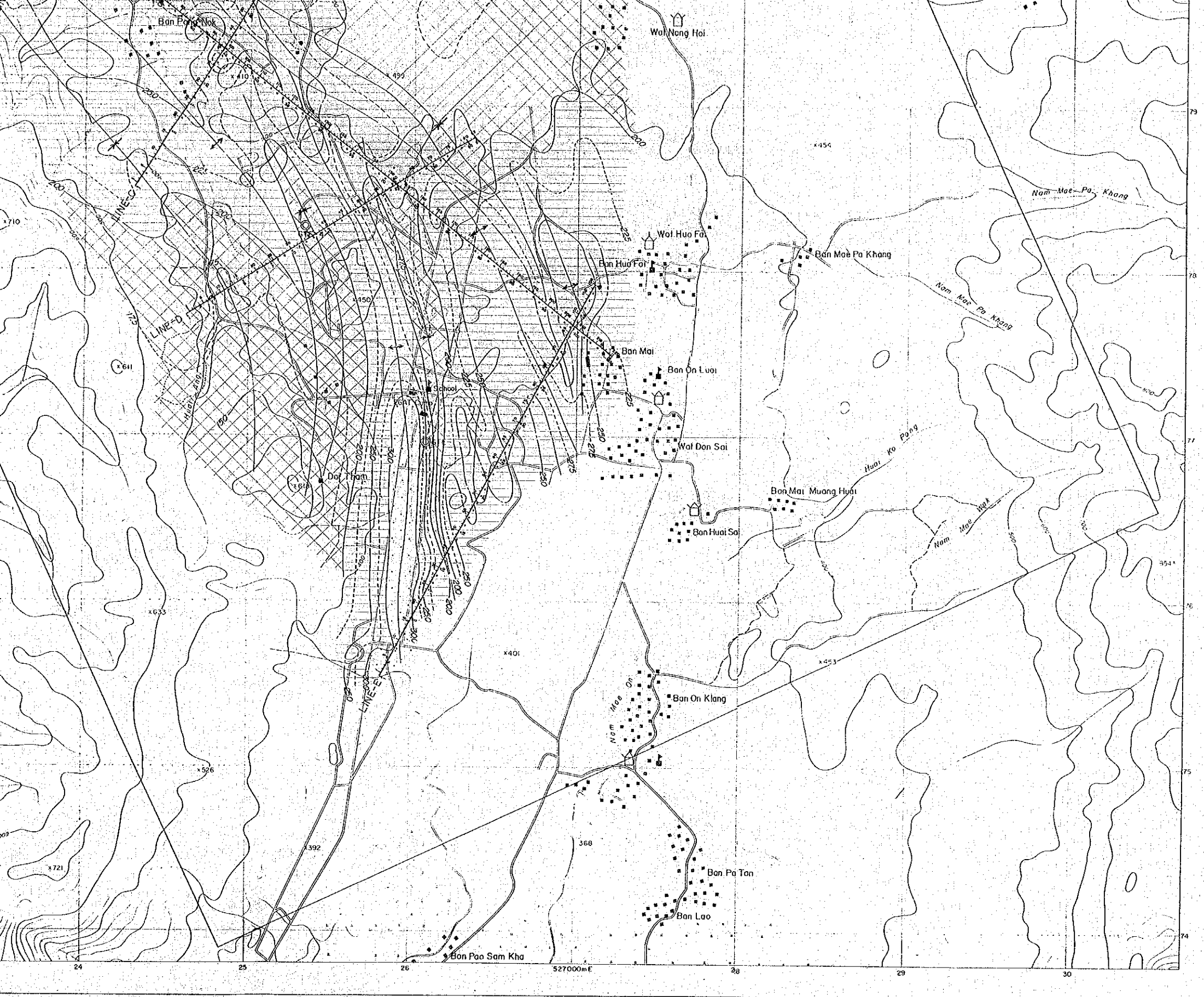
MARCH 1983

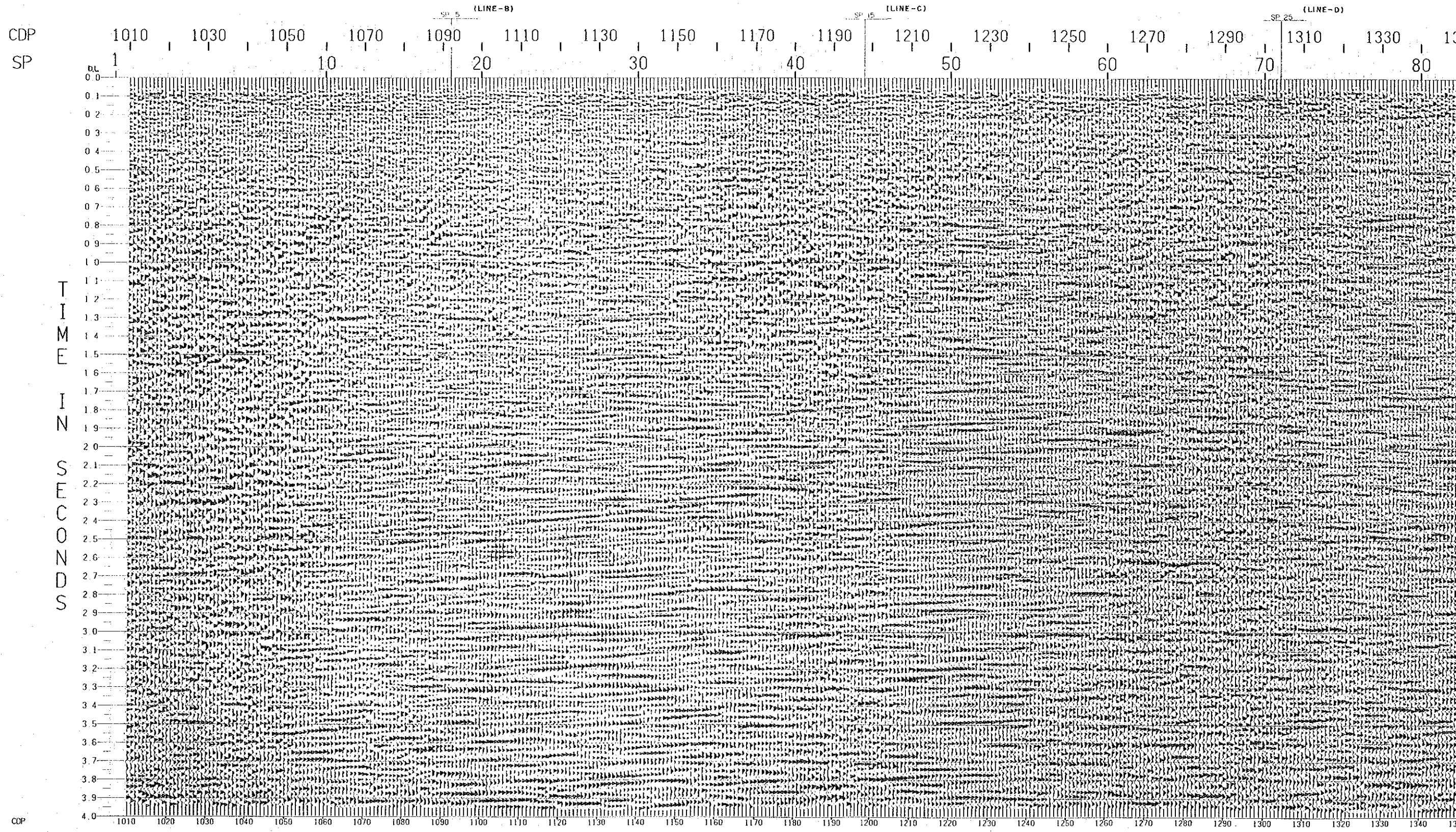


LEGEND

- Confirmed road
- Unconfirmed road
- Stream
- Village
- Wat
- School
- Rice field
- Dam (water reserve)
- 50°C
- 30°C-50°C
- 20°C-30°C
- ~20°C
- Isothermal line (°C)
- Temperature anticline axis
- Temperature syncline axis







CDP  
SP

TIME  
IN  
SECONDS

CDP

(LINE-B)

(LINE-C)

(LINE-D)

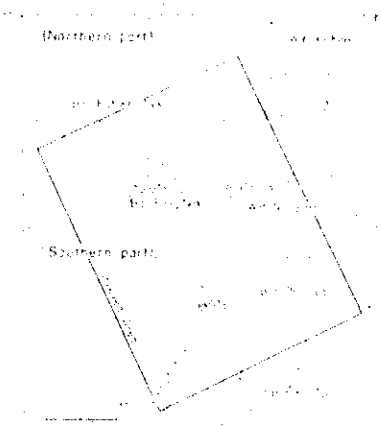
1010 1030 1050 1070 1090 1110 1130 1150 1170 1190 1210 1230 1250 1270 1290 1310 1330

0.0  
0.1  
0.2  
0.3  
0.4  
0.5  
0.6  
0.7  
0.8  
0.9  
1.0  
1.1  
1.2  
1.3  
1.4  
1.5  
1.6  
1.7  
1.8  
1.9  
2.0  
2.1  
2.2  
2.3  
2.4  
2.5  
2.6  
2.7  
2.8  
2.9  
3.0  
3.1  
3.2  
3.3  
3.4  
3.5  
3.6  
3.7  
3.8  
3.9  
4.0

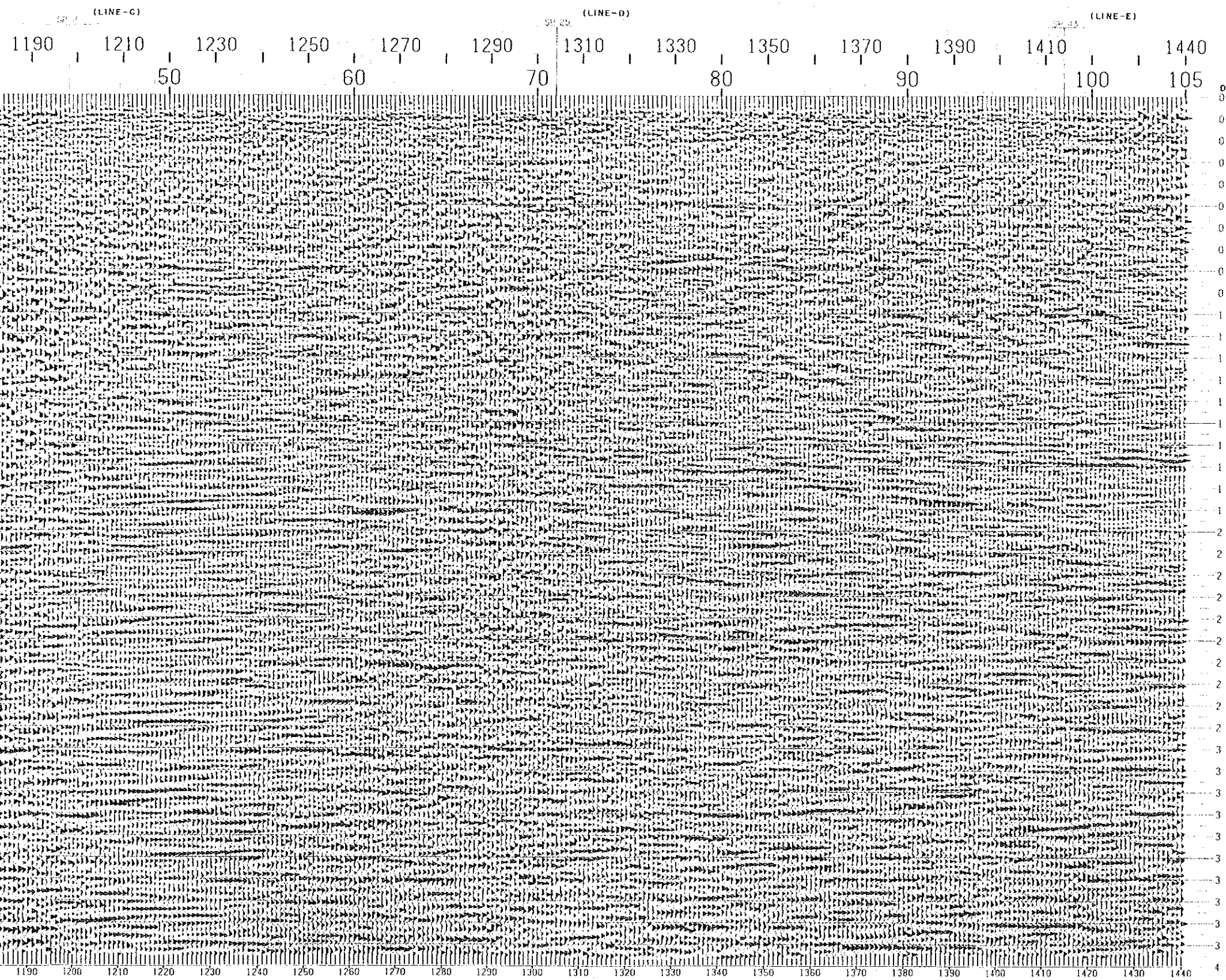
1010 1020 1030 1040 1050 1060 1070 1080 1090 1100 1110 1120 1130 1140 1150 1160 1170 1180 1190 1200 1210 1220 1230 1240 1250 1260 1270 1280 1290 1300 1310 1320 1330 1340

THE PRE-FEASIBILITY STUDY  
ON  
THE SAN KAMPAENG GEOTHERMAL DEVELOPMENT PROJECT  
IN THE KINGDOM OF THAILAND

FINAL STACK (TIME SECTION)  
(LINE - A)



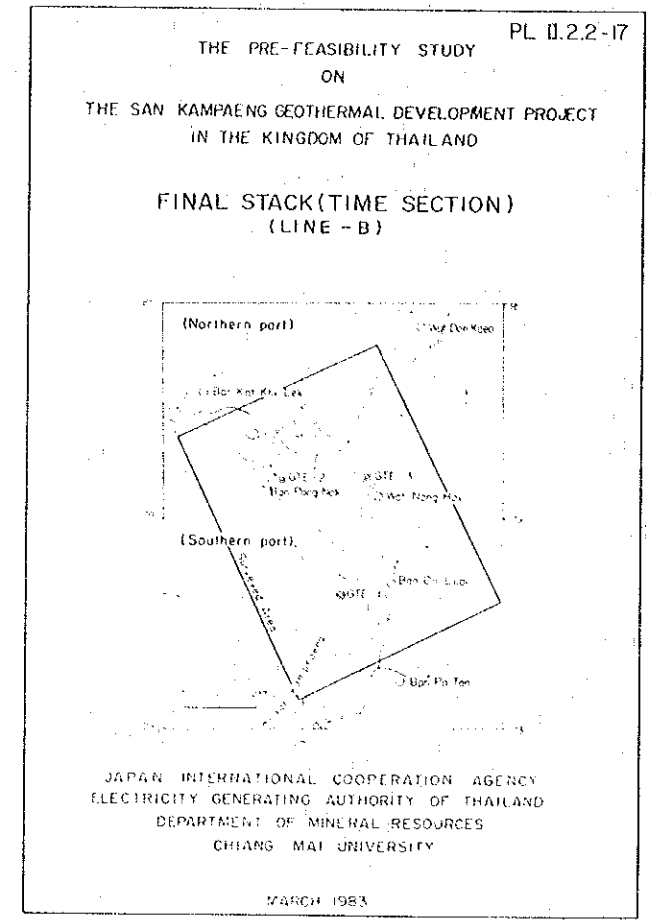
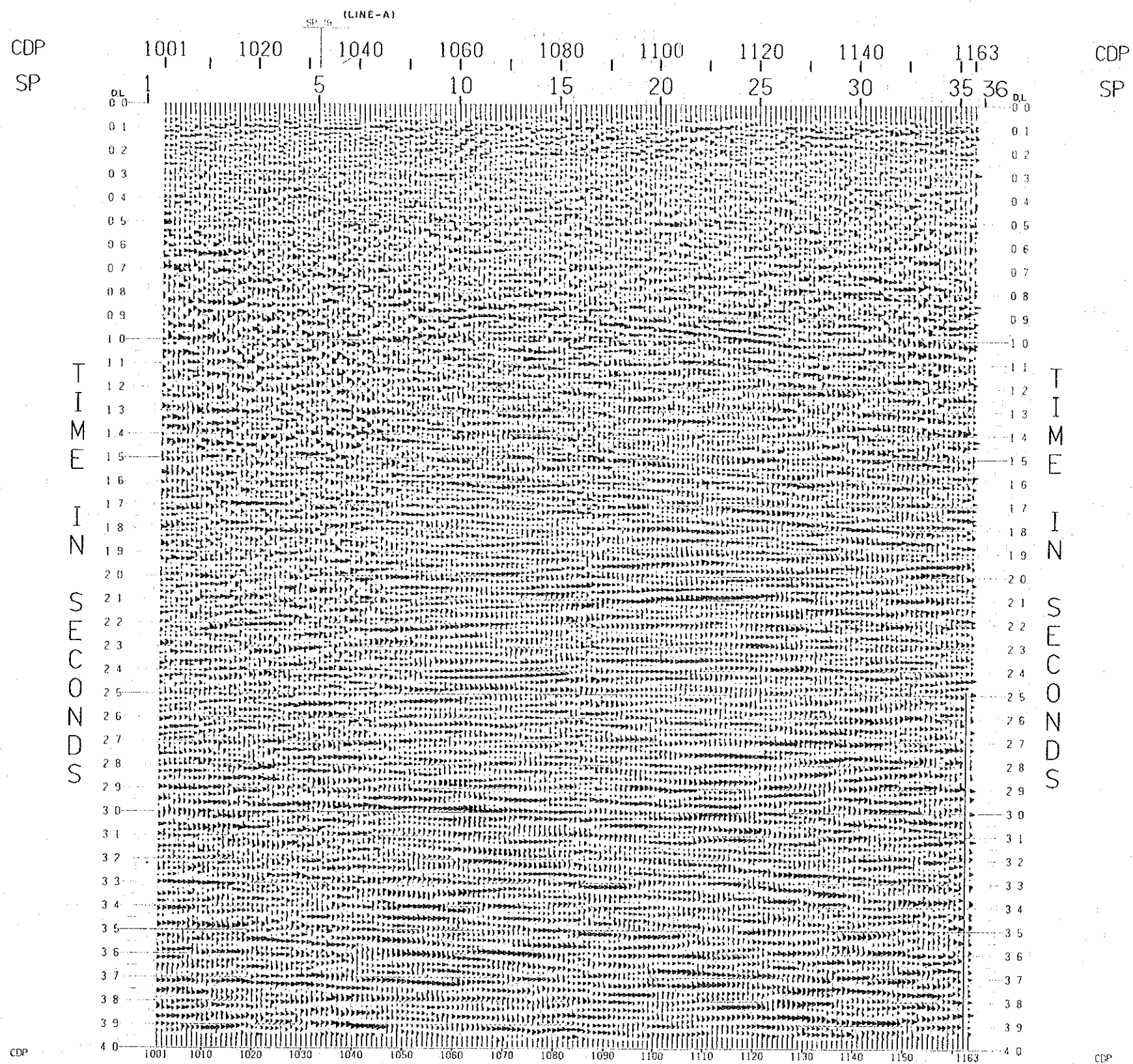
MINISTRY OF ENERGY AND ELECTRICITY  
DEPARTMENT OF GEOTHERMAL ENERGY  
CHANG MAE, BANGKOK



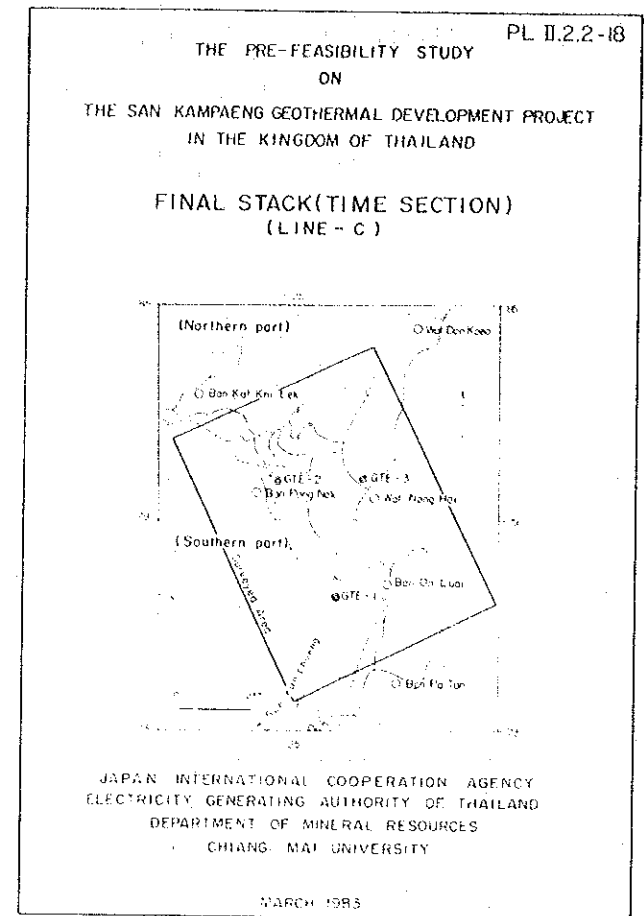
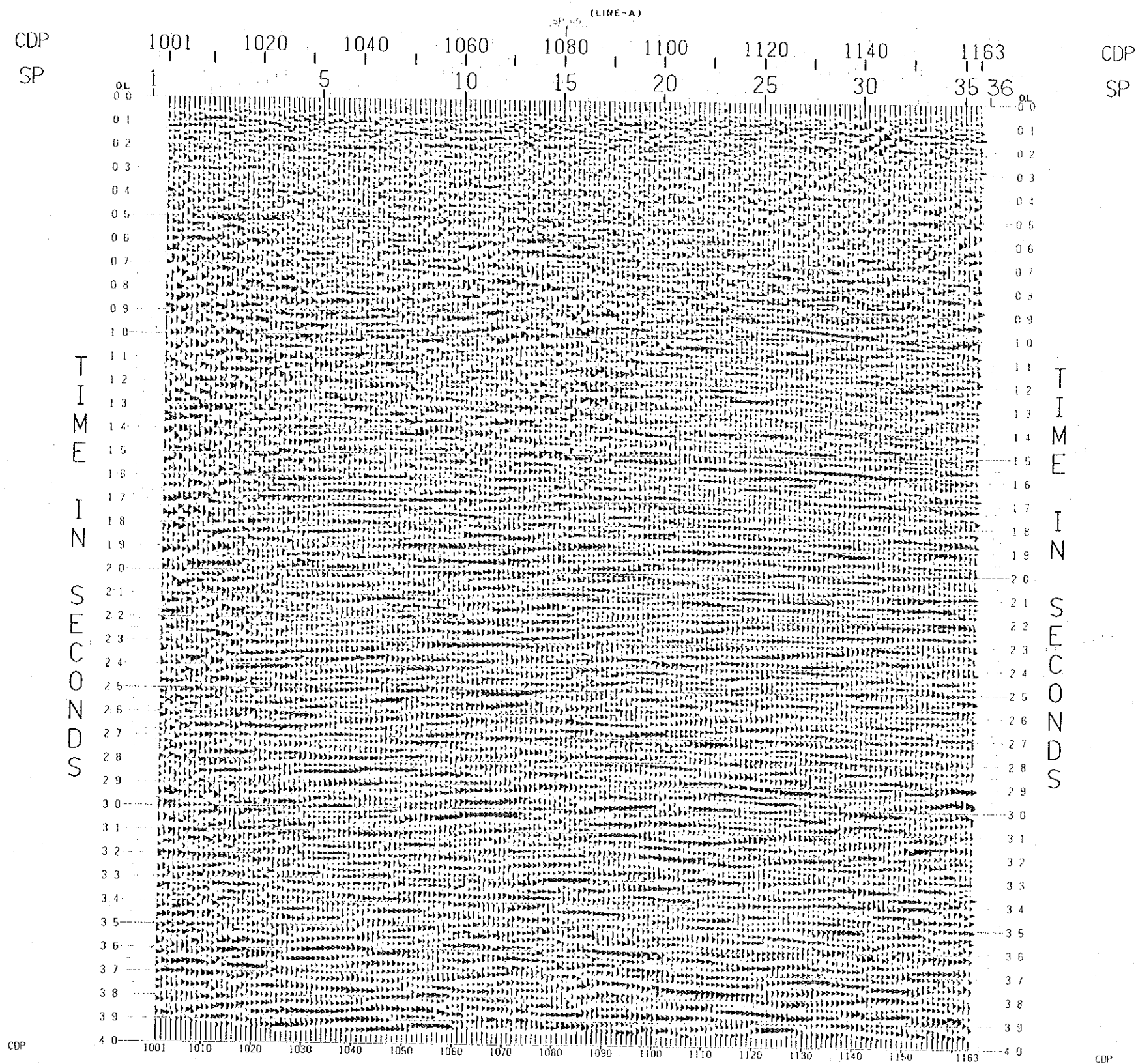
CDP  
SP

T  
I  
M  
E  
I  
N  
S  
E  
C  
O  
N  
D  
S

CDP



11019

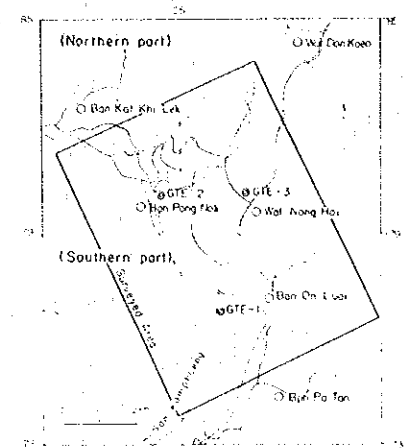


11019

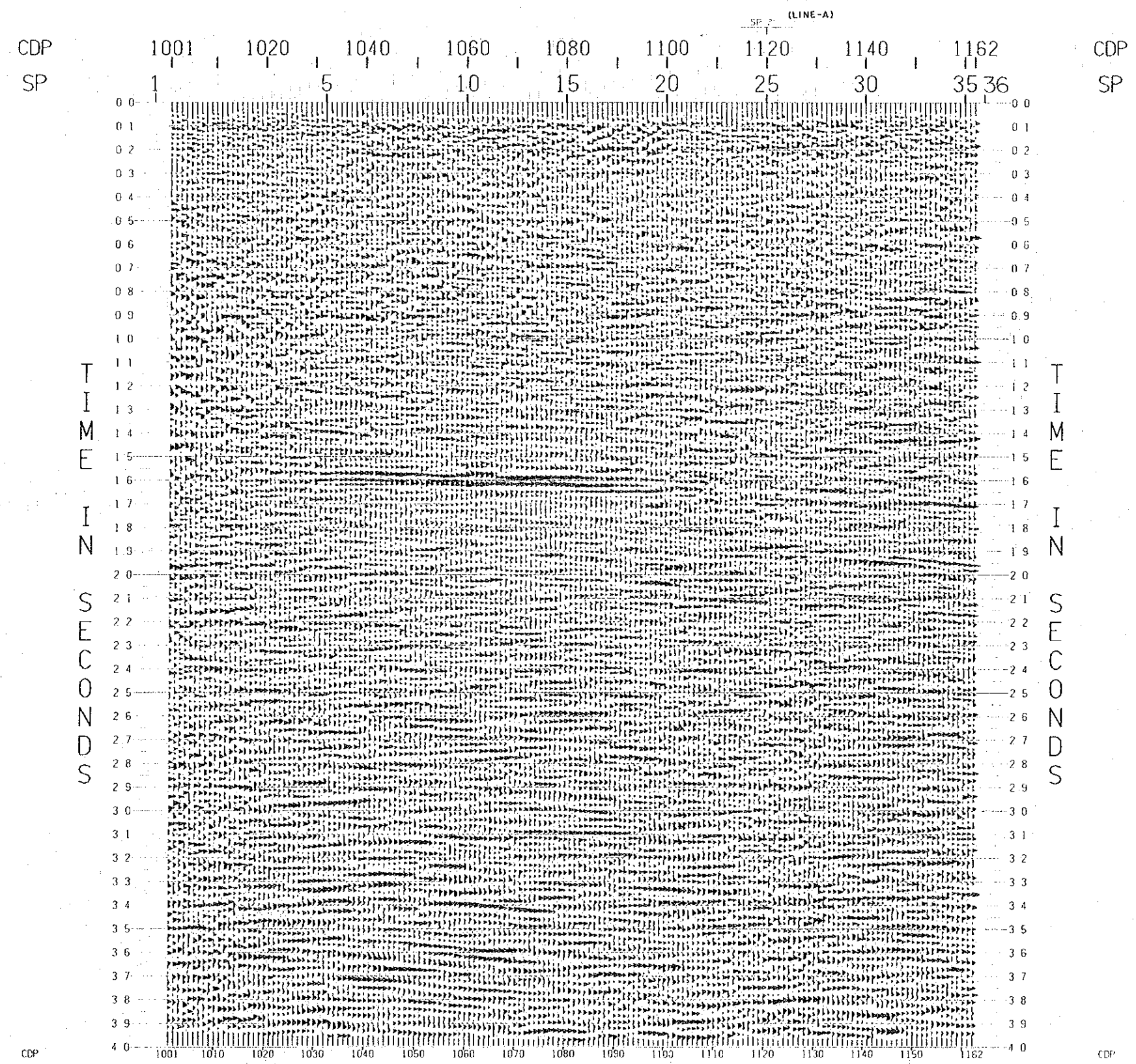


THE PRE-FEASIBILITY STUDY PL II.2.2-19  
 ON  
 THE SAN KAMPAENG GEOTHERMAL DEVELOPMENT PROJECT  
 IN THE KINGDOM OF THAILAND

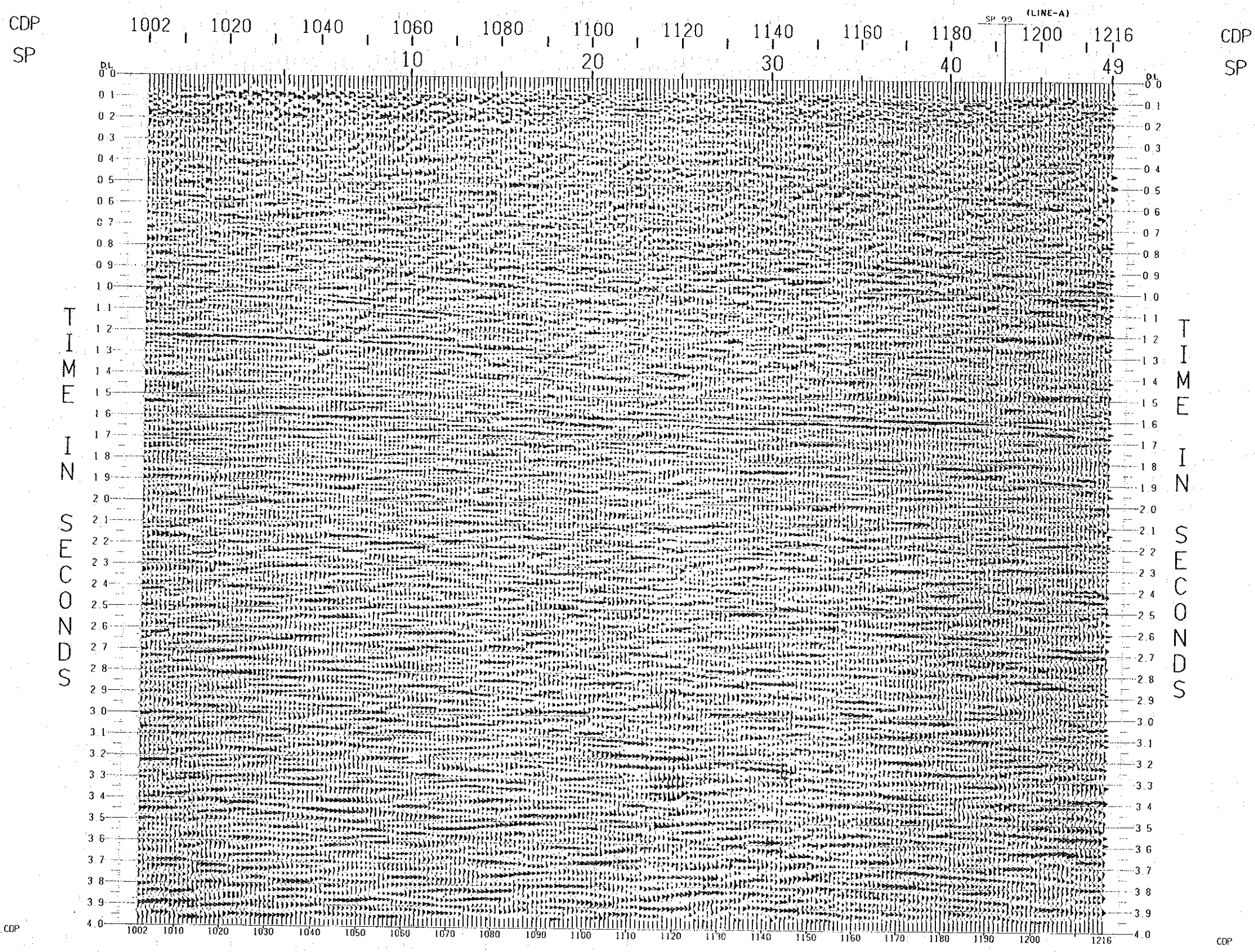
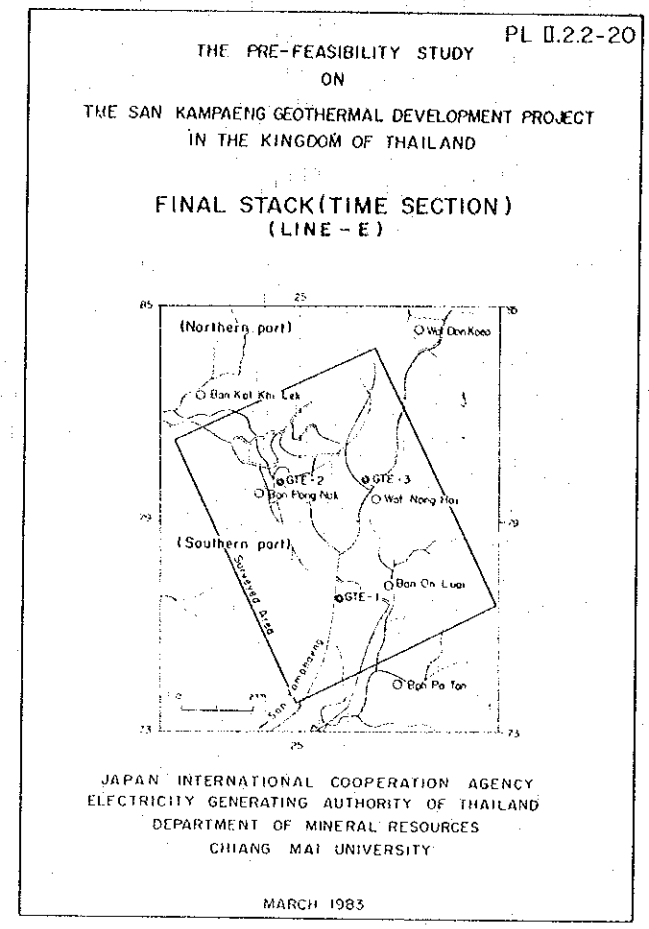
FINAL STACK (TIME SECTION)  
 (LINE - D)



JAPAN INTERNATIONAL COOPERATION AGENCY  
 ELECTRICITY GENERATING AUTHORITY OF THAILAND  
 DEPARTMENT OF MINERAL RESOURCES  
 CHIANG MAI UNIVERSITY  
 MARCH 1983



11019



11019