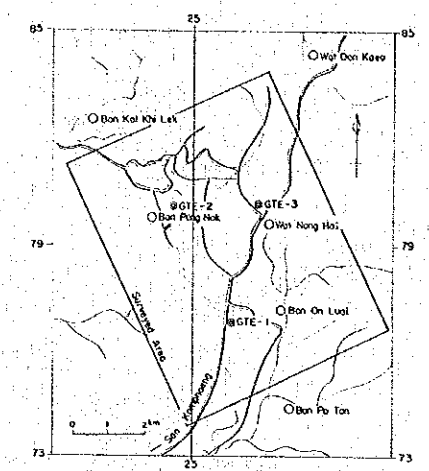


SIDE REFLECTION ANALYSIS MAP  
 (LINE - A)

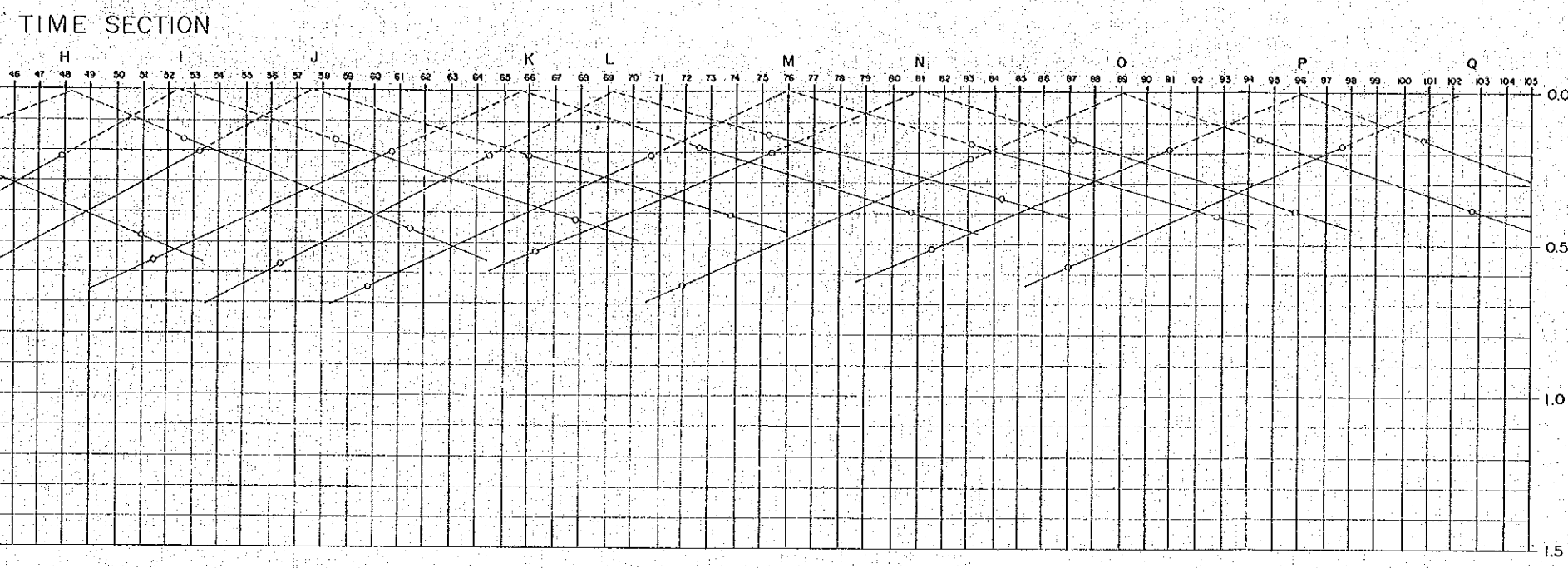


JAPAN INTERNATIONAL COOPERATION AGENCY  
 ELECTRICITY GENERATING AUTHORITY OF THAILAND  
 DEPARTMENT OF MINERAL RESOURCES  
 CHIANG MAI UNIVERSITY

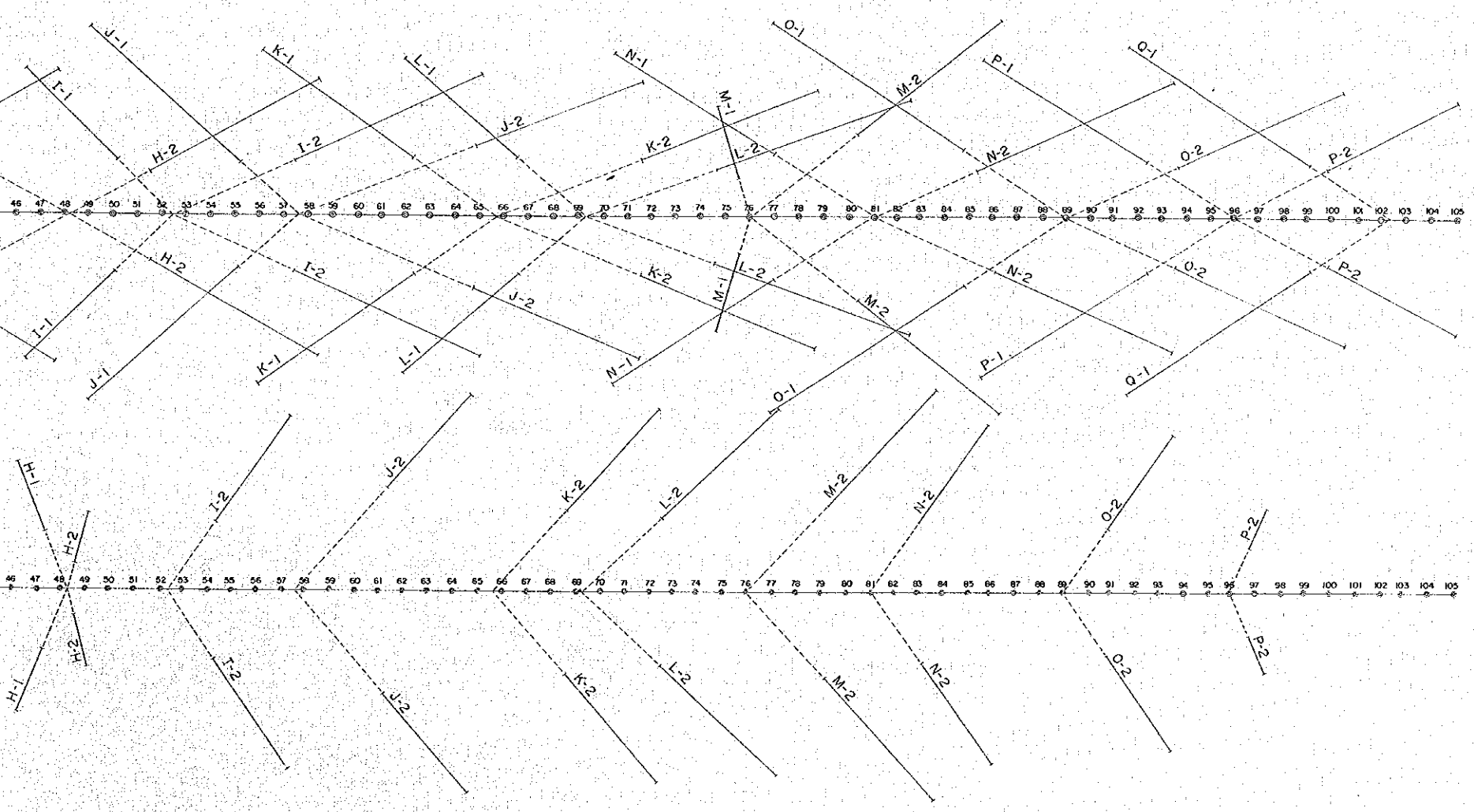
MARCH 1983

11019

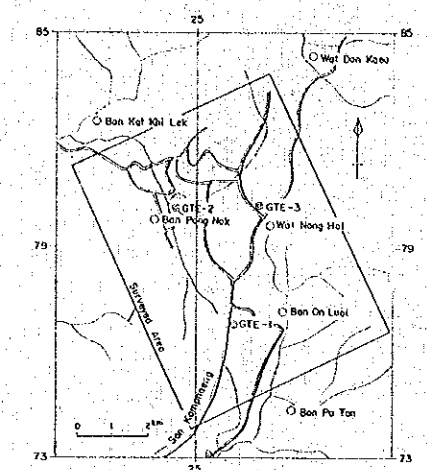
- LEGEND
- Decided side reflection line
  - - - Presumptive side reflection line
  - Calculation point



PLANE FIGURE



SIDE REFLECTION ANALYSIS MAP  
 (LINE - B)



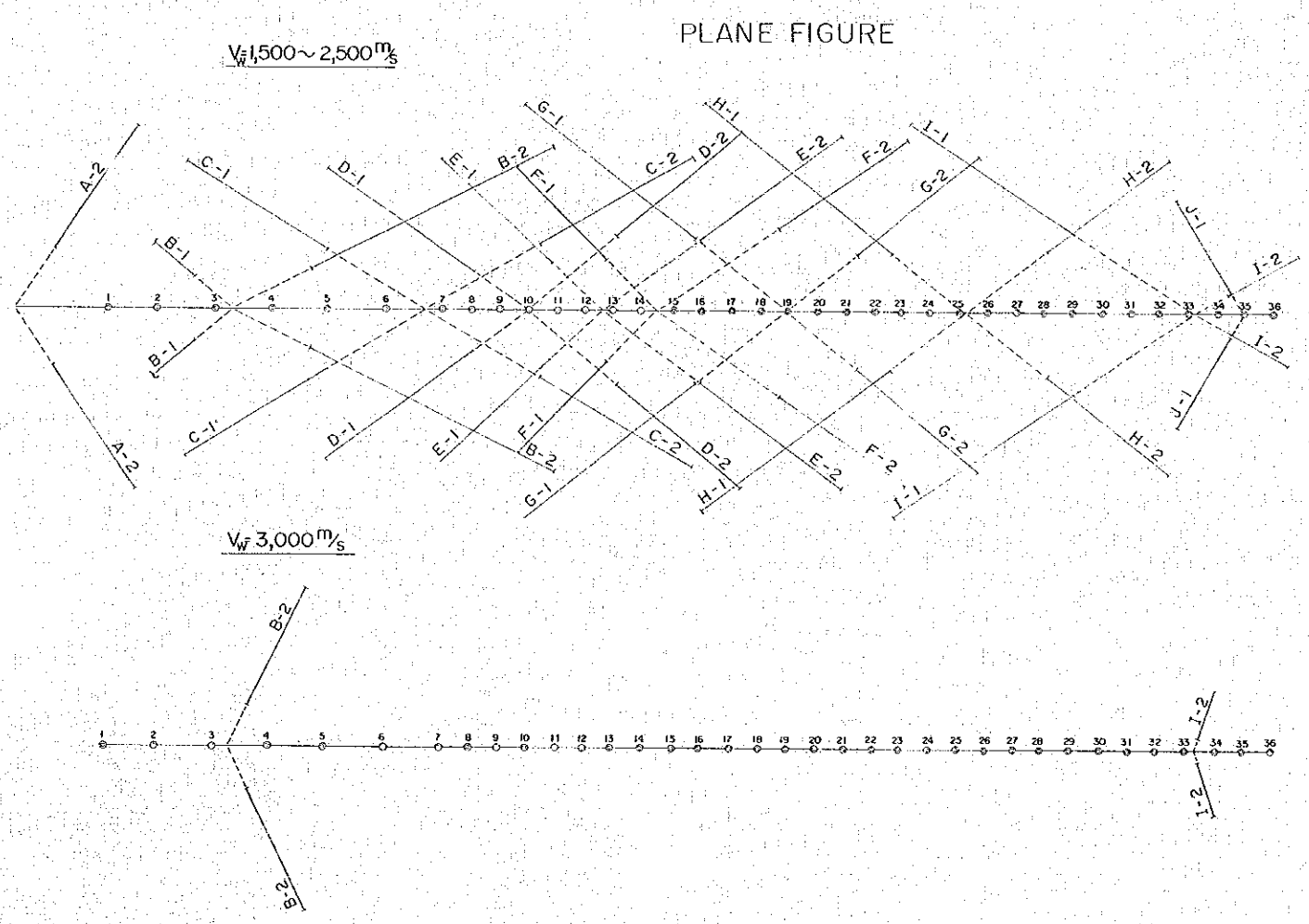
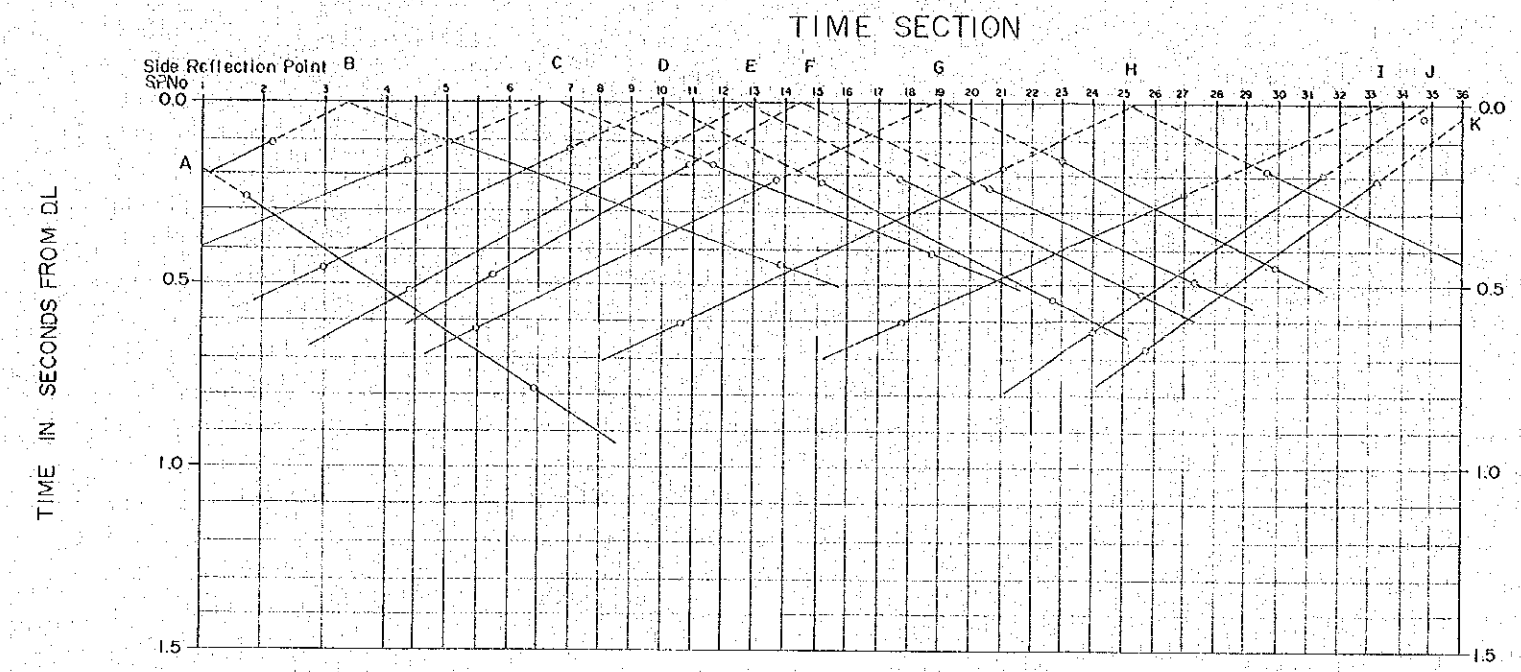
JAPAN INTERNATIONAL COOPERATION AGENCY  
 ELECTRICITY GENERATING AUTHORITY OF THAILAND  
 DEPARTMENT OF MINERAL RESOURCES  
 CHIANG MAI UNIVERSITY

MARCH 1983

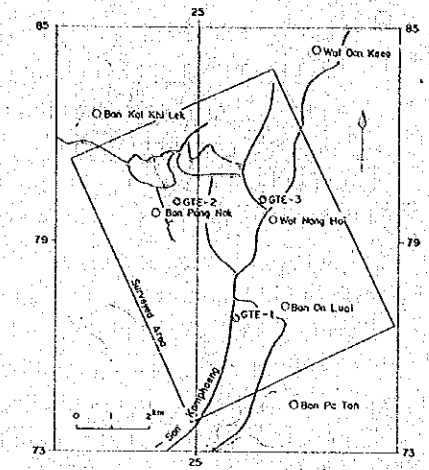
11019

LEGEND

- Decided side reflection line
- - - Presumptive side reflection line
- Calculation point



SIDE REFLECTION ANALYSIS MAP  
 (LINE - C)



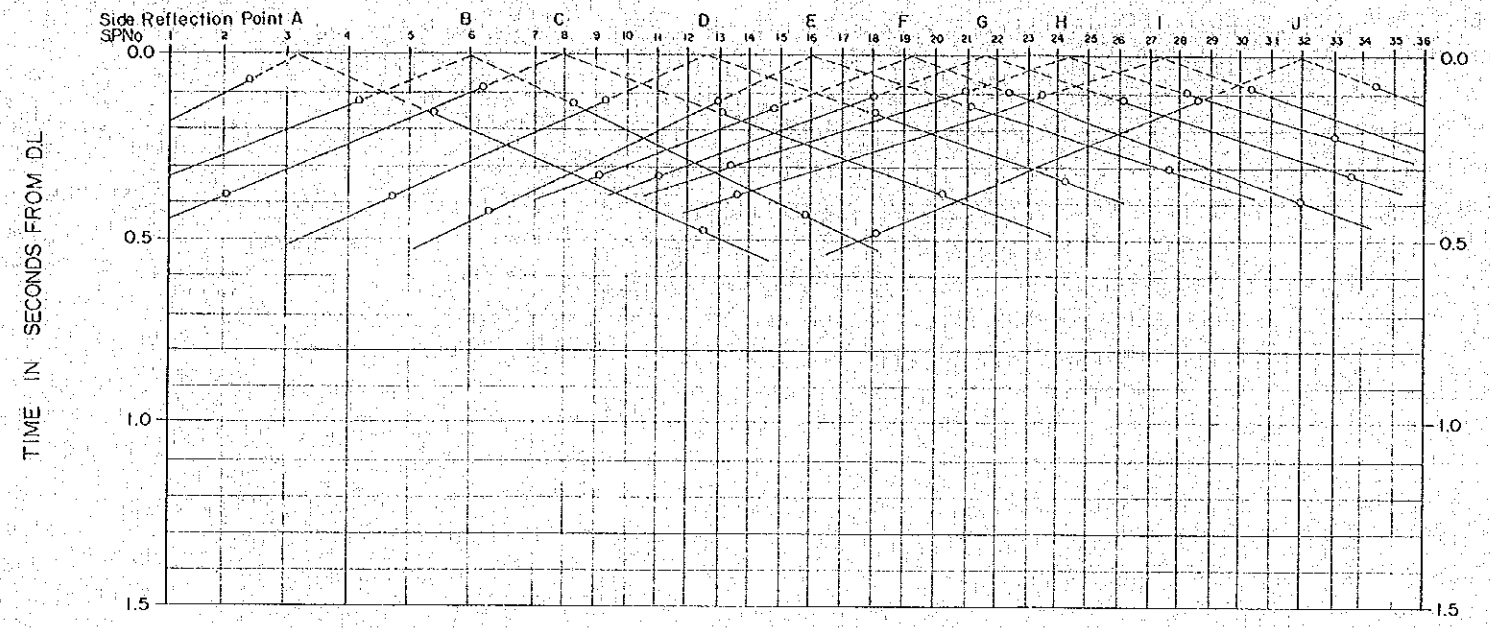
JAPAN INTERNATIONAL COOPERATION AGENCY  
 ELECTRICITY GENERATING AUTHORITY OF THAILAND  
 DEPARTMENT OF MINERAL RESOURCES  
 CHIANG MAI UNIVERSITY

MARCH 1983

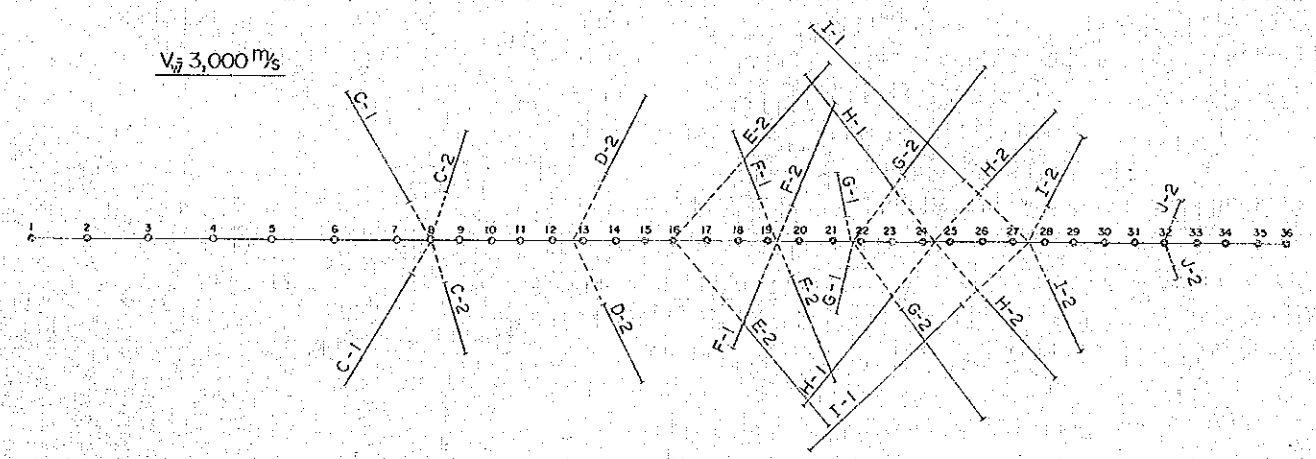
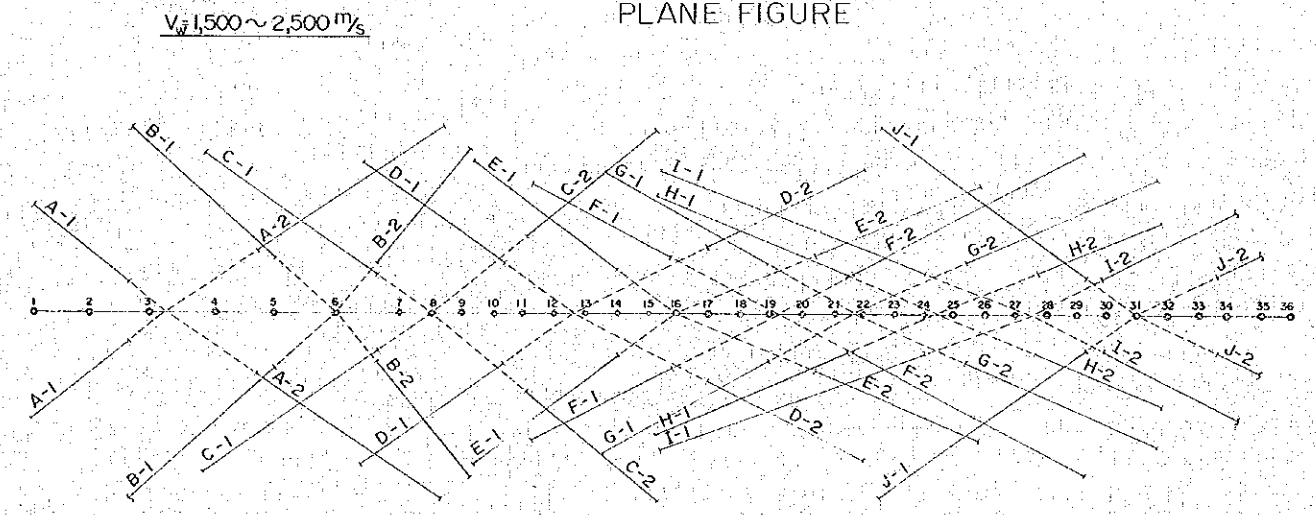
11019

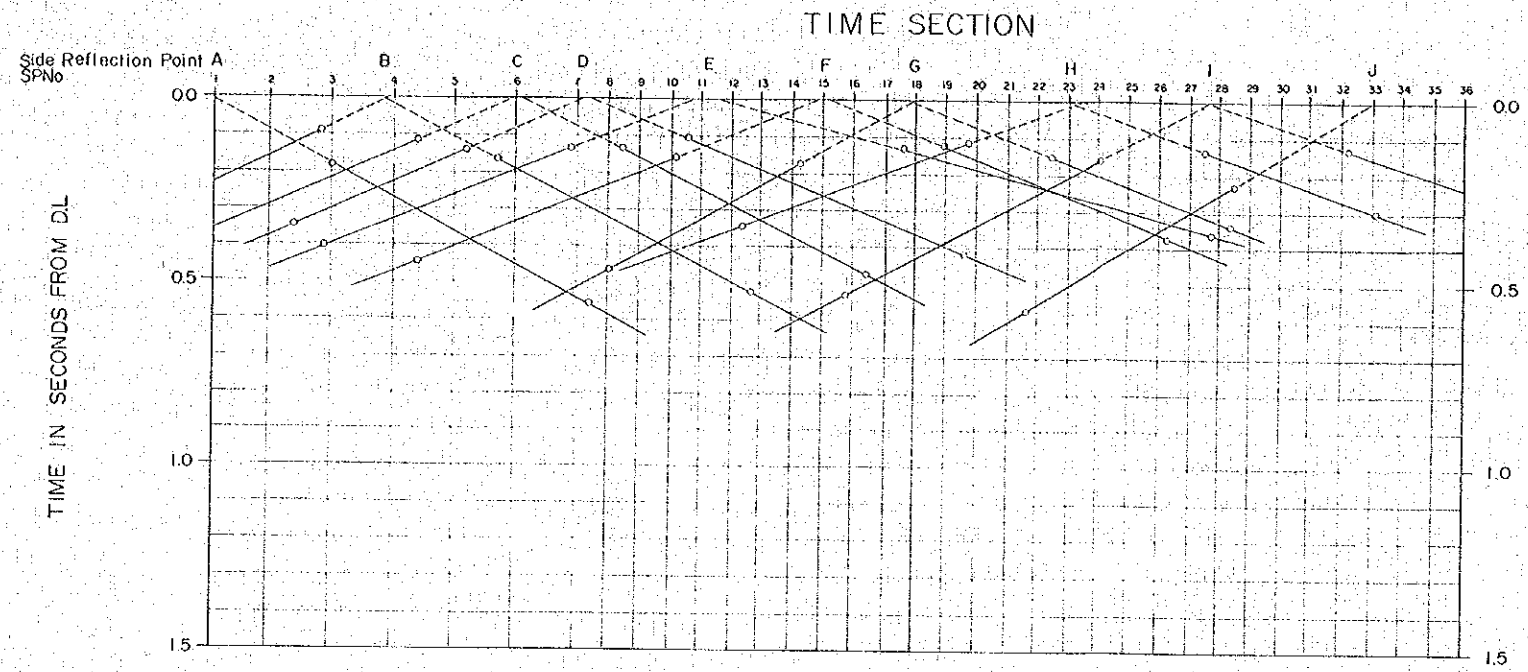
- LEGEND
- Decided side reflection line
  - - - - Presumptive side reflection line
  - O Calculation point

TIME SECTION



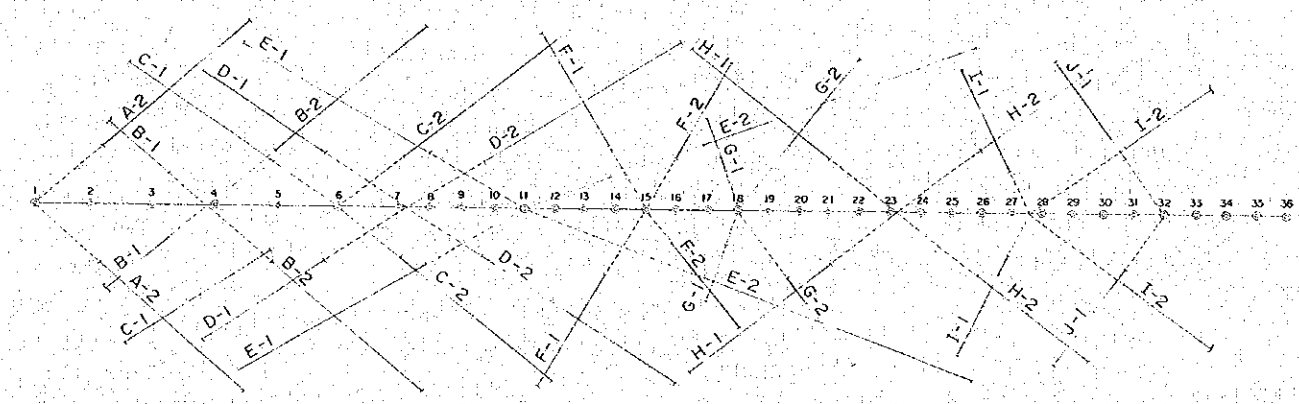
PLANE FIGURE



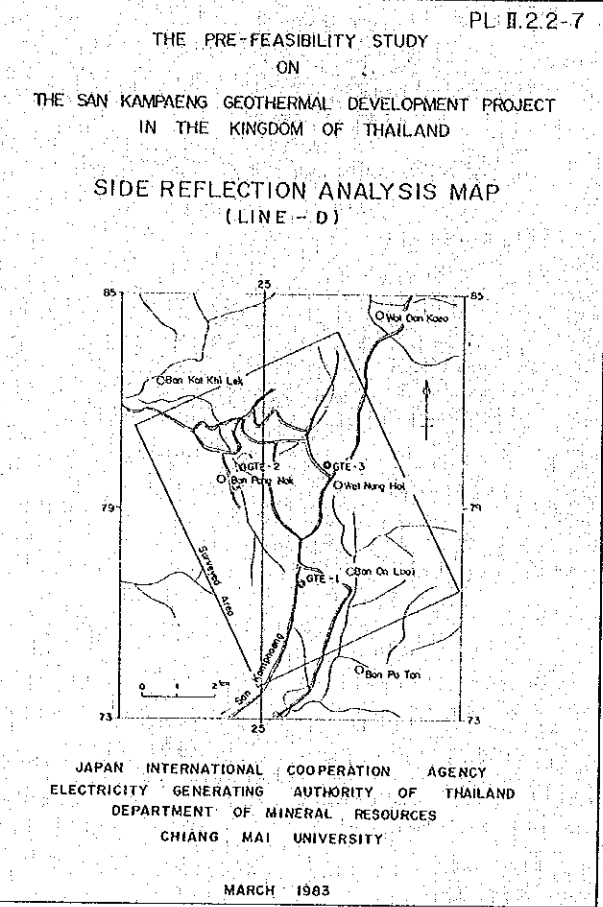
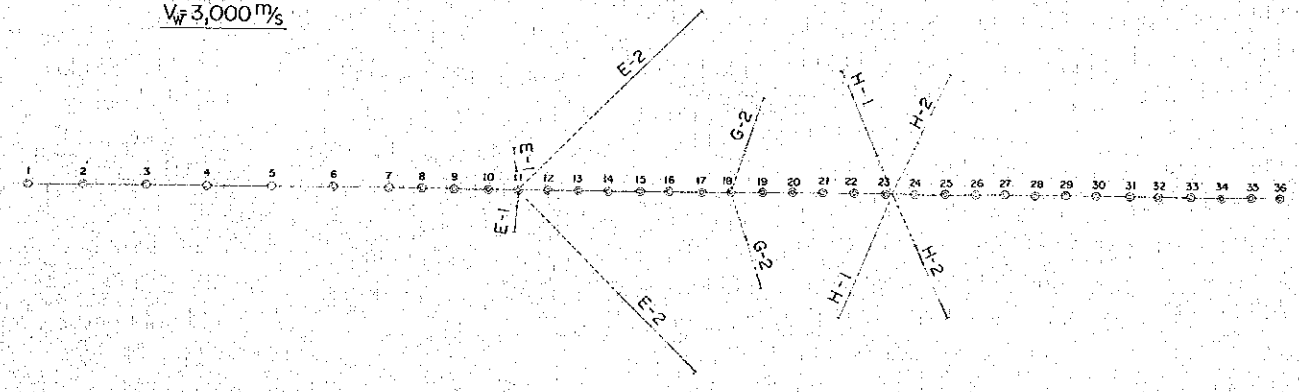


$V_p 1,500 \sim 2,500 \text{ m/s}$

### PLANE FIGURE



$V_p 3,000 \text{ m/s}$



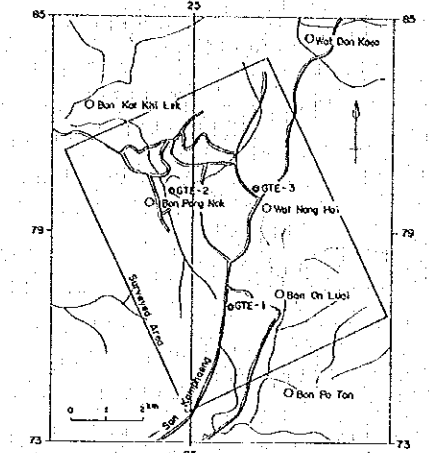
11019

### LEGEND

- Decided side reflection line
- Presumptive side reflection line
- Calculation point



SIDE REFLECTION ANALYSIS MAP  
 (LINE - E)



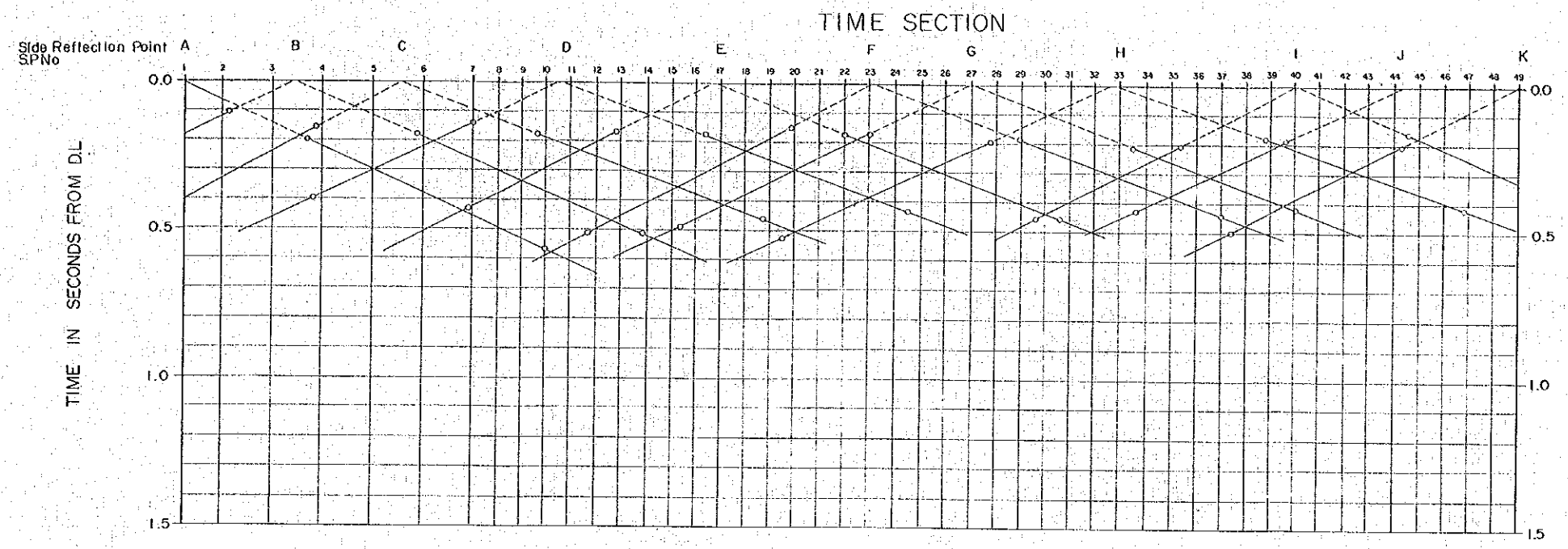
JAPAN INTERNATIONAL COOPERATION AGENCY  
 ELECTRICITY GENERATING AUTHORITY OF THAILAND  
 DEPARTMENT OF MINERAL RESOURCES  
 CHIANG MAI UNIVERSITY

MARCH 1983

11019

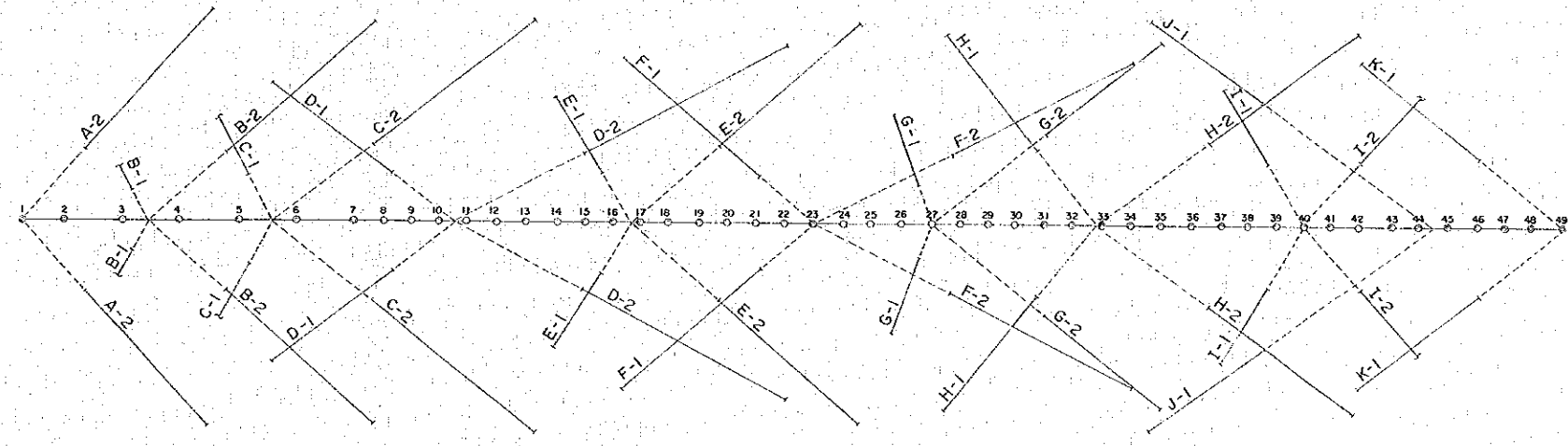
LEGEND

- Decided side reflection line
- - - Presumptive side reflection line
- Calculation point

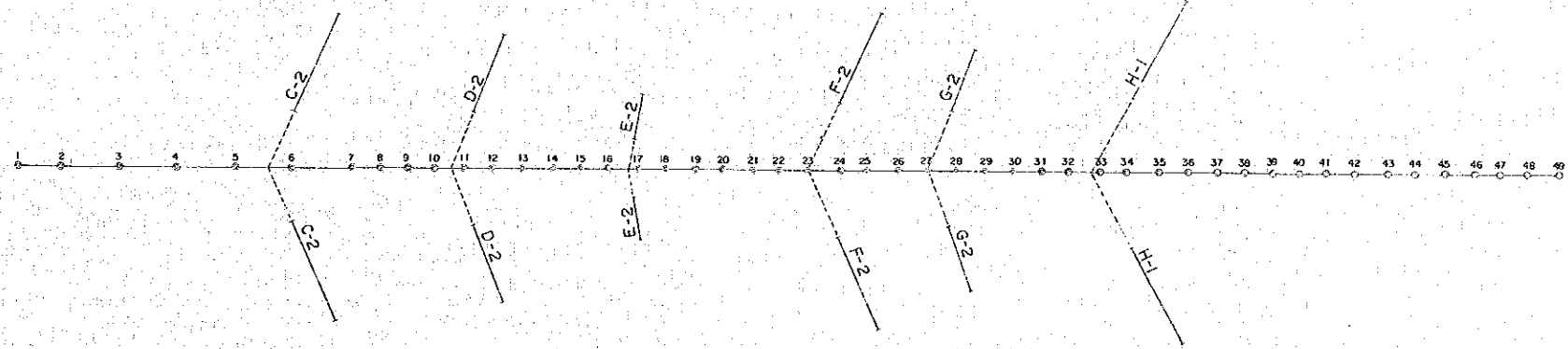


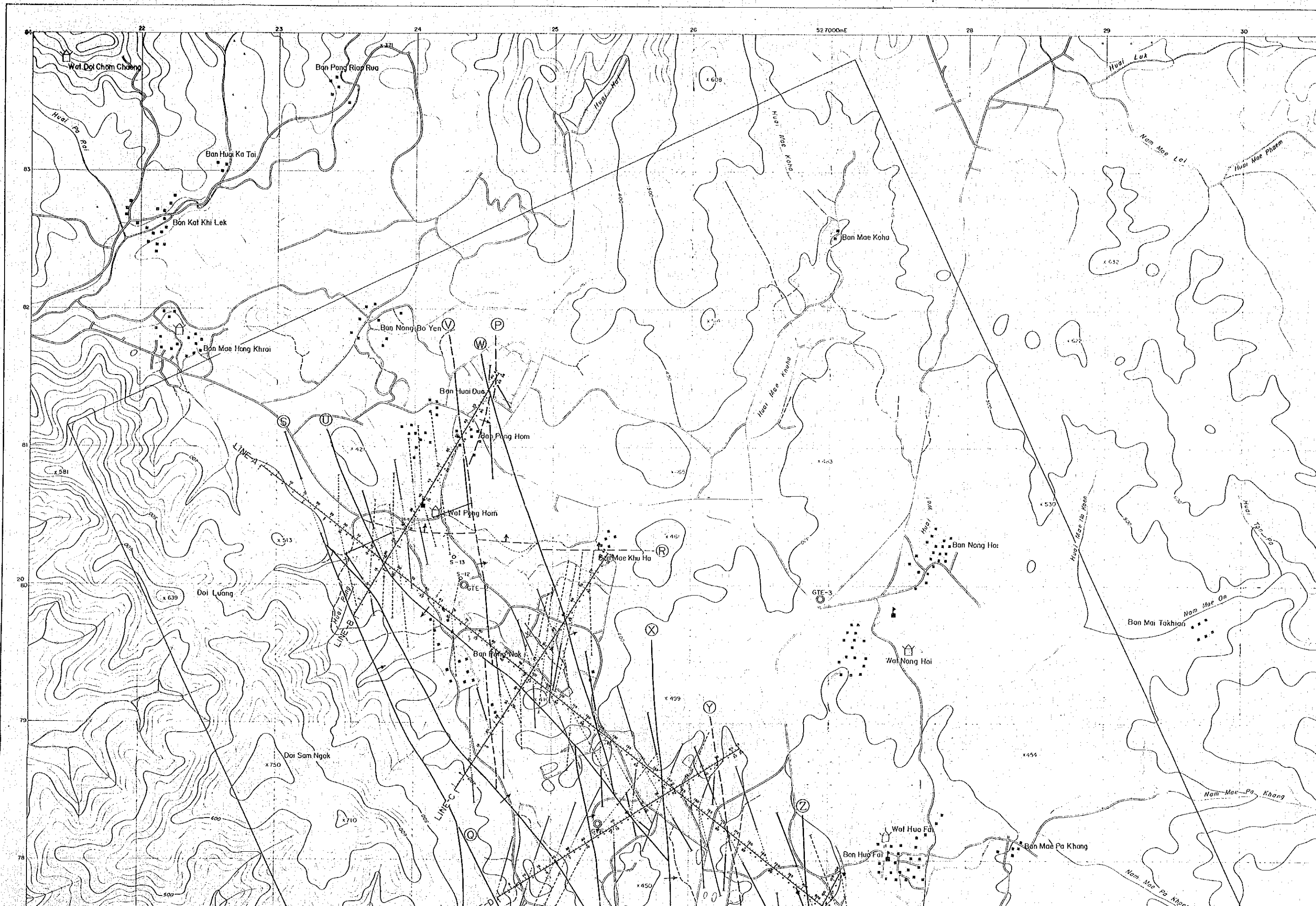
$V_f 1,500 \sim 2,500 \text{ m/s}$

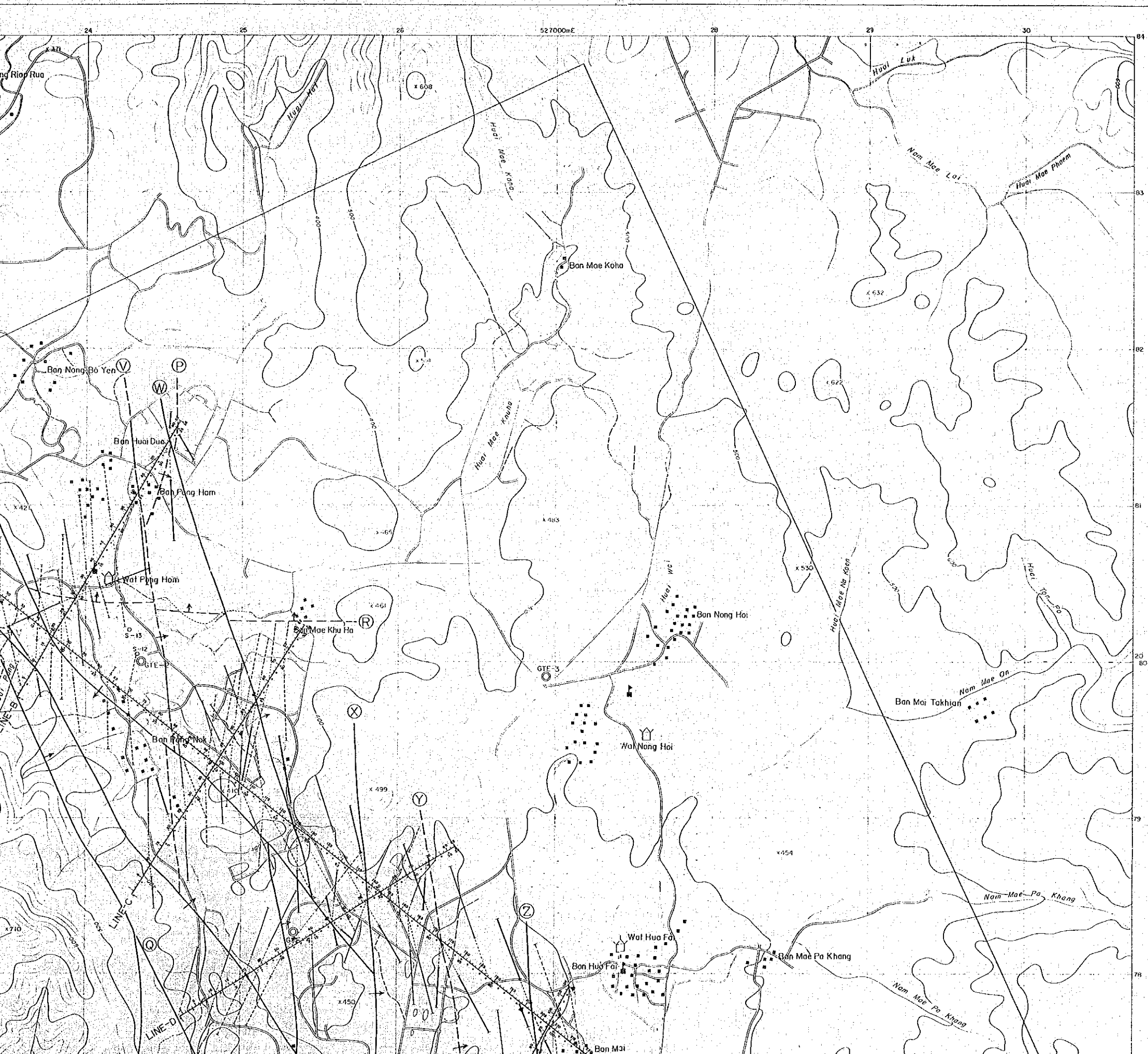
PLANE FIGURE



$V_f 3,000 \text{ m/s}$







PL II.2.2-9

THE PRE-FEASIBILITY STUDY  
ON  
THE SAN KAMPAENG GEOTHERMAL DEVELOPMENT PROJECT  
IN THE KINGDOM OF THAILAND

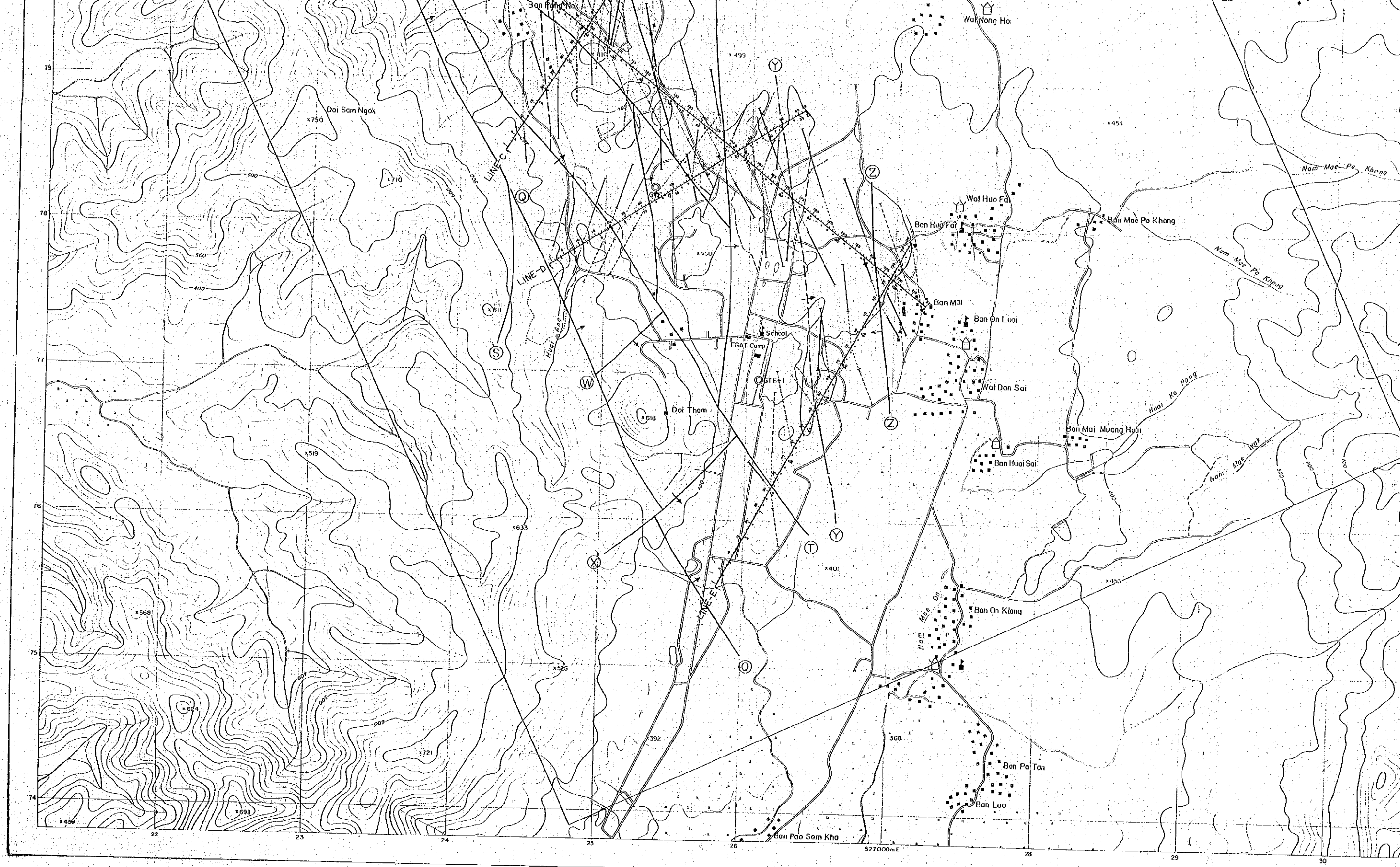
SIDE REFLECTION DISTRIBUTION MAP

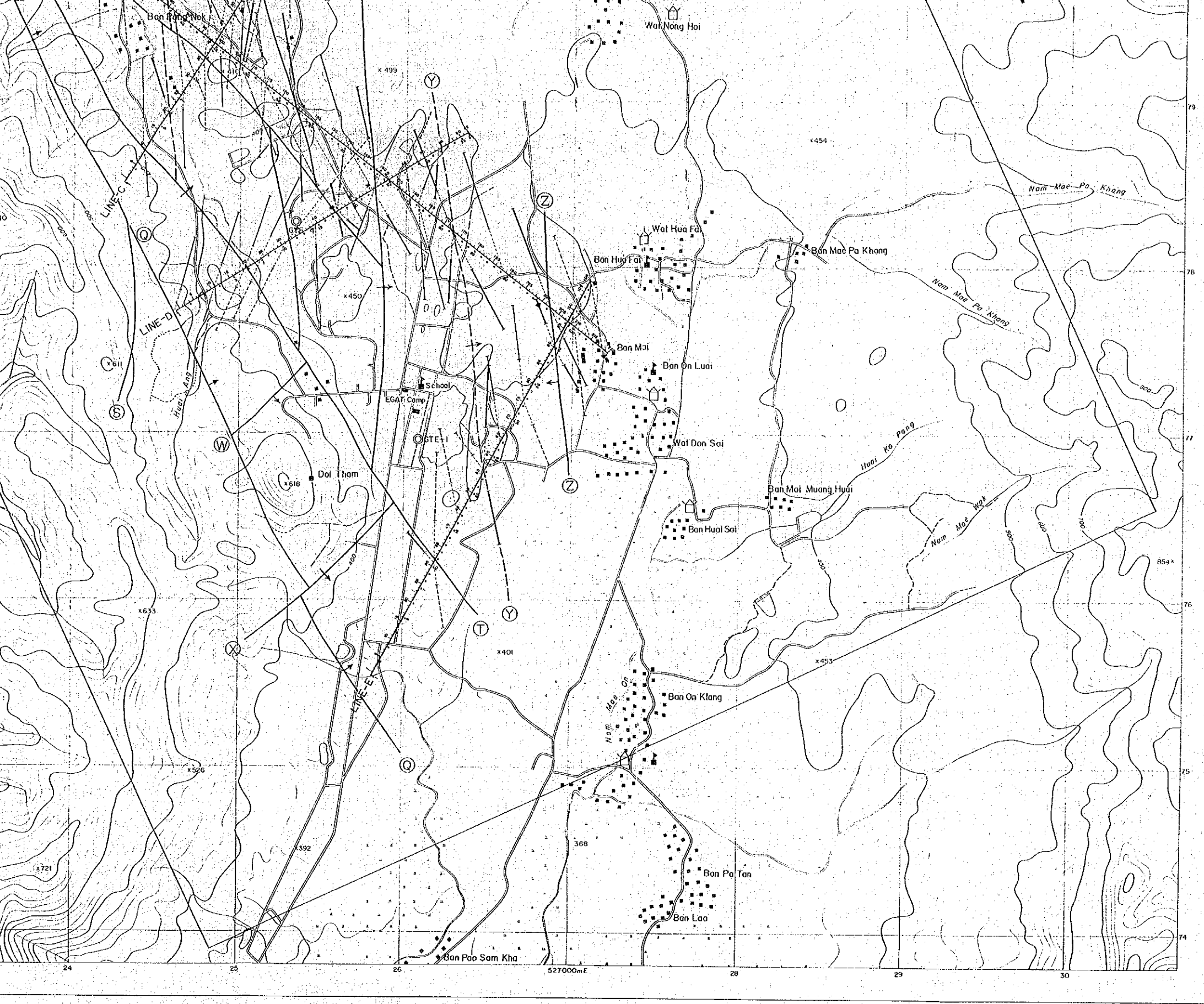
JAPAN INTERNATIONAL COOPERATION AGENCY  
ELECTRICITY GENERATING AUTHORITY OF THAILAND  
DEPARTMENT OF MINERAL RESOURCES  
CHIANG MAI UNIVERSITY

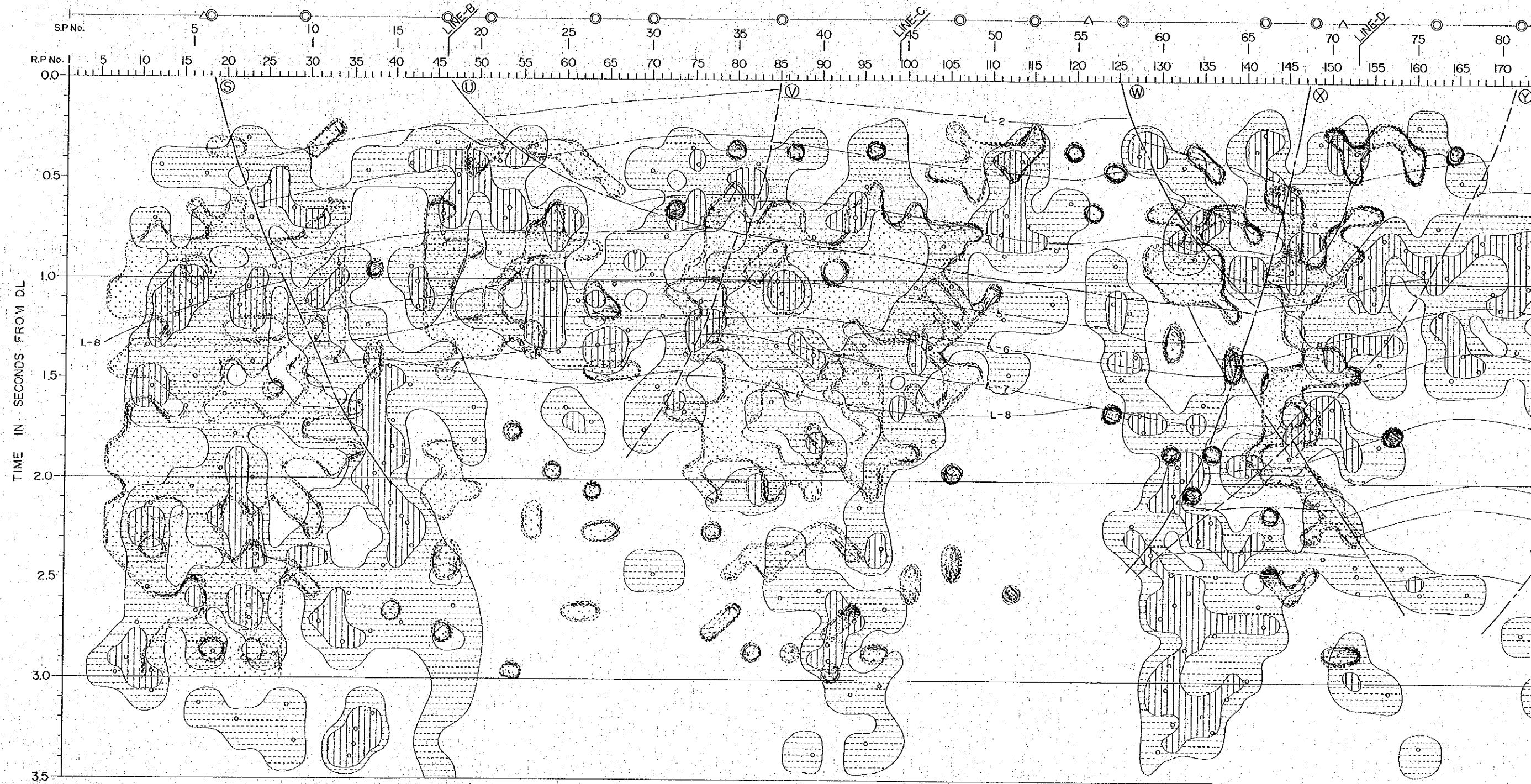
MARCH 1983

- LEGEND
- Confirmed road
  - Unconfirmed road
  - Stream
  - Village
  - Wat
  - School
  - Rice field
  - Dam (water reserve)
  - Side reflection line related fault (result from structure)
  - " related strata (result from geology)
  - " related stratification ( " )
  - Presumptive side reflection line
  - Decided fault (ex. X fault)
  - Presumptive fault (ex. Y fault)

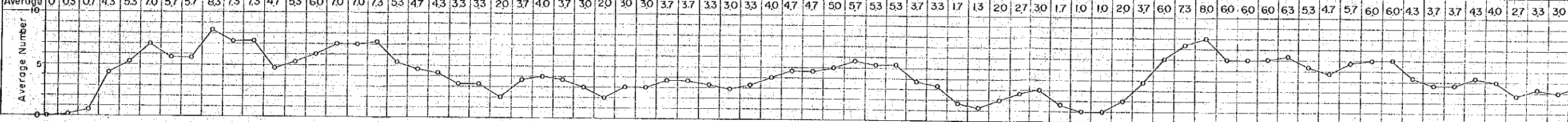


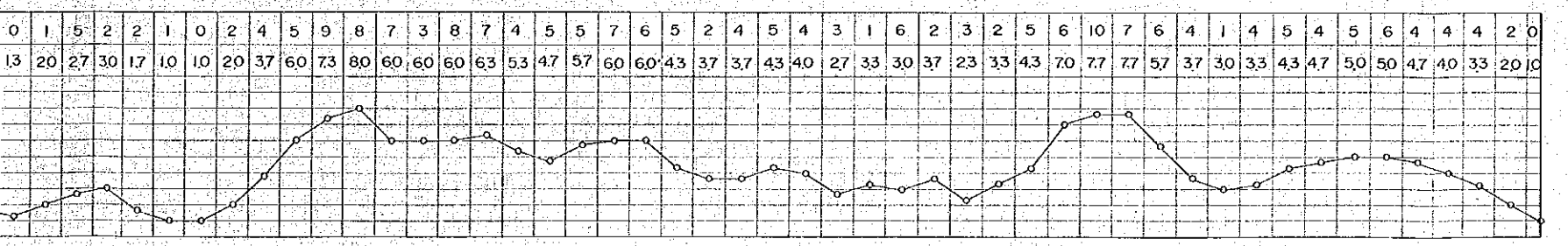
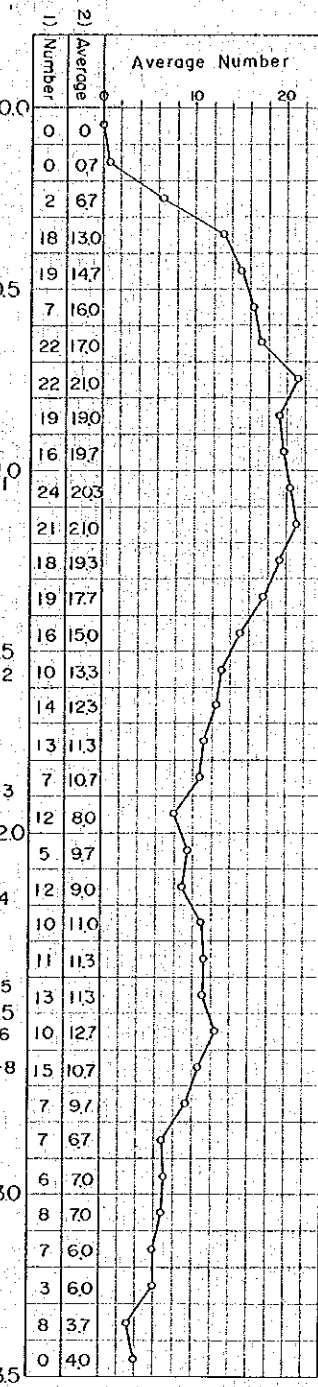
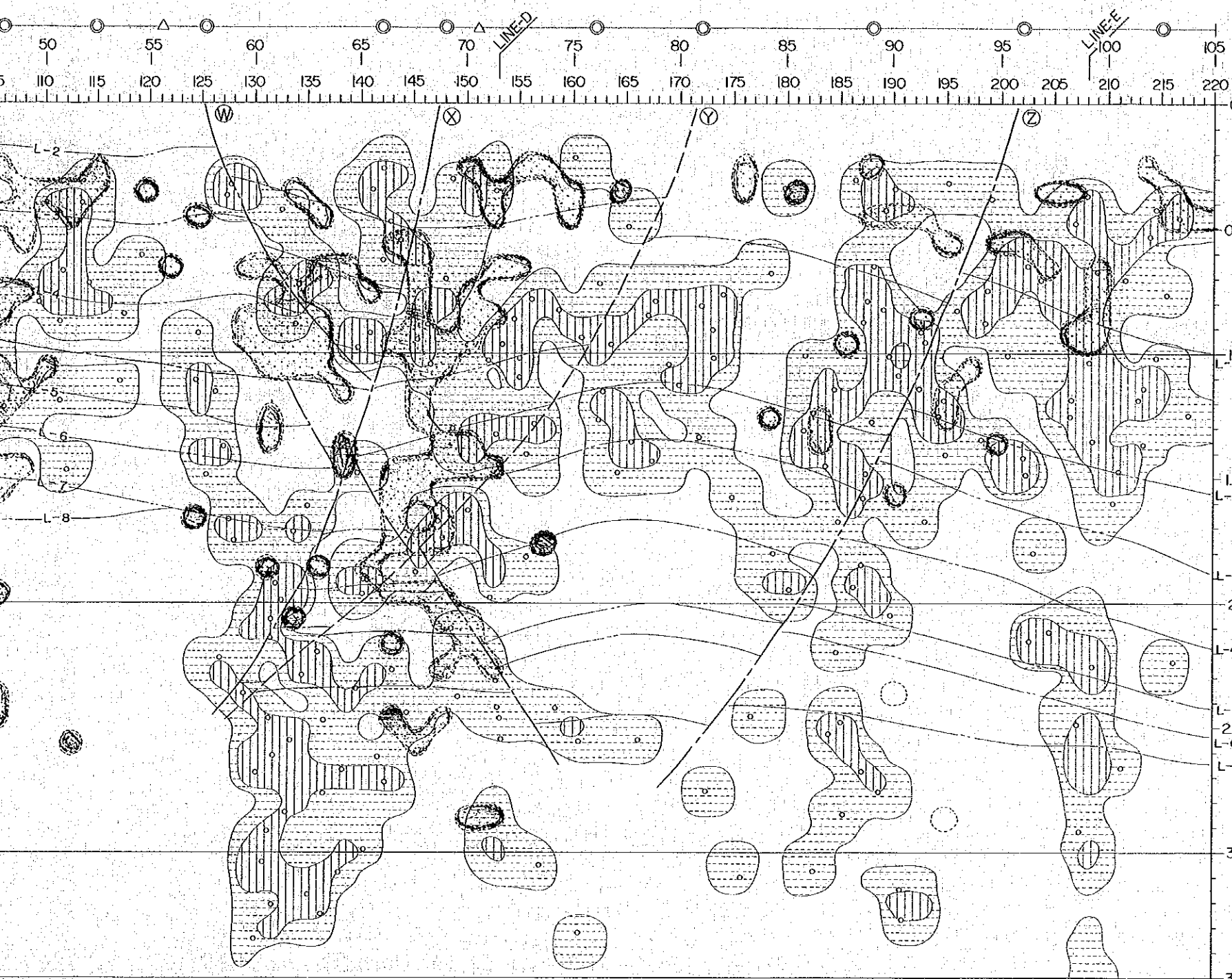






1) Number	0	0	1	1	11	4	6	7	4	14	4	4	6	6	6	9	6	7	3	4	6	0	4	2	5	5	1	3	2	4	3	4	4	2	3	5	4	5	5	5	7	4	5	2	3	0	1	5	2	2	1	0	2	4	5	9	8	7	3	8	7	4	5	5	7	6	5	2	4	5	4	3	1	6
2) Average	0	03	07	43	53	70	57	57	83	73	73	47	53	60	70	70	73	53	47	43	33	33	20	37	40	37	30	20	30	30	37	37	33	30	33	40	47	47	50	57	53	53	37	33	17	13	20	27	30	17	10	10	20	37	60	73	80	60	60	60	63	53	47	57	60	60	43	37	37	43	40	27	33	30





1) Number ; Number of diffraction source point  
 2) Average ; 3 Point moving average

PL II.2.2-10

THE PRE-FEASIBILITY STUDY  
 ON  
 THE SAN KAMPAENG GEOTHERMAL DEVELOPMENT PROJECT  
 IN THE KINGDOM OF THAILAND

DIFFRACTION SOURCE DISTRIBUTION MAP  
 (LINE - A)

JAPAN INTERNATIONAL COOPERATION AGENCY  
 ELECTRICITY GENERATING AUTHORITY OF THAILAND  
 DEPARTMENT OF MINERAL RESOURCES  
 CHIANG MAI UNIVERSITY

MARCH 1983

LEGEND

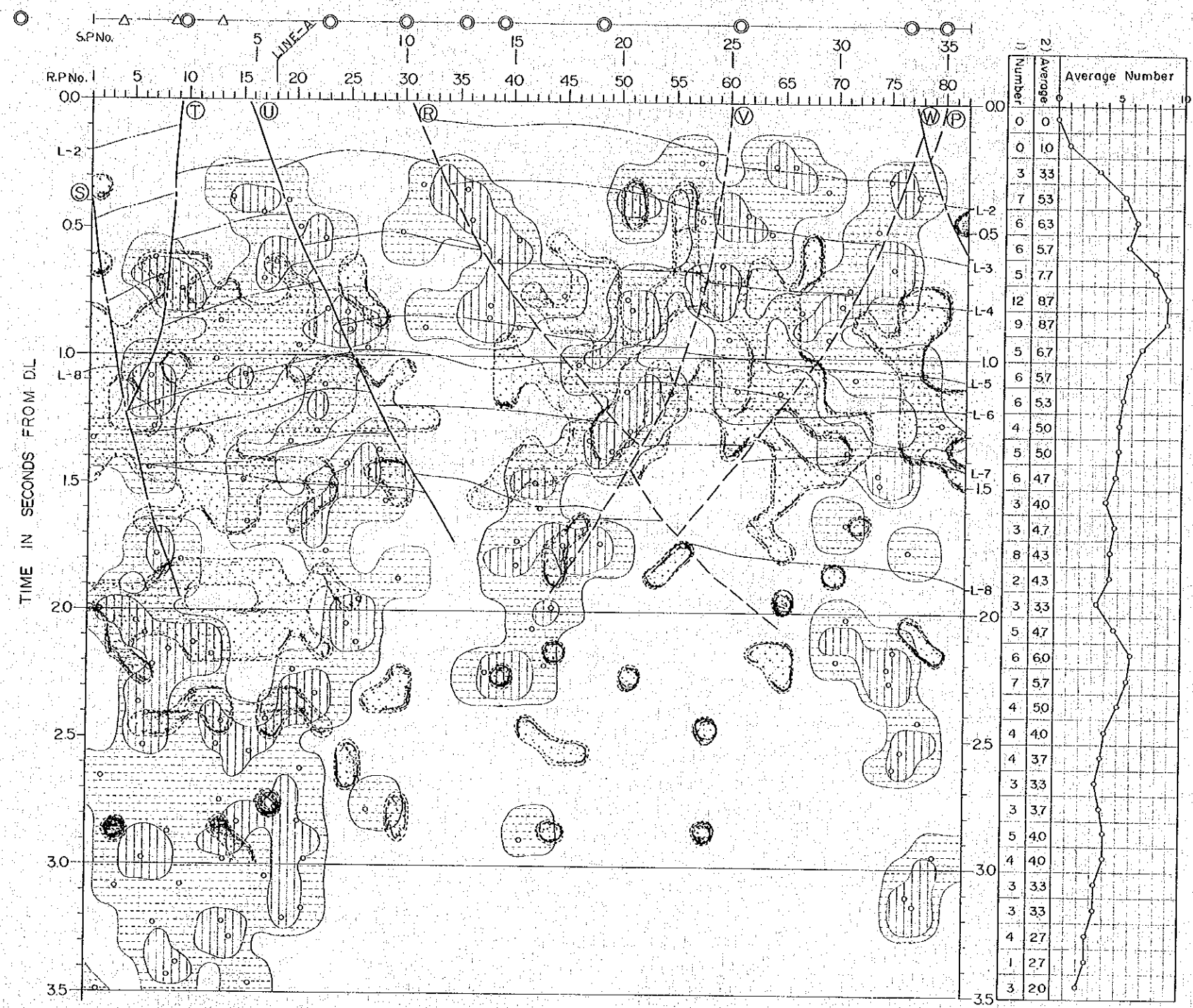
- Source number 0
- Source number 1
- Source number 2
- Source number 3
- Decided fault (ex. T fault)
- Presumptive fault (ex. V fault)
- Reflection layer (ex. L-8 Reflective layer)
- Low frequency zone (< 20HZ)
- Diffraction source
- Side reflection point
- Decided fault point



11019

LEGEND

- Source number 0
- Source number 1
- Source number 2
- Source number 3
- Decided fault (ex. T fault)
- Presumptive fault (ex. V fault)
- Reflection layer (ex. L-8 Reflective layer)
- Low frequency zone (< 20Hz)
- Diffraction source
- Side reflection point
- Decided fault point



1) Number	3	3	13	8	4	9	7	6	10	6	7	3	2	2	4	6	5	4	2	2	7	1	1	4	3	2	3	2	6	2	9	7	2	0
2) Average	30	63	80	83	70	67	73	77	73	77	53	40	23	20	27	40	50	50	37	27	37	33	30	27	30	27	23	37	33	57	60	60	30	10

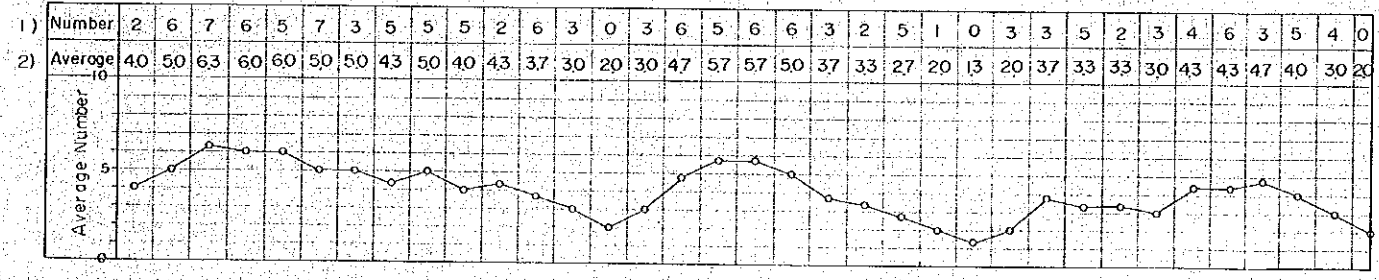
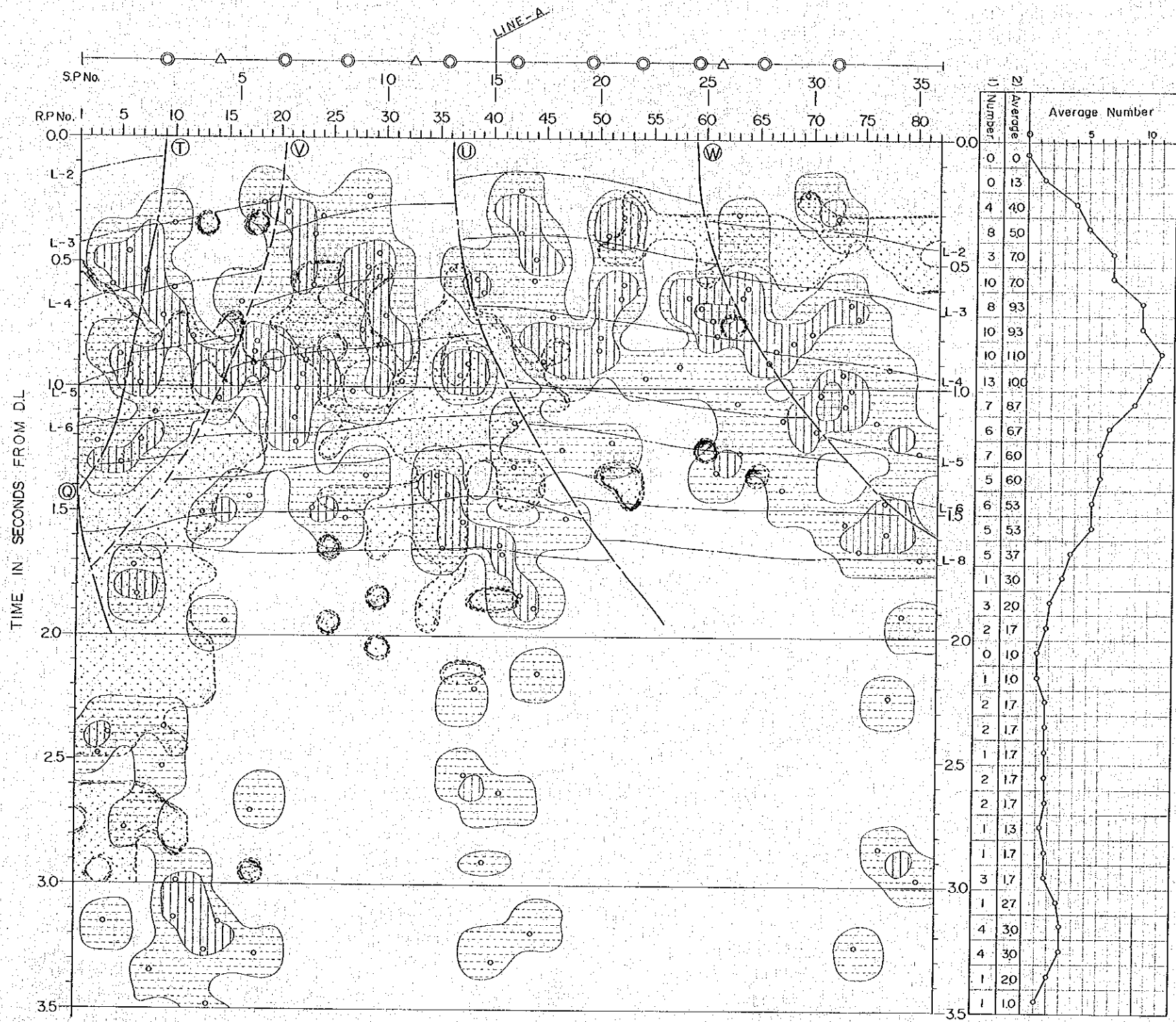
1) Number ; Number of diffraction source point  
2) Average ; 3 Point moving average



11019

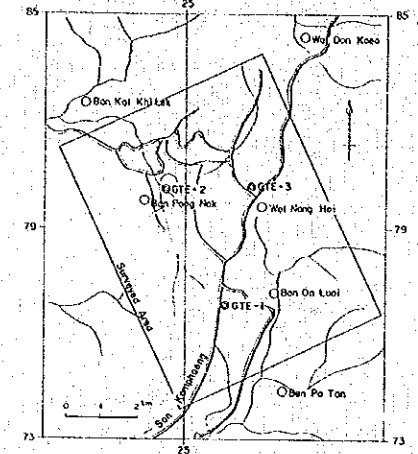
LEGEND

- Source number 0
- Source number 1
- Source number 2
- Source number 3
- Decided fault (ex. T fault)
- Presumptive fault (ex. V fault)
- Reflection layer (ex. L-8 Reflective layer)
- Low frequency zone (< 20HZ)
- Diffraction source
- Side-reflection point
- Decided fault point



1) Number ; Number of diffraction source point  
2) Average ; 3Point moving average

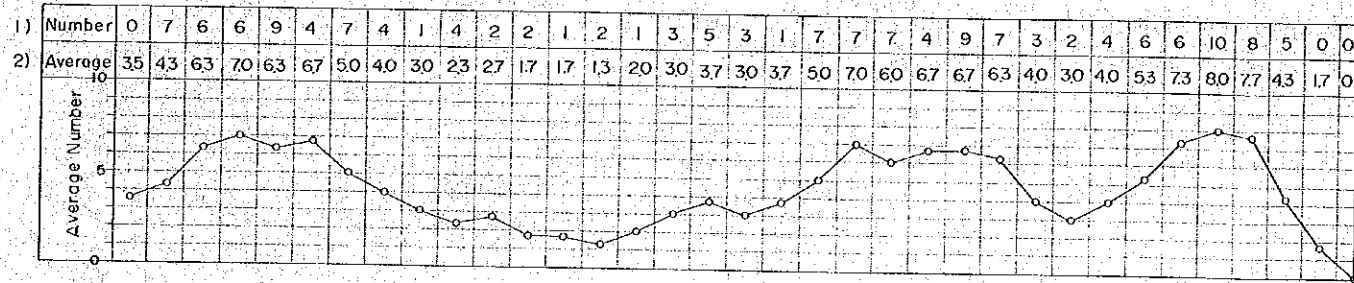
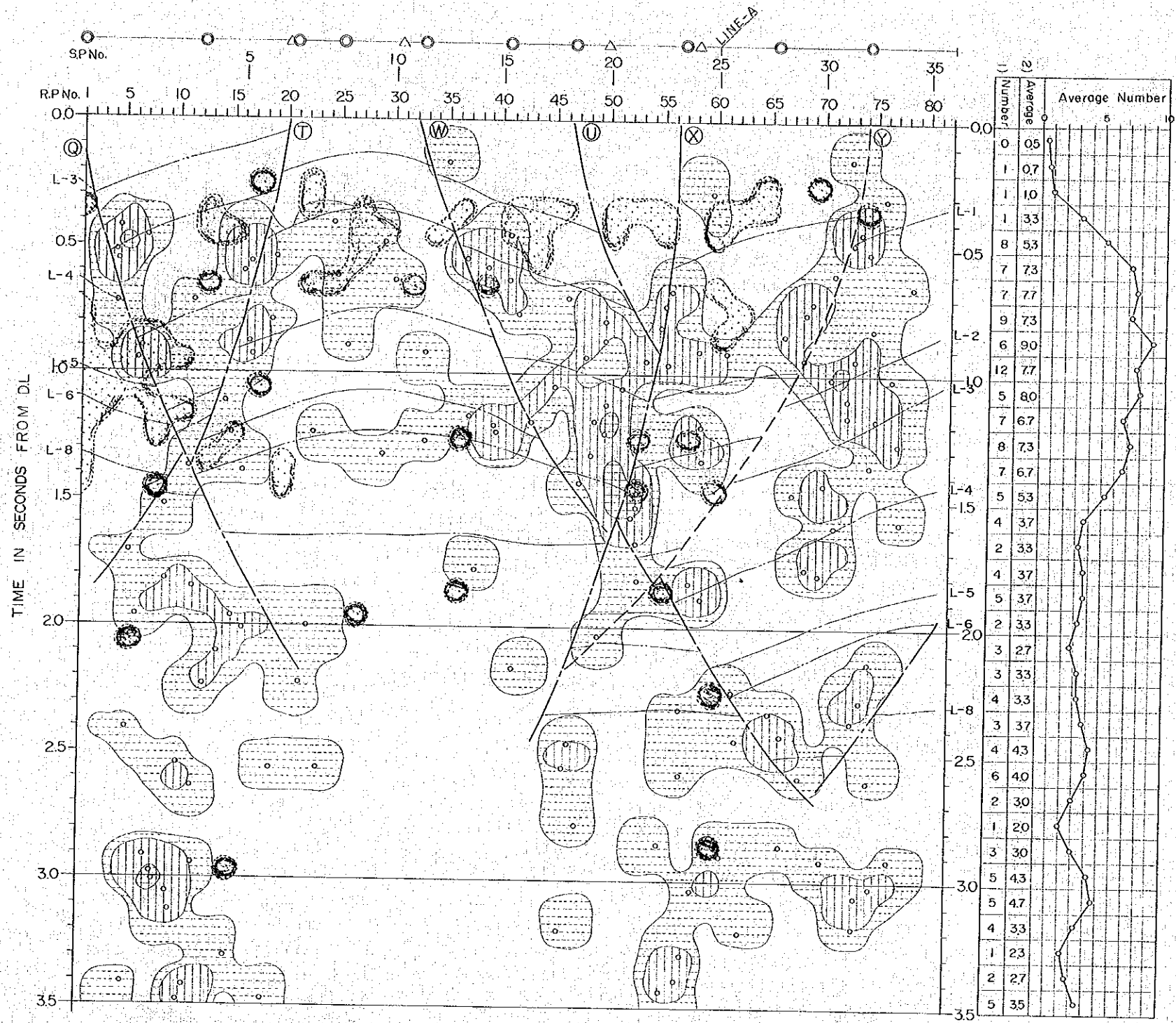
DIFFRACTION SOURCE DISTRIBUTION MAP  
 (LINE - D)



JAPAN INTERNATIONAL COOPERATION AGENCY  
 ELECTRICITY GENERATING AUTHORITY OF THAILAND  
 DEPARTMENT OF MINERAL RESOURCES  
 CHIANG MAI UNIVERSITY

MARCH 1983

11019

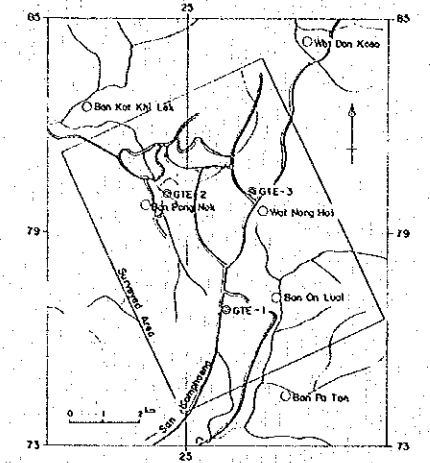


1) Number ; Number of diffraction source point  
 2) Average ; 3 Point moving average

LEGEND

- Source number
  - 0
  - 1
  - 2
  - 3 ~
- Decided fault ( ex. T fault )
- Presumptive fault ( ex. V fault )
- Reflection layer ( ex. L-8 Reflective layer )
- Low frequency zone ( < 20Hz )
- Diffraction source
- Side reflection point
- Decided fault point

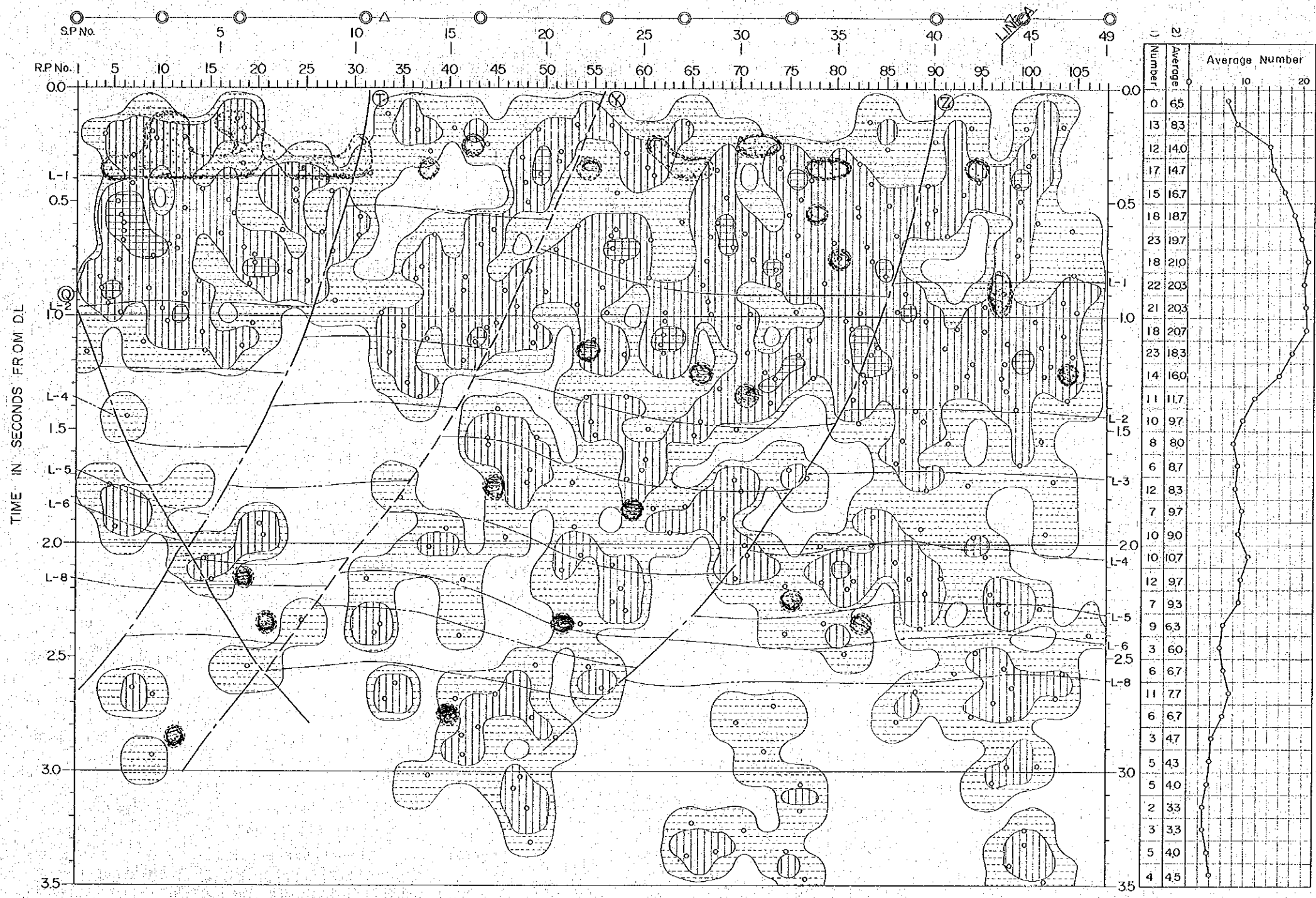
DIFFRACTION SOURCE DISTRIBUTION MAP  
 (LINE - E)



JAPAN INTERNATIONAL COOPERATION AGENCY  
 ELECTRICITY GENERATING AUTHORITY OF THAILAND  
 DEPARTMENT OF MINERAL RESOURCES  
 CHIANG MAI UNIVERSITY

MARCH 1983

11019



1) Number	1	7	11	9	8	7	5	10	2	4	4	3	4	6	4	9	4	10	10	9	11	6	12	11	7	11	7	7	3	16	7	13	11	6	11	10	11	13	7	10	11	18	10	10	5	0
2) Average	4.0	6.3	9.0	9.3	8.0	6.7	7.3	5.7	5.3	3.3	3.7	3.7	4.3	4.7	6.3	5.7	7.7	8.0	9.7	10.0	8.7	9.7	9.7	10.0	9.7	8.3	8.3	7.3	10.3	10.3	12.0	10.3	10.0	9.3	9.0	10.7	11.3	10.3	10.0	9.3	13.0	13.0	12.7	8.3	5.0	2.5

1) Number ; Number of diffraction source point  
 2) Average ; 3 Point-moving average

LEGEND

- Source number 0
- 1
- 2
- 3 ~
- Decided fault (ex. T fault)
- Presumptive fault (ex. V fault)
- Reflection layer (ex. L-8 Reflective layer)
- Low frequency zone (< 20HZ)
- Diffraction source
- Side reflection point
- Decided fault point