

PL112-6
 THE PRE-FEASIBILITY STUDY
 ON
 THE SAN KAMPANG GEOTHERMAL DEVELOPMENT PROJECT
 IN THE KINGDOM OF THAILAND
 PROFILE OF UNDERGROUND STRUCTURE
 (GRAVITY SURVEY)
 (MAGNETIC SURVEY)
 (A - A')
 JAPAN INTERNATIONAL COOPERATION AGENCY
 ELECTRICITY GENERATING AUTHORITY OF THAILAND
 DEPARTMENT OF MINERAL RESOURCES
 CHIANG MAI UNIVERSITY
 MARCH 1983



LEGEND

GRAVITY PROFILE

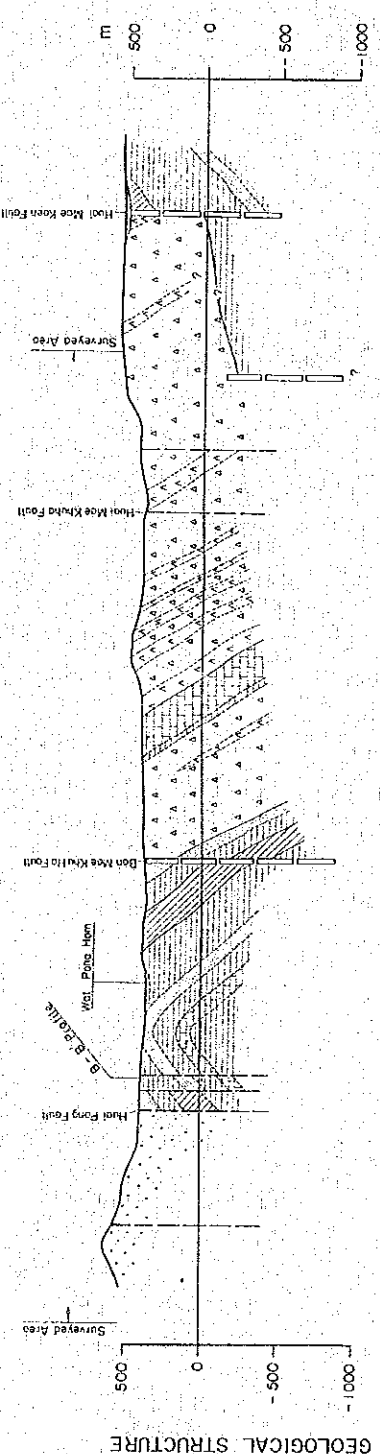
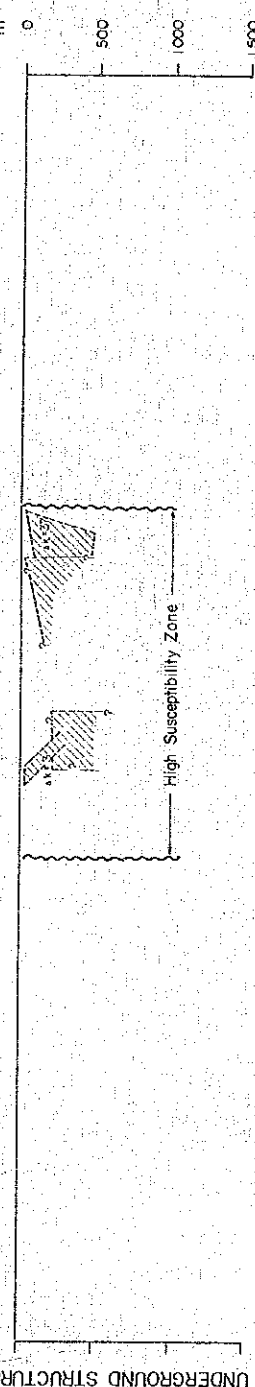
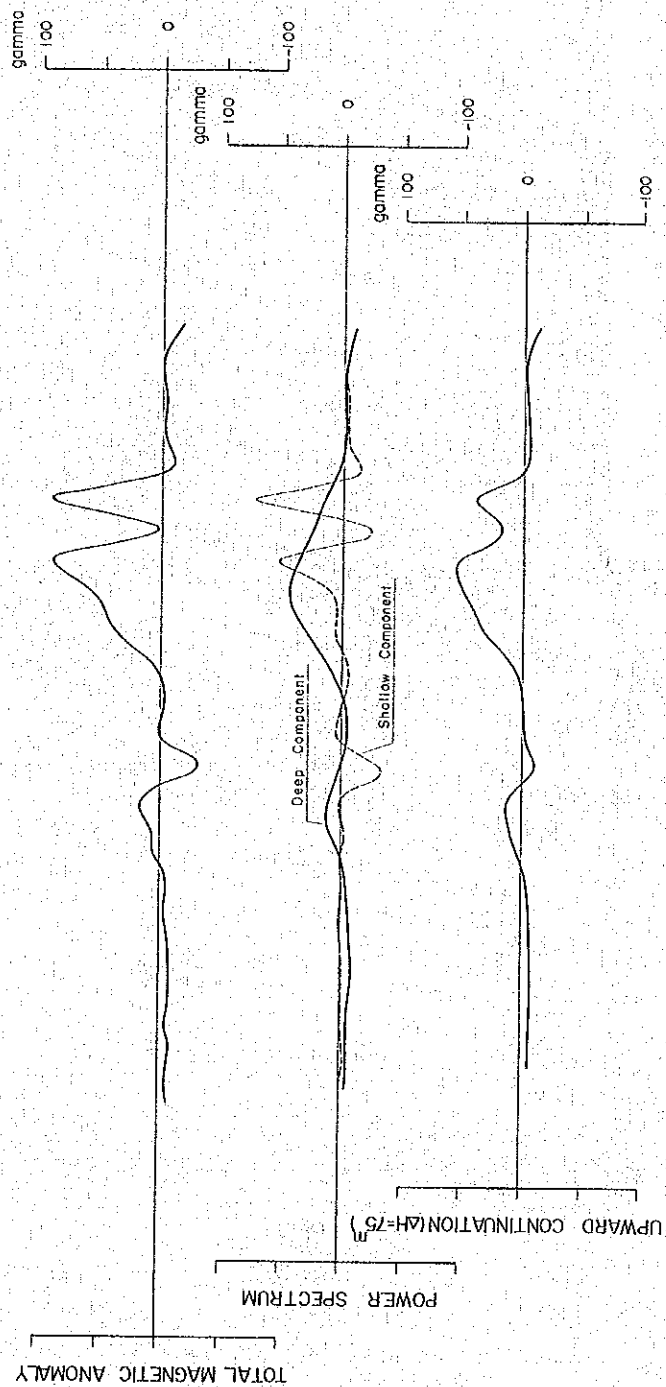
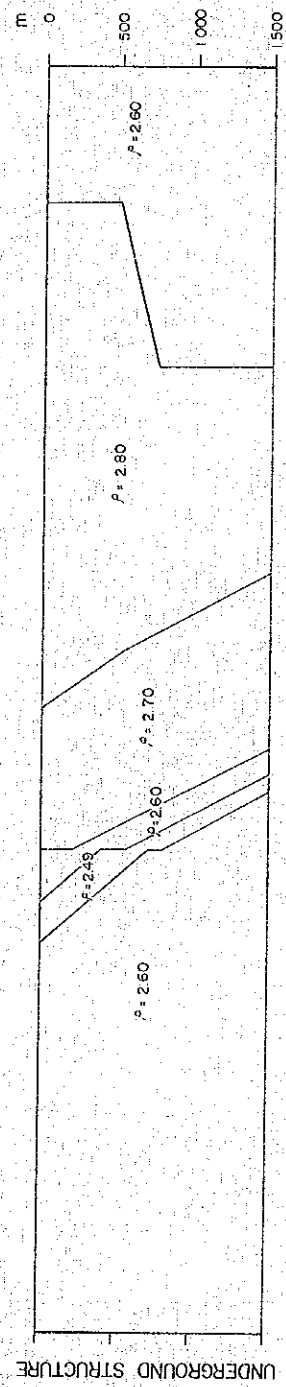
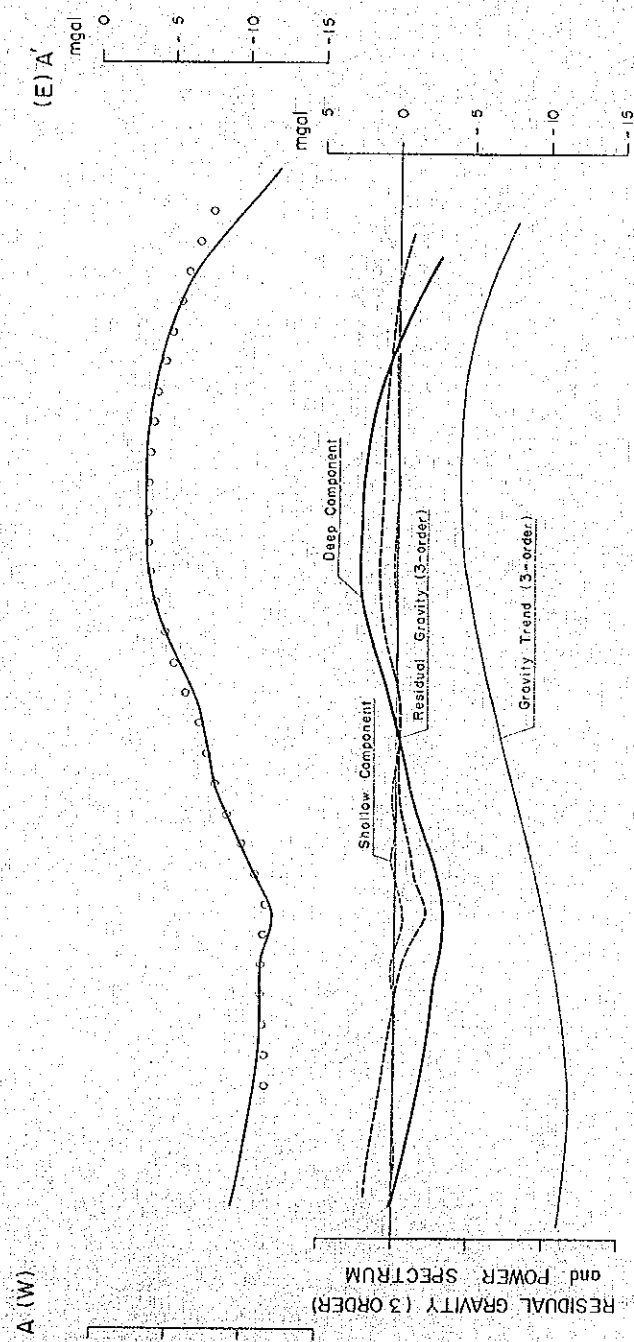
- Estimated gravity values
- ρ Assumed density (g/cm³)

MAGNETIC PROFILE

- Magnetic body
- Magnetic susceptibility (10⁻⁶ cgsemu)
- Magnetic boundary

GEOLOGICAL PROFILE

- Alluvium
- Upper: Basaltic tuff, tuff breccia, lapilli, tuff, Basalt
- Middle-Lower: Shale, Sandstone, Chert, Limestone, Sandstone
- Carboniferous Mae Tho Formation
- Fault
- Fault-like structure (Density boundary)



PL112-7
 THE PRE-FEASIBILITY STUDY
 ON
 THE SAN KAMPAENG GEOTHERMAL DEVELOPMENT PROJECT
 IN THE KINGDOM OF THAILAND

PROFILE OF UNDERGROUND STRUCTURE
 (GRAVITY SURVEY)
 (MAGNETIC SURVEY)
 (B - B')

JAPAN INTERNATIONAL COOPERATION AGENCY
 ELECTRICITY GENERATING AUTHORITY OF THAILAND
 DEPARTMENT OF MINERAL RESOURCES
 CHIANG MAI UNIVERSITY
 MARCH 1982



LEGEND

GRAVITY PROFILE

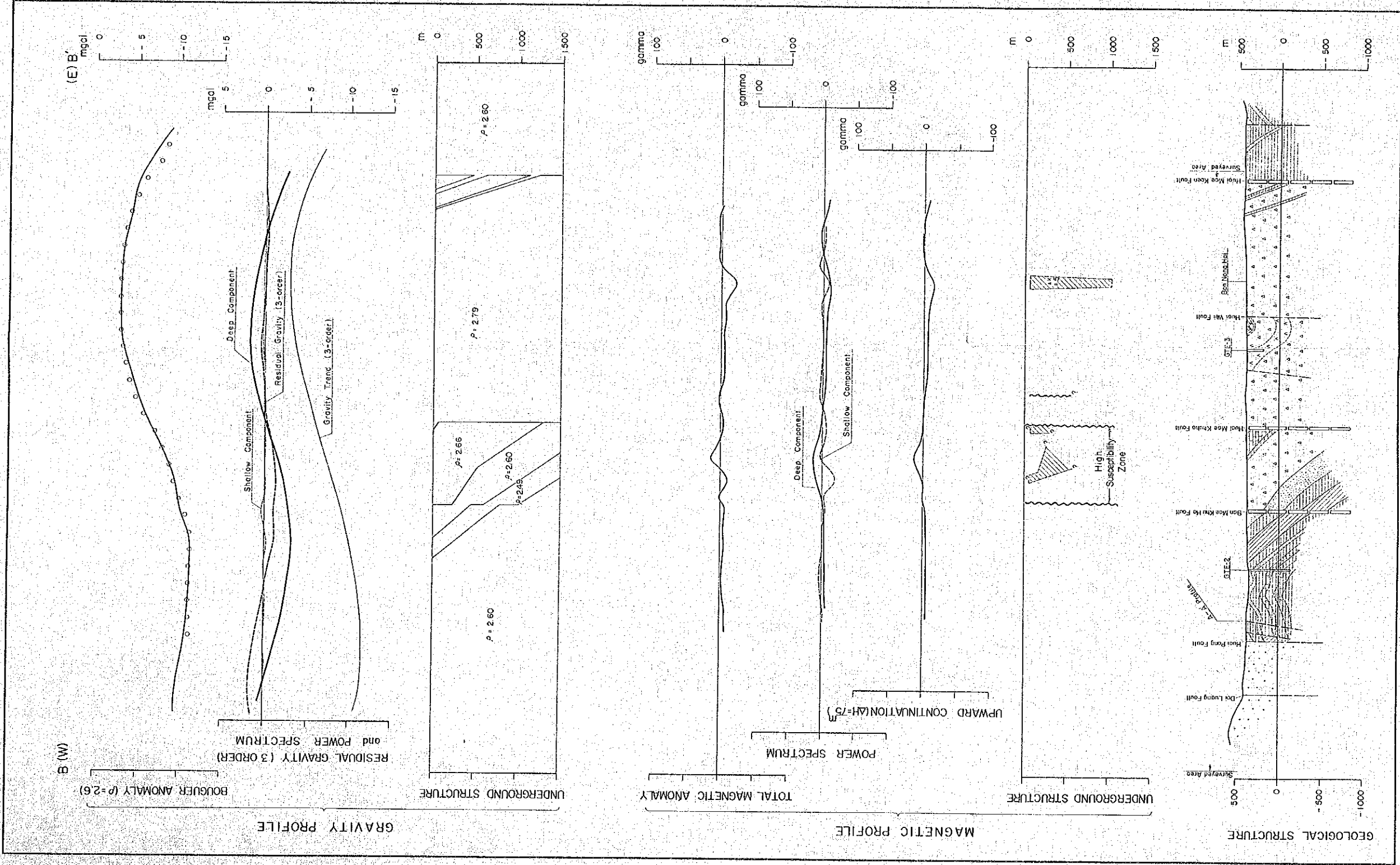
- Estimated gravity values
- P Assumed density (g/cm^3)

MAGNETIC PROFILE

- ▨ Magnetic body
- * x Magnetic susceptibility (10^{-4} oersted)
- ~ Magnetic boundary

GEOLOGICAL PROFILE

- Alluvium
- Upper: Basaltic tuff, tuff breccio, lapilli tuff, Basalt
- Middle-Lower: Shale, Sandstone, Chert, Limestone
- Carboniferous Mee Tha Formation: Sandstone
- Fault
- Fault-like structure (Density boundary)



THE PRE-FEASIBILITY STUDY
ON
THE SAN KAMPAENG GEOTHERMAL DEVELOPMENT PROJECT
IN THE KINGDOM OF THAILAND

PROFILE OF UNDERGROUND STRUCTURE
(GRAVITY SURVEY)
(MAGNETIC SURVEY)
(C - C')

JAPAN INTERNATIONAL COOPERATION AGENCY
ELECTRICITY GENERATING AUTHORITY OF THAILAND
DEPARTMENT OF MINERAL RESOURCES
CHIANG MAI UNIVERSITY
MARCH 1985



LEGEND

GRAVITY PROFILE

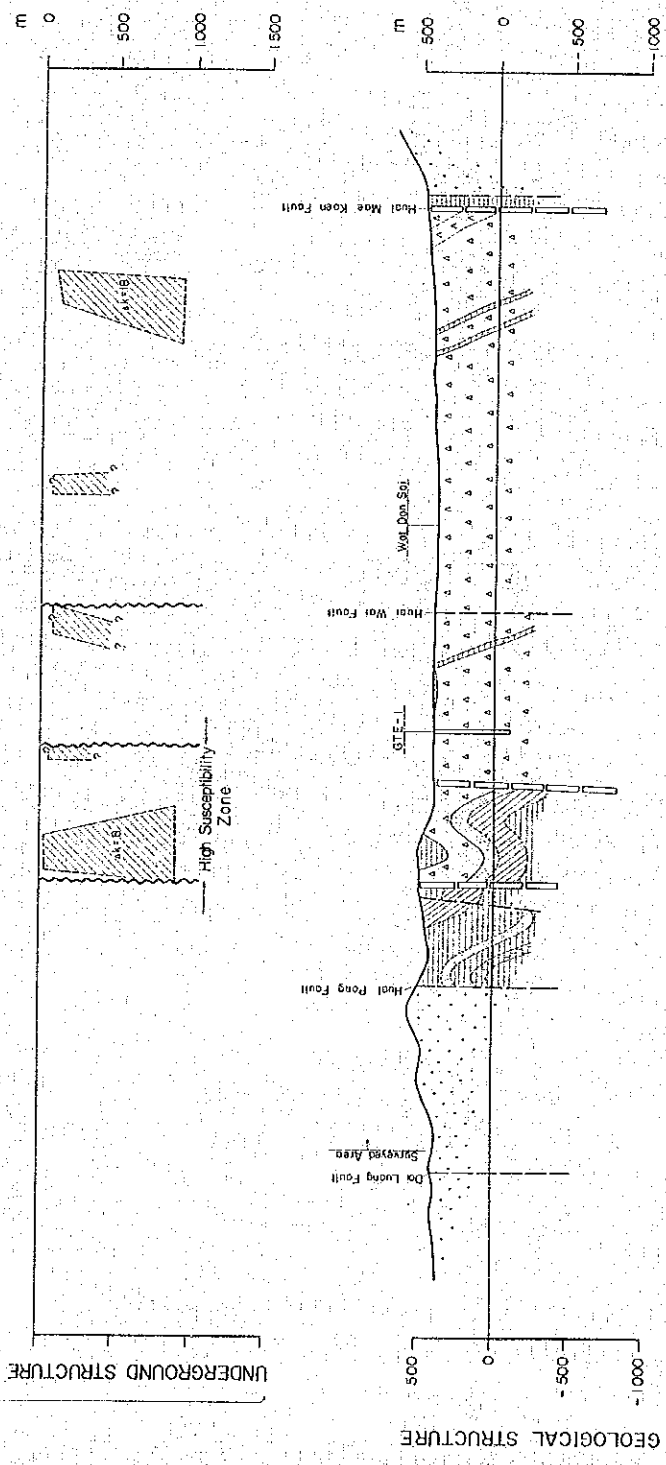
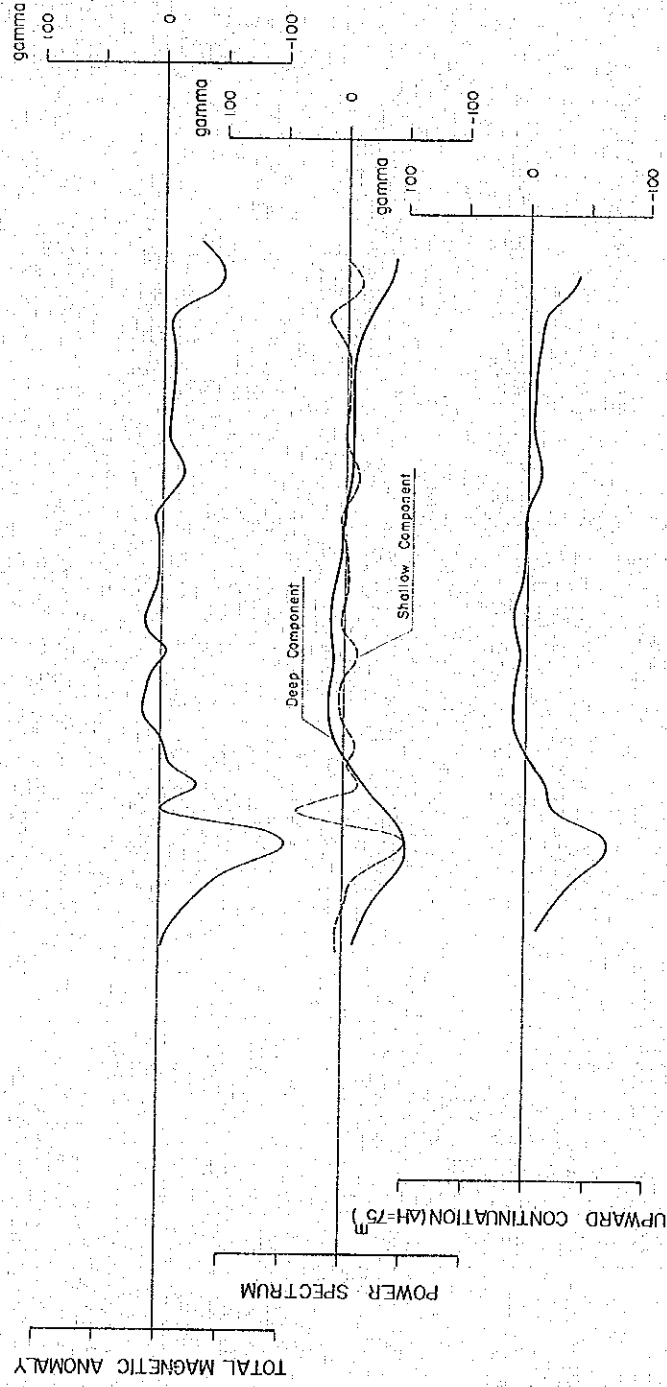
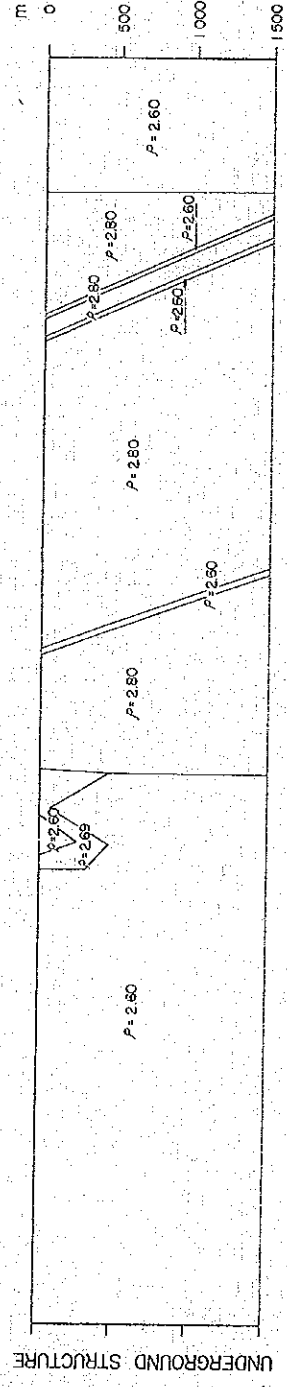
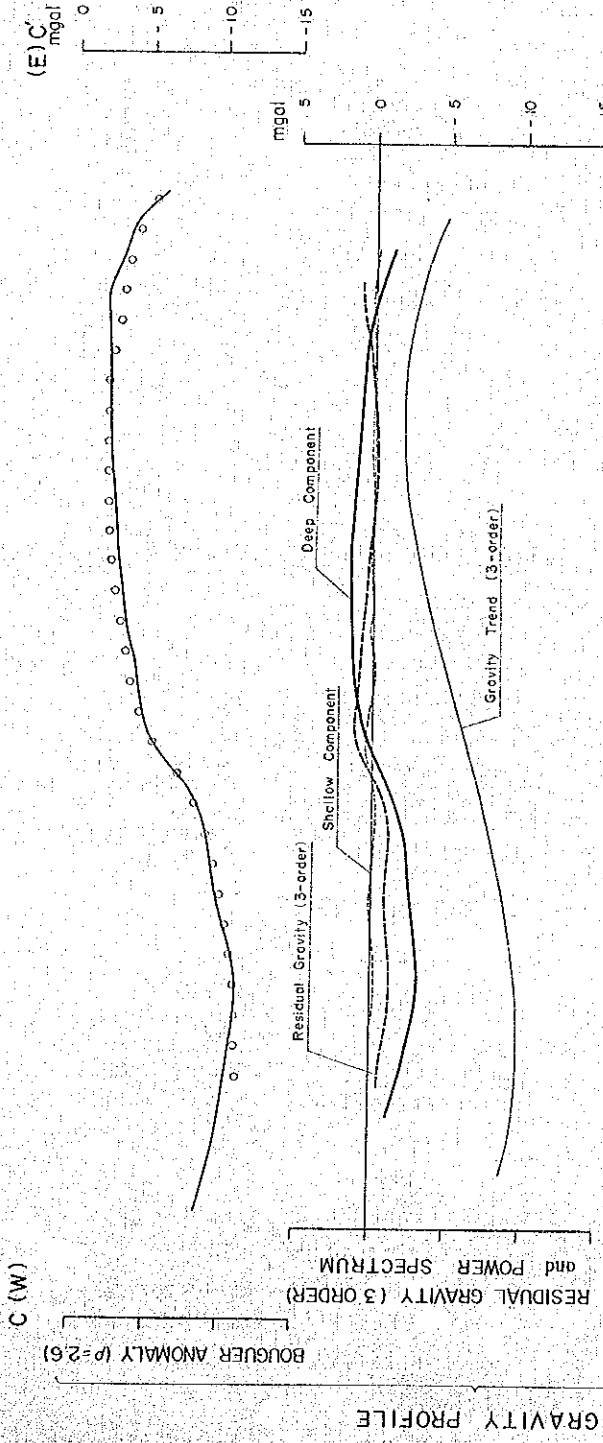
- O Estimated gravity values
- P Assumed density (g/cm^3)

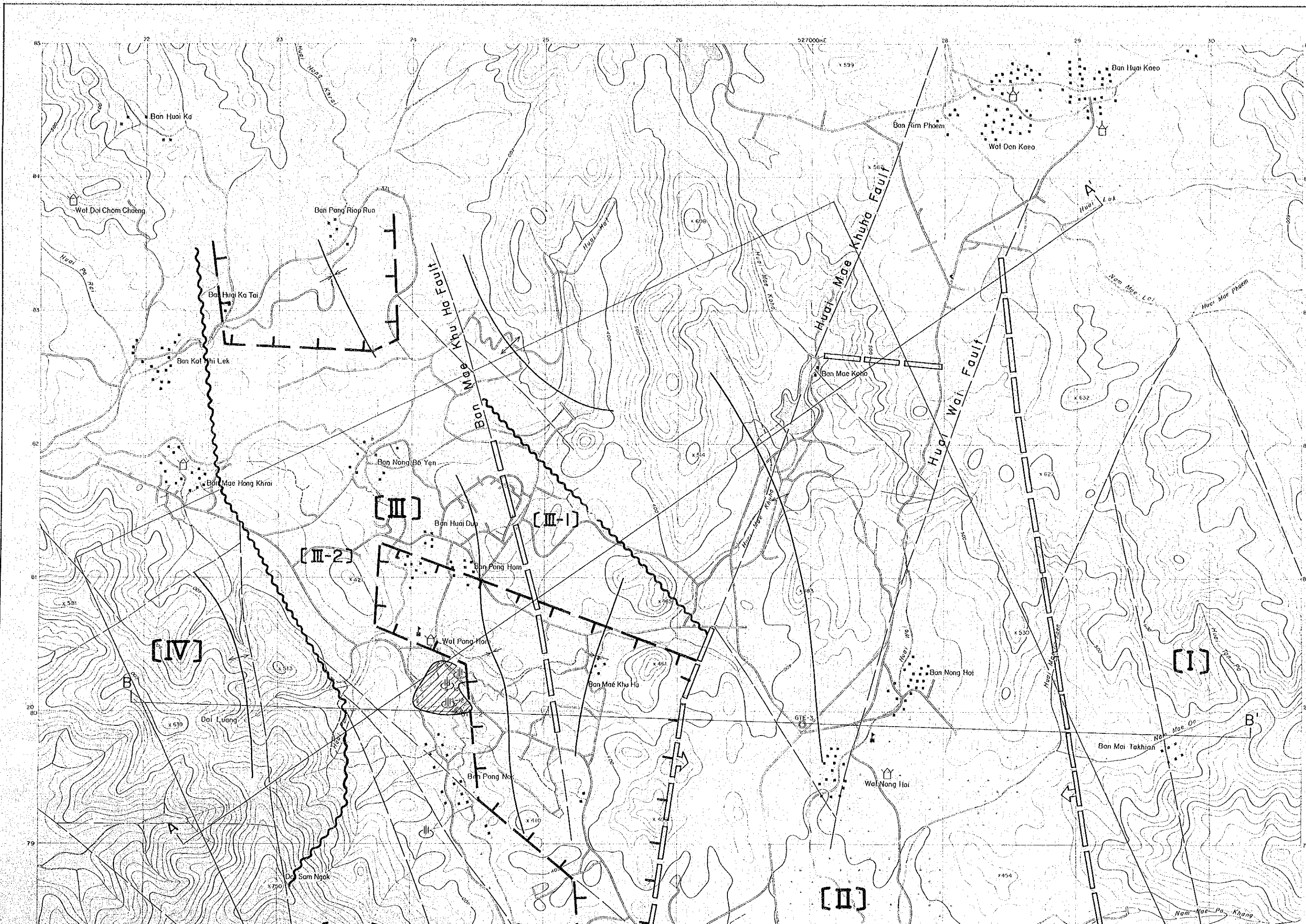
MAGNETIC PROFILE

- Magnetic body
- sk Magnetic susceptibility (10^{-4} cgsemu)
- Magnetic boundary

GEOLOGICAL PROFILE

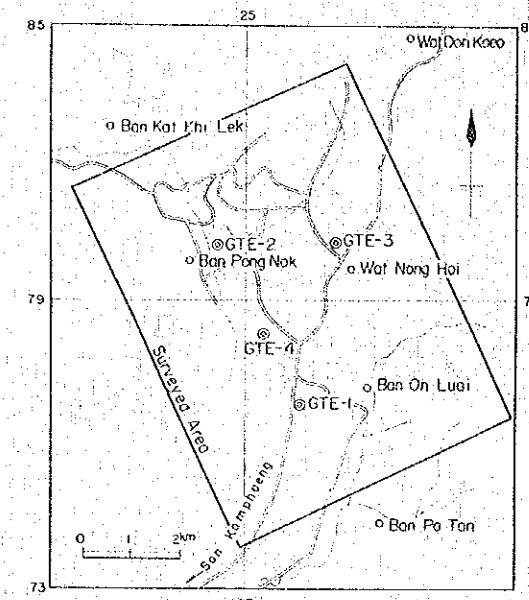
- Alluvium
- Upper: Basaltic tuff, tuff breccia, Lepilit tuff, Basalt
- Middle-Lower: Sandstone, Chert, Limestone, Sandstone
- Carboniferous Mae Tha Formation
- Fault
- Fault-like structure (Density boundary)





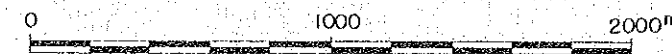
THE PRE-FEASIBILITY STUDY
 ON
 THE SAN KAMPAENG GEOTHERMAL DEVELOPMENT PROJECT
 IN THE KINGDOM OF THAILAND

UNDERGROUND STRUCTURE



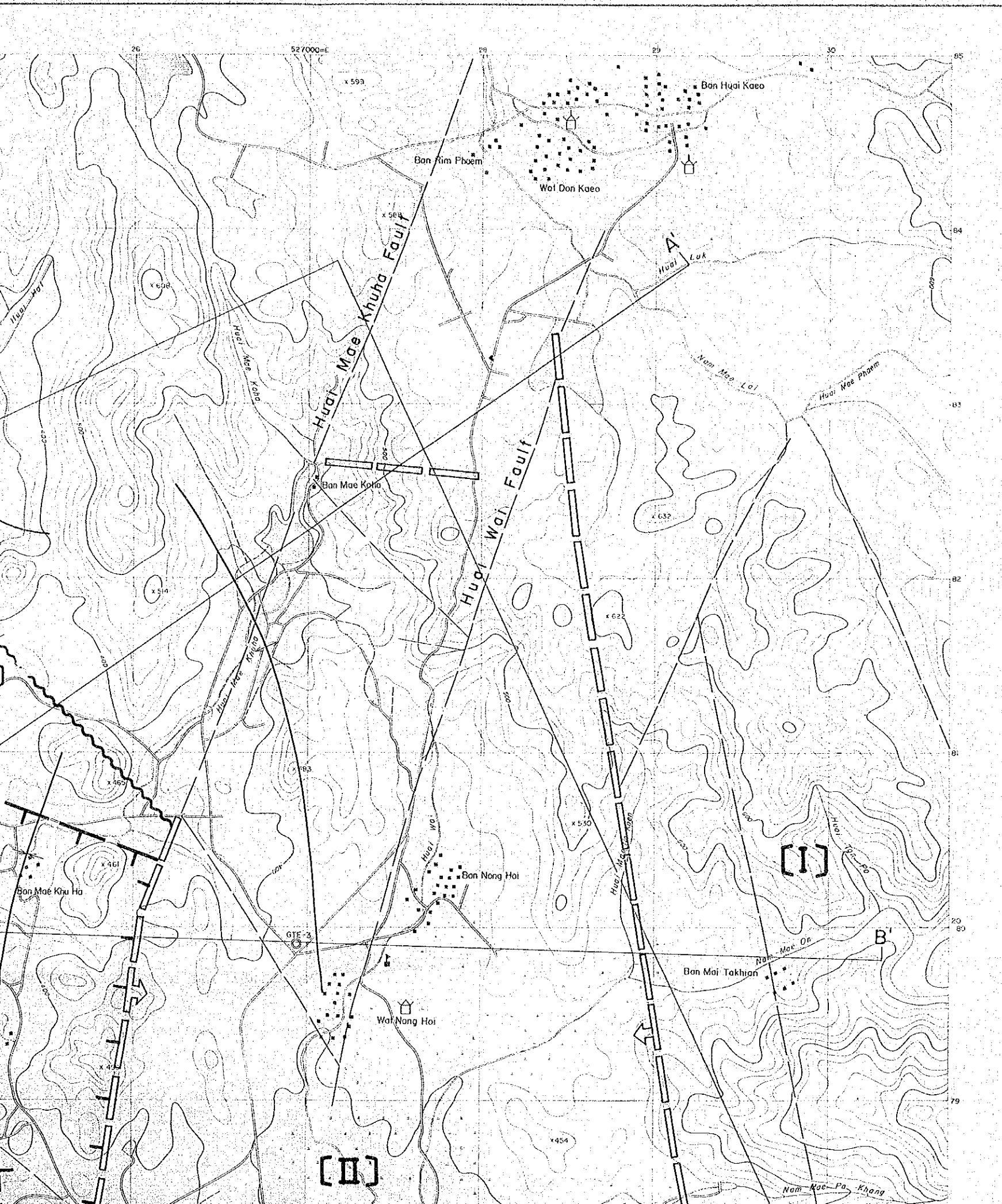
JAPAN INTERNATIONAL COOPERATION AGENCY
 ELECTRICITY GENERATING AUTHORITY OF THAILAND
 DEPARTMENT OF MINERAL RESOURCES
 CHIANG MAI UNIVERSITY

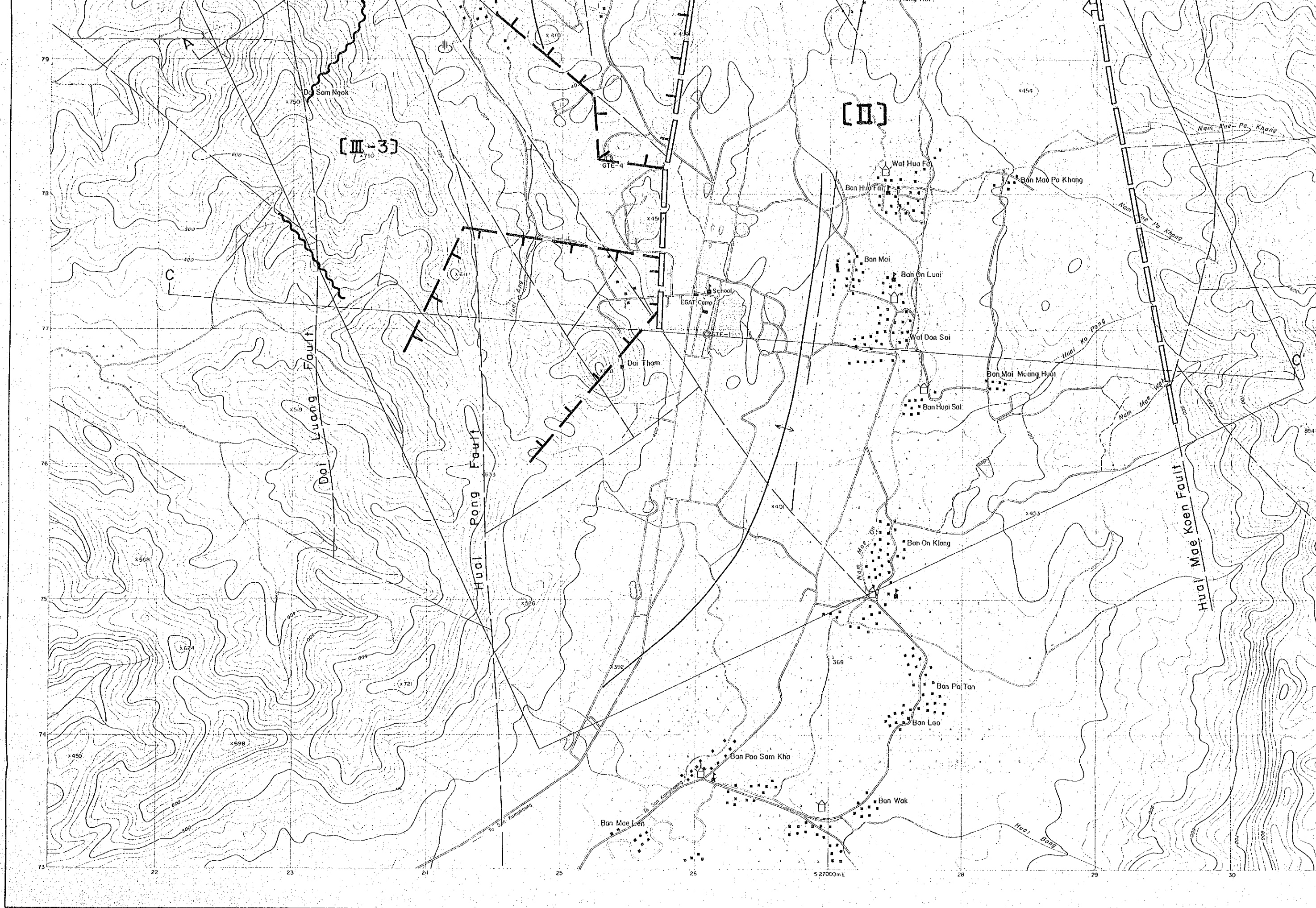
MARCH 1983



LEGEND

- Confirmed road
- Unconfirmed road
- Huai Wai Stream
- Wat
- School
- Disc field





[III-3]

[II]

Doi Sam Ngok
x750

Doi Luang Fault

Huoi Pong Fault

Huoi Mae Koen Fault

Nam Mae Po Khang

Nam Mae Po Khang

Huoi Ko Pong

Nam Mae Po Khang

Nam Mae Po Khang

Nam Mae Po Khang

Nam Mae Po Khang

Nam Mae Po Khang

Nam Mae Po Khang

Nam Mae Po Khang

Nam Mae Po Khang

C

A

B

C

Doi Tham

Doi Tham

School
EGAT Camp
GTE-1

Wai Huo Fa

Ban Huoi Fai

Ban Mae Po Khang

Ban Mai

Ban On Luoi

Wai Don Sai

Ban Mai Muang Huoi

Ban Huoi Sai

Ban On Klang

Ban Po Tan

Ban Lao

Ban Pao Sam Kha

Ban Wak

Ban Mae Len

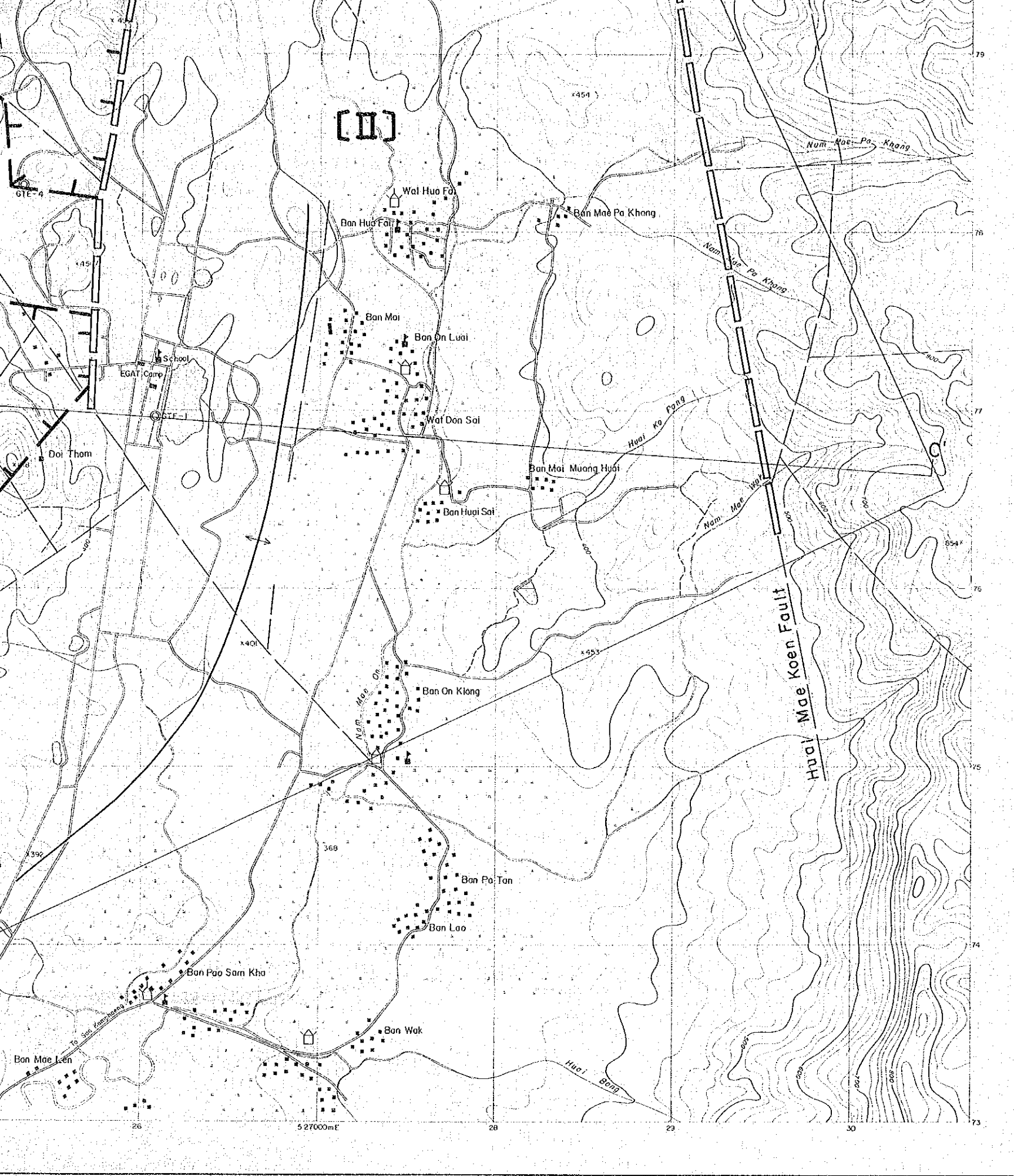
To Sam Ranghang

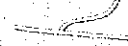
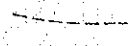
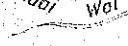
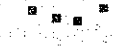



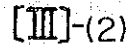



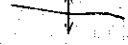




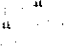
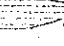
Huoi Bong

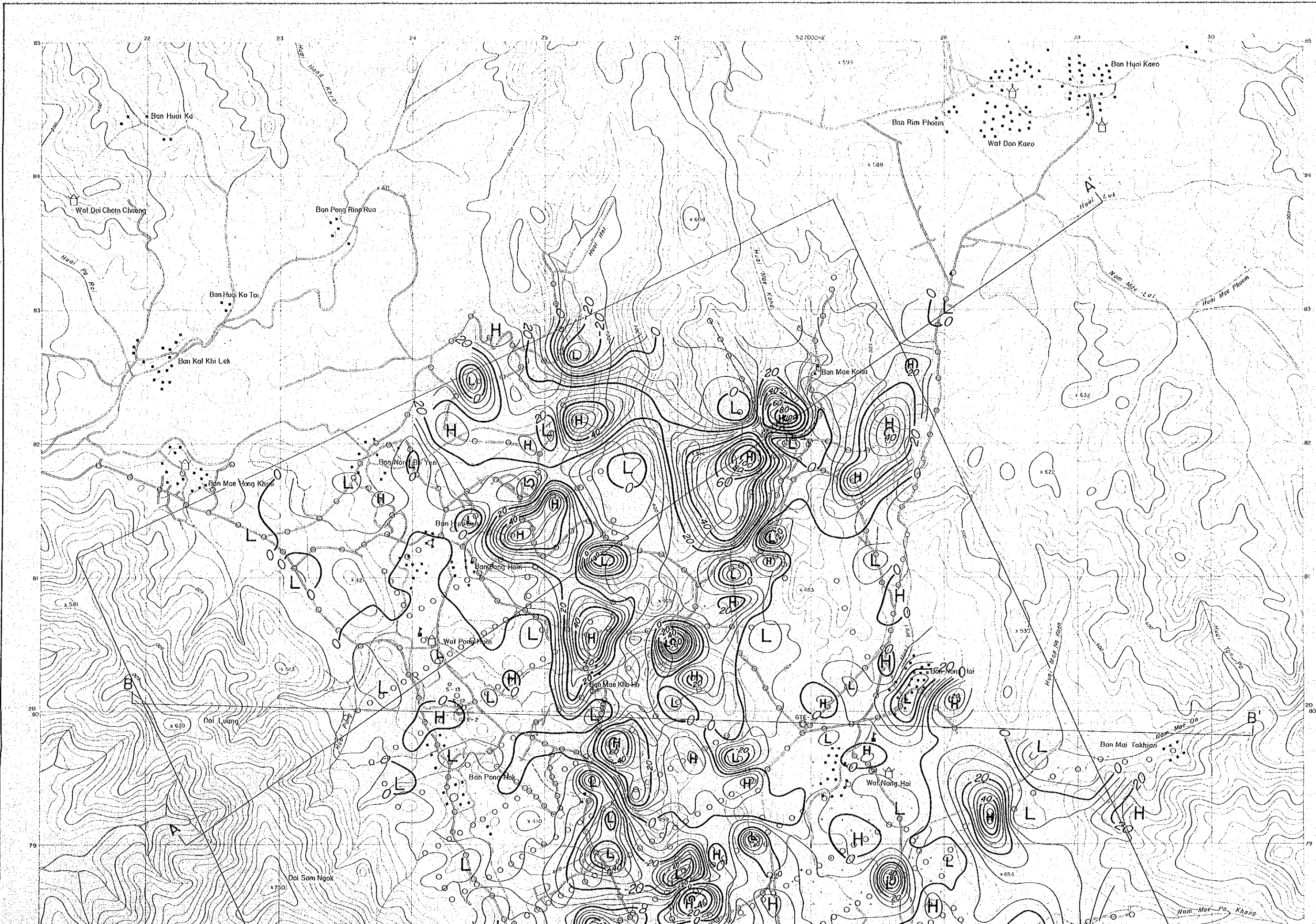
79
78
77
76
75
74
73

22 23 24 25 26 27 28 29 30

5 27000 m E

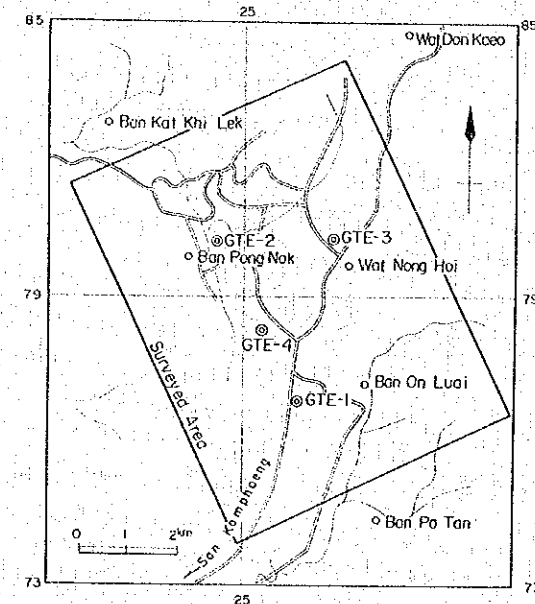


-  Confirmed road
-  Unconfirmed road
-  Stream
-  Village
-  Drill hole
-  Profile of underground structure
-  Geothermal manifestation
-  [III]-(2) Block of gravity structure
-  Fault-like structure and dip direction
-  Density boundary
-  Main fault
-  Axis of high gravity
-  Axis of low gravity
-  Low residual gravity zone (third order polynomial)
-  Wat
-  School
-  " " Rice field
-  Dam (water reserve)



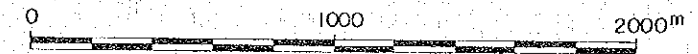
THE PRE-FEASIBILITY STUDY
ON
THE SAN KAMPAENG GEOTHERMAL DEVELOPMENT PROJECT
IN THE KINGDOM OF THAILAND

TOTAL MAGNETIC INTENSITY



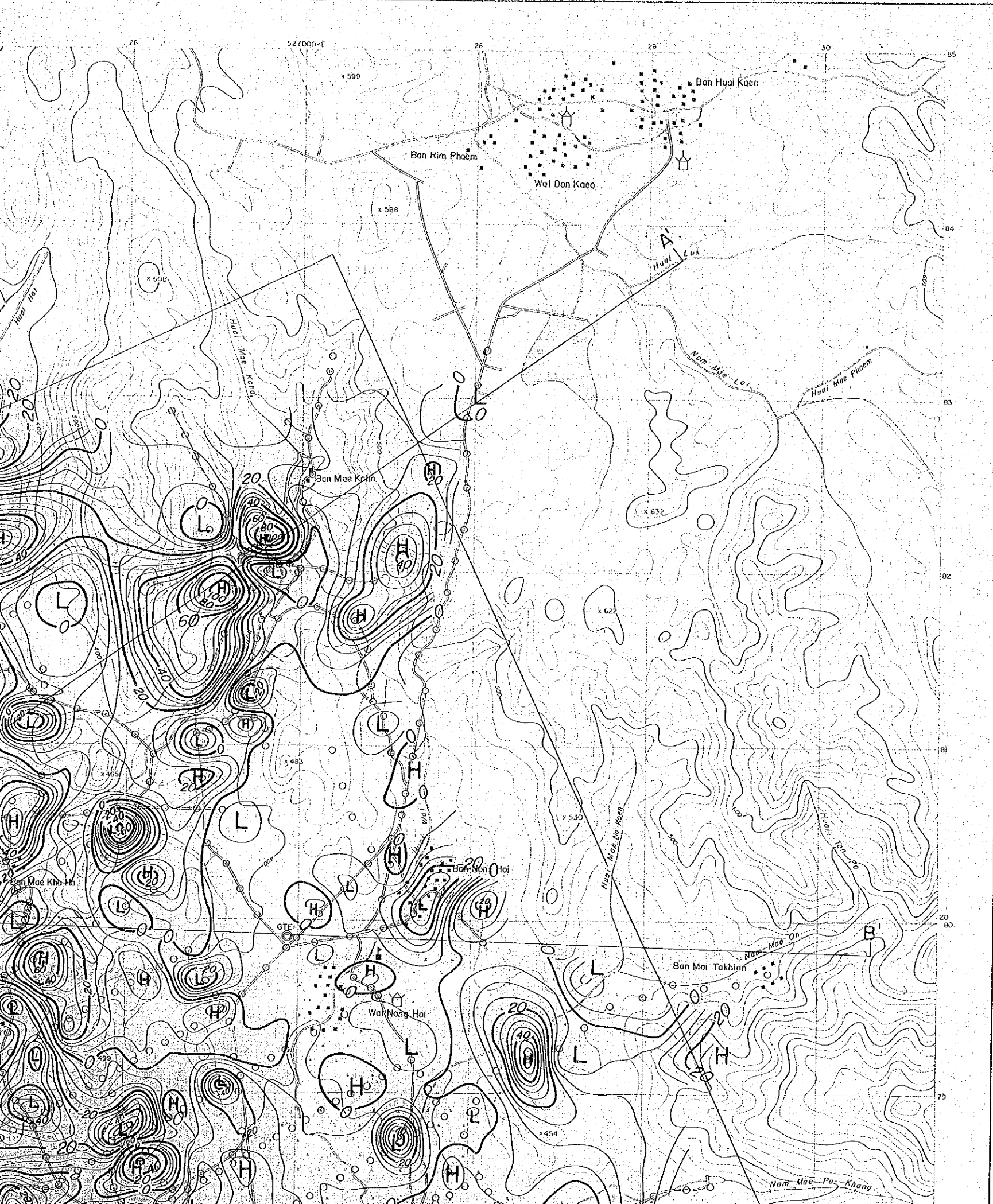
JAPAN INTERNATIONAL COOPERATION AGENCY
ELECTRICITY GENERATING AUTHORITY OF THAILAND
DEPARTMENT OF MINERAL RESOURCES
CHIANG MAI UNIVERSITY

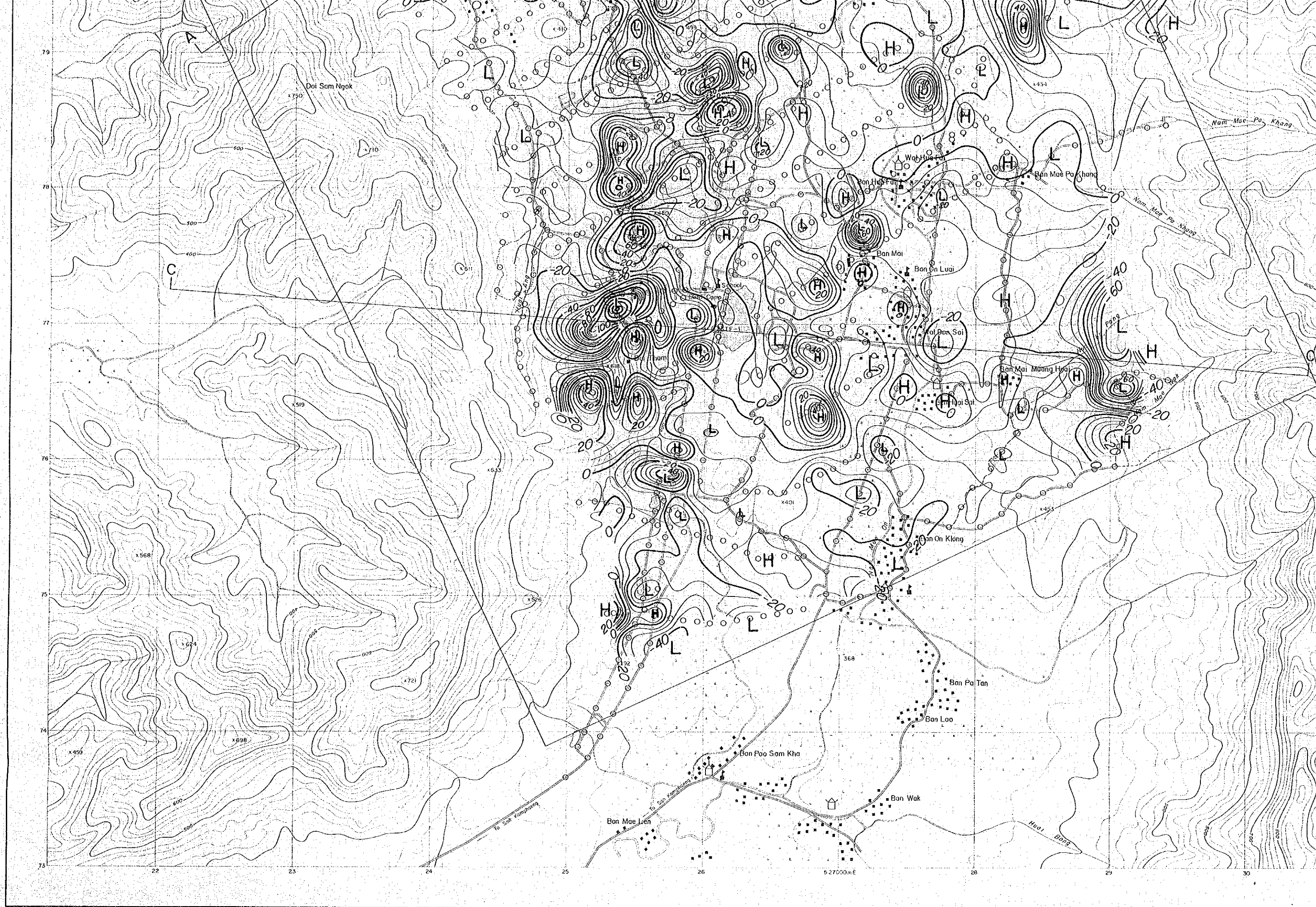
MARCH 1983

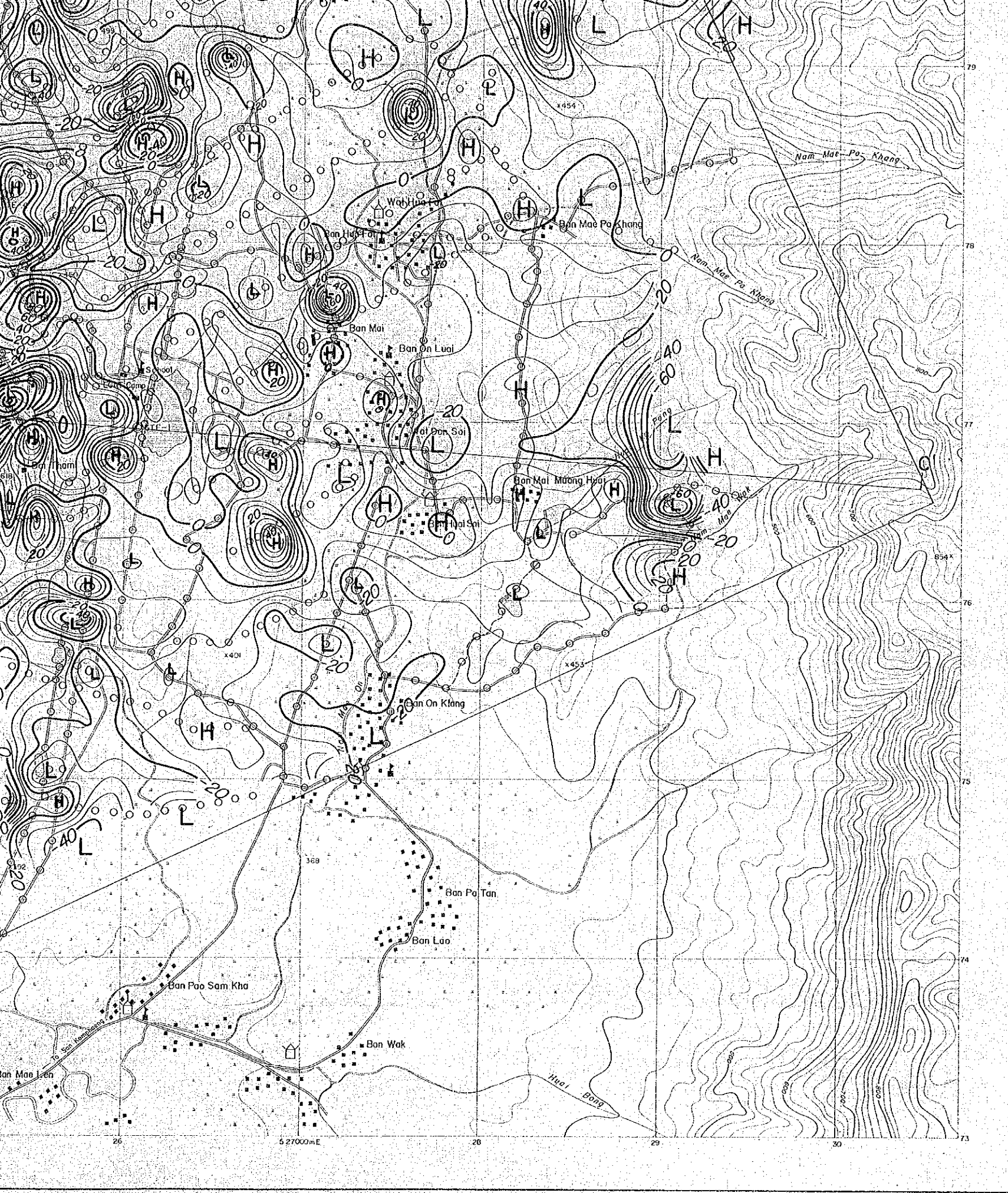


LEGEND

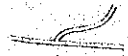
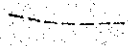
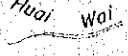
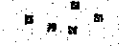



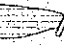
- | | | | |
|--|-------------|--|------------|
| | Wide road | | Wat |
| | Narrow pass | | School |
| | Stream | | Disc field |





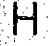

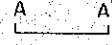






LEGEND

-  Wide road
-  Narrow pass
-  Stream
-  Village
-  Wat
-  School
-  Rice field
-  Dam (water reserve)

-  Magnetic station
-  Drill hole
-  20 gamma
-  5 gamma
-  H High magnetic anomaly
-  L Low magnetic anomaly
-  Profile of underground structure

Inclination : 15°N

Declination : N 6°W

Total intensity : 43,556 gamma