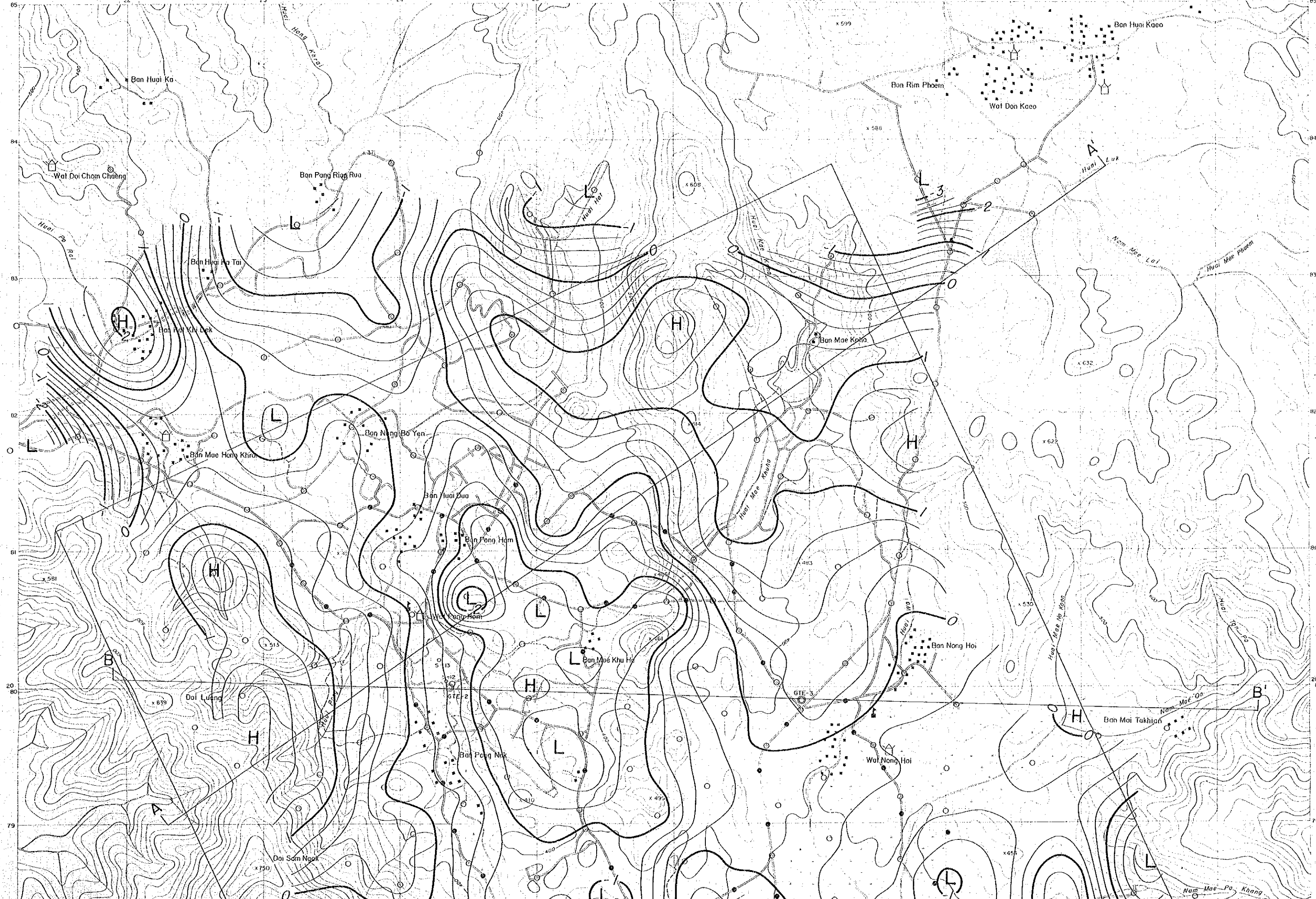


22 23 24 25 26 27 28 29 30



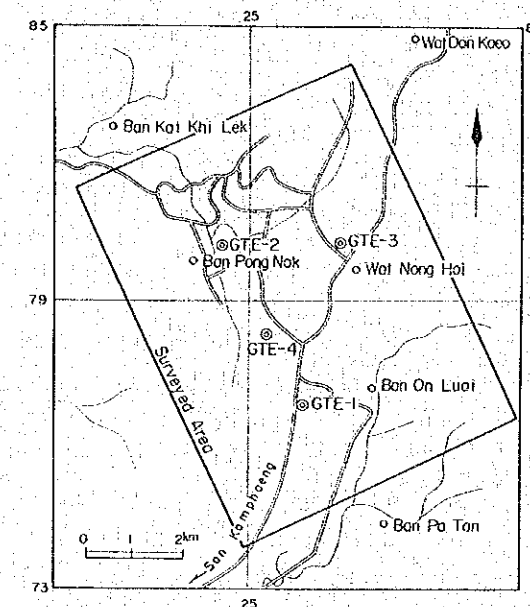
85
84
83
82
81
80
79

85
84
83
82
81
80
79

Nam Mae Phom

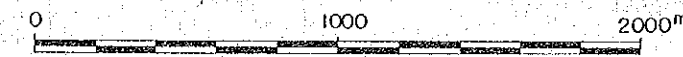
THE PRE-FEASIBILITY STUDY
ON
THE SAN KAMPAENG GEOTHERMAL DEVELOPMENT PROJECT
IN THE KINGDOM OF THAILAND

RESIDUAL GRAVITY
(THIRD ORDER POLYNOMIAL)



JAPAN INTERNATIONAL COOPERATION AGENCY
ELECTRICITY GENERATING AUTHORITY OF THAILAND
DEPARTMENT OF MINERAL RESOURCES
CHIANG MAI UNIVERSITY

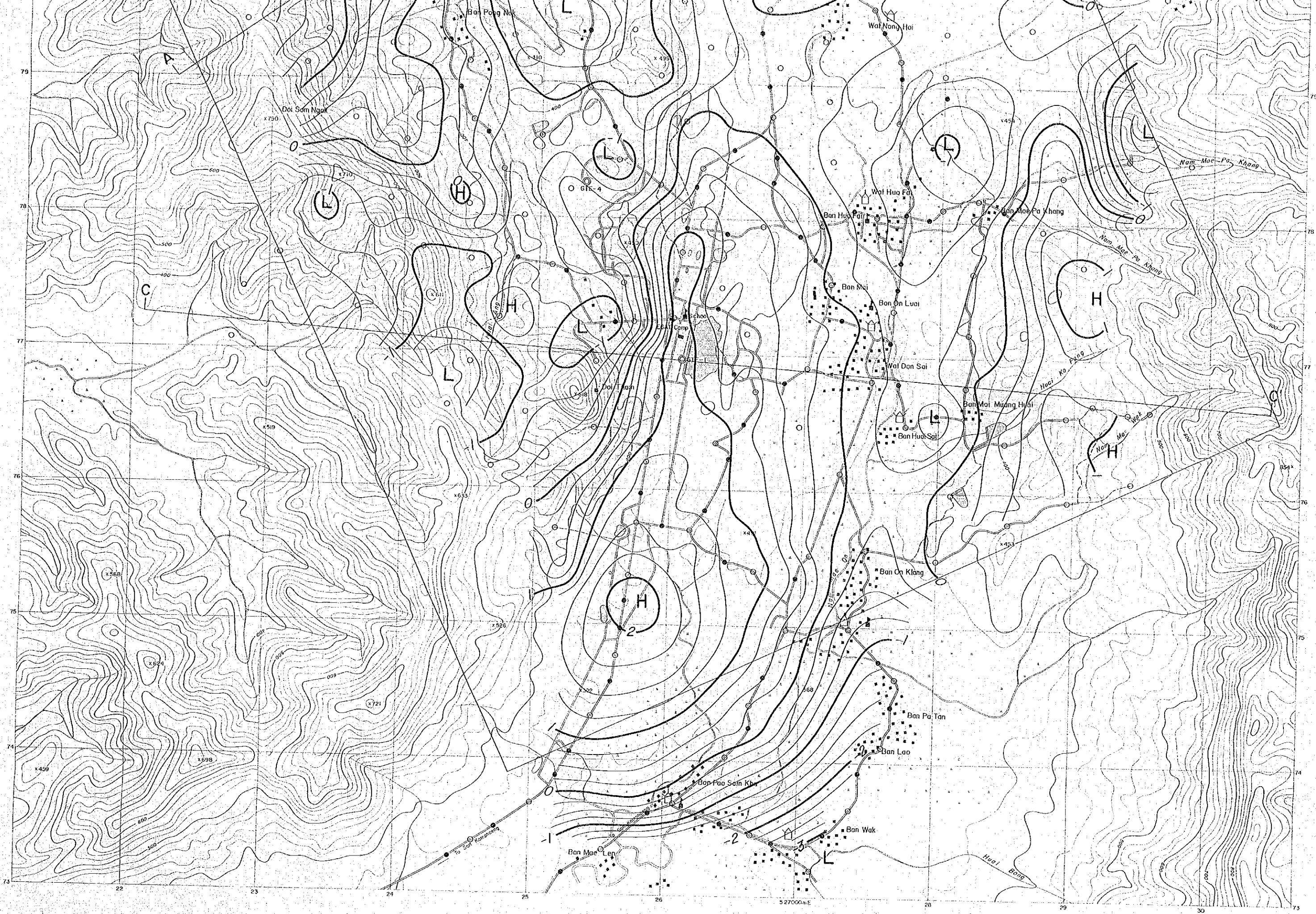
MARCH 1983

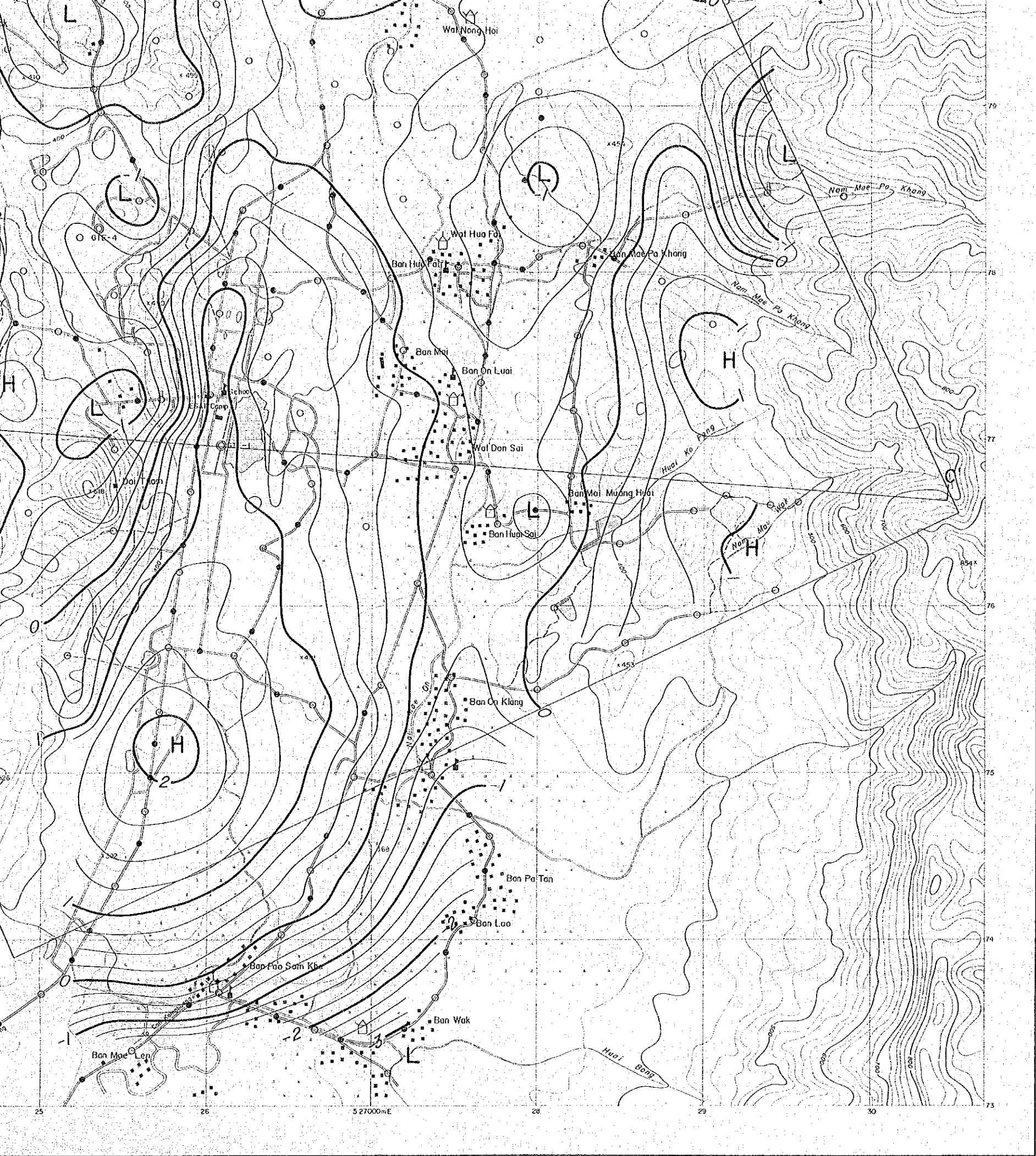


LEGEND


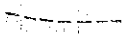
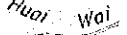




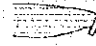
- | | | | |
|--|-------------|--|------------|
| | Wide road | | Wat |
| | Narrow path | | School |
| | Stream | | Rice field |

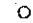

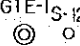









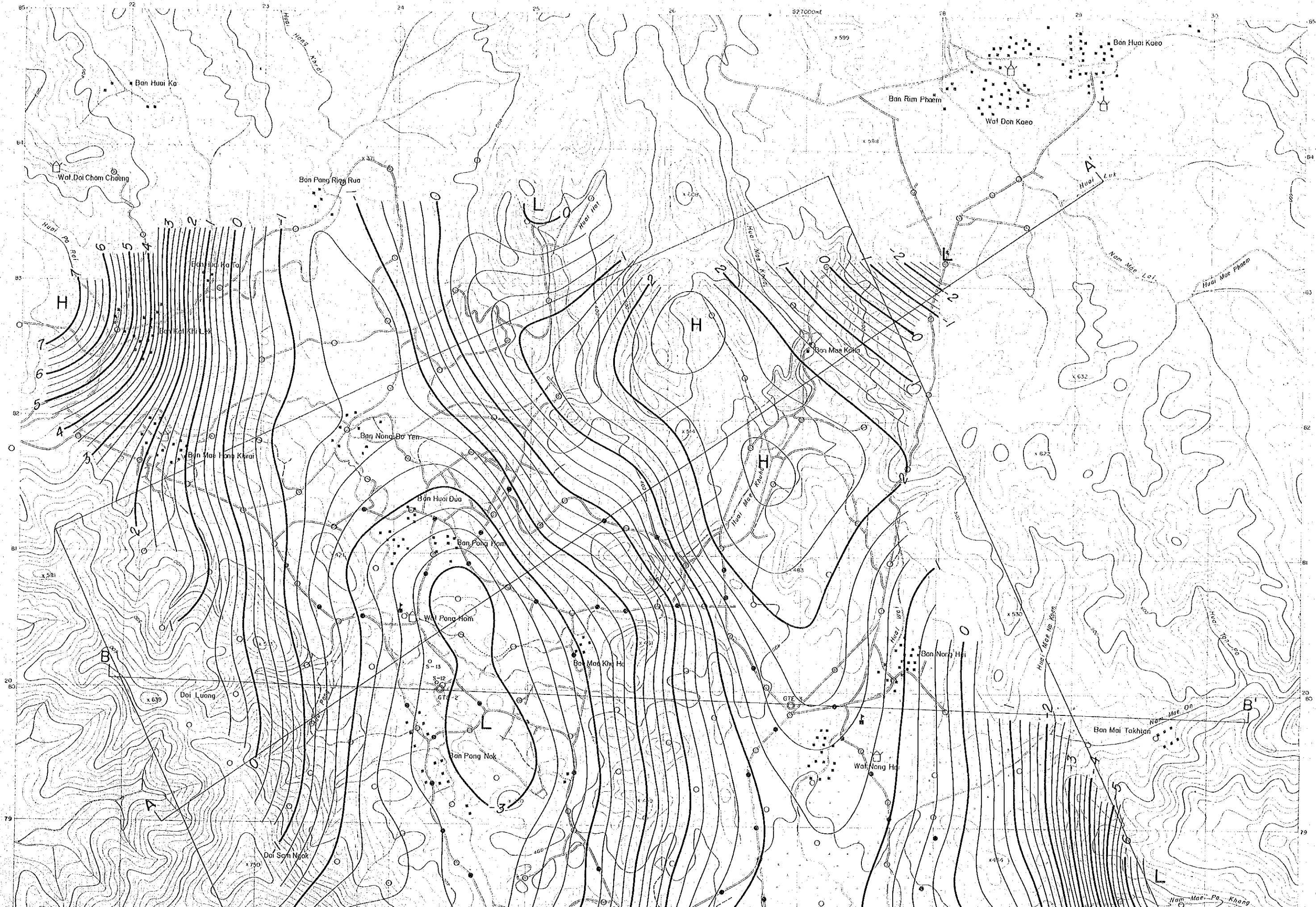


LEGEND

-  Wide road
-  Narrow path
-  Stream
-  Village
-  Wat
-  School
-  Rice field
-  Dam (water reserve)

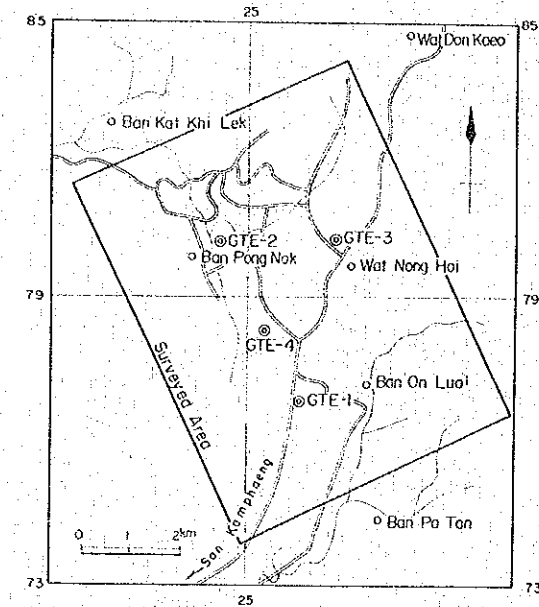
-  Gravity station surveyed by JICA
-  Gravity station surveyed by DMR
-  Drill hole
-  1.0 mgal
-  0.25 mgal
-  High gravity anomaly
-  Low gravity anomaly
-  Profile of underground structure

Contour line



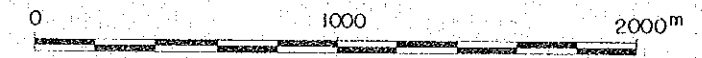
THE PRE-FEASIBILITY STUDY
ON
THE SAN KAMPAENG GEOTHERMAL DEVELOPMENT PROJECT
IN THE KINGDOM OF THAILAND

DEEP GRAVIMETRIC COMPONENT


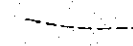
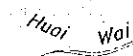


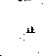


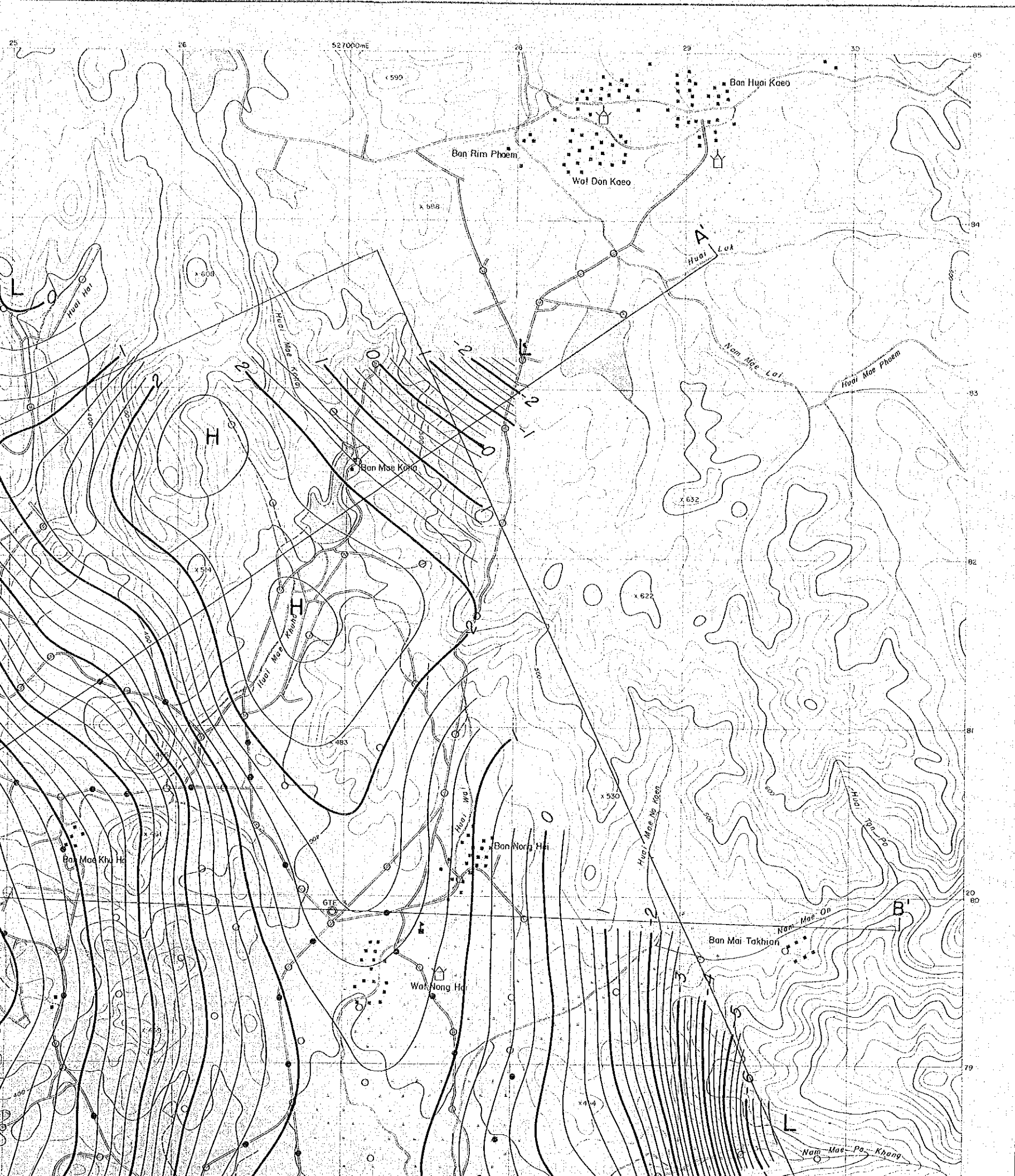
JAPAN INTERNATIONAL COOPERATION AGENCY
ELECTRICITY GENERATING AUTHORITY OF THAILAND
DEPARTMENT OF MINERAL RESOURCES
CHIANG MAI UNIVERSITY

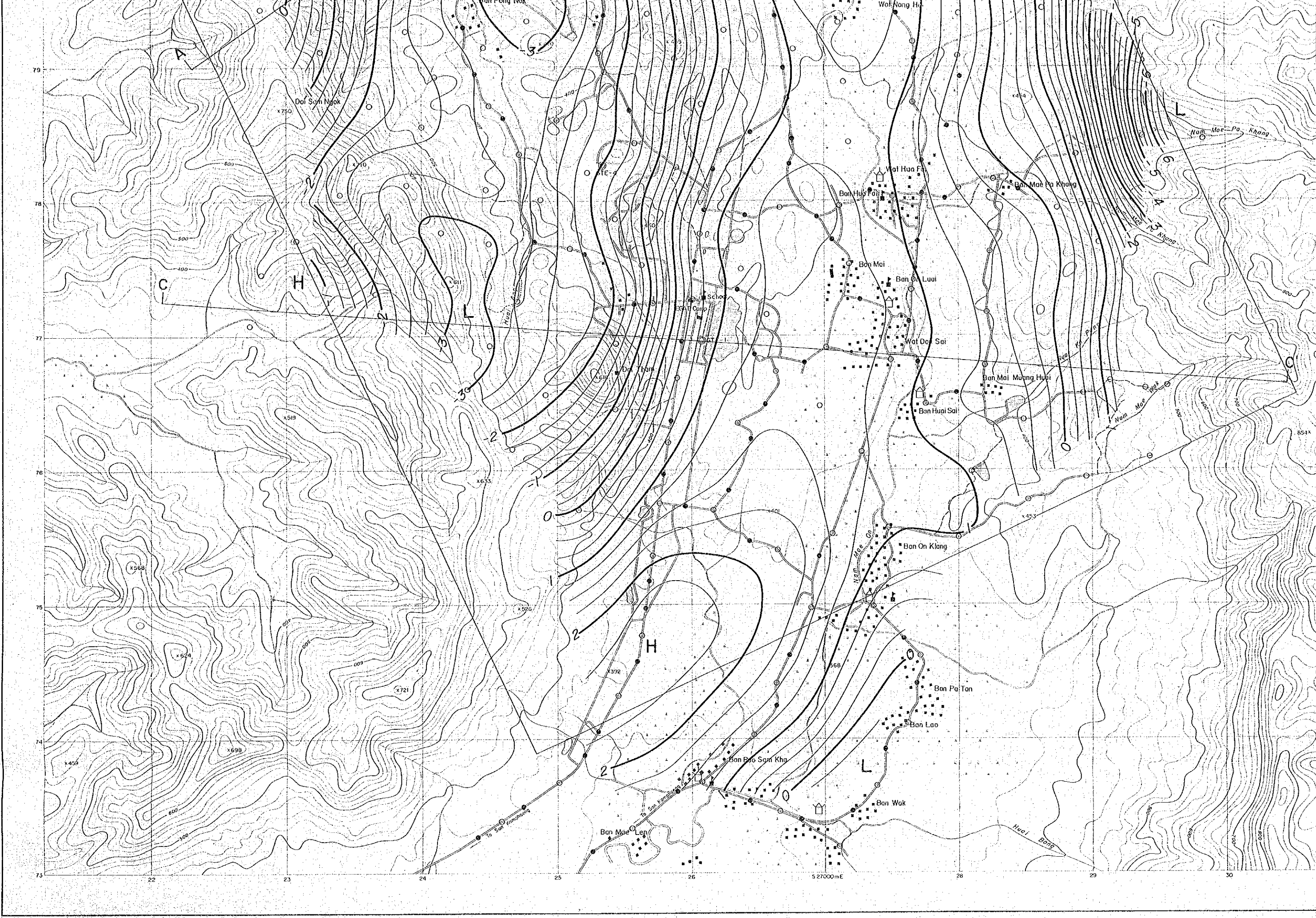
MARCH 1983

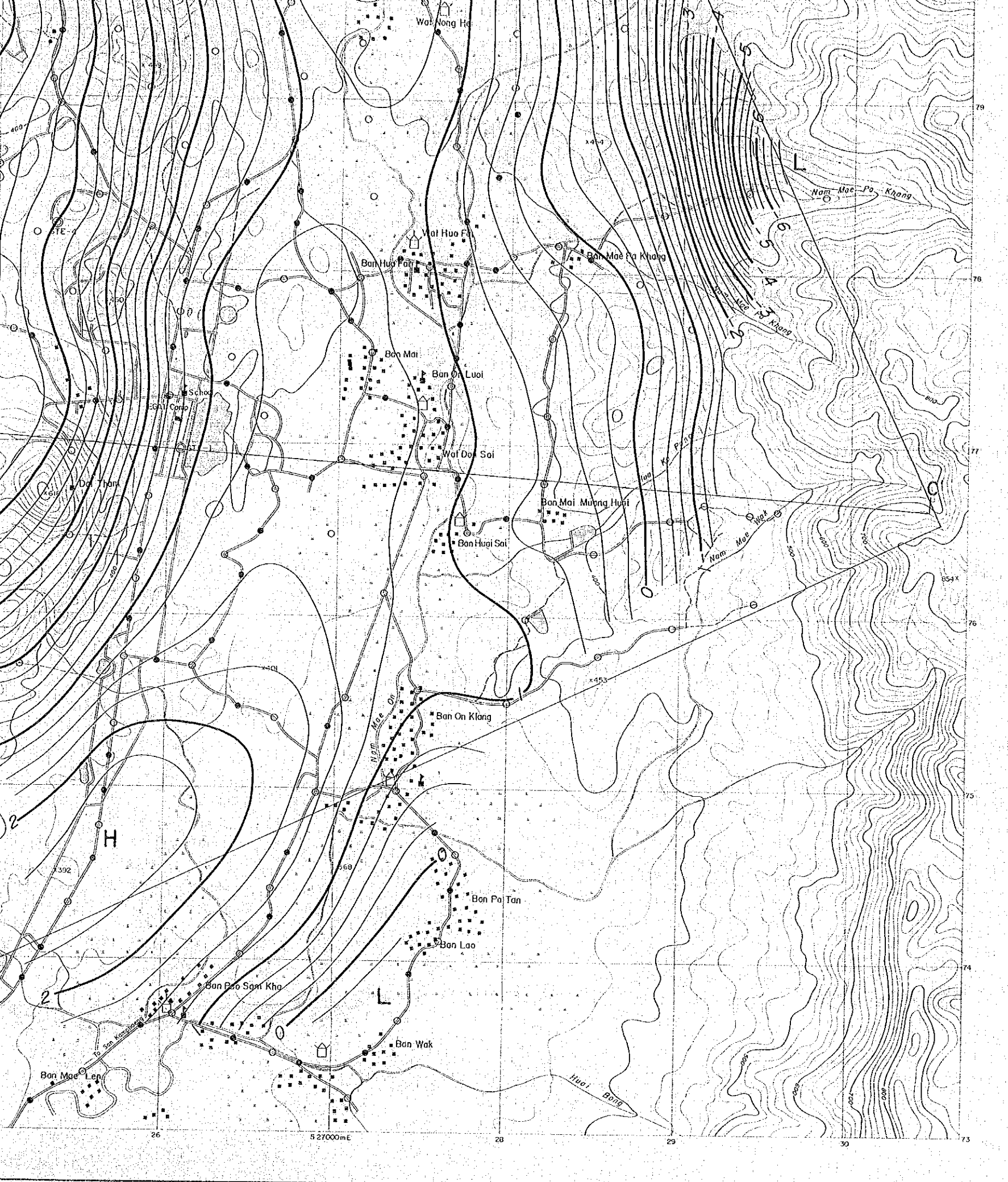


LEGEND


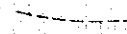
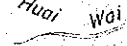

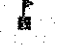

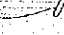
-  Wide road
-  Narrow path
-  Stream
-  Wat
-  School
-  Rice field


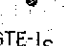
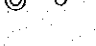


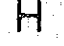
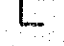







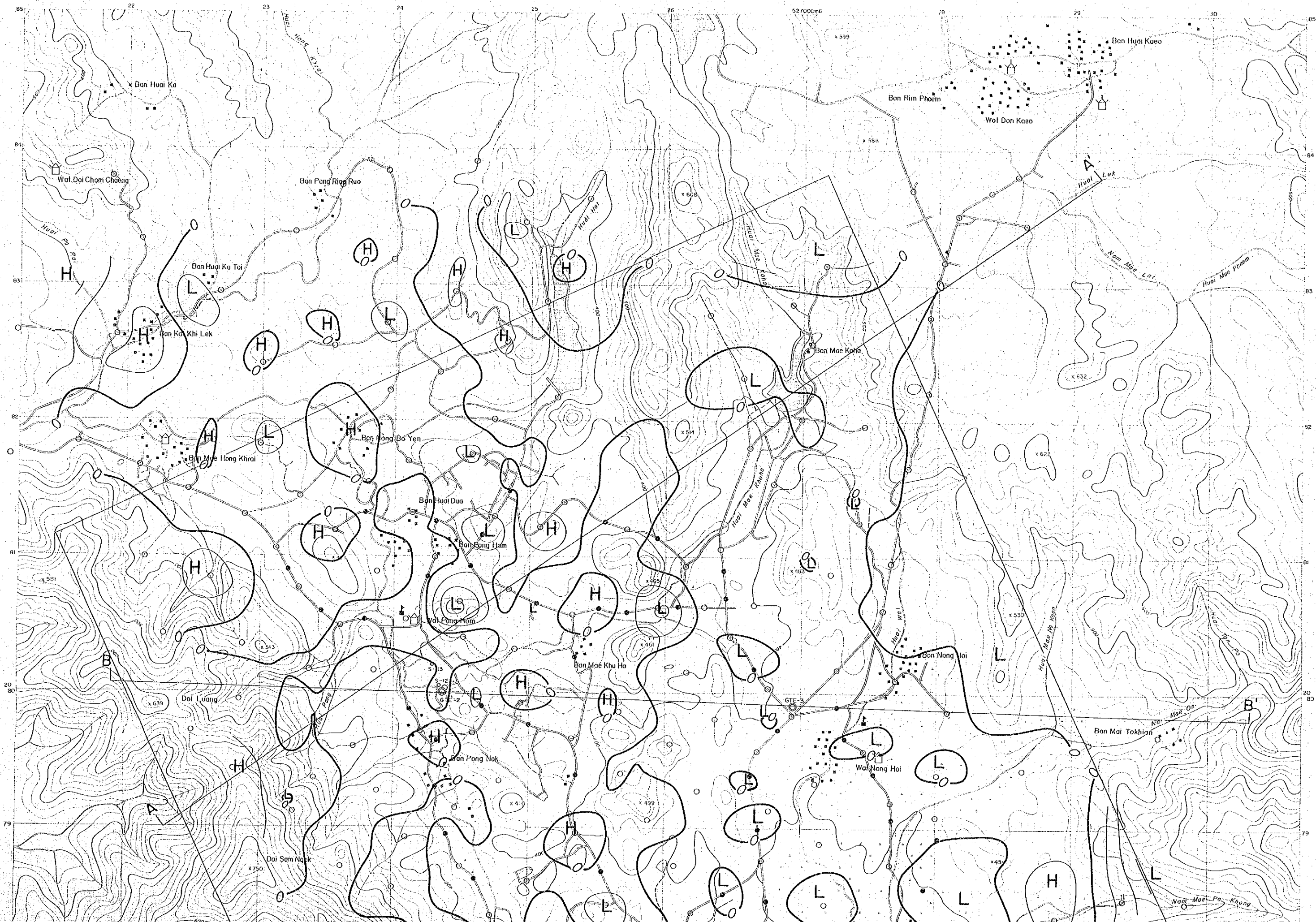
LEGEND

-  Wide road
-  Narrow path
-  Stream
-  Village
-  Wat
-  School
-  Rice field
-  Dam (water reserve)

-  Gravity station surveyed by JICA
-  Gravity station surveyed by DMR
-  Drill hole
-  1.0 mgal
-  0.25 mgal
-  High gravity anomaly
-  Low gravity anomaly
-  Profile of underground structure

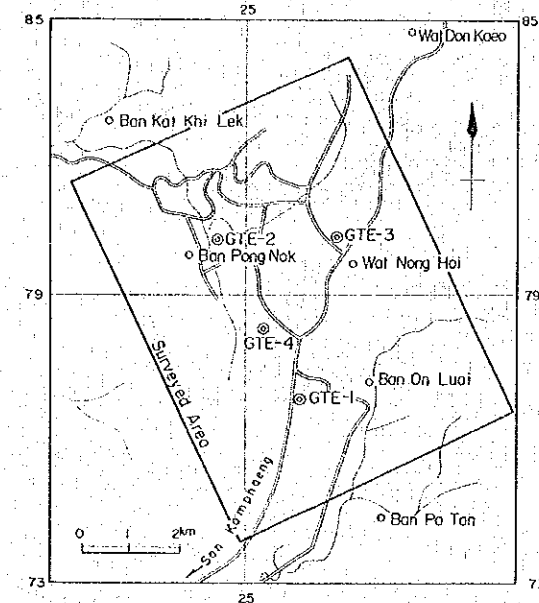
Contour line

Profile of underground structure



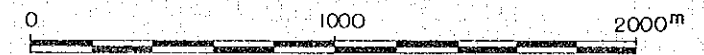
THE PRE-FEASIBILITY STUDY
ON
THE SAN KAMPAENG GEOTHERMAL DEVELOPMENT PROJECT
IN THE KINGDOM OF THAILAND

SHALLOW GRAVIMETRIC COMPONENT



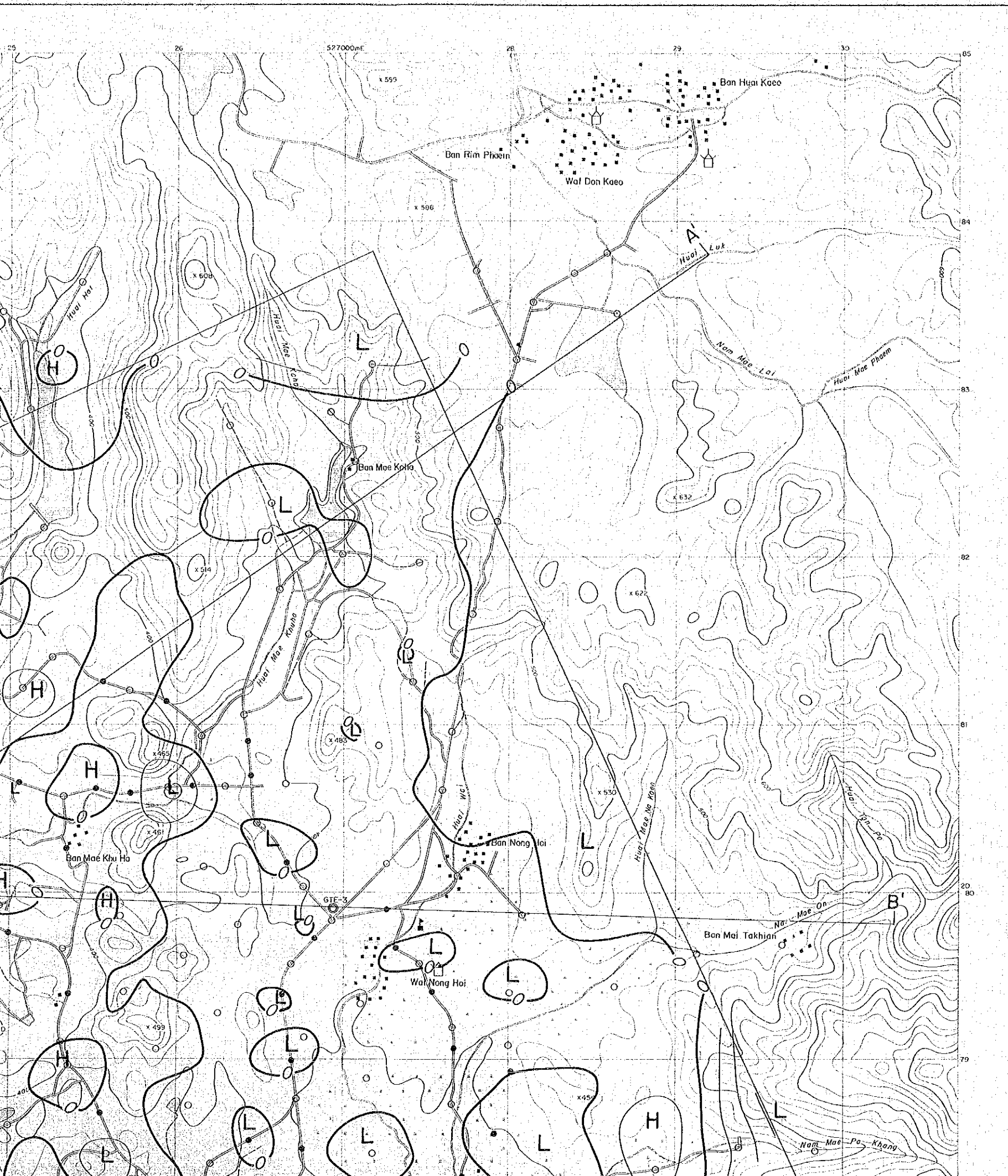
JAPAN INTERNATIONAL COOPERATION AGENCY
ELECTRICITY GENERATING AUTHORITY OF THAILAND
DEPARTMENT OF MINERAL RESOURCES
CHIANG MAI UNIVERSITY

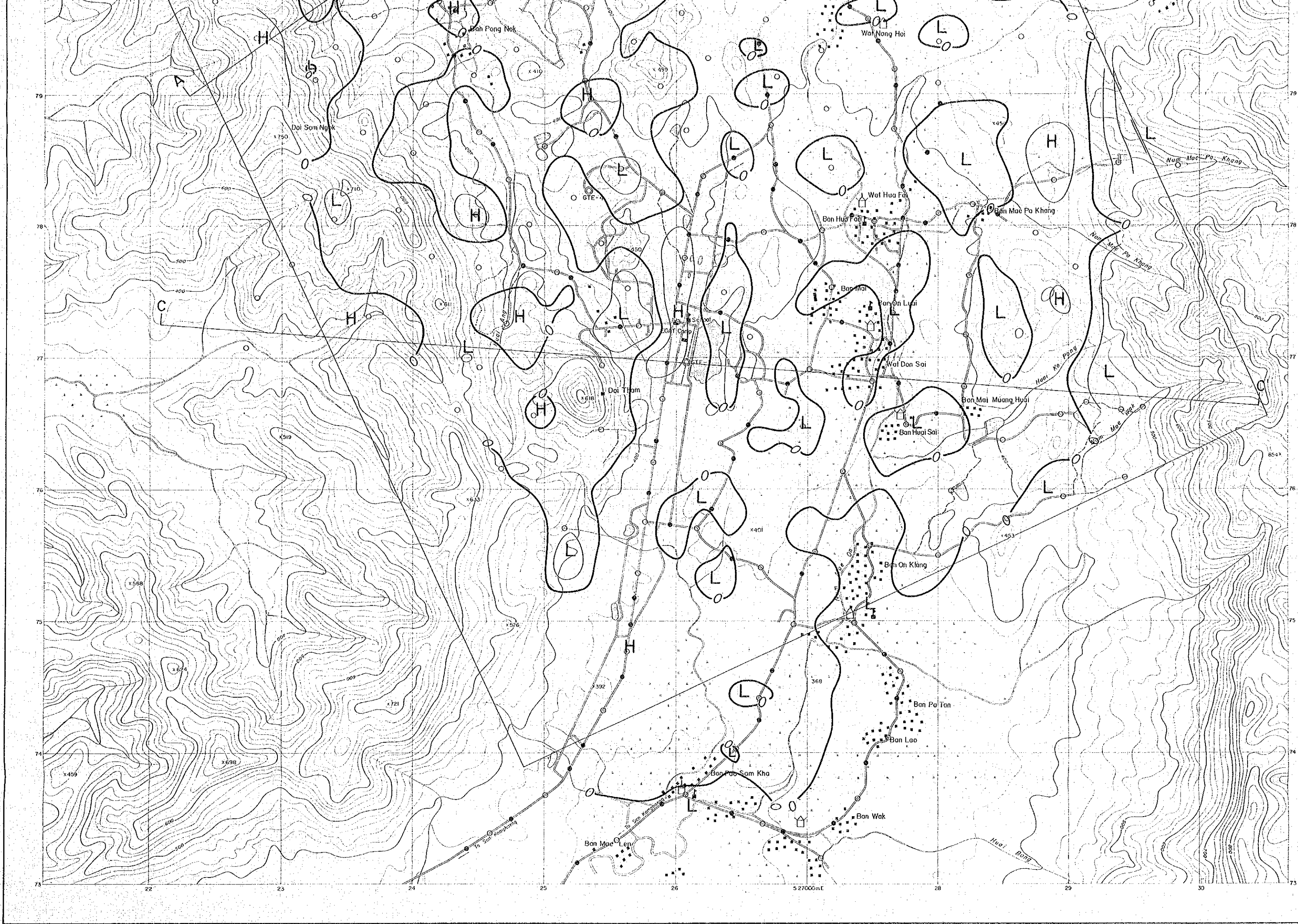
MARCH 1983

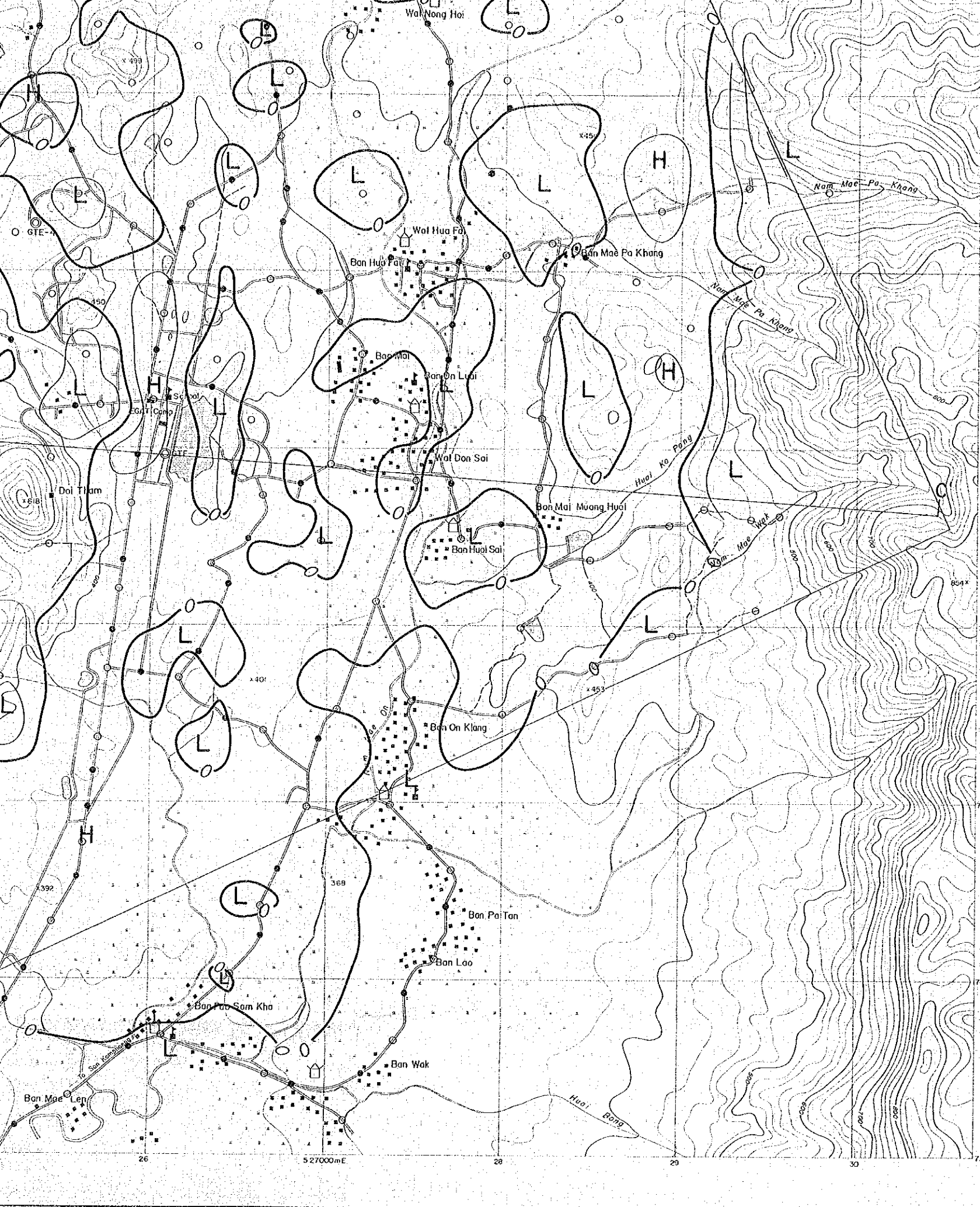


LEGEND


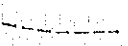
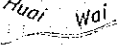




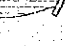
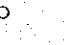
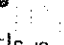
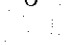
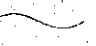



- | | | | |
|--|-------------|--|------------|
| | Wide road | | Wat |
| | Narrow path | | School |
| | Stream | | Rice field |







LEGEND

-  Wide road
-  Narrow path
-  Stream
-  Village
-  Wat
-  School
-  Rice field
-  Dam (water reserve)
-  Gravity station surveyed by JICA
-  Gravity station surveyed by DMR
-  Drill hole
-  0.25 mgal Contour line
-  High gravity anomaly
-  Low gravity anomaly
-  Profile of underground structure