

LINE-A

LINE-B

LINE-C

LINE-D

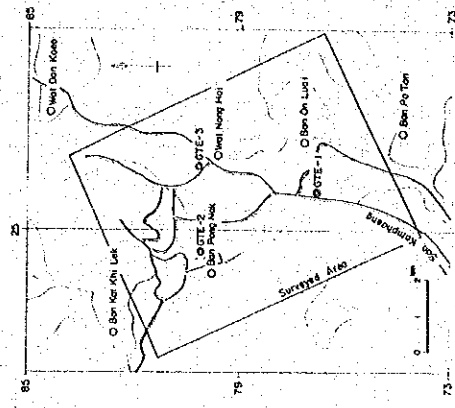
SPNS
RPNS
DL SL
0000 300

200
100
0
-100
-200
-300
-400
-500
-600
-700
-800
-900
-1000
-1100
-1200
-1300
-1400
-1500
-1600
-1700
-1800
-1900
-2000
-2100
-2200
-2300
-2400
-2500
-2600
-2700
-2800
-2900
-3000
-3100
-3200
-3300
-3400
-3500
-3600
-3700
-3800
-3900
-4000
-4100
-4200
-4300
-4400
-4500
-4600
-4700
-4800
-4900
-5000
-5100
-5200
-5300
-5400
-5500
-5600
-5700
-5800
-5900
-6000
-6100
-6200
-6300
-6400
-6500
-6600
-6700

DEPTH IN METERS

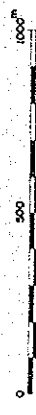


DEPTH SECTION MAP
 (LINE-A)

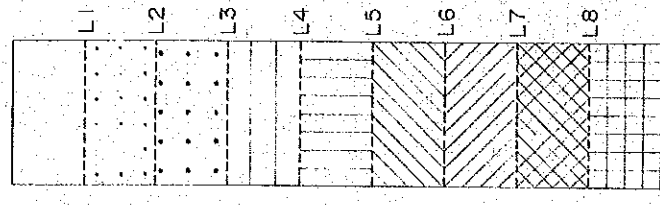


JAPAN INTERNATIONAL COOPERATION AGENCY
 ELECTRICITY GENERATING AUTHORITY OF THAILAND
 DEPARTMENT OF MINERAL RESOURCES
 CHIANG MAI UNIVERSITY

MARCH 1983

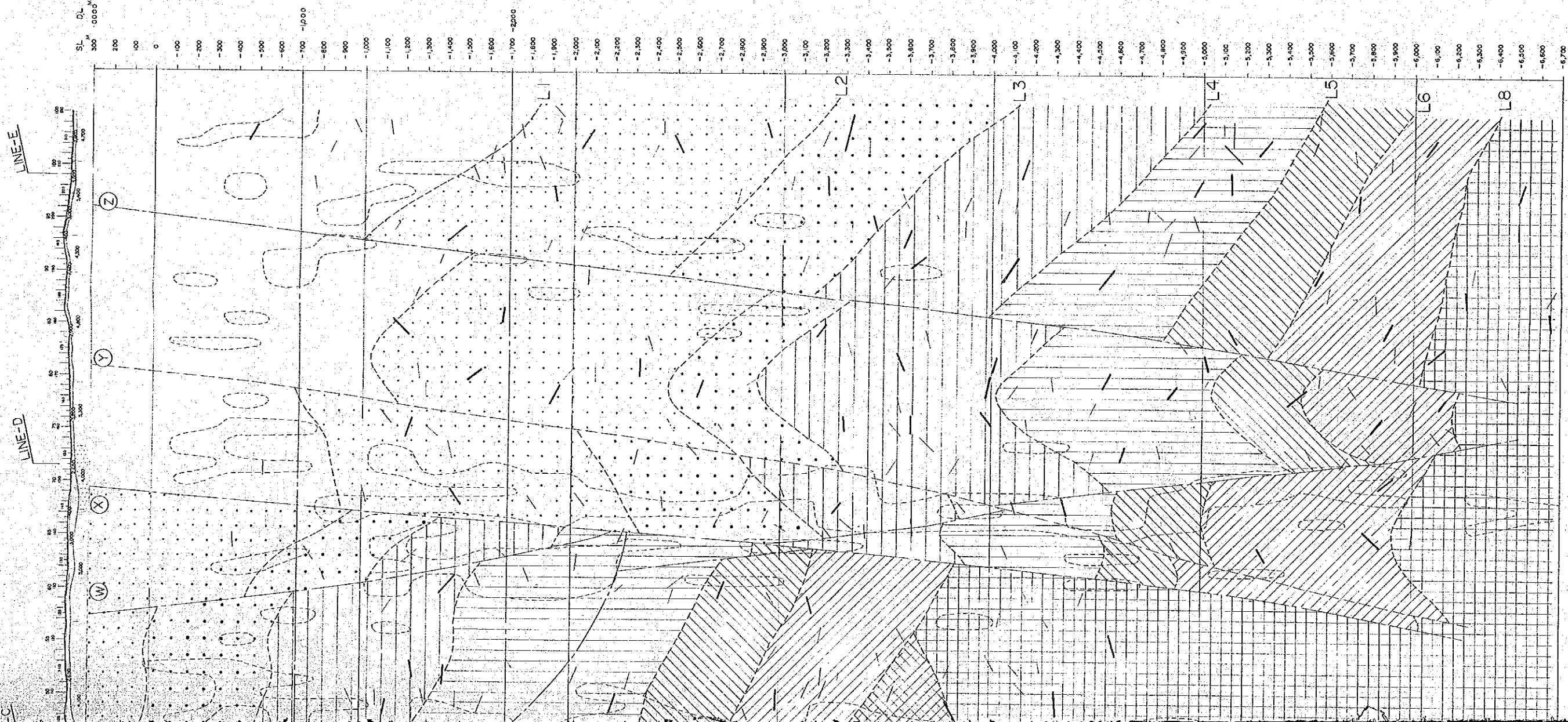


LEGEND

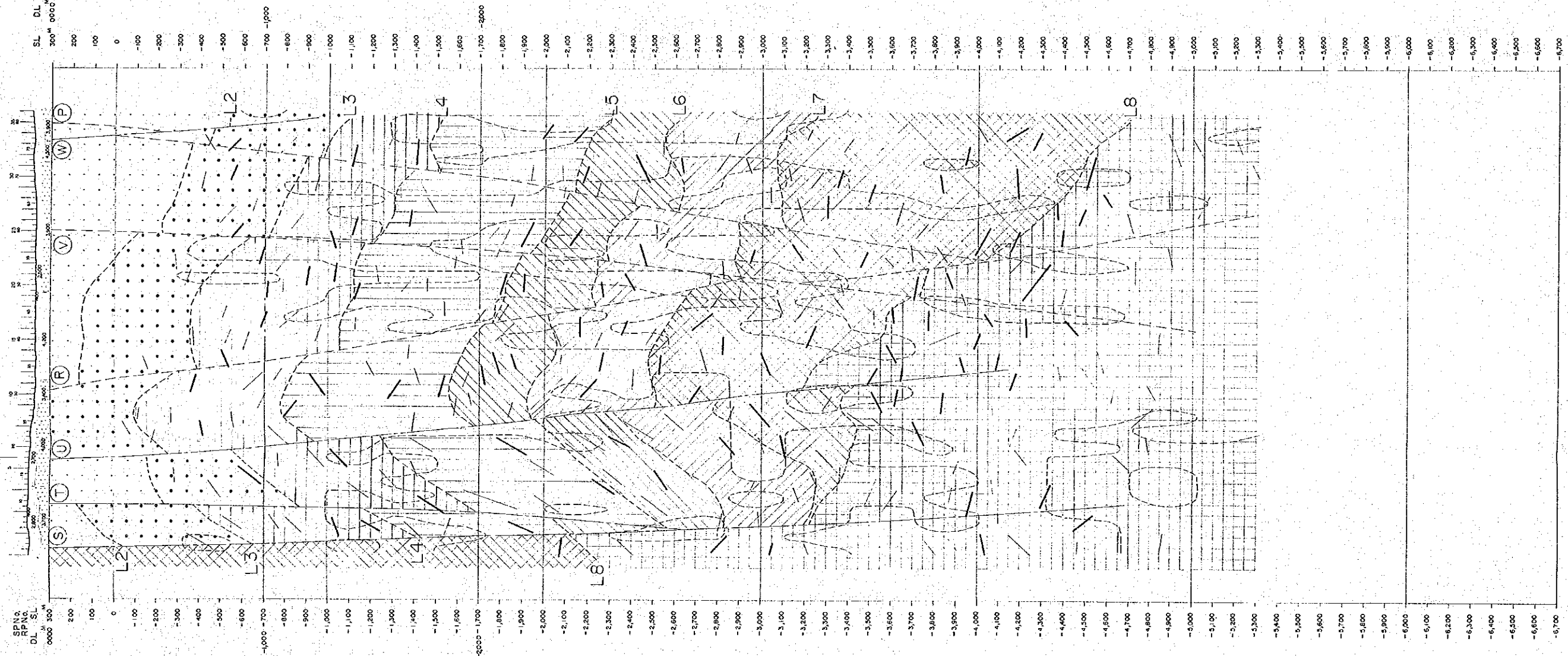


Reflective layer

- ⑤ Decided fault (ex. S fault) [dashed line with long dashes]
- ⊖ Presumptive fault (ex. P fault) [dashed line with short dashes]
- Low frequency zone (< 20HZ) [dotted area]
- Good reflector [solid horizontal line]
- Poor reflector [solid vertical line]

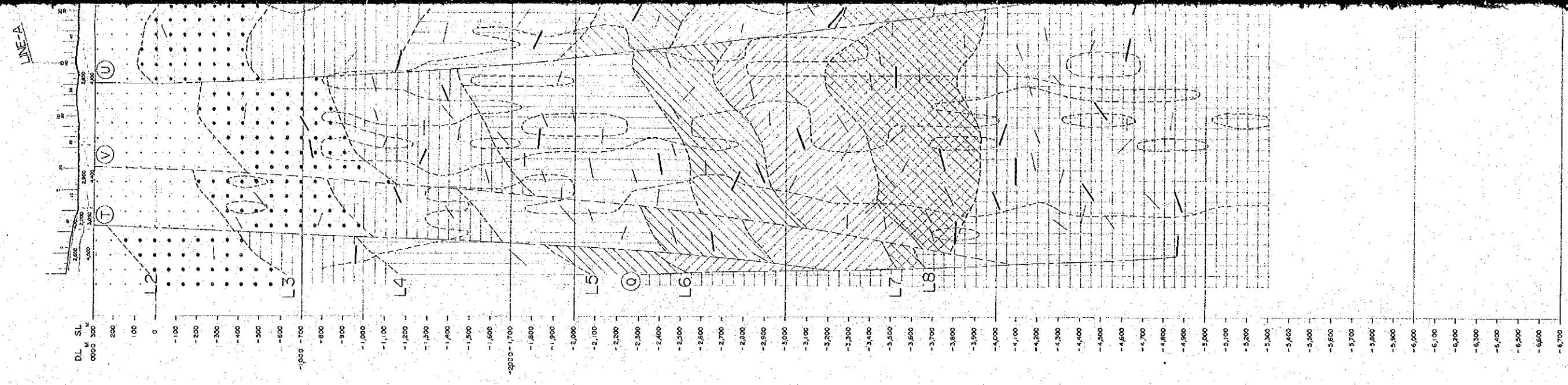


LINE-B

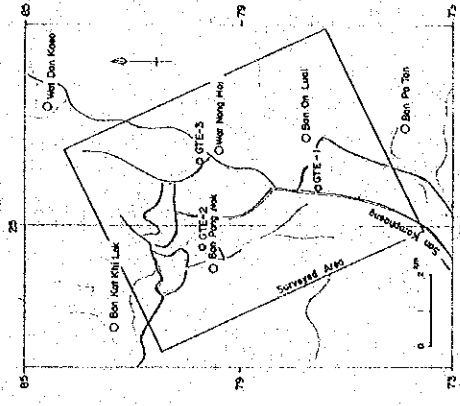


DEPTH IN METERS

LINE-C

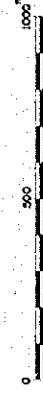


DEPTH SECTION MAP
(LINE-B, LINE-C)

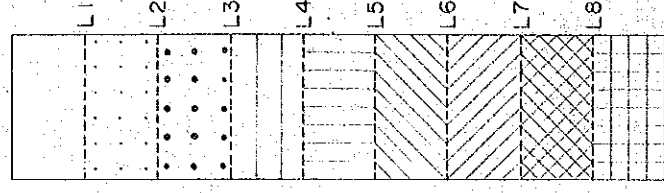


JAPAN INTERNATIONAL COOPERATION AGENCY
ELECTRICITY GENERATING AUTHORITY OF THAILAND
DEPARTMENT OF MINERAL RESOURCES
CHIANG MAI UNIVERSITY

MARCH 1988



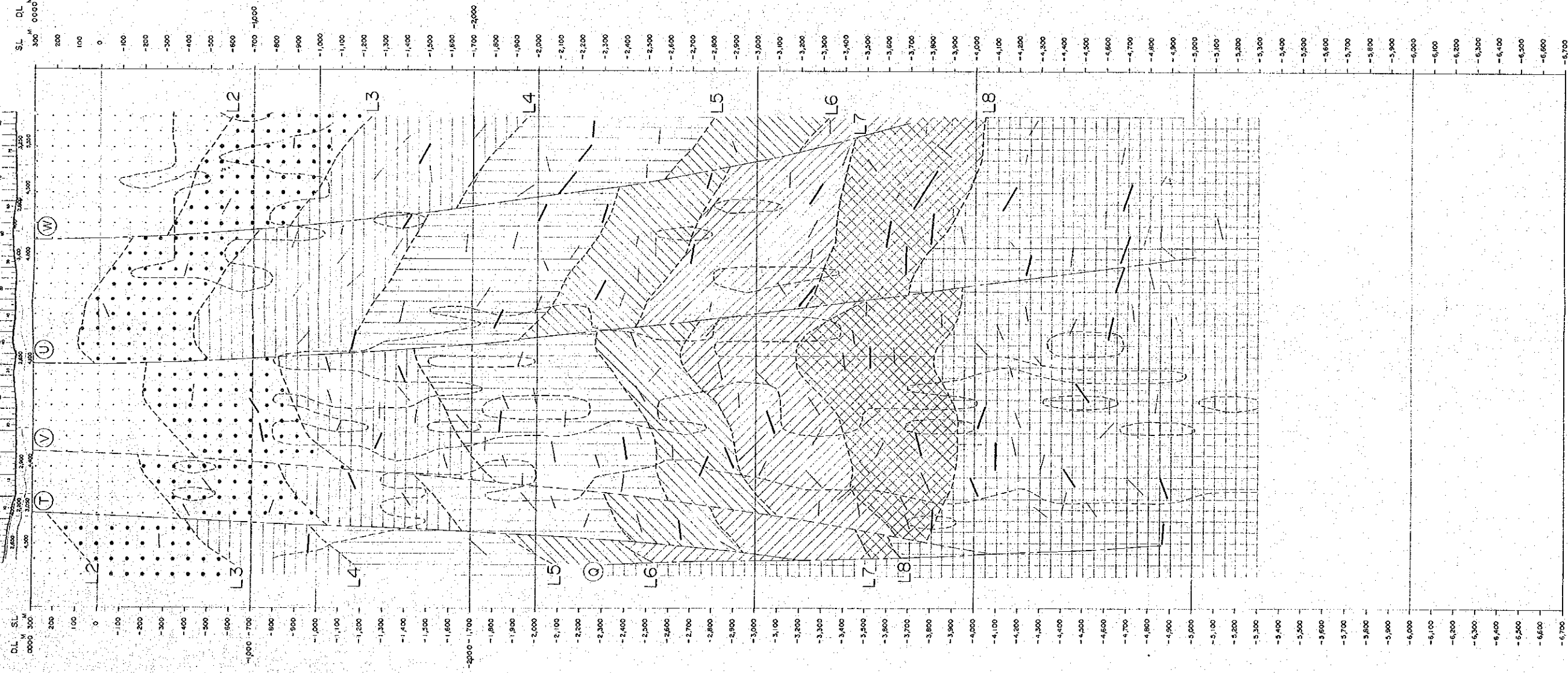
LEGEND



- ⑤ Decided - fault (ex. S fault)
- ⓐ Presumptive fault (ex. P fault)
- Low frequency zone ($\le 20\text{Hz}$)
- Good reflector
- Poor reflector

LINE-C

LINE-A

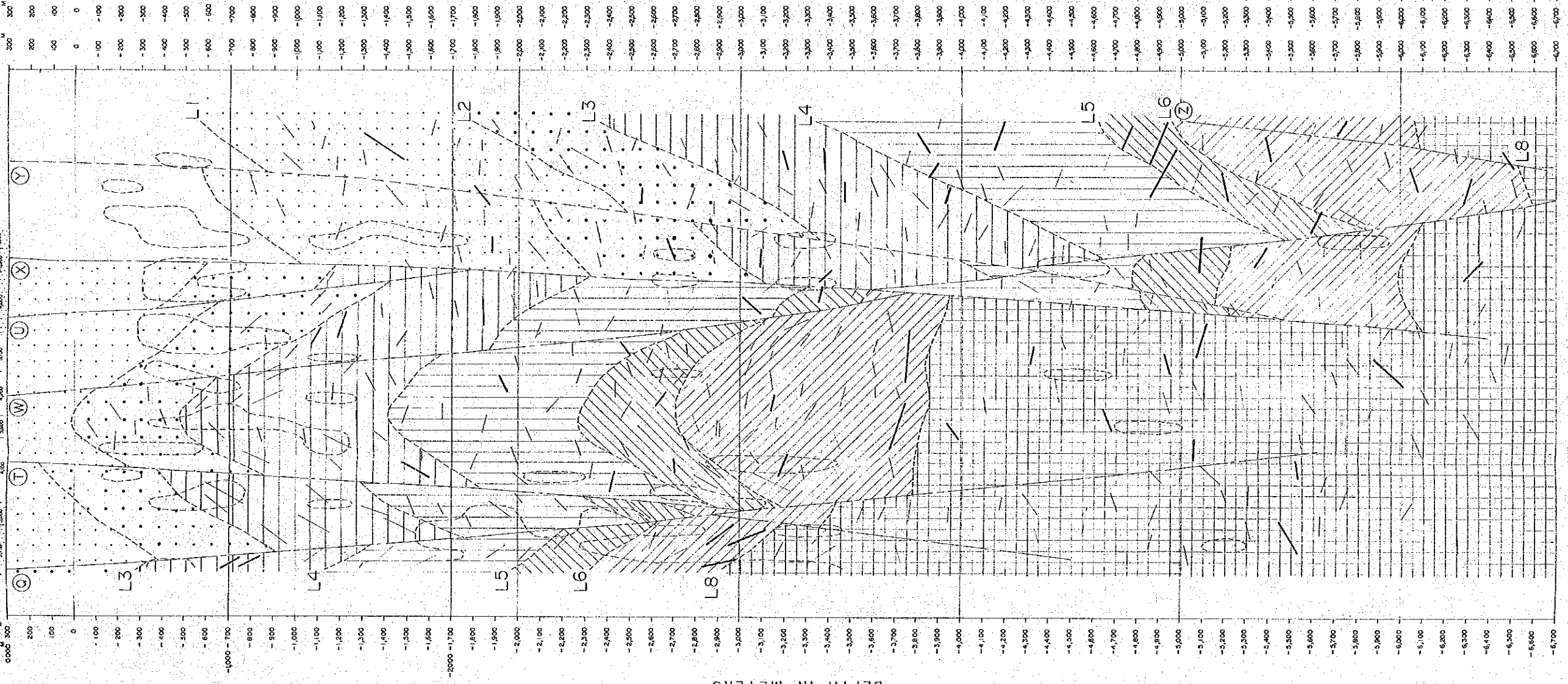


LINE-D

LINE-E

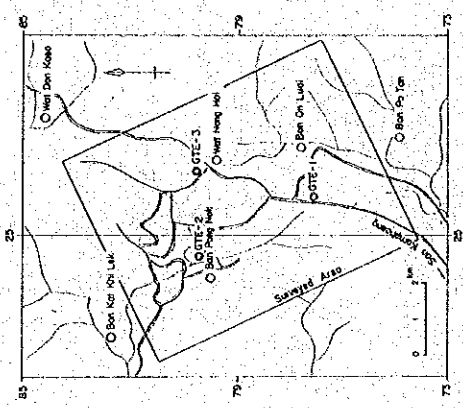
LINE-A

SPNG.
RPN.
O.L. SL
0000 500 M



DEPTH IN METERS

DEPTH SECTION MAP
(LINE-D, LINE-E)

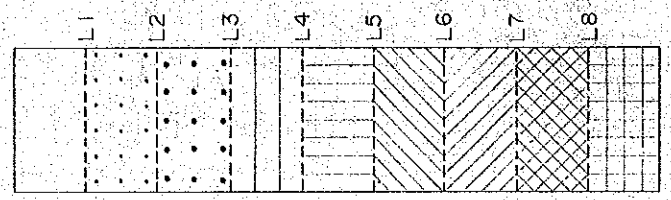


JAPAN INTERNATIONAL COOPERATION AGENCY
ELECTRICITY GENERATING AUTHORITY OF THAILAND
DEPARTMENT OF MINERAL RESOURCES
CHIANG MAI UNIVERSITY

MARCH 1985

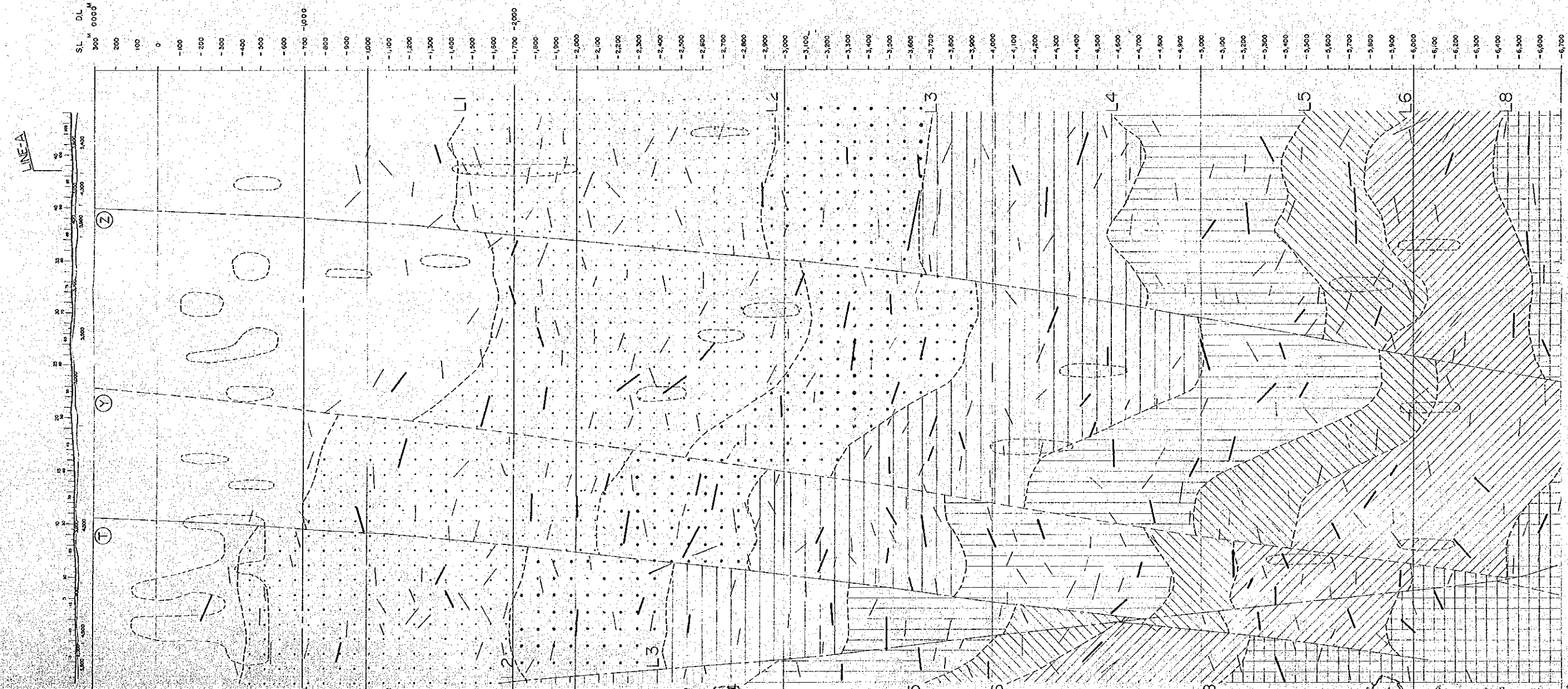


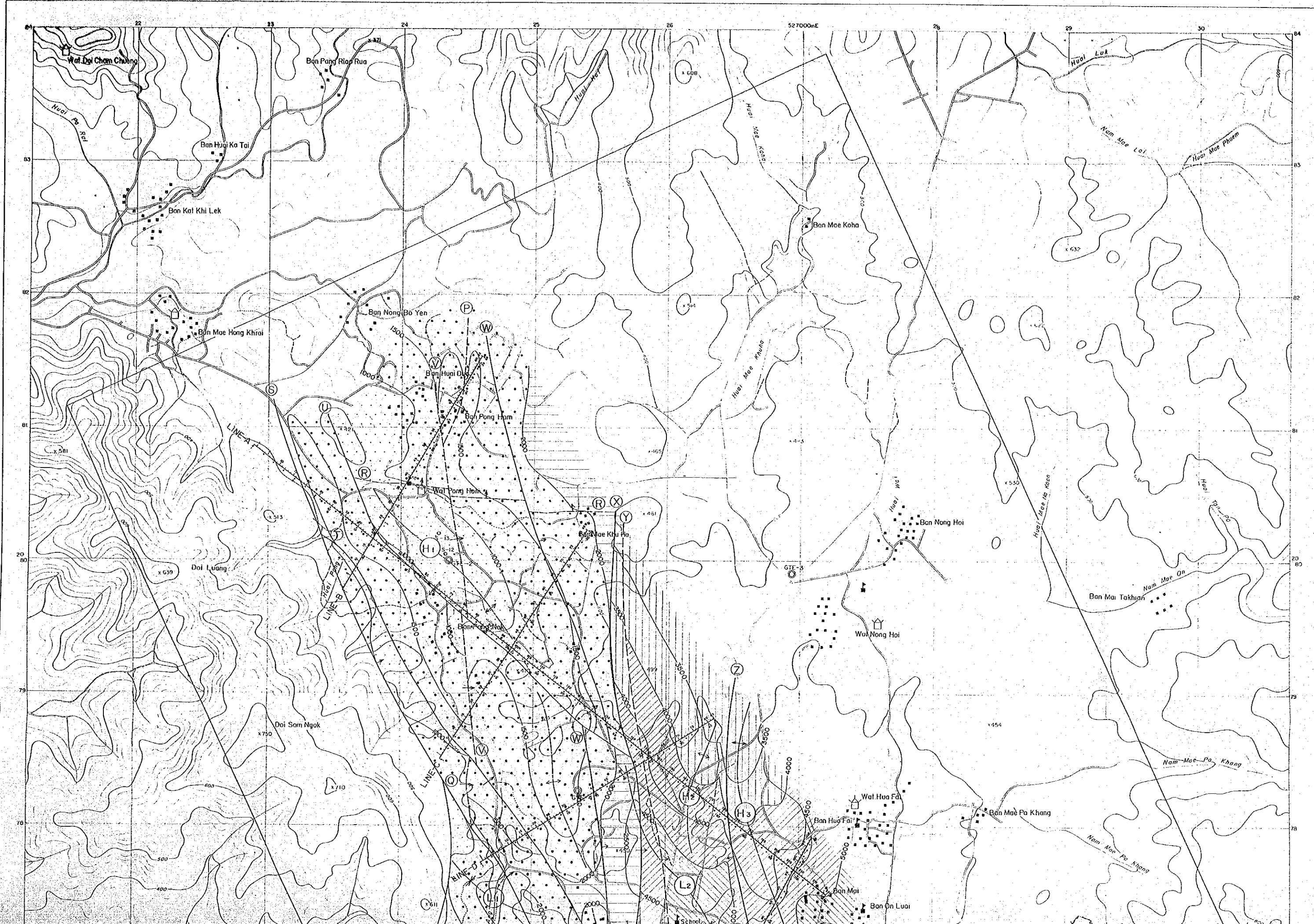
LEGEND



- ⑤ --- Decided fault (ex. S fault)
- ② --- Presumptive fault (ex. P fault)
- --- Low frequency zone (<20Hz)
- Good reflector
- Poor reflector

LINE-E





THE
FILE

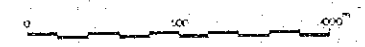
PI. II.2.2-44

THE PRE-FEASIBILITY STUDY
ON
THE SAN KAMPAENG GEOTHERMAL DEVELOPMENT PROJECT
IN THE KINGDOM OF THAILAND

STRUCTURE ANALYSIS MAP
(L-4)

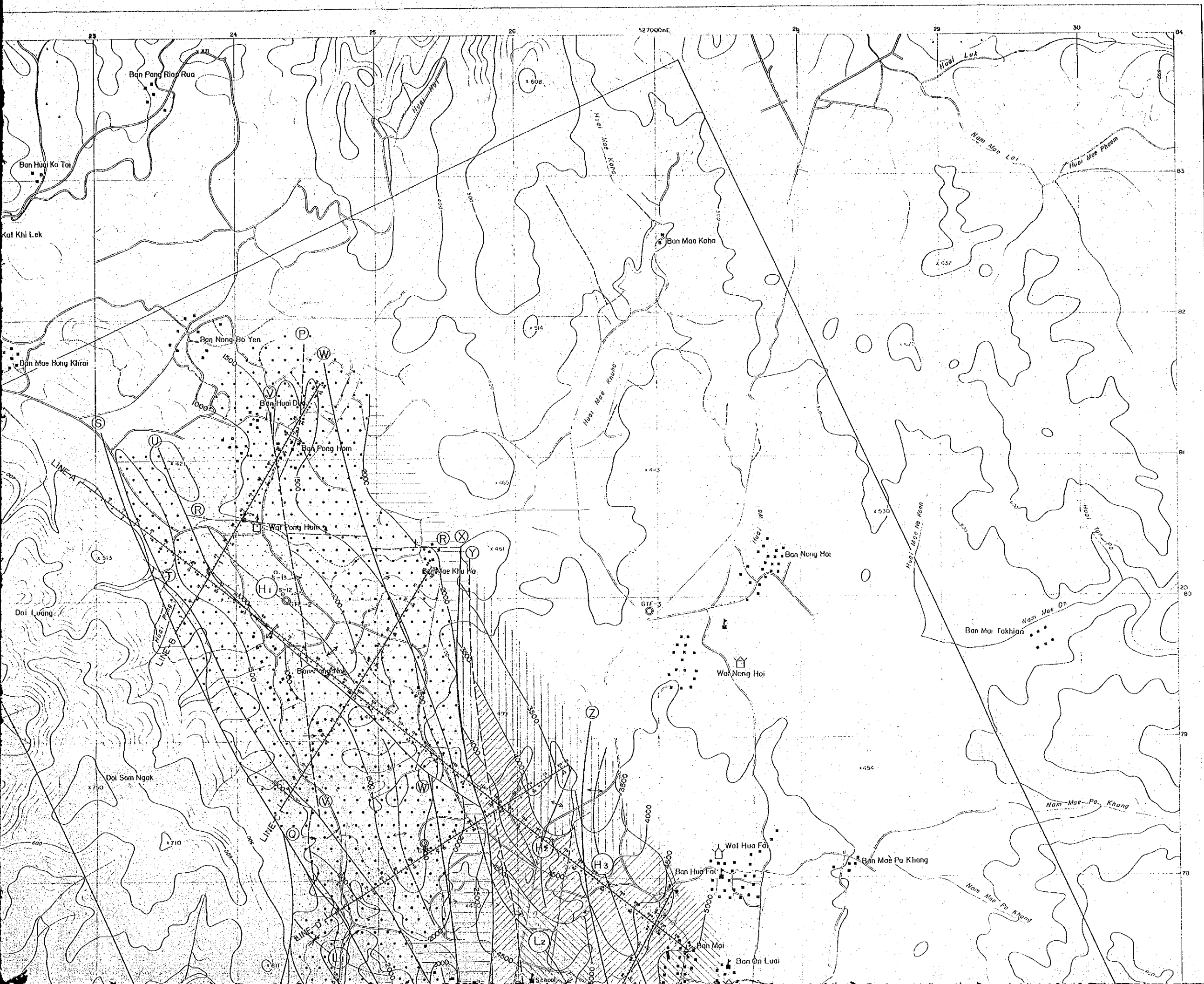
JAPAN INTERNATIONAL COOPERATION AGENCY
ELECTRICITY GENERATING AUTHORITY OF THAILAND
DEPARTMENT OF MINERAL RESOURCES
CHIANG MAI UNIVERSITY

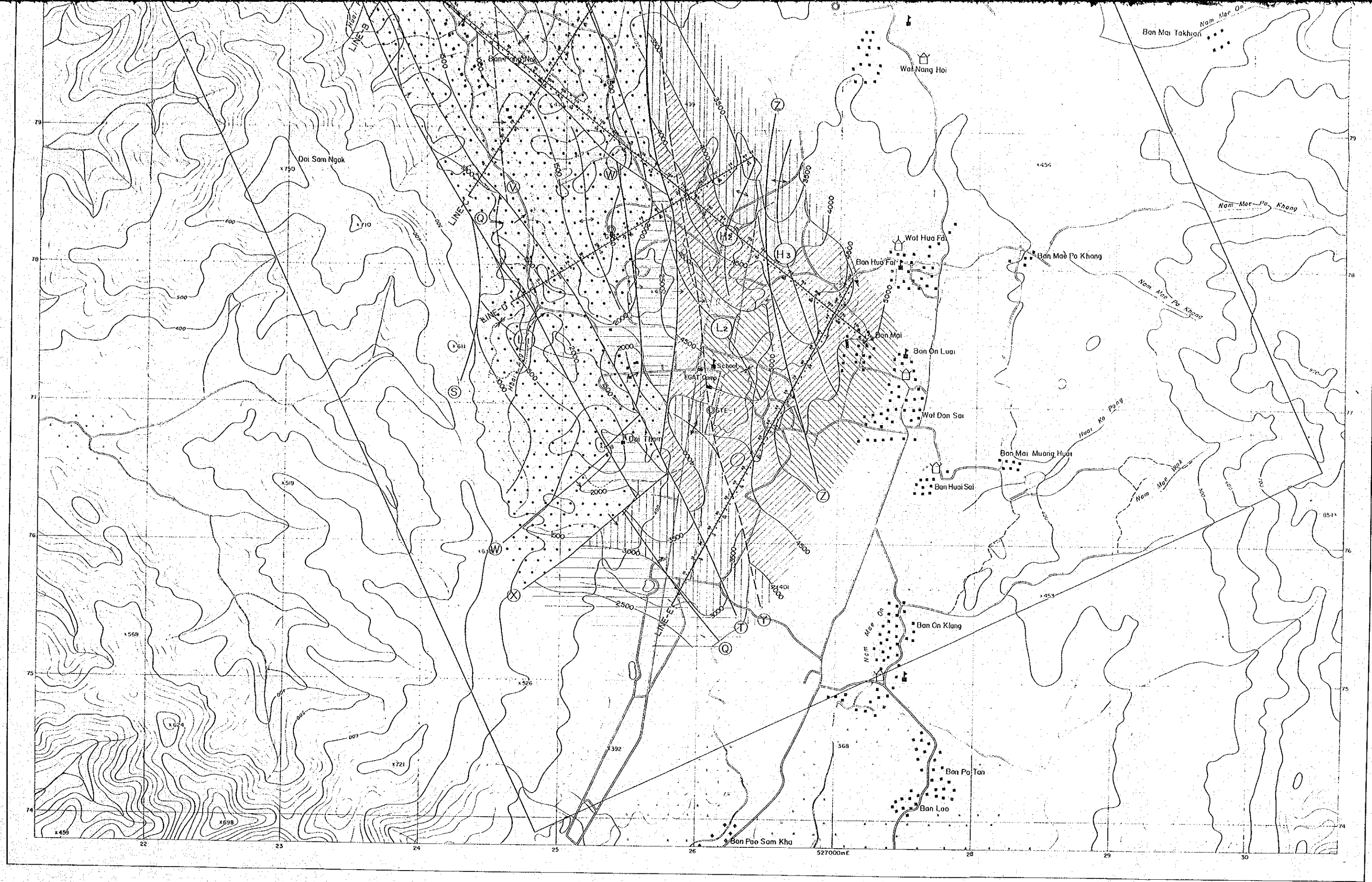
MARCH 1993

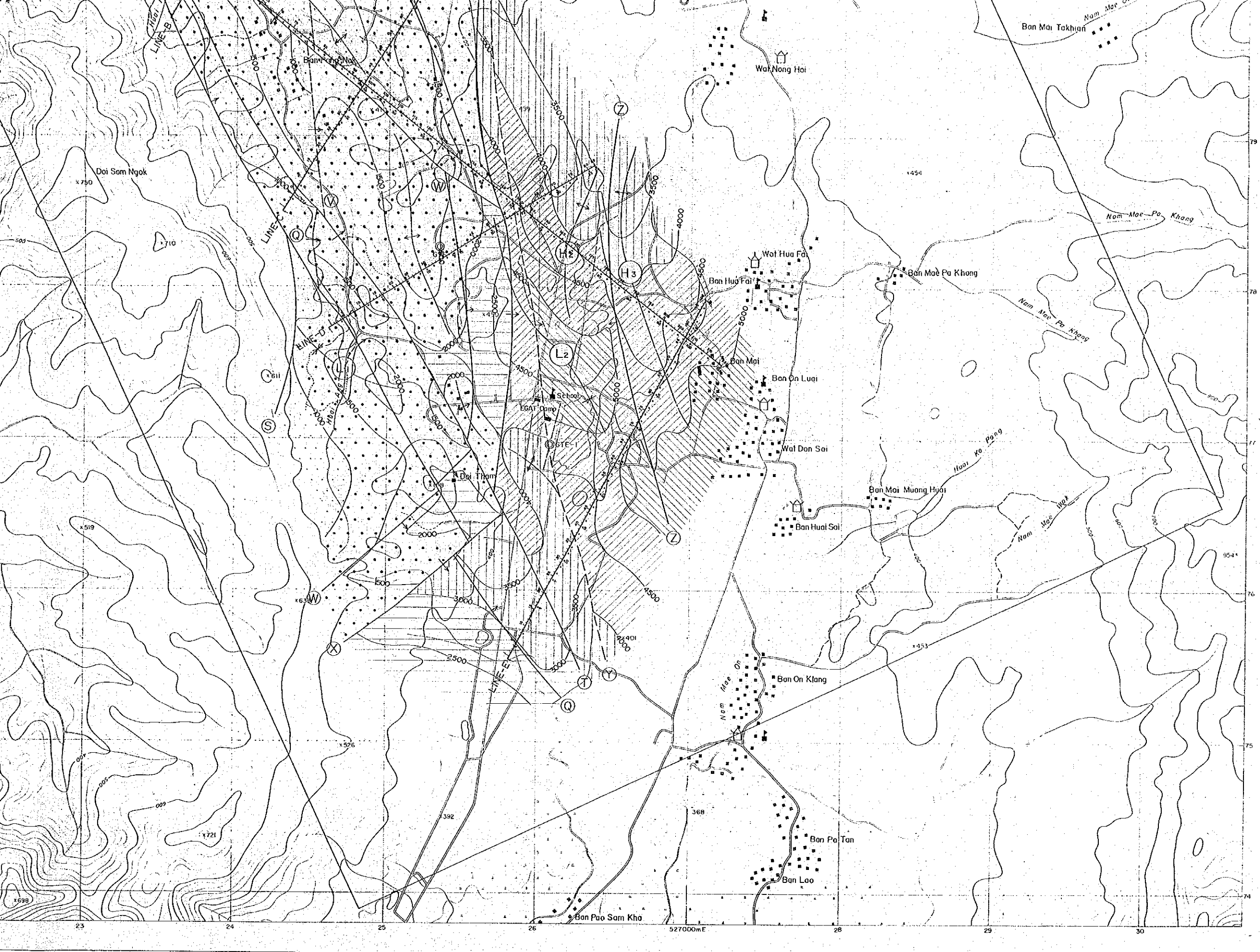


LEGEND

- Confirmed road
 - Unconfirmed road
 - Stream
 - Village
 - Wai
 - School
 - Rice field
 - 0m Water reserve
 - 1000m
 - 1500m
 - 2000m
 - 2500m
 - 3000m
 - 4000m
 - 5000m
 - 6000m
 - Contour line (D.L.M)
 - Decided fault (ex. Z fault)
 - Presumptive fault (ex. Y fault)
 - Anticline axis (ex. H₂ Anticline axis)
 - Syncline axis (ex. L₂ Syncline axis)
- Depth of L-4
Retractive layer

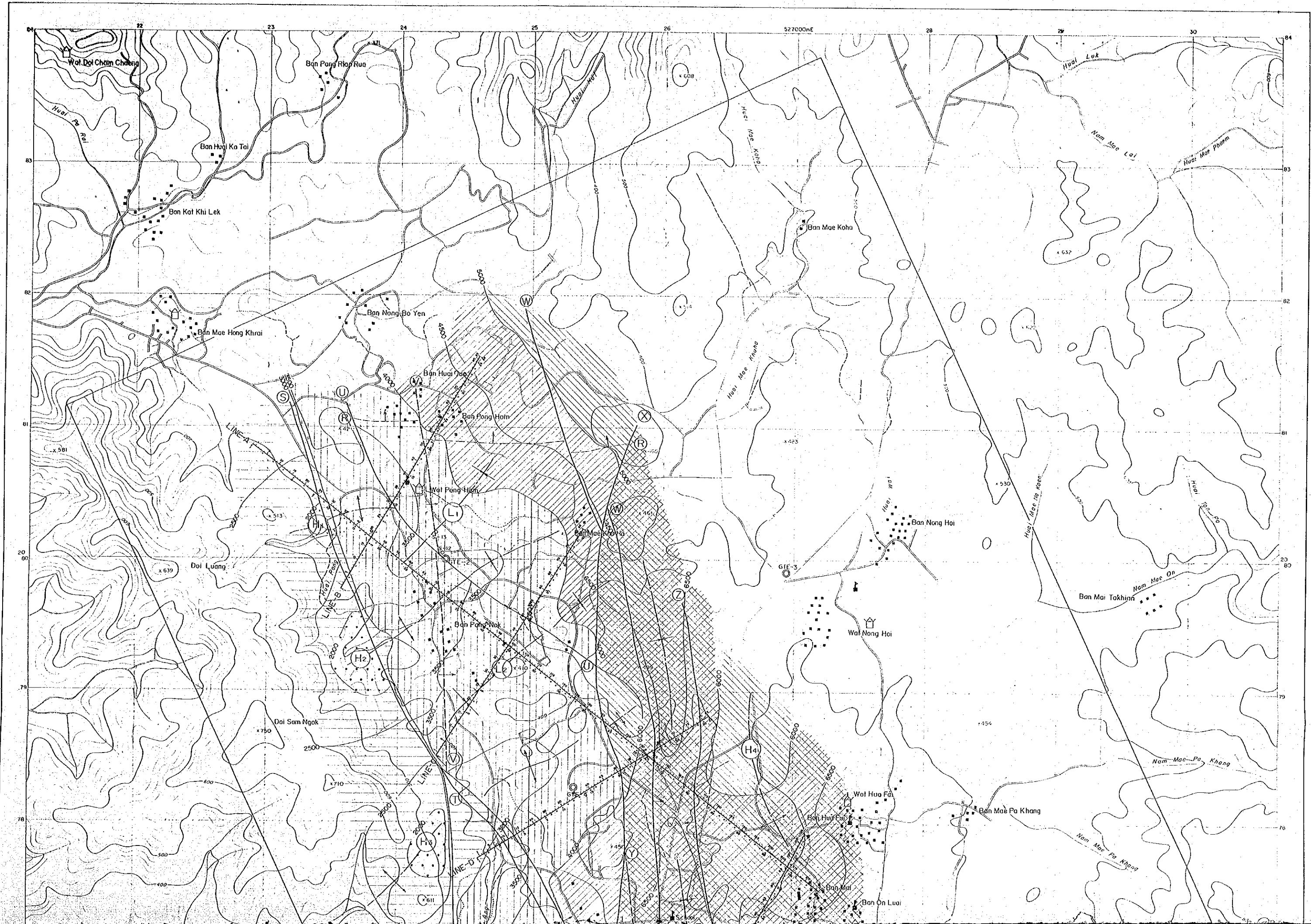




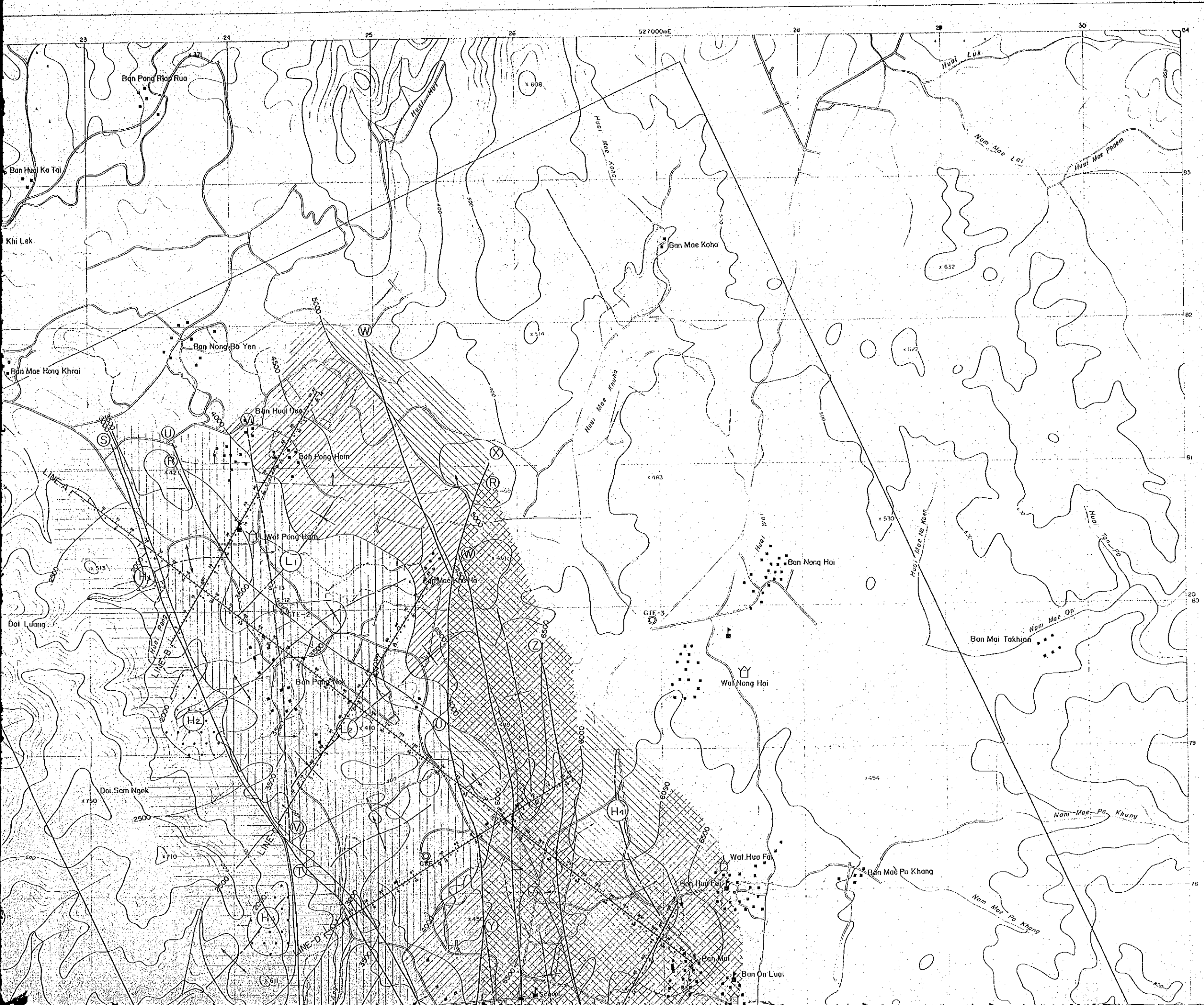


- | | |
|--|--|
| | Resistive layer |
| | Contour line (D.L.M.) |
| | Obsided fault (ex. Z fault) |
| | Presumptive fault (ex. Y fault) |
| | Anticline axis (ex. H2 Anticline axis) |
| | Syncline axis (ex. L2 Syncline axis) |

527000mE



THE SA
JAPA
ELECTR



THE PRE-FEASIBILITY STUDY PL. 0.2.2-45
 ON
 THE SAN KAMPAENG GEOTHERMAL DEVELOPMENT PROJECT
 IN THE KINGDOM OF THAILAND

STRUCTURE ANALYSIS MAP
 (1-8)

JAPAN INTERNATIONAL COOPERATION AGENCY
 ELECTRICITY GENERATING AUTHORITY OF THAILAND
 DEPARTMENT OF MINERAL RESOURCES
 CHIANG MAI UNIVERSITY

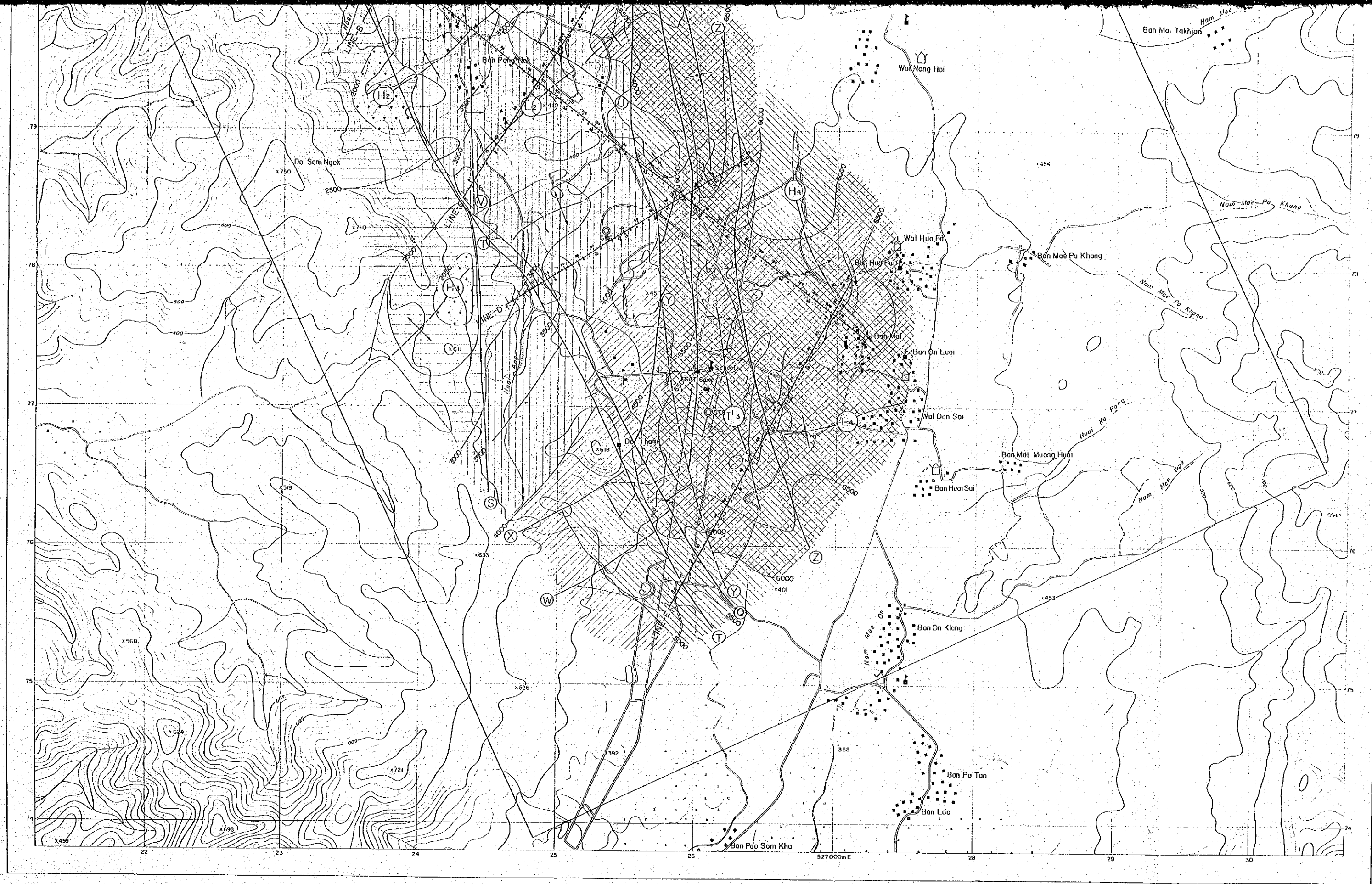
MARCH 1983

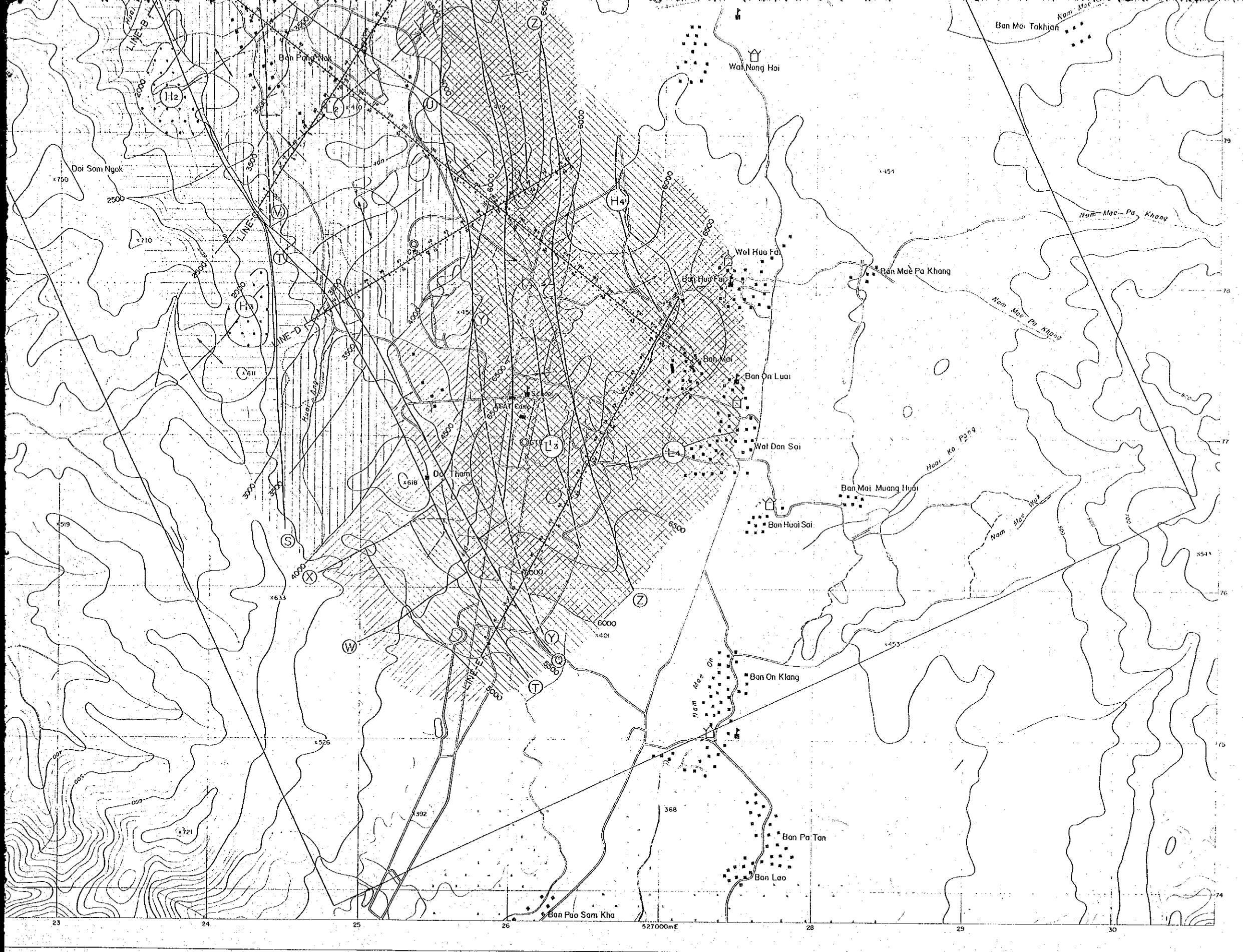
0 500 1000

LEGEND

- Confirmed road
- Unconfirmed road
- Stream
- Village
- Wat
- School
- Rice field
- Dam (water reserve)
- 0L 0L
- 0m ~ 1,000m
- 1,000m ~ 2,000m
- 2,000m ~ 3,000m
- 3,000m ~ 4,000m
- 4,000m ~ 5,000m
- 5,000m ~ 6,000m
- 6,000m ~ 7,000m
- Contour line (E.L.M.)
- Decided fault (ex. Z fault)
- Presumptive fault (ex. Y fault)
- Anticline axis (ex. H₂ Anticline axis)
- Syncline axis (ex. L₂ Syncline axis)

Scale: 1:50,000





- Relative to 1958
- 3000m ~ 3500m
 - 4000m ~ 5000m
 - 5000m ~ 6000m
 - 6000m ~ 7000m
- Contour line (DL in)
- Decided fault (ex. Z fault)
- Presumptive fault (ex. Y fault)
- Anticline axis (ex. H1 Anticline axis)
- Syncline axis (ex. L2 Syncline axis)