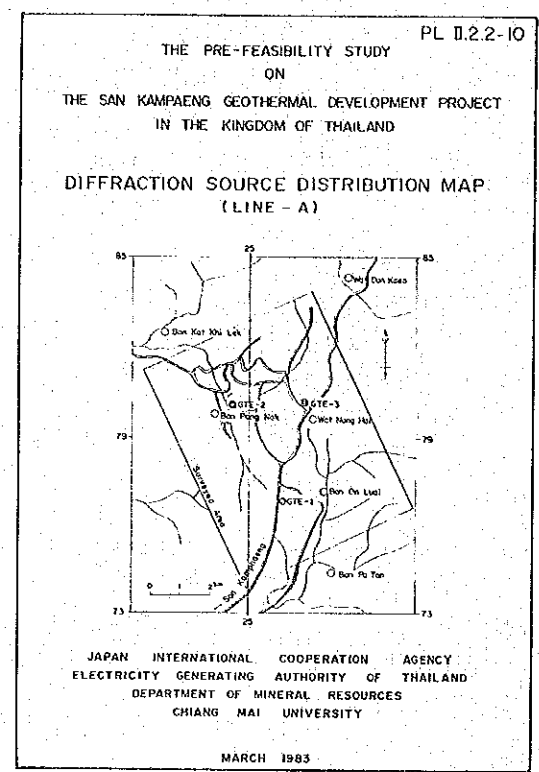
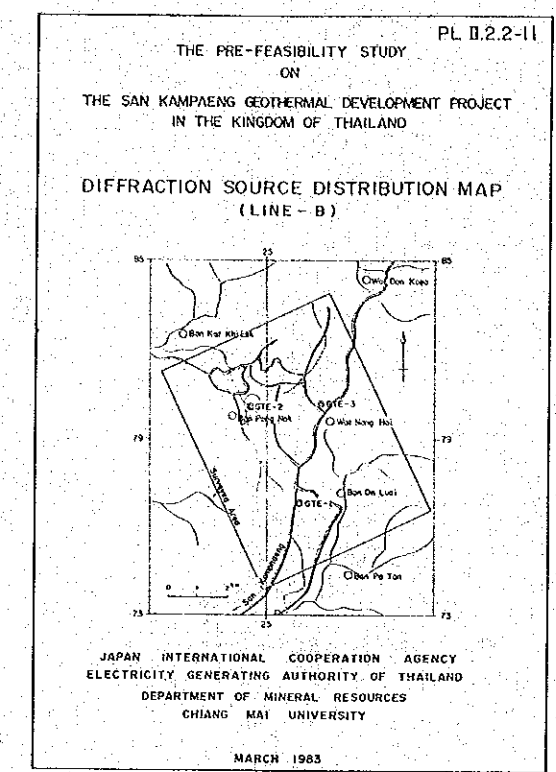
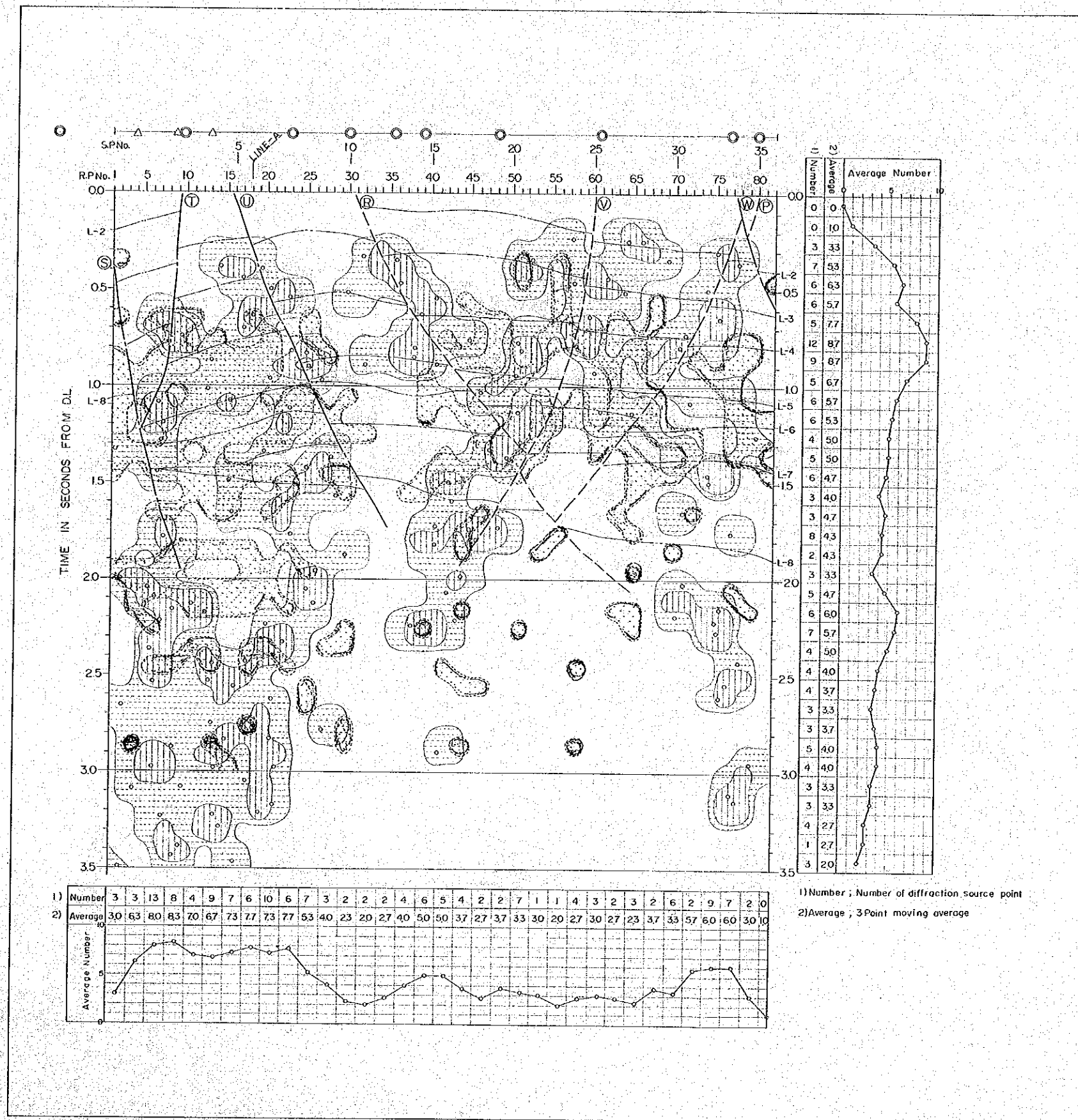


1) Number ; Number of diffraction source point  
 2) Average ; 3 Point moving average

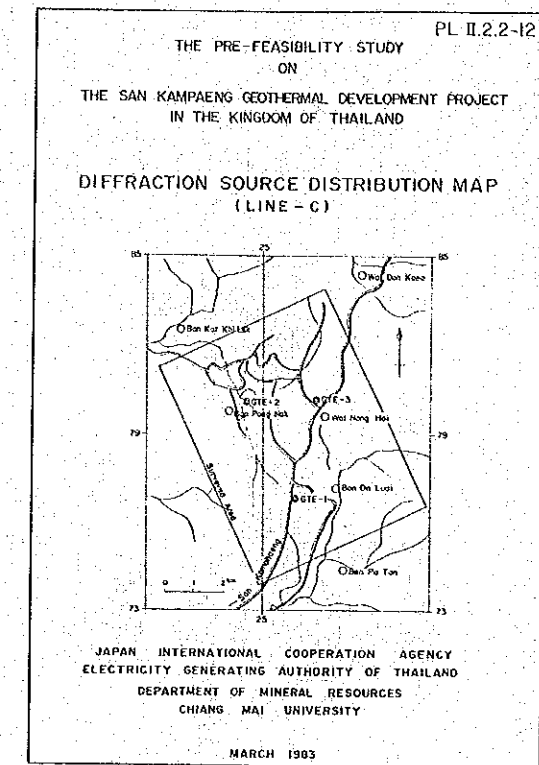
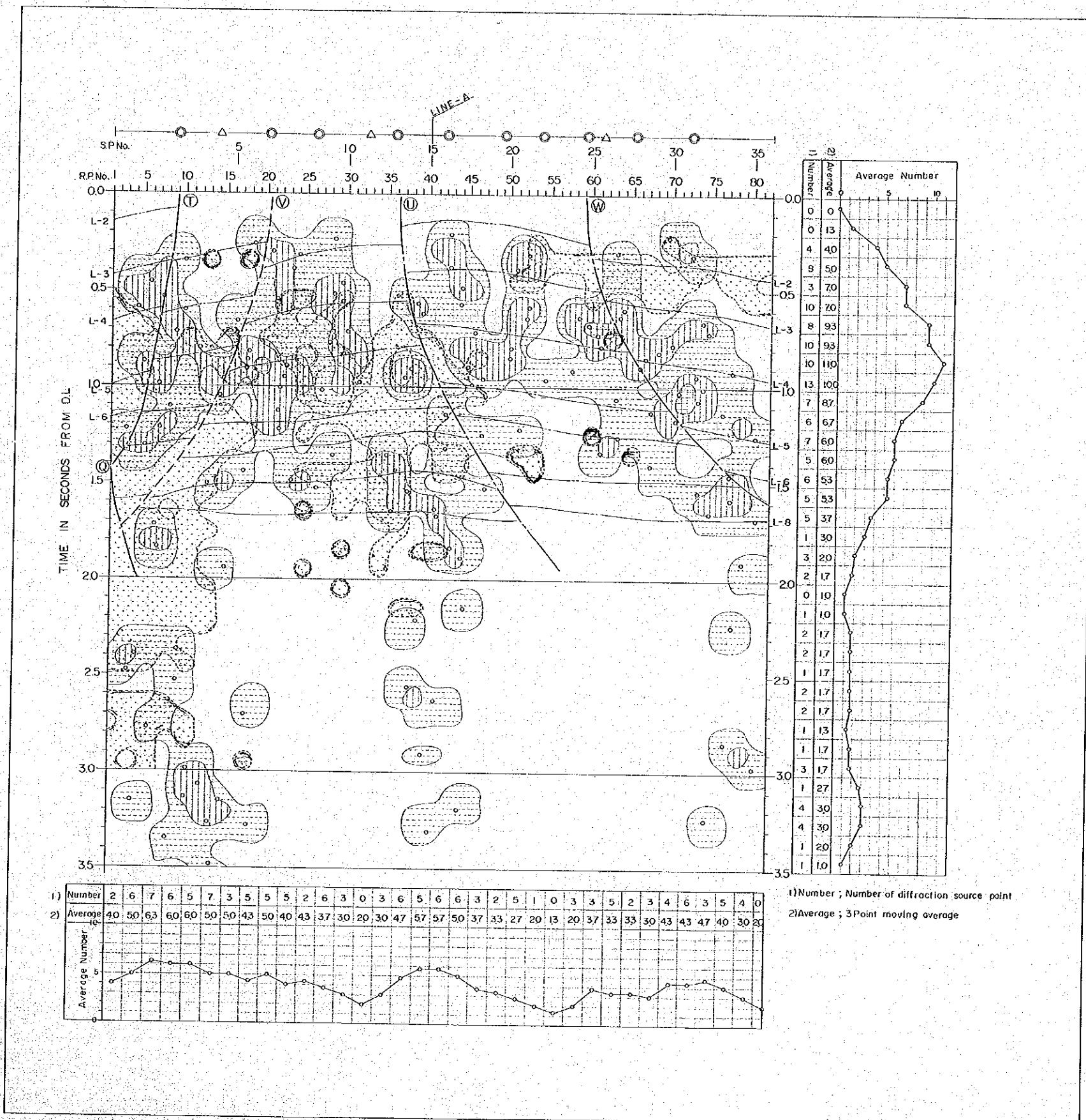


- LEGEND**
- Source number 0
  - Source number 1
  - Source number 2
  - Source number 3
  - ⊖ Decided fault (ex. T fault)
  - ⊙ Presumptive fault (ex. V fault)
  - L-8 Reflection layer (ex. L-8 Reflective layer)
  - Low frequency zone (< 20HZ)
  - Diffraction source
  - Side reflection point
  - △ Decided fault point

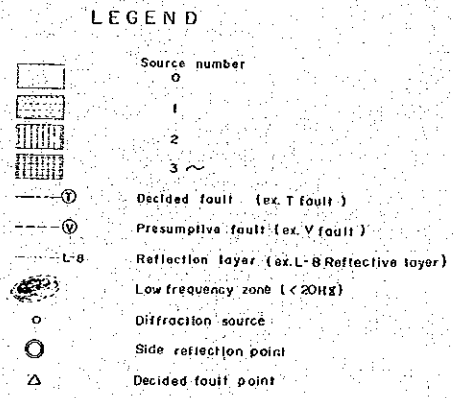
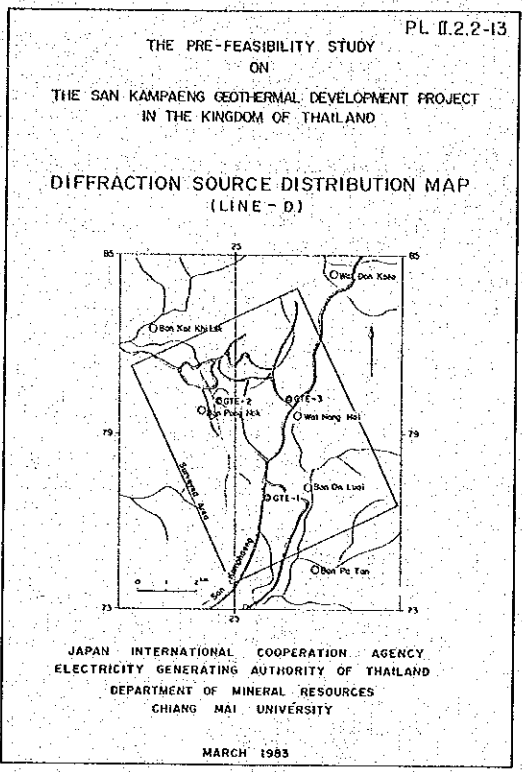
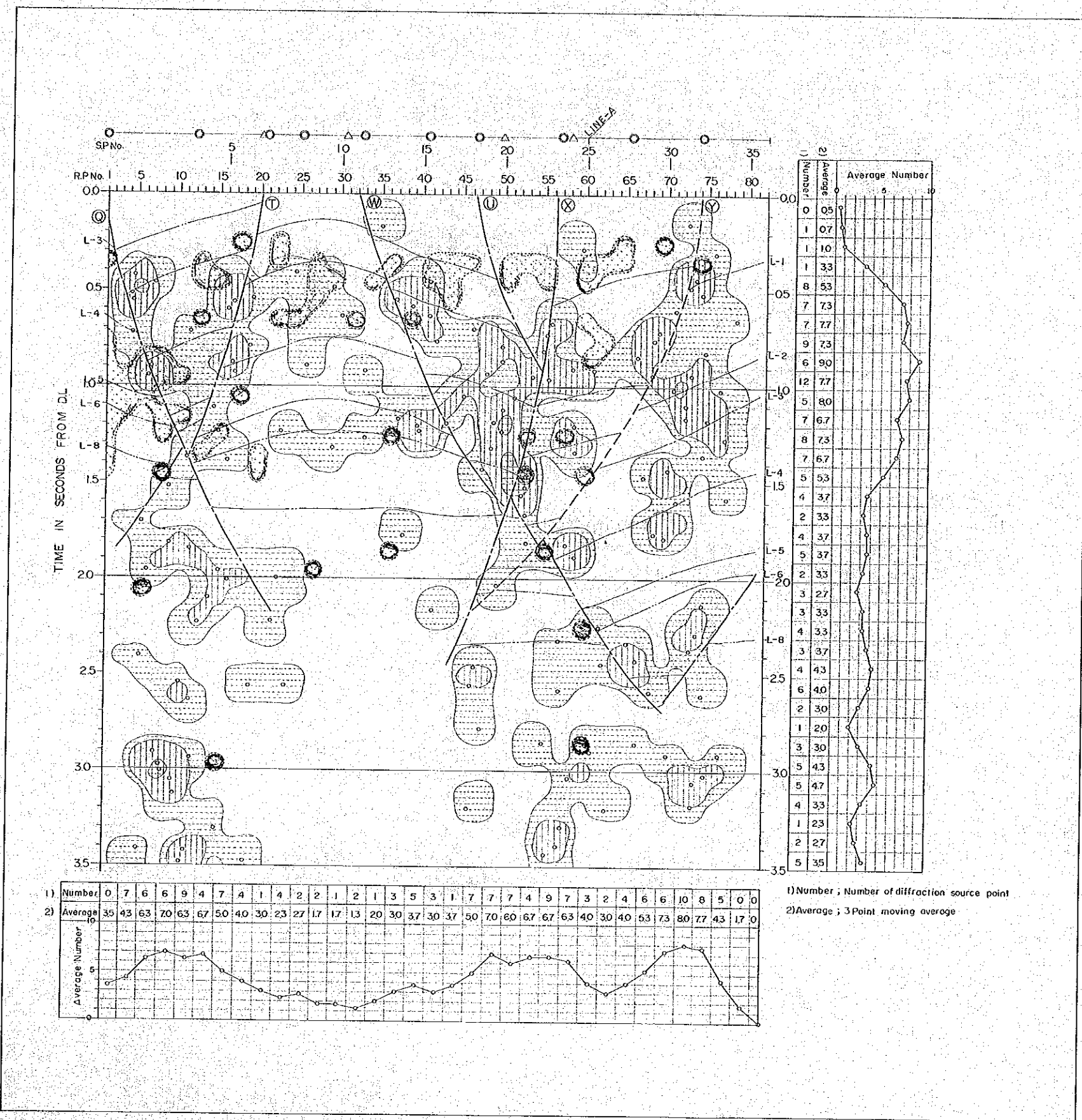


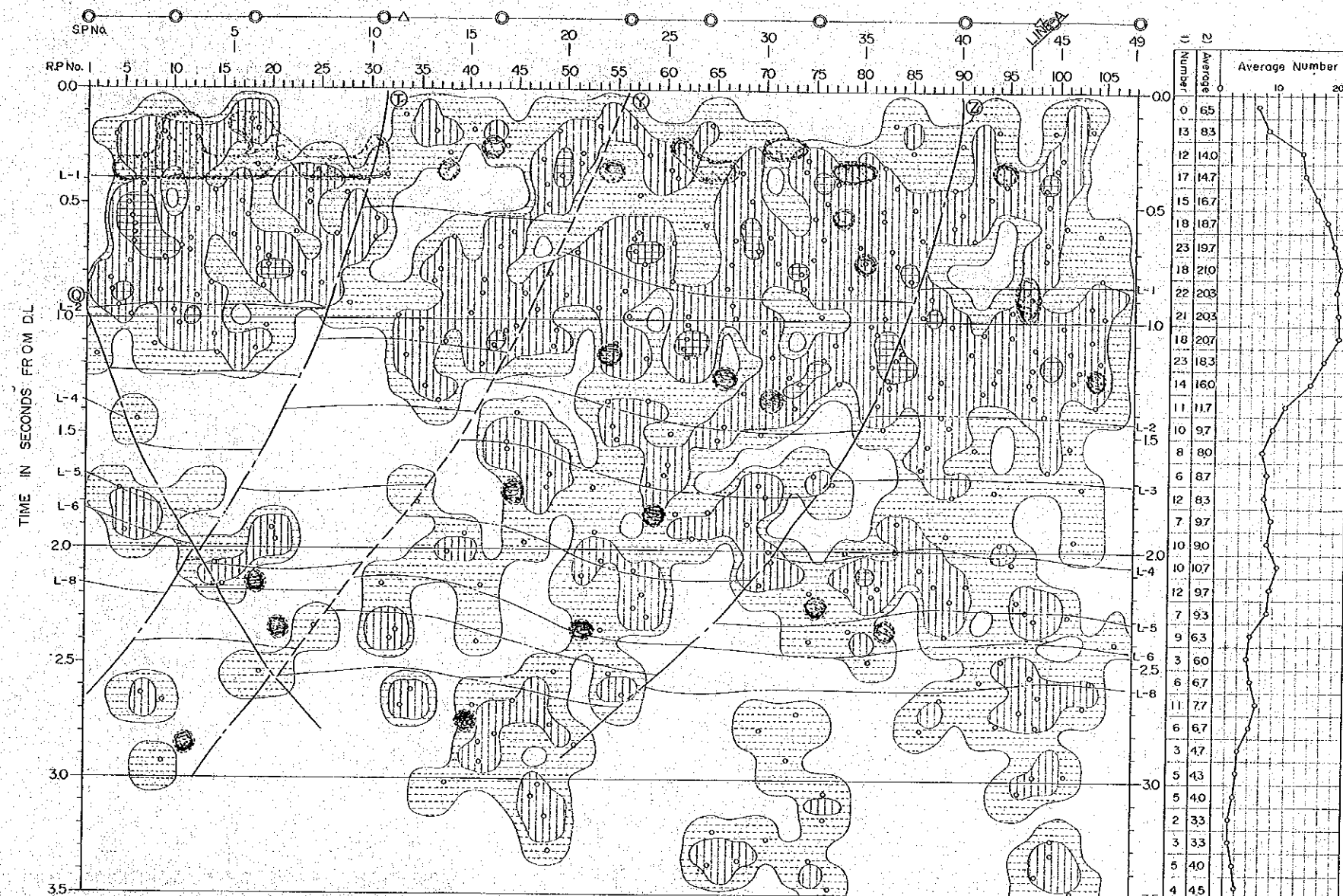
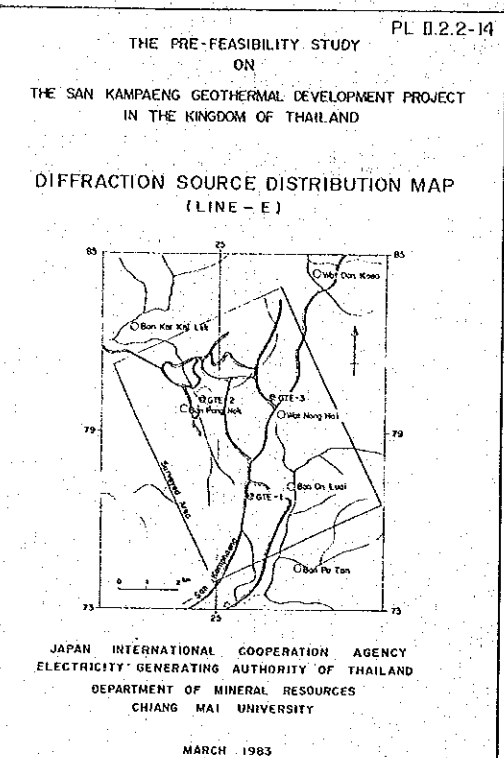
- LEGEND**
- Source number 0
  - 1
  - 2
  - 3 ~
  - Decided fault (ex. T fault)
  - Presumptive fault (ex. V fault)
  - Reflection layer (ex. L-B Reflective layer)
  - Low frequency zone (< 20Hz)
  - Diffraction source
  - Side reflection point
  - Decided fault point

1) Number ; Number of diffraction source point  
2) Average ; 3 Point moving average



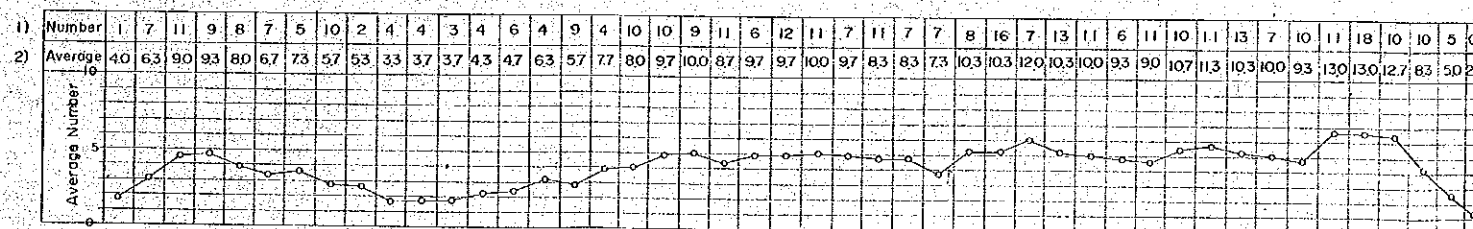
- LEGEND
- Source number 0
  - ▨ Source number 1
  - ▩ Source number 2
  - ▧ Source number 3
  - ① Decided fault (ex. T fault)
  - ② Presumptive fault (ex. V fault)
  - L-8 Reflection layer (ex. L-8 Reflective layer)
  - Low frequency zone (< 20Hz)
  - Diffraction source
  - Side reflection point
  - △ Decided fault point



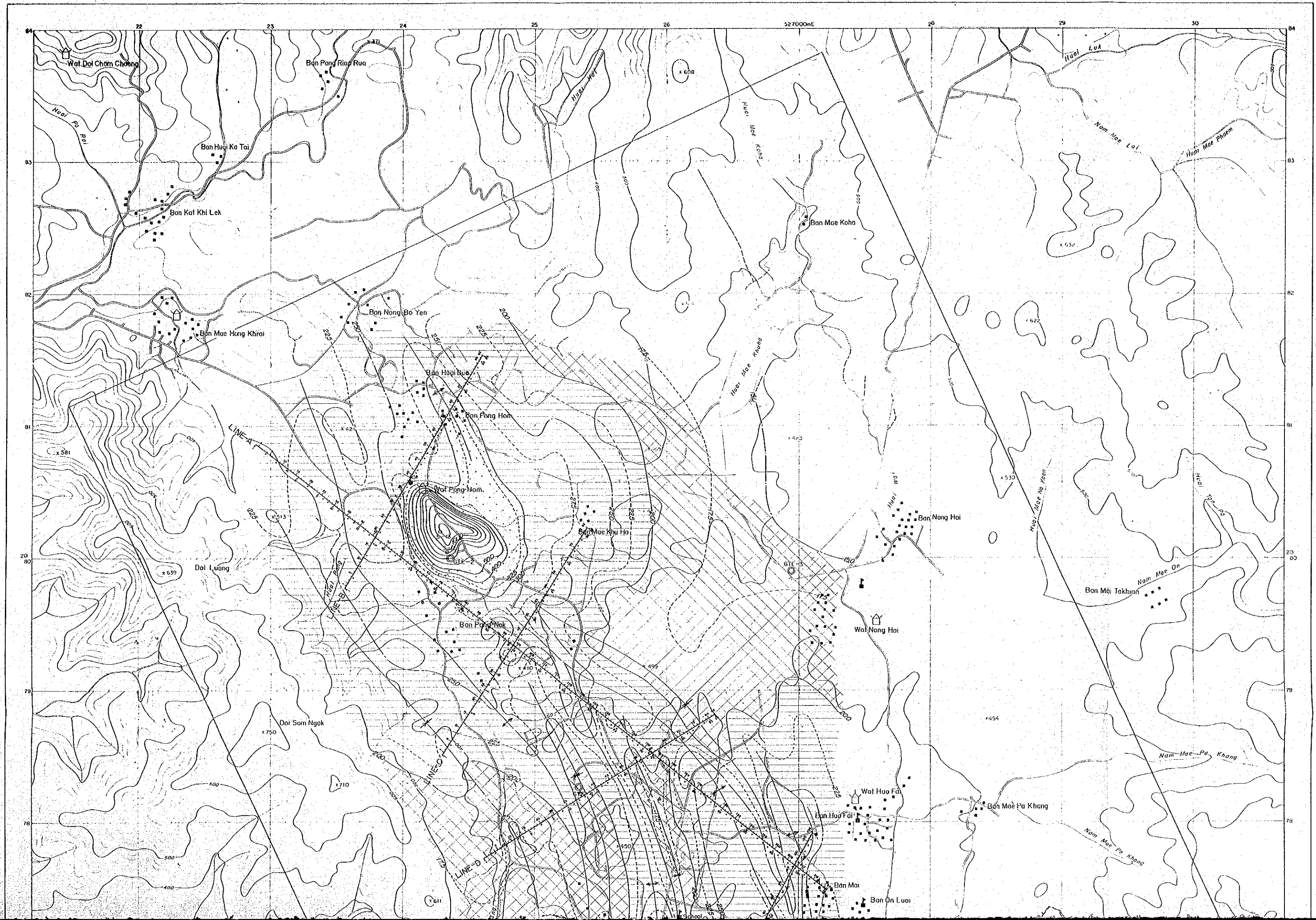


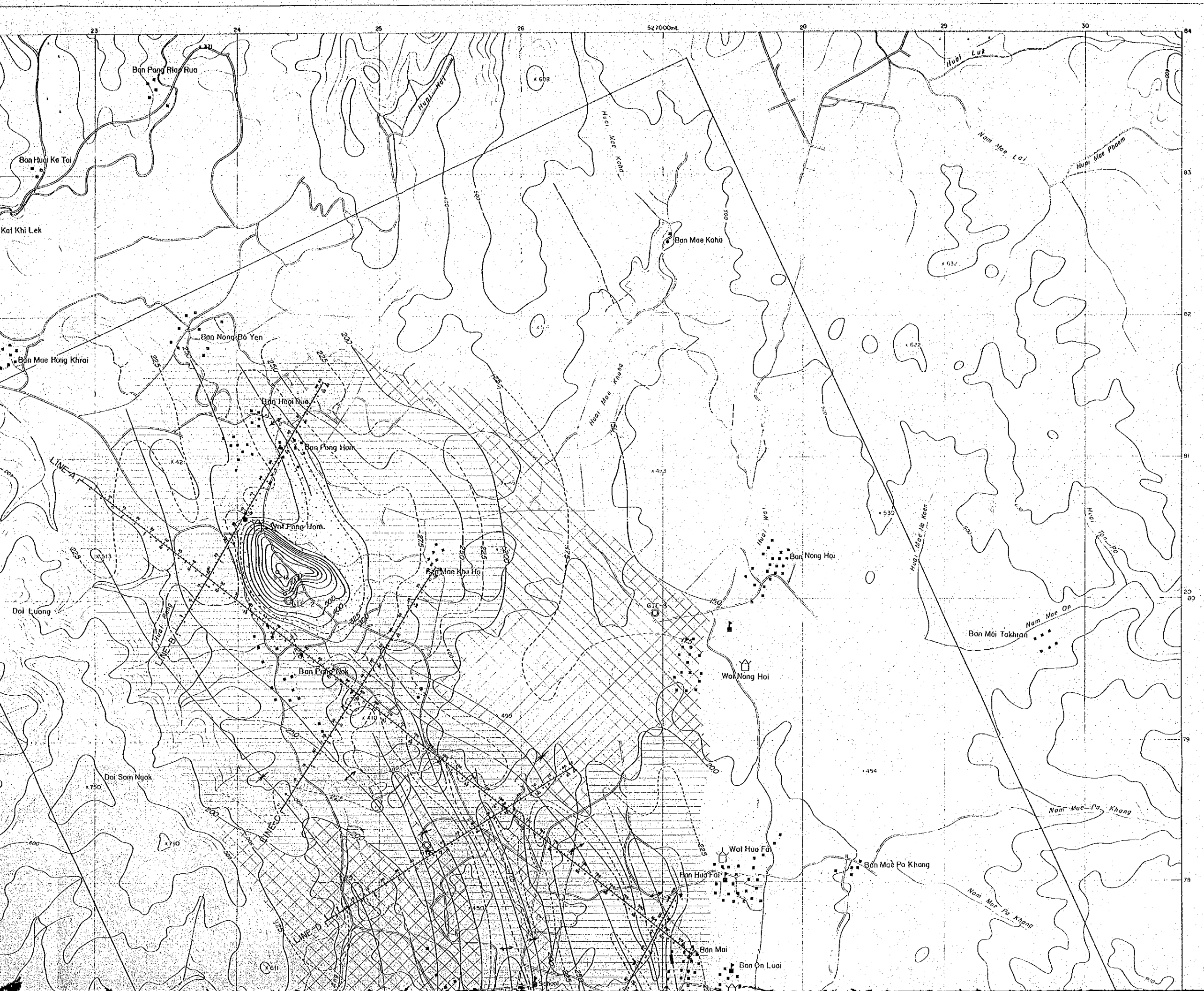
LEGEND

- Source number 0
- Source number 1
- Source number 2
- Source number 3
- Decided fault (ex. T fault)
- Presumptive fault (ex. V fault)
- Reflection layer (ex. L-8 Reflective layer)
- Low frequency zone (< 20Hz)
- Diffraction source
- Side reflection point
- Decided fault point



1) Number : Number of diffraction source point  
2) Average ; 3 Point moving average



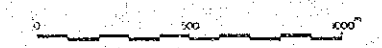


THE PRE-FEASIBILITY STUDY PL II.2.2-15  
 ON  
 THE SAN KAMPAENG GEOTHERMAL DEVELOPMENT PROJECT  
 IN THE KINGDOM OF THAILAND

10mDEPTH  
 TEMPERATURE DISTRIBUTION MAP

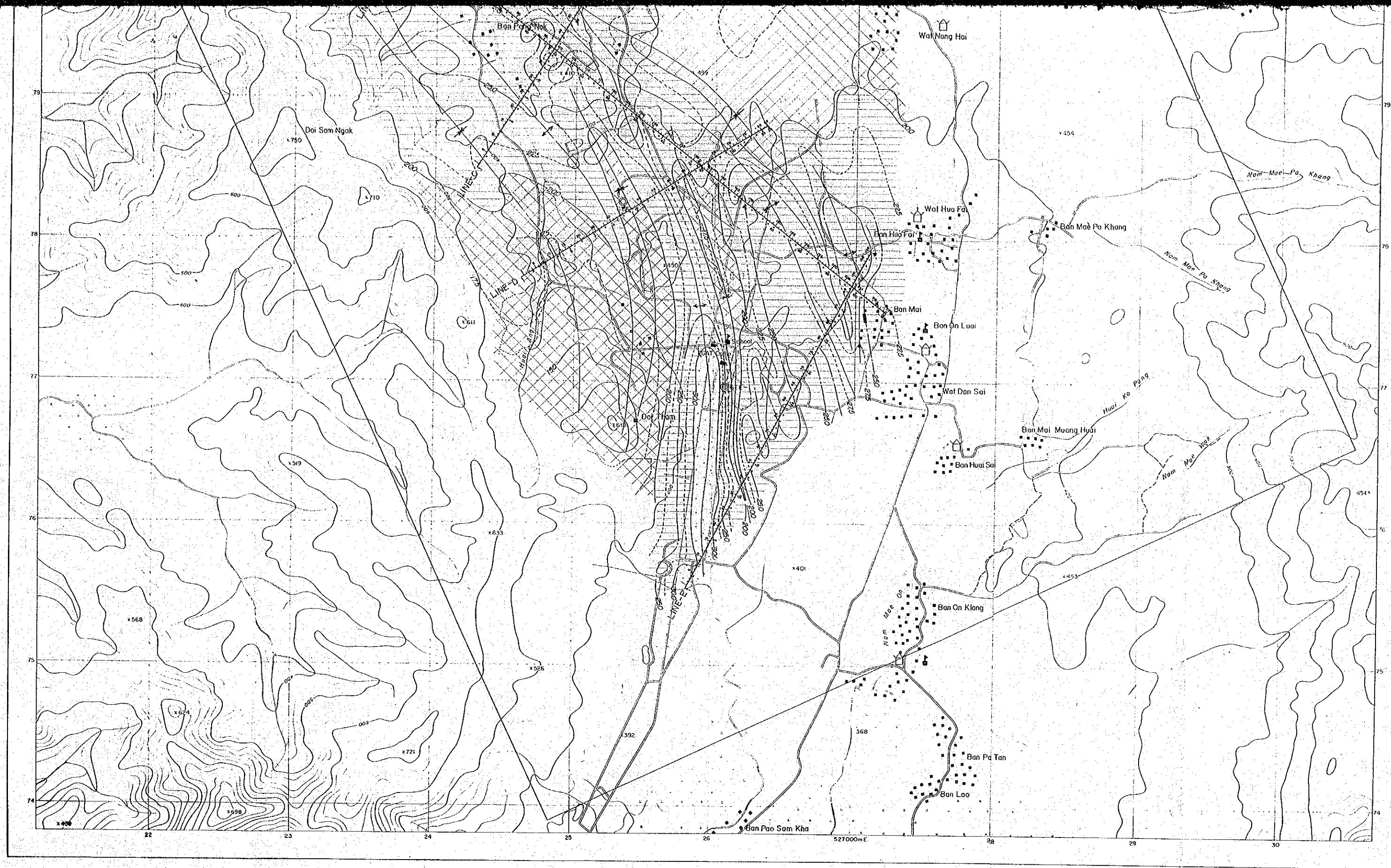
JAPAN INTERNATIONAL COOPERATION AGENCY  
 ELECTRICITY GENERATING AUTHORITY OF THAILAND  
 DEPARTMENT OF MINERAL RESOURCES  
 CHIANG MAI UNIVERSITY

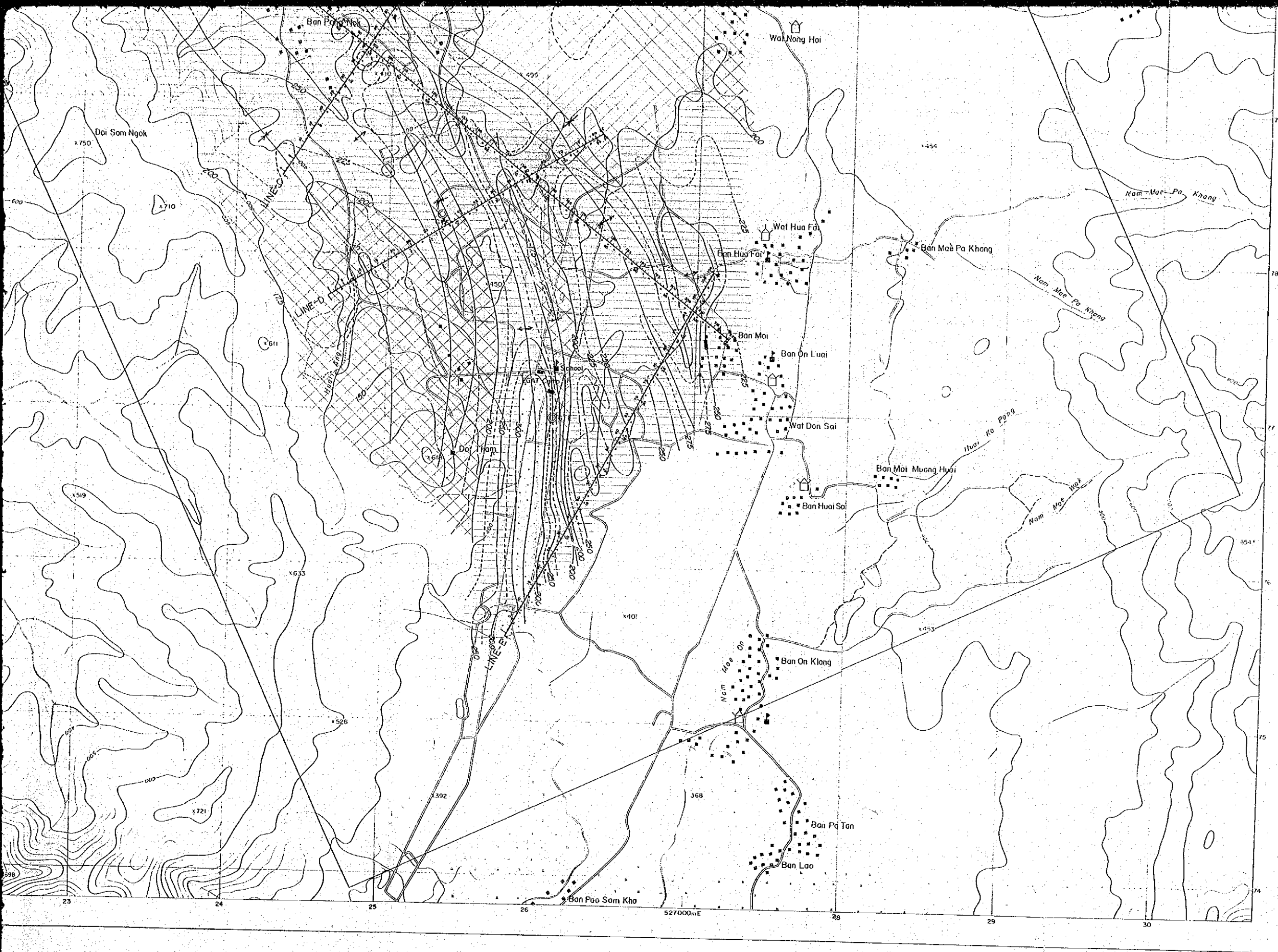
MARCH 1983



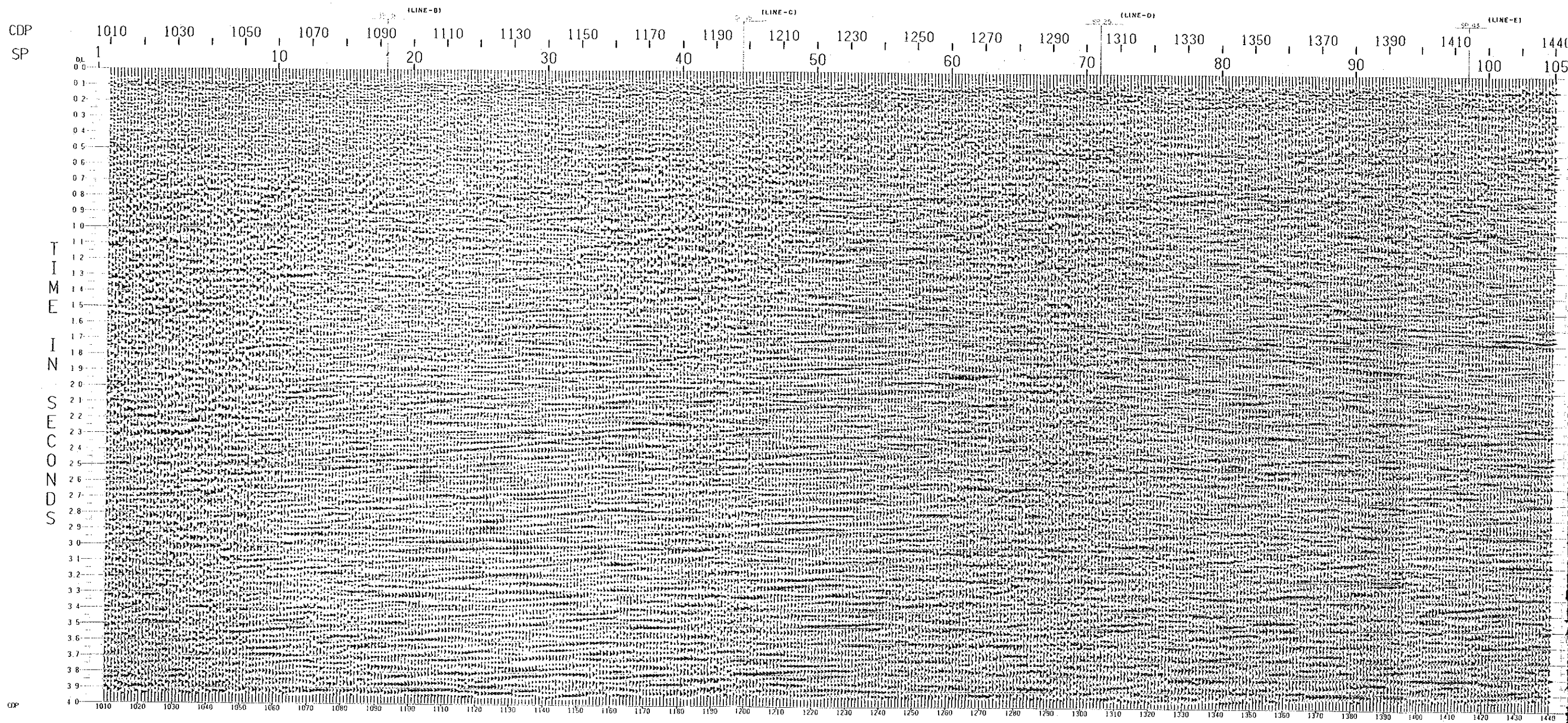
- LEGEND
- Confirmed road
  - Unconfirmed road
  - Stream
  - Village
  - Wat
  - School
  - Rice field
  - Dam (water reserve)
  - 50°C ~
  - 30°C ~ 50°C
  - 20°C ~ 30°C
  - ~ 20°C
  - Isothermal line (°C)
  - Temperature anticline axis
  - Temperature syncline axis

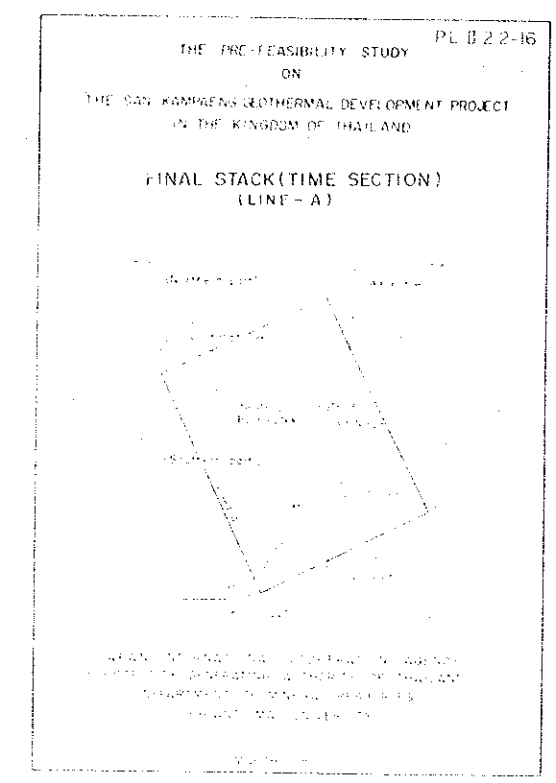
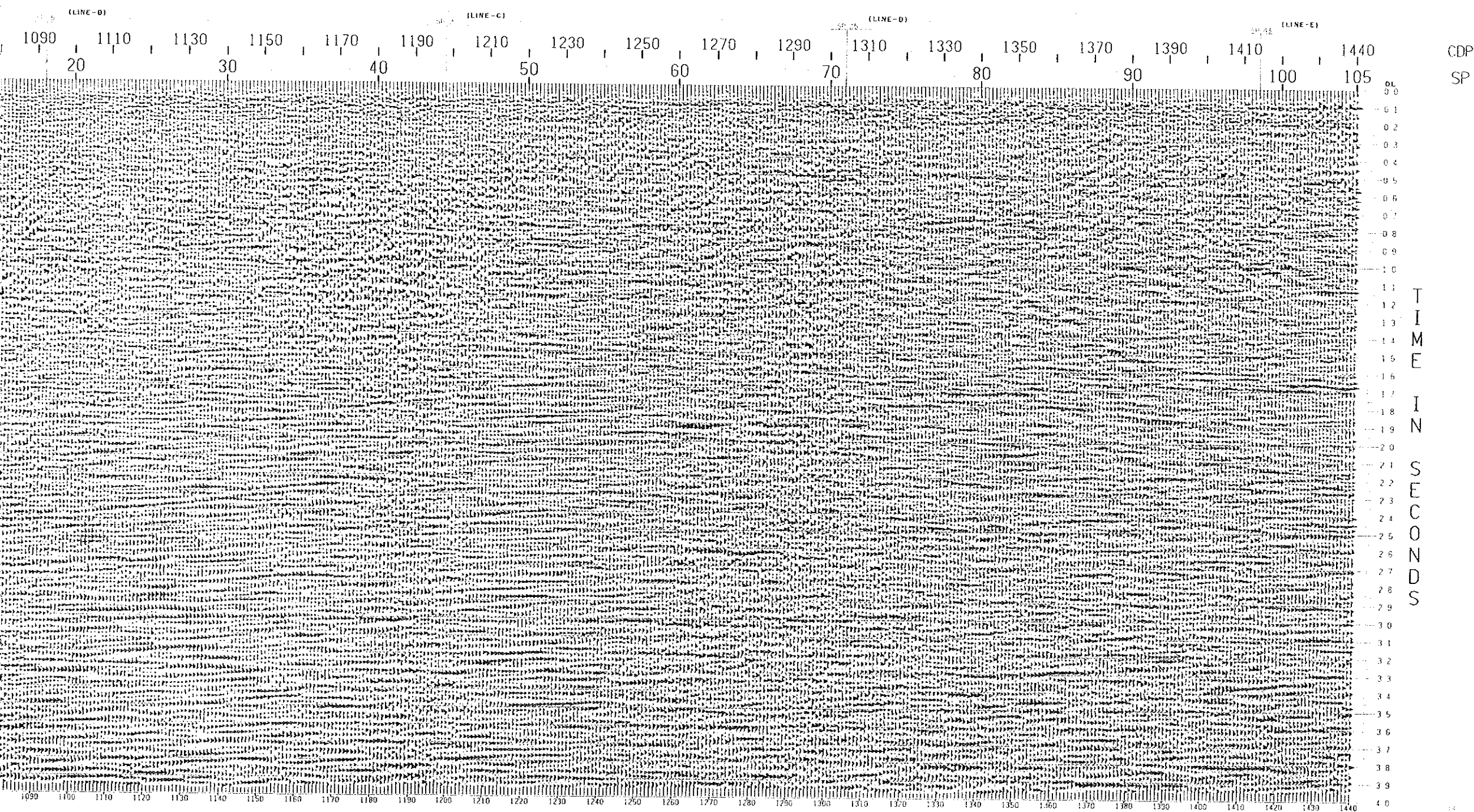






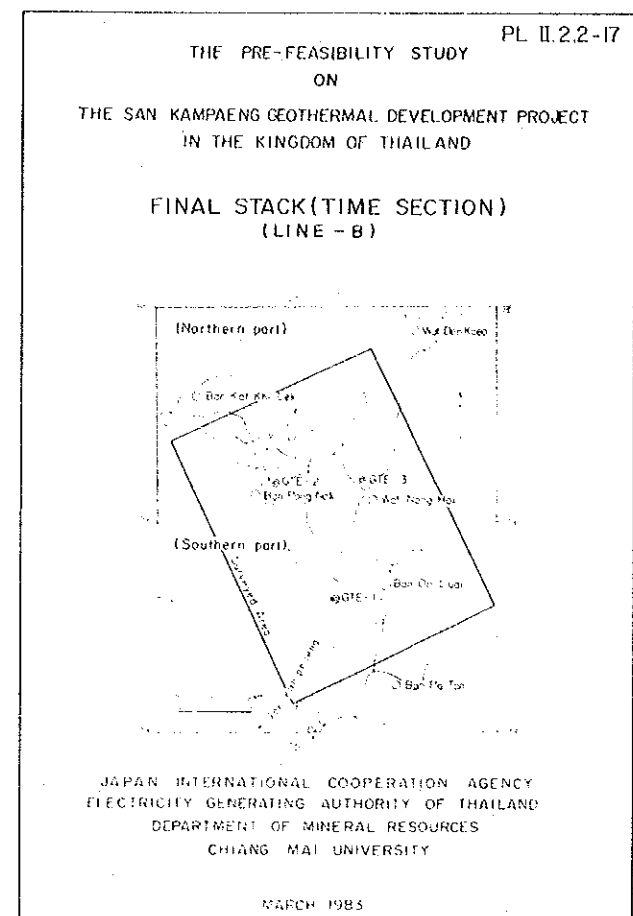
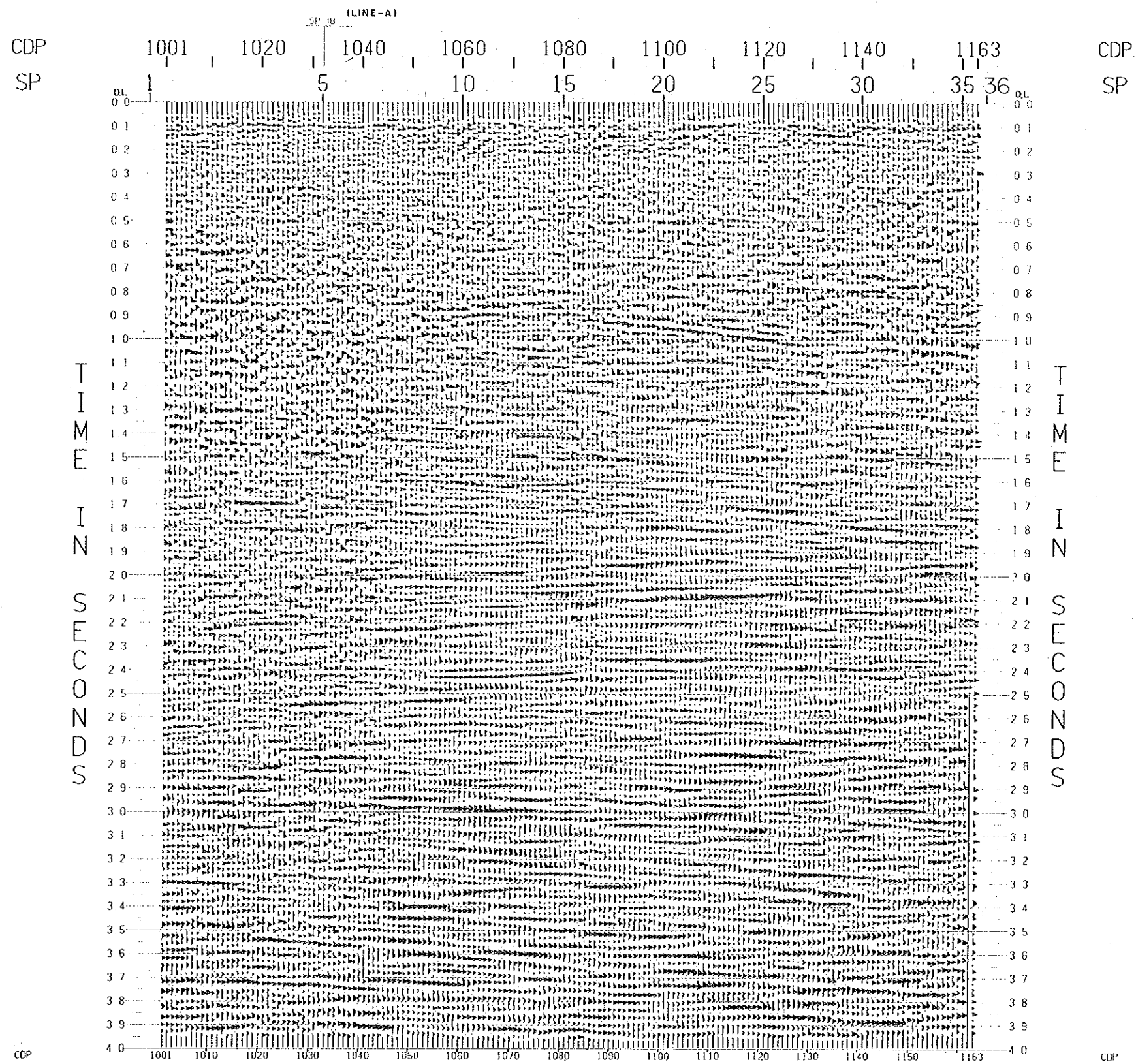
Temperature anticline axis  
Temperature syncline axis

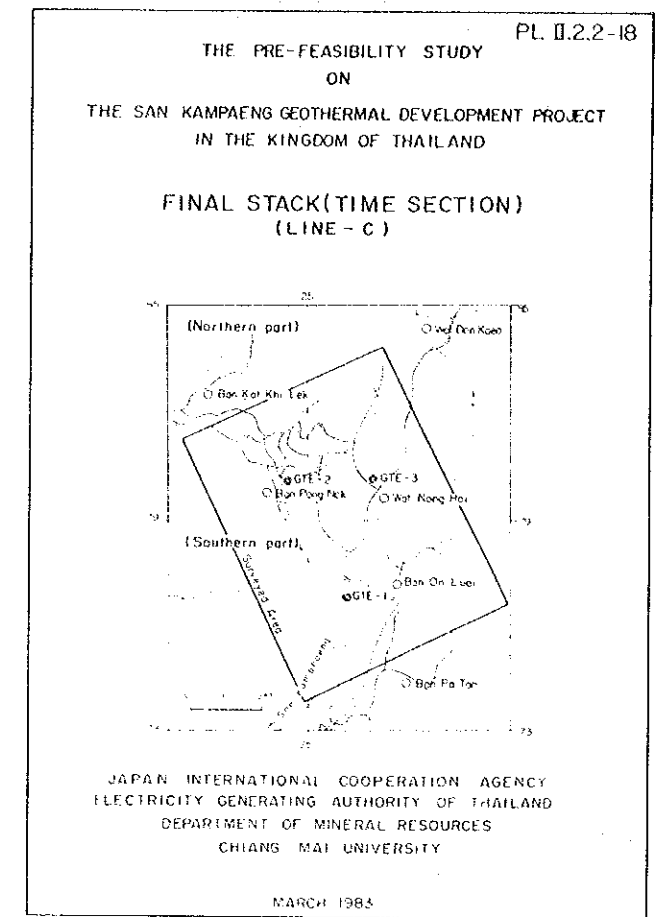
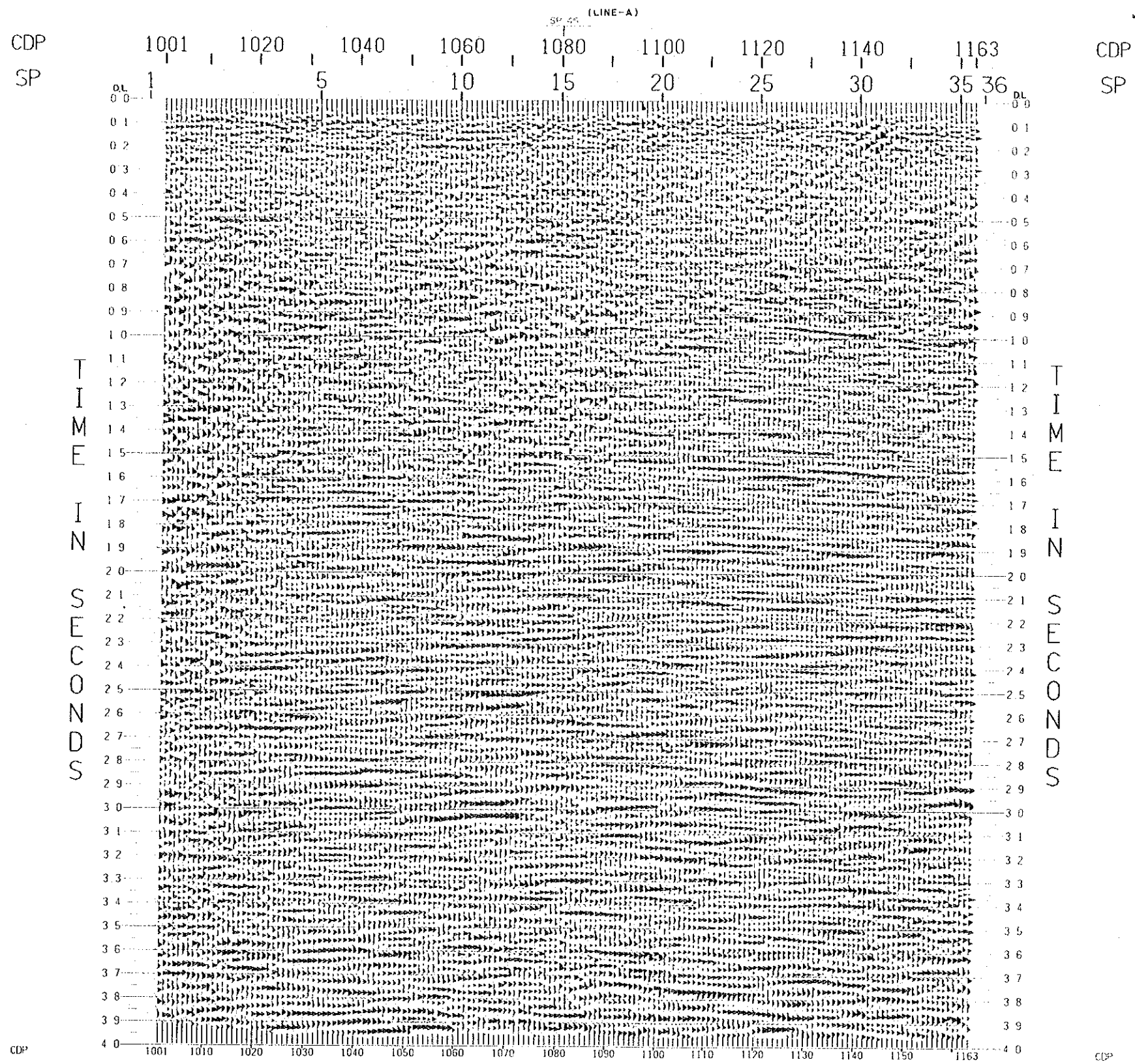


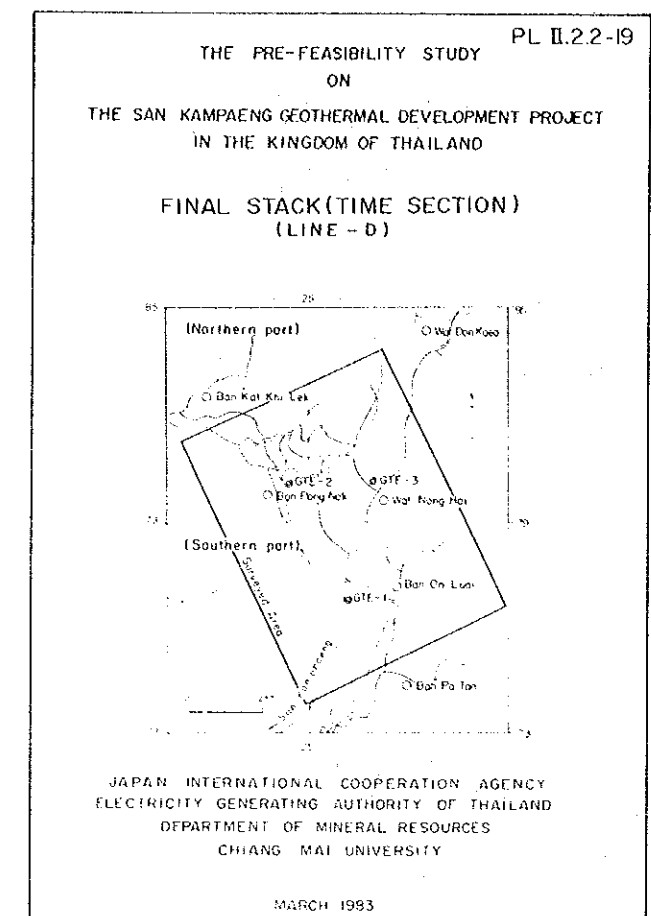
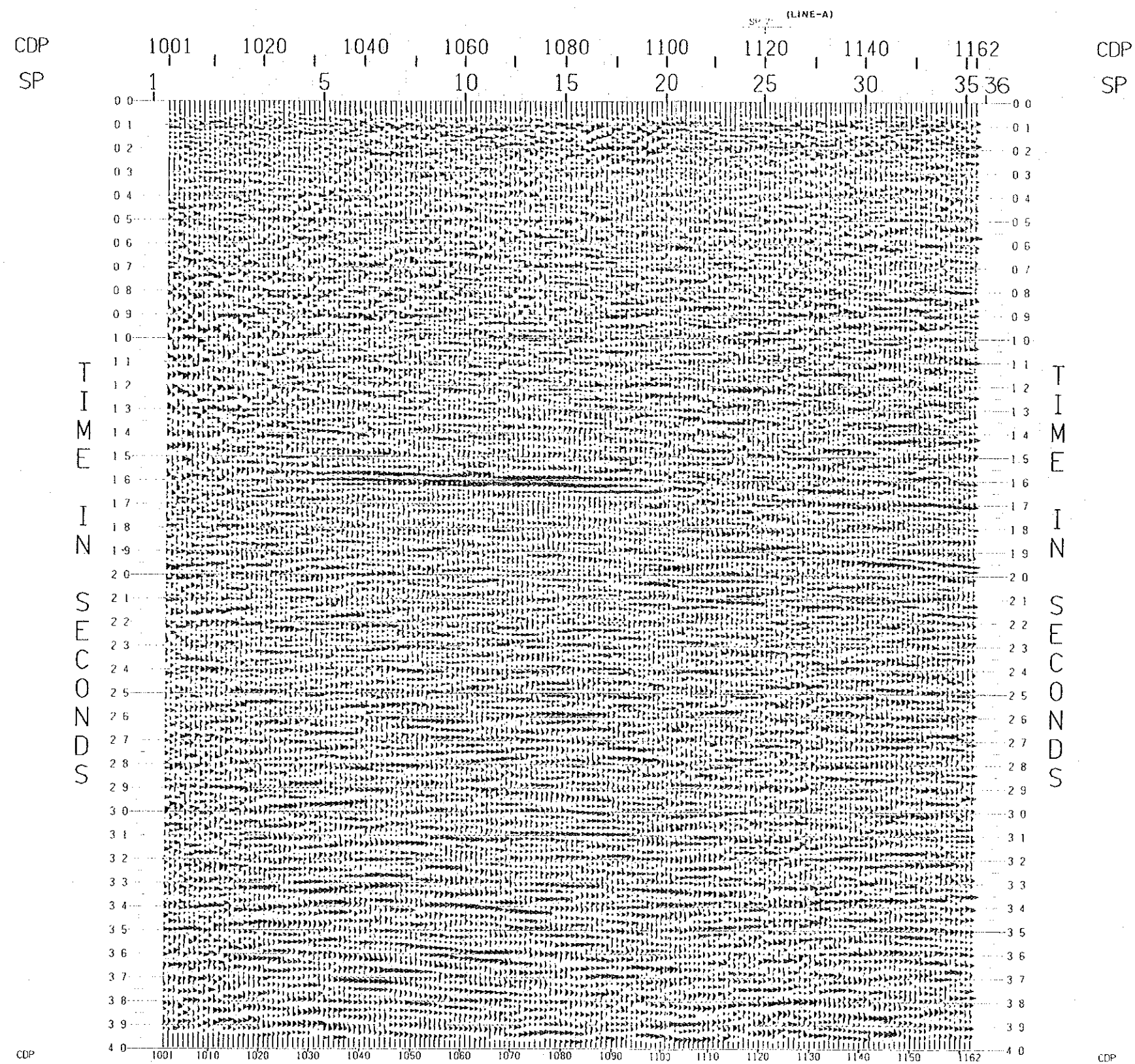


TIME IN SECONDS

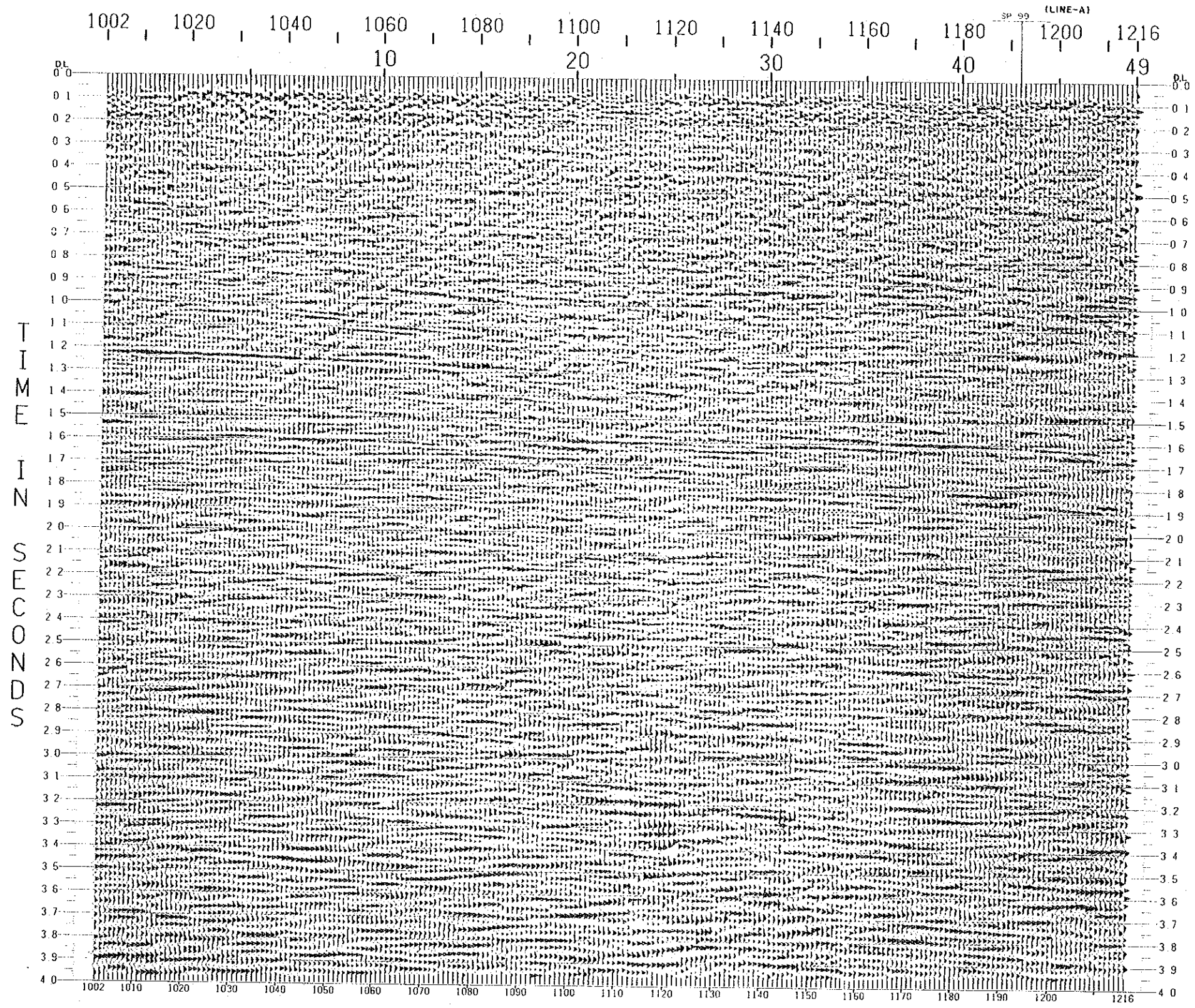
CDP  
SP







CDP  
SP



CDP  
SP

CDP

CDP

