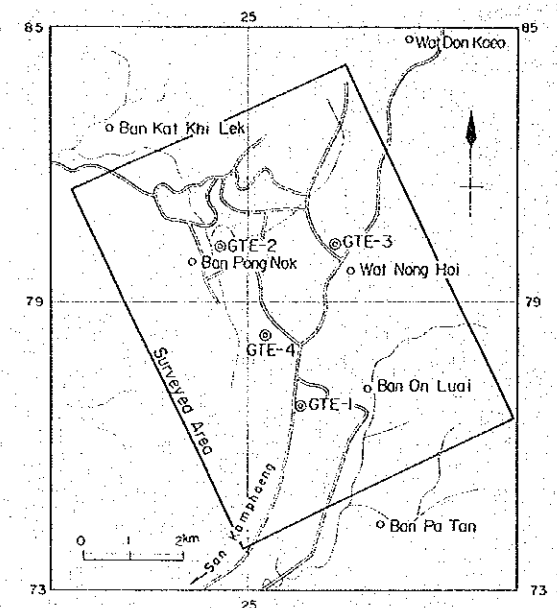


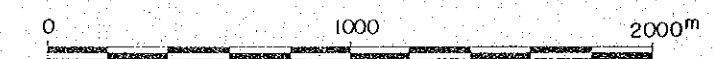
THE PRE-FEASIBILITY STUDY
ON
THE SAN KAMPAENG GEOTHERMAL DEVELOPMENT PROJECT
IN THE KINGDOM OF THAILAND

TOTAL MAGNETIC INTENSITY



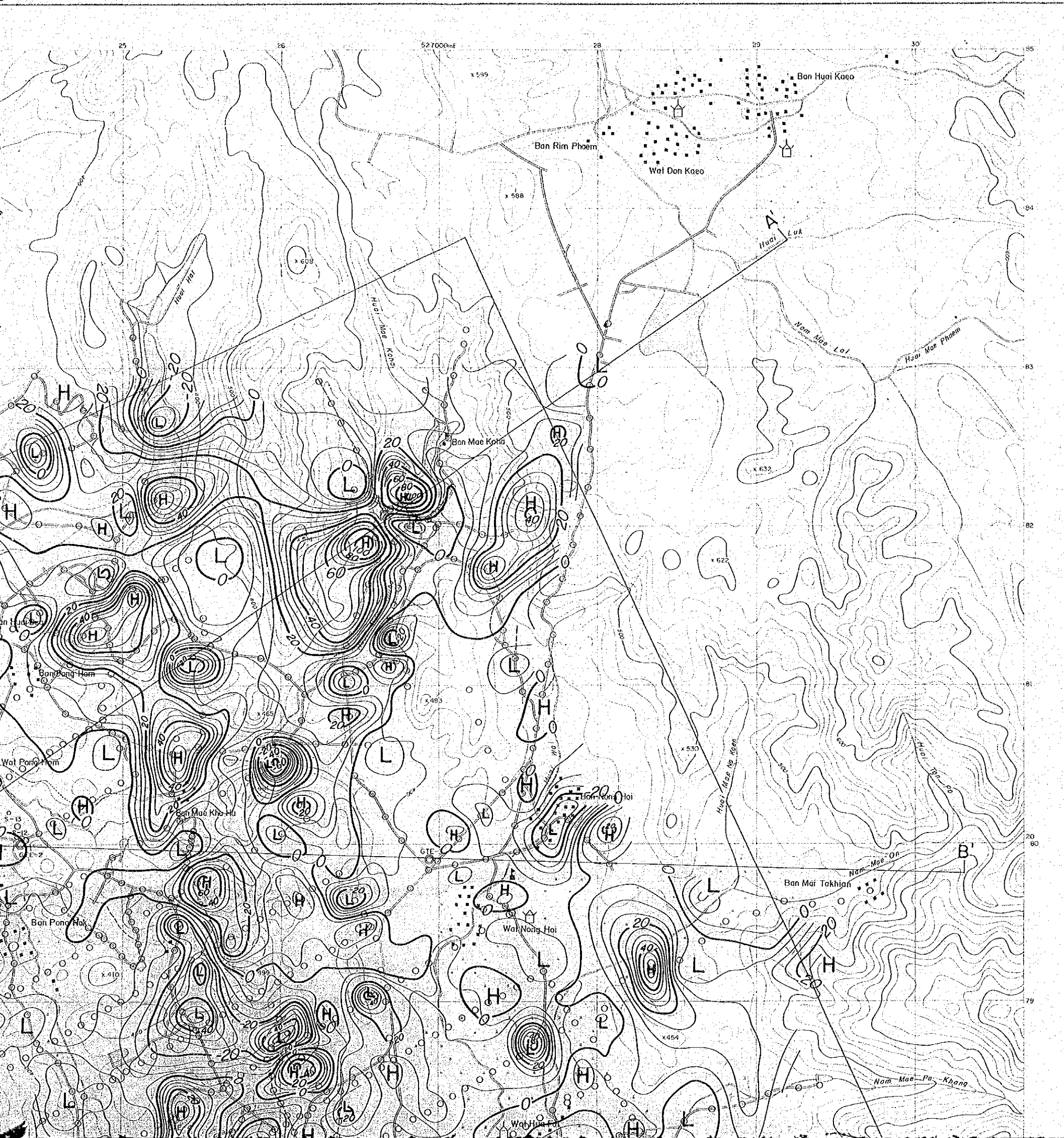
JAPAN INTERNATIONAL COOPERATION AGENCY
ELECTRICITY GENERATING AUTHORITY OF THAILAND
DEPARTMENT OF MINERAL RESOURCES
CHIANG MAI UNIVERSITY

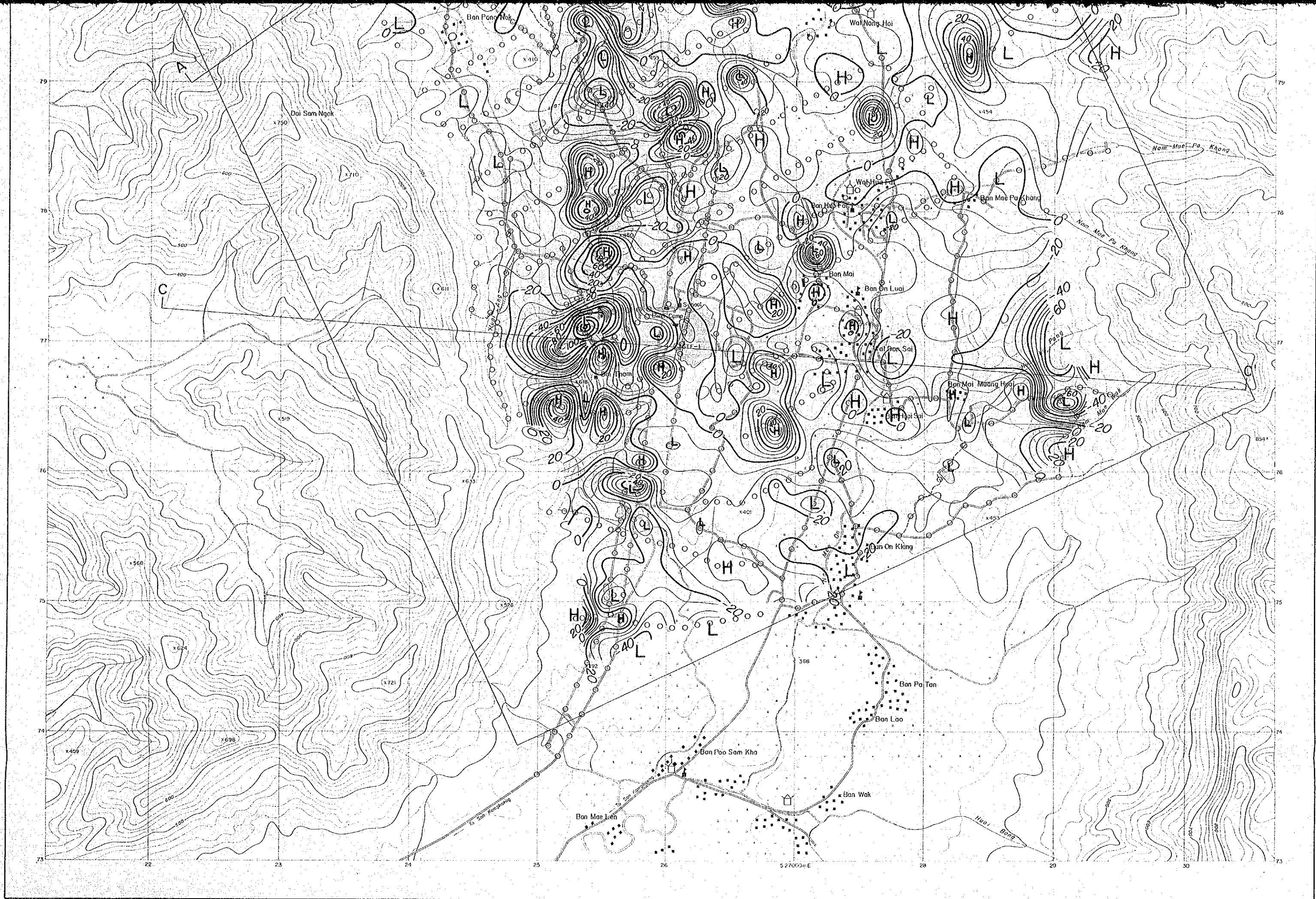
MARCH 1983

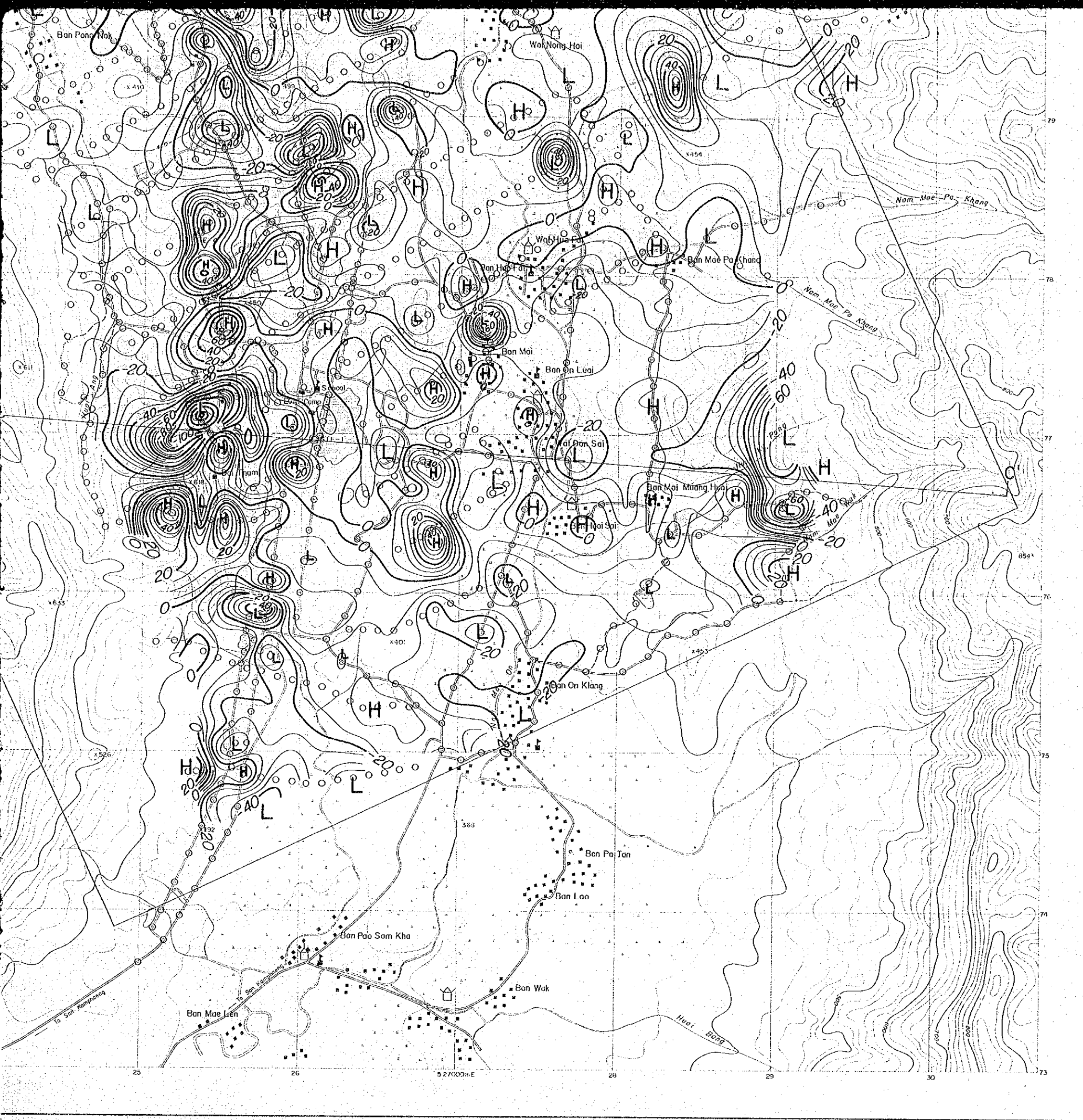


LEGEND

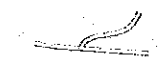
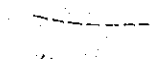



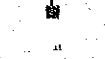


- Wide road
- Narrow pass
- Stream
- Village
- Wat
- School
- Rice field
- Dam (water reserve)

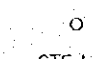




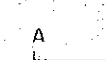





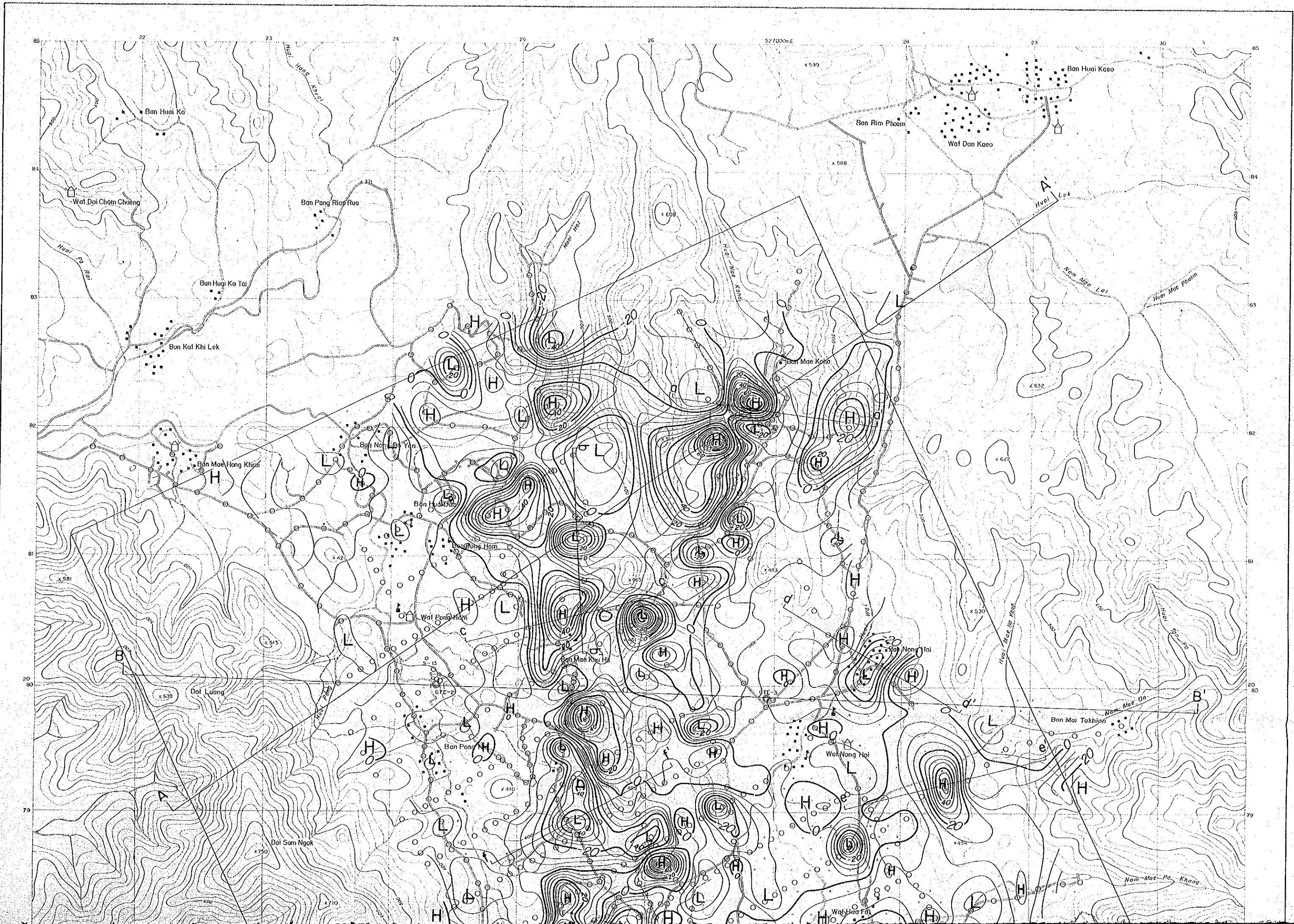


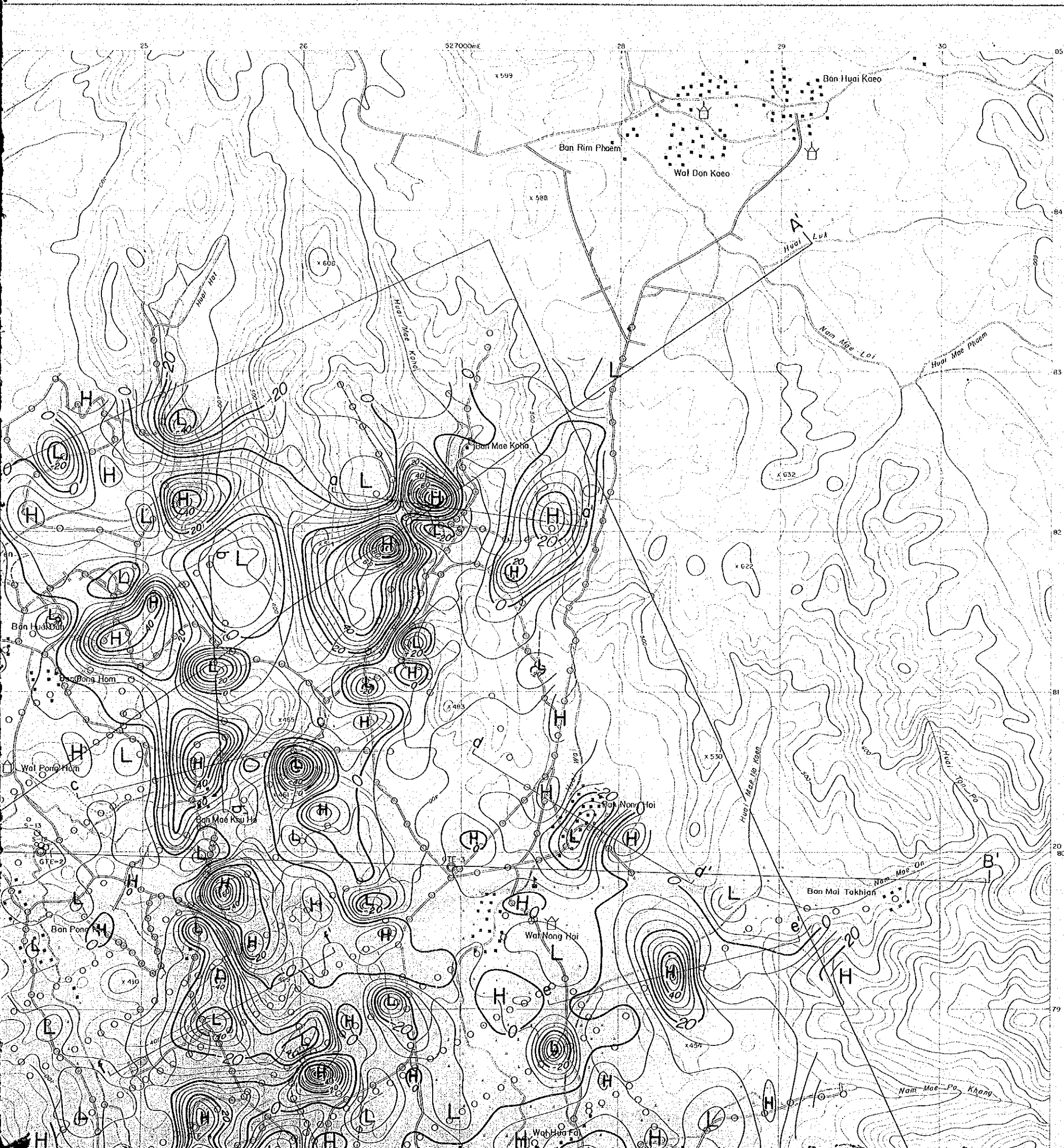
LEGEND

-  Wide road
-  Narrow pass
-  Stream
-  Village
-  Wat
-  School
-  Rice field
-  Dam (water reserve)

-  Magnetic station
-  Drill hole
-  20 gamma
-  5 gamma
-  H High magnetic anomaly
-  L Low magnetic anomaly
-  Profile of underground structure

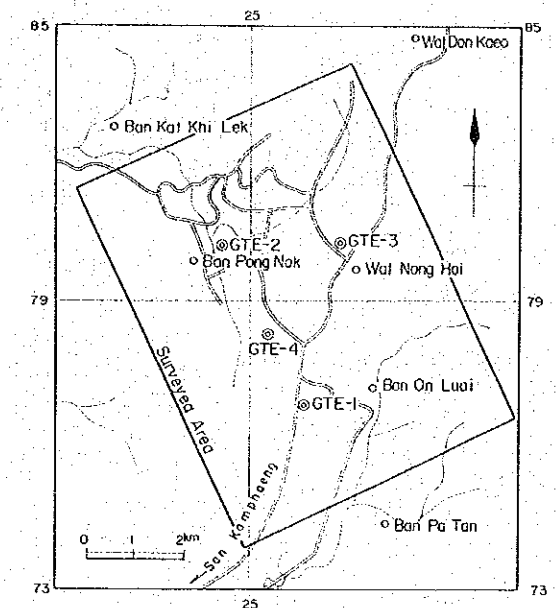
Inclination : 15° N
 Declination : N 6° W
 Total intensity : 43,556 gamma





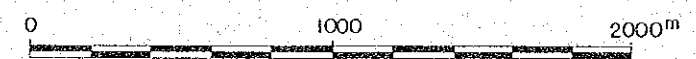
PL II 13-2
 THE PRE-FEASIBILITY STUDY
 ON
 THE SAN KAMPAENG GEOTHERMAL DEVELOPMENT PROJECT
 IN THE KINGDOM OF THAILAND

TOTAL MAGNETIC ANOMALY



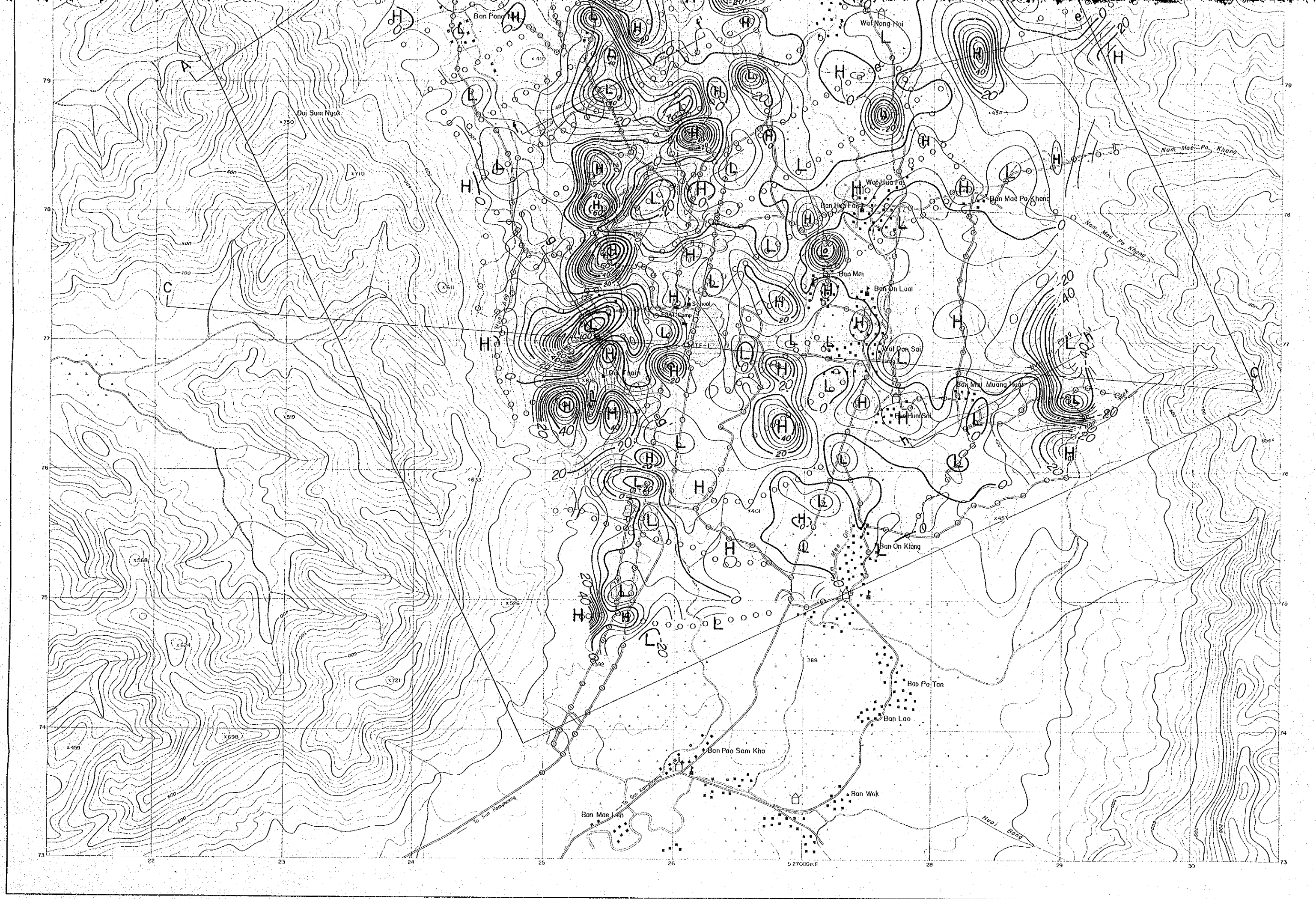
JAPAN INTERNATIONAL COOPERATION AGENCY
 ELECTRICITY GENERATING AUTHORITY OF THAILAND
 DEPARTMENT OF MINERAL RESOURCES
 CHIANG MAI UNIVERSITY

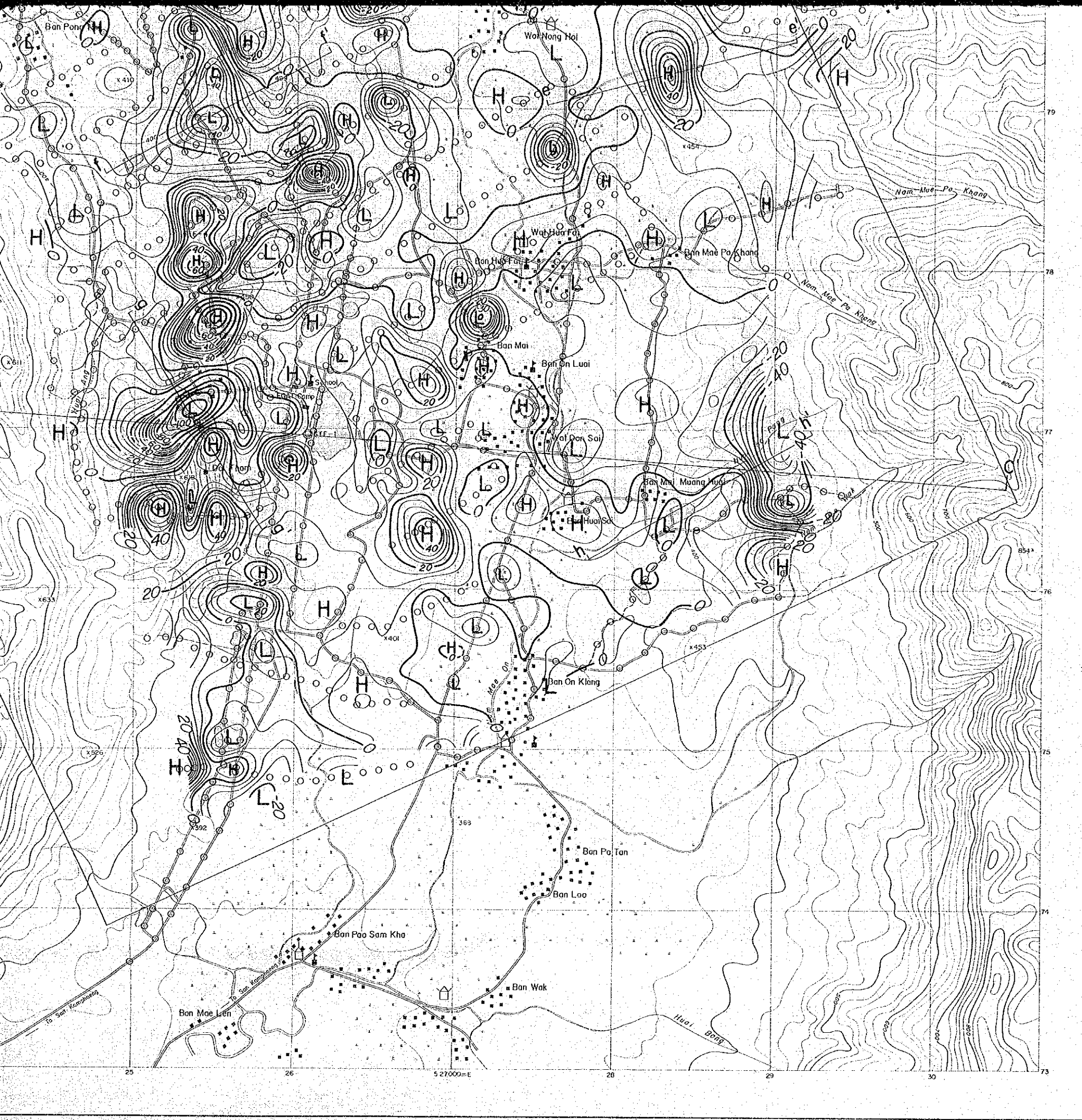
MARCH 1983



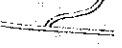
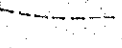

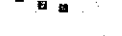


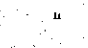
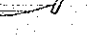
LEGEND

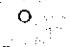
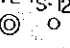

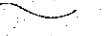
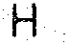

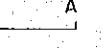
- | | | | |
|--|-------------|-----|---------------------|
| | Wide road | | Wat |
| | Narrow pass | | School |
| | Stream | " " | Rice field |
| | Village | | Dam (water reserve) |





LEGEND


-  Wide road
-  Narrow pass
-  Stream
-  Village
-  Wat
-  School
-  Rice field
-  Dam (water reserve)


-  Magnetic station
-  Drill hole
-  20 gamma } Contour line
-  5 gamma }
-  H High magnetic anomaly
-  L Low magnetic anomaly
-  Profile of underground structure

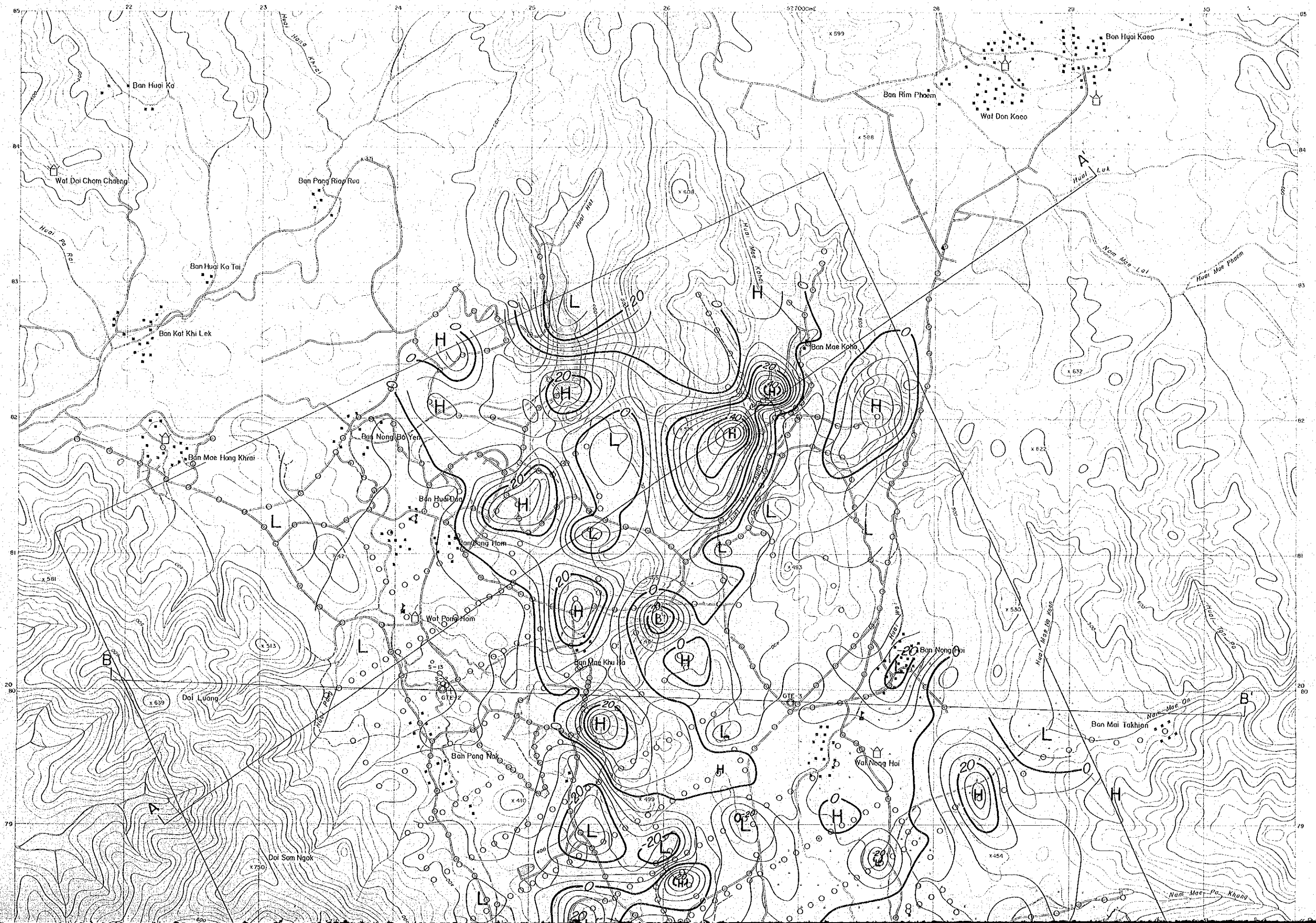
Inclination : 15°N

Declination : N 6°W

Total intensity : 43,500 gamma

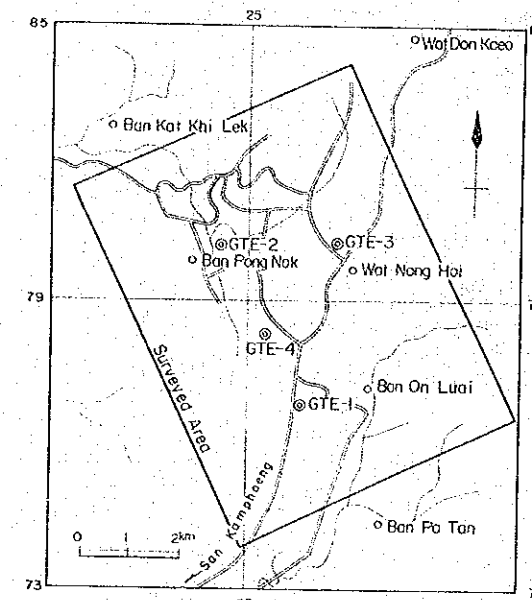
 Profile for magnetic modeling

 Geological profile



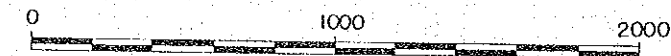
THE PRE-FEASIBILITY STUDY
ON
THE SAN KAMPAENG GEOTHERMAL DEVELOPMENT PROJECT
IN THE KINGDOM OF THAILAND

UPWARD CONTINUATION



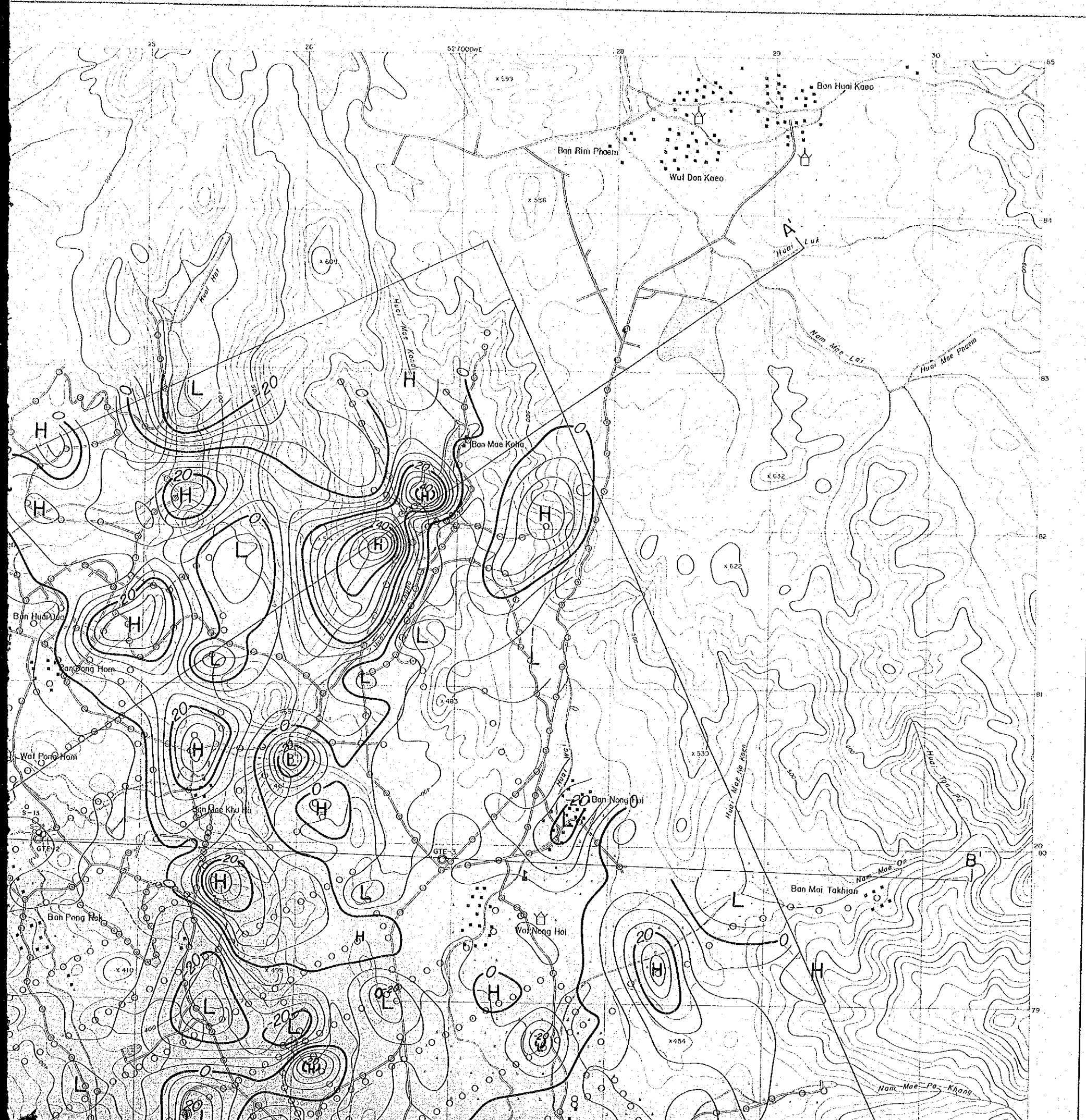
JAPAN INTERNATIONAL COOPERATION AGENCY
ELECTRICITY GENERATING AUTHORITY OF THAILAND
DEPARTMENT OF MINERAL RESOURCES
CHIANG MAI UNIVERSITY

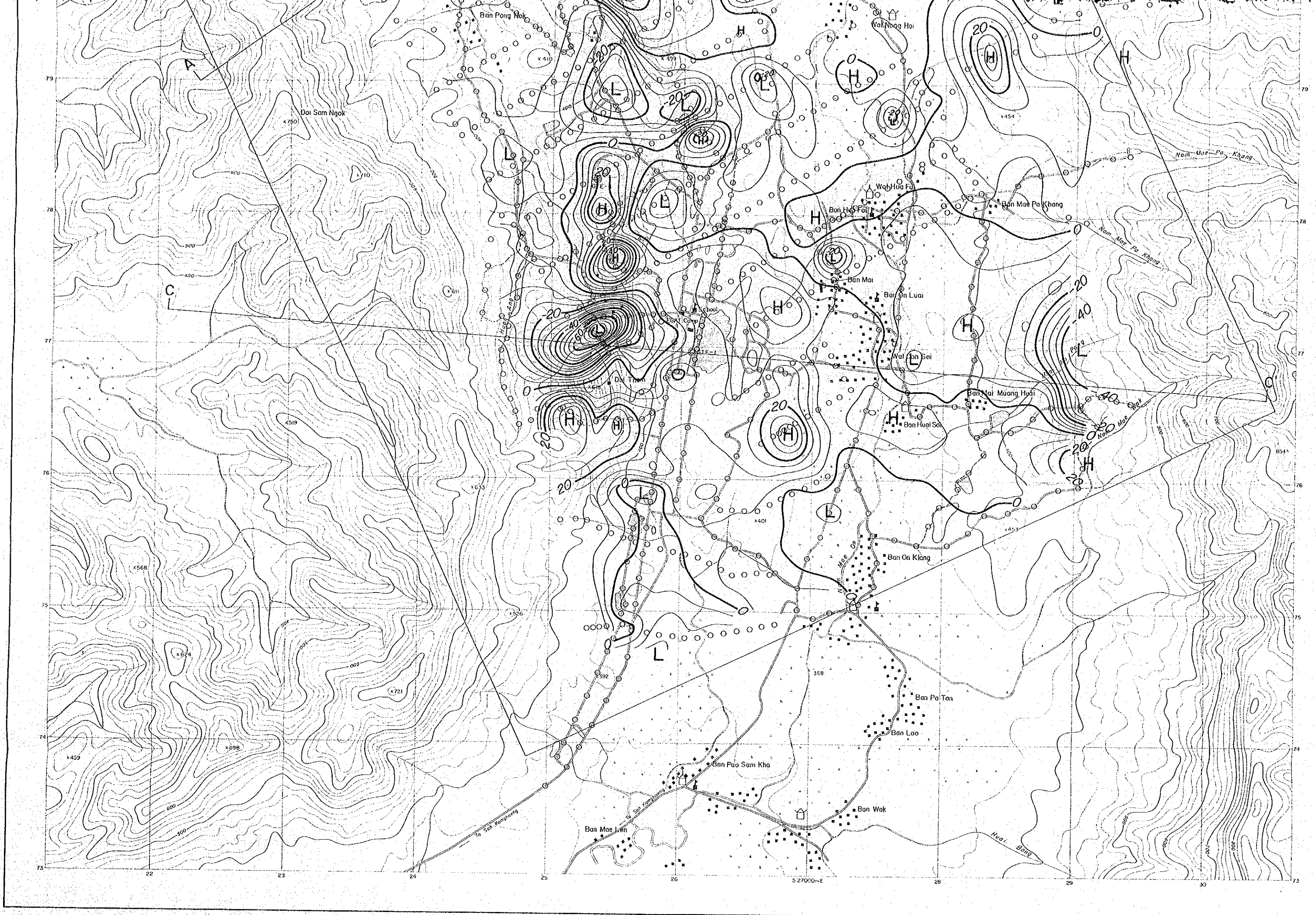
MARCH 1983

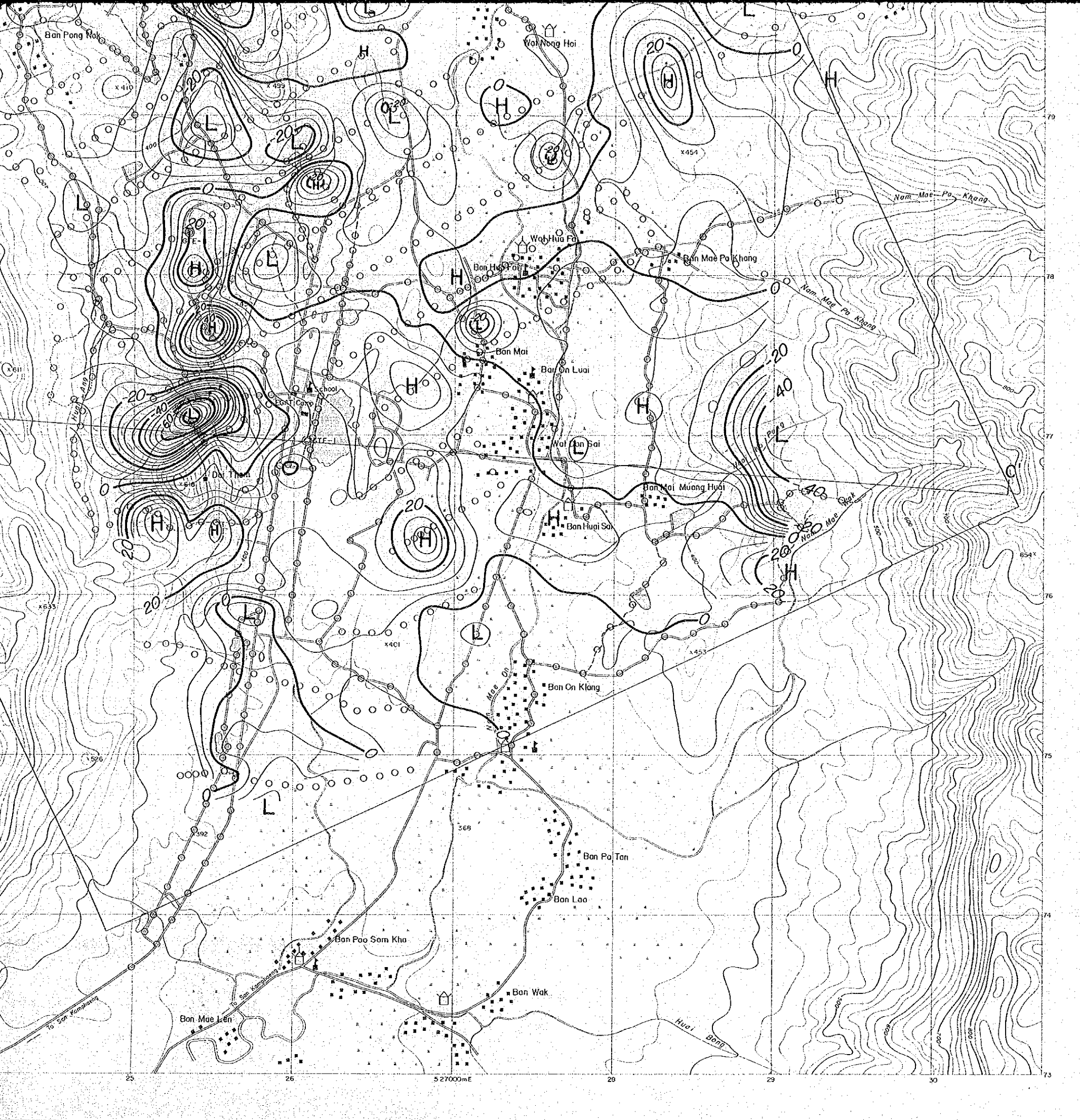


LEGEND

- Wide road
- Narrow pass
- Stream
- Wat
- School
- Rice field







LEGEND

- Wide road
- Narrow pass
- Stream
- Village
- Wat
- School
- Rice field
- Dam (water reserve)

- Magnetic station
- Drill hole
- 20 gamma } Contour line
- 5 gamma }
- High magnetic anomaly
- Low magnetic anomaly
- Profile of underground structure

Inclination : 15° N
 Declination : N 6° W
 Total intensity : 43.556 gamma