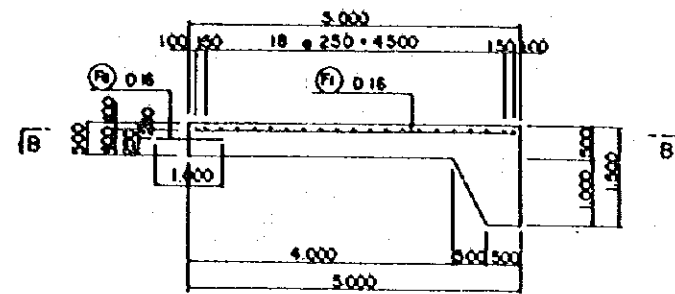
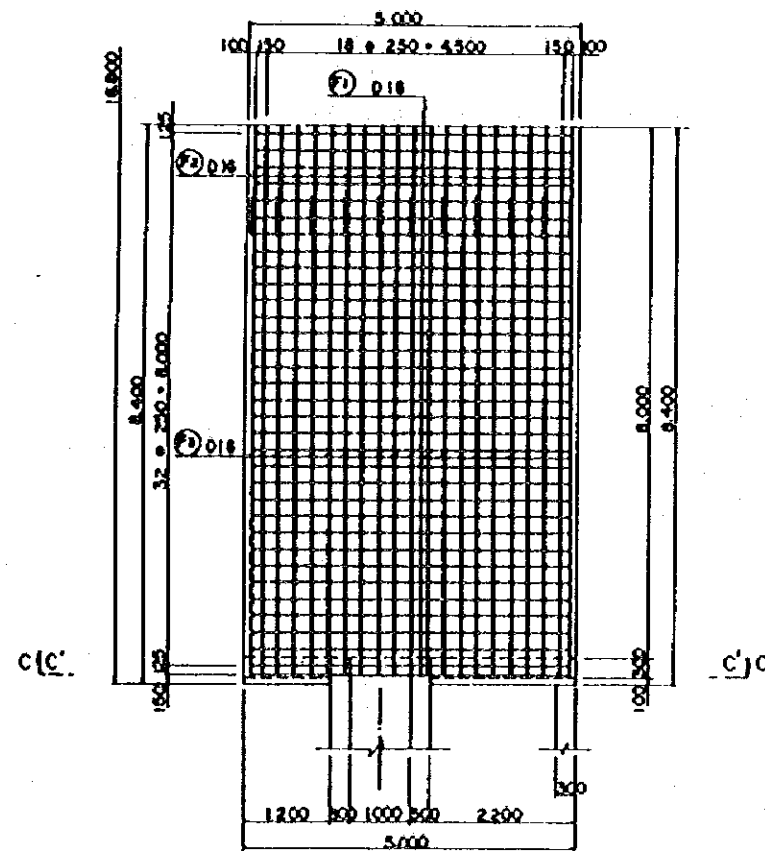


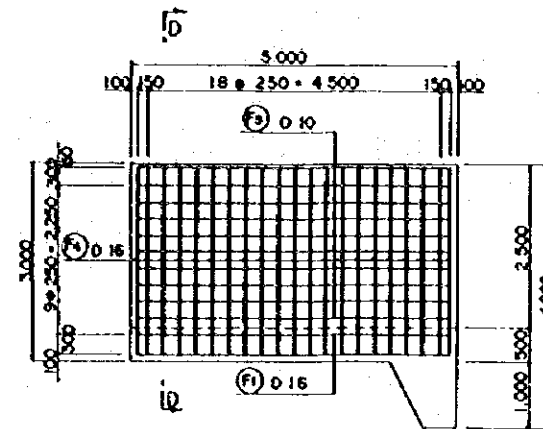
SECTION A-A



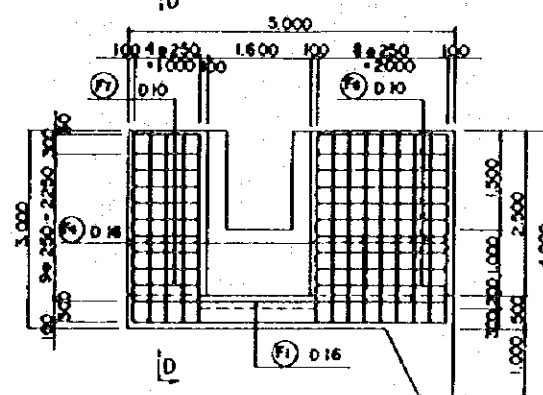
SECTION B-B



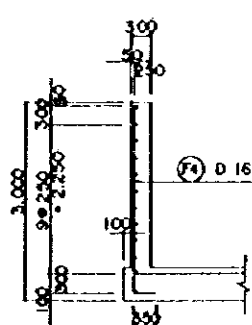
SECTION C-C



SECTION C'-C'



SECTION D-D



MATERIAL LIST

Design	Dia	Length	No	Unit wt	One piece	Weight	Remarks
W 1	D 16	10,000	70	1.58	1580	11060	
2	"	3,400	70	"	537	3759	
3	"	10,000	53	"	1580	8374	
4	"	7,200	53	"	1138	6031	
5	"	2,500	23	"	393	928	
6	"	3,200	106	"	506	5364	
7	"	3,350	84	"	529	3386	
8	"	2,830	84	"	443	3721	
9	"	1,000	2	"	158	32	
Total						4277.5	
W 10	D 10	10,000	20	0.617	617	1234	
11	"	3,200	20	"	197	393	
12	"	8,150	16	"	503	805	
13	"	7,850	20	"	484	968	
14	"	5,650	24	"	349	838	
15	"	5,650	40	"	349	1396	
16	"	2,400	64	"	148	948	
17	"	2,400	84	"	148	1243	
Total						7827	
F 1	D 16	4,800	70	1.58	758	5306	
2	"	10,000	21	"	1580	3318	
3	"	7,100	21	"	1122	2356	
4	"	3,200	35	"	506	1771	
Total						12751	
F 5	D 10	4,800	10	0.617	296	296	
6	"	2,000	10	"	123	123	
7	"	1,000	10	"	62	62	
Total						481	
F 8	D 16	1,000	69	1.58	158	1090	
Total						5655.5	
Sum total						6486.5	

69 - D16 X 1000

35 - D16 X 3200

10 - D10 X 2000

10 - D10 X 1000

21 - D16 X 7100

70 - D16 X 4800

10 - D10 X 4800

WATER SUPPLY PROJECT FOR CAMBODIAN REFUGEE CAMPS

THE KINGDOM OF THAILAND

WEIR REINFORCEMENT (2/2)

S = 1:50

Date JANUARY 1981

DWG. No 37

JAPAN INTERNATIONAL COOPERATION AGENCY

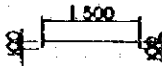
Technical drawing of a reinforced concrete beam (Fig. 10.10). The beam has a total length of 13,000 mm and a width of 250 mm. It is supported by a wall on the left and a column on the right. The drawing shows the reinforcement layout with top bars (5φ25), bottom bars (5φ25), and stirrups (φ10). Dimensions for the reinforcement are provided: 50 mm for the top bar lap, 200 mm for the bottom bar lap, and 150 mm for the stirrup lap. The beam is divided into three sections: a 5,000 mm section on the left, a 3,000 mm section in the middle, and a 5,000 mm section on the right. The right end is connected to a column with a diameter of 300 mm.

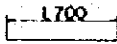
Descr	Qta	Length	No	Unit Wt	One piece	Weight	Remarks
S1	D16	1.700	9	1.58	2.62	24.2	
"	"	1.700	14	"	2.60	37.7	
"	"	2.450	30	"	3.87	116.1	
"	D10	3.100	25	0.617	1.91	47.8	
"	D16	0.900	4	1.58	0.79	3.2	
"	"	1.680	3	"	1.66	5.0	
"	"	0.450	3	"	0.71	2.1	
"	"	1.200	4	"	1.90	7.6	
"	"	0.800	3	"	1.26	3.8	
"	D10	1.800	2	0.617	0.98	2.0	
"	"	0.800	3	"	0.49	1.5	
"	D16	3.200	122	1.92	5.06	617.3	
"	D10	10.000	20	0.617	8.17	123.4	
"	"	5.300	20	"	3.27	65.4	
					D10 -	240	
					D16 -	817	
					Total	1 057 ^{kg}	


Technical drawing of a reinforced concrete beam. The drawing shows a longitudinal section of the beam with various dimensions and reinforcement details. The total length of the beam is 18,000 mm. The width of the beam is 3,000 mm. The height of the beam is 1,200 mm. The drawing includes dimensions for the beam's length, width, and height, as well as dimensions for the reinforcement bars. The reinforcement bars are labeled with their diameter and length, such as 58 Ø 250 = 14,500 and 200 Ø 75 = 110,250 = 2,750. The drawing also shows the placement of the reinforcement bars within the beam, including the top and bottom bars and the cross-sections at the ends.

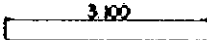
[illegible][illegible][illegible]

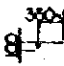
Technical drawing of a mechanical part, likely a valve or plug, showing dimensions and tolerances. The drawing includes a central circular feature with a cross-section, surrounded by a rectangular frame. Dimensions are given in millimeters (mm) and inches (in). Key dimensions include: overall width 1.600, overall height 2.500, central hole diameter 0.16, and various internal diameters and radii.

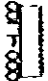

 ⑤ 9 - D16 x 1,700



 ⑤ 14 - D16 x 1,700

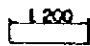

 ⑤ 30 - D16 x 2,450

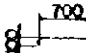

 ⑤ 25 - D10 x 3,100

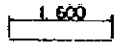

 ⑤ 4 - D16 x 500

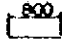

 ⑤ 3 - D16 x 1,050

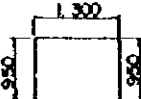

 ⑤ 3 - D16 x 450


 ⑤ 4 - D16 x 1,200


 ⑤ 3 - D16 x 800


 ⑤ 2 - D10 x 1,600


 ⑤ 3 - D10 x 800


 ⑤ 122 - D16 x 3,200

10.000

☐ 20 - 010 x 10.000

5.300

☐ 20 - 010 x 5.300

WATER SUPPLY PROJECT FOR CAMBODIAN REFUGEE CAMPS	
THE KINGDOM OF THAILAND	
INTAKE AND SLUICeway REINFORCEMENT	
Date JANUARY 1981	S=1.50 D.W.G. No. 38
JAPAN INTERNATIONAL COOPERATION AGENCY	

This architectural floor plan shows a rectangular building with a central corridor. The overall dimensions are 17.80m by 4.75m. The plan includes various rooms, a central corridor, and a staircase. Dimensions are provided in meters (m) and millimeters (mm). Structural details such as columns (Ø 16, Ø 20) and beams are indicated. The plan is oriented with North (N) at the top.

Dimensions:

- Overall width: 17.80m (17800mm)
- Overall depth: 4.75m (4750mm)
- Room widths (from left to right): 3.00m, 3.00m, 3.00m, 3.00m
- Room depths (from top to bottom): 1.50m, 1.50m, 1.50m, 1.50m

Structural Details:

- Columns: Ø 16, Ø 20
- Beams: 17.80m x 4.75m, 3.00m x 1.50m, 3.00m x 1.50m, 3.00m x 1.50m, 3.00m x 1.50m
- Staircase: 3.00m x 1.50m

Technical drawing of a rectangular plate with a grid pattern. The drawing includes dimensions for the overall size and the grid itself. The overall dimensions are 1700 mm by 900 mm. The grid dimensions are 1500 mm by 800 mm. The grid is composed of 10 rows and 10 columns of squares. The drawing also shows a central circular hole with a diameter of 100 mm. The drawing is labeled with 'F' and 'G' at the corners.

Technical drawing of a rectangular reinforced concrete structure, likely a foundation or wall, showing dimensions and reinforcement details. The drawing includes a plan view at the top and a side elevation view below.

Plan View Dimensions (Top):

- Overall width: 2,800 mm
- Overall length: 9,200 mm
- Section widths (from left to right): 1,200 mm, 300 mm, 1,100 mm, 1,100 mm, 300 mm, 500 mm
- Section lengths (from top to bottom): 1,400 mm, 250 mm, 300 mm, 300 mm, 250 mm, 50 mm

Side Elevation Dimensions (Bottom):

- Overall width: 2,800 mm
- Overall height: 9,200 mm
- Section widths (from left to right): 1,200 mm, 300 mm, 1,100 mm, 1,100 mm, 300 mm, 500 mm
- Section heights (from top to bottom): 1,400 mm, 250 mm, 300 mm, 300 mm, 250 mm, 50 mm

Reinforcement Details:

- Vertical reinforcement: 12 bars, labeled "D12".
- Horizontal reinforcement: 16 bars, labeled "D16".
- Reinforcement is concentrated in the central vertical section.

[illegible]

Technical drawing of a rectangular structure, likely a wall or partition, showing dimensions and labels. The drawing includes a plan view (top) and a side elevation view (left).

Dimensions:

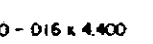
- Overall width: 4.000
- Overall height: 2.800
- Top section width: 800, 200, 2.200, 300, 800
- Top section height: 50, 2.250, 1.750, 50
- Left section width: 800, 200, 2.200, 300, 800
- Left section height: 50, 2.250, 1.750, 50

Labels:

- Top right corner: 4.000
- Top left corner: 800, 200, 2.200, 300, 800
- Top center: 50, 2.250, 1.750, 50
- Left side: 800, 200, 2.200, 300, 800
- Left center: 50, 2.250, 1.750, 50
- Bottom center: 4.000
- Right side: 2.800

[illegible]

Descr	Dia.	Length	No.	Unit wt.	One piece	Weight	Remarks
A.1	D16	4.400	50	1.58	6.95	347.5	—
* 2	"	1.700	12	"	2.69	32.3	—
* 3	"	2.200	12	"	3.48	41.8	—
* 4	"	3.000	4	"	4.74	18.0	—
* 5	"	0.700	4	"	1.11	4.4	—
* 6	"	1.100	16	"	1.74	27.8	—
* 7	"	1.650	6	"	2.61	15.7	—
* 8	"	0.750	6	"	1.19	7.1	—
* 9	"	0.950	6	"	1.50	9.0	—
* 10	"	2.200	4	"	3.48	13.9	—
* 11	"	1.500	4	"	2.37	9.5	—
* 12	"	3.900	64	"	6.16	394.2	—
* 13	"	5.800	100	"	9.32	932.0	—
* 14	"	2.700	140	"	4.27	597.8	—
* 15	D10	0.800	144	0.617	0.56	80.6	—
* 16	D16	5.200	144	1.59	8.22	1183.7	—
* 17	"	3.450	8	"	5.45	43.6	—
* 18	"	0.750	8	"	1.19	9.5	—
* 19	D10	1.750	5	0.617	1.08	5.4	—
* 20	"	1.400	6	"	0.85	5.1	—
* 21	"	0.900	74	"	0.56	41.4	—
* 22	"	0.950	32	"	0.59	18.9	—
* 23	D16	2.550	16	1.94	4.03	64.5	—
* 24	"	0.950	8	"	1.50	12.0	—
* 25	"	1.400	8	"	2.21	17.7	—
* 26	"	0.800	16	"	1.26	20.2	—
* 27	D10	0.850	22	0.617	0.59	13.0	—
* 28	"	1.050	15	"	0.65	9.8	—
* 29	"	0.500	143	"	0.31	44.3	—
					D10-	219	
					D16-	3809	
					Total	4028.9	



1650 ~ 1750

① 50 - Ø16 x 4.400

② 4 - Ø16 x 3.000

③ 4 - Ø16 x 700

④ 16 - Ø16 x 1.100

⑤ 4 - Ø16 x 2.200

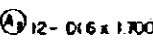
⑥ 4 - Ø16 x 1.500

⑦ 64 - Ø16 x 3.900

⑧ 140 - Ø16 x 2.700

⑨ 6 - Ø10 x 1.400

⑩ 8 - Ø16 x 1.400



2.50 ~ 2.250

① 12 - Ø16 x 1.700

② 12 - Ø16 x 2.200

③ 1600 ~ 1.700


④ 6 - Ø16 x 1.650

⑤ 800 ~ 850

⑥ 6 - Ø16 x 750

⑦ 900 ~ 1000

⑧ 6 - Ø16 x 950



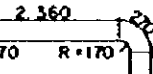
225

① 22 - Ø10 x 950

② 15 - Ø10 x 1.050

③ 143 - Ø10 x 500

④ 16 - Ø16 x 800

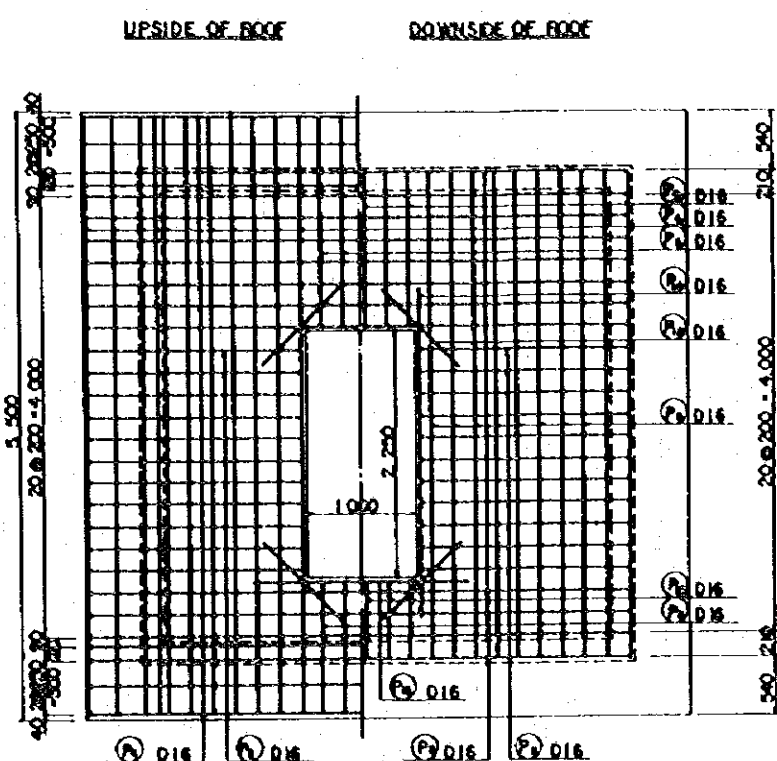
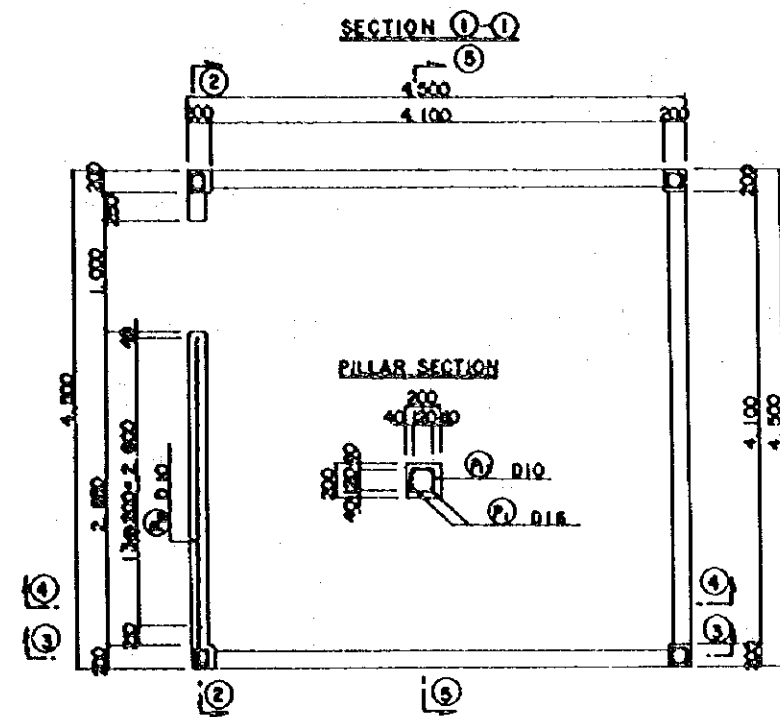


2.360

R=170 R=170

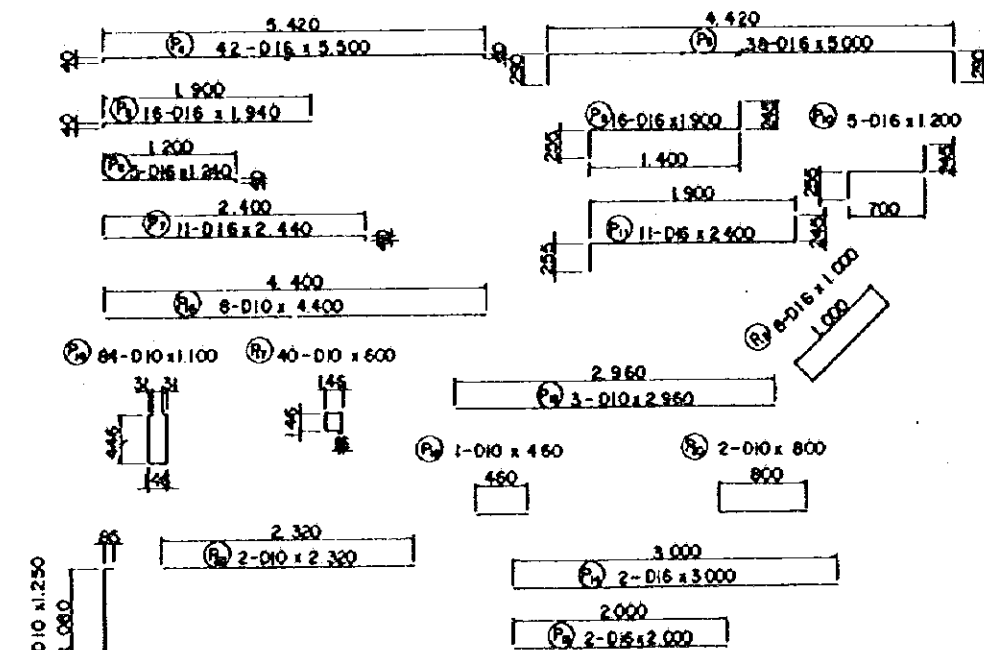
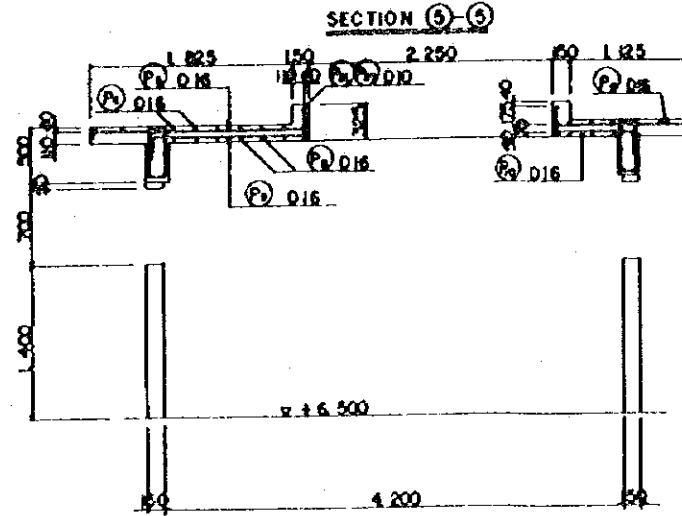
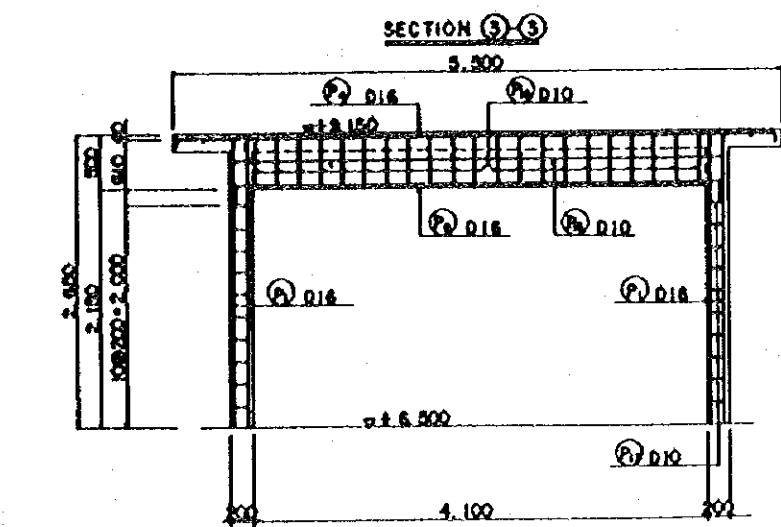
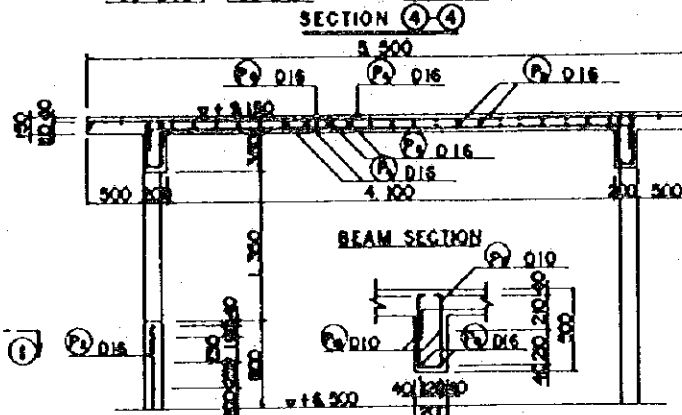
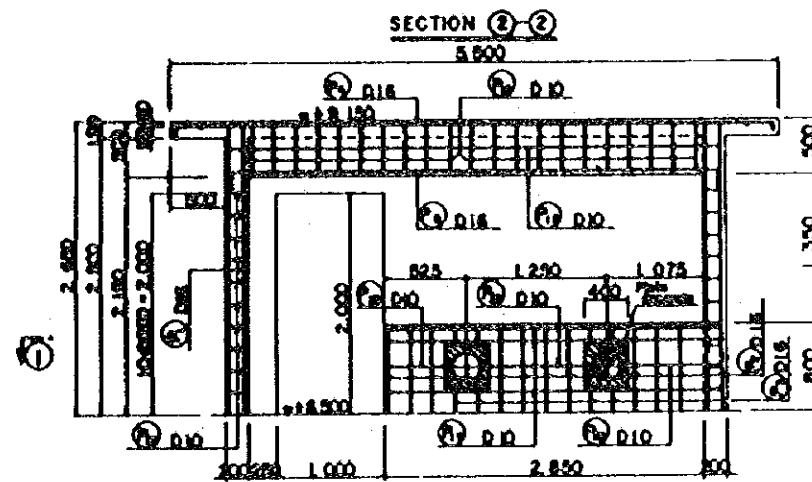
① 100 - Ø16 x 900

WATER SUPPLY PROJECT FOR CAMBODIAN REFUGEE CAMPS	
THE KINGDOM OF THAILAND	
SUCTION WELL REINFORCEMENT	
S = 1:50	
Don. JANUARY 1981	Q.W.G. No 39
JAPAN INTERNATIONAL COOPERATION AGENCY	



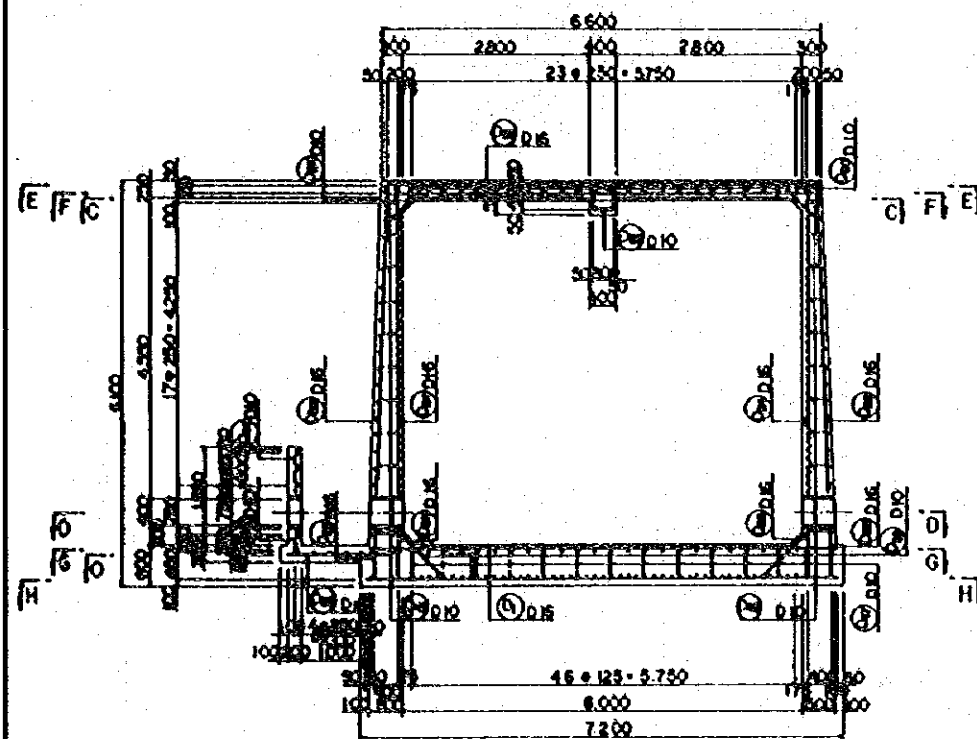
MATERIAL LIST

Qty	Dis.	Length	No.	Unit wt.	One piece	Weight	Remarks
P1	D16	2,610	16	1.58	4.12	65.9	
2	"	780	10	"	1.20	12.0	
3	"	200	4	"	0.32	1.3	
4	"	5,500	42	"	8.69	365.0	
5	"	1,990	16	"	3.07	49.1	
6	"	1,240	5	"	1.96	9.8	
7	"	2,440	11	"	3.66	40.3	
8	"	5,000	38	"	7.90	300.2	
9	"	1,900	16	"	3.00	48.0	
10	"	1,200	5	"	1.90	9.5	
11	"	2,400	11	"	3.79	41.7	
12	"	1,000	8	"	1.58	12.6	
13	"	2,000	2	"	3.16	6.3	
14	"	3,000	2	"	4.74	9.5	
15	D10	4,400	8	0.617	2.71	21.7	
16	"	1,100	84	"	0.68	57.1	
17	"	800	40	"	0.37	14.8	
18	"	2,980	3	"	1.85	5.5	
19	"	480	1	"	0.28	0.3	
20	"	800	2	"	0.49	1.0	
21	"	1,230	2	"	0.77	1.5	
22	"	2,320	2	"	1.43	2.9	
				D16	973.4		
				D10	104.8		
Total				244	1,078.2		

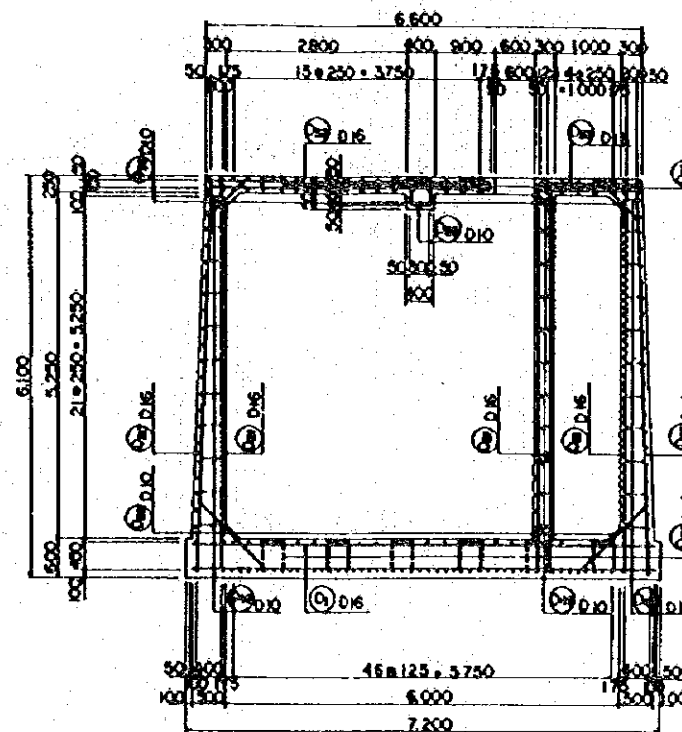


WATER SUPPLY PROJECT FOR CAMBODIAN REFUGEE CAMPS
THE KINGDOM OF THAILAND
PUMP HOUSE REINFORCEMENT
S = 1:30
DATE JANUARY 1981
DWG No. 40
JAPAN INTERNATIONAL COOPERATION AGENCY

SECTION A-A

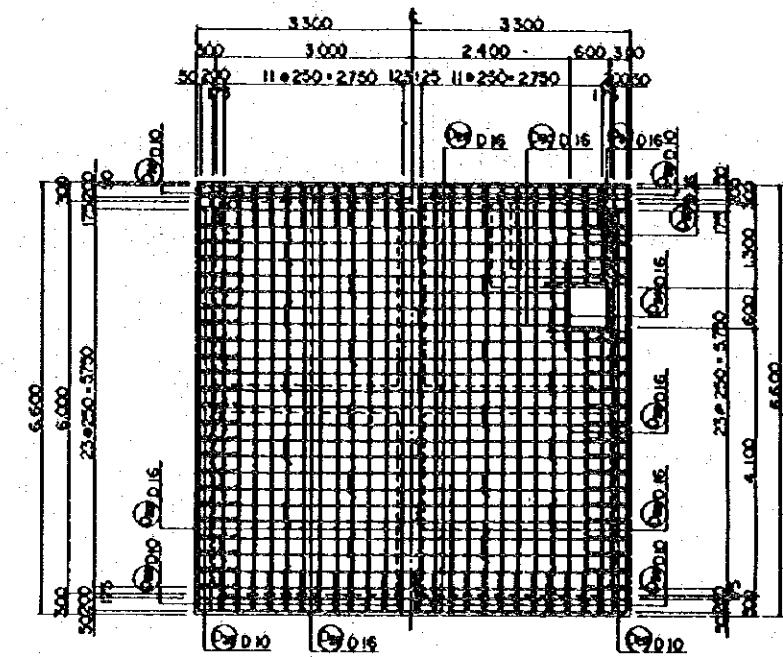


SECTION B-B

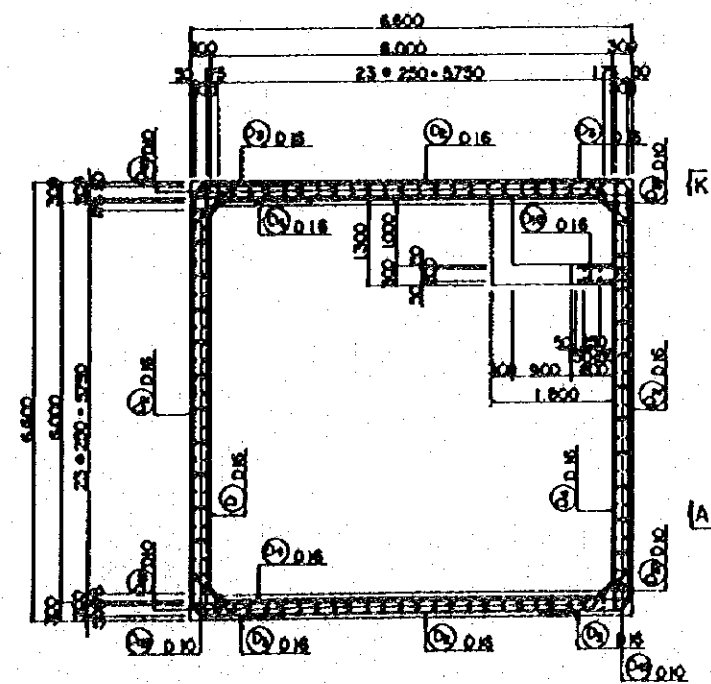


SECTION E-E

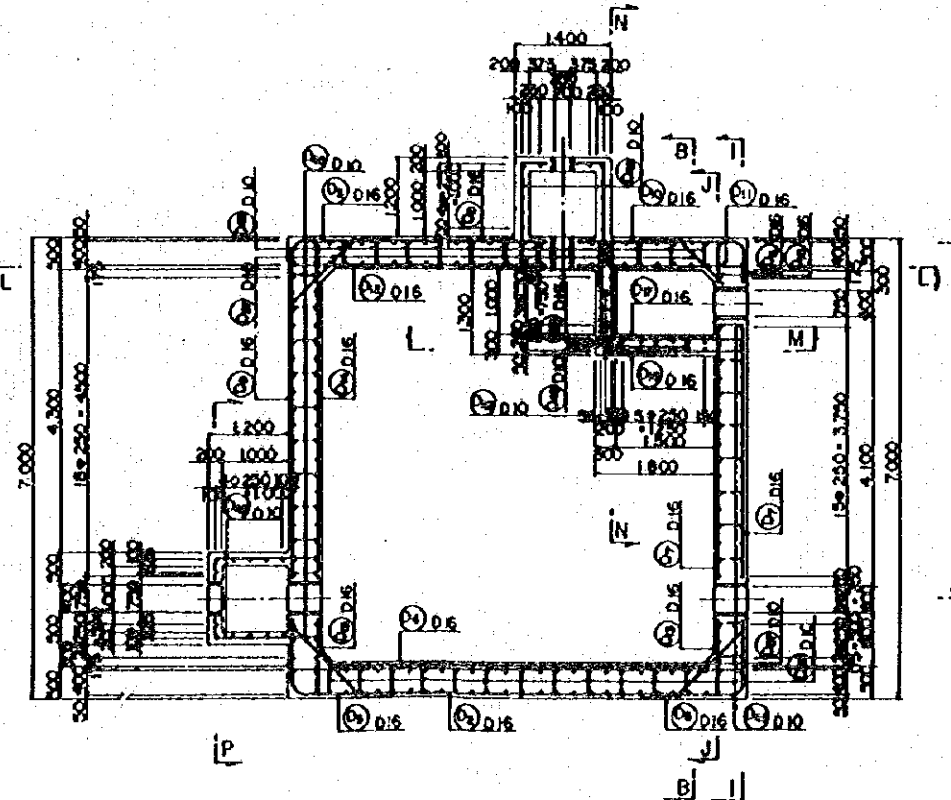
SECTION F-F



SECTION C-C

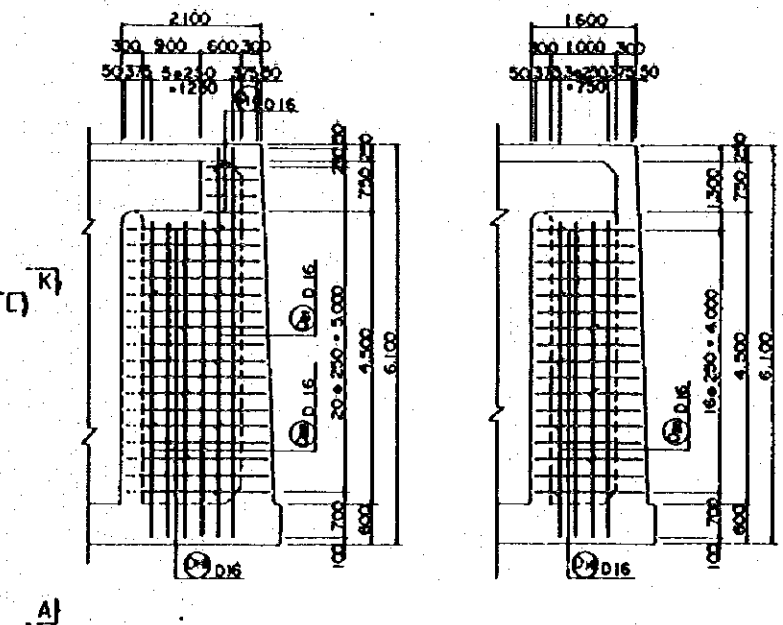


SECTION D-D

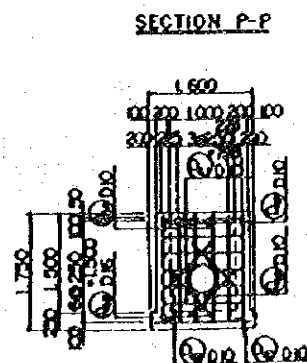
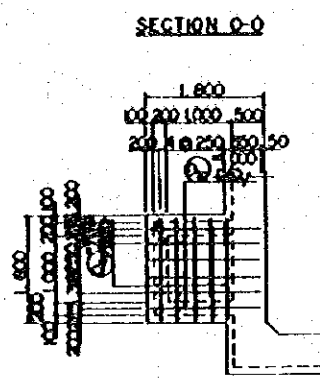
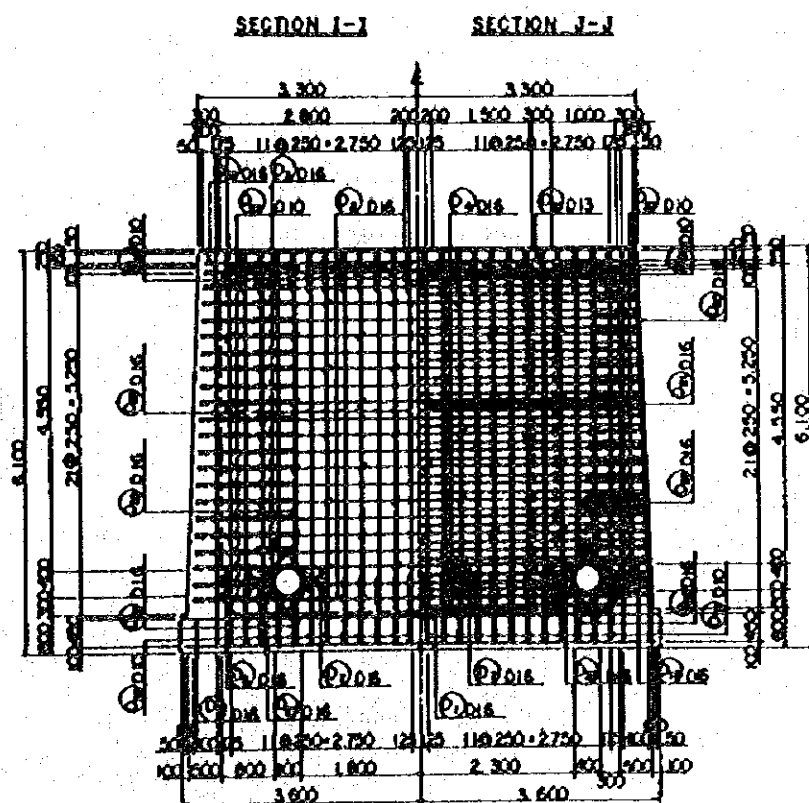
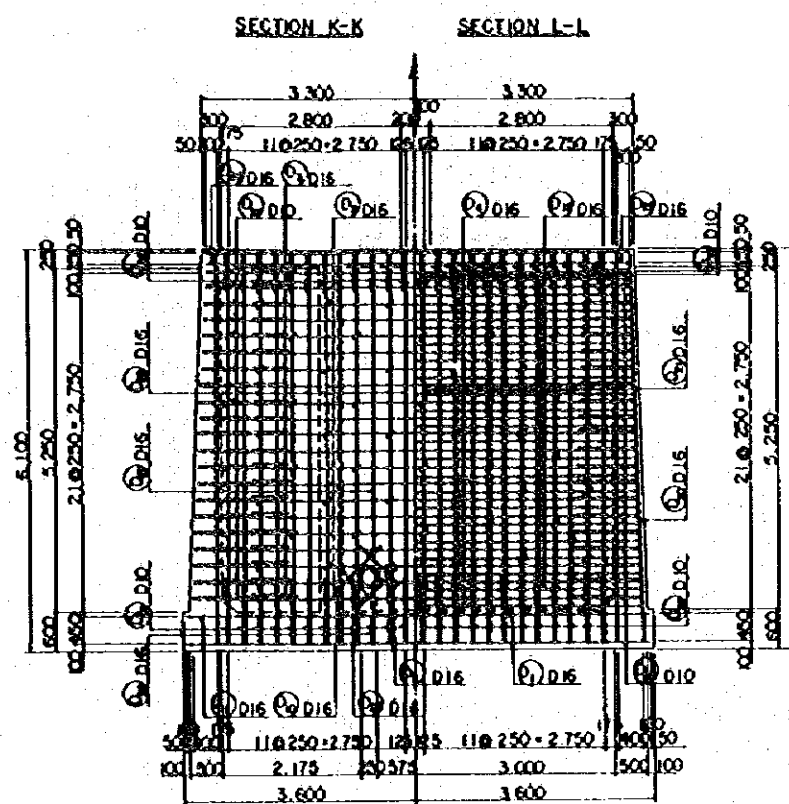


SECTION M-M

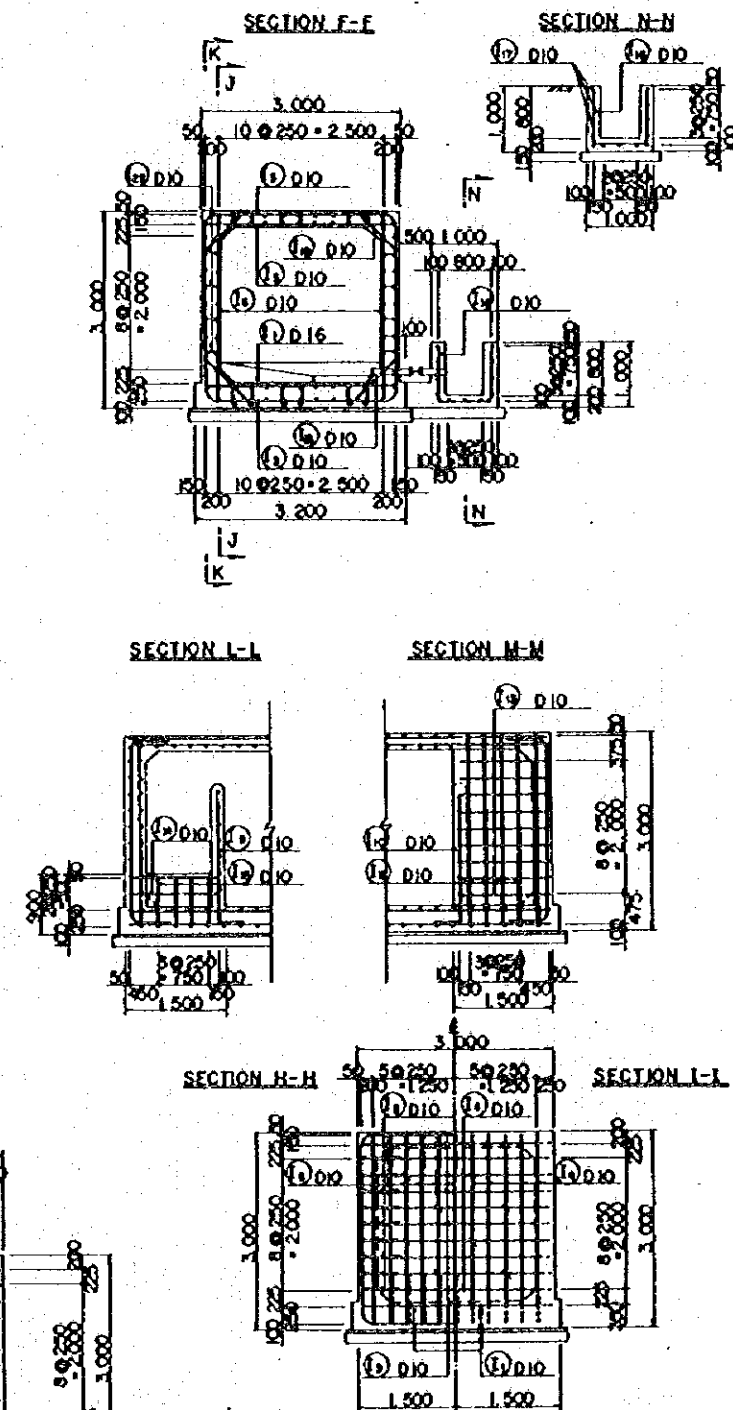
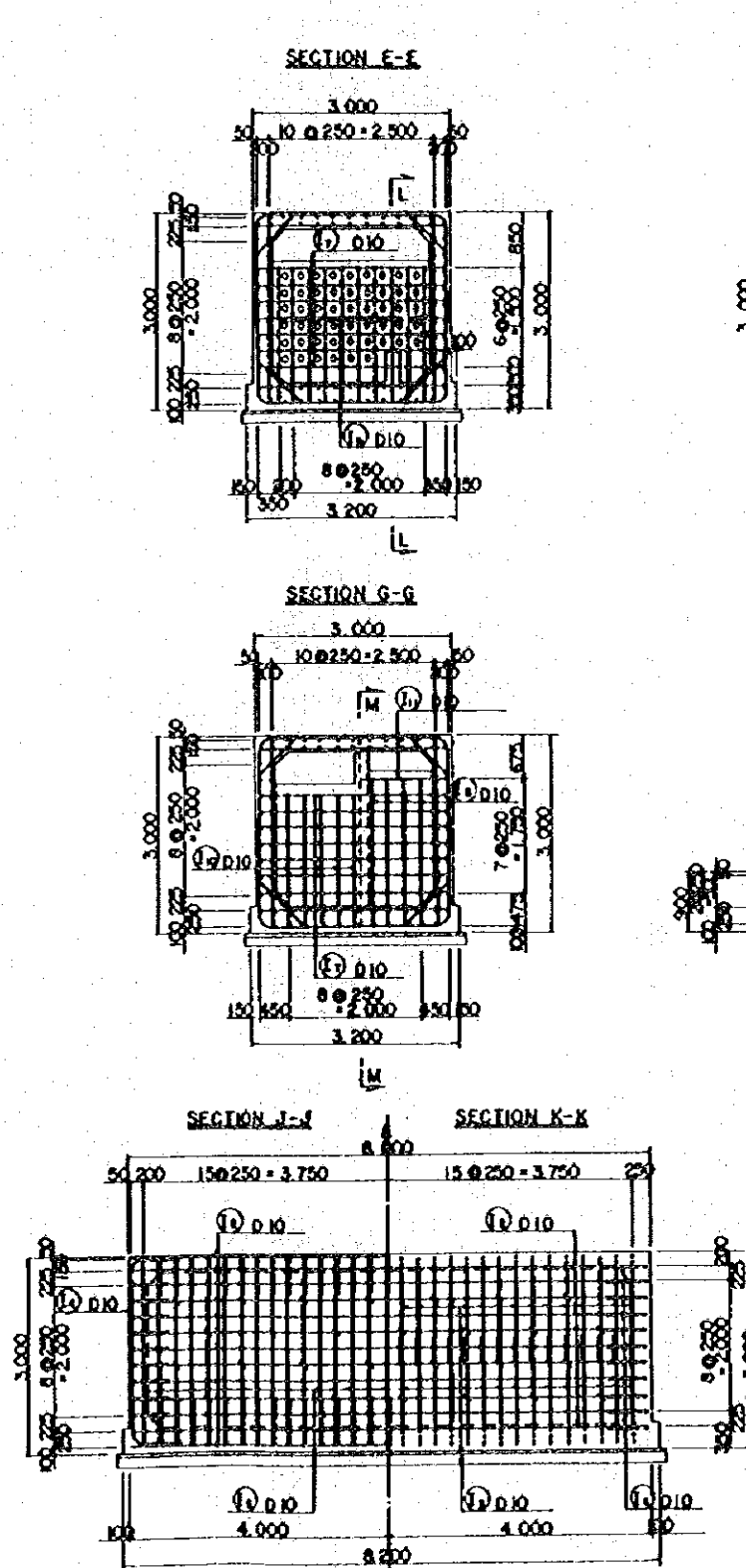
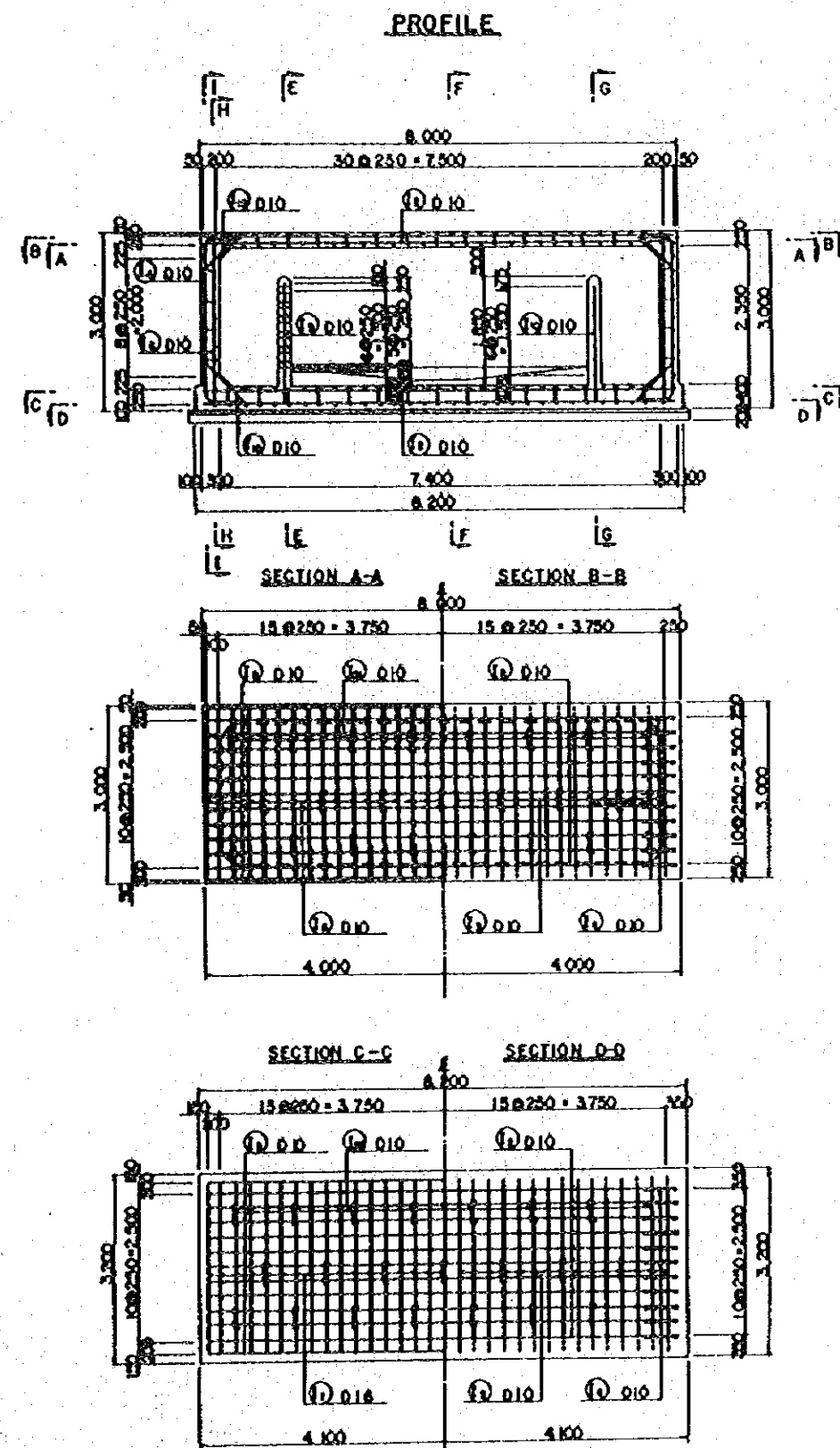
SECTION N-N



WATER SUPPLY PROJECT FOR CAMBODIAN REFUGEE CAMPS	
THE KINGDOM OF THAILAND	
DISTRIBUTING TANK	
REINFORCEMENT (1/3)	
S-1-50	
Date JANUARY 1981	DWG No 41
JAPAN INTERNATIONAL COOPERATION AGENCY	

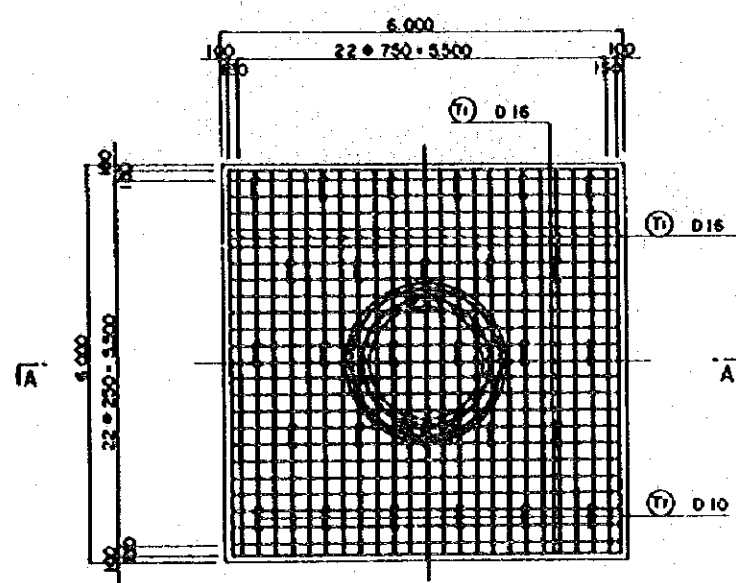


WATER SUPPLY PROJECT FOR CAMBODIAN REFUGEE CAMPS	
THE KINGDOM OF THAILAND	
DISTRIBUTING TANK REINFORCEMENT (2/3)	
S-1-50	
DON JANUARY 1981	D.W.G. No. 42
JAPAN INTERNATIONAL COOPERATION AGENCY	

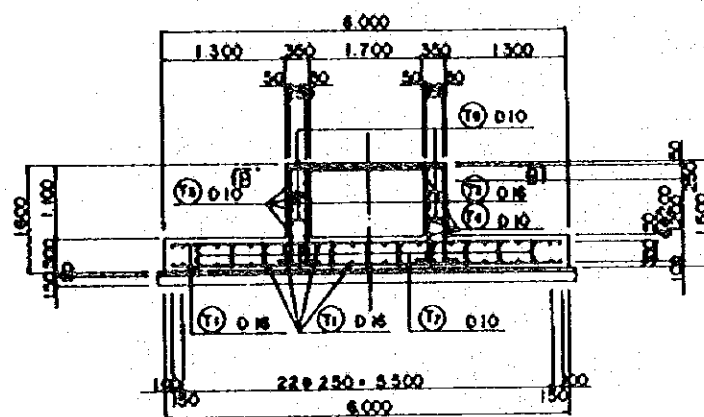


WATER SUPPLY PROJECT FOR CAMBODIAN REFUGEE CAMPS
THE KINGDOM OF THAILAND
INTAKE TANK REINFORCEMENT (1/2)
S = 1:50
Date JANUARY 1981 DWG No 44
JAPAN INTERNATIONAL COOPERATION AGENCY

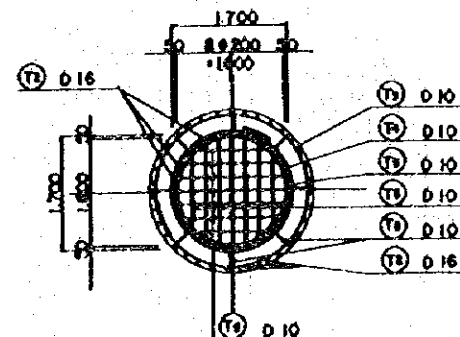
PLAN



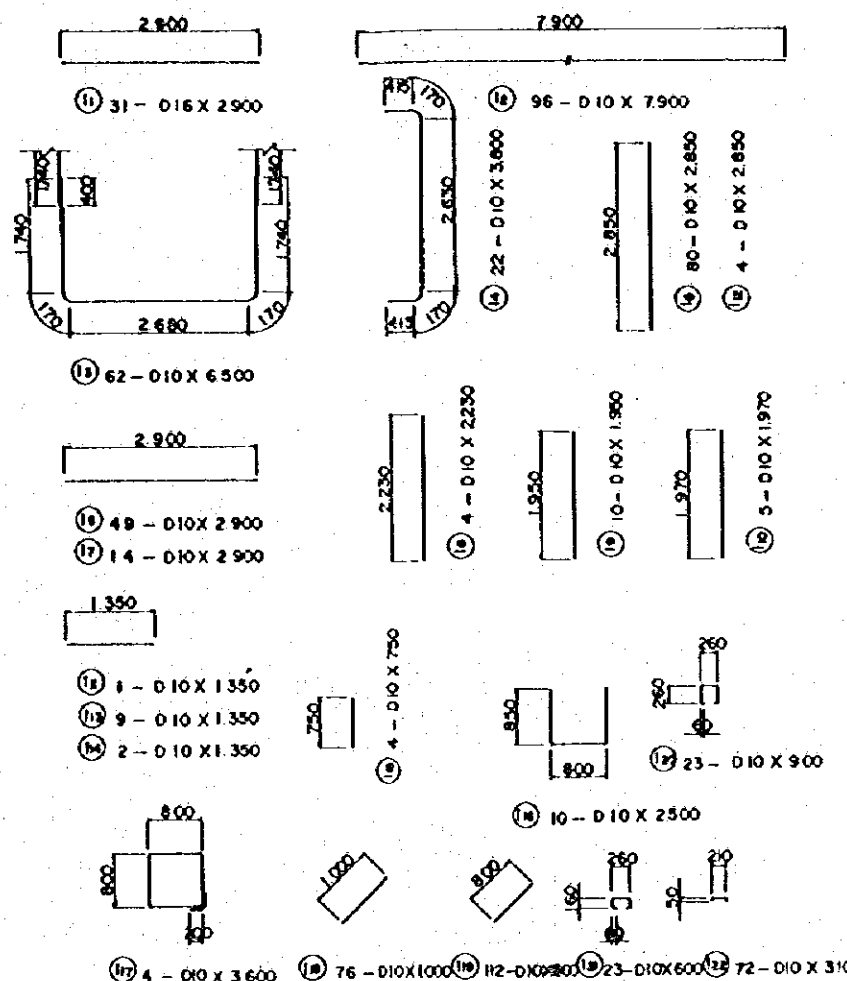
SECTION A-A



SECTION B-B

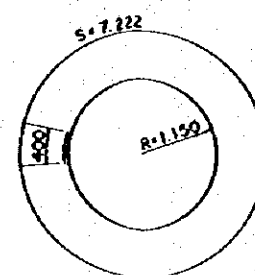


(T) 12 - D10 X 366 (T) 28 - D10 X 732

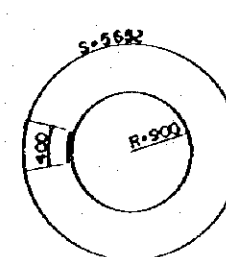


(T) 100 - D16 X 5800

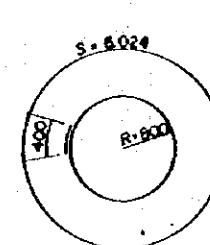
(T) 14 - D10 X 1400



(T) 8 - D10 X 7.622



(T) 8 - D10 X 6.052



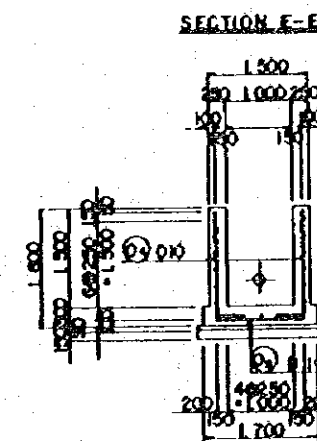
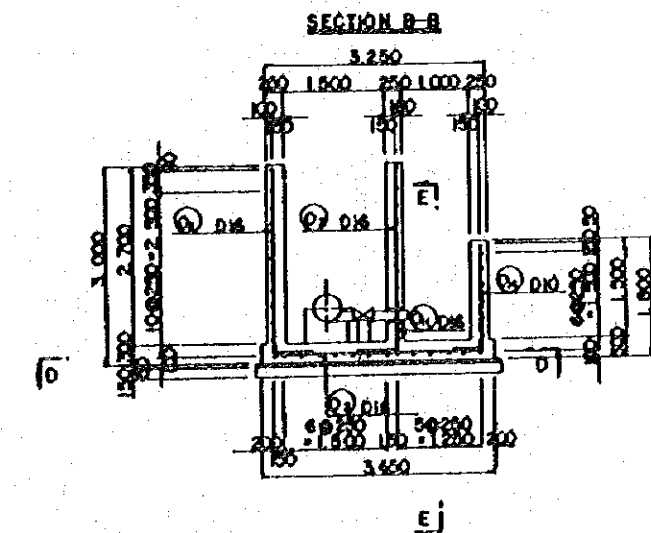
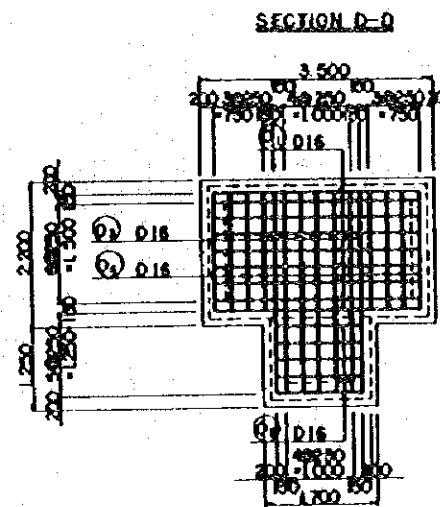
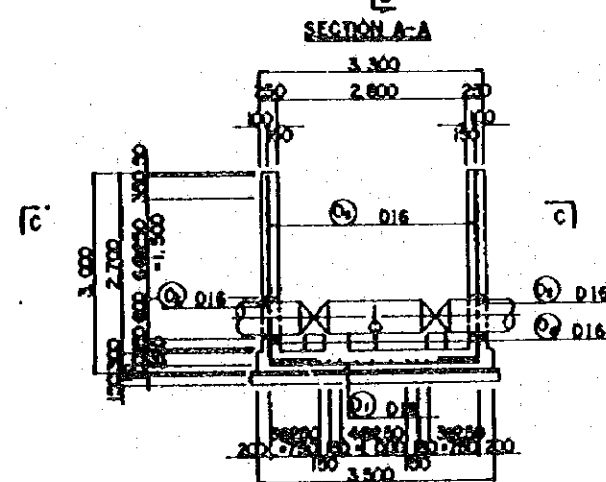
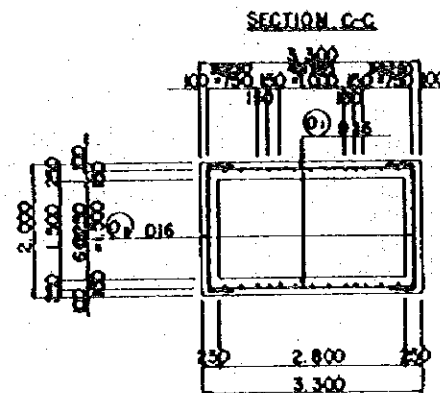
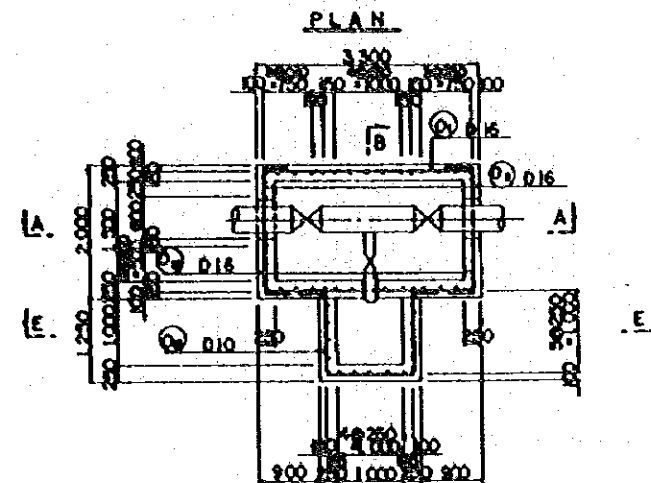
(T) 1 - D10 X 5.424

MATERIAL LIST

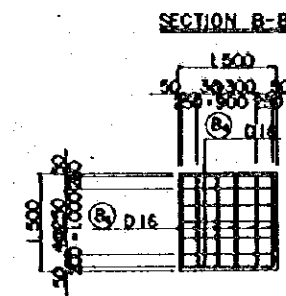
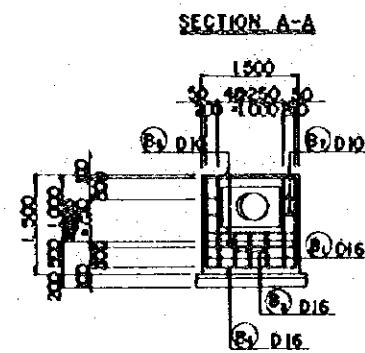
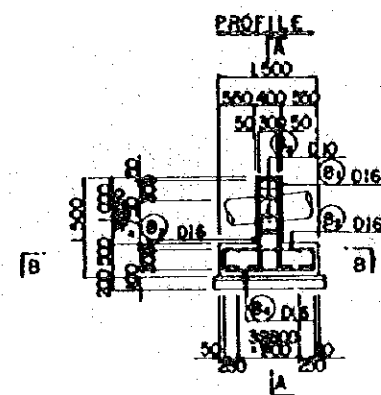
Descr	Dis	Length	No.	Unit wt	One piece	Weight	Remarks
1	D16	2.900	31	1.58	458	142.0	
2	D10	7.900	96	0.617	487	46.75	
3		6.500	62		4.01	248.7	
4		3.800	22		2.35	51.6	
5		2.900	49		1.79	87.7	
6		2.850	80		1.76	140.7	
7		2.900	14		1.79	25.1	
8		2.230	4		1.38	5.5	
9		1.950	10		1.20	12.0	
10		1.970	5		1.22	6.1	
11		1.350	1		0.93	0.8	
12		2.850	4		1.76	7.0	
13		1.350	9		0.93	7.9	
14		1.350	2		0.93	1.7	
15		750	4		0.46	1.8	
16		2.500	10		1.34	15.4	
17		3.800	4		2.22	8.9	
18		1.000	76		0.62	47.1	
19		800	112		0.49	55.3	
20		900	23		0.56	12.9	
21		600	23		0.37	8.5	
22		310	72		0.19	13.8	
					Total	1225.5	
T 1	D16	5.800	100	1.58	91.6	91.60	
2		1.350	63		2.45	15.44	
					Total	107.04	
T 3	D10	7.622	8	0.617	4.70	37.6	
4		6.052	8		3.73	29.9	
5		5.424	1		3.35	3.4	
6		1.400	14		0.88	12.1	(mean)
7		732	28		0.45	12.7	
8		366	12		0.23	2.7	
					Total	98.6	
					D 16	121.24	
					D 10	132.39	
					Sum total	253.63	

WATER SUPPLY PROJECT FOR CAMBODIAN REFUGEE CAMPS
THE KINGDOM OF THAILAND
INTAKE TANK REINFORCEMENT(2/2)
WATER TOWER FOOTING
REINFORCEMENT S=1:50
Date JANUARY 1981 D.W.O. No. 43
JAPAN INTERNATIONAL COOPERATION AGENCY

BLOW OFF

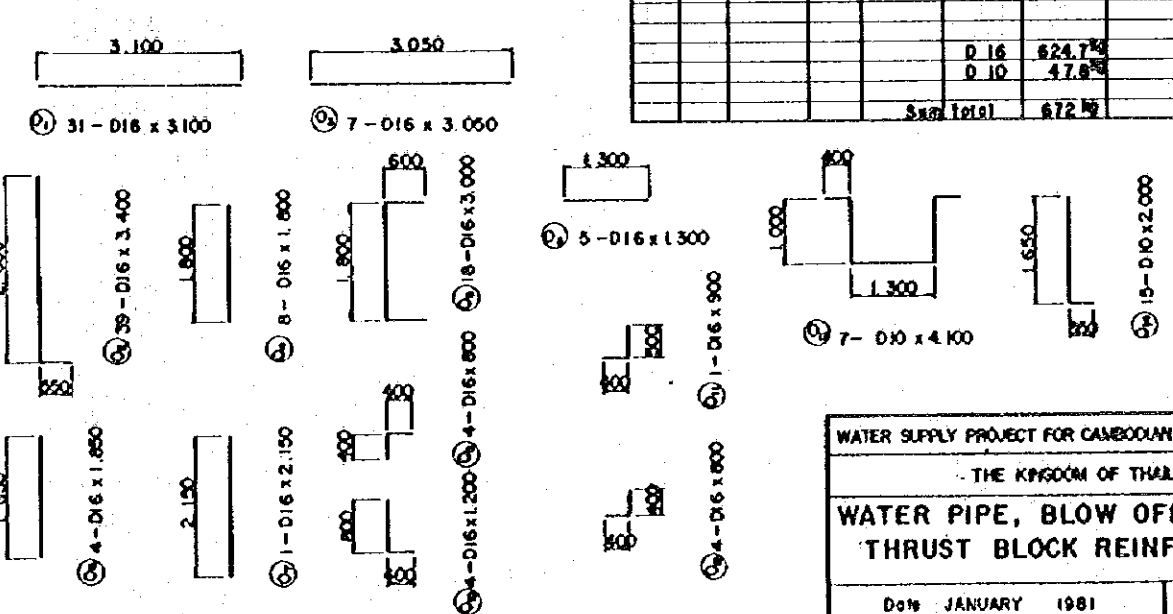
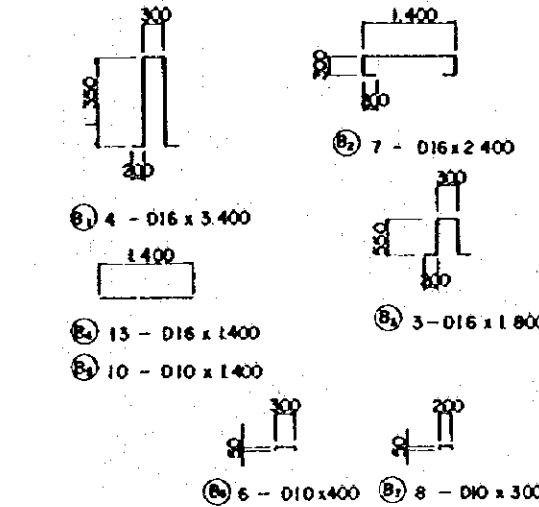


THRUST BLOCK

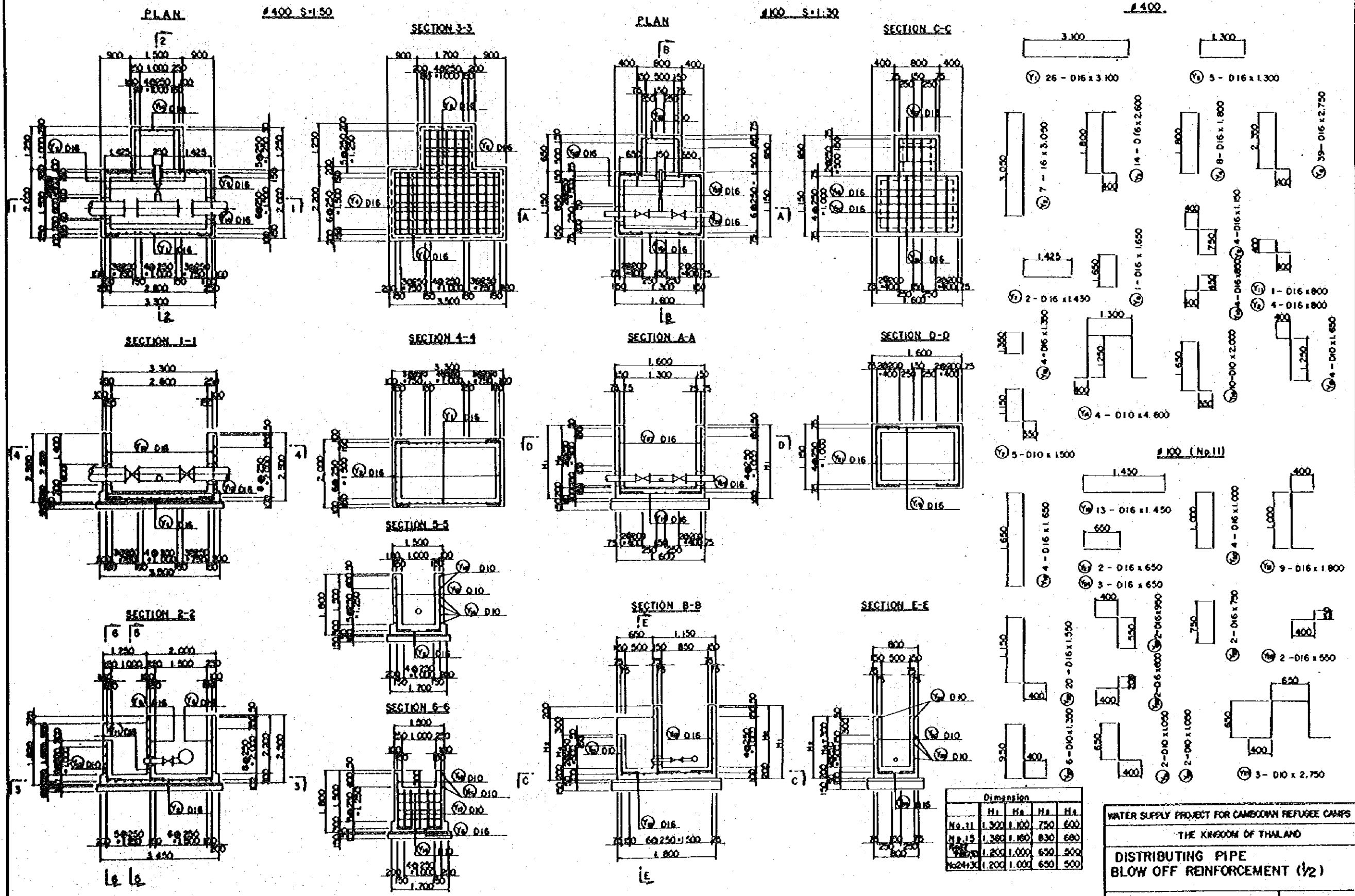


MATERIAL LIST

QTY	Dia	Length	No	Unit wt	One piece	Weight	Remarks
01	D16	3,100	31	1.56	4.84	150.0	
02	D16	3,400	39	"	5.30	206.7	
03	D16	3,000	7	"	4.76	33.3	
04	D16	1,800	8	"	2.81	22.5	
05	D16	3,000	18	"	4.88	87.2	
06	D16	1,800	4	"	2.89	11.5	
07	D16	2,100	1	"	3.35	3.4	
08	D16	1,300	5	"	2.03	10.1	
09	D16	0,800	4	"	1.25	5.0	
10	D16	1,200	4	"	1.87	7.5	
11	D16	0,900	1	"	1.40	1.4	
12	D16	0,800	4	"	1.23	5.0	
Total						540.9	
013	D10	4,300	7	0.617	2.53	17.7	1/2
014	D10	2,000	15	"	1.23	18.5	1
Total						36.2	
B 1	D16	3,400	4	1.56	5.30	21.2	1/2
B 2	D16	2,400	7	"	3.74	26.2	1/2
B 3	D16	1,800	3	"	2.81	8.4	1/2
B 4	D16	1,400	13	"	2.18	28.3	1/2
Total						84.1	
B 5	D10	1,400	10	0.617	0.88	8.6	1/2
B 6	D10	0,800	6	"	0.25	1.5	1/2
B 7	D10	0,300	8	"	0.18	1.5	1/2
Total						11.6	
Sum Total						672.8	
						D 16	624.7
						D 10	47.8



WATER SUPPLY PROJECT FOR CAMBODIAN REFUGEE CAMPS
THE KINGDOM OF THAILAND
WATER PIPE, BLOW OFF AND
THRUST BLOCK REINFORCEMENT
S=1:50
Date JANUARY 1981 DWG No. 46
JAPAN INTERNATIONAL COOPERATION AGENCY



Dimension				
	H1	H2	H3	H4
No. 11	1,300	1,100	750	600
No. 15	1,380	1,180	830	680
No. 19	1,200	1,000	650	500
No. 24+30	1,200	1,000	650	500

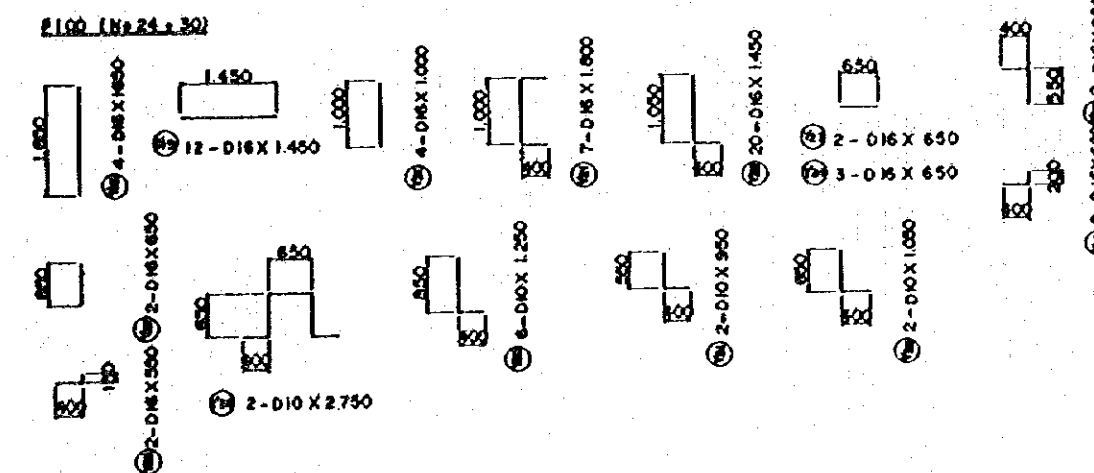
WATER SUPPLY PROJECT FOR CAMBODIAN REFUGEE CAMPS

THE KINGDOM OF THAILAND

**DISTRIBUTING PIPE
BLOW OFF REINFORCEMENT (1/2)**

Date JANUARY 1981 DWG. No 47

JAPAN INTERNATIONAL COOPERATION AGENCY



Drawn	Dia	Length	No	Unit wt	One piece	Weight	Remarks
#100 (No. 17 to 25)							
Y 18	0.16	1.650	4	1.58	2.61	10.4	1
19	"	1.450	12	"	2.29	27.5	1
20	"	1.000	4	"	1.58	6.3	1
21	"	1.800	7	"	2.84	19.9	1
22	"	1.450	20	"	2.29	45.8	1
23	"	.650	2	"	1.03	2.1	1
24	"	.650	3	"	1.03	3.1	1
25	"	.950	2	"	1.50	3.0	1
26	"	.600	2	"	0.95	1.9	1
27	"	.650	2	"	1.03	2.1	1
28	"	.550	2	"	0.87	1.7	1
Total						123.8 ^{kg}	
#100 (No. 24 & 30)							
Y 18	0.16	1.650	4	1.58	2.61	10.4	1
19	"	1.450	12	"	2.29	27.5	1
20	"	1.000	4	"	1.58	6.3	1
21	"	1.800	7	"	2.84	19.9	1
22	"	1.450	20	"	2.29	45.8	1
23	"	.650	2	"	1.03	2.1	1
24	"	.650	3	"	1.03	3.1	1
25	"	.950	2	"	1.50	3.0	1
26	"	.600	2	"	0.95	1.9	1
27	"	.650	2	"	1.03	2.1	1
28	"	.550	2	"	0.87	1.7	1
Total						123.8 ^{kg}	
#100 (No. 24 & 30)							
Y 29	0.10	2.750	2	0.617	1.70	3.4	1
30	"	1.250	6	"	0.77	4.6	1
31	"	.950	2	"	0.59	1.2	1
32	"	1.050	2	"	0.65	1.3	1
Total						10.5 ^{kg}	
Subtotal						134.3 ^{kg}	
						0.16	27.2
						0.10	78.3
Sum total						1058 ^{kg}	

Depth	Dip.	Length	No.	Unit wt	One piece	Weight	Remarks
#400							
Y 1	0 16	3 100	26	1.58	4.80	127.4	—
2	"	3 050	7	"	4.62	33.7	1
3	"	2 800	14	"	4 12	57.7	1
4	"	1 800	8	"	2.84	22.8	1
5	"	1 300	6	"	2.05	10.3	—
6	"	2 750	32	"	4.55	169.7	1
7	"	1 430	2	"	2.26	4.5	—
8	"	1 430	1	"	2.61	2.6	1
9	"	1 150	4	"	1.82	7.3	1
10	"	850	4	"	1.34	5.4	1
11	"	800	1	"	1.26	1.3	1
12	"	800	4	"	1.26	5.1	1
13	"	1 350	4	"	2.13	8.5	1
					Total	456.3 ^{kg}	
#410							
Y 14	0 10	4 500	4	0.817	2.84	11.4	1
15	"	2 000	10	"	1.23	12.3	1
16	"	1 850	4	"	1.02	4.1	1
17	"	1 500	5	"	0.93	4.7	1
					Total	32.5 ^{kg}	
					Sum total	488.8 ^{kg}	
#100 (No. 11)							
Y 18	0 16	1 850	4	1.58	2.61	10.4	1
19	"	1 450	14	"	2.29	32.1	—
20	"	1 000	4	"	1.58	6.3	1
21	"	1 800	8	"	2.84	22.8	1
22	"	1 580	20	"	2.45	49.0	1
23	"	850	2	"	1.03	2.1	—
24	"	850	3	"	1.03	3.1	—
25	"	850	2	"	1.50	3.0	1
26	"	800	2	"	0.85	1.9	1
27	"	750	2	"	1.19	2.4	1
28	"	550	2	"	0.87	1.7	1
					Total	134.0 ^{kg}	
#200							
Y 29	0 10	2 750	3	0.617	1.70	5.1	1
30	"	1 350	6	"	0.83	5.0	1
31	"	1 050	2	"	0.65	1.3	1
32	"	1 050	2	"	0.65	1.3	1
					Total	12.7 ^{kg}	
					Sum total	147.5 ^{kg}	
#100 (No. 15)							
Y 18	0 16	1 850	4	1.58	2.61	10.4	1
19	"	1 450	14	"	2.29	32.1	—
20	"	1 000	4	"	1.58	6.3	1
21	"	1 800	8	"	2.84	22.8	1
22	"	1 600	20	"	2.58	51.5	1
23	"	850	2	"	1.03	2.1	—
24	"	850	3	"	1.03	3.1	—
25	"	850	2	"	1.50	3.0	1
26	"	800	2	"	0.85	1.9	1
27	"	850	2	"	1.31	2.6	1
28	"	550	2	"	0.87	1.7	1
					Total	137.9 ^{kg}	
#200							
Y 29	0 10	2 750	3	0.617	1.70	5.1	1
30	"	1 450	6	"	0.88	5.3	1
31	"	1 150	2	"	0.70	1.4	1
32	"	1 050	2	"	0.65	1.3	1
					Total	13.5 ^{kg}	
					Sum total	150.6 ^{kg}	

WATER SUPPLY PROJECT FOR CAMBODIAN REFUGEE CAMPS	
THE KINGDOM OF THAILAND	
DISTRIBUTING PIPE BLOW OFF REINFORCEMENT (2/2)	
S-1-50	
Date JANUARY 1981	D.W.O. No. 48
JAPAN INTERNATIONAL COOPERATION AGENCY	

Ø400 S:1.50

Ø100 S:1.30

SECTION A-A

SECTION C-C

SECTION G-G

SECTION I-I

MATERIAL LIST

Qty	Dis	Length	No.	Unit wt	One piece	Weight	Remarks
Ø400							
1	Ø10	2.500	8	0.617	1.54	12.3	
2	"	1.800	11	"	1.11	12.2	
3	"	4.700	14	"	2.90	40.6	
4	"	1.400	1	"	0.85	0.9	
5	"	2.000	1	"	1.23	1.2	
6	"	3.300	2	"	2.04	4.1	
7	"	3.800	1	"	2.34	2.3	
8	"	2.400	27	"	1.51	40.8	
9	"	1.300	1	"	0.80	0.8	
10	"	0.500	1	"	0.31	0.3	
11	"	1.200	3	"	0.74	2.2	
			Total		0.10	117.7	
Ø100							
1	Ø10	1.300	5	0.617	0.80	4.0	
2	"	1.100	6	"	0.68	4.1	
3	"	3.000	8	"	1.85	14.8	
4	"	1.600	1	"	0.99	1.0	
5	"	1.150	1	"	0.71	0.7	
6	"	1.000	1	"	0.62	0.6	
7	"	1.550	15	"	0.98	14.8	
8	"	0.950	3	"	0.59	1.8	
			Total		0.10	41.4	
			Sum total			159 kg	

SECTION B-B

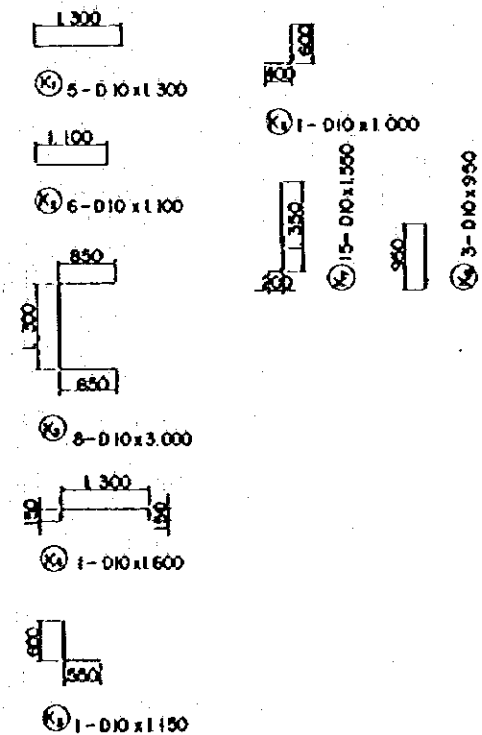
SECTION D-D SECTION E-E

SECTION H-H

SECTION J-J

SECTION F-F

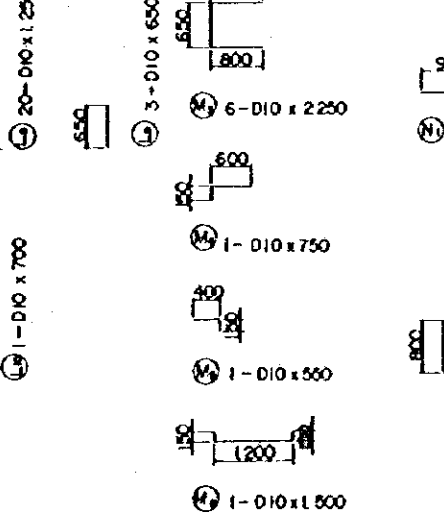
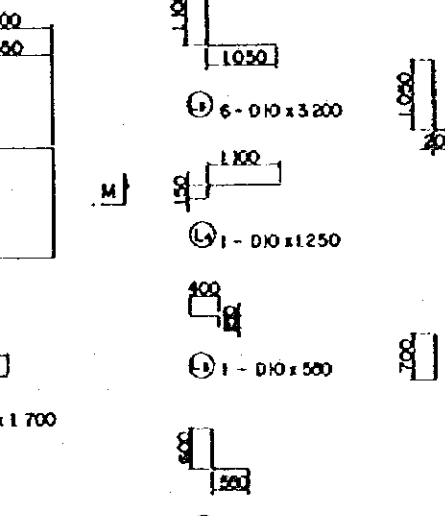
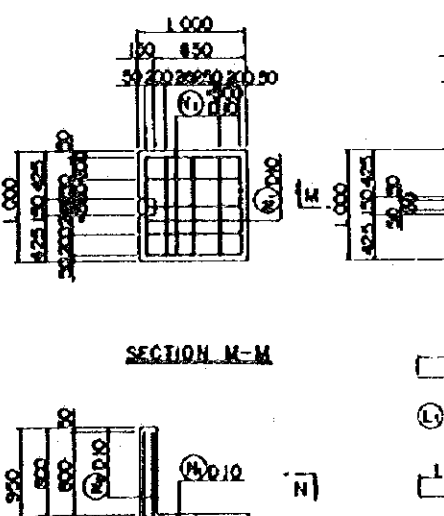
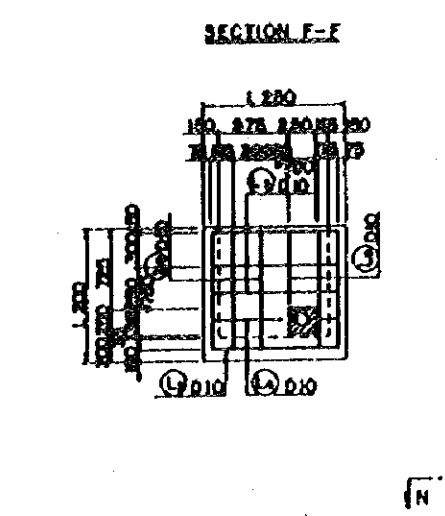
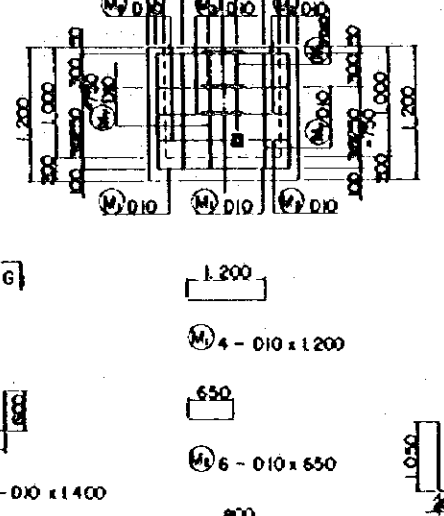
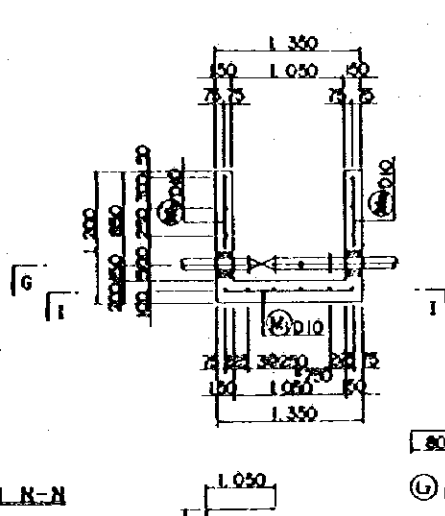
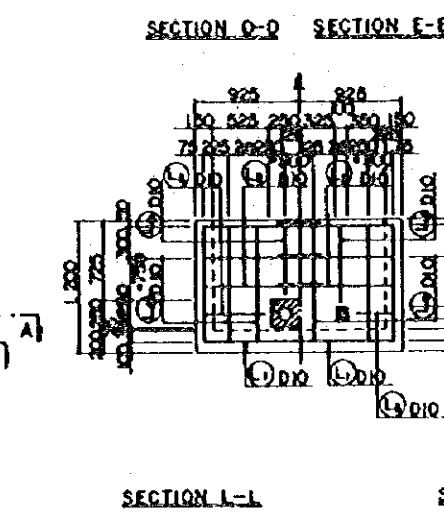
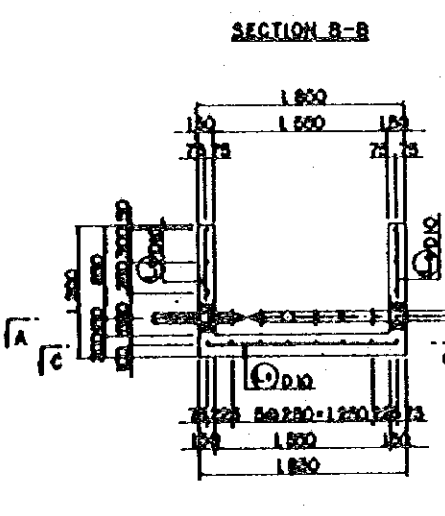
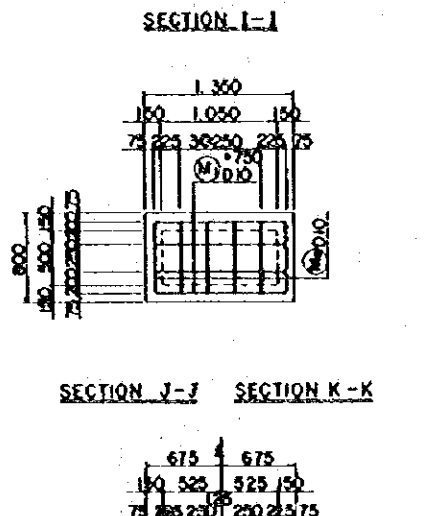
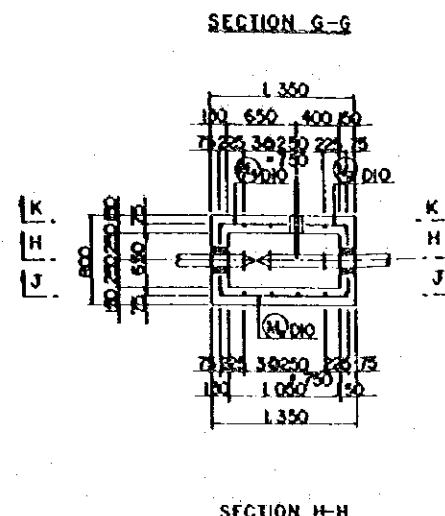
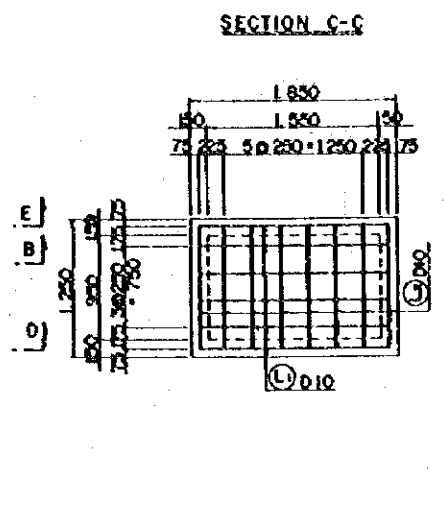
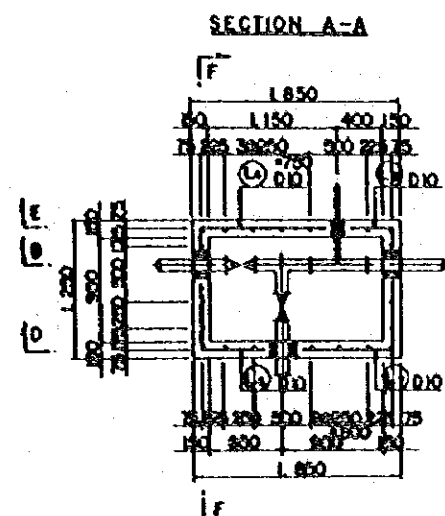
SECTION K-K



WATER SUPPLY PROJECT FOR CAMBODIAN REFUGEE CAMPS	
THE KINGDOM OF THAILAND	
DISTRIBUTING PIPE TURNOUT REINFORCEMENT	
Date JANUARY 1981	DWG No 49
JAPAN INTERNATIONAL COOPERATION AGENCY	

TURNOUT AND TAP

TAP

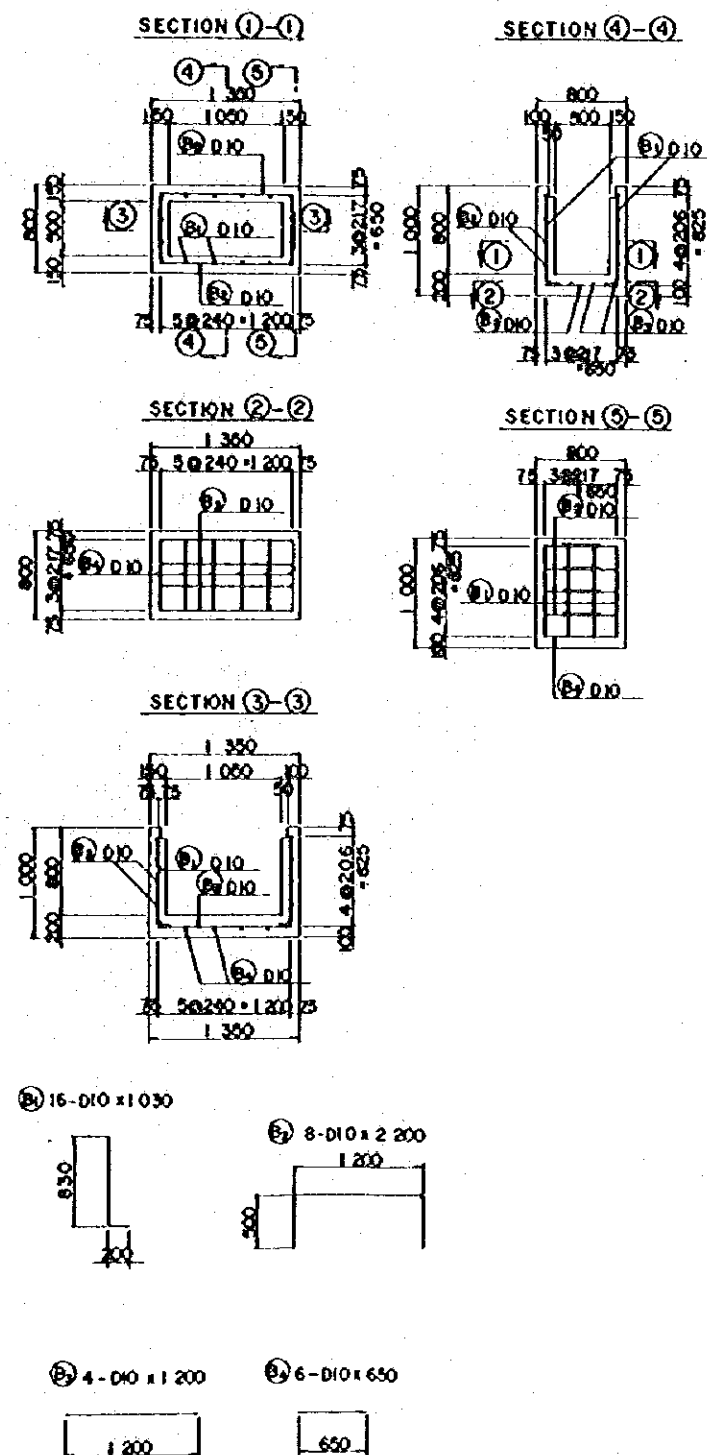


MATERIAL LIST

Design	Qty	Length	No.	Unit wt.	One piece	Weight	Remarks
Turnout and Tap							
L 1 D10	6	1.700	6	0.617	1.05	6.3	
L 2 " "	8	1.100	8	"	0.68	5.4	
L 3 " "	6	3.200	6	"	1.97	11.8	
L 4 " "	1	1.250	1	"	0.77	0.8	
L 5 " "	1	0.550	1	"	0.34	0.3	
L 6 " "	1	1.150	1	"	0.71	0.7	
L 7 " "	1	1.400	1	"	0.86	0.9	
L 8 " "	20	1.250	20	"	0.77	15.4	
L 9 " "	3	0.650	3	"	0.40	1.2	
L 10 " "	1	0.700	1	"	0.43	0.4	
				Total		43.2	
N 1 D10	10	0.900	10	0.617	0.56	5.6	
N 2 " "	4	0.800	4	"	0.49	2.0	
				Total		7.6	
				Sum total	D10-	50.8	
Tap							
M 1 D10	4	1.200	4	0.617	0.74	3.0	
M 2 " "	6	0.600	6	"	0.40	2.4	
M 3 " "	6	2.250	6	"	1.30	8.3	
M 4 " "	1	0.750	1	"	0.46	0.5	
M 5 " "	1	0.550	1	"	0.34	0.3	
M 6 " "	1	1.500	1	"	0.93	0.9	
M 7 " "	11	1.250	11	"	0.77	8.5	
M 8 " "	2	0.650	2	"	0.40	0.8	
M 9 " "	1	0.700	1	"	0.43	0.4	
				Total		25.1	
N 1 D10	10	0.900	10	0.617	0.56	5.6	
N 2 " "	4	0.800	4	"	0.49	2.0	
				Total		7.6	
				Sum total	D10-	32.7	
				Sum total	D10-	84.4	

WATER SUPPLY PROJECT FOR CAMBODIAN REFUGEE CAMPS
THE KINGDOM OF THAILAND
DISTRIBUTING PIPE
TAP BOX REINFORCEMENT
S : 1 : 30
Date JANUARY 1981
DWG. No 50
JAPAN INTERNATIONAL COOPERATION AGENCY

TAP



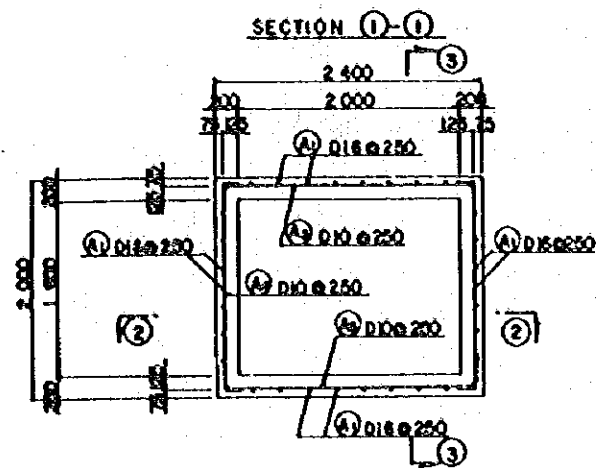
MATERIAL LIST

Desc	Dia.	Length	No.	Unit wt.	One piece	Weight	Remor
TURN OUT							
A1	DIO	2 130	18	0.617	1.31	23.6 ^{kg}	
A2	"	2 750	16	"	1.70	27.2	
A3	"	1 500	5	"	0.93	4.7	
A4	"	1 100	7	"	0.68	4.8	
					Total	60.3 ^{kg}	
TAP							
B1	DIO	1 030	16	0.617	0.64	10.2 ^{kg}	
B2	"	2 200	8	"	1.36	10.9	
B3	"	1 200	4	"	0.74	3.0	
B4	"	650	6	"	0.40	2.4	
					Total	26.5 ^{kg}	

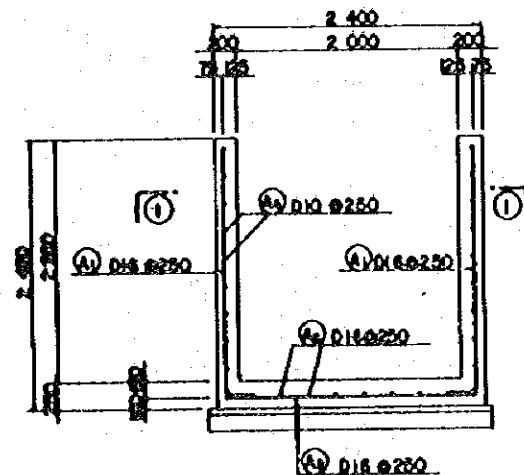


WATER SUPPLY PROJECT FOR CAMBODIAN REFUGEE CAMPS		
THE KINGDOM OF THAILAND		
DISTRIBUTING PIPE, TURN OUT TAP BOX REINFORCEMENT (3/3)		
S-1-30		
Date	JANUARY 1981	DWG No. 51
JAPAN INTERNATIONAL COOPERATION AGENCY		

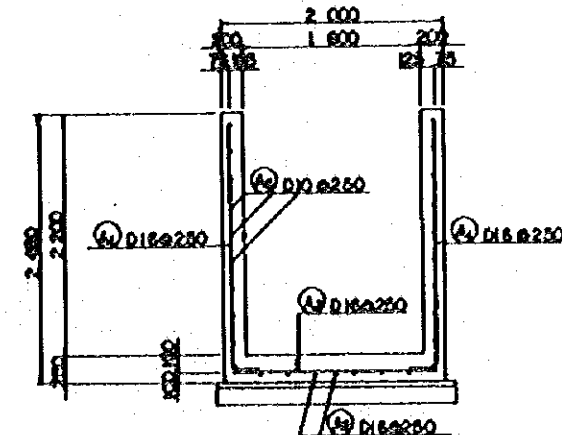
TURN OUT



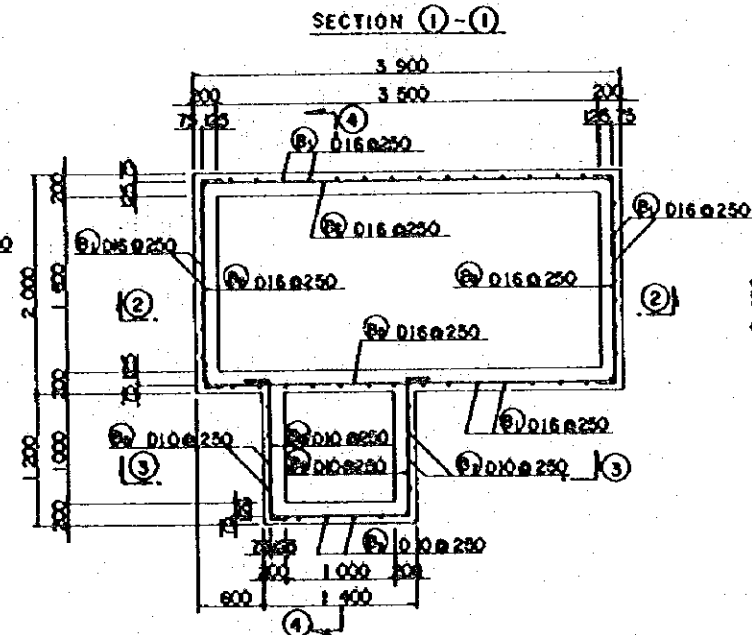
SECTION 2-2



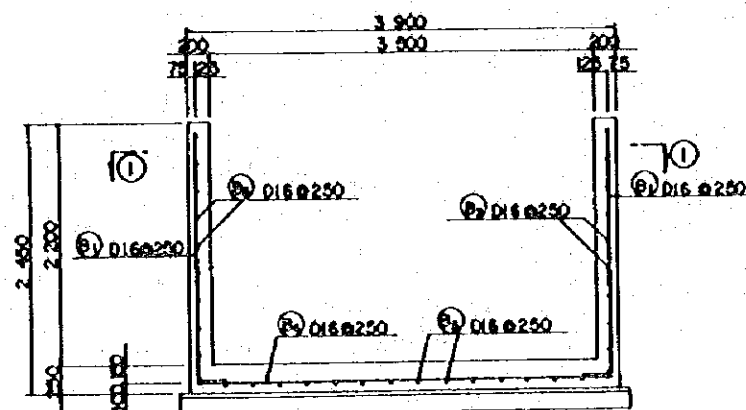
SECTION 3-3



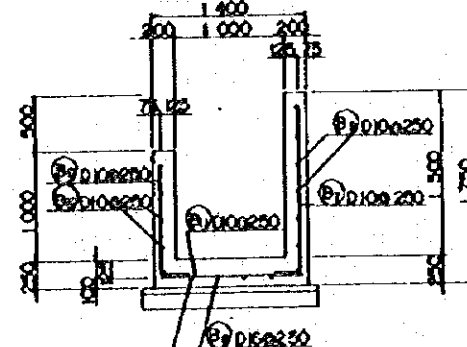
BLOW OFF & TURN OUT



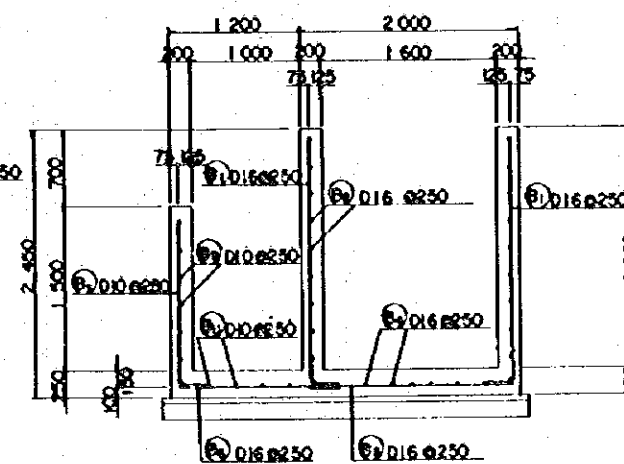
SECTION 2-2



SECTION 3-3



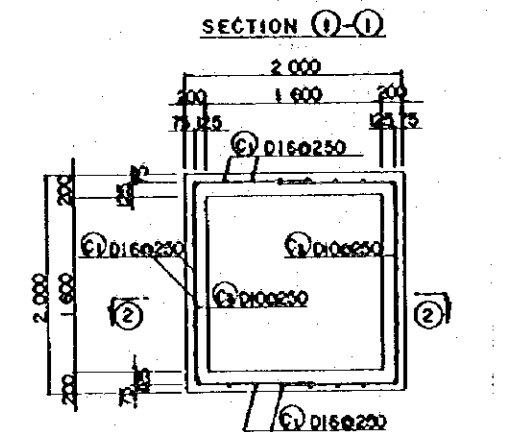
SECTION 4-4



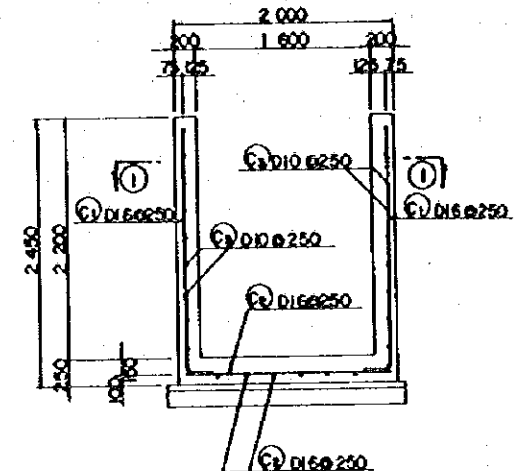
MATERIAL LIST

Descr	Dis	Length	No	Unit	Wt	One piece	Weight	Remarks
TURN OUT								
A 1	D16	2500	34		1.58	3.95	134.3	L
2	"	2250	9		"	3.56	32.0	"
3	"	1850	10		"	2.92	29.2	"
4	D10	2000	18		0.617	1.23	22.1	"
5	"	2250	18		"	1.39	25.0	"
Total							242.6	
					D16: 195.5 kg		D10: 47.1 kg	
BLOW OFF & TURN OUT								
B 1	D16	2500	46		1.58	3.95	181.7	L
2	"	3750	18		"	5.93	106.7	"
3	"	2000	18		"	3.16	56.9	"
4	"	3750	9		"	5.93	53.4	"
5	"	1850	16		"	2.92	46.7	"
6	"	1500	6		"	2.37	14.2	"
7	D10	1750	11		0.617	1.08	11.9	L
8	"	1250	5		"	0.77	3.9	"
9	"	2650	6		"	1.64	9.8	"
10	"	1500	4		"	0.93	3.7	"
11	"	1250	5		"	0.77	3.9	"
Total							492.6	
					D16: 452.6 kg		D10: 33.5 kg	
VALVE BOX								
C 1	D16	2500	28		1.58	3.95	110.6	L
2	"	1850	16		"	2.92	46.7	"
3	D10	4200	18		0.617	2.99	45.6	"
Total							203.9	
					D16: 110.6 kg		D10: 93.3 kg	

VALVE BOX



SECTION 2-2



JICA

