



GEOLOGICAL EXPLORATION REPORT
ON
THE SURVEY FOR THE REHABILITATION
OF
OMBILIN COAL MINE

NOV. 79

JICA

MPN
[REDACTED]
79-100

**国
際
機
関**

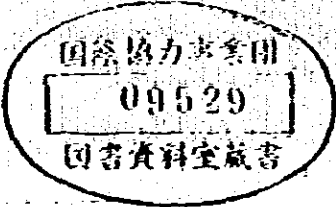
No. 4

GEOLOGICAL EXPLORATION REPORT
ON
THE SURVEY FOR THE REHABILITATION
OF
OMBILIN COAL MINE

NOVEMBER 1979

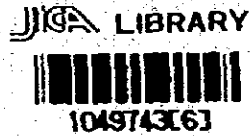
Japan International Cooperation Agency

MPN
CR-(2)
79-100

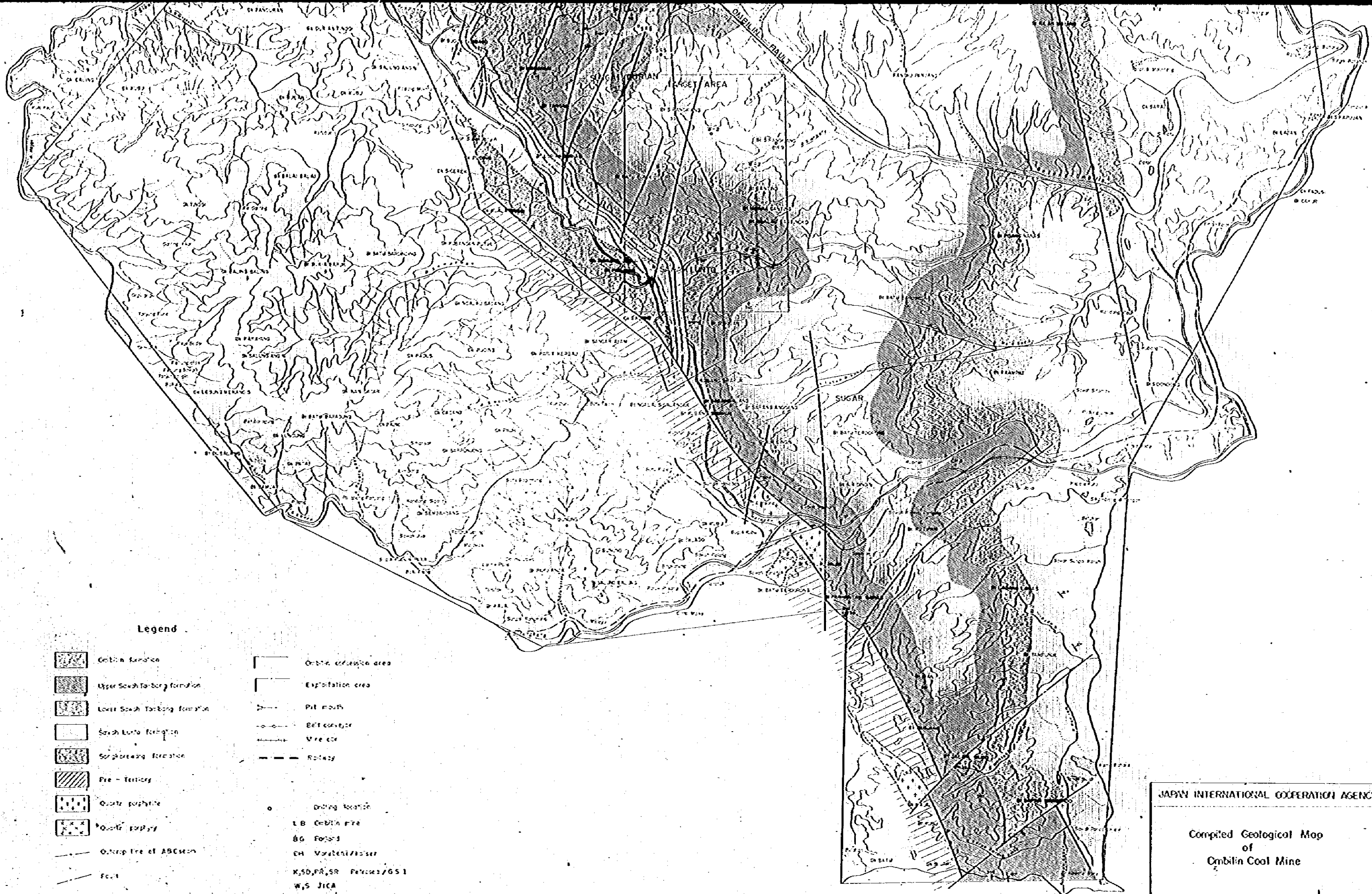


REPORT

- | 付 図 (Drawing) | |
|---------------|---------------------------------------------------------------------------------------|
| Dwg. 1. | オビシ川盆地周辺の地質調査図 (1:20000)
Compiled geological map of Obitsu coal mine (1:20000) |
| 2. | 地質図 (1:5000)
Geological map |
| 3a. | 地質断面図 (A-A'~E-E', 1:5000)
Geological cross sections |
| b. | 同 (F-F'~I-I', 1:5000) |
| 4a. | 地質柱状図 (W-1, 1:100)
Geological columnar section |
| b. | 同 (W-2, 1:100) |
| c. | 同 (W-3, 1:100) |
| d. | 同 (W-4, 1:100) |
| e. | 同 (W-7, 1:100) |
| f. | 同 (W-8, 1:100) |
| g. | 同 (S-1, 1:100) |
| h. | 同 (S-2, 1:100) |
| 5a. | 地質柱状対比図 (DH-2-W-7, 1:1000)
Correlation of geological sequence |
| b. | 同 (DH-7-S-7, 1:1000) |
| c. | 同 (SR-4-S-1, 1:1000) |
| d. | 同 (DH-1-W-8, 1:1000) |
| 6a. | 採炭状況図 (W-1-DH-2, 1:400)
Development of coal seams in Sawahata formation (1:400) |
| b. | 同 (DH-8-W-2, 1:400) |
| 7. | 採炭対比図 (1:50)
Coal seam correlation |
| 8. | 奥柱図 (1:20)
Columnar coal section |
| 9a. | A層構造断面図 (1:10000)
Structure texture map A seam |
| b. | B層構造断面図 (1:10000)
Structure texture map B seam |
| c. | C層構造断面図 (1:10000)
Structure texture map C seam |
| 10a. | サワハタ層の炭層厚さと矽砂岩割合有線図 (1:10000)
Isopach and sand ratio in Sawahata formation |
| b. | 下層サワハタ層の炭層厚さと矽砂岩割合有線図 (1:10000)
Isopach and sand ratio in lower Sawahata formation |
| 11. | サワハタ層の石炭総厚図 (1:10000)
Cumulative thickness of coal in Sawahata formation |
| 12a. | A層炭量計算図 (1:10000)
Coal reserve calculation map A seam |
| b. | B層炭量計算図 (1:10000)
Coal reserve calculation map B seam |
| c. | C層炭量計算図 (1:10000)
Coal reserve calculation map C seam |
| 13. | 採炭開始可能地域 (A, B, C層) (1:10000)
Proposed mining area at initial development stage |
| 14. | W-2, W-4の粘土鉱物のX線粉末回折図
X-ray diffraction pattern of clay minerals in W-2 and W-4 |
| 15. | 孔位決定結果
Result of hole location survey |







Legend

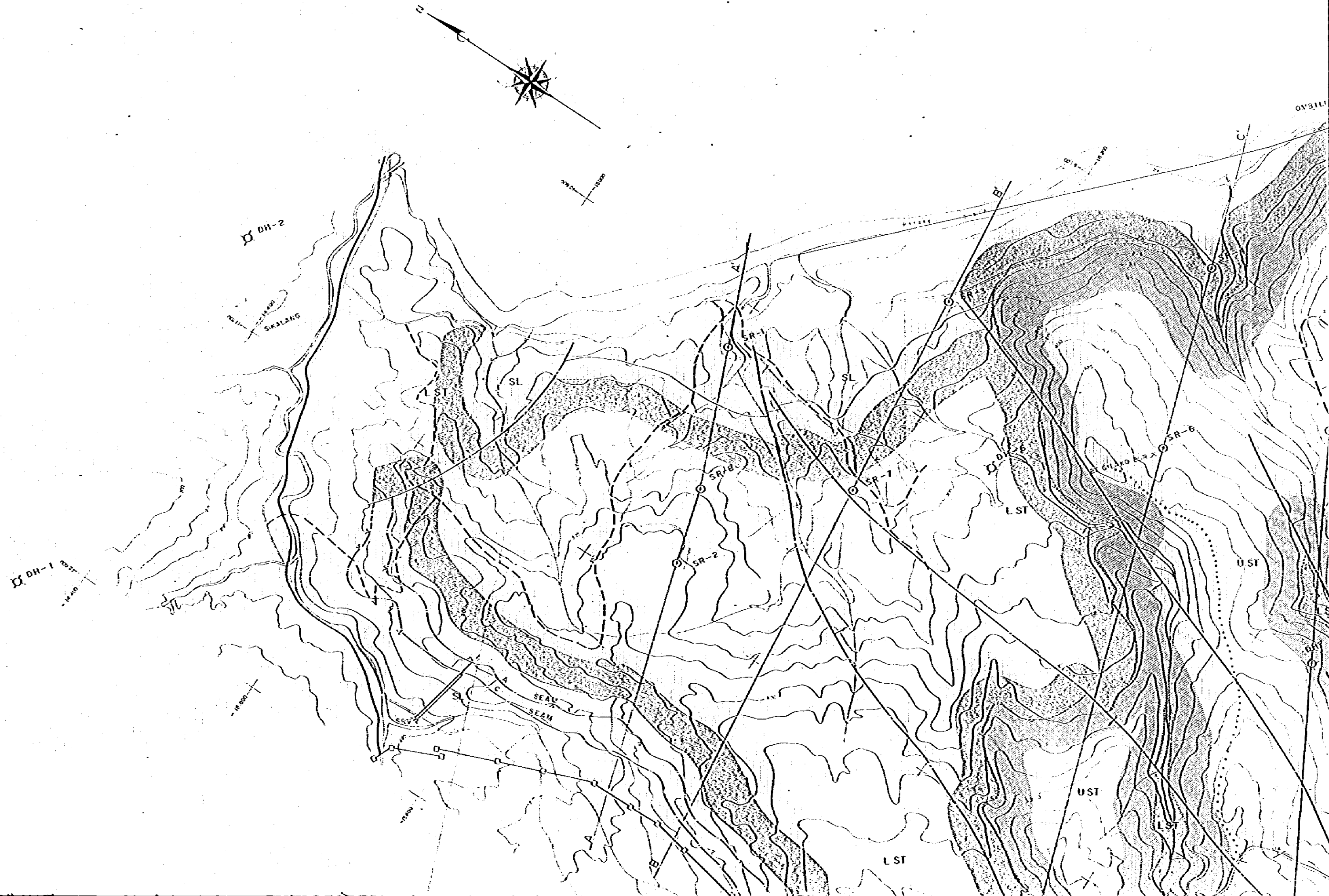
- Ombilin formation
- Upper South Tarkong formation
- Lower South Tarkong formation
- South Tarkong formation
- Sorghowang formation
- Free - Territory
- Quartz porphyry
- Quartz porphyry
- Outcrop line of ABC-stone
- Fault
- Ombilin cession area
- Exploitation area
- Pit mouth
- Belt conveyor
- Wire core
- Railway
- Drilling location
- LB Ombilin mine
- BG Forest
- CH Waterfall/Passer
- K,SD,PA,SR Forest/GS I
- W, S JICA

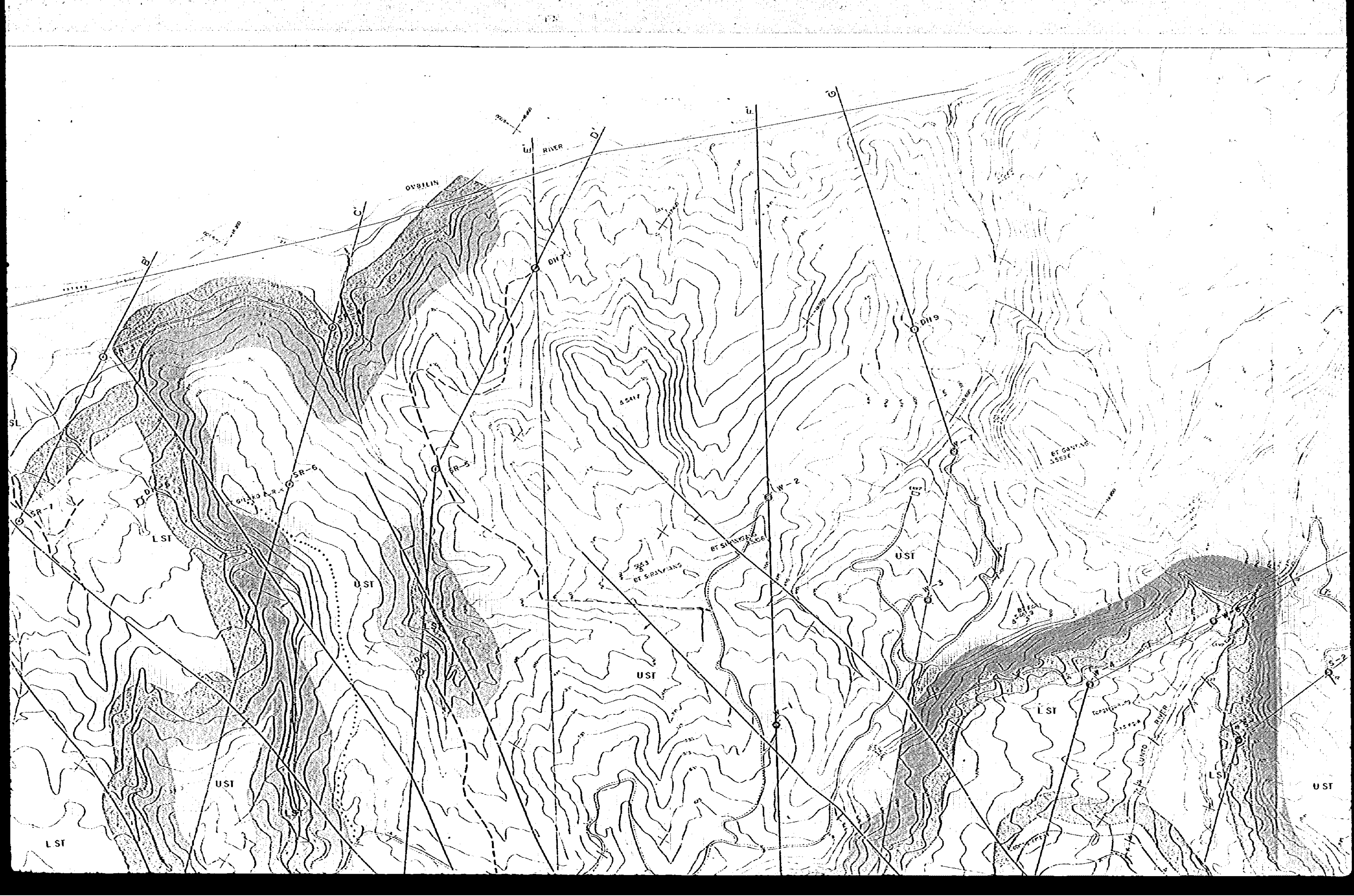
JAPAN INTERNATIONAL COOPERATION AGENCY

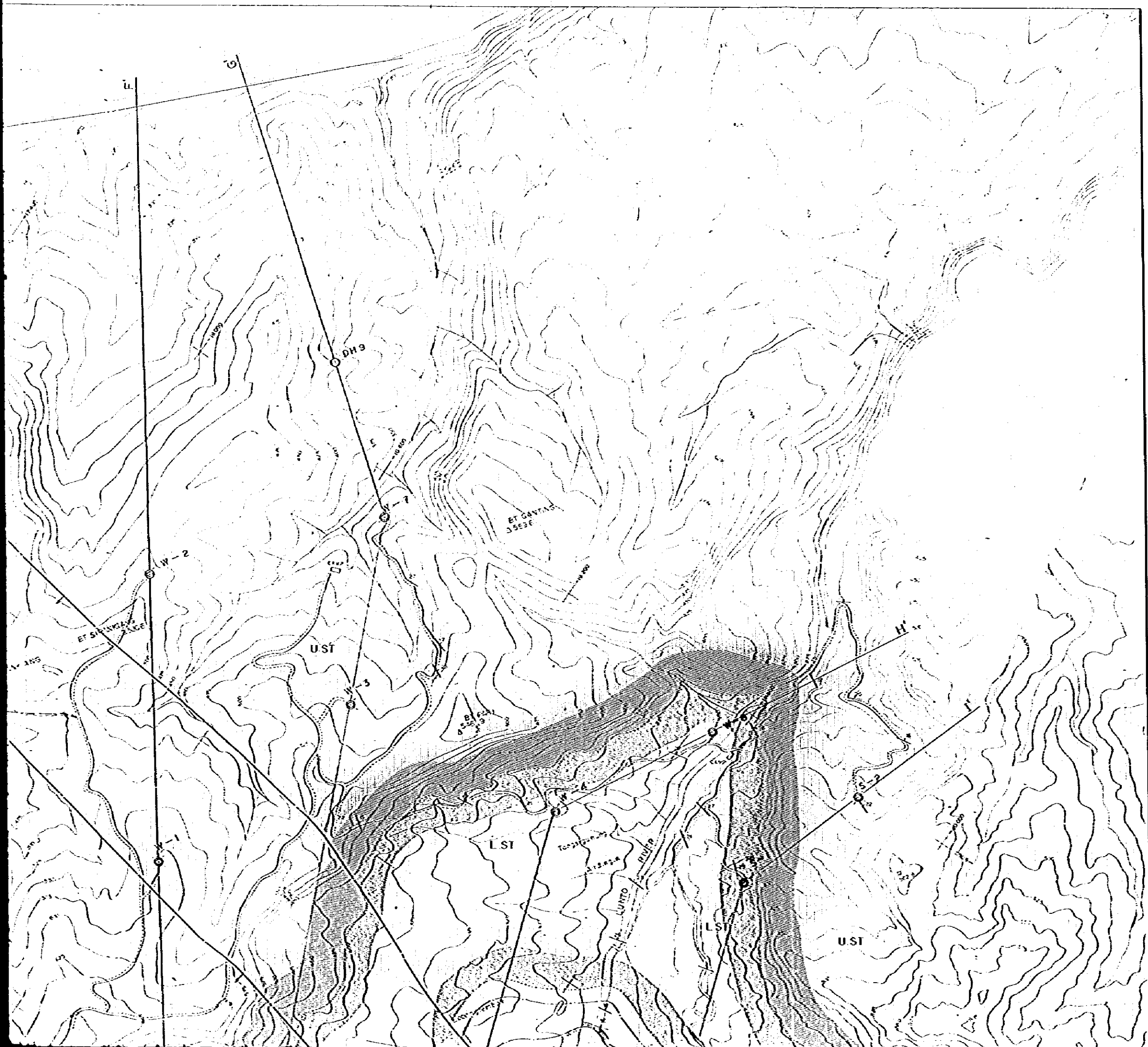
Compiled Geological Map
of
Ombilin Coal Mine

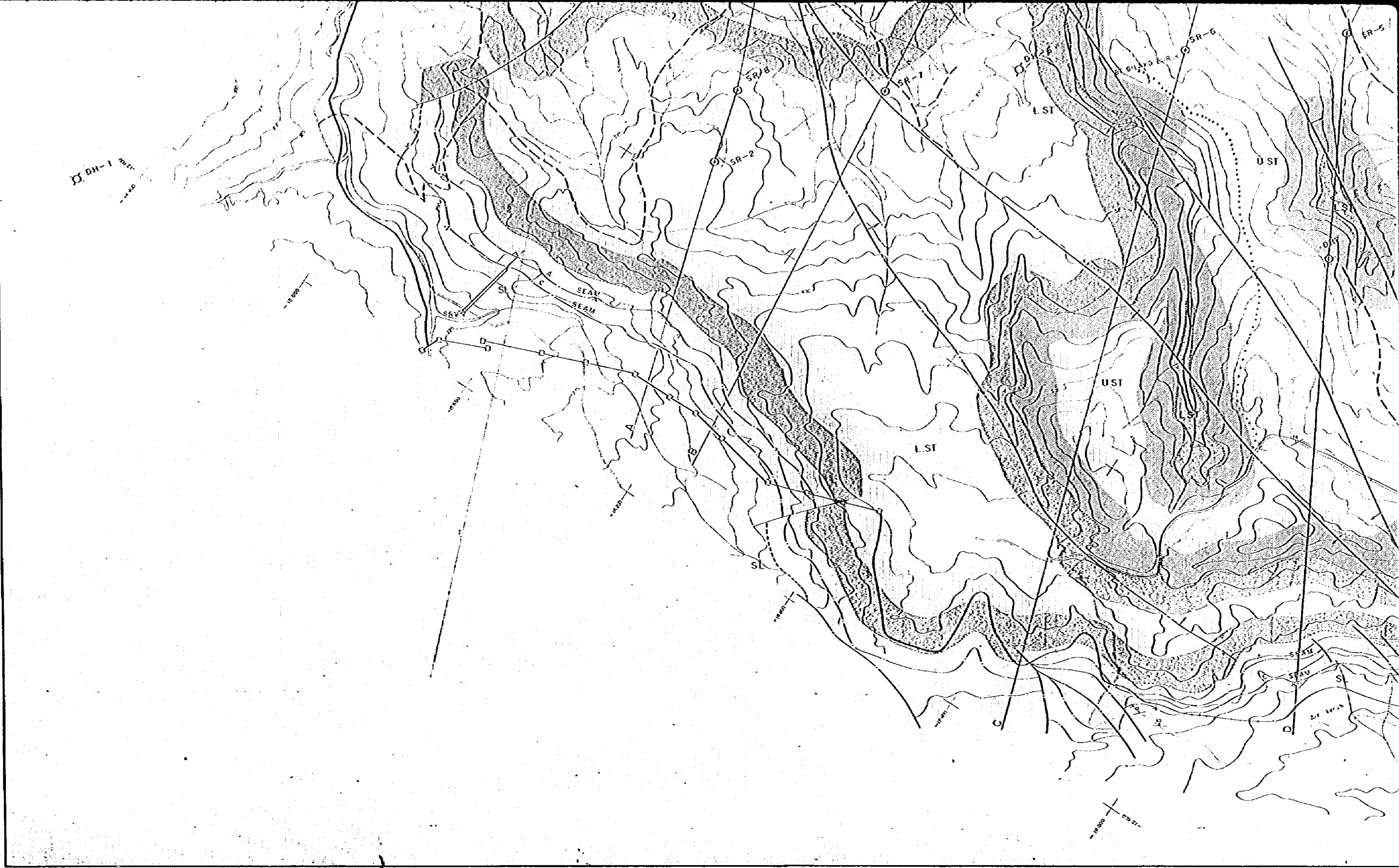
Map No.	1	Scale	1:20,000
Date	July, 1979	Prepared by	K. Ito

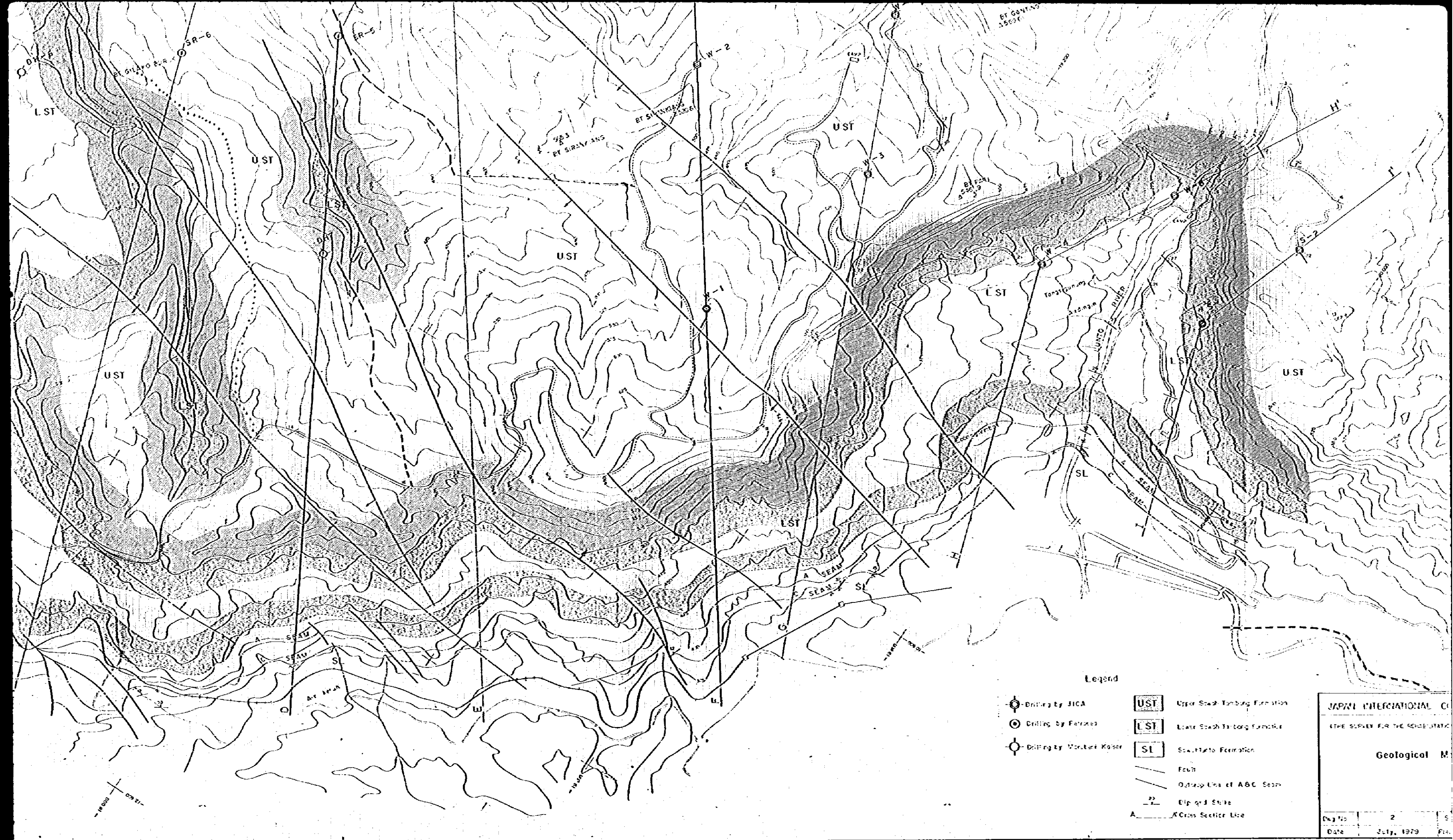
* This map is compiled based on the geological map of Marabou-Water and G-S-I together with the current survey by JICA







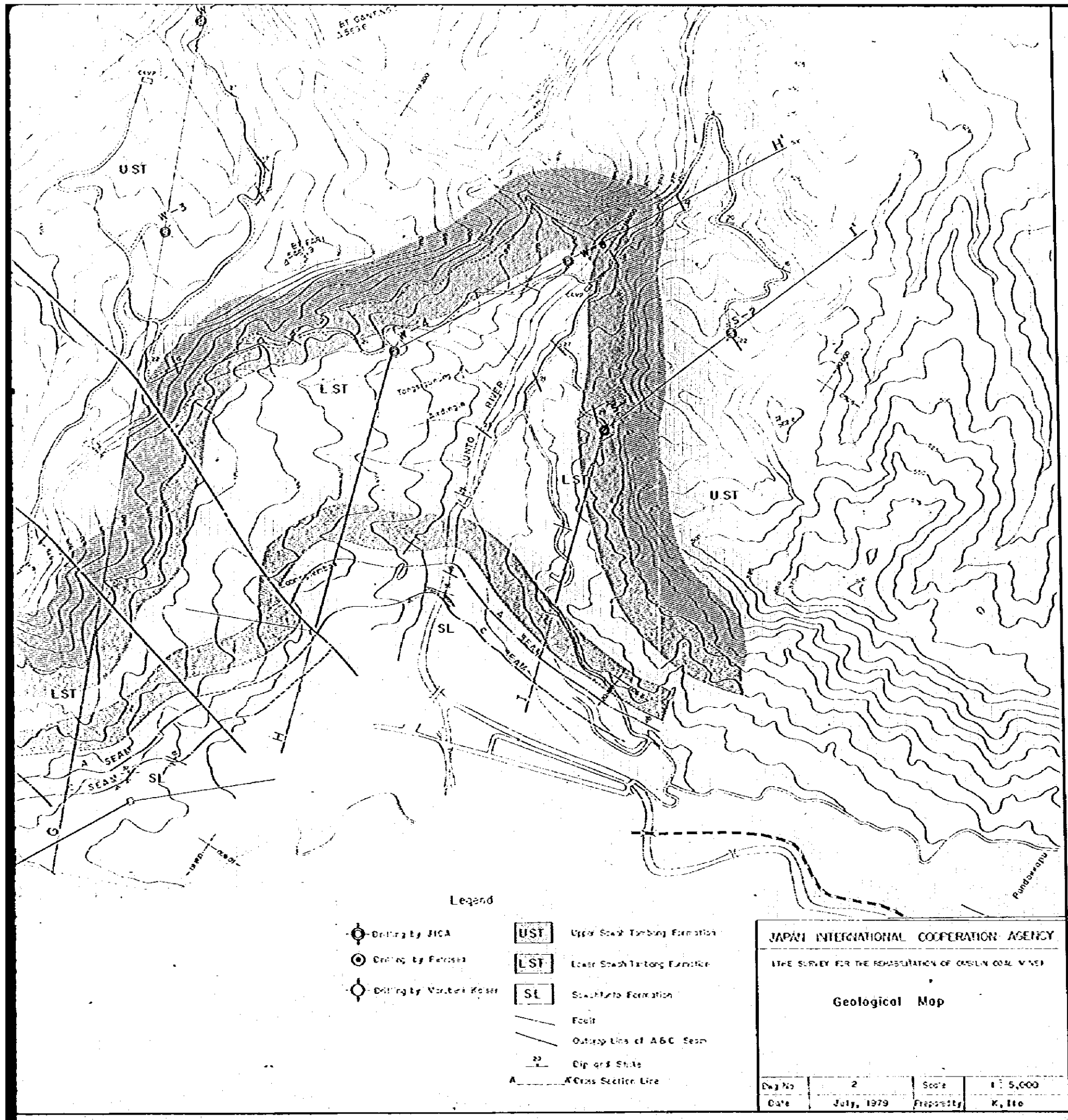




Legend

- ⊕ Drilling by JICA
- ⊙ Drilling by Ferruzzi
- ⊖ Drilling by Wobler Kaiser
- UST** Upper Saik Tangbung Formation
- LST** Lower Saik Tangbung Formation
- SL** Scaletto Formation
- Fault
- - - - - Outcrop Line of ABC Seam
- 22 Elevation Contour
- A-A Cross Section Line

JAPAN INTERNATIONAL CO.		
THE SURVEY FOR THE AGRI-CULTURE...		
Geological M...		
Drawn by	2	S
Date	July, 1979	Fig.



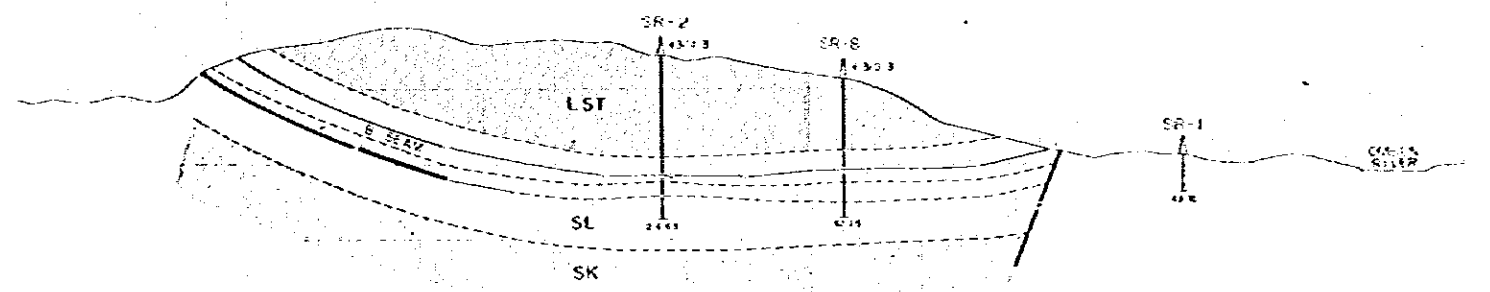
Legend

- Drilling by JICA
- ⊙ Drilling by Feroisa
- ⊙ Drilling by Marukawa Kosei
- UST** Upper Saeki Tsubang Formation
- LST** Lower Saeki Tsubang Formation
- SL** Saeki Lito Formation
- Fault
- Outcrop line of A-B-C Seam
- 22 Dip and Strike
- A— A Cross Section Line

JAPAN INTERNATIONAL COOPERATION AGENCY			
LIFE SURVEY FOR THE REHABILITATION OF COAL MINES			
Geological Map			
Drawn by	2	Scale	1:5,000
Date	July, 1979	Prepared by	K. Ito

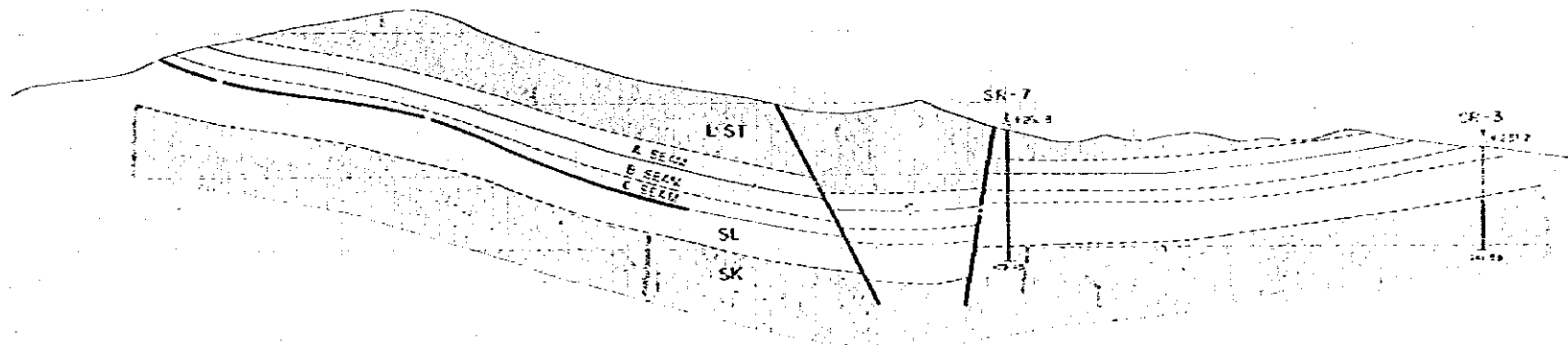
A

1300
1200
1100



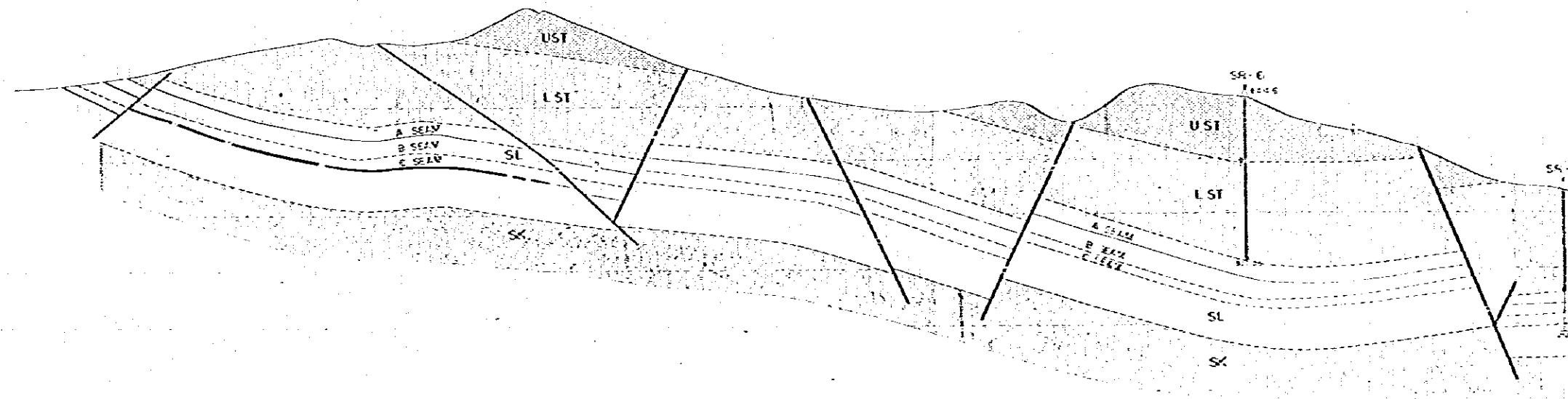
B

1400
1300
1200
1100



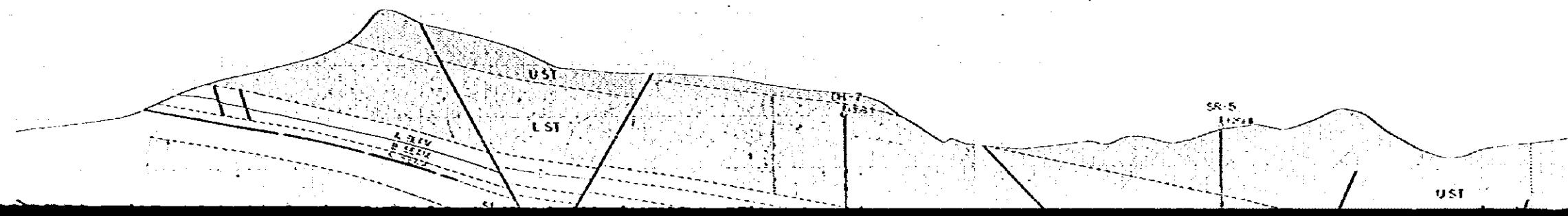
C

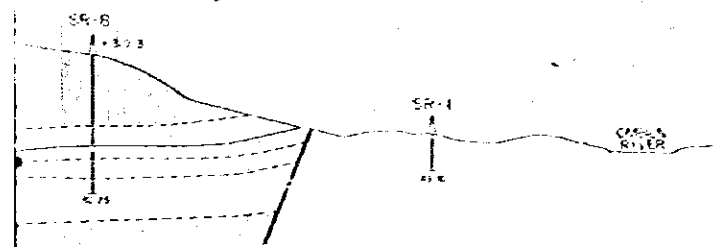
1500
1400
1300
1200
1100
100



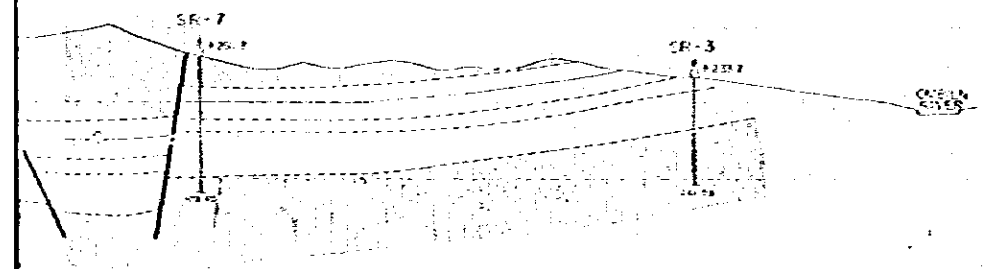
D

1600
1500
1400
1300

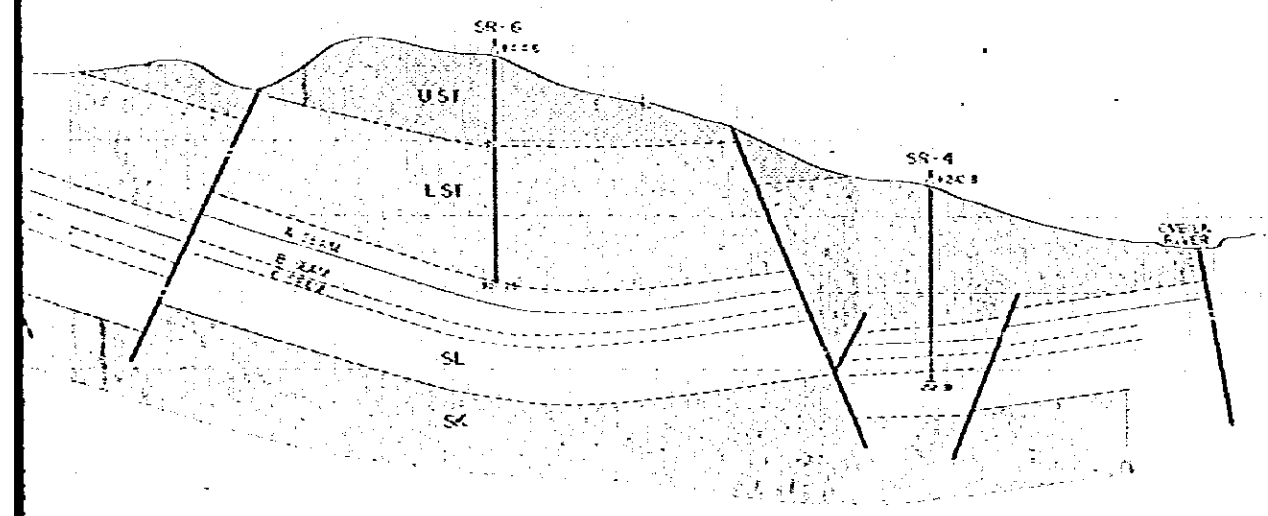




A'
SL + 300
1200
1100



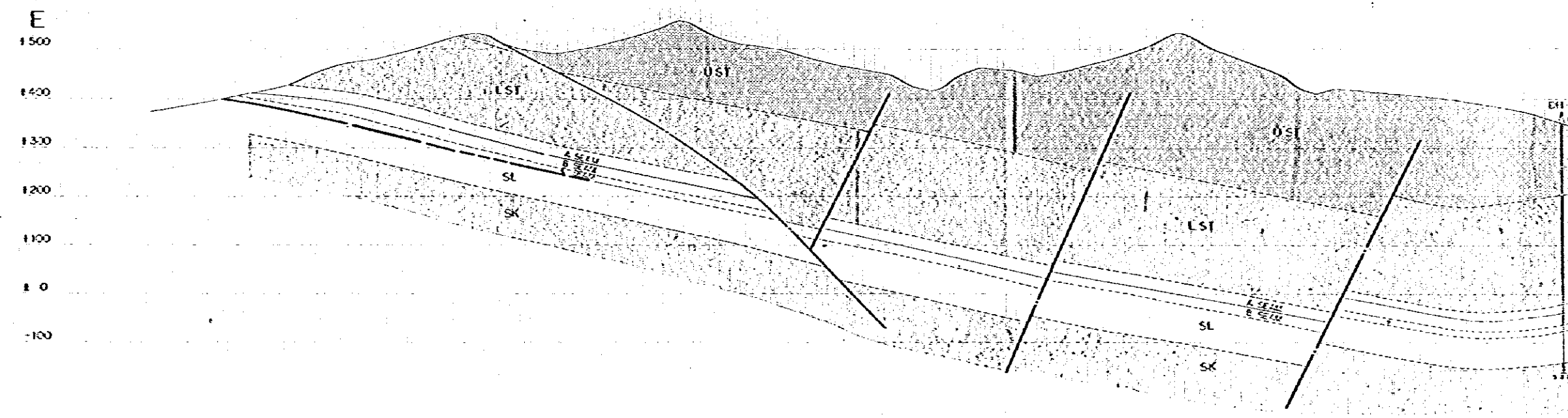
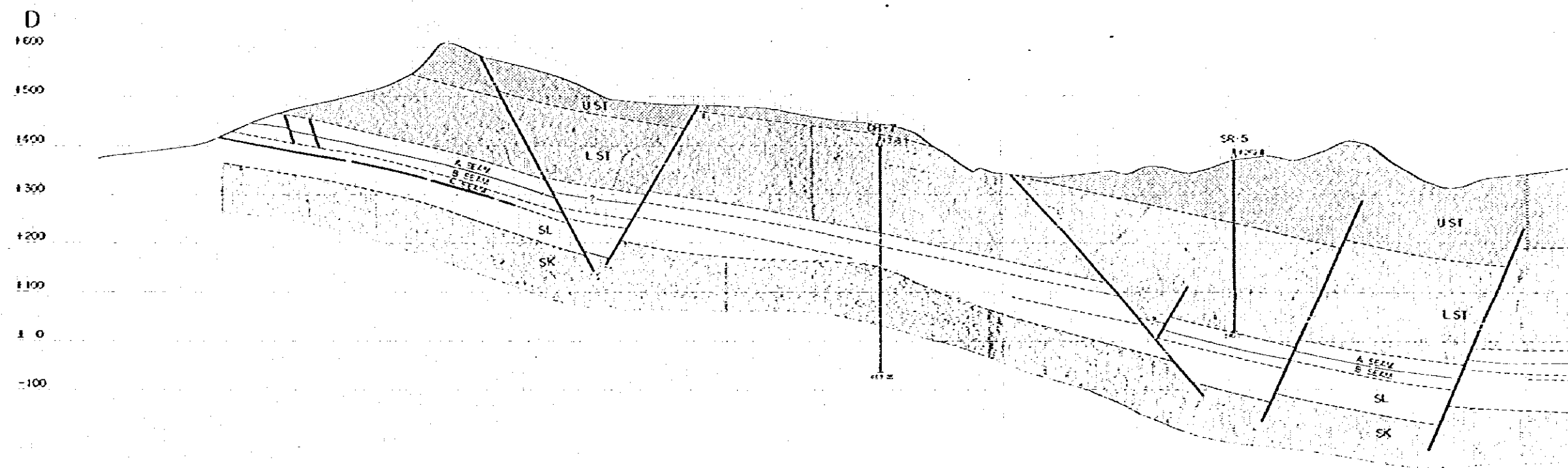
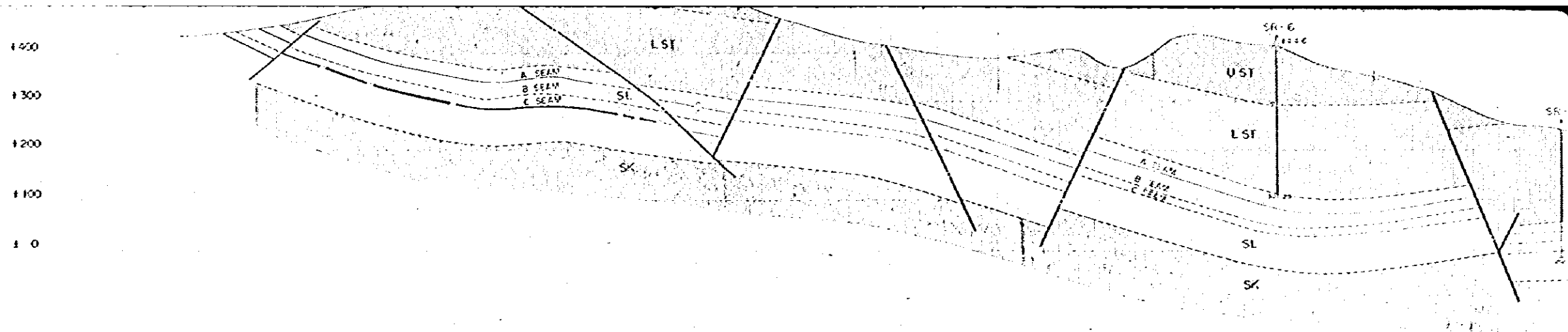
B'
SL + 400
1300
1200
1100

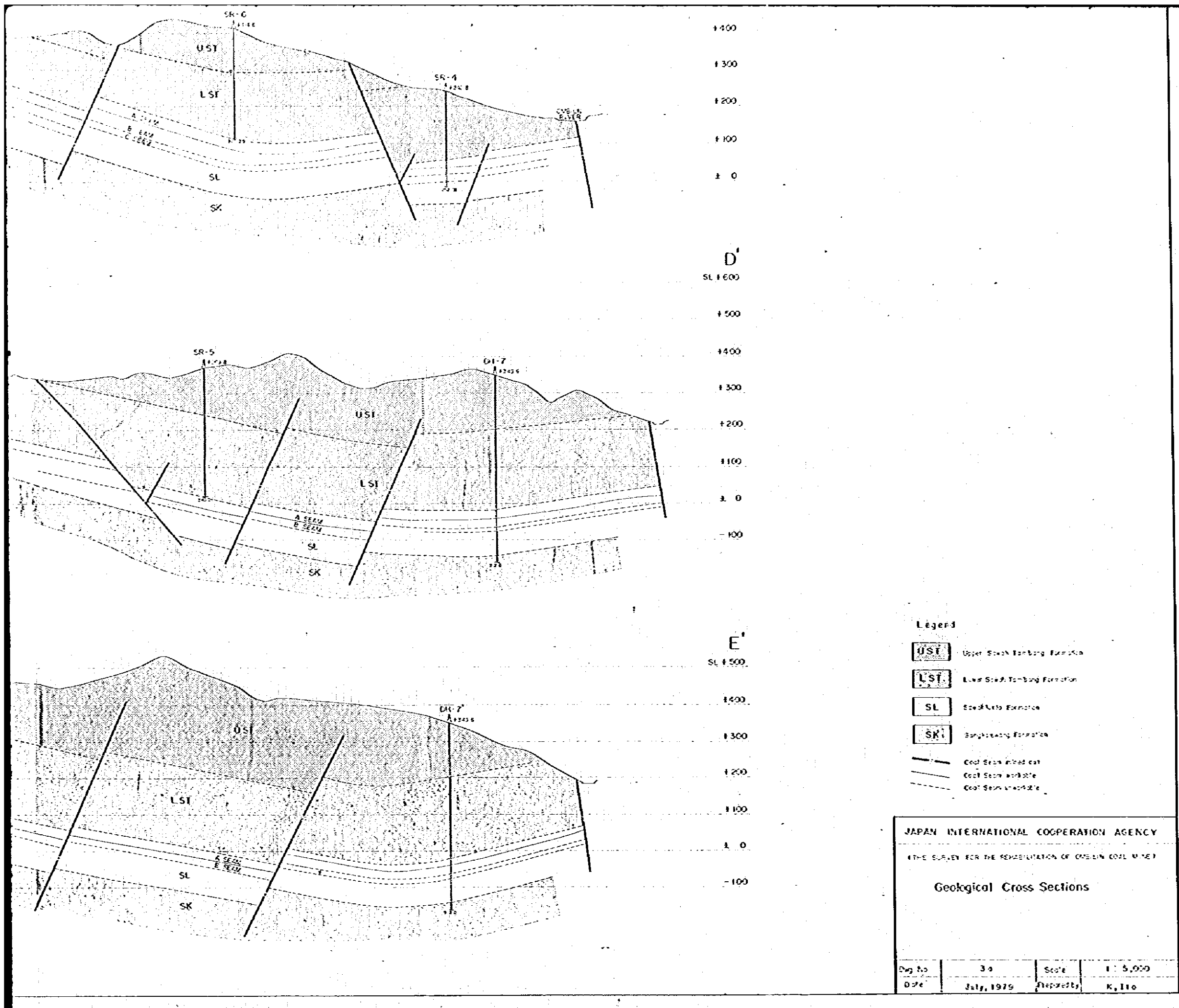


C'
SL + 500
1400
1300
1200
1100
100
10



D'
SL + 600
1500
1400
1300





- Legend**
- UST** Upper Staff-Tombing Formation
 - LST** Lower Staff-Tombing Formation
 - SL** Sookketo Formation
 - SK** Sanghwaung Formation
 - Coal Seam actual cut
 - - - Coal Seam available
 - Coal Seam unobtainable

JAPAN INTERNATIONAL COOPERATION AGENCY

MINES SURVEY FOR THE REHABILITATION OF OYAMUN COAL MINE

Geological Cross Sections

Dwg No	39	Scale	1 : 5,000
Date	July, 1979	Prepared by	K. Ito

F

+600

+500

+400

+300

+200

+100

0

-100

-200

G

+500

+400

+300

+200

+100

0

-100

-200

-300

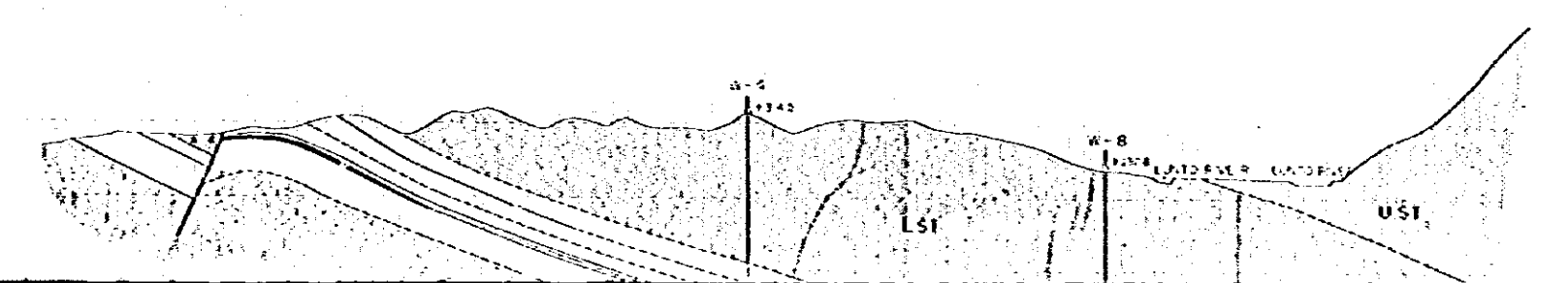
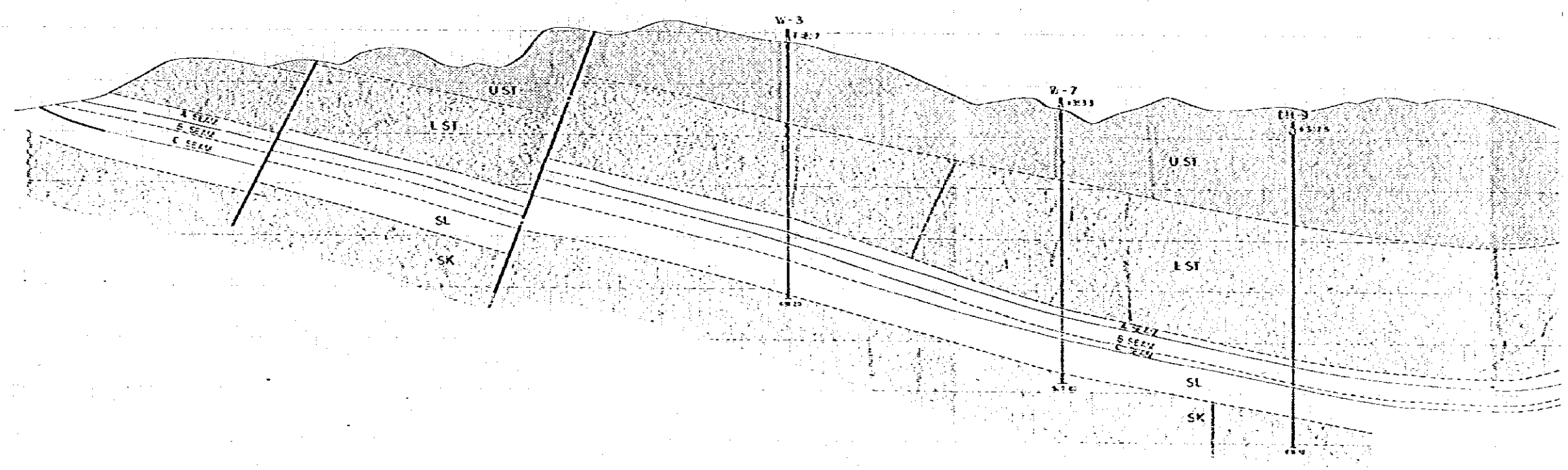
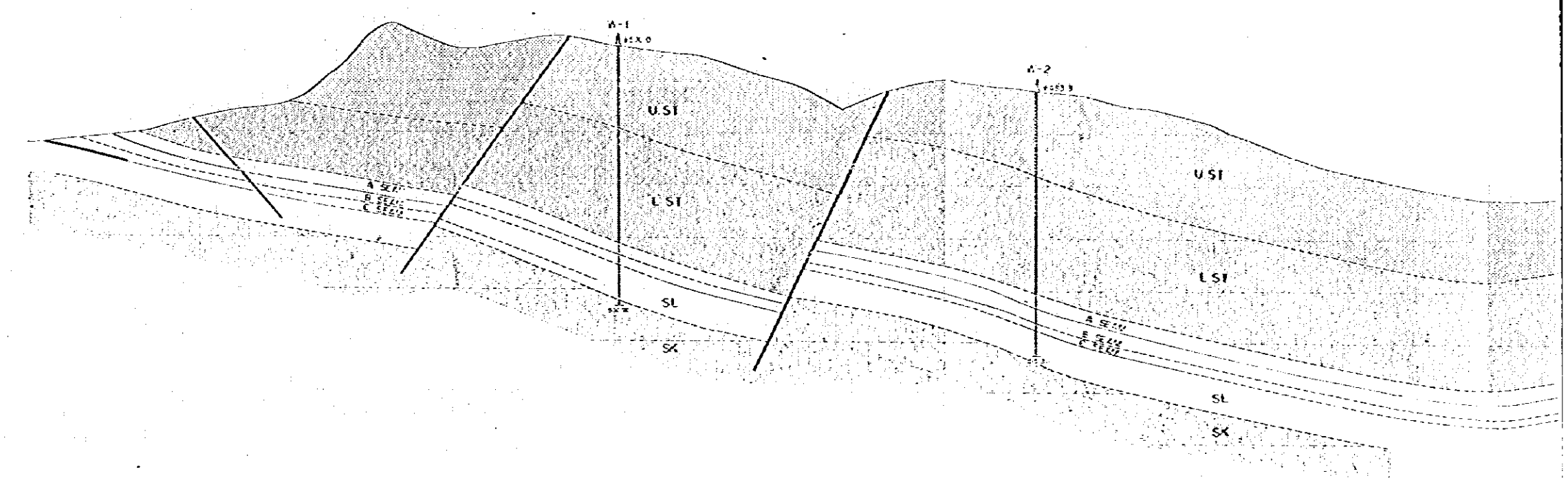
H

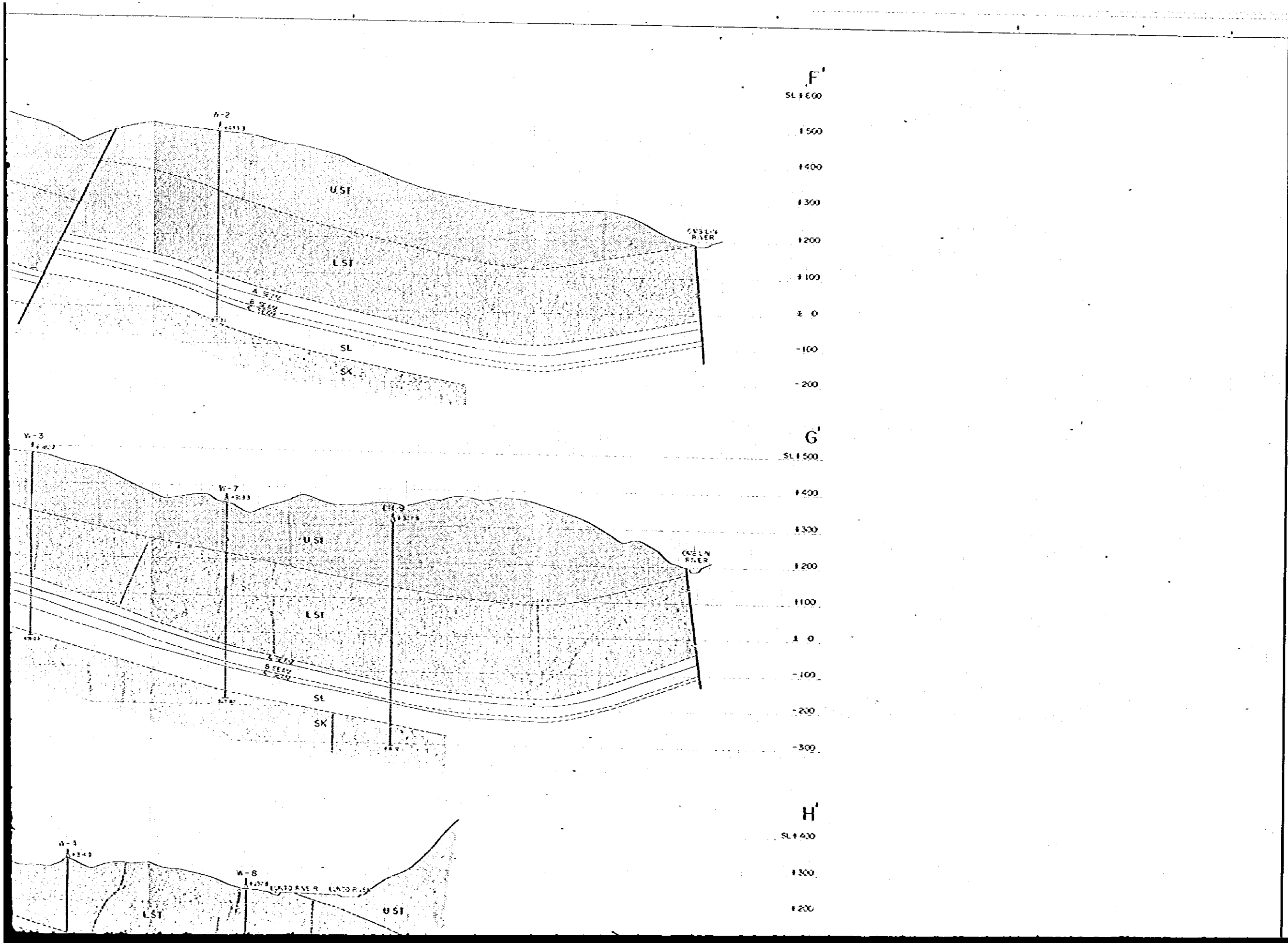
+400

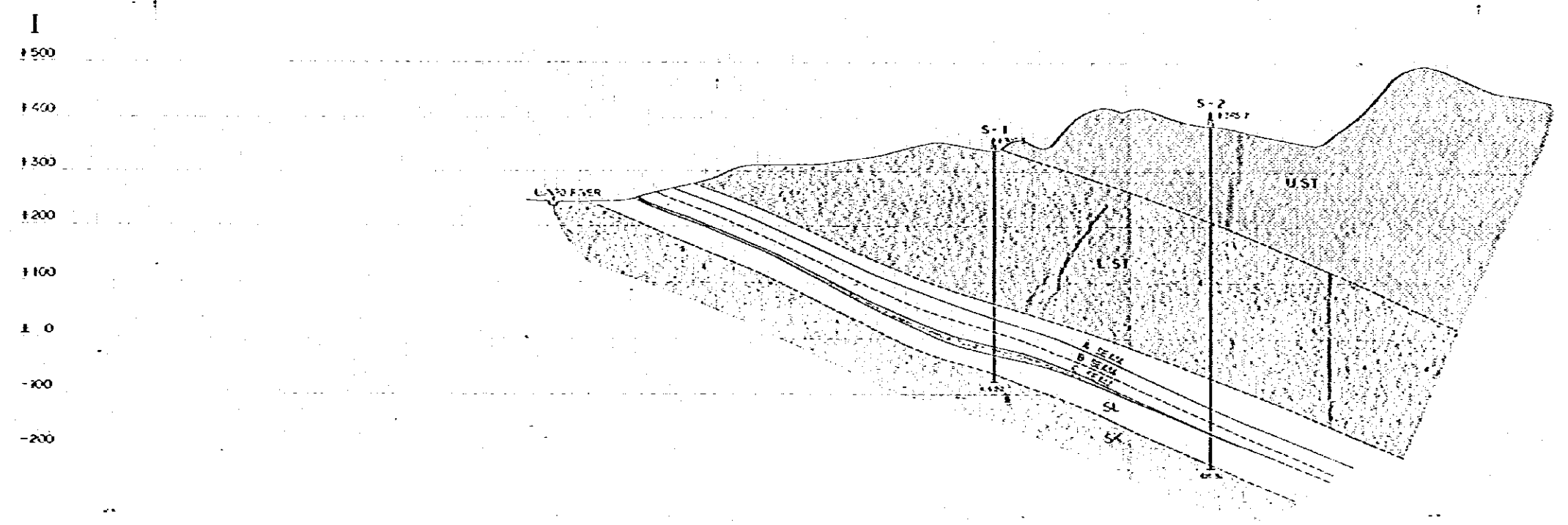
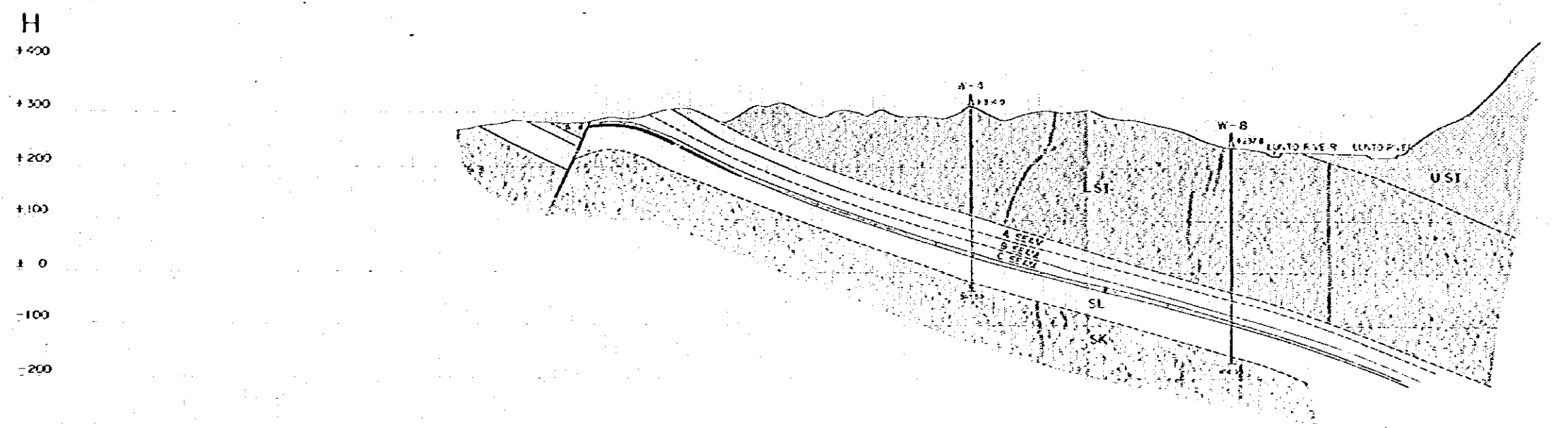
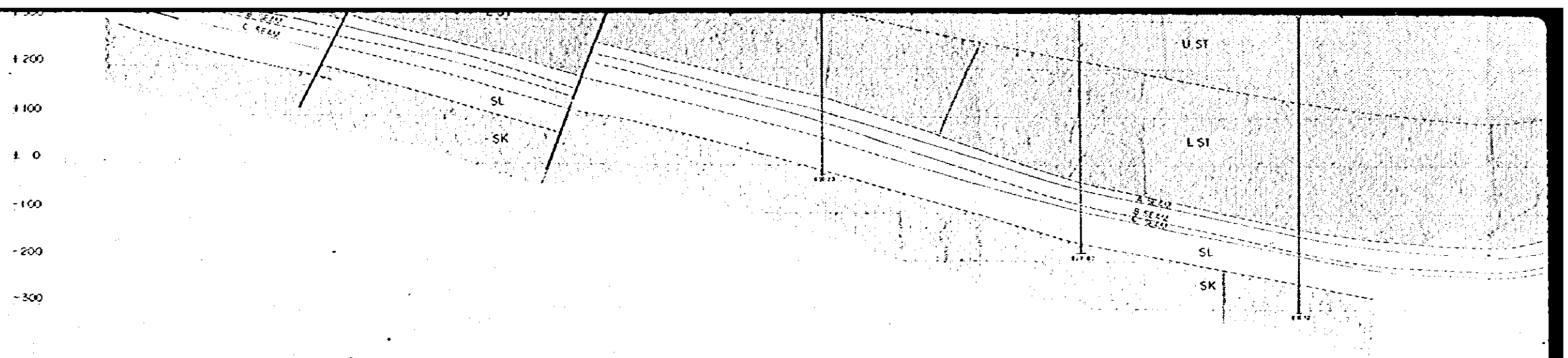
+300

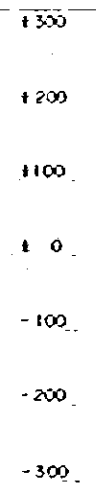
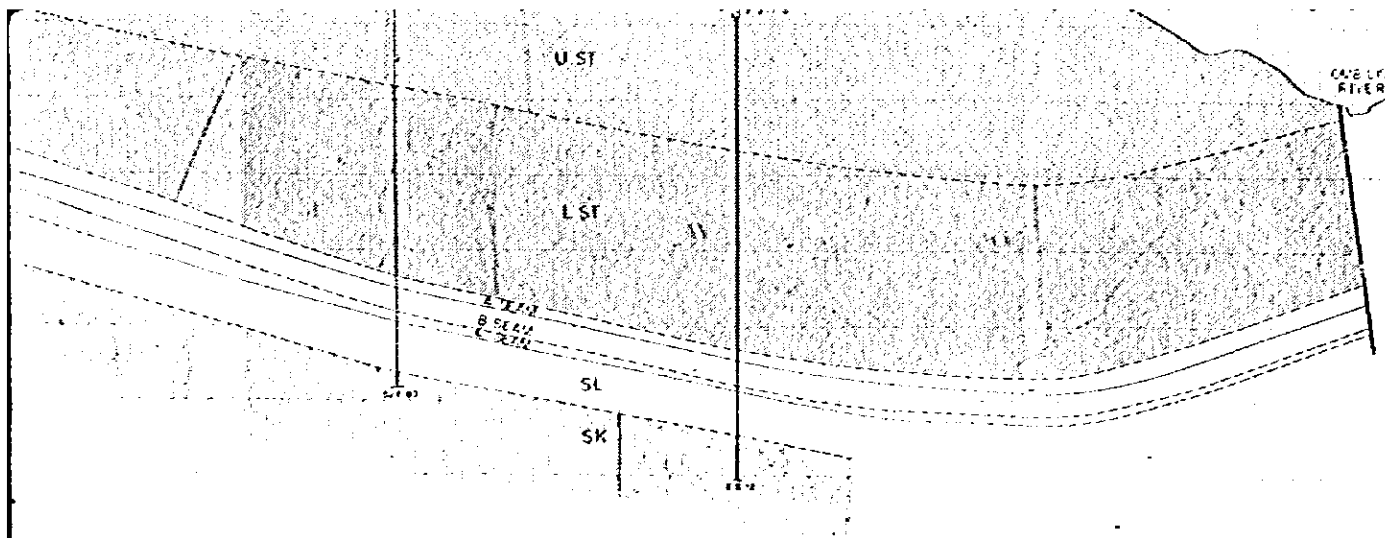
+200

+100

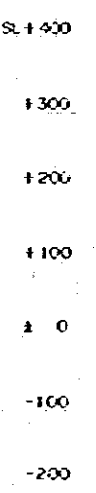
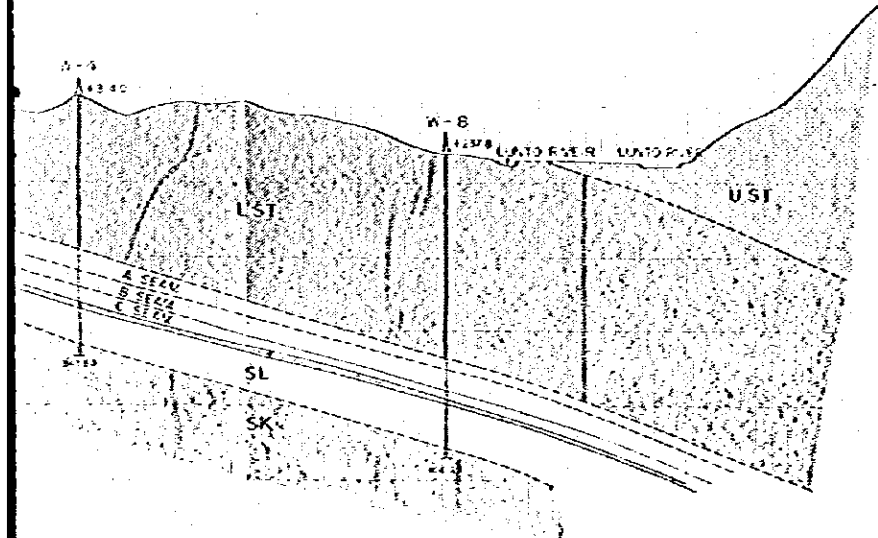




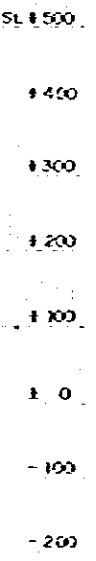
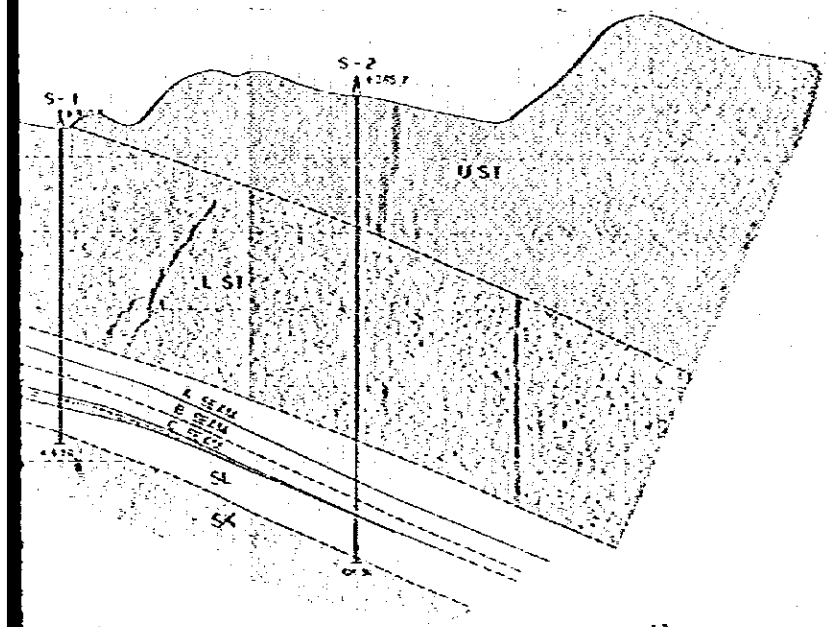




H



I



- Legend
- UST** Upper Sandstone Formation
 - LST** Lower Sandstone Formation
 - SL** Sapropite Formation
 - SK** Sargassum Formation
 - Coal Seam mined out
 - Coal Seam workable
 - Coal Seam unworkable

JAPAN INTERNATIONAL COOPERATION AGENCY

THE SLIVER FOR THE REHABILITATION OF GAS LUN COAL MINE

Geological Cross Sections

Doc No	36	Scale	1 : 5,000
Date	July, 1979	Prepared by	K. Ito