

MARINE ANIMALS OF CAMBODIA
IN COLOUR

OVERSEAS TECHNICAL
COOPERATION AGENCY
JAPAN
DECEMBER 1969

JICA LIBRARY



1048345E13

国際協力事業団		
購入 用	86.11.15	109
登録No.	09461	89 KE

マイク
ワイルド

**MARINE ANIMALS OF CAMBODIA
IN COLOUR**

**OVERSEAS TECHNICAL
COOPERATION AGENCY
JAPAN
DECEMBER 1969**

Member of the Survey Team:

- | | | |
|----------------|---------------------------|--|
| Leader: | Yoshitsugu Shiiji, | Counsellor of the Fisheries Association of Japan. |
| Member: | Takumi Taketuchi, | Chief of the Fisheries Experimental Laboratory, Hiroshima Prefectural Government. |
| " | Masukuni Kitani, | Chief of the Shallow Sea Fishing Experimental Laboratory, Oita Prefectural Government. |
| " | Tsukasa Shiokawa, | Chief of the Research Division, the Fisheries Experimental Laboratory, Nagasaki Prefectural Government. |
| " | Yoshiharu Asano, | Technical Official of the Fishery Agency, Government of Japan. |
| " | Hiroshi Kimura, | Staff Member of the Overseas Technical Cooperation Agency. |

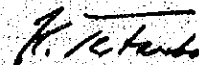
FOREWORD

This book contains a collection of colour photos illustrating marine animals sampled and photographed during the second phase survey (dry season) of the Cambodian coastal fisheries which was carried out in and around Sihanoukville from late January to early March, 1969. The collection includes also a few photos taken during the first phase survey.

Despite the strenuous efforts exerted by the members of the Survey Team, the limited time allowed for the survey has rendered it impossible to make this collection as satisfactory as originally hoped for. However, in the absence of publications on marine animals in the Cambodian coastal waters, I feel that this collection, meager as it is, will not only be useful for the much needed development of Cambodian coastal fisheries but will also prove of some scientific value. I hope that this book will be fully utilized by fisheries experts and others concerned whose efforts, it is hoped, will be directed to supplementing the collection herein contained and to compiling a better one.

I would like to express my gratitude to the members of the Survey Team and other staff members for their efforts in the preparation of this book, and extend my thanks to Dr. Tokiharu Abe, Tokai-ku Fisheries Research Laboratory, Fishery Agency, for his help in identifying the samples collected.

December, 1969



Keiichi Tatsuke
Director General
Overseas Technical Cooperation Agency
Japan

Contents

Arthropoda

1. Crustacea 1

Mollusca

2. Bivalvia 5

3. Cephalopoda 6

Vertebrata

4. Chondrichthyes 7

5. Osteichthyes 15

6. Reptilia 41

Legend:

Name card

(a)	(b)
	(c)

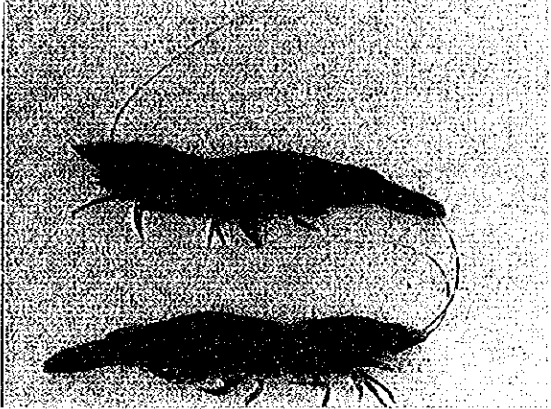
- (a) refers to Photo number.
- (b) refers to Scientific name. (in Italic)
- (c) refers to Common name in Japan.

Gen. Genus

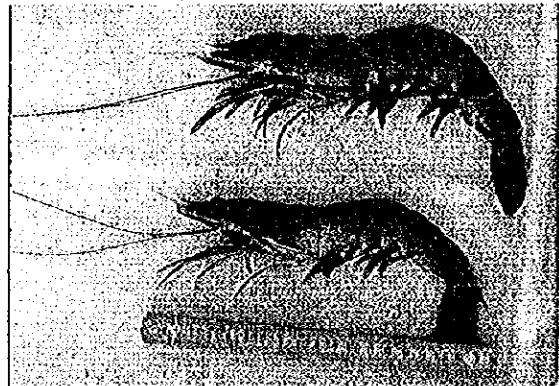
Fam. Family

Arthropoda

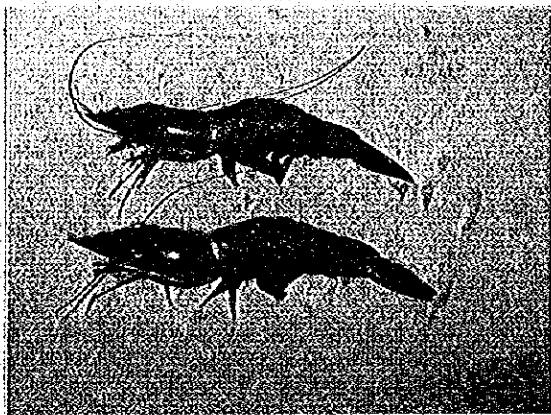
1. Crustacea



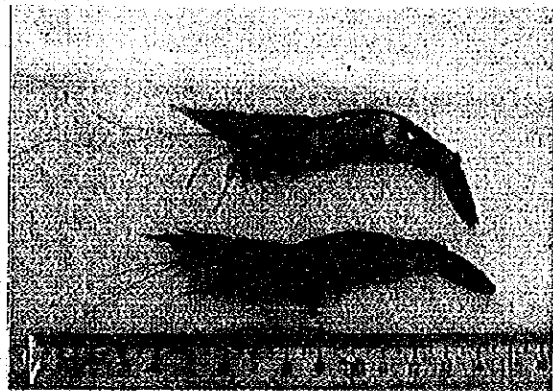
1. *Penaeus semisulcatus* De Haan
Kumaebi



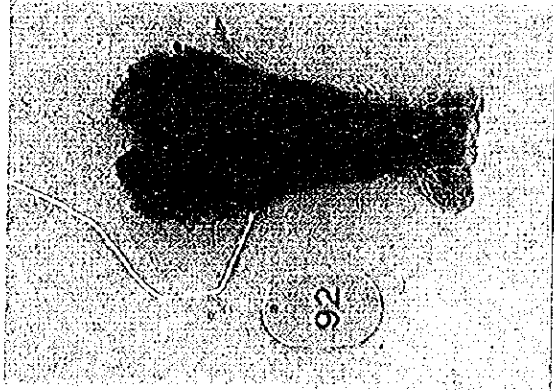
2. *Penaeus monodon* Fabricius
Ushiebi



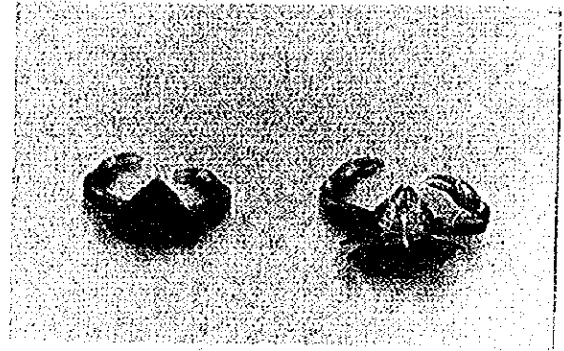
3. *Penaeus merguensis* de Man
Merugiebi



4. *Metapenaeus mutatus* (Lanchester)
Gen. Yoshiebi



5. *Scyllarus* sp.
Gen. Uchiwaebi



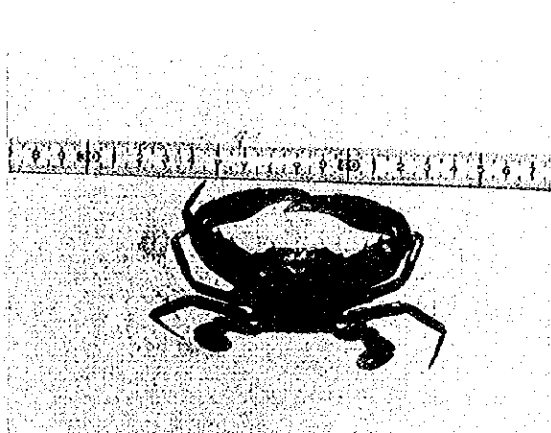
6. *Leostoa longifrons* De Haan
Tsunonagakobushi



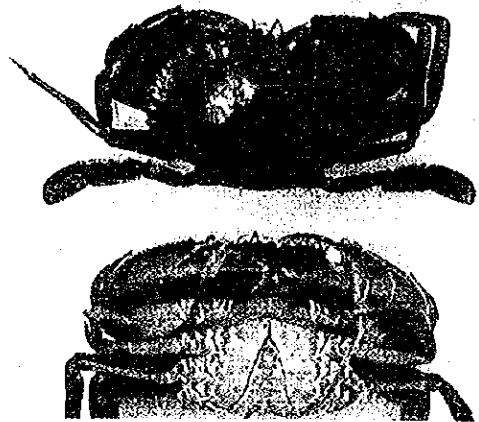
7. *Portunus pelagicus* (Linnaeus)
Taiwangazami



8. *Portunus hastatoides* Fabricius
Himegazami



9. *Portunus gladiator* Fabricius
Ibogazami



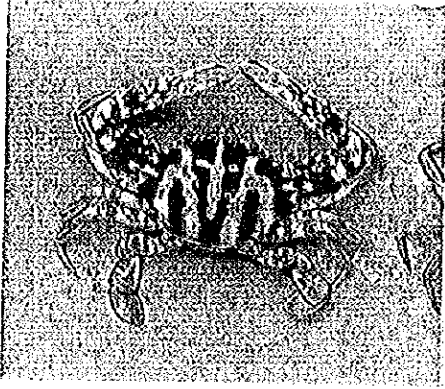
10. *Scylla serrata* (Forsk.)
Nokogirigazami



11. *Charybdis* sp.
Gen. Ishigani



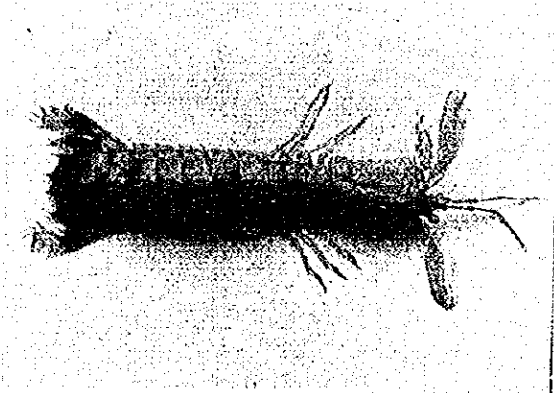
12. *Charybdis* sp.
Gen. Ishigani



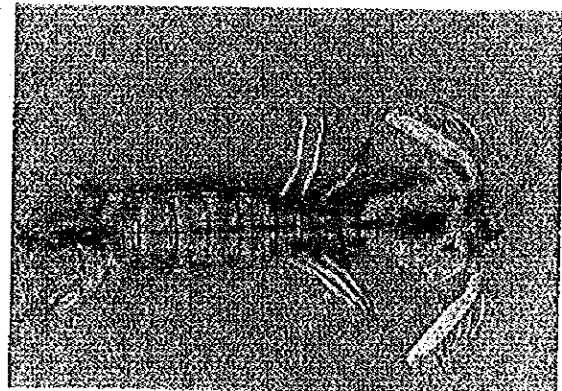
13. *Charybdis cruciata* (Herbst)
Ishigani



14. *Podophthalmus vigil* (Fabricius)
Menagazami



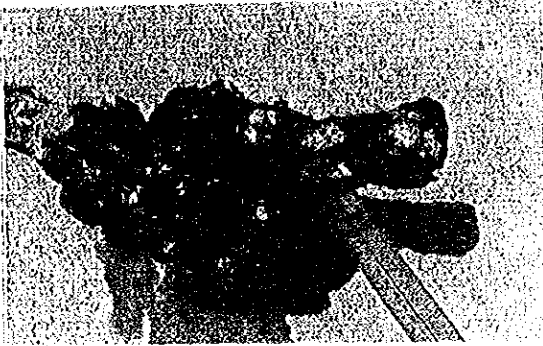
15. *Squilla oratoria* De Haan
Shako



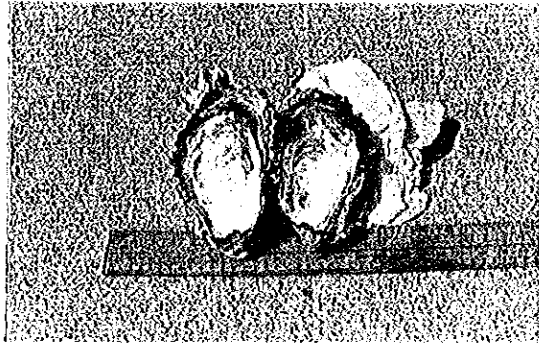
16. *Harpiosquilla raphidea* (Fabricius)
Togeshako

Mollusca

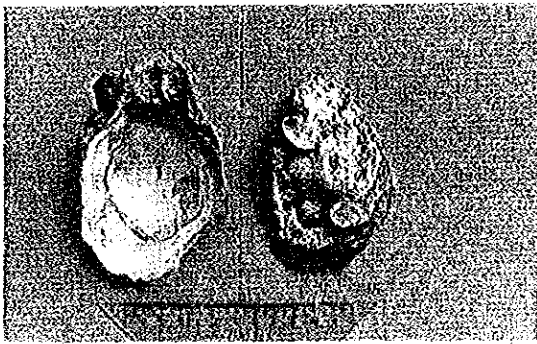
2. Bivalvia



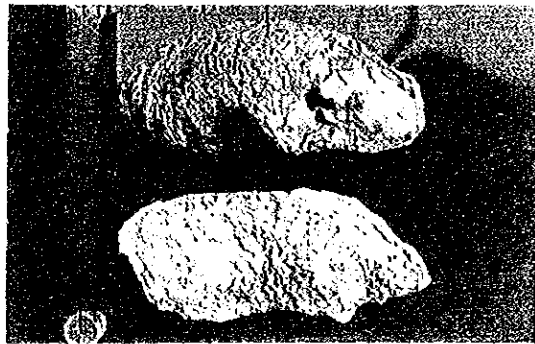
17. *Saxostrea parasitica* (Gmelin)
Kuroherigaki



18. *Saxostrea parasitica* (Gmelin)
Kuroherigaki

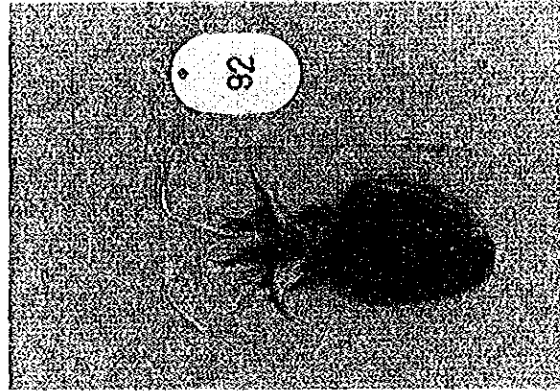


19. *Crassostrea berucheri* Sowerby
Kokegoromo

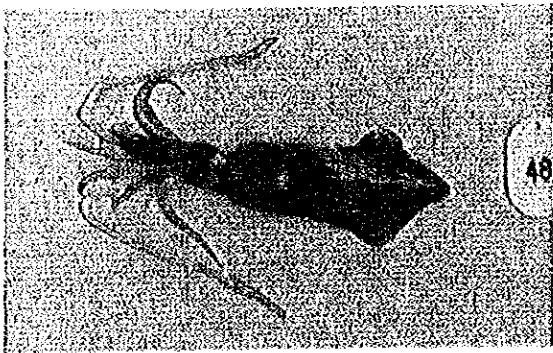


20. *Crassostrea belcheri* Sowerby
Kokegoromo

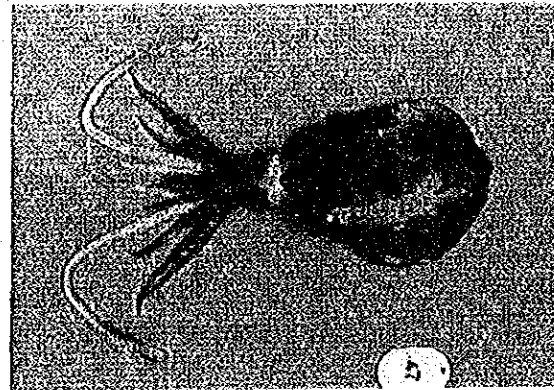
3. Cephalopoda



21. *Sepia esculenta* Hoyle
Kouika



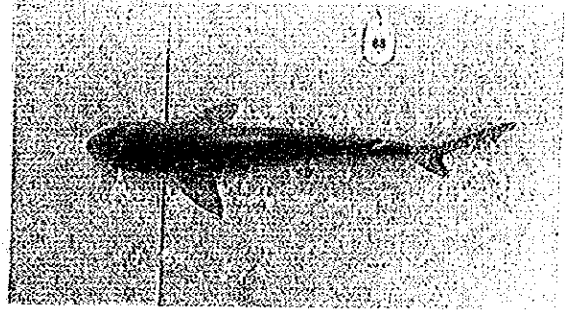
22. *Loligo duvauceli* d'Orbigny
Gen. Yariika



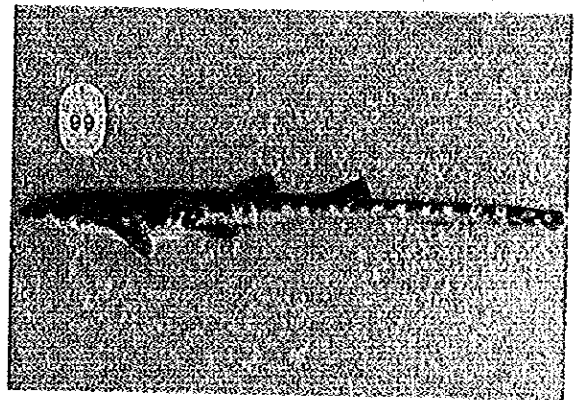
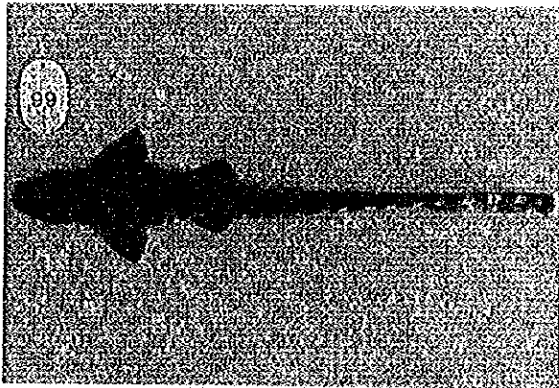
23. *Sepioteuthis lessoniana* Lesson
Aoriika

Vertebrata

4. Chondrichthyes

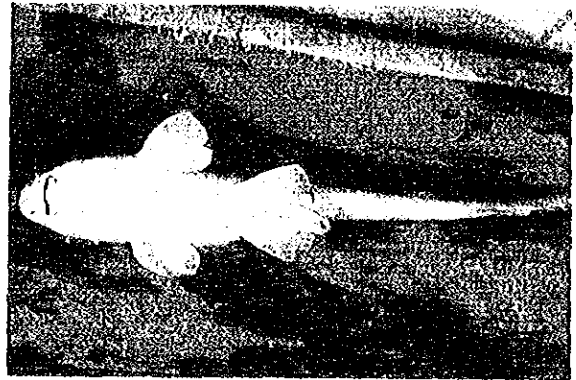
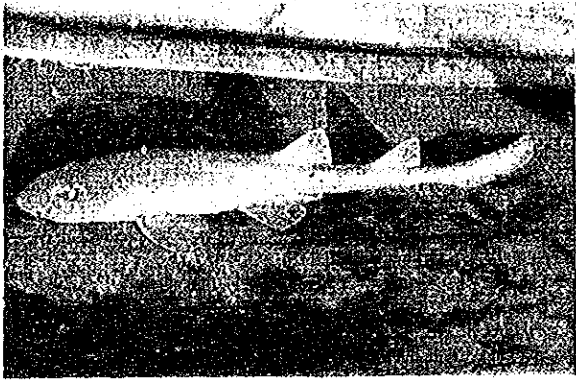


24. *Eulamia* sp.

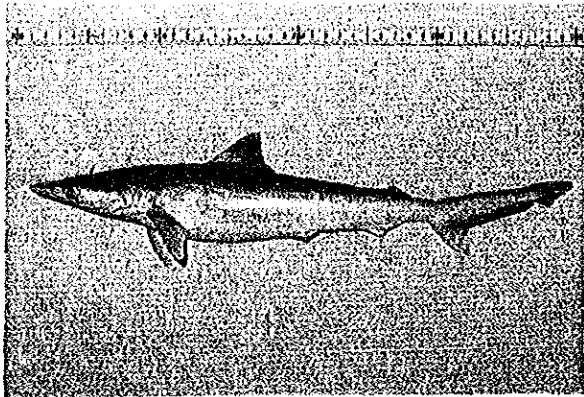


25. *Chiloscylium colax* (Meuschen)

Tenjiku-zame



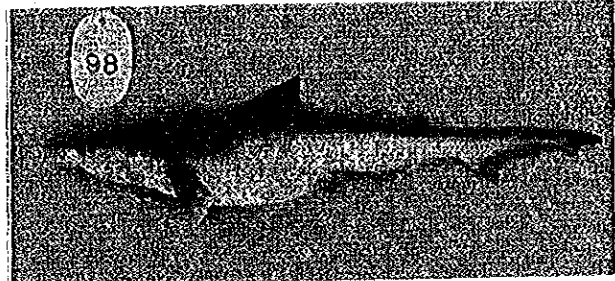
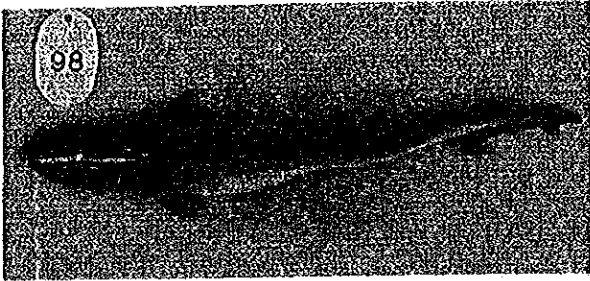
26. *Chiloscyllium* sp.
(Gen. Tejikuzame)



27. *Carcharhinus* sp.
(Gen. Mejirozame)



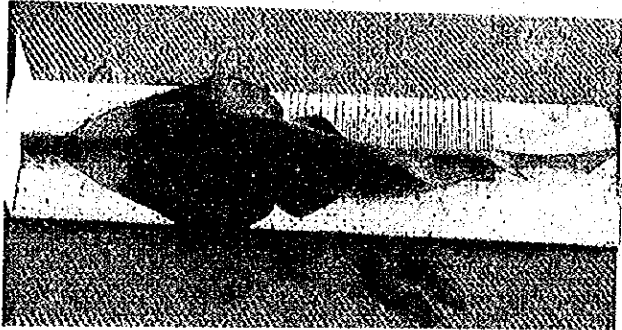
28. *Carcharhinus* sp.
Gen. Mejirozame



29. *Scoliodon sorrakowah* (Cuvier)
Hiroankouzame



30. *Rhina ancylostoma* Bloch & Schneider
Shinonomesakatazame



31. *Rhinobatos* sp.
(Gen. Sakatazame)



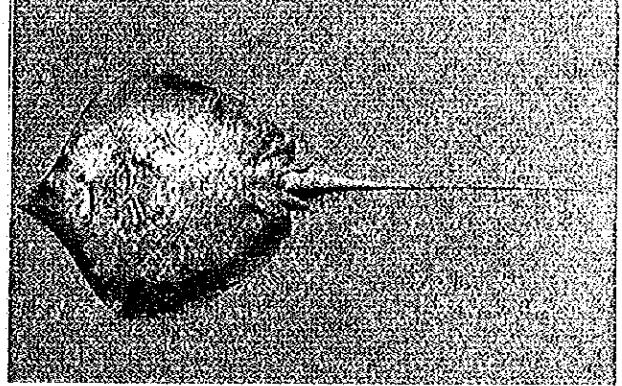
32. *Rhinobatos* sp.
(Gen. Sakatazame)



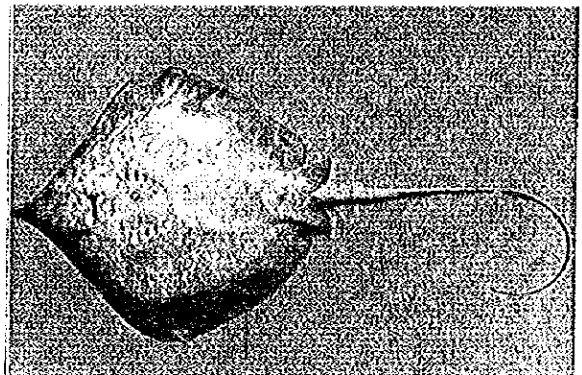
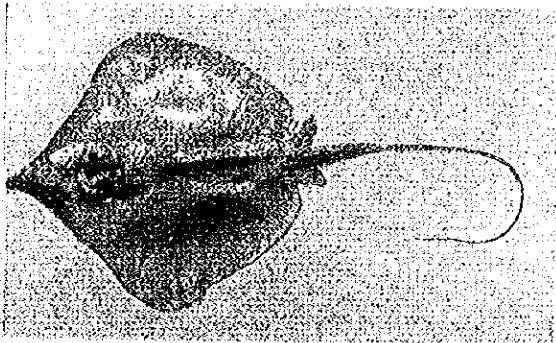
33. ? *Himantura* sp.
Fam. Akaci



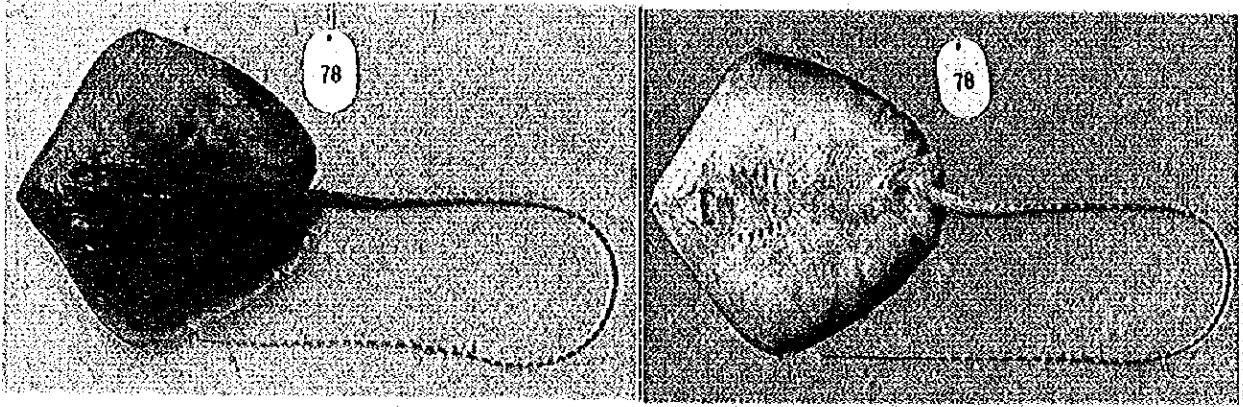
34. *Dasyatis* sp.
(Gen. Akaci)



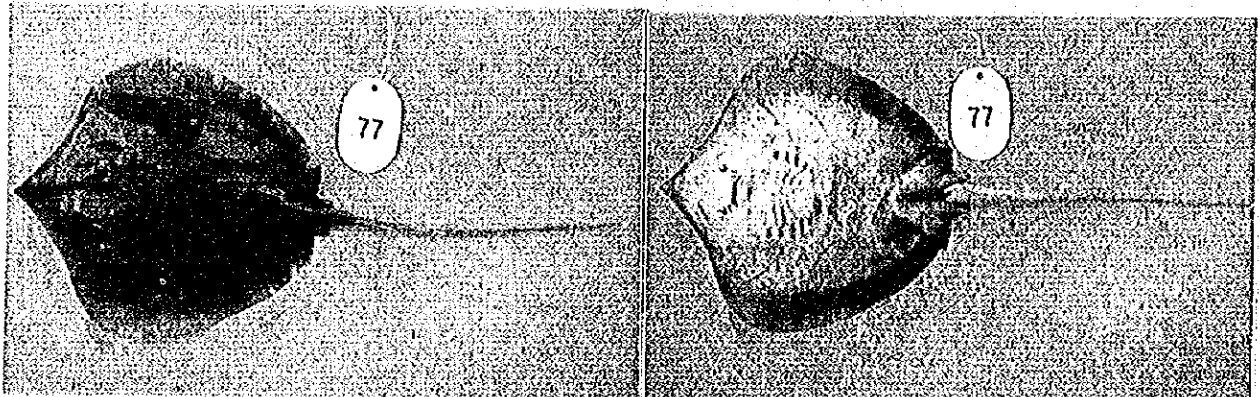
35. *Dasyatis* sp.
(Gen. Akaci)



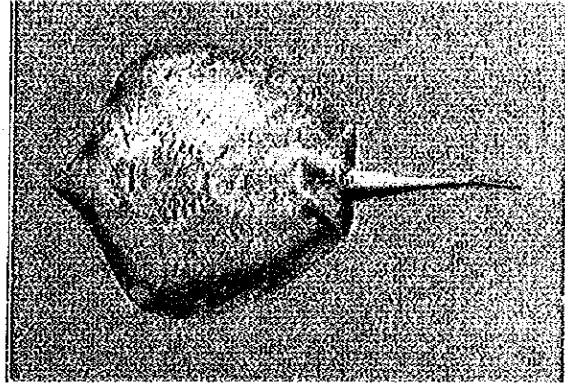
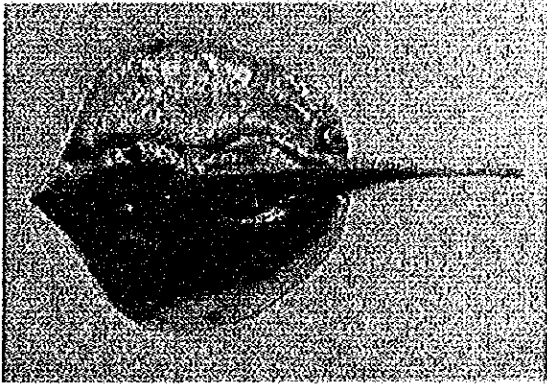
36. *Dasyatis* sp.
(Gen. Akaci)



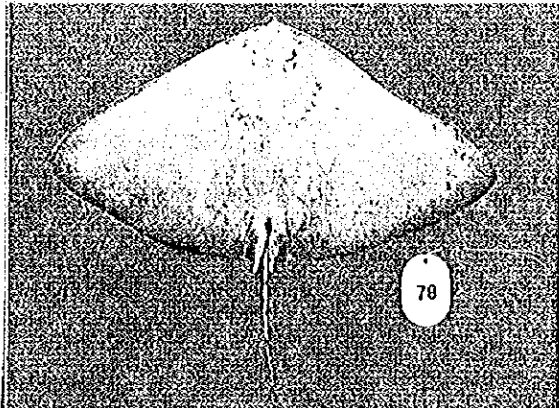
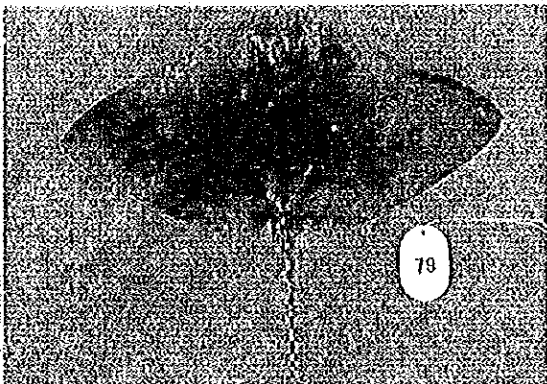
37. *Dasyatis* sp.
(Gen. Akaci)



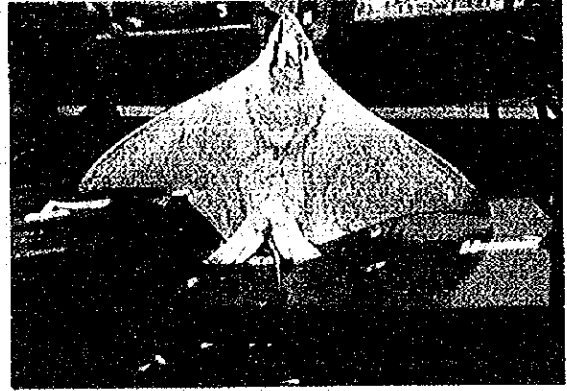
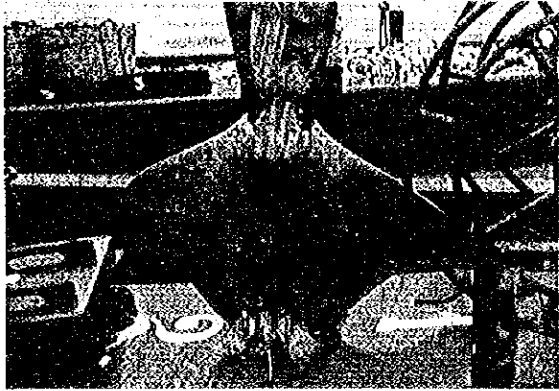
38. *Dasyatis* sp.
(Gen. Akaci)



39. *Urolophus* sp.
(Gen. Hirataei)



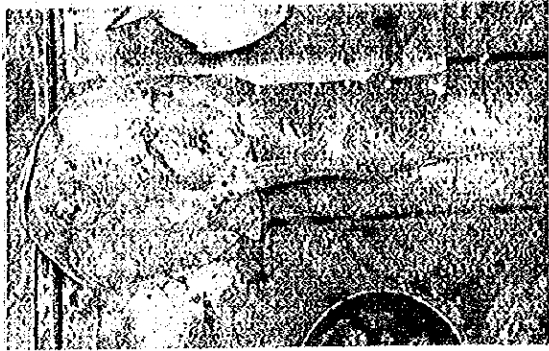
40. *Gymnura poecilura* (Shaw)
Onagatsubakuro



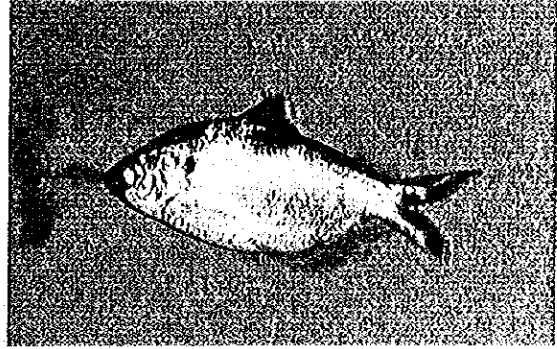
41. *Actobatus narinari* (Euphrasen)
Madaratobici



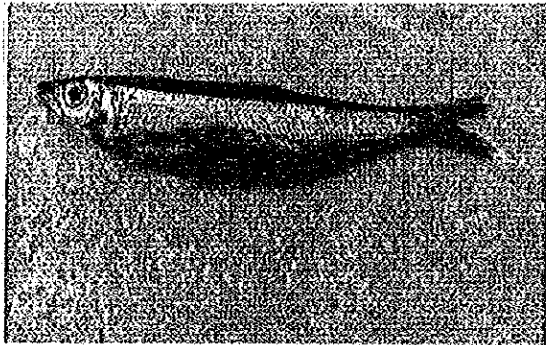
42. *Dasyatis* sp.
Gen. Akaci



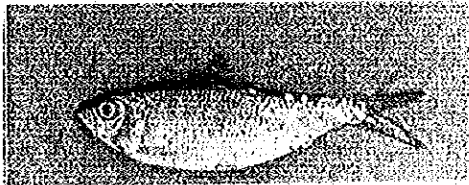
43. *Taeniura meyeni* Müller & Henle
Fam. Akaci



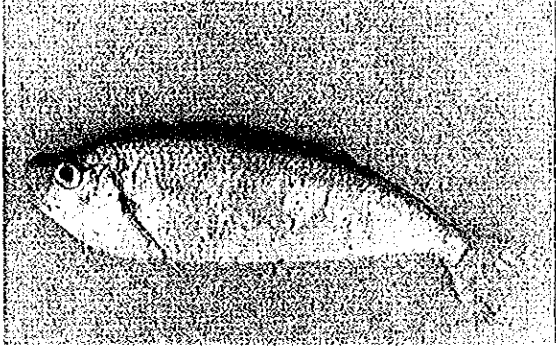
44. *Anodontostoma chacunda* (Hamilton-Buchanan)
Nanyookonoshiro



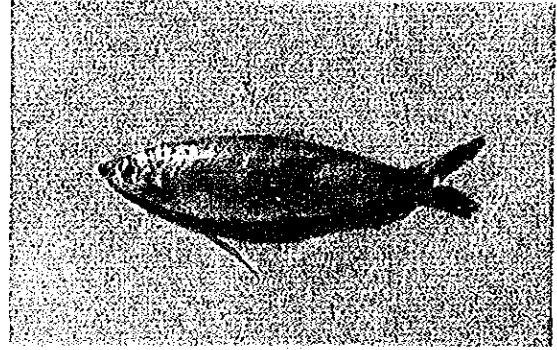
45. *Dussumiria hasselti* Bleeker
Niseginiwashi



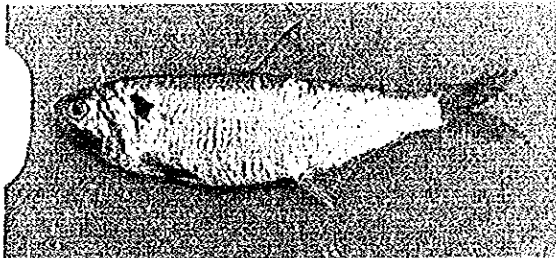
46. *Sardinella* sp.
(Gen. Yamatomizun)



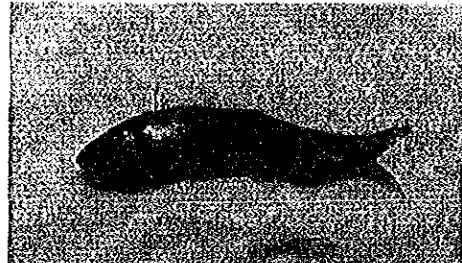
47. *Opisthopterus tardoore* (c)
Hiramodoki



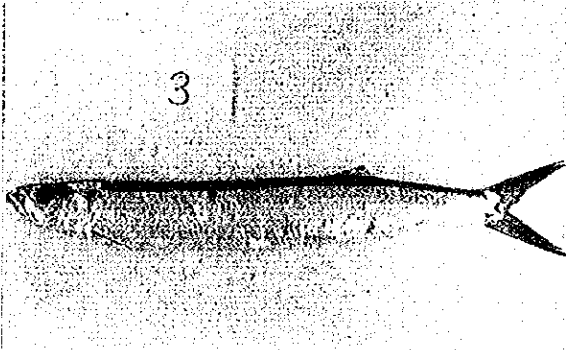
48. *Sardimella jussieu* (Lacépède)
Minamiwashi



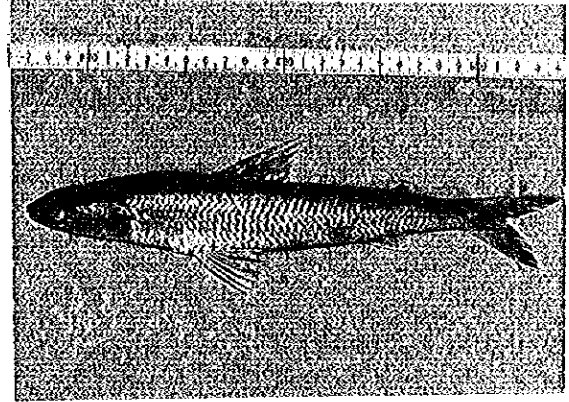
49. *Thrissa hamiltoni* (Gray)
Chosenarekuchi



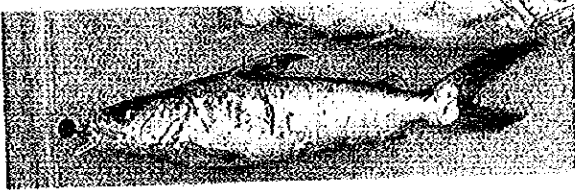
50. *Thrissa mystax* (Bloch & Schneider)
Hokushikatakuchi



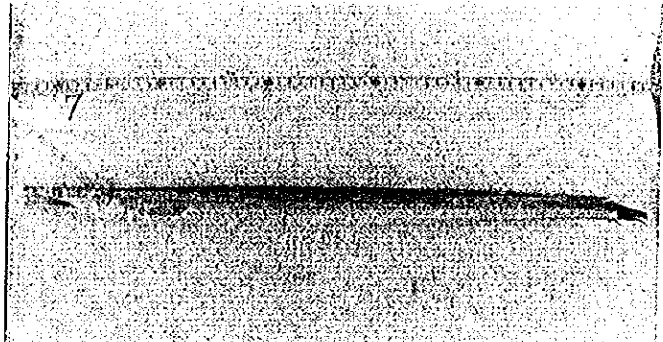
51. *Chirocentrus dorab* (Forskål)
Saito (Okitwashi)



52. *Saurida tumbil* (Bloch)
Wanieso



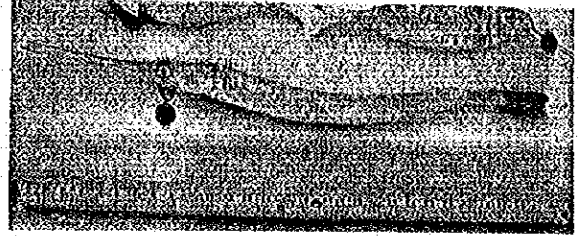
53. *Tachysurus caelotus* (Valenciennes)
(Gen. Hamagigi)



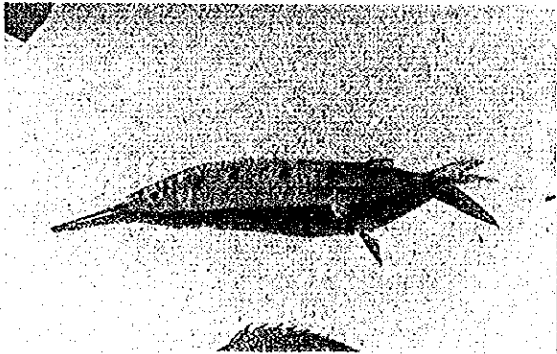
54. *Muraenesox cinereus* (Forskål)
Hamo



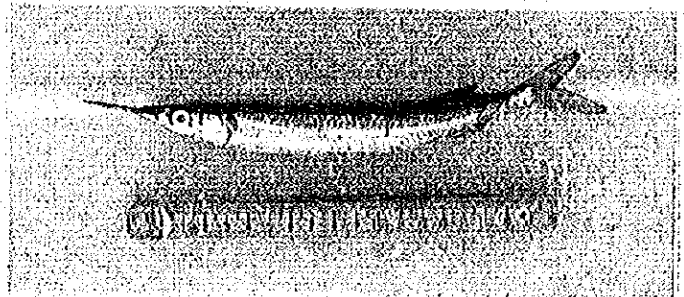
55. *Ablennes* sp.
(Gen. Datsu)



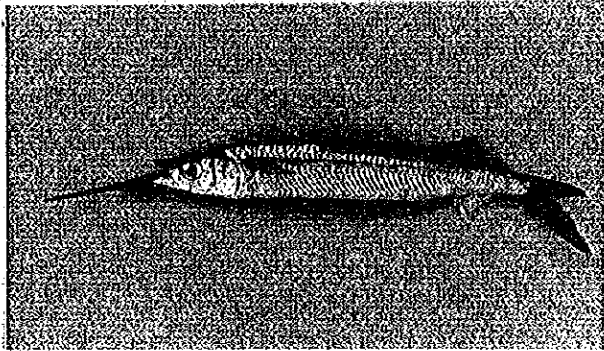
56. *Tylosurus strongylurus* (van Hasselt)
Kokutendatsu



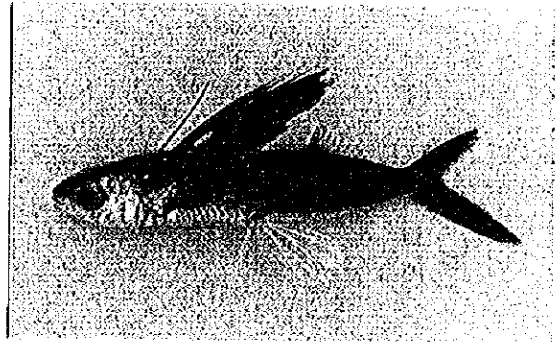
57. *Hemirhamphus georgi* (C.V.)



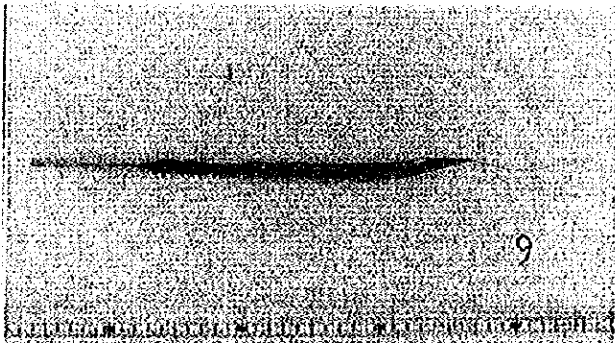
58. *Hyporhamphus gaimardi* (Valenciennes)
Gen. Sayori



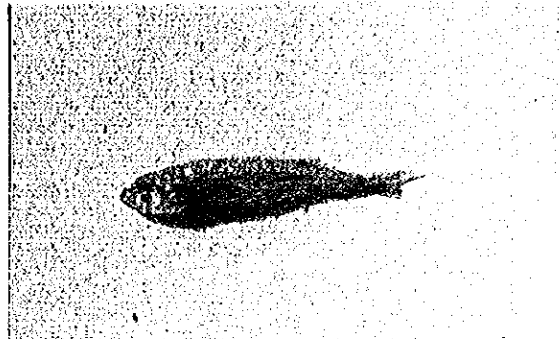
59. *Homirhamphus marginatus* (Forskål)



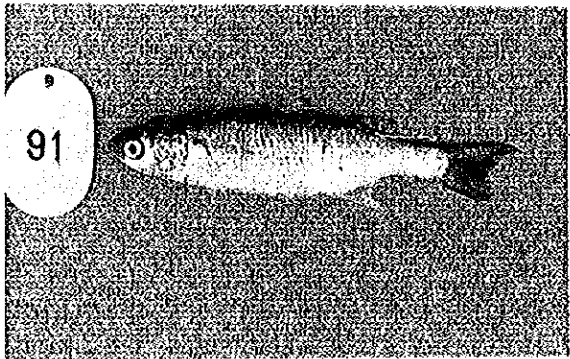
60. *Cypselurus bahiensis* (Kanzani)
Matoutobiuo



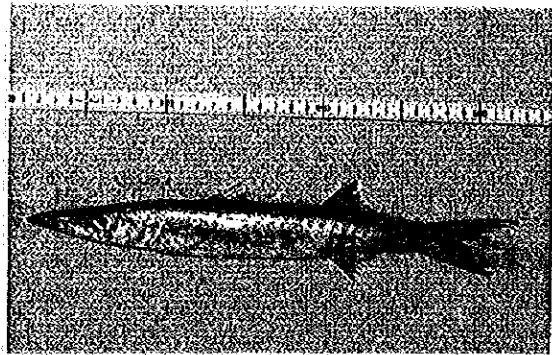
61. *Fistularia* sp.
Gen. Yagara



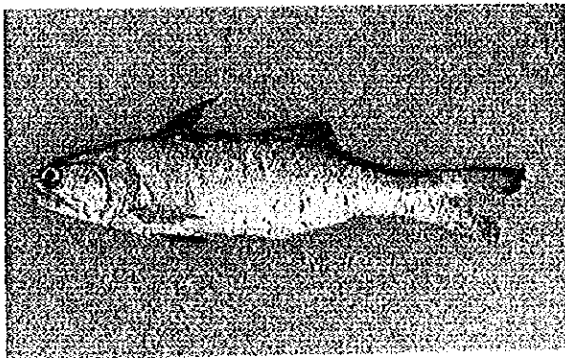
62. *Allanetta forskali* (Rüppell)
Fam. Tougoroiwashi



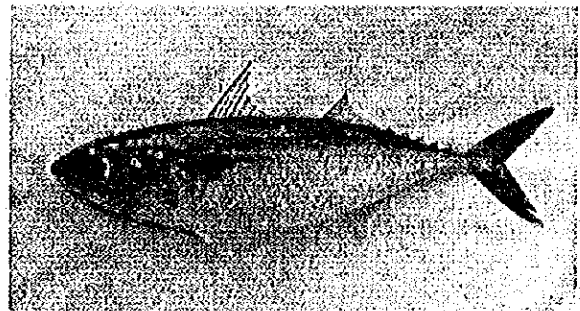
63. *Mugil* sp.
Fam. Bora



64. *Sphyaena pleuda* Bloch & Schneider
Onikamasu



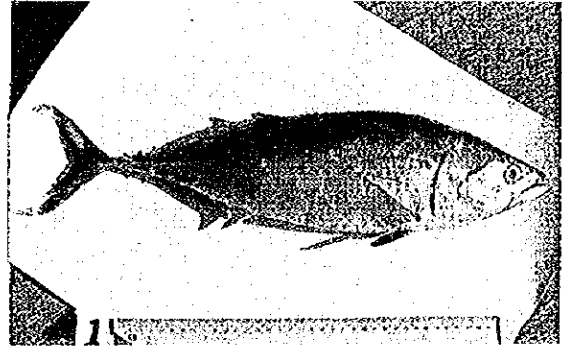
65. *Eleutheronema tetradactylum* (Shaw)
Minamikonoshiro



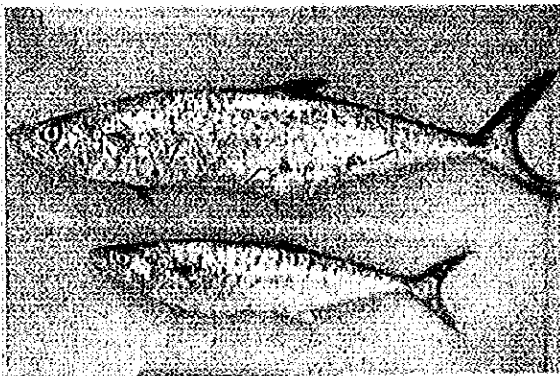
66. *Rastelliger kanagurta* (Cuvier)
Fam. Saba



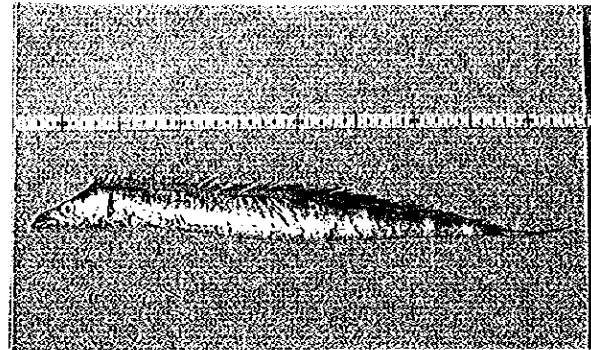
67. *Rastelliger brachysoma* (Bleeker)
Gurukuma



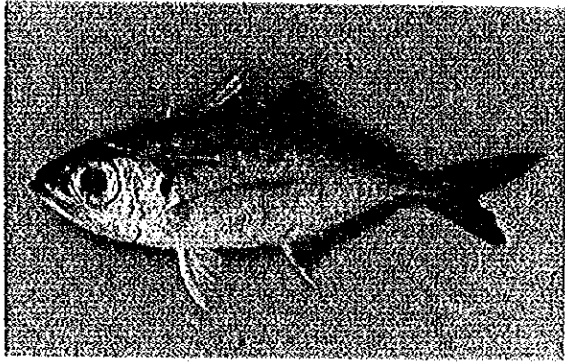
68. *Euthynnus affinis affinis* (Cantor)
Taiwanyaito



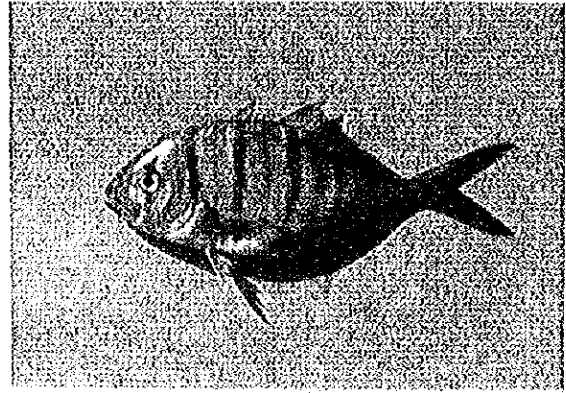
69. *Scomberomorus commersoni* (Lacépède)
Gen. Sawara



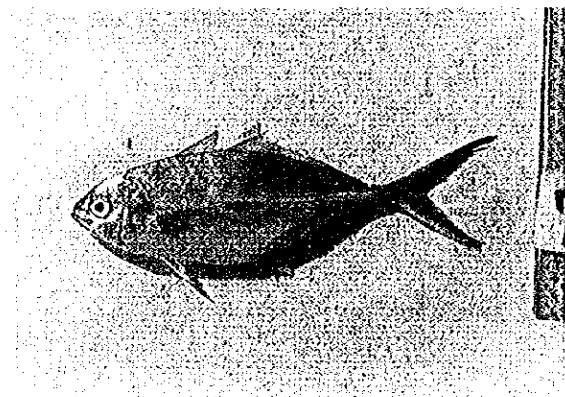
70. *Trichiurus haemula* (Forskål)
Fam. Tachiuo



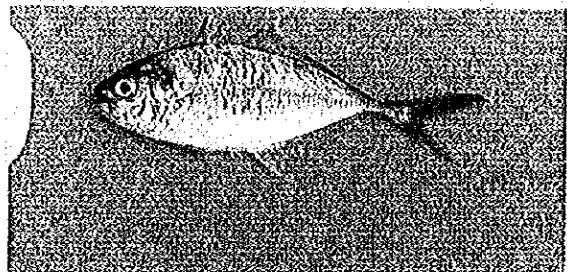
71. *Trachurops macrophthalmus* (Rüppell)
Meaji



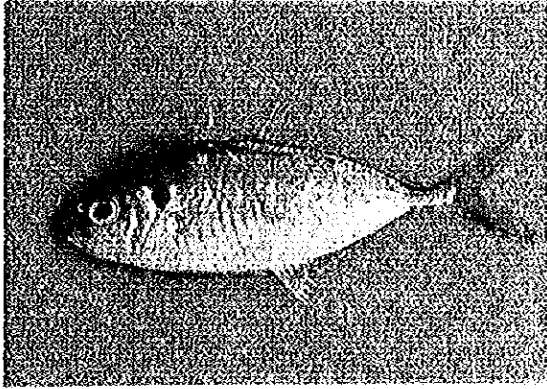
72. *Gnathanodon speciosus* (Forskål)
Kogancaji



73. *Sclarioides* sp.
Fam. Aji



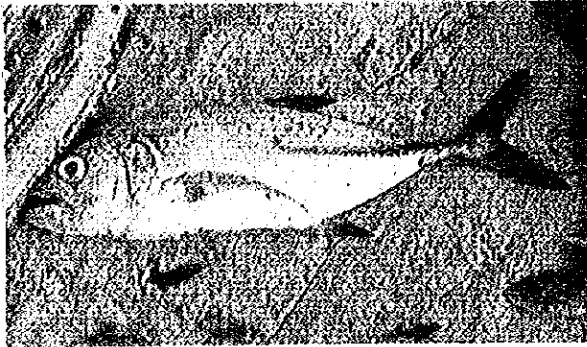
74. *Sclarioides leptolepis* (C. V.)
Fam. Aji



75. *Selaroides* sp.
Fam. Aji



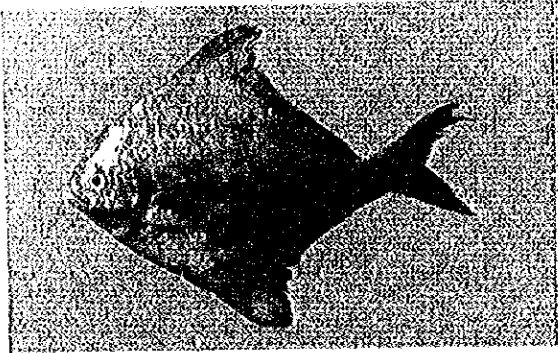
76. *Atropus atropus* (Bloch & Schneider)
Kuboaji



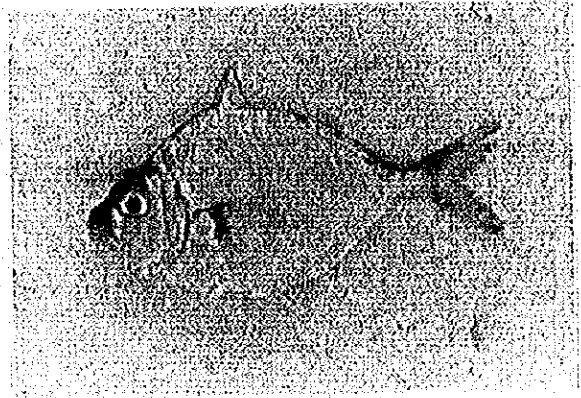
77. *Caranx* sp.
Fam. Aji



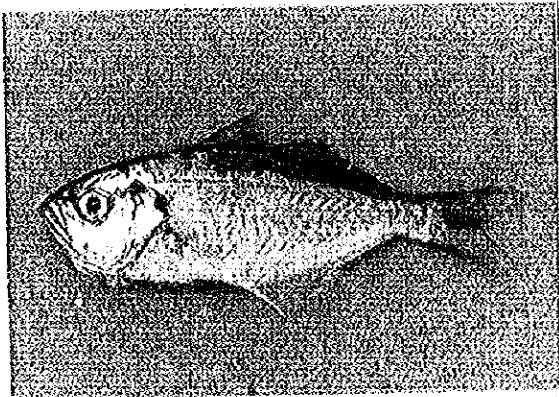
78. *Chorinemus lysan* (Forskål)
Ookuchiikegatsuo



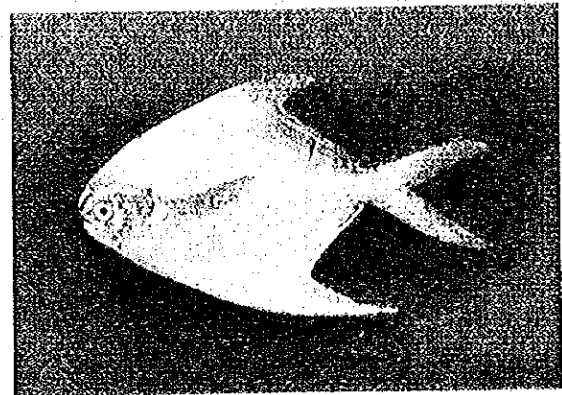
79. *Formio niger* (Bloch)
(*Apolectus niger*)
(*Parastromateus niger*)
Kuroajimodoki



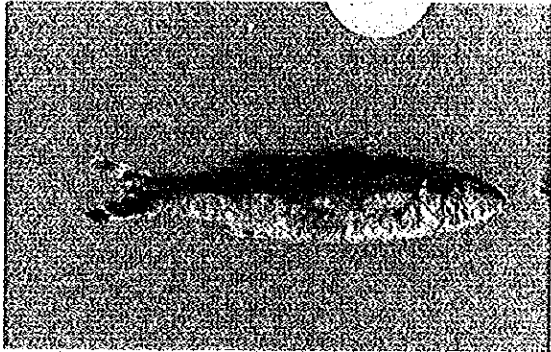
80. *Leiognathus equulus* (Forsk.)
Seitakahiragi



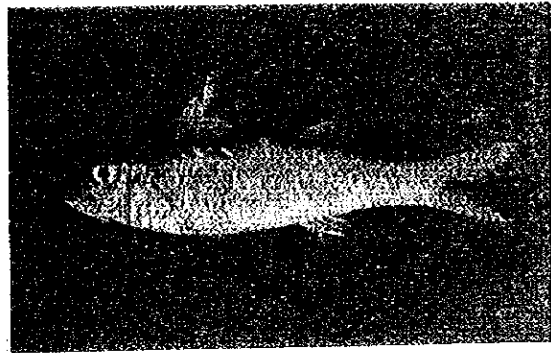
81. *Lactarius lactarius* (Bloch & Schneider)
Akufauo



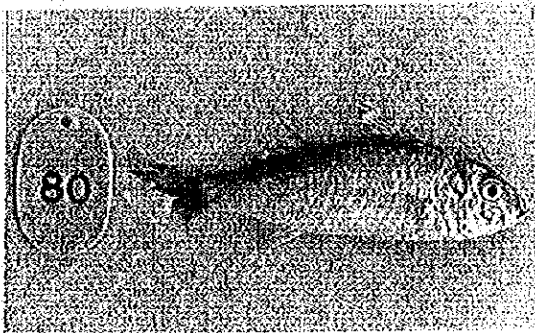
82. *Pampus argenteus* (Euphrasen)
Managatsuo



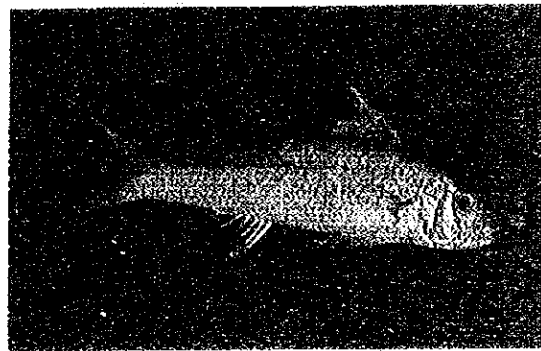
83. *Upeneus tragula* Richardson
Yomehimeji (Torahimeji)



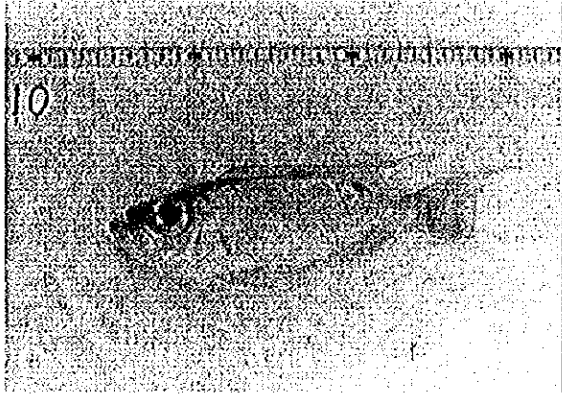
84. *Pseudupeneus cinnabarius* (Cuvier)
Kirarahimeji



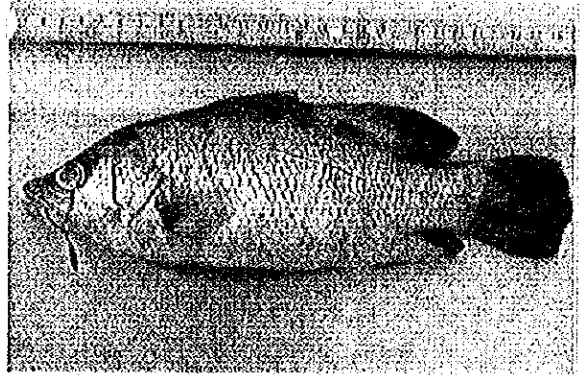
85. *Upeneus sulphureus* C. V.
Kohakuhimeji



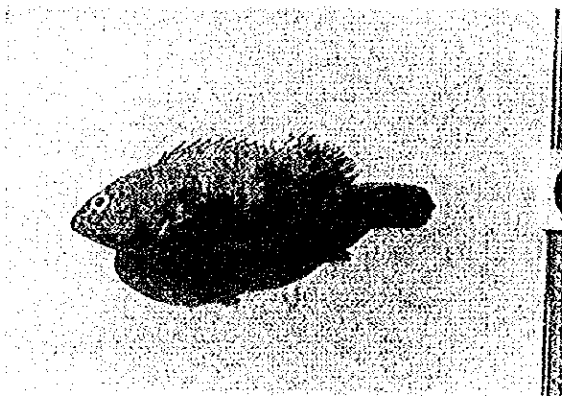
86. *Upeneus* sp.
Fam. Himeji



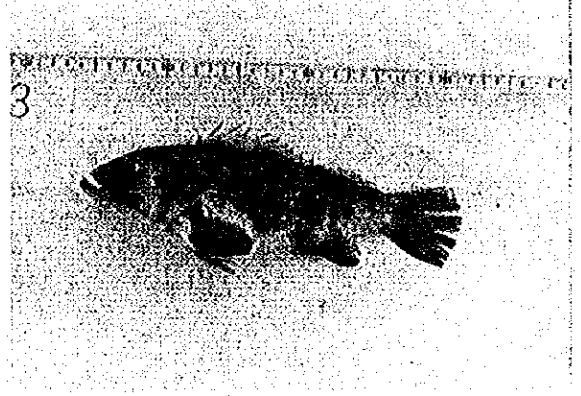
87. *Priacanthus tayenus* Richardson
Itohikikintoki



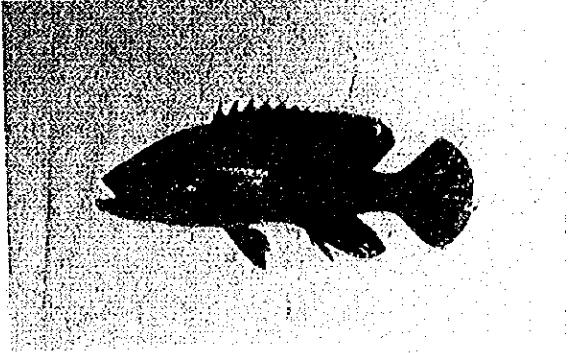
88. *Lates calcarifer* (Bloch)
Akame



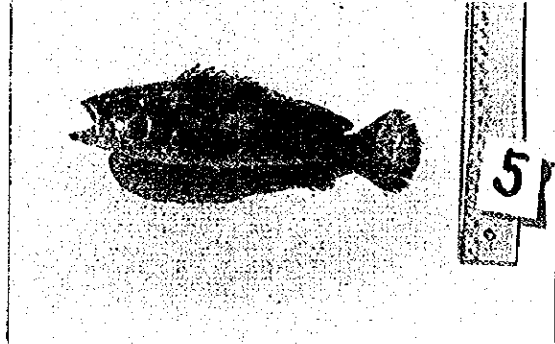
89. *Epinephelus sonnerati* (C. V.)
Fam. Hata



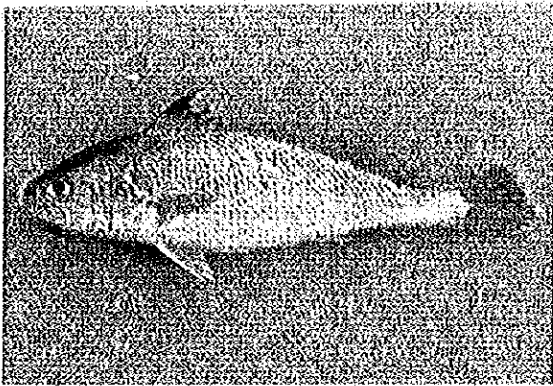
90. *Epinephelus* sp. (C. V.)
Fam. Hata



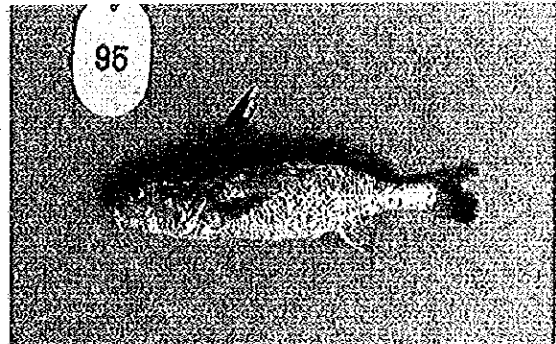
91. *Epinephelus malabaricus* (Bloch & Schneider)
Fam. Hata



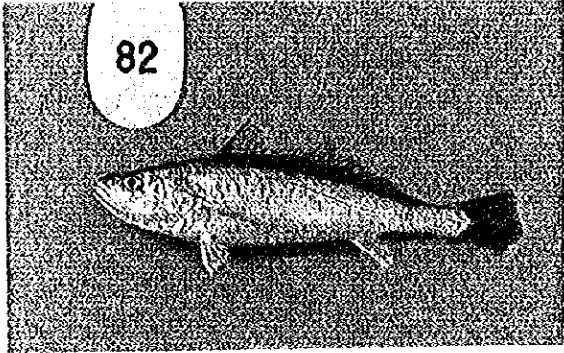
92. *Epinephelus amblycephalus* (Bleeker)
Kokutenaohata



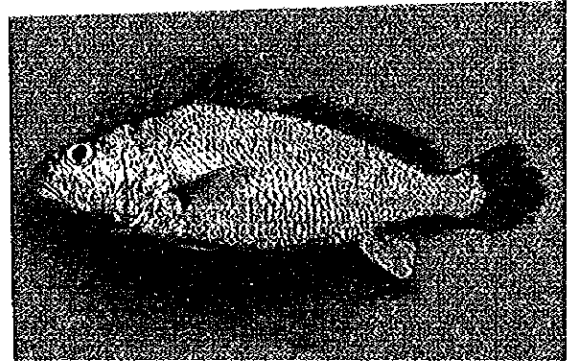
93. *Johnius sina* (C. V.)
(Gen. Konibe)



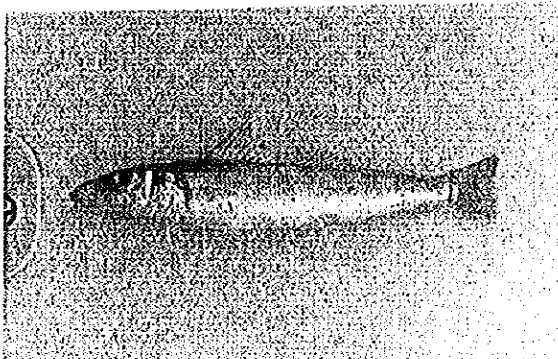
94. *Johnius dussumieri* (Cuvier)
Gen. Konibe



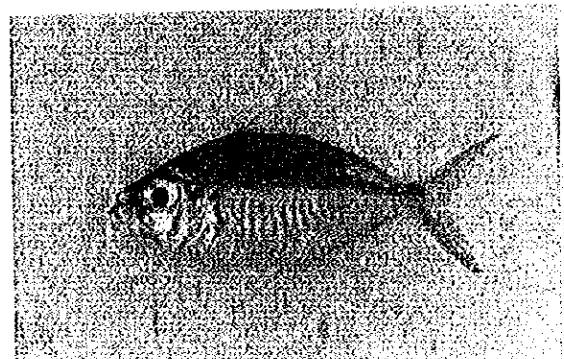
95. *Otolithes argenteus* (C. V.)
Fam. Nibe



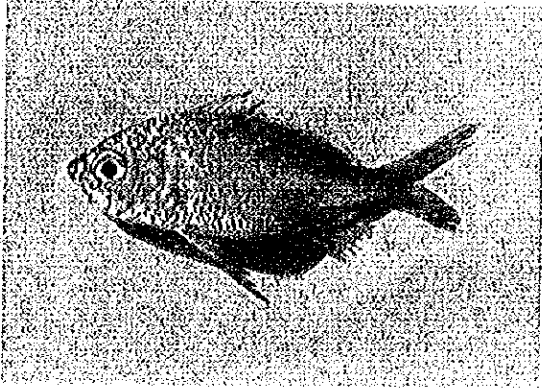
96. *Argyrosomus* sp.
Gen. Ishimochi



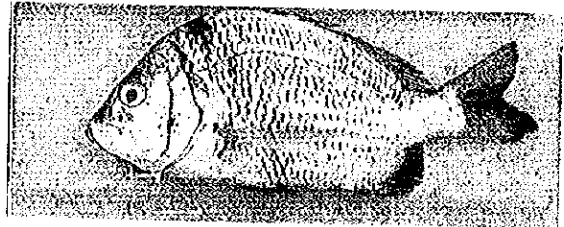
97. *Sillago sihama* (Forskål)
Kisu



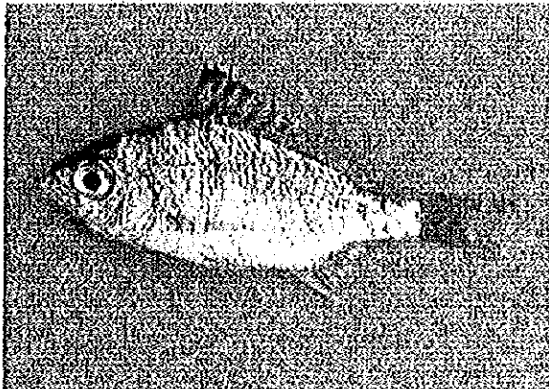
98. *Gerres abbreviatus* Bleeker
Sepparisagi



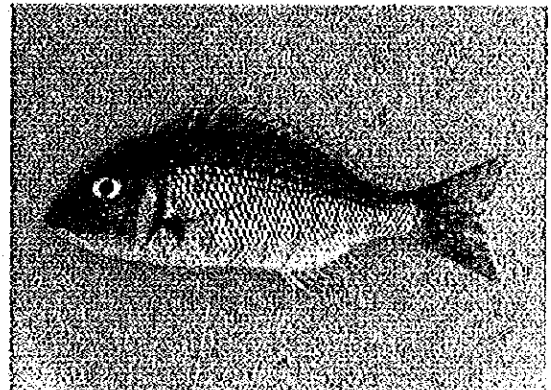
99. *Gerres oyena* (Forskål)
Kurosagi



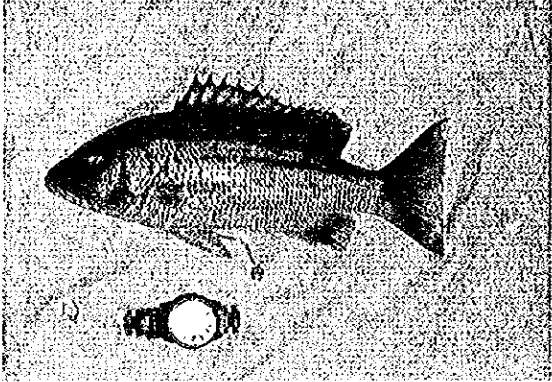
100. *Mylio berda* (Forskål)
Nanyoochimu



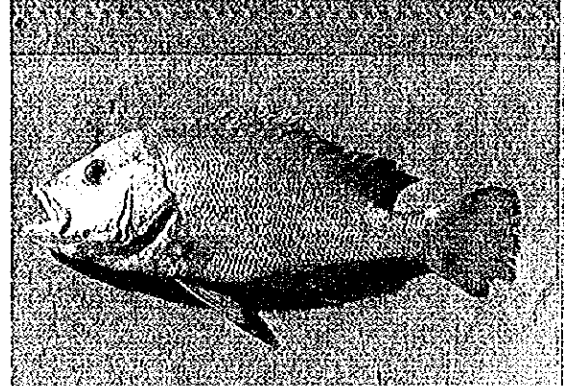
101. *Gerres* sp.
Fam. Amagi



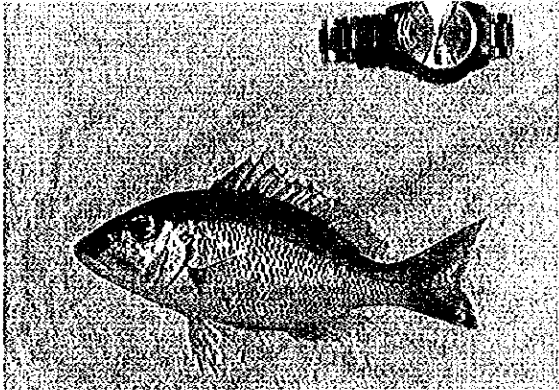
102. *Lethrimus mahsenoides* (C. V.)
Isorefuki



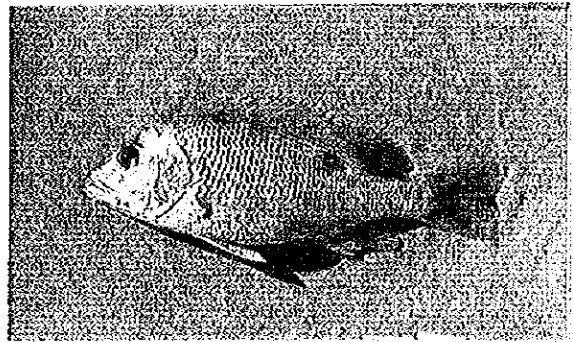
103. *Lutjanus decussatus* (C. V.)
Amimefuedai



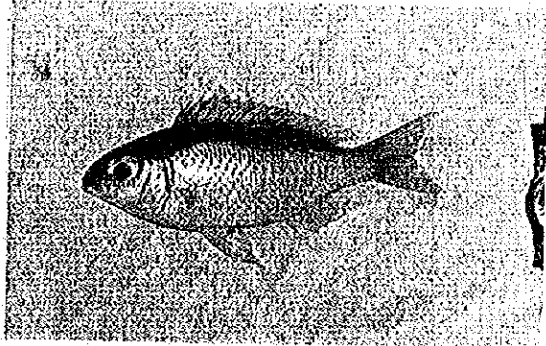
104. *Lutjanus malabaricus* (Bloch & Schneider)
Kurakaketarumi



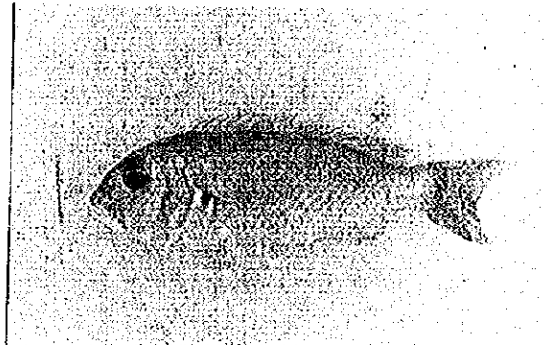
105. *Lutjanus* sp.
Fam. Tarumi



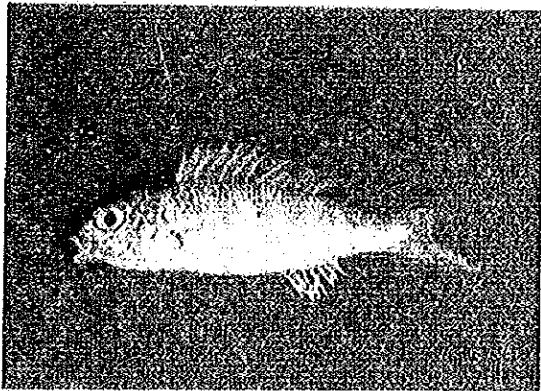
106. *Lutjanus johni* (Bloch)
Fam. Tarumi



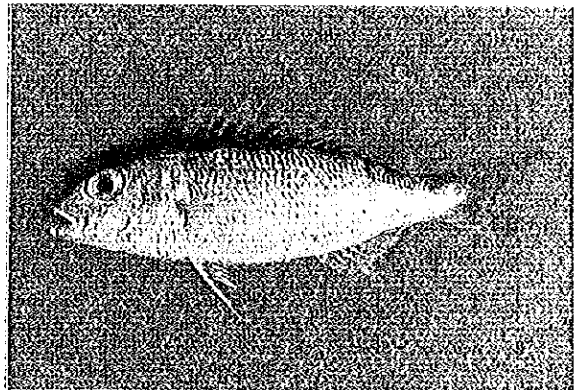
107. *Scolopsis ciliatus* (Lacépède)
Fam. Itoyoridai



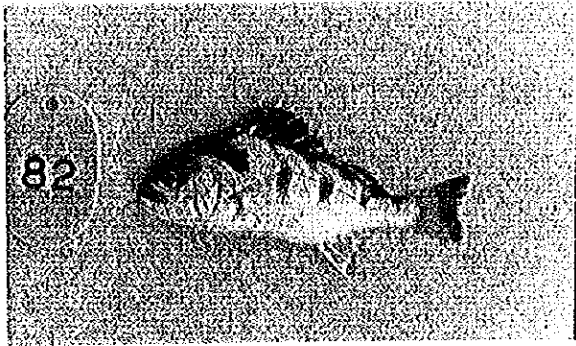
108. *Scolopsis taenipterus* C.V.
Fam. Itoyoridai



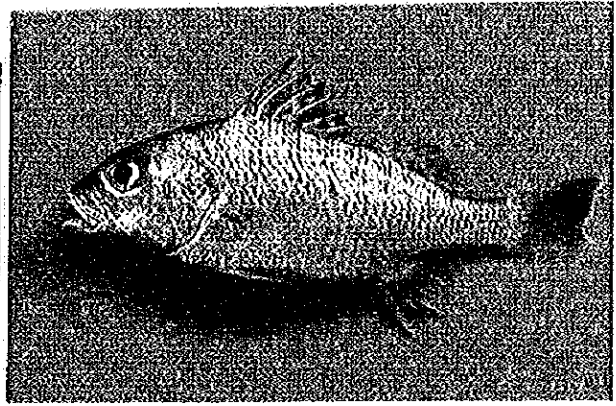
109. *Nemiterus* sp.
Fam. Itoyoridai



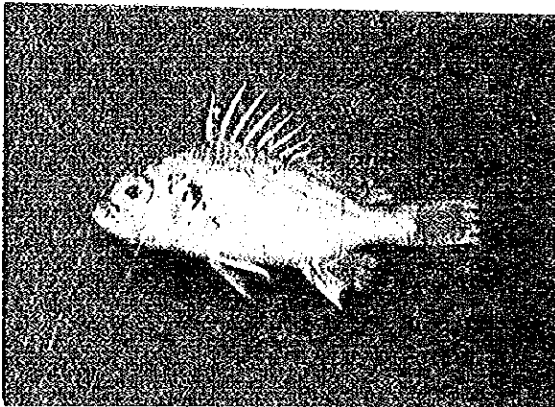
110. *Nemiterus bleekeri* (Day)
Fam. Itoyoridai



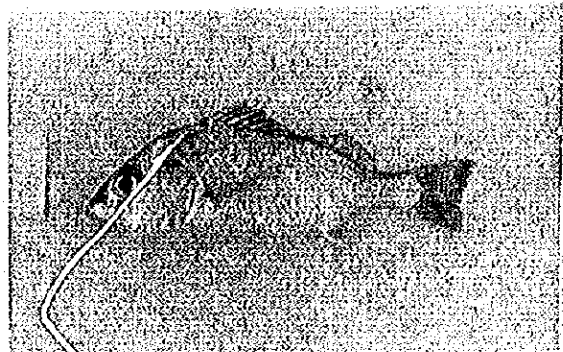
111. *Pomadasys maculatus* (Bloch)
Madaramizoisaki



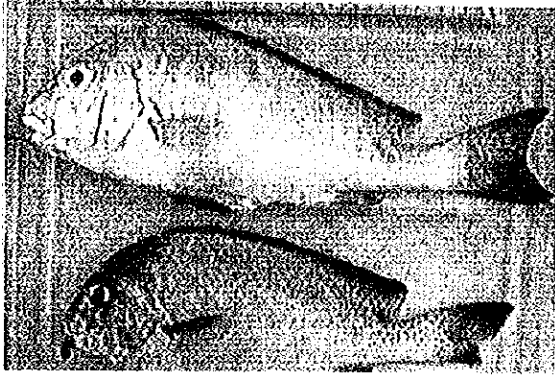
112. *Pomadasys hasta* (Bloch)
Hoshimizoisaki



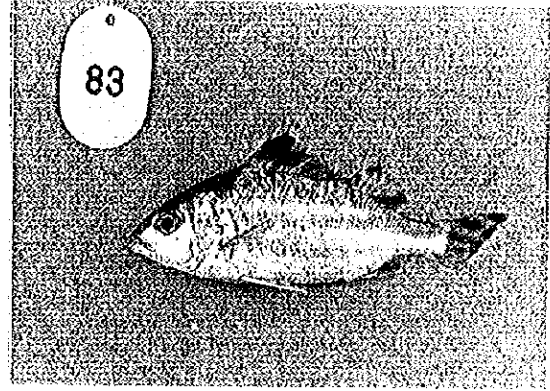
113. *Pomadasys olivaceus* (Day)
Fam. Isaki



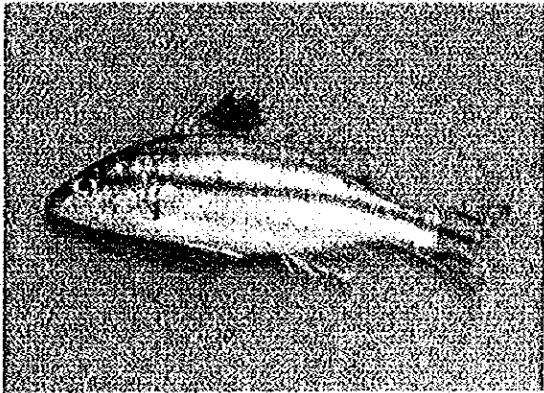
114. *Pomadasys argyreus* (C.V.)
Fam. Isaki



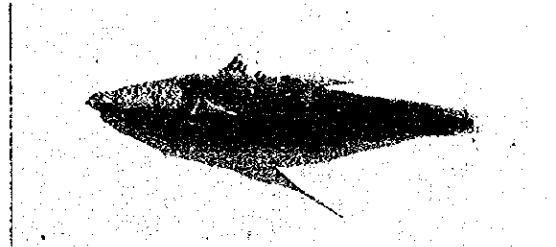
115. *Plectorhynchus pictus* (Thunberg)
Sub. Fam. Koshoodai



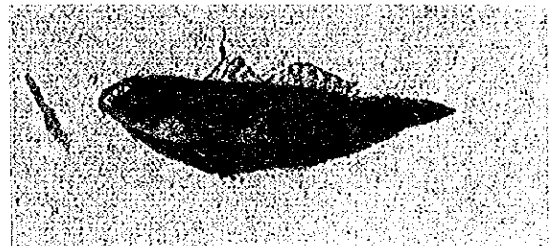
116. *Therapon theraps* C. V.
Himekotohiki



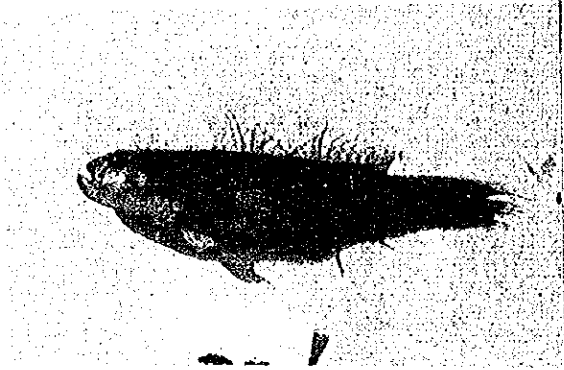
117. *Authisthes puta* (C. V.)
Fam. simaisaki



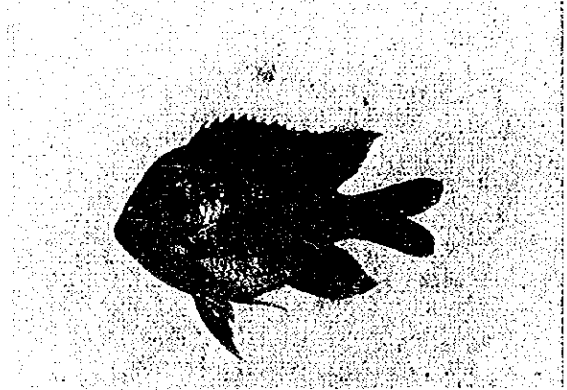
118. *Butis butis* (Hamilton)
Nokogirihaze



119. *Rhinogobius cringer* (C. V.)
Tsumugihaze



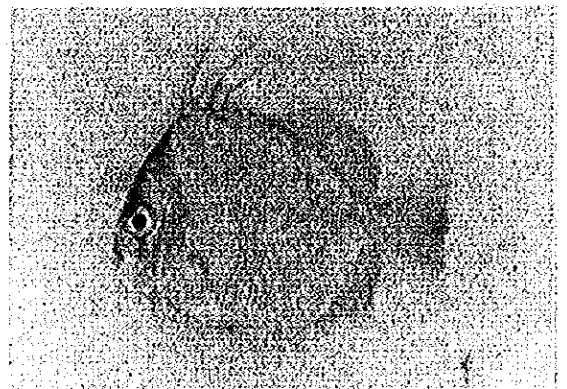
120. *Acanthogobius iridipunctatus* (Valencien)
(Gen. Mahaze)



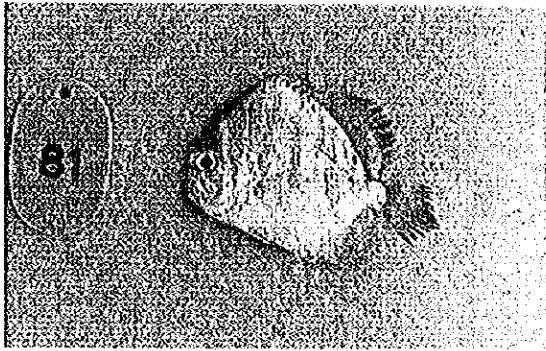
121. *Abudefduf saxatilis vaigiensis*
(Quoy & Giamard)
Fam. Suzumedai



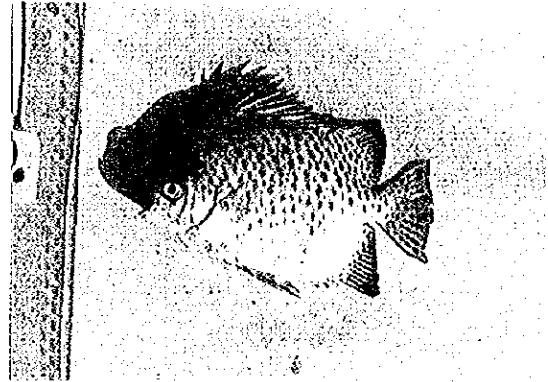
122. *Platax* sp.
Fam. Tsubameuo



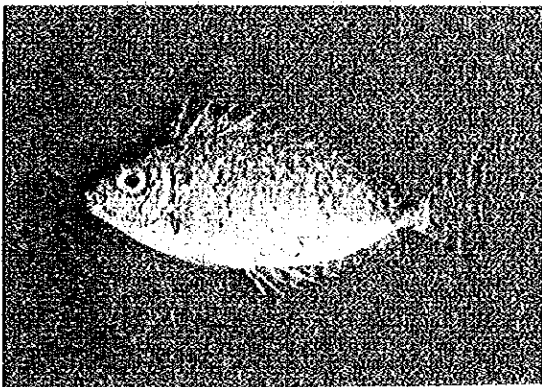
123. *Ephippus orbis* (Bloch)
Manjuudai



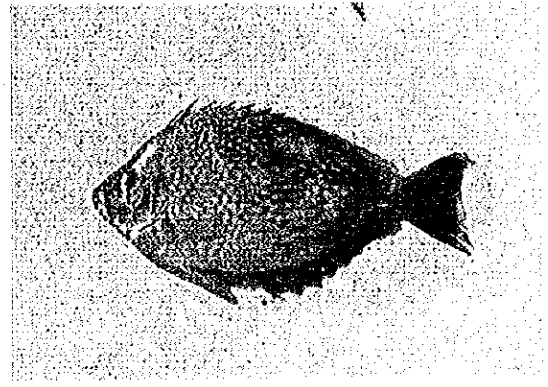
124. *Drepane longimana* (Bloch & Schneider)
Sudaredai



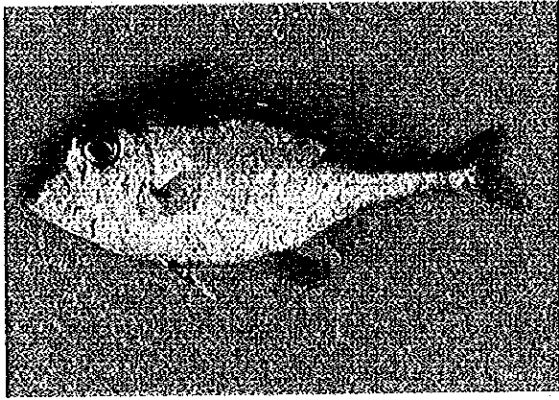
125. *Scatophagus argus* (Linnaeus)
Kurohoshimanjuudai



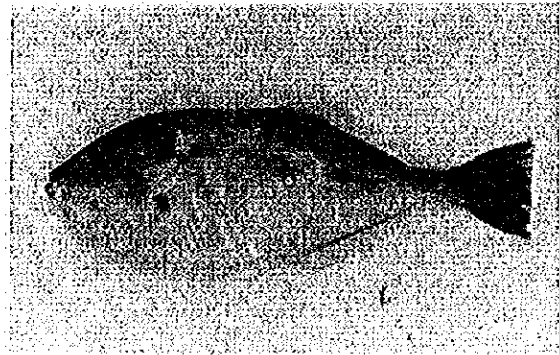
126. *Siganus oramin* (Bloch & Schneider)
Pam. Aigo



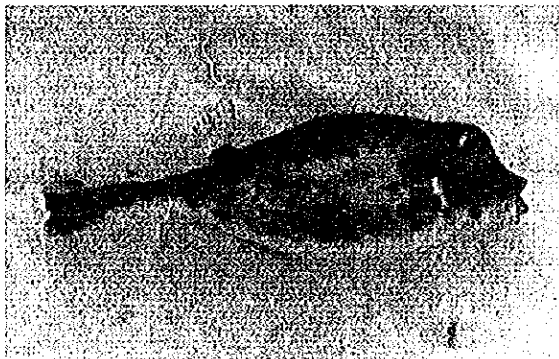
127. *Siganus vermiculatus* (Valenciennes)
Mushikuitaigo



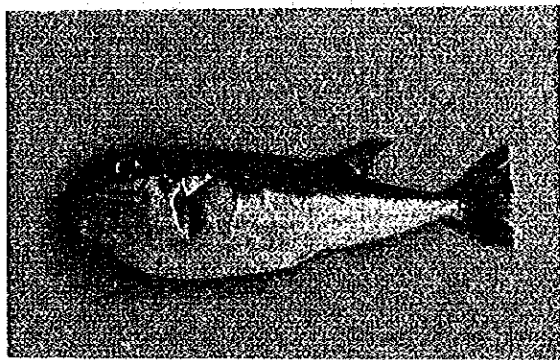
128. *Triacanthus brevirostris*
Temminck & Schlegel
Gima



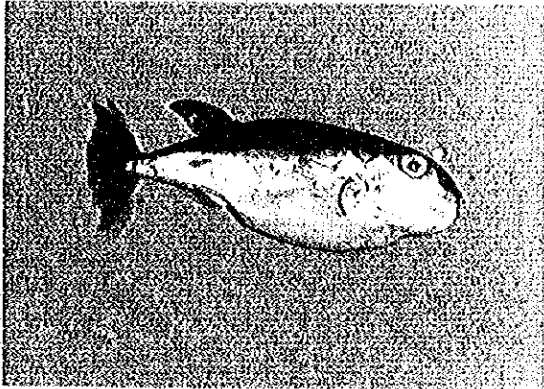
129. *Aluterus monoceros* (Linnaeus)
Usubahagi



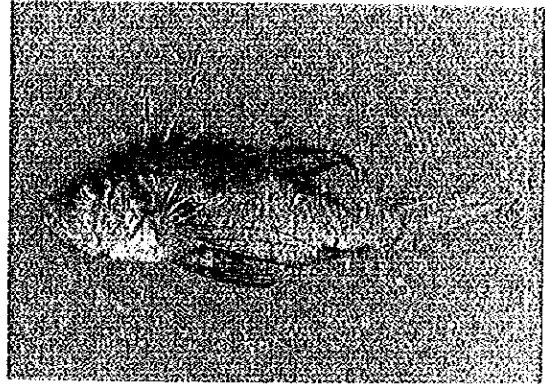
130. *Rhynchostracion nasus* (Bloch)
Fam. Hakofugu



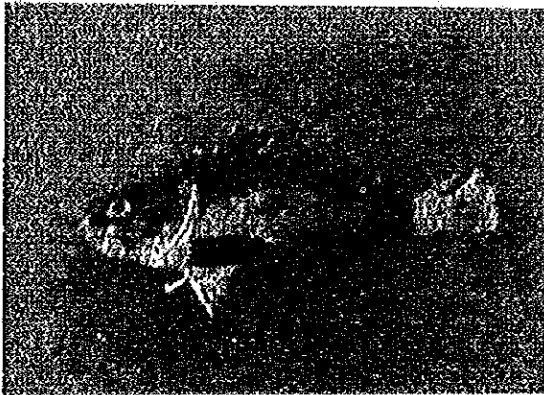
131. *Lugocephalus lunaris spadicus*
(Richardson)
(Gen. Sabafugu)



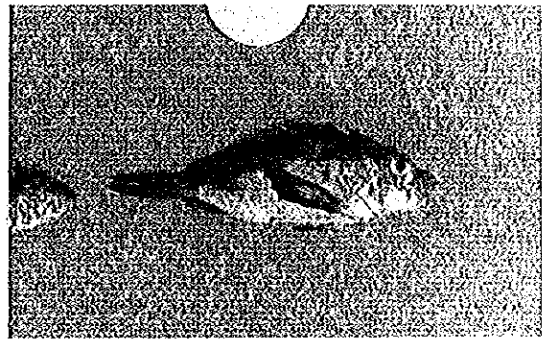
132. *Lagocephalus lunaris lunaris*
(Bloch & Schneider)
Dokusabafogu



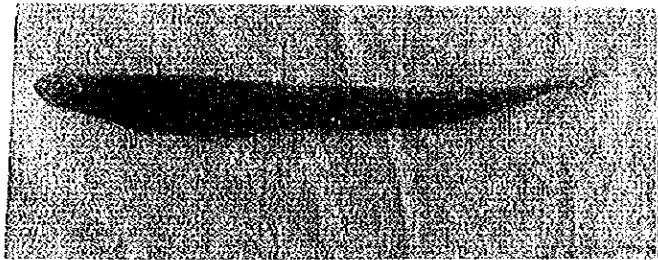
133. *Pterois russelli Bennett*
(Gen. Minokasago)



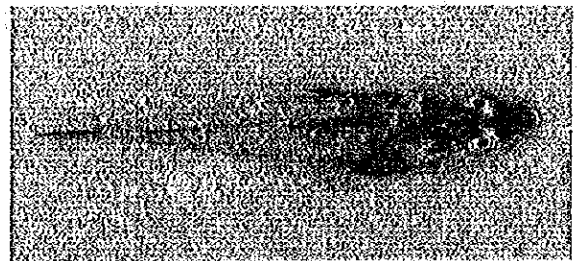
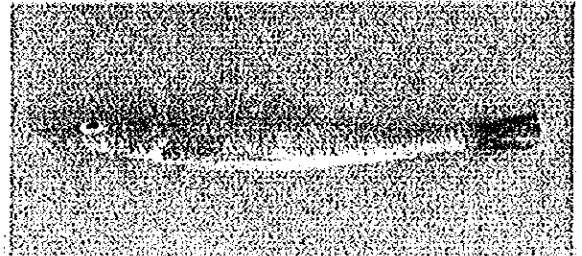
134. *Vespicula trachionoides*
Fam. Mebaru



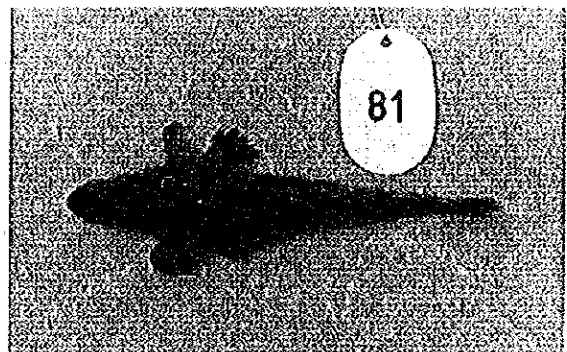
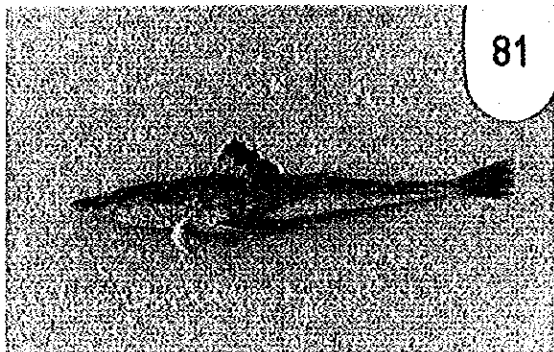
135. *Minous monodactylus* (Bloch & Schneider)
Himekoze



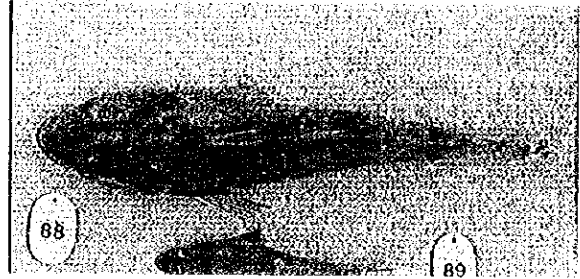
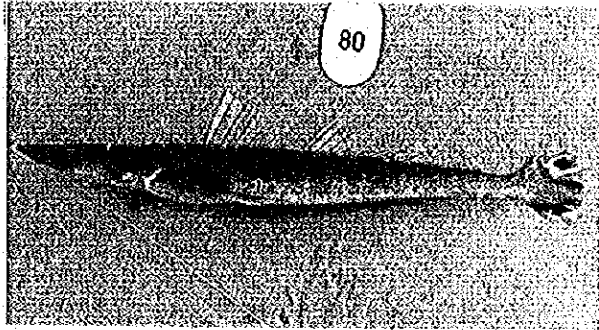
136. *Elates thompsoni* (Jordan & Seale)
(Sub. Fam. Tokagegochi)



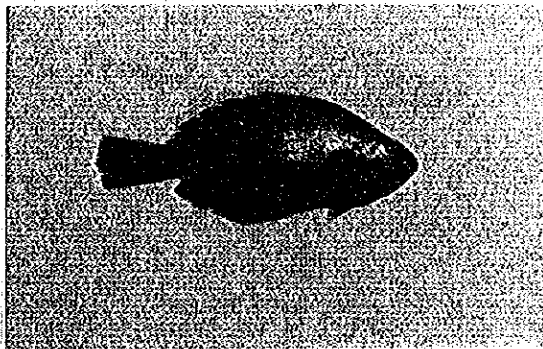
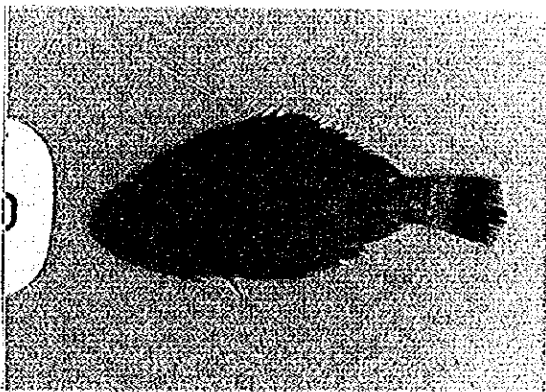
137. *Suggrundus* sp.
(Gen. Megochi)



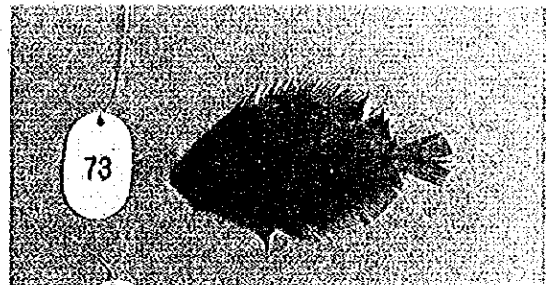
138. *Grammoplites scaber* (Linnaeus)
(Sub. Fam. Tokagegochi)



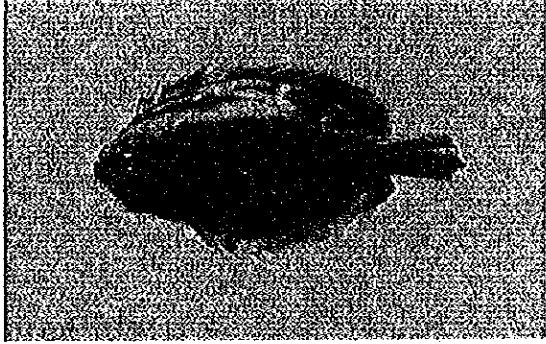
139. *Platycephalus indicus* (Linnaeus)
Kochi



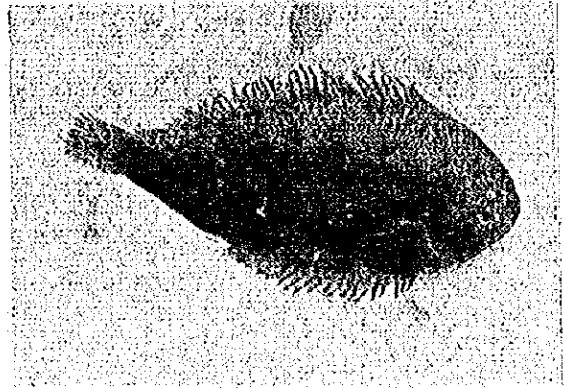
140. *Psettodes erimeus* (Schneider)
Bouzugarei



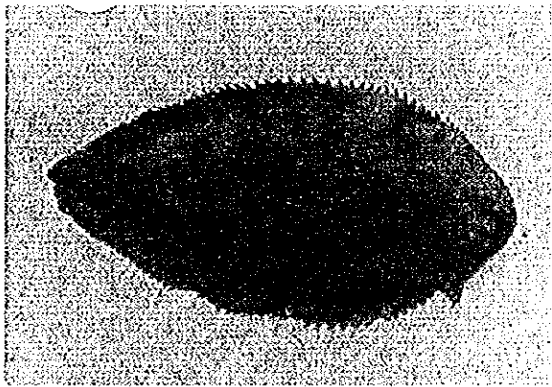
141. *Pseudorhombus arsius* (Hamilton-Buchanan)
Tanjikugarei



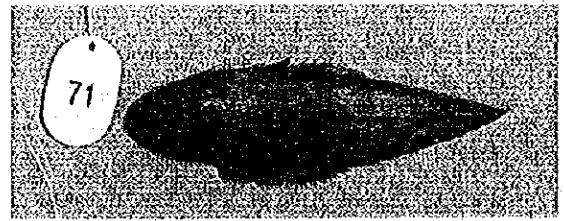
142. *Pseudorhombus javanicus* (Bleeker)
(Gen. Ganzoobirame)



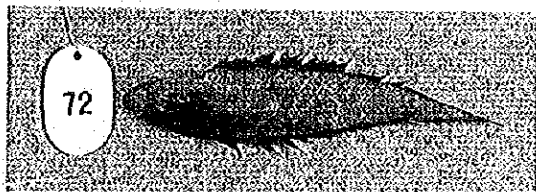
143. *Synaptura* sp.
(Gen. Minamishimaushinoshita)



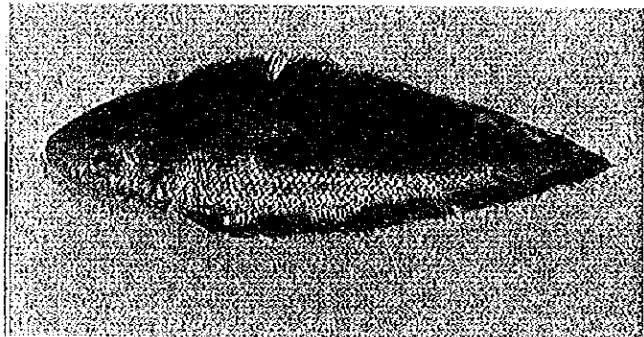
144. *Synaptura orientalis* (Bloch & Schneider)
Minamishimaushinoshita



145. *Cynoglossus* sp.
(Gen. Inunoshita)



146. *Cynoglossus lingua* Hamilton-Buchanan
(Gen. Inunoshita)

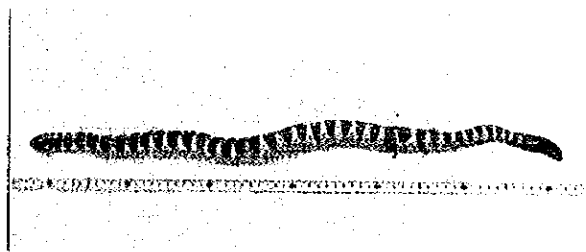


147. *Cynoglossus macroleptidatus* (Bleeker)
Tanjikuinunoshita

6. Reptilia



148. *Symbranchus bengalensis* (McClelland)
(Fam. Taunagi)



149. Sea snake
(Fam. Umihebi)

