

34M MUX

34M XMT INF	- E32-409-Q4663-0A00
34M RCV INF	- E32-409-Q4664-0A00
34M MPX	- E32-482-Q2107-0A00
34M SNYC	- E32-440-Q2168-0A00
34M DMPX	- E32-482-Q2167-0A00
34M ALM	- E32-107-Q5298-0A00
PWR (1)(2) UNIT	- E32-014-Q4657-0A00
8M CH(1) - (4)	- E32-469-Q4665-0A00

6年度換材
追加計画

SIG - B - MUX

SIG XMT	- E32-482-Q1264-0A00
SIG RCV	- E32-482-Q1265-0A00
SIG CH	- E32-099-Q6714-R/D

RADIO

1. AM-FM Radio Demonstrator Kit
540-1600KHz; 88-108 MHz.
2. VHF-FM Demonstrator Kit
146-168 MHz w/sets of crystal
3. Spare card of TX for UHF TR5PC60-1A/1B
4. " " " RX " " "
5. " " " Com. TX 940.000 MHz
RX 897.500 MHz
6. " " " Com. TX 897.00 MHz
RX 940.000 MHz
7. " " " Ope for UHF TR5PC60-1A/1B

As per

LIST OF SPARE PARTS & CARDS
NEEDED FOR JICA EQUIPMENT

POWER PLANT:

RECTIFIER FOR TELEPHONY LAB. - PX 24173 (CL33012-13)
PX 25050A (CL31742-090-
092)

RECTIFIER FOR CARRIER RADIO
LAB. - PX25050A (CL31742)
- DX22015 (CL32780-203-204)

ENGINE-GENERATOR AVR PANNEL - PV-50
PV-GC

ENGINE-GENERATOR - SSU-P1
CONTROL - CUB. - EGU-P1-Q
- A3-12501

LIST OF SPARE PARTS & CARDS
NEEDED FOR JICA EQUIPMENT

TELEPHONY WING:

LTC

1	P-7AZ1	PKG	NEC
1	P-7A22	"	"
1	P-7B43	" (LTC-B)	"
1	P-7B44	" (LTC-C)	"
1	P-7B5A	" (CPU)	"
1	P-7D3E	" (LTC-D)	"
1	P-7F4T	" (LTC-G)	"
1	NPM006N	" (POW)	"
1	S-7168B	" (MODEM)	"

STC

1	P-7AC8	PKG	NEC
1	P-7C6T	"	"
1	P-7D2T	"	"
1	P-7D2U	"	"
1	NPS001N	" (POW)	"
1	NPM002D	" (POW)	"
1	S7159A	" (MODEM)	"

TTY

1	Q-1962A	PKG (I/O BOARD)	NEC
1	Q-7021A	" (LINE INF BOARD)	"
1	Q-70ZZC	" (PTR/PTP CONT)	"
1	P-5886A	" (CONN BOARD)	"
1	S6110A-DCH		CPF
	S7142A		CPF

LIST OF SPARE PARTS AND CARDS
NEEDED FOR JICA EQUIPMENT

TELEGRAPHY

1. Package for NEDIX 510AS

-3-	pcs.	P -7076 (003)
-3-		P -7075 (003)
-1-		P -790 E
-1-		P -7036 (010)
-3-		P -7716 (500)
-3-		P -7715 (500)
-1-		P -771J (500)
-1-		P -7048
-1-		P -7048 (004)

2. Unit for MT - 100 Teleprinter

-2-		Printer Unit
-2-		Punch Unit
-2-		Reader Unit
-3-		Keyboard
-5-		CPU Board
-3-		Interface Board
-3-		Power Supply Unit
-500		P-ROM
-50		Inked Ribbon
-1-		Maintenance Tool for MTTY

3. -1- TDM System Unit

4. -1- DC - AC Inverter (NEC)

5. Spare package for NEDIX 510AS (NEC)

-1-		P -7036 (003)
-1-		P -731 H
-1-		P -731 J
-1-		P -7028 (002)
-2-		P -700 B
-1-		P -700 D
-2-		P -700 A
-2-		P -700 Q
-2-		P -701 G

-1-	P -700 S
-2-	P -702 C
-2-	F -704 L
-1-	P -700 L
-1-	F -705 C
-1-	P -700 T
-1-	P -7036 (002)
-1-	P -700 H
-2-	P -700 X
-1-	P -7007 (020)
-1-	P -7028 (003)
-1-	P -7029 (003)
-1-	P -7040
-2-	P -759 D
-1-	P -759 H (510)
-1-	P -759 J (510)
-1-	P -7934
-1-	P -759 F (510)
-1-	F -761 Y (510)
-1-	P -759 E (510)
-1-	P -759 C
-1-	P -757 B
-1-	P -755 E (510)
-1-	P -702 D
-1-	P -705 A
-1-	P -705 B
-2-	P -700 V
-1-	P -701 A
-1-	P -700 E
-1-	P -700 G
-1-	P -700 J
-1-	P -7M10 (005)
-1-	F -7M02 (001)
-2-	P -7925
-2-	P -7926
-1-	NPM - 002 N
-1-	NPS - 003 N
-1-	P - 7A7 H
-1-	P - 7F7 Q

-1-	P -7A7 F
-1-	P -7W1 P
-1-	P -7W1 Q
-1-	P -7C5 F
-1-	P -7B4 X
-1-	P -7A5Z (500)
-1-	P -7A7N
-1-	P -7A7 P
-1-	P -7925
-1-	P -7926
-1-	P -700 Q
-1-	P -702 U
-1-	P -702 C
-1-	P -7001 (002)
-2-	P -701 G
-1-	P -700A
-2-	P -700 B
-1-	P -700 E
-1-	P -703 Y
-1-	P -700% (004)
-1-	P -700 H
-1-	P -7006 (005)
-1-	P -700 X
-1-	P -701 A
-1-	P -7004
-1-	P -7044
-1-	P -7036 (002)
-1-	P -7028 (002)
-1-	P -7030 (001)
-1-	P -6066 (002)
-1-	E32-477-Q5886 (Main Control Board)
-1-	E32-477-Q1962 (I/O Control Board)
-1-	E32-477-Q7022 (PTP/PTR Control Board)
-1-	E32-477-Q7021 (Line IFC8 Level Board)
-10-	Ink Ribbon for MTTY-type NM8000ASR G 32-00104393 black color (NEC)

6. Paper Roll and Paper Tape for MT-100

-30-

Paper Roll - 214 mm width DIN
Standard 6720 SH. 1

-30-

Paper Tape - 17.4 mm width DIN
Standard 6720 SH. 2

/chf

SPARE Parts and Instrument for
Power Plant

Slide Voltage Regulator.

Surface Thermometer

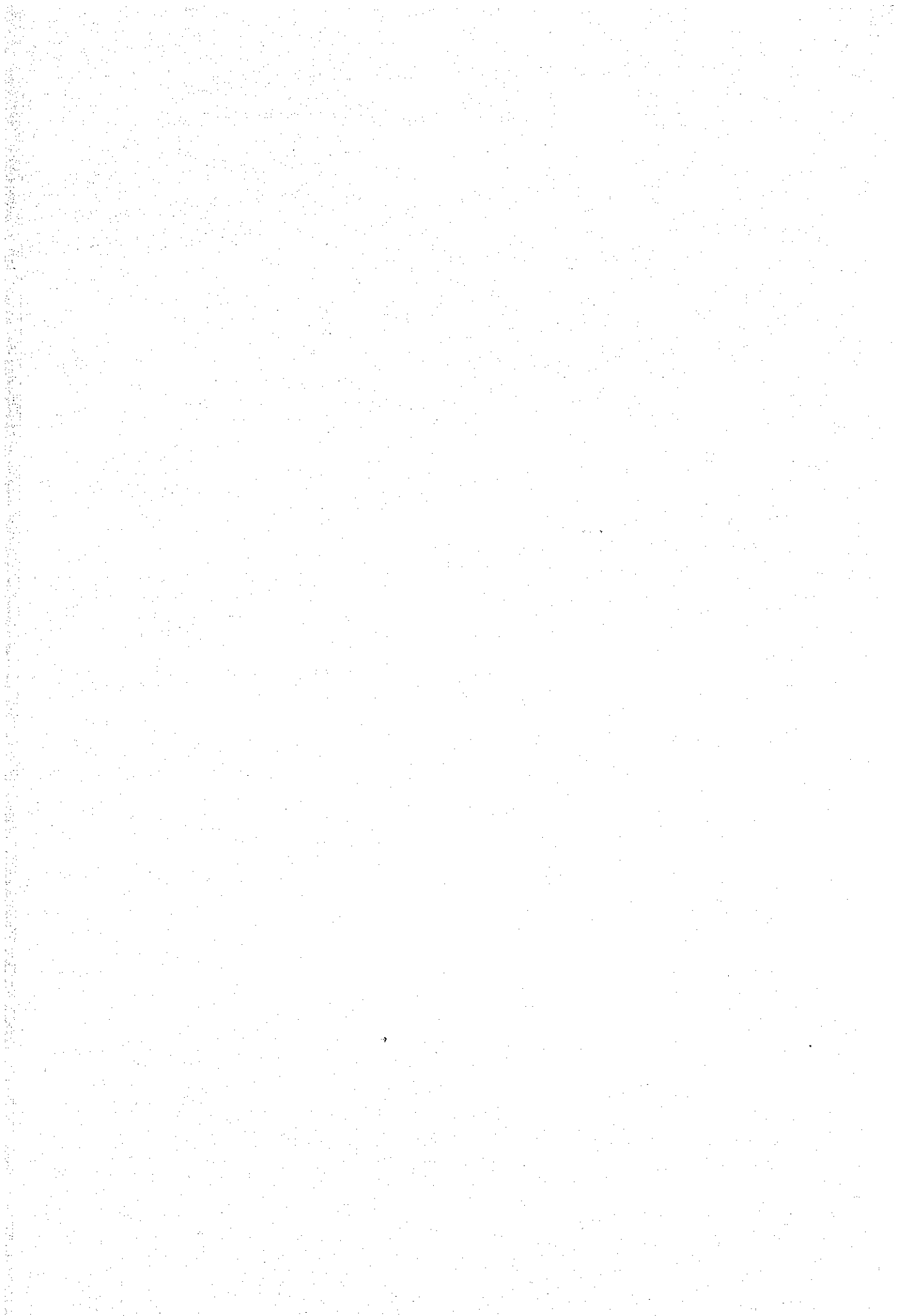
Storage Battery (Starting)

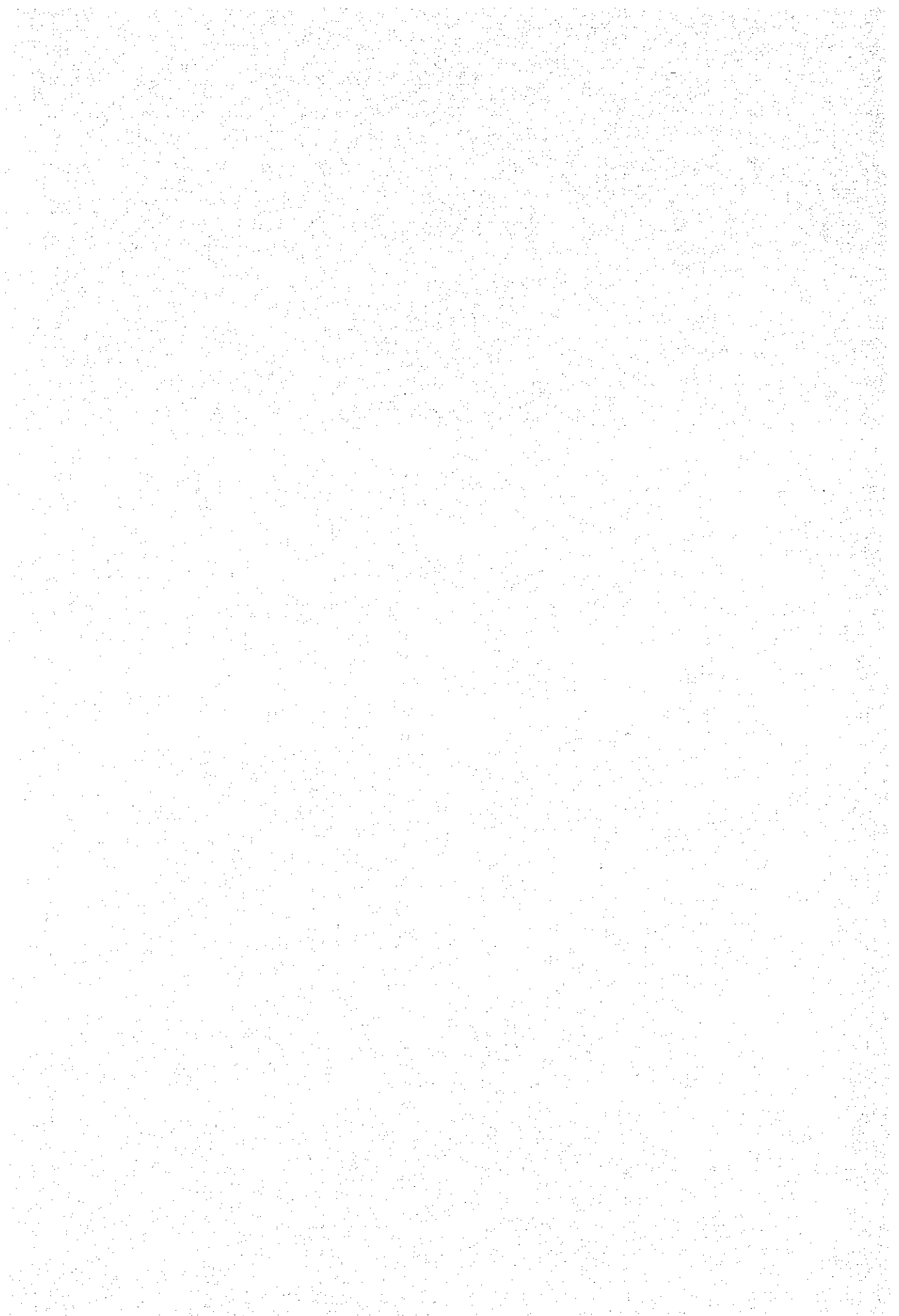
Lube Oil SAE 40

Spare Card:

- for Rectifier	Qty.	Serial No.
Gate Control Card	3	CL 31742-090-092
-do-	2	CL 31742-093,094,095
Control Card	1	CL32980-203,304 DK 22015
Rectifier Control Card	3	CL33012-113 PV24173
- for A V R		
PV- GC	1	A3-13182C
PV-50	1	A3-13183b
- for Control Cubicle		
Voltage Relay P-2 (VRY)	1	
Standby Control SSU - PI	1	A3-12501
Engine Control EGU - PE-a	1	
GC		PR20090A
Fuse: 1.3 AMP	5	
3.0 AMP	5	
5.0 AMP	5	

chf





JICA