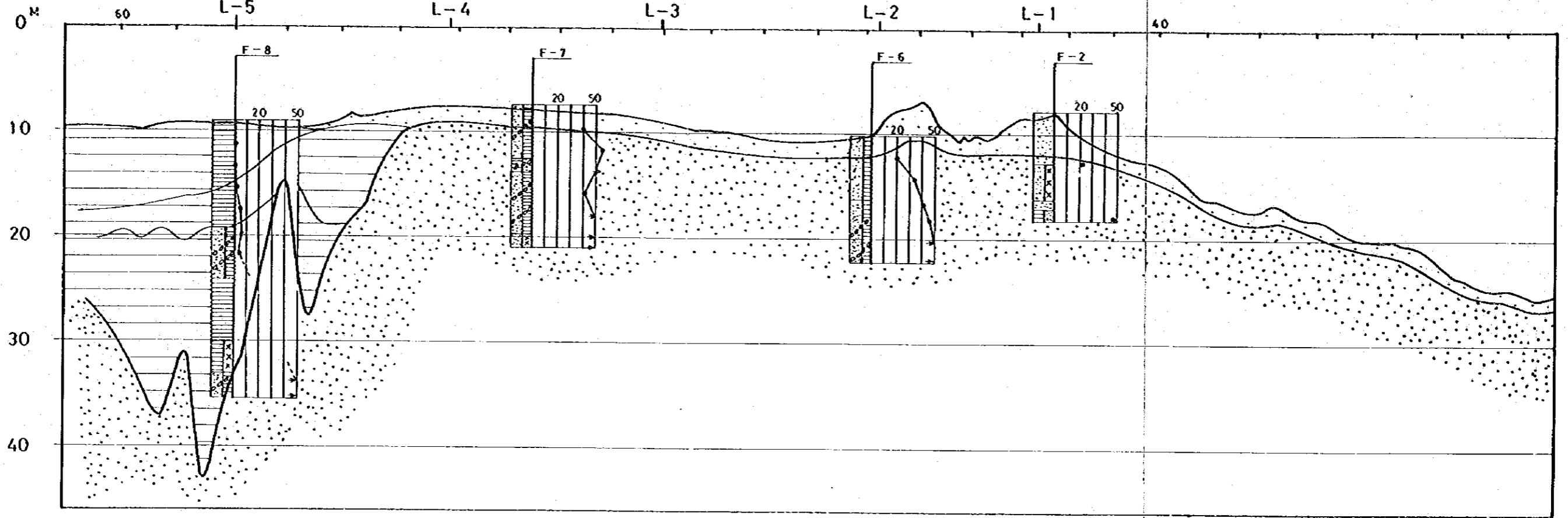


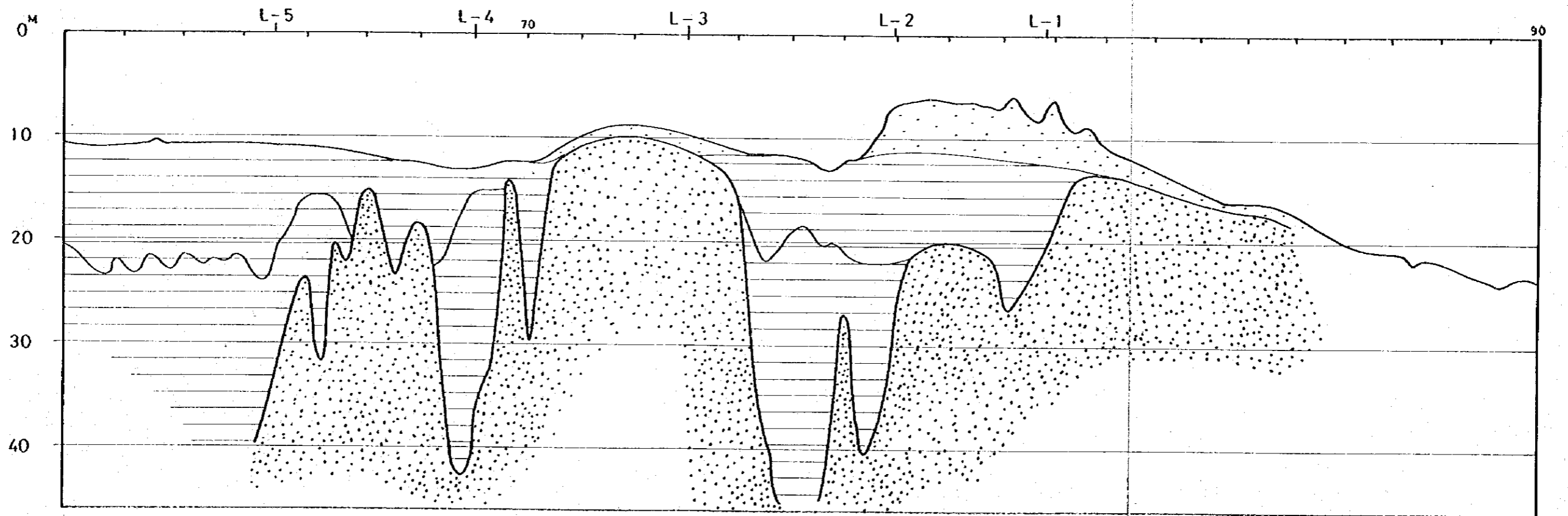
L-9

C.D.L

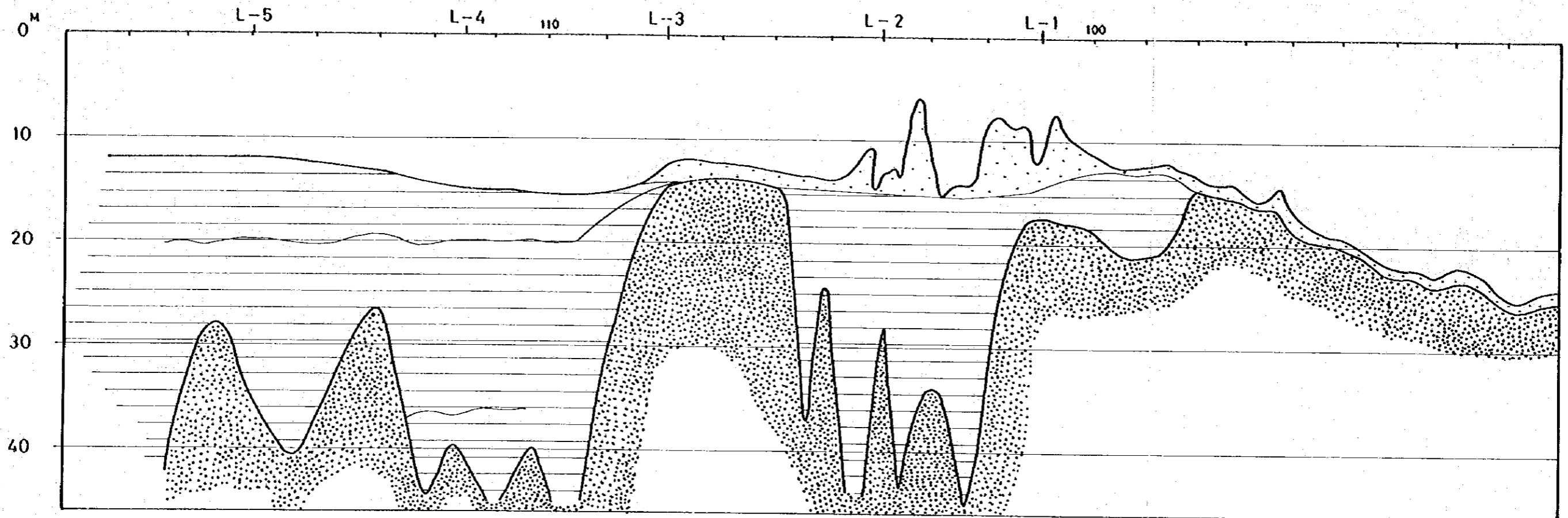


L-10

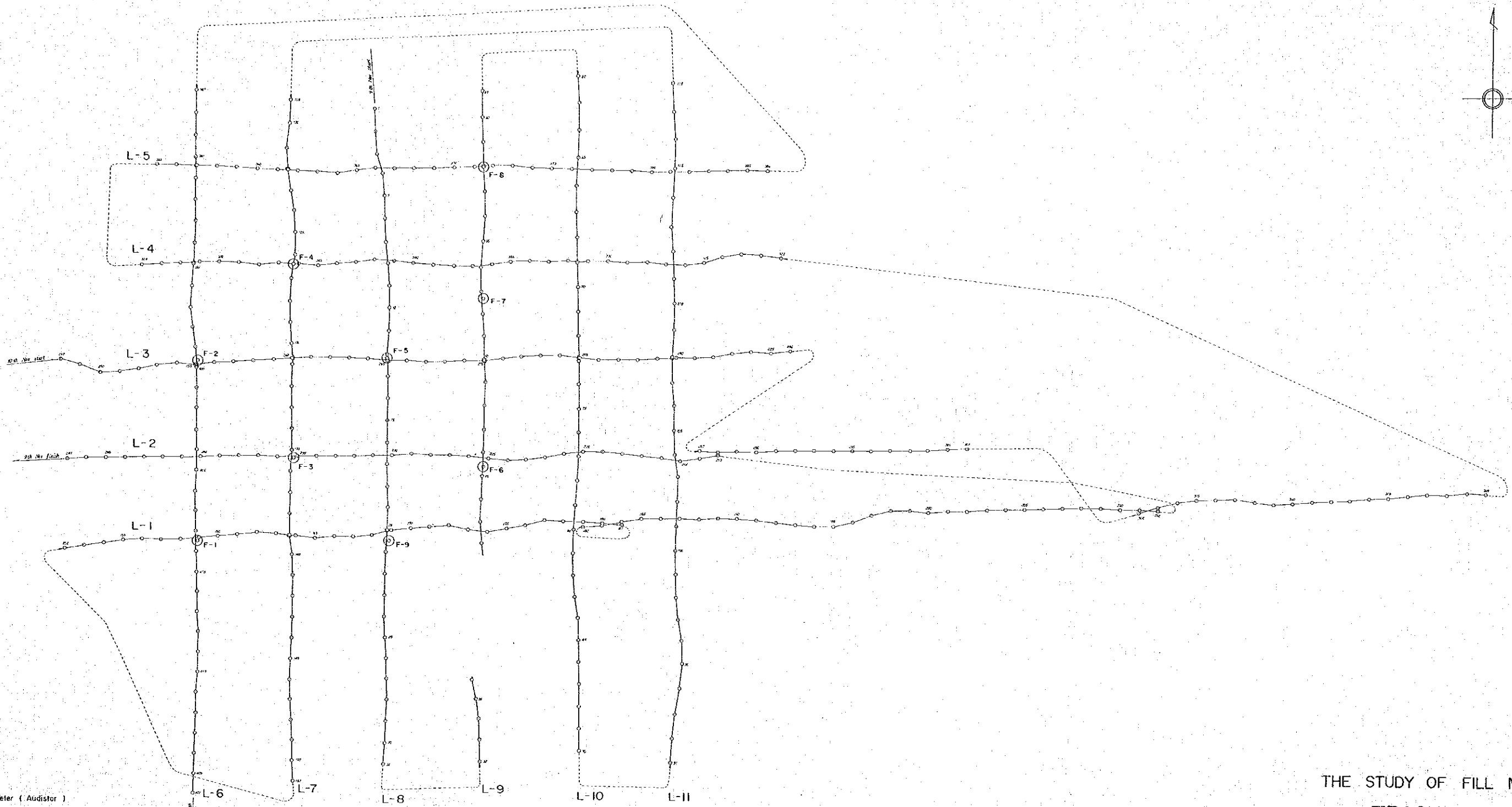
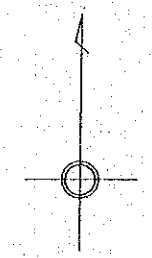
C.D.L



CDL L-11



OFF SHORE OF CHANGI

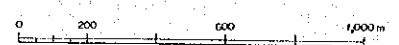


Memoir

1. The chart is constructed electric distance meter (Audistor) lattices upon the following station.  
 slave 1 (T-7) X++3 323.707 Y++13 062.428  
 slave 2 (CR-1) X++9 354.766 Y++16 487.968
2. The chart is plotted on the Plane rectangular Grid in meters based upon the co-ordinates (0° 00' N, 0° 00' E) of origin at Government Office Building being in Lat. 1° 17' 15" S 28' N, Long. 103° 51' 10" 808 E.

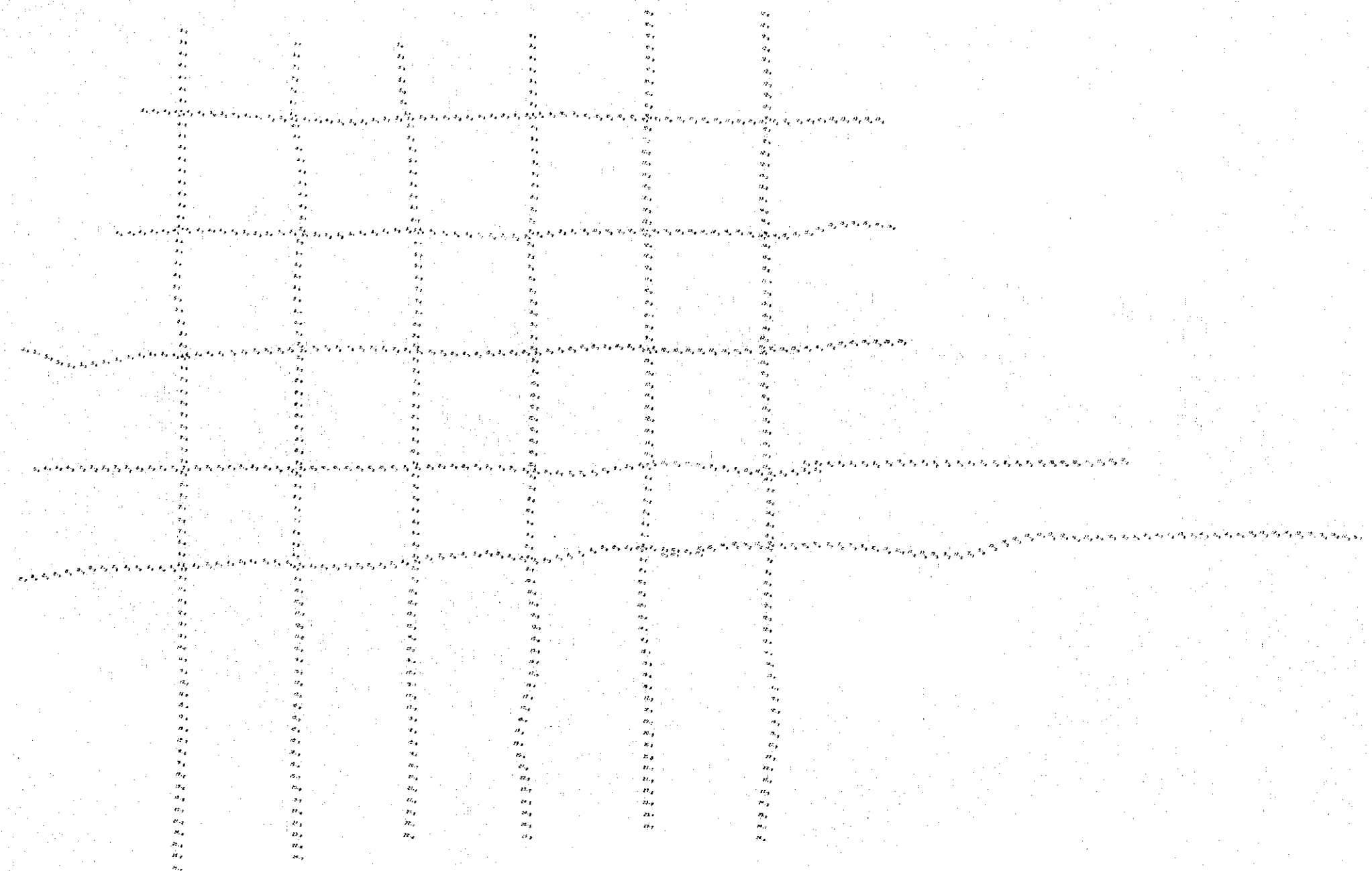
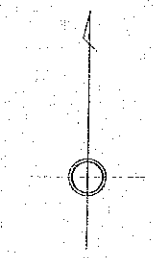
THE STUDY OF FILL MATERIALS  
 TRACK CHART  
 for Sonic Prospecting

JAN. 1979



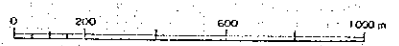
- Survey points
- ⊙ F-2 Boring points

OFF SHORE OF CHANGI



Memoir

1. The chart is constructed electric distance meter (Audiator) lattices upon the following station.  
 slope 1 (T-7) X+43 323.707 Y+13 062.428  
 slope 2 (CR-1) X+49 354.766 Y+16 487.968
2. The chart is plotted on the Plane rectangular Grid in meters based upon the co-ordinates (0° 00' N, 0° 00' E) of origin at Government Office Building being in Lat. 1° 17' 15" 520 N, Long. 103° 51' 10" 808 E.

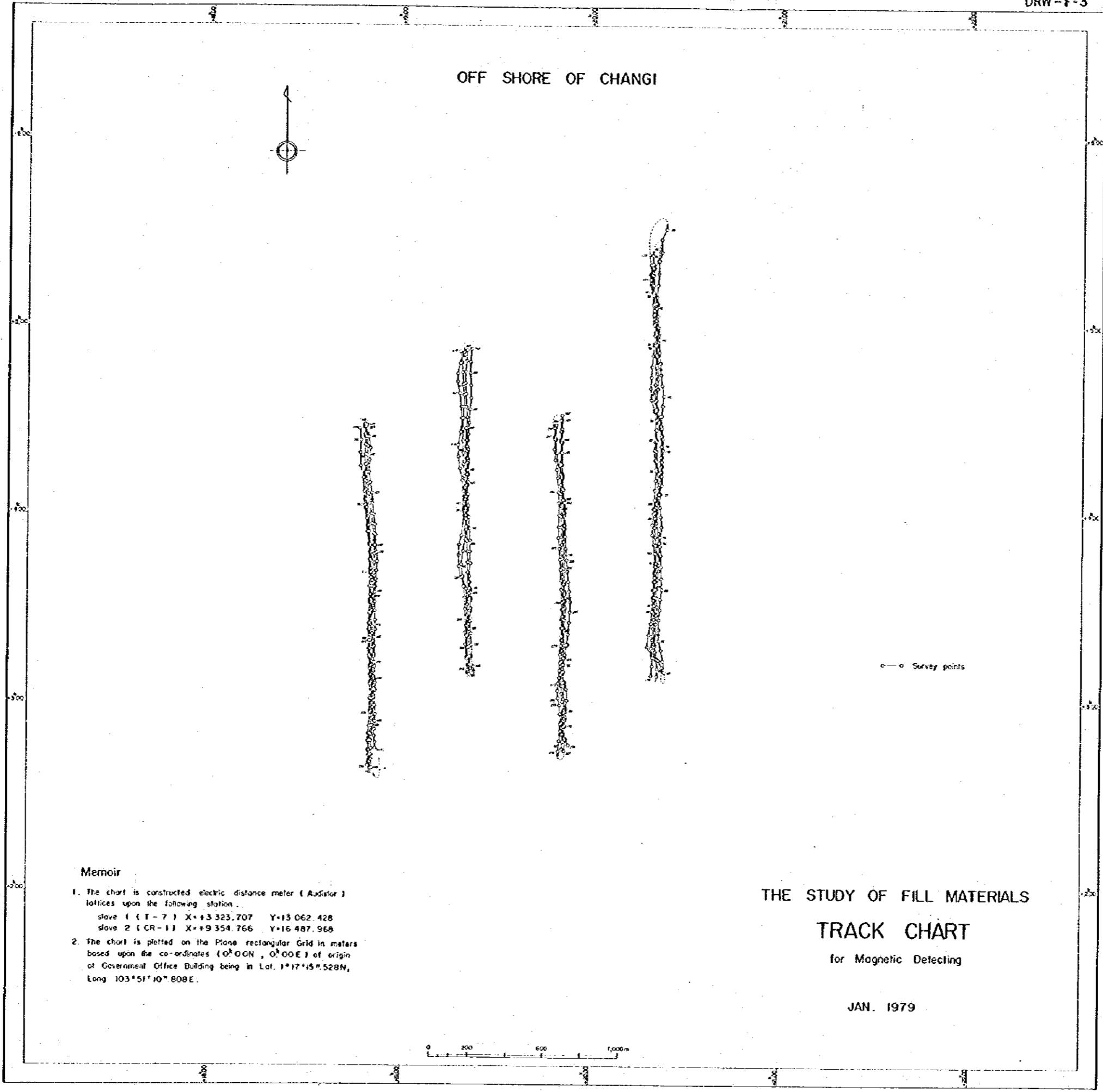


THE STUDY OF FILL MATERIALS  
SOUNDING MAP

JAN. 1979  
DEPTH IN METERS  
Reduced to Chart Datum



OFF SHORE OF CHANGI



Memoir

1. The chart is constructed electric distance meter (Audiator) lattices upon the following station.  
 slave 1 (T-7) X+13 323.707 Y+13 062.428  
 slave 2 (CR-1) X+19 354.766 Y+16 487.968
2. The chart is plotted on the Plane rectangular Grid in meters based upon the co-ordinates (0° 00N, 0° 00E) of origin of Government Office Building being in Lat. 1° 17' 15" 528N, Long 103° 51' 10" 808E.

THE STUDY OF FILL MATERIALS

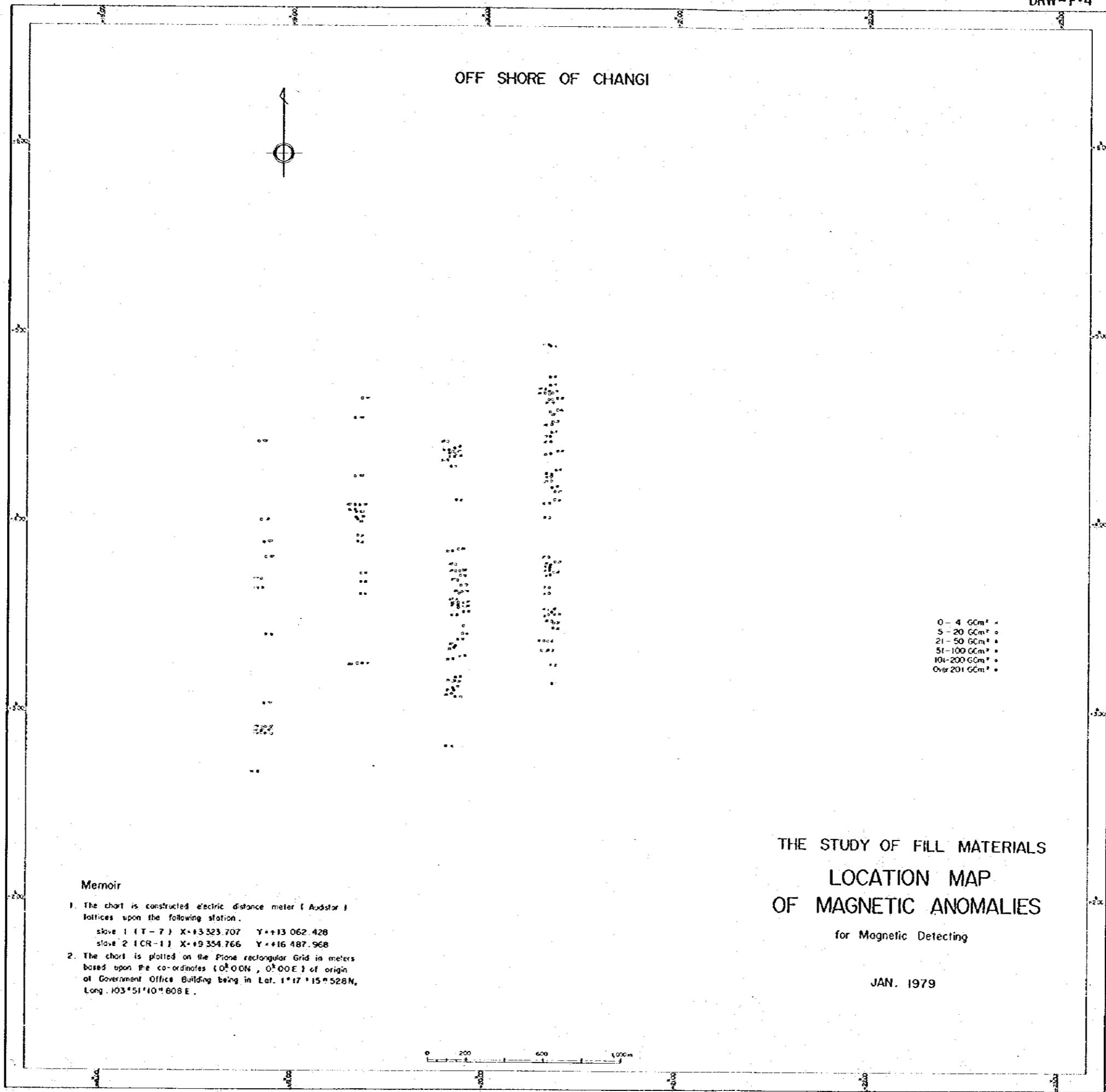
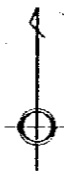
TRACK CHART

for Magnetic Detecting

JAN. 1979



OFF SHORE OF CHANGI



0-4 Gcm<sup>2</sup> \*  
 5-20 Gcm<sup>2</sup> \*  
 21-50 Gcm<sup>2</sup> \*  
 51-100 Gcm<sup>2</sup> \*  
 101-200 Gcm<sup>2</sup> \*  
 Over 201 Gcm<sup>2</sup> \*

Memoir

1. The chart is constructed electric distance meter (Audstar) lattices upon the following station.  
 slope 1 (T-7) X+13 323.707 Y+13 062.428  
 slope 2 (CR-1) X+19 354.766 Y+16 487.968
2. The chart is plotted on the Pione rectangular Grid in meters based upon the co-ordinates (0° 00' N, 0° 00' E) of origin of Government Office Building being in Lat. 1° 17' 15" 528 N, Long. 103° 51' 10" 608 E.

THE STUDY OF FILL MATERIALS  
 LOCATION MAP  
 OF MAGNETIC ANOMALIES  
 for Magnetic Detecting

JAN. 1979







JICA