

C-6

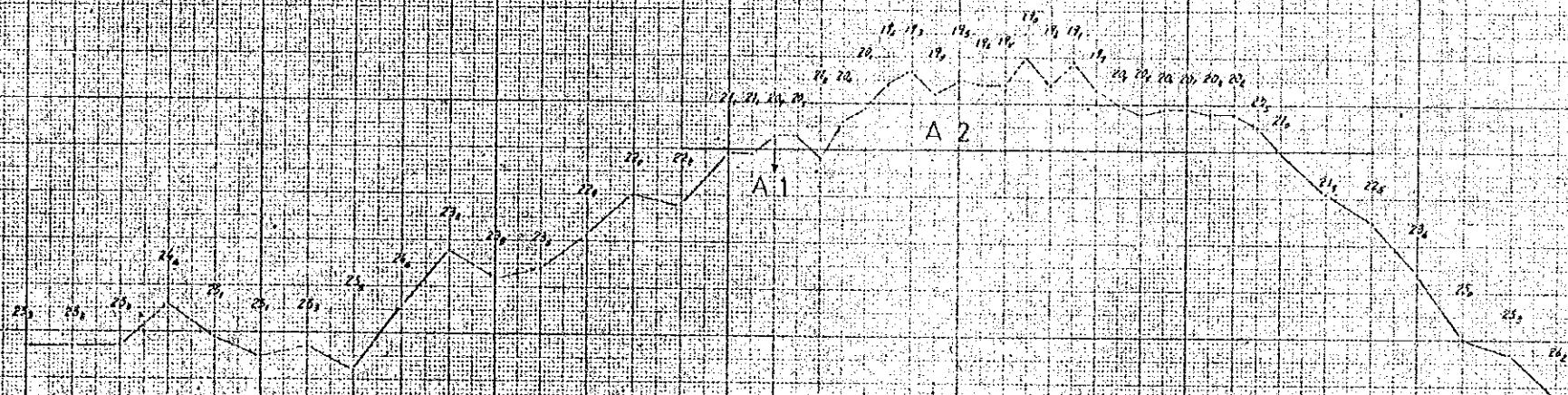
39

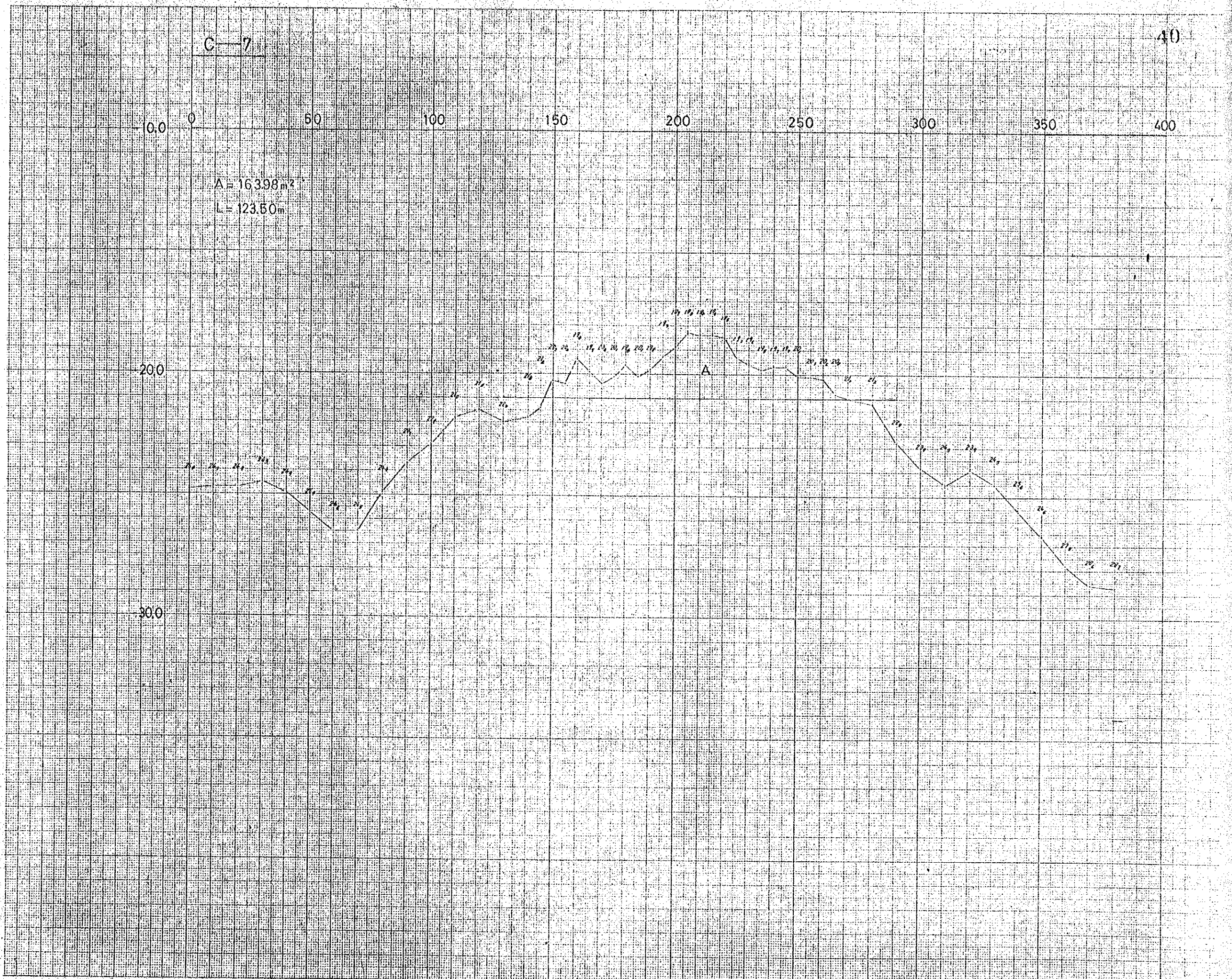
00 0 50 100 150 200 250 300 350

$A_1 = 2.48 \text{ m}^2$ $L_1 = 11.50 \text{ m}$
 $A_2 = 117.0 \text{ m}^2$ $L_2 = 99.00 \text{ m}$
 114.18 m^2 110.00 m

200

300





C-7

40

0 50 100 150 200 250 300 350 400

$A = 16398 \text{ m}^2$
 $L = 123.50 \text{ m}$

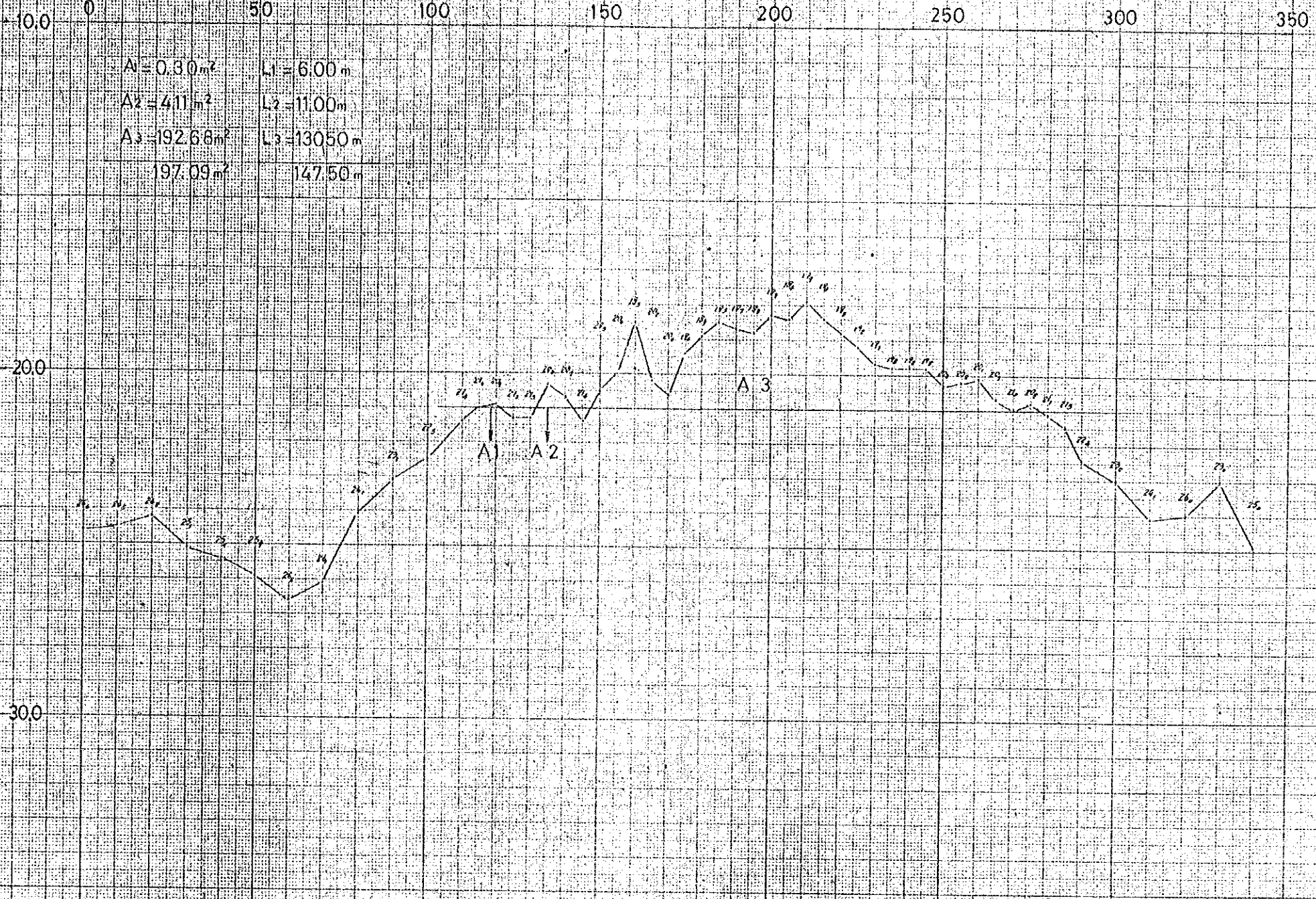
200

300

A

C-8

$A_1 = 0.30 \text{ m}^2$	$L_1 = 6.00 \text{ m}$
$A_2 = 411 \text{ m}^2$	$L_2 = 11.00 \text{ m}$
$A_3 = 192.68 \text{ m}^2$	$L_3 = 130.50 \text{ m}$
197.09 m^2	147.50 m



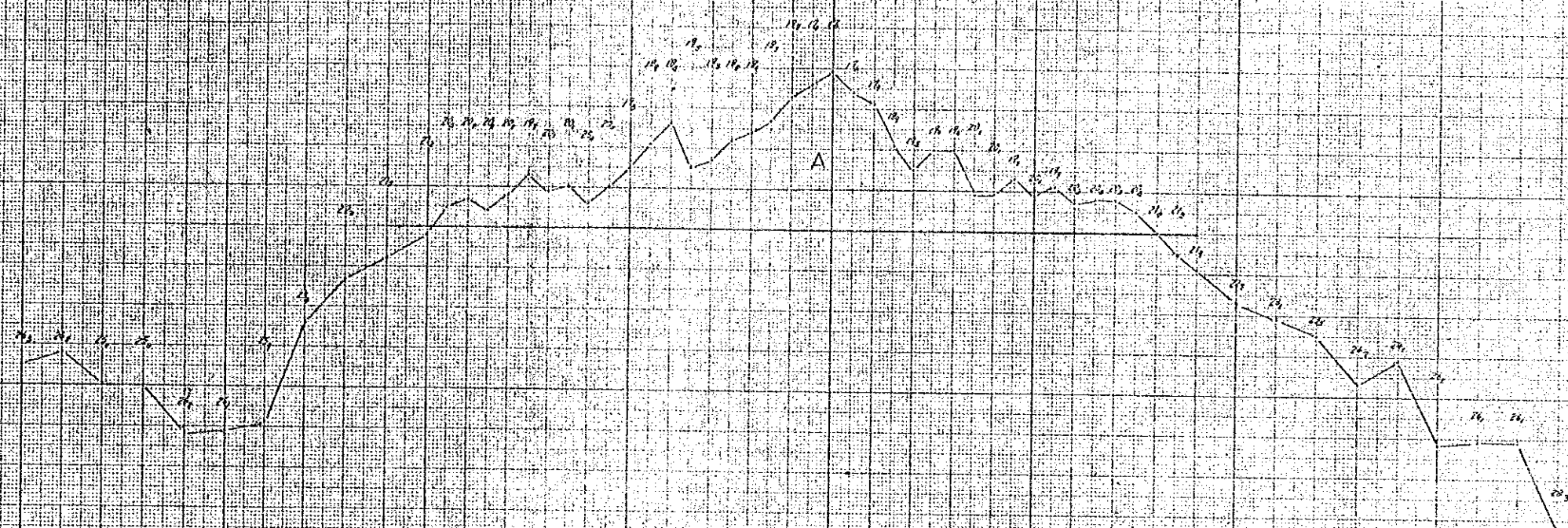
C-9

0.0 0 50 100 150 200 250 300 350 400

$A = 283.25 \text{ m}^2$
 $L = 179.00 \text{ m}$

200

300



C-10

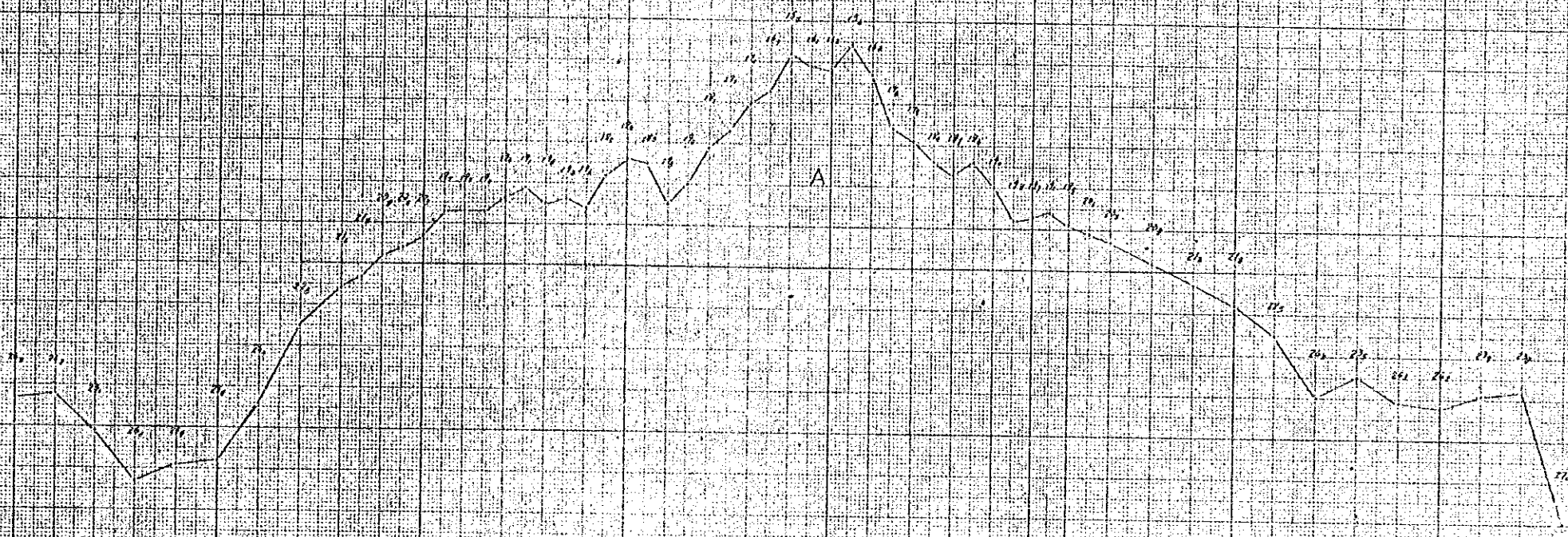
43

100 0 50 100 150 200 250 300 350 400

$A = 433.35 \text{ m}^2$
 $L = 196.00 \text{ m}$

20.0

30.0



C-11

0.0

0

50

100

150

200

250

300

350

400

A = 418.81 m²

L = 214.00 m

200

300

