

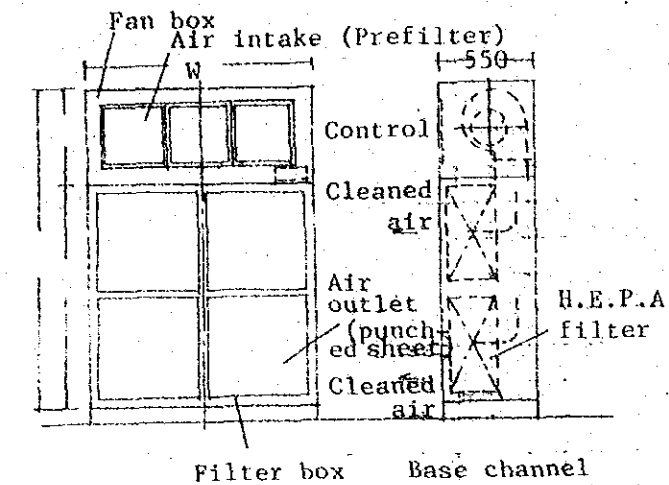
Model plan equipment details	Air-conditioning & ventilation facilities	Model plan code	A-100
------------------------------	---	-----------------	-------

Equipment list

Name	Specification	Q'ty	Remarks
Air conditioner for OR system (AC-1-1)	Air-cooled, ceiling type; cooling capacity; 18,000 Kcal/H	1	
Air conditioner for DR system (AC-2)	Air-cooled, ceiling type; cooling capacity; 7,000 Kcal/H	1	
Air conditioner for G system (AC-3)	Air-cooled, ceiling type; cooling capacity; 28,000 Kcal/H	1	
Circulating fan for OR system (RF-1-1)	Axial type 400φ	1	
Circulating fan for DR system (RF-2)	" 400φ	1	
Air conditioner for G system (RF-3)	" 550φ	1	
Air purifier (FU-1)	75m ³ /H		
Others	Ventilating facilities & others	1 set	

Specification for air purifier

Elevations

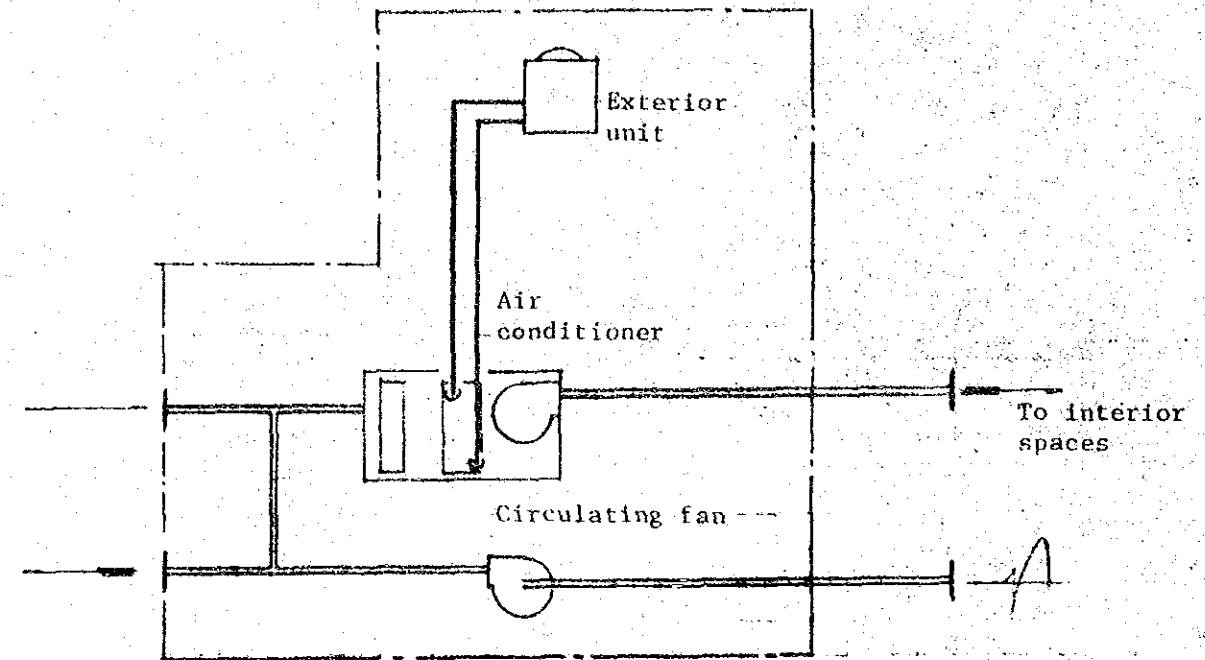
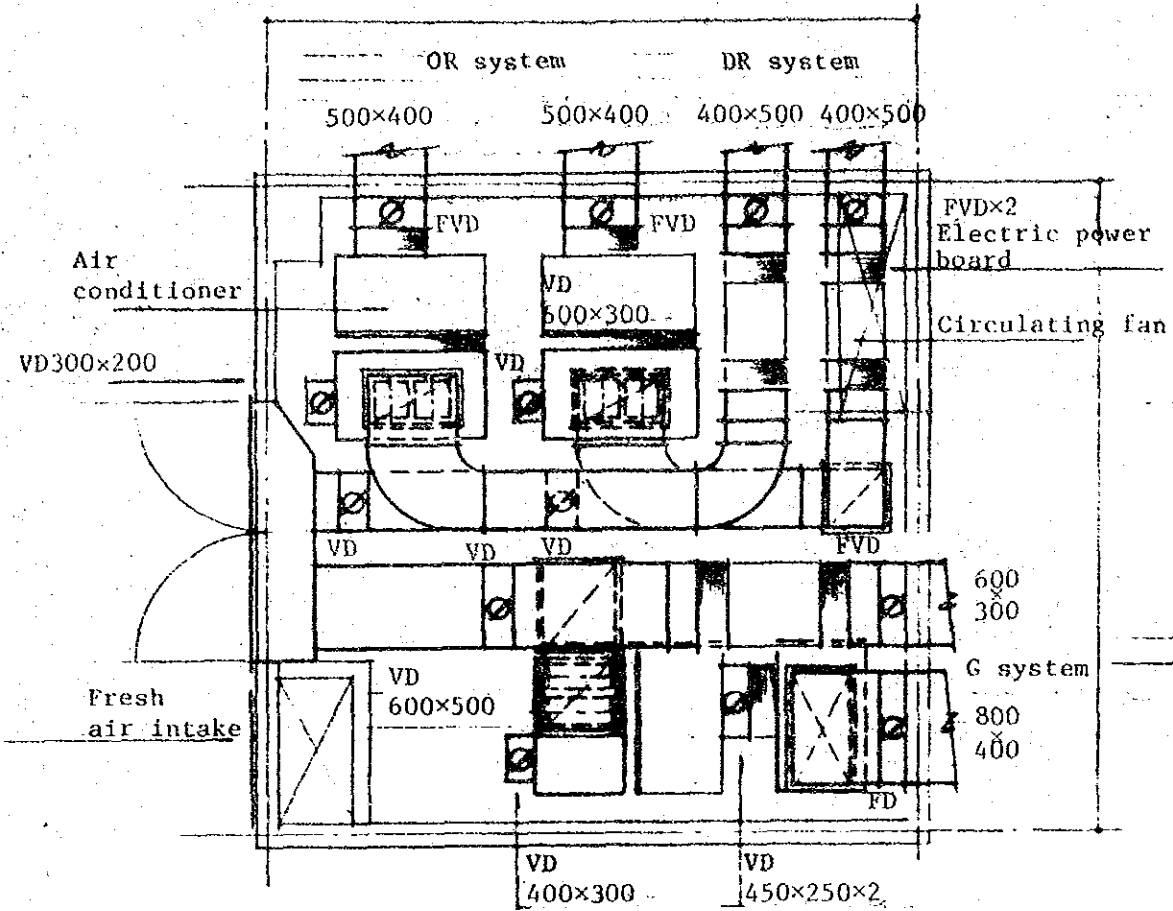


Specification

Electric power	AC3φ 200V 50/60Hz						
Percentage of dust collection	0.3μ minimum						
Class	Outlet 100						
Type	Class	Rated air volume	HEPA used	Noise	Power input	Power consumption	Weight
	Outlet 100 (0.3μ minimum)	75	610H 510W 300D	65-70	AC3φ 200V 50/60 Hz	340	330

Floor plan for air-conditioning
equipment room A-100

XII-125



Air conditioning unit ; Air-cooled remote condenser type air conditioner

Circulating fan ; Axial type fan

Kinds of systems ; OR system _____ Large OR, small OR
 DR system _____ DR x 1 room
 G system _____ NS, doctors' offices, etc.

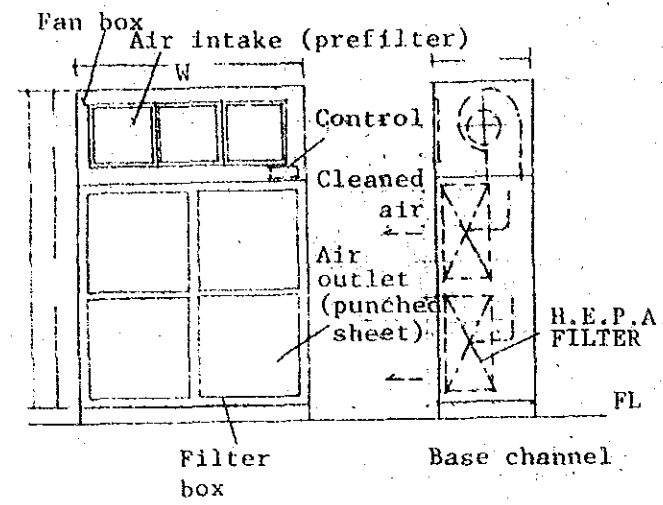
Installing location of exterior unit; Roof top

Model plan equipment details	Air conditioning & ventilation facilities	Model panel code	A-200
------------------------------	---	------------------	-------

Equipment list			
Name	Specification	Q'ty	Remarks
Air conditioner for OR-1 system (AC-1-1)	Air-cooled, ceiling type, cooling capacity: 18,000 Kcal/H	1	
Air conditioner for OR-2 system (AC-1-2)	Air-cooled, ceiling type, cooling capacity: 10,000 Kcal/H	1	
Air conditioner for DR system (AC-2)	Air-cooled, ceiling type, cooling capacity: 22,000 Kcal/H	1	
Air conditioner for G system (AC-3)	Air-cooled, ceiling type, cooling capacity: 55,000 Kcal/H	1	
Circulating fan for OR-1 system (RF-1-1)	Axial type 400φ	1	
Circulating fan for OR-2 system (RF-1-2)	" 400φ	1	
Circulating fan for DR system (RF-2)	" 400φ	1	
Circulating fan for G system (RF-3)	" 650φ	1	
Air purifier (FU-1)	75 m ³ /H		
Others	Ventilating facilities & others	1 set	

Specification for air purifier

Elevations

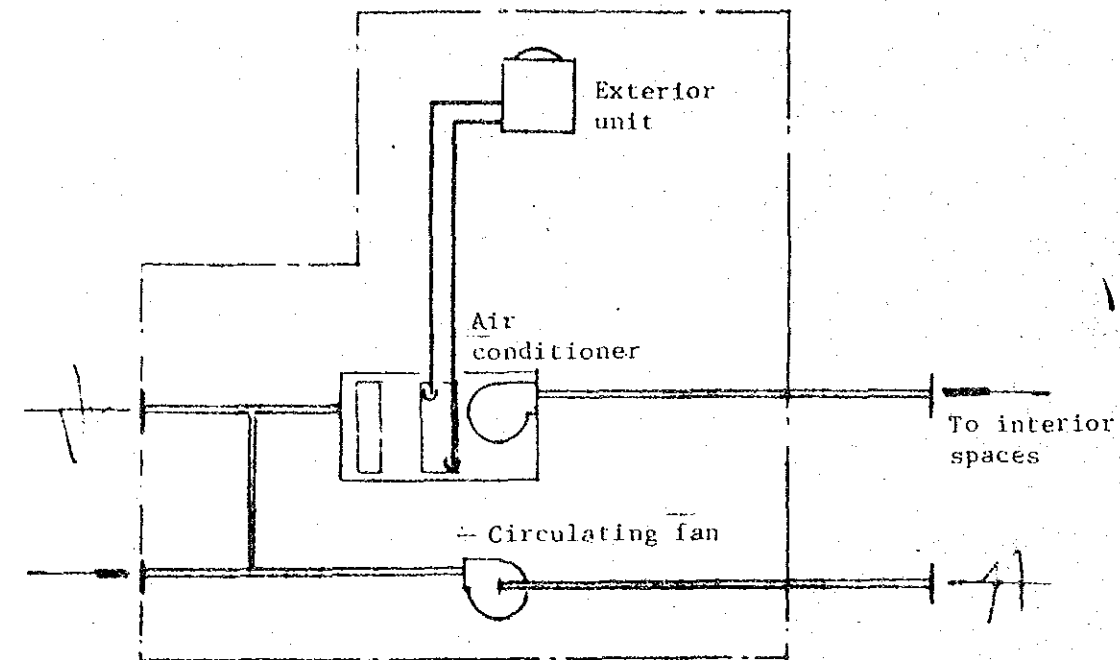
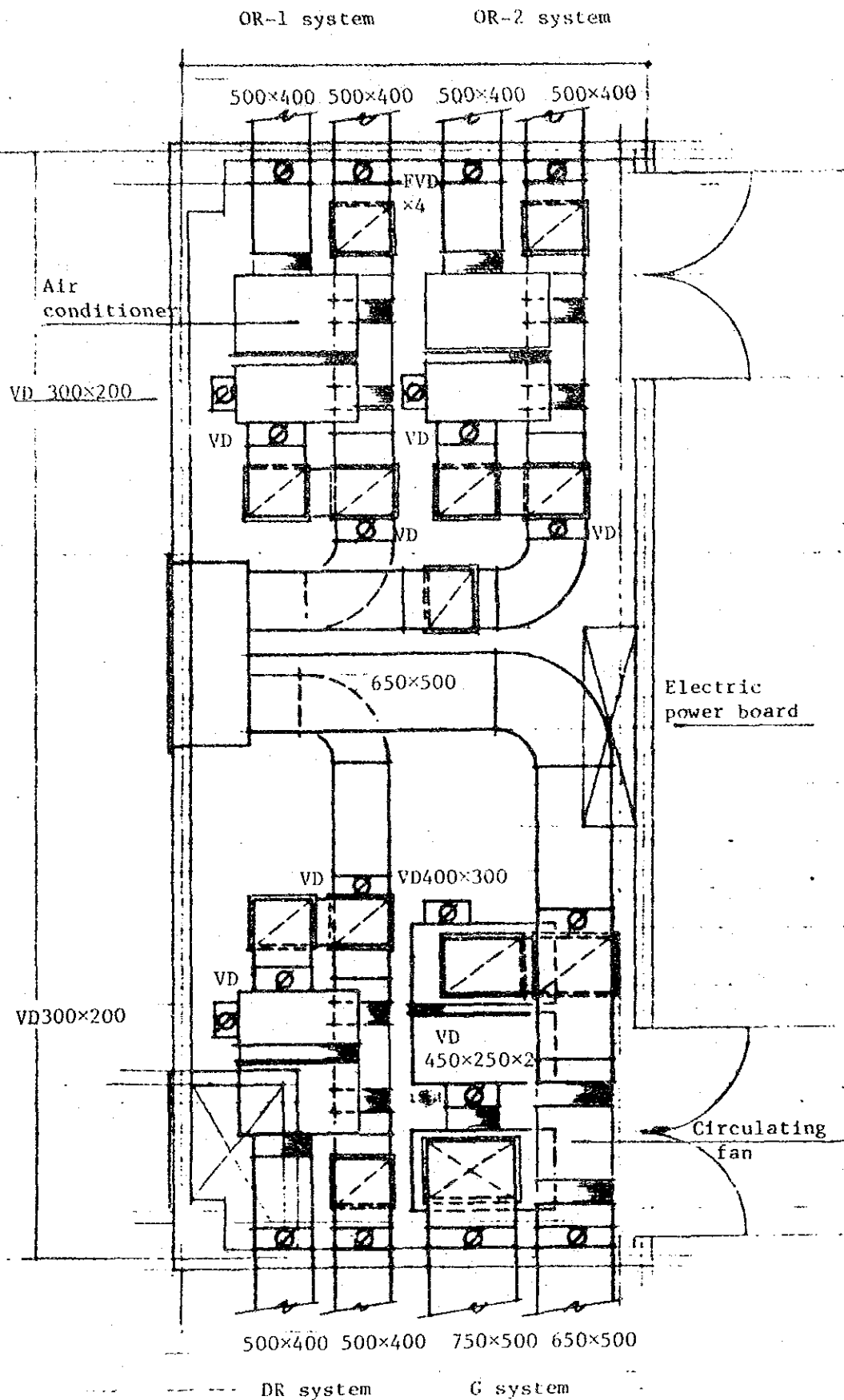


Specification

Electric power	AC3φ	200V	50/60 Hz					
Percentage of dust collection	0.3μ minimum		99.97%					
Class	Outlet: 10D							
Type	Class	Rated air volume	HEPA used Dimensions · Q'ty	Noise	Input power	Power consumption	Weight	
Outlet, 10D, 0.3μ min.		75	610H × 610W × 300D.	6	65-70	AC3φ 200V 50/60 Hz	340	350

() ()

Floor plan for air conditioning
equipment room A-200



Air conditioning unit : Air-cooled remote condenser type air conditioner

Circulating fan : Axial type fan

Kinds of systems; OR-1 system ————— Large OR, small OR

OR-2 system ————— Large OR x 1 room

DR system ————— DR x 2 room

G system ————— NS, ICU etc.

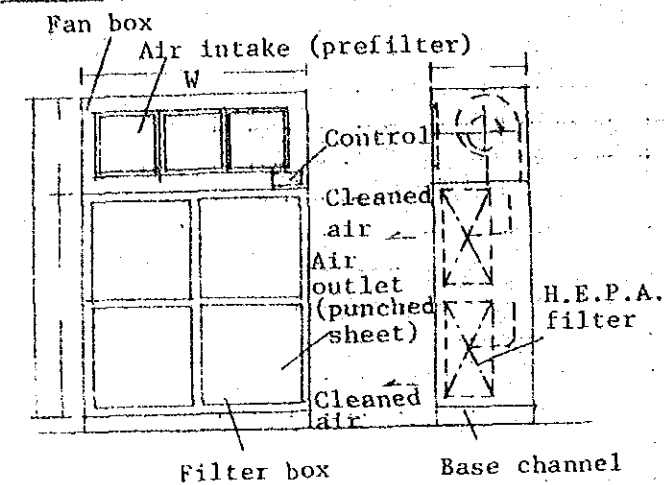
Installing location of exterior unit: Roof top

Model plan equipment details	Air conditioning & ventilation facilities	Model plan code	A-300 450
---------------------------------	--	-----------------------	--------------

Equipment list			
Name	Specification	Q'ty	Remarks
Air conditioner for OR-1 system (AC-1-1)	Air-cooled ceiling type, cooling capacity: 18,000 Kcal/H	1	
Air conditioner for OR-2 system (AC-1-2)	Air-cooled ceiling type, cooling capacity: 21,000 Kcal/H	1	
Air conditioner for OR-3 system (AC-1-3)	Air-cooled ceiling type, cooling capacity: 17,000 Kcal/H	1	
Air conditioner for DR system (AC-2)	Air-cooled ceiling type, cooling capacity: 22,000 Kcal/H	1	
Air conditioner for G system (AC-3)	Air-cooled ceiling type, cooling capacity: 51,000 Kcal/H	1	
Circulating fan for OR system (RF-1-1)	Axial type 400φ	1	
Circulating fan for OR system (RF-1-2)	" 400φ	1	
Circulating fan for DR system (RF-1-3)	" 400φ	1	
Circulating fan for DR system (RF-2)	" 400φ	1	
Circulating fan for G System (RF-3)	" 650φ	1	
Airpurifier (FU-1)	75 m ³ /H	1	
Others		1 set	

Specification for air purifier

Elevations

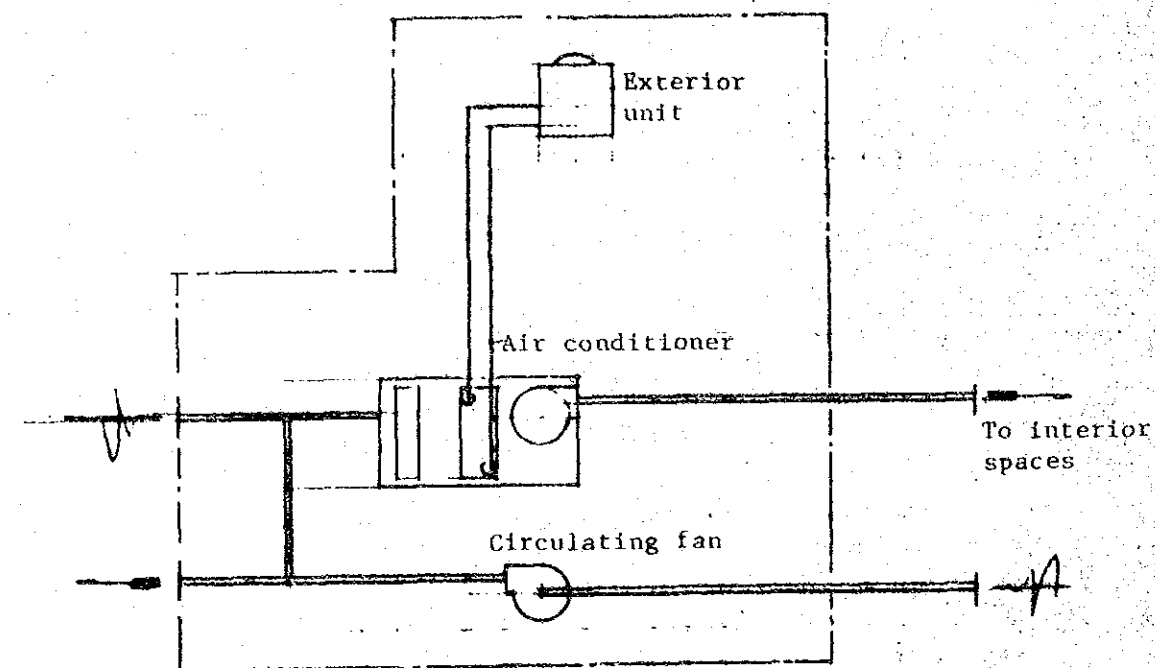
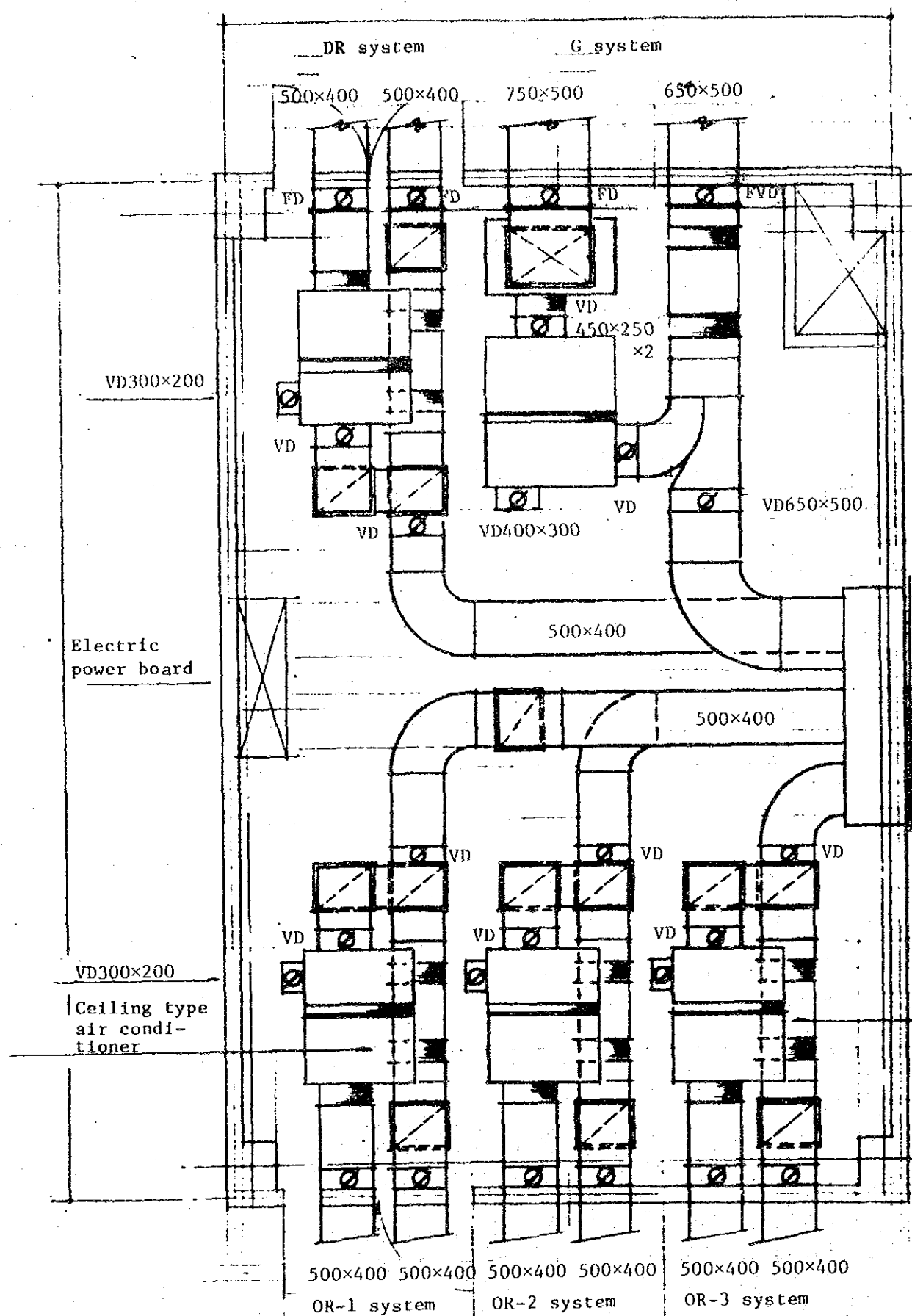


Speci-
fication

Electric power	AC3φ 200V 50/60Hz						
Percentage of dust collection	0.3μ minimum	99.97%					
Class	Air outlet: 10D						
Type	Class	Rated air volume	HEPA used	Noise	Input power	Power consumption (W)	Weight (kg)
Outlet 10D, 0.3μ minimum		75	610H 610W 200D	6	65-70	AC3φ 200V 50/60 Hz	540 350

() ()

Floor plan for air conditioning
equipment room A-300, 450



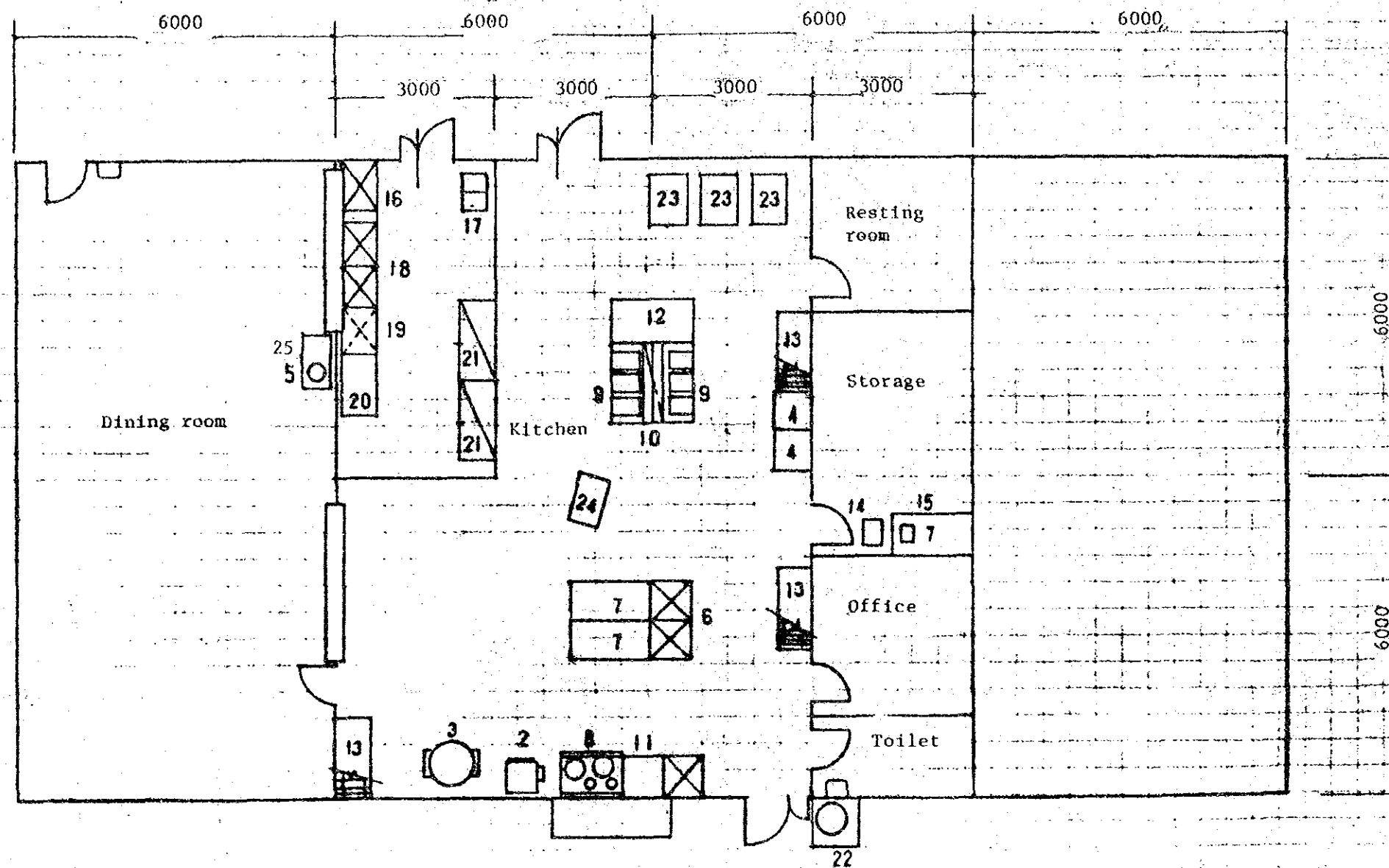
- Air conditioning ; Air-cooled remote condenser type
unit air conditioner
- Circulating fan ; Axial type fan
- Kinds of systems :
- DR system ——— DR × 2 rooms
 - G system ——— NS, ICU, etc.
 - OR-1 system ——— Large OR, small OR
 - OR-2 system ——— Large DR × 2 rooms
 - OR-3 system ——— Large OR, small OR
- Installing location of exterior unit: Roof top

Model plan equipment details	Kitchen equipment	Model plan code	K-100
---------------------------------	-------------------	-----------------------	-------

Equipment list			
Equip- ment No.	Name	Specification	Q'ty
1			-
2	Gas rice cooker	Gas consumption 9,500 Kcal/H	1
3	Gas rotary cooker	" 23,000 Kcal/H	1
4	Refrigerators	Effective capacity 441ℓ	2
5	Storage type hot water heater	Working capacity 40ℓ	1
6	Double sink	1,500×750×850H	1
7	Cooking tables	1,500×750×850H	3
8	Gas range	1,200×600×850H Gas consumption 34,200 Kcal/H	1
9	Cooking tables with drawers	1,500×750×850	2
10	Kitchen wall cabinet	1,500×400×800	1
11	Cooking table with sink	1,500×750×850	1
12	Portable table	1,500×750×850	1
13	Racks	1,520×610×1,900	3
14	200kg weighing scale	200kg	1
15	20kg table top scale	20kg	1
16	Permeation tank	1,200×750×850	1
17	Instantaneous water heater	Calorific consumption 39,000 Kcal/H	1
18	Sink for dish wash- ing	1,500×750×850	1
19	Boiler type sterilizing tank	900×750×850	1
20	Drainboard	1,500×750×850	1
21	Dish shelves	1,500×750×1,800	2
22	Garbage can	Capacity 90ℓ	1
23	Wagons (for 36 persons)	1,130×770×1,560	3
24	L-type carrier	900×600×850	1
25	Sink with drain- board	1,500×750×800	1

Kitchen floor plan K-100

S=1/100

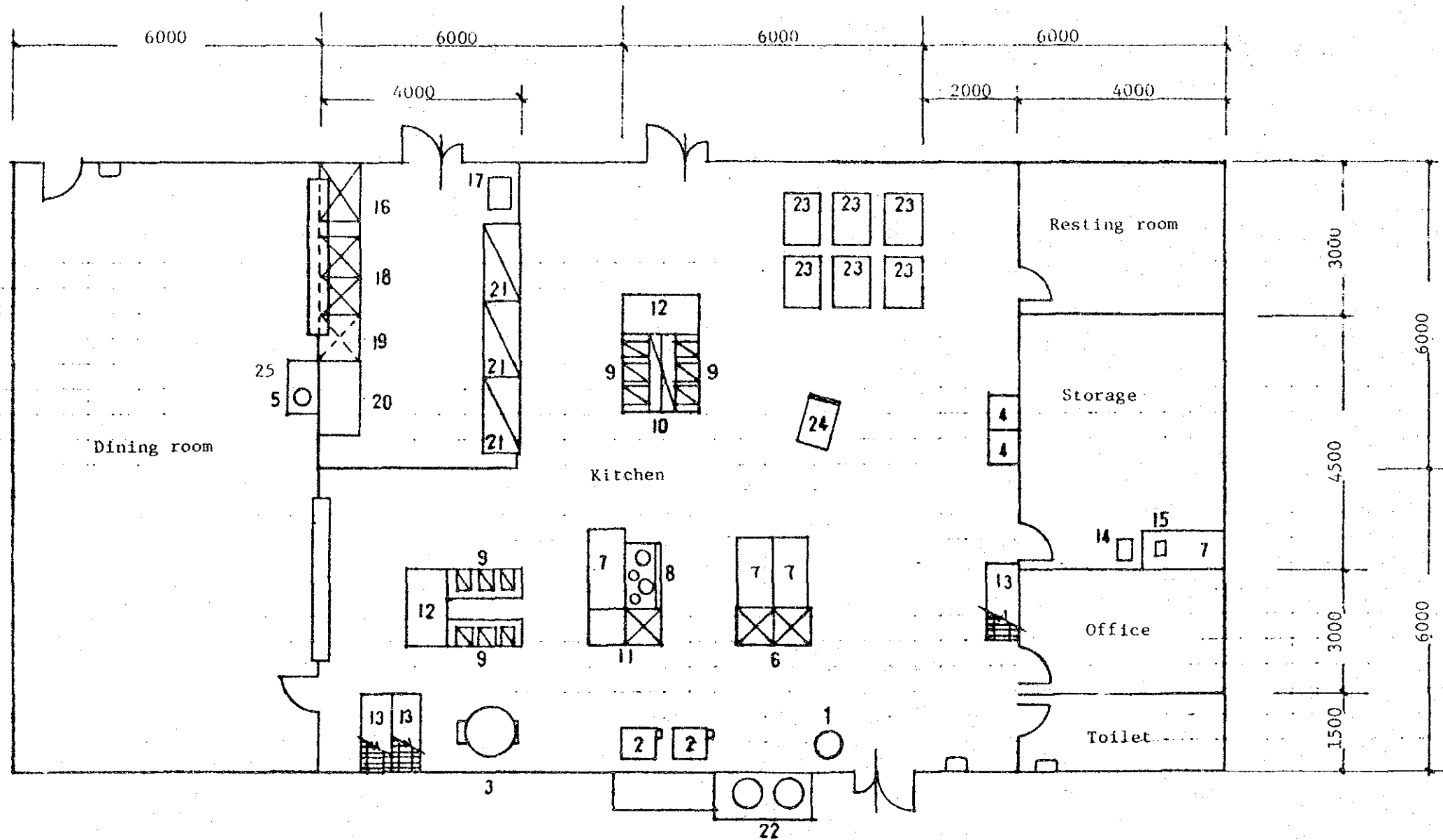


Model plan equipment details	Kitchen equipment	Model plan code	K-200
---------------------------------	-------------------	-----------------------	-------

XII-132

Equipment list			
Equip- ment No.	Name	Specification	Qty
1	Water pressured rice washer	Amount of rice washed 22kg, 4395 × 625H	1
2	Gas rice cookers	Gas consumption 9,500 Kcal/H	2
3	Gas rotary cooker	Gas consumption 23,000 Kcal/H	1
4	Refrigerators	Effective capacity 441ℓ	2
5	Storage type hot water heater	Working capacity 40ℓ	1
6	Double sink	1,500×750×850H	1
7	Cooking tables	1,500×750×850H	4
8	Gas ranges	1,200×600×850H Gas consumption 34,200 Kcal/H	4
9	Cooking table with drawers	1,500×750×850	1
10	Wall cabinet	1,500×400×800	1
11	Cooking tables with sinks	1,500×750×850	2
12	Portable tables	1,500×750×850	3
13	Rack	1,520×610×1,900	1
14	200kg weighing scale	200kg	1
15	20kg table top scale	20kg	1
16	Permeation tank	1,500×850×850	1
17	Instantaneous water heater	Calorific consumption 39,000 Kcal/H	1
18	Sink for dish washing	1,500×750×850	1
19	Boiler type sterilizing tank	900×750×850	1
20	Drainboard	1,500×750×850	1
21	Dish shelves	1,500×750×1,800	3
22	Garbage cans	Capacity 90ℓ	2
23	Wagons (for 36 person)	1,130×770×1,560	6
24	L-type carrier	900×600×850	1
25	Sink with drainboard	1,500×750×800	1

Kitchen floor plan K-200

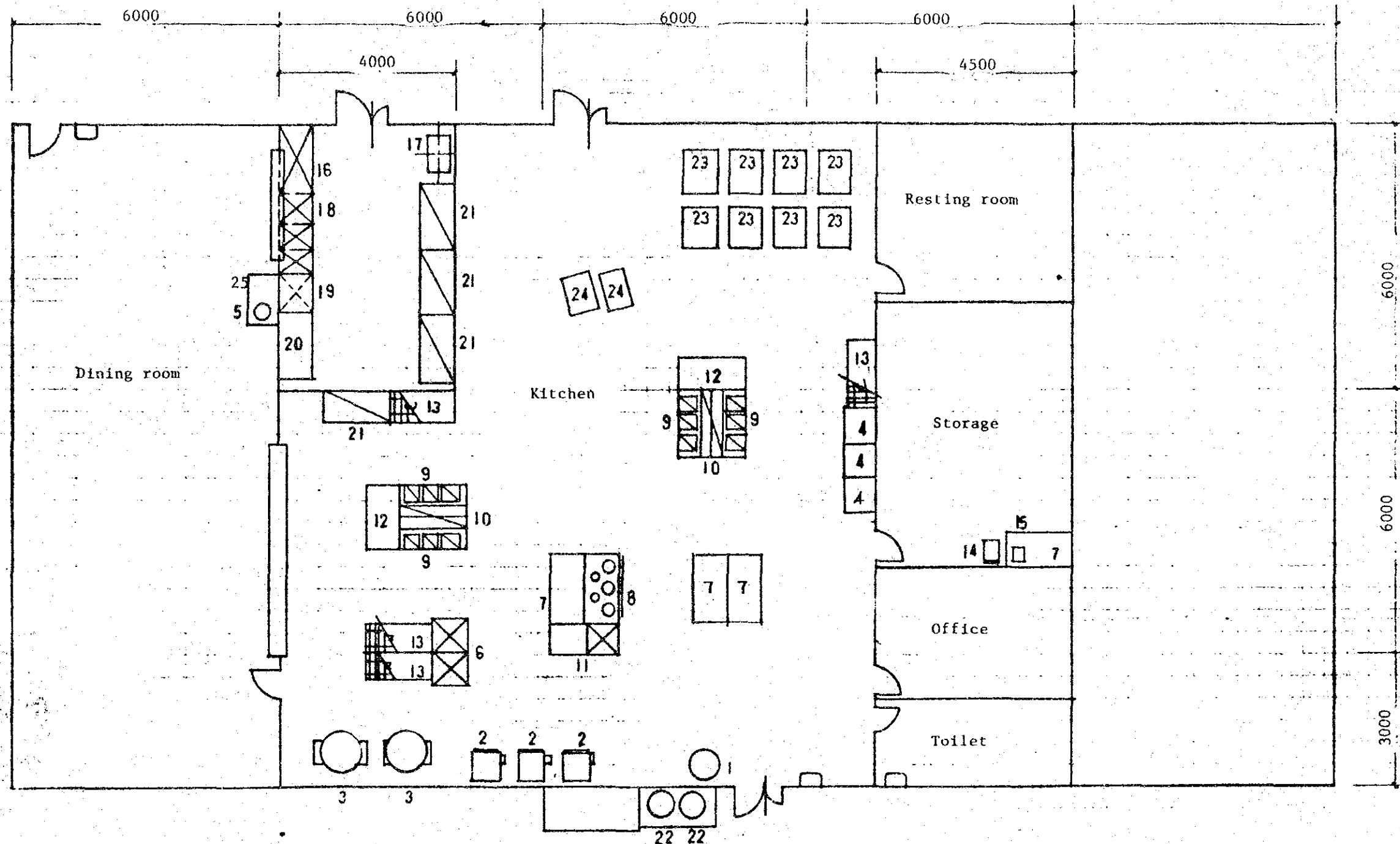


Model plan equipment details	Kitchen equipment	Model plan code	K-300
---------------------------------	-------------------	-----------------------	-------

XII-134

Equipment list			
Equip- ment No.	Name	Specification	Q'ty
1	Water pressure rice washer	Amount of rice washed 22kg, 430φ × 625H	1
2	Gas rice cookers	Gas consumption 9,500 Kcal/H	3
3	Gas rotary cooker	Gas consumption 29,000 Kcal/H	2
4	Refrigerators	Effective capacity 441L	3
5	Storage type hot water heater	Working capacity 60%	1
6	Double sink	1,500×750×850	1
7	Cooking tables	1,500×750×850	4
8	Gas range	1,500×750×850H Consumption 54,500 Kcal/H	1
9	Cooking tables with drawers	1,500×750×850	4
10	Wall cabinets	1,500×400×800	2
11	Cooking table with sink	1,500×750×850	1
12	Portable tables	1,500×750×850	2
13	Racks	1,520×610×1,800	4
14	200kg weighing scale	200kg	1
15	20kg table top scale	20kg	1
16	Permeation tank	1,500×750×850	1
17	Instantaneous water heater	Calorific consumption 45,700×Kcal/H	1
18	Sink for dish washing	1,800×750×850	1
19	Boiler type sterilizing tank	900×750×850	1
20	Drainboard	1,500×750×850	1
21	Dish shelves	1,500×750×1,800	4
22	Garbage cans	Capacity 90%	2
23	Wagons (for 36 persons)	1,130×770×1,560	8
24	L-type carriers	900×600×850	2
25	Sink with drainboard	1,500×750×800	1

Kitchen floor plan K-300



Model plan
equipment details

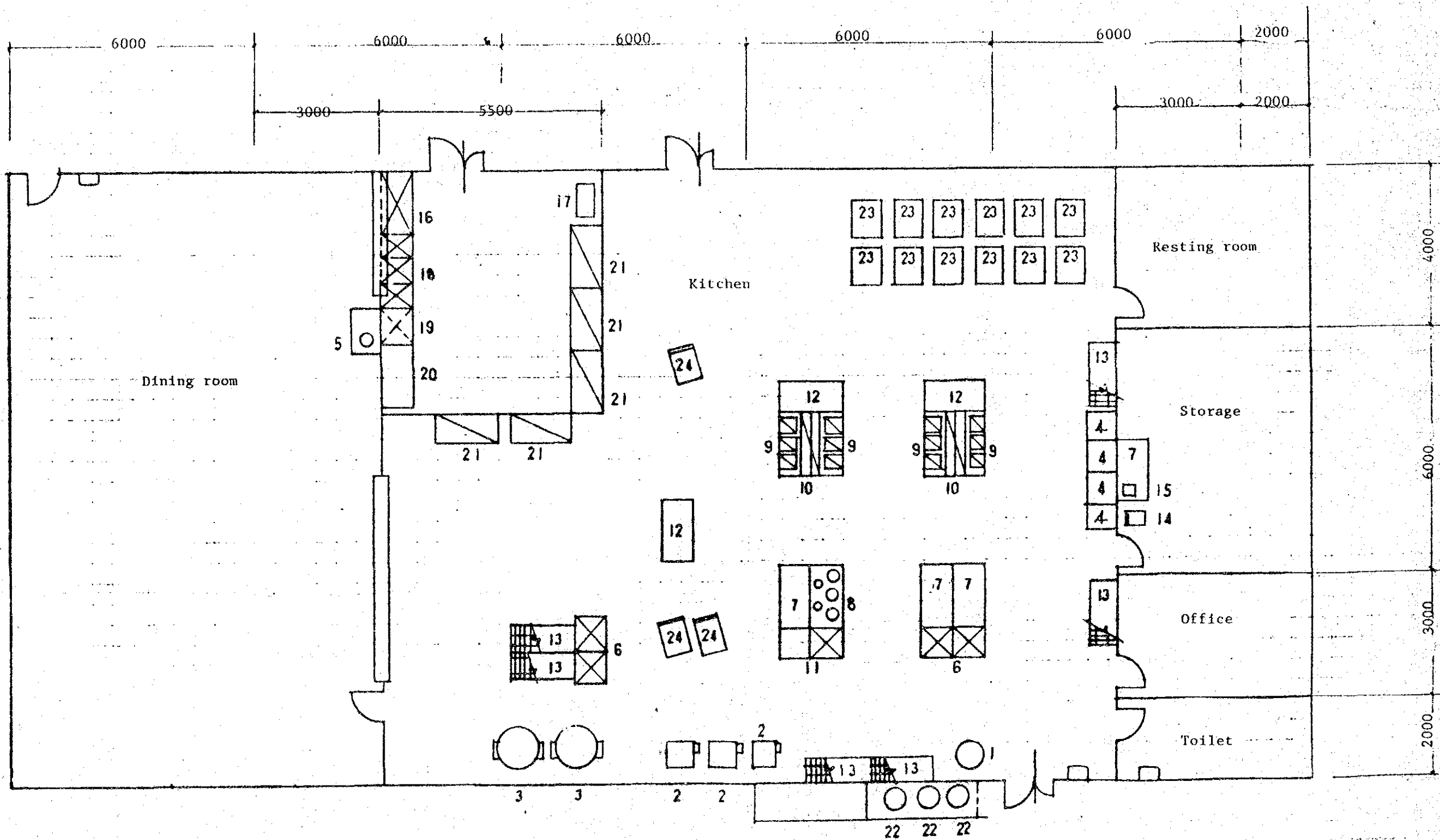
Kitchen equipment

Model
plan
code. K-450

XII-136

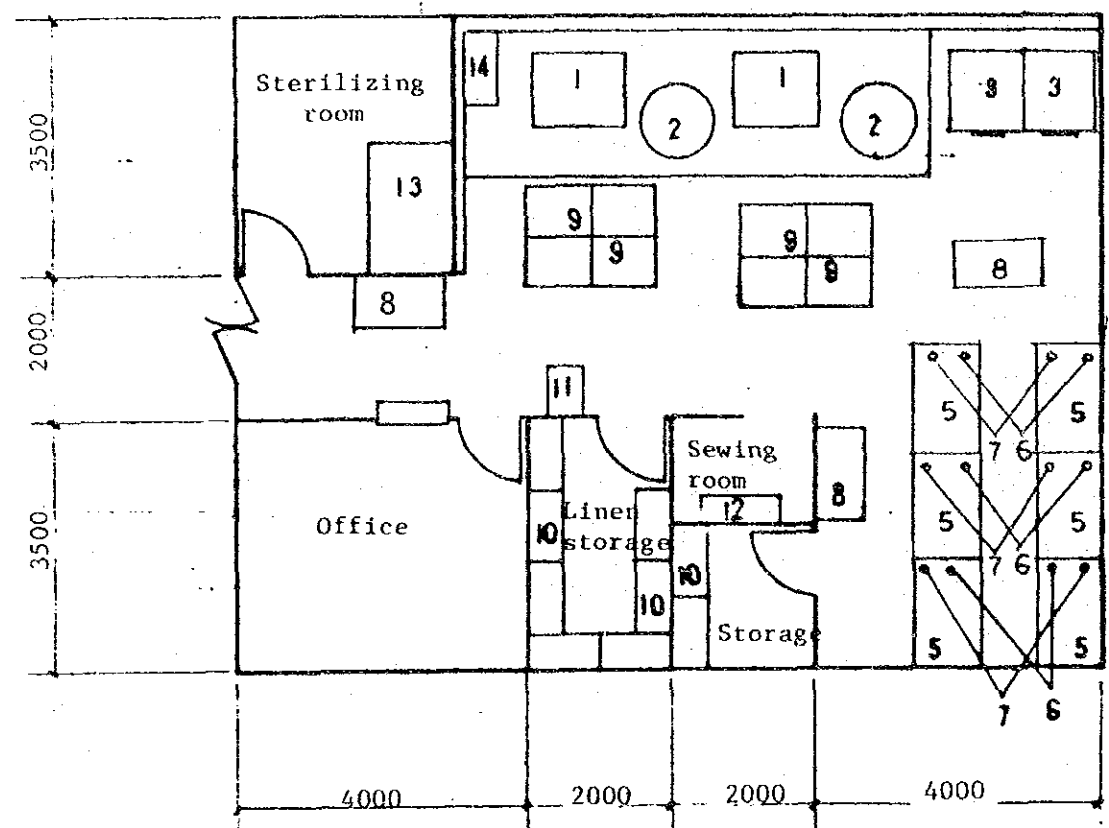
Equipment list			
Equip- ment No.	Name	Specification	Q'ty
1	Water pressure rice washer	Amount of rice washed 22kg, 430φ × 625H	1
2	Gas rice cookers	Gas consumption 9,500 Kcal/H	3
3	Gas rotary cookers	Gas consumption 29,000 Kcal/H	2
4	Refrigerators	Effective capacity 441ℓ	4
5	Storage type hot water heater	Working capacity 60ℓ	1
6	Double sinks	1,500×750×850	2
7	Cooking tables	1,500×750×850	4
8	Gas range	1,500×750×850 Consumption 54,500 Kcal/H	1
9	Cooking tables with drawers	1,500×750×850	4
10	Wall cabinets	1,500×400×800	2
11	Cooking table with sink	1,500×750×850	1
12	Portable tables	1,500×750×850	3
13	Racks	1,520×610×1,900	6
14	200kg weighing scale	200kg	1
15	20kg table top scale	20kg	1
16	Permeation tank	1,500×750×850	1
17	Instantaneous water heater	Calorific consumption 45,700 Kcal/H	1
18	Sink for dish washing	1,800×750×850	1
19	Boiling type sterilizing tank	900×750×850	1
20	Drainboard	1,500×750×850	1
21	Dish shelves	1,500×750×1,800	5
22	Garbage cans	Capacity 90ℓ	3
23	Wagons (for 36 persons)	1,130×770×1,560	12
24	L-type carriers	800×600×850	3
25	Sink with drain-board	1,500×750×800	1

Kitchen floor plan K-450



Model plan equipment details	Laundry equipment	Model plan code	L-100
---------------------------------	-------------------	-----------------------	-------

Layout		S=1/100		Equipment list			
Equipment No.	Name	Specification	Q'ty	Remarks			
1	Washers	10 ~ 20kg	2				
2	Hydroextractors	10 ~ 16kg	2				
3	Dryers	10kg	2				
4							
5	Iron boards	1510×920×640×760H	6				
6	Irons	220×150×120H	6				
7	Sprayers	1ℓ	6				
8	Working tables	1,350×750×690~820H	3				
9	Carts	880×690×750H	8				
10	Shelving	950×1,140×460×500× 1,870~2000H	9				
11	Weighing scale	100kg	1				
12	Sewing machine	1800 stiches per sec.	1				
13	Sterilizing tank	1,800×1,200×800H	1				
14	Sink	1,200×600×800H	1				



Model plan equipment details	Laundry equipment	Model plan code	L-200
---------------------------------	-------------------	-----------------------	-------

Layout		Equipment list				
S=1/100		Equipment No.	Name	Specification	Q'ty	Remarks
<p>The floor plan shows a rectangular layout with a total width of 12,000 units and a total height of 6,000 units. The layout is divided into several functional areas: a Sterilizing room (left), an Office (center), a Sewing room (right), and Linen storage (bottom right). Various pieces of equipment are numbered 1 through 15, corresponding to the equipment list. The Sterilizing room contains a sink (14) and a weighing scale (11). The Office contains a desk (15) and a chair (10). The Sewing room contains a sewing machine (12) and a desk (10). The Linen storage contains a desk (10). The main area contains washers (1), hydroextractors (2), dryers (3), sheets roll (4), iron boards (5), irons (6), sprayers (7), working tables (8), carts (9), and shelving (10).</p>		1	Washers	20 ~ 30kg	2	
		2	Hydroextractors	20 ~ 25kg	2	
		3	Dryers	20kg	2	
		4	Sheets roll	2.4 ~ 6.7 m/min	1	
		5	Iron boards	1,510 × 920 × 640 760H	2	
		6	Irons	220×150×210H	2	
		7	Sprayers	1ℓ	2	
		8	Working tables	1,350×750×690×820H	4	
		9	Carts	880×690×750H	8	
		10	Shelving	950~1,140×460~500× 1,870~2000H	14	
		11	Weighing scale	100kg	1	
		12	Sewing machine	1800 stiches per second	1	
		13	Sterilizing tank	1,800×1,200×800H	1	
		14	Sink	1,200×600×800H	1	
		15	Container carts	0.7m ³	2	

Model plan equipment details	Laundry equipment	Model plan code	L-300
---------------------------------	-------------------	-----------------------	-------

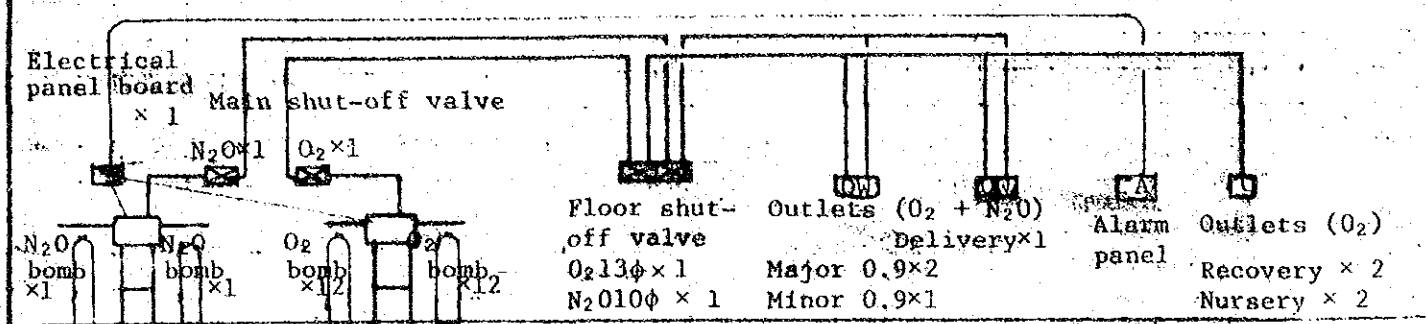
Layout		Equipment list				
S=1/100		Equip- ment No.	Name	Specification	Q'ty	Remarks
<p>6000 2000 1000 3000 3000</p> <p>3500 2500 3000 3000</p> <p>Sterilizing room Storage Sewing room Office</p>	1	Washers	20 ~ 30kg	3		
	2	Hydroextractors	20 ~ 25kg	3		
	3	Dryers	20kg	3		
	4	Sheets roll	2.4 ~ 6.7 m/min	1		
	5	Iron boards	1,510×920×640~760H	2		
	6	Irons	220×150×120H	2		
	7	Sprayers	1ℓ	2		
	8	Working tables	1,350×750×690~820H	5		
	9	Carts	880×690×750H	10		
	10	Shelving	950~1,140×460~500× 1,870~2,000H	15		
	11	Weighing scale	100kg	1		
	12	Sewing machines	1,800 stiches per second	2		
	13	Sterilizing tank	1,800×1,200×800H	1		
	14	Sink	1,200×600×800H	1		
	15	Container carts	0.7m ³	3		

Model plan equipment details	Laundry equipment	Model plan code	L-450
------------------------------	-------------------	-----------------	-------

Layout		Equipment list				
S=1/100		Equip-ment No.	Name	Specification	Q'ty	Remarks
		1	Washers	35 ~ 45kg	2	
		2	Hydroextractors	35 ~ 42kg	2	
		3	Dryers	20kg	4	
		4	Sheets roll	2.4 ~ 6.7 m/min	1	
		5	Iron boards	1,510×920~640~760H	2	
		6	Irons	220×150×120H	2	
		7	Sprayers	1ℓ	2	
		8	Working tables	1,350×750×690~820H	7	
		9	Carts	880×690×750H	14	
		10	Shelving	950~1140×460~500×1,870~2,000H	21	
		11	Weighing scale	100kg	1	
		12	Sewing machines	1,800 stiches per second	2	
		13	Sterilizing tank	1,800×1,200×800H	1	
		14	Sink	1,200×600×800H	1	
		15	Container carts	0.7m ³	4	

Model plan equipment details	Medical gas and LP gas facilities	Model plan code	M-100
------------------------------	-----------------------------------	-----------------	-------

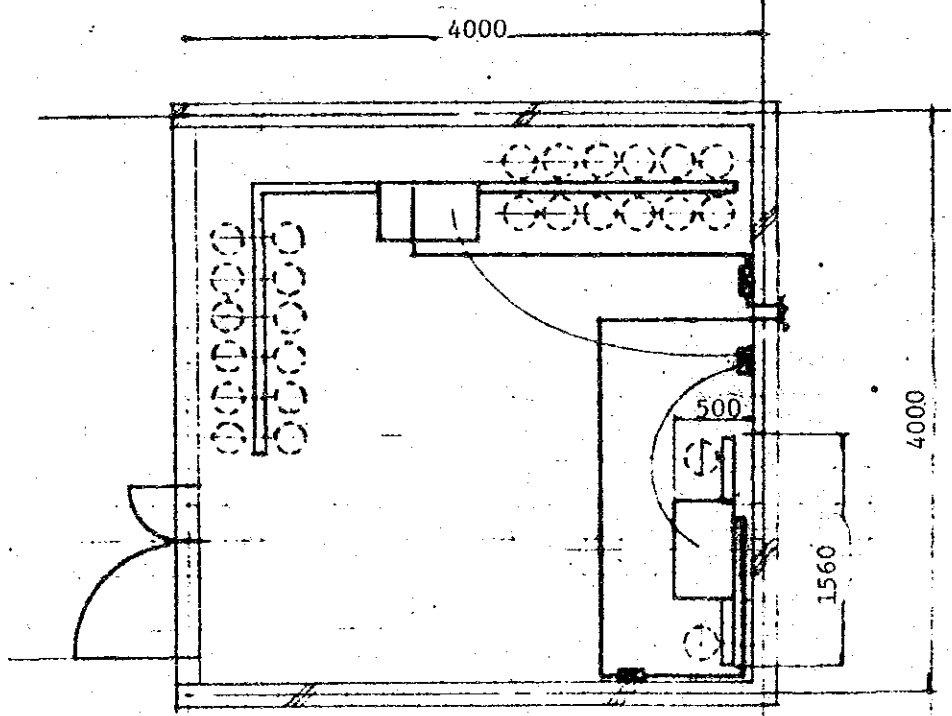
Layout



Automatic laughing gas transfer device

Automatic oxygen transfer device

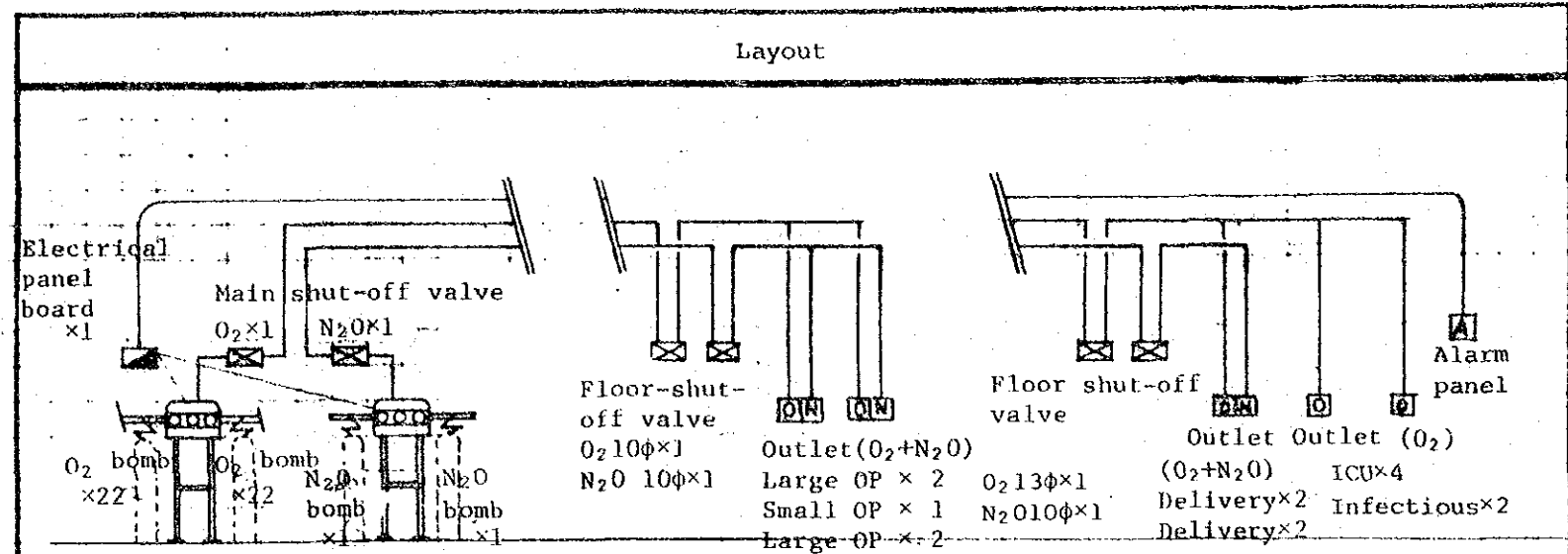
- Rooms where oxygen is supplied:
Surgery room, delivery room, ICU, nursery room; premature baby room.
- Rooms where laughing gas is supplied:
Surgery room, delivery room.
- Rooms where LP gas is supplied:
Laboratory, central supply room, boiler for showers, kitchen, laundry and quarters.



Equipment list

Name	Specification	Q'ty	Remarks
Oxygen line	Manifolds: automatic transfer ring Coupling devices: 2 rows x 24 Outlets: Single type: 4 Duplex type: 5	1 set	
Laughing gas (nitrous oxide) line	Manifolds: automatic transferring Coupling devices: 1 row x 2 Outlets: Duplex type: 5	1 set	
Electrical work		1 set	
LP gas		1 set	

Model plan equipment details	Medical gas & LP gas facilities	Model plan code	M-200
---------------------------------	------------------------------------	-----------------------	-------

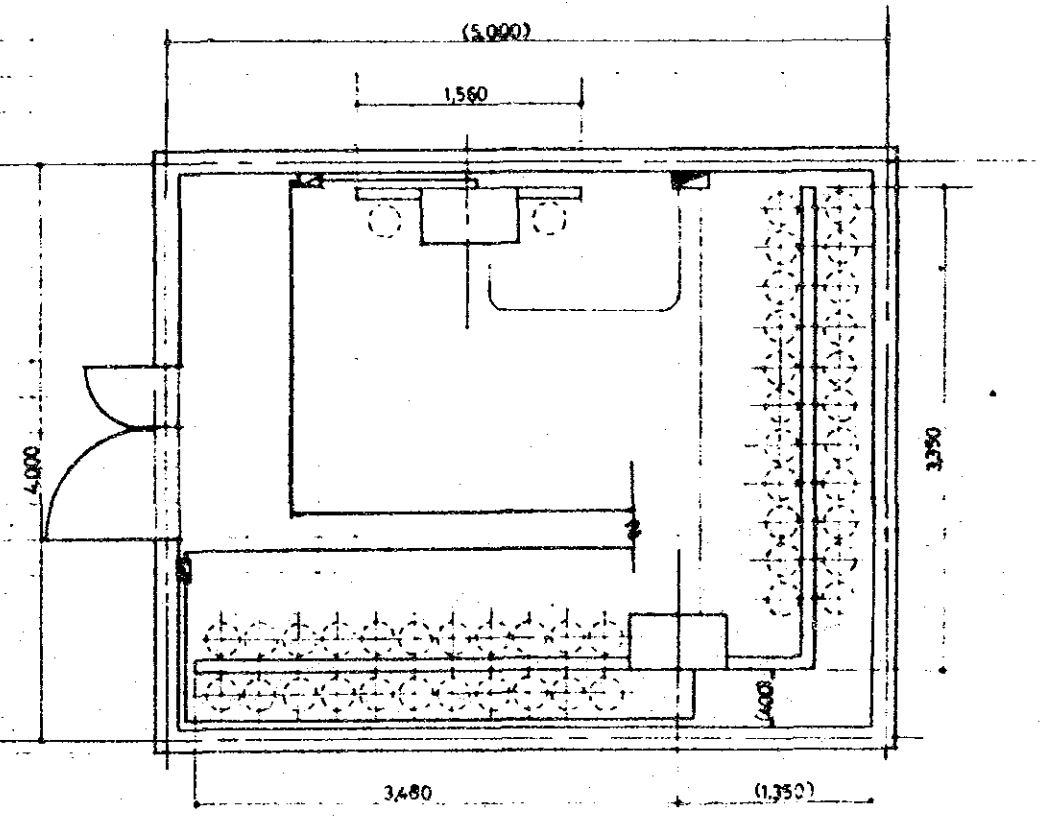


Automatic oxygen transfer device Automatic laughing gas transfer device

Rooms where oxygen is supplied:
Surgery room, delivery room, ICU, nursery room, premature baby room.

Rooms where laughing gas is supplied: Surgery room, delivery room

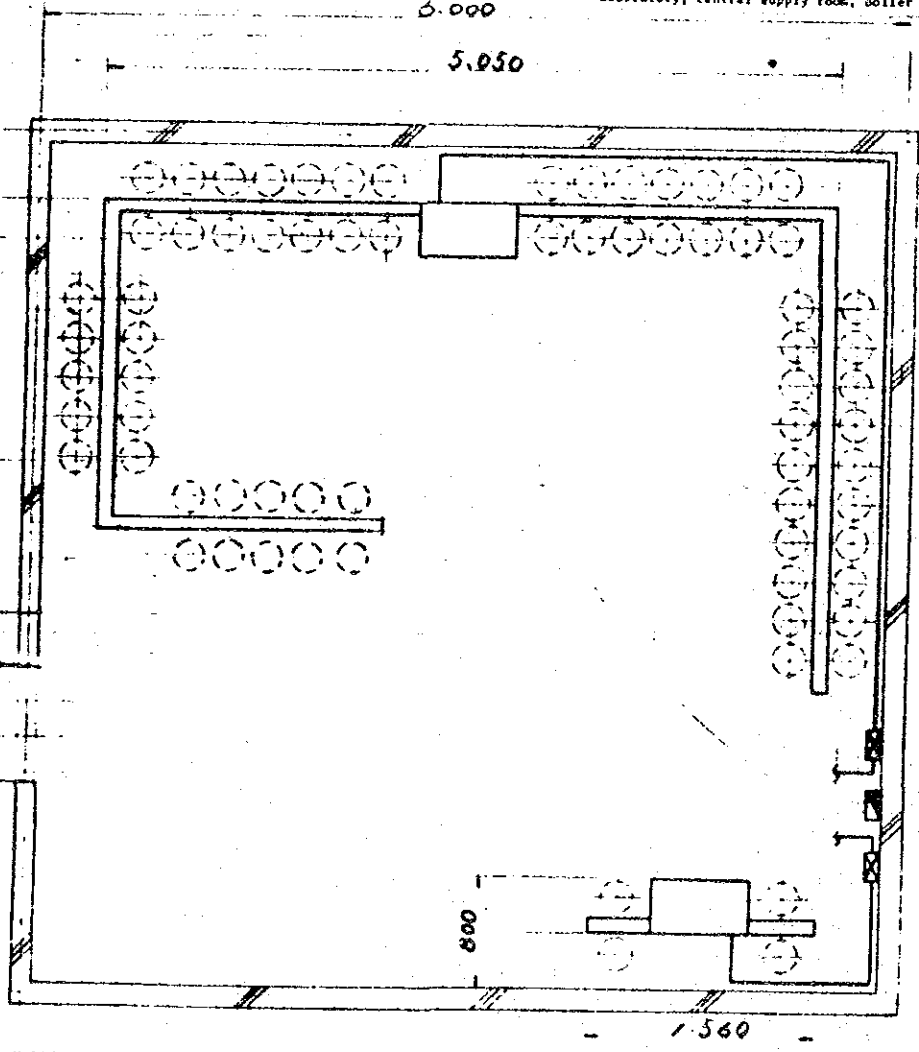
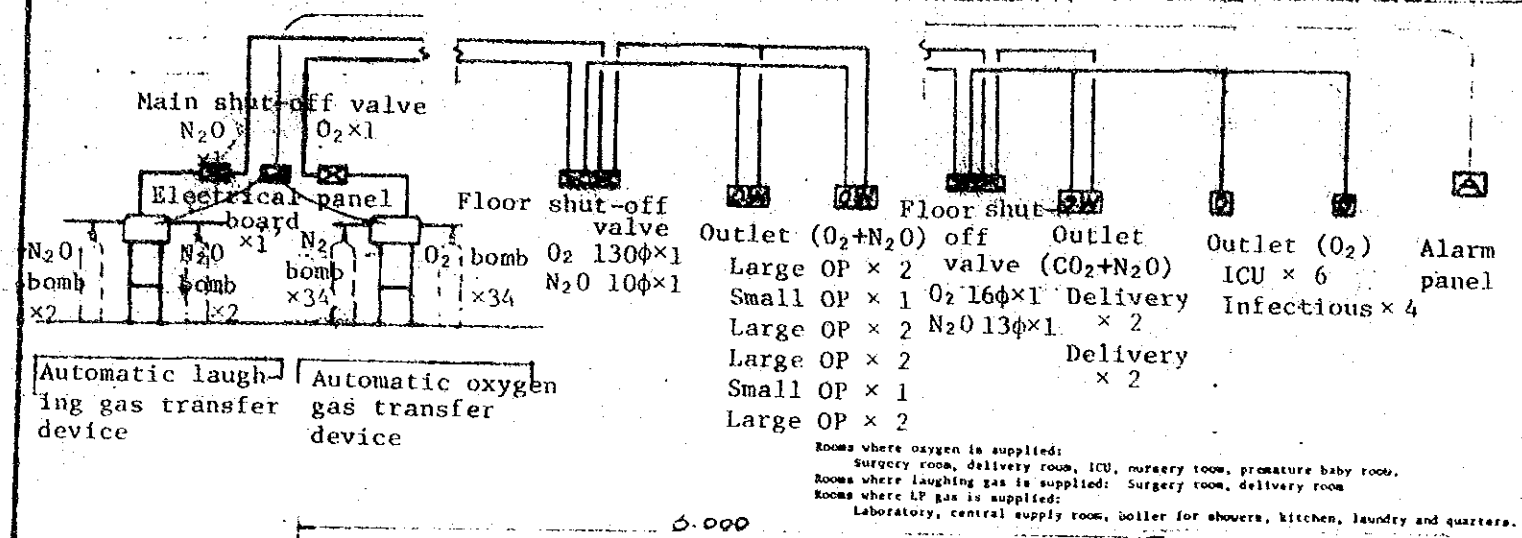
Rooms where LP gas is supplied:
Laboratory, central supply room, boiler for showers, kitchen, laundry and quarters.



Equipment list			
Name	Specification	Q'ty	Remarks
Oxygen gas	Manifolds: automatic transfer-ring Coupling devices: 2 rows x 44 Outlets: Single type: 6 Duplex type: 9	1 set	
Laughing gas (nitrous oxide) line	Manifolds: automatic transfer-ring Coupling devices: 1 row x 2 Outlets: Duplex type: 9	1 set	
Electrical work		1 set	
LP gas		1 set	

Model plan equipment details	Medical gas & LP gas facilities	Model plan cord	M- 300 450
---------------------------------	------------------------------------	-----------------------	---------------

Layout



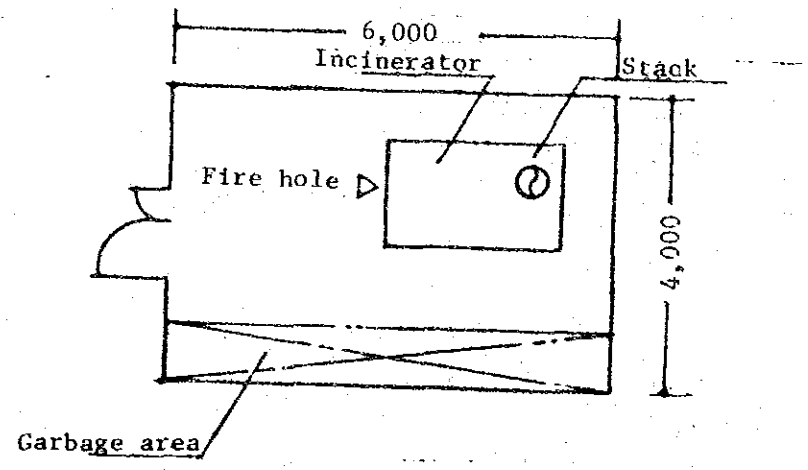
Equipment list

Name	Specification	Q'ty	Remarks
Oxygen gas	Manifolds: automatic transferring Coupling devices: 2 rows x 68 Outlets: Single type: 10 Duplex type: 14	1 set	
Laughing gas (nitrous oxide) line	Manifolds: automatic transferring Coupling devices: 2 rows x 4 Outlets: Duplex type: 14	1 set	
Electrical work		1 set	
LP gas		1 set	

Model plan equipment details	Incinerator facilities	Model plan cord	I-100
---------------------------------	------------------------	-----------------------	-------

Layout S = 1/100

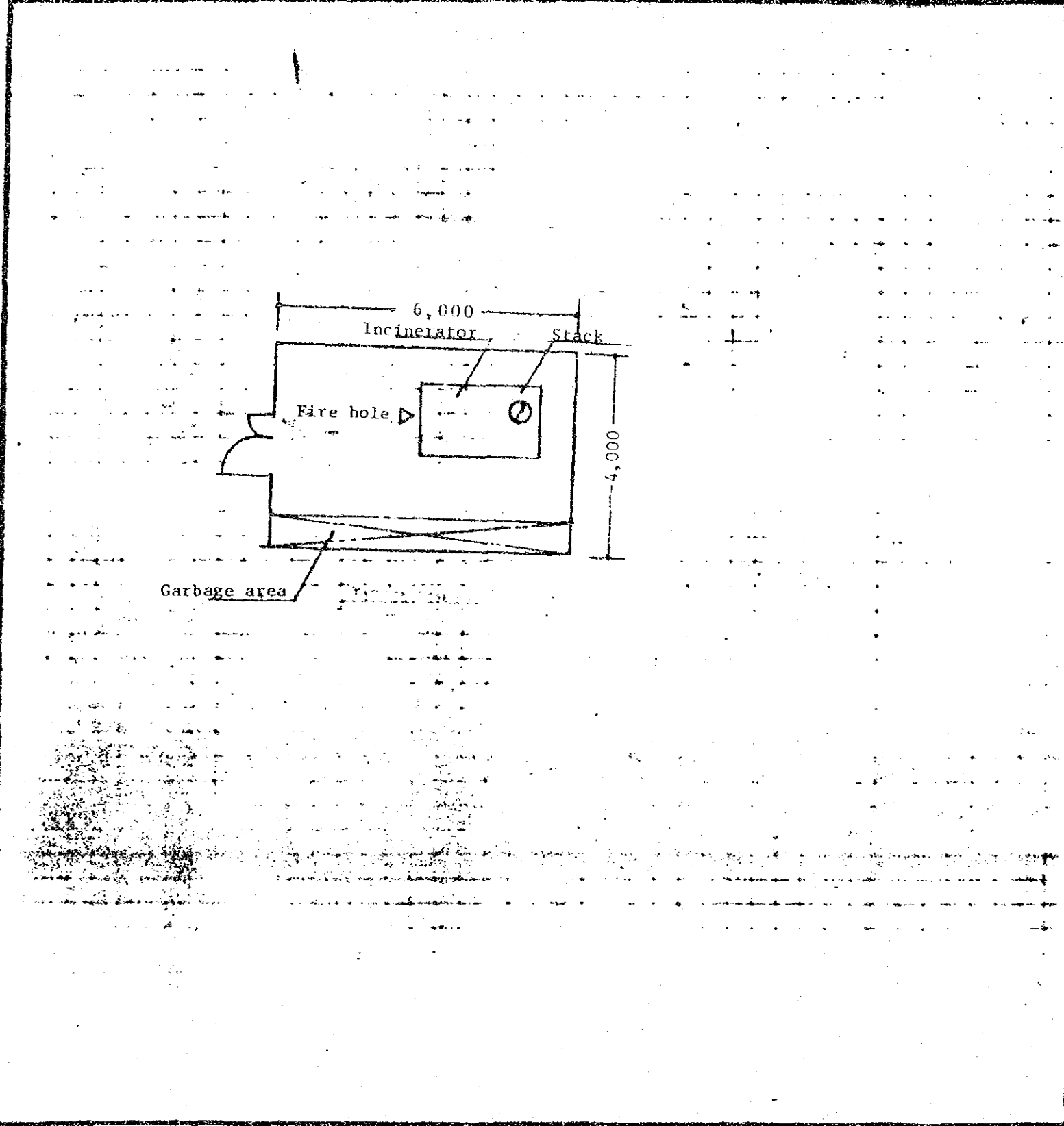
Equipment list



Name	Specification	Q'ty	Remarks
Incinerator (natural)	Rate of burning: 150 kg/H	1	

Model plan equipment details	Incinerator facilities	Model plan code	I-200
---------------------------------	------------------------	-----------------------	-------

Layout 1/100



Equipment list

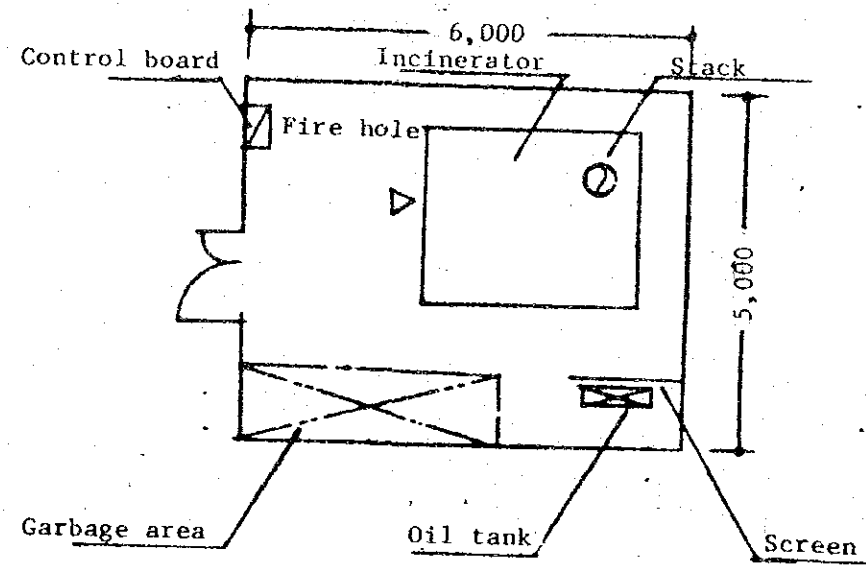
Name	Specification	Q'ty.	Remarks
Incinerator (natural)	Rate of burning: 300 kg/H	1	

Model plan equipment details	Incinerator facilities	Model plan code	I-300
---------------------------------	------------------------	-----------------------	-------

Layout

S = 1/100

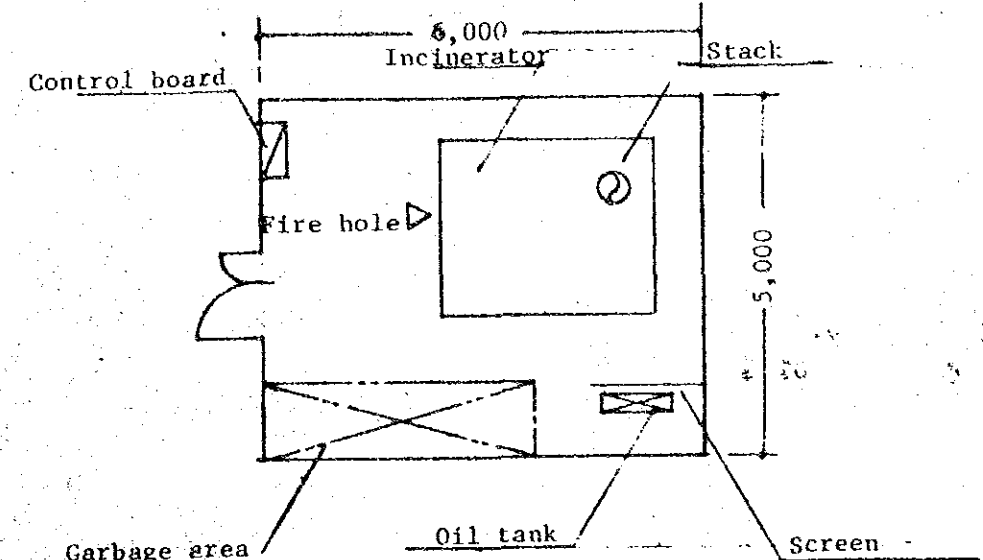
Equipment list



Name	Specification	Qty	Remarks
Incinerator (with auxiliary burner)	Rate of burning: 450 kg/H	1	

--	--	--	--

Model plan equipment detail	Incinerator facilities	Model plan code	I-450
--------------------------------	------------------------	-----------------------	-------

Layout	Equipment list			
<p style="text-align: right;">S = 1/100</p> 	Name	Specification	Q'ty	Remarks
	Incinerator (with auxiliary burner)		1	

JICA