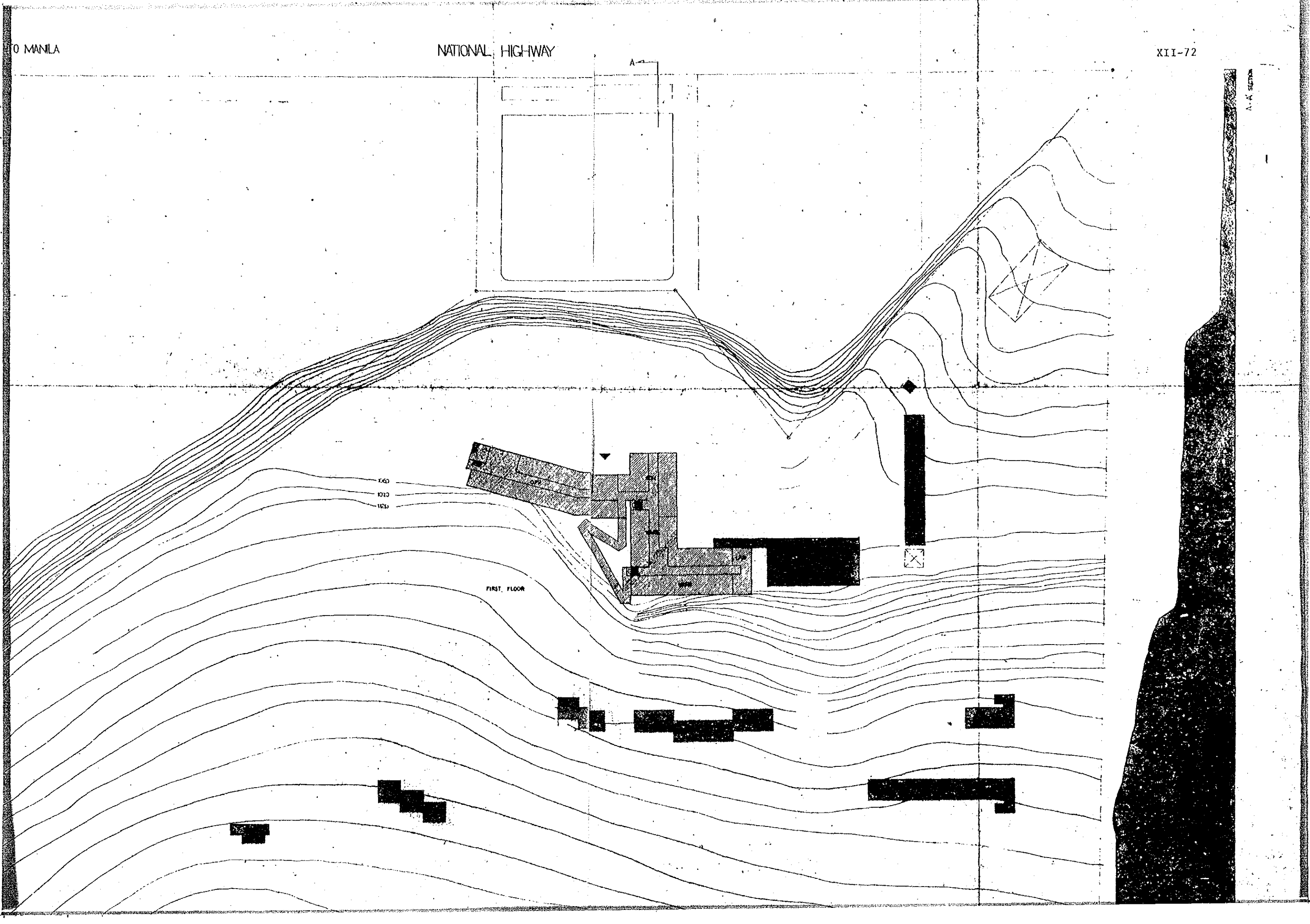


A

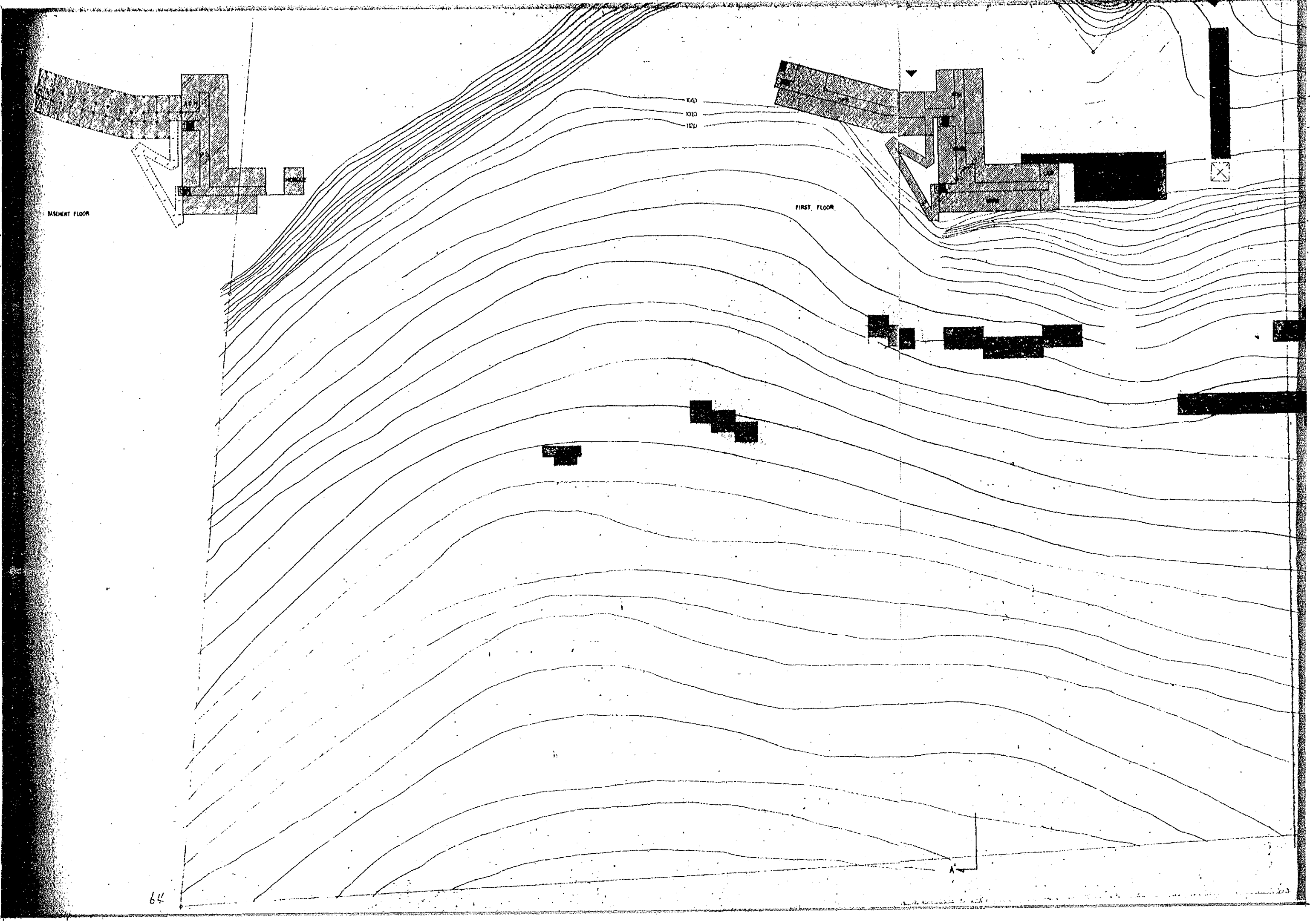
A-A SECTION

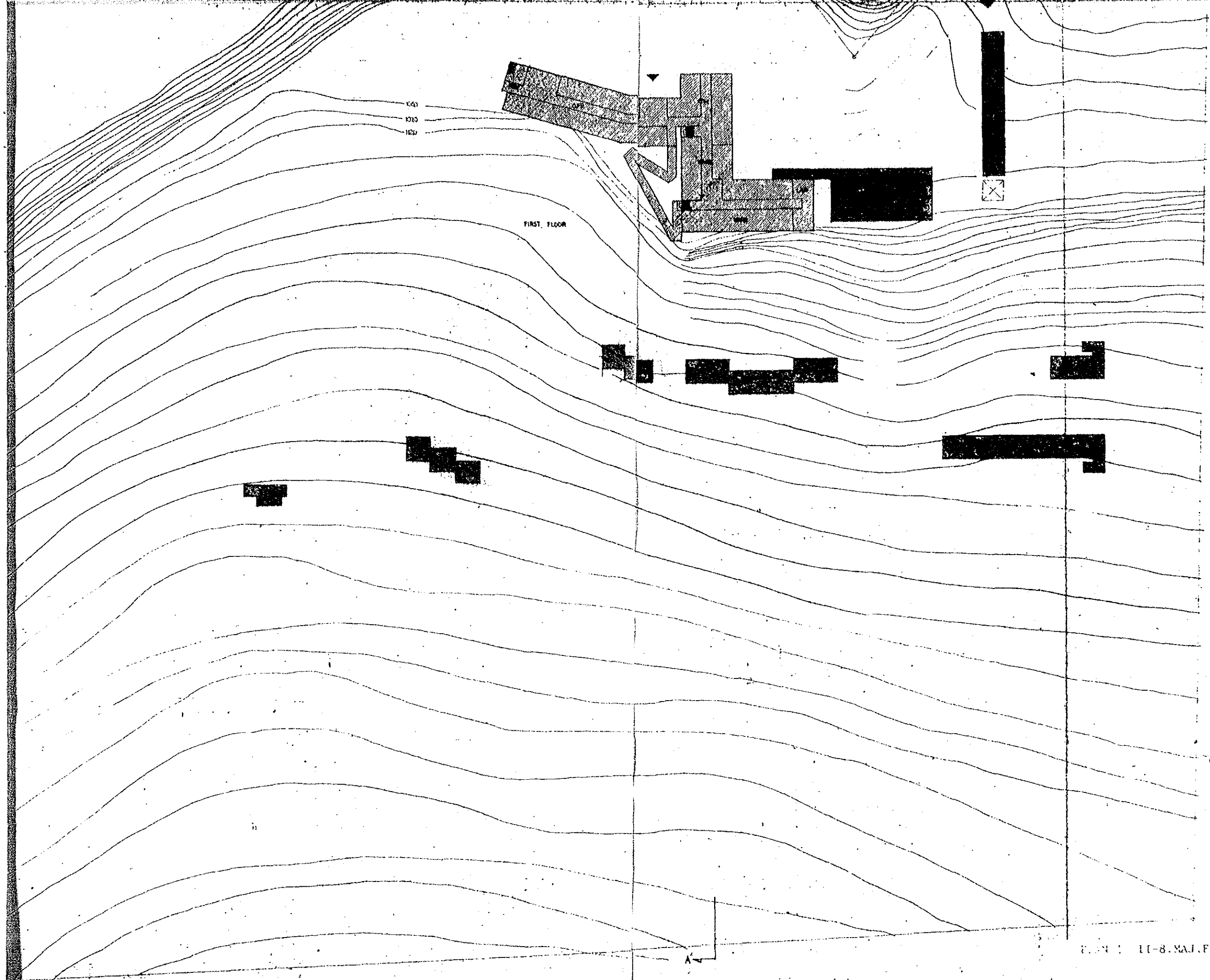


BASMENT FLOOR

FIRST FLOOR

1000
1010
1020





FIRST FLOOR

PROCESS	CONTENTS		NOTES
	DEMOLITION	ALTERATION	
①			

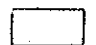
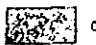


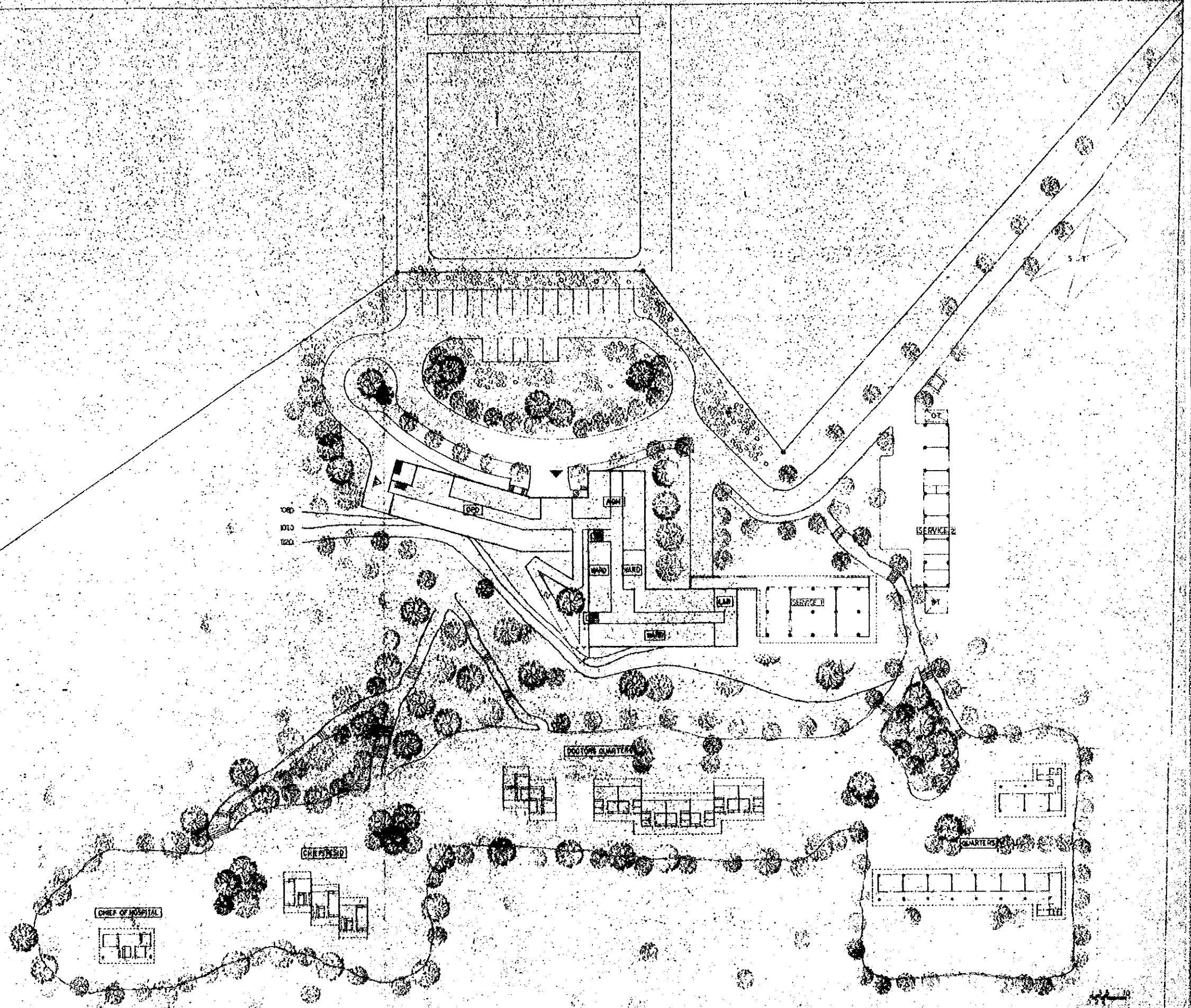
	DEMOLITION		CONSTRUCTION
	NO ALTERATION		ALTERATION

FIGURE 11-8. MAJ. F. MARCOS MEMORIAL HOSPITAL

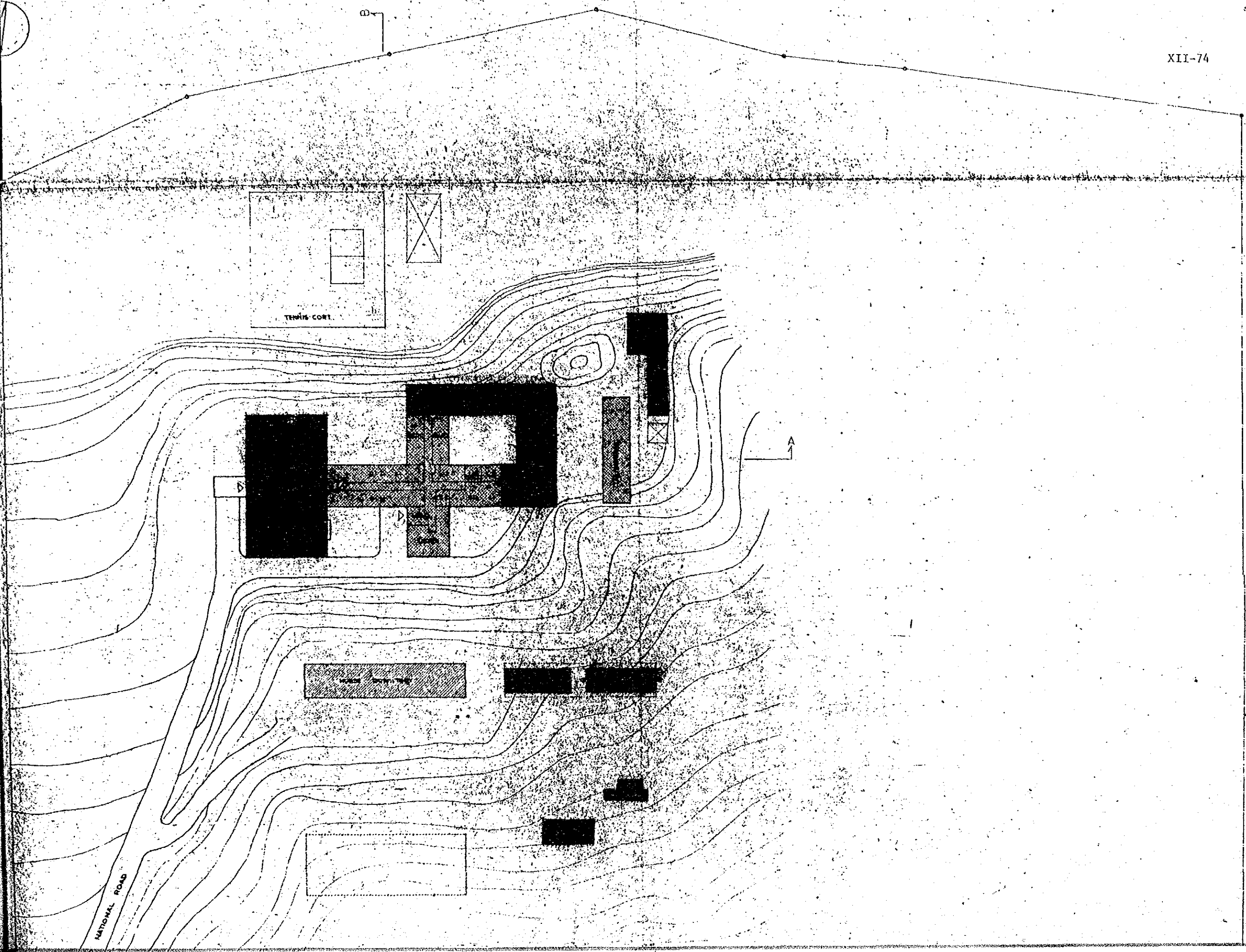
PROJECT OUTLINE

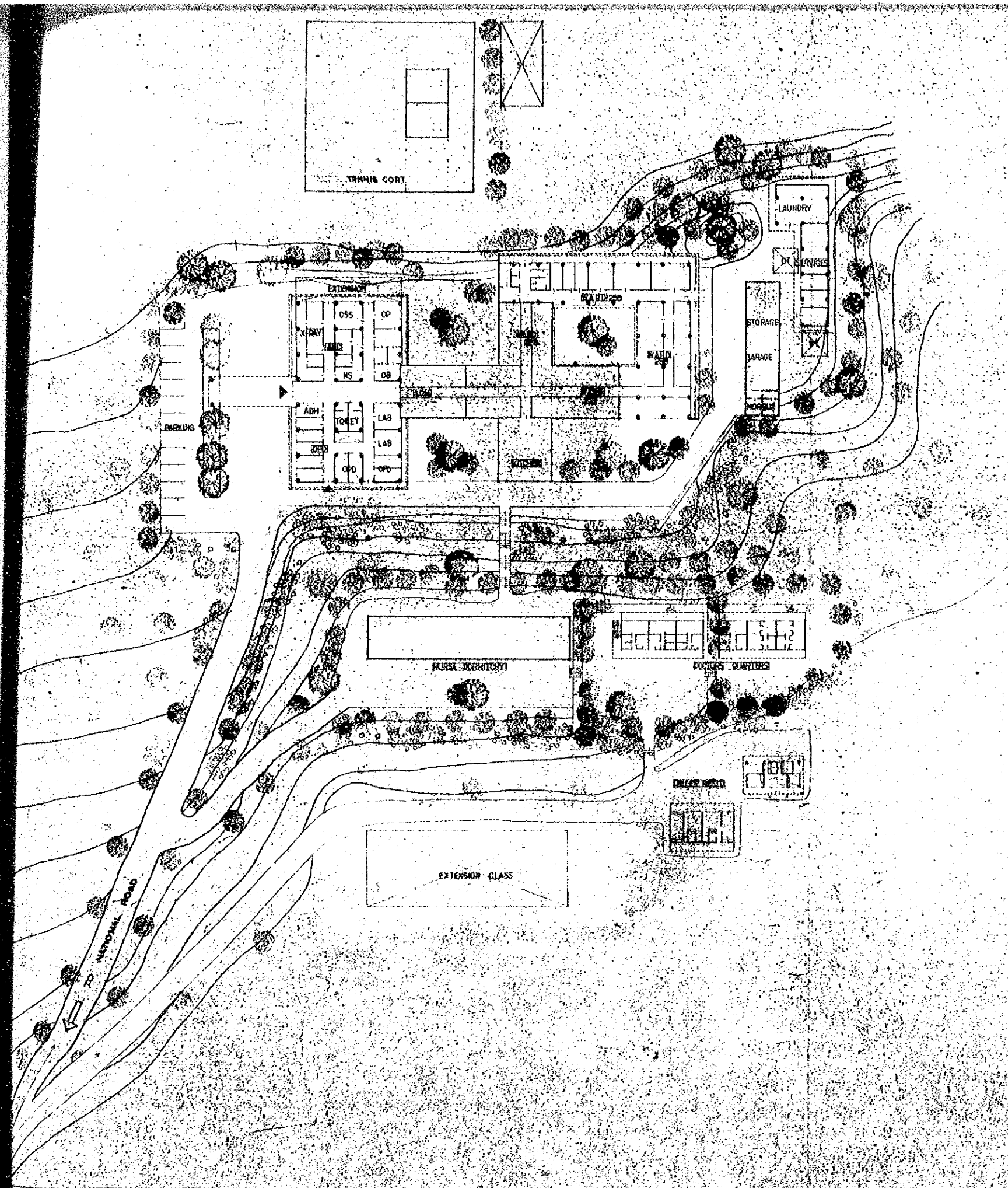


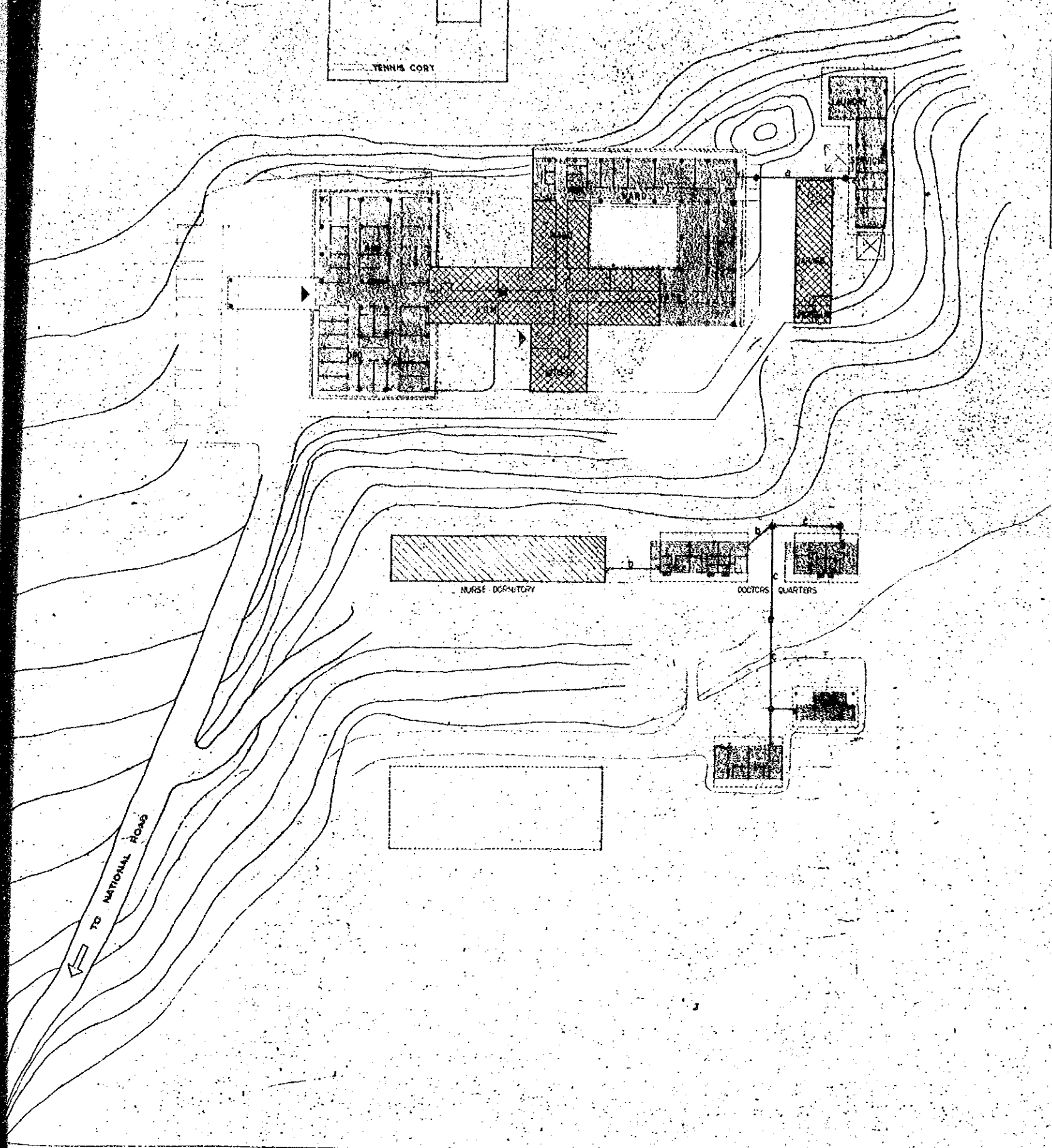
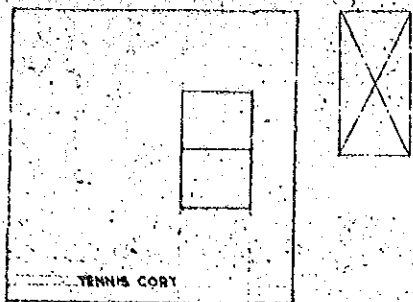
PLAN 1 11-8. MAJ. F. MARCOS MEMORIAL HOSPITAL

N

30



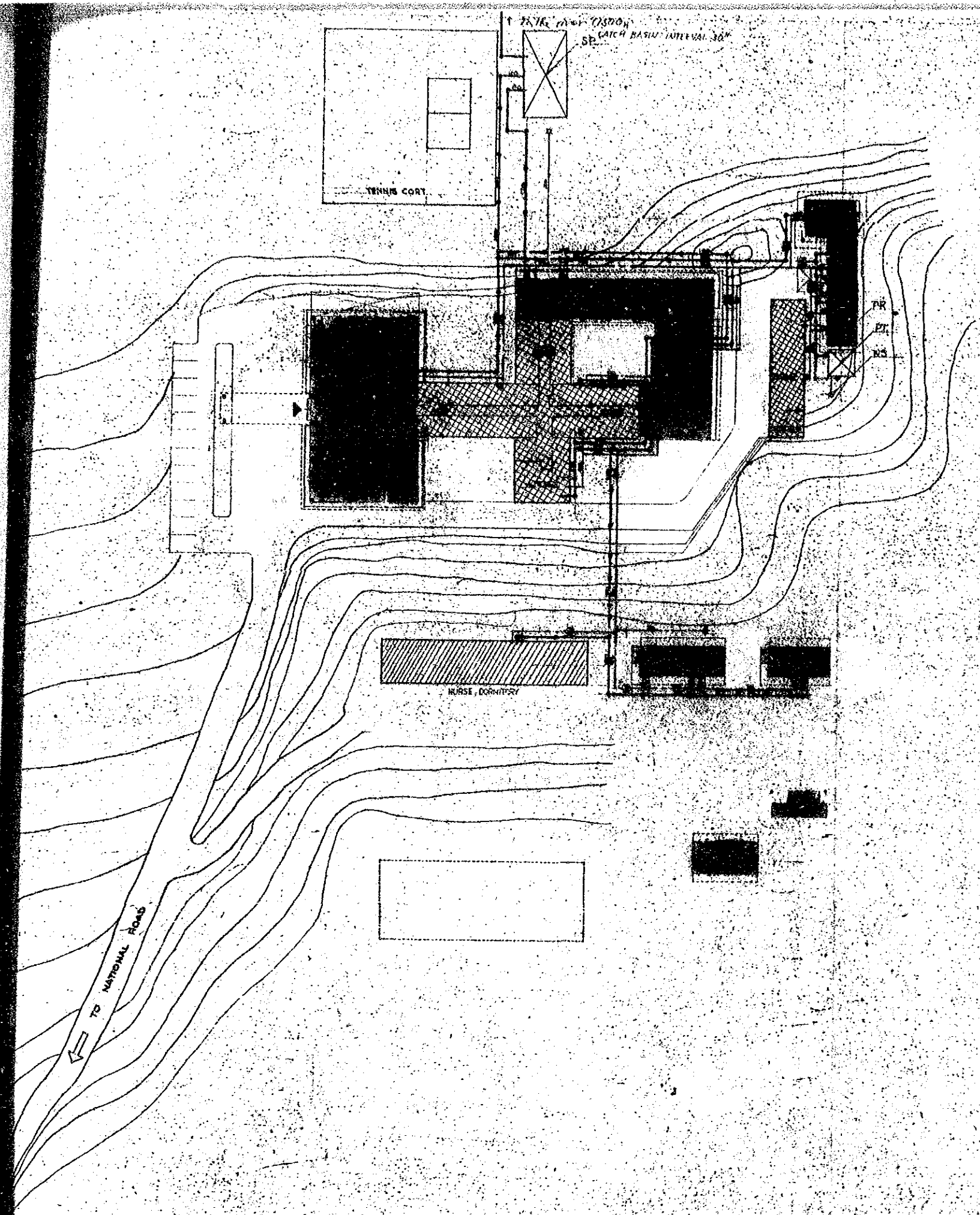


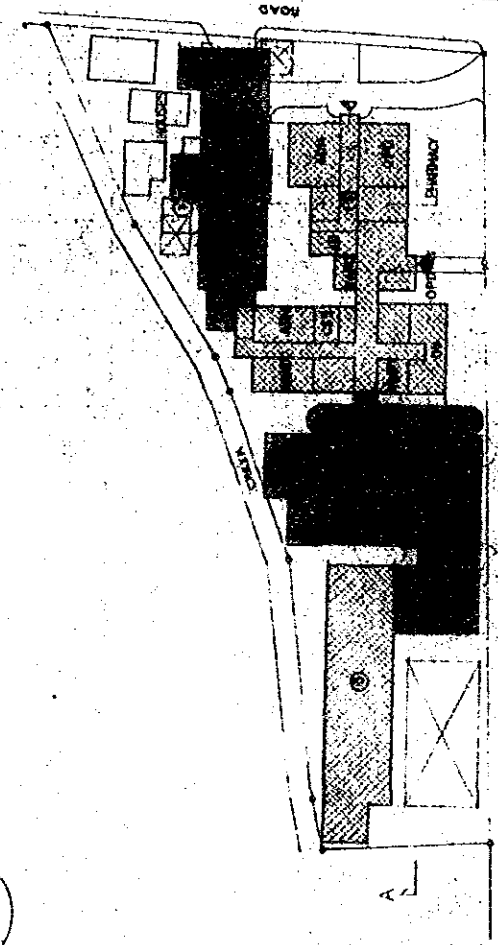
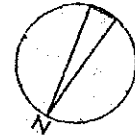


FEDDER NAME	CAPACITY
WARD LIGHTING FEEDER	17 KW
LIGHTING GENERATOR FEEDER	12 KW
MEDICAL EQUIPMENT FEEDER	10 KW
AIR CONDITIONING POWER FEEDER	10 KW
WARD LIGHTING FEEDER	18 KW
MEDICAL EQUIPMENT FEEDER	10 KW
AIR CONDITIONING POWER FEEDER	10 KW
AIR CONDITIONING POWER FEEDER	10 KW
X-RAY	10 KW
LAUNDRY INTERCOM. CABLE	5 KW
BREAKER	10 KW
QUARTERS LIGHTING FEEDER	22 KW
QUARTERS LIGHTING FEEDER	11 KW

XII-76

Q. CONCRETE POLE 15M





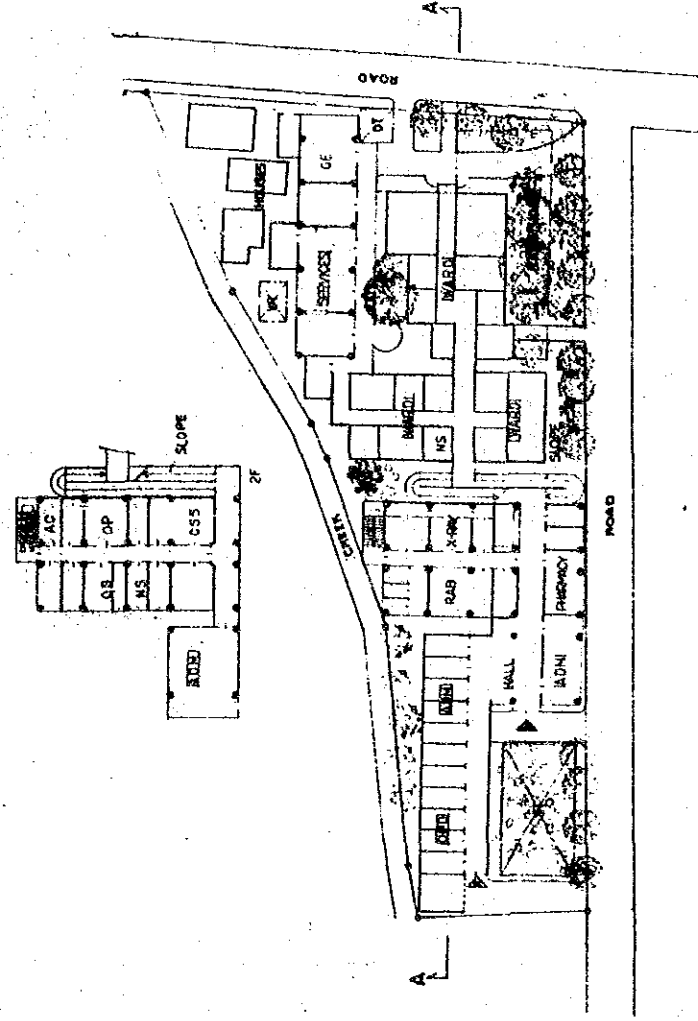
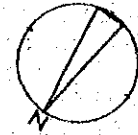
PROCESS	RESOLUTION	ALTERNATION	CONSTRUCTION	NOTES
1	●			
2	●			
3		●		
4		●		
5			●	
6			●	



135
024

PLAN I II-10. BAYNES PROVINCIAL HOSPITAL

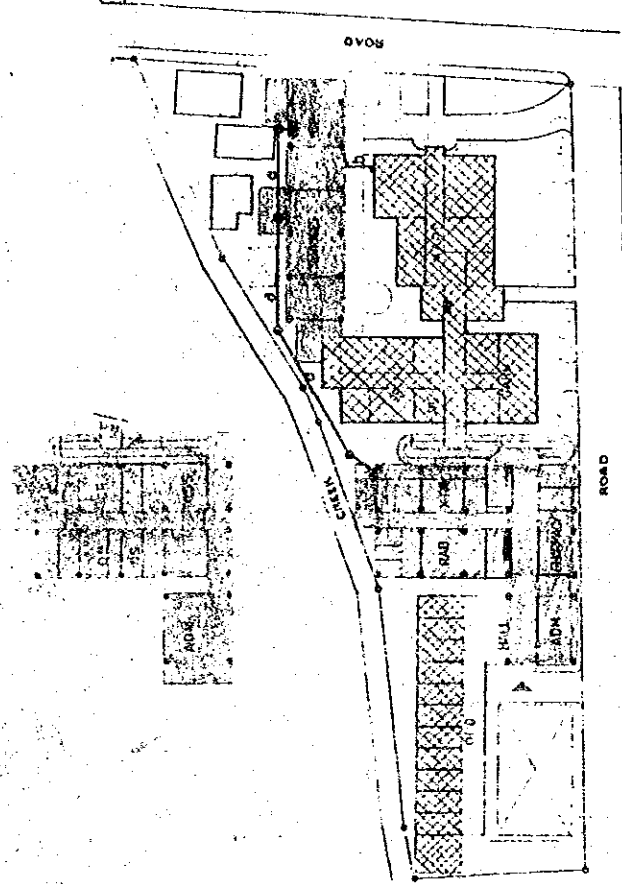
PROJECT OUTLINE



SECTION A-A

PLAN I II-10. BAYNES PROVINCIAL HOSPITAL

XII-78
145
024



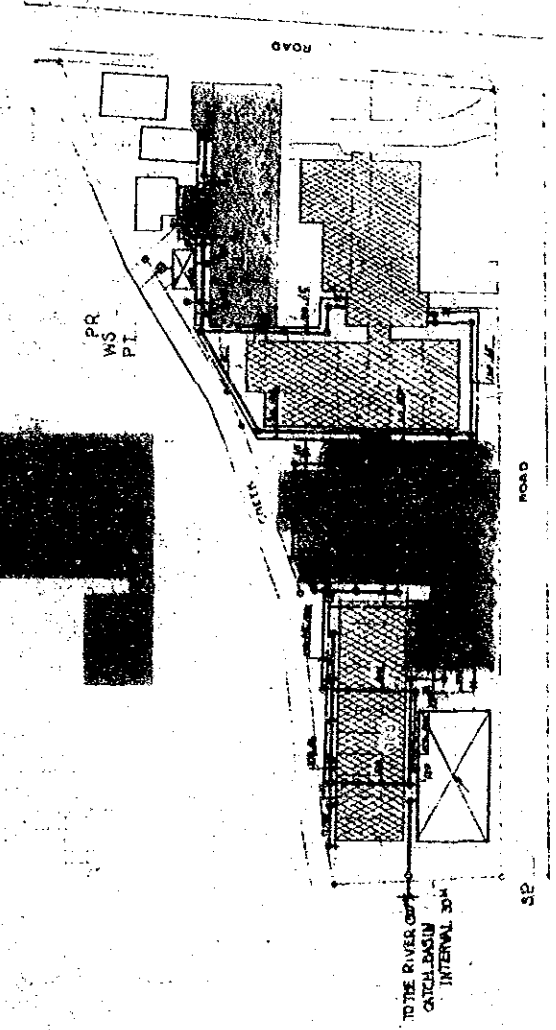
FEEDER NAME	CABLE SIZE	LENGTH
GENERAL LIGHTING FEEDER	17-2	18 MW
MEDICAL EQUIPMENT FEEDER	17-1	10 MW
LIGHTING GENERATOR FEEDER	17-3	5 MW
AMBULANCE FEEDER	17-4	10 MW
AMBULANCE FEEDER	17-5	10 MW
MEDICAL EQUIPMENT FEEDER	17-6	5 MW
X-RAY FEEDER	17-7	10 MW
WARD	17-8	5 MW
WARD	17-9	5 MW
WARD	17-10	5 MW
WARD	17-11	5 MW
WARD	17-12	5 MW
WARD	17-13	5 MW
WARD	17-14	5 MW
WARD	17-15	5 MW
WARD	17-16	5 MW
WARD	17-17	5 MW
WARD	17-18	5 MW
WARD	17-19	5 MW
WARD	17-20	5 MW
WARD	17-21	5 MW
WARD	17-22	5 MW
WARD	17-23	5 MW
WARD	17-24	5 MW
WARD	17-25	5 MW
WARD	17-26	5 MW
WARD	17-27	5 MW
WARD	17-28	5 MW
WARD	17-29	5 MW
WARD	17-30	5 MW
WARD	17-31	5 MW
WARD	17-32	5 MW
WARD	17-33	5 MW
WARD	17-34	5 MW
WARD	17-35	5 MW
WARD	17-36	5 MW
WARD	17-37	5 MW
WARD	17-38	5 MW
WARD	17-39	5 MW
WARD	17-40	5 MW
WARD	17-41	5 MW
WARD	17-42	5 MW
WARD	17-43	5 MW
WARD	17-44	5 MW
WARD	17-45	5 MW
WARD	17-46	5 MW
WARD	17-47	5 MW
WARD	17-48	5 MW
WARD	17-49	5 MW
WARD	17-50	5 MW
WARD	17-51	5 MW
WARD	17-52	5 MW
WARD	17-53	5 MW
WARD	17-54	5 MW
WARD	17-55	5 MW
WARD	17-56	5 MW
WARD	17-57	5 MW
WARD	17-58	5 MW
WARD	17-59	5 MW
WARD	17-60	5 MW
WARD	17-61	5 MW
WARD	17-62	5 MW
WARD	17-63	5 MW
WARD	17-64	5 MW
WARD	17-65	5 MW
WARD	17-66	5 MW
WARD	17-67	5 MW
WARD	17-68	5 MW
WARD	17-69	5 MW
WARD	17-70	5 MW
WARD	17-71	5 MW
WARD	17-72	5 MW
WARD	17-73	5 MW
WARD	17-74	5 MW
WARD	17-75	5 MW
WARD	17-76	5 MW
WARD	17-77	5 MW
WARD	17-78	5 MW
WARD	17-79	5 MW
WARD	17-80	5 MW
WARD	17-81	5 MW
WARD	17-82	5 MW
WARD	17-83	5 MW
WARD	17-84	5 MW
WARD	17-85	5 MW
WARD	17-86	5 MW
WARD	17-87	5 MW
WARD	17-88	5 MW
WARD	17-89	5 MW
WARD	17-90	5 MW
WARD	17-91	5 MW
WARD	17-92	5 MW
WARD	17-93	5 MW
WARD	17-94	5 MW
WARD	17-95	5 MW
WARD	17-96	5 MW
WARD	17-97	5 MW
WARD	17-98	5 MW
WARD	17-99	5 MW
WARD	17-100	5 MW

CONCRETE POLE 15' M

PLAN I II-10, RATANES PROVINCIAL HOSPITAL

OUTSIDE WIRING

125 30
0 2 2



XII-79

PLAN I II-10, RATANES PROVINCIAL HOSPITAL

OUTSIDE PLUMBING

125 30
0 2 2

PLAN (II) LIST OF SATISFACTION RATE & CONSTRUCTION RATE

S ... Satis. r.
C ... Const. r.

	Hospital Name	Main Building %								Service %				Doctors' Quarters %				Dormitory %				Demolish	Hospital %		Residence %		Sub Total %		Total				
		ANC %		OPD %		ADM %		Ward %		Toilet	-1 %		-2 %		Morgue %	Others %	Chief %		Doctor %		Female %		Male %		S	C	S	C		S	C		
		S	C	S	C	S	C	S	C		S	C	S	C			S	C	S	C	S		C	S								C	S
NS-35	450 ^B Standard																																
	300 ^B Standard																																
	200 ^B Standard																																
	100 ^B Standard																																
I	1 Pangasinan MC	100	100	100	100	100	100	92	78		100	100	100	100	100	100	117	100	100	53	53	67	67	57	57		97	90	61	61	89	83	
	2 Bontoc PH	61	0	76	0	102	0	100	0		100	100	152	72	100	0	165	165	65	55	55	69	69	67	67		96	21	79	62	93	30	
	3 Baguio MC																																
	4 Benguet PH	100	100	100	100	100	100	116	75		100	100	100	100	100	100	288	100	100	55	55	119	0	100	0		115	100	96	52	110	89	
	5 La Union RH	106	106	57	0	36	0	77	35 (3,820 m ²)		100	100	100	100	100	100	208	0	0	52	52	107	0	100	100	(Hospital) (7,970 m ²)	86	52	72	33	83	51 (9,620 m ²)	
	6 Abra PH	104	104	89	0	114	0	51	0		100	100	100	100	100	100	59	35	35	79	55	69	69	67	67		81	41	67	57	78	45	
	7 Gabriela Silang PH	100	100	100	100	100	100	86	86		100	100	100	100	100	100	100	100	100	55	55	69	69	67	67		95	95	68	68	89	89	
	8 Don Mariano Marcos MH																																
	9 Ilocos Norte PH	100	100	43	0	43	0	57	0		79		100	100	72	0	0	53	0	97	0	0	0	0			66	38	53	0	59	31	
II	1 Cagayan RH	100	100	100	100	100	100	88	88		100	100	100	100	100	100	100	100	59	59	68	68	75	75		95	95	66	66	89	89		
	2 Cagayan Mental H																																
	3 Kalinga Apayao PH	104	100	95	95	43	0	85	0		100	100	100	100	225	0	59	100	100	55	55	100	0	17	0		89	50	82	41	87	48	
	4 Cagayan PH																																
	5 Isabela PH	104	100	95	0	75	0	95	0 (2,110 m ²)		100	100	340	100	225	0	100	100	100	55	55	38	0	100	0	(Hospital) (4,380 m ²)	112	35	69	46	103	37	
	6 Quirino PH	100	100	95	95	73	0	70	0		100	100	100	100	100	100	253	100	100	55	55	69	69	67	67		94	60	68	68	88	62	
	7 Ifugao PH	100	100	100	100	100	100	93	46		100	100	100	100	100	100	229	100	100	55	55	69	69	67	67		106	89	68	68	98	84	
	8 Maj. Marcos Veteran MH																																
	9 Nueva Vizcaya PH	66	0	58	0	59	0	58	45		100	34	140	56	100	0	0	100	100	55	55	126					67	23	91	41	72	27	
	10 Batanes PH	69	69	45	0	116	70	66	0		86	86	0	0	50	50	88	0	0	0	0	0	0	0	0		61	34	0	0	48	27	
		satisfaction rate = $\frac{\text{new construction area} + \text{renovation area} + \text{using area of old facilities}}{\text{standard area}} \times 100\%$																				Region I		77	47								
		new construction rate = $\frac{\text{new construction area}}{\text{standard area}} \times 100\%$																				Region II		80	56								
																						Total		78	51								

PLAN (II) COST FOR EACH HOSPITAL

(P1,000)

Hospital	Standard Grade (Bed)		A Building	B Mechanical	C Electrical	D Site Development	E Medical Equipment	F Miscellaneous = $\gamma G + 0.65H + \delta$	$\alpha\%$ (γG)	G = A+B+C+D	H = G+E (0.65H)	δ	A = $A(1 + \frac{F}{H})$	B = $B(1 + \frac{F}{H})$	C = $C(1 + \frac{F}{H})$	D = $D(1 + \frac{F}{H})$	E = $E(1 + \frac{F}{H})$	Total = A+B+C+D+E+F = A+B+C+D+E
	ANC	WARD																
450B Standard	300	450																
300B Standard	300	300																
200B Standard	200	200																
100B Standard	100	100																
I 1. Pangasinan MC	300	450	34,765	10,585	4,835	2,083	6,607	39,367	1.5% (784)	52,268	(38,269) 58,875	314	58,011	17,663	8,068	3,476	11,025	98,243
2. Bontoc PH	100	100	3,905	4,698	1,870	61	2,675	9,031	3.0 (316)	10,534	(8,586) 13,209	129	6,575	7,910	3,149	103	4,504	22,241
3. Baguio MC	300	450	4,612	4,367	1,828	0	7,314	12,118	1.5 (162)	10,807	(11,779) 18,121	177	7,696	7,287	3,050	0	12,205	30,238
4. Benguet PH	100	100	9,998	4,890	2,221	1,332	2,509	14,036	1.5 (277)	18,441	(13,618) 20,950	141	16,696	8,166	3,709	2,224	4,190	34,985
5. La Union RH	200	250	12,538	8,955	3,210	1,187	4,810	20,557	1.5 (388)	25,890	(19,955) 30,700	214	20,934	14,951	5,359	1,982	8,031	51,257
6. Abra PH	100	100	6,075	5,082	2,275	47	2,509	10,695	1.5 (202)	13,479	(10,392) 15,988	101	10,139	8,482	3,797	78	4,187	26,683
7. Gabriela Silang PH	100	100	9,721	4,965	2,265	630	2,509	13,457	1.5 (264)	17,581	(13,059) 20,090	134	16,232	8,291	3,782	1,051	4,190	33,546
8. Don Mariano Marcos MH	150	100	177	3,217	1,381	240	5,259	6,767	1.5 (75)	5,015	(6,678) 10,274	14	294	5,336	2,291	398	8,723	17,042
9. Ilocos Norte PH	200	200	7,743	6,239	2,568	105	3,679	13,644	1.5 (250)	16,655	(13,217) 20,334	177	12,939	10,425	4,291	175	6,148	33,978
II 1. Cagayan RH	300	300	28,328	9,188	3,327	1,136	7,083	34,471	5.4 (2,267)	41,979	(31,867) 49,062	314	48,231	15,643	5,665	1,934	12,060	83,533
2. Cagayan Mental H	100	150	1,111	624	164	102	1,137	2,148	5.4 (108)	2,001	(2,040) 3,138	0	1,871	1,051	276	172	1,915	5,285
3. Kalinga-Apayao PH	100	100	6,025	5,348	2,196	440	2,509	11,642	5.4 (756)	14,009	(10,737) 16,518	149	10,271	9,117	3,744	750	4,277	28,159
4. Cagayan PH	100	100	9,721	4,965	2,265	693	3,679	14,957	5.4 (953)	17,644	(13,860) 21,323	144	16,540	8,448	3,854	1,179	6,260	36,281
5. Isabela PH	100	150	7,461	6,670	3,488	515	3,177	14,984	5.4 (979)	18,134	(13,852) 21,311	153	12,707	11,360	5,940	877	5,411	36,295
6. Quirino PH	100	100	7,622	7,109	3,613	375	2,039	14,626	5.4 (1,011)	18,719	(13,493) 20,758	122	12,992	12,118	6,159	639	3,476	35,384
7. Ifuago PH	100	100	9,212	5,140	3,794	746	2,508	15,044	5.4 (1,020)	18,892	(13,910) 21,400	114	15,688	8,753	6,461	1,270	4,271	36,443
8. Maj. F. Marcos MH	150	150	2,972	5,215	3,614	996	5,016	12,558	5.4 (691)	12,797	(11,578) 17,813	289	5,067	8,892	6,162	1,698	8,552	30,371
9. Nueva Vizcaya PH	100	100	4,713	4,598	3,440	166	2,341	10,723	5.4 (698)	12,917	(9,918) 15,258	107	8,025	7,829	5,858	283	3,986	25,981
10. Batanes PH	75	75	4,062	3,977	3,369	39	2,040	10,197	11.2 (1,339)	11,447	(8,767) 13,487	91	7,133	6,984	5,916	68	3,582	23,683
Total			170,761	105,832	51,723	10,893	69,400	281,022	(12,540)	339,209	(265,575) 408,609	2,884	288,041	178,706	87,531	18,357	116,993	689,628

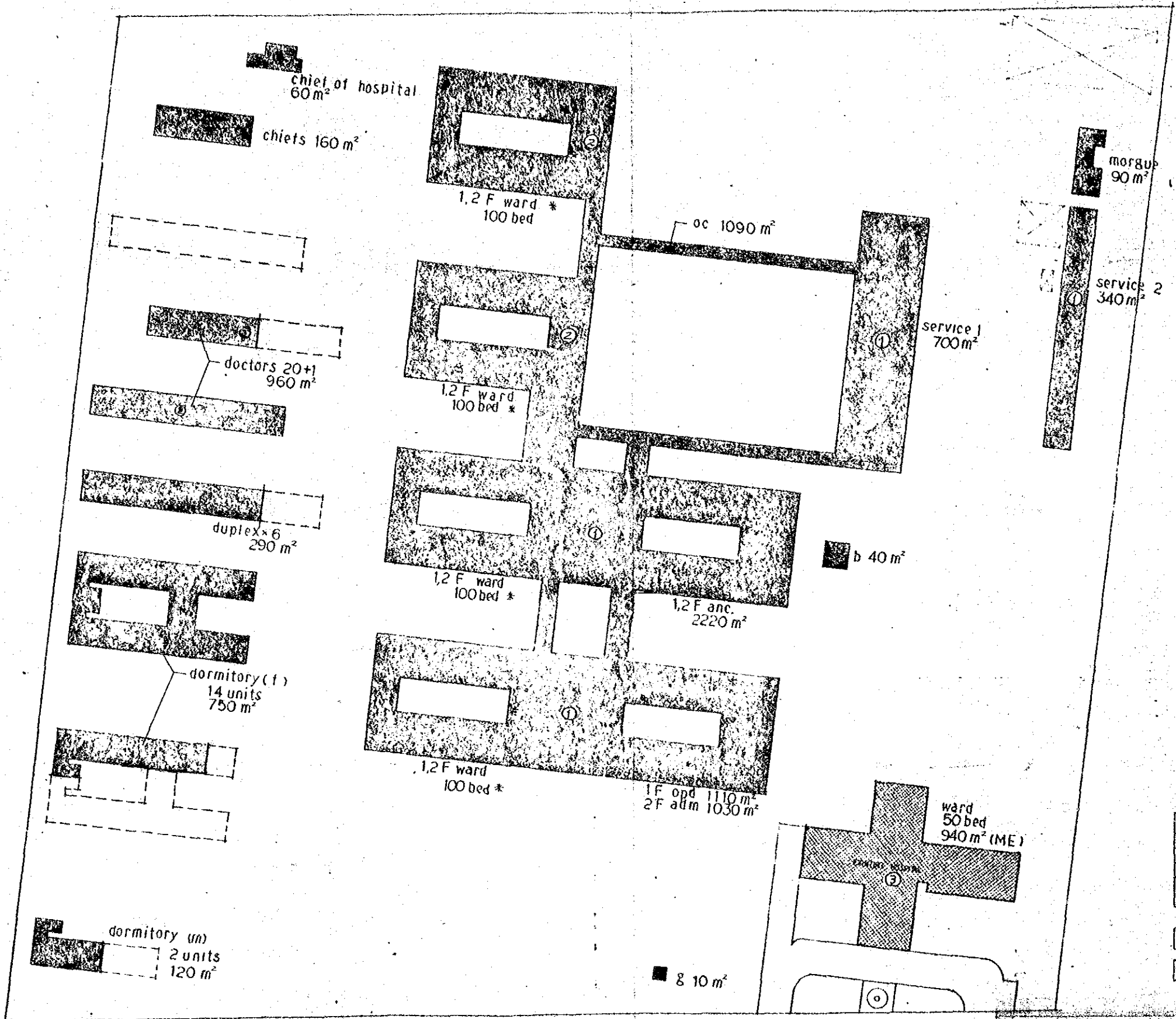
• Based on the prices of August 1 '79

α : Arch, & Engineering 10% + Consultant fee 5% + Supervision 5% + Administration 5% = 25%
 β : Physical Contingency 10% + Price Contingency 30% = 40%
 γ : Local revise (1.5%, 3.0%, 5.4%, 11.2%)
 δ : Surveying & Subsoil exploration + Water Source and Quality Survey.
 $\alpha + \beta = 65\%$

$$F = \alpha(A+B+C+D+E) + \beta(A+B+C+D+E) + \gamma(A+B+C+D) + \delta$$

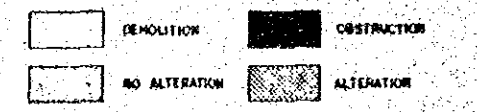
$$= (\alpha+\beta)(A+B+C+D+E) + \gamma(A+B+C+D) + \delta = \gamma G + 0.65H + \delta$$

H: Facility G: Civil work



* Total 5640 m²

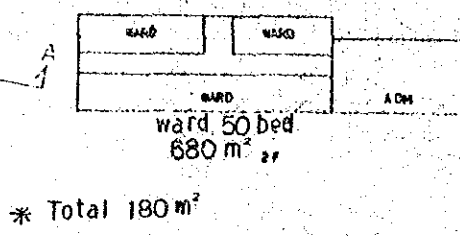
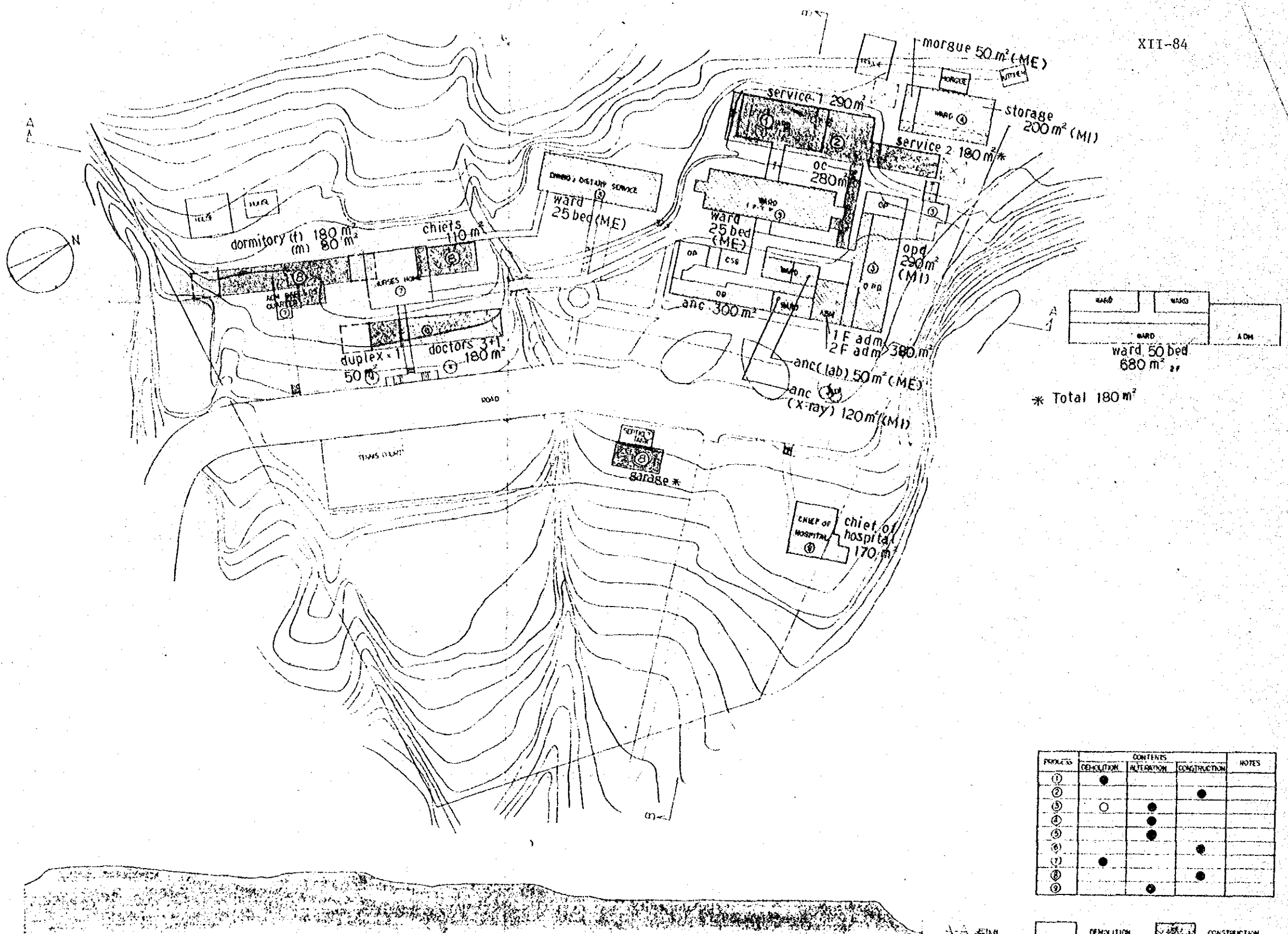
PROCESS	CONTENTS			NOTES
	DEMOLITION	ALTERATION	CONSTRUCTION	
①	●			
②	●			
③		●		
④				



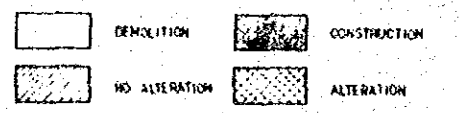
DAGUPAN BONUAN SAN FABIAN ROAD

PLAN II I-1. PANGASINAN MEDICAL CENTER

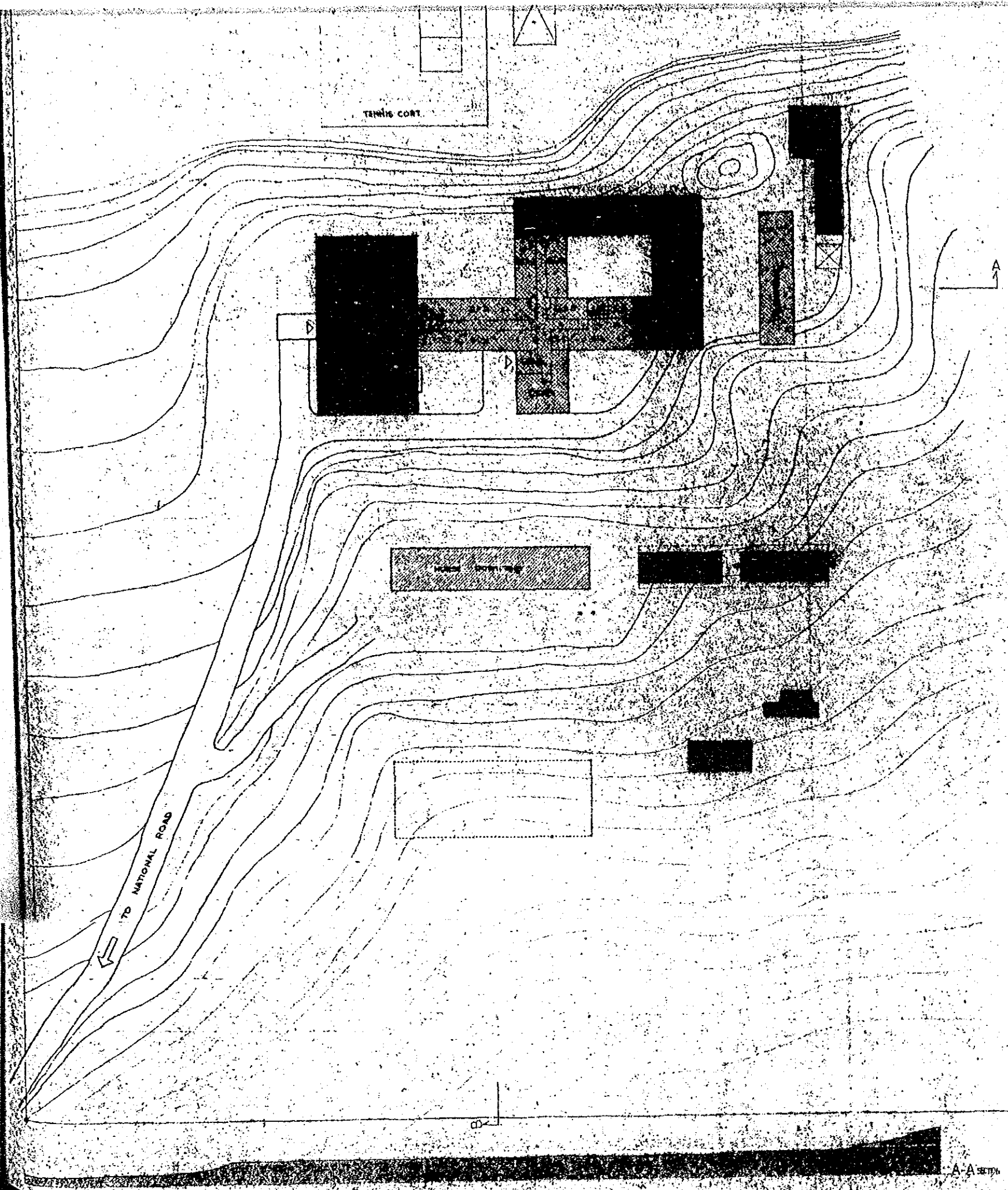
PLAN



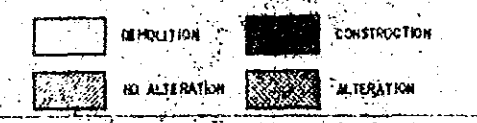
PROCESS	CONTENTS			NOTES
	DEMOLITION	ALTERATION	CONSTRUCTION	
(1)	●			
(2)			●	
(3)	○	●		
(4)		●		
(5)		●		
(6)			●	
(7)	●			
(8)			●	
(9)		●		



PLAN II 1-2. BONTOC PROVINCIAL HOSPITAL.



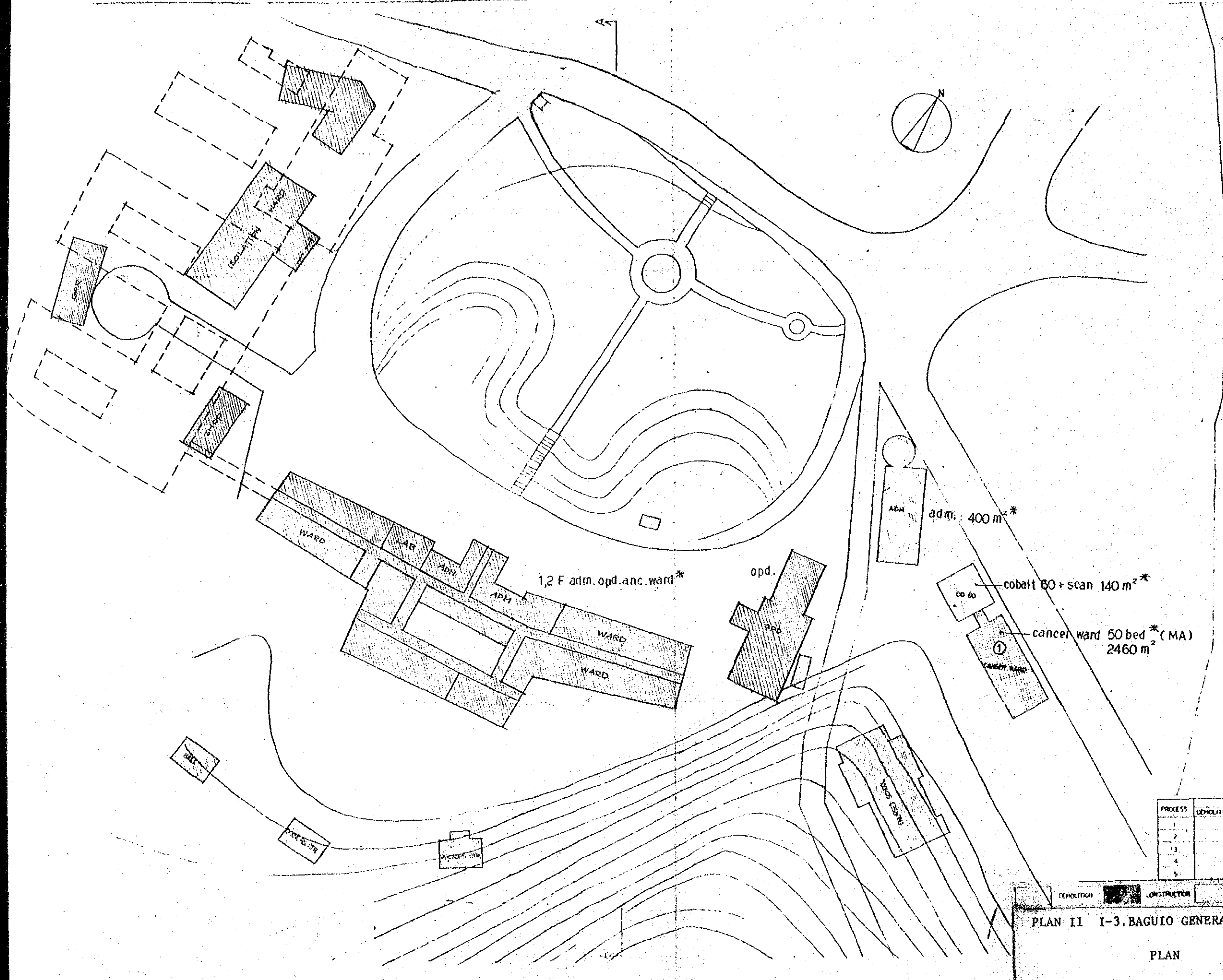
PROCESS	CONTIGS			NOTES
	DEMOLITION	ALTERATION	CONSTRUCTION	
①			●	
②	●			
③			●	
④		●		



PLAN I II-9. NUOVA VIECANA PROVINCIAL HOSPITAL

PROJECT OUTLINE

A-A SECTION



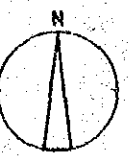
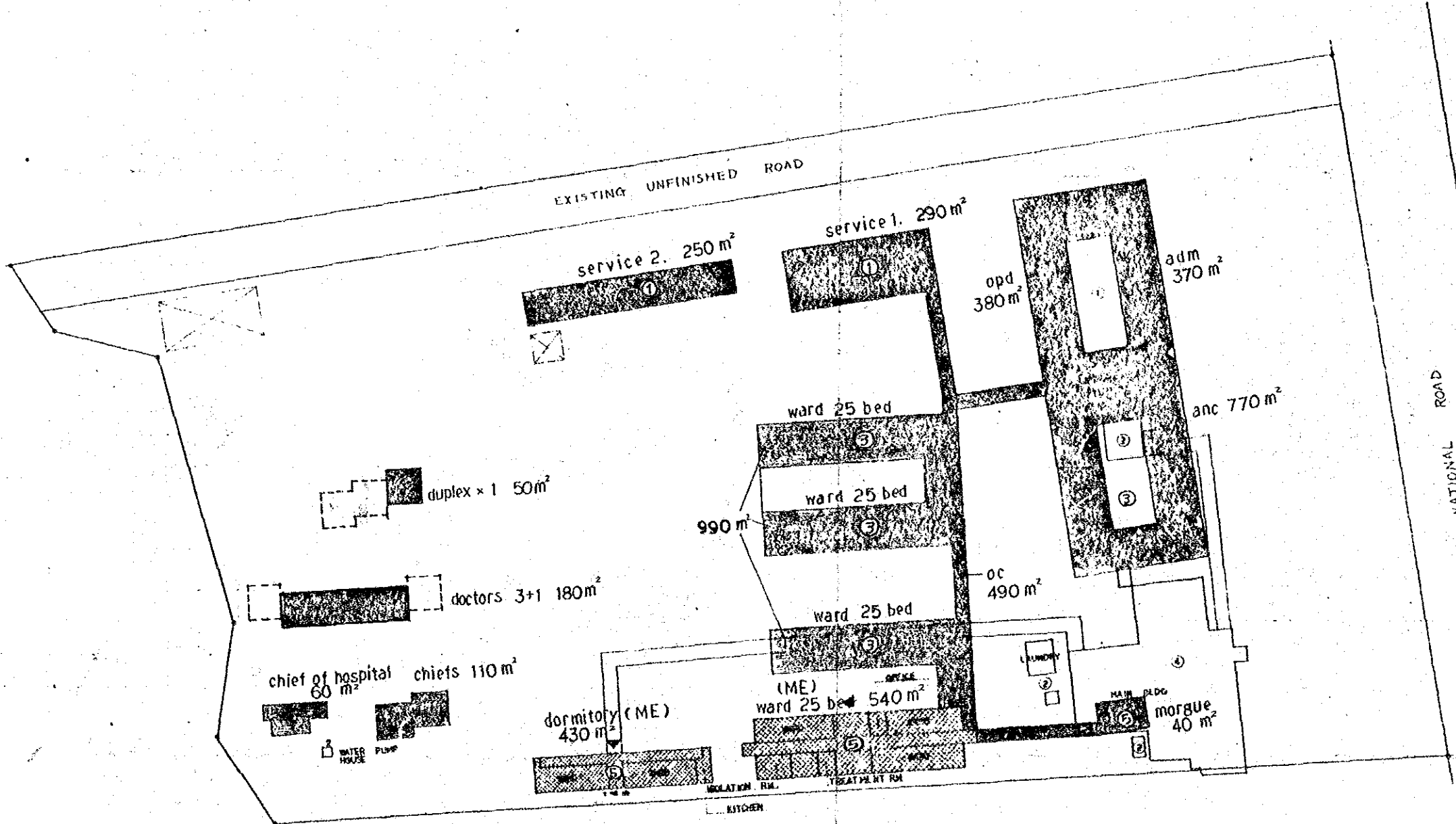
* Total 6370 m²

PROCESS	CONTENTS:		NOTES
	DEMOLITION	ALTERATION	
1		●	
2			
3			
4			
5			

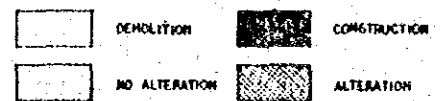
DEMOLITION
CONSTRUCTION
NO ALTERATION
ALTERATION

PLAN II I-3. BAGUIO GENERAL HOSPITAL MEDICAL CENTER

PLAN

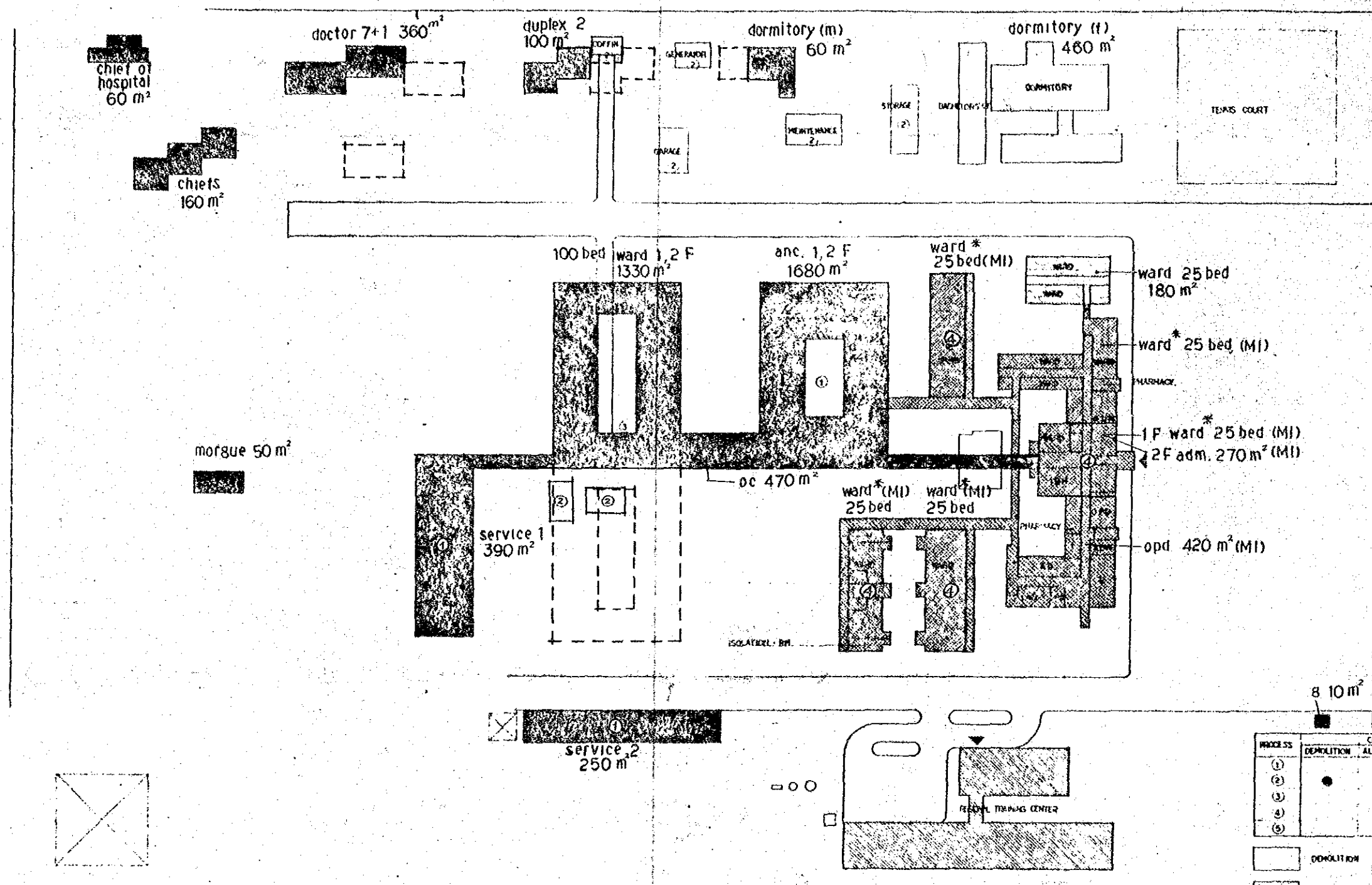
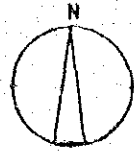


PROCESS	CONTENTS			NOTES
	DEMOLITION	ALTERATION	CONSTRUCTION	
①			●	
②	●			
③			●	
④	●			
⑤		●	●	



PLAN II I-4. BENGUET PROVINCIAL HOSPITAL

PLAN



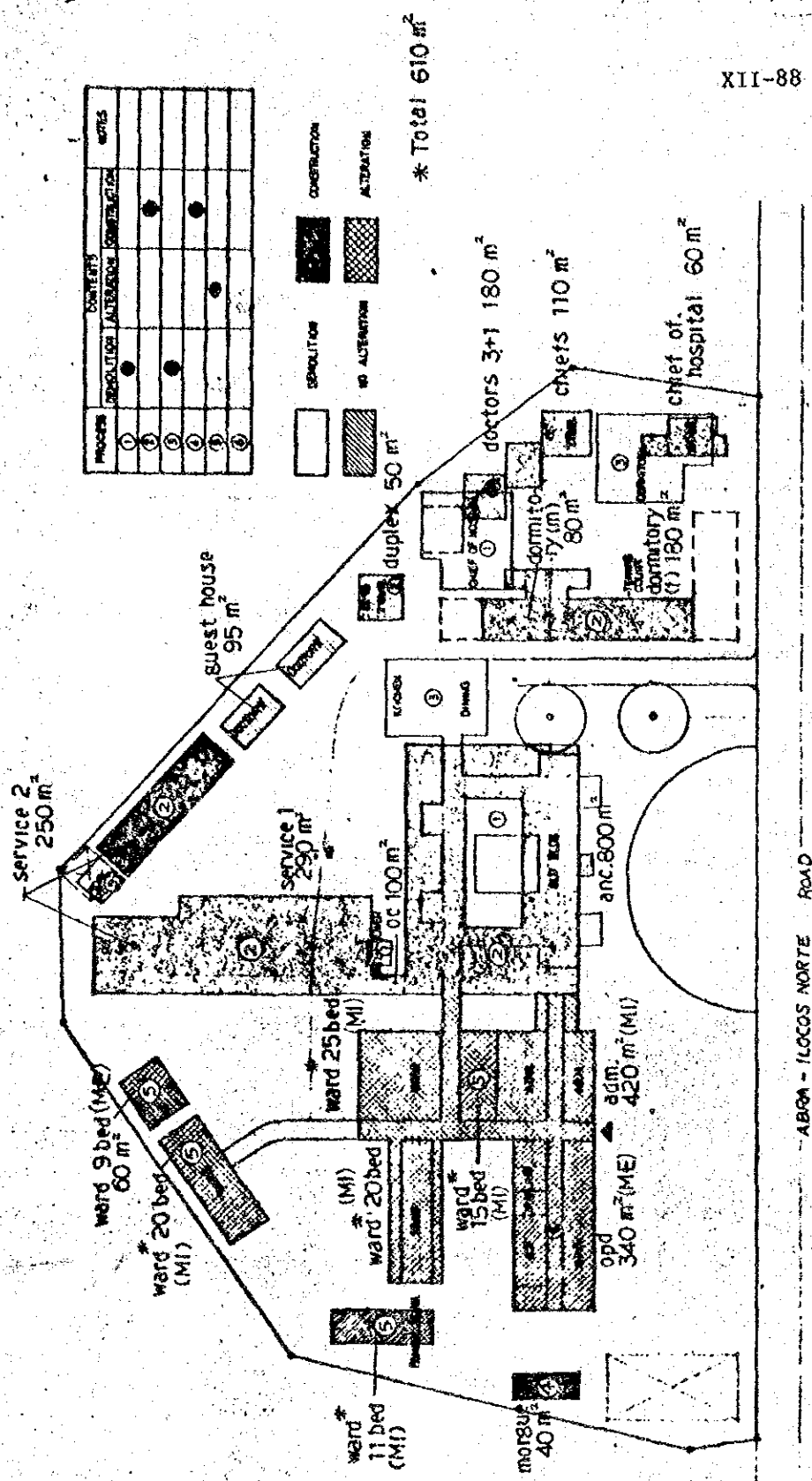
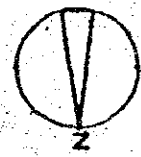
* Total 1450 m²

PROCESS	CONTENTS			NOTES
	DEMOLITION	ALTERATION	CONSTRUCTION	
①				
②	•		•	
③			•	
④		•		
⑤				

DEMOLITION CONSTRUCTION
 NO ALTERATION ALTERATION

PLAN II. I-5. LA UNION REGIONAL HOSPITAL

PLAN

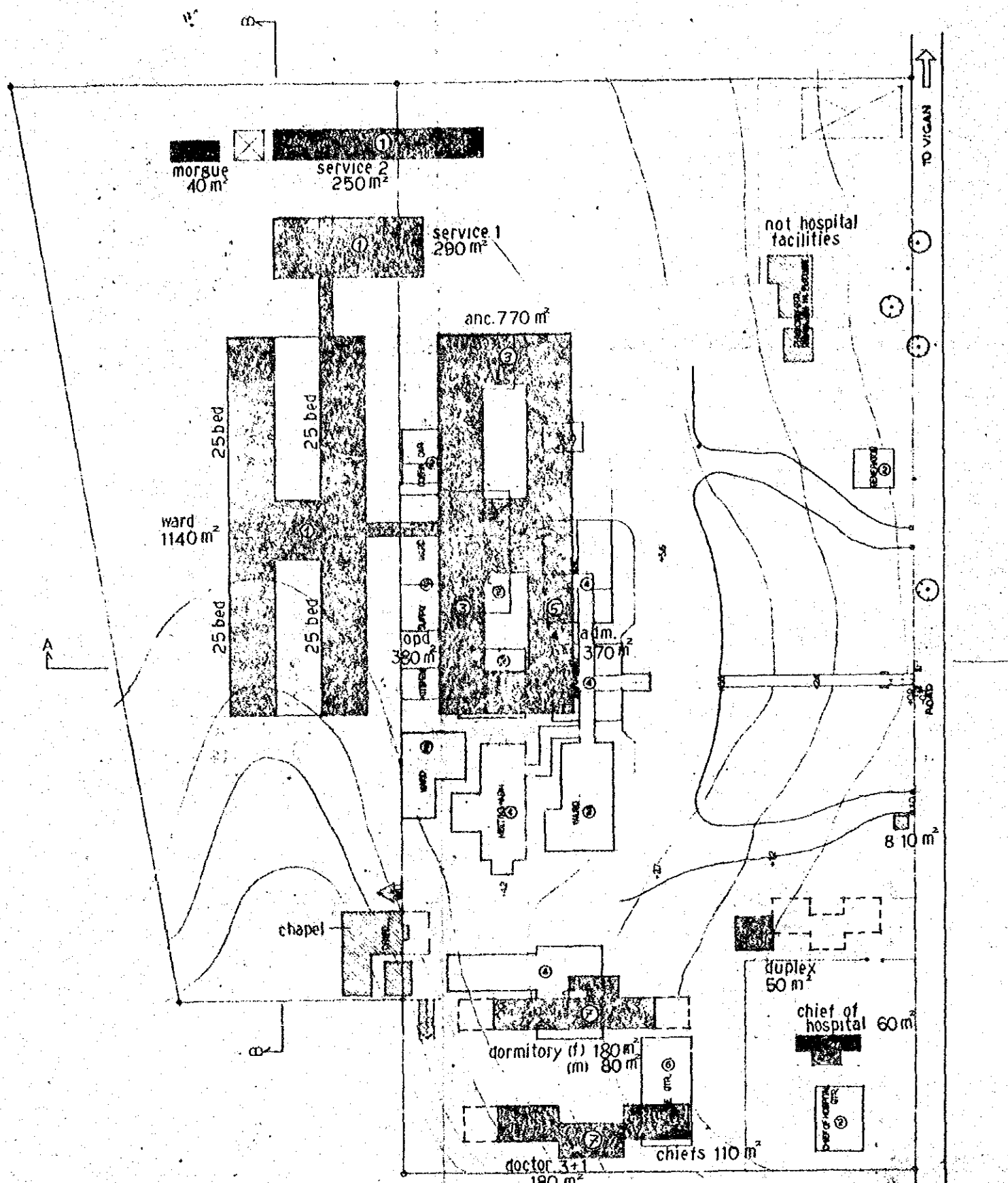
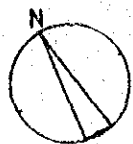


XII-88



PLAN II I-6. ABBA PROVINCIAL HOSPITAL

PLAN

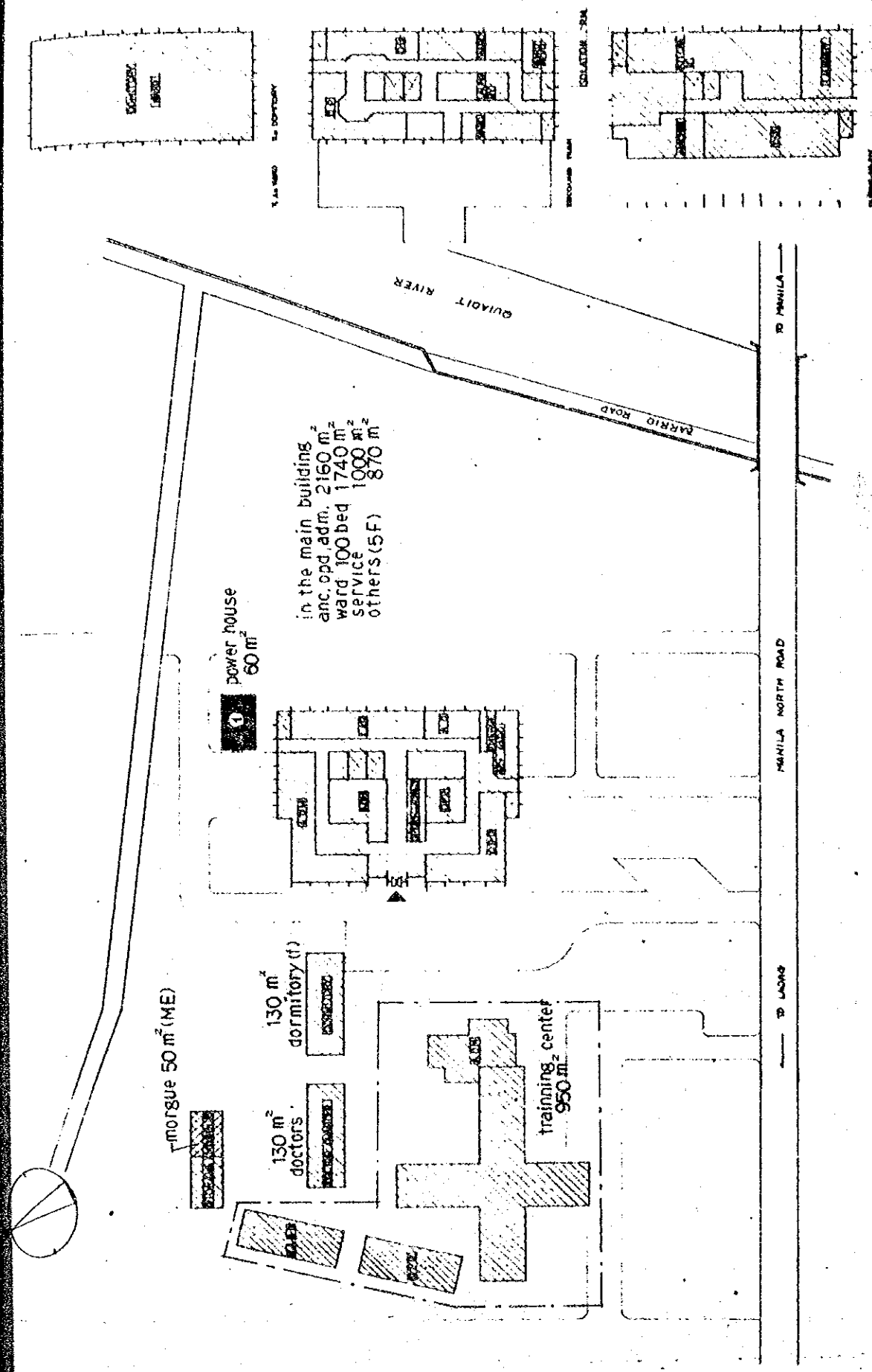


PROCES	STATUS			NOTES
	DEMOLITION	ALTERATION	CONSTRUCTION	
①			●	
②	●			
③			●	
④	●			
⑤			●	
⑥	●			
⑦			●	



PLAN II I-7. GABRIELA SILANG PROVINCIAL HOSPITAL

PLAN



power house
60 m²

in the main building
anc. opd. adm. 2160 m²
ward 100 bed 1740 m²
service 1000 m²
others (SF) 870 m²

morgue 50 m² (ME)

130 m² dormitory (1)

130 m² doctors

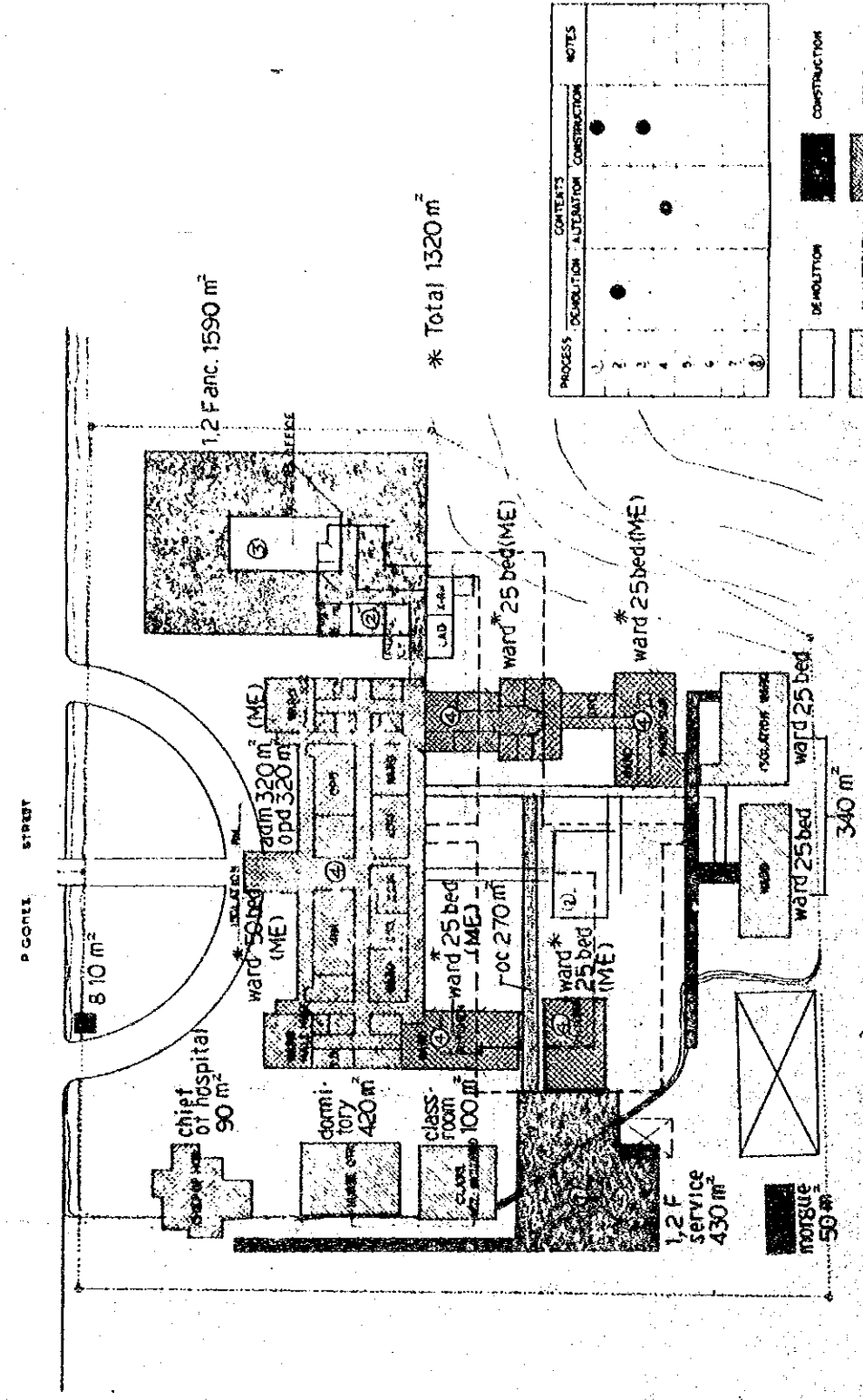
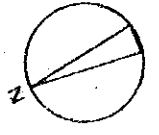
training center
950 m²

PROCESS	DEMOLITION	CONSTRUCTION	ALTERATION	NO ALTERATION	NOTES
1	[Symbol]	[Symbol]	[Symbol]	[Symbol]	

PROCESS	DEMOLITION	CONSTRUCTION	ALTERATION	NO ALTERATION
1	[Symbol]	[Symbol]	[Symbol]	[Symbol]

PLAN II I-8. DON MARIANO MARCOS MEMORIAL HOSPITAL

PLAN



1.2 F anc. 1590 m²

* Total 1320 m²

ward 50 bed (ME)

adm 320 m² (ME)
opd 320 m²

ward 25 bed (ME)

ward 25 bed (ME)

ward 25 bed (ME)

ward 25 bed (ME)

ward 25 bed (ME)

1.2 F SERVICE 430 m²

morgue 50 m²

PROCESS	DEMOLITION	CONSTRUCTION	ALTERATION	NO ALTERATION	NOTES
1	[Symbol]	[Symbol]	[Symbol]	[Symbol]	
2	[Symbol]	[Symbol]	[Symbol]	[Symbol]	
3	[Symbol]	[Symbol]	[Symbol]	[Symbol]	
4	[Symbol]	[Symbol]	[Symbol]	[Symbol]	
5	[Symbol]	[Symbol]	[Symbol]	[Symbol]	
6	[Symbol]	[Symbol]	[Symbol]	[Symbol]	
7	[Symbol]	[Symbol]	[Symbol]	[Symbol]	
8	[Symbol]	[Symbol]	[Symbol]	[Symbol]	

PROCESS	DEMOLITION	CONSTRUCTION	ALTERATION	NO ALTERATION
1	[Symbol]	[Symbol]	[Symbol]	[Symbol]

XII-90

PLAN II I-9. ILOCOS NORTE PROVINCIAL HOSPITAL

PLAN