

Scale 1:50,000



### Legend

(Quaternary)

Bodo F. dacitic pyroclastics (pumice tuff, pyroclastic flow)

(Tertiary)

Loo F. hb-andesite ~ dacite lava, pyroclastics

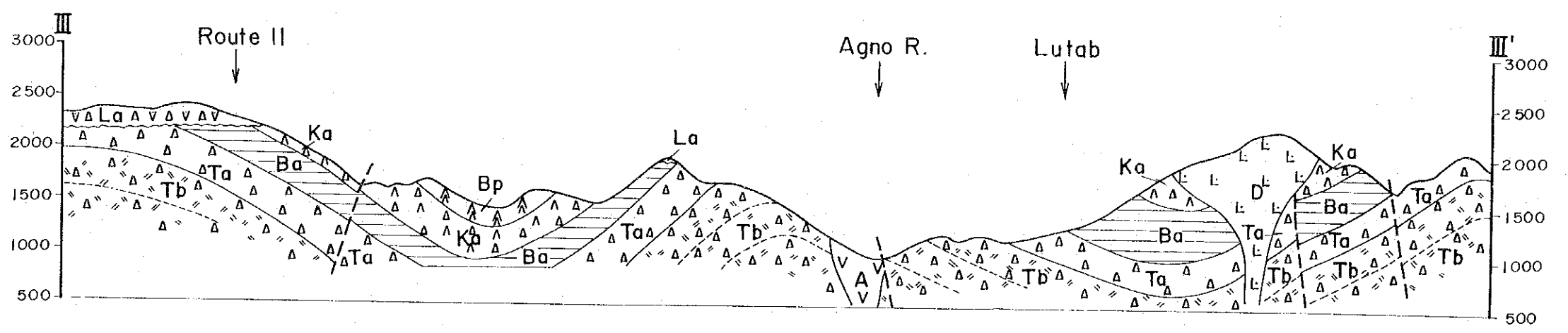
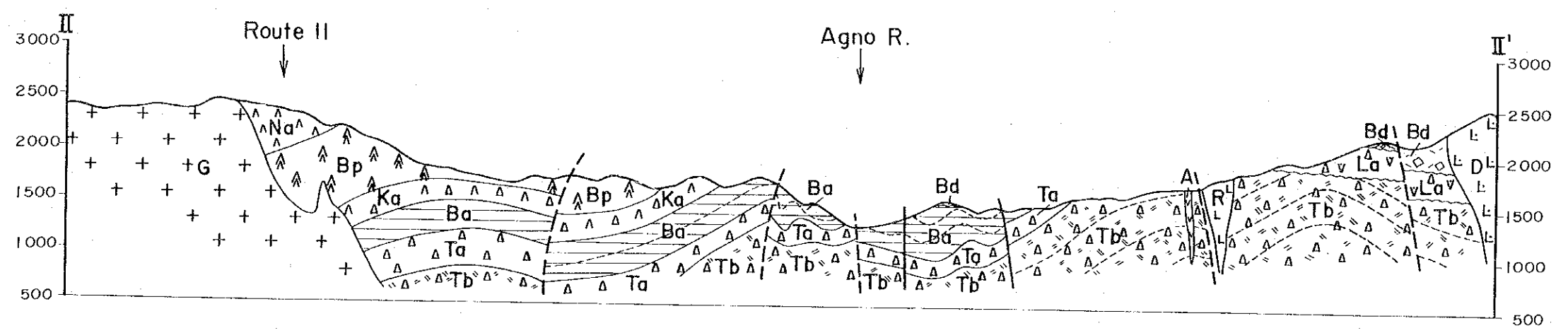
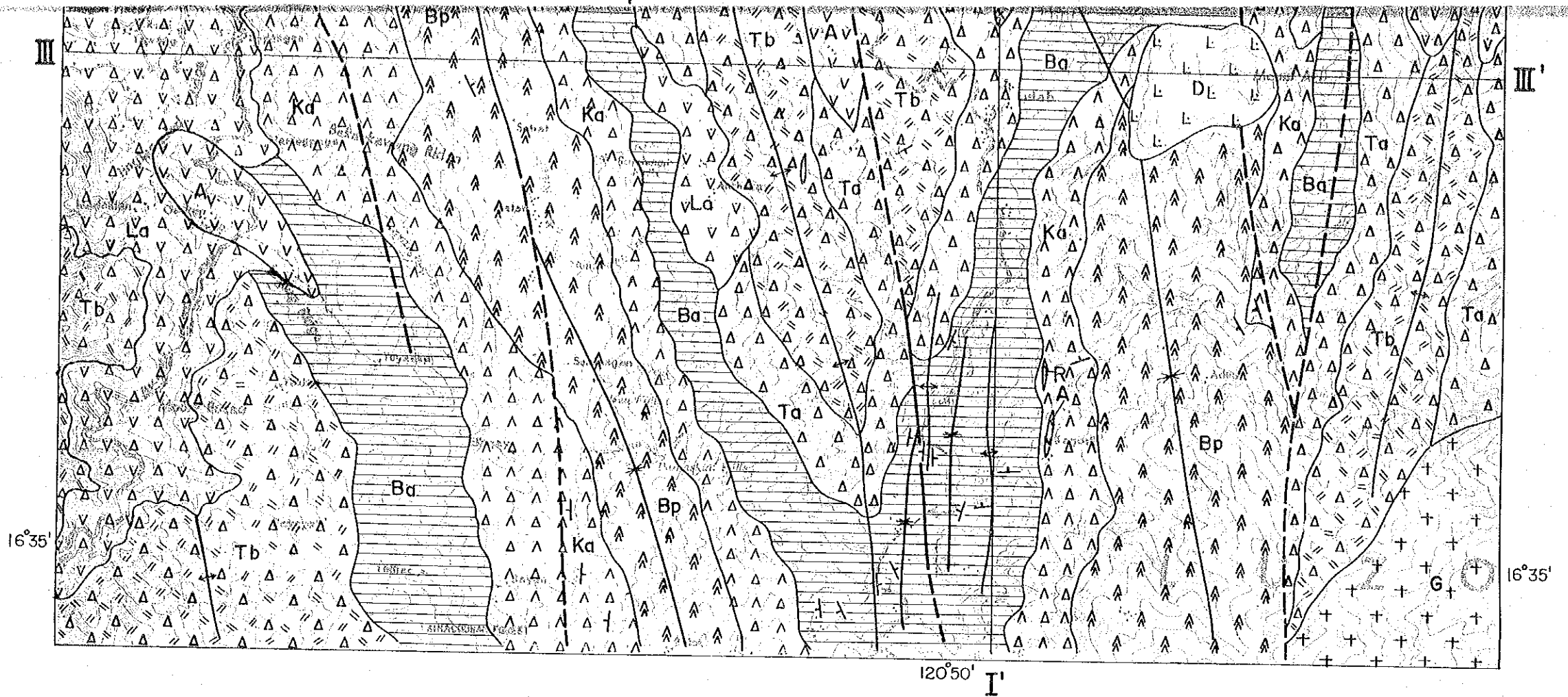
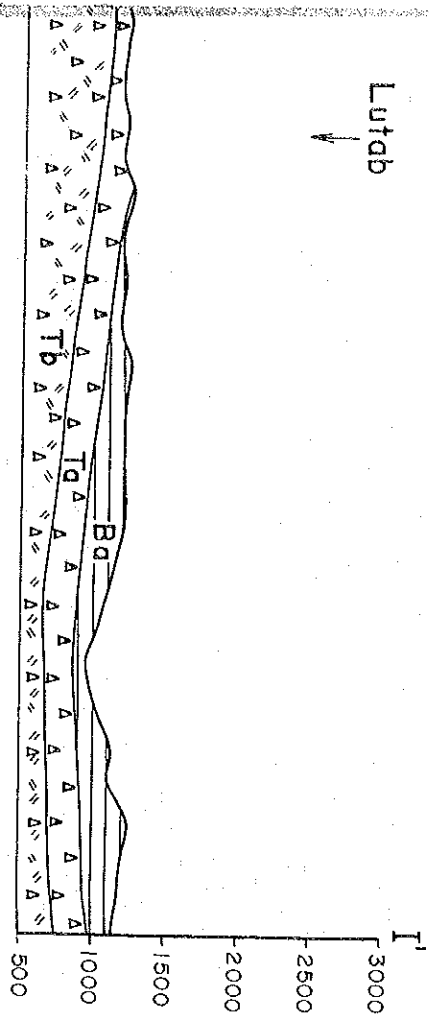
(Miocene)

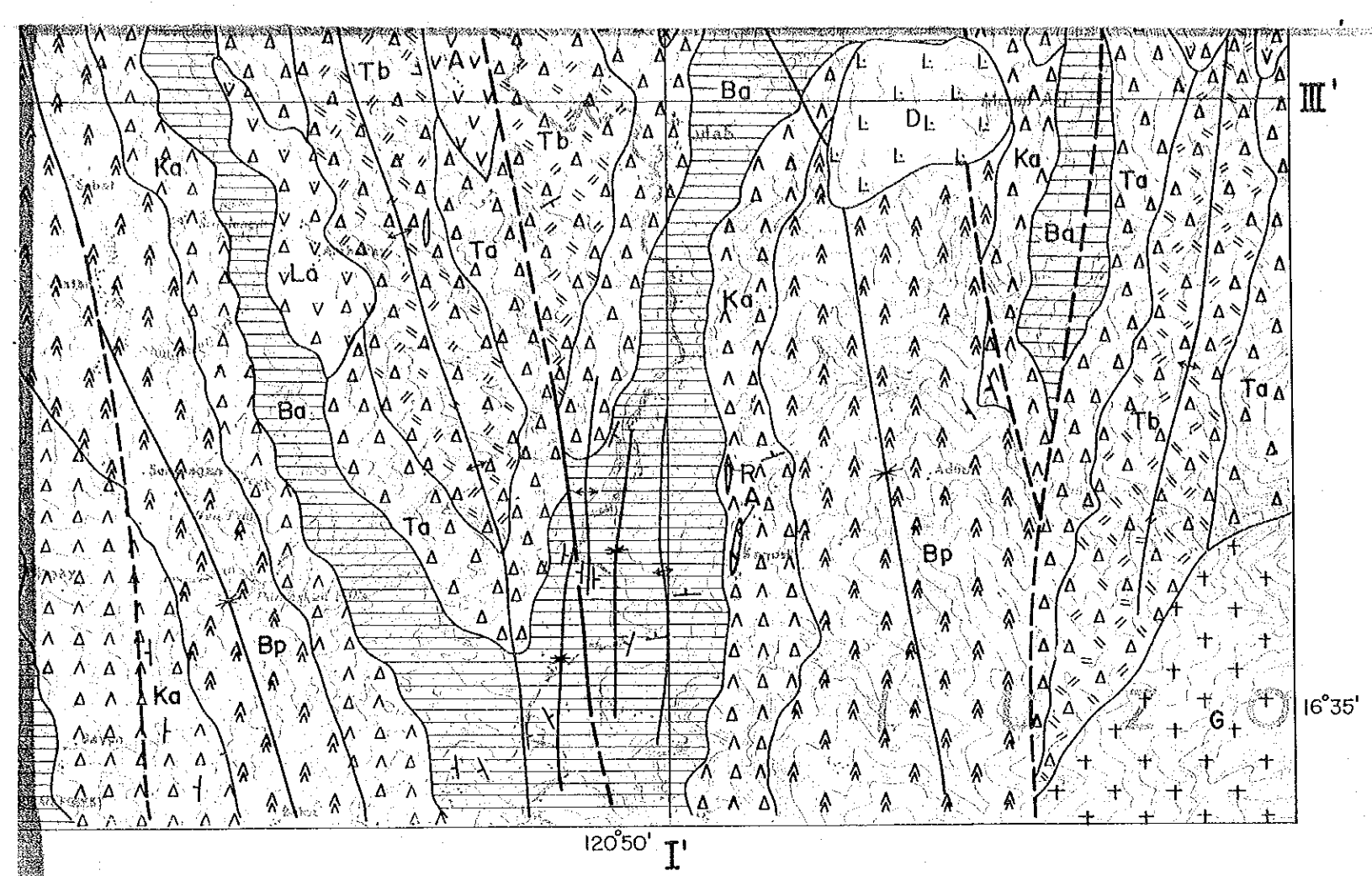
Buguias F.

- Nanayengan CR. An. M. px-andesite lava, pyroclastics
- Batan River pillow lava M. basaltic pillow lava, pyroclastics
- Kagosit. An volcanic M. px-andesitic hyalclastic tuff, pyroclastics
- Buguias CR al. M. alternation of fine tuff ~ tuff breccia
- Toking CR Ba-An volcanic M. andesitic pyroclastics
- Toking CR Ba-An volcanic M. basaltic pyroclastic
- Kayapas CR pillow lava M. basaltic pillow lava

(Intrusive rocks)

- bi-hb dacite
- rhyolite ~ dacite





(Miocene)

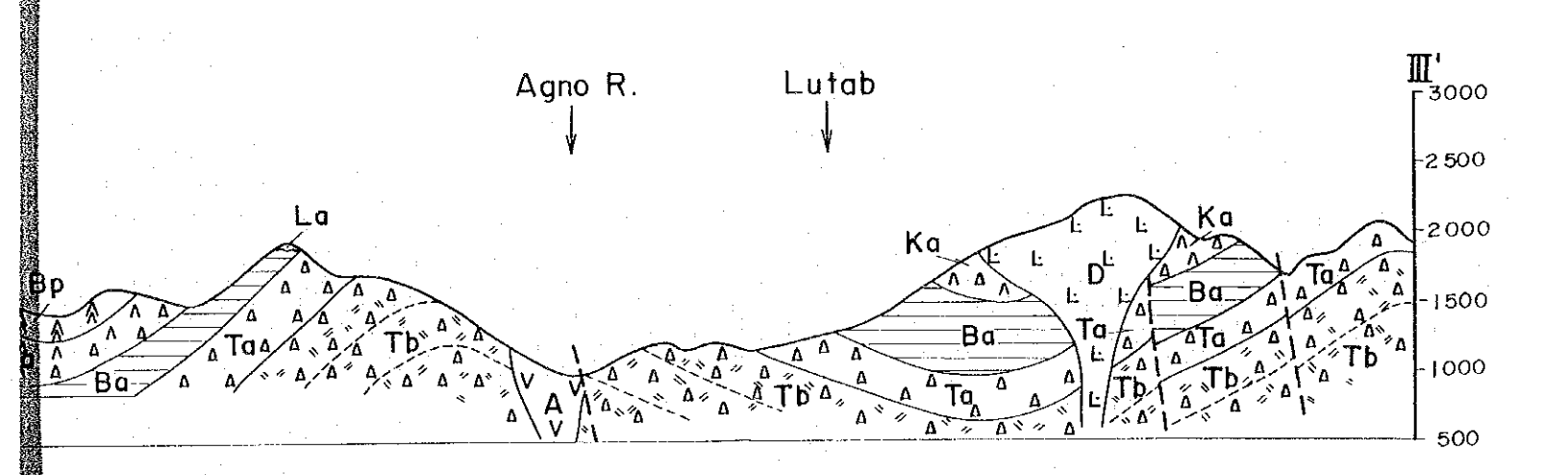
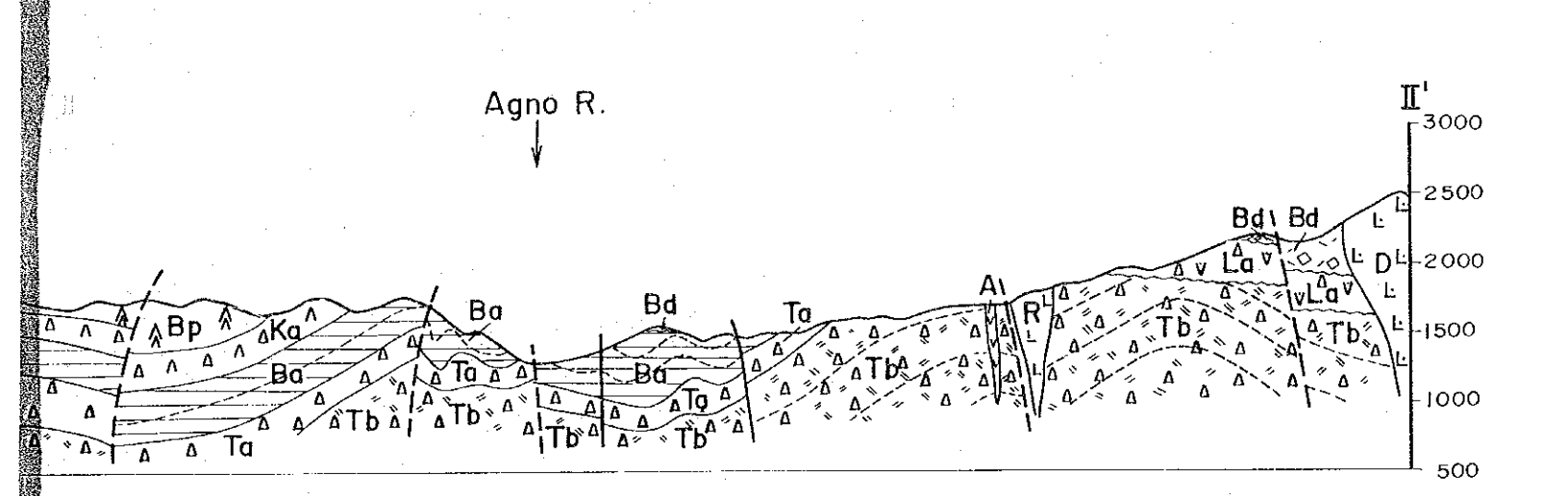
Buguias F.

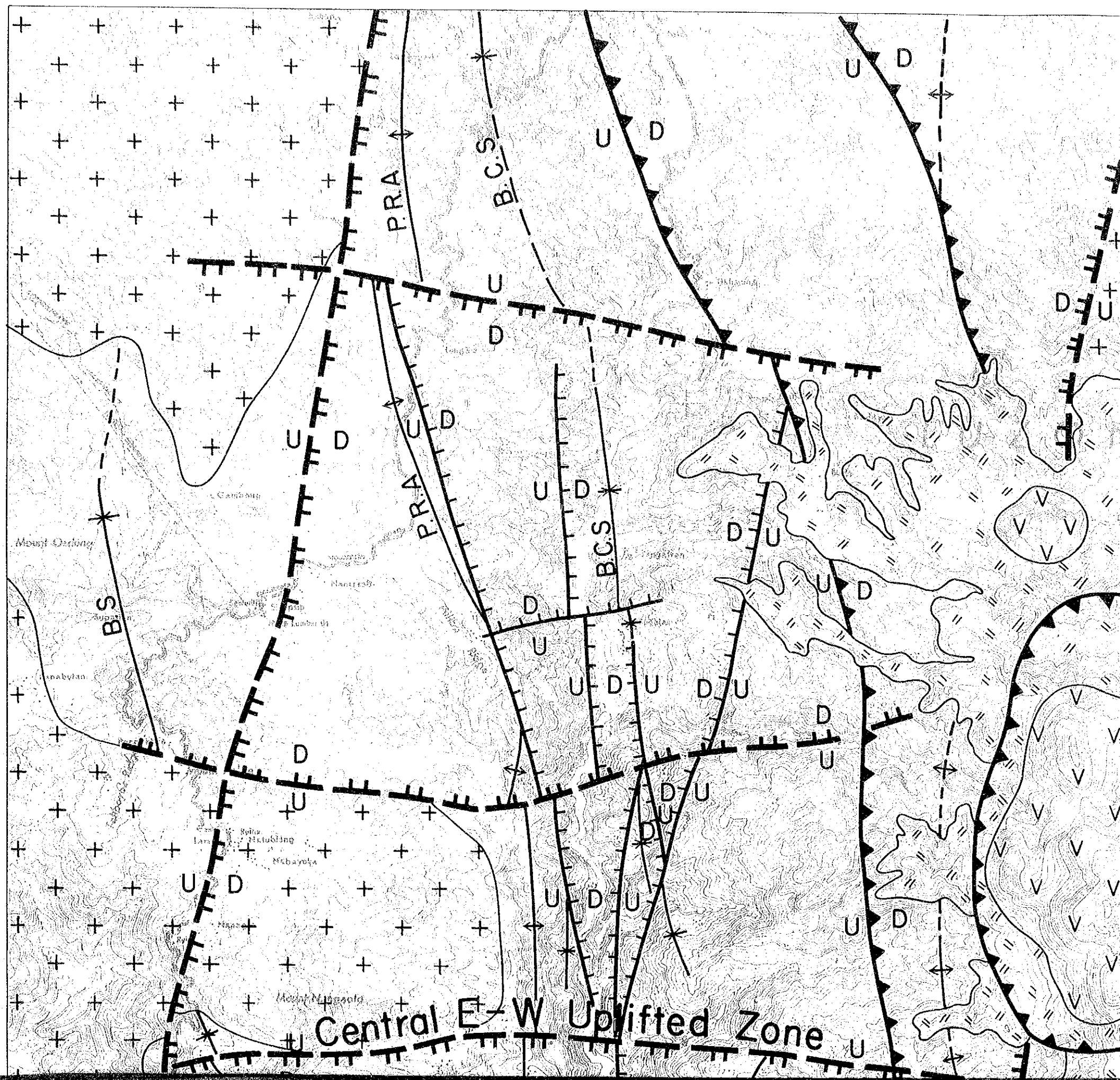
Nanayengan CR. An. M.	$\Delta \Delta \Delta$	px-andesite lava, pyroclastics
Batan River pillow lava M.	$\Delta \Delta \Delta$	basaltic pillow lava, pyroclastics
Kagosit. An volcanic M.	$\Delta \Delta \Delta$	px-andesitic hyalclastic tuff, pyroclastics
Buguias CR al. M.	$\text{---}$	alternation of fine tuff ~ tuff breccia
Toking CR Ba-An volcanic M.	$\Delta \Delta \Delta$	andesitic pyroclastics
	$\Delta \Delta \Delta$	basaltic pyroclastic
Kayapas CR pillow lava M.	$\Delta \Delta \Delta$	basaltic pillow lava

(Intrusive rocks)

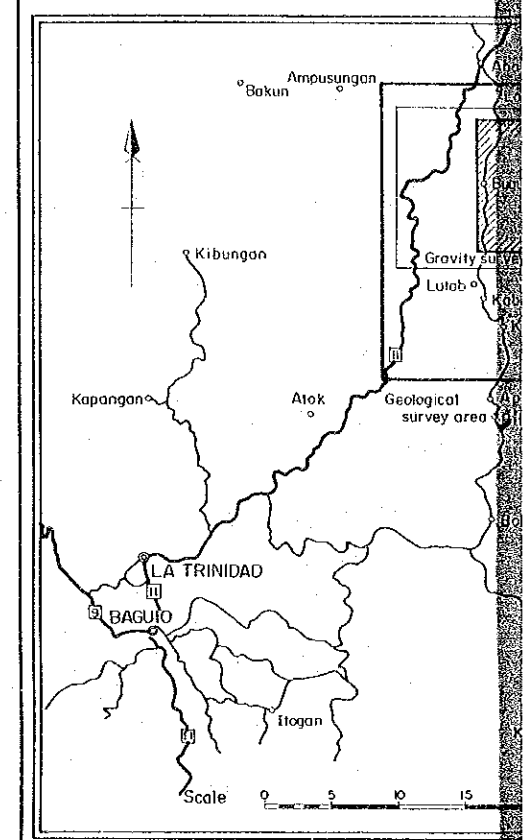
$\text{L} \text{L} \text{D} \text{L} \text{L}$	bi-hb dacite
$\text{L} \text{L} \text{R} \text{L} \text{L}$	rhyolite ~ dacite
$\text{V} \text{V} \text{A} \text{V}$	andesite ~ hb andesite porphyry
$\text{X} \text{X} \text{Q} \text{P} \text{X}$	diorite ~ granodiorite porphyry
$\text{+} \text{G} \text{+}$	diorite Qtz-diorite granodiorite

strike and dip  
 fault  
 anticline  
 syncline

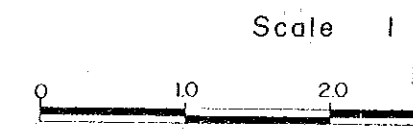


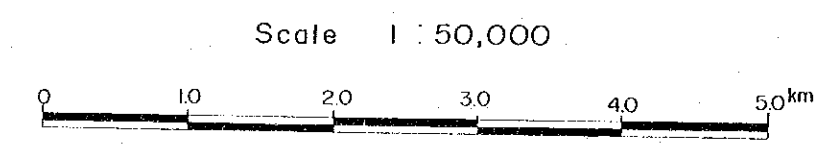
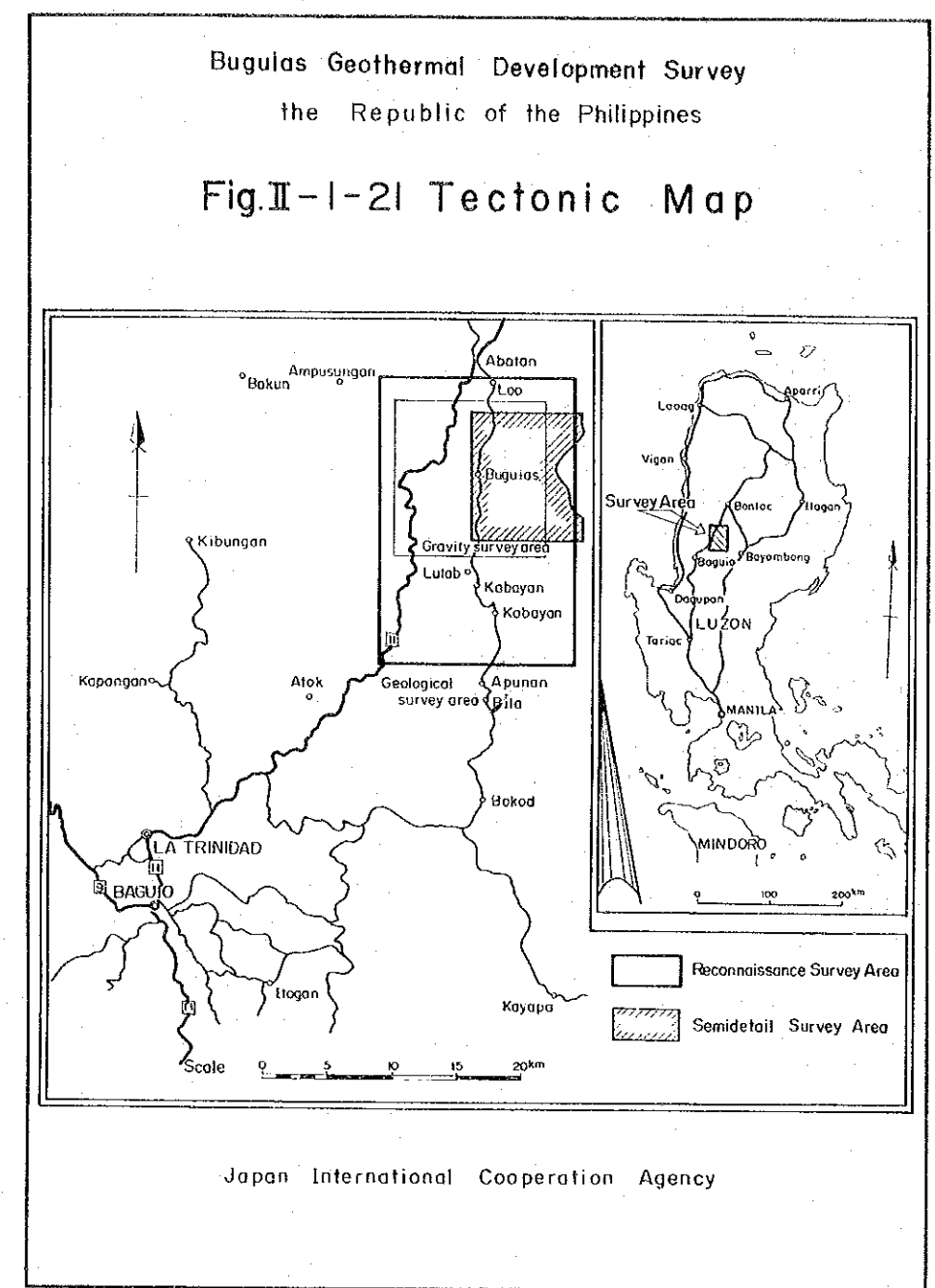
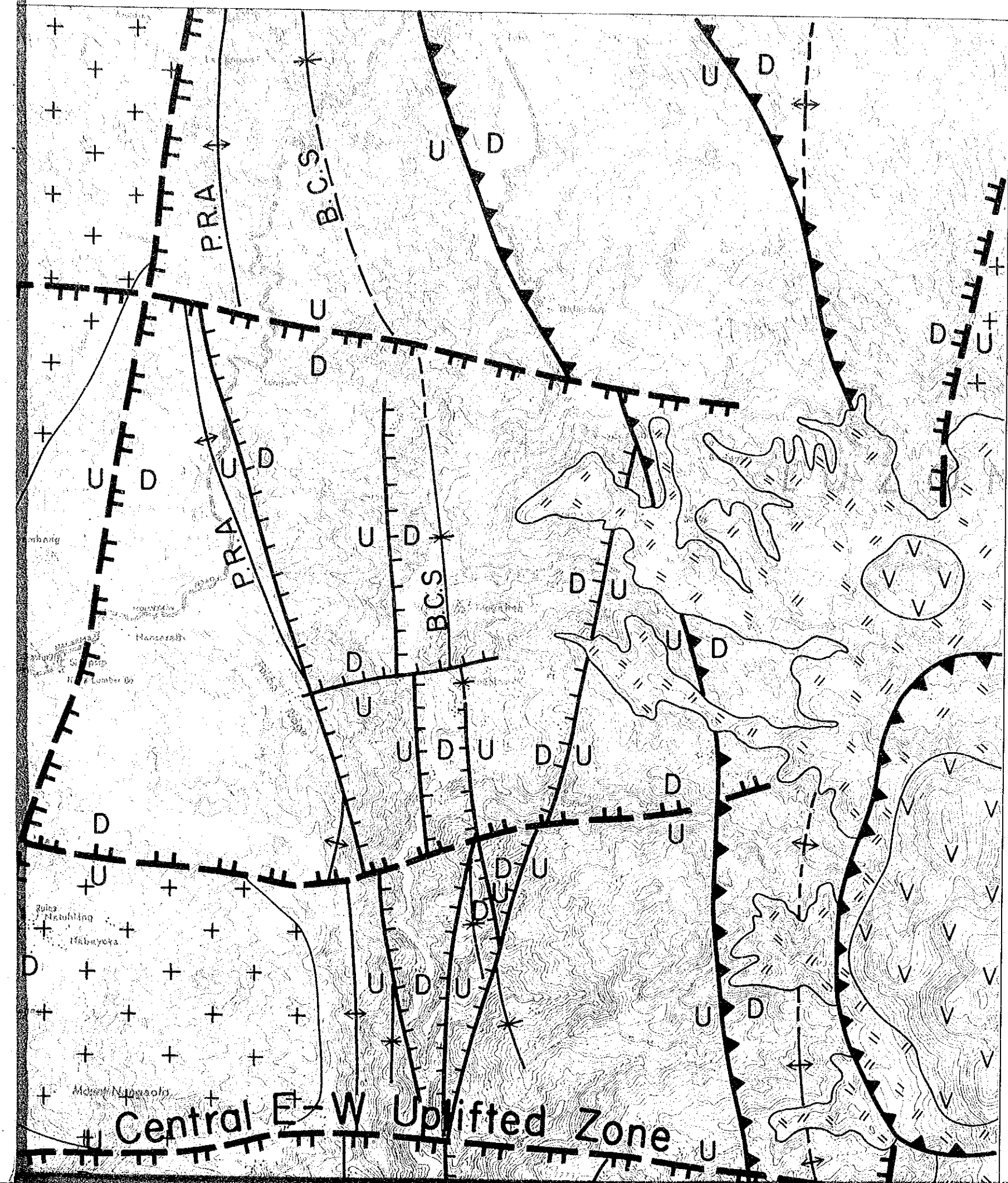


Bugulas Geothermal  
the Republic of  
Fig.II-1-21 Teo

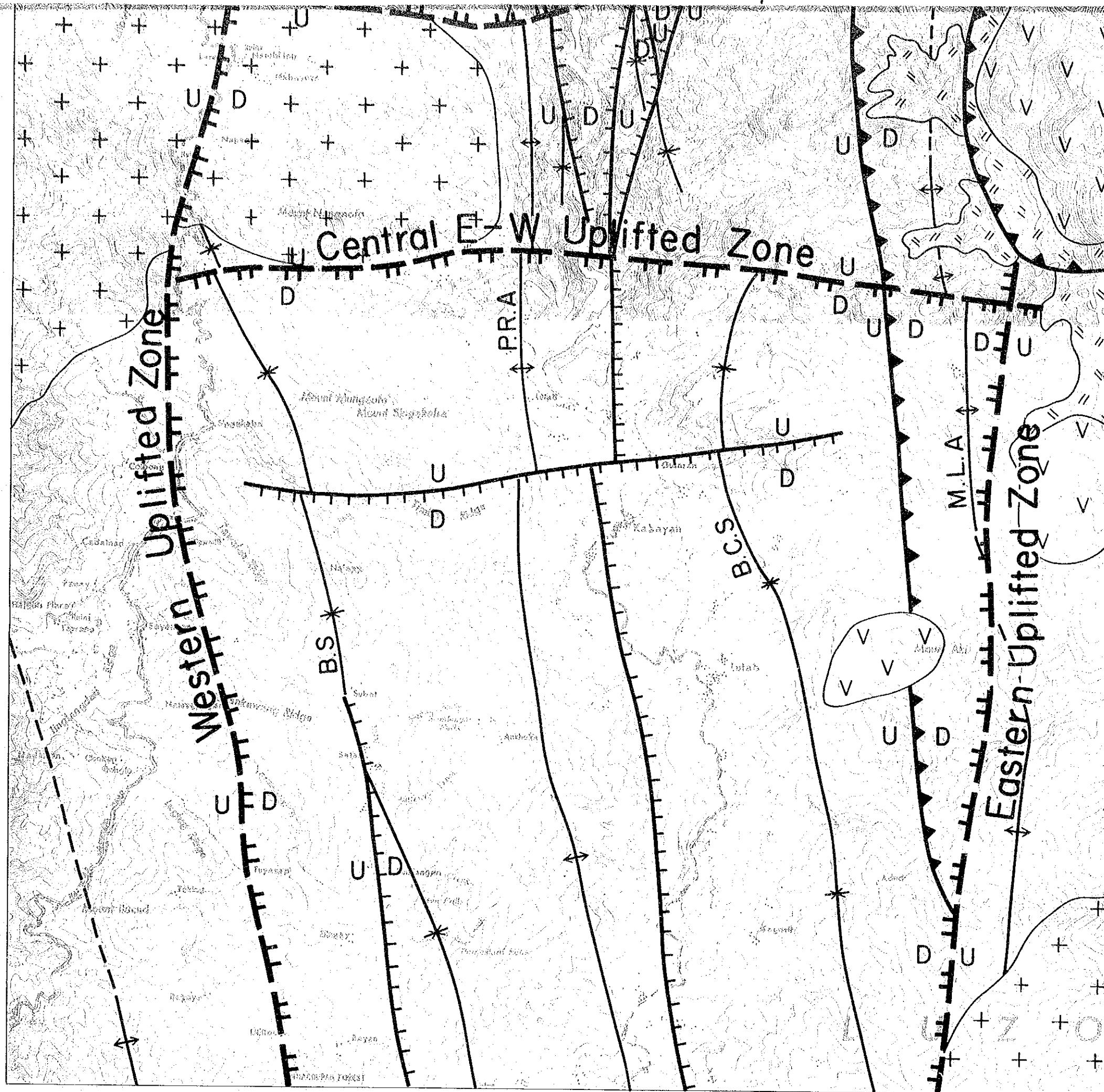


Japan International Co

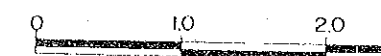






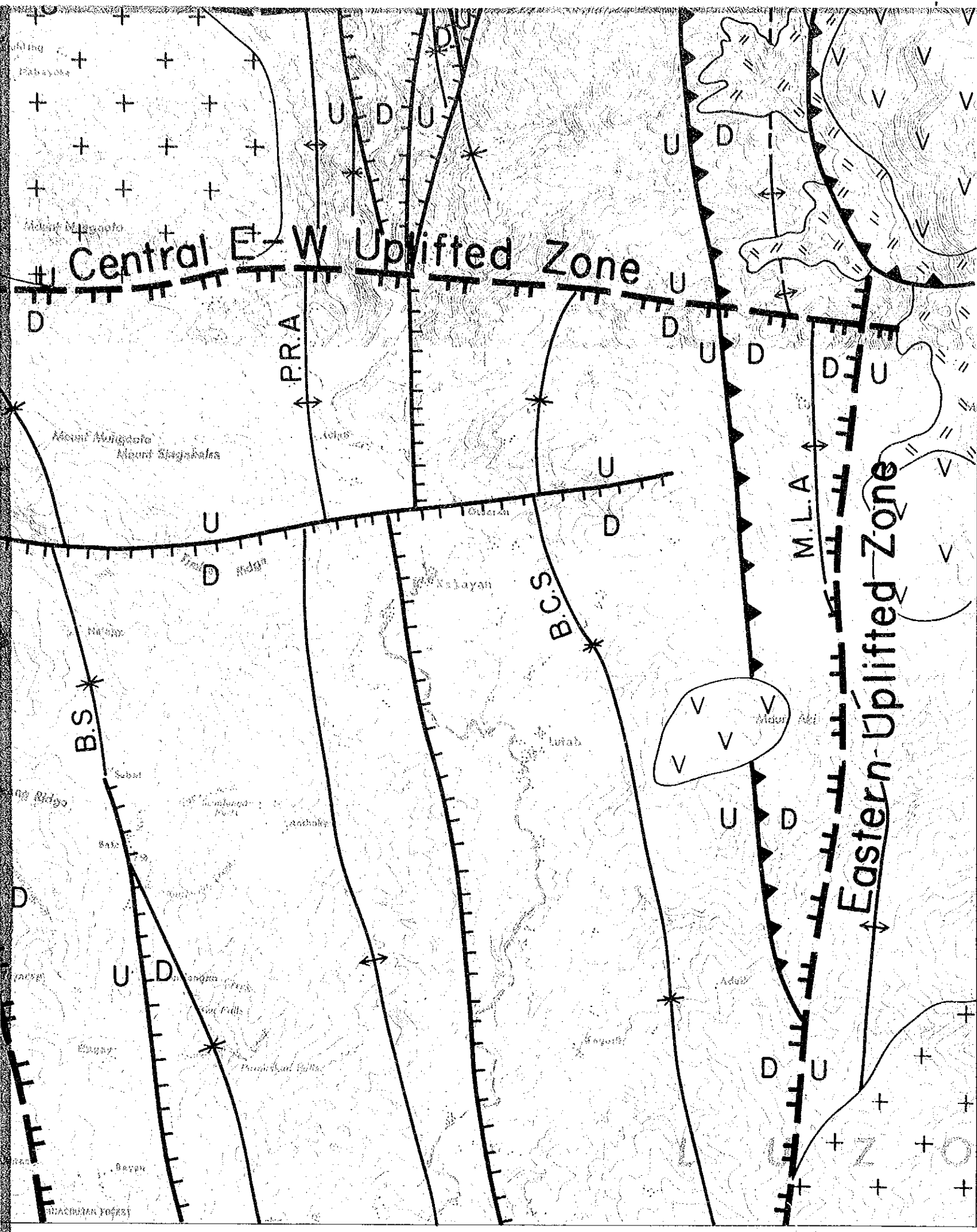


Scale 1:50,000



Legend



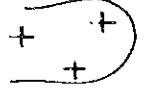




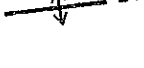
- Quaternary
- Bodo formation
- Pluton (Mid)
- Reverse fault
- Normal fault
- Deep fracture
- Anticline
- Syncline
- D · U Down, Up
- M.L.A. Mountain Land
- B.C.A. Buguias Center
- P.R.A. Pulibo Ridge
- B. S Batan syncline

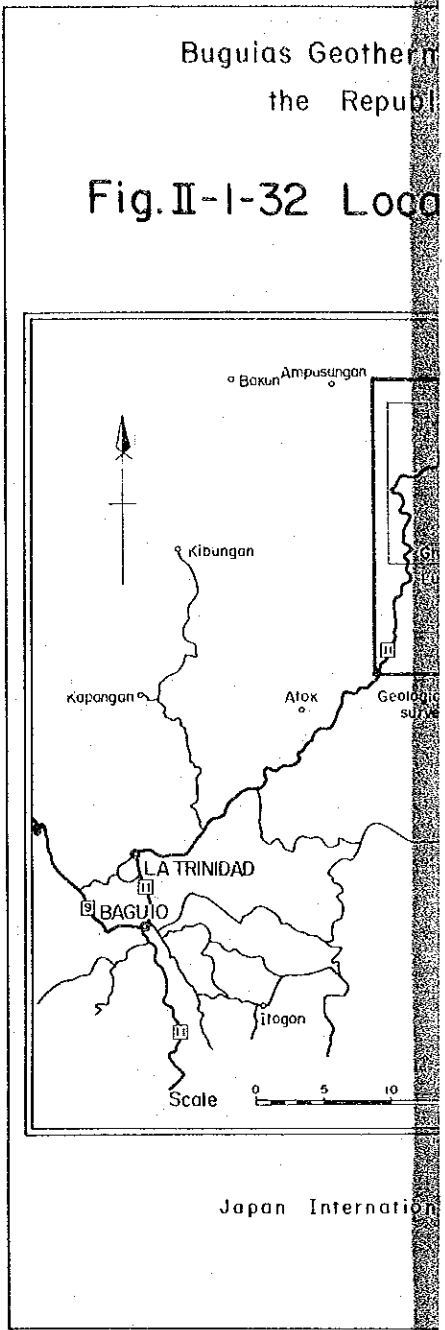
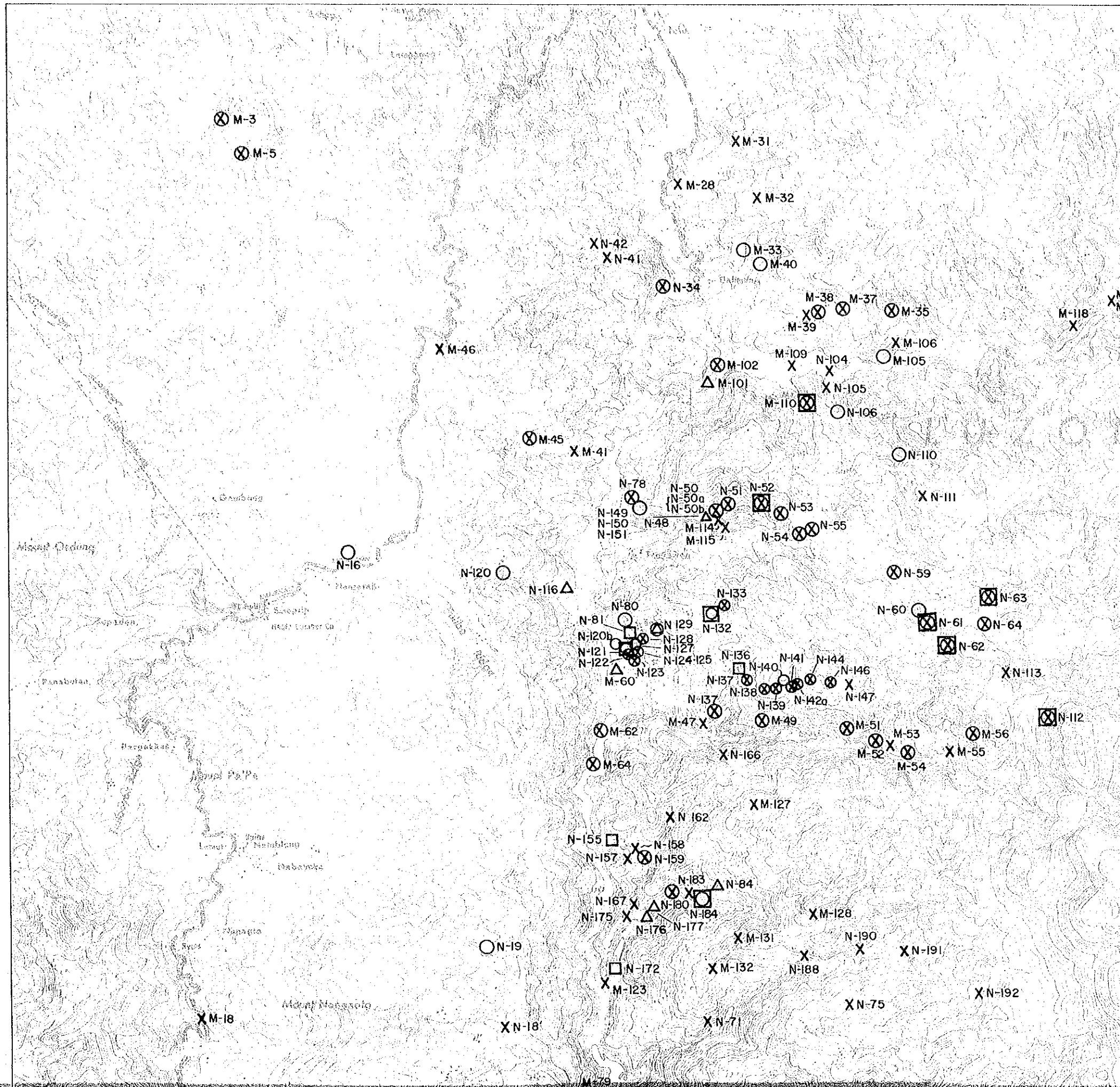


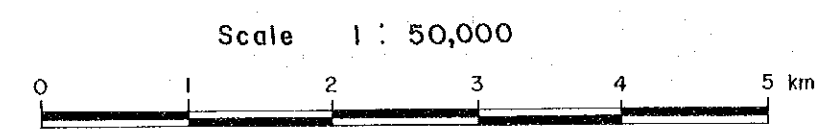
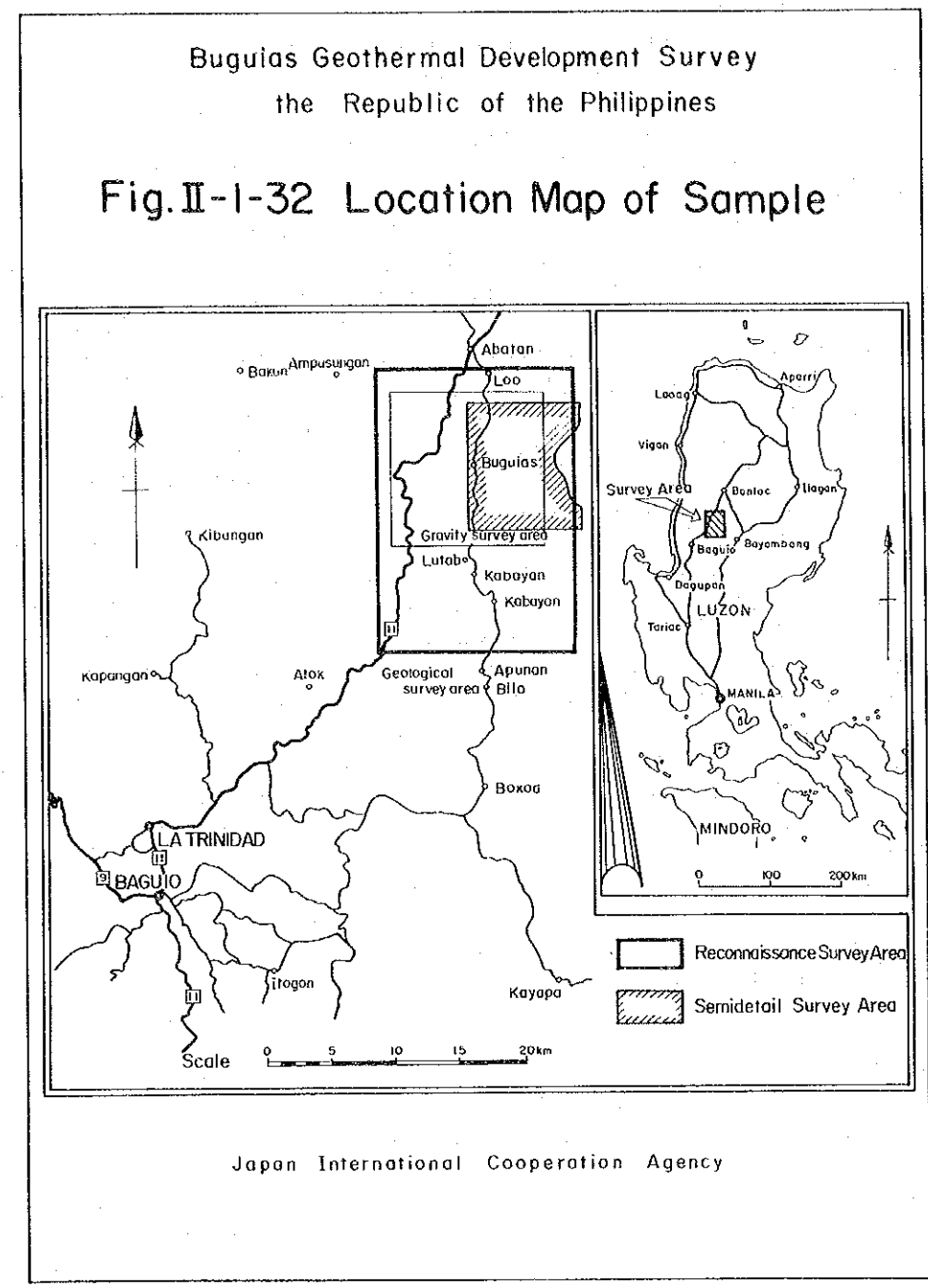
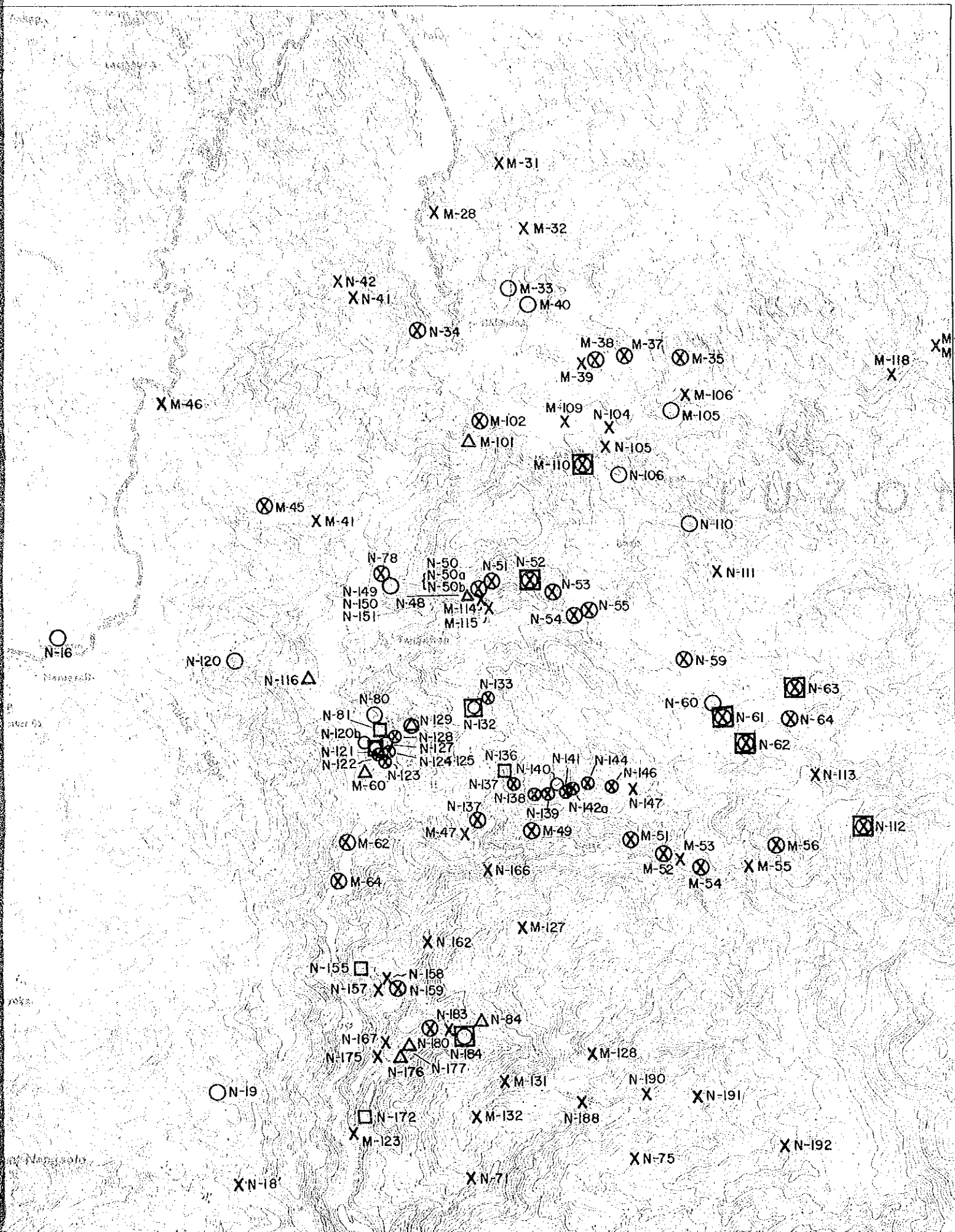
Scale 1 : 50,000

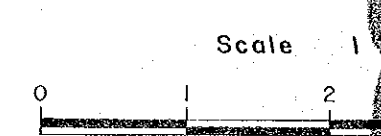
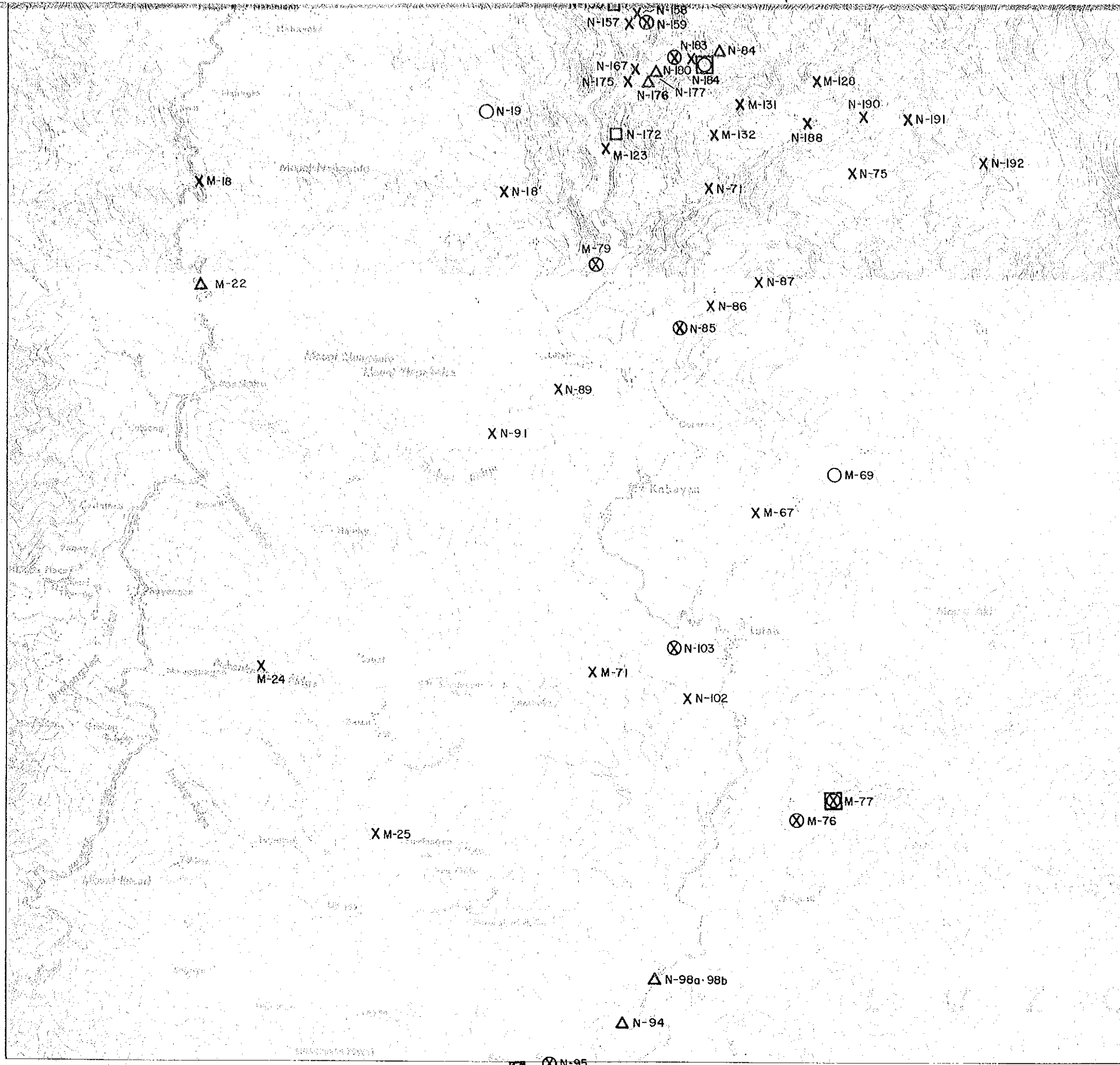


### Legend

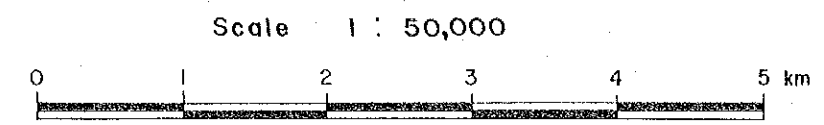
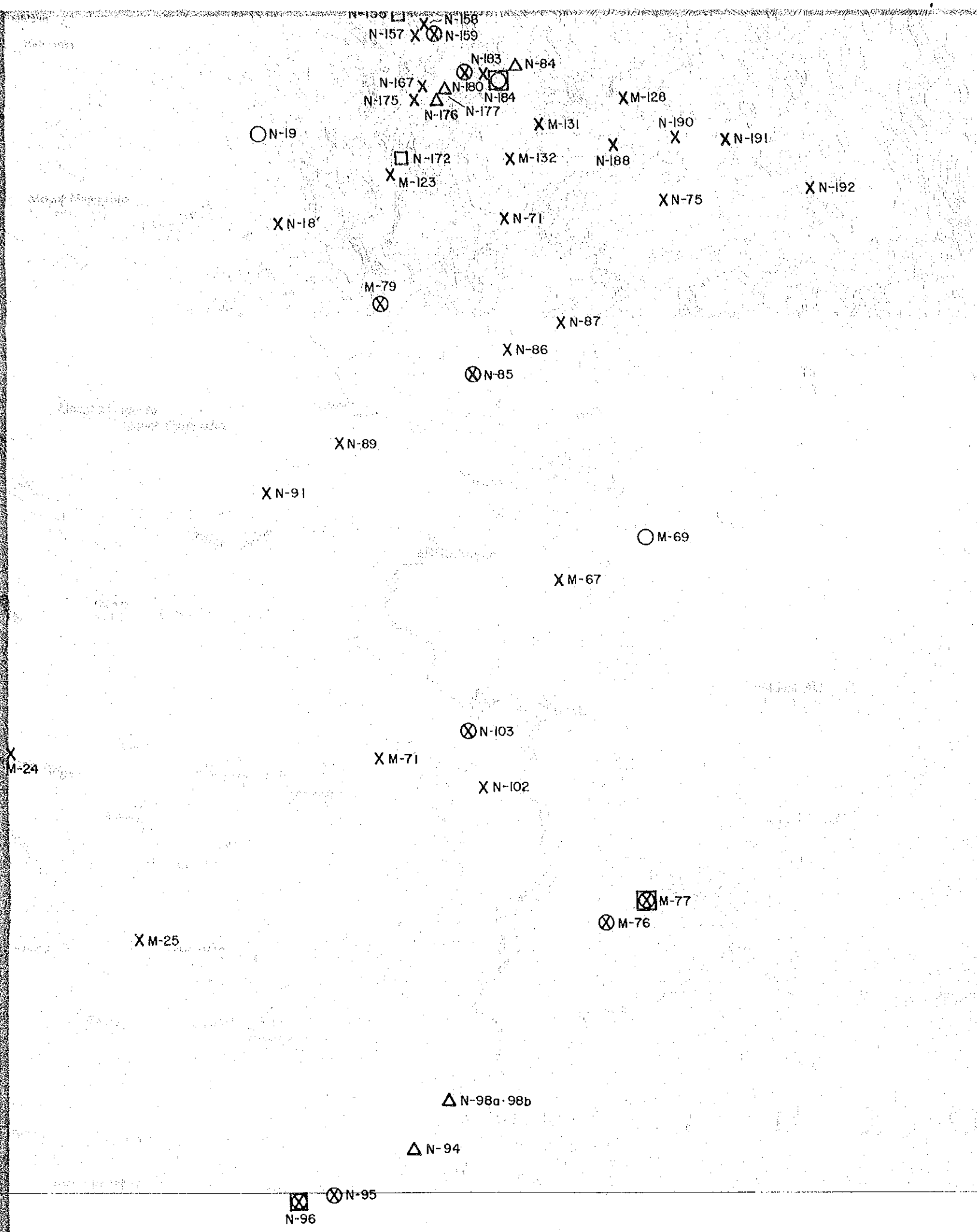
-  Quaternary dacite lava dome
-  Bodo formation (Quaternary)
-  Pluton (Middle Miocene)
-  Reverse fault
-  Normal fault
-  Deep fracture (Reverse fault)
-  Anticline
-  Syncline
  
- D · U Down, Up (sense of fault)
- M.L.A. Mountain Lake anticline
- B.C.A. Buguias Central syncline
- P.R.A Pulibo Ridge anticline
- B. S Batan syncline





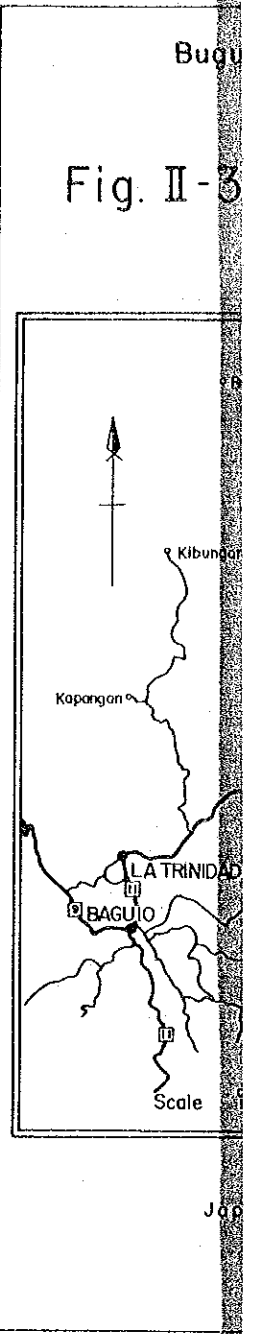
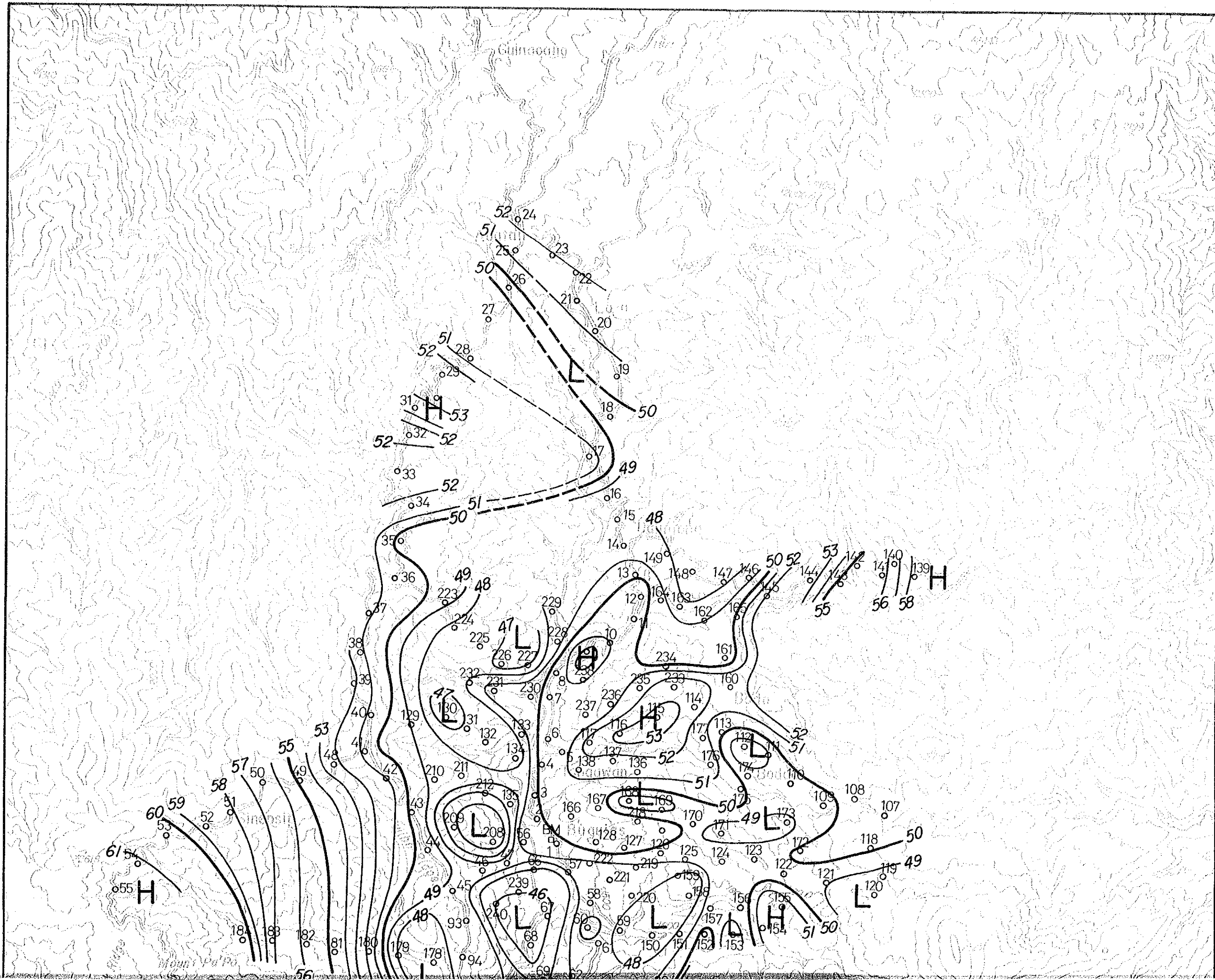


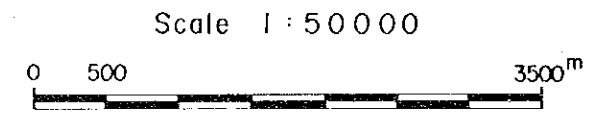
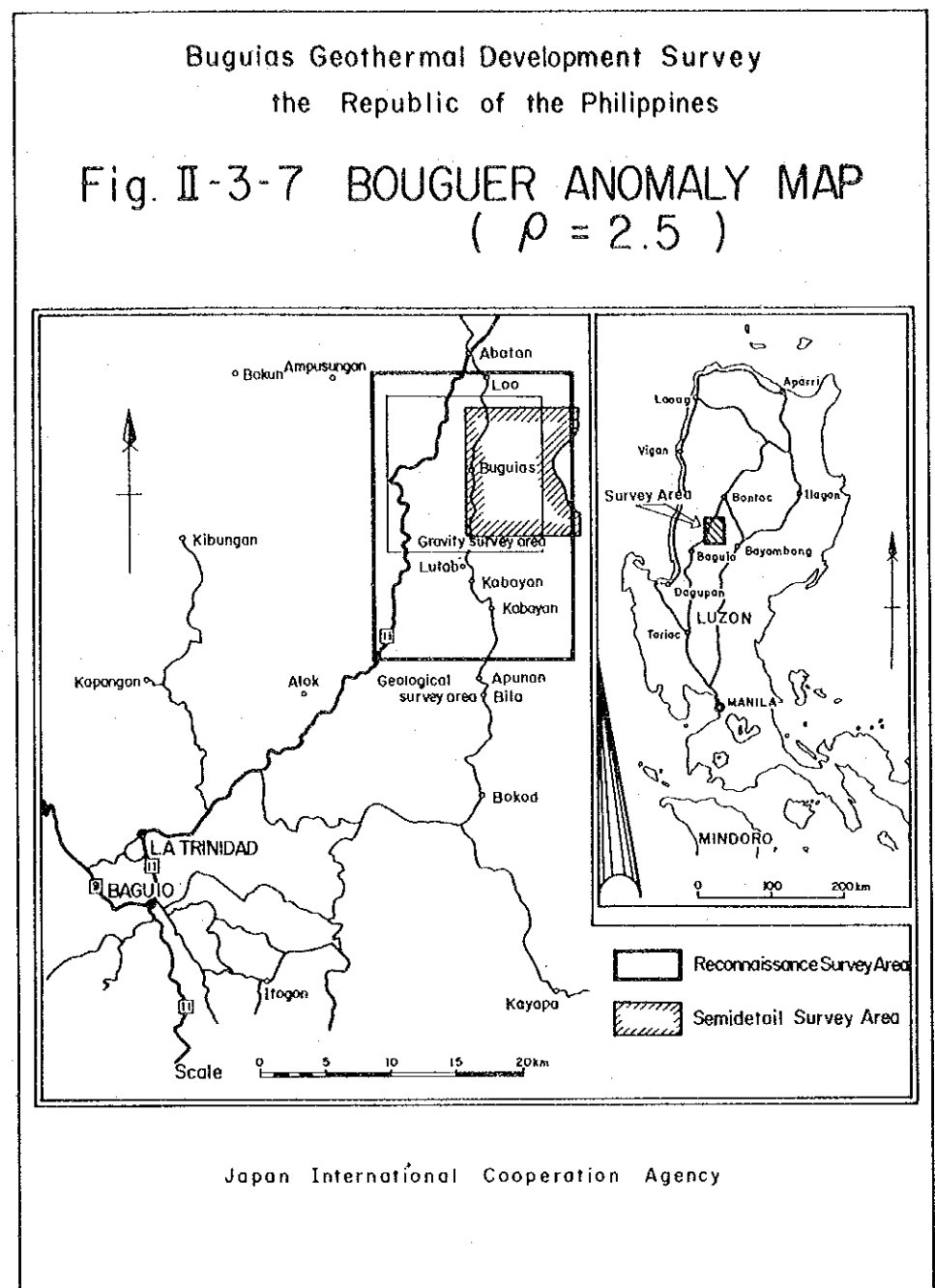
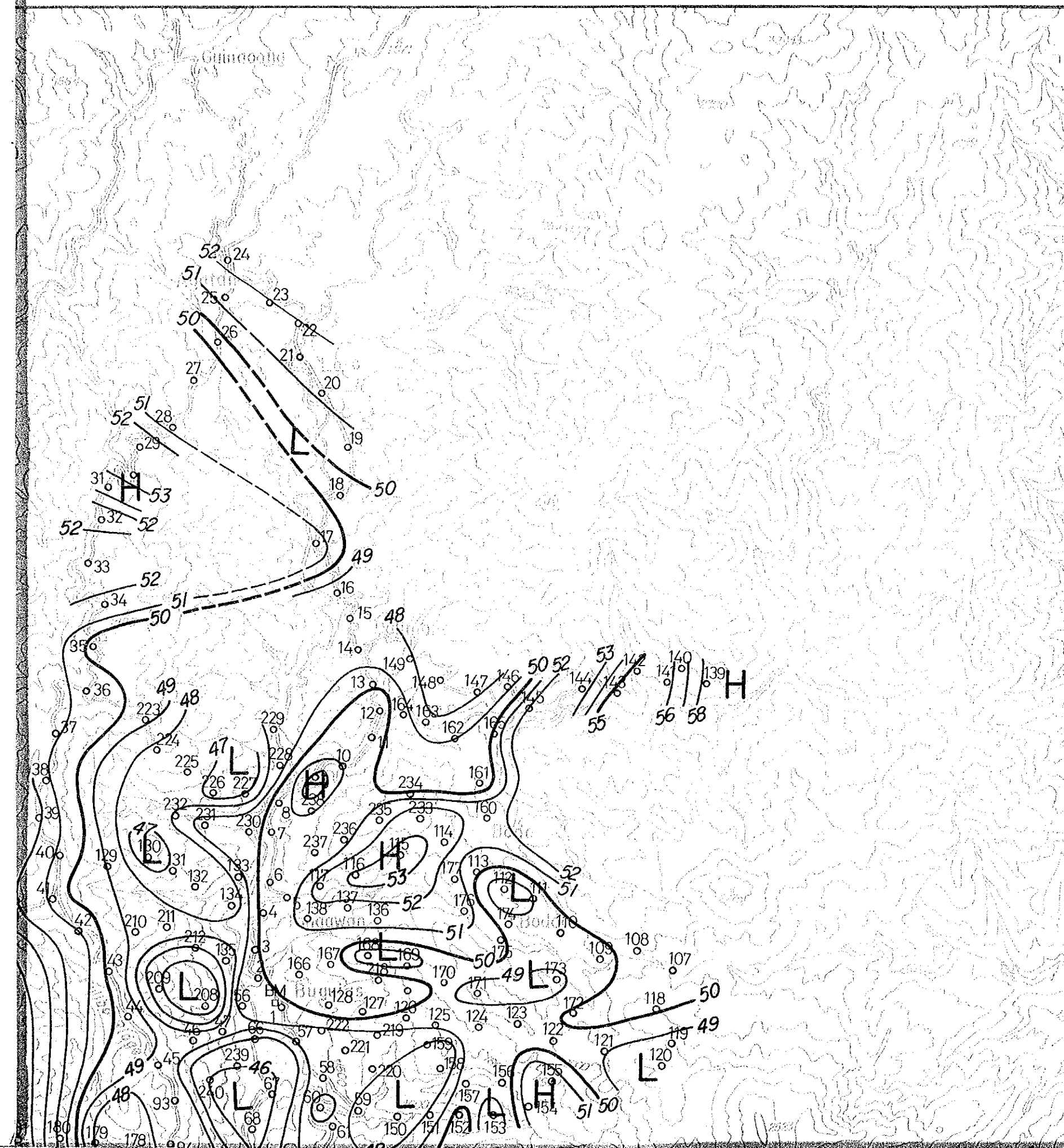
- Legend
- - ×
  - 
  - △



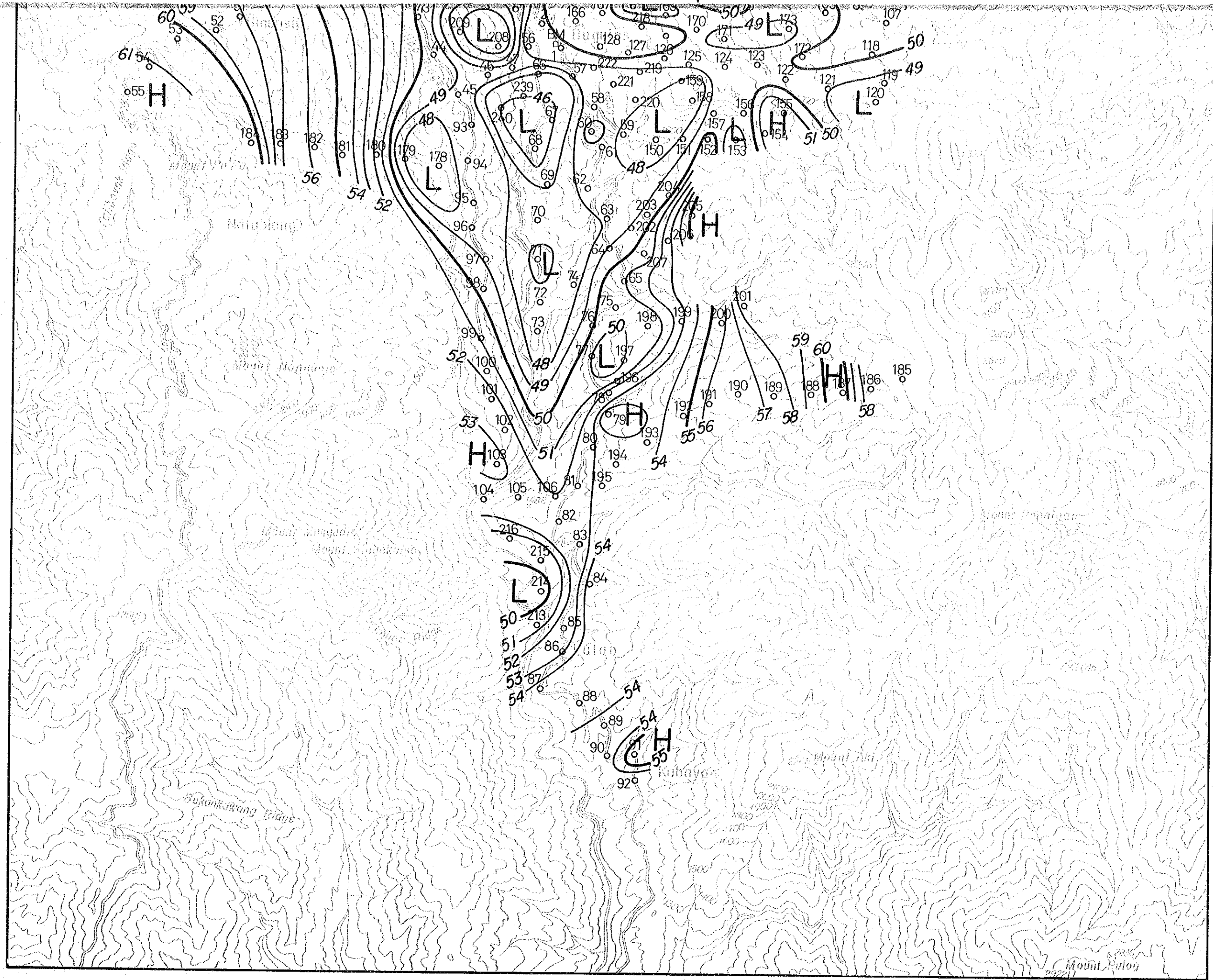
Legend

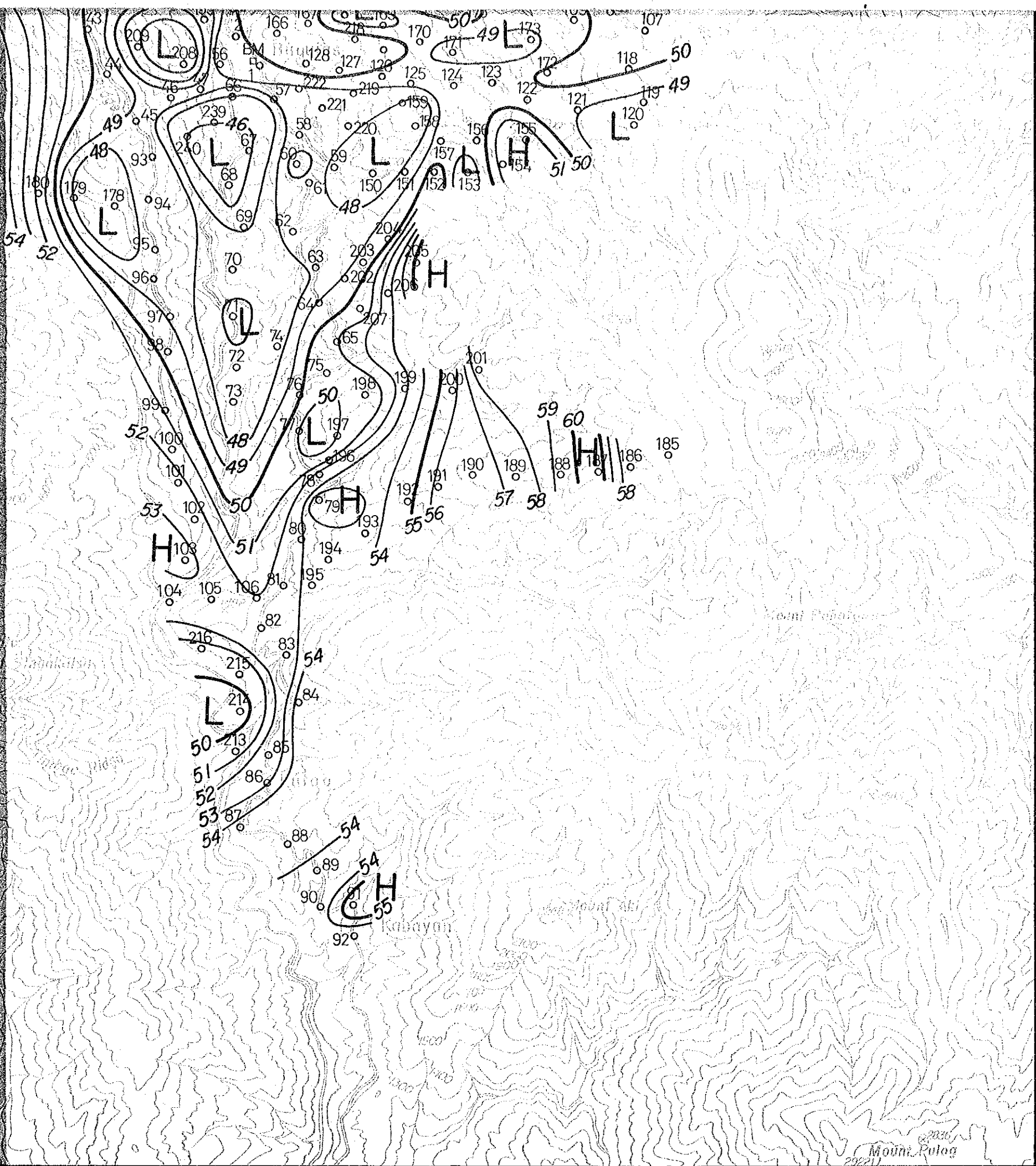
- X - Ray
- × Thin Section
- Chemical Analysis
- △ Fossil











2021  
Mouni Pulog  
2021