

Scale 1:50,000



Legend

(Quaternary)

Bodo F. dacitic pyroclastics (pumice tuff, pyroclastic flow)

(Tertiary)

Loo F. hb-andesite ~ dacite lava, pyroclastics

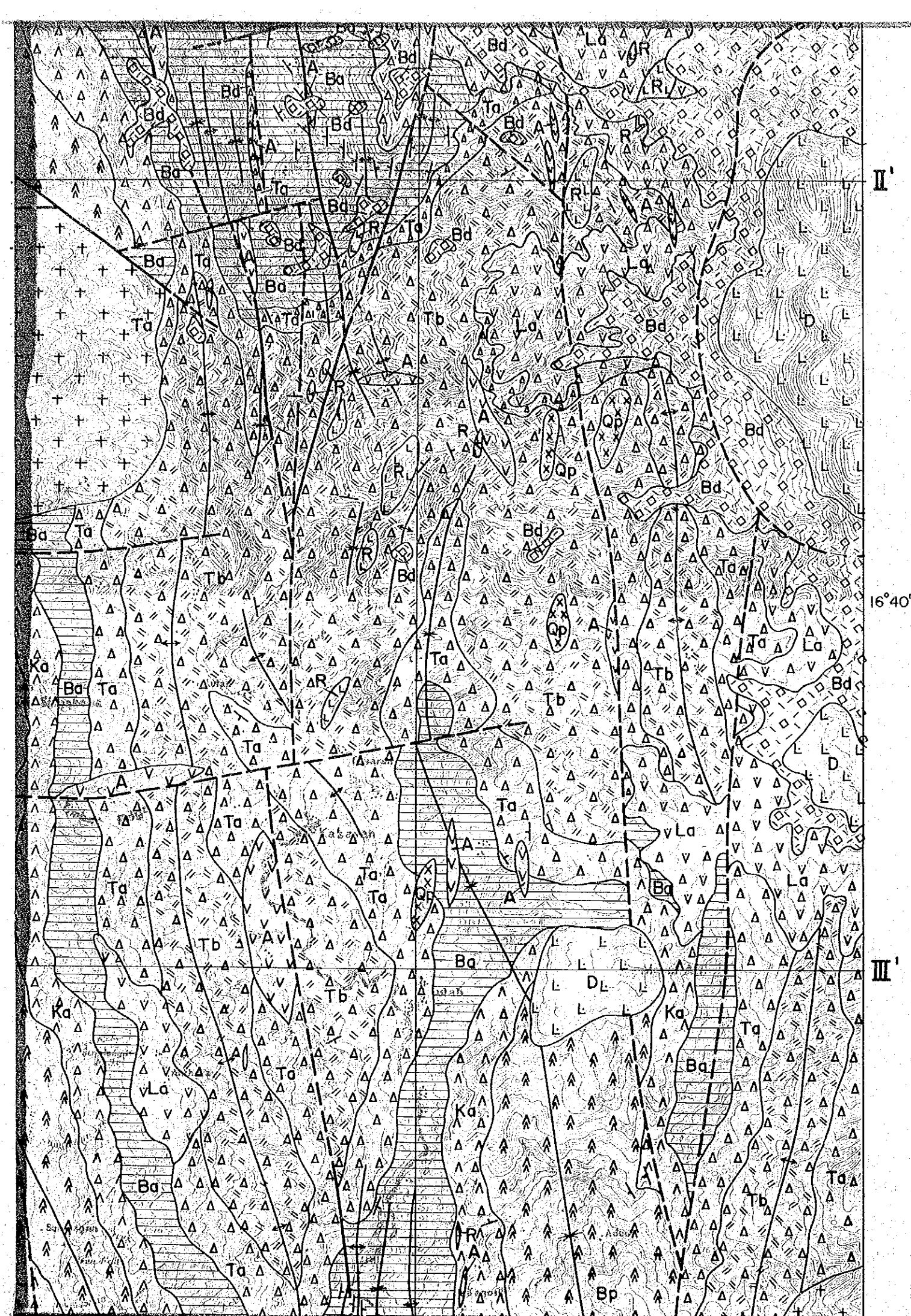
(Miocene)

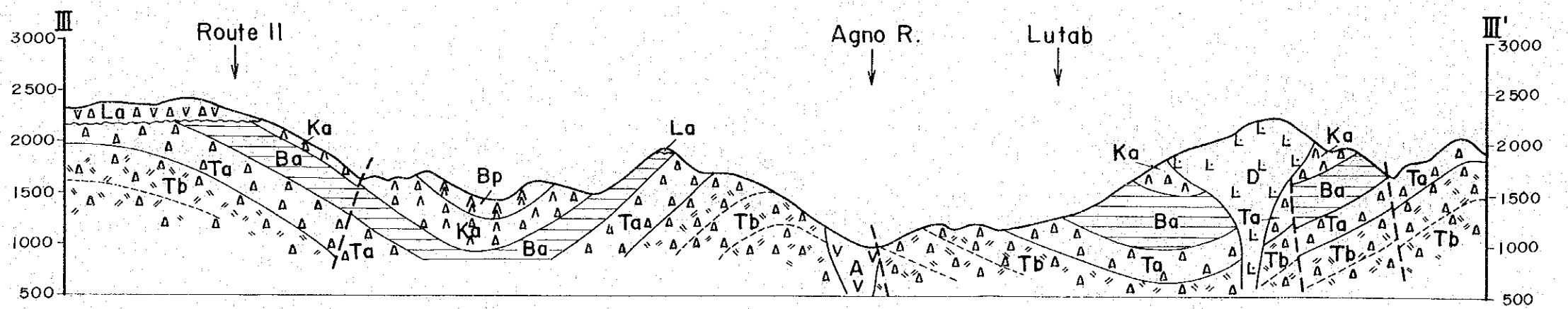
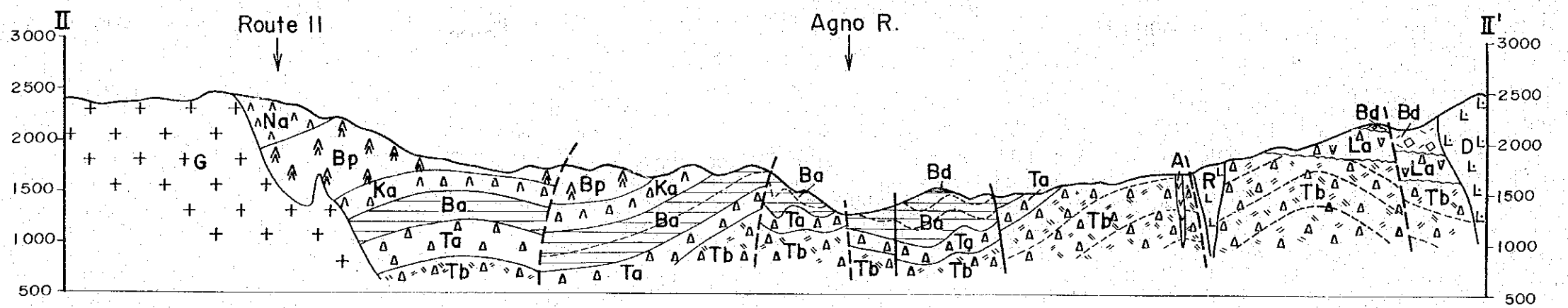
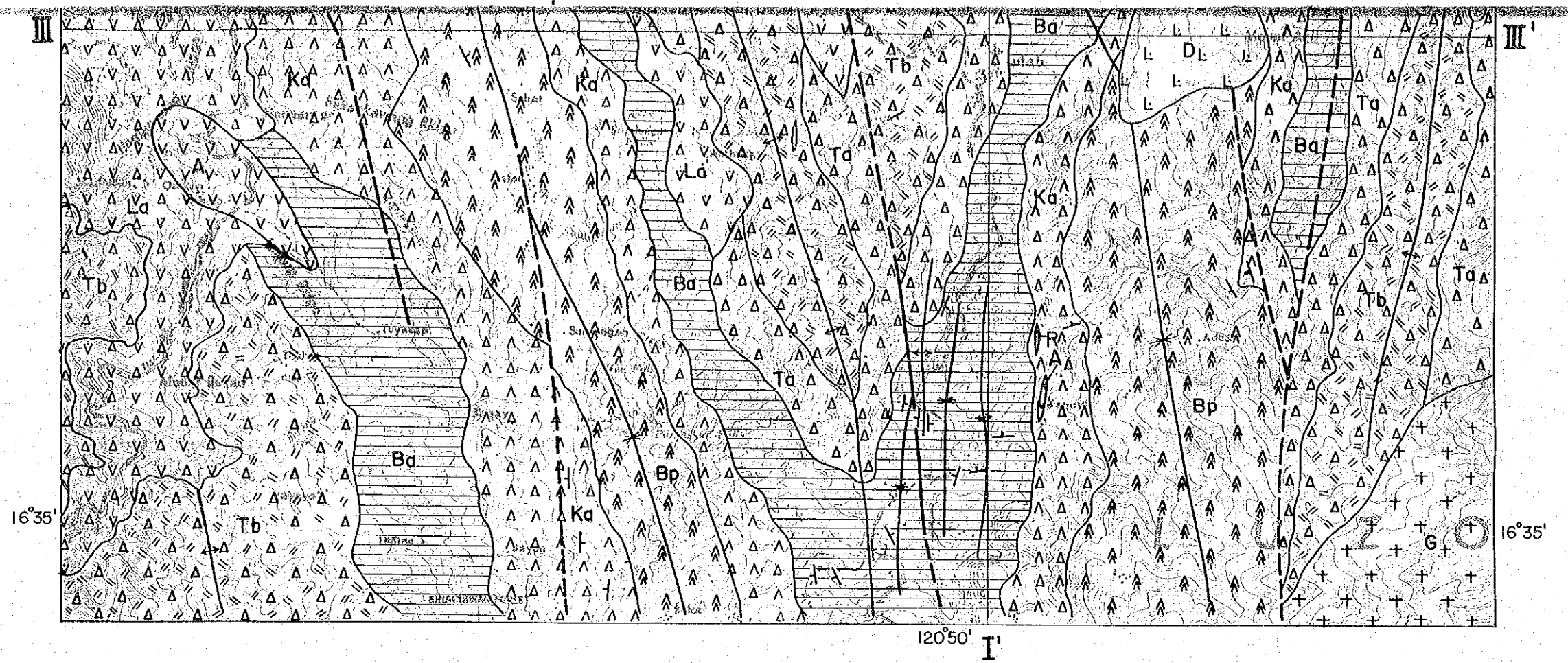
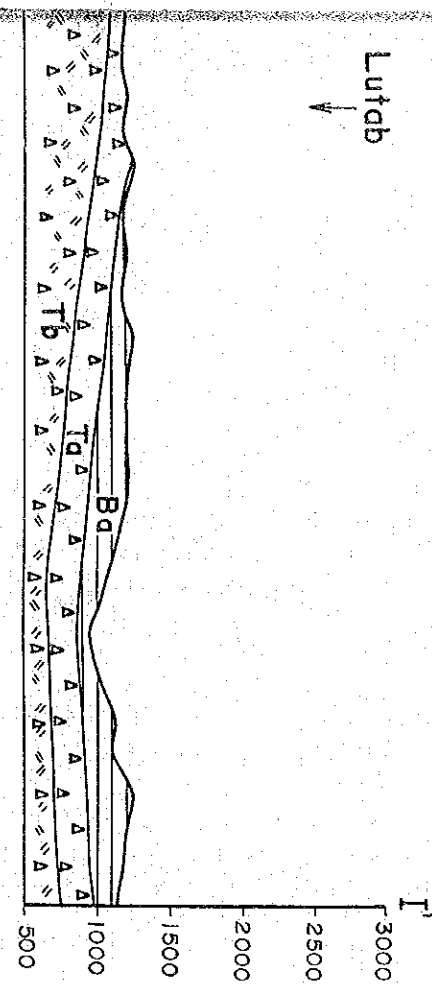
Buguias F.

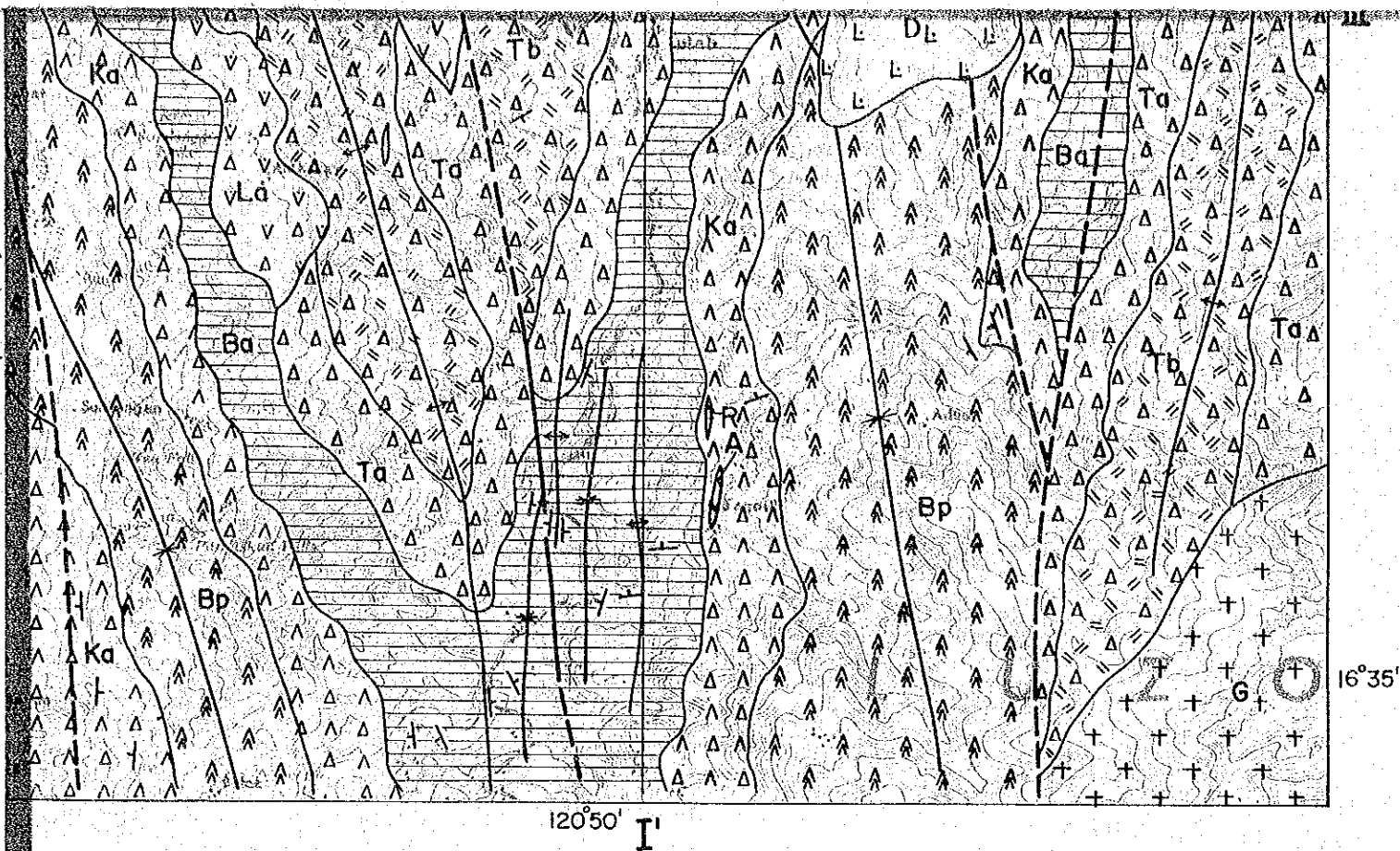
Nanayengan CR. An. M. px-andesite lava, pyroclastics
 Batan River pillow lava M. basaltic pillow lava, pyroclastics
 Kagosit. An volcanic M. px-andesitic hyalclastic tuff, pyroclastics
 Buguias CR al. M. alternation of fine tuff ~ tuff breccia
 Taking CR Ba-An volcanic M. andesitic pyroclastics
 Taking CR Ba-An volcanic M. basaltic pyroclastic
 Kayapas CR. pillow lava M. basaltic pillow lava

(Intrusive rocks)

bi-hb dacite



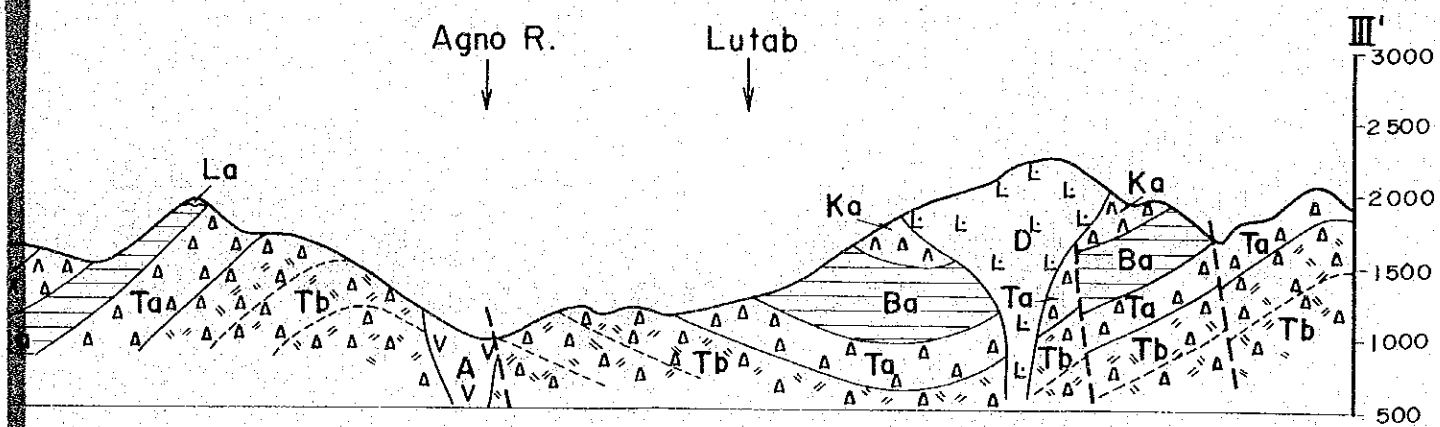
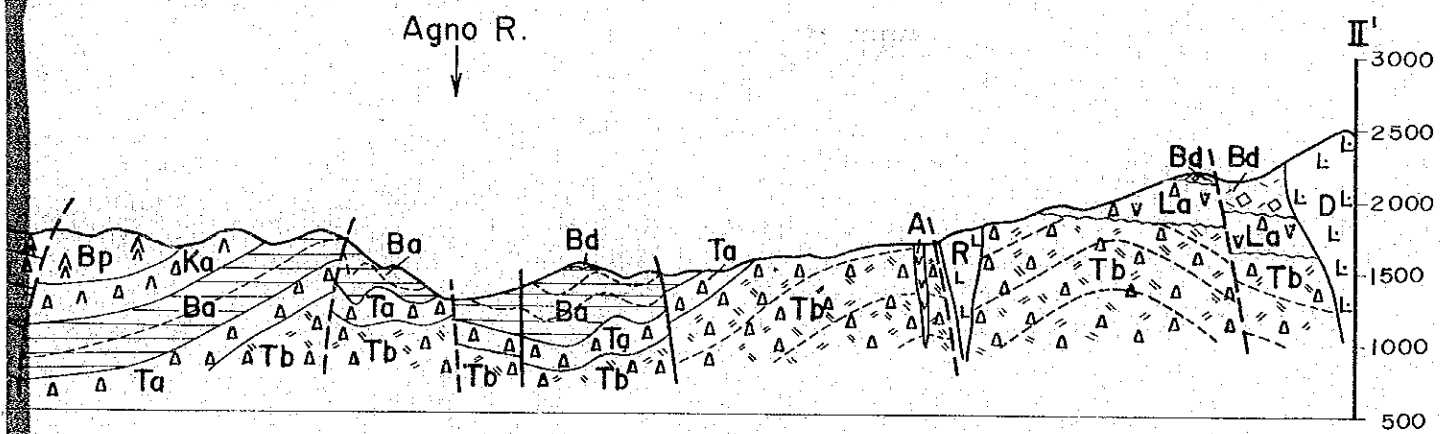


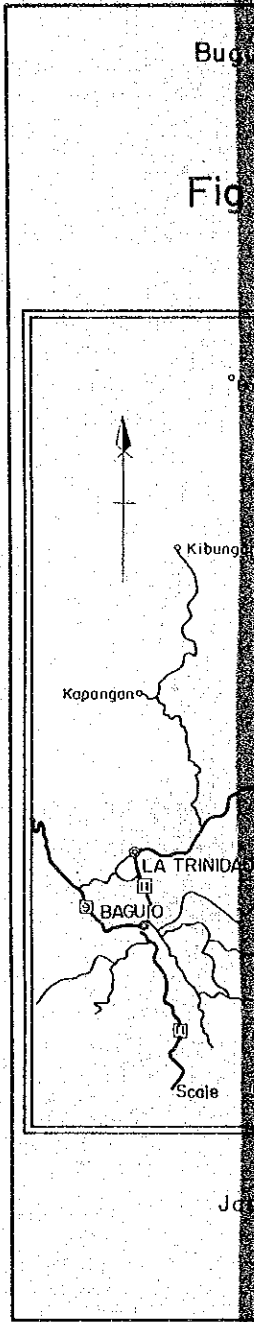
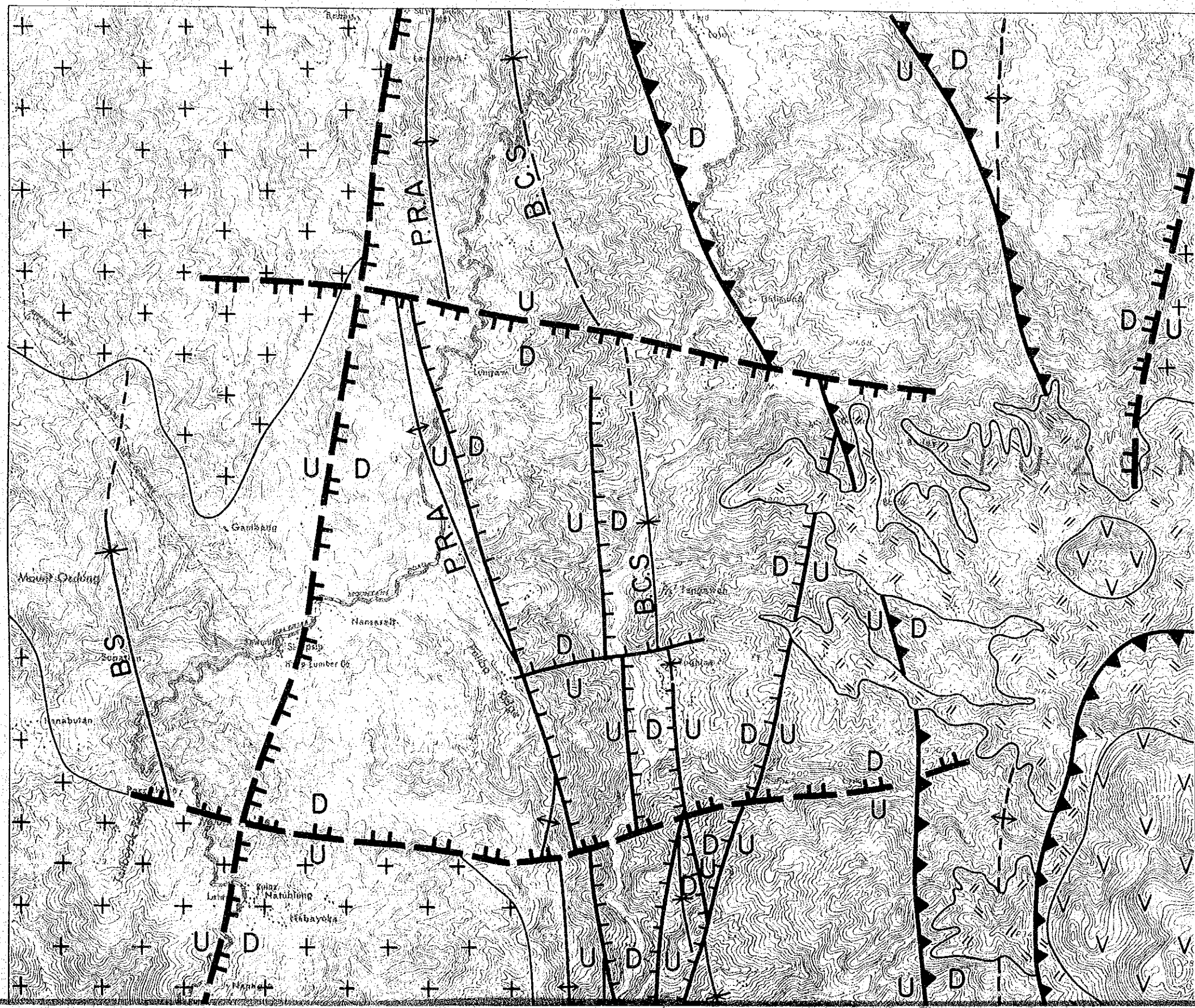


(Miocene)	Buguias F.	Batan River pillow lava M.		basaltic pillow lava, pyroclastics
		Kagosit. An volcanic M.		px-andesitic hyalclastic tuff, pyroclastics
		Buguias CR al. M.		alternation of fine tuff ~ tuff breccia
		Toking CR Ba-An volcanic M.		andesitic pyroclastics
				basaltic pyroclastic
		Kayapas CR. pillow lava M.		basaltic pillow lava

(Intrusive rocks)

	bi-hb dacite
	rhyolite ~ dacite
	andesite ~ hb andesite porphyry
	diorite ~ granodiorite porphyry
	diorite Qtz-diorite granodiorite
	strike and dip
	fault
	anticline
	syncline

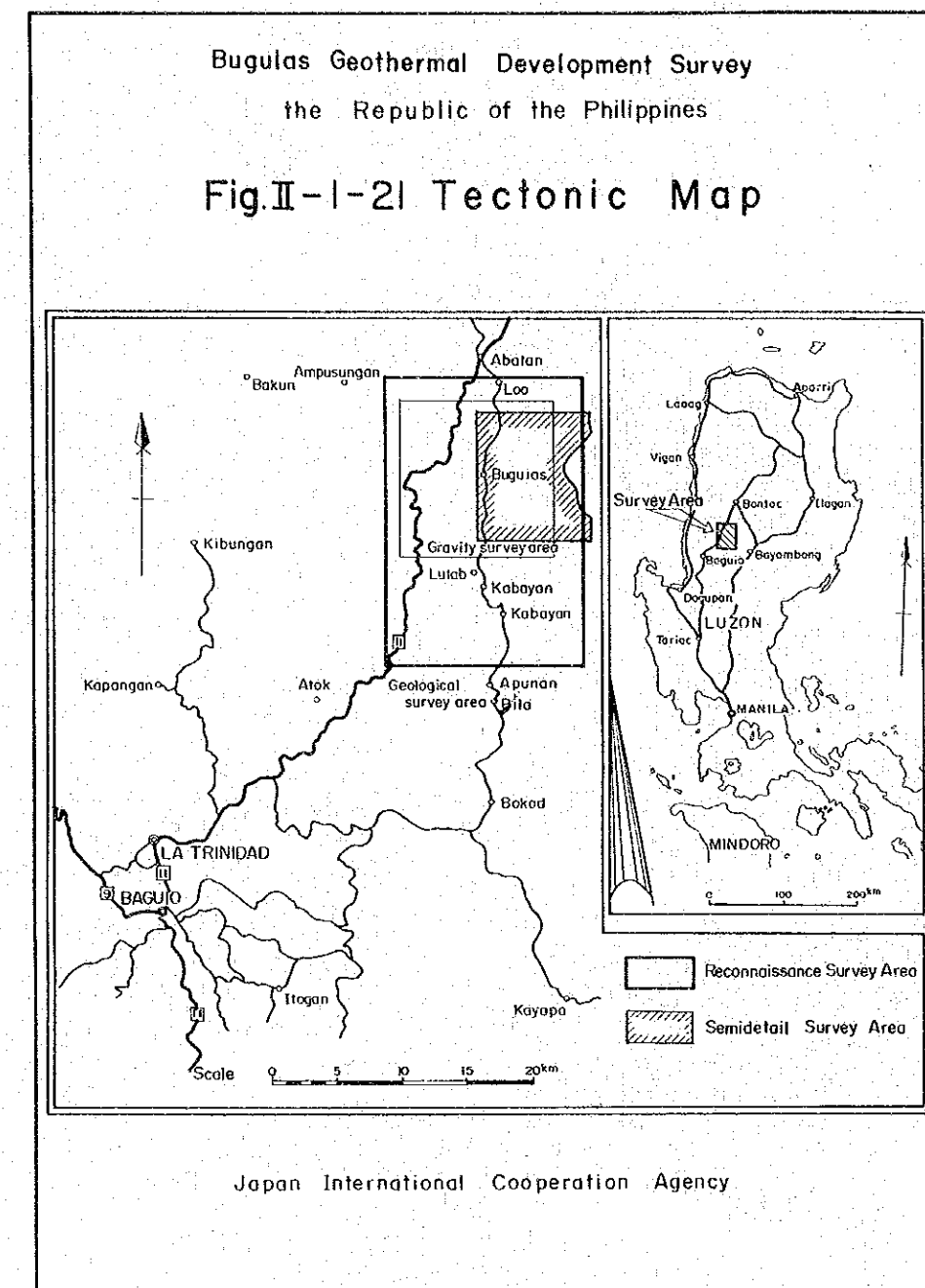
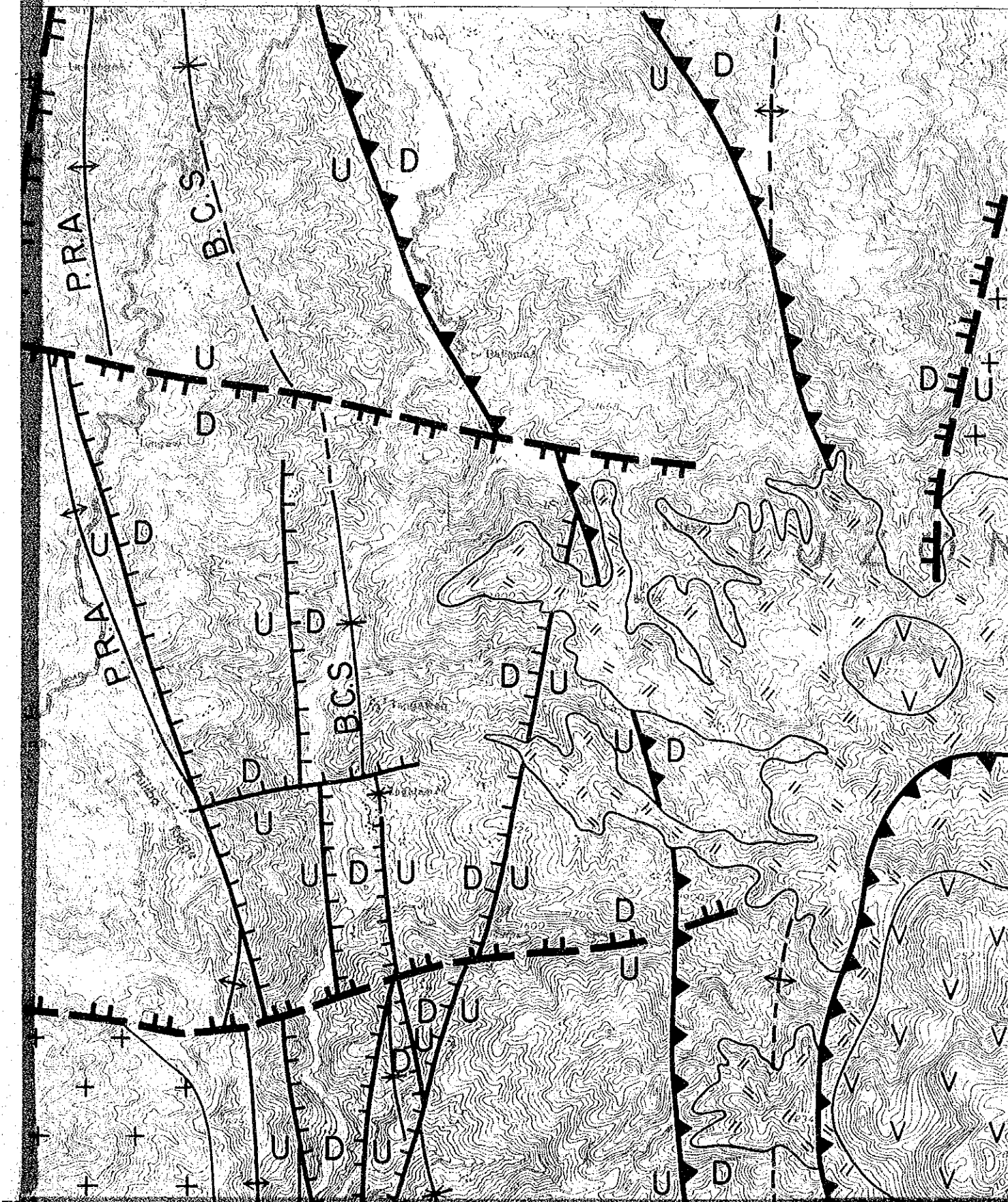




Bu

Fig

J



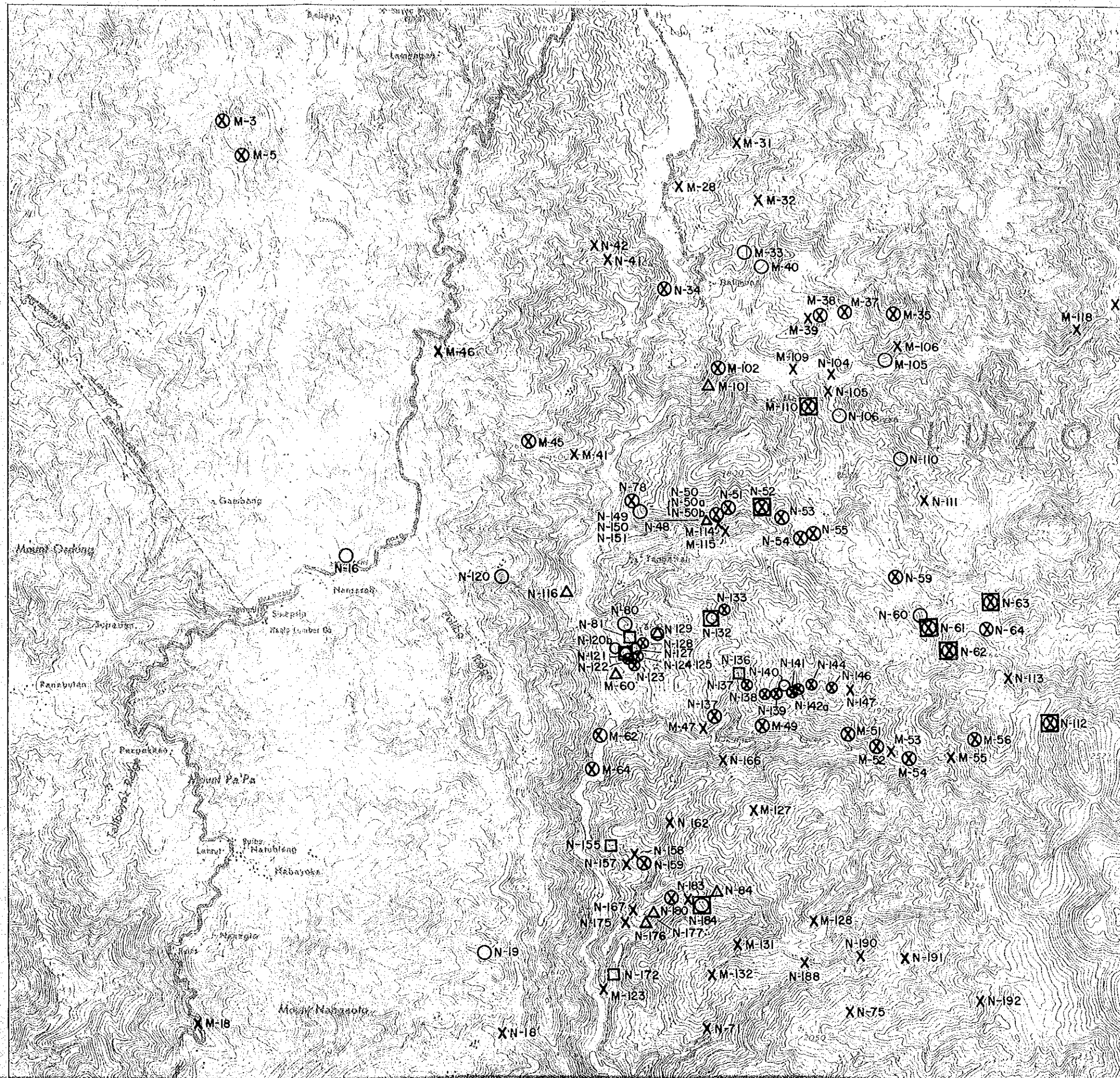


Fig. II-1

