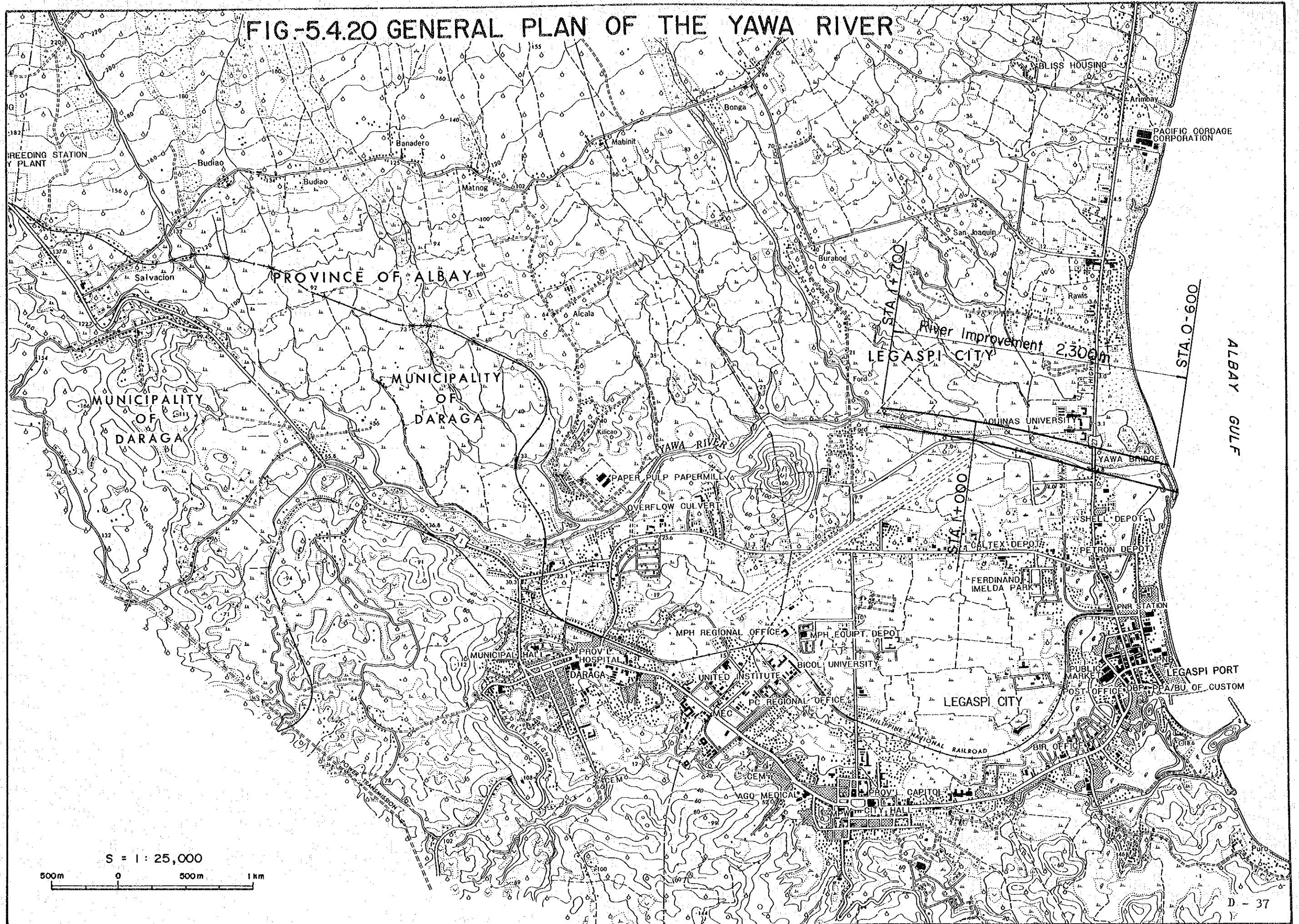


FIG-5.4.20 GENERAL PLAN OF THE YAWA RIVER



S = 1 : 25,000

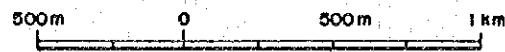


FIG.-5.4.21 PROFILE OF THE YAWA RIVER

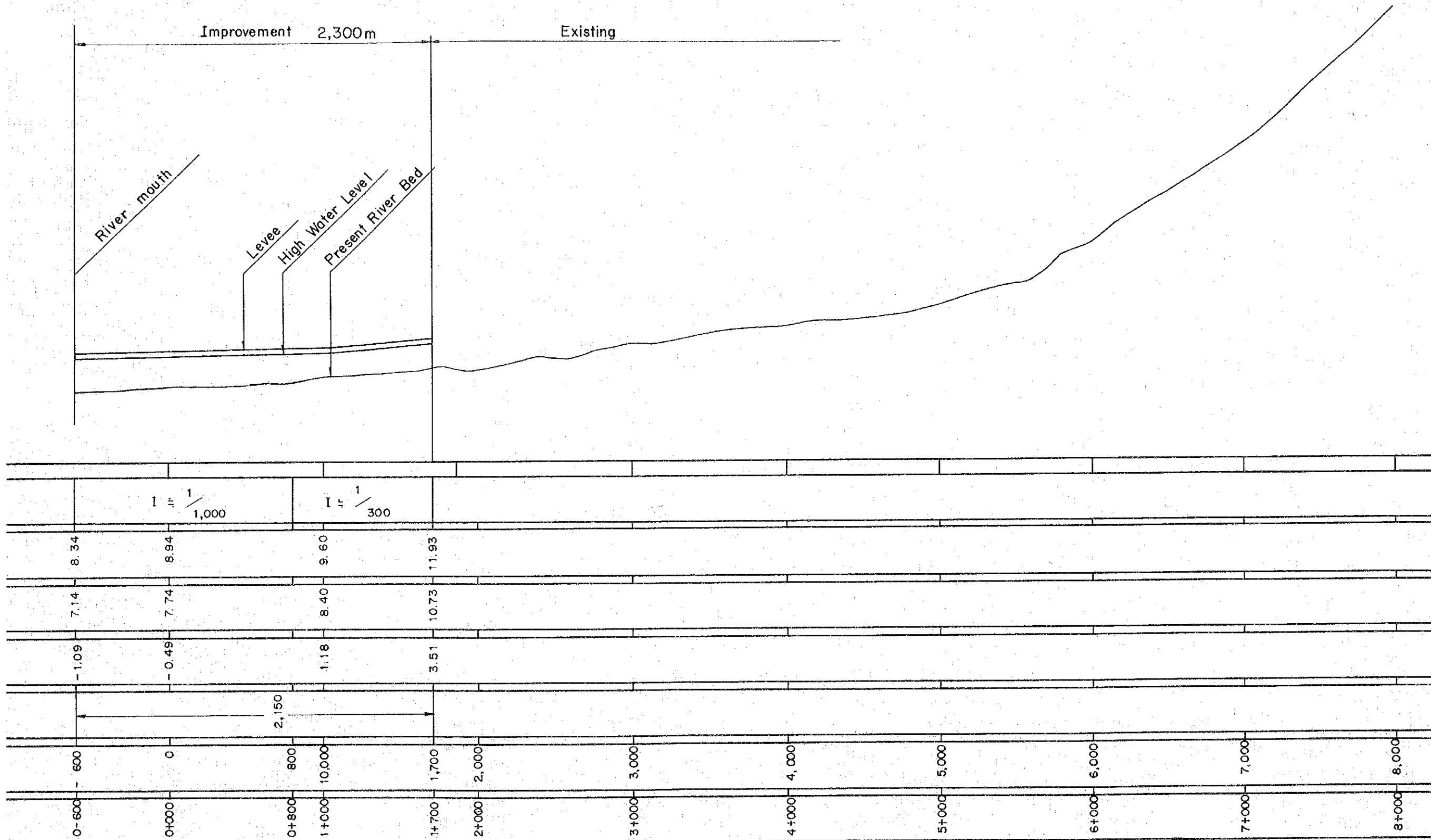


FIG.-5.4.22 TYPICAL CROSS SECTION OF YAWA RIVER

STA. 1 + 000

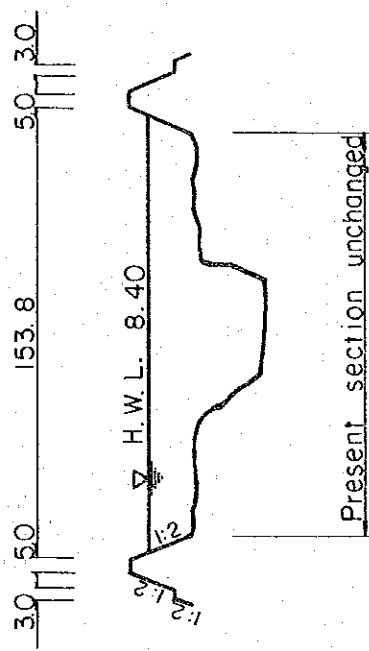


FIG.- 5.5.1 PROPOSED CROPPING PATTERN

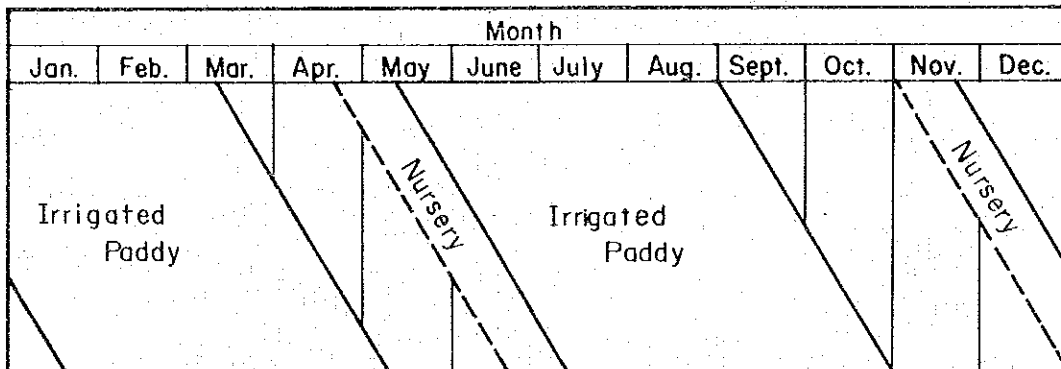
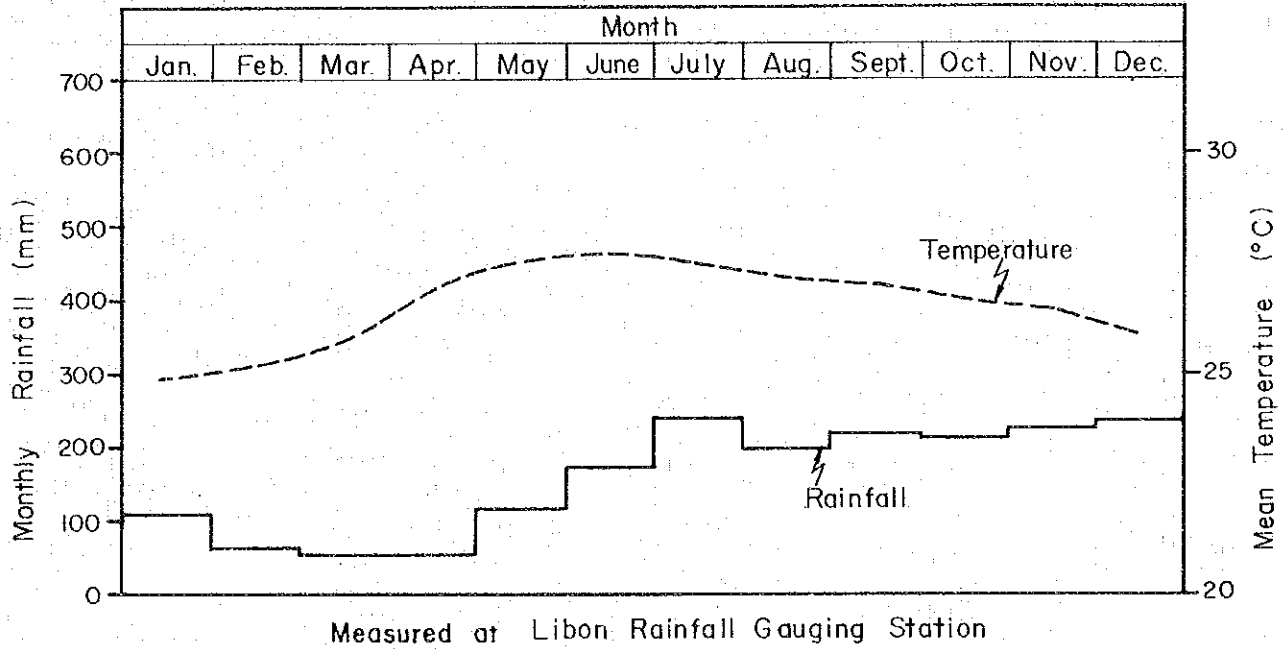


FIG- 5.7.1 CONSTRUCTION TIME SCHEDULE (1/3)

Description	1st Year			2nd Year			3rd Year			4th Year			5th Year			6th Year			7th Year			8th Year			9th Year			10th Year		
QUINALI(A) RIVER BASIN																														
Sabo Works																														
1. Quirangay River																														
No.1 Sabo Dam																														
No.1 Training Levee																														
No.1- No.4 Spur Dike																														
2. Tumpa River																														
Consolidation Fence																														
3. Maninila River																														
Ground Sill																														
4. Masarawag River																														
No.1 Sabo Dam																														
No.1 Spur Dike																														
No.2- No.4 Spur Dike																														
5. Ogsong River																														
No.1- No.6 Spur Dike																														
No.1- No.7 Jetty																														
Ground Sill																														
6. Nasisi River																														
No.1 Consolidation Dam																														
No.2 Consolidation Dam																														
No.1- No.3 Ground Sill																														
River Improvement Works																														
1. Levee for the Quinali (A) River																														
STA. 0+000-2+341																														
STA. 2+341-6+615																														
STA. 6+615-12+500																														
STA. 12+500-17+074																														
STA. 17+074-21+892																														
STA. 21+892-27+500																														
2. Levee for the Nasisi River																														
STA. 0+000-7+000																														

CONSTRUCTION TIME SCHEDULE (2/3)

Description	1st Year		2nd Year		3rd Year		4th Year		5th Year		6th Year		7th Year		8th Year		9th Year		10th Year	
3. Levee for the Talisay River																				
STA. 0+017- 3+266																				
STA. 3+266-7+500																				
STA. 7+500-13+700																				
Irrigation Works																				
YAWA RIVER BASIN																				
Sabo Works																				
1. Anuling River																				
No. 1 Sabo Dam																				
No. 1 Ground Sill																				
No. 2 Ground Sill																				
No. 1 Training Levee																				
No. 1-No. 2 Spur Dike																				
No. 3 Spur Dike																				
No. 4 Spur Dike																				
No. 5 Spur Dike																				
No. 1 Sabo Dam (Anuling 2)																				
No. 1-No. 2 Spur Dike (Anuling 2)																				
2. Budiao River																				
No. 1 Sabo Dam																				
No. 1 Training Levee																				
No. 1 Spur Dike																				
No. 2 Spur Dike																				
No. 3 Spur Dike																				
No. 4 Spur Dike																				
3. Pawa- Bura bod River																				
No. 1 Sabo Dam																				
No. 1 Consolidation Dam																				
No. 1-No. 2 Spur Dike																				
No. 3 Spur Dike																				
No. 4 Spur Dike																				
No. 5 Spur Dike																				
No. 6 Spur Dike																				
No. 7 Spur Dike																				
River Improvement Works																				
Levee for the Yawa River																				

FIG. -5.8.1 (1) INTERNAL RATE OF RETURN

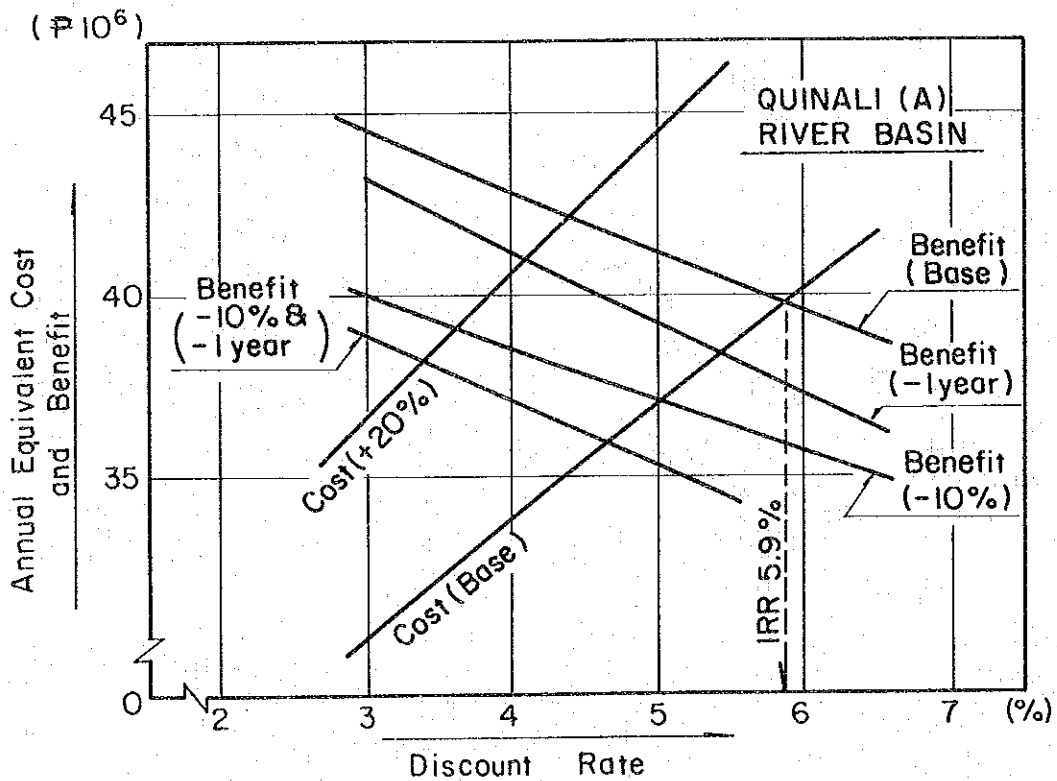
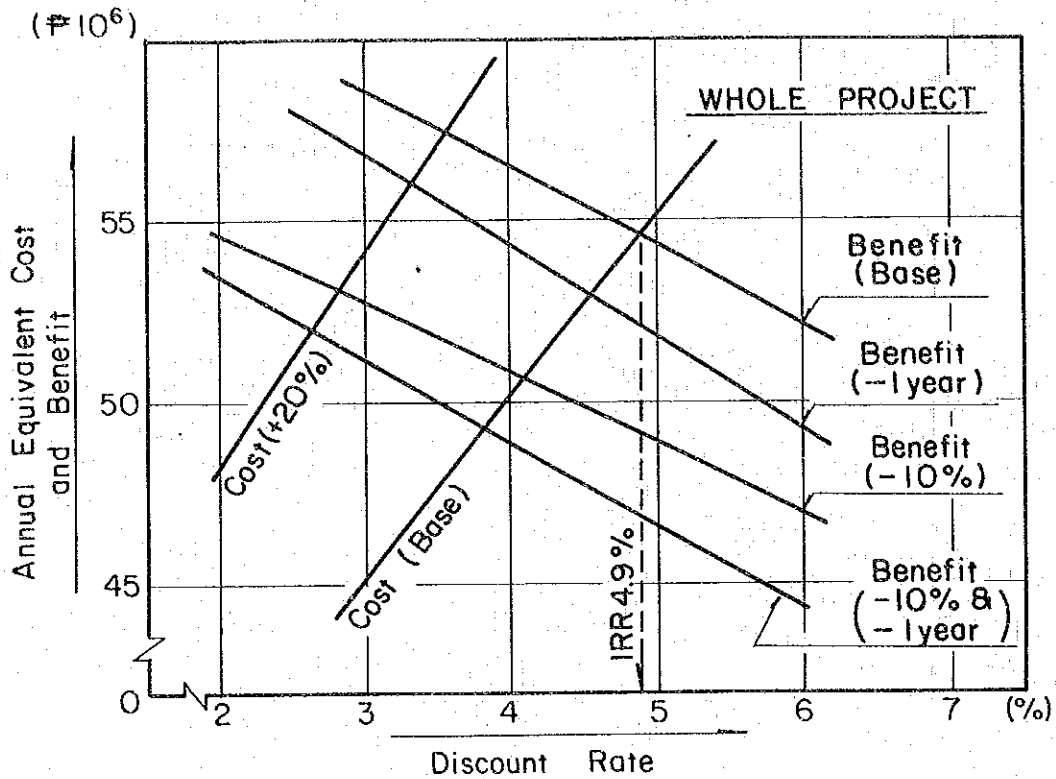


FIG. - 5.8.1 (2) INTERNAL RATE OF RETURN

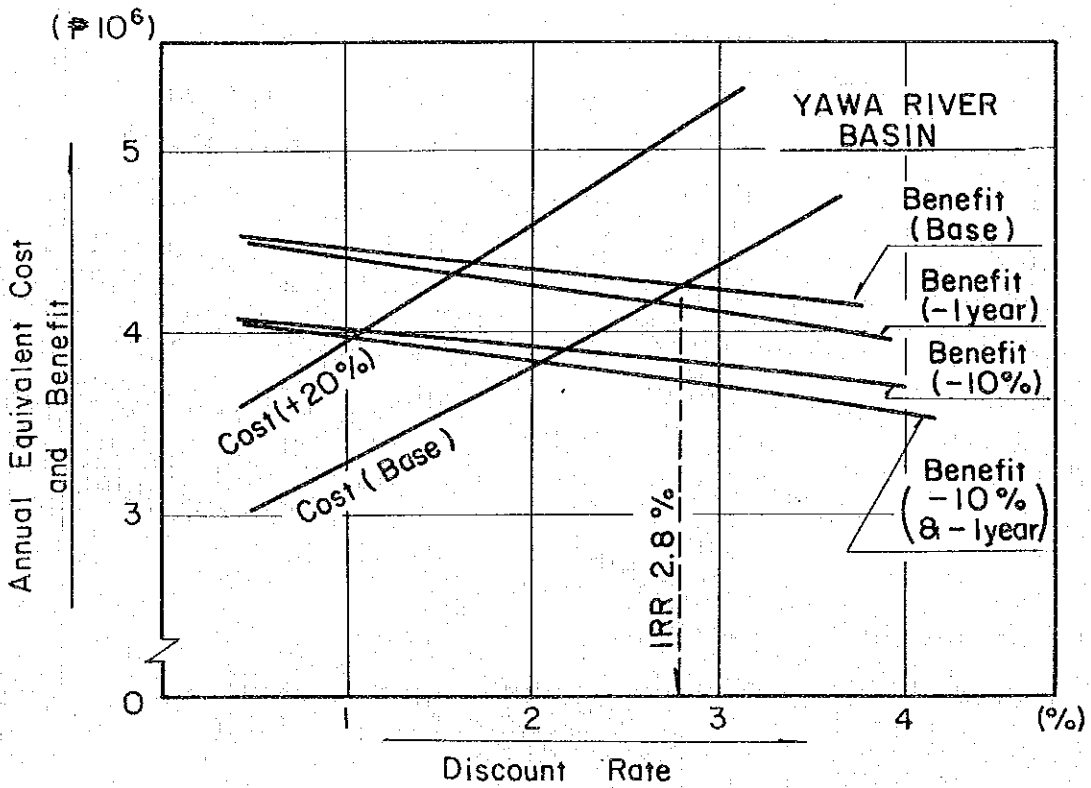
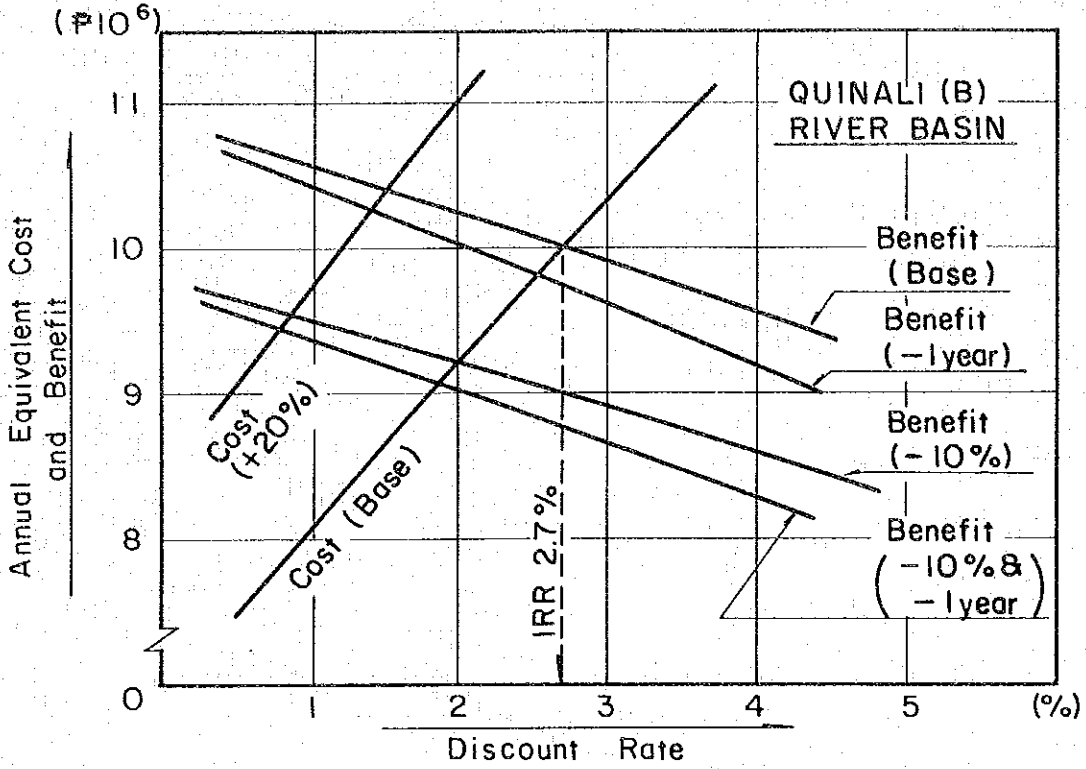
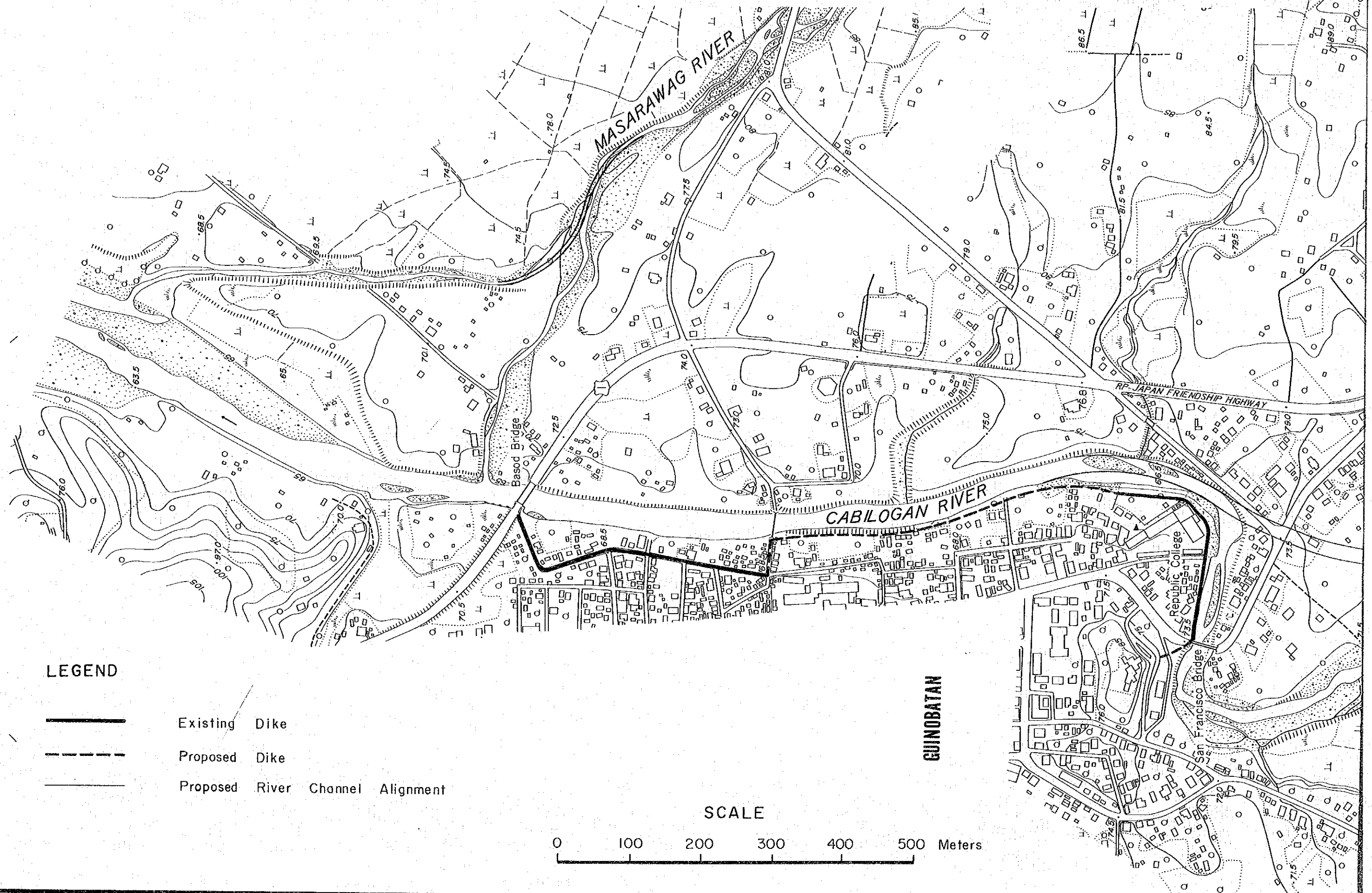





FIG.-5.9.1 GUINOBATAN RIVER IMPROVEMENT WORKS



LEGEND

-  Existing Dike
-  Proposed Dike
-  Proposed River Channel Alignment

SCALE



GUINOBATAN

FIG. - 5.9.1 GUINOBATAN RIVER IMPROVEMENT WORKS

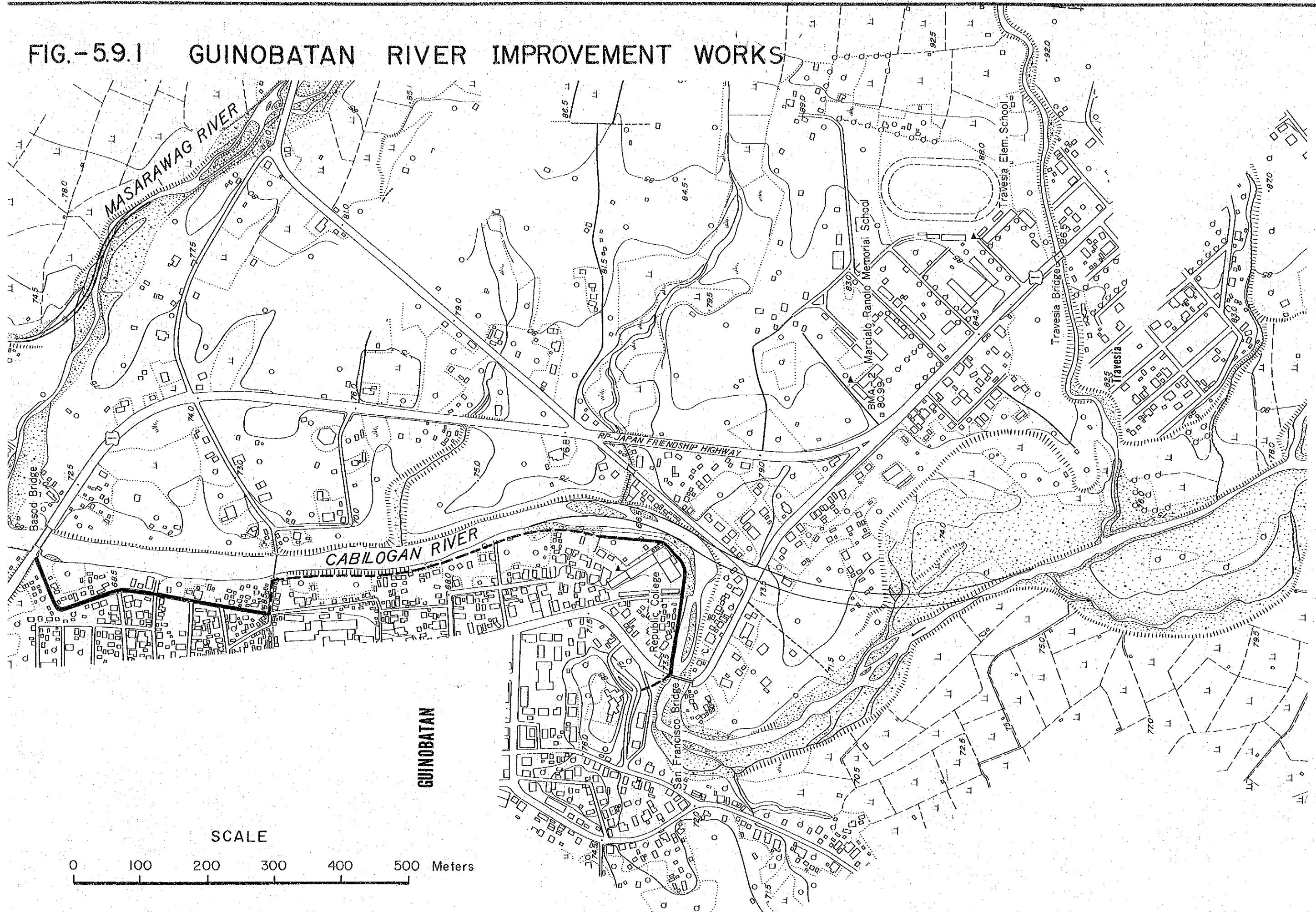
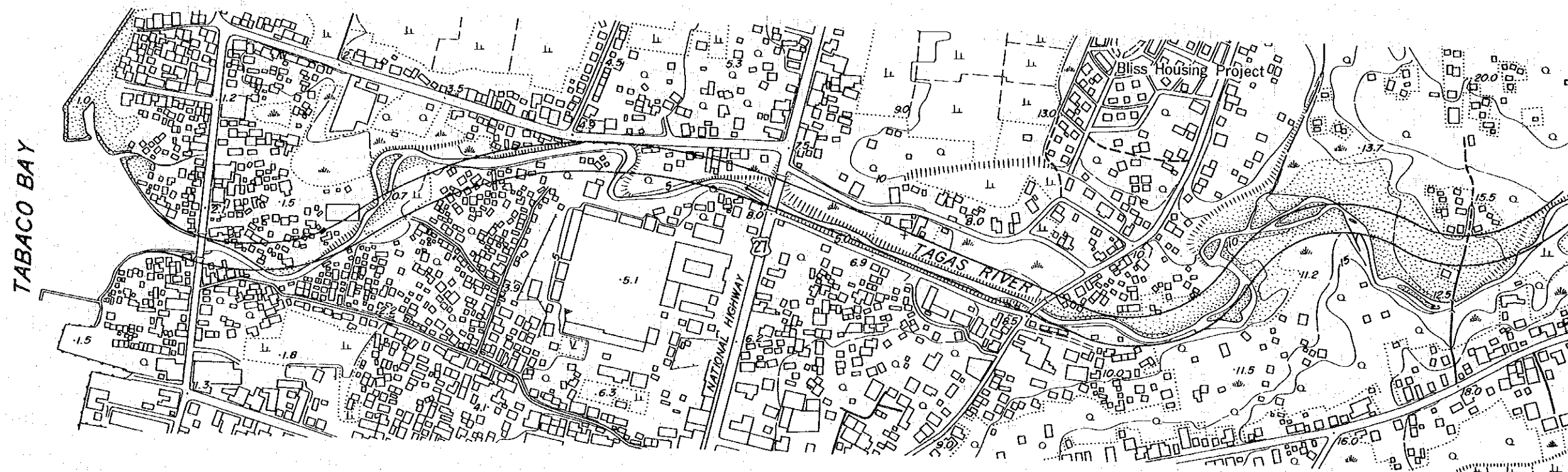


FIG.-5.9.2 TAGAS RIVER IMPROVEMENT WORKS

ALBAY

TABACO



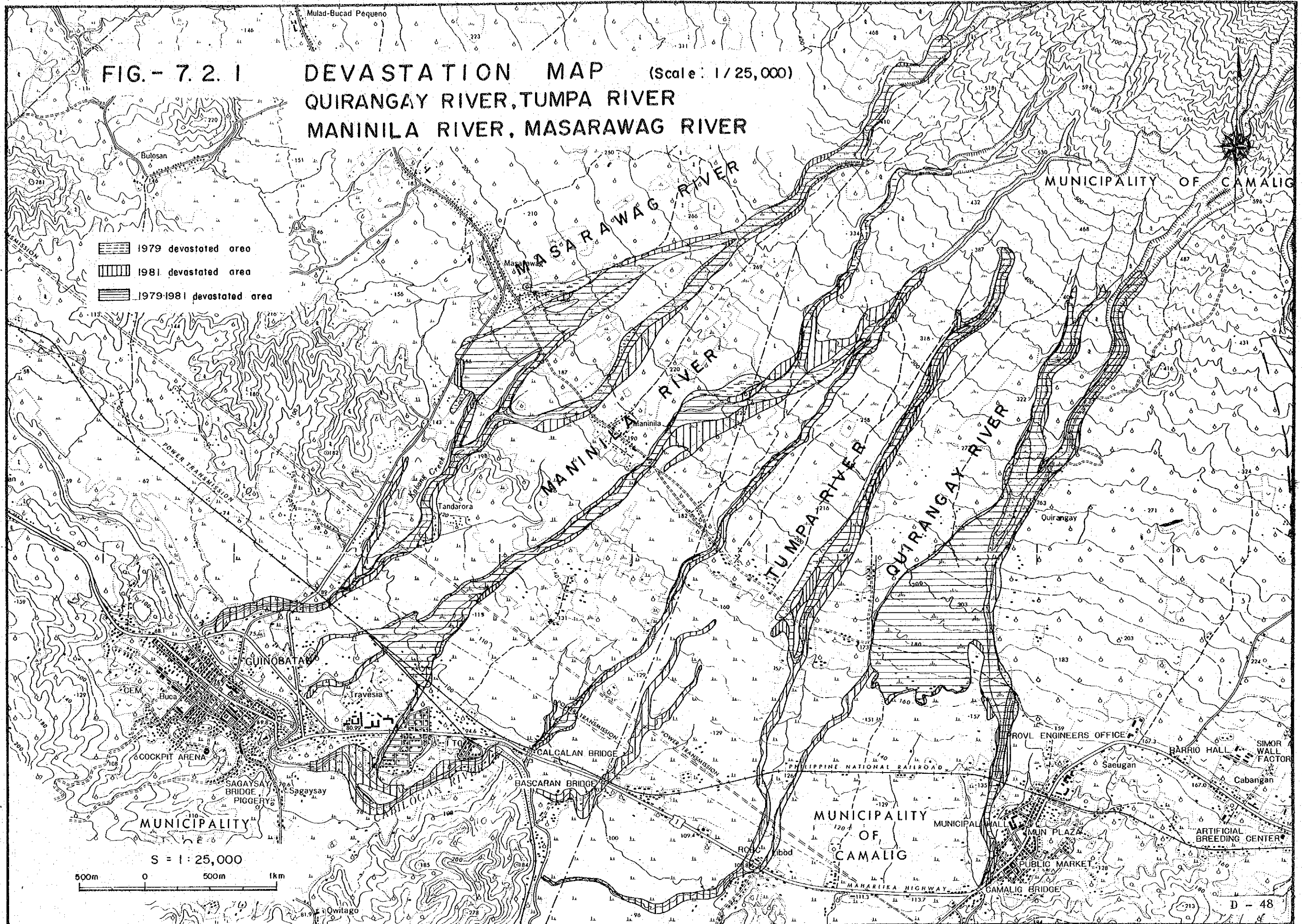
LEGEND

————— Proposed River Channel Alignment

SCALE

0 100 200 300 400 500 Meters

FIG. - 7.2.1 DEVASTATION MAP (Scale: 1/25,000)
QUIRANGAY RIVER, TUMPA RIVER
MANINILA RIVER, MASARAWAG RIVER



S = 1:25,000
 500m 0 500m 1km

FIG.- 7.2.2

DEVASTATION MAP

(Scale : 1/25,000)

OGSONG RIVER, NASISI RIVER

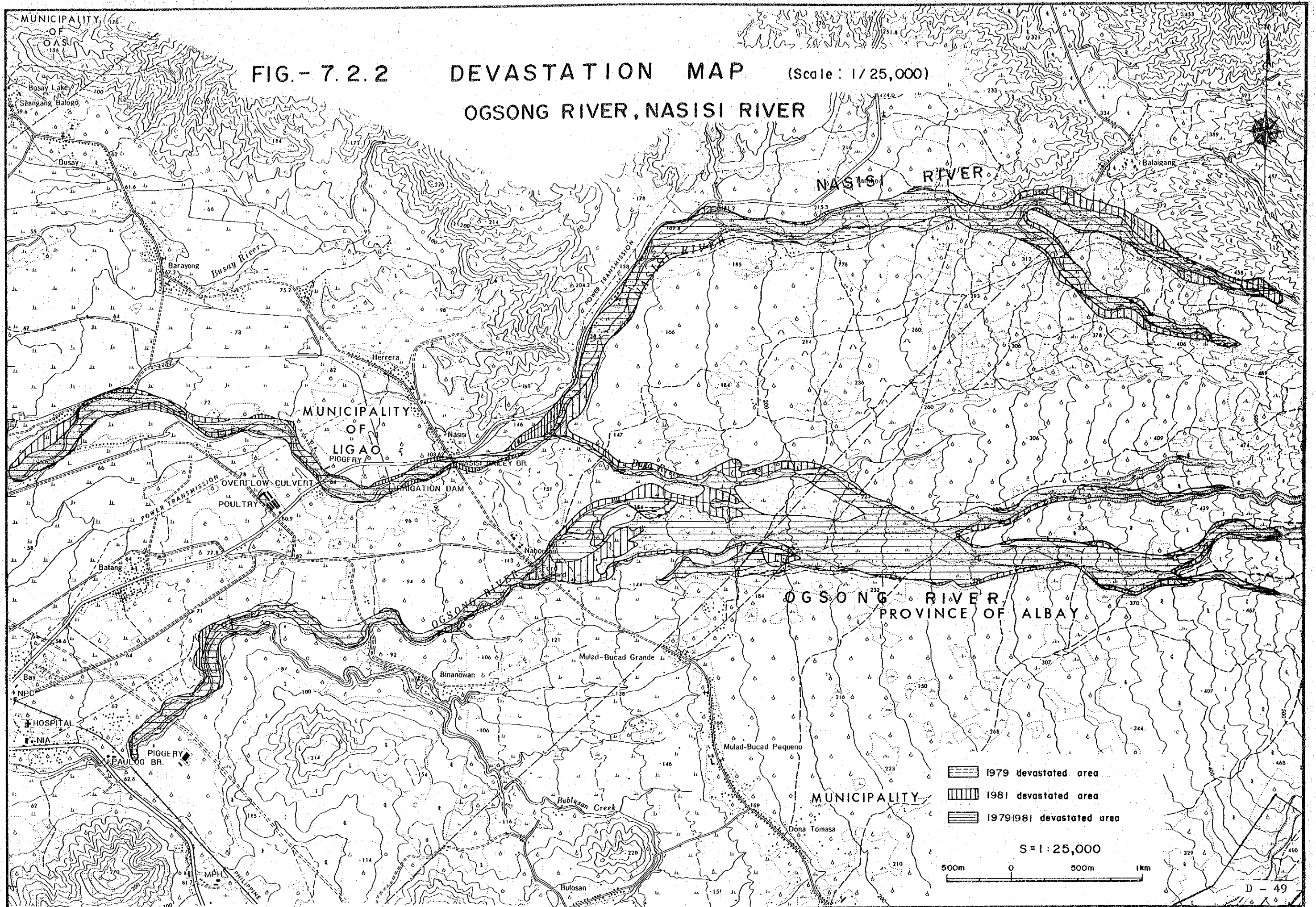


FIG.- 7. 2.3 DEVASTATION MAP (Scale : 1/ 25,000)
 QUINALI(B) RIVER

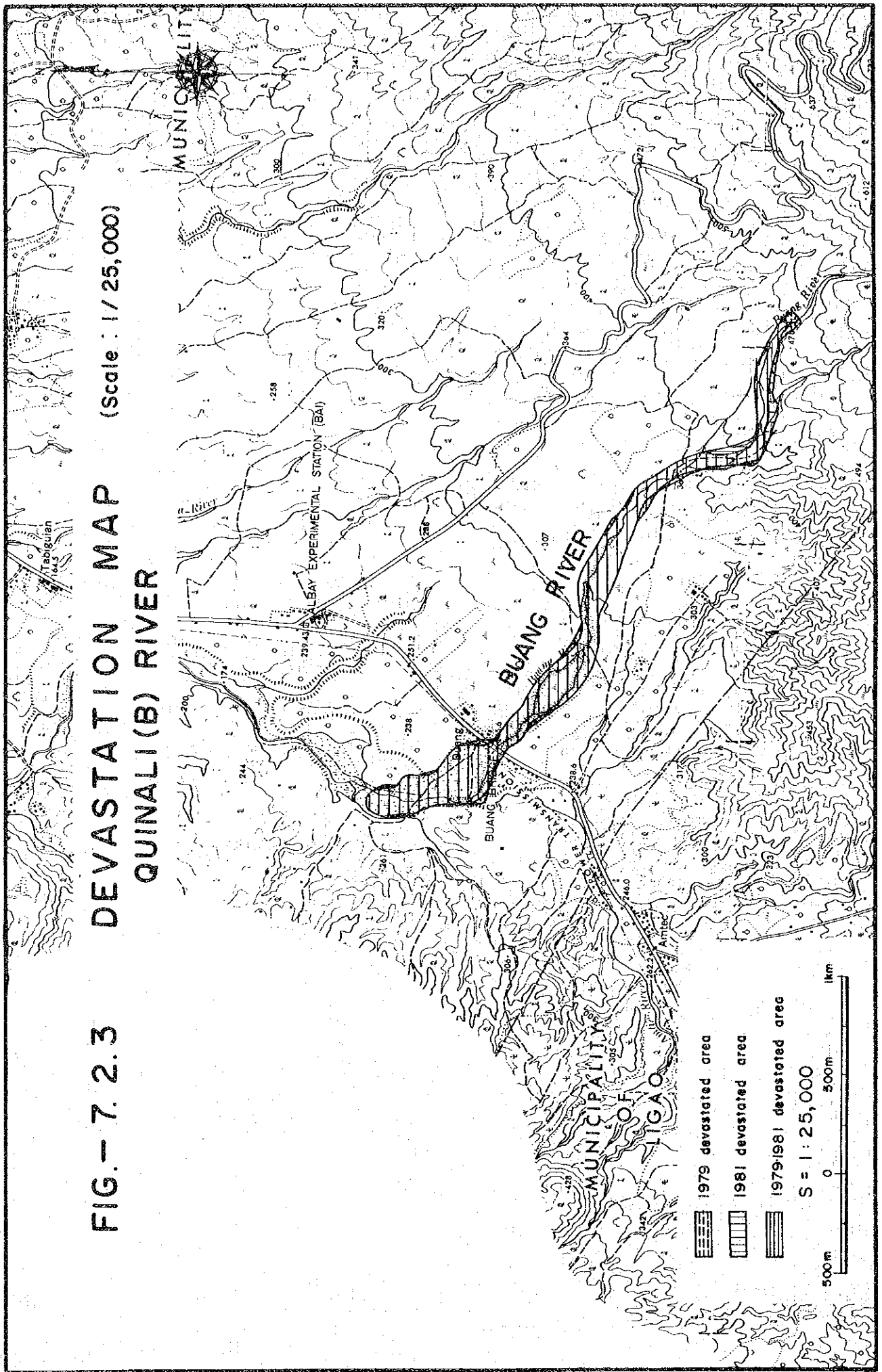
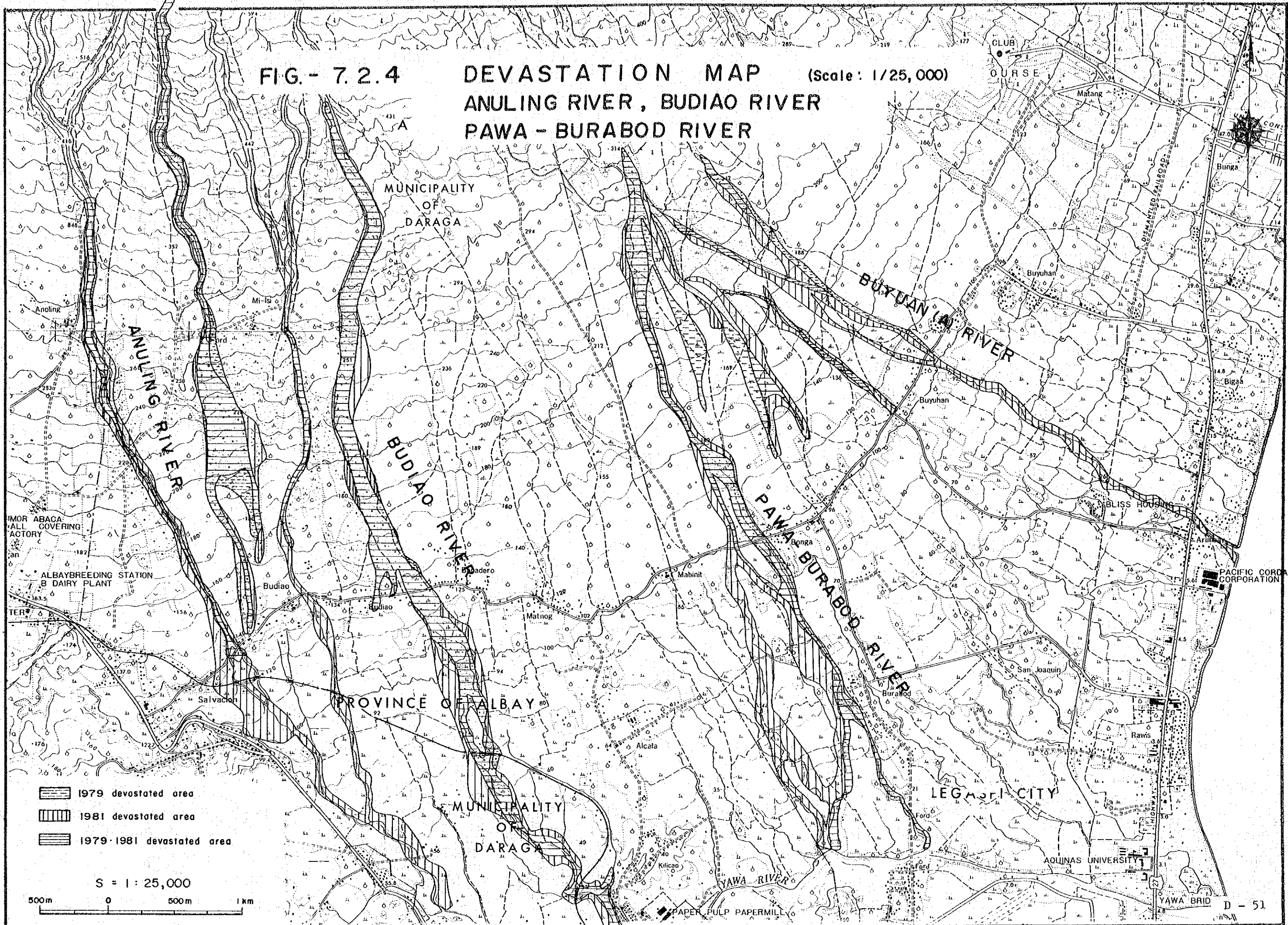
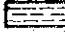

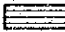


FIG. - 7.2.4

DEVASTATION MAP
ANULING RIVER, BUDIAO RIVER
PAWA - BURABOD RIVER

(Scale : 1/25,000)



-  1979 devastated area
-  1981 devastated area
-  1979-1981 devastated area

S = 1 : 25,000

500m 0 500m 1 km

FIG. - 7.2.5

DEVASTATION MAP

(Scale : 1/25,000)

EAST and NORTH-EAST STREAMS

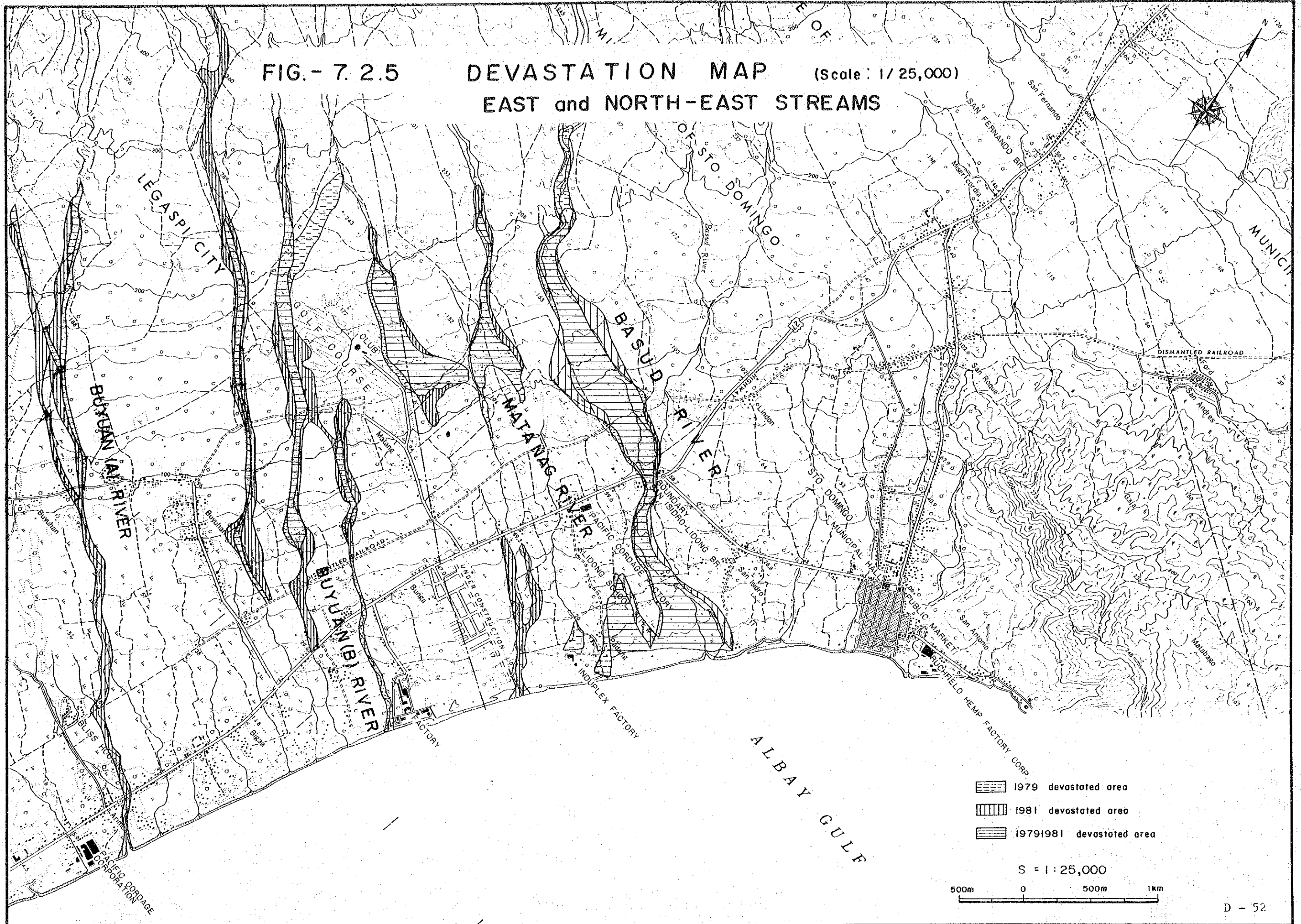
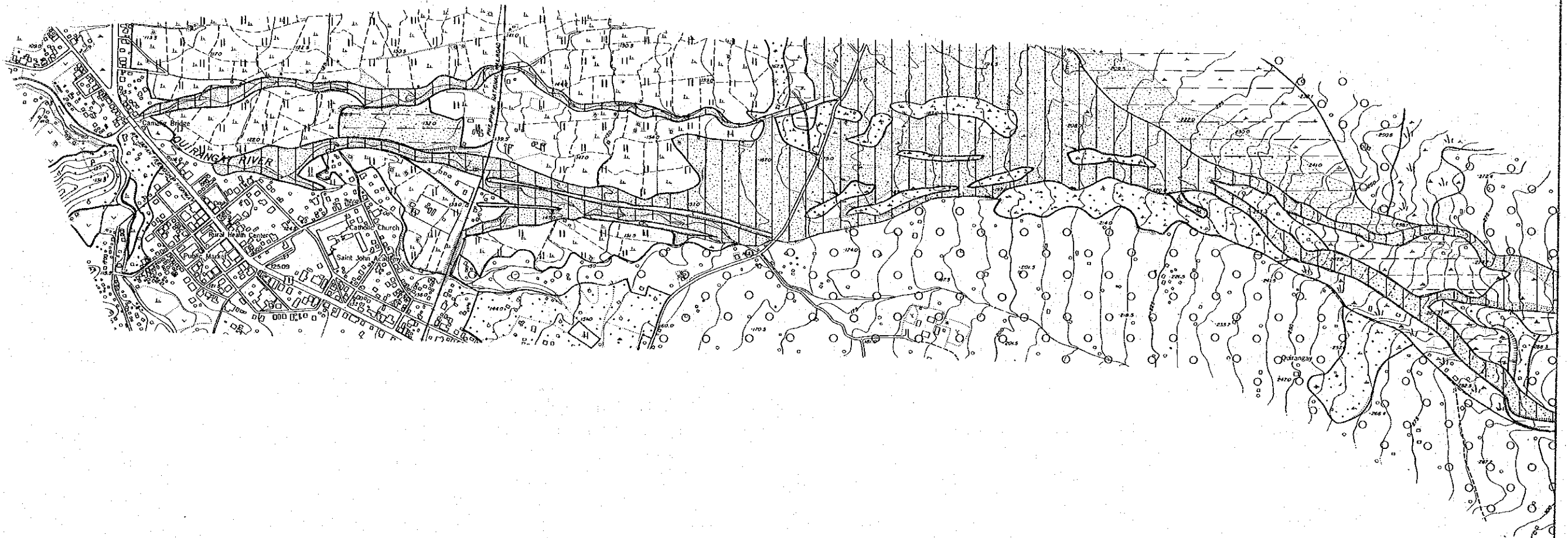


FIG.-7.2.6

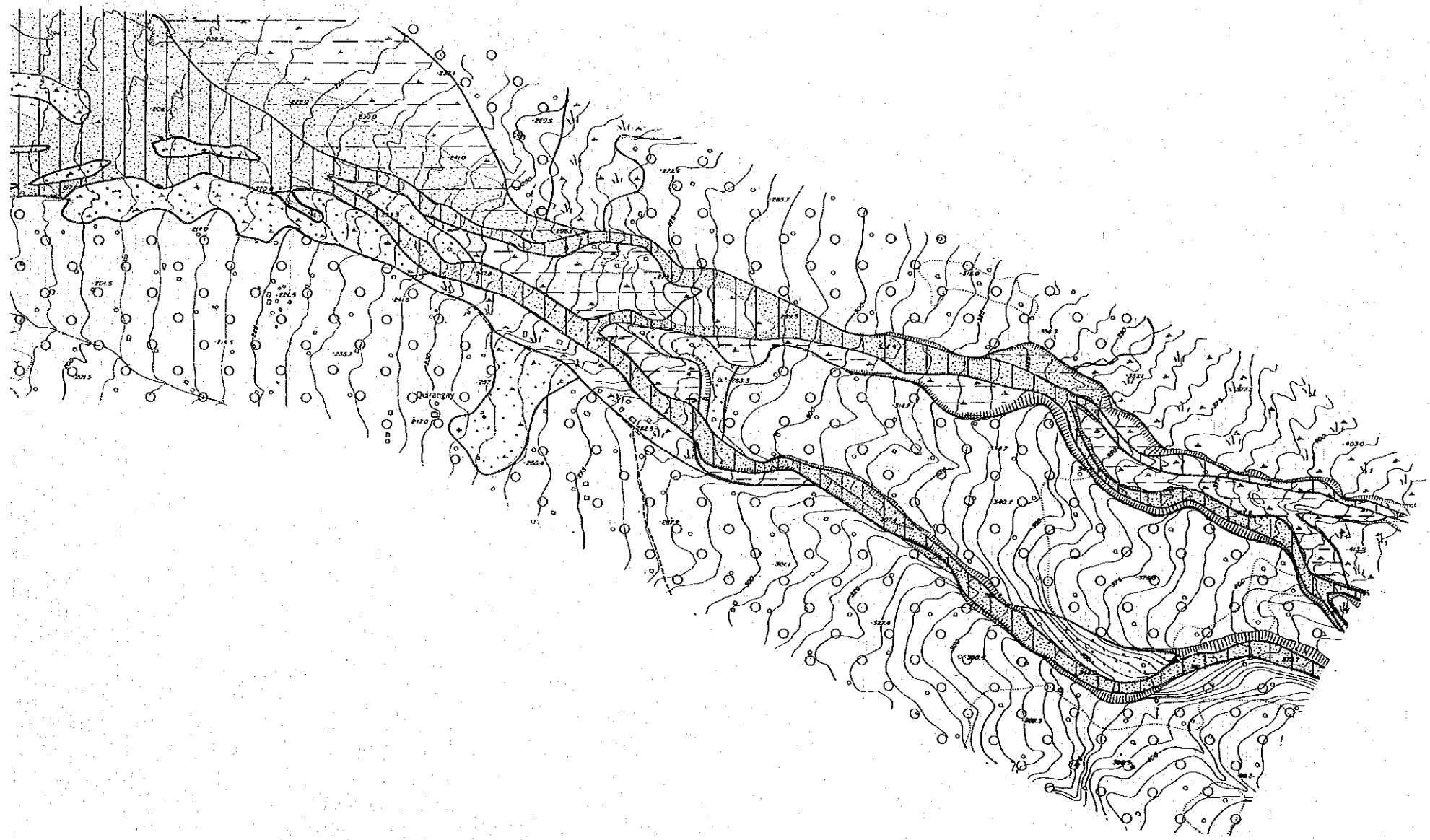
MICROTOPOGRAPHY MAP, QUIRANGAY RIVER


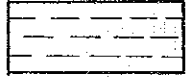

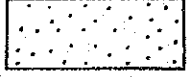
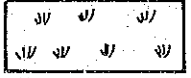
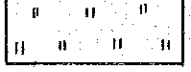


SCALE



TOPOGRAPHY MAP, QUIRANGAY RIVER



-  1981 devastated area
-  1979 devastated area
-  dense forest
-  sparse wood
-  grassland, wasteland
-  field, rice field

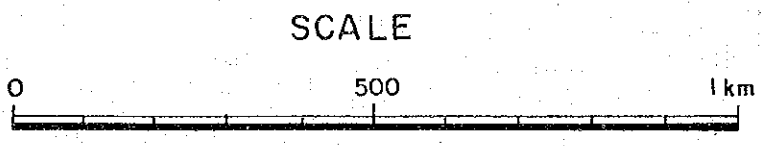


FIG.- 7.2.7

MICROTOPOGRAPHY MAP

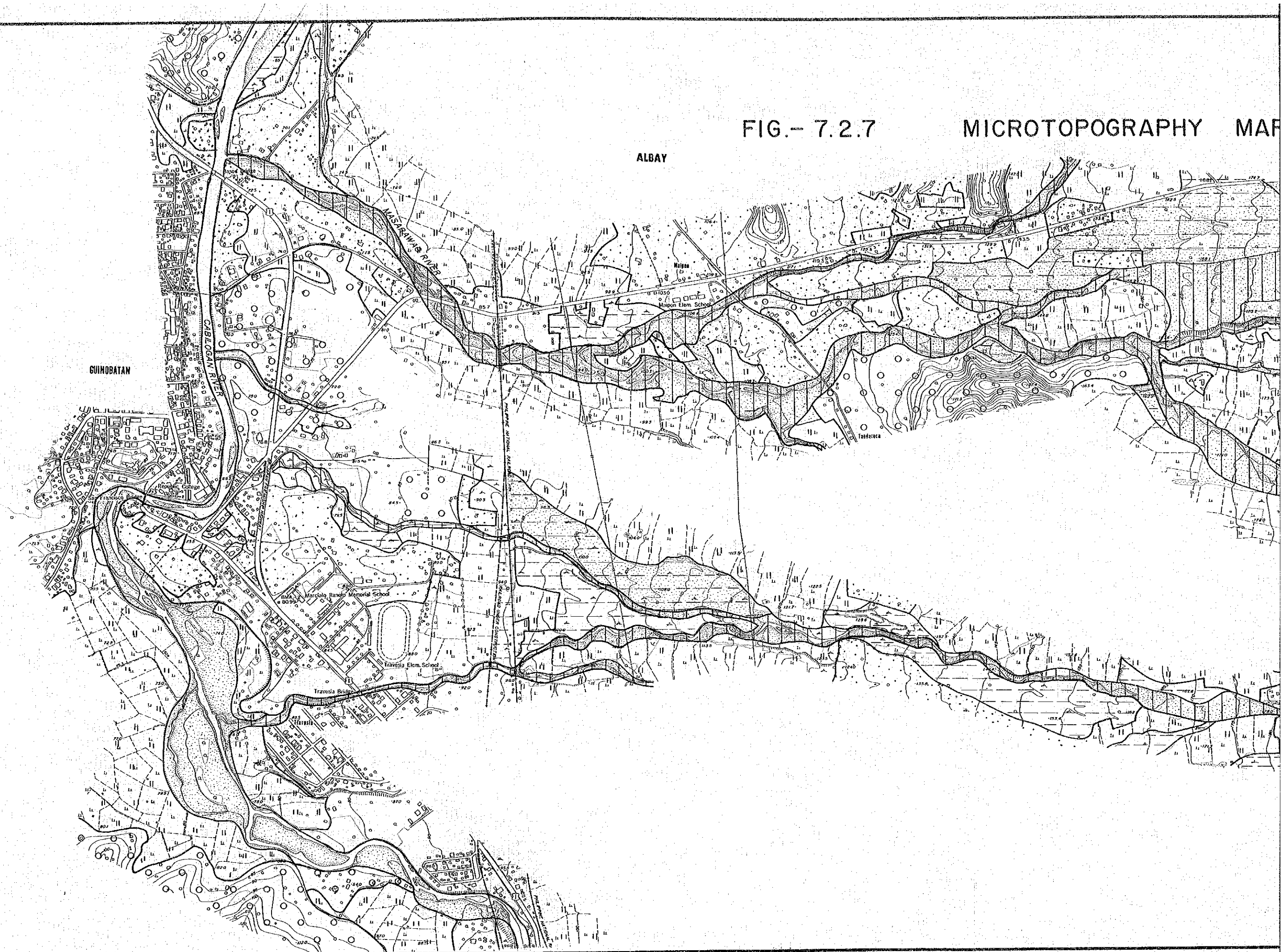
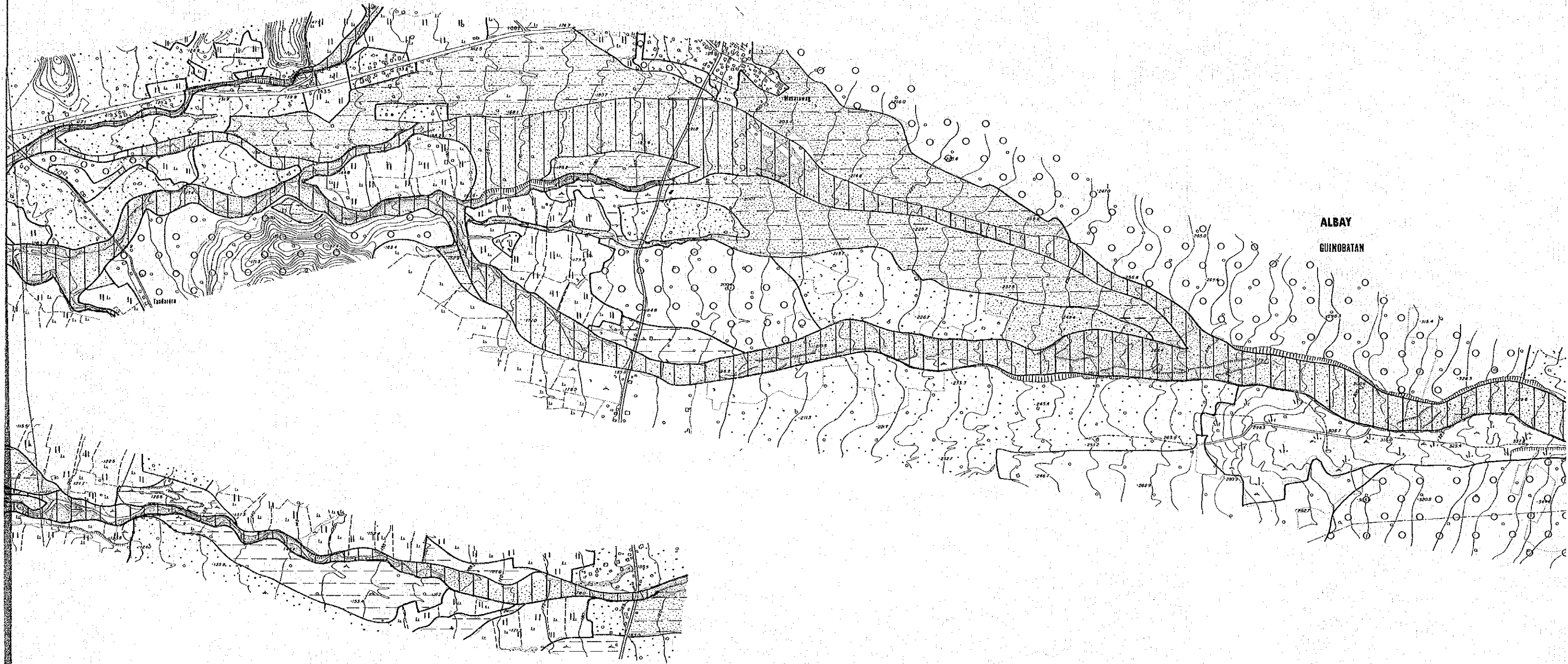
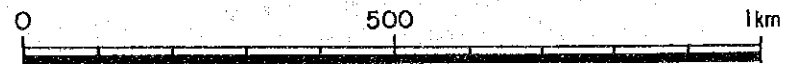


FIG.- 7.2.7

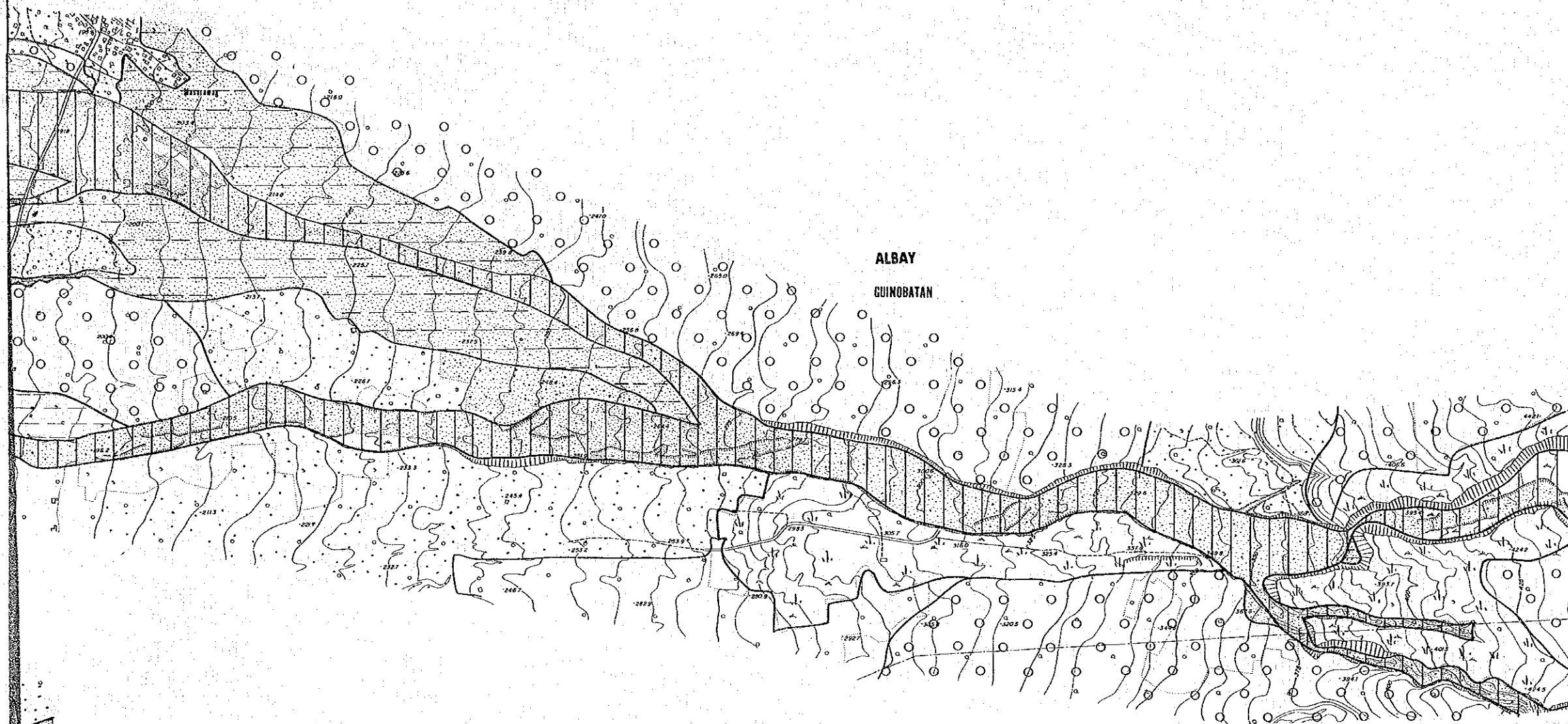
MICROTOPOGRAPHY MAP, MANINILA RIVER, MASARAWAG RIVER




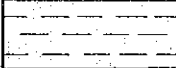
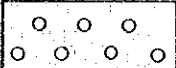

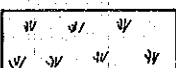
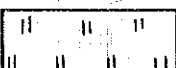
SCALE



ANINILA RIVER, MASARAWAG RIVER



ALBAY
GUINOBATAN

-  1981 devastated area
-  1979 devastated area
-  dense forest
-  sparse wood
-  grassland, wasteland
-  field, rice field

SCALE

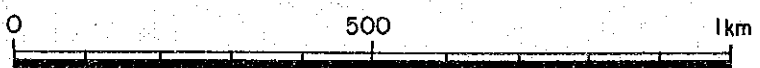
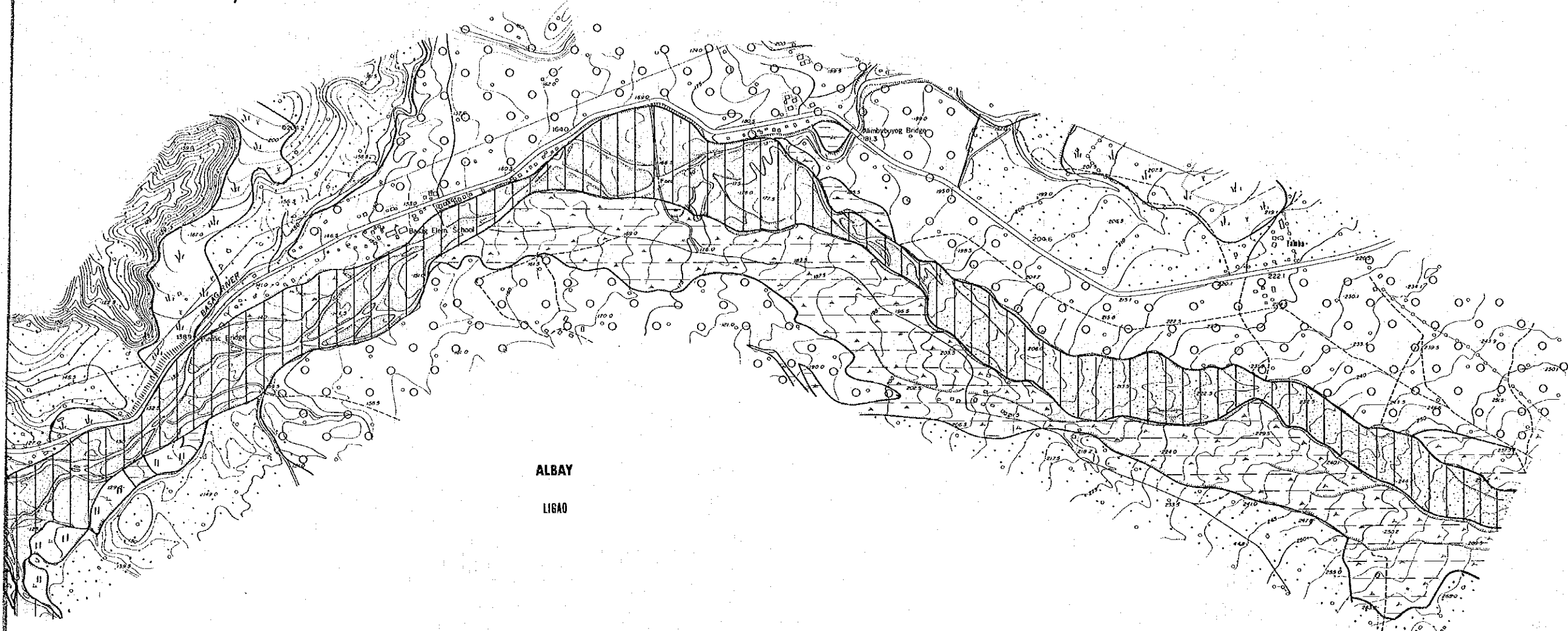


FIG.- 7.2.8


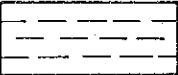
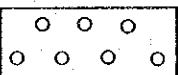
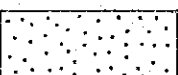
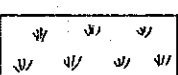
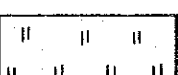
MICROTOPOGRAPHY MAP, OGSONG RIVER, NASISI



MAP, OGSONG RIVER, NASISI RIVER



ALBAY
LIGAO

-  1981 devastated area
-  1979 devastated area
-  dense forest
-  sparse wood
-  grassland, wasteland
-  field, rice field

SCALE

