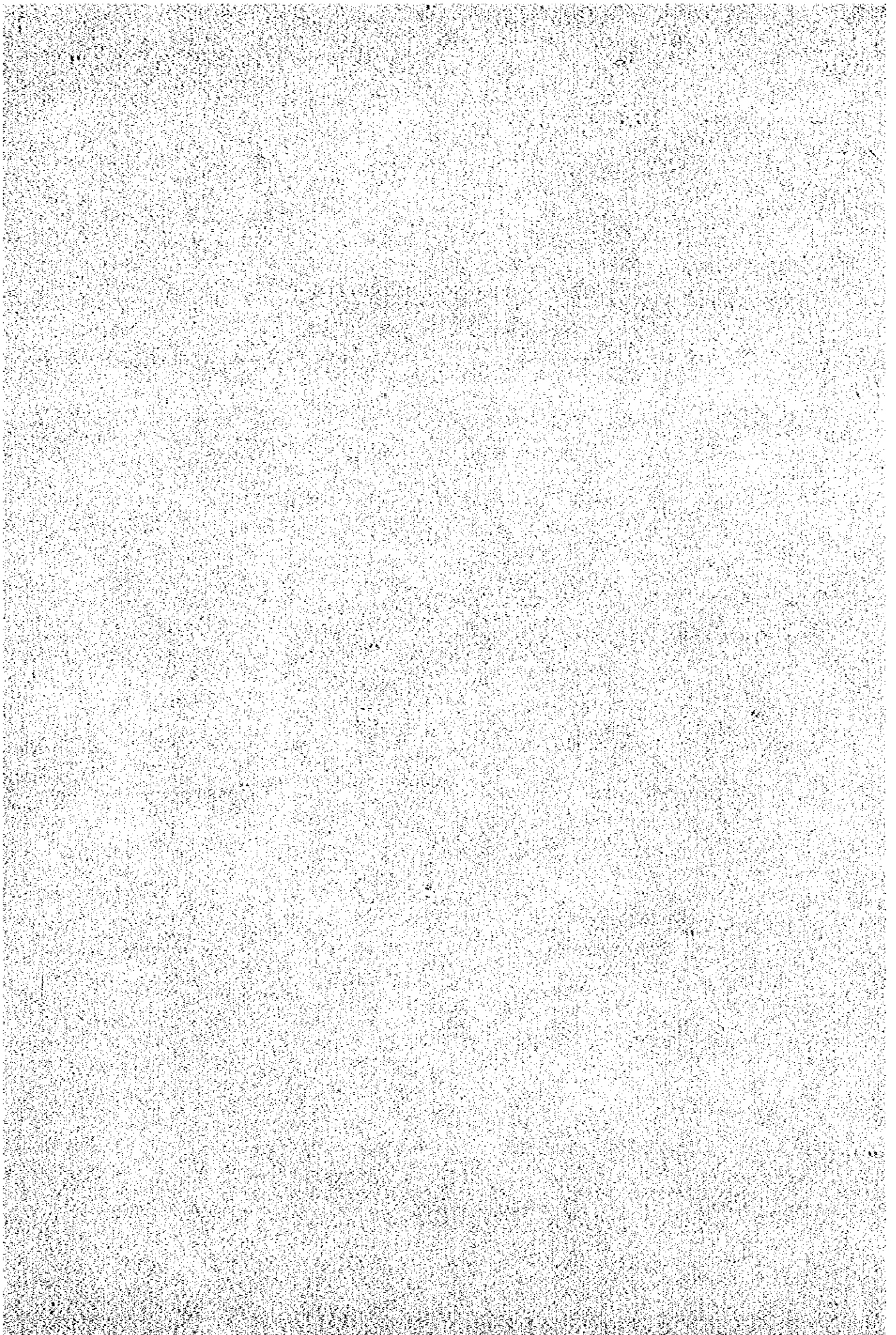
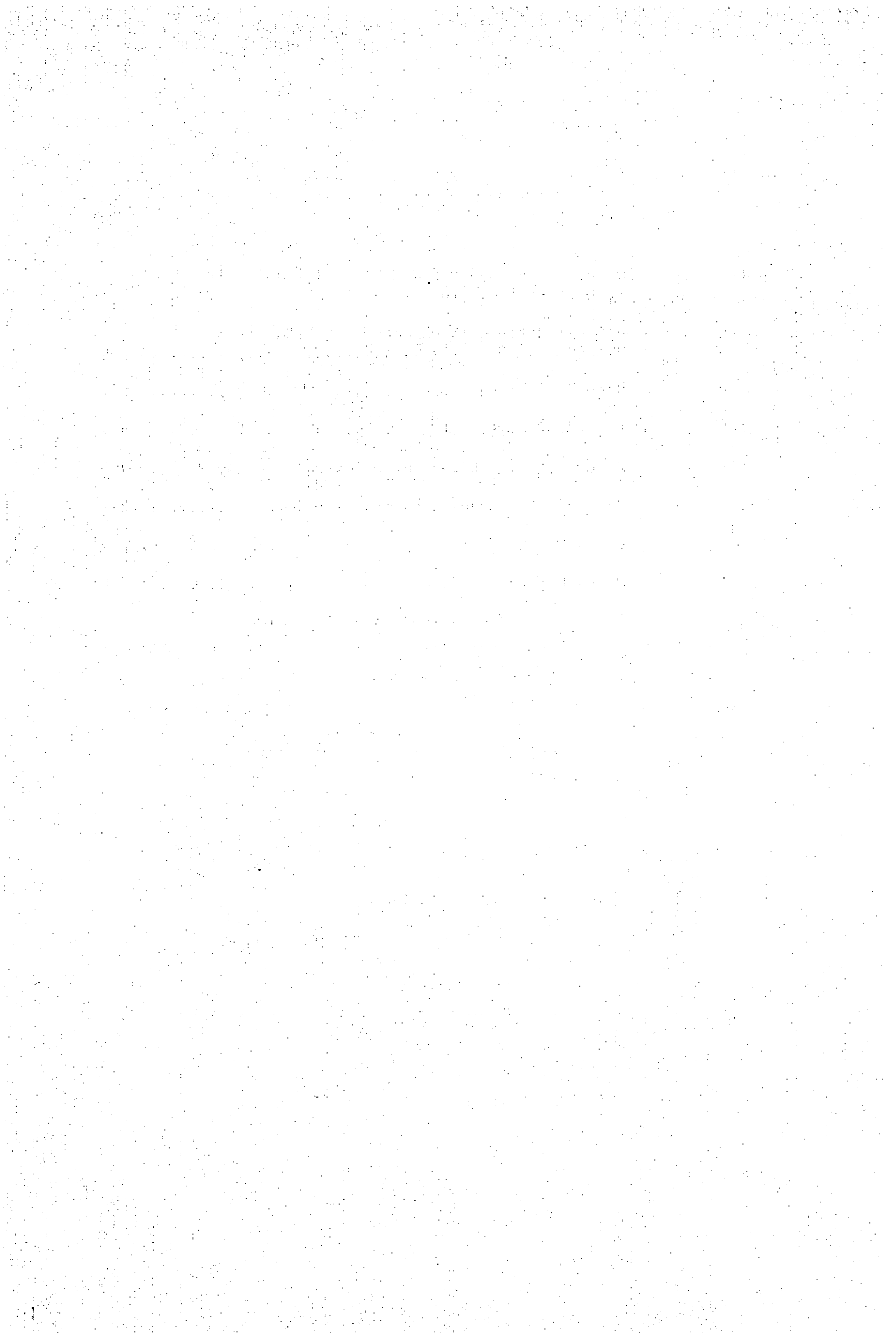


REFERENCE MATERIALS



LIST OF REFERENCE MATERIALS

R-1	Magnitude of 1-Day and 2-Day Point Rainfall in Different Return Periods	R-1
R-2	Estimated Evaporation Losses by HARGREAVES Method	R-6
R-3	Record of Temperature	R-15
R-4	Record of Evaporation	R-34
R-5	Record of Wind Direction and Wind Velocity	R-60
R-6	Record of Sunshine Time and Cloudiness	R-72
R-7	Flood Plain of the Pampanga River Basin	R-84
R-8	Flood Report of Main Floods	R-88
R-9	Cross Section at Water Stage Observation Station	R-105
R-10	Tropical Cyclon Track Chart	R-108



**R-1 Magunitude of 1-Day and 2-Day Point Rainfall
in Different Return Periods**

1-day and 2-day point rainfall has been measured at each station. Based on the data, magnitude of 1-day and 2-day point rainfall at different return periods of 2, 5, 10, 15, 25, 50 and 100 years are stated in Table-2 and Table-3.

The length of record, type, latitude, longitude and elevation of each station are presented in Table-1.

Stations are divided into four types; namely, Synoptic Station, Climate Station, Rainfall Station and Seismological Station. These stations are defined as follows.

- 1) Synoptic Station: a station at which observations of various meteorological elements are transmitted to the weather forecasting services at fixed times, maintained and operated by the Weather Bureau.
- 2) Climate Station: a station at which observations of extreme temperatures and amount of precipitation are made at least once daily; some of Climate Stations are maintained and operated by the Weather Bureau while others are voluntary in nature.
- 3) Rainfall Station: a station at which observations of precipitation only are made; a number of those stations are maintained and operated by the Weather Bureau, others are voluntary and cooperative in nature.
- 4) Seismological Station: a station at which seismological as well as meteorological observations are made.

Stations' length of record, type, geographical position, and altitude

Name of Stations	Length of Record (Years)	Type of Station	Latitude (°N)	Longitude (°E)	Elevation (feet)
1. Alabat, Quezon	14	Synoptic	14.1	122.0	9
2. Ambulong, Batangas	22	Seismic.	14.1	121.1	34
3. Aparri, Cagayan	22	Synoptic	18.4	121.6	7
4. Aurora, Quezon	22	Synoptic	13.35	122.5	6
5. Bagabag, Nueva Vizcaya	10	Rainfall	16.6	121.4	797(approx.)
6. Bagulo City	60	Synoptic	16.25	120.36	4930
7. Balara Filter, Q.C.	13	Climate	14.65	121.4	231
8. Balatoc, Itogn, Mt. Prov.	14	Climate	16.4	120.75	2998.56
9. Baler, Quezon	22	Synoptic	15.75	121.6	14
10. Bambang, Nueva Vizcaya	13	Rainfall	16.4	121.0	1830
11. Basco, Batanes	22	Synoptic	20.4	122.0	33
12. Bolinao, Pangasinan	11	Climate	16.4	119.9	20(approx.)
13. Cabanatuan City	22	Synoptic	15.5	121.0	100
14. Calapan, Mindoro	22	Synoptic	13.4	121.2	133.88
15. Calayan, Cagayan	22	Synoptic	19.3	121.4	40
16. Caliraya, Laguna	15	Climate	14.3	121.5	873
17. Casiguran, Quezon	22	Synoptic	16.3	122.15	9
18. Claveria, Cagayan	14	Rainfall	18.5	121.0	125(approx.)
19. Daet, Camarines Norte	22	Synoptic	14.1	122.9	32
20. Dagupan City	22	Synoptic	16.0	120.35	3
21. Dingras, Ilocos Norte	10	Rainfall	18.1	120.7	250(approx.)
22. Gattaran, Cagayan	10	Rainfall	18.0	121.6	325(approx.)
23. Iba, Zambales	22	Synoptic	15.3	120.0	9
24. Ilagan, Isabela	15	Climate	17.0	121.9	153
25. Infanta, Quezon	22	Synoptic	14.75	121.65	17
26. Kabugao, Mt. Prov.	14	Climate	18.0	121.2	1050
27. Lagangilang, Abra	15	Climate	17.6	120.7	1769
28. Laoag, Ilocos Norte	22	Synoptic	18.15	120.5	13
29. Legaspi City	22	Synoptic	13.2	123.65	57
30. Lucena City	22	Synoptic	13.9	121.6	36
31. Mabini, Pangasinan	15	Rainfall	16.0	119.9	15
32. Mamat-ing, Naguilian, L.U.	14	Rainfall	16.5	120.4	225(approx.)
33. Mangatarem, Pangasinan	9	Rainfall	15.8	120.3	38.7
34. Manila CO	66	Synoptic	14.6	121.0	7
35. Naneng, Tabuk, Mt. Prov.	15	Rainfall	17.4	121.3	275(approx.)
36. Norzagaray, Bulacan	14	Rainfall	14.9	121.0	481
37. San Ildefonso, Bulacan	8	Rainfall	15.05	120.9	39
38. San Marcelino, Zambales	8	Rainfall	14.85	120.15	100
39. Sta. Cruz, Laguna	12	Climate	14.3	121.54	15
40. Sta. Cruz, Marinduque	11	Rainfall	13.45	121.95	--
41. Sto. Domingo, Libog, Albay	15	Rainfall	13.2	123.5	--
42. Sta. Fe, Nueva Vizcaya	13	Rainfall	16.1	120.9	1660
43. Tilik, Lubang Is. Mindoro	10	Rainfall	13.8	120.2	--
44. Tuao, Cagayan	15	Rainfall	17.75	121.45	65(approx.)
45. Tuguegarao, Cagayan	22	Synoptic	17.65	121.7	61
46. Vigan, Ilocos Sur	22	Synoptic	17.6	120.4	94
47. Virac, Catanduanes	22	Synoptic	13.6	124.25	16
48. Yabo Farm, Naga City	12	Rainfall	13.6	123.25	--

Magnumitude of 1-day Point Rainfall (mm)
at different return periods

Name of Stations	Return periods (years)						
	2	5	10	15	25	50	100
1. Alabat, Quezon	190	250	290	315	349	393	438
2. Ambulong, Batangas	133	193	225	254	286	328	370
3. Aparri, Cagayan	186	249	290	315	350	394	439
4. Aurora, Quezon	163	239	288	315	356	410	461
5. Bagabag, Nueva Vizcaya	113	139	156	168	183	204	224
6. Baguio City	381	548	656	720	810	925	1040
7. Balara Filter, Q.C.	165	232	277	303	338	387	435
8. Balatoc, Itogon, Mt. Prov.	311	421	494	535	595	675	755
9. Baler, Quezon	228	328	393	433	485	555	625
10. Bambang, Nueva Vizcaya	90	114	131	141	154	173	192
11. Basco, Batanes	192	265	313	343	384	435	488
12. Bolinao, Pangasinan	252	285	310	325	348	380	411
13. Cabanatuan City	119	145	164	174	189	210	231
14. Calapan, Mindoro	142	177	202	216	237	265	293
15. Calayan, Cagayan	210	271	312	336	372	418	463
16. Caliraya, Laguna	202	267	313	340	376	424	473
17. Casiguran, Quezon	211	276	320	345	382	430	476
18. Claveria, Cagayan	188	250	290	314	346	390	435
19. Daet, Camarines Norte	220	312	369	405	453	515	578
20. Dagupan City	181	245	290	315	352	400	446
21. Dingras, Ilocos Norte	236	316	371	402	446	504	564
22. Iba, Zambales	263	315	352	375	408	452	495
23. Ilagan, Isabela	149	198	232	252	279	316	352
24. Infanta, Quezon	180	225	254	274	300	334	369
25. Kabugao, Mt. Prov.	166	214	248	268	296	332	369
26. Gattaran, Cagayan	90	187	244	278	325	385	444
27. Lagangilang, Abra	194	240	273	295	319	356	392
28. Laoag, Ilocos Norte	255	368	440	482	540	621	700
29. Legaspi City	186	260	310	337	375	427	480
30. Lucena City	145	193	226	246	272	308	344
31. Mabini, Pangasinan	243	296	329	355	385	427	470
32. Mamat-ing, Naguilian, L.U.	203	296	360	400	450	512	580
33. Mangatarem, Pangasinan	162	291	369	415	475	560	642
34. Manila (CO)	173	231	270	292	324	367	408
35. Naneng, Tabuk, Mt. Prov.	98	133	157	170	189	215	240
36. Norzagaray, Bulacan	261	356	415	455	505	570	640
37. San Ildefonso, Bulacan	109	137	156	167	183	204	225
38. San Marcelino, Zambales	260	395	480	535	601	695	785
39. Sta. Cruz, Laguna	158	215	254	276	306	346	387
40. Sta. Cruz, Marinduque	113	196	223	250	282	327	373
41. Sta. Fe, Nueva Vizcaya	162	213	248	270	298	336	374
42. Sto. Domingo, Libog, Albay	192	252	293	315	350	395	439
43. Tiliik, Lubang, Mindoro	118	151	174	186	205	230	256
44. Tuao, Cagayan	131	168	195	210	231	260	287
45. Tuguegarao, Cagayan	171	222	258	278	306	345	382
46. Vigan, Ilocos Sur	237	333	396	435	485	555	623
47. Virac, Catanduanes	223	304	358	396	435	495	552
48. Yabo Farm, Naga City	245	326	380	412	458	517	577

Magnitude of 2-day Point Rainfall (mm)
at different return periods

Name of Station	Return Period (years)						
	2	5	10	15	25	50	100
1. Alabat, Quezon	269	328	369	394	428	476	523
2. Ambulong, Batangas	175	243	289	360	376	402	449
3. Aparri, Cagayan	237	343	414	455	510	585	656
4. Aurora, Quezon	215	312	374	413	465	530	600
5. Bagabag, Nueva Vizcaya	163	200	226	242	264	295	324
6. Balara Filter, Q.C.	250	319	368	398	438	490	543
7. Balatoc, Itogon, Mt. Prov.	384	556	674	740	830	950	1070
8. Baler, Quezon	296	406	475	520	575	655	737
9. Bambang, Nueva Vizcaya	139	186	217	236	262	298	332
10. Basco, Batanes	266	371	439	483	540	615	690
11. Bolinao, Pangasinan	377	416	446	466	497	537	576
12. Cabanatuan City	165	212	245	264	292	328	364
13. Calapan, Midoro	191	211	276	296	324	362	400
14. Calayan, Cagayan	277	362	421	456	504	564	631
15. Caliraya, Laguna	251	322	372	400	440	493	549
16. Casiguran, Quezon	294	406	475	518	576	655	735
17. Claveria, Cagayan	254	296	323	343	370	405	442
18. Daet, Camarines Norte	288	385	444	485	540	610	677
19. Dagupan City	278	389	465	508	566	642	728
20. Dingras, Ilocos Norte	328	435	506	548	607	686	764
21. Gattaran, Cagayan	154	304	397	450	517	615	708
22. Iba, Zambales	376	448	501	533	578	610	699
23. Ilagan, Isabela	203	264	309	332	366	412	459
24. Infanta, Quezon	250	322	374	404	446	502	557
25. Kabuyao, Mt. Prov.	230	306	356	386	426	480	539
26. Lagangilang, Abra	295	378	437	472	518	583	647
27. Laoag, Ilocos Norte	346	484	573	626	697	795	890
28. Legaspi City	266	343	394	425	470	525	582
29. Lucena City	193	252	290	314	346	388	432
30. Mabini, Pangasinan	328	400	449	480	520	580	638
31. Mamat-ing, Naguilian, L.U.	324	447	530	575	645	732	820
32. Mangatarem, Pangasinan	287	421	509	560	630	724	815
33. Manila (CO)	255	345	406	440	488	554	621
34. Naneng, Tabuk, Mt. prov.	158	198	225	242	266	298	328
35. Norzagaray, Bulacan	373	489	571	620	685	770	860
36. San Ildefonso, Bulacan	167	214	246	264	291	327	362
37. San Marcelino, Zambales	367	499	591	645	717	815	913
38. Sta. Cruz, Laguna	215	281	325	352	386	436	484
39. Sta. Cruz, Marinduque	186	285	349	385	436	503	571
40. Sta. Fe, Nueva Vizcaya	226	277	313	334	366	406	448
41. Sto. Domingo, Libog, Albat	271	331	374	438	400	486	534
42. Tilik, Lubang, Is. Mindoro	173	218	251	270	298	334	369
43. Tuao, Cagayan	178	231	267	288	318	358	397
44. Tuguegarao, Cagayan	227	293	340	368	406	454	506
45. Vigan, Ilocos Sur	339	478	568	625	700	800	900
46. Virac, Catanduanes	278	349	401	432	474	528	585
47. Yabo Farm, Naga City	280	374	437	474	524	594	665

R-2 Estimated Evaporation Losses by HARGREAVES Method

Estimates of Evaporation Losses*

Evaporation is a complex physical phenomenon. The actual process can be subdivided into two main factors. The first one is closely related to the extra terrestrial energy supplied by the sun, which is more or less attenuated and absorbed by the atmosphere. Thus, the energy reaching the surface of the earth is more or less efficient depending on moisture content and cloud amounts, and movement of the air masses (wind run). The other factor in the evaporation process are closely related the specific physical or physiological properties of the body or mass exposed to evaporation. Thus some external energy and atmospheric conditions will induce different depths or amount of evaporation from moist surfaces as a deep or shallow water body, various types of plants and base soils. For these reasons it is extremely difficult to measure actual evaporation (Ea) or potential evaporation (Evp), or evapo-transpiration (Etp). Considerable differences are generally found when comparing "measured" evaporation observed by different types of instruments or pans.

The annual amount of evaporation is of the order of 1,700 to 2,100 mm/year. The average daily evaporation is about 4.5 to 5.7 mm over the year. The monthly average range within limits of $\pm 60\%$ of the annual mean. The maximum, actually occurs during the later period of the dry season i.e. April and/or May. During the rainy period, the degree of reduction depends on prevailing atmospheric conditions, and duration of the cloudy and rainy spells.

Actual evaporation data are rather scarce although, pan evaporation data, obtained from Class-A pans, are available, and have been used, to calibrate the empirical formulas, proposed by HARGREAVES, to estimate clear-day evaporation rates. This type of data is used in the Agro and Hydrometeorological calculations and water balances. It had been observed (and already mentioned in the Interim Report No. II Chapter 7) that the "potential" evaporation rates, generated by extraterrestrial energy, are being attenuated by the prevailing atmospheric conditions. Thus it was found, that quite regular, annual and seasonal variations of the energy supplied by solar radiation, is being absorbed during the rainy periods, due to the resulting drop of temperatures, and increase of moisture content of the air masses. The conversion of potential (Ep) to actual (Ea) evaporation rates are treated in the hydro-meteorological and agrometeorological

* Quoted from "Pampanga Delta/Candaba Swamp Area Development Project Report"

models as "negative inputs". The estimated mean clear-day evaporation rates are being adjusted on a daily basis, depending on two main factors:

- a) meteorological, based on rainfall occurrences on non occurrences as an indicator for negative or positive adjustments from the calculated mean;
- b) availability of moisture over the evaporating surfaces, based on water balances of soil-moisture and plant moisture and plant moisture demand or transpiration rates.

The generalized evapotration formula proposed by HARGREAVES can be written as:

$$Etp_{j,i} = K_d \cdot Ep_i \text{ ----- (I)}$$

where:

$Etp_{j,i}$ = evapo-transpiration depth of "j" type crop on the "i" the day or month.

K_d = specific "crop coefficient", adjusting pan evaporation rate to evapotranspiration rate. Each crop has a set of such coefficients, which are based on field experiments, used to calculate crop-water demands over the growing period of a given crop.

Ep_i = class A evaporation rates (L/T), L in inches or mm, T in day, moth etc. on the "i" the day or month.

The "clear day" Ep_i values can be estimated by using HARGREAVE's formula:

$$Ep_i = d \cdot (0.38 - 0.0038 \cdot Hmin) \cdot (Tm - 32.0) \text{ (in/mon) or transformed into metric units ----- (II)}$$

$$Ep_i = 17.1 \cdot d \cdot (1 - Hmin) \cdot Tm \text{ (mm/ mon) ----- (III)}$$

where:

d = daylight hour, defined as coefficient adjusting sunshine hours (clear skies) according to latitude (solar angle) and season of the year.

Hmin = noon time, minimum relative humidity of the air

Tm = mean air temperatures of the month

HARGREAVES, and others found, that the above simple formulas can safely be used in tropical or sub-tropical zones. Numerous tests, conducted in Brazil show discrepancies, between observed and calculated values within an error limit of about + 15%. Calculations for estimating Hmin are as follows:

$$Hmin = 1 - 0.009 \cdot (Tmx^2 - Tmin^2) \cdot 0.605 \text{ ----- (IV)}$$

where:

Hmin = noontime minimum relative humidity (%)

T_{mx} = mean daily maximum temperatures in °C

T_{min} = mean daily minimum temperatures in °C

By introducing (IV) in formula (III) above, and by assuming the day-length factor as a cosine function, depending on the season:

$$d = 1 - 0.1 \cdot \cos(\text{mo}/5.8 \cdot \pi) \quad \text{--- (V)}$$

where:

mo = the numerical sequence number of a given month (Jan. = 1),
this formula has been adjusted to fit conditions along latitude
14°30' in the project area.

The simplified evaporation formula takes the form:

$$E_p = 0.04235 \cdot (T_{mx} + T_{min}) \cdot (T_{mx}^2 - T_{min}^2) \cdot [1 - 0.1 \cdot \cos(\text{mo}/5.8 \cdot \pi)] \quad \text{--- (VI)}$$

using the above formulas, monthly E_p values have been calculated, based on climatological data (sources: B.P.W. and PAGASA). Samples of results are given in Tables 1 to 3 for

- 1) Cabanatuan City (period 1961 - 1969), as representative for climatological conditions in the mid Pampanga Basins
- 2) Binga H.E. Plant, Mountain Province
- 3) Baguio City - for comparison of E_p values in Upper Luzon

CABANATUAN CITY

ESTIMATED EVAPORATION CALCULATED

	Jan.	Feb.	Mar.	Apr.	May	Jun.	Jul.	Aug.	Sep.	Oct.	Nov.	Dec.	Remarks
<u>1961</u>													
1.	31.8	34.6	35.3	37.1	36.2	33.0	31.6	31.4	31.8	32.3	31.9	23.3	33.3
2.	18.5	20.6	22.6	23.1	24.1	23.4	23.6	23.6	23.8	23.0	21.7	20.8	22.4
3.	25.2	27.6	29.0	30.1	30.2	28.2	27.6	27.5	27.8	27.7	26.8	26.7	27.9
4.	162.3	194.3	197.8	223.4	205.1	260.1	138.6	135.7	140.2	152.3	153.2	162.2	2025.2
5.	0	13.5	55.9	2.03	156.7	540.8	460.0	399.5	267.7	159.0	82.3	0.2	2175.5
<u>1962</u>													
1.	31.2	32.0	34.8	35.3	35.7	34.0	31.0	32.3	40.7	33.2	31.9	31.4	32.8
2.	19.5	18.9	21.5	23.0	23.3	23.1	23.4	23.1	22.5	22.5	21.1	18.7	21.7
3.	25.4	25.5	28.2	29.2	29.5	28.6	27.2	27.7	26.6	27.8	26.5	25.1	27.3
4.	152.1	163.9	194.5	196.2	201.0	176.4	131.2	151.7	132.6	167.7	155.7	156.9	1827.8
5.	4.6	0	2.8	37.1	133.4	308.3	468.1	280.2	453.4	35.6	57.7	0.3	1781.3
<u>1963</u>													
1.	29.3	30.2	32.8	34.7	36.1	31.4	31.6	31.7	31.5	33.2	33.4	31.7	32.2
2.	18.3	17.7	18.8	24.2	22.1	24.4	22.3	22.4	22.8	21.2	20.3	19.9	21.0
3.	23.8	24.0	25.8	28.0	29.1	27.9	27.0	27.0	27.0	27.2	27.3	28.2	25.8
4.	132.4	144.5	174.4	194.0	211.6	130.0	146.1	147.0	142.0	173.0	178.7	157.4	1934.1
5.	0	17.4	1.3	0	145.0	528.3	217.2	389.3	357.9	11.4	14.0	63.5	1755.4
<u>1964</u>													
1.	32.8	31.9	33.4	35.0	35.7	33.5	32.8	31.5	31.8	32.3	29.9	30.5	32.6
2.	19.7	19.7	20.8	22.9	24.3	22.6	23.3	23.6	23.6	22.9	22.2	20.7	22.2
3.	26.3	25.8	27.1	29.0	30.0	28.1	28.1	27.6	27.7	27.6	26.1	25.6	27.4
4.	172.2	160.5	177.1	192.1	196.3	171.5	157.8	137.1	141.5	152.8	123.4	138.9	1921.2
5.	9.3	0.5	69.8	7.4	124.2	400.6	223.7	429.9	288.8	330.0	287.5	197.1	2368.8

Line 1 : Monthly mean of Tmx (°C)

Line 2 : Monthly mean of Tmin (°C)

Line 3 : Monthly mean of mean Temp (°C)

Line 4 : Monthly total evaporation: Ep (mm/month)

Line 5 : Monthly total precipitation (mm/month)

CABANATUAN CITY

ESTIMATED EVAPORATION CALCULATED BY THE ADJUSTED HARGREAVES METHOD (mm/month)

Jan.	Feb.	Mar.	Apr.	May	Jun.	Jul.	Aug.	Sep.	Oct.	Nov.	Dec.	Remarks
<u>1965</u>												
30.5	32.6	33.1	35.2	33.9	32.6	30.9	32.3	32.3	33.3	32.3	32.1	32.6
19.7	19.4	21.1	22.2	23.4	23.4	23.0	23.4	23.4	22.4	22.6	21.6	
142.6	170.4	171.9	197.9	173.4	154.3	132.5	150.0	150.0	169.5	154.4	156.3	1918.8
0	0	0	135.6	162.9	354.4	608.1	245.2	245.2	119.4	116.1	19.4	2024.0
<u>1966</u>												
32.4	33.1	34.6	36.2	32.3	33.9	32.8	32.5	30.9	33.2	31.3	31.8	32.9
20.2	20.4	22.0	23.3	23.6	24.1	23.5	23.6	23.0	22.9	22.7	21.8	22.5
165.5	174.2	189.8	208.6	148.7	169.6	156.7	151.7	132.4	165.7	139.8	151.3	1954.0
281.1	139.4	171.1	31.6	110.4	230.2	381.2	171.8	241.9	313.7	1152.2	509.2	4833.6
<u>1967</u>												
30.7	31.7	33.2	34.8	35.7	31.9	31.9	30.4	32.0	31.9	31.5	31.4	32.2
20.4	19.9	21.4	23.0	23.7	23.4	23.5	23.6	23.3	22.7	21.7	19.9	22.2
142.6	157.3	172.2	188.7	199.2	144.1	143.5	121.2	146.2	148.2	147.7	153.5	1864.4
2.6	0	0.8	14.1	202.3	384.8	262.1	400.2	628.7	255.8	86.7	0	2238.1
<u>1968</u>												
31.3	31.8	34.0	34.4	35.6	34.8	32.7	30.8	31.6	32.3	32.0	31.3	32.7
20.2	19.2	21.6	21.8	23.6	23.8	24.1	23.6	23.6	21.9	20.6	19.1	21.9
151.1	160.6	182.7	187.7	198.1	184.9	151.5	127.0	138.6	157.7	158.9	154.6	1953.4
25.8	0	0	22.1	144.1	90.4	242.0	567.0	380.0	125.5	51.3	0	1648.2
<u>1969</u>												
32.0	32.8	34.3	35.7	36.7	34.0	31.9	32.3	31.6	32.6	32.4	31.8	33.1
19.5	19.3	21.8	23.0	29.7	24.1	23.4	23.6	24.0	22.8	21.8	22.0	22.4
162.3	173.3	186.2	202.2	210.0	171.1	144.2	148.8	135.9	157.6	159.6	150.4	2001.6
6.5	0		6.8	86.2	283.0	363.7	242.4	314.9	127.2	57.5	13.0	1501.2

BINGA H.E. PLANT, ITOGON

MOUNTAIN PROVINCE

ESTIMATED EVAPORATION CALCULATED BY THE ADJUSTED HARGREAVES METHOD (mm/month)

	Jan.	Feb.	Mar.	Apr.	May	Jun.	Jul.	Aug.	Sep.	Oct.	Nov.	Dec.	TOTAL
<u>1962</u>													
1.	30.2	30.8	32.9	32.4	33.1	31.9	29.3	28.6	29.1	31.5	31.3	31.5	31.5
2.	17.1	15.7	18.7	20.4	20.9	21.3	21.2	20.4	18.9	18.6	18.1	15.7	15.7
3.	148.0	163.6	196.6	193.4	209.2	189.1	145.1	133.8	140.2	164.5	157.9	163.1	2004.4
4.	2.03	0	0	109.2	177.3	534.8	946.9	475.5	470.2	84.3	14.0	0	2362.3
<u>1963</u>													
1.	29.2	29.7	30.8	33.1	32.8	28.7	28.8	29.2	28.0	30.9	32.8	29.3	29.3
2.	13.0	13.2	16.2	18.4	20.4	19.4	19.6	19.7	19.4	19.5	19.8	17.2	17.2
3.	140.2	151.7	172.0	210.1	206.3	148.6	146.4	145.8	123.9	154.1	173.0	135.5	1907.5
4.	1.3	0	60.2	14.7	158.2	776.2	354.8	376.4	671.8	67.8	60.5	56.6	2598.7

BINGA H.E. PLANT, ITOGON

MOUNTAIN PROVINCE

ESTIMATED EVAPORATION CALCULATED BY THE ADJUSTED HARGREAVES METHOD (mm/month)

	Jan.	Feb.	Mar.	Apr.	May	Jun.	Jul.	Aug.	Sep.	Oct.	Nov.	Dec.	TOTAL
<u>1966</u>													
1.	23.2	24.2	25.2	25.3	22.3	24.1	23.5	22.4	21.2	23.7	22.4	23.1	
2.	13.6	14.4	14.6	15.9	16.4	16.4	16.2	16.3	15.5	15.6	16.0	15.5	
3.	82.0	93.4	111.7	112.1	79.0	100.6	92.6	76.6	64.1	84.1	68.0	75.8	1040.0
4.	19.6	6.9	45.3	26.8	764.3	241.8	374.3	601.8	956.7	60.1	175.4	37.1	3290.5
<u>1967</u>													
1.	22.2	22.8	23.6	23.8	24.7	22.2	22.7	20.6	22.7	22.6	22.6	21.8	
2.	13.6	12.5	13.7	15.6	16.2	16.2	16.2	16.3	15.8	15.1	14.6	12.9	
3.	82.0	33.4	93.8	96.0	107.6	79.4	83.6	57.4	77.7	75.1	74.0	70.3	971.0
4.	19.6	4.6	12.1	230.9	197.9	1417.9	423.8	1141.1	940.3	1560.3	190.1	0.8	6119.8
<u>1968</u>													
1.	21.9	22.1	24.6	24.0	24.3	24.3	23.0	21.5	22.1	22.9	22.8	23.5	
2.	12.7	11.8	14.5	14.7	16.3	16.3	16.6	16.1	16.0	14.5	13.2	13.2	
3.	72.4	78.2	102.5	100.7	102.5	103.4	85.2	68.0	70.9	79.4	78.3	84.1	1025.3
4.	4.2	0	6.4	51.4	275.5	346.7	1043.7	1672.3	1480.8	31.2	18.0	0	4930.8
<u>1969</u>													
1.	23.6	23.0	24.6	25.1	24.9	23.6	22.7	22.6	22.5	23.3	22.7	22.6	
2.	13.9	12.6	14.7	15.9	16.9	16.8	16.4	16.1	16.2	15.3	14.7	14.5	
3.	85.0	85.0	102.1	109.8	107.4	92.9	82.7	79.6	74.1	81.1	74.6	74.0	1048.2
4.	8	8	7.2	85.9	354.0	382.3	1211.8	616.3	894.9	279.1	52.0	48.6	3940.9

Line 1 : Monthly mean of T_{mx} (°C)
 Line 2 : Monthly mean of T_{min} (°C)
 Line 3 : Monthly mean of mean Temp (°C)
 Line 4 : Monthly Total evaporation : Ep (mm/month)

BAGUIO CITY

16°25'N 120°36'E

ESTIMATED EVAPORATION CALCULATED BY THE ADJUSTED HARGREAVES METHOD (mm/month)

	Jan.	Feb.	Mar.	Apr.	May	Jun.	Jul.	Aug.	Sep.	Oct.	Nov.	Dec.	TOTAL
<u>1961</u>													
22.6	25.4	24.9	26.3	25.0	24.3	21.1	22.0	22.5	23.5	23.7	24.0	24.0	
11.0	13.1	14.8	15.5	16.0	16.3	15.5	15.6	14.8	14.8	14.5	14.0	14.0	
79.4	106.7	105.0	124.7	111.9	103.4	69.3	75.3	84.2	84.2	85.0	87.3	87.3	1146.5
0	0	119.9	63.0	190.5	574.8	1025.7	611.6	196.6	196.6	72.2	7.6	7.6	3427.3
<u>1962</u>													
22.5	23.8	25.8	25.9	25.7	24.7	22.1	23.4	22.7	23.8	23.6	23.6	23.6	
12.1	11.8	15.0	15.5	16.0	16.1	16.5	15.5	15.7	14.9	14.2	13.2	13.2	
77.9	92.7	114.2	120.1	120.3	108.8	75.4	90.3	78.0	86.8	83.7	84.9	84.9	1133.2
3.3		9.1	93.0	263.9	184.9	1249.2	694.2	838.9	154.2	29.7	7.9	7.9	3528.3
<u>1963</u>													
20.2	21.9	24.6	25.1	25.5	21.7	22.4	23.2	22.0	24.0	24.4	22.7	22.7	
11.1	11.2	13.1	14.2	15.8	15.7	15.8	16.3	16.3	15.3	14.7	14.4	14.4	
61.2	77.0	104.5	113.6	118.4	76.1	78.7	85.3	68.6	87.8	93.0	75.1	75.1	1059.3
3.3	4.3	9.9	7.9	125.5	1092.5	489.7	383.8	1458.0	76.2	42.4	45.7	45.7	3739.1
<u>1964</u>													
24.1	24.0	24.6	25.6	24.4	23.3	23.6	21.3	23.0	23.2	21.8	21.5	21.5	
13.7	13.1	14.2	15.2	16.2	15.9	16.0	15.8	15.9	15.5	15.3	13.6	13.6	
89.8	93.5	103.0	117.3	104.1	93.2	94.5	67.2	80.3	79.6	64.9	66.6	66.6	1054.1
3.2	0.5	18.9	158.4	233.1	520.4	299.9	1870.9	572.3	443.7	202.9	143.6	143.6	4468.1
<u>1965</u>													
21.2	23.9	24.0	24.8	23.5	22.9	21.8	22.9	23.3	23.8	23.7	23.9	23.9	
12.1	13.0	13.7	15.2	15.9	16.0	15.6	15.7	15.7	15.3	15.7	14.7	14.7	
67.6	92.7	97.8	108.2	94.7	88.2	76.2	84.3	84.1	85.9	81.1	85.1	85.1	1046.0
22.6	22.4	118.6	200.1	459.9	193.3	712.6	371.3	364.8	106.6	24.5	0	0	2876.7

R-3 Record of Temperature

MONTHLY MEAN MAX. & MEAN MIN. TEMPERATURE

1956 - 1972

STATION CLARK FIELD																								
YEAR	JAN	FEB	MAR	APR	MAY	JUNE	JULY	AUG	SEP	OCT	NOV	DEC												
1956	84.1	70.7	87.8	71.4	88.9	72.8	89.6	74.8	89.8	75.1	89.0	73.4	88.4	73.7	81.8	73.1	83.7	73.0	86.8	84.0	86.0	73.2	83.6	72.3
57	84.5	70.9	86.2	69.8	89.6	73.5	91.8	75.3	93.6	75.3	88.5	75.2	87.6	74.3	85.7	74.4	86.9	74.5	86.7	74.5	85.4	72.6	86.9	73.0
58	85.7	71.5	86.4	70.8	89.3	72.8	92.1	74.4	93.0	77.0	87.0	75.1	86.7	74.4	86.6	74.4	84.6	74.1	87.0	74.4	85.5	72.6	85.4	70.7
59	84.8	69.8	87.1	70.5	88.8	73.2	92.4	74.8	91.6	75.9	93.0	76.5	87.8	74.6	85.1	73.7			86.8	73.8	85.5	73.8	86.0	72.2
60	86.3	71.4	86.6	72.4	90.7	73.2	90.7	75.4	90.8	76.2	86.9	74.9	88.4	75.1	84.7	73.7	86.3	73.6	85.8	73.2	86.5	73.5	85.4	71.4
61	82.6	67.9	86.9	71.1	89.1	73.8																		
62	86.2	70.7																						
63	81.2	67.3	89.2	66.8	88.3	69.3	90.4	72.4	92.9	75.3	84.2	74.0	85.1	73.4	86.4	74.7	85.3	73.7	87.8	74.5	88.1	72.2	85.4	71.1
64			86.0	68.9	89.4	72.0	93.1	74.2	93.0	76.4	88.4	74.6	86.2	73.4	84.8	73.9	85.3	74.4	85.6	74.2	82.7	72.4	82.9	70.0
65	83.7	67.3	87.0	69.1	88.6	71.1	92.5	74.7	89.0	78.2	86.3	74.0	83.6	73.0	85.8	73.3	85.3	73.6	82.0	73.8	85.4	73.8	86.6	71.7
66	87.0	71.4	90.9	73.1	91.5	73.5	94.1	76.8	85.8	74.7	88.5	74.7	86.5	74.2	86.9	74.3	83.3	73.2	85.6	74.3	83.6	73.5	84.9	73.9
67	84.5	70.6	86.1	70.0	89.1	72.4	72.2	75.3	93.2	76.6	86.2	75.0	85.2	74.5	83.2	74.2	83.9	73.7	85.4	74.1	84.4	72.7	85.1	70.3
68	85.2	70.2	85.9	69.2	91.0	61.1	91.2	73.8	91.7	74.8	90.4	75.0	87.6	74.3	83.8	73.4	85.4	73.7	86.1	74.1	85.9	71.5	85.4	70.9
69	86.9	71.2	87.9	70.4	90.5	73.6	93.1	75.5	94.3	77.1	89.3	75.9	86.0	74.1	86.5	74.7	85.5	74.3	85.3	73.8	86.0	72.5	85.5	72.8
1970	87.1	71.2	88.0	70.5	91.5	74.4	93.0	76.3	94.3	78.2	88.7	76.1	86.6	75.1	81.8	74.1	86.0	73.9	85.4	74.2	86.6	74.4	87.1	73.8
71	83.5	68.1	86.5	71.2	88.6	71.0	92.1	74.1	89.3	76.0	88.5	75.5	81.6	73.2	81.8	75.1	87.6	74.1	84.8	73.3	85.3	72.9	84.2	72.5
72	81.3	70.4	81.7	70.3	85.8	69.4	90.8	72.9	99.6	73.5	87.8	74.2	81.5	73.6	83.2	72.5	88.6	74.9	89.3	74.7	86.7	74.0	89.7	72.4
SAMPLE	16	16	16	16	16	16	16	16	16	16	16	16	16	16	16	16	16	16	16	16	16	16	16	16
TOTAL MAX	358.2	1395.2	1390.7	1373.1	1468.8	1412.4	1373.7	1359.0	1380.0	1457.5	1454.6													
MEAN MAX	84.6	87.2	89.4	91.9	91.6	88.3	85.9	84.6	86.2	85.7	85.6													
TOTAL MIN	1127.6	1223.5	1147.7	1121.1	1245.1	1200.0	1187.7	1204.4	1108.3	1185.7	1240.4													
MEAN MIN	70.0	70.3	71.7	74.7	75.9	75.1	74.2	74.0	73.8	74.1	73.0													
MAX-MIN	87.1	67.3	90.9	66.8	91.5	69.3	44.1	72.4	94.3	73.5	93.0	74.0	88.4	73.0	86.9	72.5	88.6	73.0	89.3	73.2	88.7	71.5	87.4	69.2
MEAN	77.3	78.8	80.6	83.3	83.8	81.7	80.4	79.3	79.6	80.2	71.4													

LEFT SIDE: MAXIMUM, RIGHT SIDE: MINIMUM / NO RECORD UNITS: OF

TEMPERATURES

STATION	CLARK AIR BASE												YEAR	REMARK											
	JAN		FEB		MAR		APR		MAY		JUNE				JULY		AUG		SEP		OCT		NOV		DEC
1	86	70	85	71	85	71	95	75	90	73	88	76	89	74	85	72	87	75	87	75	87	75	87	76	72
2	85	72	85	69	81	73	91	77	91	75	88	74	90	73	84	72	85	75	83	74	89	74	82	73	
3	86	70	86	70	87	72	91	74	81	74	82	75	92	75	82	73	86	75	84	73	88	73	88	74	
4	85	71	88	70	90	72	86	74	90	76	86	75	91	74	85	72	83	74	85	71	90	75	80	74	
5	84	70	87	73	89	71	88	74	88	74	85	76	90	75	87	74	86	73	88	73	89	74	85	73	
6	85	69	86	70	89	75	87	74	91	76	88	77	84	74	81	73	84	73	86	75	88	75	84	73	
7	84	68	87	69	88	73	88	76	92	75	92	76	85	74	89	74	87	73	87	75	88	73	86	72	
8	81	66	88	67	89	70	91	76	88	73	93	77	87	74	89	77	80	72	85	74	86	74	86	70	
9	83	68	85	68	83	72	82	75	97	73	88	75	89	74	80	74	81	73	89	76	88	74	83	71	
10	84	68	87	68	88	71	81	75	88	73	85	78	87	74	83	74	78	72	83	74	86	75	76	70	
11	84	70	89	71	90	69	85	74	89	72	84	75	89	73	77	73	83	71	81	74	87	74	83	72	
12	82	70	87	73	87	73	88	75	87	75	90	76	90	74	82	73	82	72	90	73	87	70	85	72	
13	82	70	84	74	86	75	88	73	87	75	91	73	89	73	80	72	83	72	86	73	86	75	81	72	
14	84	70	86	72	84	73	90	74	88	74	92	76	85	73	96	71	86	72	89	74	84	76	81	72	
15	81	71	90	73	89	74	91	73	98	75	91	76	86	73	80	72	85	73	88	74	83	74	84	72	
16	83	70	87	73	90	75	92	77	91	72	91	75	86	72	90	80	88	73	86	73	85	73	84	74	
17	84	71	85	73	91	76	95	75	89	75	89	74	86	73	86	73	83	73	88	73	85	75	84	73	
18	85	71	92	72	89	74	92	75	90	76	90	76	91	74	90	73	87	74	90	73	87	74	83	74	
19	84	73	90	74	92	70	93	79	92	77	91	76	91	73	84	76	86	73	87	74	88	75	84	74	
20	85	74	88	74	91	73	94	79	92	76	89	79	87	72	88	74	84	73	88	73	83	74	84	72	
21	86	72	90	74	89	74	86	73	92	78	90	75	84	72	92	72	75	71	90	75	85	71	84	72	
22	87	76	90	71	90	73	87	73	91	79	89	77	87	71	89	73	82	72	87	74	86	73	86	71	
23	86	73	90	72	97	74	92	73	92	76	92	77	92	74	87	74	82	73	87	74	87	74	85	71	
24	83	72	92	71	91	73	90	76	92	75	92	74	92	78	86	74	77	73	88	74	85	71	84	71	
25	82	70	88	71	93	72	91	74	91	73	90	77	88	73	83	72	88	72	87	74	84	70	85	71	
26	85	71	83	70	90	70	90	74	90	76	91	75	89	73	87	75	85	71	88	76	84	66	85	72	
27	85	73	90	72	89	76	90	71	90	75	96	75	90	73	88	73	84	74	89	75	84	69	85	74	
28	87	71	89	73	90	73	92	74	92	79	82	75	89	76	87	73	86	75	88	74	85	74	85	74	
29	81	71	87	72	91	72	90	79	92	76	87	73	88	75	86	73	84	75	88	75	77	72	86	72	
30	83	70	87	70	90	73	91	75	90	78	88	72	91	76	76	73	85	73	86	74	89	73	85	72	
31	84	72	87	72	95	75	87	75	87	75	86	75	86	72	86	72	86	72	89	74	89	74	83	74	
MEAN	84.1	70.7	87.7	76.4	88.9	82.8	89.6	84.8	89.8	87.5	89.0	87.4	88.4	83.7	84.8	83.1	83.7	83.0	86.3	84.0	86.0	83.6	83.6	82.3	
MEAN	77.4	79.4	80.9	82.2	82.5	82.2	81.1	82.2	81.1	79.0	82.2	81.1	82.2	81.1	79.0	78.4	80.4	80.4	80.4	80.4	78.6	78.6	78.0	78.0	

LEFT SIDE : MAXIMUM , RIGHT SIDE : MINIMUM NO RECORD UNITS : OF

TEMPERATURES

STATION CLARK AIR BASE		1957												YEAR	REMARKS													
DATE	MONTH	JAN	FEB	MAR	APR	MAY	JUNE	JULY	AUG	SEP	OCT	NOV	DEC															
1		83	75	83	70	86	71	93	74	92	74	93	77	83	73	90	74	88	75	88	75	88	75	88	75	88	72	
2		86	73	85	68	90	73	93	76	90	77	96	76	80	72	90	75	84	75	88	75	88	75	85	74	88	73	
3		86	73	81	70	90	75	88	76	91	76	97	76	83	72	87	73	87	75	83	77	87	75	87	75	87	75	
4		89	71	86	71	94	71	87	73	94	72	93	79	84	73	87	74	82	74	84	75	84	75	87	76	86	75	
5		85	72	88	70	92	74	88	74	92	72	88	77	88	72	90	75	86	75	87	75	87	75	86	76	88	75	
6		85	70	89	71	90	72	88	74	93	74	90	75	89	75	92	74	90	72	84	73	85	75	85	75	87	73	
7		80	70	89	71	87	73	93	75	95	75	89	75	89	77	89	75	87	75	82	72	88	75	87	75	87	72	
8		81	70	86	70	90	73	92	75	94	77	86	74	86	75	91	72	87	79	79	73	89	76	87	72			
9		82	71	87	69	88	74	91	76	93	76	89	76	83	74	88	75	85	73	81	73	88	74	89	72			
10		80	73	87	70	91	73	93	75	94	75	79	75	87	76	84	74	90	72	86	74	90	75	84	74			
11		84	70	86	70	92	75	93	72	91	76	82	74	92	74	91	76	91	73	85	73	85	75	88	74			
12		86	70	82	69	90	76	91	75	92	76	83	75	90	74	91	75	89	75	87	74	85	75	86	76			
13		85	70	84	67	87	75	91	75	96	75	87	74	89	75	87	76	89	76	81	75	85	75	87	75			
14		83	75	84	67	90	75	91	76	95	74	87	74	85	73	79	75	85	75	84	72	85	73	88	77			
15		86	70	88	69	85	75	92	73	97	75	88	73	79	73	80	74	87	73	87	73	86	73	88	75			
16		85	69	94	70	86	72	93	76	90	76	91	75	83	73	77	74	87	75	89	75	84	72	87	75			
17		85	69	85	71	86	74	93	77	90	76	87	75	82	71	80	75	89	75	90	73	84	70	90	75			
18		84	67	85	70	89	74	90	77	93	74	88	75	89	73	81	76	88	74	89	75	86	70	88	73			
19		83	70	87	72	89	72	94	77	98	74	93	75	90	75	88	76	88	74	88	74	88	72	95	74			
20		84	69	88	70	91	73	92	77	94	72	89	79	90	75	87	76	83	75	88	75	85	70	87	72			
21		84	70	85	70	91	70	92	78	93	75	93	76	90	76	84	76	89	74	89	76	82	67	86	70			
22		84	72	88	71	87	72	92	78	94	75	94	77	88	74	81	73	88	75	89	76	80	66	85	72			
23		85	72	87	70	92	72	91	74	95	75	93	77	91	77	83	73	80	73	89	76	83	69	88	73			
24		85	71	88	69	92	72	94	75	95	77	83	75	92	75	85	74	83	73	89	74	83	69	87	70			
25		85	73	90	70	90	75	94	75	95	78	84	73	92	72	82	73	84	74	88	75	84	69	86	71			
26		86	73	86	69	91	73	92	75	94	79	86	73	91	75	85	74	83	75	87	74	85	88	87	69			
27		84	73	88	69	92	74	94	77	96	75	88	73	86	75	84	74	88	75	89	74	84	73	86	72			
28		84	72	85	72	91	75	93	76	95	75	89	73	89	76	86	74	88	74	89	75	86	73	86	71			
29		87	68			88	75	92	76	93	75	90	73	90	77	85	74	89	77	90	76	87	73	86	71			
30		88	66			90	73	93	73	93	76	83	74	90	76	86	75	89	75	88	76	86	75	86	74			
31		85	70			90	77	95	77	95	77	93	75	87	73	89	76	89	76	89	76	84	72	84	72			
MEAN		94.5	70.9	96.2	69.8	89.6	73.5	91.8	75.3	93.6	75.3	88.5	75.2	87.6	74.3	85.7	74.4	86.9	74.5	86.7	74.5	85.4	72.6	86.9	73.0			
MEAN		77.7	78.0	81.6	83.6	84.5	81.9	81.0	80.1	80.7	80.6	79.0	80.0	80.0	80.0	80.0	80.0	80.0	80.0	80.0	80.0	80.0	80.0	80.0	80.0			

LEFT SIDE : MAXIMUM , RIGHT SIDE : MINIMUM , / : NO RECORD UNITS : OF

TEMPERATURES

STATION	CLARK AIR BASE												YEAR		REMARK									
	DATE	JAN	FEB	MAR	APR	MAY	JUNE	JULY	AUG	SEP	OCT	NOV	DEC	1958										
1	86	70	84	69	87	95	90	69	85	76	80	74	90	76	84	70	83	71						
2	88	71	87	67	89	75	91	71	91	76	74	72	90	77	89	71	81	74	87	75	83	68	83	69
3	88	71	87	73	85	73	93	72	93	96	83	72	87	76	89	71	81	74	85	75	84	70	83	68
4	85	70	89	73	84	73	94	74	94	77	85	73	90	76	84	73	80	74	86	74	83	69	83	69
5	83	68	86	78	85	76	93	78	95	76	79	73	91	75	88	74	87	73	87	77	83	68	83	69
6	83	68	89	72	90	73	94	73	96	78	88	74	91	76	88	75	87	73	88	76	85	72	85	71
7	84	68	89	70	88	72	93	74	95	78	84	78	89	76	88	73	86	75	89	76	87	75	84	72
8	82	68	88	73	83	71	91	71	95	77	88	76	93	76	89	73	85	75	87	73	88	76	86	69
9	84	71	87	70	86	71	89	72	94	75	85	73	91	75	91	75	79	74	88	73	87	75	86	69
10	86	74	83	71	88	72	89	74	95	79	81	73	90	75	88	78	84	74	86	71	82	74	85	73
11	85	72	85	72	92	73	91	72	95	78	86	73	85	74	91	76	90	75	87	74	84	75	83	72
12	87	73	83	72	91	72	92	72	94	78	82	75	86	73	83	76	92	97	88	74	87	76	82	70
13	90	72	85	70	88	73	96	75	92	77	89	75	76	72	89	74	85	76	87	76	85	73	83	70
14	88	74	84	67	92	72	93	74	93	77	90	75	74	72	89	76	85	74	88	75	89	75	85	70
15	88	74	83	68	89	72	91	77	91	76	90	96	79	72	88	76	81	74	89	75	87	75	88	73
16	89	74	86	71	92	74	90	74	96	76	89	76	82	72	88	77	86	72	82	76	87	79	86	74
17	85	71	86	72	90	72	93	74	90	80	90	76	84	73	88	74	81	75	89	74	86	73	86	74
18	85	72	86	73	94	73	94	73	91	77	93	78	88	77	85	73	87	75	83	74	90	75	87	72
19	83	69	88	68	90	75	91	75	94	78	92	76	78	76	88	75	84	72	89	75	86	74	85	73
20	83	62	87	69	89	73	93	73	96	78	91	75	86	72	89	76	86	72	90	76	86	72	86	76
21	83	70	85	69	91	71	93	76	94	79	89	74	70	76	90	77	85	74	83	73	85	74	87	74
22	87	72	84	68	91	72	92	78	92	79	86	76	92	77	89	74	82	78	83	73	86	75	86	72
23	88	74	85	71	92	74	95	73	97	75	90	76	90	77	80	75	83	73	87	74	89	76	88	70
24	85	74	90	69	91	73	93	76	95	76	90	75	87	77	82	75	84	74	86	74	86	70	87	71
25	83	73	89	70	91	74	96	76	94	77	71	77	86	75	84	75	81	74	89	74	85	72	88	71
26	86	74	85	74	91	73	92	76	90	78	91	75	83	73	83	75	82	75	86	75	84	70	85	70
27	83	72	90	74	92	72	93	76	90	76	91	77	87	73	89	74	86	75	86	74	84	68	85	70
28	84	72	90	75	92	75	93	74	88	76	90	77	86	73	84	74	88	74	85	73	84	73	87	70
29	89	73	89	75	91	76	91	76	91	75	90	76	88	73	79	73	89	74	86	73	85	71	84	69
30	85	72	87	73	89	77	91	76	89	77	90	75	76	73	89	76	88	75	85	71	87	67	87	67
31	84	72	88	71	88	71	88	71	93	75	75	75	93	73	82	73	85	71	85	71	89	65	89	65
MEAN	85.7	71.5	86.4	90.8	89.3	72.8	92.1	74.4	93.0	77.0	87.0	75.1	86.7	74.4	86.6	74.4	84.6	74.1	87.0	74.4	85.5	72.6	85.4	70.7
MEAN	78.6	78.6	78.6	81.1	83.3	85.0	81.1	80.6	80.5	79.4	80.7	79.1	78.1	80.7	80.7	79.4	80.7	79.1	78.1	80.7	79.1	78.1	78.1	78.1

LEFT SIDE : MAXIMUM, RIGHT SIDE : MINIMUM / NO RECORD UNITS : OF

TEMPERATURES

STATION	CLARK AIR BASE												YEAR	REMARKS									
	DATE	MONTHS																					
	JAN	FEB	MAR	APR	MAY	JUNE	JULY	AUG	SEP	OCT	NOV	DEC											
1	87	88	84	73	90	75	87	74	92	76	93	77	92	74	85	73	91	76	88	75	87	71	
2	86	71	87	72	89	72	89	72	93	76	89	76	92	76	83	74	91	78	89	76	85	75	
3	88	70	89	71	84	74	87	76	90	77	92	77	87	78	85	74	88	74	89	77	88	75	
4	88	74	87	69	87	73	93	74	89	75	86	76	86	76	82	73	84	75	90	76	84	75	
5	86	72	90	68	86	75	92	76	93	74	89	74	88	74	78	73	84	75	91	75	81	74	
6	85	71	87	72	90	73	91	74	92	76	92	74	89	73	84	74	79	73	80	73	88	72	
7	85	72	91	70	88	74	89	75	91	75	95	76	90	76	86	76	88	72	81	74	87	75	
8	83	74	91	71	92	70	91	75	92	74	95	76	88	76	89	75	87	72	84	74	87	73	
9	87	72	89	70	93	76	93	76	92	75	95	78	90	74	89	74	84	72	83	72	87	73	
10	86	71	85	72	91	76	93	76	89	75	95	78	92	74	88	74	85	70	87	73	89	75	
11	84	72	82	72	90	70	92	72	90	75	94	76	90	76	91	76	87	74	85	73	87	74	
12	87	71	80	70	87	70	92	73	92	76	92	77	91	75	93	72	88	74	88	72	86	74	
13	84	70	86	70	89	73	92	75	90	76	94	79	88	74	90	74	89	72	84	73	87	73	
14	83	69	89	69	87	75	92	76	93	76	95	77	89	76	88	75	92	73	80	73	87	71	
15	85	72	88	70	89	75	92	75	96	76	95	78	84	74	85	76	87	73	84	74	87	72	
16	87	71	86	72	89	74	93	72	94	76	92	98	83	73	91	72	86	72	67	76	86	68	
17	81	67	88	67	87	74	93	76	90	75	94	77	90	74	88	72	88	76	82	75	88	72	
18	79	65	88	66	85	72	91	73	91	74	96	78	88	74	81	73	85	74	84	73	86	73	
19	81	65	84	71	86	70	94	73	92	74	96	78	90	77	85	72	86	75	87	74	84	73	
20	83	65	89	70	88	71	92	77	91	75	94	75	85	76	83	73	83	75	65	74	87	73	
21	84	66	80	69	89	72	94	76	93	75	96	77	88	75	86	74	83	74	83	73	83	74	
22	85	68	86	73	89	73	91	78	90	75	96	75	87	75	82	73	87	71	83	71	85	72	
23	84	69	92	69	90	71	94	73	93	77	95	77	89	74	84	74	87	73	84	74	84	71	
24	83	67	90	70	92	73	94	75	95	78	95	74	88	72	87	74	87	75	87	74	85	69	
25	77	71	88	71	91	77	97	74	92	79	91	77	85	72	83	75	87	73	87	74	85	68	
26	83	70	88	71	92	74	96	76	94	79	89	78	87	76	81	74	87	75	87	73	86	69	
27	85	70	88	72	89	76	95	74	89	76	91	76	88	74	81	73	85	74	86	74	85	72	
28	87	71	85	73	87	76	95	75	90	77	90	75	87	73	85	74	88	73	85	74	85	70	
29	87	68	90	74	94	79	90	77	95	74	87	74	82	74	82	74	88	73	84	73	85	69	
30	88	69	90	70	94	75	90	76	90	75	81	74	79	74	84	74	88	75	84	71	86	70	
31	85	72	88	72	91	77	91	77	91	77	84	74	84	72	84	72	86	75	89	73	89	73	
MEAN	84.5	69.8	87.1	70.5	88.8	73.2	92.5	74.8	91.6	75.9	93.0	76.5	87.8	74.6	85.1	73.7	86.8	73.8	85.5	73.6	86.0	72.2	
MEAN	77.1	78.8	81.0	83.6	83.8	84.8	81.2	79.4	80.3	79.7	79.1												

LEFT SIDE: MAXIMUM, RIGHT SIDE: MINIMUM UNITS: OF NO. RECORD

TEMPERATURES

STATION	CLARK AIR BASE												YEAR		REMARKS									
	DATE	JAN	FEB	MAR	APR	MAY	JUNE	JULY	AUG	SEP	OCT	NOV	DEC	1960										
1	82	74	91	72	89	71	91	75	92	76	83	73	88	74	84	74	85	72	88	75	87	72	85	70
2	83	73	87	70	87	73	91	73	92	77	87	75	85	72	86	74	85	75	91	73	86	75	85	69
3	85	71	84	71	89	74	90	73	91	77	89	76	88	75	86	74	84	75	90	73	87	72	86	71
4	87	72	81	69	88	73	90	76	91	78	82	74	90	75	79	74	86	73	87	73	87	73	85	68
5	89	73	82	67	89	73	90	77	93	77	83	74	90	76	81	73	86	73	85	75	86	74	82	69
6	89	75	82	68	89	73	90	75	91	75	82	75	91	77	78	73	84	73	83	75	86	73	81	68
7	83	75	87	68	90	71	90	74	93	77	83	72	90	75	79	74	87	74	80	73	87	74	83	69
8	86	71	83	73	90	73	92	76	91	77	88	78	89	74	83	73	89	73	77	73	86	74	83	67
9	88	74	88	73	90	71	91	76	89	79	90	75	91	75	83	73	92	75	84	73	85	74	84	68
10	87	72	87	72	90	71	81	76	92	76	93	76	92	77	85	74	92	73	90	71	87	73	85	73
11	89	73	86	75	90	73	91	76	93	72	95	75	87	78	85	75	88	75	85	70	85	75	86	75
12	87	72	89	75	91	73	93	74	91	75	90	77	88	76	84	75	88	75	77	72	87	76	89	74
13	89	73	82	73	88	72	92	75	90	76	88	77	87	74	83	74	91	76	81	72	93	73	88	72
14	89	70	86	74	91	72	92	74	87	78	86	75	91	73	75	73	89	71	81	72	88	75	88	73
15	88	69	89	72	92	74	94	76	92	77	88	75	91	74	81	73	90	73	82	73	87	74	89	75
16	89	68	88	73	92	73	92	77	93	76	89	74	91	75	80	71	85	73	90	73	88	75	85	70
17	85	69	89	70	92	74	91	75	93	77	88	74	91	76	87	72	87	75	90	75	88	75	86	67
18	85	72	85	72	92	73	92	73	92	78	93	74	91	76	93	76	87	75	91	75	86	75	86	73
19	85	71	89	73	91	74	92	76	92	77	88	78	89	76	90	75	86	76	89	75	87	74	85	74
20	88	70	84	72	90	73	92	76	92	77	92	76	86	77	83	75	87	74	87	75	86	73	86	73
21	87	72	88	72	92	73	94	74	94	78	91	75	86	76	87	76	83	73	86	74	85	72	87	73
22	87	70	86	75	92	75	94	79	92	76	92	76	88	73	81	74	83	73	89	74	85	73	86	73
23	88	71	85	74	90	74	88	73	90	77	88	77	91	75	80	74	79	74	89	75	87	74	89	73
24	86	69	87	71	93	73	83	73	93	76	86	74	86	77	89	74	82	74	88	74	87	73	88	73
25	83	69	90	79	93	73	85	75	93	76	88	74	89	75	88	74	88	73	85	72	84	73	85	73
26	80	69	89	74	92	72	88	74	95	79	83	75	85	74	90	73	89	72	87	72	83	74	86	74
27	87	70	88	74	91	75	89	75	91	75	77	72	87	74	90	71	86	73	86	73	87	74	82	76
28	86	70	89	74	92	74	95	78	79	74	77	72	86	75	89	73	81	73	85	73	87	73	85	74
29	85	72	89	74	93	75	92	79	85	73	86	74	84	74	88	74	84	71	86	73	84	71	88	70
30	83	73	88	75	93	75	90	78	85	73	83	75	86	75	89	74	85	73	85	72	84	69	81	69
31	90	74	88	75	92	75	88	74	88	74	85	75	89	73	87	73	87	72	87	72	87	72	81	67
MEAN	86.3	71.4	86.6	72.4	90.7	73.2	90.7	75.4	90.8	76.2	86.9	74.9	88.4	75.1	84.7	73.7	86.3	73.6	85.8	73.2	86.5	73.5	85.4	71.4
MEAN	78.9	79.5	82.0	83.1	83.3	80.9	81.8	79.2	80.0	79.5	80.0	80.0	79.5	80.0	80.0	79.5	80.0	80.0	79.5	80.0	80.0	78.4	78.4	78.4

LEFT SIDE : MAXIMUM , RIGHT SIDE : MINIMUM , / NO RECORD UNITS : OF

TEMPERATURES

STATION DATE	CLARK AIR BASE												YEAR			
	JAN	FEB	MAR	APR	MAY	JUNE	JULY	AUG	SEP	OCT	NOV	DEC	REMARK	REMARK		
1	81	69	86	70	85	68						83	73	89	74	
2	82	70	83	70	86	72						87	73	89	73	
3	83	72	82	70	90	73						84	73	90	71	
4	80	70	82	72	82	76						86	76	89	74	
5	85	69	85	70	92	75						86	76	90	75	
6	86	71	89	69	90	75						88	74	90	74	
7	83	68	90	70	90	75						85	76	88	73	
8	86	70	84	73	90	74						88	74	84	71	
9	82	72	86	70	89	76						88	72	91	68	
10	88	68	89	69	87	74						86	72	90	73	
11	85	69	89	69	87	72						87	74	91	73	
12	83	68	87	76	89	74						85	72	90	75	
13	85	68	87	72	91	74						87	75	89	74	
14	81	66	87	72	86	73						85	73	88	76	
15	81	66	87	69	88	73						87	70	88	73	
16	81	67	88	72	91	70						86	70	85	76	
17	81	66	87	70	90	72						88	75	89	74	
18	78	64	88	73	90	75						90	75	90	75	
19	77	67	88	74	91	77						89	73	90	74	
20	79	64	85	72	91	76						91	75	92	75	
21	80	66	90	73	93	75						88	73	89	74	
22	81	62	89	71	92	78						79	74	85	71	
23	79	65	92	70	91	77						78	74	88	75	
24	84	67	91	72	90	77						86	72	88	73	
25	85	71	85	72	92	75						86	74	87	72	
26	83	69	86	73	94	73						86	73	84	72	
27	82	68	83	70	89	75						86	71	88	70	
28	84	67	83	67	87	72						86	72	86	71	
29	85	68			85	70						87	72	84	74	
30	84	69			87	69						87	73	85	72	
31	85	69			71	87	72							87	73	
MEAN	82.6	67.9	86.9	71.1	89.1	73.8						86.2	73.3	88.4	73.2	
MEAN	75.3	79.0	81.5									79.8	80.8			

LEFT SIDE : MAXIMUM , RIGHT SIDE : MINIMUM / : NO RECORD UNITS : OF

TEMPERATURES

STATION DATE	CLARK AIR BASE												YEAR	REMARK				
	JAN	FEB	MAR	ARR	MAY	JUNE	JULY	AUG	SEP	OCT	NOV	DEC						
1	86	72			93	78	92	77	89	75	88	77	88	77	86	71	86	74
2	85	68			94	77	95	75	90	74	82	74	86	74	90	76	90	74
3	84	69			95	78	92	73	90	75	87	76	79	76	91	75	89	74
4	83	74			97	78	90	74	86	77	85	75	88	75	87	72	87	74
5	85	75			97	78	90	73	88	76	83	75	76	74	89	76	87	75
6	88	75			97	77	89	73	84	78	83	76	80	75	89	77	87	75
7	91	73			96	79	90	76	87	75	89	74	86	72	90	76	79	74
8	90	75			97	81	87	77	85	75	84	75	81	73	90	73	89	75
9	84	73			97	80	88	76	80	75	83	76	84	72	90	76	88	75
10	87	73			97	79	88	74	84	74	89	74	81	74	88	77	87	75
11	88	71			96	78	88	76	84	75	88	73	84	74	89	76	87	72
12	90	70			96	78	86	75	88	74	86	73	82	75	89	77	86	71
13	89	75			94	79	86	75	88	74	89	74	86	75	90	76	87	71
14	91	71			99	77	86	74	84	72	88	71	84	74	90	76	87	70
15	89	74			97	77	87	74	87	76	85	71	83	74	90	77	87	72
16	88	73			97	78	87	74	88	76	84	73	89	72	90	75	85	68
17	90	72			95	78	90	74	85	74	87	73	87	75	82	74	84	70
18	86	72			86	70	91	74	87	75	88	75	87	74	91	75	84	70
19	90	71			92	72	91	77	77	74	84	72	80	74	91	76	84	68
20	87	72			95	73	93	74	76	74	86	73	86	74	91	77	83	70
21	83	68			91	75	91	75	78	74	85	73	88	76	91	76	83	69
22	87	67			95	76	90	73	83	75	85	71	89	74	87	76	85	71
23	86	69			94	75	90	74	78	73	88	74	87	76	86	75	84	72
24	81	69			92	77	91	75	74	72	90	74	87	76	86	71	86	72
25	84	68			94	79	90	75	81	72	90	77	84	77	88	70	87	75
26	87	67			93	77	92	75	83	73	91	75	86	76	91	71	86	72
27	85	70			95	79	93	76	86	74	91	77	88	75	88	73	84	73
28	80	67			84	76	89	77	83	75	90	77	90	75	90	73	85	73
29	81	65			85	75	89	76	84	74	87	76	90	75	87	76	85	74
30	82	66			89	75	90	75	89	76	82	75	91	76	85	73	86	67
31	85	67			92	78	91	78	87	76	85	73	84	74	84	74	86	69
MEAN	86.2	70.7			93.9	77.0	89.7	74.9	84.3	74.6	86.5	74.3	85.2	74.5	86.6	75.0	85.7	72.1
MEAN	78.5				85.5		82.3		79.5		80.4		79.9		81.8		78.9	

LEFT SIDE : MAXIMUM , RIGHT SIDE : MINIMUM / NO RECORD UNITS : OF

TEMPERATURES

STATION CLARK AIR BASE		YEAR 1963																									
DATE	MONTH	JAN	FEB	MAR	APR	MAY	JUNE	JULY	AUG	SEP	OCT	NOV	DEC	REMARKS													
1		84	70	78	67	80	61	87	69	95	75	86	75	86	73	89	72	85	74	88	76	89	74	90	73		
2		85	71	79	67	83	63	87	69	95	73	84	74	85	74	89	74	85	73	89	76	87	75	90	72		
3		82	71	79	64	86	67	84	70	93	74	87	75	86	73	89	73	86	73	86	76	85	73	89	72		
4		82	70	79	66	87	66	86	68	92	72	79	74	86	73	88	73	83	75	90	75	87	71	88	70		
5		87	68	82	64	90	68	87	67	94	73	88	74	88	74	89	77	82	74	88	74	88	70	87	72		
6		86	68	77	68	89	73	85	64	94	75	79	72	87	73	88	77	85	75	86	76	90	73	87	72		
7		80	68	80	66	88	70	91	70	95	77	79	72	87	75	85	76	80	72	89	76	86	71	85	73		
8		76	67	84	66	91	67	92	73	97	75	86	73	88	75	85	75	78	73	86	76	83	69	89	72		
9		75	66	87	65	90	66	89	73	95	75	85	75	82	73	87	76	85	72	88	73	86	69	87	74		
10		77	66	87	67	90	66	88	70	93	78	87	75	85	73	88	76	84	72	86	76	88	69	87	75		
11		82	67	90	70	90	68	86	72	95	76	85	74	82	73	90	76	82	74	83	74	83	70	79	74		
12		81	69	90	71	90	65	87	71	90	77	85	75	85	73	91	74	86	75	86	75	88	70	76	70		
13		79	69	84	67	89	70	90	69	93	77	85	74	84	73	86	77	89	75	85	75	88	71	84	73		
14		76	66	79	65	86	69	91	72	94	76	82	73	86	74	81	75	89	75	85	73	88	72	88	73		
15		78	67	80	63	87	69	92	75	94	78	82	74	86	74	80	74	87	74	87	74	87	73	88	69	72	
16		82	67	81	69	89	70	93	72	94	76	84	73	84	73	88	75	87	74	89	71	89	73	88	74		
17		82	65	82	69	88	70	92	76	96	76	87	74	78	73	91	78	88	73	88	75	89	72	87	73		
18		81	65	86	70	86	73	91	76	95	77	81	74	84	73	89	77	87	72	88	76	90	73	86	73		
19		82	68	85	67	89	69	90	75	95	78	84	73	85	74	83	77	87	74	85	72	92	74	84	73		
20		81	68	86	67	92	70	90	73	93	75	80	72	78	72	79	75	88	73	86	70	90	72	84	70		
21		87	66	81	69	89	71	95	75	94	75	79	73	82	72	85	75	83	72	88	73	89	75	81	69		
22		85	66	84	67	93	71	91	73	92	78	87	73	87	72	86	74	83	75	85	75	70	74	83	68		
23		80	68	84	67	95	74	93	74	94	75	86	76	88	73	88	74	86	75	89	74	89	75	83	69		
24		81	66	84	67	91	72	95	75	92	76	87	76	84	73	83	73	86	73	90	74	90	71	87	69		
25		82	65	87	67	89	74	95	74	90	75	90	77	87	73	86	72	80	74	90	75	90	72	87	69		
26		80	65	85	66	87	73	92	73	91	75	90	75	86	74	88	73	88	74	89	74	86	75	87	70		
27		79	68	86	67	87	72	92	73	89	76	86	73	85	76	80	72	87	74	91	76	87	75	85	70		
28		84	68	83	63	89	73	94	76	94	75	76	74	84	75	84	72	88	74	90	75	89	74	81	68		
29		79	69	89	68	89	68	95	78	89	74	87	74	88	74	85	74	87	73	92	74	88	74	81	66		
30		82	65	84	70	91	76	87	75	83	73	89	72	88	74	88	75	88	74	89	74	90	71	83	67		
31		79	64	85	70	86	75	86	73	86	74	88	75	86	74	88	75	86	74	91	76	85	70	85	70		
MEAN		81.2	67.3	83.2	66.8	88.3	69.3	90.4	72.4	92.9	75.5	84.2	74.0	85.1	73.4	86.4	74.7	83.3	73.7	87.6	74.5	88.1	72.2	85.4	71.1		
MEAN		74.3	75.0	78.8	81.4	84.2	79.1	79.3	80.6	79.5	81.2	80.2	80.2	78.3	81.2	80.6	79.5	81.2	80.2	81.2	80.2	80.2	80.2	80.2	78.3		

LEFT SIDE : MAXIMUM , RIGHT SIDE : MINIMUM , / : NO RECORD UNITS : OF

TEMPERATURES

STATION: CLARK AIR BASE		1964												REMARK	
DATE	MONTH	JAN	FEB	MAR	APR	MAY	JUNE	JULY	AUG	SEP	OCT	NOV	DEC		
1			88 65	85 74	94 74	92 77	87 76	78 73	83 73	89 73	88 74	79 68	84 73		
2			86 68	91 74	92 72	95 77	89 76	83 75	85 72	88 75	90 77	88 72	82 71		
3			84 67	87 75	91 68	95 76	86 75	88 74	86 75	84 76	88 75	84 74	79 68		
4			81 65	92 74	92 73	96 77	91 74	89 73	85 74	85 75	87 78	88 73	79 64		
5			81 63	91 72	90 72	97 78	91 74	89 76	88 74	90 75	79 76	90 76	82 67		
6			83 66	94 72	96 70	97 77	84 74	88 73	80 75	89 74	85 75	78 74	80 68		
7			84 70	94 73	89 73	96 76	89 73	86 73	79 74	81 75	86 75	84 74	82 70		
8			88 69	91 74	93 75	94 77	90 73	87 74	80 74	85 74	86 74	86 75	85 70		
9			86 68	88 71	92 73	95 77	91 75	85 72	88 74	83 75	80 74	86 74	87 69		
10			87 68	83 66	96 74	96 74	91 76	90 75	87 74	86 74	80 74	84 73	85 74		
11			88 71	85 69	95 74	79 74	92 75	85 75	85 73	83 72	82 73	85 74	81 71		
12			88 69	86 68	95 76	94 77	88 74	87 73	84 73	87 74	87 73	87 73	85 71		
13			81 69	82 68	89 75	96 77	91 76	82 73	88 74	85 77	88 73	84 73	82 72		
14			84 67	84 68	92 74	98 75	91 75	87 74	83 74	90 75	88 74	76 73	75 69		
15			84 71	85 70	95 73	94 75	89 75	87 74	88 74	87 74	85 75	79 72	77 72		
16			83 72	86 70	91 73	92 76	91 74	85 75	87 75	84 72	86 75	84 73	79 71		
17			85 71	89 71	94 76	92 79	90 72	89 73	85 76	84 75	87 74	79 73	80 68		
18			90 66	93 70	94 77	95 80	90 74	83 73	86 75	85 75	88 74	85 71	81 69		
19			90 69	93 73	95 74	90 76	93 75	86 73	87 75	85 75	88 75	81 71	80 68		
20			89 63	94 70	90 75	91 76	88 75	87 74	85 75	85 73	89 75	74 69	82 68		
21			88 68	91 71	98 74	96 78	89 74	89 92	81 73	85 74	78 73	75 67	81 70		
22			87 71	94 72	94 76	89 73	90 73	88 94	78 74	82 74	85 72	83 71	83 70		
23			88 71	94 76	94 75	89 76	87 76	88 74	84 73	84 74	85 73	85 72	82 72		
24			89 72	92 74	95 77	88 75	85 75	87 72	85 73	83 74	86 71	82 74	83 70		
25			91 71	94 75	94 76	85 74	85 75	84 73	86 74	84 75	87 74	85 73	83 68		
26			88 72	90 75	96 74	82 74	89 75	85 74	87 74	86 76	86 75	86 74	83 69		
27			86 73	87 74	95 74	91 76	89 76	87 73	86 75	85 75	87 75	82 74	83 71		
28			85 72	81 73	93 78	92 75	88 76	87 73	84 73	87 73	85 76	81 71	84 72		
29			86 72	90 74	89 75	90 76	81 75	86 74	83 73	85 73	86 75	77 71	86 73		
30			91 73	92 76	94 77	77 73	86 73	86 72	82 75	86 74	84 70	86 72			
31			93 72		93 76		84 74	90 74			86 72				
MEAN			86.0	82.9	89.4	82.0	73.1	74.2	83.0	76.4	86.2	73.6	84.8	73.9	
MEAN			77.5	80.7	83.7	84.7	81.5	79.9	79.4	79.9	77.6	77.6	74.2		

LEFT SIDE : MAXIMUM , RIGHT SIDE : MINIMUM / : NO RECORD UNITS : OF

TEMPERATURES

STATION, CLARK AIR BASE	1965												REMARK											
	JAN	FEB	MAR	APR	MAY	JUNE	JULY	AUG	SEP	OCT	NOV	DEC												
1	84	68	87	72	88	73	91	75	87	74	87	73	78	73	85	72	87	74	89	75	89	74	84	74
2	85	69	84	70	89	71	93	74	88	73	86	75	84	73	84	73	83	74	89	74	86	75	82	73
3	82	67	81	69	89	72	96	76	90	72	88	75	89	72	81	73	82	74	85	75	87	75	88	72
4	83	63	83	67	90	72	93	77	91	75	86	74	86	73	83	74	82	73	86	75	85	75	88	71
5	84	65	84	61	85	70	93	75	89	76	87	73	87	73	87	72	87	74	85	73	81	73	90	73
6	84	68	86	66	88	68	92	72	92	75	84	73	86	74	85	73	87	73	86	74	76	73	89	73
7	83	65	87	69	87	71	93	72	93	76	83	72	84	73	87	75	88	73	87	74	80	72	84	71
8	85	63	89	69	86	73	93	73	91	77	87	73	85	72	88	74	89	73	85	76	84	73	87	70
9	82	65	89	69	88	74	94	73	93	78	89	73	86	74	86	74	86	74	89	76	86	77	83	68
10	81	64	86	71	87	71	96	75	93	78	88	74	87	75	89	75	87	74	85	75	85	74	87	70
11	81	63	91	70	89	70	93	75	95	78	86	74	86	73	88	76	86	74	85	75	84	73	89	73
12	81	62	90	69	89	73	94	72	91	76	90	75	87	72	88	74	82	75	88	73	87	73	87	73
13	80	65	90	64	85	72	92	73	94	73	89	74	81	73	81	74	80	75	84	75	86	76	86	74
14	79	64	87	68	87	70	92	77	93	76	91	85	76	73	80	72	83	75	89	72	88	74	86	73
15	82	65	86	69	92	70	93	76	91	73	89	75	87	74	85	71	86	74	87	73	87	74	89	74
16	83	68	87	70	89	70	94	77	91	78	88	76	87	75	86	72	83	75	87	74	86	75	86	72
17	85	70	87	68	85	70	96	75	92	76	86	75	87	74	87	74	84	73	85	74	87	74	83	71
18	84	71	87	69	86	70	94	75	91	77	86	74	85	74	87	72	85	74	86	74	86	74	86	75
19	87	70	87	68	89	67	92	74	92	77	86	74	81	72	88	74	82	72	84	73	84	74	86	70
20	87	69	87	70	88	69	92	74	90	77	84	74	82	71	88	73	84	73	85	72	85	76	87	72
21	84	67	90	70	86	69	92	74	92	77	85	74	80	72	89	75	84	74	86	73	87	75	88	70
22	87	66	91	70	87	69	91	74	88	74	88	74	84	74	88	73	83	73	85	72	87	73	89	71
23	82	67	90	69	91	69	91	75	87	73	85	75	80	72	89	71	84	74	86	70	88	74	89	70
24	87	73	88	70	94	69	92	78	87	77	87	73	85	72	79	74	84	74	87	73	87	73	88	68
25	86	73	86	70	91	73	93	76	87	76	80	73	84	72	89	73	84	73	89	74	88	74	87	78
26	81	72	84	71	89	75	87	76	82	75	84	74	78	74	86	74	88	73	88	74	85	75	89	72
27	83	69	85	72	88	73	93	75	82	73	86	75	77	73	87	72	89	73	88	76	85	72	87	72
28	80	69	86	71	90	74	94	75	86	72	88	73	79	72	85	72	86	73	89	73	84	72	85	75
29	86	65	85	71	83	74	78	73	89	74	85	74	85	73	86	73	87	71	91	72	85	73	86	71
30	89	68	85	73	89	74	79	72	89	74	84	73	84	73	84	74	89	72	91	75	86	74	87	71
31	87	73	81	75	83	72	83	72	83	72	84	74	84	74	84	74	84	74	84	74	91	73	85	71
MEAN	83.7	67.0	87.0	69.1	88.6	71.1	92.5	74.7	89.0	75.2	86.3	74.0	83.6	73.0	85.0	73.3	85.3	73.6	87.0	73.9	85.4	73.8	86.6	71.7
MEAN	75.5	78.1	79.9	83.6	82.1	80.2	78.3	79.6	79.5	80.4	79.6	79.2	78.3	79.6	79.5	80.4	79.6	79.2	79.6	79.2	79.6	79.6	79.2	79.2

LEFT SIDE : MAXIMUM , RIGHT SIDE : MINIMUM / NO RECORD UNITS : OF

TEMPERATURES

STATION CLARK AIR BASE		1966												REMARK														
DATE	MONTH	JAN	FEB	MAR	APR	MAY	JUNE	JULY	AUG	SEP	OCT	NOV	DEC	YEAR														
1		85	69	91	70	90	73	92	77	93	80	90	75	86	75	86	75	86	75	89	74	83	73	85	73	84	75	
2		82	69	92	71	90	71	91	77	95	78	90	76	90	76	88	75	85	74	87	74	84	74	84	74	84	74	
3		84	71	87	72	91	71	92	76	92	76	92	77	90	75	86	73	88	73	83	76	85	75	81	74			
4		88	73	92	71	91	71	92	75	80	74	89	76	89	76	87	72	83	73	88	75	88	74	83	73			
5		88	73	92	68	89	71	92	75	86	73	92	77	91	75	85	73	77	73	87	74	89	76	83	74			
6		84	73	90	72	86	70	93	75	90	75	91	74	86	75	85	74	86	73	86	75	87	74	84	74			
7		89	73	88	74	89	69	91	74	92	75	89	73	91	74	86	74	77	73	88	77	84	76	84	74			
8		89	72	86	72	90	69	89	75	90	75	87	74	88	75	86	75	79	72	87	76	87	74	87	75			
9		91	73	90	73	90	73	94	76	85	74	88	76	86	74	85	75	74	72	89	75	85	74	87	74			
10		87	73	88	75	90	72	95	76	86	74	86	75	89	77	84	74	84	72	87	75	83	73	86	75			
11		91	72	89	74	91	73	96	78	89	74	84	76	80	73	87	73	81	73	88	75	85	74	86	75			
12		90	72	92	75	90	73	93	74	88	74	88	74	82	73	86	75	80	73	89	75	87	75	87	77			
13		89	72	94	73	92	72	94	78	90	76	90	74	87	73	85	74	80	73	89	74	79	73	89	76			
14		86	68	93	74	94	73	95	77	90	76	90	73	89	75	82	74	87	74	85	75	86	74	82	75			
15		87	70	90	75	91	73	95	72	93	77	90	74	88	73	85	74	86	74	89	72	86	74	83	73			
16		87	70	94	72	94	74	94	77	92	75	87	73	86	75	87	74	86	74	87	76	85	72	86	74			
17		85	73	94	74	93	74	94	78	87	75	90	76	87	74	92	74	82	74	84	75	85	74	86	76			
18		89	71	97	76	96	76	93	79	80	73	89	75	88	74	90	74	81	74	86	74	84	73	87	74			
19		87	71	93	76	95	75	95	77	74	73	90	74	87	74	90	75	84	71	84	74	86	74	81	72			
20		84	72	90	76	94	76	94	76	77	74	95	77	86	74	92	75	82	72	75	73	82	74	83	72			
21		84	71	95	74	92	74	93	79	84	73	90	74	83	75	90	75	82	73	85	71	76	72	87	75			
22		85	71	93	75	94	76	95	76	81	74	89	73	80	74	93	74	87	73	85	74	76	71	87	74			
23		84	70	95	74	94	75	96	77	84	74	89	74	81	73	86	75	87	73	85	75	83	74	89	73			
24		88	68	83	71	94	76	94	77	81	74	90	76	82	73	86	75	86	74	85	74	81	73	87	74			
25		89	70	86	74	92	74	96	80	78	73	89	75	89	73	87	76	83	75	85	74	85	71	87	75			
26		86	72	89	74	93	76	97	76	74	73	87	74	88	74	89	74	84	73	87	75	82	75	85	72			
27		88	72	91	69	91	75	97	80	80	72	88	75	87	73	86	76	84	73	85	73	79	73	82	72			
28		84	73	91	72	89	75	96	80	86	74	82	74	86	73	84	73	83	75	86	74	77	72	79	70			
29		91	71	90	76	97	78	88	76	81	74	89	74	83	73	83	74	83	74	86	73	82	71	74	69			
30		86	72	91	75	97	80	88	75	41	74	88	74	83	75	86	72	85	75	85	75	88	72	86	75			
31		91	72	91	76	91	76	91	76	88	76	94	75	88	75	88	75	84	72	84	72	85	75	85	75			
MEAN		87.0	71.4	90.9	73.1	91.5	73.5	94.1	76.8	85.8	74.7	88.5	74.9	86.5	74.2	86.9	74.3	83.3	73.2	85.6	74.3	83.6	73.5	84.9	73.9			
MEAN		79.2	82.0	82.5	85.5	80.3	81.6	80.4	80.6	78.3	80.0	78.6	79.4															

LEFT SIDE : MAXIMUM , RIGHT SIDE : MINIMUM , / : NO RECORD UNITS OF

TEMPERATURES

STATION DATE	CLARK AIR-BASE												YEAR											
	JAN	FEB	MAR	APR	MAY	JUNE	JULY	AUG	SEP	OCT	NOV	DEC	REMARK											
1	86	74	84	68	87	72	94	73	95	75	80	74	89	73	83	76	88	72	86	74	85	71	85	72
2	86	72	85	69	89	73	93	75	96	76	84	73	89	75	86	75	84	73	88	74	84	75	87	74
3	84	74	88	68	90	72	93	75	97	77	79	72	88	76	85	73	83	73	87	74	89	74	88	69
4	85	70	86	71	86	75	92	74	96	77	80	72	86	76	85	74	83	74	85	77	89	71	84	73
5	81	70	83	68	87	74	91	75	96	76	87	75	84	74	85	75	83	94	84	75	78	72	84	72
6	83	70	83	66	83	75	91	74	83	77	86	77	81	73	84	75	81	73	83	74	85	74	85	70
7	83	70	83	63	88	73	92	74	95	76	82	73	84	72	79	75	84	75	86	73	84	73	85	70
8	87	71	87	68	85	72	84	72	96	76	81	74	87	72	79	75	83	74	83	74	80	75	86	72
9	85	70	86	70	84	70	94	71	95	75	82	75	87	74	88	75	83	74	85	75	83	74	83	72
10	85	70	89	72	87	68	94	73	92	79	81	75	85	75	87	94	82	73	85	74	85	73	86	72
11	84	68	85	73	87	69	95	78	93	77	85	74	80	75	86	75	82	75	84	75	87	73	86	69
12	85	70	85	72	85	69	91	77	93	79	89	75	84	73	82	76	83	72	88	77	87	74	83	67
13	84	71	83	69	84	74	93	76	94	78	90	78	86	75	81	74	82	73	88	77	87	73	82	70
14	80	70	86	68	87	72	93	75	92	78	89	77	88	77	80	73	80	73	88	76	84	72	84	70
15	84	71	85	70	87	71	94	76	92	74	86	78	88	77	77	72	85	71	87	75	85	72	84	70
16	82	68	81	69	90	69	89	74	92	73	91	77	89	75	86	73	82	74	81	75	79	70	83	69
17	80	66	87	73	90	71	89	75	88	74	91	77	89	75	84	74	83	74	82	76	80	70	86	69
18	83	68	90	72	84	67	90	75	91	73	92	77	89	74	81	74	81	72	87	75	81	72	85	68
19	82	67	85	70	89	72	92	76	92	74	83	77	87	76	77	74	82	73	87	73	87	73	82	68
20	82	70	85	70	90	71	92	75	94	78	92	77	86	75	82	73	85	74	88	74	86	73	84	69
21	87	73	87	73	89	75	93	77	92	79	92	75	84	94	86	72	86	75	90	73	87	74	85	69
22	85	74	89	70	93	70	93	76	95	78	91	76	84	74	86	72	87	75	85	74	85	74	82	69
23	86	72	90	73	92	75	91	76	94	78	89	75	84	74	86	75	86	75	87	74	85	74	86	67
24	86	71	89	70	92	75	90	76	90	78	88	74	85	74	85	75	87	72	84	73	85	72	87	68
25	87	70	88	71	88	75	95	74	91	78	88	74	84	74	86	77	86	74	82	71	86	71	87	72
26	86	69	89	72	91	73	92	76	92	77	91	74	85	74	82	74	84	74	84	72	84	73	88	72
27	86	71	88	72	91	76	92	74	93	77	90	74	86	75	84	73	85	74	84	73	86	74	89	72
28	84	72	86	73	94	74	95	78	92	77	82	76	83	76	82	74	89	74	84	69	86	70	84	72
29	87	72	91	74	94	79	93	77	93	77	81	72	76	75	87	73	87	75	84	74	87	72	86	70
30	88	72	92	72	95	78	93	75	93	75	84	72	80	74	81	74	86	74	85	73	85	72	87	73
31	87	72	93	74	90	76	90	76	90	76	83	75	83	75	83	75	85	73	85	73	85	71	85	71
MEAN	84.5	70.6	86.1	70.0	89.1	72.4	92.2	75.3	93.2	76.6	96.7	75.0	85.2	74.5	83.2	74.2	85.9	73.7	85.6	74.1	84.4	72.7	85.1	70.3
MIN	77.6	76.1	80.8	83.8	84.9	80.6	79.9	78.7	76.8	78.8	78.6	76.8	73.8	73.8	77.7	76.8	73.8	73.8	73.8	73.8	73.8	73.8	73.8	77.7

LEFT SIDE : MAXIMUM , RIGHT SIDE : MINIMUM / NO RECORD UNITS OF

TEMPERATURES

STATION CLARK AIR BASE		YEAR 1968												REMARK											
DATE	MONTH	JAN	FEB	MAR	APR	MAY	JUNE	JULY	AUG	SEP	OCT	NOV	DEC												
1		86	72	88	73	88	63	95	73	91	75	91	72	86	75	86	73	84	72	88	73	88	72	86	73
2		86	73	86	72	86	63	95	72	93	75	90	75	82	73	88	73	84	73	84	73	88	70	88	73
3		88	75	88	70	82	63	91	75	90	73	90	77	90	75	88	73	88	75	86	72	84	72	88	72
4		88	73	90	70	84	61	93	73	91	75	90	75	90	75	86	73	86	73	84	70	84	72	88	72
5		90	73	90	68	82	61	93	75	93	77	88	75	90	75	86	75	86	73	86	73	86	73	86	72
6		88	75	88	70	86	64	91	75	95	75	90	75	88	75	88	73	88	73	88	73	88	72	86	72
7		88	72	88	68	91	61	88	75	93	75	88	75	90	73	86	73	86	75	86	75	84	75	86	72
8		86	70	88	70	90	70	91	73	97	73	90	75	91	79	86	72	82	73	88	75	88	73	86	72
9		82	68	88	70	90	66	90	75	97	75	88	73	90	75	86	72	81	73	84	75	88	73	84	73
10		82	66	84	72	88	64	91	73	93	75	88	75	90	75	84	73	84	73	90	75	88	73	86	72
11		82	66	84	72	90	64	93	73	91	75	91	73	90	75	82	73	84	73	91	75	88	70	86	72
12		94	70	84	70	91	64	91	77	93	75	91	77	93	77	86	73	86	75	88	75	84	70	88	70
13		84	70	84	70	91	63	91	73	90	75	91	73	90	73	84	75	84	75	79	75	82	70	88	72
14		84	70	84	72	91	64	90	73	90	75	96	75	86	73	88	73	88	73	90	75	82	66	86	72
15		84	68	82	64	91	64	91	73	95	75	93	75	88	73	84	73	84	75	86	73	84	68	84	72
16		81	70	82	66	93	66	91	73	91	77	91	77	91	72	84	75	88	75	84	73	84	68	84	70
17		82	64	84	61	91	66	93	75	93	77	90	75	90	73	88	73	88	75	88	77	84	70	82	70
18		84	66	86	70	91	63	93	75	93	75	90	75	88	73	84	75	88	75	88	75	86	70	84	66
19		88	68	84	68	91	66	88	75	91	75	90	73	82	73	81	75	88	72	88	75	84	72	82	70
20		86	66	86	70	95	66	91	73	91	75	90	75	84	73	81	75	88	70	86	75	84	73	82	68
21		84	70	84	72	93	66	90	73	93	79	91	75	86	73	82	75	90	75	86	75	84	73	86	66
22		84	72	86	72	93	70	93	72	90	73	97	77	86	73	86	75	86	73	88	75	84	72	94	70
23		86	70	88	70	93	70	90	73	86	73	93	77	84	75	84	75	88	73	86	73	90	72	82	72
24		82	70	88	70	93	64	88	73	91	75	93	79	81	75	81	73	82	73	88	73	90	75	84	70
25		88	70	84	70	95	64	90	75	91	75	97	75	82	75	86	72	90	75	88	73	88	73	84	70
26		88	70	84	66	97	66	90	75	90	77	86	75	86	75	77	70	88	75	88	75	84	70	88	72
27		84	72	84	66	95	63	91	75	90	73	90	75	90	75	82	72	81	75	88	75	88	70	84	72
28		84	72	88	66	93	63	88	73	90	73	90	75	90	75	84	75	84	75	88	75	88	72	86	72
29		81	72	88	68	95	61	95	73	90	75	90	73	84	75	79	72	82	72	88	75	88	73	84	70
30		88	70	97	54	90	73	90	73	90	73	84	73	88	75	81	73	77	73	88	73	88	73	86	70
31		88	72	95	64	91	72	91	72	91	72	91	72	90	73	79	73	88	72	88	72	88	70	88	70
MEAN		85.2	70.2	85.9	71.0	84.1	74.8	91.7	74.8	90.4	75.0	87.8	76.3	85.8	73.4	85.4	73.7	85.9	74.1	88.9	74.1	88.9	71.5	88.4	70.9
MEAN		77.7	77.6	77.6	77.6	82.5	83.3	82.7	81.0	78.5	78.5	80.5	80.5	78.7	78.2	78.2	78.2	78.2	78.2	78.2	78.2	78.2	78.2	78.2	78.2

LEFT SIDE : MAXIMUM , RIGHT SIDE : MINIMUM NO RECORD UNITS : OF

1 R 20 1

TEMPERATURES

STATION DATE	CLARK AIR BASE												YEAR	REMARK										
	JAN	FEB	MAR	APR	MAY	JUNE	JULY	AUG	SEP	OCT	NOV	DEC												
1	86	88	90	91	97	91	75	81	73	86	75	79	73	86	70	86	73							
2	84	72	88	72	91	77	97	79	91	77	91	75	82	73	88	73	81	73	86	70	84	73		
3	82	66	88	72	90	70	91	75	93	79	91	75	77	73	88	73	82	73	82	73	86	72	88	73
4	82	72	88	70	90	70	95	72	99	77	88	77	88	75	81	73	88	79	84	72	88	72	84	73
5	88	66	88	72	90	70	93	75	99	77	91	75	88	75	84	73	84	77	84	73	88	72	86	75
6	88	70	82	70	88	72	91	73	95	81	88	73	88	75	77	72	86	73	88	72	84	70	88	75
7	84	72	86	64	90	72	90	73	97	79	90	95	90	73	84	72	84	73	88	73	84	70	82	75
8	88	72	84	66	90	73	93	75	99	79	90	77	86	72	81	73	81	75	86	73	86	70	88	75
9	84	72	84	66	93	72	91	79	99	79	90	77	88	75	84	73	86	75	88	75	86	72	84	75
10	86	68	84	70	91	75	91	77	97	79	90	73	88	75	86	73	84	75	86	75	86	73	86	73
11	84	72	84	68	93	73	88	75	99	79	86	73	86	75	86	75	84	75	86	75	88	73	84	72
12	88	72	88	70	93	73	90	75	97	77	84	73	88	75	86	75	84	73	82	75	88	73	81	72
13	84	72	88	68	84	73	93	75	73	75	86	73	86	75	88	77	82	73	88	77	86	75	84	73
14	86	72	90	72	90	73	93	73	93	75	82	73	90	77	90	75	84	75	88	73	88	75	82	72
15	88	72	88	72	90	78	73	75	93	77	90	73	91	75	84	75	82	73	86	73	90	77	86	73
16	88	73	88	72	91	75	95	75	95	79	88	75	84	75	88	77	88	75	88	75	90	75	84	73
17	88	72	88	70	84	75	97	79	98	79	88	75	81	75	90	77	88	75	84	73	90	75	84	72
18	88	73	90	68	84	73	93	77	93	75	91	75	84	73	90	75	88	73	86	73	82	73	84	73
19	90	70	90	70	91	73	93	77	95	75	90	73	90	73	88	73	84	73	88	73	84	73	88	73
20	90	70	88	70	91	73	97	75	93	77	91	79	86	72	90	75	90	75	86	73	79	73	88	73
21	90	70	90	72	95	73	93	75	93	77	90	79	82	73	90	75	88	73	82	62	88	73	88	73
22	88	70	88	72	91	75	95	77	93	79	90	79	86	75	91	79	90	77	86	75	90	73	86	73
23	86	72	88	72	90	75	95	77	93	79	91	79	84	73	93	79	84	77	86	77	90	75	86	72
24	84	73	91	72	90	75	93	79	97	79	91	77	88	73	91	79	88	75	88	73	88	72	84	70
25	90	72	90	72	90	73	93	73	86	75	91	77	86	73	90	75	86	75	88	73	84	72	86	72
26	90	72	95	72	91	73	95	73	90	75	93	79	84	73	90	75	88	75	86	75	82	73	86	70
27	88	73	90	73	93	79	97	75	91	75	91	79	79	73	88	73	88	72	88	73	84	72	86	72
28	88	73	88	72	93	77	95	75	93	73	84	77	84	75	88	79	81	73	86	75	84	70	86	70
29	86	72	93	75	98	75	98	75	93	75	90	75	86	75	91	75	82	73	84	75	84	70	86	72
30	88	72	91	79	95	75	91	75	91	75	93	75	81	72	86	73	82	72	82	73	84	72	84	72
31	90	72	93	75	93	75	93	75	93	75	84	72	84	72	84	73	82	70	82	70	86	75	86	75
MEAN	87.9	71.2	87.9	70.4	90.5	73.6	93.1	75.5	94.3	77.1	89.3	85.9	86.5	79.1	84.5	74.7	85.5	74.3	85.5	73.8	86.0	72.5	85.5	72.8
MEAN	79.1	79.2	82.1	84.3	85.7	82.6	80.3	80.6	79.9	79.7	79.3	79.2	79.7	79.3	79.2	79.2	79.2	79.2	79.2	79.2	79.2	79.2	79.2	79.2

LEFT SIDE: MAXIMUM, RIGHT SIDE: MINIMUM / NO RECORD UNITS: OF

TEMPERATURES

STATION	CLARK AIR BASE												YEAR	REMARKS										
	DATE	JAN	FEB	MAR	APR	MAY	JUNE	JULY	AUG	SEP	OCT	NOV			DEC									
1	88	70	84	64	86	75	93	77	91	79	95	77	90	77	79	73	73	84	75	82	73	86	73	
2	91	73	82	64	90	75	91	75	93	75	91	77	86	75	82	73	79	72	91	75	81	73	88	75
3	86	75	84	68	91	73	93	77	93	81	93	77	81	75	86	75	79	72	90	73	86	73	90	75
4	86	73	88	72	93	75	90	77	93	79	93	75	82	75	90	75	79	73	90	73	88	75	90	75
5	84	72	86	72	90	75	88	75	93	81	95	73	82	73	90	75	81	73	90	75	88	75	84	75
6	88	72	82	72	91	75	91	73	97	79	93	75	82	73	86	75	90	73	91	72	90	75	84	73
7	84	73	86	72	91	73	91	75	97	79	91	75	84	73	84	75	90	73	88	73	90	75	84	73
8	88	73	88	70	90	73	90	75	97	79	91	77	90	73	90	75	90	75	86	75	90	77	88	73
9	88	75	86	72	93	73	91	73	97	79	90	77	90	73	90	75	90	75	86	75	90	75	90	70
10	91	73	84	70	93	68	93	75	97	75	91	75	90	77	88	75	88	75	82	75	86	75	88	75
11	90	73	84	68	91	73	97	75	97	81	94	75	90	77	88	73	82	73	88	75	90	77	90	73
12	88	75	86	68	91	73	93	77	93	79	79	75	84	75	84	75	86	73	90	75	81	75	88	73
13	88	73	86	68	93	72	90	75	95	75	81	73	82	75	84	73	90	73	81	75	82	73	79	75
14	91	73	90	72	91	73	91	75	97	77	84	73	82	75	84	73	90	77	79	75	84	75	81	73
15	86	72	90	72	93	79	91	75	97	75	84	75	81	75	84	75	90	73	82	73	90	73	90	73
16	86	70	91	70	93	73	90	75	95	73	90	73	90	75	82	75	84	73	86	75	84	75	84	75
17	84	66	86	66	91	75	97	75	93	75	88	75	90	73	81	73	84	73	88	73	82	75	84	75
18	82	66	88	70	93	75	97	75	91	79	88	75	90	77	79	75	90	75	90	73	90	75	84	73
19	82	68	86	70	91	79	93	79	95	75	90	77	91	77	86	73	90	73	88	75	79	73	86	75
20	82	68	90	72	90	77	91	75	95	75	84	77	86	75	79	73	84	72	81	75	90	72	88	75
21	84	66	90	72	93	75	95	75	95	79	88	77	90	75	84	75	88	75	79	75	90	75	90	75
22	86	66	88	73	95	73	93	79	93	81	91	77	90	77	86	75	90	75	84	75	88	75	86	75
23	86	72	91	73	93	75	97	77	90	81	86	75	90	77	86	75	84	75	84	73	90	75	90	75
24	88	68	91	72	90	75	93	75	93	81	86	77	91	77	82	75	86	75	82	72	86	75	90	73
25	90	73	95	73	91	75	97	81	93	81	90	77	90	75	84	72	86	73	86	72	86	73	90	73
26	88	72	95	72	90	73	95	79	95	79	90	77	90	75	86	73	84	75	86	75	84	73	88	75
27	90	73	93	72	91	73	97	79	95	75	84	79	90	75	84	73	88	75	81	73	84	75	90	75
28	91	70	90	75	90	75	95	79	91	79	90	79	84	75	86	73	90	75	84	73	88	75	90	73
29	91	72	95	75	93	75	93	77	91	81	90	79	84	75	90	75	90	75	84	75	90	73	86	73
30	90	72	91	70	93	79	95	77	95	77	91	79	82	75	86	73	84	75	84	73	88	73	86	73
31	82	71	91	75	97	79	97	79	97	79	97	82	75	79	73	81	73	81	73	81	73	86	72	
MEAN	79.2	71.2	86.0	70.5	91.5	74.4	85.0	76.3	94.3	78.2	88.7	76.1	86.6	75.1	84.8	74.1	86.0	73.9	85.4	74.0	86.6	74.4	87.1	73.9
MEAN	79.2	79.2	83.0	84.7	84.3	82.4	80.9	79.5	80.0	79.7	80.5	80.5	80.5	80.5	80.5	80.5	80.5	80.5	80.5	80.5	80.5	80.5	80.5	80.5

LEFT SIDE : MAXIMUM , RIGHT SIDE : MINIMUM . NO RECORD UNITS : OF

TEMPERATURES

STATION	CLARK AIR BASE												YEAR	1971												
	DATE	JAN	FEB	MAR	APR	MAY	JUNE	JULY	AUG	SEP	OCT	NOV			DEC	REMARKS										
1	86	72	82	72	90	73	93	73	90	75	84	75	91	79	84	77	90	73	86	75	90	73	88	93		
2	86	72	82	72	91	72	90	73	84	75	90	77	91	79	88	75	90	72	90	75	88	73	88	73	84	75
3	88	72	84	72	93	73	93	73	86	73	90	75	90	77	91	75	95	75	88	75	90	73	86	70		
4	86	70	84	70	92	73	91	75	91	75	90	75	86	75	91	75	90	79	79	73	90	73	86	75		
5	82	66	82	66	84	72	91	73	90	77	91	75	90	77	90	75	91	79	79	73	90	72	88	73		
6	70	64	82	64	88	68	93	75	90	75	86	79	90	75	90	73	93	79	79	72	90	73	88	75		
7	82	64	81	64	86	68	91	72	88	77	90	77	90	75	84	73	93	77	82	72	88	72	88	72		
8	82	70	81	66	92	68	93	75	88	75	93	77	90	73	90	75	90	79	84	73	90	92	84	73		
9	82	64	79	68	88	70	93	73	88	73	91	75	84	75	81	72	91	77	84	72	77	72	86	72		
10	81	59	82	66	91	72	93	75	91	75	91	75	82	75	84	73	91	75	73	72	84	73	75	68		
11	81	63	82	72	86	72	90	75	88	75	90	73	84	77	82	73	84	72	82	72	82	72	84	73	82	72
12	82	64	90	72	81	73	90	73	90	73	81	75	84	75	90	75	84	73	75	72	88	73	84	75		
13	84	64	90	72	82	72	90	70	88	73	82	79	90	73	90	75	84	73	82	72	90	75	86	72		
14	82	64	90	73	92	75	90	72	88	73	90	75	88	77	86	75	86	73	90	73	84	72	84	73		
15	82	72	88	73	86	75	90	72	91	77	81	75	84	75	90	75	84	72	88	73	81	72	84	73		
16	84	73	84	75	92	70	91	73	90	77	79	75	90	75	91	75	82	73	84	72	82	72	84	73		
17	81	72	90	73	92	72	93	75	90	73	88	75	95	75	90	91	88	73	88	75	86	72	84	73		
18	81	70	88	75	86	70	90	75	90	75	91	73	91	75	90	79	88	72	86	73	86	72	84	72		
19	84	70	86	75	86	70	91	75	90	79	90	75	84	73	90	75	82	75	88	75	84	75	84	73		
20	84	66	90	73	84	68	90	75	91	75	91	75	86	75	90	77	86	73	90	73	84	75	86	73		
21	86	66	91	73	92	70	93	73	91	75	90	77	82	75	91	79	86	73	82	73	86	72	84	72		
22	88	70	91	75	86	70	93	75	91	77	90	77	91	77	91	79	84	73	90	75	84	75	82	73		
23	84	68	91	70	86	70	93	75	91	79	90	75	81	77	91	77	88	73	88	75	86	75	84	72		
24	84	68	90	72	86	70	93	75	90	79	93	75	90	75	91	81	90	72	84	73	79	73	86	72		
25	90	68	90	72	84	68	93	77	91	81	90	77	82	75	93	77	84	70	90	73	84	72	84	72		
26	88	66	91	72	88	66	93	75	91	79	84	75	81	75	91	75	90	73	84	73	82	72	88	73		
27	84	70	91	73	90	70	94	77	82	75	90	75	90	73	91	79	84	73	82	75	82	73	86	72		
28	82	70	91	73	91	70	93	75	90	75	90	75	91	70	91	75	90	73	84	73	81	73	84	72		
29	82	72	82	72	93	73	93	75	91	79	90	73	91	75	91	75	84	73	86	75	84	73	81	72		
30	86	72	82	72	93	75	93	75	88	73	90	77	88	75	91	75	86	75	90	73	84	72	73	72		
31	86	70	82	70	91	73	90	73	82	75	90	75	90	73	91	75	91	73	90	73	90	73	84	73		
MEAN	83.5	68.1	86.5	71.2	88.6	71.0	92.1	74.1	89.3	76.0	88.9	75.5	87.6	75.2	89.2	75.7	87.6	74.1	84.8	73.1	85.3	72.9	84.2	72.5		
MEAN	75.8	78.9	79.8	83.1	82.7	82.0	84.4	82.5	80.9	79.1	79.1	79.1	79.1	79.1	79.1	79.1	79.1	79.1	79.1	79.1	79.1	79.1	79.1	79.1		

LEFT SIDE : MAXIMUM, RIGHT SIDE: MINIMUM, / : NO RECORD UNITS : OF

TEMPERATURES

STATION	CLARK AIR BASE												YEAR		REMARKS										
	DATE	JAN	FEB	MAR	APR	MAY	JUNE	JULY	AUG	SEP	OCT	NOV	DEC	1972											
1	86	72	86	73	81	68	84	72	84	75	75	72	88	75	90	77	90	73	88	73					
2	86	70	84	73	82	66	88	70	90	72	90	73	88	73	75	72	88	73	86	75	90	79	88	72	
3	82	72	84	73	79	64	88	70	91	75	90	72	88	73	79	72	90	75	91	75	91	75	91	84	70
4	84	73	84	70	79	64	90	72	90	73	90	75	90	73	75	72	88	75	90	75	91	75	82	72	
5	88	72	84	72	81	64	90	73	90	73	90	75	90	75	75	70	90	75	90	73	88	73	81	73	
6	86	73	84	68	82	64	90	70	90	71	90	75	81	75	82	70	91	77	84	75	84	73	86	73	
7	84	72	88	70	82	64	91	73	93	75	79	73	77	73	88	73	91	79	84	75	90	75	90	75	
8	84	72	88	72	84	64	90	73	93	75	84	72	79	72	84	73	91	77	88	75	90	75	90	73	
9	81	73	84	70	88	68	71	73	90	77	81	73	81	73	86	73	90	79	88	73	86	75	90	75	
10	82	68	84	68	82	70	88	73	91	70	82	73	77	73	86	73	70	75	88	75	86	75	90	73	
11	79	66	86	66	86	70	90	68	90	72	84	73	82	75	88	73	88	73	88	73	90	75	90	75	
12	77	70	90	72	90	68	91	75	93	75	88	73	82	75	86	72	90	75	88	72	90	75	84	75	
13	81	70	88	70	84	72	91	73	95	77	88	73	82	73	82	73	86	75	91	73	88	75	90	73	
14	84	66	90	70	86	70	91	75	93	73	88	75	81	75	88	72	90	75	91	75	88	75	84	73	
15	82	66	84	72	84	70	91	75	90	73	90	77	88	75	88	72	88	75	91	75	88	77	84	72	
16	82	66	70	84	70	84	90	77	75	93	73	91	75	90	75	79	73	90	73	90	75	90	73	86	70
17	82	68	84	68	88	68	93	73	91	75	91	75	81	73	75	72	94	77	91	75	90	75	86	70	
18	82	66	86	66	88	70	91	75	88	73	91	75	75	73	82	72	88	73	91	75	88	73	90	70	
19	84	64	84	66	88	70	91	73	90	73	90	75	73	73	84	72	88	73	90	75	90	72	90	72	
20	86	70	88	70	91	73	93	72	88	75	90	77	75	72	88	72	88	75	90	75	90	73	88	73	
21	88	72	88	70	90	70	95	75	90	75	90	79	75	72	88	72	86	75	93	75	90	75	90	72	
22	90	72	90	70	88	73	91	72	88	73	90	73	88	73	84	72	86	75	90	77	90	73	86	72	
23	90	75	90	70	90	72	91	73	88	73	88	73	84	75	84	75	88	73	86	75	91	73	88	72	
24	86	75	88	72	91	72	90	73	84	73	91	75	88	75	84	73	91	75	90	75	91	73	88	70	
25	84	73	90	70	84	73	88	72	84	72	79	73	81	75	88	73	90	77	90	73	86	73	88	70	
26	88	73	90	73	88	72	90	72	88	73	84	75	86	75	81	73	88	73	90	75	86	73	88	72	
27	86	72	91	72	86	72	91	73	90	72	88	73	75	73	86	72	90	73	88	75	86	73	86	72	
28	86	72	88	70	84	70	91	73	88	77	88	75	75	73	86	72	86	73	90	73	88	73	91	72	
29	88	70	81	70	84	73	95	73	90	75	90	75	79	73	86	73	88	73	91	75	88	73	86	75	
30	81	68	86	73	93	77	90	72	90	75	77	72	82	73	91	75	90	75	84	73	88	72	88	72	
31	82	70	81	72	81	72	72	79	73	75	72	84	75	75	72	84	75	75	77	90	77	86	73		
MEAN	84.3	70.4	70.4	70.3	85.8	67.4	90.8	89.5	73.5	87.5	74.2	81.5	73.6	83.2	72.5	88.4	74.9	89.3	76.7	88.7	74.0	87.4	72.4		
MEAN	77.4	78.5	77.6	77.6	81.9	81.6	81.0	77.6	77.9	81.8	82.0	81.4	79.9												

LEFT SIDE : MAXIMUM , RIGHT SIDE : MINIMUM / : NO RECORD UNIT S : OF

R-4 Record of Evaporation

SHADED RIM PAN EVAPORATION FOR 1961
(IN INCHES)

Tibagan, Bustos, Bulacan
Station

Lourdes Monté
Observer

DAY	JAN	FEB	MAR	APR	MAY	JUN	JUL	AUG	SEP	OCT	NOV	DEC
1	.19	.22	.29	.28	.28	.24	.03	.16	.13	.13	.14	.11
2	.17	.12	.30	.29	.30	.20	.02	.17	.04	.20	.18	.19
3	.13	.19	.14	.31	.28	.21	.09	.20	.11	.19	.18	.16
4	.15	.16	.16	.32	.37	.18	.11	.12	.18	.12	.10	.16
5	.21	.23	.18	.30	.19	.16	.06	.16	.15	.15	.04	.07
6	.14	.19	.12	.32	.38	.21	.03	.10	.03	.18	.02	.10
7	.24	.19	.13	.33	.28	.16	.06*	.16	.08	.13	.08	.17
8	.16	.19	.22	.26	.30	.22	.10	.16	.09	.16	.02	.22
9	.21	.25	.27	.21	.32	.08	.16	.08	.05	.13	.13	.14
10	.23	.24	.22	.30	.32	.13	.11	.01	.01	.14	.16	.09
11	.21	.24	.16	.27	.19	.09	.10	.11*	.12	.05	.13	.08
12	.30	.17	.22	.36	.24	.14	.17	.07	.16	.05	.17	.12
13	.24	.17	.26	.28	.13*	.24	.08	.08	.09	.07*	.09	.13
14	.26	.26	.25	.34	.20	.11	.07	.17	.10	.08	.14	.20
15	.25	.24	.21	.36	.06	.20	.18	.05	.06	.12	.07	.20
16	.18	.24	.26	.22	.13	.21	.15	.08	.11	.16	.16	.13
17	.18	.25	.24	.21	.04	.22	.10	.11	.07*	.17	.13	.11
18	.18	.28	.22	.34	.17	.25	.01	.06*	.13	.08	.10	.19
19	.26	.22	.19	.20	.20	.12	.12	.06	.10	.07	.16	.19
20	.14	.27	.29	.27	.28	.03	.07	.05	.12	.05	.18	.16
21	.13	.14	.24	.28	.20	.02	.16	.06	.20	.11	.20	.24
22	.19	.22	.28	.32	.21	.15	.10	.12	.07*	.13	.14	.23
23	.24	.26	.30	.26	.32	.10	.14	.05	.17*	.14	.04	.18
24	.12	.24	.30	.27	.26	.17	.14	.07	.15	.12	.07*	.16
25	.12	.24	.32	.31	.18	.03	.12	.12	.16	.24	.08	.23
26	.20	.22	.27	.28	.14	.07*	.15	.09	.16	.09	.08	.10
27	.16	.32	.31	.31	.05	.11*	.06	.13	.14	.15	.16	.15
28	.18	.28	.30	.33	.22	.11*	.11	.08	.19	.16	.12	.17
29	.23		.31	.35	.16	.31	.13	.07*	.09	.17	.19	.15
30	.18		.32	.30	.22	.09	.10	.02	.05	.19	.13	.09
31	.20		.28		.21		.16	.07		.19		.16
TOTAL	5.98	6.25	7.56	8.78	6.83	4.56	3.19	3.04	3.31	4.02	3.59	4.78

ANNUAL - 61.94 Inches

* - Estimated from open rim pan observations

SHADED RIM PAN EVAPORATION FOR 1962
(IN INCHES)

Tibagan, Bustos, Bulacan
Station

Lourdes Monte
Observer

DAY	JAN	FEB	MAR	APR	MAY	JUN	JUL	AUG	SEP	OCT	NOV	DEC
1	.21	.29	.27	.25	.18	.16	.16	.21	.07	.18	.14	.12
2	.20	.23	.11	.23	.23	.07	.13	.06	.12	.14	.19	.14
3	.13	.20	.31	.28	.27	.10	.13	.08	.07	.16	.16	.16
4	.14	.19	.22	.16	.22	.16	.17	.10	.06*	.16	.14	.19
5	.11	.14	.22	.28	.28	.20	.04	.07	.06	.18	.25	.13
6	.13	.25	.22	.32	.29	.18	.07	.03	.06*	.16	.13	.24
7	.11	.19	.28	.37	.29	.21	.11	.10	.05	.18	.19	.20
8	.16	.16	.28	.36	.19	.20	.14	.10	.13	.16	.04	.17
9	.14	.22	.24	.26	.32	.16	.08	.05	.03	.13	.12	.20
10	.16	.21	.28	.33	.28	.22	.07*	.11	.02	.06	.14	.12
11	.20	.24	.15	.31	.42	.16	.11	.16	.01	.13	.08	.13
12	.21	.24	.28	.39	.30	.21	.12	.13	.07	.13	.21	.14
13	.16	.22	.39	.35	.23	.18	.14	.14	.01	.12	.18	.16
14	.21	.23	.31	.34	.22	.18	.12	.14	.06	.11	.16	.13
15	.21	.23	.29	.34*	.23	.11	.03	.14	.11	.16	.12	.13
16	.14	.28	.26	.28	.24	.10	.07	.14	.08	.22	.13	.13
17	.16	.17	.27	.28	.45	.16	.18	.14*	.18	.17	.16	.14
18	.17	.28	.23	.26	.18	.16	.11	.13	.09	.01	.14	.19
19	.16	.23	.31	.16	.02	.20	.15	.08	.09	.21	.25	.16
20	.21	.21	.19	.19	.12	.20	.06*	.15	.19	.11	.19	.22
21	.28	.23	.26	.22	.24	.22	.06*	.14*	.15	.21	.22	.16
22	.16	.26	.27	.11	.27	.09	.06*	.15	.11	.10	.13	.16
23	.18	.23	.21	.19	.06	.18	.07	.08	.09	.08	.07	.16
24	.19	.24	.27	.21	.24	.06	.06*	.14	.06*	.20	.07	.10
25	.10	.26	.19	.16	.17	.24	.01	.18	.06*	.18	.10	.16
26	.13	.16	.26	.14	.18	.25	.10*	.18	.05	.13	.12	.11
27	.15	.22	.25	.08	.19	.23	.14	.22	.08	.14	.12	.07
28	.18	.28	.36	.26	.23	.18	.22	.16	.12	.15	.09	.13
29	.18		.21	.28	.02	.12	.02	.15	.16	.18	.05	.16
30	.20		.27	.16	.06	.20	.12	.17	.13	.13	.04	.23
31	.18		.36		.04		.14	.10		.20		.14
TOTAL	5.25	6.29	8.02	7.55	6.67	5.09	3.21	3.93	2.57	4.58	4.13	4.78

ANNUAL - 62.07 Inches

* - Estimated from open rim pan observations

SHADED RIM PAN EVAPORATION FOR 1963
(IN INCHES)

Tibagan, Bustos, Bulacan
Station

Lourdes Monte
Observer

DAY	JAN	FEB	MAR	APR	MAY	JUN	JUL	AUG	SEP	OCT	NOV	DEC
1	.14	.06	.26	.22	.38	.19	.15	.22	.07*	.09	.20	.21
2	.10	.14	.24	.29	.36	.12	.19	.17	.13	.18	.12	.23
3	.13	.13	.23	.31	.36	.09	.13*	.09	.10	.13	.04	.13
4	.10	.16	.26	.27	.33	.17	.19	.24	.10	.15	.19	.16
5	.17	.16	.23	.27	.34	.01	.22	.17	.09*	.14	.16	.19
6	.17	.10	.30	.28	.36	.07*	.16	.12	.01	.11	.18	.13
7	.16	.24	.32	.27	.39	.07*	.09*	.07*	.06*	.16	.07	.13
8	.15	.24	.26	.23	.34	.08*	.13	.06*	.06*	.08*	.13	.20
9	.15	.20	.30	.29	.32	.12	.07*	.14	.06*	.14	.21	.07
10	.16	.25	.28	.34	.30	.18	.03	.03	.09	.14	.20	.01*
11	.13	.23	.24	.20	.29	.14	.12	.07*	.03	.13	.07	.02*
12	.16	.14	.28	.27	.23	.16	.13	.07*	.09	.13	.16	0
13	.16	.30	.27	.30	.39	.14	.12	.01	.11	.10	.24	.16
14	.14	.24	.28	.29	.29	.18	.09	0	.07	.16	.18	.11
15	.15	.25	.30	.28	.40	.10	.07	0	.11	.20	.13	.10
16	.20	.16	.24	.19	.43	.06*	.02*	.22	.14	.11	.13	.10
17	.22	.24	.32	.24	.35	.06	.14	.10	.16	.20	.22	.09
18	.13	.24	.25	.30	.34	.02	.05	.09	.08	.21	.14	.07
19	.14	.21	.19	.20	.32	.12*	.07*	0	.14	.17	.18	.20
20	.16	.13	.32	.26	.18*	.07*	.05*	0	.09*	.22	.16	.19
21	.13	.21	.26	.28	.34	.02*	.07	.09	.03	.21	.16	.14
22	.11	.21	.32	.32	.38	.11	.11*	.14	.10	0	.18	.14
23	.17	.23	.25	.30	.27	.16	.05	.09	.19	.16	.16	.16
24	.20	.23	.32	.26	.33	.16	.11	.14	.15	.13	.16	.14
25	.16	.24	.28	.39	.20	.20	.02	.06	.03	.18	.09	.13
26	.14	.16	.27	.38	.17	.19	.09	.11	.10	.16	.14	.13
27	.19	.33	.27	.31	.22	.09*	.05*	.08*	.11	.19	.13	.24
28	.20	.31	.25	.28	.22	.05*	.14	.11	.12	.23	.16	.18
29	.22		.30	.43	.16	.13	.06	.10	.11	.12	.16	.16
30	.16		.29	.37	.17	.10	.22	.13	.09	.06	.18	.13
31	.19		.27		.15		.08	.10		.12		.16*
TOTAL	4.89	5.74	8.45	8.62	9.41	3.36	3.22	3.02	2.82	4.51	4.63	4.21

ANNUAL - 62.88 Inches

* - Estimated from open rim pan evaporations

SHADED RIM PAN EVAPORATION FOR 1964
(IN INCHES)

Tibagan, Bustos, Belacan Station										Lourdes Monté Observer		
DAY	JAN	FEB	MAR	APR	MAY	JUN	JUL	AUG	SEP	OCT	NOV	DEC
1	.14	.16	.15	.32	.18	.18	.07*	.06*	.04	.12	.07	.16
2	.14	.23	.12	.36	.29	.14	.11	.08*	.28	.18	.06	.12
3	.13	.22	.13	.33	.29	.05	.08	0 *	.16	.09	.09	.19
4	.13	.14	.12	.16	.28	.13	.21	.20	.14	.27	.17	.11
5	.12	.13	.24	.32	.17	.12	.14	.04	.09	.07*	.06	.23
6	.14	.14	.26	.30	.30	.19	.27	.08	.18	.13	.11	.12
7	.13	.14	.16	.29	.18	.13	.20	.03	.24	.20	.02*	.09
8	.14	.19	.24	.26	.29	.21	.16	.28*	0	.07	.02	.11*
9	.19	.17	.32	.36	.32	.25	.18	.01	.13	.12	.13	.24
10	.10	.22	.29	.29	.32	.26	.17	.12	.04	0 *	.12	.21
11	.09	.25	.21	.35	.29	.26	.16	.12	.28*	.08	.22	.14
12	.13	.23	.15	.14	.32	.07	.24	.14	.04*	.11	.04	.01
13	.20	.23	.23	.30	.38	.20	.05	.13	.01	.18	.27	.15
14	.20	.22	.15	.32	.30	.18	.06	.10	0	.15	.12	.08
15	.16	.13	.19	.33	.30*	.12*	.13	0 *	.05	.13	.02	.08*
16	.14	.06	.18	.29	.19*	.15	.21	.09	.22	.07	.13	.01*
17	.15	.14	.37	.29	.15	.23	.16	.13	.11	.05	.03*	.12
18	.14	.26	.29	.32	.21	.13	.07*	.09	.09	.11	.09	.21
19	.21	.27	.28	.29	.22	.14	.31	.15*	.23	.23	.13	.10
20	.23	.27	.28	.32	.13	.10	.20	.13	.11	.21	.07	.14
21	.25	.27	.17	.29	.29	.17	.22	.13*	.10	.11	.03*	.13
22	.18	.37	.26	.35	.09	.11	.30	.02*	.09	.09	0	.09
23	.14	.26	.31	.29	.23	.14	.25	.04*	.14	0 *	.02	.08
24	.13	.22	.29	.33	.19	.05*	.19	.13	.04*	.29	.19*	.29
25	.17	.28	.24	.32	.07	.11	.08	.20	.08	.07	.12	.14
26	.11	.27	.32	.36	.13	.13	.20	.04	.18	.07	.13	.19
27	.14	.23	.34	.32	.10	.14	.13	.07	.15	.16	.02	.16
28	.14	.14	.14	.29	.23	.09*	.25	.22	.12	.12	.13	.14
29	.14	.12	.28	.20	.22	.09*	.03	.16	.11	.13	.04*	.15
30	.15		.29	.16	.18	.10*	.12	.24	0	.15	.02	.29
31	.23		.29		.09		.22	.06		.27		.13
TOTAL	4.79	5.96	7.30	8.85	6.93	4.37	5.17	3.29	3.45	4.03	2.61	4.32

ANNUAL - 61.07 Inches

* - Estimated from open rim pan evaporations

SHADED RIM PAN EVAPORATION FOR 1965
(IN INCHES)

Tibagan, Bustos, Bulacan Station										Lourdes Monte Observer		
DAY	JAN	FEB	MAR	APR	MAY	JUN	JUL	AUG	SEP	OCT	NOV	DEC
1	.16	.17	.25	.27	.29	0 *	.13	.10	.19	.25	.18	.34
2	.15	.20	.24	.28	.23	.15	.02*	.16	.22	.08	.19	.28
3	.16	.24	.24	.25	.21	.29	.10	.15	.05	.14	.02	.28
4	.14	.16	.33	.15	.24	.19	.14	.13	0	.09	.19	.26
5	.14	.23	.31	.13	.77	.11	.38*	.15	0	.17	.07*	.32
6	.15	.21	.29	.23	.48	.20	.17	.12	.20	.26	.01*	.13
7	.14	.19	.25	.42	.22	.17	.23	.22	.16	.20	0 *	.17
8	.16	.22	.24	.22	.20	.13	.07	.19	.11	.33	.09*	.10
9	.17	.24	.14	.21	.25	.13	.08	.27	.21	.32	.14	.10
10	.18	.16	.31	.32	.29	.28	.15	.14	.25	.05	.14	.11
11	.04	.29	.26	.35	.07	.17	.25	.02	.18	.12	.07	.18
12	.27	.25	.30	.35	.29	.16	.15	.16	.11	.17	.14	.22
13	.27	.28	.23	.35	.30	.20	.06*	.31	.09	.22	.13	.15
14	.16	.25	.36	.33	.28*	.16	.50	.07*	.13	.11	.16	.20
15	.15	.25	.29	.23	.44	.28	0 *	.07*	.16	.14	.21	.13
16	.13	.22	.22	.38	.26	.23	.19	.12	.14	.13	.24	.21
17	.14	.22	.28	.36	.27	.29	.30	.12	.01	.20	.22	.11
18	.05	.03	.26	.29	.29	.23	.03	.14	.08	.19	.11	.09
19	.16	.21	.29	.28	.32	.22	.10	.19	.29*	.20	.15	.13
20	.17	.27	.28	.22	.29	.20	.33	.16	.08	.12	.13	.18
21	.11	.23	.29	.16	.32	.10*	.13	0	.07	.22	.18	.13
22	.16	.24	.27	.63	.24	.21	.20	.17	.07	.17	.21	.19
23	.13	.28	.27	.16	.02	.13	.28*	.16	.06	.20	.14	.17
24	.05	.27	.28	.05	.06*	.05	.06	.02	.15	.28	.13	.14
25	.17	.29	.30	.22	.13	.33	.17	.07	.20	.28	.13	.23
26	.16	.30	.23	.29	0	.05*	.10	.03	.19	.28	.17	.13
27	.18	.20	.27	.21	0 *	.14	.07*	.08	.21	.29	.14	.14
28	.17	.13	.07	.29	0 *	.17	.01*	.03*	.27	.22	.14	.12
29	.19	-	.35	.21	0 *	.19	.09	0	.15	.19	.18	.15
30	.20	-	.29	.17	.02*	.29	.27	0	.17	.25	.16	.16
31	.07	-	.29	-	.07*	-	.16	.07	-	.29	-	.13
TOTAL	4.78	6.43	8.28	7.99	6.85	5.45	4.92	3.62	4.20	6.16	4.17	5.38

ANNUAL - 68.23 Inches

* - Estimated from open rim pan observations

OPEN RIM PAN EVAPORATION FOR 1961
(IN INCHES)

Tibang, Bustos, Bulacan Station							Lourdes Monte Observer					
DAY	JAN	FEB	MAR	APR	MAY	JUN	JUL	AUG	SEP	OCT	NOV	DEC
1	.21	.27	.32	.32	.31	.32	.03	.20	.17	.16	.18	.16
2	.20	.15	.32	.32	.32	.22	.03	.22	.05	.26	.23	.20
3	.16	.22	.17	.35	.32	.26	.15	.24	.14	.22	.21	.20
4	.16	.18	.20	.36	.43	.25	.14	.16	.19	.17	.13	.21
5	.25	.26	.23	.32	.24	.22	.08	.20	.16	.18	.07	.09
6	.16	.23	.20	.36	.42	.27	.04	.13	.08	.20	.03	.12
7	.27	.23	.18	.38	.34	.20	.09*	.19	.11	.16	.11	.20
8	.19	.23	.26	.30	.32	.24	.13	.20	.14	.22	.03	.24
9	.24	.30	.31	.24	.36	.11	.22	.10	.07	.16	.16	.16
10	.26	.27	.26	.34	.36	.16	.14	.04	.08	.17	.18	.12
11	.24	.27	.18	.32	.27	.14	.13	.14*	.16	.07	.17	.09
12	.32	.22	.24	.41	.29	.19	.20	.09	.19	.06	.23	.16
13	.27	.20	.30	.32	.17*	.30	.12	.10	.13	.11*	.11	.16
14	.30	.29	.29	.39	.22	.17	.10	.21	.16	.10	.16	.25
15	.27	.28	.24	.42	.16	.27	.23	.07	.08	.15	.09	.24
16	.21	.27	.30	.30	.16	.26	.20	.10	.13	.15	.19	.16
17	.20	.28	.39	.23	.06	.26	.14	.14	.10*	.21	.16	.12
18	.21	.31	.25	.38	.22	.30	.01	.09*	.18	.10	.15	.22
19	.29	.26	.21	.25	.22	.16	.16	.07	.14	.11	.20	.22
20	.16	.32	.32	.32	.32	.03	.08	.07	.17	.06	.20	.19
21	.15	.16	.27	.32	.26	.02	.20	.09	.25	.16	.23	.27
22	.24	.26	.32	.37	.26	.18	.12	.15	.10*	.17	.18	.26
23	.28	.30	.32	.35	.36	.13	.18	.12	.21*	.19	.05	.21
24	.15	.28	.33	.32	.32	.18	.21	.10	.19	.14	.10*	.19
25	.19	.29	.36	.37	.23	.04	.16	.15	.19	.28	.12	.27
26	.22	.25	.32	.32	.17	.10*	.19	.12	.21	.13	.11	.12
27	.19	.38	.36	.39	.08	.09*	.08	.16	.16	.19	.19	.16
28	.22	.32	.32	.38	.26	.09*	.13	.10	.25	.21	.16	.20
29	.28		.34	.41	.19	.04	.19	.20	.18	.21	.23	.16
30	.20		.36	.32	.26	.12	.11	.02	.07	.20	.19	.12
31	.22		.32		.27		.21	.09		.24		.19
TOTAL	6.84	7.28	8.79	10.18	8.17	5.32	4.20	3.96	4.44	5.14	4.55	5.66

ANNUAL - 74.53 Inches
* - Estimated from Piche Tube Observations

OPEN RIM PAN EVAPORATION FOR 1962
(IN INCHES)

Tibagan, Bustos, Bulacan Station						Lourdes Monte Observer						
DAY	JAN	FEB	MAR	APR	MAY	JUN	JUL	AUG	SEP	OCT	NOV	DEC
1	.26	.31	.30	.26	.22	.18	.20	.27	.09	.24	.16	.16
2	.24	.26	.13	.31	.28	.16	.17	.09	.16	.16	.21	.16
3	.16	.23	.34	.32	.32	.12	.21	.11	.09	.19	.19	.21
4	.16	.22	.27	.20	.30	.18	.23	.14	.09*	.20	.16	.21
5	.14	.16	.25	.35	.32	.25	.06	.16	.08	.22	.27	.16
6	.16	.28	.25	.36	.32	.21	.11	.09	.09*	.21	.16	.26
7	.12	.124	.33	.44	.32	.25	.12	.13	.06	.22	.25	.22
8	.18	.19	.32	.38	.22	.25	.18	.17	.16	.20	.04	.20
9	.16	.26	.26	.29	.36	.19	.14	.06	.04	.16	.18	.24
10	.19	.26	.32	.38	.32	.27	.10*	.14	.03	.17	.18	.16
11	.23	.27	.18	.36	.45	.20	.13	.19	.01	.16	.12	.16
12	.24	.30	.32	.42	.32	.26	.13	.16	.09	.16	.23	.16
13	.18	.24	.41	.40	.32	.26	.18	.16	.01	.14	.22	.20
14	.19	.29	.36	.38	.27	.23	.15	.21	.08	.12	.18	.16
15	.26	.28	.32	.39*	.26	.14	.04	.14	.23	.20	.16	.16
16	.16	.31	.32	.32	.31	.16	.10	.18	.10	.28	.16	.16
17	.19	.20	.37	.32	.49	.22	.23	.18	.25	.22	.20	.16
18	.21	.30	.28	.33	.23	.24	.14	.11	.10	.02	.16	.22
19	.20	.28	.36	.19	.02	.22	.19	.18	.11	.24	.28	.19
20	.23	.26	.22	.21	.16	.23	.09*	.10*	.23	.14	.22	.24
21	.32	.25	.30	.29	.30	.24	.09*	.18	.18	.25	.27	.18
22	.20	.28	.32	.16	.32	.14	.09*	.10	.16	.15	.16	.19
23	.22	.26	.27	.23	.17	.16	.09	.18	.12	.10	.08	.20
24	.22	.28	.32	.26	.29	.08	.09*	.22	.09*	.22	.09	.12
25	.12	.30	.24	.19	.18	.29	.01	.23	.09*	.21	.16	.19
26	.16	.19	.28	.18	.24	.29	.13*	.24	.06	.16	.16	.16
27	.17	.27	.27	.15	.24	.26	.19	.18	.10	.16	.16	.09
28	.22	.32	.39	.29	.29	.21	.29	.21	.15	.16	.12	.16
29	.21		.24	.32	.03	.15	.03	.22	.20	.23	.06	.20
30	.23		.32	.20	.06	.24	.13	.12	.16	.16	.07	.27
31	.21		.40		.22		.19	-		.24		.16
TOTAL	6.14	7.29	9.26	8.88	8.16	6.28	4.23	4.85	3.41	5.69	5.06	5.70

ANNUAL - 74.95 Inches

* - Estimated from Piche Tube Observations

OPEN RIM PAN EVAPORATION FOR 1963
(IN INCHES)

Tibagan, Bustos, Bulacan Station							Lourdes Monte Observer					
DAY	JAN	FEB	MAR	APR	MAY	JUN	JUL	AUG	SEP	OCT	NOV	DEC
1	.16	.08	.30	.25	.42	.24	.19	.25	.10*	.11	.11*	.24
2	.13	.16	.26	.32	.40	.16	.24	.22	.17	.19	.19	.26
3	.16	.16	.26	.34	.38	.09	.17	.10	.11	.16	.04	.16
4	.13	.20	.26	.32	.37	.22	.27	.27	.12	.20	.23	.20
5	.20	.20	.26	.28	.37	.13*	.26	.19	.12*	.16	.18	.22
6	.22	.12	.32	.32	.38	.10*	.21	.16	.08	.15	.26	.16
7	.19	.26	.36	.32	.43	.10*	.12*	.10*	.09	.20	.10	.16
8	.16	.26	.28	.37	.39	.11	.17	.09*	.09*	.11	.16	.23
9	.16	.22	.32	.32	.38	.15	.10*	.18*	.09*	.17	.23	.08
10	.19	.27	.32	.37	.35	.23	.10*	.11*	.09*	.21	.26	.04
11	.16	.26	.27	.29	.32	.16	.17	.10*	.09	.14	.10	.05
12	.18	.16	.32	.32	.28	.10	.16	.10*	.12	.15	.19	.02
13	.19	.32	.32	.32	.43	.17	.15	.04	.12*	.14	.28	.20
14	.16	.27	.30	.32	.33	.24	.11	.01	.08	.19	.22	.14
15	.16	.28	.32	.32	.43	.14	.10*	0	.14	.23	.16	.12
16	.24	.21	.26	.21	.47	.09	.05	.24	.17	.15	.16	.12
17	.23	.29	.36	.37	.37	.15	.18	.15	.21	.26	.27	.12
18	.16	.28	.26	.32	.39	.05	.09	.14	.11	.23	.17	.10
19	.16	.22	.23	.22	.26	.15	.10*	.03	.17	.20	.21	.23
20	.18	.16	.38	.29	.22	.10	.08	0	.12*	.27	.20	.22
21	.16	.26	.28	.32	.39	.05	.08	.13	.07	.22	.19	.16
22	.22	.24	.36	.35	.32	.14	.14*	.20	.12*	.02	.21	.16
23	.20	.28	.28	.32	.32	.20	.12*	.11	.11*	.19	.19	.20
24	.23	.28	.38	.38	.39	.19	.18	.19	.11*	.16	.19	.16
25	.19	.27	.32	.44	.25	.22	.07	.09	.04	.21	.12	.14
26	.15	.20	.28	.42	.30	.26	.19	.14	.09*	.20	.16	.16
27	.22	.36	.32	.32	.26	.12*	.08	.11*	.16	.22	.14	.28
28	.22	.34	.30	.32	.24	.08	.16	.10*	.15	.28	.20	.21
29	.24		.32	.45	.21	.16	.13	.12	.15	.15	.20	.20
30	.22		.32	.41	.21	.12	.28	.16	.12	.12	.20	.16
31	.10		.32		.19		.11	.12		.15		.20
TOTAL	5.67	6.59	9.44	9.92	10.44	4.52	4.50	3.95	3.51	5.54	5.52	5.10

ANNUAL - 74.70 Inches

* - Estimated from Piche Tube Observations

OPEN RIM PAN EVAPORATION FOR 1964
(IN INCHES)

Tibagan, Bustos, Bulacan Station							Lourdes Monte Observer					
DAY	JAN	FEB	MAR	APR	MAY	JUN	JUL	AUG	AEP	OCT	NOV	DEC
1	.16	.19	.18	.36	.22	.23	.10*	.09*	.16	.17	.10	.20
2	.20	.28	.17	.39	.32	.16	.14	.11*	.30	.21	.09	.16
3	.16	.25	.16	.38	.32	.14	.11	.02	.25	.13	.14	.22
4	.15	.16	.15	.18	.32	.17	.25	.24	.16	.29	.20	.14
5	.13	.16	.25	.35	.22	.16	.16	.08	.10	.10*	.07	.27
6	.19	.16	.28	.34	.32	.26	.32	.20	.29	.19	.15	.16
7	.16	.16	.19	.33	.27	.15	.25	.08	.29	.24	.05	.13
8	.16	.21	.27	.30	.32	.24	.19	.33	.02	.09	.05*	.14
9	.22	.20	.56	.40	.36	.29	.22	.07	.16	.16	.16	.27
10	.15	.24	.32	.32	.37	.30	.22	.16	.07	.02	.16	.24
11	.11	.28	.23	.38	.32	.30	.23	.13	.33	.11	.26	.16
12	.16	.26	.18	.20	.37	.14	.31	.23	.07	.15	.07	.03
13	.24	.28	.26	.39	.44	.24	.11	.15	.17	.22	.34	.19
14	.23	.24	.19	.35	.32	.20	.09	.18	0	.21	.17	.12
15	.18	.17	.21	.37	.35	.15	.16	0	.18	.16	.02	.11*
16	.16	.09	.32	.32	.23	.18*	.24	.12	.25	.10	.16	.02
17	.18	.16	.39	.32	.22	.26	.20	.23	.14	.07	0	.10
18	.16	.29	.32	.36	.25	.16	.10*	.14	.13	.15	.13	.26
19	.26	.29	.32	.32	.29	.17	.35	.19	.26	.26	.16	.12
20	.26	.30	.32	.37	.19	.18	.23	.16	.13	.25	.10	.16
21	.28	.30	.21	.32	.32	.20	.26	.17	.16	.11	.06	.16
22	.20	.40	.27	.40	.13	.19	.32	.05	.12	.12	.02	.12
23	.16	.29	.36	.32	.26	.16	.30	.07	.18	.02	.07	.10
24	.16	.25	.32	.37	.27	.07	.23	.16	.07	.32	.23	.32
25	.22	.32	.27	.36	.12	.13	.08	.23	.10	.09	.16	.16
26	.14	.30	.35	.39	.10	.16	.24	.22	.22	.08	.16	.23
27	.16	.27	.38	.37	.14	.16	.17	.15	.18	.20	.04	.20
28	.16	.16	.15	.34	.27	.12*	.28	.25	.12	.15	.16	.16
29	.16	.16	.32	.28	.25	.12*	.29	.23	.17	.16	.07	.18
30	.19		.32	.18	.22	.13*	.14	.26	0	.18	.02	.23
31	.26		.32		.16		.27	.09		.29		.16
TOTAL	5.71	6.82	8.35	9.99	8.26	5.52	6.56	4.79	4.78	5.00	3.57	5.22

ANNUAL - 74.57

* - Estimated from Piche Tube Observations

OPEN RIM PAN EVAPORATION FOR 1965
(IN INCHES)

Tibagan, Bustos, Bulacan Station							Lourdes Monte Observer					
DAY	JAN	FEB	MAR	APR	MAY	JUN	JUL	AUG	SEP	OCT	NOV	DEC
1	.20	.20	.28	.32	.33	0	.19	.13	.22	.29	.23	.38
2	.20	.23	.26	.33	.26	.20	.05	.19	.25	.37	.22	.32
3	.21	.29	.26	.28	.24	.32	.14	.21	.18	.19	.26	.31
4	.16	.20	.39	.28	.31	.21	.19	.18	0	.14	.24	.29
5	.16	.26	.35	.19	.11	.20	.43*	.22	.11	.20	.11*	.37
6	.19	.24	.32	.26	.56	.23	.22	.16	.25	.38	.04	.16
7	.16	.22	.28	.49	.25	.20	.26	.25	.19	.22	0	.19
8	.19	.24	.27	.26	.24	.17	.10	.22	.13	.40	.12*	.13
9	.21	.27	.16	.32	.27	.18	.13	.31	.24	.38	.17	.13
10	.22	.20	.35	.36	.32	.36	.19	.17	.28	.11	.18	.15
11	.16	.32	.29	.39	.26	.22	.28	.20	.24	.16	.10	.21
12	.30	.28	.32	.39	.32	.18	.19	.25	.24	.21	.18	.25
13	.24	.32	.25	.40	.32	.23	.09	.38	.24	.26	.16	.19
14	.20	.30	.39	.38	.32	.19	.15*	.10*	.17	.15	.19	.23
15	.19	.30	.32	.26	.73	.32	0	.10*	.23	.16	.23	.16
16	.16	.24	.26	.43	.29	.26	.23	.16	.16	.14	.27	.27
17	.16	.17	.32	.39	.19	.32	.32	.16	.13	.29	.26	.15
18	.04	.27	.29	.32	.32	.26	.13	.20	.11	.23	.16	.11
19	.20	.24	.32	.32	.37	.25	.14	.21	.34	.23	.18	.16
20	.21	.31	.32	.25	.32	.23	.42	.20	.15	.15	.17	.21
21	.10	.27	.32	.29	.36	.13*	.15	0	.08	.25	.21	.16
22	.20	.27	.32	0	.32	.24	.39	.23	.09	.20	.24	.23
23	.16	.32	.31	.23	.24	.16	.33	.21	.08	.24	.17	.19
24	.07	.30	.32	.19	.09	.16	.08	.14	.20	.32	.16	.16
25	.22	.32	.33	.25	.16	.49	.10	.11	.28	.33	.16	.35
26	.20	.34	.33	.32	.20	.08	.14	.08	.20	.32	.21	.16
27	.22	.24	.20	.24	.03	.18	.10	.12	.24	.32	.17	.16
28	.20	.16	.25	.33	.01	.20	.04	.06	.29	.25	.16	.15
29	.23	-	.39	.28	0	.23	.13	.05	.19	.21	.21	.18
30	.22	-	.32	.20	.05	.32	.34	.02	.21	.29	.18	.19
31	.11	-	.32	-	.10*	-	.19	.09	-	.32	-	.15
TOTAL	5.69	7.42	9.51	8.95	7.99	6.72	5.95	5.11	5.72	7.71	5.34	6.45

ANNUAL - 82.56 Inches

* - Estimated from Piche Tube Observations

PICHE TUBE EVAPORATION FOR 1961
(IN CENTIMETERS)

Tibagan, Bustos, Bulacan Station										Lourdes Monte Observer		
DAY	JAN	FEB	MAR	APR	MAY	JUN	JUL	AUG	SEP	OCT	NOV	DEC
1	9.0	10.7	3.2	4.3	3.6	1.9	2.7	4.9	2.0	3.8	5.9	4.8
2	8.2	8.6	4.2	8.0	3.9	1.7	0.7	6.9	0.3	3.1	5.0	6.3
3	6.9	9.8	10.6	6.1	4.3	1.6	1.0	5.8	3.9	4.7	5.8	6.3
4	6.5	8.0	5.5	5.1	5.8	2.9	3.5	4.0	3.0	4.0	4.0	7.8
5	8.9	11.0	6.0	15.3	8.3	7.8	0.4	5.2	4.0	4.2	1.2	4.3
6	7.1	9.8	6.6	10.1	8.1	9.1	0.6	2.7	0.8	6.1	1.9	5.0
7	7.4	5.8	4.2	14.0	6.2	3.6	0.1	4.2	2.4	3.2	3.1	5.7
8	6.0	5.0	10.7	6.8	4.5	1.9	4.5	5.3	2.7	5.7	1.7	8.4
9	6.9	5.0	9.7	6.9	7.6	5.1	6.0	1.5	0.7	4.3	3.1	6.2
10	5.0	4.8	11.0	6.3	4.3	5.8	0.8	0.7	0.5	0.4	6.7	5.4
11	4.5	8.7	10.2	4.3	4.9	5.9	2.0	1.9	4.1	1.2	4.1	2.9
12	11.6	5.3	6.8	5.6	5.5	5.8	2.8	0.3	4.5	0.2	6.1	4.3
13	5.9	4.4	7.4	18.1	3.1	6.5	4.3	3.2	0.5	0.9	4.5	6.0
14	11.4	10.8	6.7	15.2	0.7	4.2	0.8	2.7	3.7	1.6	1.9	6.4
15	10.3	17.6	7.9	10.1	0.6	8.8	6.7	1.0	0.2	2.0	3.5	8.4
16	12.8	11.9	6.3	6.0	0.8	9.3	3.9	1.5	1.1	3.0	6.1	8.1
17	11.3	9.0	5.7	11.4	0.8	6.1	3.8	3.0	3.1	3.5	4.9	6.4
18	14.0	8.5	8.3	13.4	7.9	10.0	0.3	0.1	3.2	0.2	5.3	9.7
19	10.6	6.8	15.9	11.4	6.3	7.9	3.7	0.8	3.0	2.9	5.8	10.0
20	5.0	5.3	8.8	12.5	3.0	1.0	3.3	0.9	2.9	0.9	6.8	8.3
21	3.9	2.4	6.2	12.6	2.0	1.6	5.5	1.0	4.1	4.7	7.4	9.9
22	3.6	10.7	9.7	8.7	4.7	1.1	3.7	2.2	0.4	4.4	3.7	9.3
23	3.4	10.5	6.5	14.3	8.3	0.5	2.4	2.5	0.3	6.6	0.3	12.7
24	2.4	11.3	6.3	10.1	3.3	0.1	2.1	2.3	4.7	5.6	0.3	9.3
25	2.4	10.9	4.5	8.5	1.8	0.1	4.0	1.6	5.0	5.0	3.6	5.1
26	3.2	3.6	3.7	6.8	0.8	0.4	4.5	0.1	4.5	2.7	3.6	5.2
27	3.5	3.9	4.3	3.6	0.8	0.1	2.7	2.3	5.0	4.5	6.8	9.5
28	2.9	3.1	14.4	11.6	1.5	0.1	2.7	1.3	4.8	5.4	5.4	8.9
29	13.5		10.6	7.2	3.0	0.1	3.9	0.4	2.1	5.1	6.5	5.7
30	9.0		7.6	3.8	2.2	1.2	3.9	0	0.8	1.0	7.4	6.7
31	9.8		5.0		1.9		4.8		0.2		7.4	
TOTAL	226.0	213.7	234.5	278.1	120.0	112.2	92.1	70.6	79.2	108.7	132.4	213.0

ANNUAL - 1880.5 Cms.

PICHE TUBE EVAPORATION FOR 1962
(IN CENTIMETERS)

Tibagan, Bustos, Bulacan Station												Lourdes Monte Observer
DAY	JAN	FEB	MAR	APR	MAY	JUN	JUL	AUG	SEP	OCT	NOV	DEC
1	7.0		4.2	13.6	3.2	3.3	3.1	2.3	0	5.3	1.6	2.8
2	8.1	10.3	2.4	10.7	2.5	3.2	3.3	0.6	3.7	5.3	1.9	2.7
3	6.9	8.1	5.0	12.7	2.4	4.5	1.8	0.2	0.7	4.0	5.4	3.1
4	6.9	5.8	4.0	7.3	2.9	6.0	3.0	1.7	0.2	6.7	4.9	2.7
5	6.8	12.1	4.1	14.2	9.3	6.5	1.2	0.3		5.9	7.8	1.1
6	6.8	12.0	10.8	11.0	11.3	6.0	1.5	0.2	0.2	6.0	6.4	1.7
7	6.1	9.5	12.1	12.2	11.6	6.5	1.2	1.4	0.5	3.0	7.3	1.6
8	9.0	8.9	4.6	10.9	8.2	7.2	0.7	1.5	2.5	4.3	0.7	1.6
9	7.5	9.2	3.1	12.7	12.6	5.8	1.7	0.2	0.1	5.5	2.3	1.6
10	9.3	6.0	3.2	15.2	10.5	6.7	0.4	1.9	0.2	4.1	2.8	2.1
11	9.7	3.6	2.2	7.4	12.4	7.7	2.5	2.0	1.0	3.8	2.3	1.3
12	10.4	9.5	2.7	5.2	10.8	6.2	1.5	1.3	0.6	5.4	4.1	2.1
13	13.4	5.7	9.8	4.5	0.7	5.0	1.2	4.2	0.1	5.6	4.9	3.0
14	8.8	10.8	8.3	11.6	9.0	4.1	2.9	2.8	0.2	4.8	3.9	1.8
15	9.0	10.2	15.5	8.3	12.2	2.9	0.8	1.2	0.7	6.0	3.1	2.1
16	6.5	10.1	10.1	5.0	8.8	2.5	1.9	2.4	1.0	6.3	3.0	2.0
17	6.6	5.9	8.9	4.6	12.1	3.0	2.5	1.0	1.3	5.7	3.1	2.2
18	7.5	6.1	6.8	1.9	10.4	2.6	2.2	0.9	0.6	1.1	3.4	2.5
19	5.3	5.3	3.1	3.4	0.9	2.5	1.5	0.4	0.2	7.6	2.4	2.4
20	10.1	5.1	2.1	2.7	5.1	2.7	0.1	0.4	0.1	7.1	1.5	2.0
21	10.5	4.2	2.0	9.8	10.2	2.3	0.1	4.2	4.0	8.0	2.6	2.5
22	11.3	8.0	12.8	6.0	11.0	1.1	0.1	3.0	3.0	2.0	1.8	2.1
23	8.5	6.3	7.7	5.8	4.1	1.6	0.2	0.8	3.1	2.0	0.4	2.3
24	9.9	5.6	10.5	4.6	6.6	0.3	0.1	2.3	0.2	7.2	0.1	2.0
25	7.5	10.4	10.3	2.1	5.8	2.8	0.6	1.7	0.1	5.9	1.4	1.9
26	6.3	8.3	10.9	2.3	6.2	2.1	1.6	1.5	0.1	5.6	1.6	1.8
27	6.7	7.5	10.7	2.3	6.6	2.1	3.3	0.6	0.6	6.3	2.1	1.6
28	9.0	5.3	13.5	2.3	8.3	1.7	3.3	0.4	1.5	4.7	1.9	2.1
29	7.8		9.3	2.1	1.0	0.5	0.8	1.1	2.5	4.8	0.1	7.0
30	7.9		12.2	3.8	3.4	6.2	3.7	0.5	3.9	7.3	2.5	4.4
31	8.3		19.2		4.0		1.9	0.2		7.0		4.4
TOTAL	255.0	210.9	242.1	216.2	224.1	115.6	50.7	43.2	32.9	163.3	91.3	74.5

ANNUAL - 1719,8 Cms

PICHE TUBE EVAPORATION FOR 1963
(IN CENTIMETERS)

Tibagan, Bustos, Bulacan
Station

Lourdes Monte
Observer

DAY	JAN	FEB	MAR	APR	MAY	JUN	JUL	AUG	SEP	OCT	NOV	DEC
1	3.3	2.6	1.4	1.9	12.0	2.4	0.8	0.4	0.6	1.5	0.8	1.2
2	3.0	1.8	8.4	2.7	12.3	3.3	2.9	0.5	1.3	4.2	1.3	2.3
3	2.7	3.0	3.0	1.4	11.0	2.6	1.8	0.7	0.5	5.0	0.7	1.3
4	2.7	2.7	1.8	3.6	12.4	1.0	2.2	0.2	0.6	5.7	0.8	1.5
5	2.3	4.3	10.6	2.5	9.9	1.5	2.6	0.4	1.2	7.2	0.8	0.7
6	2.8	4.3	10.7	3.0	11.1	0.3	1.0	0.5	0.3	1.9	0.1	1.1
7	3.1	3.0	10.3	2.4	10.1	0.21	1.1	0.6	0.3	1.8	0.7	4.2
8	3.2	3.6	8.4	12.9	11.5	0.2	0.7	0.2	0	1.6	0.9	2.2
9	2.7	3.5	4.0	9.4	9.3	0.6	0.1	0.4	0	0.7	1.2	2.6
10	2.5	4.8	3.8	16.6	8.8	3.3	0.3	0.7	0	1.1	3.8	1.0
11	2.6	3.8	12.4	115.2	6.3	2.2	0.2	0.6	0.6	0.2	1.4	0.9
12	2.8	4.8	13.8	7.8	5.4	2.0	0.8	0.4	1.4	1.0	0.9	1.0
13	11.8	0.7	4.3	10.1	4.6	2.2	2.9	1.5	1.3	1.1	2.5	0.8
14	11.9	4.1	4.0	9.9	4.0	1.3	0.2	0	1.0	0.8	1.9	0.9
15	4.4	1.9	3.1	10.2	3.8	2.2	0.6	0.4	0.7	0.9	2.8	2.6
16	4.3	1.9	3.2	9.7	4.1	0.1	0.8	1.3	0.7	1.1	1.9	0.5
17	3.9	1.6	3.5	7.2	9.4	0	0.2	1.6	1.3	0.7	0.5	1.7
18	3.5	1.8	2.5	9.7	8.2	0.1	2.7	1.1	1.1	1.2	5.4	0.9
19	3.2	1.8	2.0	10.4	6.6	0.7	3.4	0.4	1.0	1.2	2.4	1.1
20	3.1	1.8	2.1	9.0	5.9	0.4	1.5	0.3	1.0	0.9	2.1	1.2
21	2.9	1.9	2.3	10.0	2.9	0.2	0.2	0.4	0.4	1.7	1.8	1.1
22	2.9	2.8	3.3	7.6	6.6	0.1	1.9	0.9	1.3	4.0	1.8	1.0
23	2.9	2.1	3.2	11.7	5.6	1.4	1.4	0.6	0.7	0.6	1.6	1.0
24	7.6	2.6	2.8	12.5	5.4	1.4	2.2	0.9	0.8	3.6	2.2	1.3
25	6.2	3.4	3.6	11.9	5.6	1.7	1.7	0.6	0.1	0.7	1.9	1.5
26	4.8	3.4	2.3	13.8	4.3	1.5	0.3	0.4	0.1	1.6	1.1	1.3
27	5.4	4.0	2.0	12.7	5.1	1.1	0.5	0.9	0.4	1.6	2.7	1.7
28	5.0	3.4	1.9	8.9	3.8	0.1	0.2	0.3	0.3	1.4	2.4	1.6
29	5.5		2.0	116.9	2.8	0.2	0.7	0.8	0.4	1.4	1.9	0.8
30	3.6		1.9	13.1	1.8	2.3	0.8	0.5	0.7	1.2	1.1	0.8
31	3.0		1.7		2.7		1.0	0.7		0.7		4.3
TOTAL	129.6	81.4	140.3	274.7	213.3	36.6	37.7	19.2	20.1	63.9	51.4	46.1

ANNUAL - 1,104.3 Cms.

PICHE TUBE EVAPORATION FOR 1964
(IN CENTIMETERS)

Tibagan, Bustos, Bulacan Station													Observer
DAY	JAN	FEB	MAR	APR	MAY	JUN	JUL	AUG	SEP	OCT	NOV	DEC	Lourdes Monte
1	1.9	6.1	6.6	5.1	3.2	7.8	0.3	0.1	0.9	0.4	3.5	4.3	
2	0.9	2.2	4.3	5.3	3.5	9.7	0.8	0.8	3.0	3.0	1.2	3.2	
3	1.4	2.0	5.6	4.2	2.1	1.1	0.9	0.3	3.0	0.2	8.1	3.5	
4	1.3	1.7	5.1	4.5	2.7	1.6	3.0	1.9	1.6	2.8	3.0	3.9	
5	1.2	2.4	5.3	4.4	2.3	0.7	2.0	1.4	1.9	0.2	0.9	4.5	
6	1.4	3.2	7.2	9.1	3.0	0.7	2.1	0.5	1.1	0.4	2.7	3.9	
7	1.6	6.2	4.2	3.2	2.3	1.2	2.2	0.9	1.9	2.4	0.1	2.9	
8	1.4	8.0	8.5	2.9	2.6	1.7	1.7	0.3	1.2	0.6	1.7	1.8	
9	1.9	6.8	10.2	2.0	3.4	1.8	1.6	1.2	1.5	1.1	3.5	3.6	
10	1.1	5.4	8.8	5.1	3.1	1.8	1.2	2.1	0.6	0.2	2.8	4.4	
11	0.9	3.5	5.5	7.6	3.6	1.8	1.1	1.4	0.5	0.2	2.7	3.1	
12	1.0	3.1	5.0	3.1	3.7	0.4	0.2	2.4	0.4	1.8	1.9	0.9	
13	2.7	10.2	4.5	3.6	3.5	1.4	0.1	1.2	1.0	3.4	1.7	2.4	
14	1.4	8.4	4.1	3.3	3.7	0.2	1.0	0.2	1.0	2.8	0.6	3.0	
15	1.5	8.0	11.2	4.7	1.0	0.2	2.0	0.2	0.8	2.6	1.6	0.8	
16	1.2	5.7	8.5	9.0	0.7	0.3	3.6	1.0	1.1	1.7	1.7	2.0	
17	1.3	3.3	12.1	10.8	4.6	0.6	3.6	0.2	1.1	0.7	1.8	0.8	
18	1.8	9.9	9.1	9.1	2.5	1.1	0.3	0.8	1.0	0.9	0.9	1.3	
19	2.0	11.1	7.8	8.7	2.7	-0.7	0.7	0.7	2.9	0.8	1.5	1.2	
20	0.9	16.6	7.8	7.9	0.8	3.2	0.9	0.3	2.0	2.7	8.5	0.4	
21	0.9	11.8	5.7	6.3	2.2	1.4	0.8	0.1	1.8	2.0	0.7	7.1	
22	1.2	10.0	8.9	7.4	1.8	0.2	1.8	0.3	1.8	0.2	1.8	3.0	
23	1.5	11.7	9.6	7.1	1.5	1.0	2.9	0.7	2.0	0.4	0.3	2.8	
24	2.7	8.9	9.6	6.8	0.5	0.3	1.0	1.1	0.0	1.4	1.7	3.0	
25	1.0	10.5	9.9	5.7	1.0	0.6	0.6	0.9	2.4	1.7	0.6	3.6	
26	1.1	11.4	13.8	7.9	1.2	0.5	1.0	0.9	3.7	2.7	2.7	4.3	
27	2.5	9.5	5.8	8.6	3.7	0.2	1.5	0.6	1.3	3.4	0.3	4.8	
28	2.7	6.8	7.1	3.4	5.9	1.3	1.7	1.8	1.5	2.6	2.1	3.9	
29	2.0	4.6	2.5	3.4	4.3	1.1	1.6	1.9	1.2	2.1	0.3	4.6	
30	3.1		6.2	2.8	4.3	1.6	0.8	1.5	0.9	3.6	0.8	6.4	
31	8.6		5.1		3.0		0.6	1.4		5.3		3.9	
TOTAL	56.1	208.6	200.5	151.4	84.2	44.8	43.0	29.1	45.5	54.3	61.7	99.3	

ANNUAL - 1,078.5 Cms.

PICHE TUBE EVAPORATION FOR 1965
(IN CENTIMETERS)

Tibagan, Bustos, Bulacan Station										Lourdes Monte Observer		
DAY	JAN	FEB	MAR	APR	MAY	JUN	JUL	AUG	SEP	OCT	NOV	DEC
1	4.2	4.8	5.1	7.2	7.5	1.6	1.8	1.5	3.2	2.6	3.1	4.5
2	2.3	3.8	5.9	10.2	6.9	1.9	2.0	1.7	3.0	0.6	2.1	5.0
3	5.0	6.7	5.4	10.1	7.7	4.1	2.9	1.0	0.8	1.2	0.2	5.3
4	3.2	6.3	4.6	5.6	4.1	3.5	3.1	0.7	2.5	1.3	2.0	4.4
5	4.2	5.4	10.5	10.4	5.7	0.9	7.4	0.9	0.5	3.3	0.8	
6	4.3	6.1	4.2	10.2	8.6	2.4	2.2	0.5	2.0	0.4	0.4	1.3
7	3.4	5.0	6.1	5.9	6.0	2.1	2.8	4.0	1.9	2.5	0.4	2.5
8	4.2	6.5	7.9	13.6	14.9	0.6	1.4	2.0	1.2	2.3	1.2	1.8
9	5.4	5.9	9.6	12.4	9.5	2.7	1.0	2.4	3.1	1.6	1.2	1.8
10	5.1	4.0	10.5	12.9	7.7	2.0	2.8	2.6	5.1	0.6	2.4	2.9
11	5.5	6.5	7.1	12.5	6.8	2.0	2.8	1.2	0.5	1.2	0.8	3.3
12	6.4	6.8	8.1	11.4	7.3	2.3	2.2	1.7	0.5	1.5	4.9	3.8
13	5.6	6.5	5.2	14.6	8.3	2.4	2.6	1.1	0.2	0.3	3.2	2.2
14	4.1	6.1	10.9	12.2	3.1	3.0	0.2	0.5	0.4	3.3	3.2	0.8
15	6.8	7.4	11.0	9.1	4.6	1.6	0.3	0.3	2.2	2.1	4.5	1.9
16	4.6	5.8	5.7	12.8	7.1	2.3	2.4	2.9	1.8	1.8	2.7	2.2
17	4.8	5.9	6.5	13.4	6.5	1.3	2.9	2.7	0.8	2.8	2.4	1.3
18	2.5	5.2	8.0	12.6	12.5	1.2	0.9	3.0	2.5	1.2	2.2	1.2
19	3.7	4.7	6.9	11.3	1.0	1.2	0.8	2.5	0.6	2.8	4.2	2.2
20	4.6	5.8	7.4	6.9	8.9	1.7	1.4	2.2	0.8	2.2	0.3	2.3
21	2.8	6.0	7.8	5.9	8.2	1.4	1.4	1.6	0.6	2.7	1.7	2.3
22	3.4	5.0	7.0	5.8	2.5	2.1	0.2	2.8	1.4	3.0	2.4	2.9
23	4.7	7.4	6.6	5.1	3.5	2.0	0.4	2.1	1.0	4.4	2.2	3.1
24	1.6	6.1	7.2	5.2	0.9	0.6	2.3	2.2	1.0	4.3	1.5	1.2
25	3.0	6.8	8.0	8.9	3.1	0.6	0.6	1.7	1.3	5.4	1.5	1.2
26	4.0	8.0	7.1	9.3	1.0	0.9		0.8	3.1	4.4	4.2	2.2
27	4.1	5.4	6.3	9.4	0.4	1.4	0.5	2.9	2.8		1.9	2.2
28	2.9	4.2	4.4	11.0	0.3	1.4	0.2	2.0	4.2	2.8	1.4	1.4
29	2.4		10.1	5.8	0.6	2.2	0.6	0.4	2.0	3.3	2.2	1.1
30	4.2		7.8	5.6	0.4	1.2	0.9	0.9	2.4	4.4	2.1	2.3
31	4.2		9.6	0.3	0.2	1.4	2.1	2.6	2.3	4.8		1.4
TOTAL	127.2	164.1	229.0	287.3	165.5	54.6	53.1	53.2	53.4	75.1	63.3	72.0

ANNUAL - 1,397.8 Cms.

WHITE ATMOMETER EVAPORATION FOR 1961
(IN INCHES)

Tibagan, Bustos, Bulacan Station												Lourdes Monte Observer
DAY	JAN	FEB	MAR	APR	MAY	JUN	JUL	AUG	SEP	OCT	NOV	DEC
1	.35	.25	.35	.10	.15	.20	.00	.20	.05	.05	.15	.15
2	.25	.20	.40	.20	.10	.25	.10	.10	.05	.10	.20	.20
3	.25	.30	.20	.20	.15	.15	.10	.20	.10	.15	.20	.25
4	.20	.25	.15	.15	.10	.20	.10	.10	.10	.10	.15	.25
5	.30	.30	.10	.25	.15	.15	.05	.20	.10	.15	.10	.10
6	.20	.30	.15	.15	.15	.20	.00	.10	.05	.15	.05	.15
7	.35	.25	.10	.25	.15	.05	.00	.15	.05	.15	.05	.20
8	.25	.30	.25	.20	.15	.20	.10	.15	.10	.15	.00	.35
9	.35	.35	.20	.10	.15	.10	.20	.05	.05	.10	.15	.20
10	.30	.30	.25	.20	.15	.10	.15	.00	.05	.10	.25	.20
11	.30	.35	.25	.20	.10	.10	.10	.10	.10	.05	.10	.10
12	.50	.30	.20	.15	.15	.10	.05	.05	.15	.15	.20	.15
13	.45	.30	.30	.20	.15	.15	.05	.15	.05	.00	.15	.15
14	.45	.35	.30	.20	.15	.10	.15	.25	.10	.10	.25	.20
15	.40	.35	.20	.20	.10	.20	.15	.05	.00	.05	.00	.25
16	.30	.35	.30	.15	.05	.25	.10	.05	.05	.10	.20	.15
17	.30	.30	.30	.15	.05	.25	.10	.05	.10	.15	.20	.15
18	.40	.30	.20	.20	.10	.20	.00	.05	.10	.05	.15	.25
19	.40	.35	.20	.15	.20	.15	.10	.05	.10	.15	.20	.25
20	.30	.30	.30	.20	.20	.05	.15	.05	.10	.10	.25	.15
21	.25	.25	.30	.20	.20	.05	.15	.05	.10	.10	.25	.30
22	.30	.30	.15	.15	.25	.10	.15	.05	.00	.10	.15	.30
23	.35	.35	.30	.15	.25	.10	.10	.05	.05	.25	.05	.35
24	.20	.30	.15	.10	.25	.05	.15	.05	.15	.15	.05	.30
25	.25	.30	.25	.20	.20	.00	.10	.05	.15	.15	.10	.35
26	.20	.25	.25	.20	.05	.00	.10	.10	.15	.15	.15	.15
27	.40	.40	.25	.15	.10	.05	.10	.10	.15	.10	.15	.20
28	.30	.35	.25	.15	.15	.05	.10	.05	.15	.20	.20	.25
29	.25		.20	.15	.20	.10	.10	.00	.05	.20	.20	.25
30	.30		.20	.15	.20	.05	.15	.00	.05	.20	.25	.15
31	.30		.30		.20		.10	.05		.25		.25
TOTAO	9.70	8.55	7.30	5.28	4.70	3.70	3.05	2.65	2.55	3.95	4.55	6.70

ANNUAL - 62.60 Inches

WHITE ATMOMETER EVAPORATION FOR 1962
(IN INCHES)

Tibagan, Bustos, Balacan
Station

Lourdes Monte
Observer

DAY	JAN	FEB	MAR	APR	MAY	JUN	JUL	AUG	SEP	OCT	NOV	DEC
1	.25	.45	.40	.40	.20	.10	.05	.15	.00	.15	.25	.10
2	.25	.40	.20	.25	.25	.10	.10	.05	.10	.10	.25	.15
3	.30	.35	.40	.45	.30	.15	.15	.10	.05	.10	.15	.25
4	.20	.30	.40	.25	.30	.20	.20	.10	.05	.20	.15	.25
5	.20	.30	.35	.40	.35	.20	.00	.05	.00	.10	.35	.25
6	.20	.40	.30	.45	.40	.15	.05	.05	.00	.20	.20	.30
7	.15	.30	.35	.40	.40	.20	.10	.05	.05	.10	.25	.20
8	.25	.30	.30	.55	.30	.15	.05	.10	.15	.10	.05	.30
9	.15	.35	.35	.40	.45	.15	.05	.00	.00	.20	.15	.25
10	.30	.25	.40	.45	.40	.20	.05	.10	.00	.10	.05	.20
11	.25	.35	.30	.40	.45	.20	.05	.15	.05	.05	.05	.15
12	.35	.35	.35	.45	.45	.20	.05	.03	.00	.10	.25	.25
13	.20	.35	.50	.40	.35	.15	.05	.15	.05	.25	.25	.20
14	.25	.40	.35	.40	.30	.15	.10	.15	.05	.10	.20	.20
15	.25	.35	.45	.25	.45	.05	.05	.10	.05	.20	.15	.25
16	.25	.40	.30	.25	.35	.15	.10	.10	.05	.20	.15	.15
17	.20	.30	.40	.40	.35	.15	.15	.10	.10	.15	.15	.25
18	.25	.40	.40	.25	.30	.15	.10	.10	.10	.00	.20	.40
19	.15	.35	.15	.20	.15	.15	.05	.05	.00	.20	.30	.25
20	.20	.30	.35	.20	.10	.10	.00	.05	.05	.20	.25	.25
21	.35	.35	.30	.25	.25	.20	.00	.10	.10	.30	.30	.25
22	.25	.30	.35	.20	.25	.20	.00	.05	.10	.10	.25	.25
23	.30	.30	.25	.20	.10	.13	.00	.05	.10	.05	.05	.25
24	.30	.30	.25	.20	.20	.05	.05	.15	.00	.20	.05	.15
25	.20	.35	.35	.20	.20	.25	.10	.20	.00	.20	.05	.25
26	.15	.25	.30	.20	.20	.20	.05	.10	.00	.15	.15	.25
27	.20	.30	.35	.10	.15	.20	.10	.20	.05	.15	.20	.10
28	.30	.35	.45	.30	.20	.20	.15	.10	.10	.15	.20	.15
29	.25		.25	.35	.05	.15	.10	.15	.05	.15	.00	.25
30	.25		.40	.30	.05	.20	.10	.05	.10	.15	.10	.25
31	.35		.50		.15		.10	.05		.20		.25

ANNUAL - 73.76 Inches

WHITE ATMOMETER EVAPORATION FOR 1963
(IN INCHES)

Tibagan, Bustos, Bulacan
Station

Lourdes Monte
Observer

DAY	JAN	FEB	MAR	APR	MAY	JUN	JUL	AUG	SEP	OCT	NOV	DEC
1	.25	.20		.35			.10	.05	.10	.10	.20	.35
2	.20	.10	.35	.30			.10	.20	.05	.10	.10	.20
3	.15	.30	.30	.30			.15	.10	.10	.10	.05	.25
4	.20	.25	.30	.35			.15	.10	.10	.15	.05	.25
5	.20	.20	.40	.35			.10	.15	.10	.05	.20	.20
6	.25	.35	.30	.40			.20	.15	.05	.10	.20	.25
7	.25	.15	.30	.30			.15	.05	.05	.05	.25	.15
8	.30	.30	.10	.40		.05	.10	.15	.10	.25	.20	.25
9	.25	.35	.30	.35		.05	.05	.15	.00	.05	.15	.25
10	.25	.30	.35	.40		.05	.10	.15	.00	.15	.25	.25
11	.25	.35	.25	.35		.15	.05	.10	.00	.10	.30	.05
12	.20	.25	.35	.30		.15	.10	.05	.05	.10	.15	.00
13	.30	.15	.35	.25		.20	.10	.15	.10	.15	.20	.00
14	.20	.45	.40	.40		.10	.10	.10	.05	.05	.30	.10
15	.25	.35	.35	.35		.15	.10	.05	.10	.45	.25	.10
16	.35	.35	.40	.35		.10	.10	.05	.05	.25	.15	.15
17	.25	.30	.40	.25		.05	.05	.20	.10	.15	.30	.15
18	.25	.35	.40	.40		.10	.05	.05	.15	.15	.20	.10
19	.25	.40	.35	.20		.00	.05	.10	.05	.25	.25	.05
20	.25	.25	.30	.35		.05	.10	.00	.10	.25	.20	.25
21	.20	.30	.35	.35		.05	.05	.05	.05	.25	.20	.25
22	.25	.30	.40	.40		.00	.10	.05	.05	.20	.20	.25
23	.30	.30	.40	.45		.00	.05	.10	.05	.00	.20	.25
24	.25	.35	.35	.45		.20	.10	.05	.00	.15	.20	.25
25	.40	.30	.45	.20		.20	.10	.05	.05	.15	.20	.15
26	.25	.35	.35	.55		.25	.05	.15	.00	.20	.10	.35
27	.25	.35	.40	.45		.20	.05	.05	.10	.15	.10	.25
28	.25	.35	.30	.35		.00	.05	.00	.10	.20	.15	.25
29	.30		.35	.45		.05	.10	.10	.05	.25	.20	.30
30	.30		.40	.50		.10	.10	.05	.05	.20	.25	.20
31	.25		.40				.20	.15		.05		.25
TOTAL	7.85	8.30	10.40	10.85		2.25	2.95	2.90	1.90	4.80	5.75	6.10

ANUAL - 64.05 (except May)

WHITE ATMOMETER EVAPORATION FOR 1964
(IN INCHES)

Tibagan, Bustos, Bulacan
Station

Lourdes Monte
Observer

DAY	JAN	FEB	MAR	APR	MAY	JUN	JUL	AUG	SEP	OCT	NOV	DEC
1	.20	.45	.20	.15	.15	.25	.05	.15	.10	.05	.10	.10
2	.15	.30	.15	.20	.10	.10	.10	.05	.15	.10	.05	.15
3	.25	.40	.15	.15	.10	.15	.10	.05	.15	.15	.15	.15
4	.20	.20	.15	.15	.25	.05	.05	.05	.05	.15	.15	.15
5	.20	.30	.20	.35	.05	.05	.15	.10	.05	.10	.15	.25
6	.15	.25	.20	.10	.10	.05	.15	.15	.15	.05	.15	.15
7	.20	.25	.20	.15	.10	.10	.10	.05	.20	.15	0	.10
8	.20	.30	.25	.15	.10	.05	.10	.15	.15	.10	.05	.20
9	.20	.25	.20	.10	.20	.05	.10	.10	.10	.10	.15	.15
10	.20	.20	.20	.10	.20	.10	.10	.05	.05	.05	.10	.10
11	.15	.20	.15	.25	.10	.10	.10	.05	.10	.05	.15	.20
12	.15	.40	.10	.10	.20	.05	.10	.10	.05	.05	.05	.10
13	.40	.30	.20	.15	.30	.10	.10	.10	.05	.05	.10	.05
14	.25	.25	.25	.05	.15	.05	.05	.10	.05	.15	.10	.15
15	.20	.35	.10	.15	.05	.05	.05	.05	.15	.05	.05	0
16	.20	.15	.10	.10	.05	.05	.10	.05	.15	.10	.10	.05
17	.20	.15	.20	.10	.05	.05	.15	.15	.10	.05	.05	0
18	.25	.35	.15	.10	.05	.10	.05	.05	.05	.10	.05	.05
19	.25	.35	.15	.15	.10	.10	.05	.10	.10	.15	.10	.05
20	.30	.35	.15	.05	.10	.05	.15	.15	.15	.05	.15	.15
21	.40	.35	.10	.10	.05	.05	.15	.05	.10	.05	.05	.20
22	.35	.25	.15	.15	.10	.05	.15	.05	.10	.05	.05	.10
23	.20	.35	.15	.25	.25	.05	.10	.05	.05	.05	.10	.15
24	.15	.30	.15	.30	.10	.15	.10	.05	.10	.05	.10	.15
25	.20	.30	.10	.15	.20	.05	.05	.10	.05	.10	.05	.20
26	.20	.30	.20	.25	.10	.05	.05	.10	.10	.10	.05	.30
27	.20	.25	.20	.20	.15	.05	.20	.10	.10	.10	.05	.15
28	.20	.25	.10	.20	.25	.10	.10	.15	.10	.15	.20	.20
29	.25	.15	.15	.10	.20	.00	.10	.10	.10	.10	0	.15
30	.20		.25	.10	.15	.00	.10	.10	.05	.15	.10	.20
31	.20		.15		.10		.05	.10		.20		.10
TOTAL	6.85	8.25	5.15	4.60	4.15	2.20	3.05	2.75	2.95	2.90	2.70	4.20

ANNUAL - 49.75 Inches

WHITE ATOMOMETER EVAPORATION FOR 1965
(IN INCHES)

Tibagan, Bustos, Bulacan Station										Lourdes Monte Observer		
DAY	JAN	FEB	MAR	APR	MAY	JUN	JUL	AUG	SEP	OCT	NOV	DEC
1	.20	.10	.15	.15	.05	.10	.05	.10		.10	.10	.10
2	.20	.15	.20	.20	.15	.10	.05	.05	.15	.05	.15	.10
3	.15	.15	.20	.25	.10	.15	.05	.05	.05	.10	.05	.10
4	.15	.15	.30	.05	.10	.25	.10	.15	.10	.05	.15	.15
5	.20	.30	.25	.05	.10	.25	.20	.15	.05		0	.10
6	.10	.30	.25	.15	.15	.10	.10	.10		.05	.05	.10
7	.25	.05	.20	.10	.10	.05	.10	.15	.15	.10	0	.15
8	.10	.15	.20	.15	.10	.10	.20	.05	.10	.10	0	.05
9	.25	.15	.10	.15	.15	.05	.10	.15	.15	.10	.10	.20
10	.15	.10	.20	.20	.10	.10	.10	.20	.05	.05	.10	.05
11	.20	.15	.20	.15	.25	.05	.15	.05	.10	.05	.05	.05
12	.30	.30	.25	.15	.15	.05	.10	.10	.10	.10	.25	.15
13	.15	.25	.15	.20	.10	.10	.10	.10	.05	.10	.10	.10
14	.25	.20	.25	.15	.10	.15	.05	.10	.10	.05	.10	.05
15	.35	.20	.20	.15	.10	.20	.10	.05	.05	.05	.15	.05
16	.15	.20	.15	.20	.10	.15	.10	.05	.15	.05	.10	.15
17	.25	.15	.15	.10	.15	.05	.20	.10	.05	.10	.20	.05
18	.25	.15	.25	.10	.15	.05	.15	.15	.05	.05	.05	.05
19	.05	.15	.20	.15	.10	.05	.15	.15	0	.15	.10	.05
20	.10	.20	.20	.15	.15	.05	.05	.10	.05	.15	.05	.05
21	.15	.20	.35	.10	.15	.05	.10	.15	.05	.15	.15	.05
22	.15	.20	.20	.15	.15	.05	.05	.15	.05	.15	.15	.10
23	.20	.20	.15	.10	.05	.05	.05	.10	.05	.15	.10	.10
24	.10	.20	.15	.05	.05	.15	.15	.10	.05	.15	.10	.10
25	.15	.20	.15	.05	.05	.10	.10	.25	.10	.10	.10	.05
26	.10	.30	.20	.15	.05	.15	.05	.05	.15	.15	.15	.10
27	.20	.10	.15	.15	.00	.15	.05	.05	.10	.05	.10	.05
28	.20	.05	.15	.15	.10	.15	0	.05	.10	.05	.10	.05
29	.20		.15	.10	.10	.10	.05	.05	.05	.15	.15	.10
30	.15		.15	.15	.05	.20	.05	.10	.05	.15	.15	.10
31	.10		.20		.05		.15	.05		.15		.05
TOTAL	5.50	5.00	6.05	4.10	3.25	3.30	3.00	3.20	2.25	3.05	3.05	2.75

ANNUAL - 44.50 Inches

BLACK ATOMOMETER EVAPORATION FOR 1961
(IN INCHES)

Tibagan, Bustos, Bulacan Station		Lourdes Monte Observer										
DAY	JAN	FEB	MAR	APR	MAY	JUN	JUL	AUG	SEP	OCT	NOV	DEC
1	.40	0	.50	.40	.25	.25	.15	.20	.20	.20	.30	.20
2	.35	.25	.50	.45	.20	.30	.05	.25	.05	.20	.30	.30
3	.30	.35	.30	.40	.30	.25	.20	.25	.20	.20	.25	.30
4	.25	.20	.20	.40	.25	.25	.20	.30	.15	.20	.20	.40
5	.35	.10	.20	.40	.25	.25	.05	.25	.20	.20	.15	.20
6	.25	.35	.25	.45	.20	.25	0	.15	.10	.30	.10	.20
7	.35	.30	.45	.15	.25	.15	0	.25	.15	.15	.15	.25
8	.35	.35	.30	.30	.25	.30	.20	.25	.10	.25	.05	.40
9	.40	.35	.30	.20	.25	.15	.30	.10	.10	.25	.20	.30
10	.35	.45	.35	.35	.50	.25	.15	.05	.15	.20	.30	.25
11	.40	.40	.25	.35	.20	.15	.15	.15	.15	.05	.20	.15
12	.55	.35	.25	.30	.25	.15	.05	.10	.25	.15	.30	.20
13	.50	.35	.45	.40	.20	.20	.10	.25	.10	.05	.20	.25
14	.45	.45	.45	.40	.20	.20	.15	.20	.20	.30	.30	.25
15	.45	.40	.30	.40	.20	.30	.25	.10	.05	.15	.10	.30
16	.40	.40	.40	.25	.10	.25	.20	.10	.15	.20	.25	.25
17	.35	.40	.40	.30	.10	.35	.15	.15	.20	.20	.30	.25
18	.45	.10	.30	.30	.20	.30	0	.05	.15	.05	.25	.30
19	.45	.45	.35	.25	.25	.20	.20	.10	.15	.25	.30	.35
20	.30	.40	.40	.30	.30	.05	.20	.10	.20	.10	.30	.15
21	.30	.35	.45	.30	.25	.10	.20	.10	.20	.20	.35	.40
22	.40	.35	.35	.25	.30	.25	.20	.10	.05	.15	.25	.35
23	.40	.15	.40	.25	.30	.20	.20	.15	.05	.35	.10	.40
24	.30	.35	.30	.20	.30	.10	.20	.05	.25	.25	.15	.35
25	.30	.40	.35	.30	.25	0	.20	.10	.30	.25	.15	.45
26	.25	.35	.25	.30	.10	.05	.15	.15	.20	.25	.20	.15
27	.40	.35	.55	.20	.10	.05	.15	.15	.25	.20	.35	.30
28	.40	.40	.40	.25	.25	.05	.15	.10	.25	.20	.30	.30
29	.35		.15	.25	.25	.15	.15	.05	.15	.20	.25	.35
30	.30		.40	.25	.30	.05	.20	0	.15	.30	.35	.20
31	.35		.50		.35		.25	.05		.35		.30
TOTAL	11.40	9.40	11.00	9.30	7.55	5.55	4.80	4.30	4.85	6.45	6.90	8.80

ANNUAL - 90.30 Inches

BLACK ATMOMETER EVAPORATION FOR 1962
(IN INCHES)

Tibagan, Bustos, Bulacan Station										Lourdes Monte Observer		
DAY	JAN	FEB	MAR	APR	MAY	JUN	JUL	AUG	SEP	OCT	NOV	DEC
1	.30	.50	.55	.45	.30	.15	.25	.25	.05	.25	.30	.15
2	.35	.50	.25	.40	.30	.15	.15	.10	.20	.20	.25	.25
3	.25	.35	.50	.50	.40	.25	.20	.15	.15	.15	.30	.30
4	.25	.35	.45	.30	.45	.25	.30	.15	.05	.35	.25	.30
5	.25	.35	.45	.45	.40	.15	.05	.15	.05	.25	.40	.30
6	.25	.45	.40	.60	.45	.25	.10	.10	.00	.25	.35	.35
7	.20	.40	.45	.55	.50	.25	.10	.10	.10	.20	.35	.35
8	.30	.40	.40	.60	.40	.20	.15	.20	.25	.20	.10	.40
9	.25	.40	.45	.50	.55	.25	.15	.05	.00	.30	.20	.35
10	.35	.35	.50	.50	.50	.25	.15	.15	.05	.20	.20	.35
11	.35	.35	.35	.60	.50	.25	.10	.20	.10	.10	.10	.55
12	.40	.40	.45	.50	.50	.25	.10	.20	.05	.20	.30	.30
13	.30	.45	.60	.50	.45	.10	.15	.20	.10	.30	.35	.25
14	.30	.50	.45	.45	.40	.20	.20	.20	.20	.25	.25	.25
15	.30	.45	.50	.35	.35	.15	.05	.20	.15	.25	.20	.30
16	.35	.55	.45	.35	.40	.20	.10	.20	.10	.30	.25	.25
17	.20	.35	.45	.50	.40	.25	.20	.15	.20	.20	.25	.30
18	.30	.45	.55	.35	.35	.25	.20	.20	.15	.05	.25	.35
19	.25	.45	.35	.25	.10	.20	.15	.20	.05	.35	.40	.35
20	.35	.40	.40	.30	.20	.25	.05	.15	.10	.30	.30	.30
21	.40	.40	.45	.30	.30	.25	.00	.20	.20	.40	.40	.35
22	.30	.45	.45	.30	.35	.20	.00	.10	.15	.20	.35	.30
23	.35	.30	.35	.30	.20	.20	.00	.15	.20	.05	.05	.30
24	.35	.45	.35	.25	.25	.15	.05	.20	.05	.30	.10	.25
25	.25	.40	.50	.30	.30	.30	.15	.30	.00	.30	.10	.30
26	.25	.35	.35	.25	.25	.25	.10	.20	.00	.25	.20	.25
27	.25	.35	.40	.20	.20	.30	.15	.30	.10	.25	.30	.15
28	.35	.45	.55	.35	.25	.25	.25	.25	.10	.25	.25	.20
29	.40		.40	.40	.15	.10	.10	.25	.15	.20	.05	.30
30	.35		.50	.40	.10	.15	.15	.15	.15	.25	.15	.35
31	.40		.65		.20		.15	.10		.30		.30
TOTAL	9.60	11.55	13.90	12.05	10.45	6.50	4.00	5.50	3.20	7.40	7.30	9.35

ANNUAL - 100.80 Inches

BLACK ATMOMETER EVAPORATION FOR 1963
(IN INCHES)

Tibagan, Bustos, Bulacan
Station

Lourdes Monte
Observer

DAY	JAN	FEB	MAR	APR	MAY	JUN	JUL	AUG	SEP	OCT	NOV	DEC
1	.40	.20		.40			.15	.10	.15	.15	.25	.35
2	.25	.15	.45	.35			.20	.25	.10	.15	.15	.25
3	.20	.35	.45	.40			.25	.20	.15	.15	.15	.35
4	.25	.30	.05	.25			.20	.15	.15	.25	.10	.30
5	.25	.30	.35	.40			.20	.35	.15	.20	.40	.30
6	.30	.40	.35	.40			.30	.25	.10	.25	.25	.25
7	.30	.20	.25	.35			.20	.10	.10	.15	.35	.20
8	.10	.40	.20	.15		.10	.15	.20	.10	.30	.25	.30
9	.30	.40	.35	.45		.05	.15	.25	.05	.10	.25	.30
10	.30	.40	.45	.35		.10	.20	.20	0	.25	.40	.15
11	.30	.40	.30	.30		.20	.15	.20	.05	.20	.35	.10
12	.30	.30	.40	.20		.20	.20	.15	.10	.15	.20	.45
13	.35	.30	.50	.40		.30	.20	.25	.15	.20	.25	.05
14	.30	.55	.50	.45		.15	.15	.10	.15	.15	.35	.20
15	.25	.45	.41	.40		.25	.15	.10	.15	.20	.35	.20
16	.35	.55	.50	.50		.15	.15	.15	.10	.30	.20	.20
17	.40	.35	.50	.30		.05	.10	.50	.20	.25	.35	.20
18	.35	.40	.50	.45		.20	.10	.10	.20	.20	.30	.15
19	.30	.55	.35	.40		.05	.15	.15	.15	.30	.30	.10
20	.25	.40	.35	.45		.10	.20	.05	.20	.35	.30	.30
21	.30	.35	.45	.45		.15	.15	.05	.10	.35	.25	.35
22	.30	.40	.45	.45		.05	.15	.15	.15	.30	.30	.30
23	.35	.40	.50	.55		.05	.15	.15	.15	.05	.20	.20
24	.35	.45	.40	.50		.25	.20	.10	.05	.20	.25	.30
25	.45	.45	.45	.50		.25	.15	.15	.05	.25	.25	.20
26	.35	.40	.40	.60		.30	.10	.20	.00	.25	.20	.25
27	.30	.40	.45	.45		.20	.10	.10	.15	.25	.15	.35
28	.30	.45	.30	.40		.05	.15	.05	.20	.30	.20	.30
29	.40		.40	.60		.05	.20	.20	.15	.35	.25	.40
30	.35		.45	.65		.20	.15	.10	.15	.25	.35	.25
31	.35		.45				.30	.25		.20		.30
TOTAL	9.60	10.65	11.91	12.50		3.55	5.35	5.25	3.65	7.00	8.00	8.05

ANNUAL - 85.81 (except May)

BLACK ATMOMETER EVAPORATION FOR 1964
(IN INCHES)

Tibagan, Bustos, Bulacan
Station

Lourdes Monte
Observer

DAY	JAN	FEB	MAR	APR	MAY	JUN	JUL	AUG	SEP	OCT	NOV	DEC
1	.25	.50	.25	.30	.10	.15	0	.20	.15	.15	.20	.15
2	.25	.50	.20	.25	.20	.15	.05	.10	.20	.20	.10	.20
3	.30	.45	.25	.20	.20	.20	.10	.10	.20	.20	.20	.20
4	.25	.25	.20	.20	.25	.10	.15	.10	.10	.20	.20	.20
5	.30	.35	.15	.25	.10	.10	.25	.15	.10	.15	.20	.35
6	.20	.30	.30	.20	.15	.10	.20	.10	.20	.10	.20	.20
7	.25	.30	.25	.20	.20	.15	.20	.05	.15	.25	.05	.15
8	.25	.35	.20	.20	.15	.15	.15	.05	.20	.20	.20	.20
9	.35	.30	.30	.20	.30	.20	.20	.15	.15	.15	.10	.20
10	.25	.25	.30	.15	.35	.15	.15	.10	.10	.10	.20	.15
11	.20	.30	.20	.35	.30	.20	.15	.10	.15	.10	.20	.30
12	.25	.45	.15	.15	.30	.10	.15	.15	.10	.10	.10	.20
13	.50	.35	.30	.20	.35	.20	.15	.15	.10	.05	.20	.10
14	.30	.20	.30	.10	.25	.10	.10	.15	.15	.20	.15	.20
15	.25	.40	.15	.25	.10	.10	.10	.10	.20	.15	.10	.25
16	.25	.25	.15	.15	.10	.10	.15	.20	.10	.15	.20	.15
17	.25	.25	.35	.15	.10	.10	.20	.20	.15	.15	.10	.05
18	.30	.40	.20	.20	.15	.15	.05	.10	.15	.15	.10	.15
19	.30	.40	.25	.25	.15	.15	.10	.15	.15	.20	.15	.10
20	.40	.40	.20	.15	.15	.10	.20	.25	.20	.10	.25	.20
21	.40	.40	.15	.20	.15	.10	.20	.05	.15	.10	.10	.25
22	.40	.10	.20	.20	.20	.15	.20	.10	.20	.05	.10	.15
23	.30	.40	.20	.30	.35	.10	.15	.10	.10	.10	.15	.20
24	.25	.40	.25	.45	.15	.10	.15	.05	.20	.10	.15	.20
25	.25	.35	.15	.25	.30	.15	.10	.15	.20	.15	.10	.25
26	.30	.40	.25	.35	.15	.10	.10	.15	.15	.15	.05	.35
27	.25	.45	.25	.30	.10	.10	.25	.15	.20	.15	.15	.30
28	.25	.30	.25	.40	.40	.05	.20	.25	.20	.20	.25	.30
29	.30	.20	.20	.15	.10	.05	.15	.15	.15	.15	.05	.25
30	.35		.30	.05	.25	.05	.15	.15	.10	.25	.15	.30
31	.25		.20		.05		.10	.15		.30		.15
TOTAL	8.95	9.95	7.05	6.80	6.25	3.70	4.55	4.10	4.65	3.75	4.45	6.40

ANNUAL - 70.60 Inches

BLACK ATMOMETER EVAPORATION FOR 1965
(IN INCHES)

Tibagan, Bustos, Bulacan Station		Lourdes Monte Observer											
DAY	JAN	FEB	MAR	APR	MAY	JUN	JUL	AUG	SEP	OCT	NOV	DEC	
1	.25	.15	.25	.20	.10	.15	.20	.05		.20	.20	.20	
2	.25	.20	.25	.30	.20	.15	.10	.10	.20	.10	.20	.15	
3	.20	.35	.30	.30	.10	.20	.15	.10	.05	.15	.05	.20	
4	.35	.35	.35	.20	.20	.20	.25	.25	.10	.20	.05	.15	
5	.20	.25	.35	.10	.15	.30	.15	.25	.20	.10	.15	.20	
6	.20	.35	.35	.20	.25	.15	.15	.20		.10	.05	.25	
7	.35	.25	.25	.20	.15	.10	.20	.25	.20	.20	.05	.20	
8	.20	.20	.30	.20	.20	.15	.30	.15	.15	.15	.05	.15	
9	.30	.25	.40	.25	.20	.05	.15	.20	.20	.20	.15	.15	
10	.25	.20	.30	.25	.20	.15	.15	.10	.10	.10	.15	.10	
11	.30	.25	.30	.20	.35	.10	.20	.10	.15	.10	.15	.10	
12	.35	.45	.35	.25	.20	.10	.15	.15	.15		.35	.15	
13	.20	.35	.25	.40	.20	.15	.15	.15	.05	.15	.15	.15	
14	.30	.30	.35	.20	.20	.20	.05	.15	.15	.10	.20	.10	
15	.40	.30	.30	.25	.20	.25	.20	.15	.15	.10	.25	.10	
16	.20	.30	.25	.40	.15	.20	.15	.10	.20	.10	.20	.20	
17	.30	.25	.20	.25	.20	.10	.25	.20	.10	.15	.30	.10	
18	.30	.25	.30	.20	.20	.05	.20	.20	.10	.10	.15	.10	
19	.10	.25	.35	.20	.20	.05	.15	.20	.05	.20	.20	.10	
20	.15	.30	.25	.20	.20	.10	.10	.15	.10	.20	.10	.10	
21	.25	.30	.40	.15	.20	.10	.15	.20	.05	.25	.20	.10	
22	.20	.30	.30	.20	.10	.10	.20	.20	.10	.25	.25	.15	
23	.25	.30	.25	.15	.15	.20	.10	.20	.10	.25	.20	.15	
24	.15	.30	.25	.10	.10	.15	.25	.15	.10	.30	.15	.20	
25	.20	.30	.20	.10	.10	.15	.15	.10	.15	.20	.15	.10	
26	.25	.35	.30	.14	.05	.20	.10	.10		.25	.20	.15	
27	.25	.25	.25	.10	.05	.15	.10	.15	.20	.20	.15	.15	
28	.30	.20	.20	.25	.15	.20	.05	.10	.20	.10	.20	.10	
29	.30		.20	.30	.20	.15	.10	.10	.15	.15	.20	.20	
30	.25		.20	.25	.10	.30	.15	.20	.10	.20	.20	.20	
31	.20		.25		.10		.25	.15		.25		.10	
TOTAL	7.75	7.85	8.80	6.70	5.15	4.60	5.00	4.85	2.55	5.10	5.05	4.55	

ANNUAL - 68.95 Inches