

ITEM	NAME OF EQUIPMENT	SPECIFICATION	QUANTITY	PRIORITY	REMARK
162.	Micro Computer	Complete with 72 bits	2	A	
163	Open Reel Tape	SONY high speed tape duplicator	1	A	
164		ORM-10 CCP-13A	1	A	

9. ELECTRONICS

ITEM	NAME OF EQUIPMENT	SPECIFICATION	QUANTITY	PRIORITY	REMARK																														
1	General Purpose Communication Receiver	<p>General:</p> <ol style="list-style-type: none"> Equipment shall be made of durable quality materials. It shall have six ranges with double conversion and incremental tuning above 1.6 Mhz. <p>Specific:</p> <ol style="list-style-type: none"> Frequency Coverage 0.54 Mhz - 30 in six ranges with double conversion and incremental tuning above 1.6 Mhz. Reception Modes --- c.w. - m.c.w. - a.m. (dsb) - s.s.b. Sensitivity ----- 3 microvolt for 15 dB 2/n (a.m. mode, 3 kHz bandwidth) Stability ----- 15 mins, 1 part of 10⁴ per °C or 3 parts in 10⁵ per °C with 1st oscillator crystal controlled (1.5 - 30 Mhz) Intermediate Frequencies ----- I.F. 1: Tunable 1300 1,400 kHz I.F. 2: 100 kHz Selectivity----- 6 dB bandwidth of 100Hz, 1.3 kHz, 3kHz and 8kHz. 60 dB bandwidth of 2kHz 4.5 kHz, 9kHz, and 18kHz. Crystal Calibrator-- 100 kHz marker Scale Accuracy----- Within 1 kHz using incremental facility Audio-Output----- Panel Speaker - 50 MM External Speaker (3 ohms) 0.5W at 5% distortion (1.5W max.) Line (600 ohms): 10mW Headset ----- Low/medium impedance Response ----- Within 6dB 200 Hz to 6 kHz Power Supply ----- 115/230 VAC, 60 Hz or 12 VDC pos. or neg. ground at 750 mA max. loading. Other feature: S/N - Output level meter <p>Accessories:</p> <ol style="list-style-type: none"> Equipment test data and characteristics Operation and service manual in English (2 each) 	5	A																															
2	Transceiver	Single, sideband AM, VHF 134 to 174 MHz; 50 watts.	6	A																															
3	RF Signal Generator		6	A																															
4	Industrial Process Control And Instrumentation Trainer	This trainer intend to equip students with working knowledge about common process variable in industry and their control. These processes are the temperature flow, pressure, velocity, optical and magnetic quantity, etc. The trainer will contain equipment, materials, parts, and accessories that will provide practical and theoretical experience on industrial process.	3	A																															
5	Microwave Measuring Trainer	<p>Ando Electric following model each one</p> <table border="0"> <tr> <td>LTR-10S</td> <td>MDA-10S</td> <td>TB-5</td> </tr> <tr> <td>KMR-10SA</td> <td>TB-5</td> <td>RHR-10S</td> </tr> <tr> <td>FATR-10S</td> <td>CDR-10S</td> <td>STR-10SA</td> </tr> <tr> <td>CWR-10S</td> <td>AFM-10S</td> <td>LTR-10S</td> </tr> <tr> <td>DCR-10S</td> <td>PR-10S</td> <td>EBD-10S</td> </tr> <tr> <td>VATR-10S</td> <td>HOR-10S</td> <td>HBD-10S</td> </tr> <tr> <td>SNR-10S</td> <td>KDR-10SA</td> <td>TST-10S</td> </tr> <tr> <td>KVR-10S</td> <td>PHR-10S</td> <td>MTR-10S</td> </tr> <tr> <td>MDA-10S</td> <td>KB-10S</td> <td>TSR-10S</td> </tr> <tr> <td>TMR-10S</td> <td>SWR-10S</td> <td>EHR-10SEH</td> </tr> </table>	LTR-10S	MDA-10S	TB-5	KMR-10SA	TB-5	RHR-10S	FATR-10S	CDR-10S	STR-10SA	CWR-10S	AFM-10S	LTR-10S	DCR-10S	PR-10S	EBD-10S	VATR-10S	HOR-10S	HBD-10S	SNR-10S	KDR-10SA	TST-10S	KVR-10S	PHR-10S	MTR-10S	MDA-10S	KB-10S	TSR-10S	TMR-10S	SWR-10S	EHR-10SEH	20	A	
LTR-10S	MDA-10S	TB-5																																	
KMR-10SA	TB-5	RHR-10S																																	
FATR-10S	CDR-10S	STR-10SA																																	
CWR-10S	AFM-10S	LTR-10S																																	
DCR-10S	PR-10S	EBD-10S																																	
VATR-10S	HOR-10S	HBD-10S																																	
SNR-10S	KDR-10SA	TST-10S																																	
KVR-10S	PHR-10S	MTR-10S																																	
MDA-10S	KB-10S	TSR-10S																																	
TMR-10S	SWR-10S	EHR-10SEH																																	

10. CIVIL

ITEM	NAME OF EQUIPMENT	SPECIFICATION	QUANTITY	PRIORITY	REMARK
1	Universal Testing Machine	Shimadzu (REH-RES Series 200) 200 Ton Capacity complete with standard set up plus optional accessories such as: * Electric Recorder REY-4 REY-5 1) Magnification of elongation curve x 6.25 ~ x 1,250 changeable in 2 steps of high and low. 2) Chart size 225 x 300 mm 3) Mechanical recorder of low magnification. * Strain Pacer (constant speed strain tester) for REH * Load Pacer (constant load device) for REH & RES. * Gauge length elongation device * Specimen and grips 1) for tensile strength test of metals a) steel rods b) cables or tendons 2) for tensile strength test of synthetic resin 3) for compression test a) for mortar b) for concrete cylinders c) for concrete hollow blocks * Electronic Constant load Apparatus 1) Presetting range whole capacity 2) Load fluctuation: with in $\pm 0.1\%$ of each capacity * Load Printer	1	A	
2	Calibration Tester	Loop type 50 kgf to 20 tf.	1	B	
3	Counter Scale	25 kg capacity	1	B	
4	Pychometer Glass Jar	Complete with brass cone and rubber seal 1 kg capacity	12	A	
5	Motorized Liquid Limit Device	(Conforming to A.S.T.M) specification 129 rpm 220/240V. 50Hz 1 ph. complete with grooving tools and drying cans.	2	A	
6	Mixer	22.8dm ³ (0.8 cu.ft.) capacity, bench mounting 220/240V 50 Hz. 1 ph. 3 speed motor rating 249 W 1/3 HP. wt. 80 kg.	2	A	
7	Proctor Mould	1/30 cu.ft. capacity mould is made up of heavily plated steel and comprises collar, mould body and base plate.	6	A	
8	Rammer	Standard Compaction 2.5 kg wt. incorporating a 305 mm drop, the rammer dia. is 50.8 mm in the complete units is manufactured in corrosion protected steel.	6	A	
9	Concrete Core Drilling Machine	Portable Core Drill, Electric driven by a 930 W 1/4 HP. Motor 220/240V, 50 Hz, 1 ph. Complete with the necessary adaptors to fit the penetration assembly.	1	A	
10	Flow Table	For Mortar made of cast bronze, conforming to the dimension specified by A.S.T.M. '0230 complete with accessories.	2	A	
11	Speed Moisture Tester	For moisture content of Aggregates.	1	B	
12		Los Angeles Abrasive Machine complete with twelve abrasive charges 220/240, 50HP. 1ph.	1	B	
13	Loss on Heating Oven	ASTM 6-D 220/240 50 Hz. 1ph. complete with accessories and can containers.	1	A	
14	Roch/Masonry Saw Bench	Standard mounted, supplied with diamond blade 1.12kW (1.5 HP) 230V, 1ph.	1	A	
15	Fan Connected Oven	82 dm ³ Capacity. Loading rate is 1,600W, with 3 shelves supplied, 220/240, 50Hz, 1ph with thermostat control.	2	A	
16	Block Machine	6" Concrete Hollow. Pallet type capacity 4 blocks complete with 500 pallets 6" x 16"	1	B	

ITEM	NAME OF EQUIPMENT	SPECIFICATION	QUANTITY	PRIORITY	REMARK															
17	Block Machine	4" Concrete Hollow. Pallet type capacity 4 blocks. Complete with 500 pallets 4" x 16".	1	B																
18	Concrete Vibrator	Mikasa	2	A																
19	Bar Cutter	Capable of cutting structural steel bars up to 1 1/4" dia. Complete with adaptors and blades for different sizes of bars.	2	A																
20	Electric Welding Machine	300 to 400 amperes 220/240V.	2	A																
21	Concrete Mixer	2 - 3 Bagger Horizontal drum type. Conforming to ASTM standard.	1	A																
22	Transet	Standard K-1 type (5") (Kongo Surveying instrument Co., Ltd.) with complete accessories. Telescope: Length - 242 mm Aperture - 37.5 mm Magnification - 27x Image - erect <table style="margin-left: 40px;"> <thead> <tr> <th></th> <th>Horizontal circle</th> <th>Vertical circle</th> </tr> </thead> <tbody> <tr> <td>Diameter</td> <td>158 mm</td> <td>113 mm</td> </tr> <tr> <td>No. Verrier</td> <td>2</td> <td>1</td> </tr> <tr> <td>Graduation</td> <td>20"</td> <td>30"</td> </tr> <tr> <td>Vertical Reading</td> <td>20"</td> <td>1"</td> </tr> </tbody> </table> Weight: Instrument - 7.9 kgs Core - 5.5 kgs Tripod - 4.5 kgs		Horizontal circle	Vertical circle	Diameter	158 mm	113 mm	No. Verrier	2	1	Graduation	20"	30"	Vertical Reading	20"	1"	6	A	
	Horizontal circle	Vertical circle																		
Diameter	158 mm	113 mm																		
No. Verrier	2	1																		
Graduation	20"	30"																		
Vertical Reading	20"	1"																		
23	Level	Standard Dumpy 18" with complete accessories (Kongo Surveying instrument Co., Ltd.) Telescope: Length - 490 mm Aperture - 42 mm Magnification - 40x Image - erect Min. focus - 2.5 mm Sensitivity - 20" Weight: Instrument - 4.7 kgs Core - 3.7 kgs Tripod - 4.5 kgs	6	A																
24	Philadelphia Rods	Mikasa Co., Ltd. Full length 3 meter Graduation Interval 10 mm or 5 mm.	6	A																
25	Surveyor's Steel Tape	Width - 13 mm Thickness - 0.23 mm Length - 50 m Material: Stainless Steel or Rustless nylon coated steel.	12	A																
26	Pipe Crushing Strength	(For Concrete Pipes) 1,000kN capacity pipe strength testing load frame, complete accessories. Specification: Pipe size range : 300-1,800 mm dia. x 2.5m L. Test : Proof and Ultimate Strength Loading capacity : 100kN (225,000 lbf) Over-all Dimensions: Length : 3.5 mm Width : 2.0 mm Height : 4.5 mm Weight : 5,000 kg	1	B																
27	Steel Reinforcement Detection Meter	Up to 150 mm depth of cover, should be supplied with complete accessories.	2	B																
28	Vicat Apparatus	Should be supplied with complete needles, moulds, and glass base plate.	2	B																
29	Autoclave	220V, 60Hz, 1ph conforming to A.S.T.M. C151 (AASHTO T107) should be supplied with complete accessories.	2	B																
30	Tile Testing Machine	(Tile Permeability Apparatus) Supplied with complete accessories and test caps for different sizes of tiles.	2	B																

ITEM	NAME OF EQUIPMENT	SPECIFICATION	QUANTITY	PRIORITY	REMARK
31	Light Powered Soil Auger	Should be supplied with different auger drills, cutting blades and extension rods, and other accessories.	1	B	
32	Portable Jack Hammer	Gasoline type, should be supplied with different blades and spare parts.	2	B	
33	Motor Pumps	(Portable type) Should be supplied with complete accessories 4 to 6 hp. gasoline engine.	2	B	
34	Sieve Shaker	220V, should be supplied w/transformers with timers and set of standard sieves for both fine and coarse aggs.	2	B	
35	Le Chetailer's Flask		6	B	
36	Mortar Mould	2" x 2" cubes, each mold contains 3 (2" x 2") molds	6	B	
37	Sand Pouring Cylinder Apparatus	152 mm (6") should be supplied with complete accessories	3	B	
38	Cone Sand Apparatus	152 mm (6") should be supplied with complete accessories	3	B	
39	Rotary Separator	Should conform to requirement of A.S.T.M. D2172 for the determination of Bitumen content, 220/240V 50 Hz. 1ph. should be supplied with complete accessories.	1	B	
40	Ductilometer	220/240V should conform to A.S.T.M. D113 and ASSHO T51, should molds and other accessories.	1	B	
41	Saybolt Viscosity Apparatus	A.S.T.M. D88 and ASSHO T72, 220/240V, 50Hz, 1ph. comple two tubes fitted with universal orifices and two tubes with Furel orifices. Should be supplied with accessories.	1	B	
42	Torbai Optical Projection Balance	Specifications: Capacity ----- 800g Accuracy ----- + or - 0.01g Optical range ----- 50g Mechanical substitution weights ----- 0-750g Direct tare ----- 50g Pan ----- Stainless steel 210mm in dia. Elect. supply ----- 220/240V	2	B	
43	Self Levelling Balance	Fully Damped Semi-Automatic Specifications: Capacity ----- 25kg Load pan ----- flat Scale range ----- 200g Sensitivity ----- 1g Should be supplied with complete weight sets.	2	B	
44	Vernier Calipers	For measuring sample dimensions. Should be graduated in mm and inches.	6	B	
45	Soil Hydrometer	Calibrated 0 to 60 gms of soil colloids/liter AASHO T88 and A.S.T.M. D422.	3	B	
46	Automatic Soil Compaction Machine	Specifications: Height of drop of 50.8 mm (2") rammer is adjustable from 350 mm (12") to 457 mm (18") and the rammer weight is adjustable from 2.5 kg to 4.5 kg. Should be supplied with complete accessories, 220/240V, 50Hz, 1 ph.	1	B	
47	Air Compressor	220/240V 2 hp (for cleaning and servicing laboratory equipments and apparatus)	1	B	

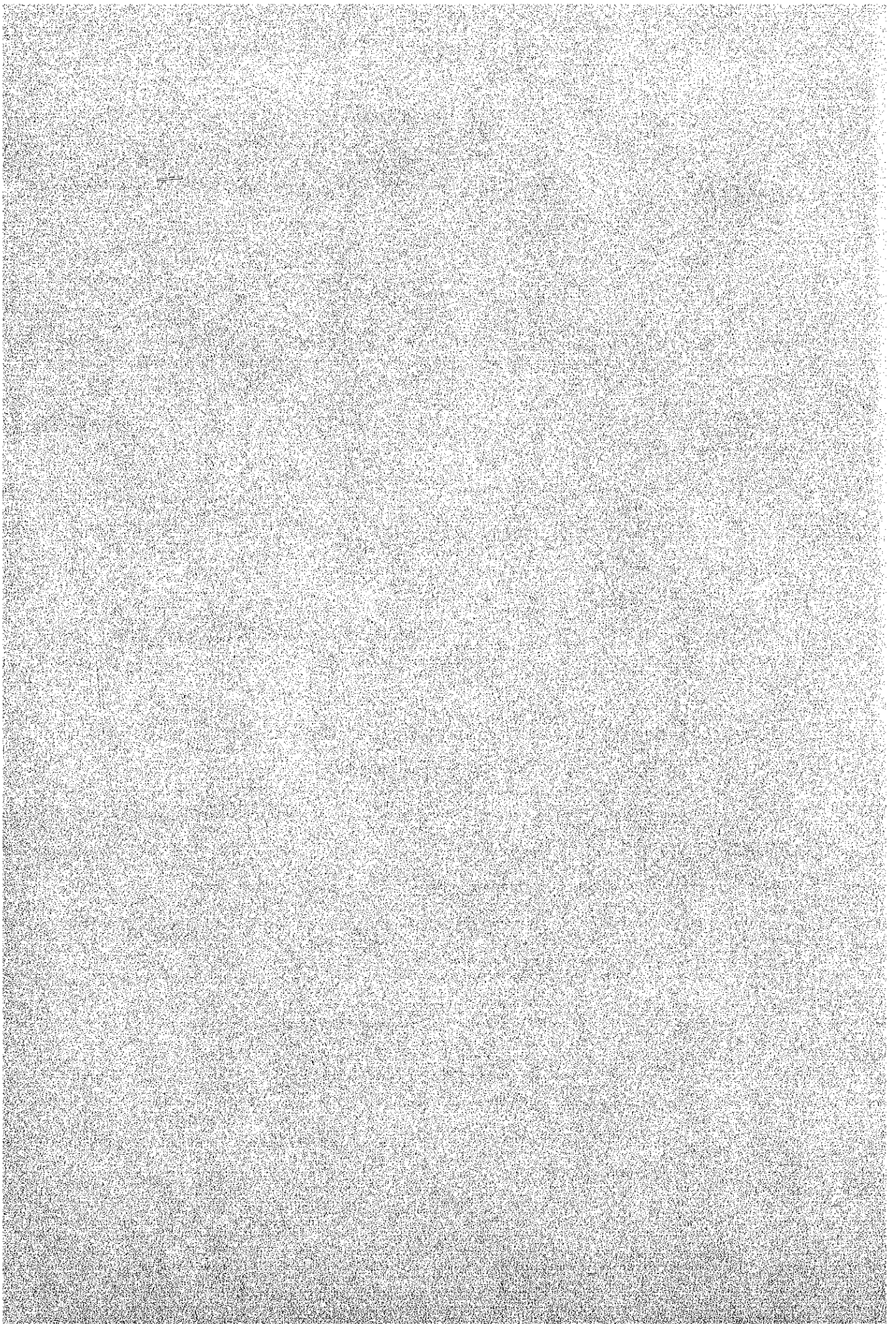
11. AUDIO - VISUAL, PRINTING

ITEM	NAME OF EQUIPMENT	SPECIFICATION	QUANTITY	PRIORITY	REMARK
1	35mm Camera	Asahi Pentax, K1000 with SMC, F1.2, 55mm lens - 35SLR's.	2	A	
2	8mm Camera	Cannon, 514-XL-S canosound with complete accessories	1	A	
3	35mm Camera	Canon F-1, 1.2 lens, other accessories to include macro lens	1	A	
4	Plain Paper Copier	Canon NP 1100, with accessories	1	A	
5	Cassette Recorder/Player	Stereo built-in microphone, AM/FM receiver, AC-220V, 60 cycles, DC-6-12 volts with stop, play, record, fast forward, rewind, cue and pause controls.	3	A	
6	Cassette Recorder/Player	Built-in microphone, AC-220V, 60 cycles, DC-6 volts with stop, play, record, fast forward, rewind, cue and pause controls.	6	A	
7	8mm Camera	CHINON SM with 8X variable power zoom plus microfocus complete with VC meter for precise manual, override and a special sound recording light, TTI viewfinder, built-in intervalometers for automatic time-lapse effects and 3 separate motors for reliability.	1	A	
8	Paper Copier Machine	DT-1200 Ricoh with complete double cassette system, chemical ingredients and other accessories.	2	A	
9	Dalite Projection Screens	3m x 4m	2	A	
10	Developing Pans, Enamel	23-can. x 32-can. for photographic work	6	A	
11	8mm Camera	ELMO 1000S Super 8-sound with 7-70mm f/1.8 power zoom with macro solid state amplifier, recording head and stabilize ALC and Manual fade-control mikes, and one AUX input earphone output, mike impedance range, 220 ohm, and other accessories.	1	A	
12	8mm Movie	ELMO GS-120, 60 cycles, 220 volts, with 200 watts halogen lamp; 12.5 - 25 mm f/1.1 or optional 25.50 mm f/1.4 lens, output of 10 watts per channel, optional sound playback and magnetic recording, VU level meter and tape recorder playback in sync., and other accessories.	4	A	
13	Film and Photographic Paper Drier	Roller type and motor controlled, 110/220 volts, 60 cycles.	1	A	
14	Overhead Projector	GAKKEN FAX, 60 cycles, 220 volts, complete with cord, and materials for motion and other accessories.	2	A	
15	Stencil Cutter	GAKKEN FAX 708 Solid State Electronic, 220 volts, 60 cycles	2	A	
16	Myriagraph Rotary Duplication Machine	Horri, 220 volts, with COM electric operated.	3	A	
17	Intercom	Telephone type large way intercom, 20 substation capacity, transistorized, buzzer and lamp calling system, two-wire system, AC 220V	1	A	
18	35mm Camera	Minolta 110 Zoom SLR with 25-50 mm telephoto-electronic shutter electronic flash and other accessories.	1	A	
19	Color Enlarger System	Minolta with Rokkor enlarging lenses; model 3 with easel changeable negative frame and other accessories.	1	A	
20	Transformer	To step down 220 volts, 1,000 watts to 110 volts outlets, mounting stand, 30" x 72" deep, panel board of 1/4 hay board, asbestos top of bench and tool shelf underneath, sliding door, mounted on heavy duty caster wheels.	1	A	
21	Refrigerator	Hitachi, 6 cu.ft., 220 volts for the storing of sera solutions and vaccines and other medicines.	1	A	
22	Movie Projector	Sanyo Sound 700, 60 cycles, 220 volts, ALC recording VU level meter and tone control, 10 watts amplifier power, sound-on-sound control of 18 and 24 fps, forward and reverse powered, 15-25 mm f/14 zoom lens and 100 watts halogen lamp.	1	A	

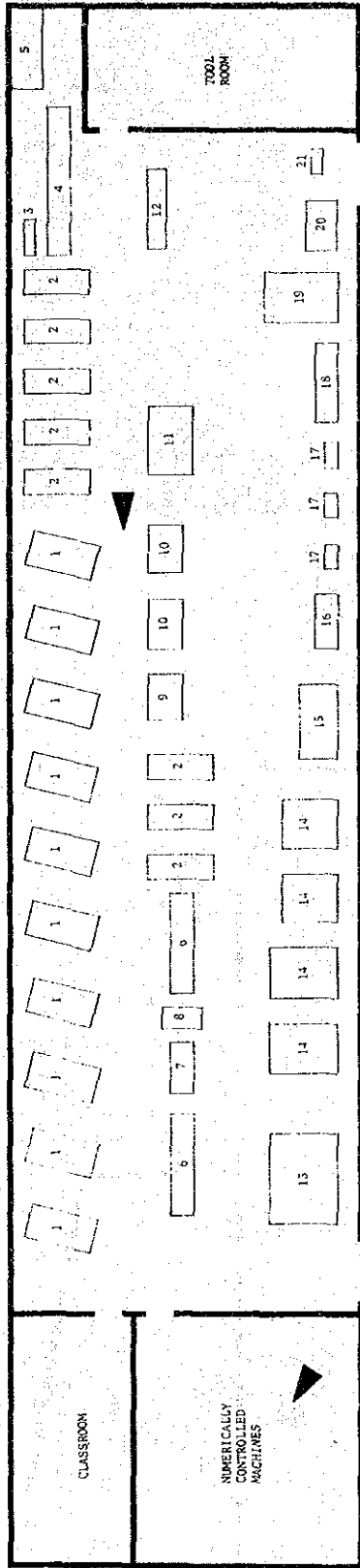
ITEM	NAME OF EQUIPMENT	SPECIFICATION	QUANTITY	PRIORITY	REMARK
23	Video System	CCTV, Sony, complete with three (3) cameras, video-cassette recorder, TV monitors, sound mixer, vision mixer, microphones, earphones, cords, cables, black tapes and other accessories.	1	A	
24	Strobe	Toshiba ES-7 with automatic sensor and other accessories with 110-220 volts or convertible to battery power.	2	A	
25	Transformer	Step down (220-110) 1,000 watts with dial amperages and voltage meters.	2	A	
26	Slide Projector	Roulette/magazine feeds, combination manual/automatic with remote control, automatic focus, 220V, 60 cycles.	6	A	
27	TV Camera	Closed-circuit T.V., TN-100A, with video monitor, TX-3V video tape recorder, Toshiba closed circuits TV	1	A	
28	Tape Recorder	Three Head Stereo, Sony, TC-366 with complete accessories, 60 cycles, 220 volts	2	A	
29	Tape Recorder	Table type, stereo set with accompanying to blank tape and other accessories (wireless microphone and other extension gadgets) Sony Brand	3	A	
30	Tape Recorder	Portable, AC-DC operated with separate speakers, wireless microphone, extension cords, etc., convertible to 110-220 volts power, Sony brand provided with a dozen of blank tapes.	6	A	
31	Plain Paper Copier	U-Bix #3150205 with table and other accessories.	1	A	
32	Stereo Receiver	AM/FM, Solid State, 260-watts, Kenwood, KR-6160, 220 volts, with accompanying matching Kenwood 26-watts 5WV, 6-speakers system and 2 pcs. matching microphone.	1	A	
33	Stereo Turn Table	Kenwood Belt-Driven KP-2022 - a 4-pole synchronous motor power, at speeds of 33 $\frac{1}{3}$ and 45 rpm, with a 12-inch solid-die cast aluminum alloy tape turntable.	1	A	
34	Composing Machine	IEM, complete accessories.	1	A	
35	Process Camera	DS C-24-D (w/standard and optional equipment)	1	A	
36	Temperature-Controlled Sink	TC-26	1	A	
37	Sink-Top Light Table	DSL-3-D	1	A	
38	Plate Coating Machine	DS W-5-G	1	A	
39	Plate Drying Cabinet	IS D-2-G	1	A	
40	Light Table	DSL-1	4	A	
41	Vacuum Printing Frame	DSP-8-Q	1	A	
42	Film Drying Cabinet	DSS-24-D	1	A	
43	Plate Graining Machine	DS UNICORN	1	A	
44	Densitometer	DSDM-251	1	A	
45	Offset Proof Press	CIROMAPROOF, DSP, 111-F	1	A	
46	Automatic Film Processor	Logescreen, DSLD-240-D	1	A	
47	Vacuum Printing Cabinet	Film and paper, DSP-6-D	1	A	
48	One-Color Offset Press	25" x 38", AKIYAMA Super Ace 38	1	A	
49	Two-Color Offset Press	25" x 38", AKIYAMA Hi-Ace 226	1	A	
50	One-Color Small Offset Press	RYOBI KR-430, KR-270	2	A	
51	Automatic Paper Cutter	39" blade, Magic Eye	1	A	
52	Hand Paper Cutter	27" blade	1	A	

ITEM	NAME OF EQUIPMENT	SPECIFICATION	QUANTITY	PRIORITY	REMARK
53	Folding Machien	ORISTAR 565-2K	1	A	
54	Book Stitcher	Sidewire and saddle-wire stitching	1	A	
55	Book Presser	7" x 22" (50-book capacity)	1	A	
56	Gold-Stamping Machine	w/accessories	1	A	
57	Contact Screens	Magenta Contact, all angles	1	A	
58	Contact Screens	Grey Contact, all angles	1	A	
59	Crossline Glass Screen	133-line	1	A	
60	Crossline Glass Screen	120-line	1	A	

I-3 既設訓練實習棟配置図



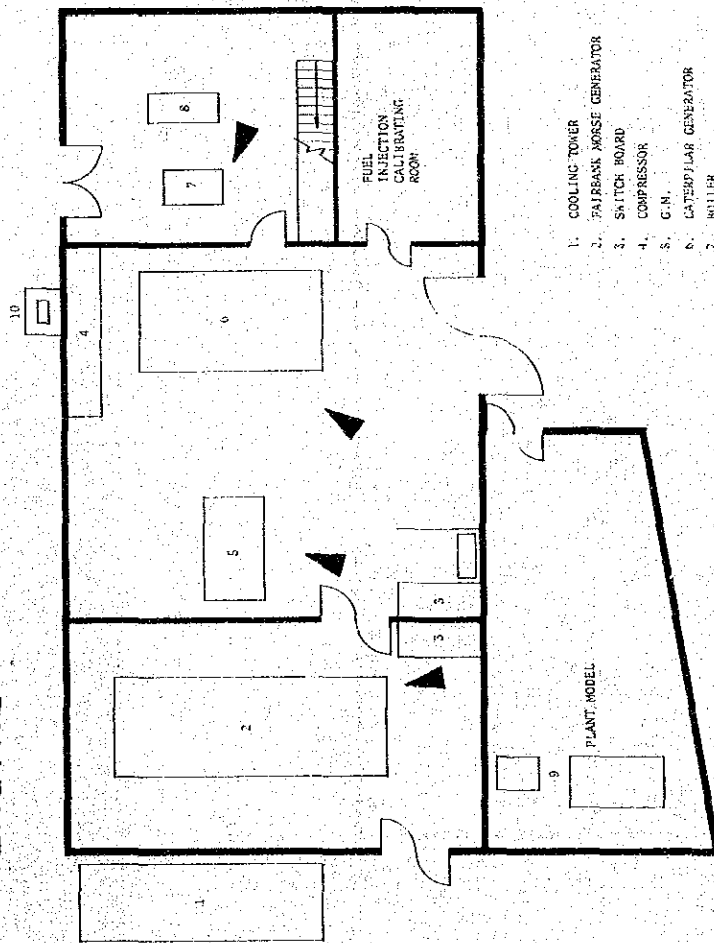
MACHINE



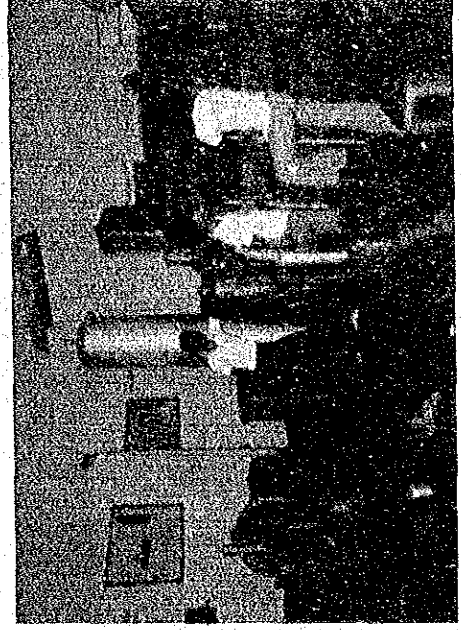
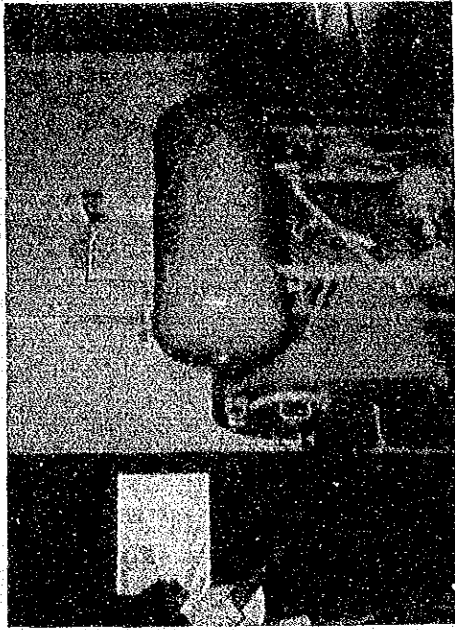
- | | |
|------------------------------|--------------------------|
| 1. LATHE | 12. HYDRAULIC PRESS |
| 2. SOUTH BEND LATHE | 13. METAL BAND SAW |
| 3. GRINDER | 14. SHAPER |
| 4. POWER LATHE | 15. RADIAL DRILL PRESS |
| 5. MAIN SWITCH | 16. SLOTTER MACHINE |
| 6. LAY-OUT TABLE | 17. DRILL PRESS |
| 7. SCREW THREADING MACHINE | 18. CYLINDRICAL GRINDER |
| 8. TORRETT LATHE MACHINE | 19. PLANER MACHINE |
| 9. TOOL & CUTTER GRINDER | 20. BORING METAL MACHINE |
| 10. MILLING MACHINE | 21. POWER JACKS |
| 11. VERTICAL MILLING MACHINE | |

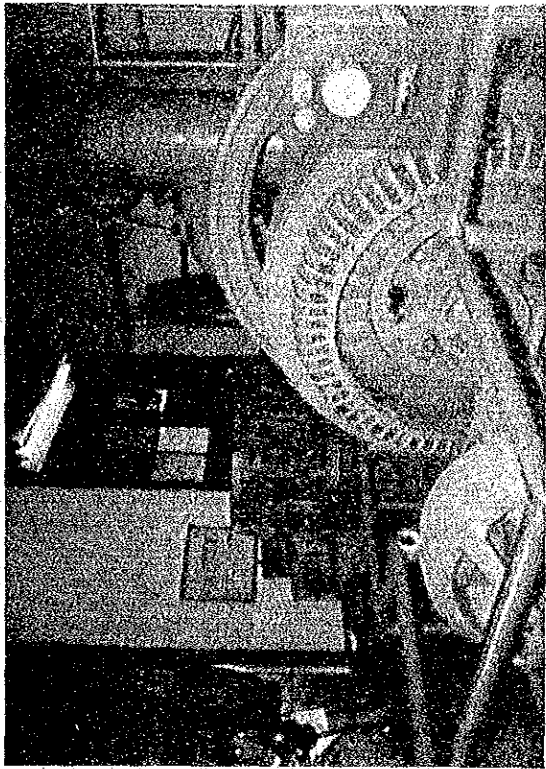


ENGINE

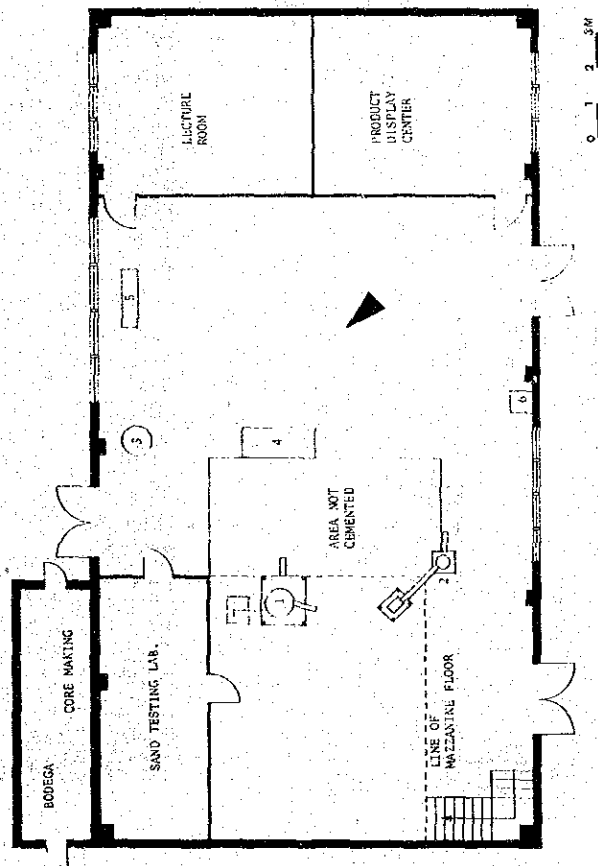


- 1. COOLING TOWER
- 2. FAIRBANK MORSE GENERATOR
- 3. SWITCH BOARD
- 4. COMPRESSOR
- 5. C.M.
- 6. CATERPILAR GENERATOR
- 7. BELLER
- 8. DIESEL GENERATOR
- 9. HYDRAULIC LIFT EQUIPMENT
- 10. CHIMNEY

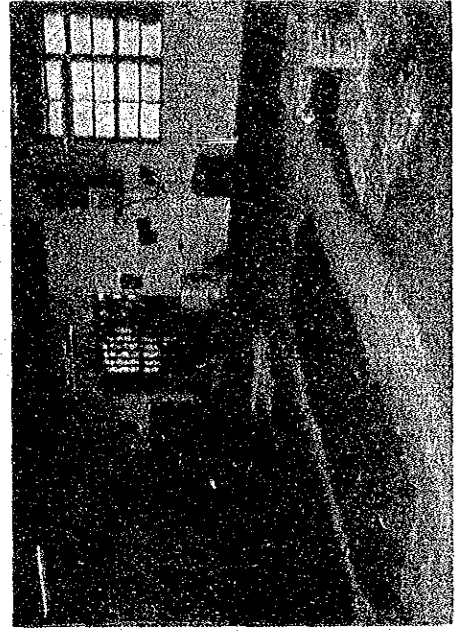




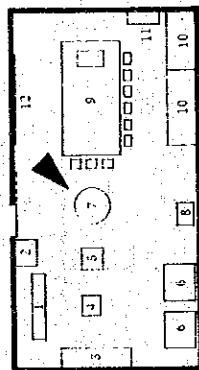
FOUNDRY



- 1. CUPOLA
- 2. CUPOLA
- 3. NON-FERROUS FURNACE
- 4. WORKING TABLE
- 5. GRINDING STONE
- 6. AIR COMPRESSOR



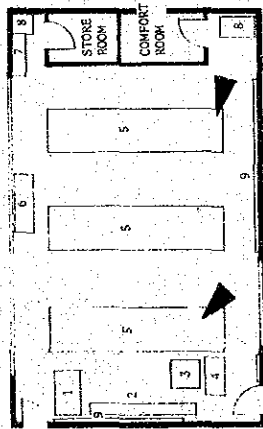
CIVIL



1. ABRASION MACHINE
2. INST. TABLE
3. CABINET
4. SIEVE SHAKER
5. SPECIAL BALANCE
6. UNIVERSAL TESTING MACHINE
7. FLOOR TABLE
8. OVEN
9. WORKING TABLE
10. CABINET
11. TANK
12. BLACK BOARD



ELECTRONICS



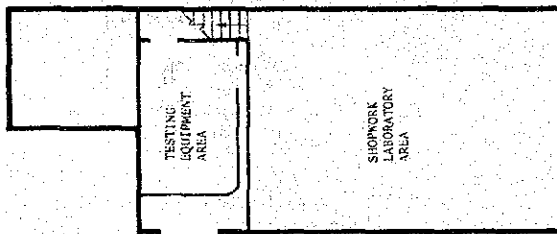
- 1. TEACHER'S TABLE
- 2. CABINET
- 3. TABLE
- 4. CABINET
- 5. WORKING TABLE
- 6. TABLE
- 7. CLEANING MATERIALS
- 8. PAUCET
- 9. BLACK BOARD



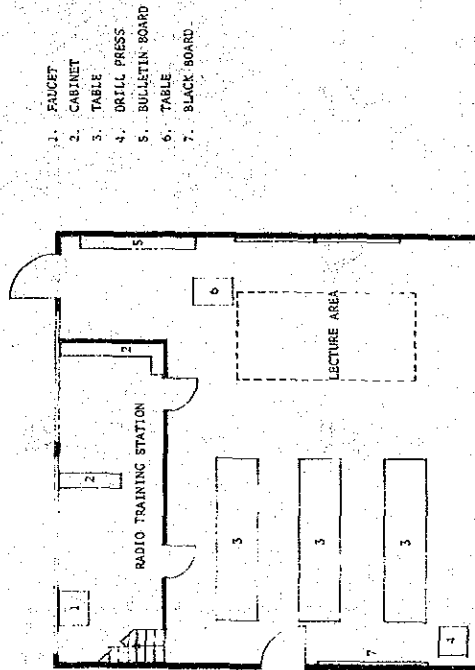
ROOM-179



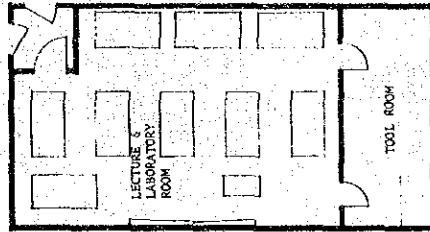
ELECTRONICS



ROOM-115



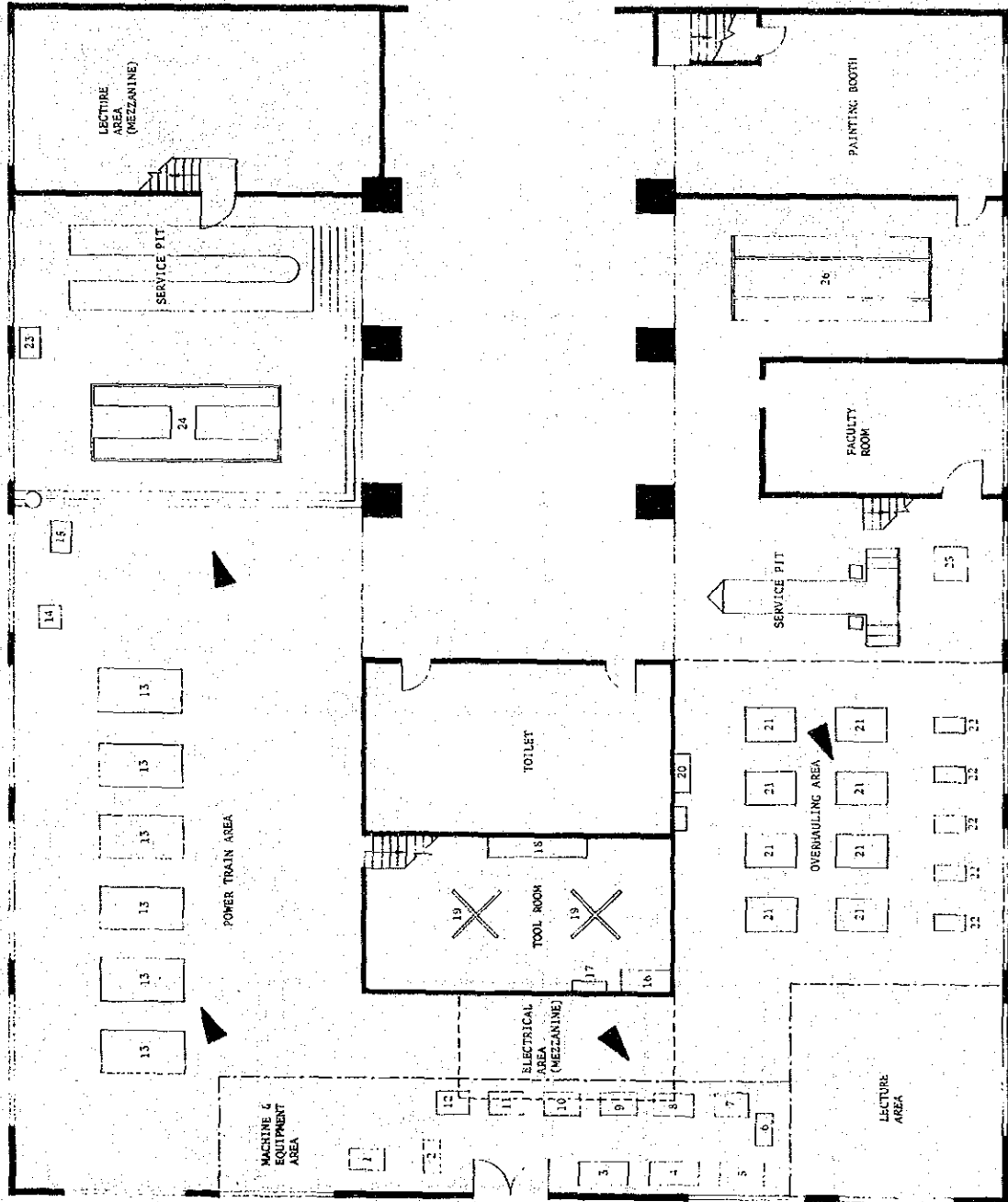
ROOM-116



ROOM-117

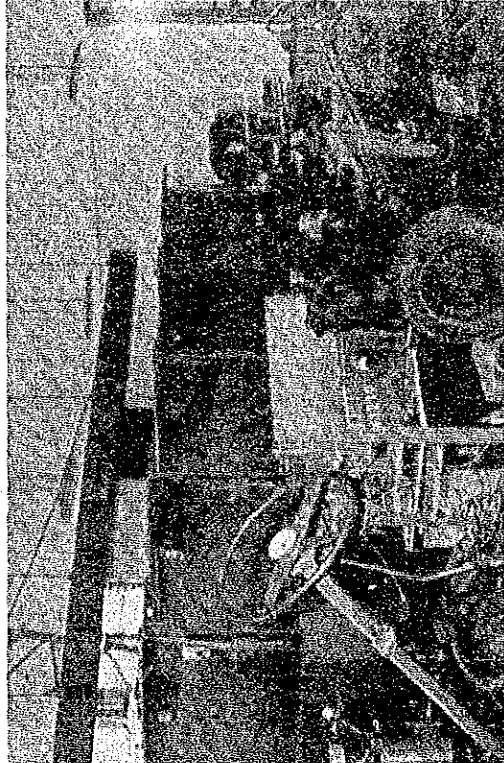
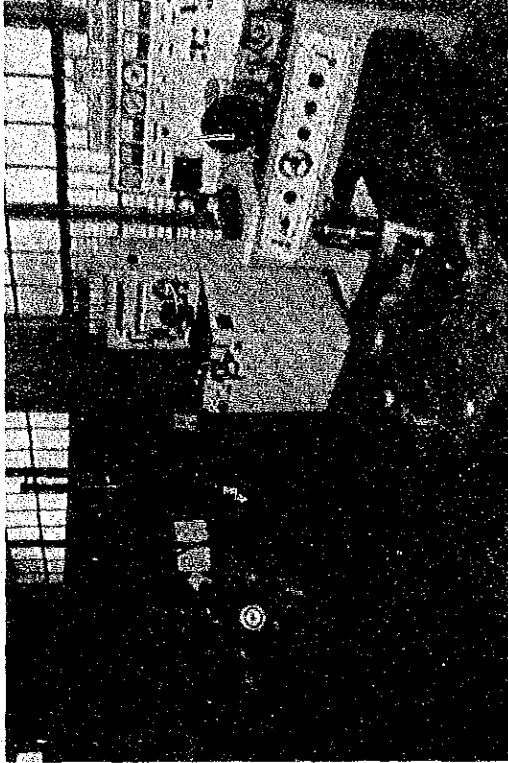


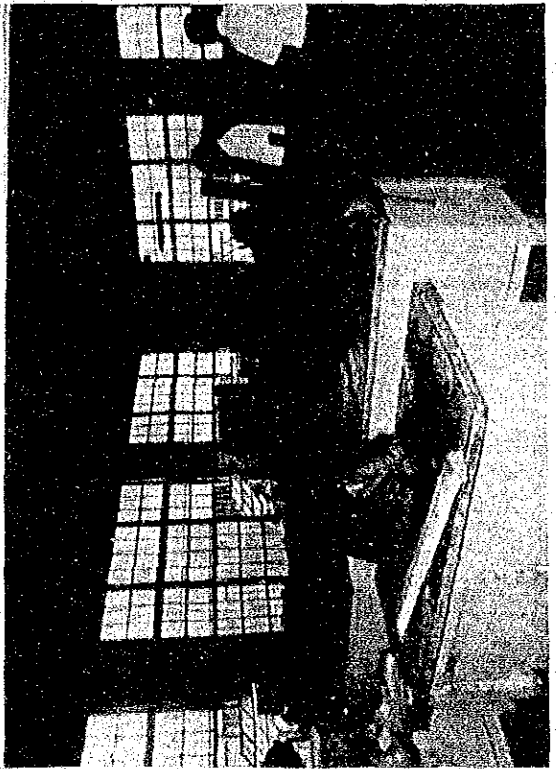
AUTOMOTIVE



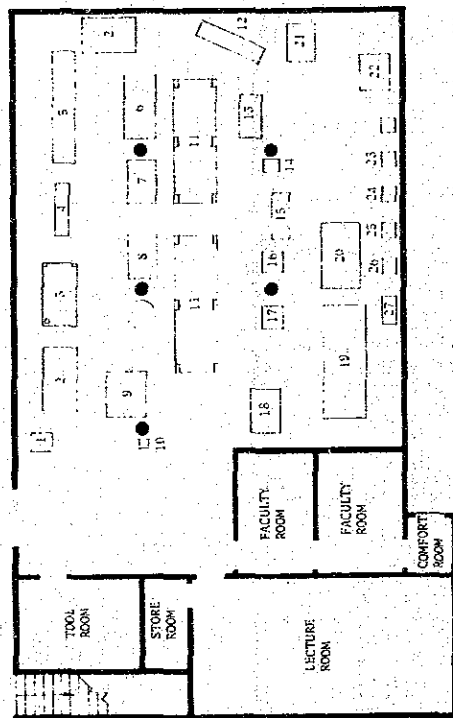
1. TIRE CHANGER
2. HYDRAULIC PRESS
3. BRASS DRUM LATHE
4. BATTERY DISCHARGE TESTER
5. JONING MACHINE
6. CON-ROD ALIGNER
7. PISTON PIN BEAMER
8. GENERATOR-REGULATOR TESTER
9. ENGINE ANALYZER
10. VALVE FACE GRINDER
11. RIVETING MACHINE
12. BRAKE LINDING GRINDER
13. INSTRUCTIONAL VEHICLES
14. GRINDER
15. WELDER
16. WHEEL ALIGNMENT TESTER
17. WHEEL BALANCER
18. UNIVERSAL TEST BENCH
19. ALTERNATOR DIODE TESTER
20. BATTERY TESTER
21. AMPHETER-VOLTMETER
22. VACUUM AND FUEL PUMP TESTER
23. SPARK PLUG AND BATTERY TESTER
24. BASIC TOOLS PANEL BOARD
25. AIR COMPRESSOR
26. WORKING TABLES
27. INSTRUCTIONAL ENGINES
28. DRILL PRESS
29. AUTO. LIFT
30. OXYACETYLENE
31. AUTO. LIFT







SHEET METAL

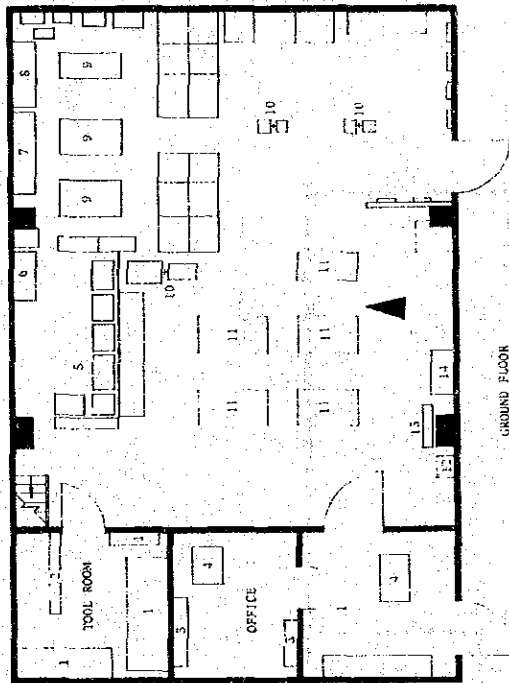


1. READING MACHINE
2. TABLE
3. TABLE
4. CONNICE BRAKE
5. STANDARD HAND BRAKE
6. RING & CIRCLE SHEAR
7. CONN. BRAKE & FOLDER
8. SLIPROLL FORMING
9. SQUARING SHEARS
10. CUTTER
11. TABLE
12. LATHE MACHINE
13. LOCK MACHINE
14. GRINDER
15. BAR POWDER
16. SPOT WELD
17. DRILL PRESS
18. SIBBLER
19. TABLE
20. FORMING DEVICES
21. WELDING MACHINE
22. TABLE
23. BEADING
24. CRIMPING & BENDING
25. TURNING MACHINE
26. BURNING MACHINE
27. DOUBLE SEAMER

ELECTRICAL

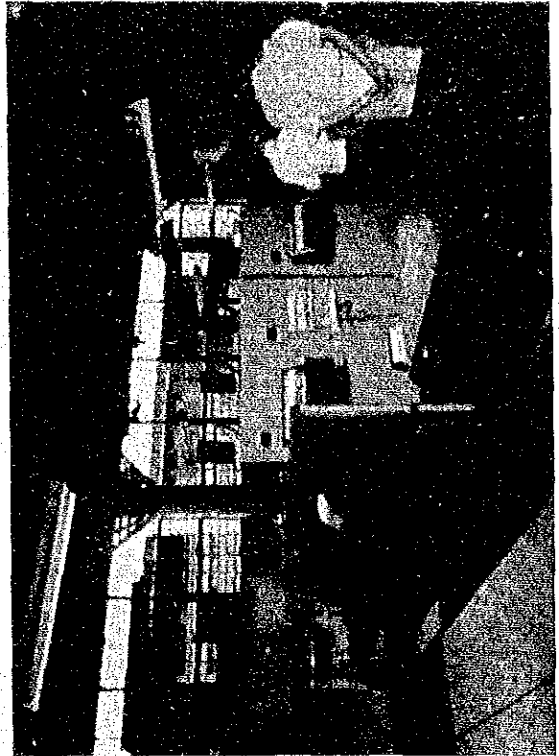


SECOND FLOOR

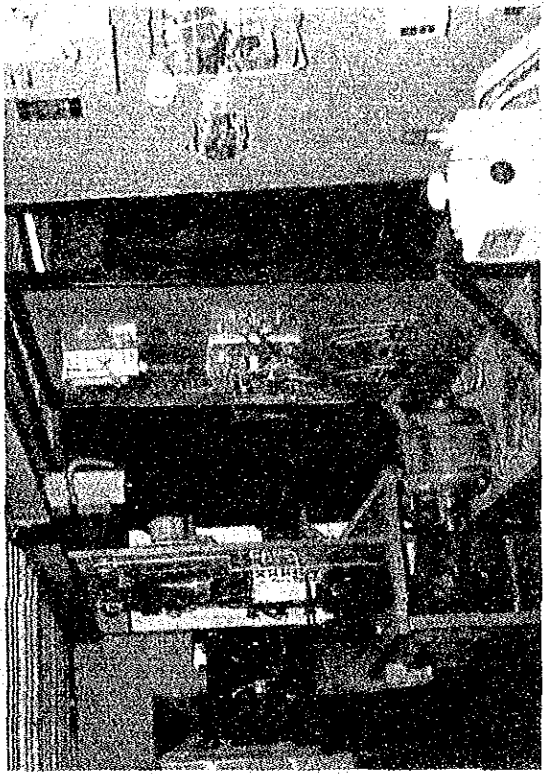
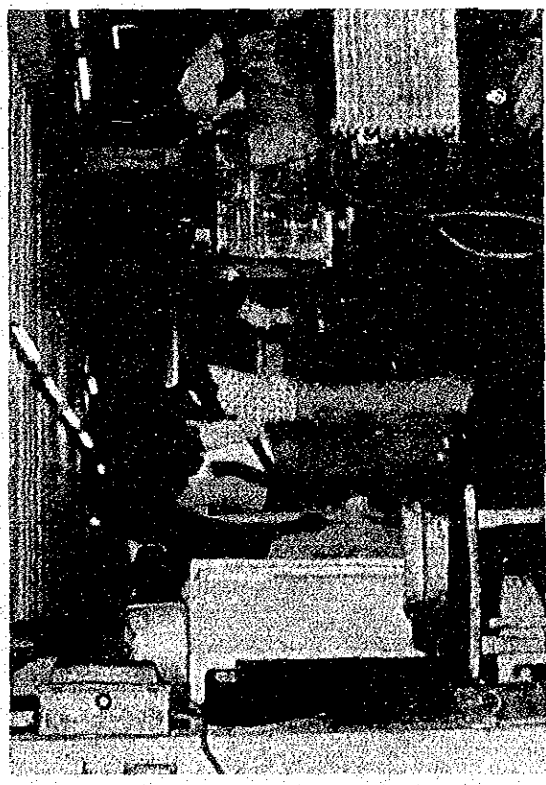
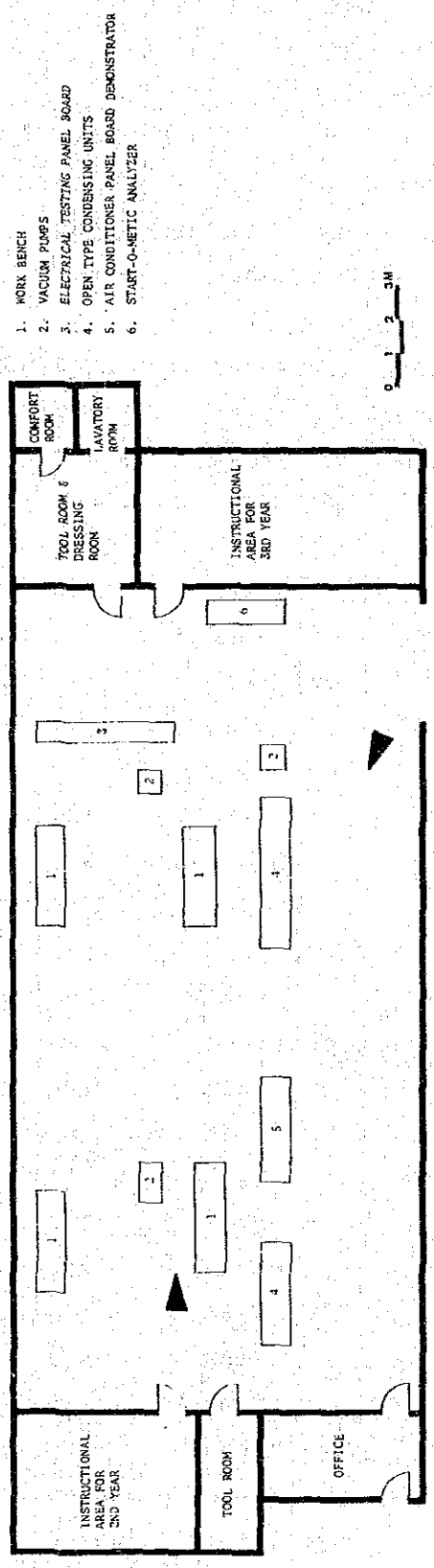


GROUND FLOOR

- 1. OPEN SHELF
- 2. CABINET
- 3. SHELF
- 4. TABLE
- 5. WASHING MACHINE AND DRYER
- 6. CABINET
- 7. DISPRAY CABINET
- 8. INSTRUMENT CABINET
- 9. TABLE
- 10. G. M.
- 11. BENCH
- 12. CABINET
- 13. GRINDER
- 14. DRILL PRESS



REFRIGERATION AND AIR CONDITIONING



II 建設資材単価表

マニラ、日本の建設資材単価表

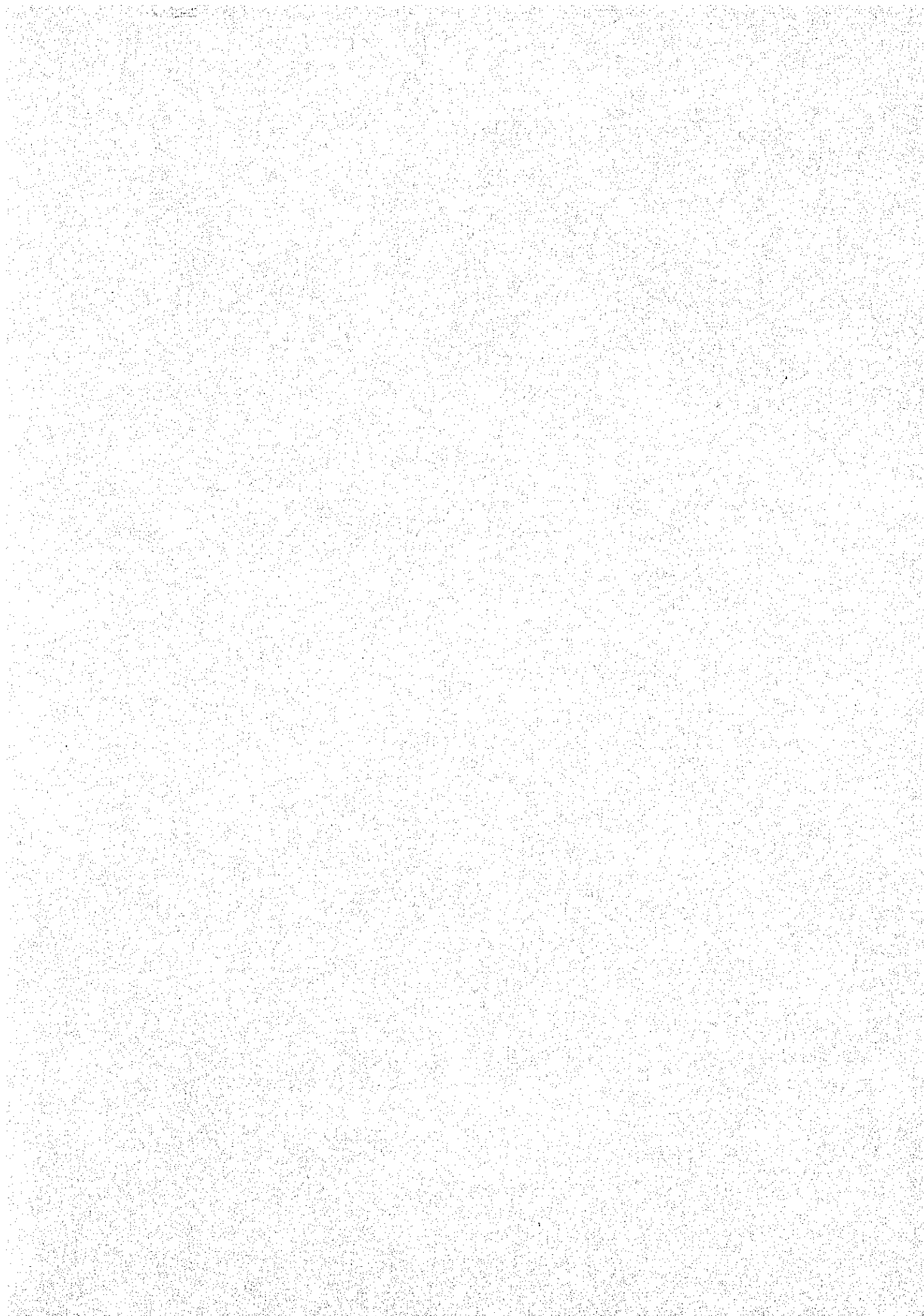
(1-ペソ=28円とする)

資材名称	マニラ		日本		備考
	単位	単価	単位	単価	
建築用資材					
セメント		円		円	
ポルトランドセメント	1袋	560	1袋	480	1袋40Kg
白セメント	"	1,950	"	1,000	"
鉄筋(材料)	ton	150,000	ton	65,000	
" 加工組立	"	32,000	"	40,000	
コンクリート					
無筋コンクリート(140Kg/cm ³)	m ³	10,000	m ³	13,500	材工共
鉄筋コンクリート(180Kg/cm ³)	"	11,500	m ³	14,000	"
" (210Kg/cm ³)	"	12,500	"	15,000	"
型 枠	m ²	1,100	m ²	2,800	"
川 砂	m ³	1,800	m ³	2,800	
砕 石	"	1,800	"	3,000	
コンクリートブロック	ケ	56	ケ	97	150×200×400
レンガ	m ²	4,800			材工共
堀削(普通土)	m ³	600	m ³	750	
" (アドベ)	"	800			
埋戻し(手間のみ)	"	400	m ³	750	
残土処分	"	1,000	"	700	
敷砂利(150%厚)	m ²	500	m ²	975	材工共
モルタル金ゴテ仕上	"	600	"	2,100	"
現研ギテラソー	"	3,500	"	7,500	"
ビニールタイル	"	1,100	"	1,300	"
セラミックタイル	"	2,400	"	5,200	"
屋根鉄板葺	"	1,100	"	2,400	木造下地別 (カラー)
大理石壁(フィリピン産)	"	6,000			
ガラス(3%厚)	"	2,200	m ²	2,300	材工共
" (5%厚)	"	3,400	"	4,800	"
オイルペイント塗(内部)	"	330	"	950	3回塗
" (外部)	"	280	"	950	"
アスファルト防水(屋根)	"	2,000	"	2,800	
木製ドア(枠共)	ケ	24,000	ケ		900×2,100
鋼製ドア(")	"	30,000	"	130,000	900×2,100
"	m ²	10,000	m ²	60,000	

資 材 名 称	マニラ		日 本		備 考
	単 位	単 価	単 位	単 価	
岩綿吸音板システム天井	m ²	3,000	m ²	4,000	
ベニヤ(ラワン、普通)					
6%×4'×8'	枚	1,000	枚	1,350	
12%×4'×8'	"	2,000	"	2,770	
ベニヤ(ナラ、普通)					
6%×4'×8'	枚	1,730			
12%×4'×8'	"	2,600			
耐水ベニヤ					
6%×4'×8'	枚	1,200	枚	1,500	
12%×4'×8'	"	2,600	"	3,000	
労 賃					
一般労働者(一般)	日給	540			
(親方)	"	865			
大工(一般)	"	650			
(親方)	"	1,010			
鉄筋工(一般)	"	650			
(親方)	"	1,010			
コンクリート工(一般)	"	650			
(親方)	"	1,010			
左官工(一般)	"	650			
(親方)	"	1,010			
ペンキ工(一般)	"	695			
(親方)	"	1,160			
溶接工(一般)	"	695			
(親方)	"	1,160			
杭打操作工(一般)	"	1,010			
(親方)	"	1,585			
タイル工(一般)	"	650			
(親方)	"	1,010			
配管工(一般)	"	720			
(親方)	"	1,300			
電気工(一般)	"	720			
(親方)	"	1,300			
製図工	月	34,600			
現場監督者	"	57,550			
タイピスト	"	23,050			
運転手	"	28,800			

資 材 名 称	マニラ		日 本		備 考
	単位	単 価	単位	単 価	
電気設備資材					
変圧器					
6KV 单相 50 KVA	台	387,800	台	172,000	
" 75 KVA	"	541,800	"	228,000	
" 150 KVA	"	809,200	"	370,000	
プラスチック電線					
1.6 %	m	20	m	12	
2.0 %	"	28	"	18	
5.5 %	"	55	"	33	
プラスチックケーブル					
2.0 % 3芯	m	314	m	93	
5.5 % "	"	402	"	166	
テウトレットボックス中浅型	個	260	個	145	
電線管					
1/2"	m	145	m	153	
3/4"	"	196	"	196	
1"	"	289	"	269	
1 1/2"	"	448	"	397	
2"	"	550	"	574	
タンブラ・スイッチ					
10 A (片切)	個	131	個	83	
10 A (3路)	"	171	"	150	
コンセント					
10 A 1口	個	132	個	65	
照明器具					
蛍光灯 トラフ 20W×1	台	1,920	台	1,410	
" 20W×2	"	2,640	"	3,640	
" 40W×1	"	3,000	"	3,990	
蛍光灯 反射笠付 20W×1	"	3,370	"	1,690	
" 40W×1	"	4,210	"	3,360	
" 40W×2	"	4,770	"	6,400	
自家用発電機					
ジーゼルエンジン 100 KVA	1 セント	5,800,000	1 セント	4,200,000	

資 材 名 称	マニラ		日 本		備 考
	単位	単 価	単位	単 価	
給排水・換気設備用資材					
配 管					
亜鉛鍍鋼管					
1"	m	505	m	322	
2"	"	1,098	"	678	
4"	"	3,031	"	1,670	
銅 管					
1"	"	1,218	"	485	
2"	"	3,528	"	1,540	
PVC給水管					
排水鋳鉄管					
2"	個	2,024	個	4,110	
4"	"	3,444	"	5,140	
6"	"	7,364	"	7,550	
バルブ(125LBS)					
25%	個	1,946	個	949	
50%	"	8,848	"	2,535	
100%	"	34,160		21,060	
タクト					
板 厚					
1.0%	m ²	1,470	m ²	903	
0.8%	"	1,238	"	778	
0.6%	"	1,143	"	604	
タクト加工費	0.8%	m ²	3,752	m ²	5,140
保 温 材					
GW保温板					
25% 24kg/m	m ²	840	m ²	305	
50% 32kg/m	"	2,520	"	590	
GW保温筒					
25% 25 A	m	725	m	200	
25% 50 A	"	1,044	"	340	
25% 100 A	"	1,669	"	425	



JICA