

**Report on the Basic Design Study  
for the Educational Development Project  
in  
Western Samoa**

**FEBRUARY 1981**

**JAPAN INTERNATIONAL COOPERATION AGENCY**

A  
1  
L  
S  
VRY

S D S  
[REDACTED]  
81-8



JICA LIBRARY



1043501E4J



Report on the Basic Design Study  
for the Educational Development Project in Western Samoa

February 1981

JAPAN INTERNATIONAL COOPERATION AGENCY

国際協力事業団	
受入 月日 '84. 3. 19	211
登録No. 01609	24
	SDS

P R E F A C E

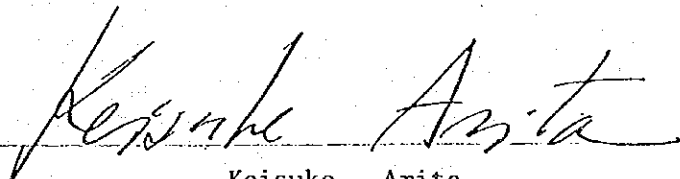
In response to the request of Government of Western Samoa, the Japanese Government decided to conduct a study on the Educational Development Project and entrusted the study to the Japan International Cooperation Agency. The JICA sent to Western Samoa a basic design study team headed by Mr. Kenji Kumagishi from 1st to 22nd October, 1980.

The team had discussions with the officials concerned of the Government of Western Samoa and conducted a field survey in Apia, Fagamalo and Salelologa. After the team returned to Japan, further studies were made and the present report has been prepared.

I hope that this report will serve for the development of the Project and contribute to the promotion of friendly relations between our two countries.

I wish to express my deep appreciation to the officials concerned of the Government of Western Samoa for their close cooperation extended to the team.

February, 1981.

A handwritten signature in cursive script, reading "Keisuke Arita", written over a horizontal line.

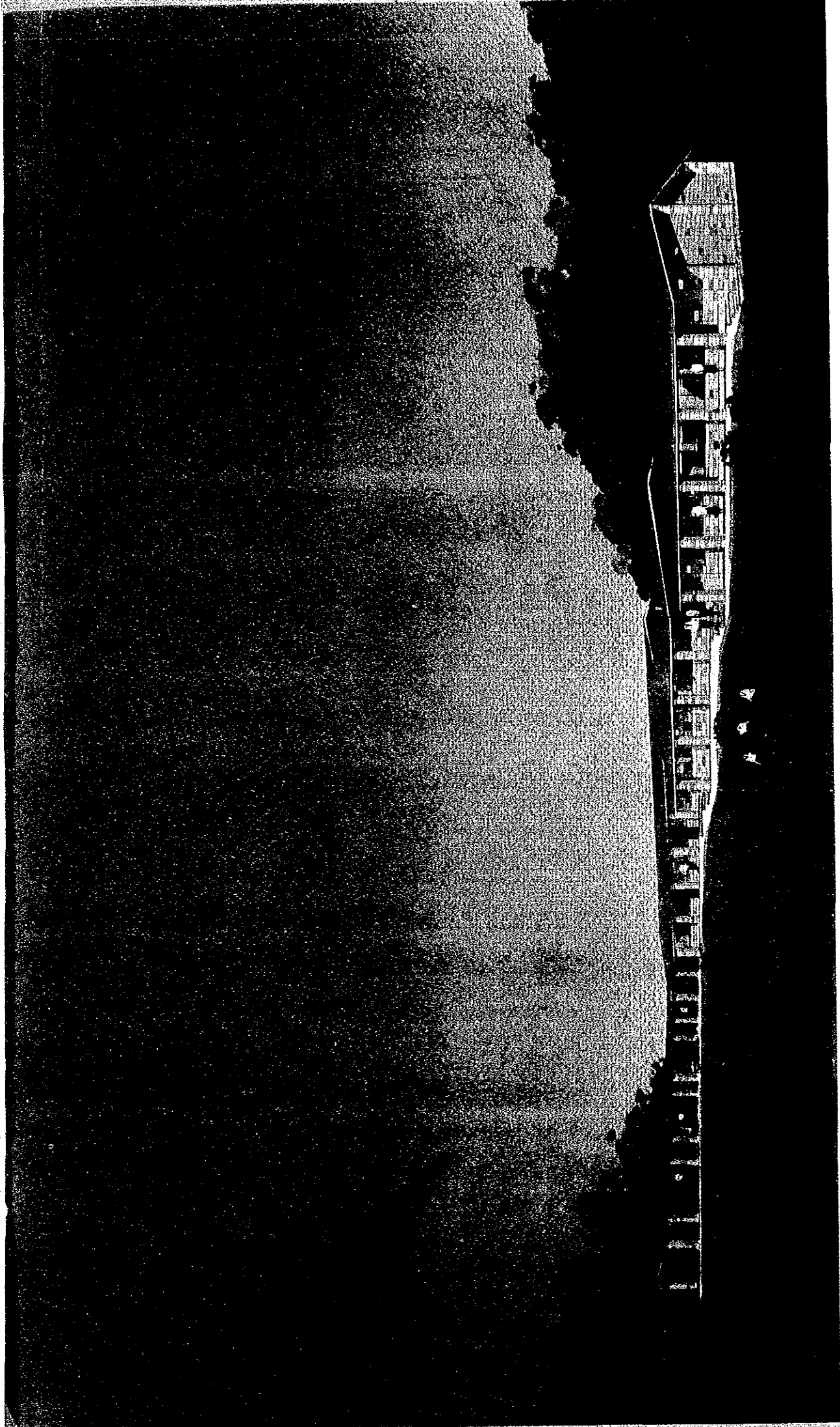
Keisuke Arita

President

Japan International Cooperation Agency

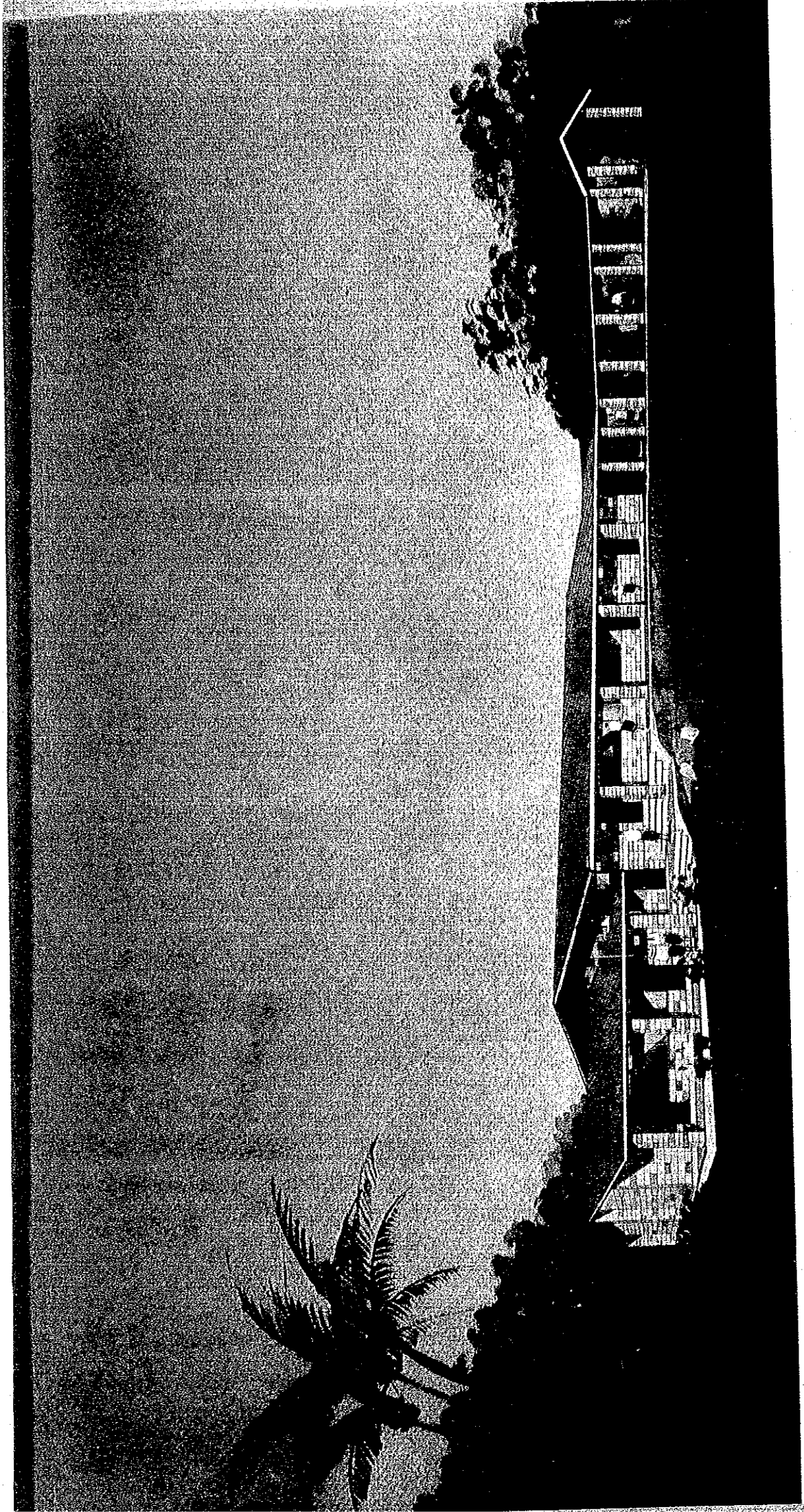






NEW BUILDING OF VAIPOULI COLLEGE

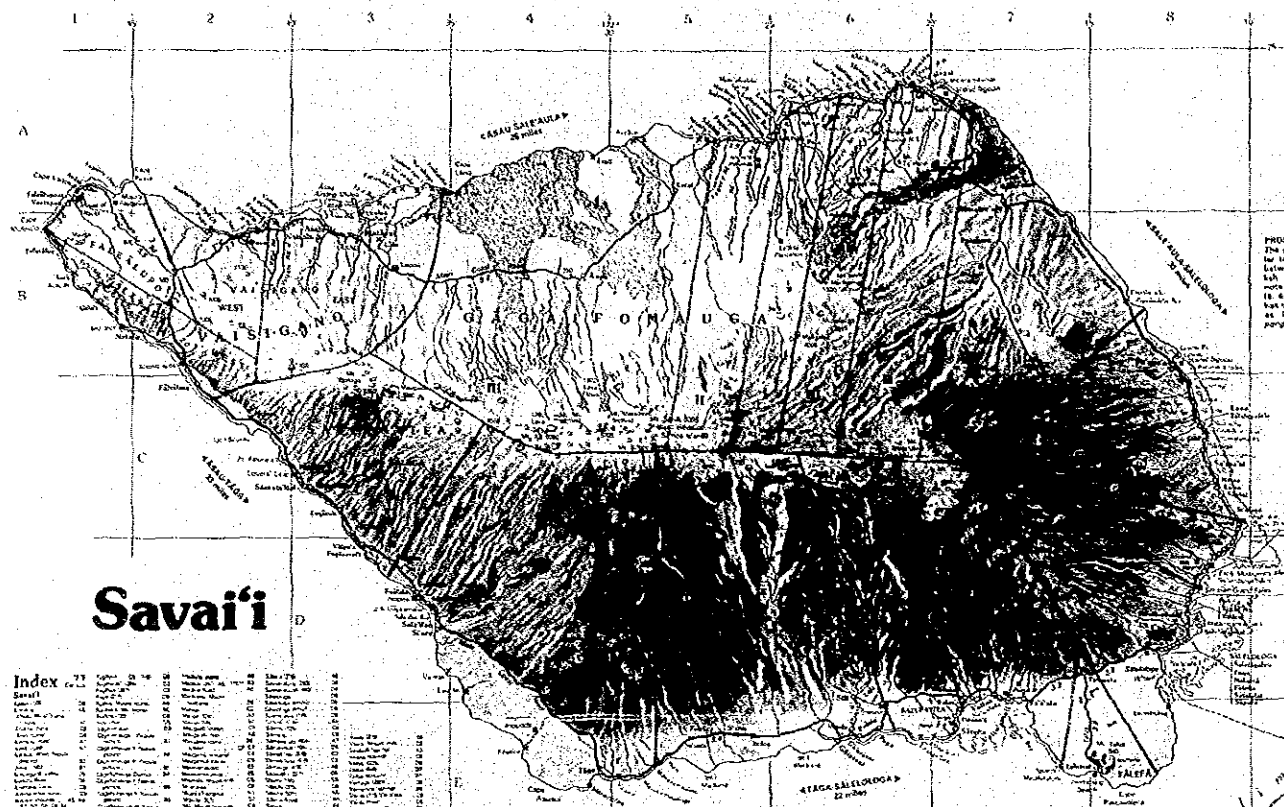




NEW LABORATORY OF AVELE COLLEGE





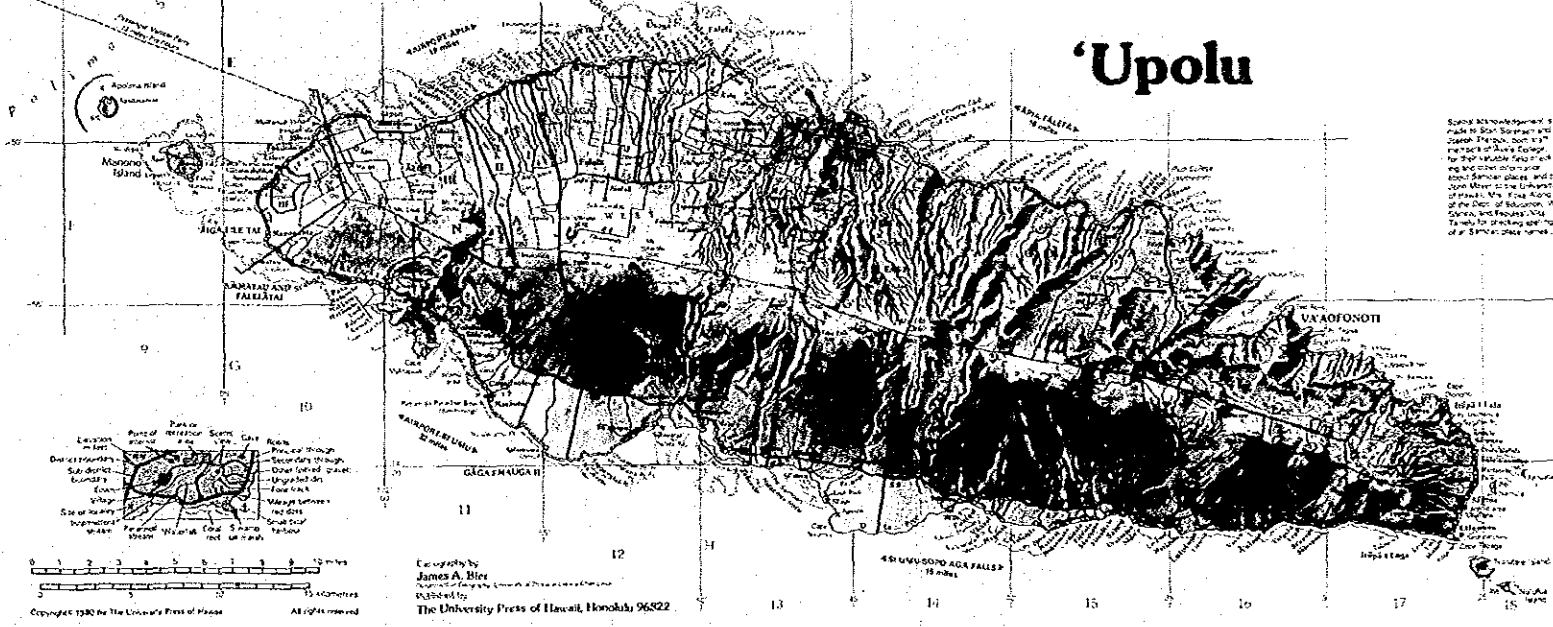
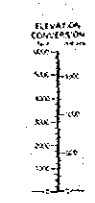


# Savai'i

**Index**

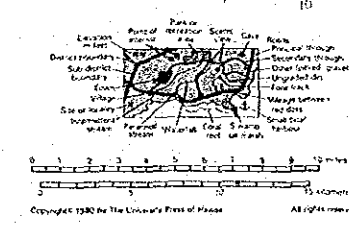
1	2	3	4	5	6	7	8
9	10	11	12	13	14	15	16
17	18	19	20	21	22	23	24
25	26	27	28	29	30	31	32
33	34	35	36	37	38	39	40
41	42	43	44	45	46	47	48
49	50	51	52	53	54	55	56
57	58	59	60	61	62	63	64
65	66	67	68	69	70	71	72
73	74	75	76	77	78	79	80
81	82	83	84	85	86	87	88
89	90	91	92	93	94	95	96
97	98	99	100				

**PRONUNCIATION**  
 The glottal stop, 'h' as in 'h' in the English word 'hollow', is used in the Hawaiian language. Between the 'h' in English and the glottal stop, the letter 'h' has the sound of 'h' as in the English word 'hollow'. The letter 'h' has the sound of 'h' as in the English word 'hollow'.



# 'Upolu

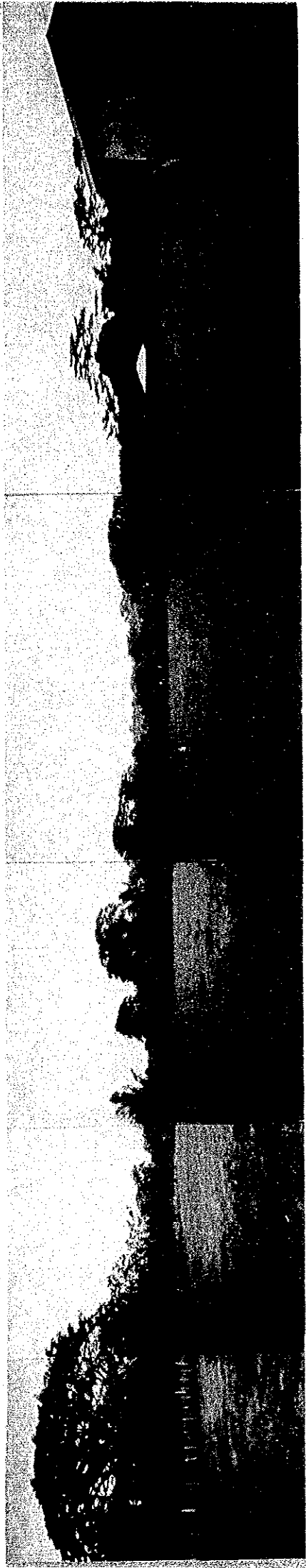
Some knowledge of the Hawaiian language is necessary to understand the Hawaiian names of places and things. The Hawaiian language is a Polynesian language and is closely related to the other Polynesian languages. The Hawaiian language is a Polynesian language and is closely related to the other Polynesian languages.



# Western Sāmoa







Vaipouli College  
Site







Avele College  
Laboratory Site



## C O N T E N T S

### Summary

Chapter 1	Outline of Basic Design Study .....	3
1 - 1	Background and Circumstances of Project .....	3
1 - 2	Members of the Basic Design Study Team .....	5
1 - 3	Minutes .....	6
Chapter 2	Facilities to be Surveyed and Necessity of Upgrading Them .....	9
2 - 1	Vaipouli College .....	10
2 - 2	Avele College .....	12
2 - 3	Savaii Library at Salelologa .....	14
Chapter 3	Basic Design .....	19
3 - 1	Climate and Natural Conditions, etc., from Viewpoint of Architectural Design .....	19
3 - 2	Basic Policy of Design .....	20
3 - 3	Conditions of Site .....	22
3 - 3 - 1	Vaipouli College .....	22
3 - 3 - 2	Avele College .....	25
3 - 4	Site Planning .....	27
3 - 4 - 1	Vaipouli College .....	27
3 - 4 - 2	Avele College .....	27
3 - 5	Planning .....	28
3 - 5 - 1	Vaipouli College .....	28
3 - 5 - 2	Avele College .....	29
3 - 6	Sectional Planning .....	30
3 - 7	Selection of Method of Construction and Structural Planning .....	31
3 - 8	Facilities Planning .....	31
3 - 8 - 1	Water Supply Planning .....	32
3 - 8 - 2	Drainage Planning .....	32
3 - 8 - 3	Gas Fittings .....	32
3 - 8 - 4	Air Conditioning and Ventilation Planning .....	32

3 - 8 - 5	Lighting and Receptacles .....	32
3 - 8 - 6	Generator .....	33
3 - 9	Built-in Furniture Planning .....	33
3 - 10	Design Drawings .....	35
3 - 10 - 1	Vaipouli College .....	37
3 - 10 - 2	Avele College .....	43
3 - 11	Equipment Planning .....	49
3 - 12	Information Related to Construction .....	49
3 - 12 - 1	Local Conditions of Construction .....	49
3 - 12 - 2	Quantity of Principal Materials .....	50
3 - 12 - 3	Supply of Materials .....	51
3 - 12 - 4	Transportation .....	52
3 - 13	Program of the Construction Project of Western Samoa .	53
Chapter 4	Significance of This Project .....	57

#### APPENDICES

## S U M M A R Y

### 1. Background and Purpose of Project

Since independence in 1962, Western Samoa joined the British Commonwealth of Nations in 1970 and the United Nations in 1977. As a non-aligned nation, it seeks to promote world peace and friendship. In terms of internal administration, its policy is to promote agriculture and to preserve the traditional social status.

The main elements of government policy decisions in recent years have been the modernization of the country in order to adjust itself to international society and the enlargement of employment opportunities to cope with the recent growth of population. Various policies for realization of these aims are included in the Fourth Five-Year Plan which started in 1980.

With the background mentioned above, the Government of Western Samoa has requested a grant assistance for the Educational Development Project focusing on the improvement of educational facilities indispensable for the development of human resources in its own country.

The Project consists in the improvement of, as a Senior Secondary School, both facilities of the Vaipouli College and the Avele College and the supply of equipment to the both colleges.

The Vaipouli College and the Avele College are expected as a main institution for the development of human resources in an intermediate rank manpower.

### 2. Basic Design

The construction of buildings in the project is as follows:

#### 1) The Education Centre Building for the Vaipouli College

Features of structure: concrete block wall plus wooden truss roof, one-storied building, total floor area 676.26 m<sup>2</sup>, and roofed passage area 136.40 m<sup>2</sup>

- 2) The Building of Biology Laboratory and Projection Room for the Avele College

Features of structure: concrete block wall plus wooden truss roof, one-storied building, total floor area 295.44 m<sup>2</sup>, and roofed passage area 51.70 m<sup>2</sup>.

But the Government of Western Samoa should pay for land, land readjustment, and the supply of water and power.

The supply of equipment is as follows:

The Vaipouli College

- |                      |        |    |
|----------------------|--------|----|
| 1) Generator         | 65 KVA | 1  |
| 2) Manual Typewriter |        | 20 |

The Avele College

- |        |                      |   |
|--------|----------------------|---|
| 3) Bus | 41-passenger vehicle | 1 |
|--------|----------------------|---|

The Vaipouli College

- |        |                      |   |
|--------|----------------------|---|
| 4) Bus | 41-passenger vehicle | 1 |
|--------|----------------------|---|

### 3. Allotment and Schedule of Construction

The allotment of construction is, as shown in Basic Design, indicated in the scope of works on Japanese grant assistance concerning the construction of buildings, construction materials and equipment, but the Government of Western Samoa has a responsibility to provide with land, to readjust for land, to supply water and power. And the maintenance and management for all are paid for by the Government of Western Samoa after the termination of the assistance.

The schedule of construction (from Contract to Delivery) is divided into two items as shown in the Basic Design: the shortest period is eight months at Avele College and the longest one is ten months at Vaipouli College.

#### 4. Significance of this Project

The project is aimed at improving school facilities to cultivate human resources in Western Samoa in order to build intermediate rank manpower for achieving the self-reliance of their nation instead of many foreigners working in various practical fields in this country, and promoting the Rural Development Project focusing mainly on agriculture as a national basis, preserving their own characteristics social systems. It is indispensable for the self-reliance of Western Samoa to realize the project.

The realization of the present Educational Development Project is the most desirable in view of the importance of the development of human resources. Every article is presented with firm conviction that it will make a great contribution to Western Samoan growth and attainment of a deep friendship between our two countries.





CHAPTER 1 OUTLINE OF BASIC DESIGN STUDY



## CHAPTER 1 OUTLINE OF BASIC DESIGN STUDY

### 1 - 1 Background and Circumstances of Project

Since independence in 1962, Western Samoa joined the British Commonwealth of Nations in 1970 and the United Nations in 1977. As a non-aligned nation, it seeks to promote world peace and friendship. In terms of internal administration, its policy is to promote agriculture and to preserve the traditional social status.

The main elements of government policy decisions in recent years have been the modernization of the country in order to adjust itself to international society and the enlargement of employment opportunities to cope with the recent growth of population. Various policies for realization of these aims are included in the Fourth Five-Year Plan which started in 1980. However, laying aside the question of funds required, there is also a severe shortage of capable manpower of intermediate levels for satisfactorily implementing these policies.

Regarding education, the improvement of the primary and junior secondary schools is already well under way. A system of higher education for future leading personnel has also been established with the cooperation of New Zealand. The most important matter in education at present is to cultivate a large enough number of men of sufficient ability to manage the various business fields. Such personnel are urgently required by the present society. For this purpose, the Ministry of Education has introduced the necessary subjects to the curriculums of basic education and has set about the renovation of the Senior Secondary School system as well as the expansion of its facilities.

In addition, the Government of Western Samoa is promoting the Rural Development Programme as one of its essential policies. This programme is to develop agriculture in villages, and also to disperse the population to rural districts. Although the programme itself is to be carried out by each village, some projects such as improvement of the infrastructure and provision of various cultural facilities are to be done by the Government.

With this background in mind, the Japanese Government was requested to cooperate in the Educational Development Project.

The basic design study was conducted in response to the request of the Government of Western Samoa. The circumstances of this project are as follows:

The First Survey:

In April, 1980, the Government of Japan sent a survey team, to hold discussion with the Government of Western Samoa on the cooperation project of construction of educational facilities and dispatch of volunteers.

Visit of Japanese Ambassador to Western Samoa:

In June, 1980, Mr. Takashi Oyamada, Ambassador of Japan to New Zealand, visited Western Samoa to talk with Prime Minister Tupuola of Western Samoa. On that occasion, the Prime Minister discussed the possibility of constructing a college in Savaii Island and a primary school in the suburbs of Apia with Japanese cooperation.

Note Verbale of the Western Samoa High Commissioner's Office:

In the same month, a formal request was made via a Note Verbale sent to the Embassy of Japan in New Zealand by the Western Samoa High Commissioner's Office. The Government of Western Samoa requested Japanese grant aid for the construction or reconstruction of Vaipouli College and Avell College, and the construction of primary school buildings.

The Second Letter of Request:

When Prime Minister Tupuola visited Japan informally at the end of June, a detailed Application for Grant Assistance from JICA for Educational Development Projects was presented to the Government of Japan. The letter clarified the details of the request regarding the two colleges mentioned in the note verbale, as well as their background and necessity. However, the construction of primary school buildings was deleted and, in its place, construction of a Savaii Branch Library at Salelologa was added.

Formal Visit of Prime Minister Tupuola to Japan:

In September, 1980, the Prime Minister made an official visit to Japan and held discussions with Government Officials of Japan. He confirmed the final contents of request for the grant assistance to be extended by the Government of Japan. At the same time, he stressed the importance of agricultural development to his country and the necessity of expanding of agriculture - oriented educational facilities.

The Basic Design Study:

In response to the request of the Government of Western Samoa, the Government of Japan sent a Basic Design Study Team for the Western Samoa Educational Development Project from October 1 to 22, 1980.

1 - 2 Members of the Basic Design Study Team

The Japan International Cooperation Agency (JICA) organized the following basic design study team headed by Mr. Kenji KUMAGISHI (JICA) and sent it to Western Samoa to conduct basic design study of the Project.:

Mr. Kenji KUMAGISHI (Team Leader)	Head of the Planning Division Social Development Cooperation Department, Japan International Cooperation Agency.
Mr. Toshio NAKAMURA (Coordinator)	Staff Social Development Cooperation Department, Japan International Cooperation Agency.
Mr. Eiichi YABUMAE	Manager Ishimoto Architectural & Engineering Firm Inc.

Mr. Toshiro KAWADA            Manager  
Ishimoto Architectural & Engineering  
Firm Inc.

Mr. Yoshihisa OMURA        Staff  
Ishimoto Architectural & Engineering  
Firm Inc.

\* Ishimoto Architectural & Engineering Firm Inc. participated in  
The Basic Design Study.

1 - 3 Minutes

The study team had discussions with the relevant personnel of the Government of Western Samoa concerning the Educational Development Project and, after coming to an agreement, the minutes was signed between Mr. Kenji Kumagishi, leader of the Japanese study team, and Mr. Perefoti F. Tamati, Director of Education, Government of Western Samoa, at Apia, on October 10, 1980. (see appendix)