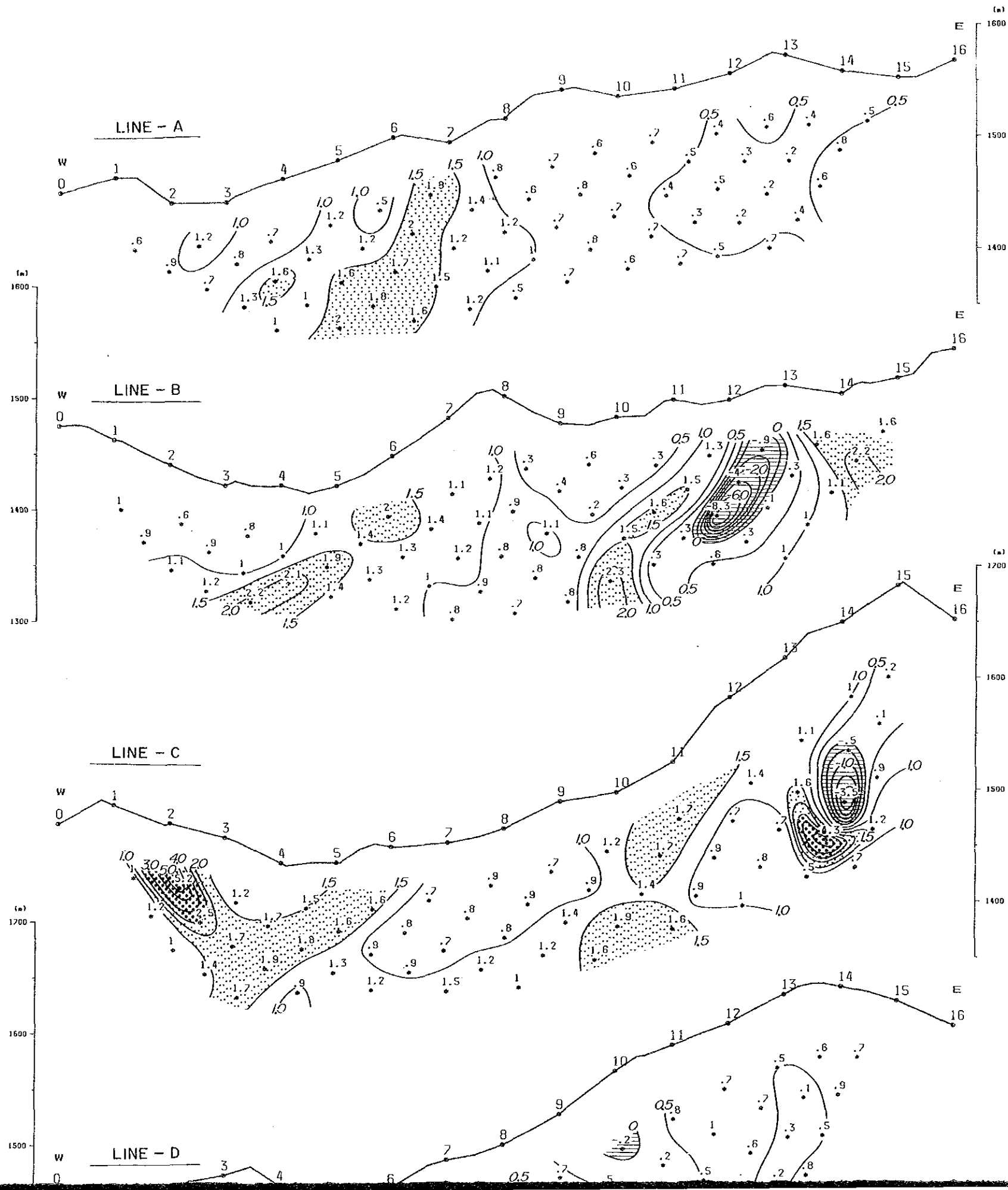


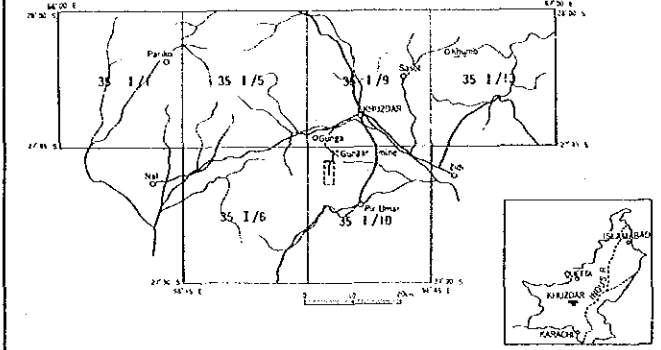
SURMAI - I



REPORT ON THE COOPERATIVE MINERAL EXPLORATION
 IN
 KHUZDAR AREA OF BALUCHISTAN
 IN
 THE ISLAMIC REPUBLIC OF PAKISTAN
 PHASE 1

国出-3-16
 国産協力事業団
 17422
 国産資料室蔵

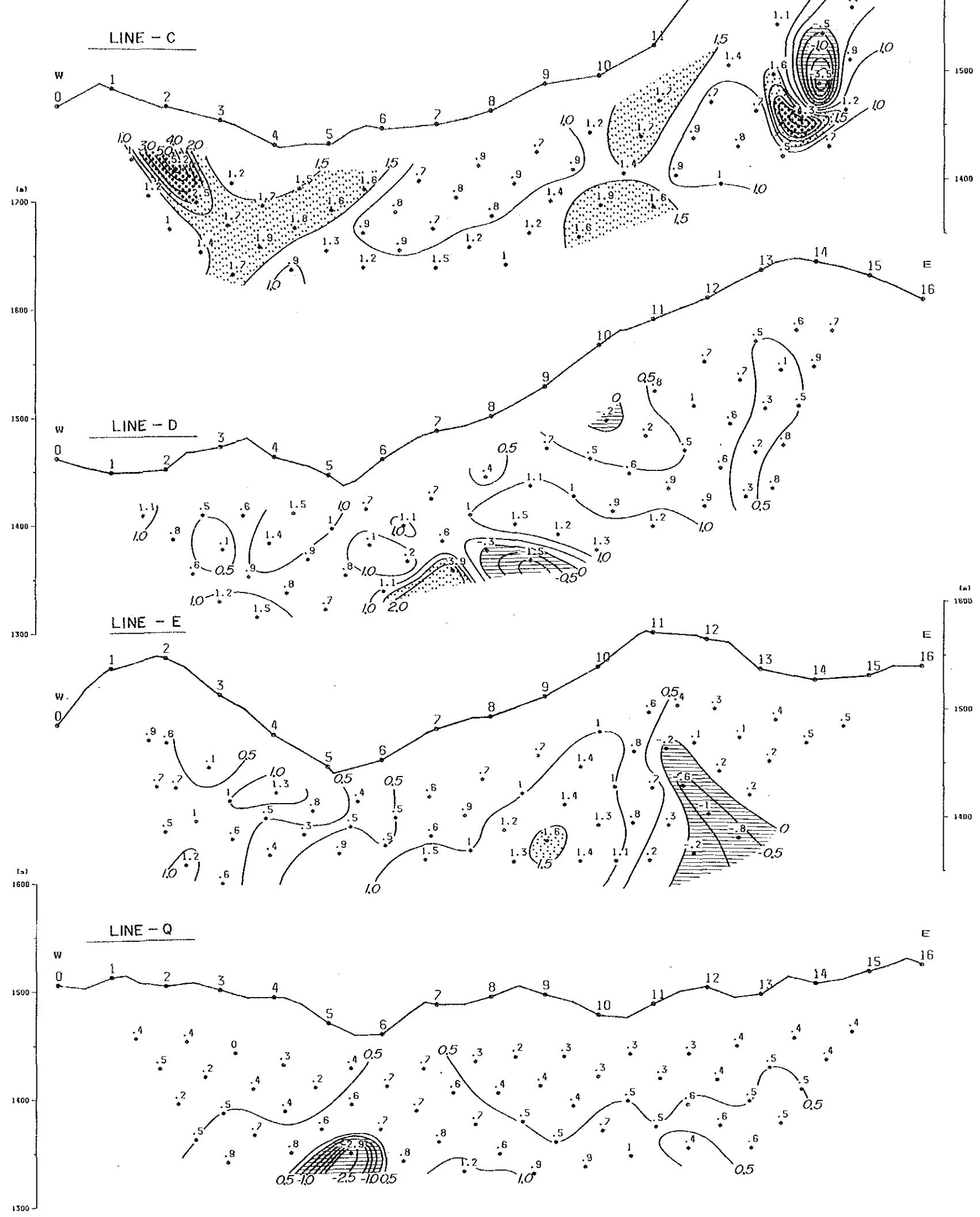
PANEL DIAGRAM OF PERCENT FREQUENCY EFFECT
 IN SURMAI I AREA
 (0.125/1.0Hz) (0.3/3.0Hz)




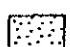
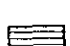
Geochemical and Geological Survey Area
 Geophysical Survey and Detailed Geological Survey Area

MAY - 1987

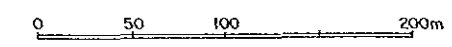
JAPAN INTERNATIONAL COOPERATION AGENCY
 METAL MINING AGENCY OF JAPAN
 Scale 1:2,000

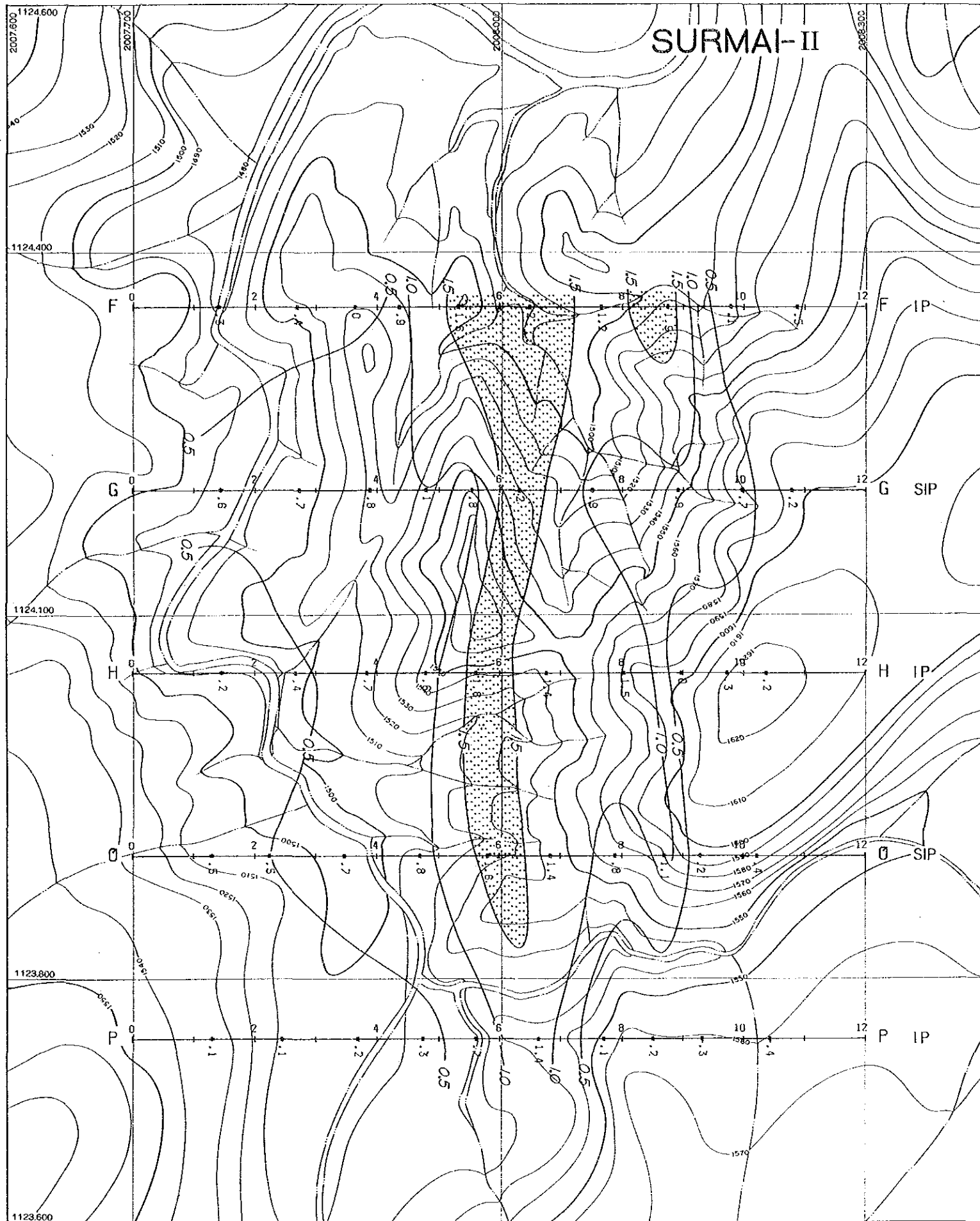


LEGEND

-  $\geq 2.5\%$
-  $\geq 1.5\%$
-  Negative FE Zone

Unit : %

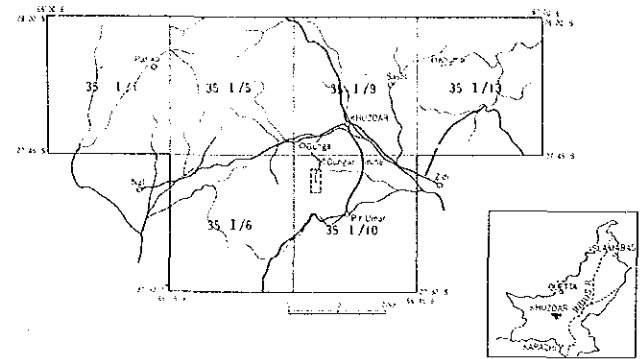




国際協力事業団
17122
図書資料室蔵

REPORT ON THE COOPERATIVE MINERAL EXPLORATION
IN
KHUZDAR AREA OF BALUCHISTAN
IN
THE ISLAMIC REPUBLIC OF PAKISTAN
PHASE I

PLAN MAP (n=1) OF PERCENT FREQUENCY EFFECT
IN SURMAI II AREA
(0.125/1.0Hz) (0.3/3.0Hz)






MAY - 1987

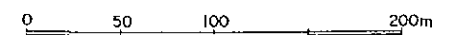
JAPAN INTERNATIONAL COOPERATION AGENCY
METAL MINING AGENCY OF JAPAN

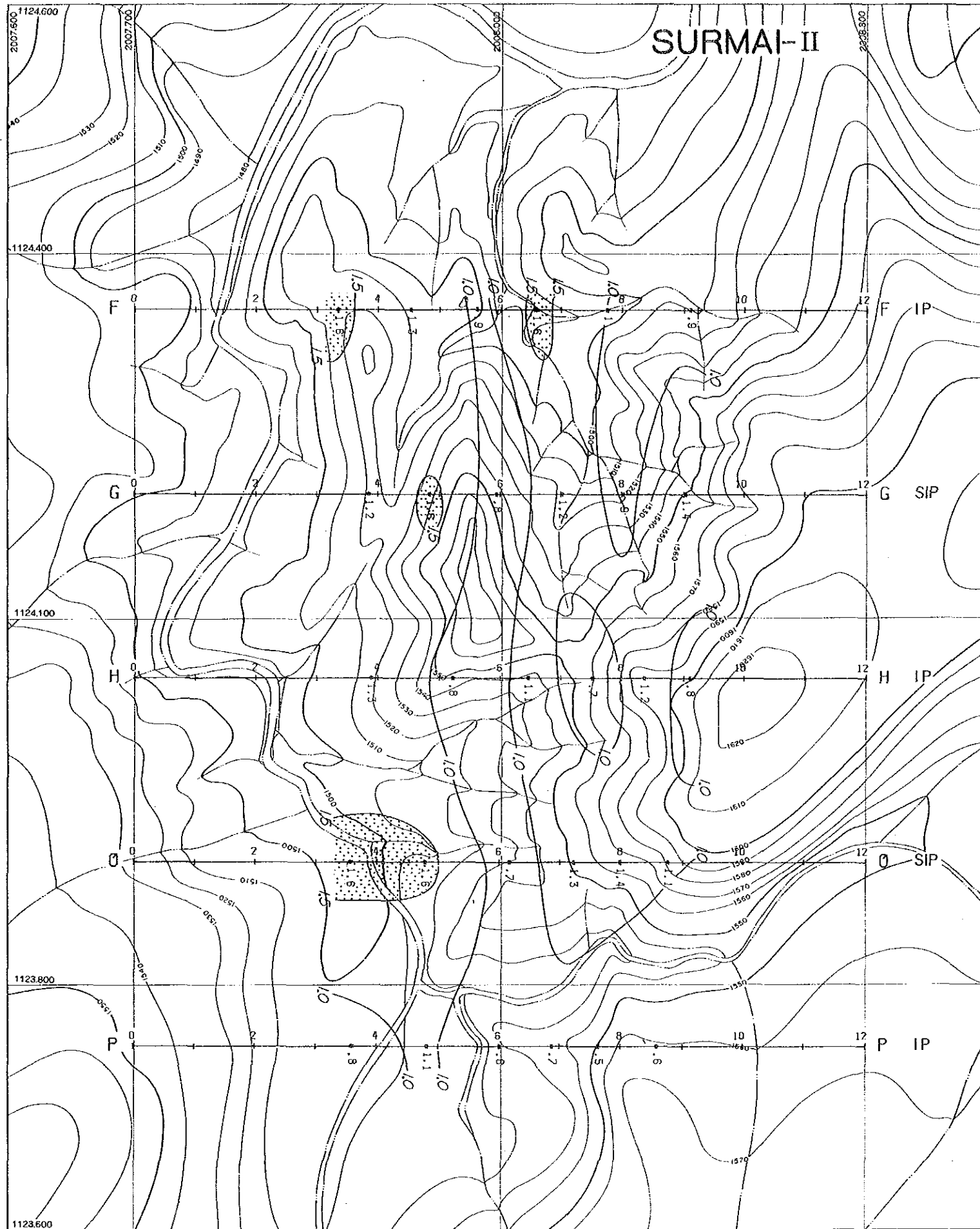
Scale 1 : 2,000

LEGEND

-  ≥ 2.5 %
-  ≥ 1.5 %
-  Negative FE Zone

Unit : %

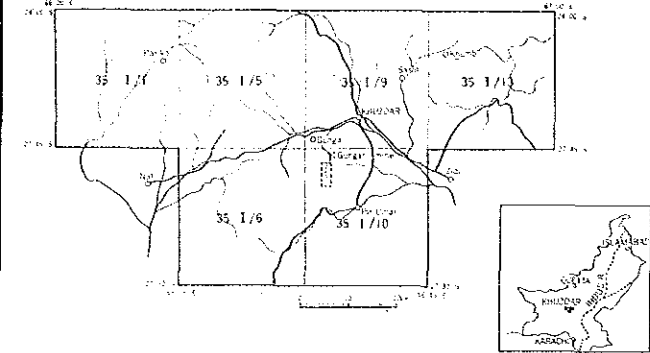




國際協力事業團
1971.2.23
圖書資料室收

REPORT ON THE COOPERATIVE MINERAL EXPLORATION
IN
KHUZDAR AREA OF BALUCHISTAN
IN
THE ISLAMIC REPUBLIC OF PAKISTAN
PHASE I

PLAN MAP (n=5) OF PERCENT FREQUENCY EFFECT
IN SURMAI II AREA
(0.125/1.0Hz) (0.3/3.0Hz)



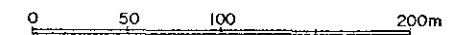
MAY - 1937

JAPAN INTERNATIONAL COOPERATION AGENCY
METAL MINING AGENCY OF JAPAN
Scale 1 : 2,000

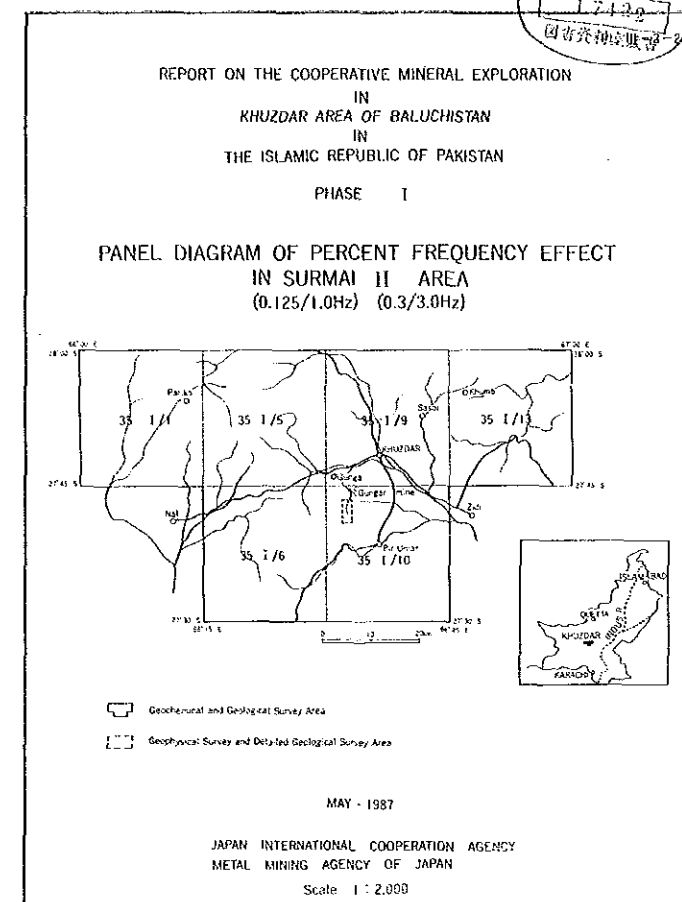
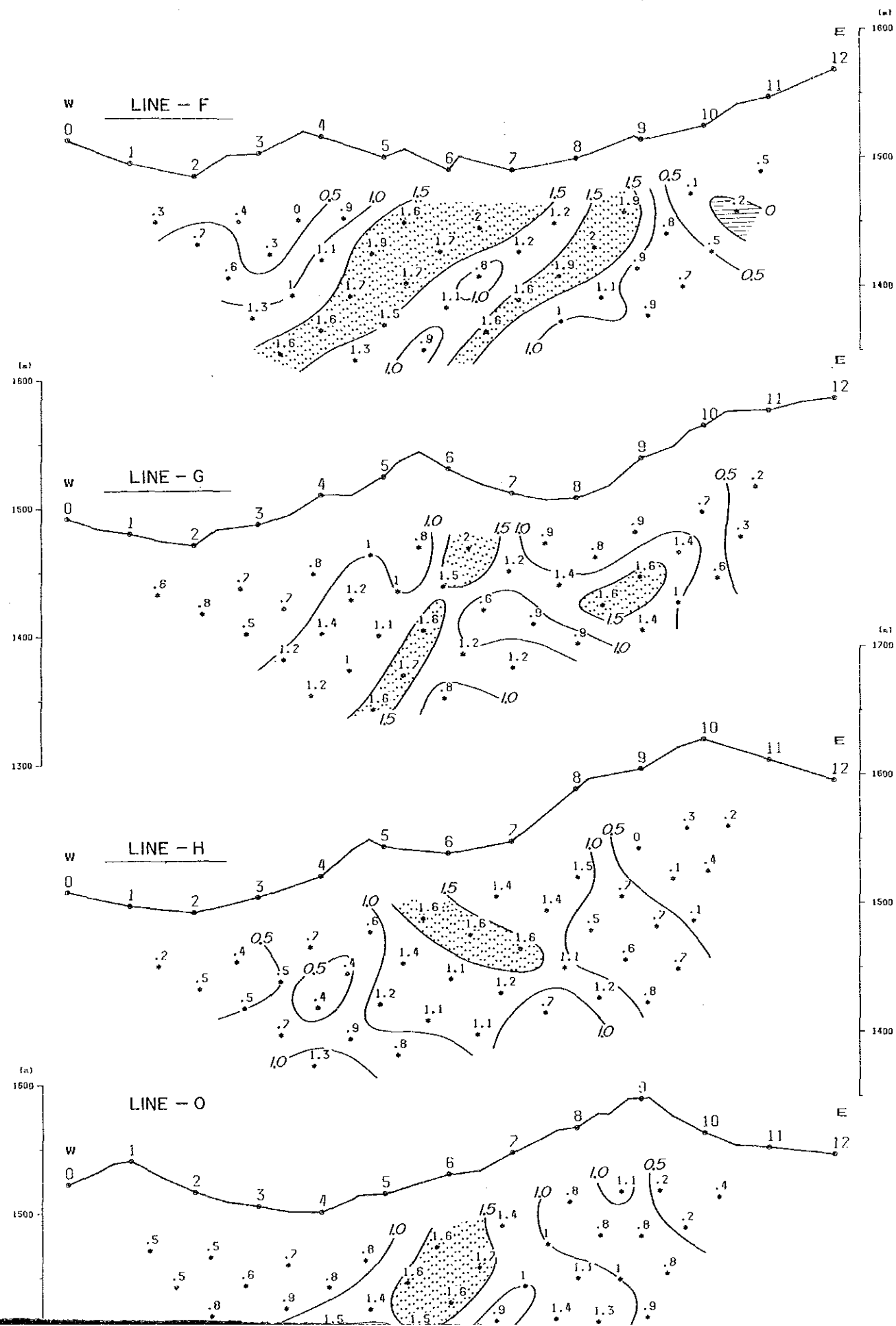
LEGEND

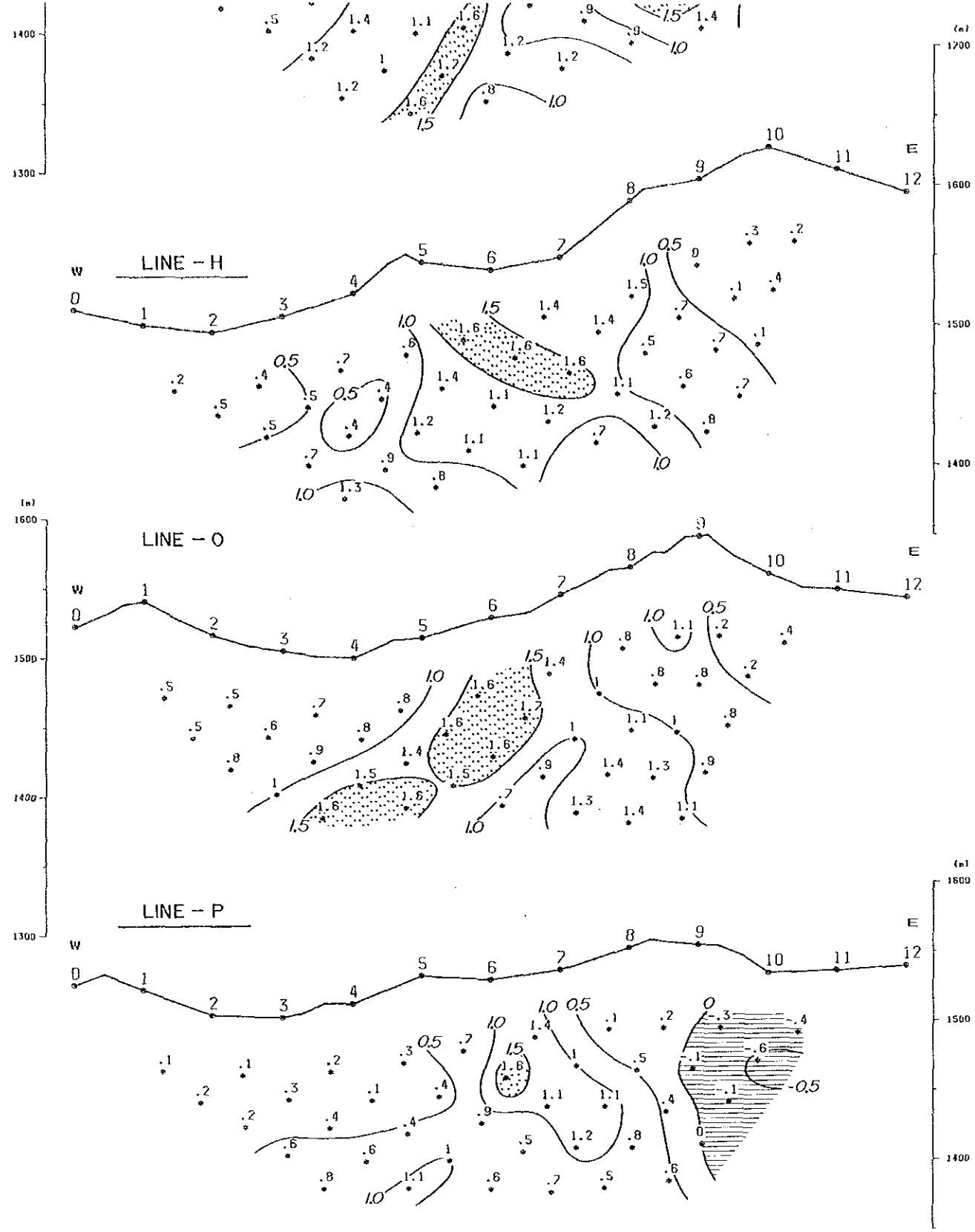
- ≥ 2.5 %
- ≥ 1.5 %
- Negative FE Zone

Unit : %


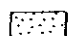
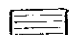


SURMAI - II

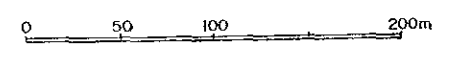


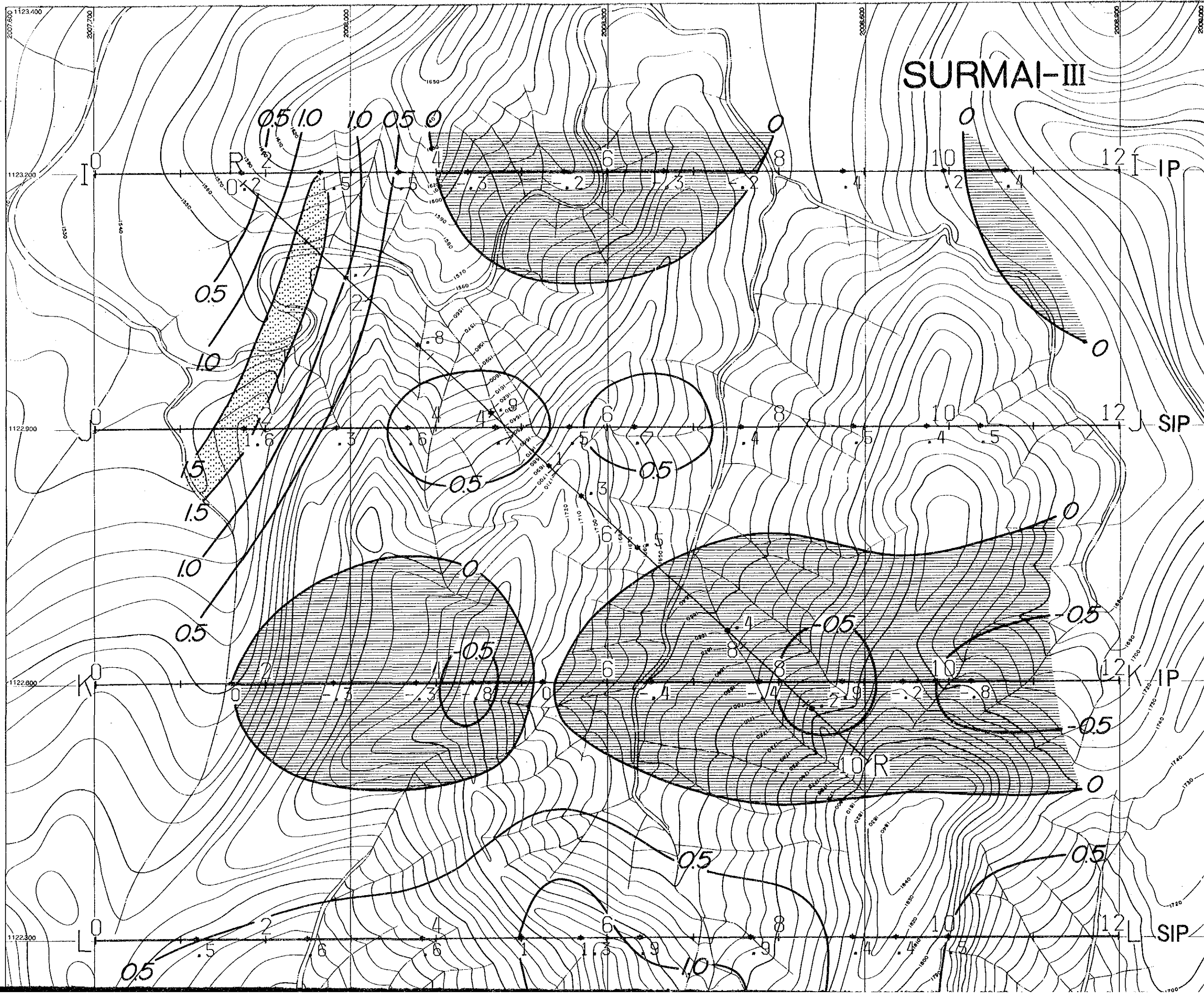


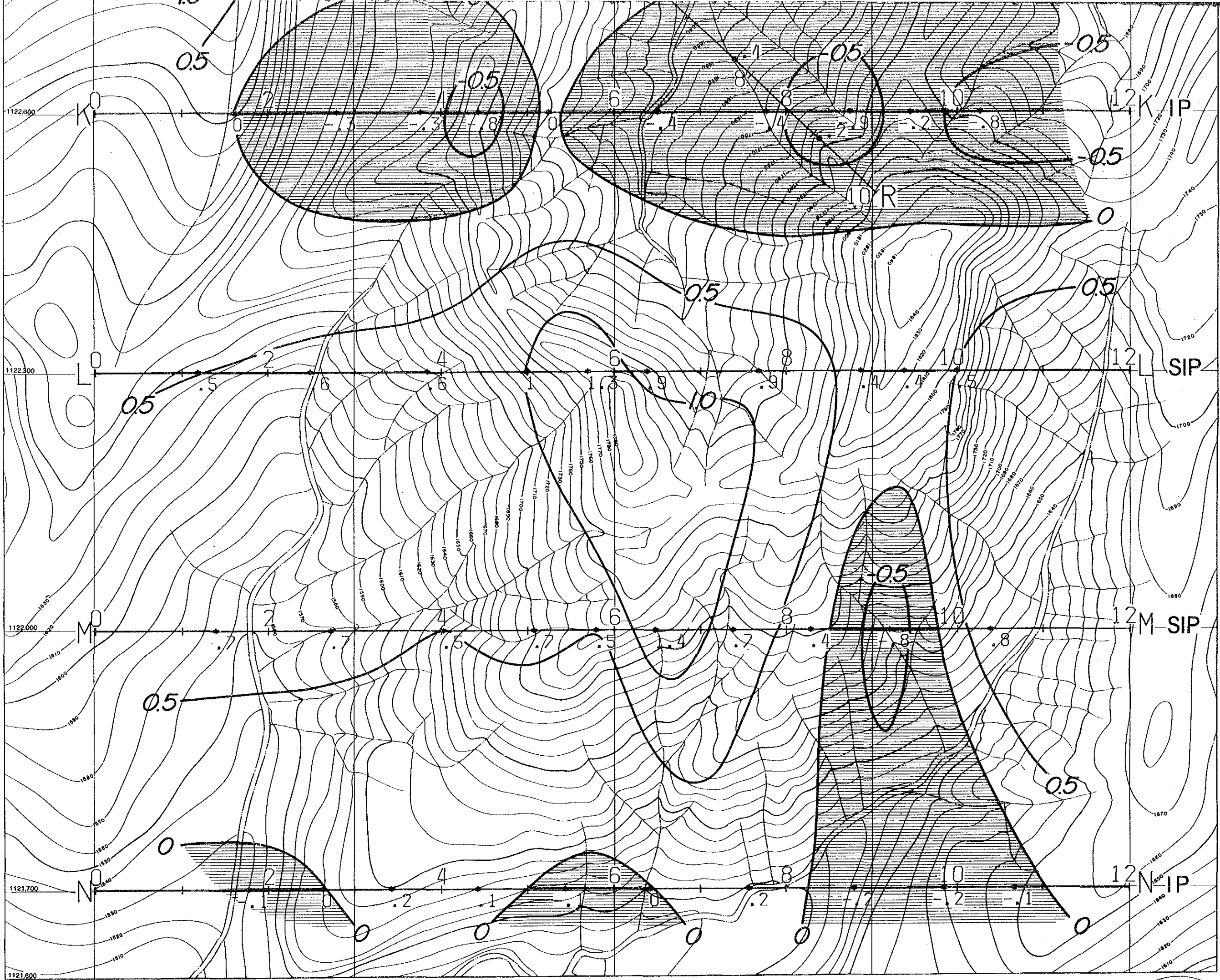
LEGEND

-  $\geq 2.5\%$
-  $\geq 1.5\%$
-  Negative FE Zone

Unit : %







1121,000

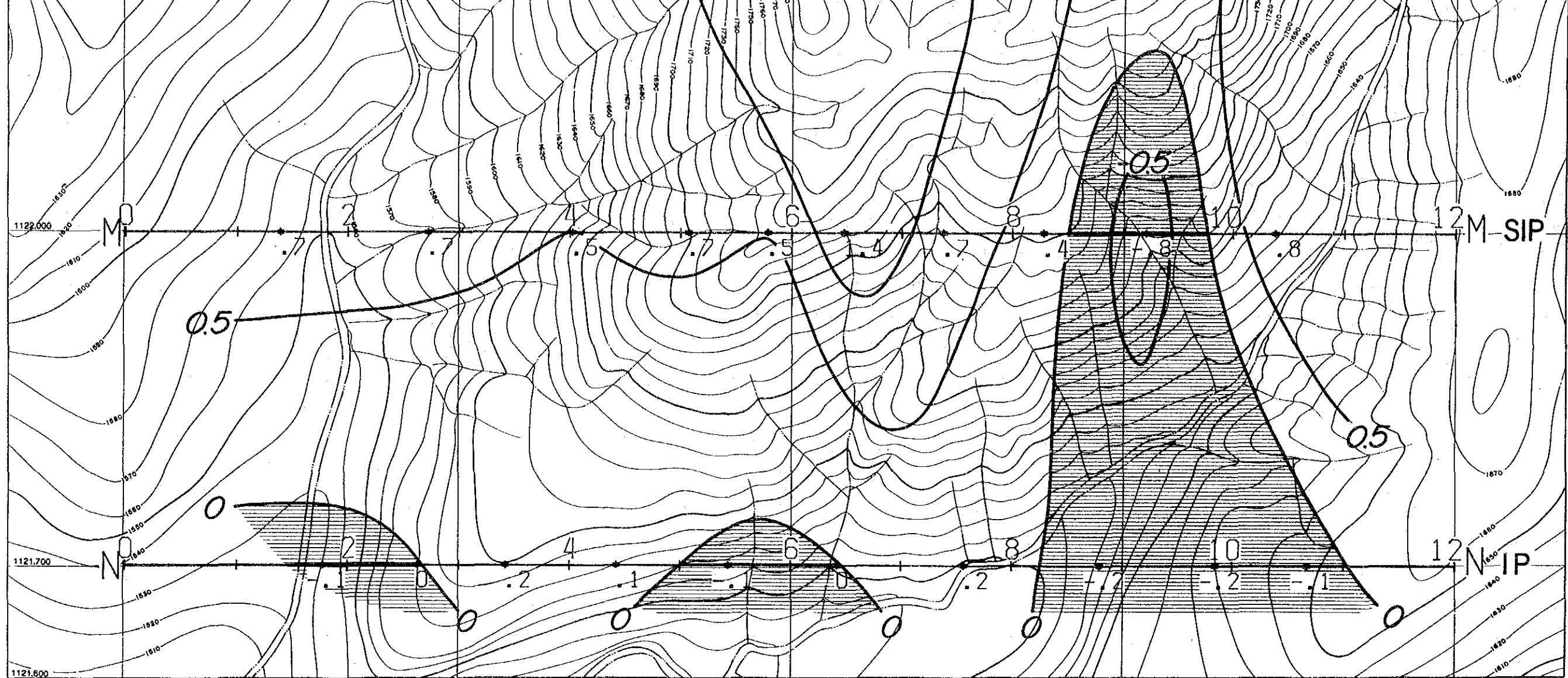
1122,000

1122,000

1122,000

17422
圖書資料

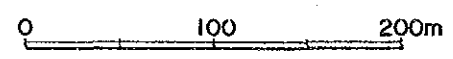
LEGEND



図例
17422
図名

LEGEND

- $\geq 2.5\%$
- Negative FE Zone
- $\geq 1.5\%$
- Unit : %



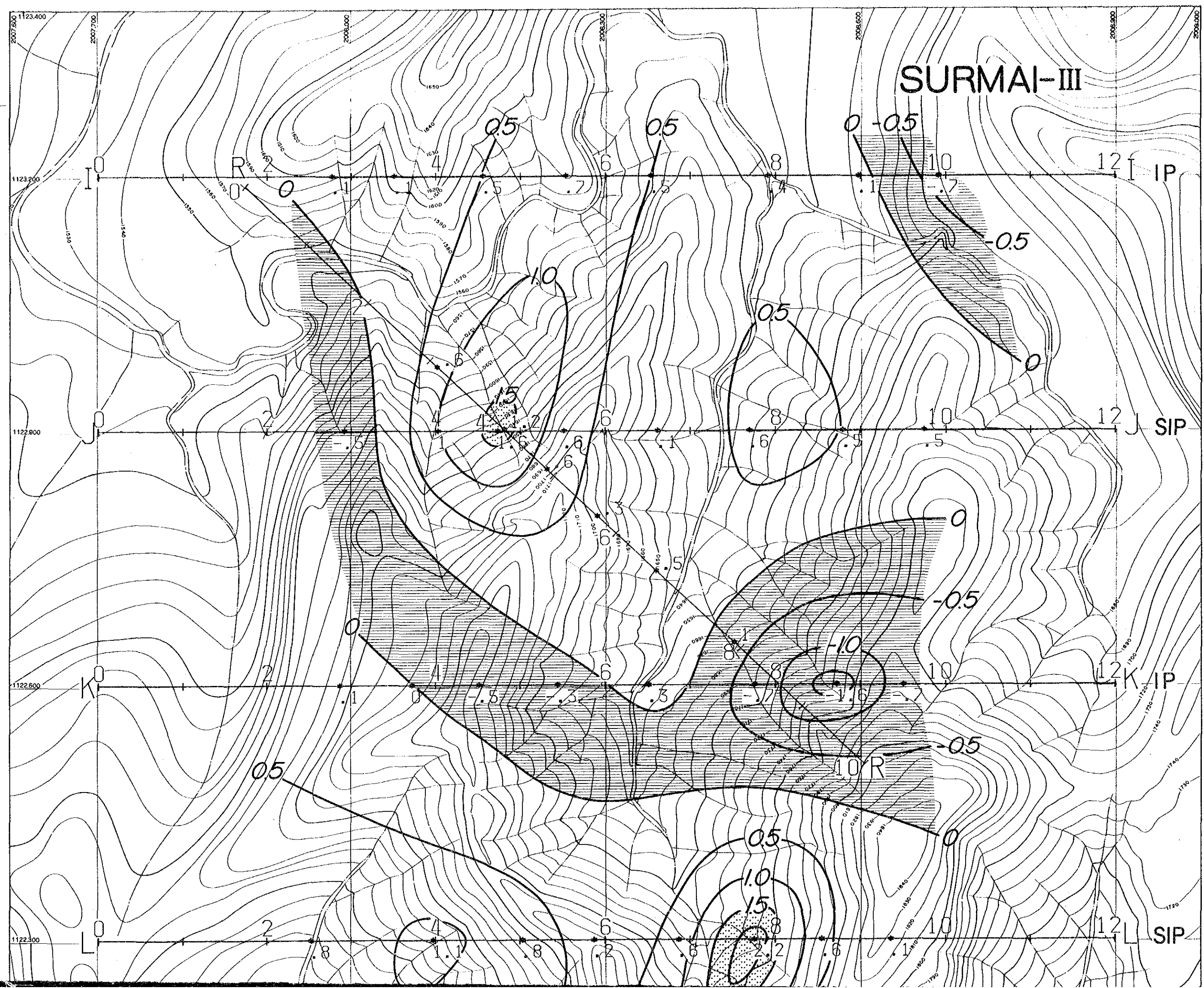
PL. III-3-21

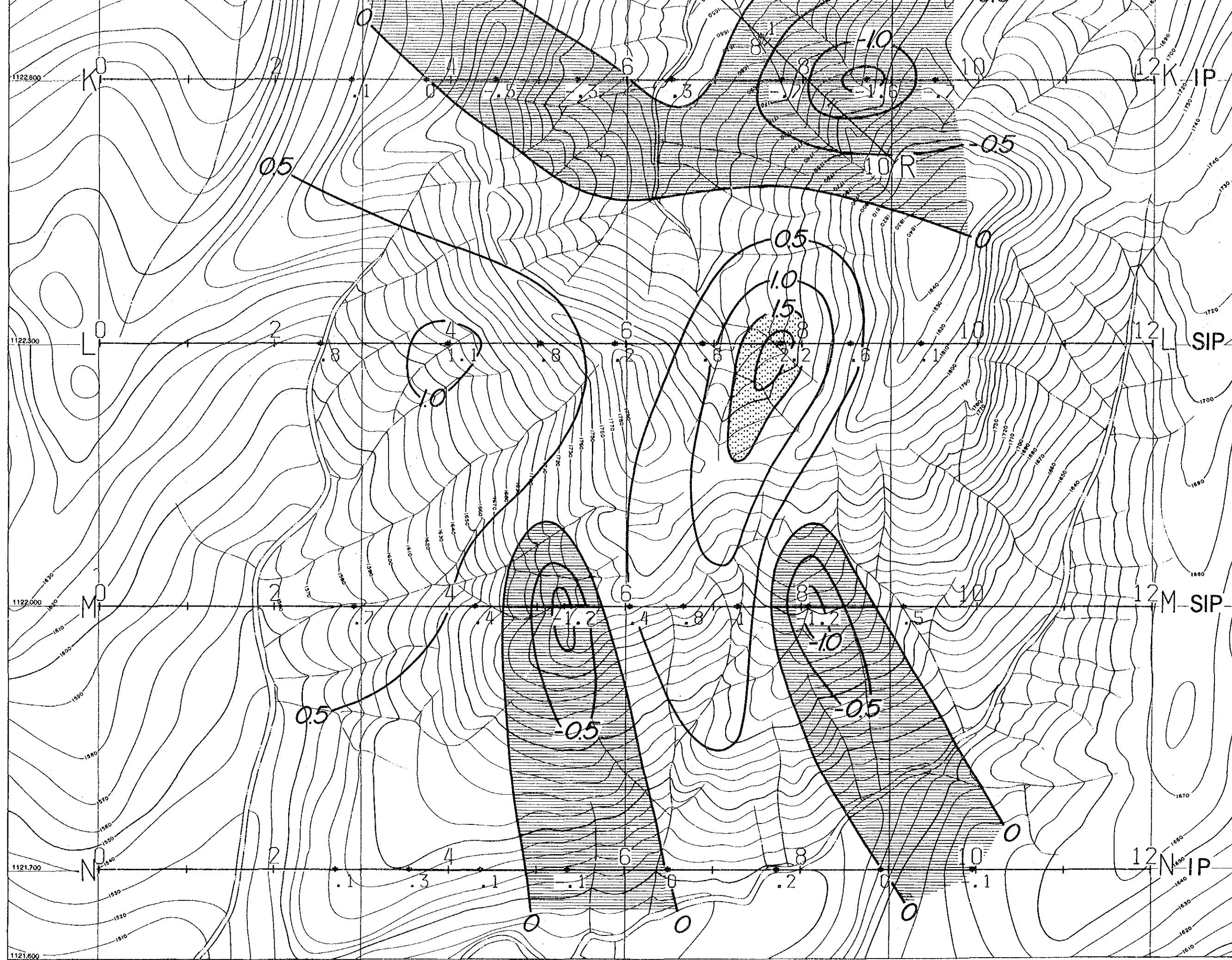
REPORT ON THE COOPERATIVE MINERAL EXPLORATION
IN
KHUZDAR AREA OF BALUCHISTAN
IN
THE ISLAMIC REPUBLIC OF PAKISTAN
PHASE I

PLAN MAP (n=1) OF PERCENT FREQUENCY EFFECT
IN SURMAI III AREA
(0.125/1.0Hz) (0.3/3.0Hz)

MAY - 1987

JAPAN INTERNATIONAL COOPERATION AGENCY
METAL MINING AGENCY OF JAPAN
Scale 1 : 2,000.

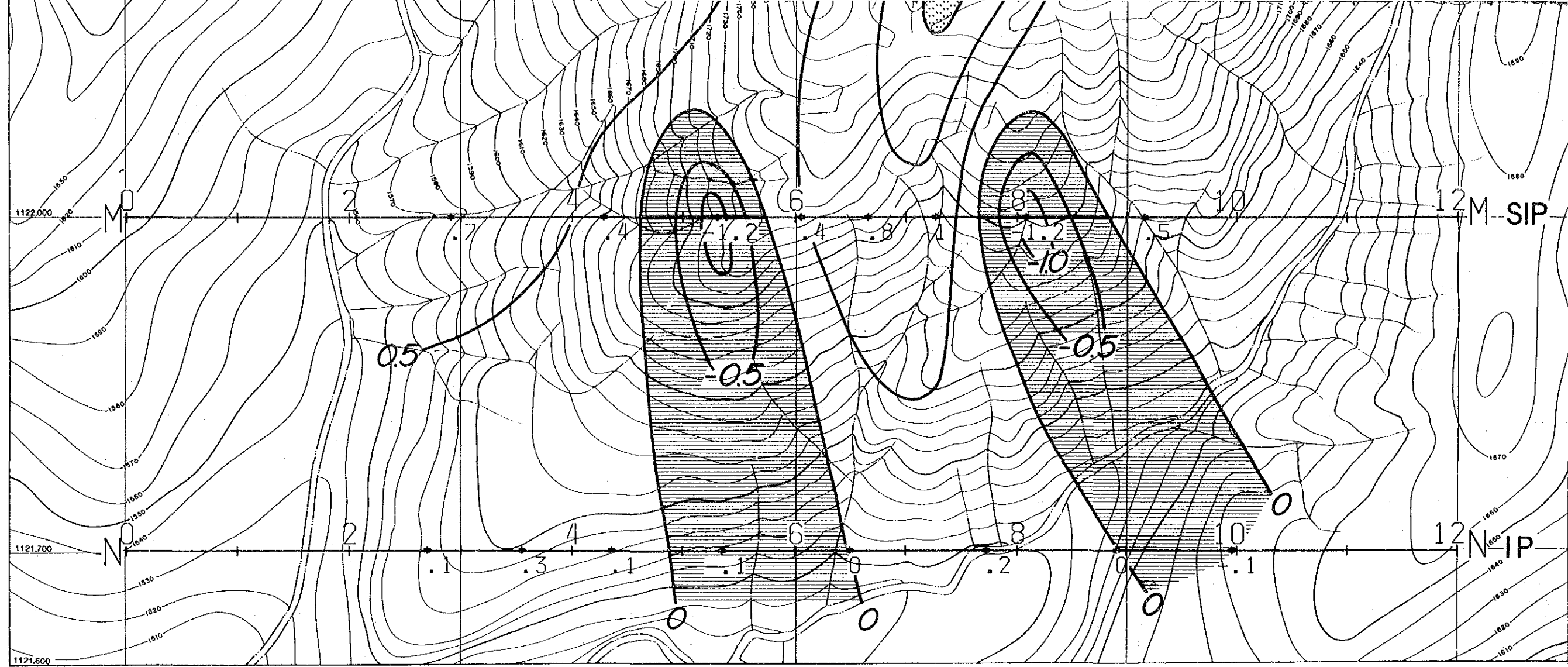




LEGEND

REPORT ON THE COOPERATIVE MINERAL EXPLORATION
 IN
 KHUZDAR AREA OF BALUCHISTAN
 IN

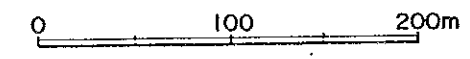
17422



国産地質調査
17422
国産地質調査

LEGEND

- $\geq 2.5\%$
 - $\geq 1.5\%$
 - Negative FE Zone
- Unit : %



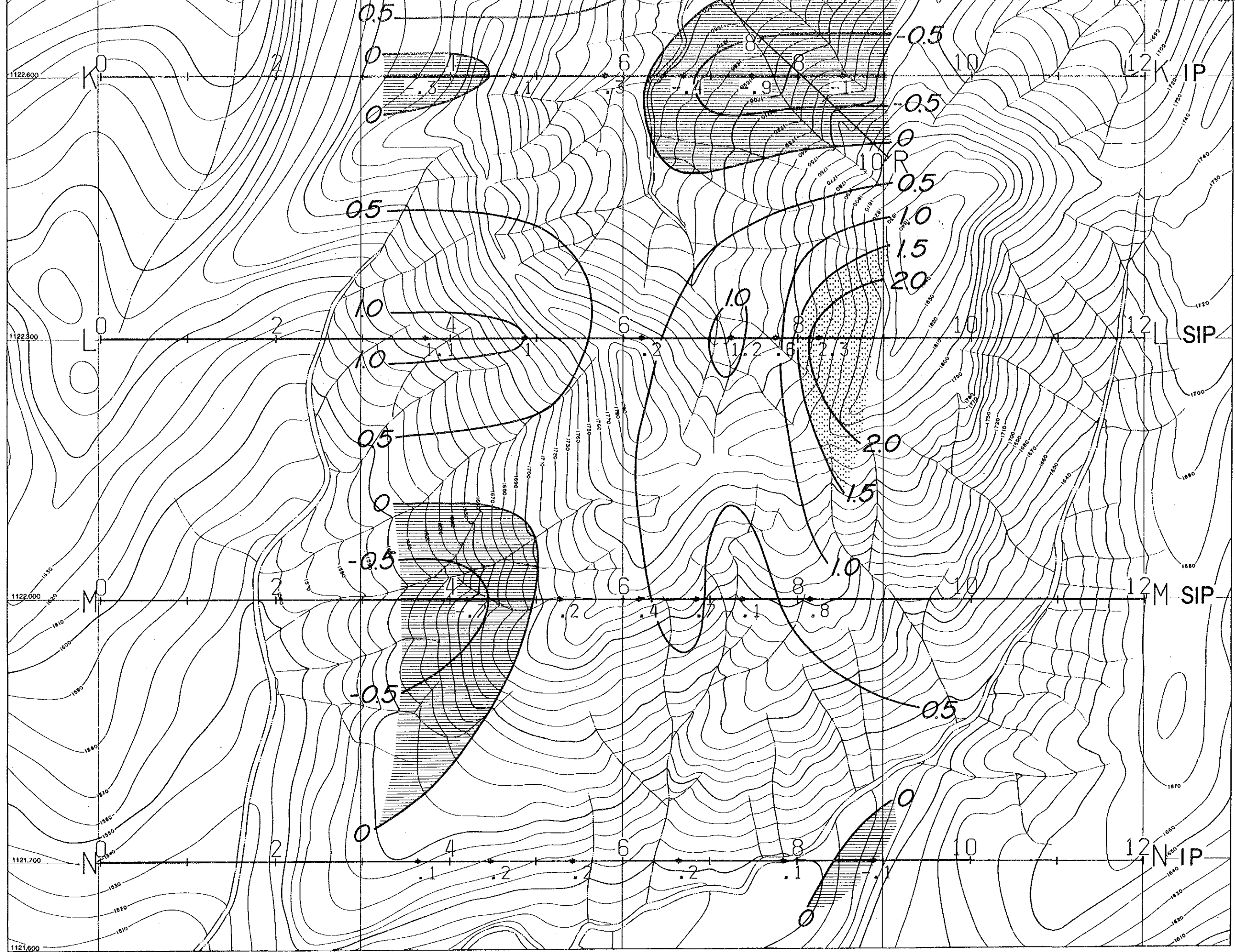
PL. III-3-22

REPORT ON THE COOPERATIVE MINERAL EXPLORATION
IN
KHUZDAR AREA OF BALUCHISTAN
IN
THE ISLAMIC REPUBLIC OF PAKISTAN
PHASE I

PLAN MAP (n=3) OF PERCENT FREQUENCY EFFECT
IN SURMAI-III AREA
(0.125/1.0Hz) (0.3/3.0Hz)

MAY - 1987

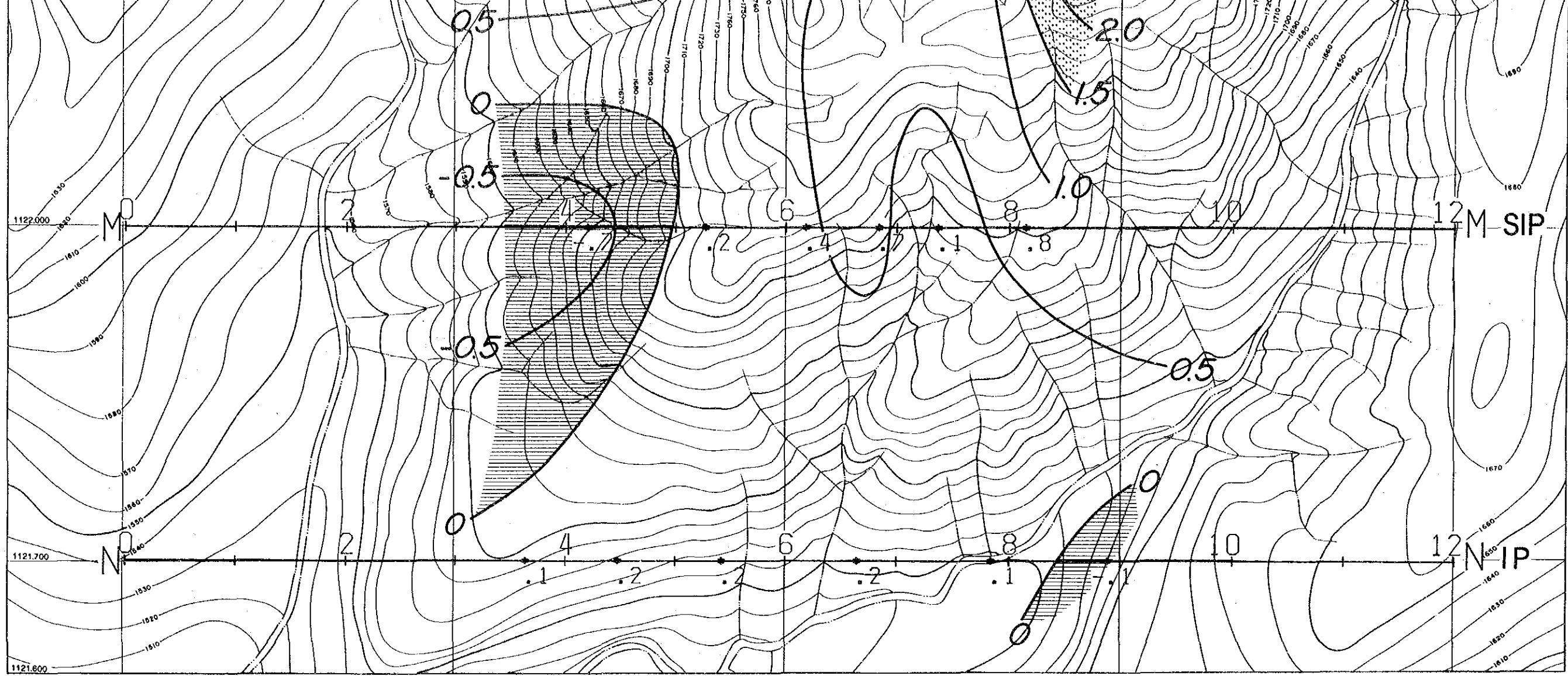
JAPAN INTERNATIONAL COOPERATION AGENCY
METAL MINING AGENCY OF JAPAN
Scale 1 : 2,000



LEGEND

REPORT ON THE COOPERATIVE MINERAL EXPLORATION
 IN
 KHUZDAR AREA OF BALUCHISTAN
 IN
 THE ISLAMIC REPUBLIC OF PAKISTAN

國際地質學
 17422
 圖書設計院藏書

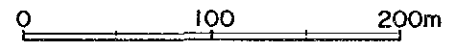


国陸経 審判
17422
図書英特宣蔵書

PL. III-3-23

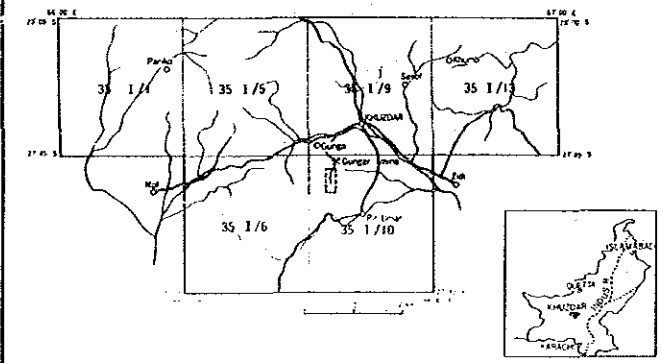
LEGEND

- $\geq 2.5\%$
- Negative FE Zone
- $\geq 1.5\%$
- Unit : %



REPORT ON THE COOPERATIVE MINERAL EXPLORATION
IN
KHUZDAR AREA OF BALUCHISTAN
IN
THE ISLAMIC REPUBLIC OF PAKISTAN
PHASE I

PLAN MAP (n=5) OF PERCENT FREQUENCY EFFECT
IN SURMAI III AREA
(0.125/1.0Hz) (0.3/3.0Hz)

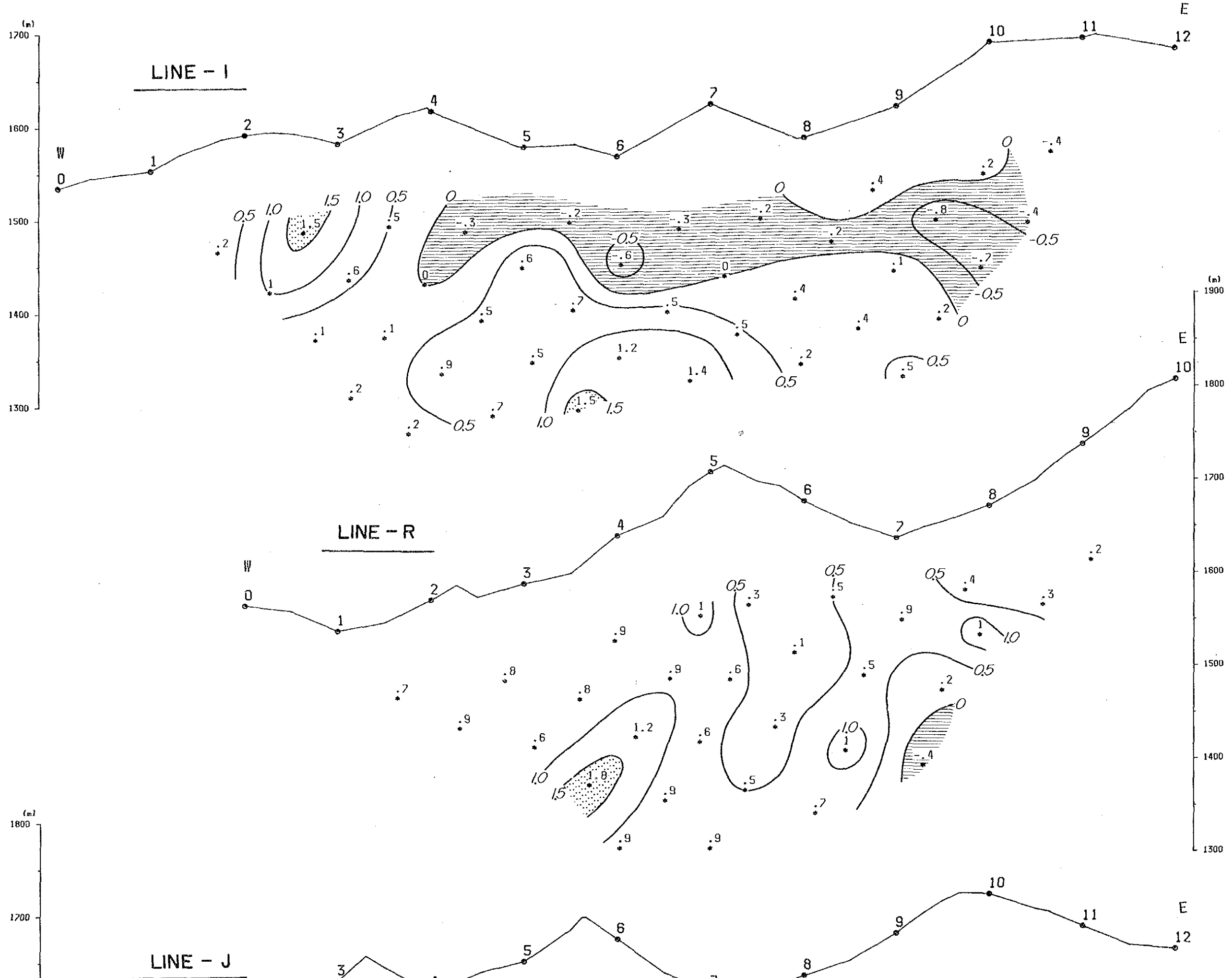


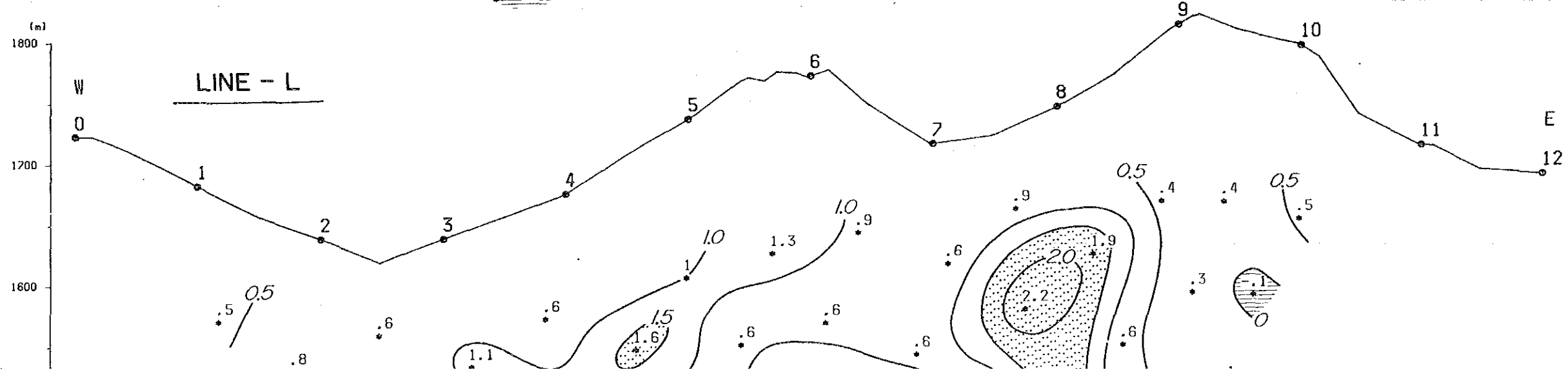
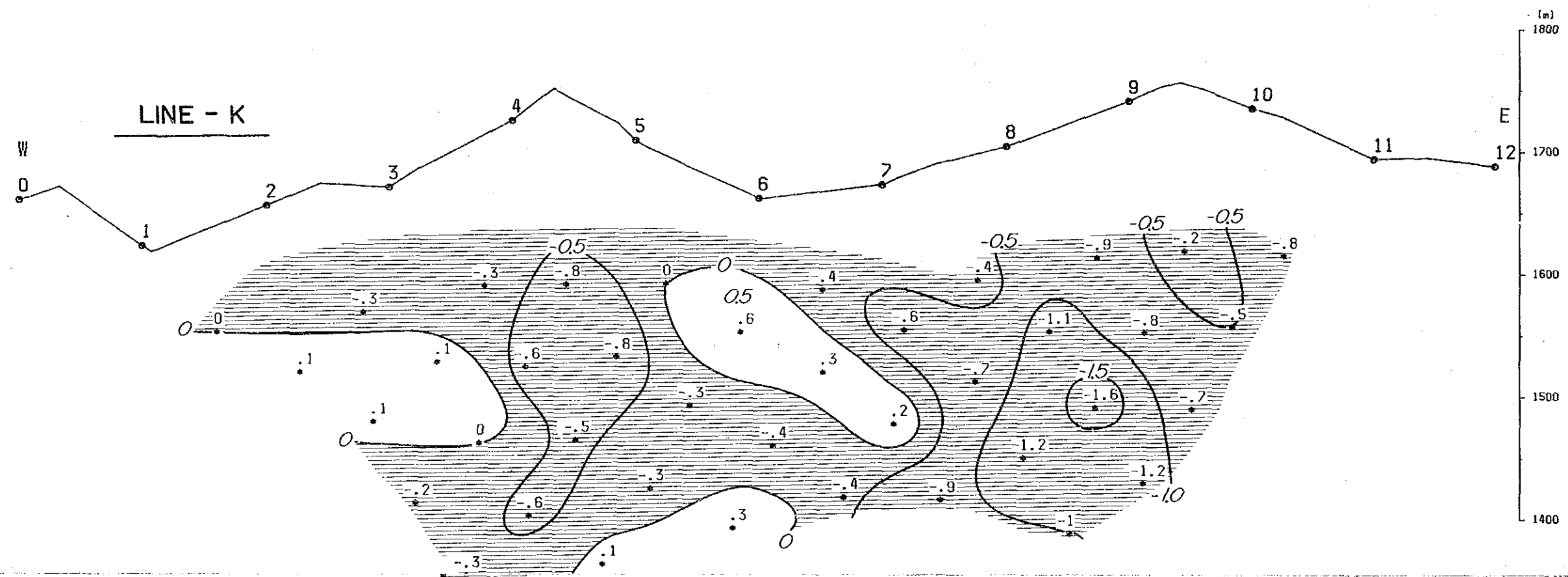
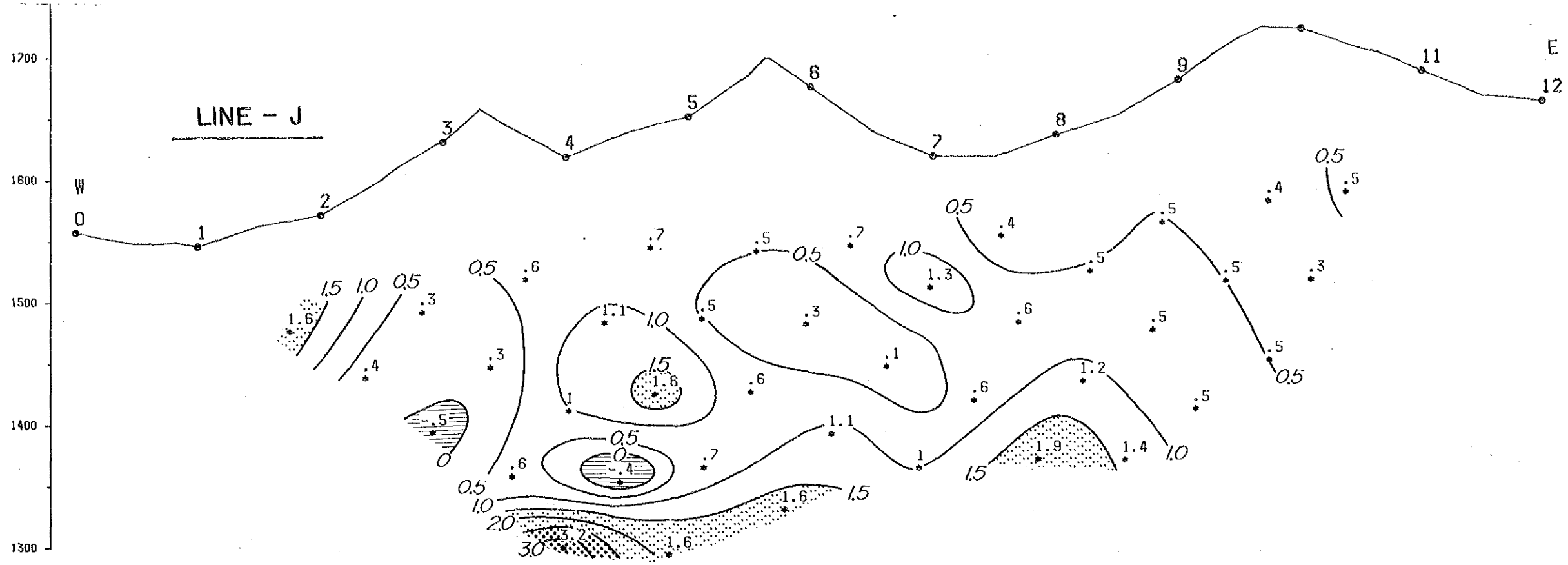
Geometrical and Geological Survey Area
Geological Survey and Detailed Geological Survey Area

MAY - 1987

JAPAN INTERNATIONAL COOPERATION AGENCY
METAL MINING AGENCY OF JAPAN
Scale 1 : 2,000

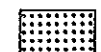

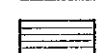
SURMAI - III



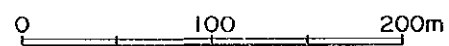




LEGEND

-  $\geq 2.5\%$
-  $\geq 1.5\%$
-  Negative FE Zone

Unit : %

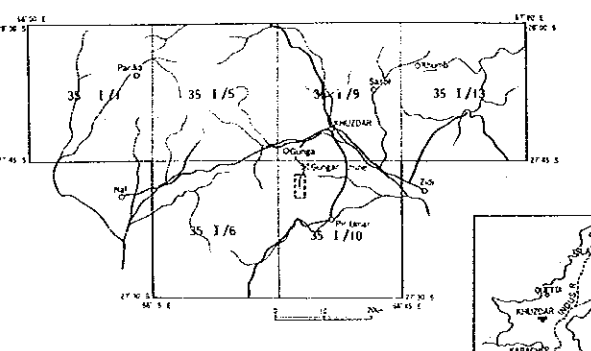



国際協力事業団
17422
四省資料室蔵書

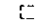
PL III-3-24

REPORT ON THE COOPERATIVE MINERAL EXPLORATION
IN
KHUZDAR AREA OF BALUCHISTAN
IN
THE ISLAMIC REPUBLIC OF PAKISTAN
PHASE I

PANEL DIAGRAM OF PERCENT FREQUENCY EFFECT
IN SURMAI III AREA
(0.125/1.0Hz) (0.3/3.0Hz)



 Geochemical and Geological Survey Area

 Geophysical Survey and Detailed Geological Survey Area

MAY - 1987

JAPAN INTERNATIONAL COOPERATION AGENCY
METAL MINING AGENCY OF JAPAN
Scale 1 : 2,000

