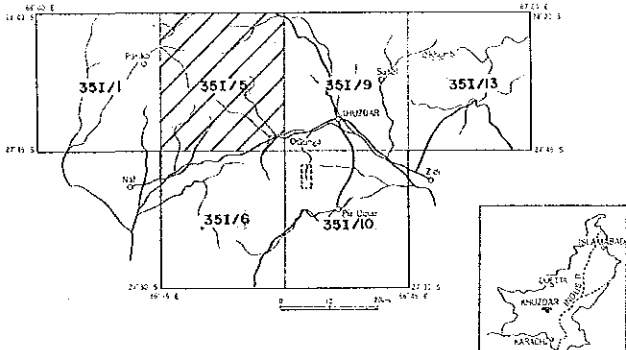


REPORT ON THE COOPERATIVE MINERAL EXPLORATION
 IN
 KHUZDAR AREA OF BALUCHISTAN
 IN
 THE ISLAMIC REPUBLIC OF PAKISTAN
 PHASE I
 LOCATION MAP OF ROCK SAMPLES
 IN KHUZDAR SURVEY AREA
 (35 1/5)

PL. II-2-2
 國際協力事業団
 17122
 調査資料室蔵



Geochemical and Geological Survey Area
 Geophysical Survey and Detailed Geological Survey Area

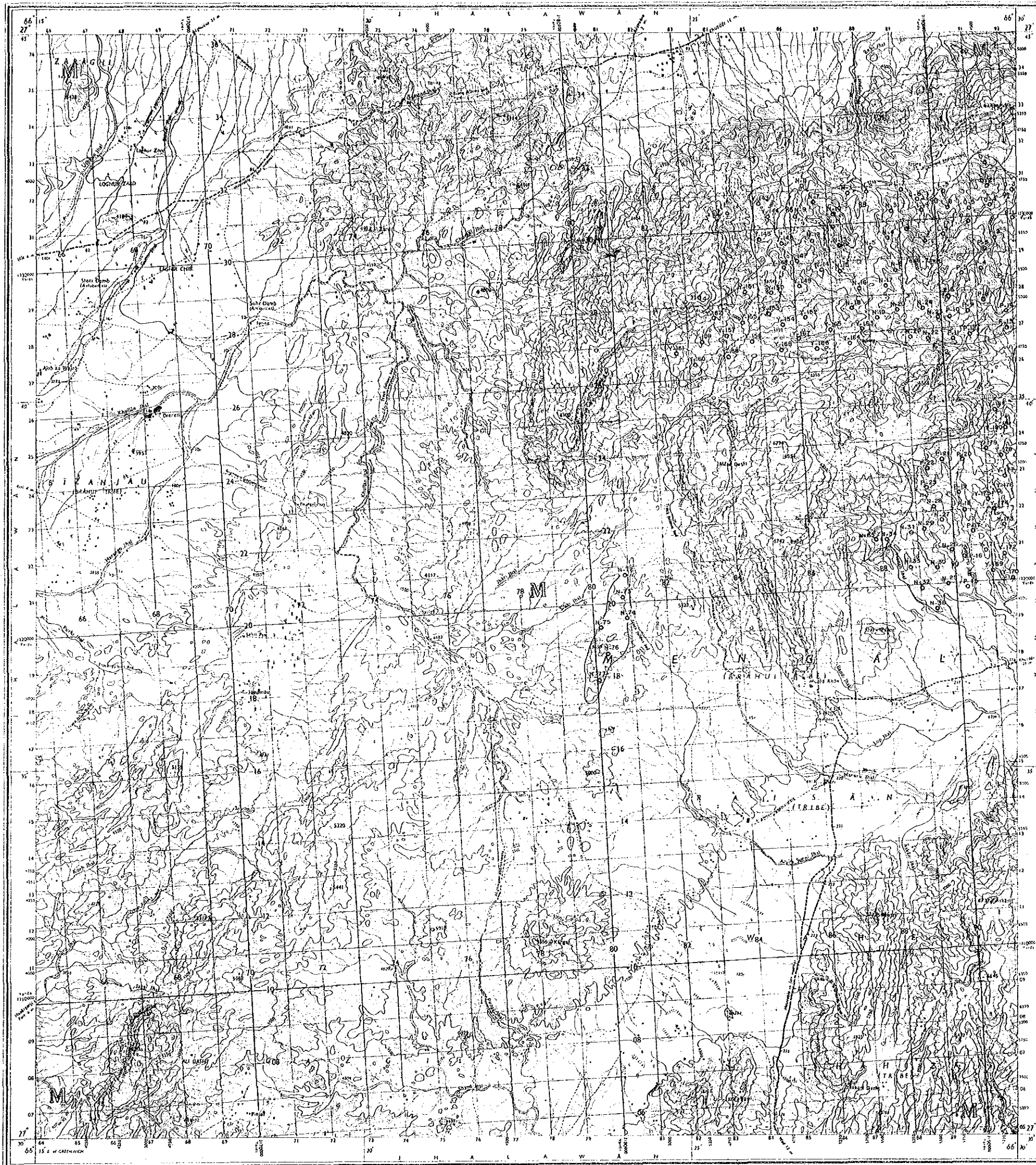
MAY - 1987

JAPAN INTERNATIONAL COOPERATION AGENCY
 METAL MINING AGENCY OF JAPAN

1:50,000

LEGEND

- A-100 Number and Location of Samples
- O : Geochemical Analysis
 - [] : Whole Rock Analysis
 - [X] : X-Ray Diffraction Analysis
 - : Surveyed Area

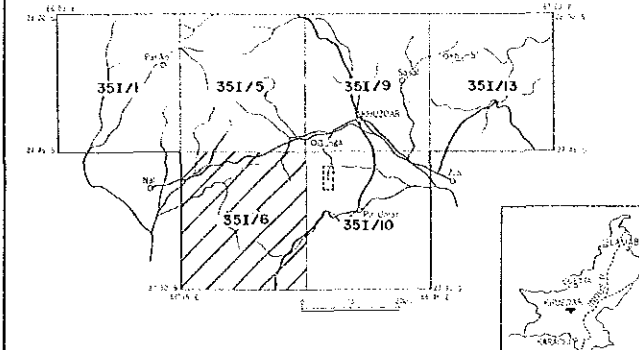


REPORT ON THE COOPERATIVE MINERAL EXPLORATION
 IN
 KHUZDAR AREA OF BALUCHISTAN
 IN
 THE ISLAMIC REPUBLIC OF PAKISTAN

PL. H-2-3
 17422
 圖書資料室藏書

PHASE I

LOCATION MAP OF ROCK SAMPLES
 IN KHUZDAR SURVEY AREA
 (35 1/6)

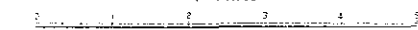


- Geochemical and Geological Survey Area
- Geological Survey and Detailed Geological Survey Area

MAY - 1987

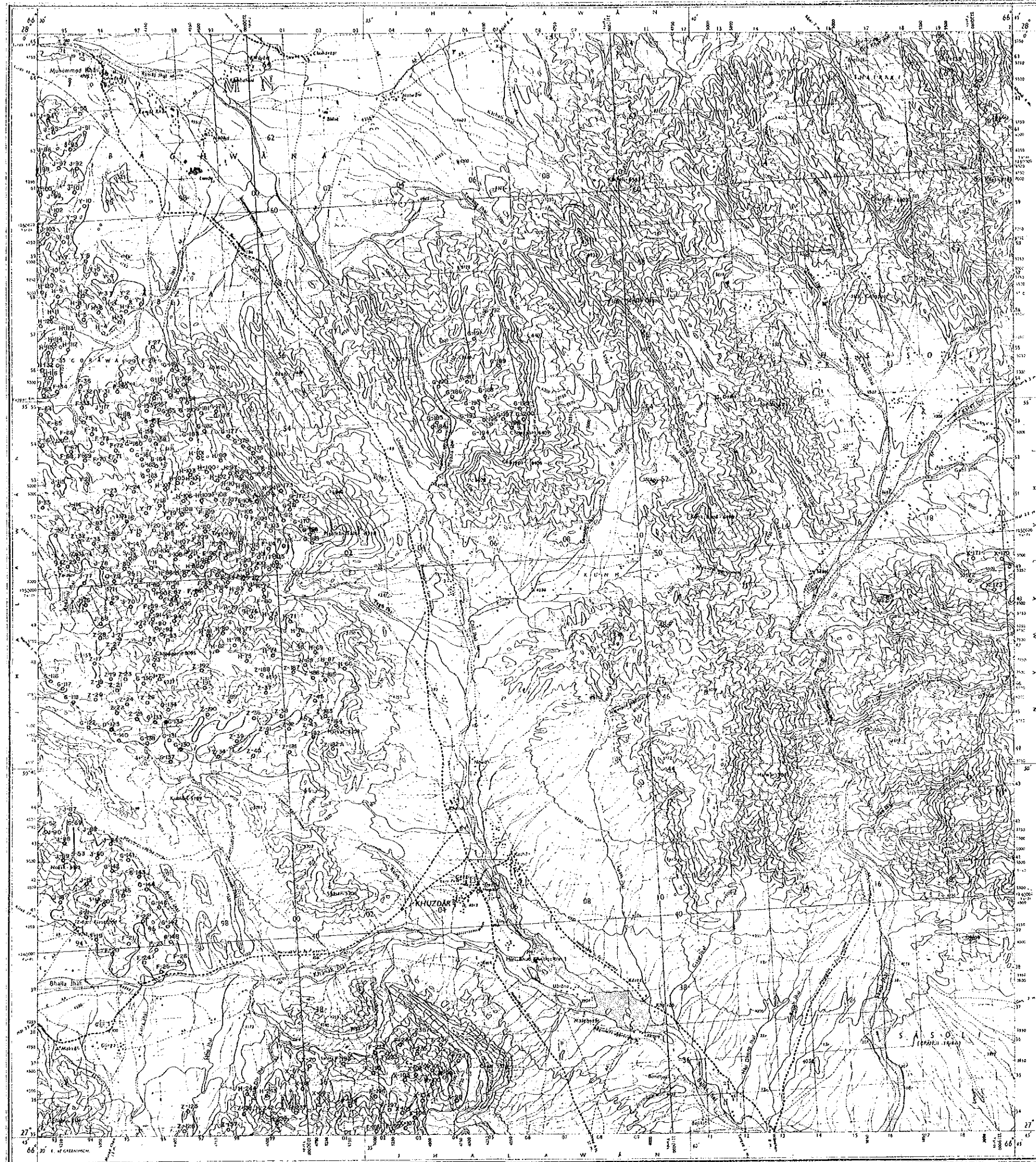
JAPAN INTERNATIONAL COOPERATION AGENCY
 METAL MINING AGENCY OF JAPAN

1 : 50,000



LEGEND

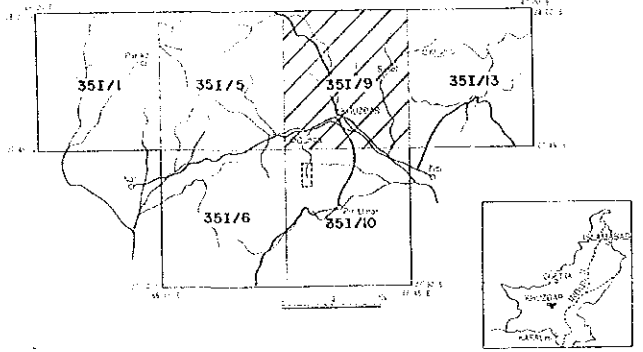
- A-100 Number and Location of Samples
- O : Geochemical Analysis
- : Surveyed Area



REPORT ON THE COOPERATIVE MINERAL EXPLORATION
 IN
 KHUZDAR AREA OF BALUCHISTAN
 IN
 THE ISLAMIC REPUBLIC OF PAKISTAN
 PHASE I

国际协力事业团
 17122
 国书史料室蔵書

LOCATION MAP OF ROCK SAMPLES
 IN KHUZDAR SURVEY AREA
 (35 I/9)



Geochemical and Geological Survey Area
 Geophysical Survey and Detailed Geological Survey Area

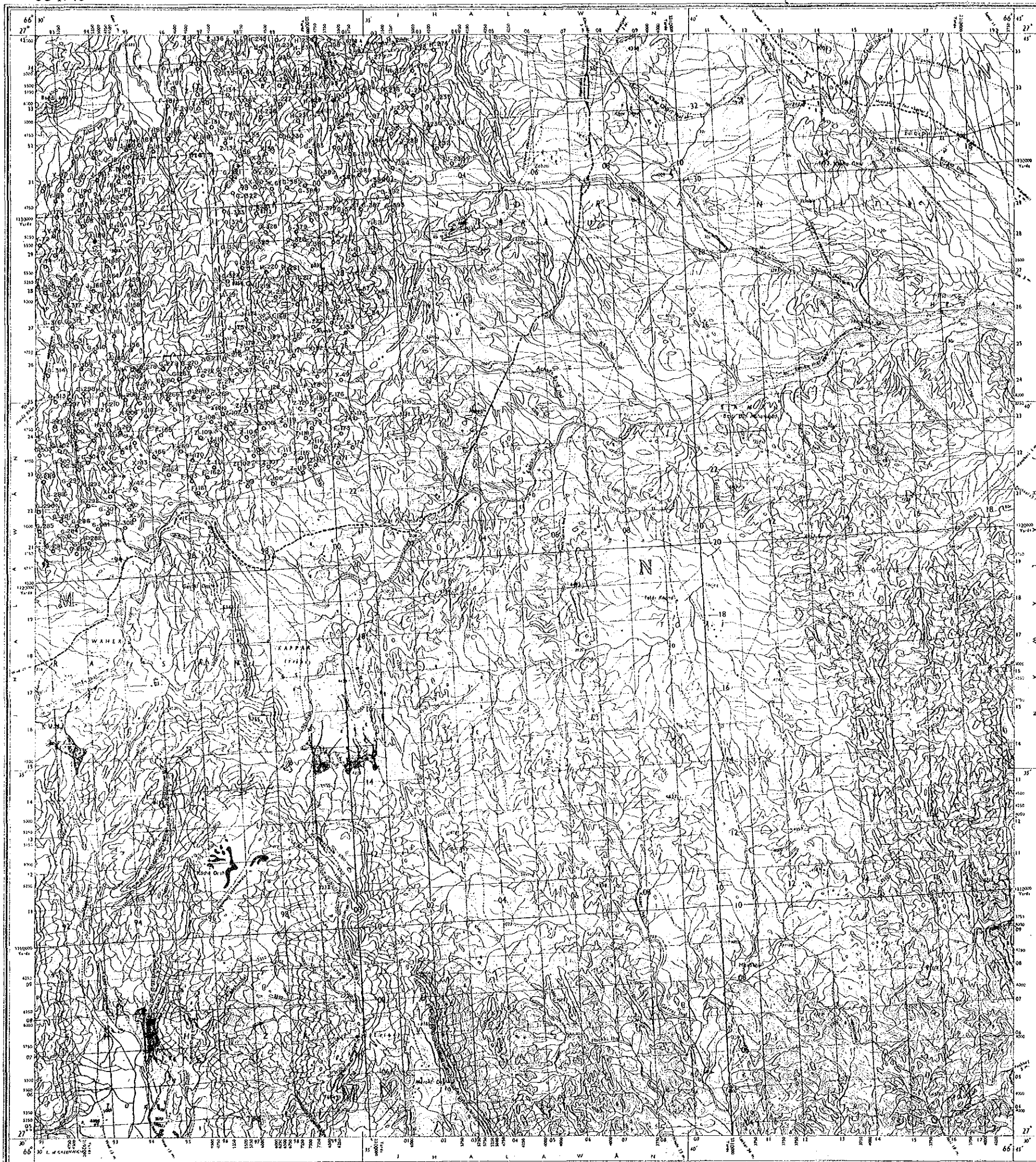
MAY - 1987

JAPAN INTERNATIONAL COOPERATION AGENCY
 METAL MINING AGENCY OF JAPAN

1 : 50,000

LEGEND

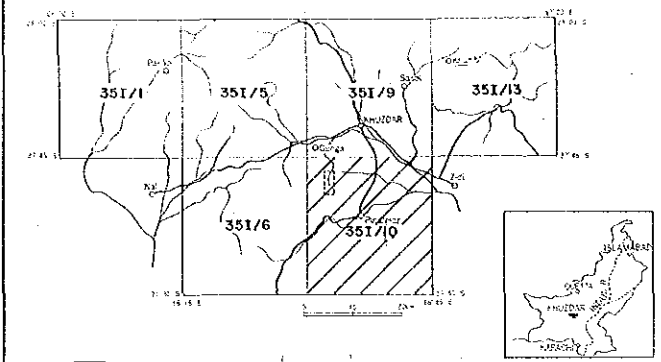
- A-100 Number and Location of Samples
- : Geochemical Analysis
- : Surveyed Area



REPORT ON THE COOPERATIVE MINERAL EXPLORATION
 IN
 KHUZDAR AREA OF BALUCHISTAN
 IN
 THE ISLAMIC REPUBLIC OF PAKISTAN
 PHASE I

17422
 国書資料室蔵書

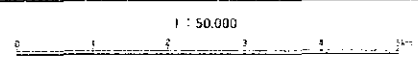
LOCATION MAP OF ROCK SAMPLES
 IN KHUZDAR SURVEY AREA
 (35 I/10)



Geochemical and Geological Survey Area
 Geophysical Survey and Detailed Geological Survey Area

MAY - 1987

JAPAN INTERNATIONAL COOPERATION AGENCY
 METAL MINING AGENCY OF JAPAN



- LEGEND
- A-100 Number and Location of Samples
 - O : Geochemical Analysis
 - : Surveyed Area
 - : Detailed Surveyed Area

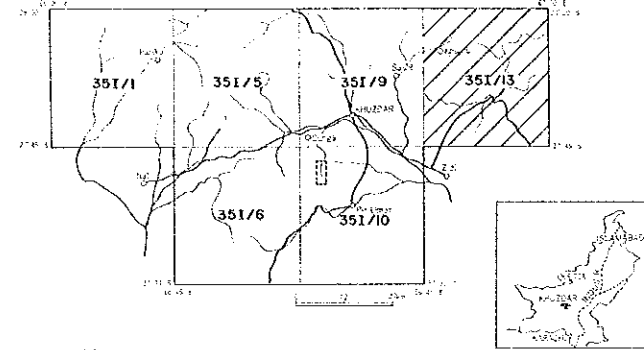


REPORT ON THE COOPERATIVE MINERAL EXPLORATION
 IN
 KHUZDAR AREA OF BALUCHISTAN
 IN
 THE ISLAMIC REPUBLIC OF PAKISTAN

17122
 国産鉱物調査
 国産資源調査

PHASE I

LOCATION MAP OF ROCK SAMPLES
 IN KHUZDAR SURVEY AREA
 (35 I/13)



Geochemical and Geological Survey Area
 Geophysical Survey and Detailed Geological Survey Area

MAY - 1987

JAPAN INTERNATIONAL COOPERATION AGENCY
 METAL MINING AGENCY OF JAPAN

1 : 50,000

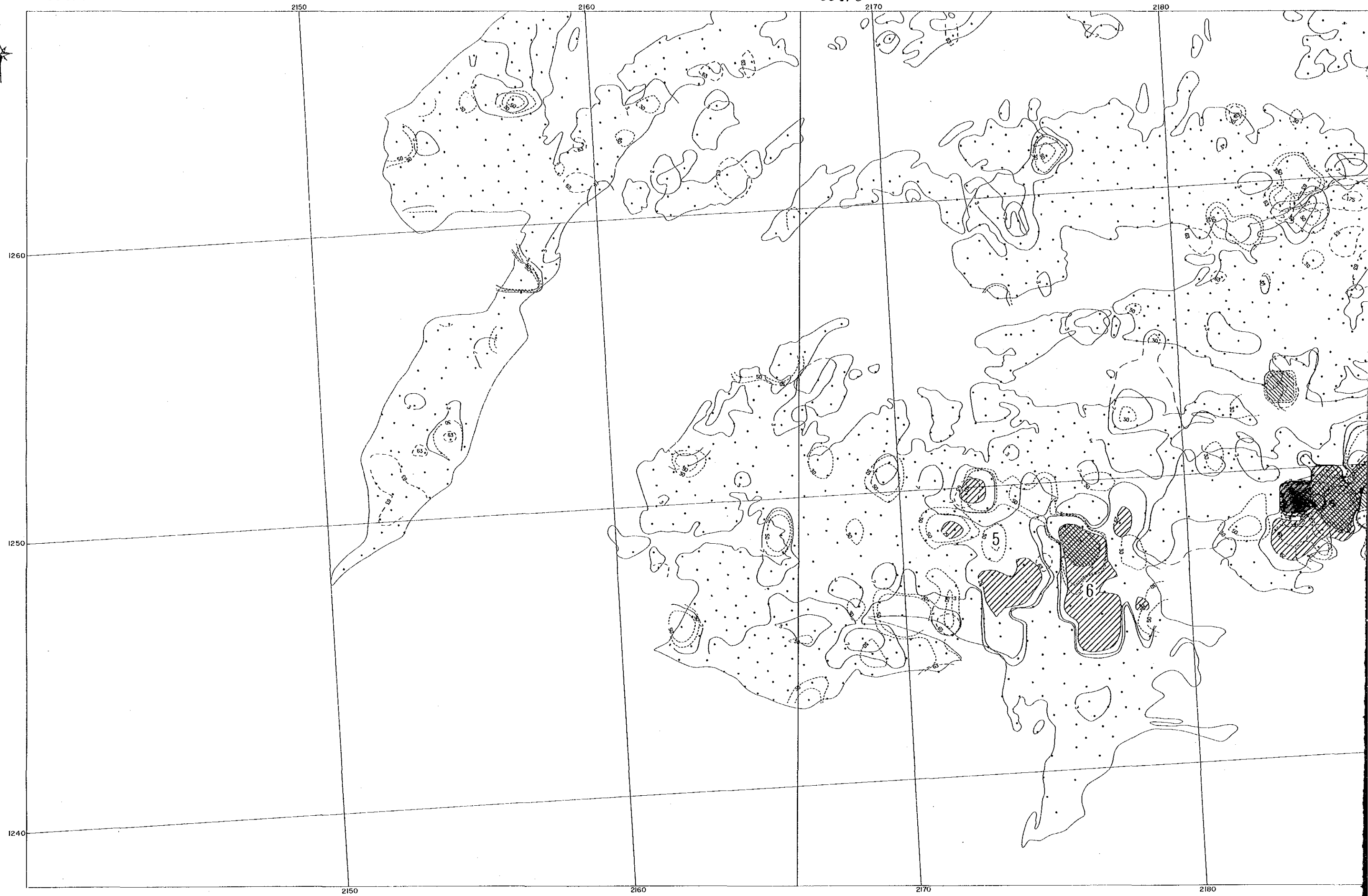


LEGEND

- 1-100 Number and Location of Samples
- : Geochemical Analysis
- : Surveyed Area

351/1

351/5



2160

351/5

2170

2180

2190



2160

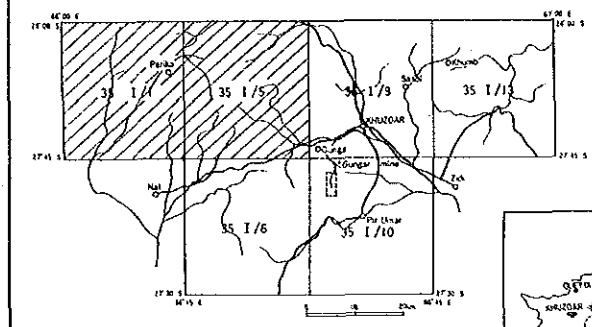
2170

2180

2190

REPORT ON THE COOPERATIVE MINERAL EXPLORATION
 IN
 KHUZDAR AREA OF BALUCHISTAN
 IN
 THE ISLAMIC REPUBLIC OF PAKISTAN
 PHASE I
 GEOCHEMICAL ANOMALOUS AREA
 IN KHUZDAR SURVEY AREA
 (35 1/1, 35 1/5) (Pb, Zn, Hg)

PL. II-2-1
 17422
 国土资源院

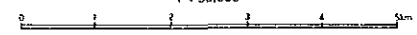


Geological and Geological Survey Area
 Geological Survey and Detailed Geological Survey Area

MAY - 1987

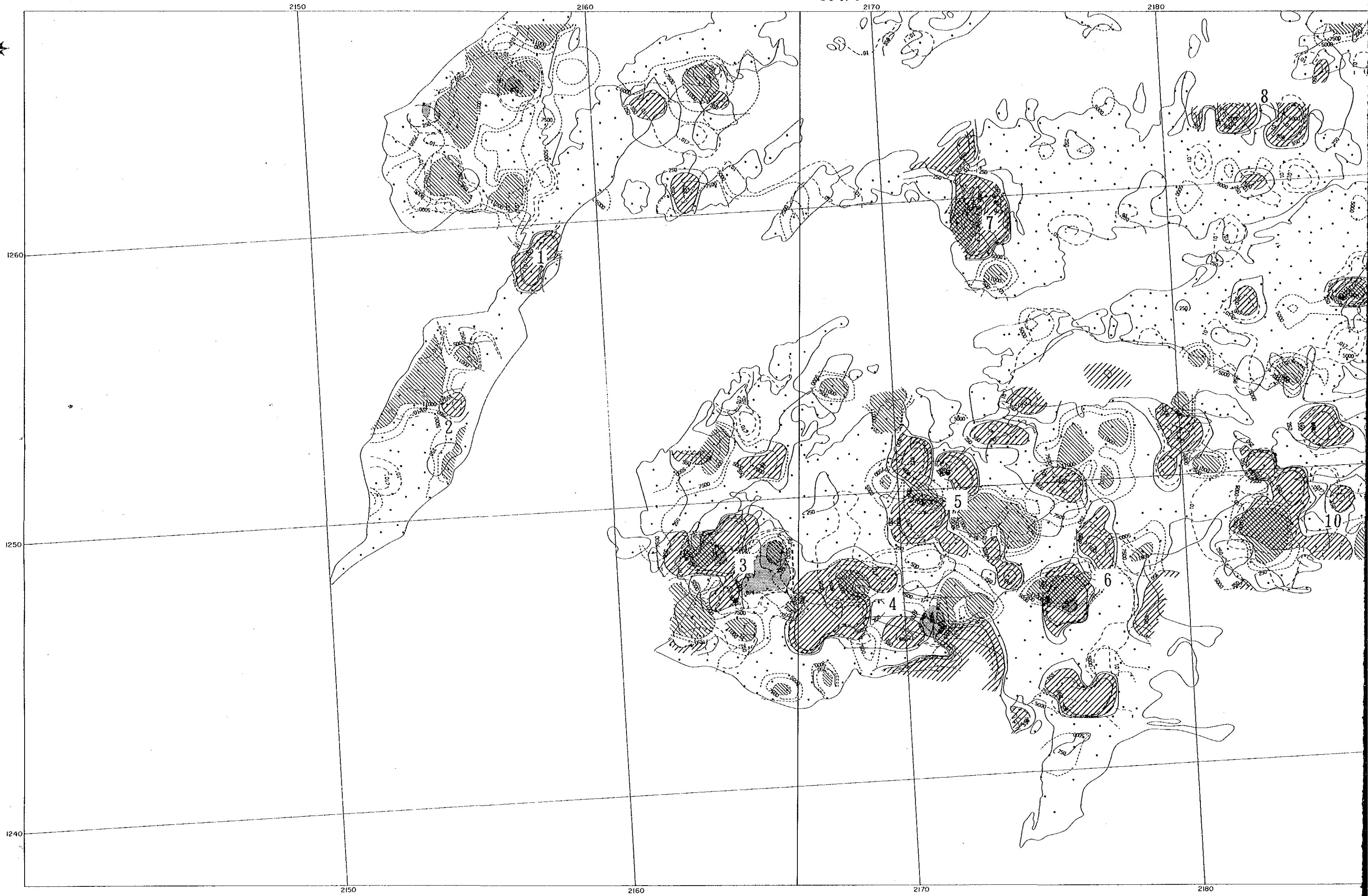
JAPAN INTERNATIONAL COOPERATION AGENCY
 METAL MINING AGENCY OF JAPAN

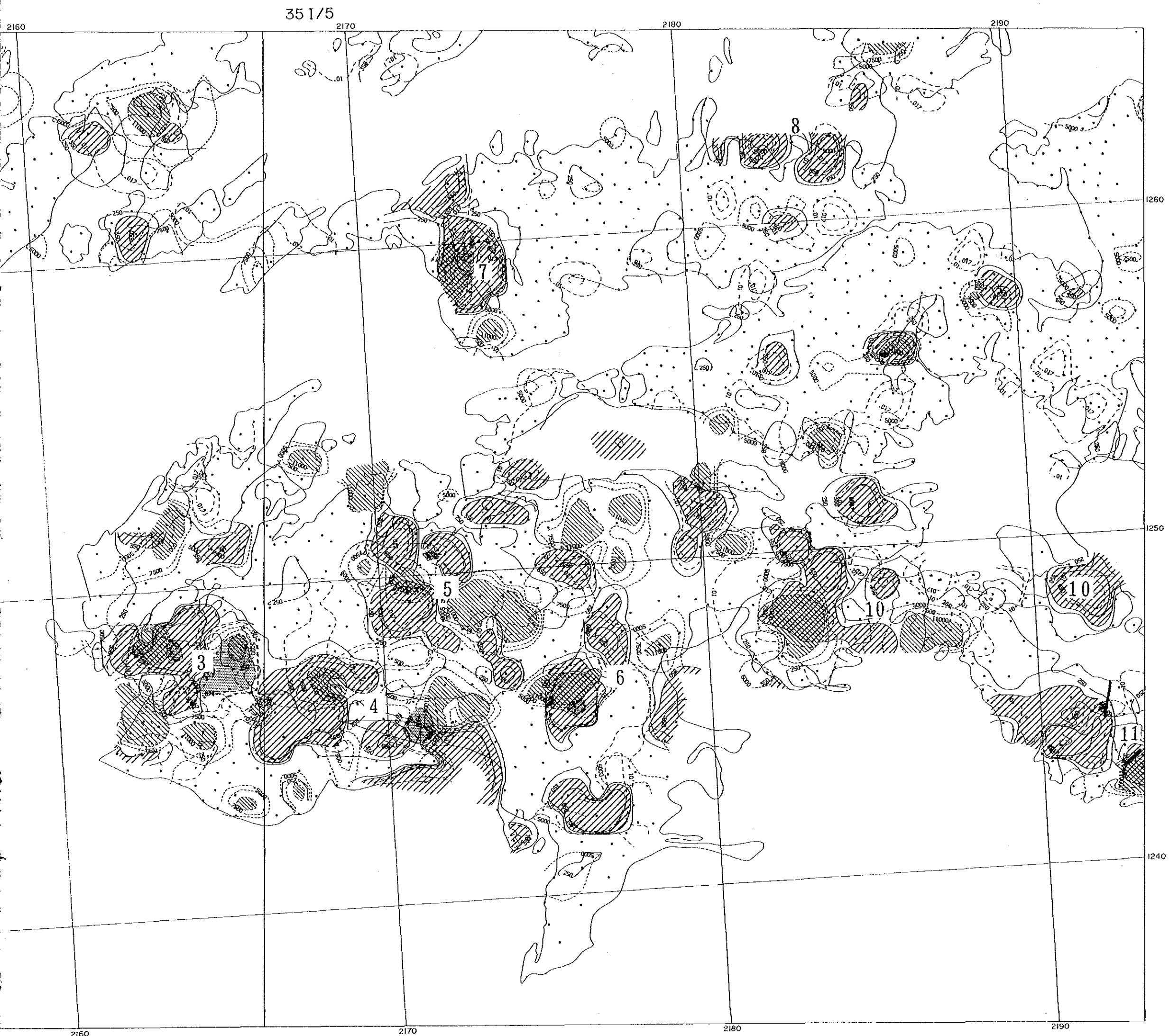
1 : 50,000



LEGEND

- Pb**
 > 2.9 ppm (Threshold)
 > 7 ppm (M+σ)
 > 3 ppm
- Zn**
 > 2.2 ppm (Threshold)
 > 5.0 ppm (M+σ)
 > 3.0 ppm
- Hg**
 > 3.4 ppb (Threshold)
 > 17.5 ppb (M+2σ)
 > 6.3 ppb (M+σ)
- : Location of Samples
 ○ : Surveyed Area
 No. : Number of Anomalous Area

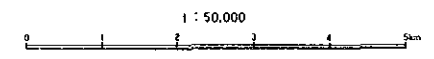




国務院地質研究所
 17422
 國有資料室藏者

REPORT ON THE COOPERATIVE MINERAL EXPLORATION
 IN
 KHUZDAR AREA OF BALUCHISTAN
 IN
 THE ISLAMIC REPUBLIC OF PAKISTAN
 PHASE I
 GEOCHEMICAL ANOMALOUS AREA
 IN KHUZDAR SURVEY AREA
 (35 1/1, 35 1/5) (Ba, Mg, S)

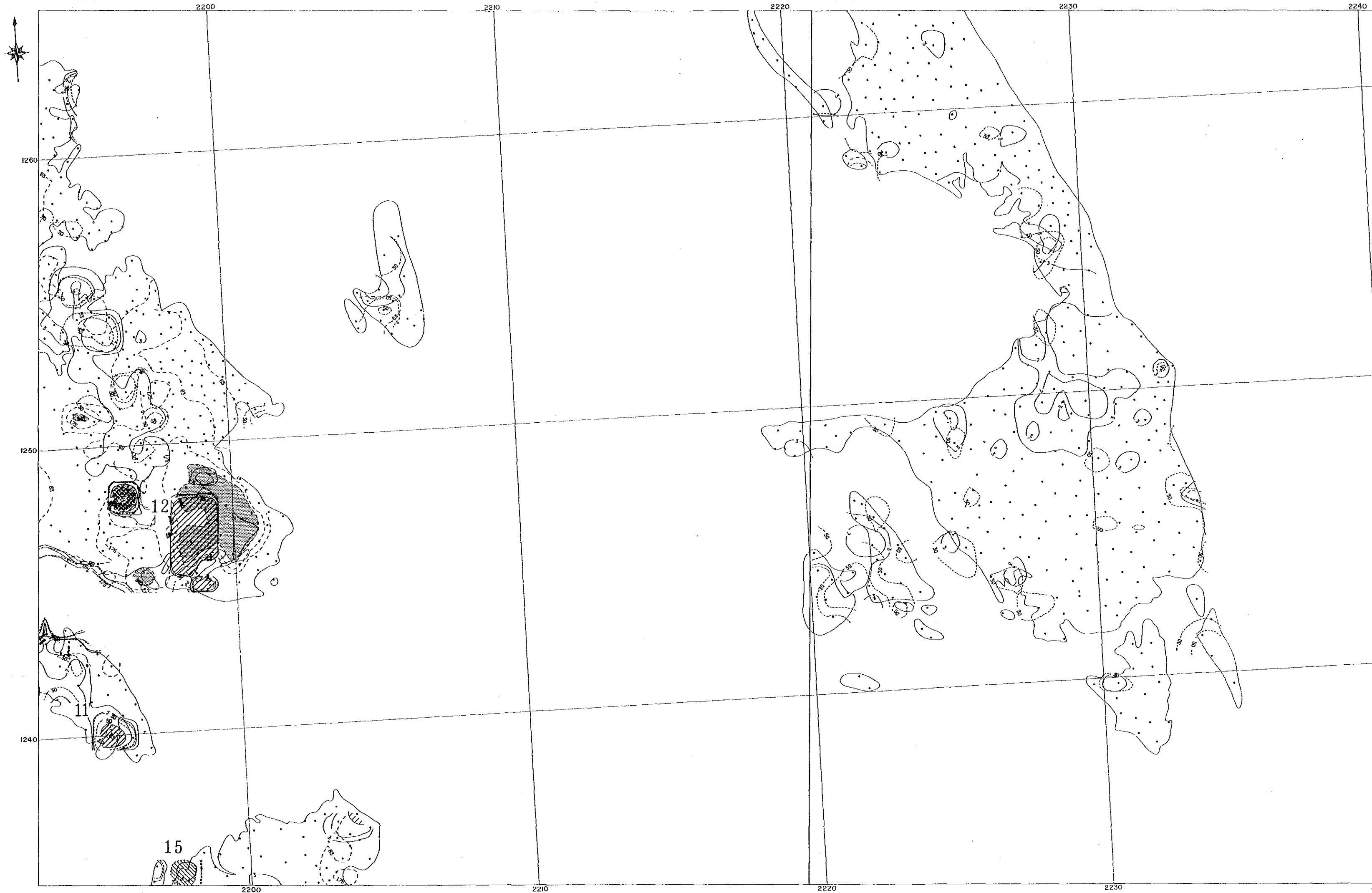
MAY - 1987
 JAPAN INTERNATIONAL COOPERATION AGENCY
 METAL MINING AGENCY OF JAPAN



- LEGEND
- Ba -
 - > 35.0 ppm (Threshold)
 - > 25.0 ppm
 - Mg -
 - > 11.00 ppm (Threshold)
 - > 7.500 ppm (M+σ)
 - > 5.000 ppm
 - S -
 - > 0.074% (Threshold)
 - > 0.017% (M+2σ)
 - > 0.010%
 - : Location of Samples
 - : Surveyed Area
 - No. : Number of Anomalous Area

35 I/9

35 I/13



35 I/13

2220

2230

2240

1260

1250

1240

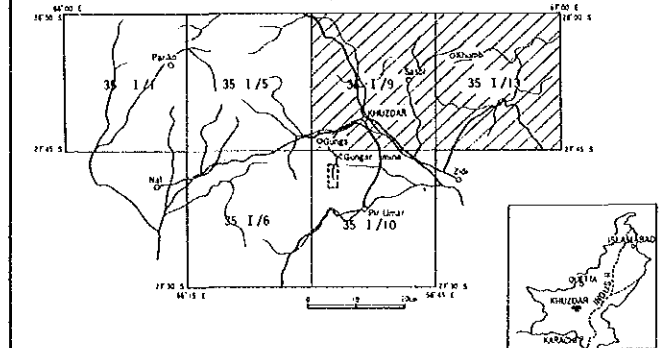
2220

2230

2240

REPORT ON THE COOPERATIVE MINERAL EXPLORATION
 IN
 KHUZDAR AREA OF BALUCHISTAN
 IN
 THE ISLAMIC REPUBLIC OF PAKISTAN
 PHASE I
 GEOCHEMICAL ANOMALOUS AREA
 IN KHUZDAR SURVEY AREA
 (35 I/3, 35 I/13) (Pb, Zn, Hg)

11-2-9
 國際協力事業団
 17422
 図書資料室蔵

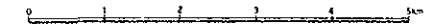


Geochemical and Geological Survey Area
 Geophysical Survey and Detailed Geological Survey Area

MAY - 1987

JAPAN INTERNATIONAL COOPERATION AGENCY
 METAL MINING AGENCY OF JAPAN

1 : 50,000



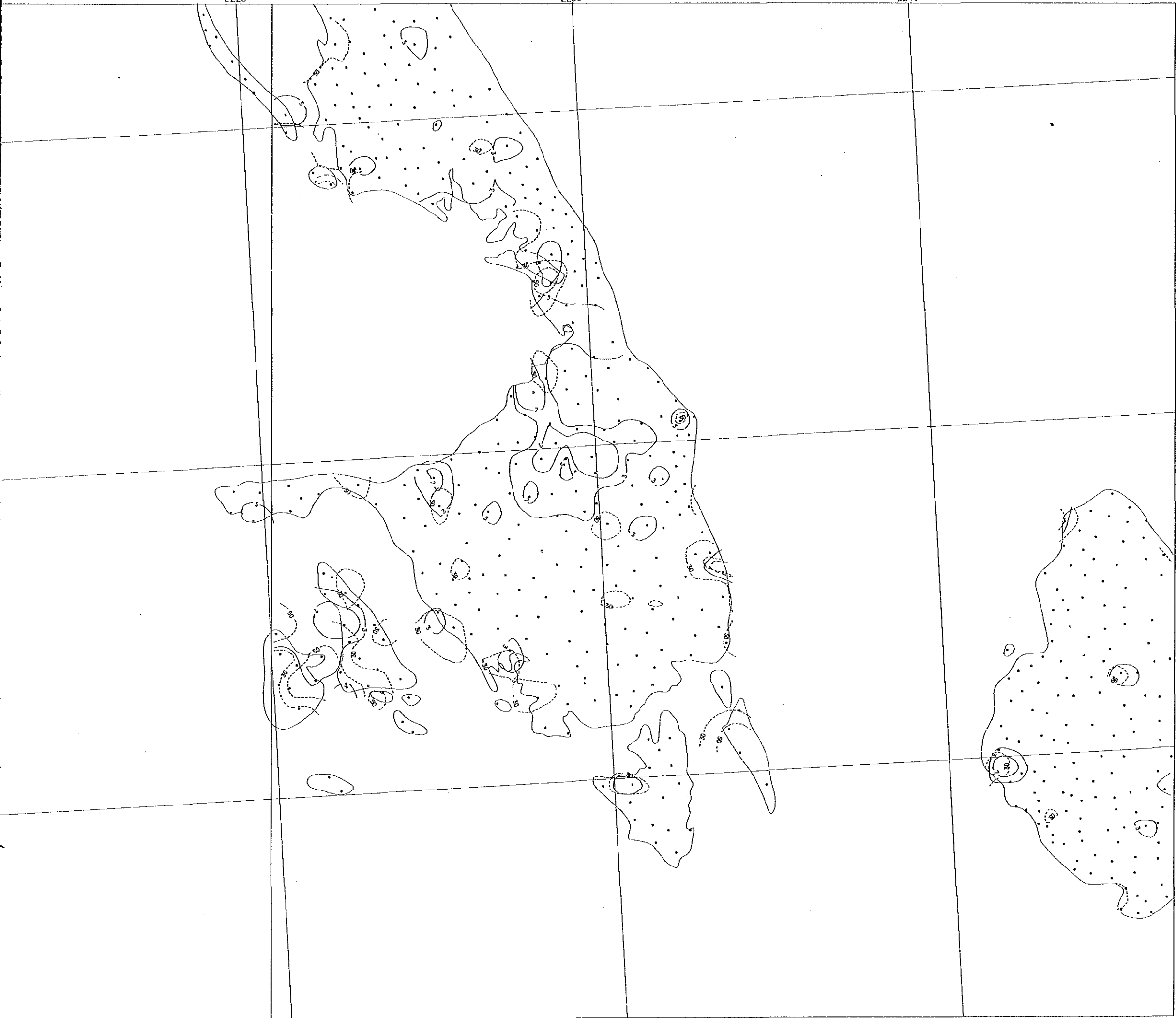
LEGEND

Pb
 > 29 ppa (Threshold)
 > 7 ppa (M+σ)
 > 3 ppa

Zn
 > 225 ppa (Threshold)
 > 50 ppa (M+σ)
 > 30 ppa

Hg
 > 340 ppb (Threshold)
 > 175 ppb (M+2σ)
 > 63 ppb (M+σ)

• : Location of Samples
 ○ : Surveyed Area
 No. : Number of Anomalous Area



35 I/9

2200

2210

35 I/13

2220

2230

2240



1260

1250

1240

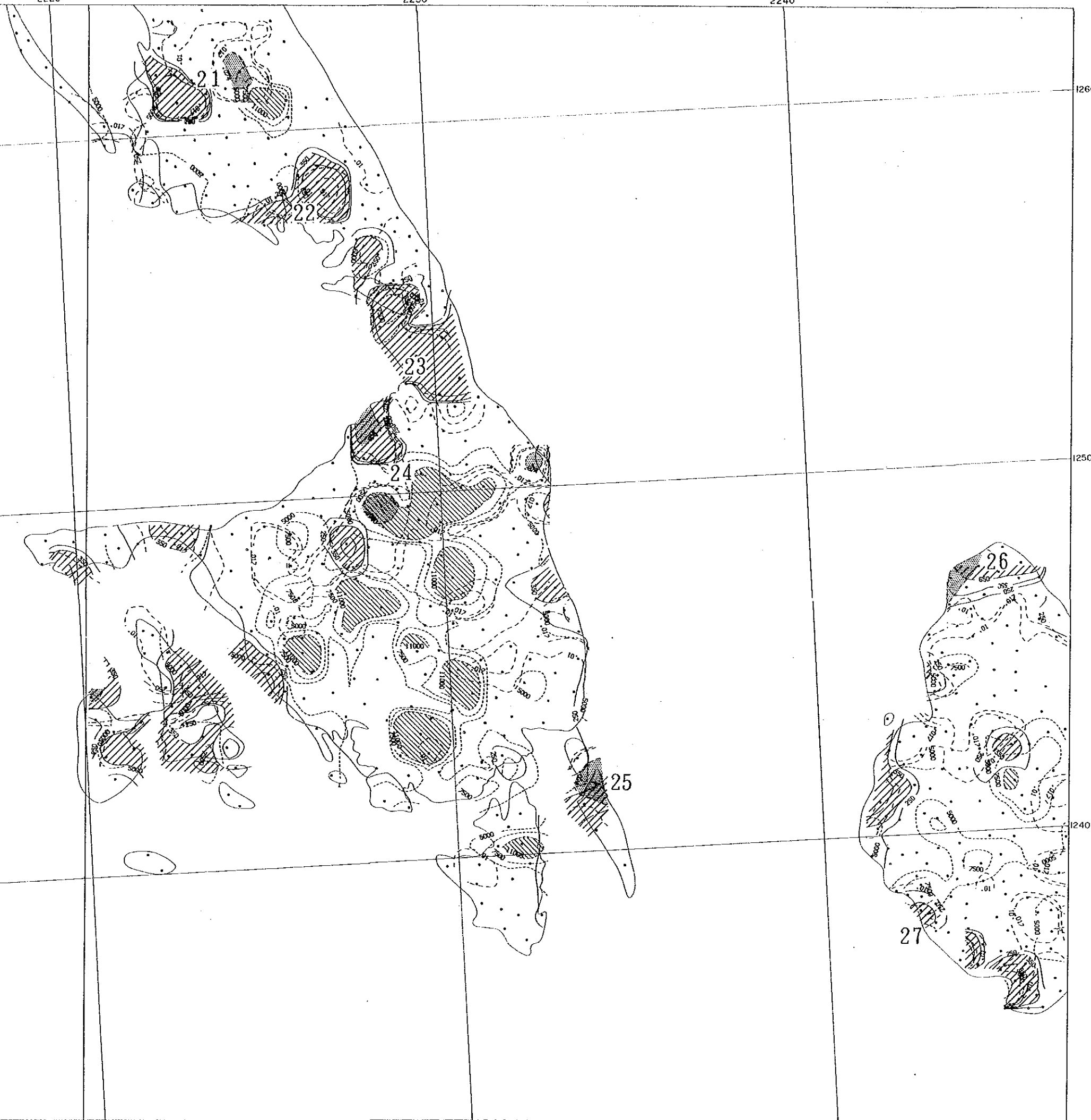
2200

2210

2220

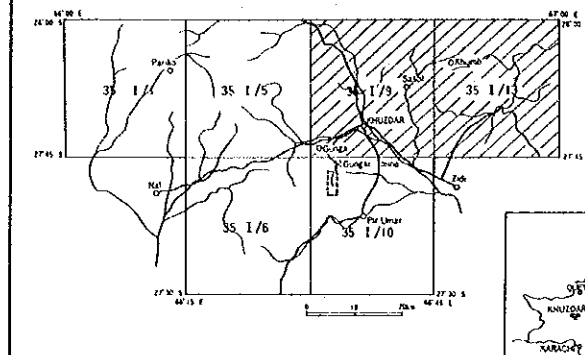
2230





REPORT ON THE COOPERATIVE MINERAL EXPLORATION
 IN
 KHUZDAR AREA OF BALUCHISTAN
 IN
 THE ISLAMIC REPUBLIC OF PAKISTAN
 PHASE I
 GEOCHEMICAL ANOMALOUS AREA
 IN KHUZDAR SURVEY AREA
 (35 I/9, 35 I/13) (Ba, Mg, S)

国際協力機構
 17422
 国書資料室蔵

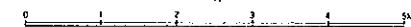


Geochemical and Geological Survey Area
 Geophysical Survey and Detailed Geological Survey Area

MAY - 1987

JAPAN INTERNATIONAL COOPERATION AGENCY
 METAL MINING AGENCY OF JAPAN

1 : 50,000

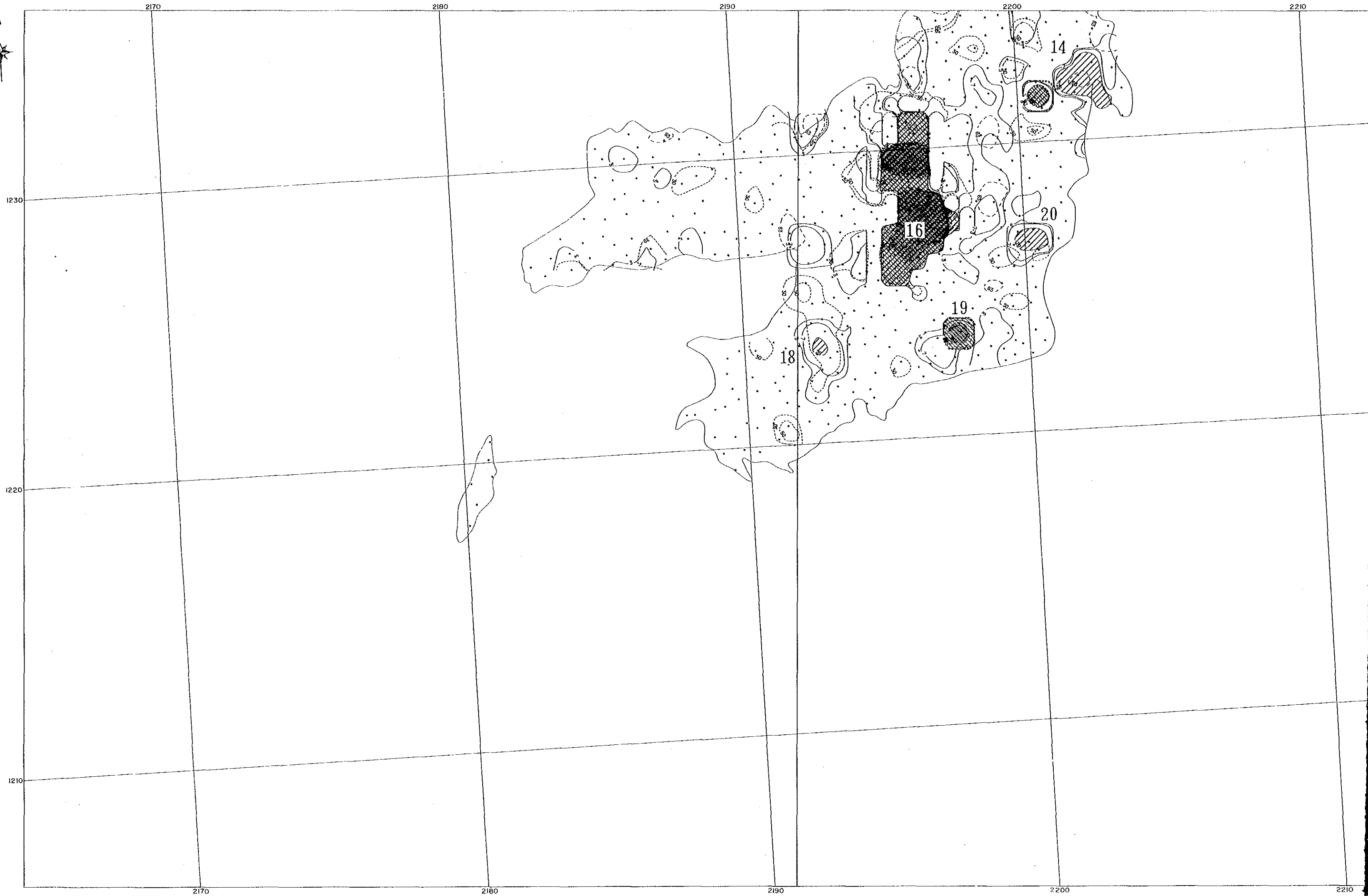


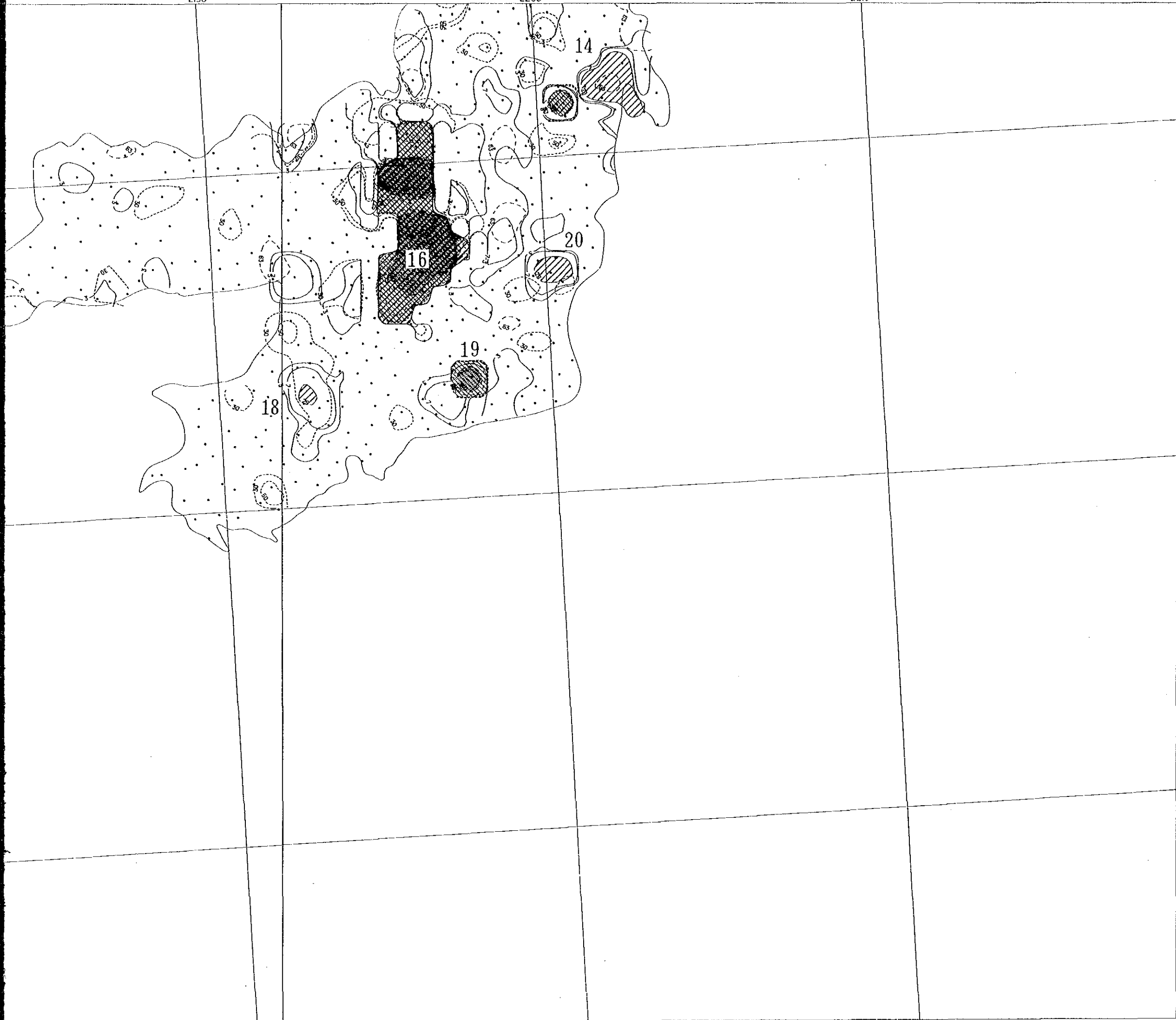
LEGEND

- Ba
 - > 350 pps (Threshold)
 - > 250 pps
- Mg
 - > 11,000 ppm (Threshold)
 - > 7,500 ppm (M+σ)
 - > 5,000 ppm
- S
 - > 0.074% (Threshold)
 - > 0.017% (M+2σ)
 - > 0.010%
- : Location of Samples
- : Surveyed Area
- No. : Number of Anomalous Area

35 I/6

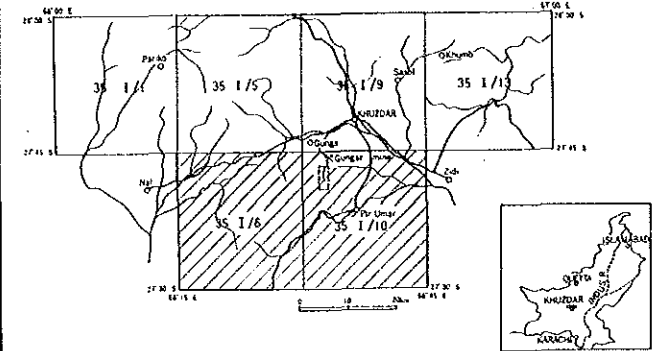
35 I/10





REPORT ON THE COOPERATIVE MINERAL EXPLORATION
 IN
 KHUZDAR AREA OF BALUCHISTAN
 IN
 THE ISLAMIC REPUBLIC OF PAKISTAN
 PHASE I
 GEOCHEMICAL ANOMALOUS AREA
 IN KHUZDAR SURVEY AREA
 (35 I/6, 35 I/10) (Pb, Zn, Hg)

地质部地质研究所
 17422
 图书资料室

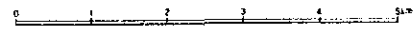


Geophysical and Geological Survey Area
 Geophysical Survey and Detailed Geological Survey Area

MAY - 1987

JAPAN INTERNATIONAL COOPERATION AGENCY
 METAL MINING AGENCY OF JAPAN

1 : 50,000



LEGEND

- Pb**
- > 29 ppm (Threshold)
 - > 7 ppm (M+σ)
 - > 3 ppm
- Zn**
- > 225 ppm (Threshold)
 - > 50 ppm (M+σ)
 - > 30 ppm
- Hg**
- > 340 ppb (Threshold)
 - > 175 ppb (M+2σ)
 - > 63 ppb (M+σ)
- : Location of Samples
 - : Surveyed Area
 - No. : Number of Anomalous Area

35 I/6

2170

2180

2190

35 I/10

15

2200

2210



1230

1220

1210

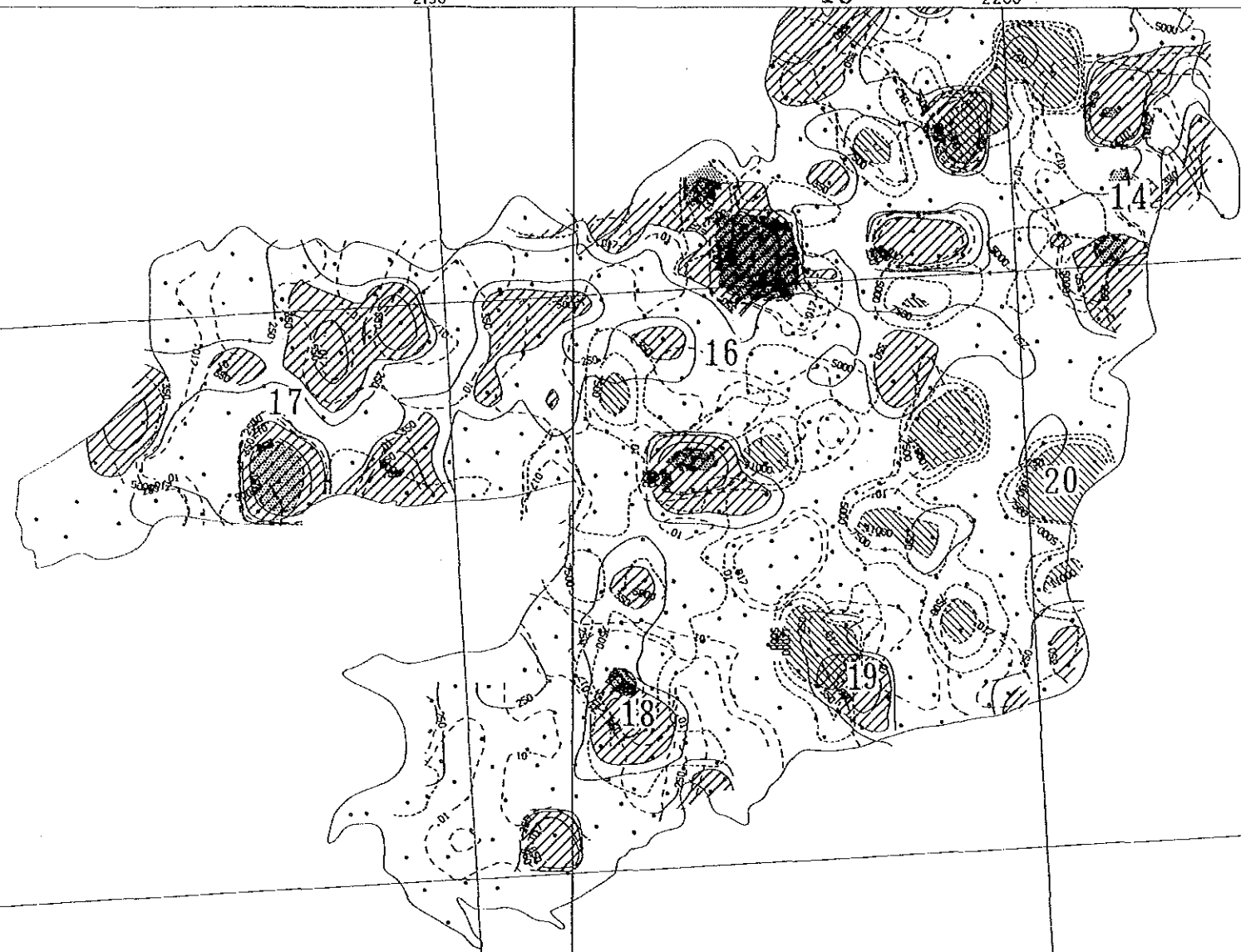
2170

2180

2190

2200

2210



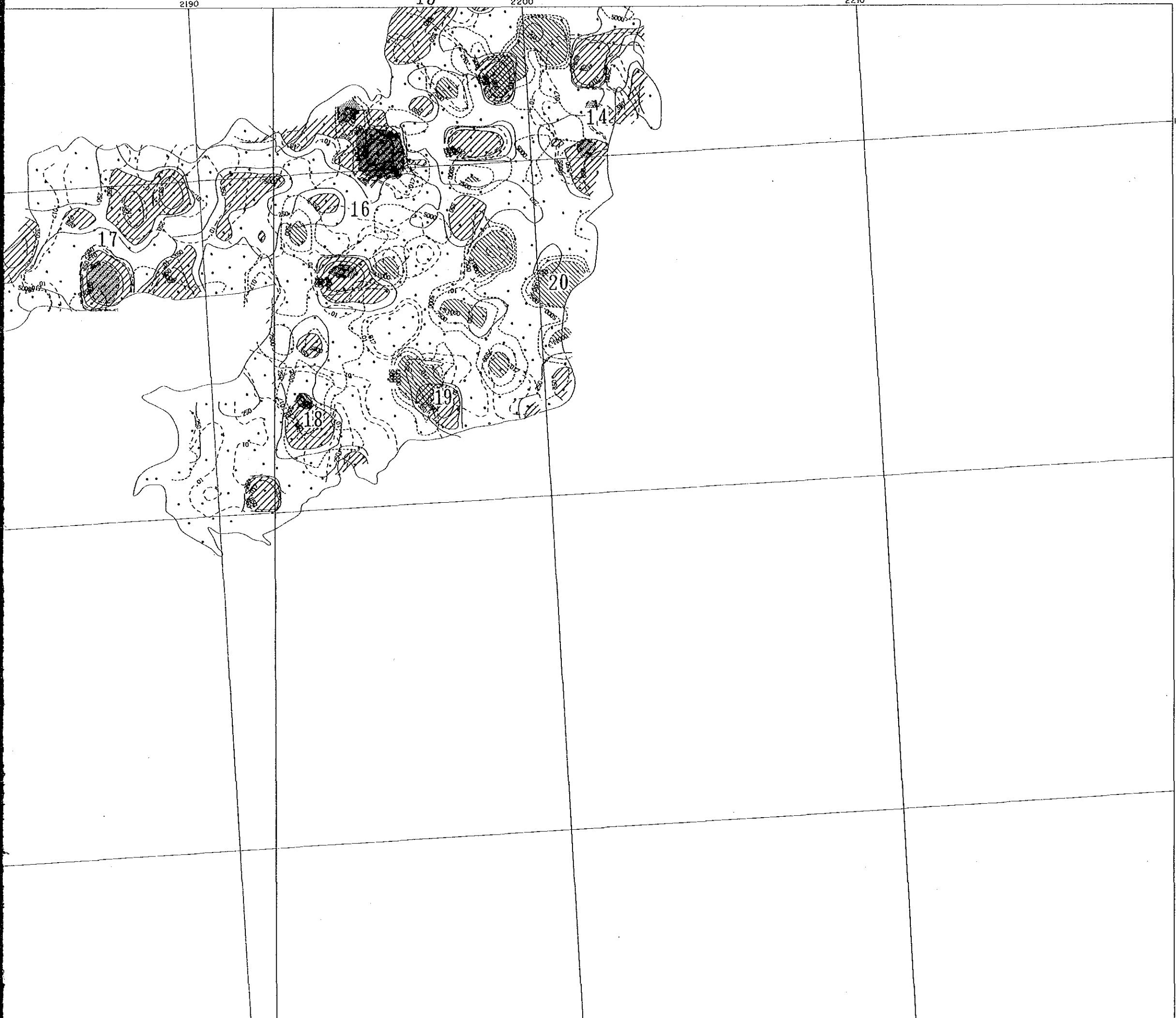
351/10

15

2200

2210

2190



2190

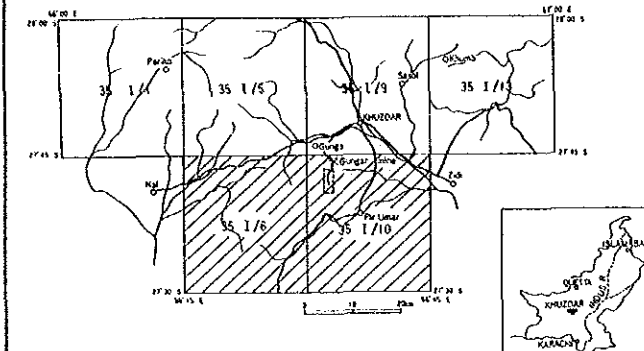
2200

2210

PL. II-2-12

REPORT ON THE COOPERATIVE MINERAL EXPLORATION 國際協力事業団
 IN KHUZDAR AREA OF BALUCHISTAN 17422
 IN THE ISLAMIC REPUBLIC OF PAKISTAN 國書資料室蔵書

PHASE I
 GEOCHEMICAL ANOMALOUS AREA
 IN KHUZDAR SURVEY AREA
 (35 1/6, 35 1/10) (Ba, Mg, S)

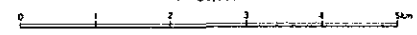


Geochemical and Geological Survey Area
 Geophysical Survey and Detailed Geological Survey Area

MAY - 1987

JAPAN INTERNATIONAL COOPERATION AGENCY
 METAL MINING AGENCY OF JAPAN

1 : 50,000



LEGEND

- Ba-
- > 35.0 ppa (Threshold)
- > 25.0 ppa
- Mg-
- > 11,000 ppm (Threshold)
- > 7,500 ppm (M+σ)
- > 5,000 ppm
- S-
- > 0.074% (Threshold)
- > 0.017% (M+2σ)
- > 0.010%
- : Location of Samples
- : Surveyed Area
- No. : Number of Anomalous Area