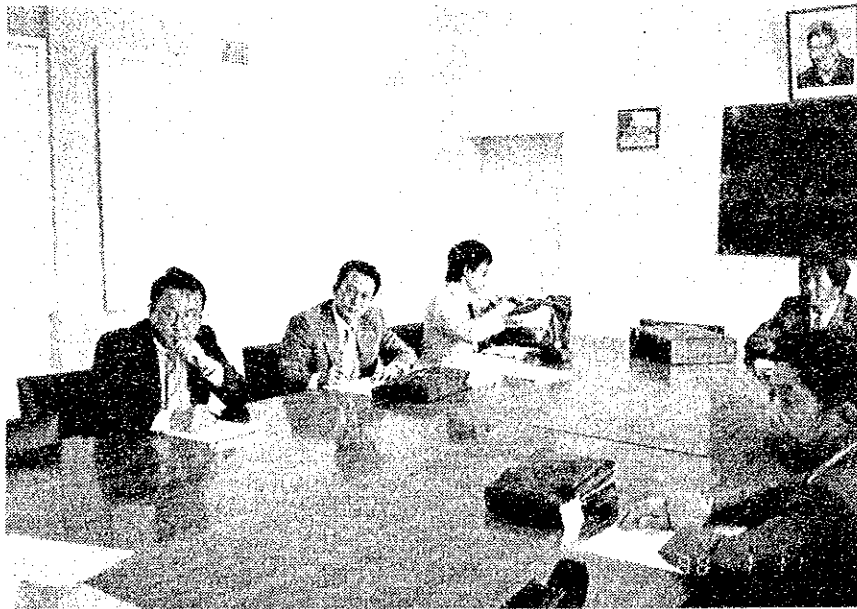


## PHOTOGRAPHS OF THE STUDY ACTIVITY





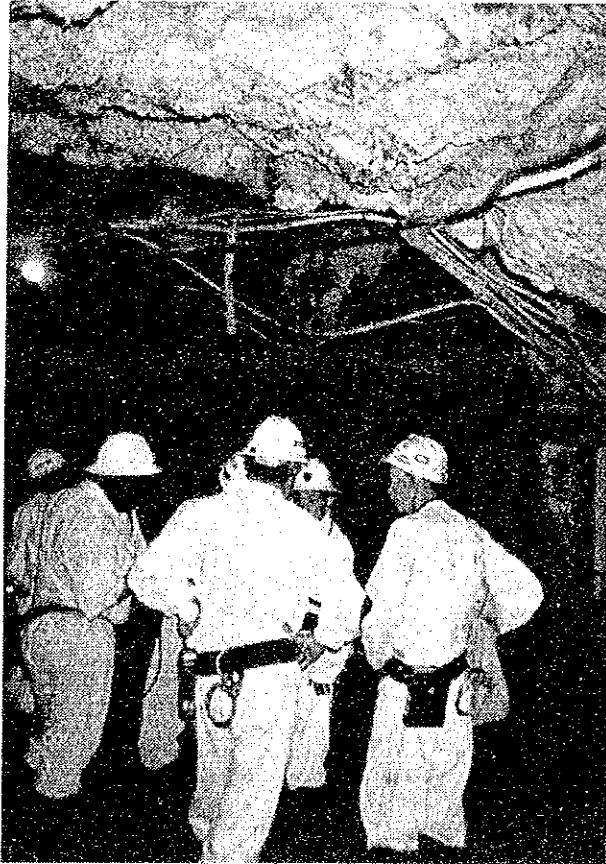
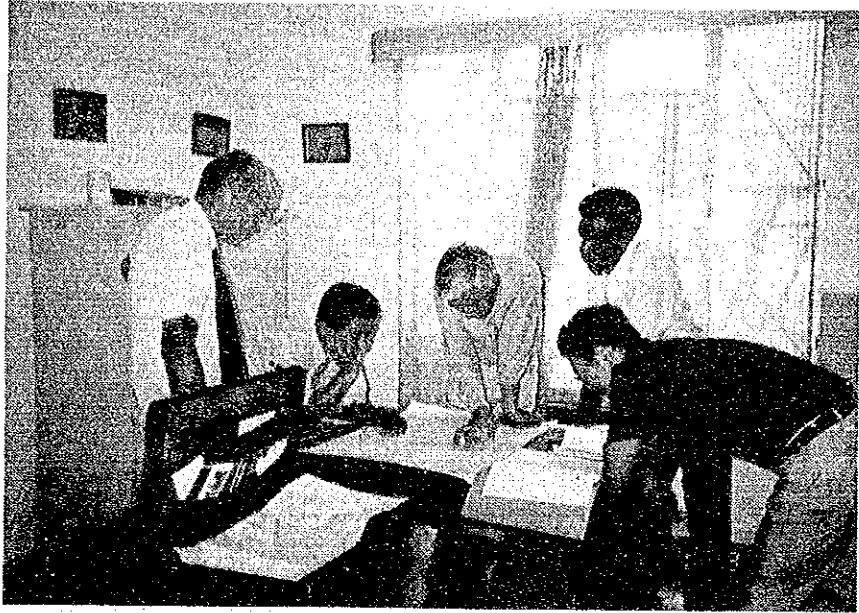
Meeting at MINEX





Meeting at ZCCM

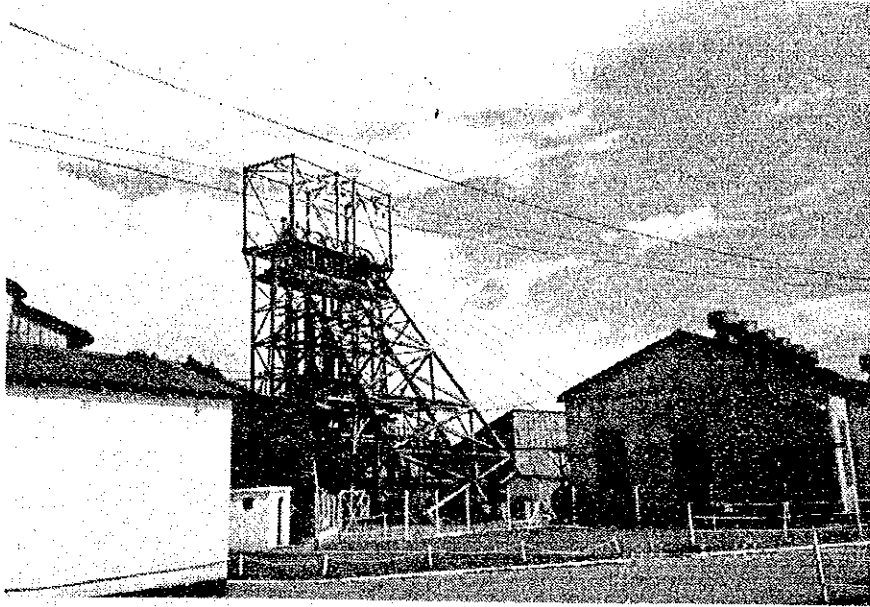




At Kabwe





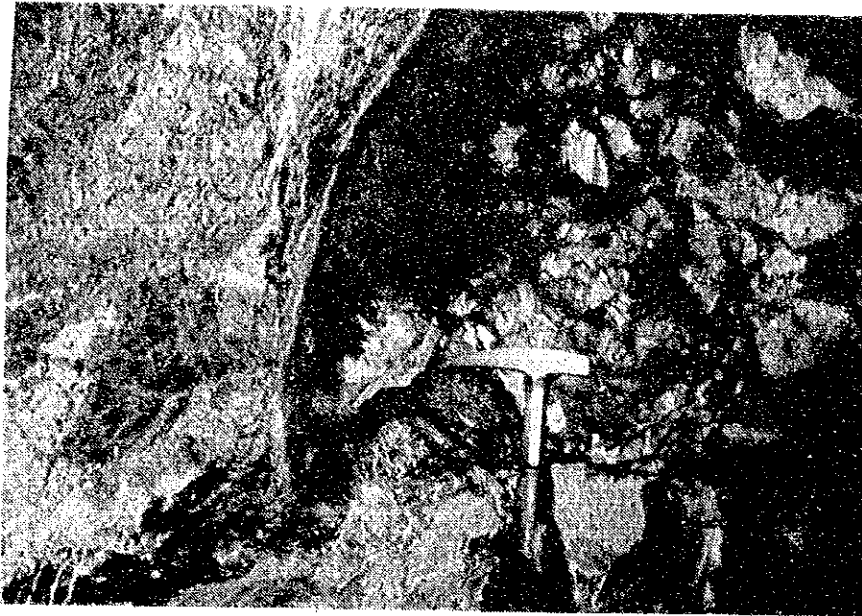


Ore Shaft, Kabwe Mine



Davis Shaft, Kabwe Mine





Ores, Kabwe Mine

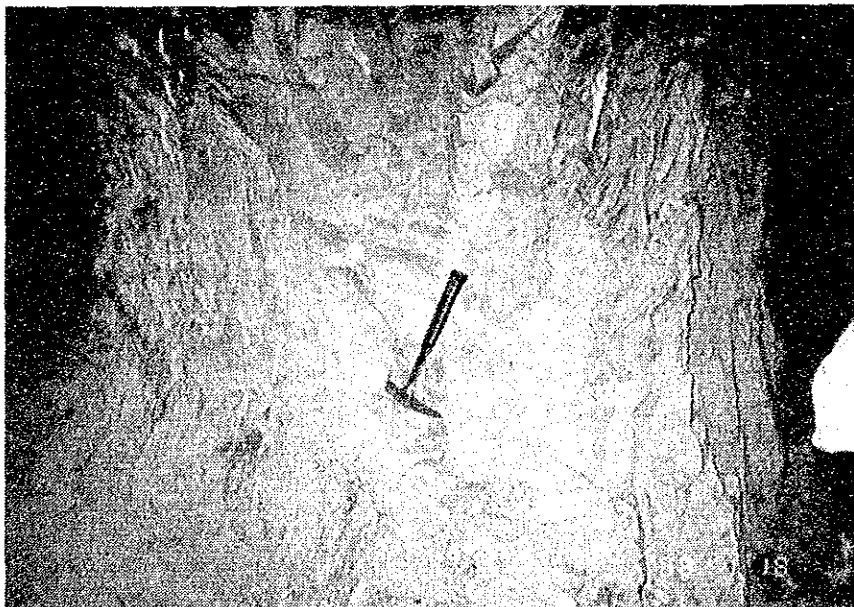
Left: Sphalerite Ore

Right: Brecciated Zone  
in Wall Rocks



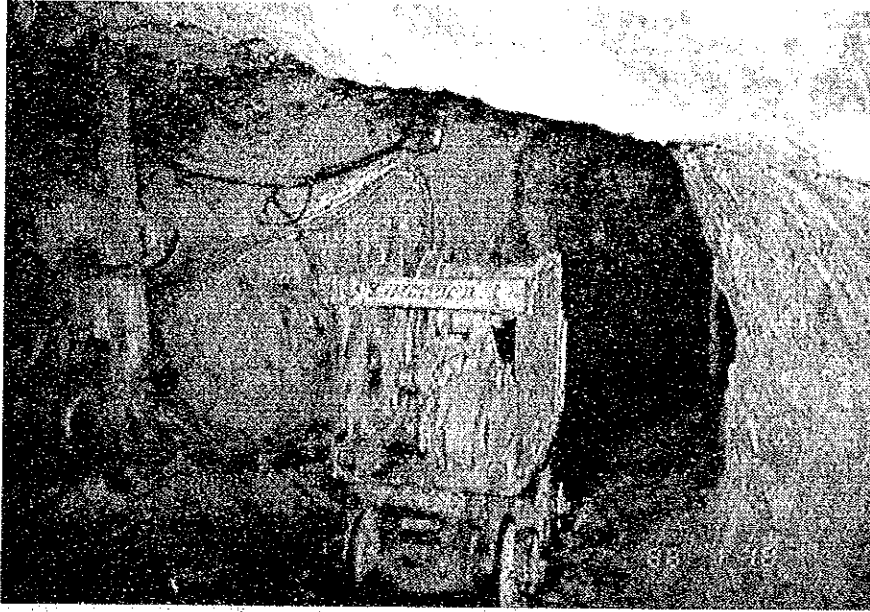


Schistose Rocks, Kabwe Mine



Massive Dolomites, Kabwe Mine





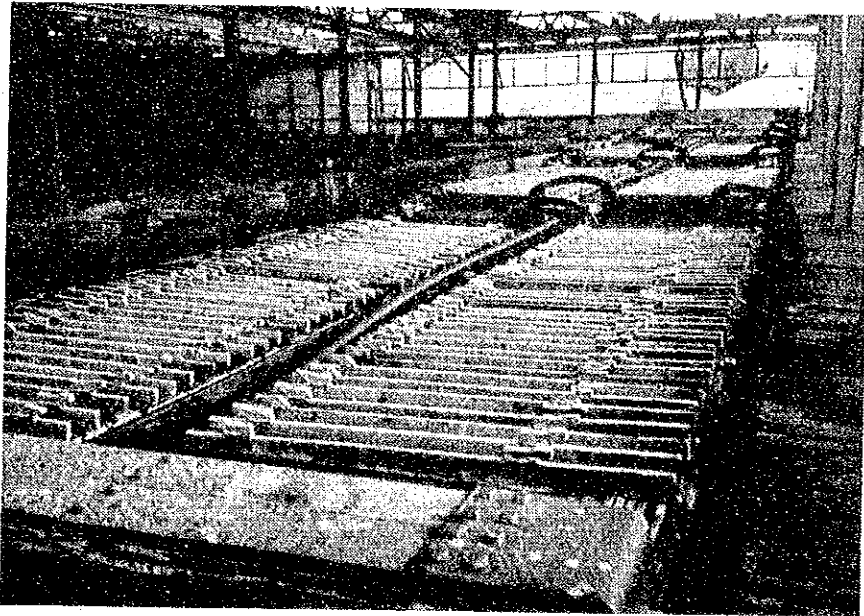
Rocker Shovel, Kabwe Mine



Locomotive, Kabwe Mine



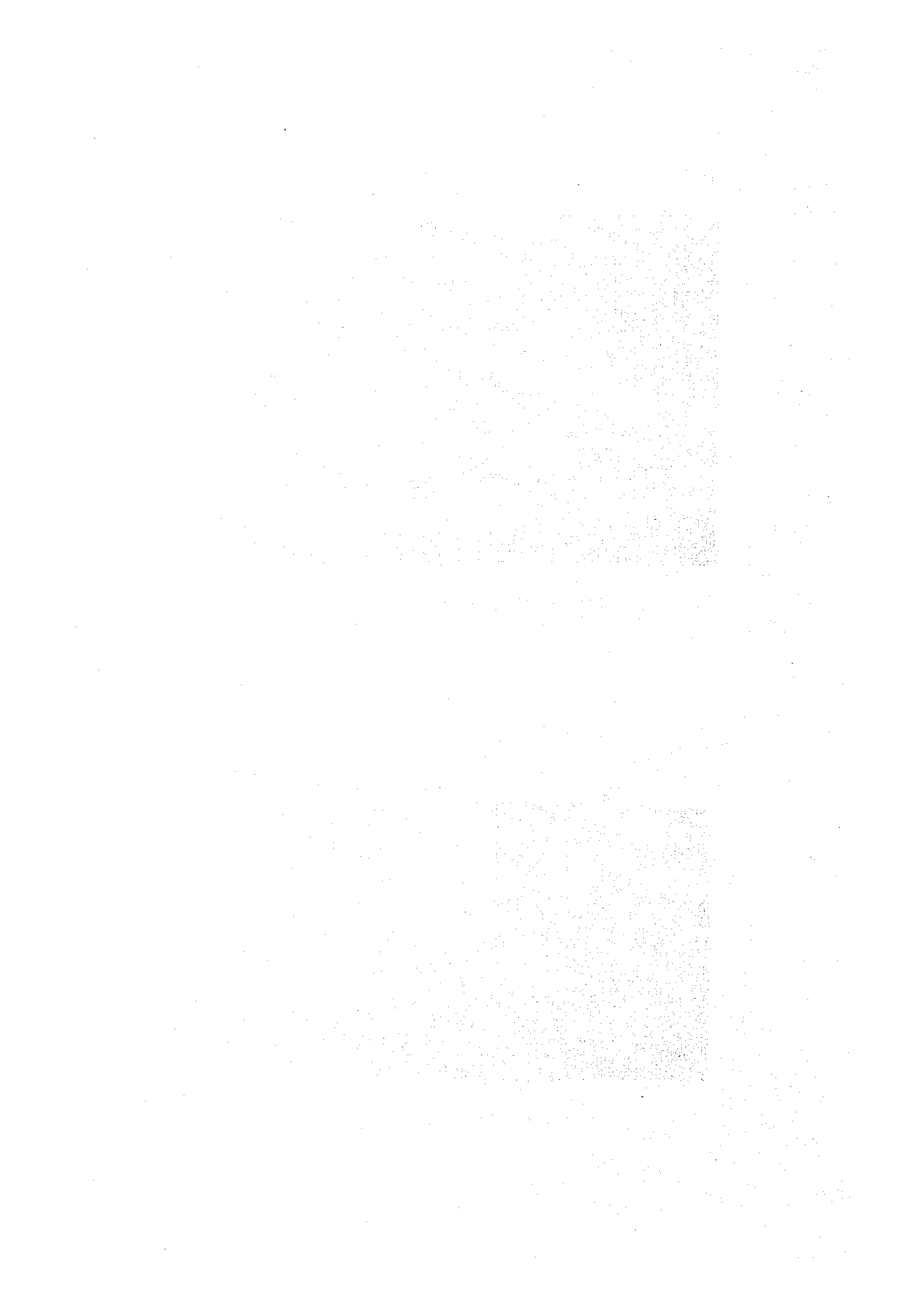


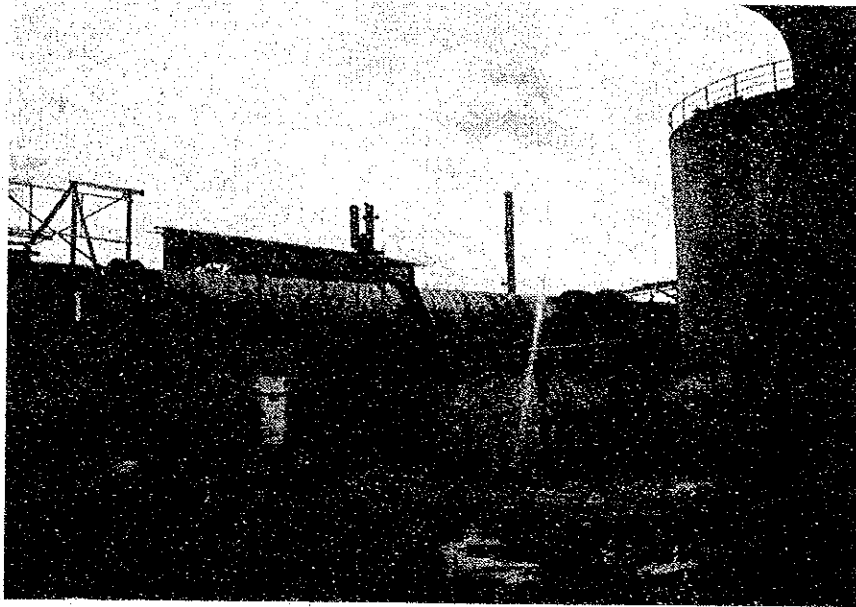


Electrolytic Cells, Kabwe Plant

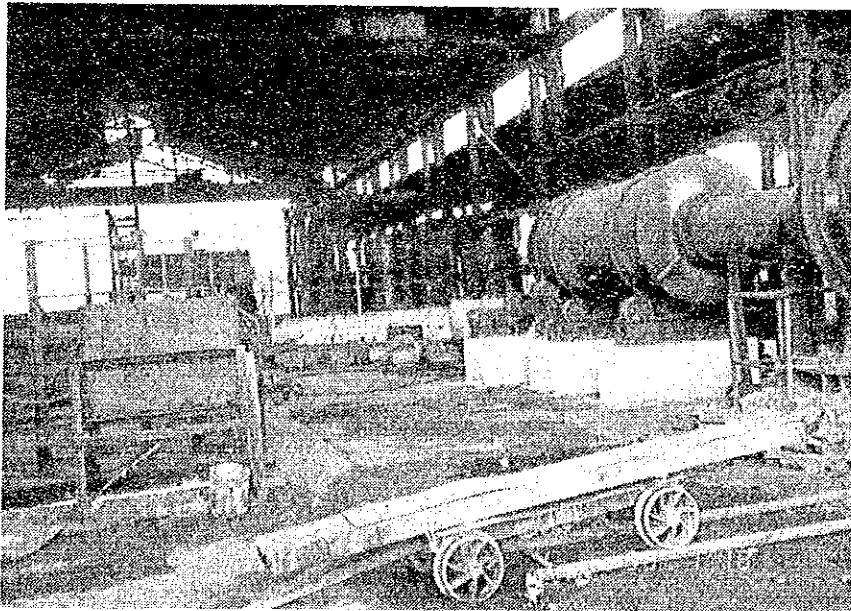


Sable 2 Zinc, Kabwe Plant



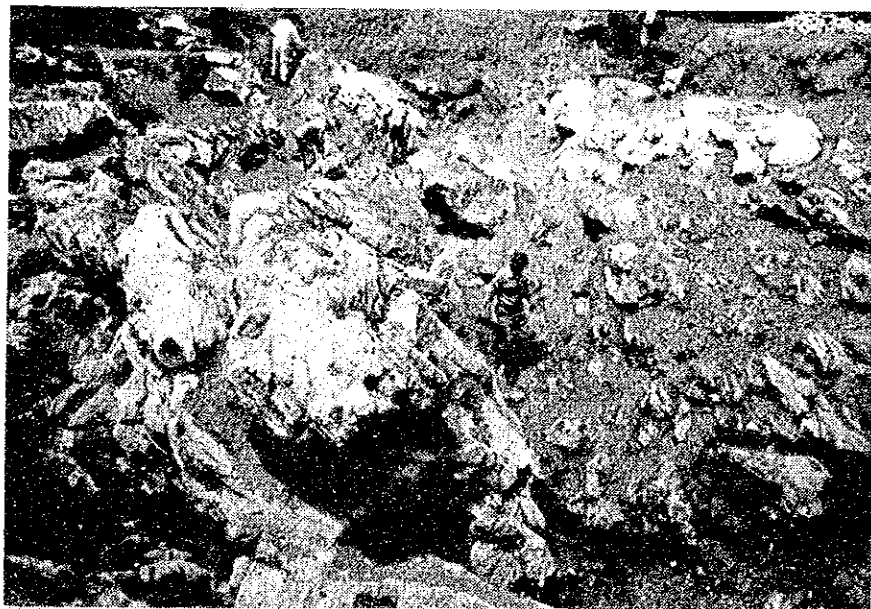


Waelz Kiln, Kabwe Plant

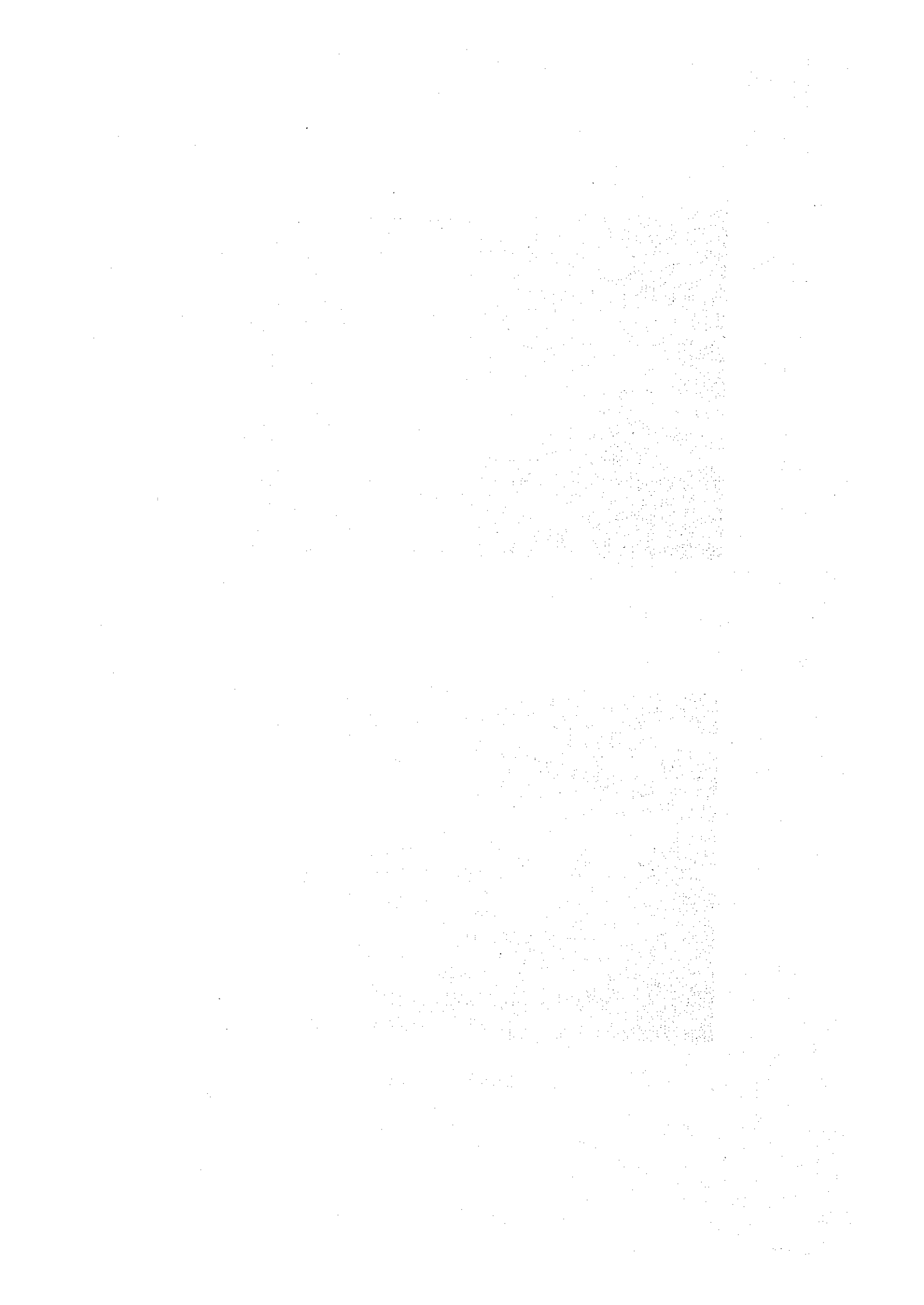


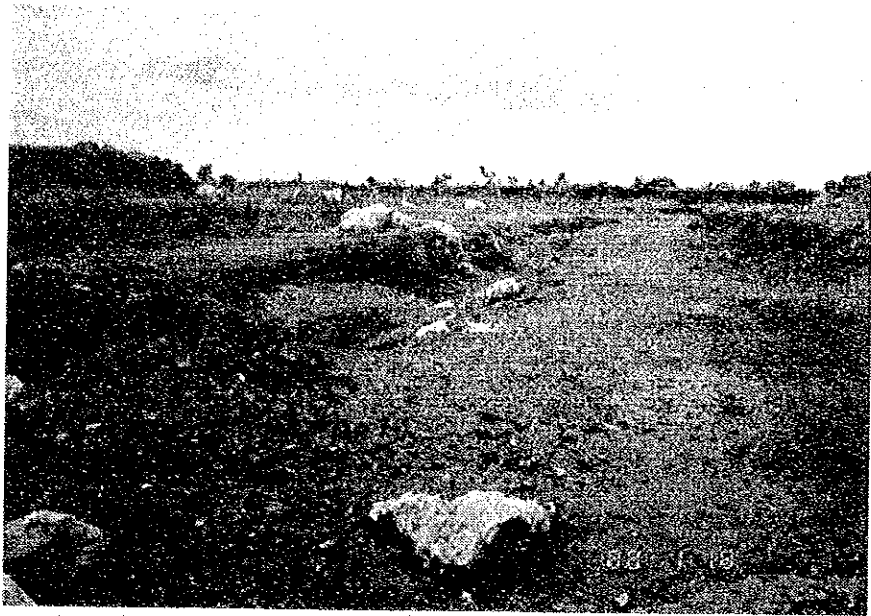
Lead Refinery, Kabwe Plant





Foundry Prospects

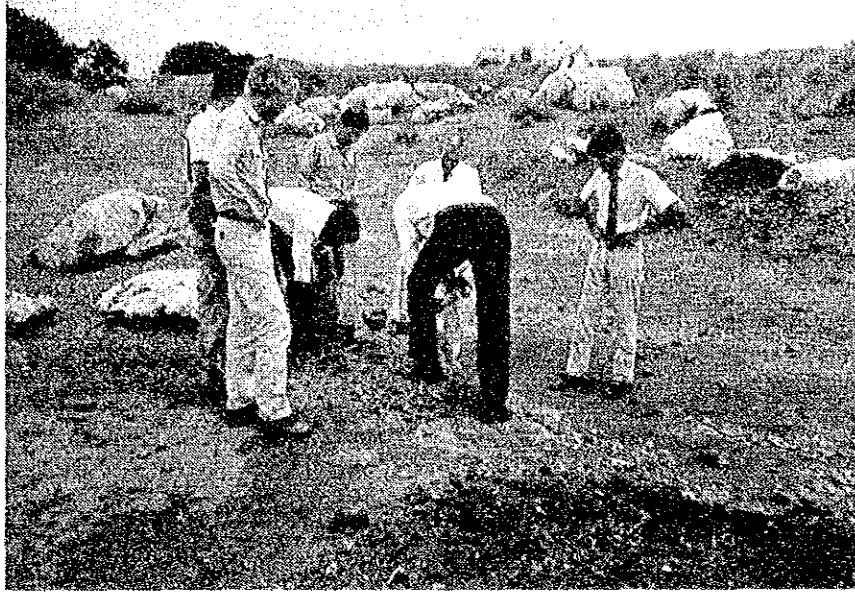




Airfield Prospect







Airfield Prospect





Star Zinc





Star Zinc

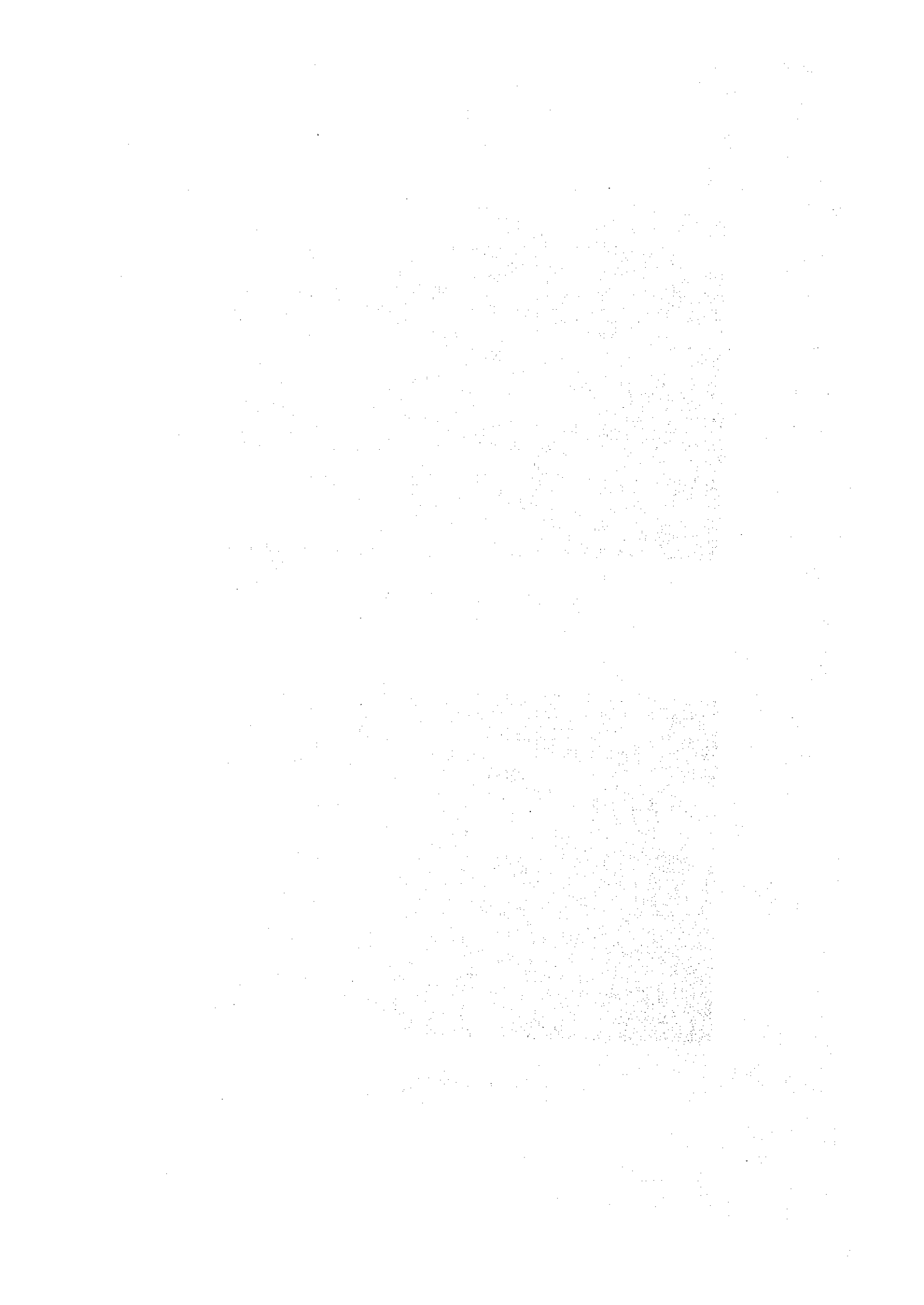




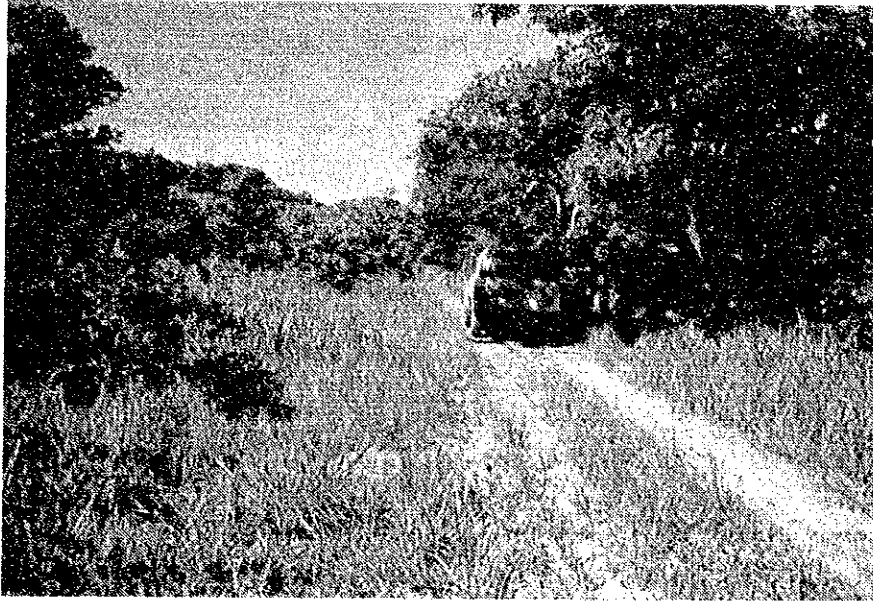
Rio Tinto Post, Sebenbere



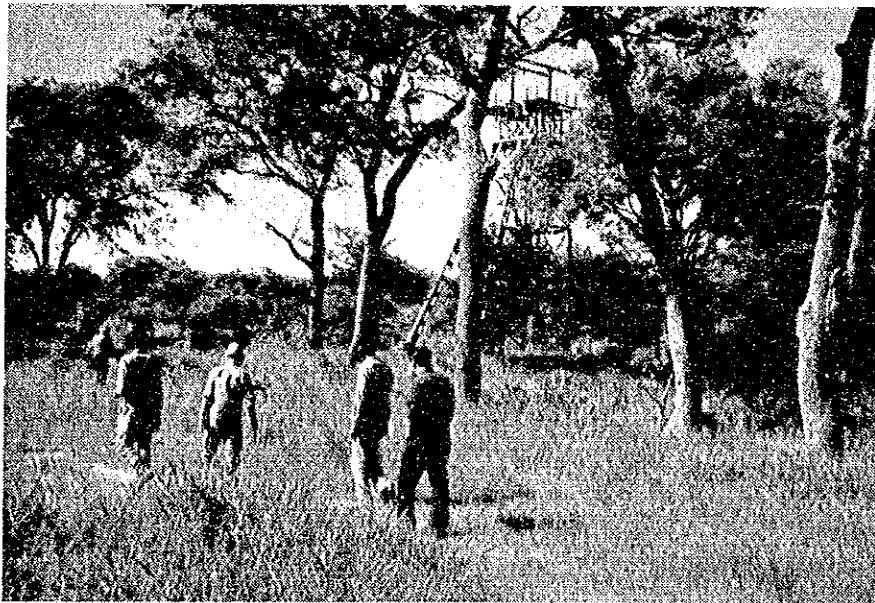
DDH R3, Sebenbere



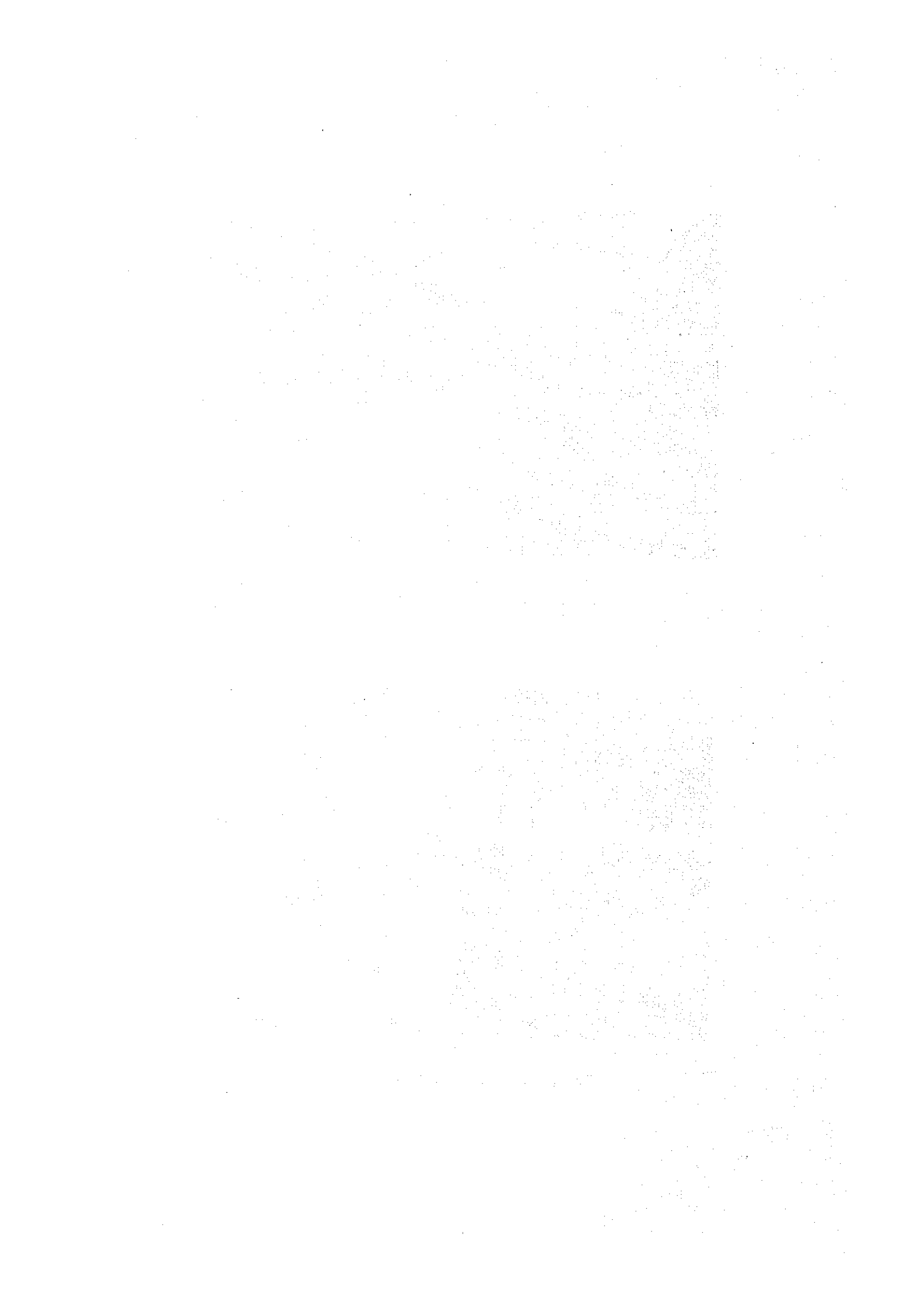




Access Road, Sebembere



Prospecting Shaft, Sebembere





Kabwe West





