

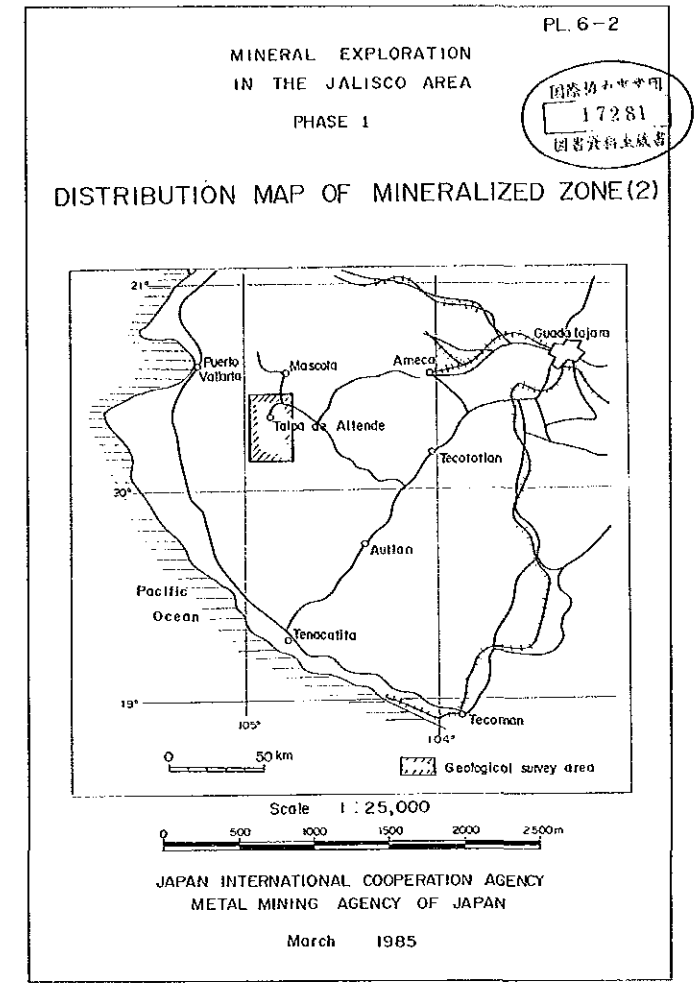
104° 55'

104° 50'

104° 45'

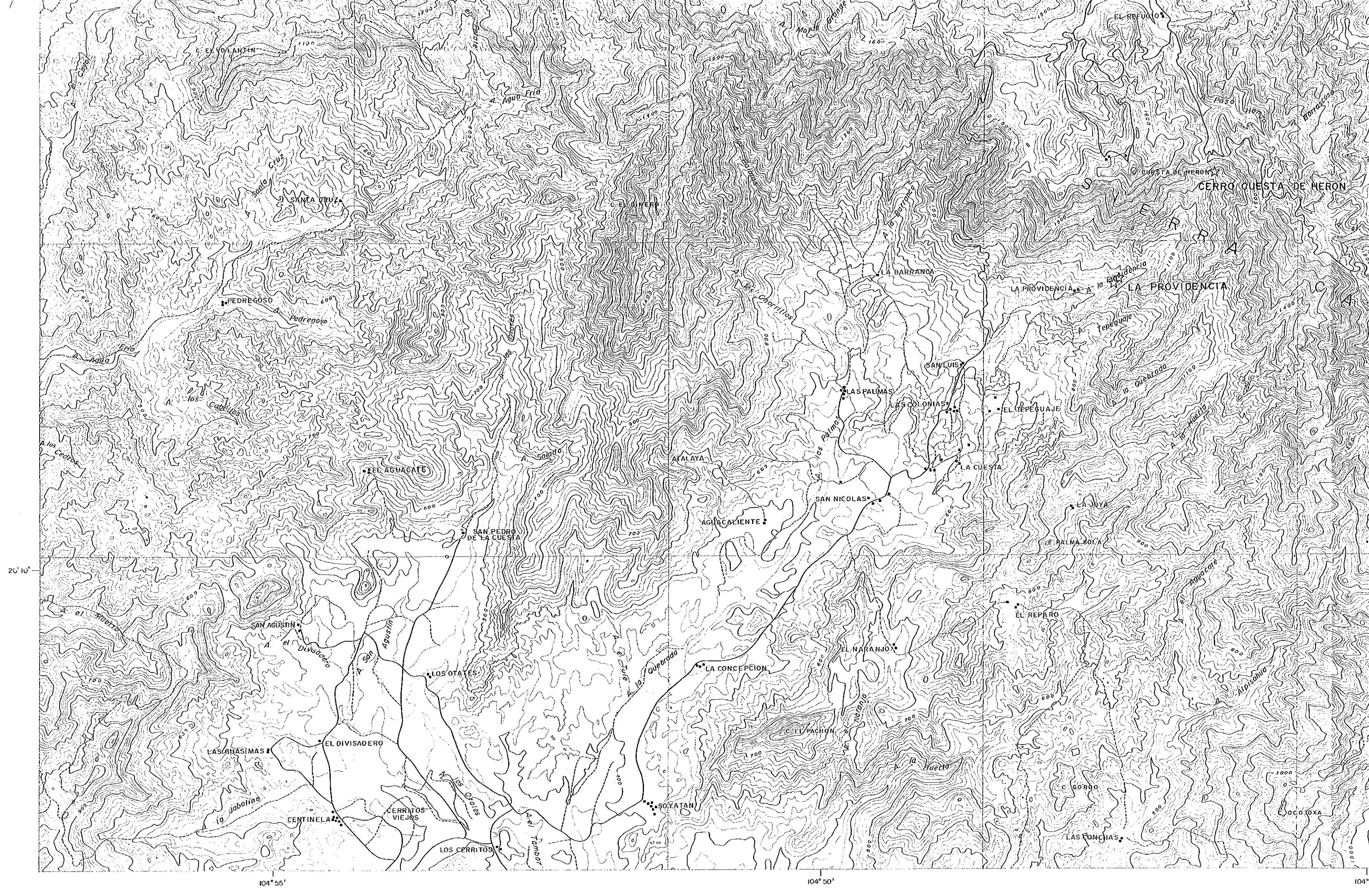
20° 15'

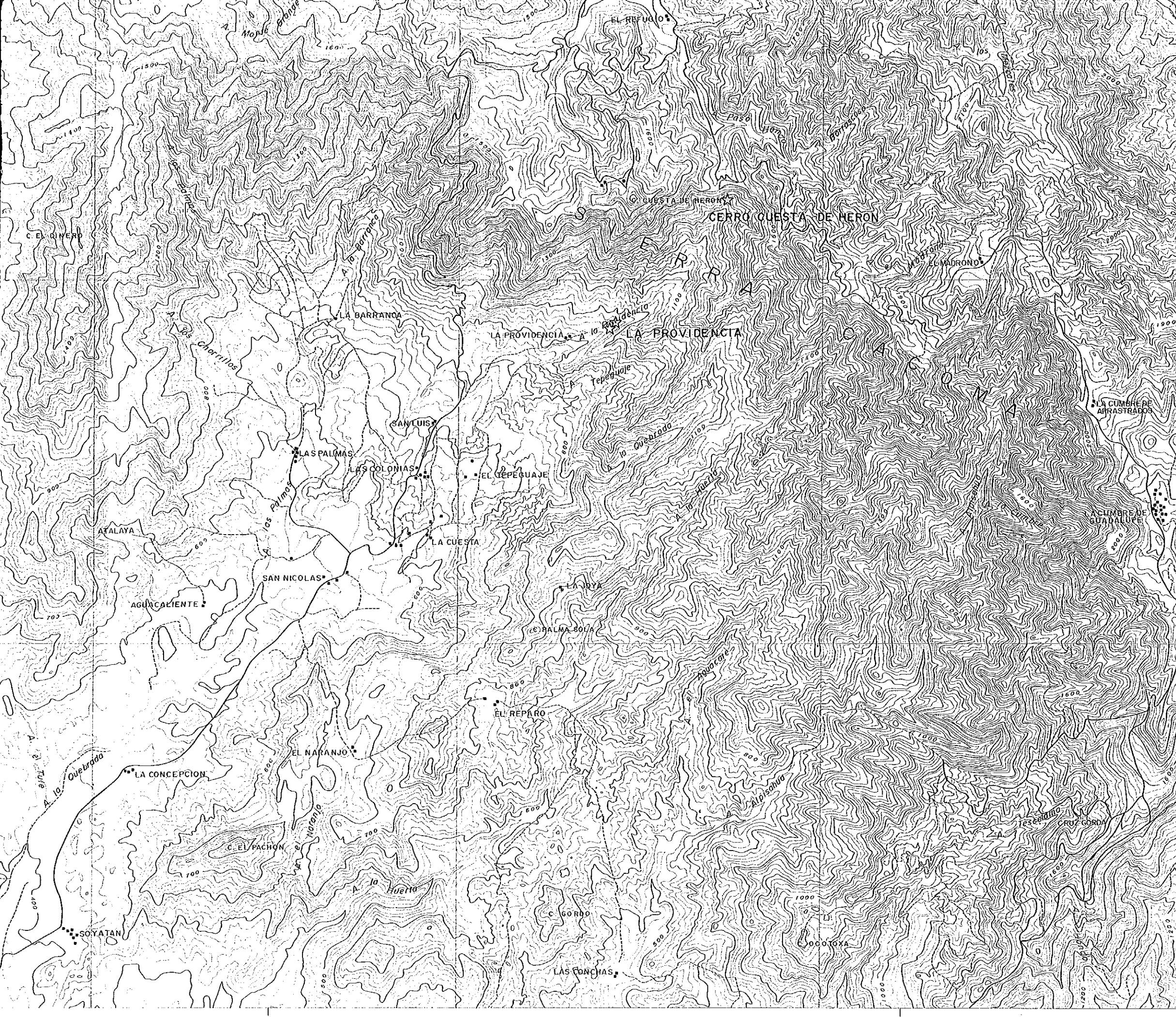




LEGEND

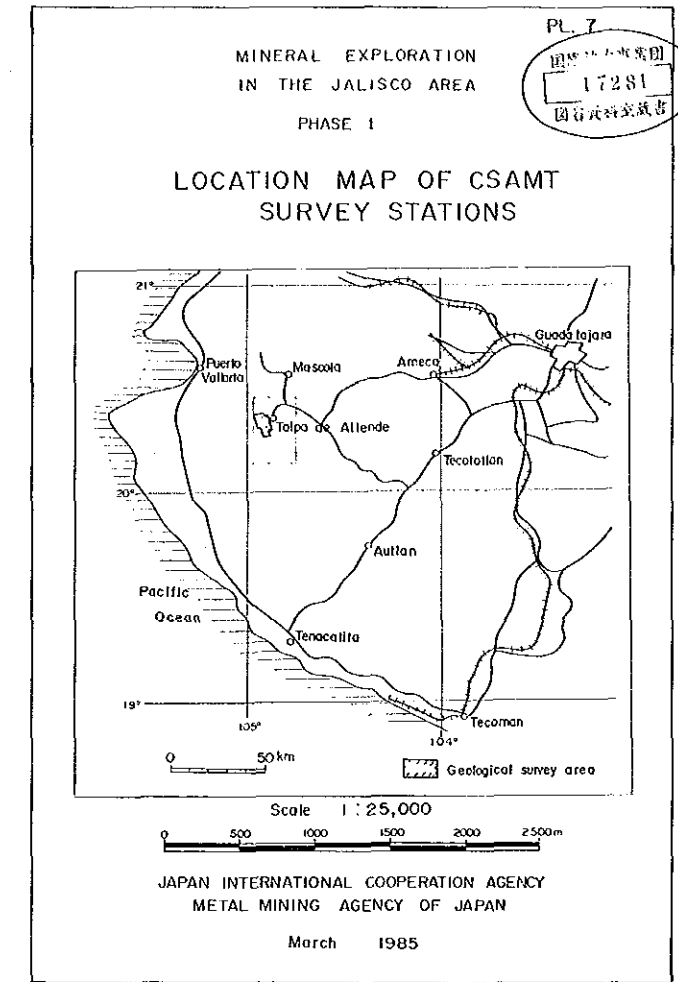
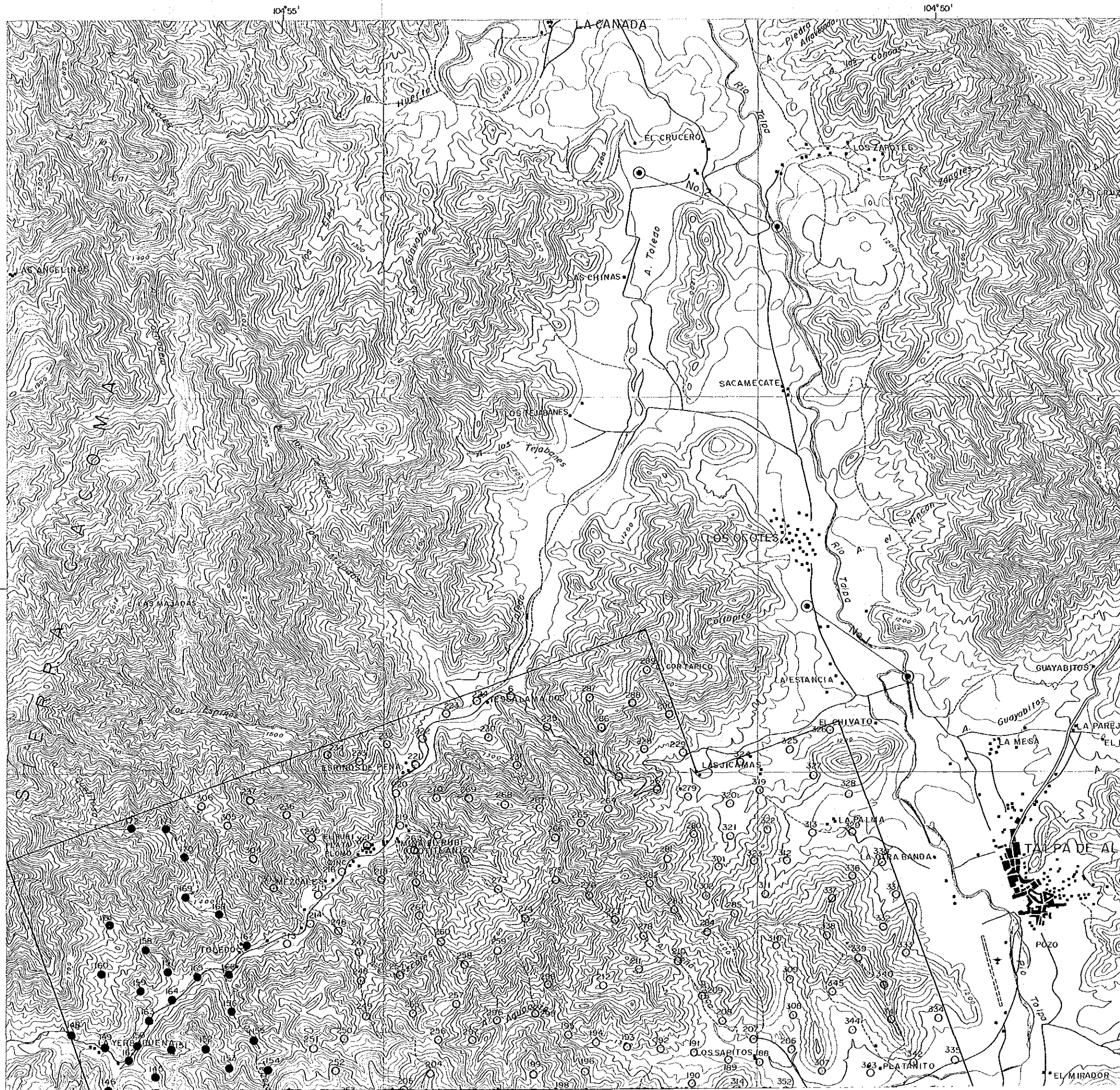
- Kuroko - type Deposit
- ▲ Xenothermal Deposit
- ☆ Gold - Silver - Quartz Vein Deposit
- ★ Gold - Silver - Lead - Zinc Vein Deposit
- Lead - Zinc Vein Deposit
- ⊙ Pyrite Dissemination





LEGEND

- Kuroko - type Deposit
- ▲ Xenothermal Deposit
- ☆ Gold - Silver - Quartz Vein Deposit
- ★ Gold - Silver - Lead - Zinc Vein Deposit
- Lead - Zinc Vein Deposit
- ⊙ Pyrite Dissemination



- LEGEND
- CSAMT Station, No. by Transmitter Bipole No.1
 - CSAMT Station, No. by Transmitter Bipole No.2

