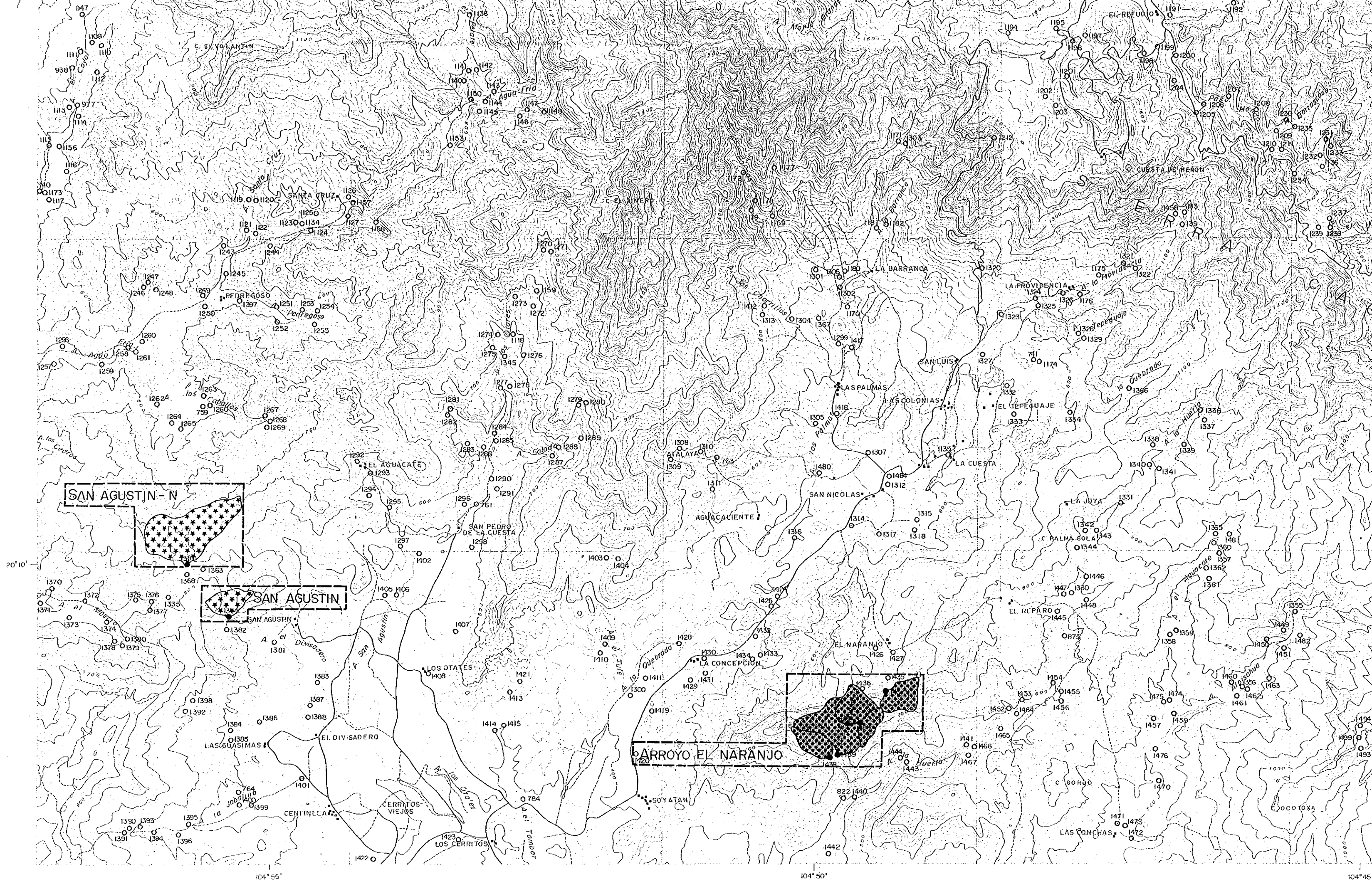


- LEGEND
- ANOMALOUS ZONES
- Ag (>0.54 ppm)
  - Ag-Zn
  - Ag-Pb-Zn
  - Ag-Cu-Pb-Zn
  - Cu (>130 ppm)
  - Pb (>114 ppm)
  - Zn (>356 ppm)
  - Pb-Zn



SAN AGUSTIN - N

SAN AGUSTIN

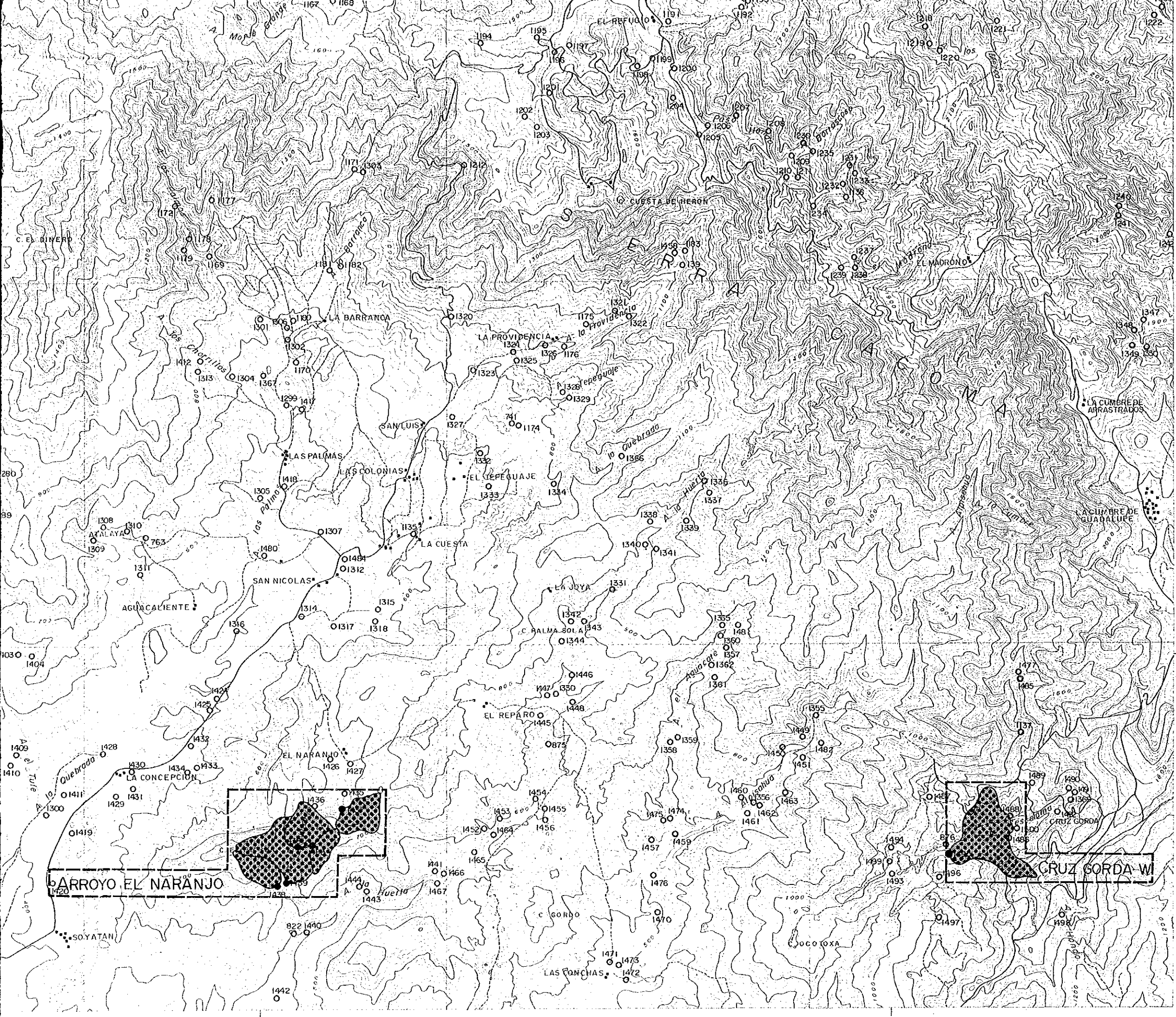
ARROYO EL NARANJO









20° 10'

104° 55'

104° 50'

104° 45'



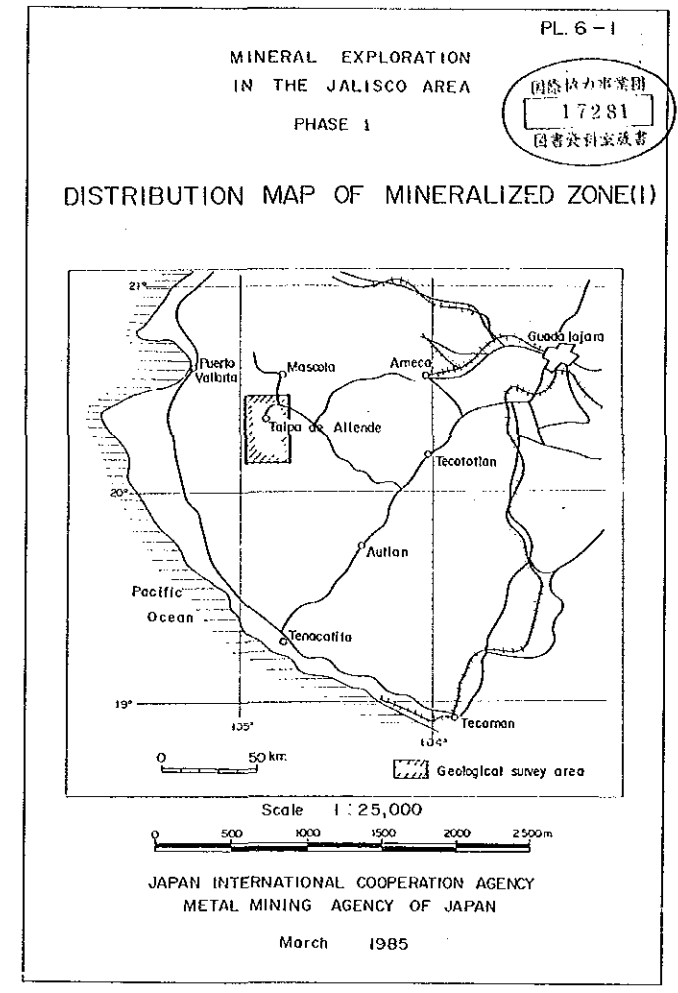
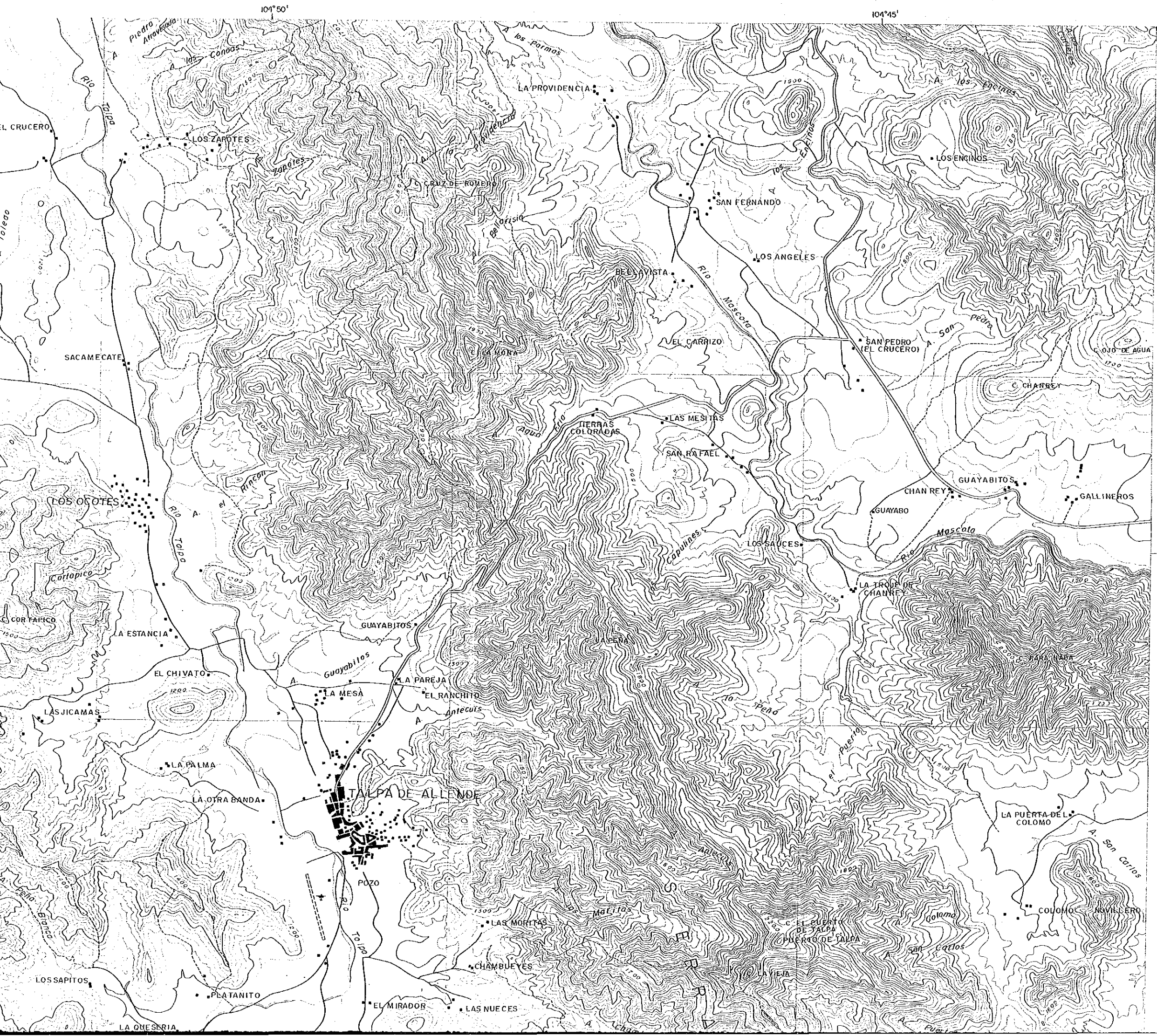
- LEGEND
- ANOMALOUS ZONES
-  Ag (>0.54 ppm)
  -  Ag-Zn
  -  Ag-Pb-Zn
  -  Ag-Cu-Pb-Zn
  -  Cu (>130 ppm)
  -  Pb (>114 ppm)
  -  Zn (>356 ppm)
  -  Pb-Zn

104° 50'

104° 45'

20° 10'





20°25'

LEGEND

- Kuroko-type Deposit
- ▲ Xenothermal Deposit
- ☆ Gold-Silver-Quartz Vein Deposit
- ★ Gold-Silver-Lead-Zinc Vein Deposit
- Lead-Zinc Vein Deposit
- ⊙ Pyrite Dissemination

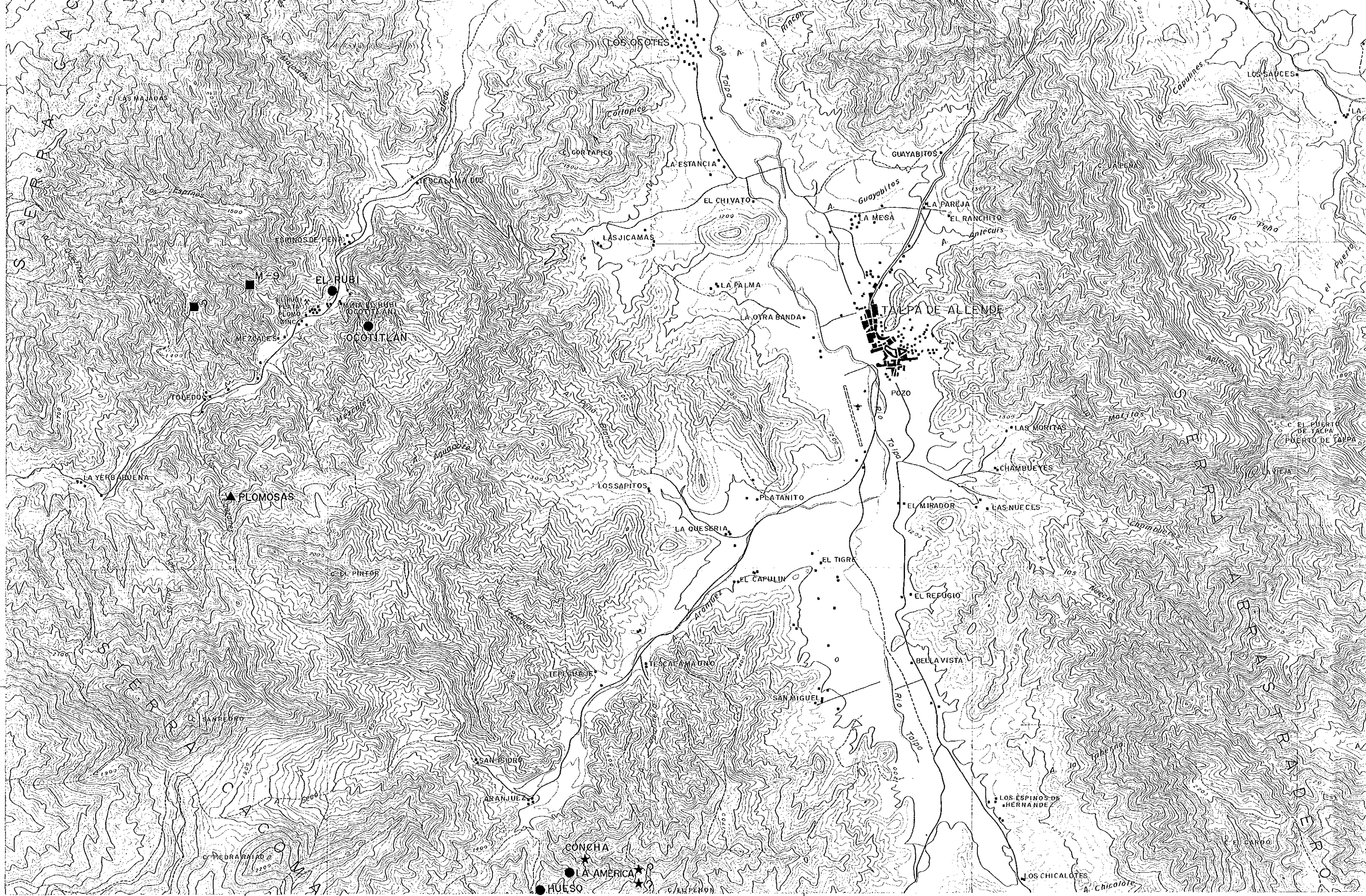
20° 25'

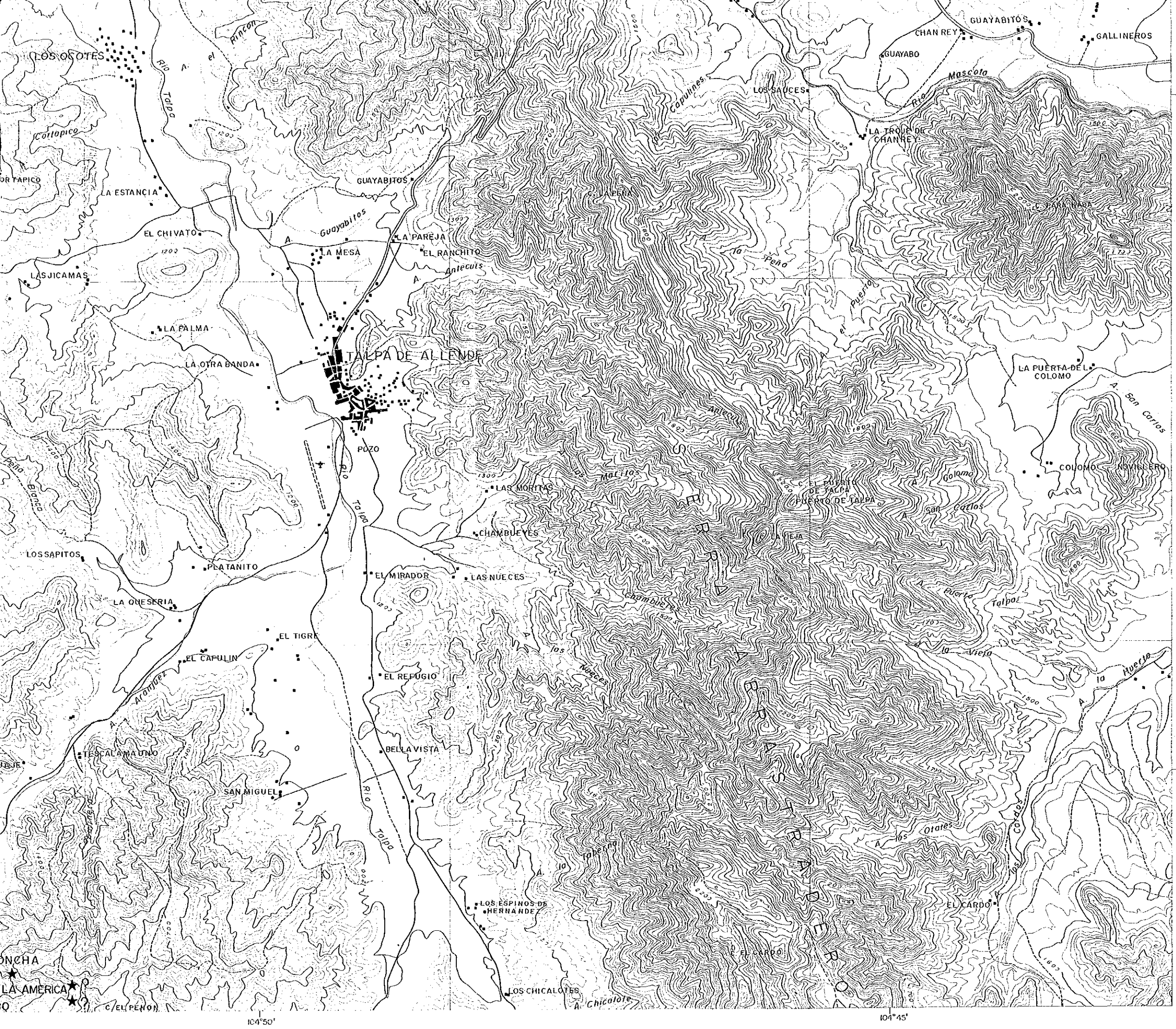
20° 20'

104° 55'

104° 50'

10





LEGEND

- Kuroko - type Deposit
- ▲ Xenothermal Deposit
- ☆ Gold - Silver - Quartz Vein Deposit
- ★ Gold - Silver - Lead - Zinc Vein Deposit
- Lead - Zinc Vein Deposit
- ⊙ Pyrite Dissemination

104° 50'

104° 45'

20° 25'

20° 20'