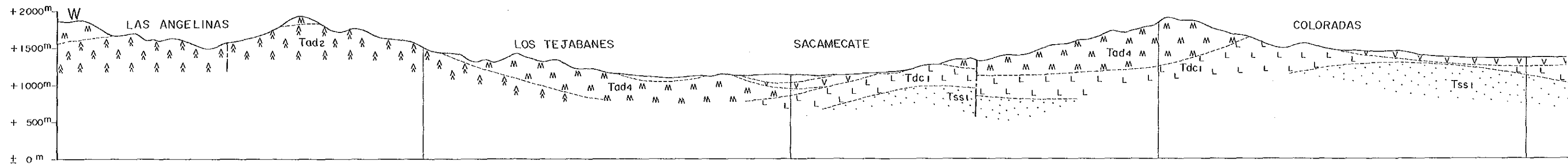
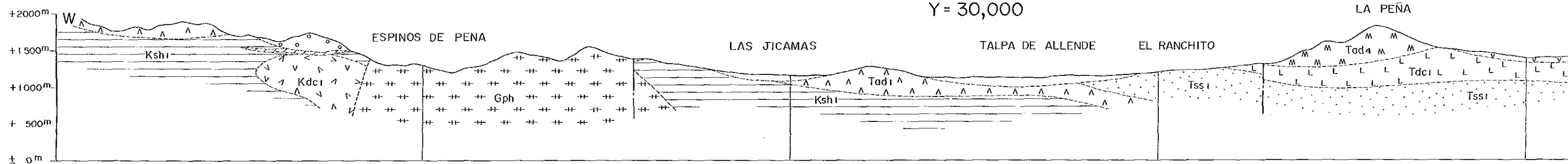


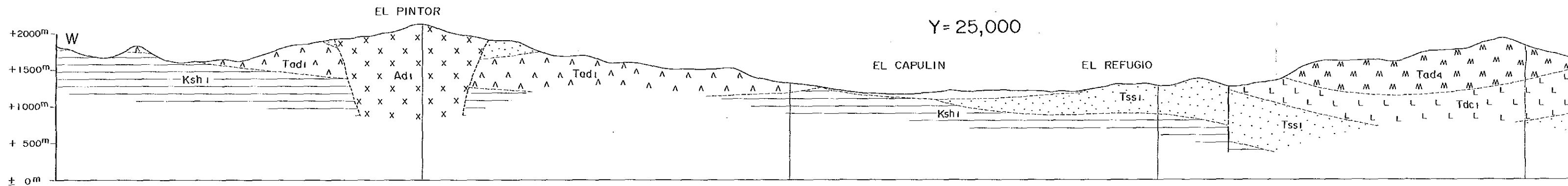
Y = 35,000



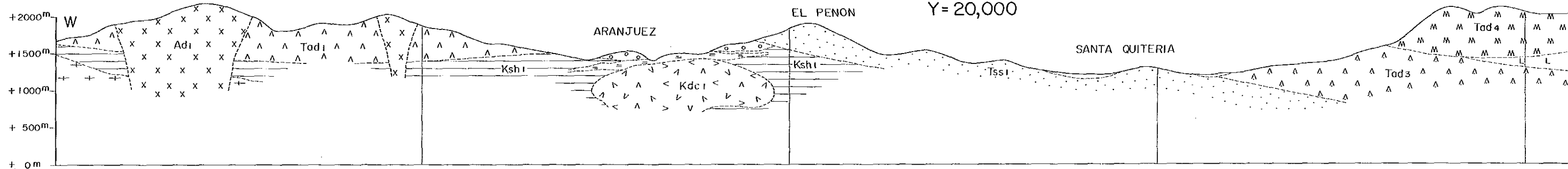
Y = 30,000



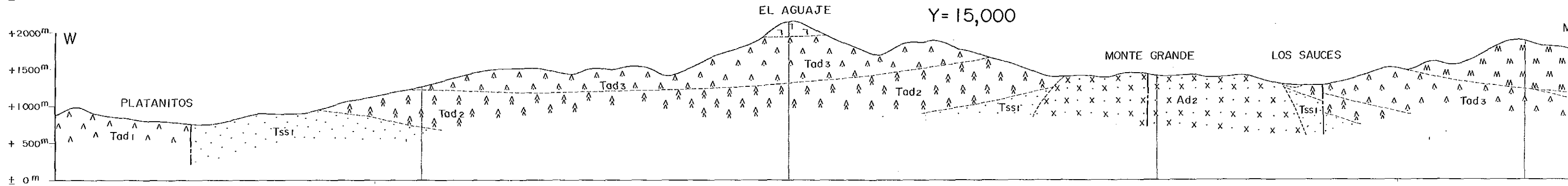
Y = 25,000



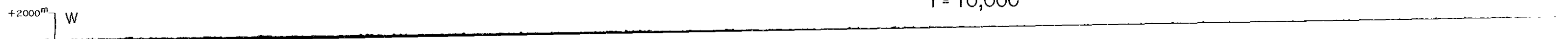
Y = 20,000

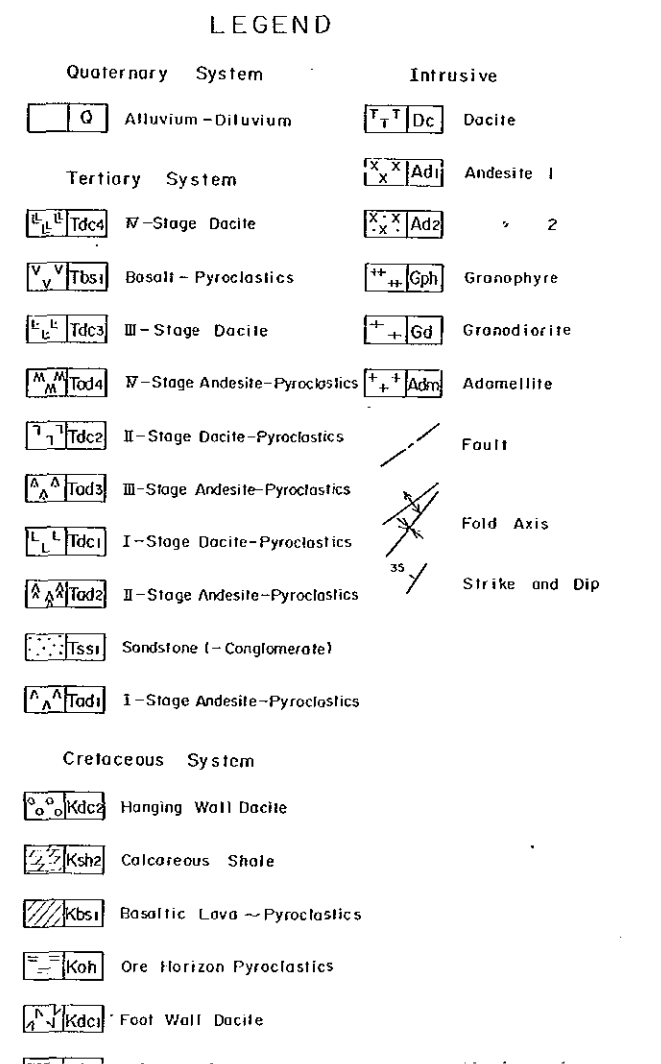
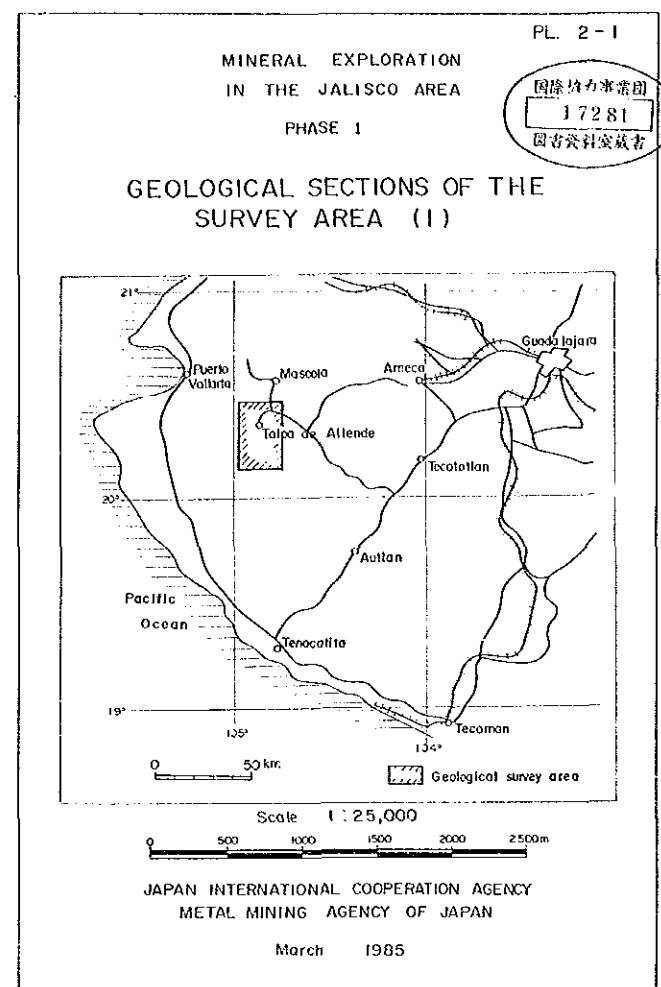
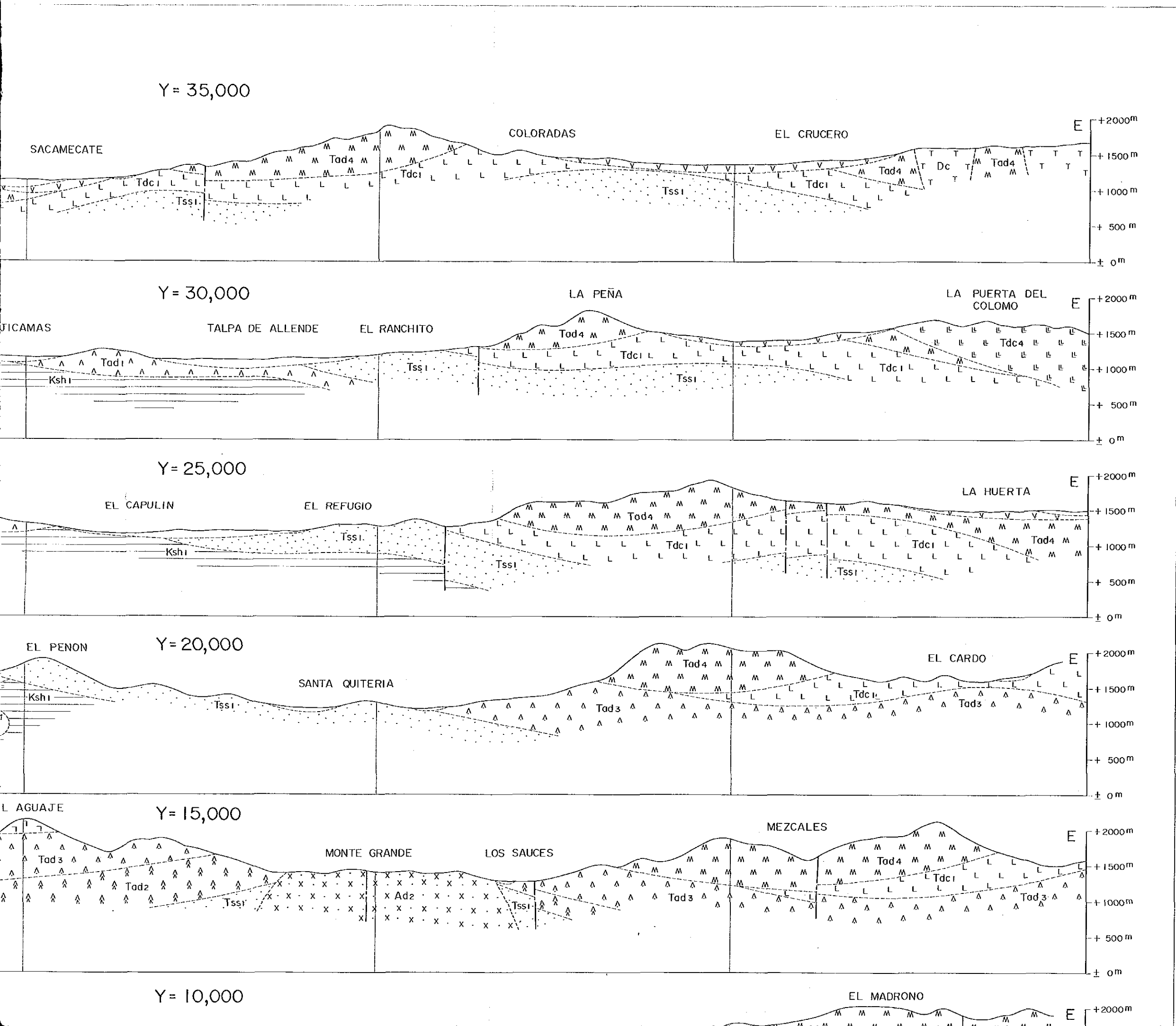


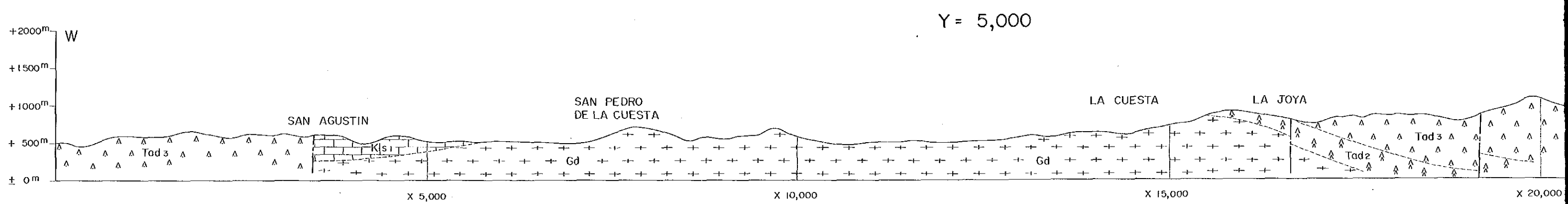
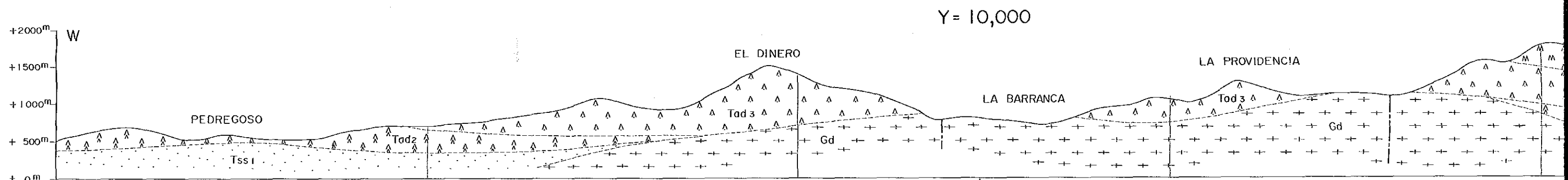
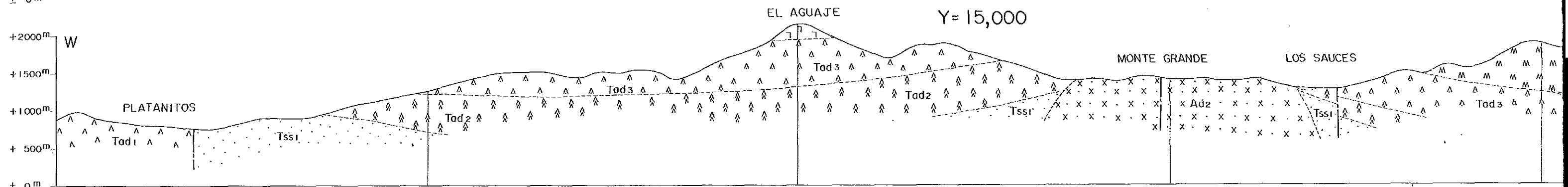
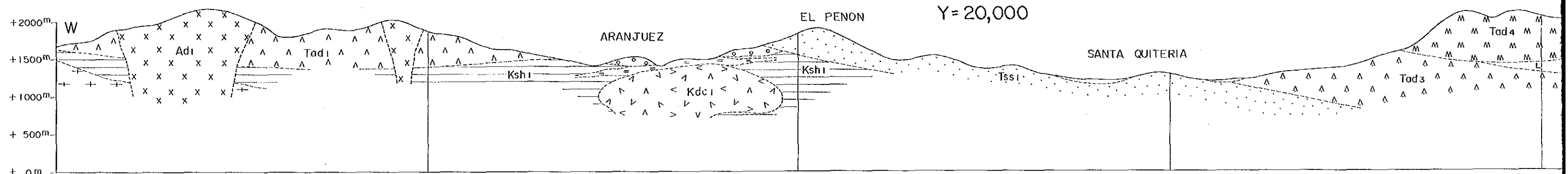
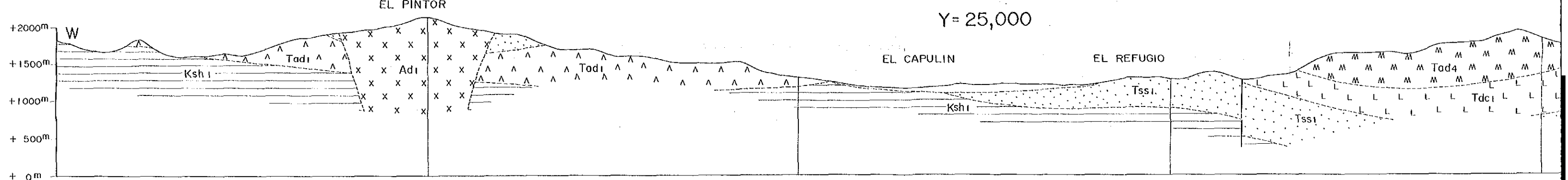
Y = 15,000

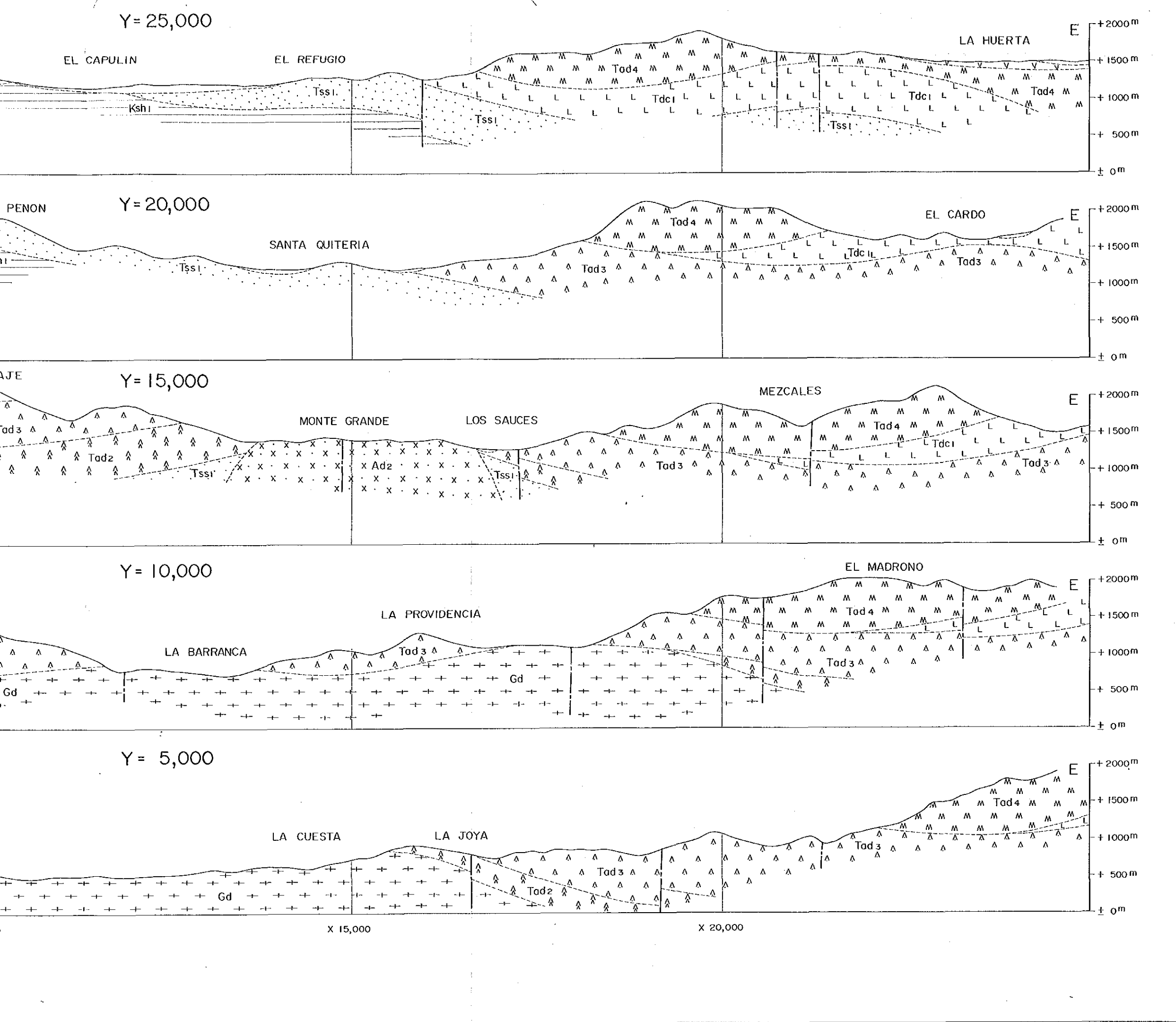


Y = 10,000



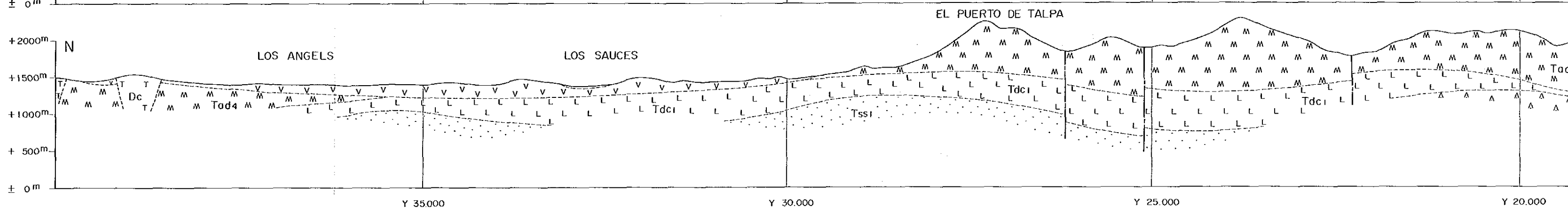
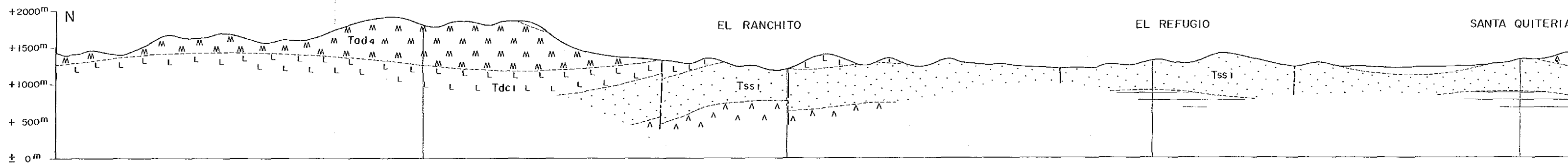
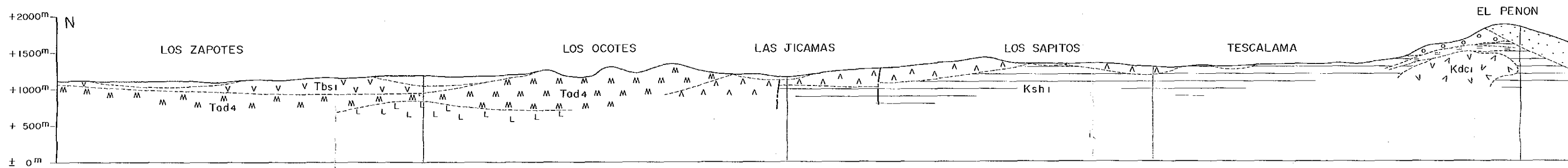
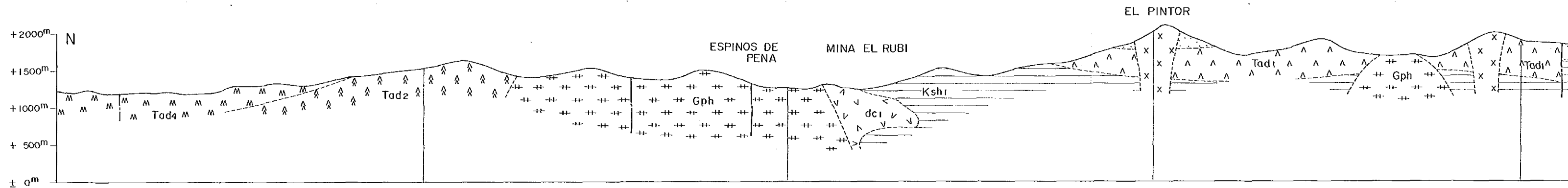






LEGEND

Quaternary System		Intrusive	
Q	Alluvium - Duvium	T ¹ Dc	Dacite
Tertiary System		X ¹ X ¹ Ad1	Andesite 1
U ¹ U ¹ Tdc4	IV-Stage Dacite	X ² X ² Ad2	Andesite 2
V ¹ V ¹ Tbs1	Basalt - Pyroclastics	+ ¹ + ¹ Gph	Granophyre
L ¹ L ¹ Tdc3	III-Stage Dacite	+ ² + ² Gd	Granodiorite
M ¹ M ¹ Tad4	IV-Stage Andesite-Pyroclastics	+ ³ + ³ Adm	Adamellite
T ¹ T ¹ Tdc2	II-Stage Dacite-Pyroclastics		Fault
A ¹ A ¹ Tad3	III-Stage Andesite-Pyroclastics		Fold Axis
L ¹ L ¹ Tdc1	I-Stage Dacite-Pyroclastics		Strike and Dip
A ² A ² Tad2	II-Stage Andesite-Pyroclastics		
Tss1	Sandstone (- Conglomerate)		
A ¹ A ¹ Tad1	I-Stage Andesite-Pyroclastics		
Cretaceous System			
O ¹ O ¹ Kdc3	Hanging Wall Dacite		
Ksh2	Calcareous Shale		
Kbs1	Basaltic Lava ~ Pyroclastics		
Koh	Ore Horizon Pyroclastics		
Kdc1	Foot Wall Dacite		
Ksh1	Shale Intercalated with Sandstone		
Kls1	Limestone ~ Marble		

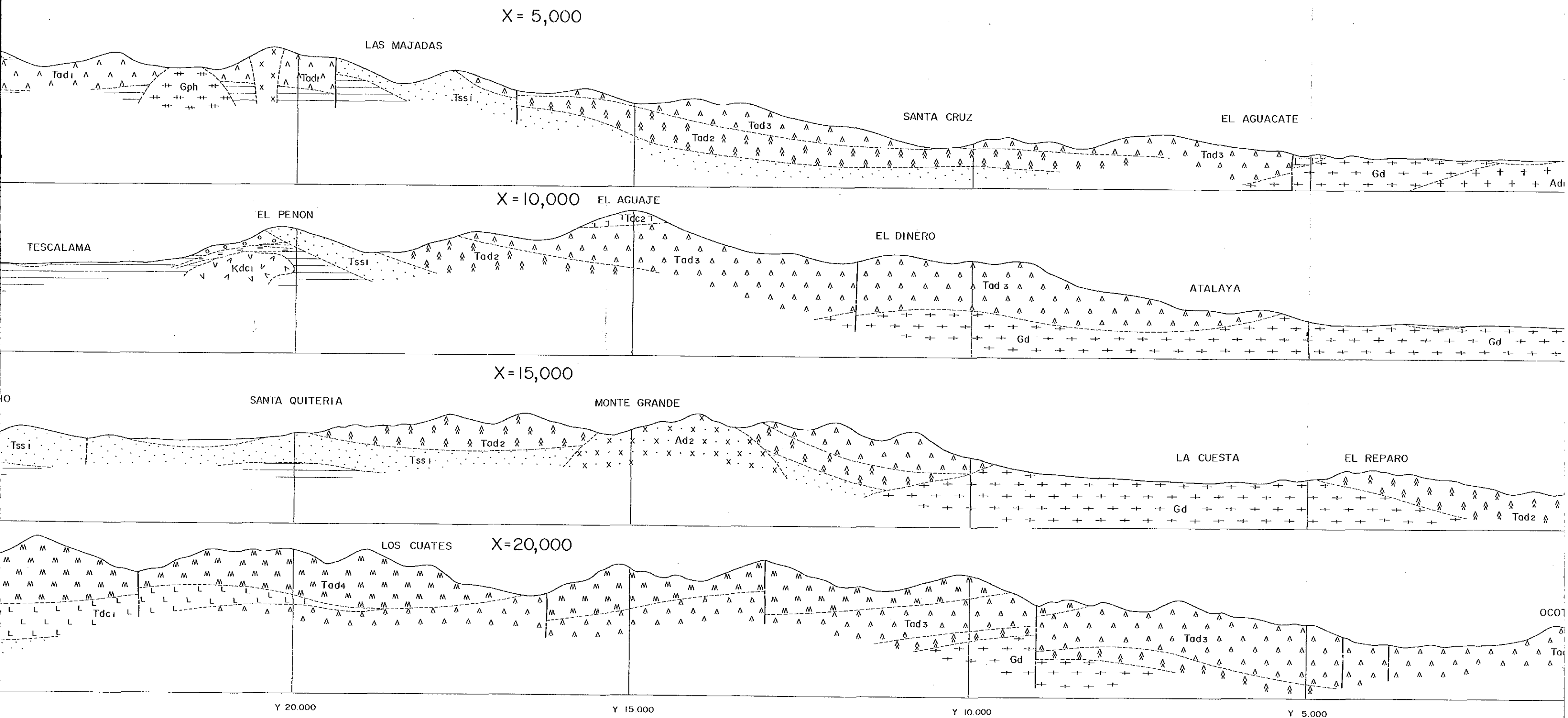


Y 35.000

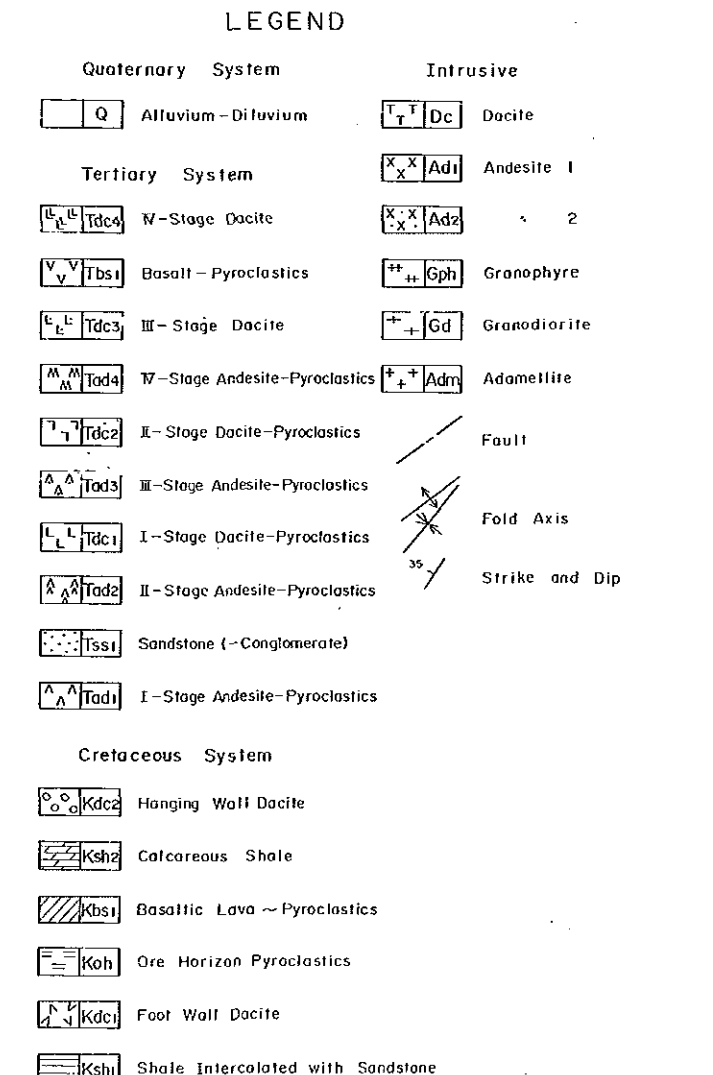
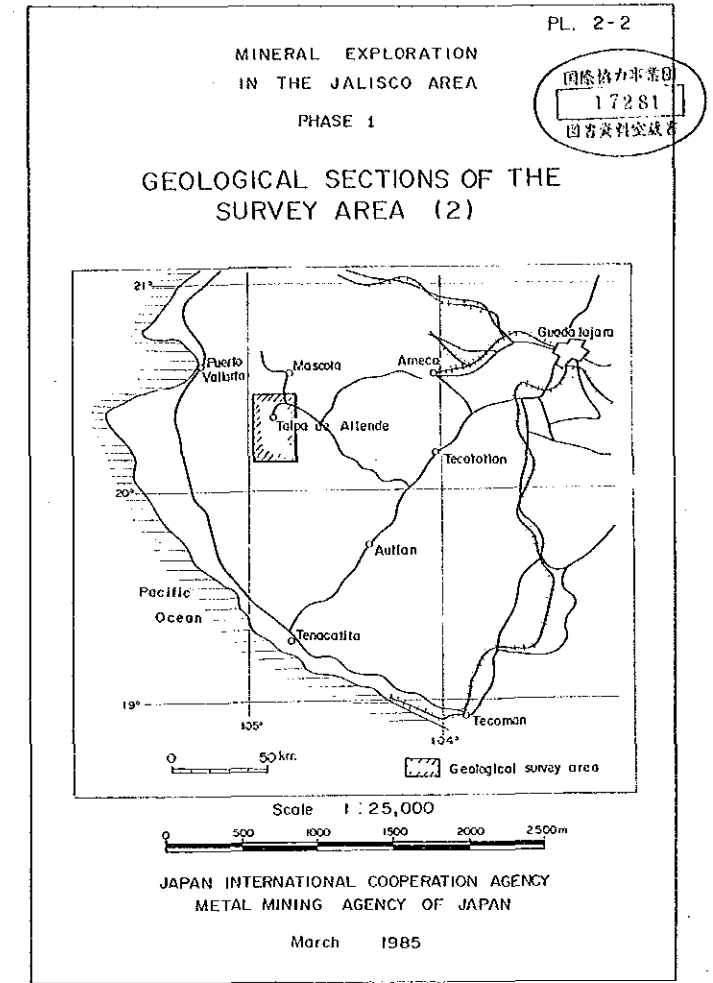
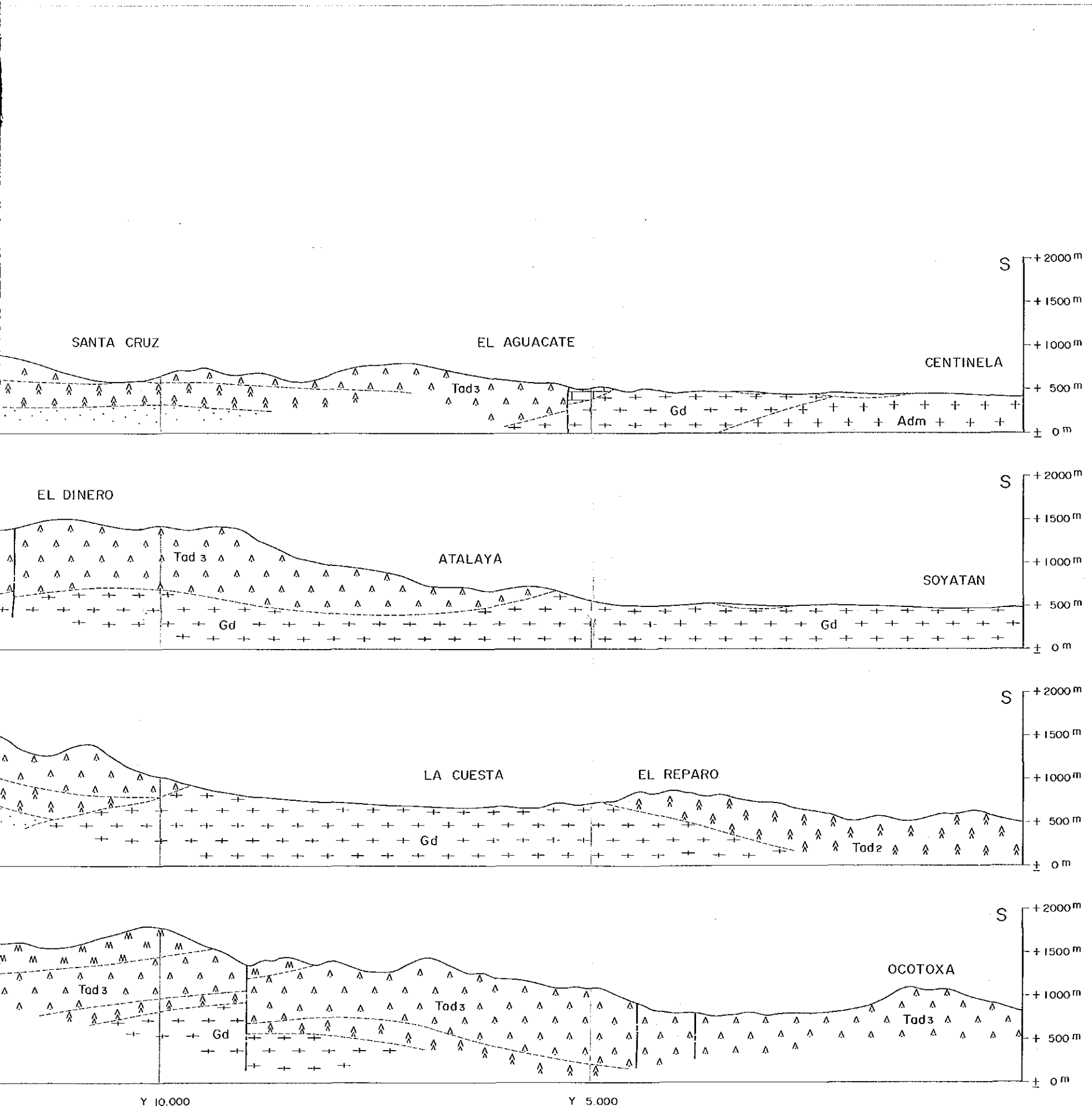
Y 30.000

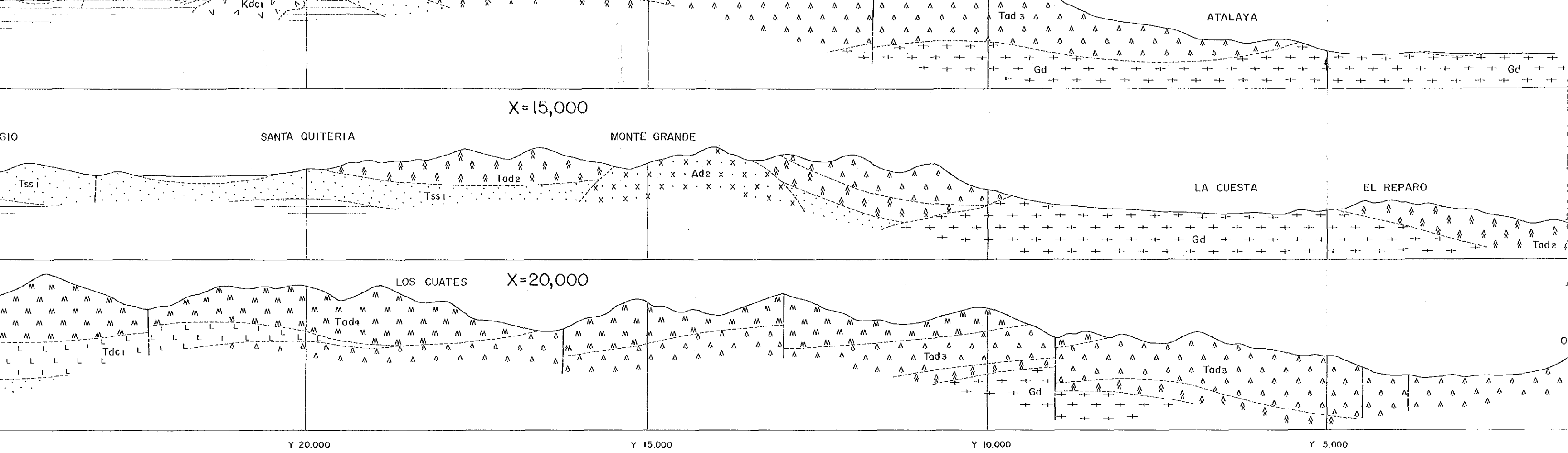
Y 25.000

Y 20.000

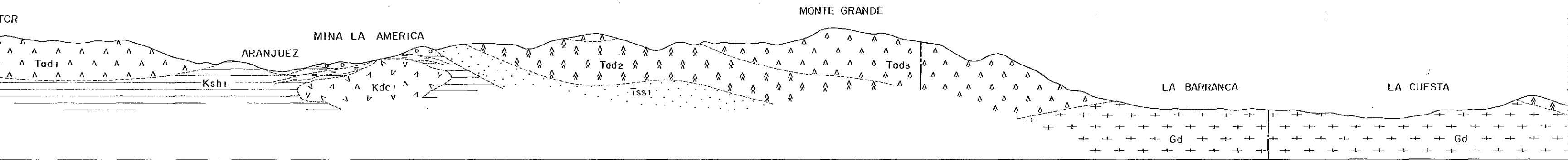


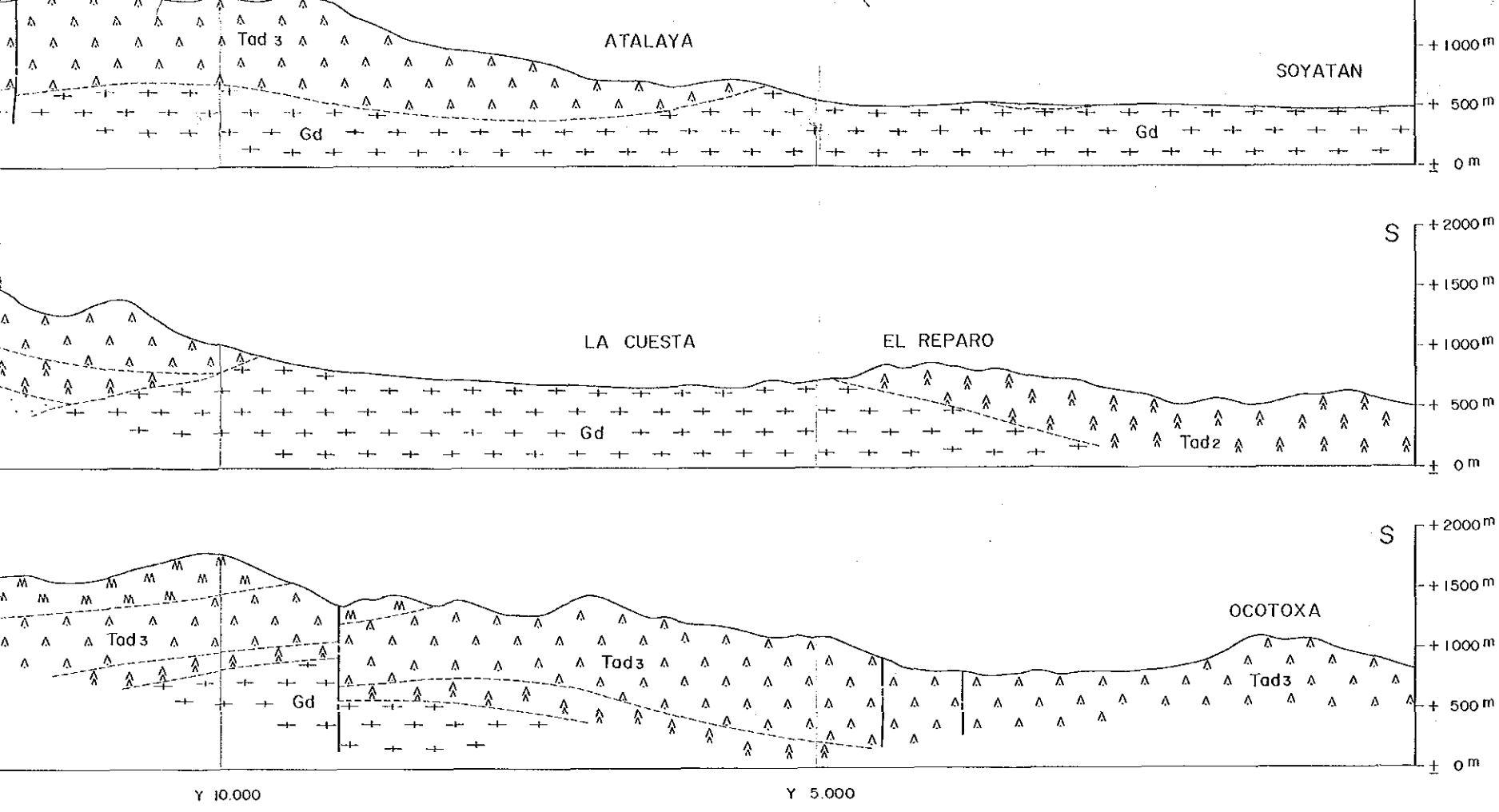
NW - SE





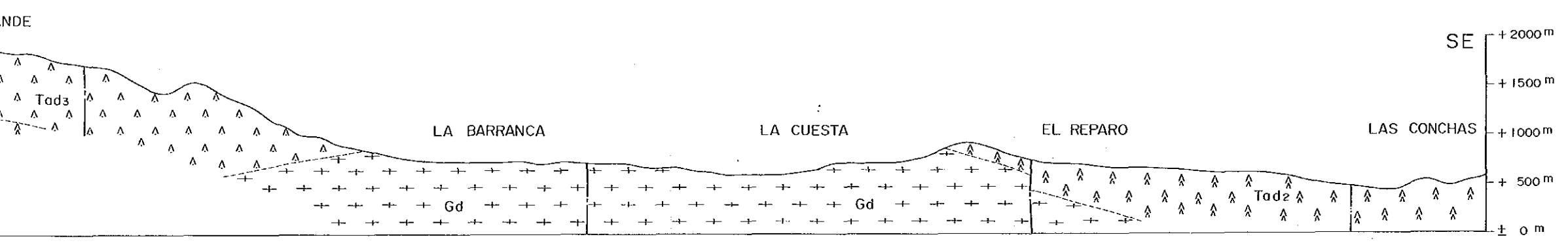
NW - SE

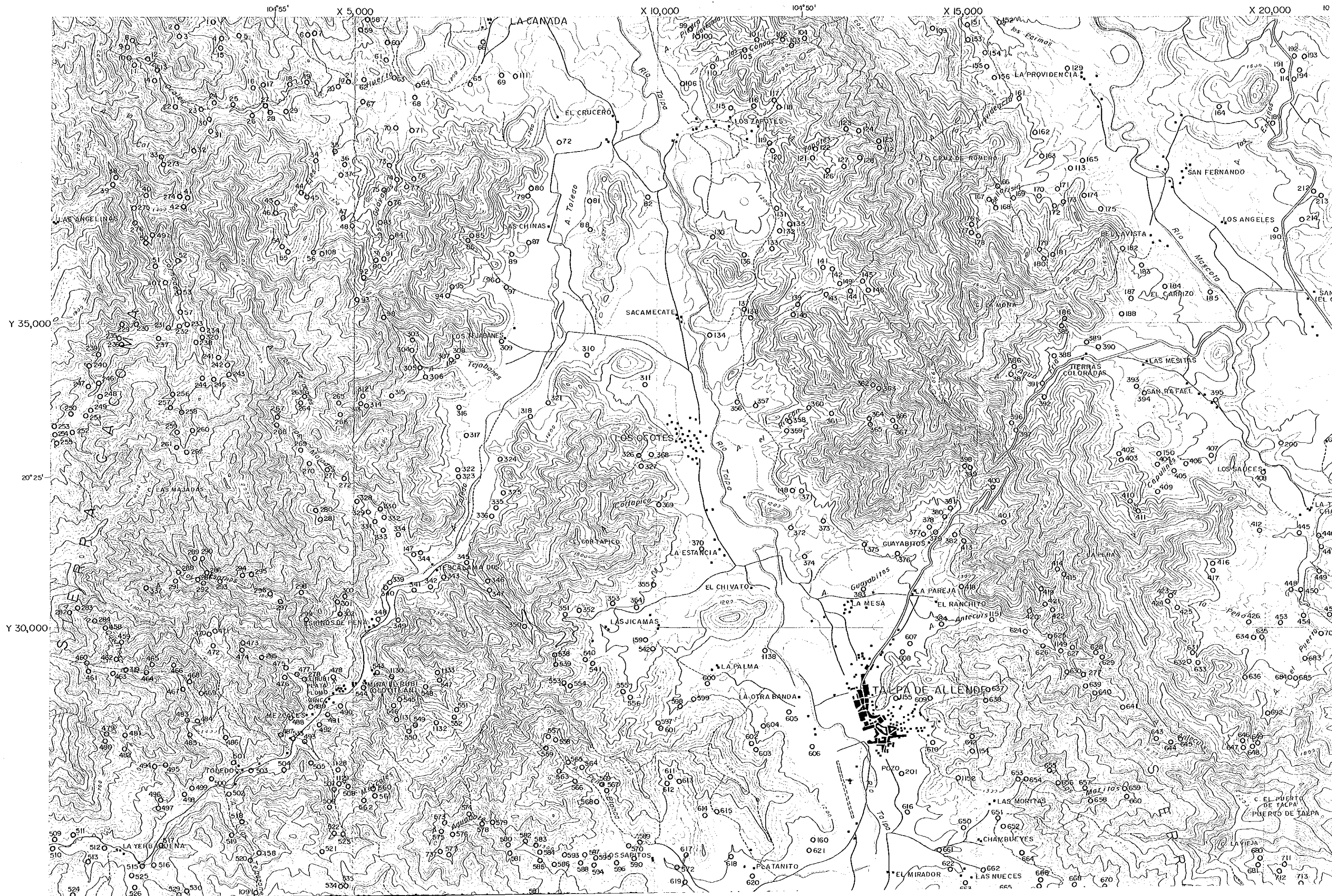


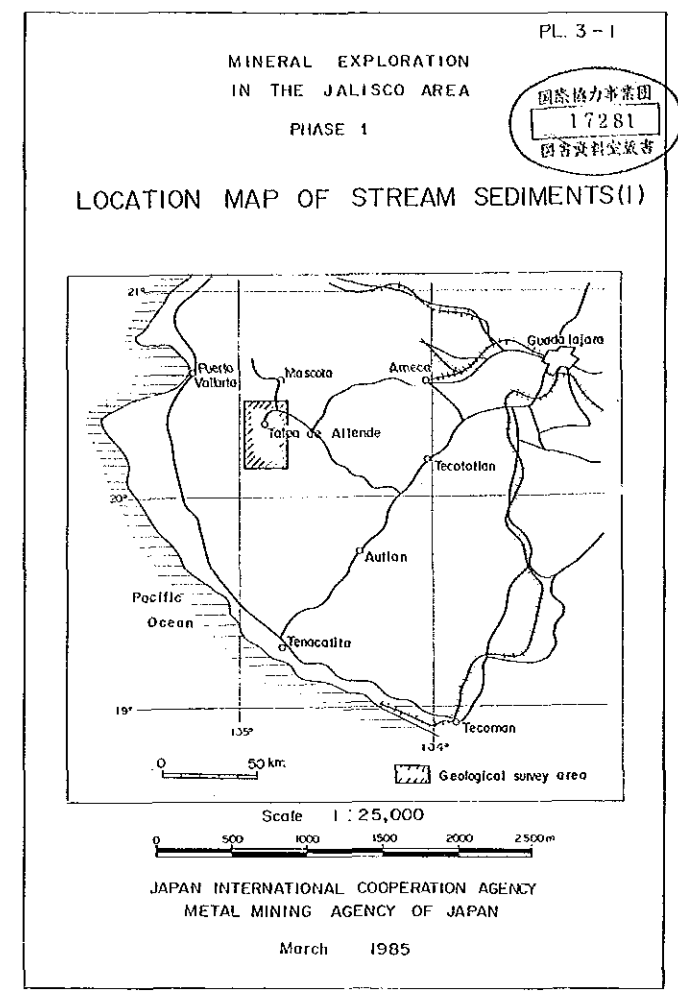
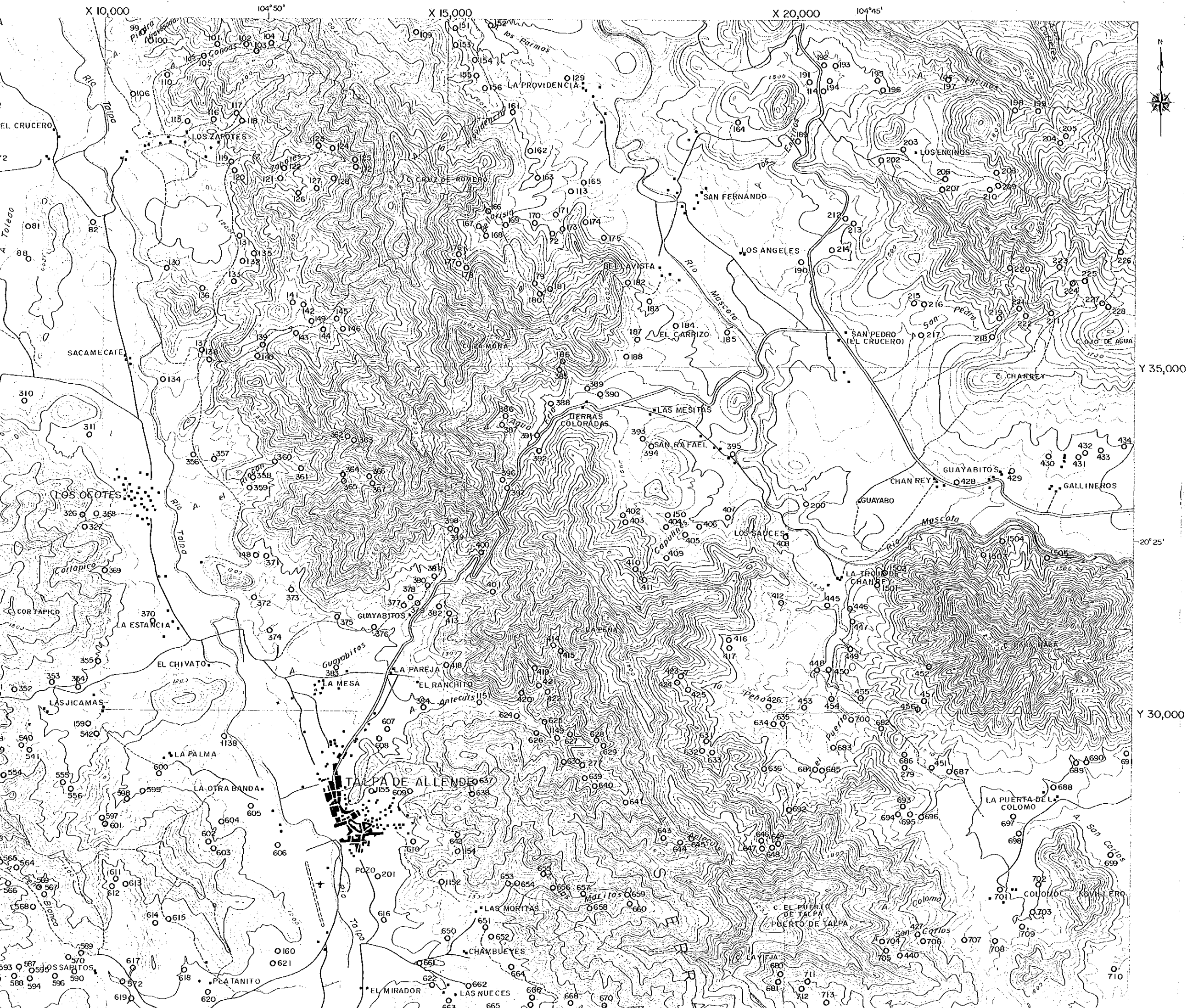


LEGEND

Quaternary System		Intrusive	
[Q]	Alluvium - Diluvium	[T De]	Dacite
Tertiary System		[X Ad1]	Andesite 1
[Ue Tdc4]	N-Stage Dacite	[X Ad2]	2
[V Tbs1]	Basalt - Pyroclastics	[+ Gph]	Granophyre
[Ue Tdc3]	III-Stage Dacite	[+ Gd]	Granodiorite
[M M Tdc4]	IV-Stage Andesite-Pyroclastics	[+ Adm]	Adamellite
[V Tdc2]	II-Stage Dacite-Pyroclastics		Fault
[A Ad3]	III-Stage Andesite-Pyroclastics		Fold Axis
[L L Tdc1]	I-Stage Dacite-Pyroclastics		Strike and Dip
[A Ad2]	II-Stage Andesite-Pyroclastics		
[Tss1]	Sandstone (- Conglomerate)		
[A Ad1]	I-Stage Andesite-Pyroclastics		
Cretaceous System			
[Oo Kdc2]	Hanging Wall Dacite		
[Ksh2]	Calcareous Shale		
[Kbs1]	Basaltic Lava ~ Pyroclastics		
[Koh]	Ore Horizon Pyroclastics		
[Kdc1]	Foot Wall Dacite		
[Ksh1]	Shale Intercalated with Sandstone		
[Kls1]	Limestone ~ Marble		

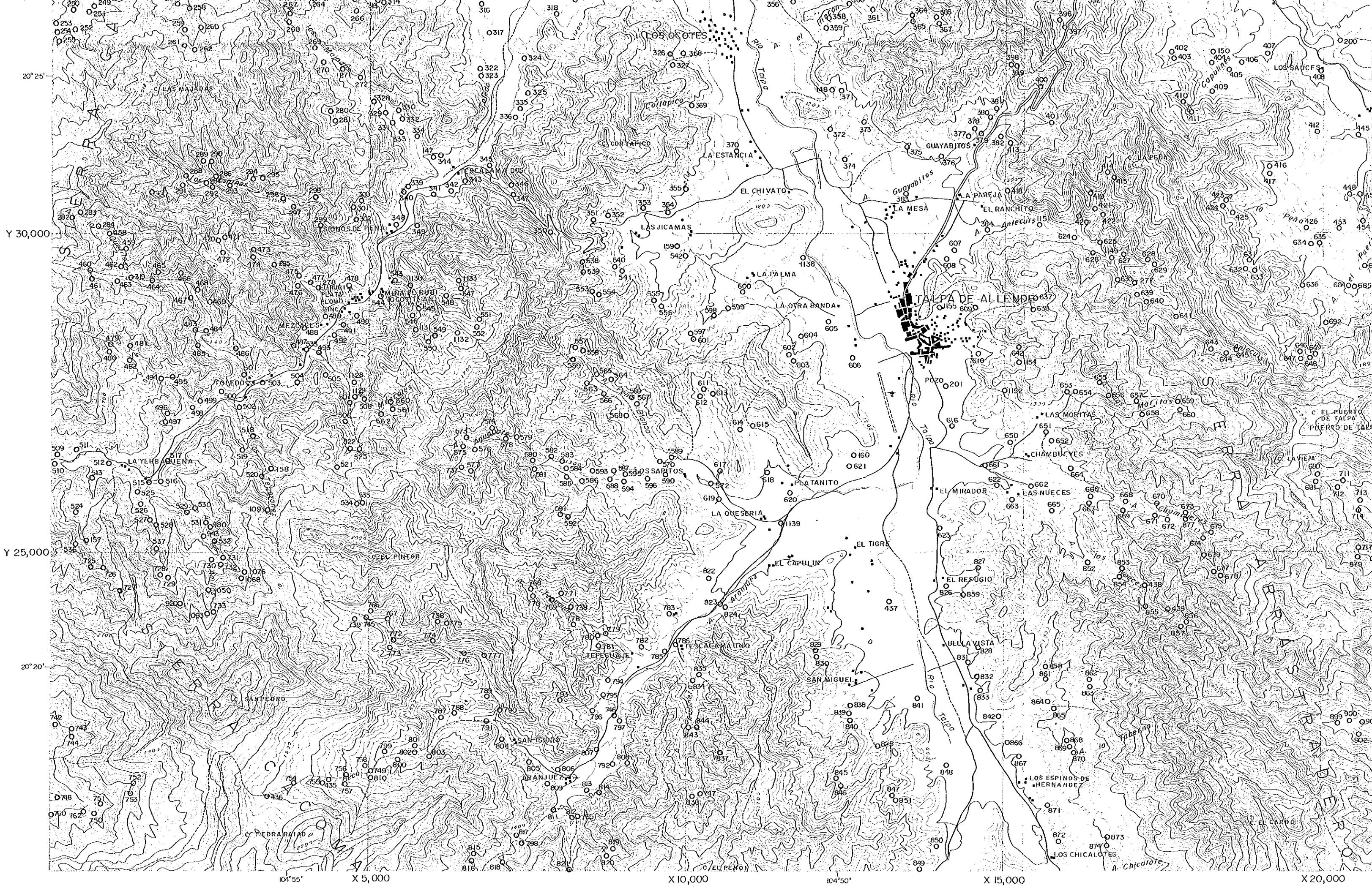






LEGEND

428
○ Sampling Site and Sample Number



20° 25'

Y 30,000

Y 25,000

20° 20'

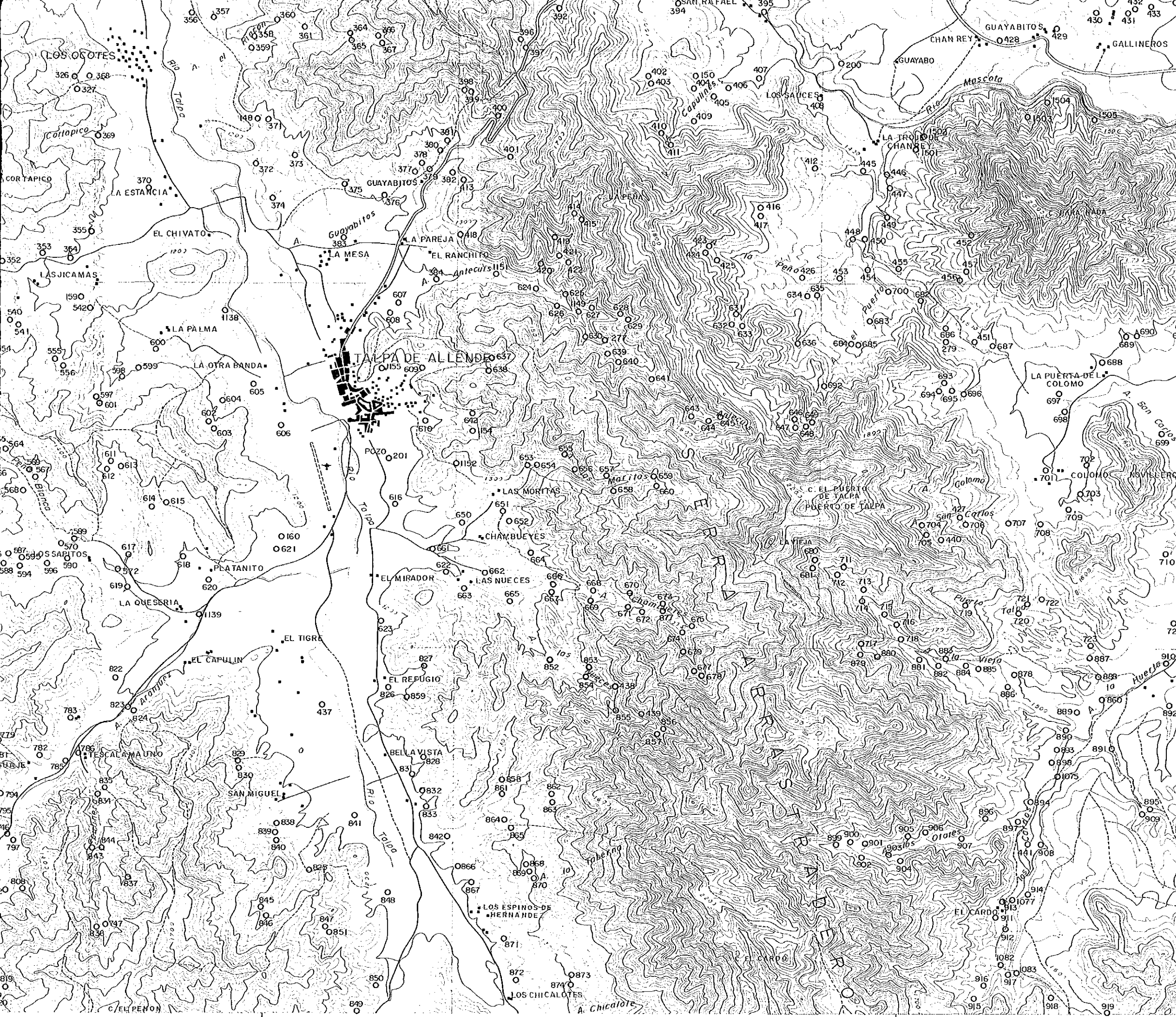
104° 55' X 5,000

X 10,000

104° 50' X 15,000

X 20,000

X 20,000



LEGEND

428
○ Sampling Site and Sample Number

Y 30,000

Y 25,000

20° 20'

X 10,000

104° 50'

X 15,000

X 20,000

104° 45'