

104°55'

X 5,000

NW

X 10,000

104°50'

X 15,000

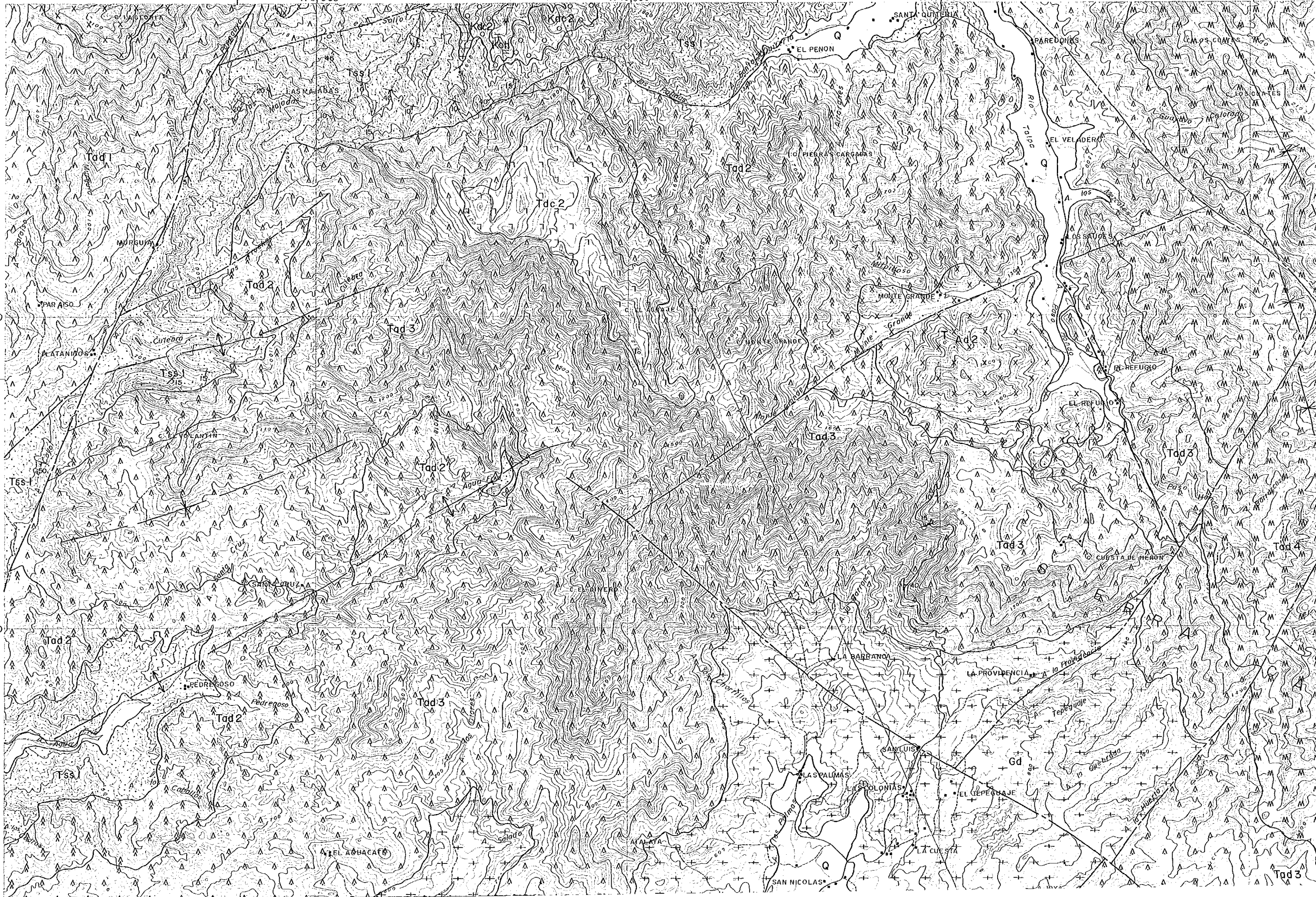
X 20,000

104

Y 15,000

20° 15'

Y 10,000

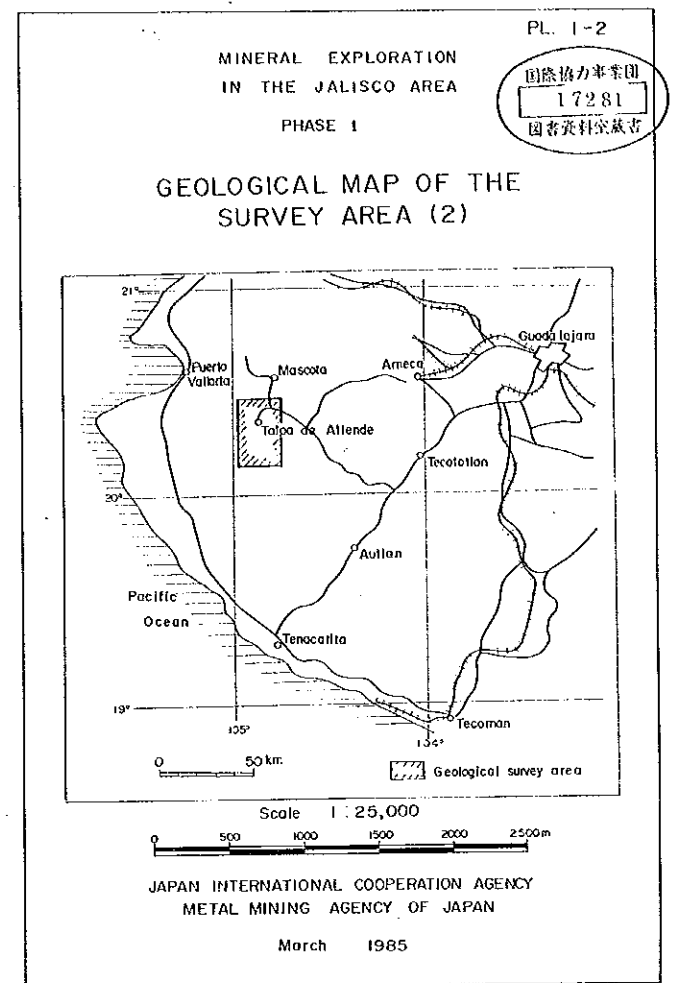






Y 15,000

Y 10,000



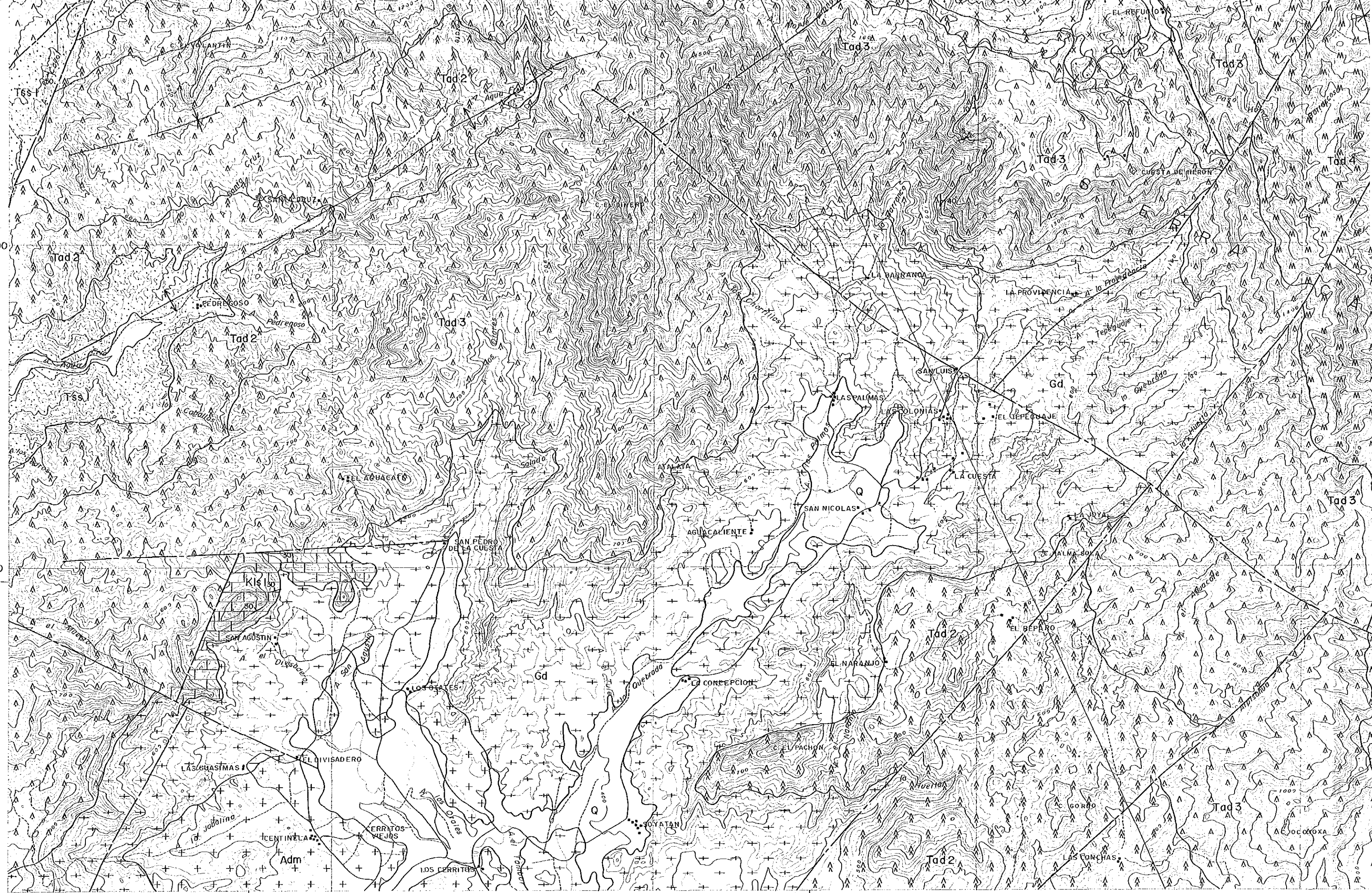
### LEGEND

Quaternary System		Intrusive	
[Q]	Alluvium - Diluvium	[T <sup>1</sup> Dc]	Dacite
Tertiary System		[X <sup>x</sup> Ad <sub>1</sub> ]	Andesite 1
[L <sup>ll</sup> Tdc <sub>4</sub> ]	IV-Stage Dacite	[X <sup>x</sup> Ad <sub>2</sub> ]	2
[V <sup>v</sup> Tbs <sub>1</sub> ]	Basalt - Pyroclastics	[+ <sup>+</sup> Gph]	Granophyre
[L <sup>ll</sup> Tdc <sub>3</sub> ]	III-Stage Dacite	[+ <sup>+</sup> Gd]	Granodiorite
[M <sup>m</sup> Tdc <sub>4</sub> ]	IV-Stage Andesite-Pyroclastics	[+ <sup>+</sup> Adm]	Adamellite
[T <sup>1</sup> Tdc <sub>2</sub> ]	II-Stage Dacite-Pyroclastics	[/]	Fault
[A <sup>a</sup> Tdc <sub>3</sub> ]	III-Stage Andesite-Pyroclastics	[/]	Fold Axis
[L <sup>ll</sup> Tdc <sub>1</sub> ]	I-Stage Dacite-Pyroclastics	[/]	Strike and Dip
[A <sup>a</sup> Tdc <sub>2</sub> ]	II-Stage Andesite-Pyroclastics	[35°]	
[Tss <sub>1</sub> ]	Sandstone (Conglomerate)		
[A <sup>a</sup> Tdc <sub>1</sub> ]	I-Stage Andesite-Pyroclastics		
Cretaceous System			
[O <sup>o</sup> Kdc <sub>2</sub> ]	Hanging Wall Dacite		
[Ksh <sub>2</sub> ]	Calcareous Shale		
[Kbs <sub>1</sub> ]	Basaltic Lava ~ Pyroclastics		
[Koh]	Ore Horizon Pyroclastics		
[Kdc <sub>1</sub> ]	Foot Wall Dacite		



Y 10,000

Y 5,000  
20' 10"



104° 55'

X 5,000

X 10,000

104° 50'

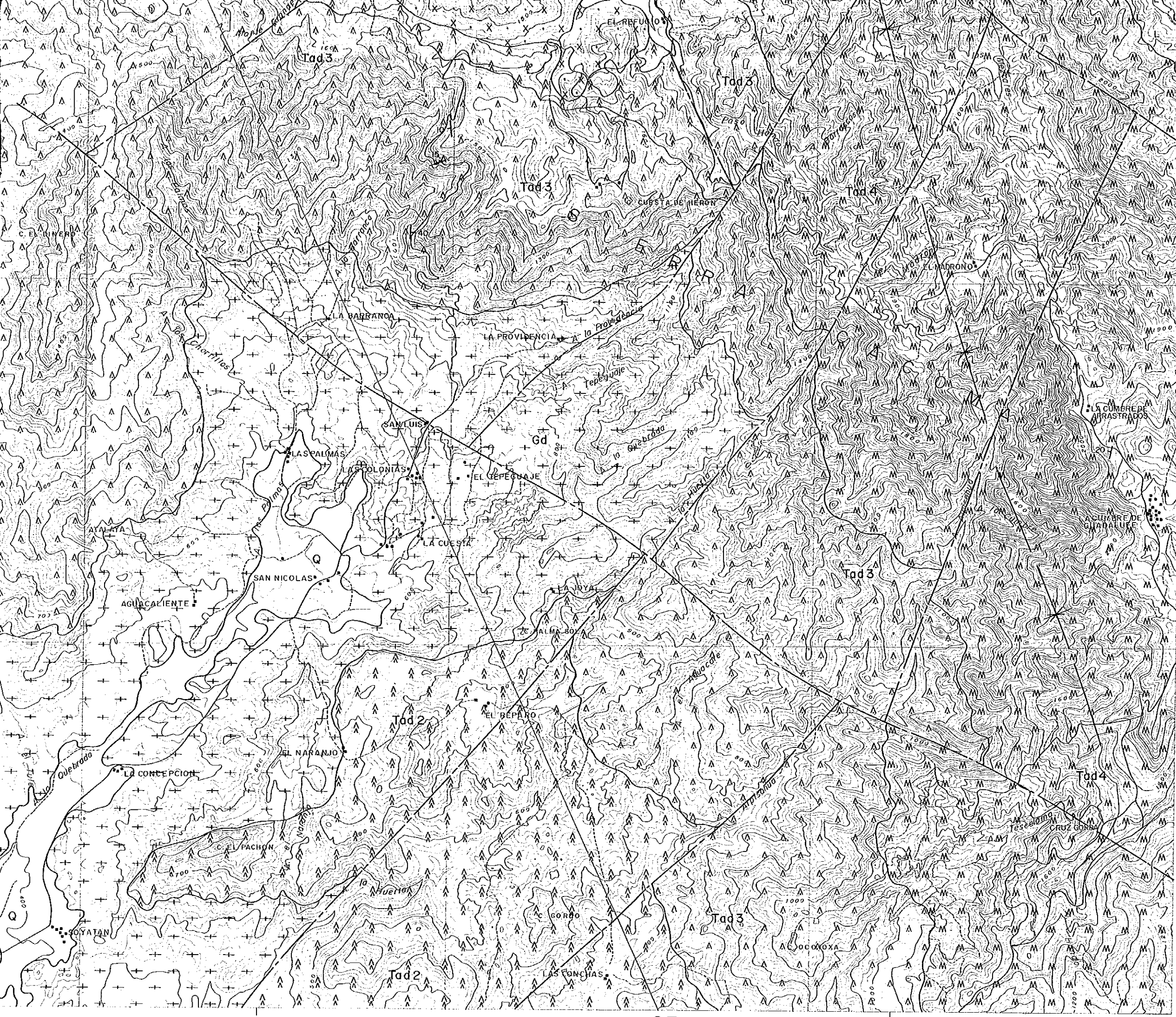
X 15,000

SE

X 20,000

104°





LEGEND

Quaternary System		Intrusive	
[Q]	Alluvium - Diluvium	[Dc]	Dacite
Tertiary System		[Ad1]	Andesite 1
[Tdc4]	IV-Stage Dacite	[Ad2]	Andesite 2
[Tbs1]	Basalt - Pyroclastics	[Gph]	Granophyre
[Tdc3]	III-Stage Dacite	[Gd]	Granodiorite
[Tad4]	IV-Stage Andesite-Pyroclastics	[Adr]	Adomettite
[Tdc2]	II-Stage Dacite-Pyroclastics	[Fault]	Fault
[Tad3]	III-Stage Andesite-Pyroclastics	[Fold Axis]	Fold Axis
[Tdc1]	I-Stage Dacite-Pyroclastics	[Strike and Dip]	Strike and Dip
[Tad2]	II-Stage Andesite-Pyroclastics		
[Tss1]	Sandstone (Conglomerate)		
[Tad1]	I-Stage Andesite-Pyroclastics		
Cretaceous System			
[Kdc2]	Hanging Wall Dacite		
[Ksh2]	Calcareous Shale		
[Kbs1]	Basaltic Lava ~ Pyroclastics		
[Koh]	Ore Horizon Pyroclastics		
[Kdc1]	Foot Wall Dacite		
[Ksh1]	Shale Intercalated with Sandstone		
[Kls1]	Limestone ~ Marble		

Y 10,000

Y 5,000  
20' 10'

X 10,000      104° 50'      X 15,000      SE      X 20,000      104° 45'