

15. RESULT OF COMPUTER SIMULATION
ON GROUNDWATER LEVEL

EEEE	After 1 Year(s)]]]]]
<<<<	Calculation Water Level												>>>>
4000.000	3990.000	4000.000	4000.000	4010.000	4027.000	4030.000	4030.000	4030.000	4030.000	4030.000	4030.000	4030.000	4030.000
3950.000	3959.012	3968.007	3977.007	3997.998	4015.000	4028.992	4029.998	4030.000	4030.000	4030.000	4029.999	4030.000	4030.000
3945.000	3950.002	3955.005	3966.002	3983.002	4001.999	4016.000	4025.990	4029.995	4029.999	4029.997	4027.000	4025.000	4025.000
3935.000	3944.996	3954.991	3955.005	3972.000	3988.001	4004.992	3997.411	4019.996	4024.998	4024.999	4021.988	3980.000	3980.000
3919.000	3925.004	3930.009	3946.000	3960.001	3975.002	3991.998	3999.999	4012.997	4016.001	4018.000	4017.998	4014.000	4014.000
3914.000	3922.000	3929.999	3939.002	3951.001	3965.001	3979.002	3993.997	4004.998	4010.998	4012.999	4011.999	4008.000	4008.000
3911.000	3918.000	3925.000	3937.998	3944.002	3956.001	3968.002	3981.001	3994.998	4003.998	4007.000	4006.001	4005.000	4005.000
3911.000	3913.000	3915.004	3935.996	3939.002	3948.001	3960.000	3970.002	3984.000	3996.997	4002.997	4002.998	4002.000	4002.000
3906.000	3906.000	3905.005	3929.997	3937.000	3942.001	3951.002	3962.001	3974.000	3985.998	3992.997	3990.998	3990.000	3990.000
3899.000	3900.000	3897.511	3923.998	3934.998	3939.000	3945.000	3952.002	3962.001	3972.999	3977.997	3968.000	3965.000	3965.000
3880.000	3900.000	3897.508	3917.504	3928.000	3936.999	3940.001	3947.001	3953.001	3959.999	3959.997	3939.989	3870.000	3870.000
3890.000	3909.999	3900.001	3907.507	3918.506	3930.999	3937.999	3943.000	3946.001	3948.000	3944.990	3870.025	3870.000	3870.000
3877.000	3889.000	3900.000	3905.001	3912.507	3922.505	3932.999	3938.000	3941.999	3941.000	3936.985	3870.033	3870.000	3870.000
3872.000	3886.000	3900.000	3905.001	3914.997	3912.508	3922.506	3935.998	3937.000	3935.999	3931.002	3930.973	3870.000	3870.000
3863.000	3878.000	3900.000	3904.999	3904.000	3910.000	3917.506	3927.505	3933.999	3931.999	3928.004	3929.985	3870.000	3870.000
3862.000	3873.000	3899.998	3895.000	3895.001	3900.001	3910.000	3917.507	3927.504	3928.001	3929.999	3930.001	3930.000	3930.000
3862.000	3873.999	3880.000	3881.002	3888.000	3895.000	3905.000	3915.999	3923.999	3927.000	3932.999	3933.000	3935.000	3935.000
3861.000	3868.000	3872.000	3875.000	3882.000	3890.000	3900.000	3909.000	3916.000	3925.000	3935.000	3937.000	3940.000	3940.000

<<<<	Calculation Total Change												>>>>
0	0	0	0	0	0	0	0	0	0	0	0	0	0
0	0.012	0.007	0.007	-0.002	-0.000	-0.008	-0.002	-0.000	-0.000	-0.000	-0.001	0	0
0	0.002	0.005	0.002	0.002	-0.001	-0.000	-0.010	-0.005	-0.001	-0.003	-0.000	0	0
0	-0.004	-0.009	0.005	-0.000	0.001	-0.008	-0.589	-0.004	-0.002	-0.001	-0.012	0	0
0	0.004	0.009	0.000	0.001	0.002	-0.002	-0.001	-0.003	0.001	0.000	-0.002	0	0
0	-0.000	-0.001	0.002	0.001	0.001	0.002	-0.003	-0.002	-0.002	-0.001	-0.001	0	0
0	0.000	0.000	-0.002	0.002	0.001	0.002	0.001	-0.002	-0.002	-0.000	0.001	0	0
0	-0.000	0.004	-0.004	0.002	0.001	0.000	0.002	0.000	-0.003	-0.003	-0.002	0	0
0	0.000	0.005	-0.003	-0.000	0.001	0.002	0.001	-0.000	-0.002	-0.003	-0.002	0	0
0	0.000	-2.489	-0.002	-0.002	0.000	0.000	0.002	0.001	-0.001	-0.003	-0.000	0	0
0	-0.000	-2.492	-2.496	-0.000	-0.001	0.001	0.001	0.001	-0.001	-0.003	-0.011	0	0
0	-0.001	0.001	-2.493	-2.494	-0.001	-0.001	-0.000	0.001	0.000	-0.010	0.025	0	0
0	0.000	0.000	0.001	-2.493	-2.495	-0.001	0.000	-0.001	-0.000	-0.015	0.033	0	0
0	-0.000	-0.000	0.001	-0.003	-2.492	-2.494	-0.002	-0.000	-0.001	0.002	-0.027	0	0
0	-0.000	-0.000	-0.001	0	-0.000	-2.494	-2.495	-0.001	-0.001	0.004	-0.015	0	0
0	0.000	-0.002	-0.000	0.001	0.001	0.000	-2.493	-2.496	0.001	-0.001	0.001	0	0
0	-0.001	-0.000	0.002	0.000	0.000	0.000	-0.001	-0.001	0.000	-0.001	0.000	0	0
0	0	0	0	0	0	0	0	0	0	0	0	0	0

[[[[[After 2 Year(s)]]]]

<<<< Calculation Water Level >>>>

4000.000	3990.000	4000.000	4000.000	4010.000	4027.000	4030.000	4030.000	4030.000	4030.000	4030.000	4030.000	4030.000	4030.000
3950.000	3959.024	3968.013	3977.013	3997.996	4014.999	4028.984	4029.996	4030.000	4030.000	4030.000	4029.998	4030.000	4030.000
3945.000	3950.003	3955.010	3966.004	3983.003	4001.998	4016.000	4025.980	4029.990	4029.998	4029.995	4027.000	4025.000	4025.000
3935.000	3944.992	3954.983	3955.010	3972.000	3988.003	4004.984	3996.823	4019.991	4024.995	4024.997	4021.976	3980.000	3980.000
3919.000	3925.009	3930.018	3946.000	3960.002	3975.004	3991.996	3999.998	4012.994	4016.001	4018.000	4017.996	4014.000	4014.000
3914.000	3922.000	3929.998	3939.004	3951.002	3965.002	3979.003	3993.994	4004.996	4010.997	4012.998	4011.998	4008.000	4008.000
3911.000	3918.000	3925.001	3937.997	3944.003	3956.002	3968.004	3981.003	3994.997	4003.997	4006.999	4006.002	4005.000	4005.000
3911.000	3913.000	3915.007	3935.992	3939.003	3948.002	3960.001	3970.005	3984.001	3996.995	4002.995	4002.997	4002.000	4002.000
3906.000	3906.000	3905.010	3929.993	3936.999	3942.002	3951.003	3962.002	3974.000	3985.997	3992.994	3990.997	3990.000	3990.000
3899.000	3900.001	3895.023	3923.995	3934.997	3939.000	3945.001	3952.004	3962.003	3972.998	3977.994	3968.000	3965.000	3965.000
3880.000	3899.999	3895.017	3915.009	3927.999	3936.997	3940.002	3947.001	3953.002	3959.997	3959.995	3939.979	3870.000	3870.000
3890.000	3909.998	3900.001	3905.015	3916.013	3930.997	3937.999	3943.000	3946.001	3948.000	3944.979	3870.049	3870.000	3870.000
3877.000	3889.000	3900.000	3905.002	3910.016	3920.011	3932.997	3938.001	3941.998	3941.000	3936.970	3870.065	3870.000	3870.000
3872.000	3886.000	3900.000	3905.001	3914.994	3910.017	3920.013	3935.996	3937.000	3935.998	3931.004	3930.946	3870.000	3870.000
3863.000	3878.000	3900.000	3904.998	3904.000	3909.999	3915.012	3925.011	3933.997	3931.998	3928.008	3929.970	3870.000	3870.000
3862.000	3873.001	3899.996	3894.999	3895.002	3900.002	3910.000	3915.015	3925.010	3928.001	3929.999	3930.001	3930.000	3930.000
3862.000	3873.998	3880.000	3881.003	3888.001	3895.001	3905.001	3915.998	3923.997	3927.000	3932.998	3933.001	3935.000	3935.000
3861.000	3868.000	3872.000	3875.000	3882.000	3890.000	3900.000	3909.000	3916.000	3925.000	3935.000	3937.000	3940.000	3940.000

<<<< Calculation Total Change >>>>

0	0	0	0	0	0	0	0	0	0	0	0	0	0
0	0.024	0.013	0.013	-0.004	-0.001	-0.016	-0.004	-0.000	-0.000	-0.000	-0.002	0	0
0	0.003	0.010	0.004	0.003	-0.002	-0.000	-0.020	-0.010	-0.002	-0.005	-0.000	0	0
0	-0.008	-0.017	0.010	-0.000	0.003	-0.016	-1.177	-0.009	-0.005	-0.003	-0.024	0	0
0	0.009	0.018	0.000	0.002	0.004	-0.004	-0.002	-0.006	0.001	0.000	-0.004	0	0
0	-0.000	-0.002	0.004	0.002	0.002	0.003	-0.006	-0.004	-0.003	-0.002	-0.002	0	0
0	0.000	0.001	-0.003	0.003	0.002	0.004	0.003	-0.003	-0.003	-0.001	0.002	0	0
0	-0.000	0.007	-0.008	0.003	0.002	0.001	0.005	0.001	-0.005	-0.005	-0.003	0	0
0	0.000	0.010	-0.007	-0.001	0.002	0.003	0.002	-0.000	-0.003	-0.006	-0.003	0	0
0	0.001	-4.977	-0.005	-0.003	0.000	0.001	0.004	0.003	-0.002	-0.006	-0.000	0	0
0	-0.001	-4.983	-4.991	-0.001	-0.003	0.002	0.001	0.002	-0.003	-0.005	-0.021	0	0
0	-0.002	0.001	-4.985	-4.987	-0.003	-0.001	-0.000	0.001	0.000	-0.021	0.049	0	0
0	0.000	0.000	0.002	-4.984	-4.989	-0.003	0.001	-0.002	-0.000	-0.030	0.065	0	0
0	-0.000	-0.000	0.001	-0.006	-4.983	-4.987	-0.004	-0.000	-0.002	0.004	-0.054	0	0
0	-0.000	-0.000	-0.002	0	-0.001	-4.988	-4.989	-0.003	-0.002	0.008	-0.030	0	0
0	0.001	-0.004	-0.001	0.002	0.002	0.000	-4.985	-4.990	0.001	-0.001	0.001	0	0
0	-0.002	-0.000	0.003	0.001	0.001	0.001	-0.002	-0.003	0.000	-0.002	0.001	0	0
0	0	0	0	0	0	0	0	0	0	0	0	0	0

[[[[[After 3 Year(s)]]]]

<<<< Calculation Water Level >>>>

4000.000	3990.000	4000.000	4000.000	4010.000	4027.000	4030.000	4030.000	4030.000	4030.000	4030.000	4030.000	4030.000
3950.000	3959.036	3968.020	3977.020	3997.994	4014.999	4028.976	4029.994	4030.000	4030.000	4030.000	4029.997	4030.000
3945.000	3950.005	3955.015	3966.006	3983.005	4001.997	4015.999	4025.969	4029.986	4029.996	4029.992	4026.999	4025.000
3935.000	3944.989	3954.974	3955.015	3971.999	3988.004	4004.976	3996.236	4019.987	4024.993	4024.996	4021.964	3980.000
3919.000	3925.013	3930.026	3946.001	3960.004	3975.006	3991.995	3999.996	4012.990	4016.002	4018.000	4017.995	4014.000
3914.000	3922.000	3929.997	3939.006	3951.004	3965.002	3979.005	3993.991	4004.994	4010.995	4012.997	4011.998	4008.000
3911.000	3918.000	3925.001	3937.995	3944.005	3956.002	3968.005	3981.004	3994.995	4003.995	4006.999	4006.003	4005.000
3911.000	3913.000	3915.011	3935.988	3939.005	3948.004	3960.001	3970.007	3984.001	3996.992	4002.992	4002.995	4002.000
3906.000	3906.000	3905.015	3929.990	3936.999	3942.003	3951.005	3962.002	3974.000	3985.995	3992.992	3990.995	3990.000
3899.000	3900.000	3892.535	3923.992	3934.995	3939.000	3945.001	3952.007	3962.004	3972.996	3977.991	3967.999	3965.000
3880.000	3899.998	3892.526	3912.515	3927.997	3936.996	3940.002	3947.002	3953.002	3959.996	3959.992	3939.968	3870.000
3890.000	3909.997	3900.001	3902.523	3913.521	3930.995	3937.998	3943.000	3946.002	3948.001	3944.969	3870.074	3870.000
3877.000	3889.001	3900.000	3905.002	3907.524	3917.517	3932.995	3938.001	3941.998	3940.999	3936.955	3870.098	3870.000
3872.000	3885.999	3900.000	3905.002	3914.990	3907.527	3917.521	3935.993	3937.000	3935.997	3931.005	3930.919	3870.000
3863.000	3877.999	3899.999	3904.997	3904.000	3909.997	3912.518	3922.517	3933.994	3931.997	3928.011	3929.955	3870.000
3862.000	3873.001	3899.994	3894.999	3895.003	3900.003	3910.000	3912.523	3922.517	3928.002	3929.998	3930.002	3930.000
3862.000	3873.997	3880.000	3881.005	3888.001	3895.001	3905.001	3915.997	3923.996	3927.001	3932.997	3933.001	3935.000
3861.000	3868.000	3872.000	3875.000	3882.000	3890.000	3900.000	3909.000	3916.000	3925.000	3935.000	3937.000	3940.000

<<<< Calculation Total Change >>>>

0	0	0	0	0	0	0	0	0	0	0	0	0
0	0.036	0.020	0.020	-0.006	-0.001	-0.024	-0.006	-0.000	-0.000	-0.000	-0.003	0
0	0.005	0.015	0.006	0.005	-0.003	-0.001	-0.031	-0.014	-0.004	-0.008	-0.001	0
0	-0.011	-0.026	0.015	-0.001	0.004	-0.024	-1.764	-0.013	-0.007	-0.004	-0.036	0
0	0.013	0.026	0.001	0.004	0.006	-0.005	-0.004	-0.010	0.002	0.000	-0.005	0
0	-0.000	-0.003	0.006	0.004	0.002	0.005	-0.009	-0.006	-0.005	-0.003	-0.002	0
0	0.000	0.001	-0.005	0.005	0.002	0.005	0.004	-0.005	-0.005	-0.001	0.003	0
0	-0.000	0.011	-0.012	0.005	0.004	0.001	0.007	0.001	-0.008	-0.008	-0.005	0
0	0.000	0.015	-0.010	-0.001	0.003	0.005	0.002	-0.000	-0.005	-0.008	-0.005	0
0	0.000	-7.465	-0.008	-0.005	0.000	0.001	0.007	0.004	-0.004	-0.009	-0.001	0
0	-0.002	-7.474	-7.485	-0.003	-0.004	0.002	0.002	0.002	-0.004	-0.008	-0.032	0
0	-0.003	0.001	-7.477	-7.479	-0.005	-0.002	-0.000	0.002	0.001	-0.031	0.074	0
0	0.001	0.000	0.002	-7.476	-7.483	-0.005	0.001	-0.002	-0.001	-0.045	0.098	0
0	-0.001	-0.000	0.002	-0.010	-7.473	-7.479	-0.007	-0.000	-0.003	0.005	-0.081	0
0	-0.001	-0.001	-0.003	0	-0.003	-7.482	-7.483	-0.006	-0.003	0.011	-0.045	0
0	0.001	-0.006	-0.001	0.003	0.003	-0.000	-7.477	-7.483	0.002	-0.002	0.002	0
0	-0.003	-0.000	0.005	0.001	0.001	0.001	-0.003	-0.004	0.001	-0.003	0.001	0
0	0	0	0	0	0	0	0	0	0	0	0	0

[[[[[After 4 Year(s)]]]]

<<<< Calculation Water Level >>>>

4000.000	3990.000	4000.000	4000.000	4010.000	4027.000	4030.000	4030.000	4030.000	4030.000	4030.000	4030.000	4030.000	4030.000
3950.000	3959.049	3968.027	3977.026	3997.992	4014.999	4028.968	4029.993	4030.000	4030.000	4030.000	4029.995	4029.995	4030.000
3945.000	3950.006	3955.021	3966.008	3983.007	4001.996	4015.999	4025.959	4029.981	4029.995	4029.990	4026.999	4025.000	4025.000
3935.000	3944.985	3954.965	3955.020	3971.999	3988.005	4004.968	3995.649	4019.982	4024.990	4024.995	4021.953	3980.000	3980.000
3919.000	3925.018	3930.035	3946.001	3960.005	3975.008	3991.993	3999.995	4012.987	4016.003	4018.000	4017.993	4014.000	4014.000
3914.000	3922.000	3929.996	3939.008	3951.005	3965.003	3979.006	3993.989	4004.992	4010.993	4012.996	4011.997	4008.000	4008.000
3911.000	3918.000	3925.001	3937.993	3944.007	3956.003	3968.007	3981.006	3994.994	4003.993	4006.998	4006.004	4005.000	4005.000
3911.000	3913.000	3915.015	3935.984	3939.006	3948.005	3960.002	3970.009	3984.001	3996.989	4002.989	4002.994	4002.000	4002.000
3906.000	3906.000	3905.019	3929.987	3936.999	3942.004	3951.007	3962.003	3974.000	3985.993	3992.989	3990.994	3990.000	3990.000
3899.000	3900.000	3890.049	3923.988	3934.994	3939.001	3945.002	3952.009	3962.005	3972.995	3977.988	3967.999	3965.000	3965.000
3880.000	3899.997	3890.035	3910.021	3927.995	3936.995	3940.003	3947.002	3953.003	3959.995	3959.989	3939.957	3870.000	3870.000
3890.000	3909.996	3900.001	3900.032	3911.030	3930.991	3937.998	3943.000	3946.003	3948.001	3944.958	3870.098	3870.000	3870.000
3877.000	3889.001	3900.000	3905.001	3905.034	3915.024	3932.993	3938.001	3941.997	3940.999	3936.941	3870.130	3870.000	3870.000
3872.000	3885.999	3900.000	3905.003	3914.985	3905.037	3915.029	3935.989	3937.000	3935.996	3931.007	3930.892	3870.000	3870.000
3863.000	3877.999	3899.999	3904.996	3904.000	3909.995	3910.026	3920.024	3933.990	3931.996	3928.015	3929.940	3870.000	3870.000
3862.000	3873.002	3899.992	3894.999	3895.004	3900.004	3909.998	3910.032	3920.025	3928.001	3929.998	3930.002	3930.000	3930.000
3862.000	3873.997	3880.000	3881.006	3888.001	3895.001	3905.001	3915.996	3923.993	3927.001	3932.996	3933.002	3935.000	3935.000
3861.000	3868.000	3872.000	3875.000	3882.000	3890.000	3900.000	3909.000	3916.000	3925.000	3935.000	3937.000	3940.000	3940.000

<<<< Calculation Total Change >>>>

0	0	0	0	0	0	0	0	0	0	0	0	0	0
0	0.049	0.027	0.026	-0.008	-0.001	-0.032	-0.007	-0.000	-0.000	-0.000	-0.005	0	0
0	0.006	0.021	0.008	0.007	-0.004	-0.001	-0.041	-0.019	-0.005	-0.010	-0.001	0	0
0	-0.015	-0.035	0.020	-0.001	0.005	-0.032	-2.351	-0.018	-0.010	-0.005	-0.047	0	0
0	0.018	0.035	0.001	0.005	0.008	-0.007	-0.005	-0.013	0.003	0.000	-0.007	0	0
0	-0.000	-0.004	0.008	0.005	0.003	0.006	-0.011	-0.008	-0.007	-0.004	-0.003	0	0
0	0.000	0.001	-0.007	0.007	0.003	0.007	0.006	-0.006	-0.007	-0.002	0.004	0	0
0	-0.000	0.015	-0.016	0.006	0.005	0.002	0.009	0.001	-0.011	-0.011	-0.006	0	0
0	0.000	0.019	-0.013	-0.001	0.004	0.007	0.003	-0.000	-0.007	-0.011	-0.006	0	0
0	-0.000	-9.951	-0.012	-0.006	0.001	0.002	0.009	0.005	-0.005	-0.012	-0.001	0	0
0	-0.003	-9.965	-9.979	-0.005	-0.005	0.003	0.002	0.003	-0.005	-0.011	-0.043	0	0
0	-0.004	0.001	-9.968	-9.970	-0.009	-0.002	-0.000	0.003	0.001	-0.042	0.098	0	0
0	0.001	0.000	0.001	-9.966	-9.976	-0.007	0.001	-0.003	-0.001	-0.059	0.130	0	0
0	-0.001	-0.000	0.003	-0.015	-9.963	-9.971	-0.011	-0.000	-0.004	0.007	-0.108	0	0
0	-0.001	-0.001	-0.004	0	-0.005	-9.974	-9.976	-0.010	-0.004	0.015	-0.060	0	0
0	0.002	-0.008	-0.001	0.004	0.004	-0.002	-9.968	-9.975	0.001	-0.002	0.002	0	0
0	-0.003	-0.000	0.006	0.001	0.001	0.001	-0.004	-0.007	0.001	-0.004	0.002	0	0
0	0	0	0	0	0	0	0	0	0	0	0	0	0

[[[[[After 5 Year(s)]]]]

<<<< Calculation Water Level >>>>

4000.000	3990.000	4000.000	4000.000	4010.000	4027.000	4030.000	4030.000	4030.000	4030.000	4030.000	4030.000	4030.000	4030.000
3950.000	3959.061	3968.033	3977.033	3997.990	4014.998	4028.959	4029.991	4030.000	4030.000	4030.000	4029.994	4030.000	4030.000
3945.000	3950.008	3955.026	3966.010	3983.008	4001.995	4015.999	4025.948	4029.976	4029.994	4029.987	4026.999	4025.000	4025.000
3935.000	3944.981	3954.956	3955.025	3971.999	3988.007	4004.959	3995.063	4019.977	4024.988	4024.993	4021.941	3980.000	3980.000
3919.000	3925.022	3930.044	3946.001	3960.006	3975.010	3991.991	3999.993	4012.984	4016.003	4018.000	4017.991	4014.000	4014.000
3914.000	3922.000	3929.995	3939.010	3951.006	3965.004	3979.008	3993.986	4004.989	4010.992	4012.995	4011.996	4008.000	4008.000
3911.000	3918.000	3925.001	3937.992	3944.009	3956.004	3968.009	3981.007	3994.992	4003.992	4006.998	4006.005	4005.000	4005.000
3911.000	3913.000	3915.019	3935.980	3939.008	3948.006	3960.002	3970.012	3984.001	3996.986	4002.986	4002.992	4002.000	4002.000
3906.000	3906.001	3905.023	3929.983	3936.999	3942.005	3951.008	3962.004	3974.000	3985.992	3992.986	3990.992	3990.000	3990.000
3899.000	3899.999	3887.565	3923.983	3934.992	3939.001	3945.002	3952.011	3962.006	3972.994	3977.985	3967.999	3965.000	3965.000
3880.000	3899.996	3887.545	3907.528	3927.992	3936.993	3940.004	3947.003	3953.004	3959.993	3959.986	3939.947	3870.000	3870.000
3890.000	3909.994	3900.001	3897.540	3908.539	3930.988	3937.997	3943.000	3946.004	3948.001	3944.948	3870.123	3870.000	3870.000
3877.000	3889.001	3900.000	3905.001	3902.544	3912.532	3932.990	3938.002	3941.996	3940.999	3936.926	3870.162	3870.000	3870.000
3872.000	3885.999	3899.999	3905.004	3914.980	3902.548	3912.537	3935.985	3937.000	3935.995	3931.009	3930.865	3870.000	3870.000
3863.000	3877.999	3899.999	3904.995	3904.000	3909.992	3907.533	3917.532	3933.986	3931.996	3928.019	3929.925	3870.000	3870.000
3862.000	3873.002	3899.990	3894.998	3895.004	3900.005	3909.997	3907.541	3917.533	3928.001	3929.997	3930.003	3930.000	3930.000
3862.000	3873.996	3880.000	3881.008	3888.001	3895.002	3905.002	3915.994	3923.991	3927.001	3932.995	3933.002	3935.000	3935.000
3861.000	3868.000	3872.000	3875.000	3882.000	3890.000	3900.000	3909.000	3916.000	3925.000	3935.000	3937.000	3940.000	3940.000

<<<< Calculation Total Change >>>>

0	0	0	0	0	0	0	0	0	0	0	0	0	0
0	0.061	0.033	0.033	-0.010	-0.002	-0.041	-0.009	-0.000	-0.000	-0.000	-0.006	0	0
0	0.008	0.026	0.010	0.008	-0.005	-0.001	-0.052	-0.024	-0.006	-0.013	-0.001	0	0
0	-0.019	-0.044	0.025	-0.001	0.007	-0.041	-2.937	-0.023	-0.012	-0.007	-0.059	0	0
0	0.022	0.044	0.001	0.006	0.010	-0.009	-0.007	-0.016	0.003	0.000	-0.009	0	0
0	-0.000	-0.005	0.010	0.006	0.004	0.008	-0.014	-0.011	-0.008	-0.005	-0.004	0	0
0	0.000	0.001	-0.008	0.009	0.004	0.009	0.007	-0.008	-0.008	-0.002	0.005	0	0
0	-0.000	0.019	-0.020	0.008	0.006	0.002	0.012	0.001	-0.014	-0.014	-0.008	0	0
0	0.001	0.023	-0.017	-0.001	0.005	0.008	0.004	-0.000	-0.008	-0.014	-0.008	0	0
0	-0.001	-12.435	-0.017	-0.008	0.001	0.002	0.011	0.006	-0.006	-0.015	-0.001	0	0
0	-0.004	-12.455	-12.472	-0.008	-0.007	0.004	0.003	0.004	-0.007	-0.014	-0.053	0	0
0	-0.006	0.001	-12.460	-12.461	-0.012	-0.003	-0.000	0.004	0.001	-0.052	0.123	0	0
0	0.001	0.000	0.001	-12.456	-12.468	-0.010	0.002	-0.004	-0.001	-0.074	0.162	0	0
0	-0.001	-0.001	0.004	-0.020	-12.452	-12.463	-0.015	-0.000	-0.005	0.009	-0.135	0	0
0	-0.001	-0.001	-0.005	0	-0.008	-12.467	-12.468	-0.014	-0.004	0.019	-0.075	0	0
0	0.002	-0.010	-0.002	0.004	0.005	-0.003	-12.459	-12.467	0.001	-0.003	0.003	0	0
0	-0.004	-0.000	0.008	0.001	0.002	0.002	-0.006	-0.009	0.001	-0.005	0.002	0	0
0	0	0	0	0	0	0	0	0	0	0	0	0	0

[[[[[After 6 Year(s)]]]]												
<<<< Calculation Water Level >>>>												
4000.000	3990.000	4000.000	4000.000	4010.000	4027.000	4030.000	4030.000	4030.000	4030.000	4030.000	4030.000	4030.000
3950.000	3959.073	3968.040	3977.039	3997.988	4014.998	4028.951	4029.989	4030.000	4030.000	4030.000	4029.993	4030.000
3945.000	3950.010	3955.031	3966.012	3983.010	4001.994	4015.999	4025.937	4029.971	4029.993	4029.985	4026.998	4025.000
3935.000	3944.977	3954.948	3955.030	3971.999	3988.008	4004.951	3994.478	4019.972	4024.985	4024.992	4021.929	3980.000
3919.000	3925.026	3930.052	3946.001	3960.007	3975.011	3991.989	3999.991	4012.981	4016.004	4018.000	4017.989	4014.000
3914.000	3922.000	3929.994	3939.012	3951.007	3965.005	3979.010	3993.983	4004.987	4010.990	4012.994	4011.995	4008.000
3911.000	3918.000	3925.002	3937.990	3944.010	3956.005	3968.011	3981.009	3994.991	4003.990	4006.997	4006.006	4005.000
3911.000	3913.000	3915.022	3935.976	3939.009	3948.007	3960.003	3970.014	3984.002	3996.984	4002.984	4002.990	4002.000
3906.000	3906.001	3905.026	3929.980	3936.998	3942.006	3951.010	3962.005	3974.000	3985.990	3992.983	3990.991	3990.000
3899.000	3899.998	3885.081	3923.977	3934.990	3939.001	3945.003	3952.013	3962.008	3972.993	3977.981	3967.999	3965.000
3880.000	3899.995	3885.055	3905.036	3927.989	3936.992	3940.005	3947.004	3953.005	3959.992	3959.984	3939.936	3870.000
3890.000	3909.993	3900.000	3895.050	3906.049	3930.983	3937.996	3943.000	3946.004	3948.001	3944.938	3870.148	3870.000
3877.000	3889.001	3900.000	3904.999	3900.054	3910.041	3932.986	3938.002	3941.995	3940.999	3936.911	3870.195	3870.000
3872.000	3885.999	3899.999	3905.004	3914.973	3900.060	3910.046	3935.980	3937.000	3935.994	3931.011	3930.839	3870.000
3863.000	3877.999	3899.999	3904.994	3904.000	3909.989	3905.041	3915.040	3933.981	3931.995	3928.022	3929.910	3870.000
3862.000	3873.003	3899.988	3894.998	3895.005	3900.007	3909.994	3905.051	3915.044	3928.000	3929.997	3930.003	3930.000
3862.000	3873.995	3880.000	3881.010	3888.002	3895.002	3905.002	3915.992	3923.988	3927.001	3932.994	3933.003	3935.000
3861.000	3868.000	3872.000	3875.000	3882.000	3890.000	3900.000	3909.000	3916.000	3925.000	3935.000	3937.000	3940.000

<<<< Calculation Total Change >>>>												
0	0	0	0	0	0	0	0	0	0	0	0	0
0	0.073	0.040	0.039	-0.012	-0.002	-0.049	-0.011	-0.000	-0.000	-0.000	-0.007	0
0	0.010	0.031	0.012	0.010	-0.006	-0.001	-0.063	-0.029	-0.007	-0.015	-0.002	0
0	-0.023	-0.052	0.030	-0.001	0.008	-0.049	-3.522	-0.028	-0.015	-0.008	-0.071	0
0	0.026	0.052	0.001	0.007	0.011	-0.011	-0.009	-0.019	0.004	0.000	-0.011	0
0	-0.000	-0.006	0.012	0.007	0.005	0.010	-0.017	-0.013	-0.010	-0.006	-0.005	0
0	0.000	0.002	-0.010	0.010	0.005	0.011	0.009	-0.009	-0.010	-0.003	0.006	0
0	-0.000	0.022	-0.024	0.009	0.007	0.003	0.014	0.002	-0.016	-0.016	-0.010	0
0	0.001	0.026	-0.020	-0.002	0.006	0.010	0.005	-0.000	-0.010	-0.017	-0.009	0
0	-0.002	-14.919	-0.023	-0.010	0.001	0.003	0.013	0.008	-0.007	-0.019	-0.001	0
0	-0.005	-14.945	-14.964	-0.011	-0.008	0.005	0.004	0.005	-0.008	-0.016	-0.064	0
0	-0.007	-0.000	-14.950	-14.951	-0.017	-0.004	-0.000	0.004	0.001	-0.062	0.148	0
0	0.001	0.000	-0.001	-14.946	-14.959	-0.014	0.002	-0.005	-0.001	-0.089	0.195	0
0	-0.001	-0.001	0.004	-0.027	-14.940	-14.954	-0.020	-0.000	-0.006	0.011	-0.161	0
0	-0.001	-0.001	-0.006	0	-0.011	-14.959	-14.960	-0.019	-0.005	0.022	-0.090	0
0	0.003	-0.012	-0.002	0.005	0.007	-0.006	-14.949	-14.956	-0.000	-0.003	0.003	0
0	-0.005	-0.000	0.010	0.002	0.002	0.002	-0.008	-0.012	0.001	-0.006	0.003	0
0	0	0	0	0	0	0	0	0	0	0	0	0

[[[[[After 7 Year(s)]]]]

<<<< Calculation Water Level >>>>

4000.000	3990.000	4000.000	4000.000	4010.000	4027.000	4030.000	4030.000	4030.000	4030.000	4030.000	4030.000	4030.000
3950.000	3959.085	3968.046	3977.046	3997.986	4014.998	4028.943	4029.987	4030.000	4030.000	4030.000	4029.992	4030.000
3945.000	3950.011	3955.036	3966.014	3983.012	4001.993	4015.998	4025.926	4029.967	4029.991	4029.982	4026.998	4025.000
3935.000	3944.973	3954.939	3955.035	3971.999	3988.010	4004.942	3993.893	4019.966	4024.983	4024.990	4021.917	3980.000
3919.000	3925.031	3930.061	3946.001	3960.009	3975.013	3991.987	3999.989	4012.978	4016.005	4018.001	4017.988	4014.000
3914.000	3921.999	3929.993	3939.014	3951.009	3965.006	3979.011	3993.980	4004.985	4010.988	4012.992	4011.994	4008.000
3911.000	3918.001	3925.002	3937.988	3944.012	3956.006	3968.012	3981.010	3994.989	4003.989	4006.997	4006.007	4005.000
3911.000	3912.999	3915.026	3935.972	3939.011	3948.008	3960.003	3970.016	3984.002	3996.981	4002.981	4002.989	4002.000
3906.000	3906.001	3905.029	3929.977	3936.998	3942.007	3951.012	3962.006	3973.999	3985.989	3992.981	3990.989	3990.000
3899.000	3899.997	3882.598	3923.971	3934.989	3939.001	3945.003	3952.015	3962.009	3972.991	3977.978	3967.999	3965.000
3880.000	3899.993	3882.565	3902.544	3927.985	3936.990	3940.005	3947.004	3953.006	3959.991	3959.981	3939.926	3870.000
3890.000	3909.992	3899.998	3892.559	3903.559	3930.977	3937.996	3943.000	3946.005	3948.001	3944.927	3870.172	3870.000
3877.000	3889.001	3900.000	3904.998	3897.565	3907.550	3932.982	3938.002	3941.995	3940.999	3936.896	3870.227	3870.000
3872.000	3885.998	3899.999	3905.005	3914.966	3897.572	3907.555	3935.975	3937.000	3935.994	3931.012	3930.812	3870.000
3863.000	3877.998	3899.999	3904.994	3904.000	3909.985	3902.550	3912.549	3933.976	3931.994	3928.026	3929.895	3870.000
3862.000	3873.003	3899.986	3894.998	3895.006	3900.008	3909.992	3902.562	3912.555	3927.998	3929.996	3930.004	3930.000
3862.000	3873.994	3880.000	3881.011	3888.002	3895.002	3905.002	3915.989	3923.985	3927.002	3932.993	3933.003	3935.000
3861.000	3866.000	3872.000	3875.000	3882.000	3890.000	3900.000	3909.000	3916.000	3925.000	3935.000	3937.000	3940.000

<<<< Calculation Total Change >>>>

0	0	0	0	0	0	0	0	0	0	0	0	0
0	0.085	0.046	0.046	-0.014	-0.002	-0.057	-0.013	-0.000	-0.000	-0.000	-0.008	0
0	0.011	0.036	0.014	0.012	-0.007	-0.002	-0.074	-0.033	-0.009	-0.018	-0.002	0
0	-0.027	-0.061	0.035	-0.001	0.010	-0.058	-4.107	-0.034	-0.017	-0.010	-0.083	0
0	0.031	0.061	0.001	0.009	0.013	-0.013	-0.011	-0.022	0.005	0.001	-0.012	0
0	-0.001	-0.007	0.014	0.009	0.006	0.011	-0.020	-0.015	-0.012	-0.008	-0.006	0
0	0.001	0.002	-0.012	0.012	0.006	0.012	0.010	-0.011	-0.011	-0.003	0.007	0
0	-0.001	0.026	-0.028	0.011	0.008	0.003	0.016	0.002	-0.019	-0.019	-0.011	0
0	0.001	0.029	-0.023	-0.002	0.007	0.012	0.006	-0.001	-0.011	-0.019	-0.011	0
0	-0.003	-17.402	-0.029	-0.011	0.001	0.003	0.015	0.009	-0.009	-0.022	-0.001	0
0	-0.007	-17.435	-17.456	-0.015	-0.010	0.005	0.004	0.006	-0.009	-0.019	-0.074	0
0	-0.008	-0.002	-17.441	-17.441	-0.023	-0.004	-0.000	0.005	0.001	-0.073	0.172	0
0	0.001	0.000	-0.002	-17.435	-17.450	-0.018	0.002	-0.005	-0.001	-0.104	0.227	0
0	-0.002	-0.001	0.005	-0.034	-17.428	-17.445	-0.025	-0.000	-0.006	0.012	-0.188	0
0	-0.002	-0.001	-0.006	0	-0.015	-17.450	-17.451	-0.024	-0.006	0.026	-0.105	0
0	0.003	-0.014	-0.002	0.006	0.008	-0.008	-17.438	-17.445	-0.002	-0.004	0.004	0
0	-0.006	-0.000	0.011	0.002	0.002	0.002	-0.011	-0.015	0.002	-0.007	0.003	0
0	0	0	0	0	0	0	0	0	0	0	0	0

[[[[[After 8 Year(s)]]]]

<<<< Calculation Water Level >>>>

4000.000	3990.000	4000.000	4000.000	4010.000	4027.000	4030.000	4030.000	4030.000	4030.000	4030.000	4030.000	4030.000
3950.000	3959.097	3968.053	3977.052	3997.984	4014.997	4028.935	4029.985	4030.000	4030.000	4030.000	4029.991	4030.000
3945.000	3950.013	3955.041	3966.016	3983.013	4001.992	4015.998	4025.915	4029.962	4029.990	4029.980	4026.998	4025.000
3935.000	3944.969	3954.930	3955.040	3971.999	3988.011	4004.933	3993.309	4019.961	4024.980	4024.989	4021.905	3980.000
3919.000	3925.035	3930.070	3946.001	3960.010	3975.015	3991.985	3999.987	4012.974	4016.005	4018.001	4017.986	4014.000
3914.000	3921.999	3929.992	3939.016	3951.010	3965.006	3979.013	3993.977	4004.983	4010.987	4012.991	4011.994	4008.000
3911.000	3918.001	3925.002	3937.987	3944.014	3956.006	3968.014	3981.011	3994.988	4003.987	4006.996	4006.007	4005.000
3911.000	3912.999	3915.030	3935.968	3939.012	3948.009	3960.004	3970.019	3984.002	3996.978	4002.978	4002.987	4002.000
3906.000	3906.001	3905.031	3929.973	3936.998	3942.008	3951.014	3962.006	3973.999	3985.987	3992.978	3990.988	3990.000
3899.000	3899.995	3880.116	3923.964	3934.987	3939.001	3945.004	3952.018	3962.010	3972.990	3977.975	3967.998	3965.000
3880.000	3899.992	3880.076	3900.053	3927.980	3936.989	3940.006	3947.005	3953.007	3959.990	3959.978	3939.915	3870.000
3890.000	3909.991	3899.997	3890.069	3901.070	3930.971	3937.995	3943.000	3946.006	3948.002	3944.917	3870.197	3870.000
3877.000	3889.002	3900.000	3904.996	3895.077	3905.059	3932.977	3938.003	3941.994	3940.998	3936.882	3870.259	3870.000
3872.000	3885.998	3899.999	3905.006	3914.959	3895.085	3905.065	3935.969	3937.000	3935.993	3931.014	3930.785	3870.000
3863.000	3877.998	3899.998	3904.993	3904.000	3909.980	3900.059	3910.059	3933.970	3931.993	3928.030	3929.880	3870.000
3862.000	3873.004	3899.983	3894.997	3895.007	3900.009	3909.988	3900.073	3910.067	3927.997	3929.996	3930.004	3930.000
3862.000	3873.993	3880.000	3881.013	3888.002	3895.003	3905.003	3915.986	3923.981	3927.002	3932.992	3933.004	3935.000
3861.000	3868.000	3872.000	3875.000	3882.000	3890.000	3900.000	3909.000	3916.000	3925.000	3935.000	3937.000	3940.000

<<<< Calculation Total Change >>>>

0	0	0	0	0	0	0	0	0	0	0	0	0
0	0.097	0.053	0.052	-0.016	-0.003	-0.065	-0.015	-0.000	-0.000	-0.000	-0.009	0
0	0.013	0.041	0.016	0.013	-0.008	-0.002	-0.085	-0.038	-0.010	-0.020	-0.002	0
0	-0.031	-0.070	0.040	-0.001	0.011	-0.067	-4.691	-0.039	-0.020	-0.011	-0.095	0
0	0.035	0.070	0.001	0.010	0.015	-0.015	-0.013	-0.026	0.005	0.001	-0.014	0
0	-0.001	-0.008	0.016	0.010	0.006	0.013	-0.023	-0.017	-0.013	-0.009	-0.006	0
0	0.001	0.002	-0.013	0.014	0.006	0.014	0.011	-0.012	-0.013	-0.004	0.007	0
0	-0.001	0.030	-0.032	0.012	0.009	0.004	0.019	0.002	-0.022	-0.022	-0.013	0
0	0.001	0.031	-0.027	-0.002	0.008	0.014	0.006	-0.001	-0.013	-0.022	-0.012	0
0	-0.005	-19.884	-0.036	-0.013	0.001	0.004	0.018	0.010	-0.010	-0.025	-0.002	0
0	-0.008	-19.924	-19.947	-0.020	-0.011	0.006	0.005	0.007	-0.010	-0.022	-0.085	0
0	-0.009	-0.003	-19.931	-19.930	-0.029	-0.005	-0.000	0.006	0.002	-0.083	0.197	0
0	0.002	0.000	-0.004	-19.923	-19.941	-0.023	0.003	-0.006	-0.002	-0.118	0.259	0
0	-0.002	-0.001	0.006	-0.041	-19.915	-19.935	-0.031	-0.000	-0.007	0.014	-0.215	0
0	-0.002	-0.002	-0.007	0	-0.020	-19.941	-19.941	-0.030	-0.007	0.030	-0.120	0
0	0.004	-0.017	-0.003	0.007	0.009	-0.012	-19.927	-19.933	-0.003	-0.004	0.004	0
0	-0.007	-0.000	0.013	0.002	0.003	0.003	-0.014	-0.019	0.002	-0.008	0.004	0
0	0	0	0	0	0	0	0	0	0	0	0	0

CCCC After 9 Year(s) JJJJ

<<<< Calculation Water Level >>>>

4000.000	3990.000	4000.000	4000.000	4010.000	4027.000	4030.000	4030.000	4030.000	4030.000	4030.000	4030.000	4030.000	4030.000
3950.000	3959.109	3968.060	3977.058	3997.982	4014.997	4028.927	4029.983	4030.000	4030.000	4030.000	4029.990	4030.000	4030.000
3945.000	3950.015	3955.046	3966.018	3983.015	4001.991	4015.998	4025.903	4029.957	4029.989	4029.977	4026.998	4025.000	4025.000
3935.000	3944.966	3954.922	3955.044	3971.998	3988.012	4004.924	3992.726	4019.955	4024.978	4024.988	4021.894	3980.000	3980.000
3919.000	3925.040	3930.078	3946.002	3960.011	3975.017	3991.984	3999.985	4012.971	4016.006	4018.001	4017.984	4014.000	4014.000
3914.000	3921.999	3929.991	3939.018	3951.011	3965.007	3979.014	3993.974	4004.981	4010.985	4012.990	4011.993	4008.000	4008.000
3911.000	3918.001	3925.003	3937.985	3944.015	3956.007	3968.016	3981.013	3994.986	4003.985	4006.996	4006.008	4005.000	4005.000
3911.000	3912.999	3915.033	3935.964	3939.014	3948.011	3960.004	3970.021	3984.002	3996.975	4002.975	4002.986	4002.000	4002.000
3906.000	3906.001	3905.033	3929.970	3936.998	3942.009	3951.015	3962.007	3973.999	3985.985	3992.975	3990.986	3990.000	3990.000
3899.000	3899.993	3877.636	3923.957	3934.985	3939.001	3945.004	3952.020	3962.011	3972.989	3977.972	3967.998	3965.000	3965.000
3880.000	3899.990	3877.587	3897.562	3927.975	3936.988	3940.007	3947.005	3953.007	3959.988	3959.975	3939.905	3870.000	3870.000
3890.000	3909.990	3899.995	3887.579	3898.582	3930.964	3937.994	3943.000	3946.006	3948.002	3944.907	3870.221	3870.000	3870.000
3877.000	3889.002	3900.000	3904.993	3892.589	3902.570	3932.971	3938.003	3941.993	3940.998	3936.867	3870.292	3870.000	3870.000
3872.000	3885.998	3899.999	3905.007	3914.950	3892.599	3902.576	3935.963	3937.000	3935.992	3931.016	3930.758	3870.000	3870.000
3863.000	3877.998	3899.998	3904.992	3904.000	3909.975	3897.569	3907.569	3933.963	3931.992	3928.034	3929.865	3870.000	3870.000
3862.000	3873.004	3899.981	3894.997	3895.008	3900.010	3909.985	3897.585	3907.580	3927.994	3929.995	3930.005	3930.000	3930.000
3862.000	3873.992	3879.999	3881.015	3888.002	3895.003	3905.003	3915.983	3923.977	3927.002	3932.992	3933.004	3935.000	3935.000
3861.000	3868.000	3872.000	3875.000	3882.000	3890.000	3900.000	3909.000	3916.000	3925.000	3935.000	3937.000	3940.000	3940.000

<<<< Calculation Total Change >>>>

0	0	0	0	0	0	0	0	0	0	0	0	0	0
0	0.109	0.060	0.058	-0.018	-0.003	-0.073	-0.017	-0.000	-0.000	-0.000	-0.010	0	0
0	0.015	0.046	0.018	0.015	-0.009	-0.002	-0.097	-0.043	-0.011	-0.023	-0.002	0	0
0	-0.034	-0.078	0.044	-0.002	0.012	-0.076	-5.274	-0.045	-0.022	-0.012	-0.106	0	0
0	0.040	0.078	0.002	0.011	0.017	-0.016	-0.015	-0.029	0.006	0.001	-0.016	0	0
0	-0.001	-0.009	0.018	0.011	0.007	0.014	-0.026	-0.019	-0.015	-0.010	-0.007	0	0
0	0.001	0.003	-0.015	0.015	0.007	0.016	0.013	-0.014	-0.015	-0.004	0.008	0	0
0	-0.001	0.033	-0.036	0.014	0.011	0.004	0.021	0.002	-0.025	-0.025	-0.014	0	0
0	0.001	0.033	-0.030	-0.002	0.009	0.015	0.007	-0.001	-0.015	-0.025	-0.014	0	0
0	-0.007	-22.364	-0.043	-0.015	0.001	0.004	0.020	0.011	-0.011	-0.028	-0.002	0	0
0	-0.010	-22.413	-22.438	-0.025	-0.012	0.007	0.005	0.007	-0.012	-0.025	-0.095	0	0
0	-0.010	-0.005	-22.421	-22.418	-0.036	-0.006	-0.000	0.006	0.002	-0.093	0.221	0	0
0	0.002	0.000	-0.007	-22.411	-22.430	-0.029	0.003	-0.007	-0.002	-0.133	0.292	0	0
0	-0.002	-0.001	0.007	-0.050	-22.401	-22.424	-0.037	-0.000	-0.008	0.016	-0.242	0	0
0	-0.002	-0.002	-0.008	0	-0.025	-22.431	-22.431	-0.037	-0.008	0.034	-0.135	0	0
0	0.004	-0.019	-0.003	0.008	0.010	-0.015	-22.415	-22.420	-0.006	-0.005	0.005	0	0
0	-0.008	-0.001	0.015	0.002	0.003	0.003	-0.017	-0.023	0.002	-0.008	0.004	0	0
0	0	0	0	0	0	0	0	0	0	0	0	0	0

[[[[[After 10 Year(s)]]]]

[[[[[Calculation Water Level]]]]

4000.000	3990.000	4000.000	4000.000	4010.000	4027.000	4030.000	4030.000	4030.000	4030.000	4030.000	4030.000	4030.000
3950.000	3959.121	3968.066	3977.065	3997.980	4014.996	4028.919	4029.981	4030.000	4030.000	4030.000	4029.988	4030.000
3945.000	3950.016	3955.051	3966.020	3983.016	4001.990	4015.997	4025.892	4029.952	4029.988	4029.975	4026.997	4025.000
3935.000	3944.962	3954.913	3955.049	3971.998	3988.014	4004.914	3992.144	4019.949	4024.976	4024.986	4021.882	3980.000
3919.000	3925.044	3930.087	3946.002	3960.012	3975.019	3991.982	3999.982	4012.968	4016.006	4018.001	4017.982	4014.000
3914.000	3921.999	3929.990	3939.019	3951.012	3965.008	3979.016	3993.971	4004.979	4010.983	4012.989	4011.992	4008.000
3911.000	3918.001	3925.003	3937.983	3944.017	3956.008	3968.017	3981.014	3994.984	4003.984	4006.995	4006.009	4005.000
3911.000	3912.999	3915.037	3935.960	3939.016	3948.012	3960.005	3970.023	3984.003	3996.973	4002.973	4002.984	4002.000
3906.000	3906.001	3905.034	3929.967	3936.997	3942.010	3951.017	3962.008	3973.999	3985.984	3992.972	3990.985	3990.000
3899.000	3899.991	3875.156	3923.948	3934.984	3939.001	3945.005	3952.022	3962.013	3972.988	3977.969	3967.998	3965.000
3880.000	3899.988	3875.098	3895.072	3927.969	3936.986	3940.008	3947.006	3953.008	3959.987	3959.973	3939.894	3870.000
3890.000	3909.989	3899.992	3885.090	3896.095	3930.957	3937.994	3943.000	3946.007	3948.002	3944.896	3870.246	3870.000
3877.000	3889.002	3900.000	3904.991	3890.102	3900.081	3932.966	3938.003	3941.992	3940.998	3936.852	3870.324	3870.000
3872.000	3885.998	3899.999	3905.007	3914.941	3890.113	3900.087	3935.956	3937.000	3935.991	3931.017	3930.732	3870.000
3863.000	3877.998	3899.998	3904.991	3904.000	3909.969	3895.079	3905.080	3933.955	3931.991	3928.037	3929.850	3870.000
3862.000	3873.005	3899.979	3894.997	3895.009	3900.011	3909.980	3895.097	3905.095	3927.992	3929.995	3930.005	3930.000
3862.000	3873.991	3879.999	3881.016	3888.003	3895.003	3905.004	3915.980	3923.973	3927.002	3932.991	3933.005	3935.000
3861.000	3868.000	3872.000	3875.000	3882.000	3890.000	3900.000	3909.000	3916.000	3925.000	3935.000	3937.000	3940.000

[[[[[Calculation Total Change]]]]

0	0	0	0	0	0	0	0	0	0	0	0	0
0	0.121	0.066	0.065	-0.020	-0.004	-0.081	-0.019	-0.000	-0.000	-0.000	-0.012	0
0	0.016	0.051	0.020	0.016	-0.010	-0.003	-0.108	-0.048	-0.012	-0.025	-0.003	0
0	-0.038	-0.087	0.049	-0.002	0.014	-0.086	-5.856	-0.051	-0.024	-0.014	-0.118	0
0	0.044	0.087	0.002	0.012	0.019	-0.018	-0.018	-0.032	0.006	0.001	-0.018	0
0	-0.001	-0.010	0.019	0.012	0.008	0.016	-0.029	-0.021	-0.017	-0.011	-0.008	0
0	0.001	0.003	-0.017	0.017	0.008	0.017	0.014	-0.016	-0.016	-0.005	0.009	0
0	-0.001	0.037	-0.040	0.016	0.012	0.005	0.023	0.003	-0.027	-0.027	-0.016	0
0	0.001	0.034	-0.033	-0.003	0.010	0.017	0.008	-0.001	-0.016	-0.028	-0.015	0
0	-0.009	-24.844	-0.052	-0.016	0.001	0.005	0.022	0.013	-0.012	-0.031	-0.002	0
0	-0.012	-24.902	-24.928	-0.031	-0.014	0.008	0.006	0.008	-0.013	-0.027	-0.106	0
0	-0.011	-0.008	-24.910	-24.905	-0.043	-0.006	-0.000	0.007	0.002	-0.104	0.246	0
0	0.002	0.000	-0.009	-24.898	-24.919	-0.034	0.003	-0.008	-0.002	-0.148	0.324	0
0	-0.002	-0.001	0.007	-0.059	-24.887	-24.913	-0.044	-0.000	-0.009	0.017	-0.268	0
0	-0.002	-0.002	-0.009	0	-0.031	-24.921	-24.920	-0.045	-0.009	0.037	-0.150	0
0	0.005	-0.021	-0.003	0.009	0.011	-0.020	-24.903	-24.905	-0.008	-0.005	0.005	0
0	-0.009	-0.001	0.016	0.003	0.003	0.004	-0.020	-0.027	0.002	-0.009	0.005	0
0	0	0	0	0	0	0	0	0	0	0	0	0

CCCC After 11 Year(s) CCCC

Calculation Water Level >>>>

4000.000	3990.000	4000.000	4000.000	4010.000	4027.000	4030.000	4030.000	4030.000	4030.000	4030.000	4030.000	4030.000
3950.000	3959.133	3968.073	3977.071	3997.978	4014.996	4028.911	4029.979	4030.000	4030.000	4030.000	4029.987	4030.000
3945.000	3950.018	3955.057	3966.022	3983.018	4001.989	4015.997	4025.880	4029.947	4029.987	4029.972	4026.997	4025.000
3935.000	3944.958	3954.904	3955.054	3971.998	3988.015	4004.905	3991.563	4019.943	4024.973	4024.985	4021.870	3980.000
3919.000	3925.048	3930.096	3946.002	3960.013	3975.021	3991.980	3999.979	4012.965	4016.007	4018.001	4017.981	4014.000
3914.000	3921.999	3929.989	3939.021	3951.013	3965.009	3979.018	3993.969	4004.977	4010.982	4012.988	4011.991	4008.000
3911.000	3918.001	3925.003	3937.981	3944.019	3956.009	3968.019	3981.016	3994.983	4003.982	4006.995	4006.010	4005.000
3911.000	3912.999	3915.041	3935.956	3939.017	3948.013	3960.005	3970.026	3984.003	3996.970	4002.970	4002.982	4002.000
3906.000	3906.001	3905.036	3929.963	3936.997	3942.011	3951.019	3962.009	3973.999	3985.982	3992.970	3990.983	3990.000
3899.000	3899.988	3872.678	3923.939	3934.982	3939.002	3945.005	3952.024	3962.014	3972.987	3977.966	3967.998	3965.000
3880.000	3899.986	3872.610	3892.583	3927.962	3936.985	3940.009	3947.006	3953.009	3959.986	3959.970	3939.883	3870.000
3890.000	3909.988	3899.989	3882.601	3893.608	3930.949	3937.993	3942.999	3946.008	3948.002	3944.886	3870.270	3870.000
3877.000	3889.002	3900.000	3904.987	3887.616	3897.593	3932.959	3938.004	3941.992	3940.998	3936.837	3870.356	3870.000
3872.000	3885.997	3899.999	3905.008	3914.931	3887.628	3897.598	3935.948	3937.000	3935.990	3931.019	3930.705	3870.000
3863.000	3877.997	3899.998	3904.990	3904.000	3909.963	3892.590	3902.591	3933.947	3931.990	3928.041	3929.835	3870.000
3862.000	3873.005	3899.977	3894.996	3895.010	3900.012	3909.976	3892.610	3902.611	3927.989	3929.994	3930.006	3930.000
3862.000	3873.991	3879.999	3881.018	3888.003	3895.004	3905.004	3915.976	3923.968	3927.003	3932.990	3933.005	3935.000
3861.000	3868.000	3872.000	3875.000	3882.000	3890.000	3900.000	3909.000	3916.000	3925.000	3935.000	3937.000	3940.000

Calculation Total Change >>>>

0	0	0	0	0	0	0	0	0	0	0	0	0
0	0.133	0.073	0.071	-0.022	-0.004	-0.089	-0.021	-0.000	-0.000	-0.000	-0.013	0
0	0.018	0.057	0.022	0.018	-0.011	-0.003	-0.120	-0.053	-0.013	-0.028	-0.003	0
0	-0.042	-0.096	0.054	-0.002	0.015	-0.095	-6.437	-0.057	-0.027	-0.015	-0.130	0
0	0.048	0.096	0.002	0.013	0.021	-0.020	-0.021	-0.035	0.007	0.001	-0.019	0
0	-0.001	-0.011	0.021	0.013	0.009	0.018	-0.031	-0.023	-0.018	-0.012	-0.009	0
0	0.001	0.003	-0.019	0.019	0.009	0.019	0.016	-0.017	-0.018	-0.005	0.010	0
0	-0.001	0.041	-0.044	0.017	0.013	0.005	0.026	0.003	-0.030	-0.030	-0.018	0
0	0.001	0.036	-0.037	-0.003	0.011	0.019	0.009	-0.001	-0.018	-0.030	-0.017	0
0	-0.012	-27.322	-0.061	-0.018	0.002	0.005	0.024	0.014	-0.013	-0.034	-0.002	0
0	-0.014	-27.390	-27.417	-0.038	-0.015	0.009	0.006	0.009	-0.014	-0.030	-0.117	0
0	-0.012	-0.011	-27.399	-27.392	-0.051	-0.007	-0.001	0.008	0.002	-0.114	0.270	0
0	0.002	0.000	-0.013	-27.384	-27.407	-0.041	0.004	-0.008	-0.002	-0.163	0.356	0
0	-0.003	-0.001	0.008	-0.069	-27.372	-27.402	-0.052	-0.000	-0.010	0.019	-0.295	0
0	-0.003	-0.002	-0.010	0	-0.037	-27.410	-27.409	-0.053	-0.010	0.041	-0.165	0
0	0.005	-0.023	-0.004	0.010	0.012	-0.024	-27.390	-27.389	-0.011	-0.006	0.006	0
0	-0.009	-0.001	0.018	0.003	0.004	0.004	-0.024	-0.032	0.003	-0.010	0.005	0
0	0	0	0	0	0	0	0	0	0	0	0	0

[[[[[After 12 Year(s)]]]]

<<<< Calculation Water Level >>>>

4000.000	3990.000	4000.000	4000.000	4010.000	4027.000	4030.000	4030.000	4030.000	4030.000	4030.000	4030.000	4030.000
3950.000	3959.145	3968.080	3977.078	3997.976	4014.996	4028.903	4029.978	4030.000	4030.000	4030.000	4029.986	4030.000
3945.000	3950.020	3955.062	3966.023	3983.020	4001.988	4015.997	4025.868	4029.943	4029.985	4029.970	4026.997	4025.000
3935.000	3944.954	3954.896	3955.059	3971.998	3988.016	4004.895	3990.982	4019.937	4024.971	4024.984	4021.858	3980.000
3919.000	3925.053	3930.104	3946.002	3960.015	3975.023	3991.978	3999.976	4012.962	4016.008	4018.001	4017.979	4014.000
3914.000	3921.999	3929.988	3939.023	3951.015	3965.010	3979.019	3993.966	4004.975	4010.980	4012.987	4011.991	4008.000
3911.000	3918.001	3925.004	3937.980	3944.020	3956.010	3968.021	3981.017	3994.981	4003.980	4006.994	4006.011	4005.000
3911.000	3912.999	3915.045	3935.952	3939.019	3948.014	3960.006	3970.028	3984.003	3996.967	4002.967	4002.981	4002.000
3906.000	3906.001	3905.036	3929.960	3936.997	3942.012	3951.020	3962.010	3973.999	3985.980	3992.967	3990.982	3990.000
3899.000	3899.985	3870.201	3923.930	3934.981	3939.002	3945.006	3952.027	3962.015	3972.985	3977.963	3967.998	3965.000
3880.000	3899.983	3870.122	3890.095	3927.955	3936.984	3940.009	3947.007	3953.010	3959.984	3959.967	3939.873	3870.000
3890.000	3909.987	3899.986	3880.112	3891.122	3930.940	3937.993	3942.999	3946.008	3948.002	3944.876	3870.295	3870.000
3877.000	3889.002	3900.000	3904.984	3885.130	3895.105	3932.952	3938.004	3941.991	3940.998	3936.823	3870.388	3870.000
3872.000	3885.997	3899.999	3905.009	3914.921	3885.144	3895.110	3935.940	3937.000	3935.989	3931.021	3930.678	3870.000
3863.000	3877.997	3899.998	3904.989	3904.000	3909.956	3890.101	3900.103	3933.938	3931.989	3928.045	3929.820	3870.000
3862.000	3873.006	3899.975	3894.996	3895.010	3900.013	3909.970	3890.123	3900.127	3927.985	3929.994	3930.007	3930.000
3862.000	3873.990	3879.999	3881.019	3888.003	3895.004	3905.004	3915.972	3923.963	3927.003	3932.989	3933.005	3935.000
3861.000	3868.000	3872.000	3875.000	3882.000	3890.000	3900.000	3909.000	3916.000	3925.000	3935.000	3937.000	3940.000

<<<< Calculation Total Change >>>>

0	0	0	0	0	0	0	0	0	0	0	0	0
0	0.145	0.080	0.078	-0.024	-0.004	-0.097	-0.022	-0.000	-0.000	-0.000	-0.014	0
0	0.020	0.062	0.023	0.020	-0.012	-0.003	-0.132	-0.057	-0.015	-0.030	-0.003	0
0	-0.046	-0.104	0.059	-0.002	0.016	-0.105	-7.018	-0.063	-0.029	-0.016	-0.142	0
0	0.053	0.104	0.002	0.015	0.023	-0.022	-0.024	-0.038	0.008	0.001	-0.021	0
0	-0.001	-0.012	0.023	0.015	0.010	0.019	-0.034	-0.025	-0.020	-0.013	-0.009	0
0	0.001	0.004	-0.020	0.020	0.010	0.021	0.017	-0.019	-0.020	-0.006	0.011	0
0	-0.001	0.045	-0.048	0.019	0.014	0.006	0.028	0.003	-0.033	-0.033	-0.019	0
0	0.001	0.036	-0.040	-0.003	0.012	0.020	0.010	-0.001	-0.020	-0.033	-0.018	0
0	-0.015	-29.799	-0.070	-0.019	0.002	0.006	0.027	0.015	-0.015	-0.037	-0.002	0
0	-0.017	-29.878	-29.905	-0.045	-0.016	0.009	0.007	0.010	-0.016	-0.033	-0.127	0
0	-0.013	-0.014	-29.888	-29.878	-0.060	-0.007	-0.001	0.008	0.002	-0.124	0.295	0
0	0.002	0.000	-0.016	-29.870	-29.895	-0.048	0.004	-0.009	-0.002	-0.177	0.388	0
0	-0.003	-0.001	0.009	-0.079	-29.856	-29.890	-0.060	-0.000	-0.011	0.021	-0.322	0
0	-0.003	-0.002	-0.011	0	-0.044	-29.899	-29.897	-0.062	-0.011	0.045	-0.180	0
0	0.006	-0.025	-0.004	0.010	0.013	-0.030	-29.877	-29.873	-0.015	-0.006	0.007	0
0	-0.010	-0.001	0.019	0.003	0.004	0.004	-0.028	-0.037	0.003	-0.011	0.005	0
0	0	0	0	0	0	0	0	0	0	0	0	0

[[[[[After 13 Year(s)]]]]]

<<<< Calculation Water Level >>>>

4000.000	3990.000	4000.000	4000.000	4010.000	4027.000	4030.000	4030.000	4030.000	4030.000	4030.000	4030.000	4030.000
3950.000	3959.157	3968.086	3977.084	3997.975	4014.995	4028.895	4029.976	4030.000	4030.000	4030.000	4029.985	4030.000
3945.000	3950.021	3955.067	3966.025	3983.021	4001.987	4015.996	4025.856	4029.938	4029.984	4029.967	4026.996	4025.000
3935.000	3944.950	3954.887	3955.064	3971.998	3988.018	4004.885	3990.402	4019.930	4024.968	4024.982	4021.847	3980.000
3919.000	3925.057	3930.113	3946.003	3960.016	3975.025	3991.976	3999.973	4012.958	4016.008	4018.001	4017.977	4014.000
3914.000	3921.999	3929.987	3939.025	3951.016	3965.010	3979.021	3993.963	4004.972	4010.978	4012.986	4011.990	4008.000
3911.000	3918.001	3925.004	3937.978	3944.022	3956.010	3968.023	3981.018	3994.980	4003.979	4006.994	4006.012	4005.000
3911.000	3912.999	3915.048	3935.948	3939.020	3948.015	3960.006	3970.030	3984.003	3996.964	4002.964	4002.979	4002.000
3906.000	3906.002	3905.036	3929.957	3936.997	3942.013	3951.022	3962.010	3973.999	3985.979	3992.964	3990.980	3990.000
3899.000	3899.982	3867.724	3923.919	3934.979	3939.002	3945.006	3952.029	3962.016	3972.984	3977.960	3967.997	3965.000
3880.000	3899.981	3867.635	3887.607	3927.947	3936.982	3940.010	3947.008	3953.011	3959.983	3959.964	3939.862	3870.000
3890.000	3909.986	3899.983	3877.624	3888.637	3930.930	3937.992	3942.999	3946.009	3948.003	3944.865	3870.319	3870.000
3877.000	3889.003	3900.000	3904.980	3882.645	3892.618	3932.945	3938.004	3941.990	3940.997	3936.808	3870.420	3870.000
3872.000	3885.997	3899.999	3905.009	3914.909	3882.661	3892.623	3935.931	3937.000	3935.988	3931.022	3930.652	3870.000
3863.000	3877.997	3899.997	3904.988	3904.000	3909.948	3887.613	3897.616	3933.928	3931.988	3928.048	3929.806	3870.000
3862.000	3873.006	3899.973	3894.996	3895.011	3900.014	3909.964	3887.637	3897.645	3927.982	3929.993	3930.007	3930.000
3862.000	3873.989	3879.999	3881.021	3888.003	3895.005	3905.005	3915.968	3923.957	3927.003	3932.988	3933.006	3935.000
3861.000	3868.000	3872.000	3875.000	3882.000	3890.000	3900.000	3909.000	3916.000	3925.000	3935.000	3937.000	3940.000

<<<< Calculation Total Change >>>>

0	0	0	0	0	0	0	0	0	0	0	0	0
0	0.157	0.086	0.084	-0.025	-0.005	-0.105	-0.024	-0.000	-0.000	-0.000	-0.015	0
0	0.021	0.067	0.025	0.021	-0.013	-0.004	-0.144	-0.062	-0.016	-0.033	-0.004	0
0	-0.050	-0.113	0.064	-0.002	0.018	-0.115	-7.598	-0.070	-0.032	-0.018	-0.153	0
0	0.057	0.113	0.003	0.016	0.025	-0.024	-0.027	-0.042	0.008	0.001	-0.023	0
0	-0.001	-0.013	-0.025	0.016	0.010	0.021	-0.037	-0.028	-0.022	-0.014	-0.010	0
0	0.001	0.004	-0.022	0.022	0.010	0.023	0.018	-0.020	-0.021	-0.006	0.012	0
0	-0.001	0.048	-0.052	0.020	0.015	0.006	0.030	0.003	-0.036	-0.036	-0.021	0
0	0.002	0.036	-0.043	-0.003	0.013	0.022	0.010	-0.001	-0.021	-0.036	-0.020	0
0	-0.018	-32.276	-0.081	-0.021	0.002	0.006	0.029	0.016	-0.016	-0.040	-0.003	0
0	-0.019	-32.365	-32.393	-0.053	-0.018	0.010	0.008	0.011	-0.017	-0.036	-0.138	0
0	-0.014	-0.017	-32.376	-32.363	-0.070	-0.008	-0.001	0.009	0.003	-0.135	0.319	0
0	0.003	0.000	-0.020	-32.355	-32.382	-0.055	0.004	-0.010	-0.003	-0.192	0.420	0
0	-0.003	-0.001	0.009	-0.091	-32.377	-32.377	-0.069	-0.000	-0.012	0.022	-0.348	0
0	-0.003	-0.003	-0.012	0	-0.052	-32.387	-32.384	-0.072	-0.012	0.048	-0.194	0
0	0.006	-0.027	-0.004	0.011	0.014	-0.036	-32.363	-32.355	-0.018	-0.007	0.007	0
0	-0.011	-0.001	0.021	0.003	0.005	0.005	-0.032	-0.043	0.003	-0.012	0.006	0
0	0	0	0	0	0	0	0	0	0	0	0	0

[[[[[After 14 Year(s)]]]]

<<<< Calculation Water Level >>>>

4000.000	3990.000	4000.000	4000.000	4010.000	4027.000	4030.000	4030.000	4030.000	4030.000	4030.000	4030.000	4030.000	4030.000
3950.000	3959.169	3968.093	3977.091	3997.973	4014.995	4028.887	4029.974	4030.000	4030.000	4030.000	4029.984	4030.000	4030.000
3945.000	3950.023	3955.072	3966.027	3983.023	4001.986	4015.996	4025.843	4029.933	4029.983	4029.965	4026.996	4025.000	4025.000
3935.000	3944.947	3954.879	3955.069	3971.998	3988.019	4004.875	3989.822	4019.924	4024.966	4024.981	4021.835	3980.000	3980.000
3919.000	3925.062	3930.122	3946.003	3960.017	3975.027	3991.975	3999.970	4012.955	4016.009	4018.001	4017.975	4014.000	4014.000
3914.000	3921.999	3929.987	3939.027	3951.017	3965.011	3979.022	3993.960	4004.970	4010.977	4012.985	4011.989	4008.000	4008.000
3911.000	3918.001	3925.004	3937.976	3944.024	3956.011	3968.024	3981.020	3994.978	4003.977	4006.993	4006.013	4005.000	4005.000
3911.000	3912.999	3915.052	3935.944	3939.022	3948.017	3960.007	3970.033	3984.004	3996.962	4002.962	4002.978	4002.000	4002.000
3906.000	3906.002	3905.036	3929.953	3936.996	3942.014	3951.024	3962.011	3973.999	3985.977	3992.961	3990.978	3990.000	3990.000
3899.000	3899.979	3865.249	3923.908	3934.977	3939.002	3945.007	3952.031	3962.018	3972.983	3977.957	3967.997	3965.000	3965.000
3880.000	3899.978	3865.148	3885.119	3927.938	3936.981	3940.011	3947.008	3953.011	3959.982	3959.961	3939.852	3870.000	3870.000
3890.000	3909.985	3899.979	3875.136	3886.152	3930.919	3937.991	3942.999	3946.010	3948.003	3944.855	3870.344	3870.000	3870.000
3877.000	3889.003	3900.000	3904.975	3880.160	3890.132	3932.937	3938.005	3941.989	3940.997	3936.794	3870.453	3870.000	3870.000
3872.000	3885.997	3899.998	3905.010	3914.897	3880.178	3890.136	3935.922	3937.000	3935.987	3931.024	3930.625	3870.000	3870.000
3863.000	3877.997	3899.997	3904.987	3904.000	3909.940	3885.125	3895.129	3933.918	3931.987	3928.052	3929.791	3870.000	3870.000
3862.000	3873.007	3899.971	3894.995	3895.012	3900.015	3909.958	3885.152	3895.164	3927.977	3929.993	3930.008	3930.000	3930.000
3862.000	3873.988	3879.999	3881.023	3888.004	3895.005	3905.005	3915.963	3923.952	3927.003	3932.987	3933.006	3935.000	3935.000
3861.000	3868.000	3872.000	3875.000	3882.000	3890.000	3900.000	3909.000	3916.000	3925.000	3935.000	3937.000	3940.000	3940.000

<<<< Calculation Total Change >>>>

0	0	0	0	0	0	0	0	0	0	0	0	0	0
0	0.169	0.093	0.091	-0.027	-0.005	-0.113	-0.026	-0.000	-0.000	-0.000	-0.016	0	0
0	0.023	0.072	0.027	0.023	-0.014	-0.004	-0.157	-0.067	-0.017	-0.035	-0.004	0	0
0	-0.053	-0.121	0.069	-0.002	0.019	-0.125	-8.178	-0.076	-0.034	-0.019	-0.165	0	0
0	0.062	0.122	0.003	0.017	0.027	-0.025	-0.030	-0.045	0.009	0.001	-0.025	0	0
0	-0.001	-0.013	0.027	0.017	0.011	0.022	-0.040	-0.030	-0.023	-0.015	-0.011	0	0
0	0.001	0.004	-0.024	0.024	0.011	0.024	0.020	-0.022	-0.023	-0.007	0.013	0	0
0	-0.001	0.052	-0.056	0.022	0.017	0.007	0.033	0.004	-0.038	-0.038	-0.022	0	0
0	0.002	0.036	-0.047	-0.004	0.014	0.024	0.011	-0.001	-0.023	-0.039	-0.022	0	0
0	-0.021	-34.751	-0.092	-0.023	0.002	0.007	0.031	0.018	-0.017	-0.043	-0.003	0	0
0	-0.022	-34.852	-34.881	-0.062	-0.019	0.011	0.008	0.011	-0.018	-0.039	-0.148	0	0
0	-0.015	-0.021	-34.864	-34.848	-0.081	-0.009	-0.001	0.010	0.003	-0.145	0.344	0	0
0	0.003	0.000	-0.025	-34.840	-34.868	-0.063	0.005	-0.011	-0.003	-0.206	0.453	0	0
0	-0.003	-0.002	0.010	-0.103	-34.822	-34.864	-0.078	-0.000	-0.013	0.024	-0.375	0	0
0	-0.003	-0.003	-0.013	0	-0.060	-34.875	-34.871	-0.082	-0.013	0.052	-0.209	0	0
0	0.007	-0.029	-0.005	0.012	0.015	-0.042	-34.848	-34.836	-0.023	-0.007	0.008	0	0
0	-0.012	-0.001	0.023	0.004	0.005	0.005	-0.037	-0.048	0.003	-0.013	0.006	0	0
0	0	0	0	0	0	0	0	0	0	0	0	0	0

[[[[[After 15 Year(s)]]]]

[[[[[Calculation Water Level]]]]

4000.000	3990.000	4000.000	4000.000	4010.000	4027.000	4030.000	4030.000	4030.000	4030.000	4030.000	4030.000	4030.000
3950.000	3959.181	3968.099	3977.097	3997.971	4014.995	4028.879	4029.972	4030.000	4030.000	4030.000	4029.983	4030.000
3945.000	3950.024	3955.077	3966.029	3983.025	4001.985	4015.996	4025.831	4029.928	4029.982	4029.962	4026.996	4025.000
3935.000	3944.943	3954.870	3955.074	3971.998	3988.020	4004.865	3989.244	4019.917	4024.963	4024.979	4021.823	3980.000
3919.000	3925.066	3930.130	3946.003	3960.018	3975.028	3991.973	3999.966	4012.952	4016.010	4018.001	4017.974	4014.000
3914.000	3921.999	3929.986	3939.029	3951.018	3965.012	3979.024	3993.957	4004.968	4010.975	4012.984	4011.988	4008.000
3911.000	3918.001	3925.004	3937.975	3944.025	3956.012	3968.026	3981.021	3994.977	4003.976	4006.993	4006.014	4005.000
3911.000	3912.999	3915.056	3935.940	3939.023	3948.018	3960.007	3970.035	3984.004	3996.959	4002.959	4002.976	4002.000
3906.000	3906.002	3905.036	3929.950	3936.996	3942.015	3951.025	3962.012	3973.999	3985.976	3992.958	3990.977	3990.000
3899.000	3899.975	3862.775	3923.897	3934.976	3939.002	3945.007	3952.033	3962.019	3972.982	3977.954	3967.997	3965.000
3880.000	3899.975	3862.661	3882.632	3927.929	3936.980	3940.012	3947.009	3953.012	3959.980	3959.959	3939.841	3870.000
3890.000	3909.983	3899.975	3872.648	3883.669	3930.908	3937.991	3942.999	3946.011	3948.003	3944.845	3870.368	3870.000
3877.000	3889.003	3900.000	3904.970	3877.676	3887.646	3932.928	3938.005	3941.989	3940.997	3936.779	3870.485	3870.000
3872.000	3885.997	3899.998	3905.011	3914.885	3877.696	3887.650	3935.912	3937.000	3935.986	3931.026	3930.599	3870.000
3863.000	3877.996	3899.997	3904.986	3904.000	3909.931	3882.638	3892.643	3933.907	3931.987	3928.055	3929.776	3870.000
3862.000	3873.007	3899.969	3894.995	3895.013	3900.016	3909.951	3882.667	3892.684	3927.973	3929.992	3930.008	3930.000
3862.000	3873.987	3879.999	3881.024	3888.004	3895.005	3905.005	3915.959	3923.945	3927.003	3932.986	3933.007	3935.000
3861.000	3868.000	3872.000	3875.000	3882.000	3890.000	3900.000	3909.000	3916.000	3925.000	3935.000	3937.000	3940.000

[[[[[Calculation Total Change]]]]

0	0	0	0	0	0	0	0	0	0	0	0	0
0	0.181	0.099	0.097	-0.029	-0.005	-0.121	-0.028	-0.000	-0.000	-0.000	-0.017	0
0	0.024	0.077	0.029	0.025	-0.015	-0.004	-0.169	-0.072	-0.018	-0.038	-0.004	0
0	-0.057	-0.130	0.074	-0.002	0.020	-0.135	-8.756	-0.083	-0.037	-0.021	-0.177	0
0	0.066	0.130	0.003	0.018	0.028	-0.027	-0.034	-0.068	0.010	0.001	-0.026	0
0	-0.001	-0.014	0.029	0.018	0.012	0.024	-0.043	-0.032	-0.025	-0.016	-0.012	0
0	0.001	0.004	-0.025	0.025	0.012	0.026	0.021	-0.023	-0.024	-0.007	0.014	0
0	-0.001	0.056	-0.060	0.023	0.018	0.007	0.035	0.004	-0.041	-0.041	-0.024	0
0	0.002	0.036	-0.050	-0.004	0.015	0.025	0.012	-0.001	-0.024	-0.042	-0.023	0
0	-0.025	-37.225	-0.103	-0.024	0.002	0.007	0.033	0.019	-0.018	-0.046	-0.003	0
0	-0.025	-37.339	-37.368	-0.071	-0.020	0.012	0.009	0.012	-0.020	-0.041	-0.159	0
0	-0.017	-0.025	-37.352	-37.331	-0.092	-0.009	-0.001	0.011	0.003	-0.155	0.368	0
0	0.003	0.000	-0.030	-37.324	-37.354	-0.072	0.005	-0.011	-0.003	-0.221	0.485	0
0	-0.003	-0.002	0.011	-0.115	-37.304	-37.350	-0.088	-0.000	-0.014	0.026	-0.401	0
0	-0.004	-0.003	-0.014	0	-0.069	-37.362	-37.357	-0.093	-0.013	0.055	-0.224	0
0	0.007	-0.031	-0.005	0.013	0.016	-0.049	-37.333	-37.316	-0.027	-0.008	0.008	0
0	-0.013	-0.001	0.024	0.004	0.005	0.005	-0.041	-0.055	0.003	-0.014	0.007	0
0	0	0	0	0	0	0	0	0	0	0	0	0

[[[[[After 16 Year(s)]]]]]												
<<<< Calculation Water Level >>>>												
4000.000	3990.000	4000.000	4000.000	4010.000	4027.000	4030.000	4030.000	4030.000	4030.000	4030.000	4030.000	4030.000
3950.000	3959.193	3968.106	3977.104	3997.969	4014.994	4028.871	4029.970	4030.000	4030.000	4030.000	4029.982	4030.000
3945.000	3950.026	3955.082	3966.031	3983.026	4001.984	4015.995	4025.818	4029.924	4029.980	4029.960	4026.995	4025.000
3935.000	3944.939	3954.861	3955.079	3971.997	3988.022	4004.854	3988.666	4019.910	4024.961	4024.978	4021.812	3980.000
3919.000	3925.070	3930.139	3946.003	3960.020	3975.030	3991.971	3999.963	4012.949	4016.010	4018.001	4017.972	4014.000
3914.000	3921.999	3929.985	3939.031	3951.019	3965.013	3979.026	3993.954	4004.966	4010.973	4012.983	4011.987	4008.000
3911.000	3918.001	3925.005	3937.973	3944.027	3956.013	3968.028	3981.023	3994.975	4003.974	4006.992	4006.015	4005.000
3911.000	3912.999	3915.059	3935.936	3939.025	3948.019	3960.008	3970.037	3984.004	3996.956	4002.956	4002.974	4002.000
3906.000	3906.002	3905.035	3929.947	3936.996	3942.016	3951.027	3962.013	3973.999	3985.974	3992.956	3990.975	3990.000
3899.000	3899.971	3860.302	3923.884	3934.974	3939.002	3945.007	3952.035	3962.020	3972.981	3977.950	3967.997	3965.000
3880.000	3899.972	3860.175	3880.146	3927.919	3936.978	3940.012	3947.009	3953.013	3959.979	3959.956	3939.831	3870.000
3890.000	3909.982	3899.970	3870.161	3881.185	3930.896	3937.990	3942.999	3946.011	3948.003	3944.835	3870.393	3870.000
3877.000	3889.003	3900.000	3904.965	3875.192	3885.162	3932.919	3938.005	3941.988	3940.997	3936.764	3870.517	3870.000
3872.000	3885.996	3899.998	3905.012	3914.871	3875.214	3885.164	3935.902	3937.000	3935.985	3931.027	3930.572	3870.000
3863.000	3877.996	3899.997	3904.985	3904.000	3909.922	3880.151	3890.158	3933.895	3931.986	3928.059	3929.761	3870.000
3862.000	3873.008	3899.967	3894.994	3895.014	3900.017	3909.944	3880.182	3890.205	3927.968	3929.992	3930.009	3930.000
3862.000	3873.986	3879.999	3881.026	3888.004	3895.006	3905.006	3915.953	3923.939	3927.004	3932.985	3933.007	3935.000
3861.000	3868.000	3872.000	3875.000	3882.000	3890.000	3900.000	3909.000	3916.000	3925.000	3935.000	3937.000	3940.000

<<<< Calculation Total Change >>>>												
0	0	0	0	0	0	0	0	0	0	0	0	0
0	0.193	0.106	0.104	-0.031	-0.006	-0.129	-0.030	-0.000	-0.000	-0.000	-0.018	0
0	0.026	0.082	0.031	0.026	-0.016	-0.005	-0.182	-0.076	-0.020	-0.040	-0.005	0
0	-0.061	-0.139	0.079	-0.003	0.022	-0.146	-9.334	-0.090	-0.039	-0.022	-0.188	0
0	0.070	0.139	0.003	0.020	0.030	-0.029	-0.037	-0.051	0.010	0.001	-0.028	0
0	-0.001	-0.015	0.031	0.019	0.013	0.026	-0.046	-0.034	-0.027	-0.017	-0.013	0
0	0.001	0.005	-0.027	0.027	0.013	0.028	0.023	-0.025	-0.026	-0.008	0.015	0
0	-0.001	0.059	-0.064	0.025	0.019	0.008	0.037	0.004	-0.044	-0.044	-0.026	0
0	0.002	0.035	-0.053	-0.004	0.016	0.027	0.013	-0.001	-0.026	-0.044	-0.025	0
0	-0.029	-39.698	-0.116	-0.026	0.002	0.007	0.035	0.020	-0.019	-0.050	-0.003	0
0	-0.028	-39.825	-39.854	-0.081	-0.022	0.012	0.009	0.013	-0.021	-0.044	-0.169	0
0	-0.018	-0.030	-39.839	-39.815	-0.104	-0.010	-0.001	0.011	0.003	-0.165	0.393	0
0	0.003	0.000	-0.035	-39.808	-39.838	-0.081	0.005	-0.012	-0.003	-0.236	0.517	0
0	-0.004	-0.002	0.012	-0.129	-39.786	-39.836	-0.098	-0.000	-0.015	0.027	-0.428	0
0	-0.004	-0.003	-0.015	0	-0.078	-39.849	-39.842	-0.105	-0.014	0.059	-0.239	0
0	0.008	-0.033	-0.006	0.014	0.017	-0.056	-39.818	-39.795	-0.032	-0.008	0.009	0
0	-0.014	-0.001	0.026	0.004	0.006	0.006	-0.047	-0.061	0.004	-0.015	0.007	0
0	0	0	0	0	0	0	0	0	0	0	0	0

[[[[[After 17 Year(s)]]]]]

[[[[[Calculation Water Level]]]]]

4000.000	3990.000	4000.000	4000.000	4010.000	4027.000	4030.000	4030.000	4030.000	4030.000	4030.000	4030.000	4030.000
3950.000	3959.205	3968.113	3977.110	3997.967	4014.994	4028.863	4029.968	4030.000	4030.000	4030.000	4029.980	4030.000
3945.000	3950.028	3955.087	3966.033	3983.028	4001.983	4015.995	4025.805	4029.919	4029.979	4029.957	4026.995	4025.000
3935.000	3944.935	3954.853	3955.083	3971.997	3988.023	4004.844	3988.089	4019.903	4024.958	4024.977	4021.800	3980.000
3919.000	3925.075	3930.148	3946.003	3960.021	3975.032	3991.969	3999.959	4012.946	4016.011	4018.001	4017.970	4014.000
3914.000	3921.999	3929.984	3939.033	3951.021	3965.014	3979.027	3993.952	4004.964	4010.972	4012.982	4011.987	4008.000
3911.000	3918.001	3925.005	3937.971	3944.029	3956.014	3968.030	3981.024	3994.974	4003.972	4006.992	4006.016	4005.000
3911.000	3912.999	3915.063	3935.932	3939.026	3948.020	3960.008	3970.040	3984.004	3996.953	4002.953	4002.973	4002.000
3906.000	3906.002	3905.033	3929.943	3936.996	3942.017	3951.029	3962.014	3973.999	3985.972	3992.953	3990.974	3990.000
3899.000	3899.966	3857.830	3923.871	3934.972	3939.002	3945.008	3952.038	3962.021	3972.979	3977.947	3967.997	3965.000
3880.000	3899.969	3857.689	3877.661	3927.909	3936.977	3940.013	3947.010	3953.014	3959.978	3959.953	3939.820	3870.000
3890.000	3909.981	3899.965	3867.674	3878.703	3930.884	3937.989	3942.999	3946.012	3948.003	3944.824	3870.417	3870.000
3877.000	3889.004	3900.000	3904.959	3872.710	3882.677	3932.909	3938.006	3941.987	3940.996	3936.750	3870.549	3870.000
3872.000	3885.996	3899.998	3905.012	3914.857	3872.734	3882.678	3935.891	3937.000	3935.984	3931.029	3930.546	3870.000
3863.000	3877.996	3899.996	3904.984	3904.000	3909.912	3877.665	3887.673	3933.883	3931.985	3928.063	3929.746	3870.000
3862.000	3873.008	3899.965	3894.994	3895.015	3900.018	3909.936	3877.699	3887.728	3927.963	3929.991	3930.009	3930.000
3862.000	3873.985	3879.999	3881.027	3888.004	3895.006	3905.006	3915.948	3923.932	3927.004	3932.984	3933.008	3935.000
3861.000	3868.000	3872.000	3875.000	3882.000	3890.000	3900.000	3909.000	3916.000	3925.000	3935.000	3937.000	3940.000

[[[[[Calculation Total Change]]]]]

0	0	0	0	0	0	0	0	0	0	0	0	0
0	0.205	0.113	0.110	-0.033	-0.006	-0.137	-0.032	-0.000	-0.000	-0.000	-0.020	0
0	0.028	0.087	0.033	0.028	-0.017	-0.005	-0.195	-0.081	-0.021	-0.043	-0.005	0
0	-0.065	-0.147	0.083	-0.003	0.023	-0.156	-9.911	-0.097	-0.042	-0.023	-0.200	0
0	0.075	0.148	0.003	0.021	0.032	-0.031	-0.041	-0.054	0.011	0.001	-0.030	0
0	-0.001	-0.016	0.033	0.021	0.014	0.027	-0.048	-0.036	-0.028	-0.018	-0.013	0
0	0.001	0.005	-0.029	0.029	0.014	0.030	0.024	-0.026	-0.028	-0.008	0.016	0
0	-0.001	0.063	-0.068	0.026	0.020	0.008	0.040	0.004	-0.047	-0.047	-0.027	0
0	0.002	0.033	-0.057	-0.004	0.017	0.029	0.014	-0.001	-0.028	-0.047	-0.026	0
0	-0.034	-42.170	-0.129	-0.028	0.002	0.008	0.038	0.021	-0.021	-0.053	-0.003	0
0	-0.031	-42.311	-42.339	-0.091	-0.023	0.013	0.010	0.014	-0.022	-0.047	-0.180	0
0	-0.019	-0.035	-42.326	-42.297	-0.116	-0.011	-0.001	0.012	0.003	-0.176	0.417	0
0	0.004	0.000	-0.041	-42.290	-42.323	-0.091	0.006	-0.013	-0.004	-0.250	0.549	0
0	-0.004	-0.002	0.012	-0.143	-42.266	-42.322	-0.109	-0.000	-0.016	0.029	-0.454	0
0	-0.004	-0.004	-0.016	0	-0.088	-42.335	-42.327	-0.117	-0.015	0.063	-0.254	0
0	0.008	-0.035	-0.006	0.015	0.018	-0.064	-42.301	-42.272	-0.037	-0.009	0.009	0
0	-0.015	-0.001	0.027	0.004	0.006	0.006	-0.052	-0.068	0.004	-0.016	0.008	0
0	0	0	0	0	0	0	0	0	0	0	0	0

[[[[[After 18 Year(s)]]]]]
<<<<	Calculation Water Level												>>>>
4000.000	3990.000	4000.000	4000.000	4010.000	4027.000	4030.000	4030.000	4030.000	4030.000	4030.000	4030.000	4030.000	4030.000
3950.000	3959.217	3968.119	3977.117	3997.965	4014.993	4028.855	4029.966	4030.000	4030.000	4030.000	4029.979	4030.000	4030.000
3945.000	3950.029	3955.092	3966.035	3983.029	4001.982	4015.995	4025.792	4029.914	4029.978	4029.955	4026.995	4025.000	4025.000
3935.000	3944.932	3954.844	3955.088	3971.997	3988.024	4004.833	3987.512	4019.896	4024.956	4024.975	4021.788	3980.000	3980.000
3919.000	3925.079	3930.156	3946.004	3960.022	3975.034	3991.967	3999.955	4012.942	4016.011	4018.001	4017.968	4014.000	4014.000
3914.000	3921.999	3929.983	3939.035	3951.022	3965.014	3979.029	3993.949	4004.962	4010.970	4012.981	4011.986	4008.000	4008.000
3911.000	3918.001	3925.005	3937.970	3944.031	3956.014	3968.031	3981.025	3994.972	4003.971	4006.991	4006.017	4005.000	4005.000
3911.000	3912.999	3915.067	3935.928	3939.028	3948.021	3960.009	3970.042	3984.005	3996.951	4002.951	4002.971	4002.000	4002.000
3906.000	3906.002	3905.031	3929.940	3936.995	3942.018	3951.030	3962.015	3973.999	3985.971	3992.950	3990.972	3990.000	3990.000
3899.000	3899.962	3855.359	3923.857	3934.971	3939.003	3945.008	3952.040	3962.023	3972.978	3977.944	3967.996	3965.000	3965.000
3880.000	3899.965	3855.203	3875.176	3927.898	3936.975	3940.014	3947.011	3953.015	3959.976	3959.950	3939.810	3870.000	3870.000
3890.000	3909.980	3899.960	3865.188	3876.221	3930.870	3937.989	3942.999	3946.013	3948.004	3944.814	3870.441	3870.000	3870.000
3877.000	3889.004	3900.000	3904.953	3870.227	3880.194	3932.899	3938.006	3941.987	3940.996	3936.735	3870.581	3870.000	3870.000
3872.000	3885.996	3899.998	3905.013	3914.842	3870.254	3880.193	3935.879	3937.000	3935.984	3931.030	3930.519	3870.000	3870.000
3863.000	3877.996	3899.996	3904.983	3904.000	3909.901	3875.180	3885.189	3933.870	3931.984	3928.066	3929.731	3870.000	3870.000
3862.000	3873.009	3899.963	3894.994	3895.016	3900.020	3909.928	3875.216	3885.251	3927.957	3929.991	3930.010	3930.000	3930.000
3862.000	3873.985	3879.999	3881.029	3888.005	3895.006	3905.006	3915.942	3923.925	3927.004	3932.983	3933.008	3935.000	3935.000
3861.000	3868.000	3872.000	3875.000	3882.000	3890.000	3900.000	3909.000	3916.000	3925.000	3935.000	3937.000	3940.000	3940.000
<<<<	Calculation Total Change												>>>>
0	0	0	0	0	0	0	0	0	0	0	0	0	0
0	0.217	0.119	0.117	-0.035	-0.007	-0.145	-0.034	-0.000	-0.000	-0.000	-0.021	0	0
0	0.029	0.092	0.035	0.029	-0.018	-0.005	-0.208	-0.086	-0.022	-0.045	-0.005	0	0
0	-0.068	-0.156	0.088	-0.003	0.024	-0.167	-10.488	-0.104	-0.044	-0.025	-0.212	0	0
0	0.079	0.156	0.004	0.022	0.034	-0.033	-0.045	-0.058	0.011	0.001	-0.032	0	0
0	-0.001	-0.017	0.035	0.022	0.014	0.029	-0.051	-0.038	-0.030	-0.019	-0.014	0	0
0	0.001	0.005	-0.030	0.031	0.014	0.031	0.025	-0.028	-0.029	-0.009	0.017	0	0
0	-0.001	0.067	-0.072	0.028	0.021	0.009	0.042	0.005	-0.049	-0.049	-0.029	0	0
0	0.002	0.031	-0.060	-0.005	0.018	0.030	0.015	-0.001	-0.029	-0.050	-0.028	0	0
0	-0.038	-44.641	-0.143	-0.029	0.003	0.008	0.040	0.023	-0.022	-0.056	-0.004	0	0
0	-0.035	-44.797	-44.824	-0.102	-0.025	0.014	0.011	0.015	-0.024	-0.050	-0.190	0	0
0	-0.020	-0.040	-44.812	-44.779	-0.130	-0.011	-0.001	0.013	0.004	-0.186	0.441	0	0
0	0.004	0.000	-0.047	-44.773	-44.806	-0.101	0.006	-0.013	-0.004	-0.265	0.581	0	0
0	-0.004	-0.002	0.013	-0.158	-44.746	-44.807	-0.121	-0.000	-0.016	0.030	-0.481	0	0
0	-0.004	-0.004	-0.017	0	-0.099	-44.820	-44.811	-0.130	-0.016	0.066	-0.269	0	0
0	0.009	-0.037	-0.006	0.016	0.020	-0.072	-44.784	-44.749	-0.043	-0.009	0.010	0	0
0	-0.015	-0.001	0.029	0.005	0.006	0.006	-0.058	-0.075	0.004	-0.017	0.008	0	0
0	0	0	0	0	0	0	0	0	0	0	0	0	0

[[[[[After 19 Year(s)]]]]]

<<<< Calculation Water Level >>>>

4000.000	3990.000	4000.000	4000.000	4010.000	4027.000	4030.000	4030.000	4030.000	4030.000	4030.000	4030.000	4030.000
3950.000	3959.228	3968.126	3977.123	3997.963	4014.993	4028.847	4029.964	4030.000	4030.000	4030.000	4029.978	4030.000
3945.000	3950.031	3955.097	3966.037	3983.031	4001.981	4015.994	4025.779	4029.909	4029.977	4029.952	4026.994	4025.000
3935.000	3944.928	3954.836	3955.093	3971.997	3988.026	4004.822	3986.936	4019.888	4024.954	4024.974	4021.777	3980.000
3919.000	3925.083	3930.165	3946.004	3960.023	3975.036	3991.965	3999.951	4012.939	4016.012	4018.001	4017.966	4014.000
3914.000	3921.999	3929.982	3939.037	3951.023	3965.015	3979.030	3993.946	4004.960	4010.968	4012.979	4011.985	4008.000
3911.000	3918.001	3925.006	3937.968	3944.032	3956.015	3968.033	3981.027	3994.971	4003.969	4006.991	4006.018	4005.000
3911.000	3912.999	3915.070	3935.974	3939.029	3948.027	3960.009	3970.044	3984.005	3996.948	4002.948	4002.970	4002.000
3906.000	3906.002	3905.029	3929.937	3936.995	3942.019	3951.032	3962.015	3973.999	3985.969	3992.947	3990.971	3990.000
3899.000	3899.957	3852.890	3923.843	3934.969	3939.003	3945.009	3952.042	3962.024	3972.977	3977.941	3967.996	3965.000
3880.000	3899.961	3852.718	3872.692	3927.886	3936.974	3940.015	3947.011	3953.015	3959.975	3959.948	3939.799	3870.000
3890.000	3909.979	3899.954	3862.702	3873.740	3930.856	3937.988	3942.999	3946.013	3948.004	3944.804	3870.466	3870.000
3877.000	3889.004	3900.000	3904.946	3867.746	3877.711	3932.888	3938.006	3941.986	3940.996	3936.721	3870.613	3870.000
3872.000	3885.996	3899.998	3905.014	3914.827	3867.774	3877.709	3935.867	3936.999	3935.983	3931.032	3930.493	3870.000
3863.000	3877.995	3899.996	3904.983	3904.000	3909.890	3872.694	3882.706	3933.856	3931.983	3928.070	3929.716	3870.000
3862.000	3873.009	3899.961	3894.993	3895.017	3900.021	3909.919	3872.733	3882.776	3927.951	3929.990	3930.010	3930.000
3862.000	3873.984	3879.999	3881.031	3888.005	3895.007	3905.007	3915.936	3923.917	3927.004	3932.982	3933.009	3935.000
3861.000	3868.000	3872.000	3875.000	3882.000	3890.000	3900.000	3909.000	3916.000	3925.000	3935.000	3937.000	3940.000

<<<< Calculation Total Change >>>>

0	0	0	0	0	0	0	0	0	0	0	0	0
0	0.228	0.126	0.123	-0.037	-0.007	-0.153	-0.036	-0.000	-0.000	-0.000	-0.022	0
0	0.031	0.097	0.037	0.031	-0.019	-0.006	-0.221	-0.091	-0.023	-0.048	-0.006	0
0	-0.072	-0.164	0.093	-0.003	0.026	-0.178	-11.064	-0.112	-0.046	-0.026	-0.223	0
0	0.083	0.165	0.004	0.023	0.036	-0.035	-0.049	-0.061	0.012	0.001	-0.034	0
0	-0.001	-0.018	0.037	0.023	0.015	0.030	-0.054	-0.040	-0.032	-0.021	-0.015	0
0	0.001	0.006	-0.032	0.032	0.015	0.033	0.027	-0.029	-0.031	-0.009	0.018	0
0	-0.001	0.070	-0.076	0.029	0.022	0.009	0.044	0.005	-0.052	-0.052	-0.030	0
0	0.002	0.029	-0.063	-0.005	0.019	0.032	0.015	-0.001	-0.031	-0.053	-0.029	0
0	-0.043	-47.110	-0.157	-0.031	0.003	0.009	0.042	0.024	-0.023	-0.059	-0.004	0
0	-0.039	-47.282	-47.308	-0.114	-0.026	0.015	0.011	0.015	-0.025	-0.052	-0.201	0
0	-0.021	-0.046	-47.298	-47.260	-0.144	-0.012	-0.001	0.013	0.004	-0.196	0.466	0
0	0.004	0.000	-0.054	-47.254	-47.289	-0.112	0.006	-0.014	-0.004	-0.279	0.613	0
0	-0.004	-0.002	0.014	-0.173	-47.226	-47.291	-0.133	-0.001	-0.017	0.032	-0.507	0
0	-0.005	-0.004	-0.017	0	-0.110	-47.306	-47.294	-0.144	-0.017	0.070	-0.284	0
0	0.009	-0.039	-0.007	0.017	0.021	-0.081	-47.267	-47.224	-0.049	-0.010	0.010	0
0	-0.016	-0.001	0.031	0.005	0.007	0.007	-0.064	-0.083	0.004	-0.018	0.009	0
0	0	0	0	0	0	0	0	0	0	0	0	0

[[[[[After 20 Year(s)]]]]]
<<<<	Calculation Water Level												>>>>
4000.000	3990.000	4000.000	4000.000	4010.000	4027.000	4030.000	4030.000	4030.000	4030.000	4030.000	4030.000	4030.000	4030.000
3950.000	3959.240	3968.133	3977.129	3997.961	4014.993	4028.839	4029.962	4029.999	4030.000	4030.000	4029.977	4030.000	4030.000
3945.000	3950.033	3955.102	3966.039	3983.033	4001.980	4015.994	4025.765	4029.904	4029.975	4029.950	4026.994	4025.000	4025.000
3935.000	3944.924	3954.827	3955.098	3971.997	3988.027	4004.811	3986.361	4019.880	4024.951	4024.972	4021.765	3980.000	3980.000
3919.000	3925.068	3930.173	3946.004	3960.024	3975.038	3991.964	3999.946	4012.936	4016.013	4018.001	4017.965	4014.000	4014.000
3914.000	3921.998	3929.981	3939.039	3951.024	3965.016	3979.032	3993.943	4004.958	4010.967	4012.978	4011.984	4008.000	4008.000
3911.000	3918.001	3925.006	3937.966	3944.034	3956.016	3968.035	3981.028	3994.969	4003.967	4006.990	4006.018	4005.000	4005.000
3911.000	3912.998	3915.074	3935.920	3939.031	3948.024	3960.010	3970.047	3984.005	3996.945	4002.945	4002.968	4002.000	4002.000
3906.000	3906.002	3905.027	3929.933	3936.995	3942.020	3951.034	3962.016	3973.999	3985.967	3992.945	3990.969	3990.000	3990.000
3899.000	3899.951	3850.421	3923.828	3934.968	3939.003	3945.009	3952.044	3962.025	3972.976	3977.938	3967.996	3965.000	3965.000
3880.000	3899.958	3850.233	3870.208	3927.874	3936.973	3940.015	3947.012	3953.016	3959.974	3959.945	3939.789	3870.000	3870.000
3890.000	3909.978	3899.948	3860.216	3871.259	3930.842	3937.987	3942.999	3946.014	3948.004	3944.794	3870.490	3870.000	3870.000
3877.000	3889.004	3900.000	3904.939	3865.265	3875.228	3932.877	3938.007	3941.985	3940.996	3936.706	3870.645	3870.000	3870.000
3872.000	3885.995	3899.998	3905.014	3914.810	3865.296	3875.225	3935.854	3936.999	3935.982	3931.033	3930.467	3870.000	3870.000
3863.000	3877.995	3899.996	3904.982	3904.000	3909.878	3870.210	3880.223	3933.841	3931.982	3928.073	3929.702	3870.000	3870.000
3862.000	3873.010	3899.959	3894.993	3895.017	3900.022	3909.909	3870.251	3880.301	3927.944	3929.990	3930.011	3930.000	3930.000
3862.000	3873.983	3879.999	3881.032	3888.005	3895.007	3905.007	3915.930	3923.909	3927.004	3932.981	3933.009	3935.000	3935.000
3861.000	3868.000	3872.000	3875.000	3882.000	3890.000	3900.000	3909.000	3916.000	3925.000	3935.000	3937.000	3940.000	3940.000

<<<<	Calculation Total Change												>>>>
0	0	0	0	0	0	0	0	0	0	0	0	0	0
0	0.240	0.133	0.129	-0.039	-0.007	-0.161	-0.038	-0.001	-0.000	-0.000	-0.023	0	0
0	0.033	0.102	0.039	0.033	-0.020	-0.006	-0.235	-0.096	-0.025	-0.050	-0.006	0	0
0	-0.076	-0.173	0.098	-0.003	0.027	-0.189	-11.639	-0.120	-0.049	-0.028	-0.235	0	0
0	0.088	0.173	0.004	0.024	0.038	-0.036	-0.054	-0.064	0.013	0.001	-0.035	0	0
0	-0.002	-0.019	0.039	0.024	0.016	0.032	-0.057	-0.042	-0.033	-0.022	-0.016	0	0
0	0.001	0.006	-0.034	0.034	0.016	0.035	0.028	-0.031	-0.033	-0.010	0.018	0	0
0	-0.002	0.074	-0.080	0.031	0.024	0.010	0.047	0.005	-0.055	-0.055	-0.032	0	0
0	0.002	0.027	-0.067	-0.005	0.020	0.034	0.016	-0.001	-0.033	-0.055	-0.031	0	0
0	-0.049	-49.579	-0.172	-0.032	0.003	0.009	0.044	0.025	-0.024	-0.062	-0.004	0	0
0	-0.042	-49.767	-49.792	-0.126	-0.027	0.015	0.012	0.016	-0.026	-0.055	-0.211	0	0
0	-0.022	-0.052	-49.784	-49.741	-0.158	-0.013	-0.001	0.014	0.004	-0.206	0.490	0	0
0	0.004	0.000	-0.061	-49.735	-49.772	-0.123	0.007	-0.015	-0.004	-0.294	0.645	0	0
0	-0.005	-0.002	0.014	-0.190	-49.704	-49.775	-0.146	-0.001	-0.018	0.033	-0.533	0	0
0	-0.005	-0.004	-0.018	0	-0.122	-49.790	-49.777	-0.159	-0.018	0.073	-0.298	0	0
0	0.010	-0.041	-0.007	0.017	0.022	-0.091	-49.749	-49.699	-0.056	-0.010	0.011	0	0
0	-0.017	-0.001	0.032	0.005	0.007	0.007	-0.070	-0.091	0.004	-0.019	0.009	0	0
0	0	0	0	0	0	0	0	0	0	0	0	0	0

[[[[[After 21 Year(s)]]]]]

[[[[[Calculation Water Level]]]]]

4000.000	3990.000	4000.000	4000.000	4010.000	4027.000	4030.000	4030.000	4030.000	4030.000	4030.000	4030.000	4030.000
3950.000	3959.252	3968.139	3977.136	3997.959	4014.992	4028.831	4029.960	4029.999	4030.000	4030.000	4029.976	4030.000
3945.000	3950.034	3955.107	3966.041	3983.034	4001.979	4015.993	4025.752	4029.900	4029.974	4029.947	4026.994	4025.000
3935.000	3944.920	3954.819	3955.103	3971.997	3988.028	4004.800	3985.787	4019.873	4024.949	4024.971	4021.753	3980.000
3919.000	3925.092	3930.182	3946.004	3960.026	3975.040	3991.962	3999.942	4012.933	4016.013	4018.002	4017.963	4014.000
3914.000	3921.998	3929.980	3939.041	3951.026	3965.017	3979.033	3993.940	4004.955	4010.965	4012.977	4011.983	4008.000
3911.000	3918.002	3925.006	3937.965	3944.036	3956.017	3968.037	3981.030	3994.968	4003.966	4006.990	4006.019	4005.000
3911.000	3912.998	3915.078	3935.916	3939.032	3948.025	3960.010	3970.049	3984.005	3996.943	4002.942	4002.966	4002.000
3906.000	3906.003	3905.023	3929.930	3936.995	3942.021	3951.035	3962.017	3973.999	3985.966	3992.942	3990.968	3990.000
3899.000	3899.946	3847.953	3923.812	3934.966	3939.003	3945.010	3952.046	3962.026	3972.974	3977.935	3967.996	3965.000
3880.000	3899.954	3847.749	3867.725	3927.861	3936.971	3940.016	3947.012	3953.017	3959.973	3959.942	3939.779	3870.000
3890.000	3909.977	3899.942	3857.731	3868.780	3930.826	3937.987	3942.999	3946.015	3948.004	3944.783	3870.515	3870.000
3877.000	3889.004	3900.000	3904.932	3862.784	3872.747	3932.865	3938.007	3941.984	3940.995	3936.692	3870.676	3870.000
3872.000	3885.995	3899.998	3905.015	3914.793	3862.818	3872.742	3935.841	3936.999	3935.981	3931.035	3930.440	3870.000
3863.000	3877.995	3899.996	3904.981	3904.000	3909.866	3867.726	3877.741	3933.826	3931.981	3928.077	3929.687	3870.000
3862.000	3873.010	3899.957	3894.993	3895.018	3900.023	3909.900	3867.770	3877.828	3927.937	3929.989	3930.011	3930.000
3862.000	3873.982	3879.999	3881.034	3888.005	3895.007	3905.007	3915.923	3923.901	3927.005	3932.980	3933.010	3935.000
3861.000	3868.000	3872.000	3875.000	3882.000	3890.000	3900.000	3909.000	3916.000	3925.000	3935.000	3937.000	3940.000

[[[[[Calculation Total Change]]]]]

0	0	0	0	0	0	0	0	0	0	0	0	0
0	0.252	0.139	0.136	-0.041	-0.008	-0.169	-0.040	-0.001	-0.000	-0.000	-0.024	0
0	0.034	0.107	0.041	0.034	-0.021	-0.007	-0.248	-0.100	-0.026	-0.053	-0.006	0
0	-0.080	-0.181	0.103	-0.003	0.028	-0.200	-12.213	-0.127	-0.051	-0.029	-0.247	0
0	0.092	0.182	0.004	0.026	0.040	-0.038	-0.058	-0.067	0.013	0.002	-0.037	0
0	-0.002	-0.020	0.041	0.026	0.017	0.033	-0.060	-0.045	-0.035	-0.023	-0.017	0
0	0.002	0.006	-0.035	0.036	0.017	0.037	0.030	-0.032	-0.034	-0.010	0.019	0
0	-0.002	0.078	-0.084	0.032	0.025	0.010	0.049	0.005	-0.057	-0.058	-0.034	0
0	0.003	0.023	-0.070	-0.005	0.021	0.035	0.017	-0.001	-0.034	-0.058	-0.032	0
0	-0.054	-52.047	-0.188	-0.034	0.003	0.010	0.046	0.026	-0.026	-0.065	-0.004	0
0	-0.046	-52.251	-52.275	-0.139	-0.029	0.016	0.012	0.017	-0.027	-0.058	-0.221	0
0	-0.023	-0.058	-52.269	-52.220	-0.174	-0.013	-0.001	0.015	0.004	-0.217	0.515	0
0	0.004	0.000	-0.068	-52.216	-52.253	-0.135	0.007	-0.016	-0.005	-0.308	0.676	0
0	-0.005	-0.002	0.015	-0.207	-52.182	-52.258	-0.159	-0.001	-0.019	0.035	-0.560	0
0	-0.005	-0.004	-0.019	0	-0.134	-52.274	-52.259	-0.174	-0.019	0.077	-0.313	0
0	0.010	-0.043	-0.007	0.018	0.023	-0.100	-52.230	-52.172	-0.063	-0.011	0.011	0
0	-0.018	-0.001	0.034	0.005	0.007	0.007	-0.077	-0.099	0.005	-0.020	0.010	0
0	0	0	0	0	0	0	0	0	0	0	0	0

[[[[[After 22 Year(s)]]]]]

<<<< Calculation Water Level >>>>

4000.000	3990.000	4000.000	4000.000	4010.000	4027.000	4030.000	4030.000	4030.000	4030.000	4030.000	4030.000	4030.000
3950.000	3959.264	3968.146	3977.142	3997.957	4014.992	4028.823	4029.958	4029.999	4030.000	4030.000	4029.975	4030.000
3945.000	3950.036	3955.112	3966.043	3983.036	4001.978	4015.993	4025.738	4029.895	4029.973	4029.945	4026.993	4025.000
3935.000	3944.917	3954.810	3955.108	3971.997	3988.029	4004.788	3985.213	4019.865	4024.946	4024.969	4021.742	3980.000
3919.000	3925.096	3930.190	3946.005	3960.027	3975.042	3991.968	3999.937	4012.930	4016.014	4018.002	4017.961	4014.000
3914.000	3921.998	3929.979	3939.043	3951.027	3965.018	3979.035	3993.938	4004.953	4010.963	4012.976	4011.983	4008.000
3911.000	3918.002	3925.006	3937.963	3944.037	3956.018	3968.038	3981.031	3994.966	4003.964	4006.989	4006.020	4005.000
3911.000	3912.998	3915.081	3935.912	3939.034	3948.026	3960.011	3970.051	3984.006	3996.940	4002.940	4002.965	4002.000
3906.000	3906.003	3905.020	3929.927	3936.994	3942.022	3951.037	3962.018	3973.998	3985.964	3992.939	3990.966	3990.000
3899.000	3899.940	3845.487	3923.795	3934.964	3939.003	3945.010	3952.048	3962.028	3972.973	3977.932	3967.995	3965.000
3880.000	3899.949	3845.265	3865.243	3927.847	3936.970	3940.017	3947.013	3953.018	3959.971	3959.939	3939.768	3870.000
3890.000	3909.976	3899.935	3855.246	3866.300	3930.810	3937.986	3942.999	3946.015	3948.004	3944.773	3870.539	3870.000
3877.000	3889.005	3900.000	3904.924	3860.304	3870.266	3932.853	3938.007	3941.984	3940.995	3936.677	3870.708	3870.000
3872.000	3885.995	3899.998	3905.016	3914.775	3860.340	3870.259	3935.827	3936.999	3935.980	3931.037	3930.414	3870.000
3863.000	3877.995	3899.995	3904.980	3904.000	3909.853	3865.242	3875.259	3933.810	3931.980	3928.081	3929.672	3870.000
3862.000	3873.011	3899.955	3894.992	3895.019	3900.024	3909.889	3865.289	3875.356	3927.930	3929.989	3930.012	3930.000
3862.000	3873.981	3879.999	3881.035	3888.006	3895.008	3905.008	3915.916	3923.892	3927.005	3932.979	3933.010	3935.000
3861.000	3868.000	3872.000	3875.000	3882.000	3890.000	3900.000	3909.000	3916.000	3925.000	3935.000	3937.000	3940.000

<<<< Calculation Total Change >>>>

0	0	0	0	0	0	0	0	0	0	0	0	0
0	0.264	0.146	0.142	-0.043	-0.008	-0.177	-0.042	-0.001	-0.000	-0.000	-0.025	0
0	0.036	0.112	0.043	0.036	-0.022	-0.007	-0.262	-0.105	-0.027	-0.055	-0.007	0
0	-0.083	-0.190	0.108	-0.003	0.029	-0.212	-12.787	-0.135	-0.054	-0.031	-0.258	0
0	0.096	0.190	0.005	0.027	0.042	-0.040	-0.063	-0.070	0.014	0.002	-0.039	0
0	-0.002	-0.021	0.043	0.027	0.018	0.035	-0.062	-0.047	-0.037	-0.024	-0.017	0
0	0.002	0.006	-0.037	0.037	0.018	0.038	0.031	-0.034	-0.036	-0.011	0.020	0
0	-0.002	0.081	-0.088	0.034	0.026	0.011	0.051	0.006	-0.060	-0.060	-0.035	0
0	0.003	0.020	-0.073	-0.006	0.022	0.037	0.018	-0.002	-0.036	-0.061	-0.034	0
0	-0.060	-54.513	-0.205	-0.036	0.003	0.010	0.048	0.028	-0.027	-0.068	-0.005	0
0	-0.051	-54.735	-54.757	-0.153	-0.030	0.017	0.013	0.018	-0.029	-0.061	-0.232	0
0	-0.024	-0.065	-54.754	-54.700	-0.190	-0.014	-0.001	0.015	0.004	-0.227	0.539	0
0	0.005	0.000	-0.076	-54.696	-54.734	-0.147	0.007	-0.016	-0.005	-0.323	0.708	0
0	-0.005	-0.002	0.016	-0.225	-54.660	-54.741	-0.173	-0.001	-0.020	0.037	-0.586	0
0	-0.005	-0.005	-0.020	0	-0.147	-54.758	-54.741	-0.190	-0.020	0.081	-0.328	0
0	0.011	-0.045	-0.008	0.019	0.024	-0.111	-54.711	-54.644	-0.070	-0.011	0.012	0
0	-0.019	-0.001	0.035	0.006	0.008	0.008	-0.084	-0.108	0.005	-0.021	0.010	0
0	0	0	0	0	0	0	0	0	0	0	0	0

[[[[[After 23 Year(s)]]]]

<<<< Calculation Water Level >>>>

4000.000	3990.000	4000.000	4000.000	4010.000	4027.000	4030.000	4030.000	4030.000	4030.000	4030.000	4030.000	4030.000
3950.000	3959.276	3968.152	3977.149	3997.955	4014.991	4028.815	4029.956	4029.999	4030.000	4030.000	4029.974	4030.000
3945.000	3950.038	3955.118	3966.045	3983.038	4001.977	4015.993	4025.724	4029.890	4029.972	4029.942	4026.993	4025.000
3935.000	3944.913	3954.802	3955.112	3971.996	3988.031	4004.777	3984.641	4019.857	4024.944	4024.968	4021.730	3980.000
3919.000	3925.101	3930.199	3946.005	3960.028	3975.044	3991.958	3999.932	4012.927	4016.014	4018.002	4017.959	4014.000
3914.000	3921.998	3929.978	3939.045	3951.028	3965.018	3979.037	3993.935	4004.951	4010.962	4012.975	4011.982	4008.000
3911.000	3918.002	3925.007	3937.961	3944.039	3956.018	3968.040	3981.032	3994.964	4003.963	4006.989	4006.021	4005.000
3911.000	3912.998	3915.085	3935.908	3939.035	3948.027	3960.011	3970.054	3984.006	3996.937	4002.937	4002.963	4002.000
3906.000	3906.003	3905.016	3929.924	3936.994	3942.023	3951.039	3962.019	3973.998	3985.962	3992.936	3990.965	3990.000
3899.000	3899.934	3843.021	3923.778	3934.963	3939.003	3945.011	3952.051	3962.029	3972.972	3977.929	3967.995	3965.000
3880.000	3899.945	3842.781	3862.761	3927.833	3936.968	3940.018	3947.014	3953.019	3959.970	3959.936	3939.758	3870.000
3890.000	3909.975	3899.928	3852.761	3863.822	3930.793	3937.985	3942.999	3946.016	3948.004	3944.763	3870.563	3870.000
3877.000	3889.005	3900.000	3904.915	3857.825	3867.786	3932.840	3938.008	3941.983	3940.995	3936.663	3870.740	3870.000
3872.000	3885.995	3899.997	3905.017	3914.757	3857.864	3867.777	3935.813	3936.999	3935.979	3931.038	3930.388	3870.000
3863.000	3877.994	3899.995	3904.979	3904.000	3909.839	3862.759	3872.778	3933.794	3931.979	3928.084	3929.657	3870.000
3862.000	3873.011	3899.953	3894.992	3895.020	3900.025	3909.878	3862.809	3872.885	3927.923	3929.988	3930.012	3930.000
3862.000	3873.980	3879.999	3881.037	3888.006	3895.008	3905.008	3915.909	3923.883	3927.005	3932.978	3933.010	3935.000
3861.000	3868.000	3872.000	3875.000	3882.000	3890.000	3900.000	3909.000	3916.000	3925.000	3935.000	3937.000	3940.000

<<<< Calculation Total Change >>>>

0	0	0	0	0	0	0	0	0	0	0	0	0
0	0.276	0.152	0.149	-0.045	-0.009	-0.185	-0.044	-0.001	-0.000	-0.000	-0.026	0
0	0.038	0.118	0.045	0.038	-0.023	-0.007	-0.276	-0.110	-0.028	-0.058	-0.007	0
0	-0.087	-0.198	0.112	-0.004	0.031	-0.223	-13.359	-0.143	-0.056	-0.032	-0.270	0
0	0.101	0.199	0.005	0.028	0.044	-0.042	-0.068	-0.073	0.014	0.002	-0.041	0
0	-0.002	-0.022	0.045	0.028	0.018	0.037	-0.065	-0.049	-0.038	-0.025	-0.018	0
0	0.002	0.007	-0.039	0.039	0.018	0.040	0.032	-0.036	-0.037	-0.011	0.021	0
0	-0.002	0.085	-0.092	0.035	0.027	0.011	0.054	0.006	-0.063	-0.063	-0.037	0
0	0.003	0.016	-0.076	-0.006	0.023	0.039	0.019	-0.002	-0.038	-0.064	-0.035	0
0	-0.066	-56.979	-0.222	-0.037	0.003	0.011	0.051	0.029	-0.028	-0.071	-0.005	0
0	-0.055	-57.219	-57.239	-0.167	-0.032	0.018	0.014	0.019	-0.030	-0.064	-0.242	0
0	-0.025	-0.072	-57.239	-57.178	-0.207	-0.015	-0.001	0.016	0.004	-0.237	0.563	0
0	0.005	0.000	-0.085	-57.175	-57.214	-0.160	0.008	-0.017	-0.005	-0.337	0.740	0
0	-0.005	-0.003	0.017	-0.243	-57.136	-57.223	-0.187	-0.001	-0.021	0.038	-0.612	0
0	-0.006	-0.005	-0.021	0	-0.161	-57.241	-57.222	-0.206	-0.021	0.084	-0.343	0
0	0.011	-0.047	-0.008	0.020	0.025	-0.122	-57.191	-57.115	-0.077	-0.012	0.012	0
0	-0.020	-0.001	0.037	0.006	0.008	0.008	-0.091	-0.117	0.005	-0.022	0.010	0
0	0	0	0	0	0	0	0	0	0	0	0	0

Start time : Sun Nov 01 09:26:41 1987
 End time : Sun Nov 01 11:45:00 1987
 Calculation time : 8299 (Sec)

***** Initial Parameter *****

X = 13 Y = 18 DX = 1000 m
 Area = 1000000 m² TORSUI = 0.0020

<<<< Calculation Flag >>>>

1	2	2	2	2	2	2	2	2	2	2	2	2	2
1	3	3	3	3	3	3	3	3	3	3	3	3	3
1	3	3	3	3	3	3	3	3	3	3	3	3	3
1	3	3	3	3	3	3	3	3	3	3	3	3	3
1	3	3	3	3	3	3	3	3	3	3	3	3	3
1	3	3	3	3	3	3	3	3	3	3	3	3	3
1	3	3	3	3	3	3	3	3	3	3	3	3	3
1	3	3	3	3	3	3	3	3	3	3	3	3	3
1	3	3	3	3	3	3	3	3	3	3	3	3	3
1	3	3	3	3	3	3	3	3	3	3	3	3	3
1	3	3	3	3	3	3	3	3	3	3	3	3	3
1	3	3	3	3	3	3	3	3	3	3	3	3	3
1	3	3	3	3	3	3	3	3	3	3	3	3	3
1	3	3	3	3	3	3	3	3	3	3	3	3	3
1	3	3	3	3	3	3	3	3	3	3	3	3	3
1	3	3	3	3	3	3	3	3	3	3	3	3	3
1	3	3	3	3	3	3	3	3	3	3	3	3	3
1	3	3	3	3	3	3	3	3	3	3	3	3	3
1	3	3	3	3	3	3	3	3	3	3	3	3	3
1	1	1	1	1	1	1	1	1	1	1	1	1	1

<<<< Ground Level >>>>

4020.000	3991.000	4013.000	4047.000	4070.000	4095.000	4111.000	4113.000	4125.000	4110.000	4123.000	4152.000	4185.000
3967.000	3981.000	3998.000	4020.000	4049.000	4064.000	4078.000	4092.000	4085.000	4080.000	4100.000	4128.000	4162.000
3957.000	3968.000	3985.000	4007.000	4020.000	4031.000	4059.000	4060.000	4060.000	4063.000	4077.000	4104.000	4123.000
3941.000	3951.000	3969.000	3985.000	3989.000	4011.000	4022.000	4024.000	4033.000	4046.000	4056.000	4080.000	4080.000
3922.000	3935.000	3950.000	3967.000	3973.000	3985.000	3996.000	4007.000	4017.000	4030.000	4044.000	4064.000	4083.000
3916.000	3929.000	3943.000	3955.000	3963.000	3974.000	3985.000	3998.000	4008.000	4023.000	4041.000	4053.000	4062.000
3913.000	3925.000	3933.000	3947.000	3956.000	3966.000	3977.000	3989.000	4002.000	4015.000	4027.000	4042.000	4052.000
3913.000	3919.000	3927.000	3936.000	3948.000	3957.000	3968.000	3979.000	3993.000	4006.000	4016.000	4027.000	4038.000
3908.000	3913.000	3920.000	3930.000	3939.000	3950.000	3960.000	3971.000	3985.000	3992.000	4004.000	4015.000	4029.000
3901.000	3909.000	3913.000	3924.000	3935.000	3943.000	3954.000	3965.000	3973.000	3979.000	3990.000	4002.000	4000.000
3882.000	3908.000	3908.000	3920.000	3929.000	3938.000	3947.000	3954.000	3963.000	3971.000	3980.000	3988.000	3900.000
3894.000	3920.000	3910.000	3915.000	3921.000	3931.000	3938.000	3948.000	3956.000	3964.000	3972.000	3900.000	3900.000
3879.000	3900.000	3920.000	3920.000	3915.000	3925.000	3933.000	3942.000	3950.000	3960.000	3965.000	3900.000	3900.000
3874.000	3890.000	3920.000	3920.000	3915.000	3918.000	3926.000	3936.000	3945.000	3955.000	3963.000	3960.000	3900.000
3865.000	3880.000	3910.000	3920.000	3904.000	3911.000	3921.000	3930.000	3938.000	3949.000	3956.000	3962.000	3900.000
3864.000	3875.000	3900.000	3896.000	3896.000	3904.000	3913.000	3924.000	3932.000	3942.000	3952.000	3960.000	3961.000
3865.000	3877.000	3882.000	3883.000	3890.000	3897.000	3907.000	3918.000	3926.000	3936.000	3947.000	3957.000	3962.000
3863.000	3870.000	3874.000	3877.000	3884.000	3892.000	3902.000	3911.000	3918.000	3930.000	3943.000	3952.000	3960.000

<<<< Water Bearing Layer >>>>

150.000	240.000	150.000	120.000	100.000	125.000	150.000	190.000	180.000	150.000	170.000	170.000	200.000
130.000	170.000	130.000	120.000	100.000	120.000	140.000	160.000	175.000	100.000	150.000	170.000	170.000
130.000	130.000	105.000	110.000	110.000	120.000	140.000	145.000	150.000	100.000	130.000	150.000	150.000
100.000	120.000	100.000	100.000	110.000	110.000	135.000	130.000	125.000	100.000	120.000	130.000	130.000
100.000	100.000	100.000	100.000	100.000	100.000	120.000	120.000	120.000	110.000	110.000	120.000	130.000
90.000	90.000	90.000	80.000	90.000	90.000	110.000	120.000	120.000	110.000	110.000	120.000	130.000
80.000	70.000	90.000	80.000	80.000	80.000	100.000	110.000	120.000	110.000	110.000	100.000	120.000
60.000	60.000	85.000	70.000	70.000	60.000	80.000	100.000	110.000	100.000	100.000	80.000	100.000
50.000	50.000	80.000	60.000	40.000	50.000	50.000	90.000	100.000	100.000	90.000	60.000	80.000
20.000	40.000	60.000	60.000	50.000	50.000	20.000	70.000	90.000	90.000	80.000	75.000	80.000
5.000	20.000	40.000	50.000	50.000	50.000	30.000	80.000	90.000	90.000	70.000	80.000	0
5.000	5.000	20.000	40.000	60.000	60.000	40.000	50.000	80.000	90.000	60.000	70.000	0
5.000	5.000	5.000	20.000	60.000	60.000	40.000	50.000	60.000	80.000	90.000	100.000	0
15.000	5.000	5.000	5.000	60.000	60.000	40.000	50.000	60.000	80.000	140.000	130.000	0
20.000	5.000	5.000	5.000	50.000	50.000	40.000	50.000	60.000	70.000	190.000	100.000	100.000
20.000	20.000	5.000	60.000	50.000	40.000	40.000	50.000	60.000	70.000	55.000	75.000	100.000
30.000	25.000	30.000	30.000	40.000	30.000	40.000	50.000	60.000	60.000	50.000	80.000	80.000
30.000	30.000	30.000	30.000	30.000	25.000	40.000	50.000	60.000	60.000	50.000	50.000	60.000

EEEE	After 1 Year(s)											JJJJ
EEEE	Calculation Water Level											EEEE
4000.000	3990.000	4000.000	4000.000	4010.000	4027.000	4030.000	4030.000	4030.000	4030.000	4030.000	4030.000	4030.000
3950.000	3959.012	3968.007	3977.007	3997.998	4015.000	4028.992	4029.998	4030.000	4030.000	4030.000	4029.999	4030.000
3945.000	3950.002	3955.005	3966.002	3983.002	4001.999	4016.000	4025.994	4029.995	4029.999	4029.997	4027.000	4025.000
3935.000	3944.996	3954.991	3955.005	3972.000	3988.001	4004.996	4009.396	4019.999	4024.998	4024.999	4021.988	3980.000
3919.000	3925.004	3930.009	3946.000	3960.001	3975.002	3991.998	4000.003	4012.997	4016.001	4018.000	4017.998	4014.000
3914.000	3922.000	3929.999	3939.002	3951.001	3965.001	3979.002	3993.997	4004.998	4010.998	4012.999	4011.999	4008.000
3911.000	3918.000	3925.000	3937.998	3944.002	3956.001	3968.002	3981.001	3994.998	4003.998	4007.000	4006.001	4005.000
3911.000	3913.000	3915.004	3935.996	3939.002	3948.001	3960.000	3970.002	3984.000	3996.997	4002.997	4002.998	4002.000
3906.000	3906.000	3905.006	3929.997	3937.000	3942.001	3951.002	3962.001	3974.000	3985.998	3992.997	3990.998	3990.000
3899.000	3900.001	3900.004	3923.998	3934.998	3939.000	3945.000	3952.002	3962.001	3972.999	3977.997	3968.000	3965.000
3880.000	3900.000	3900.002	3919.998	3928.000	3936.999	3940.001	3947.001	3953.001	3959.999	3959.997	3939.989	3870.000
3890.000	3909.999	3900.001	3910.001	3921.000	3930.999	3937.999	3943.000	3946.001	3948.000	3944.990	3870.025	3870.000
3877.000	3889.000	3900.000	3905.001	3915.000	3924.999	3932.999	3938.000	3941.999	3941.000	3936.985	3870.033	3870.000
3872.000	3886.000	3900.000	3905.001	3914.998	3915.002	3925.000	3935.998	3937.000	3935.999	3931.002	3930.973	3870.000
3863.000	3878.000	3900.000	3904.999	3904.000	3910.000	3920.000	3929.999	3933.999	3931.999	3928.004	3929.985	3870.000
3862.000	3873.000	3899.998	3895.000	3895.001	3900.001	3910.001	3920.001	3929.998	3928.001	3929.999	3930.001	3930.000
3862.000	3873.999	3880.000	3881.002	3888.000	3895.000	3905.000	3916.000	3923.999	3927.000	3932.999	3933.000	3935.000
3861.000	3868.000	3872.000	3875.000	3882.000	3890.000	3900.000	3909.000	3916.000	3925.000	3935.000	3937.000	3940.000

EEEE	Calculation Total Change											EEEE
0	0	0	0	0	0	0	0	0	0	0	0	0
0	0.012	0.007	0.007	-0.002	-0.000	-0.008	-0.002	-0.000	-0.000	-0.000	-0.001	0
0	0.002	0.005	0.002	0.002	-0.001	-0.000	-0.006	-0.005	-0.001	-0.003	-0.000	0
0	-0.004	-0.009	0.005	-0.000	0.001	-0.004	-0.604	-0.001	-0.002	-0.001	-0.012	0
0	0.004	0.009	0.000	0.001	0.002	-0.002	0.003	-0.003	0.001	0.000	-0.002	0
0	-0.000	-0.001	0.002	0.001	0.001	0.002	-0.003	-0.002	-0.002	-0.001	-0.001	0
0	0.000	0.000	-0.002	0.002	0.001	0.002	0.001	-0.002	-0.002	-0.000	0.001	0
0	-0.000	0.004	-0.004	0.002	0.001	0.000	0.002	0.000	-0.003	-0.003	-0.002	0
0	0.000	0.006	-0.003	-0.000	0.001	0.002	0.001	-0.000	-0.002	-0.003	-0.002	0
0	0.001	0.004	-0.002	-0.002	0.000	0.000	0.002	0.001	-0.001	-0.003	-0.000	0
0	-0.000	0.002	-0.002	0.000	-0.001	0.001	0.001	0.001	-0.001	-0.003	-0.011	0
0	-0.001	0.001	0.001	0	-0.001	-0.001	-0.000	0.001	0.000	-0.010	0.025	0
0	0.000	0.000	0.001	0	-0.001	-0.001	0.000	-0.001	-0.000	-0.015	0.033	0
0	-0.000	-0.000	0.001	-0.002	0.002	0.000	-0.002	-0.000	-0.001	0.002	-0.027	0
0	-0.000	-0.000	-0.001	0	-0.000	-0.000	-0.001	-0.001	-0.001	0.004	-0.015	0
0	0.000	-0.002	-0.000	0.001	0.001	0.001	0.001	-0.002	0.001	-0.001	0.001	0
0	-0.001	-0.000	0.002	0.000	0.000	0.000	-0.000	-0.001	0.000	-0.001	0.000	0
0	0	0	0	0	0	0	0	0	0	0	0	0

[[[[[After 2 Year(s)]]]]

<<<< Calculation Water Level >>>>

4000.000	3990.000	4000.000	3999.000	4000.000	4027.000	4028.000	4028.000	4030.000	4030.000	4030.000	4029.000	4030.000
3950.000	3959.024	3968.013	3967.000	3970.000	3988.003	3988.003	3988.003	4000.005	4012.994	4016.001	4018.000	4017.996
3945.000	3950.003	3955.010	3966.004	3983.003	4001.998	4016.000	4025.988	4029.990	4029.998	4029.995	4027.000	4025.000
3935.000	3944.992	3954.983	3955.010	3972.000	3988.003	4004.992	4008.792	4019.999	4024.995	4024.997	4021.976	3980.000
3919.000	3925.009	3930.018	3946.000	3960.002	3975.004	3991.996	4000.005	4012.994	4016.001	4018.000	4017.996	4014.000
3914.000	3922.000	3929.998	3939.004	3951.002	3965.002	3979.003	3993.994	4004.996	4010.997	4012.998	4011.998	4008.000
3911.000	3918.000	3925.001	3937.997	3944.003	3956.002	3968.004	3981.003	3994.997	4003.997	4006.999	4006.002	4005.000
3911.000	3913.000	3915.007	3935.992	3939.003	3948.002	3960.001	3970.005	3984.001	3996.995	4002.995	4002.997	4002.000
3906.000	3906.000	3905.011	3929.993	3936.999	3942.002	3951.003	3962.002	3974.000	3985.997	3992.994	3990.997	3990.000
3899.000	3900.001	3900.009	3923.997	3934.997	3939.000	3945.001	3952.004	3962.003	3972.998	3977.994	3968.000	3965.000
3880.000	3899.999	3900.004	3919.996	3928.000	3936.997	3940.002	3947.001	3953.002	3959.997	3959.995	3939.979	3870.000
3890.000	3909.998	3900.002	3910.003	3921.000	3930.999	3937.999	3943.000	3946.001	3948.000	3944.979	3870.049	3870.000
3877.000	3889.000	3900.000	3905.002	3915.000	3924.998	3932.999	3938.001	3941.998	3941.000	3936.970	3870.065	3870.000
3872.000	3886.000	3900.000	3905.001	3914.995	3915.004	3925.001	3935.997	3937.000	3935.998	3931.004	3930.946	3870.000
3863.000	3878.000	3900.000	3904.998	3904.000	3910.000	3919.999	3929.998	3933.998	3931.998	3928.008	3929.970	3870.000
3862.000	3873.001	3899.996	3894.999	3895.002	3900.002	3910.001	3920.002	3929.996	3928.002	3929.999	3930.001	3930.000
3862.000	3873.998	3880.000	3881.003	3888.001	3895.001	3905.001	3915.999	3923.998	3927.000	3932.998	3933.001	3935.000
3861.000	3868.000	3872.000	3875.000	3882.000	3890.000	3900.000	3909.000	3916.000	3925.000	3935.000	3937.000	3940.000

<<<< Calculation Total Change >>>>

0	0	0	0	0	0	0	0	0	0	0	0	0
0	0.024	0.013	0.013	-0.004	-0.001	-0.016	-0.004	-0.000	-0.000	-0.000	-0.002	0
0	0.003	0.010	0.004	0.003	-0.002	-0.000	-0.012	-0.010	-0.002	-0.005	-0.000	0
0	-0.008	-0.017	0.010	-0.000	0.003	-0.008	-1.208	-0.001	-0.005	-0.003	-0.024	0
0	0.009	0.018	0.000	0.002	0.004	-0.004	0.005	-0.006	0.001	0.000	-0.004	0
0	-0.000	-0.002	0.004	0.002	0.002	0.003	-0.006	-0.004	-0.003	-0.002	-0.002	0
0	0.000	0.001	-0.003	0.003	0.002	0.004	0.003	-0.003	-0.003	-0.001	0.002	0
0	-0.000	0.007	-0.008	0.003	0.002	0.001	0.005	0.001	-0.005	-0.005	-0.003	0
0	0.000	0.011	-0.007	-0.001	0.002	0.003	0.002	-0.000	-0.003	-0.006	-0.003	0
0	0.001	0.009	-0.003	-0.003	0.000	0.001	0.004	0.003	-0.002	-0.006	-0.000	0
0	-0.001	0.004	-0.004	0.000	-0.003	0.002	0.001	0.002	-0.003	-0.005	-0.021	0
0	-0.002	0.002	0.003	0	-0.001	-0.001	-0.000	0.001	0.000	-0.021	0.049	0
0	0.000	0.000	0.002	0	-0.002	-0.001	0.001	-0.002	-0.000	-0.030	0.065	0
0	-0.000	-0.000	0.001	-0.005	0.004	0.001	-0.003	-0.000	-0.002	0.004	-0.054	0
0	-0.000	-0.000	-0.002	0	-0.000	-0.001	-0.002	-0.002	-0.002	0.008	-0.030	0
0	0.001	-0.004	-0.001	0.002	0.002	0.001	0.002	-0.004	0.002	-0.001	0.001	0
0	-0.002	-0.000	0.003	0.001	0.001	0.001	-0.001	-0.002	0.000	-0.002	0.001	0
0	0	0	0	0	0	0	0	0	0	0	0	0

EEEE After 3 Year(s) IIIII

Calculation Water Level

4000.000	3990.000	4000.000	4000.000	4010.000	4027.000	4030.000	4030.000	4030.000	4030.000	4030.000	4030.000	4030.000	4030.000
3950.000	3959.036	3968.020	3977.020	3997.994	4014.999	4028.976	4029.994	4030.000	4030.000	4030.000	4029.997	4030.000	4030.000
3945.000	3950.005	3955.015	3966.006	3983.005	4001.997	4015.999	4025.981	4029.986	4029.996	4029.992	4026.999	4025.000	4025.000
3935.000	3944.989	3954.974	3955.015	3971.999	3988.004	4004.988	4008.190	4019.998	4024.993	4024.996	4021.964	3980.000	3980.000
3919.000	3925.013	3930.026	3946.001	3960.004	3975.006	3991.995	4000.007	4012.990	4016.002	4018.000	4017.995	4014.000	4014.000
3914.000	3922.000	3929.997	3939.006	3951.004	3965.002	3979.005	3993.991	4004.994	4010.995	4012.997	4011.998	4008.000	4008.000
3911.000	3918.000	3925.001	3937.995	3944.005	3956.002	3968.005	3981.004	3994.995	4003.995	4006.999	4006.003	4005.000	4005.000
3911.000	3913.000	3915.011	3935.988	3939.005	3948.004	3960.001	3970.007	3984.001	3996.992	4002.992	4002.995	4002.000	4002.000
3906.000	3906.000	3905.017	3929.990	3936.999	3942.003	3951.005	3962.002	3974.000	3985.995	3992.992	3990.995	3990.000	3990.000
3899.000	3900.002	3900.013	3923.995	3934.995	3939.000	3945.001	3952.007	3962.004	3972.996	3977.991	3967.999	3965.000	3965.000
3880.000	3899.999	3900.007	3919.995	3928.000	3936.996	3940.002	3947.002	3953.002	3959.996	3959.992	3939.968	3870.000	3870.000
3890.000	3909.997	3900.003	3910.004	3921.000	3930.998	3937.998	3943.000	3946.002	3948.001	3944.969	3870.074	3870.000	3870.000
3877.000	3889.001	3900.000	3905.004	3915.000	3924.997	3932.998	3938.001	3941.998	3940.999	3936.955	3870.098	3870.000	3870.000
3872.000	3885.999	3900.000	3905.002	3914.993	3915.006	3925.001	3935.995	3937.000	3935.997	3931.005	3930.919	3870.000	3870.000
3863.000	3877.999	3899.999	3904.997	3904.000	3910.000	3919.999	3929.997	3933.997	3931.997	3928.011	3929.955	3870.000	3870.000
3862.000	3873.001	3899.994	3894.999	3895.003	3900.003	3910.002	3920.003	3929.994	3928.003	3929.998	3930.002	3930.000	3930.000
3862.000	3873.997	3880.000	3881.005	3888.001	3895.001	3905.001	3915.999	3923.997	3927.001	3932.997	3933.001	3935.000	3935.000
3861.000	3868.000	3872.000	3875.000	3882.000	3890.000	3900.000	3909.000	3916.000	3925.000	3935.000	3937.000	3940.000	3940.000

Calculation Total Change

0	0	0	0	0	0	0	0	0	0	0	0	0	0
0	0.036	0.020	0.020	-0.006	-0.001	-0.024	-0.006	-0.000	-0.000	-0.000	-0.003	0	0
0	0.005	0.015	0.006	0.005	-0.003	-0.001	-0.019	-0.014	-0.004	-0.008	-0.001	0	0
0	-0.011	-0.026	0.015	-0.001	0.004	-0.012	-1.810	-0.002	-0.007	-0.004	-0.036	0	0
0	0.013	0.026	0.001	0.004	0.006	-0.005	0.007	-0.010	0.002	0.000	-0.005	0	0
0	-0.000	-0.003	0.006	0.004	0.002	0.005	-0.009	-0.006	-0.005	-0.003	-0.002	0	0
0	0.000	0.001	-0.005	0.005	0.002	0.005	0.004	-0.005	-0.005	-0.001	0.003	0	0
0	-0.000	0.011	-0.012	0.005	0.004	0.001	0.007	0.001	-0.008	-0.008	-0.005	0	0
0	0.000	0.017	-0.010	-0.001	0.003	0.005	0.002	-0.000	-0.005	-0.008	-0.005	0	0
0	0.002	0.013	-0.005	-0.005	0.000	0.001	0.007	0.004	-0.004	-0.009	-0.001	0	0
0	-0.001	0.007	-0.005	0.000	-0.004	0.002	0.002	0.002	-0.004	-0.008	-0.032	0	0
0	-0.003	0.003	0.004	0	-0.002	-0.002	-0.000	0.002	0.001	-0.031	0.074	0	0
0	0.001	0.000	0.004	0	-0.003	-0.002	0.001	-0.002	-0.001	-0.045	0.098	0	0
0	-0.001	-0.000	0.002	-0.007	0.006	0.001	-0.005	-0.000	-0.003	0.005	-0.081	0	0
0	-0.001	-0.001	-0.003	0	-0.000	-0.001	-0.003	-0.003	-0.003	0.011	-0.045	0	0
0	0.001	-0.006	-0.001	0.003	0.003	0.002	0.003	-0.006	0.003	-0.002	0.002	0	0
0	-0.003	-0.000	0.005	0.001	0.001	0.001	-0.001	-0.003	0.001	-0.003	0.001	0	0
0	0	0	0	0	0	0	0	0	0	0	0	0	0

[[[[[After 4 Year(s)]]]]

<<<< Calculation Water Level >>>>

4000.000	3990.000	4000.000	4000.000	4010.000	4027.000	4030.000	4030.000	4030.000	4030.000	4030.000	4030.000	4030.000
3950.000	3959.049	3968.027	3977.026	3997.992	4014.999	4028.968	4029.993	4030.000	4030.000	4030.000	4029.995	4030.000
3945.000	3950.006	3955.021	3966.008	3983.007	4001.996	4015.999	4025.975	4029.981	4029.995	4029.990	4026.999	4025.000
3935.000	3944.985	3954.965	3955.020	3971.999	3988.006	4004.983	4007.588	4019.997	4024.990	4024.995	4021.953	3980.000
3919.000	3925.018	3930.035	3946.001	3960.005	3975.008	3991.993	4000.009	4012.987	4016.003	4018.000	4017.993	4014.000
3914.000	3922.000	3929.996	3939.008	3951.005	3965.003	3979.006	3993.989	4004.992	4010.993	4012.996	4011.997	4008.000
3911.000	3918.000	3925.001	3937.993	3944.007	3956.003	3968.007	3981.006	3994.994	4003.993	4006.998	4006.004	4005.000
3911.000	3913.000	3915.015	3935.984	3939.006	3948.005	3960.002	3970.009	3984.001	3996.989	4002.989	4002.994	4002.000
3906.000	3906.000	3905.022	3929.987	3936.999	3942.004	3951.007	3962.003	3974.000	3985.993	3992.989	3990.994	3990.000
3899.000	3900.002	3900.017	3923.993	3934.994	3939.001	3945.002	3952.009	3962.005	3972.995	3977.988	3967.999	3965.000
3880.000	3899.999	3900.009	3919.993	3928.000	3936.995	3940.003	3947.002	3953.003	3959.995	3959.989	3939.957	3870.000
3890.000	3909.996	3900.004	3910.005	3921.000	3930.997	3937.998	3943.000	3946.003	3948.001	3944.958	3870.098	3870.000
3877.000	3889.001	3900.000	3905.005	3915.000	3924.996	3932.997	3938.001	3941.997	3940.999	3936.941	3870.130	3870.000
3872.000	3885.999	3900.000	3905.003	3914.991	3915.008	3925.001	3935.994	3937.000	3935.996	3931.007	3930.892	3870.000
3863.000	3877.999	3899.999	3904.996	3904.000	3910.000	3919.998	3929.996	3933.996	3931.996	3928.015	3929.940	3870.000
3862.000	3873.002	3899.992	3894.999	3895.004	3900.004	3910.002	3920.004	3929.992	3928.005	3929.998	3930.002	3930.000
3862.000	3873.997	3880.000	3881.006	3888.001	3895.001	3905.001	3915.998	3923.996	3927.001	3932.996	3933.002	3935.000
3861.000	3868.000	3872.000	3875.000	3882.000	3890.000	3900.000	3909.000	3916.000	3925.000	3935.000	3937.000	3940.000

<<<< Calculation Total Change >>>>

0	0	0	0	0	0	0	0	0	0	0	0	0
0	0.049	0.027	0.026	-0.008	-0.001	-0.032	-0.007	-0.000	-0.000	-0.000	-0.005	0
0	0.006	0.021	0.008	0.007	-0.004	-0.001	-0.025	-0.019	-0.005	-0.010	-0.001	0
0	-0.015	-0.035	0.020	-0.001	0.006	-0.017	-2.412	-0.003	-0.010	-0.005	-0.047	0
0	0.018	0.035	0.001	0.005	0.008	-0.007	0.009	-0.013	0.003	0.000	-0.007	0
0	-0.000	-0.004	0.008	0.005	0.003	0.006	-0.011	-0.008	-0.007	-0.004	-0.003	0
0	0.000	0.001	-0.007	0.007	0.003	0.007	0.006	-0.006	-0.007	-0.002	0.004	0
0	-0.000	0.015	-0.016	0.006	0.005	0.002	0.009	0.001	-0.011	-0.011	-0.006	0
0	0.000	0.022	-0.013	-0.001	0.004	0.007	0.003	-0.000	-0.007	-0.011	-0.006	0
0	0.002	0.017	-0.007	-0.006	0.001	0.002	0.009	0.005	-0.005	-0.012	-0.001	0
0	-0.001	0.009	-0.007	0.000	-0.005	0.003	0.002	0.003	-0.005	-0.011	-0.043	0
0	-0.004	0.004	0.005	0	-0.003	-0.002	-0.000	0.003	0.001	-0.042	0.098	0
0	0.001	0.000	0.005	0	-0.004	-0.003	0.001	-0.003	-0.001	-0.059	0.130	0
0	-0.001	-0.000	0.003	-0.009	0.008	0.001	-0.006	-0.000	-0.004	0.007	-0.108	0
0	-0.001	-0.001	-0.004	0	-0.000	-0.002	-0.004	-0.004	-0.004	0.015	-0.060	0
0	0.002	-0.008	-0.001	0.004	0.004	0.002	0.004	-0.008	0.005	-0.002	0.002	0
0	-0.003	-0.000	0.006	0.001	0.001	0.001	-0.002	-0.004	0.001	-0.004	0.002	0
0	0	0	0	0	0	0	0	0	0	0	0	0

[[[[[After 5 Year(s)]]]]

<<<< Calculation Water Level >>>>

4000.000	3990.000	4000.000	4000.000	4010.000	4027.000	4030.000	4030.000	4030.000	4030.000	4030.000	4030.000	4030.000
3950.000	3959.061	3968.033	3977.033	3997.990	4014.998	4028.959	4029.991	4030.000	4030.000	4030.000	4029.994	4030.000
3945.000	3950.008	3955.026	3966.010	3983.008	4001.995	4015.999	4025.968	4029.976	4029.994	4029.987	4026.999	4025.000
3935.000	3944.981	3954.956	3955.025	3971.999	3988.007	4004.979	4006.987	4019.995	4024.988	4024.993	4021.941	3980.000
3919.000	3925.022	3930.044	3946.001	3960.006	3975.010	3991.991	4000.011	4012.984	4016.003	4018.000	4017.991	4014.000
3914.000	3922.000	3929.995	3939.010	3951.006	3965.004	3979.008	3993.986	4004.989	4010.992	4012.995	4011.996	4008.000
3911.000	3918.000	3925.001	3937.992	3944.009	3956.004	3968.009	3981.007	3994.992	4003.992	4006.998	4006.005	4005.000
3911.000	3913.000	3915.019	3935.980	3939.008	3948.006	3960.002	3970.012	3984.001	3996.986	4002.986	4002.992	4002.000
3906.000	3906.001	3905.028	3929.983	3936.999	3942.005	3951.008	3962.004	3974.000	3985.992	3992.986	3990.992	3990.000
3899.000	3900.003	3900.022	3923.992	3934.992	3939.001	3945.002	3952.011	3962.006	3972.994	3977.985	3967.999	3965.000
3880.000	3899.998	3900.011	3919.991	3928.000	3936.993	3940.004	3947.003	3953.004	3959.993	3959.986	3939.947	3870.000
3890.000	3909.994	3900.005	3910.007	3921.000	3930.997	3937.997	3943.000	3946.004	3948.001	3944.948	3870.123	3870.000
3877.000	3889.001	3900.000	3905.006	3915.000	3924.995	3932.996	3938.002	3941.996	3940.999	3936.926	3870.162	3870.000
3872.000	3885.999	3899.999	3905.004	3914.989	3915.010	3925.001	3935.992	3937.000	3935.995	3931.009	3930.865	3870.000
3863.000	3877.999	3899.999	3904.995	3904.000	3910.000	3919.998	3929.995	3933.995	3931.996	3928.019	3929.925	3870.000
3862.000	3873.002	3899.990	3894.998	3895.004	3900.005	3910.003	3920.005	3929.990	3928.006	3929.997	3930.003	3930.000
3862.000	3873.996	3880.000	3881.008	3888.001	3895.002	3905.002	3915.998	3923.995	3927.001	3932.995	3933.002	3935.000
3861.000	3868.000	3872.000	3875.000	3882.000	3890.000	3900.000	3909.000	3916.000	3925.000	3935.000	3937.000	3940.000

<<<< Calculation Total Change >>>>

0	0	0	0	0	0	0	0	0	0	0	0	0
0	0.061	0.033	0.033	-0.010	-0.002	-0.041	-0.009	-0.000	-0.000	-0.000	-0.006	0
0	0.008	0.026	0.010	0.008	-0.005	-0.001	-0.032	-0.024	-0.006	-0.013	-0.001	0
0	-0.019	-0.044	0.025	-0.001	0.007	-0.021	-3.013	-0.005	-0.012	-0.007	-0.059	0
0	0.022	0.044	0.001	0.006	0.010	-0.009	0.011	-0.016	0.003	0.000	-0.009	0
0	-0.000	-0.005	0.010	0.006	0.004	0.008	-0.014	-0.011	-0.008	-0.005	-0.004	0
0	0.000	0.001	-0.008	0.009	0.004	0.009	0.007	-0.008	-0.008	-0.002	0.005	0
0	-0.000	0.019	-0.020	0.008	0.006	0.002	0.012	0.001	-0.014	-0.014	-0.008	0
0	0.001	0.028	-0.017	-0.001	0.005	0.008	0.004	-0.000	-0.008	-0.014	-0.008	0
0	0.003	0.022	-0.008	-0.008	0.001	0.002	0.011	0.006	-0.006	-0.015	-0.001	0
0	-0.002	0.011	-0.009	0.000	-0.007	0.004	0.003	0.004	-0.007	-0.014	-0.053	0
0	-0.006	0.005	0.007	0	-0.003	-0.003	-0.000	0.004	0.001	-0.052	0.123	0
0	0.001	0.000	0.006	0	-0.005	-0.004	0.002	-0.004	-0.001	-0.074	0.162	0
0	-0.001	-0.001	0.004	-0.011	0.010	0.001	-0.008	-0.000	-0.005	0.009	-0.135	0
0	-0.001	-0.001	-0.005	0	-0.000	-0.002	-0.005	-0.005	-0.004	0.019	-0.075	0
0	0.002	-0.010	-0.002	0.004	0.005	0.003	0.005	-0.010	0.006	-0.003	0.003	0
0	-0.004	-0.000	0.008	0.001	0.002	0.002	-0.002	-0.005	0.001	-0.005	0.002	0
0	0	0	0	0	0	0	0	0	0	0	0	0

CCCCC After 6 Year(s) JJJJJ

<<<<< Calculation Water Level >>>>>

4000.000	3990.000	4000.000	4000.000	4010.000	4027.000	4030.000	4030.000	4030.000	4030.000	4030.000	4030.000	4030.000
3950.000	3959.073	3968.040	3977.039	3997.988	4014.998	4028.951	4029.989	4030.000	4030.000	4030.000	4029.993	4030.000
3945.000	3950.010	3955.031	3966.012	3983.010	4001.994	4015.999	4025.961	4029.971	4029.993	4029.985	4026.998	4025.000
3935.000	3944.977	3954.948	3955.030	3971.999	3988.008	4004.974	4006.387	4019.994	4024.985	4024.992	4021.929	3980.000
3919.000	3925.026	3930.052	3946.001	3960.007	3975.011	3991.989	4000.013	4012.981	4016.004	4018.000	4017.989	4014.000
3914.000	3922.000	3929.994	3939.012	3951.007	3965.005	3979.010	3993.983	4004.987	4010.990	4012.994	4011.995	4008.000
3911.000	3918.000	3925.002	3937.990	3944.010	3956.005	3968.011	3981.009	3994.991	4003.990	4006.997	4006.006	4005.000
3911.000	3913.000	3915.022	3935.976	3939.009	3948.007	3960.003	3970.014	3984.002	3996.984	4002.984	4002.990	4002.000
3906.000	3906.001	3905.033	3929.980	3936.998	3942.006	3951.010	3962.005	3974.000	3985.990	3992.983	3990.991	3990.000
3899.000	3900.004	3900.026	3923.990	3934.990	3939.001	3945.003	3952.013	3962.008	3972.993	3977.981	3967.999	3965.000
3880.000	3899.998	3900.013	3919.989	3928.000	3936.992	3940.005	3947.004	3953.005	3959.992	3959.984	3939.936	3870.000
3890.000	3909.993	3900.006	3910.008	3921.000	3930.996	3937.996	3943.000	3946.004	3948.001	3944.938	3870.148	3870.000
3877.000	3889.001	3900.000	3905.007	3915.000	3924.994	3932.996	3938.002	3941.995	3940.999	3936.911	3870.195	3870.000
3872.000	3885.999	3899.999	3905.004	3914.986	3915.012	3925.002	3935.991	3937.000	3935.994	3931.011	3930.839	3870.000
3863.000	3877.999	3899.999	3904.994	3904.000	3910.000	3919.997	3929.994	3933.994	3931.995	3928.022	3929.910	3870.000
3862.000	3873.003	3899.988	3894.998	3895.005	3900.007	3910.004	3920.006	3929.988	3928.007	3929.997	3930.003	3930.000
3862.000	3873.995	3880.000	3881.010	3888.002	3895.002	3905.002	3915.997	3923.994	3927.001	3932.994	3933.003	3935.000
3861.000	3868.000	3872.000	3875.000	3882.000	3890.000	3900.000	3909.000	3916.000	3925.000	3935.000	3937.000	3940.000

<<<<< Calculation Total Change >>>>>

0	0	0	0	0	0	0	0	0	0	0	0	0
0	0.073	0.040	0.039	-0.012	-0.002	-0.049	-0.011	-0.000	-0.000	-0.000	-0.007	0
0	0.010	0.031	0.012	0.010	-0.006	-0.001	-0.039	-0.029	-0.007	-0.015	-0.002	0
0	-0.023	-0.052	0.030	-0.001	0.008	-0.026	-3.613	-0.006	-0.015	-0.008	-0.071	0
0	0.026	0.052	0.001	0.007	0.011	-0.011	0.013	-0.019	0.004	0.000	-0.011	0
0	-0.000	-0.006	0.012	0.007	0.005	0.010	-0.017	-0.013	-0.010	-0.006	-0.005	0
0	0.000	0.002	-0.010	0.010	0.005	0.011	0.009	-0.009	-0.010	-0.003	0.006	0
0	-0.000	0.022	-0.024	0.009	0.007	0.003	0.014	0.002	-0.016	-0.016	-0.010	0
0	0.001	0.033	-0.020	-0.002	0.006	0.010	0.005	-0.000	-0.010	-0.017	-0.009	0
0	0.004	0.026	-0.010	-0.010	0.001	0.003	0.013	0.008	-0.007	-0.019	-0.001	0
0	-0.002	0.013	-0.011	0.000	-0.008	0.005	0.004	0.005	-0.008	-0.016	-0.064	0
0	-0.007	0.006	0.008	0	-0.004	-0.004	-0.000	0.004	0.001	-0.062	0.148	0
0	0.001	0.000	0.007	0	-0.006	-0.004	0.002	-0.005	-0.001	-0.089	0.195	0
0	-0.001	-0.001	0.004	-0.014	0.012	0.002	-0.009	-0.000	-0.006	0.011	-0.161	0
0	-0.001	-0.001	-0.006	0	-0.000	-0.003	-0.006	-0.006	-0.005	0.022	-0.090	0
0	0.003	-0.012	-0.002	0.005	0.007	0.004	0.006	-0.012	0.007	-0.003	0.003	0
0	-0.005	-0.000	0.010	0.002	0.002	0.002	-0.003	-0.006	0.001	-0.006	0.003	0
0	0	0	0	0	0	0	0	0	0	0	0	0

[[[[[[After 7 Year(s)]]]]]

<<<< Calculation Water Level >>>>

4000.000	3990.000	4000.000	4000.000	4010.000	4027.000	4030.000	4030.000	4030.000	4030.000	4030.000	4030.000	4030.000	
3950.000	3959.085	3968.046	3977.046	3997.986	4014.998	4028.943	4029.987	4030.000	4030.000	4030.000	4029.992	4030.000	
3945.000	3950.011	3955.036	3966.014	3983.012	4001.993	4015.998	4025.954	4029.967	4029.991	4029.982	4026.998	4025.000	
3935.000	3944.973	3954.939	3955.035	3971.999	3988.010	4004.969	4005.787	4019.992	4024.983	4024.990	4021.917	3980.000	
3919.000	3925.031	3930.061	3946.001	3960.009	3975.013	3991.987	4000.015	4012.978	4016.005	4018.001	4017.988	4014.000	
3914.000	3921.999	3929.993	3939.014	3951.009	3965.006	3979.011	3993.980	4004.985	4010.988	4012.992	4011.994	4008.000	
3911.000	3918.001	3925.002	3937.988	3944.012	3956.006	3968.012	3981.010	3994.989	4003.989	4006.997	4005.007	4005.000	
3911.000	3912.999	3915.026	3935.972	3939.011	3948.008	3960.003	3970.016	3984.002	3996.981	4002.981	4002.989	4002.000	
3906.000	3906.001	3905.039	3929.977	3936.998	3942.007	3951.012	3962.006	3973.999	3985.989	3992.981	3990.989	3990.000	
3899.000	3900.004	3900.030	3923.988	3934.989	3939.001	3945.003	3952.015	3962.009	3972.991	3977.978	3967.999	3965.000	
3880.000	3899.998	3900.015	3919.988	3928.000	3936.990	3940.005	3947.004	3953.006	3959.991	3959.981	3939.926	3870.000	
3890.000	3909.992	3900.007	3910.009	3921.000	3930.995	3937.996	3943.000	3946.005	3948.001	3944.927	3870.172	3870.000	
3877.000	3889.001	3900.000	3905.008	3915.000	3924.993	3932.995	3938.002	3941.995	3940.999	3936.896	3870.227	3870.000	
3872.000	3885.998	3899.999	3905.005	3914.984	3915.014	3925.002	3935.989	3937.000	3935.994	3931.012	3930.812	3870.000	
3863.000	3877.998	3899.999	3904.994	3904.000	3910.000	3919.997	3929.993	3933.993	3931.994	3928.026	3929.895	3870.000	
3862.000	3873.003	3899.986	3894.998	3895.006	3900.000	3910.004	3920.007	3929.986	3928.008	3929.996	3930.004	3930.000	
3862.000	3873.994	3880.000	3881.011	3888.002	3895.002	3905.002	3915.997	3923.994	3927.002	3932.993	3933.003	3935.000	
3861.000	3868.000	3872.000	3875.000	38	82.000	3890.000	3900.000	3909.000	3916.000	3925.000	3935.000	3937.000	3940.000

<<<< Calculation Total Change >>>>

0	0	0	0	0	0	0	0	0	0	0	0	0	0
0	0.085	0.046	0.046	-0.014	-0.002	-0.057	-0.013	-0.000	-0.000	-0.000	-0.008	0	
0	0.011	0.036	0.014	0.012	-0.007	-0.002	-0.046	-0.033	-0.009	-0.018	-0.002	0	
0	-0.027	-0.061	0.035	-0.001	0.010	-0.031	-4.213	-0.008	-0.017	-0.010	-0.083	0	
0	0.031	0.061	0.001	0.009	0.013	-0.013	0.015	-0.022	0.005	0.001	-0.012	0	
0	-0.001	-0.007	0.014	0.009	0.006	0.011	-0.020	-0.015	-0.012	-0.008	-0.006	0	
0	0.001	0.002	-0.012	0.012	0.006	0.012	0.010	-0.011	-0.011	-0.003	0.007	0	
0	-0.001	0.026	-0.028	0.011	0.008	0.003	0.016	0.002	-0.019	-0.019	-0.011	0	
0	0.001	0.039	-0.023	-0.002	0.007	0.012	0.006	-0.001	-0.011	-0.019	-0.011	0	
0	0.004	0.030	-0.012	-0.011	0.001	0.003	0.015	0.009	-0.009	-0.022	-0.001	0	
0	-0.002	0.015	-0.012	0.000	-0.010	0.005	0.004	0.006	-0.009	-0.019	-0.074	0	
0	-0.008	0.007	0.009	0	-0.005	-0.004	-0.000	0.005	0.001	-0.073	0.172	0	
0	0.001	0.000	0.008	0	-0.007	-0.005	0.002	-0.005	-0.001	-0.104	0.227	0	
0	-0.002	-0.001	0.005	-0.016	0.014	0.002	-0.011	-0.000	-0.006	0.012	-0.188	0	
0	-0.002	-0.001	-0.006	0	-0.000	-0.003	-0.007	-0.007	-0.006	0.026	-0.105	0	
0	0.003	-0.014	-0.002	0.006	0.008	0.004	0.007	-0.014	0.008	-0.004	0.004	0	
0	-0.006	-0.000	0.011	0.002	0.002	0.002	-0.003	-0.006	0.002	-0.007	0.003	0	
0	0	0	0	0	0	0	0	0	0	0	0	0	

After 8 Year(s)												
Calculation Water Level												
4000.000	3990.000	4000.000	4000.000	4010.000	4027.000	4030.000	4030.000	4030.000	4030.000	4030.000	4030.000	4030.000
3950.000	3959.097	3968.053	3977.052	3997.984	4014.997	4028.935	4029.985	4030.000	4030.000	4030.000	4029.991	4030.000
3945.000	3950.013	3955.041	3966.016	3983.013	4001.992	4015.998	4025.947	4029.962	4029.990	4029.980	4026.998	4025.000
3935.000	3944.969	3954.930	3955.040	3971.999	3988.011	4004.963	4005.188	4019.990	4024.980	4024.989	4021.905	3980.000
3919.000	3925.035	3930.070	3946.001	3960.010	3975.015	3991.986	4000.016	4012.974	4016.005	4018.001	4017.986	4014.000
3914.000	3921.999	3929.992	3939.016	3951.010	3965.006	3979.013	3993.977	4004.983	4010.987	4012.991	4011.994	4008.000
3911.000	3918.001	3925.002	3937.987	3944.014	3956.006	3968.014	3981.011	3994.988	4003.987	4006.996	4006.007	4005.000
3911.000	3912.999	3915.030	3935.968	3939.012	3948.009	3960.004	3970.019	3984.002	3996.978	4002.978	4002.987	4002.000
3906.000	3906.001	3905.044	3929.973	3936.998	3942.008	3951.014	3962.006	3973.999	3985.987	3992.978	3990.988	3990.000
3899.000	3900.005	3900.035	3923.986	3934.987	3939.001	3945.004	3952.018	3962.010	3972.990	3977.975	3967.998	3965.000
3880.000	3899.998	3900.018	3919.986	3928.000	3936.989	3940.006	3947.005	3953.007	3959.990	3959.978	3939.915	3870.000
3890.000	3909.991	3900.008	3910.011	3921.000	3930.995	3937.995	3943.000	3946.006	3948.002	3944.917	3870.197	3870.000
3877.000	3889.002	3900.000	3905.009	3915.000	3924.991	3932.994	3938.003	3941.994	3940.998	3936.882	3870.259	3870.000
3872.000	3885.998	3899.999	3905.006	3914.982	3915.016	3925.002	3935.988	3937.000	3935.993	3931.014	3930.785	3870.000
3863.000	3877.998	3899.998	3904.993	3904.000	3910.000	3919.996	3929.992	3933.992	3931.993	3928.030	3929.880	3870.000
3862.000	3873.004	3899.983	3894.997	3895.007	3900.009	3910.005	3920.008	3929.984	3928.009	3929.994	3930.004	3930.000
3862.000	3873.993	3880.000	3881.013	3888.002	3895.003	3905.003	3915.996	3923.993	3927.002	3932.992	3933.004	3935.000
3861.000	3868.000	3872.000	3875.000	3882.000	3890.000	3900.000	3909.000	3916.000	3925.000	3935.000	3937.000	3940.000

Calculation Total Change												
0	0	0	0	0	0	0	0	0	0	0	0	0
0	0.097	0.053	0.052	-0.016	-0.003	-0.065	-0.015	-0.000	-0.000	-0.000	-0.009	0
0	0.013	0.041	0.016	0.013	-0.008	-0.002	-0.053	-0.038	-0.010	-0.020	-0.002	0
0	-0.031	-0.070	0.040	-0.001	0.011	-0.037	-4.812	-0.010	-0.020	-0.011	-0.095	0
0	0.035	0.070	0.001	0.010	0.015	-0.014	0.016	-0.026	0.005	0.001	-0.014	0
0	-0.001	-0.008	0.016	0.010	0.006	0.013	-0.023	-0.017	-0.013	-0.009	-0.006	0
0	0.001	0.002	-0.013	0.014	0.006	0.014	0.011	-0.012	-0.013	-0.004	0.007	0
0	-0.001	0.030	-0.032	0.012	0.009	0.004	0.019	0.002	-0.022	-0.022	-0.013	0
0	0.001	0.044	-0.027	-0.002	0.008	0.014	0.006	-0.001	-0.013	-0.022	-0.012	0
0	0.005	0.035	-0.014	-0.013	0.001	0.004	0.018	0.010	-0.010	-0.025	-0.002	0
0	-0.002	0.018	-0.014	0.000	-0.011	0.006	0.005	0.007	-0.010	-0.022	-0.085	0
0	-0.009	0.008	0.011	0	-0.005	0.005	-0.000	0.006	0.002	-0.083	0.197	0
0	0.002	0.000	0.009	0	-0.009	-0.006	0.003	-0.006	-0.002	-0.118	0.259	0
0	-0.002	-0.001	0.006	-0.018	0.016	0.002	-0.012	-0.000	-0.007	0.014	-0.215	0
0	-0.002	-0.002	-0.007	0	-0.000	-0.004	-0.008	-0.008	-0.007	0.030	-0.120	0
0	0.004	-0.017	-0.003	0.007	0.009	0.005	0.008	-0.016	0.009	-0.004	0.004	0
0	-0.007	-0.000	0.013	0.002	0.003	0.003	-0.004	-0.007	0.002	-0.008	0.004	0
0	0	0	0	0	0	0	0	0	0	0	0	0

EEEE After 9 Year(s) IIIII

Calculation Water Level

4000.000	3990.000	4000.000	4000.000	4010.000	4027.000	4030.000	4030.000	4030.000	4030.000	4030.000	4030.000	4030.000
3950.000	3959.109	3968.060	3977.058	3997.982	4014.997	4028.927	4029.983	4030.000	4030.000	4030.000	4029.990	4030.000
3945.000	3950.015	3955.046	3966.018	3983.015	4001.991	4015.998	4025.939	4029.957	4029.989	4029.977	4026.998	4025.000
3935.000	3944.966	3954.922	3955.044	3971.998	3988.012	4004.958	4004.590	4019.988	4024.978	4024.988	4021.894	3980.000
3919.000	3925.040	3930.078	3946.002	3960.011	3975.017	3991.984	4000.017	4012.971	4016.006	4018.001	4017.984	4014.000
3914.000	3921.999	3929.991	3939.018	3951.011	3965.007	3979.014	3993.974	4004.981	4010.985	4012.990	4011.993	4008.000
3911.000	3918.001	3925.003	3937.985	3944.015	3956.007	3968.016	3981.013	3994.986	4003.985	4006.996	4006.008	4005.000
3911.000	3912.999	3915.033	3935.964	3939.014	3948.011	3960.004	3970.021	3984.002	3996.975	4002.975	4002.986	4002.000
3906.000	3906.001	3905.050	3929.970	3936.998	3942.009	3951.015	3962.007	3973.999	3985.985	3992.975	3990.986	3990.000
3899.000	3900.005	3900.039	3923.985	3934.985	3939.001	3945.004	3952.020	3962.011	3972.989	3977.972	3967.998	3965.000
3880.000	3899.997	3900.020	3919.984	3928.000	3936.988	3940.007	3947.005	3953.007	3959.988	3959.975	3939.905	3870.000
3890.000	3909.990	3900.009	3910.012	3921.000	3930.994	3937.994	3943.000	3946.006	3948.002	3944.907	3870.221	3870.000
3877.000	3889.002	3900.000	3905.011	3915.000	3924.990	3932.994	3938.003	3941.993	3940.998	3936.867	3870.292	3870.000
3872.000	3885.998	3899.999	3905.007	3914.980	3915.018	3925.003	3935.986	3937.000	3935.992	3931.016	3930.758	3870.000
3863.000	3877.998	3899.998	3904.992	3904.000	3909.999	3919.996	3929.991	3933.991	3931.992	3928.034	3929.865	3870.000
3862.000	3873.004	3899.981	3894.997	3895.008	3900.010	3910.005	3920.009	3929.983	3928.010	3929.995	3930.005	3930.000
3862.000	3873.992	3879.999	3881.015	3888.002	3895.003	3905.003	3915.996	3923.992	3927.002	3932.992	3933.004	3935.000
3861.000	3868.000	3872.000	3875.000	3882.000	3890.000	3900.000	3909.000	3916.000	3925.000	3935.000	3937.000	3940.000

Calculation Total Change

0	0	0	0	0	0	0	0	0	0	0	0	0
0	0.109	0.060	0.058	-0.018	-0.003	-0.073	-0.017	-0.000	-0.000	-0.000	-0.010	0
0	0.015	0.046	0.018	0.015	-0.009	-0.002	-0.061	-0.043	-0.011	-0.023	-0.002	0
0	-0.034	-0.078	0.044	-0.002	0.012	-0.042	-5.410	-0.012	-0.022	-0.012	-0.106	0
0	0.040	0.078	0.002	0.011	0.017	-0.016	0.017	-0.029	0.006	0.001	-0.016	0
0	-0.001	-0.009	0.018	0.011	0.007	0.014	-0.026	-0.019	-0.015	-0.010	-0.007	0
0	0.001	0.003	-0.015	0.015	0.007	0.016	0.013	-0.014	-0.015	-0.004	0.008	0
0	-0.001	0.033	-0.036	0.014	0.011	0.004	0.021	0.002	-0.025	-0.025	-0.014	0
0	0.001	0.050	-0.030	-0.002	0.009	0.015	0.007	-0.001	-0.015	-0.025	-0.014	0
0	0.005	0.039	-0.015	-0.015	0.001	0.004	0.020	0.011	-0.011	-0.028	-0.002	0
0	-0.003	0.020	-0.016	0.000	-0.012	0.007	0.005	0.007	-0.012	-0.025	-0.095	0
0	-0.010	0.009	0.012	0	-0.006	-0.006	-0.000	0.006	0.002	-0.093	0.221	0
0	0.002	0.000	0.011	0	-0.010	-0.006	0.003	-0.007	-0.002	-0.133	0.292	0
0	-0.002	-0.001	0.007	-0.020	0.018	0.003	-0.014	-0.000	-0.008	0.016	-0.242	0
0	-0.002	-0.002	-0.008	0	-0.001	-0.004	-0.009	-0.009	-0.008	0.034	-0.135	0
0	0.004	-0.019	-0.003	0.008	0.010	0.005	0.009	-0.017	0.010	-0.005	0.005	0
0	-0.008	-0.001	0.015	0.002	0.003	0.003	-0.004	-0.008	0.002	-0.008	0.004	0
0	0	0	0	0	0	0	0	0	0	0	0	0

After 10 Year(s)												
Calculation Water Level												
4000.000	3990.000	4000.000	4000.000	4010.000	4027.000	4030.000	4030.000	4030.000	4030.000	4030.000	4030.000	4030.000
3950.000	3959.121	3968.066	3977.065	3997.980	4014.996	4028.919	4029.981	4030.000	4030.000	4030.000	4029.988	4030.000
3945.000	3950.016	3955.051	3966.020	3983.016	4001.990	4015.998	4025.931	4029.952	4029.988	4029.975	4026.997	4025.000
3935.000	3944.962	3954.913	3955.049	3971.998	3988.014	4004.952	4003.993	4019.986	4024.976	4024.986	4021.882	3980.000
3919.000	3925.044	3930.087	3946.002	3960.012	3975.019	3991.982	4000.018	4012.968	4016.006	4018.001	4017.982	4014.000
3914.000	3921.999	3929.990	3939.019	3951.012	3965.008	3979.016	3993.971	4004.979	4010.983	4012.989	4011.992	4008.000
3911.000	3918.001	3925.003	3937.983	3944.017	3956.008	3968.017	3981.014	3994.984	4003.984	4006.995	4006.009	4005.000
3911.000	3912.999	3915.037	3935.960	3939.016	3948.012	3960.005	3970.023	3984.003	3996.973	4002.973	4002.984	4002.000
3906.000	3906.001	3905.056	3929.967	3936.997	3942.010	3951.017	3962.008	3973.999	3985.984	3992.972	3990.985	3990.000
3899.000	3900.006	3900.043	3923.983	3934.984	3939.001	3945.005	3952.022	3962.013	3972.988	3977.969	3967.998	3965.000
3880.000	3899.997	3900.022	3919.982	3928.000	3936.986	3940.008	3947.006	3953.008	3959.987	3959.973	3939.894	3870.000
3890.000	3909.989	3900.010	3910.013	3921.000	3930.993	3937.994	3943.000	3946.007	3948.002	3944.896	3870.246	3870.000
3877.000	3889.002	3900.000	3905.012	3915.000	3924.989	3932.993	3938.004	3941.992	3940.998	3936.852	3870.324	3870.000
3872.000	3885.998	3899.999	3905.007	3914.977	3915.020	3925.003	3935.984	3937.000	3935.991	3931.017	3930.732	3870.000
3863.000	3877.998	3899.998	3904.991	3904.000	3909.999	3919.995	3929.990	3933.990	3931.991	3928.037	3929.850	3870.000
3862.000	3873.005	3899.979	3894.997	3895.009	3900.011	3910.006	3920.010	3929.981	3928.011	3929.995	3930.005	3930.000
3862.000	3873.991	3879.999	3881.016	3888.003	3895.003	3905.004	3915.995	3923.991	3927.002	3932.991	3933.005	3935.000
3861.000	3868.000	3872.000	3875.000	3882.000	3890.000	3900.000	3909.000	3916.000	3925.000	3935.000	3937.000	3940.000

Calculation Total Change												
0	0	0	0	0	0	0	0	0	0	0	0	0
0	0.121	0.066	0.065	-0.020	-0.004	-0.081	-0.019	-0.000	-0.000	-0.000	-0.012	0
0	0.016	0.051	0.020	0.016	-0.010	-0.002	-0.069	-0.048	-0.012	-0.025	-0.003	0
0	-0.038	-0.087	0.049	-0.002	0.014	-0.048	-6.007	-0.014	-0.024	-0.014	-0.118	0
0	0.044	0.087	0.002	0.012	0.019	-0.018	0.018	-0.032	0.006	0.001	-0.018	0
0	-0.001	-0.010	0.019	0.012	0.008	0.016	-0.029	-0.021	-0.017	-0.011	-0.008	0
0	0.001	0.003	-0.017	0.017	0.008	0.017	0.014	-0.016	-0.016	-0.005	0.009	0
0	-0.001	0.037	-0.040	0.016	0.012	0.005	0.023	0.003	-0.027	-0.027	-0.016	0
0	0.001	0.056	-0.033	-0.003	0.010	0.017	0.008	-0.001	-0.016	-0.028	-0.015	0
0	0.006	0.043	-0.017	-0.016	0.001	0.005	0.022	0.013	-0.012	-0.031	-0.002	0
0	-0.003	0.022	-0.018	0.000	-0.014	0.008	0.006	0.008	-0.013	-0.027	-0.106	0
0	-0.011	0.010	0.013	0	-0.007	-0.006	-0.000	0.007	0.002	-0.104	0.246	0
0	0.002	0.000	0.012	0	-0.011	-0.007	0.004	-0.008	-0.002	-0.148	0.324	0
0	-0.002	-0.001	0.007	-0.023	0.020	0.003	-0.016	-0.000	-0.009	0.017	-0.268	0
0	-0.002	-0.002	-0.009	0	-0.001	-0.005	-0.010	-0.010	-0.009	0.037	-0.150	0
0	0.005	-0.021	-0.003	0.009	0.011	0.006	0.010	-0.019	0.011	-0.005	0.005	0
0	-0.009	-0.001	0.016	0.003	0.003	0.004	-0.005	-0.009	0.002	-0.009	0.005	0
0	0	0	0	0	0	0	0	0	0	0	0	0

CCCC After 11 Year(s) JJJJ

Calculation Water Level >>>>

4000.000	3990.000	4000.000	4000.000	4010.000	4027.000	4030.000	4030.000	4030.000	4030.000	4030.000	4030.000	4030.000
3950.000	3959.133	3968.073	3977.071	3997.978	4014.996	4028.911	4029.980	4030.000	4030.000	4030.000	4029.987	4030.000
3945.000	3950.018	3955.057	3966.022	3983.018	4001.989	4015.997	4025.923	4029.948	4029.987	4029.972	4026.997	4025.000
3935.000	3944.958	3954.904	3955.054	3971.998	3988.015	4004.947	4003.396	4019.983	4024.973	4024.985	4021.870	3980.000
3919.000	3925.048	3930.096	3946.002	3960.013	3975.021	3991.980	4000.019	4012.965	4016.007	4018.001	4017.981	4014.000
3914.000	3921.999	3929.989	3939.021	3951.013	3965.009	3979.018	3993.969	4004.977	4010.982	4012.988	4011.991	4008.000
3911.000	3918.001	3925.003	3937.981	3944.019	3956.009	3968.019	3981.016	3994.983	4003.982	4006.995	4006.010	4005.000
3911.000	3912.999	3915.041	3935.956	3939.017	3948.013	3960.005	3970.026	3984.003	3996.970	4002.970	4002.982	4002.000
3906.000	3906.001	3905.061	3929.963	3936.997	3942.011	3951.019	3962.009	3973.999	3985.982	3992.970	3990.983	3990.000
3899.000	3900.006	3900.048	3923.981	3934.982	3939.002	3945.005	3952.024	3962.014	3972.987	3977.966	3967.998	3965.000
3880.000	3899.997	3900.024	3919.981	3928.000	3936.985	3940.009	3947.006	3953.009	3959.986	3959.970	3939.883	3870.000
3890.000	3909.988	3900.011	3910.015	3921.000	3930.993	3937.993	3942.999	3946.008	3948.002	3944.886	3870.270	3870.000
3877.000	3889.002	3900.000	3905.013	3915.000	3924.988	3932.992	3938.004	3941.992	3940.998	3936.837	3870.356	3870.000
3872.000	3885.997	3899.999	3905.008	3914.975	3915.022	3925.003	3935.983	3937.000	3935.990	3931.019	3930.705	3870.000
3863.000	3877.997	3899.998	3904.990	3904.000	3909.999	3919.995	3929.989	3933.989	3931.990	3928.041	3929.835	3870.000
3862.000	3873.005	3899.977	3894.996	3895.010	3900.012	3910.007	3920.011	3929.979	3928.013	3929.994	3930.006	3930.000
3862.000	3873.991	3879.999	3881.018	3888.003	3895.004	3905.004	3915.995	3923.990	3927.003	3932.990	3933.005	3935.000
3861.000	3868.000	3872.000	3875.000	3882.000	3890.000	3900.000	3909.000	3916.000	3925.000	3935.000	3937.000	3940.000

Calculation Total Change >>>>

0	0	0	0	0	0	0	0	0	0	0	0	0
0	0.133	0.073	0.071	-0.022	-0.004	-0.089	-0.020	-0.000	-0.000	-0.000	-0.013	0
0	0.018	0.057	0.022	0.018	-0.011	-0.003	-0.077	-0.052	-0.013	-0.028	-0.003	0
0	-0.042	-0.096	0.054	-0.002	0.015	-0.053	-6.604	-0.017	-0.027	-0.015	-0.130	0
0	0.048	0.096	0.002	0.013	0.021	-0.020	0.019	-0.035	0.007	0.001	-0.019	0
0	-0.001	-0.011	0.021	0.013	0.009	0.018	-0.031	-0.023	-0.018	-0.012	-0.009	0
0	0.001	0.003	-0.019	0.019	0.009	0.019	0.016	-0.017	-0.018	-0.005	0.010	0
0	-0.001	0.041	-0.044	0.017	0.013	0.005	0.026	0.003	-0.030	-0.030	-0.018	0
0	0.001	0.061	-0.037	-0.003	0.011	0.019	0.009	-0.001	-0.018	-0.030	-0.017	0
0	0.006	0.048	-0.019	-0.018	0.002	0.005	0.024	0.014	-0.013	-0.034	-0.002	0
0	-0.003	0.024	-0.019	0.000	-0.015	0.009	0.006	0.009	-0.014	-0.030	-0.117	0
0	-0.012	0.011	0.015	0	-0.007	-0.007	-0.001	0.008	0.002	-0.114	0.270	0
0	0.002	0.000	0.013	0	-0.012	-0.008	0.004	-0.008	-0.002	-0.163	0.356	0
0	-0.003	-0.001	0.008	-0.025	0.022	0.003	-0.017	-0.000	-0.010	0.019	-0.295	0
0	-0.003	-0.002	-0.010	0	-0.001	-0.005	-0.011	-0.011	-0.010	0.041	-0.165	0
0	0.005	-0.023	-0.004	0.010	0.012	0.007	0.011	-0.021	0.013	-0.006	0.006	0
0	-0.009	-0.001	0.018	0.003	0.004	0.004	-0.005	-0.010	0.003	-0.010	0.005	0
0	0	0	0	0	0	0	0	0	0	0	0	0

[[[[[After 12 Year (s)]]]]

<<<< Calculation Water Level >>>>

4000.000	3990.000	4000.000	4000.000	4010.000	4027.000	4030.000	4030.000	4030.000	4030.000	4030.000	4030.000	4030.000	4030.000
3950.000	3959.145	3968.080	3977.078	3997.976	4014.996	4028.903	4029.978	4030.000	4030.000	4030.000	4029.986	4030.000	4030.000
3945.000	3950.020	3955.062	3966.023	3983.020	4001.988	4015.997	4025.915	4029.943	4029.985	4029.970	4026.997	4025.000	4025.000
3935.000	3944.954	3954.896	3955.059	3971.998	3988.016	4004.941	4002.800	4019.981	4024.971	4024.984	4021.858	3980.000	3980.000
3919.000	3925.053	3930.104	3946.002	3960.015	3975.023	3991.978	4000.019	4012.962	4016.008	4018.001	4017.979	4014.000	4014.000
3914.000	3921.999	3929.988	3939.023	3951.015	3965.010	3979.019	3993.966	4004.975	4010.980	4012.987	4011.991	4008.000	4008.000
3911.000	3918.001	3925.004	3937.980	3944.020	3956.010	3968.021	3981.017	3994.981	4003.980	4006.994	4006.011	4005.000	4005.000
3911.000	3912.999	3915.045	3935.952	3939.019	3948.014	3960.006	3970.028	3984.003	3996.967	4002.967	4002.981	4002.000	4002.000
3906.000	3906.002	3905.067	3929.960	3936.997	3942.012	3951.020	3962.010	3973.999	3985.980	3992.967	3990.982	3990.000	3990.000
3899.000	3900.007	3900.052	3923.980	3934.981	3939.002	3945.006	3952.027	3962.015	3972.985	3977.963	3967.998	3965.000	3965.000
3880.000	3899.996	3900.026	3919.979	3928.000	3936.984	3940.009	3947.007	3953.010	3959.984	3959.967	3939.873	3870.000	3870.000
3890.000	3909.987	3900.012	3910.016	3921.000	3930.992	3937.993	3942.999	3946.008	3948.002	3944.876	3870.295	3870.000	3870.000
3877.000	3889.002	3900.000	3905.014	3915.000	3924.987	3932.991	3938.004	3941.991	3940.998	3936.823	3870.388	3870.000	3870.000
3872.000	3885.997	3899.999	3905.009	3914.973	3915.024	3925.003	3935.981	3937.000	3935.989	3931.021	3930.678	3870.000	3870.000
3863.000	3877.997	3899.998	3904.989	3904.000	3909.999	3919.994	3929.987	3933.988	3931.989	3928.045	3929.820	3870.000	3870.000
3862.000	3873.006	3899.975	3894.996	3895.010	3900.013	3910.007	3920.012	3929.977	3928.014	3929.994	3930.007	3930.000	3930.000
3862.000	3873.990	3879.999	3881.019	3888.003	3895.004	3905.004	3915.994	3923.989	3927.003	3932.989	3933.005	3935.000	3935.000
3861.000	3868.000	3872.000	3875.000	3882.000	3890.000	3900.000	3909.000	3916.000	3925.000	3935.000	3937.000	3940.000	3940.000

<<<< Calculation Total Change >>>>

0	0	0	0	0	0	0	0	0	0	0	0	0	0
0	0.145	0.080	0.078	-0.024	-0.004	-0.097	-0.022	-0.000	-0.000	-0.000	-0.014	0	0
0	0.020	0.062	0.023	0.020	-0.012	-0.003	-0.085	-0.057	-0.015	-0.030	-0.003	0	0
0	-0.046	-0.104	0.059	-0.002	0.016	-0.059	-7.200	-0.019	-0.029	-0.016	-0.142	0	0
0	0.053	0.104	0.002	0.015	0.023	-0.022	0.019	-0.038	0.008	0.001	-0.021	0	0
0	-0.001	-0.012	0.023	0.015	0.010	0.019	-0.034	-0.025	-0.020	-0.013	-0.009	0	0
0	0.001	0.004	-0.020	0.020	0.010	0.021	0.017	-0.019	-0.020	-0.006	0.011	0	0
0	-0.001	0.045	-0.048	0.019	0.014	0.006	0.028	0.003	-0.033	-0.033	-0.019	0	0
0	0.002	0.067	-0.040	-0.003	0.012	0.020	0.010	-0.001	-0.020	-0.033	-0.018	0	0
0	0.007	0.052	-0.020	-0.019	0.002	0.006	0.027	0.015	-0.015	-0.037	-0.002	0	0
0	-0.004	0.026	-0.021	0.000	-0.016	0.009	0.007	0.010	-0.016	-0.033	-0.127	0	0
0	-0.013	0.012	0.016	0	-0.008	-0.007	-0.001	0.008	0.002	-0.124	0.295	0	0
0	0.002	0.000	0.014	0	-0.013	-0.009	0.004	-0.009	-0.002	-0.177	0.388	0	0
0	-0.003	-0.001	0.009	-0.027	0.024	0.003	-0.019	-0.000	-0.011	0.021	-0.322	0	0
0	-0.003	-0.002	-0.011	0	-0.001	-0.006	-0.013	-0.012	-0.011	0.045	-0.180	0	0
0	0.006	-0.025	-0.004	0.010	0.013	0.007	0.012	-0.023	0.014	-0.006	0.007	0	0
0	-0.010	-0.001	0.019	0.003	0.004	0.004	-0.006	-0.011	0.003	-0.011	0.005	0	0
0	0	0	0	0	0	0	0	0	0	0	0	0	0

[[[[[After 13 Year(s)]]]]]

<<<< Calculation Water Level >>>>

4000.000	3990.000	4000.000	4000.000	4010.000	4027.000	4030.000	4030.000	4030.000	4030.000	4030.000	4030.000	4030.000
3950.000	3959.157	3968.086	3977.084	3997.975	4014.995	4028.895	4029.976	4030.000	4030.000	4030.000	4029.985	4030.000
3945.000	3950.021	3955.067	3966.025	3983.021	4001.987	4015.997	4025.907	4029.938	4029.984	4029.967	4026.996	4025.000
3935.000	3944.950	3954.887	3955.064	3971.998	3988.018	4004.935	4002.205	4019.978	4024.968	4024.982	4021.847	3980.000
3919.000	3925.057	3930.113	3946.003	3960.016	3975.025	3991.977	4000.020	4012.959	4016.008	4018.001	4017.977	4014.000
3914.000	3921.999	3929.987	3939.025	3951.016	3965.010	3979.021	3993.963	4004.972	4010.978	4012.986	4011.990	4008.000
3911.000	3918.001	3925.004	3937.978	3944.022	3956.010	3968.023	3981.018	3994.980	4003.979	4006.994	4006.012	4005.000
3911.000	3912.999	3915.048	3935.948	3939.020	3948.015	3960.006	3970.030	3984.003	3996.964	4002.964	4002.979	4002.000
3906.000	3906.002	3905.072	3929.957	3936.997	3942.013	3951.022	3962.010	3973.999	3985.979	3992.964	3990.980	3990.000
3899.000	3900.008	3900.057	3923.978	3934.979	3939.002	3945.006	3952.029	3962.016	3972.984	3977.960	3967.997	3965.000
3880.000	3899.996	3900.028	3919.977	3928.000	3936.982	3940.010	3947.008	3953.011	3959.983	3959.964	3939.862	3870.000
3890.000	3909.986	3900.013	3910.017	3921.000	3930.991	3937.992	3942.999	3946.009	3948.003	3944.865	3870.319	3870.000
3877.000	3889.003	3900.000	3905.015	3915.000	3924.986	3932.991	3938.005	3941.990	3940.997	3936.808	3870.420	3870.000
3872.000	3885.997	3899.999	3905.009	3914.971	3915.026	3925.004	3935.980	3937.000	3935.988	3931.022	3930.652	3870.000
3863.000	3877.997	3899.997	3904.988	3904.000	3909.999	3919.994	3929.986	3933.987	3931.988	3928.048	3929.806	3870.000
3862.000	3873.006	3899.973	3894.996	3895.011	3900.014	3910.008	3920.013	3929.975	3928.015	3929.993	3930.007	3930.000
3862.000	3873.989	3879.999	3881.021	3888.003	3895.005	3905.005	3915.994	3923.988	3927.003	3932.988	3933.006	3935.000
3861.000	3868.000	3872.000	3875.000	3882.000	3890.000	3900.000	3909.000	3916.000	3925.000	3935.000	3937.000	3940.000

<<<< Calculation Total Change >>>>

0	0	0	0	0	0	0	0	0	0	0	0	0
0	0.157	0.086	0.084	-0.025	-0.005	-0.105	-0.024	-0.000	-0.000	-0.000	-0.015	0
0	0.021	0.067	0.025	0.021	-0.013	-0.003	-0.093	-0.062	-0.016	-0.033	-0.004	0
0	-0.050	-0.113	0.064	-0.002	0.018	-0.065	-7.795	-0.022	-0.032	-0.018	-0.153	0
0	0.057	0.113	0.003	0.016	0.025	-0.023	0.020	-0.041	0.008	0.001	-0.023	0
0	-0.001	-0.013	0.025	0.016	0.010	0.021	-0.037	-0.028	-0.022	-0.014	-0.010	0
0	0.001	0.004	-0.022	0.022	0.010	0.023	0.018	-0.020	-0.021	-0.006	0.012	0
0	-0.001	0.048	-0.052	0.020	0.015	0.006	0.030	0.003	-0.036	-0.036	-0.021	0
0	0.002	0.072	-0.043	-0.003	0.013	0.022	0.010	-0.001	-0.021	-0.036	-0.020	0
0	0.008	0.057	-0.022	-0.021	0.002	0.006	0.029	0.016	-0.016	-0.040	-0.003	0
0	-0.004	0.028	-0.023	0.000	-0.018	0.010	0.008	0.011	-0.017	-0.036	-0.138	0
0	-0.014	0.013	0.017	0	-0.009	-0.008	-0.001	0.009	0.003	-0.135	0.319	0
0	0.003	0.000	0.015	0	-0.014	-0.009	0.005	-0.010	-0.003	-0.192	0.420	0
0	-0.003	-0.001	0.009	-0.029	0.026	0.004	-0.020	-0.000	-0.012	0.022	-0.348	0
0	-0.003	-0.003	-0.012	0	-0.001	-0.006	-0.014	-0.013	-0.012	0.048	-0.194	0
0	0.006	-0.027	-0.004	0.011	0.014	0.008	0.013	-0.025	0.015	-0.007	0.007	0
0	-0.011	-0.001	0.021	0.003	0.005	0.005	-0.006	-0.012	0.003	-0.012	0.006	0
0	0	0	0	0	0	0	0	0	0	0	0	0

After 14 Year(s)												
Calculation Water Level												
4000.000	3990.000	4000.000	4000.000	4010.000	4027.000	4030.000	4030.000	4030.000	4030.000	4030.000	4030.000	4030.000
3950.000	3959.169	3968.093	3977.091	3997.973	4014.995	4028.887	4029.974	4030.000	4030.000	4030.000	4029.984	4030.000
3945.000	3950.023	3955.072	3966.027	3983.023	4001.986	4015.996	4025.898	4029.933	4029.983	4029.965	4026.996	4025.000
3935.000	3944.947	3954.879	3955.069	3971.998	3988.019	4004.928	4001.611	4019.975	4024.966	4024.981	4021.835	3980.000
3919.000	3925.062	3930.122	3946.003	3960.017	3975.027	3991.975	4000.020	4012.955	4016.009	4018.001	4017.975	4014.000
3914.000	3921.999	3929.987	3939.027	3951.017	3965.011	3979.022	3993.960	4004.970	4010.977	4012.985	4011.989	4008.000
3911.000	3918.001	3925.004	3937.976	3944.024	3956.011	3968.024	3981.020	3994.978	4003.977	4006.993	4006.013	4005.000
3911.000	3912.999	3915.052	3935.944	3939.022	3948.017	3960.007	3970.033	3984.004	3996.962	4002.962	4002.978	4002.000
3906.000	3906.002	3905.078	3929.954	3936.996	3942.014	3951.024	3962.011	3973.999	3985.977	3992.961	3990.978	3990.000
3899.000	3900.008	3900.061	3923.976	3934.977	3939.002	3945.007	3952.031	3962.018	3972.983	3977.957	3967.997	3965.000
3880.000	3899.996	3900.031	3919.975	3928.000	3936.981	3940.011	3947.008	3953.011	3959.982	3959.961	3939.852	3870.000
3890.000	3909.985	3900.014	3910.019	3921.000	3930.990	3937.991	3942.999	3946.010	3948.003	3944.855	3870.344	3870.000
3877.000	3889.003	3900.000	3905.017	3915.000	3924.985	3932.990	3938.005	3941.989	3940.997	3936.794	3870.453	3870.000
3872.000	3885.997	3899.998	3905.010	3914.968	3915.028	3925.004	3935.978	3937.000	3935.987	3931.024	3930.625	3870.000
3863.000	3877.997	3899.997	3904.987	3904.000	3909.999	3919.993	3929.985	3933.986	3931.988	3928.052	3929.791	3870.000
3862.000	3873.007	3899.971	3894.995	3895.012	3900.015	3910.009	3920.014	3929.973	3928.016	3929.993	3930.008	3930.000
3862.000	3873.988	3879.999	3881.023	3888.004	3895.005	3905.005	3915.993	3925.987	3927.003	3932.987	3933.006	3935.000
3861.000	3868.000	3872.000	3875.000	3882.000	3890.000	3900.000	3909.000	3916.000	3925.000	3935.000	3937.000	3940.000
Calculation Total Change												
0	0	0	0	0	0	0	0	0	0	0	0	0
0	0.169	0.093	0.091	-0.027	-0.005	-0.113	-0.026	-0.000	-0.000	-0.000	-0.016	0
0	0.023	0.072	0.027	0.023	-0.014	-0.004	-0.102	-0.067	-0.017	-0.035	-0.004	0
0	-0.053	-0.121	0.069	-0.002	0.019	-0.072	-8.389	-0.025	-0.034	-0.019	-0.165	0
0	0.062	0.122	0.003	0.017	0.027	-0.025	0.020	-0.045	0.009	0.001	-0.025	0
0	-0.001	-0.013	0.027	0.017	0.011	0.022	-0.040	-0.030	-0.023	-0.015	-0.011	0
0	0.001	0.004	-0.024	0.024	0.011	0.024	0.020	-0.022	-0.023	-0.007	0.013	0
0	-0.001	0.052	-0.056	0.022	0.017	0.007	0.033	0.004	-0.038	-0.038	-0.022	0
0	0.002	0.078	-0.046	-0.004	0.014	0.024	0.011	-0.001	-0.023	-0.039	-0.022	0
0	0.008	0.061	-0.024	-0.023	0.002	0.007	0.031	0.018	-0.017	-0.043	-0.003	0
0	-0.004	0.031	-0.025	0.000	-0.019	0.011	0.008	0.011	-0.018	-0.039	-0.148	0
0	-0.015	0.014	0.019	0	-0.010	-0.009	-0.001	0.010	0.003	-0.145	0.344	0
0	0.003	0.000	0.017	0	-0.015	-0.010	0.005	-0.011	-0.003	-0.206	0.453	0
0	-0.003	-0.002	0.010	-0.032	0.028	0.004	-0.022	-0.000	-0.013	0.024	-0.375	0
0	-0.003	-0.003	-0.013	0	-0.001	-0.007	-0.015	-0.014	-0.012	0.052	-0.209	0
0	0.007	-0.029	-0.005	0.012	0.015	0.009	0.014	-0.027	0.016	-0.007	0.008	0
0	-0.012	-0.001	0.023	0.004	0.005	0.005	-0.007	-0.013	0.003	-0.013	0.006	0
0	0	0	0	0	0	0	0	0	0	0	0	0

[[[[[After 15 Year(s)]]]]]
<<<<	Calculation Water Level												>>>>
4000.000	3990.000	4000.000	4000.000	4010.000	4027.000	4030.000	4030.000	4030.000	4030.000	4030.000	4030.000	4030.000	4030.000
3950.000	3959.181	3968.099	3977.097	3997.971	4014.995	4028.879	4029.972	4030.000	4030.000	4030.000	4029.983	4030.000	4030.000
3945.000	3950.024	3955.077	3966.029	3983.025	4001.985	4015.996	4025.890	4029.929	4029.982	4029.962	4026.996	4025.000	4025.000
3935.000	3944.943	3954.870	3955.074	3971.998	3988.020	4004.922	4001.018	4019.972	4024.963	4024.979	4021.823	3980.000	3980.000
3919.000	3925.066	3930.130	3946.003	3960.018	3975.028	3991.973	4000.020	4012.952	4016.010	4018.001	4017.974	4014.000	4014.000
3914.000	3921.999	3929.986	3939.029	3951.018	3965.012	3979.024	3993.957	4004.968	4010.975	4012.984	4011.988	4008.000	4008.000
3911.000	3918.001	3925.004	3937.975	3944.025	3956.012	3968.026	3981.021	3994.977	4003.976	4006.993	4006.014	4005.000	4005.000
3911.000	3912.999	3915.056	3935.940	3939.023	3948.018	3960.007	3970.035	3984.004	3996.959	4002.959	4002.976	4002.000	4002.000
3906.000	3906.002	3905.083	3929.950	3936.996	3942.015	3951.025	3962.012	3973.999	3985.976	3992.958	3990.977	3990.000	3990.000
3899.000	3900.009	3900.065	3923.975	3934.976	3939.002	3945.007	3952.033	3962.019	3972.982	3977.954	3967.997	3965.000	3965.000
3880.000	3899.995	3900.033	3919.973	3928.000	3936.980	3940.012	3947.009	3953.012	3959.980	3959.959	3939.841	3870.000	3870.000
3890.000	3909.983	3900.016	3910.020	3921.000	3930.990	3937.991	3942.999	3946.011	3948.003	3944.845	3870.368	3870.000	3870.000
3877.000	3889.003	3900.000	3905.018	3915.000	3924.984	3932.989	3938.005	3941.989	3940.997	3936.779	3870.485	3870.000	3870.000
3872.000	3885.997	3899.998	3905.011	3914.966	3915.030	3925.004	3935.977	3937.000	3935.986	3931.026	3930.599	3870.000	3870.000
3863.000	3877.996	3899.997	3904.986	3904.000	3909.999	3919.993	3929.984	3933.985	3931.987	3928.055	3929.776	3870.000	3870.000
3862.000	3873.007	3899.969	3894.995	3895.013	3900.016	3910.009	3920.015	3929.971	3928.017	3929.992	3930.008	3930.000	3930.000
3862.000	3873.987	3879.999	3881.024	3888.004	3895.005	3905.005	3915.993	3923.986	3927.003	3932.986	3933.007	3935.000	3935.000
3861.000	3868.000	3872.000	3875.000	3882.000	3890.000	3900.000	3909.000	3916.000	3925.000	3935.000	3937.000	3940.000	3940.000

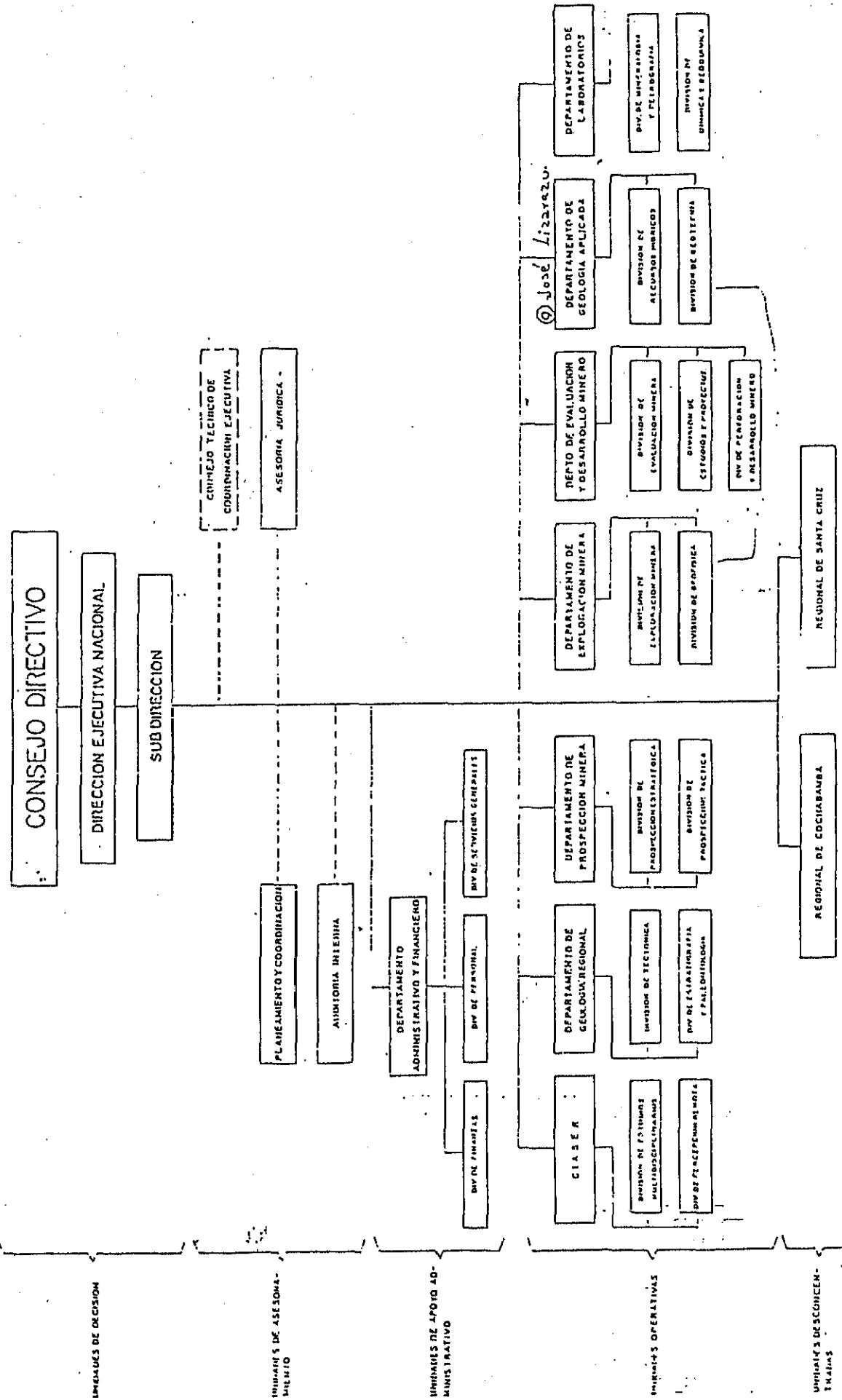
<<<<	Calculation Total Change												>>>>
0	0	0	0	0	0	0	0	0	0	0	0	0	0
0	0.181	0.099	0.097	-0.029	-0.005	-0.121	-0.028	-0.000	-0.000	-0.000	-0.017	0	0
0	0.024	0.077	0.029	0.025	-0.015	-0.004	-0.110	-0.071	-0.018	-0.038	-0.004	0	0
0	-0.057	-0.130	0.074	-0.002	0.020	-0.078	-8.982	-0.028	-0.037	-0.021	-0.177	0	0
0	0.066	0.130	0.003	0.018	0.028	-0.027	0.020	-0.048	0.010	0.001	-0.026	0	0
0	-0.001	-0.014	0.029	0.018	0.012	0.024	-0.043	-0.032	-0.025	-0.016	-0.012	0	0
0	0.001	0.004	-0.025	0.025	0.012	0.026	0.021	-0.023	-0.024	-0.007	0.014	0	0
0	-0.001	0.056	-0.060	0.023	0.018	0.007	0.035	0.004	-0.041	-0.041	-0.024	0	0
0	0.002	0.083	-0.050	-0.004	0.015	0.025	0.012	-0.001	-0.024	-0.042	-0.023	0	0
0	0.009	0.065	-0.025	-0.024	0.002	0.007	0.033	0.019	-0.018	-0.046	-0.003	0	0
0	-0.005	0.033	-0.027	0.000	-0.020	0.012	0.009	0.012	-0.020	-0.041	-0.159	0	0
0	-0.017	0.016	0.020	0	-0.010	-0.009	-0.001	0.011	0.003	-0.155	0.368	0	0
0	0.003	0.000	0.018	0	-0.016	-0.011	0.005	-0.011	-0.003	-0.221	0.485	0	0
0	-0.003	-0.002	0.011	-0.034	0.030	0.004	-0.023	-0.000	-0.014	0.026	-0.401	0	0
0	-0.004	-0.003	-0.014	0	-0.001	-0.007	-0.016	-0.015	-0.013	0.055	-0.224	0	0
0	0.007	-0.031	-0.005	0.013	0.016	0.009	0.015	-0.029	0.017	-0.008	0.008	0	0
0	-0.013	-0.001	0.024	0.004	0.005	0.005	-0.007	-0.014	0.003	-0.014	0.007	0	0
0	0	0	0	0	0	0	0	0	0	0	0	0	0

Start time : Sun Nov 01 12:06:12 1987
End time : Sun Nov 01 13:36:13 1987
Calculation time : 5401 (Sec)

16. ORGANIZATION CHART OF SAMAPA

17. ORGANIZATION CHART OF GEOBOL

ORGANIGRAMA DE GEOBOL

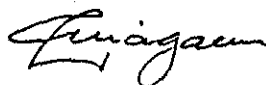


ORGANIZATION OF GEOBOL


18. OTHERS

MINUTES OF DISCUSSION
ON
THE INTERIM REPORT
FOR
THE STUDY ON
GROUNDWATER DEVELOPMENT PROJECT
ON EL ALTO DISTRICT IN LA PAZ CITY

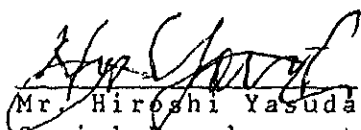
=====



Ing. Luis Aliaga Doria Medina
GENERAL MANAGER
SAMAPA



Ing. Masaaki Shindo
SURVEY TEAM LEADER
Project of Groundwater
on El Alto, District
in La Paz City, BOLIVIA



Mr. Hiroshi Yasuda
Social Development
Cooperation Department
of JICA, TOKYO, JAPAN.

September 17th, 1987. La Paz, Bolivia.

=====

The Japanese Survey Team for the study of the Groundwater Development Project on El Alto District in La Paz City, organized by the Japan International Cooperation Agency (JICA) headed by Mr. Masaaki Shindo, visited the Republic of BOLIVIA, between 10th September and 18th 1987, to submit and explain the Interim Report.

During the Team's stay in BOLIVIA, the Team exchanged views and a series of discussions with Servicio Autonomo Municipal de Agua Potable y Alcantarillado (SAMAPA).

Main items which were understood by both parties are as follows:

1. SAMAPA, showed the water supply plan on El Alto District which was composed by two stages as follows:

Stage I	Plan in 1995	
	Population	385,000 habts.
	Water consumption	155 lts./day/man

Stage II	Plan in 2000	
	Population	495,000 habts.
	Water consumption	160 lts./day/man

The study Team considered these aspects and these plans will be reflected in the pumping plan at the stage of the Draft Final Report.

2. SAMAPA, requested the Team to provide the summary of the Draft Final Report and the Final Report in Spanish for the purpose of easy understanding.
3. SAMAPA and the Japanese Survey Team, agreed upon the schedule to get more details and to analyze the results of the study as follows:
 - Conference of the Draft Final Report - Middle of November
 - Receiving comments on the Draft Final Report from SAMAPA.- Middle of December.
 - Sending the Final Report - Before middle of January

=====

LIST OF COLLECTED DATA

A. SAMAPA.

1. Alcantarillado Sanitario y Pluvial, Tratamiento de aguas servidas, La Paz (Plan Maestro Tomo 3).
2. Alcantarillado Sanitario y Pluvial, Tratamiento de aguas servidas, La Paz (Plan Maestro Tomo 4).
3. Tubería de Conexión Pampahasi - Ovejuyo (Estudio de Factibilidad) Anexos y Planos.
4. Actualización de datos básicos, Anexos y Planos (Borrador).
5. Estudio de Factibilidad programa de Saneamiento La Paz El Alto, Fase I, Diagnóstico y análisis de la situación actual, Volúmen 2 Anexos, Borrador.
6. Agua Potable La Paz, Actualización del Plan Maestro y Factibilidad de la 2da. Etapa, Sumario.
7. Agua Potable La Paz, Actualización del Plan Maestro y Factibilidad de la 2da. Etapa, Tomo 2, Anexos.
8. Agua Potable La Paz, Actualización del Plan Maestro y Factibilidad de la 2da. Etapa, Tomo 1, Informe.
9. Agua Potable La Paz, Proyecto Definitivo de la 2da. Etapa, Tomo I, Informe.
10. Estudio de Factibilidad Programa de Saneamiento La Paz-El Alto, Fase II, Planificación concepcional Volúmen 2, Anexos Borrador.
11. Estudio de Factibilidad, Programa de Saneamiento La Paz-El Alto, Fase II, Diagnóstico de los aspectos socio-económicos y socio-culturales, Volumen 3, Memoria descriptiva, Borrador.
12. Mejora y Ampliación del servicio de agua Potable, Primera Etapa, Informe Final.
13. Estudio de Factibilidad Programa de Saneamiento La Paz-El Alto, Fase I, Diagnóstico y análisis de la situación actual, Volúmen I, Memoria Descriptiva, Borrador.
14. Estudio de Factibilidad Programa de Saneamiento La Paz-El Alto, Fase II, Planificación concepcional, Volúmen 1, Memoria Descriptiva, Borrador.
15. Agua Potable La Paz, Actualización del Plan Maestro y Factibilidad de la 2da. Etapa, Tomo 3, Planos, Anexos 8.
16. Informe Geológico No. 11, Características Hidrogeológicas de la región de La Paz (I), H.A.M. (fotocopia)

17. Bolivia, estimaciones y proyecciones de población, INE.
18. Bolivia en cifras 1985.
19. Los recursos de agua del altiplano norte y del área de Oruro, GEOBOL-N.N.U.U. (fotocopia) incluye 53 planos (cincuenta y tres).
20. Informe Geológico No. 12, HAM, incluye 8 (ocho) planos.
21. Juego de planillas de consumos y tarifas de abril/86 SAMAPA.
22. Resumen de facturación por zonas y categorías, planillas de SAMAPA.
23. Estudio de Factibilidad, Programa de Saneamiento La Paz - El Alto, Fase I, Diagnóstico y análisis de la situación actual, volumen 3, Planos, Borrador (Archivador).
24. Fase II, Planificación conceptual, Volumen 4, Planos Borrador (Archivador).
25. Informe Geológico No. 4, Investigación Geofísica por sondeos eléctricos (fotocopia), Incluye 26 planos (veintiseis).
26. Honorable Alcaldía Municipal de La Paz, PLAN DE DESARROLLO URBANO - CIUDAD DE LAPAZ, tomo 1, ASPECTOS FISICOS Y AMBIENTALES geología y aguas.

MINUTES OF THE FINAL MEETING
GROUNDWATER DEVELOPMENT
PROJECT IN EL ALTO

Members of the Project participating in the meeting:

Ing. Masaaki Shindo	Ing. Alfonso Pomarino
Dr. Takashi Ohya	Ing. José Antonio López
Dr. Mashio Yamaha	Sr. Fernando Alba
Ing. Enrique Medina	Ing. Marco Romay
Ing. Alfredo Soria (GEOBOL)	Ing. Alberto Chavez

JICA - SAMAPA - GEOBOL

DATE: March 24, 1987

- 1) WATER QUALITY ANALYSIS (described by Sr. Fernando Alba) LABORATORY
- 2) GEOPHYSIC PRSPECTING (described by Ing. Marco Romay) SAMAPA
- 3) HIDROGEOLOGY (described by Ing. Alberto Chavez) SAMAPA
- 4) GEOLOGY (described by Ing. Alfredo Soria) GEOBOL
- 5) WATER SUPPLY (described by Ing. Alberto Chavez) SAMAPA
- 1) WATER QUALITY ANALYSIS

Twenty five samples have been taken during the study in areas such as:

- | | |
|------------------|------------------|
| a) R. Seque | e) in Viacha |
| b) R. Choqueyapu | f) Milluni mine |
| c) R. Seco | g) Milluni Chico |
| d) Milluni Lake | |

In order to determine the water quality, samples were taken to examine contamination, heavy metals and bacteria. It was found that the water quality around the area in Viacha is of better quality than the water around Rio Seco. It is considered a good quality the samples taken with an average of (-100) contamination. Those samples that were contaminated with heavy metals were considered for study in JAPAN. The study covered all of the wells perforated by GEOBOL.

2) GEOPHYSIC PROSPECTING

The study took place in a distance that covered 470 Kms, 27 Kms were considered within the North and South territorial ground and 17 Kms, within the East and West points. An estimate of three stations were covered daily electric resistivity tests in 64 spots were covered in the course of the study, marking a length of 800 mts and a central point in between of 400 mts. on each side. The topographer's team covered an area of 23 stations. The areas studied are Panamerican Road, road to Laja, road to Viacha, road to Oruro, road to Sankata. A preliminar perspective of the water flow was considered which places the Table of water in a horizontal position, although this is basically a focus to the actual flow of current. Dr. Ohya has mentioned that there is hardly any flow of water, most of the water is basically from the lakes, there is also a possibility the mountains interfere with with flow, making it to move towards the other side. Next reports will have further details of the study about the flow of water current.

3) HIDROGEOLOGY

During the study, they were able to calculate the flow of water of the following rivers;

- | | |
|------------------|-----------------|
| a) R. La Paz | d) R. Lipari |
| b) R. Orkohauira | e) R. Achocalla |
| c) R. Achumani | |

Three samples were taken from each one of the rivers, including R. Seco, R. Seque, R. La Paz. Ing. Marui has the exact measurements of all the above rivers. Installed is a device, in order to measure the level of water located at (GEOBOL Plant). Various maps were elaborated considering the following focus;

- | | |
|----------------------|------------------------------------|
| a) General map | d) Level of water considering 1973 |
| b) Well's location | e) Level of water |
| c) Chemical analysis | f) Level of water in 1987 |

The General Map (a) describes the basic characteristics of the project including Treatment Plants, Reservoirs, Water Supply installation Systems, Wells.

4) GEOLOGY

In order to find the appropriate location for construction, it is necessary to examine the territorial ground area, for the advantageous installation of wells, water supply systems etc. VASCAL, (Coca Cola bottling Co.) is an example of having problems with the location of it's Well, due to impermeability, therefore other factories as well have been affected by the same mistake.

It is found that within the area around Chunchocoro Lake is a good location for the intallation of Water Supply System, geologically speaking it is important to notice and examine the origin of ground. During the study the knowledge and dedication of Ing. Miyamoto was very helpful.

5) WATER SUPPLY

The ~~analysis to~~ supply water from the Treatment in El Alto, corresponds to the month of December, 1986. It shows that 61.6 % of the water that is treated is distributed to El Alto area, the rest covers the demand to supply water in the city.

Considering the improvement of the Treatment Plant "El Alto" and taking full advantage of the capacity that the pipeline from Tuni - El Alto the demand for 1993 can be covered.

Consequently by 1999, we have a déficit of 39.000 m³/day, that is supposed to have a coverage by the explotación of groundwater. The information concerning population and future demands were basically taken from the (December issue 1986) by GIIEC, actualized in a certain form, using further information provided by the Ministry cabinet of Urbanism.& Housing.

The data provided above is preliminar, although changes can occur with the complementary studies performed in JAPAN, by the JICA experts.

WATER QUALITY ANALYSIS

The study on water quality analysis with Dr. Yamaha, using a Portable Kit and a complementary Conductimeter for the specific control of other analysis at the Central Laboratory at SAMAPA.

For this, the study was divided in different aspects;

1) TREATMENT PLANTS CONTROL: In this item control, the raw water analysis test was considered and treated water at three different plants that SAMAPA has, (Achachicala, Pampahasi and El Alto).

At the same time a sample was taken from each one of the water treatment plants.

Taking into consideration the Milluni Dam as the most problematic point by heavy mineral contamination (Fe, Mn, etc) there was strict control of the area analyzing samples. Including from the Huayna Potosí Lagoon, where the water sources come from the ice defrosting of the Huayna Potosí Mountain.

Samples were taken at the mine exit, level -36 and level 0 and one sample from Milluni Chico. These three samples were sent to JAPAN, for the analysis on heavy metals.

The samples taken from Rio Seque, Rio Seco, were taken to evaluate the influence of the water from the Milluni waters, about these two rivers.

2) WATER QUALITY CONTROL ANALYSIS: Of approximately 23 wells perforated by GEOBOL, around the area in Rio Seco, such wells as; HORMITABOL, GEOBOL, FAN-VIPLAN, and others, where the water contained a specific conductivity index with an average of 200 to 300 μS , that, compared with the water on the way to Viacha, ACRIBOL, ELMEC, PATRIA, INSA and others had an average conductivity level of 65 to 100 μS approximately, therefore a lower amount of ions, dissolved such as Ca, Mn, SO_4 , Cl etc.

The same was proven, that the water located on the road to Oruro, also contained specific conductivity index similar to the samples taken from the road on the way to Viacha.

All the results of these analysis are to be presented during the Final Report of the Japanese Mission.

15

In order to understand the water quality depending upon the sources, dam water for municipal supply, well water for industrial use, etc, and the areas, samples were taken from various sources. The water samples were examined in regard to physical, chemical and biological factors, depending upon each water condition and each use, some which are related to the contamination caused by mining waste (Milluni waters) or human waste (river waters/well waters).

It was found that the water quality around the southern central areas of El Alto (mainly groundwater) seemed better quality than the water around surface water (R. Seco and R. Seque), or some groundwater samples on the PanAmerican road. Several water samples taken in the southern central El Alto showed less than 100 μ S/cm. for EC.

On the other hand, the surface water of Rio Seque showed lower pH (3.5), seemed polluted by Milluni water. The samples taken from the line of flow of Milluni (Milluni Mine, Milluni Chico, Milluni Dam and the followed Canal, and also the downflow of Milluni Dam) showed some contamination of Milluni Mine in some extent, however, it seemed almost no problem from Achachicala treated water for Municipal water supply after treatment.

The contamination by Milluni mine waste water will be analyzed in TOKYO, however the results of analysis will carefully be considered in order to report, and ~~the~~ ^{to} publish, if necessary.

SAMAPA

SERVICIO AUTONOMO MUNICIPAL DE AGUA POTABLE Y ALCANTARILLADO

S.J/001/87

INFORME

A : Sr. Masaaki Shindo
JEFE DE LA MISION JICA.

DE : Ing. Alfonso Pomarino
Jefe de Planificacion- SAMAPA

REFERENCIA : REUNION CON DIRECTIVA DE SAMAPA

FECHA : 27 de Julio 1987

A horas 15 del día anteriormente mencionado se llevo a cabo una reunion en la Sala de la Gerencia General con la presencia de los siguientes ejecutivos de SAMAPA :

- Ing. Enrique Medina	Gerente Tecnico
- Ing. Alfonso Pomarina	Gerente de planificacion
- Ing. Jose Luis Cabero	Director de obras y mantenimiento
- Ing. Jose Antonio Lopez	Hidrologia y Estadistica
- Ing. Marco Antonio Romay	Mantenimiento
- Ing. Gregorio Chavez	Ingeniero Civil
- Ing. Angel zeballos	Tecnico
- Ing. Alfredo Soria	Ingeniero (GEOBOL)

y representantes de la Mission JICA, en las personas nombradas a continuacion:

- Dr. Masaaki Shindo	Jefe del equipo JICA
- Mr. Suenori Isayama	Planificacion y Estimacion de costos.

Se trataron los siguientes temas:

1. Evaluacion del trabajo en la primera etapa.
Fue satisfactoria, pero con algunos detalles ajenos a la voluntad de ambas partes , que hicieron dificil su conclusion total.
2. Convenios entre SAMAPA y GEOBOL, referente a los equipos.
Se revisara las condiciones de trabajo y aporte entre ambas partes para las siguientes etapas de trabajo.
3. Explicacion de los problemas a causa del Generador por parte del Ing. Soria representante de GEOBOL.
Corresponde tambien a la revision del convenio ya mencionado.
4. Informacion sobre futuros programas de trabajo a cargo del Dr. Shindo.
5. Agradecimiento de los Ejecutivos de SAMAPA en nombre de la Institucion y del Pais al Gobierno del Japon y al equipo JICA, por la gran labor que estan desempeñando en el pais.

Atentamente,


Ing. Alfonso Pomarino
ASESOR PLANIFICACION.
SAMAPA

Oficinas Centrales: Avda. Las Américas (Villa Fátima)
Oficinas Comerciales: Batallón Colorados (Edificio "CONDOR")
Teléfonos (Central) 310295 - 98, (Oficinas Comerciales) 320678 y 358017
Casilla 4439 - Cables SAMAPA - La Paz - Bolivia



SERVICIO AUTONOMO MUNICIPAL DE AGUA POTABLE Y ALCANTARILLADO

S.J/002/87

I N F O R M E

A : Sr. Masaaki Shindo
JEFE DE LA MISION JICA

DE : Ing. Alfonso Pomarino
JEFE DE PLANIFICACION - SAMAPA

REFERENCIA : PRUEBAS DE BOMBEO.

FECHA : 28 de Julio de 1987

Con referencia a las pruebas de bombeo que debian realizarse en 3 pozos del Distrito del Alto, desde el dia 13 al 24 de Julio del presente año, corresponde efectuar las siguientes aclaraciones:

- En fecha 20/05/87, recibimos un telex del Sr. Shindo desde el Japon. consultando sobre la posibilidad de conseguir un grupo generador de las siguientes características: 231 Volts Trifasico, 12 Kw, 15 KVA. 50 Hz, 3000 RPM , averiguando en el comercio local se respondió afirmativamente.

Sin embargo, al adquirir el equipo, se constato que la linea Trifasica era de 380 Volts y las salidas de 220 Volts, solo monofasicas.

Ante este problema y la llegada del Sr. Shindo a La Paz se trato de conseguir por todos los medios posibles un grupo generador que pudiera hacer funcionar la bomba sumergible. En este intento, habiendo agotado todas las posibilidades que son de su conocimiento, se perdieron casi dos semanas por lo que se optó por conseguir otros 3 pozos que fueran representativos de la zona de estudio y que ademas contacen con linea electrica trifasica de 220 Volts.

Surgieron como alternativa los pozos de CONVIPET, INFOL y CENACO, de los cuales el segundo (INFOL) tenia bomba y Energia electrica, por lo que los dias Sabado 15 y Domingo 26 se hizo la prueba de bombeo respectiva.

Ahora se esta haciendo un tramite para que el pozo de CENACO pueda ser utilizado, solicitando a la compañía de Energia Electrica COBEE que habilite una toma de corriente 220 V. Trifasica.

Se espera que para el regreso del Dr, Isayama el 7 de Agosto al Japon, lleve los datos de prueba de bombeo de este pozo.

Oficinas Centrales: Avda. Las Américas (Villa Fátima)
Oficinas Comerciales: Batallón Colorados (Edificio "CONDOR")
Teléfonos (Central) 310295 - 98, (Oficinas Comerciales) 320678 y 358017
Casilla 4439 - Cables SAMAPA - La Paz - Bolivia

SAMAPA

SERVICIO AUTONOMO MUNICIPAL DE AGUA POTABLE Y ALCANTARILLADO


Finalmente, quedan como alternativas las siguientes opciones:

1. Encontrar y alquilar un equipo generador con características que puedan hacer funcionar la bomba donada por el Gobierno del Japon; en este caso se harian las pruebas de bombeo en los pozos inicialmente escogidos.
2. Hacer construir en Cochabamba FATRAMA un transformador con entrada de 380 Volts. Trifasica y salida 220 Volts. trifasica para una potencia de unos 40 KVA.

Opciones que tambien SAMAPA desarrollará en atencion al programa originalmente previsto.

Todo lo ocurrido en esta segunda fase del desarrollo del proyecto, como Ud. constato se debieron a causas de fuerza mayor en cuya solucion SAMAPA dedico su total empeño.

Atentamente,



Ing. Alfonso Domarino
ABESOR PLANIFICACION
SAMAPA

cc. Arch
SAMAPA

Oficinas Centrales: Avda. Las Américas (Villa Fátima)
Oficinas Comerciales: Batallón Colorados (Edificio "CONDOR")
Teléfonos (Central) 310295 - 98, (Oficinas Comerciales) 320678 y 358017
Casilla 4439 - Cables SAMAPA - La Paz - Bolivia

GRUPO ELECTROGENO

Con suma urgencia precisamos en alquiler Grupo Electrogeno de las siguientes características:

- 220 Voltios (Trifásico)
- 60 Amperios
- 30 KVA

Referencias teléfono 310574 (horas de oficina).

~~viernes 14 de julio de 1967~~

GRUPO ELECTROGENO

Con suma urgencia precisamos en alquiler Grupo Electrogeno de las siguientes características:

- 220 Voltios (Trifásico)
- 60 Amperios
- 30 kva.

Referencias teléfono 310574 (Horas de Oficina)

PRESENCIA

SALAPA. (GERENCIA)



(Solo para uso interno)

Ministry of Urbanism & Housing
Meeting

Date: March 17, 1987

Sub secretary of Urbanism & Housing: Lic. Jorge Mealla E.

Sanitary Consultant for the United Nations: Ing. Ronny Vega

Association of Potable Water and Sewerage System:

(A N E S A P A) Ing. Johnny Cuellar PRESIDENT
Ex- General Manager for SAMAPA (1984)

Urban Infra structure Director: Arq. Nelson Guzman

Subsecretario de Urbanismo y Vivienda: Lic. Jorge Mealla E.

Consultor de Saneamiento de Naciones Unidas: Ing. Ronny Vega

Asociación de Servicio de Agua Potable y Alcantarillado

(A N E S A P A) Ing. Johnny Cuellar PRESIDENTE

Director de Infra estructura Urbana: Arq. Nelson Guzmán

JICA