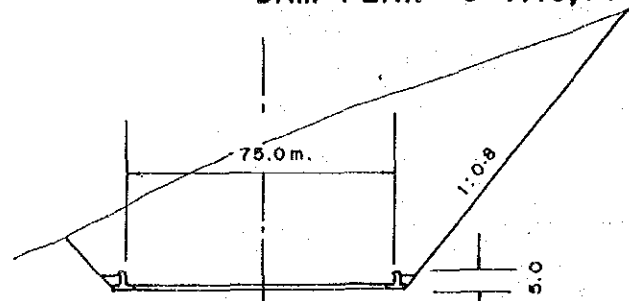
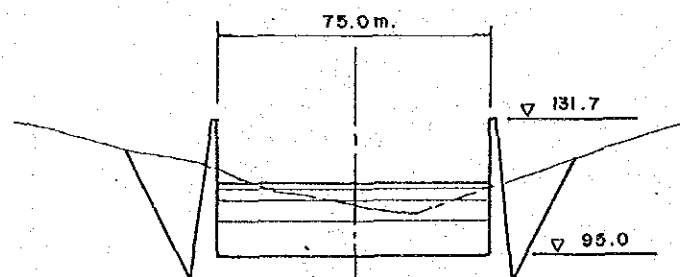


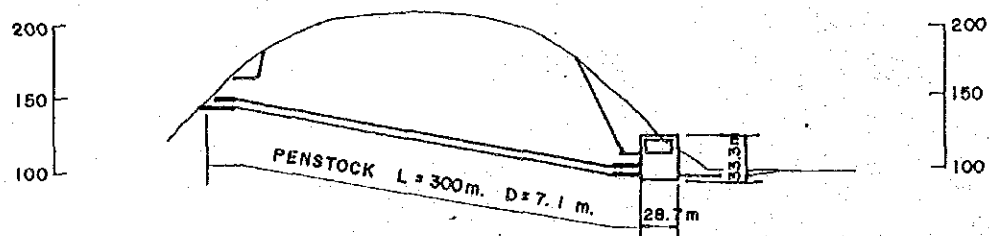
DAM PLAN S=1:10,000



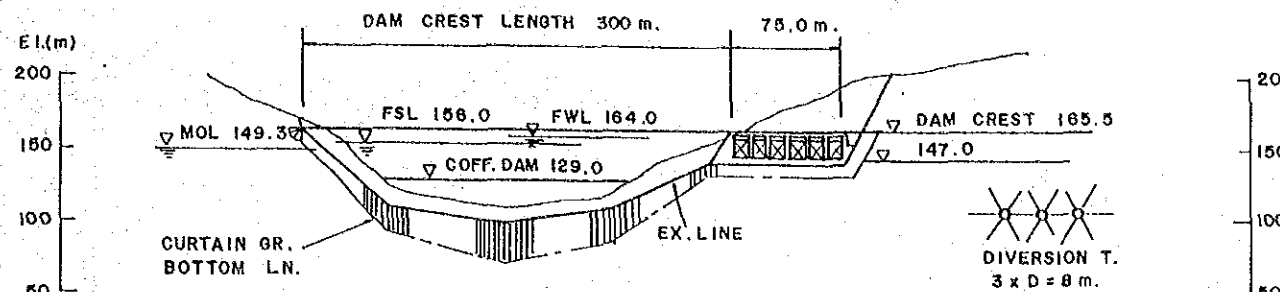
S/W CHUTEWAY SECTION
S=1:2000



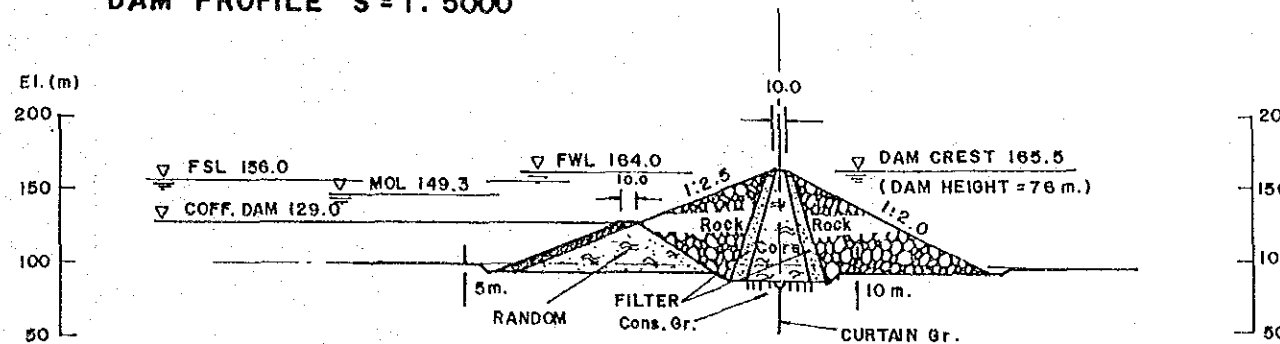
S/W STILLING BASIN SECTION
S=1:2000



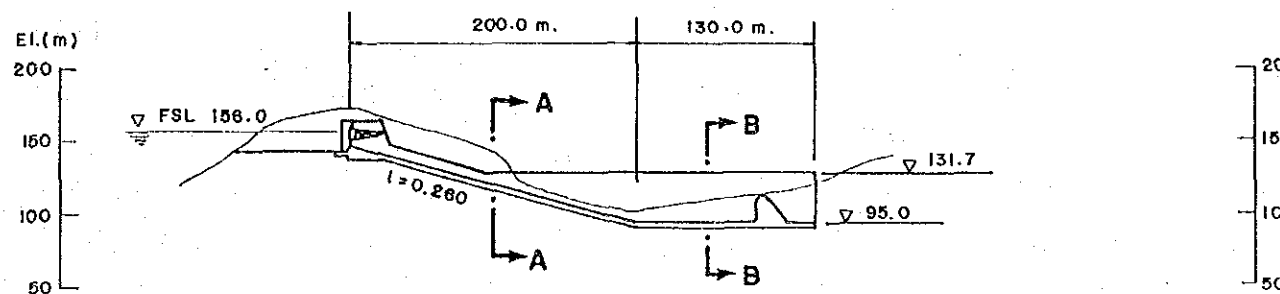
WATERWAY PROFILE S=1:5000



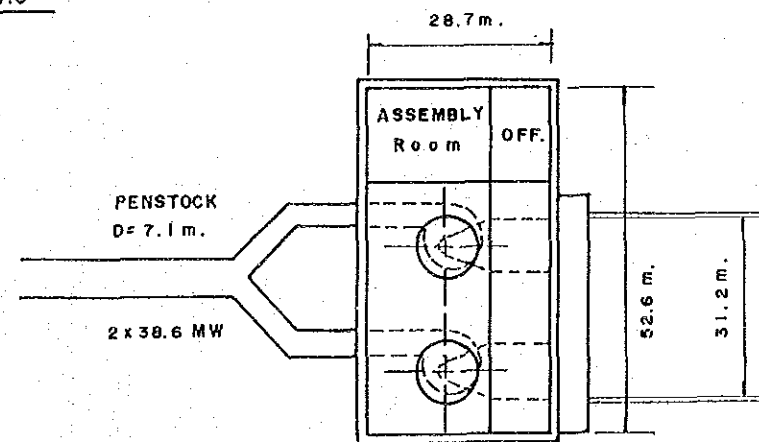
DAM PROFILE S=1:5000



DAM SECTION S=1:5000

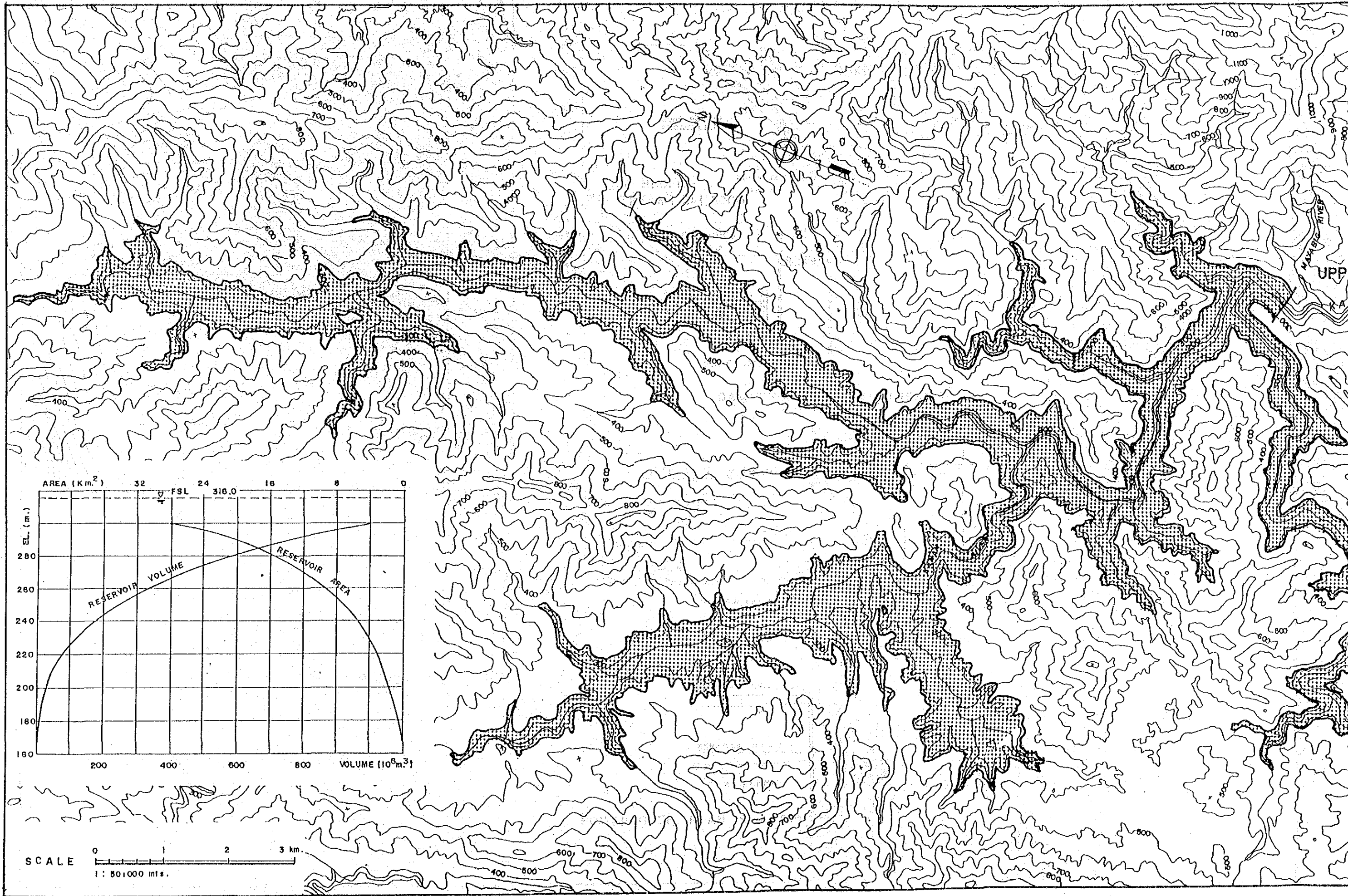


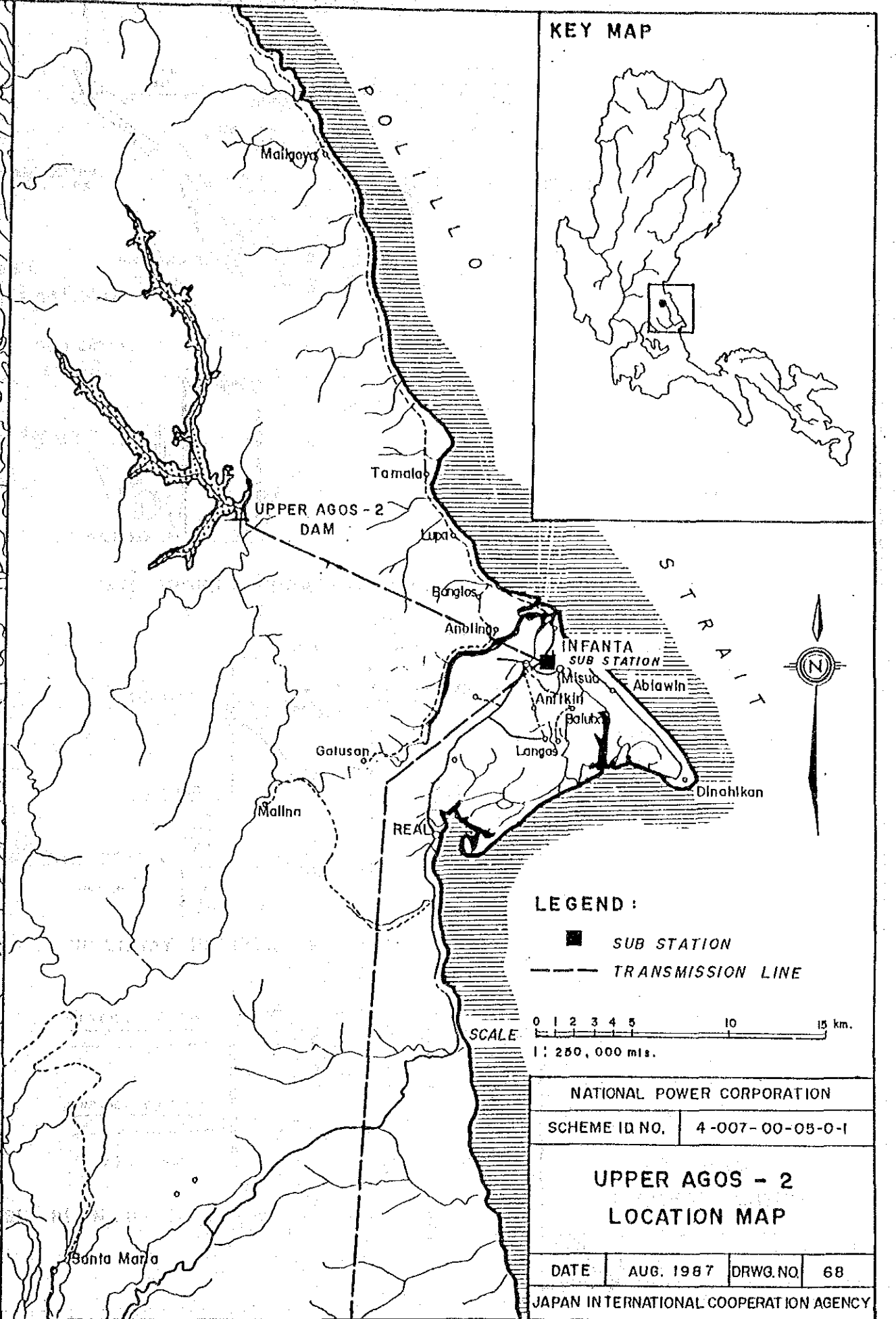
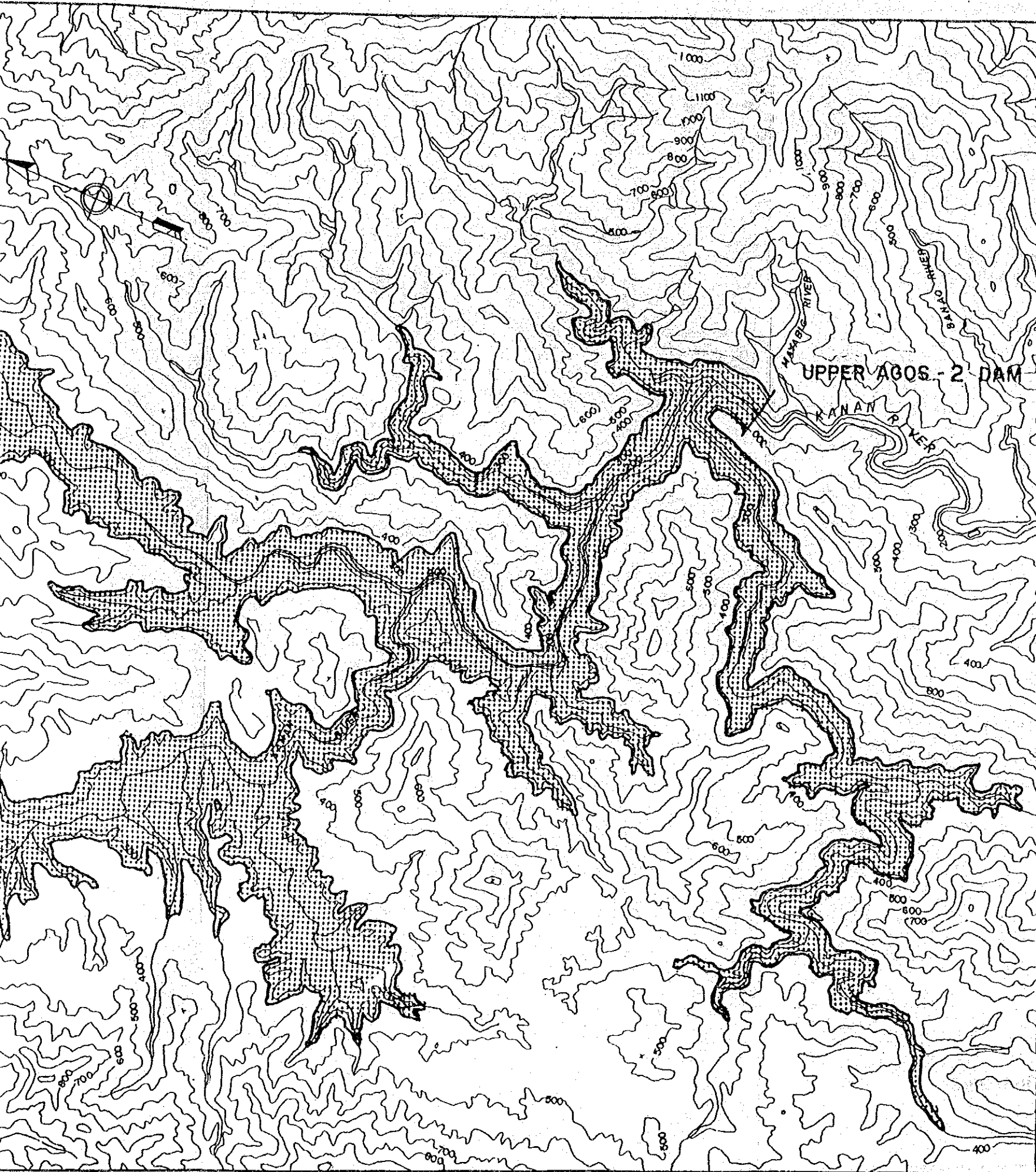
SPILLWAY PROFILE S=1:5000

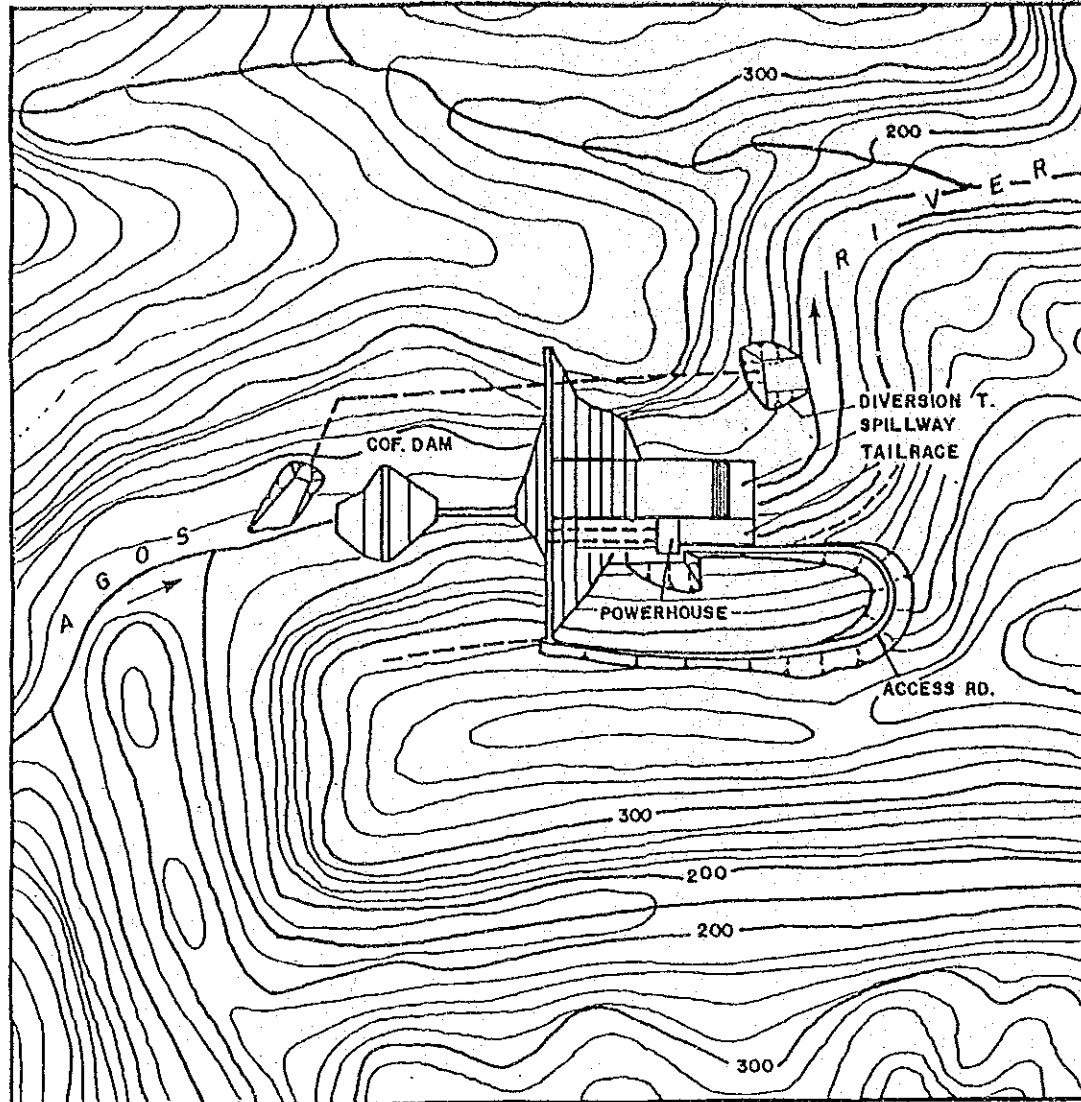


POWERHOUSE PLAN S=1:1000

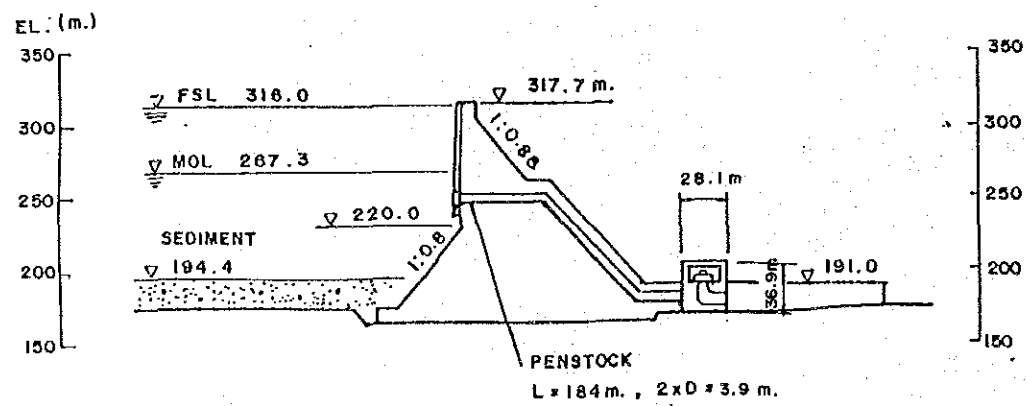
NATIONAL POWER CORPORATION			
SCHEME ID. NO.	4-007-00-01-1-1		
KANAN			
GENERAL LAYOUT			
Combined with UPPER AGOS-2			
DATE	AUG. 1987	DRWG. NO.	67
JAPAN INTERNATIONAL COOPERATION AGENCY			



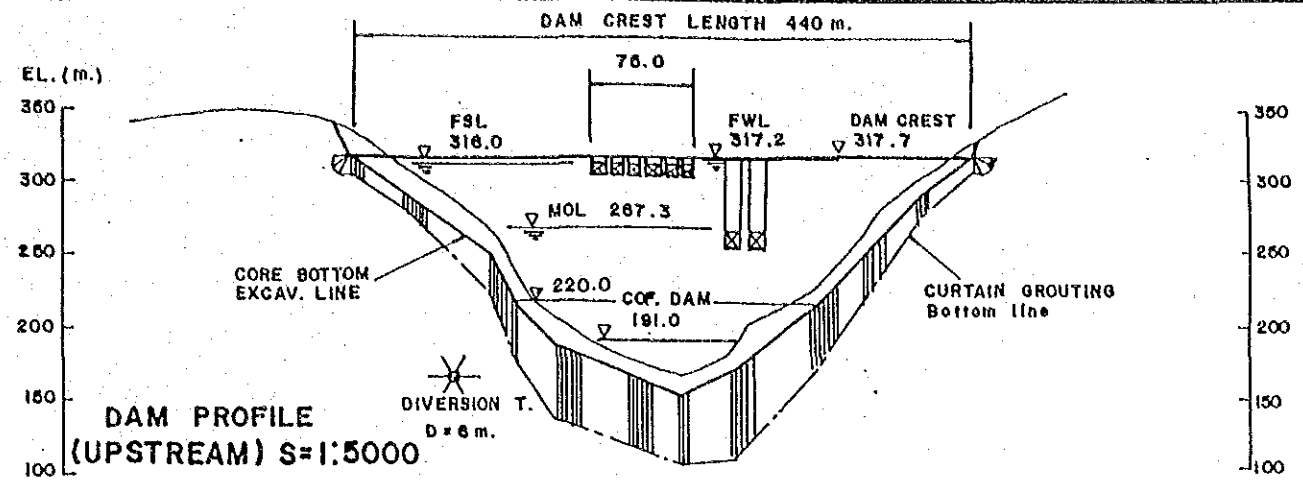




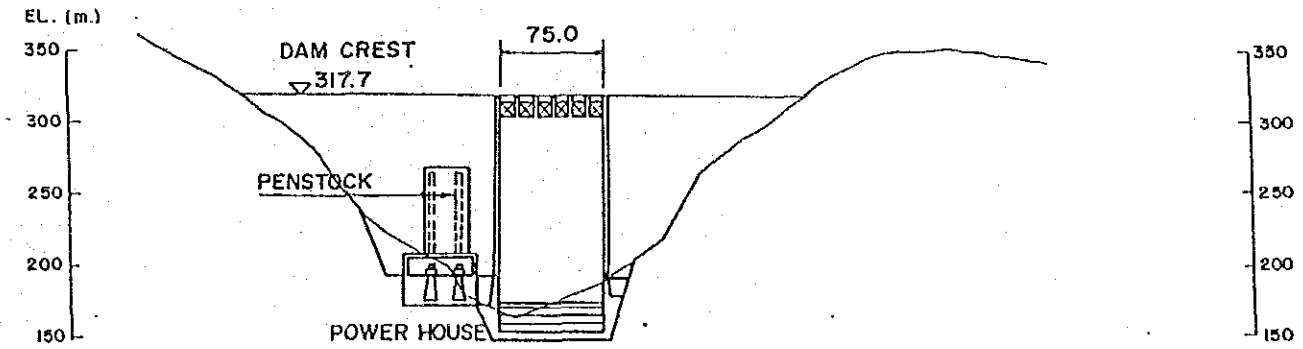
DAM PLAN S=1:10,000



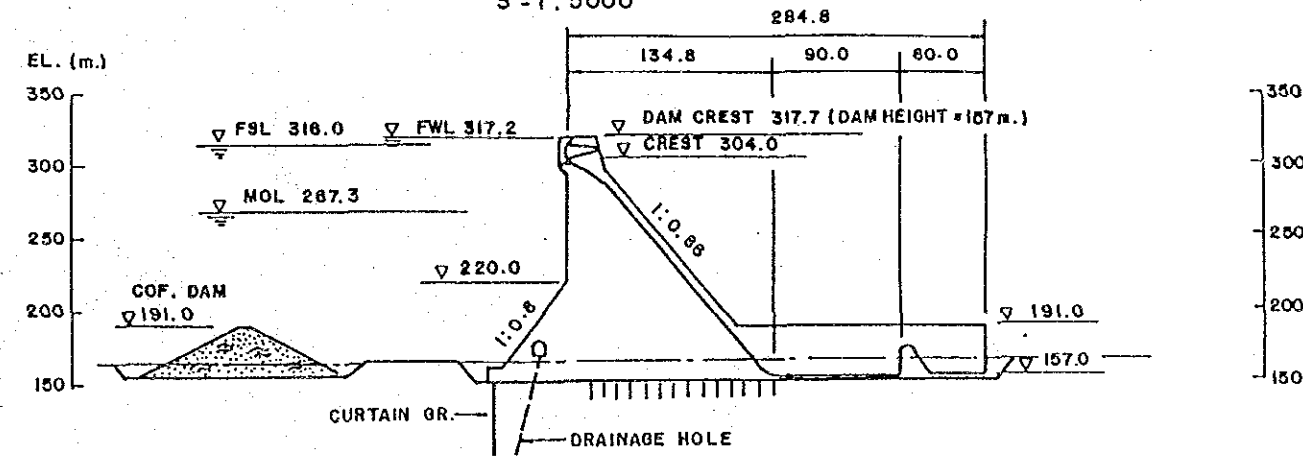
WATERWAY PROFILE S=1:5000



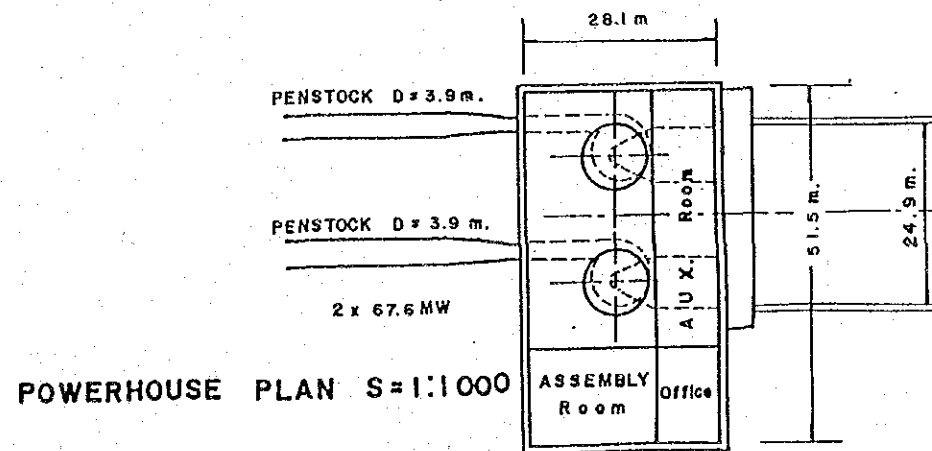
DAM PROFILE (UPSTREAM) S=1:5000



DAM PROFILE (DOWNSTREAM) S=1:5000

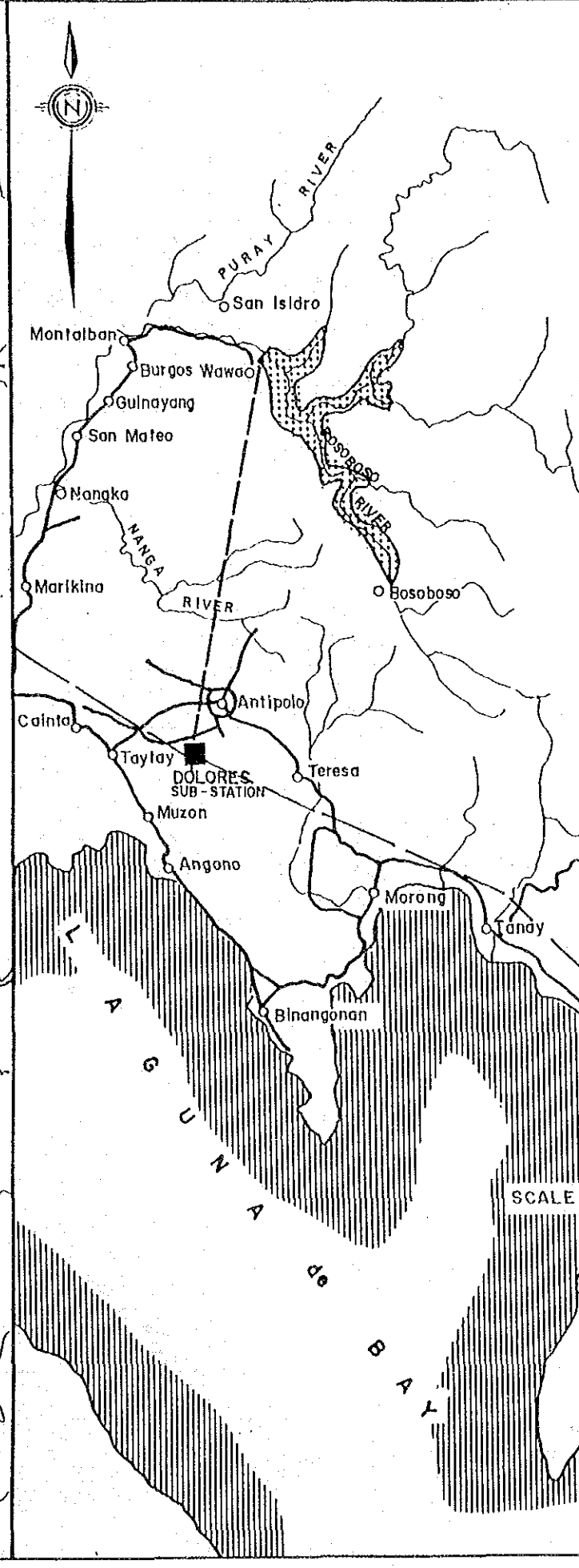
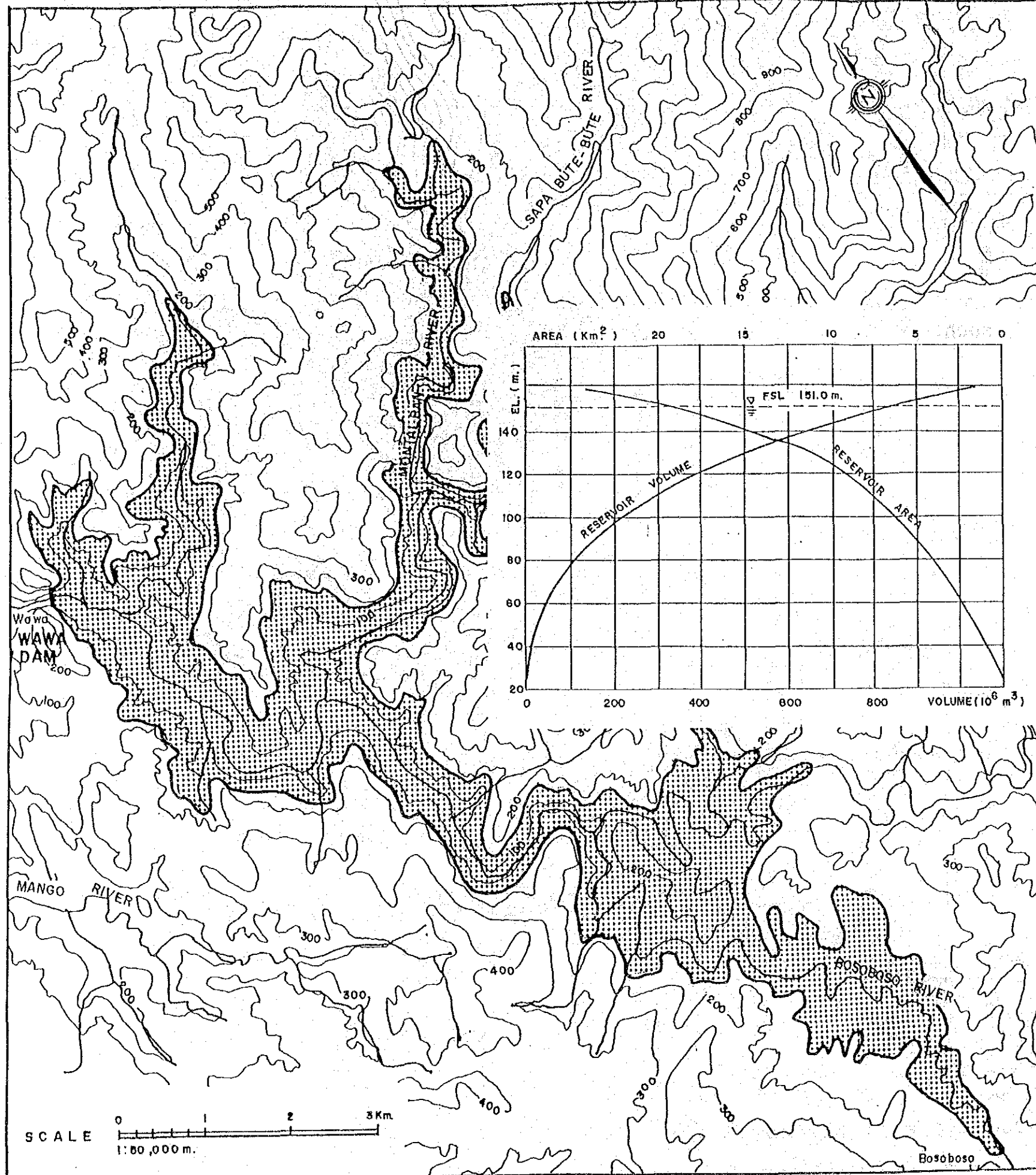


SPILLWAY PROFILE S=1:5000



POWERHOUSE PLAN S=1:1000

NATIONAL POWER CORPORATION			
SCHEME ID. NO.	4-007-00-05-0-1		
UPPER AGOS-2 GENERAL LAYOUT			
DATE	AUG. 1987	DRWG. NO.	69
JAPAN INTERNATIONAL COOPERATION AGENCY			



Montalban

Burgos Wawao

Ogulnayang

San Mateo

Nangka

Marikina

Calinta

Taylay

Muzon

Angono

Marong

Tanday

Binangonan

Balimbing

Sainpalo

MALAYA SUB-STATION

LEGEND:

■ SUB-STATION

--- TRANSMISSION LINE

SCALE 0 1 2 3 4 5 10 Km
1:250,000 m.

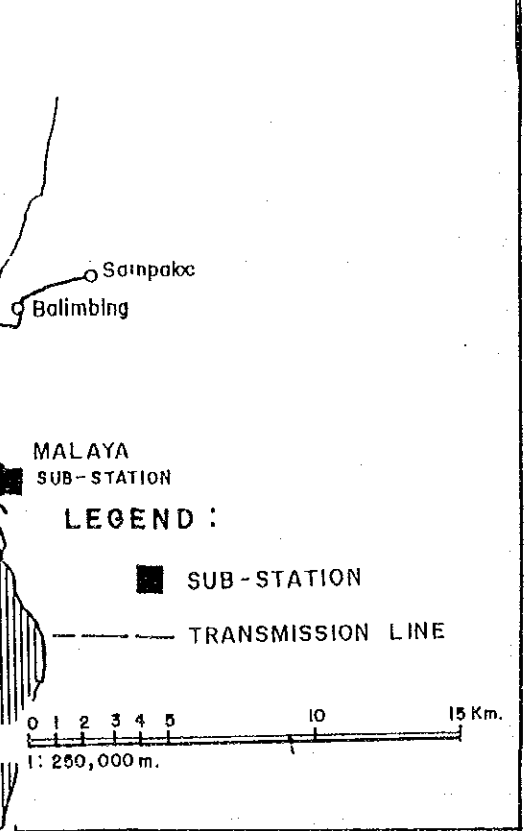
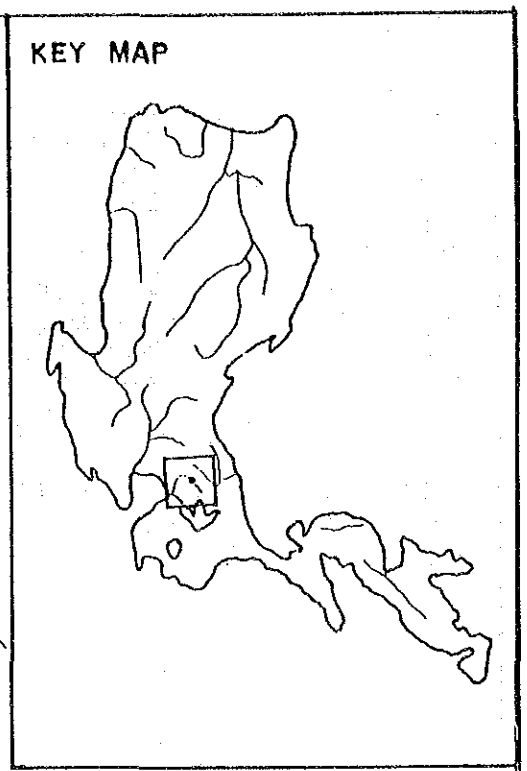
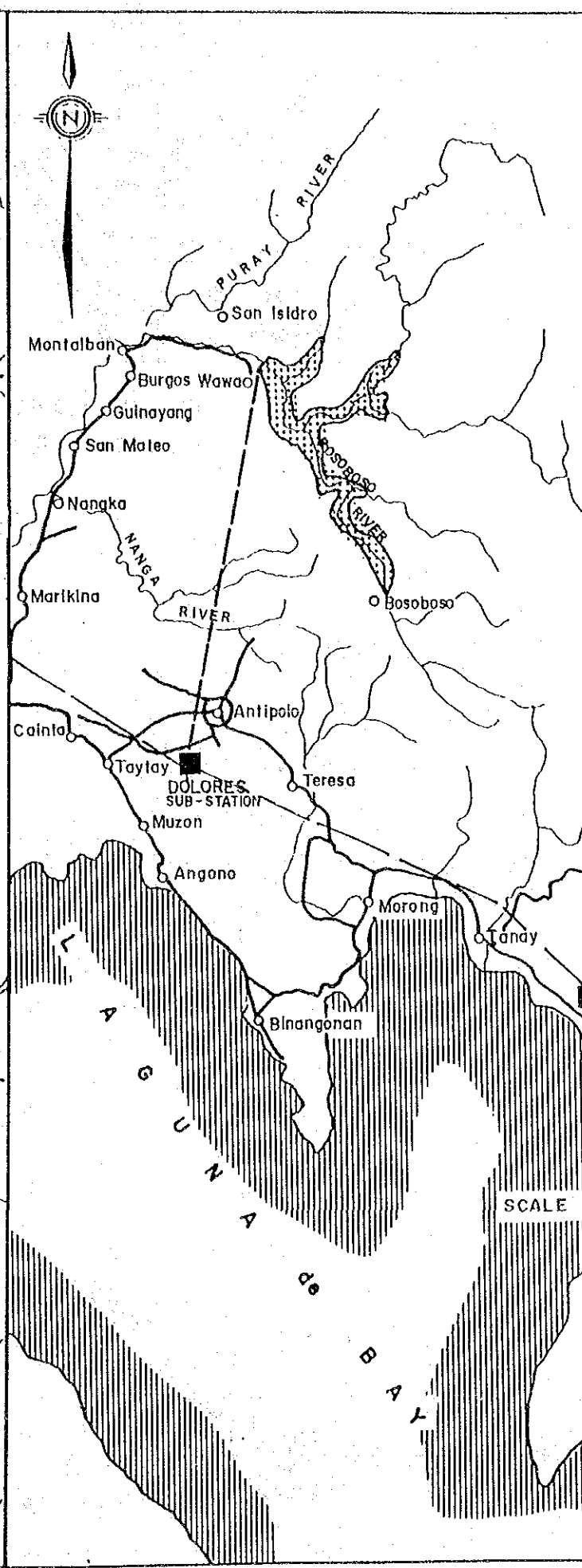
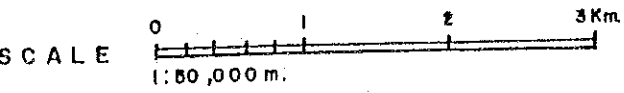
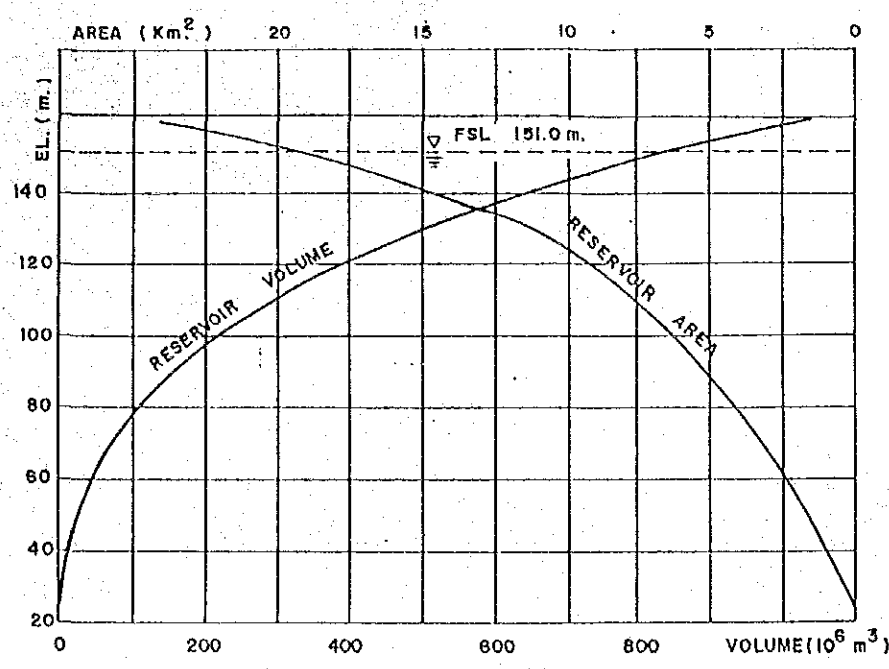
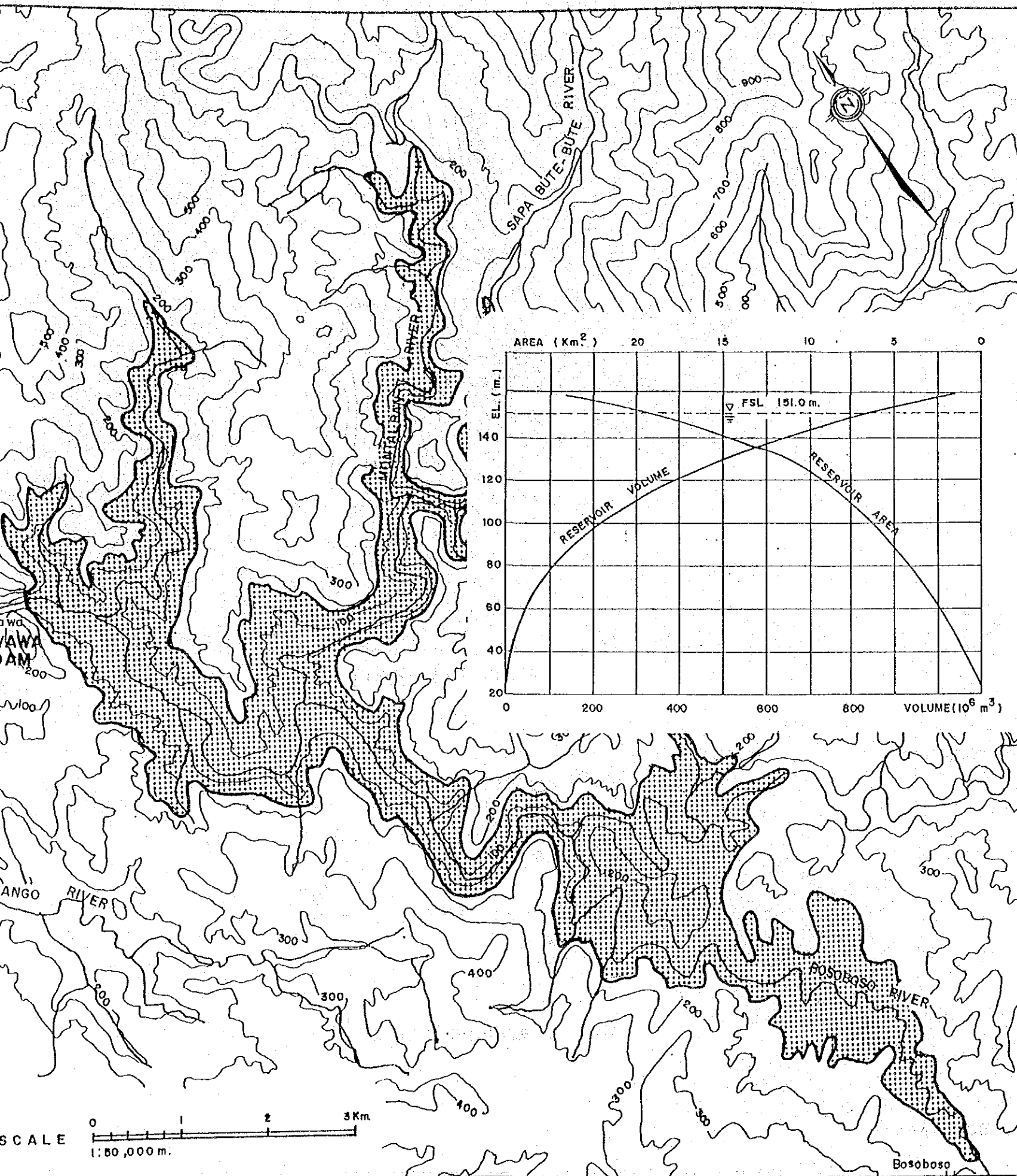
NATIONAL POWER CORPORATION

SCHEME ID. NO. 4-115-01-01-0

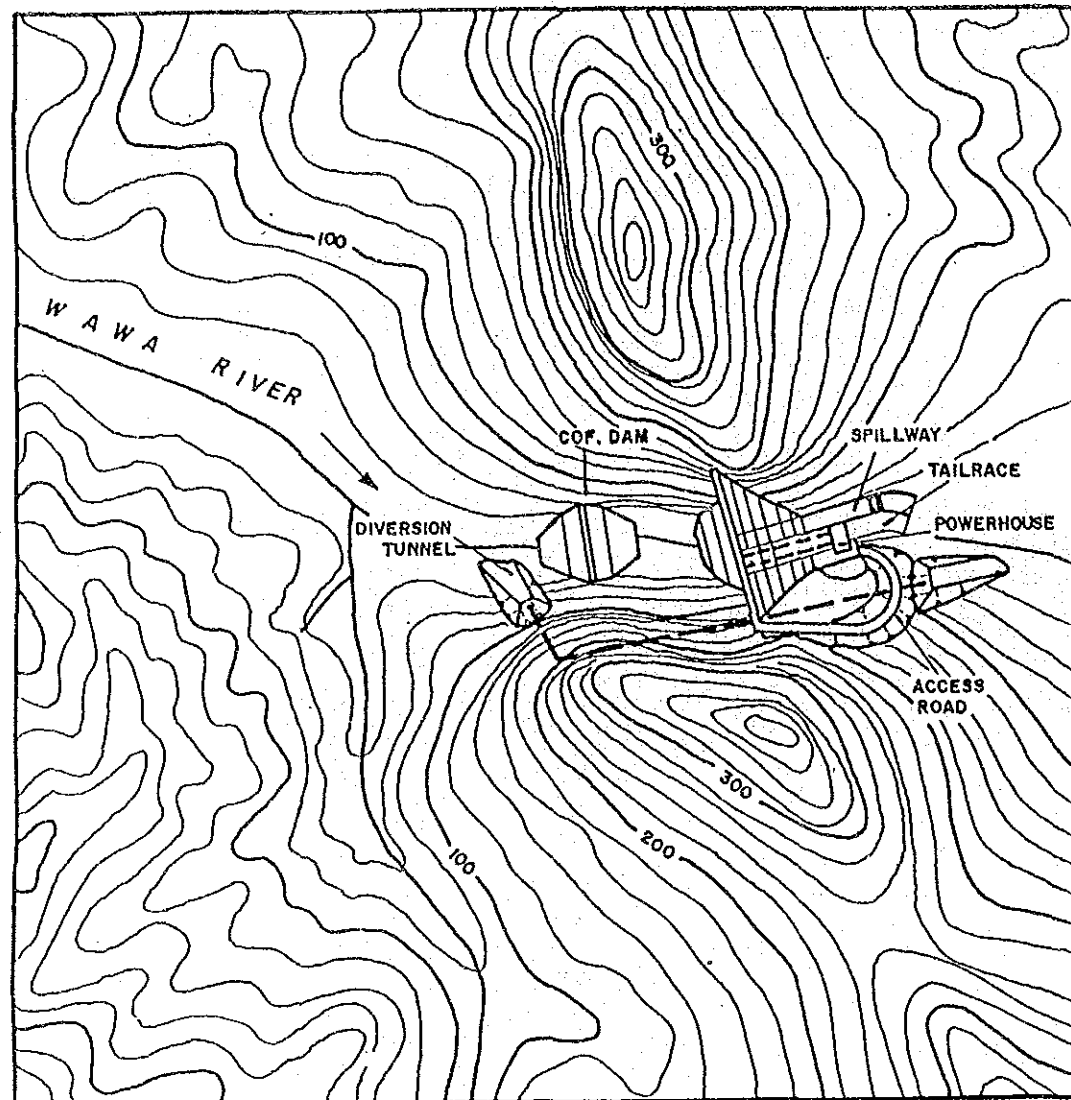
WAWA LOCATION MAP

DATE AUG. 1987 DRWG. NO.

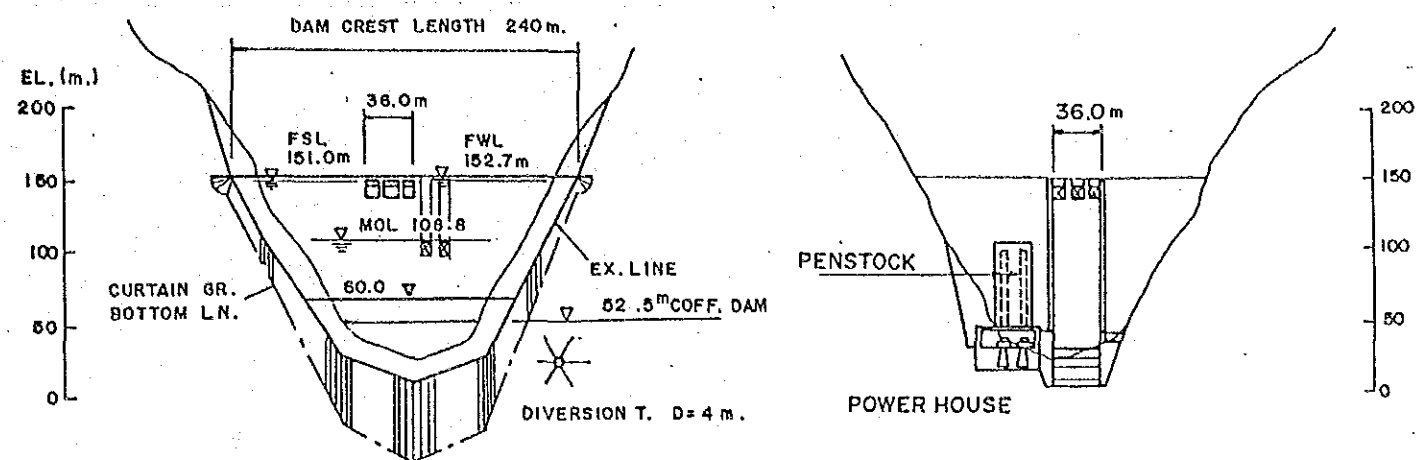
JAPAN INTERNATIONAL COOPERATION AG



NATIONAL POWER CORPORATION			
SCHEME ID. NO.		4-115-01-01-0-1	
WAWA LOCATION MAP			
DATE	AUG. 1987	DRWG. NO.	70
JAPAN INTERNATIONAL COOPERATION AGENCY			

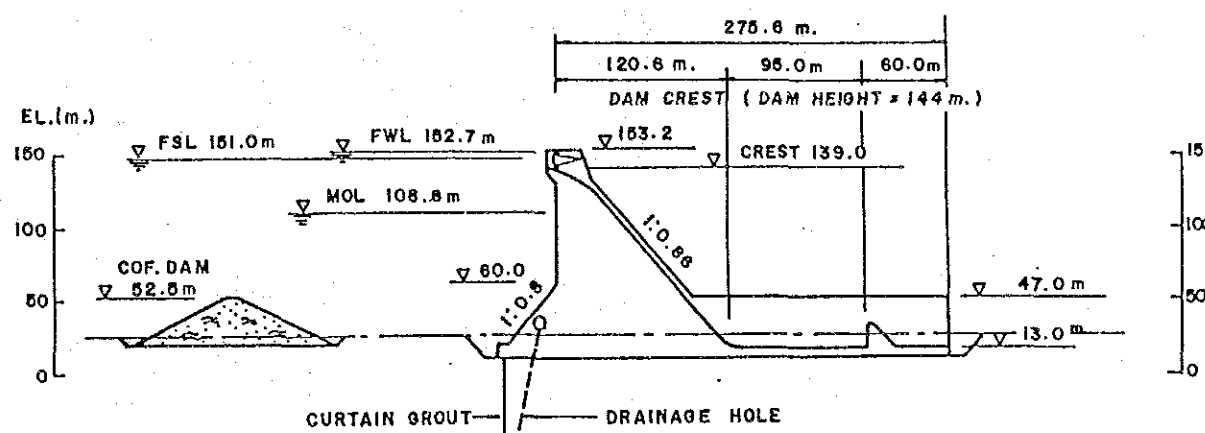


DAM PLAN S = 1:10,000

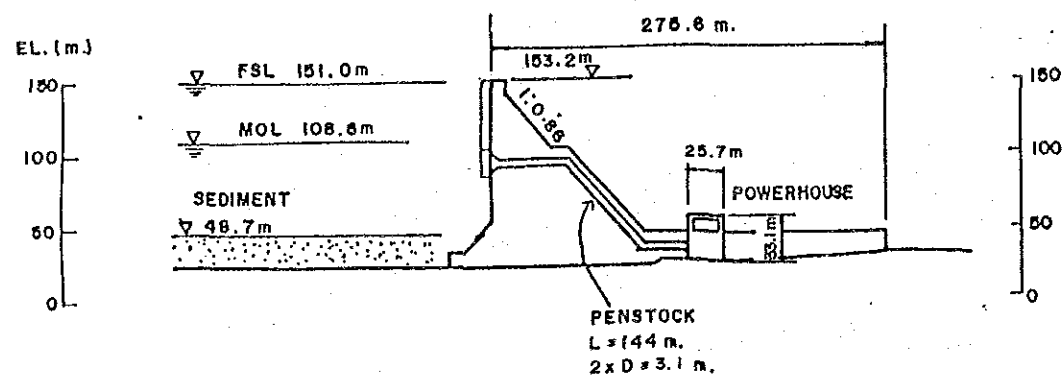


DAM PROFILE (UP STREAM)
S = 1:5000

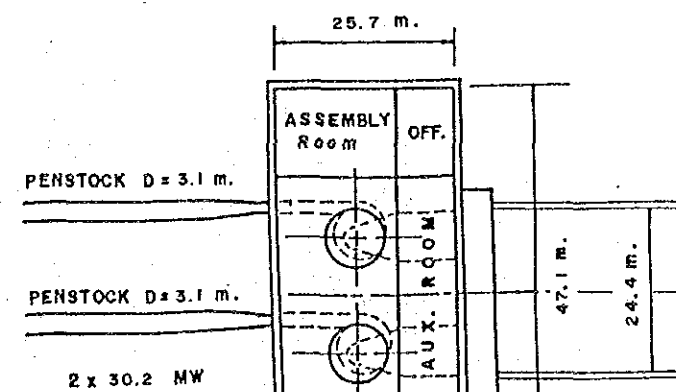
DAM PROFILE (DOWNSTREAM)
S = 1:5000



SPILLWAY PROFILE S=1:5000

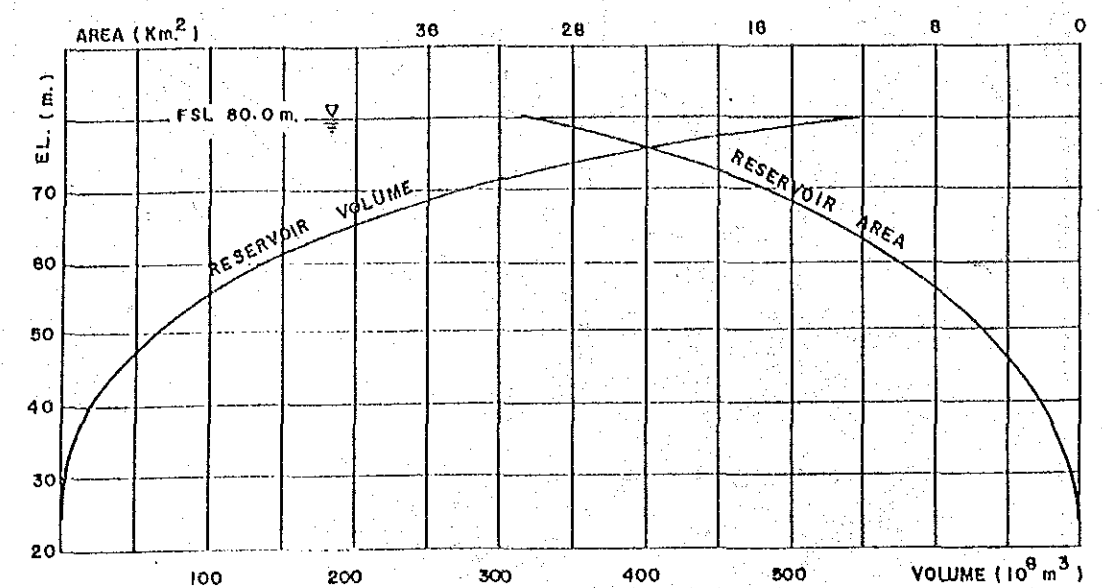
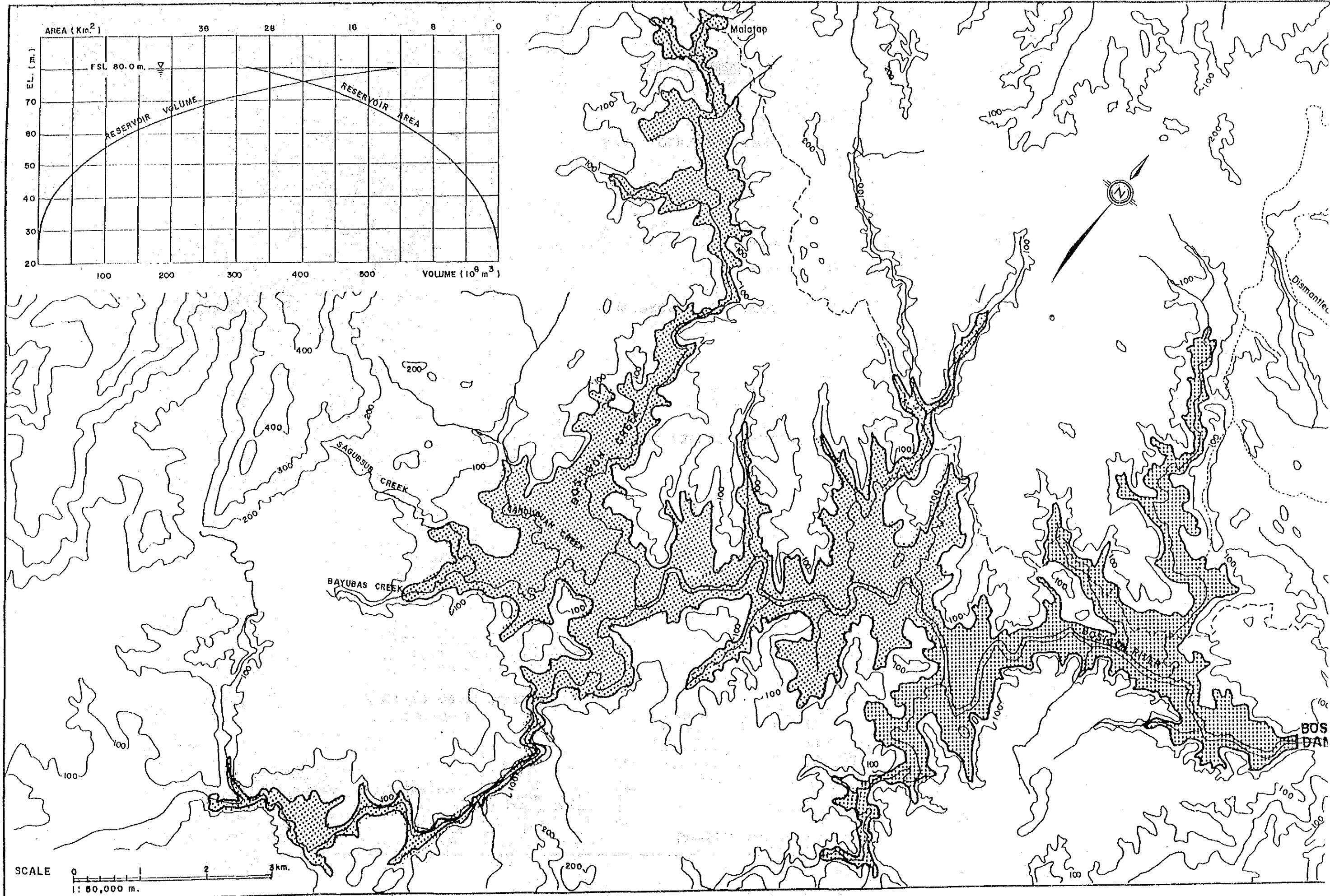


WATERWAY PROFILE S = 1:5000

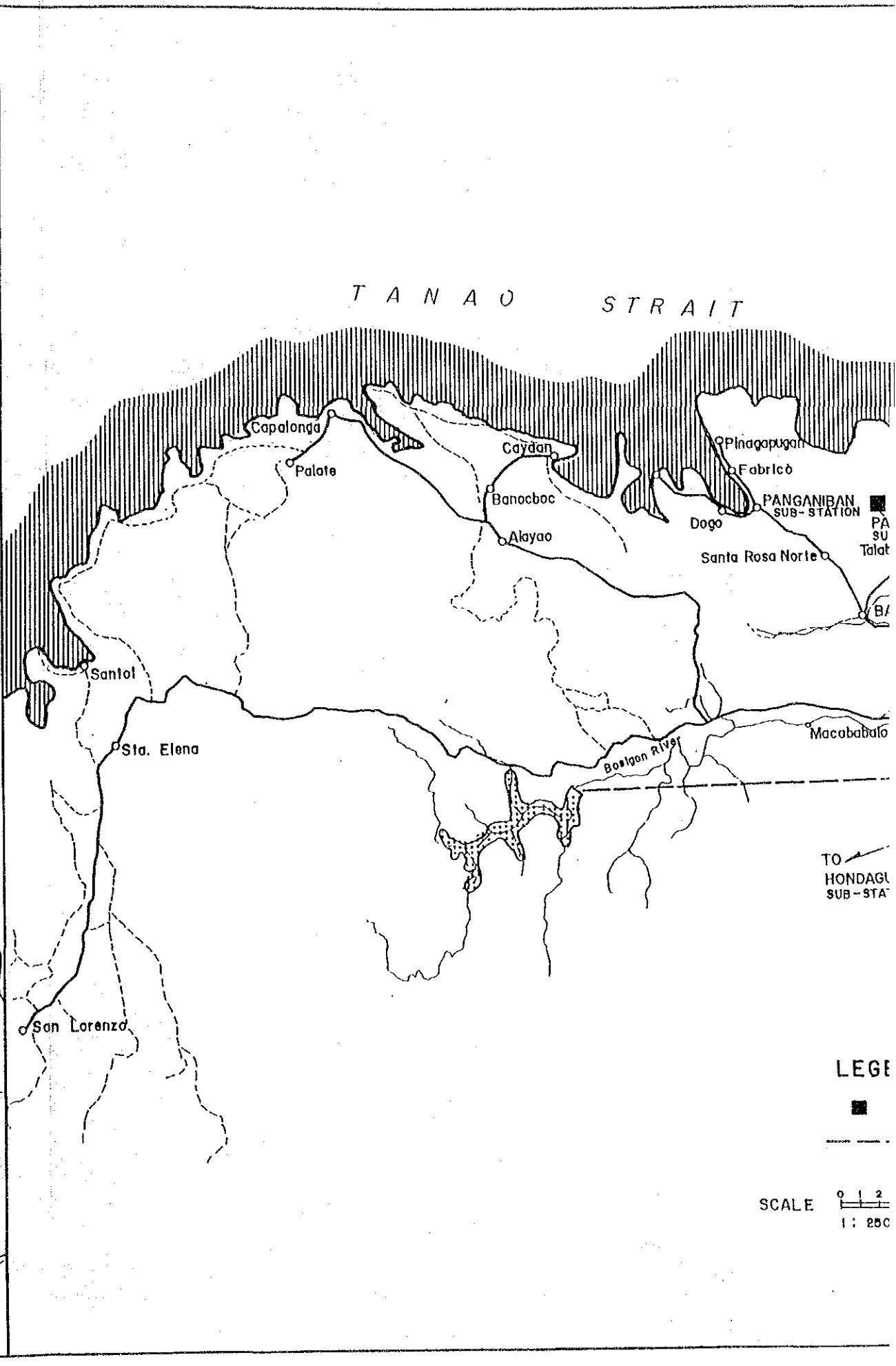
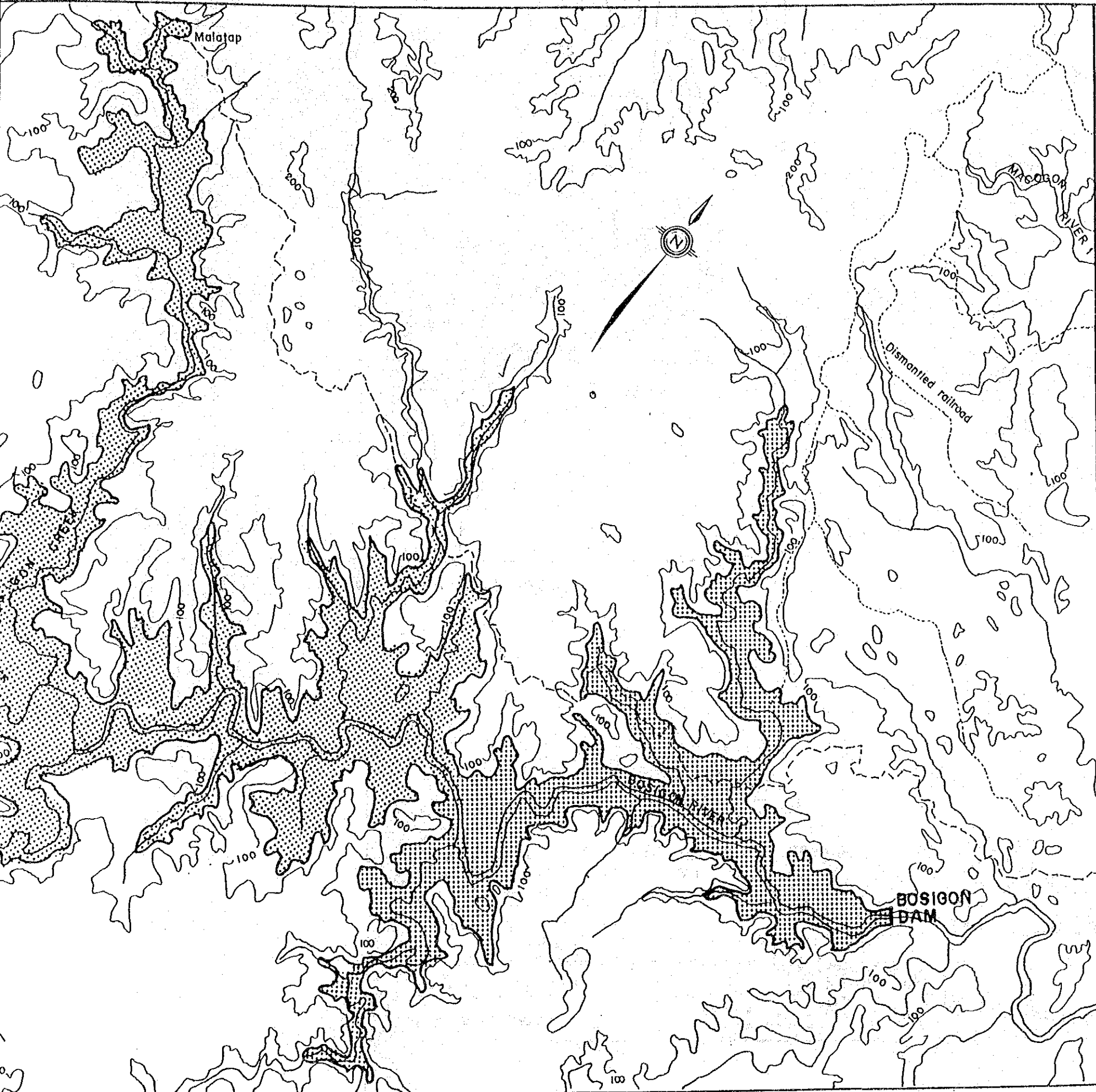


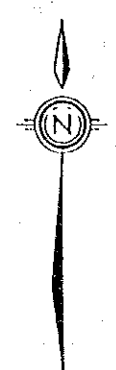
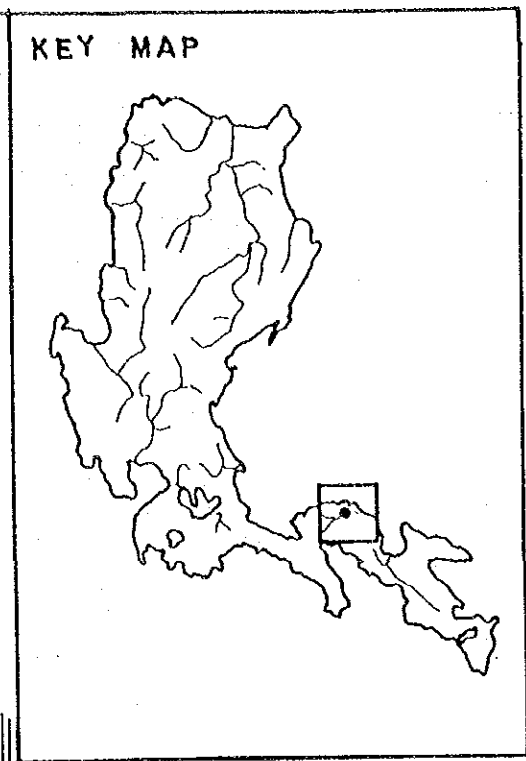
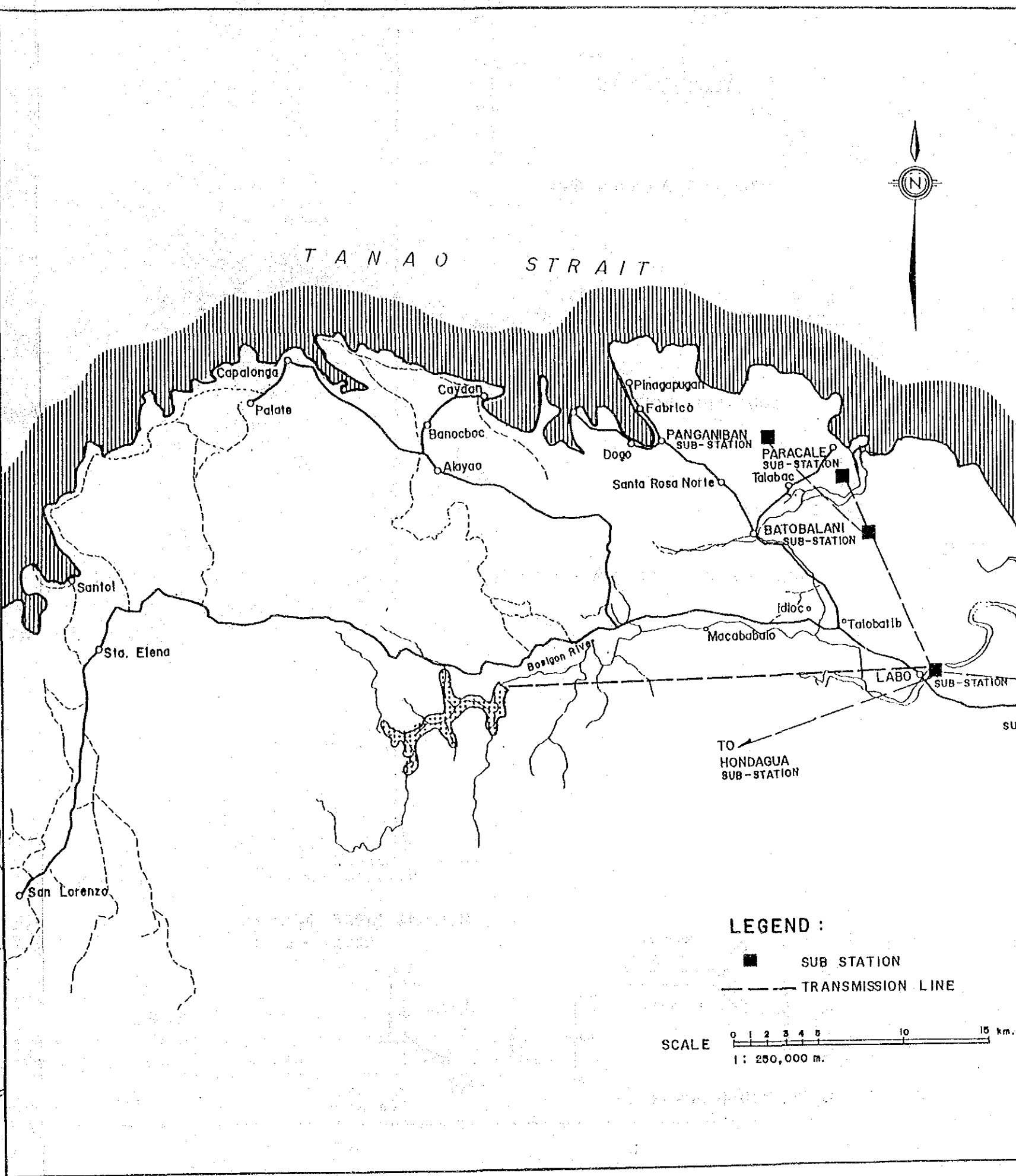
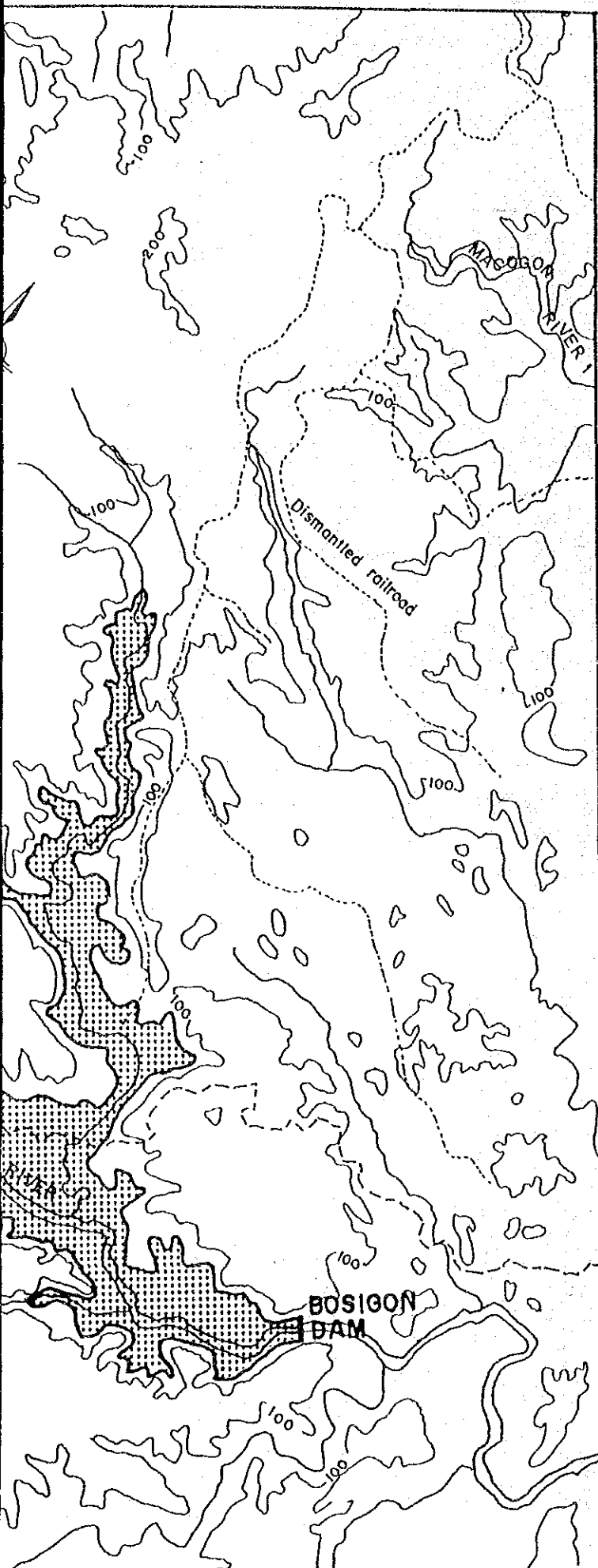
POWERHOUSE PLAN S=1:1000

NATIONAL POWER CORPORATION			
SCHEME ID. NO.		4-115-01-01-0-1	
WAWA			
GENERAL LAYOUT			
DATE	AUG. 1987	DRWG. NO.	71
JAPAN INTERNATIONAL COOPERATION AGENCY			



SCALE 0 1 2 3 km.
1:50,000 m.

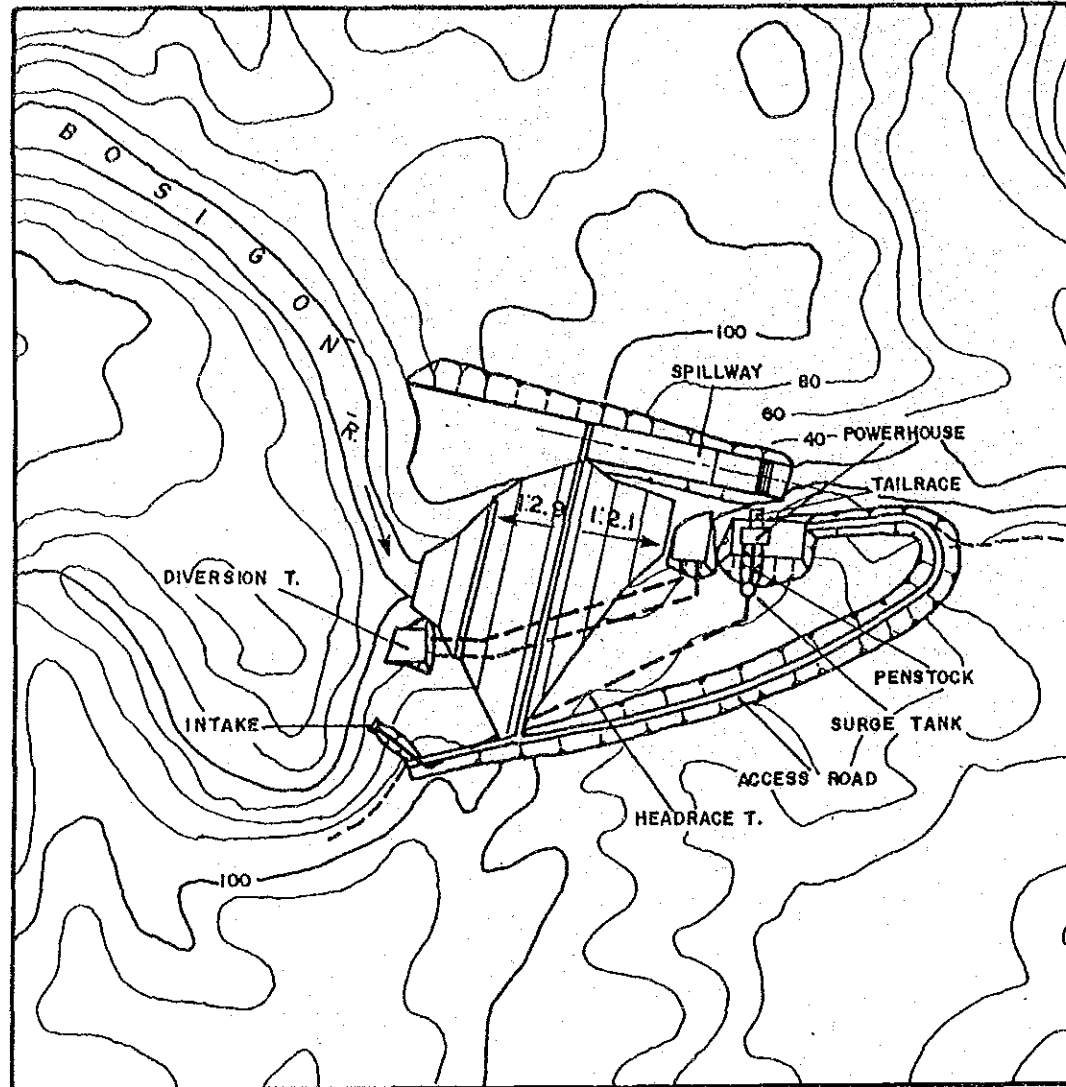




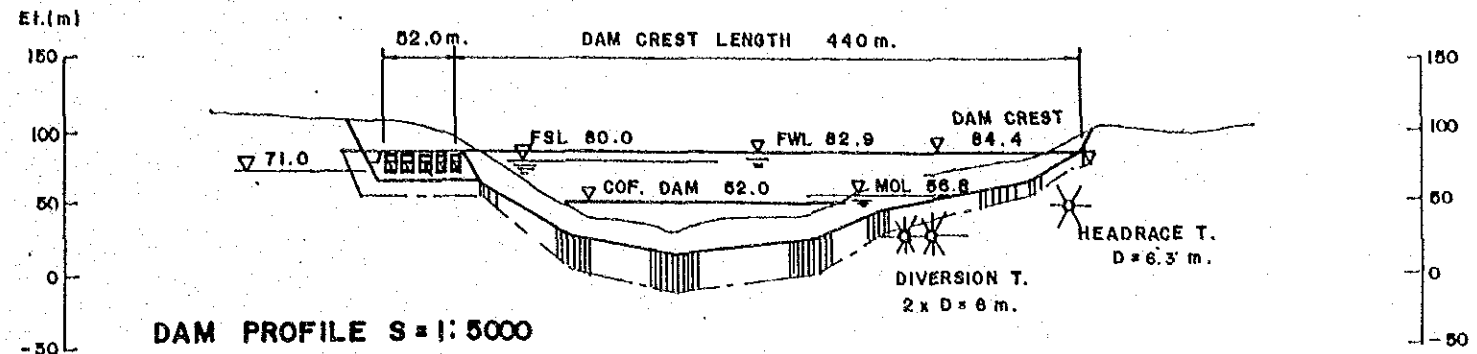
LEGEND :
 ■ SUB STATION
 --- TRANSMISSION LINE

SCALE 0 1 2 3 4 5 10 15 km.
 1 : 250,000 m.

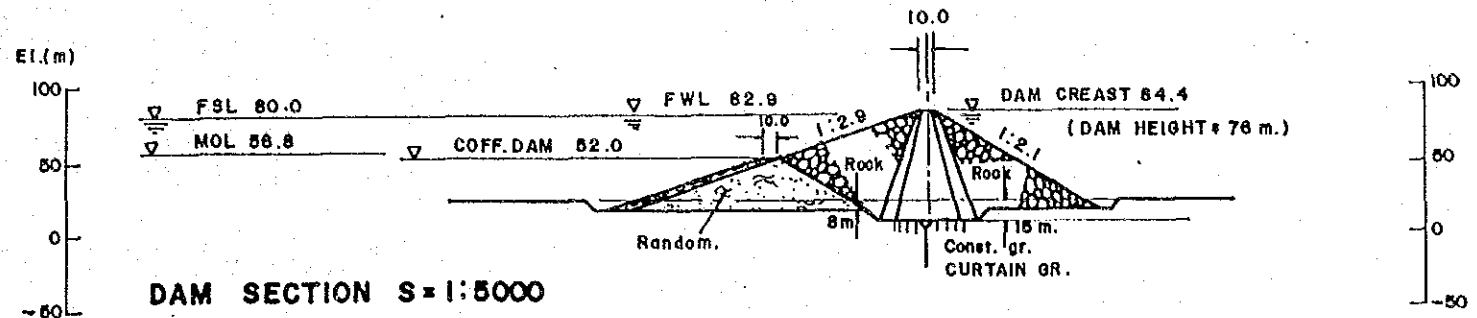
NATIONAL POWER CORPORATION			
SCHEME ID. NO.	5-014-01-01-0-1		
BOSIGON LOCATION MAP			
DATE	'AUG. 1987	DRWG. NO.	72
JAPAN INTERNATIONAL COOPERATION AGENCY			



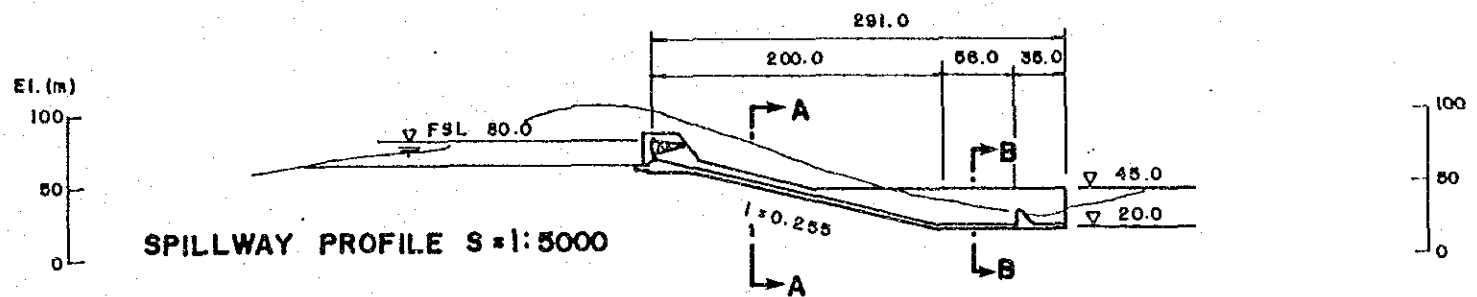
DAM PLAN S = 1:10,000



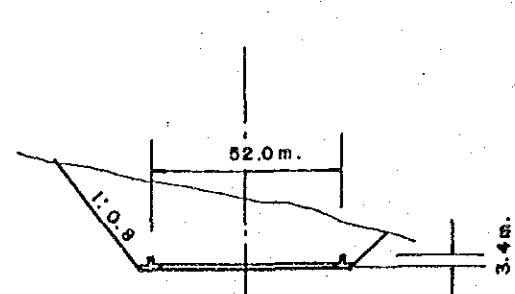
DAM PROFILE S = 1:5000



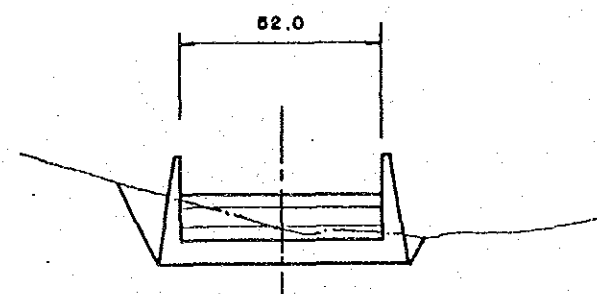
DAM SECTION S = 1:5000



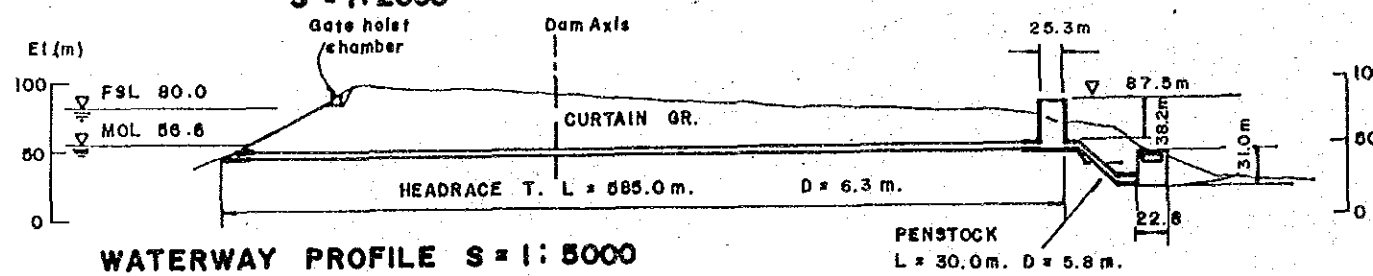
SPILLWAY PROFILE S = 1:5000



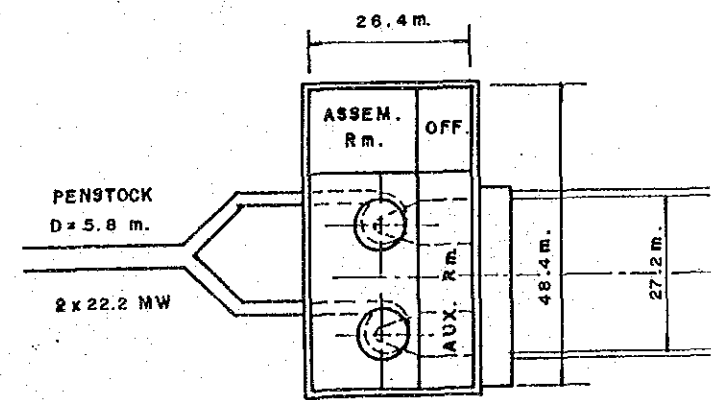
S/W CHUTEWAY SECTION S = 1:2000



STILLING BASIN SECTION S = 1:2000



WATERWAY PROFILE S = 1:5000

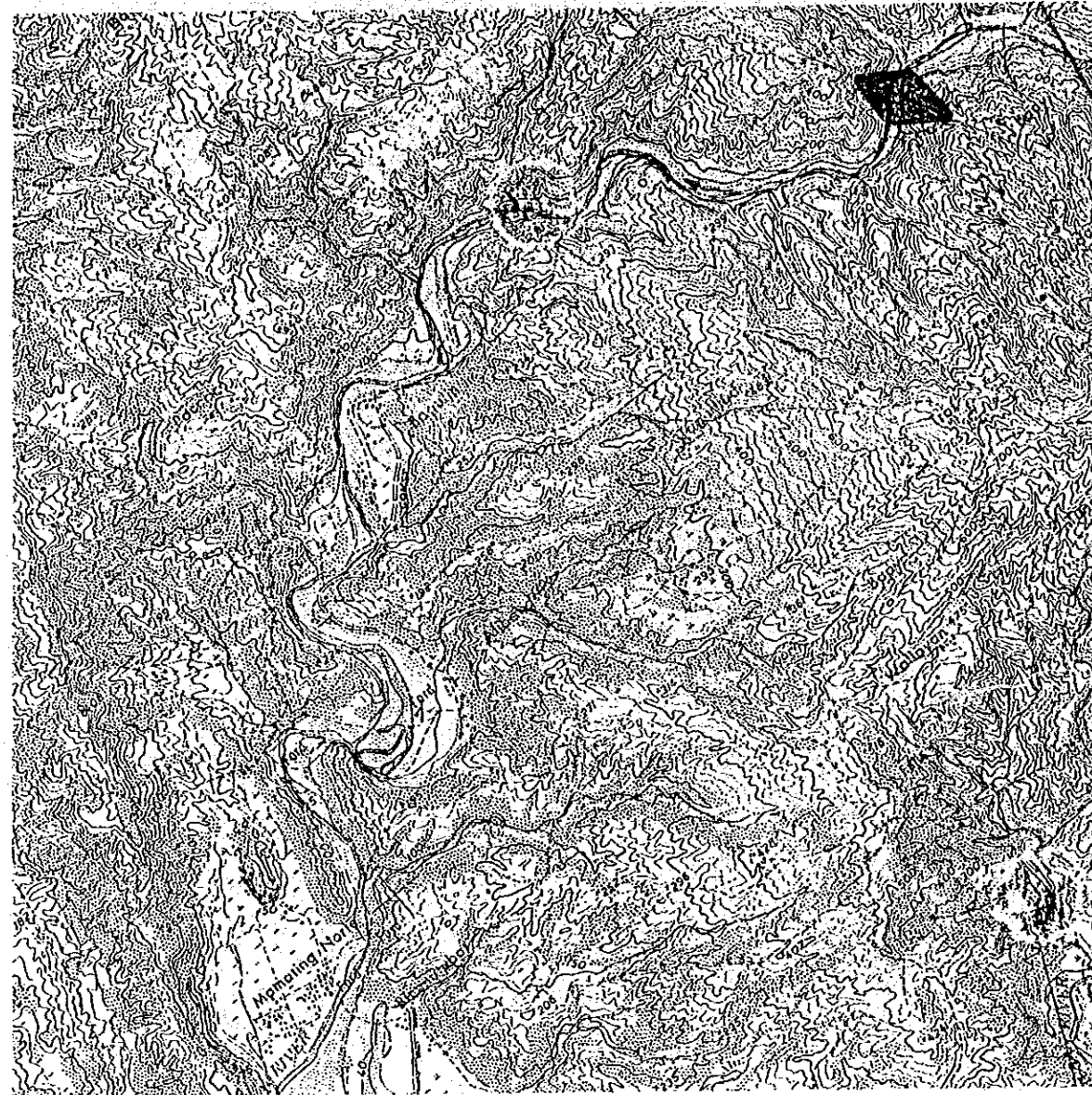


POWERHOUSE PLAN S = 1:1000

NATIONAL POWER CORPORATION	
SCHEME ID. NO.	5-014-01-01-0-1
BOSIGON GENERAL LAYOUT	
DATE	AUG. 1987
DRWG. NO.	73
JAPAN INTERNATIONAL COOPERATION AGENCY	

GENERAL DEVELOPMENT PLAN

General Development Plan

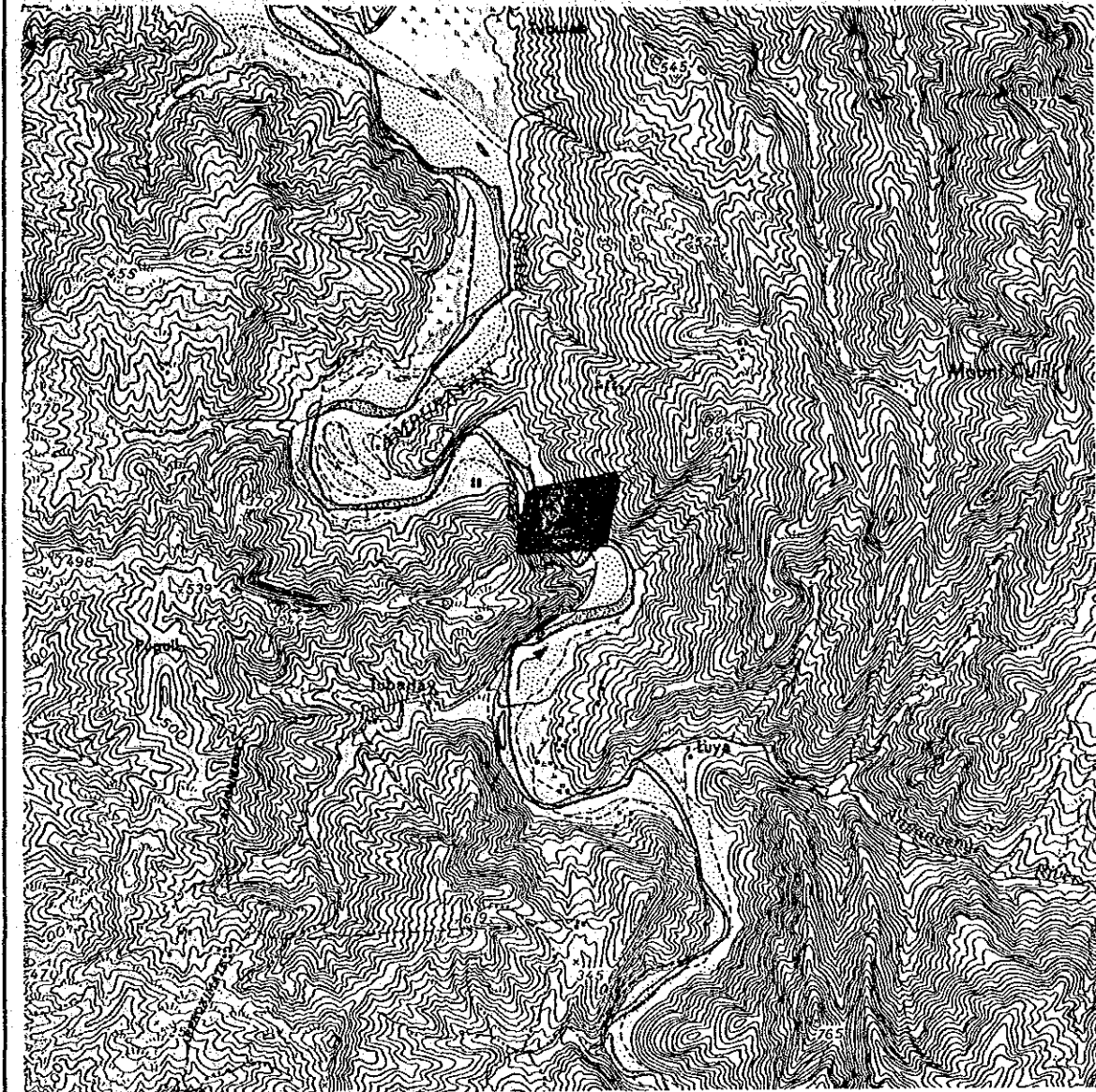


Scheme Name : BAGULIN
 ID No. : 1-003-00-01-0-1
 Type of Development : RESERVOIR
 Ref. Map No. : 3069-1

Catchment Area(km²) : 297.0
 Dam Height(m) : 197.0
 Plant Max. Discharge(m³/s) : 135.9
 Installed Capacity(MW) : 183.8
 Annual Energy Output(GWh) : 342.9

NATIONAL POWER CORPORATION
 STUDY ON HYDROPOWER POTENTIALS
 IN LUZON ISLAND
 JAPAN INTERNATIONAL COOPERATION AGENCY

General Development Plan



Scheme Name : LUYA
 ID No. : 1-010-00-01-0-1
 Type of Development : RESERVOIR
 Ref. Map No. : 3170-III

Catchment Area(km²) : 599.0
 Dam Height(m) : 231.0
 Plant Max. Discharge(m³/s) : 262.8
 Installed Capacity(MW) : 411.7
 Annual Energy Output(GWh) : 768.5

NATIONAL POWER CORPORATION
 STUDY ON HYDROPOWER POTENTIALS
 IN LUZON ISLAND
 JAPAN INTERNATIONAL COOPERATION AGENCY

General Development Plan

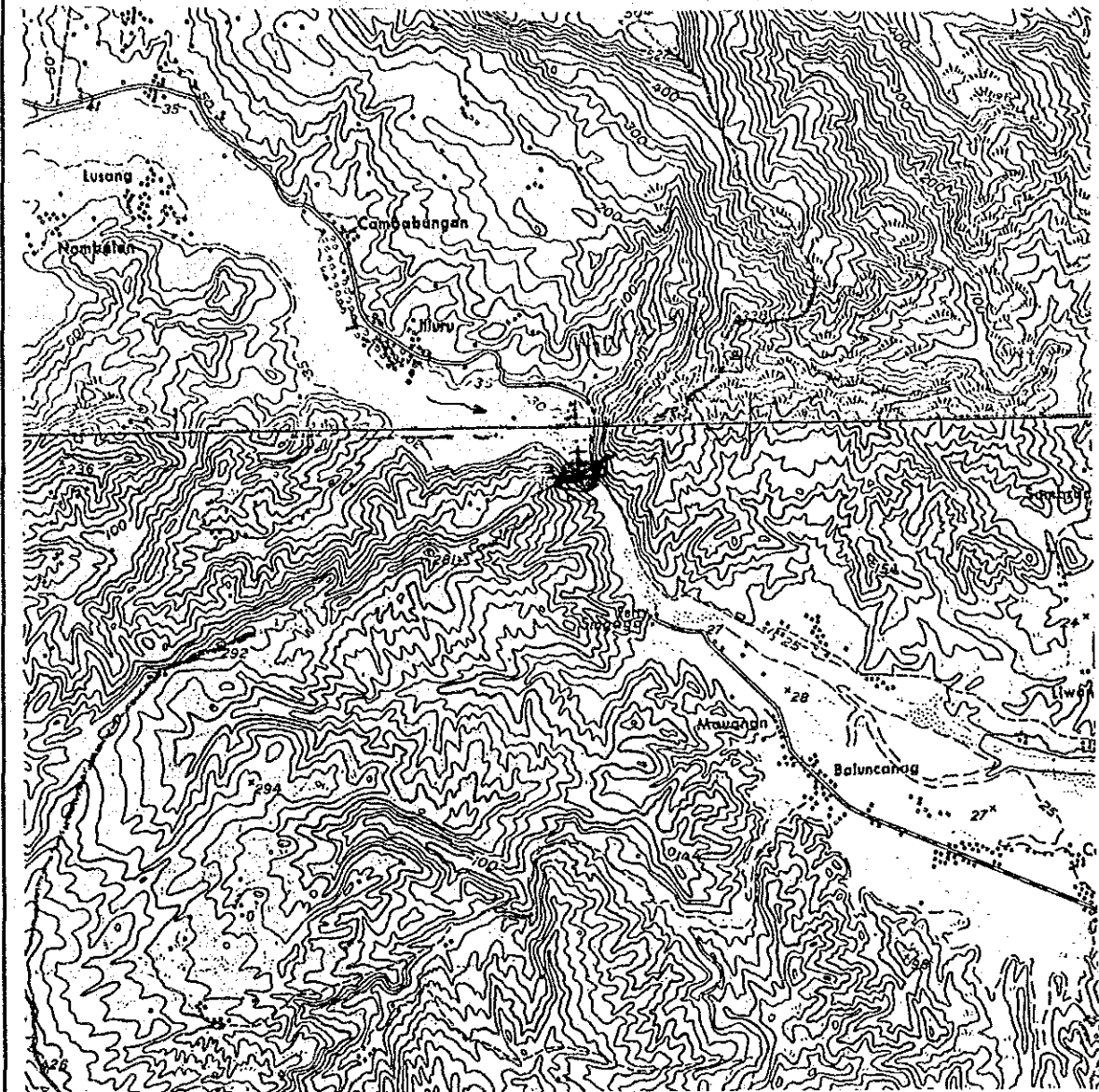


Scheme Name : ZIMIGUI
 ID No. : 2-005-00-02-0-1
 Type of Development : RESERVOIR
 Ref. Map No. : 3275-11

Catchment Area(km2) : 342.7
 Dam Height(m) : 74.0
 Plant Max. Discharge(m3/s) : 139.5
 Installed Capacity(MW) : 64.7
 Annual Energy Output(GWh) : 177.5

NATIONAL POWER CORPORATION
 STUDY ON HYDROPOWER POTENTIALS
 IN LUZON ISLAND
 JAPAN INTERNATIONAL COOPERATION AGENCY

General Development Plan

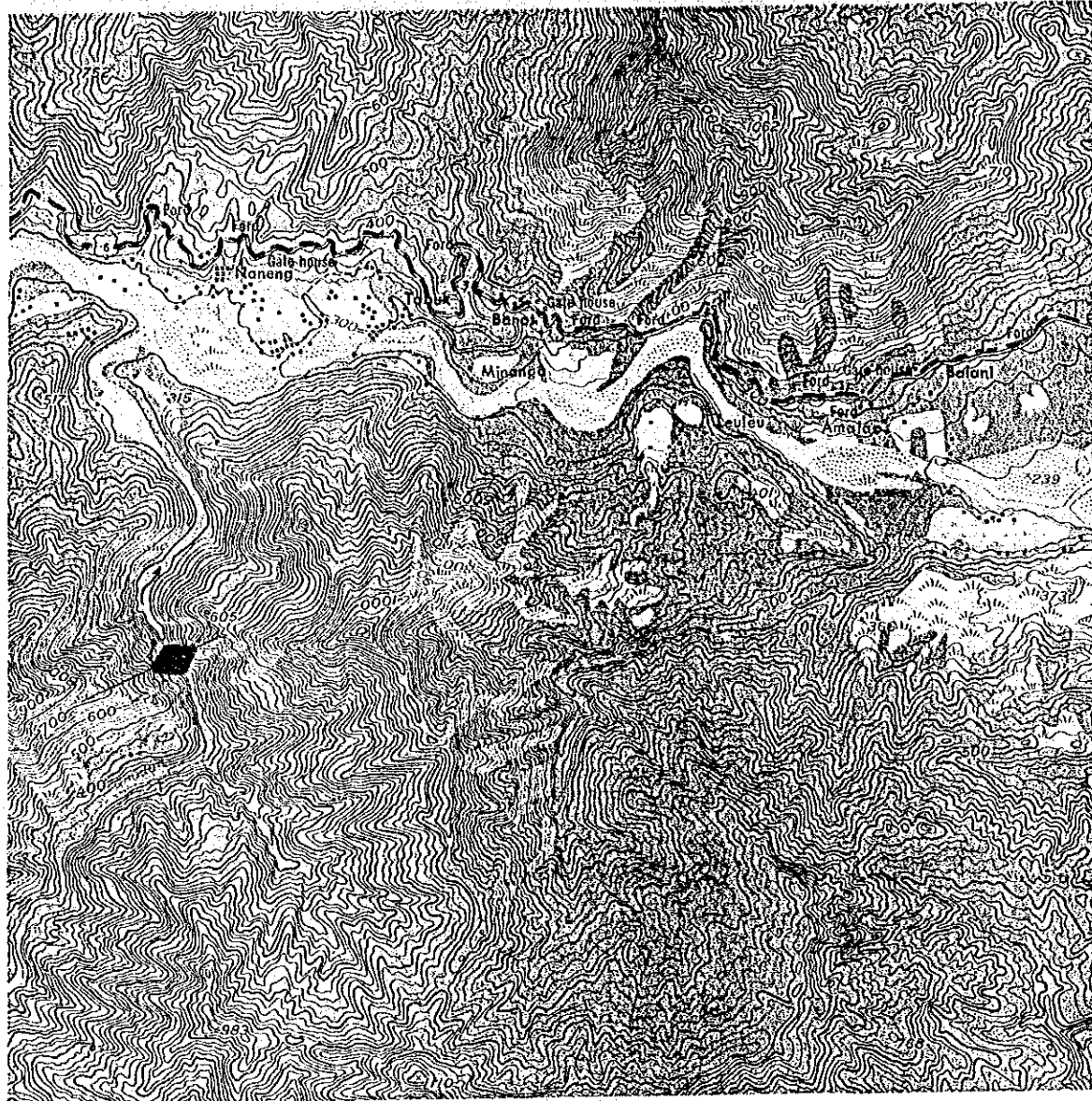


Scheme Name : MATALAG
 ID No. : 2-008-04-01-0-1
 Type of Development : RESERVOIR
 Ref. Map No. : 3273-11

Catchment Area(km2) : 666.4
 Dam Height(m) : 59.3
 Plant Max. Discharge(m3/s) : 64.2
 Installed Capacity(MW) : 23.4
 Annual Energy Output(GWh) : 80.7

NATIONAL POWER CORPORATION
 STUDY ON HYDROPOWER POTENTIALS
 IN LUZON ISLAND
 JAPAN INTERNATIONAL COOPERATION AGENCY

General Development Plan

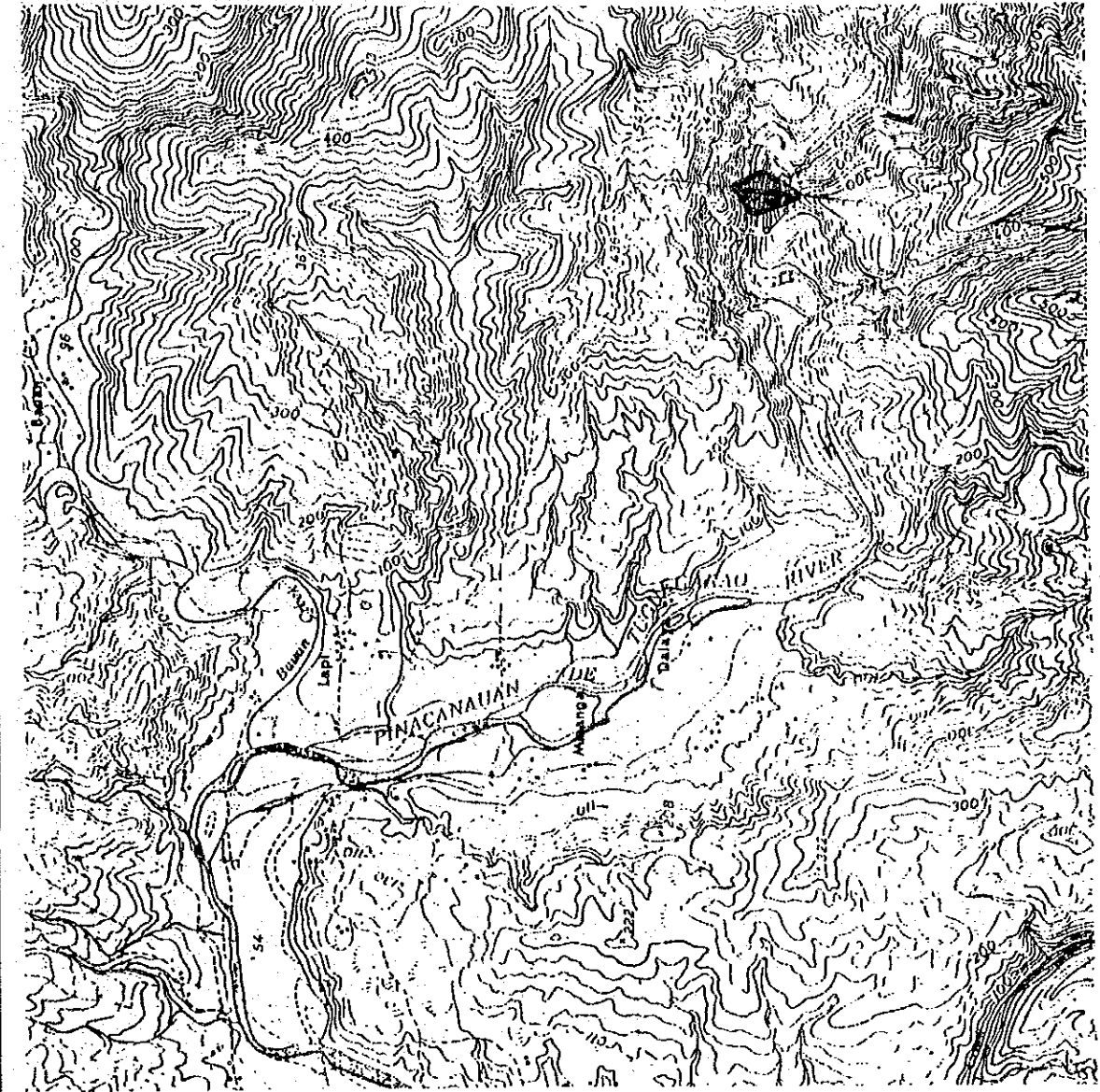


Scheme Name : NANENG
 ID No. : 2-008-06-19-0-1
 Type of Development : RESERVOIR
 Ref. Map No. : 3272-II

Catchment Area(km²) : 365.0
 Dam Height(m) : 178.0
 Plant Max. Discharge(m³/s) : 67.0
 Installed Capacity(MW) : 82.2
 Annual Energy Output(GWh) : 209.6

NATIONAL POWER CORPORATION
STUDY ON HYDROPOWER POTENTIALS IN LUZON ISLAND
JAPAN INTERNATIONAL COOPERATION AGENCY

General Development Plan

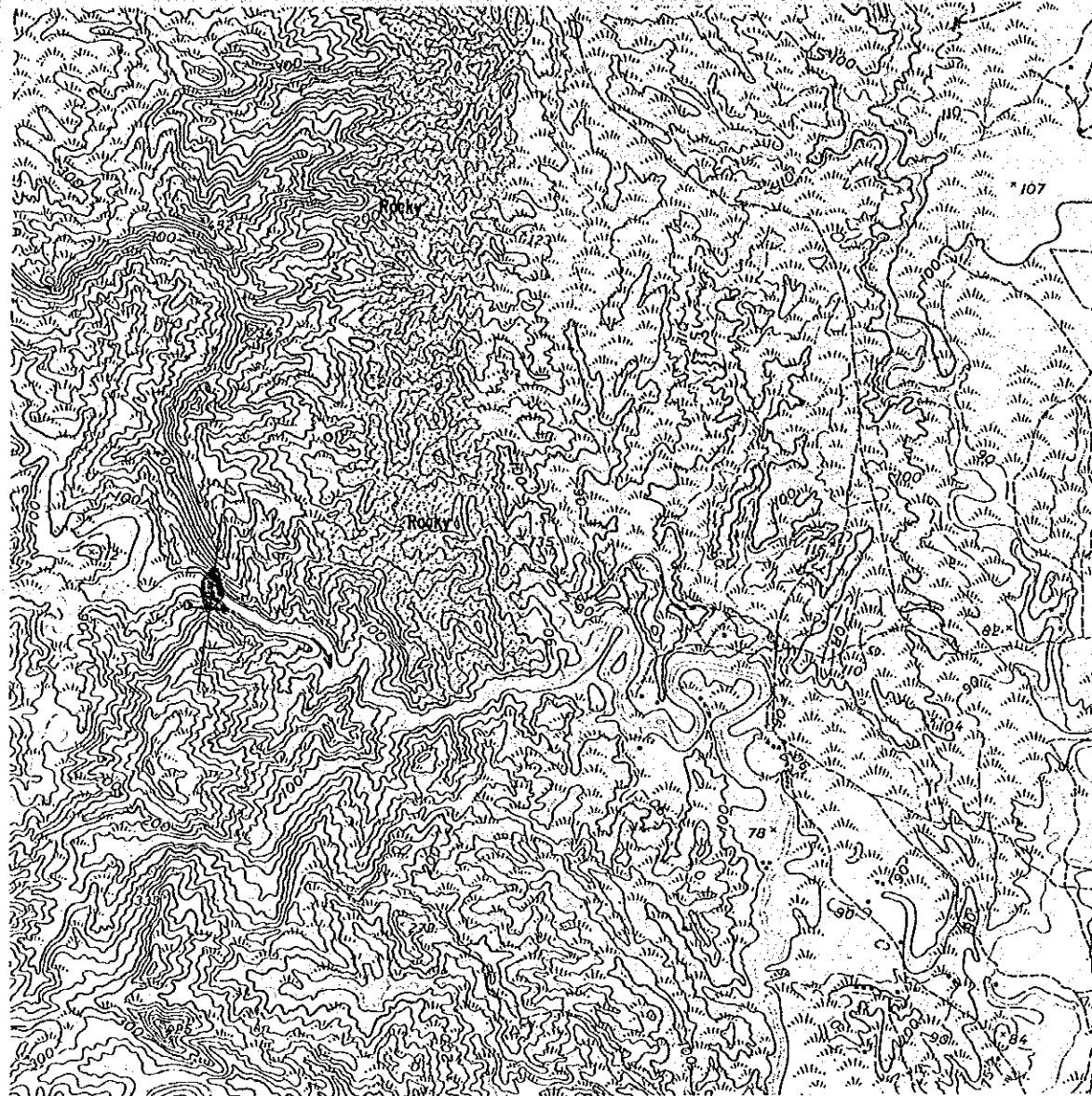


Scheme Name : DALAYA
 ID No. : 2-008-08-26-0-1
 Type of Development : RESERVOIR
 Ref. Map No. : 3373-II

Catchment Area(km²) : 216.7
 Dam Height(m) : 158.0
 Plant Max. Discharge(m³/s) : 95.7
 Installed Capacity(MW) : 100.9
 Annual Energy Output(GWh) : 223.7

NATIONAL POWER CORPORATION
STUDY ON HYDROPOWER POTENTIALS IN LUZON ISLAND
JAPAN INTERNATIONAL COOPERATION AGENCY

General Development Plan

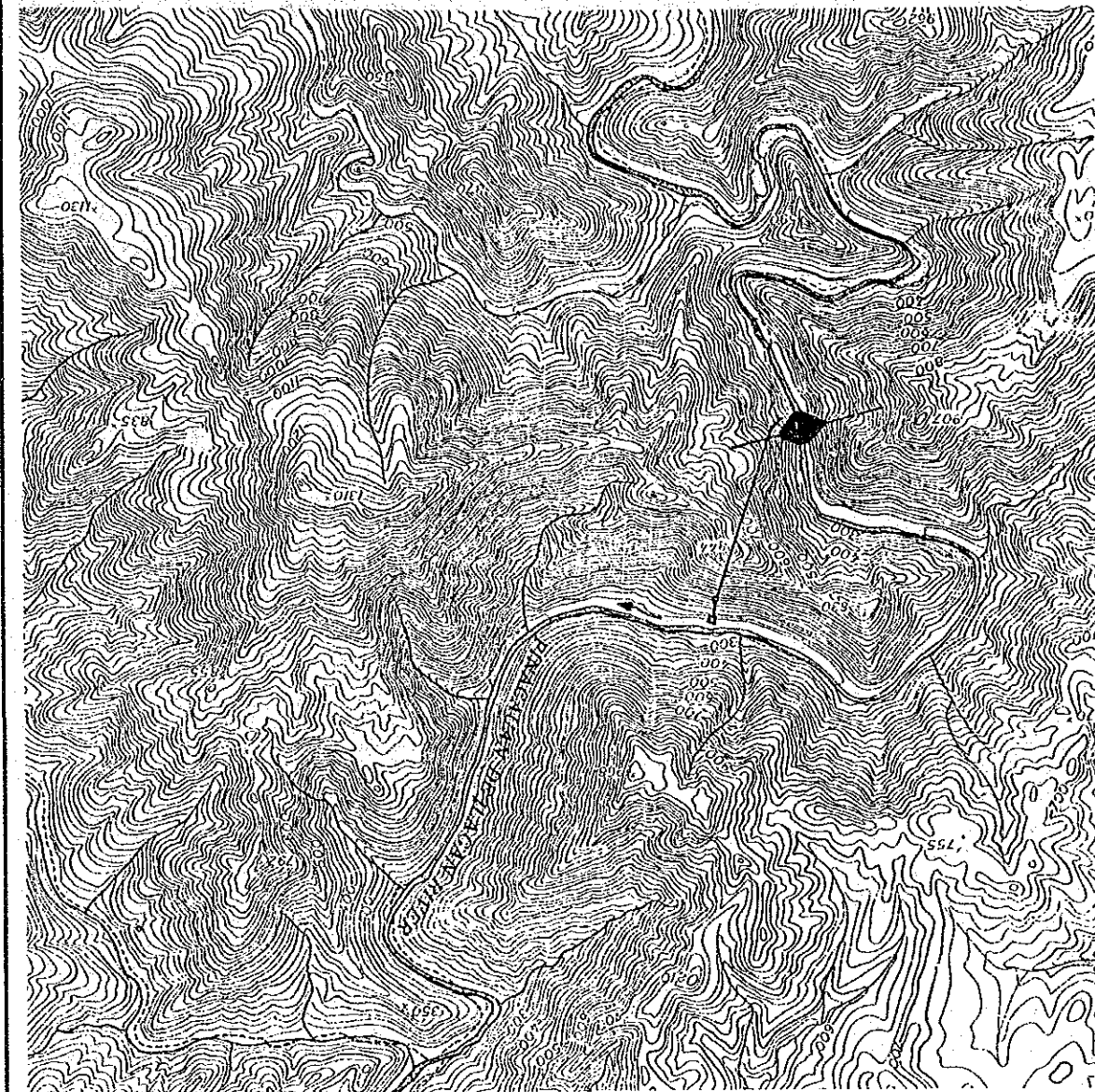


Scheme Name : TABUK
 ID No. : 2-008-13-32-0-1
 Type of Development : RESERVOIR
 Ref. Map No. : 3371-IV

Catchment Area(km²) : 439.0
 Dam Height(m) : 79.0
 Plant Max. Discharge(m³/s) : 71.8
 Installed Capacity(MW) : 36.6
 Annual Energy Output(GWh) : 81.1

NATIONAL POWER CORPORATION
 STUDY ON HYDROPOWER POTENTIALS
 IN LUZON ISLAND
 JAPAN INTERNATIONAL COOPERATION AGENCY

General Development Plan

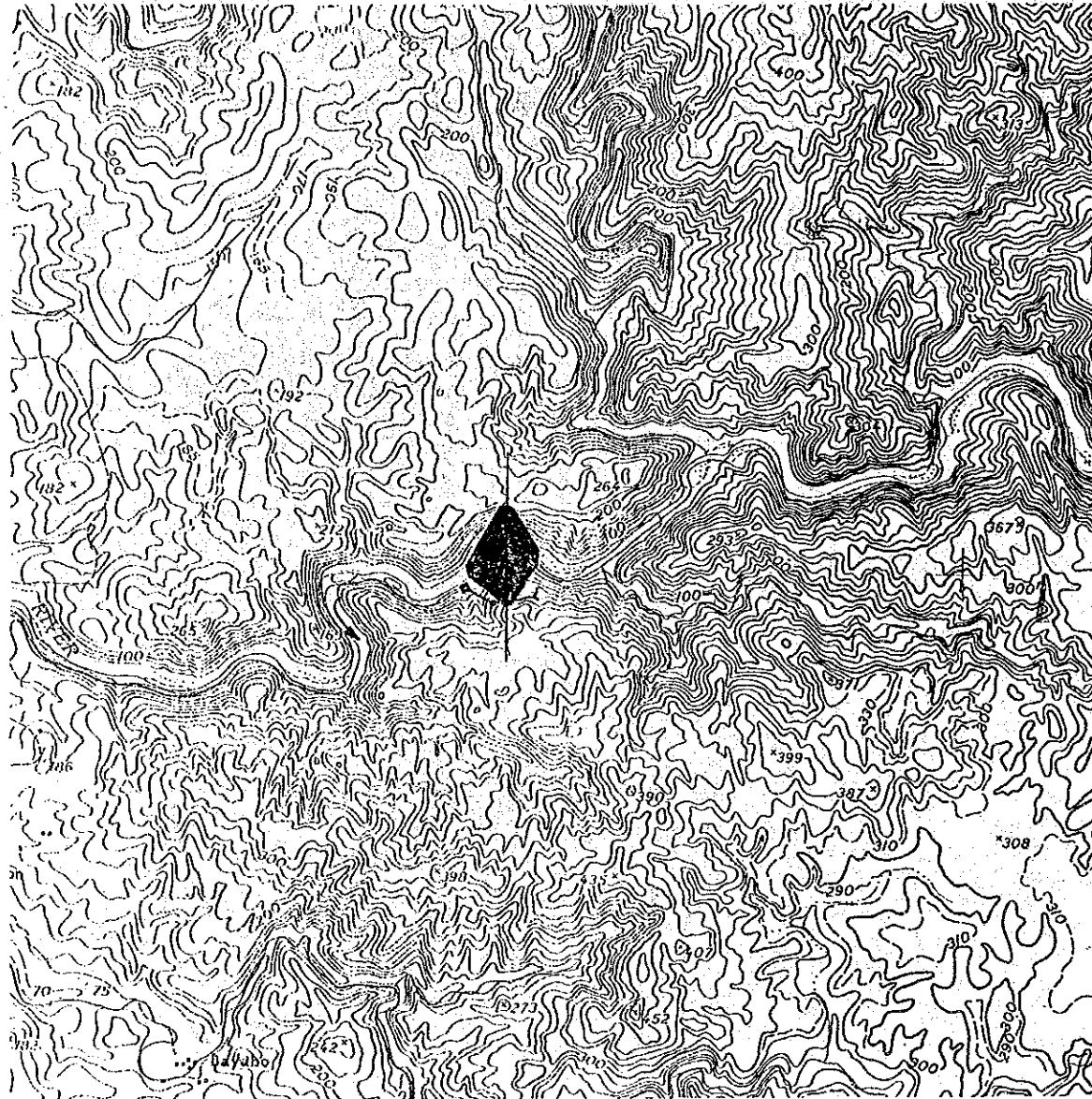


Scheme Name : ILAGAN-1
 ID No. : 2-008-14-35-0-1
 Type of Development : RESERVOIR
 Ref. Map No. : 3469-IV

Catchment Area(km²) : 413.7
 Dam Height(m) : 186.0
 Plant Max. Discharge(m³/s) : 135.0
 Installed Capacity(MW) : 208.4
 Annual Energy Output(GWh) : 401.2

NATIONAL POWER CORPORATION
 STUDY ON HYDROPOWER POTENTIALS
 IN LUZON ISLAND
 JAPAN INTERNATIONAL COOPERATION AGENCY

General Development Plan

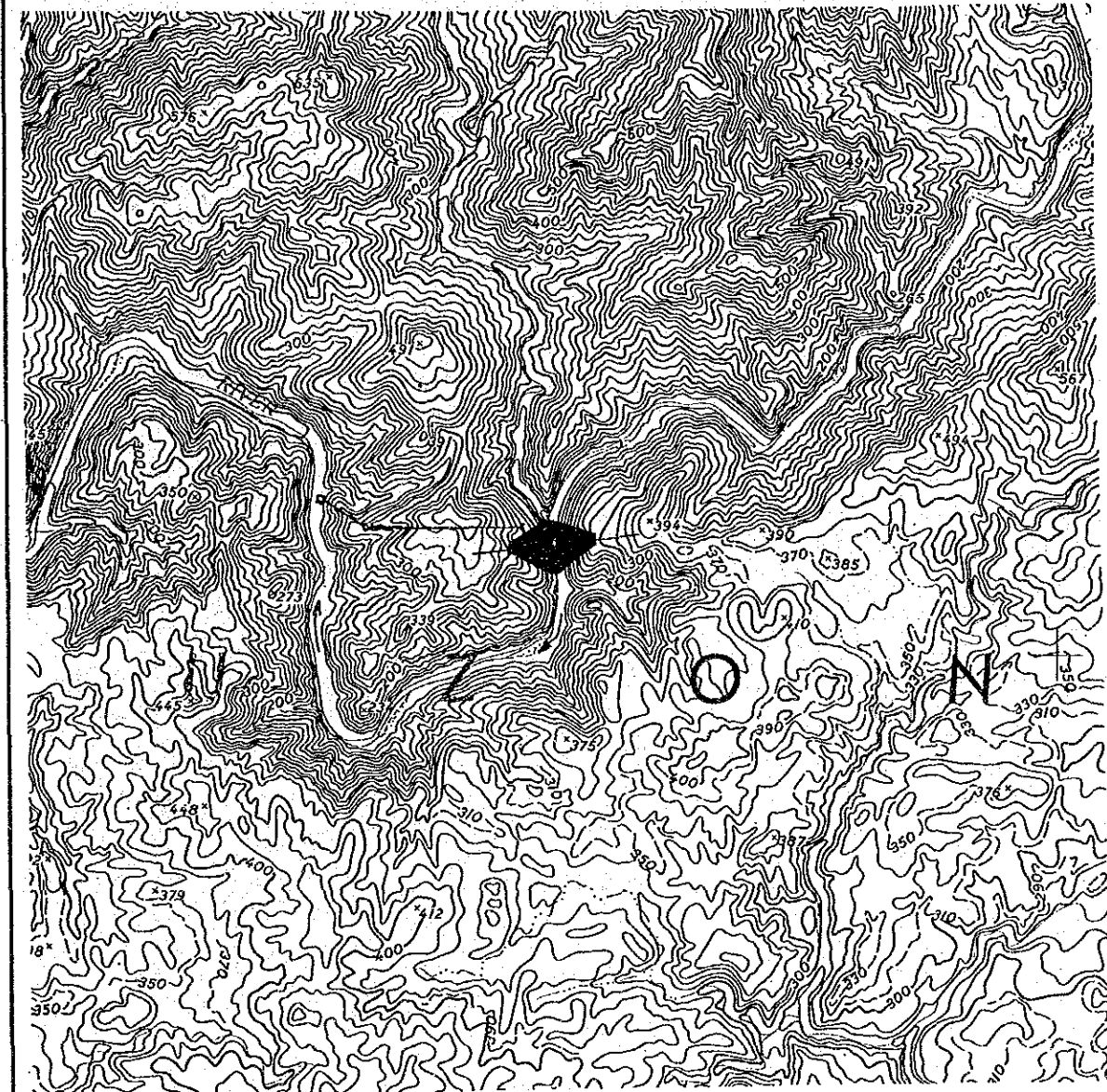


Scheme Name : BALLASANG
 ID No. : 2-008-15-38-0-1
 Type of Development : RESERVOIR
 Ref. Map No. : 3471-III

Catchment Area(km²) : 462.0
 Dam Height(m) : 141.0
 Plant Max. Discharge(m³/s) : 149.1
 Installed Capacity(MW) : 139.2
 Annual Energy Output(GWh) : 341.6

NATIONAL POWER CORPORATION
STUDY ON HYDROPOWER POTENTIALS IN LUZON ISLAND
JAPAN INTERNATIONAL COOPERATION AGENCY

General Development Plan



Scheme Name : ABUAN-1
 ID No. : 2-008-15-39-0-1
 Type of Development : RESERVOIR
 Ref. Map No. : 3471-III

Catchment Area(km²) : 355.3
 Dam Height(m) : 173.0
 Plant Max. Discharge(m³/s) : 146.6
 Installed Capacity(MW) : 185.6
 Annual Energy Output(GWh) : 373.3

NATIONAL POWER CORPORATION
STUDY ON HYDROPOWER POTENTIALS IN LUZON ISLAND
JAPAN INTERNATIONAL COOPERATION AGENCY